



# Wisconsin Department of Transportation

February 28, 2017

**Division of Transportation Systems Development**

Bureau of Project Development  
 4802 Sheboygan Avenue, Rm 601  
 P O Box 7916  
 Madison, WI 53707-7916

Telephone: (608) 266-1631  
 Facsimile (FAX): (608) 266-8459

**NOTICE TO ALL CONTRACTORS:**

**Proposal #13: 1060-39-90**  
**Zoo IC, 2017 TMP Projects**  
**Various Locations, Mke &**  
**Wauk Co**  
**Var Hwy**  
**Milwaukee & Waukesha County**

**1360-09-71, WISC 2017 102**  
**IH 41**  
**Intersection with Capitol Drive**  
**USH 45**  
**Milwaukee County**

**Letting of March 14, 2017**

This is Addendum No. 01, which provides for the following:

**Special Provisions:**

Revised Special Provisions	
Article No.	Description
3	Prosecution and Progress

Added Special Provisions	
Article No.	Description
114	Exposing Existing Utility Paved Area, Item SPV.0060.0010.
115	Exposing Existing Utility Unpaved Area, Item SPV.0060.0011.
116	Abandon Water Service, Item SPV.0060.5100; Abandon Sanitary Sewer Service, Item SPV.0060.5110.

**Schedule of Items:**

Revised Bid Item Quantities-ID1060-39-90					
Bid Item	Item Description	Unit	Old Quantity	Revised Quantity	Proposal Total
204.0100	Removing Pavement	SY	4,736	20	4,756
204.0150	Removing Curb & Gutter	LF	1,120	-3	1,117
204.0155	Removing Concrete Sidewalk	SY	998	5	1,003
305.0120	Base Aggregate Dense 1 ¼ Inch	Ton	2,123	8	2,131
312.0115	Select Crushed Material	CY	71	8	79
415.1080	Concrete Pavement HES 8-Inch	SY	114	16	130
416.0610	Drilled Tie Bars	EA	900	4	904
416.0620	Drilled Dowel Bars	EA	273	22	295

601.0331	Concrete Curb & Gutter, 31-Inch	LF	1,040	12	1,052
602.0410	Concrete Sidewalk 5-Inch	SF	9,177	40	9,217
653.0140	Pull Boxes Steel 24X42-Inch	EA	68	1	69
690.0250	Sawing Concrete	LF	2,935	50	2,985

Added Bid Item Quantities- ID1060-39-90					
Bid Item	Item Description	Unit	Old Quantity	Revised Quantity	Proposal Total
SPV.0060.0010	Exposing Existing Utility Paved Area	EA	0	5	5
SPV.0060.0011	Exposing Existing Utility Unpaved Area	EA	0	5	5
SPV.0060.5100	Abandon Water Service	EA	0	1	1
SPV.0060.5110	Abandon Sanitary Service	EA	0	1	1

**Plan Sheets:**

Revised Plan Sheets- ID1060-39-90	
Plan Sheet	Plan Sheet Title (brief description of changes to sheet)
34	Removal Plans (added removals for Water and Sanitary Service disconnects)
40	Plan Details (added details for Water and Sanitary Service disconnects)
102	Traffic Signal Removal Plan (added Luminaire Pole removal)
103	Traffic Signal Plan (added a lighting Pull Box and notes)
167	W. Bluemound Road/Glenview Avenue Construction (added location for Water and Sanitary Service disconnects)
185	Miscellaneous Quantities (added quantities for Water and Sanitary Service disconnects)
187	Miscellaneous Quantities (added quantities for Water and Sanitary Service disconnects)
188	Miscellaneous Quantities (added quantities for Water and Sanitary Service disconnects)
189	Miscellaneous Quantities (added quantities for Water and Sanitary Service disconnects)
204	Miscellaneous Quantities (added quantity for Lighting Pull Box at 124 <sup>th</sup> & North)

The responsibility for notifying potential subcontractors and suppliers of these changes remains with the prime contractor.

Sincerely,

*Mike Coleman*

Proposal Development Specialist  
Proposal Management Section

**ADDENDUM NO. 01**  
**1060-39-90 & 1360-09-71**  
**February 28, 2017**

**Special Provisions**

**3. Prosecution and Progress.**

*Add the following paragraph after paragraph one under section titled **Closure Restrictions**:*

Do not restrict traffic on southbound STH 181 (84<sup>th</sup> Street) to abandon the water and sewer services for more than 14 continuous calendar days, or as approved by the engineer.

*Add the following subsection titled **Interim Completion of Work 08/31/2017** after subsection titled **Interim Completion of Work 06/30/2017** under Section titled **PROJECT 1060-39-90**:*

**Interim Completion of Work 08/31/2017**

Complete construction operations on US 18 (Bluemound Road) and STH 181 (84<sup>th</sup> Street) to complete all permanent sidewalk to open to pedestrian traffic prior to 12:01 AM September 1, 2017. Do not open the permanent sidewalk until completing the following work: concrete paving, storm sewer, curb and gutter, curb ramps, sidewalk, pavement marking and crosswalk push buttons and signals.

If the contractor fails to complete the work necessary on US 18 (Bluemound Road) and STH 181 (84<sup>th</sup> Street) to complete all permanent sidewalk to open to pedestrian traffic prior to 12:01 AM September 1, 2017, the department will assess the contractor \$2,000 in interim liquidated damages for each calendar day that the permanent sidewalk remains closed after 12:01 AM, September 1, 2017. An entire calendar day will be charged for any period of time within a calendar day that the road remains closed beyond 12:01 AM.

If contract time expires prior to completing all work specified in the contract, additional liquidated damages will be affixed according to standard spec 108.11.

**114. Exposing Existing Utility Paved Area, Item SPV.0060.0010.**

**A Description**

This work includes exposing existing utilities which are in direct conflict with proposed facilities at the intersection of the southbound IH41 exit ramp and CTH EE(Hampton Avenue). The location of existing utilities not in direct conflict with proposed facilities is not included and shall be addressed using standard utility location procedures. The work includes exposing existing utilities under paved surfaces or within 6 feet of a paved surface, and providing both lateral and depth measurements for use in determining potential utility conflict solutions.

**B Materials**

**B.1 Backfill Slurry**

Use aggregates that conform to standard spec 501 for grade A concrete. Weigh aggregates at a batch plant suitable for batching concrete masonry. Mix and deliver to the project site using a truck mixer. Add enough water to enable the mixture to flow readily.

**C Construction**

**C.1 General**

Obtain engineer approval prior to performing the work, submitting all requests for exposing existing utilities in writing. Coordinate utility exposures with the engineer and notify the utility owner or their agents of this work 2 working days in advance so that they may be present when the work commences.

## **C.2 Excavation**

Remove all paved surfaces at locations where the existing utility is being exposed. Saw or remove concrete and asphaltic pavements to the nearest joint. Remove all pavement surfaces in such a way that all existing edges consist of a true line having a perpendicular edge with no unraveling. Maintain drainage at all times in accordance to standard spec 205.3.3. Take precautions, including temporary shoring, in order to prevent any undermining of the existing roadway. Perform work in accordance to all applicable laws, ordinances, rules, regulations, and OSHA standards.

Expose all utility locations within a given location to a minimum depth of 18-inches below the bottom of each utility. Excavate in a manner that protects the integrity of the utilities and prevents any damage to wrappings or protective coatings such as by any mechanical method or hand digging. Notify the utility owner promptly if damage or interruption of service occurs. Repair all damage caused to such utilities resulting from negligence or carelessness at own expense.

Take all lateral and depth measurements in US feet and tenths thereof. Identify horizontal locations of each exposed utility with a coordinate northing and easting referenced to the Wisconsin County Coordinate System (WCCS), Milwaukee County, NAD 83 (GRS-1980) (2007). Provide vertical elevations for each exposed utility and reference to NAVD 88 (2007).

The utility location shall remain exposed and available for visual inspection until the completion of all work in a given location. If the utility shall remain exposed overnight or for prolonged periods of time, protect the location with traffic-rated steel plating, safety barriers, and all necessary traffic control devices that may be required under applicable standards or as directed by the engineer.

## **C.3 Backfilling**

Upon completion of the utility exposure, restore the location in kind to its original condition. When exposed utility locations fall within local streets or city right-of-way, use slurry backfill to fill the entire location to the subgrade elevation.

Restore concrete pavement and concrete base course to the depth found in the existing roadway. Replace all locations that fall within live lanes of any roadway or pedestrian traffic with a high early-strength concrete pavement mix design having a depth equivalent to the existing pavement structure unless directed otherwise by the engineer. Locations that are closed to through traffic may use an approved concrete pavement mix conforming to standard spec 501. If directed by the engineer, tie concrete pavement and/or dowel it to the existing pavement according to the standard detail drawing for concrete pavement. All locations requiring asphaltic pavement shall consist of HMA Pavement Type E-3 unless otherwise directed by the engineer. Place the HMA pavement in lifts to a depth as directed by the engineer. Apply tack coat to composite pavement structures and between lifts.

Place base aggregate dense between the subgrade surface and the bottom of the pavement.

## **C.4 Documentation**

Provide documentation to the engineer and include the coordinates, elevations, and sketches of the utility locations tied to known features in the plans. Reference each utility to a proposed alignment with a station and offset. Where near a ramp, reference the ramp alignment. Document the size and/or diameter, composition, and a description of each utility and the location of the elevation with respect to each utility noted. Supply digital photographs of the uncovered utility to the engineer in .jpeg format for future reference.

## **D Measurement**

The department will measure Exposing Existing Utility, Paved Area as a unit for each location. A location may have multiple utilities located within the same exposure area. An exposure area will include all utilities within 6 lateral feet of each other and payment will only be made for one unit regardless of the number of utilities exposed. The department will pay for the item as a single unit of

work for each 6-foot increment of exposure measured vertically from the existing ground elevation located above the existing utility to a point 18 inches below the exposed utility.

**E Payment**

The department will pay for measured quantities at the contract unit price under the following bid item:

ITEM NUMBER	DESCRIPTION	UNIT
SPV.0060.0010	Exposing Existing Utility Paved Area	Each

Payment is full compensation for all excavation; for disposing of all materials; for locating all utilities within each respective location; for providing documentation and photographs of utility locations to the engineer; for all surveying associated with exposing existing utilities; for all maintenance of the location during construction; for all traffic control, safety barriers, and steel plating required; for furnishing and placing backfill slurry; for temporary shoring, and all finishing items including, but not limited to, base aggregate dense, concrete pavement, HMA pavement, curb and gutter, and sidewalk located above the subgrade elevation.

**115. Exposing Existing Utility Unpaved Area, Item SPV.0060.0011.**

**A Description**

This work includes exposing existing utilities which are in direct conflict with proposed facilities at the intersection of the southbound IH41 exit ramp and CTH EE(Hampton Avenue). The location of existing utilities not in direct conflict with proposed facilities is not included and shall be addressed using standard utility location procedures. The work includes exposing existing utilities under unpaved surfaces more than 6 feet outside a paved surface, and providing both lateral and depth measurements for use in determining potential utility conflict solutions.

**B Materials**

**B.1 Granular Backfill**

Furnish granular backfill that conforms to standard spec 209.

**C Construction**

**C.1 General**

Obtain engineer approval prior to performing the work, submitting all requests for exposing existing utilities in writing. Coordinate utility exposures with the engineer and notify the utility owner or their agents of this work 2 working days in advance so that they may be present when the work commences.

**C.2 Excavation**

Remove all unpaved surfaces at locations where the existing utility is being exposed. Maintain drainage at all times in accordance to standard spec 205.3.3. Take precautions, including temporary shoring, in order to prevent any undermining of the existing roadway. Perform work in accordance to all applicable laws, ordinances, rules, regulations, and OSHA standards.

Expose all utility locations within a given location to a minimum depth of 18-inches below the bottom of each utility. Excavate in a manner that protects the integrity of the utilities and prevents any damage to wrappings or protective coatings such as by any mechanical method or hand digging. Notify the utility owner promptly if damage or interruption of service occurs. Repair all damage caused to such utilities resulting from negligence or carelessness at own expense.

Take all lateral and depth measurements in US feet and tenths thereof. Identify horizontal locations of each exposed utility with a coordinate northing and easting referenced to the Wisconsin County Coordinate System (WCCS), Milwaukee County, NAD 83 (GRS-1980) (2007). Provide vertical elevations for each exposed utility and reference to NAVD 88 (2007).

The utility location shall remain exposed and available for visual inspection until the completion of all work in a given location. If the utility shall remain exposed overnight or for prolonged periods of time, protect the location with traffic-rated steel plating, safety barriers, and all necessary traffic control devices that may be required under applicable standards or as directed by the engineer.

**C.3 Backfilling**

Upon completion of the utility exposure, restore the location in kind to its original condition. Use granular backfill, conforming to standard spec 209, to backfill the exposed utility locations to the subgrade elevation except for areas located within local streets. All granular material placed to an elevation of 18-inches above each exposed utility shall consist substantially of sand with all particles retained on a one-inch (25.0 mm) sieve removed. The remaining granular material shall conform to the specifications for backfill for trench excavation. In grassy areas, place 6-inches of topsoil, seed and mulch, and fertilizer. Alternate restoration methods may be used upon written approval from the engineer.

**C.4 Documentation**

Provide documentation to the engineer and include the coordinates, elevations, and sketches of the utility locations tied to known features in the plans. Reference each utility to a proposed alignment with a station and offset. Where near a ramp, reference the ramp alignment. Document the size and/or diameter, composition, and a description of each utility and the location of the elevation with respect to each utility noted. Supply digital photographs of the uncovered utility to the engineer in .jpeg format for future reference.

**D Measurement**

The department will measure Exposing Existing Utility, Unpaved Area as a unit for each location. A location may have multiple utilities located within the same exposure area. An exposure area will include all utilities within 6 lateral feet of each other, and payment will only be made for one unit regardless of the number of utilities exposed. The department will pay for the item as a single unit of work for each 6-foot increment of exposure measured vertically from the existing ground elevation located above the existing utility to a point 18 inches below the exposed utility.

**E Payment**

The department will pay for measured quantities at the contract unit price under the following bid item:

ITEM NUMBER	DESCRIPTION	UNIT
SPV.0060.0011	Exposing Existing Utility Unpaved Area	Each

Payment is full compensation for all excavation; for disposing of all materials; for locating all utilities within each respective location; for providing documentation and photographs of utility locations to the engineer; for all surveying associated with exposing existing utilities; for all maintenance of the location during construction; for all traffic control, safety barriers, and steel plating required; and for temporary shoring.

**116. Abandon Water Service, Item SPV.0060.5100; Abandon Sanitary Sewer Service, Item SPV.0060.5110.**

**A Description**

This special provision describes abandoning existing sanitary and water laterals, as shown on the plans, conforming to the requirements in the separate special provision entitled "General Requirements for Sanitary Sewer and Water", and as hereinafter provided.

Perform the work in accordance with the Standard Specifications for Sewer and Water Construction in Wisconsin, latest Edition.

Notify the City of Wauwatosa of the commencement of construction at least three district business days in advance. Notify, in writing, all businesses and property owners/occupants within the project

limits to inform them of the project and to inform them of any temporary sewer service disconnections. Provide and maintain all necessary bypass pumping for utility abandonment.

**B Materials**

**B.1 General**

All materials and work required to abandon the services will conform to the Standard Specifications for Sewer and Water.

**C Construction**

Abandoning existing sanitary laterals by plugging the end of the existing lateral using a method approved by the city sewer utility. Install Mechanical watertight plug 4" to 6" inside cast iron, clay or concrete laterals. Cap PVC laterals with PVC glue fittings.

Prior to abandonment of water services the Municipal Utility will remove the water meter and shut-off the service at the curb box

Abandon water services to meet the requirements of standard specifications for sewer and water section 5.5.16. Watermain branches to be abandoned in accordance with 4.14.6 of the standard specifications for sewer and water. The open end of copper laterals shall be closed by peening the end. The open end of service pipe and branches shall be cut and plugged with an approved gasketed cap.

**D Measurement**

The department will measure Abandon Water Service and Abandon Sanitary Sewer Service as each individual unit, regardless of size or pipe material acceptably completed.

**E Payment**

The department will pay for measured quantities at the contract unit price under the following bid item:

ITEM NUMBER	DESCRIPTION	UNIT
SPV.0060.5100	Abandon Water Service	Each
SPV.0060.5110	Abandon Sanitary Sewer Service	Each

Payment is full compensation for furnishing and installing all materials including all labor, tools, equipment, and incidentals necessary for abandonment. For plugging sanitary sewer connections; for sealing water lateral connections; for backfilling including mechanical compaction; for restoration for disposal of all surplus or waste material; and for clean-up.

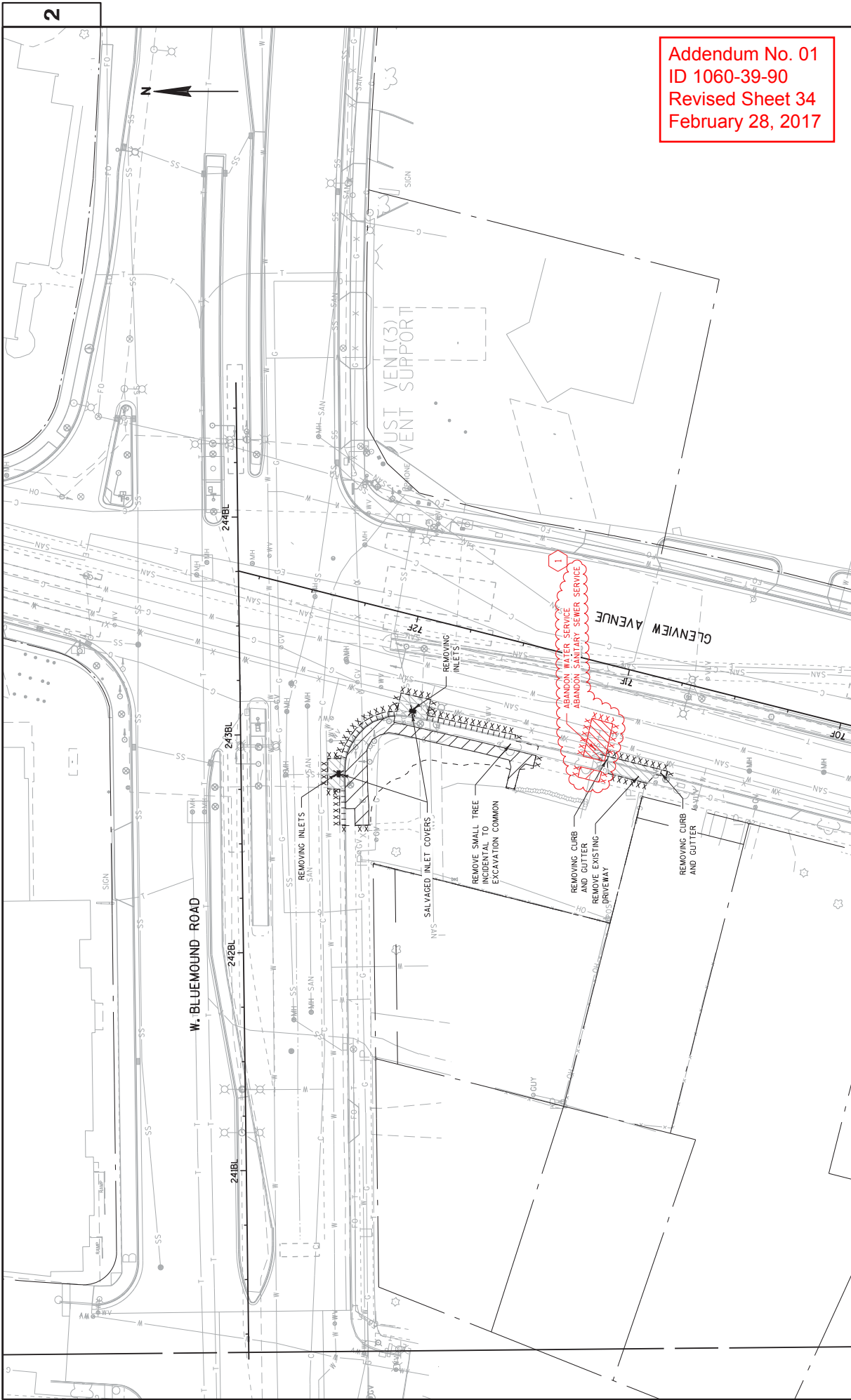
**Schedule of Items**

Attached, dated February 28, 2017, are the revised Schedule of Items Pages 1 – 23.

**Plan Sheets**

The following 8½ x 11-inch sheets are attached and made part of the plans for this proposal:  
Revised: 34, 40, 102, 103, 167, 185 - 189, and 204.

END OF ADDENDUM



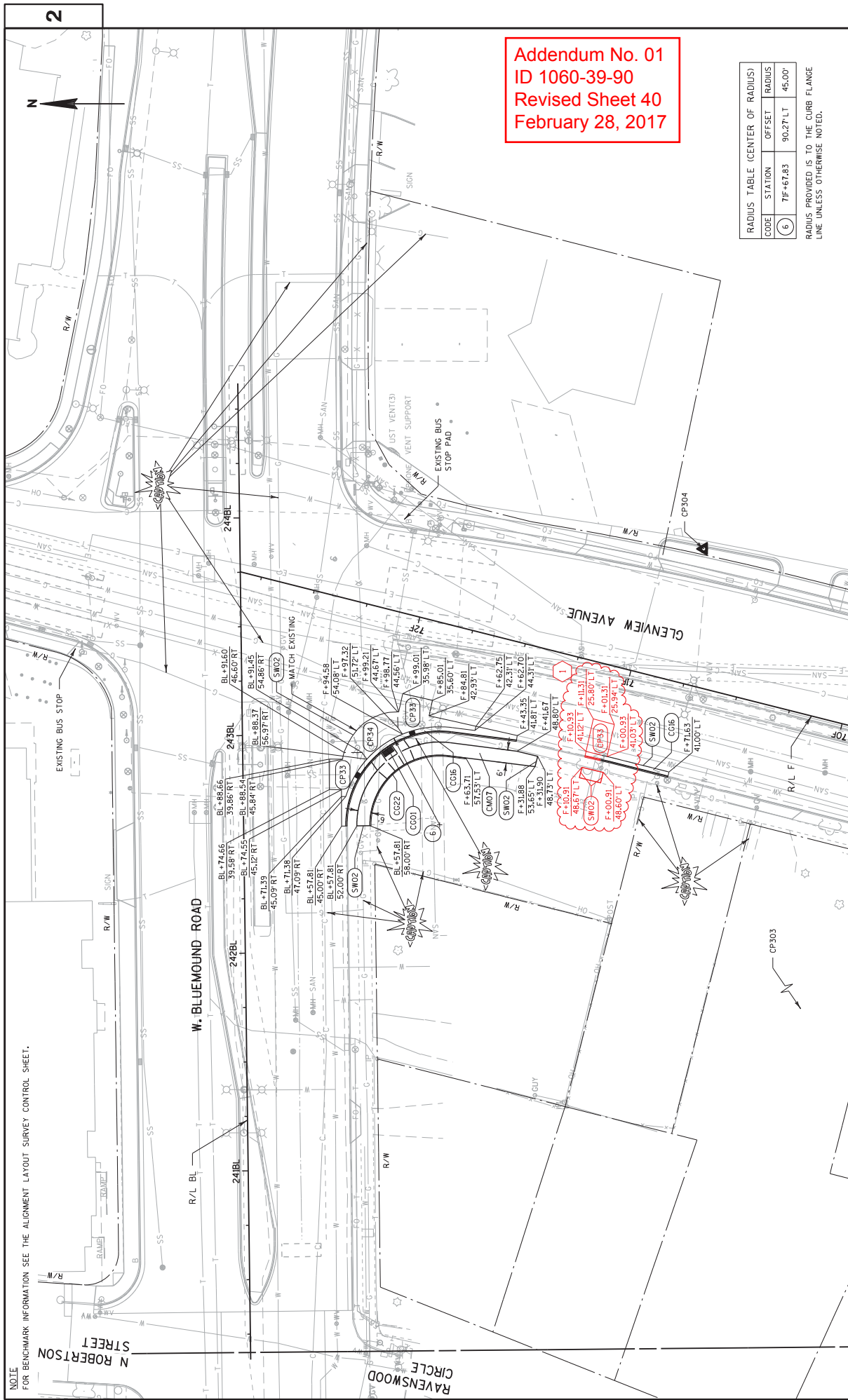
Addendum No. 01  
 ID 1060-39-90  
 Revised Sheet 34  
 February 28, 2017

2

2

PROJECT NO: 1060-39-90	COUNTY: MILWAUKEE/WAUKESHA	REMOVAL PLANS	SHEET 34	E
FILE NAME: Z:\W:\Cadd\VF\final\10603990_TMS\Roads\cadd\021105.dwg	HWY: VARIOUS LOCATIONS	PLOT BY: mescoj	PLOT NAME: 102105.rvt	WISDOT/CADDUS SHEET 42
		PLOT DATE: 21-FEB-2017 09:35	PLOT SCALE: 40:1	





Addendum No. 01  
 ID 1060-39-90  
 Revised Sheet 40  
 February 28, 2017

RADIUS TABLE (CENTER OF RADIUS)		
CODE	STATION	OFFSET RADIUS
6	7F+67.83	90.27'LT
		45.00'

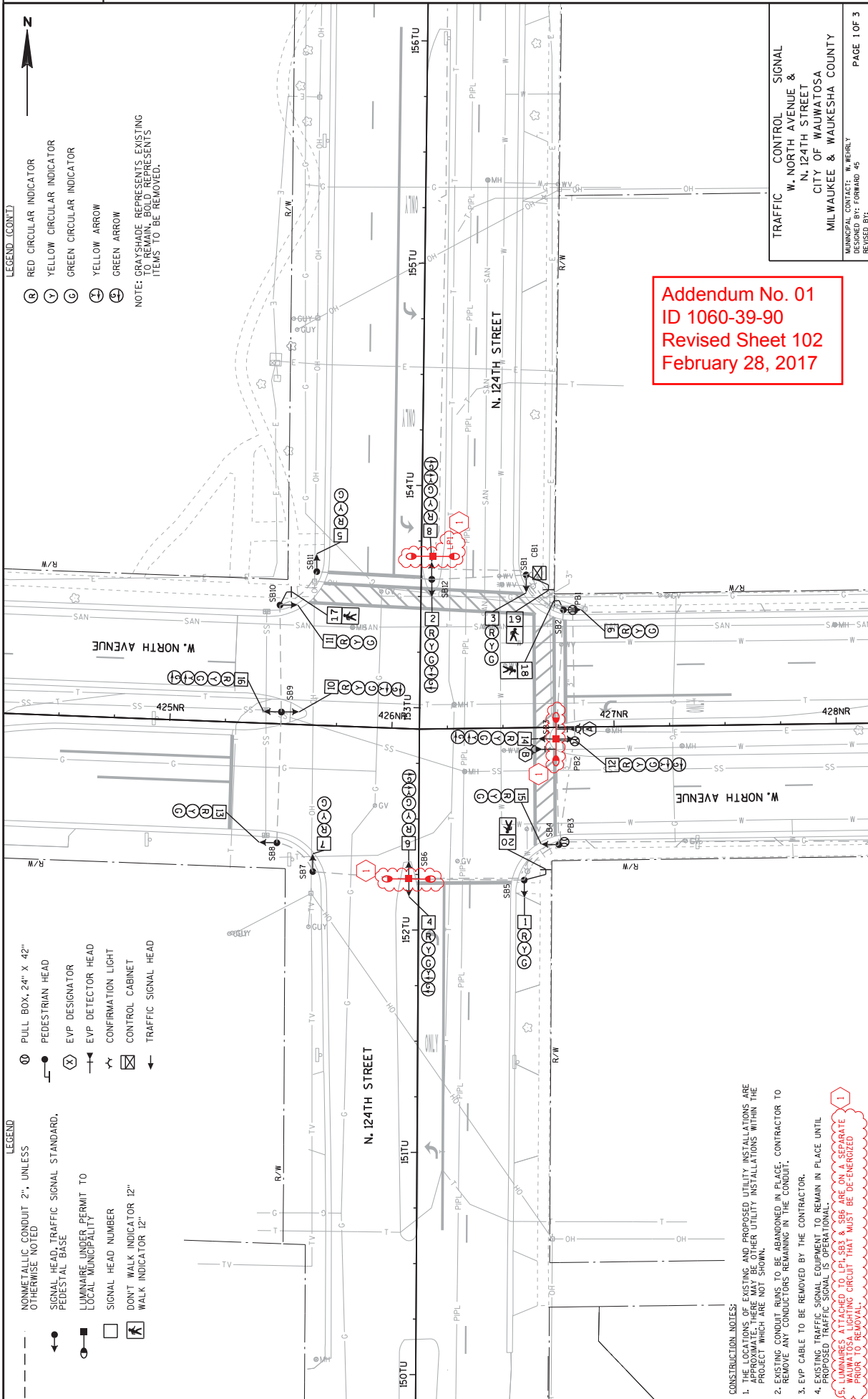
RADIUS PROVIDED IS TO THE CURB FLANGE LINE UNLESS OTHERWISE NOTED.

NOTE FOR BENCHMARK INFORMATION SEE THE ALIGNMENT LAYOUT SURVEY CONTROL SHEET.

- LEGEND**
- NONMETALLIC CONDUIT 2", UNLESS OTHERWISE NOTED
  - ← SIGNAL HEAD, TRAFFIC SIGNAL STANDARD, PEDESTAL BASE
  - LUMINAIRE UNDER PERMIT TO LOCAL MUNICIPALITY
  - SIGNAL HEAD NUMBER
  - DONT WALK INDICATOR 12"
  - WALK INDICATOR 12"
  - ⊕ PULL BOX, 24" X 42"
  - PEDESTRIAN HEAD
  - ⊗ E.V.P DESIGNATOR
  - ⊖ E.V.P DETECTOR HEAD
  - ⋈ CONFIRMATION LIGHT
  - ⊠ CONTROL CABINET
  - ← TRAFFIC SIGNAL HEAD

- LEGEND (CONT.)**
- ⊙ RED CIRCULAR INDICATOR
  - ⊙ YELLOW CIRCULAR INDICATOR
  - ⊙ GREEN CIRCULAR INDICATOR
  - ⊙ YELLOW ARROW
  - ⊙ GREEN ARROW

NOTE: GRAYSHADE REPRESENTS EXISTING ITEMS REMAINING TO BE MAINTAINED. WHITE REPRESENTS ITEMS TO BE REMOVED.



Addendum No. 01  
ID 1060-39-90  
Revised Sheet 102  
February 28, 2017

**CONSTRUCTION NOTES:**

1. THE LOCATIONS OF EXISTING AND PROPOSED UTILITY INSTALLATIONS ARE SHOWN. THE LOCATIONS OF OTHER UTILITY INSTALLATIONS WITHIN THE PROJECT WHICH ARE NOT SHOWN.
2. EXISTING CONDUIT RUNS TO BE ABANDONED IN PLACE. CONTRACTOR TO REMOVE ANY CONDUITS REMAINING IN THE GROUND.
3. E.V.P. CABLE TO BE REMOVED BY THE CONTRACTOR.
4. EXISTING TRAFFIC SIGNAL EQUIPMENT TO REMAIN IN PLACE UNTIL PROPOSED TRAFFIC SIGNAL IS OPERATIONAL.
5. LUMINAIRES ATTACHED TO LPI, SB3 & SB6 ARE ON A SEPARATE CIRCUIT TO BE REMOVED PRIOR TO REMOVAL OF TRAFFIC SIGNAL EQUIPMENT.

TRAFFIC CONTROL SIGNAL  
W. NORTH AVENUE &  
N. 124TH STREET  
CITY OF WAUKATOSA  
MILWAUKEE & WAUKESHA COUNTY  
MUNICIPAL CONTACT: W. NEHRLY  
DATE: 01-FEBRUARY-15  
REVISED BY: \_\_\_\_\_

LEGEND (CONT.)

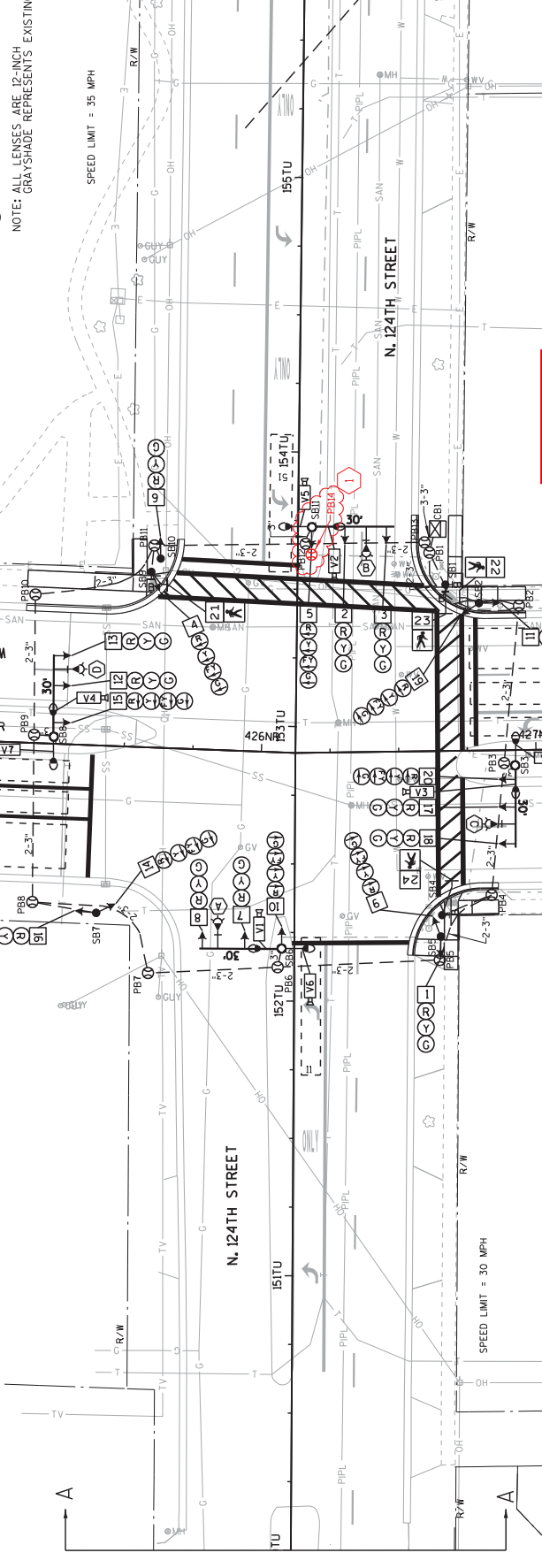
- SIGNAL HEAD NUMBER
- ⊠ WALK/DONT WALK INDICATOR 16" (COUNTDOWN TIMER)
- ⊙ RED CIRCULAR INDICATOR
- ⊙ YELLOW CIRCULAR INDICATOR
- ⊙ GREEN CIRCULAR INDICATOR
- ⊙ RED ARROW
- ⊙ YELLOW ARROW
- ⊙ GREEN ARROW

NOTE: ALL LENSES ARE 12-INCH GRAY SHADE REPRESENTS EXISTING

LEGEND

- NONMETALLIC CONDUIT 2", UNLESS OTHERWISE NOTED
- ⊙ SIGNAL HEAD, TRAFFIC SIGNAL STANDARD, PEDESTAL BASE
- ⊙ MONOTUBE BASE, POLE, 15'-30" ARM
- ⊙ LUMINAIRE, TRAFFIC POLE, TRANSFORMER BASE
- ⊙ LUMINAIRE UNDER PERMIT TO LOCAL MUNICIPALITY
- ⊙ VIDEO DETECTION AREA
- ⊙ VIDEO DETECTION CAMERA
- ⊙ PULL BOX, 24" X 42"
- ⊙ PEDESTRIAN HEAD WITH PUSH BUTTON
- ⊙ PUSH BUTTON
- ⊙ EVP DESIGNATOR
- ⊙ EVP DETECTOR HEAD
- ⊙ CONFIRMATION LIGHT
- ⊙ CONTROL CABINET
- ⊙ TRAFFIC SIGNAL HEAD

CONSTRUCTION NOTES:



CONSTRUCTION NOTES:

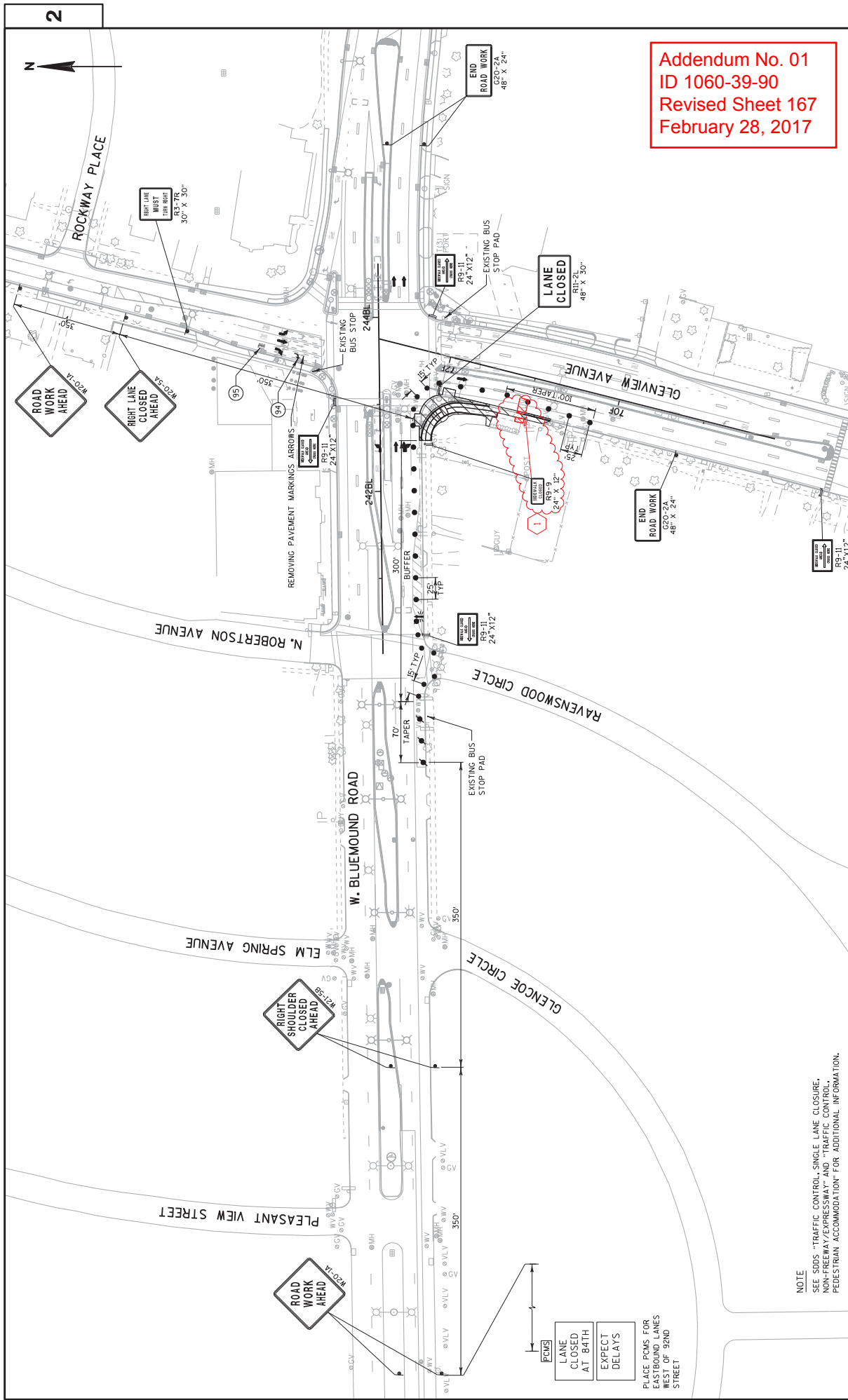
1. THE CONTRACTOR SHALL HAVE THE PULL BOXES AND CONDUIT RUNS INSPECTED 5 WORKING DAYS PRIOR TO PLACING SIGNAL CABLE INTO SYSTEM. CONTACT THE CITY OF WAUKESHA AT (414) 471-8422.
2. THE LOCATIONS OF EXISTING AND PROPOSED UTILITY INSTALLATIONS ARE SHOWN. OTHER UTILITY INSTALLATIONS WITHIN THE PROJECT WHICH ARE NOT SHOWN.
3. ALL LUMINAIRES ARE LED CATEGORY C UNLESS OTHERWISE NOTED.
4. THE ENGINEER MAY ADJUST THE LOCATIONS OF ITEMS UNDER THIS CONTRACT TO AVOID CONFLICT WITH EXISTING UTILITY FACILITIES.
5. INSTALL CABINET BASE 6" ABOVE FINAL ROADWAY ELEVATION.
6. CONDUIT EMBEDDED IN A TYPE 10 OR TYPE 13 CONCRETE BASE SHALL BE 3".
7. PROPOSED FTMS IS SHOWN GRAYSHADED FOR PLAN CLARITY.
8. VIDEO DETECTION AND EVP DETECTOR LOCATIONS ARE APPROXIMATE. COORDINATE PLACEMENT OF THE EQUIPMENT WITH THE CITY OF WAUKESHA. NOTIFY THE CITY OF WAUKESHA AT (414) 471-8422 A MINIMUM OF 5 DAYS PRIOR TO PLACING THE EQUIPMENT.
9. DETECTION ZONE LOCATIONS SHOWN ARE APPROXIMATE. COORDINATE THE CITY OF WAUKESHA AT (414) 471-8422 A MINIMUM OF 5 DAYS PRIOR TO SETTING DETECTION ZONES.

Addendum No. 01  
ID 1060-39-90  
Revised Sheet 103  
February 28, 2017

- LIGHTING NOTES:
1. PB14 SHALL BE PLACED AT THE SAME TIME LPHS IS REMOVED.
  2. SPLICE EXISTING WAUKESHA LIGHTING CABLE IN PB14 TO MAINTAIN THE LIGHTING CIRCUIT CONTINUITY.
  3. THIS SPLICE IS CONSIDERED INCIDENTAL TO PB14.
  4. COORDINATE THIS WORK WITH THE CITY OF WAUKESHA AT (414) 471-8422.

TRAFFIC CONTROL SIGNAL  
W. NORTH AVENUE &  
N. 124TH STREET  
CITY OF WAUKESHA  
MILWAUKEE & WAUKESHA COUNTY  
MUNICIPAL CONTACT: W. NEHRLY  
PHONE: 414-471-8422  
REVISED BY: [ ]

PROJECT NO: 1060-39-90  
HWY: N. 124TH STREET  
COUNTY: MILWAUKEE/WAUKESHA  
TRAFFIC SIGNAL PLAN  
SHEET 103  
PAGE 1 OF 3  
E



Addendum No. 01  
 ID 1060-39-90  
 Revised Sheet 167  
 February 28, 2017

NOTE  
 SEE SDDS "TRAFFIC CONTROL-SINGLE LANE CLOSURE,  
 NON-FREEMWAY/EXPRESSWAY" AND "TRAFFIC CONTROL,  
 PEDESTRIAN ACCOMMODATION" FOR ADDITIONAL INFORMATION.

PLACE PCMS FOR  
 EASTBOUND LANES  
 WEST OF 92ND  
 STREET

Addendum No. 01  
 ID 1060-39-90  
 Revised Sheet 185  
 February 28, 2017

3

REMOVING PAVEMENT

CATEGORY	ROADWAY	FROM	TO	STATION	OFFSET	SY
1000	H.41/USH.45	269+20	-	270+50	RT	57
		269+20	-	270+50	LT	53
	N.124TH STREET	204TU+53	-	205TU+47	RT	135
	W. BURLEIGH STREET	527BR+05	-	527BR+11	MEDIAN	9
		527BR+96	-	528BR+41	MEDIAN	66
	GLENVIEW AVENUE	70F+77	-	71F+00	LT	19
		71F+05	-	71F+15	LT	20
		71F+85	-	71F+99	LT	16
		72F+13	-	72F+24	LT	13
	<b>TOTAL</b>					<b>388</b>

REMOVING CONCRETE BARRIER

CATEGORY	ROADWAY	FROM	TO	STATION	OFFSET	LF
1000	H.41/USH.45	269+20	2' RT	270+50	2' RT	130
		269+20	2' LT	270+50	2' LT	130
	<b>TOTAL</b>					<b>260</b>

3

REMOVING CURB & GUTTER

CATEGORY	ROADWAY	FROM	TO	STATION	OFFSET	LF
1000	N.124TH STREET	152TU+17	43' RT	152TU+42	74' RT	45
		153TU+43	83' RT	153TU+78	43' RT	65
		153TU+43	98' LT	153TU+68	43' LT	70
		206TU+32	78' RT	206TU+60	49' RT	50
	W. NORTH AVENUE	422NR+69	14' RT	424NR+53	4' RT	185
	W. BURLEIGH STREET	527BR+10	10' RT	527BR+96	11' RT	86
		527BR+11	0' LT	527BR+97	1' LT	86
		528BR+41	1' LT	529BR+71	11' LT	131
	GLENVIEW AVENUE	70F+72	43' LT	70F+77	43' LT	5
		71F+00	43' LT	71F+01	43' LT	1
		71F+43	44' LT	71F+85	45' LT	42
		71F+99	46' LT	72F+17	72' LT	33
		72F+09	101' LT	72F+14	85' LT	17
	<b>TOTAL</b>					<b>816</b>

REMOVING CONCRETE SIDEWALK

CATEGORY	ROADWAY	FROM	TO	STATION	OFFSET	SY
1000	N.124TH STREET	152TU+12	-	152TU+40	RT	30
		153TU+44	-	153TU+78	RT	31
		153TU+48	-	153TU+68	RT	39
		205TU+00	-	205TU+43	RT	31
		206TU+33	-	206TU+60	RT	35
	W. HAMPTON AVENUE	618HP+37	-	620HP+06	LT	18
		619HP+04	-	620HP+04	RT	10
		619HP+94	-	620HP+31	MEDIAN	44
	GLENVIEW AVENUE	71F+05	-	71F+15	LT	5
		71F+32	-	72F+16	LT	95
	<b>TOTAL</b>					<b>339</b>

SAWING

CATEGORY	ROADWAY	FROM	TO	STATION	OFFSET	LF
1000	H.41/USH.45	269+20	-	270+50	RT	138
		269+20	-	270+50	LT	137
	N.124TH STREET	152TU+12	-	152TU+43	RT	63
		153TU+41	-	153TU+78	RT	83
		153TU+41	-	153TU+68	LT	89
		204TU+53	-	205TU+47	RT	184
		206TU+30	-	206TU+60	RT	79
	W. NORTH AVENUE	422NR+69	-	424NR+53	RT	191
	W. BURLEIGH STREET	527BR+05	-	528BR+71	MEDIAN	419
	W. HAMPTON AVENUE	618HP+37	-	620HP+06	LT	42
		619HP+04	-	620HP+04	RT	23
		620HP+31	-	620HP+31	MEDIAN	12
	GLENVIEW AVENUE	70F+72	-	71F+15	LT	106
		71F+32	-	72F+24	LT	167
	<b>TOTAL</b>					<b>1,733</b>

PROJECT NO: 1060-39-90

HWY: VARIOUS LOCATIONS

COUNTY: MILWAUKEE/WAUKESHA

MISCELLANEOUS QUANTITIES

SHEET: 185

E

FILE NAME: W:\Cadd\raai10603990\_TMS\Roads\cds\030201\_mil\_pav.ppt

PLOT BY: MSCDYB

PLOT DATE: 2/21/2017 10:57:01 AM

PLOT NAME: 106201\_mil\_pav1

PLOT SCALE: 1:1

BASE AGGREGATE ITEMS

CATEGORY	ROADWAY	STATION	TO	STATION	OFFSET	TON	305.0120 BASE AGGREGATE DENSE 1 1/4-INCH MATERIAL	312.0115 SELECT CRUSHED MATERIAL	CY
1000	IH41/USH45	269+20	-	270+50	RT	25		--	--
		269+20	-	270+50	LT	25		--	--
	<u>N. 124TH STREET</u>	152TU+12	-	152TU+44	RT	15		--	--
		153TU+41	-	153TU+78	RT	18		--	--
		153TU+41	-	153TU+68	LT	21		--	--
		204TU+53	-	205TU+20	RT	31		--	--
		205TU+20	-	205TU+47	RT	32		--	--
		206TU+30	-	206TU+60	RT	18		--	--
	<u>W. NORTH AVENUE</u>	422NR+69	-	424NR+53	RT	70		--	--
	<u>W. BURLEIGH STREET</u>	527BR+05	-	529BR+71	MEDIAN	131		--	--
	<u>W. HAMPTON AVENUE</u>	618HP+37	-	620HP+06	LT	4		--	--
		618HP+04	-	620HP+04	RT	2		--	--
		618HP+84	-	620HP+31	MEDIAN	10		--	--
	<u>GLENVIEW AVENUE</u>	70F+72	-	71F+04	LT	5		7	
		71F+05	-	71F+15	LT	8		8	
		71F+32	-	72F+26	LT	66		64	
	<b>TOTALS</b>					<b>481</b>		<b>79</b>	

1

1

1

1

1

1

1

1

1

1

1

1

ABANDON SERVICES

CATEGORY	ROADWAY	STATION	OFFSET	SPV.0060.5100 ABANDON WATER SERVICE EACH	SPV.0060.5110 ABANDON SANITARY SEWER SERVICE EACH
1000	<u>GLENVIEW AVENUE</u>	71F+10	LT	1	1
	<b>TOTALS</b>			<b>1</b>	<b>1</b>

1

1

1

1

1

1

1

1

1

1

1

1

CONCRETE PAVEMENT

CATEGORY	ROADWAY	STATION	TO	STATION	OFFSET	SY	415.1080 CONCRETE PAVEMENT HES 8-INCH	416.1710 CONCRETE PAVEMENT HES 9-INCH	SPV.0180.0001 CONCRETE PAVEMENT HES 8-INCH SPECIAL REPAIR
1000	<u>IH41/USH45</u>	269+20	-	270+50	RT	29		--	--
		269+20	-	270+50	LT	29		--	--
	<u>N. 124TH STREET</u>	204TU+53	-	205TU+20	RT	--	57	--	--
		205TU+20	-	205TU+47	RT	--	58	--	--
		206TU+30	-	206TU+48	RT	--	10	--	--
	<u>W. NORTH AVENUE</u>	422NR+81	-	424NR+29	RT	--	114	--	--
	<u>W. BURLEIGH STREET</u>	527BR+05	-	529BR+01	MEDIAN	--	99	--	--
	<u>GLENVIEW AVENUE</u>	71F+63	-	72F+26	LT	96			34
		71F+05	-	71F+15	LT	16			--
	<b>SUBTOTALS</b>					<b>1</b>	<b>130</b>		<b>34</b>
	<b>UNDISTRIBUTED</b>					--	--	500	--
	<b>TOTALS</b>					<b>1</b>	<b>130</b>	<b>500</b>	<b>34</b>

Addendum No. 01  
ID 1060-39-90  
Revised Sheet 187  
February 28, 2017

ASPHALTIC ITEMS

CATEGORY	ROADWAY	STATION	TO	STATION	OFFSET	TACK COAT	PAVEMENT	TON
1000	N. 124TH STREET	205TU+20	-	205TU+47	RT	3	HMA	10
		206TU+30	-	206TU+48	RT	1	4 MT 58-28 S	2
	W. BURLEIGH STREET	527BR+05	-	529BR+01	MEDIAN	5		17
<b>TOTALS</b>								<b>29</b>

EXPOSE EXISTING UTILITIES  
IH 41 SB OFF RAMP & CTH EE

CATEGORY	LOCATION	EACH	UNPAVED AREA	EACH
1000	IH 41 SB OFF RAMP & CTH EE	5		5
<b>TOTALS</b>				<b>5</b>

DRILLED BAR ITEMS

CATEGORY	ROADWAY	STATION	TO	STATION	OFFSET	DRILLED TIE BARS	DRILLED DOWEL BARS	EACH
1000	H 41 USH 45	269+20	-	270+50	RT	52	416.0620	2
		269+20	-	270+50	LT	52		2
	N. 124TH STREET	152TU+17	-	152TU+44	RT	25		--
		153TU+41	-	153TU+78	RT	33		--
		153TU+41	-	153TU+68	LT	35		--
		204TU+53	-	205TU+20	RT	29		4
		205TU+20	-	205TU+47	RT	30		3
		206TU+30	-	206TU+60	RT	27		--
	W. NORTH AVENUE	422NR+69	-	424NR+53	RT	79		--
	W. BURLEIGH STREET	527BR+05	-	529BR+71	MEDIAN	170		--
	GLENVIEW AVENUE	70F+72	-	71F+15	LT	22		22
		71F+43	-	72F+26	LT	52		17
<b>TOTALS</b>							<b>606</b>	<b>50</b>

CONCRETE CURB & GUTTER

CATEGORY	ROADWAY	STATION	TO	STATION	OFFSET	CONCRETE CURB & GUTTER 31-INCH	CONCRETE CURB PEDESTRIAN	LF
1000	N. 124TH STREET	152TU+17	-	152TU+42	RT	45	601.0600	23
		153TU+43	-	153TU+78	RT	65		11
		153TU+43	-	153TU+68	LT	70		26
		204TU+53	-	205TU+46	RT	107		21
		206TU+32	-	206TU+60	RT	45		31
	W. NORTH AVENUE	422NR+69	-	424NR+53	RT	185		--
	W. BURLEIGH STREET	527BR+12	-	528BR+39	RT	127		--
		527BR+12	-	529BR+71	RT/LT	260		--
	GLENVIEW AVENUE	70F+72	-	71F+15	LT	44		--
		71F+43	-	72F+09	LT	104		62
		71F+64	-	71F+98	LT	--		--
<b>TOTALS</b>							<b>1,052</b>	<b>174</b>

Addendum No. 01  
ID 1060-39-90  
Revised Sheet 188  
February 28, 2017

CONCRETE BARRIER ITEMS

CATEGORY	ROADWAY	STATION	TO	STATION	OFFSET	603.3113 CONCRETE BARRIER TRANSITION TYPE N/2SF TO S36	603.3535 CONCRETE BARRIER TRANSITION TYPE S36 TO S42	603.3559 CONCRETE BARRIER TRANSITION TYPE S42 TO S56	SPV.0060.0164 CONCRETE BARRIER TYPE S56 END ANCHOR
1000	JH41/USH45	269+20	-	269+80	RT	1	1	1	1
		269+20	-	269+80	LT	1	1	1	1
		269+80	-	270+50	RT	1	1	1	1
		269+80	-	270+50	LT	1	1	1	1
<b>TOTALS</b>						<b>4</b>	<b>4</b>	<b>4</b>	<b>4</b>

CONCRETE MEDIAN SLOPED NOSE

CATEGORY	ROADWAY	STATION	OFFSET	620.0300 CONCRETE MEDIAN SLOPED NOSE TYPE 1**
1000	W. BURLEIGH STREET	527BR+09	MEDIAN	77
<b>TOTAL</b>				<b>77</b>

\*\*FOR INFORMATION ONLY

CONCRETE SIDEWALK

CATEGORY	ROADWAY	STATION	TO	STATION	OFFSET	602.0410 CONCRETE SIDEWALK 5-INCH
1000	N. 124TH STREET	152TU+12	-	152TU+40	RT	274
		153TU+44	-	153TU+78	RT	296
		153TU+47	-	153TU+68	LT	362
		205TU+00	-	205TU+41	RT	239
		206TU+35	-	206TU+60	RT	264
	W. BURLEIGH STREET	527BR+12	-	529BR+24	MEDIAN	1,194
	W. HAMPTON AVENUE	618HP+37	-	620HP+06	LT	160
		619HP+04	-	620HP+04	RT	88
		619HP+94	-	620HP+31	MEDIAN	400
	GLENVIEW AVENUE	71F+05	-	71F+15	LT	40
		71F+32	-	72F+05	LT	677
<b>TOTAL</b>						<b>3,994</b>

CURB RAMP DETECTABLE WARNING FIELD

CATEGORY	ROADWAY	STATION	OFFSET	602.0505 CURB RAMP DETECTABLE WARNING FIELD YELLOW	602.0515 CURB RAMP DETECTABLE WARNING FIELD NATURAL PATINA
1000	N. 124TH STREET	152TU+36	RT	8	--
		153TU+48	RT	8	--
		153TU+51	LT	8	--
		205TU+37	RT	8	--
		206TU+42	RT	8	--
	GLENVIEW AVENUE	71F+99	LT	--	8
<b>TOTALS</b>				<b>40</b>	<b>8</b>

Addendum No. 01  
ID 1060-39-90  
Revised Sheet 189  
February 28, 2017



W. NORTH AVENUE & N. 124<sup>TH</sup> STREET  
 ALL ITEMS ARE CATEGORY 1500 UNLESS OTHERWISE NOTED

SUMMARY OF STATE FURNISHED MATERIALS - FOR INFORMATION ONLY

QUANTITY	UNIT	DESCRIPTION
1	EACH	TRAFFIC SIGNAL CONTROLLER AND CABINET
4	EACH	POLES TYPE 10
4	EACH	MONOTUBE ARMS 30-FT
8	EACH	LUMINAIRE ARMS STEEL 8-FT

CONDUIT	FROM	TO	652.0225* CONDUIT RIGID NONMETALLIC SCHEDULE 40 2-INCH LF	652.0235* CONDUIT RIGID NONMETALLIC SCHEDULE 40 3-INCH LF	652.0615* CONDUIT SPECIAL 3-INCH LF
CB1					
PB1			27		
PB2			92		
PB3					116
PB4					96
PB5			64		
PB6					118
PB7					94
PB8			116		
PB9					122
PB10					102
PB11			100		
PB12					110
PB13				18	86
CB1					
SB1			13		
SB2			15		
SB3				4	
SB4			8		
SB5			9		
SB6				7	
SB8			24		
SB9				7	
SB11			10		
SB12			5		
SB11				6	
TOTAL			84	441	844

\*ADDITIONAL QUANTITIES SHOWN ELSEWHERE

REMOVING CONCRETE BASES

EXISTING BASE NO.	REMOVING CONCRETE BASES EACH
SB1	1
SB2	1
SB4	1
SB5	1
SB7	1
SB8	1
SB9	1
SB10	1
SB11	1
SB12	1
CB1	1
TOTAL	11

\*ADDITIONAL QUANTITIES SHOWN ELSEWHERE

PULL BOXES STEEL

PULL BOX NO.	STATION	LOCATION	653.0140* FULL BOXES STEEL 24X42-INCH EACH
PB1	153TU+63.9	47.9' RT	1
PB2	153TU+45.1	80.8' RT	1
PB3	152TU+87.2	76.1' RT	1
PB4	152TU+39.1	71.8' RT	1
PB5	152TU+15.3	53.1' RT	1
PB6	152TU+12.4	6.0' LT	1
PB7	152TU+10.0	53.2' LT	1
PB8	152TU+35.5	95.5' LT	1
PB9	152TU+95.9	95.3' LT	1
PB10	153TU+47.0	95.4' LT	1
PB11	153TU+65.3	52.3' LT	1
PB12	153TU+66.6	2.8' RT	1
PB13	153TU+67.7	46.1' RT	1
PB14	153TU+62.7	5.0' RT	1
TOTAL			14

\*ADDITIONAL QUANTITIES SHOWN ELSEWHERE

\*\*\*FINAL LOCATION TO BE DETERMINED BY THE ENGINEER IN THE FIELD



Proposal Schedule of Items

Proposal ID: 20170314013 Project(s): 1060-39-90, 1360-09-71

Federal ID(s): N/A, WISC 2017102

SECTION: 0001 Contract Items

Alt Set ID: Alt Mbr ID:

Proposal Line Number	Item ID Description	Approximate Quantity and Units	Unit Price	Bid Amount
0010	108.4400 CPM Progress Schedule	1.000 EACH	7,500.00000	7,500.00
0020	204.0100 Removing Pavement	4,756.000 SY	_____.	_____.
0030	204.0150 Removing Curb & Gutter	1,117.000 LF	_____.	_____.
0040	204.0155 Removing Concrete Sidewalk	1,003.000 SY	_____.	_____.
0050	204.0157 Removing Concrete Barrier	260.000 LF	_____.	_____.
0060	204.0195 Removing Concrete Bases	93.000 EACH	_____.	_____.
0070	204.0220 Removing Inlets	9.000 EACH	_____.	_____.
0080	204.0245 Removing Storm Sewer (size) 0001. 12-Inch	242.000 LF	_____.	_____.
0090	204.0280 Sealing Pipes	1.000 EACH	_____.	_____.
0100	205.0100 Excavation Common	2,981.000 CY	_____.	_____.
0110	205.0501.S Excavation, Hauling, and Disposal of Petroleum Contaminated Soil	34.000 TON	_____.	_____.
0120	209.2100 Backfill Granular Grade 2	20.000 CY	_____.	_____.
0130	213.0100 Finishing Roadway (project) 0001. 1060-39-90	1.000 EACH	_____.	_____.
0140	213.0100 Finishing Roadway (project) 0002. 1360-09-71	1.000 EACH	_____.	_____.
0150	305.0120 Base Aggregate Dense 1 1/4-Inch	2,131.000 TON	_____.	_____.
0160	310.0110 Base Aggregate Open-Graded	12.900 TON	_____.	_____.



Proposal Schedule of Items

Proposal ID: 20170314013 Project(s): 1060-39-90, 1360-09-71

Federal ID(s): N/A, WISC 2017102

SECTION: 0001 Contract Items

Alt Set ID: Alt Mbr ID:

Proposal Line Number	Item ID Description	Approximate Quantity and Units	Unit Price	Bid Amount
0170	311.0115 Breaker Run	282.000 CY	_____.	_____.
0180	312.0115 Select Crushed Material	79.000 CY	_____.	_____.
0190	415.0090 Concrete Pavement 9-Inch	3,686.000 SY	_____.	_____.
0200	415.1080 Concrete Pavement HES 8-Inch	130.000 SY	_____.	_____.
0210	415.1090 Concrete Pavement HES 9-Inch	338.000 SY	_____.	_____.
0220	416.0610 Drilled Tie Bars	904.000 EACH	_____.	_____.
0230	416.0620 Drilled Dowel Bars	295.000 EACH	_____.	_____.
0240	416.1710 Concrete Pavement Repair	500.000 SY	_____.	_____.
0250	416.1725 Concrete Pavement Replacement SHES	248.000 SY	_____.	_____.
0260	455.0605 Tack Coat	9.000 GAL	_____.	_____.
0270	460.6224 HMA Pavement 4 MT 58-28 S	29.000 TON	_____.	_____.
0280	520.8000 Concrete Collars for Pipe	3.000 EACH	_____.	_____.
0290	601.0331 Concrete Curb & Gutter 31-Inch	1,052.000 LF	_____.	_____.
0300	601.0409 Concrete Curb & Gutter 30-Inch Type A	1,737.000 LF	_____.	_____.
0310	601.0452 Concrete Curb & Gutter Integral 30-Inch Type D	40.000 LF	_____.	_____.
0320	601.0600 Concrete Curb Pedestrian	174.000 LF	_____.	_____.



Proposal Schedule of Items

Proposal ID: 20170314013 Project(s): 1060-39-90, 1360-09-71

Federal ID(s): N/A, WISC 2017102

SECTION: 0001 Contract Items

Alt Set ID: Alt Mbr ID:

Proposal Line Number	Item ID Description	Approximate Quantity and Units	Unit Price	Bid Amount
0330	602.0410 Concrete Sidewalk 5-Inch	9,217.000 SF	_____.	_____.
0340	602.0505 Curb Ramp Detectable Warning Field Yellow	144.000 SF	_____.	_____.
0350	602.0515 Curb Ramp Detectable Warning Field Natural Patina	8.000 SF	_____.	_____.
0360	603.3113 Concrete Barrier Transition Type NJ32SF to S36	4.000 EACH	_____.	_____.
0370	603.3535 Concrete Barrier Transition Type S36 to S42	4.000 EACH	_____.	_____.
0380	603.3559 Concrete Barrier Transition Type S42 to S56	4.000 EACH	_____.	_____.
0390	603.8000 Concrete Barrier Temporary Precast Delivered	1,185.000 LF	_____.	_____.
0400	603.8125 Concrete Barrier Temporary Precast Installed	1,185.000 LF	_____.	_____.
0410	608.0312 Storm Sewer Pipe Reinforced Concrete Class III 12-Inch	115.000 LF	_____.	_____.
0420	608.0315 Storm Sewer Pipe Reinforced Concrete Class III 15-Inch	233.000 LF	_____.	_____.
0430	608.0318 Storm Sewer Pipe Reinforced Concrete Class III 18-Inch	9.000 LF	_____.	_____.
0440	611.0420 Reconstructing Manholes	1.000 EACH	_____.	_____.
0450	611.0530 Manhole Covers Type J	1.000 EACH	_____.	_____.
0460	611.0624 Inlet Covers Type H	10.000 EACH	_____.	_____.



Proposal Schedule of Items

Proposal ID: 20170314013 Project(s): 1060-39-90, 1360-09-71

Federal ID(s): N/A, WISC 2017102

SECTION: 0001 Contract Items

Alt Set ID: Alt Mbr ID:

Proposal Line Number	Item ID Description	Approximate Quantity and Units	Unit Price	Bid Amount
0470	611.0639 Inlet Covers Type H-S	2.000 EACH	_____.	_____.
0480	611.0642 Inlet Covers Type MS	4.000 EACH	_____.	_____.
0490	611.2006 Manholes 6-FT Diameter	1.000 EACH	_____.	_____.
0500	611.3004 Inlets 4-FT Diameter	6.000 EACH	_____.	_____.
0510	611.3230 Inlets 2x3-FT	7.000 EACH	_____.	_____.
0520	611.3901 Inlets Median 1 Grate	4.000 EACH	_____.	_____.
0530	611.8115 Adjusting Inlet Covers	5.000 EACH	_____.	_____.
0540	611.9710 Salvaged Inlet Covers	2.000 EACH	_____.	_____.
0550	612.0106 Pipe Underdrain 6-Inch	66.000 LF	_____.	_____.
0560	614.0905 Crash Cushions Temporary	3.000 EACH	_____.	_____.
0570	614.2300 MGS Guardrail 3	264.000 LF	_____.	_____.
0580	614.2610 MGS Guardrail Terminal EAT	1.000 EACH	_____.	_____.
0590	614.2620 MGS Guardrail Terminal Type 2	1.000 EACH	_____.	_____.
0600	619.1000 Mobilization	1.000 EACH	_____.	_____.
0610	620.0300 Concrete Median Sloped Nose	137.000 SF	_____.	_____.
0620	623.0200 Dust Control Surface Treatment	6,934.000 SY	_____.	_____.
0630	624.0100 Water	58.000 MGAL	_____.	_____.



Proposal Schedule of Items

Proposal ID: 20170314013 Project(s): 1060-39-90, 1360-09-71

Federal ID(s): N/A, WISC 2017102

SECTION: 0001 Contract Items

Alt Set ID: Alt Mbr ID:

Proposal Line Number	Item ID Description	Approximate Quantity and Units	Unit Price	Bid Amount
0640	625.0100 Topsoil	2,553.000 SY	_____.	_____.
0650	628.1504 Silt Fence	795.000 LF	_____.	_____.
0660	628.1520 Silt Fence Maintenance	1,116.000 LF	_____.	_____.
0670	628.1905 Mobilizations Erosion Control	7.000 EACH	_____.	_____.
0680	628.1910 Mobilizations Emergency Erosion Control	4.000 EACH	_____.	_____.
0690	628.7005 Inlet Protection Type A	9.000 EACH	_____.	_____.
0700	628.7010 Inlet Protection Type B	3.000 EACH	_____.	_____.
0710	628.7015 Inlet Protection Type C	19.000 EACH	_____.	_____.
0720	628.7020 Inlet Protection Type D	41.000 EACH	_____.	_____.
0730	628.7504 Temporary Ditch Checks	25.000 LF	_____.	_____.
0740	628.7570 Rock Bags	58.000 EACH	_____.	_____.
0750	629.0210 Fertilizer Type B	2.890 CWT	_____.	_____.
0760	630.0200 Seeding Temporary	10.000 LB	_____.	_____.
0770	631.0300 Sod Water	55.500 MGAL	_____.	_____.
0780	631.1000 Sod Lawn	2,553.000 SY	_____.	_____.
0790	634.0618 Posts Wood 4x6-Inch X 18-FT	44.000 EACH	_____.	_____.
0800	634.0622 Posts Wood 4x6-Inch X 22-FT	5.000 EACH	_____.	_____.



Proposal Schedule of Items

Proposal ID: 20170314013 Project(s): 1060-39-90, 1360-09-71

Federal ID(s): N/A, WISC 2017102

SECTION: 0001 Contract Items

Alt Set ID: Alt Mbr ID:

Proposal Line Number	Item ID Description	Approximate Quantity and Units	Unit Price	Bid Amount
0810	634.0814 Posts Tubular Steel 2x2-Inch X 14-FT	2.000 EACH	_____.	_____.
0820	634.0816 Posts Tubular Steel 2x2-Inch X 16-FT	8.000 EACH	_____.	_____.
0830	636.0100 Sign Supports Concrete Masonry	35.000 CY	_____.	_____.
0840	636.1500 Sign Supports Steel Coated Reinforcement HS	5,590.000 LB	_____.	_____.
0850	637.2210 Signs Type II Reflective H	848.868 SF	_____.	_____.
0860	637.2215 Signs Type II Reflective H Folding	247.420 SF	_____.	_____.
0870	637.2220 Signs Type II Reflective SH	111.000 SF	_____.	_____.
0880	637.2230 Signs Type II Reflective F	68.860 SF	_____.	_____.
0890	638.2102 Moving Signs Type II	10.000 EACH	_____.	_____.
0900	638.2602 Removing Signs Type II	101.000 EACH	_____.	_____.
0910	638.3000 Removing Small Sign Supports	41.000 EACH	_____.	_____.
0920	641.6600 Sign Bridge (structure) 0001. S-40-456	LS	LUMP SUM	_____.
0930	643.0100 Traffic Control (project) 0001. 1060-39-90	1.000 EACH	_____.	_____.
0940	643.0100 Traffic Control (project) 0002. 1360-09-71	1.000 EACH	_____.	_____.
0950	643.0300 Traffic Control Drums	46,122.000 DAY	_____.	_____.
0960	643.0410 Traffic Control Barricades Type II	2,016.000 DAY	_____.	_____.



Proposal Schedule of Items

Proposal ID: 20170314013 Project(s): 1060-39-90, 1360-09-71

Federal ID(s): N/A, WISC 2017102

SECTION: 0001 Contract Items

Alt Set ID: Alt Mbr ID:

Proposal Line Number	Item ID Description	Approximate Quantity and Units	Unit Price	Bid Amount
0970	643.0420 Traffic Control Barricades Type III	4,527.000 DAY	_____.	_____.
0980	643.0705 Traffic Control Warning Lights Type A	11,070.000 DAY	_____.	_____.
0990	643.0715 Traffic Control Warning Lights Type C	11,883.000 DAY	_____.	_____.
1000	643.0800 Traffic Control Arrow Boards	1,995.000 DAY	_____.	_____.
1010	643.0900 Traffic Control Signs	23,367.000 DAY	_____.	_____.
1020	643.0910 Traffic Control Covering Signs Type I	17.000 EACH	_____.	_____.
1030	643.1000 Traffic Control Signs Fixed Message	1,176.000 SF	_____.	_____.
1040	643.1050 Traffic Control Signs PCMS	769.000 DAY	_____.	_____.
1050	643.2000 Traffic Control Detour (project) 0001. 1060-39-90	1.000 EACH	_____.	_____.
1060	643.2000 Traffic Control Detour (project) 0002. 1360-09-71	1.000 EACH	_____.	_____.
1070	643.3000 Traffic Control Detour Signs	31,620.000 DAY	_____.	_____.
1080	644.1410.S Temporary Pedestrian Surface Asphalt	500.000 SF	_____.	_____.
1090	644.1601.S Temporary Curb Ramp	10.000 EACH	_____.	_____.
1100	644.1616.S Temporary Pedestrian Safety Fence	100.000 LF	_____.	_____.
1110	645.0111 Geotextile Type DF Schedule A	109.000 SY	_____.	_____.
1120	646.0106 Pavement Marking Epoxy 4-Inch	943.000 LF	_____.	_____.





Proposal Schedule of Items

Proposal ID: 20170314013 Project(s): 1060-39-90, 1360-09-71

Federal ID(s): N/A, WISC 2017102

SECTION: 0001 Contract Items

Alt Set ID: Alt Mbr ID:

Proposal Line Number	Item ID Description	Approximate Quantity and Units	Unit Price	Bid Amount
1130	646.0136 Pavement Marking Epoxy 12-Inch	120.000 LF	_____.	_____.
1140	646.0600 Removing Pavement Markings	3,349.000 LF	_____.	_____.
1150	646.0842.S Pavement Marking Grooved Contrast Wet Reflective Epoxy 4-Inch	6,772.000 LF	_____.	_____.
1160	646.0843.S Pavement Marking Grooved Wet Reflective Contrast Tape 8-Inch	1,444.000 LF	_____.	_____.
1170	646.0844.S Pavement Marking Grooved Contrast Wet Reflective Epoxy 8-Inch	1,459.000 LF	_____.	_____.
1180	646.0881.S Pavement Marking Grooved Wet Reflective Tape 4-Inch	214.000 LF	_____.	_____.
1190	646.0883.S Pavement Marking Grooved Wet Reflective Tape 8-Inch	1,354.000 LF	_____.	_____.
1200	647.0146 Pavement Marking Arrows Epoxy Type 6	3.000 EACH	_____.	_____.
1210	647.0156 Pavement Marking Arrows Epoxy Type 1	2.000 EACH	_____.	_____.
1220	647.0166 Pavement Marking Arrows Epoxy Type 2	19.000 EACH	_____.	_____.
1230	647.0176 Pavement Marking Arrows Epoxy Type 3	9.000 EACH	_____.	_____.
1240	647.0356 Pavement Marking Words Epoxy	14.000 EACH	_____.	_____.
1250	647.0456 Pavement Marking Curb Epoxy	137.000 LF	_____.	_____.
1260	647.0526 Pavement Marking Yield Line Symbols Epoxy 18-Inch	28.000 EACH	_____.	_____.
1270	647.0566 Pavement Marking Stop Line Epoxy 18-Inch	774.000 LF	_____.	_____.



Proposal Schedule of Items

Proposal ID: 20170314013 Project(s): 1060-39-90, 1360-09-71

Federal ID(s): N/A, WISC 2017102

SECTION: 0001 Contract Items

Alt Set ID: Alt Mbr ID:

Proposal Line Number	Item ID Description	Approximate Quantity and Units	Unit Price	Bid Amount
1280	647.0606 Pavement Marking Island Nose Epoxy	3.000 EACH	_____.	_____.
1290	647.0706 Pavement Marking Diagonal Epoxy 6-Inch	1,324.000 LF	_____.	_____.
1300	647.0726 Pavement Marking Diagonal Epoxy 12-Inch	165.000 LF	_____.	_____.
1310	647.0766 Pavement Marking Crosswalk Epoxy 6-Inch	819.000 LF	_____.	_____.
1320	647.0776 Pavement Marking Crosswalk Epoxy 12-Inch	1,298.000 LF	_____.	_____.
1330	647.0955 Removing Pavement Markings Arrows	5.000 EACH	_____.	_____.
1340	647.0965 Removing Pavement Markings Words	3.000 EACH	_____.	_____.
1350	649.0400 Temporary Pavement Marking Removable Tape 4-Inch	4,809.000 LF	_____.	_____.
1360	649.0801 Temporary Pavement Marking Removable Tape 8-Inch	983.000 LF	_____.	_____.
1370	649.1800 Temporary Pavement Marking Arrows Removable Tape	1.000 EACH	_____.	_____.
1380	649.2000 Temporary Pavement Marking Words Removable Tape	1.000 EACH	_____.	_____.
1390	652.0125 Conduit Rigid Metallic 2-Inch	64.000 LF	_____.	_____.
1400	652.0225 Conduit Rigid Nonmetallic Schedule 40 2-Inch	6,152.000 LF	_____.	_____.
1410	652.0235 Conduit Rigid Nonmetallic Schedule 40 3-Inch	3,760.000 LF	_____.	_____.



Proposal Schedule of Items

Proposal ID: 20170314013 Project(s): 1060-39-90, 1360-09-71

Federal ID(s): N/A, WISC 2017102

SECTION: 0001 Contract Items

Alt Set ID: Alt Mbr ID:

Proposal Line Number	Item ID Description	Approximate Quantity and Units	Unit Price	Bid Amount
1420	652.0615 Conduit Special 3-Inch	3,211.000 LF	_____.	_____.
1430	652.0700.S Install Conduit into Existing Item	13.000 EACH	_____.	_____.
1440	653.0135 Pull Boxes Steel 24x36-Inch	4.000 EACH	_____.	_____.
1450	653.0140 Pull Boxes Steel 24x42-Inch	69.000 EACH	_____.	_____.
1460	653.0905 Removing Pull Boxes	60.000 EACH	_____.	_____.
1470	654.0101 Concrete Bases Type 1	21.000 EACH	_____.	_____.
1480	654.0102 Concrete Bases Type 2	3.000 EACH	_____.	_____.
1490	654.0105 Concrete Bases Type 5	30.000 EACH	_____.	_____.
1500	654.0108 Concrete Bases Type 8	4.000 EACH	_____.	_____.
1510	654.0110 Concrete Bases Type 10	12.000 EACH	_____.	_____.
1520	654.0113 Concrete Bases Type 13	1.000 EACH	_____.	_____.
1530	654.0217 Concrete Control Cabinet Bases Type 9 Special	2.000 EACH	_____.	_____.
1540	654.0230 Concrete Control Cabinet Bases Type L30	1.000 EACH	_____.	_____.
1550	655.0230 Cable Traffic Signal 5-14 AWG	2,104.000 LF	_____.	_____.
1560	655.0240 Cable Traffic Signal 7-14 AWG	5,268.000 LF	_____.	_____.
1570	655.0260 Cable Traffic Signal 12-14 AWG	10,699.000 LF	_____.	_____.



Proposal Schedule of Items

Proposal ID: 20170314013 Project(s): 1060-39-90, 1360-09-71

Federal ID(s): N/A, WISC 2017102

SECTION: 0001 Contract Items

Alt Set ID: Alt Mbr ID:

Proposal Line Number	Item ID Description	Approximate Quantity and Units	Unit Price	Bid Amount
1580	655.0270 Cable Traffic Signal 15-14 AWG	555.000 LF	_____.	_____.
1590	655.0320 Cable Type UF 2-10 AWG Grounded	2,322.000 LF	_____.	_____.
1600	655.0510 Electrical Wire Traffic Signals 12 AWG	1,138.000 LF	_____.	_____.
1610	655.0515 Electrical Wire Traffic Signals 10 AWG	9,567.000 LF	_____.	_____.
1620	655.0610 Electrical Wire Lighting 12 AWG	12,798.000 LF	_____.	_____.
1630	655.0615 Electrical Wire Lighting 10 AWG	1,824.000 LF	_____.	_____.
1640	655.0620 Electrical Wire Lighting 8 AWG	31,425.000 LF	_____.	_____.
1650	655.0630 Electrical Wire Lighting 4 AWG	9,950.000 LF	_____.	_____.
1660	655.0635 Electrical Wire Lighting 2 AWG	880.000 LF	_____.	_____.
1670	655.0640 Electrical Wire Lighting 1 AWG	18.000 LF	_____.	_____.
1680	655.0900 Traffic Signal EVP Detector Cable	2,812.000 LF	_____.	_____.
1690	656.0200 Electrical Service Meter Breaker Pedestal (location) 3001. IH 41 SB Ramps & CTH EE	LS	LUMP SUM	_____.
1700	656.0200 Electrical Service Meter Breaker Pedestal (location) 3051. IH 41 & STH 190	LS	LUMP SUM	_____.
1710	656.0200 Electrical Service Meter Breaker Pedestal (location) 3101. W. North Avenue & N. 124th Street	LS	LUMP SUM	_____.
1720	656.0400 Electrical Service Main Lugs Only Meter Pedestal (location) 0001. HL-40-CD	LS	LUMP SUM	_____.



Proposal Schedule of Items

Proposal ID: 20170314013 Project(s): 1060-39-90, 1360-09-71

Federal ID(s): N/A, WISC 2017102

SECTION: 0001 Contract Items

Alt Set ID: Alt Mbr ID:

Proposal Line Number	Item ID Description	Approximate Quantity and Units	Unit Price	Bid Amount
1730	656.0500 Electrical Service Breaker Disconnect Box (location) 2001. CB-DMS-40-0036	LS	LUMP SUM	_____.
1740	657.0100 Pedestal Bases	27.000 EACH	_____.	_____.
1750	657.0210 Transformer Bases Breakaway 15-17 Inch Bolt Circle	4.000 EACH	_____.	_____.
1760	657.0255 Transformer Bases Breakaway 11 1/2-Inch Bolt Circle	34.000 EACH	_____.	_____.
1770	657.0305 Poles Type 2	2.000 EACH	_____.	_____.
1780	657.0310 Poles Type 3	2.000 EACH	_____.	_____.
1790	657.0322 Poles Type 5-Aluminum	30.000 EACH	_____.	_____.
1800	657.0380 Poles Type E	4.000 EACH	_____.	_____.
1810	657.0420 Traffic Signal Standards Aluminum 13-FT	13.000 EACH	_____.	_____.
1820	657.0425 Traffic Signal Standards Aluminum 15-FT	9.000 EACH	_____.	_____.
1830	657.0430 Traffic Signal Standards Aluminum 10-FT	5.000 EACH	_____.	_____.
1840	657.0590 Trombone Arms 20-FT	2.000 EACH	_____.	_____.
1850	657.0605 Luminaire Arms Single Member 4 1/2-Inch Clamp 4-FT	18.000 EACH	_____.	_____.
1860	657.0609 Luminaire Arms Single Member 4-Inch Clamp 6-FT	2.000 EACH	_____.	_____.
1870	657.0610 Luminaire Arms Single Member 4 1/2-Inch Clamp 6-FT	30.000 EACH	_____.	_____.



Proposal Schedule of Items

Proposal ID: 20170314013 Project(s): 1060-39-90, 1360-09-71

Federal ID(s): N/A, WISC 2017102

SECTION: 0001 Contract Items

Alt Set ID: Alt Mbr ID:

Proposal Line Number	Item ID Description	Approximate Quantity and Units	Unit Price	Bid Amount
1880	657.0705 Luminaire Arms Truss Type 4 1/2-Inch Clamp 10-FT	16.000 EACH	_____.	_____.
1890	657.0715 Luminaire Arms Truss Type 4 1/2-Inch Clamp 15-FT	20.000 EACH	_____.	_____.
1900	657.1345 Install Poles Type 9	4.000 EACH	_____.	_____.
1910	657.1350 Install Poles Type 10	8.000 EACH	_____.	_____.
1920	657.1355 Install Poles Type 12	1.000 EACH	_____.	_____.
1930	657.1525 Install Monotube Arms 25-FT	1.000 EACH	_____.	_____.
1940	657.1530 Install Monotube Arms 30-FT	11.000 EACH	_____.	_____.
1950	657.1540 Install Monotube Arms 40-FT	1.000 EACH	_____.	_____.
1960	657.1808 Install Luminaire Arms Steel 8-FT	8.000 EACH	_____.	_____.
1970	657.1815 Install Luminaire Arms Steel 15-FT	4.000 EACH	_____.	_____.
1980	658.0110 Traffic Signal Face 3-12 Inch Vertical	49.000 EACH	_____.	_____.
1990	658.0115 Traffic Signal Face 4-12 Inch Vertical	25.000 EACH	_____.	_____.
2000	658.0215 Backplates Signal Face 3 Section 12-Inch	37.000 EACH	_____.	_____.
2010	658.0220 Backplates Signal Face 4 Section 12-Inch	25.000 EACH	_____.	_____.
2020	658.0416 Pedestrian Signal Face 16-Inch	22.000 EACH	_____.	_____.
2030	658.0500 Pedestrian Push Buttons	18.000 EACH	_____.	_____.



Proposal Schedule of Items

Proposal ID: 20170314013 Project(s): 1060-39-90, 1360-09-71

Federal ID(s): N/A, WISC 2017102

SECTION: 0001 Contract Items

Alt Set ID: Alt Mbr ID:

Proposal Line Number	Item ID Description	Approximate Quantity and Units	Unit Price	Bid Amount
2040	658.0600 Led Modules 12-Inch Red Ball	57.000 EACH	_____.	_____.
2050	658.0605 Led Modules 12-Inch Yellow Ball	55.000 EACH	_____.	_____.
2060	658.0610 Led Modules 12-Inch Green Ball	35.000 EACH	_____.	_____.
2070	658.0615 Led Modules 12-Inch Red Arrow	17.000 EACH	_____.	_____.
2080	658.0620 Led Modules 12-Inch Yellow Arrow	32.000 EACH	_____.	_____.
2090	658.0625 Led Modules 12-Inch Green Arrow	51.000 EACH	_____.	_____.
2100	658.0635 Led Modules Pedestrian Countdown Timer 16-Inch	22.000 EACH	_____.	_____.
2110	658.5069 Signal Mounting Hardware (location) 3001. IH 41 SB Ramps & CTH EE	LS	LUMP SUM	_____.
2120	658.5069 Signal Mounting Hardware (location) 3002. USH 18 & STH 181	LS	LUMP SUM	_____.
2130	658.5069 Signal Mounting Hardware (location) 3051. IH 41 & STH 190	LS	LUMP SUM	_____.
2140	658.5069 Signal Mounting Hardware (location) 3101. W. North Avenue & N. 124th Street	LS	LUMP SUM	_____.
2150	658.5069 Signal Mounting Hardware (location) 3102. W. Center Street & N. 124th Street	LS	LUMP SUM	_____.
2160	658.5069 Signal Mounting Hardware (location) 3103. W. Burleigh Street & N. 124th Street	LS	LUMP SUM	_____.
2170	659.0600 Underdeck Lighting (location) 0001. EB Lower Level	LS	LUMP SUM	_____.



Proposal Schedule of Items

Proposal ID: 20170314013 Project(s): 1060-39-90, 1360-09-71

Federal ID(s): N/A, WISC 2017102

SECTION: 0001 Contract Items

Alt Set ID: Alt Mbr ID:

Proposal Line Number	Item ID Description	Approximate Quantity and Units	Unit Price	Bid Amount
2180	659.0600 Underdeck Lighting (location) 0002. WB Lower Level	LS	LUMP SUM	_____.
2190	659.0600 Underdeck Lighting (location) 0003. EB Mid Level	LS	LUMP SUM	_____.
2200	659.0600 Underdeck Lighting (location) 0004. WB Mid Level	LS	LUMP SUM	_____.
2210	659.1125 Luminaires Utility LED C	74.000 EACH	_____.	_____.
2220	659.1130 Luminaires Utility LED D	22.000 EACH	_____.	_____.
2230	659.1215 Luminaires Underdeck LED C	14.000 EACH	_____.	_____.
2240	659.2230 Lighting Control Cabinets 240/480 30-Inch	1.000 EACH	_____.	_____.
2250	661.0300 Generators	2.000 DAY	_____.	_____.
2260	670.0100 Field System Integrator 2001. FTMS	LS	LUMP SUM	_____.
2270	670.0200 ITS Documentation 2001. FTMS	LS	LUMP SUM	_____.
2280	672.0280 Base Camera Pole 80-FT	1.000 EACH	_____.	_____.
2290	673.0225.S Install Pole Mounted Cabinet	1.000 EACH	_____.	_____.
2300	674.0300 Remove Cable	90.000 LF	_____.	_____.
2310	675.0300 Install Mounted Controller Microwave Detector Assembly	1.000 EACH	_____.	_____.
2320	675.0400.S Install Ethernet Switch	9.000 EACH	_____.	_____.





Proposal Schedule of Items

Proposal ID: 20170314013 Project(s): 1060-39-90, 1360-09-71

Federal ID(s): N/A, WISC 2017102

SECTION: 0001 Contract Items

Alt Set ID: Alt Mbr ID:

Proposal Line Number	Item ID Description	Approximate Quantity and Units	Unit Price	Bid Amount
2330	677.0180 Install Camera Pole 80-FT	1.000 EACH	_____.	_____.
2340	677.0200 Install Camera Assembly	2.000 EACH	_____.	_____.
2350	677.9051.S Removing 50-FT Camera Pole	1.000 EACH	_____.	_____.
2360	677.9200.S Removing CCTV Camera	1.000 EACH	_____.	_____.
2370	678.0006 Install Fiber Optic Cable Outdoor Plant 6-CT	830.000 LF	_____.	_____.
2380	678.0012 Install Fiber Optic Cable Outdoor Plant 12-CT	1,780.000 LF	_____.	_____.
2390	678.0300 Fiber Optic Splice	4.000 EACH	_____.	_____.
2400	678.0400 Fiber Optic Termination	12.000 EACH	_____.	_____.
2410	678.0500 Communication System Testing 2001. FTMS	LS	LUMP SUM	_____.
2420	690.0250 Sawing Concrete	2,985.000 LF	_____.	_____.
2430	715.0415 Incentive Strength Concrete Pavement	1,106.000 DOL		_____.
2440	ASP.1T0A On-the-Job Training Apprentice at \$5.00/HR	300.000 HRS	5.00000	1,500.00
2450	ASP.1T0G On-the-Job Training Graduate at \$5.00/HR	200.000 HRS	5.00000	1,000.00
2460	SPV.0035 Special 0001. Backfill Slurry	414.000 CY	_____.	_____.
2470	SPV.0060 Special 0001. Traffic Control Interim Freeway Lane Closure	10.000 EACH	_____.	_____.



Proposal Schedule of Items

Proposal ID: 20170314013 Project(s): 1060-39-90, 1360-09-71

Federal ID(s): N/A, WISC 2017102

SECTION: 0001 Contract Items

Alt Set ID: Alt Mbr ID:

Proposal Line Number	Item ID Description	Approximate Quantity and Units	Unit Price	Bid Amount
2480	SPV.0060 Special 0002. Traffic Control Close-Open Freeway Ramp	3.000 EACH	_____.	_____.
2490	SPV.0060 Special 0003. Reconnect Storm Sewer Laterals	4.000 EACH	_____.	_____.
2500	SPV.0060 Special 0164. Concrete Barrier Type S56 End Anchor	4.000 EACH	_____.	_____.
2510	SPV.0060 Special 1001. Removing Distribution Centers	1.000 EACH	_____.	_____.
2520	SPV.0060 Special 1002. Removing Luminaires Underdeck	14.000 EACH	_____.	_____.
2530	SPV.0060 Special 1003. Removing Lighting Units	66.000 EACH	_____.	_____.
2540	SPV.0060 Special 1004. Lamp Disposal High Intensity Discharge	109.000 EACH	_____.	_____.
2550	SPV.0060 Special 1005. Poles Type F	12.000 EACH	_____.	_____.
2560	SPV.0060 Special 1006. Poles Type 5-Aluminum Multi-Arm Heights	16.000 EACH	_____.	_____.
2570	SPV.0060 Special 2001. Ground Rod	2.000 EACH	_____.	_____.
2580	SPV.0060 Special 2002. Install Overhead Freeway DMS Full Matrix	1.000 EACH	_____.	_____.
2590	SPV.0060 Special 2004. Pull Box Non-Conductive 24X42-Inch	4.000 EACH	_____.	_____.
2600	SPV.0060 Special 2005. Install 5.8 GHz Ethernet Bridge	9.000 EACH	_____.	_____.
2610	SPV.0060 Special 2006. Removing Microwave Detector Assembly	1.000 EACH	_____.	_____.



Proposal Schedule of Items

Proposal ID: 20170314013 Project(s): 1060-39-90, 1360-09-71

Federal ID(s): N/A, WISC 2017102

SECTION: 0001 Contract Items

Alt Set ID: Alt Mbr ID:

Proposal Line Number	Item ID Description	Approximate Quantity and Units	Unit Price	Bid Amount
2620	SPV.0060 Special 3051. Remove Monotube Concrete Bases	4.000 EACH	_____.	_____.
2630	SPV.0060 Special 3052. Backplates With Reflective Border 3 Section 12-Inch	12.000 EACH	_____.	_____.
2640	SPV.0060 Special 3053. Locating Monotube Traffic Signals	2.000 EACH	_____.	_____.
2650	SPV.0060 Special 3054. Concrete Bases Type 1 Spread Footing	2.000 EACH	_____.	_____.
2660	SPV.0060 Special 3055. Concrete Control Cabinet Bases Type 9 Special Mod.	1.000 EACH	_____.	_____.
2670	SPV.0060 Special 3101. EVP Detector Type I	4.000 EACH	_____.	_____.
2680	SPV.0060 Special 3102. EVP Discriminator Type IV	1.000 EACH	_____.	_____.
2690	SPV.0060 Special 3103. EVP Confirmation Light Assembly Type I	4.000 EACH	_____.	_____.
2700	SPV.0060 Special 3104. Traffic Signal Controller Programming	6.000 EACH	_____.	_____.
2710	SPV.0060 Special 3105. Concrete Control Cabinet Bases Type 9 Modified	1.000 EACH	_____.	_____.
2720	SPV.0060 Special 3106. Video Detection System Programming	1.000 EACH	_____.	_____.
2730	SPV.0060 Special 5001. Relocation Hydrant Assembly	1.000 EACH	_____.	_____.
2740	SPV.0075 Special 0001. Pavement Cleanup Project 1060-39-90	100.000 HRS	_____.	_____.



Proposal Schedule of Items

Proposal ID: 20170314013 Project(s): 1060-39-90, 1360-09-71

Federal ID(s): N/A, WISC 2017102

SECTION: 0001 Contract Items

Alt Set ID: Alt Mbr ID:

Proposal Line Number	Item ID Description	Approximate Quantity and Units	Unit Price	Bid Amount
2750	SPV.0075 Special 0002. Pavement Cleanup Project 1360-09-71	24.000 HRS	_____.	_____.
2760	SPV.0075 Special 4000. Obstructions Sign Supports Concrete Masonry	2.000 HRS	_____.	_____.
2770	SPV.0090 Special 0001. Pipe Underdrain 6-Inch Special	218.000 LF	_____.	_____.
2780	SPV.0090 Special 0002. Concrete Curb & Gutter 30-Inch Type A (Modified)	73.000 LF	_____.	_____.
2790	SPV.0090 Special 0003. Concrete Curb & Gutter Integral 30-Inch Type D (Modified)	63.000 LF	_____.	_____.
2800	SPV.0090 Special 2001. Outdoor Rated Network Cable	903.000 LF	_____.	_____.
2810	SPV.0090 Special 3001. Cable Type UF 2-14 AWG	1,171.000 LF	_____.	_____.
2820	SPV.0090 Special 3002. Install State Supplied Video Detection Cable	510.000 LF	_____.	_____.
2830	SPV.0090 Special 3003. Install State Supplied Cat- 5E Cable	554.000 LF	_____.	_____.
2840	SPV.0105 Special 0001. Survey Project 1360-09-71	LS	LUMP SUM	_____.
2850	SPV.0105 Special 0007. Survey Project 1060-39-90	LS	LUMP SUM	_____.
2860	SPV.0105 Special 1001. Maintenance of Lighting Systems	LS	LUMP SUM	_____.
2870	SPV.0105 Special 1002. Lighting system Integrator	LS	LUMP SUM	_____.
2880	SPV.0105 Special 1003. Lighting System Survey	LS	LUMP SUM	_____.



Proposal Schedule of Items

Proposal ID: 20170314013 Project(s): 1060-39-90, 1360-09-71

Federal ID(s): N/A, WISC 2017102

SECTION: 0001 Contract Items

Alt Set ID: Alt Mbr ID:

Proposal Line Number	Item ID Description	Approximate Quantity and Units	Unit Price	Bid Amount
2890	SPV.0105 Special 3001. Remove Traffic Signals STH 190 & Industrial Road	LS	LUMP SUM	_____.
2900	SPV.0105 Special 3002. Remove Traffic Signals USH 18 & STH 181	LS	LUMP SUM	_____.
2910	SPV.0105 Special 3003. Trnspt & Install State Furnished Traffic Signal Cabinet IH 41 SB Off Ramp & CTH EE	LS	LUMP SUM	_____.
2920	SPV.0105 Special 3004. Transporting Traffic Signal and Lighting Materials IH 41 SB Off Ramp & CTH EE	LS	LUMP SUM	_____.
2930	SPV.0105 Special 3005. Trnsp and Inst State Furn Radar Detection System IH 41 SB Off Ramp & CTH EE	LS	LUMP SUM	_____.
2940	SPV.0105 Special 3006. Trnsp and Install State Furnished Autoscope Video Detection System USH 18 & STH 181	LS	LUMP SUM	_____.
2950	SPV.0105 Special 3007. Covering Traffic Signal Equipment USH 18 & STH 181	LS	LUMP SUM	_____.
2960	SPV.0105 Special 3008. Trnsp & Install State Furnished Autoscope Video Detection System IH 41 Ramps & W. Burleigh St.	LS	LUMP SUM	_____.
2970	SPV.0105 Special 3009. Covering Traffic Signal Equipment STH 190 & Industrial Road	LS	LUMP SUM	_____.
2980	SPV.0105 Special 3051. Removing Traffic Signals IH 41 & STH 190	LS	LUMP SUM	_____.
2990	SPV.0105 Special 3052. Transport & Install State Furnished Traffic Signal Cabinet IH 41 & STH 190	LS	LUMP SUM	_____.
3000	SPV.0105 Special 3053. Transporting Traffic Signal and Lighting Materials IH 41 & STH 190	LS	LUMP SUM	_____.



Proposal Schedule of Items

Proposal ID: 20170314013 Project(s): 1060-39-90, 1360-09-71

Federal ID(s): N/A, WISC 2017102

SECTION: 0001 Contract Items

Alt Set ID: Alt Mbr ID:

Proposal Line Number	Item ID Description	Approximate Quantity and Units	Unit Price	Bid Amount
3010	SPV.0105 Special 3054. Transporting and Installing State Furnished Radar Detection System IH 41 & STH 190	LS	LUMP SUM	_____.
3020	SPV.0105 Special 3101. Remove Traffic Signals W. North Avenue & N. 124th Street	LS	LUMP SUM	_____.
3030	SPV.0105 Special 3102. Remove Traffic Signals W. Center Street & N. 124th Street	LS	LUMP SUM	_____.
3040	SPV.0105 Special 3103. Remove Traffic Signals W. Burleigh Street & N. 124th Street	LS	LUMP SUM	_____.
3050	SPV.0105 Special 3104. Trnsp Traffic Signal and Lighting Materials W. North Avenue & N. 124th Street	LS	LUMP SUM	_____.
3060	SPV.0105 Special 3105. Install State Furnished Municipal Traffic Signal Cabinet W. North Avenue & N. 124th Street	LS	LUMP SUM	_____.
3070	SPV.0105 Special 3106. Install State Furnished Municipal Traffic Signal Cabinet W. Center Street & N. 124th Street	LS	LUMP SUM	_____.
3080	SPV.0105 Special 3107. Video Vehicle Detection System W. North Avenue & N. 124th Street	LS	LUMP SUM	_____.
3090	SPV.0105 Special 3108. Temp Traffic Signals for Intersections Partial W. North Avenue & N. 124th Street	LS	LUMP SUM	_____.
3100	SPV.0105 Special 3109. Video Vehicle Detection System W. Burleigh Street & N. 124th Street	LS	LUMP SUM	_____.
3110	SPV.0105 Special 3110. Operate and Maintain Traffic Signal W. Burleigh Street & N. 124th Street	LS	LUMP SUM	_____.



Proposal Schedule of Items

Proposal ID: 20170314013 Project(s): 1060-39-90, 1360-09-71

Federal ID(s): N/A, WISC 2017102

SECTION: 0001 Contract Items

Alt Set ID: Alt Mbr ID:

Proposal Line Number	Item ID Description	Approximate Quantity and Units	Unit Price	Bid Amount
3120	SPV.0105 Special 3111. Remove Traffic Signals W. Burleigh Street & N. 119th Street	LS	LUMP SUM	_____.
3130	SPV.0105 Special 3112. Remove Traffic Signals W. Burleigh Street & N. 114th Street.	LS	LUMP SUM	_____.
3140	SPV.0105 Special 3113. Install State Furnished Municipal Traffic Signal Cabinet W. Burleigh Street & N. 119th Street	LS	LUMP SUM	_____.
3150	SPV.0105 Special 3114. Install State Furnished Municipal Traffic Signal Cabinet W. Burleigh Street & N. 114th Street	LS	LUMP SUM	_____.
3160	SPV.0105 Special 3115. Video Vehicle Detection System W. Burleigh Street & N. 119th Street	LS	LUMP SUM	_____.
3170	SPV.0105 Special 3116. Video Vehicle Detection System W. Burleigh Street & N. 114th Street	LS	LUMP SUM	_____.
3180	SPV.0105 Special 3117. Video Vehicle Detection System W. Burleigh Street & N. 112th Street	LS	LUMP SUM	_____.
3190	SPV.0105 Special 3200. Mast Arm Retrofit Structure B-40-333	LS	LUMP SUM	_____.
3200	SPV.0105 Special 3210. Mast Arm Retrofit Structure B-40-334	LS	LUMP SUM	_____.
3210	SPV.0180 Special 0001. Concrete Pavement HES 8-Inch Special	34.000 SY	_____.	_____.
3220	SPV.0060 Special 0010. Exposing Existing Utility Paved Area	5.000 EACH	_____.	_____.
3230	SPV.0060 Special 0011. Exposing Existing Utility Unpaved Area	5.000 EACH	_____.	_____.



Proposal Schedule of Items

Proposal ID: 20170314013 Project(s): 1060-39-90, 1360-09-71

Federal ID(s): N/A, WISC 2017102

SECTION: 0001 Contract Items

Alt Set ID: Alt Mbr ID:

Proposal Line Number	Item ID Description	Approximate Quantity and Units	Unit Price	Bid Amount
3240	SPV.0060 Special 5100. Abandon Water Service	1.000 EACH	_____.	_____.
3250	SPV.0060 Special 5110. Abandon Sanitary Service	1.000 EACH	_____.	_____.
<b>Section: 0001</b>			<b>Total:</b>	_____.
			<b>Total Bid:</b>	_____.