



# Wisconsin Department of Transportation

## Division of Transportation Systems Development

Bureau of Project Development  
4802 Sheboygan Avenue, Rm 601  
P O Box 7916  
Madison, WI 53707-7916

Telephone: (608) 266-1631  
Facsimile (FAX): (608) 266-8459

March 8, 2017

### NOTICE TO ALL CONTRACTORS:

**Proposal #14: 2025-13-71, WISC 2017 103  
Capitol Drive Village and City of Pewaukee  
Five Fields Road to Wethersfield Road  
STH 190  
Waukesha County**

### Letting of March 14, 2017

This is Addendum No. 01, which provides for the following:

#### Schedule of Items:

Revised Bid Item Quantities					
Bid Item	Item Description	Unit	Old Quantity	Revised Quantity	Proposal Total
505.0600	Bars Steel Reinforcement HS Coated Structures	LB	362,420	800	363,220

Added Bid Item Quantities					
Bid Item	Item Description	Unit	Old Quantity	Revised Quantity	Proposal Total
204.0175	Removing Concrete Slope Paving	SY	0	454	454

#### Plan Sheets:

Revised Plan Sheets	
Plan Sheet	Plan Sheet Title (brief description of changes to sheet)
465	Moved name plate location, added removing concrete slope paving note
466	Changes to Total Estimated Quantities Table
474	Added note for spacing of P502 bars
477	Changed concrete strength units to ksi
481	Changes to Parapet Bill of Bars
482	Changes to Approach Slab Bill of Bars
483	Added minimum lap note to bar R508
485	Added removing concrete slope paving note
486	Changes to Total Estimated Quantities Table
493	Changes to notes on East Abutment Bill of Bars
494	Added note for spacing of P502 bars

497	Changed concrete strength units to ksi
501	Changes to Parapet Bill of Bars
502	Changes to Approach Slab Bill of Bars
503	Added minimum lap note to bar R508

**Schedule of Items**

Attached, dated March 8, 2017, are the revised Schedule of Items Pages 1 – 19.

**Plan Sheets**

The following 8½ x 11-inch sheets are attached and made part of the plans for this proposal:  
Revised: 465, 466, 474, 477, 481, 482, 483, 485, 486, 493, 494, 497, 501, 502, and 503.

The responsibility for notifying potential subcontractors and suppliers of these changes remains with the prime contractor.

Sincerely,

*Mike Coleman*

Proposal Development Specialist  
Proposal Management Section

END OF ADDENDUM

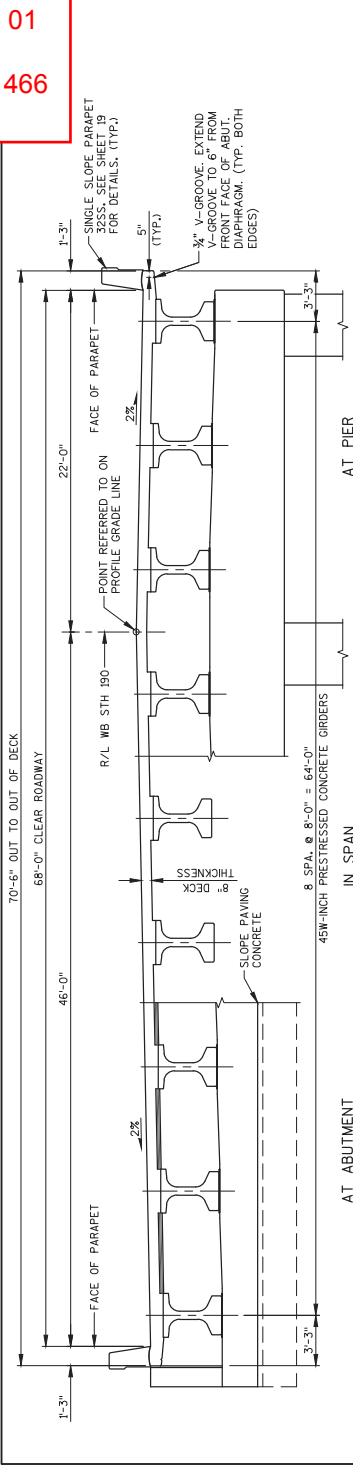


**GENERAL NOTES**

DRAWINGS SHALL NOT BE SCALED. BAR STEEL REINFORCEMENT SHALL BE EMBEDDED 2" CLEAR UNLESS OTHERWISE SHOWN OR NOTED.  
ELEVATIONS SHOWN ON THE PLAN ARE REFERENCED TO THE NORTH AMERICA VERTICAL DATUM OF 1988 (1991 ADJUSTMENT).  
JOINT FILLER SHALL CONFORM TO A.A.S.H.T.O. DESIGNATION M53, TYPE I, II OR III OR A.A.S.H.T.O. DESIGNATION M25.  
THE SLOPE OF FILL IN FRONT OF THE ABUTMENTS SHALL BE COVERED WITH SLOPE PAVING CONCRETE TO THE EXTENT SHOWN ON SHEET 1 AND IN THE SLOPE PAVING DETAILS.  
AT THE BACK FACE OF ABUTMENTS, ALL VOLUME WHICH CANNOT BE PLACED BEFORE ABUTMENT CONSTRUCTION AND IS NOT OCCUPIED BY THE NEW SLOPE PAVING SHALL BE BACKFILLED WITH BACKFILL STRUCTURE TYPE A. SEE THIS SHEET FOR DETAIL.  
APPLY PROTECTIVE SURFACE TREATMENT TO THE ENTIRE TOP OF THE DECK, THE TOP OF THE STRUCTURAL APPROACH SLABS, AND TO THE PAVING NOTCHES.  
APPLY PIGMENTED SURFACE SEALER TO THE FRONT FACE AND TOP OF THE PARAPETS INCLUDING PARAPETS ON THE STRUCTURAL APPROACH SLABS.  
THE EXISTING STRUCTURE (B-67-0099) IS A 2-SPAN CONTINUOUS PRESTRESSED CONCRETE BRIDGE WITH 17'-0" SPAN ABUTMENTS, 17'-0" SPAN ABUTMENTS SUPPORTED ON PIERS, AND REINFORCED CONCRETE 4-COLUMN SPREAD FOOTING PIER. THE STRUCTURE HAS A 49.9' CLEAR ROADWAY WIDTH AND A 17'4" OVERALL LENGTH AND SHALL BE REMOVED.  
THE HAUNCH CONCRETE QUANTITY IS BASED ON THE AVERAGE HAUNCH SHOWN ON THE PRESTRESSED ORDER DETAILS SHEET.  
ALL STATIONS AND ELEVATIONS SHOWN ARE IN FEET.  
THE EXISTING GROUNDLINE SHALL BE THE UPPER LIMITS OF EXCAVATION FOR STRUCTURES.  
THE FIRST DIGIT OF A THREE DIGIT BAR MARK OR THE FIRST TWO DIGITS OF A FOUR DIGIT BAR MARK SIGNIFIES THE BAR SIZE.

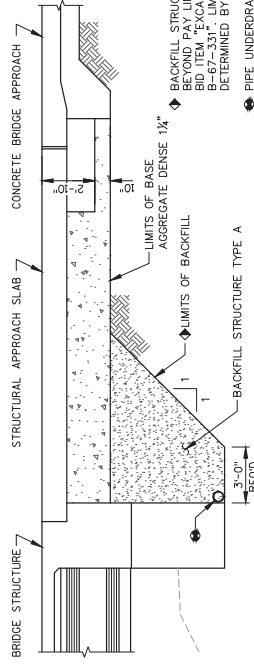
**GENERAL NOTES**

DRAWINGS SHALL NOT BE SCALED. BAR STEEL REINFORCEMENT SHALL BE EMBEDDED 2" CLEAR UNLESS OTHERWISE SHOWN OR NOTED.  
ELEVATIONS SHOWN ON THE PLAN ARE REFERENCED TO THE NORTH AMERICA VERTICAL DATUM OF 1988 (1991 ADJUSTMENT).  
JOINT FILLER SHALL CONFORM TO A.A.S.H.T.O. DESIGNATION M53, TYPE I, II OR III OR A.A.S.H.T.O. DESIGNATION M25.  
THE SLOPE OF FILL IN FRONT OF THE ABUTMENTS SHALL BE COVERED WITH SLOPE PAVING CONCRETE TO THE EXTENT SHOWN ON SHEET 1 AND IN THE SLOPE PAVING DETAILS.  
AT THE BACK FACE OF ABUTMENTS, ALL VOLUME WHICH CANNOT BE PLACED BEFORE ABUTMENT CONSTRUCTION AND IS NOT OCCUPIED BY THE NEW SLOPE PAVING SHALL BE BACKFILLED WITH BACKFILL STRUCTURE TYPE A. SEE THIS SHEET FOR DETAIL.  
APPLY PROTECTIVE SURFACE TREATMENT TO THE ENTIRE TOP OF THE DECK, THE TOP OF THE STRUCTURAL APPROACH SLABS, AND TO THE PAVING NOTCHES.  
APPLY PIGMENTED SURFACE SEALER TO THE FRONT FACE AND TOP OF THE PARAPETS INCLUDING PARAPETS ON THE STRUCTURAL APPROACH SLABS.  
THE EXISTING STRUCTURE (B-67-0099) IS A 2-SPAN CONTINUOUS PRESTRESSED CONCRETE BRIDGE WITH 17'-0" SPAN ABUTMENTS, 17'-0" SPAN ABUTMENTS SUPPORTED ON PIERS, AND REINFORCED CONCRETE 4-COLUMN SPREAD FOOTING PIER. THE STRUCTURE HAS A 49.9' CLEAR ROADWAY WIDTH AND A 17'4" OVERALL LENGTH AND SHALL BE REMOVED.  
THE HAUNCH CONCRETE QUANTITY IS BASED ON THE AVERAGE HAUNCH SHOWN ON THE PRESTRESSED ORDER DETAILS SHEET.  
ALL STATIONS AND ELEVATIONS SHOWN ARE IN FEET.  
THE EXISTING GROUNDLINE SHALL BE THE UPPER LIMITS OF EXCAVATION FOR STRUCTURES.  
THE FIRST DIGIT OF A THREE DIGIT BAR MARK OR THE FIRST TWO DIGITS OF A FOUR DIGIT BAR MARK SIGNIFIES THE BAR SIZE.



**PROPOSED CROSS-SECTION THROUGH ROADWAY (LOOKING EAST)**

*William C. Dehn*  
03/08/17



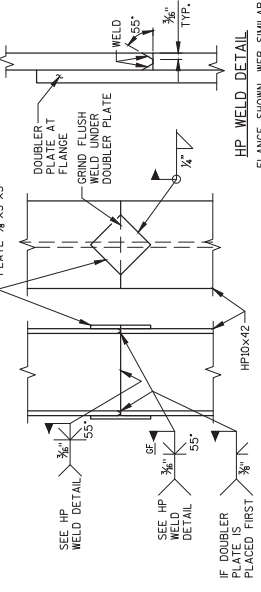
**BACKFILL STRUCTURE DETAIL**  
(TYPICAL AT BOTH ABUTMENTS)

BACKFILL STRUCTURE TYPE A PAY LIMITS. BACKFILL BEYOND PAY LIMITS SHALL BE INCIDENTAL TO THE BID ITEM EXCAVATION FOR STRUCTURES.  
LIMITS OF BACKFILL SHALL BE DETERMINED BY THE CONTRACTOR.  
PIPE UNDERDRAIN WRAPPED (6-INCH) SLOPED 0.5% BEYOND PAY LIMITS SHALL BE INCIDENTAL TO THE BID ITEM EXCAVATION FOR STRUCTURES.  
SCREEN AT ENDS OF PIPE UNDERDRAIN AS DETAILED ON SHEET 7. ROBERT SCREEN TO BE INCLUDED IN THE BID ITEM "PIPE UNDERDRAIN WRAPPED 6-INCH."

**TOTAL ESTIMATED QUANTITIES**

ITEM NUMBER	ITEM DESCRIPTION	UNIT	W. APPR. SLAB	W. ABUT.	PIER	E. ABUT.	E. APPR. SLAB	*SUPER	TOTALS
203.0200	REMOVING OLD STRUCTURE STA. 134+56	LS	---	---	---	---	---	---	1
203.0255.5	DEBRIS CONTAINMENT B-67-331	LS	---	---	---	---	---	---	1
204.0175	REMOVING CONCRETE SLOPE PAVING	SY	---	---	---	---	---	---	(227)
206.1000	EXCAVATION FOR STRUCTURES BRIDGES B-67-331	LS	---	---	---	---	---	---	1
500.1500	BACKFILL STRUCTURE TYPE A	TON	---	230	---	---	---	---	460
501.0005	GE-HOT WEATHER CONCRETING	LB	215	515	710	4,265	---	---	7,250
501.0005	CONCRETE MASONRY BRIDGES	CY	93	69	74	69	569	---	967
502.3200	PROTECTIVE SURFACE TREATMENT	SY	150	---	---	---	150	1,990	1,990
502.3210	PIGMENTED SURFACE SEALER	SY	17	---	---	---	17	181	181
503.0416	PRESTRESSED ORDER TYPE 1 45W-INCH	LF	---	---	---	---	---	---	1,951
505.0400	BAR STEEL REINFORCEMENT HS STRUCTURES	LB	---	4,790	2,040	4,790	---	---	11,620
505.0600	BAR STEEL REINFORCEMENT HS STRUCTURES	LB	34,800	1,680	23,790	1,700	34,800	(24,840)	(81,600)
505.0800.5	BAR STEEL REINFORCEMENT HS STAINLESS STRUCTURES	LB	1,205	---	---	---	1,205	---	2,410
506.2605	BEARING PADS ELASTOMERIC NON-LAMINATED	EACH	---	---	---	---	---	36	36
506.4000	STEEL DIAPHRAGMS B-67-331	SY	---	---	---	---	---	---	32
506.0500	RUBBERIZED MEMBRANE WATERPROOFING	SY	---	13	---	---	---	---	26
506.0500	PILING STEEL HP 10-INCH X 42 LB	LF	---	540	510	---	---	---	1,560
604.0400	SLOPE PAVING CONCRETE	SY	---	215	---	---	---	---	550
604.0405	PIPE UNDERDRAIN	LF	---	310	---	---	---	---	620
604.0405	ANCHOR ASSEMBLIES FOR STEEL PLATE BEAM GUARD	EACH	---	---	---	---	---	---	4
NON-BID ITEMS									
	FILLER	SIZE	---	---	---	---	---	---	1/2", 3/4", 1"

\* THE SUPERSTRUCTURE QUANTITIES INCLUDE THE CONCRETE AND BAR STEEL REINFORCEMENT OF THE PARAPETS ON THE DECK INCLUDING THOSE PORTIONS LOADED ON THE STRUCTURAL APPROACH SLABS.



**PILE SPLICE DETAIL**

STEEL "HP" PILE MATERIAL SHALL BE ASTM A 572 GRADE 50.  
FLANGE SHOWN, WEB SIMILAR



REVISION  
1 3/9/2017 ADD REMAINING QUANTITY OF SLOPE PAVING QUANTITIES TO SHEET 2 OF 20

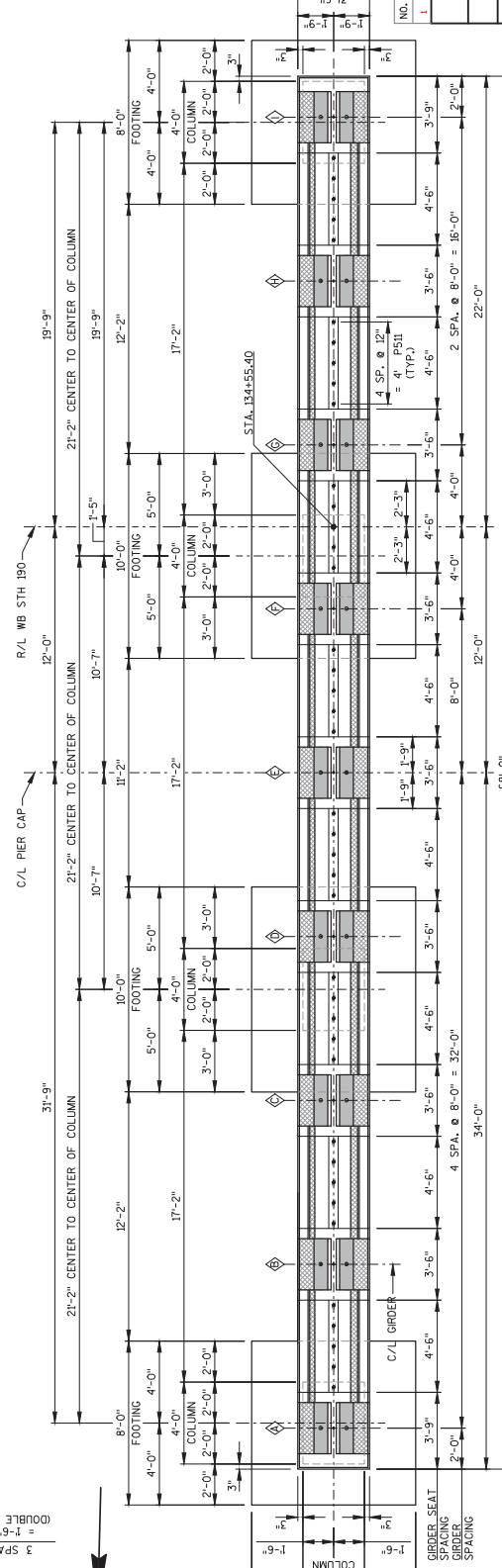
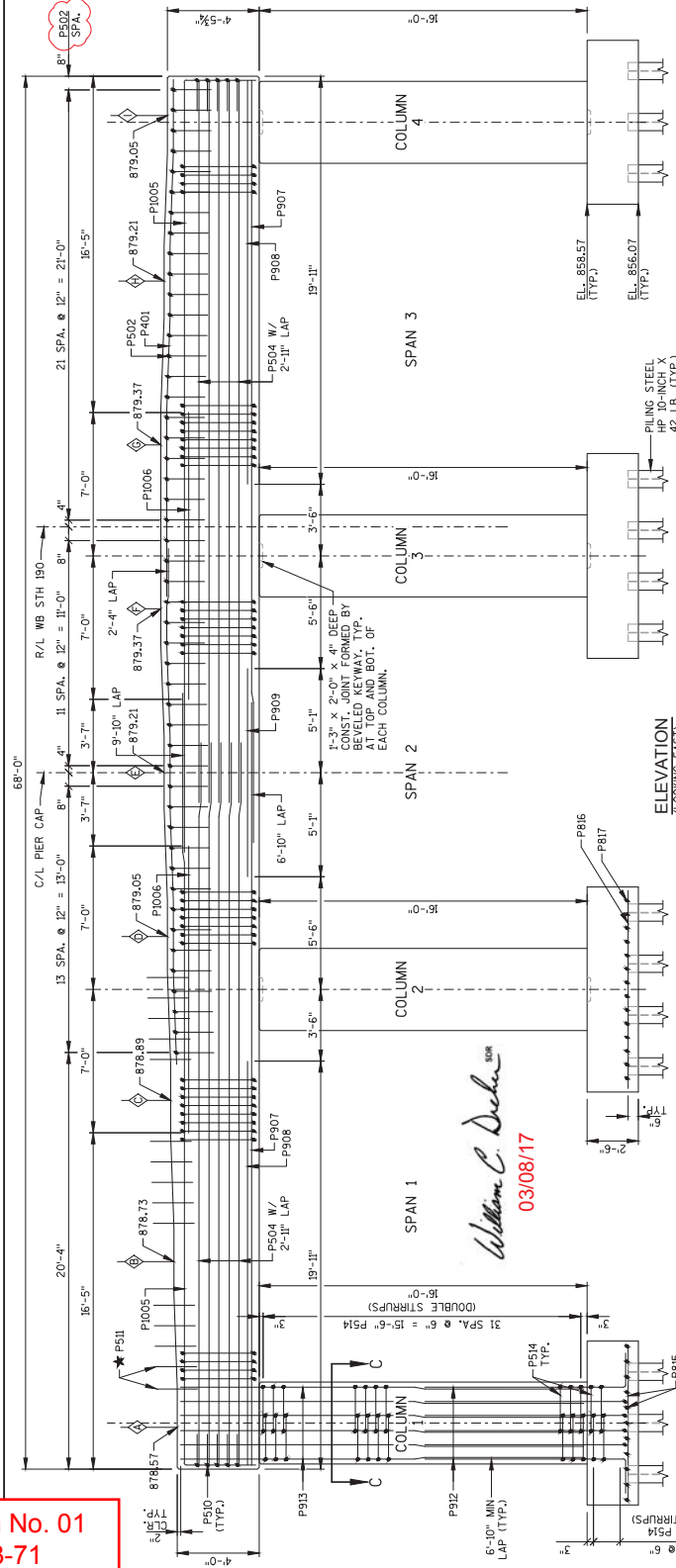
STRUCTURE B-67-331  
CROSS SECTION  
AND QUANTITIES  
SHEET 2 OF 20  
466

Addendum No. 01  
ID 2025-13-71  
Revised Sheet 466  
March 8, 2017



**NOTES**  
SOME BARS HAVE BEEN OMITTED FOR CLARITY. SEE SHEET 11 FOR BILL OF BARS.  
AT PIER, DRIVE PILING STEEL HP 10-INCH X 42 LB TO A REOD. DRIVING RESISTANCE OF 180 TONS. PILING SPACING IS 5 FT. PILE LENGTHS AT PIER.  
SEE SHEET 11 FOR PILE LAYOUT AND PIER LAYOUT.

**LEGEND**  
◇ INDICATES ORDER LINE.  
★ P511 BARS MAY BE PLACED AFTER CONCRETE IS POURED BUT BEFORE IT HAS TAKEN ITS INITIAL SET. PLACE P511 BARS BETWEEN GRIDDERS.



Addendum No. 01  
ID 2025-13-71  
Revised Sheet 474  
March 8, 2017

*William C. Decker*  
03/08/17



**BILL OF BARS  
SUPERSTRUCTURE**

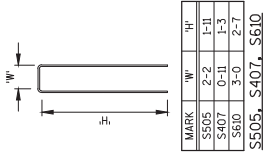
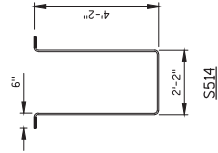
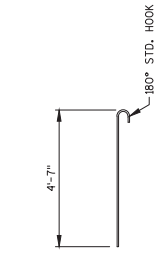
**113,490 LB. (COATED)**

BAR MARK	NO. REOD.	LENGTH	BENT	COAT	LOCATION
S501	124	13'-0"	X	X	DIAPHRAGM - ABUTMENT - VERT.
S502	36	11'-4"	X	X	DIAPHRAGM - ABUTMENT - VERT.
S603	96	4'-8"	X	X	DIAPHRAGM - ABUTMENT - HORIZ.
S604	16	5'-2"	X	X	DIAPHRAGM - ABUTMENT - HORIZ.
S605	174	5'-0"	X	X	DIAPHRAGM - ABUTMENT - HORIZ.
S606	84	5'-0"	X	X	DIAPHRAGM - ABUTMENT - HORIZ.
S407	80	3'-2"	X	X	DIAPHRAGM - ABUTMENT
S408	32	4'-2"	X	X	DIAPHRAGM - ABUTMENT
S609	4	1'-8"	X	X	DIAPHRAGM - ABUTMENT - EDGE
S610	12	7'-11"	X	X	DIAPHRAGM/DECK - ABUTMENT - EDGE
S412	8	2'-2"	X	X	DIAPHRAGM - ABUTMENT - EDGE
S613	16	3'-2"	X	X	DIAPHRAGM - ABUTMENT
S514	48	11'-0"	X	X	DIAPHRAGM - PIER - VERT.
S515	16	9'-4"	X	X	DIAPHRAGM - PIER - VERT.
S416	64	4'-4"	X	X	DIAPHRAGM - PIER - HORIZ.
S417	32	3'-4"	X	X	DIAPHRAGM - PIER - HORIZ.
S518	36	6'-0"	X	X	DIAPHRAGM - ABUTMENT - ORDER
S419	424	3'-3"	X	X	BRIDGE DECK - TOP - LONGIT.
S520	180	3'-6"	X	X	BRIDGE DECK - TOP - LONGIT.
S521	1312	3'-6"	X	X	BRIDGE DECK - TOP & BOT TRANS.
S822	211	4'-0"	X	X	BRIDGE DECK - TOP - AT PIER
S523	654	5'-2"	X	X	BRIDGE DECK - EDGES

**BILL OF BARS  
PARAPETS**

**11,350 LB. (COATED)**

BAR MARK	NUMBER REOD.	LENGTH	BENT	COAT	LOCATION
R501	656	4'-5"	X	X	PARAPET - VERT.
R502	68	4'-5"	X	X	PARAPET - VERT.
R503	68	4'-4"	X	X	PARAPET - VERT.
R504	48	2'-9"	X	X	PARAPET - VERT.
R505	724	5'-0"	X	X	PARAPET - VERT.
R506	24	4'-10"	X	X	PARAPET - VERT.
R507	24	4'-10"	X	X	PARAPET - VERT.
R508	84	3'-8"	X	X	PARAPET - HORIZ.
R509	20	19'-8"	X	X	PARAPET - HORIZ.
R510	4	10'-10"	X	X	PARAPET - HORIZ.
R511	4	11'-9"	X	X	PARAPET - HORIZ.



MARK	W	H
S405	2'-2"	1'-11"
S407	0'-11"	1'-3"
S610	3'-0"	2'-7"

MARK	W	H
S501	3'-2"	3'-0"
S502	3'-2"	2'-2"
S503	2'-2"	2'-2"



Addendum No. 01  
ID 2025-13-71  
Revised Sheet 481  
March 8, 2017

**NOTES**  
THE FIRST DIGIT OF A BAR MARK SIGNIFIES THE BAR SIZE.  
DIMENSIONS IN BENDING DETAILS ARE OUT TO OUT OF BAR.

NO.	DATE	REVISION	BY
1	3-3-2017	REQUIRED NUMBER OF BARS	PTB

STATE OF WISCONSIN  
DEPARTMENT OF TRANSPORTATION

STRUCTURE B-67-331

DRAWN BY: JZ (S.S.)  
PLANS P.T.B.

SUPERSTRUCTURE  
DETAILS (2 OF 2)

SHEET 17 OF 20  
481

LAYOUT: BAR STEEL DETAILS

*William C. Decker*  
03/08/17



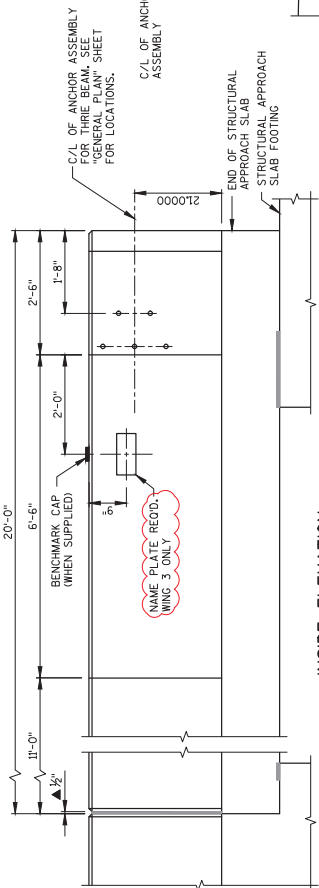




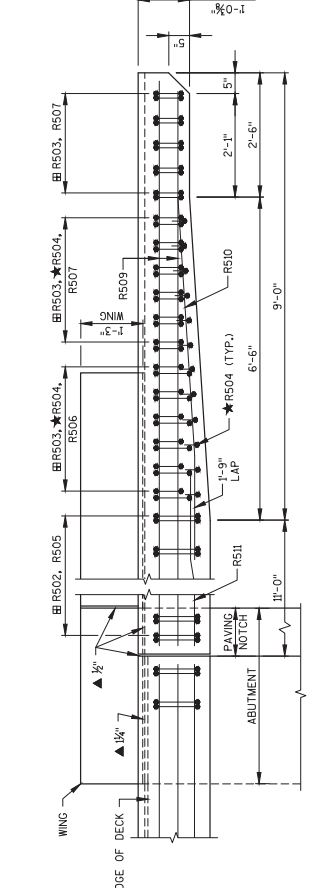
STATE PROJECT NUMBER  
2025-13-71

NOTES  
SOME BARS HAVE BEEN OMITTED FOR CLARITY.  
SEE SHEET 17 FOR BILL OF BARS.

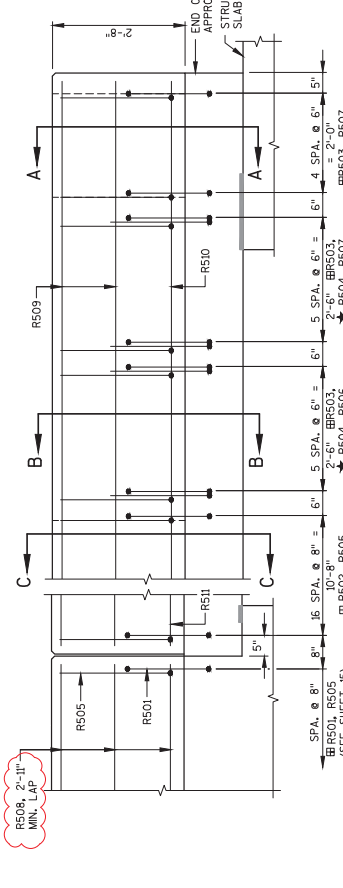
Addendum No. 01  
ID 2025-13-71  
Revised Sheet 483  
March 8, 2017



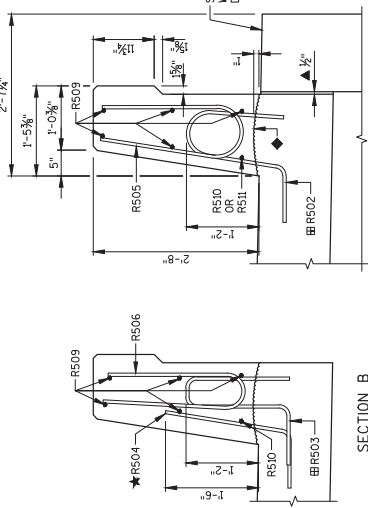
INSIDE ELEVATION  
(WING 3 SHOWN - OTHER WINGS SIMILAR)



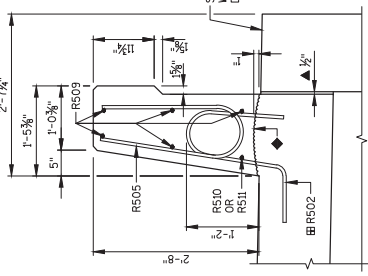
PLAN LAYOUT



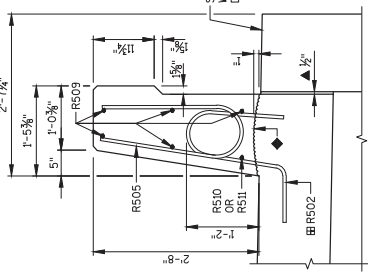
STEEL LAYOUT



SECTION A

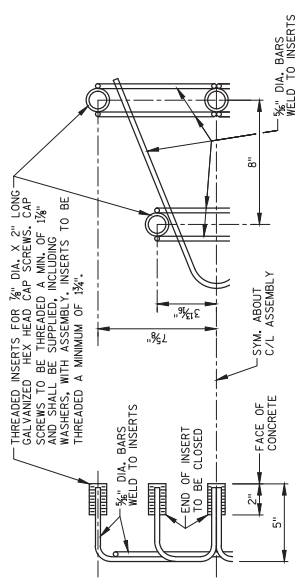


SECTION B



SECTION C

SECTION THROUGH  
PARAPET ON BRIDGE



DETAIL OF ANCHOR ASSEMBLY

NOTE: HEX HEAD CAP SCREWS AND WASHERS TO BE GALVANIZED IN ACCORDANCE WITH AASHTO M232, CLASS C.  
ASSEMBLY SHALL BE BID ITEM "ANCHOR ASSEMBLIES FOR STEEL PLATE BEAM GUARD".

LEGEND

- ◆ CONSTRUCTION JOINT, STRIKE OFF AS SHOWN.
- ▲ FILLER WITH NON-STAINING, SEAL ALL EXPOSED HORIZ. & VERT. SURFACES OF & HOLD 1/8" BELOW SURFACE OF CONCRETE.
- ★ RS04 BARS MAY BE PLACED AFTER CONCRETE IS POURED BUT BEFORE INITIAL SET HAS TAKEN PLACE. USE CARE TO PLACE RS04 BARS CORRECTLY ALONG TRANSITION OF PARAPET.
- RS01 BARS TO BE TIED TO DECK STEEL BEFORE DECK IS POURED. RS02 AND RS03 BARS TO BE TIED TO APPROACH SLAB STEEL BEFORE APPROACH SLAB IS POURED.

William C. Decker  
03/08/17



NO.	DATE	REVISION	BY
1	3-3-2017	NAME PLATE LOCATION, MINIMUM BAR LAP	PTB

STATE OF WISCONSIN  
DEPARTMENT OF TRANSPORTATION

STRUCTURE B-67-0331

PTB  
SHEET 19 OF 20

PARAPET DETAILS  
483



Addendum No. 01  
 ID 2025-13-71  
 Revised Sheet 486  
 March 8, 2017

STATE PROJECT NUMBER  
**2025-13-71**

**GENERAL NOTES**

DRAWINGS SHALL NOT BE SCALED. BAR STEEL REINFORCEMENT SHALL BE EMBEDDED 2" CLEAR UNLESS OTHERWISE SHOWN OR NOTED.

ELEVATIONS SHOWN ON THE PLAN ARE REFERENCED TO THE NORTH AMERICA VERTICAL DATUM OF 1988 (1991 ADJUSTMENT).

JOINT FILLER SHALL CONFORM TO A.A.S.H.T.O. DESIGNATION M53, TYPE I, II OR III OR A.A.S.H.T.O. DESIGNATION M23.

THE SLOPE OF FILL IN FRONT OF THE ABUTMENTS SHALL BE COVERED WITH SLOPE PAVING CONCRETE TO THE EXTENT SHOWN ON SHEET 1 AND IN THE SLOPE PAVING DETAILS.

AT THE BACK FACE OF ABUTMENTS, ALL VOLUME WHICH CANNOT BE PLACED BEFORE ABUTMENT CONSTRUCTION AND IS NOT OCCUPIED BY THE NEW STRUCTURE SHALL BE BACKFILLED WITH BACKFILL STRUCTURE TYPE A. SEE THIS SHEET FOR DETAIL.

APPLY PROTECTIVE SURFACE TREATMENT TO THE ENTIRE TOP OF THE DECK, THE TOP OF THE STRUCTURAL APPROACH SLABS, AND TO THE PAVING NOTCHES.

APPLY PRIMED SURFACE SEALER TO THE FRONT FACE AND TOP OF THE PARAPETS INCLUDING PARAPETS ON THE STRUCTURAL APPROACH SLABS.

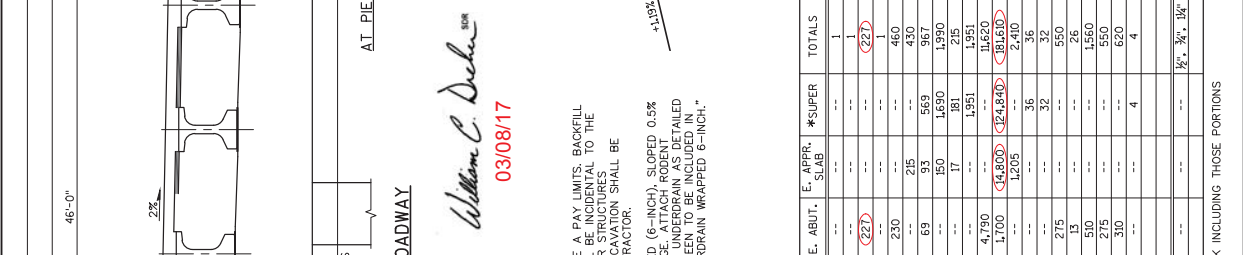
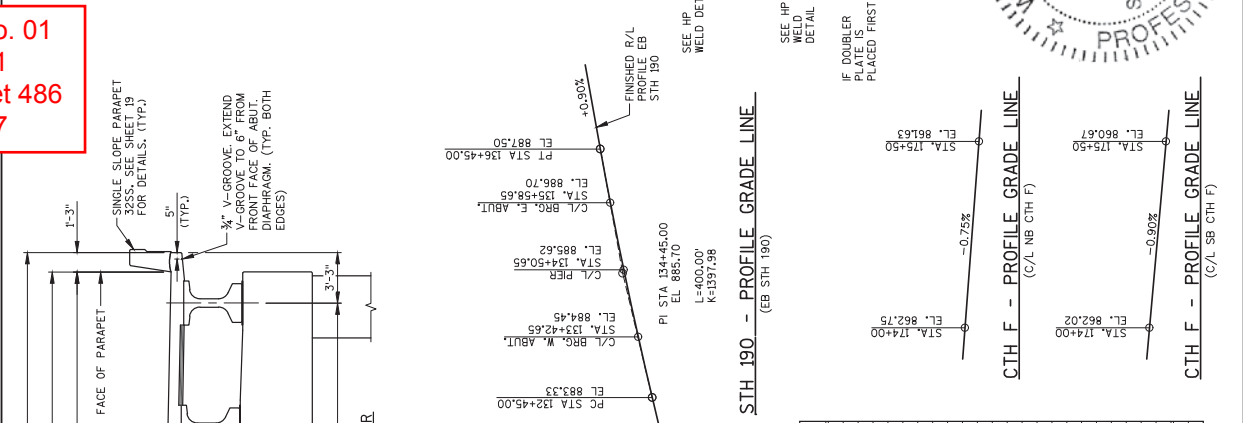
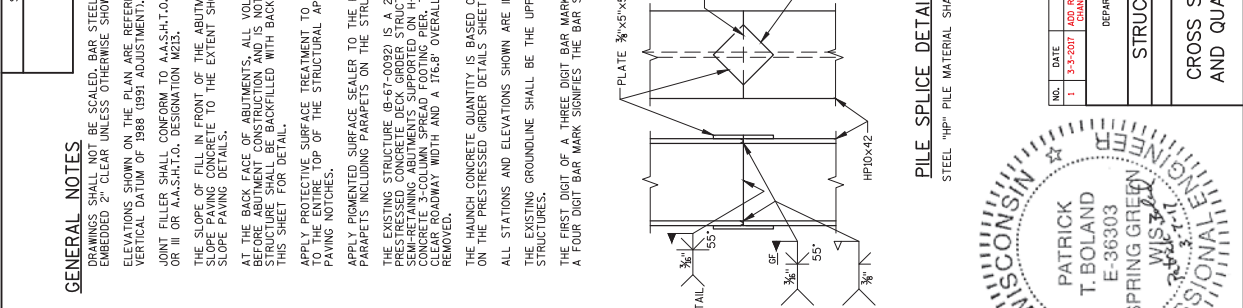
THE EXISTING STRUCTURE (B-67-0092) IS A 2-SPAN CONTINUOUS CONCRETE OVERCAST BAR STEEL STRUCTURE WITH SEMI-RETAINING ABUTMENT SUPPORTED ON PILES, AND A REINFORCED CONCRETE 3-COLUMN SPREAD FOOTING PIER. THE STRUCTURE HAS A 39.8' CLEAR ROADWAY WIDTH AND A 176.8' OVERALL LENGTH AND SHALL BE REMOVED.

THE HAUNCH CONCRETE QUANTITY IS BASED ON THE AVERAGE HAUNCH SHOWN ON THE PRESTRESSED GIRDER DETAILS SHEET.

ALL STATIONS AND ELEVATIONS SHOWN ARE IN FEET.

THE EXISTING GROUNDLINE SHALL BE THE UPPER LIMITS OF EXCAVATION FOR STRUCTURES.

THE FIRST DIGIT OF A THREE DIGIT BAR MARK OR THE FIRST TWO DIGITS OF A FOUR DIGIT BAR MARK SIGNIFIES THE BAR SIZE.



*William C. Decker*  
 03/08/17

**PROPOSED CROSS-SECTION THROUGH ROADWAY**  
 (LOOKING EAST)

BACKFILL STRUCTURE TYPE A  
 (TYPICAL AT BOTH ABUTMENTS)

PIPE UNDERDRAIN WRAPPED (6-INCH) SLOPED 0.5% MIN. TO SUITABLE DRAINAGE. ATTACH RODENT SCREEN AT ENDS OF PIPE UNDERDRAIN AS DETAILED ON SHEET 17. RODENT SCREEN TO BE INCLUDED IN THE BID ITEM PIPE UNDERDRAIN WRAPPED 6-INCH.

**TOTAL ESTIMATED QUANTITIES**

ITEM NUMBER	ITEM DESCRIPTION	UNIT	W. APPR. SLAB	W. ABUT.	PIER	E. ABUT.	E. APPR. SLAB	*SUPER	TOTALS
203.0200	REMOVING OLD STRUCTURE STA. 134+56	LS	---	---	---	---	---	---	1
203.0250	DEBRIS CONTAINMENT B-67-332	LS	---	---	---	---	---	---	1
204.0175	REMOVING CONCRETE B-67-332	SY	---	---	---	---	---	---	(227)
206.1000	EXCAVATION FOR STRUCTURES BRIDGES B-67-332	LS	---	---	---	---	---	---	460
206.1500	BACKFILL STRUCTURE TYPE A	TON	---	---	---	---	---	---	216
502.0100	CONCRETE MASONRY BRIDGES	CY	69	14	69	93	569	1,990	367
502.3200	PROTECTIVE SURFACE TREATMENT	SY	150	---	---	---	17	1,951	216
503.0400	PRESTRESSED GIRDER TYPE I 45W-INCH	LF	---	---	---	---	---	---	1,951
505.0400	BAR STEEL REINFORCEMENT HS STRUCTURES	LB	4,790	2,040	4,790	---	---	11,620	11,620
505.0600	BAR STEEL REINFORCEMENT HS COATED STRUCTURES	LB	4,800	1,680	23,750	1,700	34,800	(24,840)	(81,600)
505.0800	BAR STEEL REINFORCEMENT HS STAINLESS STRUCTURES	LB	---	---	---	---	---	---	---
506.2605	BEARING PADS ELASTOMERIC NON-LAMINATED	EACH	---	---	---	---	---	---	1,205
506.4000	STEEL DIAPHRAGMS B-67-332	EACH	---	---	---	---	---	---	32
511.0200	TEMPORARY SHORING B-67-332	SF	---	---	---	---	---	---	32
516.0500	RUBBERIZED MEMBRANE WATERPROOFING	SF	---	---	---	---	---	---	550
550.1000	PILING STEEL HP 10-INCH X 42 LB	LF	---	---	---	---	---	---	26
604.0400	SLOPE PAVING CONCRETE	SF	---	---	---	---	---	---	1,550
622.0400	PIPE UNDERDRAIN WRAPPED 6-INCH	LF	---	---	---	---	---	---	350
624.0500	ANCHOR ASSEMBLIES FOR STEEL PLATE BEAM GUARD	EACH	---	---	---	---	---	---	620
	NON-BID ITEMS		---	---	---	---	---	---	4
	FILLER	SIZE	---	---	---	---	---	---	1/2", 3/4", 1 1/2"

\* THE SUPERSTRUCTURE QUANTITIES INCLUDE THE CONCRETE AND BAR STEEL REINFORCEMENT OF THE PARAPETS ON THE DECK INCLUDING THOSE PORTIONS LOCATED ON THE STRUCTURAL APPROACH SLABS.



NO. DATE REVISION  
 1 3-9-2011 ASB REMOVAL OF EXISTING HAUNCH COATED BAR STEEL QUANTITY P/B  
 STATE OF WISCONSIN  
 DEPARTMENT OF TRANSPORTATION

STRUCTURE B-67-332  
 BRN  
 UZ CONC.  
 PTB

CROSS SECTION  
 AND QUANTITIES

SHEET 2 OF 20  
**486**

Addendum No. 01  
 ID 2025-13-71  
 Revised Sheet 493  
 March 8, 2017

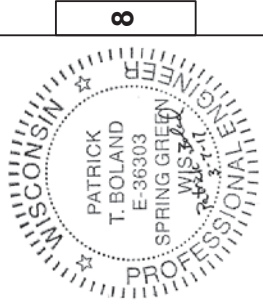
STATE PROJECT NUMBER  
 2025-13-71

1,700 LB. (COATED)  
 4,790 LB. (UNCOATED)

**BILL OF BARS EAST ABUTMENT**

BAR MARK	NO.	LENGTH	BENT	COAT	LOCATION
B501	30	15-8	X		BODY - VERT. - STIRRUP
B402	90	2-3	X		BODY - VERT. - 2 PER PILE
B403	15	28-0	X		BODY - VERT. - SPIRAL - 1 PER PILE
B604	11	36-9			BODY - HORIZ.
B605	11	39-3			BODY - HORIZ.
B606	14	13-0			BODY - HORIZ. - B.F. @ ENDS
B607	7	28-6			BODY - HORIZ. - B.F.
B608	7	28-6			BODY - HORIZ. - B.F.
B609	51	69-7	X		BODY - VERT. - TOP
B410	4	35-7			BODY - HORIZ. - TOP
B411	4	17-6			BODY - HORIZ. - TOP
B412	24	4-5	X		BODY - VERT. - TOP BETWEEN SEATS
B413	24	6-6	X		BODY - HORIZ. - TOP BETWEEN SEATS
B514	7	16-6	X		WING 3 - VERT. - STIRRUP
B515	7	15-8	X		WING 4 - VERT. - STIRRUP
B516	12	8-2	X		WINGS 3 & 4 - HORIZ. - F.F.
B717	18	9-2	X		WINGS 3 & 4 - HORIZ. - B.F. & TOP
B518	28	14-4	X		WINGS 3 & 4 - VERT. - TOP
B519	18	13-4	X		WINGS 3 & 4 - VERT. - TOP
B420	10	7-9	X		WINGS 3 & 4 - HORIZ. - F.F. & B.F.
B421	20	12-7	X		WINGS 3 & 4 - HORIZ. - F.F. & B.F.
B622	4	6-6	X		WINGS 3 & 4 - HORIZ. - TOP
B624	4	3-2	X		WINGS 3 & 4 - HORIZ. - TOP

NOTES: THE FIRST DIGIT OF A BAR MARK SIGNIFIES THE BAR SIZE.  
 DIMENSIONS IN BENDING DETAILS ARE OUT TO OUT OF BAR.  
 SOME BARS HAVE BEEN OMITTED FOR CLARITY. SEE THIS SHEET FOR BILL OF BARS.



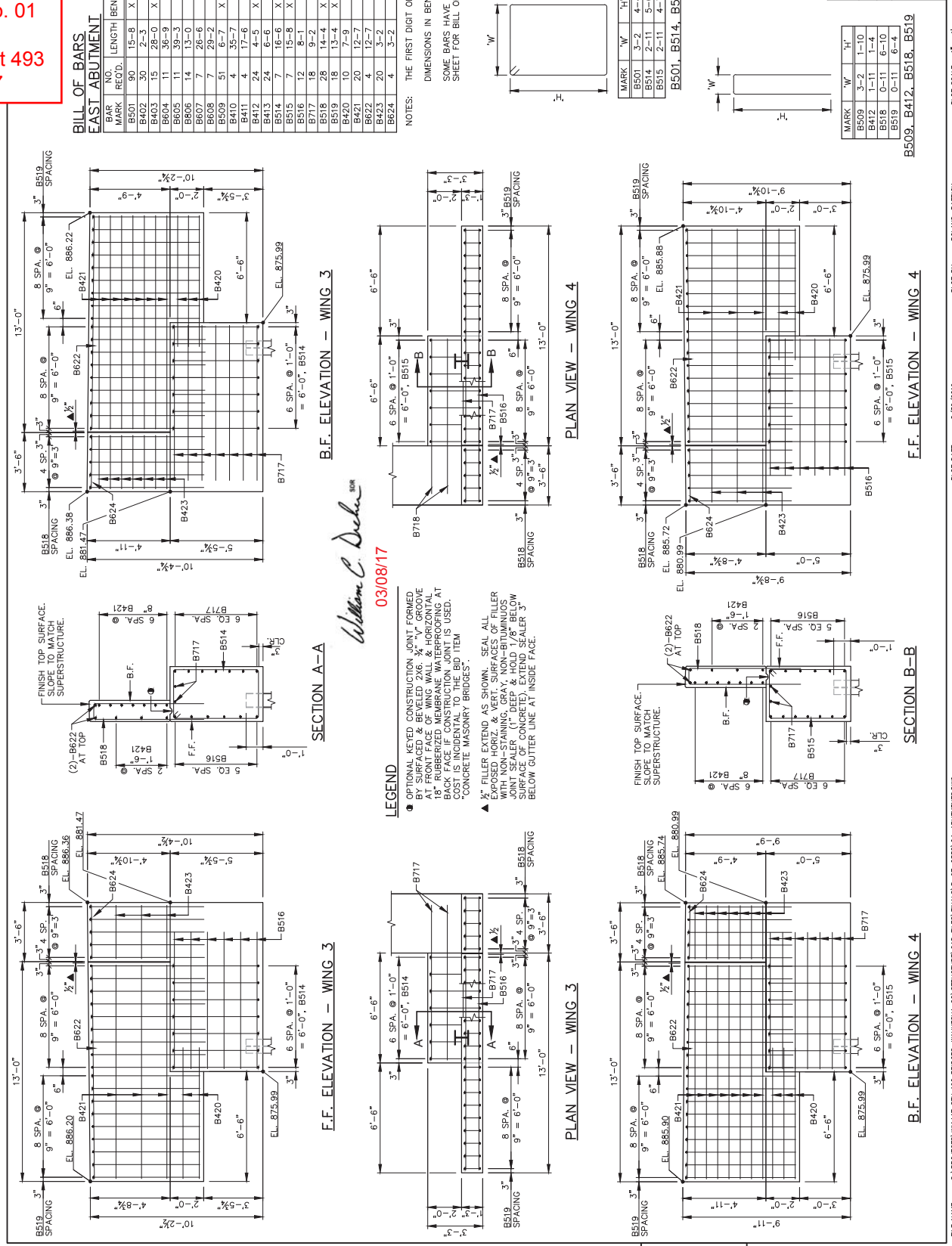
NO.	DATE	REVISION	BY
1	3-3-2017	BILL OF BARS, LOCATIONS	PTB

STATE OF WISCONSIN  
 DEPARTMENT OF TRANSPORTATION

STRUCTURE B-67-332  
 PLANS  
 IZ L&CO. PTB

EAST ABUTMENT  
 DETAILS

SHEET 9 OF 20  
 493



FILE NAME: S:\PROJECTS\W147\_S11\_190\_BRIDGES\_WAUKESHA\_CO\STRUCTURE\CAD FILES\W147-67-0332\_04-ABUTMENTS.DWG  
 LAYOUT: EAST ABUT. WINGS

PLOT DATE: 8/25/2016  
 PLOT TIME: 4:07:32 PM

PLOT BY: BOLAND, PATRICK

PLOT SCALE: 1" = 1'





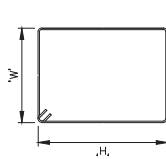




**BILL OF BARS  
SUPERSTRUCTURE**

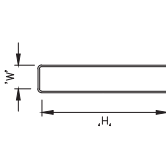
113,490 LB. (COATED)

BAR MARK	NO.	LENGTH	BENT	COAT	LOCATION
S501	124	13'-0"	X	X	DIAPHRAGM - ABUTMENT - VERT.
S502	36	11'-4"	X	X	DIAPHRAGM - ABUTMENT - VERT.
S603	96	4'-8"	X	X	DIAPHRAGM - ABUTMENT - HORIZ.
S604	16	5'-2"	X	X	DIAPHRAGM - ABUTMENT - HORIZ.
S605	124	5'-0"	X	X	DIAPHRAGM/DECK - ABUTMENT - GRDERS
S606	32	5'-0"	X	X	DIAPHRAGM/DECK - ABUTMENT
S407	80	3'-2"	X	X	DIAPHRAGM - ABUTMENT
S408	32	4'-2"	X	X	DIAPHRAGM - ABUTMENT
S609	4	1'-8"	X	X	DIAPHRAGM - ABUTMENT - EDGE
S610	12	7'-11"	X	X	DIAPHRAGM - ABUTMENT - EDGE
S412	8	2'-2"	X	X	DIAPHRAGM/DECK - ABUTMENT - EDGE
S413	16	36'-2"	X	X	DIAPHRAGM - ABUTMENT
S514	48	11'-0"	X	X	DIAPHRAGM - ABUTMENT
S515	16	9'-4"	X	X	DIAPHRAGM - PIER - VERT.
S416	64	4'-4"	X	X	DIAPHRAGM - PIER - HORIZ.
S417	32	3'-4"	X	X	DIAPHRAGM - PIER - HORIZ.
S518	36	6'-0"	X	X	DIAPHRAGM - ABUTMENT - GRDERS
S419	424	39'-3"	X	X	BRIDGE DECK - TOP - LONGIT.
S420	424	39'-3"	X	X	BRIDGE DECK - BOT - LONGIT.
S521	1312	36'-6"	X	X	BRIDGE DECK - TOP & BOT TRANS.
S822	211	47'-0"	X	X	BRIDGE DECK - TOP - AT PIER
S523	654	5'-2"	X	X	BRIDGE DECK - EDGES



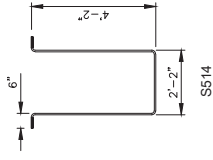
MARK	W	H
S501	3-2	3-0
S502	3-2	2-2
S315	2-2	2-2

S501, S502, S515

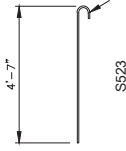


MARK	W	H
S505	2-2	1-11
S407	0-11	1-3
S610	3-0	2-7

S505, S407, S610



S514

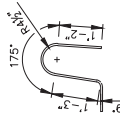


S523

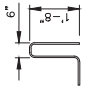
**BILL OF BARS  
PARAPETS**

11,350 LB. (COATED)

BAR MARK	NUMBER	LENGTH	BENT	COAT	LOCATION
R501	656	4'-5"	X	X	PARAPET - VERT.
R502	68	4'-5"	X	X	PARAPET - VERT.
R503	68	4'-4"	X	X	PARAPET - VERT.
R504	48	2'-5"	X	X	PARAPET - VERT.
R505	724	5'-0"	X	X	PARAPET - VERT.
R506	24	4'-10"	X	X	PARAPET - VERT.
R507	24	4'-10"	X	X	PARAPET - VERT.
R508	84	33'-8"	X	X	PARAPET - HORIZ.
R509	20	19'-8"	X	X	PARAPET - HORIZ.
R510	4	10'-10"	X	X	PARAPET - HORIZ.
R511	4	11'-9"	X	X	PARAPET - HORIZ.



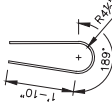
R501 & R502



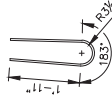
R503



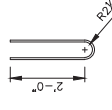
R504



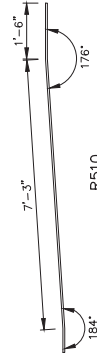
R505



R506



R507



R510

Addendum No. 01  
ID 2025-13-71  
Revised Sheet 501  
March 8, 2017



*William C. Decker*  
03/08/17

NO.	DATE	REVISION	BY
1	3-3-2017	REQUIRED NUMBER OF BARS	PTB

STATE OF WISCONSIN  
DEPARTMENT OF TRANSPORTATION

STRUCTURE B-67-332

DRAWN BY: JZ (KCD) PLANS P/TB

SUPERSTRUCTURE  
DETAILS (2 OF 2)

SHEET 17 OF 20

501

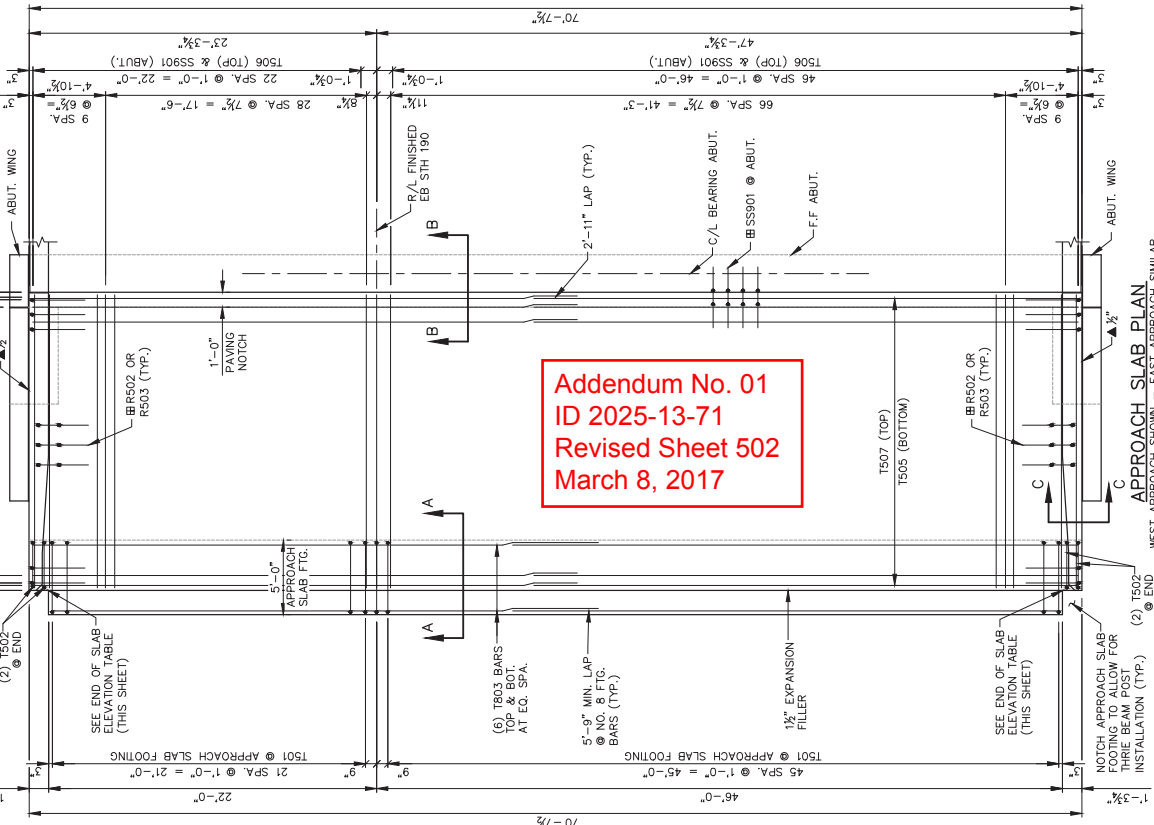
LAYOUT - BAR STEEL DETAILS

**NOTES**  
THE FIRST DIGIT OF A BAR MARK SIGNIFIES THE BAR SIZE.  
DIMENSIONS IN BENDING DETAILS ARE OUT TO OUT OF BAR.

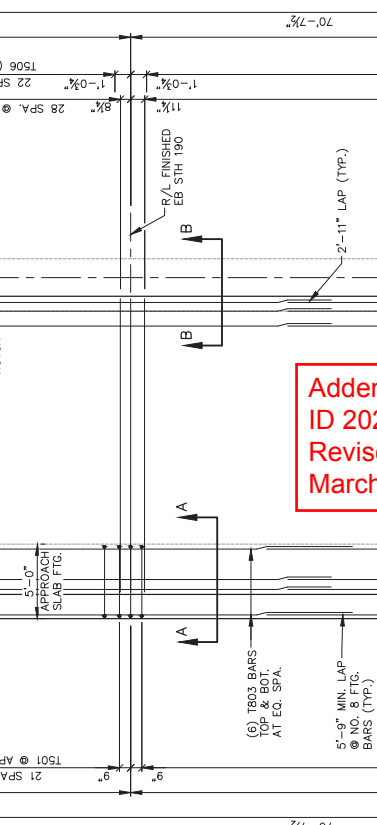
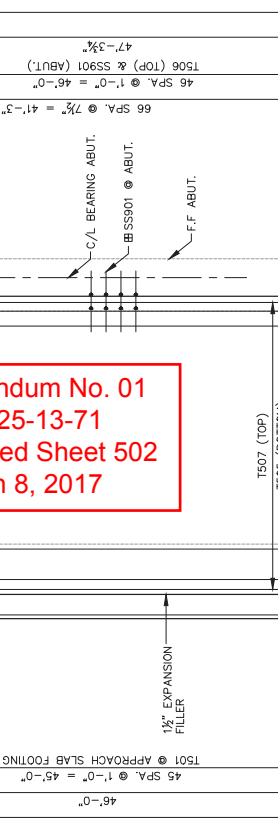
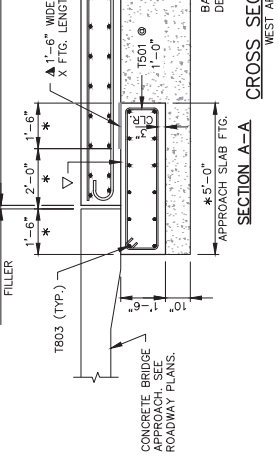
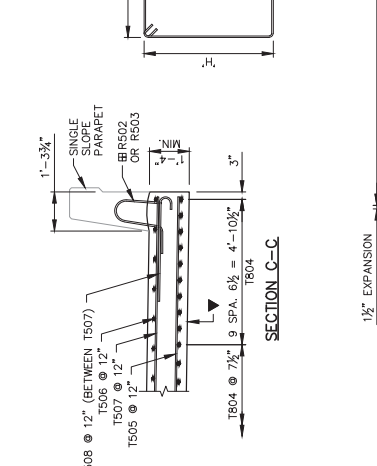
**BILL OF BARS**  
**TWO APPROACH SLABS**      2,410 LB (STAINLESS STEEL)

BAR MARK	NUMBER	LENGTH REQ'D	BENT COAT	LOCATION
T501	138	12'-2"	X	APPROACH SLAB FTG. - ENDS
T502	8	8'-10"	X	APPROACH SLAB FTG. - ENDS
T803	48	38'-2"	X	APPROACH SLAB FTG. - TRANS.
T804	230	21'-6"	X	APPROACH SLAB - LONG. - BOT.
T505	84	36'-8"	X	APPROACH SLAB - LONG. - BOT.
T506	142	19'-8"	X	APPROACH SLAB - LONG. - TOP
T507	80	36'-8"	X	APPROACH SLAB - TRANS. - TOP
T508	80	4'-1"	X	APPROACH SLAB - TRANS. - ENDS
STAINLESS STEEL				
SS901	142	5'-0"	X	CONG. ABUT. DIAPH. TO APPROACH SLAB

- LEGEND**
- APPLY PROTECTIVE SURFACE TREATMENT TO PAVING NOTCH PRIOR TO POURING STRUCTURAL APPROACH SLAB.
  - \* DIMENSION IS NORMAL TO THE C/L OF SUBSTRUCTURE UNITS.
  - ▲ ¾" PREFORMED JOINT FILLER, EXTEND AS SHOWN.
  - ▲ FILLER EXTEND AS SHOWN. SEAL ALL EXPOSED HORIZ. & VERT. SURFACES OF FILLER WITH NON-STAINING GRAY, NON-BITUMINOUS JOINT SEALER. (1" DEEP & HOLD 1/8" BELOW SURFACE OF CONCRETE)
  - ▽ STEEL TROWEL TOP SURFACE OF FOOTING AND PLACE MULTIPLE LAYERS OF POLYETHYLENE SHEETS OVER ENTIRE TOP OF FOOTING. TOTAL THICKNESS OF SHEETS SHALL BE AT LEAST 0.03".
  - ▼ PLACE MULTIPLE LAYERS OF POLYETHYLENE SHEETS OVER THE ENTIRE TOP OF SUBGRADE BENEATH SLAB. TOTAL THICKNESS OF SHEETS SHALL BE AT LEAST 0.03".
  - ⊞ SS901 BARS (PAVING NOTCH) TO BE TIED TO RECK STEEL BEFORE DECK IS POURED. R502 & R503 BARS (PARAPET) TO BE TIED TO APPROACH SLAB STEEL BEFORE APPROACH SLAB IS POURED.



**Addendum No. 01**  
**ID 2025-13-71**  
**Revised Sheet 502**  
**March 8, 2017**



**END OF SLAB ELEVATIONS**

END OF SLAB LOCATION	WEST APPROACH SLAB STATION	ELEV.	EAST APPROACH SLAB STATION	ELEV.
FACE N. PARAPET	135+21.73 EB	883.78	135+80.23 EB	886.46
P/L WB STH 190	135+21.73 EB	884.22	135+80.23 EB	886.90
FACE S. PARAPET	135+21.73 EB	883.30	135+80.23 EB	885.98

**PROFESSIONAL ENGINEER**

**PATRICK T. BOLAND**  
 E-36303  
 WISCONSIN PROFESSIONAL ENGINEER

WISCONSIN PROFESSIONAL ENGINEER  
 SPRING GREEN, WISCONSIN

William C. Decker  
**03/08/17**

PLOT BY: BOLAND, PATRICK  
 PLOT DATE: 8/29/2016  
 PLOT TIME: 10:36:10 AM  
 FILE NAME: S:\PROJECTS\W147 STH 190 BRIDGES\_WAUKESHA CO\STRUCTURE\CAD FILES\NALS\B-67-0332\STRUCTURE\_LAYOUT.LAYOUT  
 LAYOUT: APPROACH SLAB

NO.	DATE	REVISION	BY
1	3-3-2017	BAR LENGTH	PTB

STATE OF WISCONSIN  
DEPARTMENT OF TRANSPORTATION

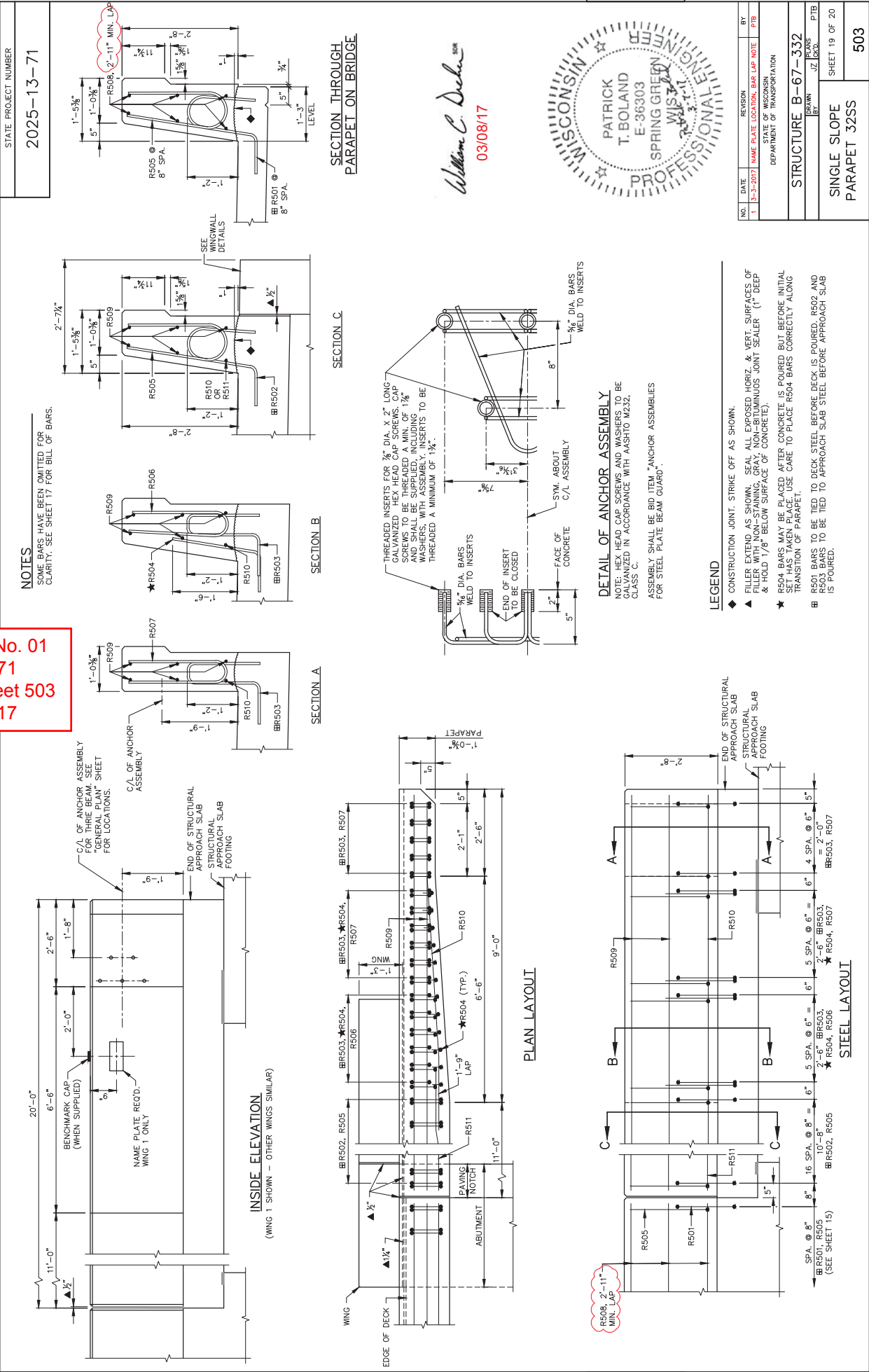
**STRUCTURE B-67-332**

APPROACH SLAB

SHEET 18 OF 20

502

Addendum No. 01  
 ID 2025-13-71  
 Revised Sheet 503  
 March 8, 2017





Proposal Schedule of Items

Proposal ID: 20170314014 Project(s): 2025-13-71

Federal ID(s): WISC 2017103

SECTION: 0001

Contract Items

Alt Set ID:

Alt Mbr ID:

Proposal Line Number	Item ID Description	Approximate Quantity and Units	Unit Price	Bid Amount
0010	201.0105 Clearing	50.000 STA	_____.	_____.
0020	201.0205 Grubbing	50.000 STA	_____.	_____.
0030	203.0100 Removing Small Pipe Culverts	19.000 EACH	_____.	_____.
0040	203.0200 Removing Old Structure (station) 01. 134+56	LS	LUMP SUM	_____.
0050	203.0200 Removing Old Structure (station) 02. 134+56	LS	LUMP SUM	_____.
0060	203.0225.S Debris Containment (structure) 01. B-67- 331	LS	LUMP SUM	_____.
0070	203.0225.S Debris Containment (structure) 02. B-67- 332	LS	LUMP SUM	_____.
0080	204.0100 Removing Pavement	43,396.000 SY	_____.	_____.
0090	204.0110 Removing Asphaltic Surface	2,301.000 SY	_____.	_____.
0100	204.0150 Removing Curb & Gutter	573.000 LF	_____.	_____.
0110	204.0157 Removing Concrete Barrier	668.000 LF	_____.	_____.
0120	204.0165 Removing Guardrail	1,703.000 LF	_____.	_____.
0130	204.0190 Removing Surface Drains	13.000 EACH	_____.	_____.
0140	204.0195 Removing Concrete Bases	9.000 EACH	_____.	_____.
0150	204.0210 Removing Manholes	3.000 EACH	_____.	_____.
0160	204.0220 Removing Inlets	18.000 EACH	_____.	_____.



Proposal Schedule of Items

Proposal ID: 20170314014 Project(s): 2025-13-71

Federal ID(s): WISC 2017103

SECTION: 0001

Contract Items

Alt Set ID:

Alt Mbr ID:

Proposal Line Number	Item ID Description	Approximate Quantity and Units	Unit Price	Bid Amount
0170	204.0245 Removing Storm Sewer (size) 01. 12-inch	30.000 LF	_____.	_____.
0180	204.0245 Removing Storm Sewer (size) 02. 18-inch	271.000 LF	_____.	_____.
0190	204.0245 Removing Storm Sewer (size) 03. 24-inch	222.000 LF	_____.	_____.
0200	204.0245 Removing Storm Sewer (size) 04. 30-inch	136.000 LF	_____.	_____.
0210	204.0245 Removing Storm Sewer (size) 05. 16x28-inch RCEP	111.000 LF	_____.	_____.
0220	204.0245 Removing Storm Sewer (size) 06. 19x27-inch CMP	92.000 LF	_____.	_____.
0230	204.9165.S Removing (item description) 01. Concrete Ditch	9,881.000 SF	_____.	_____.
0240	205.0100 Excavation Common	109,071.000 CY	_____.	_____.
0250	206.1000 Excavation for Structures Bridges (structure) 01. B-67-331	LS	LUMP SUM	_____.
0260	206.1000 Excavation for Structures Bridges (structure) 02. B-67-332	LS	LUMP SUM	_____.
0270	208.0100 Borrow	4,238.000 CY	_____.	_____.
0280	210.1100 Backfill Structure Type A	920.000 CY	_____.	_____.
0290	213.0100 Finishing Roadway (project) 01. 2025-13-71	1.000 EACH	_____.	_____.
0300	305.0110 Base Aggregate Dense 3/4-Inch	5,038.000 TON	_____.	_____.



Proposal Schedule of Items

Proposal ID: 20170314014 Project(s): 2025-13-71

Federal ID(s): WISC 2017103

SECTION: 0001

Contract Items

Alt Set ID:

Alt Mbr ID:

Proposal Line Number	Item ID Description	Approximate Quantity and Units	Unit Price	Bid Amount
0310	305.0120 Base Aggregate Dense 1 1/4-Inch	57,148.000 TON	_____	_____
0320	311.0110 Breaker Run	17,660.000 TON	_____	_____
0330	371.1000.S QMP Base Aggregate Dense 1 1/4-Inch Compaction	32,116.000 TON	_____	_____
0340	390.0403 Base Patching Concrete Shes	100.000 SY	_____	_____
0350	415.0070 Concrete Pavement 7-Inch	13,689.000 SY	_____	_____
0360	415.0080 Concrete Pavement 8-Inch	39,931.000 SY	_____	_____
0370	415.0100 Concrete Pavement 10-Inch	73.000 SY	_____	_____
0380	415.0210 Concrete Pavement Gaps	1.000 EACH	_____	_____
0390	415.0410 Concrete Pavement Approach Slab	329.000 SY	_____	_____
0400	416.0610 Drilled Tie Bars	1,574.000 EACH	_____	_____
0410	416.0620 Drilled Dowel Bars	88.000 EACH	_____	_____
0420	416.1010 Concrete Surface Drains	44.000 CY	_____	_____
0430	440.4410 Incentive IRI Ride	9,399.000 DOL	1.00000	9,399.00
0440	450.1100.S Asphaltic Mixture For Extreme Conditions	3,173.000 TON	_____	_____
0450	450.4000 HMA Cold Weather Paving	797.000 TON	_____	_____
0460	460.2000 Incentive Density HMA Pavement	1,760.000 DOL	1.00000	1,760.00





Proposal Schedule of Items

Proposal ID: 20170314014 Project(s): 2025-13-71

Federal ID(s): WISC 2017103

SECTION: 0001

Contract Items

Alt Set ID:

Alt Mbr ID:

Proposal Line Number	Item ID Description	Approximate Quantity and Units	Unit Price	Bid Amount
0470	460.5224 HMA Pavement 4 LT 58-28 S	2,747.000 TON	_____.	_____.
0480	465.0120 Asphaltic Surface Driveways and Field Entrances	103.000 TON	_____.	_____.
0490	465.0125 Asphaltic Surface Temporary	8,070.000 TON	_____.	_____.
0500	465.0310 Asphaltic Curb	64.000 LF	_____.	_____.
0510	501.1000.S Ice Hot Weather Concreting	7,250.000 LB	_____.	_____.
0520	502.0100 Concrete Masonry Bridges	1,934.000 CY	_____.	_____.
0530	502.3200 Protective Surface Treatment	3,980.000 SY	_____.	_____.
0540	502.3210 Pigmented Surface Sealer	430.000 SY	_____.	_____.
0550	503.0146 Prestressed Girder Type I 45W-Inch	3,902.000 LF	_____.	_____.
0560	505.0400 Bar Steel Reinforcement HS Structures	23,240.000 LB	_____.	_____.
0570	505.0600 Bar Steel Reinforcement HS Coated Structures	363,220.000 LB	_____.	_____.
0580	505.0800.S Bar Steel Reinforcement HS Stainless Structures	4,820.000 LB	_____.	_____.
0590	506.2605 Bearing Pads Elastomeric Non-Laminated	72.000 EACH	_____.	_____.
0600	506.4000 Steel Diaphragms (structure) 01. B-67-331	32.000 EACH	_____.	_____.
0610	506.4000 Steel Diaphragms (structure) 02. B-67-332	32.000 EACH	_____.	_____.



## Proposal Schedule of Items

Proposal ID: 20170314014 Project(s): 2025-13-71

Federal ID(s): WISC 2017103

SECTION: 0001

Contract Items

Alt Set ID:

Alt Mbr ID:

Proposal Line Number	Item ID Description	Approximate Quantity and Units	Unit Price	Bid Amount
0620	511.1200 Temporary Shoring (structure) 02. B-67-332	550.000 SF	_____.	_____.
0630	516.0500 Rubberized Membrane Waterproofing	52.000 SY	_____.	_____.
0640	520.1018 Apron Endwalls for Culvert Pipe 18-Inch	3.000 EACH	_____.	_____.
0650	520.2018 Culvert Pipe Temporary 18-Inch	748.700 LF	_____.	_____.
0660	520.2024 Culvert Pipe Temporary 24-Inch	664.000 LF	_____.	_____.
0670	520.2036 Culvert Pipe Temporary 36-Inch	3.900 LF	_____.	_____.
0680	520.8000 Concrete Collars for Pipe	1.000 EACH	_____.	_____.
0690	521.0112 Culvert Pipe Corrugated Steel 12-Inch	18.000 LF	_____.	_____.
0700	521.0118 Culvert Pipe Corrugated Steel 18-Inch	52.000 LF	_____.	_____.
0710	521.0124 Culvert Pipe Corrugated Steel 24-Inch	224.800 LF	_____.	_____.
0720	521.0336 Apron Endwalls for Culvert Pipe Sloped Cross Drains Steel 36-Inch 4 to 1	1.000 EACH	_____.	_____.
0730	521.0728 Pipe Arch Corrugated Steel 28x20-Inch	108.300 LF	_____.	_____.
0740	521.1012 Apron Endwalls for Culvert Pipe Steel 12-Inch	2.000 EACH	_____.	_____.
0750	521.1018 Apron Endwalls for Culvert Pipe Steel 18-Inch	4.000 EACH	_____.	_____.
0760	521.1024 Apron Endwalls for Culvert Pipe Steel 24-Inch	2.000 EACH	_____.	_____.



## Proposal Schedule of Items

Proposal ID: 20170314014 Project(s): 2025-13-71

Federal ID(s): WISC 2017103

SECTION: 0001

Contract Items

Alt Set ID:

Alt Mbr ID:

Proposal Line Number	Item ID Description	Approximate Quantity and Units	Unit Price	Bid Amount
0770	521.1524 Apron Endwalls for Culvert Pipe Sloped Side Drains Steel 24-Inch 6 to 1	6.000 EACH	_____.	_____.
0780	521.1728 Apron Endwalls for Pipe Arch Sloped Side Drains Steel 28x20-Inch 6 to 1	2.000 EACH	_____.	_____.
0790	522.0318 Culvert Pipe Reinforced Concrete Class IV 18-Inch	272.000 LF	_____.	_____.
0800	522.0324 Culvert Pipe Reinforced Concrete Class IV 24-Inch	122.000 LF	_____.	_____.
0810	522.0336 Culvert Pipe Reinforced Concrete Class IV 36-Inch	128.000 LF	_____.	_____.
0820	522.0342 Culvert Pipe Reinforced Concrete Class IV 42-Inch	216.000 LF	_____.	_____.
0830	522.1018 Apron Endwalls for Culvert Pipe Reinforced Concrete 18-Inch	15.000 EACH	_____.	_____.
0840	522.1024 Apron Endwalls for Culvert Pipe Reinforced Concrete 24-Inch	6.000 EACH	_____.	_____.
0850	522.1036 Apron Endwalls for Culvert Pipe Reinforced Concrete 36-Inch	3.000 EACH	_____.	_____.
0860	522.1042 Apron Endwalls for Culvert Pipe Reinforced Concrete 42-Inch	2.000 EACH	_____.	_____.
0870	523.0424 Culvert Pipe Reinforced Concrete Horizontal Elliptical Class HE-IV 24x38-Inch	124.000 LF	_____.	_____.
0880	523.0519 Apron Endwalls for Culvert Pipe Reinforced Concrete Horizontal Elliptical 19x30-Inch	3.000 EACH	_____.	_____.



## Proposal Schedule of Items

Proposal ID: 20170314014 Project(s): 2025-13-71

Federal ID(s): WISC 2017103

SECTION: 0001

Contract Items

Alt Set ID:

Alt Mbr ID:

Proposal Line Number	Item ID Description	Approximate Quantity and Units	Unit Price	Bid Amount
0890	523.0524 Apron Endwalls for Culvert Pipe Reinforced Concrete Horizontal Elliptical 24x38-Inch	4.000 EACH	_____.	_____.
0900	524.0624 Apron Endwalls for Culvert Pipe Salvaged 24-Inch	2.000 EACH	_____.	_____.
0910	550.1100 Piling Steel HP 10-Inch X 42 Lb	3,120.000 LF	_____.	_____.
0920	601.0409 Concrete Curb & Gutter 30-Inch Type A	206.000 LF	_____.	_____.
0930	601.0413 Concrete Curb & Gutter 6-Inch Sloped 30-Inch Type G	221.000 LF	_____.	_____.
0940	601.0555 Concrete Curb & Gutter 6-Inch Sloped 36-Inch Type A	4,876.000 LF	_____.	_____.
0950	601.0590 Concrete Curb & Gutter 4-Inch Sloped 36-Inch Type TBTT	151.000 LF	_____.	_____.
0960	602.0405 Concrete Sidewalk 4-Inch	7,223.000 SF	_____.	_____.
0970	603.1142 Concrete Barrier Type S42	564.000 LF	_____.	_____.
0980	603.8000 Concrete Barrier Temporary Precast Delivered	12,775.000 LF	_____.	_____.
0990	603.8125 Concrete Barrier Temporary Precast Installed	14,550.000 LF	_____.	_____.
1000	604.0400 Slope Paving Concrete	1,100.000 SY	_____.	_____.
1010	606.0200 Riprap Medium	350.100 CY	_____.	_____.
1020	608.0412 Storm Sewer Pipe Reinforced Concrete Class IV 12-Inch	39.900 LF	_____.	_____.



## Proposal Schedule of Items

Proposal ID: 20170314014 Project(s): 2025-13-71

Federal ID(s): WISC 2017103

SECTION: 0001

Contract Items

Alt Set ID:

Alt Mbr ID:

Proposal Line Number	Item ID Description	Approximate Quantity and Units	Unit Price	Bid Amount
1030	608.0415 Storm Sewer Pipe Reinforced Concrete Class IV 15-Inch	16.800 LF	_____.	_____.
1040	608.0418 Storm Sewer Pipe Reinforced Concrete Class IV 18-Inch	416.600 LF	_____.	_____.
1050	608.0424 Storm Sewer Pipe Reinforced Concrete Class IV 24-Inch	142.600 LF	_____.	_____.
1060	608.0436 Storm Sewer Pipe Reinforced Concrete Class IV 36-Inch	154.300 LF	_____.	_____.
1070	610.0419 Storm Sewer Pipe Reinforced Concrete Horizontal Elliptical Class HE-IV 19x30-Inch	222.700 LF	_____.	_____.
1080	610.0424 Storm Sewer Pipe Reinforced Concrete Horizontal Elliptical Class HE-IV 24x38-Inch	124.000 LF	_____.	_____.
1090	611.0430 Reconstructing Inlets	1.000 EACH	_____.	_____.
1100	611.0627 Inlet Covers Type HM	16.000 EACH	_____.	_____.
1110	611.0642 Inlet Covers Type MS	19.000 EACH	_____.	_____.
1120	611.2005 Manholes 5-FT Diameter	4.000 EACH	_____.	_____.
1130	611.2055 Manholes 5x5-FT	1.000 EACH	_____.	_____.
1140	611.3004 Inlets 4-FT Diameter	8.000 EACH	_____.	_____.
1150	611.3230 Inlets 2x3-FT	3.000 EACH	_____.	_____.
1160	611.3901 Inlets Median 1 Grate	7.000 EACH	_____.	_____.



Proposal Schedule of Items

Proposal ID: 20170314014 Project(s): 2025-13-71

Federal ID(s): WISC 2017103

SECTION: 0001

Contract Items

Alt Set ID:

Alt Mbr ID:

Proposal Line Number	Item ID Description	Approximate Quantity and Units	Unit Price	Bid Amount
1170	611.3902 Inlets Median 2 Grate	6.000 EACH	_____.	_____.
1180	612.0206 Pipe Underdrain Unperforated 6-Inch	28.000 LF	_____.	_____.
1190	612.0406 Pipe Underdrain Wrapped 6-Inch	1,240.000 LF	_____.	_____.
1200	612.0806 Apron Endwalls for Underdrain Reinforced Concrete 6-Inch	4.000 EACH	_____.	_____.
1210	614.0150 Anchor Assemblies for Steel Plate Beam Guard	8.000 EACH	_____.	_____.
1220	614.0200 Steel Thrie Beam Structure Approach	86.700 LF	_____.	_____.
1230	614.0220 Steel Thrie Beam Bullnose Terminal	4.000 EACH	_____.	_____.
1240	614.0230 Steel Thrie Beam	387.000 LF	_____.	_____.
1250	614.0305 Steel Plate Beam Guard Class A	12.500 LF	_____.	_____.
1260	614.0905 Crash Cushions Temporary	12.000 EACH	_____.	_____.
1270	614.2300 MGS Guardrail 3	1,787.500 LF	_____.	_____.
1280	614.2500 MGS Thrie Beam Transition	118.200 LF	_____.	_____.
1290	614.2610 MGS Guardrail Terminal EAT	3.000 EACH	_____.	_____.
1300	614.2620 MGS Guardrail Terminal Type 2	3.000 EACH	_____.	_____.
1310	619.1000 Mobilization	1.000 EACH	_____.	_____.
1320	620.0300 Concrete Median Sloped Nose	356.000 SF	_____.	_____.





Proposal Schedule of Items

Proposal ID: 20170314014 Project(s): 2025-13-71

Federal ID(s): WISC 2017103

SECTION: 0001

Contract Items

Alt Set ID:

Alt Mbr ID:

Proposal Line Number	Item ID Description	Approximate Quantity and Units	Unit Price	Bid Amount
1330	624.0100 Water	1,500.000 MGAL	_____.	_____.
1340	625.0500 Salvaged Topsoil	120,892.000 SY	_____.	_____.
1350	628.1504 Silt Fence	2,892.000 LF	_____.	_____.
1360	628.1520 Silt Fence Maintenance	4,687.000 LF	_____.	_____.
1370	628.1905 Mobilizations Erosion Control	15.000 EACH	_____.	_____.
1380	628.1910 Mobilizations Emergency Erosion Control	10.000 EACH	_____.	_____.
1390	628.2004 Erosion Mat Class I Type B	144,633.000 SY	_____.	_____.
1400	628.6510 Soil Stabilizer Type B	3.320 ACRE	_____.	_____.
1410	628.7005 Inlet Protection Type A	17.000 EACH	_____.	_____.
1420	628.7010 Inlet Protection Type B	3.000 EACH	_____.	_____.
1430	628.7015 Inlet Protection Type C	24.000 EACH	_____.	_____.
1440	628.7504 Temporary Ditch Checks	2,810.000 LF	_____.	_____.
1450	628.7555 Culvert Pipe Checks	178.000 EACH	_____.	_____.
1460	628.7560 Tracking Pads	6.000 EACH	_____.	_____.
1470	629.0210 Fertilizer Type B	8.500 CWT	_____.	_____.
1480	630.0140 Seeding Mixture No. 40	362.700 LB	_____.	_____.
1490	630.0200 Seeding Temporary	252.500 LB	_____.	_____.



Proposal Schedule of Items

Proposal ID: 20170314014 Project(s): 2025-13-71

Federal ID(s): WISC 2017103

SECTION: 0001

Contract Items

Alt Set ID:

Alt Mbr ID:

Proposal Line Number	Item ID Description	Approximate Quantity and Units	Unit Price	Bid Amount
1500	633.5200 Markers Culvert End	34.000 EACH	_____.	_____.
1510	634.0618 Posts Wood 4x6-Inch X 18-FT	185.000 EACH	_____.	_____.
1520	634.0624 Posts Wood 4x6-Inch X 24-FT	10.000 EACH	_____.	_____.
1530	637.2210 Signs Type II Reflective H	2,109.645 SF	_____.	_____.
1540	637.2215 Signs Type II Reflective H Folding	44.760 SF	_____.	_____.
1550	637.2230 Signs Type II Reflective F	386.250 SF	_____.	_____.
1560	638.2602 Removing Signs Type II	127.000 EACH	_____.	_____.
1570	638.3000 Removing Small Sign Supports	149.000 EACH	_____.	_____.
1580	643.0100 Traffic Control (project) 01. 2025-13-71	1.000 EACH	_____.	_____.
1590	643.0300 Traffic Control Drums	80,924.000 DAY	_____.	_____.
1600	643.0420 Traffic Control Barricades Type III	9,869.000 DAY	_____.	_____.
1610	643.0500 Traffic Control Flexible Tubular Marker Posts	242.000 EACH	_____.	_____.
1620	643.0600 Traffic Control Flexible Tubular Marker Bases	242.000 EACH	_____.	_____.
1630	643.0705 Traffic Control Warning Lights Type A	19,738.000 DAY	_____.	_____.
1640	643.0715 Traffic Control Warning Lights Type C	20,771.000 DAY	_____.	_____.
1650	643.0800 Traffic Control Arrow Boards	1,508.000 DAY	_____.	_____.



Proposal Schedule of Items

Proposal ID: 20170314014 Project(s): 2025-13-71

Federal ID(s): WISC 2017103

SECTION: 0001

Contract Items

Alt Set ID:

Alt Mbr ID:

Proposal Line Number	Item ID Description	Approximate Quantity and Units	Unit Price	Bid Amount
1660	643.0900 Traffic Control Signs	27,263.000 DAY	_____.	_____.
1670	643.1000 Traffic Control Signs Fixed Message	84.000 SF	_____.	_____.
1680	643.1050 Traffic Control Signs PCMS	843.000 DAY	_____.	_____.
1690	643.2000 Traffic Control Detour (project) 01. 2025-13-71	1.000 EACH	_____.	_____.
1700	643.3000 Traffic Control Detour Signs	30,831.000 DAY	_____.	_____.
1710	645.0120 Geotextile Type HR	1,153.000 SY	_____.	_____.
1720	646.0600 Removing Pavement Markings	31,429.500 LF	_____.	_____.
1730	646.0842.S Pavement Marking Grooved Contrast Wet Reflective Epoxy 4-Inch	40,515.500 LF	_____.	_____.
1740	646.0844.S Pavement Marking Grooved Contrast Wet Reflective Epoxy 8-Inch	7,881.000 LF	_____.	_____.
1750	646.0900.S Pavement Marking Late Season	49,181.000 LF	_____.	_____.
1760	647.0166 Pavement Marking Arrows Epoxy Type 2	12.000 EACH	_____.	_____.
1770	647.0186 Pavement Marking Arrows Epoxy Type 4	4.000 EACH	_____.	_____.
1780	647.0196 Pavement Marking Arrows Epoxy Type 5	4.000 EACH	_____.	_____.
1790	647.0356 Pavement Marking Words Epoxy	8.000 EACH	_____.	_____.
1800	647.0456 Pavement Marking Curb Epoxy	40.000 LF	_____.	_____.
1810	647.0526 Pavement Marking Yield Line Symbols Epoxy 18-Inch	19.000 EACH	_____.	_____.



Proposal Schedule of Items

Proposal ID: 20170314014 Project(s): 2025-13-71

Federal ID(s): WISC 2017103

SECTION: 0001

Contract Items

Alt Set ID:

Alt Mbr ID:

Proposal Line Number	Item ID Description	Approximate Quantity and Units	Unit Price	Bid Amount
1820	647.0566 Pavement Marking Stop Line Epoxy 18-Inch	116.000 LF	_____.	_____.
1830	647.0606 Pavement Marking Island Nose Epoxy	4.000 EACH	_____.	_____.
1840	647.0726 Pavement Marking Diagonal Epoxy 12-Inch	199.000 LF	_____.	_____.
1850	649.0400 Temporary Pavement Marking Removable Tape 4-Inch	86,004.000 LF	_____.	_____.
1860	649.0402 Temporary Pavement Marking Paint 4-Inch	33,059.000 LF	_____.	_____.
1870	649.0801 Temporary Pavement Marking Removable Tape 8-Inch	305.000 LF	_____.	_____.
1880	650.4000 Construction Staking Storm Sewer	36.000 EACH	_____.	_____.
1890	650.4500 Construction Staking Subgrade	25,919.000 LF	_____.	_____.
1900	650.5000 Construction Staking Base	11,034.000 LF	_____.	_____.
1910	650.5500 Construction Staking Curb Gutter and Curb & Gutter	141.000 LF	_____.	_____.
1920	650.6000 Construction Staking Pipe Culverts	17.000 EACH	_____.	_____.
1930	650.6500 Construction Staking Structure Layout (structure) 01. B-67-331	LS	LUMP SUM	_____.
1940	650.6500 Construction Staking Structure Layout (structure) 02. B-67-332	LS	LUMP SUM	_____.
1950	650.7000 Construction Staking Concrete Pavement	14,885.000 LF	_____.	_____.



Proposal Schedule of Items

Proposal ID: 20170314014 Project(s): 2025-13-71

Federal ID(s): WISC 2017103

SECTION: 0001

Contract Items

Alt Set ID:

Alt Mbr ID:

Proposal Line Number	Item ID Description	Approximate Quantity and Units	Unit Price	Bid Amount
1960	650.7500 Construction Staking Concrete Barrier	564.000 LF	_____.	_____.
1970	650.8500 Construction Staking Electrical Installations (project) 01. 2025-13-71	LS	LUMP SUM	_____.
1980	650.9910 Construction Staking Supplemental Control (project) 01. 2025-13-71	LS	LUMP SUM	_____.
1990	650.9920 Construction Staking Slope Stakes	29,931.000 LF	_____.	_____.
2000	652.0225 Conduit Rigid Nonmetallic Schedule 40 2-Inch	1,217.000 LF	_____.	_____.
2010	652.0235 Conduit Rigid Nonmetallic Schedule 40 3-Inch	990.000 LF	_____.	_____.
2020	652.0615 Conduit Special 3-Inch	572.000 LF	_____.	_____.
2030	652.0800 Conduit Loop Detector	1,108.000 LF	_____.	_____.
2040	653.0135 Pull Boxes Steel 24x36-Inch	6.000 EACH	_____.	_____.
2050	653.0140 Pull Boxes Steel 24x42-Inch	13.000 EACH	_____.	_____.
2060	653.0905 Removing Pull Boxes	13.000 EACH	_____.	_____.
2070	654.0101 Concrete Bases Type 1	5.000 EACH	_____.	_____.
2080	654.0102 Concrete Bases Type 2	1.000 EACH	_____.	_____.
2090	654.0105 Concrete Bases Type 5	3.000 EACH	_____.	_____.
2100	654.0113 Concrete Bases Type 13	2.000 EACH	_____.	_____.



Proposal Schedule of Items

Proposal ID: 20170314014 Project(s): 2025-13-71

Federal ID(s): WISC 2017103

SECTION: 0001

Contract Items

Alt Set ID:

Alt Mbr ID:

Proposal Line Number	Item ID Description	Approximate Quantity and Units	Unit Price	Bid Amount
2110	654.0217 Concrete Control Cabinet Bases Type 9 Special	1.000 EACH	_____.	_____.
2120	655.0230 Cable Traffic Signal 5-14 AWG	347.000 LF	_____.	_____.
2130	655.0240 Cable Traffic Signal 7-14 AWG	2,372.000 LF	_____.	_____.
2140	655.0260 Cable Traffic Signal 12-14 AWG	471.000 LF	_____.	_____.
2150	655.0305 Cable Type UF 2-12 AWG Grounded	804.000 LF	_____.	_____.
2160	655.0515 Electrical Wire Traffic Signals 10 AWG	2,091.000 LF	_____.	_____.
2170	655.0610 Electrical Wire Lighting 12 AWG	702.000 LF	_____.	_____.
2180	655.0700 Loop Detector Lead In Cable	6,109.000 LF	_____.	_____.
2190	655.0800 Loop Detector Wire	4,084.000 LF	_____.	_____.
2200	655.0900 Traffic Signal EVP Detector Cable	1,234.000 LF	_____.	_____.
2210	656.0200 Electrical Service Meter Breaker Pedestal (location) 01. STH 190 WB OFF RAMP & CTH F	LS	LUMP SUM	_____.
2220	657.0100 Pedestal Bases	6.000 EACH	_____.	_____.
2230	657.0255 Transformer Bases Breakaway 11 1/2-Inch Bolt Circle	3.000 EACH	_____.	_____.
2240	657.0305 Poles Type 2 01. Aluminum	1.000 EACH	_____.	_____.
2250	657.0322 Poles Type 5-Aluminum	3.000 EACH	_____.	_____.



Proposal Schedule of Items

Proposal ID: 20170314014 Project(s): 2025-13-71

Federal ID(s): WISC 2017103

SECTION: 0001

Contract Items

Alt Set ID:

Alt Mbr ID:

Proposal Line Number	Item ID Description	Approximate Quantity and Units	Unit Price	Bid Amount
2260	657.0420 Traffic Signal Standards Aluminum 13-FT	4.000 EACH	_____.	_____.
2270	657.0425 Traffic Signal Standards Aluminum 15-FT	1.000 EACH	_____.	_____.
2280	657.0610 Luminaire Arms Single Member 4 1/2-Inch Clamp 6-FT	6.000 EACH	_____.	_____.
2290	657.1355 Install Poles Type 12	2.000 EACH	_____.	_____.
2300	657.1545 Install Monotube Arms 45-FT	1.000 EACH	_____.	_____.
2310	657.1555 Install Monotube Arms 55-FT	1.000 EACH	_____.	_____.
2320	658.0110 Traffic Signal Face 3-12 Inch Vertical	10.000 EACH	_____.	_____.
2330	658.0115 Traffic Signal Face 4-12 Inch Vertical	2.000 EACH	_____.	_____.
2340	658.0215 Backplates Signal Face 3 Section 12-Inch	10.000 EACH	_____.	_____.
2350	658.0220 Backplates Signal Face 4 Section 12-Inch	2.000 EACH	_____.	_____.
2360	658.0600 Led Modules 12-Inch Red Ball	10.000 EACH	_____.	_____.
2370	658.0605 Led Modules 12-Inch Yellow Ball	8.000 EACH	_____.	_____.
2380	658.0610 Led Modules 12-Inch Green Ball	8.000 EACH	_____.	_____.
2390	658.0615 Led Modules 12-Inch Red Arrow	2.000 EACH	_____.	_____.
2400	658.0620 Led Modules 12-Inch Yellow Arrow	6.000 EACH	_____.	_____.
2410	658.0625 Led Modules 12-Inch Green Arrow	4.000 EACH	_____.	_____.





Proposal Schedule of Items

Proposal ID: 20170314014 Project(s): 2025-13-71

Federal ID(s): WISC 2017103

SECTION: 0001

Contract Items

Alt Set ID:

Alt Mbr ID:

Proposal Line Number	Item ID Description	Approximate Quantity and Units	Unit Price	Bid Amount
2420	658.5069 Signal Mounting Hardware (location) 01. STH 190 WB OFF RAMP & CTH F	LS	LUMP SUM	_____.
2430	659.1125 Luminaires Utility LED C	6.000 EACH	_____.	_____.
2440	661.0200 Temporary Traffic Signals for Intersections (location) 01. STH 190 WB OFF RAMP & CTH F	LS	LUMP SUM	_____.
2450	671.0132 Conduit HDPE 3-Duct 2-Inch	4,735.000 LF	_____.	_____.
2460	671.0232 Conduit HDPE Directional Bore 3-Duct 2- Inch	492.000 LF	_____.	_____.
2470	673.0105 Communication Vault Type 1	2.000 EACH	_____.	_____.
2480	690.0150 Sawing Asphalt	11,735.000 LF	_____.	_____.
2490	690.0250 Sawing Concrete	1,904.000 LF	_____.	_____.
2500	715.0415 Incentive Strength Concrete Pavement	16,086.000 DOL	1.00000	16,086.00
2510	715.0502 Incentive Strength Concrete Structures	11,604.000 DOL	1.00000	11,604.00
2520	ASP.1T0A On-the-Job Training Apprentice at \$5.00/HR	3,500.000 HRS	5.00000	17,500.00
2530	ASP.1T0G On-the-Job Training Graduate at \$5.00/HR	4,000.000 HRS	5.00000	20,000.00
2540	SPV.0060 Special 01. SECTION CORNER MONUMENTS SPECIAL	1.000 EACH	_____.	_____.
2550	SPV.0060 Special 02. TRAFFIC CONTROL CLOSE-OPEN TRAFFIC LANE	70.000 EACH	_____.	_____.



Proposal Schedule of Items

Proposal ID: 20170314014 Project(s): 2025-13-71

Federal ID(s): WISC 2017103

SECTION: 0001

Contract Items

Alt Set ID:

Alt Mbr ID:

Proposal Line Number	Item ID Description	Approximate Quantity and Units	Unit Price	Bid Amount
2560	SPV.0060 Special 03. FIELD FACILITIES OFFICE SPACE	1.000 EACH	_____.	_____.
2570	SPV.0090 Special 01. HEAVY DUTY SILT FENCE 3-FT	1,795.000 LF	_____.	_____.
2580	SPV.0090 Special 02. FIBER OPTIC TRACER WIRE STH 190 WB OFF RAMP & CTH F	5,634.000 LF	_____.	_____.
2590	SPV.0090 Special 03. FIBER OPTIC WARNING TAPE STH 190 OFF RAMP & CTH F	5,634.000 LF	_____.	_____.
2600	SPV.0105 Special 01. TRANSPORT AND INSTALL STATE FURNISHED TRAFFIC SIGNAL CABINET STH 190 WB OFF RAMP & CTH F	LS	LUMP SUM	_____.
2610	SPV.0105 Special 02. TRANSPORT TRAFFIC SIGNAL AND INTERSECTION LIGHTING MATERIALS STH 190 WB OFF RAMP & CTH F	LS	LUMP SUM	_____.
2620	SPV.0105 Special 03. REMOVE TRAFFIC SIGNALS STH 190 WB OFF RAMP & CTH F	LS	LUMP SUM	_____.
2630	SPV.0105 Special 04. REMOVE LOOP DETECTOR WIRE & LEAD-IN CABLE STH 190 WB OFF RAMP & CTH F	LS	LUMP SUM	_____.
2640	SPV.0105 Special 05. EVP DETECTOR HEAD INSTALLATION STH 190 WB OFF RAMP & CTH F	LS	LUMP SUM	_____.
2650	SPV.0105 Special 06. TRANSPORT AND INSTALL STATE FURNISHED RADAR DETECTION SYSTEM	LS	LUMP SUM	_____.
2660	204.0175 Removing Concrete Slope Paving	454.000 SY	_____.	_____.
Section: 0001			Total:	_____.

Total Bid: \_\_\_\_\_.