



Wisconsin Department of Transportation

Division of Transportation Systems Development

Bureau of Project Development
 4802 Sheboygan Avenue, Rm 601
 P O Box 7916
 Madison, WI 53707-7916

March 6, 2017

Telephone: (608) 266-1631
 Facsimile (FAX): (608) 266-8459

NOTICE TO ALL CONTRACTORS:

Proposal #18: 6525-06-71, WISC 2017 107
STH 28 – Random Lake
STH 28 – STH 57
STH 144
Sheboygan County

Letting of March 14, 2017

This is Addendum No. 01, which provides for the following:

Special Provisions:

Revised Special Provisions	
Article No.	Description
6	Utilities

Schedule of Items:

Revised Bid Item Quantities					
Bid Item	Item Description	Unit	Old Quantity	Revised Quantity	Proposal Total
520.1018	Apron Endwalls For Culvert Pipe, 18 – Inch	EA	6	-2	4
520.1030	Apron Endwalls For Culvert Pipe, 30 - Inch	EA	2	2	4
521.0118	Culvert Pipe Corrugated steel 18 – Inch	LF	179	-147	32
521.0130	Culvert Pipe Corrugated Steel 30 – Inch	LF	36	21	57
608.0324	Storm Sewer Pipe Reinforced Concrete Class III 24-Inch	LF	2,501	-1,359	1,142

Added Bid Item Quantities					
Bid Item	Item Description	Unit	Old Quantity	Revised Quantity	Proposal Total
520.3318	Culvert Pipe Class III–A, 18 - Inch	LF	0	90	90
520.3330	Culvert Pipe Class III-A, 30 - Inch	LF	0	36	36
608.3024	Storm Sewer Pipe Class III-A, 24 - Inch	LF	0	1,359	1,359

Plan Sheets:

Revised Plan Sheets	
Plan Sheet	Plan Sheet Title (brief description of changes to sheet)
25	Intersection Detail (Lone Pine RD) – Revised note STA 20+48, 1 - 18"x 98- CPCS Class III to STA 20+48, 1-18"x 98' CP Class III-A
43	Storm Sewer Detail – Revised note for pipe from STR 101 to STR 102 SSPRC Class III to SSPRC Class IV
44	Storm Sewer Detail – Revised note for pipe from STR 114 to STR 116 SSPRC Class III @ to SSP Class III-A
45	Storm Sewer Detail – Revised notes for pipes from STR 131 to STR 133, STR 133 to STR 136, STR 136 to STR 138 and STR 138 to STR 141 from SSPRC Class III to SSP Class III-A
46	Storm Sewer Detail – Revised notes for pipes from STR 138 to STR 141, STR 141 to STR 143, STR 143 to STR 146 and STR 146 to STR 148 from SSPRC Class III to SSP Class III-A
47	Storm Sewer Detail – Revised notes for pipes from STR 146 to STR 148 and STR 148 to STR 151 from SSPRC Class III to SSP Class III-A
78	Miscellaneous Quantities – Added table for Culvert Pipe Class III-A, 18-Inch and Culvert Pipe Class III-A, 30-Inch and moved the Apron Endwalls associated with the pipe locations
79	Miscellaneous Quantities – Revised the table to remove quantities changed from Culvert Pipe Corrugated Steel 18-Inch and Culvert Pipe Corrugated Steel 30-Inch which are now listed as Culvert Pipe Class III-A, 18-Inch and 30-inch. Moved the quantity for the pipe at STAT 465+34, STH 144 LT the incorrect location as Apron Endwalls for Culvert Pipe 18-Inch and Culvert Pipe Corrugated Steel, 18-Inch to the correct column as Apron Endwall for Culvert Pipe 30-Inch and Culvert Pipe Corrugated Steel 30-Inch.
81	Miscellaneous Quantities – Add item Storm Sewer Pipe Class III-A 24-Inch to the table and moved the quantity from the Reinforced Concrete class III, 24-Inch to the new column for the locations revised in the Storm Sewer Detail Sheets above.
119	Plan Sheet – Revised note STA 20+48, 1 - 18"x 98- CPCS Class III to STA 20+48, 1-18"x 98' CP Class III-A
120	Plan Sheet - Revised note 1 - 30"x 35'- CPCS to STA 20+48, 1 - 30"x 358' CP Class III-A

The responsibility for notifying potential subcontractors and suppliers of these changes remains with the prime contractor.

Sincerely,

Mike Coleman

Proposal Development Specialist
Proposal Management Section

ADDENDUM NO. 01

6525-06-71

March 6, 2017

Special Provisions

5. Utilities

Replace the entire article language with the following:

This contract comes under the provision of Administrative Rule Trans 220. 107-065 (20080501)

There are utility facilities within the construction limits of this project. Coordinate construction activities with a call to Diggers Hotline or a direct call to the utilities for the underground facilities in the area, as required per statutes. Take all required precautions when working within 18-inches of underground utilities. Use caution to maintain the integrity of underground utilities and maintain OSHA code clearances from overhead facilities at all times.

Additional detailed information regarding the location of utility facilities is available at the region WisDOT office during normal working hours.

ANR Pipeline Co (gas/petroleum) – has underground 6-inch high pressure natural gas pipeline crossing along STH 144 at approximate station 554+75. Maintain a minimum sign placement clearance of 25-feet (+/-) to the existing pipeline facility. No conflicts are anticipated with this facility.

The field contact for this project is:

Steve Whitty
W8715 Tower Road
Adell, WI 53001
(262) 626-3441
(920) 375-0475 mobile
steve_whitty@transcanada.com

ATC Management, Inc. (electricity-transmission) – has an overhead 138-kV transmission facility crossing along STH 144 at approximate station 475+75. Maintain a safe working clearance to the conductors at all times based on the latest OSHA requirements. No conflicts are anticipated with this facility.

The field contact for this project is:

Doug Vosberg
5303 Fen Oak Drive
Madison, WI 53718
(608) 877-7650
dvosberg@atcllc.com

Frontier Communications of WI LLC (communication line) – has overhead and underground facilities within the project limits.

Frontier Communications will complete the following relocations:

Station	Location		Station	Location	Work Proposed
290+70	30' RT	to	294+45	30' RT	Place a new copper and fiber cable, 36" - 48" deep
290+70	32' RT				Place a new pedestal
292+20	32' RT				Place a new pedestal
294+45	32' RT				Place a new pedestal
294+45					Place a new copper and fiber cable road crossing, 48" deep
295+20	32' RT				Place a new pedestal
294+45	30' LT	to	300+80	30' LT	Place a new copper and fiber cable, 36"- 48" deep
296+85	32' LT				Place a new pedestal
299+10	32' LT				Place a new pedestal
299+00					Place a new copper cable road crossing, 48" deep
300+80	32' LT				Place a new pedestal
300+80	35' LT	to	301+80	35' LT	Place a new copper and fiber cable, 60" deep
301+80	35' LT	to	307+25	35' LT	Place a new copper and fiber cable, 36" - 42" deep
304+04	33' LT				Place a new pedestal
307+25	30' LT	to	309+64	30' LT	Place a new copper and fiber cable, 48" deep
307+25	30' LT	to	309+64	30' LT	Place a new copper and fiber cable, 48" deep
309+64	32' LT				Place a new pedestal
309+65					Place a new cable road crossing, 60" deep
309+50	32' RT				Place a new pedestal
309+50	30' RT	to	320+00	30' RT	Place a new copper and fiber cable, 48" deep
313+75	32' RT				Place a new pedestal
316+32	32' RT				Place a new pedestal
320+00	32' RT				Place a new pedestal
320+00					Place a new copper cable road crossing, 72" deep
320+30	30' LT				Place a new pedestal
320+30	30' RT	to	317+00	30' RT	Place a new copper cable, 48" deep
70+30		to	71+63		Place new copper cable on existing utility easement (Schroeter Road)
320+00	30' RT	to	324+35	30' RT	Place a new copper and fiber cable, 36" - 42" deep
324+35	32' RT				Place a new pedestal
324+35	30' RT	to	326+35	30' RT	Place a new copper and fiber cable, 48" deep
326+35	32' RT				Place a new pedestal
326+35	25' RT	to	330+85	25' RT	Place a new copper and fiber cable, 48" deep
329+15	32' RT				Place a new pedestal
330+85	32' RT				Place a new pedestal
330+85	30' RT	to	342+00	30' RT	Place a new copper and fiber cable, 48" deep
334+46	32' RT				Place a new pedestal
338+46	32' RT				Place a new pedestal

340+04	32' RT				Place a new pedestal
342+00	30' RT	to	344+00	30' RT	Place a new copper and fiber cable, 72" deep
86+70	30' LT	to	89+00	30' LT	Place a new copper and fiber cable, 36" deep
89+00	30' LT	to	90+00	30' LT	Place a new copper cable, 72" deep (CTH DE)
80+00	30' LT	to	81+00	30' LT	Place a new copper cable, 72" deep (Silver Creek/Cascade Road)
81+00	30' RT	to	82+05	30' RT	Place a new copper cable, 36" deep (Silver Creek/Cascade Road)
344+00	30' RT	to	345+75	30' RT	Place a new copper and fiber cable, 48" deep
345+75	32' RT				Place a new pedestal
345+75	RT	to	354+70	RT	Place a new copper cable on existing utility easement
374+21	35' LT				Place a new pedestal
374+21	35' LT	to	382+50	35' LT	Place a new copper cable, 36" deep
382+50	28' LT	to	383+50	28' LT	Place a new copper cable, 48" deep
383+50	28' LT	to	390+91	28' LT	Place a new copper cable, 36" deep
387+20	30' LT				Place a new pedestal
390+91	33' LT	to	394+90	33' LT	Place a new copper cable, 36" deep
394+90	35' LT				Place a new pedestal
394+90					Place a new copper cable road crossing, 48" deep
394+90	LT	to	395+68	LT	Place a new copper cable, 36" deep (3' inside proposed r/w)
100+60	30' LT	to	102+30	30' LT	Place a new copper cable, 36" deep (Lynn Road)
101+00					Place a new copper cable road crossing, 48" deep (Lynn Road)
394+90	32' RT				Place a new pedestal
394+90	RT	to	395+68	RT	Place a new copper cable, 36" deep (3' inside proposed r/w)
98+90	32' LT				Place a new pedestal (Lynn Road)
98+90					Place a new copper cable road crossing, 48" deep (Lynn Road)
396+30	RT	to	397+60	RT	Place a new copper cable, 36" deep (3' inside proposed r/w)
397+60	32' RT				Place a new pedestal
436+20	45' RT	to	439+00	45' RT	Place a new copper cable, 36" deep
439+00		to	444+00		Place a new copper cable (on existing utility easement)
442+00	32' RT				Place a new pedestal
444+00		to	449+10		Place a new copper cable, 48" deep (5' inside proposed r/w utility easement)
108+60	32' RT				Place a new pedestal (CTH I)
108+60	RT	to	109+40	RT	Place a new copper cable, 36" deep (CTH I, 3' inside proposed r/w)
449+40		to	452+45		Place a new copper cable (existing utility easement)
511+87					Place a new copper cable road crossing, 48" deep

511+87		to	518+00		Place a new copper cable (existing utility easement)
--------	--	----	--------	--	--

The anticipated start date is April 01, 2017 with an estimated 40-working days to complete the relocation.

The field contact for this project is:

Russ Ryan
 315 Oak Street
 Oakfield, WI 53065
 (920) 583-3275
 (920) 737-9662 mobile
russell.w.ryan@ftr.com

Lakeside Foods, Inc. (water) – has an underground facilities within the project limits. The facility begins at the well located at approximate station 460+00, RT and the 8-inch water line runs east parallel to STH 144, RT until approximate station 470+00 where it continues east and runs parallel with Wolf Street, RT. The 8-inch water line crosses STH 144 at approximate station 500+00. No conflicts are anticipated with this facility.

The field contact for this project is:

Renee Hess
 808 Hamilton Street
 Manitowoc, WI 54220
 (920) 994-2117 ext. 308
rhess@lakesidefoods.com

Time Warner Cable (communication line) – has underground and overhead facilities within the project limits.

Time Warner Cable has no underground conflicts within the project limits.

Time Warner Cable will adjust their overhead facilities by transferring them onto new We Energies' poles.

The relocation will take an estimated 30-working days.

The field contact for this project is:

Steve Cramer
 1320 N. Martin Luther King Jr. Drive
 Milwaukee, WI 53212
 (414) 277-4045
 (414) 688-2385 mobile
steve.cramer@twcable.com

Village of Random Lake (sewer) – has underground facilities within the project limits.

The Village of Random Lake will adjust the sanitary manhole castings during construction that are located at approximate locations; station 515+00 RT, 517+25 RT, 519+60 RT, 521+50 RT, and 523+65 RT.

Contact the Village of Random Lake 5-days prior to construction operation in that area. It will take the Village of Random Lake an estimated 3-hours to adjust each casting.

The field contact for this project is:

Joe Huiras

96 Russell Drive
Random Lake, WI 53075
(920) 980-0598
jhuiras@randomlakewi.com

Village of Random Lake (water) – has underground facilities within the project limits.

The Village of Random Lake will adjust the water valve casting during construction that is located at approximate locations; station 513+80 RT.

Contact the Village of Random Lake 5-days prior to construction operation in that area. It will take the Village of Random Lake an estimated 3-hours to adjust each casting.

The field contact for this project is:

Joe Huiras
96 Russell Drive
Random Lake, WI 53075
(920) 980-0598
jhuiras@randomlakewi.com

We Energies (gas/petroleum) – has underground facilities within the project limits.

We Energies will install a 4-inch gas main along the north side of STH 144 from station 307+00 to station 345+00, LT. This gas facility will be located within 3-feet of the right-of-way at a minimum cover of 36-inches. This gas facility will be positioned between the right-of-way and the We Energies power pole facilities.

We Energies will install a 4-inch gas main along the south side of STH 144 from station 505+00 to station 523+50, RT. This gas facility will be located parallel between 10-feet south of the centerline and 5-feet from the existing sanitary sewer.

The anticipated start date is February 1, 2017 with an estimated 60-working days to complete the relocation.

The field contact for this project:

Nick Ernster
500 S. 116th Street
West Allis, WI 53214
(414) 944-5574
(414) 640-4271 mobile
nicholas.ernster@we-energies.com

We Energies (electricity) – has overhead facilities within the project limits.

We Energies will complete the following relocations:

Station	Location	Pole No.	Work Proposed
306+55	27' LT	68-33246	Place anchor
306+98	32' LT	New	Place pole
306+73	32' LT	New	Place anchor
308+45	25' LT	68-33231	Remove pole
308+49	31' LT	New	Place pole
310+ 14	25' LT	68-33232	Remove pole

310+12	30' LT	New	Place pole
311+86	24' LT	68-32769	Remove pole
311+42	29' LT	New	Place pole
313+78	29' LT	New	Place pole
313+78	22' LT	68-32770	Remove pole
315+58	29' LT	New	Place pole
315+44	23' LT	68-32773	Remove pole
315+28	31' RT	New	Place pole
315+33	20' RT	90-29259	Remove pole
316+35	31' RT	New	Place pole
316+35	20' RT	64-12225	Remove pole
317+58	29' LT	New	Place pole
317+11	24' LT	68-32774	Remove pole
318+82	29' LT	New	Place pole
318+82	24' LT	68-32775	Remove pole
320+28	29' LT	New	Place pole
322+01	29' LT	New	Place pole
320+35	23' LT	60-13893	Remove pole
323+98	29' LT	New	Place pole
322+01	23' LT	93-07035	Remove pole
324+37	32' RT	New	Place pole
323+95	24' LT	88-01708	Remove pole
326+07	29' LT	New	Place pole
326+07	22' LT	12-06762	Remove pole
326+33	32' RT	New	Place pole
327+44	22' LT	60-13890	Remove pole
327+45	29' LT	New	Place pole
329+00	22' LT	88-01710	Remove pole
327+65	32' RT	New	Place pole
329+ 14	21' LT	09-02770	Remove pole
329+00	29' LT	New	Place pole
330+95	22' LT	12-06760	Remove pole
329+ 17	32' RT	New	Place pole
332+93	21' LT	58-17450	Remove pole
329+ 14	29' LT	New	Place pole
334+70	21' LT	58-17449	Remove pole
330+97	29' LT	New	Place pole
336+42	21' LT	58-17448	Remove pole
330+89	32' RT	New	Place pole
338+28	21' LT	58-17447	Cut pole off at ground level
332+89	29' LT	New	Install pole
339+94	19' LT	58-17446	Cut pole off at ground level
334+44	32' RT	New	Install pole
341+31	20' LT	88-01711	Remove pole

334+68	29' LT	New	Install pole
342+51	22' LT	99-07982	Remove pole
336+42	28' LT	New	Install pole
343+60	25' LT	03-09472	Remove pole
338+28	28' LT	New	Install pole
338+43	32' RT	New	Install pole
339+94	28' LT	New	Install pole
341+22	28' LT	New	Install pole
342+31	29' LT	New	Install pole
342+51	54' LT	New	Install pole
343+97	29' LT	New	Install pole
344+84	31' RT	New	Install pole
394+99	33' LT	New	Install pole
396+30	73' LT	New	Install pole
396+38	58' LT	New	Install anchor
396+29	95' RT	New	Install pole
396+36	79' RT	New	Install anchor
396+43	31' LT	84-09108	Remove pole/anchor
396+92	32' LT	New	Install pole
447+05	38' LT	New	Install pole
448+00	39' LT	12-10050	Remove pole
448+26	68' LT	New	Install pole
448+22	39' LT	66-10286	Remove pole
450+22	48' LT	86-12201	Install anchor to existing pole

Station	Location	Station	Location	Work Proposed
317+08	48' LT	317+11	24' LT	Discontinue underground conductor
317+08	48' LT	317+33	29' LT	Install underground conductor
340+66	28' LT	341+31	28' LT	Install underground conductor

Contact We Energies 3-days prior to construction operations near station 338+28, LT and station 339+94, LT so they may remove the stub poles.

The anticipated start date is March, 2017 with an estimated 30-working days to complete the relocation.

The field contact for this project is:
 Phil McDonnell
 500 S. 116 Street
 West Allis, WI 53214
 (414) 944-5620
phil.mcdonnell@we-energies.com

Schedule of Items

Attached, dated March 6, 2017, are the revised Schedule of Items Pages 5, 7, and 14.

Plan Sheets

The following 8½ x 11-inch sheets are attached and made part of the plans for this proposal:

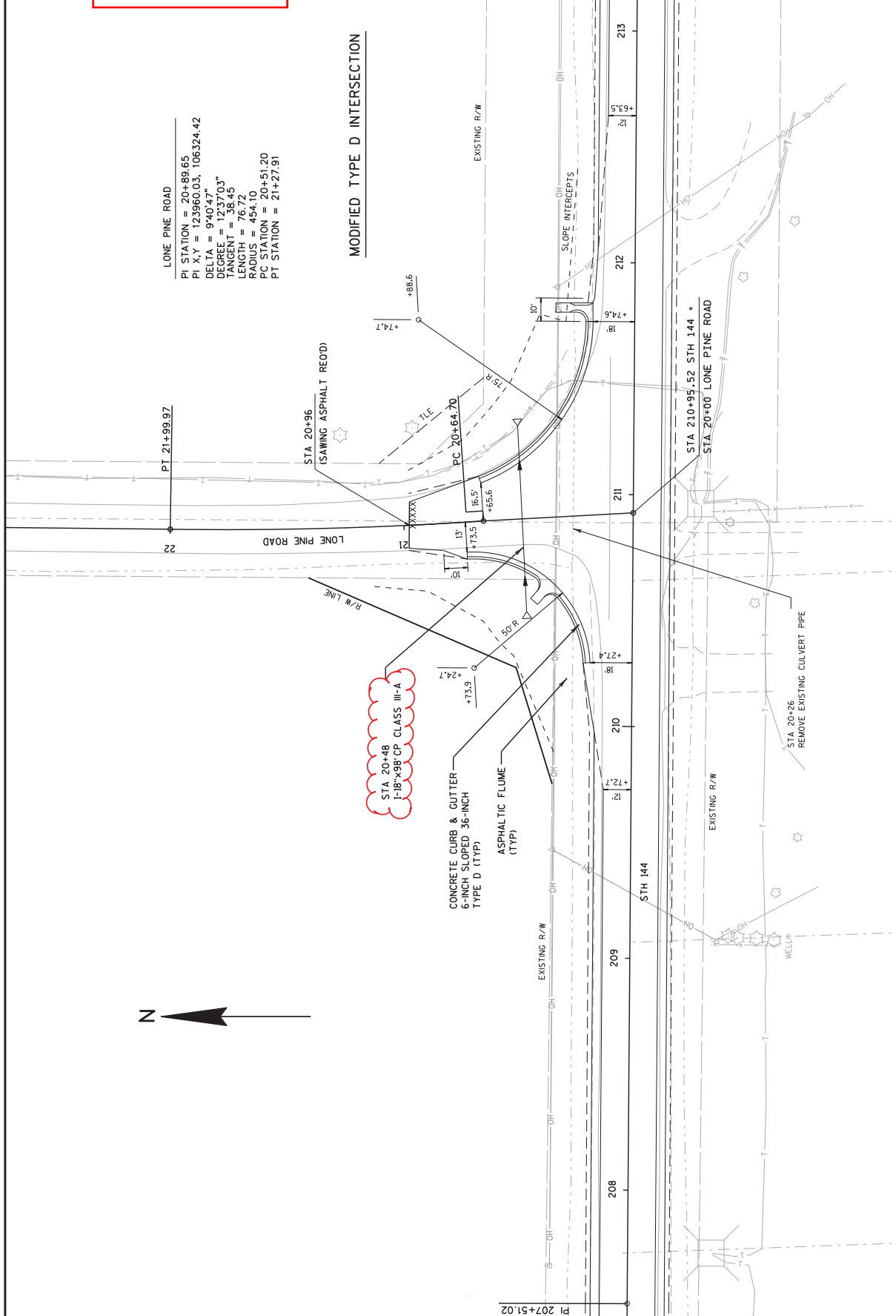
Revised: 25, 43, 44, 45, 46, 47, 78, 79, 81, 119, and 120.

END OF ADDENDUM

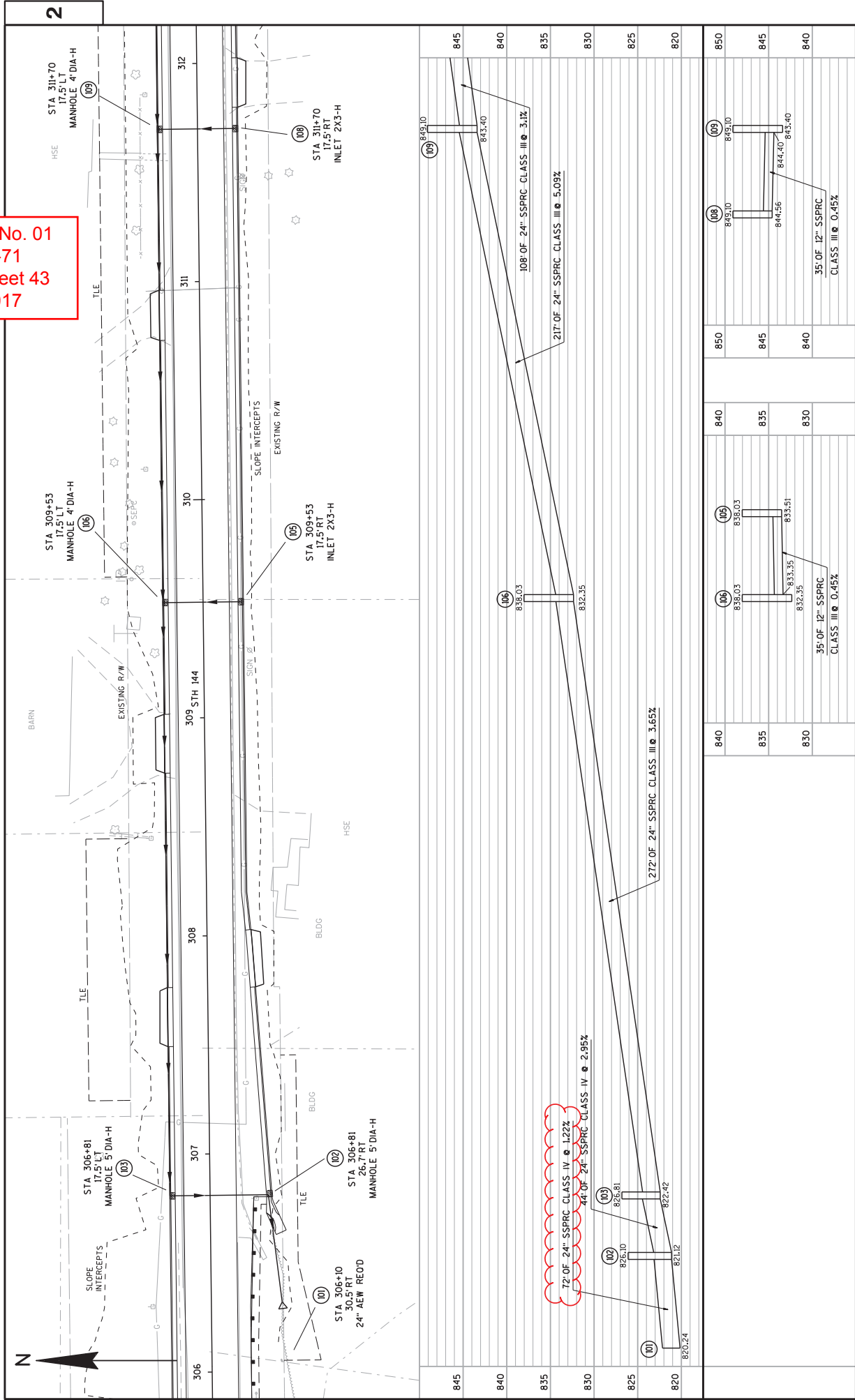
Addendum No. 01
 ID 6525-06-71
 Revised Sheet 25
 March 6, 2017

LONE PINE ROAD
 PI STATION = 20+89.65
 PI X,Y = 123960.03, 106324.42
 DELTA = 9°40'47"
 DEGREE = 12°37'03"
 TANGENT = 38.45
 LENGTH = 76.72
 RADIUS = 454.10
 PC STATION = 20+51.20
 PT STATION = 21+27.91

MODIFIED TYPE D INTERSECTION

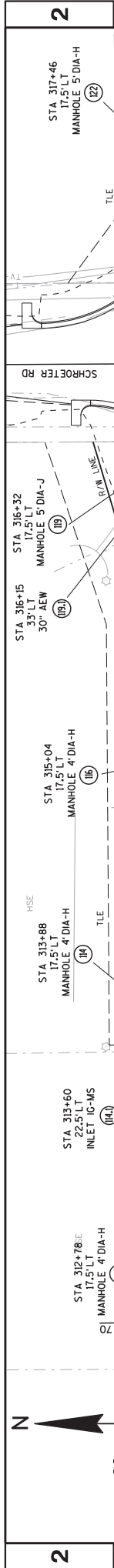


Addendum No. 01
 ID 6525-06-71
 Revised Sheet 43
 March 6, 2017

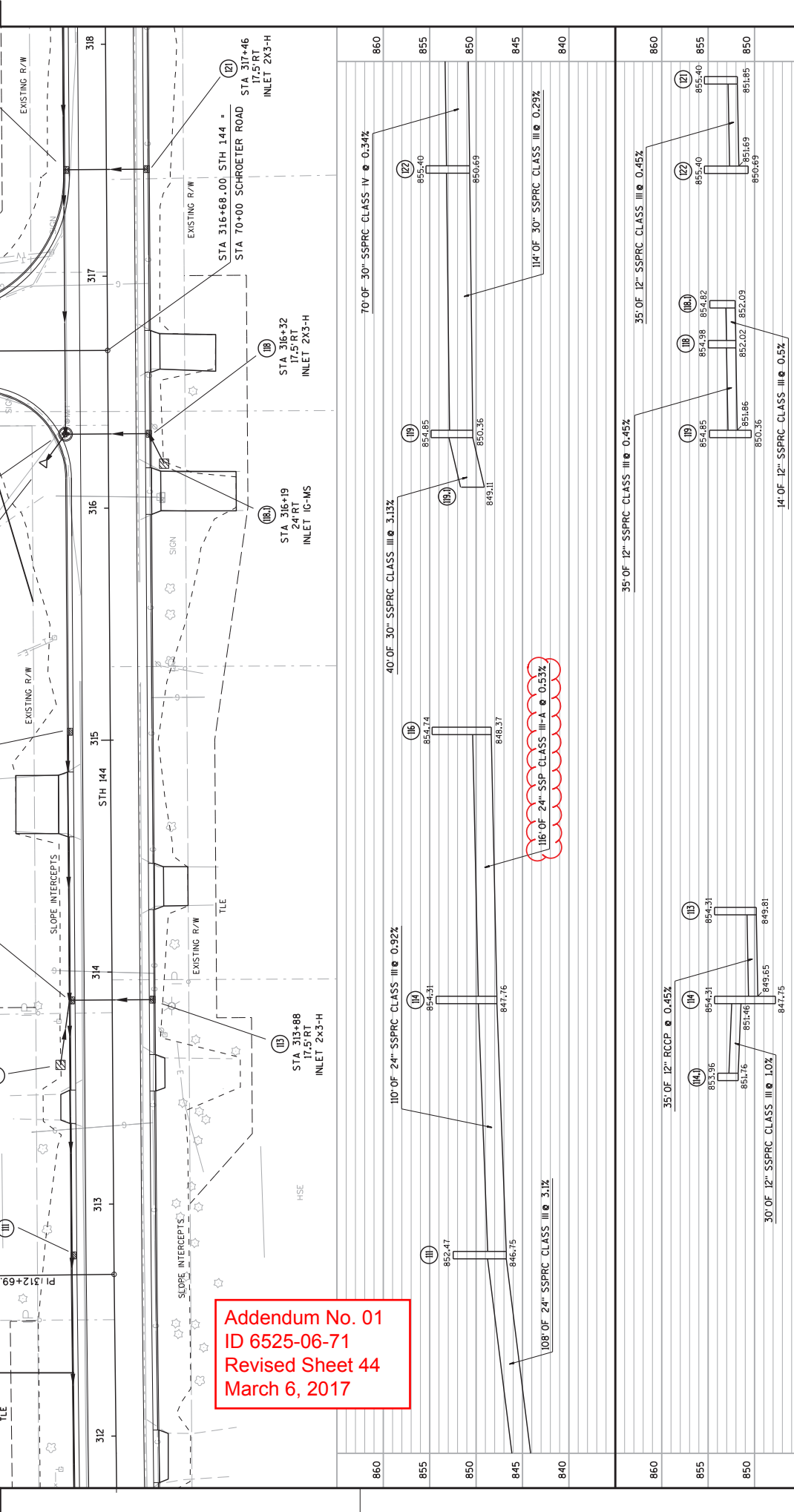


Station	Manhole ID	Manhole Description	Notes
306+81	103	17.5' LT, 5' DIA-H	
306+81	102	30.5' RT, 26.7' RT, 24\"/>	
306+53	105	17.5' LT, 4' DIA-H	
306+53	106	17.5' RT, 2X3-H	
311+70	109	17.5' LT, 4' DIA-H	
311+70	108	17.5' RT, 2X3-H	

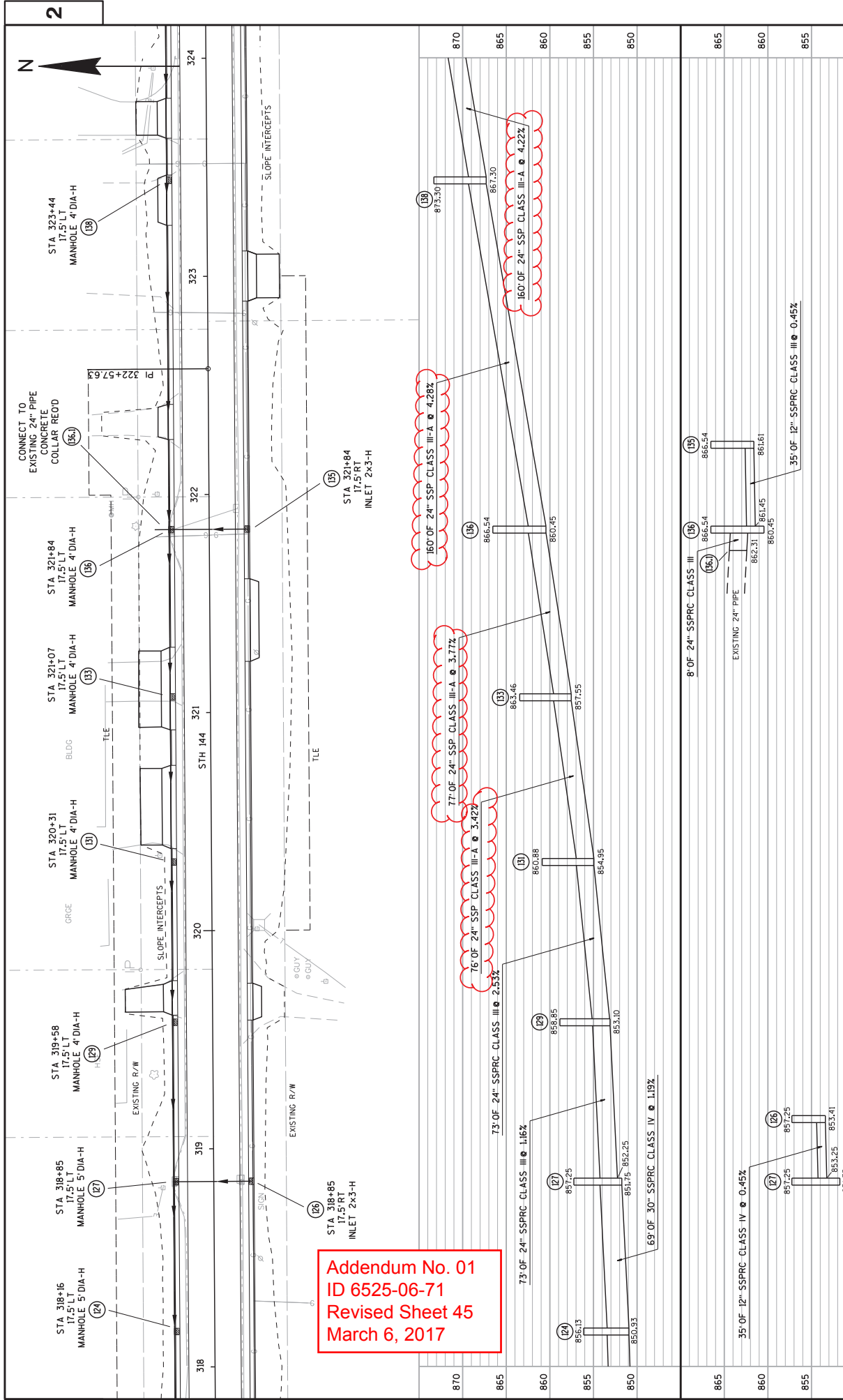
Station	Manhole ID	Manhole Description	Notes
820.24	101	30.5' RT, 24\"/>	
821.12	102	30.5' RT, 24\"/>	
822.42	101	30.5' RT, 24\"/>	
825.81	102	30.5' RT, 24\"/>	
826.10	102	30.5' RT, 24\"/>	
832.35	106	30.5' RT, 24\"/>	
832.35	106	30.5' RT, 24\"/>	
833.35	106	30.5' RT, 24\"/>	
833.51	105	30.5' RT, 24\"/>	
843.40	109	30.5' RT, 24\"/>	
843.40	109	30.5' RT, 24\"/>	
844.56	108	30.5' RT, 24\"/>	
844.40	108	30.5' RT, 24\"/>	
845.10	109	30.5' RT, 24\"/>	
845.10	109	30.5' RT, 24\"/>	



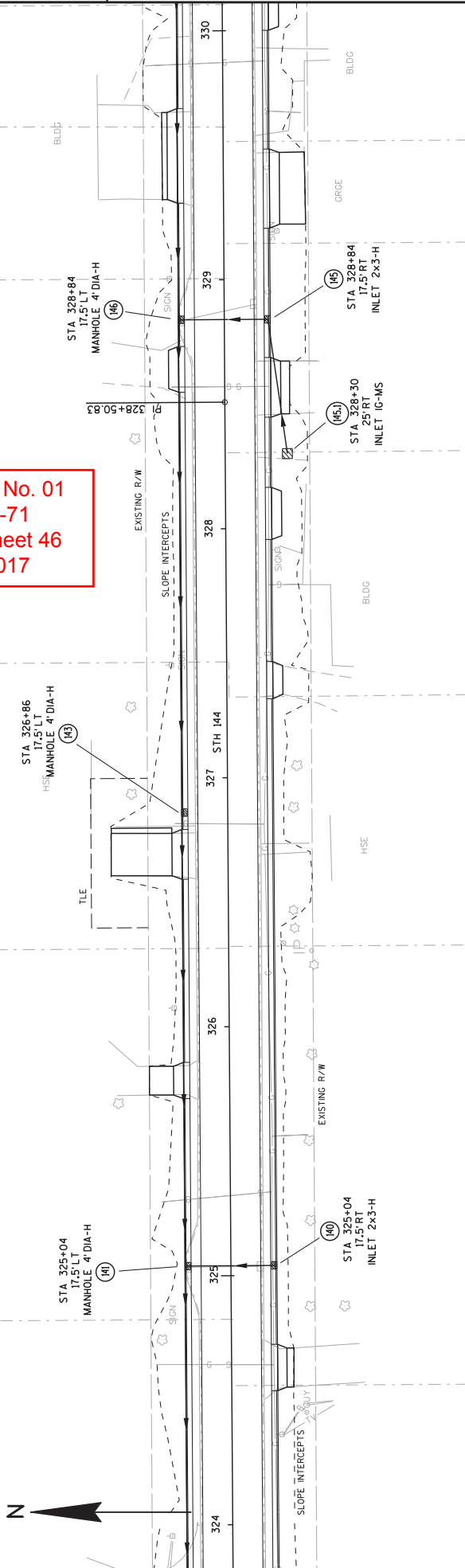
Addendum No. 01
 ID 6525-06-71
 Revised Sheet 44
 March 6, 2017



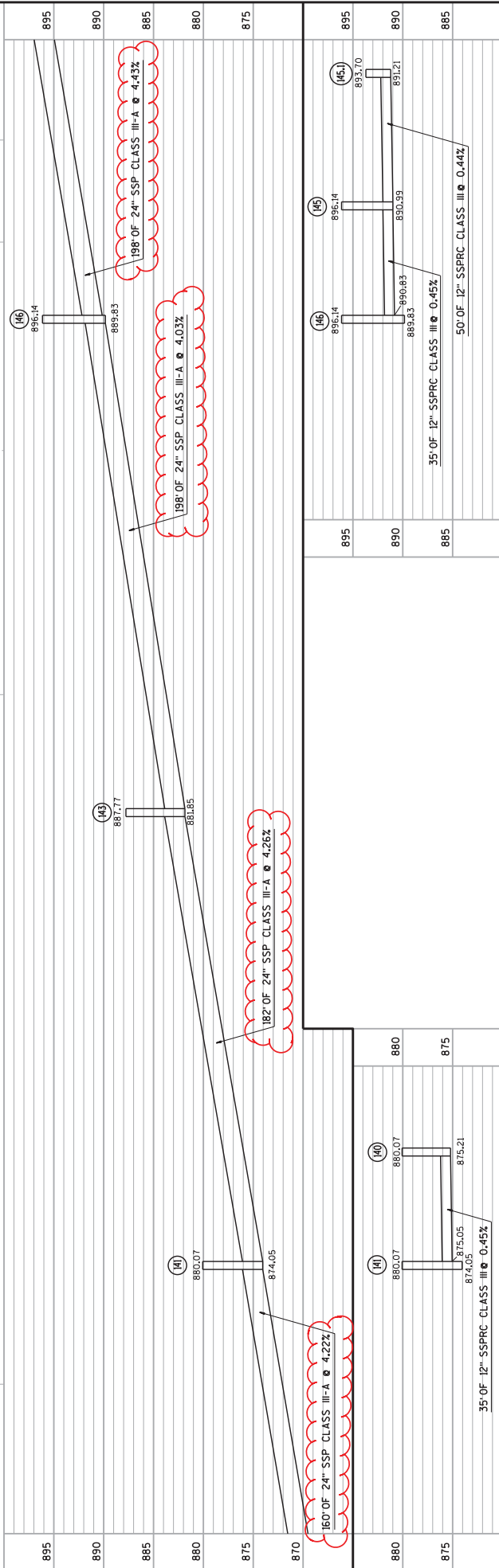
PROJECT NO: 6525-06-71	COUNTY: SHEBOYGAN	STORM SEWER DETAIL	SHEET 44
HWY: STH 144		E	
FILE NAME : F:\03-652506\022502-ss-dgn			
PLOT DATE : 28-FEB-2017 16:42			
PLOT BY : dmzmc			
PLOT NAME : 022502 ss.j			
PLOT SCALE : 1/32' = 1\"/>			

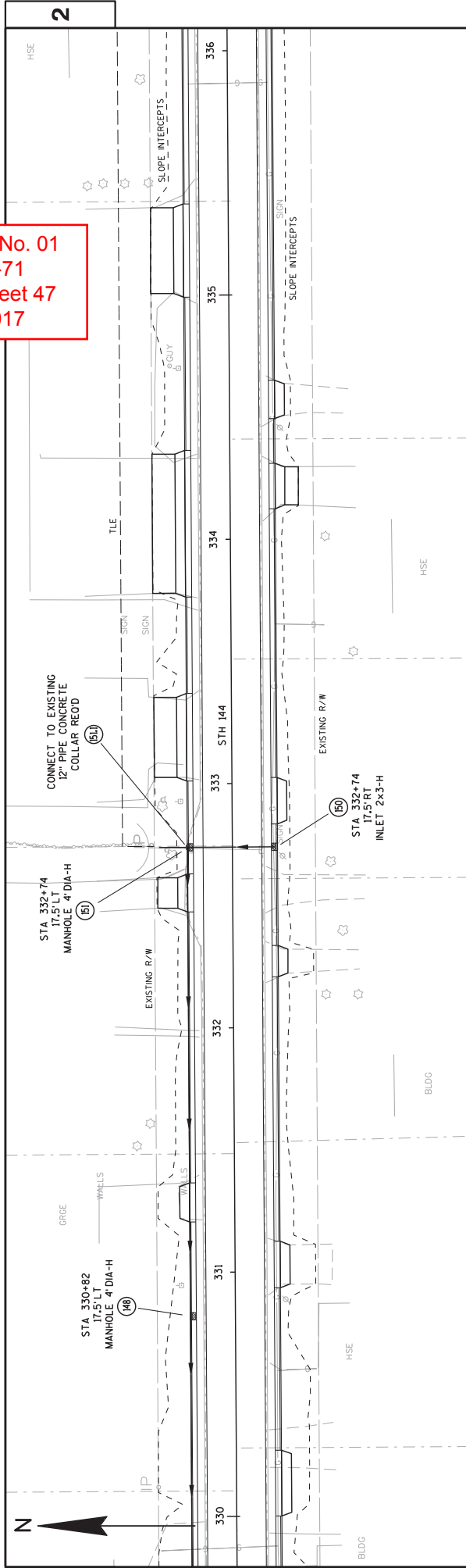


Addendum No. 01
 ID 6525-06-71
 Revised Sheet 45
 March 6, 2017

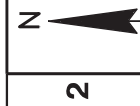
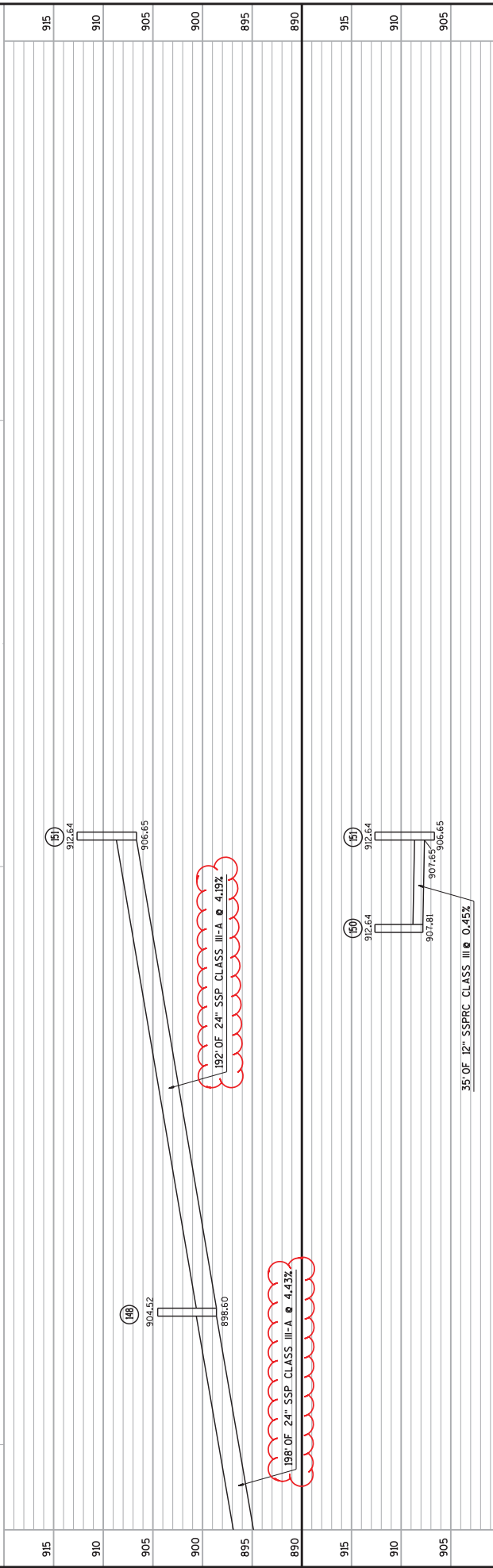


Addendum No. 01
 ID 6525-06-71
 Revised Sheet 46
 March 6, 2017





Addendum No. 01
 ID 6525-06-71
 Revised Sheet 47
 March 6, 2017



PROJECT NO: 6525-06-71	HWY: STH 144	COUNTY: SHEBOYGAN	STORM SEWER DETAIL	SHEET 47	E
FILE NAME : F:\03-652506\022505-ss-dgn					
PLOT DATE : 28-FEB-2017 16:42					
PLOT BY : doimezc					
PLOT NAME : 022505 ss-I					
PLOT SCALE : 1/32"=1'					
WISDOT/CADDSS SHEET 41					

ASPHALT CENTER LINE RUMBLE STRIPS 2-LANE RURAL

CATEGORY	STATION TO	STATION	LOCATION	LF	REMARKS
0010	202+00	- 208+95	STH 144	695	
	212+95	- 233+77	STH 144	2082	
	234+69	- 235+50	STH 144	81	
	239+50	- 250+35	STH 144	1085	
	251+15	- 257+01	STH 144	586	
	257+67	- 288+55	STH 144	3088	
	292+55	- 296+64	STH 144	409	
	300+63	- 314+43	STH 144	1380	
	318+68	- 319+60	STH 144	92	
	322+40	- 340+86	STH 144	1846	
	336+20	- 393+98	STH 144	5778	
	397+98	- 448+64	STH 144	5066	
	450+64	- 476+67	STH 144	2603	
	480+67	- 500+24	STH 144	1957	
	502+97	- 504+90	STH 144	193	
	508+90	- 521+49	STH 144	1259	
	525+49	- 534+00	STH 144	851	
	538+00	- 559+97	STH 144	2197	
	TOTAL 0010			31248	

CONCRETE MASONRY ENDWALLS

CATEGORY	STATION	LOCATION	504.0900 CY
0010	382+87	STH 144 LT	2
	382+87	STH 144 RT	2
	TOTAL 0010		4

CONCRETE SURFACE REPAIR

CATEGORY	STATION	LOCATION	509.1500 SF
0010	513+11	STH 144 LT	30
	TOTAL 0010		30

ASPHALTIC SURFACE

CATEGORY	STATION	LOCATION	TON
0010	0+23 - 2+16	PE AT 464+52 WAYSIDE	75
	TOTAL 0010		39
			114

CULVERT PIPE SUMMARY (CONTINUED)

CAT	STATION	LOCATION	EACH	18 INCH CULVERT PIPE	30 INCH CULVERT PIPE	30 INCH CLASS III - A	520.3318 CULVERT PIPE	521.3330 CULVERT PIPE	CLASS III - A	THICKNESS (INCHES)	DI SCH. ELEV.	ELEV.
0010	248+30	STH 144 RT	2							0.079	804.99	804.74
	20+48	LOME PINE	2							0.064	883.23	880.48
	TOTAL 0010		2				90		36			

**QUANTITY ALSO LISTED ELSEWHERE

CONCRETE COLLARS FOR PIPE

CATEGORY	STATION	LOCATION	520.8000 EACH	REMARKS
0010	321+84	STH 144 LT	1	STR 136 TO EXISTING PIPE
	332+74	STH 144 LT	1	STR 151 TO EXISTING PIPE
	513+11	STH 144 LT	1	
	TOTAL 0010		3	

Addendum No. 01
 ID 6525-06-71
 Revised Sheet 78
 March 6, 2017

CULVERT PIPE SUMMARY

CAT	STATION	LOCATION	EACH	520.1018** APRON ENDWALLS FOR CULVERT PIPE 18 INCH	521.0118 CORRUGATED STEEL 18 INCH	521.0130 CORRUGATED STEEL 30 INCH	522.0124 REINFORCED CONCRETE CLASS III 24 INCH	522.0130 REINFORCED CONCRETE CLASS III 30 INCH	522.0148 REINFORCED CONCRETE CLASS III 48 INCH	522.1024** APRON ENDWALLS FOR CULVERT PIPE REINFORCED CONCRETE 24 INCH	522.1030** APRON ENDWALLS FOR CULVERT PIPE REINFORCED CONCRETE 30 INCH	THICKNESS (INCHES)	INLET ELEV.	DI SCH. ELEV.	JOINT TIES EACH	REMARKS	
0010	281+50	STH 144					58	56	111	2	2		815.95	815.35	12		
	299+00	STH 144											814.60	813.65	12		
	382+87	STH 144											897.83	896.63	12		
	467+24	STH 144						56	111				874.44	874.05	12		
	465+34	STH 144 L	2		57								0.079	864.00	863.43	12	Skew 5° -36' RH
	511+55	STH 144 R	2										0.064	871.44	871.92	12	
	535+64	STH 144					88	200	111	2	6		883.46	883.04	12	Skew 40° RH	
	TOTAL 0010				57		58	200	111	2	6						

**QUANTITY ALSO LISTED ELSEWHERE

Addendum No. 01
 ID 6525-06-71
 Revised Sheet 79
 March 6, 2017

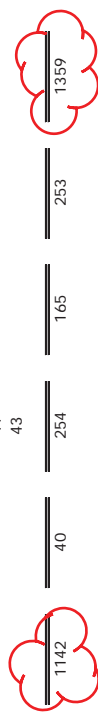
CONCRETE HORIZONTAL ELLIPTICAL PIPE SUMMARY

CATEGORY	STATION	LOCATION	LF	523.0129 CULVERT PIPE REINFORCED CONCRETE HORZ ELIP CLASS HE-111 29X45 INCH	523.0143 CULVERT PIPE REINFORCED CONCRETE HORZ ELIP CLASS HE-111 43X68 INCH	523.0148 CULVERT PIPE REINFORCED CONCRETE HORZ ELIP CLASS HE-111 48X76 INCH	523.0419 CULVERT PIPE REINFORCED CONCRETE HORZ ELIP CLASS HE-1V 19X30 INCH	523.0424 CULVERT PIPE REINFORCED CONCRETE HORZ ELIP CLASS HE-1V 24X38 INCH	INLET ELEV.	DI SCH ELEV.	JOINT TIES EACH	REMARKS
0010	301+16	STH 144	76						814.06	813.6	12	Skew 37° LHF
	358+36	STH 144	54						874.62	874.02	12	
	403+27	STH 144						42	904.46	903.97	12	
	424+01	STH 144							876.47	874.94	12	depressed 8"
	449+42	STH 144	64	55					872.04	871.66	12	
	99+56	LYNN ROAD					80		923.01	922.15	12	
	100+30	LYNN ROAD					136		923.45	921.21	12	
	TOTAL 0010		64	55			216	42				

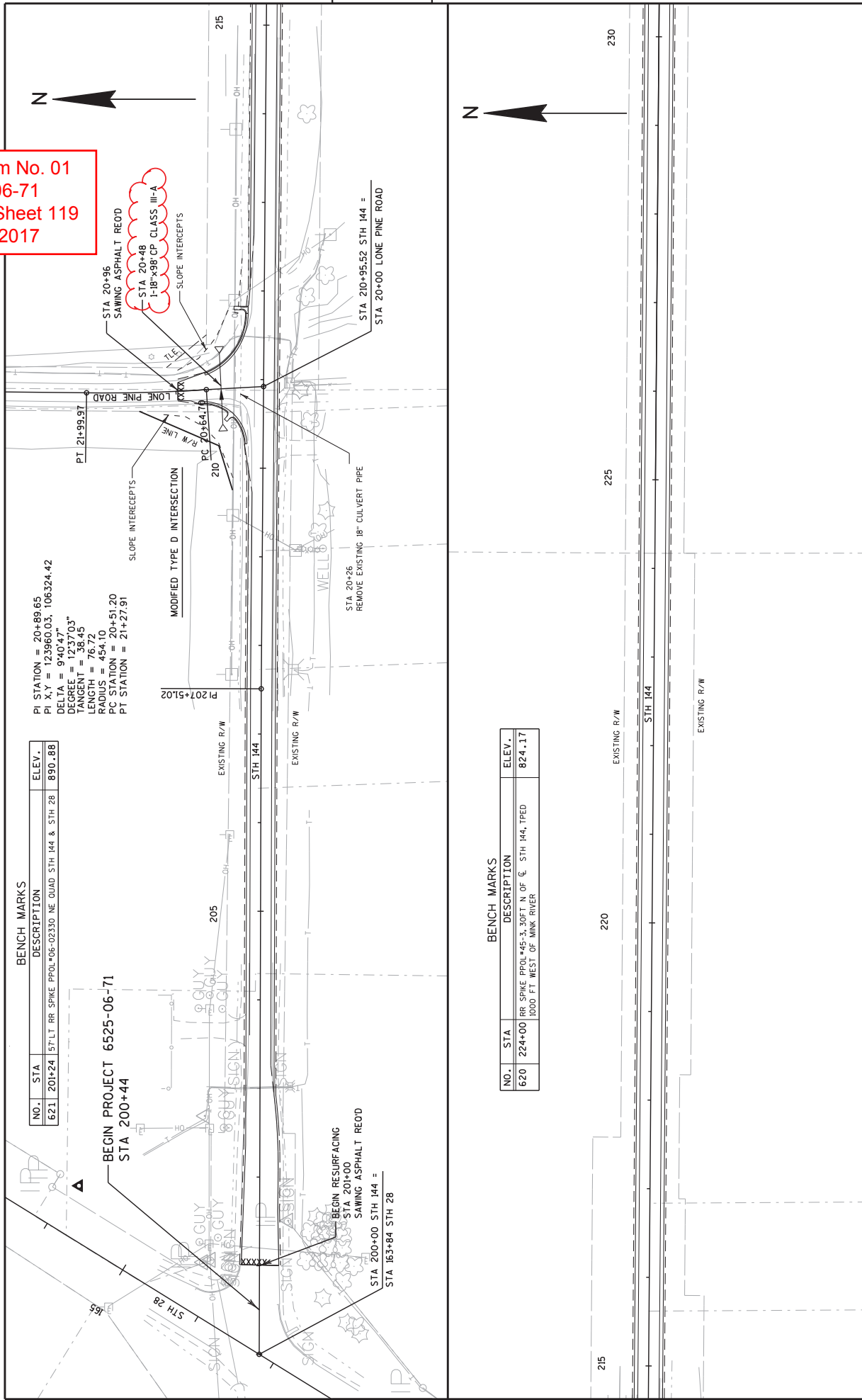
Addendum No. 01
ID 6525-06-71
Revised Sheet 81
March 6, 2017

STORM SEWER SUMMARY

CATEGORY	STR	TO	STR	INVERT ELEVATION		SLOPE	%	MATERIALS				REMARKS		
				INLET	DISCHARGE			608.0312	608.0324	608.0330	608.0412		608.0424	608.0430
								REINFORCED CONCRETE CLASS III 12 - 1 INCH	REINFORCED CONCRETE CLASS III 24 - 1 INCH	REINFORCED CONCRETE CLASS IV 30 - 1 INCH	REINFORCED CONCRETE CLASS IV 24 - 1 INCH	REINFORCED CONCRETE CLASS IV 30 - 1 INCH	STORM SEWER PIPE	
0010	102	-	101	821.12	820.24	1.22								
	103	-	102	822.42	821.12	2.95					72			
	105	-	106	833.51	833.35	0.45	35				44			
	106	-	103	832.35	822.42	3.65		272						
	108	-	109	844.56	844.40	0.45	35							
	109	-	106	843.40	832.35	5.09		217						
	111	-	109	846.75	843.40	3.10		108						
	113	-	114	849.81	849.65	0.44	35							
	114	-	111	847.76	845.75	0.92		110						
	114.1	-	114	851.76	851.46	1.06	30							
	116	-	114	848.37	847.76	0.53							116	
	118	-	119	852.02	851.86	0.45					35			
	118.1	-	118	852.09	852.02	0.50	14							
	119	-	119.1	580.36	849.11	3.13			40					
	121	-	122	851.85	851.69	0.45			35					
	122	-	119	850.69	850.36	0.29				114				
	124	-	122	850.93	850.69	0.34				70				
	126	-	127	853.41	853.25	0.45			35					
	127	-	124	851.75	850.93	1.19					69			
	129	-	127	853.10	852.25	1.16								
	131	-	129	854.95	853.10	2.58								
	133	-	131	857.55	854.95	3.42							76	
	136	-	133	860.45	857.55	3.77							77	
	136.1	-	136	862.91	862.91	0.00								
	138	-	136	867.30	860.45	4.28							160	
	140	-	144	873.21	873.01	0.15								
	141	-	138	874.05	867.30	4.22							160	
	143	-	141	881.85	874.05	4.26							182	
	146	-	146	890.99	890.99	0.00								
	146.1	-	146	890.21	890.99	0.44								
	148	-	143	889.83	881.85	4.03							198	
	148.1	-	146	898.60	889.83	4.43							198	
	151	-	151	907.65	907.65	0.00								
	151.1	-	148	906.65	898.60	4.19							192	
	153	-	151	907.65	907.65	0.00								
	201	-	201	908.63	898.71	3.53								
	202	-	202	909.86	909.63	1.00			23					
	203	-	202	910.05	909.63	1.00			42					
	204	-	202	909.12	908.63	1.00				49				
	205	-	204	910.53	910.12	1.02				41				
	206	-	204	910.55	910.12	1.00				43				
				TOTAL 0010										
							341		40		254		165	
												253	1359	



Addendum No. 01
 ID 6525-06-71
 Revised Sheet 119
 March 6, 2017



PI STATION = 20+89.65
 PI X,Y = 123960.03, 106324.42
 DELTA = 9°40'47"
 DEGREE = 12°37'03"
 TANGENT = 38.45
 LENGTH = 76.72
 RADIUS = 454.10
 PC STATION = 20+51.20
 PT STATION = 21+27.91

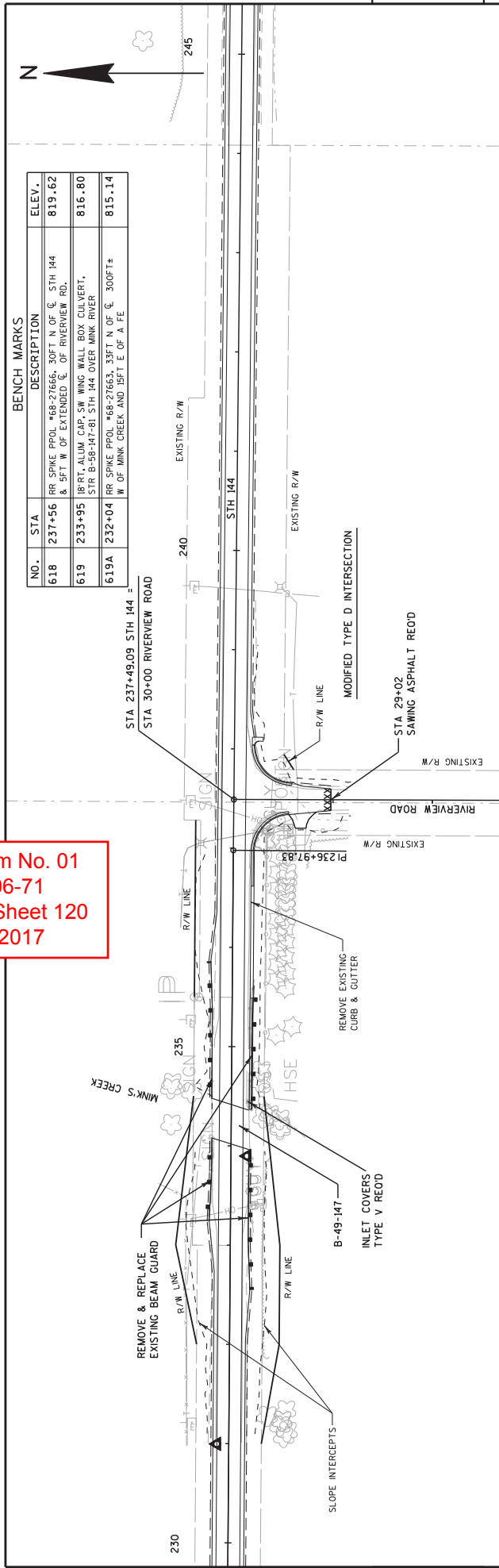
BENCH MARKS

NO.	STA	DESCRIPTION	ELEV.
621	201+24	57" LT RR SPIKE PPOOL-06-02330 NE QUAD STH 144 & STH 28	890.88

BENCH MARKS

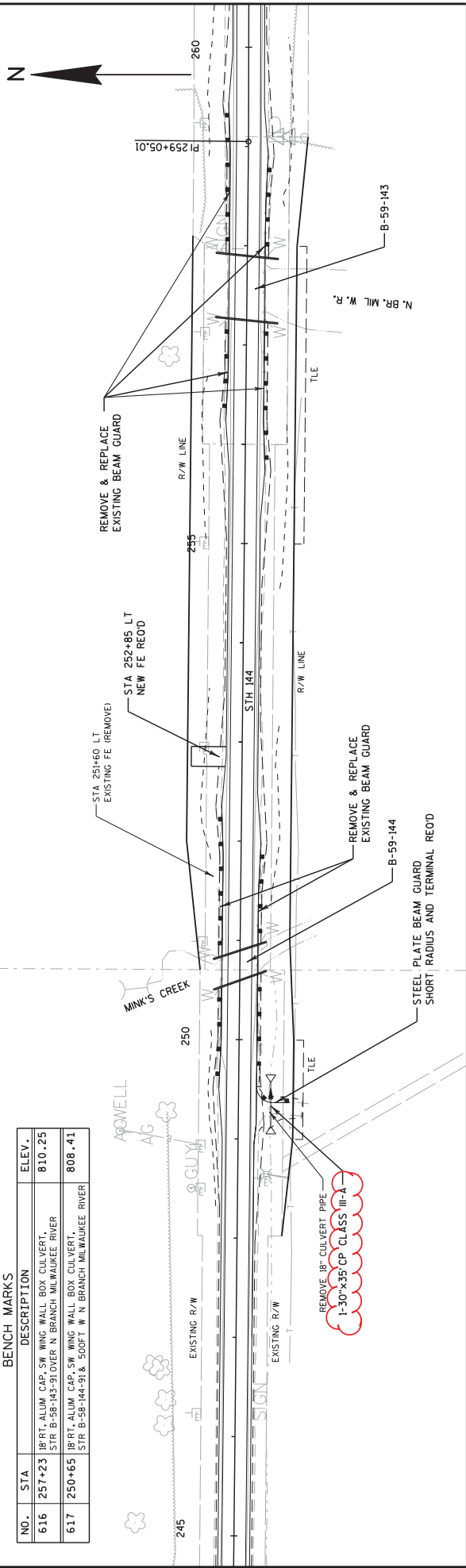
NO.	STA	DESCRIPTION	ELEV.
620	224+00	RR SPIKE PPOOL-45-3.30FT N OF CL STH 144, TPED 1000 FT WEST OF MINK RIVER	824.17

Addendum No. 01
 ID 6525-06-71
 Revised Sheet 120
 March 6, 2017



BENCH MARKS

NO.	STA	DESCRIPTION	ELEV.
618	237+56	RR SPKE PPOLE #68-27666, 30FT N OF C. STH 144 & 5FT W OF EXTENDED C. OF RIVERVIEW RD.	819.62
619	233+95	18" RT. ALUM. CAP. SW WING WALL BOX CULVERT, STR B-58-147-81 STH 144 OVER MNK RIVER	816.80
619A	232+04	RR SPKE PPOLE #68-27663, 33FT N OF C. 300FT* W OF MNK CREEK AND 15FT E OF A FE	815.14



BENCH MARKS

NO.	STA	DESCRIPTION	ELEV.
616	257+23	18" RT. ALUM. CAP. SW WING WALL BOX CULVERT, STR B-58-143-91 OVER N BRANCH MILWAUKEE RIVER	810.25
617	250+65	18" RT. ALUM. CAP. SW WING WALL BOX CULVERT, STR B-58-144-91 & 500FT W N BRANCH MILWAUKEE RIVER	808.41

PROJECT NO: 6525-06-71 COUNTY: SHEBOYGAN PLAN SHEET 120 E

FILE NAME: F:\103-652506\050202.dgn PLOT DATE: 28-FEB-2017 16:43 PLOT BY: ddmzcc PLOT NAME: 1:050202.plt PLOT SCALE: 1:99,311 WSDOT/CADD SHEET 44



Proposal Schedule of Items

Proposal ID: 20170314018 Project(s): 6525-06-71

Federal ID(s): WISC 2017107

SECTION: 0001

Contract Items

Alt Set ID:

Alt Mbr ID:

Proposal Line Number	Item ID Description	Approximate Quantity and Units	Unit Price	Bid Amount
0620	509.0302 Preparation Decks Type 2	106.000 SY	_____.	_____.
0630	509.0500 Cleaning Decks	872.000 SY	_____.	_____.
0640	509.1500 Concrete Surface Repair	1,000.000 SF	_____.	_____.
0650	509.2000 Full-Depth Deck Repair	8.000 SY	_____.	_____.
0660	509.2500 Concrete Masonry Overlay Decks	98.000 CY	_____.	_____.
0670	509.9005.S Removing Concrete Masonry Deck Overlay (structure) 01. B-59-104	672.000 SY	_____.	_____.
0680	509.9050.S Cleaning Parapets	489.000 LF	_____.	_____.
0690	520.1018 Apron Endwalls for Culvert Pipe 18-Inch	4.000 EACH	_____.	_____.
0700	520.1030 Apron Endwalls for Culvert Pipe 30-Inch	4.000 EACH	_____.	_____.
0710	520.8000 Concrete Collars for Pipe	3.000 EACH	_____.	_____.
0720	521.0118 Culvert Pipe Corrugated Steel 18-Inch	32.000 LF	_____.	_____.
0730	521.0130 Culvert Pipe Corrugated Steel 30-Inch	57.000 LF	_____.	_____.
0740	522.0124 Culvert Pipe Reinforced Concrete Class III 24-Inch	58.000 LF	_____.	_____.
0750	522.0130 Culvert Pipe Reinforced Concrete Class III 30-Inch	200.000 LF	_____.	_____.
0760	522.0148 Culvert Pipe Reinforced Concrete Class III 48-Inch	111.000 LF	_____.	_____.



Proposal Schedule of Items

Proposal ID: 20170314018 Project(s): 6525-06-71

Federal ID(s): WISC 2017107

SECTION: 0001

Contract Items

Alt Set ID:

Alt Mbr ID:

Proposal Line Number	Item ID Description	Approximate Quantity and Units	Unit Price	Bid Amount
0880	523.0548 Apron Endwalls for Culvert Pipe Reinforced Concrete Horizontal Elliptical 48x76-Inch	2.000 EACH	_____.	_____.
0890	601.0110 Concrete Curb Type D	84.000 LF	_____.	_____.
0900	601.0411 Concrete Curb & Gutter 30-Inch Type D	8,485.000 LF	_____.	_____.
0910	601.0557 Concrete Curb & Gutter 6-Inch Sloped 36-Inch Type D	1,204.000 LF	_____.	_____.
0920	602.0405 Concrete Sidewalk 4-Inch	165.000 SF	_____.	_____.
0930	602.1500 Concrete Steps	54.000 SF	_____.	_____.
0940	606.0200 Riprap Medium	73.000 CY	_____.	_____.
0950	608.0312 Storm Sewer Pipe Reinforced Concrete Class III 12-Inch	341.000 LF	_____.	_____.
0960	608.0324 Storm Sewer Pipe Reinforced Concrete Class III 24-Inch	1,142.000 LF	_____.	_____.
0970	608.0330 Storm Sewer Pipe Reinforced Concrete Class III 30-Inch	40.000 LF	_____.	_____.
0980	608.0412 Storm Sewer Pipe Reinforced Concrete Class IV 12-Inch	254.000 LF	_____.	_____.
0990	608.0424 Storm Sewer Pipe Reinforced Concrete Class IV 24-Inch	165.000 LF	_____.	_____.
1000	608.0430 Storm Sewer Pipe Reinforced Concrete Class IV 30-Inch	253.000 LF	_____.	_____.
1010	611.0530 Manhole Covers Type J	3.000 EACH	_____.	_____.



Proposal Schedule of Items

Proposal ID: 20170314018 Project(s): 6525-06-71

Federal ID(s): WISC 2017107

SECTION: 0001

Contract Items

Alt Set ID:

Alt Mbr ID:

Proposal Line Number	Item ID Description	Approximate Quantity and Units	Unit Price	Bid Amount
1960	SPV.0090 Special 02. Handrail Special	12.000 LF	_____.	_____.
1970	SPV.0120 Special 01. Water For Seeded Areas	340.000 MGAL	_____.	_____.
1980	SPV.0165 Special 01. Wall Modular Block Gravity LRFD	1,576.000 SF	_____.	_____.
1990	520.3318 Culvert Pipe Class III-A 18-Inch	90.000 LF	_____.	_____.
2000	520.3330 Culvert Pipe Class III-A 30-Inch	36.000 LF	_____.	_____.
2010	608.3024 Storm Sewer Pipe Class III-A 24-Inch	1,359.000 LF	_____.	_____.
	Section: 0001		Total:	_____.
			Total Bid:	_____.