



Wisconsin Department of Transportation

Division of Transportation Systems Development

Bureau of Project Development
 4802 Sheboygan Avenue, Rm 601
 P O Box 7916
 Madison, WI 53707-7916

March 6, 2017

Telephone: (608) 266-1631
 Facsimile (FAX): (608) 266-8459

NOTICE TO ALL CONTRACTORS:

Proposal #30: 1570-02-73, WISC 2017 117
V Turtle Lake, USH 8
CTH K/Norway Street
Intersection
USH 8
Barron County

1570-02-75, WISC 2017 118
V Turtle Lake, USH 8
USH 63 E Jct/Maple St
Intersection
USH 8
Barron County

Letting of March 14, 2017

This is Addendum No. 01, which provides for the following:

Special Provisions:

Revised Special Provisions	
Article No.	Description
05	Holiday Work Restrictions

Schedule of Items:

Revised Bid Item Quantities					
Bid Item	Item Description	Unit	Old Quantity	Revised Quantity	Proposal Total
305.0120	Base Aggregate Dense 1 1/4 – Inch	TON	23,578	-35	23,543
455.0605	Tack Coat	GAL	2,434	-1	2,433
465.0105	Asphaltic Surface	TON	384	-5	379
601.0411	Concrete Curb & Gutter 30-Inch Type D	LF	2,730	-50	2,680
643.0410	Traffic Control Barricades Type II	DAY	377	360	737
643.1050	Traffic Control Signs PCMS	DAY	92	360	452
643.3000	Traffic Control Detour Signs	DAY	5,252	360	5,612
690.0150	Sawing Asphalt	LF	6,585	-74	6,511

Added Bid Item Quantities					
Bid Item	Item Description	Unit	Old Quantity	Revised Quantity	Proposal Total
643.1051	Traffic Control PCMS with Cellular Communications	DAY	0	360	360

Plan Sheets: ID 1570-02-73

Revised Plan Sheets	
Plan Sheet	Plan Sheet Title (brief description of changes to sheet)
38	Updated sheet to include staking information for point 126 on Cherry Street due revised C&G location.
42	Revised detail sheet to remove point number 511 due to revision of C&G on Cherry Street.
47	Revised driveway detail to remove a section of C&G on Cherry Street and match into existing pavement surface on the north side of the driveway.
138	Updated quantities of Base Aggregate and HMA Pavement.
139	Updated quantities of Concrete Curb & Gutter, Base Aggregate, Asphaltic Surface, Tack Coat, and Sawing Asphalt
148	Updated quantity of Traffic Control Signs Fixed Message
149	Updated quantity of Traffic Control Signs PCMS and PCMS with Cellular Communications. Additional quantity of Traffic Control Detour Signs item.

The responsibility for notifying potential subcontractors and suppliers of these changes remains with the prime contractor.

Sincerely,

Mike Coleman

Proposal Development Specialist
Proposal Management Section

ADDENDUM NO. 01
1570-02-73 & 1570-02-75
March 6, 2017

Special Provisions

5. Holiday Work Restrictions.

Replace entire article language with the following.

Do not perform work on, nor haul materials of any kind along or across any portion of the highway carrying USH 8 traffic, and entirely clear the traveled way and shoulders of such portions of the highway of equipment, barricades, signs, lights, and any other material that might impede the free flow of traffic during the following holiday periods:

From noon Friday, May 26, 2017 to 6:00 AM Tuesday, May 30, 2017;
From noon Friday, June 30, 2017 to 6:00 AM Wednesday, July 5, 2017;
From noon Friday, September 1, 2017 to 6:00 AM Tuesday, September 5, 2017;

Do not haul materials of any kind along or across any portion of the highway carrying USH 8 traffic, nor impede the free flow of traffic during the weekend periods between Friday at 3:00 PM to Monday at 6:00 AM each weekend between Memorial Day and Labor Day unless prior authorization is approved by the engineer.

Schedule of Items

Attached, dated March 6, 2017, are the revised Schedule of Items Pages 2, 3, 9, 10, 14, and 17.

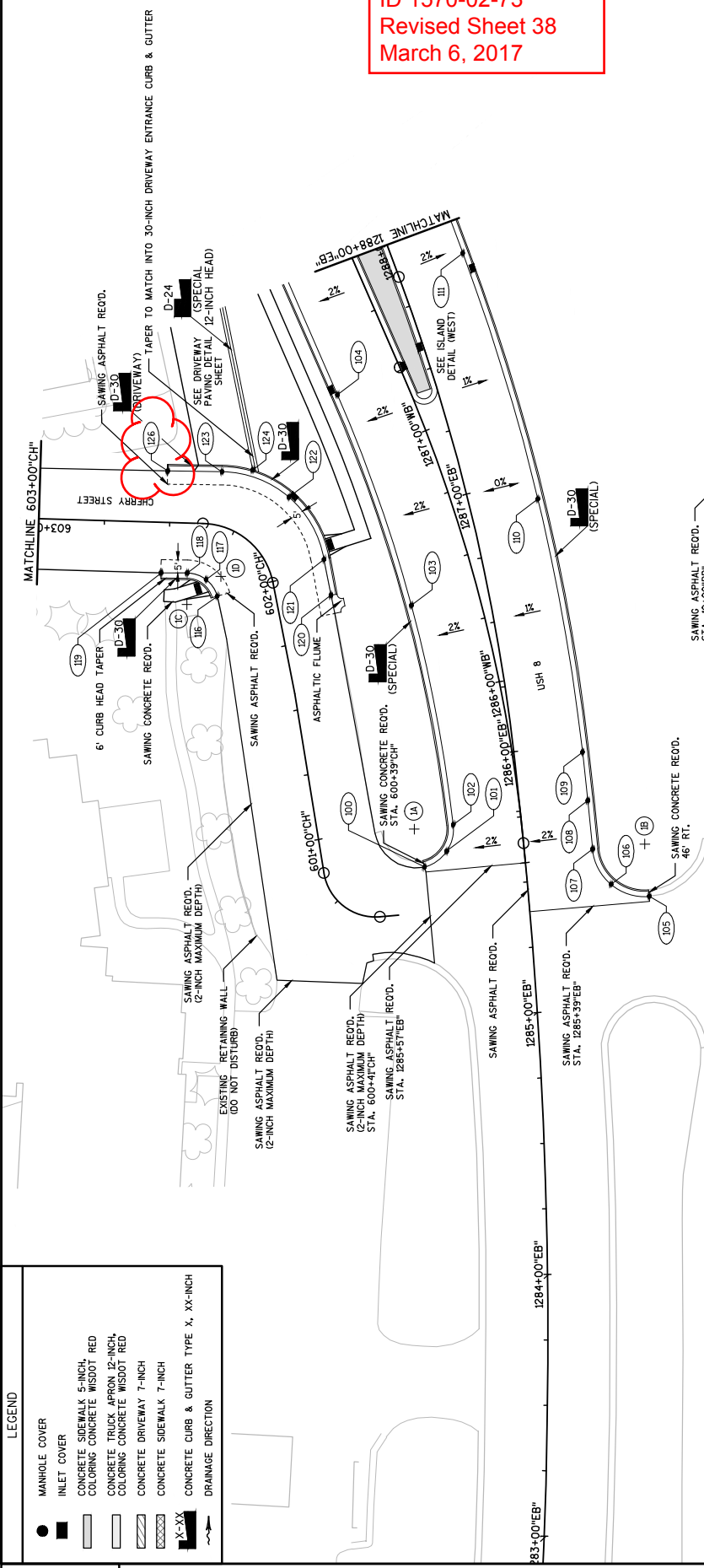
Plan Sheets

The following 8½ x 11-inch sheets are attached and made part of the plans for this proposal:

Revised (1570-02-73): 38, 42, 47, 138, 139, 148, and 149.

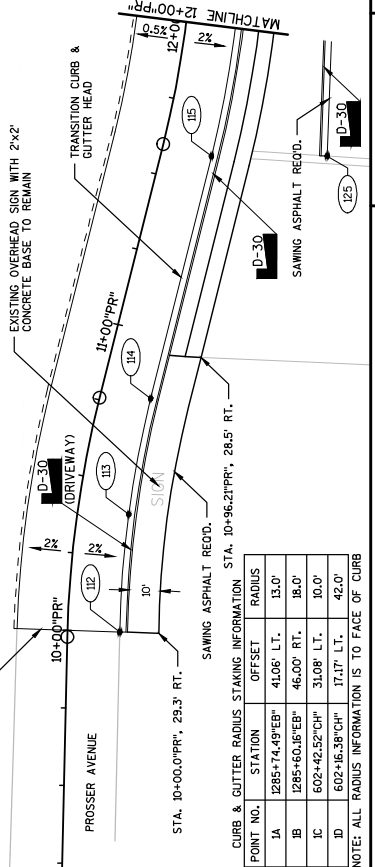
END OF ADDENDUM

Addendum No. 01
 ID 1570-02-73
 Revised Sheet 38
 March 6, 2017



LEGEND

- MANHOLE COVER
- INLET COVER
- ▨ CONCRETE SIDEWALK 5-INCH COLORING CONCRETE INSIDE RED
- ▨ CONCRETE TRUCK APRON 12-INCH COLORING CONCRETE INSIDE RED
- ▨ CONCRETE DRIVEWAY 7-INCH
- ▨ CONCRETE SIDEWALK 7-INCH
- ▨ CONCRETE CURB & GUTTER TYPE X, XX-INCH DRAINAGE DIRECTION



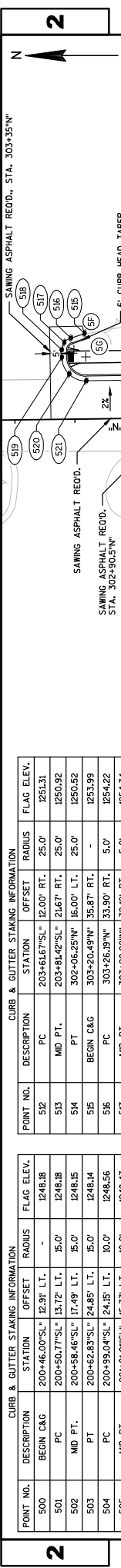
CURB & GUTTER STAKING INFORMATION

POINT NO.	STATION	DESCRIPTION	OFFSET	RADIUS	FLAG ELEV.
100	10+00.00'PR	SAWING ASPHALT RECD.	10.00'	10.00'	1247.69
101	10+00.00'PR	SAWING ASPHALT RECD.	10.00'	10.00'	1247.69
102	10+00.00'PR	SAWING ASPHALT RECD.	10.00'	10.00'	1247.69
103	10+00.00'PR	SAWING ASPHALT RECD.	10.00'	10.00'	1247.69
104	10+00.00'PR	SAWING ASPHALT RECD.	10.00'	10.00'	1247.69
105	10+00.00'PR	SAWING ASPHALT RECD.	10.00'	10.00'	1247.69
106	10+00.00'PR	SAWING ASPHALT RECD.	10.00'	10.00'	1247.69
107	10+00.00'PR	SAWING ASPHALT RECD.	10.00'	10.00'	1247.69
108	10+00.00'PR	SAWING ASPHALT RECD.	10.00'	10.00'	1247.69
109	10+00.00'PR	SAWING ASPHALT RECD.	10.00'	10.00'	1247.69
110	10+00.00'PR	SAWING ASPHALT RECD.	10.00'	10.00'	1247.69
111	10+00.00'PR	SAWING ASPHALT RECD.	10.00'	10.00'	1247.69
112	10+00.00'PR	SAWING ASPHALT RECD.	10.00'	10.00'	1247.69
113	10+00.00'PR	SAWING ASPHALT RECD.	10.00'	10.00'	1247.69
114	10+00.00'PR	SAWING ASPHALT RECD.	10.00'	10.00'	1247.69
115	10+00.00'PR	SAWING ASPHALT RECD.	10.00'	10.00'	1247.69
116	10+00.00'PR	SAWING ASPHALT RECD.	10.00'	10.00'	1247.69
117	10+00.00'PR	SAWING ASPHALT RECD.	10.00'	10.00'	1247.69
118	10+00.00'PR	SAWING ASPHALT RECD.	10.00'	10.00'	1247.69
119	10+00.00'PR	SAWING ASPHALT RECD.	10.00'	10.00'	1247.69
120	10+00.00'PR	SAWING ASPHALT RECD.	10.00'	10.00'	1247.69
121	10+00.00'PR	SAWING ASPHALT RECD.	10.00'	10.00'	1247.69
122	10+00.00'PR	SAWING ASPHALT RECD.	10.00'	10.00'	1247.69
123	10+00.00'PR	SAWING ASPHALT RECD.	10.00'	10.00'	1247.69
124	10+00.00'PR	SAWING ASPHALT RECD.	10.00'	10.00'	1247.69
125	10+00.00'PR	SAWING ASPHALT RECD.	10.00'	10.00'	1247.69
126	10+00.00'PR	SAWING ASPHALT RECD.	10.00'	10.00'	1247.69

CURB & GUTTER RADIUS STAKING INFORMATION

POINT NO.	STATION	DESCRIPTION	OFFSET	RADIUS	FLAG ELEV.
100	10+00.00'PR	SAWING ASPHALT RECD.	10.00'	10.00'	1247.69
101	10+00.00'PR	SAWING ASPHALT RECD.	10.00'	10.00'	1247.69
102	10+00.00'PR	SAWING ASPHALT RECD.	10.00'	10.00'	1247.69
103	10+00.00'PR	SAWING ASPHALT RECD.	10.00'	10.00'	1247.69
104	10+00.00'PR	SAWING ASPHALT RECD.	10.00'	10.00'	1247.69
105	10+00.00'PR	SAWING ASPHALT RECD.	10.00'	10.00'	1247.69
106	10+00.00'PR	SAWING ASPHALT RECD.	10.00'	10.00'	1247.69
107	10+00.00'PR	SAWING ASPHALT RECD.	10.00'	10.00'	1247.69
108	10+00.00'PR	SAWING ASPHALT RECD.	10.00'	10.00'	1247.69
109	10+00.00'PR	SAWING ASPHALT RECD.	10.00'	10.00'	1247.69
110	10+00.00'PR	SAWING ASPHALT RECD.	10.00'	10.00'	1247.69
111	10+00.00'PR	SAWING ASPHALT RECD.	10.00'	10.00'	1247.69
112	10+00.00'PR	SAWING ASPHALT RECD.	10.00'	10.00'	1247.69
113	10+00.00'PR	SAWING ASPHALT RECD.	10.00'	10.00'	1247.69
114	10+00.00'PR	SAWING ASPHALT RECD.	10.00'	10.00'	1247.69
115	10+00.00'PR	SAWING ASPHALT RECD.	10.00'	10.00'	1247.69
116	10+00.00'PR	SAWING ASPHALT RECD.	10.00'	10.00'	1247.69
117	10+00.00'PR	SAWING ASPHALT RECD.	10.00'	10.00'	1247.69
118	10+00.00'PR	SAWING ASPHALT RECD.	10.00'	10.00'	1247.69
119	10+00.00'PR	SAWING ASPHALT RECD.	10.00'	10.00'	1247.69
120	10+00.00'PR	SAWING ASPHALT RECD.	10.00'	10.00'	1247.69
121	10+00.00'PR	SAWING ASPHALT RECD.	10.00'	10.00'	1247.69
122	10+00.00'PR	SAWING ASPHALT RECD.	10.00'	10.00'	1247.69
123	10+00.00'PR	SAWING ASPHALT RECD.	10.00'	10.00'	1247.69
124	10+00.00'PR	SAWING ASPHALT RECD.	10.00'	10.00'	1247.69
125	10+00.00'PR	SAWING ASPHALT RECD.	10.00'	10.00'	1247.69
126	10+00.00'PR	SAWING ASPHALT RECD.	10.00'	10.00'	1247.69

Addendum No. 01
 ID 1570-02-73
 Revised Sheet 42
 March 6, 2017



CURB & GUTTER STAKING INFORMATION					
POINT NO.	DESCRIPTION	STATION	OFFSET	RADIUS	FLAG ELEV.
512	PC	203+616.77'SL"	12.00' RT.	25.0'	1251.31
513	MD PT.	203+814.42'SL"	21.67' RT.	25.0'	1250.92
514	PT	302+06.25'N"	16.00' LT.	-	1250.52
515	BEGIN C&G	303+20.49'N"	35.87' RT.	-	1253.99
516	PC	303+26.09'N"	33.90' RT.	5.0'	1254.22
517	MD PT.	303+28.98'N"	32.19' RT.	5.0'	1254.34
518	PT	303+30.05'N"	29.08' RT.	5.0'	1254.36
519	PC	303+30.04'N"	25.98' RT.	10.0'	1254.36
520	MD PT.	303+27.11'N"	18.92' RT.	10.0'	1254.27
521	PT	303+20.04'N"	16.00' RT.	10.0'	1253.52
522	PC	301+83.04'N"	16.00' RT.	583.0'	1249.94
523	MD PT.	301+23.23'N"	16.00' RT.	583.0'	1249.43

CURB & GUTTER STAKING INFORMATION					
POINT NO.	DESCRIPTION	STATION	OFFSET	RADIUS	FLAG ELEV.
500	BEGIN C&G	200+46.00'SL"	12.91' LT.	-	1248.18
501	PC	200+50.77'SL"	13.72' LT.	15.0'	1248.18
502	MD PT.	200+58.46'SL"	17.49' LT.	15.0'	1248.15
503	PT	200+62.83'SL"	24.85' LT.	15.0'	1248.14
504	PC	200+99.04'SL"	24.15' LT.	10.0'	1248.56
505	MD PT.	200+101.07'SL"	15.73' LT.	10.0'	1248.47
506	PT	201+08.80'SL"	12.00' LT.	10.0'	1248.37
507	PC	203+86.57'SL"	12.00' LT.	20.0'	1251.59
508	MD PT.	203+98.74'SL"	16.13' LT.	20.0'	1252.02
509	PT	204+05.89'SL"	26.81' LT.	20.0'	1252.45
510	BEGIN C&G	302+30.00'SL"	33.87' RT.	-	1252.67

CURB & GUTTER RADIUS STAKING INFORMATION					
POINT NO.	STATION	OFFSET	RADIUS	FLAG ELEV.	FLAG ELEV.
5A	200+46.29'SL"	28.50' LT.	15.0'	1252.70	1252.70
5B	201+08.80'SL"	22.00' LT.	8.0'	1252.70	1252.70
5C	203+86.57'SL"	32.00' LT.	18.0'	1252.43	1252.43
5D	201+07.17'SL"	32.00' RT.	20.0'	1252.43	1252.43
5E	203+61.67'SL"	37.00' RT.	23.0'	1252.43	1252.43
5F	303+25.05'N"	29.09' RT.	3.0'	1252.43	1252.43
5G	303+20.04'N"	26.00' RT.	8.0'	1252.43	1252.43

CURB & GUTTER RADIUS STAKING INFORMATION					
POINT NO.	STATION	OFFSET	RADIUS	FLAG ELEV.	FLAG ELEV.
525	BEGIN C&G/PC	301+44.74'N"	40.52' RT.	181.35'	1252.70
526	MID PT.	300+81.93'N"	37.58' RT.	181.35'	1252.43

PARKING LOT CURB & GUTTER STAKING INFORMATION					
POINT NO.	DESCRIPTION	STATION	OFFSET	RADIUS	FLAG ELEV.
525	BEGIN C&G/PC	301+44.74'N"	40.52' RT.	181.35'	1252.70
526	MID PT.	300+81.93'N"	37.58' RT.	181.35'	1252.43

PARKING LOT CURB & GUTTER STAKING INFORMATION					
POINT NO.	DESCRIPTION	STATION	OFFSET	RADIUS	FLAG ELEV.
525	BEGIN C&G/PC	301+44.74'N"	40.52' RT.	181.35'	1252.70
526	MID PT.	300+81.93'N"	37.58' RT.	181.35'	1252.43

NOTE: ALL RADIUS INFORMATION IS TO FACE OF CURB OR EDGE OF PAVEMENT.

NOTE: ALL RADIUS INFORMATION IS TO FACE OF CURB OR EDGE OF PAVEMENT.

PROJECT NO: 1570-02-73
 COUNTY: BARRON
 HWY: USH 8
 PAVING DETAILS
 SHEET 42

FILE NAME: P:\905\93\0093129\CADD\SHEET\SP\PAVING\DETAILS\PAVING DETAILS.DWG
 LAYOUT NAME: PAVING DETAILS - 021205-PD
 PLOT DATE: 2/22/2017 10:55 AM
 PLOT BY: SARAH GENGLER
 PLOT NAME: PLOT SCALE: 1:140-XREF

WISDOT/CADD SHEET 42

LEGEND

- MANHOLE COVER
- INLET COVER
- CONCRETE SIDEWALK 5-INCH, COLORING CONCRETE WISDOT RED
- CONCRETE TRUCK APRON 12-INCH, COLORING CONCRETE WISDOT RED
- CONCRETE DRIVEWAY 7-INCH
- CONCRETE SIDEWALK 7-INCH
- CONCRETE CURB & GUTTER TYPE X, XX-INCH
- DRAINAGE DIRECTION

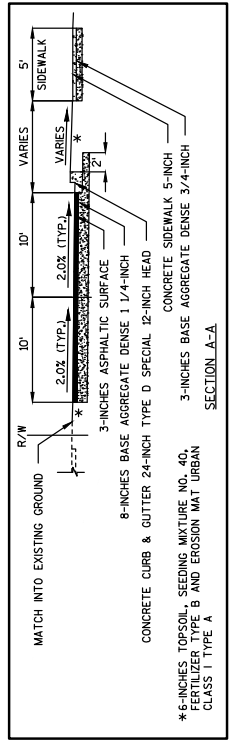
Addendum No. 01
 ID 1570-02-73
 Revised Sheet 47
 March 6, 2017

2

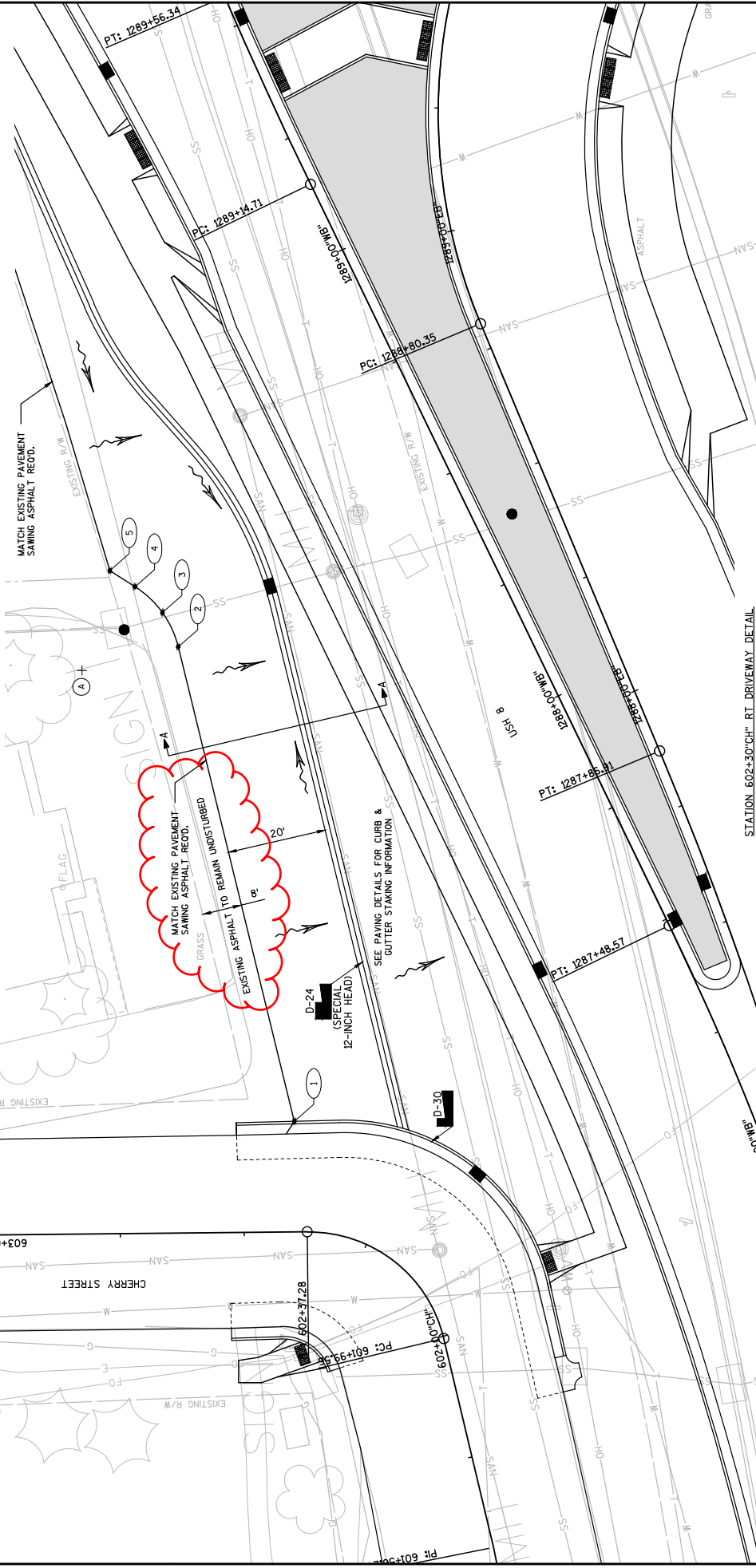
POINT NO.	DESCRIPTION	STATION	OFFSET	RADIUS	ELEVATION
1	BEGIN DRIVEWAY	1287+45.5(WB)	86.3' LT.	-	1247.29
2	P.C.	1288+42.3(WB)	64.6' LT.	20.0'	1247.26
3	MID. PT.	1288+49.3(WB)	64.6' LT.	20.0'	1247.27
4	P.T.	1288+57.0(WB)	61.2' LT.	20.0'	1247.28
5	BEND PT.	1288+62.7(WB)	70.4' LT.	-	1247.34

NOTE: GRADES MAY NEED TO BE ADJUSTED TO ACCOMMODATE FIELD CONDITIONS.

RADIUS STAKING INFORMATION			
POINT NO.	STATION	OFFSET	RADIUS
A	1288+46.4(WB)	84.20' LT.	20.0'



2



PROJECT NO: 1570-02-73 FILE NAME : P:\905\93\0093129\CADD\SHEETS\PLAN\PAVING DETAILS\DRIVEWAY.DWG LAYOUT NAME - 021301-PO	HWY: USH 8	COUNTY: BARRON	PAVING DETAILS: DRIVEWAY DETAIL	SHEET 47
	STATION 602+30' CH RT DRIVEWAY DETAIL		PLOT SCALE : 1 IN:20 FT	
PLOT DATE : 2.8.2017 2:33 PM			PLOT NAME : WISDOT/CADD SHEET 42	
PLOT BY : SARAH GENSLER				

BASE AGGREGATE

CATEGORY	STATION	TO STATION	LOCATION	*(305.0120)		(624.0100)		(208.1100)	
				BASE AGGREGATE DENSE 3/4-INCH	TON	WATER	MGAL	SELECT BORROW	CY
0010	1285+39"EB"	1298+11"EB"	LT & RT	5,527	77	-	-	3,610	-
	10+00"PR"	12+96"PR"	LT & RT	21	11	-	-	-	-
	14+55"PR"	17+11"PR"	LT & RT	760	10	-	-	-	-
	300+63"N"	303+34"N"	LT & RT	733	10	-	-	-	-
	200+94"SL"	203+62"SL"	LT & RT	729	6	-	-	-	-
	600+41"CH"	605+28"CH"	LT & RT	431	6	-	-	-	-
PROJECT TOTALS				40	116	1	3,610		

*ADDITIONAL QUANTITIES FOUND ELSEWHERE

NOTE: WATER BID ITEM TO BE USED FOR BASE AGGREGATE DUST CONTROL AND COMPACTION

CONCRETE ROUNDABOUT TRUCK APRON

CATEGORY	STATION	TO STATION	*(305.0120)		(416.0512)	
			BASE AGGREGATE DENSE 1 1/4-INCH	TON	COLORING CONCRETE	CONCRETE TRUCK APRON 12-INCH
0010	7+23"CI"	10+88"CI"	221	157	470	470
PROJECT TOTALS				221	157	470

*ADDITIONAL QUANTITIES FOUND ELSEWHERE

HMA PAVEMENT

CATEGORY	STATION	TO STATION	LOCATION	(460.8443)		(460.7448)		(460.7444)		(450.4000)		*(690.0150)	
				HMA PAVEMENT 3 MT 56-34 H	TON	HMA PAVEMENT 4 MT 56-34 H	TON	HMA PAVEMENT 4 HT 56-34 V	TON	HMA COLD TACK COAT	GAL	SAWING ASPHALT	LF
0010	1285+39"EB"	1298+11"EB"	LT & RT	-	-	4,122	1,374	-	-	981	182	-	-
	10+00"PR"	12+96"PR"	LT & RT	287	118	-	-	-	-	53	33	-	-
	14+56"PR"	17+11"PR"	LT & RT	288	119	-	-	-	-	53	46	-	-
	300+63"N"	303+34"N"	LT & RT	164	111	-	-	-	-	52	114	-	-
	200+94"SL"	203+62"SL"	LT & RT	142	142	-	-	-	-	36	-	-	-
	600+41"CH"	605+28"CH"	LT & RT	14	255	-	-	270	10	-	-	-	-
PROJECT TOTALS				813	733	4,122	1,374	1,094	186	374			

*ADDITIONAL QUANTITIES FOUND ELSEWHERE

ASPHALTIC FLUME

CATEGORY	STATION	LOCATION	(465.0315)		*(465.0310)	
			ASPHALTIC FLUMES	SY	ASPHALTIC CURB	LF
0010	601+87"CH"	RT	3	6	-	-
PROJECT TOTALS				3	6	

*ADDITIONAL QUANTITIES FOUND ELSEWHERE

WALL MODULAR BLOCK MECHANICALLY STABILIZED EARTH/LRF/D/MP

CATEGORY	STATION	TO STATION	(SPV.0165.01)		(SPV.0090.10)	
			WALL MODULAR BLOCK MECHANICALLY STABILIZED EARTH/LRF/D/MP	SF	RAILING PEDESTRIAN STEEL	STONE MULCH
0010	70+17"WL"	72+03"WL"	672	120	3	3
PROJECT TOTALS				672	120	3

EXCAVATION, HAULING, AND DISPOSAL OF PETROLEUM CONTAMINATED SOIL

CATEGORY	STATION	TO STATION	(SPV.0195.01)	
			LOCATION	TON
0010	1291+16"EB"	1292+87"EB"	LT & RT	200
PROJECT TOTAL				200

Addendum No. 01
ID 1570-02-73
Revised Sheet 138
March 6, 2017

Addendum No. 01
ID 1570-02-73
Revised Sheet 139
March 6, 2017

3

DRIVEWAYS AND PARKING LOTS

CATEGORY	STATION	TO STATION	LOCATION	TON	TON	TON	TON	GAL	SY	SY	LF	SY	LF	SY
				(685,0105) ASPHALTIC SURFACE	(465,0105) TACK COAT	(416,0170) CONCRETE DRIVEWAY 7-INCH	(690,0150) SAWING ASPHALT	(SPV,0180.01) CONCRETE DRIVEWAY CURE AND SEAL TREATMENT						
0010	1283+38"EB*	-	RT	74	13	42	141	-	-	-	-	-	-	-
	1295+33"EB*	-	RT	78	14	42	124	-	-	-	-	-	-	-
	13+38"PR*	-	RT	303	27	-	40	-	-	-	-	-	-	-
	16+10"PR*	-	RT	13	1	30	45	-	-	-	-	-	-	-
	16+61"PR*	-	LT	2	0	-	15	-	-	-	-	-	-	-
	300+36"N*	-	LT	25	4	62	55	-	-	-	-	-	-	-
	301+51"N*	-	LT	14	1	33	67	-	-	-	-	-	-	-
	204+27"LT*	-	RT	31	24	-	221	-	-	-	-	-	-	-
	602+30"CH*	-	RT	274	24	-	221	-	-	-	-	-	-	-
	603+7"CH*	-	LT	32	4	-	23	-	-	-	-	-	-	-
	307+15"N*	-	RT	14	4	-	136	-	-	-	-	-	-	-
	10+18"NE*	-	LT	14	4	-	136	-	-	-	-	-	-	-
	1296+53"EB*	-	RT	80	33	9	351	-	-	-	-	-	-	-
	1293+12"EB*	-	RT	22	5	-	100	-	-	-	-	-	-	-
	10+00"PR*	-	RT	22	5	-	100	-	-	-	-	-	-	-
	11+68"PR*	-	RT	23	1	-	254	-	-	-	-	-	-	-
	14+45"PR*	-	RT	-	-	-	63	-	-	-	-	-	-	-
	14+00"PR*	-	RT	-	-	-	63	-	-	-	-	-	-	-
PROJECT TOTALS				6	110	209	1,654	209	209	209	1,654	209	209	209

*ADDITIONAL QUANTITIES FOUND ELSEWHERE

3

CONCRETE CURB & GUTTER

CATEGORY	STATION	TO STATION	LOCATION	LF	LF	LF	LF	LF	LF	LF	LF	LF	LF	LF	LF	LF	LF	LF	LF	
				(601,0405) CONCRETE CURB & GUTTER 18-INCH TYPE A	(SPV,0090.02) CONCRETE CURB & GUTTER 24-INCH TYPE D SPECIAL	(SPV,0090.03) CONCRETE CURB & GUTTER 24-INCH TYPE D SPECIAL 12-INCH HEAD	(601,0411) CONCRETE CURB & GUTTER 30-INCH TYPE D	(SPV,0090.01) CONCRETE CURB & GUTTER 30-INCH TYPE D SPECIAL	(SPV,0090.04) CONCRETE CURB & GUTTER 4-INCH SLOPED 36-INCH TYPE R SPECIAL	(SPV,0090.07) CONCRETE CURB & GUTTER HES 30-INCH TYPE D SPECIAL	(601,0600) CONCRETE CURB & GUTTER PEDESTRIAN	(690,5500) CONSTRUCTION STAKING CURB GUTTER AND CURE AND SEAL	(SPV,0090.08) CONCRETE CURB & GUTTER TREATMENT							
0010	1285+42"EB*	12+96"PR	RT/RT	-	-	-	-	630	-	-	-	300	-	-	-	-	-	-	-	630
	1285+34"WB*	300+63"N	LT	-	-	-	-	535	-	-	-	260	-	-	-	-	-	-	-	535
	1287+07"WB*	300+75"N	LT (DRIVEWAY)	-	-	360	-	-	-	-	-	360	-	-	-	-	-	-	-	360
	1287+39"EB*	1289+56"EB*	SPLITTER ISLAND	-	-	-	-	475	-	-	-	160	-	-	-	-	-	-	-	475
	300+02"N*	300+44"N*	SPLITTER ISLAND	-	-	-	-	75	-	-	-	20	-	-	-	-	-	-	-	75
	400+40"K*	401+27"K*	SPLITTER ISLAND	-	-	-	-	210	-	-	-	60	-	-	-	-	-	-	-	210
	1291+27"EB*	1291+88"EB*	SPLITTER ISLAND	-	-	-	-	140	-	-	-	50	-	-	-	-	-	-	-	140
	7+23"C*	10+89"C*	CENTER CIRCLE	255	-	-	-	-	355	-	-	-	-	-	-	-	-	-	-	610
	14+56"PR*	1297+51"EB*	LT/RT	-	-	-	-	850	-	-	-	530	-	-	-	-	-	-	-	850
	1297+84"EB*	1298+11"EB*	RT	-	-	-	-	45	-	-	-	45	-	-	-	-	-	-	-	45
	300+63"N*	1298+11"EB*	RT/RT	-	-	-	-	765	-	-	-	765	-	-	-	-	-	-	-	765
	301+15"N*	10+13"NE*	RT	-	-	160	-	-	-	-	-	160	-	-	-	-	-	-	-	160
	1293+12"EB*	1296+53"EB*	LT	-	-	340	-	-	-	-	-	340	-	-	-	-	-	-	-	340
	1293+57"EB*	1295+15"EB*	RT	-	-	180	-	-	-	-	-	180	-	-	-	-	-	-	-	180
	10+00"PR*	12+46"PR*	RT	-	-	300	-	-	-	-	-	300	-	-	-	-	-	-	-	300
	14+68"PR*	12+89"PR	RT	-	-	150	-	-	-	-	-	150	-	-	-	-	-	-	-	150
	14+36"PR	14+36"PR	RT	-	-	175	-	-	-	-	-	175	-	-	-	-	-	-	-	175
	14+56"PR	17+11"PR	RT	-	-	250	-	-	-	-	-	250	-	-	-	-	-	-	-	250
	12+40"PR	12+96"PR	LT	-	-	55	-	-	-	-	-	55	-	-	-	-	-	-	-	55
	14+56"PR*	17+11"PR*	LT	-	-	260	-	-	-	-	-	260	-	-	-	-	-	-	-	260
	300+63"N*	203+62"SL	LT/RT	-	-	210	-	-	-	-	-	210	-	-	-	-	-	-	-	210
	300+63"N*	303+20"N	RT	-	-	280	-	-	-	-	-	280	-	-	-	-	-	-	-	280
	200+46"SL*	200+63"SL*	LT	-	-	30	-	-	-	-	-	30	-	-	-	-	-	-	-	30
	605+28"CH*	302+91"CH*	LT	-	-	340	-	-	-	-	-	340	-	-	-	-	-	-	-	340
	601+90"CH*	602+51"CH*	RT	-	-	105	-	-	-	-	-	105	-	-	-	-	-	-	-	105
	601+98"CH*	602+53"CH*	LT	-	-	25	-	-	-	-	-	25	-	-	-	-	-	-	-	25
UNDISTRIBUTED				-	-	-	-	100	-	-	-	-	-	-	-	-	-	-	-	-
PROJECT TOTALS				255	160	360	3,885	355	355	100	210	5,185	210	7,695	210	7,695	210	7,695	210	7,695

NOTE: BASE AGGREGATE DENSE 1 1/4 INCH UNDER THE CURB & GUTTER IS INCLUDED WITH THE HMA PAVEMENT AND CONCRETE TRUCK APRON BID ITEMS

PROJECT NO: 1570-02-73

HWY: USH 8

COUNTY: BARRON

MISCELLANEOUS QUANTITIES

SHEET 139

E

TRAFFIC CONTROL

CATEGORY	DESCRIPTION	(643.0300) TRAFFIC CONTROL		(643.0410) BARRICADES		(643.0420) BARRICADES		(643.0500) FLEXIBLE TUBULAR MARKER POSTS		(643.0705) WARNING LIGHTS		(643.0715) WARNING LIGHTS		(643.0900) TRAFFIC CONTROL SIGNS		(643.1000) TRAFFIC CONTROL SIGNS		(643.0100) TRAFFIC CONTROL			
		DRUMS	NO. DEVICES	DRUMS	NO. DEVICES	TYPE II	NO. DEVICES	TYPE III	NO. DEVICES	TYPE A	NO. DEVICES	TYPE C	NO. DEVICES	TYPE A	NO. DEVICES	TYPE C	NO. DEVICES	TYPE C	NO. DEVICES	PROJECT	DURATION
0010	STAGE 1A	69	2,139	1	31	12	372	-	26	806	23	713	13	13	403	-	-	-	-	31	DAYS
	STAGE 1B	231	3,465	1	15	27	405	102	56	840	48	720	63	63	945	7.5	-	-	-	15	DAYS
	STAGE 2A	276	13,800	1	50	17	850	103	36	1,800	103	1,800	64	64	3,200	2,400	-	-	-	50	DAYS
	STAGE 2B	240	6,480	3	81	27	729	121	60	1,620	60	1,377	70	70	1,890	-	-	-	-	27	DAYS
	STAGE 3	251	10,040	5	200	38	1,520	79	36	3,440	53	2,120	75	75	3,000	-	-	-	-	40	DAYS
	STAGE 4	-	-	-	-	18	18	-	22	462	-	-	10	10	189	-	-	-	-	21	DAYS
	STAGE 5	-	-	11	231	-	-	-	-	-	-	-	9	9	-	-	-	-	-	1	DAYS
	PROJECT 1570-02-73	-	-	-	-	-	-	-	-	-	-	-	-	-	-	-	-	-	-	1	DAYS
	INCIDENT MANAGEMENT	-	-	12	360	-	-	-	-	-	-	-	-	-	-	-	-	-	-	30	DAYS
	PROJECT TOTALS	35,924	-	367	4,125	405	9,004	405	7,330	9,637	7.5	-	-	-	-	-	-	-	-	1	DAYS

TEMPORARY PAVEMENT MARKINGS

CATEGORY	DESCRIPTION	(649.0400) TEMPORARY PAVEMENT MARKING		(649.0403) TEMPORARY PAVEMENT MARKING		(649.0801) TEMPORARY PAVEMENT MARKING		(649.0803) TEMPORARY PAVEMENT MARKING		(649.0900) TEMPORARY PAVEMENT MARKING		(649.1800) TEMPORARY PAVEMENT MARKING		(649.2000) TEMPORARY PAVEMENT MARKING	
		REMOVABLE TAPE 4-INCH (YELLOW)	REMOVABLE TAPE 4-INCH (WHITE)	EPOXY 4-INCH (YELLOW)	EPOXY 4-INCH (WHITE)	REMOVABLE TAPE 8-INCH	EPOXY 8-INCH	REMOVABLE TAPE 12-INCH	STOP LINE	ARROWS	PAVEMENT MARKING	PAVEMENT MARKING	REMOVABLE TAPE	REMOVABLE TAPE	REMOVABLE TAPE
0010	STAGING LIMITS	2,345	540	510	960	110	100	100	100	9	9	2	2	3	3
	USH 8/CHERRY STREET INTERSECTION	1,685	360	2,380	2,230	285	25	25	25	5	5	3	3	1	1
	USH 8 PROJECT 1570-0273 LIMITS	-	-	2,320	2,410	100	25	25	25	3	3	1	1	1	1
	USH 8 PROJECT 1570-0273 LIMITS	-	-	1,220	100	250	25	25	25	2	2	1	1	1	1
	USH 8/CHERRY STREET INTERSECTION	-	150	1,535	1,275	360	40	40	40	4	4	2	2	2	2
	USH 8 PROJECT 1570-0273 LIMITS	490	160	870	650	175	35	35	35	5	5	3	3	3	3
	UNDISTRIBUTED	-	-	1,475	6,665	-	-	-	-	-	-	-	-	-	-
	SUBTOTALS	6,525	8,000	15,500	1,650	1,000	250	250	28	28	12	12	12	12	12
	PROJECT TOTALS	4,900	8,000	15,500	1,650	1,000	250	250	28	28	12	12	12	12	12

*ADDITIONAL QUANTITIES FOUND ELSEWHERE

Addendum No. 01
 ID 1570-02-73
 Revised Sheet 148
 March 6, 2017

PEDESTRIAN ACCESS

CATEGORY	DESCRIPTION	(644.1410.S) TEMPORARY PEDESTRIAN SURFACE ASPHALT		(644.1601.S) TEMPORARY CURB RAMP		(644.1616.S) TEMPORARY PEDESTRIAN SAFETY FENCE	
		SF	EACH	SF	EACH	SF	EACH
0010	STAGE 1B - USH 8/CHERRY STREET INTERSECTION	800	3	140	140	-	-
	STAGES 2A & 2B - USH 8/CHERRY STREET INTERSECTION	25	1	-	-	-	-
	STAGE 3 - USH 8/CHERRY STREET INTERSECTION	25	1	-	-	-	-
	STAGES 2A & 2B - CASINO PARKING LOT	-	-	860	860	-	-
	PROJECT TOTALS	850	5	1,000	1,000	-	-

TEMPORARY ROAD (STAGE 1B)

STATION	TO STATION	LOCATION	SF	HMA PAVEMENT THICKNESS	TEMPORARY ASPHALTIC SURFACE	TEMPORARY ASPHALTIC TACK COAT	BASE AGGREGATE DENSE 3/4" INCH	BASE AGGREGATE DENSE 1 1/4" INCH ASPHALT	SAWING CONCRETE CURB	NO. DEVICES	WITH CELLULAR COMMUNICATION (643.1051)
100+59	113+01	LT & RT	34,598	3.00	646	384	50	1,085	10	1	380
PROJECT TOTALS											
34,598											

*ADDITIONAL QUANTITIES FOUND ELSEWHERE

STORM SEWER STAGING

DESCRIPTION	STAGE 1A	STAGE 1B	PROJECT TOTALS
COVER PLATES	2	2	4
PIPE CONNECTION	2	2	4
TEMPORARY	6	6	12
PROJECT TOTALS			
12			

(SPV.0060.02) TEMPORARY

DESCRIPTION	STAGE 1A	STAGE 1B	PROJECT TOTALS
TEMPORARY PRECAST CONCRETE BARRIER	180	170	350
CONCRETE BARRIER	180	170	350
PROJECT TOTALS			
350			

TEMPORARY CONCRETE BARRIER

DESCRIPTION	STAGES 2A & 2B - USH 8 ALONG THE NEW FRONTIER RESTAURANT PARKING LOT	STAGES 2A & 2B - PROSSER AVENUE ALONG BUS PARKING LOT	PROJECT TOTALS
CONCRETE BARRIER	180	170	350
TEMPORARY PRECAST	180	170	350
TEMPORARY PRECAST INSTALLED	180	170	350
PROJECT TOTALS			
350			

TRAFFIC CONTROL DETOUR

DESCRIPTION	STAGE 1A	STAGE 1B	PROJECT TOTALS
TRAFFIC CONTROL DETOUR	1	1	2
TRAFFIC CONTROL DETOUR	1	1	2
PROJECT TOTALS			
2			

TEMPORARY TRAFFIC SIGNALS FOR INTERSECTIONS

DESCRIPTION	CHERRY STREET (USH 8 & CHERRY STREET)	PROJECT TOTALS
TEMPORARY VEHICLE DETECTION	1	1
CHERRY STREET	1	1
PROJECT TOTALS		
1		

TRAFFIC CONTROL SIGNS POMS

DESCRIPTION	STAGE 1A	STAGE 1B	PROJECT TOTALS
TRAFFIC CONTROL SIGN	1	1	2
TRAFFIC CONTROL SIGN	1	1	2
PROJECT TOTALS			
2			

CRASH CUSHION

DESCRIPTION	STAGE 1A	STAGE 1B	PROJECT TOTALS
CRASH CUSHION	1	1	2
CRASH CUSHION	1	1	2
PROJECT TOTALS			
2			

Addendum No. 01
ID 1570-02-73
Revised Sheet 149
March 6, 2017



Proposal Schedule of Items

Proposal ID: 20170314030 Project(s): 1570-02-73, 1570-02-75

Federal ID(s): WISC 2017117, WISC 2017118

SECTION: 0001

Contract Items

Alt Set ID:

Alt Mbr ID:

Proposal Line Number	Item ID Description	Approximate Quantity and Units	Unit Price	Bid Amount
0160	205.0100 Excavation Common	35,862.000 CY	_____.	_____.
0170	208.1100 Select Borrow	8,730.000 CY	_____.	_____.
0180	213.0100 Finishing Roadway (project) 01. 1570-02-73	1.000 EACH	_____.	_____.
0190	213.0100 Finishing Roadway (project) 02. 1570-02-75	1.000 EACH	_____.	_____.
0200	214.0100 Obliterating Old Road	3.000 STA	_____.	_____.
0210	305.0110 Base Aggregate Dense 3/4-Inch	1,063.000 TON	_____.	_____.
0220	305.0120 Base Aggregate Dense 1 1/4-Inch	23,543.000 TON	_____.	_____.
0230	310.0110 Base Aggregate Open-Graded	74.000 TON	_____.	_____.
0240	405.0100 Coloring Concrete WisDOT Red	678.000 CY	_____.	_____.
0250	416.0170 Concrete Driveway 7-Inch	209.000 SY	_____.	_____.
0260	416.0512 Concrete Truck Apron 12-Inch	1,400.000 SY	_____.	_____.
0270	450.4000 HMA Cold Weather Paving	1,647.000 TON	_____.	_____.
0280	455.0605 Tack Coat	2,433.000 GAL	_____.	_____.
0290	460.2000 Incentive Density HMA Pavement	8,500.000 DOL	1.00000	8,500.00
0300	460.6244 HMA Pavement 4 MT 58-34 S	300.000 TON	_____.	_____.
0310	460.6443 HMA Pavement 3 MT 58-34 H	816.000 TON	_____.	_____.



Proposal Schedule of Items

Proposal ID: 20170314030 Project(s): 1570-02-73, 1570-02-75

Federal ID(s): WISC 2017117, WISC 2017118

SECTION: 0001

Contract Items

Alt Set ID:

Alt Mbr ID:

Proposal Line Number	Item ID Description	Approximate Quantity and Units	Unit Price	Bid Amount
0320	460.6444 HMA Pavement 4 MT 58-34 H	753.000 TON	_____.	_____.
0330	460.7443 HMA Pavement 3 HT 58-34 H	8,332.000 TON	_____.	_____.
0340	460.7644 HMA Pavement 4 HT 58-34 V	3,074.000 TON	_____.	_____.
0350	465.0105 Asphaltic Surface	379.000 TON	_____.	_____.
0360	465.0125 Asphaltic Surface Temporary	2,036.000 TON	_____.	_____.
0370	465.0310 Asphaltic Curb	481.000 LF	_____.	_____.
0380	465.0315 Asphaltic Flumes	73.000 SY	_____.	_____.
0390	520.2018 Culvert Pipe Temporary 18-Inch	70.000 LF	_____.	_____.
0400	522.0124 Culvert Pipe Reinforced Concrete Class III 24-Inch	82.000 LF	_____.	_____.
0410	522.1018 Apron Endwalls for Culvert Pipe Reinforced Concrete 18-Inch	5.000 EACH	_____.	_____.
0420	522.1024 Apron Endwalls for Culvert Pipe Reinforced Concrete 24-Inch	2.000 EACH	_____.	_____.
0430	601.0405 Concrete Curb & Gutter 18-Inch Type A	500.000 LF	_____.	_____.
0440	601.0411 Concrete Curb & Gutter 30-Inch Type D	2,680.000 LF	_____.	_____.
0450	601.0600 Concrete Curb Pedestrian	495.000 LF	_____.	_____.
0460	602.0410 Concrete Sidewalk 5-Inch	38,140.000 SF	_____.	_____.
0470	602.0505 Curb Ramp Detectable Warning Field Yellow	416.000 SF	_____.	_____.



Proposal Schedule of Items

Proposal ID: 20170314030 Project(s): 1570-02-73, 1570-02-75

Federal ID(s): WISC 2017117, WISC 2017118

SECTION: 0001

Contract Items

Alt Set ID:

Alt Mbr ID:

Proposal Line Number	Item ID Description	Approximate Quantity and Units	Unit Price	Bid Amount
1280	641.8100 Overhead Sign Support (structure) 01. S-3-004	LS	LUMP SUM	_____.
1290	641.8100 Overhead Sign Support (structure) 02. S-3-005	LS	LUMP SUM	_____.
1300	641.8100 Overhead Sign Support (structure) 03. S-3-003	LS	LUMP SUM	_____.
1310	642.5401 Field Office Type D	1.000 EACH	_____.	_____.
1320	643.0100 Traffic Control (project) 01. 1570-02-73	1.000 EACH	_____.	_____.
1330	643.0100 Traffic Control (project) 02. 1570-02-75	1.000 EACH	_____.	_____.
1340	643.0300 Traffic Control Drums	54,000.000 DAY	_____.	_____.
1350	643.0410 Traffic Control Barricades Type II	737.000 DAY	_____.	_____.
1360	643.0420 Traffic Control Barricades Type III	6,726.000 DAY	_____.	_____.
1370	643.0500 Traffic Control Flexible Tubular Marker Posts	471.000 EACH	_____.	_____.
1380	643.0600 Traffic Control Flexible Tubular Marker Bases	471.000 EACH	_____.	_____.
1390	643.0705 Traffic Control Warning Lights Type A	11,676.000 DAY	_____.	_____.
1400	643.0715 Traffic Control Warning Lights Type C	8,378.000 DAY	_____.	_____.
1410	643.0900 Traffic Control Signs	14,435.000 DAY	_____.	_____.
1420	643.1000 Traffic Control Signs Fixed Message	82.500 SF	_____.	_____.



Proposal Schedule of Items

Proposal ID: 20170314030 Project(s): 1570-02-73, 1570-02-75

Federal ID(s): WISC 2017117, WISC 2017118

SECTION: 0001

Contract Items

Alt Set ID:

Alt Mbr ID:

Proposal Line Number	Item ID Description	Approximate Quantity and Units	Unit Price	Bid Amount
1430	643.1050 Traffic Control Signs PCMS	452.000 DAY	_____.	_____.
1440	643.2000 Traffic Control Detour (project) 01. 1570-02-73	1.000 EACH	_____.	_____.
1450	643.2000 Traffic Control Detour (project) 02. 1570-02-75	1.000 EACH	_____.	_____.
1460	643.3000 Traffic Control Detour Signs	5,612.000 DAY	_____.	_____.
1470	644.1410.S Temporary Pedestrian Surface Asphalt	850.000 SF	_____.	_____.
1480	644.1601.S Temporary Curb Ramp	5.000 EACH	_____.	_____.
1490	644.1616.S Temporary Pedestrian Safety Fence	1,000.000 LF	_____.	_____.
1500	645.0111 Geotextile Type DF Schedule A	556.000 SY	_____.	_____.
1510	645.0120 Geotextile Type HR	80.000 SY	_____.	_____.
1520	646.0106 Pavement Marking Epoxy 4-Inch	20,820.000 LF	_____.	_____.
1530	646.0126 Pavement Marking Epoxy 8-Inch	3,920.000 LF	_____.	_____.
1540	646.0156 Pavement Marking Epoxy 18-Inch	189.000 LF	_____.	_____.
1550	646.0600 Removing Pavement Markings	20,623.000 LF	_____.	_____.
1560	647.0156 Pavement Marking Arrows Epoxy Type 1	4.000 EACH	_____.	_____.
1570	647.0160 Pavement Marking Arrows Epoxy Type 2R	2.000 EACH	_____.	_____.
1580	647.0166 Pavement Marking Arrows Epoxy Type 2	9.000 EACH	_____.	_____.



Proposal Schedule of Items

Proposal ID: 20170314030 Project(s): 1570-02-73, 1570-02-75

Federal ID(s): WISC 2017117, WISC 2017118

SECTION: 0001

Contract Items

Alt Set ID:

Alt Mbr ID:

Proposal Line Number	Item ID Description	Approximate Quantity and Units	Unit Price	Bid Amount
2020	656.0200 Electrical Service Meter Breaker Pedestal (location) 01. USH 8 & CTH K	LS	LUMP SUM	_____.
2030	656.0200 Electrical Service Meter Breaker Pedestal (location) 02. 1570-02-75	LS	LUMP SUM	_____.
2040	657.0255 Transformer Bases Breakaway 11 1/2-Inch Bolt Circle	30.000 EACH	_____.	_____.
2050	657.0322 Poles Type 5-Aluminum	30.000 EACH	_____.	_____.
2060	657.0605 Luminaire Arms Single Member 4 1/2-Inch Clamp 4-FT	12.000 EACH	_____.	_____.
2070	657.0715 Luminaire Arms Truss Type 4 1/2-Inch Clamp 15-FT	16.000 EACH	_____.	_____.
2080	659.1115 Luminaires Utility LED A	17.000 EACH	_____.	_____.
2090	659.1120 Luminaires Utility LED B	3.000 EACH	_____.	_____.
2100	659.1125 Luminaires Utility LED C	13.000 EACH	_____.	_____.
2110	659.2124 Lighting Control Cabinets 120/240 24-Inch	2.000 EACH	_____.	_____.
2120	661.0200 Temporary Traffic Signals for Intersections (location) 01. USH 8 & Cherry Street	LS	LUMP SUM	_____.
2130	661.0200 Temporary Traffic Signals for Intersections (location) 02. USH 8 & USH 63	LS	LUMP SUM	_____.
2140	690.0150 Sawing Asphalt	6,511.000 LF	_____.	_____.
2150	690.0250 Sawing Concrete	396.000 LF	_____.	_____.



Proposal Schedule of Items

Proposal ID: 20170314030 Project(s): 1570-02-73, 1570-02-75

Federal ID(s): WISC 2017117, WISC 2017118

SECTION: 0001

Contract Items

Alt Set ID:

Alt Mbr ID:

Proposal Line Number	Item ID Description	Approximate Quantity and Units	Unit Price	Bid Amount
2450	SPV.0105 Special 04. Lighting System Integrator (1570-02-73)	LS	LUMP SUM	_____.
2460	SPV.0105 Special 05. Lighting System Integrator (1570-02-75)	LS	LUMP SUM	_____.
2470	SPV.0105 Special 06. Lighting System Survey (1570-02-73)	LS	LUMP SUM	_____.
2480	SPV.0105 Special 07. Lighting System Survey (1570-02-75)	LS	LUMP SUM	_____.
2490	SPV.0105 Special 08. Construction Staking Roundabout (1570-02-73)	LS	LUMP SUM	_____.
2500	SPV.0105 Special 09. Construction Staking Roundabout (1570-02-75)	LS	LUMP SUM	_____.
2510	SPV.0120 Special 01. Water for Seeded Areas	1,220.000 MGAL	_____.	_____.
2520	SPV.0165 Special 01. Wall Modular Block Mechanically Stabilized Earth LRFD/QMP	672.000 SF	_____.	_____.
2530	SPV.0165 Special 02. Concrete Sidewalk Cure and Seal Treatment	38,140.000 SF	_____.	_____.
2540	SPV.0180 Special 01. Concrete Driveway Cure and Seal Treatment	209.000 SY	_____.	_____.
2550	SPV.0195 Special 01. Excavation, Hauling, and Disposal of Petroleum Contaminated Soil	200.000 TON	_____.	_____.
2560	643.1051 Traffic Control Signs PCMS with Cellular Communications	360.000 DAY	_____.	_____.

Section: 0001

Total: _____.

Total Bid: _____.