

Wisconsin Department of Transportation

January 4, 2018

Division of Transportation Systems Development

Bureau of Project Development
4802 Sheboygan Avenue, Rm 601
P O Box 7916
Madison, WI 53707-7916

Telephone: (608) 266-1631
Facsimile (FAX): (608) 266-8459

NOTICE TO ALL CONTRACTORS:

Proposal #03: 1661-05-76, WISC 2018 035
Marquette Rd, Prairie du Chien
La Pointe St to Mooney St
STH 35
Crawford County

1661-05-86
Marquette Rd, Prairie du Chien
La Pointe St to Mooney St
STH 35
Crawford County

Letting of January 9, 2018

This is Addendum No. 02, which provides for the following:

Special Provisions:

Revised Special Provisions	
Article No.	Description
3	Prosecution and Progress
4	Traffic

Added Special Provisions	
Article No.	Description
40	Flashing Beacon System, STH 35 and Campion Blvd, Item SPV.0105.05; Flashing Beacon System, STH 35 and Wells Street, Item SPV.0105.06.

Schedule of Items:

Added Bid Item Quantities					
Bid Item	Item Description	Unit	Old Quantity	Revised Quantity	Proposal Total
SPV.0105.05	Flashing Beacon System, STH 35 and Campion Blvd	LS	0	1	1
SPV.0105.06	Flashing Beacon System, STH 35 and Wells Street	LS	0	1	1

Plan Sheets:

Revised Plan Sheets	
Plan Sheet	Plan Sheet Title (brief description of changes to sheet)
119	Community Sensitive Design (delete reference to Rectangular Rapid Flashing Beacon (RRFB) system, change to Flashing Beacon system)
121	Community Sensitive Design (delete reference to Rectangular Rapid Flashing Beacon (RRFB) system, change to Flashing Beacon system)
123	Community Sensitive Design (delete reference to Rectangular Rapid Flashing Beacon (RRFB) system detail, add Flashing Beacon system detail)
130	Permanent Signing plan (delete reference to Rectangular Rapid Flashing Beacon (RRFB) system, change to Flashing Beacon system)
134	Permanent Signing plan (delete reference to Rectangular Rapid Flashing Beacon (RRFB) system, change to Flashing Beacon system)
204	Miscellaneous Quantities (delete reference to Rectangular Rapid Flashing Beacon (RRFB) system, change to Flashing Beacon system)
205	Miscellaneous Quantities (delete reference to Rectangular Rapid Flashing Beacon (RRFB) system, change to Flashing Beacon system)
206	Miscellaneous Quantities (delete reference to Rectangular Rapid Flashing Beacon (RRFB) system, change to Flashing Beacon system)
213	Miscellaneous Quantities (add table for Flashing Beacon System item, SPV.0105.01 and SPV.0105.02)
241	Plan and Profile (delete reference to Rectangular Rapid Flashing Beacon (RRFB) system, change to Flashing Beacon system)
245	Plan and Profile (delete reference to Rectangular Rapid Flashing Beacon (RRFB) system, change to Flashing Beacon system)

The responsibility for notifying potential subcontractors and suppliers of these changes remains with the prime contractor.

Sincerely,

Mike Coleman

Proposal Development Specialist
Proposal Management Section

ADDENDUM NO. 02
1661-05-76 & 1661-05-86
January 4, 2018

Special Provisions

3. Prosecution and Progress.

Replace paragraphs 7, 8, and 9 with the following:

At the beginning of Stage 2B operations, close STH 35/Parrish Street to through traffic for a maximum of 19 calendar days. Do not reopen until completing the following work:
All underground work and a final paved surface suitable for traffic.

If the contractor fails to complete the work necessary to reopen STH 35/ Parrish Street to traffic within 19 calendar days, the department will assess the contractor \$4,500 in interim liquidated damages for each calendar day the contract work remains incomplete beyond 19 calendar days. An entire calendar day will be charged for any period of time within a calendar day that the road remains closed beyond 12:01 AM.

If contract time expires prior to completing all work specified in the contract, additional liquidated damages will be affixed according to standard spec 108.11.

4. Traffic.

*Replace entire section titled **Stage 2B** with the following:*

Stage 2B

A full closure of the Parrish Street intersection will be allowed for up to 15 working days, carrying over through two full weekends only.

40. Flashing Beacon System, STH 35 and Campion Blvd, Item SPV.0105.05; Flashing Beacon System, STH 35 and Wells Street, Item SPV.0105.06.

A Description

This work shall consist of furnishing and installing a solar powered flashing beacon system consisting of multiple assemblies as described herein and as shown in the plans. Each assembly shall be solar powered and pedestrian activated.

The assemblies shall be wirelessly controlled and multiple units shall be synchronized.

B Materials

Furnish a complete Flashing Beacon system with multiple assemblies. Each assembly may consist of, but is not limited to, light indications, wireless communication equipment, solar power equipment, and electrical components (wiring, solid-state circuit boards, etc). The Flashing Beacon units and their mountings shall comply with the provisions of Chapter 4D and Chapter 4L of the MUTCD.

Light Indications:

The signal faces shall have a black colored door and visor with a yellow housing body containing a 12 inch Yellow LED type lens/lamp. The signal face shall be mounted with two polycarbonate mounting brackets to the pole and base at the location shown on the plan detail.

A single indication shall be installed on an assembly facing in the direction of approaching pedestrian traffic to serve as a confirmation for the pedestrian that the system has been activated.

Beacons shall be flashed at a rate of not less than 50 or more than 60 times per minute. The illuminated period of each flash shall be a minimum of $\frac{1}{2}$ and a maximum of $\frac{2}{3}$ of the total cycle. A beacon shall not be included within the border of a sign and be located above the W11-2 sign as shown on the plan detail.

The light intensity of the indications shall meet the minimum specifications of the Society of Automotive Engineers (SAE) standard J595 (Directional Flashing Optical Warning Devices for Authorized Emergency, Maintenance, and Service Vehicles) dated January 2005. Contractor shall furnish a Certificate of Compliance for this standard. Specifically, the certificate should state that the indications: "Meet photometry of jurisdictional compliance standard(s) identical to: 2 J595 Class 2 Nov08 Yellow Peak Cd and 2 J595 Class 3 Nov08 Yellow Cds/Min.

Signs:

Signage shall include:

- a. W11-2
- b. W16-7
- c. R-10-25

The assemblies must be constructed to allow the appropriate space for the installation of the signs in the field.

Control Circuit:

The control circuit shall have the capability of independently flashing up to two independent outputs. The LED light outputs and flash pattern shall be completely programmable.

When activated, the Flashing Beacon shall operate for a predetermined interval based on MUTCD procedures for timing of pedestrian clearance times for pedestrian signals. Coordinate with the department for this interval.

To prevent continuous activation of the flashing beacon and to allow vehicular queue clearance, the flashing beacon shall be programmed to prevent activation within 30 seconds of the termination of a previous activation.

The control circuit shall be installed in an IP67 NEMA rated enclosure. All circuit connectors shall conform to Ingress Protection, IP-67 rating, dust proof, and protected from temporary immersion in water up to 3 feet deep for 30 minutes. Connectors shall be Deutsch DTM series.

Battery:

Battery unit shall be a 4.8 volt 14000mAH Nickel Metal Hydride (NiMH). All batteries shall be sealed in a plastic film to provide moisture and corrosion resistance.

All batteries shall operate between the temperatures of -40°C and +60°C.

Solar Panel:

The solar panel shall be up to 13.8"x15.4" in size and provide up to 13.5 watts peak total output. The panel shall be sized according to the weather and field conditions to maximize performance.

The solar panel shall be mounted to an aluminum plate and bracket at an angle of 45° - 60° to provide maximum output. To ensure maximum solar insolation regardless of installation location, the post top mounting system shall provide 360° of rotational direction adjustment and upon installation, must be oriented with the collector facing South.

All fasteners used shall be anti-vandal.

All solar panel connectors shall conform to Ingress Protection, IP-67 rating, dust proof, and protected from temporary immersion in water up to 1 meter deep for 30 minutes. Connectors shall be Deutsch DTM series.

Pushbutton:

Furnish freeze-proof ADA compliant pedestrian push buttons made by an approved manufacturer to meet requirements of Section 658 of the current Wisconsin Department of Transportation Standard Specifications.

Aluminum Pole Standard and Pedestal Base:

The supporting structure (pole, breakaway transformer base, sign supports), shall be constructed of anodized aluminum and meet requirements of Section 657 of the current Wisconsin Department of Transportation Standard Specifications.

Concrete Base:

The concrete base and anchor bolts shall be supplied and installed to meet requirements of a Concrete Base Type 1 of Section 654 of the current Wisconsin Department of Transportation Standard Specifications.

Hardware:

Furnish all hardware, connections, etc to make the Flashing Beacon system fully operational.

C Construction

The Flashing Beacon system will consist of multiple assemblies to be constructed by the contractor as shown on the plans. Make the Flashing Beacon system fully operational. Construct and assemble the system per manufacturer's instructions.

D Measurement

The department will measure Flashing Beacon System [Location] as a single lump sum unit of work for each location, acceptably completed.

E Payment

The department will pay for measured quantities at the contract unit price under the following bid items.

ITEM NUMBER	DESCRIPTION	UNIT
SPV.0105.05	Flashing Beacon System, STH 35 and Campion Blvd	LS
SPV.0105.06	Flashing Beacon System, STH 35 and Wells Street	LS

Payment is full compensation for furnishing and installing a fully operational Flashing Beacon system; and for labor, equipment, tools, and incidentals necessary to complete a working system.

The signs are paid for under separate item and are shown elsewhere in plan.

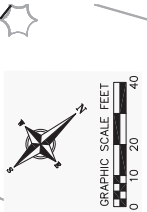
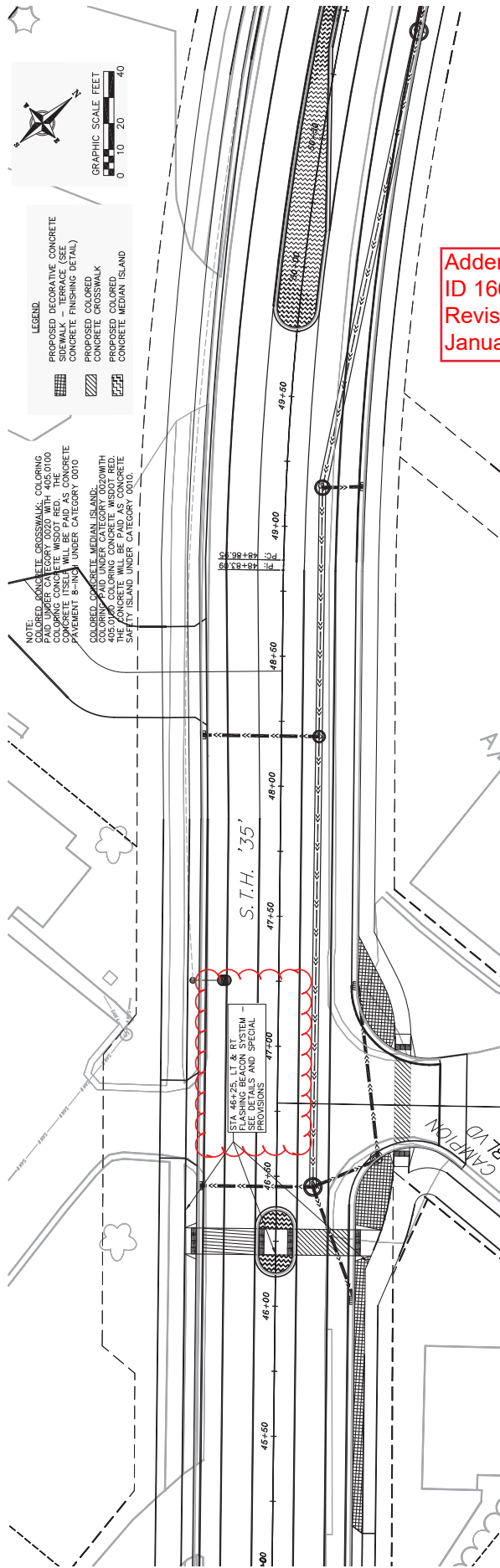
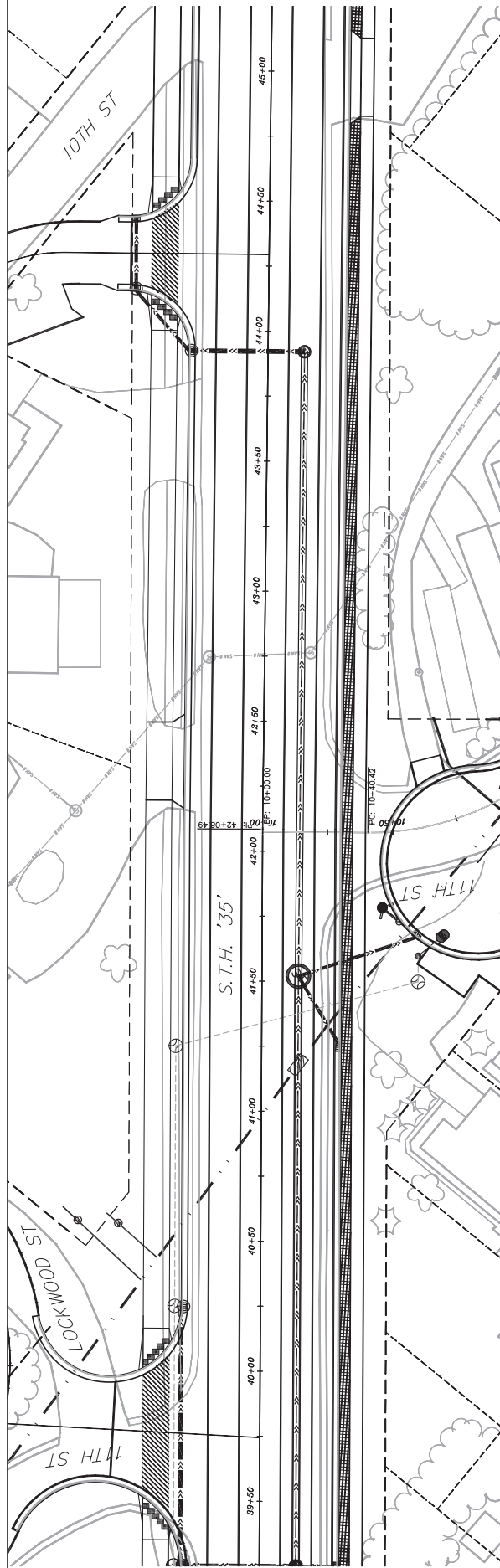
Schedule of Items

Attached, dated January 4, 2018, are the revised Schedule of Items Page 16.

Plan Sheets

The following 8½ x 11-inch sheets are attached and made part of the plans for this proposal:
Revised: 119, 121, 123, 130, 134, 204, 205, 206, 213, 241, and 245.

END OF ADDENDUM

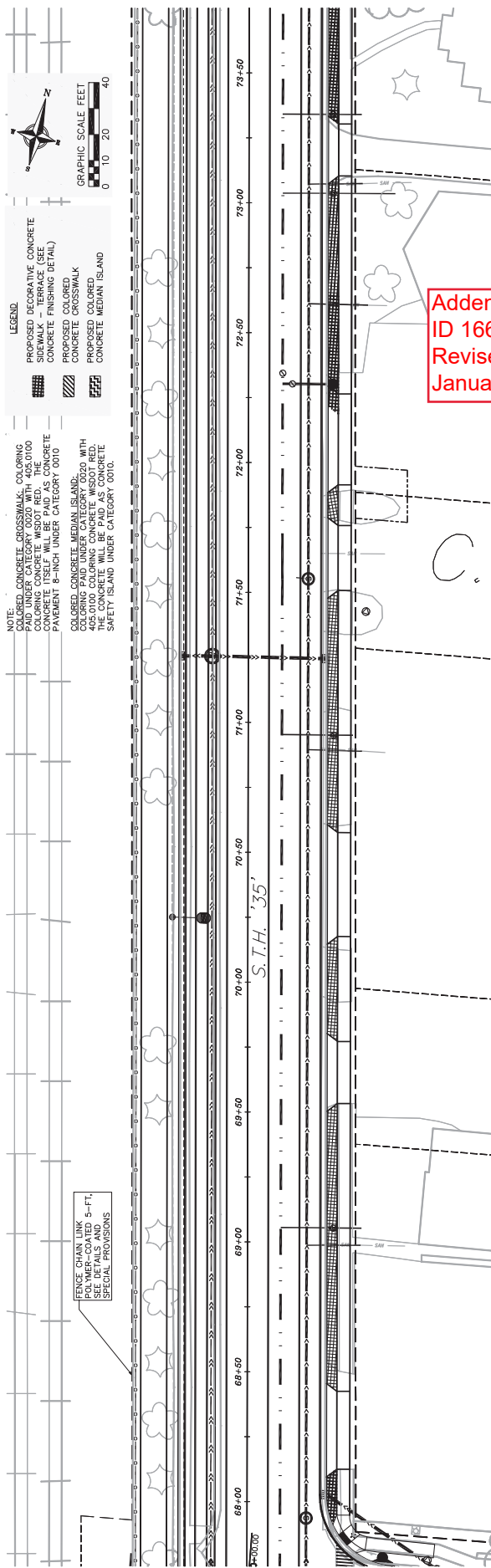
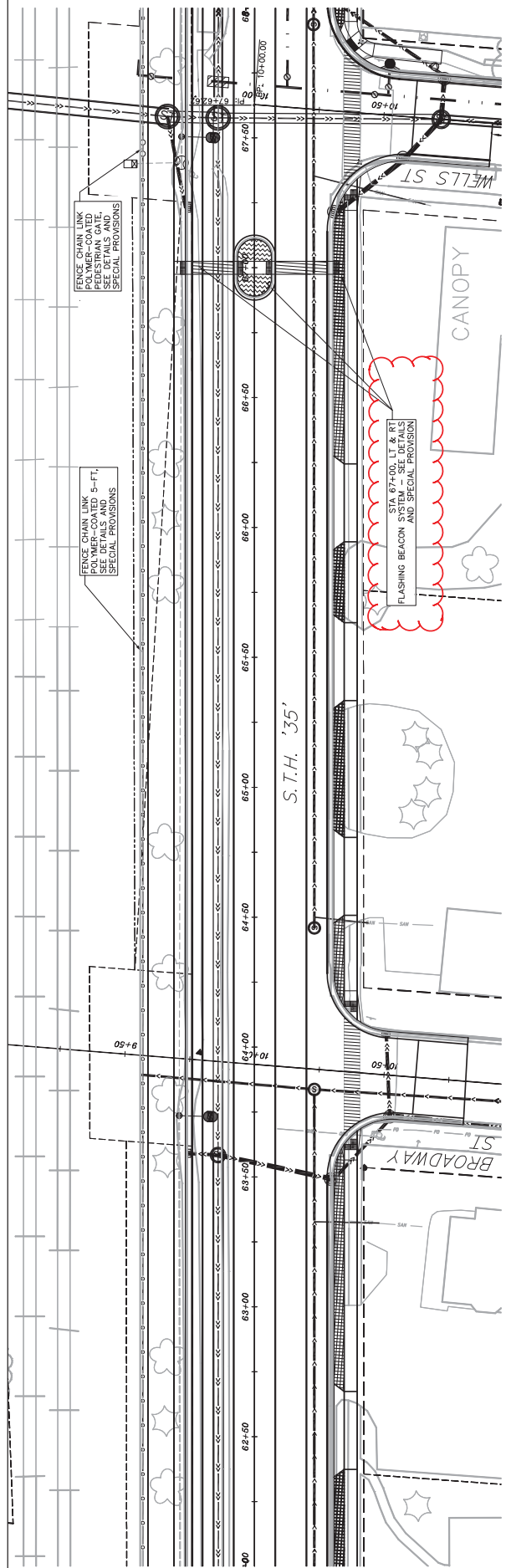


- LEGEND
- PROPOSED DECORATIVE CONCRETE FINISHING DETAIL
 - PROPOSED COLORED CONCRETE CROSSWALK
 - PROPOSED COLORED CONCRETE MEDIAN ISLAND

NOTE: COLORED CONCRETE CROSSWALKS, COLORING POLYMER FIBER CONCRETE, AND COLORED CONCRETE MEDIAN ISLANDS WITH 405,000 COLORING CONCRETE WSDOT RED. THE CONCRETE WILL BE PAID AS CONCRETE FINISHING DETAIL UNDER CATEGORY 020.

COLORED CONCRETE MEDIAN ISLANDS WITH 405,000 COLORING CONCRETE WSDOT RED. THE CONCRETE WILL BE PAID AS CONCRETE FINISHING DETAIL UNDER CATEGORY 020.

Addendum No. 02
ID 1661-05-76
Revised Sheet 119
January 4, 2018

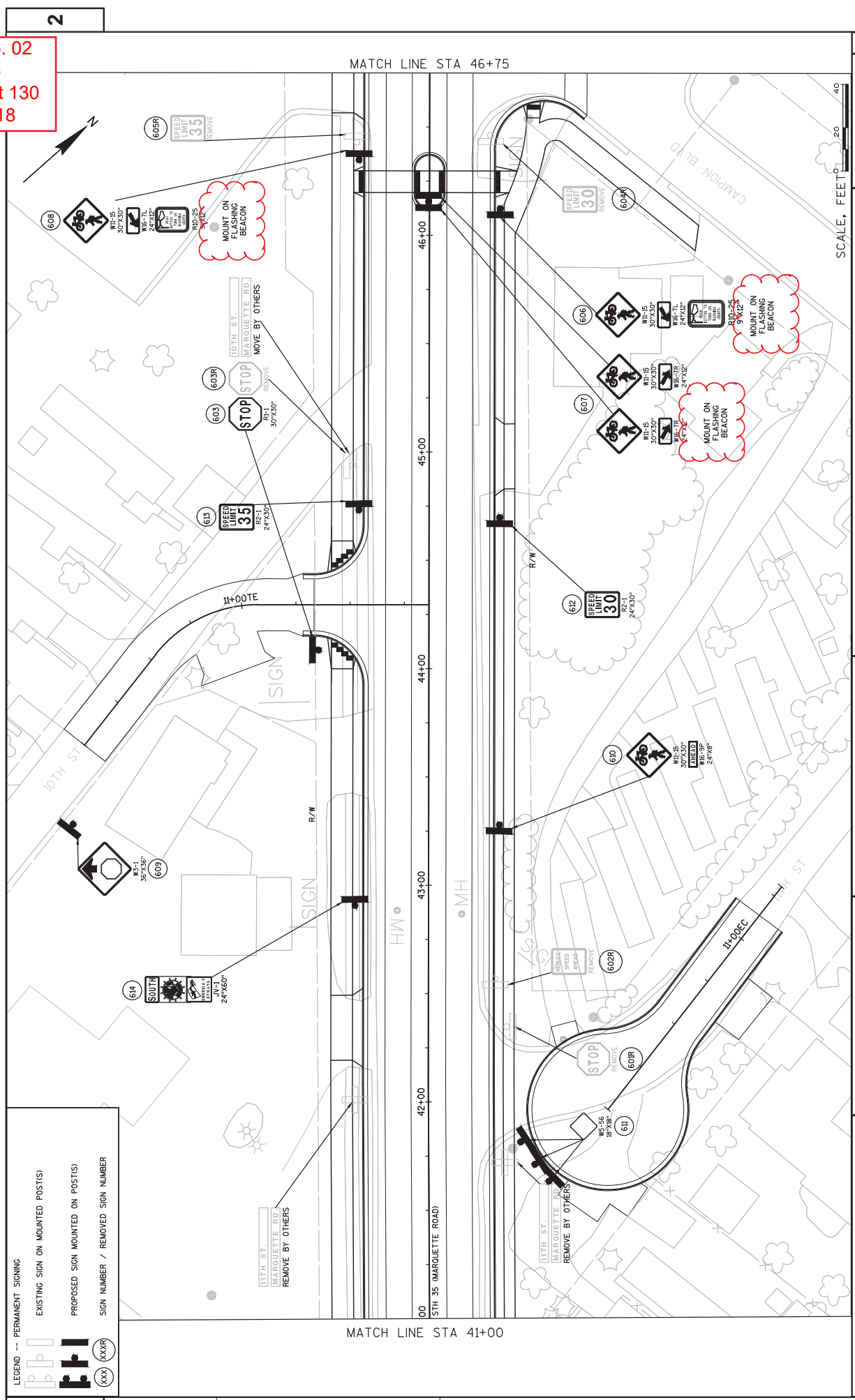


NOTE:
 COLORED CONCRETE CROSSWALKS: COLORING AND FINISHING SHALL BE PAID AS CONCRETE. COLORING CONCRETE WSDOT REF. THE CONCRETE ITSELF WILL BE PAID AS CONCRETE PAVEMENT 8-INCH UNDER CATEGORY 0010.
 COLORED CONCRETE MEDIAN ISLANDS: COLORING AND FINISHING SHALL BE PAID AS CONCRETE. COLORING CONCRETE WSDOT REF. THE CONCRETE ITSELF WILL BE PAID AS CONCRETE PAVEMENT 8-INCH UNDER CATEGORY 0010.

LEGEND
 PROPOSED DECORATIVE CONCRETE CROSSWALK (SEE FINISHING DETAIL)
 PROPOSED COLORED CONCRETE CROSSWALK
 PROPOSED COLORED CONCRETE MEDIAN ISLAND

Addendum No. 02
 ID 1661-05-76
 Revised Sheet 121
 January 4, 2018

Addendum No. 02
 ID 1661-05-76
 Revised Sheet 130
 January 4, 2018



2

LEGEND -- PERMANENT SIGNING

EXISTING SIGN ON MOUNTED POST(S)

PROPOSED SIGN MOUNTED ON POST(S)

SIGN NUMBER / REMOVED SIGN NUMBER

2

MATCH LINE STA 46+75

MATCH LINE STA 41+00

SCALE, FEET 1" = 40'

PROJECT NO: 1661-05-76

HWY: STH 35

COUNTY: CRAWFORD

PERMANENT SIGNING

PLOT NAME : MARZOLF, ROBBIE

PLOT DATE : 1.3.2018 10:54 AM

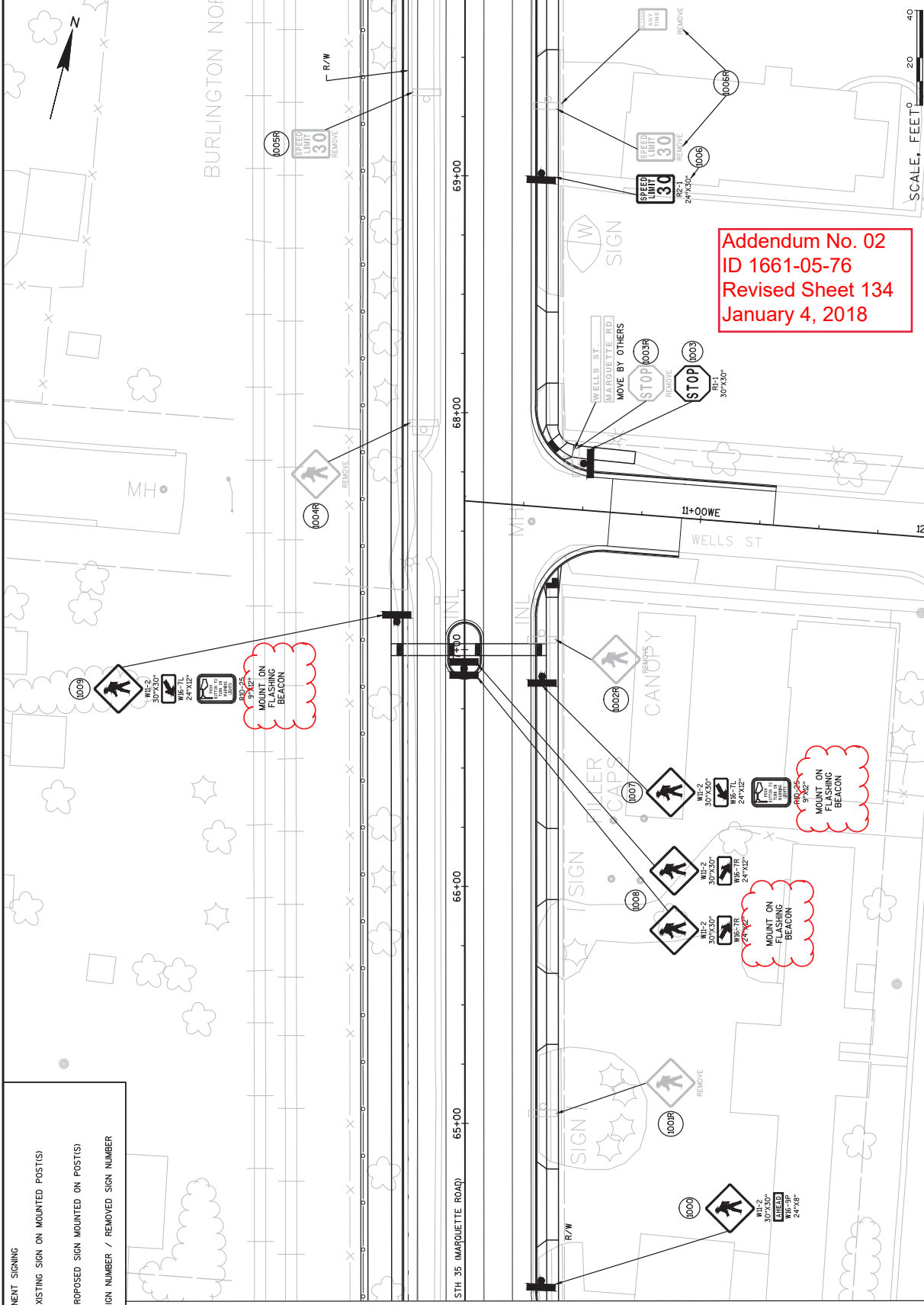
PLOT SCALE : 1" = 40' .XREF

SHEET 130

E

WSDOT/CADD SHEET 42

MATCH LINE STA 69+75



LEGEND -- PERMANENT SIGNING

EXISTING SIGN ON MOUNTED POST(S)

PROPOSED SIGN MOUNTED ON POST(S)

SIGN NUMBER / REMOVED SIGN NUMBER

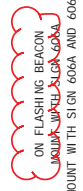
(XXX) (XXX)

MATCH LINE STA 64+25

Addendum No. 02
 ID 1661-05-76
 Revised Sheet 204
 January 4, 2018

NOTE: ALL CITY'S ARE CAT 0010 UNLESS OTHERWISE NOTED

SIGN AND POSTS SUMMARY																
STAGE	SIGN NO.	STATION	LOCATION	IN X	IN	SIGN CODE	DESCRIPTION	SIGNS TYPE		MOVING SIGNS		REMOVING SIGNS		SMALL		REMARKS
								WOOD	POSTS	TYPE I	TYPE II	TYPE I	TYPE II	TYPE I	TYPE II	
								4X6-INCH X 16-FT	4X6-INCH X 16-FT	638.2102	638.2102	638.2102	638.2102	638.2102	638.2102	
								634.0614	634.0616	637.2230	637.2230	638.3000	638.3000	638.4000	638.4000	
								EACH	EACH	EACH	EACH	EACH	EACH	EACH	EACH	
3	001	8+11	STH 35 RT	30 X 30	R3-7-L	JV-1	LEFT LANE MUST TURN LEFT	-	-	-	-	-	-	-	-	BAND TO EXISTING LIGHT POLE
3	002	9+63	STH 35 LT	24 X 81	JV-1	WEST/USH 18/STH 60/LEFT AHEAD ARROW	LEFT LANE MUST TURN LEFT	-	13.50	-	-	-	-	-	-	BAND TO EXISTING LIGHT POLE
3	003	9+00	STH 35 RT	42 X 48	R3-5-L	R3-5-L	LEFT ONLY LANE CONTROL SYMBOL	-	14.00	-	-	-	-	-	-	-
3	004	9+00	STH 35 RT	42 X 48	R3-6-R	R3-6-R	RIGHT AND AHEAD LANE CONTROL SYMBOL	-	14.00	-	-	-	-	-	-	-
3	005	11+02	STH 35 RT	42 X 48	D1-3	D1-3	LYXVILLE & LA CROSSE AHEAD/ MARQUETTE LEFT	-	-	1	-	-	-	-	2	-
3	006	11+09	STH 35 LT	30 X 30	R3-7-L	R3-7-L	LEFT LANE MUST TURN LEFT	-	6.25	-	-	-	-	-	-	-
3	101	12+50	STH 35 RT	42 X 48	R3-5-L	R3-5-L	LEFT ONLY LANE CONTROL SYMBOL	-	14.00	-	-	-	-	-	-	EXISTING SIGN MOVED FROM STA 12+90 BAND TO EXISTING LIGHT POLE
3	102	12+50	STH 35 RT	42 X 48	R3-6-R	R3-6-R	RIGHT AND AHEAD LANE CONTROL SYMBOL	-	14.00	-	-	-	-	-	-	-
3	103	12+36	STH 35 LT	24 X 81	JV-1	JV-1	WEST/USH 18/STH 60/LEFT ARROW	-	13.50	-	-	-	-	-	-	-
3	104	15-01	STH 35 RT	24 X 24	W12-ID	W12-ID	DOUBLE DIAGONAL ARROW	-	4.00	-	-	-	-	-	-	BAND TO EXISTING LIGHT POLE
3	105	17+78	STH 35 RT	24 X 30	R4-7	R4-7	KEEP RIGHT	-	5.00	-	1	-	-	-	-	-
3	106	12+50	STH 35 RT	24 X 30	R4-7	R4-7	NORTH/STH 35/AHEAD ARROW	-	-	-	1	-	-	-	-	EXISTING SIGN MOVED FROM STA 11+20; MOVE AND REPLACE IN SIMILAR LOCATION
3	107	12+56	STH 35 RT	24 X 30	R1-1	R1-1	STOP	-	-	-	1	-	-	-	-	-
3	108	12+60	STH 35 RT	24 X 30	R6-2-R	R6-2-R	ONE WAY RIGHT	-	5.00	-	1	-	-	-	-	-
3	109	16+46	STH 35 RT	30 X 30	R5-1	R5-1	DO NOT ENTER	-	-	-	1	-	-	-	-	-
3	110	17+61	STH 35 RT	30 X 30	R5-1	R5-1	DO NOT ENTER/STOP	-	-	-	2	-	-	-	-	-
3	111	17+85	STH 35 LT	24 X 30	R4-7	R4-7	KEEP RIGHT	-	-	-	2	-	-	-	-	-
3	112	17+18	STH 35 RT	24 X 36	J4-2	J4-2	DO NOT ENTER/STOP	-	-	-	1	-	-	-	-	-
3	201	18+71	STH 35 RT	24 X 36	J4-2	J4-2	DO NOT ENTER/STOP	-	-	-	1	-	-	-	-	-
3	202	18+72	STH 35 LT	24 X 24	W12-ID	W12-ID	DOUBLE DIAGONAL ARROW	-	6.00	-	1	-	-	-	-	-
3	203	19+26	STH 35 RT	24 X 24	W12-ID	W12-ID	DOUBLE DIAGONAL ARROW	-	-	4.00	-	-	-	-	-	-
3	204	19+44	STH 35 LT	48 X 57	J3-2	J3-2	KEEP RIGHT	-	-	-	1	-	-	-	-	-
3	205	20+02	STH 35 RT	24 X 30	R2-1	R2-1	SOUTH/STH 35/STRAIGHT ARROW	-	19.00	-	1	-	-	-	-	-
3	206	20+69	STH 35 LT	78 X 36	D1-3	D1-3	SPEED LIMIT 35 MPH	-	5.00	-	1	-	-	-	-	-
3	207	21+20	STH 35 RT	24 X 36	R3-9-B & C	R3-9-B & C	BRIDGEPORT/ADISON STRAIGHT; MARQUETTE RIGHT	-	19.50	-	1	-	-	-	-	-
3	208	21+39	STH 35 LT	54 X 30	R3-8-M	R3-8-M	LEFT ONLY STRAIGHT ONLY/RIGHT ONLY AND BEGIN	-	6.00	-	1	-	-	-	-	-
3	209	21+82	STH 35 LT	24 X 42	R3-9-B & D	R3-9-B & D	LEFT ONLY STRAIGHT ONLY/RIGHT ONLY AND END	-	11.25	-	1	-	-	-	-	-
3	210	22+35	STH 35 LT	36 X 36	W3-3	W3-3	TRAFFIC SIGNAL AHEAD	-	7.00	-	1	-	-	-	-	-
3	211	23+22	STH 35 LT	48 X 57	J3-2	J3-2	EAST/USH 18/STRAIGHT ARROW	-	9.00	-	1	-	-	-	-	-
3	212	19+68	STH 35 LT	24 X 30	R6-2-R	R6-2-R	ONE WAY	-	19.00	-	1	-	-	-	-	-
3	213	19+25	STH 35 RT	24 X 36	R3-20-L	R3-20-L	ONE WAY	-	5.00	-	1	-	-	-	-	-
3	214	19+23	STH 35 RT	30 X 30	R5-1	R5-1	DO NOT ENTER	-	6.00	-	1	-	-	-	-	-
3	215	21+08	STH 35 RT	24 X 60	JV-1	JV-1	BEGIN LEFT TURN LANE W/ARROW	-	6.25	-	1	-	-	-	-	-
3	216	22+88	STH 35 RT	24 X 30	R6-2-R	R6-2-R	ONE WAY	-	5.00	-	1	-	-	-	-	-
3	301	24+23	STH 35 LT	48 X 57	J2-2	J2-2	NORTH/GREAT RIVER ROAD	-	10.00	-	1	-	-	-	-	-
3	302	24+31	STH 35 RT	48 X 39	R1-1	R1-1	WEST/USH 18/RIGHT AHEAD ARROW	-	5.18	-	1	-	-	-	-	-
3	303	25+54	STH 35 LT	48 X 30	R1-1	R1-1	STOP	-	19.00	-	1	-	-	-	-	-
3	304	25+27	STH 35 RT	24 X 30	R2-1	R2-1	JCT/USH 18; JCT/STH 60	-	13.00	-	1	-	-	-	-	-
3	305	27+25	STH 35 LT	24 X 30	R2-1	R2-1	SPEED LIMIT 35 MPH	-	5.00	-	1	-	-	-	-	-
3	401	31+51	STH 35 LT	24 X 30	R2-1	R2-1	SPEED LIMIT 35 MPH	-	5.00	-	1	-	-	-	-	-
3	402	32+93	STH 35 RT	30 X 36	W3-1	W3-1	STOP	-	5.18	-	1	-	-	-	-	-
3	403	32+39	STH 35 RT	30 X 36	W3-1	W3-1	STOP AHEAD	-	5.18	-	1	-	-	-	-	-
3	404	34+03	STH 35 RT	24 X 30	R2-1	R2-1	STOP LIMIT 35 MPH	-	9.00	-	1	-	-	-	-	-
3	501	39+52	STH 35 LT	30 X 30	R1-1	R1-1	STOP	-	5.00	-	1	-	-	-	-	-
3	502	40+14	STH 35 LT	30 X 30	R1-1	R1-1	STOP	-	5.18	-	1	-	-	-	-	-
3	503	35+12	STH 35 LT	24 X 30	R2-1	R2-1	STOP	-	5.00	-	1	-	-	-	-	-
3	601	42+35	STH 35 RT	36 X 36	W3-5	W3-5	REDUCE SPEED AHEAD	-	-	-	1	-	-	-	-	-
3	602	42+56	STH 35 LT	30 X 30	R1-1	R1-1	STOP	-	5.18	-	1	-	-	-	-	-
3	603	44+09	STH 35 RT	24 X 30	R2-1	R2-1	SPEED LIMIT 30 MPH	-	-	-	1	-	-	-	-	-
2	604	46+38	STH 35 RT	24 X 30	R2-1	R2-1	SPEED LIMIT 35 MPH	-	-	-	1	-	-	-	-	-
2	605	46+45	STH 35 LT	24 X 30	R2-1	R2-1	SPEED LIMIT 35 MPH	-	-	-	1	-	-	-	-	-
2	606A	46+12	STH 35 RT	24 X 12	W16-7L	W16-7L	BI-CYCLE/PEDESTRIAN CROSSING	-	-	6.25	-	-	-	-	-	-
2	606B	46+12	STH 35 RT	24 X 12	W16-7L	W16-7L	DIAGONAL ARROW LEFT	-	-	2.00	-	-	-	-	-	-
2	606C	46+12	STH 35 RT	9 X 12	R10-25	R10-25	PUSH BUTTON TO TURN ON WARNING LIGHTS	-	0.75	-	-	-	-	-	-	-
SUBTOTAL 1 =										17	14	8	21	22	6	
										318.15	25.25					



Addendum No. 02
 ID 1661-05-76
 Revised Sheet 206
 January 4, 2018

NOTE: ALL CITY'S ARE CAT 0010 UNLESS OTHERWISE NOTED

SLGN AND POSTS SUMMARY (CONTINUED)

STAGE	SLGN NO.	STATION	LOCATION	SIZE	IN X IN	SIGN CODE	DESCRIPTION	POSTS WOOD		SIGNS TYPE		MOVING SIGNS		REMOVING SIGNS		SMALL MOVING SIGNS		REMARKS	
								14-FT	16-FT	REFLECTIVE	H	II	II	TYPE I	TYPE II	TYPE I	TYPE II		638.2602
2	901	59-63	STH 35 LT	24 X 30	R2-1		SPEED LIMIT 30 MPH	1	5.00	-	-	-	-	-	-	-	-	-	-
2	902	59-93	STH 35 RT	30 X 30	R1-1		STOP	1	6.25	-	-	-	-	-	-	-	-	-	-
2	903	61-00	STH 35 RT	24 X 60	S4-51		NORTH GREAT RIVER ROAD NATIONAL SCENIC BYWAY	1	10.00	-	-	-	-	-	-	-	-	-	-
2	904	63-69	STH 35 LT	24 X 18	R14-1		TRUCK ROUTE	1	-	-	-	-	-	-	-	-	-	-	-
2	905	64-13	STH 35 RT	24 X 30	R1-1		STOP	1	-	-	-	-	-	-	-	-	-	-	-
2	906	58-76	STH 35 RT	24 X 30	R2-1		SPEED LIMIT 30 MPH	1	5.00	-	-	-	-	-	-	-	-	-	-
2	1000A	64-34	STH 35 RT	30 X 30	W11-2		PEDESTRIAN CROSSING	1	-	-	-	-	-	-	-	-	-	-	-
2	1000B	64-34	STH 35 RT	24 X 8	W16-9P		AHEAD	1	-	-	-	-	-	-	-	-	-	-	-
2	1001	65-07	STH 35 RT	24 X 8	W16-9P		PEDESTRIAN CROSSING	1	-	-	-	-	-	-	-	-	-	-	-
2	1002	67-07	STH 35 RT	30 X 30	R1-1		STOP	1	5.18	-	-	-	-	-	-	-	-	-	-
2	1003	67-79	STH 35 RT	30 X 30	R1-1		STOP	1	-	-	-	-	-	-	-	-	-	-	-
2	1004	67-93	STH 35 LT	24 X 30	R2-1		PEDESTRIAN CROSSING	1	-	-	-	-	-	-	-	-	-	-	-
2	1005	69-33	STH 35 LT	24 X 30	R2-1		SPEED LIMIT 30 MPH	1	5.00	-	-	-	-	-	-	-	-	-	-
2	1006A	69-37	STH 35 RT	24 X 30	R2-1		SPEED LIMIT 30 MPH	1	-	-	-	-	-	-	-	-	-	-	-
2	1006B	69-37	STH 35 RT	18 X 24	NO PARKING ANY TIME			1	-	-	-	-	-	-	-	-	-	-	-
2	1007A	66-89	STH 35 RT	30 X 30	W11-2		PEDESTRIAN CROSSING	1	-	-	-	-	-	-	-	-	-	-	-
2	1007B	66-89	STH 35 RT	24 X 12	W16-7L		ARROW	1	-	-	-	-	-	-	-	-	-	-	-
2	1007C	66-89	STH 35 RT	9 X 12	R10-25		PUSH BUTTON	1	0.75	-	-	-	-	-	-	-	-	-	-
2	1008A	66-92	STH 35 RT	30 X 30	W11-2		PEDESTRIAN CROSSING	1	-	-	-	-	-	-	-	-	-	-	-
2	1008B	66-92	STH 35 RT	24 X 12	W16-7L		ARROW	1	-	-	-	-	-	-	-	-	-	-	-
2	1008C	66-92	STH 35 RT	24 X 12	W16-7L		ARROW	1	-	-	-	-	-	-	-	-	-	-	-
2	1009A	67-12	STH 35 LT	30 X 30	W11-2		PEDESTRIAN CROSSING	1	-	-	-	-	-	-	-	-	-	-	-
2	1009B	67-12	STH 35 LT	24 X 12	W16-7L		ARROW	1	-	-	-	-	-	-	-	-	-	-	-
2	1009C	67-12	STH 35 LT	9 X 12	R10-25		PUSH BUTTON	1	0.75	-	-	-	-	-	-	-	-	-	-
1	1101	70-61	STH 35 LT	30 X 30	W11-2		PEDESTRIAN CROSSING	1	-	-	-	-	-	-	-	-	-	-	-
1	1102A	70-03	STH 35 LT	24 X 8	W16-9P		AHEAD	1	-	-	-	-	-	-	-	-	-	-	-
1	1102B	70-03	STH 35 LT	24 X 8	W16-9P		AHEAD	1	-	-	-	-	-	-	-	-	-	-	-
1	1103	71-97	STH 35 LT	24 X 30	R2-1		SPEED LIMIT 30 MPH	1	5.00	-	-	-	-	-	-	-	-	-	-
1	1201	77-28	STH 35 RT	24 X 30	R2-1		SPEED LIMIT 30 MPH	1	5.00	-	-	-	-	-	-	-	-	-	-
1	1202	77-48	STH 35 LT	24 X 30	R2-1		SPEED LIMIT 30 MPH	1	5.00	-	-	-	-	-	-	-	-	-	-
1	1203	78-84	STH 35 RT	24 X 48	S4-51		SCHOOL ZONE SPEED LIMIT 15 MPH WHEN CHILDREN ARE PRESENT	1	-	-	-	-	-	-	-	-	-	-	-
1	1204	79-27	STH 35 LT	24 X 42	R3-9-B & C		CENTER LANE TWILT ONLY AND BEGIN	1	7.00	-	-	-	-	-	-	-	-	-	-
1	1205	79-70	STH 35 RT	30 X 30	R1-1		STOP	1	5.18	-	-	-	-	-	-	-	-	-	-
1	1206A	80-35	STH 35 RT	30 X 30	W11-2		PEDESTRIAN CROSSING	1	-	-	-	-	-	-	-	-	-	-	-
1	1206B	80-35	STH 35 RT	24 X 8	W16-9P		AHEAD	1	-	-	-	-	-	-	-	-	-	-	-
1	1207	81-38	STH 35 LT	30 X 30	R6-1		DO NOT ENTER	1	-	-	-	-	-	-	-	-	-	-	-
1	1208	81-51	STH 35 RT	24 X 42	R3-9-B & D		CENTER LANE TWILT ONLY AND END	1	6.25	-	-	-	-	-	-	-	-	-	-
1	1209	81-59	STH 35 RT	24 X 30	R4-2		KEEP RIGHT	1	7.00	-	-	-	-	-	-	-	-	-	-
1	1301	81-52	STH 35 LT	36 X 36	W4-2R		RIGHT LANE ENDS	1	5.00	-	-	-	-	-	-	-	-	-	-
1	1302	82-14	STH 35 LT	24 X 30	R6-2-R		WAVE WAY RIGHT	1	5.00	-	-	-	-	-	-	-	-	-	-
1	1303	82-14	STH 35 LT	36 X 31	R1-2		WAVE WAY RIGHT	1	3.88	-	-	-	-	-	-	-	-	-	-
1	1306	82-33	STH 35 LT	24 X 30	R8-8		DO NOT STOP ON TRACKS	1	5.00	-	-	-	-	-	-	-	-	-	-
1	1307	82-32	STH 35 LT	24 X 30	R8-8		STOP	1	-	-	-	-	-	-	-	-	-	-	-
1	1308	82-34	STH 35 RT	24 X 30	R6-2-R		ONE WAY RIGHT	1	5.00	-	-	-	-	-	-	-	-	-	-
1	1309	84-154	STH 35 RT	30 X 30	R6-1		DO NOT ENTER	1	6.25	-	-	-	-	-	-	-	-	-	-
1	1310	82-87	STH 35 LT	24 X 30	R6-2-R		ONE WAY RIGHT	1	5.00	-	-	-	-	-	-	-	-	-	-
1	1311	82-87	STH 35 LT	36 X 36	W10-1		RAILROAD CROSSING	1	-	-	-	-	-	-	-	-	-	-	-
1	1315	83-85	STH 35 LT	36 X 36	W10-1		RAILROAD CROSSING	1	-	-	-	-	-	-	-	-	-	-	-
1	1316	82-92	STH 35 LT	30 X 30	W11-15		PEDESTRIAN CROSSING	1	-	-	-	-	-	-	-	-	-	-	-
1	1317A	83-114	STH 35 LT	24 X 12	W16-7L		KEEP RIGHT	1	6.25	-	-	-	-	-	-	-	-	-	-
1	1317B	83-114	STH 35 LT	24 X 12	W16-7L		KEEP RIGHT	1	2.00	-	-	-	-	-	-	-	-	-	-
1	1318	84-30	STH 35 LT	24 X 30	R2-1		SPEED LIMIT 30 MPH	1	5.00	-	-	-	-	-	-	-	-	-	-
1	1319	84-54	STH 35 LT	24 X 30	R2-1		SPEED LIMIT 30 MPH	1	5.00	-	-	-	-	-	-	-	-	-	-
1	1320	85-01	STH 35 LT	36 X 36	W10-3		ADVANCE WARNING RAILROAD CROSSING	1	-	-	-	-	-	-	-	-	-	-	-
1	1401	87-47	STH 35 LT	24 X 30	R2-1		SPEED LIMIT 30 MPH	1	5.00	-	-	-	-	-	-	-	-	-	-
1	1402	88-42	STH 35 LT	36 X 36	W4-2R		RIGHT LANE ENDS SYMBOL	1	-	-	-	-	-	-	-	-	-	-	-
1	1403	89-84	STH 35 LT	36 X 36	W9-1R		RIGHT LANE ENDS	1	-	-	-	-	-	-	-	-	-	-	-
1	1404	90-74	STH 35 LT	30 X 30	W9-1R		RIGHT LANE ENDS	1	-	-	-	-	-	-	-	-	-	-	-

ON FLASHING BEACON
 MOUNT WITH SIGN 1007A
 ON FLASHING BEACON
 MOUNT WITH SIGN 1007B
 ON FLASHING BEACON
 MOUNT WITH SIGN 1008A
 ON FLASHING BEACON
 MOUNT WITH SIGN 1008B
 ON FLASHING BEACON
 MOUNT WITH SIGN 1008C
 ON FLASHING BEACON
 MOUNT WITH SIGN 1009A
 MOUNT WITH SIGN 1102A

MOUNT WITH SIGN 1206A

KEEP IN PLACE

KEEP IN PLACE

SUBTOTAL 3 =	22	12	134.74	106.32	0	21	0
SUBTOTAL 2 =	21	17	129.17	116.14	0	6	0
SUBTOTAL 1 =	17	14	318.15	25.25	21	22	6
PROJECT TOTALS =	60	43	582.06	247.71	8	48	49

COLORED CONCRETE CROSSWALK

CATEGORY	STATION TO STATION	LOCATION	C.Y.
0020	17+83	STH 35 at LaPointe St	10
0020	23+50 to 24+36	STH 35 at 15th St	11
0020	32+34 to 32+95	STH 35 at Prairie St	7
0020	39+45 to 40+05	STH 35 at 11th St	13
0020	44+10 to 44+50	STH 35 at 10th St	8
0020	48+25 LT	STH 35	5
0020	48+25 RT	STH 35	5
0020	48+64 to 48+85	STH 35 at Campion Blvd	5
0020	52+51 to 53+84 RT	STH 35 at Parrish St	8
0020	52+92 to 53+05 LT	STH 35 at Parrish St	5
0020	53+12 to 53+54 LT	STH 35 at Parrish St	15
0020	52+51 to 53+04 RT	STH 35 at Parrish St	8
0020	53+30 RT	STH 35 at Parrish St	2
0020	55+82 to 55+22 RT	STH 35 at Fowler St	6
0020	59+48 to 59+89	STH 35 at Brunson St	6
0020	67+00 LT	STH 35	2
0020	67+00 RT	STH 35	2
0020	67+38 to 67+81	STH 35 at Wells St	7
0020	79+27 to 79+67	STH 35 at Crawford St	6
0020	82+26 to 82+51	STH 35 at Mooney St	7
0020	82+62 to 82+85	STH 35 at Mooney St	7
0020	CATEGORY 0020 TOTAL		144

COLORED CONCRETE MEDIAN

CATEGORY	STATION TO STATION	LOCATION	C.Y.
0020	17+87 to 19+27 RT	STH 35	9
0020	17+87 to 18+76 RT	STH 35	3
0020	46+13 to 46+37	STH 35	2
0020	49+77 to 52+86	STH 35	28
0020	53+20 to 53+80	STH 35	3
0020	66+68 to 67+11	STH 35	2
0020	81+37 to 83+00	Parrish St	17
0020	11+50 to 12+31	Mooney St	4
0020	12+60 to 13+18	Mooney St	2
0020	CATEGORY 0020 TOTAL		69
0020	PROJECT TOTAL		213

FLASHING BEACON SYSTEM

CATEGORY	STATION	LOCATION	LS
0020	48+25 LT & RT	STH 35 and Campion Blvd	1
0020	67+00 LT & RT	STH 35 and Wells Street	1
0020	TOTAL		2

CONCRETE SIDEWALK

CATEGORY	STATION TO STATION	LOCATION	S.F.
0020	67+98 to 79+20	STH 35 - Crawford to Wells	1832
0020	64+15 to 67+30	STH 35 - Wells to Broadway	410
0020	60+00 to 63+70	STH 35 - Broadway to Brunson	578
0020	58+25 to 58+58	STH 35 - Brunson to Fowler	400
0020	53+00 to 53+75	STH 35 - Fowler to Parrish	488
0020	47+00 to 47+50	STH 35 - Parrish to Campion	240
0020	33+00 to 46+80	STH 35 - Campion to Prairie	2880
0020	24+50 to 32+50	STH 35 - Prairie to 15th	1355
0020	17+60 to 23+50	STH 35 - 15th to LaPointe	1064
0020	CATEGORY 0020 TOTAL		8835
0020	PROJECT TOTAL		8835

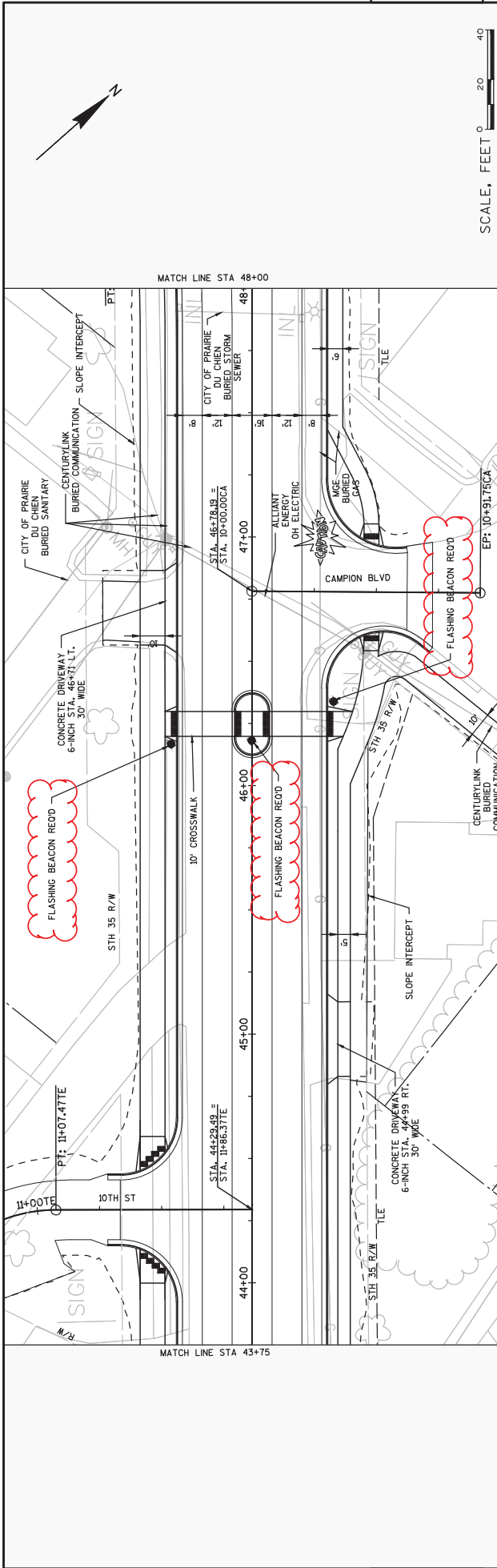
FENCE CHAIN LINK POLYMER-COATED PEDESTRIAN GATE

CATEGORY	STATION TO STATION	LOCATION	EA
0020	67+46 LT	STH 35	1
0020	CATEGORY 0020 TOTAL		1
0020	PROJECT TOTAL		1

FENCE CHAIN LINK POLYMER-COATED 5-FT

CATEGORY	STATION TO STATION	LOCATION	LF
0020	53+65 to 81+75 LT	STH 35	2820
0020	CATEGORY 0020 TOTAL		2820
0020	PROJECT TOTAL		2820

Addendum No. 02
ID 1661-05-76
Revised Sheet 213
January 4, 2018



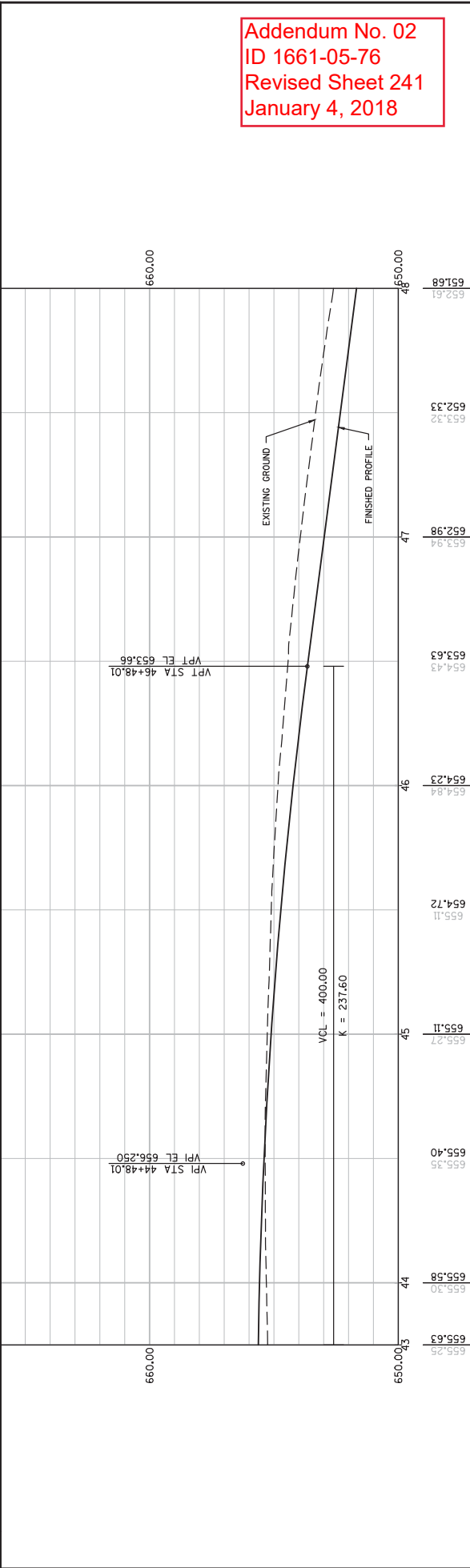
5

5

SCALE, FEET 0 20 40



Addendum No. 02
 ID 1661-05-76
 Revised Sheet 241
 January 4, 2018



PROJECT NO: 1661-05-76	HWY: STH 35	COUNTY: CRAWFORD	PLAN AND PROFILE: STH 35	SHEET 241	E
655.25	655.30	655.58	655.63	655.72	655.84
655.30	655.40	655.11	654.72	654.23	653.98
655.40	655.35	655.27	655.11	654.84	654.63
655.58	655.40	655.27	655.11	654.84	654.63
655.63	655.35	655.27	655.11	654.84	654.63
655.72	655.40	655.27	655.11	654.84	654.63
655.84	655.35	655.27	655.11	654.84	654.63
655.98	655.40	655.27	655.11	654.84	654.63
656.12	655.35	655.27	655.11	654.84	654.63
656.25	655.30	655.58	655.63	655.72	655.84
656.38	655.30	655.58	655.63	655.72	655.84
656.50	655.30	655.58	655.63	655.72	655.84
656.62	655.30	655.58	655.63	655.72	655.84
656.74	655.30	655.58	655.63	655.72	655.84
656.86	655.30	655.58	655.63	655.72	655.84
656.98	655.30	655.58	655.63	655.72	655.84
657.10	655.30	655.58	655.63	655.72	655.84
657.22	655.30	655.58	655.63	655.72	655.84
657.34	655.30	655.58	655.63	655.72	655.84
657.46	655.30	655.58	655.63	655.72	655.84
657.58	655.30	655.58	655.63	655.72	655.84
657.70	655.30	655.58	655.63	655.72	655.84
657.82	655.30	655.58	655.63	655.72	655.84
657.94	655.30	655.58	655.63	655.72	655.84
658.06	655.30	655.58	655.63	655.72	655.84
658.18	655.30	655.58	655.63	655.72	655.84
658.30	655.30	655.58	655.63	655.72	655.84
658.42	655.30	655.58	655.63	655.72	655.84
658.54	655.30	655.58	655.63	655.72	655.84
658.66	655.30	655.58	655.63	655.72	655.84
658.78	655.30	655.58	655.63	655.72	655.84
658.90	655.30	655.58	655.63	655.72	655.84
659.02	655.30	655.58	655.63	655.72	655.84
659.14	655.30	655.58	655.63	655.72	655.84
659.26	655.30	655.58	655.63	655.72	655.84
659.38	655.30	655.58	655.63	655.72	655.84
659.50	655.30	655.58	655.63	655.72	655.84
659.62	655.30	655.58	655.63	655.72	655.84
659.74	655.30	655.58	655.63	655.72	655.84
659.86	655.30	655.58	655.63	655.72	655.84
659.98	655.30	655.58	655.63	655.72	655.84
660.10	655.30	655.58	655.63	655.72	655.84
660.22	655.30	655.58	655.63	655.72	655.84
660.34	655.30	655.58	655.63	655.72	655.84
660.46	655.30	655.58	655.63	655.72	655.84
660.58	655.30	655.58	655.63	655.72	655.84
660.70	655.30	655.58	655.63	655.72	655.84
660.82	655.30	655.58	655.63	655.72	655.84
660.94	655.30	655.58	655.63	655.72	655.84
661.06	655.30	655.58	655.63	655.72	655.84
661.18	655.30	655.58	655.63	655.72	655.84
661.30	655.30	655.58	655.63	655.72	655.84
661.42	655.30	655.58	655.63	655.72	655.84
661.54	655.30	655.58	655.63	655.72	655.84
661.66	655.30	655.58	655.63	655.72	655.84
661.78	655.30	655.58	655.63	655.72	655.84
661.90	655.30	655.58	655.63	655.72	655.84
662.02	655.30	655.58	655.63	655.72	655.84
662.14	655.30	655.58	655.63	655.72	655.84
662.26	655.30	655.58	655.63	655.72	655.84
662.38	655.30	655.58	655.63	655.72	655.84
662.50	655.30	655.58	655.63	655.72	655.84
662.62	655.30	655.58	655.63	655.72	655.84
662.74	655.30	655.58	655.63	655.72	655.84
662.86	655.30	655.58	655.63	655.72	655.84
662.98	655.30	655.58	655.63	655.72	655.84
663.10	655.30	655.58	655.63	655.72	655.84
663.22	655.30	655.58	655.63	655.72	655.84
663.34	655.30	655.58	655.63	655.72	655.84
663.46	655.30	655.58	655.63	655.72	655.84
663.58	655.30	655.58	655.63	655.72	655.84
663.70	655.30	655.58	655.63	655.72	655.84
663.82	655.30	655.58	655.63	655.72	655.84
663.94	655.30	655.58	655.63	655.72	655.84
664.06	655.30	655.58	655.63	655.72	655.84
664.18	655.30	655.58	655.63	655.72	655.84
664.30	655.30	655.58	655.63	655.72	655.84
664.42	655.30	655.58	655.63	655.72	655.84
664.54	655.30	655.58	655.63	655.72	655.84
664.66	655.30	655.58	655.63	655.72	655.84
664.78	655.30	655.58	655.63	655.72	655.84
664.90	655.30	655.58	655.63	655.72	655.84
665.02	655.30	655.58	655.63	655.72	655.84
665.14	655.30	655.58	655.63	655.72	655.84
665.26	655.30	655.58	655.63	655.72	655.84
665.38	655.30	655.58	655.63	655.72	655.84
665.50	655.30	655.58	655.63	655.72	655.84
665.62	655.30	655.58	655.63	655.72	655.84
665.74	655.30	655.58	655.63	655.72	655.84
665.86	655.30	655.58	655.63	655.72	655.84
665.98	655.30	655.58	655.63	655.72	655.84
666.10	655.30	655.58	655.63	655.72	655.84
666.22	655.30	655.58	655.63	655.72	655.84
666.34	655.30	655.58	655.63	655.72	655.84
666.46	655.30	655.58	655.63	655.72	655.84
666.58	655.30	655.58	655.63	655.72	655.84
666.70	655.30	655.58	655.63	655.72	655.84
666.82	655.30	655.58	655.63	655.72	655.84
666.94	655.30	655.58	655.63	655.72	655.84
667.06	655.30	655.58	655.63	655.72	655.84
667.18	655.30	655.58	655.63	655.72	655.84
667.30	655.30	655.58	655.63	655.72	655.84
667.42	655.30	655.58	655.63	655.72	655.84
667.54	655.30	655.58	655.63	655.72	655.84
667.66	655.30	655.58	655.63	655.72	655.84
667.78	655.30	655.58	655.63	655.72	655.84
667.90	655.30	655.58	655.63	655.72	655.84
668.02	655.30	655.58	655.63	655.72	655.84
668.14	655.30	655.58	655.63	655.72	655.84
668.26	655.30	655.58	655.63	655.72	655.84
668.38	655.30	655.58	655.63	655.72	655.84
668.50	655.30	655.58	655.63	655.72	655.84
668.62	655.30	655.58	655.63	655.72	655.84
668.74	655.30	655.58	655.63	655.72	655.84
668.86	655.30	655.58	655.63	655.72	655.84
668.98	655.30	655.58	655.63	655.72	655.84
669.10	655.30	655.58	655.63	655.72	655.84
669.22	655.30	655.58	655.63	655.72	655.84
669.34	655.30	655.58	655.63	655.72	655.84
669.46	655.30	655.58	655.63	655.72	655.84
669.58	655.30	655.58	655.63	655.72	655.84
669.70	655.30	655.58	655.63	655.72	655.84
669.82	655.30	655.58	655.63	655.72	655.84
669.94	655.30	655.58	655.63	655.72	655.84
670.06	655.30	655.58	655.63	655.72	655.84
670.18	655.30	655.58	655.63	655.72	655.84
670.30	655.30	655.58	655.63	655.72	655.84
670.42	655.30	655.58	655.63	655.72	655.84
670.54	655.30	655.58	655.63	655.72	655.84
670.66	655.30	655.58	655.63	655.72	655.84
670.78	655.30	655.58	655.63	655.72	655.84
670.90	655.30	655.58	655.63	655.72	655.84
671.02	655.30	655.58	655.63	655.72	655.84
671.14	655.30	655.58	655.63	655.72	655.84
671.26	655.30	655.58	655.63	655.72	655.84
671.38	655.30	655.58	655.63	655.72	655.84
671.50	655.30	655.58	655.63	655.72	655.84
671.62	655.30	655.58	655.63	655.72	655.84
671.74	655.30	655.58	655.63	655.72	655.84
671.86	655.30	655.58	655.63	655.72	655.84
671.98	655.30	655.58	655.63	655.72	655.84
672.10	655.30	655.58	655.63	655.72	655.84
672.22	655.30	655.58	655.63	655.72	655.84
672.34	655.30	655.58	655.		



Proposal Schedule of Items

Proposal ID: 20180109003 Project(s): 1661-05-76, 1661-05-86

Federal ID(s): WISC 2018035, N/A

SECTION: 0001 Roadway Items

Alt Set ID: Alt Mbr ID:

Proposal Line Number	Item ID Description	Approximate Quantity and Units	Unit Price	Bid Amount
0464	SPV.0090 Special 12. Fence Chain Link Polymer-Coated 5-ft	2,820.000 LF	_____.	_____.
0470	SPV.0105 Special 03. Abandon Existing Water Mains, Valves, Hydrants	LS	LUMP SUM	_____.
0472	SPV.0105 Special 04. Abandon Existing Sanitary Mains and Manholes	LS	LUMP SUM	_____.
0474	SPV.0165 Special 01. Concrete Sidewalk, Picture-Frame, 4-inch	37,372.000 SF	_____.	_____.
0476	SPV.0165 Special 02. Concrete Sidewalk, Picture-Frame, 6-inch	4,025.000 SF	_____.	_____.
0478	SPV.0165 Special 03. Colored & Textured Concrete Sidewalk, 4-inch	8,569.000 SF	_____.	_____.
0480	SPV.0105 Special 05. Flashing Beacon System, STH 35 and Campion Blvd	LS	LUMP SUM	_____.
0482	SPV.0105 Special 06. Flashing Beacon System, STH 35 and Wells Street	LS	LUMP SUM	_____.
Section: 0001			Total:	_____.
			Total Bid:	_____.

