



Wisconsin Department of Transportation

January 22, 2018

Division of Transportation Systems Development

Bureau of Project Development
4802 Sheboygan Avenue, Rm 601
P O Box 7916
Madison, WI 53707-7916

Telephone: (608) 266-1631
Facsimile (FAX): (608) 266-8459

NOTICE TO ALL CONTRACTORS:

Proposal #08: 2250-16-70, WISC 2018 176
Washington Ave, V Mount Pleasant
IH 94 to CTH H
STH 20
Racine County

Letting of February 13, 2018

This is Addendum No. 01, which provides for the following:

Schedule of Items:

Revised Bid Item Quantities					
Bid Item	Item Description	Unit	Old Quantity	Revised Quantity	Proposal Total
655.0900	Traffic Signal EVP Detector Cable	LF	1,110	1,245	2,355

Plan Sheets:

Revised Plan Sheets	
Plan Sheet	Plan Sheet Title (brief description of changes to sheet)
43	Removed the EVP Confirmation Lights from the CTH V intersection plans
49	Rotated the monotube base/wings at SB 14 90 degrees to avoid a potential utility conflict
90	Modified miscellaneous quantities table to account for revised EVP detection design

Schedule of Items

Attached, dated January 22, 2018, are the revised Schedule of Items Page 7.

Plan Sheets

The following 8½ x 11-inch sheets are attached and made part of the plans for this proposal:

Revised: 43, 49, and 90.

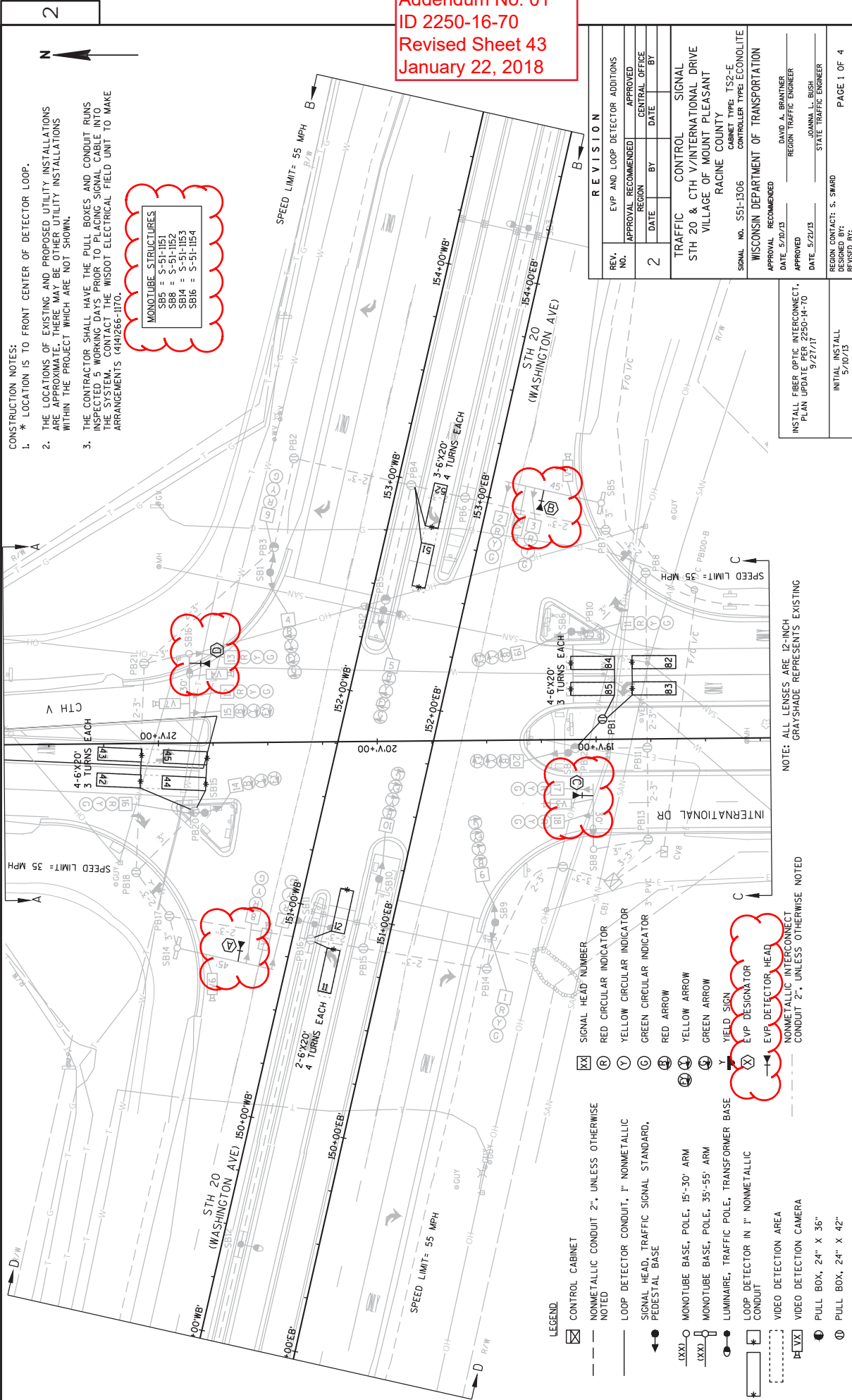
The responsibility for notifying potential subcontractors and suppliers of these changes remains with the prime contractor.

Sincerely,

Mike Coleman

Proposal Development Specialist
Proposal Management Section

END OF ADDENDUM



CONSTRUCTION NOTES:

- * LOCATION IS TO FRONT CENTER OF DETECTOR LOOP.
- THE LOCATIONS OF EXISTING AND PROPOSED UTILITY INSTALLATIONS ARE APPROXIMATE. THERE MAY BE OTHER UTILITY INSTALLATIONS WITHIN THE PROJECT WHICH ARE NOT SHOWN.
- THE CONTRACTOR SHALL HAVE THE PULL BOXES AND CONDUIT RUNS INSPECTED 5 WORKING DAYS PRIOR TO PLACING SIGNAL CABLE INTO THE SYSTEM. CONTACT THE WISDOT ELECTRICAL FIELD UNIT TO MAKE ARRANGEMENTS (414)266-1170.

MONOTUBE STRUCTURES
 SB85 = S-51-1151
 SB88 = S-51-1152
 SB84 = S-51-1153
 SB86 = S-51-1154

REVISION	
REV. NO.	EVP AND LOOP DETECTOR ADDITIONS
APPROVAL REGION	APPROVED
DATE	CENTRAL OFFICE
BY	BY
2	

TRAFFIC CONTROL	SIGNAL
STH 20 & CTH V/INTERNATIONAL DRIVE	VILLAGE OF MOUNT PLEASANT
RACINE COUNTY	
SIGNAL NO. S51-1306	CABINET TYPE: TS2-E
	CONTROLLER TYPE: ECONOLITE
WISCONSIN DEPARTMENT OF TRANSPORTATION	
APPROVAL REGION	RECOMMENDED
DATE	5/20/13
APPROVED	DAVID A. BRANTNER
DATE	5/20/13
DESIGNED BY:	JOANNA L. BUSH
REGION CONTACT:	STATE TRAFFIC ENGINEER
DESIGNED BY:	S. SWARD
REVISION BY:	

INSTALL FIBER OPTIC INTERCONNECT PLAN UPDATE PER 2250-14-70 9/27/17
 INITIAL INSTALL 5/20/13

NOTE: ALL LENSES ARE 12-INCH GRAYSHADE REPRESENTS EXISTING

NOTE: ALL LENSES ARE 12-INCH GRAYSHADE REPRESENTS EXISTING CONDUIT 2", UNLESS OTHERWISE NOTED

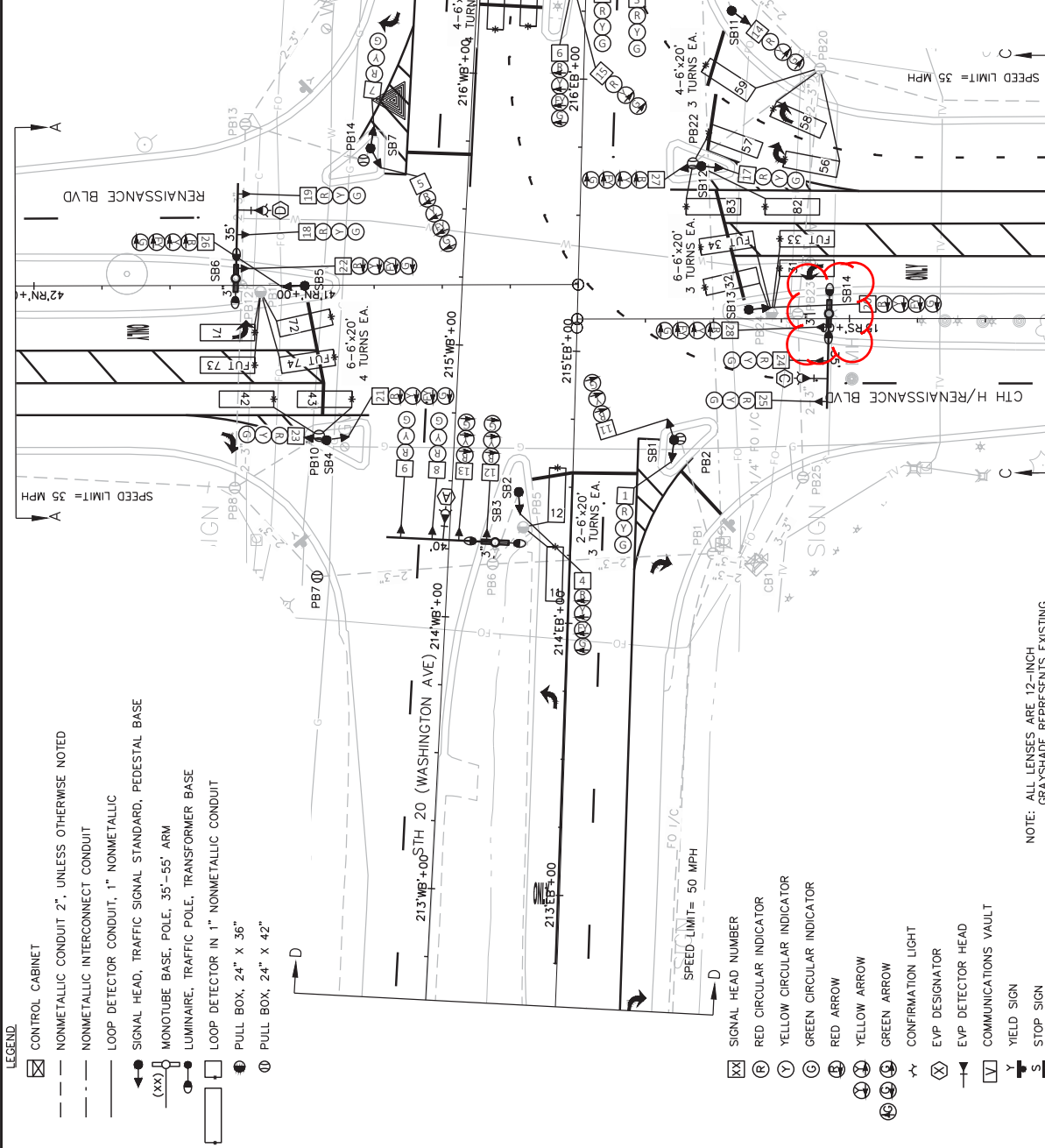
- LEGEND**
- [Symbol] CONTROL CABINET
 - [Symbol] NONMETALLIC CONDUIT 2", UNLESS OTHERWISE NOTED
 - [Symbol] LOOP DETECTOR CONDUIT, 1" NONMETALLIC
 - [Symbol] SIGNAL HEAD, TRAFFIC SIGNAL STANDARD, PEDESTAL BASE
 - [Symbol] MONOTUBE BASE, POLE, 15'-30" ARM
 - [Symbol] MONOTUBE BASE, POLE, 35'-55" ARM
 - [Symbol] LUMINAIRE, TRAFFIC POLE, TRANSFORMER BASE
 - [Symbol] LOOP DETECTOR IN 1" NONMETALLIC CONDUIT
 - [Symbol] VIDEO DETECTION AREA
 - [Symbol] VIDEO DETECTION CAMERA
 - [Symbol] PULL BOX, 24" X 36"
 - [Symbol] PULL BOX, 24" X 42"
 - [Symbol] SIGNAL HEAD NUMBER
 - [Symbol] RED CIRCULAR INDICATOR
 - [Symbol] YELLOW CIRCULAR INDICATOR
 - [Symbol] GREEN CIRCULAR INDICATOR
 - [Symbol] RED ARROW
 - [Symbol] YELLOW ARROW
 - [Symbol] GREEN ARROW
 - [Symbol] YIELD SIGN
 - [Symbol] EVP DESIGNATOR
 - [Symbol] NONMETALLIC INTERCONNECT CONDUIT 2", UNLESS OTHERWISE NOTED

CONSTRUCTION NOTES:

- LOCATION IS TO FRONT CENTER OF DETECTOR LOOP.
- THE CONTRACTOR SHALL HAVE THE PULL BOXES AND CONDUIT RUNS INSPECTED 5 WORKING DAYS PRIOR TO PLACING SIGNAL CABLE INTO SYSTEM. CONTACT THE WISDOT ELECTRICAL FIELD UNIT TO MAKE ARRANGEMENTS. (414) 266-1170.
- THE LOCATIONS OF EXISTING AND PROPOSED UTILITY INSTALLATIONS ARE APPROXIMATE. THERE MAY BE OTHER UTILITY INSTALLATIONS WITHIN THE PROJECT WHICH ARE NOT SHOWN.
- SB1, SB4, SB7, SB12 ARE TYPE 2 CONCRETE BASES WITH A PEDESTAL BASE.

MONOTUBE STRUCTURE NUMBERS	
SB3	= S-51-1228
SB6	= S-51-1225
SB10	= S-51-1227
SB14	= S-51-1226

Addendum No. 01
 ID 2250-16-70
 Revised Sheet 49
 January 22, 2018



- LEGEND:
- ☒ CONTROL CABINET
 - NONMETALLIC CONDUIT 2", UNLESS OTHERWISE NOTED
 - - - NONMETALLIC INTERCONNECT CONDUIT
 - LOOP DETECTOR CONDUIT, 1" NONMETALLIC
 - ◀◀ SIGNAL HEAD, TRAFFIC SIGNAL STANDARD, PEDESTAL BASE
 - (XX) MONOTUBE BASE, POLE, 35"-55" ARM
 - ⊕ LUMINAIRE, TRAFFIC POLE, TRANSFORMER BASE
 - LOOP DETECTOR IN 1" NONMETALLIC CONDUIT
 - PULL BOX, 24" X 36"
 - ⊙ PULL BOX, 24" X 42"

- XX SIGNAL HEAD NUMBER
- ⊕ RED CIRCULAR INDICATOR
- ⊖ YELLOW CIRCULAR INDICATOR
- ⊙ GREEN CIRCULAR INDICATOR
- ⊕ RED ARROW
- ⊖ YELLOW ARROW
- ⊙ GREEN ARROW
- ⊕ CONFIRMATION LIGHT
- ⊖ EXP DESIGNATOR
- ⊙ EXP DETECTOR HEAD
- ⊕ COMMUNICATIONS VAULT
- ⊖ YIELD SIGN
- ⊙ STOP SIGN

NOTE: ALL LENSES ARE 12-INCH GRAYSHADE REPRESENTS EXISTING

REVISION		APPROVAL		DATE		BY	
REV. NO.	DESCRIPTION	REGION	OFFICE	DATE	DATE	DATE	DATE
4	UPGRADE TO MONOTUBE AND LOOP DETECTOR REPLACEMENT						

INSTALL FIBER OPTIC INTERCONNECT TO MONOTUBES 9/17
 REPLACE CABINET AND CONTROLLER, INSTALL FIBER OPTIC INTERCONNECT, EXP AND CELLULAR MODEM. 05/14
 HEAD 19 RELOCATED TO SB10 MOVE HEAD 8 TO SB3. MOVE LOOPS 42, 43, 82, 83 AHEAD 5'.
 COMPLETE RECONSTRUCTION 9/05
 REGION CONTACT: S. SWARD
 DESIGNED BY: WILLIAM C. GILDS
 STATE TRAFFIC ENGINEER
 REGION CONTACT: S. SWARD
 DESIGNED BY: WILLIAM C. GILDS
 STATE TRAFFIC ENGINEER

TRAFFIC CONTROL SIGNAL
 STH 20 & CTH H/RENAISSANCE BLVD
 VILLAGE OF MT. PLEASANT
 RACINE COUNTY
 SIGNAL NO. S51-0719
 CABINET TYPE: TS2-F
 CONTROLLER TYPE: ECOLONITE
 WISCONSIN DEPARTMENT OF TRANSPORTATION
 APPROVAL RECOMMENDED
 DATE: 11/9/98
 APPROVED
 DATE: 10/9/98
 REGION TRAFFIC ENGINEER
 WILLIAM C. GILDS
 STATE TRAFFIC ENGINEER

INITIAL INSTALLATION DATE NOT AVAILABLE
 REGION CONTACT: S. SWARD
 DESIGNED BY: WILLIAM C. GILDS
 STATE TRAFFIC ENGINEER

TRAFFIC SIGNAL CABLE SUMMARY

655.0240* CABLE TRAFFIC SIGNAL 7-14 AWG	655.0260 CABLE TRAFFIC SIGNAL 12-14 AWG	655.0900 TRAFFIC SIGNAL EVP DETECTOR CABLE	655.0900 SPV. 0090.03 CONFI RMATION LIGHT CABLE TYPE 2-14 AWG GROUNDED
LF	LF	LF	LF
---	---	110	---
---	---	275	---
---	---	350	---
---	---	510	---
---	95	---	---
---	---	175	175
---	140	---	---
---	310	---	---
385	---	---	---
---	---	415	415
---	370	---	---
---	485	---	---
375	---	---	---
390	---	---	---
---	---	345	345
---	310	---	---
315	---	---	---
---	305	---	---
155	---	---	---
---	---	175	175
---	150	---	---
TOTAL	1,785	2,355	1,110

*ADDITIONAL QUANTITIES LISTED ELSEWHERE

655.0230 CABLE TRAFFIC SIGNAL 5- 14 AWG	655.0240* CABLE TRAFFIC SIGNAL 7-14 AWG	HEAD NO.	STH 20 & CTH H/RENAI SSANCE BLVD FROM CB1 TO	LF	LF	REMARKS
---	---	1	SB1	20	---	
---	---	11		20	---	
---	---	4	SB2	---	20	
---	---	Head A	SB3	---	---	
---	---	8		55	---	
---	---	9		65	---	
---	---	12		35	---	
---	---	13		45	---	
---	---	21	SB4	---	20	
---	---	23		20	---	
---	---	26	SB5	---	20	
---	---	Head D	SB6	---	---	
---	---	18		45	---	
---	---	19		55	---	
---	---	22		---	35	
---	---	5	SB7	---	20	
---	---	7		20	---	
---	---	10	SB8	20	---	
---	---	15		20	---	
---	---	16	SB9	20	---	
---	---	Head B	SB10	---	---	
---	---	2		65	---	
---	---	3		75	---	
---	---	6		---	85	
---	---	14	SB11	20	---	
---	---	17	SB12	20	---	
---	---	27		---	20	
---	---	20	SB13	---	20	
---	---	Head C	SB14	---	---	
---	---	24		45	---	
---	---	25		55	---	
---	---	28		---	35	
TOTAL				720	275	

*ADDITIONAL QUANTITIES LISTED ELSEWHERE

MISCELLANEOUS QUANTITIES

SHEET: 90

PROJECT NO: 2250-16-70

HWY: STH 20

COUNTY: RACINE

PLOT DATE: December 21, 2017

PLOT BY: JT ENGINEERING

PLOT NAME:

PLOT SCALE: 1:1

E

E



Proposal Schedule of Items

Proposal ID: 20180213008 Project(s): 2250-16-70

Federal ID(s): WISC 2018176

SECTION: 0001 Roadway Items

Alt Set ID: Alt Mbr ID:

Proposal Line Number	Item ID Description	Approximate Quantity and Units	Unit Price	Bid Amount
0194	653.0164 Pull Boxes Non-Conductive 24x42-Inch	7.000 EACH	_____.	_____.
0196	653.0905 Removing Pull Boxes	11.000 EACH	_____.	_____.
0198	654.0113 Concrete Bases Type 13	4.000 EACH	_____.	_____.
0200	655.0230 Cable Traffic Signal 5-14 AWG	720.000 LF	_____.	_____.
0202	655.0240 Cable Traffic Signal 7-14 AWG	2,060.000 LF	_____.	_____.
0204	655.0260 Cable Traffic Signal 12-14 AWG	2,165.000 LF	_____.	_____.
0206	655.0305 Cable Type UF 2-12 AWG Grounded	1,050.000 LF	_____.	_____.
0208	655.0515 Electrical Wire Traffic Signals 10 AWG	2,765.000 LF	_____.	_____.
0210	655.0610 Electrical Wire Lighting 12 AWG	1,080.000 LF	_____.	_____.
0212	655.0700 Loop Detector Lead In Cable	17,035.000 LF	_____.	_____.
0214	655.0800 Loop Detector Wire	21,270.000 LF	_____.	_____.
0216	655.0900 Traffic Signal EVP Detector Cable	2,355.000 LF	_____.	_____.
0218	657.0100 Pedestal Bases	9.000 EACH	_____.	_____.
0220	657.0420 Traffic Signal Standards Aluminum 13-FT	3.000 EACH	_____.	_____.
0222	657.0425 Traffic Signal Standards Aluminum 15-FT	6.000 EACH	_____.	_____.
0224	657.1355 Install Poles Type 12	1.000 EACH	_____.	_____.
0226	657.1360 Install Poles Type 13	3.000 EACH	_____.	_____.