



Wisconsin Department of Transportation

March 8, 2018

Division of Transportation Systems Development

Bureau of Project Development
 4802 Sheboygan Avenue, Rm 601
 P O Box 7916
 Madison, WI 53707-7916

Telephone: (608) 266-1631
 Facsimile (FAX): (608) 266-8459

NOTICE TO ALL CONTRACTORS:

**Proposal #29: 1517-75-73, WISC 2018 157
 USH 10 – USH 10/STH 441
 County CB – Oneida Street
 USH 10
 Winnebago County**

**1517-75-79, WISC 2018 158
 USH 10 – USH 10/STH 441
 County CB – Oneida Street
 USH 10
 Winnebago County**

Letting of March 13, 2018

This is Addendum No. 03, which provides for the following:

Special Provisions:

Revised Special Provisions	
Article No.	Description
1.3	Other Contracts

Added Special Provisions	
Article No.	Description
9.6	Abandoning Sewer

Schedule of Items:

Revised Bid Item Quantities					
Bid Item	Item Description	Unit	Old Quantity	Revised Quantity	Proposal Total
204.0110	Removing Asphaltic Surface	SY	24,521	2,598	27,119
204.0120	Removing Asphaltic Surface Milling	SY	8,386	-2,371	6,015
204.0245.05	Removing Storm Sewer 48-54-Inch	LF	2,332	-1,351	981
205.0100	Common Excavation	CY	443,263	6,614	449,877

Added Bid Item Quantities					
Bid Item	Item Description	Unit	Old Quantity	Revised Quantity	Proposal Total
204.0291.S	Abandoning Sewer	CY	0	627	627

Plan Sheets:

Revised Plan Sheets	
Plan Sheet	Plan Sheet Title (brief description of changes to sheet)
89-95	1517-75-73 Removal Plans to remove asphaltic surface milling out of the median and add remove asphaltic surface in areas.
824-825	1517-75-73 Removing Storm Sewer Miscellaneous Quantity Update for Abandoning sewer
826-827	1517-75-73 Removing Pavement Miscellaneous Quantities updated for Removing asphaltic surface milling and removing asphaltic surface
829	1517-75-73 Earthwork Quantities updating Common Excavation for quantities in stage 1 temporary widening

The responsibility for notifying potential subcontractors and suppliers of these changes remains with the prime contractor.

Sincerely,

Mike Coleman

Proposal Development Specialist
Proposal Management Section

ADDENDUM NO. 03

1517-75-73/79

March 8, 2018

Special Provisions

1.3. Other Contracts.

Add the following:

Project 1517-75-77, USH 10 – USH 10/STH 441 County CB - Oneida Street, USH 10, Midway Rd (CTH AP) Interchange, Winnebago County, Wisconsin under a department contract. Work under this contract (LET date of 2/12/19) is anticipated to be completed in November of 2019. The work under this contract consists of common excavation, roadway embankment, base aggregate, concrete pavement, HMA pavement, storm sewer, erosion control, signing, pavement marking, and lighting. The work under this contract has schedule and work zone overlap for 1517-75-73 but does not impact Project ID 1517-75-79.

9.6. Abandoning Sewer, Item 204.0291.S.

A Description

This special provision describes abandoning existing sewer by filling it with cellular concrete as the plans show and conforming to standard spec 204 and standard spec 501as modified in this special provision.

B Materials

Provide cellular concrete meeting the following specifications: 1 part cement, 1 part fly ash, 8 parts sand, or an approved equal, and water. Provide cement meeting the requirements of standard spec 501.2.1 for Type 1 Portland Cement. Provide sand meeting the requirements of standard spec 501.2.5.3 Provide water meeting the requirements of standard spec 501.2.4.

C Construction

Fill the abandoned sewer pipe with cellular concrete as the engineer directs. In the event that the sewer cannot be completely filled from existing manholes, tap the sewer where necessary and fill from these locations.

D Measurement

The department will measure Abandoning Sewer in volume by the cubic yard as specified in standard spec 109.1.3.

E Payment

The department will pay for measured quantities at the contract unit price under the following bid item:

ITEM NUMBER	DESCRIPTION	UNIT
204.0291.S	Abandoning Sewer	CY

Payment is full compensation for furnishing all materials and excavating and backfilling where necessary.

stp-204-050 (20080902)

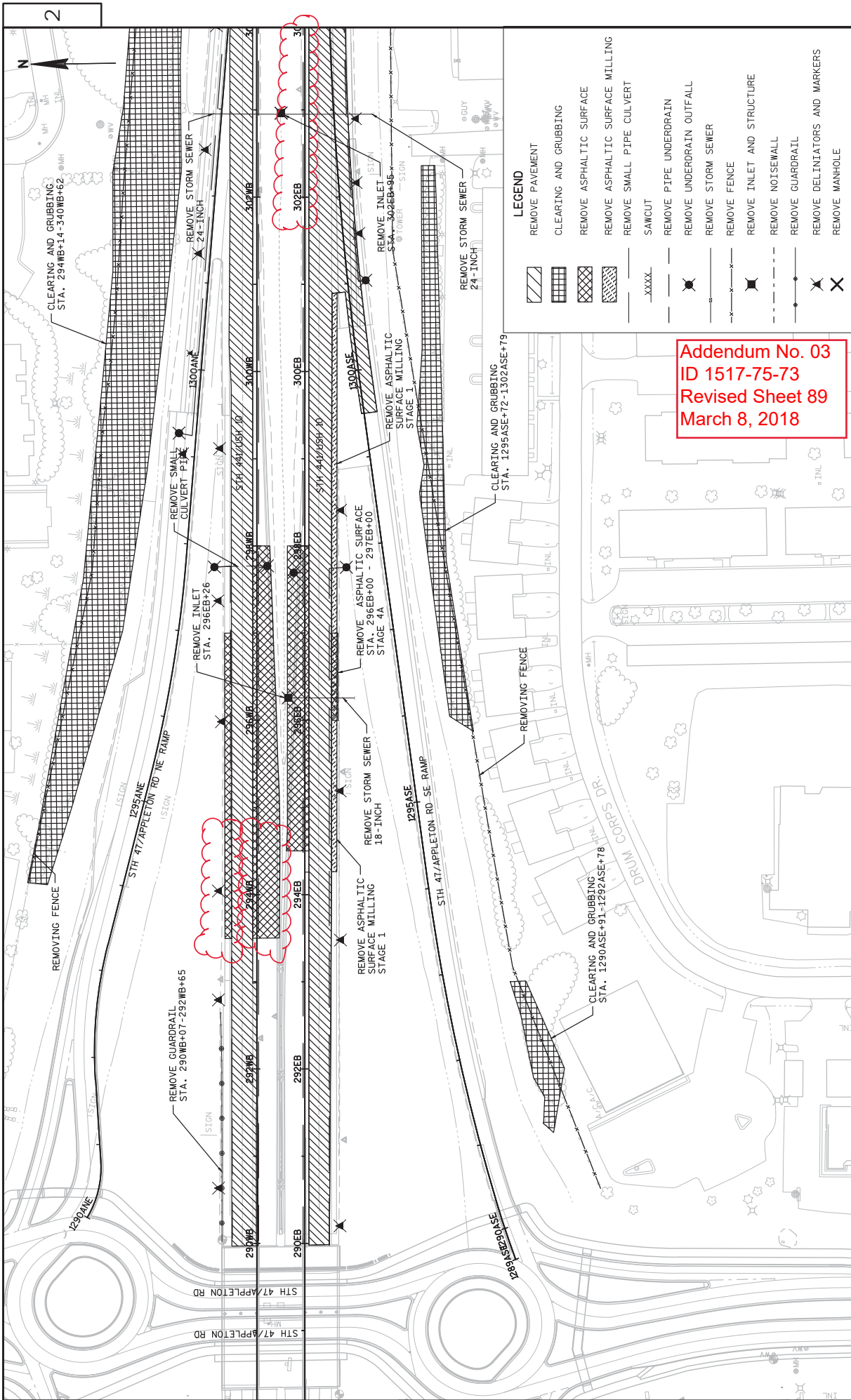
Schedule of Items

Attached, dated March 8, 2018, are the revised Schedule of Items Pages 1, 2 and 33.

Plan Sheets

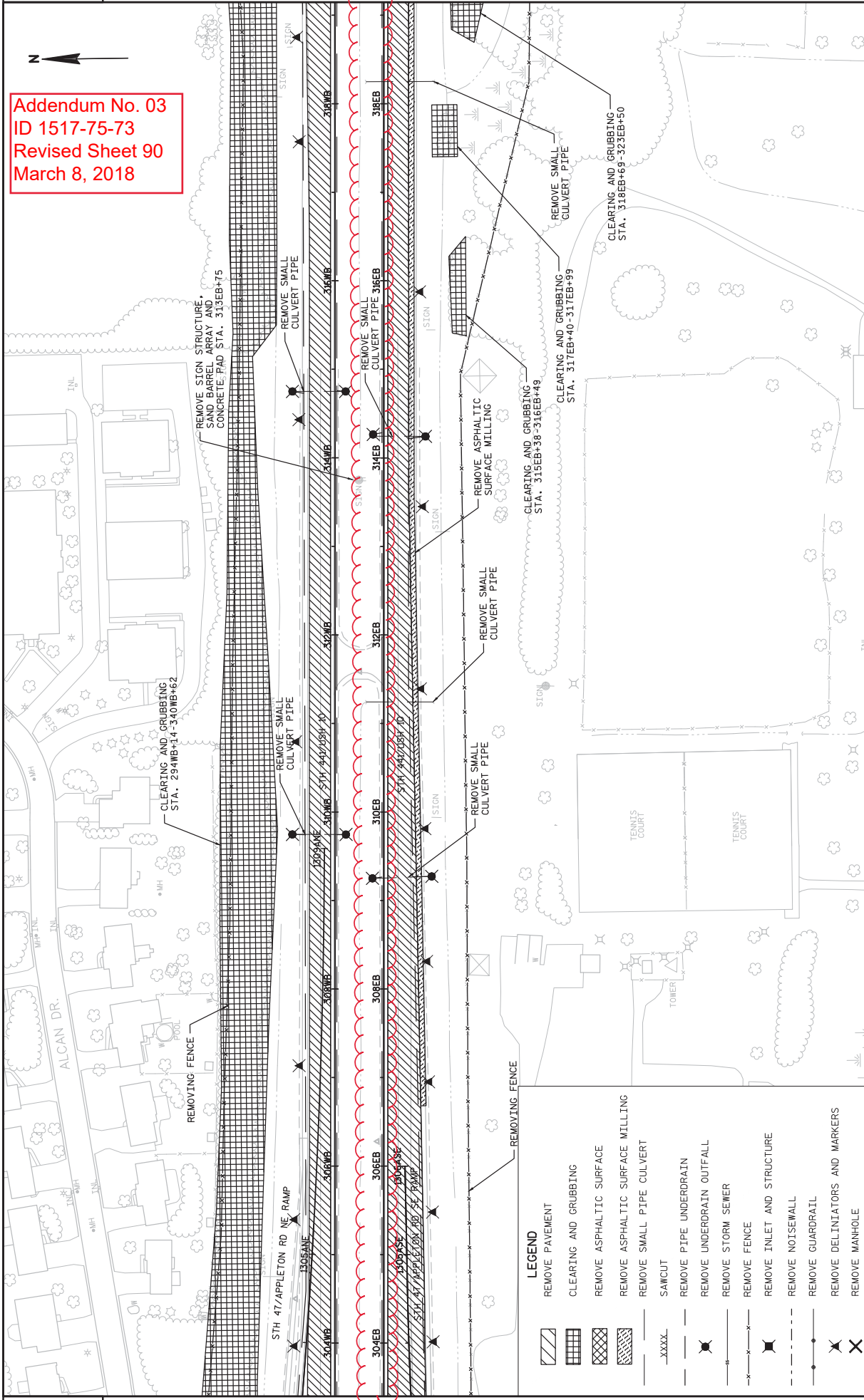
The following 8½ x 11-inch sheets are attached and made part of the plans for this proposal:
Revised: 89-95, 824-827 and 829.

END OF ADDENDUM



Addendum No. 03
 ID 1517-75-73
 Revised Sheet 90
 March 8, 2018

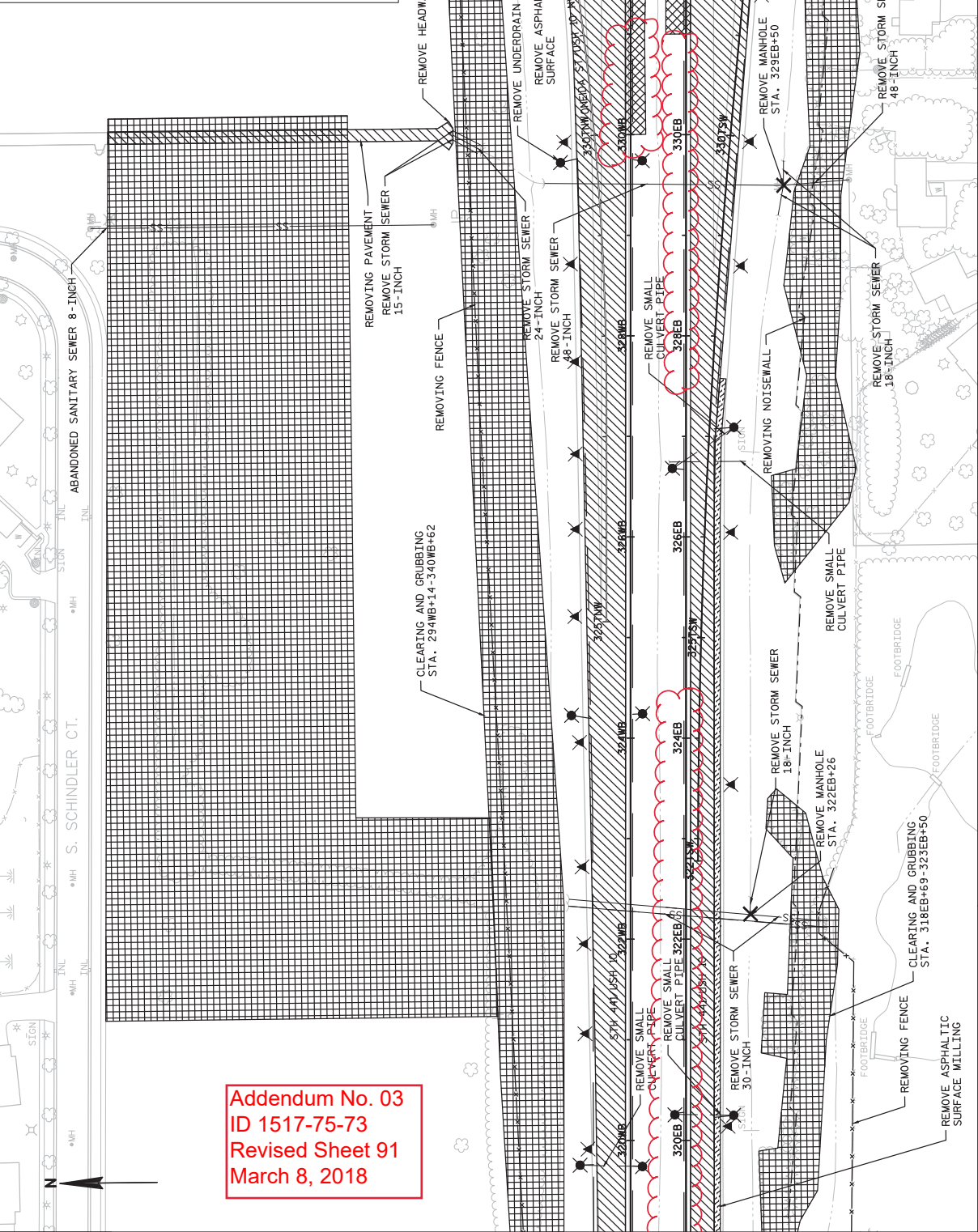
2



2

PROJECT NO: 1517-75-73	COUNTY: WINNEBAGO	REMOVAL PLAN	SHEET 90
HWY: STH 441/USH 10	PLOT DATE : 3/7/2018 2:26 PM		PLOT SCALE : 1 IN=100 FT
FILE NAME : S:\NPOS\CD\WIS441\15177574-75\9\SHETS\PLAN\15177574\021100_RK\1517-75-73\NE-15177573-021101_RM.DWG		PLOT BY : MARTENS, JOHN M	
LAYOUT NAME : 021102_RM		WISDOT/CADD SHEET 42	

LEGEND	
	REMOVE PAVEMENT
	CLEARING AND GRUBBING
	REMOVE ASPHALTIC SURFACE
	REMOVE ASPHALTIC SURFACE MILLING
	REMOVE SMALL PIPE CULVERT
	SAWCUT
	REMOVE PIPE UNDERDRAIN
	REMOVE UNDERDRAIN OUTFALL
	REMOVE STORM SEWER
	REMOVE FENCE
	REMOVE INLET AND STRUCTURE
	REMOVE NOISEWALL
	REMOVE GUARDRAIL
	REMOVE DELIMITATORS AND MARKERS
	REMOVE MANHOLE

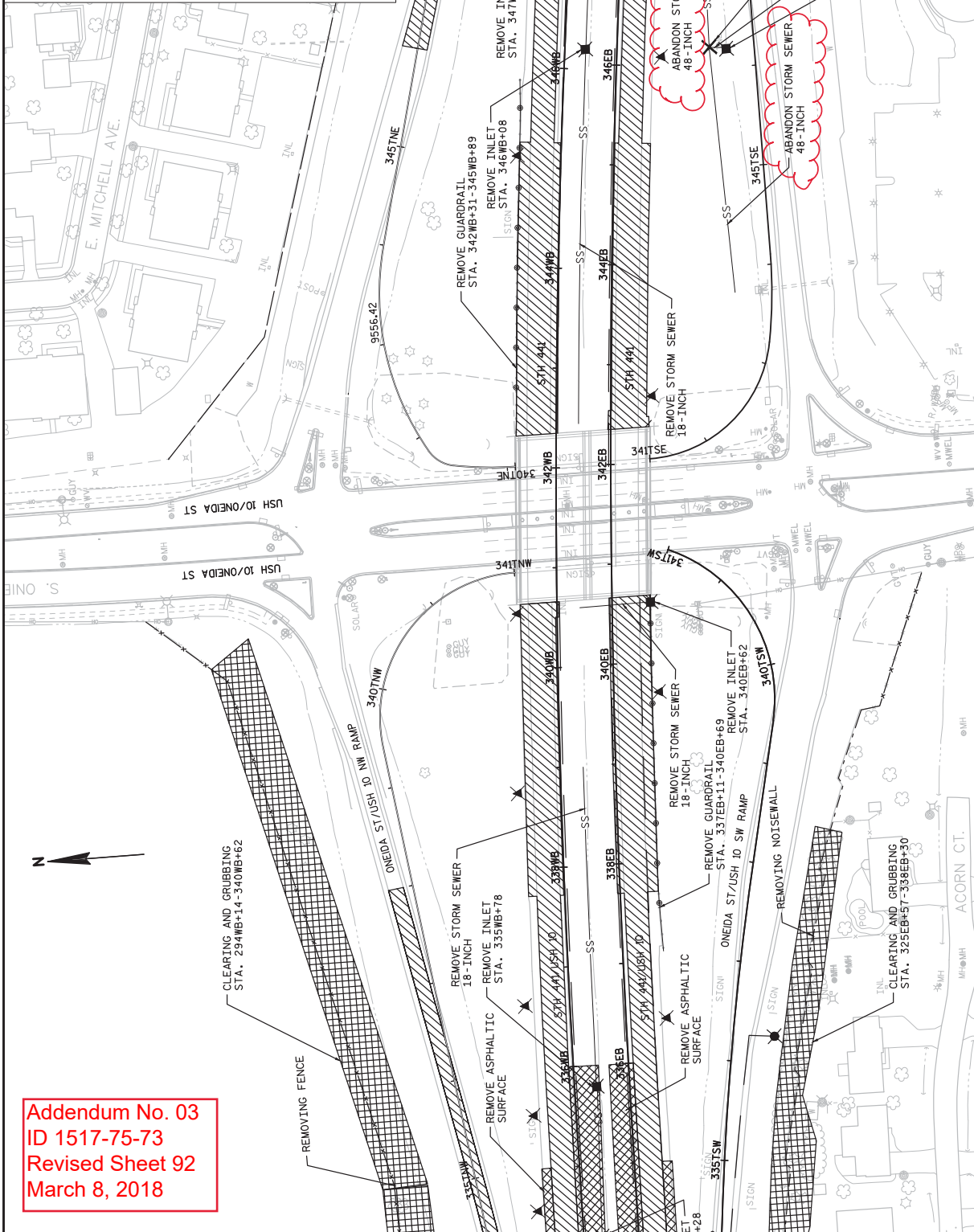


Addendum No. 03
ID 1517-75-73
Revised Sheet 91
March 8, 2018

PROJECT NO: 1517-75-73	COUNTY: WINNEBAGO	REMOVAL PLAN	SHEET 91
HWY: STH 441/USH 10			
FILE NAME : S:\NPS\330\WIS441\15177574-79\SHEETS\PLAN\15177574\021100_RK\1517-75-73\NE-15177573-021101_RM.DWG			
LAYOUT NAME - 02103-RM			
PLLOT DATE : 3.7.2018 2:26 PM	PLLOT NAME :	PLLOT SCALE : 1:1 IN:100 FT	WISDOT/CADD SHEET 42
PLLOT BY : MARTENS, JOHN M			

LEGEND

[Hatched Box]	REMOVE PAVEMENT
[Grid Box]	CLEARING AND GRUBBING
[Cross-hatched Box]	REMOVE ASPHALTIC SURFACE
[Diagonal Hatched Box]	REMOVE ASPHALTIC SURFACE MILLING
[Dashed Line]	REMOVE SMALL PIPE CULVERT
[XXXX]	SAWCUT
[Line with Triangle]	REMOVE PIPE UNDERDRAIN
[Line with Square]	REMOVE UNDERDRAIN OUTFALL
[Line with Circle]	REMOVE STORM SEWER
[Line with Triangle]	REMOVE FENCE
[Line with Square]	REMOVE INLET AND STRUCTURE
[Line with Circle]	REMOVE NOISEWALL
[Line with Square]	REMOVE GUARDRAIL
[Line with Triangle]	REMOVE DELINEATORS AND MARKERS
[Line with Circle]	REMOVE MANHOLE



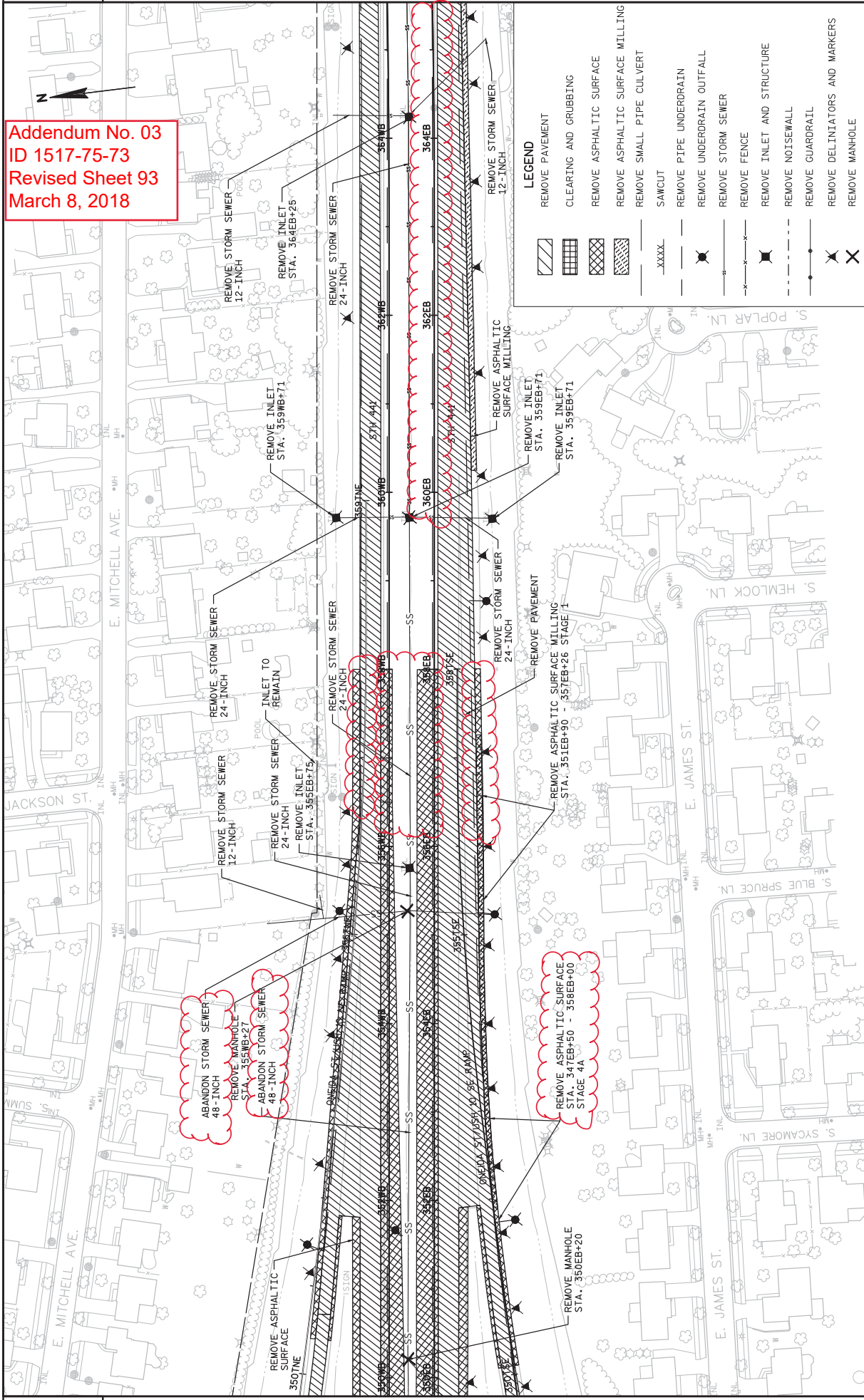
Addendum No. 03
ID 1517-75-73
Revised Sheet 92
March 8, 2018

PROJECT NO: 1517-75-73 **HWY: STH 441/USH 10** **COUNTY: WINNEBAGO** **REMOVAL PLAN** **SHEET 92**

FILE NAME : S:\NPS\G30\WIS441\15177574-79\SHEETS\PLAN\15177574\021100_RK1517-75-73NE-15177573-021101_RM.DWG PLOT BY : MARTENS, JOHN M PLOT NAME : PLOT SCALE : 1 IN=100 FT WSDOT/CADD SHEET 42

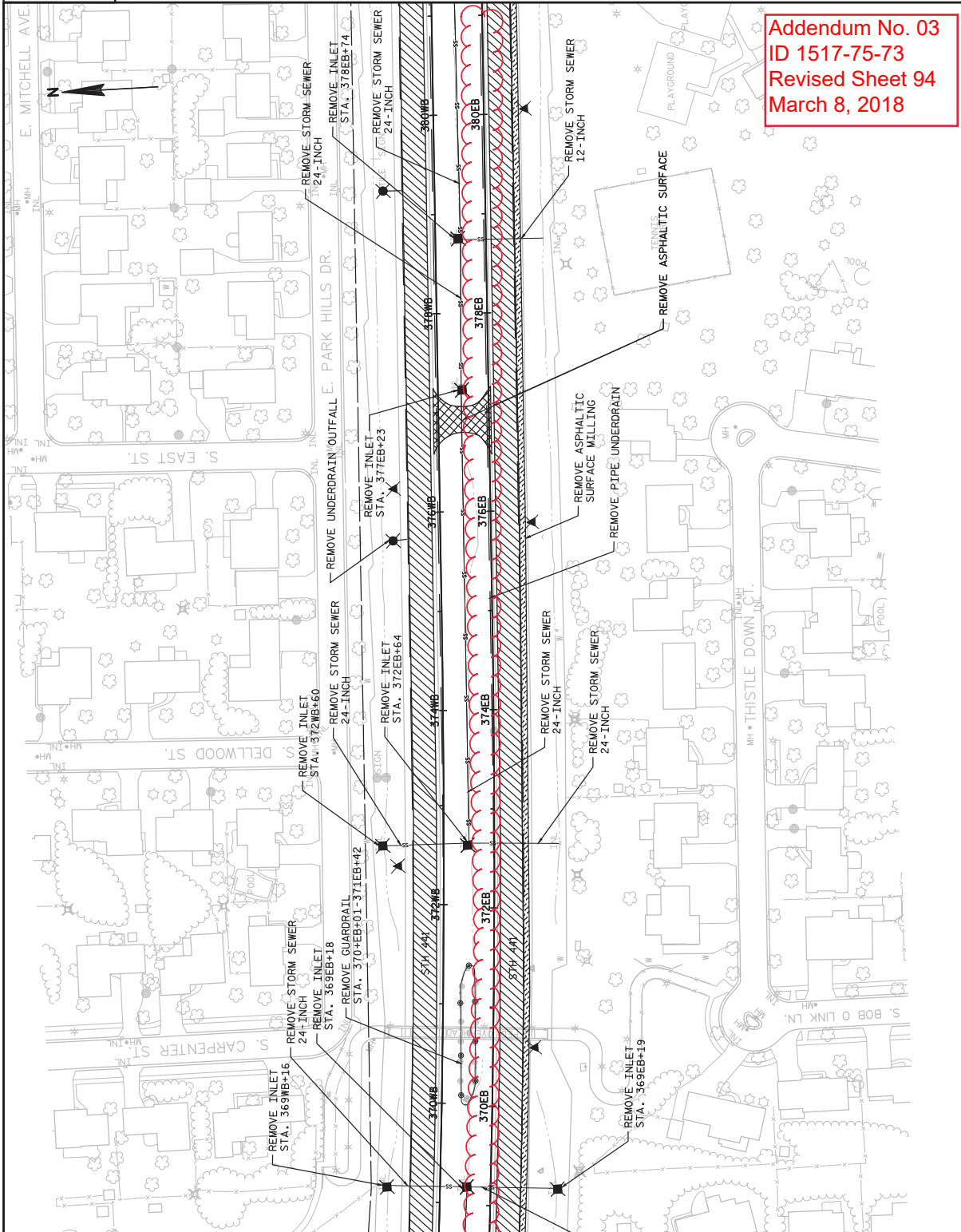
LAYOUT NAME : 021104-RM LAYOUT DATE : 3/7/2018 2:27 PM

Addendum No. 03
ID 1517-75-73
Revised Sheet 93
March 8, 2018



2

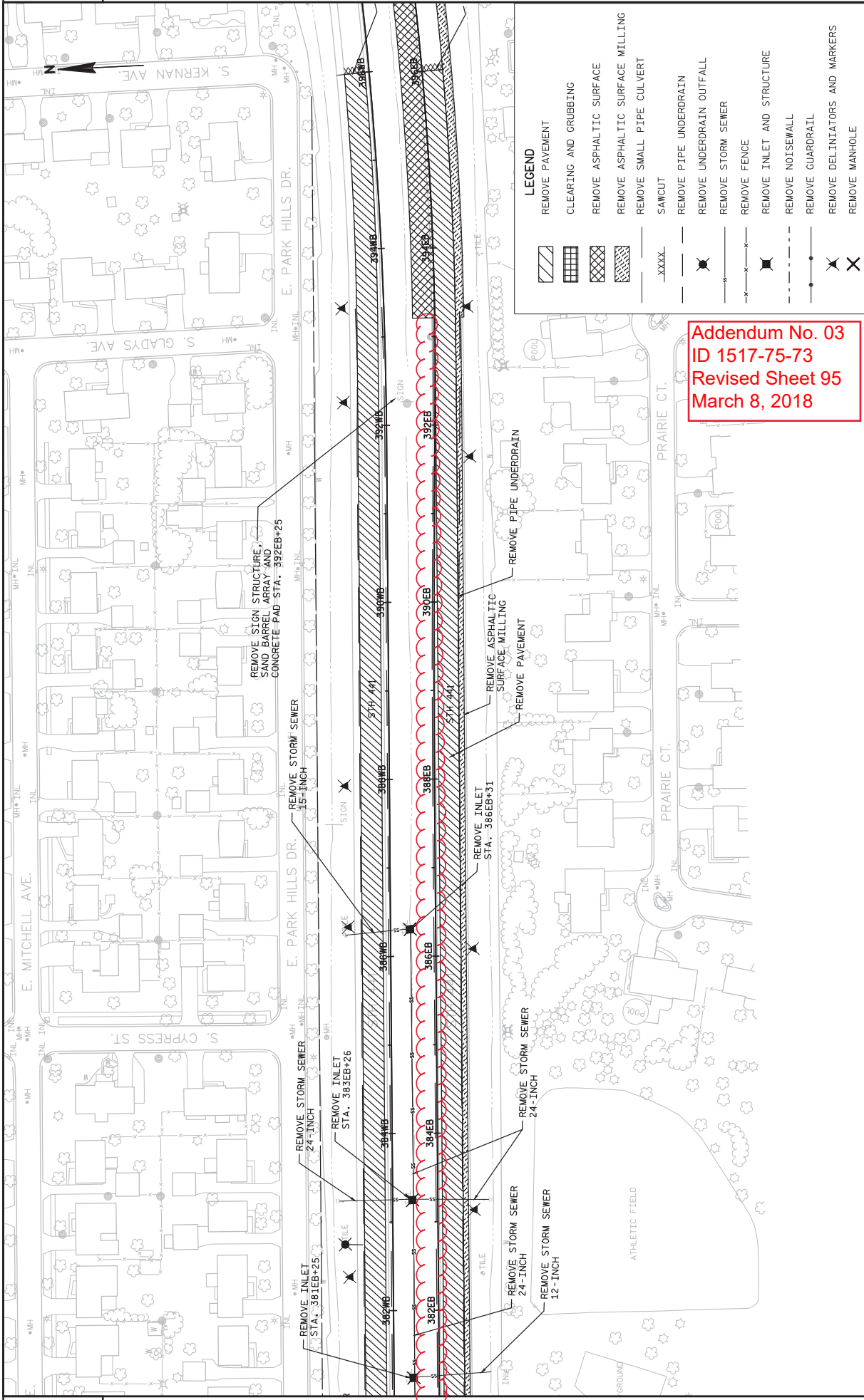
2



Addendum No. 03
 ID 1517-75-73
 Revised Sheet 94
 March 8, 2018

LEGEND	
	REMOVE PAVEMENT
	CLEARING AND GRUBBING
	REMOVE ASPHALTIC SURFACE
	REMOVE ASPHALTIC SURFACE MILLING
	REMOVE SMALL PIPE CULVERT
	SAWCUT
	REMOVE PIPE UNDERDRAIN
	REMOVE UNDERDRAIN OUTFALL
	REMOVE STORM SEWER
	REMOVE FENCE
	REMOVE INLET AND STRUCTURE
	REMOVE NOISEWALL
	REMOVE GUADRRAIL
	REMOVE DELINEATORS AND MARKERS
	REMOVE MANHOLE

PROJECT NO: 1517-75-73	COUNTY: WINNEBAGO	REMOVAL PLAN	SHEET 94
HWY: STH 441/USH 10	PLOT DATE : 3/7/2018 2:27 PM	PLOT BY : MARTENS, JOHN M	PLOT SCALE : 1 IN=100 FT
FILE NAME : S:\NPOS\CS0\WIS441\1517754-75\94SHEETSPLAN1517754-75-73\NE-15177573-021101-LM.DWG	LAYOUT NAME : 021106-RM		WSDOT/CADD SHEET 42



LEGEND

	REMOVE PAVEMENT
	CLEARING AND GRUBBING
	REMOVE ASPHALTIC SURFACE
	REMOVE ASPHALTIC SURFACE MILLING
	REMOVE SMALL PIPE CULVERT
	SANICUT
	REMOVE PIPE UNDERDRAIN
	REMOVE UNDERDRAIN OUTFALL
	REMOVE STORM SEWER
	REMOVE FENCE
	REMOVE INLET AND STRUCTURE
	REMOVE NOISEWALL
	REMOVE GUARDRAIL
	REMOVE DELIMITATORS AND MARKERS
	REMOVE MANHOLE

Addendum No. 03
ID 1517-75-73
Revised Sheet 95
March 8, 2018

204.0291.S
ABANDONING SEWER
CY

REMOVING STORM SEWER

204.0210 REMOVING MANHOLES EACH
 204.0220 REMOVING INLETS EACH
 204.0245.01 REMOVING STORM SEWER 12-15-I INCH LF
 204.0245.02 REMOVING STORM SEWER 18-21-I INCH LF
 204.0245.03 REMOVING STORM SEWER 24-30-I INCH LF
 204.0245.05 REMOVING STORM SEWER 48-54-I INCH LF

CATEGORY ROADWAY STATION TO STATION OFFSET EACH INLETS EACH LF LF LF LF REMARKS

STAGE	ROWWAY	STATION	TO	STATION	OFFSET	EACH	EACH	LF	LF	LF	LF	LF	REMARKS
STAGE 1		346EB+21	-	346EB+21	RT	-	1	-	-	-	-	-	
	ONEIDA ST/USH 10 SE RAMP	349TSE+22	-	349TSE+45	L/R	-	72	-	-	-	-	-	
	STAGE 1 SUBTOTAL					0	1	72	0	0	0	0	
STAGE 2		359EB+71	-	359EB+71	RT	-	1	-	-	-	8	-	
	STH 441 NB/USH 10 EB	364WB+25	-	364WB+25	LT	-	-	16	-	-	-	-	
	STH 441 SB/USH 10 WB	365EB+15	-	365EB+37	RT	-	-	16	-	-	-	-	
	STH 441 NB/USH 10 EB	369EB+18	-	369EB+19	RT	-	1	-	-	29	-	-	
	STH 441 NB/USH 10 EB	369WB+18	-	369WB+18	LT	-	1	-	-	8	-	-	
	STH 441 SB/USH 10 WB	372EB+64	-	372EB+64	RT	-	1	-	-	35	-	-	
	STH 441 NB/USH 10 EB	372WB+60	-	372WB+64	LT	-	1	-	-	21	-	-	
	STH 441 SB/USH 10 WB	378EB+74	-	378EB+75	RT	-	-	8	-	-	-	-	
	STH 441 NB/USH 10 EB	381EB+25	-	381EB+31	RT	-	-	8	-	-	-	-	
	STAGE 2 SUBTOTAL					0	5	48	0	101	0	0	
STAGE 3A		302WB+95	-	302WB+95	L/R	-	-	-	-	99	-	-	
	STH 441 SB/USH 10 WB	322WB+18	-	322WB+42	L/R	-	-	-	-	214	-	-	
	STH 441 SB/USH 10 WB	329WB+50	-	329WB+55	L/R	-	-	-	-	-	120	-	
	STH 441 SB/USH 10 WB	329WB+80	-	330WB+00	LT	1	-	60	-	32	-	-	
	STH 441 SB/USH 10 WB	332WB+25	-	339WB+00	RT	-	3	-	672	-	-	-	
	STH 441 SB/USH 10 WB	342WB+44	-	350WB+20	RT	-	3	-	779	-	-	-	
	STH 441 SB/USH 10 WB	355WB+27	-	355WB+27	L/R	1	-	-	-	85	-	-	
	STH 441 SB/USH 10 WB	359WB+71	-	359WB+71	L/R	-	1	-	-	69	-	-	
	STH 441 SB/USH 10 WB	364WB+25	-	364WB+25	L/R	-	-	-	-	-	-	-	
	STH 441 SB/USH 10 WB	369WB+16	-	369WB+18	L/R	-	-	-	-	71	-	-	
	STH 441 SB/USH 10 WB	372WB+60	-	372WB+64	L/R	-	-	-	-	65	-	-	
	STH 441 SB/USH 10 WB	383WB+26	-	383WB+26	L/R	-	-	-	-	83	-	-	
	STH 441 SB/USH 10 WB	386WB+31	-	386WB+31	L/R	-	-	72	-	-	-	-	
	STH 441 NB/USH 10 EB	350EB+20	-	355EB+27	LT	2	-	-	-	-	-	597	
	STH 441 NB/USH 10 EB	355EB+27	-	355EB+75	LT	-	1	-	-	49	-	-	
	STH 441 NB/USH 10 EB	355EB+75	-	359EB+71	LT	-	1	-	-	396	-	-	
	STH 441 NB/USH 10 EB	359EB+71	-	364EB+25	LT	-	1	-	-	463	-	-	
	STH 441 NB/USH 10 EB	364EB+25	-	369EB+18	LT	-	1	-	-	491	-	-	
	STH 441 NB/USH 10 EB	372EB+64	-	377EB+23	LT	-	2	-	-	459	-	-	
	STH 441 NB/USH 10 EB	377EB+23	-	378EB+74	LT	-	1	-	-	150	-	-	
	STH 441 NB/USH 10 EB	378EB+74	-	381EB+25	LT	-	1	-	-	260	-	-	
	STH 441 NB/USH 10 EB	381EB+25	-	383EB+26	LT	-	1	-	-	202	-	-	
	STH 441 NB/USH 10 EB	383EB+26	-	386EB+31	LT	-	1	-	-	305	-	-	
	STAGE 3A SUBTOTAL					4	17	201	1451	3404	-789	120	310

75

235

Addendum No. 03
ID 1517-75-73
Revised Sheet 824
March 8, 2018

3

3

REMOVING STORM SEWER (CONTINUED)

204.0291.S
ABANDONING SEWER
CY

STAGE	ROADWAY	STATION TO	STATION	OFFSET	204.0210 REMOVING MANHOLES EACH	204.0220 REMOVING INLETS EACH	204.0245.01 REMOVING STORM SEWER 12-15-INCH LF	204.0245.02 REMOVING STORM SEWER 18-21-INCH LF	204.0245.03 REMOVING STORM SEWER 24-30-INCH LF	204.0245.05 REMOVING STORM SEWER 48-54-INCH LF	REMARKS	
1000												
STAGE 4A												
	STH 441 SB/USH 10 WB	222WB-19	- 226WB-58	LT	1	-	-	432	-	-		
	STH 441 SB/USH 10 WB	226WB-58	- 229WB+34	LT	1	-	-	298	-	-		
	STH 441 SB/USH 10 WB	222WB-72	- 222WB+72	LT	-	1	-	-	-	-		
	STH 441 SB/USH 10 WB	225WB+62	- 226WB+55	LT	1	2	91	-	-	-		
	STH 441 SB/USH 10 WB	226WB+55	- 227WB+20	LT	-	-	78	-	-	-		
	STH 441 NB/USH 10 EB	296EB+26	- 296EB+26	L/R	-	1	-	76	-	-		
	STH 441 NB/USH 10 EB	302EB+95	- 302EB+95	L/R	1	-	-	106	-	-		
	STH 441 NB/USH 10 EB	322EB+18	- 322EB+42	L/R	1	-	16	320	-	-		
	STH 441 NB/USH 10 EB	329EB+50	- 329EB+55	L/R	1	-	-	-	185	-		
	STH 441 NB/USH 10 EB	329EB+25	- 329EB+80	RT	-	-	55	-	-	-		
	STH 441 NB/USH 10 EB	332EB+25	- 332EB+25	L/R	-	-	138	-	-	-		
	STH 441 NB/USH 10 EB	340EB+62	- 340EB+62	L/R	-	1	-	-	-	-		
	STH 441 NB/USH 10 EB	343EB-72	- 346EB+21	RT	1	-	-	-	247	-	115	
	STH 441 NB/USH 10 EB	346EB+21	- 346EB+21	RT	1	-	-	17	-	-		
	STH 441 NB/USH 10 EB	346EB-21	- 350EB+20	L/R	1	-	-	-	435	-	202	
	STH 441 NB/USH 10 EB	359EB-71	- 359EB+71	L/R	-	-	-	85	-	-		
	STH 441 NB/USH 10 EB	364EB+25	- 365EB+37	L/R	-	-	108	-	-	-		
	STH 441 NB/USH 10 EB	369EB+18	- 369EB+19	L/R	-	-	-	62	-	-		
	STH 441 NB/USH 10 EB	369EB+58	- 371EB+97	LT	-	2	241	-	-	-	TEMPORARY FROM STAGE 1	
	STH 441 NB/USH 10 EB	372EB-64	- 372EB+64	L/R	-	-	-	56	-	-		
	STH 441 NB/USH 10 EB	378EB-74	- 378EB+75	L/R	-	-	75	-	-	-		
	STH 441 NB/USH 10 EB	381EB-25	- 381EB+31	L/R	-	-	78	-	-	-		
	STH 441 NB/USH 10 EB	383EB+26	- 383EB+26	L/R	-	-	-	85	-	-		
	STH 441 NB/USH 10 EB	401EB-90	- 403EB+30	LT	-	-	132	-	-	-	TEMPORARY SLOTTED DRAIN	
	STAGE 4A SUBTOTAL				8	8	593	566	1461	667	185	317
	STAGE 5											
	STH 441 NB/USH 10 EB	212EB+01	- 216EB+19	LT	-	-	-	418	-	-	TEMPORARY SLOTTED DRAIN	
	STH 441 NB/USH 10 EB	281EB+50	- 287EB+50	LT	-	-	600	-	-	-	TEMPORARY SLOTTED DRAIN	
	STH 441 NB/USH 10 EB	400EB+00	- 403EB+20	LT	-	-	338	-	-	-	TEMPORARY SLOTTED DRAIN	
	STAGE 5 SUBTOTAL				0	0	600	756	0	0		
	PROJECT 1517-75-73 TOTAL				12	31	1514	2773	4966	1466	305	627

Addendum No. 03
ID 1517-75-73
Revised Sheet 825
March 8, 2018

Addendum No. 03
ID 1517-75-73
Revised Sheet 826
March 8, 2018

REMOVING PAVEMENT

CATEGORY	ROADWAY	STATION TO	STATION	OFFSET	204.0100		204.0120		REMARKS
					REMOVING PAVEMENT	ASPHALTIC SURFACE	REMOVING ASPHALTIC SURFACE	ASPHALTIC SURFACE MILLING	
1000									
STAGE 1									
	STH 441 NB/USH TO EB	294EB+26	303EB+24	RT	-	-	-	599	OUTSIDE SHOULDER
	STH 441 NB/USH TO EB	299EB+36	324EB+43	RT	-	-	-	826	INSIDE SHOULDER
	STH 441 NB/USH TO EB	306EB+68	327EB+80	RT	-	-	-	1,408	OUTSIDE SHOULDER
	STH 441 NB/USH TO EB	328EB+68	331EB+68	RT	-	-	-	493	INSIDE SHOULDER
	STH 441 NB/USH TO EB	351EB+90	357EB+26	RT	-	-	-	320	OUTSIDE SHOULDER
	STH 441 NB/USH TO EB	366EB+84	393EB+24	RT	-	-	-	4,342	INSIDE SHOULDER
	STH 441 NB/USH TO EB	361EB+24	402EBE+32	RT	-	-	-	3,688	OUTSIDE SHOULDER
	STAGE 1 SUBTOTAL				0	0	0	8,386 6,015	
STAGE 3A									
	STH 441 SB/USH TO WB	289WB+97	299WB+51	LT	2,754	-	-	-	INSIDE SHOULDER, GREATER THAN 2' FILL
	STH 441 SB/USH TO WB	293WB+50	298WB+00	L/R	-	1,523	-	-	OUTSIDE SHOULDER, GREATER THAN 2' FILL
	STH 441 SB/USH TO WB	293WB+50	297WB+00	LT	-	356	-	-	
	STH 441 SB/USH TO WB	299WB+51	304WB+54	LT	1,449	-	-	-	
	STH 441 SB/USH TO WB	304WB+54	332WB+00	LT	9,641	-	-	-	
	STH 441 SB/USH TO WB	329WB+85	330WB+13	LT	494	-	-	-	CONCRETE CHANNEL
	STH 441 SB/USH TO WB	330WB+00	336WB+50	L/R	-	1,737	-	-	INSIDE SHOULDER, GREATER THAN 2' FILL
	ONEIDA ST/USH TO NW RAMP	332TNI+00	338TNI+00	L/R	975	-	-	-	
	STH 441 SB/USH TO WB	332WB+00	340WB+64	LT	2,645	-	-	-	
	STH 441 SB/USH TO WB	330WB+00	336WB+50	LT	-	394	-	-	OUTSIDE SHOULDER, GREATER THAN 2' FILL
	STH 441 SB/USH TO WB	342WB+33	351WB+81	LT	3,051	-	-	-	
	ONEIDA ST/USH TO NE RAMP	346TNE+00	351TNE+82	L/R	1,025	-	-	-	
	STH 441 SB/USH TO WB	347WB+50	358WB+00	LT	-	512	-	-	OUTSIDE SHOULDER, GREATER THAN 2' FILL
	STH 441 SB/USH TO WB	347WB+50	358WB+00	RT	-	2,431	-	-	INSIDE SHOULDER, GREATER THAN 2' FILL
	ONEIDA ST/USH TO NE RAMP	350TNE+41	356TNE+49	L/R	-	377	-	-	OUTSIDE SHOULDER, GREATER THAN 2' FILL
	ONEIDA ST/USH TO NE RAMP	350TNE+41	351TNE+83	RT	-	54	-	-	INSIDE SHOULDER, GREATER THAN 2' FILL
	STH 441 SB/USH TO WB	351WB+81	396WB+00	LT	12,540	-	-	-	
	STAGE 3A SUBTOTAL				34,574	7,384	0		
STAGE 3C									
	TEMPORARY APPLETON RD NE RAMP	5TAME+53	5TAME+83	LT	-	-	-	802	TEMPORARY APPLETON RD NE RAMP
	STH 441 SB/USH TO WB	301EB+62	306EB+27	LT	-	-	-	503	TEMPORARY APPLETON RD NE RAMP
	ONEIDA ST/USH TO SW RAMP	327TSW+93	330TSW+93	RT	-	-	-	425	TEMPORARY ASPHALT REMOVAL
	STAGE 3C SUBTOTAL				0	1,730	0		
STAGE 3D									
	STH 441 NB/USH TO EB	393EB+26	408EB+50	LT	-	-	-	4,041	TEMPORARY ASPHALT CROSSOVER
	STAGE 3D SUBTOTAL				0	4,041	0		

Addendum No. 03
ID 1517-75-73
Revised Sheet 827
March 8, 2018

REMOVING PAVEMENT (CONTINUED)

CATEGORY	ROADWAY	STATION	TO	STATION	OFFSET	REMOVING PAVEMENT		REMARKS	
						SY	SY		
1000	STAGE 4A								
		STH 441 NB/USH TO EB	267NB+50	-	282NB+50	LT	5,560	-	
		STH 441 NB/USH TO EB	285EB+98	-	300EB+90	RT	3,104	-	
		STH 441 NB/USH TO EB	294EB+50	-	298EB-00	L/R	-	958	INSIDE SHOULDER, GREATER THAN 2' FILL
		STH 441 NB/USH TO EB	296EB+00	-	297EB-00	LT	-	81	OUTSIDE SHOULDER, GREATER THAN 2' FILL
		ONEIDA ST/USH TO SE RAMP	347TSE+00	-	351TSE+50	L/R	-	716	TEMPORARY ASPHALT REMOVAL
		APPLETON RD SE RAMP	1299ASE+50	-	1300ASE+91	L/R	287	-	
		STH 441 NB/USH TO EB	300EB+90	-	331EB+58	RT	10,886	-	
		ONEIDA ST/USH TO SW RAMP	331TSM+59	-	334TSM+00	L/R	384	-	
		STH 441 NB/USH TO EB	331EB+00	-	336EB+00	L/R	-	1,367	INSIDE SHOULDER, GREATER THAN 2' FILL
		STH 441 NB/USH TO EB	331EB+58	-	340EB+68	RT	2,933	-	
		STH 441 NB/USH TO EB	334EB+00	-	335EB+00	LT	-	111	OUTSIDE SHOULDER, GREATER THAN 2' FILL
		STH 441 NB/USH TO EB	342EB+35	-	351EB+92	RT	2,866	-	
		STH 441 NB/USH TO EB	347EB+50	-	358EB+00	LT	-	2,841	INSIDE SHOULDER, GREATER THAN 2' FILL
		STH 441 NB/USH TO EB	347EB+50	-	358EB+00	RT	-	996	OUTSIDE SHOULDER, GREATER THAN 2' FILL
	ONEIDA ST/USH TO SE RAMP	347TSE+00	-	351TSE+94	L/R	800	-		
	ONEIDA ST/USH TO SE RAMP	350TSE+10	-	351TSE+95	LT	-	82	INSIDE SHOULDER, GREATER THAN 2' FILL	
	ONEIDA ST/USH TO SE RAMP	350TSE+10	-	356TSE+51	RT	-	377	OUTSIDE SHOULDER, GREATER THAN 2' FILL	
	STH 441 NB/USH TO EB	351EB+92	-	396EB+00	RT	14,119	-		
	STAGE 4A SUBTOTAL					40,939	7,529	0	
	STAGE 4B								
	STH 441 SB/USH TO WB	279WB+50	-	288WB+17	RT	-	2,989	TEMPORARY ASPHALT CROSSOVER	
	TEMPORARY APPLETON RD SE RAMP	0TEMPSE+00	-	15TEMPSE+14	RT	2,071	-	TEMPORARY RAMP	
	TEMPORARY ONEIDA ST/USH TO SW RAMP	0TEMPSTW+00	-	10TEMPSTW+54	RT	1,800	-	TEMPORARY RAMP	
	STAGE 4B SUBTOTAL					3,871	2,989	0	
	PROJECT 1517-75-73 TOTAL					79,384	23,673	8-386 6,015	

REMOVING SAND BARREL ARRAY AND CONCRETE PAD AT SIGN STRUCTURE SUPPORT

CATEGORY	ROADWAY	STATION	TO	STATION	OFFSET	REMARKS	
						EACH	REMARKS
1000							
	STAGE 1						
	STH 441 NB/USH TO EB	313EB+75	-	313EB+75	LT	2	
	STH 441 NB/USH TO EB	392EB+25	-	392EB+25	LT	2	
	STAGE 1 SUBTOTAL					4	
	PROJECT 1517-75-73 TOTAL					4	

EARTHWORK QUANTITIES

Category	Division	From/To Station	Location	Common Excavation (Item # 205.0100)		Salvaged/Unusable Pavement Material (CY) (4)	Available Material (CY) (5)	Fill (CY)	Roadway Embankment (CY) (6)	Mass Ordinate +/- (7)
				Cut (CY) (2)	EBS (CY) (3)					
1000	Stage 1	295EB+75 to 408EB+51	MEDIAN	6,614	0	0	6,614	0	0	6,614
	Stage 1 Subtotal			6,614	0	0	6,614	0	0	6,614
	Stage 3	289WB+25 to 396WB+00	WB MAINLINE (SEE NOTE 8)	49,613	0	11,540	38,073	18,892.0	18,892.0	19,181
		300WB+00 to 326WB+70	MEDIAN	0	7,766	0	0	0	0	0
		305WB+60 to 338WB+00	OUTSIDE SHOULDER	0	1,614	0	0	0	0	0
		360WB+30 to 396WB+00	MEDIAN	0	10,921	0	0	0	0	0
		1300ANE+00 to 1309ANE+50	APPLETON RD NE RAMP	7,014	0	0	7,014	324	324	6,690
		325TNW+27 to 338TNW+00	USH 10/ONEIDA ST NW RAMP	6,085	0	0	6,085	9,090	9,090	-2,995
		345TNE+00 to 359TNE+50	USH 10/ONEIDA ST NE RAMP	5,901	0	0	5,901	4,222	4,222	1,679
		321WB+00 to 330WB+50	POND 5	108,100	0	0	108,100	2,900	2,900	105,200
Stage 3 Subtotal	0TEMPANE+00 to 5TEMPANE+50	TEMPORARY APPLETON RD NE RAMP	376	0	0	376	0	0	376	
			177,689	20,301	11,540	165,569	35,428	35,428	130,131	
Stage 4	287WB+50 to 396WB+00	EB MAINLINE	53,709	0	0	53,709	22,842	22,842	30,867	
	300WB+00 to 306WB+00	MEDIAN	0	3,401	0	0	0	0	0	
	307WB+50 to 319WB+00	MEDIAN	0	901	0	0	0	0	0	
	362WB+50 to 396WB+00	MEDIAN	0	8,773	0	0	0	0	0	
	307WB+90 to 337WB+00	OUTSIDE SHOULDER	0	1,242	0	0	0	0	0	
	228MSE+30 to 239MSE+25	MIDWAY RD SE RAMP	4,023	0	0	4,023	4,056	4,056	-33	
	224MSW+48 to 240MSW+00	MIDWAY RD SW RAMP	31,865	0	0	31,865	3,505	3,505	28,360	
	242MNV+00 to 245MNV+50	MIDWAY RD NW RAMP	2,671	0	0	2,671	585	585	2,086	
	1275ANN+28 to 1282ANN+50	APPLETON RD NW RAMP	1,858	0	0	1,858	690	690	1,168	
	1299ANE+50 to 1305ANE+50	APPLETON RD SE RAMP	2,901	0	0	2,901	81	81	2,820	
	347TSE+00 to 358TSE+00	USH 10/ONEIDA ST SE RAMP	2,156	0	0	2,156	6,025	6,025	-3,869	
	322TSW+77 to 334TSW+00	USH 10/ONEIDA ST SW RAMP	6,056	0	0	6,056	2,334	2,334	3,722	
	241MNV+50 to 255MNV+50	POND 4	79,378	0	0	79,378	0	0	79,378	
	0TEMPANE+00 to 6TEMPANE+64	TEMPORARY APPLETON RD SE RAMP	132	0	0	132	705	705	-573	
	5TEMPANE+91 to 9TEMPANE+02	TEMPORARY USH 10/ONEIDA ST SW RAMP	221	0	0	221	0	0	221	
Stage 4 Subtotal			184,970	14,317	0	184,970	40,823	40,823	144,147	
PROJECT 1517-75-73 Totals		408+00 to 426+25	1,508	0	0	1,508	30,618	30,618	-29,110	
		WIS 441 & CTH OO FILL SITE	370,191	34,618	0	350,529	106,869	106,869	251,762	
		Total Common Exc	404,809							

- Common Excavation is the sum of the Cut and EBS Excavation columns. Item number 205.0100
- Salvaged/Unusable Pavement Material is included in Cut.
- EBS Excavation to be backfilled with Breaker Run.
- Salvaged/Unusable Pavement Material is the material classified as top soil located in the median of STH 441/USH 10 between Appleton Rd. and East End of Project Limits. Average depth of top soil was determined to be 0.75'.
- Available Material = Cut - Salvaged/Unusable Pavement Material
- Roadway Embankment = (Fill+EBS Excavation)
- The Mass Ordinate is calculated by division. A positive quantity indicates an excess of material within the Division and a negative quantity indicates a shortage of material within the Division. Mass Ordinate = Cut-Fill. The Mass Ordinate is for information purposes only as Common Excavation and Roadway Embankment are not balanced for quantity purposes and does not guarantee the quality of Common Excavation, and if it can be reused onsite.
- Temporary MSE Wall Backfill Quantity of 1278 CY was removed from Fill/Roadway Embankment Quantity in Stage 3 Mainline
- Removing Asphaltic Surface is incidental to Common Excavation where cuts are called for in the Earthwork quantity tables

Addendum No. 03
 ID 1517-75-73
 Revised Sheet 829
 March 8, 2018



Proposal Schedule of Items

Proposal ID: 20180313029 Project(s): 1517-75-73, 1517-75-79

Federal ID(s): WISC 2018157, WISC 2018158

SECTION: 0001

Contract Items

Alt Set ID:

Alt Mbr ID:

Proposal Line Number	Item ID Description	Approximate Quantity and Units	Unit Price	Bid Amount
0002	201.0105 Clearing	156.000 STA	_____.	_____.
0004	201.0205 Grubbing	156.000 STA	_____.	_____.
0006	203.0100 Removing Small Pipe Culverts	13.000 EACH	_____.	_____.
0008	204.0100 Removing Pavement	103,182.000 SY	_____.	_____.
0010	204.0110 Removing Asphaltic Surface	27,119.000 SY	_____.	_____.
0012	204.0120 Removing Asphaltic Surface Milling	6,015.000 SY	_____.	_____.
0014	204.0150 Removing Curb & Gutter	440.000 LF	_____.	_____.
0016	204.0155 Removing Concrete Sidewalk	1,326.000 SY	_____.	_____.
0018	204.0165 Removing Guardrail	1,295.000 LF	_____.	_____.
0020	204.0170 Removing Fence	9,960.000 LF	_____.	_____.
0022	204.0175 Removing Concrete Slope Paving	636.000 SY	_____.	_____.
0024	204.0180 Removing Delineators and Markers	124.000 EACH	_____.	_____.
0026	204.0190 Removing Surface Drains	1.000 EACH	_____.	_____.
0028	204.0195 Removing Concrete Bases	6.000 EACH	_____.	_____.
0030	204.0210 Removing Manholes	30.000 EACH	_____.	_____.
0032	204.0220 Removing Inlets	62.000 EACH	_____.	_____.



Proposal Schedule of Items

Proposal ID: 20180313029 Project(s): 1517-75-73, 1517-75-79

Federal ID(s): WISC 2018157, WISC 2018158

SECTION: 0001

Contract Items

Alt Set ID:

Alt Mbr ID:

Proposal Line Number	Item ID Description	Approximate Quantity and Units	Unit Price	Bid Amount
0034	204.0245 Removing Storm Sewer (size) 01. 12-15-Inch	2,477.000 LF	_____.	_____.
0036	204.0245 Removing Storm Sewer (size) 02. 18-21-Inch	3,097.000 LF	_____.	_____.
0038	204.0245 Removing Storm Sewer (size) 03. 24-30-Inch	7,022.000 LF	_____.	_____.
0040	204.0245 Removing Storm Sewer (size) 04. 36-42-Inch	560.000 LF	_____.	_____.
0042	204.0245 Removing Storm Sewer (size) 05. 48-54-Inch	981.000 LF	_____.	_____.
0044	204.0280 Sealing Pipes	1.000 EACH	_____.	_____.
0046	204.9090.S Removing (item description) 01. Noise Barrier	3,676.000 LF	_____.	_____.
0048	204.9090.S Removing (item description) 02. Underdrain	38,639.000 LF	_____.	_____.
0050	205.0100 Excavation Common	449,877.000 CY	_____.	_____.
0052	209.1100 Backfill Granular Grade 1	20.000 CY	_____.	_____.
0054	209.2100 Backfill Granular Grade 2	580.000 CY	_____.	_____.
0056	210.1100 Backfill Structure Type A	227.000 CY	_____.	_____.
0058	213.0100 Finishing Roadway (project) 01. 1517-75-73	1.000 EACH	_____.	_____.
0060	213.0100 Finishing Roadway (project) 02. 1517-75-79	1.000 EACH	_____.	_____.



Proposal Schedule of Items

Proposal ID: 20180313029 Project(s): 1517-75-73, 1517-75-79

Federal ID(s): WISC 2018157, WISC 2018158

SECTION: 0001

Contract Items

Alt Set ID:

Alt Mbr ID:

Proposal Line Number	Item ID Description	Approximate Quantity and Units	Unit Price	Bid Amount
0958	SPV.0180 Special 006. Colored & Stamped Concrete 5-Inch, Color 16293	4,377.000 SY	_____.	_____.
0960	SPV.0180 Special 007. Colored Concrete 5-Inch	627.000 SY	_____.	_____.
0962	SPV.0180 Special 008. Colored Concrete 10-Inch	151.000 SY	_____.	_____.
0964	SPV.0195 Special 001. Cold Patch	20.000 TON	_____.	_____.
0966	305.0500 Shaping Shoulders	72.000 STA	_____.	_____.
0968	638.2101 Moving Signs Type I	1.000 EACH	_____.	_____.
0970	638.4100 Moving Structural Steel Sign Supports	2.000 EACH	_____.	_____.
0972	204.0291.S Abandoning Sewer	627.000 CY	_____.	_____.
Section: 0001			Total:	_____.
			Total Bid:	_____.

