



# Wisconsin Department of Transportation

June 27, 2018

## Division of Transportation Systems Development

Bureau of Project Development  
4822 Madison Yards Way, 4<sup>th</sup> Floor South  
Madison, WI 53705

Telephone: (608) 266-1631  
Facsimile (FAX): (608) 266-8459

### NOTICE TO ALL CONTRACTORS:

**Proposal #03: 1706-02-72, WISC 2018 301  
Monroe – Brodhead  
STH 81 to Hiltbrand Road EB & WB  
STH 11  
Green County**

### Letting of Letting Date July 10, 2018

This is Addendum No. 01, which provides for the following:

#### Plan Sheets:

Revised Plan Sheets	
Plan Sheet	Plan Sheet Title (brief description of changes to sheet)
303	Plan/Profile Sheet, Inlet, Sta 171++77BW-34' LT (18" IE included and revised rim elevation)

#### Plan Sheets

The following 8½ x 11-inch sheets are attached and made part of the plans for this proposal:  
Revised: 303

The responsibility for notifying potential subcontractors and suppliers of these changes remains with the prime contractor.

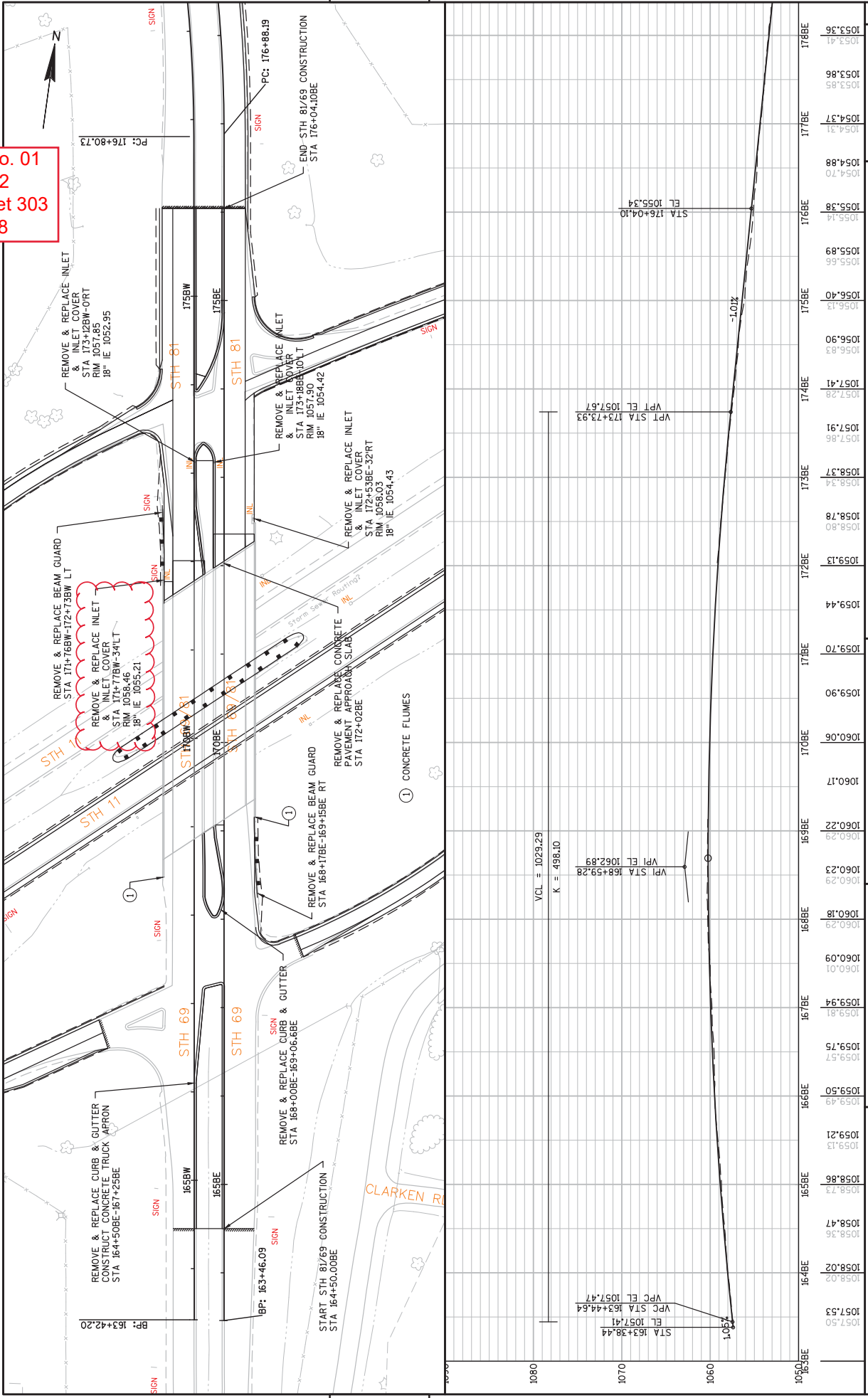
Sincerely,

*Mike Coleman*

Proposal Development Specialist  
Proposal Management Section

END OF ADDENDUM

Addendum No. 01  
 ID 1706-02-72  
 Revised Sheet 303  
 June 27, 2018



PROJECT NO: 1706-02-02	HWY: STH 11	COUNTY: GREEN	PLAN AND PROFILE: STH 81 BE	SHEET 303	E
FILE NAME : N:\POS\303\17060202\SHEETS\PLAN\050201_PP_STH81-59.DWG					
LAYOUT NAME - 050201_PP_STH81-59 - STH81E					
PLOT DATE : 6/22/2018 12:15 PM					
PLOT BY : OLSON, RICHARD J					
PLOT SCALE : 1 IN=100 FT					
1057.50	1057.53	1057.53	1057.53	1057.53	1057.53
1058.02	1058.02	1058.02	1058.02	1058.02	1058.02
1058.73	1058.73	1058.73	1058.73	1058.73	1058.73
1058.86	1058.86	1058.86	1058.86	1058.86	1058.86
1059.21	1059.21	1059.21	1059.21	1059.21	1059.21
1059.49	1059.49	1059.49	1059.49	1059.49	1059.49
1059.90	1059.90	1059.90	1059.90	1059.90	1059.90
1059.75	1059.75	1059.75	1059.75	1059.75	1059.75
1059.81	1059.81	1059.81	1059.81	1059.81	1059.81
1059.94	1059.94	1059.94	1059.94	1059.94	1059.94
1060.01	1060.01	1060.01	1060.01	1060.01	1060.01
1060.29	1060.29	1060.29	1060.29	1060.29	1060.29
1060.18	1060.18	1060.18	1060.18	1060.18	1060.18
1060.29	1060.29	1060.29	1060.29	1060.29	1060.29
1060.23	1060.23	1060.23	1060.23	1060.23	1060.23
1060.29	1060.29	1060.29	1060.29	1060.29	1060.29
1060.22	1060.22	1060.22	1060.22	1060.22	1060.22
1060.17	1060.17	1060.17	1060.17	1060.17	1060.17
1060.06	1060.06	1060.06	1060.06	1060.06	1060.06
1059.90	1059.90	1059.90	1059.90	1059.90	1059.90
1059.70	1059.70	1059.70	1059.70	1059.70	1059.70
1059.44	1059.44	1059.44	1059.44	1059.44	1059.44
1059.13	1059.13	1059.13	1059.13	1059.13	1059.13
1058.78	1058.78	1058.78	1058.78	1058.78	1058.78
1058.37	1058.37	1058.37	1058.37	1058.37	1058.37
1057.86	1057.86	1057.86	1057.86	1057.86	1057.86
1057.91	1057.91	1057.91	1057.91	1057.91	1057.91
1057.28	1057.28	1057.28	1057.28	1057.28	1057.28
1057.41	1057.41	1057.41	1057.41	1057.41	1057.41
1056.83	1056.83	1056.83	1056.83	1056.83	1056.83
1056.90	1056.90	1056.90	1056.90	1056.90	1056.90
1056.13	1056.13	1056.13	1056.13	1056.13	1056.13
1056.40	1056.40	1056.40	1056.40	1056.40	1056.40
1055.66	1055.66	1055.66	1055.66	1055.66	1055.66
1055.89	1055.89	1055.89	1055.89	1055.89	1055.89
1055.14	1055.14	1055.14	1055.14	1055.14	1055.14
1055.38	1055.38	1055.38	1055.38	1055.38	1055.38
1054.70	1054.70	1054.70	1054.70	1054.70	1054.70
1054.88	1054.88	1054.88	1054.88	1054.88	1054.88
1054.37	1054.37	1054.37	1054.37	1054.37	1054.37
1053.85	1053.85	1053.85	1053.85	1053.85	1053.85
1053.86	1053.86	1053.86	1053.86	1053.86	1053.86
1053.36	1053.36	1053.36	1053.36	1053.36	1053.36

5

5