



# Wisconsin Department of Transportation

## Division of Transportation Systems Development

Bureau of Project Development  
4822 Madison Yards Way, 4<sup>th</sup> Floor South  
Madison, WI 53705

November 8, 2018

Telephone: (608) 266-1631  
Facsimile (FAX): (608) 266-8459

### NOTICE TO ALL CONTRACTORS:

**Proposal #05: 1206-08-77, WISC 2018 438**  
**Mount Horeb - Madison**  
**CTH PD to Raymond RD/STG 2/Phase 3**  
**USH 18**  
**Dane County**

### Letting of November 13, 2018

This is Addendum No. 02, which provides for the following:

#### Special Provisions:

Revised Special Provisions	
Article No.	Description
45	Pre-Boring.

#### Plan Sheets:

Revised Plan Sheets	
Plan Sheet	Plan Sheet Title (brief description of changes to sheet)
889	Structure B-13-831 (Revised note for pre-bored hole diameter from 30-inches to 34-inches)
893	Structure B-13-831 (Revised note for pre-bored hole diameter from 30-inches to 34-inches)
895	Structure B-13-831 (Revised note for pre-bored hole diameter from 30-inches to 34-inches)
936	Structure B-13-832 (Revised note for pre-bored hole diameter from 30-inches to 34-inches)
940	Structure B-13-832 (Revised note for pre-bored hole diameter from 30-inches to 34-inches)
942	Structure B-13-832 (Revised note for pre-bored hole diameter from 30-inches to 34-inches)

The responsibility for notifying potential subcontractors and suppliers of these changes remains with the prime contractor.

Sincerely,

*Mike Coleman*

Proposal Development Specialist  
Proposal Management Section

**ADDENDUM NO. 02**

**1206-08-77**

**November 8, 2018**

**Special Provisions**

**45. Pre-boring.**

*Replace paragraph four with the following:*

Pre-bore holes 34-inches in diameter.

**Plan Sheets**

The following 8½ x 11-inch sheets are attached and made part of the plans for this proposal:

Revised: 889, 893, 895, 936, 940, and 942.

END OF ADDENDUM

Addendum No. 02  
ID 1206-08-77  
Revised Sheet 889  
November 8, 2018

STATE PROJECT NUMBER	1206-08-77
----------------------	------------

**LEGEND**

⊗ INDICATES WING/CORNER NUMBER

NOTES FOR LIST OF DRAININGS, DESIGN DATA, TRAFFIC DATA, FOUNDATION DATA AND GENERAL NOTES: SEE SHEET 2.

**TABLE OF INTERSECTION POINTS**

A	STA. 89+27.34 EB = STA. 102+79.91 D
B	STA. 902+99.38 VR = STA. 103+57.17 A
C	STA. 89+97.80 EB = STA. 103+58.57 A
D	STA. 803+01.22 VR = STA. 100+00.00 EB
E	STA. 103+01.00 A = STA. 103+32.04 D
F	STA. 803+33.66 VR = STA. 103+67.91 D
G	STA. 104+53.20 A = STA. 102+30.98 B
H	STA. 803+75.44 VR = STA. 103+28.98 B
I	STA. 103+67.98 B = STA. 2+95.54 C
J	STA. 804+07.30 VR = STA. 100+00.00 WB
K	STA. 100+03.71 WB = 9+25.41 C
L	STA. 804+09.91 VR = 9+26.36 C
M	STA. 100+58.02 WB = 104+03.70 B

REV	DATE	REVISION	BY
1/18		PRE-BIDRE DIAMETER	TAK



STATE OF WISCONSIN  
DEPARTMENT OF TRANSPORTATION

ACCEPTED CHIEF STRUCTURES DESIGN ENGINEER DATE

STRUCTURE B-13-831

CONTRACT NO. 18/181/VERONA RD OVER CTH PD IMCKEE RD  
COUNTY VERONA  
DATE 11/5/2018

DESIGN SPEC. MAH/LEF/DESIGN IDENTIFICATION MAH/LEF/MSK  
DESIGN DATE MAH/LEF/MSK  
BY MAH/LEF/MSK

GENERAL PLAN SHEET 1 OF 47

889

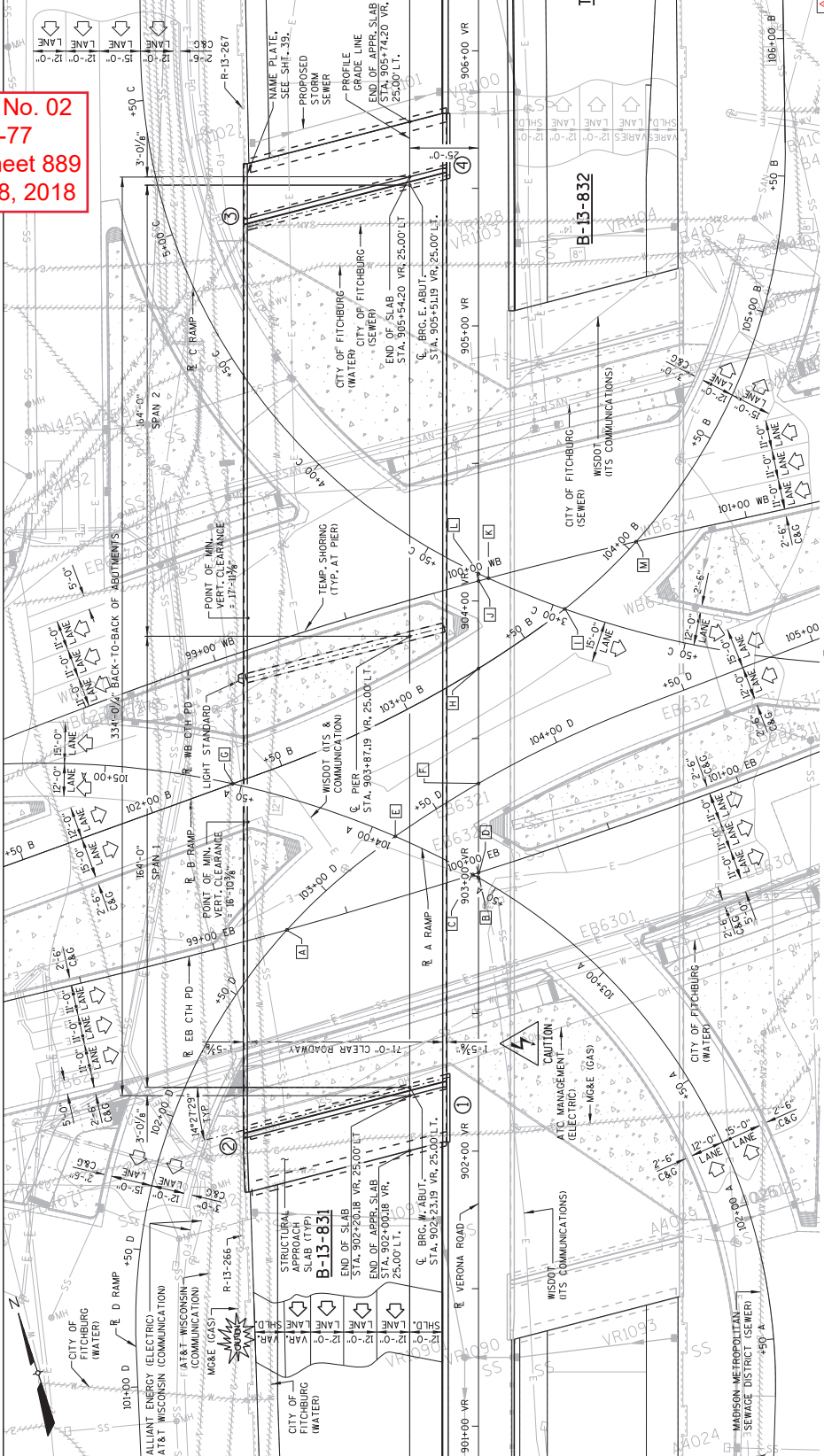


**STRUCTURES DESIGN CONTACTS**

BRIDGE OFFICE: BILL DREHER (608) 266-8489  
SW REGION: MARK VESPERMAN (608) 884-1227  
CONSULTANT: MATT KRUPPNER (608) 828-6123

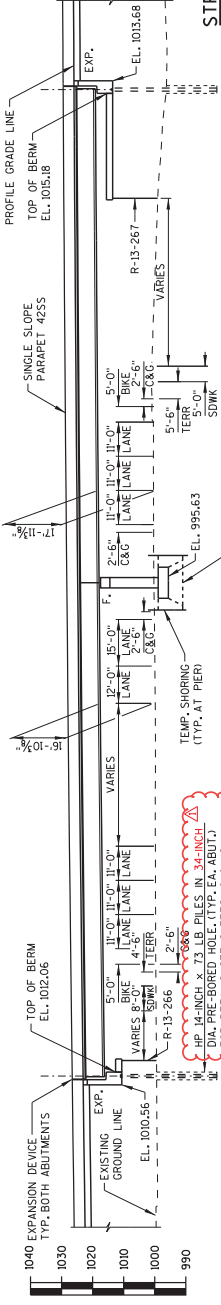
11/06/18

*William C. Decker*



**PLAN**

(TWO SPAN 72W-INCH PRESTRESSED CONCRETE GIRDER STRUCTURE)



**ELEVATION - LOOKING WEST**

(NORMAL TO CTH PD)

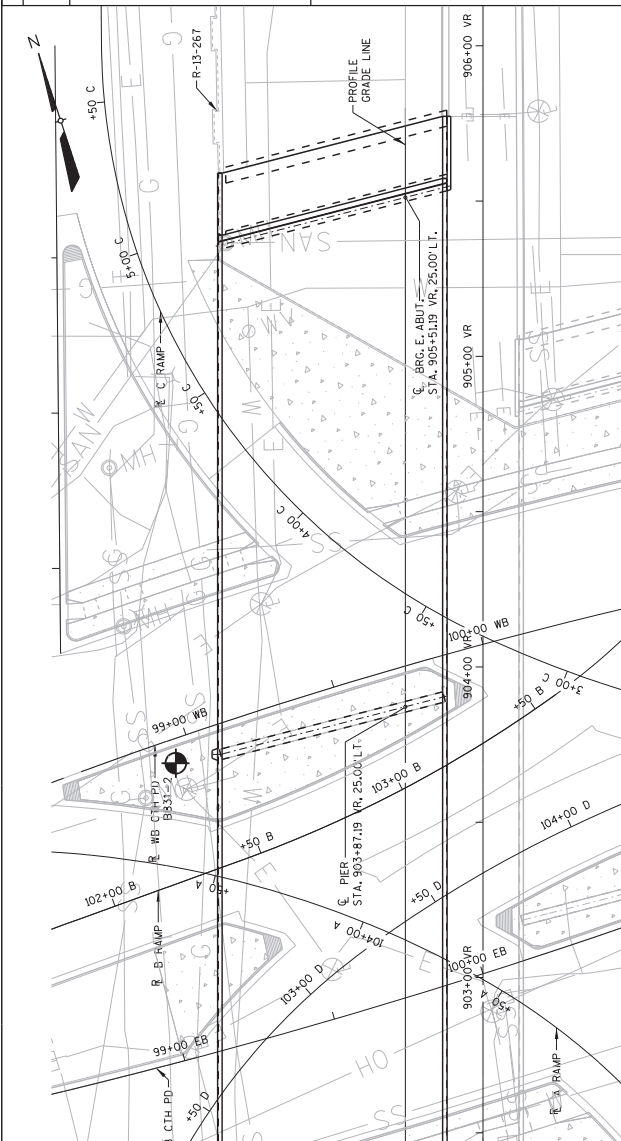
**BENCH MARK TABLE**

NO.	STATION	DESCRIPTION	ELEVATION
2	87+06.53 WB, 72.77 RT.	TOP NUT HYD	1010.56

HP 14-INCH x 73 LB. PILES IN 34-INCH DIA. PRE-BORED HOLE (TYP. EA. ABUT.) FOR DETAILS SEE SHEET 2 OF 3

BORING	DATE COMPLETED	NORTHING (Y)	EASTING (X)
BB31-1	06/27/2014	460955.00	79733100
BB31-2	07/11/2014	461280.00	79738100

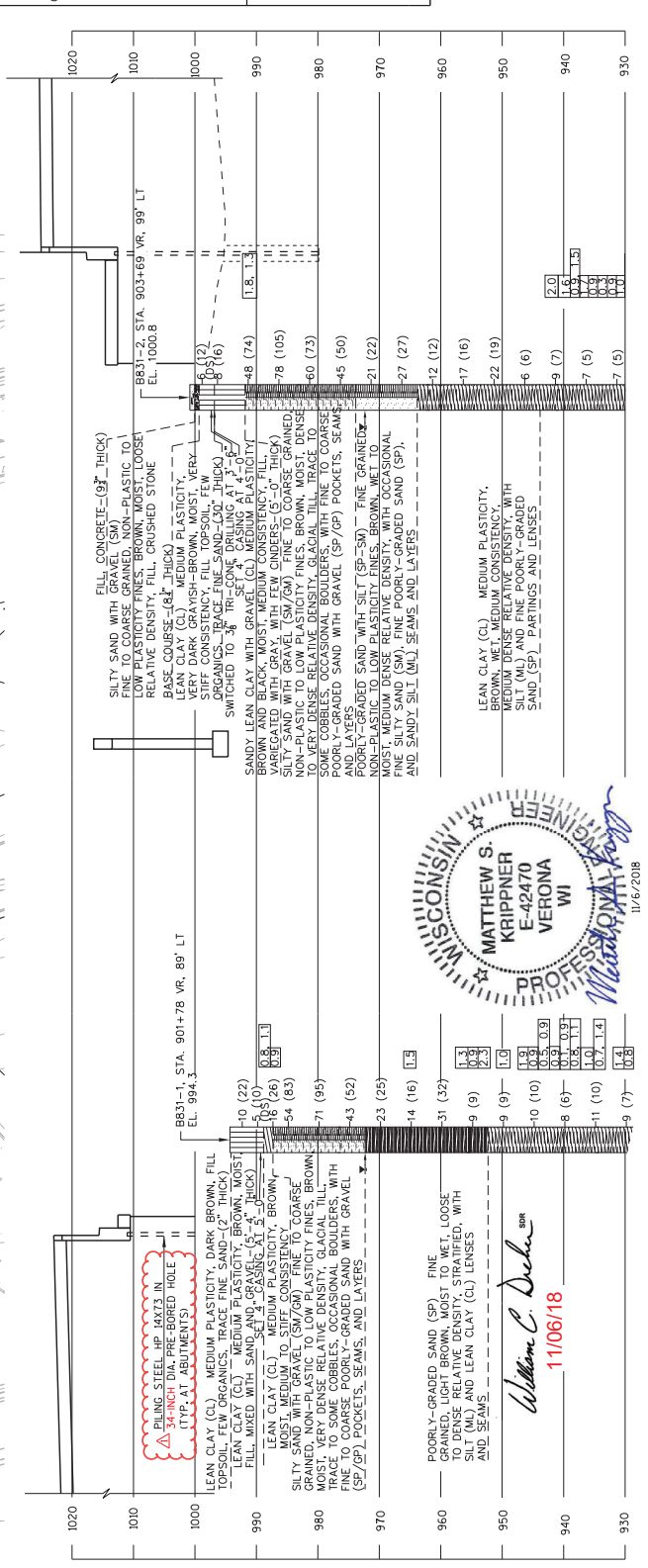
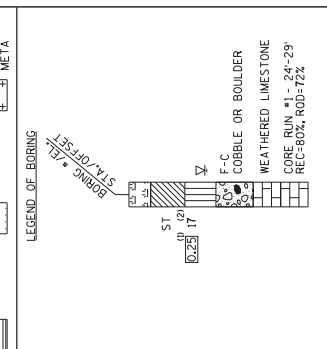
BORINGS COMPLETED BY SOILS & ENGINEERING SERVICES, INC.  
 REPORT COMPLETED BY SOILS & ENGINEERING SERVICES, INC.  
 ALL COORDINATES REFERENCED TO WCCS NAD 83(91) DANE COUNTY



STATE PROJECT NUMBER  
1206-08-77

MATERIAL SYMBOLS

ASPHALT	TOPSOIL	PEAT
CONCRETE	FILL	GRAVEL
SAND	CLAY	SILT
BOULDERS OR COBBLES	LIMESTONE	BEDROCK (UNKNOWN)
SHALE	SANDSTONE	IGNEOUS/METAL



*William C. Decker*  
11/06/18

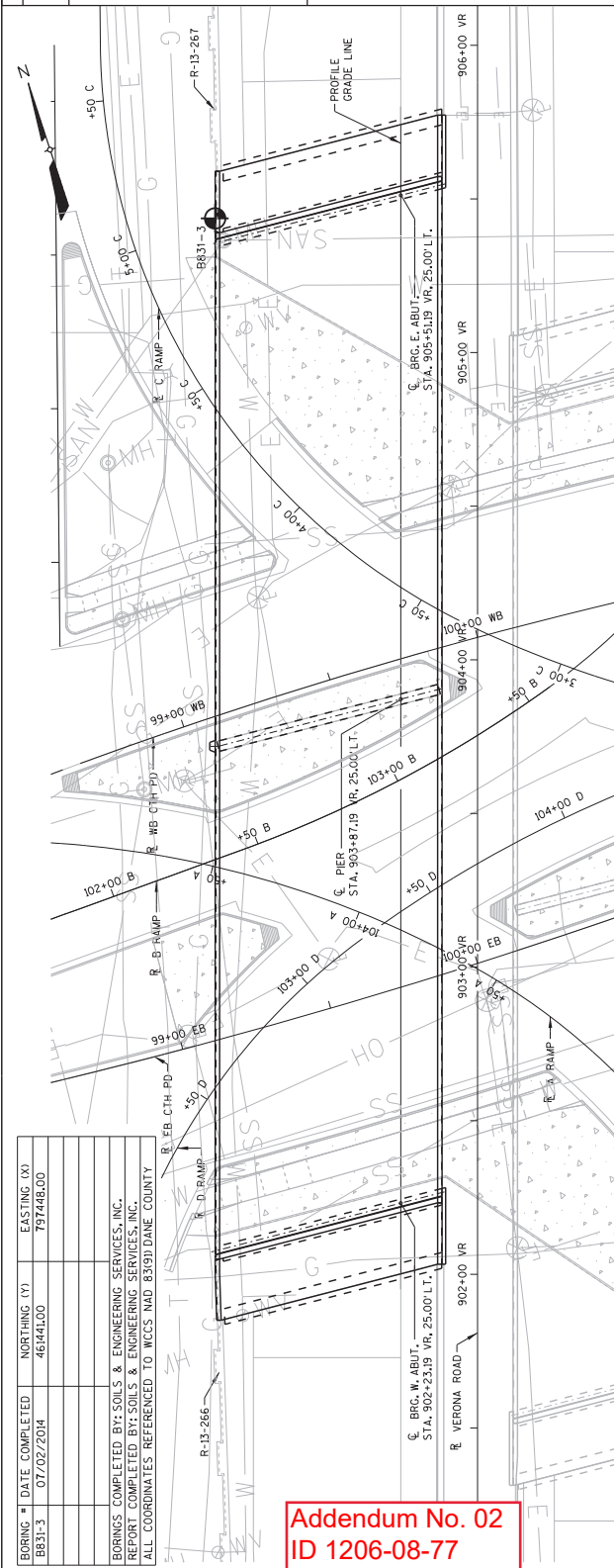
Addendum No. 02  
 ID 1206-08-77  
 Revised Sheet 893  
 November 8, 2018

DATE	BY	REVISION
11/07	PRE-BORER	DIAMETER
NO.	DATE	BY
STATE OF WISCONSIN DEPARTMENT OF TRANSPORTATION STRUCTURES DESIGN SECTION		
STRUCTURE B-13-831		
DOWN	BY	MAH
MES	PLANS	CHD.
SUBSURFACE EXPLORATION 1		
SHEET 5 OF 47		
893		

UNCONFIRMED STRENGTH, AS DETERMINED BY A POCKET PENETROMETER (TSP)  
 UNLESS OTHERWISE SPECIFIED THE SPT 'N' VALUE IS BASED ON AUSHO T-206 STANDARD PENETRATION TEST. STRENGTH VALUES SHOULD BE CORRECTED FOR OVERBURDEN PRESSURE OR HAMMER EFFICIENCY.  
 GROUND WATER ELEVATION  
 AT TIME OF DRILLING  
 END OF DRILLING  
 AFTER DRILLING  
 ABBREVIATIONS  
 F-FINE M-MEDIUM C-COARSE ST-SHELBY TUBE  
 SUBSURFACE EXPLORATION FOR FOUNDATION DESIGN AND BIDDERS INFORMATION  
 BORINGS WERE COMPLETED AT POINTS APPROXIMATELY AS INDICATED ON THIS DRAWING TO OBTAIN INFORMATION CONCERNING THE CHARACTER OF SUBSURFACE MATERIALS. THE CHARACTER OF SUBSURFACE MATERIALS AT DEPTHS ARE LIMITED TO THE AREA OF THE BORINGS IS VERY SMALL IN RELATION TO THE ENTIRE SITE. THESE BORINGS ARE NOT WARRANTED TO REPRESENT CONDITIONS BELOW, BETWEEN, OR BEYOND THESE BORINGS. VARIATIONS IN SOIL CONDITIONS SHOULD BE EXPECTED AND FLUCTUATIONS IN GROUNDWATER LEVELS MAY OCCUR.



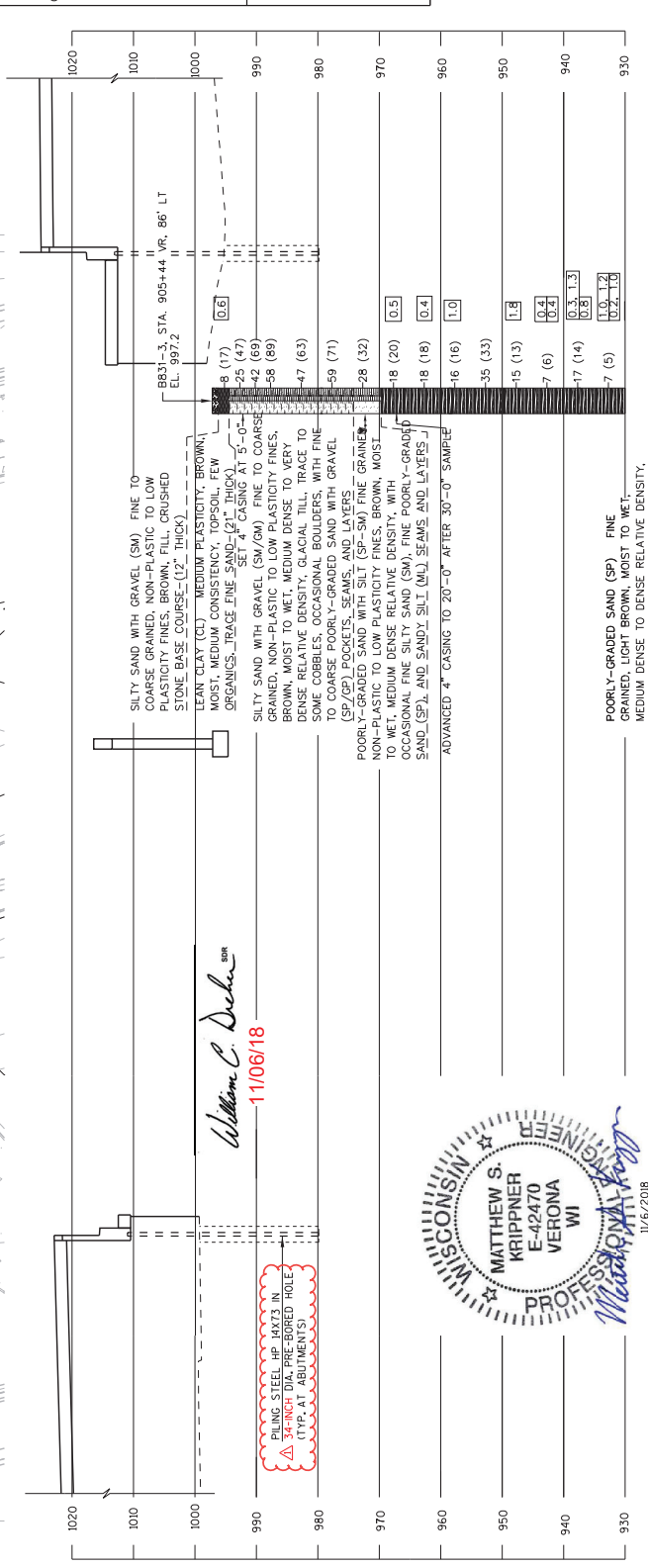
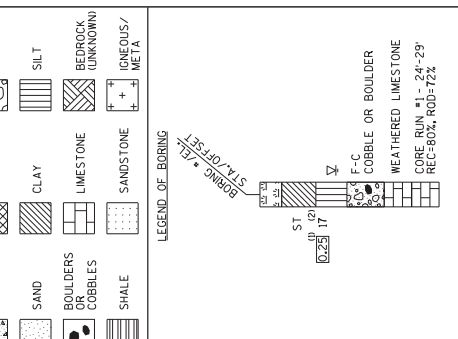
BORING #	DATE COMPLETED	NORTHING (Y1)	EASTING (X1)
BB31-3	07/02/2014	46441.00	797448.00
BORINGS COMPLETED BY SOILS & ENGINEERING SERVICES, INC. REPORT COMPLETED BY SOILS & ENGINEERING SERVICES, INC. ALL COORDINATES REFERENCED TO WCCS NAD 83(91) DANE COUNTY			



STATE PROJECT NUMBER  
1206-08-77

MATERIAL SYMBOLS

ASPHALT	TOPSOIL	PEAT
CONCRETE	FILL	GRAVEL
SAND	CLAY	SILT
BOULDERS OR COBBLES	LIMESTONE	BEDROCK (UNKNOWN)
SHALE	SANDSTONE	IGNEOUS/METAL



Addendum No. 02  
ID 1206-08-77  
Revised Sheet 895  
November 8, 2018

William C. Decker  
11/06/18



BORING BB31-3 IS CONTINUED ON SHEET B.

STATE PROJECT NUMBER  
1206-08-77

**LEGEND**  
 ⊗ INDICATES WING/CORNER NUMBER  
 \* LOCATION OF ANCHOR ASSEMBLY FOR STEEL PLATE BEAM GUARD

NOTE: FOR LIST OF DRAWINGS, DESIGN DATA, TRAFFIC DATA, FOUNDATION DATA AND GENERAL NOTES, SEE SHEET 2.

**Addendum No. 02  
 ID 1206-08-77  
 Revised Sheet 936  
 November 8, 2018**

**TABLE OF INTERSECTION POINTS**

LETTER	STA. 90+27.34 EB = STA. 102+78.91 D	STA. 90+29.98 EB = STA. 103+57.17 A	STA. 90+67.80 EB = STA. 103+58.57 A	STA. 90+31.22 VR = STA. 100+00.00 EB	STA. 103+91.00 A = STA. 103+32.04 D	STA. 90+33.66 VR = STA. 103+67.91 D	STA. 104+53.20 A = STA. 102+30.96 B	STA. 103+75.44 VR = STA. 103+28.96 B	STA. 103+67.98 B = STA. 2+46.54 C	STA. 100+03.71 WB = STA. 9+29.96 C	STA. 100+58.02 WB = STA. 104+03.70 B
A	STA. 90+27.34 EB = STA. 102+78.91 D	STA. 90+29.98 EB = STA. 103+57.17 A	STA. 90+67.80 EB = STA. 103+58.57 A	STA. 90+31.22 VR = STA. 100+00.00 EB	STA. 103+91.00 A = STA. 103+32.04 D	STA. 90+33.66 VR = STA. 103+67.91 D	STA. 104+53.20 A = STA. 102+30.96 B	STA. 103+75.44 VR = STA. 103+28.96 B	STA. 103+67.98 B = STA. 2+46.54 C	STA. 100+03.71 WB = STA. 9+29.96 C	STA. 100+58.02 WB = STA. 104+03.70 B
B											
C											
D											
E											
F											
G											
H											
I											
J											
K											
L											
M											

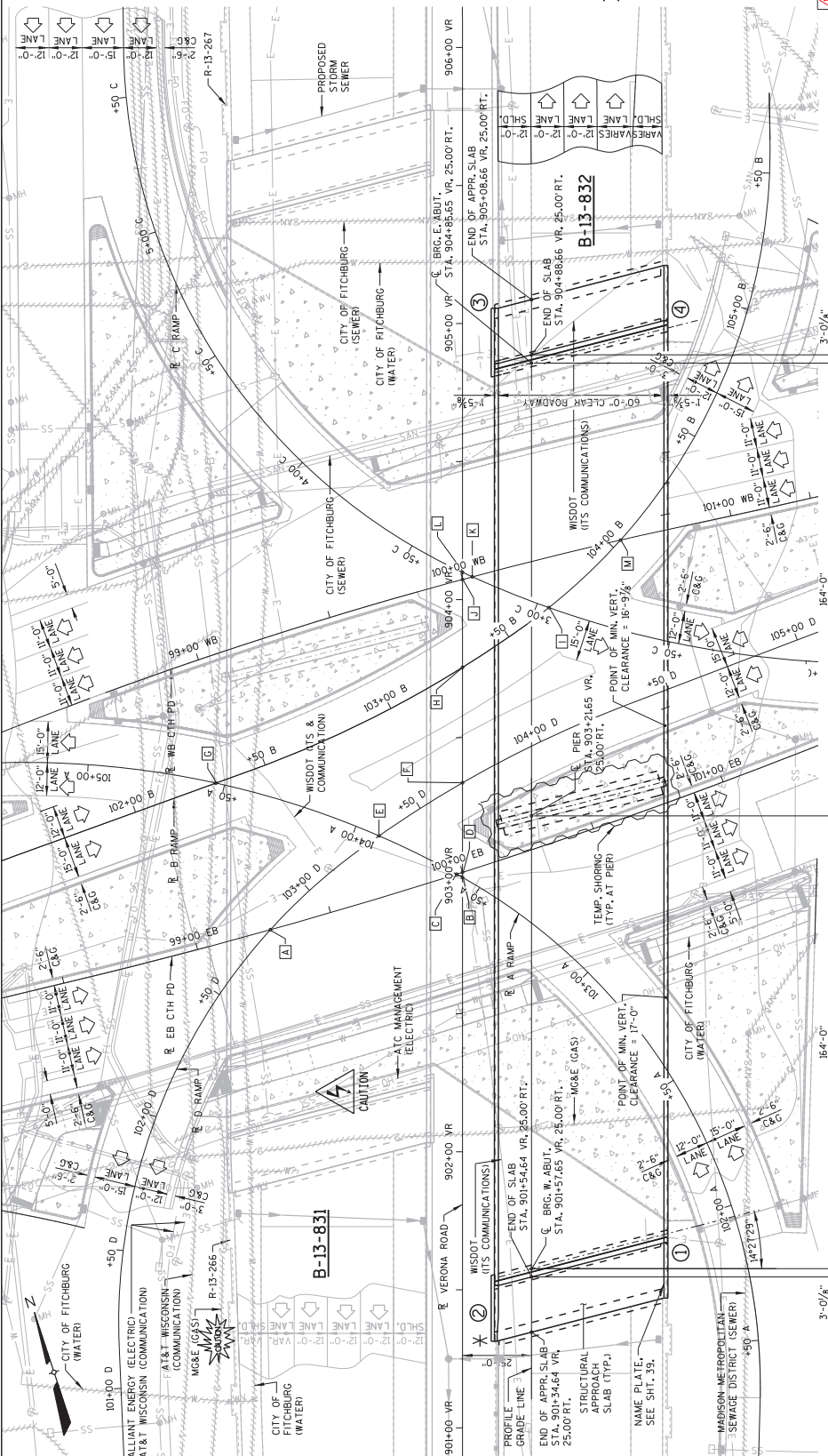
NO.	DATE	REVISION	TAK	BY
1	11/9/2018	PRE-BID DRAWING		



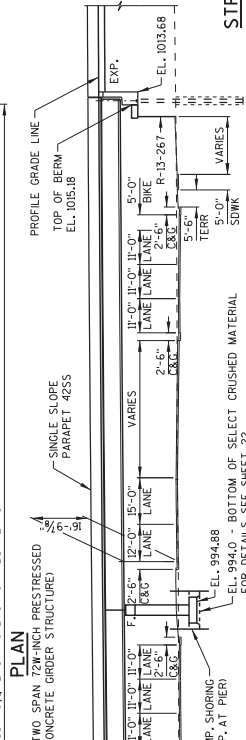
STATE OF WISCONSIN  
 DEPARTMENT OF TRANSPORTATION  
 CHIEF STRUCTURES DESIGN ENGINEER DATE  
 STRUCTURE B-13-832

COUNTY VERONA  
 FROM CITY/VERONA RD OVER CTH PD MCKEE RD  
 DESIGN SPEC. DATE  
 ASSTO. LEAD BRIDGE DESIGN SPECIFICATIONS  
 BY MAH/VERONA MSK  
 MAH/VERONA MSK  
 MAH/VERONA MSK  
 MAH/VERONA MSK

GENERAL PLAN  
 SHEET 1 OF 46  
 936



**STRUCTURES DESIGN CONTACTS**  
 BRIDGE OFFICE: (608) 266-8489  
 BILL DREHER  
 SW REGION: (608) 884-1227  
 MARK VESPERMAN  
 CONSULTANT: (608) 828-6123  
 MATT KRIPPNER



William C. Decker  
 11/06/18

**BENCH MARK TABLE**

NO.	STATION	DESCRIPTION	ELEVATION
2	87+06.53	WB, 72.77 FT, TOP NUT HYD	1010.56

1040 EXPANSION DEVICE TYP. BOTH ABUTMENTS  
 1030  
 1020  
 1010  
 1000  
 990

Addendum No. 02  
 ID 1206-08-77  
 Revised Sheet 940  
 November 8, 2018

STATE PROJECT NUMBER  
 1206-08-77

MATERIAL SYMBOLS

ASPHALT	TOPSOIL	PEAT
CONCRETE	FILL	GRAVEL
SAND	CLAY	SILT
BOULDERS OR COBBLES	LIMESTONE	BEDROCK (UNKNOWN)
SHALE	SANDSTONE	IGNEOUS/METAL

LEGEND OF BORING

UNCONFINED STRENGTH, AS DETERMINED BY A POCKET PENETROMETER (TSP)  
 UNLESS OTHERWISE SPECIFIED THE SPT 'N' VALUE IS BASED ON A SHOTO 1-206 STANDARD PENETRATION TEST CORRECTED FOR OVERBURDEN PRESSURE OR HAMMER EFFICIENCY.

GROUND WATER ELEVATION  
 ▽ AT TIME OF DRILLING  
 ▽ END OF DRILLING  
 ▽ AFTER DRILLING

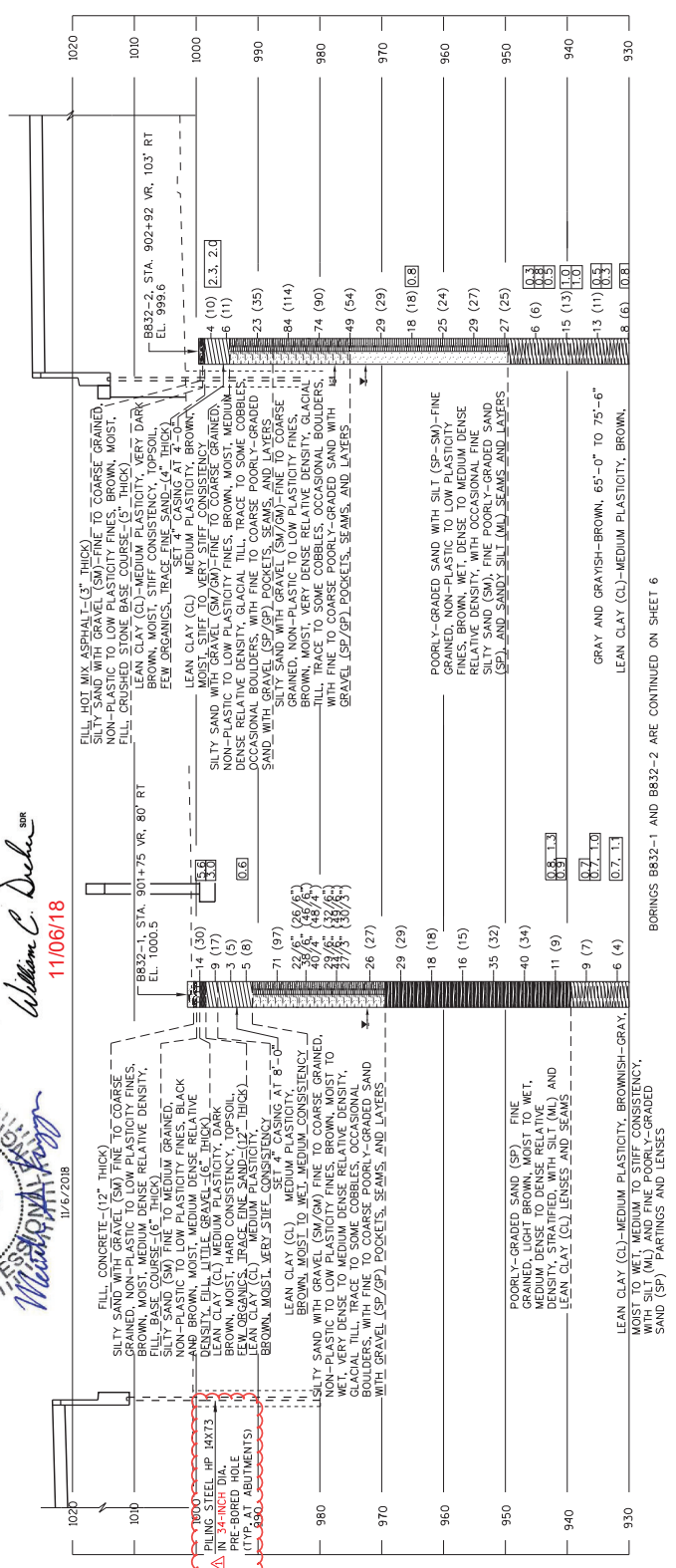
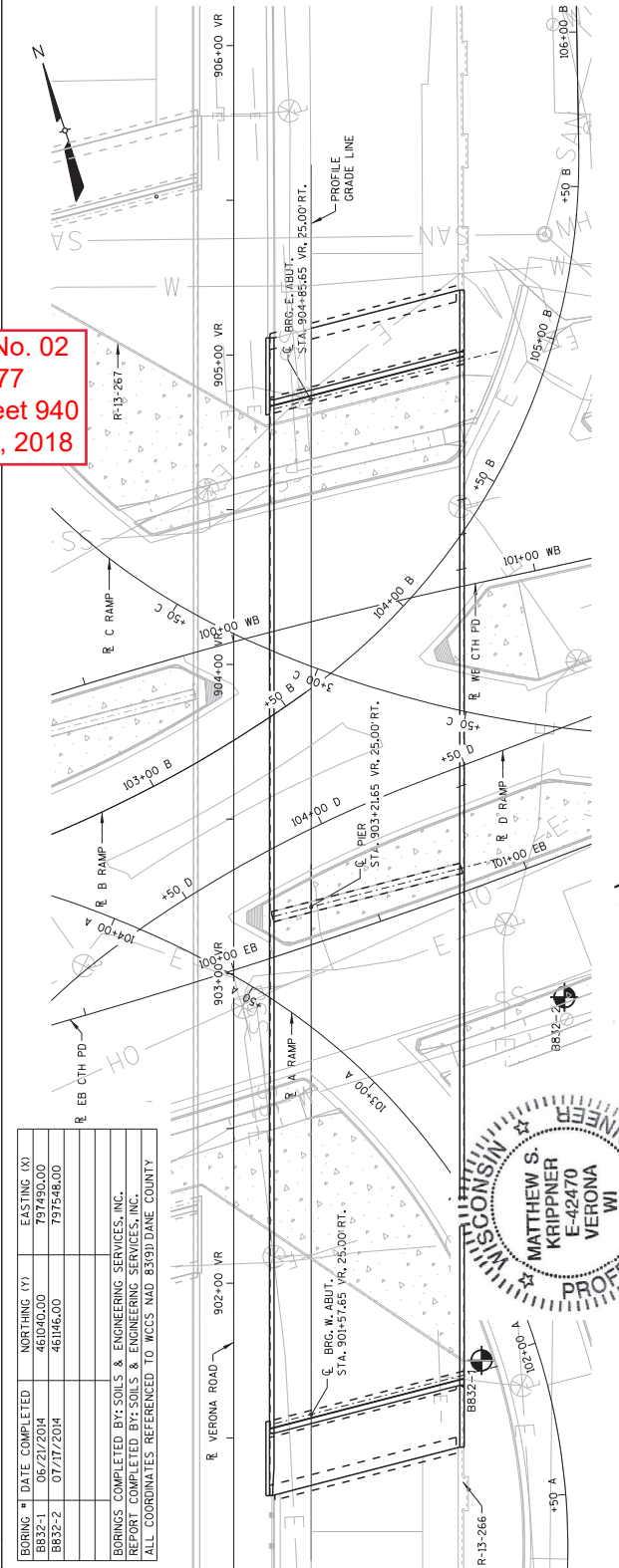
ABBREVIATIONS  
 F-FINE M-MEDIUM C-COARSE ST-SHELBY TUBE

SUBSURFACE EXPLORATION FOR FOUNDATION DESIGN AND BIDDERS INFORMATION  
 BORINGS WERE COMPLETED AT POINTS APPROXIMATELY AS INDICATED ON THIS DRAWING TO OBTAIN INFORMATION CONCERNING THE CHARACTER OF SUBSURFACE MATERIALS. DEPTHS ARE LIMITED AND THE AREA OF THE BORINGS IS VERY SMALL IN RELATION TO THE ENTIRE SITE. NOT WARRANTED FOR SUBSURFACE CONDITIONS BELOW, BETWEEN, OR BEYOND THESE BORINGS. VARIATIONS IN SOIL CONDITIONS SHOULD BE EXPECTED AND FLUCTUATIONS IN GROUNDWATER LEVELS MAY OCCUR.

DATE PREPARED BY REVISION BY  
 11/16/2018 WCCS PRE-BORER DAWHER

STATE OF WISCONSIN  
 DEPARTMENT OF TRANSPORTATION  
 STRUCTURES DESIGN SECTION  
 STRUCTURE B-13-832

DATE BY MES (C.D.) MAH  
 SHEET 5 OF 46  
 EXPLORATION 1 940



BORINGS BB32-1 AND BB32-2 ARE CONTINUED ON SHEET 6

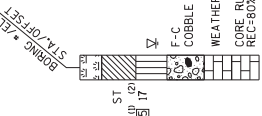


STATE PROJECT NUMBER  
1206-08-77

MATERIAL SYMBOLS

	ASPHALT		TOPSOIL		PEAT
	CONCRETE		FILL		GRAVEL
	SAND		CLAY		SILT
	BOULDERS OR COBBLES		LIMESTONE		BEDROCK (UNKNOWN)
	SHALE		SANDSTONE		IGNEOUS/META

LEGEND OF BORING



<sup>10</sup> UNCONFINED STRENGTH, AS DETERMINED BY A POCKET PENETROMETER (TSP)  
<sup>12</sup> UNLESS OTHERWISE SPECIFIED THE SPT 'N' VALUE IS BASED ON AUSHTO T-206 STANDARD PENETRATION TESTS. RESULTS SHOULD BE CORRECTED FOR OVERBURDEN PRESSURE OR HAMMER EFFICIENCY.

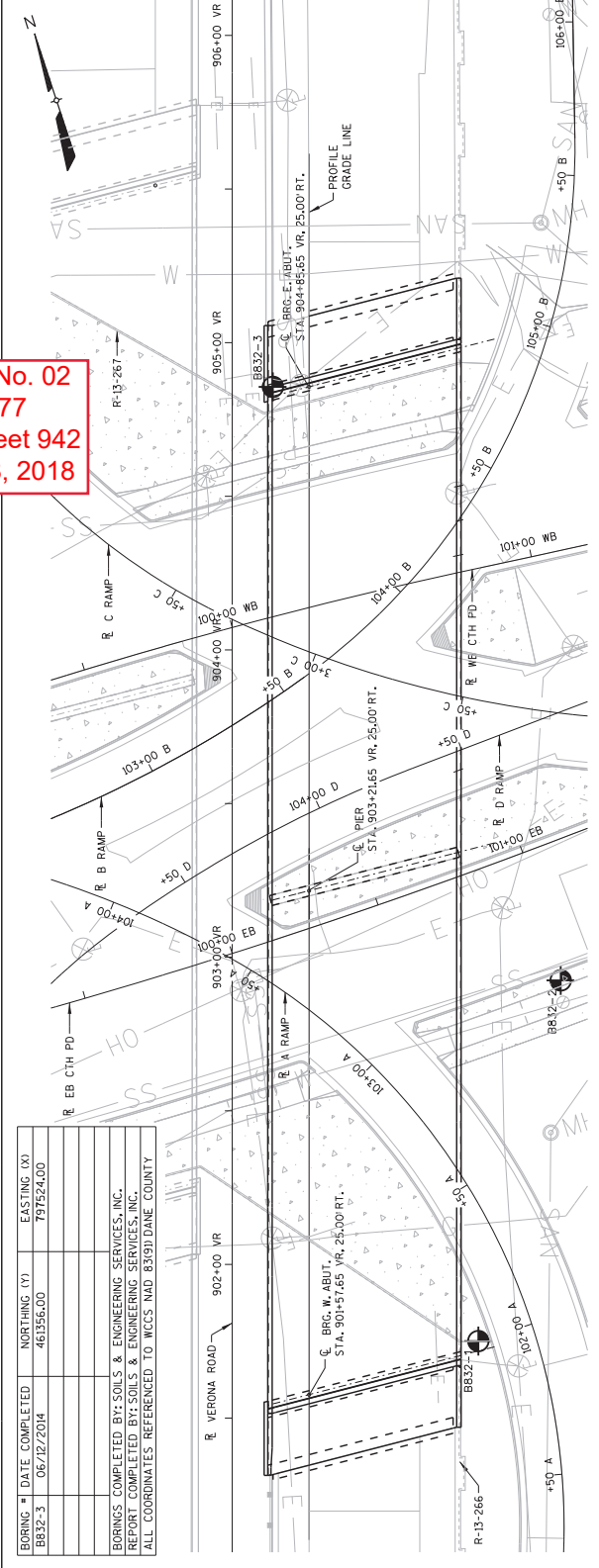
GROUND WATER ELEVATION  
 ▽ AT TIME OF DRILLING  
 ▽ END OF DRILLING  
 ▽ AFTER DRILLING

ABBREVIATIONS  
 F-FINE M-MEDIUM C-COARSE ST-SHELBY TUBE

SUBSURFACE EXPLORATION FOR FOUNDATION DESIGN AND BIDDERS INFORMATION  
 BORINGS WERE COMPLETED AT POINTS APPROXIMATELY AS INDICATED ON THIS DRAWING. TO OBTAIN INFORMATION CONCERNING THE CHARACTER OF SUBSURFACE MATERIALS DEPTHS ARE LIMITED AND THE AREA OF THE BORINGS IS VERY SMALL IN RELATION TO THE ENTIRE SITE. NOT WARRANT SMALLER SUBSURFACE CONDITIONS BELOW, BETWEEN, OR BEYOND THESE BORINGS. VARIATIONS IN SOIL CONDITIONS SHOULD BE EXPECTED AND FLUCTUATIONS IN GROUNDWATER LEVELS MAY OCCUR.

	PRE-BORE DIAMETER	DATE	REVISION	BY
STATE OF WISCONSIN DEPARTMENT OF TRANSPORTATION STRUCTURES DESIGN SECTION				
STRUCTURE B-13-832				
DRWN BY	MES	CHKD BY	MAH	
SUBSURFACE EXPLORATION 3				SHEET 7 OF 46
EXPLORATION 3				942

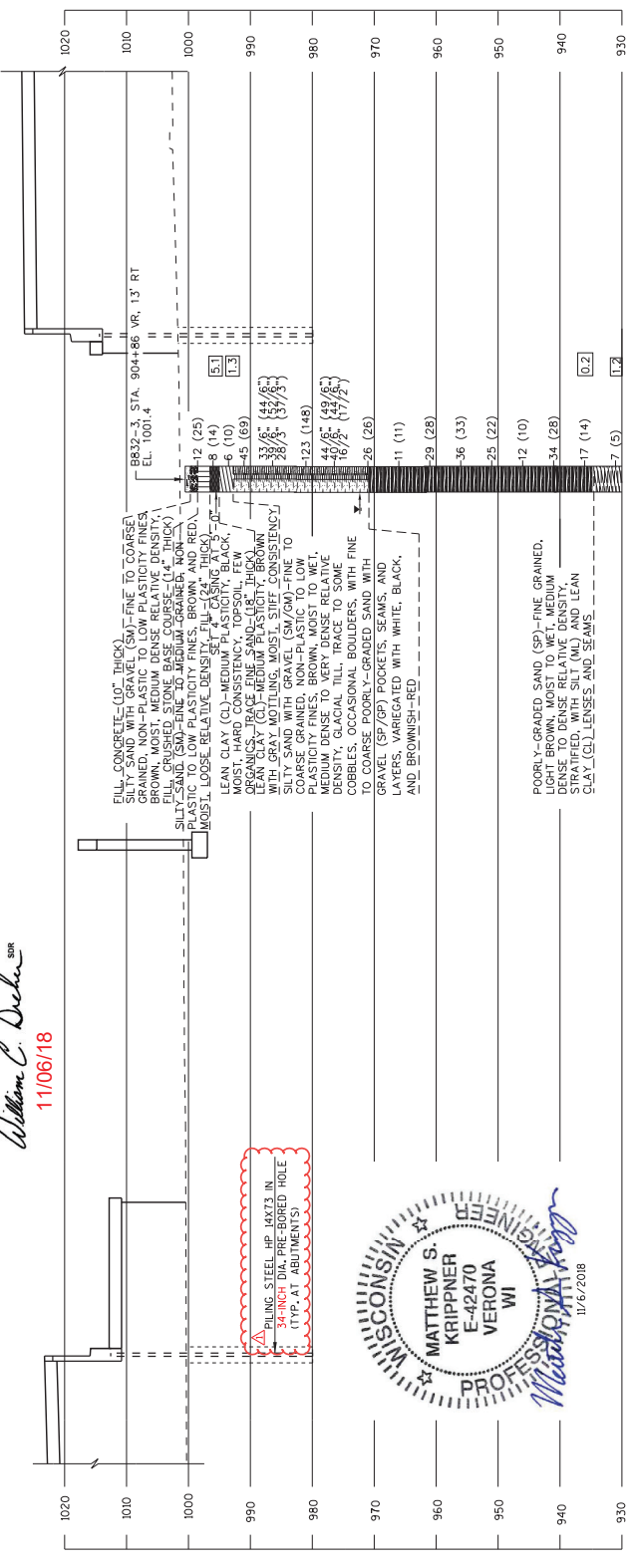
Addendum No. 02  
 ID 1206-08-77  
 Revised Sheet 942  
 November 8, 2018



BORING #	DATE COMPLETED	NORTHING (Y)	EASTING (X)
BB32-3	06/12/2014	461356.00	797524.00

BORINGS COMPLETED BY SOILS & ENGINEERING SERVICES, INC.  
 REPORT COMPLETED BY SOILS & ENGINEERING SERVICES, INC.  
 ALL COORDINATES REFERENCED TO WCCS NAD 83(9) DANE COUNTY

*William C. Dehn*  
 11/06/18



PILING STEEL UP LAXTS IN (TYP AT ABUTMENTS)

WISCONSIN PROFESSIONAL ENGINEERING MATTHEW S. KRIPPNER E-42470 VERONA WI 11/6/2018

BORING BB32-3 IS CONTINUED ON SHEET 8