



Wisconsin Department of Transportation

Division of Transportation Systems Development

Bureau of Project Development
4822 Madison Yards Way, 4th Floor South
Madison, WI 53705

February 4, 2019

Telephone: (608) 266-1631
Facsimile (FAX): (608) 266-8459

NOTICE TO ALL CONTRACTORS:

Proposal #26: 8725-01-70, WISC 2019 132
Benoit – STH 112
Ashland Bayfield Road to STH 112
STH 118
Ashland County

8727-00-70, WISC 2019 133
Marengo – Ashland
STH 118 to USH 2
STH 112
Ashland County

Letting of February 12, 2019

This is Addendum No. 01, which provides for the following:

Special Provisions:

Revised Special Provisions	
Article No.	Description
3	Prosecution and Progress
27	Adjusting Water Valves, Item SPV.0060.01

Schedule of Items:

Revised Bid Item Quantities – ID 8727-00-70					
Bid Item	Item Description	Unit	Old Quantity	Revised Quantity	Proposal Total
455.0605	Tack Coat	GAL	7,824	476	8,300
460.2000	Incentive Density HMA Pavement	DOL	9,010	170	9,180
460.7645	HMA Pavement 5HT58-34V	TON	1,904	274	2,178
465.0105	Asphaltic Surface	TON	800	-60	740
465.0110	Asphaltic Surface Patching	TON	350	60	410
SPV.0035.01	Base Repair for CIR Pavement	CY	575	-200	375
SPV.0035.02	Base Repair for HMA Pavement	CY	275	200	475
SPV.0180.01	Cold-In-Place Recycling (CIR) Partial Depth	SY	96,930	-7,209	89,721
SPV.0195.01	Asphalt Stabilizing Agent	TON	406	-30	376

Plan Sheets:

Revised Plan Sheets	
Plan Sheet	Plan Sheet Title (brief description of changes to sheet)
3	Typical Sections – Revised stated existing and finished cross slopes of the STH 118 typical sections.
10	Typical Sections – Revised finished typical section for the urban segment of STH 112 located between STA. 674+53 to 695+25. The revision includes the removal of the Cold-In-Place Recycling (CIR) Partial Depth pavement treatment between STA. 674+53 and STA. 690+75. The revised typical section also changes the pavement treatment for the shoulders (bike lanes) and gutter pan to a variable depth single layer of HMA.
15	Construction Details – The urban side road construction details have been revised to be consisted with the new urban finished typical section.
46	Miscellaneous Quantities – The milling depths provided on the miscellaneous quantity <i>Milling Removal Summary</i> table have been updated to reflect the revised STH 112 pavement treatment for STA. 674+53 to STA. 695+25 (Sheet 10 finished typical).
49	Miscellaneous Quantities – The quantities of Tack Coat, HMA Pavement 5HT58-34 and HMA thickness notes have been updated to reflect the revised STH 112 pavement treatment for STA. 674+53 to STA. 695+25 (Sheet 10 finished typical).
50	Miscellaneous Quantities – The quantities of Asphaltic Surface Patching (used in areas of HMA pavement) and Asphaltic Surface (used in areas of CIR) have been updated to reflect the revised STH 112 pavement treatment for STA. 674+53 to STA. 695+25 (Sheet 10 finished typical).
60	Miscellaneous Quantities – The quantities of Base Repair for CIR and Base Repair for HMA Pavement have been updated to reflect the revised STH 112 pavement treatment for STA. 674+53 to STA. 695+25 (Sheet 10 finished typical). The quantities of Cold-In-Place Recycling (CIR) Partial Depth and Asphalt Stabilizing Agent were removed for the urban segment of STH 112 between STA. 674+53 to 690+75.
72	Plan – The note “Station 690+75: Transition from CIR to Mill and Overlay Pavement Treatment” has been removed from the STH 112 plan sheet.

The responsibility for notifying potential subcontractors and suppliers of these changes remains with the prime contractor.

Sincerely,

Mike Coleman

Proposal Development Specialist
Proposal Management Section

ADDENDUM NO. 01

8725-01-70

February 4, 2019

Special Provisions

3. Prosecution and Progress.

Replace paragraphs 6 and 7 with the following:

Coordinate construction activities on STH 112 so that the lower layer of HMA pavement between Station 666+66 and 695+25 is placed the same day as the existing asphaltic surface is milled. Place the upper layer of HMA pavement for this segment within 24-hours of the lower layer being placed.

27. Adjusting Water Valves, Item SPV.0060.01.

Replace entire section titled A General with the following:

The work under this item shall consist of making final adjustments to existing water valves located in milling and HMA pavement areas all shown on the plans and provided by these specifications.

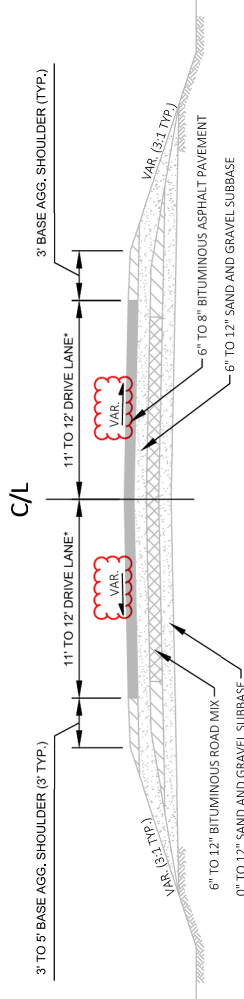
Schedule of Items

Attached, dated February 4, 2019, are the revised Schedule of Items Pages 1, 2, 7, and 8.

Plan Sheets

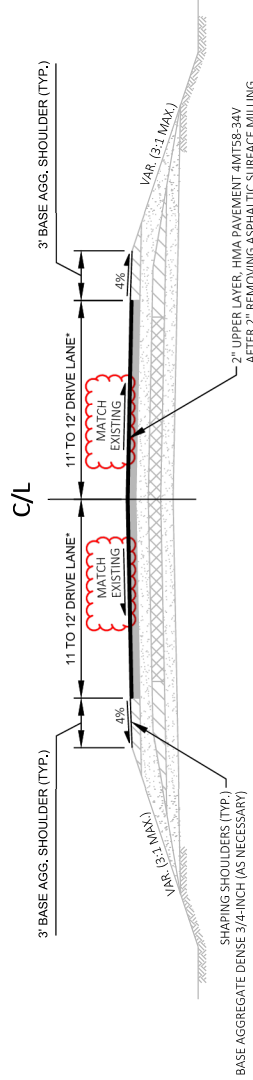
The following 8½ x 11-inch sheets are attached and made part of the plans for this proposal:
Revised: 3, 10, 15, 46, 49, 50, 60 and 72

END OF ADDENDUM



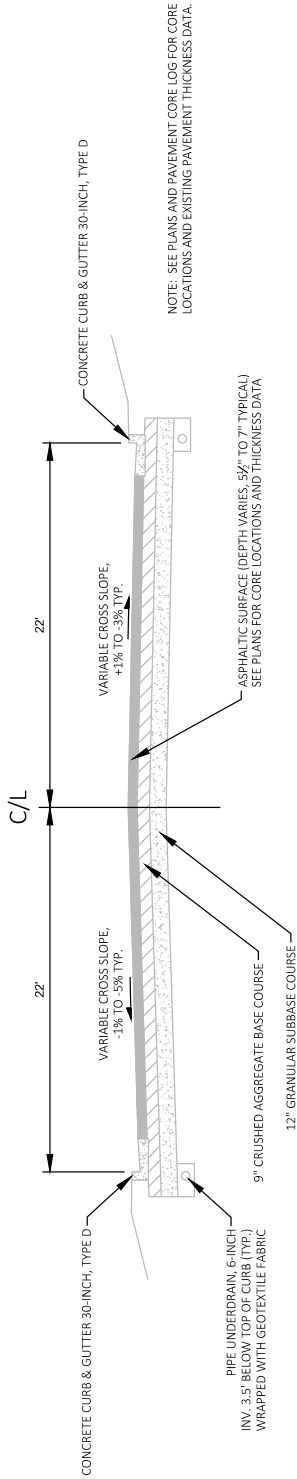
EXISTING TYPICAL SECTION STH 118
STA 309+25 TO STA 362+06

- *MATCH EXISTING PAVEMENT WIDTHS
- 11' DRIVE LANE STA. 309+25 TO STA. 346+00
 - 12' DRIVE LANE STA. 346+00 TO STA. 359+00
 - PAVED WIDTH WIDENS AT APPROACH TO INTERSECTION WITH STH 112, STA. 359+00 TO STA. 362+06



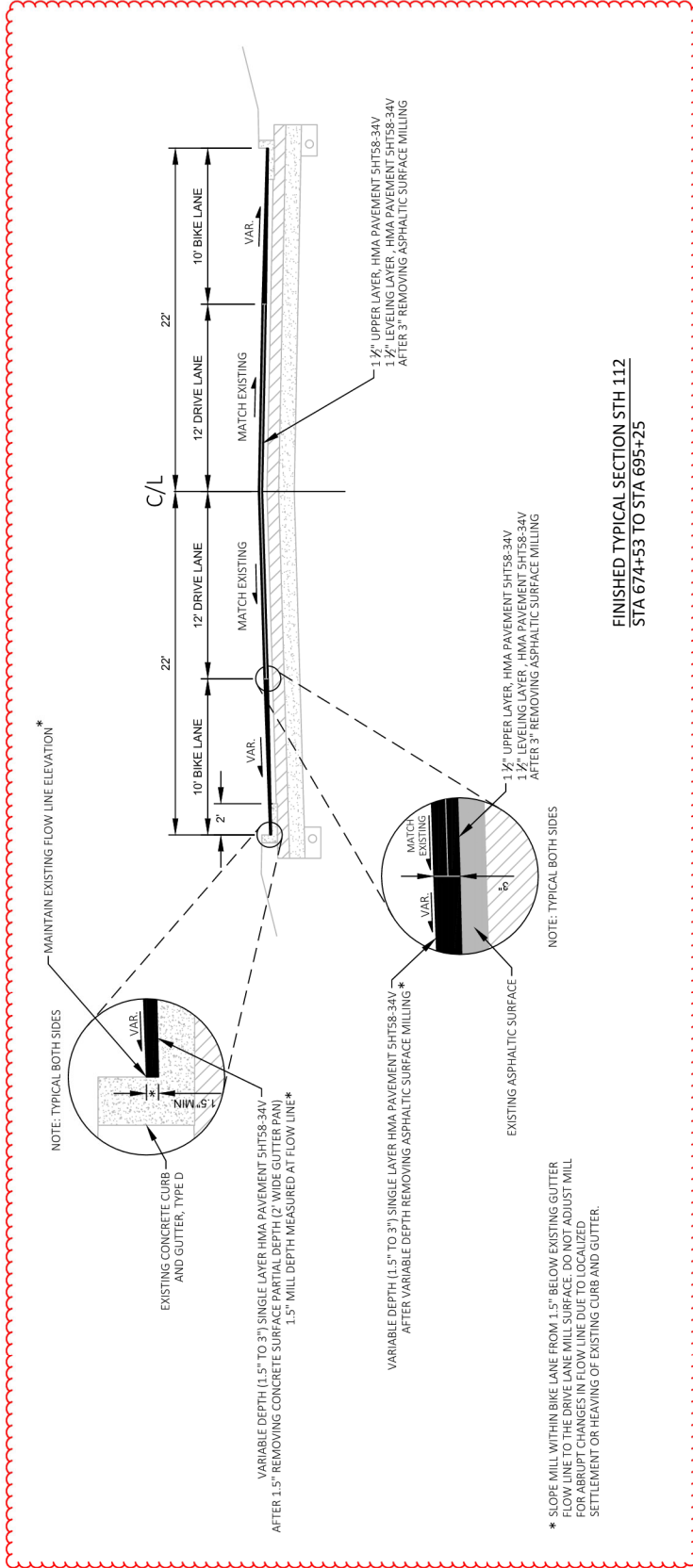
FINISHED TYPICAL SECTION STH 118
STA 309+25 TO STA 362+06

Addendum No. 01
ID 8725-01-70
ID 8727-00-70
Revised Sheet 3
February 4, 2019

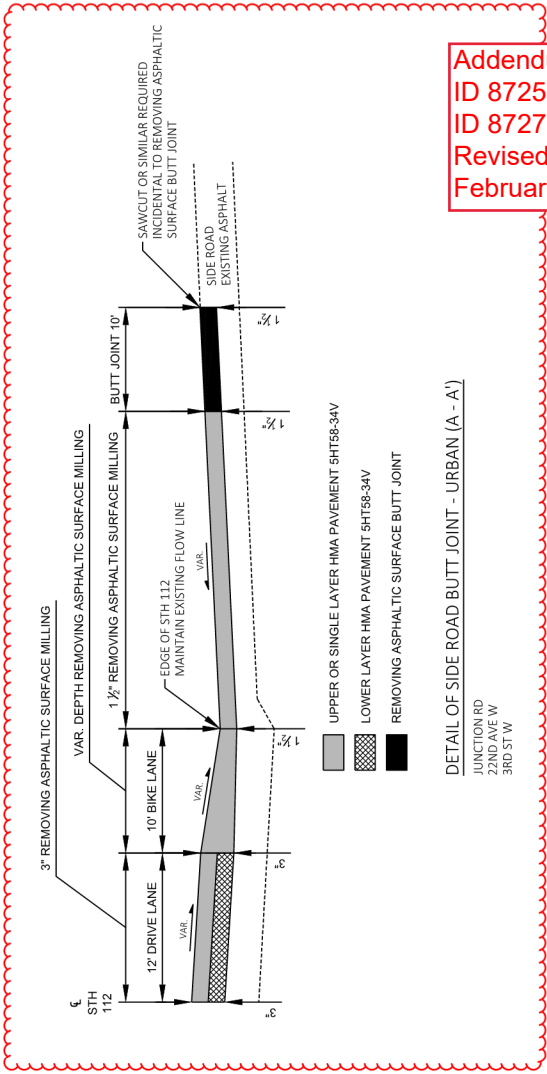


EXISTING TYPICAL SECTION STH 112
STA 674+53 TO STA 695+25

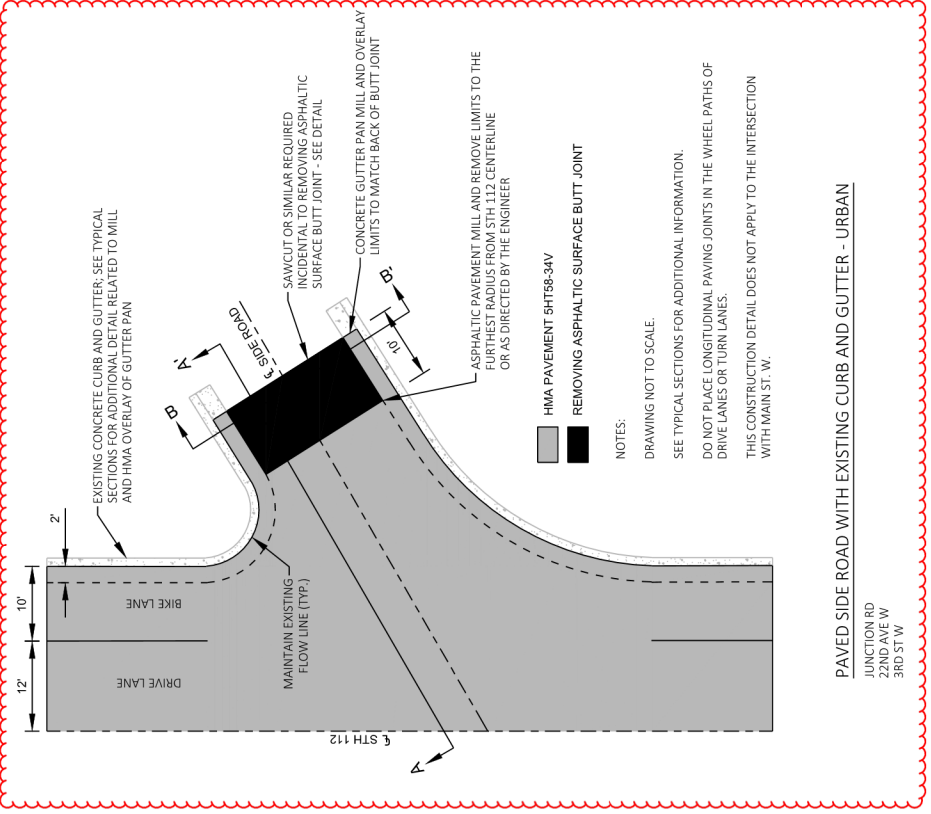
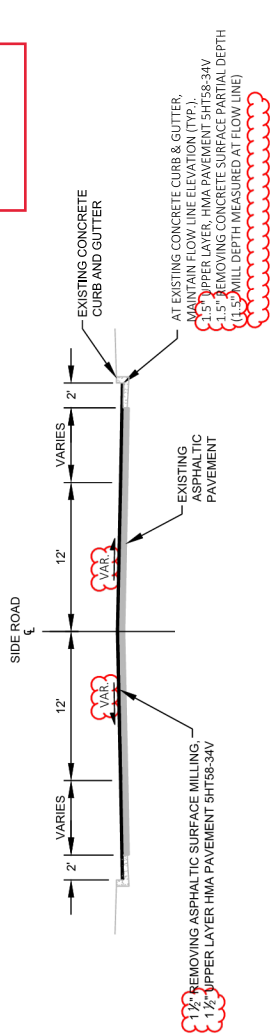
Addendum No. 01
ID 8725-01-70
ID 8727-00-70
Revised Sheet 10
February 4, 2019



FINISHED TYPICAL SECTION STH 112
STA 674+53 TO STA 695+25



Addendum No. 01
ID 8725-01-70
ID 8727-00-70
Revised Sheet 15
February 4, 2019



PROJECT NO: 8727-00-70 / 8725-01-70	COUNTY: ASHLAND	PLAN: CONSTRUCTION DETAILS	SHEET 15
FILE NAME: N:\PDS\CD\87270000\5SHEETS\PLAN\87270000\70_LAYOUT NAME - CD-4	HWY: STH 112 / STH 118	PLOT BY: ERICKSON, ZACHARY A	1 IN=30 FT
		PLOT DATE: 1/25/2019 12:41 PM	PLOT SCALE: 1 IN=30 FT
			WISDOT/CADDIS SHEET 42

Addendum No. 01
ID 8725-01-70
ID 8727-00-70
Revised Sheet 46
February 4, 2019

MILLING REMOVAL SUMMARY

CATEGORY	ALIGNMENT	STATION TO	STATION	SIDE	LF	WIDTH (FT)	AREA (SF)	LOCATION	REMOVING ASPHALTIC SURFACE MILLING		REMOVING CONCRETE SURFACE PARTIAL DEPTH		MILLING DEPTH (IN)
									204.0120	SY	204.0109.S	SF	
PROJECT 8727-00-70													
0010	STH 112	401+25	666+66	LT & RT	26541	30	796230	MAINLINE	88470	---	---	2.00	
0010	STH 112	666+66	673+11	LT & RT	645	30	19350	MAINLINE	2150	---	---	4.00	
0010	STH 112	674+53	690+75	LT & RT	1622	40	64880	MAINLINE	7209	---	---	VAR	
0010	STH 112	690+75	695+25	LT & RT	450	40	18000	MAINLINE	2000	---	---	VAR	
0010	STH 112	401+25	408+25	LT	---	---	5828	RT TURN LANE FOR STH 118 & INT. TAPER	648	---	---	2.00	
0010	STH 112	401+50	404+18	RT	---	---	1090	SHOULDER WIDENING	121	---	---	2.00	
0010	STH 112	454+84	455+62	LT	---	---	1450	WAKEFIELD RD	161	---	---	2.00	
0010	STH 112	480+90	481+70	RT	---	---	1725	HEGSTROM RD	192	---	---	2.00	
0010	STH 112	504+80	509+00	RT	---	---	4635	DAHLSTROM RD, RT TURN LANE & INT. TAPER	515	---	---	2.00	
0010	STH 112	504+80	509+85	LT	---	---	4200	KLAUS RD, RT TURN LANE & INT. TAPER	467	---	---	2.00	
0010	STH 112	546+30	547+25	RT	---	---	1740	WEISTER RD	193	---	---	2.00	
0010	STH 112	585+70	586+75	LT	---	---	1695	CTH K	188	---	---	2.00	
0010	STH 112	611+95	612+95	LT	---	---	2110	SUMMIT RD W.	234	---	---	2.00	
0010	STH 112	612+08	612+78	RT	---	---	715	SUMMIT RD E.	79	---	---	2.00	
0010	STH 112	638+35	639+35	RT	---	---	2524	MAPLE LN	280	---	---	2.00	
0010	STH 112	644+50	645+85	LT	---	---	1170	CITY HEIGHTS RD	130	---	---	2.00	
0010	STH 112	652+73	656+75	LT	---	---	4560	LINDSTROM RD & INT. TAPERS	507	---	---	2.00	
0010	STH 112	659+00	662+60	LT	---	---	4735	FELLMAN DR & INT. TAPERS	526	---	---	2.00	
0010	STH 112	671+15	673+11	LT	---	---	860	STH 137 TAPER	96	---	---	4.00	
0010	STH 112	671+60	673+50	RT	---	---	350	6TH ST W. TAPER	39	---	---	4.00	
0010	STH 112	678+63	679+60	LT	---	---	1915	JUNCTION RD	213	---	---	2.00	
0010	STH 112	686+58	687+30	LT	---	---	845	22ND AVE W.	94	---	---	2.00	
0010	STH 112	686+50	687+50	RT	---	---	1565	3RD ST W.	174	---	---	2.00	
0010	STH 112	690+85	691+50	RT	---	---	419	MAIN ST W.	47	---	---	1.50	
0010	STH 112	674+53	690+75	LT & RT	---	2 & 2	6496	CURB PAN OF MAINLINE (INCLUDES SIDE ROAD RADII)	6496	---	---	1.50	
0010	STH 112	690+75	695+25	LT & RT	---	2 & 2	1912	CURB PAN OF MAINLINE (INCLUDES SIDE ROAD RADII)	1912	---	---	1.50	
0010	STH 112	695+25	696+28	LT & RT	---	VARIES	6140	MAINLINE (APPROACH TO USH 2 INT.)	6140	---	---	1.50	
									104732	14472	14548		
									104732	14472	14548		
PROJECT 8727-00-70 TOTAL									104732	14472	14548		
PROJECT 8725-01-70													
0010	STH 118	309+25	359+00	LT & RT	4975	24	119400	MAINLINE	13267	---	0	2.00	
0010	STH 118	359+00	362+06	LT & RT	306	VARIES	10846	MAINLINE & INT. TAPERS	1205	---	0	2.00	
									14472	14472	0		
PROJECT 8725-01-70 TOTAL									14472	14472	0		

HMA PAVEMENT AND TACK COAT SUMMARY

Addendum No. 01
ID 8725-01-70
ID 8727-00-70
Revised Sheet 49
February 4, 2019

CATEGORY	ALIGNMENT	STATION TO	STATION	LOCATION	TACK COAT 455.0605 GAL	HMA PAVEMENT 4MT58-34V TON	HMA PAVEMENT 5HT58-34V TON	HMA THICKNESS
PROJECT 8727-00-70								
0010	STH 112	401+25	638+50	MAINLINE (30' WIDTH)	4745	8857	--	2"
0010	STH 112	638+50	666+66	MAINLINE (34' WIDTH)	638	1191	--	2"
0010	STH 112	666+66	673+11	MAINLINE (34' WIDTH)	292	--	546	4"
0010	STH 112	674+53	690+75	MAINLINE (44' WIDTH)	392	--	1186	VAR. (1.5" TO 3" TYP.)
0010	STH 112	690+75	695+25	MAINLINE (44' WIDTH)	264	--	329	VAR. (1.5" TO 3" TYP.)
0010	STH 112	695+25	696+28	MAINLINE & INT. TAPERS	48	--	57	1.5"
0010	STH 112	403+15	408+25	RT TURN LANE	32	50	--	2"
0010	STH 112	401+50	404+18	SHOULDER WIDENING	8	14	--	2"
0010	STH 112	454+84	455+62	WAKEFIELD RD	11	--	--	2"
0010	STH 112	480+90	481+70	HEGSTROM RD	13	21	--	2"
0010	STH 112	504+80	509+00	DAHLSTROM RD, TURN LANE & TAPER	45	72	--	2"
0010	STH 112	504+80	509+85	KLAUS RD, TURN LANE & TAPER	33	52	--	2"
0010	STH 112	546+30	547+25	WEISTER RD	14	22	--	2"
0010	STH 112	585+70	586+75	CTH K	13	21	--	2"
0010	STH 112	611+95	612+95	SUMMIT RD W.	16	26	--	2"
0010	STH 112	612+08	612+78	SUMMIT RD E.	8	13	--	2"
0010	STH 112	638+35	639+35	MAPLE LN	19	31	--	2"
0010	STH 112	645+06	645+77	CITY HEIGHTS RD	8	13	--	2"
0010	STH 112	652+84	656+41	LINDSTROM RD & TAPERS	36	57	--	2"
0010	STH 112	659+22	662+34	FELLMAN DR & TAPERS	31	49	--	2"
0010	STH 112	671+58	673+11	STH 137 TAPER	8	--	13	4"
0010	STH 112	671+60	673+50	6TH ST W. TAPER	3	--	4	4"
0010	STH 112	678+63	679+60	JUNCTION RD	15	--	18	1.5"
0010	STH 112	686+58	687+30	22ND AVE W.	6	--	7	1.5"
0010	STH 112	686+50	687+50	3RD ST W.	12	--	14	1.5"
0010	STH 112	690+85	691+50	MAIN ST W. (S. OF PED. ISLAND)	3	--	4	1.5"
					7273	10508	2178	
					7273	10508	2178	
PROJECT 8727-00-70 TOTAL								
PROJECT 8725-00-70								
0010	STH 118	309+25	359+00	MAINLINE (24' WIDTH)	929	1486	--	2"
0010	STH 118	359+00	362+06	MAINLINE & INT. TAPERS	98	157	--	2"
					1027	1643	0	
					1027	1643	0	
PROJECT 8725-01-70 TOTAL								

ASPHALTIC SURFACE DRIVEWAYS AND FIELD ENTRANCES

CATEGORY	ALIGNMENT	LOCATION	STATION	ALIGNMENT	STATION	LOCATION	TON
PROJECT 8727-00-70							
0010	STH 112	UNDISTRIBUTED	440+38	STH 112	440+38	RT	5
0010	STH 112	UNDISTRIBUTED	451+28	STH 112	451+28	RT	4
0010	STH 112	UNDISTRIBUTED	463+10	STH 112	463+10	LT	4
0010	STH 112	UNDISTRIBUTED	472+11	STH 112	472+11	RT	6
0010	STH 112	UNDISTRIBUTED	505+15	STH 112	505+15	RT	4
0010	STH 112	UNDISTRIBUTED	505+45	STH 112	505+45	LT	8
0010	STH 112	UNDISTRIBUTED	506+52	STH 112	506+52	LT	3
0010	STH 112	UNDISTRIBUTED	508+52	STH 112	508+52	RT	2
0010	STH 112	UNDISTRIBUTED	509+27	STH 112	509+27	LT	3
0010	STH 112	UNDISTRIBUTED	510+40	STH 112	510+40	LT	6
0010	STH 112	UNDISTRIBUTED	516+17	STH 112	516+17	RT	5
0010	STH 112	UNDISTRIBUTED	530+80	STH 112	530+80	RT	6
0010	STH 112	UNDISTRIBUTED	535+00	STH 112	535+00	LT	5
0010	STH 112	UNDISTRIBUTED	537+85	STH 112	537+85	RT	2
0010	STH 112	UNDISTRIBUTED	549+90	STH 112	549+90	RT	4
0010	STH 112	UNDISTRIBUTED	564+18	STH 112	564+18	RT	6
0010	STH 112	UNDISTRIBUTED	567+90	STH 112	567+90	RT	4
0010	STH 112	UNDISTRIBUTED	576+52	STH 112	576+52	LT	4
0010	STH 112	UNDISTRIBUTED	594+40	STH 112	594+40	RT	11
0010	STH 112	UNDISTRIBUTED	622+28	STH 112	622+28	LT	3
0010	STH 112	UNDISTRIBUTED	625+37	STH 112	625+37	LT	5
0010	STH 112	UNDISTRIBUTED	636+57	STH 112	636+57	RT	2
0010	STH 112	UNDISTRIBUTED	640+30	STH 112	640+30	LT	4
0010	STH 112	UNDISTRIBUTED	643+25	STH 112	643+25	RT	2
0010	STH 112	UNDISTRIBUTED	646+54	STH 112	646+54	LT	2
0010	STH 112	UNDISTRIBUTED	646+80	STH 112	646+80	RT	5
0010	STH 112	UNDISTRIBUTED	649+85	STH 112	649+85	RT	3
0010	STH 112	UNDISTRIBUTED	663+15	STH 112	663+15	LT	3
0010	STH 112	UNDISTRIBUTED	667+82	STH 112	667+82	LT	2
0010	STH 112	UNDISTRIBUTED	668+65	STH 112	668+65	RT	7
0010	STH 112	UNDISTRIBUTED	669+25	STH 112	669+25	LT	2
0010	STH 112	UNDISTRIBUTED	670+60	STH 112	670+60	RT	6
0010	STH 112	UNDISTRIBUTED	672+00	STH 112	672+00	RT	8
CATEGORY 0010 TOTAL							145
PROJECT 8727-00-70 TOTAL							145

ASPHALTIC SURFACE

CATEGORY	ALIGNMENT	LOCATION	TON	REMARKS
PROJECT 8727-00-70				
0010	STH 112	UNDISTRIBUTED	290	PREPARE FOUNDATION FOR HMA LAYER (OVER CIR)
0010	STH 112	UNDISTRIBUTED	450	UNDISTRIBUTED, FOR WEDGING AND LEVELING
0010	STH 112	UNDISTRIBUTED	110	PREPARE FOUNDATION FOR ASPHALTIC PAVING
0010	STH 112	UNDISTRIBUTED	25	BUTT JOINT RAMPS AND MINOR REPAIRS
CATEGORY 0010 TOTAL			740	
PROJECT 8727-00-70 TOTAL			740	
PROJECT 8725-01-70				
0010	STH 118	UNDISTRIBUTED	250	PREPARE FOUNDATION FOR ASPHALTIC PAVING
0010	STH 118	UNDISTRIBUTED	25	BUTT JOINT RAMPS AND MINOR REPAIRS
CATEGORY 0010 TOTAL			275	
PROJECT 8725-01-70 TOTAL			275	

ASPHALT CENTER LINE RUMBLE STRIPS 2-LANE RURAL

CATEGORY	STATION	TO	STATION	LOCATION	LF
PROJECT 8727-00-70					
0010	404+85	-	453+21	STH 112	4836
0010	457+21	-	464+70	STH 112	749
0010	466+70	-	479+28	STH 112	1258
0010	483+28	-	504+14	STH 112	2086
0010	509+48	-	515+17	STH 112	569
0010	517+17	-	544+73	STH 112	2756
0010	548+73	-	566+90	STH 112	1817
0010	568+90	-	584+17	STH 112	1527
0010	588+17	-	593+40	STH 112	523
CATEGORY 0010 TOTAL					16121
PROJECT 8727-00-70 TOTAL					16121

Addendum No. 01
 ID 8725-01-70
 ID 8727-00-70
 Revised Sheet 50
 February 4, 2019

BASE REPAIR FOR CIR AND HMA SUMMARY

CATEGORY	STATION TO	STATION	LOCATION	CY	REMARKS
PROJECT 8727-00-70					
0010	401+25	-	666+66	375	PREPARE FOUNDATION FOR CIR ASPHALTIC PAVING & HMA LAYER
0010	666+66	-	695+25	300	PREPARE FOUNDATION FOR ASPHALTIC PAVING
CATEGORY 0010 TOTAL				375	
PROJECT 8727-00-70 TOTAL				300	
PROJECT 8725-01-70					
0010	309+25	-	362+06	175	PREPARE FOUNDATION FOR ASPHALTIC PAVING
CATEGORY 0010 TOTAL				0	
PROJECT 8725-01-70 TOTAL				175	

ADJUSTING WATER VALUES

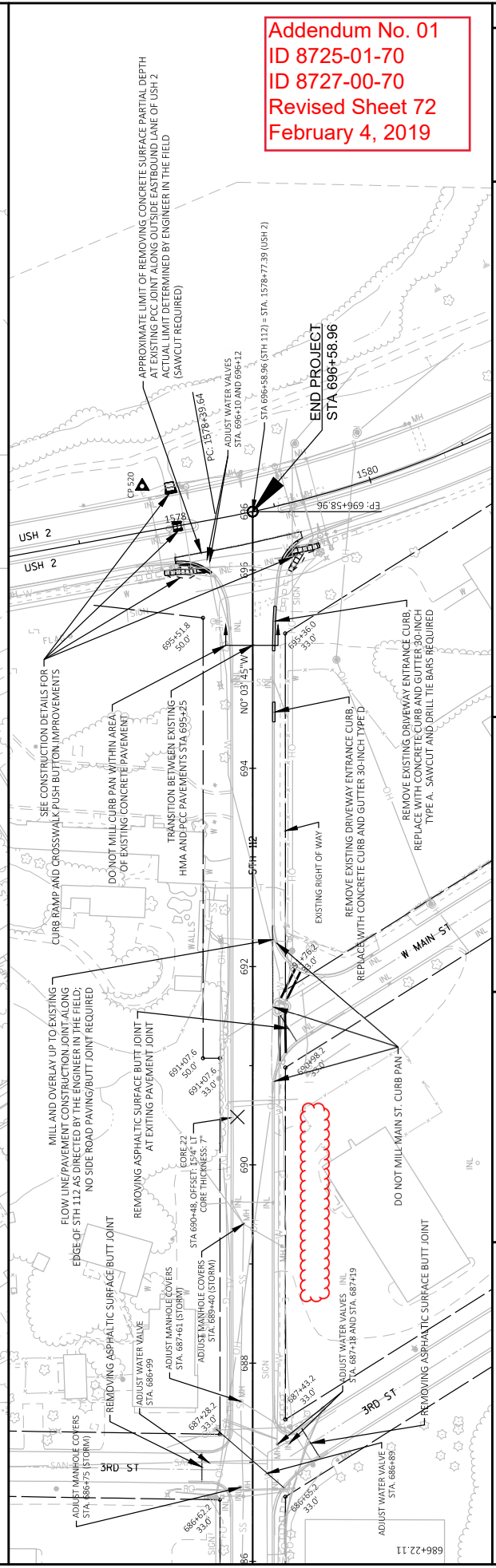
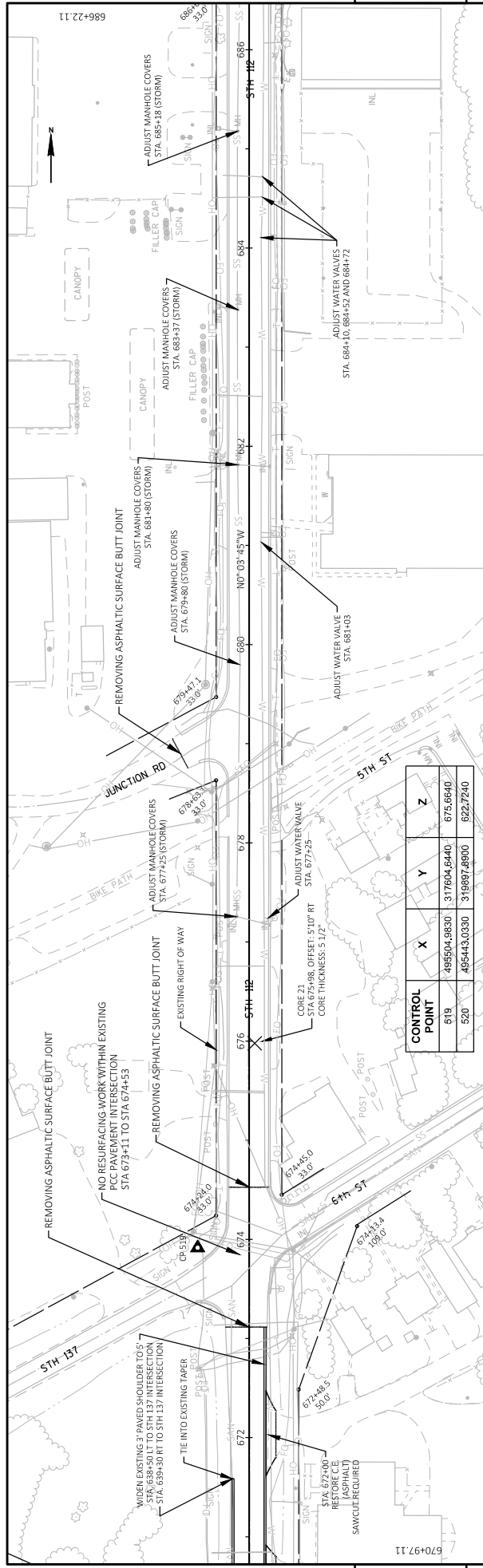
CATEGORY	ALIGNMENT	STATION	LOCATION	EACH	SPV, 0060.01
PROJECT 8727-00-70					
0020	STH 112	67725	RT	1	
0020	STH 112	68103	RT	1	
0020	STH 112	68410	RT	1	
0020	STH 112	68452	RT	1	
0020	STH 112	68472	RT	1	
0020	STH 112	68689	RT	1	
0020	STH 112	68699	LT	1	
0020	STH 112	68718	RT	1	
0020	STH 112	68719	RT	1	
0020	STH 112	69610	LT	1	
0020	STH 112	69612	LT	1	
CATEGORY 0020 TOTAL				11	
PROJECT 8727-00-70 TOTAL				11	

COLD-IN-PLACE RECYCLING (CIR) PAVEMENT PARTIAL DEPTH ITEMS

CATEGORY	STATION TO	STATION	WIDTH (FT)	CIR THICKNESS (IN)	LOCATION	SY	REMARKS
PROJECT 8727-00-70							
0010	401+25	-	638+50	3	STH 112	79083	RURAL SEGMENT
0010	638+50	-	666+66	3.5*	STH 112	10638	RURAL SEGMENT WITH SHOULDER WIDENING*
0010	674+53	-	690+75	0	STH 112	0	URBAN SEGMENT
CATEGORY 0010 TOTAL						89721	376
PROJECT 8727-00-70 TOTAL						89721	376
PROJECT 8725-01-70							
0010	309+25	-	362+06	0	STH 118	175	
CATEGORY 0010 TOTAL						0	175
PROJECT 8725-01-70 TOTAL						0	175

*NOTE: PROCESS 3.5" OF CIR THE TYPICAL 30' WIDTH AFTER REDUCING TYPICAL PRE-MILL DEPTH FROM 2" TO 1.5". PLACE CIR MATERIAL 34' WIDE TO ACHIEVE THE 5' PAVED SHOULDER WIDTH; APPROXIMATE DEPTH OF PLACED CIR MATERIAL = 3.1".

Addendum No. 01
ID 8725-01-70
ID 8727-00-70
Revised Sheet 60
February 4, 2019



Addendum No. 01
ID 8725-01-70
ID 8727-00-70
Revised Sheet 72
February 4, 2019

CONTROL POINT	X	Y	Z
619	485504.9830	317604.6440	675.6640
520	485443.0330	319897.8900	622.7240



Proposal Schedule of Items

Proposal ID: 20190212026 Project(s): 8725-01-70, 8727-00-70

Federal ID(s): WISC 2019133, WISC 2019132

SECTION: 0001 Contract Items

Alt Set ID: Alt Mbr ID:

Proposal Line Number	Item ID Description	Approximate Quantity and Units	Unit Price	Bid Amount
0002	204.0109.S Removing Concrete Surface Partial Depth	14,548.000 SF	_____.	_____.
0004	204.0110 Removing Asphaltic Surface	1,350.000 SY	_____.	_____.
0006	204.0115 Removing Asphaltic Surface Butt Joints	537.000 SY	_____.	_____.
0008	204.0120 Removing Asphaltic Surface Milling	119,204.000 SY	_____.	_____.
0010	204.0150 Removing Curb & Gutter	128.000 LF	_____.	_____.
0012	204.0155 Removing Concrete Sidewalk	83.000 SY	_____.	_____.
0014	211.0100 Prepare Foundation for Asphaltic Paving (project) 01. 8727-00-70	LS	LUMP SUM	_____.
0016	211.0100 Prepare Foundation for Asphaltic Paving (project) 02. 8725-01-70	LS	LUMP SUM	_____.
0018	213.0100 Finishing Roadway (project) 01. 8727-00-70	1.000 EACH	_____.	_____.
0020	213.0100 Finishing Roadway (project) 02. 8725-01-70	1.000 EACH	_____.	_____.
0022	305.0110 Base Aggregate Dense 3/4-Inch	1,863.000 TON	_____.	_____.
0024	305.0500 Shaping Shoulders	650.000 STA	_____.	_____.
0026	416.0610 Drilled Tie Bars	44.000 EACH	_____.	_____.
0028	455.0605 Tack Coat	8,300.000 GAL	_____.	_____.
0030	460.2000 Incentive Density HMA Pavement	9,180.000 DOL	1.00000	9,180.00



Proposal Schedule of Items

Proposal ID: 20190212026 Project(s): 8725-01-70, 8727-00-70

Federal ID(s): WISC 2019133, WISC 2019132

SECTION: 0001 Contract Items

Alt Set ID: Alt Mbr ID:

Proposal Line Number	Item ID Description	Approximate Quantity and Units	Unit Price	Bid Amount
0032	460.4110.S Reheating HMA Pavement Longitudinal Joints	34,784.000 LF	_____.	_____.
0034	460.6644 HMA Pavement 4 MT 58-34 V	12,151.000 TON	_____.	_____.
0036	460.7645 HMA Pavement 5 HT 58-34 V	2,178.000 TON	_____.	_____.
0038	465.0105 Asphaltic Surface	740.000 TON	_____.	_____.
0040	465.0110 Asphaltic Surface Patching	410.000 TON	_____.	_____.
0042	465.0120 Asphaltic Surface Driveways and Field Entrances	145.000 TON	_____.	_____.
0044	465.0475 Asphalt Centerline Rumble Strips 2-Lane Rural	16,121.000 LF	_____.	_____.
0046	601.0409 Concrete Curb & Gutter 30-Inch Type A	69.000 LF	_____.	_____.
0048	601.0411 Concrete Curb & Gutter 30-Inch Type D	20.000 LF	_____.	_____.
0050	601.0413 Concrete Curb & Gutter 6-Inch Sloped 30-Inch Type G	39.000 LF	_____.	_____.
0052	601.0576 Concrete Curb & Gutter 4-Inch Sloped 30-Inch Type J	72.000 LF	_____.	_____.
0054	602.0405 Concrete Sidewalk 4-Inch	944.000 SF	_____.	_____.
0056	602.0515 Curb Ramp Detectable Warning Field Natural Patina	76.000 SF	_____.	_____.
0058	602.0615 Curb Ramp Detectable Warning Field Radial Natural Patina	19.500 SF	_____.	_____.
0060	611.8110 Adjusting Manhole Covers	10.000 EACH	_____.	_____.



Proposal Schedule of Items

Proposal ID: 20190212026 Project(s): 8725-01-70, 8727-00-70

Federal ID(s): WISC 2019133, WISC 2019132

SECTION: 0001 Contract Items

Alt Set ID: Alt Mbr ID:

Proposal Line Number	Item ID Description	Approximate Quantity and Units	Unit Price	Bid Amount
0184	SPV.0035 Special 01. Base Repair for CIR Pavement	375.000 CY	_____.	_____.
0186	SPV.0035 Special 02. Base Repair for HMA Pavement	475.000 CY	_____.	_____.
0188	SPV.0060 Special 01. Adjusting Water Valves	11.000 EACH	_____.	_____.
0190	SPV.0090 Special 01. Concrete Curb and Gutter Cure and Seal Treatment	200.000 LF	_____.	_____.
0192	SPV.0105 Special 01. Prepare Foundation for CIR Asphalt Pavement Project 8727-00-70	LS	LUMP SUM	_____.
0194	SPV.0105 Special 02. Material Transfer Vehicle Project 8727-00-70	LS	LUMP SUM	_____.
0196	SPV.0105 Special 03. Material Transfer Vehicle Project 8725-01-70	LS	LUMP SUM	_____.
0198	SPV.0105 Special 04. Remove Pedestrian Signal Face and Push Button Equipment STH 112 & USH 2	LS	LUMP SUM	_____.
0200	SPV.0105 Special 05. Prepare Foundation for HMA Layer Project 8727-00-70	LS	LUMP SUM	_____.
0202	SPV.0105 Special 06. Milling and Removing Temporary Joint Project 8727-00-70	LS	LUMP SUM	_____.
0204	SPV.0105 Special 07. Milling and Removing Temporary Joint Project 8725-01-70	LS	LUMP SUM	_____.
0206	SPV.0165 Special 01. Concrete Sidewalk Cure and Seal Treatment	944.000 SF	_____.	_____.
0208	SPV.0180 Special 01. Cold In-Place Recycling (CIR) Pavement w/ Higher Moisture and 3-Day Set Time	89,721.000 SY	_____.	_____.



Proposal Schedule of Items

Proposal ID: 20190212026 Project(s): 8725-01-70, 8727-00-70

Federal ID(s): WISC 2019133, WISC 2019132

SECTION: 0001 Contract Items

Alt Set ID: Alt Mbr ID:

Proposal Line Number	Item ID Description	Approximate Quantity and Units	Unit Price	Bid Amount
0210	SPV.0195 Special 01. Asphalt Stabilizing Agent	376.000 TON	_____.	_____.
	Section: 0001		Total:	_____.
			Total Bid:	_____.

