



# Wisconsin Department of Transportation

April 1, 2019

**Division of Transportation Systems Development**  
 Bureau of Project Development  
 4822 Madison Yards Way, 4<sup>th</sup> Floor South  
 Madison, WI 53705

Telephone: (608) 266-1631  
 Facsimile (FAX): (608) 266-8459

## NOTICE TO ALL CONTRACTORS:

**Proposal #19: 9029-02-71, WISC 2019 176**  
**T Lake, Cth G**  
**Cth E – Spur Rd**  
**CTH G**  
**Marinette County**

## Letting of April 9, 2019

This is Addendum No. 02, which provides for the following:

### Schedule of Items:

| Revised Bid Item Quantities |                         |      |              |                  |                |
|-----------------------------|-------------------------|------|--------------|------------------|----------------|
| Bid Item                    | Item Description        | Unit | Old Quantity | Revised Quantity | Proposal Total |
| 450.4000                    | HMA Cold Weather Paving | Ton  | 12,577       | -9,427           | 3,150          |

| Added Bid Item Quantities |                          |      |              |                  |                |
|---------------------------|--------------------------|------|--------------|------------------|----------------|
| Bid Item                  | Item Description         | Unit | Old Quantity | Revised Quantity | Proposal Total |
| 460.5223                  | HMA Pavement 3 LT 58-28S | Ton  | 0            | 7,075            | 7,075          |
| 642.5001                  | Field Office Type B      | Each | 0            | 1                | 1              |

| Deleted Bid Item Quantities |                          |      |              |                  |                |
|-----------------------------|--------------------------|------|--------------|------------------|----------------|
| Bid Item                    | Item Description         | Unit | Old Quantity | Revised Quantity | Proposal Total |
| 460.5243                    | HMA Pavement 3 LT 58-34S | Ton  | 7,075        | -7,075           | 0              |

### Plan Sheets:

| Revised Plan Sheets |   |
|---------------------|---|
| Plan Sheet          | Plan Sheet Title (brief description of changes to sheet)  |
| 4                   | Typical Sections. Lower layer of HMA pavement was changed to the correct bid item.  |
| 5                   | Typical Sections. Lower layer of HMA pavement was changed to the correct bid item.  |
| 6                   | Typical Sections. Lower layer of HMA pavement was changed to the correct bid item.  |
| 8                   | Construction Details. Lower layer of HMA pavement was changed to the correct bid item.  |
| 28                  | Miscellaneous Quantities. Quantity of HMA Cold Weather Paving was revised to the correct value. Bid item for lower layer of pavement was changed to the correct item. |

**Schedule of Items**

Attached, dated March 29, 2019, are the revised Schedule of Items Pages 1-5.

**Plan Sheets**

The following 8½ x 11-inch sheets are attached and made part of the plans for this proposal:

Revised: 4, 5, 6, 8, 28.

The responsibility for notifying potential subcontractors and suppliers of these changes remains with the prime contractor.

Sincerely,

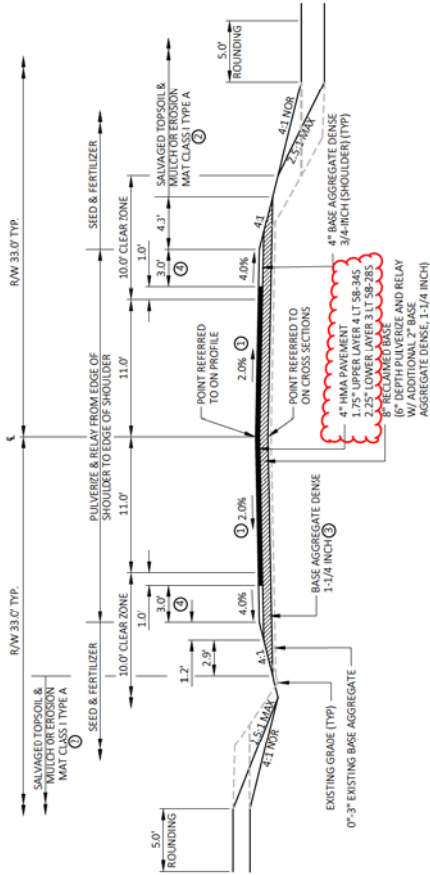
*Mike Coleman*

Proposal Development Specialist  
Proposal Management Section



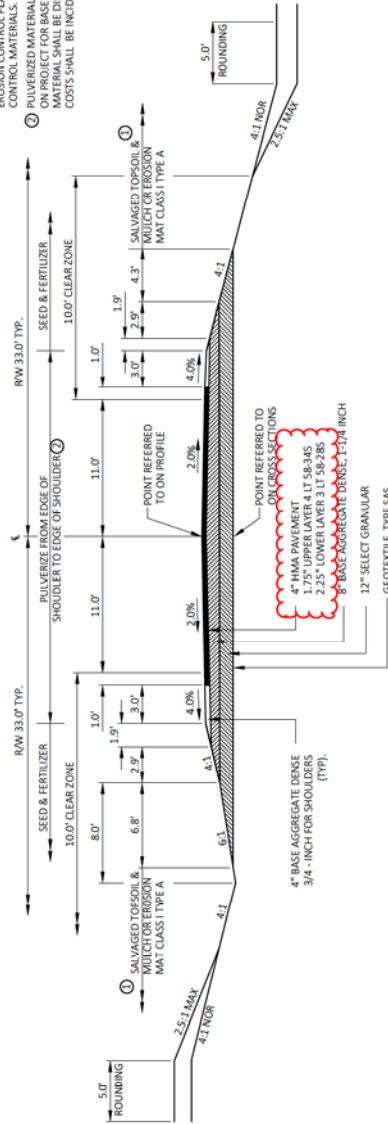
Addendum No. 02  
ID 9029-02-71  
Revised Sheet 5  
April 1, 2019

- ① REFER TO SUPERELEVATED TYPICAL SECTION AND TABLE FOR SPECIFIC SUPERELEVATED LOCATIONS
- ② EROSION MAT ON SLOPES STEEPER THAN 4:1. REFER TO EROSION CONTROL PLANS FOR TYPE & LOCATION OF EROSION CONTROL MATERIALS.
- ③ ADDITIONAL BASE AGGREGATE DENSE 1 3/4-INCH MAY BE REQUIRED WHERE THERE IS INSUFFICIENT EXISTING MATERIAL TO CONSTRUCT TO FINISHED SECTION.
- ④ WHERE THE EXISTING TOTAL SHOULDER WIDTH IS GREATER THAN 4.0', THE WIDTH OF THE UNPAVED SHOULDER SHALL BE INCREASED 30 AS TO MATCH THE EXISTING WIDTH AS DIRECTED BY THE ENGINEER.



TYPICAL FINISHED SECTION  
STA 344+50.00 - STA 91+85.00  
STA 96+65.00 - STA 235+20.00

- ① EROSION MAT ON SLOPES STEEPER THAN 4:1. REFER TO EROSION CONTROL PLANS FOR TYPE & LOCATION OF EROSION CONTROL MATERIALS.
- ② PULVERIZED MATERIAL TO BE REMOVED AND USED ELSEWHERE ON PROJECT FOR BASE MATERIAL/WIDENING. ANY EXCESS MATERIAL SHALL BE DISPOSED OF BY THE CONTRACTOR. ALL COSTS SHALL BE INCIDENTAL TO "PULVERIZE AND RELAY".



TYPICAL FINISHED SECTION  
STA 91+85.00 - STA 96+65.00

TYPICAL SECTIONS

COUNTY: MARINETTE

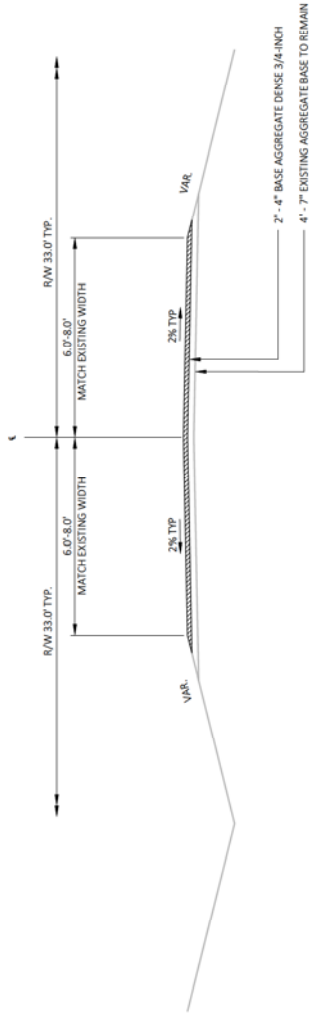
HWY: CTH G

PROJECT NO: 9029-02-71

SHEET

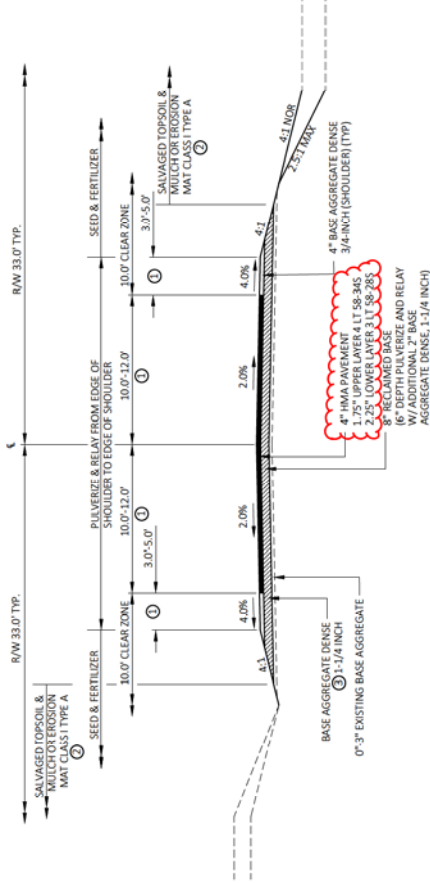
5

E



TYPICAL FINISHED SIDEWALK SECTION

ASH LANE  
TOWNLINE ROAD



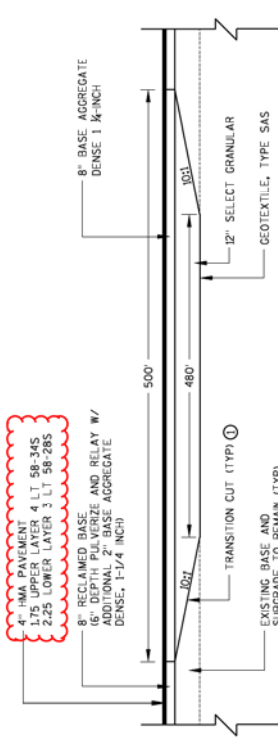
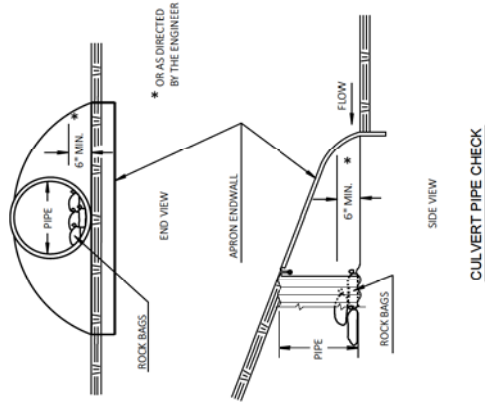
TYPICAL FINISHED SIDEWALK SECTION

FERNDALE ROAD  
WALTERS ROAD  
WALTON ROAD  
JACOBSON ROAD  
BEHL ROAD

- ① MATCH EXISTING WIDTH.
- ② EROSION MAT ON SLOPES STEEPER THAN 4:1. REFER TO EROSION CONTROL PLANS FOR TYPE & LOCATION OF EROSION CONTROL MATERIALS.
- ③ ADDITIONAL BASE AGGREGATE DENSE 1-1/4 INCH MAY BE REQUIRED WHERE THERE IS INSUFFICIENT EXISTING MATERIAL TO CONSTRUCT TO FINISHED SECTION. SEE CONSTRUCTION DETAILS FOR TYPICAL INTERSECTION AND BUTT JOINT DETAILS.

Addendum No. 02  
ID 9029-02-71  
Revised Sheet 6  
April 1, 2019

Addendum No. 02  
ID 9029-02-71  
Revised Sheet 8  
April 1, 2019

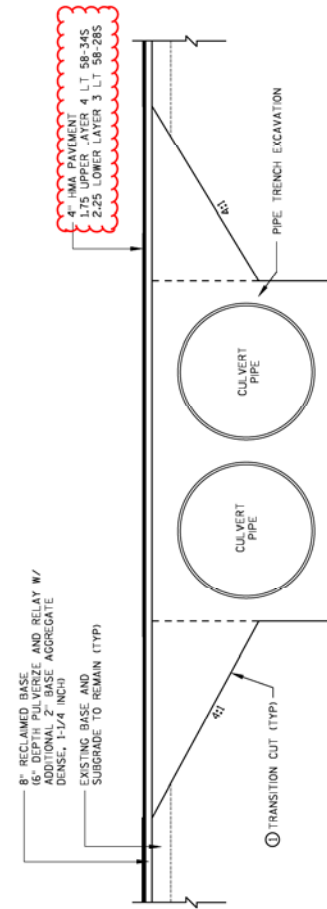


**PULVERIZE AND RELAY TO RECONSTRUCTION TRANSITION**

STA 94+75 TO STA 94+85  
STA 96+65 TO STA 96+75

**NOTES**

TRANSITION CUT WILL BE PAID FOR AS COMMON  
EXCAVATION. TRANSITION CUT SHALL BE SHOULDER  
POINT TO SHOULDER POINT.



**CTH & MAINLINE CULVERT PIPE TRANSITION**

REFER TO PLAN AND CROSS SECTION  
SHEETS FOR CULVERT PIPE LOCATIONS  
AND ELEVATIONS

Addendum No. 02  
 ID 9029-02-71  
 Revised Sheet 28  
 April 1, 2019

HMA PAVEMENT ITEMS

| STATION                 | LOCATION | HMA PAVING | COLD WEATHER PAVING | TACK COAT | HMA PAVEMENT | HMA PAVEMENT | ASPHALTIC SURFACE AND CROWN AND FIELD ENTRANCES |
|-------------------------|----------|------------|---------------------|-----------|--------------|--------------|---|
| CTH-G                   |          | TON        | TON                 | GAL       | 3 LT 58.285  | 3 LT 58.345  | TON   |
| STA 34+50 - STA 74+34   | LT & RT  | 585        | 637                 |           | 1023         |              | 465.0120  |
| STA 74+34 - STA 102+02  | LT & RT  | 406        | 443                 |           | 710          |              | 465.0120  |
| STA 102+02 - STA 127+48 | LT & RT  | 380        | 414                 |           | 664          |              | 465.0120  |
| STA 127+48 - STA 157+25 | LT & RT  | 431        | 470                 |           | 754          |              | 465.0120  |
| STA 157+25 - STA 183+66 | LT & RT  | 388        | 423                 |           | 678          |              | 465.0120  |
| STA 183+66 - STA 209+56 | LT & RT  | 380        | 416                 |           | 665          |              | 465.0120  |
| STA 209+56 - STA 239+20 | LT & RT  | 382        | 416                 |           | 667          |              | 465.0120  |
| INTERSECTIONS           |          |            |                     |           |              |              |   |
| ASH RD                  | LT       | 0          | 0                   |           | 0            |              |   |
| BRANDALE RD             | RT       | 36         | 39                  |           | 62           |              |   |
| WALTERS RD              | RT       | 27         | 29                  |           | 46           |              |   |
| ANDERSON RD             | LT       | 40         | 44                  |           | 70           |              |   |
| ANDERSON ST             | LT       | 35         | 39                  |           | 66           |              |   |
| BEHLERD                 | RT & LT  | 22         | 24                  |           | 43           |              |   |
| DRIVEWAYS               |          |            |                     |           |              |              | 50  |
| ITEM TOTAL              |          | 3150       | 2793                |           | 7075         |              | 5503  |

TURF ESTABLISHMENT ITEMS

| STATION                 | LOCATION | SEEDING | TOPSOIL | MULCHING | FERTILIZER | MAX TUBE | NO. 30 | SEEDING TEMPORARY | BORROW | PIT |
|-------------------------|----------|---------|---------|----------|------------|----------|--------|-------------------|--------|-----|
| CTH-G                   |          | LB      | SY      | SY       | TYPE B     | NO. 30   | LB     | LB                | LB     | LB  |
| STA 34+50 - STA 74+34   | LT & RT  | 1150    | 1.2     | 36       | 4.3        | 122      | 59     |                   |        |     |
| STA 74+34 - STA 102+02  | LT & RT  | 6750    | 3320    | 4.2      | 121        | 181      |        |                   |        |     |
| STA 102+02 - STA 127+48 | LT & RT  | 6700    | 2870    | 4.2      | 121        | 181      |        |                   |        |     |
| STA 127+48 - STA 157+25 | LT & RT  | 4800    | 2410    | 3.1      | 85         | 118      |        |                   |        |     |
| STA 157+25 - STA 183+66 | LT & RT  | 2250    | 1320    | 1.4      | 41         | 61       |        |                   |        |     |
| STA 183+66 - STA 209+56 | LT & RT  | 2200    | 1000    | 1.4      | 40         | 60       |        |                   |        |     |
| STA 209+56 - STA 239+20 | LT & RT  | 4650    | 2630    | 2.9      | 84         | 126      |        |                   |        |     |
| STA 184+00 - STA 194+00 | LT & RT  | 4550    | 1990    | 2.9      | 82         | 123      |        |                   |        |     |
| STA 194+00 - STA 204+00 | LT & RT  | 2050    | 1040    | 1.3      | 37         | 56       |        |                   |        |     |
| STA 204+00 - STA 214+00 | LT & RT  | 3850    | 2470    | 2.4      | 70         | 104      |        |                   |        |     |
| UNDISTRIBUTED           |          | 4858    | 2891    | 5        | 144        | 216      |        |                   |        | 275 |
| ITEM TOTAL              |          | 55808   | 31251   | 38.5     | 1105       | 1656     |        |                   |        | 275 |

MARKERS CULVERT END

| STATION    | LOCATION | MARKERS     |
|------------|----------|-------------|
| CTH-G      |          | CULVERT END |
| STA 34+56  | LT & RT  | 2           |
| STA 58+55  | LT & RT  | 2           |
| STA 90+50  | LT & RT  | 4           |
| STA 99+03  | LT & RT  | 2           |
| STA 102+38 | LT & RT  | 2           |
| STA 116+28 | LT & RT  | 2           |
| STA 139+28 | LT & RT  | 2           |
| STA 147+32 | LT & RT  | 2           |
| STA 153+94 | LT & RT  | 2           |
| STA 160+66 | LT & RT  | 2           |
| STA 167+62 | LT & RT  | 4           |
| STA 185+13 | LT & RT  | 2           |
| STA 194+60 | LT & RT  | 2           |
| STA 206+24 | LT & RT  | 2           |
| STA 209+72 | LT & RT  | 2           |
| STA 228+43 | LT & RT  | 4           |
| ITEM TOTAL |          | 42          |

PERMANENT SIGNING ITEMS

| SIGN NO.   | SIGN CODE | SIGN MESSAGE                  | W     | H     | IN     | REFLECTIVE H | REFLECTIVE F | PLACEMENT | MARKING | REMOVING | SMALL SIGN | SUPPORTS | REMARKS             |
|------------|-----------|-------------------------------|-------|-------|--------|--------------|--------------|-----------|---------|----------|------------|----------|---------------------|
|            |           |                               | IN    | IN    | IN     | TYPE II      | TYPE I       | TYPE II   | TYPE I  | TYPE I   | TYPE I     | TYPE I   |                     |
| 1-1        | W1-4R     | RIGHT REVERSE CURVE           | 30    | 30    | X      | 6.25         | -            | -         | 1       | -        | 1          | -        | ON SAME POST AS 1-1 |
| 1-2        | W1-1      | ADVISORY SPEED (YELLOW BLACK) | 18    | 18    | X      | 2.25         | -            | -         | 1       | -        | 1          | -        | ON SAME POST AS 1-3 |
| 1-3        | W1-1      | ADVISORY SPEED (YELLOW BLACK) | 18    | 18    | X      | 2.25         | -            | -         | 1       | -        | 1          | -        | ON SAME POST AS 1-3 |
| 1-5        | W1-1      | HIDDEN ENTRANCE               | 30    | 30    | MOVE   | -            | -            | -         | -       | -        | -          | -        |                     |
| 2-1        | W1-4R     | RIGHT REVERSE CURVE           | 30    | 30    | X      | 6.25         | -            | -         | 1       | -        | 1          | -        | ON SAME POST AS 2-1 |
| 2-2        | W1-1      | ADVISORY SPEED (YELLOW BLACK) | 18    | 18    | X      | 2.25         | -            | -         | 1       | -        | 1          | -        |                     |
| 2-3        | R1-1      | STOP                          | 30    | 30    | X      | 5.18         | -            | -         | 1       | -        | 1          | -        |                     |
| 3-1        | R1-1      | STOP                          | 30    | 30    | X      | 5.18         | -            | -         | 1       | -        | 1          | -        |                     |
| 4-1        | W2-2      | SIDE ROAD (90 DEGREES)        | 30    | 30    | X      | 6.25         | -            | -         | 1       | -        | 1          | -        |                     |
| 4-2        | R1-1      | WELCOME TO THE TOWN OF LAKE   | 30    | 30    | MOVE   | -            | -            | -         | -       | -        | -          | -        |                     |
| 4-3        | R1-1      | WELCOME TOWN OF PORTFIELD     | 30    | 30    | MOVE   | -            | -            | -         | -       | -        | -          | -        |                     |
| 4-4        | R1-1      | STOP                          | 30    | 30    | X      | 5.18         | -            | -         | 1       | -        | 1          | -        |                     |
| 6-1        | W5-52L    | CLEARANCE STRIPPER DOWN RIGHT | 30    | 30    | REMOVE | -            | -            | -         | -       | -        | -          | -        |                     |
| 6-2        | W5-52R    | CLEARANCE STRIPPER DOWN LEFT  | 30    | 30    | REMOVE | -            | -            | -         | -       | -        | -          | -        |                     |
| 6-3        | W5-52R    | CLEARANCE STRIPPER DOWN LEFT  | 30    | 30    | REMOVE | -            | -            | -         | -       | -        | -          | -        |                     |
| 6-4        | W5-52L    | CLEARANCE STRIPPER DOWN RIGHT | 30    | 30    | REMOVE | -            | -            | -         | -       | -        | -          | -        |                     |
| 6-5        | R1-1      | STOP                          | 30    | 30    | X      | 5.18         | -            | -         | 1       | -        | 1          | -        |                     |
| 6-6        | R1-1      | STOP                          | 30    | 30    | X      | 5.18         | -            | -         | 1       | -        | 1          | -        |                     |
| 7-1        | S3-1      | SCHOOL BUS STOP AHEAD         | 30    | 30    | X      | 6.50         | -            | -         | 1       | -        | 1          | -        |                     |
| 7-2        | S3-1      | SCHOOL BUS STOP AHEAD         | 30    | 30    | X      | 6.50         | -            | -         | 1       | -        | 1          | -        |                     |
| 8-1        | J1-1      | JUNCTION ASSEMBLY             | 24    | 24    | X      | 6.50         | -            | -         | 1       | -        | 1          | -        |                     |
| ITEM TOTAL |           |                               | 42.76 | 38.00 | 7      | 6            | 3            | 20        | 17      | 3        |            |          |                     |

NOTE: ALL ITEMS AND QUANTITIES ON THIS SHEET ARE FOR ENGINEER ESTIMATE CATEGORY 000 UNLESS OTHERWISE NOTED.



Proposal Schedule of Items

Proposal ID: 20190409019 Project(s): 9029-02-71

Federal ID(s): WISC 2019176

SECTION: 0001 Contract Items

Alt Set ID: Alt Mbr ID:

| Proposal Line Number | Item ID Description   | Approximate Quantity and Units | Unit Price | Bid Amount |
|----------------------|---|--------------------------------|------------|------------|
| 0002                 | 201.0105<br>Clearing  | 48.000<br>STA                  | _____.     | _____.     |
| 0004                 | 201.0205<br>Grubbing  | 48.000<br>STA                  | _____.     | _____.     |
| 0006                 | 203.0100<br>Removing Small Pipe Culverts  | 35.000<br>EACH                 | _____.     | _____.     |
| 0008                 | 203.0600.S<br>Removing Old Structure Over Waterway With Minimal Debris (station) 01. 167+62 | LS                             | LUMP SUM   | _____.     |
| 0010                 | 204.0110<br>Removing Asphaltic Surface  | 323.000<br>SY                  | _____.     | _____.     |
| 0012                 | 204.0115<br>Removing Asphaltic Surface Butt Joints  | 700.000<br>SY                  | _____.     | _____.     |
| 0014                 | 204.0165<br>Removing Guardrail  | 92.000<br>LF                   | _____.     | _____.     |
| 0016                 | 204.0170<br>Removing Fence  | 569.000<br>LF                  | _____.     | _____.     |
| 0018                 | 205.0100<br>Excavation Common   | 9,074.000<br>CY                | _____.     | _____.     |
| 0020                 | 208.0100<br>Borrow  | 3,184.000<br>CY                | _____.     | _____.     |
| 0022                 | 213.0100<br>Finishing Roadway (project) 01. 9029-02-71                                      | 1.000<br>EACH                  | _____.     | _____.     |
| 0024                 | 305.0110<br>Base Aggregate Dense 3/4-Inch   | 4,832.000<br>TON               | _____.     | _____.     |
| 0026                 | 305.0120<br>Base Aggregate Dense 1 1/4-Inch   | 9,950.000<br>TON               | _____.     | _____.     |
| 0028                 | 312.0110<br>Select Crushed Material   | 1,525.000<br>TON               | _____.     | _____.     |
| 0030                 | 325.0100<br>Pulverize and Relay   | 69,989.000<br>SY               | _____.     | _____.     |
| 0032                 | 374.1020.S<br>QMP Pulverize and Relay Compaction  | 69,989.000<br>SY               | _____.     | _____.     |





## Proposal Schedule of Items

Proposal ID: 20190409019 Project(s): 9029-02-71

Federal ID(s): WISC 2019176

SECTION: 0001 Contract Items

Alt Set ID: Alt Mbr ID:

| Proposal Line Number | Item ID Description  | Approximate Quantity and Units | Unit Price | Bid Amount |
|----------------------|--|--------------------------------|------------|------------|
| 0034                 | 450.4000<br>HMA Cold Weather Paving                            | 3,150.000<br>TON               | _____.     | _____.     |
| 0036                 | 455.0605<br>Tack Coat  | 2,793.000<br>GAL               | _____.     | _____.     |
| 0038                 | 460.2000<br>Incentive Density HMA Pavement                     | 7,710.000<br>DOL               | 1.00000    | 7,710.00   |
| 0042                 | 460.5244<br>HMA Pavement 4 LT 58-34 S                          | 5,503.000<br>TON               | _____.     | _____.     |
| 0044                 | 465.0120<br>Asphaltic Surface Driveways and Field Entrances    | 50.000<br>TON                  | _____.     | _____.     |
| 0046                 | 520.1015<br>Apron Endwalls for Culvert Pipe 15-Inch            | 30.000<br>EACH                 | _____.     | _____.     |
| 0048                 | 520.1018<br>Apron Endwalls for Culvert Pipe 18-Inch            | 30.000<br>EACH                 | _____.     | _____.     |
| 0050                 | 520.1024<br>Apron Endwalls for Culvert Pipe 24-Inch            | 10.000<br>EACH                 | _____.     | _____.     |
| 0052                 | 520.1030<br>Apron Endwalls for Culvert Pipe 30-Inch            | 10.000<br>EACH                 | _____.     | _____.     |
| 0054                 | 520.1036<br>Apron Endwalls for Culvert Pipe 36-Inch            | 12.000<br>EACH                 | _____.     | _____.     |
| 0056                 | 520.3315<br>Culvert Pipe Class III-A 15-Inch                   | 446.000<br>LF                  | _____.     | _____.     |
| 0058                 | 520.3318<br>Culvert Pipe Class III-A 18-Inch                   | 422.000<br>LF                  | _____.     | _____.     |
| 0060                 | 520.3324<br>Culvert Pipe Class III-A 24-Inch                   | 270.000<br>LF                  | _____.     | _____.     |
| 0062                 | 520.3330<br>Culvert Pipe Class III-A 30-Inch                   | 280.000<br>LF                  | _____.     | _____.     |
| 0064                 | 520.3336<br>Culvert Pipe Class III-A 36-Inch                   | 302.000<br>LF                  | _____.     | _____.     |
| 0066                 | 522.0142<br>Culvert Pipe Reinforced Concrete Class III 42-Inch | 54.000<br>LF                   | _____.     | _____.     |



Proposal Schedule of Items

Proposal ID: 20190409019 Project(s): 9029-02-71

Federal ID(s): WISC 2019176

SECTION: 0001 Contract Items

Alt Set ID: Alt Mbr ID:

| Proposal Line Number | Item ID Description   | Approximate Quantity and Units | Unit Price | Bid Amount |
|----------------------|---|--------------------------------|------------|------------|
| 0068                 | 522.0160<br>Culvert Pipe Reinforced Concrete Class III 60-Inch          | 108.000<br>LF                  | _____.     | _____.     |
| 0070                 | 522.1042<br>Apron Endwalls for Culvert Pipe Reinforced Concrete 42-Inch | 2.000<br>EACH                  | _____.     | _____.     |
| 0072                 | 522.1060<br>Apron Endwalls for Culvert Pipe Reinforced Concrete 60-Inch | 4.000<br>EACH                  | _____.     | _____.     |
| 0074                 | 619.1000<br>Mobilization  | 1.000<br>EACH                  | _____.     | _____.     |
| 0076                 | 621.0100<br>Landmark Reference Monuments                                | 28.000<br>EACH                 | _____.     | _____.     |
| 0078                 | 624.0100<br>Water   | 650.000<br>MGAL                | _____.     | _____.     |
| 0080                 | 625.0500<br>Salvaged Topsoil  | 55,808.000<br>SY               | _____.     | _____.     |
| 0082                 | 627.0200<br>Mulching  | 31,251.000<br>SY               | _____.     | _____.     |
| 0084                 | 628.1504<br>Silt Fence  | 25,614.000<br>LF               | _____.     | _____.     |
| 0086                 | 628.1520<br>Silt Fence Maintenance                                      | 25,614.000<br>LF               | _____.     | _____.     |
| 0088                 | 628.1905<br>Mobilizations Erosion Control                               | 10.000<br>EACH                 | _____.     | _____.     |
| 0090                 | 628.1910<br>Mobilizations Emergency Erosion Control                     | 10.000<br>EACH                 | _____.     | _____.     |
| 0092                 | 628.2002<br>Erosion Mat Class I Type A                                  | 24,712.000<br>SY               | _____.     | _____.     |
| 0094                 | 628.2006<br>Erosion Mat Urban Class I Type A                            | 1,421.000<br>SY                | _____.     | _____.     |
| 0096                 | 628.7504<br>Temporary Ditch Checks                                      | 715.000<br>LF                  | _____.     | _____.     |
| 0098                 | 628.7555<br>Culvert Pipe Checks   | 205.000<br>EACH                | _____.     | _____.     |



Proposal Schedule of Items

Proposal ID: 20190409019 Project(s): 9029-02-71

Federal ID(s): WISC 2019176

SECTION: 0001 Contract Items

Alt Set ID: Alt Mbr ID:

| Proposal Line Number | Item ID Description                       | Approximate Quantity and Units | Unit Price | Bid Amount |
|----------------------|---|--------------------------------|------------|------------|
| 0100                 | 629.0210<br>Fertilizer Type B             | 38.500<br>CWT                  | _____.     | _____.     |
| 0102                 | 630.0130<br>Seeding Mixture No. 30        | 1,105.000<br>LB                | _____.     | _____.     |
| 0104                 | 630.0200<br>Seeding Temporary             | 1,656.000<br>LB                | _____.     | _____.     |
| 0106                 | 630.0300<br>Seeding Borrow Pit            | 275.000<br>LB                  | _____.     | _____.     |
| 0108                 | 633.5200<br>Markers Culvert End           | 42.000<br>EACH                 | _____.     | _____.     |
| 0110                 | 634.0614<br>Posts Wood 4x6-Inch X 14-FT   | 7.000<br>EACH                  | _____.     | _____.     |
| 0112                 | 634.0616<br>Posts Wood 4x6-Inch X 16-FT   | 6.000<br>EACH                  | _____.     | _____.     |
| 0114                 | 637.2210<br>Signs Type II Reflective H    | 42.760<br>SF                   | _____.     | _____.     |
| 0116                 | 637.2230<br>Signs Type II Reflective F    | 38.000<br>SF                   | _____.     | _____.     |
| 0118                 | 638.2102<br>Moving Signs Type II          | 3.000<br>EACH                  | _____.     | _____.     |
| 0120                 | 638.2602<br>Removing Signs Type II        | 20.000<br>EACH                 | _____.     | _____.     |
| 0122                 | 638.3000<br>Removing Small Sign Supports  | 17.000<br>EACH                 | _____.     | _____.     |
| 0124                 | 638.4000<br>Moving Small Sign Supports    | 3.000<br>EACH                  | _____.     | _____.     |
| 0126                 | 645.0140<br>Geotextile Type SAS           | 803.000<br>SY                  | _____.     | _____.     |
| 0128                 | 648.0100<br>Locating No-Passing Zones     | 3.800<br>MI                    | _____.     | _____.     |
| 0130                 | 650.4500<br>Construction Staking Subgrade | 480.000<br>LF                  | _____.     | _____.     |
| 0132                 | 650.5000<br>Construction Staking Base     | 20,070.000<br>LF               | _____.     | _____.     |



Proposal Schedule of Items

Proposal ID: 20190409019 Project(s): 9029-02-71

Federal ID(s): WISC 2019176

SECTION: 0001 Contract Items

Alt Set ID: Alt Mbr ID:

| Proposal Line Number | Item ID Description  | Approximate Quantity and Units | Unit Price        | Bid Amount |
|----------------------|--|--------------------------------|-------------------|------------|
| 0134                 | 650.6000<br>Construction Staking Pipe Culverts                                 | 21.000<br>EACH                 | _____.            | _____.     |
| 0136                 | 650.9910<br>Construction Staking Supplemental Control (project) 01. 9029-02-71 | LS                             | LUMP SUM          | _____.     |
| 0138                 | 650.9920<br>Construction Staking Slope Stakes                                  | 20,070.000<br>LF               | _____.            | _____.     |
| 0140                 | 690.0150<br>Sawing Asphalt   | 264.000<br>LF                  | _____.            | _____.     |
| 0142                 | 740.0440<br>Incentive IRI Ride   | 15,200.000<br>DOL              | 1.00000           | 15,200.00  |
| 0144                 | ASP.1T0A<br>On-the-Job Training Apprentice at \$5.00/HR                        | 1,200.000<br>HRS               | 5.00000           | 6,000.00   |
| 0146                 | ASP.1T0G<br>On-the-Job Training Graduate at \$5.00/HR                          | 600.000<br>HRS                 | 5.00000           | 3,000.00   |
| 0148                 | SPV.0090<br>Special 01. Culvert Pipe Reinforced Concrete CL III 72X115-Inch    | 124.000<br>LF                  | _____.            | _____.     |
| 0150                 | 460.5223<br>HMA Pavement 3 LT 58-28 S  | 7,075.000<br>TON               | _____.            | _____.     |
| 0152                 | 642.5001<br>Field Office Type B  | 1.000<br>EACH                  | _____.            | _____.     |
| <b>Section: 0001</b> |  |                                | <b>Total:</b>     | _____.     |
|                      |  |                                | <b>Total Bid:</b> | _____.     |