



Wisconsin Department of Transportation

Division of Transportation Systems Development

Bureau of Project Development
 4822 Madison Yards Way, 4th Floor South
 Madison, WI 53705

April 4, 2019

Telephone: (608) 266-1631
 Facsimile (FAX): (608) 266-8459

NOTICE TO ALL CONTRACTORS:

Proposal #25: 6910-01-70, WISC 2019 230
Pine River – Poy Sippi
CTH E South to W of Beechnut Ln
CTH H
Waushara County

Letting of April 9, 2019

This is Addendum No. 01, which provides for the following:

Special Provisions:

Revised Special Provisions	
Article No.	Description
4	Traffic

Schedule of Items:

Revised Bid Item Quantities					
Bid Item	Item Description	Unit	Old Quantity	Revised Quantity	Proposal Total
624.0100	Water	MGAL	514	-296	218
625.0100	Topsoil	SY	14,790	-13,180	1,610
627.0200	Mulching	SY	13,280	-2,180	11,100
629.0210	Fertilizer Type B	CWT	10.2	-1.6	8.6
630.0120	Seeding Mixture #20	LB	435	-94	341
630.0200	Seeding Temporary	LB	435	-94	341
646.1005	Marking Line Paint 4-Inch	LF	32,200	-12,050	20,150

Added Bid Item Quantities					
Bid Item	Item Description	Unit	Old Quantity	Revised Quantity	Proposal Total
646.4505	Marking Line Same Day Paint 4-Inch	LF	0	12,050	12,050

Plan Sheets:

Revised Plan Sheets	
Plan Sheet	Plan Sheet Title (brief description of changes to sheet)
6	Construction Details (removed Detail of Butted Joint)
9	Signing and Marking Plans (revised Pavement Markings callouts)
10	Signing and Marking Plans (revised Pavement Markings callouts)
11	Signing and Marking Plans (revised Pavement Markings callouts)
12	Signing and Marking Plans (revised Pavement Markings callouts)
19	Miscellaneous Quantities (revised quantity sheet to add the item for Marking Line Same Day Paint 4-Inch; updated quantities for Water, Topsoil, Mulching, Fertilizer Type B, Seeding Mixture #20, Seeding Temporary and Marking Line Paint 4-Inch)

The responsibility for notifying potential subcontractors and suppliers of these changes remains with the prime contractor.

Sincerely,

Mike Coleman

Proposal Development Specialist
Proposal Management Section

ADDENDUM NO. 01

6910-01-70

April 4, 2019

Special Provisions

4. Traffic

Insert the following after paragraph one:

Use signs on portable supports to designate no-passing zones and to warn traffic when the center of pavement is not marked. When traffic is traveling on pulverize material and the HMA pavement binder layer use "No Center Stripe" (W8-12, 48" x 48") at the beginning of the unmarked area, at ½ mile intervals throughout the unmarked area and at locations where traffic enters the unmarked area from intersections with county trunk highways.

Schedule of Items

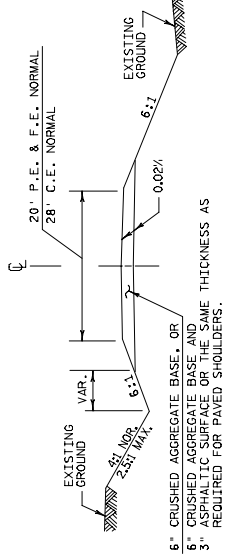
Attached, dated April 4, 2019, are the revised Schedule of Items Pages 1 – 4.

Plan Sheets

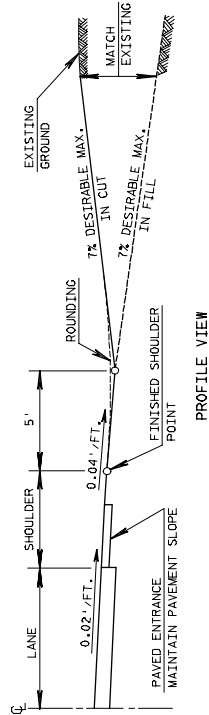
The following 8½ x 11-inch sheets are attached and made part of the plans for this proposal:

Revised: 6, 9, 10, 11, 12 and 19.

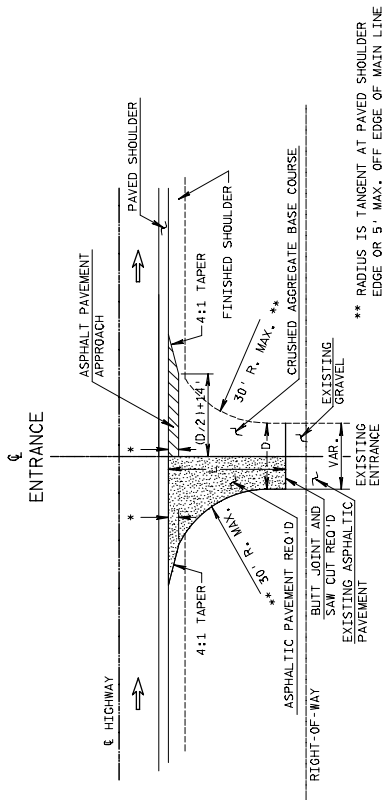
END OF ADDENDUM



TYPICAL CROSS SECTION



PROFILE VIEW



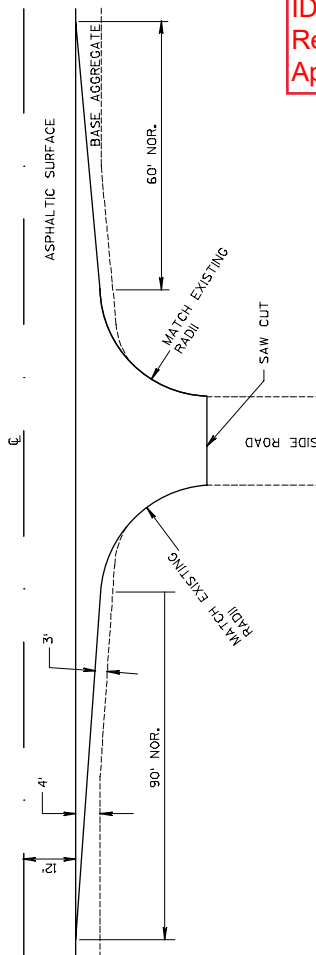
L-VARIABLE, EXACT LENGTH TO BE DETERMINED IN THE FIELD BY THE ENGINEER. BLEND BACK ON THE ENTRANCE FAR ENOUGH TO GET A SMOOTH PROFILE.
 D-DRIVEWAY WIDTH
 D-20' TYP. (P.E.'s & F.E.'s) (16' MIN. - 24' MAX.)
 D-28' TYP. (C.E.'s & FARM ENT.) (24' MIN. - 35' MAX.)

** RADIUS IS TANGENT AT PAVED SHOULDER EDGE OR 5' MAX. OFF EDGE OF MAIN LINE PAVEMENT WHICH EVER IS LESS.
 * 3' MAX. OR TO FINISHED SHOULDER WHICH EVER IS LESS.

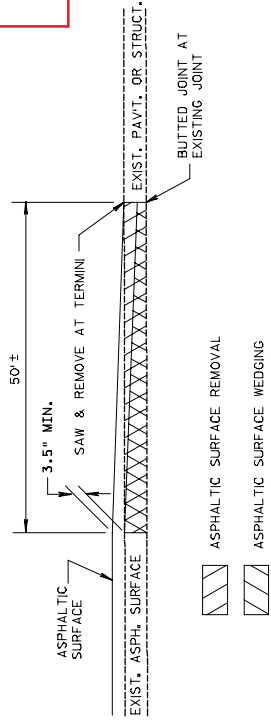
PLAN VIEW

RURAL DRIVEWAY INTERSECTION DETAIL
 (P.E.'S, F.E.'S & C.E.'S)
 (FOR NEW CONSTRUCTION)

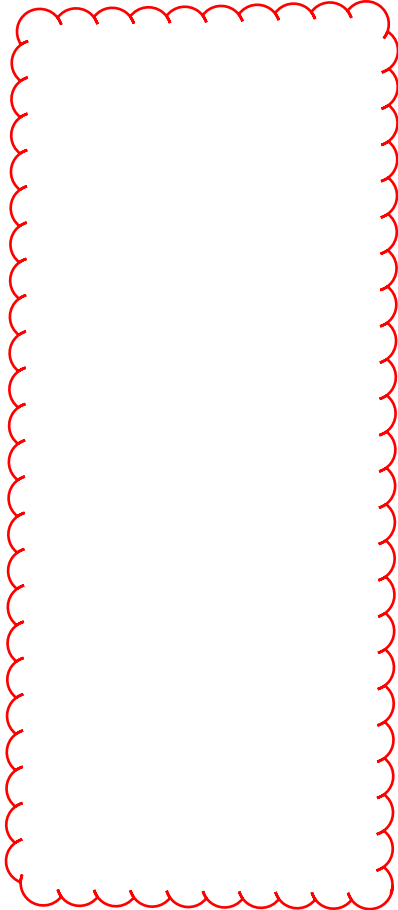
Addendum No. 01
 ID 6910-01-70
 Revised Sheet 6
 April 4, 2019



SIDE ROAD DETAIL, SPECIAL
(BASE AGGREGATE SHOULDERS)



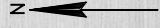
OVERLAP JOINT, BUTTED DETAIL



Addendum No. 01
ID 6910-01-70
Revised Sheet 9
April 4, 2019

115+00 MATCH LINE

130+00 MATCH LINE



JCT. COUNTY E
24°X39"
1-07

Redgranite
D1-566
60"X12"
1-06

COUNTY E H
113-1
24°X45"
1-02

COUNTY E H
113-2
48°X45"
1-05

COUNTY E
113-1
24°X45"
1-01

MARKING LEGEND

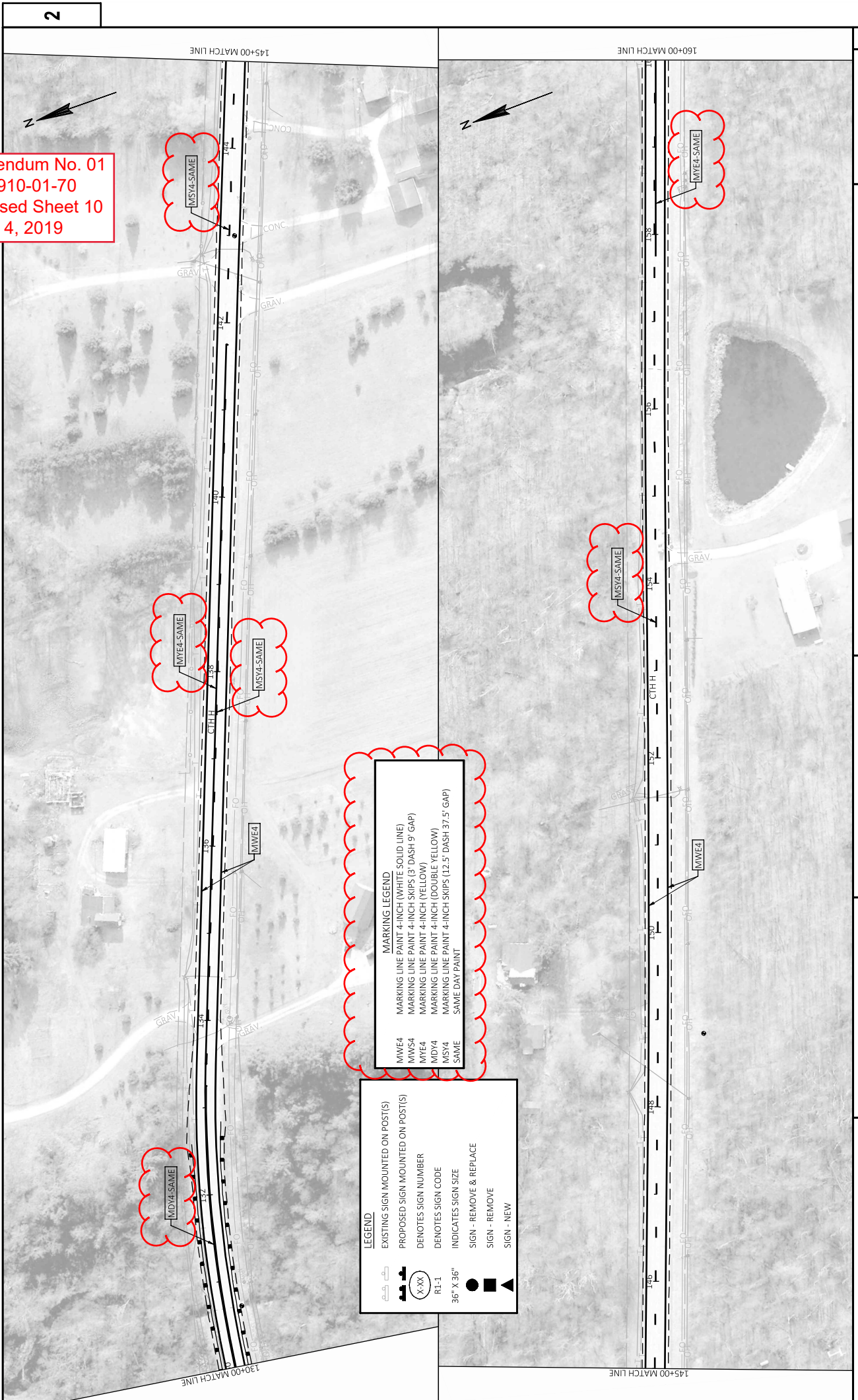
- MW/E4 MARKING LINE PAINT 4-INCH (WHITE SOLID LINE)
- MW/S4 MARKING LINE PAINT 4-INCH SKIPS (3' DASH 9" GAP)
- MY/E4 MARKING LINE PAINT 4-INCH (YELLOW)
- MY/S4 MARKING LINE PAINT 4-INCH (DOUBLE YELLOW)
- MS/Y4 MARKING LINE PAINT 4-INCH SKIPS (12.5' DASH 37.5' GAP)
- SAME SAME DAY PAINT

LEGEND

- EXISTING SIGN MOUNTED ON POST(S)
- PROPOSED SIGN MOUNTED ON POST(S)
- (X-XX) DENOTES SIGN NUMBER
- R1-1 DENOTES SIGN CODE
- 36" X 36" INDICATES SIGN SIZE
- SIGN - REMOVE & REPLACE
- SIGN - REMOVE
- ▲ SIGN - NEW

BEGIN PROJECT 6910-01-70
STA. 100+50

Addendum No. 01
 ID 6910-01-70
 Revised Sheet 10
 April 4, 2019



LEGEND

EXISTING SIGN MOUNTED ON POST(S)

PROPOSED SIGN MOUNTED ON POST(S)

RE-1

36" X 36"

SIGN - REMOVE & REPLACE

SIGN - REMOVE

SIGN - NEW

MARKING LEGEND

MWE4 MARKING LINE PAINT 4-INCH (WHITE SOLID LINE)

MWS4 MARKING LINE PAINT 4-INCH SKIPS (3' DASH 9' GAP)

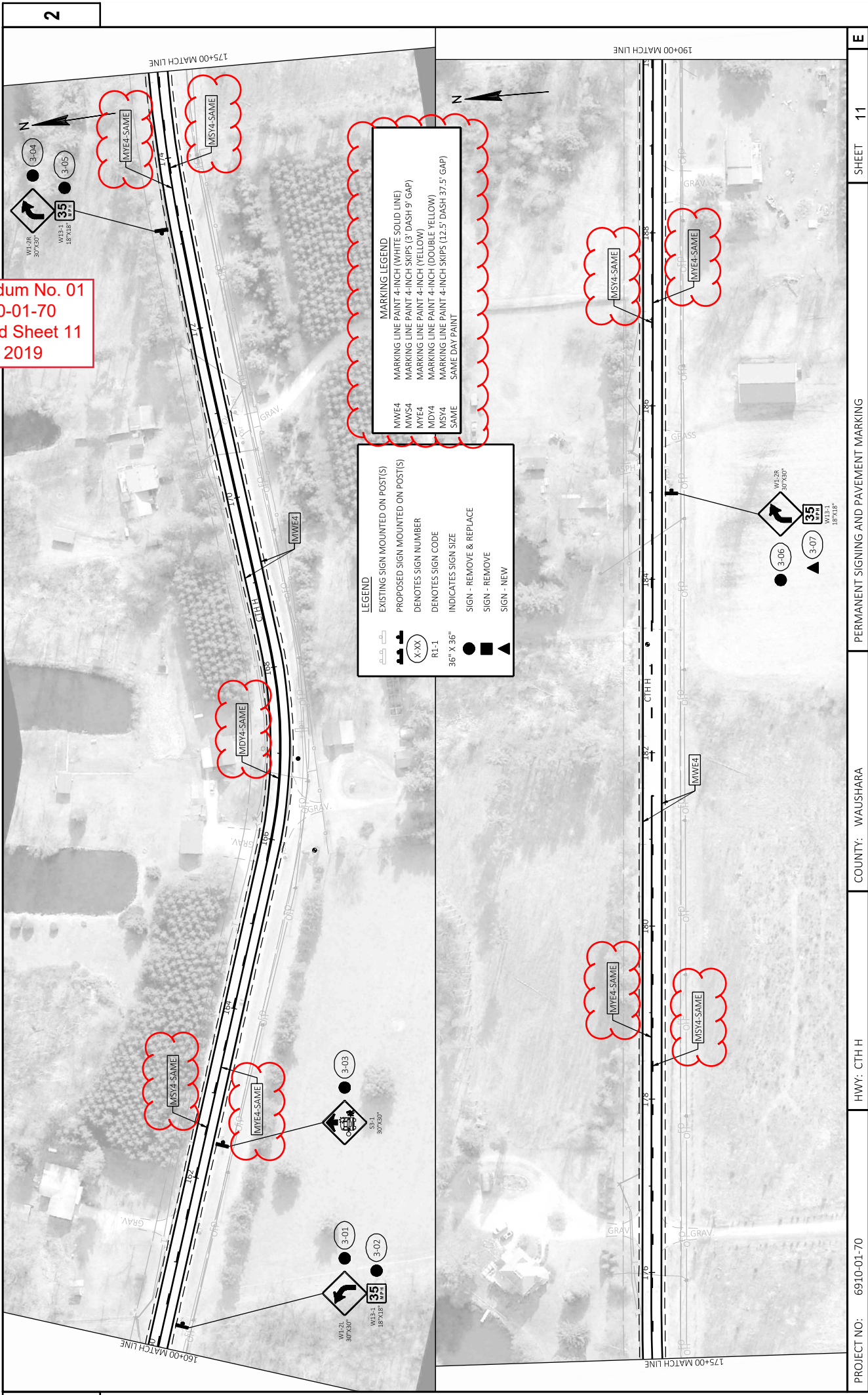
MYE4 MARKING LINE PAINT 4-INCH (YELLOW)

MDY4 MARKING LINE PAINT 4-INCH (DOUBLE YELLOW)

MSY4 MARKING LINE PAINT 4-INCH SKIPS (12.5' DASH 37.5' GAP)

SAME SAME DAY PAINT

Addendum No. 01
 ID 6910-01-70
 Revised Sheet 11
 April 4, 2019



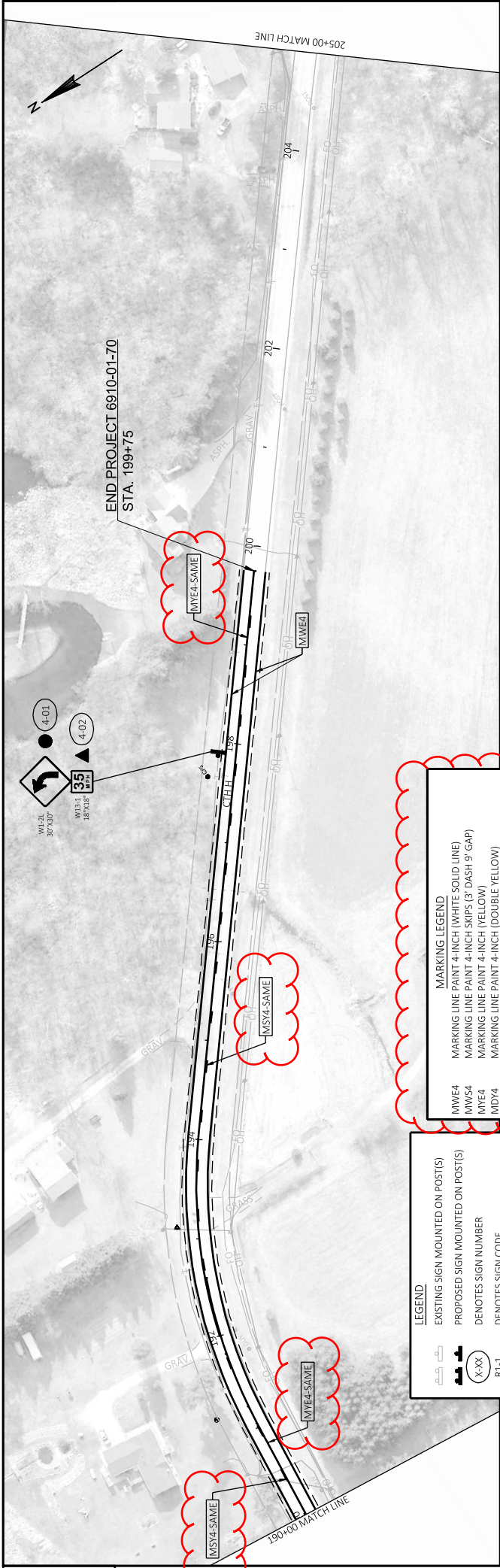
LEGEND

- EXISTING SIGN MOUNTED ON POST(S)
- PROPOSED SIGN MOUNTED ON POST(S)
- X-XX DENOTES SIGN NUMBER
- RL-1 DENOTES SIGN CODE
- 36" X 36" INDICATES SIGN SIZE
- SIGN - REMOVE & REPLACE
- SIGN - REMOVE
- SIGN - NEW

MARKING LEGEND

- MWE4 MARKING LINE PAINT 4-INCH (WHITE SOLID LINE)
- MWS4 MARKING LINE PAINT 4-INCH SKIPS (3' DASH 9' GAP)
- MYE4 MARKING LINE PAINT 4-INCH (YELLOW)
- MDY4 MARKING LINE PAINT 4-INCH (DOUBLE YELLOW)
- MSY4 MARKING LINE PAINT 4-INCH SKIPS (12.5' DASH 37.5' GAP)
- SAME SAME DAY PAINT

Addendum No. 01
 ID 6910-01-70
 Revised Sheet 11
 April 4, 2019



LEGEND

- EXISTING SIGN MOUNTED ON POST(S)
- PROPOSED SIGN MOUNTED ON POST(S)
- DENOTES SIGN NUMBER
- DENOTES SIGN CODE
- INDICATES SIGN SIZE
- SIGN - REMOVE & REPLACE
- SIGN - REMOVE
- SIGN - NEW

MARKING LEGEND

- MWE4 MARKING LINE PAINT 4-INCH (WHITE SOLID LINE)
- MWS4 MARKING LINE PAINT 4-INCH SKIPS (3' DASH 9' GAP)
- MYE4 MARKING LINE PAINT 4-INCH (YELLOW)
- MDY4 MARKING LINE PAINT 4-INCH (DOUBLE YELLOW)
- MSY4 MARKING LINE PAINT 4-INCH SKIPS (12.5' DASH 37.5' GAP)
- SAME SAME DAY PAINT

THIS SPACE LEFT BLANK INTENTIONALLY

Addendum No. 01
 ID 6910-01-70
 Revised Sheet 12
 April 4, 2019

MOBILIZATION				FIELD OFFICE TYPE B				TRAFFIC CONTROL			
PROJECT	LOCATION	EACH	TOTAL	PROJECT	LOCATION	EACH	TOTAL	PROJECT	LOCATION	EACH	TOTAL
6910-01-70	6910-01-70	1	1	642.5001	6910-01-70	1	1	643.0300	643.0310.S	643.0900	643.5000
TOTAL	TOTAL	1	1	TOTAL	TOTAL	1	1	TOTAL	TOTAL	TOTAL	TOTAL

RESTORATION		EROSION CONTROL		SEEDING				
STATION	LOCATION	MGAL	SY	SY	LB	SY	LB	TEMPORARY
624.0100	625.0100	15	780	629.0210	630.0120	630.0200	630.0220	630.0240
128+51 - 133+74	RT	15	780	EROSION MAT	FERTILIZER	SEEDING MIXTURE #20	SEEDING MIXTURE #20	SEEDING MIXTURE #20
128+62 - 133+60	LT	14	730	TYPE B	TYPE B	TYPE B	TYPE B	TYPE B
MAINLINE	LT & RT	--	--	11,000	100	100	100	100
UNDISTRIBUTED	UNDISTRIBUTED	2	100	UNDISTRIBUTED	UNDISTRIBUTED	UNDISTRIBUTED	UNDISTRIBUTED	UNDISTRIBUTED
TOTALS	TOTALS	31	1,610	11,100	1,610	1,610	1,610	341

(1) ADDITIONAL QUANTITIES LISTED ELSEWHERE.

EROSION CONTROL		ROCK BAGS		
STATION	LOCATION	LF	EA	EA
628.1504	628.1520	580	580	628.7504
128+47 - 133+79	RT	580	580	628.7570
128+59 - 133+62	LT	--	--	ROCK BAGS
PROJECT 6910-01-70	UNDISTRIBUTED	500	500	UNDISTRIBUTED
TOTALS	TOTALS	1,660	1,660	1,660

NOTE: LOCATIONS FOR TEMPORARY DITCH CHECKS AND ROCK BAGS FOR SILT FENCE RELIEFS ARE THE ENGINEER IN THE FIELD.

Addendum No. 01
ID 6910-01-70
Revised Sheet 6
April 4, 2019

MARKER CULVERT END	
LOCATION	EACH
130+68	2
156+45	2
183+42	2
196+62	2
TOTAL	8

CONSTRUCTION STAKING	
STATION	LOCATION
650.8000	650.9910
100+50 - 198+75	RESURFACING
129+41 - 132+84	REFERENCE
198+00 - 198+75	BEAM GUARD
PROJECT 6910-01-70	EBS
TOTALS	TOTALS

NOTE: LOCATIONS FOR TEMPORARY DITCH CHECKS AND ROCK BAGS FOR SILT FENCE RELIEFS ARE THE ENGINEER IN THE FIELD.

CONSTRUCTION STAKING		TRAFFIC CONTROL		
STATION	LOCATION	LF	EA	EA
650.8000	650.9910	650.9920	650.4500	650.5000
100+50 - 198+75	RESURFACING	650.9920	SUBGRADE	BASE
129+41 - 132+84	REFERENCE	--	STAKES	STAKES
198+00 - 198+75	BEAM GUARD	--	STAKES	STAKES
PROJECT 6910-01-70	EBS	--	STAKES	STAKES
TOTALS	TOTALS	9,925	818	818

Addendum No. 01
ID 6910-01-70
Revised Sheet 19
April 4, 2019

SAVING ASPHALT	
STATION	LOCATION
690.0150	690.0150
100+50	CTH H
198+75	CTH H
28TH COURT (SOUTH)	CTH E
28TH COURT (NORTH)	CTH E
DRIVEWAYS	DRIVEWAYS
TOTAL	TOTAL

NOTE: ALL ITEMS ON THIS SHEET ARE UNDER PROJECT ID 6910-01-70 CATEGORY 0010 UNLESS INDICATED OTHERWISE IN THE ITEM TABLE.



Proposal Schedule of Items

Proposal ID: 20190409025 Project(s): 6910-01-70

Federal ID(s): WISC 2019230

SECTION: 0001

Contract Items

Alt Set ID:

Alt Mbr ID:

Proposal Line Number	Item ID Description	Approximate Quantity and Units	Unit Price	Bid Amount
0002	204.0115 Removing Asphaltic Surface Butt Joints	1,988.000 SY	_____.	_____.
0004	205.0100 Excavation Common	202.000 CY	_____.	_____.
0006	208.0100 Borrow	95.000 CY	_____.	_____.
0008	209.1500 Backfill Granular Grade 1	450.000 TON	_____.	_____.
0010	211.0100 Prepare Foundation for Asphaltic Paving (project) 01. 6910-01-70	LS	LUMP SUM	_____.
0012	211.0400 Prepare Foundation for Asphaltic Shoulders	12.000 STA	_____.	_____.
0014	213.0100 Finishing Roadway (project) 01. 6910- 01-70	1.000 EACH	_____.	_____.
0016	305.0110 Base Aggregate Dense 3/4-Inch	3,834.000 TON	_____.	_____.
0018	305.0120 Base Aggregate Dense 1 1/4-Inch	825.000 TON	_____.	_____.
0020	325.0100 Pulverize and Relay	23,410.000 SY	_____.	_____.
0022	374.1020.S QMP Pulverize and Relay Compaction	23,410.000 SY	_____.	_____.
0024	455.0605 Tack Coat	1,290.000 GAL	_____.	_____.
0026	460.2000 Incentive Density HMA Pavement	3,126.000 DOL	1.00000	3,126.00
0028	460.5224 HMA Pavement 4 LT 58-28 S	5,070.000 TON	_____.	_____.
0030	465.0120 Asphaltic Surface Driveways and Field Entrances	26.000 TON	_____.	_____.
0032	606.0200 Riprap Medium	230.000 CY	_____.	_____.



Proposal Schedule of Items

Proposal ID: 20190409025 Project(s): 6910-01-70

Federal ID(s): WISC 2019230

SECTION: 0001

Contract Items

Alt Set ID:

Alt Mbr ID:

Proposal Line Number	Item ID Description	Approximate Quantity and Units	Unit Price	Bid Amount
0034	606.0600 Grouted Riprap Medium	4.000 CY	_____.	_____.
0036	614.2300 MGS Guardrail 3	425.000 LF	_____.	_____.
0038	614.2610 MGS Guardrail Terminal EAT	4.000 EACH	_____.	_____.
0040	618.0100 Maintenance And Repair of Haul Roads (project) 01. 6910-01-70	1.000 EACH	_____.	_____.
0042	619.1000 Mobilization	1.000 EACH	_____.	_____.
0044	624.0100 Water	218.000 MGAL	_____.	_____.
0046	625.0100 Topsoil	1,610.000 SY	_____.	_____.
0048	627.0200 Mulching	11,100.000 SY	_____.	_____.
0050	628.1504 Silt Fence	1,660.000 LF	_____.	_____.
0052	628.1520 Silt Fence Maintenance	1,660.000 LF	_____.	_____.
0054	628.1905 Mobilizations Erosion Control	4.000 EACH	_____.	_____.
0056	628.1910 Mobilizations Emergency Erosion Control	2.000 EACH	_____.	_____.
0058	628.2008 Erosion Mat Urban Class I Type B	1,610.000 SY	_____.	_____.
0060	628.7504 Temporary Ditch Checks	60.000 LF	_____.	_____.
0062	628.7570 Rock Bags	40.000 EACH	_____.	_____.
0064	629.0210 Fertilizer Type B	8.600 CWT	_____.	_____.



Proposal Schedule of Items

Proposal ID: 20190409025 Project(s): 6910-01-70

Federal ID(s): WISC 2019230

SECTION: 0001

Contract Items

Alt Set ID:

Alt Mbr ID:

Proposal Line Number	Item ID Description	Approximate Quantity and Units	Unit Price	Bid Amount
0066	630.0120 Seeding Mixture No. 20	341.000 LB	_____.	_____.
0068	630.0200 Seeding Temporary	341.000 LB	_____.	_____.
0070	633.5200 Markers Culvert End	8.000 EACH	_____.	_____.
0072	634.0414 Posts Wood 4x4-Inch X 14-FT	10.000 EACH	_____.	_____.
0074	634.0416 Posts Wood 4x4-Inch X 16-FT	4.000 EACH	_____.	_____.
0076	637.2210 Signs Type II Reflective H	65.040 SF	_____.	_____.
0078	637.2230 Signs Type II Reflective F	40.250 SF	_____.	_____.
0080	638.2602 Removing Signs Type II	13.000 EACH	_____.	_____.
0082	638.3000 Removing Small Sign Supports	13.000 EACH	_____.	_____.
0084	642.5001 Field Office Type B	1.000 EACH	_____.	_____.
0086	643.0300 Traffic Control Drums	100.000 DAY	_____.	_____.
0088	643.0310.S Temporary Portable Rumble Strips	LS	LUMP SUM	_____.
0090	643.0900 Traffic Control Signs	1,210.000 DAY	_____.	_____.
0092	643.5000 Traffic Control	1.000 EACH	_____.	_____.
0094	645.0130 Geotextile Type R	635.000 SY	_____.	_____.
0096	646.1005 Marking Line Paint 4-Inch	20,150.000 LF	_____.	_____.
0098	648.0100 Locating No-Passing Zones	1.880 MI	_____.	_____.



Proposal Schedule of Items

Proposal ID: 20190409025 Project(s): 6910-01-70

Federal ID(s): WISC 2019230

SECTION: 0001

Contract Items

Alt Set ID:

Alt Mbr ID:

Proposal Line Number	Item ID Description	Approximate Quantity and Units	Unit Price	Bid Amount
0100	650.4500 Construction Staking Subgrade	818.000 LF	_____.	_____.
0102	650.5000 Construction Staking Base	818.000 LF	_____.	_____.
0104	650.8000 Construction Staking Resurfacing Reference	9,925.000 LF	_____.	_____.
0106	650.9910 Construction Staking Supplemental Control (project) 01. 6910-01-70	LS	LUMP SUM	_____.
0108	650.9920 Construction Staking Slope Stakes	818.000 LF	_____.	_____.
0110	690.0150 Sawing Asphalt	173.000 LF	_____.	_____.
0112	740.0440 Incentive IRI Ride	7,520.000 DOL	1.00000	7,520.00
0114	ASP.1T0A On-the-Job Training Apprentice at \$5.00/HR	300.000 HRS	5.00000	1,500.00
0116	ASP.1T0G On-the-Job Training Graduate at \$5.00/HR	600.000 HRS	5.00000	3,000.00
0118	646.4505 Marking Line Same Day Paint 4-Inch	12,050.000 LF	_____.	_____.
Section: 0001			Total:	_____.
			Total Bid:	_____.

