



Wisconsin Department of Transportation

May 1, 2019

Division of Transportation Systems Development

Bureau of Project Development
4822 Madison Yards Way, 4th Floor South
Madison, WI 53705

Telephone: (608) 266-1631
Facsimile (FAX): (608) 266-8459

NOTICE TO ALL CONTRACTORS:

Proposal #26: 4580-11-60
Sherwood - Hilbert
STH 55 – STH 32
STH 114
Calumet County

Letting of May 14, 2019

This is Addendum No. 01, which provides for the following:

Special Provisions:

Revised Special Provisions	
Article No.	Description
3	Prosecution and Progress
4	Traffic

Added Special Provisions	
Article No.	Description
17	Foundation Backfill, Item SPV.0035.02

Schedule of Items:

Revised Bid Item Quantities					
Bid Item	Item Description	Unit	Old Quantity	Revised Quantity	Proposal Total
305.0110	Base Aggregate Dense 3/4-Inch	TON	2,003	92	2,095
455.0605	Tack Coat	GAL	8,520	110	8,630
465.0105	Asphaltic Surface	TON	320	533	853
624.0100	Water	MGAL	30	12	42
643.0300	Traffic Control Drums	DAY	780	140	920
643.0420	Traffic Control Barricades Type III	DAY	34	423	457
643.0705	Traffic Control Warning Lights Type A	DAY	68	594	662
643.0900	Traffic Control Signs	DAY	3,892	1,535	5,427
643.1050	Traffic Control Signs PCMS	DAY	14	14	28
690.0150	Sawing Asphalt	LF	2,899	140	3,039
690.0250	Sawing Concrete	LF	2,838	280	3,118

Added Bid Item Quantities					
Bid Item	Item Description	Unit	Old Quantity	Revised Quantity	Proposal Total
204.0100	Removing Pavement	SY	0	1,056	1,056
205.0100	Excavation Common	CY	0	1,953	1,953
305.0120	Base Aggregate Dense 1 1/4-Inch	TON	0	739	739
643.0920	Traffic Control Covering Signs Type II	EACH	0	5	5
SPV.0035.01	Foundation Backfill	CY	0	2,263	2,263

Plan Sheets:

Revised Plan Sheets	
Plan Sheet	Plan Sheet Title (brief description of changes to sheet)
24	Miscellaneous Quantities (revised to show additional base aggregate quantities associated with the added frost heave repair work)
25	Miscellaneous Quantities (revised to show additional asphalt quantities associated with the added frost heave repair work)
30	Miscellaneous Quantities (revised to show additional traffic control quantities associated with the added frost heave repair work)
32	Miscellaneous Quantities (revised to show additional saw cut quantities associated with the added frost heave repair work)

Added Plan Sheets	
Plan Sheet	Plan Sheet Title (brief description of why sheet was added)
11A	Construction Detail: Frost Heave Repair (sheet was added to state the locations and show the work to be done at the frost heave repair areas)
20A	Detour Signing Detail (sheet added to show the details of the detour needed for the added work)
20B	Detour Signing Detail (sheet added to show the details of the detour needed for the added work)
23A	Miscellaneous Quantities (sheet added to show the additional quantities associated with the added frost heave repair work)
30A	Miscellaneous Quantities (sheet added to show the additional quantities associated with the added detour)
30B	Miscellaneous Quantities (sheet added to show the additional quantities associated with the added detour)
30C	Miscellaneous Quantities (sheet added to show the additional quantities associated with the added detour)
61A	SDD Barricades and Signs for Mainline Closures
61B	SDD Barricades and Signs for Various Closures
61C	SDD Detour Signing for Mainline Closures
61D	SDD Barricades and Signs for Sideroad Closures

Other

Revise the contract time for completion from 25 working days to 30 working days (an increase of 5 working days)

The responsibility for notifying potential subcontractors and suppliers of these changes remains with the prime contractor.

Sincerely,

Mike Coleman

Proposal Development Specialist
Proposal Management Section

ADDENDUM NO. 01

4580-11-60

May 1, 2019

Special Provisions

3. Prosecution and Progress

Add the following paragraph after paragraph four:

At the beginning of the frost heave repair operations, close STH 114 to through traffic for a maximum of 7 working days. Furthermore, the 7 working day closure may only include one weekend consisting of two weekend days. Do not reopen until completing the following work: Frost heave repairs and asphalt patching.

4. Traffic

Replace paragraph one with the following:

Detour STH 114 traffic using County B and STH 32/57. Maintain cross traffic at all other side roads at all times during the various construction operations. Do not reopen until completing the following work: All work necessary for the frost heave repairs including patching with asphaltic surface.

Except when STH 114 is detoured, maintain two-way counter directional traffic along STH 114 at all times during non-working hours. One lane may be closed with flagging operations during daylight working hours. At the end of each workday restore roadway to normal traffic patterns and do not leave a drop-off of 2 inches or greater between driving lanes, between driving lanes and shoulders, and between driving lanes and adjacent intersecting roadways or driveways.

17. Foundation Backfill, Item SPV.0035.01.

A Description

This special provision describes providing foundation backfill that conforms to Standard Spec 520.

B Materials

Furnish Foundation Backfill in accordance to 520.2.5.2.

C Construction

Place foundation backfill in layers no more than 8 inches thick after compaction to the top of the subgrade. Mechanically compact the entire length of each layer to the same degree as the material abutting the trench.

D Measurement

The department will measure Foundation Backfill by the Cubic Yard, acceptably completed.

E Payment

The department will pay for measured quantities at the contract unit price under the following bid item:

ITEM NUMBER	DESCRIPTION	UNIT
SPV.0035.01	Foundation Backfill	CY

Payment is full compensation for placing, shaping and compacting.

ner-520-025 (20190409)

Schedule of Items

Attached, dated May 1, 2019, are the revised Schedule of Items Pages 1 - 5.

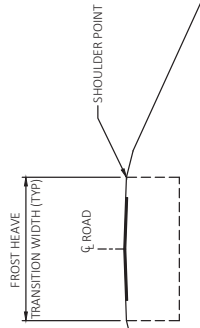
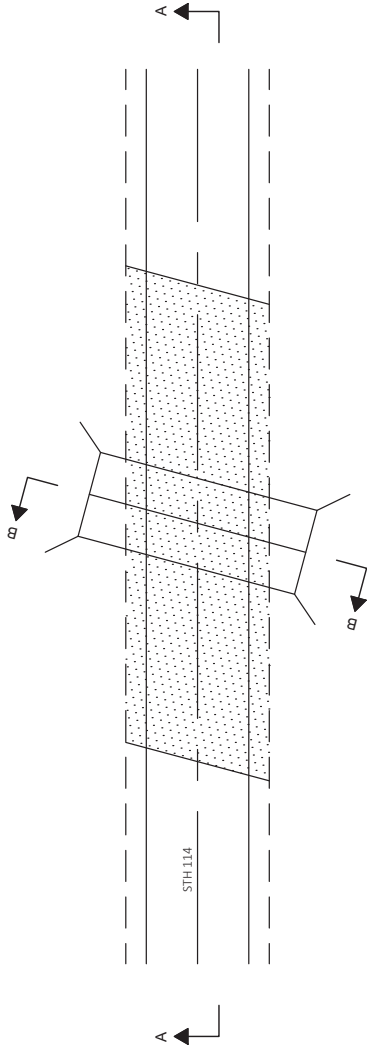
Plan Sheets

The following 8½ x 11-inch sheets are attached and made part of the plans for this proposal:

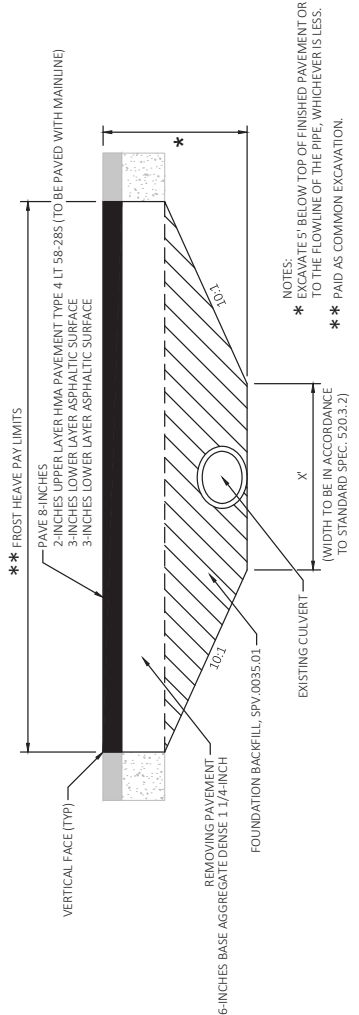
Revised: 24, 25, 30, and 32

Added: 11A, 20A, 20B, 23A, 30A, 30B, 30C, 61A, 61B, 61C, and 61D

END OF ADDENDUM



SECTION B-B



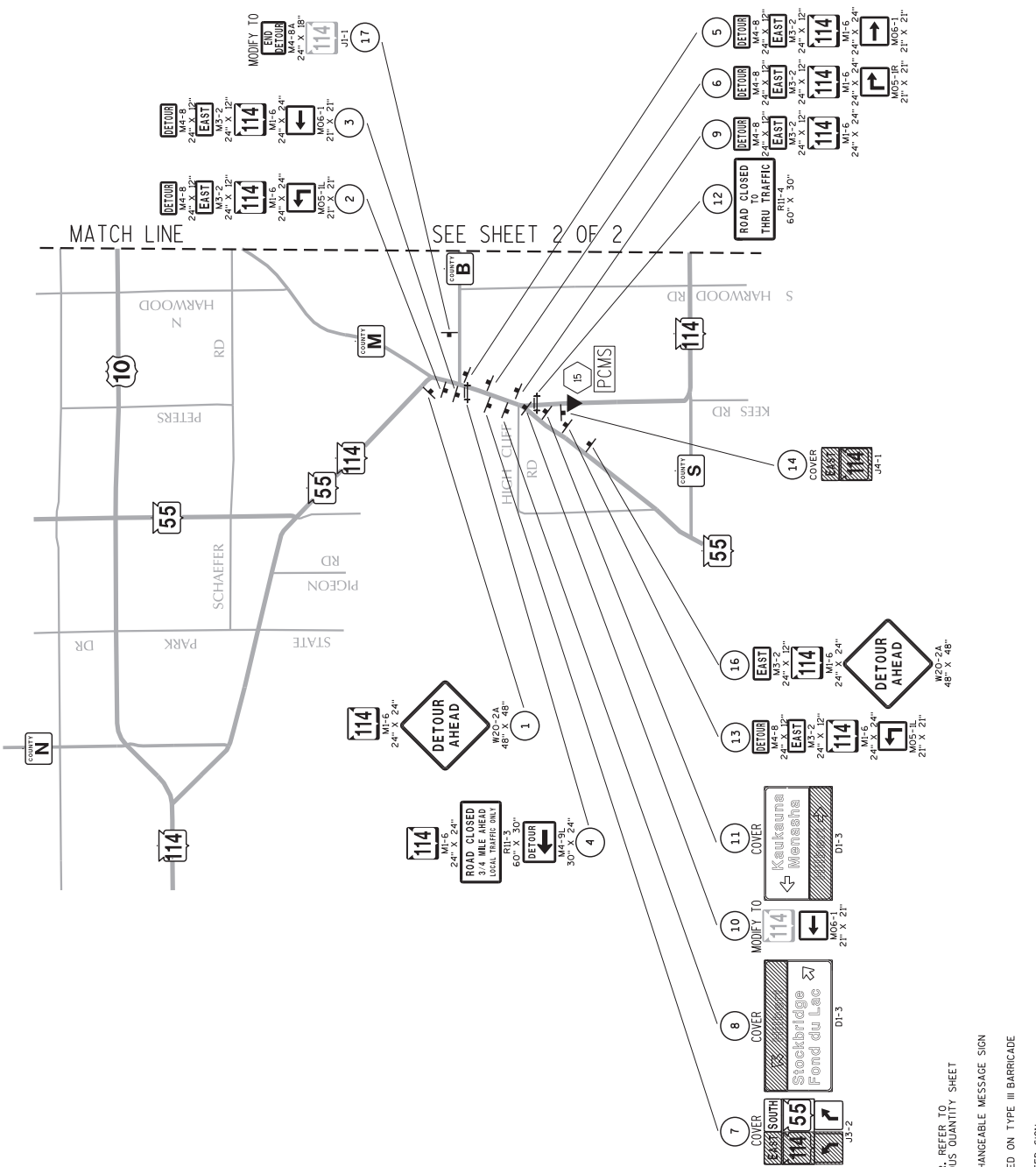
SECTION AA

LONGITUDINAL DETAIL FOR CULVERT PIPE FROST HEAVE REPAIR AREA

STATIONS: 116+72, 124+07, 138+90, 145+74, 192+97, 222+10, 250+27

- NOTES:
- * EXCAVATE 5' BELOW TOP OF FINISHED PAVEMENT OR TO THE FLOWLINE OF THE PIPE, WHICHEVER IS LESS.
 - ** PAID AS COMMON EXCAVATION.

Addendum No. 01
ID 4580-11-60
Added Sheet 11A
May 1, 2019

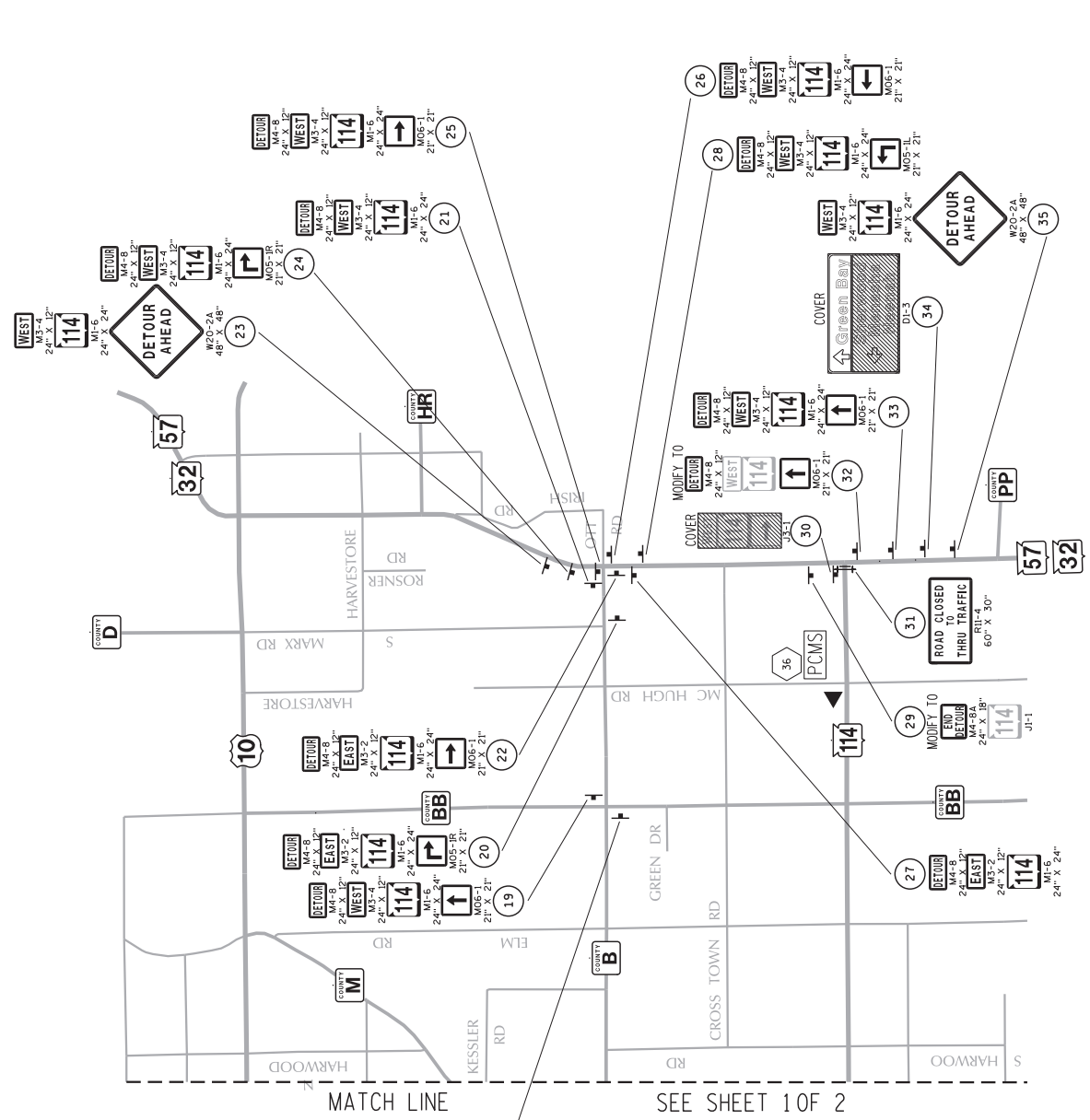


Addendum No. 01
 ID 4580-11-60
 Added Sheet 20A
 May 1, 2019

- LEGEND**
- (X) SIGN NUMBER - REFER TO MISCELLANEOUS QUANTITY SHEET
 - (X) PORTABLE CHANGEABLE MESSAGE SIGN
 - ▲ SIGN MOUNTED ON TYPE III BARRICADE
 - POST MOUNTED SIGN



Addendum No. 01
ID 4580-11-60
Added Sheet 20B
May 1, 2019



- LEGEND**
- (X) SIGN NUMBER - REFER TO MISCELLANEOUS QUANTITY SHEET
 - (X) PORTABLE CHANGEABLE MESSAGE SIGN
 - ▲ SIGN MOUNTED ON TYPE III BARRICADE
 - POST MOUNTED SIGN

PROJECT NO: 4580-11-60
 COUNTY: CALUMET
 HWY: STH 114
 DETOUR SIGNING DETAIL
 SHEET 20B
 E

FILE NAME : N:\sdp\Traffic\Work Zone\Detours\Calumet County\STH 114\Sherwood - HJLibert+027002.dwg
 PLOT DATE : 23-APR-2019 10:15
 PLOT BY : ddtjif
 PLOT NAME : STH114_STH5DETOURAPLOT SCALE : 5000:1

FROST HEAVE REPAIR SUMMARY

CATEGORY	STATION	LOCATION	SY	204.0100 REMOVING PAVEMENT	205.0100 EXCAVATION COMMON	CY	305.0110 BASE AGGREGATE DENSE 3/4- INCH**	TON	305.0120 BASE AGGREGATE DENSE 1 3/4-INCH	TON	455.0605 TACK COAT	465.0105 ASPHALTIC SURFACE**	624.0010 WATER	MGAL	690.0150 SAWING ASPHALT	LF	690.0250 SAWING CONCRETE	LF	SPV.0035.01 SPECIAL (O.I.)	FOUNDATION BACKFILL	CY	REMARKS
0010	116+72	STH 114	185			383		16	128	19		93	2.1	20	40	40	478				EXISTING 36-INCH RCCP	
	124+07	STH 114	110			168		10	78	12		56	1	20	40	164					EXISTING 24-INCH RCCP	
	138+90	STH 114	140			248		12	99	15		71	2	20	40	277					EXISTING 24-INCH RCCP	
	145+74	STH 114	192			397		17	133	20		97	2	20	40	496					EXISTING 34" x 53" RCCEP	
	192+97	STH 114	185			365		16	129	19		93	2	20	40	443					EXISTING 38" x 60" RCCEP	
	222+10	STH 114	107			160		10	76	11		54	1	20	40	153					EXISTING 24-INCH RCCP	
	250+27	STH 114	137			232		12	96	14		69	2	20	40	252					EXISTING 30-INCH RCCP	
PROJECT TOTALS			1056			1953		93*	739	111*		532*	12*	140*	280*					2263		

*NOTE: FOR INFORMATIONAL PURPOSES ONLY; ADDITIONAL QUANTITY SHOWN ELSEWHERE
 **NOTE: DOES NOT INCLUDE UPPER LAYER WHICH IS INCLUDED IN THE MAINLINE PAVEMENT
 ***NOTE: TOP 3-INCHES OF THE UNPAVED SHOULDER WITHIN THE FROST HEAVE REPAIR LIMITS

Addendum No. 01
 ID 4580-11-60
 Added Sheet 23A
 May 1, 2019

Addendum No. 01
ID 4580-11-60
Revised Sheet 24
May 1, 2019

SHOULDER WORK SUMMARY

CATEGORY	STATION	TO	STATION	OFFSET	LOCATION	305.0110		624.0100		REMARKS
						BASE AGGREGATE DENSE 3/4-INCH*	SHAPING SHOULDERS	BASE AGGREGATE DENSE 3/4-INCH*	SHAPING SHOULDERS	
0010	7+66	-	76+94	RT	STH 114	225	69	3.2	3.2	
	77+93	-	80+07	RT	STH 114	7	2	0.2	0.2	
	81+35	-	129+95	RT	STH 114	157	49	2.3	2.3	
	131+30	-	183+06	RT	STH 114	168	52	2.4	2.4	
	184+39	-	235+94	RT	STH 114	167	52	2.4	2.4	
	237+25	-	288+58	RT	STH 114	166	51	2.4	2.4	
	289+89	-	328+49	RT	STH 114	125	39	1.9	1.9	
	6+12	-	75+69	LT	STH 114	225	70	3.3	3.3	
	83+81	-	130+15	LT	STH 114	150	46	2.3	2.3	
	131+50	-	157+18	LT	STH 114	83	26	1.3	1.3	
	157+42	-	183+24	LT	STH 114	84	26	1.3	1.3	
	184+54	-	236+14	LT	STH 114	167	52	2.4	2.4	
	237+43	-	288+73	LT	STH 114	166	51	2.4	2.4	
	240+11	-	324+47	LT	STH 114	111	34	1.7	1.7	
	116+72	-	250+27	RT & LT	STH 114	93	-	12.2	12.2	
PROJECT TOTALS						2095	618	42	42	

*BASE AGGREGATE QUANTITY BASED ON NEEDING 1-INCH OF GRAVEL AT A 5-FOOT WIDTH FOR THE LENGTH OF THE EXISTING GRAVEL SHOULDER.

SEE FROST HEAVE REPAIR SUMMARY FOR DETAILS

HMA SUMMARY

CATEGORY	STATION TO	STATION	LOCATION	OFFSET	DOJ	GAL	TACK COAT	REHEATING HMA PAVEMENT JOINTS		TON	TON	TON	REMARKS
								LONGITUDINAL	TRANSVERSE				
0010	6+12	342+18	STH 114	LT & RT	67211	-	-	-	-	-	-	-	2-IN UPPER LAYER MAINLINE
	6+12	74+12	STH 114	LT & RT	-	1648	-	6800	-	2895	-	-	2-INCHES UPPER LAYER MAINLINE
	74+12	83+97	STH 114	LT & RT	-	286	-	985	-	499	-	-	2-INCHES UPPER LAYER MAINLINE
	83+97	328+33	STH 114	LT & RT	-	5800	-	24436	-	10196	-	-	2-INCHES UPPER LAYER MAINLINE
	328+33	338+83	STH 114	LT & RT	-	324	-	1050	-	556	-	-	2-IN UPPER LAYER MAINLINE, INCLUDES UPPER LAYER OF FULL DEPTH REPLACEMENT AREA
	338+83	342+18	STH 114	LT & RT	-	104	-	335	-	178	-	-	2-IN UPPER LAYER MAINLINE, INCLUDES UPPER LAYER OF FULL DEPTH REPLACEMENT AREA
	14+35	14+90	KEES RD.	LT & RT	-	21	-	-	-	37	-	-	KESS RD. SOUTH, UPPER LAYER
	24+06	24+98	ERTL RD.	LT & RT	-	30	-	-	-	52	-	-	ERTL RD. SOUTH, UPPER LAYER
	34+18	34+80	HARWOOD RD.	LT & RT	-	29	-	-	-	49	-	-	HARWOOD RD. SOUTH, UPPER LAYER
	35+18	35+80	HARWOOD RD.	LT & RT	-	26	-	-	-	45	-	-	HARWOOD RD. NORTH, UPPER LAYER
	34+18	35+80	HARWOOD RD.	LT & RT	-	-	-	-	-	-	6	-	HMA FOR PATCHING CURB AND GUTTER REPLACEMENT
	45+12	45+48	KRUEGER LN.	LT & RT	-	9	-	-	-	16	-	-	KRUEGER LN. NORTH, UPPER LAYER
	54+17	54+80	ELM RD.	LT & RT	-	29	-	-	-	49	-	-	ELM RD. SOUTH, UPPER LAYER
	55+19	55+82	ELM RD.	LT & RT	-	28	-	-	-	48	-	-	ELM RD. NORTH, UPPER LAYER
	64+17	64+78	CTH 88	LT & RT	-	31	-	-	-	53	-	-	CTH 88 SOUTH, UPPER LAYER
	65+24	65+77	CTH 88	LT & RT	-	32	-	-	-	55	-	-	CTH 88 NORTH, UPPER LAYER
	74+19	74+80	MCHUGH RD.	LT & RT	-	24	-	-	-	42	-	-	MCHUGH RD. SOUTH, UPPER LAYER
	75+20	75+83	MCHUGH RD.	LT & RT	-	28	-	-	-	48	-	-	MCHUGH RD. NORTH, UPPER LAYER
	85+26	85+87	12TH ST.	LT & RT	-	50	-	-	-	86	-	-	12TH ST. NORTH, UPPER LAYER
	94+59	94+80	11TH ST.	LT & RT	-	-	-	-	-	-	-	-	11TH ST. SOUTH, UPPER LAYER
	104+57	104+80	10TH ST.	LT & RT	-	-	-	-	-	-	-	-	10TH ST. SOUTH, UPPER LAYER
	114+55	114+80	9TH ST.	LT & RT	-	9	-	-	-	16	-	-	9TH ST. SOUTH, UPPER LAYER
	115+20	115+49	9TH ST.	LT & RT	-	9	-	-	-	16	-	-	9TH ST. NORTH, UPPER LAYER
	328+07	339+38	STH 114	10' RT	-	-	-	-	-	-	102	-	3 1/2-INCH LOWER LAYER FULL DEPTH REPLACEMENT
	328+07	339+35	STH 114	10' LT	-	-	-	-	-	-	102	-	3 1/2-INCH LOWER LAYER FULL DEPTH REPLACEMENT
	339+38	342+18	STH 114	10' RT	-	-	-	-	-	-	59	-	2 TO 4-INCH LOWER LAYER FULL DEPTH REPLACEMENT
	339+38	342+18	STH 114	10' LT	-	-	-	-	-	-	58	-	2 TO 4-INCH LOWER LAYER FULL DEPTH REPLACEMENT
	116+72	250+27	UNDISTRIBUTED	LT & RT	-	111	-	-	-	-	532	-	SEE FROST HEAVE REPAIR SUMMARY FOR DETAILS
											50	-	TO BE USED TO MAKE MINOR PAVEMENT REPAIRS
PROJECT TOTALS						67211	8630	33605	14938	853	56		

PWL SUMMARY

CATEGORY	STATION TO	STATION	LOCATION	OFFSET	DOJ	EACH	HMA PERCENT WITHIN LIMITS (PWL) TEST STRIP VOLUMETRICS	EACH	HMA PERCENT WITHIN LIMITS (PWL) TEST STRIP DENSITY	TON	TON	TON	REMARKS
0010	6+12	342+18	STH 114	LT & RT	-	1	460.0105.S	1	460.0110.S	460.2005	460.2005	460.2010	INCENTIVE DENSITY PWL HMA PAVEMENT
	6+12	74+12	STH 114	LT & RT	-	1	-	1	-	9858	14938	-	INCENTIVE AIR VOIDS HMA PAVEMENT
PROJECT TOTALS						2		2		9858	14938		

Addendum No. 01
 ID 4580-11-60
 Revised Sheet 25
 May 1, 2019

*NOTE: INCENTIVE DENSITY PWL HMA PAVEMENT APPLIES TO THE 2 12-FT DRIVING LANES ONLY

Addendum No. 01
 ID 4580-11-60
 Revised Sheet 30
 May 1, 2019

TRAFFIC CONTROL ITEMS - CONTINUED

SIGN NO.	LOCATION	SIGN CODE	SIZE WXH	NUMBER IN SERVICE	APPROX. SERVICE PERIOD DAYS	DRUMS DAY	643.0300 DRUMS	643.0310.S TEMPORARY PORTABLE RUMBLE STRIPS LS	643.0420 BARRICADES TYPE III DAY	643.0705 WARNING LIGHTS		643.0900 SIGNS DAY	643.1050 SIGNS PCMS DAY	643.1070 CONES 42-INCH DAY	REMARKS						
										TYPE A DAY	TYPE C DAY										
	FULL DEPTH REPLACEMENT IN VILLAGE OF HILBERT - STAGE 1	W1-4L	36"X36"	1.00	2.00	-	-	-	-	-	-	2	-	-	SEE TRAFFIC CONTROL - FULL DEPTH REMOVAL DETAIL STAGE 1						
	"	W01-6	48"X24"	1.00	2.00	-	-	-	-	-	2	-	-	-	"						
	"	R4-7	24"X30"	9.00	2.00	-	-	-	-	-	18	-	-	-	"						
	"	R11-2L	48"X30"	8.00	2.00	-	-	-	-	-	16	-	-	-	"						
	"	R5-1	30"X30"	4.00	2.00	-	-	-	-	-	8	-	-	-	"						
	"			91.00	2.00	182	-	-	-	-	-	-	-	-	"						
	"			9.00	2.00	-	-	-	18	-	-	-	-	-	"						
	"			18.00	2.00	-	-	-	-	-	-	-	-	-	"						
	"			8.00	2.00	-	-	-	36	-	-	-	-	-	"						
	"			54.00	2.00	-	-	-	-	16	-	-	-	-	"						
	FULL DEPTH REPLACEMENT IN VILLAGE OF HILBERT - STAGE 2	W1-4R	36"X36"	2.00	2.00	-	-	-	-	-	4	-	-	-	SEE TRAFFIC CONTROL - FULL DEPTH REMOVAL DETAIL STAGE 2						
	"	R4-7	24"X30"	9.00	2.00	-	-	-	-	-	18	-	-	-	"						
	"	R11-2L	48"X30"	8.00	2.00	-	-	-	-	-	16	-	-	-	"						
	"	R5-1	30"X30"	4.00	2.00	-	-	-	-	-	8	-	-	-	"						
	"			77.00	2.00	154	-	-	-	-	-	-	-	-	"						
	"			8.00	2.00	-	-	-	16	-	-	-	-	-	"						
	"			16.00	2.00	-	-	-	-	32	-	-	-	-	"						
	"			3.00	2.00	-	-	-	-	-	6	-	-	-	"						
	"			56.00	2.00	-	-	-	-	-	-	-	-	-	"						
	BEAM GUARD REPAIR AND ADJUSTMENTS	W01-5	48"X48"	6.00	2.00	164	-	-	-	-	17	-	-	-	"						
	DETOUR			82.00	2.00	-	-	-	-	-	-	-	-	-	SEE TRAFFIC CONTROL DETOUR SUMMARY FOR DETAILS						
	DRUMS FOR PCMS BOARDS			20.00	7.00	140	-	-	27	54	783	14	-	-	5 DRUMS FOR EACH PCMS BOARD						
	STH 114 MAINLINE CLOSURE LIMITS								18	36	-	-	-	-	SEE SDD 15C02 - 07A, DETAIL A						
	STH 114 MAINLINE CLOSURE AT FROST HEAVE REPAIR AFTER LAST LOCAL ACCESS POINT	W20-3A, W20-3C, W20-3D, R11-2	VARIABLES	10.00	9.00	-	-	-	54	180	90	-	-	-	SEE SDD 15C02 - 07A, DETAIL C AND 15C02 - 07B, DETAIL D & E						
	STH 114 SIDEROAD CLOSURES: KEES RD, ERTL RD, HARWOOD RD, AND 11TH ST	W20-3A, W20-3D, R11-4	VARIABLES	24.00	9.00	-	-	-	144	144	216	-	-	-	SEE SDD 15C3 - 5, DETAIL 4						
	STH 114 SIDEROAD CLOSURES: ELM RD, CTH 8B, MCHUGH RD, 10TH ST, AND 9TH ST	W20-1A, R11-4	VARIABLES	20.00	9.00	-	-	-	180	180	180	-	-	-	SEE SDD 15C3 - 5, DETAIL 3						
	FROST HEAVE REPAIRS	W08-7	48" x 48"	14.00	9.00	-	-	-	-	-	126	-	-	-	2 "LOOSE GRAVEL" SIGNS AT EACH REPAIR BEFORE ASPHALTIC SURFACE IS APPLIED (1 EACH DIRECTION)						
	FROST HEAVE REPAIRS	W08-1	48" x 48"	14.00	10.00	-	-	-	-	-	140	-	-	-	2 "BUMP" SIGNS AT EACH REPAIR BEFORE UPPER PAVEMENT LAYER IS APPLIED (1 EACH DIRECTION)						
	UNDISTRIBUTED			10.00	10.00	100	-	-	-	-	-	-	-	-	"						
PAGE SUBTOTAL														740	457	1639	14	320			
PROJECT TOTALS														920	457	5427	28	320			
HWY: STH 114														MISCELLANEOUS QUANTITIES		662	22	5427	28	320	
COUNTY: CALUMET														SHEET:		30					

Addendum No. 01
ID 4580-11-60
Added Sheet 30A
May 1, 2019

TRAFFIC CONTROL DETOUR SIGN SUMMARY

SIGN NO.	LOCATION	SIGN CODE	SIZE	NUMBER IN SERVICE	APPROX. SERVICE PERIOD	643.0900 SIGNS		643.0420 BARRICADES TYPE III	643.0705 WARNING LIGHTS TYPE A	643.1050 SIGNS PORTABLE MESSAGE	NO OF CYCLES	643.0920 COVERING SIGNS TYPE II	REMARKS
						DAYS	DAYS						
1	STH 55/STH 114, N. OF CTH B, PLACE 1500' N. OF CTH B INTERSECTION	M 1-6 W 20-2A	24"x24" 48"x48"	1 1	9 9	9 9							114
2	STH 55/STH 114, N. OF CTH B, PLACE 750' N. OF CTH B INTERSECTION	M 4-8 M 3-2	24"x12" 24"x12"	1 1	9 9	9 9							114
3	STH 55/STH 114, N. OF CTH B, PLACE 100' N. OF CTH B INTERSECTION	M 1-6 MO 5-1L M 4-8 M 3-2	24"x24" 21"x21" 24"x12" 24"x12"	1 1 1 1	9 9 9 9	9 9 9 9							114
4	STH 55/STH 114, AT CTH B, PLACE ON RIGHT SHOULDER AT CTH B INTERSECTION	M 1-6 MO 6-1 R 11-3 M 4-9L	24"x24" 24"x24" 60"x30" 30"x24"	1 1 1 1	9 9 9 9	9 9 9 9		18					114 LEFT 114 3/4 MILE AHEAD
5	STH 55/STH 114, S. OF CTH B, PLACE 100' S. OF CTH B INTERSECTION	M 4-8 M 3-2 M 1-6 MO 6-1	24"x12" 24"x12" 24"x24" 21"x21"	1 1 1 1	9 9 9 9	9 9 9 9							114 RIGHT
6	STH 55/STH 114, S. OF CTH B, PLACE 750' S. OF CTH B INTERSECTION	M 4-8 M 3-2 M 1-6 MO 5-1R	24"x12" 24"x12" 24"x24" 21"x21"	1 1 1 1	9 9 9 9	9 9 9 9							114
7	STH 55/STH 114, S. OF CTH B, COVER EXISTING J3-2 SIGN AS SHOWN										1	1	COVER "EAST 114 ADV TILT LT"
8	STH 55/STH 114, S. OF CTH B, COVER EXISTING DL-3 SIGN AS SHOWN										1	1	COVER "HLBERT"
9	STH 55/STH 114, S. OF CTH B, PLACE RIGHT OF EXISTING J4-2 SIGN	M 4-8 M 3-2 M 1-6 MO 6-1	24"x12" 24"x12" 24"x24" 21"x21"	1 1 1 1	9 9 9 9	9 9 9 9							114 LEFT
10	STH 55, AT STH 114, MODIFY EXISTING J13-1 SIGN AS SHOWN												
11	STH 55, S. OF STH 114, COVER EXISTING DL-3 SIGN AS SHOWN												
12	STH 114, AT STH 55, PLACE ON RIGHT SHOULDER	R 11-4	60"x30"	1	9	9		18					114
13	STH 55, S. OF STH 114, PLACE 750' S. OF STH 114 INTERSECTION	M 4-8 M 3-2 M 1-6 MO 5-1L	24"x12" 24"x12" 24"x24" 21"x21"	1 1 1 1	9 9 9 9	9 9 9 9							114
14	STH 114, S. OF STH 55, COVER EXISTING J4-1 SIGN AS SHOWN												
15	STH 114, S. OF STH 55, PLACE ON RIGHT SHOULDER, FIELD DETERMINE LOCATION	PCMS											PLACE 7 DAYS IN ADVANCE OF CLOSURE
16	STH 55, S. OF STH 114, PLACE 1500' S. OF STH 114 INTERSECTION	M 3-2 M 1-6	24"x12" 24"x24"	1 1	9 9	9 9			7				114
17	CTH B, E. OF STH 55/STH 114, MODIFY EXISTING J1-1 SIGN AS SHOWN	W 20-2A	48"x48"	1	9	9							
18	CTH B, W. OF CTH 88, PLACE 150' W. OF CTH 88 INTERSECTION	M 4-8A M 4-8 M 3-2 M 1-6 MO 6-1	24"x18" 24"x12" 24"x12" 24"x24" 21"x21"	1 1 1 1 1	9 9 9 9 9	9 9 9 9 9							114 AHEAD
				40		351	18	36	7		2		
PAGE SUBTOTALS													

PLAN SHEET PRODUCED
BY WisDOT - NE REGION

PROJECT NUMBER: 4580-11-60

HWY: STH 114

COUNTY: CALUMET

MISCELLANEOUS QUANTITIES

SHEET 30A

E

Addendum No. 01
 ID 4580-11-60
 Added Sheet 30B
 May 1, 2019

TRAFFIC CONTROL DETOUR SIGN SUMMARY

SIGN NO.	LOCATION	SIGN CODE	SIZE W X H	NUMBER IN SERVICE	APPROX. SERVICE PERIOD DAYS	643.0900 SIGNS DAYS	643.0420 BARRICADES TYPE III DAYS	643.0705 WARNING LIGHTS TYPE A DAYS	643.1050 SIGNS PORTABLE CHANGEABLE MESSAGE DAYS	NO OF CYCLES	643.0920 COVERING SIGNS TYPE II EACH	REMARKS
19	CTH B, E. OF CTH BB, PLACE 150' E. OF CTH BB INTERSECTION	M 4-8	24"X12"	1	9	9						
	"	M 3-4	24"X12"	1	9	9						
	"	M 1-6	24"X24"	1	9	9						114
	"	MO 6-1	21"X21"	1	9	9						AHEAD
20	CTH B, W. OF STH 32/57, PLACE 750' W. OF STH 32/57 INTERSECTION	M 4-8	24"X12"	1	9	9						
	"	M 3-2	24"X12"	1	9	9						
	"	M 1-6	24"X24"	1	9	9						114
	"	MO 5-JR	21"X21"	1	9	9						
21	CTH B, W. OF STH 32/57, PLACE RIGHT OF EXISTING MI-51A SIGN	M 4-8	24"X12"	1	9	9						
	"	M 3-4	24"X12"	1	9	9						
	"	M 1-6	24"X24"	1	9	9						114
	"	M 4-8	24"X12"	1	9	9						
	"	M 3-4	24"X12"	1	9	9						
	"	M 1-6	24"X24"	1	9	9						114
	"	MO 6-1	21"X21"	1	9	9						RIGHT
23	STH 32/57, N. OF CTH B, PLACE 1500' N. OF CTH B INTERSECTION	M 3-4	24"X12"	1	9	9						
	"	M 1-6	24"X24"	1	9	9						114
	"	W 20-2A	48"X48"	1	9	9						
	"	M 4-8	24"X12"	1	9	9						
	"	M 3-4	24"X12"	1	9	9						
	"	M 1-6	24"X24"	1	9	9						114
	"	MO 5-JR	21"X21"	1	9	9						
25	STH 32/57, AT CTH B, PLACE RIGHT OF EXISTING J13-1 SIGN	M 4-8	24"X12"	1	9	9						
	"	M 3-4	24"X12"	1	9	9						
	"	M 1-6	24"X24"	1	9	9						114
	"	MO 6-1	21"X21"	1	9	9						RIGHT
26	STH 32/57, AT CTH B, PLACE RIGHT OF EXISTING J13-1 SIGN	M 4-8	24"X12"	1	9	9						
	"	M 3-4	24"X12"	1	9	9						
	"	M 1-6	24"X24"	1	9	9						114
	"	MO 6-1	21"X21"	1	9	9						LEFT
27	STH 32/57, S. OF CTH B, PLACE RIGHT OF EXISTING J4-2 SIGN	M 4-8	24"X12"	1	9	9						
	"	M 3-2	24"X12"	1	9	9						
	"	M 1-6	24"X24"	1	9	9						114
	"	M 4-8	24"X12"	1	9	9						
	"	M 3-4	24"X12"	1	9	9						
	"	M 1-6	24"X24"	1	9	9						114
28	STH 32/57, S. OF CTH B, PLACE 750' S. OF CTH B INTERSECTION	M 4-8	24"X12"	1	9	9						
	"	M 3-4	24"X12"	1	9	9						
	"	M 1-6	24"X24"	1	9	9						114
	"	MO 5-1L	21"X21"	1	9	9						
29	STH 32/57, N. OF STH 114, MODIFY EXISTING J1-1 SIGN AS SHOWN	M 4-8A	24"X18"	1	9	9						
PAGE SUBTOTALS												
												342
												0
												0
												0
												0
												38

PLAN SHEET PRODUCED
 BY WisDOT - NE REGION

PROJECT NUMBER: 4580-11-60

HWY: STH 114

COUNTY: CALUMET

MISCELLANEOUS QUANTITIES

SHEET

30B

E

TRAFFIC CONTROL DETOUR SIGN SUMMARY

SIGN NO.	LOCATION	SIGN CODE	SIZE W X H	NUMBER IN SERVICE	APPROX. SERVICE PERIOD DAYS	643.0900 SIGNS DAYS	643.0420 BARRICADES TYPE III DAYS	643.0705 WARNING LIGHTS TYPE A DAYS	643.1050 SIGNS PORTABLE CHANGEABLE MESSAGE DAYS	NO OF CYCLES	643.0920 COVERING SIGNS TYPE II EACH	REMARKS
30	STH 32/57, AT STH 114, COVER ENTIRE J3-I SIGN AS SHOWN	R 11-4	60"X30"	1	9	9	9	18		1	1	COVER ENTIRE SIGN
31	STH 114, AT STH 32/57, PLACE ON RIGHT SHOULDER IN NW QUADRANT	M 4-8	24"X12"	1	9	9						
32	STH 32/57, AT STH 114, MODIFY EXISTING J3-I SIGN AS SHOWN	MO 6-1	21"X21"	1	9	9						
33	STH 32/57, S. OF STH 114, PLACE 750' S. OF STH 114 INTERSECTION	M 4-8	24"X12"	1	9	9						AHEAD
	"	M 3-4	24"X12"	1	9	9						
	"	M 1-6	24"X24"	1	9	9						114
	"	MO 6-1	21"X21"	1	9	9						AHEAD
34	STH 32/57, S. OF STH 114, COVER EXISTING DI-3 SIGN AS SHOWN	M 3-4	24"X12"	1	9	9				1	1	COVER "SHERWOOD-MEMSHA-NEEMH"
35	"	M 1-6	24"X24"	1	9	9						114
	"	W 20-2A	48"X48"	1	9	9						
36	STH 114, W. OF STH 32/57, PLACE ON RIGHT SHOULDER, FIELD DETERMINE LOCATION	PCMS		1					7		2	PLACE IN ADVANCE OF FULL CLOSURE
				11		90	9	18	7			
PAGE SUBTOTALS												
DETOUR TOTALS				89		783*	27*	54*	14*		5	

*NOTE: FOR INFORMATIONAL PURPOSES ONLY; ADDITIONAL QUANTITIES SHOWN ELSEWHERE

Addendum No. 01
ID 4580-11-60
Added Sheet 30C
May 1, 2019

CONSTRUCTION STAKING SUMMARY

650.8000	CONSTRUCTION STAKING	650.9910	CONSTRUCTION STAKING
RESURFACING REFERENCE	SUPPLEMENTAL CONTROL		

CATEGORY	STATION TO	STATION	LOCATION	LF	LS
0010	6+12	-	342+18	33605	1

PROJECT TOTALS 33605 1

SAW CUT SUMMARY

690.0150	SAWING ASPHALT	690.0250	SAWING CONCRETE
----------	----------------	----------	-----------------

CATEGORY	STATION TO	STATION	OFFSET	LOCATION	LF	LF	REMARKS
0010	6+12	-	LT & RT	STH 114	41	-	BEGIN PROJECT
	14+35	-	LT & RT	KEES RD. SOUTH	32	-	
	24+06	-	LT & RT	ERTL RD. SOUTH	33	-	
	35+18	-	LT & RT	HARWOOD RD. SOUTH	28	-	
	34+18	-	LT & RT	HARWOOD RD. NORTH	28	-	
	45+12	-	LT & RT	KRUEGER LN. NORTH	24	-	
	55+19	-	LT & RT	ELM RD. SOUTH	29	-	
	54+17	-	LT & RT	ELM RD. NORTH	28	-	
	65+24	-	LT & RT	CTH BB SOUTH	28	-	
	64+78	-	LT & RT	CTH BB NORTH	30	-	
	75+20	-	LT & RT	MCHUGH RD. SOUTH	25	-	
	74+19	-	LT & RT	MCHUGH RD. NORTH	28	-	
	85+26	-	LT & RT	12TH ST. NORTH	35	-	
	94+59	-	LT & RT	11TH ST. SOUTH	-	-	
	104+57	-	LT & RT	10TH ST. SOUTH	-	-	
	115+20	-	LT & RT	9TH ST SOUTH	36	-	
	114+55	-	LT & RT	9TH ST NORTH	34	-	
			LT & RT	HARWOOD RD.	87	18	CURB AND GUTTER SAW CUT TOTALS, LOCATIONS BROKEN OUT IN CURB AND GUTTER REMOVAL SUMMARY
	328+07	-	STH 114 10' RT	STH 114	1135	1131	FULL DEPTH / SHOULDER REPLACEMENT
	328+07	-	STH 114 10' LT	STH 114	1132	1128	FULL DEPTH / SHOULDER REPLACEMENT
	339+38	-	STH 114 10' RT	STH 114	23	279	FULL DEPTH / SHOULDER REPLACEMENT
	339+35	-	STH 114 10' LT	STH 114	16	282	FULL DEPTH / SHOULDER REPLACEMENT
	342+18	-	LT & RT	STH 114	47	-	END PROJECT
	116+72	-	LT & RT	STH 114	140	280	SAWING FOR FROST HEAVE REPAIRS; SEE FROST HEAVE REPAIR SUMMARY FOR DETAILS

PROJECT TOTALS 3039 3118

NOTE: IF A VERTICAL FACE CAN BE OBTAINED WITHOUT A SAW CUT, SAW CUT CAN BE OMITTED

Addendum No. 01
 ID 4580-11-60
 Revised Sheet 32
 May 1, 2019

GENERAL NOTES

THE EXACT NUMBER, LOCATION, AND SPACING OF ALL SIGNS AND BARRICADES SHALL BE ADJUSTED TO FIT FIELD CONDITIONS AS APPROVED BY THE ENGINEER.

ANY SIGNS TEMPORARY OR EXISTING, WHICH CONFLICT WITH TRAFFIC CONTROL "IN USE", SHALL BE REMOVED OR COVERED AS NEEDED AND AS APPROVED BY THE ENGINEER.

THE SPACING BETWEEN TRAFFIC CONTROL SIGNS SHOULD BE ADJUSTED TO NOT CONFLICT WITH AND SHOULD PROVIDE A DESIRABLE MINIMUM OF 200 FEET CLEARANCE TO EXISTING SIGNS THAT WILL REMAIN IN PLACE.

BARRICADES THAT MUST BE MOVED FOR A WORK OPERATION SHALL BE IMMEDIATELY RE-ESTABLISHED UPON COMPLETION OF THE OPERATION, OR FOR CONTINUING OPERATIONS, AT THE END OF EACH WORKING DAY.

SIGNS THAT WILL BE IN PLACE LESS THAN 7 CONTINUOUS DAYS AND NIGHTS MAY BE MOUNTED ON PORTABLE SUPPORTS.

ALL TYPE III BARRICADES SHALL HAVE RAILS REFLECTORIZED ON BOTH FACES. STRIPES SHALL BE PROPERLY SLOPED DOWN TOWARD THE TRAFFIC SIDE OR AS SHOWN IN THE ROAD CLOSURE BARRICADE DETAIL "D" FOR FULL ROAD CLOSURES.

TYPE "A" - LOW - INTENSITY FLASHING WARNING LIGHTS SHALL BE VISIBLE ON BOTH SIDES OF THE BARRICADE.

THE R11 - 2, R11 - 3, M4 - 9, R11 - 4, AND R10 - 61 SIGNS PLACED ON THE BARRICADES SHALL COVER NO MORE THAN THE TOP RAIL. THE SIGNS SHALL NOT COVER ANY PORTION OF THE MIDDLE RAIL OR BOTTOM RAILS.

"W" AND "M" SIGNS ARE THE SAME AS "W" AND "M" SIGNS EXCEPT THE BACKGROUND IS ORANGE.

ALL SIGNS SHALL BE 48" X 48" UNLESS OTHERWISE NOTED BELOW:

- R11 - 2 SHALL BE 48" X 30"
- R11 - 3 SHALL BE 48" X 30"
- M4 - 9 SHALL BE 30" X 24"
- M3 - X SHALL BE 24" X 12" (36" X 18" IF NEEDED TO MATCH EXISTING SIGNS)
- M4 - 8 SHALL BE 24" X 12" (36" X 15" IF NEEDED TO MATCH EXISTING SIGNS)
- M1 - 4, M1 - 5A AND M1 - 6 SHALL BE 24" X 24" (36" X 36" IF NEEDED TO MATCH EXISTING SIGNS)
- M05 - 1 AND M06 - 1 SHALL BE 21" X 21" (30" X 30" IF NEEDED TO MATCH EXISTING SIGNS)
- D1 - X SHALL BE AS SHOWN ON SPECIFIC PROJECT SIGNING DETAIL SHEETS.
- R1 - 1 SHALL BE 36" X 36"

① TWO WARNING LIGHTS SHALL BE PROVIDED ON THE CENTER BARRICADE AND A MINIMUM OF ONE WARNING LIGHT SHALL BE PROVIDED ON EACH OF THE OTHER BARRICADES WITHIN THE ROADWAY LIMITS. SPACING OF THE WARNING LIGHTS SHALL BE UNIFORM TO THE EDGE OF ROADWAY AS SHOWN (APPROX. 8 FOOT LIGHT SPACING).

② THESE SIGNS AND BARRICADES ARE NOT REQUIRED IF ROAD CLOSURE BEGINS AT AN INTERSECTION.

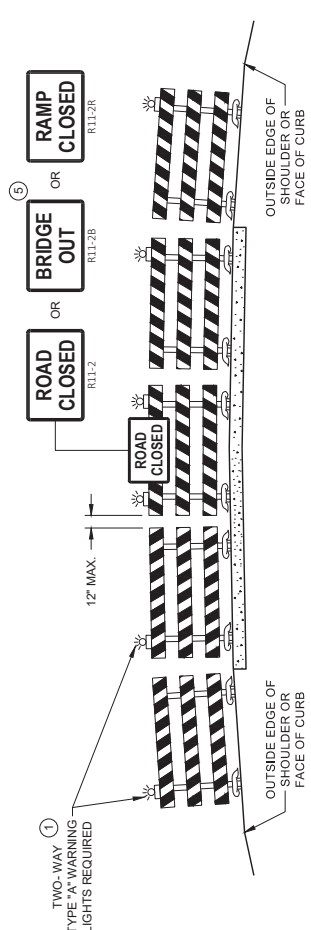
③ FOR ROAD CLOSURE WITHOUT LOCAL ACCESS TO PROJECT, SEE ROAD CLOSURE BARRICADE DETAIL "D".

④ FOR ROAD CLOSURE WITH LOCAL ACCESS TO PROJECT, SEE ROAD CLOSURE BARRICADE DETAIL "E".

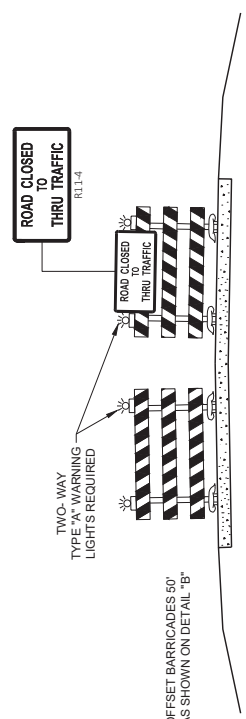
⑤ FOR BRIDGE OR CULVERT REPLACEMENTS, SUBSTITUTE "BRIDGE OUT" INSTEAD OF "ROAD CLOSED" ON R11 - 2 AND R11 - 3 SIGNS.

⑥ INSTALL DETOUR AND COMMUNITY GUIDE SIGNS AND ARROWS ONLY IF SPECIFIED IN THE CONTRACT. IF THERE ARE EXISTING ROUTE MARKER ASSEMBLIES THAT WILL REMAIN IN PLACE, ADJUST THE LOCATION OF THE DETOUR ROUTE SIGNS TO CORRESPOND WITH THE EXISTING ASSEMBLIES. MODIFY EXISTING SIGNS WHERE POSSIBLE. SEE SPECIFIC PROJECT DETOUR SIGNING DETAIL SHEETS. IF DETOUR SIGNS ARE BEING INSTALLED BY OTHERS, PLACE THE CONTRACTED TRAFFIC CONTROL SIGNS TO ALLOW FOR PLACEMENT OF ALL WARNING, DETOUR AND GUIDE SIGNS AS SHOWN.

⑦ "EAST" CARDINAL DIRECTION MARKERS AND RIGHT TURN ARROWS ARE SHOWN. USE OTHER CARDINAL DIRECTIONS AND ARROWS AS APPROPRIATE.



**DETAIL D
ROAD CLOSURE BARRICADE DETAIL
APPROACH VIEW**



**DETAIL E
LANE CLOSURE BARRICADE DETAIL
APPROACH VIEW**

Addendum No. 01
ID 4580-11-60
Added Sheet 61B
May 1, 2019

SEE SDD 15C2 - SHEET "a" FOR LEGEND

BARRICADES AND SIGNS FOR VARIOUS CLOSURES
STATE OF WISCONSIN DEPARTMENT OF TRANSPORTATION
APPROVED November 2018 DATE
/s/ Andrew Hedding WORK ZONE ENGINEER

GENERAL NOTES

THE EXACT NUMBER, LOCATION AND SPACING OF ALL SIGNS SHALL BE ADJUSTED TO FIT FIELD CONDITIONS AS APPROVED BY THE ENGINEER.

IF THERE ARE EXISTING ROUTE MARKER ASSEMBLIES THAT WILL REMAIN IN PLACE, ADJUST THE LOCATION OF THE DETOUR SIGN ASSEMBLIES TO MATCH THE EXISTING ASSEMBLIES. SEE SPECIFIC PROJECT DETOUR SIGNING DETAIL SHEETS. MODIFY EXISTING SIGNS WHERE POSSIBLE.

THE SPACING BETWEEN TRAFFIC CONTROL AND DETOUR SIGNS SHOULD BE ADJUSTED TO NOT CONFLICT WITH AND TO PROVIDE A DESIRABLE MINIMUM OF 200 FEET CLEARANCE TO EXISTING SIGNS THAT WILL REMAIN IN PLACE.

ANY SIGNS TEMPORARY OR EXISTING, WHICH CONFLICT WITH TRAFFIC CONTROL "IN USE" SHALL BE REMOVED OR COVERED AS NEEDED AND AS APPROVED BY THE ENGINEER.

SIGNS THAT WILL BE IN PLACE LESS THAN 7 CONTINUOUS DAYS AND NIGHTS MAY BE MOUNTED ON PORTABLE SUPPORTS.

*NOT SIGNS ARE THE SAME AS "M" SIGNS EXCEPT THE BACKGROUND IS ORANGE.

SIGN SIZES SHALL BE AS FOLLOWS:

M3-X SHALL BE 24" X 12" (36" X 18" IF NEEDED TO MATCH EXISTING SIGNS)

M4-B SHALL BE 24" X 12" (30" X 15" IF NEEDED TO MATCH EXISTING SIGNS)

M1-4, M1-5A AND M1-6 SHALL BE 24" X 24" (30" X 30" IF NEEDED TO MATCH EXISTING SIGNS)

M5-1 AND M8-1 SHALL BE 21" X 21" (30" X 30" IF NEEDED TO MATCH EXISTING SIGNS)

M4-9 AND M4-99 SHALL BE 30" X 24"

M4-10 SHALL BE 30" X 24"

G20-51 SHALL BE 60" X 24"

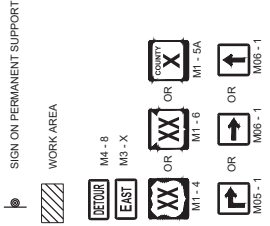
W20-2 SHALL BE 48" X 48"

D1-X SHALL BE AS SHOWN ON SPECIFIC PROJECT DETOUR SIGNING DETAIL SHEETS.

* OPTIONAL SIGNS. SEE SPECIFIC PROJECT DETOUR SIGNING DETAIL SHEETS.

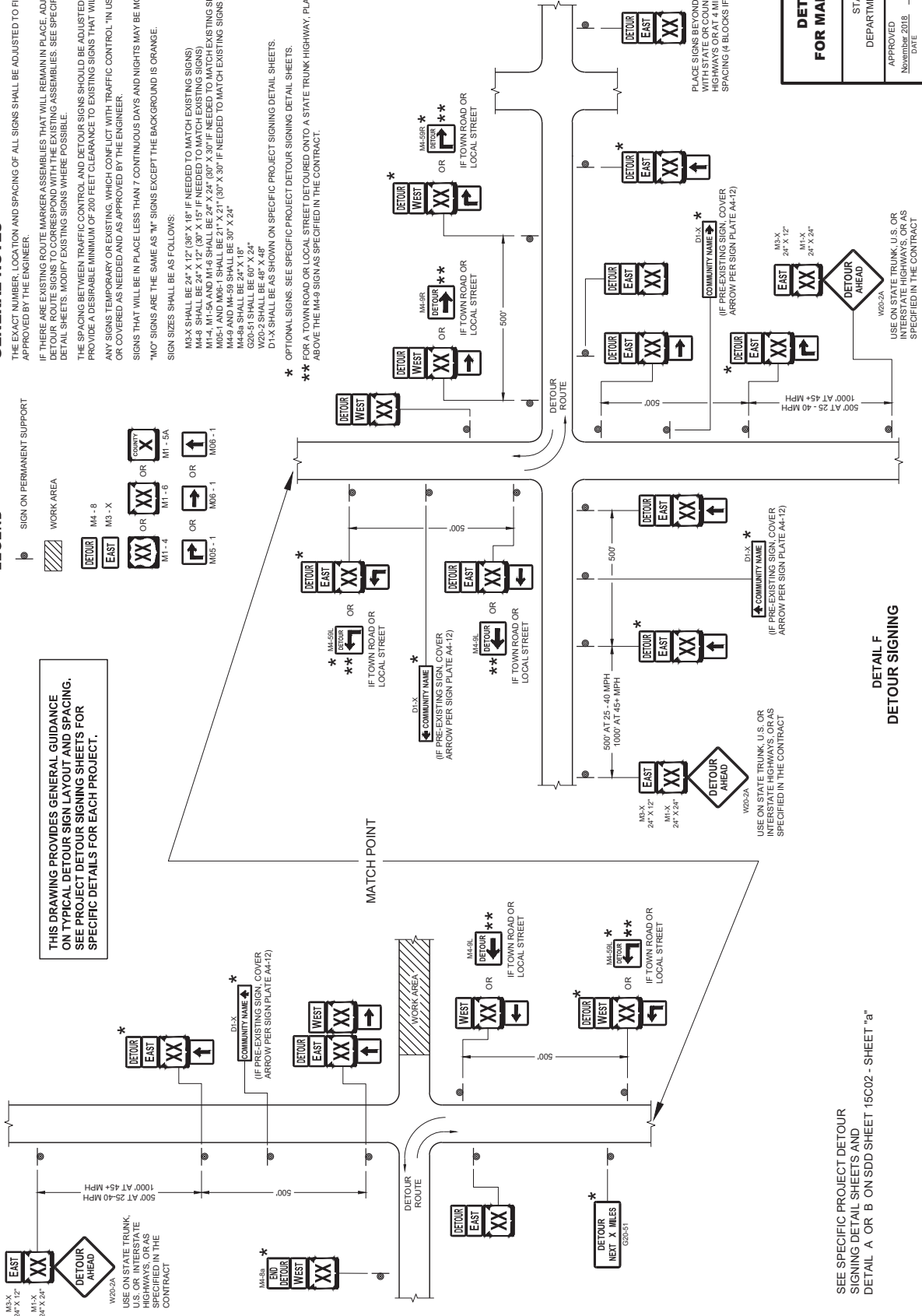
** FOR A TOWN ROAD OR LOCAL STREET DETOURED ONTO A STATE TRUNK HIGHWAY, PLACE A ROAD NAME PLAQUE ABOVE THE M4-9 SIGN AS SPECIFIED IN THE CONTRACT.

LEGEND



THIS DRAWING PROVIDES GENERAL GUIDANCE ON TYPICAL DETOUR SIGN LAYOUT AND SPACING. SEE PROJECT DETOUR SIGNING SHEETS FOR SPECIFIC DETAILS FOR EACH PROJECT.

MATCH POINT

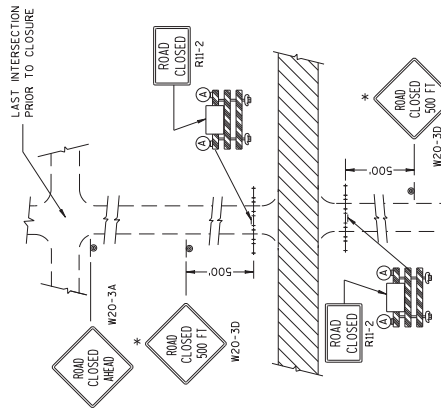


Addendum No. 01
ID 4580-11-60
Added Sheet 61C
May 1, 2019

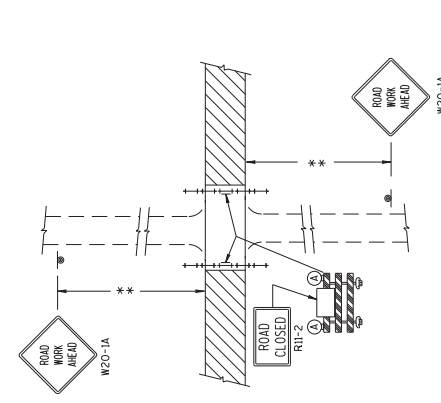
DETOUR SIGNING FOR MAINLINE CLOSURES
STATE OF WISCONSIN DEPARTMENT OF TRANSPORTATION
APPROVED November 2018 DATE
/s/ Andrew Hedling WORK ZONE ENGINEER

**DETAIL F
DETOUR SIGNING**

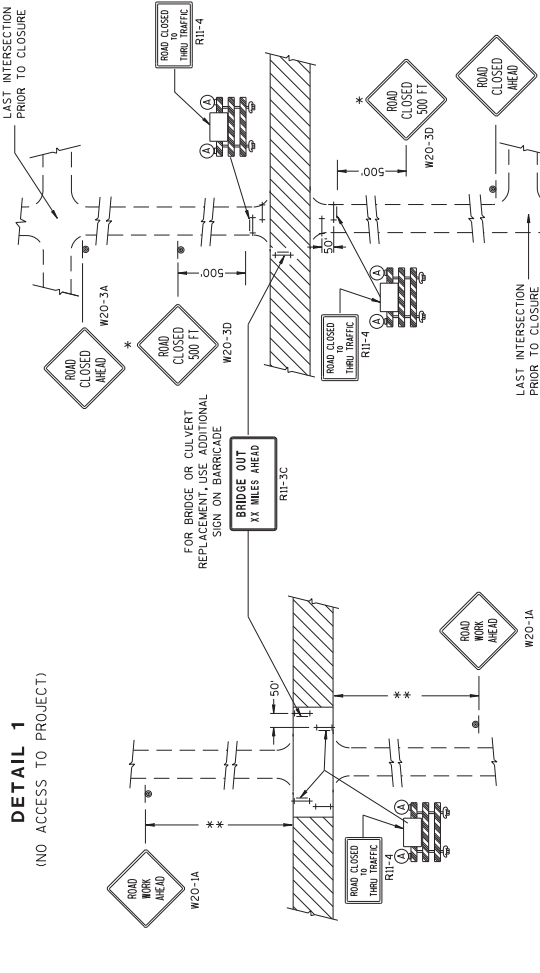
SEE SPECIFIC PROJECT DETOUR SIGNING DETAIL SHEETS AND DETAIL A OR B ON SDD SHEET 15C02 - SHEET "a"



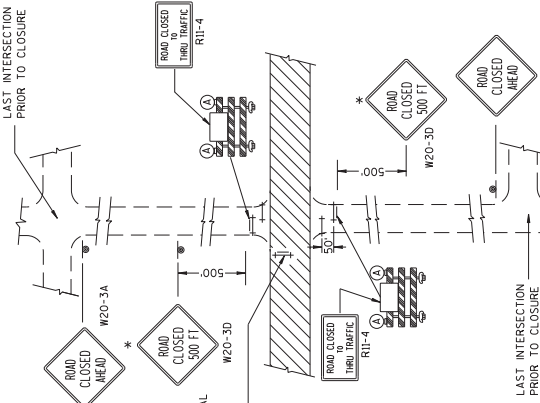
DETAIL 1
(NO ACCESS TO PROJECT)



DETAIL 2
(PUBLIC CROSS-TRAFFIC MAINTAINED.
NO ACCESS TO PROJECT).



DETAIL 3
(PUBLIC CROSS-TRAFFIC MAINTAINED. CONTRACTOR,
LOCAL BUSINESS AND RESIDENT ACCESS.)



DETAIL 4
(CONTRACTOR, LOCAL BUSINESS AND
RESIDENT ACCESS TO PROJECT)

GENERAL NOTES

THE EXACT NUMBER, LOCATION, AND SPACING OF ALL SIGNS AND BARRICADES SHALL BE ADJUSTED TO FIT FIELD CONDITIONS AS APPROVED BY THE ENGINEER.

ANY SIGNS TEMPORARY OR EXISTING, WHICH CONFLICT WITH TRAFFIC CONTROL "IN USE" SHALL BE REMOVED OR COVERED AS NEEDED AND AS APPROVED BY THE ENGINEER.

THE SPACING BETWEEN TRAFFIC CONTROL SIGNS SHOULD BE ADJUSTED TO NOT CONFLICT WITH AND SHOULD PROVIDE A DESIRABLE MINIMUM OF 200 FEET CLEARANCE TO EXISTING SIGNS THAT WILL REMAIN IN PLACE. IF A "STOP" SIGN MUST BE REMOVED FOR A WORK OPERATION, A TEMPORARY "STOP" SIGN SHALL BE PLACED PRIOR TO THE SIGN REMOVAL, OR A FLAGGER SHALL BE PROVIDED UNTIL THE SIGN IS RE-ESTABLISHED.

BARRICADES THAT MUST BE MOVED FOR A WORK OPERATION SHALL BE IMMEDIATELY BE ESTABLISHED UPON COMPLETION OF THE OPERATION OR, FOR CONTINUING OPERATIONS, AT THE END OF EACH WORKING DAY. SIGNS THAT WILL BE IN PLACE LESS THAN 7 CONTINUOUS DAYS AND NIGHTS MAY BE MOUNTED ON PORTABLE SUPPORTS.

ALL TYPE III BARRICADES SHALL HAVE RAILS REFLECTORIZED ON BOTH FACES. STRIPES SHALL BE PROPERLY SLOPED DOWN TOWARD THE TRAFFIC SIDE OR AS SHOWN IN THE ROAD CLOSURE BARRICADE DETAIL D FOR FULL ROAD CLOSURES.

TYPE "A" LOW-INTENSITY FLASHING WARNING LIGHTS SHALL BE VISIBLE ON BOTH SIDES OF THE BARRICADE.

THE R11-2, R11-3 AND R11-4 SIGNS PLACED ON BARRICADES SHALL COVER NO MORE THAN THE TOP RAIL. THE SIGNS SHALL NOT COVER ANY PORTION OF THE MIDDLE OR BOTTOM RAILS.

ALL SIGNS SHALL BE 48" X 48" UNLESS OTHERWISE NOTED BELOW:
R11-2 SHALL BE 48" X 30"
R11-4 AND R11-3 SHALL BE 60" X 30".

LEGEND

- ⊙ SIGN ON PERMANENT SUPPORT
- ⊥ TYPE III BARRICADE
- ⊥ TYPE III BARRICADE WITH ATTACHED SIGN
- Ⓐ TYPE "A" WARNING LIGHT (FLASHING)
- ▨ WORK AREA

* OMIT THE "ROAD CLOSED 500 FT." SIGN IF THE LAST INTERSECTION IS 500 FT. OR LESS FROM THE WORK ZONE.

** 500' MAX. OR AT LAST INTERSECTION WHICHEVER IS CLOSER.

Addendum No. 01
ID 4580-11-60
Added Sheet 61D
May 1, 2019

BARRICADES AND SIGNS FOR SIDEROAD CLOSURES

STATE OF WISCONSIN
DEPARTMENT OF TRANSPORTATION

APPROVED _____
DATE 7/2008
PIWA _____ /S/ Andrew Heitko
WORK ZONE ENGINEER



Proposal Schedule of Items

Proposal ID: 20190514026 Project(s): 4580-11-60

Federal ID(s): N/A

SECTION: 0001

Contract Items

Alt Set ID:

Alt Mbr ID:

Proposal Line Number	Item ID Description	Approximate Quantity and Units	Unit Price	Bid Amount
0002	204.0110 Removing Asphaltic Surface	1,648.000 SY	_____.	_____.
0004	204.0115 Removing Asphaltic Surface Butt Joints	112.000 SY	_____.	_____.
0006	204.0120 Removing Asphaltic Surface Milling	121,390.000 SY	_____.	_____.
0008	204.0150 Removing Curb & Gutter	75.000 LF	_____.	_____.
0010	211.0100 Prepare Foundation for Asphaltic Paving (project) 01. 4580-11-60	LS	LUMP SUM	_____.
0012	213.0100 Finishing Roadway (project) 01. 4580-11-60	1.000 EACH	_____.	_____.
0014	305.0110 Base Aggregate Dense 3/4-Inch	2,095.000 TON	_____.	_____.
0016	305.0500 Shaping Shoulders	618.000 STA	_____.	_____.
0018	416.0610 Drilled Tie Bars	12.000 EACH	_____.	_____.
0020	455.0605 Tack Coat	8,630.000 GAL	_____.	_____.
0022	460.0105.S HMA Percent Within Limits (PWL) Test Strip Volumetrics	2.000 EACH	_____.	_____.
0024	460.0110.S HMA Percent Within Limits (PWL) Test Strip Density	2.000 EACH	_____.	_____.
0026	460.2005 Incentive Density PWL HMA Pavement	9,858.000 DOL	1.00000	9,858.00
0028	460.2010 Incentive Air Voids HMA Pavement	14,938.000 DOL	1.00000	14,938.00
0030	460.4110.S Reheating HMA Pavement Longitudinal Joints	33,605.000 LF	_____.	_____.



Proposal Schedule of Items

Proposal ID: 20190514026 Project(s): 4580-11-60

Federal ID(s): N/A

SECTION: 0001

Contract Items

Alt Set ID:

Alt Mbr ID:

Proposal Line Number	Item ID Description	Approximate Quantity and Units	Unit Price	Bid Amount
0032	460.5224 HMA Pavement 4 LT 58-28 S	14,938.000 TON	_____.	_____.
0034	465.0105 Asphaltic Surface	853.000 TON	_____.	_____.
0036	465.0110 Asphaltic Surface Patching	56.000 TON	_____.	_____.
0038	465.0315 Asphaltic Flumes	11.000 SY	_____.	_____.
0040	465.0425 Asphaltic Shoulder Rumble Strips 2-Lane Rural	43,656.000 LF	_____.	_____.
0042	465.0475 Asphalt Centerline Rumble Strips 2-Lane Rural	28,740.000 LF	_____.	_____.
0044	601.0557 Concrete Curb & Gutter 6-Inch Sloped 36-Inch Type D	75.000 LF	_____.	_____.
0046	614.0400 Adjusting Steel Plate Beam Guard	1,425.000 LF	_____.	_____.
0048	614.0950 Replacing Guardrail Posts and Blocks	49.000 EACH	_____.	_____.
0050	614.0951 Replacing Guardrail Rail and Hardware	50.000 LF	_____.	_____.
0052	618.0100 Maintenance And Repair of Haul Roads (project) 01. 4580-11-60	1.000 EACH	_____.	_____.
0054	619.1000 Mobilization	1.000 EACH	_____.	_____.
0056	624.0100 Water	42.000 MGAL	_____.	_____.
0058	625.0100 Topsoil	24.000 SY	_____.	_____.
0060	625.0500 Salvaged Topsoil	60.000 SY	_____.	_____.
0062	628.1905 Mobilizations Erosion Control	2.000 EACH	_____.	_____.



Proposal Schedule of Items

Proposal ID: 20190514026 Project(s): 4580-11-60

Federal ID(s): N/A

SECTION: 0001

Contract Items

Alt Set ID:

Alt Mbr ID:

Proposal Line Number	Item ID Description	Approximate Quantity and Units	Unit Price	Bid Amount
0064	628.1910 Mobilizations Emergency Erosion Control	1.000 EACH	_____.	_____.
0066	628.2004 Erosion Mat Class I Type B	83.000 SY	_____.	_____.
0068	628.7015 Inlet Protection Type C	5.000 EACH	_____.	_____.
0070	629.0210 Fertilizer Type B	0.100 CWT	_____.	_____.
0072	630.0130 Seeding Mixture No. 30	2.000 LB	_____.	_____.
0074	630.0200 Seeding Temporary	1.000 LB	_____.	_____.
0076	642.5001 Field Office Type B	1.000 EACH	_____.	_____.
0078	643.0300 Traffic Control Drums	920.000 DAY	_____.	_____.
0080	643.0310.S Temporary Portable Rumble Strips	LS	LUMP SUM	_____.
0082	643.0420 Traffic Control Barricades Type III	457.000 DAY	_____.	_____.
0084	643.0705 Traffic Control Warning Lights Type A	662.000 DAY	_____.	_____.
0086	643.0715 Traffic Control Warning Lights Type C	22.000 DAY	_____.	_____.
0088	643.0900 Traffic Control Signs	5,427.000 DAY	_____.	_____.
0090	643.1050 Traffic Control Signs PCMS	28.000 DAY	_____.	_____.
0092	643.1070 Traffic Control Cones 42-Inch	320.000 DAY	_____.	_____.
0094	643.5000 Traffic Control	1.000 EACH	_____.	_____.
0096	646.1020 Marking Line Epoxy 4-Inch	89,420.000 LF	_____.	_____.



Proposal Schedule of Items

Proposal ID: 20190514026 Project(s): 4580-11-60

Federal ID(s): N/A

SECTION: 0001

Contract Items

Alt Set ID:

Alt Mbr ID:

Proposal Line Number	Item ID Description	Approximate Quantity and Units	Unit Price	Bid Amount
0098	646.3020 Marking Line Epoxy 8-Inch	285.000 LF	_____.	_____.
0100	646.4520 Marking Line Same Day Epoxy 4-Inch	2,610.000 LF	_____.	_____.
0102	646.6120 Marking Stop Line Epoxy 18-Inch	27.000 LF	_____.	_____.
0104	646.7420 Marking Crosswalk Epoxy Transverse Line 6-Inch	773.000 LF	_____.	_____.
0106	649.0105 Temporary Marking Line Paint 4-Inch	22,003.000 LF	_____.	_____.
0108	649.0120 Temporary Marking Line Epoxy 4-Inch	24,410.000 LF	_____.	_____.
0110	650.8000 Construction Staking Resurfacing Reference	33,605.000 LF	_____.	_____.
0112	650.9910 Construction Staking Supplemental Control (project) 01. 4580-11-60	LS	LUMP SUM	_____.
0114	690.0150 Sawing Asphalt	3,039.000 LF	_____.	_____.
0116	690.0250 Sawing Concrete	3,118.000 LF	_____.	_____.
0118	740.0440 Incentive IRI Ride	67,211.000 DOL	1.00000	67,211.00
0120	SPV.0090 Special Special 01. Milling and Removing Temporary Joint	31,490.000 LF	_____.	_____.
0122	204.0100 Removing Pavement	1,056.000 SY	_____.	_____.
0124	205.0100 Excavation Common	1,953.000 CY	_____.	_____.
0126	305.0120 Base Aggregate Dense 1 1/4-Inch	739.000 TON	_____.	_____.
0128	643.0920 Traffic Control Covering Signs Type II	5.000 EACH	_____.	_____.



Proposal Schedule of Items

Proposal ID: 20190514026 Project(s): 4580-11-60

Federal ID(s): N/A

SECTION: 0001

Contract Items

Alt Set ID:

Alt Mbr ID:

Proposal Line Number	Item ID Description	Approximate Quantity and Units	Unit Price	Bid Amount
0130	SPV.0035 Special 01. Foundation Backfill	2,263.000 CY		
	Section: 0001		Total:	
			Total Bid:	

