



Wisconsin Department of Transportation

Division of Transportation Systems Development

Bureau of Project Development
4822 Madison Yards Way, 4th Floor South
Madison, WI 53705

Telephone: (608) 266-1631
Facsimile (FAX): (608) 266-8459

July 2, 2019

NOTICE TO ALL CONTRACTORS:

**Proposal #01: 1003-10-80, WISC 2019 496
Illinois State Line – Madison
IH 43 Interchange Core
IH 39
Rock County**

Letting of July 9, 2019

This is Addendum No. 02, which provides for the following:

Schedule of Items:

Revised Bid Item Quantities					
Bid Item	Item Description	Unit	Old Quantity	Revised Quantity	Proposal Total
550.0020	Pre-Boring Rock or Consolidated Material	LF	1,305	812	2,117
616.0100	Fence Wire Woven (4-FT)	LF	15,508	-5,326	10,182
616.0206	Fence Chain Link 6-FT	LF	15,975	-2,946	13,029

Plan Sheets:

Revised Plan Sheets	
Plan Sheet	Plan Sheet Title (brief description of changes to sheet)
145	Plan Detail (Barrier wall note added)
151	Plan Detail (Barrier wall note added)
1122-1131	Fencing Plan (Updated line type of fence)
1239	Misc. Quantity (Updated fence quantity)
1852	Structure B-53-304 General Notes and Quantities (Added note)
2020	Structure B-53-306 General Notes and Quantities (Added note and quantity)

Added Plan Sheets	
Plan Sheet	Plan Sheet Title (brief description of why sheet was added)
162A-162B	Plan Detail (Station 308+00 – 316+00)

Schedule of Items

Attached, dated July 2, 2019, are the revised Schedule of Items Pages 11 and 16.

Plan Sheets

The following 8½ x 11-inch sheets are attached and made part of the plans for this proposal:

Revised: 145, 151, 1122-1131, 1239, 1852, 2020

Added: 162A, 162B

The responsibility for notifying potential subcontractors and suppliers of these changes remains with the prime contractor.

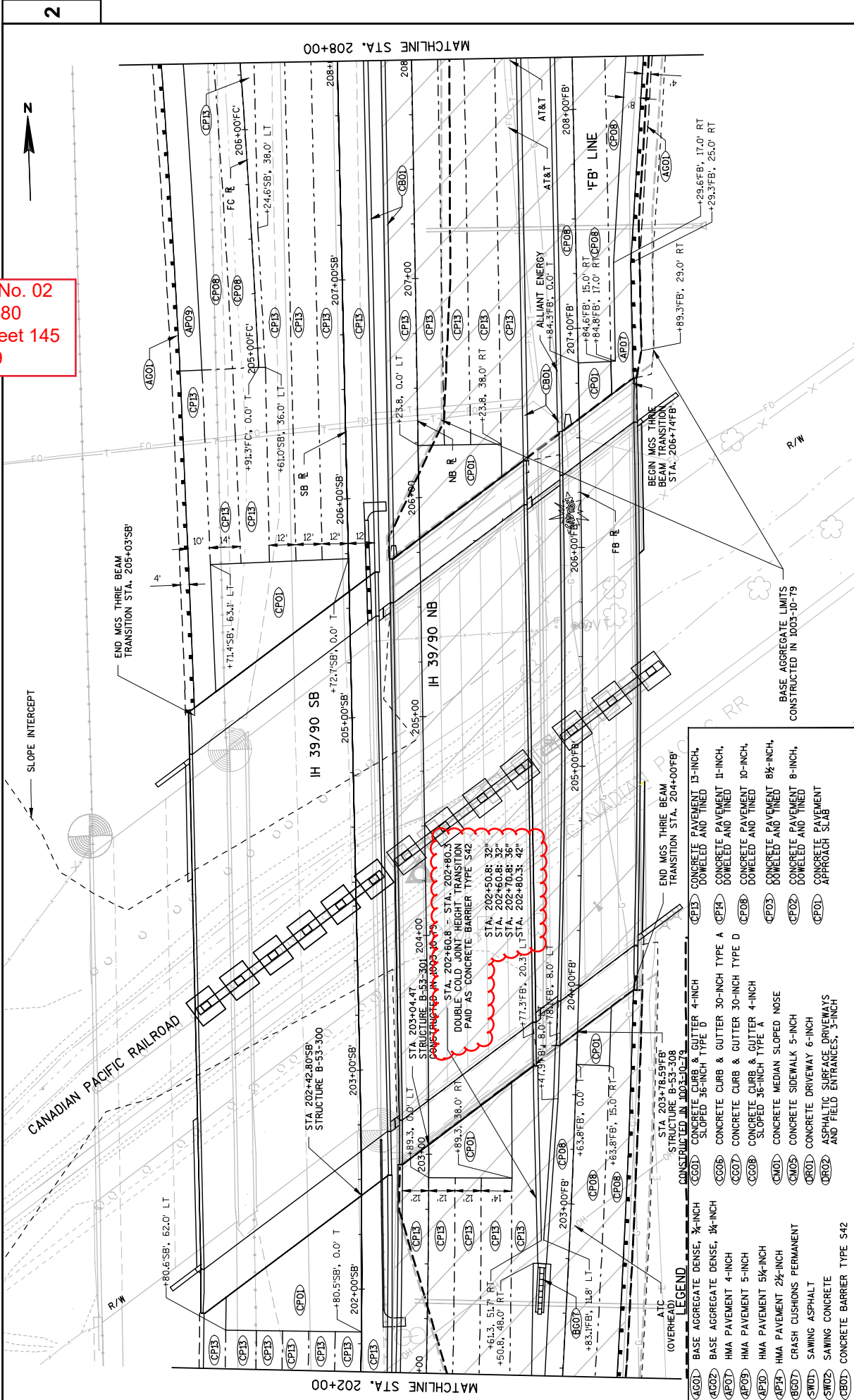
Sincerely,

Mike Coleman

Proposal Development Specialist
Proposal Management Section

END OF ADDENDUM

Addendum No. 02
 ID 1003-10-80
 Revised Sheet 145
 July 2, 2019

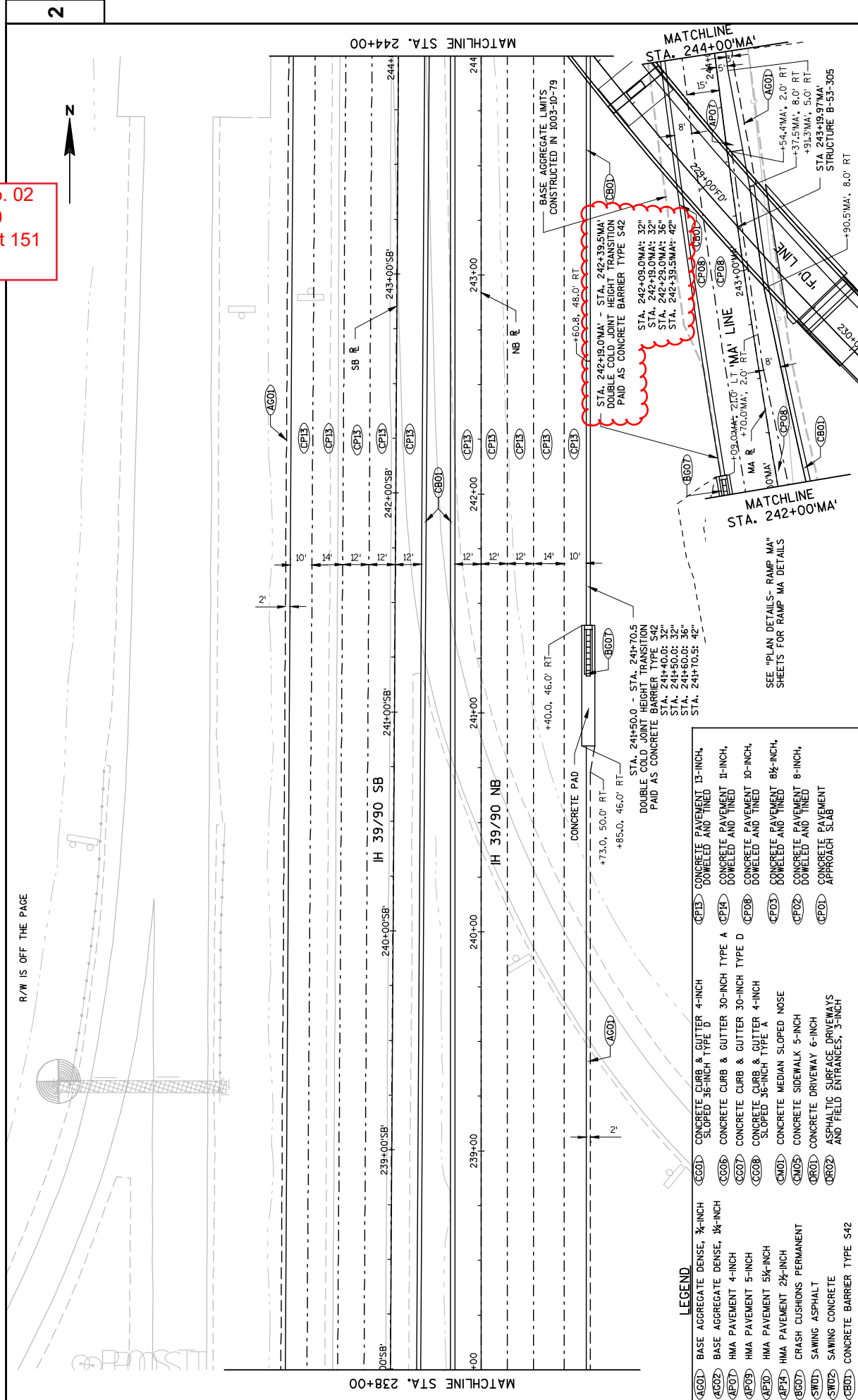


LEGEND

(CG01)	BASE AGGREGATE DENSE, 3/4-INCH	(CP03)	CONCRETE PAVEMENT 13-INCH, DOWELED AND TINED
(CG02)	BASE AGGREGATE DENSE, 3/4-INCH	(CP04)	CONCRETE PAVEMENT 11-INCH, DOWELED AND TINED
(CP01)	HMA PAVEMENT 4-INCH	(CP05)	CONCRETE PAVEMENT 10-INCH, DOWELED AND TINED
(CP02)	HMA PAVEMENT 5-INCH	(CP06)	CONCRETE PAVEMENT 8 1/2-INCH, DOWELED AND TINED
(CP03)	HMA PAVEMENT 5 1/2-INCH	(CP07)	CONCRETE PAVEMENT 8-INCH, DOWELED AND TINED
(CP04)	HMA PAVEMENT 2 1/2-INCH	(CP08)	CONCRETE PAVEMENT CONCRETE APPROACH SLAB
(CG03)	CRASH CUSHIONS PERMANENT		
(SW01)	SAWING ASPHALT		
(SW02)	SAWING CONCRETE		
(CB01)	CONCRETE BARRIER TYPE S42		

Addendum No. 02
 ID 1003-10-80
 Revised Sheet 151
 July 2, 2019

R/W IS OFF THE PAGE



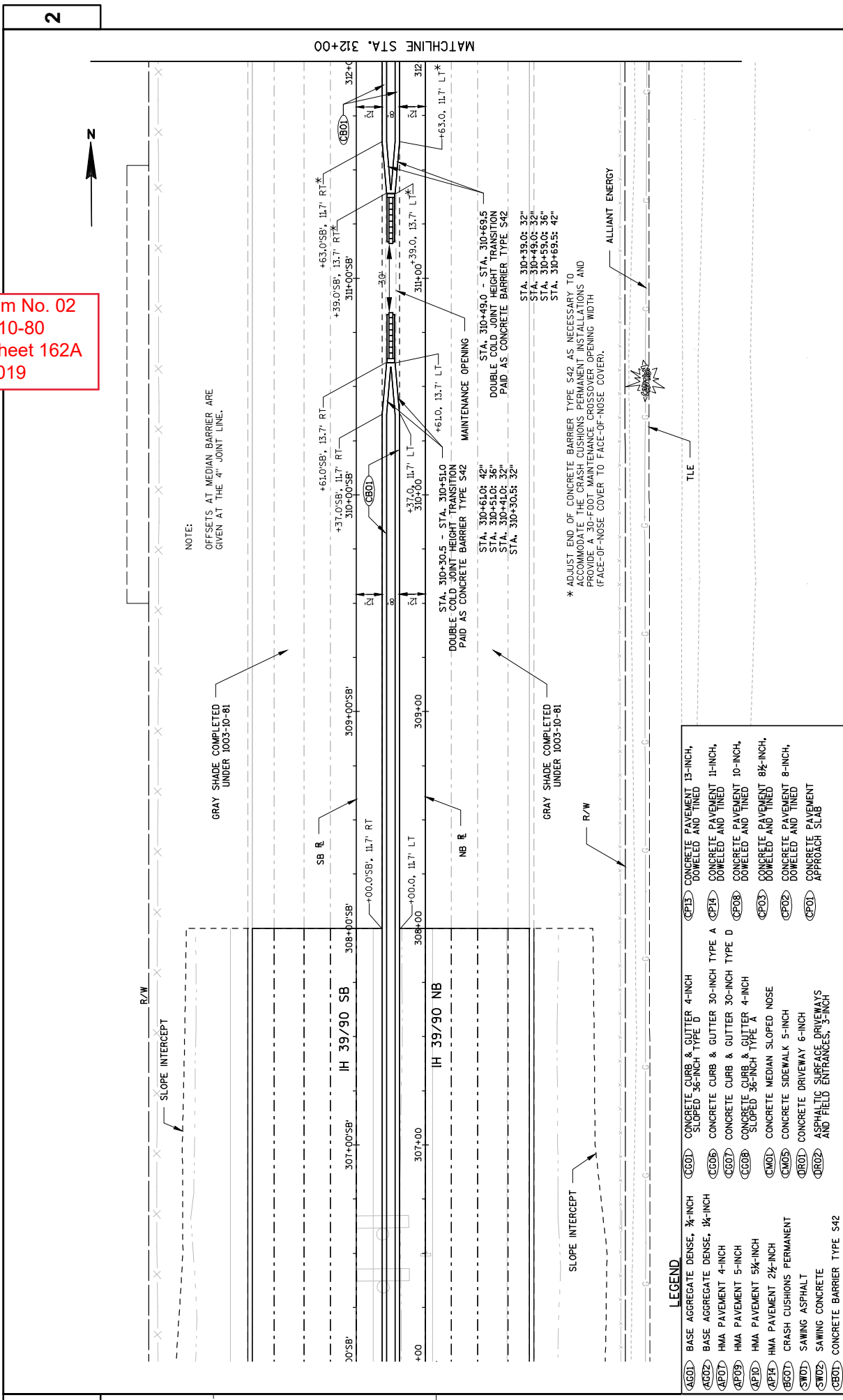
LEGEND

(AG01)	BASE AGGREGATE DENSE, 3/4-INCH	(CP13)	CONCRETE PAVEMENT 13-INCH, DOWELED AND TINED
(AG02)	BASE AGGREGATE DENSE, 3/4-INCH	(CPH)	CONCRETE PAVEMENT 11-INCH, DOWELED AND TINED
(AP01)	HMA PAVEMENT 4-INCH	(CPD)	CONCRETE PAVEMENT 10-INCH, DOWELED AND TINED
(AP02)	HMA PAVEMENT 5-INCH	(CP08)	CONCRETE PAVEMENT 8 1/2-INCH, DOWELED AND TINED
(AP03)	HMA PAVEMENT 5 1/2-INCH	(CP02)	CONCRETE PAVEMENT 8-INCH, DOWELED AND TINED
(AP04)	HMA PAVEMENT 2 1/2-INCH	(CP01)	CONCRETE PAVEMENT APPROACH SLAB
(AW01)	CRASH CUSHIONS PERMANENT		
(SW01)	SAWING ASPHALT		
(SW02)	SAWING CONCRETE		
(CB01)	CONCRETE BARRIER TYPE S42		

PROJECT NO: 1003-10-80
 COUNTY: ROCK
 HWY: IH 39
 PLAN DETAILS
 SHEET 151
 E

FILE NAME: \\USKSNF5001\PRODD\DATA\LIBRARY\WORK\PROJECTS\60242687\000_CAD\001_DRAWINGS\2014\1003-10-80_IH-43_INTERCHANGE\MODELOM 2-REG03\PART1.DWG/2/2019 10:44 AM
 PLOT BY: SCHNEIDER, MICHAEL PLOT NAME: INTERCHANGE\MODELOM 2-REG03\PART1.DWG/2/2019 10:44 AM
 PLOT SCALE: 1:1 IN=40 FT
 WISDOT/CADD SHEET 42

Addendum No. 02
 ID 1003-10-80
 Added Sheet 162A
 July 2, 2019



NOTE:
 OFFSETS AT MEDIAN BARRIER ARE
 GIVEN AT THE 4" JOINT LINE.

GRAY SHADE COMPLETED
 UNDER 1003-10-81

GRAY SHADE COMPLETED
 UNDER 1003-10-81

* ADJUST END OF CONCRETE BARRIER TYPE S42 AS NECESSARY TO
 ACCOMMODATE THE CRASH CUSHIONS PERMANENT INSTALLATIONS AND
 PROVIDE A 30-FOOT MAINTENANCE CROSSOVER OPENING WIDTH
 (FACE-OF-NOSE COVER TO FACE-OF-NOSE COVER).

STA. 310+49.0 - STA. 310+69.5
 DOUBLE COLD JOINT HEIGHT TRANSITION
 PAID AS CONCRETE BARRIER TYPE S42

STA. 310+39.0: 32"
 STA. 310+49.0: 32"
 STA. 310+59.0: 36"
 STA. 310+69.5: 42"

STA. 310+30.5 - STA. 310+51.0
 DOUBLE COLD JOINT HEIGHT TRANSITION
 PAID AS CONCRETE BARRIER TYPE S42

STA. 310+61.0: 42"
 STA. 310+51.0: 36"
 STA. 310+41.0: 32"
 STA. 310+30.5: 32"

LEGEND

- (AG01) BASE AGGREGATE DENSE, 3/4-INCH
- (AG02) BASE AGGREGATE DENSE, 1/2-INCH
- (AP01) HMA PAVEMENT 4-INCH
- (AP05) HMA PAVEMENT 5-INCH
- (AP09) HMA PAVEMENT 9 1/2-INCH
- (AP14) HMA PAVEMENT 14-INCH
- (AG07) CRASH CUSHIONS PERMANENT
- (SW01) SAWING ASPHALT
- (SW02) SAWING CONCRETE
- (CB01) CONCRETE BARRIER TYPE S42
- (CP13) CONCRETE PAVEMENT 13-INCH, DOWELED AND TINED
- (CP14) CONCRETE PAVEMENT 11-INCH, DOWELED AND TINED
- (CP08) CONCRETE PAVEMENT 10-INCH, DOWELED AND TINED
- (CP03) CONCRETE PAVEMENT 8 1/2-INCH, DOWELED AND TINED
- (CP02) CONCRETE PAVEMENT 8-INCH, DOWELED AND TINED
- (CP01) CONCRETE PAVEMENT APPROACH SLAB
- (CG01) CONCRETE CURB & GUTTER 4-INCH SLOPED 36-INCH TYPE D
- (CG06) CONCRETE CURB & GUTTER 30-INCH TYPE A
- (CG07) CONCRETE CURB & GUTTER 30-INCH TYPE D
- (CG08) CONCRETE CURB & GUTTER 4-INCH SLOPED 36-INCH TYPE A
- (CM01) CONCRETE MEDIAN SLOPED NOSE
- (CM05) CONCRETE SIDEWALK 5-INCH
- (CR01) CONCRETE DRIVEWAY 6-INCH
- (DR02) ASPHALTIC SURFACE DRIVEWAYS AND FIELD ENTRANCES, 3-INCH

COUNTY: ROCK

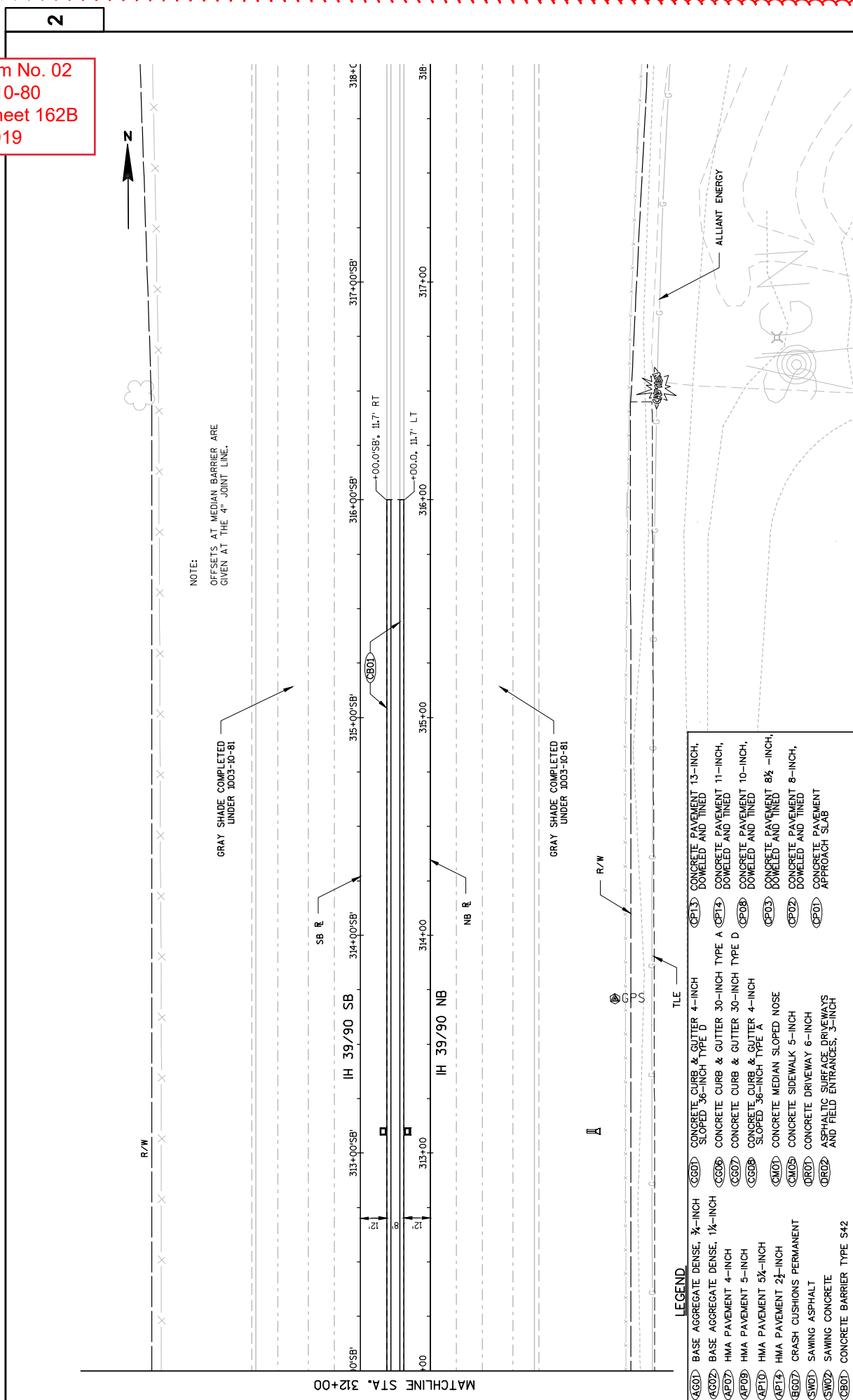
HWY: IH 39

PROJECT NO: 1003-10-80

PLAN DETAILS

SHEET 162A

Addendum No. 02
 ID 1003-10-80
 Added Sheet 162B
 July 2, 2019



NOTE:
 OFFSETS AT MEDIAN BARRIER ARE
 GIVEN AT THE 4" JOINT LINE.

GRAY SHADE COMPLETED
 UNDER 1003-10-81

GRAY SHADE COMPLETED
 UNDER 1003-10-81

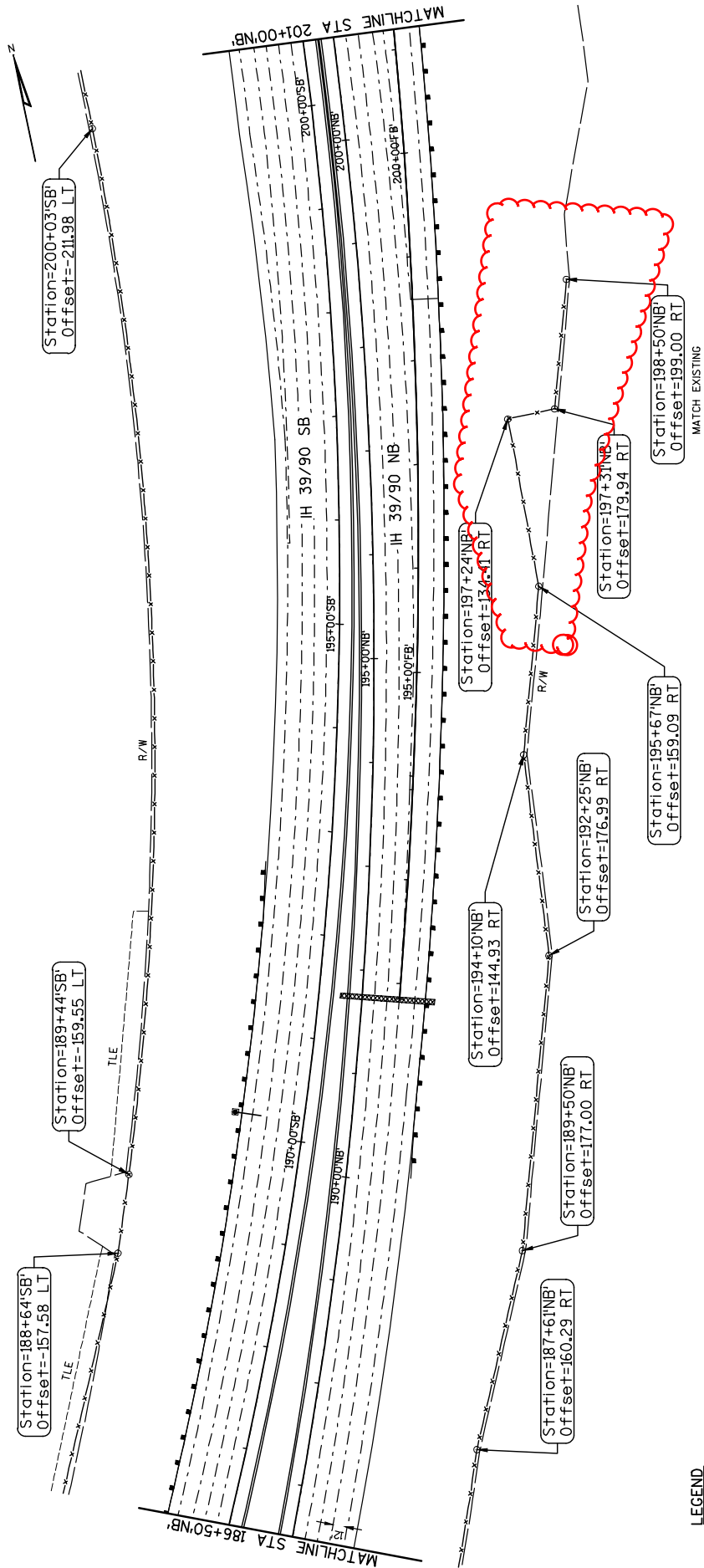
LEGEND

(AG01)	BASE AGGREGATE DENSE, ¾-INCH	(CP13)	CONCRETE PAVEMENT 13-INCH, DOWELED AND TINED
(AG02)	BASE AGGREGATE DENSE, 1½-INCH	(CP14)	CONCRETE PAVEMENT 11-INCH, DOWELED AND TINED
(AP07)	HMA PAVEMENT 4-INCH	(CP08)	CONCRETE PAVEMENT 10-INCH, DOWELED AND TINED
(AP09)	HMA PAVEMENT 5-INCH	(CP03)	CONCRETE PAVEMENT 8½-INCH, DOWELED AND TINED
(AP10)	HMA PAVEMENT 5½-INCH	(CP02)	CONCRETE PAVEMENT 8-INCH, DOWELED AND TINED
(AP14)	HMA PAVEMENT 2½-INCH	(CP01)	CONCRETE PAVEMENT APPROACH SLAB
(BG07)	CRASH CUSHIONS PERMANENT		
(SW01)	SAWING ASPHALT		
(SW02)	SAWING CONCRETE		
(CB01)	CONCRETE BARRIER TYPE S42		
(GG01)	CONCRETE CURB & GUTTER 4-INCH SLOPED 36-INCH TYPE D		
(GG06)	CONCRETE CURB & GUTTER 30-INCH TYPE A		
(GG07)	CONCRETE CURB & GUTTER 30-INCH TYPE D		
(GG08)	CONCRETE CURB & GUTTER 4-INCH SLOPED 36-INCH TYPE A		
(GM01)	CONCRETE MEDIAN SLOPED NOSE		
(GM09)	CONCRETE SIDEWALK 5-INCH		
(DR01)	CONCRETE DRIVEWAY 6-INCH		
(DR02)	ASPHALTIC SURFACE DRIVEWAYS AND FIELD ENTRANCES, 3-INCH		

PROJECT No: 1003-10-80
 COUNTY: ROCK
 HWY: IH 39
 PLAN DETAILS
 SHEET 162B
 E

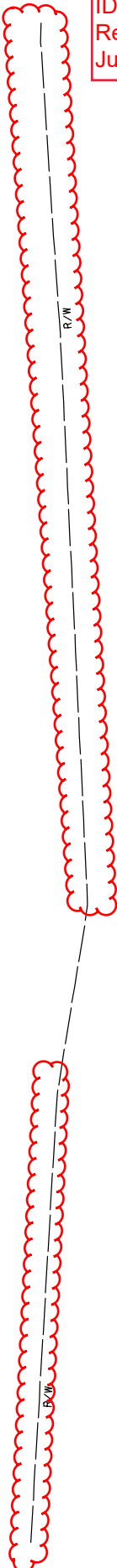
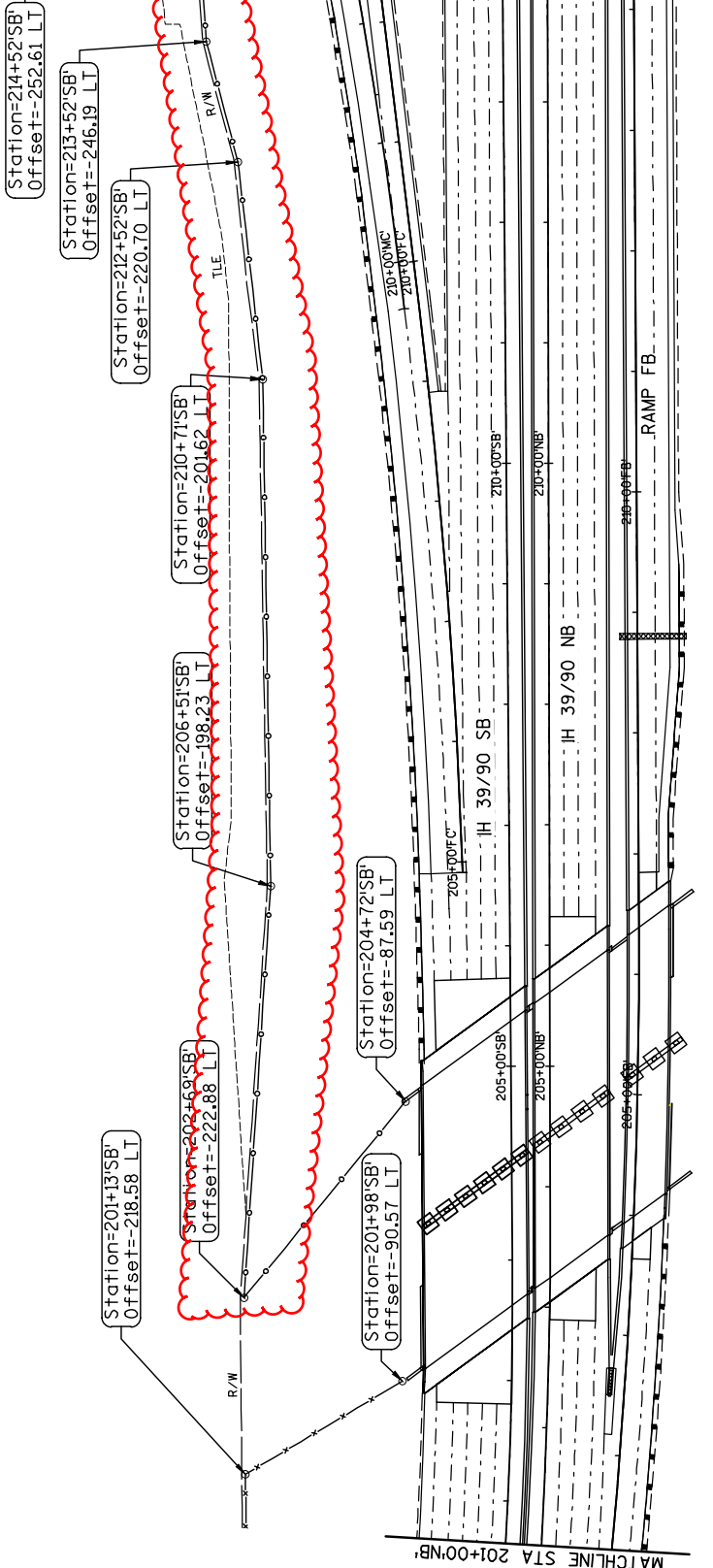
FILE NAME : L:\WORK\IH-39-SOUTH-SEGMENT\000-CAV\001\DRAWINGS-2014\1003-10-80-IH-43 INTERCHANGE\100A\021204B_PD.DWG
 PLOT DATE : 7.1.2019 4:16 PM
 PLOT BY : MROZ, ZACHARY T.
 PLOT NAME :
 PLOT SCALE : 1" = 40' XREF
 WISDOT/CADD SHEET 42

Addendum No. 02
ID 1003-10-80
Revised Sheet 1122
July 2, 2019



LEGEND

- x- FENCE WOVEN WIRE (4-FT)
- o- FENCE CHAIN LINK (6-FT)

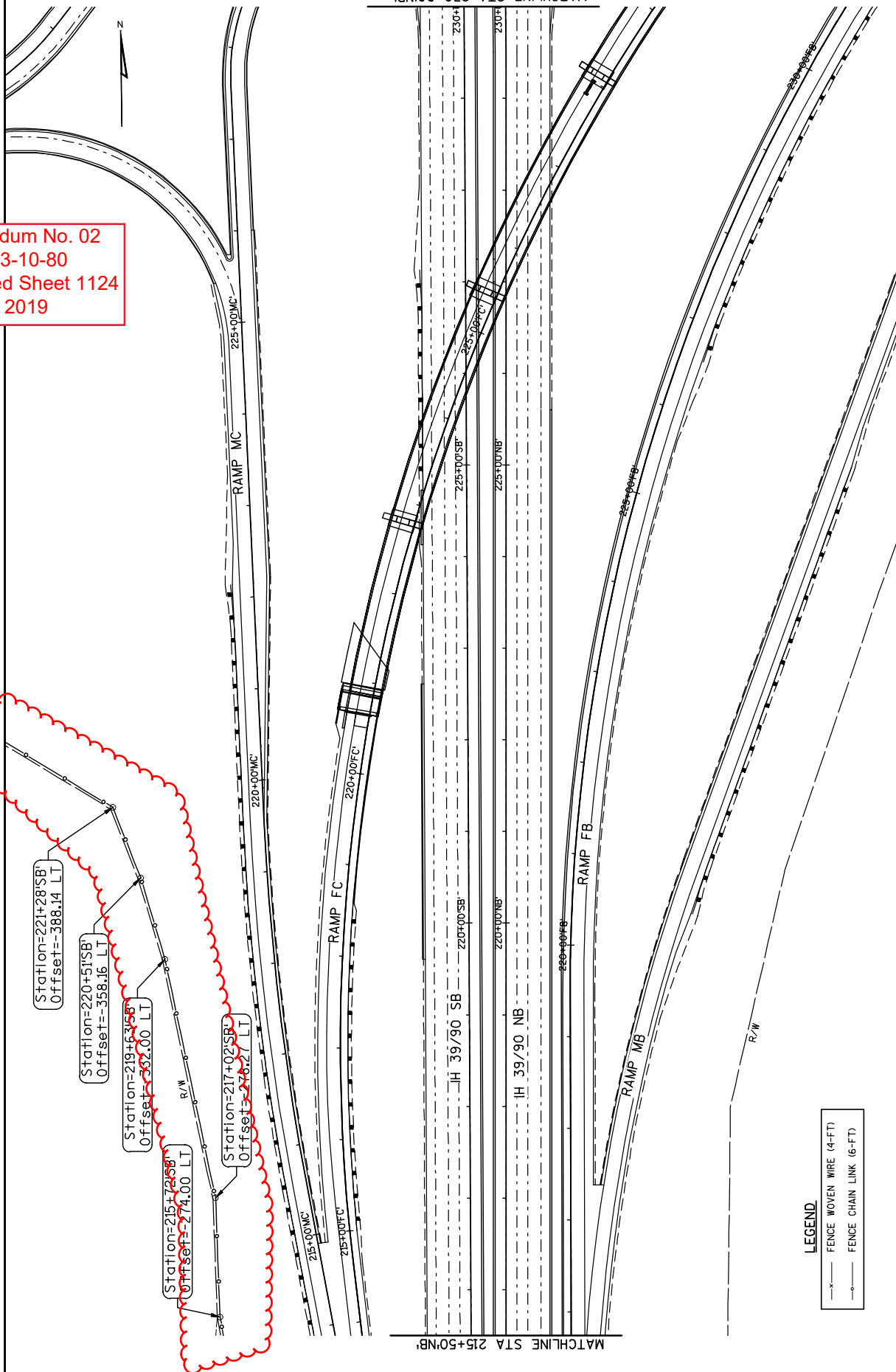


Addendum No. 02
 ID 1003-10-80
 Revised Sheet 1123
 July 2, 2019

LEGEND

	FENCE WOVEN WIRE (4-FT)
	FENCE CHAIN LINK (6-FT)

Addendum No. 02
ID 1003-10-80
Revised Sheet 1124
July 2, 2019



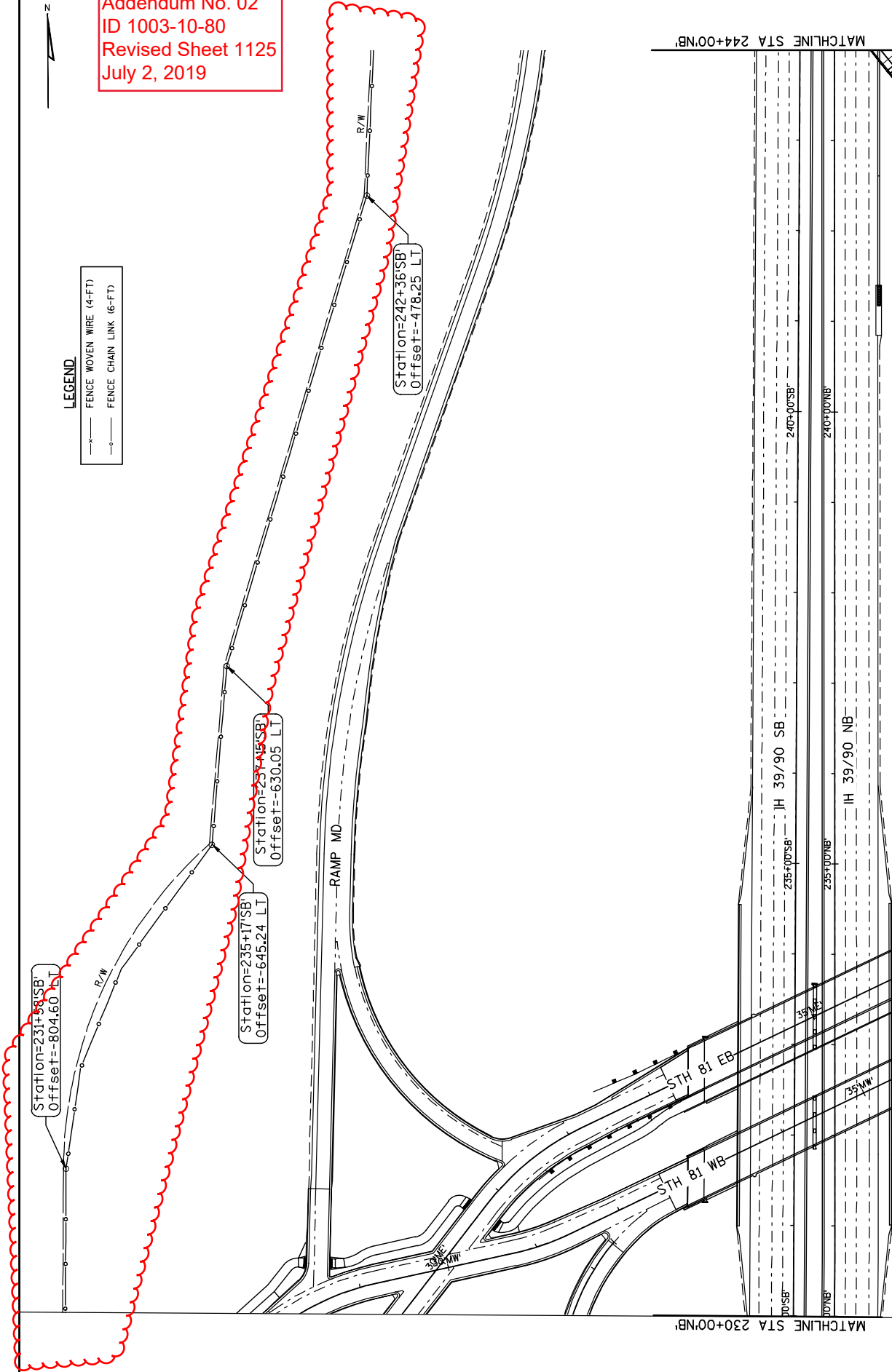
LEGEND

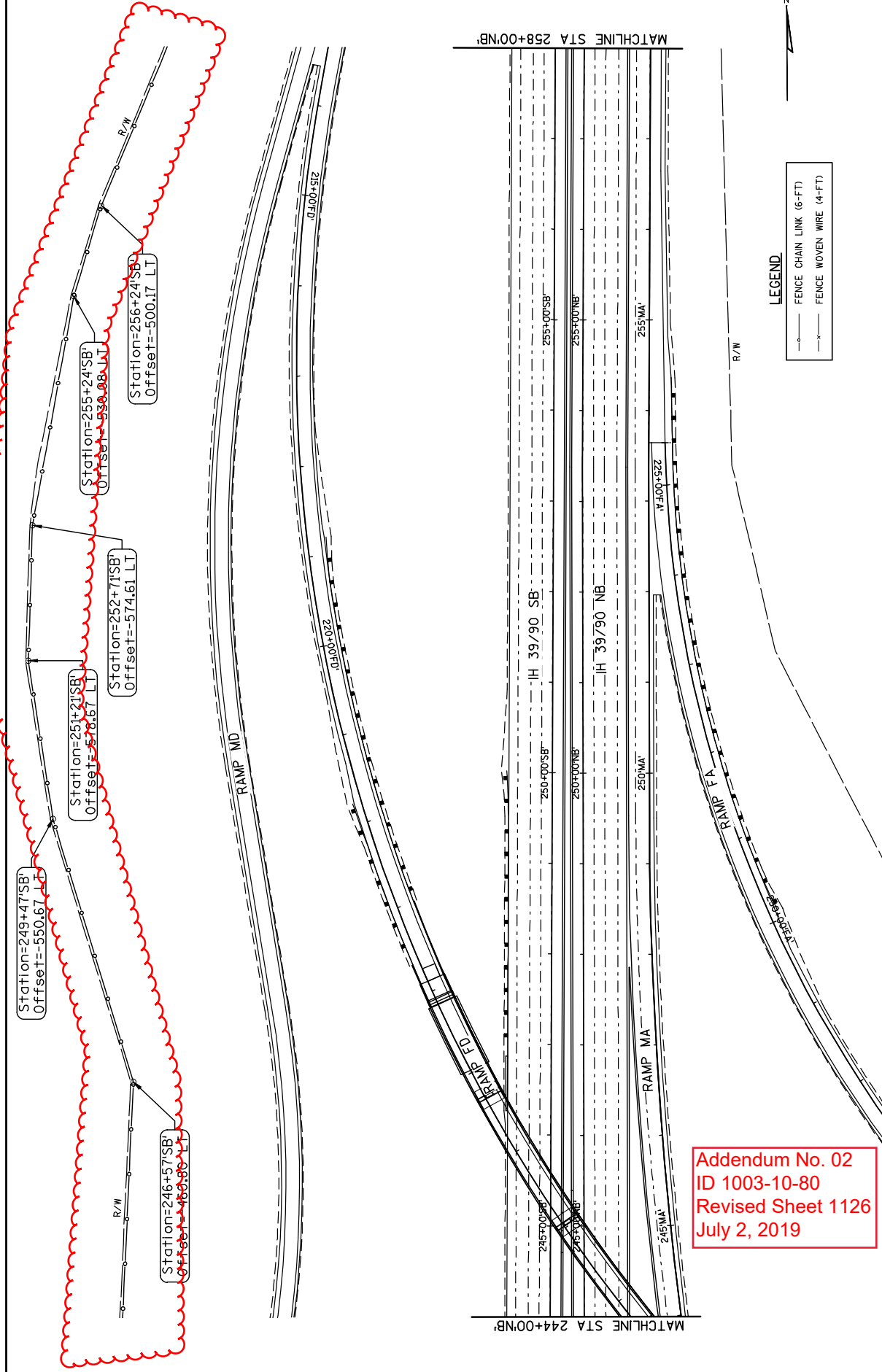
- FENCE WOVEN WIRE (4-FT)
- FENCE CHAIN LINK (6-FT)

Addendum No. 02
ID 1003-10-80
Revised Sheet 1125
July 2, 2019

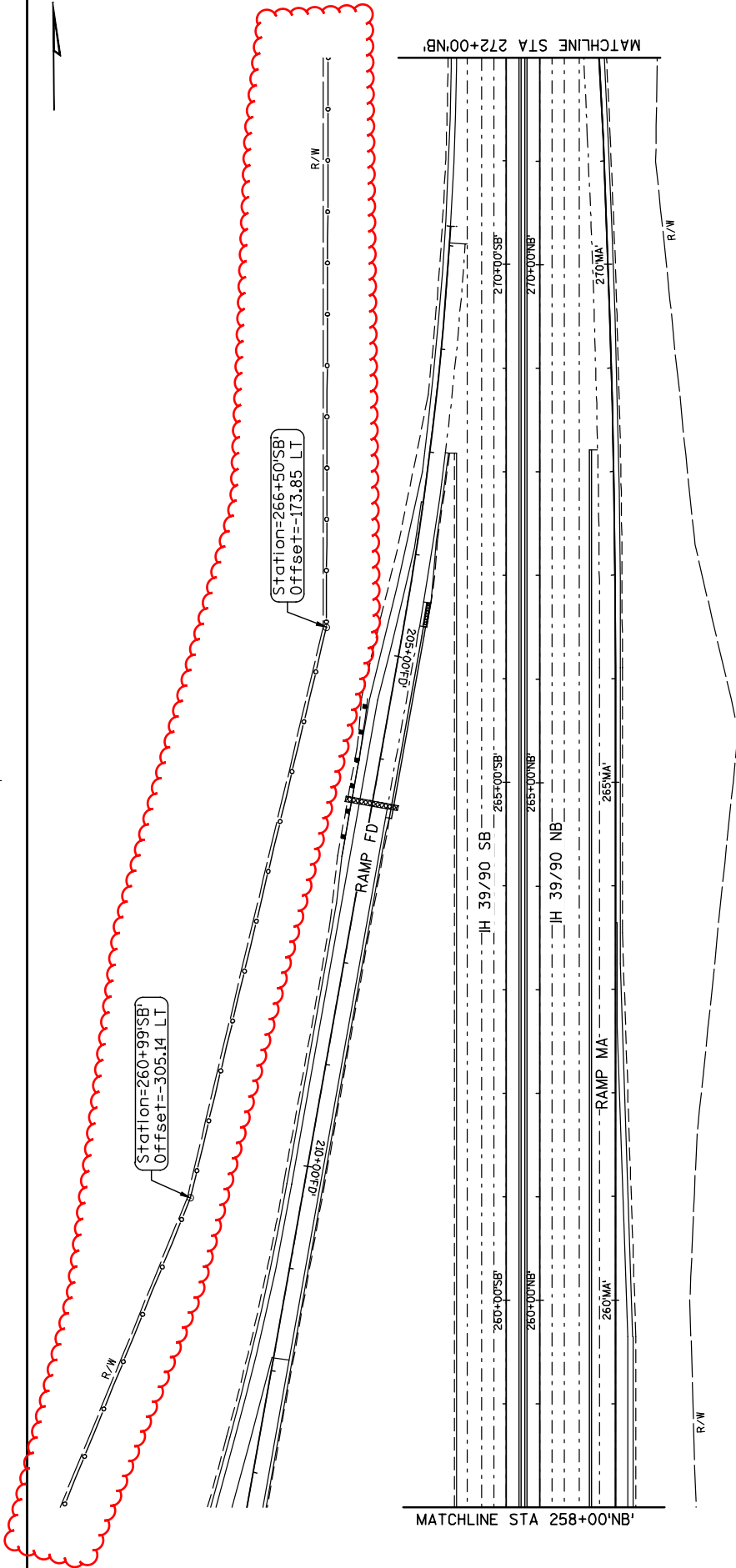
LEGEND

- x- FENCE WOVEN WIRE (4-FT)
- o- FENCE CHAIN LINK (6-FT)





Addendum No. 02
 ID 1003-10-80
 Revised Sheet 1126
 July 2, 2019



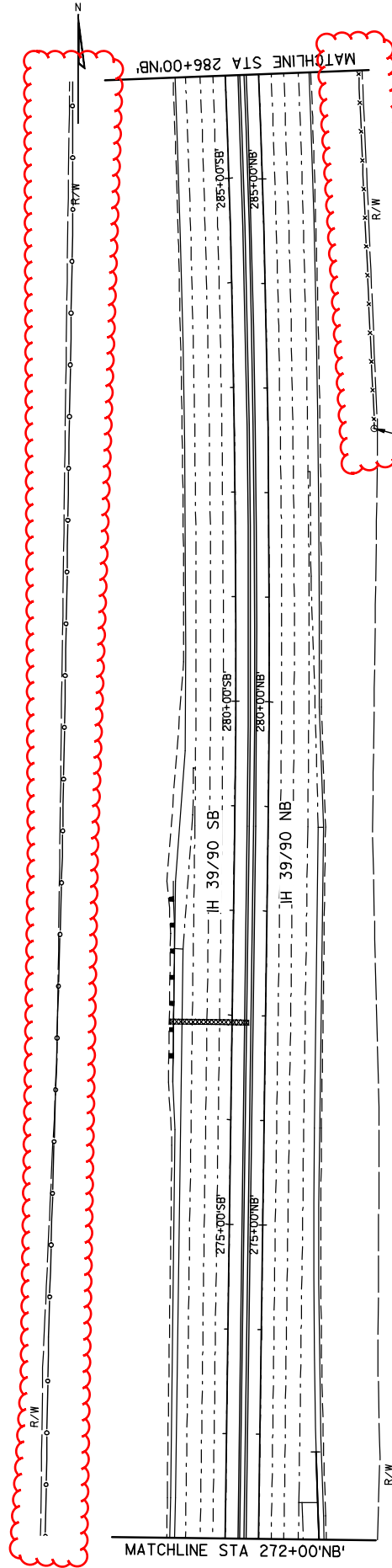
Addendum No. 02
 ID 1003-10-80
 Revised Sheet 1127
 July 2, 2019

LEGEND

- FENCE CHAIN LINK (6-FT)
- x— FENCE WOVEN WIRE (4-FT)

LEGEND

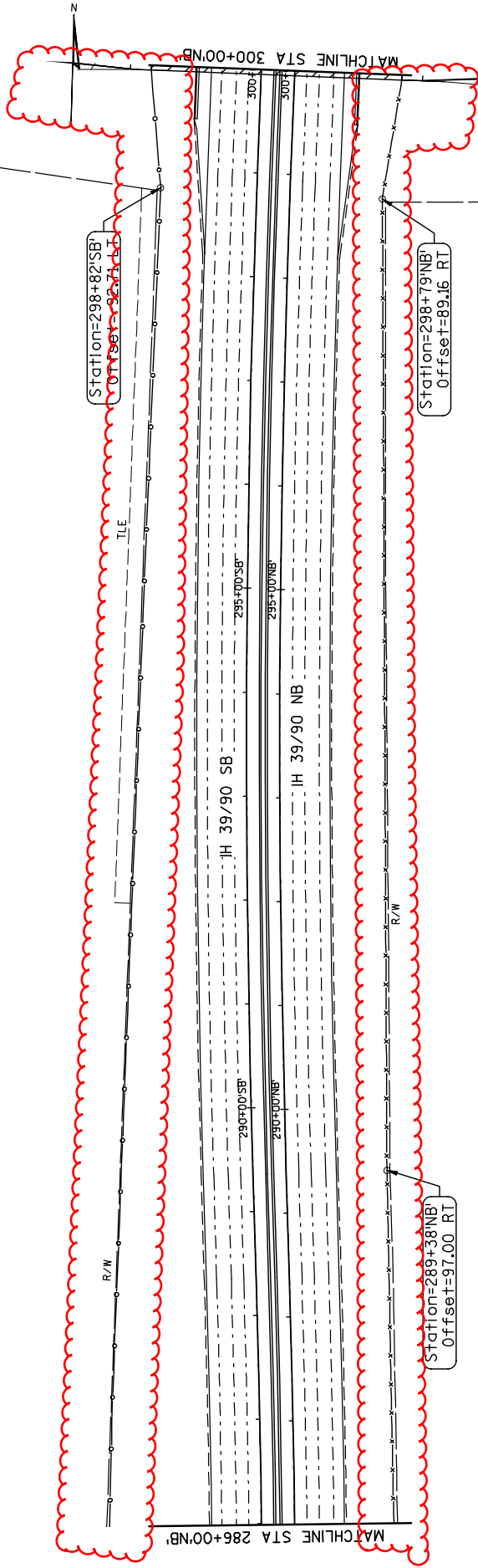
- FENCE CHAIN LINK (6-FT)
- x— FENCE WOVEN WIRE (4-FT)



Addendum No. 02
 ID 1003-10-80
 Revised Sheet 1128
 July 2, 2019

LEGEND

- FENCE CHAIN LINK (6-FT)
- x— FENCE WOVEN WIRE (4-FT)

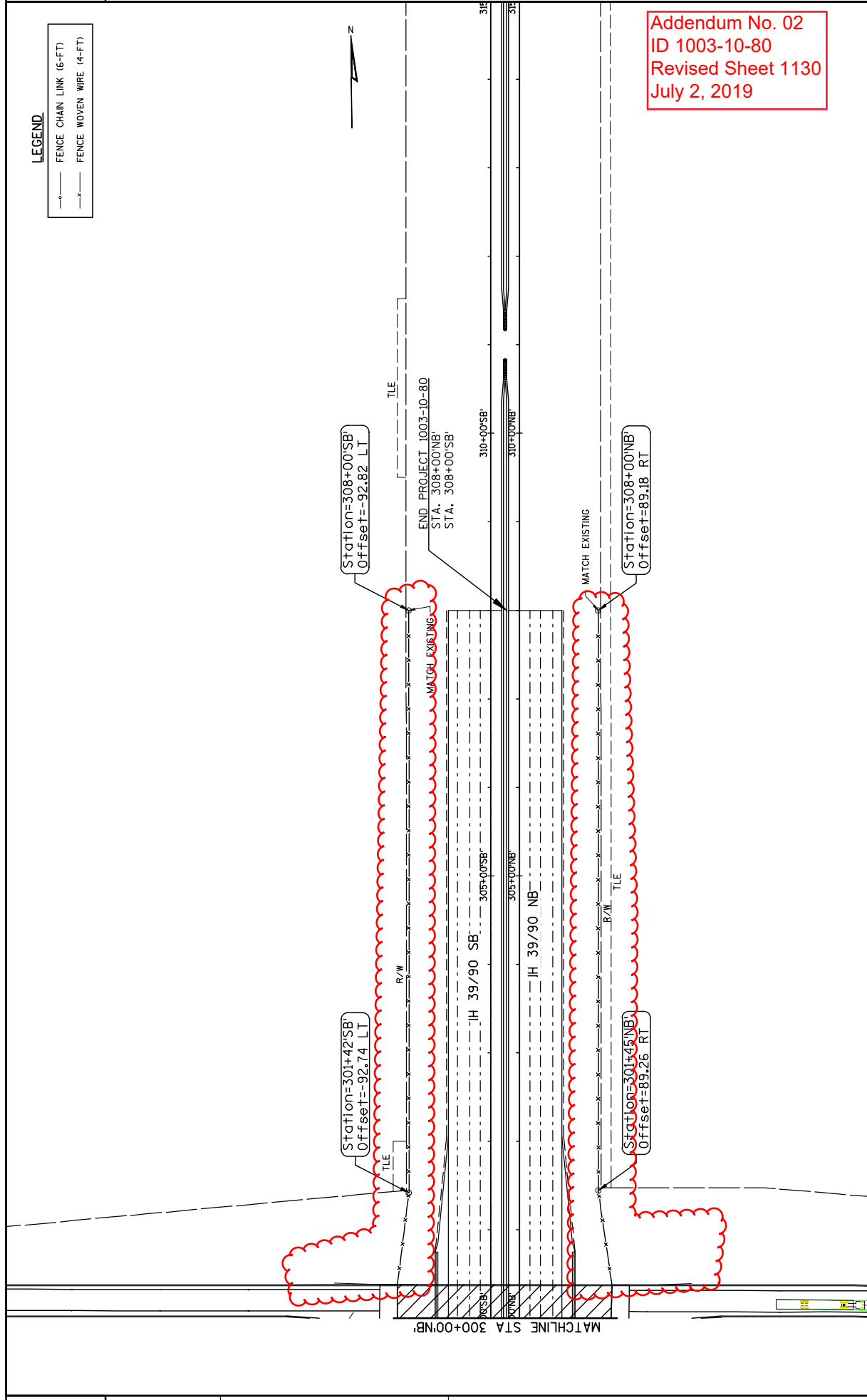


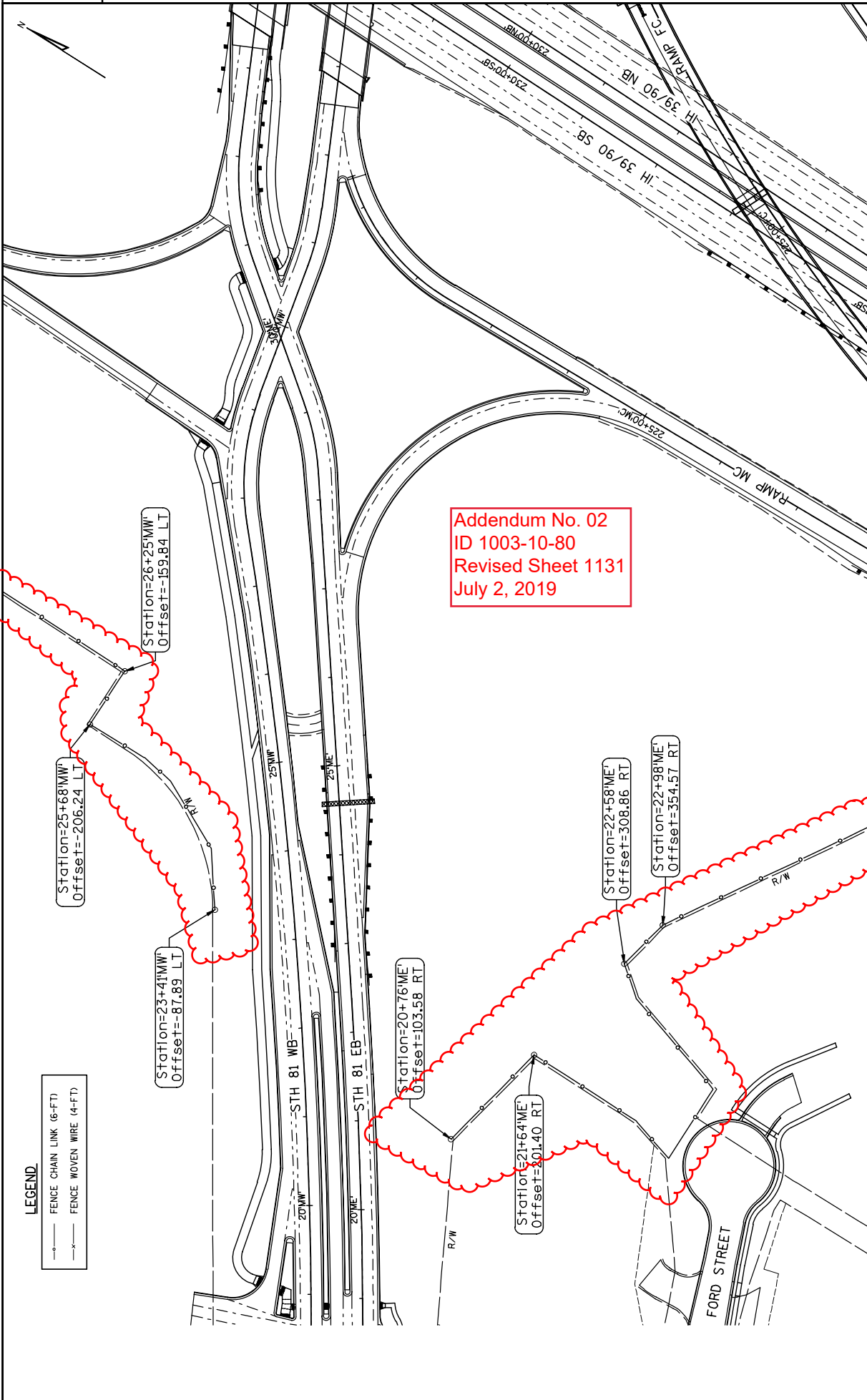
Addendum No. 02
 ID 1003-10-80
 Revised Sheet 1129
 July 2, 2019

PROJECT NO: 1003-10-80	HWY: IH 39	COUNTY: ROCK	FENCING PLAN	SHEET 1129	E
FILE NAME : L:\WORK\11-39-SOUTH-SEGMENT\000_CAD\001.DRAWINGS_2014\1003-10-80_IH-43_INTERCHANGE\100A\027101.LFN.DWG					
LAYOUT NAME : SHEET - (110)					
PLOT DATE : 7/2/2019 7:29 AM					
PLOT BY : STEVENSON, SCOTT					
PLOT NAME :					
PLOT SCALE : 1 IN=100 FT					
WISDOT/CADD SHEET 42					

LEGEND

- - - - - FENCE CHAIN LINK (6-FT)
- x - - - FENCE WOVEN WIRE (4-FT)





LEGEND

- FENCE CHAIN LINK (6-FT)
- x— FENCE WOVEN WIRE (4-FT)

Addendum No. 02
 ID 1003-10-80
 Revised Sheet 1131
 July 2, 2019

DELIMITERS AND TUBULAR MARKER POSTS

L/RT	STATION	STATION	SPACING FT	DELIMITOR POSTS STEEL		DELIMITOR REFLECTORS WHITE/YELLOW		DELIMITOR BRACKETS
				EACH	EACH	EACH	EACH	
IH 3990 NB	173+17	310+61	100	-	-	138	-	633,1000
	173+17	316+00	100	-	-	5	-	633,0500
	173+17	176+66	200	2	2	-	5	
	183+01	183+01	100	-	-	-	-	
	183+01	190+06	200	4	4	-	-	
	202+50	225+60	100	8	24	-	24	
	225+60	241+40	200	8	-	-	-	
	241+40	268+21	100	27	-	-	27	
	268+21	282+00	100	14	28	-	-	
	282+00	300+00	300	6	6	-	-	
	300+00	308+00	400	2	2	-	-	
IH 3990 SB	163+11	168+00	100	-	-	5	-	
	172+00	310+61	100	-	-	139	-	
	311+39	316+00	100	-	-	5	-	
	172+00	177+00	100	6	12	-	-	
	177+00	181+25	100	4	4	-	-	
	181+25	183+25	100	2	2	-	-	
	192+67	201+80	200	5	5	-	-	
	210+60	224+13	200	7	7	-	-	
	227+13	268+18	200	21	21	-	-	
	268+18	276+35	100	9	18	-	-	
	279+52	300+00	300	7	7	-	-	
	300+00	308+00	400	2	2	-	-	
FA LINE	226+20	248+79	100	23	-	-	-	
FB LINE	202+83	266+00	100	-	-	64	-	
	278+31	296+70	100	-	-	19	-	
	209+40	271+15	100	16	16	-	-	
	271+15	226+59	100	10	10	-	-	
	231+32	232+58	100	-	-	2	-	
	233+59	246+25	100	-	-	11	-	
	246+25	260+62	200	8	8	-	-	
	260+60	266+00	100	6	12	-	-	
FC LINE	218+60	248+00	100	-	-	50	-	
	292+00	296+55	100	-	-	5	-	
	214+90	220+46	100	6	6	-	-	
	220+46	243+50	100	3	24	-	-	
	245+94	248+71	100	3	3	-	-	
	248+71	253+08	100	5	10	-	-	
	255+50	268+00	400	4	4	-	-	
FD LINE	203+50	205+45	100	2	4	-	-	
	207+00	213+56	100	7	14	-	-	
	213+56	221+76	100	9	9	-	-	
	223+67	231+00	100	-	-	8	-	
	231+00	238+66	100	8	8	-	-	
	239+10	246+50	100	-	-	8	-	
	246+50	240+64	100	15	15	-	-	
MA LINE	242+09	247+87	100	-	-	6	-	
	236+56	240+25	100	4	4	-	-	
	241+90	243+38	100	-	-	2	-	
	243+38	251+96	100	9	9	-	-	
	251+96	268+21	100	17	34	-	-	
MB LINE	217+36	220+46	100	4	4	-	-	
	225+63	233+20	100	8	8	-	-	
MC LINE	222+14	225+71	100	4	4	-	-	
MD LINE	213+55	238+08	100	25	25	-	-	
SUBTOTAL	292	466		436	546			
PROJECT TOTALS	292	902		436	546			

MOBILIZATION

PROJECT ID	MOBILIZATION EACH
1003-10-80	1
PROJECT TOTAL	1

619,1000

MAINTENANCE AND REPAIR OF HAUL ROADS

PROJECT ID	MAINTENANCE AND REPAIR OF HAUL ROADS EACH
1003-10-80	1
PROJECT TOTAL	1

618,0100

Addendum No. 02
ID 1003-10-80
Revised Sheet 1239
July 2, 2019

FENCE AND GATES

STATION	STATION	LOCATION	616.0100 FENCE WIRE WOVEN (4-FT) (LF)	616.0206 FENCE CHAIN LINK 6-FT (EACH)	616.0700.S FENCE SAFETY (LF)	SPV.0060.016 ACCESS GATE (6-FT) (EACH)
172+00' SB'	181+24' SB'	LT	924			1
173+17	181+36	RT	819			1
183+33	198+50	RT	1,417			
204+72' SB'	268+79' SB'	LT	1,696			
282+60 NB'	298+84 NB'	RT	1,824	9,445		1
301+33' SB'	308+00' SB'	LT	667			
301+45' NB'	308+00' NB'	RT	655			
245+42' FC'	268+00' FC'	LT	2,258			
243+93' FB	274+71' FB	RT		3,078		
23+41' MW'	26+25' MW'	LT		284		
20+76' ME'	22+98' ME'	RT		222		
UNDISTRIBUTED			10,182	13,029	5,000	4
PROJECT TOTALS			10,182	13,029	5,000	4

***ALL ITEMS CATEGORY 1000 UNLESS OTHERWISE NOTED.

GENERAL NOTES

DRAWINGS SHALL NOT BE SCALED.

BAR STEEL REINFORCEMENT SHALL BE EMBEDDED 2" CLEAR UNLESS SHOWN OR NOTED OTHERWISE.

THE SLOPE OF THE FILL BETWEEN THE ABUTMENTS AND MSE WALLS SHALL BE COVERED WITH 18" OF FILL TO THE TOP OF THE MSE WALLS. THE MSE WALLS SHALL BE COVERED WITH SLOPE PAVING CONCRETE TO THE EXTENT SHOWN ON THE SLOPE PAVING CONCRETE CAST-IN-PLACE DETAILS SHEET.

PROTECTIVE SURFACE TREATMENT TO BE APPLIED TO THE PAVING NOTCHES AND THE TOP OF THE STRUCTURAL APPROACH SLAB-PIGMENTED SURFACE SEALER TO BE APPLIED TO THE INSIDE FACE OF PARAPETS AND THE TOP OF PARAPETS, INCLUDING PARAPETS ON STRUCTURAL APPROACH SLABS.

POLYUREA COATING TO BE APPLIED TO THE EXPOSED PIER CAPS, THE TOP OF THE ABUTMENTS AND PIER CAPS.

THE FIRST DIGIT OF A THREE DIGIT BAR MARK AND THE FIRST TWO DIGITS OF A FOUR DIGIT BAR MARK SIGNIFIES THE BAR SIZE.

ALL FIELD CONNECTIONS SHALL BE MADE WITH 3/4" DIAMETER FRICTION TYPE HIGH-TENSILE STRENGTH BOLTS UNLESS SHOWN OR NOTED OTHERWISE.

ALL STRUCTURAL STEEL SHALL BE ASTM A709 GRADE 50 UNLESS SHOWN OR NOTED OTHERWISE.

ALL STATIONS AND ELEVATIONS ARE IN FEET.

FILL/EXCAVATE TO BOTTOM OF PIER ELEVATION BEFORE DRIVING PILING.

THE EXISTING GROUNDLINE SHALL BE USED AS THE UPPER LIMITS OF EXCAVATION AT THE PIERS.

THE MINIMUM CONCRETE HAUNCH SHALL BE 1/4" FOR CONSTRUCTION. THE BRIDGE IS DESIGNED FOR A CONSTANT 5' DISTANCE FROM THE TOP OF ORDER WEB TO BOTTOM OF SLAB AT CENTERLINE OF ORDER. HAUNCH CONCRETE QUANTITY IS BASED ON THIS APPROACH.

THE RUSTICATIONS IN THE ABUTMENTS AND PIERS ARE INCLUDED IN THE BID ITEM "CONCRETE MASONRY BRIDGES".

THE RUSTICATIONS IN THE BACK FACES OF PARAPETS ARE INCLUDED IN THE BID ITEM "HIGH PERFORMANCE CONCRETE (HPC) MASONRY STRUCTURES".

THE STRUCTURE SHALL BE PAINTED IN ACCORDANCE WITH THE SPECIAL PROVISIONS AND THE STAINING DETAILS PROVIDED IN THIS PLAN.

IF TOUCH UP STAINING IS REQUIRED, IT SHALL BE DONE TO THE SATISFACTION OF THE ENGINEER AT NO ADDITIONAL COST.

M.S.E BACKFILL AT THE ABUTMENTS, M.S.E. REINFORCEMENT STRIPS, AND THE CONNECTION OF THE STRIPS TO THE ABUTMENT ARE INCLUDED IN THE BID ITEM "ABUTMENT ANCHORAGE".

THE CONTRACTOR SHALL PROVIDE BLOCKING BETWEEN ORDERS AS NEEDED TO RESIST FORCES FROM THE DECK OVERHANG BRACKETS WHEN POURING THE DECK.

A GEOTECHNICAL REPORT HAS BEEN PREPARED FOR THIS STRUCTURE AND IS AVAILABLE UPON REQUEST.

THE UTILITY INFORMATION SHOWN ON THESE DRAWINGS CONCERNING TYPE AND LOCATION OF UNDERGROUND UTILITIES IS NOT GUARANTEED TO BE ACCURATE OR ALL-INCLUSIVE. THE CONTRACTOR IS RESPONSIBLE FOR MAKING THEIR OWN DETERMINATION AS TO TYPE AND LOCATION OF THE UNDERGROUND UTILITIES AS MAY BE NECESSARY TO AVOID DAMAGE.

CHAMFER ALL EXPOSED OUTSIDE CORNERS 3/4" UNLESS OTHERWISE NOTED.

DECK SURFACE PREPARATION IS INCLUDED IN THE BID ITEM "POLYMER OVERLAY".

PROVIDE ANCHOR RODS, NUTS AND WASHERS CONFORMING TO ASTM F1554 (GRADE 50) AND HOT-DIP GALVANIZE IN ACCORDANCE WITH AASHTO M232.

DETAIL CROSS FRAME DIAPHRAGMS FOR STEEL DEAD LOAD FIT (ERECTED FIT).

THE COLOR OF THE FINISH EPOXY TOP COAT SHALL BE BROWN (SEE SPECIAL PROVISIONS NO. 30940) OR A SIMILAR COLOR APPROVED BY THE ENGINEER.

STEEL TO BE ERECTED FROM FIELD SPICE #3 TO THE NORTH ABUTMENT IN STAGE 2B, AND FROM THE SOUTH ABUTMENT TO THE NORTH ABUTMENT IN STAGE 2C. THE STEEL SHALL BE INSTALLED IMMEDIATELY AFTER STEEL ERECTION IN EACH STAGE. SEE ROADWAY PLANS FOR TRAFFIC STAGING DETAILS.

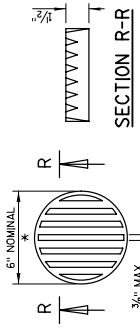
TEMPORARY CASINGS SHALL BE USED AT PRE-BORED HOLES. THE USE OF THE CASINGS SHALL BE INCIDENTAL TO THE BID ITEM "PRE-BORING ROCK OR CONCRETE MATERIALS".

DURING PRE-BORING OPERATIONS, THE REGIONAL SOILS ENGINEER SHALL DETERMINE THE ELEVATION OF THE TOP OF COMPETENT ROCK.

Addendum No. 02
ID 1003-10-80
Revised Sheet 2020
July 2, 2019

LEGEND

- APPLY LONGITUDINAL GROOVING AND PROTECTIVE SURFACE TREATMENT TO STRUCTURAL APPROACH SLABS ONLY.
- SEE SPECIAL PROVISIONS FOR BRIDGE DECK SURFACE FINISH REQUIREMENTS.



RODENT SHIELD DETAIL

* DIMENSIONS ARE APPROXIMATE. THE GRATE IS SIZED TO FIT INTO A PIPE COUPLING. ORIENT SO SLOTS ARE VERTICAL.

THE RODENT SHIELD, PIPE COUPLING AND SCREWS SHALL BE CONSIDERED INCIDENTAL TO THE BID ITEM "PIPE UNDERDRAIN WRAPPED 6-INCH".

THE RODENT SHIELD SHALL BE A PVC GRATE SIMILAR TO THIS DETAIL. THE GRATE IS COMMERCIALY AVAILABLE AS A FLOOR STRAINER. A PIPE COUPLING IS REQUIRED FOR THE ATTACHMENT OF THIS SHIELD TO THE EXPOSED END OF THE PIPE UNDERDRAIN. THE SHIELD SHALL BE FASTENED TO THE PIPE COUPLING WITH TWO OR MORE NO. 10 X 1/2 INCH STAINLESS STEEL SHEET METAL SCREWS.



6/27/2019

William C. Decker
06/27/19

NO.	DATE	REVISION	BY
1	06/27/19	UPDATED QUANTITY & ADDED NOTE	KAM

STATE OF WISCONSIN
DEPARTMENT OF TRANSPORTATION

STRUCTURE B-53-306

GENERAL NOTES AND QUANTITIES

SHEET 4 OF 71

2020

TOTAL ESTIMATED QUANTITIES

BID ITEM NUMBER	BID ITEM DESCRIPTION	UNIT	SOUTH ABUTMENT	PIER 1	PIER 2	PIER 3	PIER 4	NORTH ABUTMENT	NORTH APPROACH	TOTALS
206.000.706	EXCAVATION FOR STRUCTURES BRIDGES B-53-306	LS	135	140	140	140	140	140	140	1
305.0120	BASE AGGREGATE DENSE 1 1/4-INCH	TON	500	710	2,220	2,310	1,600	630	510	2,715
501.000.5	ICE HOT WEATHER CONCRETE	LB	II	94	296	308	213	92	12	1,270
502.0100	CONCRETE MASONRY BRIDGES	CY	II	94	296	308	213	92	12	1,270
502.310.5.703	EXPANSION DEVICE MODULAR B-53-306	LS	100	100	100	100	100	100	100	225
502.3200	PROTECTIVE SURFACE TREATMENT	SY	40	40	40	40	40	40	40	160
502.4210	PIGMENTED SURFACE SEALER	EACH	100	100	100	100	100	100	100	400
505.0400	ADHESIVE ANCHORS 5/8-INCH	LB	12,215	3,845	36,605	28,745	13,950	3,880	11,045	82,950
505.0600	BAR STEEL REINFORCEMENT HIS STRUCTURES	LB	12,215	3,845	36,605	28,745	13,950	3,880	11,045	300,380
505.0800.5	BAR STEEL REINFORCEMENT HIS STAINLESS STRUCTURES	LB	770	15	15	15	15	15	770	473,370
505.091L	BAR COUPLERS NO. II	EACH	8	8	8	8	8	8	8	64
506.0935	STEEL TUBULAR STEEL	LB	8	8	8	8	8	8	8	1,955,210
508.500.5	STEEL TUBULAR CONNECTORS T/8X7-INCH	EACH	8	8	8	8	8	8	8	64
508.500.5	POLYMER OVERLAY	SY	8	8	8	8	8	8	8	3,440
511.020.705	TEMPORARY SHORING B-53-306	SF	8	8	8	8	8	8	8	400
513.0431	RAILING TUBULAR SCREENING	LF	8	8	8	8	8	8	8	16
514.0450	FLOOR DRAINS TYPE WF	EACH	8	8	8	8	8	8	8	2
514.2608	DOWNSPOUT R-INCH	LF	8	8	8	8	8	8	8	80
516.0500	RUBBERIZED MEMBRANE WATERPROOFING	SY	8	8	8	8	8	8	8	16
517.0600.703	PAINTING EPOXY SYSTEM B-53-306	LS	380	520	2,340	1,680	1,680	480	380	13,220
517.1010.5.705	CONCRETE STAINING B-53-306	SF	380	520	2,340	1,680	1,680	480	380	24,110
550.0020	PRE-BORING ROCK OR CONSOLIDATED MATERIALS	LF	420	840	1,280	1,160	500	280	710	9,865
550.1140	PILING STEEL HP 14-INCH X 13 LB	SY	370	740	1,080	1,080	500	280	710	4,480
604.0400	SLOPE PAVING CONCRETE	CY	8	8	8	8	8	8	8	1,080
606.0100	RIPRAP LIGHT	CY	8	8	8	8	8	8	8	395
612.0406	PIPE UNDERDRAIN WRAPPED 6-INCH	LF	80	80	80	80	80	80	80	1,540
645.0120	GEOTEXTILE TYPE HR	SY	55	55	55	55	55	55	55	12
SPV.0035.701	HIGH PERFORMANCE CONCRETE (HPC) MASONRY STRUCTURES	CY	55	55	55	55	55	55	55	1,492
SPV.0060.709	BEARINGS HIGH-LOAD MULTI-ROTATIONAL FIXED B-53-306	EACH	4	4	4	4	4	4	4	8
SPV.0060.710	BEARINGS HIGH-LOAD MULTI-ROTATIONAL GUIDED B-53-306	EACH	4	4	4	4	4	4	4	16
SPV.0060.711	PILE DYNAMIC ANALYZER (PDA) TESTING	EACH	2	2	2	2	2	2	2	10
SPV.0060.712	PILE DYNAMIC ANALYZER (PDA) RESTRIKES	EACH	2	2	2	2	2	2	2	10
SPV.0060.713	CASE FILE MAKE ANALYSIS PROGRAM (CAPMAIP) EVALUATION	EACH	1	1	1	1	1	1	1	5
SPV.0060.701	LONGITUDINAL ANCHORAGE	LF	45	45	45	45	45	45	45	32
SPV.0185.102	LONGITUDINAL GROOVING BRIDGE DECK	SF	850	850	850	850	850	850	850	92
SPV.0185.103	POLYUREA COATING	SF	160	160	160	160	160	160	160	640
SPV.0185.104	STAY-IN-PLACE (SIP) METAL DECK FORMS B-53-306	SF	160	160	160	160	160	160	160	7,600
	NON-BID ITEMS	SIZE								1/2" & 3/4"
	FILLER	EACH								1
	NAME PLATE									

ALL BID ITEMS ARE CATEGORY 2050.



Proposal Schedule of Items

Proposal ID: 20190709001 Project(s): 1003-10-80

Federal ID(s): WISC 2019496

SECTION: 0001

Contract Items

Alt Set ID:

Alt Mbr ID:

Proposal Line Number	Item ID Description	Approximate Quantity and Units	Unit Price	Bid Amount
0288	522.1036 Apron Endwalls for Culvert Pipe Reinforced Concrete 36-Inch	3.000 EACH	_____.	_____.
0290	522.1042 Apron Endwalls for Culvert Pipe Reinforced Concrete 42-Inch	3.000 EACH	_____.	_____.
0292	522.1048 Apron Endwalls for Culvert Pipe Reinforced Concrete 48-Inch	12.000 EACH	_____.	_____.
0294	522.1054 Apron Endwalls for Culvert Pipe Reinforced Concrete 54-Inch	1.000 EACH	_____.	_____.
0296	522.1060 Apron Endwalls for Culvert Pipe Reinforced Concrete 60-Inch	6.000 EACH	_____.	_____.
0298	522.2338 Culvert Pipe Reinforced Concrete Horizontal Elliptical Class HE-III 38x60-Inch	511.000 LF	_____.	_____.
0300	550.0020 Pre-Boring Rock or Consolidated Materials	2,117.000 LF	_____.	_____.
0302	550.1120 Piling Steel HP 12-Inch X 53 Lb	13,600.000 LF	_____.	_____.
0304	550.1140 Piling Steel HP 14-Inch X 73 Lb	20,755.000 LF	_____.	_____.
0306	601.0409 Concrete Curb & Gutter 30-Inch Type A	23,177.000 LF	_____.	_____.
0308	601.0411 Concrete Curb & Gutter 30-Inch Type D	1,621.000 LF	_____.	_____.
0310	601.0551 Concrete Curb & Gutter 4-Inch Sloped 36-Inch Type A	2,676.000 LF	_____.	_____.
0312	601.0553 Concrete Curb & Gutter 4-Inch Sloped 36-Inch Type D	710.000 LF	_____.	_____.
0314	601.0557 Concrete Curb & Gutter 6-Inch Sloped 36-Inch Type D	574.000 LF	_____.	_____.



Proposal Schedule of Items

Proposal ID: 20190709001 Project(s): 1003-10-80

Federal ID(s): WISC 2019496

SECTION: 0001

Contract Items

Alt Set ID:

Alt Mbr ID:

Proposal Line Number	Item ID Description	Approximate Quantity and Units	Unit Price	Bid Amount
0438	614.0930 Salvaged Crash Cushions	1.000 EACH	_____.	_____.
0440	614.2300 MGS Guardrail 3	10,238.000 LF	_____.	_____.
0442	614.2500 MGS Thrie Beam Transition	694.000 LF	_____.	_____.
0444	614.2610 MGS Guardrail Terminal EAT	29.000 EACH	_____.	_____.
0446	614.2620 MGS Guardrail Terminal Type 2	14.000 EACH	_____.	_____.
0448	616.0100 Fence Woven Wire (height) 001. 4-FT	10,182.000 LF	_____.	_____.
0450	616.0206 Fence Chain Link 6-FT	13,029.000 LF	_____.	_____.
0452	616.0700.S Fence Safety	6,000.000 LF	_____.	_____.
0454	618.0100 Maintenance And Repair of Haul Roads (project) 001. 1003-10-80	1.000 EACH	_____.	_____.
0456	619.1000 Mobilization	1.000 EACH	_____.	_____.
0458	620.0300 Concrete Median Sloped Nose	416.000 SF	_____.	_____.
0460	624.0100 Water	3,360.000 MGAL	_____.	_____.
0462	625.0500 Salvaged Topsoil	500,000.000 SY	_____.	_____.
0464	627.0200 Mulching	500,000.000 SY	_____.	_____.
0466	628.1504 Silt Fence	8,150.000 LF	_____.	_____.
0468	628.1520 Silt Fence Maintenance	16,300.000 LF	_____.	_____.

