



Wisconsin Department of Transportation

Division of Transportation Systems Development

Bureau of Project Development
4822 Madison Yards Way, 4th Floor South
Madison, WI 53705

Telephone: (608) 266-1631
Facsimile (FAX): (608) 266-8459

August 7, 2019

NOTICE TO ALL CONTRACTORS:

Proposal #08: 9560-02-74 WISC 2019 582
City of Niagara
Pine Street – 4th Street
USH 141
Marinette County

9560-02-75 WISC 2019 583
City of Niagara
Bettors Court – Pine Street
USH 141
Marinette County

Letting of August 13, 2019

This is Addendum No.01, which provides for the following:

Plan Sheets:

Revised Plan Sheets	
Plan Sheet	Plan Sheet Title (brief description of changes to sheet)
104	Lines 4 – 6 of the CONSTRUCTION STAGE 2 notes have been changed to: CONSTRUCT THE LOWER LAYER HMA PAVEMENT FROM BETTERS COURT TO 4TH STREET. COMPLETE ALL CONSTRUCTION ACTIVITIES REQUIRED TO OPEN USH 141 TO THE STAGE NECESSARY TO REOPEN USH 141 TO THROUGH TRAFFIC, WITH FLAGGING OPERATIONS, PRIOR TO 12:01 AUGUST 22, 2020.

Plan Sheets

The following 8½ x 11-inch sheets are attached and made part of the plans for this proposal:
Revised: Sheet 104

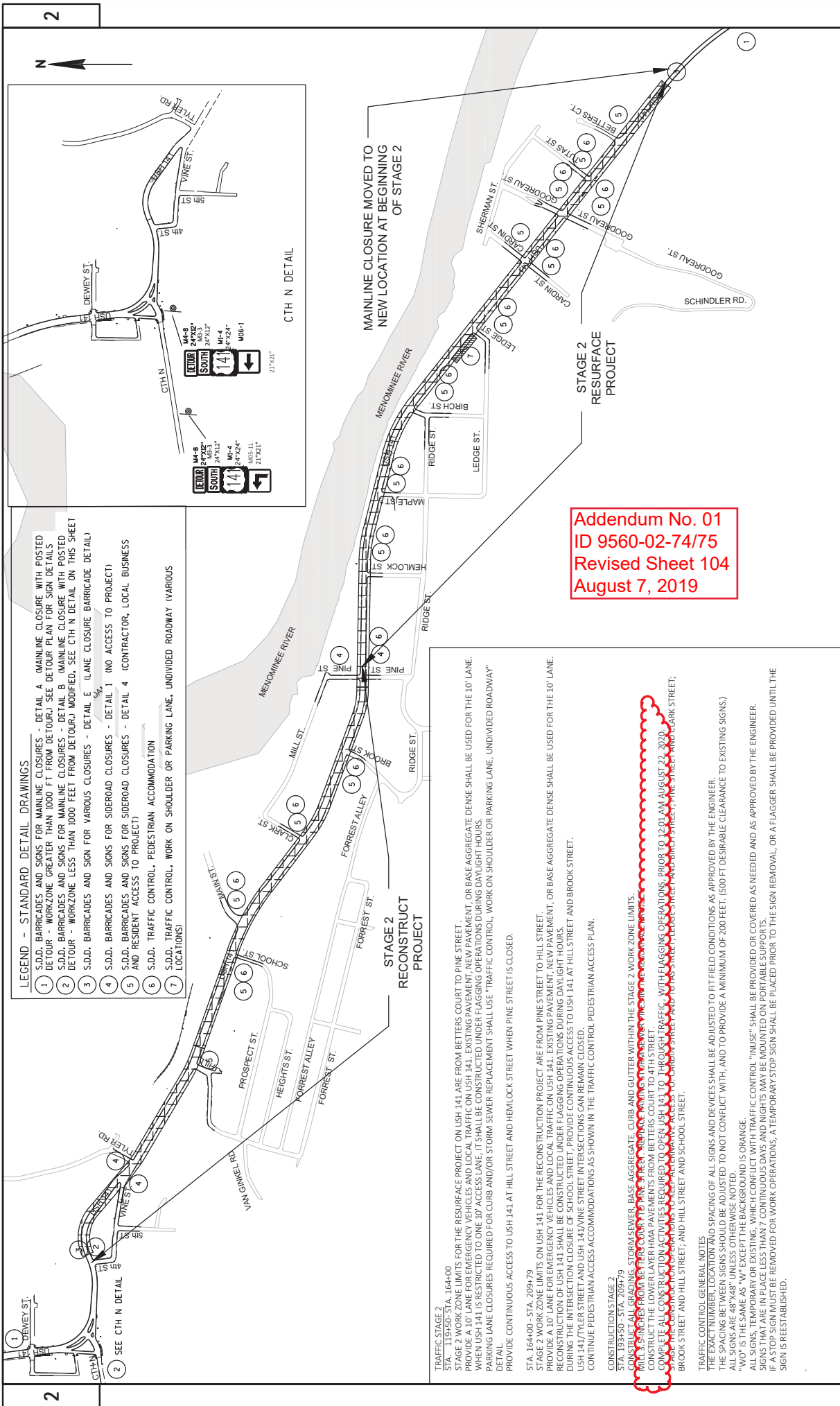
The responsibility for notifying potential subcontractors and suppliers of these changes remains with the prime contractor.

Sincerely,

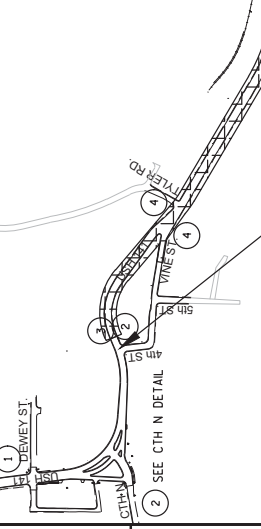
Mike Coleman

Proposal Development Specialist
Proposal Management Section

END OF ADDENDUM



- LEGEND - STANDARD DETAIL DRAWINGS**
- 1 S.D.D. BARRICADES AND SIGNS FOR MAINLINE CLOSURES - DETAIL A (MAINLINE CLOSURE WITH POSTED DETOUR - WORKZONE GREATER THAN 1000 FT FROM DETOUR.) SEE DETOUR PLAN FOR SIGN DETAILS
 - 2 S.D.D. BARRICADES AND SIGNS FOR MAINLINE CLOSURES - DETAIL B (MAINLINE CLOSURE WITH POSTED DETOUR - WORKZONE LESS THAN 1000 FEET FROM DETOUR.) MODIFIED. SEE CTH N DETAIL ON THIS SHEET
 - 3 S.D.D. BARRICADES AND SIGN FOR VARIOUS CLOSURES - DETAIL E (LANE CLOSURE BARRICADE DETAIL)
 - 4 S.D.D. BARRICADES AND SIGNS FOR SIDEROAD CLOSURES - DETAIL 1 (NO ACCESS TO PROJECT)
 - 5 S.D.D. BARRICADES AND SIGNS FOR SIDEROAD CLOSURES - DETAIL 4 (CONTRACTOR, LOCAL BUSINESS AND RESIDENT ACCESS TO PROJECT)
 - 6 S.D.D. TRAFFIC CONTROL, PEDESTRIAN ACCOMMODATION
 - 7 S.D.D. TRAFFIC CONTROL, WORK ON SHOULDER OR PARKING LANE, UNDIVIDED ROADWAY (VARIOUS LOCATIONS)



STAGE 2 RECONSTRUCT PROJECT

STAGE 2 RESURFACE PROJECT

Addendum No. 01
ID 9560-02-74/75
Revised Sheet 104
August 7, 2019

TRAFFIC CONTROL - GENERAL NOTES

THE EXACT NUMBER, LOCATION AND SPACING OF ALL SIGNS AND DEVICES SHALL BE ADJUSTED TO FIT FIELD CONDITIONS AS APPROVED BY THE ENGINEER.

THE SPACING BETWEEN SIGNS SHOULD BE ADJUSTED TO NOT CONFLICT WITH, AND TO PROVIDE A MINIMUM OF 200 FEET, (500 FT DESIRABLE CLEARANCE TO EXISTING SIGNS.)

ALL SIGNS, TEMPORARY OR EXISTING, WHICH CONFLICT WITH TRAFFIC CONTROL "IN USE" SHALL BE PROVIDED OR COVERED AS NEEDED AND AS APPROVED BY THE ENGINEER.

SIGNS THAT ARE IN PLACE LESS THAN 7 CONTINUOUS DAYS AND NIGHTS MAY BE MOUNTED ON PORTABLE SUPPORTS.

IF A STOP SIGN MUST BE REMOVED FOR WORK OPERATIONS, A TEMPORARY STOP SIGN SHALL BE PLACED PRIOR TO THE SIGN REMOVAL, OR A FLAGGER SHALL BE PROVIDED UNTIL THE SIGN IS REESTABLISHED.

CONSTRUCTION STAGE 2

STA. 119+50 - STA. 164+00
 STAGE 2 WORK ZONE LIMITS FOR THE RESURFACE PROJECT ON USH 141 ARE FROM BETTERS COURT TO PINE STREET.
 PROVIDE A 10' LANE FOR EMERGENCY VEHICLES AND LOCAL TRAFFIC ON USH 141, EXISTING PAVEMENT, NEW PAVEMENT, OR BASE AGGREGATE DENSE SHALL BE USED FOR THE 10' LANE.
 WHEN USH 141 IS RESTRICTED TO ONE (1) ACCESS LANE, IT SHALL BE CONSTRUCTED UNDER FLAGGING OPERATIONS DURING DAYLIGHT HOURS.
 PARKING LANE CLOSURES REQUIRED FOR CURB AND/OR STORM SEWER REPLACEMENT SHALL USE "TRAFFIC CONTROL, WORK ON SHOULDER OR PARKING LANE, UNDIVIDED ROADWAY" PROVIDE CONTINUOUS ACCESS TO USH 141 AT HILL STREET AND HEMLOCK STREET WHEN PINE STREET IS CLOSED.

STA. 164+00 - STA. 209+79
 STAGE 2 WORK ZONE LIMITS FOR THE RECONSTRUCTION PROJECT ARE FROM PINE STREET TO HILL STREET.
 PROVIDE A 10' LANE FOR EMERGENCY VEHICLES AND LOCAL TRAFFIC ON USH 141, EXISTING PAVEMENT, NEW PAVEMENT, OR BASE AGGREGATE DENSE SHALL BE USED FOR THE 10' LANE.
 RECONSTRUCTION OF USH 141 SHALL BE CONSTRUCTED UNDER FLAGGING OPERATIONS DURING DAYLIGHT HOURS.
 DURING THE INTERSECTION CLOSURE OF SCHOOL STREET, PROVIDE CONTINUOUS ACCESS TO USH 141 AT HILLS STREET AND BROOK STREET.
 USH 141/TWILER STREET AND USH 141/VINE STREET INTERSECTIONS CAN REMAIN CLOSED.
 CONTINUE PEDESTRIAN ACCESS ACCOMMODATIONS AS SHOWN IN THE TRAFFIC CONTROL PEDESTRIAN ACCESS PLAN.

CONSTRUCTION STAGE 2

STA. 193+50 - STA. 209+79
 CONSTRUCT ALL GRADING, STORM SEWER, BASE AGGREGATE, CURB AND GUTTER WITHIN THE STAGE 2 WORK ZONE LIMITS.
 MILL & FINISHES FROM BETTERS COURT TO PINE STREET.
 CONSTRUCT THE LOWER LAYER HMA PAVEMENTS FROM BETTERS COURT TO 4TH STREET.
 COMPLETE ALL CONSTRUCTION ACTIVITIES REQUIRED TO OPEN USH 141 TO THROUGH TRAFFIC, WITH FLAGGING OPERATIONS, PRIOR TO 12:01 AM AUGUST 22, 2020.
 STAGE 2 CONSTRUCTION ACTIVITIES REQUIRED TO OPEN USH 141 TO THROUGH TRAFFIC, WITH FLAGGING OPERATIONS, PRIOR TO 12:01 AM AUGUST 22, 2020.
 STAGE 2 CONSTRUCTION ACTIVITIES REQUIRED TO OPEN USH 141 TO THROUGH TRAFFIC, WITH FLAGGING OPERATIONS, PRIOR TO 12:01 AM AUGUST 22, 2020.
 BROOK STREET AND HILL STREET, AND SCHOOL STREET.