



Wisconsin Department of Transportation

August 15, 2019

Division of Transportation Systems Development

Bureau of Project Development
4822 Madison Yards Way, 4th Floor South
Madison, WI 53705

Telephone: (608) 266-1631
Facsimile (FAX): (608) 266-8459

NOTICE TO ALL CONTRACTORS:

Proposal #04: 2260-07-70, WISC 2019 626
Durand Avenue, City of Racine
Kentucky St to Kearney Ave
STH 11
Racine County

Letting of September 10, 2019

This is Addendum No. 01, which provides for the following:

Special Provisions:

Added Special Provisions	
Article No.	Description
76	Material Stockpile and Equipment Storage

Plan Sheets:

Added Plan Sheets	
Plan Sheet	Plan Sheet Title (brief description of why sheet was added)
453A	Standard Detail Drawing: Urban Doweled Concrete Pavement

The responsibility for notifying potential subcontractors and suppliers of these changes remains with the prime contractor.

Sincerely,

Mike Coleman

Proposal Development Specialist
Proposal Management Section

ADDENDUM NO. 01

2260-07-70

August 15, 2019

Special Provisions

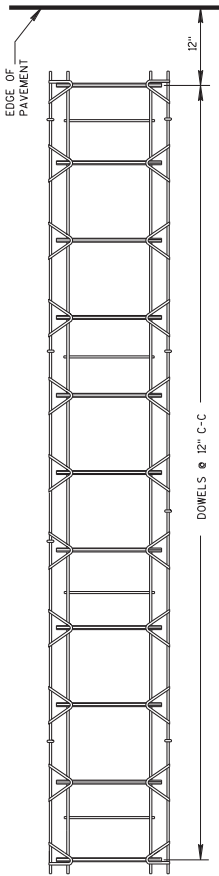
76. Material Stockpile and Equipment Storage.

Submit a map showing all proposed material stockpile and equipment storage locations to the engineer 14 calendar days before either the preconstruction conference or proposed use, whichever comes first. Identify the purpose; length, width & height; and duration of material stockpile or equipment storage at each location. If outside of WisDOT Right-of-way, obtain written permission and necessary permits from the property owner and local governments/agencies and submit two copies to the engineer. Do not stockpile material or store equipment until the engineer approves.
SER-107-011 (20181019)

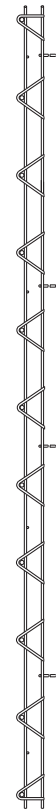
Plan Sheets

The following 8½ x 11-inch sheets are attached and made part of the plans for this proposal:
Added: 453A

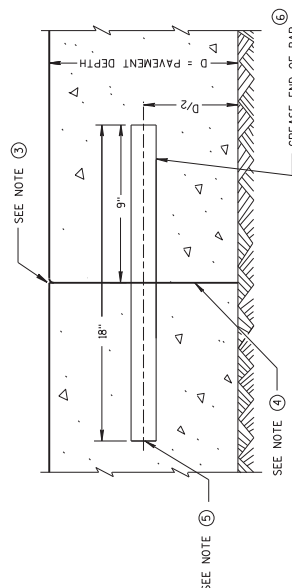
END OF ADDENDUM



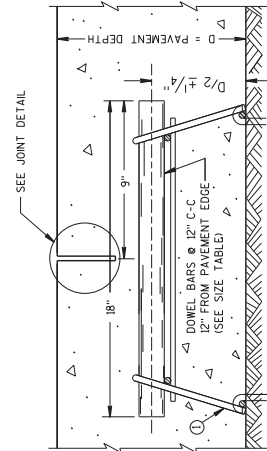
PLAN VIEW



SIDE VIEW
CONTRACTION JOINT DOWEL ASSEMBLY

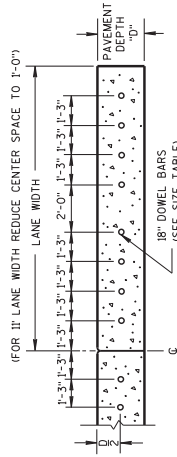


TRANSVERSE CONSTRUCTION JOINT

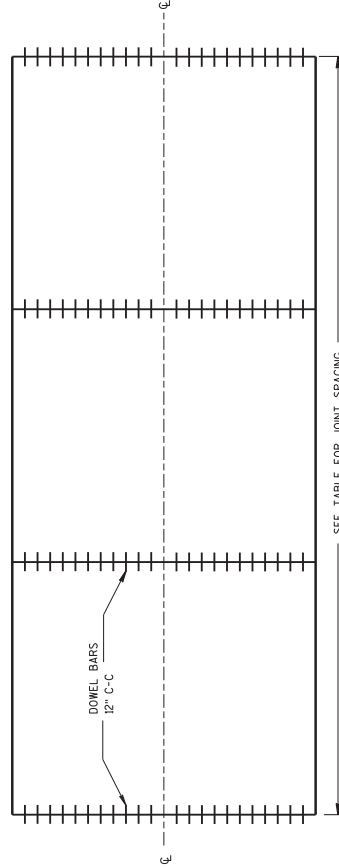


DOWELED CONTRACTION JOINT

Addendum No. 01
ID 2260-07-70
Added Sheet 453A
August 15, 2019



DRILLED DOWEL BAR CONSTRUCTION JOINT



CONTRACTION JOINT LOCATIONS
SEE TABLE FOR JOINT SPACING

PAVEMENT DEPTH, DOWEL BAR SIZE
AND JOINT SPACING TABLE

PAVEMENT DEPTH (D)	DOWEL BAR DIAMETER	CONTRACTION JOINT SPACING
5 1/2" - 6 1/2"	NONE	12'
7" - 7 1/2"	1"	14'
8" - 8 1/2"	1 1/4"	15'
9" - 9 1/2"	1 1/4"	15'
10" & ABOVE	1 1/2"	15'

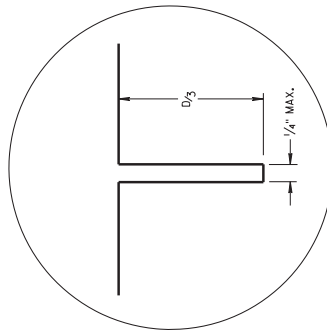
GENERAL NOTES

CONTRACTION JOINTS

CONSTRUCT TRANSVERSE CONTRACTION JOINTS NORMAL TO THE CENTERLINE. SHOW THE LOCATION OF CONTRACTION JOINTS THROUGH INTERSECTIONS ON THE PLANS OR AS DIRECTED BY THE ENGINEER.
INSTALL DOWEL BARS PARALLEL TO THE PAVEMENT CENTERLINE AND PAVEMENT SURFACE.
FOR PAVEMENT SLABS OF VARYING WIDTHS, LOCATE THE OUTER MOST DOWEL BAR SO THAT THE CENTER OF THE BAR IS A MINIMUM OF 6 INCHES AND A MAXIMUM OF 18 INCHES FROM THE LONGITUDINAL JOINT AND THE FREE EDGE OF PAVEMENT.

CONSTRUCTION JOINTS

- LOCATE CONSTRUCTION JOINTS A MINIMUM OF 6 FEET FROM THE NEAREST CONTRACTION JOINT AND ALIGN PARALLEL TO CONTRACTION JOINTS.
- OBTAIN THE ENGINEER'S APPROVAL FOR THE USE OF ALTERNATIVE DESIGNS OF THE DOWEL ASSEMBLY. USE MECHANICAL DOWEL BAR INSERTERS OR DOWEL ASSEMBLIES WHEN CONSTRUCTING CONTRACTION JOINTS.
- SECURE BASKETS WITH ANCHORS TO HOLD DOWEL BARS IN THE CORRECT POSITION AND ALIGNMENT. TYPE, LOCATION, NUMBER AND LENGTH OF ANCHORS ARE DEPENDENT UPON FIELD CONDITIONS.
- FORM OR SAW CONSTRUCTION JOINTS. PROVIDE A 1/4-INCH RADIUS AT FORMED JOINTS.
- PROVIDE A SMOOTH VERTICAL FACE FOR THE ENTIRE DEPTH OF THE PAVEMENT WHEN FORMING CONSTRUCTION JOINTS.
- INSTALL DOWEL BARS AT CONSTRUCTION JOINTS BY FORMING OR DRILLING. INSTALL FORMED DOWEL BARS 12 INCHES C-C AND 12 INCHES FROM PAVEMENT SURFACE. DRILLED DOWEL BARS SHALL BE CONCRETE FILL TO THE END OF THE DOWEL BAR. DOWEL BARS SHALL BE PROTECTED FROM DAMAGE BY THE INSTALLATION OF DOWEL BARS ACCORDING TO *DRILLED DOWEL BAR CONSTRUCTION JOINT* DETAIL.
- APPLY A THIN UNIFORM COATING OF SURFACE TREATMENT TO THE FREE END OF DOWEL BARS TO PREVENT BONDING.
- ANCHOR DOWEL BARS INTO DRILLED HOLES WITH AN EPOXY. MAXIMUM DRILLED HOLE SIZE IS 1/8-INCH GREATER THAN DOWEL BAR DIAMETER, 9 INCHES IN LENGTH.



JOINT DETAIL

URBAN DOWELED
CONCRETE PAVEMENT

STATE OF WISCONSIN
DEPARTMENT OF TRANSPORTATION

APPROVED
Mcr-Ch 2018
DATE: _____
75/ Peter Kemp, P.E.
PAVEMENT SUPERVISOR

FWWA

