



# Wisconsin Department of Transportation

## Division of Transportation Systems Development

Bureau of Project Development  
4822 Madison Yards Way, 4<sup>th</sup> Floor South  
Madison, WI 53705

January 8, 2020

Telephone: (608) 266-1631  
Facsimile (FAX): (608) 266-8459

### NOTICE TO ALL CONTRACTORS:

**Proposal #14: 4657-25-03, WISC 2019 806**  
**T Grand Chute, CTH CA**  
**CTH CB – Casaloma Drive**  
**CTH CA**  
**Outagamie County**

### Letting of January 14, 2020

This is Addendum No. 01, which provides for the following:

#### Special Provisions:

Revised Special Provisions	
Article No.	Description
62	Steel Casing Pipe 24-Inch, Item SPV.0090.10

#### Schedule of Items:

Revised Bid Item Quantities					
Bid Item	Item Description	Unit	Old Quantity	Revised Quantity	Proposal Total
305.0120	Base Aggregate Dense 1 ¼-Inch	Ton	42,690	-180	42,510

Added Bid Item Quantities					
Bid Item	Item Description	Unit	Old Quantity	Revised Quantity	Proposal Total
460.6223	HMA Pavement 3 MT 58-28S	Ton	0	720	720
460.6224	HMA Pavement 4 MT 58-28S	Ton	0	460	460
209.2100	Backfill Granular Grade 2	CY	0	19	19

Deleted Bid Item Quantities					
Bid Item	Item Description	Unit	Old Quantity	Revised Quantity	Proposal Total
460.5223	HMA Pavement 3 LT 58-28S	Ton	890	-890	0
460.5224	HMA Pavement 4 LT 58-28S	Ton	1,100	-1,100	0

**Plan Sheets:**

<b>Revised Plan Sheets</b>	
<b>Plan Sheet</b>	<b>Plan Sheet Title (brief description of changes to sheet)</b>
10	Modified HMA pavement type (LT to MT) and thickness (4.5" over 18" to 5.5" over 17")
11	Modified HMA pavement type (LT to MT) and thickness (4.5" over 18" to 5.5" over 17")
19	Added Construction detail for dead heading concrete joints, and backfilling water main trenches.
55	Updated Paving details labels to match the new HMA pavement depth.
56	Updated Paving details labels to match the new HMA pavement depth.
57	Updated Paving details labels to match the new HMA pavement depth.
58	Updated Paving details labels to match the new HMA pavement depth.
59	Updated Paving details labels to match the new HMA pavement depth.
60	Updated Paving details labels to match the new HMA pavement depth.
225	Revised Base Agg 1 ¼-Inch due to pavement section changes
227	Revised HMA Pavement table to match new mix type and quantity
260	Added Granular Backfill Grade 2 item to watermain table for trench backfill

The responsibility for notifying potential subcontractors and suppliers of these changes remains with the prime contractor.

Sincerely,

*Mike Coleman*

Proposal Development Specialist  
Proposal Management Section

**ADDENDUM NO. 01**

**4657-25-03**

**January 8, 2020**

**Special Provisions**

**62. Steel Casing Pipe 24-Inch, Item SPV.0090.10.**

*Replace entire section titled C Construction with the following:*

**C Construction**

Submit the following documents to the engineer for approval prior to ordering of materials and the start of construction:

- Certificate of compliance for the steel casing pipe.

Connect adjacent lengths of steel casing pipe by continuous, circumferential, field butt welding according to AWWA C206. Provide connections that are straight and true, and watertight in the existing groundwater conditions.

**Schedule of Items**

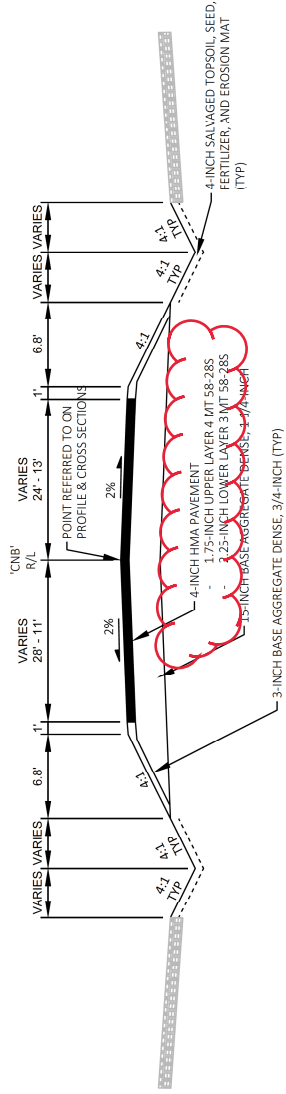
Attached, dated January 8, 2020, are the revised Schedule of Items Pages 1 – 21.

**Plan Sheets**

The following 8½ x 11-inch sheets are attached and made part of the plans for this proposal:

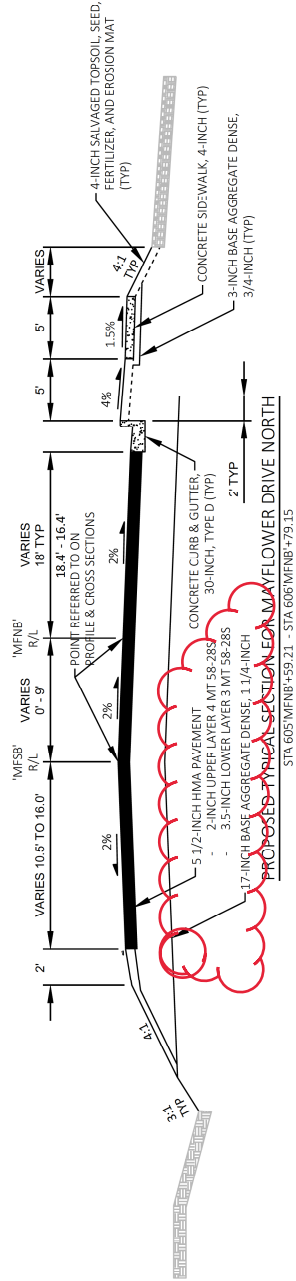
Revised: 10, 11, 19, 55, 56, 57, 58, 59, 60, 225, 227 and 260.

END OF ADDENDUM



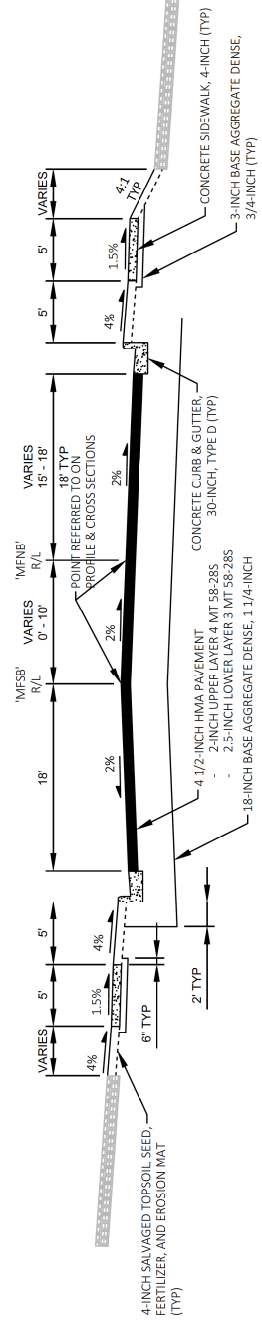
PROPOSED TYPICAL SECTION FOR COMMUNICATION DRIVE

STA 404+00 'C'NB+63.11 - STA 405+00 'C'NB+67.25



PROPOSED TYPICAL SECTION FOR MAYFLOWER DRIVE NORTH

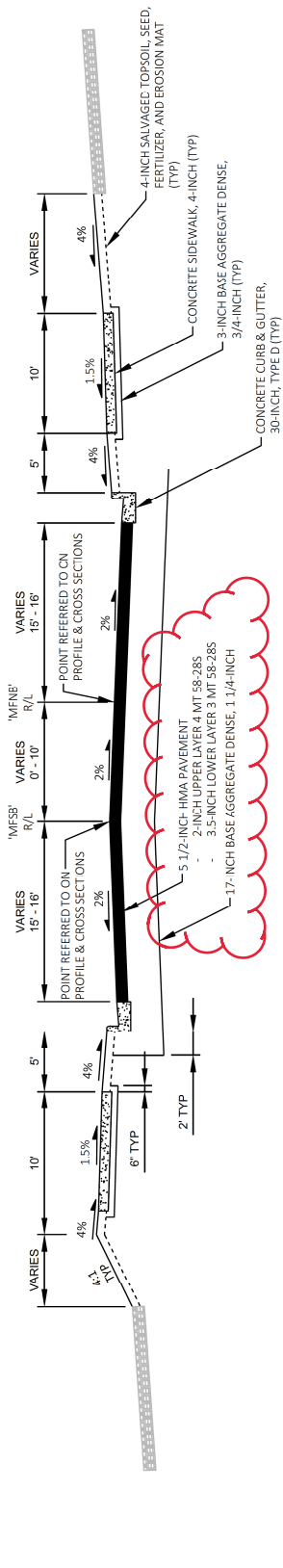
STA 605+00 'M'NB+59.21 - STA 606+00 'M'NB+79.15



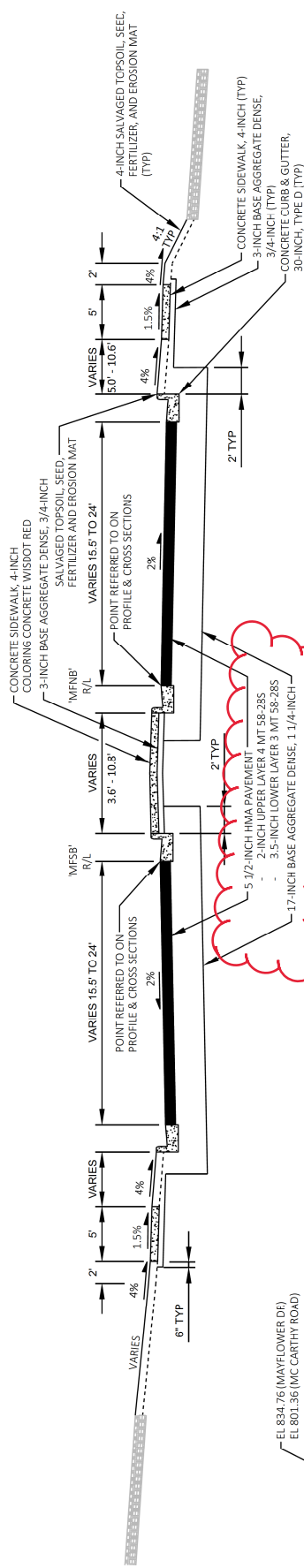
PROPOSED TYPICAL SECTION FOR MAYFLOWER DRIVE SOUTH

STA 600+00 'M'NB+93.75 - STA 602+00 'M'NB+93.37

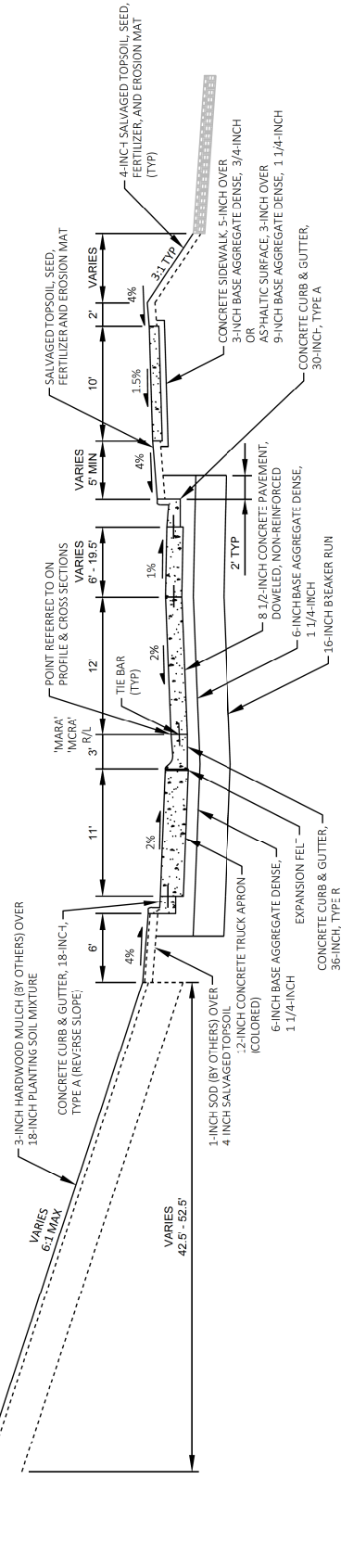
Addendum No. 01  
ID 4657-25-03  
Revised Sheet 10  
January 8, 2020



PROPOSED TYPICAL SECTION FOR MC CARTHY ROAD SOUTH  
 STA. 802+MANB+07.23 - STA 804+MANB+72.56



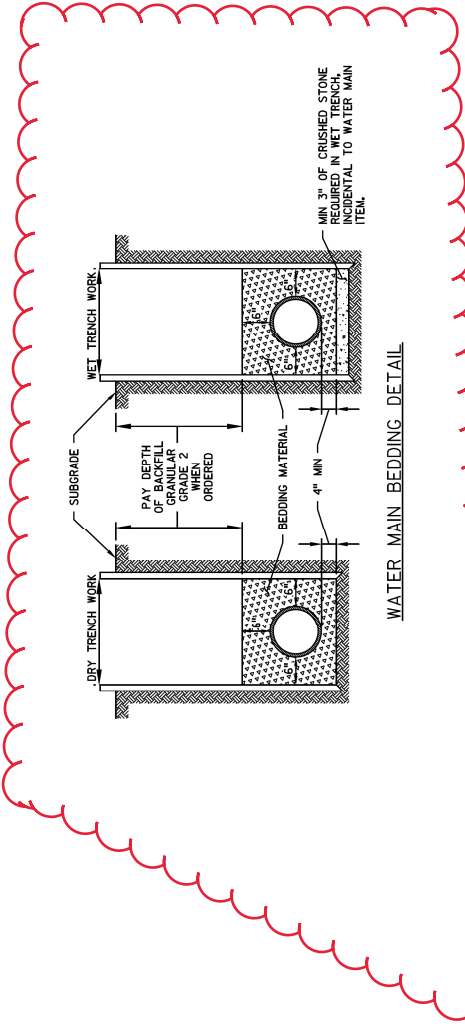
PROPOSED TYPICAL SECTION FOR MC CARTHY ROAD NORTH  
 STA. 808+MANB+00.00 - STA 810+MANB+10.16



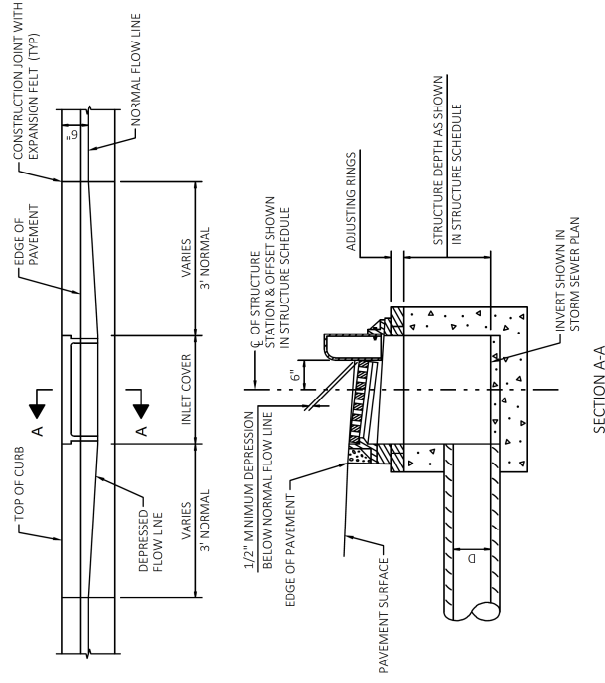
PROPOSED TYPICAL SECTION FOR MAYFLOWER DRIVE / MC CARTHY ROAD ROUNDABOUTS  
 STA 60+MABA+00.00 - STA 63+MABA+74.10  
 STA 80+MCBA+00.00 - STA 83+MCBA+75.37

Addendum No. 01  
 ID 4657-25-03  
 Revised Sheet 11  
 January 8, 2020

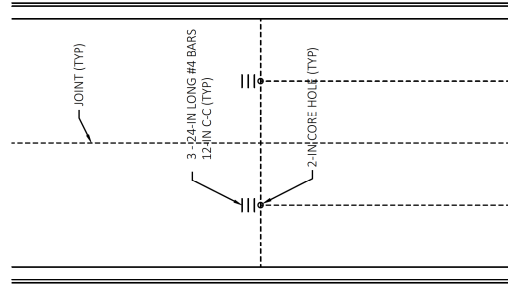
Addendum No. 01  
ID 4657-25-03  
Revised Sheet 19  
January 8, 2020



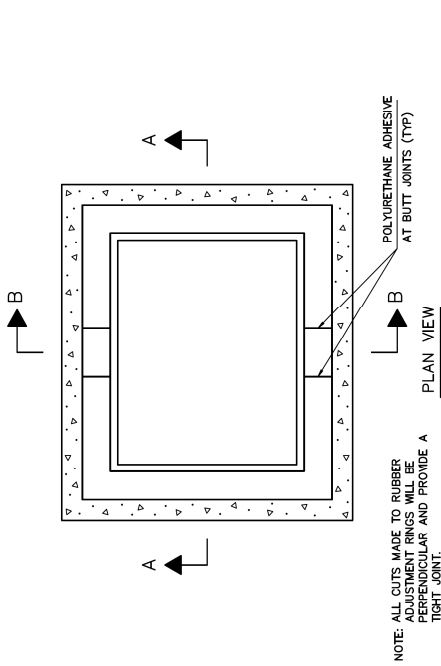
WATER MAIN BEDDING DETAIL



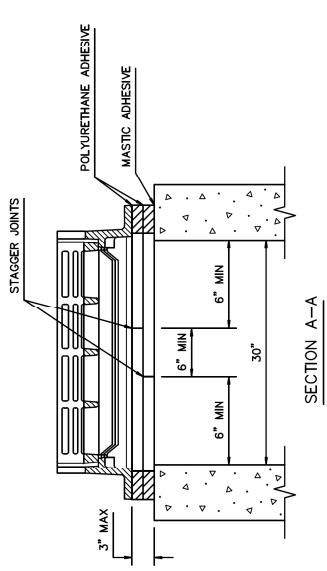
DETAIL OF CURB AND GUTTER AT INLETS



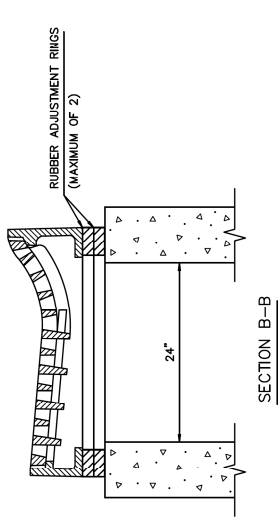
DEAD END JOINT DETAIL



NOTE: ALL CUTS MADE TO RUBBER ADJUSTMENT RINGS WILL BE PERPENDICULAR AND PROVIDE A TIGHT JOINT.



SECTION A-A



SECTION B-B

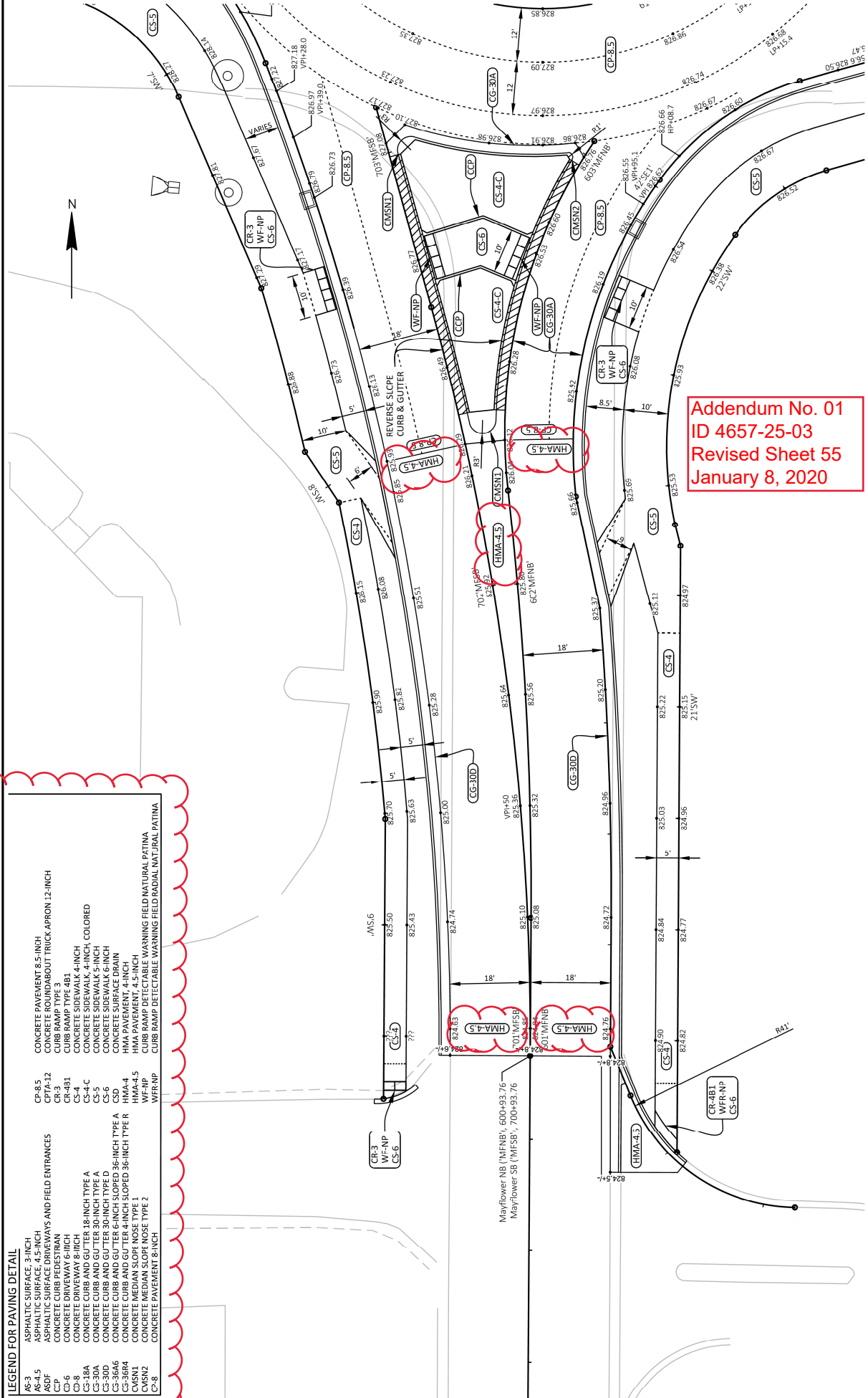
RUBBER RING CUTTING DETAIL FOR INLET, SPECIAL

PROJECT NO: 4657-25-03	COUNTY: OUTAGAMIE	CONSTRUCTION DETAILS	SHEET 19	E
FILE NAME: F:\TR\0812246A\B\C\W\18_2016\SHETS\PLAN\465725-021011-01.DWG	PLOT DATE: 1/6/2020 2:44 PM	PLOT BY: OWINI ASSOCIATES - CRAIG RUTH	PLOT SCALE: #####	WIS007CADDSS SHEET 42
LAYOUT NAME: 4657-25-02101-01				

**LEGEND FOR PAVING DETAIL**

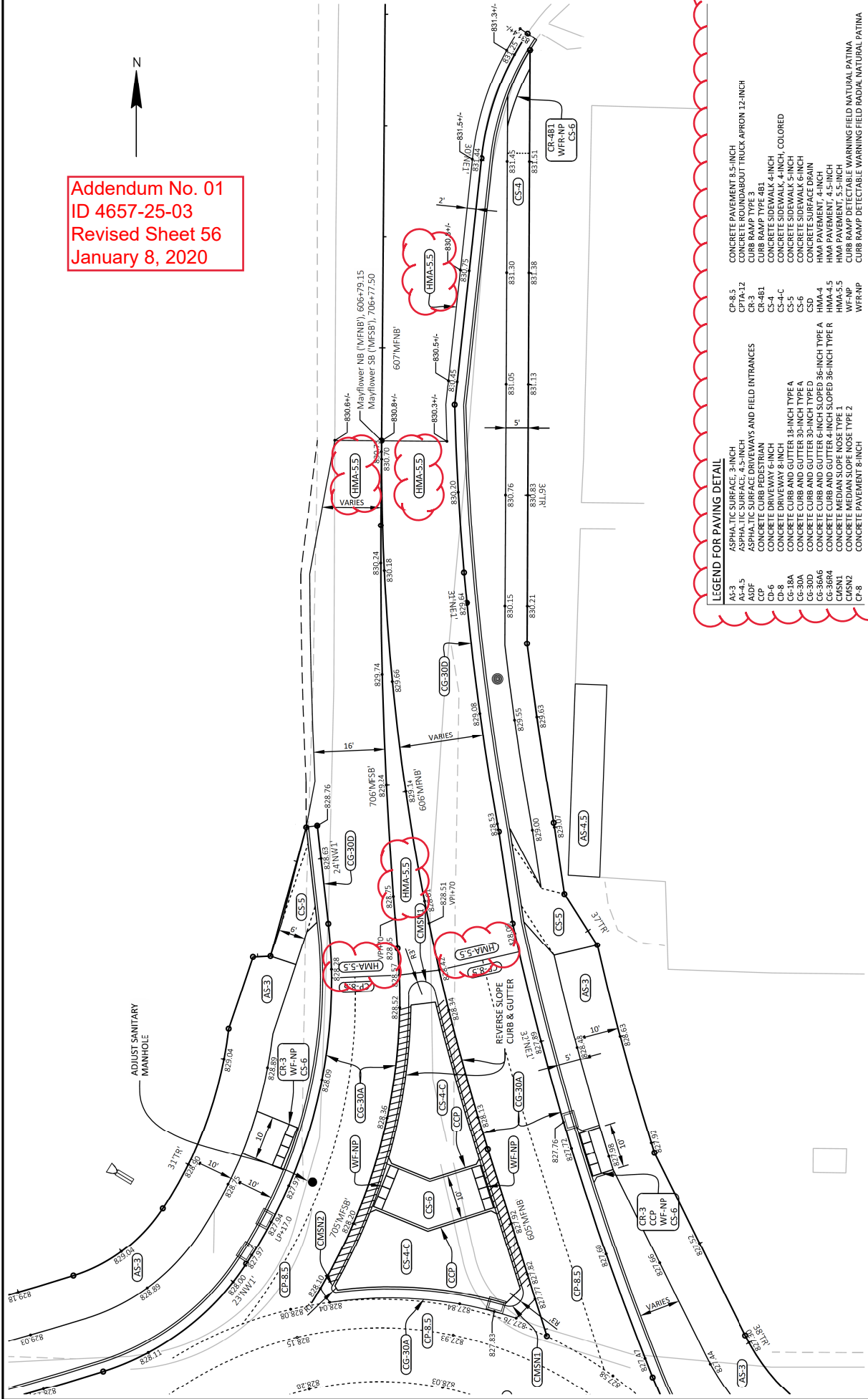
AS-3 ASPHALTIC SURFACE, 3-INCH  
 AS-4.5 ASPHALTIC SURFACE, 4.5-INCH  
 CSDF CONCRETE DRIVEWAY  
 CD-6 CONCRETE DRIVEWAY 6-INCH  
 CD-8 CONCRETE DRIVEWAY 8-INCH  
 CS-18A CONCRETE CURB AND GUTTER 18-INCH TYPE A  
 CS-30A CONCRETE CURB AND GUTTER 30-INCH TYPE A  
 CS-30D CONCRETE CURB AND GUTTER 30-INCH TYPE D  
 CS-36R4 CONCRETE CURB AND GUTTER 36-INCH TYPE R  
 CS-36R4 CONCRETE CURB AND GUTTER 36-INCH TYPE R  
 OMSN1 CONCRETE MEDIAN SLOPE NOSE TYPE 1  
 OMSN2 CONCRETE MEDIAN SLOPE NOSE TYPE 2  
 CS-8 CONCRETE PAVEMENT 8-INCH

CP-B.5 CONCRETE PAVEMENT 8.5-INCH  
 CPB-12 CONCRETE PAVED SHOULDERS AND TRUCK APPROACH 12-INCH  
 CR-B.5 CURB RAMP  
 CR-4B1 CURB RAMP TYPE 4B1  
 CS-4 CONCRETE SIDEWALK 4-INCH, COLORED  
 CS-5 CONCRETE SIDEWALK 5-INCH  
 CS-6 CONCRETE SIDEWALK 6-INCH  
 CS-6.5 CONCRETE SIDEWALK 6.5-INCH  
 HMA-4 HMA PAVEMENT 4-INCH  
 HMA-4.5 HMA PAVEMENT, 4.5-INCH  
 WF-NP CURB RAMP DETECTABLE WARNING FIELD NATURAL PATINA  
 WFR-NP CURB RAMP DETECTABLE WARNING FIELD RADIAL NATURAL PATINA



Addendum No. 01  
 ID 4657-25-03  
 Revised Sheet 55  
 January 8, 2020

Addendum No. 01  
ID 4657-25-03  
Revised Sheet 56  
January 8, 2020



**LEGEND FOR PAVING DETAIL**

AC-3	ASPHALTIC SURFACE 3-INCH
AC-4.5	ASPHALTIC SURFACE DRIVEWAYS AND FIELD ENTRANCES
ADF	CONCRETE CURB PEDESTRIAN
CCP	CONCRETE DRIVEWAY 6-INCH
CP-6	CONCRETE CURB AND GUTTER 18-INCH TYPE A
CP-8A	CONCRETE CURB AND GUTTER 30-INCH TYPE A
CP-8B	CONCRETE CURB AND GUTTER 30-INCH TYPE B
CP-8C	CONCRETE CURB AND GUTTER 30-INCH TYPE C
CP-8D	CONCRETE CURB AND GUTTER 30-INCH TYPE D
CP-8E	CONCRETE CURB AND GUTTER 4-INCH SLOPED 36-INCH TYPE A
CP-8F	CONCRETE CURB AND GUTTER 4-INCH SLOPED 36-INCH TYPE B
CP-8G	CONCRETE CURB AND GUTTER 4-INCH SLOPED 36-INCH TYPE C
CP-8H	CONCRETE CURB AND GUTTER 4-INCH SLOPED 36-INCH TYPE D
CP-8I	CONCRETE CURB AND GUTTER 4-INCH SLOPED 36-INCH TYPE E
CP-8J	CONCRETE CURB AND GUTTER 4-INCH SLOPED 36-INCH TYPE F
CP-8K	CONCRETE CURB AND GUTTER 4-INCH SLOPED 36-INCH TYPE G
CP-8L	CONCRETE CURB AND GUTTER 4-INCH SLOPED 36-INCH TYPE H
CP-8M	CONCRETE CURB AND GUTTER 4-INCH SLOPED 36-INCH TYPE I
CP-8N	CONCRETE CURB AND GUTTER 4-INCH SLOPED 36-INCH TYPE J
CP-8	CONCRETE PAVEMENT 8-INCH
CP-8.5	CONCRETE PAVEMENT 8.5-INCH
CP-12	CONCRETE ROUNDABOUT TRUCK APRON 12-INCH
CR-3	CURB RAMP TYPE 3
CR-4B1	CONCRETE SIDEWALK 4-INCH
CS-4	CONCRETE SIDEWALK 5-INCH
CS-4-C	CONCRETE SIDEWALK 5-INCH - COLORED
CS-5	CONCRETE SIDEWALK 6-INCH
CS-6	CONCRETE SIDEWALK 6-INCH
CSD	CONCRETE SURFACE DRAIN
HMA-4	HMA PAVEMENT, 4-INCH
HMA-4.5	HMA PAVEMENT, 4.5-INCH
HMA-5.5	HMA PAVEMENT, 5.5-INCH
WF-NP	WARNING FIELD NATURAL PATINA
WF-NP	WARNING FIELD RADIAL NATURAL PATINA

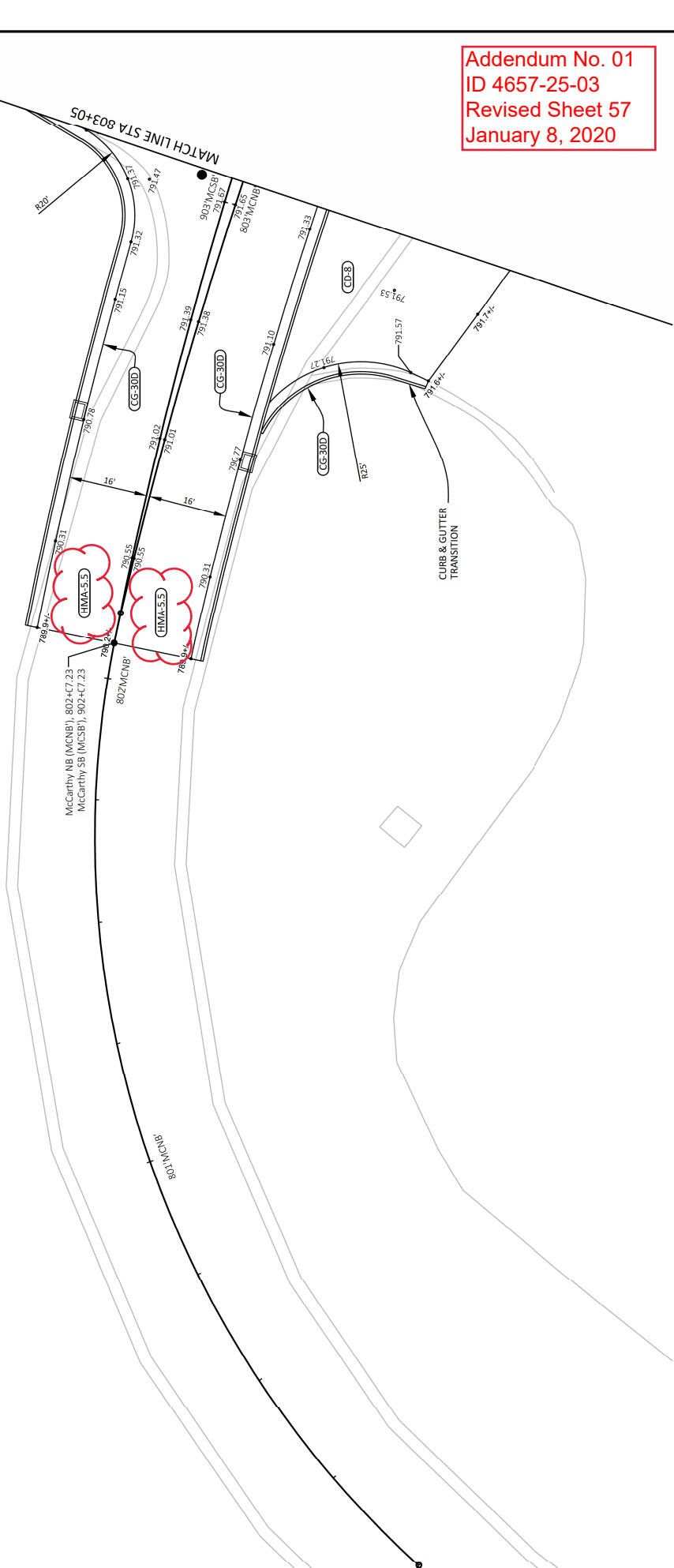
PROJECT NO: 4657-25-03  
 COUNTY: OUTAGAMIE  
 HWY: CTH CA  
 PAVING DETAILS: MAYFLOWER DRIVE  
 PLOT BY: OMNINI ASSOCIATES - CRAIG WUITH  
 PLOT DATE: 1/6/2020 1:03 PM  
 FILE NAME: F:\TR\0812\4648\B\CIVIL 3D\2016\SHSHEET56\AN4657-25-01200-HD.DWG  
 LAYOUT NAME: 4657-25-021-02.plt  
 WISDOT/CADDS SHEET 42



**LEGEND FOR PAVING DETAIL**

IS-3	ASPHALTIC SURFACE 3-INCH	CP-8-5	CONCRETE PAVEMENT 8.5-INCH
IS-4.5	ASPHALTIC SURFACE 4.5-INCH	CP1A-12	CONCRETE ROUNDABOUT TRUCK APRON 12-INCH
IS-5	ASPHALTIC SURFACE 5-INCH	CH-481	CONCRETE CURB AND GUTTER 48-INCH
IS-6	CONCRETE CURB AND GUTTER 36-INCH	CH-481	CONCRETE CURB TYPE 481
IS-7	CONCRETE CURB AND GUTTER 36-INCH	CS-4	CONCRETE SIDEWALK 4-INCH
IS-8	CONCRETE DRIVEWAY 6-INCH	CS-4-C	CONCRETE SIDEWALK 4-INCH, COLORED
IS-18A	CONCRETE DRIVEWAY 8-INCH	CS-5	CONCRETE SIDEWALK 5-INCH
IS-18B	CONCRETE CURB AND GUTTER 18-INCH TYPE A	CS-6	CONCRETE SIDEWALK 6-INCH
IS-30A	CONCRETE CURB AND GUTTER 30-INCH TYPE A	CSD	CONCRETE SURFACE DRAIN
IS-30B	CONCRETE CURB AND GUTTER 30-INCH TYPE B	CSD	CONCRETE SURFACE DRAIN
IS-30C	CONCRETE CURB AND GUTTER 30-INCH TYPE C	HMA-4	HMA PAVEMENT, 4.5-INCH
IS-30D	CONCRETE CURB AND GUTTER 4-INCH SLOPED 36-INCH TYPE A	HMA-4.5	HMA PAVEMENT, 4.5-INCH
IS-30E	CONCRETE CURB AND GUTTER 4-INCH SLOPED 36-INCH TYPE B	HMA-5	HMA PAVEMENT, 5.5-INCH
MS-N1	CONCRETE MEDIAN SLOPE NOSE TYPE 1	WF-NP	CURB RAMP DETECTABLE WARNING FIELD NATURAL PATINA
MS-N2	CONCRETE MEDIAN SLOPE NOSE TYPE 2	WF-NP	CURB RAMP DETECTABLE WARNING FIELD NATURAL PATINA
PS-8	CONCRETE PAVEMENT 8-INCH		

2



Addendum No. 01  
ID 4657-25-03  
Revised Sheet 57  
January 8, 2020

PROJECT NO: 4657-25-03  
FILE NAME: F:\R\08\12\4657-25-03\01\08\01\01.dwg  
LAYOUT NAME: 4657-25-021-01.psd

HWY: CTH CA

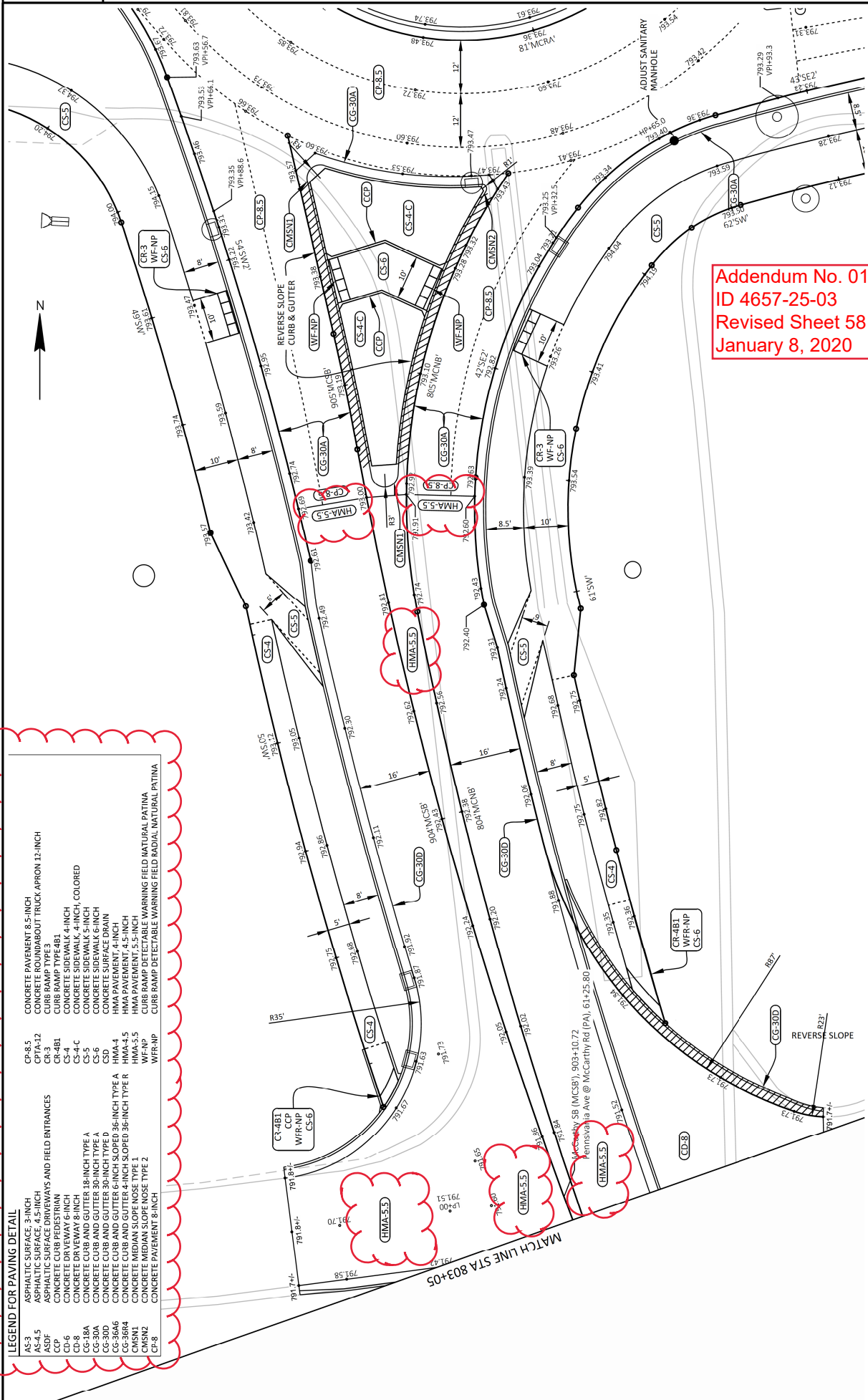
COUNTY: OUTAGAMIE

PAVING DETAILS - MC CARTHY ROAD

SHEET 57

E

PLOT SCALE: ##### PLOT BY: OMNI ASSOCIATES - CRAIG WIRTH FILE NAME: F:\R\08\12\4657-25-03\01\08\01\01.dwg LAYOUT NAME: 4657-25-021-01.psd

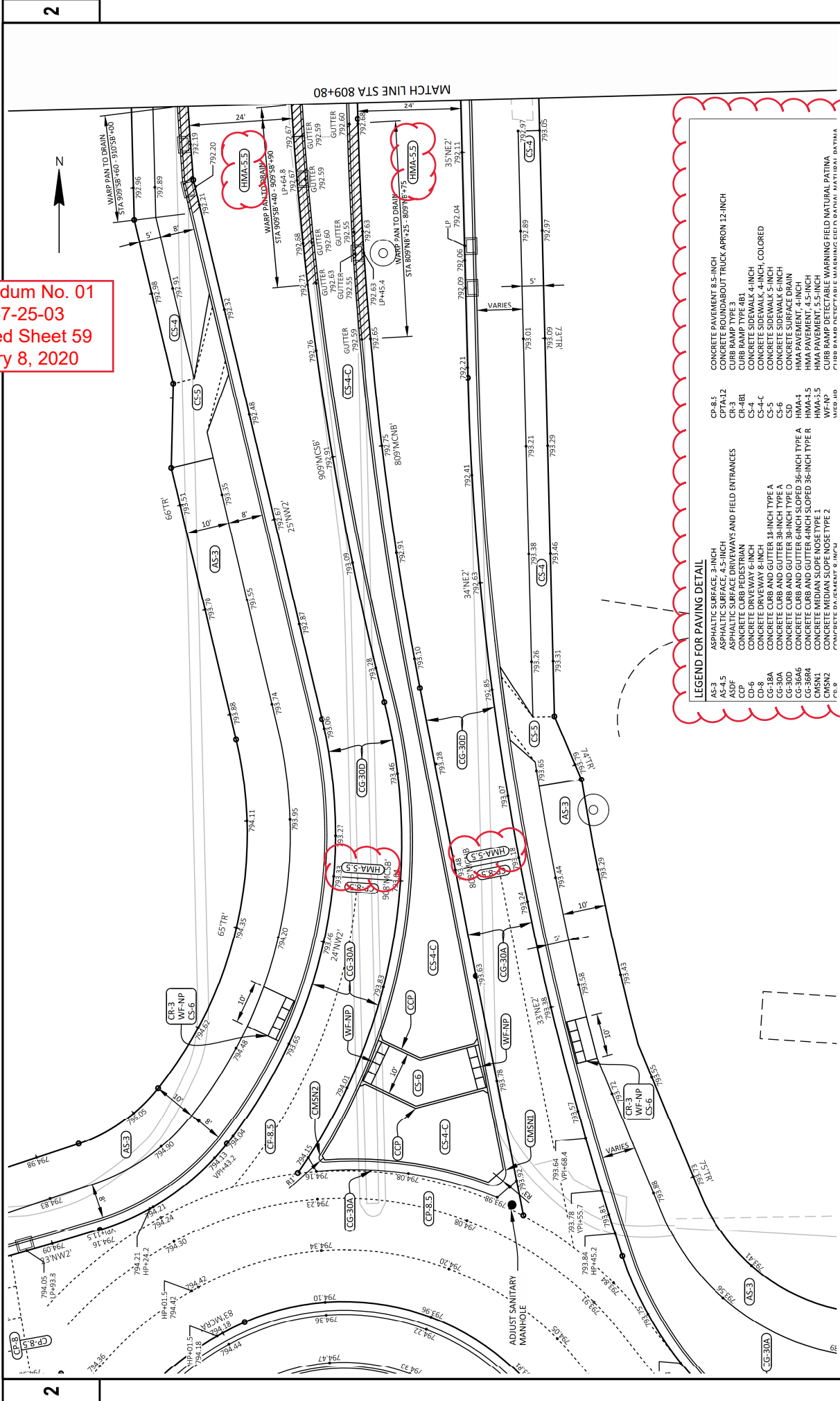


Addendum No. 01  
 ID 4657-25-03  
 Revised Sheet 58  
 January 8, 2020

**LEGEND FOR PAVING DETAIL**

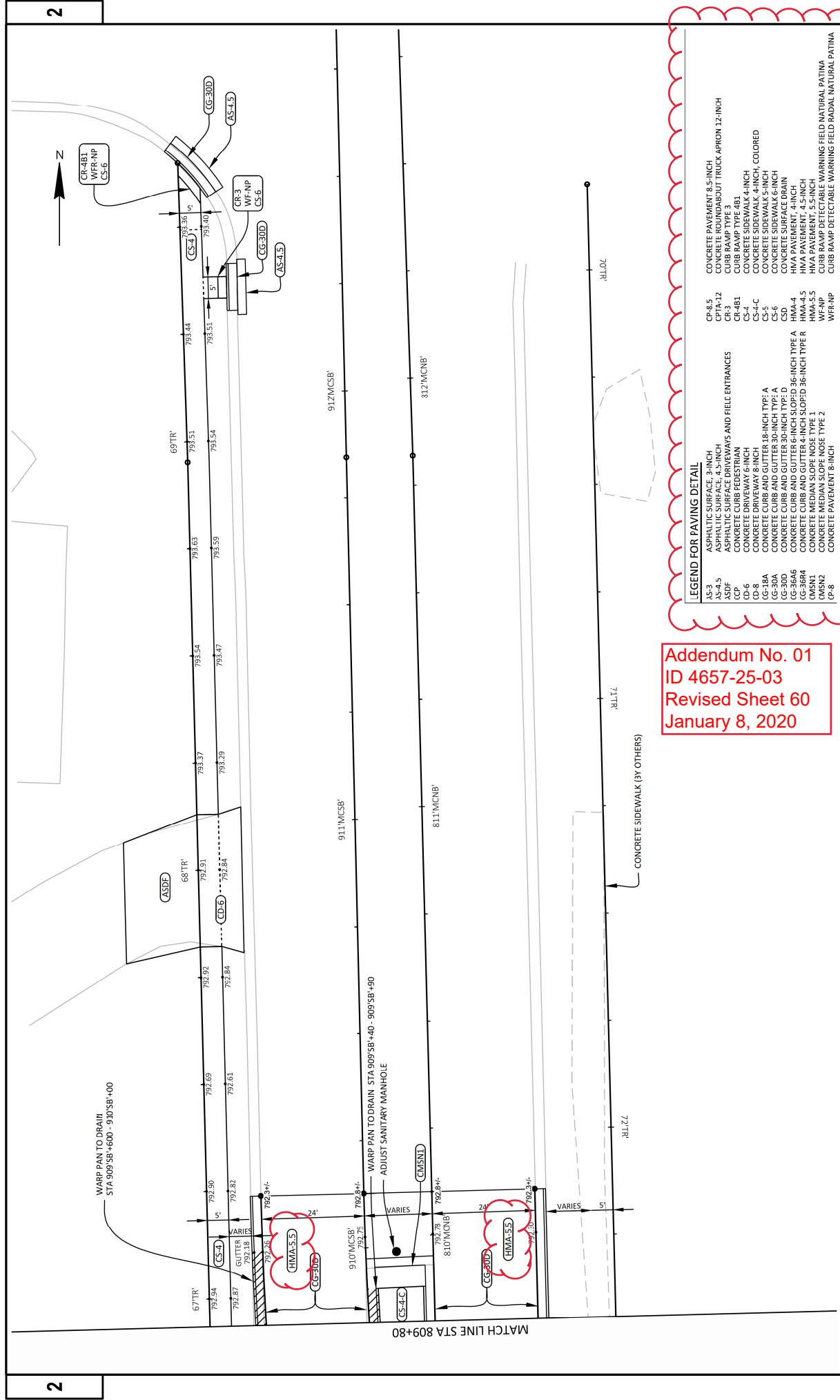
AS-3	ASPHALTIC SURFACE 3-INCH	CP-8.5	CONCRETE PAVEMENT 8.5-INCH
AS-4.5	ASPHALTIC SURFACE 4.5-INCH	CP7A-12	CONCRETE ROUNDABOUT TRUCK APRON 12-INCH
CP	CONCRETE CURB AND FIELD ENTRANCES	CR-4B1	CURB RAMP TYPE A
CP-1	CONCRETE CURB AND FIELD ENTRANCES	CS-4	CONCRETE SIDEWALK 4-INCH
CP-2	CONCRETE CURB AND FIELD ENTRANCES	CS-4-C	CONCRETE SIDEWALK 4-INCH, COLORED
CP-3	CONCRETE CURB AND FIELD ENTRANCES	CS-5	CONCRETE SIDEWALK 5-INCH
CP-4	CONCRETE CURB AND FIELD ENTRANCES	CS-6	CONCRETE SIDEWALK 6-INCH
CP-5	CONCRETE CURB AND FIELD ENTRANCES	CS-D	CONCRETE SURFACE DRAIN
CP-6	CONCRETE DRIVEWAY 8-INCH	CS-E	CONCRETE SURFACE DRAIN
CP-7	CONCRETE DRIVEWAY 8-INCH	CS-F	CONCRETE SURFACE DRAIN
CP-8	CONCRETE DRIVEWAY 8-INCH	CS-G	CONCRETE SURFACE DRAIN
CP-9	CONCRETE DRIVEWAY 8-INCH	CS-H	CONCRETE SURFACE DRAIN
CP-10	CONCRETE DRIVEWAY 8-INCH	CS-I	CONCRETE SURFACE DRAIN
CP-11	CONCRETE DRIVEWAY 8-INCH	CS-J	CONCRETE SURFACE DRAIN
CP-12	CONCRETE DRIVEWAY 8-INCH	CS-K	CONCRETE SURFACE DRAIN
CP-13	CONCRETE DRIVEWAY 8-INCH	CS-L	CONCRETE SURFACE DRAIN
CP-14	CONCRETE DRIVEWAY 8-INCH	CS-M	CONCRETE SURFACE DRAIN
CP-15	CONCRETE DRIVEWAY 8-INCH	CS-N	CONCRETE SURFACE DRAIN
CP-16	CONCRETE DRIVEWAY 8-INCH	CS-O	CONCRETE SURFACE DRAIN
CP-17	CONCRETE DRIVEWAY 8-INCH	CS-P	CONCRETE SURFACE DRAIN
CP-18	CONCRETE DRIVEWAY 8-INCH	CS-Q	CONCRETE SURFACE DRAIN
CP-19	CONCRETE DRIVEWAY 8-INCH	CS-R	CONCRETE SURFACE DRAIN
CP-20	CONCRETE DRIVEWAY 8-INCH	CS-S	CONCRETE SURFACE DRAIN
CP-21	CONCRETE DRIVEWAY 8-INCH	CS-T	CONCRETE SURFACE DRAIN
CP-22	CONCRETE DRIVEWAY 8-INCH	CS-U	CONCRETE SURFACE DRAIN
CP-23	CONCRETE DRIVEWAY 8-INCH	CS-V	CONCRETE SURFACE DRAIN
CP-24	CONCRETE DRIVEWAY 8-INCH	CS-W	CONCRETE SURFACE DRAIN
CP-25	CONCRETE DRIVEWAY 8-INCH	CS-X	CONCRETE SURFACE DRAIN
CP-26	CONCRETE DRIVEWAY 8-INCH	CS-Y	CONCRETE SURFACE DRAIN
CP-27	CONCRETE DRIVEWAY 8-INCH	CS-Z	CONCRETE SURFACE DRAIN
CP-28	CONCRETE DRIVEWAY 8-INCH	CS-AA	CONCRETE SURFACE DRAIN
CP-29	CONCRETE DRIVEWAY 8-INCH	CS-AB	CONCRETE SURFACE DRAIN
CP-30	CONCRETE DRIVEWAY 8-INCH	CS-AC	CONCRETE SURFACE DRAIN
CP-31	CONCRETE DRIVEWAY 8-INCH	CS-AD	CONCRETE SURFACE DRAIN
CP-32	CONCRETE DRIVEWAY 8-INCH	CS-AE	CONCRETE SURFACE DRAIN
CP-33	CONCRETE DRIVEWAY 8-INCH	CS-AF	CONCRETE SURFACE DRAIN
CP-34	CONCRETE DRIVEWAY 8-INCH	CS-AG	CONCRETE SURFACE DRAIN
CP-35	CONCRETE DRIVEWAY 8-INCH	CS-AH	CONCRETE SURFACE DRAIN
CP-36	CONCRETE DRIVEWAY 8-INCH	CS-AI	CONCRETE SURFACE DRAIN
CP-37	CONCRETE DRIVEWAY 8-INCH	CS-AJ	CONCRETE SURFACE DRAIN
CP-38	CONCRETE DRIVEWAY 8-INCH	CS-AK	CONCRETE SURFACE DRAIN
CP-39	CONCRETE DRIVEWAY 8-INCH	CS-AL	CONCRETE SURFACE DRAIN
CP-40	CONCRETE DRIVEWAY 8-INCH	CS-AM	CONCRETE SURFACE DRAIN
CP-41	CONCRETE DRIVEWAY 8-INCH	CS-AN	CONCRETE SURFACE DRAIN
CP-42	CONCRETE DRIVEWAY 8-INCH	CS-AO	CONCRETE SURFACE DRAIN
CP-43	CONCRETE DRIVEWAY 8-INCH	CS-AP	CONCRETE SURFACE DRAIN
CP-44	CONCRETE DRIVEWAY 8-INCH	CS-AQ	CONCRETE SURFACE DRAIN
CP-45	CONCRETE DRIVEWAY 8-INCH	CS-AR	CONCRETE SURFACE DRAIN
CP-46	CONCRETE DRIVEWAY 8-INCH	CS-AS	CONCRETE SURFACE DRAIN
CP-47	CONCRETE DRIVEWAY 8-INCH	CS-AT	CONCRETE SURFACE DRAIN
CP-48	CONCRETE DRIVEWAY 8-INCH	CS-AU	CONCRETE SURFACE DRAIN
CP-49	CONCRETE DRIVEWAY 8-INCH	CS-AV	CONCRETE SURFACE DRAIN
CP-50	CONCRETE DRIVEWAY 8-INCH	CS-AW	CONCRETE SURFACE DRAIN
CP-51	CONCRETE DRIVEWAY 8-INCH	CS-AX	CONCRETE SURFACE DRAIN
CP-52	CONCRETE DRIVEWAY 8-INCH	CS-AY	CONCRETE SURFACE DRAIN
CP-53	CONCRETE DRIVEWAY 8-INCH	CS-AZ	CONCRETE SURFACE DRAIN
CP-54	CONCRETE DRIVEWAY 8-INCH	CS-BA	CONCRETE SURFACE DRAIN
CP-55	CONCRETE DRIVEWAY 8-INCH	CS-BB	CONCRETE SURFACE DRAIN
CP-56	CONCRETE DRIVEWAY 8-INCH	CS-BC	CONCRETE SURFACE DRAIN
CP-57	CONCRETE DRIVEWAY 8-INCH	CS-BD	CONCRETE SURFACE DRAIN
CP-58	CONCRETE DRIVEWAY 8-INCH	CS-BE	CONCRETE SURFACE DRAIN
CP-59	CONCRETE DRIVEWAY 8-INCH	CS-BF	CONCRETE SURFACE DRAIN
CP-60	CONCRETE DRIVEWAY 8-INCH	CS-BG	CONCRETE SURFACE DRAIN
CP-61	CONCRETE DRIVEWAY 8-INCH	CS-BH	CONCRETE SURFACE DRAIN
CP-62	CONCRETE DRIVEWAY 8-INCH	CS-BI	CONCRETE SURFACE DRAIN
CP-63	CONCRETE DRIVEWAY 8-INCH	CS-BJ	CONCRETE SURFACE DRAIN
CP-64	CONCRETE DRIVEWAY 8-INCH	CS-BK	CONCRETE SURFACE DRAIN
CP-65	CONCRETE DRIVEWAY 8-INCH	CS-BL	CONCRETE SURFACE DRAIN
CP-66	CONCRETE DRIVEWAY 8-INCH	CS-BM	CONCRETE SURFACE DRAIN
CP-67	CONCRETE DRIVEWAY 8-INCH	CS-BN	CONCRETE SURFACE DRAIN
CP-68	CONCRETE DRIVEWAY 8-INCH	CS-BO	CONCRETE SURFACE DRAIN
CP-69	CONCRETE DRIVEWAY 8-INCH	CS-BP	CONCRETE SURFACE DRAIN
CP-70	CONCRETE DRIVEWAY 8-INCH	CS-BQ	CONCRETE SURFACE DRAIN
CP-71	CONCRETE DRIVEWAY 8-INCH	CS-BR	CONCRETE SURFACE DRAIN
CP-72	CONCRETE DRIVEWAY 8-INCH	CS-BS	CONCRETE SURFACE DRAIN
CP-73	CONCRETE DRIVEWAY 8-INCH	CS-BT	CONCRETE SURFACE DRAIN
CP-74	CONCRETE DRIVEWAY 8-INCH	CS-BU	CONCRETE SURFACE DRAIN
CP-75	CONCRETE DRIVEWAY 8-INCH	CS-BV	CONCRETE SURFACE DRAIN
CP-76	CONCRETE DRIVEWAY 8-INCH	CS-BW	CONCRETE SURFACE DRAIN
CP-77	CONCRETE DRIVEWAY 8-INCH	CS-BX	CONCRETE SURFACE DRAIN
CP-78	CONCRETE DRIVEWAY 8-INCH	CS-BY	CONCRETE SURFACE DRAIN
CP-79	CONCRETE DRIVEWAY 8-INCH	CS-BZ	CONCRETE SURFACE DRAIN
CP-80	CONCRETE DRIVEWAY 8-INCH	CS-CA	CONCRETE SURFACE DRAIN
CP-81	CONCRETE DRIVEWAY 8-INCH	CS-CB	CONCRETE SURFACE DRAIN
CP-82	CONCRETE DRIVEWAY 8-INCH	CS-CC	CONCRETE SURFACE DRAIN
CP-83	CONCRETE DRIVEWAY 8-INCH	CS-CD	CONCRETE SURFACE DRAIN
CP-84	CONCRETE DRIVEWAY 8-INCH	CS-CE	CONCRETE SURFACE DRAIN
CP-85	CONCRETE DRIVEWAY 8-INCH	CS-CE	CONCRETE SURFACE DRAIN
CP-86	CONCRETE DRIVEWAY 8-INCH	CS-CE	CONCRETE SURFACE DRAIN
CP-87	CONCRETE DRIVEWAY 8-INCH	CS-CE	CONCRETE SURFACE DRAIN
CP-88	CONCRETE DRIVEWAY 8-INCH	CS-CE	CONCRETE SURFACE DRAIN
CP-89	CONCRETE DRIVEWAY 8-INCH	CS-CE	CONCRETE SURFACE DRAIN
CP-90	CONCRETE DRIVEWAY 8-INCH	CS-CE	CONCRETE SURFACE DRAIN
CP-91	CONCRETE DRIVEWAY 8-INCH	CS-CE	CONCRETE SURFACE DRAIN
CP-92	CONCRETE DRIVEWAY 8-INCH	CS-CE	CONCRETE SURFACE DRAIN
CP-93	CONCRETE DRIVEWAY 8-INCH	CS-CE	CONCRETE SURFACE DRAIN
CP-94	CONCRETE DRIVEWAY 8-INCH	CS-CE	CONCRETE SURFACE DRAIN
CP-95	CONCRETE DRIVEWAY 8-INCH	CS-CE	CONCRETE SURFACE DRAIN
CP-96	CONCRETE DRIVEWAY 8-INCH	CS-CE	CONCRETE SURFACE DRAIN
CP-97	CONCRETE DRIVEWAY 8-INCH	CS-CE	CONCRETE SURFACE DRAIN
CP-98	CONCRETE DRIVEWAY 8-INCH	CS-CE	CONCRETE SURFACE DRAIN
CP-99	CONCRETE DRIVEWAY 8-INCH	CS-CE	CONCRETE SURFACE DRAIN
CP-100	CONCRETE DRIVEWAY 8-INCH	CS-CE	CONCRETE SURFACE DRAIN

Addendum No. 01  
 ID 4657-25-03  
 Revised Sheet 59  
 January 8, 2020



**LEGEND FOR PAVING DETAIL**

AS-3	ASPHALTIC SURFACE 3-INCH	CP-8.5	CONCRETE PAVEMENT 8.5-INCH
AS-4.5	ASPHALTIC SURFACE 4.5-INCH	CP-1A.12	CONCRETE ROUNDABOUT TRUCK ARRON 12-INCH
AS-5	ASPHALTIC SURFACE 5-INCH	CP-1B.12	CONCRETE ROUNDABOUT TRUCK ARRON 12-INCH
CCP	CONCRETE CURB PEDESTRIAN	CR-4B1	CURB RAMP TYPE B1
CD-6	CONCRETE DRIVEWAY 6-INCH	CS-4	CONCRETE SIDEWALK 4-INCH
CD-8	CONCRETE DRIVEWAY 8-INCH	CS-4-C	CONCRETE SIDEWALK 4-INCH, COLORED
CG-18A	CONCRETE CURB AND GUTTER 18-INCH TYPE A	CS-5	CONCRETE SIDEWALK 5-INCH
CG-30A	CONCRETE CURB AND GUTTER 30-INCH TYPE A	CS-6	CONCRETE SIDEWALK 6-INCH
CG-30B	CONCRETE CURB AND GUTTER 30-INCH TYPE B	HMA-4	HMA PAVEMENT 4-INCH
CG-30AB	CONCRETE CURB AND GUTTER 30-INCH SLOPED 36-INCH TYPE A	HMA-4.5	HMA PAVEMENT 4.5-INCH
CG-30AB	CONCRETE CURB AND GUTTER 30-INCH SLOPED 36-INCH TYPE B	HMA-5.5	HMA PAVEMENT 5.5-INCH
CG-36RA	CONCRETE CURB AND GUTTER 36-INCH SLOPED 36-INCH TYPE A	WF-NP	CURB RAMP DETECTABLE WARNING FIELD NATURAL DITCH
CG-36RA	CONCRETE CURB AND GUTTER 36-INCH SLOPED 36-INCH TYPE B	WF-NP	CURB RAMP DETECTABLE WARNING FIELD NATURAL DITCH
CMSN1	CONCRETE CURB AND GUTTER 4-INCH SLOPED 36-INCH TYPE 1	WF-NP	CURB RAMP DETECTABLE WARNING FIELD NATURAL DITCH
CMSN2	CONCRETE CURB AND GUTTER 4-INCH SLOPED 36-INCH TYPE 2	WF-NP	CURB RAMP DETECTABLE WARNING FIELD NATURAL DITCH
CP-8.5	CONCRETE DRIVEWAY 8-INCH	WF-NP	CURB RAMP DETECTABLE WARNING FIELD NATURAL DITCH



Addendum No. 01  
ID 4657-25-03  
Revised Sheet 60  
January 8, 2020

**LEGEND FOR PAVING DETAIL**

AS-3	ASPHALTIC SURFACE 3-INCH
AS-4.5	ASPHALTIC SURFACE 4.5-INCH
ASDF	ASPHALTIC SURFACE DRIVEWAYS AND FIELD ENTRANCES
CCP	CONCRETE CURB PEDESTRIAN
CD-6	CONCRETE DRIVEWAY 6-INCH
CG-18A	CONCRETE CURB AND GUTTER 18-INCH TYPE A
CG-30A	CONCRETE CURB AND GUTTER 30-INCH TYPE A
CG-30D	CONCRETE CURB AND GUTTER 30-INCH TYPE D
CG-36A6	CONCRETE CURB AND GUTTER 36-INCH SLOPED 36-INCH TYPE A
CG-36R4	CONCRETE CURB AND GUTTER 36-INCH SLOPED 36-INCH TYPE R
OMSN1	CONCRETE MEDIAN SLOPE NOSE TYPE 1
OMSN2	CONCRETE MEDIAN SLOPE NOSE TYPE 2
CP-8	CONCRETE PAVEMENT 8-INCH
CP-8.5	CONCRETE PAVEMENT 8.5-INCH
CPTA-12	CONCRETE ROUNDABOUT TRUCK APRON 12-INCH
CR-3	CURB RAMP TYPE 3
CR-4B1	CURB RAMP TYPE 4B1
CS-4	CONCRETE SIDEWALK 4-INCH
CS-5	CONCRETE SIDEWALK 5-INCH
CS-6	CONCRETE SIDEWALK 6-INCH
CSD	CONCRETE SURFACE DRAIN
HMA-4	HMA PAVEMENT 4-INCH
HMA-4.5	HMA PAVEMENT 4.5-INCH
HMA-5	HMA PAVEMENT 5-INCH
WFR-NP	WARNING FIELD RADIAL NATURAL PATINA
WFR-NP	WARNING FIELD RADIAL NATURAL PATINA

Addendum No. 01  
ID 4657-25-03  
Revised Sheet 225  
January 8, 2020

REMOVING WATERMAIN

STATION TO STATION	LOCATION	REMOVING FIRE HYDRANT	REMOVING WATER VALVE AND BOX	REMOVING WATER MAIN
204.0210		EACH	EACH	LF
404+74 - 405+21	COMMUNICATIONS DR NB	1	2	60
PROJECT TOTAL		1	2	60

REMOVING MANHOLES

STATION TO STATION	LOCATION	REMOVING MANHOLES
809+45	N MCCARTHY	EA
CATEGORY TOTAL		1
605+00	N MAYFLOWER	EA
CATEGORY TOTAL		1
PROJECT TOTAL		2

REMOVING INLETS

STATION TO STATION	LOCATION	REMOVING INLETS
202+38	CTH CA EB	EA
202+88	CTH CA EB	EA
277+50	CTH CA EB	EA
278+56	CTH CA EB	EA
279+93	CTH CA EB	EA
280+10	CTH CA EB	EA
280+20	CTH CA EB	EA
802+43	S MCCARTHY	EA
802+50	S MCCARTHY	EA
803+00	S MCCARTHY	EA
803+25	S MCCARTHY	EA
804+50	S MCCARTHY	EA
809+25	N MCCARTHY	EA
809+50	N MCCARTHY	EA
809+50	N MCCARTHY	EA
402+70	COMMUNICATIONS	EA
402+70	COMMUNICATIONS	EA
PROJECT TOTAL		20

REMOVING CONCRETE BASES

BASE NO.	STATION	DIR	LOCATION	REMOVING CONCRETE BASES
SB 10	300' WB'+50	LT	CTH CA & CTH CB	EACH
SB 4	280' EB'+00	RT	CTH CA & CASALOMA	EACH
SB 6	280' EB'+12	LT	CTH CA & CASALOMA	EACH
SB 9	280' EB'+80	LT	CTH CA & CASALOMA	EACH
SB 13	281' EB'+48	LT	CTH CA & CASALOMA	EACH
SB 14	281' EB'+62	RT	CTH CA & CASALOMA	EACH
PROJECT TOTAL				6

BASE COURSE

STATION TO STATION	LOCATION	BASE AGG DENSE 3/4-INCH	BASE AGG DENSE 1 1/4-INCH	BREAKER RUN	WATER
200+70	CA	10	4890	12,420	29
213+22	CA	50	4760	12,080	29
227+52	CA	20	900	2,280	6
255+33	CA	140	8840	22,450	54
402+51	CA	20	910	2,300	6
404+63	S COMMUNICATIONS	0	180	0	1
600+94	S MAYFLOWER	70	890	420	6
800+00	S MCCARTHY	70	1900	450	12
807+30	N MCCARTHY	40	1570	440	10
ASPHALT TRAIL		0	6830	0	41
TEMP PAVEMENT		0	130	0	1
CATEGORY TOTAL		560	42,510	76,660	260
SIDEWALK		560	0	0	3
CATEGORY TOTAL		560	0	0	3
PROJECT TOTAL		1,120	42,510	76,660	263

BACKFILL CONTROLLED LOW STRENGTH

STA	DIR	LOCATION	209.0200.S BACKFILL CONTROLLED LOW STRENGTH
404+78	RT	COMM. DRIVE	9.0
81+15	RT	MCCARTHY ROAD RAB	3.0
807+25	LT	NB MCCARTHY ROAD	5.0
PROJECT TOTAL			25.0

CONCRETE SURFACE DRAINS

STA	DIR	LOCATION	416.1010 CONCRETE SURFACE DRAINS	645.0130 GEOTEXTILE TYPE R
404+60	LT	COMM. DRIVE	1.5	12
404+60	RT	COMM. DRIVE	1.5	12
PROJECT TOTAL			3.0	24

\*\* ADDITIONAL QUANTITIES SHOWN IN RIPRAP TABLE

CONCRETE PAVEMENT

Table with columns: STATION, TO STATION, ROADWAY, 405.0100, 415.0085, 415.4100, 416.0512, SPV.0180.02

\* INCLUDES CONCRETE TRUCK APRON
\*\* ADDITIONAL QUANTITY SHOWN IN SIDEWALK TABLE

PROJECT TOTALS 260 61,220 4,470 76,990 780 30
CONCRETE TRUCK APRON

DRILLED BARS

Table with columns: LOCATION, 416.0610, 416.0620, DRILLED TIE BARS, DRILLED DOMEL BARS

CONCRETE MEDIUM SLOPED NOSE

Table with columns: STATION DIR, LOCATION, 620.0300, 620.0300, CONCRETE MEDIUM SLOPED NOSE, CONCRETE MEDIUM SLOPED NOSE

CONCRETE DRIVEWAY

Table with columns: LOCATION, 416.0160, 416.0180, CONCRETE DRIVEWAY, CONCRETE DRIVEWAY

ASPHALTIC ITEMS

Table with columns: STATION, TO STATION, LOCATION, 455.0605, 460.6223, 460.6224, 465.0105, 465.0120, 465.0125

Addendum No. 01
ID 4657-25-03
Revised Sheet 227
January 8, 2020

PAVEMENT MARKING CONTINUED

Table with columns: STATION TO STATION CATEGORY, LOCATION, 646.6120 MARKING STOP LINE EPOXY 18-INCH, 646.7120 MARKING DIAGONAL EPOXY 12-INCH, 646.7420 MARKING CROSSWALK EPOXY TRANSVERSE LINE 12-INCH, 646.8120 MARKING CURB EPOXY (YELLOW), 646.8220 MARKING ISLAND NOSE EPOXY, SPV.0060.01 PAVEMENT MARKING GROOVED CONTRAST THERMOPLASTIC ARROW TYPE 1, SPV.0060.02 PAVEMENT MARKING GROOVED CONTRAST THERMOPLASTIC ARROW TYPE 2, SPV.0060.03 PAVEMENT MARKING GROOVED CONTRAST THERMOPLASTIC ARROW TYPE 3, SPV.0060.04 PAVEMENT MARKING GROOVED CONTRAST THERMOPLASTIC ARROW TYPE 3R, SPV.0060.05 PAVEMENT MARKING GROOVED CONTRAST PREFORMED THERMOPLASTIC WORD ONLY YIELD EACH

SUBTOTALS 75 63 85 40 8 4 4 8 8 12 4 4 6 8  
PROJECT TOTALS 75 63 85 40 8 4 4 8 8 12 4 4 6 8

WATERMAIN

Table with columns: STATION TO STATION CATEGORY, LOCATION, SPV.0060.16 HYDRANT, SPV.0060.17 RELOCATING HYDRANT, SPV.0060.18 WATER VALVE 6-INCH, SPV.0060.19 WATER VALVE 10-INCH, SPV.0060.20 TEE 10X6-INCH, SPV.0060.21 CONNECT TO EXISTING 10-INCH WATERMAIN, SPV.0060.22 CORPORATION, CURB STOP AND BOX (SET), SPV.0060.23 YARD HYDRANT, SPV.0090.13 WATER SERVICE 1-INCH, SPV.0090.14 WATER MAIN 6-INCH, SPV.0090.15 WATER MAIN 10-INCH, 209.2100\*\* BACKFILL GRANULAR GRADE 2 CY

\*\* QUANTITY FOR TRENCH BACKFILL LIN POOR SOILS, ESTIMATED 25% OF TRENCH LENGTH, 4' WIDE, 7' DEEP



Proposal Schedule of Items

Proposal ID: 20200114014 Project(s): 4657-25-03  
Federal ID(s): WISC 2019806

SECTION: 0001 Contract Items

Alt Set ID: Alt Mbr ID:

Proposal Line Number	Item ID Description	Approximate Quantity and Units	Unit Price	Bid Amount
0002	201.0105 Clearing	3.000 STA	_____.	_____.
0004	201.0120 Clearing	8.000 ID	_____.	_____.
0006	201.0205 Grubbing	3.000 STA	_____.	_____.
0008	201.0220 Grubbing	8.000 ID	_____.	_____.
0010	203.0100 Removing Small Pipe Culverts	17.000 EACH	_____.	_____.
0012	203.0200 Removing Old Structure (station) 01. 266'EB'+50, 78"x102" CMP	LS	LUMP SUM	_____.
0014	203.0200 Removing Old Structure (station) 02. 605'NBMF'+00, 60"x82" CMP	LS	LUMP SUM	_____.
0016	204.0100 Removing Pavement	3,710.000 SY	_____.	_____.
0018	204.0150 Removing Curb & Gutter	6,272.000 LF	_____.	_____.
0020	204.0155 Removing Concrete Sidewalk	400.000 SY	_____.	_____.
0022	204.0175 Removing Concrete Slope Paving	14.000 SY	_____.	_____.
0024	204.0190 Removing Surface Drains	3.000 EACH	_____.	_____.
0026	204.0195 Removing Concrete Bases	6.000 EACH	_____.	_____.
0028	204.0210 Removing Manholes	2.000 EACH	_____.	_____.
0030	204.0220 Removing Inlets	20.000 EACH	_____.	_____.
0032	204.0245 Removing Storm Sewer (size) 01. 12- Inch to 15-Inch	675.000 LF	_____.	_____.





Proposal Schedule of Items

Proposal ID: 20200114014 Project(s): 4657-25-03

Federal ID(s): WISC 2019806

SECTION: 0001

Contract Items

Alt Set ID:

Alt Mbr ID:

Proposal Line Number	Item ID Description	Approximate Quantity and Units	Unit Price	Bid Amount
0034	204.0245 Removing Storm Sewer (size) 02. 24-Inch to 36-Inch	335.000 LF	_____.	_____.
0036	204.0250 Abandoning Manholes	8.000 EACH	_____.	_____.
0038	204.0280 Sealing Pipes	2.000 EACH	_____.	_____.
0040	204.0291.S Abandoning Sewer	81.000 CY	_____.	_____.
0042	204.9060.S Removing (item description) 01. Apron Endwall for Underdrain Reinforced Concrete	2.000 EACH	_____.	_____.
0044	204.9060.S Removing (item description) 02. Removing Fire Hydrant	1.000 EACH	_____.	_____.
0046	204.9060.S Removing (item description) 03. Removing Water Valve and Box	2.000 EACH	_____.	_____.
0048	204.9090.S Removing (item description) 01. Underdrain 6-Inch	1,705.000 LF	_____.	_____.
0050	204.9090.S Removing (item description) 02. Removing Sanitary Sewer 12 to 15-Inch	22.000 LF	_____.	_____.
0052	204.9090.S Removing (item description) 03. Removing Water Main	60.000 LF	_____.	_____.
0054	205.0100 Excavation Common	71,270.000 CY	_____.	_____.
0056	209.0200.S Backfill Controlled Low Strength	25.000 CY	_____.	_____.
0058	213.0100 Finishing Roadway (project) 01. 4657-25-03	1.000 EACH	_____.	_____.
0060	305.0110 Base Aggregate Dense 3/4-Inch	1,120.000 TON	_____.	_____.



Proposal Schedule of Items

Proposal ID: 20200114014 Project(s): 4657-25-03

Federal ID(s): WISC 2019806

SECTION: 0001

Contract Items

Alt Set ID:

Alt Mbr ID:

Proposal Line Number	Item ID Description	Approximate Quantity and Units	Unit Price	Bid Amount
0062	305.0120 Base Aggregate Dense 1 1/4-Inch	42,510.000 TON	_____	_____
0064	310.0115 Base Aggregate Open-Graded	11.600 CY	_____	_____
0066	311.0110 Breaker Run	76,660.000 TON	_____	_____
0068	405.0100 Coloring Concrete WisDOT Red	512.000 CY	_____	_____
0070	415.0080 Concrete Pavement 8-Inch	61,220.000 SY	_____	_____
0072	415.0085 Concrete Pavement 8 1/2-Inch	4,470.000 SY	_____	_____
0074	415.4100 Concrete Pavement Joint Filling	76,990.000 SY	_____	_____
0076	415.5110.S Concrete Pavement Joint Layout	1.000 LS	_____	_____
0078	416.0160 Concrete Driveway 6-Inch	40.000 SY	_____	_____
0080	416.0180 Concrete Driveway 8-Inch	250.000 SY	_____	_____
0082	416.0512 Concrete Truck Apron 12-Inch	780.000 SY	_____	_____
0084	416.0610 Drilled Tie Bars	128.000 EACH	_____	_____
0086	416.0620 Drilled Dowel Bars	96.000 EACH	_____	_____
0088	416.1010 Concrete Surface Drains	3.000 CY	_____	_____
0090	455.0605 Tack Coat	280.000 GAL	_____	_____
0092	460.2000 Incentive Density HMA Pavement	1,300.000 DOL	1.00000	1,300.00
0098	465.0105 Asphaltic Surface	1,887.000 TON	_____	_____



## Proposal Schedule of Items

Proposal ID: 20200114014 Project(s): 4657-25-03

Federal ID(s): WISC 2019806

SECTION: 0001

Contract Items

Alt Set ID:

Alt Mbr ID:

Proposal Line Number	Item ID Description	Approximate Quantity and Units	Unit Price	Bid Amount
0100	465.0120 Asphaltic Surface Driveways and Field Entrances	37.000 TON	_____.	_____.
0102	465.0125 Asphaltic Surface Temporary	100.000 TON	_____.	_____.
0104	520.2012 Culvert Pipe Temporary 12-Inch	70.000 LF	_____.	_____.
0106	520.8000 Concrete Collars for Pipe	5.000 EACH	_____.	_____.
0108	521.1012 Apron Endwalls for Culvert Pipe Steel 12-Inch	16.000 EACH	_____.	_____.
0110	521.1030 Apron Endwalls for Culvert Pipe Steel 30-Inch	1.000 EACH	_____.	_____.
0112	521.1217 Apron Endwalls for Pipe Arch Steel 17x13-Inch	6.000 EACH	_____.	_____.
0114	521.3112 Culvert Pipe Corrugated Steel 12-Inch	210.000 LF	_____.	_____.
0116	521.3717 Pipe Arch Corrugated Steel 17x13-Inch	72.000 LF	_____.	_____.
0118	521.6124 Culvert Pipe Corrugated Steel Aluminum Coated 24-Inch	20.000 LF	_____.	_____.
0120	521.6130 Culvert Pipe Corrugated Steel Aluminum Coated 30-Inch	9.000 LF	_____.	_____.
0122	521.6136 Culvert Pipe Corrugated Steel Aluminum Coated 36-Inch	11.000 LF	_____.	_____.
0124	522.1012 Apron Endwalls for Culvert Pipe Reinforced Concrete 12-Inch	11.000 EACH	_____.	_____.
0126	522.1015 Apron Endwalls for Culvert Pipe Reinforced Concrete 15-Inch	3.000 EACH	_____.	_____.



## Proposal Schedule of Items

Proposal ID: 20200114014 Project(s): 4657-25-03

Federal ID(s): WISC 2019806

SECTION: 0001

Contract Items

Alt Set ID:

Alt Mbr ID:

Proposal Line Number	Item ID Description	Approximate Quantity and Units	Unit Price	Bid Amount
0128	522.1018 Apron Endwalls for Culvert Pipe Reinforced Concrete 18-Inch	1.000 EACH	_____.	_____.
0130	522.1024 Apron Endwalls for Culvert Pipe Reinforced Concrete 24-Inch	4.000 EACH	_____.	_____.
0132	522.1030 Apron Endwalls for Culvert Pipe Reinforced Concrete 30-Inch	2.000 EACH	_____.	_____.
0134	522.2329 Culvert Pipe Reinforced Concrete Horizontal Elliptical Class HE-III 29x45-Inch	172.000 LF	_____.	_____.
0136	522.2429 Culvert Pipe Reinforced Concrete Horizontal Elliptical Class HE-IV 29x45-Inch	192.000 LF	_____.	_____.
0138	522.2629 Apron Endwalls for Culvert Pipe Reinforced Concrete Horizontal Elliptical 29x45-Inch	4.000 EACH	_____.	_____.
0140	522.2653 Apron Endwalls for Culvert Pipe Reinforced Concrete Horizontal Elliptical 53x83-Inch	12.000 EACH	_____.	_____.
0142	524.0630 Apron Endwalls for Culvert Pipe Salvaged 30-Inch	1.000 EACH	_____.	_____.
0144	601.0405 Concrete Curb & Gutter 18-Inch Type A	560.000 LF	_____.	_____.
0146	601.0409 Concrete Curb & Gutter 30-Inch Type A	5,880.000 LF	_____.	_____.
0148	601.0411 Concrete Curb & Gutter 30-Inch Type D	2,026.000 LF	_____.	_____.
0150	601.0555 Concrete Curb & Gutter 6-Inch Sloped 36-Inch Type A	26,630.000 LF	_____.	_____.
0152	601.0557 Concrete Curb & Gutter 6-Inch Sloped 36-Inch Type D	100.000 LF	_____.	_____.



## Proposal Schedule of Items

Proposal ID: 20200114014 Project(s): 4657-25-03

Federal ID(s): WISC 2019806

SECTION: 0001

Contract Items

Alt Set ID:

Alt Mbr ID:

Proposal Line Number	Item ID Description	Approximate Quantity and Units	Unit Price	Bid Amount
0154	601.0580 Concrete Curb & Gutter 4-Inch Sloped 36-Inch Type R	720.000 LF	_____.	_____.
0156	601.0600 Concrete Curb Pedestrian	510.000 LF	_____.	_____.
0158	602.0405 Concrete Sidewalk 4-Inch	47,210.000 SF	_____.	_____.
0160	602.0410 Concrete Sidewalk 5-Inch	16,500.000 SF	_____.	_____.
0162	602.0415 Concrete Sidewalk 6-Inch	5,440.000 SF	_____.	_____.
0164	602.0515 Curb Ramp Detectable Warning Field Natural Patina	760.000 SF	_____.	_____.
0166	602.0615 Curb Ramp Detectable Warning Field Radial Natural Patina	285.000 SF	_____.	_____.
0168	606.0100 Riprap Light	8.000 CY	_____.	_____.
0170	606.0200 Riprap Medium	487.000 CY	_____.	_____.
0172	606.0300 Riprap Heavy	290.000 CY	_____.	_____.
0174	608.0315 Storm Sewer Pipe Reinforced Concrete Class III 15-Inch	20.000 LF	_____.	_____.
0176	608.0318 Storm Sewer Pipe Reinforced Concrete Class III 18-Inch	170.000 LF	_____.	_____.
0178	608.0324 Storm Sewer Pipe Reinforced Concrete Class III 24-Inch	541.000 LF	_____.	_____.
0180	608.0330 Storm Sewer Pipe Reinforced Concrete Class III 30-Inch	48.000 LF	_____.	_____.
0182	608.0336 Storm Sewer Pipe Reinforced Concrete Class III 36-Inch	215.000 LF	_____.	_____.



Proposal Schedule of Items

Proposal ID: 20200114014 Project(s): 4657-25-03

Federal ID(s): WISC 2019806

SECTION: 0001

Contract Items

Alt Set ID:

Alt Mbr ID:

Proposal Line Number	Item ID Description	Approximate Quantity and Units	Unit Price	Bid Amount
0184	608.0412 Storm Sewer Pipe Reinforced Concrete Class IV 12-Inch	3,063.000 LF	_____	_____
0186	608.0415 Storm Sewer Pipe Reinforced Concrete Class IV 15-Inch	283.000 LF	_____	_____
0188	608.0418 Storm Sewer Pipe Reinforced Concrete Class IV 18-Inch	133.000 LF	_____	_____
0190	608.0424 Storm Sewer Pipe Reinforced Concrete Class IV 24-Inch	94.000 LF	_____	_____
0192	608.3612 Storm Sewer Pipe Class III-B 12-Inch	639.000 LF	_____	_____
0194	608.3615 Storm Sewer Pipe Class III-B 15-Inch	333.000 LF	_____	_____
0196	608.3618 Storm Sewer Pipe Class III-B 18-Inch	1,125.000 LF	_____	_____
0198	608.3624 Storm Sewer Pipe Class III-B 24-Inch	673.000 LF	_____	_____
0200	608.3630 Storm Sewer Pipe Class III-B 30-Inch	1,621.000 LF	_____	_____
0202	608.3636 Storm Sewer Pipe Class III-B 36-Inch	1,598.000 LF	_____	_____
0204	611.0420 Reconstructing Manholes	2.000 EACH	_____	_____
0206	611.0530 Manhole Covers Type J	33.000 EACH	_____	_____
0208	611.0545 Manhole Covers Type L	2.000 EACH	_____	_____
0210	611.0624 Inlet Covers Type H	31.000 EACH	_____	_____
0212	611.0627 Inlet Covers Type HM	78.000 EACH	_____	_____
0214	611.0636 Inlet Covers Type HM-S	6.000 EACH	_____	_____



Proposal Schedule of Items

Proposal ID: 20200114014 Project(s): 4657-25-03  
Federal ID(s): WISC 2019806

SECTION: 0001 Contract Items

Alt Set ID: Alt Mbr ID:

Proposal Line Number	Item ID Description	Approximate Quantity and Units	Unit Price	Bid Amount
0216	611.0639 Inlet Covers Type H-S	16.000 EACH	_____.	_____.
0218	611.0642 Inlet Covers Type MS	1.000 EACH	_____.	_____.
0220	611.0652 Inlet Covers Type T	6.000 EACH	_____.	_____.
0222	611.2004 Manholes 4-FT Diameter	5.000 EACH	_____.	_____.
0224	611.2005 Manholes 5-FT Diameter	13.000 EACH	_____.	_____.
0226	611.2006 Manholes 6-FT Diameter	8.000 EACH	_____.	_____.
0228	611.2008 Manholes 8-FT Diameter	2.000 EACH	_____.	_____.
0230	611.3004 Inlets 4-FT Diameter	3.000 EACH	_____.	_____.
0232	611.3230 Inlets 2x3-FT	126.000 EACH	_____.	_____.
0234	611.3901 Inlets Median 1 Grate	1.000 EACH	_____.	_____.
0236	611.8120.S Cover Plates Temporary	2.000 EACH	_____.	_____.
0238	611.9800.S Pipe Grates	5.000 EACH	_____.	_____.
0240	612.0106 Pipe Underdrain 6-Inch	385.000 LF	_____.	_____.
0242	612.0206 Pipe Underdrain Unperforated 6-Inch	222.000 LF	_____.	_____.
0244	612.0212 Pipe Underdrain Unperforated 12-Inch	15.000 LF	_____.	_____.
0246	612.0215 Pipe Underdrain Unperforated 15-Inch	11.000 LF	_____.	_____.
0248	614.2300 MGS Guardrail 3	75.000 LF	_____.	_____.



Proposal Schedule of Items

Proposal ID: 20200114014 Project(s): 4657-25-03

Federal ID(s): WISC 2019806

SECTION: 0001

Contract Items

Alt Set ID:

Alt Mbr ID:

Proposal Line Number	Item ID Description	Approximate Quantity and Units	Unit Price	Bid Amount
0250	614.2610 MGS Guardrail Terminal EAT	2.000 EACH	_____.	_____.
0252	614.2620 MGS Guardrail Terminal Type 2	2.000 EACH	_____.	_____.
0254	618.0100 Maintenance And Repair of Haul Roads (project) 01. 4657-25-03	1.000 EACH	_____.	_____.
0256	619.1000 Mobilization	1.000 EACH	_____.	_____.
0258	620.0300 Concrete Median Sloped Nose	1,410.000 SF	_____.	_____.
0260	624.0100 Water	263.000 MGAL	_____.	_____.
0262	625.0500 Salvaged Topsoil	75,440.000 SY	_____.	_____.
0264	628.1504 Silt Fence	16,870.000 LF	_____.	_____.
0266	628.1520 Silt Fence Maintenance	16,870.000 LF	_____.	_____.
0268	628.1905 Mobilizations Erosion Control	4.000 EACH	_____.	_____.
0270	628.1910 Mobilizations Emergency Erosion Control	2.000 EACH	_____.	_____.
0272	628.2002 Erosion Mat Class I Type A	1,470.000 SY	_____.	_____.
0274	628.2004 Erosion Mat Class I Type B	1,190.000 SY	_____.	_____.
0276	628.2006 Erosion Mat Urban Class I Type A	71,080.000 SY	_____.	_____.
0278	628.2027 Erosion Mat Class II Type C	1,550.000 SY	_____.	_____.
0280	628.7005 Inlet Protection Type A	3.000 EACH	_____.	_____.





Proposal Schedule of Items

Proposal ID: 20200114014 Project(s): 4657-25-03

Federal ID(s): WISC 2019806

SECTION: 0001

Contract Items

Alt Set ID:

Alt Mbr ID:

Proposal Line Number	Item ID Description	Approximate Quantity and Units	Unit Price	Bid Amount
0282	628.7015 Inlet Protection Type C	129.000 EACH	_____.	_____.
0284	628.7020 Inlet Protection Type D	38.000 EACH	_____.	_____.
0286	628.7504 Temporary Ditch Checks	230.000 LF	_____.	_____.
0288	628.7555 Culvert Pipe Checks	125.000 EACH	_____.	_____.
0290	628.7560 Tracking Pads	5.000 EACH	_____.	_____.
0292	628.7570 Rock Bags	420.000 EACH	_____.	_____.
0294	629.0210 Fertilizer Type B	47.530 CWT	_____.	_____.
0296	630.0110 Seeding Mixture No. 10	536.000 LB	_____.	_____.
0298	630.0130 Seeding Mixture No. 30	729.000 LB	_____.	_____.
0300	630.0140 Seeding Mixture No. 40	65.000 LB	_____.	_____.
0302	630.0160 Seeding Mixture No. 60	147.000 LB	_____.	_____.
0304	630.0200 Seeding Temporary	1,018.000 LB	_____.	_____.
0306	630.0500 Seed Water	39.400 MGAL	_____.	_____.
0308	633.5200 Markers Culvert End	35.000 EACH	_____.	_____.
0310	634.0614 Posts Wood 4x6-Inch X 14-FT	14.000 EACH	_____.	_____.
0312	634.0616 Posts Wood 4x6-Inch X 16-FT	102.000 EACH	_____.	_____.
0314	634.0618 Posts Wood 4x6-Inch X 18-FT	5.000 EACH	_____.	_____.



Proposal Schedule of Items

Proposal ID: 20200114014 Project(s): 4657-25-03

Federal ID(s): WISC 2019806

SECTION: 0001

Contract Items

Alt Set ID:

Alt Mbr ID:

Proposal Line Number	Item ID Description	Approximate Quantity and Units	Unit Price	Bid Amount
0316	637.2210 Signs Type II Reflective H	784.960 SF	_____.	_____.
0318	637.2230 Signs Type II Reflective F	173.750 SF	_____.	_____.
0320	638.2102 Moving Signs Type II	8.000 EACH	_____.	_____.
0322	638.2602 Removing Signs Type II	73.000 EACH	_____.	_____.
0324	638.3000 Removing Small Sign Supports	62.000 EACH	_____.	_____.
0326	641.8100 Overhead Sign Support (structure) 01. S-44-0246	LS	LUMP SUM	_____.
0328	642.5401 Field Office Type D	1.000 EACH	_____.	_____.
0330	643.0300 Traffic Control Drums	22,104.000 DAY	_____.	_____.
0332	643.0420 Traffic Control Barricades Type III	8,453.000 DAY	_____.	_____.
0334	643.0500 Traffic Control Flexible Tubular Marker Posts	29.000 EACH	_____.	_____.
0336	643.0600 Traffic Control Flexible Tubular Marker Bases	29.000 EACH	_____.	_____.
0338	643.0705 Traffic Control Warning Lights Type A	16,905.000 DAY	_____.	_____.
0340	643.0715 Traffic Control Warning Lights Type C	3,575.000 DAY	_____.	_____.
0342	643.0800 Traffic Control Arrow Boards	112.000 DAY	_____.	_____.
0344	643.0900 Traffic Control Signs	28,741.000 DAY	_____.	_____.
0346	643.0910 Traffic Control Covering Signs Type I	12.000 EACH	_____.	_____.



Proposal Schedule of Items

Proposal ID: 20200114014 Project(s): 4657-25-03

Federal ID(s): WISC 2019806

SECTION: 0001

Contract Items

Alt Set ID:

Alt Mbr ID:

Proposal Line Number	Item ID Description	Approximate Quantity and Units	Unit Price	Bid Amount
0348	643.0920 Traffic Control Covering Signs Type II	20.000 EACH	_____.	_____.
0350	643.1000 Traffic Control Signs Fixed Message	306.500 SF	_____.	_____.
0352	643.1050 Traffic Control Signs PCMS	39.000 DAY	_____.	_____.
0354	643.5000 Traffic Control	1.000 EACH	_____.	_____.
0356	644.1410 Temporary Pedestrian Surface Asphalt	90.000 SF	_____.	_____.
0358	644.1601 Temporary Pedestrian Curb Ramp	28.000 DAY	_____.	_____.
0360	644.1810 Temporary Pedestrian Barricade	465.000 LF	_____.	_____.
0362	645.0111 Geotextile Type DF Schedule A	231.000 SY	_____.	_____.
0364	645.0120 Geotextile Type HR	1,227.000 SY	_____.	_____.
0366	645.0130 Geotextile Type R	44.000 SY	_____.	_____.
0368	646.1020 Marking Line Epoxy 4-Inch	2,981.000 LF	_____.	_____.
0370	646.1040 Marking Line Grooved Wet Ref Epoxy 4-Inch	29,418.000 LF	_____.	_____.
0372	646.1555 Marking Line Grooved Contrast Permanent Tape 4-Inch	3,445.000 LF	_____.	_____.
0374	646.3020 Marking Line Epoxy 8-Inch	237.000 LF	_____.	_____.
0376	646.3040 Marking Line Grooved Wet Ref Epoxy 8-Inch	833.000 LF	_____.	_____.
0378	646.3555 Marking Line Grooved Contrast Permanent Tape 8-Inch	5,300.000 LF	_____.	_____.



Proposal Schedule of Items

Proposal ID: 20200114014 Project(s): 4657-25-03

Federal ID(s): WISC 2019806

SECTION: 0001

Contract Items

Alt Set ID:

Alt Mbr ID:

Proposal Line Number	Item ID Description	Approximate Quantity and Units	Unit Price	Bid Amount
0380	646.5020 Marking Arrow Epoxy	8.000 EACH	_____.	_____.
0382	646.6120 Marking Stop Line Epoxy 18-Inch	75.000 LF	_____.	_____.
0384	646.7120 Marking Diagonal Epoxy 12-Inch	63.000 LF	_____.	_____.
0386	646.7420 Marking Crosswalk Epoxy Transverse Line 6-Inch	85.000 LF	_____.	_____.
0388	646.8120 Marking Curb Epoxy	40.000 LF	_____.	_____.
0390	646.8220 Marking Island Nose Epoxy	8.000 EACH	_____.	_____.
0392	646.9000 Marking Removal Line 4-Inch	845.000 LF	_____.	_____.
0394	646.9100 Marking Removal Line 8-Inch	91.000 LF	_____.	_____.
0396	646.9200 Marking Removal Line Wide	138.000 LF	_____.	_____.
0398	646.9300 Marking Removal Special Marking	5.000 EACH	_____.	_____.
0400	649.0105 Temporary Marking Line Paint 4-Inch	1,940.000 LF	_____.	_____.
0402	649.0150 Temporary Marking Line Removable Tape 4-Inch	890.000 LF	_____.	_____.
0404	649.0250 Temporary Marking Line Removable Tape 8-Inch	857.000 LF	_____.	_____.
0406	650.4000 Construction Staking Storm Sewer	185.000 EACH	_____.	_____.
0408	650.4500 Construction Staking Subgrade	16,409.000 LF	_____.	_____.
0410	650.5000 Construction Staking Base	1,218.000 LF	_____.	_____.



Proposal Schedule of Items

Proposal ID: 20200114014 Project(s): 4657-25-03

Federal ID(s): WISC 2019806

SECTION: 0001

Contract Items

Alt Set ID:

Alt Mbr ID:

Proposal Line Number	Item ID Description	Approximate Quantity and Units	Unit Price	Bid Amount
0412	650.5500 Construction Staking Curb Gutter and Curb & Gutter	2,280.000 LF	_____.	_____.
0414	650.6000 Construction Staking Pipe Culverts	24.000 EACH	_____.	_____.
0416	650.7000 Construction Staking Concrete Pavement	17,424.000 LF	_____.	_____.
0418	650.8500 Construction Staking Electrical Installations (project) 01. 4657-25-03	LS	LUMP SUM	_____.
0420	650.9000 Construction Staking Curb Ramps	56.000 EACH	_____.	_____.
0422	650.9910 Construction Staking Supplemental Control (project) 01. 4657-25-03	LS	LUMP SUM	_____.
0424	650.9920 Construction Staking Slope Stakes	18,478.000 LF	_____.	_____.
0426	652.0325 Conduit Rigid Nonmetallic Schedule 80 2-Inch	260.000 LF	_____.	_____.
0428	652.0700.S Install Conduit into Existing Item	8.000 EACH	_____.	_____.
0430	652.0800 Conduit Loop Detector	693.000 LF	_____.	_____.
0432	653.0105 Pull Boxes Steel 12x24-Inch	2.000 EACH	_____.	_____.
0434	653.0905 Removing Pull Boxes	2.000 EACH	_____.	_____.
0436	654.0101 Concrete Bases Type 1	5.000 EACH	_____.	_____.
0438	654.0102 Concrete Bases Type 2	4.000 EACH	_____.	_____.
0440	654.0110 Concrete Bases Type 10	2.000 EACH	_____.	_____.



Proposal Schedule of Items

Proposal ID: 20200114014 Project(s): 4657-25-03

Federal ID(s): WISC 2019806

SECTION: 0001

Contract Items

Alt Set ID:

Alt Mbr ID:

Proposal Line Number	Item ID Description	Approximate Quantity and Units	Unit Price	Bid Amount
0442	655.0240 Cable Traffic Signal 7-14 AWG	1,190.000 LF	_____	_____
0444	655.0515 Electrical Wire Traffic Signals 10 AWG	849.000 LF	_____	_____
0446	655.0610 Electrical Wire Lighting 12 AWG	984.000 LF	_____	_____
0448	655.0700 Loop Detector Lead In Cable	2,004.000 LF	_____	_____
0450	655.0800 Loop Detector Wire	1,978.000 LF	_____	_____
0452	655.0900 Traffic Signal EVP Detector Cable	203.000 LF	_____	_____
0454	657.0100 Pedestal Bases	2.000 EACH	_____	_____
0456	657.0255 Transformer Bases Breakaway 11 1/2-Inch Bolt Circle	4.000 EACH	_____	_____
0458	657.0310 Poles Type 3	5.000 EACH	_____	_____
0460	657.0350 Poles Type 10	2.000 EACH	_____	_____
0462	657.0430 Traffic Signal Standards Aluminum 10-FT	2.000 EACH	_____	_____
0464	657.0525 Monotube Arms 25-FT	1.000 EACH	_____	_____
0466	657.0530 Monotube Arms 30-FT	1.000 EACH	_____	_____
0468	657.0709 Luminaire Arms Truss Type 4-Inch Clamp 12-FT	4.000 EACH	_____	_____
0470	657.0808 Luminaire Arms Steel 8-FT	4.000 EACH	_____	_____
0472	658.0173 Traffic Signal Face 3S 12-Inch	4.000 EACH	_____	_____



Proposal Schedule of Items

Proposal ID: 20200114014 Project(s): 4657-25-03

Federal ID(s): WISC 2019806

SECTION: 0001

Contract Items

Alt Set ID:

Alt Mbr ID:

Proposal Line Number	Item ID Description	Approximate Quantity and Units	Unit Price	Bid Amount
0474	658.0174 Traffic Signal Face 4S 12-Inch	5.000 EACH	_____.	_____.
0476	658.0416 Pedestrian Signal Face 16-Inch	6.000 EACH	_____.	_____.
0478	658.0500 Pedestrian Push Buttons	6.000 EACH	_____.	_____.
0480	658.5069 Signal Mounting Hardware (location) 01. CTH CA & CTH CB	LS	LUMP SUM	_____.
0482	658.5069 Signal Mounting Hardware (location) 02. CTH CA & Casaloma Dr.	LS	LUMP SUM	_____.
0484	658.5069 Signal Mounting Hardware (location) 03. CTH CA & Mall Dr.	LS	LUMP SUM	_____.
0486	659.1125 Luminaires Utility LED C	9.000 EACH	_____.	_____.
0488	690.0150 Sawing Asphalt	860.000 LF	_____.	_____.
0490	690.0250 Sawing Concrete	442.000 LF	_____.	_____.
0492	715.0415 Incentive Strength Concrete Pavement	19,716.000 DOL	1.00000	19,716.00
0494	715.0710 Optimized Aggregate Gradation Incentive	41,500.000 DOL	1.00000	41,500.00
0496	740.0440 Incentive IRI Ride	4,899.000 DOL	1.00000	4,899.00
0498	ASP.1T0A On-the-Job Training Apprentice at \$5.00/HR	2,400.000 HRS	5.00000	12,000.00
0500	ASP.1T0G On-the-Job Training Graduate at \$5.00/HR	4,400.000 HRS	5.00000	22,000.00
0502	SPV.0035 Special 10. Planting Mixture	780.000 CY	_____.	_____.



Proposal Schedule of Items

Proposal ID: 20200114014 Project(s): 4657-25-03

Federal ID(s): WISC 2019806

SECTION: 0001

Contract Items

Alt Set ID:

Alt Mbr ID:

Proposal Line Number	Item ID Description	Approximate Quantity and Units	Unit Price	Bid Amount
0504	SPV.0060 Special 01. Pavement Marking Grooved Contrast Preformed Thermoplastic Arrow Type 1	4.000 EACH	_____.	_____.
0506	SPV.0060 Special 02. Pavement Marking Grooved Contrast Preformed Thermoplastic Arrow Type 2	12.000 EACH	_____.	_____.
0508	SPV.0060 Special 03. Pavement Marking Grooved Contrast Preformed Thermoplastic Arrow Type 3	8.000 EACH	_____.	_____.
0510	SPV.0060 Special 04. Pavement Marking Grooved Contrast Preformed Thermoplastic Arrow Type 3R	4.000 EACH	_____.	_____.
0512	SPV.0060 Special 05. Pavement Marking Grooved Contrast Preformed Thermoplastic Word	14.000 EACH	_____.	_____.
0514	SPV.0060 Special 06. Adjusting Water Valve Box	9.000 EACH	_____.	_____.
0516	SPV.0060 Special 07 . Inlet 2x2.5-Ft Special	4.000 EACH	_____.	_____.
0518	SPV.0060 Special 08. Inlet 4-FT Diameter Special	2.000 EACH	_____.	_____.
0520	SPV.0060 Special 09. Bolt Replacement Hydrant	3.000 EACH	_____.	_____.
0522	SPV.0060 Special 10. Bolt Replacement Valve/Fitting	17.000 EACH	_____.	_____.
0524	SPV.0060 Special 11. Adjusting Sanitary Manhole	5.000 EACH	_____.	_____.
0526	SPV.0060 Special 12. Reconstructing Sanitary Manhole	7.000 EACH	_____.	_____.
0528	SPV.0060 Special 14. Manhole Cover Type J Sanitary	1.000 EACH	_____.	_____.





Proposal Schedule of Items

Proposal ID: 20200114014 Project(s): 4657-25-03

Federal ID(s): WISC 2019806

SECTION: 0001

Contract Items

Alt Set ID:

Alt Mbr ID:

Proposal Line Number	Item ID Description	Approximate Quantity and Units	Unit Price	Bid Amount
0530	SPV.0060 Special 16. Hydrant	1.000 EACH	_____.	_____.
0532	SPV.0060 Special 17. Relocating Hydrant	1.000 EACH	_____.	_____.
0534	SPV.0060 Special 18. Water Valve 6-Inch	2.000 EACH	_____.	_____.
0536	SPV.0060 Special 19. Water Valve 10-Inch	1.000 EACH	_____.	_____.
0538	SPV.0060 Special 20. Tee 10x6-Inch	1.000 EACH	_____.	_____.
0540	SPV.0060 Special 21. Connect to Existing 10-Inch Watermain	2.000 EACH	_____.	_____.
0542	SPV.0060 Special 22. Corporation, Curb Stop and Box	2.000 EACH	_____.	_____.
0544	SPV.0060 Special 23. Yard Hydrant	2.000 EACH	_____.	_____.
0546	SPV.0060 Special 24. Pipe Tap 12-Inch	1.000 EACH	_____.	_____.
0548	SPV.0060 Special 25. Pipe Tap 15-Inch	1.000 EACH	_____.	_____.
0550	SPV.0060 Special 26. Anti-Seep Clay Dam	7.000 EACH	_____.	_____.
0552	SPV.0075 Special 01. Street Sweeping	170.000 HRS	_____.	_____.
0554	SPV.0090 Special 01. Pavement Marking Grooved Contrast Preformed Thermoplastic Stop Line 18-Inch	178.000 LF	_____.	_____.
0556	SPV.0090 Special 02. Pavement Marking Grooved Contrast Preformed Thermoplastic Crosswalk 6-Inch	758.000 LF	_____.	_____.



Proposal Schedule of Items

Proposal ID: 20200114014 Project(s): 4657-25-03

Federal ID(s): WISC 2019806

SECTION: 0001

Contract Items

Alt Set ID:

Alt Mbr ID:

Proposal Line Number	Item ID Description	Approximate Quantity and Units	Unit Price	Bid Amount
0558	SPV.0090 Special 03. Pavement Marking Grooved Contrast Preformed Thermoplastic Crosswalk 18-Inch	1,192.000 LF	_____.	_____.
0560	SPV.0090 Special 04. Pavement Marking Grooved Contrast Preformed Thermoplastic Dotted Extension	466.000 LF	_____.	_____.
0562	SPV.0090 Special 05. Fence Chain Link Polymer Coated 4-FT	250.000 LF	_____.	_____.
0564	SPV.0090 Special 06. Sanitary Sewer Pipe 12-Inch	62.000 LF	_____.	_____.
0566	SPV.0090 Special 07. Culvert Pipe Reinforced Concrete Horizontal Elliptical CL HE-IV 53x83-Inch	986.000 LF	_____.	_____.
0568	SPV.0090 Special 08. Pipe Arch Corrugated Steel Aluminum Coated 79x117-Inch	236.000 LF	_____.	_____.
0570	SPV.0090 Special 10. Steel Casing Pipe 24-Inch	156.000 LF	_____.	_____.
0572	SPV.0090 Special 11. Cable Traffic Signal 20-14 AWG	541.000 LF	_____.	_____.
0574	SPV.0090 Special 12. Tray Cable for Street Lighting 3 Conductor 12 AWG	2,565.000 LF	_____.	_____.
0576	SPV.0090 Special 13. Water Service 1-Inch	166.000 LF	_____.	_____.
0578	SPV.0090 Special 14. Water Main 6-Inch	27.000 LF	_____.	_____.
0580	SPV.0090 Special 15. Water Main 10-Inch	45.000 LF	_____.	_____.
0582	SPV.0090 Special 16. Concrete Curb & Gutter 18-Inch Type D SHES	26.000 LF	_____.	_____.



Proposal Schedule of Items

Proposal ID: 20200114014 Project(s): 4657-25-03

Federal ID(s): WISC 2019806

SECTION: 0001

Contract Items

Alt Set ID:

Alt Mbr ID:

Proposal Line Number	Item ID Description	Approximate Quantity and Units	Unit Price	Bid Amount
0584	SPV.0090 Special 17. Concrete Curb and Gutter 30-Inch Type D SHES	15.000 LF	_____.	_____.
0586	SPV.0090 Special 18. Concrete Curb and Gutter 30-Inch Type A SHES	20.000 LF	_____.	_____.
0588	SPV.0105 Special 01. Salvage & Reinstall Traffic Signal at CTH CA & CTH CB	LS	LUMP SUM	_____.
0590	SPV.0105 Special 02. Salvage & Reinstall Traffic Signal at CTH CA & Casaloma Dr.	LS	LUMP SUM	_____.
0592	SPV.0105 Special 03. Salvage & Reinstall Traffic Signal at CTH CA & Mall Dr.	LS	LUMP SUM	_____.
0594	SPV.0105 Special 04. Construction Staking Multi- Use Path and Sidewalk	LS	LUMP SUM	_____.
0596	SPV.0105 Special 05. West Underground Detention System	LS	LUMP SUM	_____.
0598	SPV.0105 Special 06. East Underground Detention System	LS	LUMP SUM	_____.
0600	SPV.0105 Special 07. Video Vehicle Detection System at CTH CA & Casaloma Drive	LS	LUMP SUM	_____.
0602	SPV.0105 Special 08. Video Vehicle Detection System at CTH CA & Mall Drive	LS	LUMP SUM	_____.
0604	SPV.0105 Special 10. Landscape Wall - Mayflower Drive Northeast (South)	LS	LUMP SUM	_____.
0606	SPV.0105 Special 11. Landscape Wall - Mayflower Drive Northeast (North)	LS	LUMP SUM	_____.
0608	SPV.0105 Special 12. Landscape Wall McCarthy Drive Southwest	LS	LUMP SUM	_____.



Proposal Schedule of Items

Proposal ID: 20200114014 Project(s): 4657-25-03

Federal ID(s): WISC 2019806

SECTION: 0001

Contract Items

Alt Set ID:

Alt Mbr ID:

Proposal Line Number	Item ID Description	Approximate Quantity and Units	Unit Price	Bid Amount
0610	SPV.0105 Special 13. Landscape Wall - McCarthy Drive Northeast (South)	LS	LUMP SUM	_____.
0612	SPV.0105 Special 14. Landscape Wall - McCarthy Drive Northeast (North)	LS	LUMP SUM	_____.
0614	SPV.0165 Special 01. Concrete Median Sloped Nose SHES	180.000 SF	_____.	_____.
0616	SPV.0180 Special 01. 2-Inch Insulation	34.000 SY	_____.	_____.
0618	SPV.0180 Special 02. Concrete Pavement SHES 8-Inch	30.000 SY	_____.	_____.
0620	SPV.0200 Special 01. Sanitary Manhole	15.770 VF	_____.	_____.
0622	209.2100 Backfill Granular Grade 2	19.000 CY	_____.	_____.
0624	460.6223 HMA Pavement 3 MT 58-28 S	720.000 TON	_____.	_____.
0626	460.6224 HMA Pavement 4 MT 58-28 S	460.000 TON	_____.	_____.
Section: 0001			Total:	_____.
			Total Bid:	_____.