



Wisconsin Department of Transportation

February 3, 2020

NOTICE TO ALL CONTRACTORS:

**Proposal #14: 1228-22-72, WISC 2020 042
IH 43 North South Freeway
Hampton Rd to Bender Rd
IH 43
Milwaukee County**

Division of Transportation Systems Development

Bureau of Project Development
4822 Madison Yards Way, 4th Floor South
Madison, WI 53705

Telephone: (608) 266-1631
Facsimile (FAX): (608) 266-8459

Letting of February 11, 2020

This is Addendum No. 01, which provides for the following:

Special Provisions:

Revised Special Provisions	
Article No.	Description
3	Prosecution and Progress
8	Other Contracts
22	Labeling and Disposal of Waste Material

Added Special Provisions	
Article No.	Description
81	Notice to Contractor – Interstate Work Restriction

Plan Sheets:

Revised Plan Sheets	
Plan Sheet	Plan Sheet Title (brief description of changes to sheet)
673	Structure B-40-581 revised the color for girder painting in the general notes to use the correct Blue color instead of Brown.
678	Structure B-40-582 revised the color for girder painting in the general notes to use the correct Blue color instead of Brown.
683	Structure B-40-583 revised the color for girder painting in the general notes to use the correct Blue color instead of Brown.
688	Structure B-40-584 revised the color for girder painting in the general notes to use the correct Blue color instead of Brown.
693	Structure B-40-585 revised the color for girder painting in the general notes to use the correct Blue color instead of Brown.
698	Structure B-40-586 revised the color for girder painting in the general notes to use the correct Blue color instead of Brown.
703	Structure B-40-587 revised the color for girder painting in the general notes to use the correct Blue color instead of Brown.
704	Structure B-40-602 revised the color for girder painting in the general notes to use the correct Blue color instead of Brown.

The responsibility for notifying potential subcontractors and suppliers of these changes remains with the prime contractor.

Sincerely,

Mike Coleman

Proposal Development Specialist
Proposal Management Section

ADDENDUM NO. 01

1228-22-72

February 3, 2020

Special Provisions

3. Prosecution and Progress

*Replace entire section titled **Interim Liquidated Damages** with the following:*

Northbound IH 43 off-ramp over Lexington Avenue

At the beginning of Stage 1A operations, close the IH 43 northbound off ramp to Silver Spring Dr/Port Washington to through traffic for a maximum of 14 calendar days. Do not reopen until completing the following work: All work on Structure B-40-602 (except girder painting) and approach slabs.

If the contractor fails to complete the work necessary to reopen the ramp to Port Washington Rd (Intersection south of Silver Spring Rd.) to traffic within 14 calendar days, the department will assess the contractor \$6,000 in interim liquidated damages for each calendar day the contract work remains incomplete beyond 14 calendar days. An entire calendar day will be charged for any period of time within a calendar day that the road remains closed beyond 12:01 AM.

If the 14 days cannot be completed prior to the Article 81 Notice to Contractor – Interstate Work Restriction dates, the work should be started post Article 81 Notice to Contractor – Interstate Work Restriction Dates.

Northbound IH 43 off-ramp to Silver Spring Rd. and Port Washington Road

At the beginning of Stage 1A operations, close the IH 43 northbound off ramp to Silver Spring Dr/Port Washington to through traffic for a maximum of 30 calendar days. Do not reopen until completing the following work: All work on Structure B-40-602(except girder painting), all work on Structure B-40-586(except girder painting), all work on Structure B-40-587(except girder painting), new concrete pavement, and all approach slabs.

If the contractor fails to complete the work necessary to reopen the northbound off ramp to Silver Spring Dr/Port Washington Rd in its entirety to traffic within 30 calendar days, the department will assess the contractor \$4,500 in interim liquidated damages for each calendar day the contract work remains incomplete beyond 30 calendar days. An entire calendar day will be charged for any period of time within a calendar day that the road remains closed beyond 12:01 AM.

If the 14 days cannot be completed prior to the Article 81 Notice to Contractor – Interstate Work Restriction dates, the work should be started post Article 81 Notice to Contractor – Interstate Work Restriction Dates.

Northbound IH 43 on-ramp from Silver Spring Rd. and Port Washington Road

At the beginning of Stage 1B operations, close the IH 43 northbound on ramp from Silver Spring Dr/Port Washington to through traffic for a maximum of 21 calendar days. Do not reopen until completing the following work: All work on Structure B-40-585(except girder painting) and approach slabs.

If the contractor fails to complete the work necessary to reopen the northbound on ramp from Silver Spring Dr/Port Washington Rd in its entirety to traffic within 21 calendar days, the department will assess the contractor \$2,500 in interim liquidated damages for each calendar day the contract work remains incomplete beyond 21 calendar days. An entire calendar day will be charged for any period of time within a calendar day that the road remains closed beyond 12:01 AM.

IH 43 Northbound Mainline

Once all work on the IH 43 Northbound off-ramp is entirely complete (except for girder painting), work may commence on IH 43 northbound. Reduce the number of IH 43 northbound lanes to 2 lanes of through traffic

for a maximum of 60 calendar days. Do not reopen until completing the following work: PMA overlay and joint repair on Structure B-40-581, PMA overlay and joint repair on Structure B-40-583, and approach slabs.

If the contractor fails to complete the work necessary to reopen all lanes of northbound IH 43 to traffic within 60 calendar days, the department will assess the contractor \$15,000 in interim liquidated damages for each calendar day the contract work remains incomplete beyond 60 calendar days. An entire calendar day will be charged for any period of time within a calendar day that the road remains closed beyond 12:01 AM.

IH 43 Southbound Mainline

At the beginning of Stage 1B operations, reduce the IH 43 southbound to 2 lanes of through traffic for a maximum of 60 calendar days. Do not reopen until completing the following work: PMA overlay and joint repair on Structure B-40-582, PMA overlay and joint repair on Structure B-40-584, and approach slabs.

If the contractor fails to complete the work necessary to reopen all lanes of southbound IH 43 to traffic within 60 calendar days, the department will assess the contractor \$5,000 in interim liquidated damages for each calendar day the contract work remains incomplete beyond 60 calendar days. An entire calendar day will be charged for any period of time within a calendar day that the road remains closed beyond 12:01 AM.

If contract time expires prior to completing all work specified in the contract, additional liquidated damages will be affixed according to standard spec 108.11.

Add the follow sentence to the end of the Port Washington Road section of the Local Road restrictions section:

Do not start Stage 2A work until all Stage 1 A&B work is complete.

8. Other Contracts

Add the following projects to the end of the article:

City of Glendale Project G0580230

Silver Spring Rd., Silver Spring Rd Pavement Replacement
Glendale Contact: Andy Ashley, 414-831-2869, Andrew.Ashley@clarkdietz.com

City of Glendale Project G0580290

Silver Spring Rd., Port Washington Rd., Port Washington Rd Intersection Pavement Replacement
Glendale Contact: Andy Ashley, 414-831-2869, Andrew.Ashley@clarkdietz.com

22. Labeling and Disposal of Waste Material

Replace the first 8 rows of text with the following:

The EPA ID number for Structure B-40-581 is WIR000172106.

The EPA ID number for Structure B-40-582 is WIR000172106.

The EPA ID number for Structure B-40-583 is WIR000172114.

The EPA ID number for Structure B-40-584 is WIR000172114.

The EPA ID number for Structure B-40-585 is WIR000172122.

The EPA ID number for Structure B-40-586 is WIR000172130.

The EPA ID number for Structure B-40-587 is WIR000172148.

The EPA ID number for Structure B-40-602 is WIR000172155.

81. Notice to Contractor – Interstate Work Restriction

From 5:30AM Thursday July 9th to 11:59 PM Friday July 17th, 2020:

Do not perform work; haul equipment; or haul materials, on, along, or across any portion of IH 43, Silver Spring Drive, Hampton Avenue, and Port Washington Road, including ramps. Any exceptions to this work restriction must be approved by the engineer in writing.

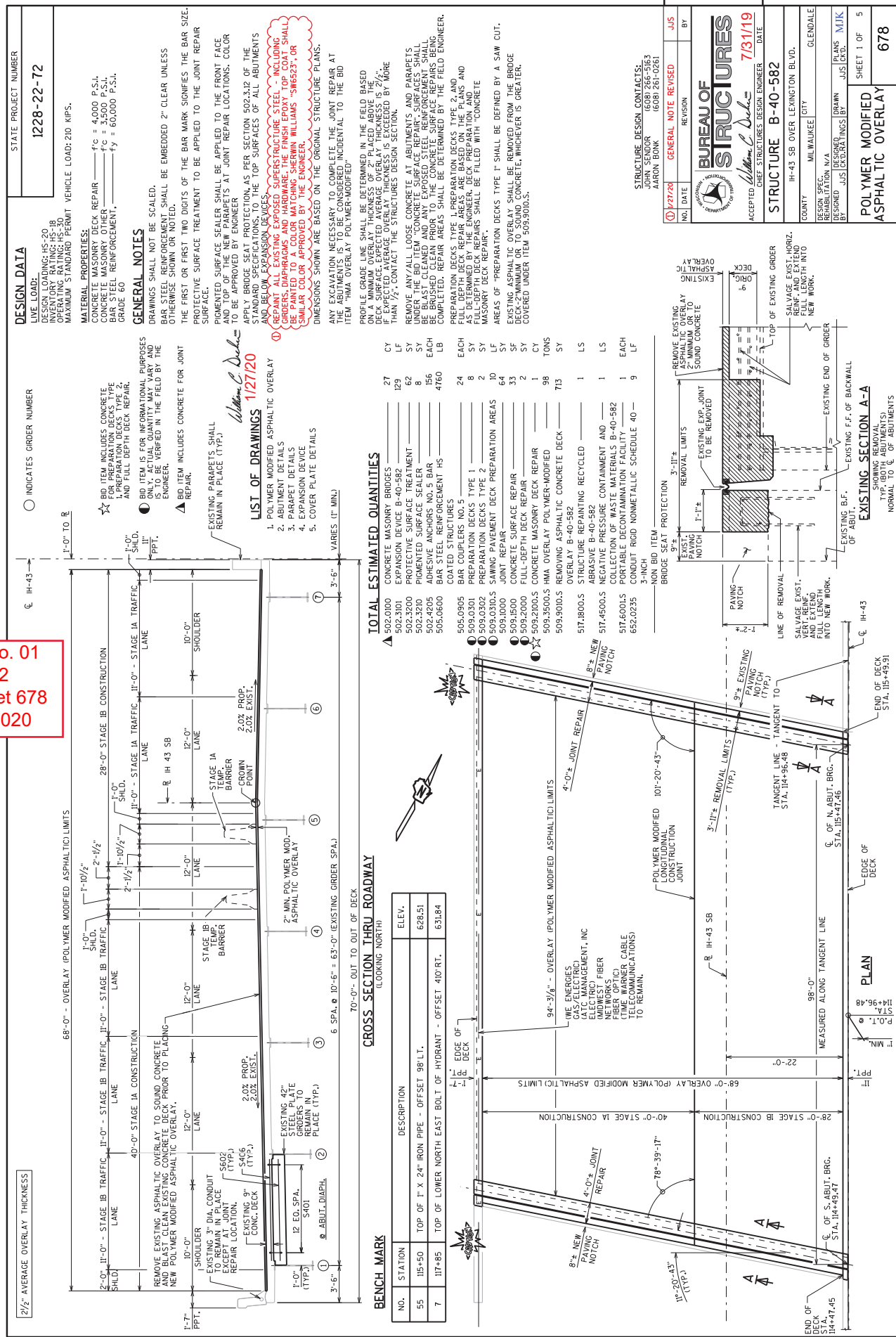
Roadway and traffic control maintenance required by the contractor shall be performed as needed during this work restriction. Coordinate with the project engineer for approval in advance of performing necessary roadway or traffic control maintenance work.

Plan Sheets

The following 8½ x 11-inch sheets are attached and made part of the plans for this proposal:
Revised: 673, 678, 683, 688, 693, 698, 703, and 704.

END OF ADDENDUM

Addendum No. 01
ID 1228-22-72
Revised Sheet 678
February 3, 2020



DESIGN DATA

LIVE LOAD: HS-20
DESIGN LOADING: HS-20
INVENTORY RATING: HS-18
MAXIMUM STANDARD PERMIT VEHICLE LOAD: 210 KIPS.

MATERIAL PROPERTIES:
CONCRETE STRENGTH: $f'c = 4,000$ P.S.I.
CONCRETE MASONRY OTHER: $f'c = 3,500$ P.S.I.
BAR STEEL REINFORCEMENT: $f_y = 60,000$ P.S.I.
GRADE 60

GENERAL NOTES

DRAWINGS SHALL NOT BE SCALED.
BAR STEEL REINFORCEMENT SHALL BE EMBEDDED 2" CLEAR UNLESS OTHERWISE NOTED.
THE FIRST OR FIRST TWO DIGITS OF THE BAR MARK SIGNIFY THE BAR SIZE.
CONCRETE SURFACE TREATMENT TO BE APPLIED TO THE JOINT REPAIR SURFACE.
PICKED SURFACE SEALER SHALL BE APPLIED TO THE FRONT FACE AND TOP OF THE NEW PARAPETS AT JOINT REPAIR LOCATIONS. COLOR TO BE APPROVED BY ENGINEER.
APPLY BRIDGE SEAT PROTECTION, AS PER SECTION 502.3.12 OF THE STANDARD SPECIFICATIONS, TO THE TOP SURFACES OF ALL ABUTMENTS AND BELOW EXPANSION DEVICES.
REPAIR ALL EXISTING EXPOSED SUPERSTRUCTURE STEEL INCLUDING: BRACKET PLATES, END PLATES, AND WELDS. ALL STEEL SHALL BE PAINTED TO A COLOR MATCHING SHERWIN WILLIAMS "S6523", OR SIMILAR COLOR APPROVED BY THE ENGINEER.
DIMENSIONS SHOWN ARE BASED ON THE ORIGINAL STRUCTURE PLANS. ANY REVISIONS NECESSARY TO COMPLETE THE JOINT REPAIR AT THE ABUTMENTS, IS TO BE CONSIDERED INCIDENTAL TO THE BID ITEM "HMA OVERLAY POLYMER-MODIFIED".

LIST OF DRAWINGS

1. POLYMER MODIFIED ASPHALTIC OVERLAY
2. ABUTMENT DETAILS
3. PARAPET DETAILS
4. EXPANSION DEVICE
5. COVER PLATE DETAILS

TOTAL ESTIMATED QUANTITIES

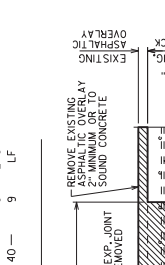
592.0100	CONCRETE MASONRY BRIDGES	27	CY
592.3100	PAVING DEVICE B-40-582	429	LF
502.3210	PICKED SURFACE SEALER	8	SY
502.4205	ADHESIVE ANCHORS NO.5 BAR	156	EACH
505.0600	BAR STEEL REINFORCEMENT HS	4760	LB
505.0905	COATED STRUCTURES NO.5	24	EACH
509.0301	PREPARATION DECKS TYPE 1	8	SY
509.0302	PREPARATION DECKS TYPE 2	2	SY
509.0310	SAWING PAVEMENT DECK PREPARATION AREAS	10	LF
509.1000	JOINT REPAIR	64	SY
509.1500	CONCRETE SURFACE REPAIR	33	SY
509.2000	FULL-DEPTH DECK REPAIR	2	SY
509.2100	CONCRETE MASONRY DECK REPAIR	1	CY
509.3500	HMA OVERLAY POLYMER-MODIFIED	98	TONS
509.3600	REMOVING ASPHALTIC CONCRETE DECK OVERLAY B-40-582	713	SY
517.1800	STRUCTURE REPAINTING RECYCLED ABRASIVE B-40-582	1	LS
517.4500	NEGATIVE PRESSURE CONTAINMENT AND COLLECTION OF WASTE MATERIALS B-40-582	1	LS
652.0235	CONDUIT RIGID NONMETALLIC SCHEDULE 40-3-INCH	9	LF

CROSS SECTION THRU ROADWAY
(LOOKING NORTH)

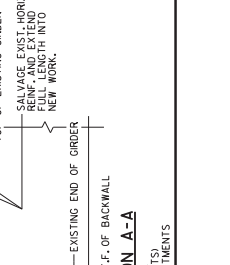
70'-0" - OUT TO OUT OF DECK

NO.	STATION	DESCRIPTION	ELEV.
55	115+50	TOP OF 1" X 24" IRON PIPE - OFFSET 98 LT.	628.51
7	117+85	TOP OF LOWER NORTH EAST BOLT OF HYDRANT - OFFSET 410 RT.	631.84

EXISTING SECTION A-A



PLAN



STATE PROJECT NUMBER
1228-22-72

GENERAL NOTE REVISED BY JJS
NO. DATE REVISION

BUREAU OF STRUCTURES
ACCEPTED *William C. Decker* 7/31/19
CHIEF STRUCTURES DESIGN ENGINEER DATE

STRUCTURE DESIGN CONTACTS:
JOHN SENDOR (608) 266-5163
AARON BARK (608) 261-0261

STRUCTURE B-40-582
COUNTY MILWAUKEE CITY GLENDALE
DESIGN SPEC. NO. 100
REHABILITATION NO. 200
DESIGNED BY JJS
CHECKED BY MJK
PLANS JUSTICED

POLYMER MODIFIED ASPHALTIC OVERLAY
SHEET 1 OF 5
678

DATE: OCT. 2017

LIVE LOAD:
DESIGN LOADING: HS-20
INVENTORY RATING: HS-21
MAXIMUM STANDARD PERMIT VEHICLE LOAD: 200 KIPS.
MATERIAL PROPERTIES:
CONCRETE MASONRY - DECK REPAIR $f_c = 4,000$ P.S.I.
BAR STEEL REINFORCEMENT, GRADE 60 $f_y = 60,000$ P.S.I.

GENERAL NOTES

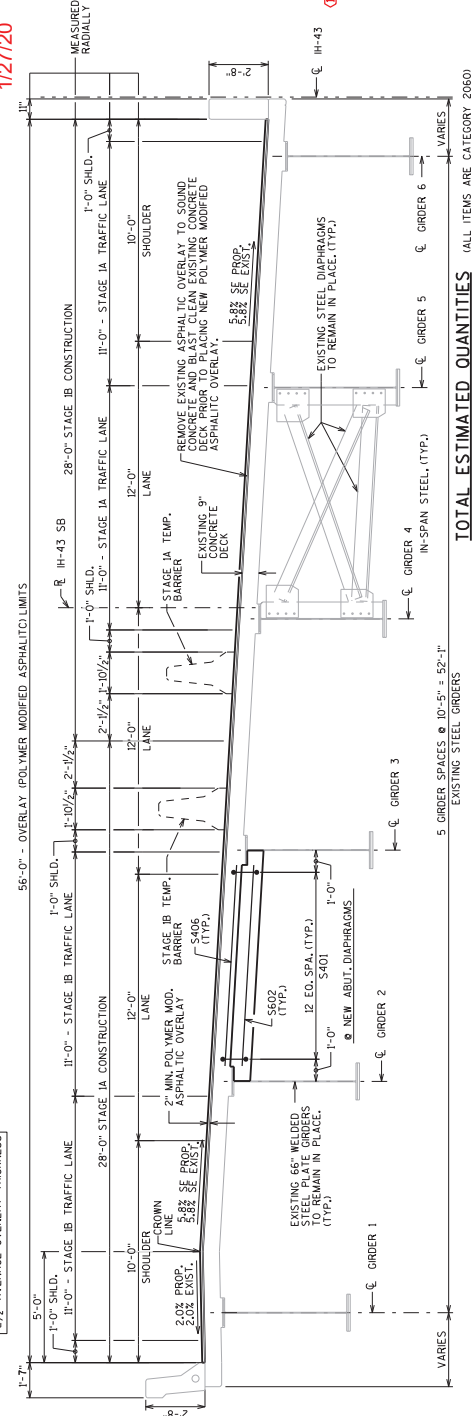
DRAWINGS SHALL NOT BE SCALED.
BAR STEEL REINFORCEMENT SHALL BE EMBEDDED 2" CLEAR UNLESS OTHERWISE SHOWN OR NOTED.
THE FIRST OR TWO DIGITS OF THE BAR MARK IDENTIFIES THE BAR SIZE. PROTECTIVE SURFACE TREATMENT TO BE APPLIED TO THE JOINT REPAIR SURFACE.
PIGMENTED SURFACE SEALER SHALL BE APPLIED TO THE FRONT FACE AND TOP SURFACES AT JOINT REPAIR LOCATIONS. COLOR TO BE APPROVED BY ENGINEER.
APPLY BRIDGE SEAT PROTECTION, AS PER SECTION 502.3.12 OF THE STANDARD SPECIFICATIONS, TO THE TOP SURFACES OF ALL ABUTMENTS AND BELOW EXPANSION DEVICES.

REPAIR ALL EXISTING EXPOSED SUPERSTRUCTURE STEEL - INCLUDING STEEL PLATE REPAIRS - TO A COLOR MATCHING SHERWIN WILLIAMS (SW6523) OR SIMILAR COLOR APPROVED BY THE ENGINEER.

DIMENSIONS SHOWN ARE BASED ON THE ORIGINAL STRUCTURE PLANS. ANY EXCAVATION NECESSARY TO COMPLETE THE JOINT REPAIR AT THE ABUTMENTS IS TO BE CONSIDERED INCIDENTAL TO THE BID ITEM "HMA PREPARE GRADE LINE SHALL BE DETERMINED IN THE FIELD BASED ON A MINIMUM OVERLAY THICKNESS OF 2" PLACED ABOVE THE DECK SURFACE. EXPECTED AVERAGE OVERLAY THICKNESS IS 2 1/2". IF EXPECTED AVERAGE OVERLAY THICKNESS IS GREATER THAN 2 1/2", CONTACT THE STRUCTURES DESIGN SECTION.

REMOVE ANY/ALL LOOSE CONCRETE AT ABUTMENTS AND PARAPETS UNDER THE BID ITEM "CONCRETE SURFACE REPAIR". SURFACES SHALL BE BLAST CLEAN PRIOR TO THE CONCRETE SURFACE REPAIRS BEING COMPLETED. REPAIR AREAS SHALL BE DETERMINED BY THE FIELD ENGINEER.
PREPARATION DECKS TYPE 1, PREPARATION DECKS TYPE 2, AND FULL DEPTH DECK REPAIR AREAS ARE BASED ON THE PLANS AND AS DETERMINED BY THE FIELD ENGINEER. FULL DEPTH DECK REPAIRS SHALL BE FILLED WITH "CONCRETE MASONRY DECK REPAIR".
AREAS OF "PREPARATION DECKS TYPE 1" SHALL BE DEFINED BY A SAW CUT.
EXISTING ASPHALTIC OVERLAY SHALL BE REMOVED FROM THE BRIDGE DECK-1 AND BRIDGE DECK-2. SOUND CONCRETE, WHEREVER IS GREATER COVERED UNDER ITEM 502.3.11 OF THE STANDARD SPECIFICATIONS AND THE STANDARD SPECIFICATIONS SHALL BE SHOWN ON THE PLANS. NAME PLATE TO SHOW ORIGINAL CONSTRUCTION YEAR 1992.

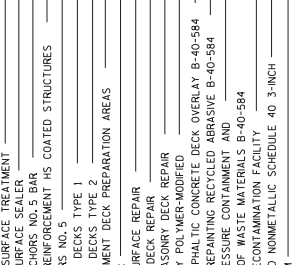
THE CONTRACTOR SHALL SUPPLY A NEW NAME PLATE IF DAMAGED IN REMOVAL OF PARAPET IN ACCORDANCE WITH SECTION 502.3.11 OF THE STANDARD SPECIFICATIONS AND THE STANDARD SPECIFICATIONS SHALL BE SHOWN ON THE PLANS. NAME PLATE TO SHOW ORIGINAL CONSTRUCTION YEAR 1992.



TOTAL ESTIMATED QUANTITIES (ALL ITEMS ARE CATEGORY 2060)

22	CY	CONCRETE MASONRY BRIDGES
114	EA	EXPANSION DEVICE B-40-584
51	SY	PROTECTIVE SURFACE TREATMENT
7	EA	PIGMENTED SURFACE SEALER
400	LB	ADHESIVE ANCHORS NO. 5 BAR
800	EA	BAR STEEL REINFORCEMENT HS COATED STRUCTURES
400	EA	BAR COUPLERS NO. 5
10	SY	PREPARATION DECKS TYPE 1
10	SY	PREPARATION DECKS TYPE 2
10	SY	PREPARATION DECKS TYPE 3
10	SY	PREPARATION DECKS TYPE 4
10	SY	PREPARATION DECKS TYPE 5
10	SY	PREPARATION DECKS TYPE 6
10	SY	PREPARATION DECKS TYPE 7
10	SY	PREPARATION DECKS TYPE 8
10	SY	PREPARATION DECKS TYPE 9
10	SY	PREPARATION DECKS TYPE 10
10	SY	PREPARATION DECKS TYPE 11
10	SY	PREPARATION DECKS TYPE 12
10	SY	PREPARATION DECKS TYPE 13
10	SY	PREPARATION DECKS TYPE 14
10	SY	PREPARATION DECKS TYPE 15
10	SY	PREPARATION DECKS TYPE 16
10	SY	PREPARATION DECKS TYPE 17
10	SY	PREPARATION DECKS TYPE 18
10	SY	PREPARATION DECKS TYPE 19
10	SY	PREPARATION DECKS TYPE 20
10	SY	PREPARATION DECKS TYPE 21
10	SY	PREPARATION DECKS TYPE 22
10	SY	PREPARATION DECKS TYPE 23
10	SY	PREPARATION DECKS TYPE 24
10	SY	PREPARATION DECKS TYPE 25
10	SY	PREPARATION DECKS TYPE 26
10	SY	PREPARATION DECKS TYPE 27
10	SY	PREPARATION DECKS TYPE 28
10	SY	PREPARATION DECKS TYPE 29
10	SY	PREPARATION DECKS TYPE 30
10	SY	PREPARATION DECKS TYPE 31
10	SY	PREPARATION DECKS TYPE 32
10	SY	PREPARATION DECKS TYPE 33
10	SY	PREPARATION DECKS TYPE 34
10	SY	PREPARATION DECKS TYPE 35
10	SY	PREPARATION DECKS TYPE 36
10	SY	PREPARATION DECKS TYPE 37
10	SY	PREPARATION DECKS TYPE 38
10	SY	PREPARATION DECKS TYPE 39
10	SY	PREPARATION DECKS TYPE 40
10	SY	PREPARATION DECKS TYPE 41
10	SY	PREPARATION DECKS TYPE 42
10	SY	PREPARATION DECKS TYPE 43
10	SY	PREPARATION DECKS TYPE 44
10	SY	PREPARATION DECKS TYPE 45
10	SY	PREPARATION DECKS TYPE 46
10	SY	PREPARATION DECKS TYPE 47
10	SY	PREPARATION DECKS TYPE 48
10	SY	PREPARATION DECKS TYPE 49
10	SY	PREPARATION DECKS TYPE 50
10	SY	PREPARATION DECKS TYPE 51
10	SY	PREPARATION DECKS TYPE 52
10	SY	PREPARATION DECKS TYPE 53
10	SY	PREPARATION DECKS TYPE 54
10	SY	PREPARATION DECKS TYPE 55
10	SY	PREPARATION DECKS TYPE 56
10	SY	PREPARATION DECKS TYPE 57
10	SY	PREPARATION DECKS TYPE 58
10	SY	PREPARATION DECKS TYPE 59
10	SY	PREPARATION DECKS TYPE 60
10	SY	PREPARATION DECKS TYPE 61
10	SY	PREPARATION DECKS TYPE 62
10	SY	PREPARATION DECKS TYPE 63
10	SY	PREPARATION DECKS TYPE 64
10	SY	PREPARATION DECKS TYPE 65
10	SY	PREPARATION DECKS TYPE 66
10	SY	PREPARATION DECKS TYPE 67
10	SY	PREPARATION DECKS TYPE 68
10	SY	PREPARATION DECKS TYPE 69
10	SY	PREPARATION DECKS TYPE 70
10	SY	PREPARATION DECKS TYPE 71
10	SY	PREPARATION DECKS TYPE 72
10	SY	PREPARATION DECKS TYPE 73
10	SY	PREPARATION DECKS TYPE 74
10	SY	PREPARATION DECKS TYPE 75
10	SY	PREPARATION DECKS TYPE 76
10	SY	PREPARATION DECKS TYPE 77
10	SY	PREPARATION DECKS TYPE 78
10	SY	PREPARATION DECKS TYPE 79
10	SY	PREPARATION DECKS TYPE 80
10	SY	PREPARATION DECKS TYPE 81
10	SY	PREPARATION DECKS TYPE 82
10	SY	PREPARATION DECKS TYPE 83
10	SY	PREPARATION DECKS TYPE 84
10	SY	PREPARATION DECKS TYPE 85
10	SY	PREPARATION DECKS TYPE 86
10	SY	PREPARATION DECKS TYPE 87
10	SY	PREPARATION DECKS TYPE 88
10	SY	PREPARATION DECKS TYPE 89
10	SY	PREPARATION DECKS TYPE 90
10	SY	PREPARATION DECKS TYPE 91
10	SY	PREPARATION DECKS TYPE 92
10	SY	PREPARATION DECKS TYPE 93
10	SY	PREPARATION DECKS TYPE 94
10	SY	PREPARATION DECKS TYPE 95
10	SY	PREPARATION DECKS TYPE 96
10	SY	PREPARATION DECKS TYPE 97
10	SY	PREPARATION DECKS TYPE 98
10	SY	PREPARATION DECKS TYPE 99
10	SY	PREPARATION DECKS TYPE 100

CROSS SECTION THRU ROADWAY

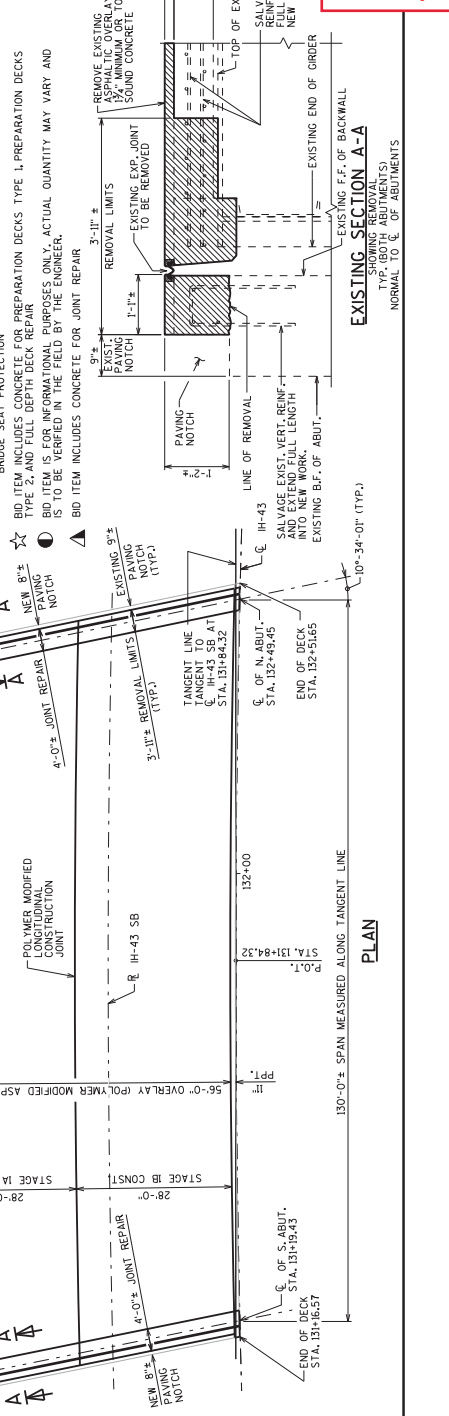


BENCH MARK

NO.	STATION	DESCRIPTION	ELEV.
12	131-81	TOP OF NORTH EAST FLANGE BOLT OF HYDRANT - OFFSET 460 FT.	639.36

LIST OF DRAWINGS

- POLYMER MODIFIED ASPHALTIC OVERLAY
- PARAPET DETAILS
- EXPANSION DEVICE
- COVER PLATE DETAILS



STRUCTURE DESIGN CONTACTS:
JOHN SENDOR 1609 266-5163
JASON BORN 1609 681-0261

GENERAL NOTE REVISED JJS BY

BUREAU OF STRUCTURES
7/31/19
ACCEPTED *William C. Decker* 7/31/19
CHIEF STRUCTURES DESIGN ENGINEER DATE

STRUCTURE B-40-584

COUNTY: IH-43 SB OVER SILVER SPRING RD.
CITY: GLENDALE
DESIGN SPEC.:
REHABILITATION (V.A.)
DESIGNED BY: JJS
CHECKED BY: MJK
PLANS JUSTICED: MJK

POLYMER MODIFIED ASPHALTIC OVERLAY

SHEET 1 OF 5
688

DATE: OCT. 2017
I.D. 1228-22-026

Addendum No. 01
ID 1228-22-72
Revised Sheet 688
February 3, 2020

