



Wisconsin Department of Transportation

Division of Transportation Systems Development

Bureau of Project Development
4822 Madison Yards Way, 4th Floor South
Madison, WI 53705

March 3, 2020

Telephone: (608) 266-1631
Facsimile (FAX): (608) 266-8459

NOTICE TO ALL CONTRACTORS:

Proposal #09: 1228-09-74, WISC 2020 070
IH 94 East West Freeway
Marquette I/C
IH 94
Milwaukee County

Letting of March 10, 2020

This is Addendum No. 01, which provides for the following:

Special Provisions:

Revised Special Provisions	
Article No.	Description
3	Prosecution and Progress
5	Traffic
7	Utilities

Schedule of Items:

Revised Bid Item Quantities					
Bid Item	Item Description	Unit	Old Quantity	Revised Quantity	Proposal Total
643.0300	Traffic Control Drums	DAYS	12,118	5,715	17,833
643.0420	Traffic Control Barricades Type III	DAYS	1,006	855	1,861
643.0705	Traffic Control Warning Lights Type A	DAYS	2,013	1,710	3,723
643.0715	Traffic Control Warning Lights Type C	DAYS	2,174	169	2,343
643.0800	Traffic Control Arrow Boards	DAYS	145	23	168
643.0900	Traffic Control Signs	DAYS	4,193	1,080	5,273
643.1000	Traffic Control Signs Fixed Message	DAYS	820	1,399	2,219
643.1050	Traffic Control Signs PCMS	DAYS	423	273	696
643.4100.S	Traffic Control Interim Lane Closure	DAYS	62	11	73
SPV.0060.0001	Traffic Control Close-Open Freeway Entrance Ramp	DAYS	65	23	88

Added Bid Item Quantities					
Bid Item	Item Description	Unit	Old Quantity	Revised Quantity	Proposal Total
649.0150	Temporary Marking Line Removable Tape 4-Inch	LF	0	2800	2800

Plan Sheets:

Revised Plan Sheets	
Plan Sheet	Plan Sheet Title (brief description of changes to sheet)
2	General Notes – Revised contact info, utility general notes.
24-28	Plan Details – Revised Station Offset Callouts
264	Miscellaneous Quantities – Revised Traffic Control quantities
269	Miscellaneous Quantities – Revised Temporary Marking Line & Traffic Control closure quantities

Added Plan Sheets	
Plan Sheet	Plan Sheet Title (brief description of why sheet was added)
245A-N	Traffic Control – STH 145 Interchange Closure
294A-B	Standard Detail Drawing – Temporary Traffic Control Sign Mounting
322A	Standard Sign – G20-63

Other

Revise the Contract Completion Time completion date from September 18, 2020 to a completion date of October 16, 2020.

The responsibility for notifying potential subcontractors and suppliers of these changes remains with the prime contractor.

Sincerely,

Mike Coleman

Proposal Development Specialist
Proposal Management Section

ADDENDUM NO. 01

1228-09-74

March 3, 2020

Special Provisions

3. Prosecution and Progress

*Add the following paragraph to the end of the section titled **Schedule of Operations – Construction Staging:***

STH 145 Interchange Closure:

-Install all temporary Type I signs and all temporary fixed message signs to complete the STH 145 Interchange Closure.

*Replace entire section titled **Interim Completion of Work** with the following:*

Complete milling and paving of Ramp WN from Sta 86WN+71 to Sta 98WN+43, IH 43 NB from Sta 380N+91 to Sta 415N+50, and IH 43 SB from Sta 481S+81 to Sta 515S+92 to open all lanes to traffic, prior to 12:01 AM on July 9, 2020.

If the contractor does not complete all milling and paving of Ramp WN from Sta 86WN+71 to Sta 98WN+43, IH 43 NB from Sta 380N+91 to Sta 415N+50, and IH 43 SB from Sta 481S+81 to Sta 515S+92 to restore traffic on IH 43 & Ramp WN before 12:01AM on July 9, 2020, the department will assess the contractor \$10,000 in interim liquidated damages per day for each calendar day after 12:01 AM on July 9, 2010 that IH 43 & Ramp WN are not open to traffic.

5. Traffic

*Replace paragraph one under section titled **Schedule of Operations – Traffic Control** with the following:*

Traffic shifts shown in a given stage may occur at different times during that stage depending on the controlling elements for a given traffic movement as approved by the engineer. Staging of the project may need to deviate from the staging listed below in order to meet interim completion dates. The department anticipates that the schedule of major traffic shifts and roadway opening and closing for each stage shall be as follows, unless approved by the engineer:

*Add the following paragraph to the end of the **Schedule of Operations – Traffic Control:***

STH 145 Interchange Closure:

The STH 145 Interchange Closure will be in place from July 9th to July 17th, 2020.

-The following ramps will be closed:

-Kilbourn Ave exit ramp from Ramp WN

-Kilbourn Ave entrance ramp to IH 43

-STH 145 exit ramp from NB IH 43

-STH 145 entrance ramp to NB IH 43

-STH 145 exit ramp from SB IH 43

-STH 145 entrance ramp to SB IH 43

-James Lovell Dr exit from IH 94

-STH 145 will be closed at Walnut Street

7. Utilities.

Replace the entire article with the following:

This contract comes under the provision of Administrative Rule Trans 220.

Utility adjustments are not anticipated for this construction project. Coordinate construction activities with a call to Diggers Hotline or a direct call to the utilities that have facilities in the area as required per statutes. Use caution to ensure the integrity of underground facilities and maintain code clearances from overhead facilities at all times.

Contact the local governing road authority to find out if there are any locally owned facilities within the project limits.

Contact each utility company listed in the plans, prior to preparing bids, to obtain current information on the status of existing and any new utility relocation work.

The following utilities have facilities within the construction limits, however, no adjustments are anticipated:

AT&T Legacy – Communication Line

The field contact is Kenneth M. Nine at (574) 842-8830 office / (574) 904-6336 mobile or Knine@jmceainc.com.

ATC Management, Inc. – Electricity Transmission

The field contact is Chris Dailey at (262) 506-6884 or cdailey@atcllc.com.

CenturyLink Communications, LLC – Communication Line

The field contact is Shad Garcia at (414) 908-1009 office / (262) 606-0896 mobile or Shad.garcia@centurylink.com.

Charter Communications – Communication Line

The field contact is Scott Dietrich at (414) 277-4283 or Scott.Dietrich@charter.com.

City of Milwaukee – Sewer

The field contact is Zafar Yousuf at (414) 286-2467 or Zafar.yousef@milwaukee.gov.

City of Milwaukee – Water

The field contact is Dave Goldapp at (414) 286-6301 office / (414) 708-2695 mobile or Dave.M.Goldapp@milwaukee.gov.

Level 3 Communications LLC – Communication Line

The field contact is Shad Garcia at (414) 908-1009 office / (262) 606-0896 mobile or Shad.garcia@centurylink.com.

Marquette University – Communication Line

The field contact is Michael Jahner at (414) 288-6104 office / (414) 313-9583 mobile or Michael.jahner@marquette.edu.

Midwest Fiber Networks LLC – Communication Line

The field contact is Richard Trgovec at (414) 459-3554 or rtrgovec@midwestfibernetworks.com.

Milwaukee Metropolitan Sewerage District – Sewer

The field contact is Micki Klappa-Sullivan at (414) 225-2178 or mklappasullivan@mmsd.com.

We Energies – Electricity

The field contact is Alex Dantine at (920) 621-6903 or Alex.dantine@we-energies.com.

We Energies – Gas

The field contact is Alex Dantine at (920) 621-6903 or Alex.dantine@we-energies.com.

We Energies Gas and Electric have facilities within the construction limits. It is imperative that the highway contactor contact We Energies if removing any gas facilities or electrical underground cables, to verify that

they have been discontinued in its place and carry no natural gas or electrical current. The contractor must not assume that unmarked facilities have been discontinued in its place. At no time is it acceptable to push, pull, cut or drill an unmarked facility without explicit consent from We Energies. The contractor must call the We Energies 24-hour Dispatch lines to arrange for this verification.

We Energies Electric Dispatch #1-800-662-4797

We Energies Gas Dispatch #1-800-261-5325.

Wisconsin Department of Transportation – Communication Line

The field contact is John Mittlestadt at (605)-205-7859 or John.mittlestadt@dot.wi.gov.

Wisconsin Department of Transportation – Communication Line has underground communication lines, cameras, detectors, pull boxes and FTMS devices within the construction limits. These facilities will remain in place without adjustment. The field contact must be contacted 7 days in advance to coordinate locations to avoid damage during milling and paving operations.

Wisconsin Department of Transportation – Street Lighting

The field contact is Eric Perea at (262) 574-5422 or Eric.perea@dot.wi.gov.

WisDOT ATR Pull Boxes – Electricity

The field contact is Russell Lewis at (608) 516-5754 or Russell.Lewis@dot.wi.gov.

Schedule of Items

Attached, dated March 3, 2020, are the revised Schedule of Items Pages 1 – 5.

Plan Sheets

The following 8½ x 11-inch sheets are attached and made part of the plans for this proposal:

Revised: 2, 24-28, 264 and 269.

Added: 245A-N, 294A-B and 322A.

END OF ADDENDUM

GENERAL NOTES

THE LOCATIONS OF EXISTING AND PROPOSED UTILITY INSTALLATIONS AS SHOWN IN THE PLANS ARE APPROXIMATE. THERE MAY BE OTHER UTILITY INSTALLATIONS WITHIN THE PROJECT AREA THAT ARE NOT SHOWN.

CONSTRUCT PAVEMENT CONSISTENT WITH THE PLAN TYPICAL SECTIONS. LOCATE LONGITUDINAL JOINTS IN ASPHALT PAVEMENT OUTSIDE OF DRIVING, TURNING, BIKE, OR PARKING LANE UNLESS DIRECTED OTHERWISE BY THE ENGINEER. PREVENT HMA LONGITUDINAL JOINTS FROM BEING LOCATED WITHIN A DRIVING, TURNING, BIKE, OR PARKING LANE. THE CONTRACTOR'S PAVING OPERATIONS SHALL BE CONSISTENT WITH THE PLAN TYPICAL SECTIONS AND CONSTRUCTED TO PREVENT HMA LONGITUDINAL JOINTS FROM BEING LOCATED WITHIN A DRIVING, TURNING, BIKE OR PARKING LANE. SAWCUT EXISTING ASPHALT AT THE MATCHLINE AS INDICATED ON THE PLAN OR AS DIRECTED BY THE ENGINEER.

ORDER OF SECTION 2 DETAIL SHEETS

- GENERAL NOTES
- PROJECT OVERVIEW
- TYPICAL SECTIONS
- CONSTRUCTION DETAILS
- PLAN DETAILS
- PERMANENT SIGNING
- PAVEMENT MARKING
- TRAFFIC CONTROL
- DETOURS
- ALIGNMENT

OTHER CONTACTS

WISDOT DESIGN
 EVAN LIMBERATOS, PROJECT MANAGER
 141 NW BARSTOW ST.
 WAUKESHA, WI 53187 0788
 PHONE: (262) 548-8797
 EVAN.LIMBERATOS@DOT.WI.GOV

WISCONSIN DNR
 KRISTINA BETZOLD
 2300 N. MARTIN LUTHER KING DR.
 MILWAUKEE WI 53212
 PHONE: (414) 507-4946
 KRISTINA.BETZOLD@WISCONSIN.GOV

CITY OF MILWAUKEE
 DAVID J. TAPIA PE
 FRANK P. ZEIDLER BUILDING
 841 NORTH BROADWAY, ROOM 902
 MILWAUKEE WI 53202
 (414) 286-2453
 DTAPIA@MILWAUKEE.GOV

MILWAUKEE COUNTY TRANSIT SYSTEM
 DAVID LOCHER
 1942 N 17TH STREET
 MILWAUKEE, WI 53205
 (414) 343-1727
 DLOCHER@MCTS.ORG

AT&T LEGACY - COMMUNICATION LINE

KENNETH M. NINE
110 N. MAIN ST
CULVER, IN 46511
PHONE: (574) 842-8880
KNINE@JMCEAINC.COM

ATC MANAGEMENT, INC. - ELECTRICITY

CHRIS DAILEY
ATC MANAGEMENT, INC. - ELECTRICITY
W234 N2000 RIDGEVIEW PARKWAY CT
WAUKESHA, WI 53187
PHONE: (262) 506-6884
CDAILEY@ATCLLC.COM

CENTURYLINK COMMUNICATIONS, LLC

SHAD GARCIA
PHONE: (414) 908-1009
SHAD.GARCIA@CENTURYLINK.COM

CHARTER COMMUNICATIONS

SCOTT DIETRICH
1320 N DR MARTIN LUTHER KING DR
MILWAUKEE, WI 53212
PHONE: (414) 277-4283
SCOTT.DIETRICH@CHARTER.COM

CITY OF MILWAUKEE - SEWER

ZAFAR YOUSUF
841 N BROADWAY
MILWAUKEE, WI 53202
PHONE: (414) 286-2467
ZAFAR.YOUSUF@MILWAUKEE.GOV

CITY OF MILWAUKEE - WATER

DAVE GOLDAPP
841 N BROADWAY
MILWAUKEE, WI 53202
PHONE: (414) 286-6301
DAVE.M.GOLDAPP@MILWAUKEE.GOV

LEVEL 3 COMMUNICATIONS, LLC

SHAD GARCIA
1025 ELDORADO BLVD
BROOMFIELD, CO 80021
PHONE: (414) 908-1009
SHAD.GARCIA@CENTURYLINK.COM

MARQUETTE UNIVERSITY - COMMUNICATION LINE

MICHAEL JAHNER
517 N 14TH ST
MILWAUKEE, WI 53233
PHONE: (414) 313-9583
MICHAEL.JAHNER@MARQUETTE.EDU

MIDWEST FIBER NETWORKS, LLC - COMMUNICATION LINE

RICHARD TRGOVEC
6070 NORTH FLINT RD
GLENDALE, WI 53209
PHONE: (414) 459-3554
RTRGOVEC@MIDWESTFIBERNETWORKS.COM

MILWAUKEE METROPOLITAN SEWERAGE DISTRICT - SEWER

MICKI KLAPPA-SULLIVAN
260 W SEEBOTH ST
MILWAUKEE, WI 53204
PHONE: (414) 225-2178
MKLAPPASULLIVAN@MMSD.COM

WE ENERGIES (ELECTRIC/GAS/PETROLEUM)

ALEX DANTINNE
333 W. EVERETT ST - A299
MILWAUKEE, WI 53203
PHONE: (920) 621-6903
ALEX.DANTINNE@WE-ENERGIES.COM

WISDOT COMMUNICATION LINE

JOHN MITTLESTADT
433 W ST. PAUL AVE., STE 300
MILWAUKEE, WI 53203
PHONE: (605) 205-7859
JOHN.MITTESTADT@DOT.WI.GOV

WISDOT SE REGION - STREET LIGHTING

ERIC PEREA
141 NW BARSTOW ST.
WAUKESHA, WI 53187
PHONE: (262) 574-5422
ERIC.PEREA@DOT.WI.GOV

WISDOT ATTR PULL BOXES - ELECTRICITY

RUSSELL LEWIS
TRAVEL SURVEY SHOP, 3633 PIERSTORFF ST.
P.O. BOX 2583
MADISON, WI 53704-2583
PHONE: (608) 516-5754
RUSSELL.LEWIS@DOT.WI.GOV

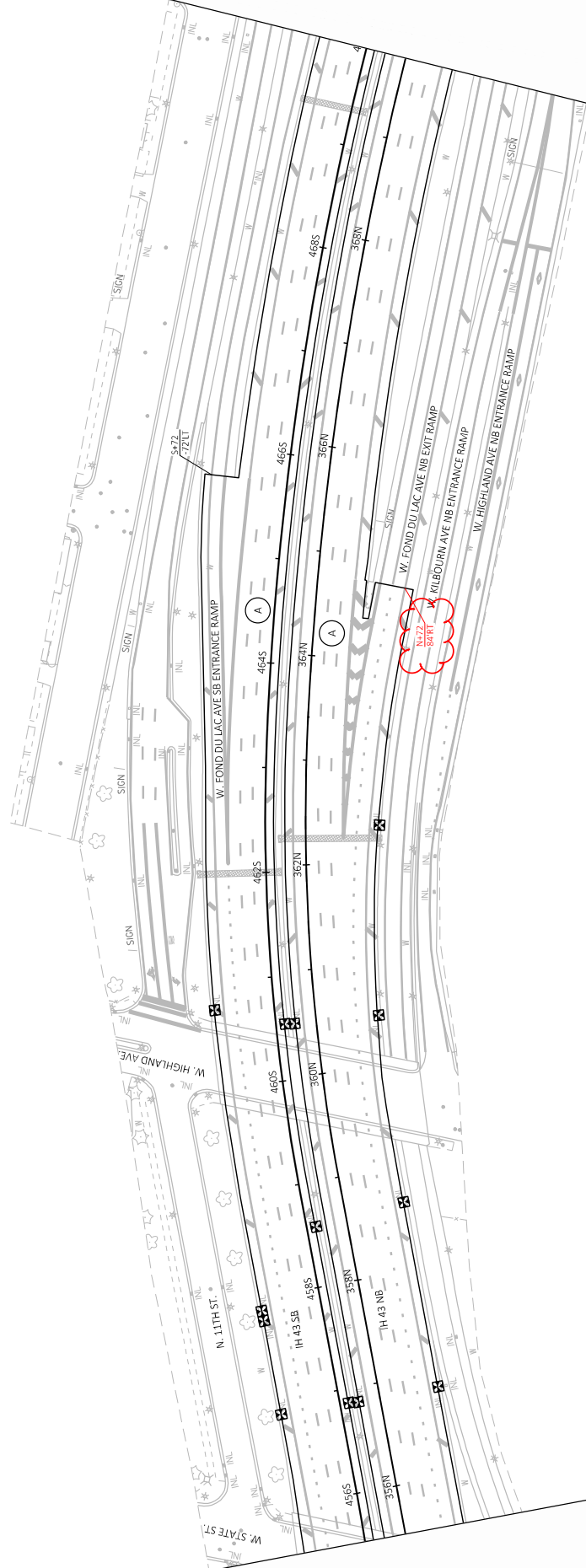
Addendum No. 01
ID 1228-09-74
Revised Sheet 2
March 3, 2020



Dial 811 or (800) 242-8511
www.DiggersHotline.com

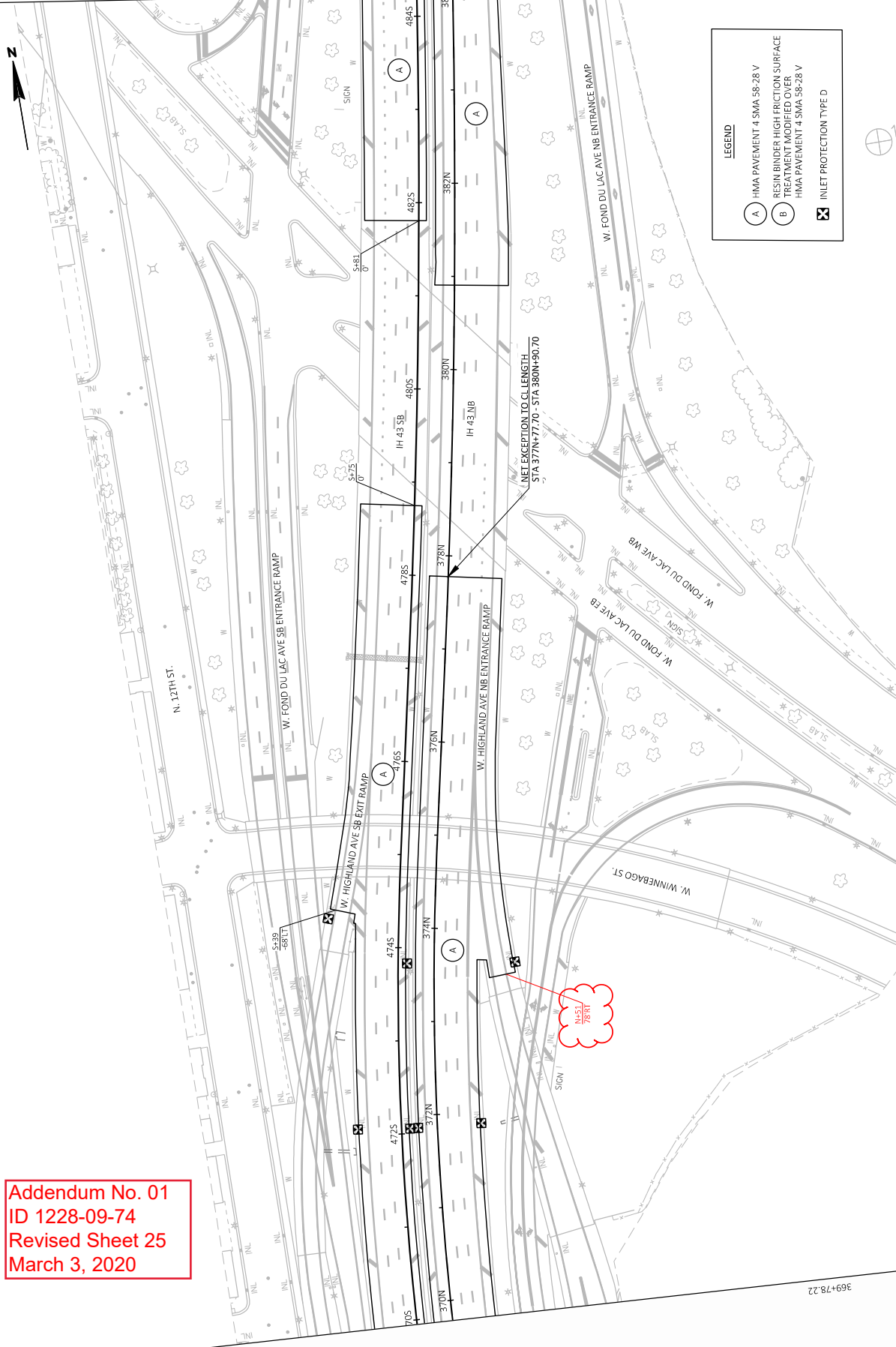


Addendum No. 01
ID 1228-09-74
Revised Sheet 24
March 3, 2020

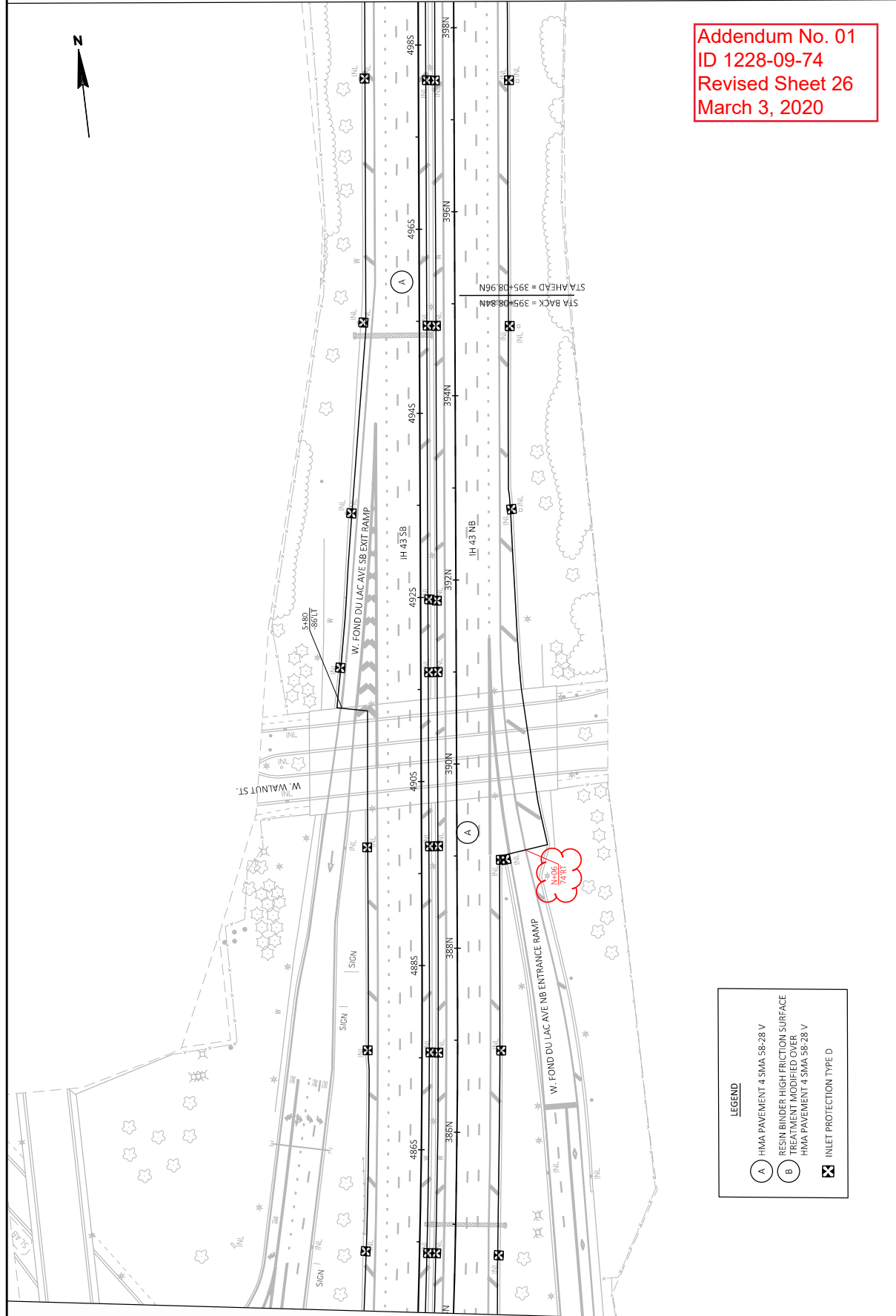


LEGEND

- (A) HMA PAVEMENT 4 SMA 58-28 V
- (B) RESIN BINDER HIGH FRICTION SURFACE TREATMENT MODIFIED OVER HMA PAVEMENT 4 SMA 58-28 V
- ☒ INLET PROTECTION TYPE D



Addendum No. 01
 ID 1228-09-74
 Revised Sheet 25
 March 3, 2020

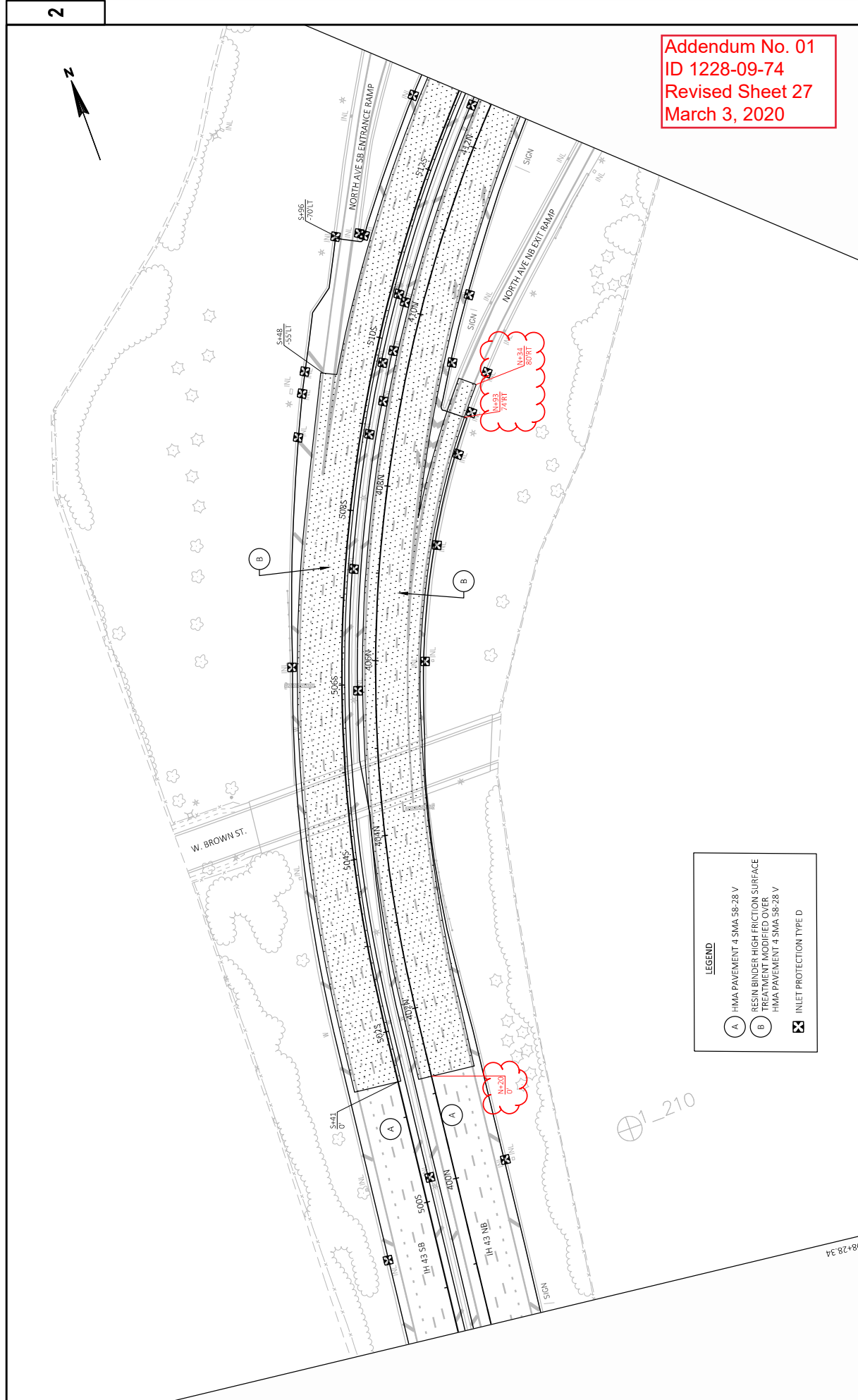


Addendum No. 01
 ID 1228-09-74
 Revised Sheet 26
 March 3, 2020

LEGEND

- (A) HMA PAVEMENT 4 SMA 58-28 V
- (B) RESIN BINDER HIGH FRICTION SURFACE TREATMENT MODIFIED OVER HMA PAVEMENT 4 SMA 58-28 V
- ☒ INLET PROTECTION TYPE D

**Addendum No. 01
 ID 1228-09-74
 Revised Sheet 27
 March 3, 2020**



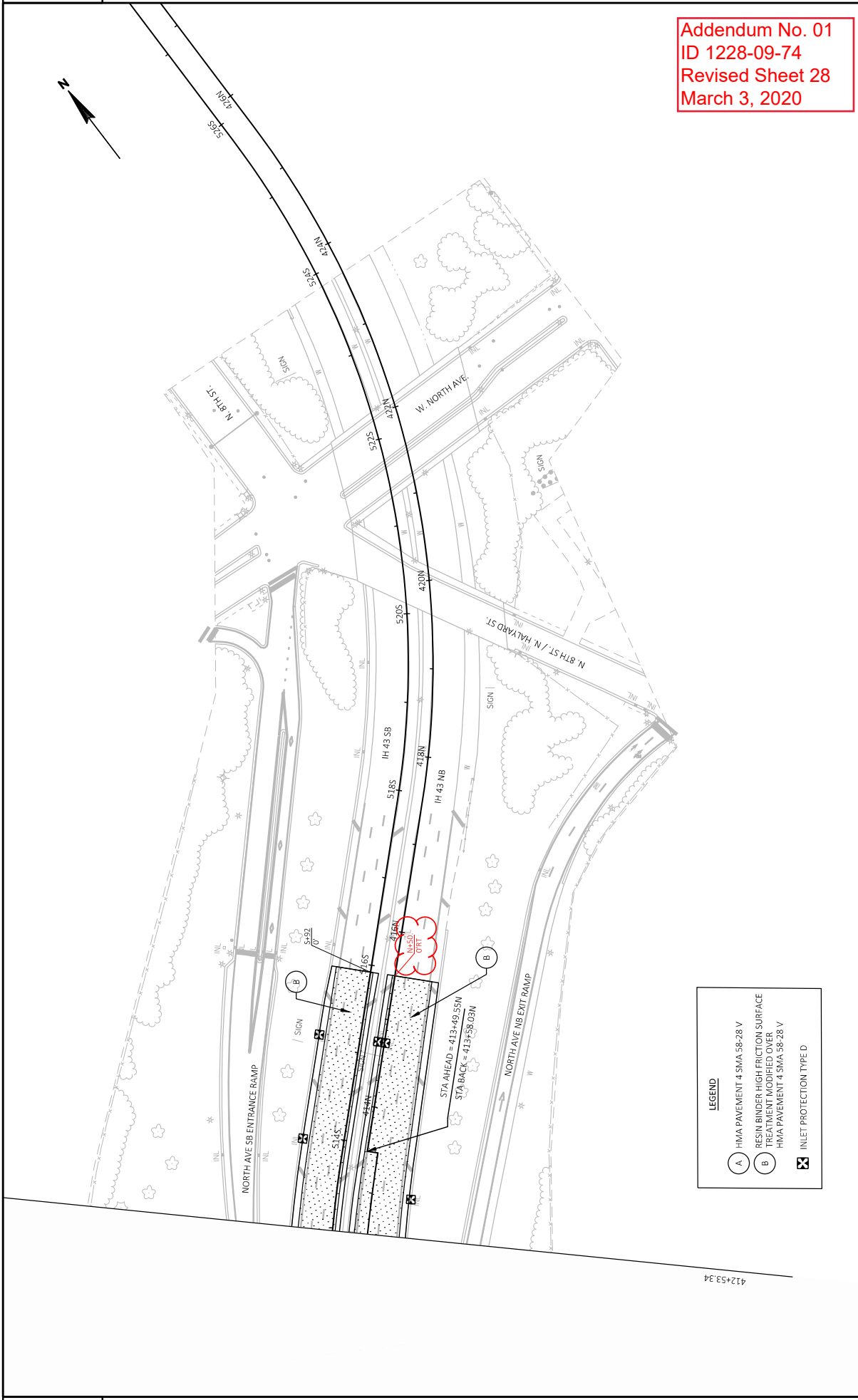
LEGEND

(A) HMA PAVEMENT 4 SMA 58-28 V
 (B) RESIN BINDER HIGH FRICTION SURFACE TREATMENT MODIFIED OVER HMA PAVEMENT 4 SMA 58-28 V
 [Symbol] INLET PROTECTION TYPE D

2

2

Addendum No. 01
 ID 1228-09-74
 Revised Sheet 28
 March 3, 2020

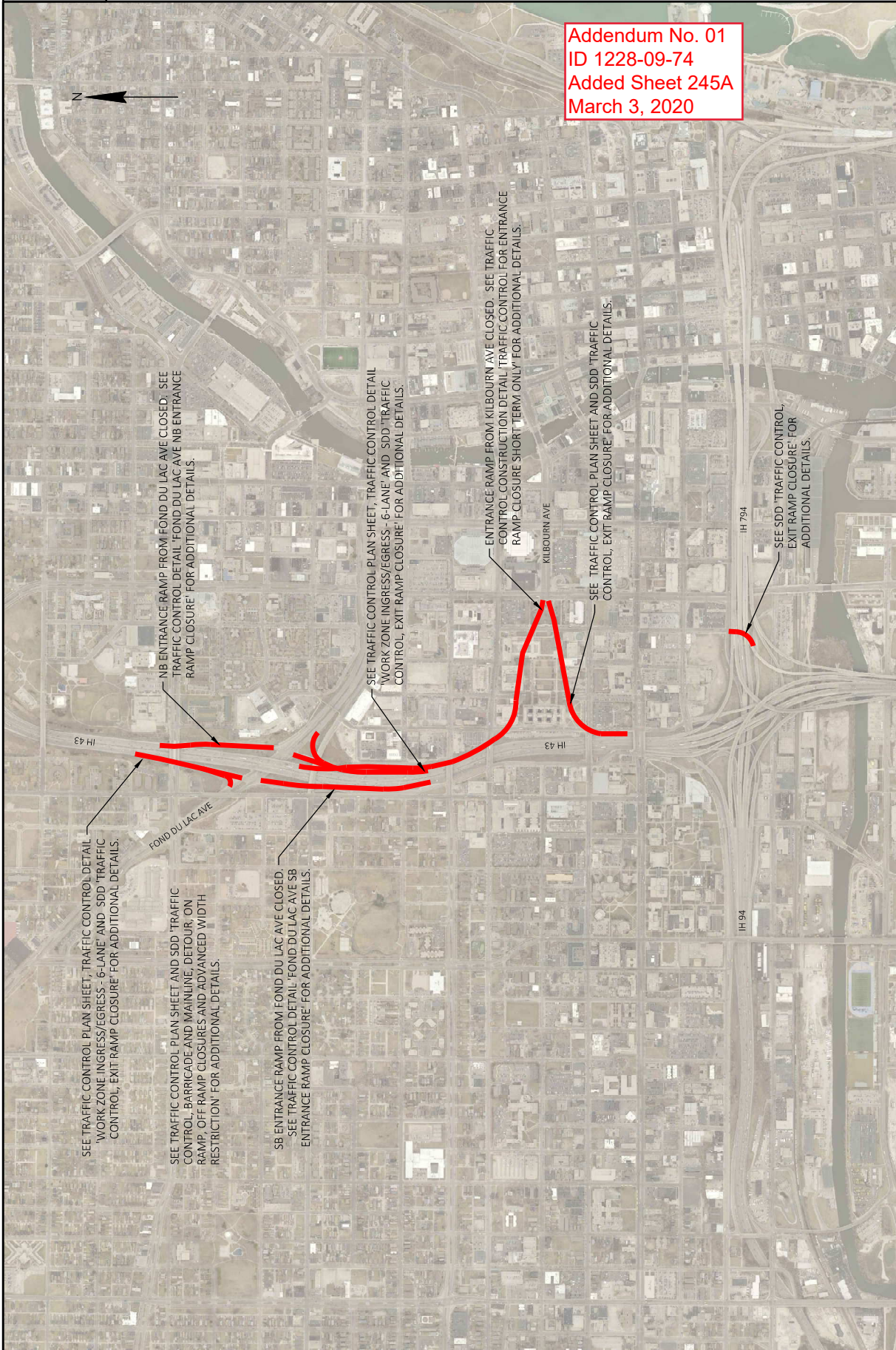


LEGEND

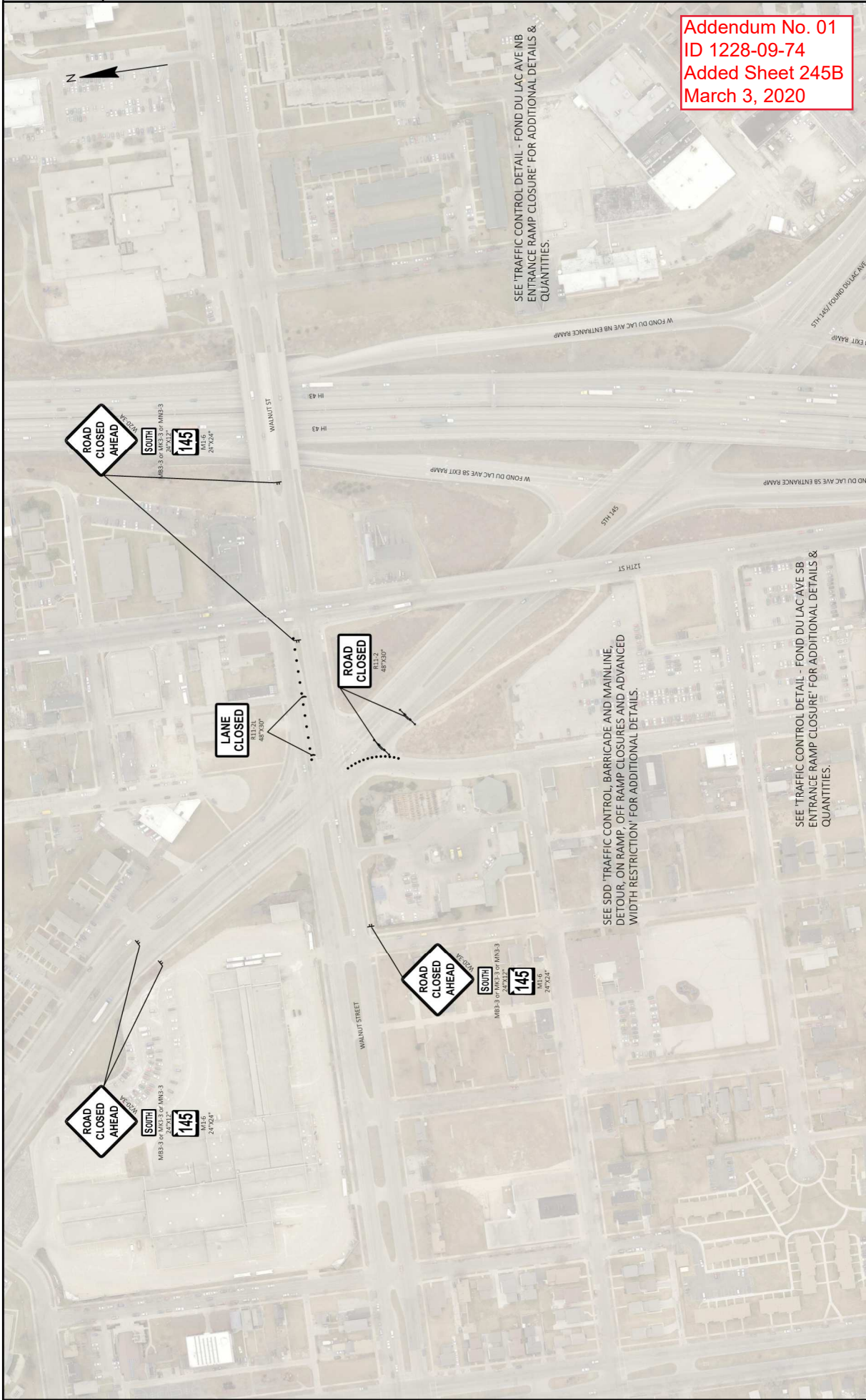
- (A) HMA PAVEMENT 4 SMA 58-28 V
- (B) RESIN BINDER HIGH FRICTION SURFACE TREATMENT MODIFIED OVER HMA PAVEMENT 4 SMA 58-28 V
- ☒ INLET PROTECTION TYPE D

2

2

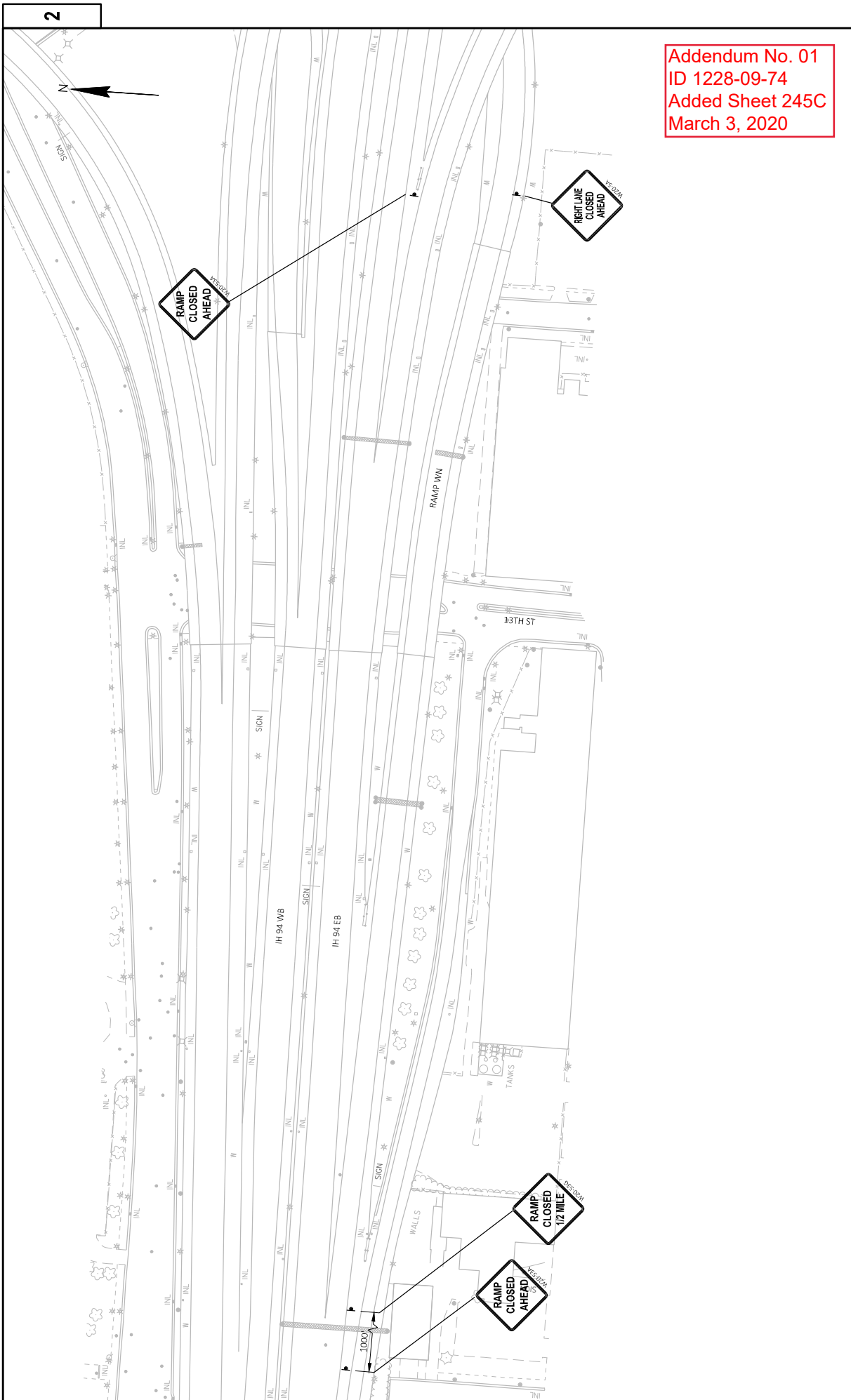


Addendum No. 01
 ID 1228-09-74
 Added Sheet 245A
 March 3, 2020



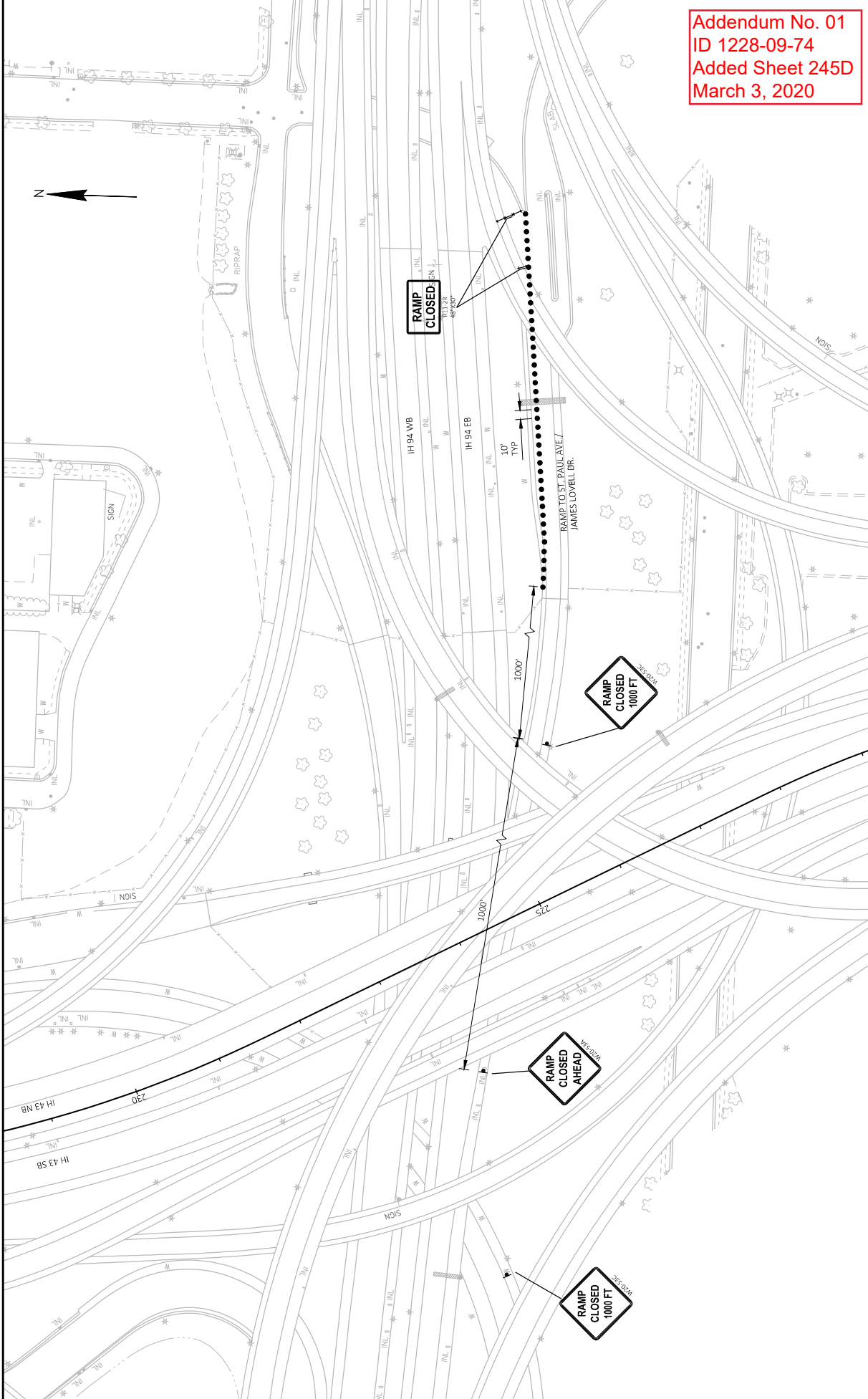
Addendum No. 01
 ID 1228-09-74
 Added Sheet 245B
 March 3, 2020

PROJECT NO: 1228-09-74	HWY: IH 94	COUNTY: MILWAUKEE	TRAFFIC CONTROL DETAIL - STH 145 INTERCHANGE CLOSURE	SHEET 245B	E
FILE NAME: N:\PDS\12280904\SHETS\PLANT\DMATC_FOLAVE_CLOSURE_DETAIL.DWG	LAYOUT NAME: FOLAVE CD SB	PLOT DATE: 3/27/2020 4:44 PM	PLOT NAME: SPAETH, MICHELE	PLUT SCALE: 1 IN=200 FT	WSS07/CADDS SHEET 42



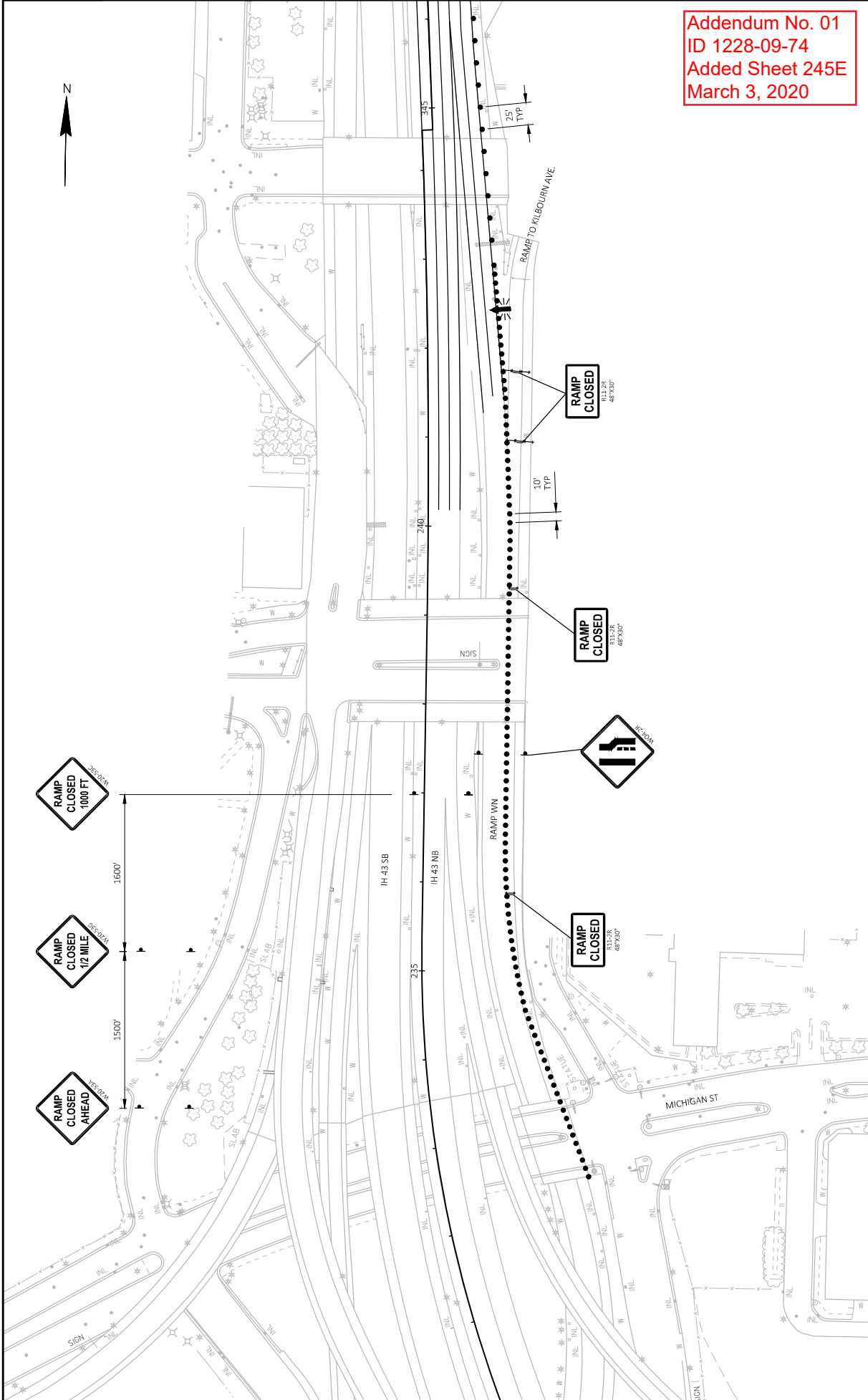
Addendum No. 01
 ID 1228-09-74
 Added Sheet 245C
 March 3, 2020

PROJECT NO: 1228-09-74	COUNTY: MILWAUKEE	TRAFFIC CONTROL - STH 145 INTERCHANGE CLOSURE	SHEET 245C
HWY: IH 94	FILE NAME: N:\PDS\32012280909\SHETS\PLAN\TC_DWG\EX\TRAMP\CLOSURE_SHEETS.DWG	FLY BY: SPAETH, MICHELE L	WISDOT/CODS SHEET 42
FILE NAME: N:\PDS\32012280909\SHETS\PLAN\TC_DWG\EX\TRAMP\CLOSURE_SHEETS.DWG	DATE: 3/22/20 8:44 PM	SCALE: 1 IN=100 FT	
LAYOUT NAME: TC_1			



Addendum No. 01
ID 1228-09-74
Added Sheet 245D
March 3, 2020

PROJECT NO: 1228-09-74 FILE NAME: N:\PDS\3\012280909\94\SHETS\PLAN\TC_DWG\EX\TRAMP\CLOSURE_SHEETS.DWG LAYOUT NAME: TC_2	HWY: IH 94	COUNTY: MILWAUKEE PLOT DATE: 3/2/2020 6:44 PM	TRAFFIC CONTROL - STH 145 INTERCHANGE CLOSURE PLOT BY: SPAETH, MICHELE L.	SHEET: 245D PLOT SCALE: 1 IN=100 FT	E WISDOT/CADDS SHEET 42
---	------------	--	--	--	----------------------------



Addendum No. 01
 ID 1228-09-74
 Added Sheet 245E
 March 3, 2020

PROJECT NO: 1228-09-74

HWY: IH 94

COUNTY: MILWAUKEE

TRAFFIC CONTROL - STH 145 INTERCHANGE CLOSURE

SHEET

245E

E

FILE NAME: N:\PDS\3D\12280909\SHETS\PLAN\TC_DWG\EXTRAMP\CLOSURE_SHEETS.DWG

LAYOUT NAME: TC_3

PLOT DATE: 3/22/20 6:44 PM

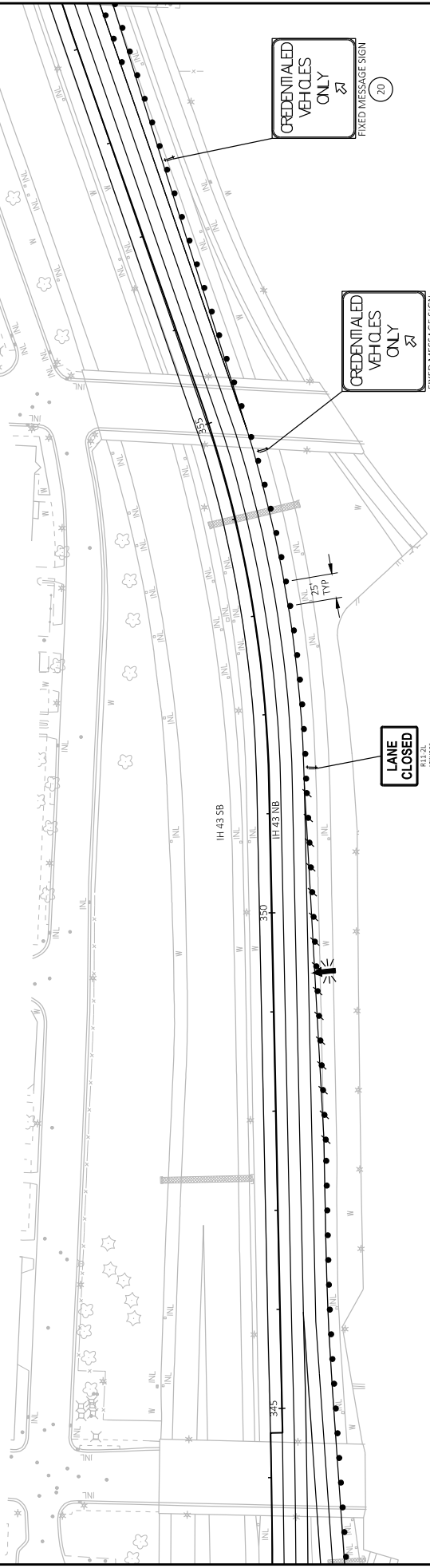
PLOT BY: SPAETH, MICHELE L

PLOT SCALE: 1 IN=100 FT

WISDOT/CADD/SHEET 42

2

2



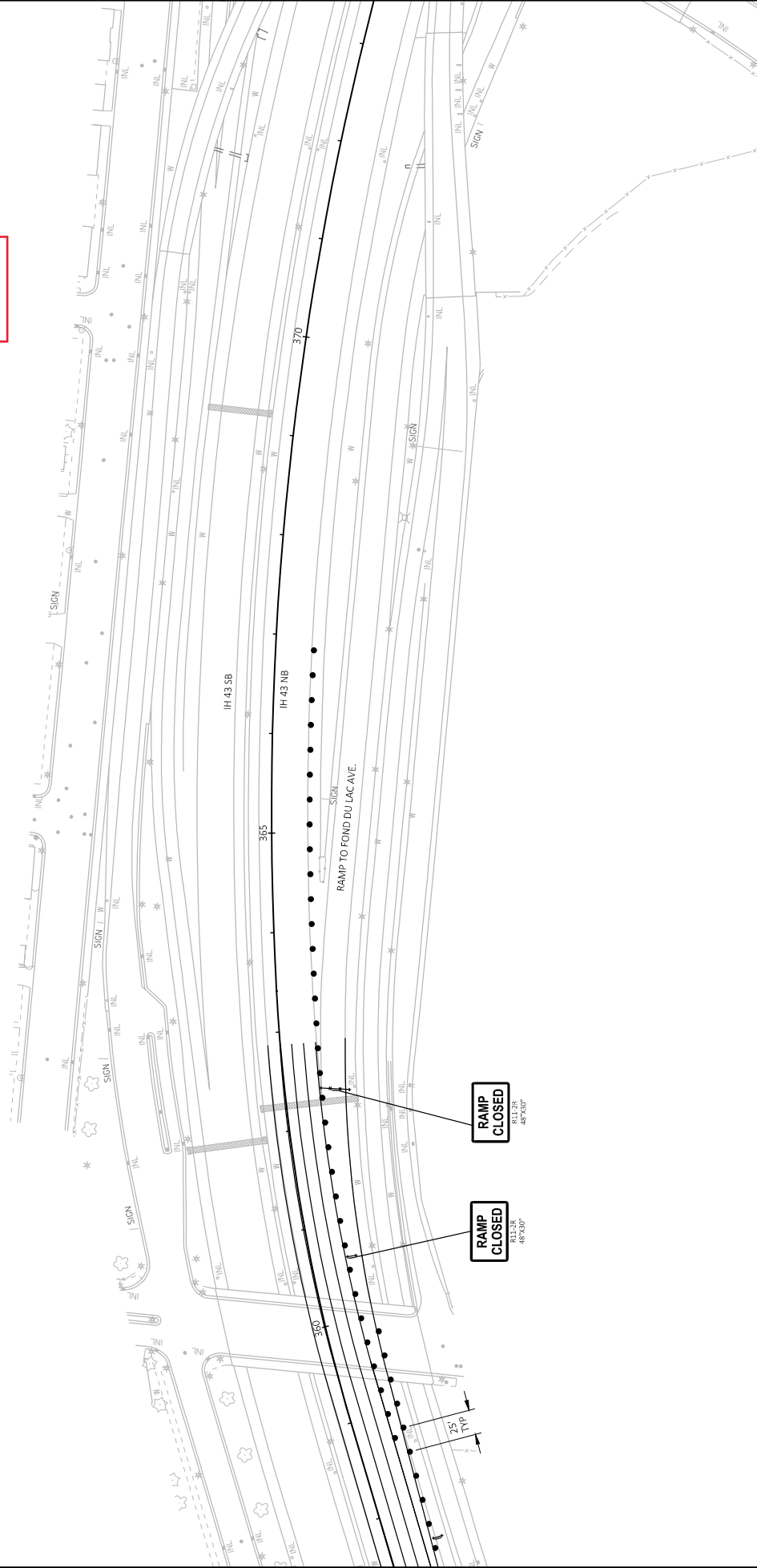
Addendum No. 01
 ID 1228-09-74
 Added Sheet 245F
 March 3, 2020

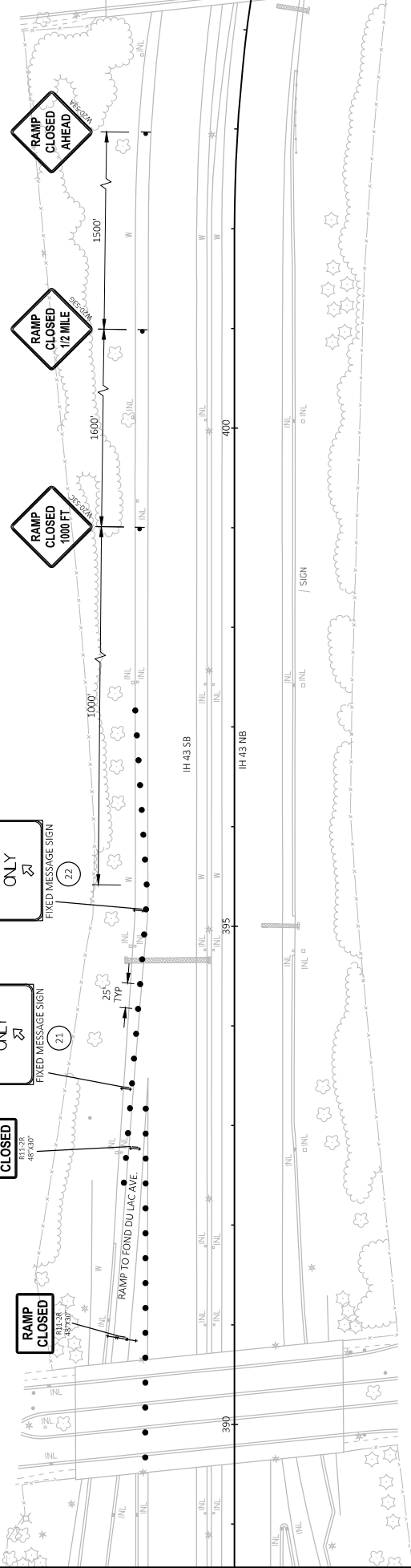
PROJECT NO: 1228-09-74	COUNTY: MILWAUKEE	TRAFFIC CONTROL - STH 145 INTERCHANGE CLOSURE	SHEET 245F
FILE NAME: N:\PDS\32012280909\SHETS\PLAN\TC_DWG\EX\TRAMP\CLOSURE_SHEETS.DWG	PLLOT DATE: 3/22/20 4:45 PM	PLLOT NAME: SPAETH, MICHELE L	PLLOT SCALE: 1 IN=100 FT
HWY: IH 94			

E



Addendum No. 01
ID 1228-09-74
Added Sheet 245G
March 3, 2020





Addendum No. 01
 ID 1228-09-74
 Added Sheet 245H
 March 3, 2020



Addendum No. 01
 ID 1228-09-74
 Added Sheet 2451
 March 3, 2020

LEGEND: FIXED MESSAGE SIGNS


 FIXED MESSAGE SIGN NUMBER

 PORTABLE CHANGEABLE MESSAGE SIGN

FIXED MESSAGE SIGNS (DETAILS SHEETS)

GENERAL NOTES:

1. ALL SIGNS TO HAVE FLUORESCENT REFLECTIVE SHEETING TYPE F - REFERENCE: "WISDOT STANDARD SPECIFICATIONS FOR ROAD AND BRIDGE CONSTRUCTION," LATEST EDITION.
2. AFTER SIGNS HAVE BEEN LOCATED IN THE FIELD, BUT BEFORE INSTALLATION, THE PROJECT ENGINEER SHALL VERIFY EACH SIGN LOCATION.
3. ALL SIGNS TO BE MOUNTED ON WOODEN POST SUPPORTS (4"x6") (FREEWAY) OR TUBULAR STEEL POSTS OR 4X6 WOOD POSTS (NON-FREEWAY) UNLESS SHOWN ON SIGN BRIDGE UPRIGHT. INCIDENTAL TO SIGN, SEE DETAIL. THE NUMBER OF POSTS REQUIRED FOR EACH LAYOUT IS SHOWN. SEE SDD 15D 38-2c.
4. SIGNS ON THIS SHEET TO BE PAID UNDER THE ITEM "FIXED MESSAGE SIGNS."
5. SIGNS SHALL BE BLACK NON-REFLECTIVE MESSAGE ON ORANGE FLUORESCENT REFLECTIVE BACKGROUND PER SPEC 643 & 637.
6. ALL SIGNS SHALL HAVE CAPITAL LETTERS AND NUMERALS:
 a. CAPS SHALL BE SERIES "D"
 b. CAPS SHALL BE SERIES "C" -- UNLESS OTHERWISE SHOWN
7. ALL SIGNS SHALL HAVE BORDER & RADIUS OF BORDERS AS FOLLOWS:
 SIGN AREA
 GREATER THAN 150 50 FT 3"
 60-150 50 FT 2"
 LESS THAN 60 50 FT 1"
 RADIUS
 CORNER RADIUS
 SMALLEST OUTSIDE DIMENSION
 > 8 FT 12"
 > 6 FT 9"
 > 4 FT 7"
 LESS THAN 4 FT 3"
8. SIGN BASE MATERIAL SHALL BE ACCORDING TO SECTION 643 & 637.

(X) = SIGN NUMBER

Addendum No. 01
ID 1228-09-74
Added Sheet 245J
March 3, 2020

PROJECT NO: 1228-09-74
FILE NAME: N:\PDS\CD\40122809\SIGN\023401_PS_18.DWG
LAYOUT NAME: 023401_PS_181

HWY: 194

COUNTY: MILWAUKEE

PLOT DATE: 2/28/2020 9:33 AM

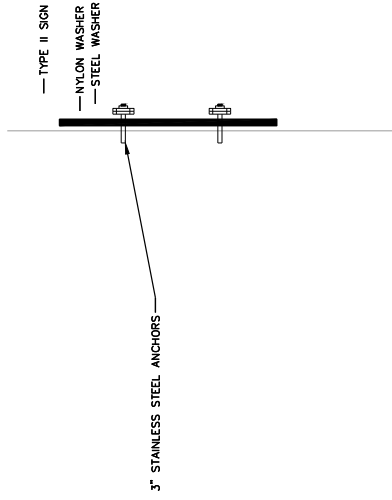
TEMPORARY SIGNING
PLOT BY: VANDE LEST, CYNTHIA

PLOT SCALE: Custom

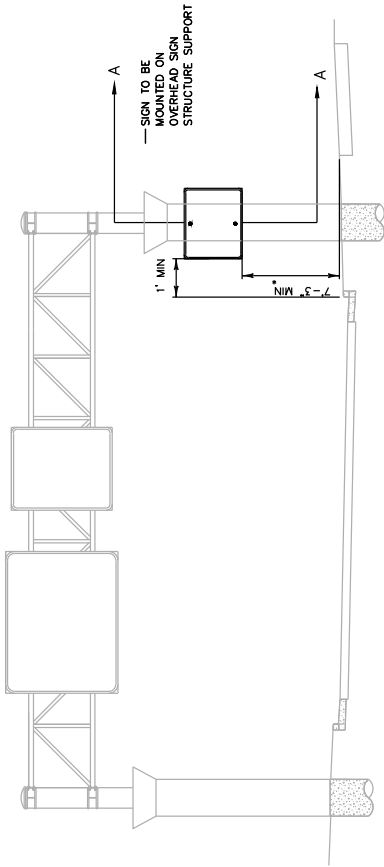
SHEET

245J

E



SECTION A-A



NOTES

- TYPICAL INSTALLATION OF THE SIGN IS CENTERED ON THE SUPPORT.
NOTE: SHIFT THE SIGN WHEN ADJACENT TO A MULTI-USE PATH OR SIDEWALK TO AVOID ENCROACHMENT INTO THE PATH OR SIDEWALK. THE MINIMUM OFFSET FROM THE FACE OF THE CURB TO THE SIGN IS 1'. THE NORMAL LATERAL OFFSET IS SHOWN ELSEWHERE IN THE PLANS.
- * MOUNT SIGN AT 8' HIGH (MIN) WHEN ADJACENT TO A MULTI-USE PATH. MOUNT SIGN AT 7' +/- 3" WHEN NO MULTI-USE PATH IS ADJACENT.
- DRILL HOLES IN THE SIGN AT THE NECESSARY LOCATIONS TO INSTALL THE SIGN IN THE REQUIRED LATERAL LOCATION.
- ANCHORS SHALL BE 3" STAINLESS STEEL ANCHOR BOLTS.
- INSTALL BOLTS WITH A NYLON WASHER FOLLOWED BY A STEEL WASHER. FOLLOW DETAIL FOR ATTACHMENT OF SIGNS TO POSTS (A4-B).
- ANCHORING THE SIGN IS INCIDENTAL TO THE SIGN INSTALLATION.

DETAIL FOR ANCHORING SIGNS TO OVERHEAD SIGN STRUCTURE SUPPORTS

Addendum No. 01
 ID 1228-09-74
 Added Sheet 245K
 March 3, 2020

PROJECT NO: 1228-09-74

FILE NAME: N:\PDS\3D\CAD\12280909\SIGN\023401_PS_18.DWG
LAYOUT NAME: 023401_PS_182

HWY: 194

COUNTY: MILWAUKEE

TEMPORARY SIGNING

PLOT DATE: 2/28/2020 9:33 AM

PLOT BY: VANDE LEST, CYNTHIA

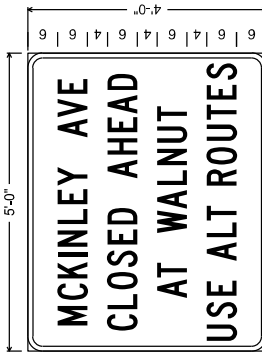
PLOT SCALE: Custom

SHEET

245K

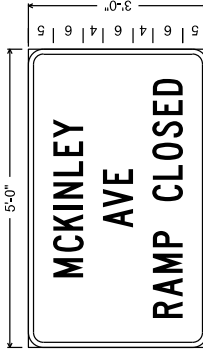
E

WISDOT/CADD/SHEET 42



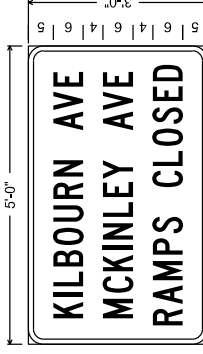
3,000" Radius, 1,000" Border;
 [MCKINLEY] C; [AVE] C; [CLOSED] C;
 [AHEAD] C; [AT] C; [WALNUT] C;
 [USE] C; [ALT] C; [ROUTES] C

PLACE ON SB STH 145:
 PRIOR TO BURLEIGH
 PRIOR TO NORTH AVE
 PRIOR TO 20TH AVE



3,000" Radius, 1,000" Border;
 [MCKINLEY] C; [AVE] C; [RAMP] C;
 [CLOSED] C

S-40-519
 RIGHT AND LEFT
 ON UPRIGHT
 1 43 NB



3,000" Radius, 1,000" Border;
 [KILBOURN] C; [AVE] C; [MCKINLEY] C;
 [AVE] C; [RAMPS] C; [CLOSED] C

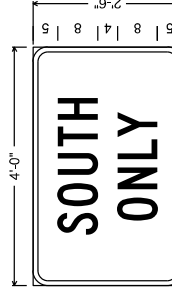
S-40-526
 1 94 EB

Addendum No. 01
 ID 1228-09-74
 Added Sheet 245L
 March 3, 2020



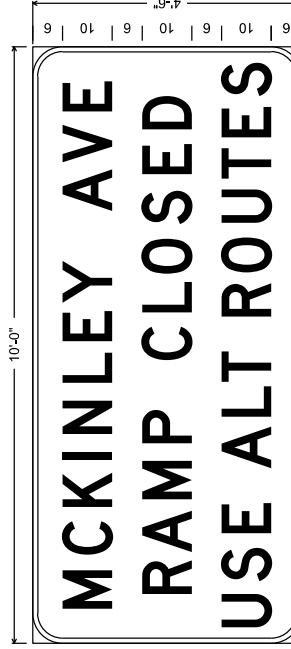
3,000" Radius, 1,000" Border;
 [NO] C; [ACCESS] C; [TO] C;
 [EAST] C

S-40-524
 1 43 NB



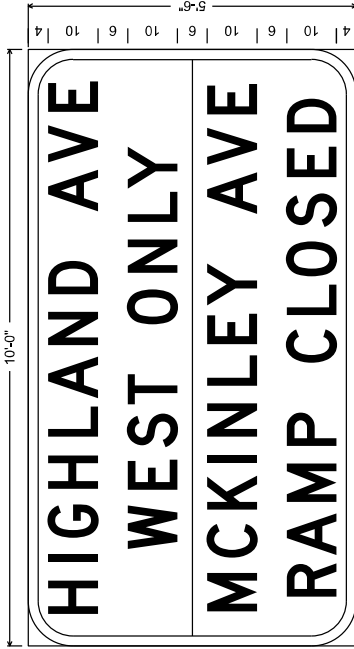
3,000" Radius, 1,000" Border;
 [SOUTH] C; [ONLY] C

S-40-531
 1 794 EB
 OVERHEAD
 S-40-716
 1 94 EB
 ON UPRIGHT



6,000" Radius, 1,000" Border;
 [MCKINLEY] D; [AVE] D; [RAMP] D; [CLOSED] D; [USE] D;
 [ALT] D; [ROUTES] D

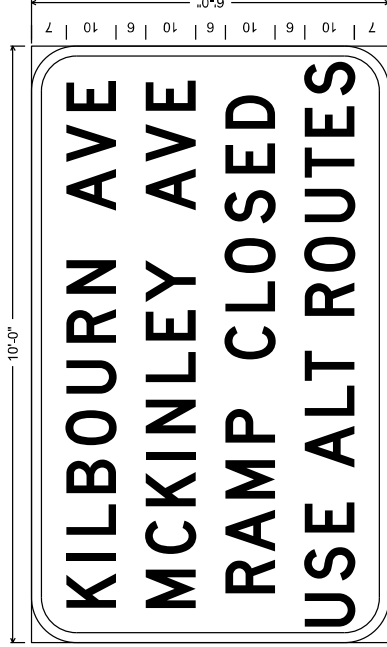
GROUND MOUNTED
 ACROSS FROM S-40-225
 ON RIGHT
 1 43 SB



15

9.000" Radius, 2.000" Border;
 [HIGHLAND] D; [AVE] D; [WEST] D; [ONLY] D; [MCKINLEY] D; [AVE] D; [RAMP] D;
 [CLOSED] D

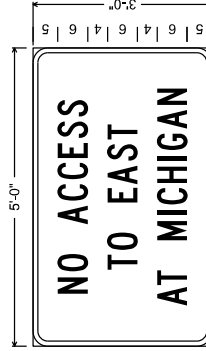
GROUND MOUNTED
 PLACE NEXT TO
 S-40-509
 1 43 SB



1

9.000" Radius, 2.000" Border;
 [KILBOURN] D; [AVE] D; [MCKINLEY] D; [AVE] D; [RAMP] D; [CLOSED] D;
 [USE] D; [ALT] D; [ROUTES] D

GROUND MOUNTED
 PLACE NEXT TO
 S-40-525
 1 94 EB

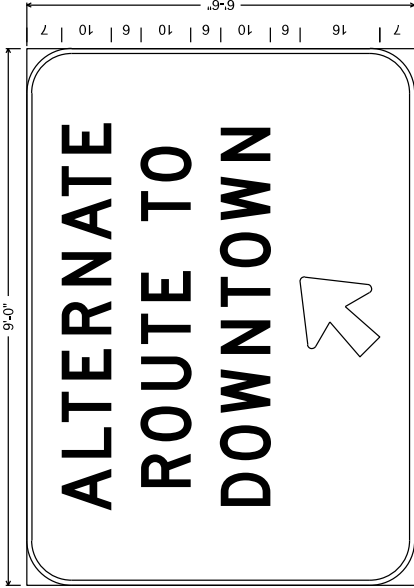


7

3.000" Radius, 1.000" Border;
 [NO] C; [ACCESS] C; [TO] C; [EAST] C;
 [AT] C; [MICHIGAN] C

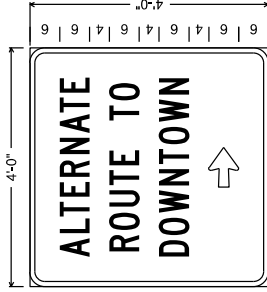
S-40-522
 1 43 NB

Addendum No. 01
 ID 1228-09-74
 Added Sheet 245M
 March 3, 2020



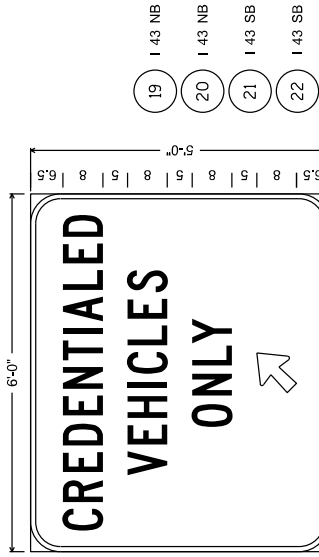
9,000" Radius, 1,000" Border;
[ALTERNATE] D; [ROUTE] D; [TO] D; [DOWNTOWN] D

QTY = 6 SIGNS



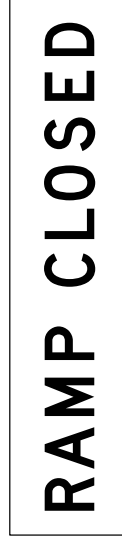
3,000" Radius, 1,000" Border;
[ALTERNATE] C; [ROUTE] C;
[TO] C; [DOWNTOWN] C

QTY = 23 SIGNS



6,000" Radius, 1,000" Border;
[CREDENTIALLED] C; [VEHICLES] C; [ONLY] C

1 43 NB & SB @
MCKINLEY AVE EXIT



G20-63
108 X 24

PLACE ON:

S-40-544 OVERHEAD
1 43 NB

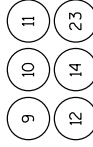
S-40-500 OVERHEAD
1 43 NB

S-40-501 OVERHEAD
1 43 NB

S-40-502 OVERHEAD
1 43 NB

S-40-508 OVERHEAD
1 43 SB

S-40-546 OVERHEAD



Addendum No. 01
ID 1228-09-74
Added Sheet 245N
March 3, 2020

Addendum No. 01
 ID 1228-09-74
 Revised Sheet 64
 March 3, 2020

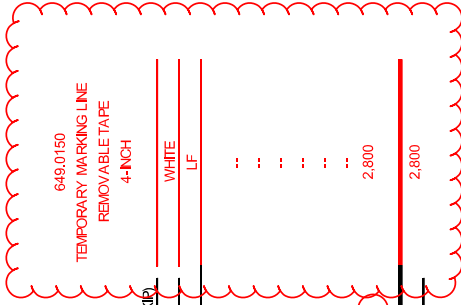
TRAFFIC CONTROL ITEMS

CATEGORY	STAGE	LOCATION	STAGE DURATION DAYS	TRAFFIC CONTROL DRUMS		TRAFFIC CONTROL WARNING LIGHTS		TRAFFIC CONTROL BARRICADES		TRAFFIC CONTROL WARNING LIGHTS		TRAFFIC CONTROL ARROW BOARDS		TRAFFIC CONTROL SIGNS		TRAFFIC CONTROL SIGNS		TRAFFIC CONTROL SIGNS	FIXED MESSAGE
				EACH	DAYS	EACH	TYPE C	EACH	DAYS	EACH	DAYS	EACH	DAYS	EACH	DAYS	EACH	DAYS		
1000	1A	IH43 SB	2	199	398	33	66	18	36	36	72	3	6	46	92	0	0	64.0	
	1B	IH43 SB	1	222	222	33	33	21	21	42	42	3	3	49	49	0	0	64.0	
	1C	IH43 SB	2	389	778	33	66	26	52	52	104	3	6	70	140	1	7	48.0	
	1D	IH43 SB	2	338	676	26	52	22	44	44	88	3	6	51	102	2	14	32.0	
	2A	IH43 SB	2	176	352	39	78	8	16	16	32	3	6	37	74	0	0	16.0	
	2B	IH43 SB	1	346	346	31	31	18	18	36	36	3	3	41	41	0	0	32.0	
	2C	IH43 SB	2	174	348	33	66	21	42	42	84	4	8	38	76	1	14	0.0	
	1A	IH43 NB	1	258	258	80	80	12	12	24	24	4	4	52	52	4	16	0.0	
	1B	IH43 NB	3	90	270	22	66	7	21	14	42	0	0	14	42	3	27	0.0	
	1C	IH43 NB	1	280	280	61	61	22	22	44	44	4	4	58	58	4	16	16.0	
	1D	IH43 NB	1	276	276	77	77	18	18	36	36	5	5	62	62	0	0	32.0	
	1E	IH43 NB	1	524	524	108	108	32	32	64	64	6	6	89	89	1	7	16.0	
	1F	IH43 NB	3	346	1038	35	105	43	129	86	258	2	6	77	231	1	21	64.0	
	2A	IH43 NB	1	130	130	37	37	5	5	10	10	3	3	46	46	1	7	0.0	
	2B	IH43 NB	1	259	259	56	56	11	11	22	22	4	4	60	60	1	7	0.0	
	2C	IH43 NB	3	181	543	39	117	10	30	20	60	4	12	48	144	0	0	0.0	
	1A	IH94 EB	2	163	326	33	66	28	56	56	112	3	6	37	74	2	28	48.0	
	1B	IH94 EB	1	85	85	13	13	20	20	40	40	2	2	30	30	1	7	32.0	
2	IH94 EB	2	356	712	93	186	31	62	62	124	3	6	76	152	1	14	48.0		
1A	IH94 WB	1	174	174	26	26	15	15	30	30	3	3	35	35	2	14	16.0		
1B	IH94 WB	2	167	334	37	74	4	8	8	16	4	8	22	44	2	14	0.0		
2A	IH94 WB	1	441	441	91	91	43	43	86	86	3	3	95	95	2	16	64.0		
2B	IH94 WB	2	462	924	92	184	46	92	92	184	3	6	96	192	2	16	64.0		
UNDISTRIBUTED				2424	435	201	403	29	495	164.0									
STH 145 INTERCHANGE CLOSURE				9	89	801	15	135	7	63	14	126	1	9	9	81	1	7	193.0
STH 145 INTERCHANGE CLOSURE				9	35	315	0	0	6	54	12	108	0	0	5	45	1	7	178.0
STH 145 INTERCHANGE CLOSURE				9	43	387	0	0	4	36	8	72	0	0	5	45	1	7	95.0
STH 145 INTERCHANGE CLOSURE				9	116	1044	0	0	8	72	16	144	1	9	10	90	1	7	18.0
STH 145 INTERCHANGE CLOSURE				9	193	1737	0	0	38	342	76	684	0	0	52	468	4	28	60.0
STH 145 INTERCHANGE CLOSURE				9	32	288	0	0	13	117	26	234	0	0	15	135	1	7	0.0
STH 145 INTERCHANGE CLOSURE				14	1143	1143	34	34	171	342	342	5	5	216	216	15	210	855.0	
TOTALS:					17,833	2,343	1,861	3,723	168	3,555	560	2,219.0							

* ADDITIONAL QUANTITIES LISTED ELSEWHERE IN PLAN

TEMPORARY MARKING LINE

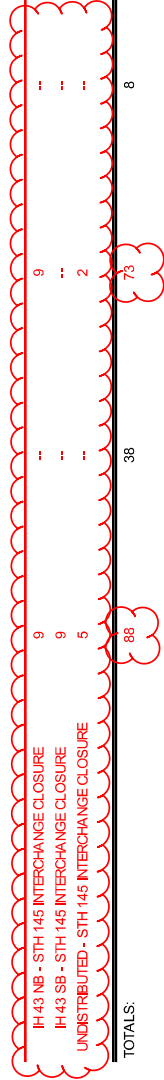
CATEGORY	LOCATION	STATION	WHITE		YELLOW		WHITE		WHITE		8-INCH		8-INCH	
			LF	LF	LF	LF	LF	LF	LF	LF	LF	LF		
1000	IH 43 NB		7,609		7,919		4,788				4,272		1,270	
	IH 43 SB		8,140		8,146		4,425		47	4,105		665		
	IH 94 EB		2,814		2,834		1,538		65	3,068		212		
	IH 94 WB		4,670		4,681		2,713			2,444		387		
	NW RAMP		919		927		225							
	NW RAMP		1,889		1,934		638							
	UNDISTRIBUTED													
TOTALS:			26,041		26,441		14,327		112	14,372		17,087		2,800

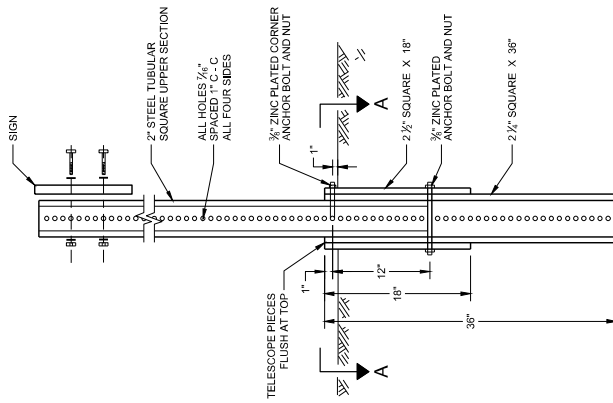


Addendum No. 01
 ID 1228-09-74
 Revised Sheet 269
 March 3, 2020

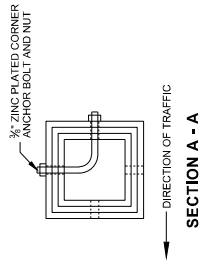
TRAFFIC CONTROL

CATEGORY	ROADWAY	SPV.0060.0001		SPV.0060.0002		643.4100.S		SPV.0060.0003		
		TRAFFIC CONTROL	TRAFFIC CONTROL	TRAFFIC CONTROL	TRAFFIC CONTROL	INTERIM	TRAFFIC CONTROL	TRAFFIC CONTROL	TRAFFIC CONTROL	
1000	NB 43	12	13			21				
	SB 43	20	6			15				
	EB 94/794	7	5			6				
	WB 94/794	13	6			7				
	UNDISTRIBUTED	13	8			13				
	IH 43 NB - STH 145 INTERCHANGE CLOSURE	9				9				
	IH 43 SB - STH 145 INTERCHANGE CLOSURE	9								
	UNDISTRIBUTED - STH 145 INTERCHANGE CLOSURE	5				2				
	TOTALS:		88	38			73			8





DETAIL OF TUBULAR STEEL SIGN POST



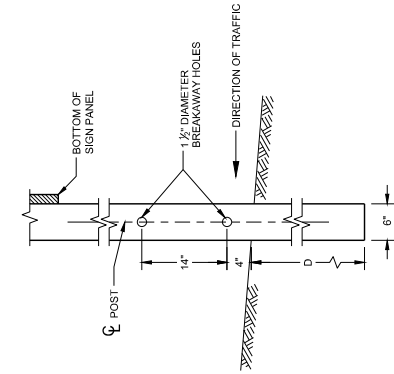
TUBULAR STEEL POSTS

AREA OF SIGN INSTALLATION (SQ. FT.)	NUMBER OF REQUIRED TUBULAR STEEL POSTS
9 OR LESS	1
GREATER THAN 9, LESS THAN OR EQUAL TO 16	2
GREATER THAN 16, LESS THAN OR EQUAL TO 27	3

SIGNS WIDER THAN 3 FEET OR LARGER THAN 9 SQ. FT. SHALL BE MOUNTED ON MULTIPLE POSTS (SEE ABOVE TABLE).
SIGNS LARGER THAN 27 SQ. FT. SHALL NOT BE MOUNTED ON TUBULAR STEEL POSTS.

GENERAL NOTES

- 1 6 FEET FROM THE EDGE OF PAVEMENT (EDGE LINE LOCATION) UNLESS OTHERWISE DIRECTED BY THE PROJECT ENGINEER, LATERAL OFFSET SHOULD BE ADJUSTED TO AVOID THE DITCH FLOWLINE.
- 2 THE EXISTENCE OF CURB AND GUTTER DOES NOT IN ITSELF MANDATE THE VERTICAL CLEARANCE ILLUSTRATED. THAT HEIGHT IS TYPICALLY MEASURED WHERE THERE IS SIDEWALK ADJACENT TO THE ROADWAY OR WHERE THERE IS NO SIDEWALK AND NO PARKING. THE VERTICAL CLEARANCE FROM THE BOTTOM OF THE SIGN PANEL TO THE TOP OF THE CURB, IF NO SIDEWALK AND NO PARKING, VERTICAL CLEARANCE MAY BE REDUCED TO 5 FOOT MINIMUM. OFFSET OF SIGNS IS MEASURED FROM THE CURB FLOWLINE.
- 3 FOR SIGNS REQUIRING 4 POSTS, SPACE INTERMEDIATE POSTS EVENLY.



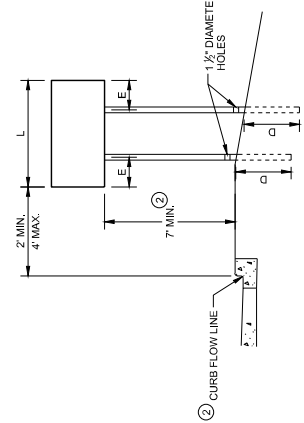
4" X 6" WOOD POST MODIFICATION

4" X 6" WOOD POST

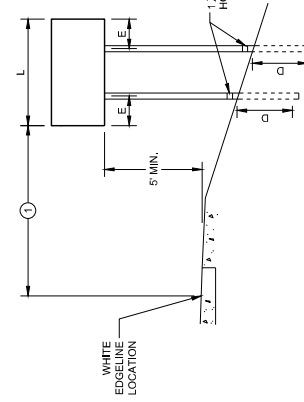
POST SPACING REQUIREMENTS	NUMBER OF WOOD POSTS REQUIRED	
	L	E
48' OR LESS AND LESS THAN 20 SQ. FT.	-	1
LESS THAN 60'	12"	2
60' TO 120'	L/5	2
GREATER THAN 120' LESS THAN 168'	12"	3
168' AND GREATER	12"	4

WOOD POST EMBEDMENT DEPTH

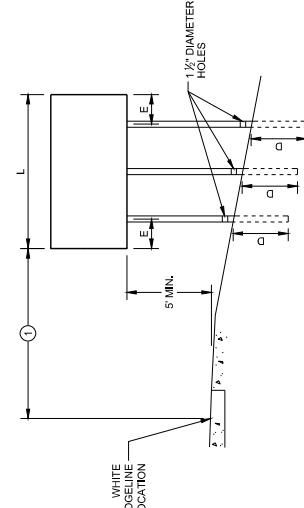
AREA OF SIGN INSTALLATION (SQ. FT.)	D (MIN.)
20 OR LESS	4'
GREATER THAN 20	5'



URBAN AREA



RURAL AREA



RURAL AREA

POST MOUNTING DETAIL FOR TEMPORARY TRAFFIC CONTROL FIXED MESSAGE SIGNS

TEMPORARY TRAFFIC CONTROL SIGN MOUNTING

STATE OF WISCONSIN DEPARTMENT OF TRANSPORTA 294A

Addendum No. 01
ID 1228-09-74
Added Sheet 294A
March 3, 2020



NUTS, BOLTS AND LAGS USED FOR MOUNTING SIGNS SHALL HAVE HEXAGONAL HEADS AND SHALL BE EITHER:

- A. HOT DIP GALVANIZED IN ACCORDANCE WITH ASTM DESIGNATION: A 153, CLASS D, OR, SC 3
- B. ELECTRO-GALVANIZED IN ACCORDANCE WITH ASTM DESIGNATION: B 633, TYPE III, SC 3

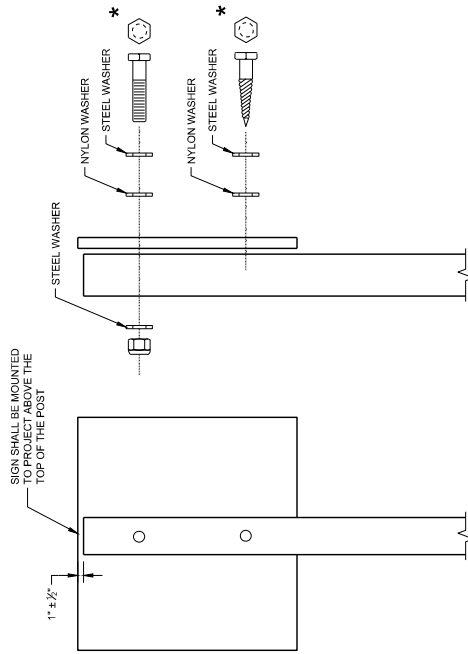
THREADS ON BOLTS AND NUTS SHALL BE MANUFACTURED WITH SUFFICIENT ALLOWANCE FOR THE CADMIUM PLATE OR GALVANIZED COATING TO PERMIT THE NUTS TO RUN FREELY ON THE BOLTS.

WOOD POST (4" x 4" OR 4" x 6")
 LAG SCREWS - 3/4" x 3"
 MACHINE BOLTS - 5/8" x 6 1/2" OR 7" LENGTH WINUTS

SQUARE STEEL POST (2" x 2")
 MACHINE BOLTS - 3/4" x 3 1/2" LENGTH WINUTS
 RIVETS - 5/8" (6656-66) BULB-TITE, TRIFOLD, ALUMINUM
 BODY/MANDREL O.D. FLANGE 0.720 - 0.765 INCH,
 GRIP RANGE 0.042 - 0.375 INCH

WASHERS (ALL POSTS) -
 1 1/2" O.D. x 3/8" I.D. x 1/16" STEEL
 1 1/2" O.D. x 3/8" I.D. x 0.080 NYLON

* TWO DIFFERENT FASTENING SYSTEMS ARE SHOWN FOR ILLUSTRATION PURPOSES. ON ANY INDIVIDUAL SIGN, EITHER ONE OR THE OTHER SYSTEM SHALL BE USED. ACTUAL NUMBER OF FASTENERS PER SIGN VARIES WITH THE SIGN AREA. FOR A SINGLE POST INSTALLATION, ALL SIGNS GREATER THAN 9 SQ. FT. REQUIRE THE USE OF 3 FASTENERS.



ATTACHMENT OF SIGNS TO POSTS

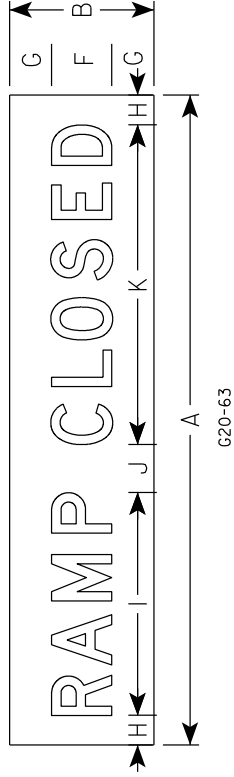
STATE OF WISCONSIN DEPARTMENT OF TRANSPORTATION

APPROVED June 2017 DATE /S/ Andrew Heitko WORK-ZONE ENGINEER 294B

Addendum No. 01 ID 1228-09-74 Added Sheet 294B March 3, 2020

NOTES

1. Sign is Type II - Type F Reflective
2. Color:
Background - Orange
Message - Black
3. Message Series - D
4. Material shall be .040 aluminum



Addendum No. 01
ID 1228-09-74
Added Sheet 322A
March 3, 2020

SIZE	A	B	C	D	E	F	G	H	I	J	K	L	M	N	O	P	Q	R	S	T	U	V	W	X	Y	Z	Area sq.ft.
1																											
2																											
3	72	12			6	3	6	22 1/8	6	31 7/8																	6.0
4	108	24			10	7	4 7/8	37	8	53 1/8																	18.0
5																											

STANDARD SIGN

G20-63

WISCONSIN DEPT OF TRANSPORTATION

APPROVED *Matthew R. Rauch*
for State Traffic Engineer

DATE 11/8/17 PLATE NO. G20-63.1

PROJECT NO:

HWY:

COUNTY:

PLOT DATE : 08-NOV-2017 14:36 PLOT BY : \$\$.plotuser... PLOT NAME :

PLOT SCALE : 20.6438911.00000 WISDOT/CADD SHEET 42

SHEET NO: 322A

E



Proposal Schedule of Items

Proposal ID: 20200310009 Project(s): 1228-09-74

Federal ID(s): WISC 2020070

SECTION: 0001 Roadway Items

Alt Set ID: Alt Mbr ID:

Proposal Line Number	Item ID Description	Approximate Quantity and Units	Unit Price	Bid Amount
0002	204.0120 Removing Asphaltic Surface Milling	186,525.000 SY	_____.	_____.
0004	213.0100 Finishing Roadway (project) 01. 1228-09-74	1.000 EACH	_____.	_____.
0006	450.4000 HMA Cold Weather Paving	3,500.000 TON	_____.	_____.
0008	455.0605 Tack Coat	13,057.000 GAL	_____.	_____.
0010	460.0115.S HMA Pavement Test Strips Volumetrics	1.000 EACH	_____.	_____.
0012	460.0120.S HMA Pavement Test Strips Density	1.000 EACH	_____.	_____.
0014	460.2000 Incentive Density HMA Pavement	13,440.000 DOL	1.00000	13,440.00
0016	460.8624 HMA Pavement 4 SMA 58-28 V	20,891.000 TON	_____.	_____.
0018	465.0110 Asphaltic Surface Patching	100.000 TON	_____.	_____.
0020	619.1000 Mobilization	1.000 EACH	_____.	_____.
0022	628.7020 Inlet Protection Type D	245.000 EACH	_____.	_____.
0024	635.0200 Sign Supports Structural Steel HS	2,000.000 LB	_____.	_____.
0026	636.0100 Sign Supports Concrete Masonry	3.000 CY	_____.	_____.
0028	636.0500 Sign Supports Steel Reinforcement	196.000 LB	_____.	_____.
0030	637.1220 Signs Type I Reflective SH	4,232.000 SF	_____.	_____.
0032	638.2601 Removing Signs Type I	24.000 EACH	_____.	_____.



Proposal Schedule of Items

Proposal ID: 20200310009 Project(s): 1228-09-74

Federal ID(s): WISC 2020070

SECTION: 0001 Roadway Items

Alt Set ID: Alt Mbr ID:

Proposal Line Number	Item ID Description	Approximate Quantity and Units	Unit Price	Bid Amount
0034	638.3100 Removing Structural Steel Sign Supports	4.000 EACH	_____.	_____.
0036	643.0300 Traffic Control Drums	17,833.000 DAY	_____.	_____.
0038	643.0420 Traffic Control Barricades Type III	1,861.000 DAY	_____.	_____.
0040	643.0705 Traffic Control Warning Lights Type A	3,723.000 DAY	_____.	_____.
0042	643.0715 Traffic Control Warning Lights Type C	2,343.000 DAY	_____.	_____.
0044	643.0800 Traffic Control Arrow Boards	168.000 DAY	_____.	_____.
0046	643.0900 Traffic Control Signs	5,273.000 DAY	_____.	_____.
0048	643.1000 Traffic Control Signs Fixed Message	2,219.000 SF	_____.	_____.
0050	643.1050 Traffic Control Signs PCMS	696.000 DAY	_____.	_____.
0052	643.4100.S Traffic Control Interim Lane Closure	73.000 EACH	_____.	_____.
0054	643.5000 Traffic Control	1.000 EACH	_____.	_____.
0056	646.1020 Marking Line Epoxy 4-Inch	43,489.000 LF	_____.	_____.
0058	646.1040 Marking Line Grooved Wet Ref Epoxy 4-Inch	50,735.000 LF	_____.	_____.
0060	646.1555 Marking Line Grooved Contrast Permanent Tape 4-Inch	14,439.000 LF	_____.	_____.
0062	646.3020 Marking Line Epoxy 8-Inch	6,047.000 LF	_____.	_____.
0064	646.3555 Marking Line Grooved Contrast Permanent Tape 8-Inch	17,094.000 LF	_____.	_____.



Proposal Schedule of Items

Proposal ID: 20200310009 Project(s): 1228-09-74

Federal ID(s): WISC 2020070

SECTION: 0001 Roadway Items

Alt Set ID: Alt Mbr ID:

Proposal Line Number	Item ID Description	Approximate Quantity and Units	Unit Price	Bid Amount
0066	646.5020 Marking Arrow Epoxy	53.000 EACH	_____.	_____.
0068	646.5120 Marking Word Epoxy	16.000 EACH	_____.	_____.
0070	646.5220 Marking Symbol Epoxy	20.000 EACH	_____.	_____.
0072	646.6120 Marking Stop Line Epoxy 18-Inch	476.000 LF	_____.	_____.
0074	646.7120 Marking Diagonal Epoxy 12-Inch	5,976.000 LF	_____.	_____.
0076	646.7220 Marking Chevron Epoxy 24-Inch	3,314.000 LF	_____.	_____.
0078	646.9000 Marking Removal Line 4-Inch	75.000 LF	_____.	_____.
0080	649.0105 Temporary Marking Line Paint 4-Inch	66,921.000 LF	_____.	_____.
0082	649.0205 Temporary Marking Line Paint 8-Inch	17,087.000 LF	_____.	_____.
0084	649.0960 Temporary Marking Removable Mask Out Tape 6-Inch	10,192.000 LF	_____.	_____.
0086	649.0970 Temporary Marking Removable Mask Out Tape 10-Inch	1,388.000 LF	_____.	_____.
0088	ASP.1T0A On-the-Job Training Apprentice at \$5.00/HR	1,800.000 HRS	_____.	_____.
0090	ASP.1T0G On-the-Job Training Graduate at \$5.00/HR	3,000.000 HRS	_____.	_____.
0092	SPV.0060 Special 0001. TRAFFIC CONTROL CLOSE-OPEN FREEWAY ENTRANCE RAMP	88.000 EACH	_____.	_____.



Proposal Schedule of Items

Proposal ID: 20200310009 Project(s): 1228-09-74

Federal ID(s): WISC 2020070

SECTION: 0001 Roadway Items

Alt Set ID: Alt Mbr ID:

Proposal Line Number	Item ID Description	Approximate Quantity and Units	Unit Price	Bid Amount
0094	SPV.0060 Special 0002. TRAFFIC CONTROL CLOSE-OPEN FREEWAY TO FREEWAY SYSTEM RAMP	38.000 EACH	_____.	_____.
0096	SPV.0060 Special 0003. TRAFFIC CONTROL FULL FREEWAY CLOSURE	8.000 EACH	_____.	_____.
0098	SPV.0060 Special 0004. FIELD FACILITIES OFFICE SPACE	1.000 EACH	_____.	_____.
0100	SPV.0060 Special 0005. MOBILIZATIONS EMERGENCY PAVEMENT REPAIR	4.000 EACH	_____.	_____.
0102	SPV.0075 Special 0001. PAVEMENT CLEANUP PROJECT 1228-09-74	42.000 HRS	_____.	_____.
0104	SPV.0090 Special 0001. MARKING CROSSWALK EPOXY 12-INCH	825.000 LF	_____.	_____.
0106	SPV.0090 Special 0002. MARKING LINE CONTRAST EPOXY 4-INCH	939.000 LF	_____.	_____.
0108	SPV.0090 Special 0003. MARKING LINE CONTRAST EPOXY 8-INCH	2,438.000 LF	_____.	_____.
0110	SPV.0105 Special 0001. MATERIAL TRANSFER VEHICLE PROJECT 1228-09-74	LS	LUMP SUM	_____.
0112	SPV.0105 Special 0002. SURVEY PROJECT 1228- 09-74	LS	LUMP SUM	_____.
0114	SPV.0180 Special 0001. RESIN BINDER HIGH FRICTION SURFACE TREATMENT MODIFIED	21,370.000 SY	_____.	_____.
0116	649.0150 Temporary Marking Line Removable Tape 4-Inch	2,800.000 LF	_____.	_____.
Section: 0001			Total:	_____.

Total Bid: _____.

