



Wisconsin Department of Transportation

February 27, 2020

Division of Transportation Systems Development

Bureau of Project Development
4822 Madison Yards Way, 4th Floor South
Madison, WI 53705

Telephone: (608) 266-1631
Facsimile (FAX): (608) 266-8459

NOTICE TO ALL CONTRACTORS:

Proposal #12: 2225-14-70, WISC 2020 072
Lake Drive
Various Locations Along STH 32
STH 32
Milwaukee County

Letting of March 10, 2020

This is Addendum No. 01, which provides for the following:

Special Provisions:

Revised Special Provisions	
Article No.	Description
3.	Prosecution & Progress
4.	Traffic
6.	Utilities

Added Special Provisions	
Article No.	Description
19.	Concrete Curb & Gutter HES 30 Inch Type A, Item SPV.0090.02

Schedule of Items:

Revised Bid Item Quantities					
Bid Item	Item Description	Unit	Old Quantity	Revised Quantity	Proposal Total
204.0100	Removing Pavement	SY	684	116	800
305.0120	Base Aggregate Dense 1-1/4 Inch	TON	297	50	347
416.0610	Drilled Tie Bars	EACH	16	10	29
455.0605	Tack Coat	GAL	22	2	24
465.0110	Asphaltic Surface Patching	SY	168	22	190
601.0409	Concrete Curb & Gutter 30-Inch Type A	LF	749	94	873
611.8115	Adjusting Inlet Covers	EACH	8	1	9
614.0010	Barrier System Grading Shaping Finishing	EACH	1	1	2
614.2300	MGS Guardrail 3	LF	105	21	126
614.2610	MGS Terminal EAT	EACH	1	2	3
625.0100	Topsoil	SY	588	103	691
631.0300	Sod Water	MGAL	13.2	2.3	15.5
631.1000	Sod Lawn	SY	588	103	691
643.0300	Traffic Control Drums	DAY	13,383	2,000	13,503
650.5500	Construction Staking Curb Gutter and Curb & Gutter	LF	845	169	1,014
690.0250	Sawing Concrete	LF	1,882	188	2,070

Added Bid Item Quantities					
Bid Item	Item Description	Unit	Old Quantity	Revised Quantity	Proposal Total
416.0270	Concrete Driveway HES 7-Inch	SY	0	5	5
SPV.0090.02	Concrete Curb & Gutter HES 30-Inch Type A	LF	0	45	45

Plan Sheets:

Revised Plan Sheets	
Plan Sheet	Plan Sheet Title (brief description of changes to sheet)
11	Removals (Revised removal limits along STH 32)
12	Removals (Revised removal limits along STH 32)
19	Curb Ramp Construction Detail (Revised work limits along STH 32, added MGS beamguard linework)
43	Plan Details (Revised work limits along STH 32, added MGS beamguard and driveway replacement)
79	Temporary Pavement Marking (Revised pavement and beamguard linework)
100	Stage Construction S1B (Revised work limits along STH 32, revised construction notes)
101	Stage Construction S1B (Revised sheet showing work locations at Day Ave and Belle Ave. Linework did not plot in advertised plans)
103	Stage Construction S1B (Revised work limits along STH 32, added MGS beamguard and driveway replacement)
111	Stage Construction S2A (Revised work limits along STH 32 of work completed in S1B)
112	Stage Construction S2A (Revised linework showing work completed in S1A. Linework did not plot in advertised plans)
115	Stage Construction S2A (Revised linework showing work completed in S1A and S1B. Linework did not plot in advertised plans)
116	Stage Construction S2A (Revised linework showing work completed in S1A and S1B. Linework did not plot in advertised plans)
121	Stage Construction S2B (Revised linework showing work completed in S1B)
139	Stage Construction S3B (Revised linework showing work completed in S1B)
172	Existing Utilities (Revised work limits and utility survey along STH 32)
181	Miscellaneous Quantities (Revised Removing Pavement Quantity)
182	Miscellaneous Quantities (Revised Sawing Concrete Quantity)
183	Miscellaneous Quantities (Revised Base Aggregate Dense 1 ¼-Inch and Asphaltic Surface Patching Quantities)
184	Miscellaneous Quantities (Revised Drilled Tie Bar Quantity, added Concrete Curb & Gutter HES 30-Inch Type A and Concrete Driveway HES 7-Inch Items and Quantities)
185	Miscellaneous Quantities (Revised Construction Staking Curb Gutter And Curb & Gutter Quantity)
186	Miscellaneous Quantities (Revised Topsoil, Sod Water, and Sod Lawn Quantities)
187	Miscellaneous Quantities (Revised Traffic Control Drums Quantity)
192	Miscellaneous Quantities (Revised Adjusting Inlet Covers Quantity)

The responsibility for notifying potential subcontractors and suppliers of these changes remains with the prime contractor.

Sincerely,

Mike Coleman

Proposal Development Specialist
Proposal Management Section

ADDENDUM NO. 01

2225-14-70

February 27, 2020

Special Provisions

3. Prosecution and Progress.

*Add the following after the second bullet point under section titled **Stage 1B**:*

Removal and installation of driveway apron and curb & gutter at 5000 Lake Drive shall be completed within 7 calendar days from start of work.

4. Traffic.

*Add the following after the second paragraph of section titled **Stage 4**:*

Provide notice to residents at 5000 N Lake Drive 10 calendar days prior to closing their driveway for curb & gutter and driveway apron replacement.

6. Utilities.

*Replace the first two paragraphs under section titled **Village of Whitefish Bay – Road Facility** with the following:*

The Village of Whitefish Bay Department of Public Works has storm sewer facilities within the project limits. Village of Whitefish Bay–Road Facility has reviewed the proposed plan and concluded the following: Storm Sewer facilities are close to the existing guardrail. The contractor shall remove and replace the guardrail along Lake Drive/Palisades, Station 203+60 to Station 205+00 RT and Station 205+68 to 207+31 RT during construction as part of the Let project and shall coordinate with the village regarding the guardrail as follows:

*Replace the first paragraph under section titled **WE Energies – Electric** with the following:*

We Energies – Electric has aerial and underground facilities within the project limits. has underground facilities from Sta. 206+79.02, 32.16' RT to Sta. 204+70.99, 59.01' RT at 41" deep and 27" from the back of curb.

We Energies to relocate cable during construction.

Contractor shall notify WE Energies-Electric of the planned date of installation at least 30 calendar days prior to installing the guardrail west of Palisades to ensure the facility is relocated. The We Energies (Electric) field contact person is Alex Dantine at (920) 621-6903; alex.dantine@we-energies.com

*Add the following paragraph after the second paragraph of section titled **WE Energies – Gas**:*

We Energies – Gas has underground facilities from Sta. 205+56.66, 82.35' RT to 203+82.98, 35.15' RT. We Energies - Gas is not expected to be in conflict with the proposed additional guardrail

*Add the following paragraph after the second paragraph of section titled **Village of Whitefish Bay – Street Lighting**:*

The Village will relocate the light pole at Sta. 207+00.2.35, 34.10' RT prior to construction to avoid any conflicts with guardrail installation. The street light relocation includes related street light cables between this light pole and Palisades Road. The anticipated start date for this relocation is April 6, 2020 and is estimated to take 3 working days to complete.

*Add the following paragraph after the third paragraph of Village of **Whitefish Bay – Sewer** section:*

The Village of Whitefish Bay Department of Public Works has sanitary sewer facilities that run along the new guardrail from Sta. 205+52.42, 37.96' RT to 207+ 02.09, 32.85' RT.

This sanitary line is not expected to be in conflict with the proposed additional guardrail.

19. Concrete Curb & Gutter HES 30-Inch Type A, Item SPV.0090.02.

A Description

This special provision describes constructing concrete curb and concrete curb and gutter according to the requirements of standard spec 601.

B Materials.

Provide concrete that conforms to the requirements for high early strength concrete according to standard spec 501.

C Construction

Construct according to standard spec 601.

D Measurement

The department will measure Concrete Curb and Gutter HES 30-Inch Type D in length by the linear foot acceptably completed according to standard spec 601.4.

E Payment

The department will pay for measured quantities at the contract unit price under the following bid item(s):

ITEM NUMBER	DESCRIPTION	UNIT
SPV.0090.001	Concrete Curb and Gutter HES 30-Inch Type A	LF

Payment will be made according to standard spec 601.5.

Schedule of Items

Attached, dated February 27, 2020, are the revised Schedule of Items Pages 1 – 7.

Plan Sheets

The following 8½ x 11-inch sheets are attached and made part of the plans for this proposal:
Revised: 11,12,19,43,79,100,101,103,111,112,115,116,121,139,172,181-187,192.

END OF ADDENDUM



Addendum No. 01
 ID 2225-14-70
 Revised Sheet 11
 February 27, 2020

LEGEND	
	REMOVING PAVEMENT
	REMOVING CONCRETE SIDEWALK
	SAWING CONCRETE
	REMOVING GUARDRAIL
	MARKING REMOVAL LINE 4-INCH
	MARKING REMOVAL LINE WIDE

2

2

PROJECT NO: 2225-14-00/70

HWY: 5TH 32 (N. LAKE DRIVE)

COUNTY: MILWAUKEE

PILOT DATE: 2/27/2020 1:09 PM

REMOVAL PLANS
 PLOT BY: POBRIC, SILVANA

PILOT NAME: 1 INK4DFT

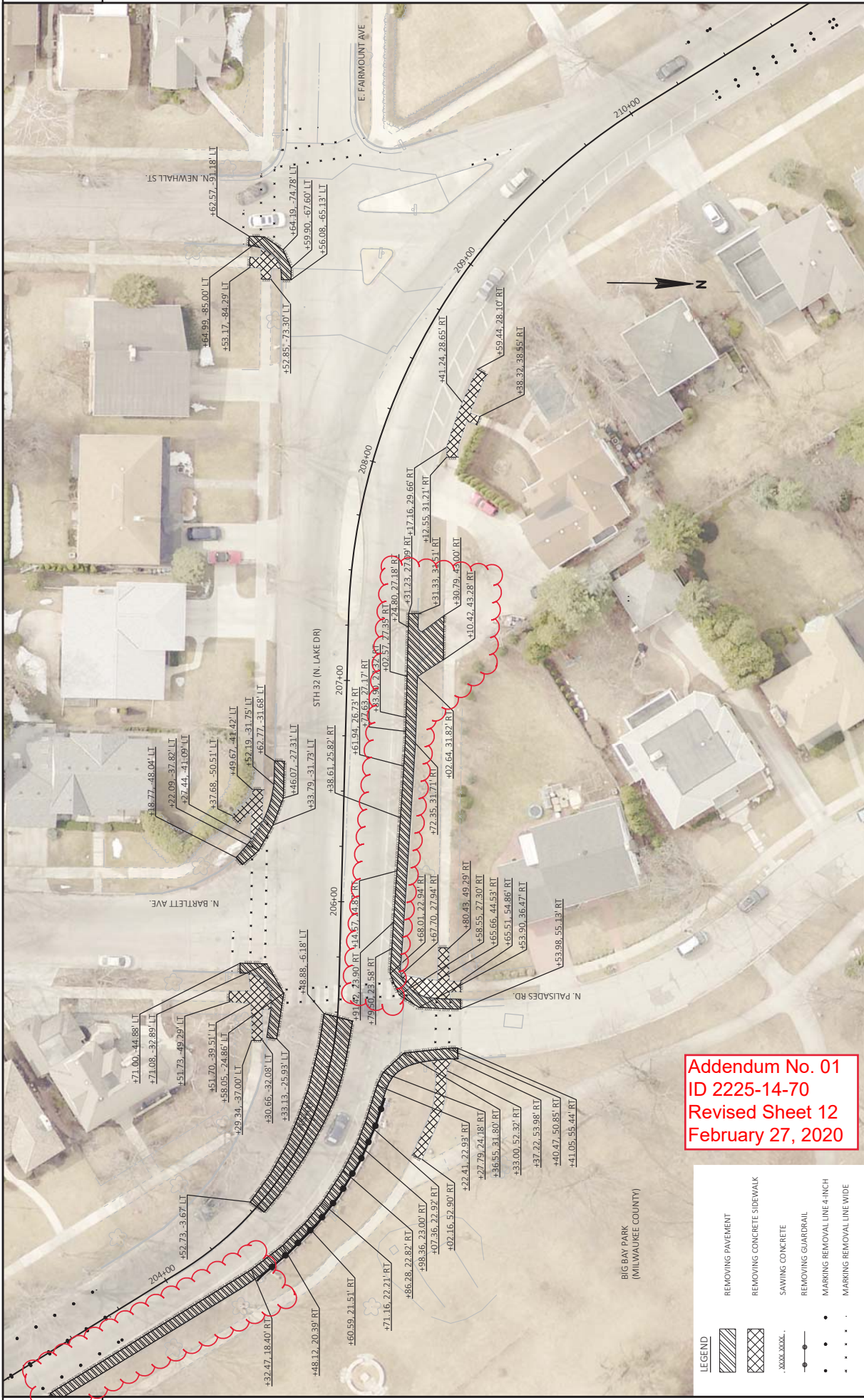
SHEET

11

E

FILE NAME: N:\PDS\320\225-1400\5HEETS\PLAN02\201_RMDWG
 LAYOUT NAME: 021201_1m

W8507\CADDS SHEET 42



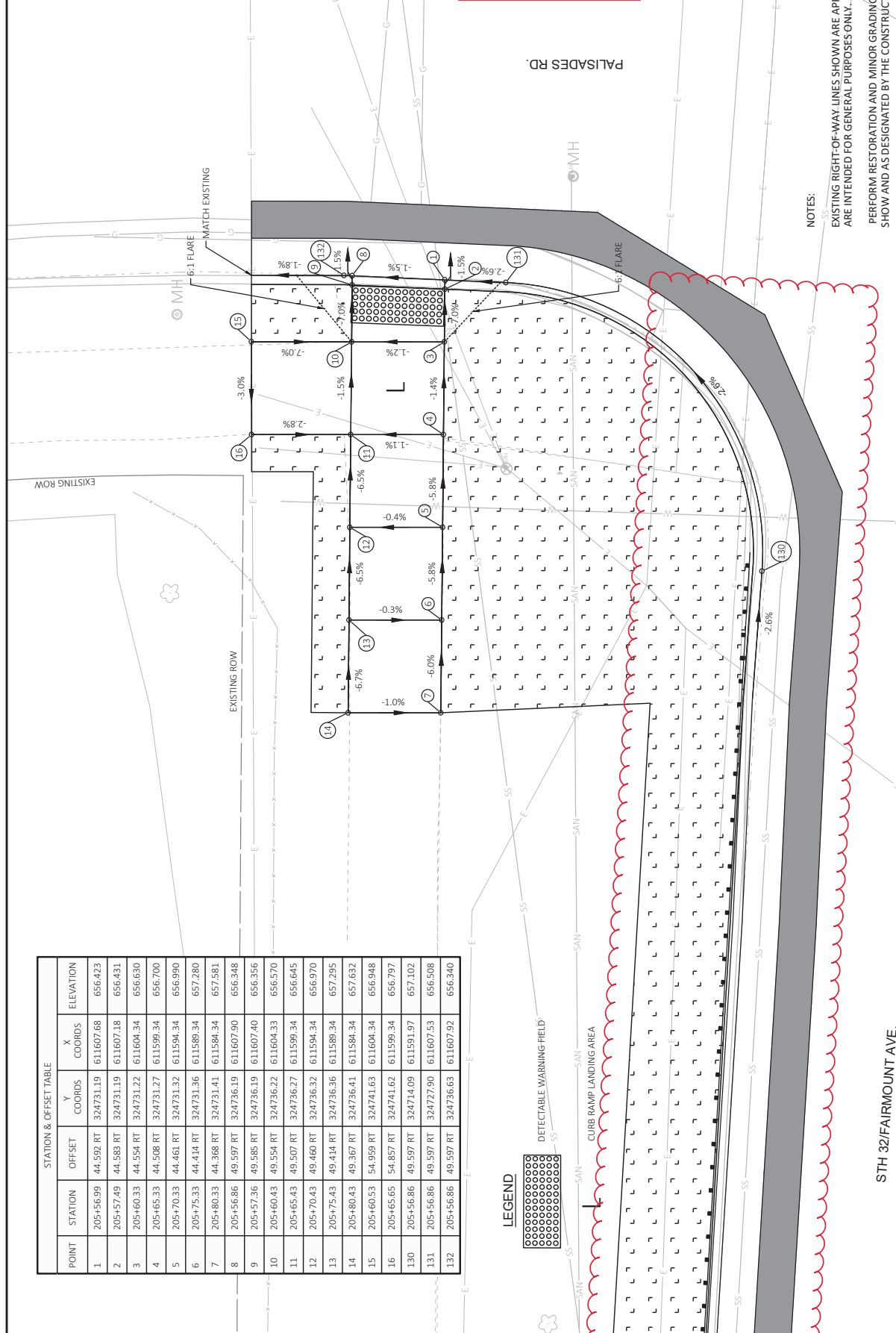
Addendum No. 01
 ID 2225-14-70
 Revised Sheet 12
 February 27, 2020

LEGEND	
	REMOVING PAVEMENT
	REMOVING CONCRETE SIDEWALK
	SAWING CONCRETE
	REMOVING GUARDRAIL
	MARKING REMOVAL LINE 4-INCH
	MARKING REMOVAL LINE WIDE



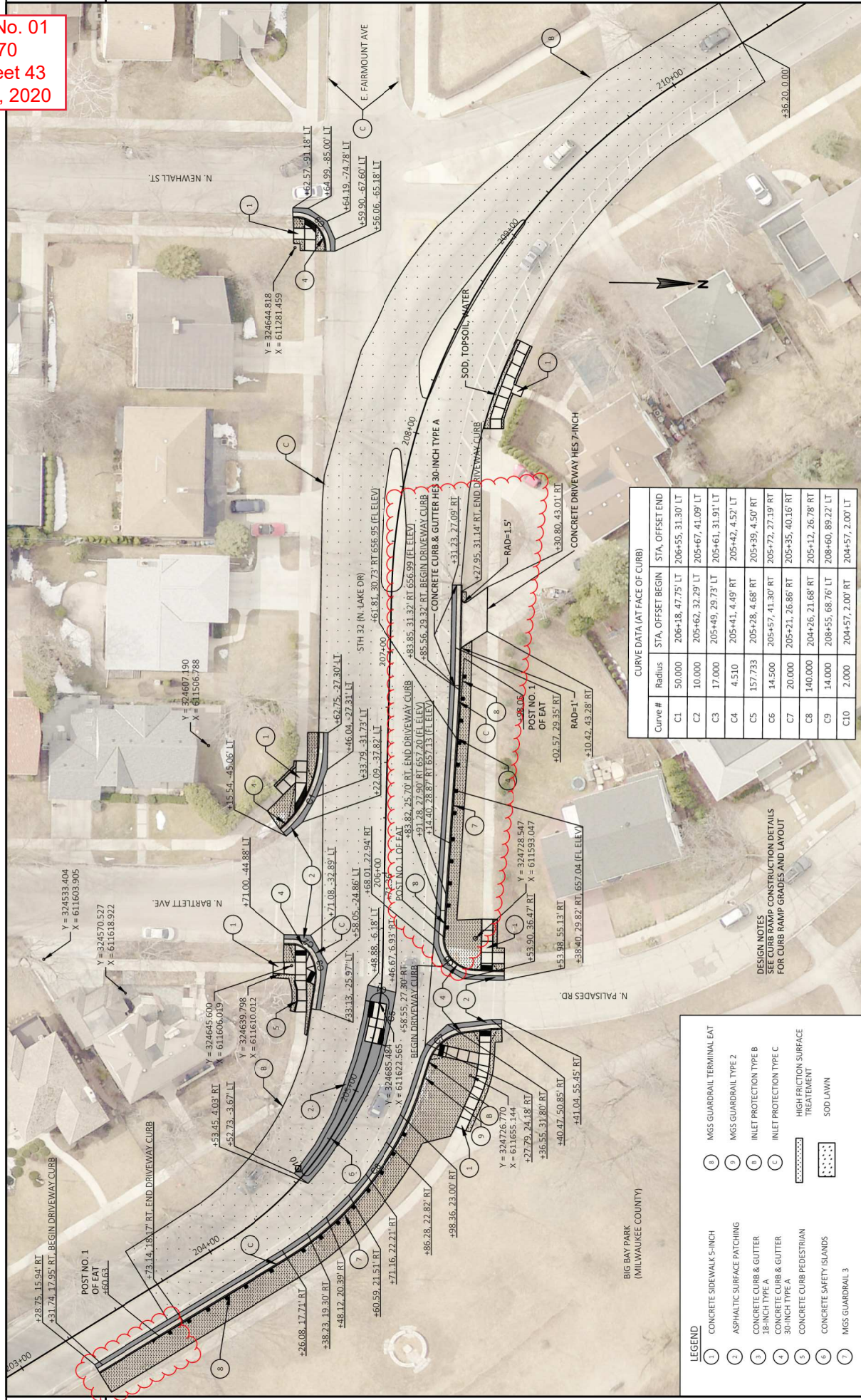
Addendum No. 01
 ID 2225-14-70
 Revised Sheet 19
 February 27, 2020

POINT	STATION	OFFSET	Y COORDS	X COORDS	ELEVATION
1	205+56.99	44.592 RT	324731.19	611607.68	656.423
2	205+57.49	44.583 RT	324731.19	611607.18	656.431
3	205+60.33	44.554 RT	324731.22	611604.34	656.630
4	205+65.33	44.508 RT	324731.27	611598.34	656.700
5	205+70.33	44.461 RT	324731.32	611594.34	656.990
6	205+75.33	44.414 RT	324731.36	611589.34	657.280
7	205+80.33	44.368 RT	324731.41	611584.34	657.581
8	205+85.86	49.597 RT	324736.19	611607.90	656.348
9	205+87.36	49.585 RT	324736.19	611607.40	656.356
10	205+90.43	49.554 RT	324736.22	611604.33	656.570
11	205+95.43	49.507 RT	324736.27	611599.34	656.645
12	205+100.43	49.460 RT	324736.32	611594.34	656.970
13	205+105.43	49.414 RT	324736.36	611589.34	657.295
14	205+110.43	49.367 RT	324736.41	611584.34	657.632
15	205+115.43	54.959 RT	324741.63	611604.34	656.948
16	205+120.43	54.857 RT	324741.62	611599.34	656.797
130	205+156.86	49.597 RT	324714.09	611591.97	657.102
131	205+156.86	49.597 RT	324727.90	611607.53	656.508
132	205+156.86	49.597 RT	324736.63	611607.92	656.340



NOTES:
 EXISTING RIGHT-OF-WAY LINES SHOWN ARE APPROXIMATE AND ARE INTENDED FOR GENERAL PURPOSES ONLY.
 PERFORM RESTORATION AND MINOR GRADING AS THE PLANS SHOW AND AS DESIGNATED BY THE CONSTRUCTION ENGINEER.

Addendum No. 01
 ID 2225-14-70
 Revised Sheet 43
 February 27, 2020



CURVE DATA (AT FACE OF CURB)			
Curve #	Radius	STA. OFFSET BEGIN	STA. OFFSET END
C1	50,000	206+18.4775' LT	206+55.3130' LT
C2	10,000	205+62.3229' LT	205+67.4109' LT
C3	17,000	205+49.2973' LT	205+61.3191' LT
C4	4,510	205+41.449' RT	205+42.432' LT
C5	157,733	205+28.468' RT	205+39.450' RT
C6	14,500	205+57.4130' RT	205+72.2719' RT
C7	20,000	205+21.2686' RT	205+35.4016' RT
C8	140,000	204+26.2168' RT	205+12.2678' RT
C9	14,000	208+55.6876' LT	208+60.8922' LT
C10	2,000	204+57.200' RT	204+57.200' LT

DESIGN NOTES
 SEE CURB RAMP CONSTRUCTION DETAILS
 FOR CURB RAMP GRADES AND LAYOUT

- LEGEND**
- (1) CONCRETE SIDEWALK 5-INCH
 - (2) ASPHALTIC SURFACE PATCHING
 - (3) CONCRETE CURB & GUTTER 18-INCH TYPE A
 - (4) CONCRETE CURB & GUTTER 30-INCH TYPE A
 - (5) CONCRETE CURB PEDESTRIAN
 - (6) CONCRETE SAFETY ISLANDS
 - (7) MGS GUARDRAIL 3
 - (8) MGS GUARDRAIL TERMINAL EAT
 - (9) MGS GUARDRAIL TYPE 2
 - (B) INLET PROTECTION TYPE B
 - (C) INLET PROTECTION TYPE C
 - (D) HIGH FRICTION SURFACE TREATMENT
 - (E) SOD LAWN

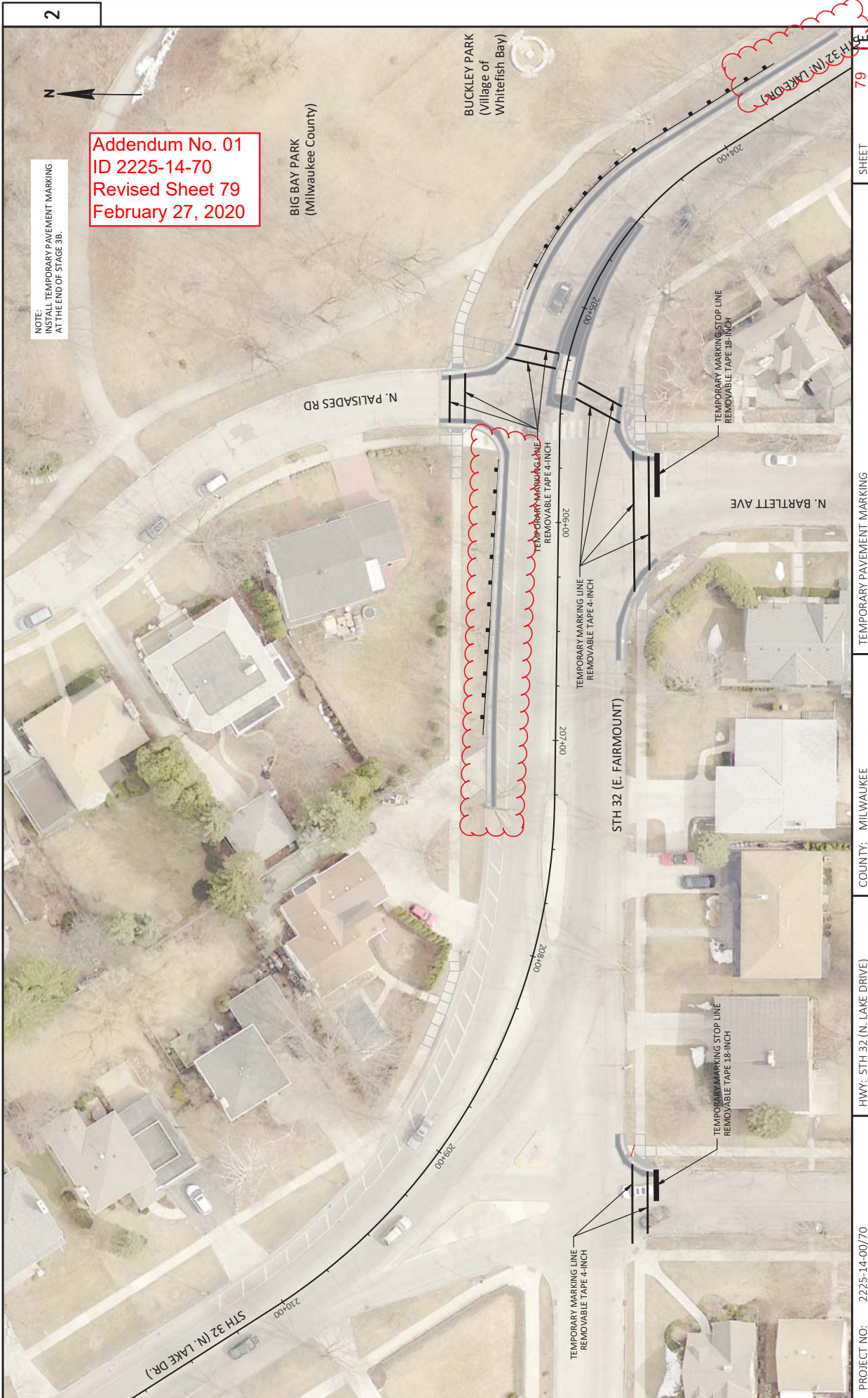
Addendum No. 01
ID 2225-14-70
Revised Sheet 79
February 27, 2020

NOTE:
INSTALL TEMPORARY PAVEMENT MARKING
AT THE END OF STAGE 3B.



BIG BAY PARK
(Milwaukee County)

BUCKLEY PARK
(Village of
Whitefish Bay)

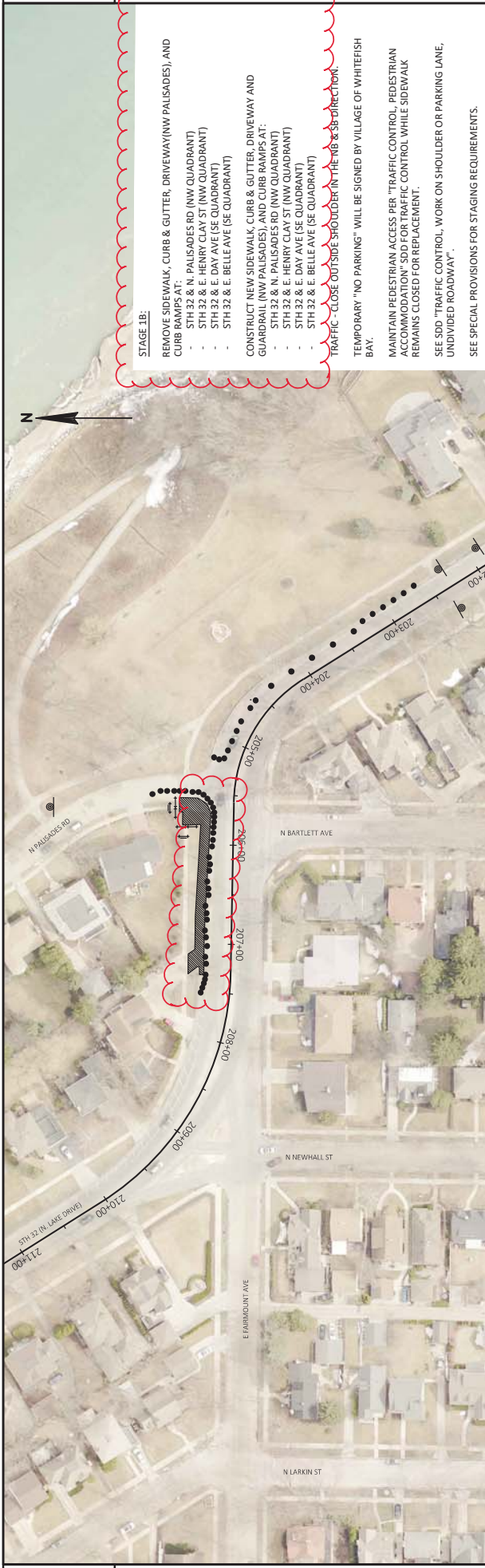


2

2

PROJECT NO: 2225-14-00/70 FILE NAME: N:\PDS\320\225-14-00\320\320\SHEETS\PLAN\02\901_PM_TEMP.DWG LAYOUT NAME: 02\901_b.m	HWY: STH 32 (N. LAKE DRIVE)	COUNTY: MILWAUKEE	TEMPORARY PAVEMENT MARKING	FLYBY: POBRC-SILVARA	PLOT NAME: 1 IN=40 FT	SHEET 79
--	-----------------------------	-------------------	----------------------------	----------------------	-----------------------	----------

WISDOT/CADDIS SHEET 42



STAGE 1B:
 REMOVE SIDEWALK, CURB & GUTTER, DRIVEWAY(NW PALISADES), AND CURB RAMPS AT:
 - STH 32 & N PALISADES RD (NW QUADRANT)
 - STH 32 & E HENRY CLAY ST (NW QUADRANT)
 - STH 32 & E DAY AVE (SE QUADRANT)
 - STH 32 & E BELLE AVE (SE QUADRANT)
 CONSTRUCT NEW SIDEWALK, CURB & GUTTER, DRIVEWAY AND GUARDRAIL (NW PALISADES), AND CURB RAMPS AT:
 - STH 32 & N PALISADES RD (NW QUADRANT)
 - STH 32 & E HENRY CLAY ST (NW QUADRANT)
 - STH 32 & E DAY AVE (SE QUADRANT)
 - STH 32 & E BELLE AVE (SE QUADRANT)
 TRAFFIC - "CLOSE OUTSIDE SHOULDER" IN THE NB & SB DIRECTION.

TEMPORARY "NO PARKING" WILL BE SIGNED BY VILLAGE OF WHITEFISH BAY.
 MAINTAIN PEDESTRIAN ACCESS PER "TRAFFIC CONTROL, PEDESTRIAN ACCOMMODATION" SDD FOR TRAFFIC CONTROL WHILE SIDEWALK REMAINS CLOSED FOR REPLACEMENT.
 SEE SDD "TRAFFIC CONTROL, WORK ON SHOULDER OR PARKING LANE, UNDIVIDED ROADWAY".
 SEE SPECIAL PROVISIONS FOR STAGING REQUIREMENTS.

Addendum No. 01
 ID 2225-14-70
 Revised Sheet 100
 February 27, 2020

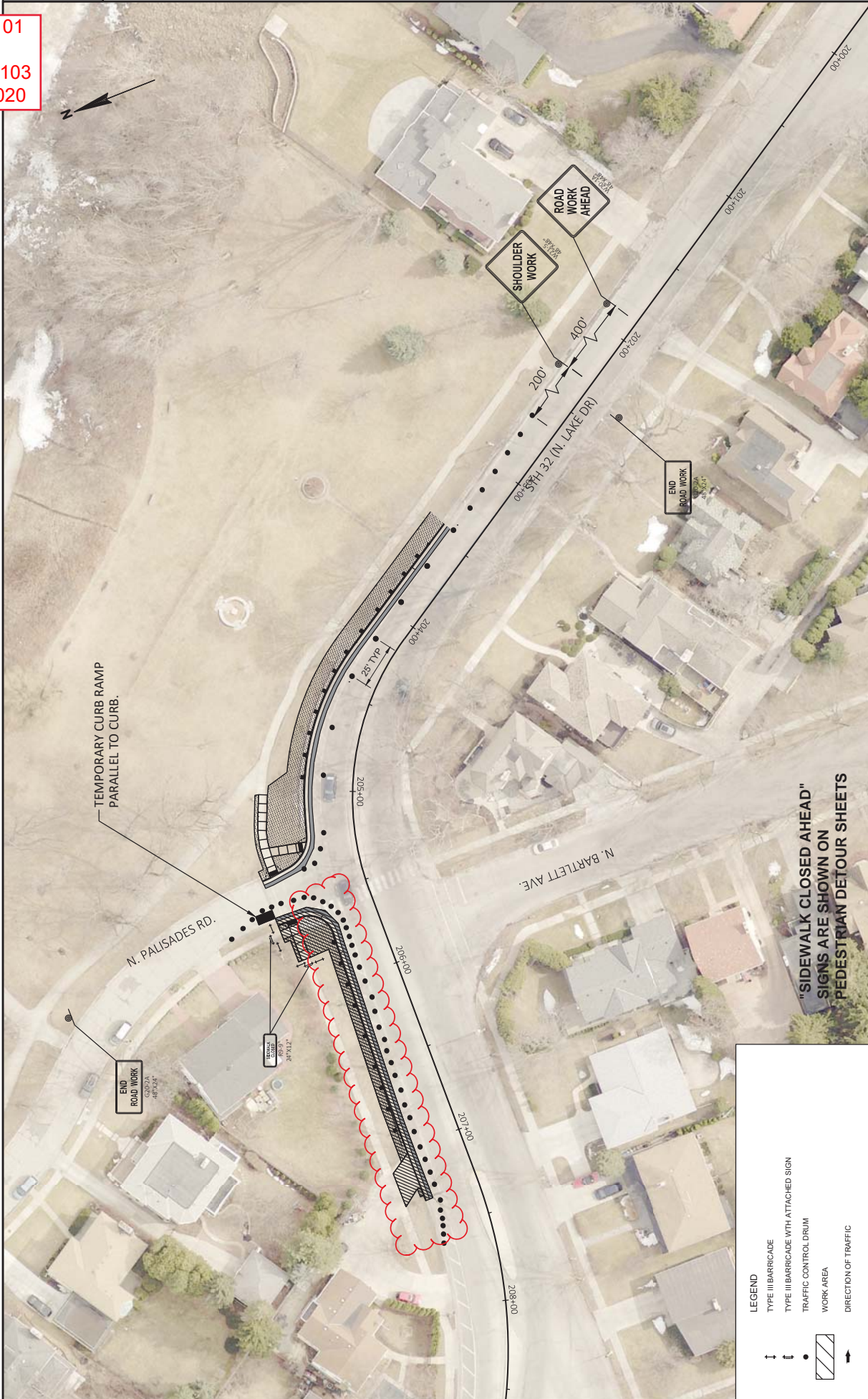


PROJECT NO: 2225-14-00/70	COUNTY: MILWAUKEE	SHEET: 100	E
FILE NAME: N:\PDS\320\225-1400\SHEETS\PAV026001_OVERVIEW_S1B.DWG	FLYBY: POBRC-SILVANA	1 IN=100 FT	WISDOT/CADDS SHEET 44
LAYOUT NAME: Palisades and Woodburn	PLOT DATE: 2/24/2020 9:26 AM		
HWY: STH 32 (N. LAKE DRIVE)	STB		



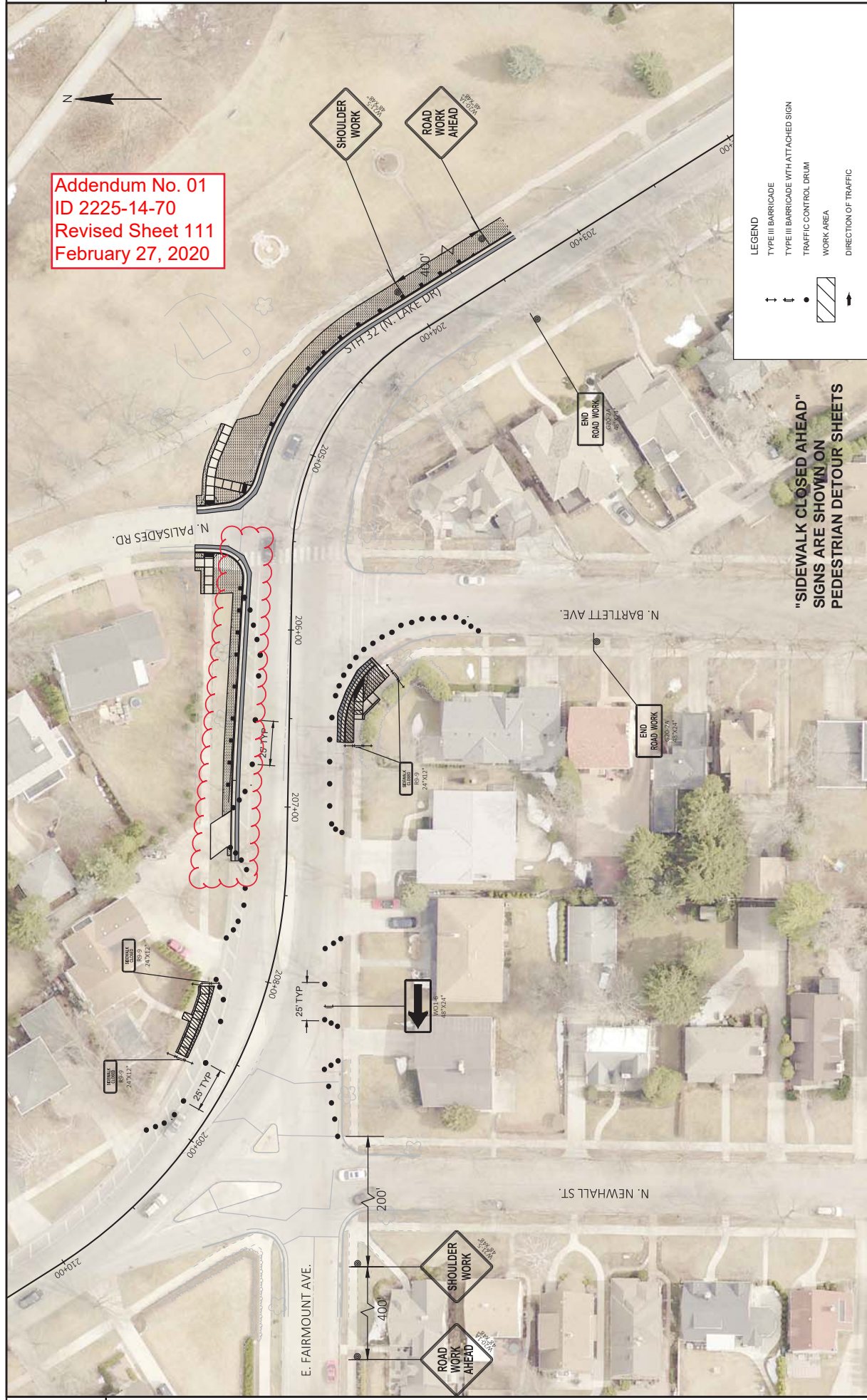
Addendum No. 01
 ID 2225-14-70
 Revised Sheet 101
 February 27, 2020

PROJECT NO: 2225-14-00/70 FILE NAME: N:\PDS\32D\225-14-00\SHEETS\PLAN\026001_OVERVIEW_S1B.DWG LAYOUT NAME: Belle and Day	COUNTY: MILWAUKEE HWY: STH 32 (N. LAKE DRIVE)	SIB PLOT BY: POBRC, SILVANA PLOT DATE: 2/24/2020 9:28 AM	SHEET 101 E PLOT SCALE: 1 IN=100 FT PLOT NAME: WISS07\CADDS SHEET 44
--	--	--	--



Addendum No. 01
 ID 2225-14-70
 Revised Sheet 103
 February 27, 2020

Addendum No. 01
ID 2225-14-70
Revised Sheet 111
February 27, 2020



PROJECT NO: 2225-14-00/70

HWY: STH 32 (N. LAKE DRIVE)

COUNTY: MILWAUKEE

PLOT DATE: 2/24/2020 9:39 AM

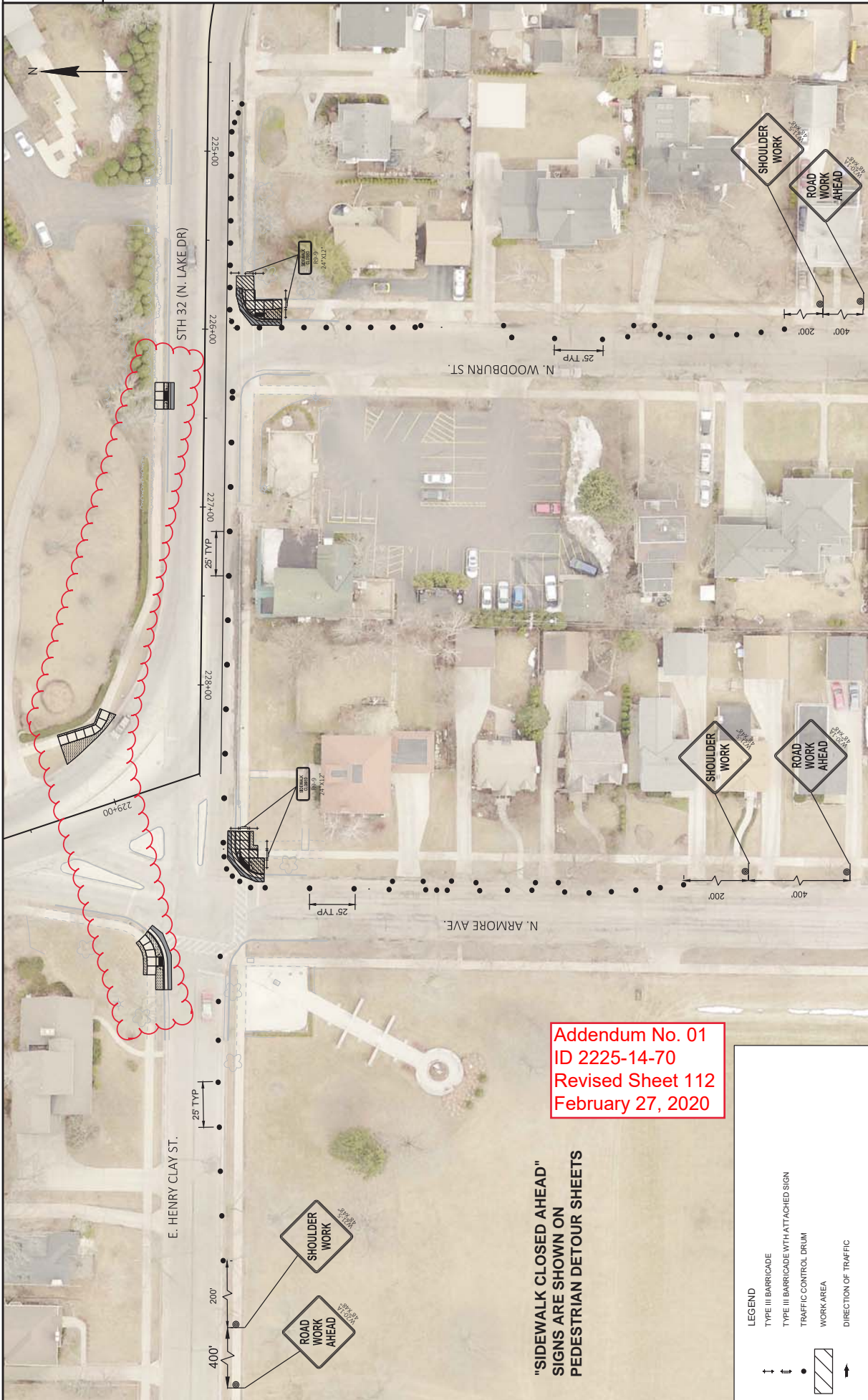
FLY BY: POBRC, SILVANA

PLOT SCALE: 1"=50 FT

SHEET

111

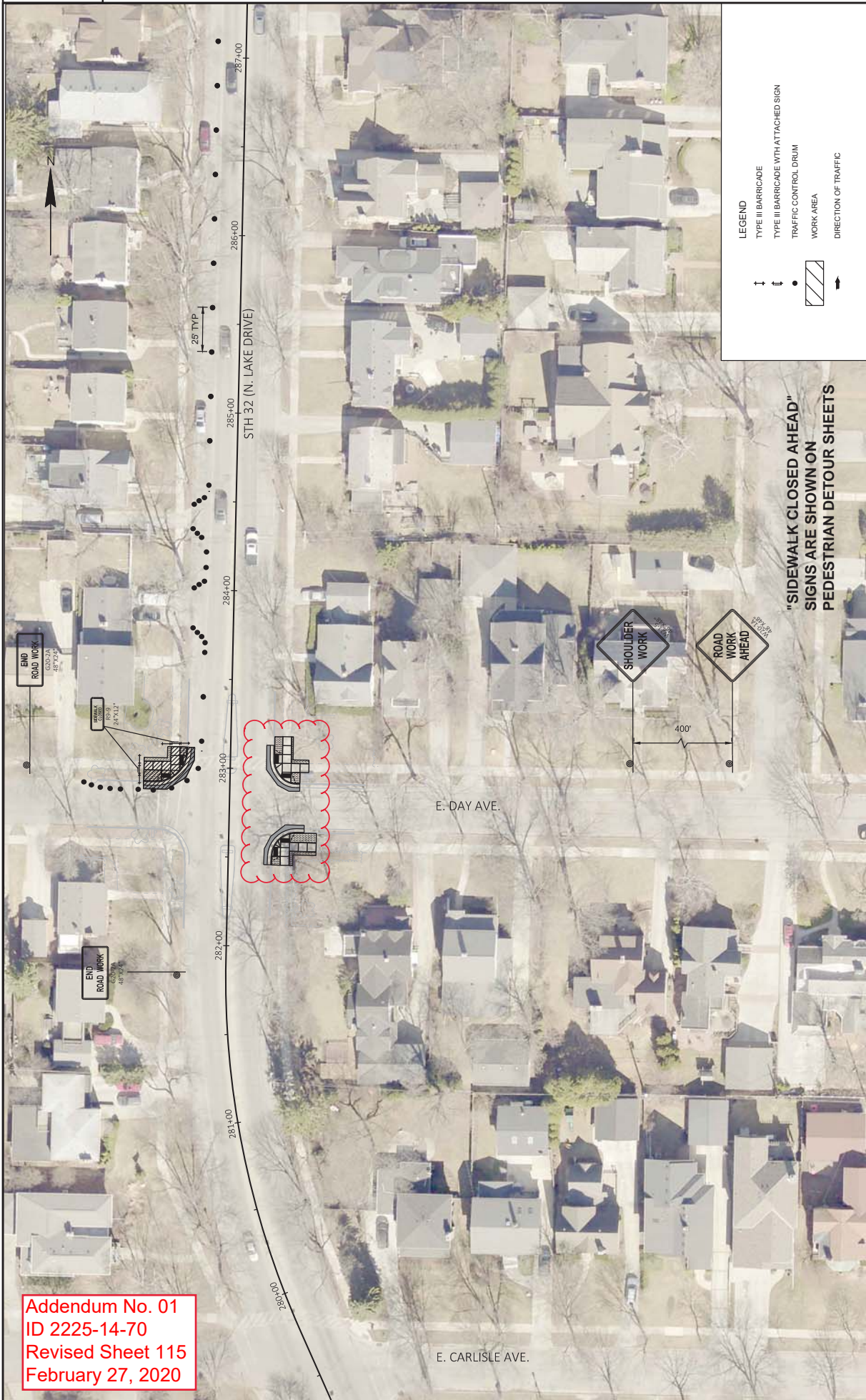
E
WISDOT/CADDIS SHEET 42



Addendum No. 01
 ID 2225-14-70
 Revised Sheet 112
 February 27, 2020

"SIDEWALK CLOSED AHEAD"
 SIGNS ARE SHOWN ON
 PEDESTRIAN DETOUR SHEETS

LEGEND	
↑	TYPE III BARRICADE
↑	TYPE III BARRICADE WITH ATTACHED SIGN
•	TRAFFIC CONTROL DRUM
▨	WORK AREA
→	DIRECTION OF TRAFFIC



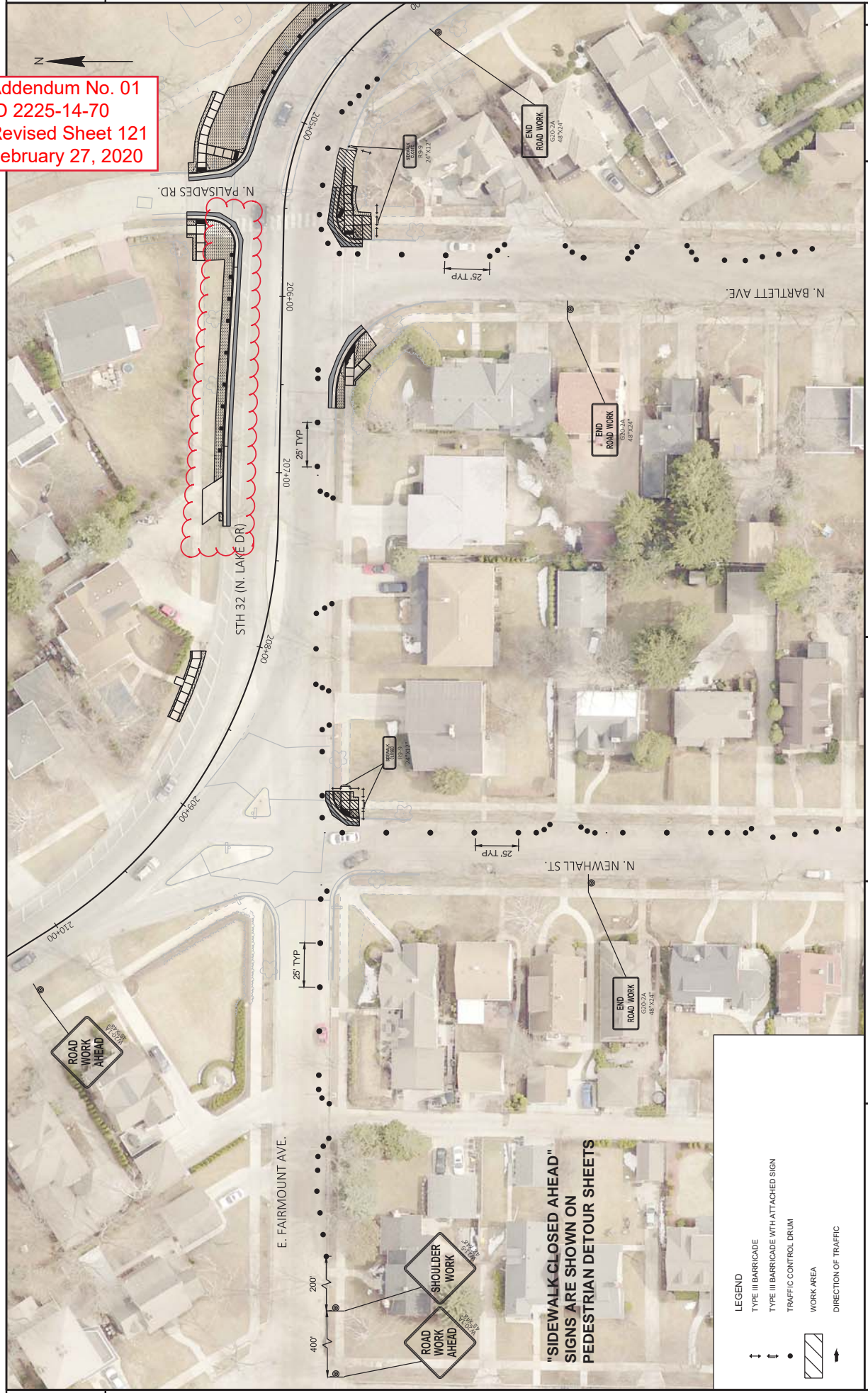
Addendum No. 01
 ID 2225-14-70
 Revised Sheet 115
 February 27, 2020

PROJECT NO: 2225-14-00/70	COUNTY: MILWAUKEE	FLY BY: POBRC, SILVANA	SHEET	115	E
FILE NAME: N:\PDR\32\25-1400\SHEETS\PLAN\02600_L_S2A.DWG	HWY: STH 32 (N. LAKE DRIVE)	FLY DATE: 2/24/2020 9:41 AM	1 IN=50 FT		
LAYOUT NAME: DAY AVE					



Addendum No. 01
 ID 2225-14-70
 Revised Sheet 116
 February 27, 2020

Addendum No. 01
 ID 2225-14-70
 Revised Sheet 121
 February 27, 2020



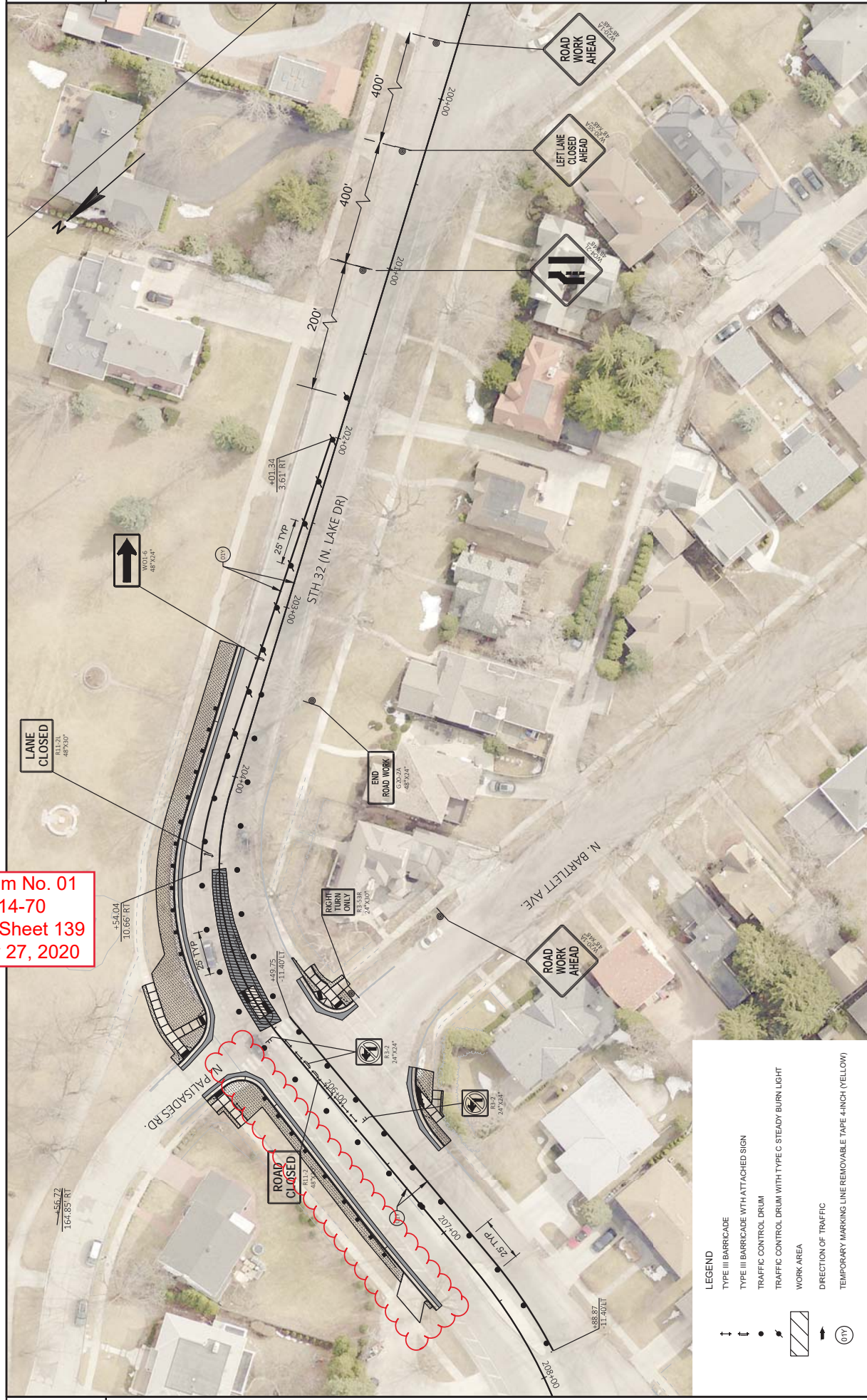
LEGEND

- ↑ TYPE III BARRICADE
- ↓ TYPE III BARRICADE WITH ATTACHED SIGN
- TRAFFIC CONTROL DRUM
- ▨ WORK AREA
- DIRECTION OF TRAFFIC

"SIDEWALK CLOSED AHEAD"
 SIGNS ARE SHOWN ON
 PEDESTRIAN DETOUR SHEETS

2

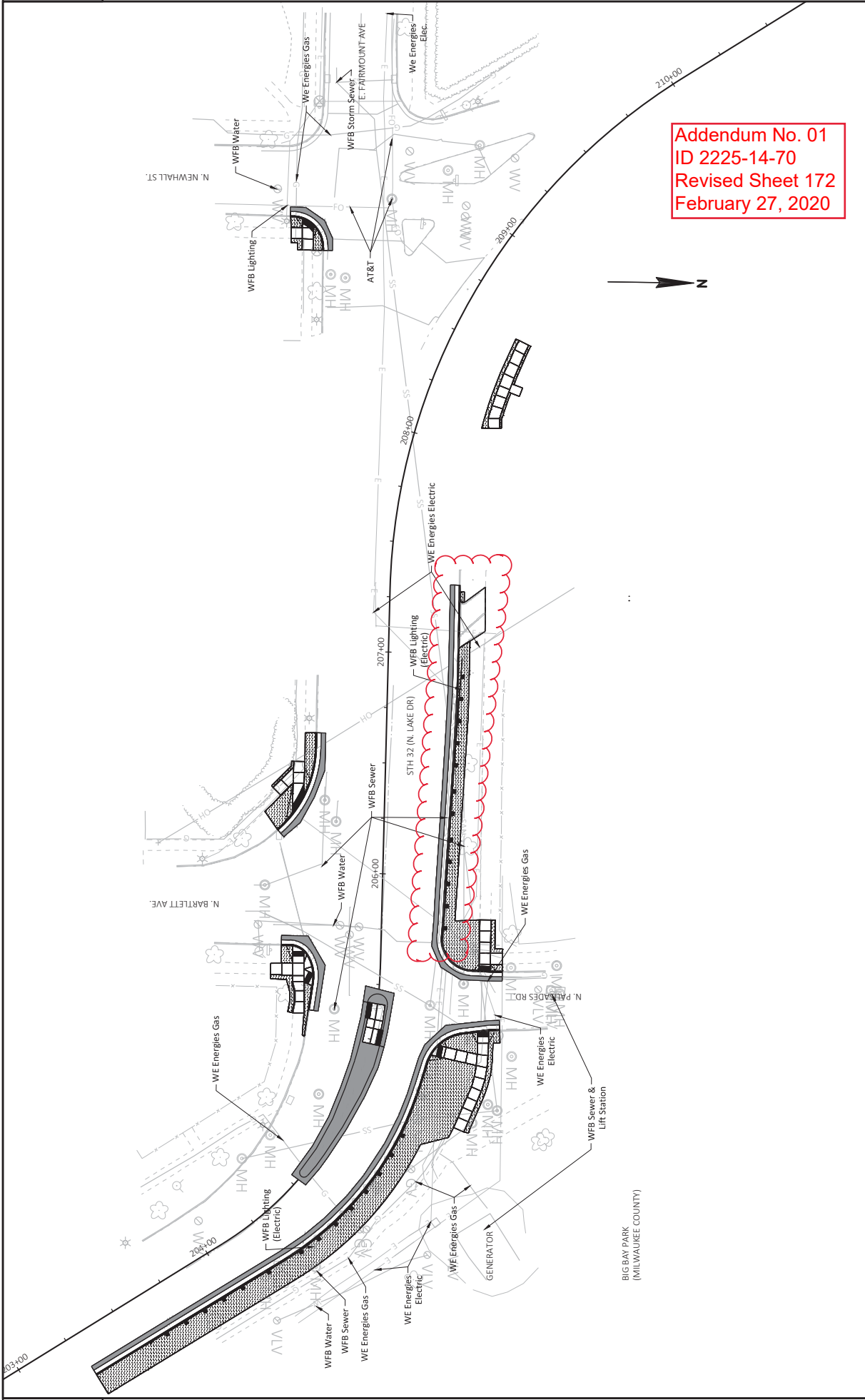
2



Addendum No. 01
 ID 2225-14-70
 Revised Sheet 139
 February 27, 2020

LEGEND

	TYPE III BARRICADE
	TYPE III BARRICADE WITH ATTACHED SIGN
	TRAFFIC CONTROL DRUM
	TRAFFIC CONTROL DRUM WITH TYPE C STEADY BURN LIGHT
	WORK AREA
	DIRECTION OF TRAFFIC
	TEMPORARY MARKING LINE REMOVABLE TAPE 4-INCH (YELLOW)



Addendum No. 01
 ID 2225-14-70
 Revised Sheet 172
 February 27, 2020

PROJECT NO: 2225-14-00/70	COUNTY: MILWAUKEE	PLAN: EXISTING UTILITIES	SHEET 172	E
FILE NAME: N:\PDS\320\225-1400\5\SHETS\PLAN02.201.PLDWG	DATE: 2/27/2020 1:31 PM	DATE: 2/27/2020 1:31 PM	DATE: 1/19/2020	DATE: 1/19/2020
LAYOUT NAME: 021201.plt	BY: POBRC, SILVANA	BY: POBRC, SILVANA	BY: POBRC, SILVANA	BY: POBRC, SILVANA
	HWY: STH 32 (N. LAKE DRIVE)			

BIG BAY PARK
 (MILWAUKEE COUNTY)

Addendum No. 01
 ID 2225-14-70
 Revised Sheet 181
 February 27, 2020

REMOVING CONCRETE SIDEWALK

CATEGORY STAGE	LOCATION	LOCATION	SY
0010	1A	STH 32 & N PALISADES RD	204.0155
		STH 32 & N WOODBURN ST	29
		STH 32 & E HENRY CLAY ST	8
		STH 32 & E DAY AVE	18
		STH 32 & EBELLE AVE	24
	SUBTOTAL	111	
1B		NW QUADRANT	28
		NW QUADRANT	15
		SE QUADRANT	21
		SE QUADRANT	20
		SUBTOTAL	85
2A		SW QUADRANT	16
		NE QUADRANT	29
		SE QUADRANT	19
		SE QUADRANT	17
		SUBTOTAL	121
2B		SE QUADRANT	27
		SE QUADRANT	11
		SW QUADRANT	35
		SW QUADRANT	14
		SUBTOTAL	21
PROJECT TOTAL			441

REMOVING PAVEMENT

CATEGORY STAGE	LOCATION	LOCATION	COMMENTS	SY
0010	1A	STH 32 & N PALISADES RD	INCLUDES REMOVING CURB & GUTTER	127
		STH 32 & N WOODBURN ST	INCLUDES REMOVING CURB & GUTTER	6
		STH 32 & E DAY AVE	INCLUDES REMOVING CURB & GUTTER	18
		STH 32 & EBELLE AVE	INCLUDES REMOVING CURB & GUTTER	23
		SUBTOTAL		174
1B		NW QUADRANT	INCLUDES REMOVING CURB & GUTTER AND DRIVEWAY	126
		NW QUADRANT	INCLUDES REMOVING CURB & GUTTER	20
		SE QUADRANT	INCLUDES REMOVING CURB & GUTTER	18
		SE QUADRANT	INCLUDES REMOVING CURB & GUTTER	21
		SUBTOTAL		185
2A		SW QUADRANT	INCLUDES REMOVING CURB & GUTTER	27
		SE QUADRANT	INCLUDES REMOVING CURB & GUTTER	15
		SE QUADRANT	INCLUDES REMOVING CURB & GUTTER	20
		SE QUADRANT	INCLUDES REMOVING CURB & GUTTER	21
		SUBTOTAL		101
2B		SE QUADRANT	INCLUDES REMOVING CURB & GUTTER	24
		SE QUADRANT	INCLUDES REMOVING CURB & GUTTER	14
		SW QUADRANT	INCLUDES REMOVING CURB & GUTTER	20
		SW QUADRANT	INCLUDES REMOVING CURB & GUTTER	16
		SUBTOTAL		108
3A		MEDIAN	INCLUDES REMOVING CURB & GUTTER	33
		MEDIAN	INCLUDES REMOVING CURB & GUTTER	18
		MEDIAN	INCLUDES REMOVING CURB & GUTTER	17
	SUBTOTAL		68	
3B		MEDIAN	INCLUDES REMOVING CURB & GUTTER	117
		MEDIAN	INCLUDES REMOVING CURB & GUTTER	24
		MEDIAN	INCLUDES REMOVING CURB & GUTTER	23
		SUBTOTAL		164
PROJECT TOTAL				800

Addendum No. 01
 ID 2225-14-70
 Revised Sheet 182
 February 27, 2020

REMOVING GUARDRAIL

204.0165

CATEGORY STAGE	LOCATION	STATION OFFSET	TO STATION OFFSET	COMMENTS
0010	1	STH 32	204+31 22' RT 205+19 28' RT	REMOVING GUARDRAIL LF 108
PROJECT TOTAL				108

SAWING CONCRETE

CATEGORY STAGE	LOCATION	LF
0010	1A	690.0250
	STH 32 & N PALISADES RD	
	NE QUADRANT	264
	NORTH SIDE OF STH 32	35
	NE QUADRANT	11
	STH 32 & E HENRY CLAY ST	
	NE QUADRANT	58
	NE QUADRANT	63
	STH 32 & EBELLE AVE	
	NE QUADRANT	431
	SUBTOTAL	
	1B	
	STH 32 & N PALISADES RD	
	NW QUADRANT	242
	NW QUADRANT	61
	SE QUADRANT	57
	SE QUADRANT	62
	STH 32 & EBELLE AVE	
	SE QUADRANT	422
	SUBTOTAL	
	2A	
	STH 32 & N BARTLETT AVE	
	SW QUADRANT	68
	NE QUADRANT	14
	NE QUADRANT	65
	SE QUADRANT	64
	SE QUADRANT	64
	STH 32 & N ARDMORE AVE	
	NW QUADRANT	63
	NW QUADRANT	57
	STH 32 & EBELLE AVE	
	NW QUADRANT	331
	SUBTOTAL	
	2B	
	STH 32 & N BARTLETT AVE	
	SE QUADRANT	90
	SE QUADRANT	50
	STH 32 & N NEWHALL ST	
	SW QUADRANT	75
	SW QUADRANT	54
	STH 32 & N ARDMORE AVE	
	SW QUADRANT	54
	SW QUADRANT	57
	STH 32 & EBELLE AVE	
	SW QUADRANT	380
	SUBTOTAL	
	3A	
	STH 32 & N WOODBURN ST	
	MEDIAN	77
	STH 32 & E DAY AVE	
	MEDIAN	51
	STH 32 & EBELLE AVE	
	MEDIAN	50
	SUBTOTAL	178
	3B	
	STH 32 & N PALISADES RD	
	MEDIAN	210
	STH 32 & E DAY AVE	
	MEDIAN	60
	STH 32 & EBELLE AVE	
	MEDIAN	58
	SUBTOTAL	328
	PROJECT TOTAL	2,070

ASPHALTIC ITEMS

CATEGORY	STAGE	LOCATION	TACK COAT GAL	465.0110 ASPHALTIC SURFACE PATCHING TON
0010	1A	STH 32 & N PALISADES RD	4	32
		NORTH SIDE OF STH 32	0	2
		STH 32 & N WOODBURN	0	5
		STH 32 & E DAY AVE	1	6
		NE QUADRANT	6	45
		SUBTOTAL		
	1B	STH 32 & N PALISADES RD	3	25
		NW QUADRANT	1	5
		STH 32 & E HENRY CLAY	1	5
		SE QUADRANT	1	5
STH 32 & E BELLE AVE		5	40	
	SUBTOTAL			
2A	STH 32 & N BARTLETT	1	7	
	SW QUADRANT	1	5	
	STH 32 & N WOODBURN	1	5	
	SE QUADRANT	1	5	
	STH 32 & N ARDMORE	1	6	
	SUBTOTAL			
2B	STH 32 & N BARTLETT	4	28	
	SE QUADRANT	1	7	
	STH 32 & N NEWHALL ST	1	4	
	SW QUADRANT	1	7	
	STH 32 & N WOODBURN	1	5	
	SUBTOTAL			
3A	STH 32 & N WOODBURN	2	15	
	MEDIAN	1	7	
	STH 32 & E DAY AVE	1	6	
	MEDIAN	1	6	
	STH 32 & EBELLEAVE	4	27	
	SUBTOTAL			
3B	STH 32 & N PALISADES RD	7	56	
	MEDIAN	1	10	
	STH 32 & E DAY AVE	1	9	
	MEDIAN	1	9	
	STH 32 & EBELLEAVE	3	19	
	SUBTOTAL			
PROJECT TOTAL			24	190

Addendum No. 01
ID 2225-14-70
Revised Sheet 183
February 27, 2020

BASE AGGREGATE ITEMS

CATEGORY	STAGE	LOCATION	305.0110 AGGREGATE DENSE 3/4-INCH TON	305.0120 BASE AGGREGATE DENSE 1/4-INCH TON
0010	1A	STH 32 & N PALISADES RD	7	61
		NORTH SIDE OF STH 32	2	3
		STH 32 & E HENRY CLAY ST	3	--
		NE QUADRANT	4	8
		STH 32 & E DAY AVE	3	10
		SUBTOTAL		
	1B	STH 32 & N PALISADES RD	3	54
		NW QUADRANT	2	9
		STH 32 & E HENRY CLAY ST	4	8
		SE QUADRANT	5	9
STH 32 & E BELLE AVE		14	80	
	SUBTOTAL			
2A	STH 32 & N BARTLETT AVE	3	12	
	NE QUADRANT	4	--	
	STH 32 & N WOODBURN ST	3	7	
	SE QUADRANT	3	9	
	STH 32 & N ARDMORE AVE	4	9	
	SUBTOTAL			
2B	STH 32 & N BARTLETT AVE	21	45	
	SE QUADRANT	4	11	
	STH 32 & N NEWHALL ST	2	6	
	SW QUADRANT	6	12	
	STH 32 & N WOODBURN ST	2	7	
	SUBTOTAL			
3A	STH 32 & E DAY AVE	20	51	
	MEDIAN	--	12	
	STH 32 & N WOODBURN ST	--	8	
	MEDIAN	--	7	
	STH 32 & EBELLEAVE	--	27	
	SUBTOTAL			
3B	STH 32 & N PALISADES RD	--	43	
	MEDIAN	--	10	
	STH 32 & E DAY AVE	--	9	
	MEDIAN	--	9	
	STH 32 & EBELLEAVE	--	62	
	SUBTOTAL			
PROJECT TOTAL			74	347

CONCRETE SIDEWALK

CONCRETE CURB & GUTTER

CATEGORY	STAGE	LOCATION	CONCRETE SIDEWALK 5-INCH SF		CONCRETE SAFETY ISLANDS SF		DRILLED TIE BARS EACH
			602.0410	602.2400	602.0410	416.0610	
0010	1A	STH 32 & N PALISADES RD	NE QUADRANT	353	--	--	--
		STH 32 & N WOODBURN ST	NORTH SIDE OF STH 32	84	--	--	--
		STH 32 & E HENRY CLAY ST	NE QUADRANT	163	--	--	--
		STH 32 & E DAY AVE	NE QUADRANT	216	--	--	--
		STH 32 & E BELLE AVE	NE QUADRANT	180	--	--	--
		SUBTOTAL		996	--	--	--
	1B	STH 32 & N PALISADES RD	NW QUADRANT	142	--	--	13
		STH 32 & E HENRY CLAY ST	NW QUADRANT	133	--	--	--
		STH 32 & E DAY AVE	SE QUADRANT	191	--	--	--
		STH 32 & E BELLE AVE	SE QUADRANT	257	--	--	--
		SUBTOTAL		723	--	--	13
2A	STH 32 & N BARTLETT AVE	SW QUADRANT	150	--	--	--	
	STH 32 & E FAIRMOUNT	NE QUADRANT	225	--	--	--	
	STH 32 & N WOODBURN ST	SE QUADRANT	173	--	--	--	
	STH 32 & N ARMORE AVE	SE QUADRANT	154	--	--	--	
	STH 32 & E DAY AVE	NW QUADRANT	197	--	--	--	
	SUBTOTAL		1,133	--	--	--	
2B	STH 32 & N BARTLETT AVE	SE QUADRANT	237	--	--	--	
	STH 32 & N NEWHALL ST	SE QUADRANT	89	--	--	--	
	STH 32 & N WOODBURN ST	SW QUADRANT	330	--	--	--	
	STH 32 & N ARMORE AVE	SW QUADRANT	123	--	--	--	
	STH 32 & E DAY AVE	SW QUADRANT	128	--	--	--	
	SUBTOTAL		1,120	--	--	--	
3A	STH 32 & N WOODBURN ST	MEDIAN	52	93	--	--	
	STH 32 & E DAY AVE	MEDIAN	56	25	4	4	
	STH 32 & E BELLE AVE	MEDIAN	56	25	4	4	
	SUBTOTAL		164	143	8	8	
3B	STH 32 & N PALISADES RD	MEDIAN	142	491	--	--	
	STH 32 & E DAY AVE	MEDIAN	56	67	4	4	
	STH 32 & E BELLE AVE	MEDIAN	56	57	4	4	
	SUBTOTAL		254	615	8	8	
	PROJECT TOTAL		4,390	758	29	29	

Addendum No. 01
 ID 2225-14-70
 Revised Sheet 184
 February 27, 2020

CATEGORY	STAGE	LOCATION	CONCRETE CURB & GUTTER 18-INCH TYPE A LF		CONCRETE CURB & GUTTER 30-INCH TYPE A LF		CONCRETE CURB & GUTTER HES 30-INCH TYPE A LF		CONCRETE CURB & GUTTER HES 30-INCH FEDESTRAN LF
			601.0405	601.0409	601.0409	SPV.0090.02	601.0600		
0010	1A	STH 32 & N PALISADES RD	NE QUADRANT	--	250	--	--	--	--
		STH 32 & N WOODBURN ST	NORTH SIDE OF STH 32	15	--	--	--	--	--
		STH 32 & E DAY AVE	NE QUADRANT	--	31	--	--	--	--
		STH 32 & E BELLE AVE	NE QUADRANT	--	40	--	--	--	--
			SUBTOTAL		15	321	--	--	--
1B	STH 32 & N PALISADES RD	NW QUADRANT	--	150	45	--	--	--	
		NW QUADRANT	--	36	--	--	--	--	
		SE QUADRANT	--	31	--	--	--	--	
		SE QUADRANT	--	36	--	--	--	--	
			SUBTOTAL		253	45	--	--	--
2A	STH 32 & N BARTLETT AVE	SW QUADRANT	--	49	--	--	--	--	
		SE QUADRANT	34	--	--	--	10		
		SE QUADRANT	--	34	--	--	--		
		SW QUADRANT	--	37	--	--	--		
			SUBTOTAL		34	151	--	10	
2B	STH 32 & N BARTLETT AVE	SE QUADRANT	--	39	--	--	34		
		SE QUADRANT	--	24	--	--	--		
		SW QUADRANT	47	--	--	--	23		
		SW QUADRANT	--	27	--	--	--		
			SUBTOTAL		47	31	--	10	
	PROJECT TOTAL		47	148	--	67	77		
			98	873	45	--	--		

CONCRETE DRIVEWAY

CATEGORY	STAGE	LOCATION	CONCRETE DRIVEWAY HES 7-INCH SY
0010	1B	STH 32 & N PALISADES RD NW QUADRANT	5
		PROJECT TOTAL	5

CURB RAMP DETECTABLE WARNING FIELDS

CATEGORY_STAGE	LOCATION	602.0505		602.0805		COMMENTS
		WARNING FIELD YELLOW	WARNING FIELD RADIAL YELLOW	CURB RAMP DETECTABLE	CURB RAMP DETECTABLE	
0010	1A	NE QUADRANT	20	20	--	
		NORTH SIDE OF STH 32	10	--	--	
		NE QUADRANT	20	--	--	
		NE QUADRANT	20	--	--	
		SUBTOTAL	70	--	--	
1B		NW QUADRANT	10	--	--	
		NW QUADRANT	10	--	--	
		SE QUADRANT	20	--	--	
		SE QUADRANT	10	12	--	
		SUBTOTAL	50	12	--	
2A		SW QUADRANT	--	22	--	
		SE QUADRANT	10	--	--	
		SE QUADRANT	--	14	--	
		NW QUADRANT	20	--	--	
		SUBTOTAL	50	36	--	
2B		SE QUADRANT	20	--	--	
		SE QUADRANT	--	11	--	
		SW QUADRANT	20	--	--	
		SW QUADRANT	20	--	--	
		SUBTOTAL	90	22	--	
3A		MEDIAN	28	--	--	
		MEDIAN	28	--	--	
		MEDIAN	28	--	--	
		MEDIAN	28	--	--	
		SUBTOTAL	112	--	--	
3B		MEDIAN	28	--	--	
		MEDIAN	28	--	--	
		SUBTOTAL	56	--	--	
	PROJECT TOTAL	428	70	--		

CONSTRUCTION STAKING

CATEGORY_STAGE	LOCATION	650.5500		650.9000	
		CONSTRUCTION STAKING CURB & GUTTER	CONSTRUCTION STAKING CURB RAMP	CONSTRUCTION STAKING CURB & GUTTER	CONSTRUCTION STAKING CURB RAMP
0010	1A	NE QUADRANT	280	2	
		NORTH SIDE OF STH 32	15	1	
		NE QUADRANT	31	2	
		NE QUADRANT	40	2	
		SUBTOTAL	336	7	
1B		NW QUADRANT	195	1	
		NW QUADRANT	36	1	
		SE QUADRANT	31	2	
		SE QUADRANT	36	2	
		SUBTOTAL	298	6	
2A		SW QUADRANT	49	1	
		SE QUADRANT	34	1	
		SE QUADRANT	34	1	
		NW QUADRANT	37	2	
		SUBTOTAL	185	7	
2B		SE QUADRANT	39	2	
		SE QUADRANT	24	1	
		SW QUADRANT	47	2	
		SW QUADRANT	27	2	
		SUBTOTAL	31	2	
3A		MEDIAN	195	11	
		MEDIAN	--	2	
		MEDIAN	--	2	
		MEDIAN	--	2	
		SUBTOTAL	--	8	
3B		MEDIAN	--	2	
		MEDIAN	--	2	
		SUBTOTAL	--	4	
	PROJECT TOTAL	1014	43		

Addendum No. 01
ID 2225-14-70
Revised Sheet 185
February 27, 2020

RESTORATION

CATEGORY	STAGE	LOCATION	625.0100 TOPSOIL SY	631.0300 SOD WATER MGAL	631.1000 SOD LAWN SY
0010	1A	STH 32 & N. PALISADES RD.	315	7.1	315
		STH 32 & N. WOODBURN ST.	3	0.1	3
		STH 32 & E. HENRY CLAY ST	23	0.5	23
		STH 32 & E. DAY AVE	12	0.3	12
		STH 32 & EBELLEAVE	26	0.6	26
	SUBTOTAL		8.5	379	
1B		STH 32 & N. PALISADES RD.	114	2.5	114
		STH 32 & E. HENRY CLAY ST	16	0.3	16
		STH 32 & E. DAY AVE	16	0.4	16
		STH 32 & EBELLEAVE	18	0.4	18
		SUBTOTAL	163	3.6	163
2A		STH 32 & N. BARTLETT AVE	28	0.6	28
		STH 32 & E. FAIRMOUNT AVE	12	0.3	12
		STH 32 & N. WOODBURN ST	6	0.1	6
		STH 32 & N. ARMORE AVE	11	0.2	11
		STH 32 & E. DAY AVE	14	0.3	14
	SUBTOTAL	88	2.0	88	
2B		STH 32 & N. BARTLETT AVE	15	0.3	15
		STH 32 & N. NEWHALL ST	8	0.2	8
		STH 32 & N. WOODBURN ST	10	0.2	10
		STH 32 & N. ARMORE AVE	7	0.2	7
		STH 32 & E. DAY AVE	9	0.2	9
	SUBTOTAL	61	1.4	61	
PROJECT TOTAL			691	15.5	691

MOBILIZATION EROSION CONTROL

CATEGORY	STAGE	LOCATION	628.1905 MOBILIZATION EROSION CONTROL EACH	628.1910 MOBILIZATION/EMERGENCY EROSION CONTROL EACH
0010	ALL	PROJECT	8	4
PROJECT TOTAL			8	4

INLET PROTECTION

CATEGORY	STAGE	LOCATION	STATION	TO	STATION	628.7010		628.7015	
						INLET PROTECTION TYPE	EACH	INLET PROTECTION TYPE	EACH
0010	1,2,3, & 4	STH32	200+30	--	210+50	2	8		
			210+50	--	219+00	3	3		
			219+00	--	230+50	7	3		
			230+50	--	255+00	3	10		
			255+00	--	279+00	11	9		
			279+00	--	287+00	1	7		
			287+00	--	295+30	4	--		
PROJECT TOTAL						31	40		

Addendum No. 01
ID 2225-14-70
Revised Sheet 186
February 27, 2020

TRAFFIC CONTROL ITEMS

CATEGORY	STAGE	LOCATION	DURATION DAYS	643.0300		643.0420		643.0705*		643.0715		643.0900*		643.1050		644.1601	
				NO.	DAY	TRAFFIC CONTROL BARRICADES TYPE II	NO.	DAY	TRAFFIC CONTROL WARNING LIGHTS TYPE A	NO.	DAY	TRAFFIC CONTROL WARNING LIGHTS TYPE C	NO.	DAY	TRAFFIC CONTROL SIGNS FCMS	NO.	DAY
0010	1A	STH-32	25	227	5,675	26	650	52	1,300	--	--	28	700	2	50	1	25
	1B	STH-32	8	192	1,536	23	184	46	368	--	--	29	232	2	16	1	8
		SUBTOTAL	33		7,211	834		1,668					932		101		33
2A	1A	STH-32	8	282	2,256	37	296	74	592	--	--	42	336	2	16	1	8
	2B	STH-32	8	228	1,824	34	272	68	544	--	--	39	312	2	16	1	8
		SUBTOTAL	16		4,080	568		1,136					648		32		16
3A	1A	STH-32	7	150	1,050	19	133	38	266	35	245	41	287	2	14	1	7
	3B	STH-32	7	166	1,162	25	175	50	350	36	252	42	294	2	14	1	7
		SUBTOTAL	14		2,212	308		616		497			581		28		14
4	STH-32	17	--	--	--	--	--	--	--	--	--	--	2	34	--	--	
	SUBTOTAL	17											34				
	PROJECT TOTAL	80			13,503		1,710		3,420		497		2,161		195		63

* ADDITIONAL QUANTITIES SHOWN ELSEWHERE

PEDESTRIAN DETOUR ITEMS

CATEGORY	STAGE	LOCATION	DURATION DAYS	643.0410		643.0705*		643.0900*	
				TRAFFIC CONTROL BARRICADES TYPE II	NO.	DAY	TRAFFIC CONTROL WARNING LIGHTS TYPE A	NO.	DAY
0010	1A	STH-32	20	31	620	31	620	34	680
	1B	STH-32	8	26	208	26	208	36	288
		SUBTOTAL	28		828		828		968
2A	1A	STH-32	8	33	264	33	264	46	368
	2B	STH-32	8	40	320	40	320	55	440
		SUBTOTAL	16		584		584		808
3A	1A	STH-32	7	4	28	4	28	4	28
	3B	STH-32	7	17	119	17	119	19	133
		SUBTOTAL	14		147		147		161
	PROJECT TOTAL				1,559		1,559		1,937

* ADDITIONAL QUANTITIES SHOWN ELSEWHERE

TRAFFIC CONTROL

CATEGORY	STAGE	LOCATION	TRAFFIC CONTROL EACH
0010	ALL	PROJECT	1
PROJECT TOTAL			1

Addendum No. 01
 ID 2225-14-70
 Revised Sheet 187
 February 27, 2020

RESIN BINDER HIGH SURFACE FRICTION TREATMENT				CPM PROGRESS SCHEDULE				EXCAVATION COMMON				FIELD OFFICE TYPE B							
SPV.0180.01 RESIN BINDER HIGH SURFACE FRICTION TREATMENT				108.4400 EACH				205.0100 EXCAVATION COMMON CY				642.5001 EACH							
CATEGORY	STAGE	LOCATION	STATION TO	STATION	SY	CATEGORY	STAGE	LOCATION	STATION TO	STATION	CY	CATEGORY	STAGE	LOCATION	PROJECT TOTAL	CATEGORY	STAGE	LOCATION	PROJECT TOTAL
0010	1		203+69	210+37	3.746	0010	ALL	PROJECT			300	0010	ALL	PROJECT	1	0010	ALL	PROJECT	1
			219+73	230+15	5.499						300				PROJECT TOTAL				PROJECT TOTAL
			255+87	257+78	9.935						300				PROJECT TOTAL				PROJECT TOTAL
					10.180						300				PROJECT TOTAL				PROJECT TOTAL
											300				PROJECT TOTAL				PROJECT TOTAL

3

3

ADJUSTING COVERS

CATEGORY	STAGE	LOCATION	MANHOLE COVERS EACH	LOCATION	INLET COVERS EACH
0010	ALL	205+18, 27' RT	--		1
		205+60, 32' LT	--		1
		206+79, 31' RT	--		1
		208+64, 76' LT	--		1
		225+82, 21' LT	--		1
		226+38, 21' LT	--		1
		226+47, 1' LT	1		1
		282+46, 24' RT	--		1
		282+95, 29' RT	--		1
		283+04, 25' LT	--		1
					9
					PROJECT TOTAL

Addendum No. 01
ID 2225-14-70
Revised Sheet 192
February 27, 2020

FINISHING ROADWAY (PROJECT)

CATEGORY	STAGE	LOCATION	EACH
0010	ALL	PROJECT	1
			PROJECT TOTAL
			1

GUARDRAIL ITEMS

CATEGORY	STAGE	LOCATION	STATION TO	STATION	OFFSET	EACH	
0010	1	STH 32	203+60.63	--	205+01.83	RT	1
			205+71.36	--	207+03.03	RT	1
							2
							PROJECT TOTAL
							1

DYNAMIC SPEED DISPLAY SIGN ASSEMBLY SOLAR POWERED

CATEGORY	STAGE	LOCATION	STATION	OFFSET	EACH	COMMENTS
0010	1	STH 32	201+00	RT	1	STH 32 NB ON WOOD POST, MOUNT WITH SGIN #3 & #3A
			212+65	LT	1	STH 32 SB ON LIGHT POLE, MOUNT WITH SGIN #40 & #40A
			218+50	RT	1	STH 32 NB ON LIGHT POLE, MOUNT WITH SGIN #49 & #49A
			233+75	LT	1	STH 32 SB ON WOOD POST, MOUNT WITH SGIN #99 & #99A
					4	
					PROJECT TOTAL	



Proposal Schedule of Items

Proposal ID: 20200310012 Project(s): 2225-14-70

Federal ID(s): WISC 2020072

SECTION: 0001 Roadway Work

Alt Set ID: Alt Mbr ID:

Proposal Line Number	Item ID Description	Approximate Quantity and Units	Unit Price	Bid Amount
0002	108.4400 CPM Progress Schedule	1.000 EACH	_____.	_____.
0004	204.0100 Removing Pavement	800.000 SY	_____.	_____.
0006	204.0155 Removing Concrete Sidewalk	441.000 SY	_____.	_____.
0008	204.0165 Removing Guardrail	108.000 LF	_____.	_____.
0010	204.9060.S Removing (item description) 01. Solar Flashing RRFB, Signs, and Pole	4.000 EACH	_____.	_____.
0012	205.0100 Excavation Common	300.000 CY	_____.	_____.
0014	213.0100 Finishing Roadway (project) 01. 2225-14-70	1.000 EACH	_____.	_____.
0016	305.0110 Base Aggregate Dense 3/4-Inch	74.000 TON	_____.	_____.
0018	305.0120 Base Aggregate Dense 1 1/4-Inch	347.000 TON	_____.	_____.
0020	416.0610 Drilled Tie Bars	29.000 EACH	_____.	_____.
0022	455.0605 Tack Coat	24.000 GAL	_____.	_____.
0024	465.0110 Asphaltic Surface Patching	190.000 TON	_____.	_____.
0026	601.0405 Concrete Curb & Gutter 18-Inch Type A	96.000 LF	_____.	_____.
0028	601.0409 Concrete Curb & Gutter 30-Inch Type A	873.000 LF	_____.	_____.
0030	601.0600 Concrete Curb Pedestrian	77.000 LF	_____.	_____.
0032	602.0410 Concrete Sidewalk 5-Inch	4,390.000 SF	_____.	_____.



Proposal Schedule of Items

Proposal ID: 20200310012 Project(s): 2225-14-70

Federal ID(s): WISC 2020072

SECTION: 0001 Roadway Work

Alt Set ID: Alt Mbr ID:

Proposal Line Number	Item ID Description	Approximate Quantity and Units	Unit Price	Bid Amount
0034	602.0505 Curb Ramp Detectable Warning Field Yellow	428.000 SF	_____.	_____.
0036	602.0605 Curb Ramp Detectable Warning Field Radial Yellow	70.000 SF	_____.	_____.
0038	602.2400 Concrete Safety Islands	758.000 SF	_____.	_____.
0040	611.8110 Adjusting Manhole Covers	1.000 EACH	_____.	_____.
0042	611.8115 Adjusting Inlet Covers	9.000 EACH	_____.	_____.
0044	614.0010 Barrier System Grading Shaping Finishing	2.000 EACH	_____.	_____.
0046	614.2300 MGS Guardrail 3	126.000 LF	_____.	_____.
0048	614.2610 MGS Guardrail Terminal EAT	3.000 EACH	_____.	_____.
0050	614.2620 MGS Guardrail Terminal Type 2	1.000 EACH	_____.	_____.
0052	619.1000 Mobilization	1.000 EACH	_____.	_____.
0054	625.0100 Topsoil	691.000 SY	_____.	_____.
0056	628.1905 Mobilizations Erosion Control	8.000 EACH	_____.	_____.
0058	628.1910 Mobilizations Emergency Erosion Control	4.000 EACH	_____.	_____.
0060	628.7010 Inlet Protection Type B	31.000 EACH	_____.	_____.
0062	628.7015 Inlet Protection Type C	40.000 EACH	_____.	_____.
0064	631.0300 Sod Water	15.500 MGAL	_____.	_____.



Proposal Schedule of Items

Proposal ID: 20200310012 Project(s): 2225-14-70

Federal ID(s): WISC 2020072

SECTION: 0001 Roadway Work

Alt Set ID: Alt Mbr ID:

Proposal Line Number	Item ID Description	Approximate Quantity and Units	Unit Price	Bid Amount
0066	631.1000 Sod Lawn	691.000 SY	_____.	_____.
0068	633.5400 Markers Median	8.000 EACH	_____.	_____.
0070	634.0618 Posts Wood 4x6-Inch X 18-FT	7.000 EACH	_____.	_____.
0072	634.0816 Posts Tubular Steel 2x2-Inch X 16-FT	89.000 EACH	_____.	_____.
0074	637.2210 Signs Type II Reflective H	492.100 SF	_____.	_____.
0076	637.2230 Signs Type II Reflective F	466.250 SF	_____.	_____.
0078	638.2102 Moving Signs Type II	4.000 EACH	_____.	_____.
0080	638.2602 Removing Signs Type II	99.000 EACH	_____.	_____.
0082	638.3000 Removing Small Sign Supports	74.000 EACH	_____.	_____.
0084	642.5001 Field Office Type B	1.000 EACH	_____.	_____.
0086	643.0300 Traffic Control Drums	13,503.000 DAY	_____.	_____.
0088	643.0410 Traffic Control Barricades Type II	1,559.000 DAY	_____.	_____.
0090	643.0420 Traffic Control Barricades Type III	1,710.000 DAY	_____.	_____.
0092	643.0705 Traffic Control Warning Lights Type A	4,979.000 DAY	_____.	_____.
0094	643.0715 Traffic Control Warning Lights Type C	497.000 DAY	_____.	_____.
0096	643.0900 Traffic Control Signs	4,098.000 DAY	_____.	_____.
0098	643.1050 Traffic Control Signs PCMS	195.000 DAY	_____.	_____.



Proposal Schedule of Items

Proposal ID: 20200310012 Project(s): 2225-14-70

Federal ID(s): WISC 2020072

SECTION: 0001 Roadway Work

Alt Set ID: Alt Mbr ID:

Proposal Line Number	Item ID Description	Approximate Quantity and Units	Unit Price	Bid Amount
0100	643.5000 Traffic Control	1.000 EACH	_____.	_____.
0102	644.1601 Temporary Pedestrian Curb Ramp	63.000 DAY	_____.	_____.
0104	646.1020 Marking Line Epoxy 4-Inch	9,417.000 LF	_____.	_____.
0106	646.3020 Marking Line Epoxy 8-Inch	49.000 LF	_____.	_____.
0108	646.5020 Marking Arrow Epoxy	35.000 EACH	_____.	_____.
0110	646.5220 Marking Symbol Epoxy	23.000 EACH	_____.	_____.
0112	646.6120 Marking Stop Line Epoxy 18-Inch	275.000 LF	_____.	_____.
0114	646.6220 Marking Yield Line Epoxy 18-Inch	135.000 EACH	_____.	_____.
0116	646.7120 Marking Diagonal Epoxy 12-Inch	584.000 LF	_____.	_____.
0118	646.7520 Marking Crosswalk Epoxy Ladder Pattern 24-Inch	801.000 LF	_____.	_____.
0120	646.8120 Marking Curb Epoxy	1,751.000 LF	_____.	_____.
0122	646.8220 Marking Island Nose Epoxy	31.000 EACH	_____.	_____.
0124	646.9000 Marking Removal Line 4-Inch	1,046.000 LF	_____.	_____.
0126	646.9200 Marking Removal Line Wide	1,953.000 LF	_____.	_____.
0128	649.0150 Temporary Marking Line Removable Tape 4-Inch	6,134.000 LF	_____.	_____.
0130	649.0850 Temporary Marking Stop Line Removable Tape 18-Inch	152.000 LF	_____.	_____.



Proposal Schedule of Items

Proposal ID: 20200310012 Project(s): 2225-14-70

Federal ID(s): WISC 2020072

SECTION: 0001 Roadway Work

Alt Set ID: Alt Mbr ID:

Proposal Line Number	Item ID Description	Approximate Quantity and Units	Unit Price	Bid Amount
0132	650.5500 Construction Staking Curb Gutter and Curb & Gutter	1,014.000 LF	_____.	_____.
0134	650.9000 Construction Staking Curb Ramps	43.000 EACH	_____.	_____.
0136	690.0250 Sawing Concrete	2,070.000 LF	_____.	_____.
0138	ASP.1T0A On-the-Job Training Apprentice at \$5.00/HR	600.000 HRS	5.00000	3,000.00
0140	ASP.1T0G On-the-Job Training Graduate at \$5.00/HR	700.000 HRS	5.00000	3,500.00
0142	SPV.0060 Special 01 Dynamic Speed Display Sign Assembly Solar Powered	4.000 EACH	_____.	_____.
0144	SPV.0090 Special 01. Construction Staking Pavement Marking	7,203.000 LF	_____.	_____.
0146	SPV.0105 Special 01 RRFB - Right NB STH 32 Prior to N. Bartlett Ave	LS	LUMP SUM	_____.
0148	SPV.0105 Special 02 RRFB - Right NB STH 32 at N. Bartlett Ave	LS	LUMP SUM	_____.
0150	SPV.0105 Special 03 RRFB - Median NB STH 32 at N. Bartlett Ave	LS	LUMP SUM	_____.
0152	SPV.0105 Special 04 RRFB - Median SB STH 32 at N. Bartlett Ave	LS	LUMP SUM	_____.
0154	SPV.0105 Special 05 RRFB - Right SB STH 32 Prior to N. Bartlett Ave	LS	LUMP SUM	_____.
0156	SPV.0105 Special 06 RRFB - Right SB STH 32 at N. Bartlett Ave	LS	LUMP SUM	_____.



Proposal Schedule of Items

Proposal ID: 20200310012 Project(s): 2225-14-70

Federal ID(s): WISC 2020072

SECTION: 0001 Roadway Work

Alt Set ID: Alt Mbr ID:

Proposal Line Number	Item ID Description	Approximate Quantity and Units	Unit Price	Bid Amount
0158	SPV.0105 Special 07 RRFB - Right NB STH 32 prior to N. Woodburn St	LS	LUMP SUM	_____.
0160	SPV.0105 Special 08 RRFB - Right NB STH 32 at N. Woodburn St	LS	LUMP SUM	_____.
0162	SPV.0105 Special 09 RRFB - Median NB STH 32 at N. Woodburn St	LS	LUMP SUM	_____.
0164	SPV.0105 Special 10 RRFB - Median SB STH 32 at N. Woodburn St	LS	LUMP SUM	_____.
0166	SPV.0105 Special 11 RRFB - Right SB STH 32 at N. Woodburn St	LS	LUMP SUM	_____.
0168	SPV.0105 Special 12 RRFB - Right SB STH 32 prior to N. Woodburn St	LS	LUMP SUM	_____.
0170	SPV.0105 Special 13 RRFB - Right NB STH 32 at E. Day Ave	LS	LUMP SUM	_____.
0172	SPV.0105 Special 14 RRFB - Median NB STH 32 at E. Day Ave	LS	LUMP SUM	_____.
0174	SPV.0105 Special 15 RRFB - Median SB STH 32 at E. Day Ave	LS	LUMP SUM	_____.
0176	SPV.0105 Special 16 RRFB - Right SB STH 32 at E. Day Ave	LS	LUMP SUM	_____.
0178	SPV.0105 Special 17 RRFB - Right NB STH 32 at E. Belle Ave	LS	LUMP SUM	_____.
0180	SPV.0105 Special 18 RRFB - Median NB STH 32 at E. Belle Ave	LS	LUMP SUM	_____.
0182	SPV.0105 Special 19 RRFB - Median SB STH 32 at E. Belle Ave	LS	LUMP SUM	_____.



Proposal Schedule of Items

Proposal ID: 20200310012 Project(s): 2225-14-70

Federal ID(s): WISC 2020072

SECTION: 0001 Roadway Work

Alt Set ID: Alt Mbr ID:

Proposal Line Number	Item ID Description	Approximate Quantity and Units	Unit Price	Bid Amount
0184	SPV.0105 Special 20 RRFB - Right SB STH 32 at E.Belle Ave	LS	LUMP SUM	_____.
0186	SPV.0180 Special 01 Resin Binder High Friction Surface Treatment	10,180.000 SY	_____.	_____.
0188	416.0270 Concrete Driveway HES 7-Inch	5.000 SY	_____.	_____.
0190	SPV.0090 Special 02. Concrete Curb & Gutter HES 30-Inch Type A	45.000 LF	_____.	_____.
Section: 0001			Total:	_____.
			Total Bid:	_____.