



Wisconsin Department of Transportation

Division of Transportation Systems Development

Bureau of Project Development
4822 Madison Yards Way, 4th Floor South
Madison, WI 53705

Telephone: (608) 266-1631
Facsimile (FAX): (608) 266-8459

May 4, 2020

NOTICE TO ALL CONTRACTORS:

Proposal #20: 4010-20-71, WISC 2020 256
Sheboygan Falls – Sheboygan
CTH EE Intersection
STH 28
Sheboygan County

Letting of May 12, 2020

This is Addendum No. 01, which provides for the following:

Schedule of Items:

Added Bid Item Quantities					
Bid Item	Item Description	Unit	Old Quantity	Revised Quantity	Proposal Total
614.0380	Steel Plate Beam Guard Energy Absorbing Terminal Temporary	Each	0	1	1

Plan Sheets:

Revised Plan Sheets	
Plan Sheet	Plan Sheet Title (brief description of changes to sheet)
44	Traffic Control – Stage 1B (added notes allowing partial guardrail removal, the addition of a temporary energy absorbing terminal (EAT), and references to standard detail drawings)
66	Miscellaneous Quantities (Removing Guardrail quantity for stage 2 was split between stage 1 and stage 2)

Added Plan Sheets	
Plan Sheet	Plan Sheet Title (brief description of why sheet was added)
137A	Standard Detail Drawing “Steel Plate Beam Guard Energy Absorbing Terminal” (associated with bid item 614.0380)
137B	Standard Detail Drawing “Steel Plate Beam Guard Energy Absorbing Terminal” (associated with bid item 614.0380)
137C	Standard Detail Drawing “Steel Plate Beam Guard Energy Absorbing Terminal” (associated with bid item 614.0380)

Schedule of Items

Attached, dated May 4, 2020, are the revised Schedule of Items Page 10.

Plan Sheets

The following 8½ x 11-inch sheets are attached and made part of the plans for this proposal:

Revised: 44, 66

Added: 137A, 137B, 137C

The responsibility for notifying potential subcontractors and suppliers of these changes remains with the prime contractor.

Sincerely,

Mike Coleman

Proposal Development Specialist
Proposal Management Section

END OF ADDENDUM

CLEARING AND GRUBBING			
LOCATION	201.0105 CLEARING STA	201.0205 GRUBBING STA	
CTH EE			
STAGE 1			
120+00'SB' - 123+00'SB' RT	3	3	
STAGE 2			
114+00'SB' - 116+00'SB' RT	2	2	
122+00'SB' - 123+00'SB' LT	1	1	
PROJECT TOTAL	6	6	

REMOVALS - DRAINAGE			
LOCATION	EACH	LF	CY
STH 28 - STAGE 2			
28+75'WB' LT	1		
29+65'WB' LT/RT	1		
35+75'EB' RT	1		
CTH EE - STAGE 1			
122+25'SB' LT/RT		25	145
122+32'SB' 107' LT	1		
PROJECT TOTAL	3	25	145

REMOVALS			
LOCATION	LS	LF	LF
203.0210.S ABATEMENT OF ASBESTOS CONTAINING MATERIAL B-59-101	204.0150 REMOVING CURB & GUTTER	204.0165 REMOVING GUARDRAIL	
STH 28 - STAGE 2			
NW CORNER	---	85	---
NE CORNER	---	52	---
SW CORNER	---	77	---
SE CORNER	---	73	---
22+45'EB' - 25+18'EB' LT	---	---	279
22+35'EB' - 26+22'EB' RT	---	---	378
CTH EE - STAGE 1			
119+65'SB' - 123+07'SB'	---	---	340
CTH EE - STAGE 2			
119+10'SB' - 119+65'SB'	---	---	56
PROJECT TOTAL	1	287	1,053

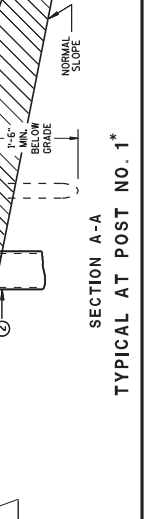
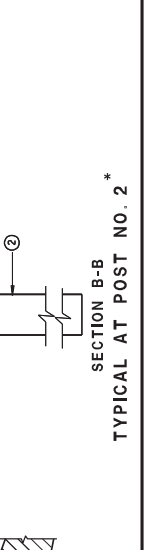
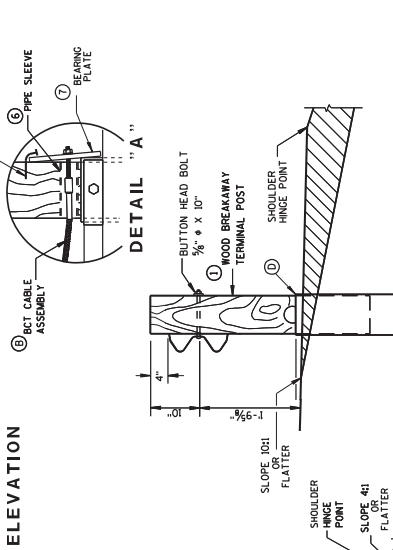
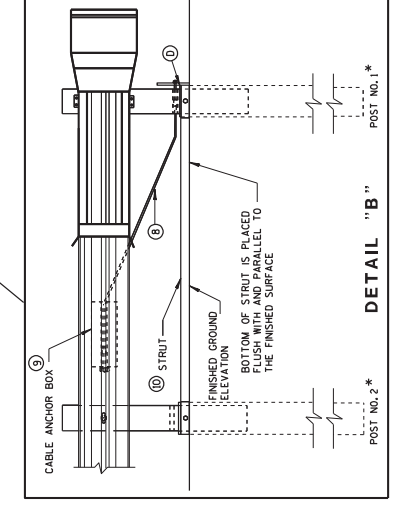
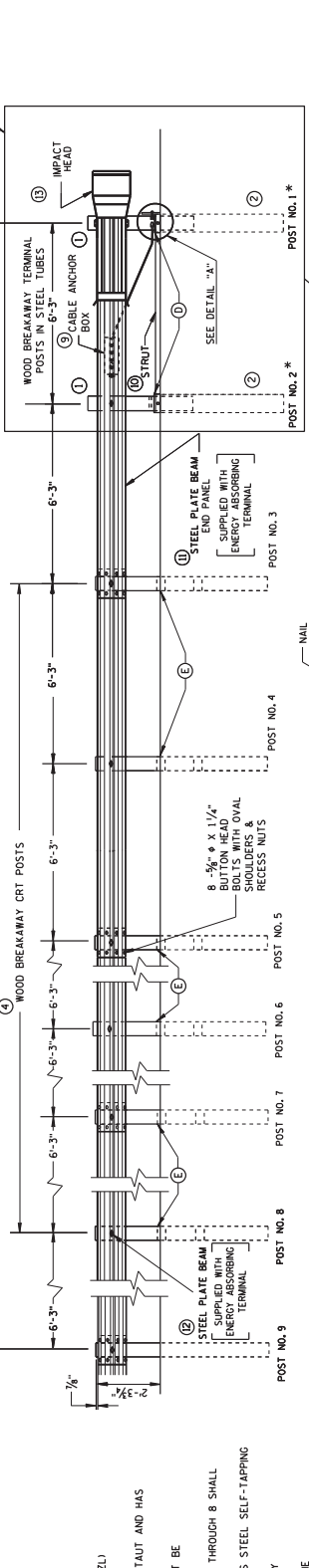
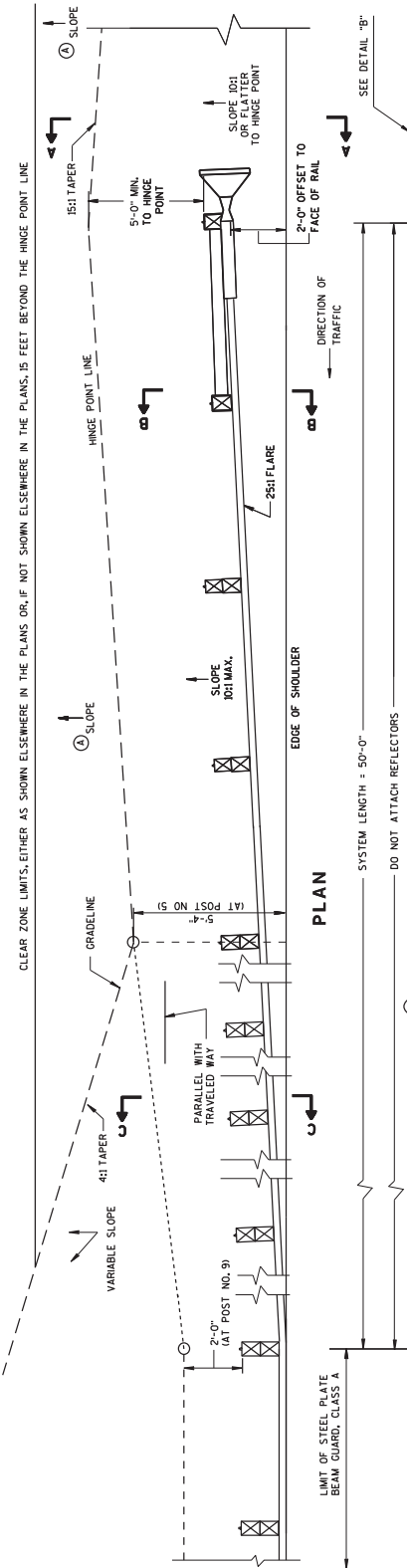
Addendum No. 01
ID 4010-20-71
Revised Sheet 66
May 4, 2020

BILL OF MATERIALS

NOTE NO.	DESCRIPTION
1	WOOD BREAKAWAY TERMINAL POST: 5 1/2" x 7 1/2" x 3'-9"
2	STEEL TUBE 1 1/2" O.D. x 1/8" WALL THICKNESS
3	WOOD BREAKAWAY CRT POST: 6" x 8" x 6'-0"
4	WOOD OFFSET BLOCKS: 6" x 8" x 1'-2"
5	PPE SLEEVE: 2" x 5 1/2" STANDARD PPE
6	BEARING PLATE
7	BCT CABLE ASSEMBLY
8	CABLE ANCHOR BOX
9	STRUT & YOKE
10	STEEL PLATE BEAM END PANEL 1/2 GA.
11	STEEL PLATE BEAM: 12 GA. 13'-6 1/2"
12	IMPACT HEAD
13	6060* ALUMINUM SHEET WITH REFLECTIVE SURFACE FINISH PER SECTION 637 OF THE STANDARD SPECIFICATIONS

GENERAL NOTES

- FOLLOW MANUFACTURER'S BOLTING RECOMMENDATIONS.
- A THE SLOPE IN THE AREA BOUNDED BY THE GRADELINE, THE HINGE POINT LINE (HPL), AND THE CLEAR ZONE LIMITS (CZL) SHALL BE 4:1 OR FLATTER.
- B AFTER FINAL ASSEMBLY, RECHECK CABLE TO BE SURE IT IS TAUT AND HAS NOT RELAXED.
- C THE TOP OF THE STEEL TUBE ON POSTS 1 AND 2 SHALL NOT BE MORE THAN 3" ABOVE THE FINISH GROUND ELEVATION.
- D THE CENTER OF THE UPPER 3/2" DIAMETER HOLE ON POST 3 THROUGH 8 SHALL BE 3/4" ABOVE THE FINISHED GROUND LINE.
- E ATTACH ALUMINUM SHEET TO E.A.T. HEAD USING 4 STAINLESS STEEL SELF-TAPPING SCREWS, ONE SCREW PER CORNER.
- F STEEL POSTS SHALL NOT BE ALLOWED FOR USE WITH ENERGY ABSORBING TERMINALS.
- DO NOT INSTALL REFLECTORS ON THE FIRST 50 FEET OF THE APPROACH END OF THE ENERGY ABSORBING TERMINAL.
- * DO NOT ATTACH BLOCKOUTS TO POSTS 1 AND 2.



Addendum No. 01
ID 4010-20-71
Added Sheet 137A
May 4, 2020

STATE OF WISCONSIN
DEPARTMENT OF TRANSPORTATION
137A

SECTION A-A
TYPICAL AT POST NO. 1 *

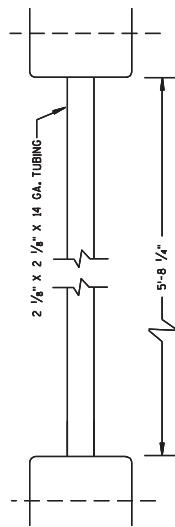
SECTION B-B
TYPICAL AT POST NO. 2 *

SECTION C-C
TYPICAL AT POST NOS. 6, 8

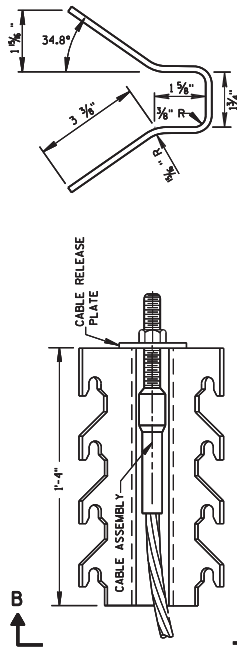
Addendum No. 01
ID 4010-20-71
Added Sheet 137B
May 4, 2020

STEEL PLATE BEAM GUARD
ENERGY ABSORBING TERMINAL

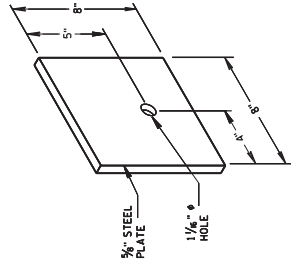
STATE OF WISCONSIN 137B
DEPARTMENT OF TRANSPORTATION



⑩ STRUT DETAIL



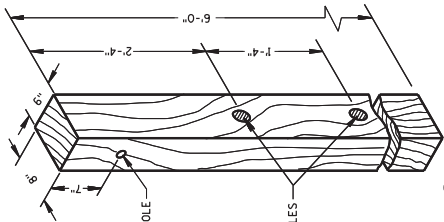
⑨ CABLE ANCHOR BOX



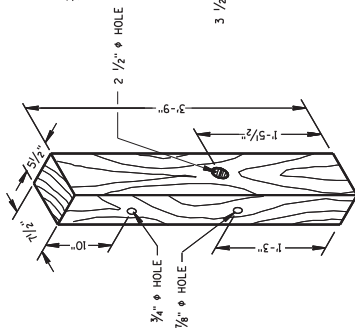
⑦ STEEL BEARING PLATE

GENERAL NOTES

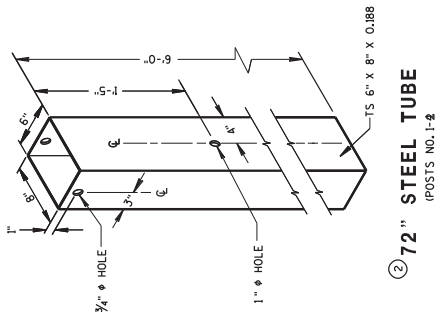
WHEN ROCK IS ENCOUNTERED DURING EXCAVATION, A 12 INCH DIA. POST HOLE EXTENDING 20 INCHES DEEP INTO THE ROCK MAY BE USED IF APPROVED BY THE ENGINEER. GRANULAR MATERIAL SHALL BE PLACED IN THE BOTTOM OF THE HOLE APPROXIMATELY 2 1/2 INCHES DEEP TO PROVIDE DRAINAGE. THE SOIL TUBES SHALL BE FIELD CUT TO LENGTH, PLACED IN THE HOLE AND BACKFILLED WITH ADEQUATELY COMPACTED MATERIAL EXCAVATED FROM THE HOLE.



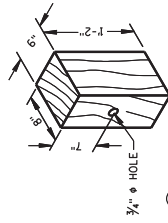
④ CRT POST
POSTS NOS 5-8



① TERMINAL POST

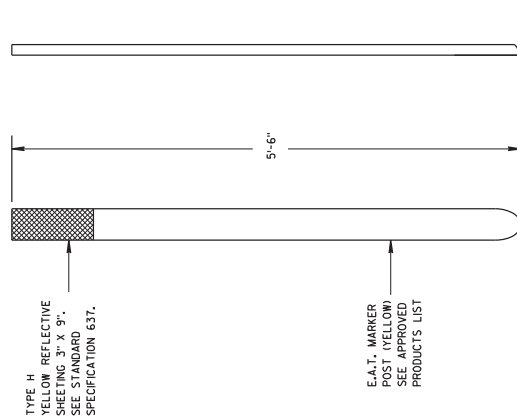


② 72" STEEL TUBE
POSTS NO. 1-2

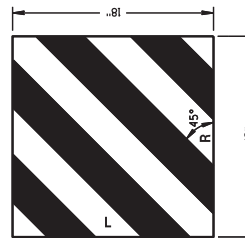


⑤ WOOD OFFSET BLOCK
RECORD AT ALL POSTS EXCEPT POST NOS 1 & 2

WOOD BREAKAWAY POSTS



FRONT VIEW SIDE VIEW
E.A.T. MARKER POST



⑬ REFLECTIVE SHEETING DETAILS

Addendum No. 01
ID 4010-20-71
Added Sheet 137C
May 4, 2020

STEEL PLATE BEAM GUARD
ENERGY ABSORBING TERMINAL

STATE OF WISCONSIN
DEPARTMENT OF TRANSPORTATION

APPROVED: /s/ Rodney Taylor
DATE: June 2017
ROADWAY STANDARDS DEVELOPMENT UNIT SUPERVISOR
137C
FHWA



Proposal Schedule of Items

Proposal ID: 20200512020 Project(s): 4010-20-71

Federal ID(s): WISC 2020256

SECTION: 0001 Roadway Items

Alt Set ID: Alt Mbr ID:

Proposal Line Number	Item ID Description	Approximate Quantity and Units	Unit Price	Bid Amount
0286	SPV.0035 Special 02. Abandon and Fill Culvert Pipes	145.000 CY	_____.	_____.
0288	SPV.0060 Special 01 INLETS 4-FT SPECIAL	2.000 EACH	_____.	_____.
0290	SPV.0060 Special 02. Spread Footing Concrete Base Type 5	1.000 EACH	_____.	_____.
0292	SPV.0085 Special 01 LOW MAINTENANCE SEED MIX	11.000 LB	_____.	_____.
0294	614.0380 Steel Plate Beam Guard Energy Absorbing Terminal Temporary	1.000 EACH	_____.	_____.
Section: 0001			Total:	_____.
			Total Bid:	_____.