



# Wisconsin Department of Transportation

June 2, 2020

## Division of Transportation Systems Development

Bureau of Project Development  
4822 Madison Yards Way, 4<sup>th</sup> Floor South  
Madison, WI 53705

Telephone: (608) 266-1631  
Facsimile (FAX): (608) 266-8459

### NOTICE TO ALL CONTRACTORS:

- Proposal 001: 1007-12-79, WISC 2020 313**  
**Illinois State Line - Madison**  
**USH 12/18 Intchg/Core SB**  
**IH 39**  
**Dane County**
- 1007-12-80, WISC 2020 314**  
**Illinois State Line - Madison**  
**USH 12/18 Intchg/Core NB/Final Work**  
**IH 39**  
**Dane County**
- 1008-10-70, WISC 2020 315**  
**Illinois State Line – Madison**  
**Safety Rest Area 22**  
**IH 39**  
**Rock County**

### Letting of June 09, 2020

This is Addendum No. 01, which provides for the following:

#### Special Provisions:

| Revised Special Provisions |  |
|----------------------------|--|
| Article No.                | Description                                  |
| 39                         | Base Aggregate Dense 1 ¼-Inch, Item 305.0120 |

| Added Special Provisions |  |
|--------------------------|--|
| Article No.              | Description  |
| 116                      | Abandoning Sewer, Item 204.0291.S                      |
| 117                      | Slope Paving Repair Crushed Aggregate, Item 604.9010.S |

#### Schedule of Items:

| Revised Bid Item Quantities |   |      |              |                  |                |
|-----------------------------|---|------|--------------|------------------|----------------|
| Bid Item                    | Item Description                                | Unit | Old Quantity | Revised Quantity | Proposal Total |
| 415.0120                    | Concrete Pavement 12-inch                       | SY   | 83,937       | 10,364           | 94,301         |
| 415.0125                    | Concrete Pavement 12.5-inch                     | SY   | 62,851       | -10,004          | 52,847         |
| 628.7560                    | Tracking Pads                                   | EACH | 7            | 6                | 13             |
| 649.0760                    | Temporary Marking Raised Pavement Marker Type 1 | EACH | 810          | 2,000            | 2,810          |

| <b>Added Bid Item Quantities</b> |   |      |              |                  |                |
|----------------------------------|---|------|--------------|------------------|----------------|
| Bid Item                         | Item Description                        | Unit | Old Quantity | Revised Quantity | Proposal Total |
| 204.0291.S                       | Abandoning Sewer                        | CY   | 0            | 11               | 11             |
| 604.9010.S                       | Slope Paving Repair Crushed Aggregate   | CY   | 0            | 30               | 30             |
| 611.0535                         | Manhole Covers Type J Special           | EACH | 0            | 1                | 1              |
| 614.0805                         | Crash Cushion Permanent Low Maintenance | EACH | 0            | 1                | 1              |

| <b>Deleted Bid Item Quantities</b> |                         |      |              |                  |                |
|------------------------------------|-------------------------|------|--------------|------------------|----------------|
| Bid Item                           | Item Description        | Unit | Old Quantity | Revised Quantity | Proposal Total |
| 204.0270                           | Abandon Culvert Pipes   | EACH | 1            | 0                | 0              |
| 611.0530                           | Manhole Covers Type J   | EACH | 1            | 0                | 0              |
| 614.0800                           | Crash Cushion Permanent | EACH | 1            | 0                | 1              |

**Plan Sheets:**

| <b>Revised Plan Sheets 1007-12-79</b> |   |
|---------------------------------------|---|
| Plan Sheet                            | Plan Sheet Title (brief description of changes to sheet)  |
| 12                                    | Typical Sections - Finished (updated typical to show the location for longitudinal saw cut)   |
| 25                                    | Construction Details (updated the detail for Concrete Barrier Type S42A to show the joint location and to define the concrete pavement pay limits)      |
| 322                                   | Miscellaneous Quantities (increased undistributed quantity for 649.0760 Temporary Marking Raised Pavement Marker Type I)                                |
| 324                                   | Miscellaneous Quantities (increased undistributed quantity for 628.7560 Tracking Pads, added new item 604.9010.S Slope Paving Repair Crushed Aggregate) |

| <b>Revised Plan Sheets 1007-12-80</b> |  |
|---------------------------------------|--|
| Plan Sheet                            | Plan Sheet Title (brief description of changes to sheet)   |
| 37                                    | Construction Details (updated the detail for Concrete Barrier Type S42A to show the joint location and to define the concrete pavement pay limits) |
| 58                                    | Removal Plan (revised note from Abandoning Culvert Pipe to Abandoning Sewer)   |
| 65                                    | Plan Details (revised legend from Crash Cushions Permanent to Crash Cushions Permanent Low Maintenance)  |
| 83                                    | Plan Details (revised legend from Crash Cushions Permanent to Crash Cushions Permanent Low Maintenance)  |
| 152                                   | Storm Sewer (revised note for Manhole Covers Type J to Manhole Covers Type J Special)  |
| 202                                   | Traffic Control (removed a unnecessary note about extending and removing a pipe)   |
| 305                                   | Miscellaneous Quantities (deleted 204.0270 Abandoning Culvert Pipe, added new item 204.0291.S Abandoning Sewer)                                    |
| 308                                   | Miscellaneous Quantities (revised quantities for 415.0120 Concrete Pavement 12-Inch and 415.0125 Concrete Pavement 12.5-Inch)                      |
| 313                                   | Miscellaneous Quantities (removed item 611.0530 Manhole Covers Type J, added new item 611.0535 Manhole Covers Type J Special)                      |
| 315                                   | Miscellaneous Quantities (removed item 614.0800 Crash Cushions Permanent, added new item 614.0805 Crash Cushions Permanent Low Maintenance)        |

|     |   |
|-----|---|
| 321 | Miscellaneous Quantities (increased undistributed quantity for 649.0760 Temporary Marking Raised Pavement Marker Type I)                                |
| 323 | Miscellaneous Quantities (increased undistributed quantity for 628.7560 Tracking Pads, added new item 604.9010.S Slope Paving Repair Crushed Aggregate) |

The responsibility for notifying potential subcontractors and suppliers of these changes remains with the prime contractor.

Sincerely,

*Mike Coleman*

Proposal Development Specialist  
Proposal Management Section

**ADDENDUM NO. 01**

**1007-12-79**

**June 2, 2020**

**Special Provisions**

**39. Base Aggregate Dense 1 1/4-Inch, Item 305.0120**

*Replace paragraph one with the following:*

The contractor for Project 1007-12-78 may have used reclaimed asphalt as base aggregate material. In areas where reclaimed asphalt was used by the previous contractor, place: additional reclaimed asphalt; blended aggregate; or reprocessed base aggregate material approved by the engineer instead of base aggregate to establish final grade prior to paving.

**116. Abandoning Sewer, Item 204.0291.S.**

**A Description**

This special provision describes abandoning existing sewer by filling it with cellular concrete as the plans show and conforming to standard spec 204 and standard spec 501 as modified in this special provision.

**B Materials**

Provide cellular concrete meeting the following specifications: 1 part cement, 1 part fly ash, 8 parts sand, or an approved equal, and water. Provide cement meeting the requirements of standard spec 501.2.1 for Type 1 Portland Cement. Provide sand meeting the requirements of standard spec 501.2.5.3 Provide water meeting the requirements of standard spec 501.2.4.

**C Construction**

Fill the abandoned sewer pipe with cellular concrete as the engineer directs. In the event that the sewer cannot be completely filled from existing manholes, tap the sewer where necessary and fill from these locations.

**D Measurement**

The department will measure Abandoning Sewer in volume by the cubic yard as specified in standard spec 109.1.3.

**E Payment**

The department will pay for measured quantities at the contract unit price under the following bid item:

| ITEM NUMBER | DESCRIPTION      | UNIT |
|-------------|------------------|------|
| 204.0291.S  | Abandoning Sewer | CY   |

Payment is full compensation for furnishing all materials and excavating and backfilling where necessary.

stp-204-050 (20080902)

**117. Slope Paving Repair Crushed Aggregate, Item 604.9010.S.**

**A Description**

This special provision describes providing crushed aggregate slope paving where erosion has occurred. Conform to standard spec 604 as modified in this special provision.

**B Materials**

Furnish materials conforming to standard spec 604.2.

**C Construction**

Replace paragraph (1) of standard spec 604.3.2 with the following:

- (1) Place the crushed aggregate on the prepared foundation in areas where erosion has occurred. Shape and consolidate it using mechanical or hand methods to provide a stable, even and uniform surface.

**D Measurement**

The department will measure Slope Paving Repair Crushed Aggregate by the cubic yard acceptably completed.

**E Payment**

The department will pay for measured quantities at the contract unit price under the following bid item:

| ITEM NUMBER | DESCRIPTION                           | UNIT |
|-------------|---------------------------------------|------|
| 604.9010.S  | Slope Paving Repair Crushed Aggregate | CY   |

Payment is full compensation for all excavating and backfilling required to prepare the foundation; disposing of surplus materials; providing, handling, placing, and consolidating the crushed aggregate; providing, handling, heating, and for applying the asphaltic material.

stp-604-010 (20100709)

**Schedule of Items**

Attached, dated June 2, 2020 are the revised Schedule of Items Pages 1 – 27.

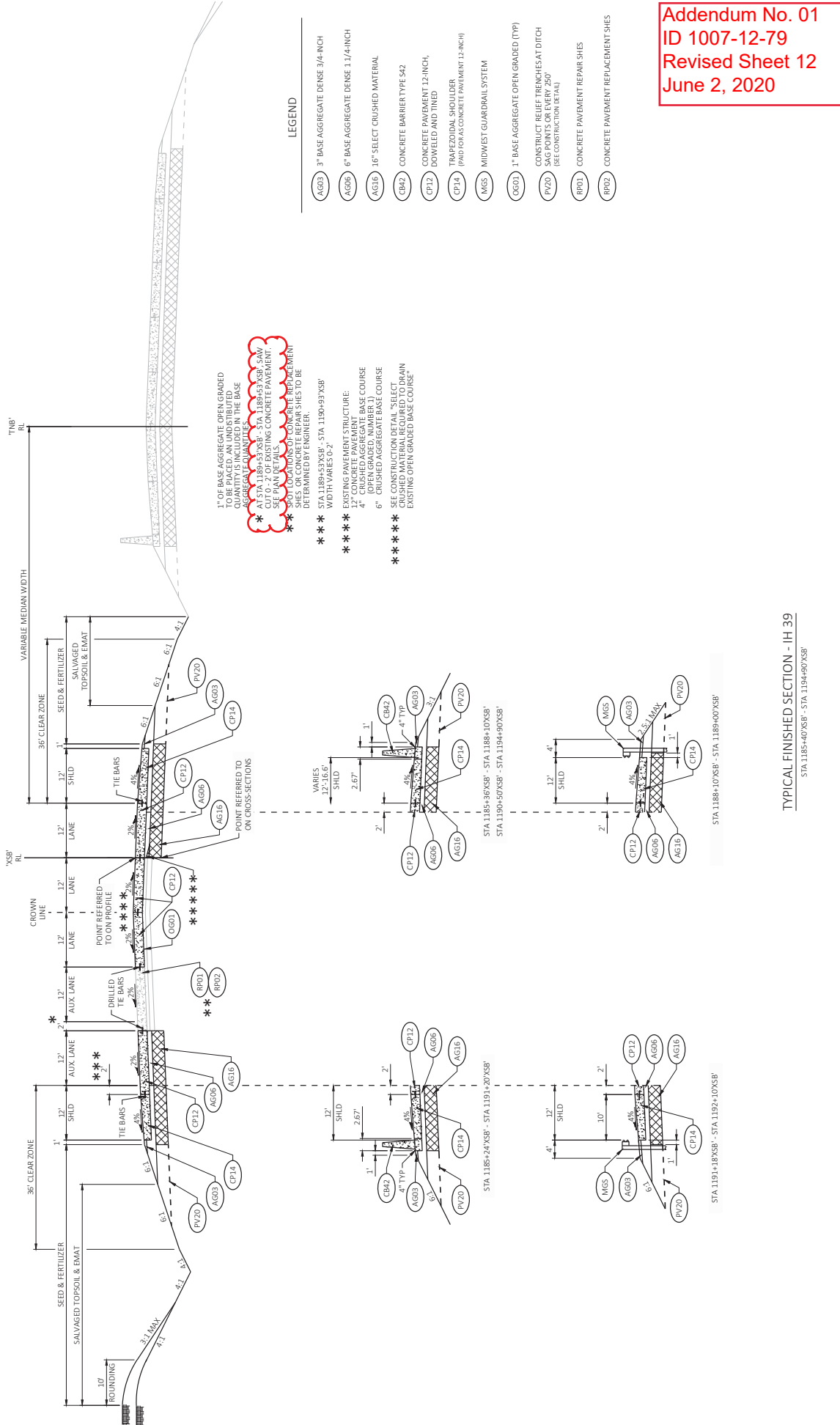
**Plan Sheets**

The following 8½ x 11-inch sheets are attached and made part of the plans for this proposal:

Revised Sheets 1007-12-79: 12, 25, 322, and 324

Revised Sheets 1007-12-80: 37, 58, 65, 83, 152, 202, 305, 308, 313, 315, 321, and 323

END OF ADDENDUM



1" OF BASE AGGREGATE OPEN GRADED TO BE PLACED AN UNDISTRIBUTED QUANTITY IS INCLUDED IN THE BASE AT STA 1188+53'XSB - STA 1188+55'XSB AND AT STA 1190+50'XSB - STA 1190+52'XSB. SEE PLAN DETAILS.

SEE PLAN DETAILS FOR CONCRETE REPAIR SHEETS OR CONCRETE REPAIR SHEETS DETERMINED BY ENGINEER.

\*\*\* STA 1188+53'XSB - STA 1190+93'XSB WIDTH VARIES 6'-2'

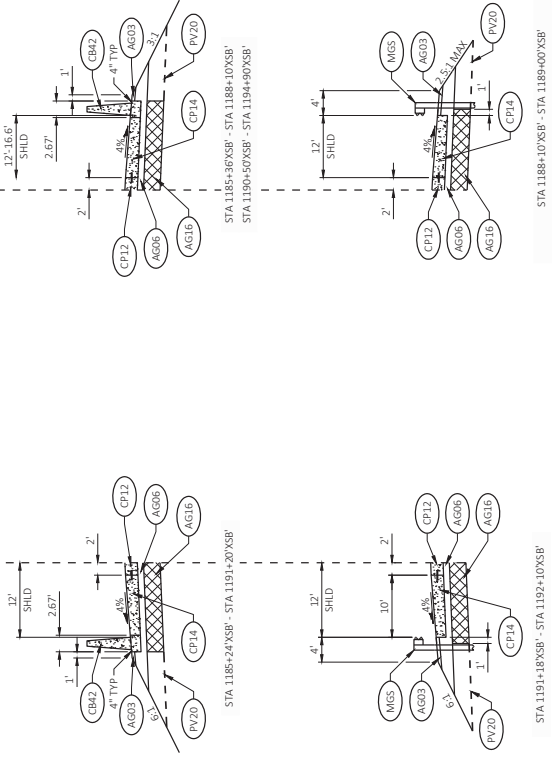
\*\*\* EXISTING PAVEMENT STRUCTURE: 12" CONCRETE PAVEMENT (OPEN GRADED, NUMBER 1) 4" CRUSHED AGGREGATE BASE COURSE

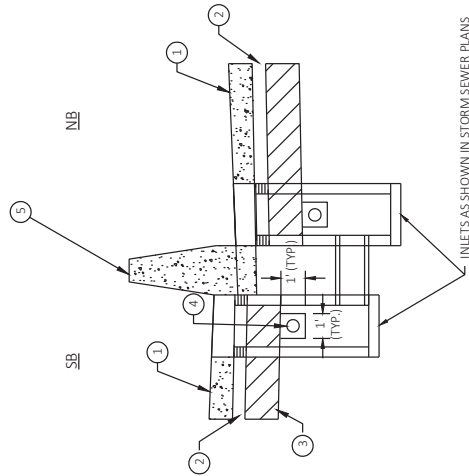
\*\*\* SEE CONSTRUCTION DETAIL "SELECT CRUSHED MATERIAL REQUIRED TO DRAIN EXISTING OPEN GRADED BASE COURSE"

- LEGEND**
- AG03 3" BASE AGGREGATE DENSE 3/4-INCH
  - AG06 6" BASE AGGREGATE DENSE 1 1/4-INCH
  - AG16 1 1/2" SELECT CRUSHED MATERIAL
  - CB42 CONCRETE BARRIER TYPE 542
  - CP12 CONCRETE PAVEMENT 12-INCH, DOWNELED AND TINED
  - CP14 TRAPEZOIDAL SHOULDER (PAD FOR AS CONCRETE PAVEMENT 12-INCH)
  - MG5 MIDWEST GUARDRAIL SYSTEM
  - OGD1 1" BASE AGGREGATE OPEN GRADED (TPP)
  - PV20 CONSTRUCT RELIEF TRENCHES AT DITCH SAG POINTS OR EVERY 250' (SEE CONSTRUCTION DETAIL)
  - RP01 CONCRETE PAVEMENT REPAIR SHEETS
  - RP02 CONCRETE PAVEMENT REPLACEMENT SHEETS

Addendum No. 01  
ID 1007-12-79  
Revised Sheet 12  
June 2, 2020

TYPICAL FINISHED SECTION - IH 39  
STA 1185+40'XSB - STA 1194+90'XSB

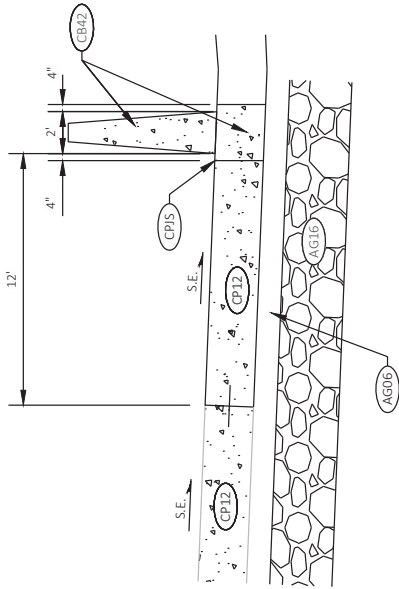




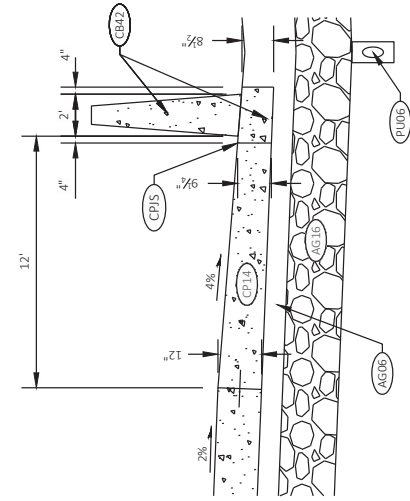
INLETS AS SHOWN IN STORM SEWER PLANS

- 1 TRAPEZOIDAL SHOULDER (PAID SEPARATELY)
- 2 BASE AGGREGATE DENSE 1 1/4-INCH, 6-INCH (PAID SEPARATELY)
- 3 SELECT CRUSHED MATERIAL, 16-INCH (PAID SEPARATELY)
- 4 PIPE UNDERDRAIN 6-INCH WITH GEOTEXTILE FABRIC AND AGGREGATE
- 5 CONCRETE BARRIER TYPE S42A OR S42 (PAID SEPARATELY)

PIPE UNDERDRAIN 6-INCH

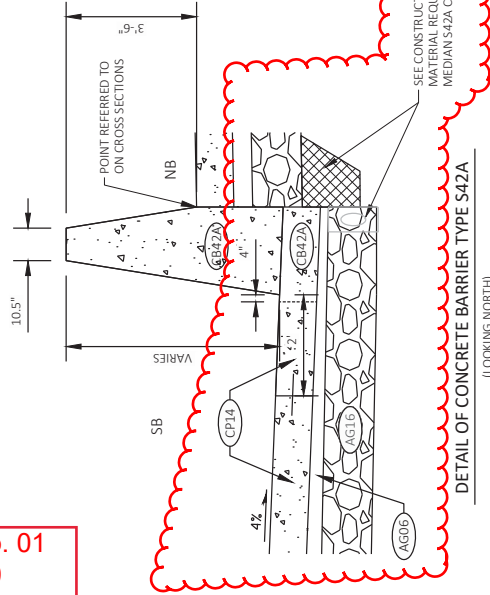


DETAIL OF SUPERELEVATED SHOULDER -  
CONCRETE BARRIER TYPE S42 IN MEDIAN



DETAIL OF TRAPEZOIDAL SHOULDER -  
CONCRETE BARRIER TYPE S42 IN MEDIAN

Addendum No. 01  
ID 1007-12-79  
Revised Sheet 25  
June 2, 2020



DETAIL OF CONCRETE BARRIER TYPE S42A  
(LOOKING NORTH)

- LEGEND
- AG06 6" BASE AGGREGATE DENSE 1 1/4-INCH
  - AG16 16" SELECT CRUSHED MATERIAL
  - CB42 CONCRETE BARRIER TYPE S42
  - CB42A CONCRETE BARRIER TYPE S42A
  - CP12 CONCRETE PAVEMENT 12-INCH, DOMED AND TINED
  - CP14 TRAPEZOIDAL SHOULDER 4-INCH HIGH AND 12-INCH THE MAXIMUMS OF CONCRETE PAVEMENT ARE 4" SHORT OF THE INSIDE EDGE OF CB42A
  - CP15 CONCRETE PAVEMENT JOINT SEALING
  - PUB6 PIPE UNDERDRAIN 6-INCH

SEE CONSTRUCTION DETAIL "SELECT CRUSHED MATERIAL REQUIRED TO DRAIN HIGH SIDE MEDIAN S42A CONCRETE BARRIER"

CONTINUED FROM PREVIOUS SHEET

TEMPORARY MARKING LINES

| LOCATION                             | STA     | TO  | STA | 646.9010** 646.9110** MARKING REMOVAL LINE WATER BLASTING |        | 649.0105 TEMPORARY MARKING LINE PAINT 4-INCH |       | 649.0205 TEMPORARY MARKING LINE PAINT 8-INCH |        | 649.0120 * EPOXY 4-INCH |       | 649.0220 * EPOXY 8-INCH |        | 649.0760 RAISED PAVEMENT MARKER TYPE I |       |       |       |
|--------------------------------------|---------|-----|-----|---|--------|--|-------|--|--------|-------------------------|-------|-------------------------|--------|--|-------|-------|-------|
|                                      |         |     |     | 4-INCH  | 8-INCH | YELLOW                                       | WHITE | WHITE  | WHITE  | YELLOW                  | WHITE | WHITE                   | WHITE  | LF                                     | LF    | LF    | LF    |
| STAGE 3B                             |         |     |     |   |        |  |       |  |        |                         |       |                         |        |  |       |       |       |
| IH 39 SB                             | 1134+00 | XSB | -   | 1143+69   | XSB    | 1,000  | 1,000 | 970  | 2,310  |                         |       |                         |        |  |       |       |       |
| IH 39 SB                             | 1143+69 | XSB | -   | 1168+00   | XSB    |  |       | 2,430  | 2,430  | 610                     |       |                         |        |  | 19    |       |       |
| IH 39 SB                             | 1168+00 | XSB | -   | 1176+00   | XSB    |  |       | 800  | 1,600  |                         |       |                         |        |  |       |       |       |
| STAGE 3B SUBTOTALS                   |         |     |     |   |        | 1,000  | 1,000 | 4,200  | 6,340  | 610                     |       |                         |        |  | 35    |       |       |
| STAGE 4A                             |         |     |     |   |        |  |       |  |        |                         |       |                         |        |  |       |       |       |
| IH 39 SB                             | 1134+00 | XSB | -   | 1136+50   | XSB    |  |       |  |        |                         | 250   | 250                     | 130    | 60                                     |       |       |       |
| IH 39 SB                             | 1136+50 | XSB | -   | 1142+00   | XSB    |  |       | 550  | 1,100  |                         |       | 450                     | 30     | 11                                     |       |       |       |
| IH 39 SB                             | 1142+00 | XSB | -   | 1163+25   | XSB    |  |       | 2,130  | 2,130  | 530                     |       |                         |        |  |       |       |       |
| IH 39 SB                             | 1163+25 | XSB | -   | 1186+22   | XSB    |  |       | 2,300  | 4,590  |                         |       |                         |        |  |       |       |       |
| IH 39 SB                             | 1186+22 | XSB | -   | 1229+00   | XSB    |  |       | 4,280  | 4,280  | 1,070                   |       |                         |        |  |       |       |       |
| SB TO WB RAMP                        | 1183+50 | XSB | -   | 1224+00   | XSB    |  |       | 4,050  |        | 1,010                   |       |                         |        |  |       |       |       |
| SB TO WB RAMP                        | 1224+00 | XSB | -   | 1229+00   | XSB    |  |       | 500  |        |                         |       |                         |        |  |       |       |       |
| IH 39 SB                             | 1229+00 | XSB | -   | 1235+00   | XSB    |  |       | 600  | 600    | 860                     |       |                         |        |  |       |       |       |
| STAGE 4A SUBTOTALS                   |         |     |     |   |        |  |       | 14,410                                       | 12,700 | 2,610                   | 250   | 800                     | 130    | 90                                     | 85    |       |       |
| STAGE 4B                             |         |     |     |   |        |  |       |  |        |                         |       |                         |        |  |       |       |       |
| IH 39 SB                             | 1159+30 | XSB | -   | 1166+25   | XSB    |  |       | 700  | 700    | 600                     | 100   | 100                     |        | 300                                    | 80    |       |       |
| STAGE 4B SUBTOTALS                   |         |     |     |   |        |  |       | 700  | 700    | 600                     | 100   | 100                     |        | 300                                    | 80    |       |       |
| STAGE 4C                             |         |     |     |   |        |  |       |  |        |                         |       |                         |        |  |       |       |       |
| IH 39 SB                             | 1136+50 | XSB | -   | 1159+00   | XSB    |  |       |  |        |                         | 2,250 |                         | 1,130  | 600                                    |       |       |       |
| IH 39 SB                             | 1159+00 | XSB | -   | 1170+00   | XSB    |  |       |  |        |                         | 1,100 |                         | 550    | 500                                    |       |       |       |
| IH 39 SB                             | 1170+00 | XSB | -   | 1182+00   | XSB    |  |       |  |        |                         | 1,200 |                         | 600    |  |       |       |       |
| IH 39 SB                             | 1182+00 | XSB | -   | 1230+00   | XSB    |  |       |  |        |                         | 4,800 | 4,800                   | 2,400  | 1,200                                  |       |       |       |
| IH 39 SB                             | 1230+00 | XSB | -   | 1235+00   | XSB    |  |       |  |        |                         | 500   | 500                     | 250    |  |       |       |       |
| FINAL MARKINGS                       |         |     |     |   |        |  |       |  |        |                         | 9,850 | 5,300                   | 4,930  | 6,400                                  | 2,300 |       |       |
| UNDISTRIBUTED IH 39 TANGENT SECTIONS |         |     |     |   |        |  |       |  |        |                         |       |                         |        |  |       |       |       |
| CATEGORY 1000 PROJECT TOTALS         |         |     |     |   |        | 18,990                                       | 2,970 | 35,930                                       | 40,770 | 7,780                   | 3,980 | 2,310                   | 17,710 | 14,610                                 | 7,815 | 3,415 | 1,500 |
|                                      |         |     |     |   |        |  |       | 84,480                                       | 6,290  | 40,135                  | 7,550 | 10,965                  |        |  |       |       |       |

\* TEMPORARY EPOXY IS PLACED PRIOR TO FINAL GROOVED MARKING LINES BEING PLACE  
 \*\* ADDITIONAL QUANTITIES LISTED ELSEWHERE

Addendum No. 01  
 ID 1007-12-79  
 Revised Sheet 322  
 June 2, 2020



**EROSION CONTROL**

| STA                                | OFFSET | ALIGN | CY | SY        | 628.0200<br>RIPRAP<br>MEDIUM | 645.0120<br>GEOTEXTILE<br>TYPE HR | 628.1104<br>EROSION<br>BALES | 628.1504<br>SILT<br>FENCE | 628.1520<br>SILT FENCE<br>MAINTENANCE | 628.1920<br>CLEANING<br>SEDIMENT<br>BASINS | 628.7005<br>INLET PROTECTION<br>TYPE A | 628.7010<br>INLET PROTECTION<br>TYPE B | 628.7504<br>TEMPORARY<br>DITCH | 628.7555<br>CULVERT<br>PIPE | 628.7560<br>TRACKING<br>PADS | 628.7570<br>ROCK<br>BAGS | SPV.0060.008<br>TEMPORARY<br>SEDIMENT<br>BASIN |
|------------------------------------|--------|-------|----|-----------|------------------------------|-----------------------------------|------------------------------|---------------------------|---------------------------------------|--|--|--|--------------------------------|-----------------------------|------------------------------|--------------------------|--|
| 1160+89.88                         | LT     | XSB   | 3  | 7         |                              |                                   |                              |                           |                                       |  |  |  |                                |                             |                              |                          |  |
| 1165+88.69                         | LT     | XSB   | 6  | 13        |                              |                                   |                              |                           |                                       |  |  |  |                                |                             |                              |                          |  |
| 1165+95.77                         | RT     | XSB   | 3  | 5         |                              |                                   |                              |                           |                                       |  |  |  |                                |                             |                              |                          |  |
| 1173+61.63                         | RT     | XSB   | 4  | 7         |                              |                                   |                              |                           |                                       |  |  |  |                                |                             |                              |                          |  |
| 1173+89.61                         | LT     | XSB   | 5  | 11        |                              |                                   |                              |                           |                                       |  |  |  |                                |                             |                              |                          |  |
| 1196+39.20                         | LT     | XSB   | 5  | 10        |                              |                                   |                              |                           |                                       |  |  |  |                                |                             |                              |                          |  |
| 1201+85.57                         | LT     | XSB   | 5  | 10        |                              |                                   |                              |                           |                                       |  |  |  |                                |                             |                              |                          |  |
| 1208+02.86                         | LT     | XSB   | 10 | 19        |                              |                                   |                              |                           |                                       |  |  |  |                                |                             |                              |                          |  |
| 1213+32.18                         | LT     | XSB   | 7  | 14        |                              |                                   |                              |                           |                                       |  |  |  |                                |                             |                              |                          |  |
| 1200+82                            | LT     | XSB   | 20 | 41        |                              |                                   |                              |                           |                                       |  |  |  |                                |                             |                              |                          |  |
| <b>CATEGORY 1000 PROJECT TOTAL</b> |        |       |    | <b>68</b> | <b>137</b>                   |                                   |                              |                           |                                       |  |  |  |                                |                             |                              |                          |  |

Addendum No. 01  
ID 1007-12-79  
Revised Sheet 324  
June 2, 2020

**EROSION CONTROL MOBILIZATION**

| LOCATION                           | EACH      | 628.1905<br>MOBILIZATION<br>EROSION CONTROL | 628.1910<br>EMERGENCY<br>MOBILIZATION<br>EROSION CONTROL |
|------------------------------------|-----------|---|--|
| PROJECT 1007-12-79 IH 39           | 16        |   | 12   |
| <b>CATEGORY 1000 PROJECT TOTAL</b> | <b>16</b> |   | <b>12</b>  |

**EROSION MAT**

| STA                                | TO | STA     | OFFSET | ALIGN | SY           | 628.2002<br>CLASS I<br>TYPE A | 628.2008<br>EROSION MAT<br>URBAN CLASS I<br>TYPE A | 628.2023<br>CLASS II<br>TYPE B |
|------------------------------------|----|---------|--------|-------|--------------|-------------------------------|--|--------------------------------|
| UNDISTRIBUTED STAGE 1A             |    |         |        |       |              |                               |  |                                |
| 2542+75                            | -  | 2559+59 | RT     | TSB   | 1333         |                               |  |                                |
| UNDISTRIBUTED STAGE 1B             |    |         |        |       |              |                               |  |                                |
| 1162+71                            | -  | 1166+29 | RT     | XSB   | 2304         |                               |  |                                |
| UNDISTRIBUTED STAGE 3A             |    |         |        |       |              |                               |  |                                |
| 2542+75                            | -  | 2559+56 | LT     | TSB   | 2847         |                               |  |                                |
| 1162+71                            | -  | 1166+29 | RT     | XSB   | 208          |                               |  |                                |
| 1162+71                            | -  | 1166+29 | LT     | XSB   | 495          |                               |  |                                |
| 1167+48                            | -  | 1174+07 | RT     | XSB   | 726          |                               |  |                                |
| 1167+48                            | -  | 1174+07 | LT     | XSB   | 469          |                               |  |                                |
| 1175+50                            | -  | 1183+65 | RT     | XSB   | 1417         |                               |  |                                |
| 1175+50                            | -  | 1183+65 | LT     | XSB   | 696          |                               |  |                                |
| 30+86                              | -  | 36+34   | RT/LT  | XF    | 605          |                               |  |                                |
| 1185+24                            | -  | 1194+00 | RT     | XSB   | 1152         |                               |  |                                |
| 1185+24                            | -  | 1212+85 | LT     | XSB   | 2612         | 5391                          |  |                                |
| 1212+85                            | -  | 1233+60 | LT     | XSB   | 1086         | 7430                          | 1793   |                                |
| UNDISTRIBUTED                      |    |         |        |       |              |                               |  |                                |
|                                    |    |         |        |       | 1226         | 539                           | 179  |                                |
| <b>CATEGORY 1000 PROJECT TOTAL</b> |    |         |        |       | <b>17163</b> | <b>13360</b>                  | <b>1972</b>  |                                |

**REMOVING BUILDING**

| STA                                | LOCATION  | LS       | 204.0230.001 |
|------------------------------------|-----------|----------|--------------|
| 110+50'NN'                         | CTH N, LT | 1        |              |
| 110+61'NN'                         | CTH N, LT | 1        |              |
| <b>CATEGORY 1800 PROJECT TOTAL</b> |           | <b>1</b> |              |

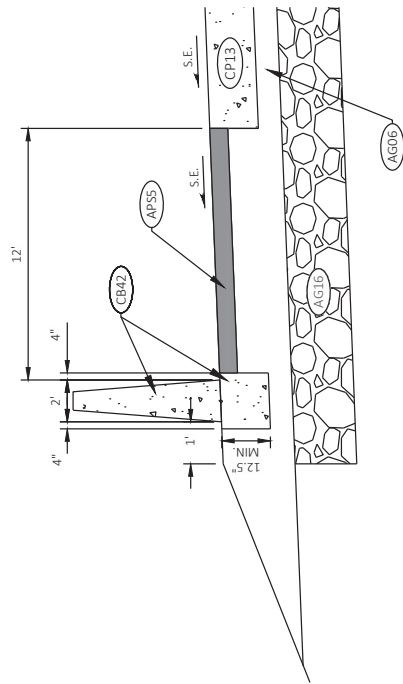
**REMOVING BUSINESS SIGN**

| STA                                | LOCATION  | 204.9060.S.02 |
|------------------------------------|-----------|---------------|
| 109+76                             | CTH N, LT | 1             |
| 109+06                             | CTH N, LT | 1             |
| <b>CATEGORY 1800 PROJECT TOTAL</b> |           | <b>2</b>      |

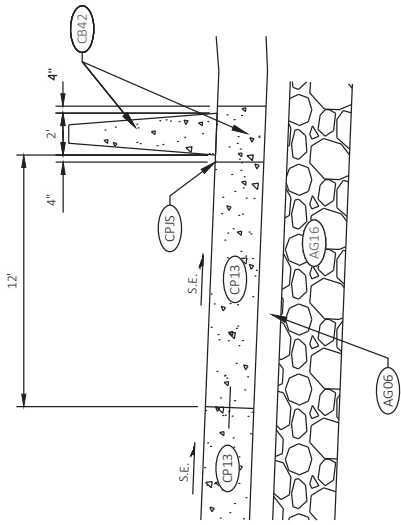
  

**SLOPE PAVING REPAIR CRUSHED AGGREGATE**

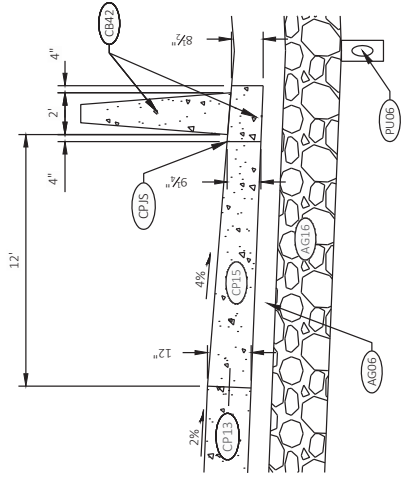
| STRUCTURE                          | LOCATION    | 604.9010.S |
|------------------------------------|-------------|------------|
| B-13-462                           | SOUTH SLOPE | 8          |
| B-13-462                           | NORTH SLOPE | 4          |
| <b>CATEGORY 1000 PROJECT TOTAL</b> |             | <b>12</b>  |



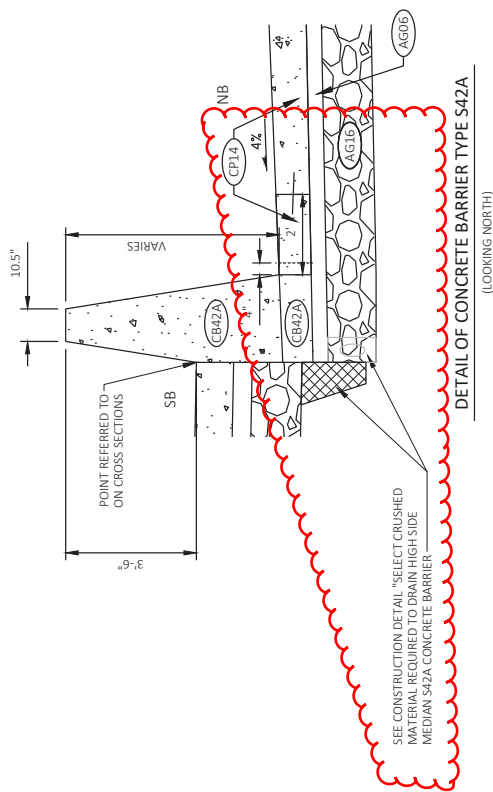
DETAIL OF CONCRETE BARRIER TYPE S42  
ADJACENT TO HMA SHOULDER



DETAIL OF SUPERELEVATED SHOULDER -  
CONCRETE BARRIER TYPE S42 IN MEDIAN

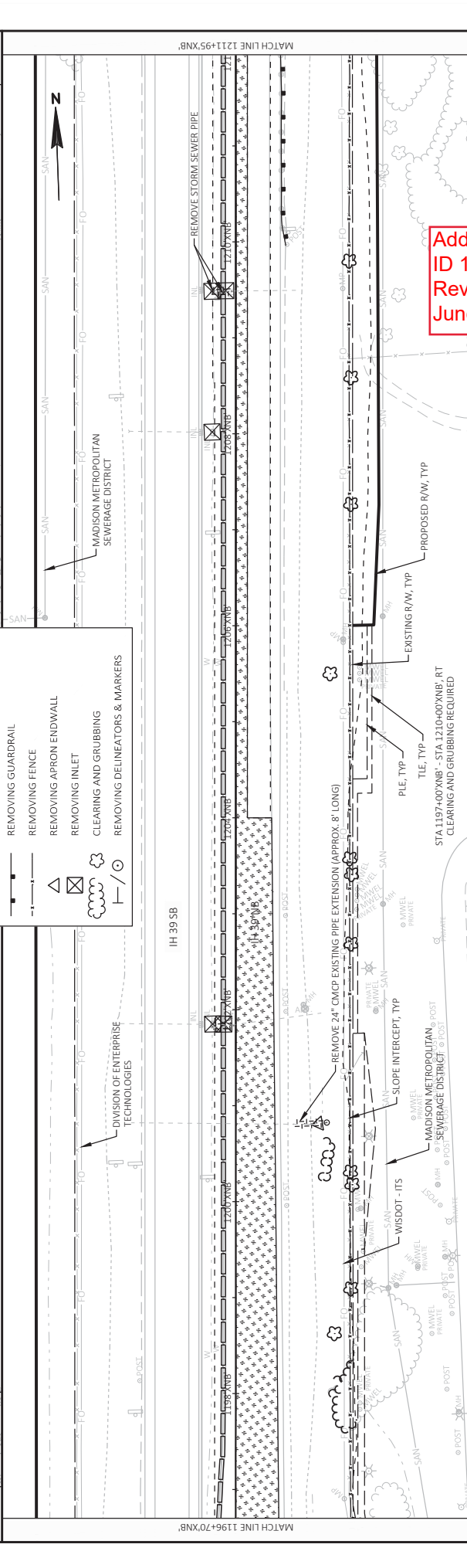
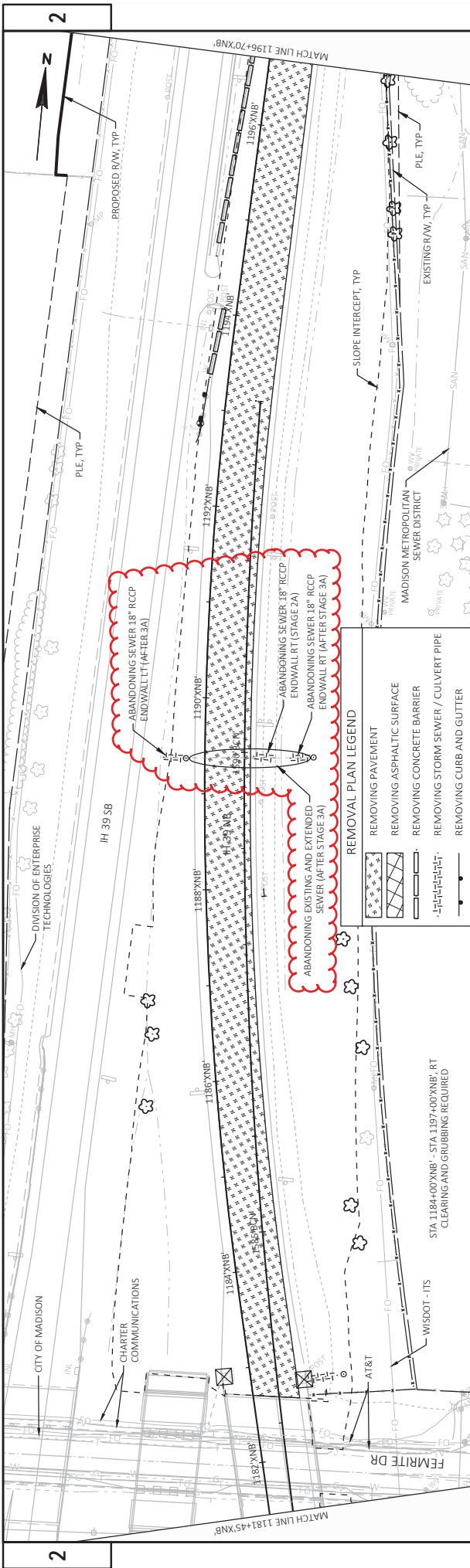


DETAIL OF TRAPEZOIDAL SHOULDER -  
CONCRETE BARRIER TYPE S42 IN MEDIAN



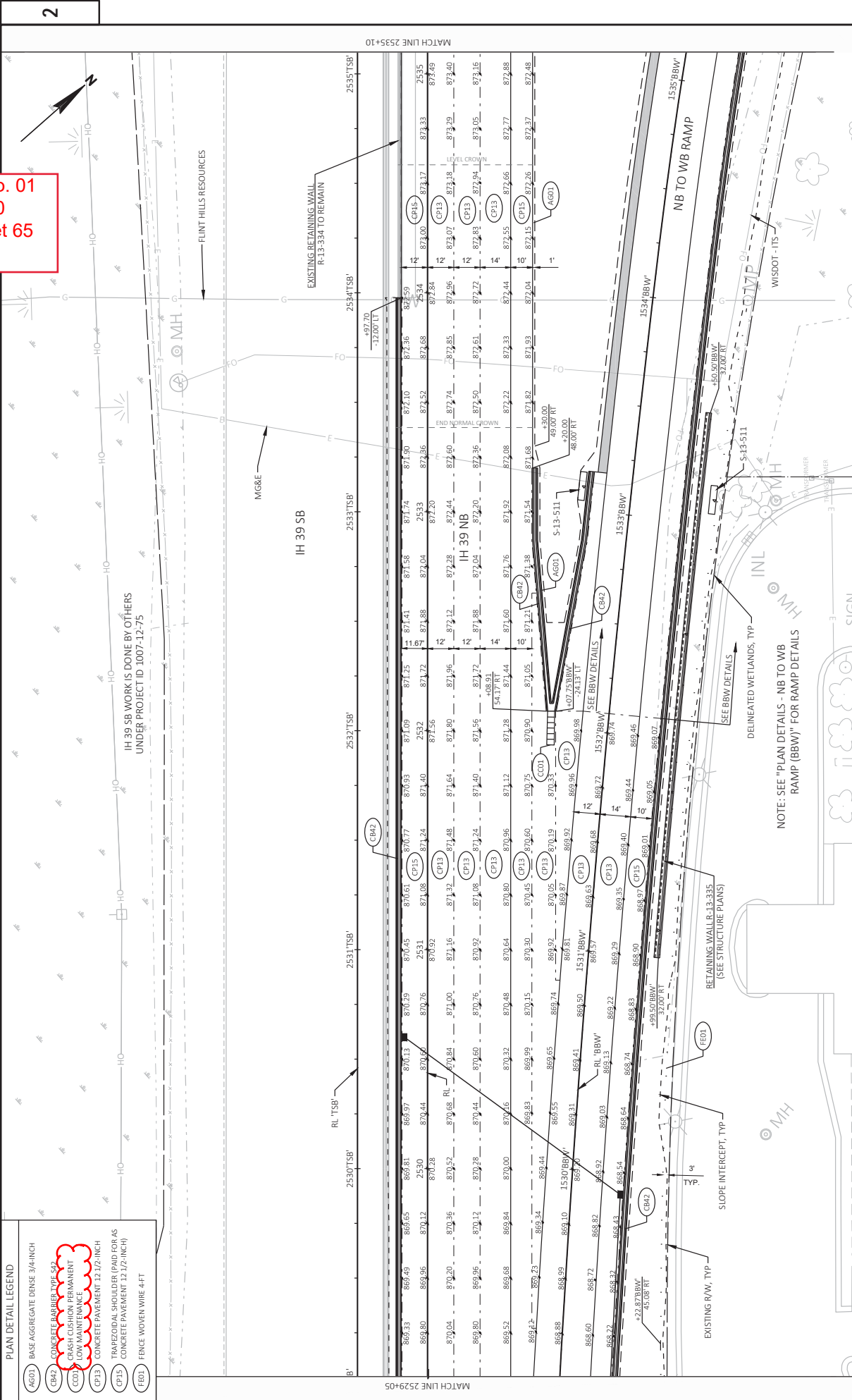
- LEGEND
- AG06 6" BASE AGGREGATE DENSE 1 1/4-INCH
  - AG16 16" SELECT CRUSHED MATERIAL
  - CB42 CONCRETE BARRIER TYPE S42
  - CB42A CONCRETE BARRIER TYPE S42A
  - CP13 CONCRETE PAVEMENT 12 1/2-INCH, DOWELED AND TINED
  - CP15 TRAPEZOIDAL SHOULDER
  - CP15 TRAPEZOIDAL SHOULDER (PAVED FOR AS CONCRETE PAVEMENT 12 1/2-INCH, DOWELED AND TINED)
  - CP15 TRAPEZOIDAL SHOULDER (PAVED FOR AS CONCRETE PAVEMENT 12-INCH, THE MAX LIMITS OF CONCRETE PAVEMENT ARE 4' SHORT OF THE INSIDE EDGE OF CRADA)
  - CP15 CONCRETE PAVEMENT JOINT SEALING
  - PLU06 PIPE UNDER DRAIN 6-INCH ENCLOSED IN A 1'X1' AREA OF COURSE BASE AGGREGATE SIZE NO. 1 WRAPPED IN GEOTEXTILE FABRIC, TYPE SCHEDULE B
  - APSS HMA PAVEMENT 5-INCH SHOULDER

Addendum No. 01  
ID 1007-12-80  
Revised Sheet 37  
June 2, 2020



Addendum No. 01  
 ID 1007-12-80  
 Revised Sheet 58  
 June 2, 2020

Addendum No. 01  
ID 1007-12-80  
Revised Sheet 65  
June 2, 2020



PLAN DETAIL LEGEND

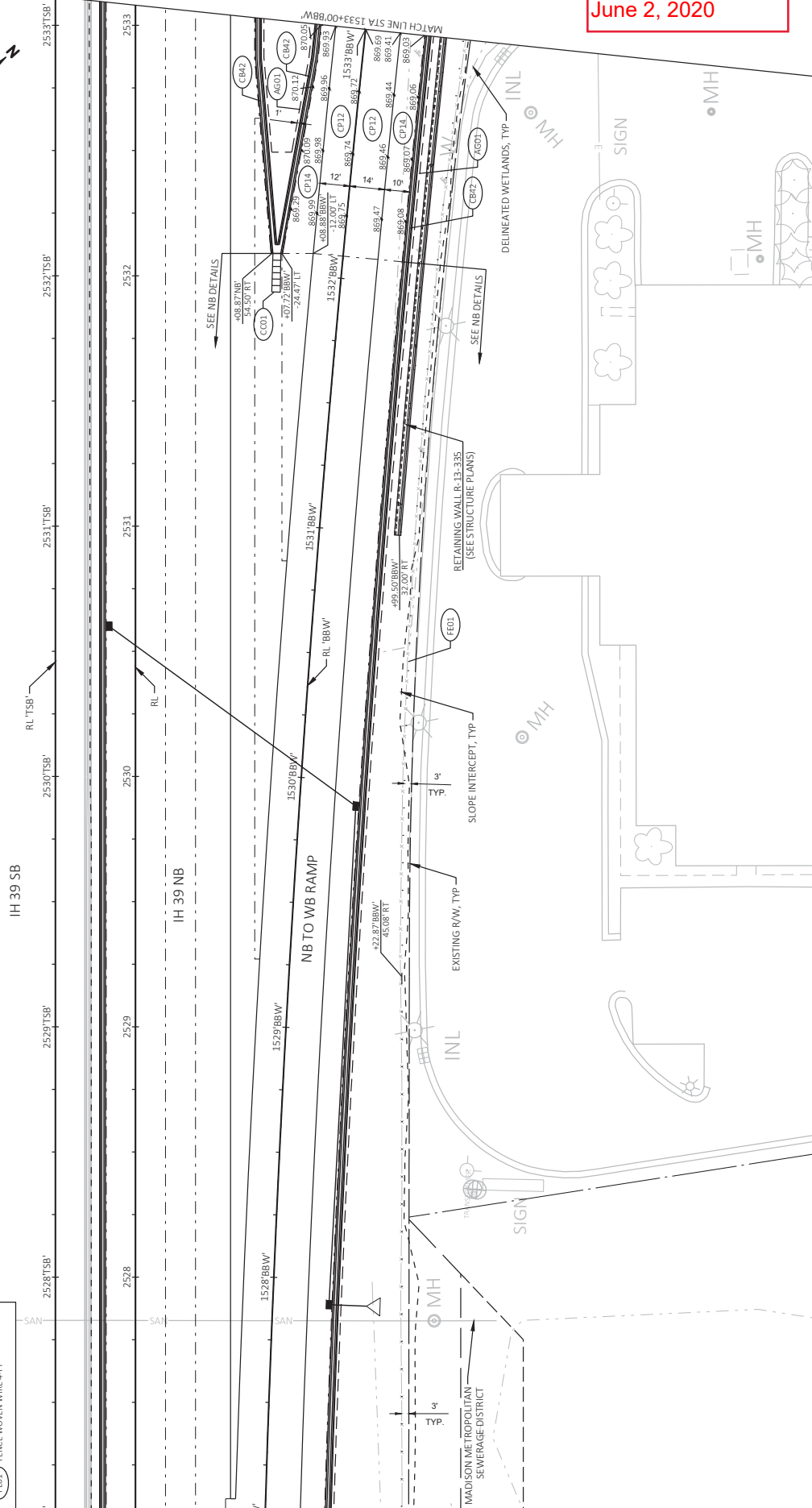
- (AG01) BASE AGGREGATE DENSE 3/4 INCH
- (CB42) CONCRETE BARRIER TYPE 52
- (CC03) CRASH CUSHION PERMANENT
- (CP13) CONCRETE PAVEMENT 12 1/2 INCH
- (CP15) TRAPEZOIDAL SHOULDER (PAID FOR AS CONCRETE PAVEMENT 12 1/2 INCH)
- (FE01) FENCE WOVEN WIRE 4 FT

NOTE: SEE "PLAN DETAILS - NB TO WB RAMP (BBW)" FOR RAMP DETAILS

Addendum No. 01  
ID 1007-12-80  
Revised Sheet 83  
June 2, 2020

PLAN DETAIL LEGEND

- (A600) BASE AGGREGATE DENSE 3/4 INCH
- (CB42) CONCRETE BARRIER TYPE S2
- (CC00) DASH CUSHION PERMANENT LOW VAIN PLAIN
- (CP12) CONCRETE PAVEMENT 12 INCH
- (CP14) TRAPEZOIDAL SHOULDER (PAID FOR AS CONCRETE PAVEMENT 12 INCH)
- (FE01) FENCE WOVEN WIRE 4-FT



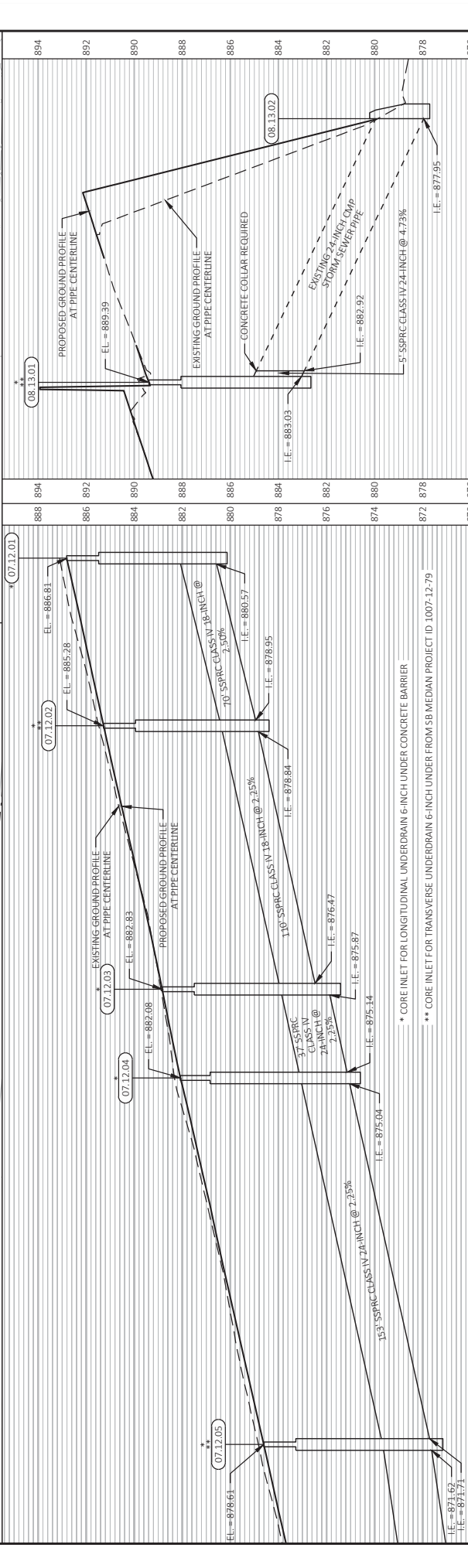
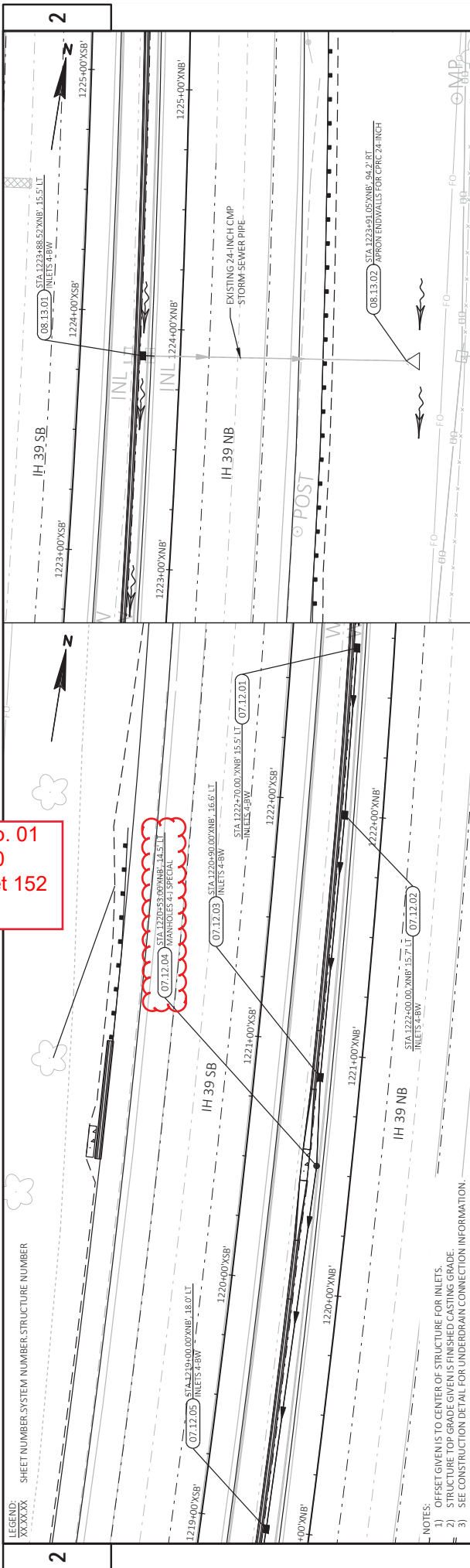
PROJECT NO: 1007-12-80    HWY: IH 39    COUNTY: DANE    SHEET: 83    E

FILE NAME: P:\2019 PROJECTS\1000 - BICOM\13\3\SHEET\PLAN\10071280\0212\_PD\_BBW\_BBE.DWG    LAYOUT NAME: -01

PLOT DATE: 5/29/2020 3:30 PM    PLOT BY: GES, LLC    PLOT NAME: PLAN DETAILS - NB TO WB RAMP (BBW)    PLOT SCALE: 1 IN=40 FT

WISDOT/CADDIS SHEET 42

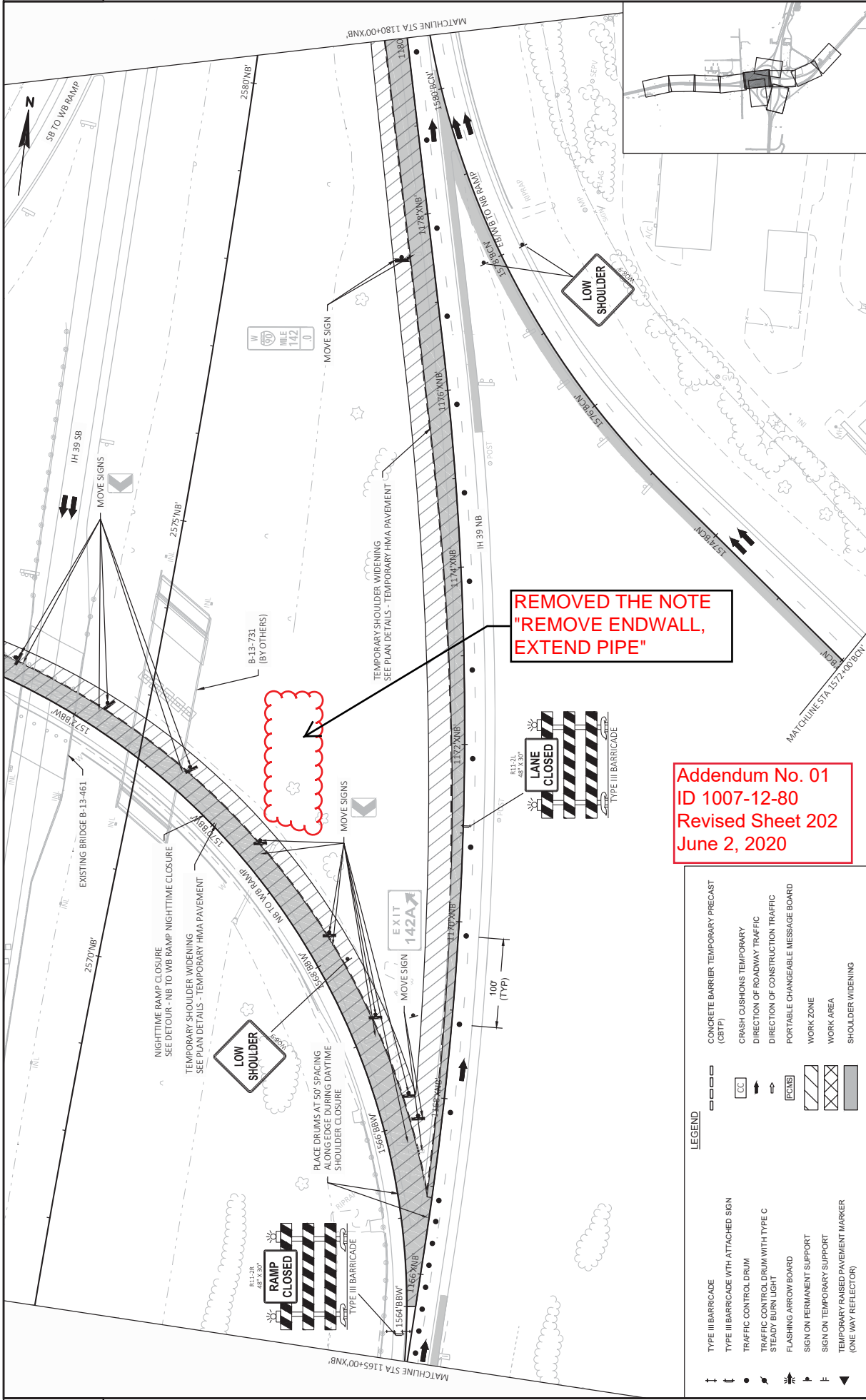
Addendum No. 01  
 ID 1007-12-80  
 Revised Sheet 152  
 June 2, 2020



|  |                          |                    |           |                     |
|--|--------------------------|--------------------|-----------|---------------------|
| PROJECT NO: 1007-12-80   | COUNTY: DANE             | STORM SEWER        | SHEET 152 | E                   |
| Hwy: IH 39   |                          |                    |           |                     |
| FILE NAME: P:\2019 PROJECTS\1007-12-80\META\1007-12-80\SHEETPLAN\1007-12-80-152-SS-01-10.DWG | DATE: 5/28/2020 12:45 PM | BY: KYLE CORNELIUS | SCALE: #  | WSS07/CADD SHEET 41 |

- NOTES:
- 1) OFFSET GIVEN IS CENTER OF STRUCTURE FOR INLETS.
  - 2) STRUCTURE TOP GRADE GIVEN IS FINISHED CASTING GRADE.
  - 3) SEE CONSTRUCTION DETAIL FOR UNDERDRAIN CONNECTION INFORMATION.

\* CORE INLET FOR LONGITUDINAL UNDERDRAIN 6-INCH UNDER CONCRETE BARRIER  
 \*\* CORE INLET FOR TRANSVERSE UNDERDRAIN 6-INCH UNDER FROM SB MEDIAN PROJECT ID 1007-12-79



**Addendum No. 01**  
**ID 1007-12-80**  
**Revised Sheet 202**  
**June 2, 2020**

| LEGEND |  |
|--------|--|
|        | TYPE III BARRICADE                                   |
|        | TYPE III BARRICADE WITH ATTACHED SIGN                |
|        | TRAFFIC CONTROL DRUM                                 |
|        | TRAFFIC CONTROL DRUM WITH TYPE C STEADY BURN LIGHT   |
|        | FLASHING ARROW BOARD                                 |
|        | SIGN ON PERMANENT SUPPORT                            |
|        | SIGN ON TEMPORARY SUPPORT                            |
|        | TEMPORARY RAISED PAVEMENT MARKER (ONE WAY REFLECTOR) |
|        | CONCRETE BARRIER TEMPORARY PRECAST (CBTP)            |
|        | CRASH CUSHIONS TEMPORARY                             |
|        | DIRECTION OF ROADWAY TRAFFIC                         |
|        | PORTABLE CHANGEABLE MESSAGE BOARD                    |
|        | WORK ZONE  |
|        | WORK AREA  |
|        | SHOULDER WIDENING                                    |

**REMOVED THE NOTE**  
**"REMOVE ENDWALL,**  
**EXTEND PIPE"**

| REMOVING GUARDRAIL                  |         |                            |     |              |
|-------------------------------------|---------|----------------------------|-----|--------------|
| STATION                             | STATION | LOCATION                   | LF  | 204.0165     |
| 546+41                              | -       | 'BBE' - NB TO EB RAMP - RT | 200 |              |
| 1546+82                             | -       | 'BBW' - NB TO WB RAMP - LT | 163 |              |
| 1548+34                             | -       | 'BBW' - NB TO WB RAMP - LT | 821 |              |
| 1551+25                             | -       | 'BBW' - NB TO WB RAMP - RT | 520 |              |
| 1558+21                             | -       | 'BBW' - NB TO WB RAMP - LT | 324 |              |
| 1558+24                             | -       | 'BBW' - NB TO WB RAMP - RT | 322 |              |
| 1562+82                             | -       | 'BBW' - NB TO WB RAMP - LT | 72  |              |
| 1562+85                             | -       | 'BBW' - NB TO WB RAMP - LT | 334 |              |
| 1580+69                             | -       | 'BCN' - EB TO NB RAMP - RT | 88  |              |
| 1581+07                             | -       | 'BCN' - EB TO NB RAMP - LT | 70  |              |
| 2593+18                             | -       | 'TNB' - IH 39 NB - LT      | 69  |              |
| 1209+96                             | -       | 'XNB' - IH 39 NB - LT      | 327 |              |
| 1225+12                             | -       | 'XNB' - IH 39 NB - LT      | 853 |              |
| 1234+96                             | -       | 'XNB' - IH 39 NB - LT      | 167 |              |
| 1571+64                             | -       | 'BBW' - NB TO WB RAMP - RT | 40  |              |
| 1570+75                             | -       | 'BBW' - NB TO WB RAMP - LT | 40  |              |
| <b>CATEGORY 1000 PROJECT TOTAL:</b> |         |                            |     | <b>4,409</b> |

| REMOVING BUTT JOINTS & MILLING     |        |           |               |    |            |
|------------------------------------|--------|-----------|---------------|----|------------|
| STATION                            | OFFSET | ALIGNMENT | TYPE          | SY | NOTES      |
| 1563+40                            | RT     | BBW       | TRANSVERSE    | 8  | -          |
| 1564+00                            | RT     | BBW       | ASPHALT WEDGE | -  | 110        |
| <b>CATEGORY 1000 PROJECT TOTAL</b> |        |           |               |    | <b>110</b> |

| REMOVING OLD STRUCTURE              |     |                                   |    |                |
|-------------------------------------|-----|-----------------------------------|----|----------------|
| STATION                             | O/S | DESCRIPTION                       | LS | 203.0500.S.801 |
| 1213+00 'XNB'                       | RT  | PENNITO CREEK ANCILLARY STRUCTURE | 1  |                |
| <b>CATEGORY 1000 PROJECT TOTAL:</b> |     |                                   |    | <b>1</b>       |

| REMOVING APRON ENDWALL               |        |         |      |               |          |
|--------------------------------------|--------|---------|------|---------------|----------|
| STATION                              | OFFSET | 12-INCH | EACH | 204.9060.S.01 | 12-INCH  |
| 1189+38 'XNB'                        | LT     |         | 1    |               |          |
| 1189+40 'XNB'                        | RT     |         | 2    |               |          |
| 1200+80 'XNB'                        | RT     |         | 1    |               |          |
| 1209+49 'XNB'                        | RT     |         | 1    |               |          |
| 1223+90 'XNB'                        | RT     |         | 1    |               |          |
| <b>CATEGORY 1000 PROJECT TOTALS:</b> |        |         |      |               | <b>6</b> |

| DRAINAGE REMOVALS                    |        |         |         |            |
|--------------------------------------|--------|---------|---------|------------|
| STATION                              | OFFSET | 12-INCH | 18-INCH | 24-INCH    |
| 1556+38 'BBW'                        | LT     | 50      | -       | -          |
| 1556+38 'BBW'                        | RT     | 68      | -       | -          |
| 1562+93 'BBW'                        | RT     | 77      | -       | -          |
| 1580+69                              | LT     | 55      | -       | -          |
| 1556+38 'BBW'                        | LT     | 50      | -       | -          |
| 1556+38 'BBW'                        | RT     | 68      | -       | -          |
| 1532+37 'BBW'                        | RT     | -       | 100     | -          |
| 2583+25 'TNB'                        | RT     | 52      | -       | -          |
| 2589+92 'TNB'                        | -      | -       | 113     | -          |
| 2601+34 'TNB'                        | RT     | -       | -       | 8          |
| 1182+94 'XNB'                        | LT     | 53      | -       | -          |
| 1191+72 'XNB'                        | RT     | -       | 213     | -          |
| 1201+84 'XNB'                        | LT     | 11      | -       | -          |
| 1209+49 'XNB'                        | LT     | 11      | -       | -          |
| 1213+32 'XNB'                        | LT     | 13      | -       | -          |
| 1223+89 'XNB'                        | LT     | 8       | -       | -          |
| 1583+42 'BCN'                        | RT     | 23      | -       | -          |
| 1589+94 'BCN'                        | -      | -       | -       | -          |
| <b>CATEGORY 1000 PROJECT TOTALS:</b> |        |         |         | <b>539</b> |
| <b>CATEGORY 1000 PROJECT TOTALS:</b> |        |         |         | <b>108</b> |

| REMOVING INLETS                     |          |                        |      |          |           |
|-------------------------------------|----------|------------------------|------|----------|-----------|
| STATION                             | OFFSET   | DESCRIPTION            | EACH | 204.0220 |           |
| 1182+94 'XNB'                       | 27.0' LT | 2'X2' DROP DRAIN INLET | 1    |          |           |
| 1158+00 'XNB'                       | 28.1' LT | SURFACE DRAIN INLET    | 1    |          |           |
| 1158+00 'XNB'                       | 32.6' RT | SURFACE DRAIN INLET    | 1    |          |           |
| 1164+57 'XNB'                       | 26.9' LT | SURFACE DRAIN INLET    | 1    |          |           |
| 1164+57 'XNB'                       | 35.1' RT | SURFACE DRAIN INLET    | 1    |          |           |
| 1182+80 'XNB'                       | 53.8' RT | SURFACE DRAIN INLET    | 1    |          |           |
| 1182+93 'XNB'                       | 26.5' LT | SURFACE DRAIN INLET    | 1    |          |           |
| 1193+84 'XNB'                       | 30.8' LT | INLET 4' DIAMETER      | 1    |          |           |
| 1201+85 'XNB'                       | 13.2' LT | SHOULDER INLET         | 1    |          |           |
| 1209+49 'XNB'                       | 10.6' LT | SHOULDER INLET         | 1    |          |           |
| 1213+33 'XNB'                       | 12.2' LT | SHOULDER INLET         | 1    |          |           |
| 1223+89 'XNB'                       | 13.3' LT | SHOULDER INLET         | 1    |          |           |
| 1556+38 'BBW'                       | 39.7' LT | 2'X2' DROP DRAIN INLET | 1    |          |           |
| 1556+38 'BBW'                       | 20.6' RT | 2'X2' DROP DRAIN INLET | 1    |          |           |
| 1562+93 'BBW'                       | 35.5' RT | 2'X2' DROP DRAIN INLET | 1    |          |           |
| 1562+96 'BBW'                       | 26.2' LT | 2'X2' DROP DRAIN INLET | 1    |          |           |
| 1583+42 'BBW'                       | 27.8' RT | 2'X2' DROP DRAIN INLET | 1    |          |           |
| <b>CATEGORY 1000 PROJECT TOTAL:</b> |          |                        |      |          | <b>17</b> |

**Addendum No. 01**  
**ID 1007-12-80**  
**Revised Sheet 305**  
**June 2, 2020**



Addendum No. 01  
ID 1007-12-80  
Revised Sheet 308  
June 2, 2020

| CONCRETE PAVEMENT ITEMS     |         |           |           |         |   |   |                                      |   |   |  |
|-----------------------------|---------|-----------|-----------|---------|---|---|--------------------------------------|---|---|--|
| LOCATION                    | STATION | STATION   | ALIGNMENT | OFFSET  | 415.0100<br>CONCRETE<br>PAVEMENT<br>10-INCH<br>SY | 415.0125<br>CONCRETE<br>PAVEMENT<br>12.5-INCH<br>SY | 416.0610*<br>DRILLED<br>BARS<br>EACH | 416.0620*<br>DRILLED<br>DOWEL<br>BARS<br>EACH | REMARKS                                       |  |
| STAGE 2A                    |         |           |           |         |   |   |                                      |   |   |  |
| IH 39 NB                    | 2524+64 | - 2558+79 | NB        | LT & RT | -   | 21,514  | -                                    | 38  | NB LANES AND SHOULDERS                        |  |
| IH 39 NB                    | 2560+65 | - 2563+72 | NB        | LT & RT | -   | 1,919   | -                                    | -   | NB LANES AND SHOULDERS                        |  |
| IH 39 NB                    | 2565+60 | - 2571+71 | NB        | LT & RT | -   | 3,762   | -                                    | -   | NB LANES AND SHOULDERS                        |  |
| IH 39 NB                    | 2574+00 | - 2581+65 | NB        | LT & RT | -   | 3,830   | -                                    | -   | NB LANES AND OUTSIDE SHOULDER                 |  |
| IH 39 NB                    | 2593+66 | - 2602+00 | TNB       | RT      | -   | 3,339   | -                                    | -   | NB LANES AND OUTSIDE SHOULDER                 |  |
| IH 39 NB                    | 1201+46 | - 1233+46 | XNB       | RT      | -   | 8,572   | 1178                                 | 8   | NB OUTSIDE LANES AND OUTSIDE SHOULDER         |  |
| EB-NB RAMP                  | 1571+16 | - 1581+77 | BCN       | RT      | -   | 2,912   | 402                                  | 33  | NB OUTSIDE LANES AND OUTSIDE SHOULDER         |  |
| EB-NB RAMP                  | 1583+24 | - 1586+79 | BCN       | RT      | -   | 1,367   | -                                    | -   | NB OUTSIDE LANES AND OUTSIDE SHOULDER         |  |
| EB-NB RAMP                  | 1586+79 | - 1593+66 | BCN       | RT      | -   | 2,732   | -                                    | -   | NB OUTSIDE LANES AND OUTSIDE SHOULDER         |  |
| WB-NB RAMP                  | 7+93    | - 11+00   | XG        | LT & RT | -   | 520   | -                                    | 12  | RAMP LANE                                     |  |
| WB-NB RAMP                  | 11+00   | - 23+00   | XG        | LT & RT | -   | 2273  | -                                    | -   | RAMP LANE                                     |  |
| WB-NB RAMP                  | 23+00   | - 24+79   | XG        | LT & RT | -   | 459   | -                                    | 12  | RAMP LANE                                     |  |
| SUBTOTAL STAGE 2A:          |         |           |           |         | 2,273   | 37,096  | 1,580                                | 103   |   |  |
| STAGE 2B                    |         |           |           |         |   |   |                                      |   |   |  |
| EB-NB RAMP                  | 1583+24 | - 1586+79 | BCN       | LT & RT | -   | 944   | -                                    | -   | INSIDE LANE AND SHOULDER                      |  |
| IH 39 NB                    | 2586+79 | - 2593+66 | TNB       | RT      | -   | 2,146   | -                                    | -   | OUTSIDE LANE AND GORE                         |  |
| IH 39 NB                    | 2593+66 | - 2602+00 | TNB       | RT      | -   | 1,399   | -                                    | -   | NB INSIDE LANE                                |  |
| IH 39 NB                    | 1201+46 | - 1204+00 | XNB       | RT      | -   | 338   | -                                    | 10  | NB INSIDE LANE                                |  |
| SUBTOTAL STAGE 2B:          |         |           |           |         | 0   | 3,545   | 0                                    | 10  |   |  |
| STAGE 2C                    |         |           |           |         |   |   |                                      |   |   |  |
| IH 39 NB                    | 2583+51 | - 2602+00 | TNB       | LT & RT | -   | 8,496   | -                                    | -   | NB LANES AND INSIDE/OUTSIDE SHOULDERS         |  |
| IH 39 NB                    | 1201+46 | - 1233+60 | XNB       | LT      | -   | 10,364  | 1185                                 | 19  | NB FUTURE LANE AND INSIDE SHOULDER            |  |
| SUBTOTAL STAGE 2C:          |         |           |           |         | 0   | 10,364  | 1,185                                | 19  |   |  |
| STAGE 3A                    |         |           |           |         |   |   |                                      |   |   |  |
| IH 39 NB                    | 2527+11 | - 2533+33 | NB        | RT      | -   | 1,093   | -                                    | -   | OUTSIDE SHOULDER & GORE                       |  |
| NB-WB RAMP                  | 1524+64 | - 1530+25 | BBW       | LT & RT | -   | 2,258   | -                                    | 29  | RAMP LANES & SHOULDER                         |  |
| NB-WB RAMP                  | 1530+25 | - 1548+53 | BBW       | LT & RT | -   | 4,945   | -                                    | -   | RAMP LANES AND SHOULDER                       |  |
| NB-EB RAMP                  | 548+53  | - 551+50  | BBE       | RT      | -   | 491   | -                                    | 12  | RAMP LANE                                     |  |
| USH 12 EB                   | 114+75  | - 125+33  | XEB       | RT      | -   | 1188  | -                                    | 346   | NB TO EB TAPER                                |  |
| NB-WB RAMP                  | 1552+00 | - 1556+58 | BBW       | LT      | -   | 782   | -                                    | -   | RAMP LANE AND BRIDGE APPROACH INSIDE SHOULDER |  |
| NB-WB RAMP                  | 1558+11 | - 1561+56 | BBW       | LT      | -   | 596   | -                                    | -   | RAMP LANE AND BRIDGE APPROACH INSIDE SHOULDER |  |
| NB-WB RAMP                  | 1562+76 | - 1566+50 | BBW       | LT      | -   | 616   | -                                    | 12  | RAMP LANE AND BRIDGE APPROACH INSIDE SHOULDER |  |
| EB-NB RAMP                  | 1581+61 | - 1581+86 | BCN       | LT      | -   | 117   | -                                    | -   | RAMP INSIDE SHOULDER BRIDGE APPROACH          |  |
| EB-NB RAMP                  | 1583+30 | - 1583+63 | BCN       | LT      | -   | 138   | -                                    | -   | RAMP INSIDE SHOULDER BRIDGE APPROACH          |  |
| NB-WB RAMP                  | 1566+50 | - 1574+75 | BBW       | LT      | -   | 1362  | -                                    | 24  | RAMP LANE                                     |  |
| SUBTOTAL STAGE 3A:          |         |           |           |         | 3,041   | 3,351   | 346                                  | 89  |   |  |
| STAGE 3B                    |         |           |           |         |   |   |                                      |   |   |  |
| NB-WB RAMP                  | 1539+00 | - 1552+00 | BBW       | LT      | -   | 2,002   | -                                    | -   | INSIDE RAMP LANE                              |  |
| SUBTOTAL STAGE 3B:          |         |           |           |         | 0   | 2,002   | 0                                    | 0   |   |  |
| STAGE 3C                    |         |           |           |         |   |   |                                      |   |   |  |
| NB-WB RAMP                  | 1556+43 | - 1556+59 | BBW       | RT      | -   | 37  | -                                    | -   | RAMP BRIDGE APPROACH OUTSIDE SHOULDER         |  |
| NB-WB RAMP                  | 1558+12 | - 1558+26 | BBW       | RT      | -   | 37  | -                                    | -   | RAMP BRIDGE APPROACH OUTSIDE SHOULDER         |  |
| NB-WB RAMP                  | 1561+39 | - 1561+54 | BBW       | RT      | -   | 47  | -                                    | -   | RAMP BRIDGE APPROACH OUTSIDE SHOULDER         |  |
| NB-WB RAMP                  | 1562+74 | - 1562+90 | BBW       | RT      | -   | 57  | -                                    | -   | RAMP BRIDGE APPROACH OUTSIDE SHOULDER         |  |
| SUBTOTAL STAGE 3C:          |         |           |           |         | 0   | 178   | 0                                    | 0   |   |  |
| CATEGORY 1000 PROJECT TOTAL |         |           |           |         | 5,314   | 52,487  | 3,111                                | 221   |   |  |

\*ADDITIONAL QUANTITIES ELSEWHERE



Addendum No. 01  
ID 1007-12-80  
Revised Sheet 315  
June 2, 2020

| PIPE UNDERDRAIN                     |  | SPV.0090.003 |      | 612.0206   |                     | 612.0806 |  | PULL BOXES |            |
|-------------------------------------|--|--------------|------|------------|---------------------|----------|--|------------|------------|
| STATION                             | LOCATION                                     | LF           | MGs  | THRE       | 6-INCH UNPERFORATED | APRON    | END WALLS FOR UNDERDRAIN REINFORCED CONCRETE | STATION    | STRUCTURE  |
| 1208+55 'XNB' - 1233+61 'XNB'       | PLACE BELOW MEDIUM CONCRETE BARRIER TYPE S42 | 2506         | 1675 | -          | -                   | -        | -  | 2558+79    | RT PARAPET |
| 1214+50 'XNB' - 1231+25 'XNB'       | RT, EDGE OF EXISTING CONCRETE                | 1675         | -    | -          | -                   | -        | -  | 2560+64    | NB         |
| 1214+50 'XNB'                       | RT, TRANSVERSE UNDER NEW PAVEMENT            | -            | 55   | 55         | 55                  | 1        | 1  | 2563+73    | NB         |
| 1217+00 'XNB'                       | RT, TRANSVERSE UNDER NEW PAVEMENT            | -            | 55   | 55         | 55                  | 1        | 1  | 2565+60    | NB         |
| 1219+50 'XNB'                       | RT, TRANSVERSE UNDER NEW PAVEMENT            | -            | 55   | 55         | 55                  | 1        | 1  | 2571+37    | NB         |
| 1222+00 'XNB'                       | RT, TRANSVERSE UNDER NEW PAVEMENT            | -            | 55   | 55         | 55                  | 1        | 1  | 2575+00    | NB         |
| 1224+50 'XNB'                       | RT, TRANSVERSE UNDER NEW PAVEMENT            | -            | 55   | 55         | 55                  | 1        | 1  | 2581+65    | TNB        |
| 1227+00 'XNB'                       | RT, TRANSVERSE UNDER NEW PAVEMENT            | -            | 55   | 55         | 55                  | 1        | 1  | 2583+51    | TNB        |
| 1229+50 'XNB'                       | RT, TRANSVERSE UNDER NEW PAVEMENT            | -            | 55   | 55         | 55                  | 1        | 1  | 1581+66    | RT PARAPET |
| <b>CATEGORY 1000 PROJECT TOTAL:</b> |  | <b>4,181</b> |      | <b>385</b> |                     | <b>7</b> |  | 1583+18    | RT PARAPET |

653.0164  
PULL  
BOXES  
NON-CONDUCTIVE  
24X42  
INCH  
EACH

| GUARDRAIL                            |                            | 614.2300     |            | 614.2500   |           | 614.2610 |     | 616.0700.S                           |           |
|--------------------------------------|----------------------------|--------------|------------|------------|-----------|----------|-----|--------------------------------------|-----------|
| STATION                              | LOCATION                   | LF           | MGs        | THRE       | MGs       | THRE     | MGs | STATION                              | STRUCTURE |
| 1544+53                              | 'BBW' - NB TO WB RAMP - LT | -            | 39.4       | 39.4       | 1         | -        | -   | 1527+50                              | RT        |
| 1544+53                              | 'BBW' - NB TO WB RAMP - RT | -            | 39.4       | 39.4       | 1         | -        | -   | 1534+00                              | RT        |
| 1555+55                              | 'BBW' - NB TO WB RAMP - LT | -            | 39.4       | 39.4       | 1         | -        | -   | 2597+00                              | RT        |
| 1555+55                              | 'BBW' - NB TO WB RAMP - RT | -            | 39.4       | 39.4       | 1         | -        | -   | 2602+00                              | TNB       |
| 1558+21                              | 'BBW' - NB TO WB RAMP - LT | -            | 78.8       | 78.8       | 1         | -        | -   | 1201+46.53                           | RT        |
| 1558+21                              | 'BBW' - NB TO WB RAMP - RT | -            | 78.8       | 78.8       | 1         | -        | -   | 2524+64                              | RT        |
| 1558+21                              | 'BBW' - NB TO WB RAMP - RT | -            | 246.0      | 246.0      | 1         | -        | -   | <b>CATEGORY 1000 PROJECT TOTALS:</b> |           |
| 1558+21                              | 'BBW' - NB TO WB RAMP - RT | -            | 246.0      | 246.0      | 1         | -        | -   | 616.0700.S                           | FENCE     |
| 2556+27                              | 'NB' - IH 39 NB - RT       | -            | 159.5      | 159.5      | 1         | -        | -   | 616.0700.S                           | FENCE     |
| 2560+62                              | 'NB' - IH 39 NB - RT       | -            | 234.5      | 234.5      | 1         | -        | -   | 616.0700.S                           | FENCE     |
| 2565+58                              | 'NB' - IH 39 NB - RT       | -            | 502.0      | 502.0      | 1         | -        | -   | 616.0700.S                           | FENCE     |
| 2579+15                              | 'NB' - IH 39 NB - RT       | -            | 163.5      | 163.5      | 1         | -        | -   | 616.0700.S                           | FENCE     |
| 1577+77                              | 'BCN' - EB TO NB RAMP - RT | -            | 269.0      | 269.0      | 1         | -        | -   | 616.0700.S                           | FENCE     |
| 2588+60                              | 'TNB' - IH 39 NB - LT      | -            | 39.4       | 39.4       | 1         | -        | -   | 616.0700.S                           | FENCE     |
| 1222+53                              | 'XNB' - IH 39 NB - RT      | -            | 1,025.0    | 1,025.0    | 1         | -        | -   | 616.0700.S                           | FENCE     |
| 1234+93                              | 'XNB' - IH 39 NB - RT      | -            | 100.0      | 100.0      | 1         | -        | -   | 616.0700.S                           | FENCE     |
| 1570+75 'BBW' - 1572+75 'BBW'        | NB TO WB RAMP, RT          | -            | 112        | 112        | 1         | -        | -   | 616.0700.S                           | FENCE     |
| 1568+00 'BBW' - 1572+75 'BBW'        | NB TO WB RAMP, LT          | -            | 475        | 475        | 1         | -        | -   | 616.0700.S                           | FENCE     |
| <b>CATEGORY 1000 PROJECT TOTALS:</b> |                            | <b>3,533</b> | <b>709</b> | <b>709</b> | <b>11</b> |          |     | 616.0700.S                           | FENCE     |

616.0700.S  
FENCE  
SAFETY  
LF

| FENCE WOVEN WIRE                     |                            | 616.0100       |              | 619.1000 |     |
|--------------------------------------|----------------------------|----------------|--------------|----------|-----|
| STATION                              | LOCATION                   | LF             | MGs          | THRE     | MGs |
| 1524+64                              | 'BBW' - NB TO WB RAMP - RT | -              | 940          | 940      | 1   |
| 1576+00                              | 'BBW' - NB TO WB RAMP - RT | -              | 450          | 450      | 1   |
| 1584+15                              | 'BBW' - NB TO WB RAMP - RT | -              | 930          | 930      | 1   |
| 2593+66                              | 'BBW' - NB TO WB RAMP - RT | -              | 780          | 780      | 1   |
| 1201+47                              | 'BBW' - NB TO WB RAMP - RT | -              | 1,140        | 1,140    | 1   |
| 1213+00                              | 'BBW' - NB TO WB RAMP - RT | -              | 375          | 375      | 1   |
| <b>CATEGORY 1000 PROJECT TOTALS:</b> |                            | <b>TOTALS:</b> | <b>4,615</b> |          |     |

616.0100  
FENCE  
WOVEN WIRE  
4-FT  
LF

| CRASH CUSHION PERMANENT             |                 | 614.0805 |          |
|-------------------------------------|-----------------|----------|----------|
| STATION                             | LOCATION        | LF       | MGs      |
| 2532+09                             | 'OM-3C (W5-58M) | 4        | 4        |
| <b>CATEGORY 1000 PROJECT TOTAL:</b> |                 | <b>1</b> | <b>1</b> |

619.1000  
MOBILIZATION  
NAMES  
EACH  
0.52  
CATEGORY 1000 PROJECT TOTAL: 0.52

| MAINTENANCE AND REPAIR OF HAUL ROADS |          | 618.0110.02 |            |
|--------------------------------------|----------|-------------|------------|
| STATION                              | LOCATION | LF          | MGs        |
| <b>CATEGORY 1000 PROJECT TOTAL:</b>  |          | <b>1.0</b>  | <b>1.0</b> |

PROJECT NO: 1007-12-80  
HWY: IH 39  
COUNTY: DANE  
MISCELLANEOUS QUANTITIES  
ZACH FREEMAN  
5/29/2020 3:43 PM  
PLOT NAME:

Addendum No. 01  
 ID 1007-12-80  
 Revised Sheet 321  
 June 2, 2020

CONTINUED FROM PREVIOUS SHEET  
 TEMPORARY MARKING LINES

| LOCATION                             | 646.9010*** 646.9110 MARKING REMOVAL LINE WATER BLASTING |               | 649.0105 TEMPORARY MARKING LINE PAINT 4-INCH |       | 649.0205 TEMPORARY MARKING LINE WHITE PAINT 8-INCH |        | 649.0120**** TEMPORARY MARKING LINE EPOXY 4-INCH |       | 649.0220**** TEMPORARY MARKING LINE EPOXY 8-INCH |       | 649.0760 TEMPORARY MARKING LINE RAISED PAVEMENT MARKER TYPE I EACH |
|--------------------------------------|--|---------------|--|-------|--|--------|--|-------|--|-------|--|
|                                      | 4-INCH   | 8-INCH        | LF   | LF    | LF   | LF     | LF   | LF    | LF   | LF    |  |
| STAGE 2B                             |  |               |  |       |  |        |  |       |  |       |  |
| EB TO NB RAMP                        | 1562+00 'BCN'  | 1568+00 'BCN' | --   | 100   | --   | --     | 600  | 600   | 150  | --    | --   |
| EB TO NB RAMP                        | 1568+00 'BCN'  | 1573+00 'BCN' | --   | 500   | --   | 500    | --   | --    | --   | --    | 24   |
| EB TO NB RAMP                        | 1573+00 'BCN'  | 1593+67 'BCN' | --   | 2,070 | 520  | --     | --   | --    | --   | --    | 24   |
| IH 39 NB                             | 1183+69 'XNB'  | 1204+50 'XNB' | --   | 2,080 | --   | --     | --   | --    | --   | --    | --   |
| IH 39 NB                             | 1193+14 'XNB'  | 1204+50 'XNB' | --   | 1,140 | 300  | --     | --   | --    | --   | --    | --   |
| IH 39 NB                             | 1204+50 'XNB'  | 1216+55 'XNB' | --   | 1,210 | 300  | 2,410  | --   | --    | --   | --    | --   |
| IH 39 NB                             | 1216+55 'XNB'  | 1221+00 'XNB' | --   | 450   | 110  | --     | --   | --    | --   | --    | --   |
| IH 39 NB                             | 1221+00 'XNB'  | 1227+00 'XNB' | --   | 600   | --   | --     | --   | --    | --   | --    | 24   |
| STAGE 2B SUBTOTALS                   |  |               |  | 3,710 | 8,150  | 2,910  | 600  | 600   | 150  |       |  |
| STAGE 2C                             |  |               |  |       |  |        |  |       |  |       |  |
| IH 39 NB                             | 1166+03 'XNB'  | 1179+38 'XNB' | --   | 1,340 | 330  | --     | --   | --    | --   | --    | --   |
| EB TO NB RAMP                        | 1580+00 'BCN'  | 1585+00 'BCN' | --   | 500   | 130  | 1,000  | --   | --    | --   | --    | 24   |
| EB TO NB RAMP                        | 1585+00 'BCN'  | 1582+00 'BCN' | --   | 700   | 350  | --     | --   | --    | --   | --    | --   |
| IH 39 NB                             | 1191+40 'XNB'  | 1203+13 'XNB' | --   | 1,170 | 590  | --     | --   | --    | --   | --    | --   |
| IH 39 NB                             | 1203+13 'XNB'  | 1230+43 'XNB' | --   | 2,730 | 1,370  | --     | --   | --    | --   | --    | --   |
| IH 39 NB                             | 1230+43 'XNB'  | 1236+90 'XNB' | --   | 650   | 1,940  | --     | --   | --    | --   | --    | 26   |
| IH 39 NB                             | 1236+90 'XNB'  | 1239+80 'XNB' | --   | 290   | 150  | --     | --   | --    | --   | --    | 50   |
| STAGE 2C SUBTOTALS                   |  |               |  | 7,380 | 6,300  | 2,920  | 1,000  | --    | --   | --    |  |
| STAGE 3A                             |  |               |  |       |  |        |  |       |  |       |  |
| IH 39 NB                             | 2509+94 'NB'   | 2519+50 'NB'  | --   | 960   | 1,910  | --     | --   | --    | --   | --    | 38   |
| IH 39 NB                             | 2519+50 'NB'   | 2523+55 'NB'  | --   | 410   | 100  | --     | --   | --    | --   | --    | --   |
| IH 39 NB                             | 2523+55 'NB'   | 2531+83 'NB'  | --   | 830   | 210  | 210    | --   | --    | --   | --    | --   |
| IH 39 NB                             | 2531+83 'NB'   | 2534+00 'NB'  | --   | 220   | 220  | 330    | --   | --    | --   | --    | --   |
| IH 39 NB                             | 2534+00 'NB'   | 2540+00 'NB'  | --   | 2,200 | --   | --     | --   | --    | --   | --    | 24   |
| NB TO US 12 RAMPS                    | 1135+58 'XNB'  | 1164+33 'XNB' | --   | 2,880 | 2,880  | --     | --   | --    | --   | --    | --   |
| NB TO WB RAMP                        | 1562+70 'BBW'  | 1579+11 'BBW' | --   | 1,640 | 1,640  | --     | --   | --    | --   | --    | --   |
| US 12 EB                             | 103+40 'XEB'   | 108+50 'XEB'  | 130  | --    | --   | 790    | --   | --    | --   | --    | --   |
| US 12 EB                             | 105+80 'XEB'   | 127+00 'XEB'  | --   | 2,120 | --   | --     | --   | --    | --   | --    | --   |
| EB TO NB RAMP                        | 1572+50 'BCN'  | 1588+00 'BCN' | --   | --    | --   | --     | 1,450  | 1,450 | 730  | --    | --   |
| EB TO NB RAMP                        | 2588+00 'TNB'  | 2599+00 'TNB' | --   | --    | --   | --     | 1,100  | 1,100 | 830  | 1,500 | --   |
| IH 39 NB                             | 2599+00 'TNB'  | 2603+50 'TNB' | --   | --    | --   | --     | 450  | 450   | 450  | --    | --   |
| IH 39 NB                             | 1203+00 'XNB'  | 1223+50 'XNB' | --   | --    | --   | --     | 2,050  | 2,050 | 1,540  | --    | --   |
| IH 39 NB                             | 1223+50 'XNB'  | 1240+00 'XNB' | 130  | 7,540 | 11,210   | 310    | 1,120  | 210   | 4,380  | 1,500 | 62   |
| STAGE 3A SUBTOTALS                   |  |               |  | 7,540 | 11,210   | 310    | 1,120  | 210   | 4,380  | 1,500 |  |
| STAGE 3B                             |  |               |  |       |  |        |  |       |  |       |  |
| IH 39 NB                             | 2513+00 'NB'   | 2515+00 'NB'  | --   | 200   | --   | --     | --   | --    | --   | --    | --   |
| IH 39 NB                             | 2515+00 'NB'   | 2519+50 'NB'  | --   | 450   | --   | 110    | --   | --    | --   | --    | --   |
| IH 39 NB                             | 2519+50 'NB'   | 2524+60 'NB'  | --   | 510   | --   | 1,020  | --   | --    | --   | --    | --   |
| IH 39 NB                             | 2524+60 'NB'   | 2533+33 'NB'  | --   | 870   | --   | --     | --   | --    | --   | --    | --   |
| IH 39 NB                             | 2533+33 'NB'   | 2540+00 'NB'  | --   | 670   | 1,330  | --     | --   | --    | --   | --    | 10   |
| NB TO US 12 RAMPS                    | 1524+60 'BBW'  | 1547+00 'BBW' | --   | 2,240 | 2,240  | --     | --   | --    | --   | --    | --   |
| NB TO US 12 RAMPS                    | 1547+00 'BBW'  | 1552+00 'BBW' | --   | 500   | 300  | 200    | --   | --    | --   | 500   | --   |
| EB TO NB RAMP                        | 1564+00 'BCN'  | 1573+50 'BCN' | --   | 950   | 750  | 200    | 1,420  | 110   | 950  | 300   | 10   |
| STAGE 3B SUBTOTALS                   |  |               |  | 4,360 | 6,650  | 1,420  | 110  | 950   | 300  | 500   |  |
| STAGE 3C                             |  |               |  |       |  |        |  |       |  |       |  |
| IH 39 NB                             | 2517+40 'NB'   | 2525+00 'NB'  | --   | --    | --   | --     | 760  | 760   | 600  | --    | --   |
| IH 39 NB                             | 2525+00 'NB'   | 2531+00 'NB'  | --   | --    | --   | --     | 600  | 600   | 450  | 1,200 | --   |
| IH 39 NB                             | 2531+00 'NB'   | 2540+00 'NB'  | --   | --    | --   | --     | 900  | 900   | 450  | --    | --   |
| NB TO US 12 RAMPS                    | 1531+00 'BBW'  | 1546+00 'BBW' | --   | 200   | --   | 200    | --   | --    | 1,500  | 380   | --   |
| NB TO WB RAMP                        | 1546+00 'BBW'  | 1580+52 'BBW' | --   | 3,450 | 3,450  | --     | --   | --    | --   | --    | 32   |
| STAGE 3C SUBTOTALS                   |  |               |  | 3,450 | 3,450  | 200    | 200  | 3,760 | 3,760  | 2,040 | 1,092  |
| UNDISTRIBUTED IH 39 TANGENT SECTIONS |  |               |  |       |  |        |  |       |  |       |  |
| CATEGORY 1000 PROJECT TOTALS         |  |               | 23,420                                       | 1,170 | 35,660   | 49,930 | 8,570  | 7,720 | 530  | 8,250 | 30,890   |

\* STATIONING STARTS ALONG RAMP ALIGNMENT (BCN) AND CONTINUES ALONG NB IH 39 ALIGNMENT (XNB)  
 \*\* AFTER 27 DAY CLOSURE OF WB TO NB RAMP, REVISE MARKING LINES  
 \*\*\* ADDITIONAL QUANTITIES ELSEWHERE  
 \*\*\*\* TEMPORARY EPOXY IS PLACED PRIOR TO FINAL GROOVED MARKING LINES BEING PLACED

EROSION CONTROL

Table with columns for STA, TO, STA, OFFSET, ALIGN, EROSION CONTROL, and various material types like Silt Fence, Turbidity Barriers, etc. Includes a red circled section for tracking pads and culvert checks.

Addendum No. 01 ID 1007-12-80 Revised Sheet 323 June 2, 2020

EROSION CONTROL MOBILIZATION

Table showing mobilization quantities for Erosion Control, Emergency Mobilization, and Riprap. Includes a red circled section for slope paving repair crushed aggregate.

EROSION MAT

Table detailing erosion mat materials, including STA, TO, STA, OFFSET, ALIGN, and various mat types like Undistributed Stage 1A, 1B, 2A.

RIPRAP

Table for riprap materials, including STA, OFFSET, ALIGN, Riprap Medium, and Geotextile Type HR.



Proposal Schedule of Items

Proposal ID: 20200609001 Project(s): 1007-12-79, 1007-12-80, 1008-10-70

Federal ID(s): WISC 2020313, WISC 2020314, WISC 2020315

SECTION: 0001 Contract Items

Alt Set ID: Alt Mbr ID:

| Proposal Line Number | Item ID Description  | Approximate Quantity and Units | Unit Price | Bid Amount |
|----------------------|--|--------------------------------|------------|------------|
| 0002                 | 201.0105<br>Clearing   | 50.000<br>STA                  | _____.     | _____.     |
| 0004                 | 201.0120<br>Clearing   | 88.000<br>ID                   | _____.     | _____.     |
| 0006                 | 201.0205<br>Grubbing   | 50.000<br>STA                  | _____.     | _____.     |
| 0008                 | 201.0220<br>Grubbing   | 88.000<br>ID                   | _____.     | _____.     |
| 0010                 | 203.0200<br>Removing Old Structure (station) 700.<br>1184 'XSB'+52                 | LS                             | LUMP SUM   | _____.     |
| 0012                 | 203.0200<br>Removing Old Structure (station) 701.<br>1582 'BCN'+52                 | LS                             | LUMP SUM   | _____.     |
| 0014                 | 203.0500.S<br>Removing Old Structure Over Waterway<br>(station) 800. 1212+84 'XSB' | LS                             | LUMP SUM   | _____.     |
| 0016                 | 203.0500.S<br>Removing Old Structure Over Waterway<br>(station) 801. 1213+00 'XNB' | LS                             | LUMP SUM   | _____.     |
| 0018                 | 204.0100<br>Removing Concrete Pavement   | 82,120.000<br>SY               | _____.     | _____.     |
| 0020                 | 204.0105<br>Removing Pavement Butt Joints  | 126.000<br>SY                  | _____.     | _____.     |
| 0022                 | 204.0110<br>Removing Asphaltic Surface   | 18,715.000<br>SY               | _____.     | _____.     |
| 0024                 | 204.0120<br>Removing Asphaltic Surface Milling                                     | 6,130.000<br>SY                | _____.     | _____.     |
| 0026                 | 204.0150<br>Removing Curb & Gutter   | 2,162.000<br>LF                | _____.     | _____.     |
| 0028                 | 204.0155<br>Removing Concrete Sidewalk   | 535.000<br>SY                  | _____.     | _____.     |
| 0030                 | 204.0157<br>Removing Concrete Barrier  | 8,984.000<br>LF                | _____.     | _____.     |
| 0032                 | 204.0165<br>Removing Guardrail   | 7,089.000<br>LF                | _____.     | _____.     |



Proposal Schedule of Items

Proposal ID: 20200609001 Project(s): 1007-12-79, 1007-12-80, 1008-10-70

Federal ID(s): WISC 2020313, WISC 2020314, WISC 2020315

SECTION: 0001 Contract Items

Alt Set ID: Alt Mbr ID:

| Proposal Line Number | Item ID Description  | Approximate Quantity and Units | Unit Price | Bid Amount |
|----------------------|--|--------------------------------|------------|------------|
| 0034                 | 204.0170<br>Removing Fence   | 10,561.000<br>LF               | _____.     | _____.     |
| 0036                 | 204.0180<br>Removing Delineators and Markers                                 | 32.000<br>EACH                 | _____.     | _____.     |
| 0038                 | 204.0195<br>Removing Concrete Bases  | 5.000<br>EACH                  | _____.     | _____.     |
| 0040                 | 204.0220<br>Removing Inlets  | 39.000<br>EACH                 | _____.     | _____.     |
| 0042                 | 204.0230<br>Removing Building (station) 001.<br>STA.110+50'NN'               | LS                             | LUMP SUM   | _____.     |
| 0044                 | 204.0230<br>Removing Building (station) 002.<br>STA.110+61'NN'               | LS                             | LUMP SUM   | _____.     |
| 0046                 | 204.0245<br>Removing Storm Sewer (size) 01. 12-<br>Inch                      | 846.000<br>LF                  | _____.     | _____.     |
| 0048                 | 204.0245<br>Removing Storm Sewer (size) 02. 18-<br>Inch                      | 425.000<br>LF                  | _____.     | _____.     |
| 0050                 | 204.0245<br>Removing Storm Sewer (size) 03. 24-<br>Inch                      | 20.000<br>LF                   | _____.     | _____.     |
| 0052                 | 204.0245<br>Removing Storm Sewer (size) 04. 30-<br>Inch                      | 69.000<br>LF                   | _____.     | _____.     |
| 0054                 | 204.0245<br>Removing Storm Sewer (size) 05. 24-<br>Inch                      | 108.000<br>LF                  | _____.     | _____.     |
| 0058                 | 204.9060.S<br>Removing (item description) 01. Apron<br>Endwall               | 10.000<br>EACH                 | _____.     | _____.     |
| 0060                 | 204.9060.S<br>Removing (item description) 02.<br>Business Sign               | 2.000<br>EACH                  | _____.     | _____.     |
| 0062                 | 204.9060.S<br>Removing (item description) 03.<br>Removing Type 1 Sign Covers | 6.000<br>EACH                  | _____.     | _____.     |



Proposal Schedule of Items

Proposal ID: 20200609001 Project(s): 1007-12-79, 1007-12-80, 1008-10-70

Federal ID(s): WISC 2020313, WISC 2020314, WISC 2020315

SECTION: 0001 Contract Items

Alt Set ID: Alt Mbr ID:

| Proposal Line Number | Item ID Description  | Approximate Quantity and Units | Unit Price | Bid Amount |
|----------------------|--|--------------------------------|------------|------------|
| 0064                 | 204.9060.S<br>Removing (item description) 04.<br>Removing Temporary Sign Support | 2.000<br>EACH                  | _____.     | _____.     |
| 0066                 | 205.0100<br>Excavation Common  | 216,450.000<br>CY              | _____.     | _____.     |
| 0068                 | 206.1000<br>Excavation for Structures Bridges<br>(structure) 700. B-13-462       | LS                             | LUMP SUM   | _____.     |
| 0070                 | 206.1000<br>Excavation for Structures Bridges<br>(structure) 701. B-13-463       | LS                             | LUMP SUM   | _____.     |
| 0072                 | 206.2000<br>Excavation for Structures Culverts<br>(structure) 702. C-13-44       | LS                             | LUMP SUM   | _____.     |
| 0074                 | 208.1100<br>Select Borrow  | 8,019.000<br>CY                | _____.     | _____.     |
| 0076                 | 210.1500<br>Backfill Structure Type A  | 280.000<br>TON                 | _____.     | _____.     |
| 0078                 | 210.2500<br>Backfill Structure Type B  | 1,870.000<br>TON               | _____.     | _____.     |
| 0080                 | 211.0200<br>Prepare Foundation for Concrete<br>Pavement (project) 01. 1008-10-70 | LS                             | LUMP SUM   | _____.     |
| 0082                 | 213.0100<br>Finishing Roadway (project) 01. 1007-<br>12-79                       | 1.000<br>EACH                  | _____.     | _____.     |
| 0084                 | 213.0100<br>Finishing Roadway (project) 02. 1007-<br>12-80                       | 1.000<br>EACH                  | _____.     | _____.     |
| 0086                 | 213.0100<br>Finishing Roadway (project) 03. 1008-<br>10-70                       | 1.000<br>EACH                  | _____.     | _____.     |
| 0088                 | 214.0100<br>Obliterating Old Road  | 12.000<br>STA                  | _____.     | _____.     |
| 0090                 | 305.0110<br>Base Aggregate Dense 3/4-Inch  | 6,259.000<br>TON               | _____.     | _____.     |
| 0092                 | 305.0120<br>Base Aggregate Dense 1 1/4-Inch                                      | 124,373.000<br>TON             | _____.     | _____.     |





Proposal Schedule of Items

Proposal ID: 20200609001 Project(s): 1007-12-79, 1007-12-80, 1008-10-70

Federal ID(s): WISC 2020313, WISC 2020314, WISC 2020315

SECTION: 0001 Contract Items

Alt Set ID: Alt Mbr ID:

| Proposal Line Number | Item ID Description                             | Approximate Quantity and Units | Unit Price | Bid Amount |
|----------------------|---|--------------------------------|------------|------------|
| 0094                 | 305.0130<br>Base Aggregate Dense 3-Inch         | 1,315.000<br>TON               | _____.     | _____.     |
| 0096                 | 310.0110<br>Base Aggregate Open-Graded          | 1,888.000<br>TON               | _____.     | _____.     |
| 0098                 | 312.0110<br>Select Crushed Material             | 102,395.000<br>TON             | _____.     | _____.     |
| 0100                 | 415.0090<br>Concrete Pavement 9-Inch            | 2,996.000<br>SY                | _____.     | _____.     |
| 0102                 | 415.0100<br>Concrete Pavement 10-Inch           | 10,705.000<br>SY               | _____.     | _____.     |
| 0104                 | 415.0110<br>Concrete Pavement 11-Inch           | 22,026.000<br>SY               | _____.     | _____.     |
| 0106                 | 415.0120<br>Concrete Pavement 12-Inch           | 94,301.000<br>SY               | _____.     | _____.     |
| 0108                 | 415.0125<br>Concrete Pavement 12 1/2-Inch       | 52,487.000<br>SY               | _____.     | _____.     |
| 0110                 | 415.0410<br>Concrete Pavement Approach Slab     | 1,024.000<br>SY                | _____.     | _____.     |
| 0112                 | 415.1120<br>Concrete Pavement HES 12-Inch       | 2,320.000<br>SY                | _____.     | _____.     |
| 0114                 | 415.1410<br>Concrete Pavement Approach Slab HES | 611.000<br>SY                  | _____.     | _____.     |
| 0116                 | 415.4100<br>Concrete Pavement Joint Filling     | 29,983.000<br>SY               | _____.     | _____.     |
| 0118                 | 415.6000.S<br>Rout and Seal                     | 28,127.000<br>LF               | _____.     | _____.     |
| 0120                 | 416.0610<br>Drilled Tie Bars                    | 8,414.000<br>EACH              | _____.     | _____.     |
| 0122                 | 416.0620<br>Drilled Dowel Bars                  | 5,487.000<br>EACH              | _____.     | _____.     |
| 0124                 | 416.1010<br>Concrete Surface Drains             | 5.000<br>CY                    | _____.     | _____.     |
| 0126                 | 416.1110<br>Concrete Shoulder Rumble Strips     | 39,122.000<br>LF               | _____.     | _____.     |



Proposal Schedule of Items

Proposal ID: 20200609001 Project(s): 1007-12-79, 1007-12-80, 1008-10-70

Federal ID(s): WISC 2020313, WISC 2020314, WISC 2020315

SECTION: 0001 Contract Items

Alt Set ID: Alt Mbr ID:

| Proposal Line Number | Item ID Description                            | Approximate Quantity and Units | Unit Price | Bid Amount |
|----------------------|--|--------------------------------|------------|------------|
| 0128                 | 416.1710<br>Concrete Pavement Repair           | 365.000<br>SY                  | _____.     | _____.     |
| 0130                 | 416.1715<br>Concrete Pavement Repair SHES      | 2,196.000<br>SY                | _____.     | _____.     |
| 0132                 | 416.1720<br>Concrete Pavement Replacement      | 50.000<br>SY                   | _____.     | _____.     |
| 0134                 | 416.1725<br>Concrete Pavement Replacement SHES | 330.000<br>SY                  | _____.     | _____.     |
| 0136                 | 455.0605<br>Tack Coat                          | 3,295.000<br>GAL               | _____.     | _____.     |
| 0138                 | 460.2000<br>Incentive Density HMA Pavement     | 12,260.000<br>DOL              | 1.00000    | 12,260.00  |
| 0140                 | 460.7222<br>HMA Pavement 2 HT 58-28 S          | 11,840.000<br>TON              | _____.     | _____.     |
| 0142                 | 460.7424<br>HMA Pavement 4 HT 58-28 H          | 5,225.000<br>TON               | _____.     | _____.     |
| 0144                 | 460.7624<br>HMA Pavement 4 HT 58-28 V          | 2,510.000<br>TON               | _____.     | _____.     |
| 0146                 | 465.0105<br>Asphaltic Surface                  | 110.000<br>TON                 | _____.     | _____.     |
| 0148                 | 465.0110<br>Asphaltic Surface Patching         | 120.000<br>TON                 | _____.     | _____.     |
| 0150                 | 465.0315<br>Asphaltic Flumes                   | 278.000<br>SY                  | _____.     | _____.     |
| 0152                 | 465.0400<br>Asphaltic Shoulder Rumble Strips   | 13,920.000<br>LF               | _____.     | _____.     |
| 0154                 | 501.1000.S<br>Ice Hot Weather Concreting       | 3,125.000<br>LB                | _____.     | _____.     |
| 0156                 | 502.0100<br>Concrete Masonry Bridges           | 202.000<br>CY                  | _____.     | _____.     |
| 0158                 | 502.3210<br>Pigmented Surface Sealer           | 175.000<br>SY                  | _____.     | _____.     |
| 0160                 | 502.4204<br>Adhesive Anchors No. 4 Bar         | 530.000<br>EACH                | _____.     | _____.     |



Proposal Schedule of Items

Proposal ID: 20200609001 Project(s): 1007-12-79, 1007-12-80, 1008-10-70

Federal ID(s): WISC 2020313, WISC 2020314, WISC 2020315

SECTION: 0001 Contract Items

Alt Set ID: Alt Mbr ID:

| Proposal Line Number | Item ID Description                                      | Approximate Quantity and Units | Unit Price | Bid Amount |
|----------------------|--|--------------------------------|------------|------------|
| 0162                 | 502.4205<br>Adhesive Anchors No. 5 Bar                   | 549.000<br>EACH                | _____.     | _____.     |
| 0164                 | 502.4206<br>Adhesive Anchors No. 6 Bar                   | 96.000<br>EACH                 | _____.     | _____.     |
| 0166                 | 503.0136<br>Prestressed Girder Type I 36-Inch            | 735.000<br>LF                  | _____.     | _____.     |
| 0168                 | 504.0100<br>Concrete Masonry Culverts                    | 154.000<br>CY                  | _____.     | _____.     |
| 0170                 | 504.0500<br>Concrete Masonry Retaining Walls             | 2.000<br>CY                    | _____.     | _____.     |
| 0172                 | 505.0400<br>Bar Steel Reinforcement HS Structures        | 21,440.000<br>LB               | _____.     | _____.     |
| 0174                 | 505.0600<br>Bar Steel Reinforcement HS Coated Structures | 67,050.000<br>LB               | _____.     | _____.     |
| 0176                 | 506.2605<br>Bearing Pads Elastomeric Non-Laminated       | 30.000<br>EACH                 | _____.     | _____.     |
| 0178                 | 506.4000<br>Steel Diaphragms (structure) 700. B-13-462   | 6.000<br>EACH                  | _____.     | _____.     |
| 0180                 | 506.4000<br>Steel Diaphragms (structure) 701. B-13-463   | 9.000<br>EACH                  | _____.     | _____.     |
| 0182                 | 509.0301<br>Preparation Decks Type 1                     | 35.000<br>SY                   | _____.     | _____.     |
| 0184                 | 509.0302<br>Preparation Decks Type 2                     | 6.000<br>SY                    | _____.     | _____.     |
| 0186                 | 509.0310.S<br>Sawing Pavement Deck Preparation Areas     | 420.000<br>LF                  | _____.     | _____.     |
| 0188                 | 509.1500<br>Concrete Surface Repair                      | 300.000<br>SF                  | _____.     | _____.     |
| 0190                 | 509.2000<br>Full-Depth Deck Repair                       | 6.000<br>SY                    | _____.     | _____.     |



Proposal Schedule of Items

Proposal ID: 20200609001 Project(s): 1007-12-79, 1007-12-80, 1008-10-70

Federal ID(s): WISC 2020313, WISC 2020314, WISC 2020315

SECTION: 0001 Contract Items

Alt Set ID: Alt Mbr ID:

| Proposal Line Number | Item ID Description   | Approximate Quantity and Units | Unit Price | Bid Amount |
|----------------------|---|--------------------------------|------------|------------|
| 0192                 | 509.2100.S<br>Concrete Masonry Deck Repair  | 2.000<br>CY                    | _____.     | _____.     |
| 0194                 | 509.5100.S<br>Polymer Overlay   | 8,880.000<br>SY                | _____.     | _____.     |
| 0196                 | 509.9050.S<br>Cleaning Parapets   | 345.000<br>LF                  | _____.     | _____.     |
| 0198                 | 511.1200<br>Temporary Shoring (structure) 700. B-13-462                             | 670.000<br>SF                  | _____.     | _____.     |
| 0200                 | 511.1200<br>Temporary Shoring (structure) 701. B-13-463                             | 710.000<br>SF                  | _____.     | _____.     |
| 0202                 | 516.0500<br>Rubberized Membrane Waterproofing                                       | 83.000<br>SY                   | _____.     | _____.     |
| 0204                 | 517.1010.S<br>Concrete Staining (structure) 700. B-13-462                           | 1,660.000<br>SF                | _____.     | _____.     |
| 0206                 | 517.1010.S<br>Concrete Staining (structure) 701. B-13-463                           | 1,655.000<br>SF                | _____.     | _____.     |
| 0208                 | 517.1010.S<br>Concrete Staining (structure) 702. S-13-509                           | 775.000<br>SF                  | _____.     | _____.     |
| 0210                 | 517.1010.S<br>Concrete Staining (structure) 703. S-13-510                           | 715.000<br>SF                  | _____.     | _____.     |
| 0212                 | 520.2084<br>Culvert Pipe Temporary 84-Inch  | 150.000<br>LF                  | _____.     | _____.     |
| 0214                 | 520.8000<br>Concrete Collars for Pipe   | 14.000<br>EACH                 | _____.     | _____.     |
| 0216                 | 521.1012<br>Apron Endwalls for Culvert Pipe Steel 12-Inch                           | 11.000<br>EACH                 | _____.     | _____.     |
| 0218                 | 521.1524<br>Apron Endwalls for Culvert Pipe Sloped Side Drains Steel 24-Inch 6 to 1 | 2.000<br>EACH                  | _____.     | _____.     |



Proposal Schedule of Items

Proposal ID: 20200609001 Project(s): 1007-12-79, 1007-12-80, 1008-10-70

Federal ID(s): WISC 2020313, WISC 2020314, WISC 2020315

SECTION: 0001 Contract Items

Alt Set ID: Alt Mbr ID:

| Proposal Line Number | Item ID Description   | Approximate Quantity and Units | Unit Price | Bid Amount |
|----------------------|---|--------------------------------|------------|------------|
| 0220                 | 522.0118<br>Culvert Pipe Reinforced Concrete Class III 18-Inch          | 40.000<br>LF                   | _____.     | _____.     |
| 0222                 | 522.0124<br>Culvert Pipe Reinforced Concrete Class III 24-Inch          | 234.000<br>LF                  | _____.     | _____.     |
| 0224                 | 522.1018<br>Apron Endwalls for Culvert Pipe Reinforced Concrete 18-Inch | 11.000<br>EACH                 | _____.     | _____.     |
| 0226                 | 522.1021<br>Apron Endwalls for Culvert Pipe Reinforced Concrete 21-Inch | 1.000<br>EACH                  | _____.     | _____.     |
| 0228                 | 522.1024<br>Apron Endwalls for Culvert Pipe Reinforced Concrete 24-Inch | 11.000<br>EACH                 | _____.     | _____.     |
| 0230                 | 522.1030<br>Apron Endwalls for Culvert Pipe Reinforced Concrete 30-Inch | 2.000<br>EACH                  | _____.     | _____.     |
| 0232                 | 550.1100<br>Piling Steel HP 10-Inch X 42 Lb                             | 1,375.000<br>LF                | _____.     | _____.     |
| 0234                 | 601.0409<br>Concrete Curb & Gutter 30-Inch Type A                       | 4,886.000<br>LF                | _____.     | _____.     |
| 0236                 | 601.0555<br>Concrete Curb & Gutter 6-Inch Sloped 36-Inch Type A         | 477.000<br>LF                  | _____.     | _____.     |
| 0238                 | 601.0600<br>Concrete Curb Pedestrian                                    | 22.000<br>LF                   | _____.     | _____.     |
| 0240                 | 602.0410<br>Concrete Sidewalk 5-Inch                                    | 5,240.000<br>SF                | _____.     | _____.     |
| 0242                 | 602.0505<br>Curb Ramp Detectable Warning Field Yellow                   | 180.000<br>SF                  | _____.     | _____.     |
| 0244                 | 603.1142<br>Concrete Barrier Type S42                                   | 8,044.000<br>LF                | _____.     | _____.     |
| 0246                 | 603.1242<br>Concrete Barrier Type S42A                                  | 4,096.000<br>LF                | _____.     | _____.     |



Proposal Schedule of Items

Proposal ID: 20200609001 Project(s): 1007-12-79, 1007-12-80, 1008-10-70

Federal ID(s): WISC 2020313, WISC 2020314, WISC 2020315

SECTION: 0001 Contract Items

Alt Set ID: Alt Mbr ID:

| Proposal Line Number | Item ID Description   | Approximate Quantity and Units | Unit Price | Bid Amount |
|----------------------|---|--------------------------------|------------|------------|
| 0248                 | 603.8000<br>Concrete Barrier Temporary Precast Delivered          | 26,440.000<br>LF               | _____.     | _____.     |
| 0250                 | 603.8125<br>Concrete Barrier Temporary Precast Installed          | 77,550.000<br>LF               | _____.     | _____.     |
| 0252                 | 604.0500<br>Slope Paving Crushed Aggregate                        | 1,303.000<br>SY                | _____.     | _____.     |
| 0254                 | 604.9015.S<br>Reseal Crushed Aggregate Slope Paving               | 1,245.000<br>SY                | _____.     | _____.     |
| 0256                 | 606.0200<br>Riprap Medium   | 188.000<br>CY                  | _____.     | _____.     |
| 0258                 | 606.0300<br>Riprap Heavy  | 65.000<br>CY                   | _____.     | _____.     |
| 0260                 | 608.0412<br>Storm Sewer Pipe Reinforced Concrete Class IV 12-Inch | 228.000<br>LF                  | _____.     | _____.     |
| 0262                 | 608.0418<br>Storm Sewer Pipe Reinforced Concrete Class IV 18-Inch | 1,499.000<br>LF                | _____.     | _____.     |
| 0264                 | 608.0421<br>Storm Sewer Pipe Reinforced Concrete Class IV 21-Inch | 27.000<br>LF                   | _____.     | _____.     |
| 0266                 | 608.0424<br>Storm Sewer Pipe Reinforced Concrete Class IV 24-Inch | 1,104.000<br>LF                | _____.     | _____.     |
| 0268                 | 608.0430<br>Storm Sewer Pipe Reinforced Concrete Class IV 30-Inch | 56.000<br>LF                   | _____.     | _____.     |
| 0272                 | 611.0606<br>Inlet Covers Type B                                   | 1.000<br>EACH                  | _____.     | _____.     |
| 0274                 | 611.0610<br>Inlet Covers Type BW                                  | 51.000<br>EACH                 | _____.     | _____.     |
| 0276                 | 611.0624<br>Inlet Covers Type H                                   | 4.000<br>EACH                  | _____.     | _____.     |
| 0278                 | 611.0642<br>Inlet Covers Type MS                                  | 2.000<br>EACH                  | _____.     | _____.     |



Proposal Schedule of Items

Proposal ID: 20200609001 Project(s): 1007-12-79, 1007-12-80, 1008-10-70

Federal ID(s): WISC 2020313, WISC 2020314, WISC 2020315

SECTION: 0001 Contract Items

Alt Set ID: Alt Mbr ID:

| Proposal Line Number | Item ID Description  | Approximate Quantity and Units | Unit Price | Bid Amount |
|----------------------|--|--------------------------------|------------|------------|
| 0280                 | 611.0654<br>Inlet Covers Type V                                      | 16.000<br>EACH                 | _____.     | _____.     |
| 0282                 | 611.2004<br>Manholes 4-FT Diameter                                   | 1.000<br>EACH                  | _____.     | _____.     |
| 0284                 | 611.2005<br>Manholes 5-FT Diameter                                   | 3.000<br>EACH                  | _____.     | _____.     |
| 0286                 | 611.3004<br>Inlets 4-FT Diameter                                     | 26.000<br>EACH                 | _____.     | _____.     |
| 0288                 | 611.3220<br>Inlets 2x2-FT  | 11.000<br>EACH                 | _____.     | _____.     |
| 0290                 | 611.3225<br>Inlets 2x2.5-FT  | 20.000<br>EACH                 | _____.     | _____.     |
| 0292                 | 611.3230<br>Inlets 2x3-FT  | 4.000<br>EACH                  | _____.     | _____.     |
| 0294                 | 611.3902<br>Inlets Median 2 Grate                                    | 1.000<br>EACH                  | _____.     | _____.     |
| 0296                 | 611.8115<br>Adjusting Inlet Covers                                   | 2.000<br>EACH                  | _____.     | _____.     |
| 0298                 | 612.0106<br>Pipe Underdrain 6-Inch                                   | 2,830.000<br>LF                | _____.     | _____.     |
| 0300                 | 612.0206<br>Pipe Underdrain Unperforated 6-Inch                      | 859.000<br>LF                  | _____.     | _____.     |
| 0302                 | 612.0212<br>Pipe Underdrain Unperforated 12-Inch                     | 576.000<br>LF                  | _____.     | _____.     |
| 0304                 | 612.0406<br>Pipe Underdrain Wrapped 6-Inch                           | 430.000<br>LF                  | _____.     | _____.     |
| 0306                 | 612.0806<br>Apron Endwalls for Underdrain Reinforced Concrete 6-Inch | 18.000<br>EACH                 | _____.     | _____.     |
| 0308                 | 614.0150<br>Anchor Assemblies for Steel Plate Beam Guard             | 4.000<br>EACH                  | _____.     | _____.     |
| 0312                 | 614.0905<br>Crash Cushions Temporary                                 | 16.000<br>EACH                 | _____.     | _____.     |



Proposal Schedule of Items

Proposal ID: 20200609001 Project(s): 1007-12-79, 1007-12-80, 1008-10-70

Federal ID(s): WISC 2020313, WISC 2020314, WISC 2020315

SECTION: 0001 Contract Items

Alt Set ID: Alt Mbr ID:

| Proposal Line Number | Item ID Description   | Approximate Quantity and Units | Unit Price | Bid Amount |
|----------------------|---|--------------------------------|------------|------------|
| 0314                 | 614.2300<br>MGS Guardrail 3   | 4,368.000<br>LF                | _____.     | _____.     |
| 0316                 | 614.2500<br>MGS Thrie Beam Transition                                     | 1,064.000<br>LF                | _____.     | _____.     |
| 0318                 | 614.2610<br>MGS Guardrail Terminal EAT                                    | 16.000<br>EACH                 | _____.     | _____.     |
| 0320                 | 614.2620<br>MGS Guardrail Terminal Type 2                                 | 2.000<br>EACH                  | _____.     | _____.     |
| 0322                 | 616.0100<br>Fence Woven Wire (height) 01. 4-FT                            | 10,130.000<br>LF               | _____.     | _____.     |
| 0324                 | 616.0700.S<br>Fence Safety  | 4,820.000<br>LF                | _____.     | _____.     |
| 0326                 | 618.0100<br>Maintenance And Repair of Haul Roads (project) 01. 1007-12-79 | 1.000<br>EACH                  | _____.     | _____.     |
| 0328                 | 618.0100<br>Maintenance And Repair of Haul Roads (project) 02. 1007-12-80 | 1.000<br>EACH                  | _____.     | _____.     |
| 0330                 | 619.1000<br>Mobilization  | 1.000<br>EACH                  | _____.     | _____.     |
| 0332                 | 624.0100<br>Water   | 1,272.000<br>MGAL              | _____.     | _____.     |
| 0334                 | 625.0500<br>Salvaged Topsoil  | 138,529.000<br>SY              | _____.     | _____.     |
| 0336                 | 627.0200<br>Mulching  | 77,357.000<br>SY               | _____.     | _____.     |
| 0338                 | 628.1104<br>Erosion Bales   | 495.000<br>EACH                | _____.     | _____.     |
| 0340                 | 628.1504<br>Silt Fence  | 13,456.000<br>LF               | _____.     | _____.     |
| 0342                 | 628.1520<br>Silt Fence Maintenance  | 13,456.000<br>LF               | _____.     | _____.     |
| 0344                 | 628.1905<br>Mobilizations Erosion Control                                 | 37.000<br>EACH                 | _____.     | _____.     |





Proposal Schedule of Items

Proposal ID: 20200609001 Project(s): 1007-12-79, 1007-12-80, 1008-10-70

Federal ID(s): WISC 2020313, WISC 2020314, WISC 2020315

SECTION: 0001 Contract Items

Alt Set ID: Alt Mbr ID:

| Proposal Line Number | Item ID Description                                 | Approximate Quantity and Units | Unit Price | Bid Amount |
|----------------------|---|--------------------------------|------------|------------|
| 0346                 | 628.1910<br>Mobilizations Emergency Erosion Control | 27.000<br>EACH                 | _____.     | _____.     |
| 0348                 | 628.1920<br>Cleaning Sediment Basins                | 295.000<br>CY                  | _____.     | _____.     |
| 0350                 | 628.2002<br>Erosion Mat Class I Type A              | 63,548.000<br>SY               | _____.     | _____.     |
| 0352                 | 628.2008<br>Erosion Mat Urban Class I Type B        | 25,232.000<br>SY               | _____.     | _____.     |
| 0354                 | 628.2023<br>Erosion Mat Class II Type B             | 5,060.000<br>SY                | _____.     | _____.     |
| 0356                 | 628.6005<br>Turbidity Barriers                      | 419.000<br>SY                  | _____.     | _____.     |
| 0358                 | 628.6505<br>Soil Stabilizer Type A                  | 10.000<br>ACRE                 | _____.     | _____.     |
| 0360                 | 628.6510<br>Soil Stabilizer Type B                  | 10.000<br>ACRE                 | _____.     | _____.     |
| 0362                 | 628.7005<br>Inlet Protection Type A                 | 6.000<br>EACH                  | _____.     | _____.     |
| 0364                 | 628.7010<br>Inlet Protection Type B                 | 98.000<br>EACH                 | _____.     | _____.     |
| 0366                 | 628.7020<br>Inlet Protection Type D                 | 2.000<br>EACH                  | _____.     | _____.     |
| 0368                 | 628.7504<br>Temporary Ditch Checks                  | 1,154.000<br>LF                | _____.     | _____.     |
| 0370                 | 628.7555<br>Culvert Pipe Checks                     | 27.000<br>EACH                 | _____.     | _____.     |
| 0372                 | 628.7560<br>Tracking Pads                           | 13.000<br>EACH                 | _____.     | _____.     |
| 0374                 | 628.7570<br>Rock Bags                               | 385.000<br>EACH                | _____.     | _____.     |
| 0376                 | 629.0205<br>Fertilizer Type A                       | 106.700<br>CWT                 | _____.     | _____.     |
| 0378                 | 630.0110<br>Seeding Mixture No. 10                  | 1,249.000<br>LB                | _____.     | _____.     |



Proposal Schedule of Items

Proposal ID: 20200609001 Project(s): 1007-12-79, 1007-12-80, 1008-10-70

Federal ID(s): WISC 2020313, WISC 2020314, WISC 2020315

SECTION: 0001 Contract Items

Alt Set ID: Alt Mbr ID:

| Proposal Line Number | Item ID Description  | Approximate Quantity and Units | Unit Price | Bid Amount |
|----------------------|--|--------------------------------|------------|------------|
| 0380                 | 630.0130<br>Seeding Mixture No. 30   | 1,198.000<br>LB                | _____.     | _____.     |
| 0382                 | 630.0140<br>Seeding Mixture No. 40   | 235.000<br>LB                  | _____.     | _____.     |
| 0384                 | 630.0200<br>Seeding Temporary  | 4,237.000<br>LB                | _____.     | _____.     |
| 0386                 | 630.0300<br>Seeding Borrow Pit   | 1,000.000<br>LB                | _____.     | _____.     |
| 0388                 | 630.0500<br>Seed Water   | 3,743.200<br>MGAL              | _____.     | _____.     |
| 0390                 | 632.0101<br>Trees (species) (size) (root) 001. Oak,<br>Bur, B&B, 2-Inch Cal.                       | 5.000<br>EACH                  | _____.     | _____.     |
| 0392                 | 632.0101<br>Trees (species) (size) (root) 002. Oak,<br>Chinkapin, B&B, 2-Inch Cal.                 | 5.000<br>EACH                  | _____.     | _____.     |
| 0394                 | 632.0101<br>Trees (species) (size) (root) 003. Oak,<br>Swamp White, B&B, 2-Inch Cal.               | 28.000<br>EACH                 | _____.     | _____.     |
| 0396                 | 632.0101<br>Trees (species) (size) (root) 004. Oak,<br>Regal Prince, B&B, 2-Inch Cal.              | 14.000<br>EACH                 | _____.     | _____.     |
| 0398                 | 632.0101<br>Trees (species) (size) (root) 005. Maple,<br>Sugar, B&B, 2-Inch Cal.                   | 9.000<br>EACH                  | _____.     | _____.     |
| 0400                 | 632.0101<br>Trees (species) (size) (root) 006. Hickory,<br>Shagbark, B&B, 2-Inch Cal.              | 10.000<br>EACH                 | _____.     | _____.     |
| 0402                 | 632.0101<br>Trees (species) (size) (root) 007.<br>Exclamation, Planetree, B&B, 2-Inch Cal.         | 5.000<br>EACH                  | _____.     | _____.     |
| 0404                 | 632.0101<br>Trees (species) (size) (root) 008. Cedar,<br>Eastern Red, B&B, 8-Foot HT.              | 36.000<br>EACH                 | _____.     | _____.     |
| 0406                 | 632.0101<br>Trees (species) (size) (root) 009.<br>Baldcypress, Shawnee Brave, B&B, 2-<br>Inch Cal. | 47.000<br>EACH                 | _____.     | _____.     |



Proposal Schedule of Items

Proposal ID: 20200609001 Project(s): 1007-12-79, 1007-12-80, 1008-10-70

Federal ID(s): WISC 2020313, WISC 2020314, WISC 2020315

SECTION: 0001 Contract Items

Alt Set ID: Alt Mbr ID:

| Proposal Line Number | Item ID Description   | Approximate Quantity and Units | Unit Price | Bid Amount |
|----------------------|---|--------------------------------|------------|------------|
| 0408                 | 632.0101<br>Trees (species) (size) (root) 010.<br>Hemlock, Canadian, B&B, 6-Foot HT.                        | 19.000<br>EACH                 | _____.     | _____.     |
| 0410                 | 632.0101<br>Trees (species) (size) (root) 012. Pine,<br>Vanderwolf's Pyramid, B&B, 8-Foot HT.               | 37.000<br>EACH                 | _____.     | _____.     |
| 0412                 | 632.0101<br>Trees (species) (size) (root) 013. Birch,<br>Whitespire, B&B, 6-Foot HT.                        | 72.000<br>EACH                 | _____.     | _____.     |
| 0414                 | 632.0101<br>Trees (species) (size) (root) 014.<br>Hawthorn, Thornless Cockspur, B&B, 6-<br>Foot HT.         | 3.000<br>EACH                  | _____.     | _____.     |
| 0416                 | 632.0201<br>Shrubs (species) (size) (root) 001. Pine,<br>Enci Mugo, Container, 30-Inch HT/24" W,<br>#5      | 133.000<br>EACH                | _____.     | _____.     |
| 0418                 | 632.0201<br>Shrubs (species) (size) (root) 002.<br>Juniper, Oldfield Common, Container,<br>30-inch HT #5    | 38.000<br>EACH                 | _____.     | _____.     |
| 0420                 | 632.0201<br>Shrubs (species) (size) (root) 003.<br>Chokecherry, Brilliant Red, Container,<br>30-Inch HT. #3 | 60.000<br>EACH                 | _____.     | _____.     |
| 0422                 | 632.0201<br>Shrubs (species) (size) (root) 004.<br>Bayberry, Northern, Container, 30-Inch<br>HT, #3         | 22.000<br>EACH                 | _____.     | _____.     |
| 0424                 | 632.0201<br>Shrubs (species) (size) (root) 005.<br>Dogwood, Redtwig, Container, 30-Inch<br>HT, #3           | 257.000<br>EACH                | _____.     | _____.     |
| 0426                 | 632.0201<br>Shrubs (species) (size) (root) 007.<br>Sumac, Smooth, Container, 30-Inch HT.<br>#3              | 152.000<br>EACH                | _____.     | _____.     |
| 0428                 | 632.9101<br>Landscape Planting Surveillance and<br>Care Cycles  | 13.000<br>EACH                 | _____.     | _____.     |
| 0430                 | 633.0100<br>Delineator Posts Steel  | 110.000<br>EACH                | _____.     | _____.     |



Proposal Schedule of Items

Proposal ID: 20200609001 Project(s): 1007-12-79, 1007-12-80, 1008-10-70

Federal ID(s): WISC 2020313, WISC 2020314, WISC 2020315

SECTION: 0001 Contract Items

Alt Set ID: Alt Mbr ID:

| Proposal Line Number | Item ID Description                                     | Approximate Quantity and Units | Unit Price | Bid Amount |
|----------------------|---|--------------------------------|------------|------------|
| 0432                 | 633.0500<br>Delineator Reflectors                       | 168.000<br>EACH                | _____.     | _____.     |
| 0434                 | 633.1000<br>Delineators Barrier Wall                    | 80.000<br>EACH                 | _____.     | _____.     |
| 0436                 | 633.5200<br>Markers Culvert End                         | 26.000<br>EACH                 | _____.     | _____.     |
| 0438                 | 634.0414<br>Posts Wood 4x4-Inch X 14-FT                 | 1.000<br>EACH                  | _____.     | _____.     |
| 0440                 | 634.0612<br>Posts Wood 4x6-Inch X 12-FT                 | 65.000<br>EACH                 | _____.     | _____.     |
| 0442                 | 634.0614<br>Posts Wood 4x6-Inch X 14-FT                 | 14.000<br>EACH                 | _____.     | _____.     |
| 0444                 | 634.0616<br>Posts Wood 4x6-Inch X 16-FT                 | 24.000<br>EACH                 | _____.     | _____.     |
| 0446                 | 634.0618<br>Posts Wood 4x6-Inch X 18-FT                 | 45.000<br>EACH                 | _____.     | _____.     |
| 0448                 | 634.0620<br>Posts Wood 4x6-Inch X 20-FT                 | 20.000<br>EACH                 | _____.     | _____.     |
| 0450                 | 635.0200<br>Sign Supports Structural Steel HS           | 2,328.000<br>LB                | _____.     | _____.     |
| 0452                 | 636.0100<br>Sign Supports Concrete Masonry              | 199.600<br>CY                  | _____.     | _____.     |
| 0454                 | 636.0500<br>Sign Supports Steel Reinforcement           | 540.000<br>LB                  | _____.     | _____.     |
| 0456                 | 636.1500<br>Sign Supports Steel Coated Reinforcement HS | 32,440.000<br>LB               | _____.     | _____.     |
| 0458                 | 637.1220<br>Signs Type I Reflective SH                  | 3,977.000<br>SF                | _____.     | _____.     |
| 0460                 | 637.1230<br>Signs Type I Reflective F                   | 584.000<br>SF                  | _____.     | _____.     |
| 0462                 | 637.2210<br>Signs Type II Reflective H                  | 854.430<br>SF                  | _____.     | _____.     |



Proposal Schedule of Items

Proposal ID: 20200609001 Project(s): 1007-12-79, 1007-12-80, 1008-10-70

Federal ID(s): WISC 2020313, WISC 2020314, WISC 2020315

SECTION: 0001 Contract Items

Alt Set ID: Alt Mbr ID:

| Proposal Line Number | Item ID Description  | Approximate Quantity and Units | Unit Price | Bid Amount |
|----------------------|--|--------------------------------|------------|------------|
| 0464                 | 637.2230<br>Signs Type II Reflective F   | 1,285.000<br>SF                | _____.     | _____.     |
| 0466                 | 638.2101<br>Moving Signs Type I  | 12.000<br>EACH                 | _____.     | _____.     |
| 0468                 | 638.2102<br>Moving Signs Type II   | 34.000<br>EACH                 | _____.     | _____.     |
| 0470                 | 638.2601<br>Removing Signs Type I  | 29.000<br>EACH                 | _____.     | _____.     |
| 0472                 | 638.2602<br>Removing Signs Type II   | 138.000<br>EACH                | _____.     | _____.     |
| 0474                 | 638.3000<br>Removing Small Sign Supports   | 123.000<br>EACH                | _____.     | _____.     |
| 0476                 | 638.3100<br>Removing Structural Steel Sign Supports                                | 4.000<br>EACH                  | _____.     | _____.     |
| 0478                 | 638.3150<br>Removing Overhead Sign Supports<br>Cantilever (structure) 01. S-13-135 | 1.000<br>EACH                  | _____.     | _____.     |
| 0480                 | 638.3155<br>Removing Overhead Sign Supports Full<br>Span (structure) 01. S-13-134  | 1.000<br>EACH                  | _____.     | _____.     |
| 0482                 | 638.3155<br>Removing Overhead Sign Supports Full<br>Span (structure) 02. S-13-138  | 1.000<br>EACH                  | _____.     | _____.     |
| 0484                 | 638.3155<br>Removing Overhead Sign Supports Full<br>Span (structure) 03. S-13-139  | 1.000<br>EACH                  | _____.     | _____.     |
| 0486                 | 641.1200<br>Sign Bridge Cantilevered (structure) 700.<br>S-13-507                  | LS                             | LUMP SUM   | _____.     |
| 0488                 | 641.6600<br>Sign Bridge (structure) 700. S-13-508                                  | LS                             | LUMP SUM   | _____.     |
| 0490                 | 641.6600<br>Sign Bridge (structure) 701. S-13-511                                  | LS                             | LUMP SUM   | _____.     |
| 0492                 | 641.6600<br>Sign Bridge (structure) 702. S-13-509                                  | LS                             | LUMP SUM   | _____.     |



Proposal Schedule of Items

Proposal ID: 20200609001 Project(s): 1007-12-79, 1007-12-80, 1008-10-70

Federal ID(s): WISC 2020313, WISC 2020314, WISC 2020315

SECTION: 0001 Contract Items

Alt Set ID: Alt Mbr ID:

| Proposal Line Number | Item ID Description   | Approximate Quantity and Units | Unit Price | Bid Amount |
|----------------------|---|--------------------------------|------------|------------|
| 0494                 | 641.6600<br>Sign Bridge (structure) 703. S-13-510           | LS                             | LUMP SUM   | _____.     |
| 0496                 | 641.6600<br>Sign Bridge (structure) 704. S-13-512           | LS                             | LUMP SUM   | _____.     |
| 0498                 | 641.8100<br>Overhead Sign Support (structure) 700. S-13-506 | LS                             | LUMP SUM   | _____.     |
| 0500                 | 641.8100<br>Overhead Sign Support (structure) 701. S-13-513 | LS                             | LUMP SUM   | _____.     |
| 0502                 | 642.5201<br>Field Office Type C                             | 1.000<br>EACH                  | _____.     | _____.     |
| 0504                 | 642.5401<br>Field Office Type D                             | 1.000<br>EACH                  | _____.     | _____.     |
| 0506                 | 643.0300<br>Traffic Control Drums                           | 106,002.000<br>DAY             | _____.     | _____.     |
| 0508                 | 643.0420<br>Traffic Control Barricades Type III             | 3,390.000<br>DAY               | _____.     | _____.     |
| 0510                 | 643.0500<br>Traffic Control Flexible Tubular Marker Posts   | 400.000<br>EACH                | _____.     | _____.     |
| 0512                 | 643.0600<br>Traffic Control Flexible Tubular Marker Bases   | 400.000<br>EACH                | _____.     | _____.     |
| 0514                 | 643.0705<br>Traffic Control Warning Lights Type A           | 6,262.000<br>DAY               | _____.     | _____.     |
| 0516                 | 643.0715<br>Traffic Control Warning Lights Type C           | 10,246.000<br>DAY              | _____.     | _____.     |
| 0518                 | 643.0800<br>Traffic Control Arrow Boards                    | 776.000<br>DAY                 | _____.     | _____.     |
| 0520                 | 643.0900<br>Traffic Control Signs                           | 45,630.000<br>DAY              | _____.     | _____.     |
| 0522                 | 643.0910<br>Traffic Control Covering Signs Type I           | 36.000<br>EACH                 | _____.     | _____.     |
| 0524                 | 643.0920<br>Traffic Control Covering Signs Type II          | 15.000<br>EACH                 | _____.     | _____.     |



Proposal Schedule of Items

Proposal ID: 20200609001 Project(s): 1007-12-79, 1007-12-80, 1008-10-70

Federal ID(s): WISC 2020313, WISC 2020314, WISC 2020315

SECTION: 0001 Contract Items

Alt Set ID: Alt Mbr ID:

| Proposal Line Number | Item ID Description   | Approximate Quantity and Units | Unit Price | Bid Amount |
|----------------------|---|--------------------------------|------------|------------|
| 0526                 | 643.1000<br>Traffic Control Signs Fixed Message                 | 592.750<br>SF                  | _____.     | _____.     |
| 0528                 | 643.1050<br>Traffic Control Signs PCMS                          | 858.000<br>DAY                 | _____.     | _____.     |
| 0530                 | 643.1055.S<br>Truck or Trailer Mounted Attenuator               | 100.000<br>DAY                 | _____.     | _____.     |
| 0532                 | 643.1205.S<br>Basic Traffic Queue Warning System                | 382.000<br>DAY                 | _____.     | _____.     |
| 0534                 | 643.5000<br>Traffic Control                                     | 1.000<br>EACH                  | _____.     | _____.     |
| 0536                 | 645.0105<br>Geotextile Type C                                   | 285.000<br>SY                  | _____.     | _____.     |
| 0538                 | 645.0111<br>Geotextile Type DF Schedule A                       | 1,670.000<br>SY                | _____.     | _____.     |
| 0540                 | 645.0120<br>Geotextile Type HR                                  | 572.000<br>SY                  | _____.     | _____.     |
| 0542                 | 645.0220<br>Geogrid Type SR                                     | 6,000.000<br>SY                | _____.     | _____.     |
| 0544                 | 646.1020<br>Marking Line Epoxy 4-Inch                           | 11,167.000<br>LF               | _____.     | _____.     |
| 0546                 | 646.1040<br>Marking Line Grooved Wet Ref Epoxy 4-Inch           | 118,393.000<br>LF              | _____.     | _____.     |
| 0548                 | 646.1555<br>Marking Line Grooved Contrast Permanent Tape 4-Inch | 20,645.000<br>LF               | _____.     | _____.     |
| 0550                 | 646.3020<br>Marking Line Epoxy 8-Inch                           | 703.000<br>LF                  | _____.     | _____.     |
| 0552                 | 646.3555<br>Marking Line Grooved Contrast Permanent Tape 8-Inch | 15,950.000<br>LF               | _____.     | _____.     |
| 0554                 | 646.5020<br>Marking Arrow Epoxy                                 | 7.000<br>EACH                  | _____.     | _____.     |
| 0556                 | 646.5220<br>Marking Symbol Epoxy                                | 8.000<br>EACH                  | _____.     | _____.     |



Proposal Schedule of Items

Proposal ID: 20200609001 Project(s): 1007-12-79, 1007-12-80, 1008-10-70

Federal ID(s): WISC 2020313, WISC 2020314, WISC 2020315

SECTION: 0001 Contract Items

Alt Set ID: Alt Mbr ID:

| Proposal Line Number | Item ID Description  | Approximate Quantity and Units | Unit Price | Bid Amount |
|----------------------|--|--------------------------------|------------|------------|
| 0558                 | 646.5520<br>Marking Outfall Epoxy                          | 7.000<br>EACH                  | _____.     | _____.     |
| 0560                 | 646.6120<br>Marking Stop Line Epoxy 18-Inch                | 16.000<br>LF                   | _____.     | _____.     |
| 0562                 | 646.6464<br>Cold Weather Marking Epoxy 4-Inch              | 17,530.000<br>LF               | _____.     | _____.     |
| 0564                 | 646.6468<br>Cold Weather Marking Epoxy 8-Inch              | 3,378.000<br>LF                | _____.     | _____.     |
| 0566                 | 646.7020<br>Marking Diagonal Epoxy 6-Inch                  | 1,080.000<br>LF                | _____.     | _____.     |
| 0568                 | 646.7220<br>Marking Chevron Epoxy 24-Inch                  | 1,132.000<br>LF                | _____.     | _____.     |
| 0570                 | 646.7420<br>Marking Crosswalk Epoxy Transverse Line 6-Inch | 490.000<br>LF                  | _____.     | _____.     |
| 0572                 | 646.8320<br>Marking Parking Stall Epoxy                    | 9,992.000<br>LF                | _____.     | _____.     |
| 0574                 | 646.9010<br>Marking Removal Line Water Blasting 4-Inch     | 58,100.000<br>LF               | _____.     | _____.     |
| 0576                 | 646.9110<br>Marking Removal Line Water Blasting 8-Inch     | 4,880.000<br>LF                | _____.     | _____.     |
| 0578                 | 646.9210<br>Marking Removal Line Water Blasting Wide       | 500.000<br>LF                  | _____.     | _____.     |
| 0580                 | 646.9310<br>Marking Removal Special Marking Water Blasting | 3.000<br>EACH                  | _____.     | _____.     |
| 0582                 | 649.0105<br>Temporary Marking Line Paint 4-Inch            | 181,640.000<br>LF              | _____.     | _____.     |
| 0584                 | 649.0120<br>Temporary Marking Line Epoxy 4-Inch            | 71,025.000<br>LF               | _____.     | _____.     |
| 0586                 | 649.0150<br>Temporary Marking Line Removable Tape 4-Inch   | 300.000<br>LF                  | _____.     | _____.     |





Proposal Schedule of Items

Proposal ID: 20200609001 Project(s): 1007-12-79, 1007-12-80, 1008-10-70

Federal ID(s): WISC 2020313, WISC 2020314, WISC 2020315

SECTION: 0001 Contract Items

Alt Set ID: Alt Mbr ID:

| Proposal Line Number | Item ID Description   | Approximate Quantity and Units | Unit Price | Bid Amount |
|----------------------|---|--------------------------------|------------|------------|
| 0588                 | 649.0205<br>Temporary Marking Line Paint 8-Inch             | 14,540.000<br>LF               | _____.     | _____.     |
| 0590                 | 649.0220<br>Temporary Marking Line Epoxy 8-Inch             | 14,165.000<br>LF               | _____.     | _____.     |
| 0592                 | 649.0760<br>Temporary Marking Raised Pavement Marker Type I | 2,810.000<br>EACH              | _____.     | _____.     |
| 0594                 | 652.0125<br>Conduit Rigid Metallic 2-Inch                   | 48.000<br>LF                   | _____.     | _____.     |
| 0596                 | 652.0225<br>Conduit Rigid Nonmetallic Schedule 40 2-Inch    | 2,169.000<br>LF                | _____.     | _____.     |
| 0598                 | 652.0235<br>Conduit Rigid Nonmetallic Schedule 40 3-Inch    | 308.000<br>LF                  | _____.     | _____.     |
| 0600                 | 652.0615<br>Conduit Special 3-Inch                          | 50.000<br>LF                   | _____.     | _____.     |
| 0602                 | 653.0164<br>Pull Boxes Non-Conductive 24x42-Inch            | 17.000<br>EACH                 | _____.     | _____.     |
| 0604                 | 653.0222<br>Junction Boxes 18x12x6-Inch                     | 4.000<br>EACH                  | _____.     | _____.     |
| 0606                 | 653.0905<br>Removing Pull Boxes                             | 3.000<br>EACH                  | _____.     | _____.     |
| 0608                 | 654.0105<br>Concrete Bases Type 5                           | 3.000<br>EACH                  | _____.     | _____.     |
| 0610                 | 654.0106<br>Concrete Bases Type 6                           | 9.000<br>EACH                  | _____.     | _____.     |
| 0612                 | 654.0111<br>Concrete Bases Type 11                          | 1.000<br>EACH                  | _____.     | _____.     |
| 0614                 | 654.0230<br>Concrete Control Cabinet Bases Type L30         | 1.000<br>EACH                  | _____.     | _____.     |
| 0616                 | 654.1150<br>Concrete Bases Camera Pole 50-FT                | 1.000<br>EACH                  | _____.     | _____.     |
| 0618                 | 655.0515<br>Electrical Wire Traffic Signals 10 AWG          | 6,003.000<br>LF                | _____.     | _____.     |



Proposal Schedule of Items

Proposal ID: 20200609001 Project(s): 1007-12-79, 1007-12-80, 1008-10-70

Federal ID(s): WISC 2020313, WISC 2020314, WISC 2020315

SECTION: 0001 Contract Items

Alt Set ID: Alt Mbr ID:

| Proposal Line Number | Item ID Description  | Approximate Quantity and Units | Unit Price | Bid Amount |
|----------------------|--|--------------------------------|------------|------------|
| 0620                 | 655.0610<br>Electrical Wire Lighting 12 AWG  | 1,860.000<br>LF                | _____.     | _____.     |
| 0622                 | 655.0620<br>Electrical Wire Lighting 8 AWG   | 6,748.000<br>LF                | _____.     | _____.     |
| 0624                 | 655.0625<br>Electrical Wire Lighting 6 AWG   | 798.000<br>LF                  | _____.     | _____.     |
| 0626                 | 656.0200<br>Electrical Service Meter Breaker Pedestal (location) 01. Rest Area #22 | LS                             | LUMP SUM   | _____.     |
| 0628                 | 656.0200<br>Electrical Service Meter Breaker Pedestal (location) 401. SDS-13-0135  | LS                             | LUMP SUM   | _____.     |
| 0630                 | 656.0500<br>Electrical Service Breaker Disconnect Box (location) 401. CCTV-13-0014 | LS                             | LUMP SUM   | _____.     |
| 0632                 | 656.0500<br>Electrical Service Breaker Disconnect Box (location) 402. SDS-13-0135  | LS                             | LUMP SUM   | _____.     |
| 0634                 | 657.0255<br>Transformer Bases Breakaway 11 1/2-Inch Bolt Circle                    | 12.000<br>EACH                 | _____.     | _____.     |
| 0636                 | 657.0322<br>Poles Type 5-Aluminum  | 2.000<br>EACH                  | _____.     | _____.     |
| 0638                 | 657.0327<br>Poles Type 6-Aluminum  | 9.000<br>EACH                  | _____.     | _____.     |
| 0640                 | 657.0715<br>Luminaire Arms Truss Type 4 1/2-Inch Clamp 15-FT                       | 11.000<br>EACH                 | _____.     | _____.     |
| 0642                 | 659.0700<br>Lighting Units Walkway   | 1.000<br>EACH                  | _____.     | _____.     |
| 0644                 | 659.1125<br>Luminaires Utility LED C   | 11.000<br>EACH                 | _____.     | _____.     |
| 0646                 | 659.2130<br>Lighting Control Cabinets 120/240 30-Inch                              | 1.000<br>EACH                  | _____.     | _____.     |
| 0648                 | 670.0100<br>Field System Integrator  | LS                             | LUMP SUM   | _____.     |



Proposal Schedule of Items

Proposal ID: 20200609001 Project(s): 1007-12-79, 1007-12-80, 1008-10-70

Federal ID(s): WISC 2020313, WISC 2020314, WISC 2020315

SECTION: 0001 Contract Items

Alt Set ID: Alt Mbr ID:

| Proposal Line Number | Item ID Description  | Approximate Quantity and Units | Unit Price | Bid Amount |
|----------------------|--|--------------------------------|------------|------------|
| 0650                 | 670.0200<br>ITS Documentation                                      | LS                             | LUMP SUM   | _____.     |
| 0652                 | 671.0112<br>Conduit HDPE 1-Duct 2-Inch                             | 1,105.000<br>LF                | _____.     | _____.     |
| 0654                 | 671.0132<br>Conduit HDPE 3-Duct 2-Inch                             | 3,436.000<br>LF                | _____.     | _____.     |
| 0656                 | 671.0212<br>Conduit HDPE Directional Bore 1-Duct 2-Inch            | 323.000<br>LF                  | _____.     | _____.     |
| 0658                 | 671.0232<br>Conduit HDPE Directional Bore 3-Duct 2-Inch            | 371.000<br>LF                  | _____.     | _____.     |
| 0660                 | 673.0110<br>Communication Vault Type Round                         | 2.000<br>EACH                  | _____.     | _____.     |
| 0662                 | 673.0200<br>Tracer Wire Marker Posts                               | 2.000<br>EACH                  | _____.     | _____.     |
| 0664                 | 673.0225.S<br>Install Pole Mounted Cabinet                         | 2.000<br>EACH                  | _____.     | _____.     |
| 0666                 | 674.0200<br>Cable Microwave Detector                               | 3,106.000<br>LF                | _____.     | _____.     |
| 0668                 | 674.0300<br>Remove Cable   | 5,612.000<br>LF                | _____.     | _____.     |
| 0670                 | 675.0300<br>Install Mounted Controller Microwave Detector Assembly | 8.000<br>EACH                  | _____.     | _____.     |
| 0672                 | 677.0150<br>Install Camera Pole 50-FT                              | 1.000<br>EACH                  | _____.     | _____.     |
| 0674                 | 677.0200<br>Install Camera Assembly                                | 1.000<br>EACH                  | _____.     | _____.     |
| 0676                 | 678.0012<br>Install Fiber Optic Cable Outdoor Plant 12-CT          | 3,296.000<br>LF                | _____.     | _____.     |
| 0678                 | 678.0072<br>Install Fiber Optic Cable Outdoor Plant 72-CT          | 6,620.000<br>LF                | _____.     | _____.     |



Proposal Schedule of Items

Proposal ID: 20200609001 Project(s): 1007-12-79, 1007-12-80, 1008-10-70

Federal ID(s): WISC 2020313, WISC 2020314, WISC 2020315

SECTION: 0001 Contract Items

Alt Set ID: Alt Mbr ID:

| Proposal Line Number | Item ID Description  | Approximate Quantity and Units | Unit Price | Bid Amount |
|----------------------|--|--------------------------------|------------|------------|
| 0680                 | 678.0200<br>Fiber Optic Splice Enclosure                   | 4.000<br>EACH                  | _____.     | _____.     |
| 0682                 | 678.0300<br>Fiber Optic Splice                             | 228.000<br>EACH                | _____.     | _____.     |
| 0684                 | 678.0400<br>Fiber Optic Termination                        | 48.000<br>EACH                 | _____.     | _____.     |
| 0686                 | 678.0500<br>Communication System Testing                   | LS                             | LUMP SUM   | _____.     |
| 0688                 | 678.0600<br>Install Ethernet Switches                      | 6.000<br>EACH                  | _____.     | _____.     |
| 0690                 | 690.0150<br>Sawing Asphalt                                 | 3,100.000<br>LF                | _____.     | _____.     |
| 0692                 | 690.0250<br>Sawing Concrete                                | 41,944.000<br>LF               | _____.     | _____.     |
| 0694                 | 715.0415<br>Incentive Strength Concrete Pavement           | 110,901.000<br>DOL             | 1.00000    | 110,901.00 |
| 0696                 | 715.0502<br>Incentive Strength Concrete Structures         | 3,432.000<br>DOL               | 1.00000    | 3,432.00   |
| 0698                 | 715.0603<br>Incentive Strength Concrete Barrier            | 24,600.000<br>DOL              | 1.00000    | 24,600.00  |
| 0700                 | 715.0710<br>Optimized Aggregate Gradation Incentive        | 246,397.700<br>DOL             | 1.00000    | 246,397.70 |
| 0702                 | 740.0440<br>Incentive IRI Ride                             | 21,000.000<br>DOL              | 1.00000    | 21,000.00  |
| 0704                 | SPV.0005<br>Special 500. Subsoiling                        | 2.000<br>ACRE                  | _____.     | _____.     |
| 0706                 | SPV.0005<br>Special 501. Pre-Planting Vegetation Treatment | 53.600<br>ACRE                 | _____.     | _____.     |
| 0708                 | SPV.0005<br>Special 502. Seed Bed Preparation              | 14.000<br>ACRE                 | _____.     | _____.     |
| 0710                 | SPV.0035<br>Special 001. Roadway Embankment                | 63,313.000<br>CY               | _____.     | _____.     |



Proposal Schedule of Items

Proposal ID: 20200609001 Project(s): 1007-12-79, 1007-12-80, 1008-10-70

Federal ID(s): WISC 2020313, WISC 2020314, WISC 2020315

SECTION: 0001 Contract Items

Alt Set ID: Alt Mbr ID:

| Proposal Line Number | Item ID Description  | Approximate Quantity and Units | Unit Price | Bid Amount |
|----------------------|--|--------------------------------|------------|------------|
| 0712                 | SPV.0035<br>Special 501. Topsoil Special   | 1,405.000<br>CY                | _____.     | _____.     |
| 0714                 | SPV.0035<br>Special 700. High Performance Concrete (HPC) Masonry Structures                | 214.000<br>CY                  | _____.     | _____.     |
| 0716                 | SPV.0035<br>Special 701. Rapid Set Deck Repair   | 12.000<br>CY                   | _____.     | _____.     |
| 0718                 | SPV.0045<br>Special 001. Portable Speed Trailer  | 503.000<br>DAY                 | _____.     | _____.     |
| 0720                 | SPV.0060<br>Special 001. Baseline CPM Progress Schedule                                    | 1.000<br>EACH                  | _____.     | _____.     |
| 0722                 | SPV.0060<br>Special 002. CPM Progress Schedule Updates and Accepted Revisions              | 28.000<br>EACH                 | _____.     | _____.     |
| 0724                 | SPV.0060<br>Special 003. Test Pits   | 12.000<br>EACH                 | _____.     | _____.     |
| 0726                 | SPV.0060<br>Special 004. Roadway Cleanup   | 26.000<br>EACH                 | _____.     | _____.     |
| 0728                 | SPV.0060<br>Special 005. Welded Inlet Covers   | 24.000<br>EACH                 | _____.     | _____.     |
| 0730                 | SPV.0060<br>Special 006. Pipe Bollard  | 20.000<br>EACH                 | _____.     | _____.     |
| 0732                 | SPV.0060<br>Special 007. Utility Line Opening (ULO)  | 2.000<br>EACH                  | _____.     | _____.     |
| 0734                 | SPV.0060<br>Special 008. Temporary Sediment Basin  | 8.000<br>EACH                  | _____.     | _____.     |
| 0736                 | SPV.0060<br>Special 203. Repair State Owned Energy Absorbing Terminal (EAT)                | 4.000<br>EACH                  | _____.     | _____.     |
| 0738                 | SPV.0060<br>Special 204. Emergency Response to Traffic Incident Involving Guardrail or EAT | 4.000<br>EACH                  | _____.     | _____.     |
| 0740                 | SPV.0060<br>Special 205. Emergency Response to Pavement Repairs                            | 4.000<br>EACH                  | _____.     | _____.     |



Proposal Schedule of Items

Proposal ID: 20200609001 Project(s): 1007-12-79, 1007-12-80, 1008-10-70

Federal ID(s): WISC 2020313, WISC 2020314, WISC 2020315

SECTION: 0001 Contract Items

Alt Set ID: Alt Mbr ID:

| Proposal Line Number | Item ID Description  | Approximate Quantity and Units | Unit Price | Bid Amount |
|----------------------|--|--------------------------------|------------|------------|
| 0742                 | SPV.0060<br>Special 206. Emergency Response to Traffic Incident Involving Concrete Barrier Temporary | 10.000<br>EACH                 | _____.     | _____.     |
| 0744                 | SPV.0060<br>Special 207. Emergency Response to Traffic Incident Involving Crash Cushion              | 4.000<br>EACH                  | _____.     | _____.     |
| 0746                 | SPV.0060<br>Special 401. Remove Communication Vault  | 1.000<br>EACH                  | _____.     | _____.     |
| 0748                 | SPV.0060<br>Special 402. Install Radio   | 1.000<br>EACH                  | _____.     | _____.     |
| 0750                 | SPV.0060<br>Special 501. Native Seed Surveillance and Care Cycles                                    | 8.000<br>EACH                  | _____.     | _____.     |
| 0752                 | SPV.0060<br>Special 502. Delineator Post Steel Modified  | 48.000<br>EACH                 | _____.     | _____.     |
| 0754                 | SPV.0060<br>Special 701. Tension Anchor Rods   | 48.000<br>EACH                 | _____.     | _____.     |
| 0756                 | SPV.0060<br>Special 702. Install ID Plaque   | 1.000<br>EACH                  | _____.     | _____.     |
| 0758                 | SPV.0085<br>Special 501. Seeding Native Mix N2   | 674.000<br>LB                  | _____.     | _____.     |
| 0760                 | SPV.0085<br>Special 502. Seeding Native Mix N3   | 30.000<br>LB                   | _____.     | _____.     |
| 0762                 | SPV.0090<br>Special 001. Concrete Pavement Joint Sealing   | 12,140.000<br>LF               | _____.     | _____.     |
| 0764                 | SPV.0090<br>Special 002. Bore and Jack Storm Sewer Pipe Reinforced Concrete Class IV 24-INCH         | 141.000<br>LF                  | _____.     | _____.     |
| 0766                 | SPV.0090<br>Special 003. Pipe Underdrain 6-inch with Geotextile Fabric and Aggregate                 | 8,198.000<br>LF                | _____.     | _____.     |
| 0768                 | SPV.0090<br>Special 200. Repair State Owned Guardrail  | 800.000<br>LF                  | _____.     | _____.     |



Proposal Schedule of Items

Proposal ID: 20200609001 Project(s): 1007-12-79, 1007-12-80, 1008-10-70

Federal ID(s): WISC 2020313, WISC 2020314, WISC 2020315

SECTION: 0001 Contract Items

Alt Set ID: Alt Mbr ID:

| Proposal Line Number | Item ID Description   | Approximate Quantity and Units | Unit Price | Bid Amount |
|----------------------|---|--------------------------------|------------|------------|
| 0770                 | SPV.0090<br>Special 201. Gawk Screen Furnished  | 42,050.000<br>LF               | _____.     | _____.     |
| 0772                 | SPV.0090<br>Special 202. Gawk Screen Installed  | 74,635.000<br>LF               | _____.     | _____.     |
| 0774                 | SPV.0090<br>Special 203. Concrete Barrier Temporary Precast Delivered, Department Owned             | 16,355.000<br>LF               | _____.     | _____.     |
| 0776                 | SPV.0090<br>Special 204. Removing Department Owned Concrete Barrier Precast                         | 6,225.000<br>LF                | _____.     | _____.     |
| 0778                 | SPV.0105<br>Special 001. Concrete Pavement Joint Layout Project 1007-12-79                          | LS                             | LUMP SUM   | _____.     |
| 0780                 | SPV.0105<br>Special 002. Concrete Pavement Joint Layout Project 1007-12-80                          | LS                             | LUMP SUM   | _____.     |
| 0782                 | SPV.0105<br>Special 003. Concrete Pavement Joint Layout Project 1008-10-70                          | LS                             | LUMP SUM   | _____.     |
| 0784                 | SPV.0105<br>Special 004. Survey Project 1007-12-79 with Optional AMG for Concrete Pavement and Base | LS                             | LUMP SUM   | _____.     |
| 0786                 | SPV.0105<br>Special 005. Survey Project 1007-12-80 with Optional AMG for Concrete Pavement and Base | LS                             | LUMP SUM   | _____.     |
| 0788                 | SPV.0105<br>Special 006. Survey Project 1008-10-70 with Optional AMG for Conc Pavt and Base Course  | LS                             | LUMP SUM   | _____.     |
| 0790                 | SPV.0105<br>Special 401. Salvage ITS Equipment CCTV-13-0014   | LS                             | LUMP SUM   | _____.     |
| 0792                 | SPV.0105<br>Special 402. Salvage ITS Equipment SDS-13-0091  | LS                             | LUMP SUM   | _____.     |
| 0794                 | SPV.0105<br>Special 403. Salvage ITS Equipment Dejope Cabinet                                       | LS                             | LUMP SUM   | _____.     |



Proposal Schedule of Items

Proposal ID: 20200609001 Project(s): 1007-12-79, 1007-12-80, 1008-10-70

Federal ID(s): WISC 2020313, WISC 2020314, WISC 2020315

SECTION: 0001 Contract Items

Alt Set ID: Alt Mbr ID:

| Proposal Line Number | Item ID Description   | Approximate Quantity and Units | Unit Price | Bid Amount |
|----------------------|---|--------------------------------|------------|------------|
| 0796                 | SPV.0105<br>Special 404. Salvage ITS Equipment<br>SDS-13-0015                         | LS                             | LUMP SUM   | _____.     |
| 0798                 | SPV.0105<br>Special 405. Relocate Solar Power<br>Microwave Detector                   | LS                             | LUMP SUM   | _____.     |
| 0800                 | SPV.0105<br>Special 406. Relocate Bluetooth Detector                                  | LS                             | LUMP SUM   | _____.     |
| 0802                 | SPV.0105<br>Special 701. Temporary Sand Bag Dike<br>C-13-44                           | LS                             | LUMP SUM   | _____.     |
| 0804                 | SPV.0165<br>Special 001. Insulation Board 4-inch                                      | 320.000<br>SF                  | _____.     | _____.     |
| 0806                 | SPV.0165<br>Special 701. Wall Modular Block<br>Mechanically Stabilized Earth R-13-335 | 1,800.000<br>SF                | _____.     | _____.     |
| 0808                 | SPV.0165<br>Special 702. Repair Galvanized Coating                                    | 300.000<br>SF                  | _____.     | _____.     |
| 0810                 | SPV.0180<br>Special 501. Compost  | 530.000<br>SY                  | _____.     | _____.     |
| 0812                 | 204.0291.S<br>Abandoning Sewer  | 11.000<br>CY                   | _____.     | _____.     |
| 0814                 | 604.9010.S<br>Slope Paving Repair Crushed Aggregate                                   | 30.000<br>CY                   | _____.     | _____.     |
| 0816                 | 611.0535<br>Manhole Covers Type J-Special   | 1.000<br>EACH                  | _____.     | _____.     |
| 0818                 | 614.0805<br>Crash Cushions Permanent Low<br>Maintenance                               | 1.000<br>EACH                  | _____.     | _____.     |

Section: 0001 Total: \_\_\_\_\_.

Total Bid: \_\_\_\_\_.