



# Wisconsin Department of Transportation

May 29, 2020

## Division of Transportation Systems Development

Bureau of Project Development  
4822 Madison Yards Way, 4<sup>th</sup> Floor South  
Madison, WI 53705

Telephone: (608) 266-1631  
Facsimile (FAX): (608) 266-8459

### NOTICE TO ALL CONTRACTORS:

**Proposal #08: 2030-13-70, WISC 2020 321**  
**108<sup>th</sup> St**  
**I43 to Hank Aaron State Trail**  
**STH 100**  
**Milwaukee County**

### Letting of June 9, 2020

This is Addendum No. 01, which provides for the following:

#### Special Provisions:

Revised Special Provisions	
Article No.	Description
16	Material Stockpile and Equipment Storage
38	Cover Plates Temporary, Item 611.8120.S.

#### Schedule of Items:

Revised Bid Item Quantities					
Bid Item	Item Description	Unit	Old Quantity	Revised Quantity	Proposal Total
204.0155	Removing Concrete Sidewalk	SY	1,822	56	1,878
602.0410	Concrete Sidewalk 5-Inch	SF	17,457	500	17,957
602.0505	Curb Ramp Detectable Warning Field Yellow	SF	1,096	-26	1,070
646.6220	Marking Yield Line Epoxy 18-Inch	EA	4	48	52

Added Bid Item Quantities					
Bid Item	Item Description	Unit	Old Quantity	Revised Quantity	Proposal Total
602.0605	Curb Ramp Detectable Warning Field Radial Yellow	SF	0	26	26

**Plan Sheets:**

<b>Revised Plan Sheets</b>	
Plan Sheet	Plan Sheet Title (brief description of changes to sheet)
2	Updated the SWRPC contact
21	Included needed information for radial detectable warning fields
28	Included needed information for radial detectable warning fields
245	Revised yield marking to show the correct number of triangles
246	Revised yield marking to show the correct number of triangles
247	Revised yield marking to show the correct number of triangles
390	Added undistributed quantity for extra sidewalk that needs to be removed
396	Added undistributed quantity for extra sidewalk and differentiated between a regular detectable warning field vs a radial detectable warning field.
397	Added undistributed quantity for extra sidewalk and differentiated between a regular detectable warning field vs a radial detectable warning field.
414	Revised yield marking quantity to account for number of triangles, not each location

<b>Added Plan Sheets</b>	
Plan Sheet	Plan Sheet Title (brief description of why sheet was added)
20A	Sheet added to show stockpile restrictions (place after sheet 20)

The responsibility for notifying potential subcontractors and suppliers of these changes remains with the prime contractor.

Sincerely,

*Mike Coleman*

Proposal Development Specialist  
Proposal Management Section

**ADDENDUM NO. 01**

**2030-13-70**

**May 29, 2020**

**Special Provisions**

**16. Material Stockpile and Equipment Storage.**

*Replace entire article language with the following:*

Supplement standard spec 107.9 with the following:

Stockpiling is only allowed in certain areas and is limited to certain heights as detailed in the plans.

Submit a map showing all proposed material stockpile and equipment storage locations to the engineer 14 calendar days before either the preconstruction conference or proposed use, whichever comes first. Identify the purpose; length, width & height; and duration of material stockpile or equipment storage at each location. Obtain written permission and necessary permits from the property owner and submit two copies to the engineer. Do not stockpile material or store equipment until the engineer approves.

Material stockpiles and equipment storage on STH 100 is limited to a duration of 14 calendar days unless the engineer approves otherwise in writing.

Material stockpiles in locations where crushing is allowed is limited to a duration of 45 calendar days.

SER-107-011 (20200504)

**38. Cover Plates Temporary, Item 611.8120.S**

*Replace the last paragraph under section titled E Payment with the following:*

Payment is full compensation for furnishing, installing, and removing the cover plates including removal and disposal of asphaltic surface temporary. The steel plates shall become the property of the contractor when no longer needed in the contract work.

**Schedule of Items**

Attached, dated May 29, 2020, are the revised Schedule of Items Pages 1, 5, 9, and 20.

**Plan Sheets**

The following 8½ x 11-inch sheets are attached and made part of the plans for this proposal:

Revised: 2, 21, 28, 245-247, 390, 396-397, 414

Added: 20A

END OF ADDENDUM

**UTILITY CONTACTS**

**AT&T WISCONSIN - COMMUNICATION LINE**  
MATTHEW DINNAUER  
2005 PEWAUKEE RD  
WAUKESHA, WI 53188-2443  
PHONE: (262) 237-0042  
md9542@aatt.com

**ATC MANAGEMENT, INC. - ELECTRICITY TRANSMISSION**  
ANTHONY MARCINIAK  
W 234 N 2000 RIDGEVIEW PARKWAY CT  
P.O. BOX 47  
WAUKESHA, WI 53187-0047  
PHONE: (262) 506-6614  
amarcinia@aattc.com

**WISDOT ATR PULL BOXES - ELECTRICITY**  
CHAD BIGLER  
TRAVEL SURVEYS SHOP  
3633 PIERSTORFF ST  
P.O. BOX 2583  
MADISON, WI 53704-2583  
PHONE: (608) 535-7413  
chad.bigler@dot.wi.gov

**CHARTER COMMUNICATIONS - COMMUNICATION LINE**  
BEAU ABUYA  
1320 N DR MARTIN LUTHER KING JR DR  
MILWAUKEE, WI 53212  
PHONE: (414) 908-1343  
wis.engineering@charter.com

**CITY OF GREENFIELD - SEWER STREET LIGHTING**  
JEFF KATZ  
7325 W FOREST HOME AVENUE  
GREENFIELD, WI 53220  
PHONE: (414) 329-5525  
jeffk@greenfield.wi.us

**CITY OF MILWAUKEE - STREET LIGHTING & WATER**  
SAMIR AMIN  
841 N BROADWAY  
MILWAUKEE, WI 53202  
PHONE: (414) 286-3301  
samir@milwaukee.gov

**CITY OF WEST ALLIS - COMMUNICATION LINE, ROAD FACILITY, SEWER, STREET LIGHTING & WATER**  
PETER DANIELS  
7525 W GREENFIELD AVE  
WEST ALLIS, WI 53214  
PHONE: (414) 302-8374  
pdaniels@westalliswi.gov

**NETWORK RELOCATIONS LEVEL 3 COMMUNICATIONS, LLC - COMMUNICATION LINE**  
1025 ELDORADO BLVD  
BROOMFIELD, CO 80021  
NationalRelo@centurylink.com

**MIDWEST FIBER NETWORKS, LLC - COMMUNICATION LINE**  
RICHARD TRGOVEC  
6070 NORTH FLINT RD  
GLENDALE, WI 53209  
PHONE: (414) 459-3554  
rttrgovec@midwestfibernetworks.com

**MILWAUKEE METROPOLITAN SEWERAGE DISTRICT - SEWER**  
MCKI KLAPPA-SULLIVAN  
260 W SEEBOTH ST  
MILWAUKEE, WI 53204  
PHONE: (414) 225-2178  
MKlappaSullivan@mmsd.com

**PAETEC COMMUNICATION, LLC - COMMUNICATION LINE**  
MARY FISHER  
13935 BISHOPS DR  
BROOKFIELD, WI 53005  
PHONE: (262) 792-7938  
Mary.B.Fisher@windstream.com

**TDS METROCOM - COMMUNICATION LINE**  
MICHAEL SWEET  
525 JUNCTION RD  
MADISON, WI 53717  
PHONE: (608) 664-4539  
Michael.Sweet@tdstelecom.com

**WISDOT - COMMUNICATION LINE**  
JEFF MADSON  
433 W ST PAUL AVE, STE 300  
MILWAUKEE, WI 53203-3007  
PHONE: (414) 225-3723  
jeffrey.madson@dot.wi.gov

**WISDOT - STREET LIGHTING**  
ERIC PEREA  
141 NW BARSTOW ST  
WAUKESHA, WI 53188  
PHONE: (262) 574-5422  
eric.peres@dot.wi.gov

**WISDOT - WISCONSIN SIGNAL**  
DERRIN WOLFORD  
141 NW BARSTOW ST, PO BOX 798  
WAUKESHA, WI 53188  
PHONE: (262) 521-4409  
derrin.wolford@dot.wi.gov

**WISCONSIN INDEPENDENT NETWORK, LLC - COMMUNICATION LINE**

**DICK HAMMETTER**  
SUITE 219  
800 WISCONSIN AVE  
EAU CLAIRE, WI 54703  
PHONE: (715) 838-4406  
Hammetter@WINS.net

**WE ENERGIES - ELECTRICITY, GAS/PETROLEUM**  
NICOLE SMULLEN  
333 W EVERETT ST, ROOM A299  
MILWAUKEE, WI 53203  
PHONE: (414) 221-5617  
Nicole.SmulLEN@weenergygroup.com

**WEST ALLIS WEST MILWAUKEE SCHOOL DISTRICT ET AL - ITSNET**  
GREG SELLSSEN  
P O BOX 11064  
GREENBAY, WI 54307  
PHONE: (877) 870-8988, X1004  
gsellsesen@nccewi.com

Addendum No. 01  
ID 2030-13-70  
Revised Sheet 2  
May 29, 2020

**OTHER AGENCIES**

**WISDOT SOUTHEAST REGION**  
DYLAN GATES  
UTILITY COORDINATOR  
141 NW BARSTOW STREET  
P.O. BOX 798  
WAUKESHA, WI 53187-0798  
PHONE: (414) 550-2689  
dylan.gates@dot.wi.gov

**MILWAUKEE COUNTY TRANSIT SYSTEM (MCTS)**  
1942 N 17TH STREET  
MILWAUKEE, WI 53205  
MELANIE FLYNN  
LEAD & COORDINATOR OF STREET SUPERVISION (ROUTES)  
PHONE: (414) 343-1764  
mflynn@mcts.org

**ANDY TILLMAN**  
TRANSIT PLANNER (STOPS/SHELTERS)  
PHONE: (414) 343-1728  
atillman@mcts.org

**DAVID LOCHER**  
TRANSPORTATION SPECIALIST (DETOUR/SPECIAL EVENTS)  
PHONE: (414) 343-1727  
dlocher@mcts.org

**CHRIS T KECKEISEN**  
MANAGER SPECIAL PROJECTS - INDUSTRY & PUBLIC PROJECTS ENGINEERING DEPT  
1400 DOUGLAS, MS 0910  
OMAHA, NE 68179  
PHONE: (402) 544-5131  
ctkeckeil@up.com

**WISDOT SOUTHEAST REGION**  
SCOTT ANDERSON, P.E.  
PROJECT MANAGER  
141 NW BARSTOW STREET  
P.O. BOX 798  
WAUKESHA, WI 53187-0798  
scottm.anderson@dot.wi.gov

**WISDOT SOUTHEAST REGION**  
BRENDA RUENGER  
SE REGION ENVIRONMENTAL COORDINATOR  
141 NW BARSTOW STREET  
P.O. BOX 798  
WAUKESHA, WI 53187-0798  
PHONE: (262) 548-6709  
brenda.ruenger@dot.wi.gov

**WISCONSIN DEPARTMENT OF NATURAL RESOURCES**  
KRISTINA BETZOLD  
2300 N DR MARTIN LUTHER KING DRIVE  
MILWAUKEE, WI 53212  
CELL: (414) 507-4846  
kristina.betzold@wisconsin.gov

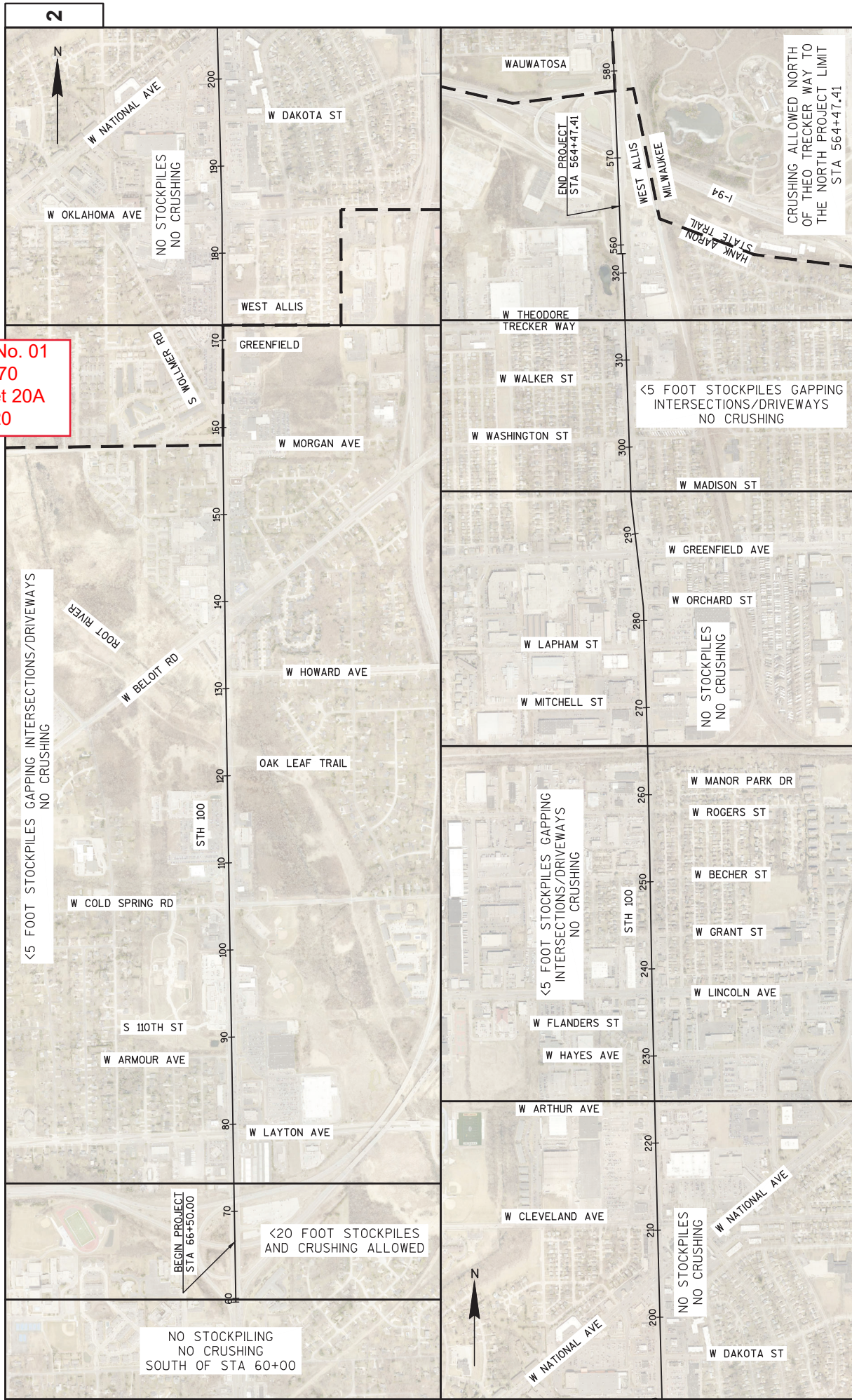
**SOUTH-EAST WISCONSIN REGIONAL PLANNING COMMISSION**  
ROB MERRY  
W239 N1812 ROCKWOOD DRIVE  
WAUKESHA, WI 53187-1607  
PHONE: (262) 953-4289  
CELL: (920) 912-1036  
rmerry@sewppc.org



Dial 811 or (800) 242-8511  
www.DiggersHotline.com

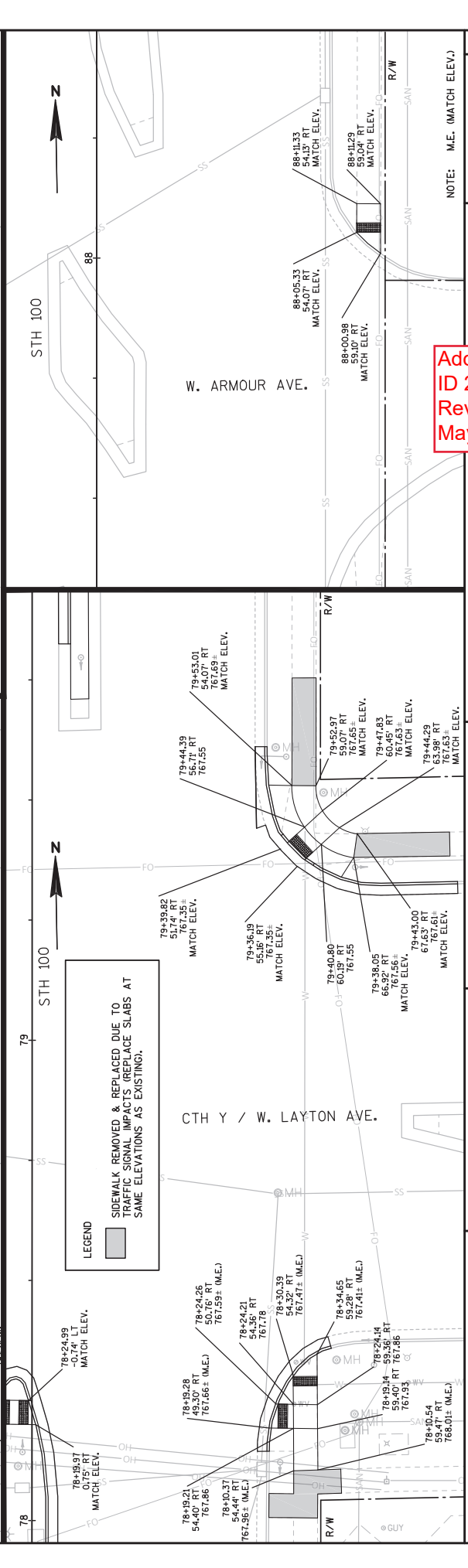
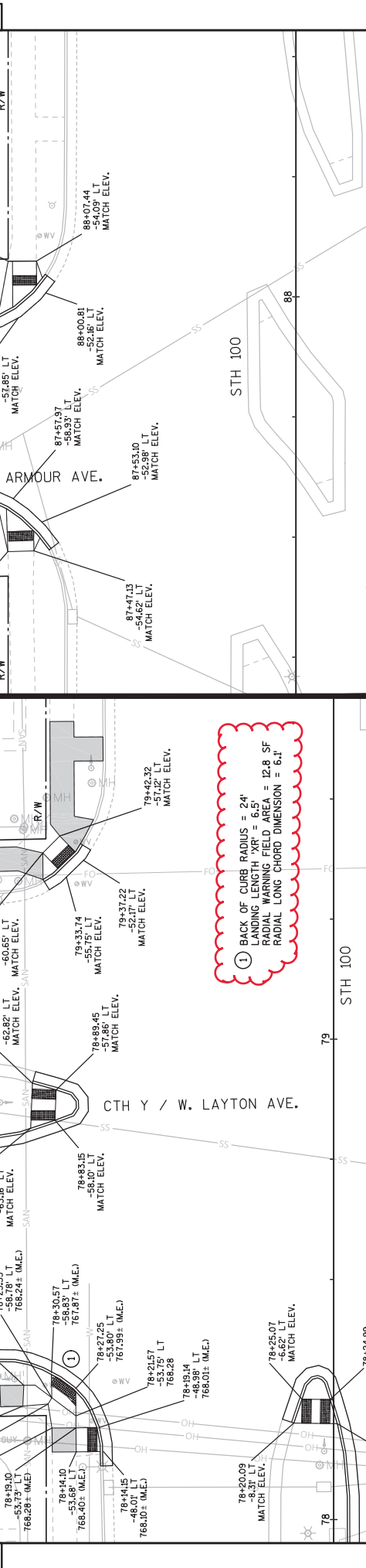
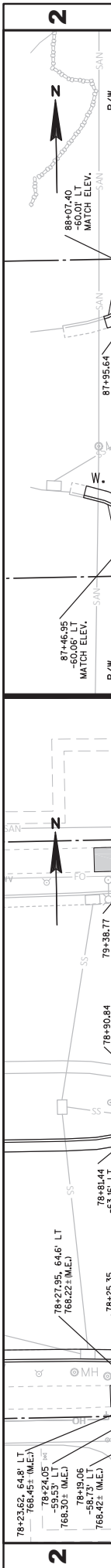


Addendum No. 01  
ID 2030-13-70  
Added Sheet 20A  
May 29, 2020



PROJECT NO: 2030-13-70	HWY: STH 100	COUNTY: MILWAUKEE	STOCKPILE RESTRICTIONS	SHEET 20A	E
FILE NAME : N:\PDS\CD\20301300\SHEETS\PLAN\021003_CD.DWG					
LAYOUT NAME - PROJECT OVERVIEW					
PLOT DATE : 5/15/2020 8:57 AM					
PLOT BY : JOHANSEN, AMANDA A					
PLOT NAME :					
PLOT SCALE : 1 IN=1000 FT					
WSDOT/CADD SHEET 44					





① BACK OF CURB RADIUS = 24'  
 LANDING LENGTH 'XR' = 6.5'  
 RADIAL WARNING FIELD AREA = 12.8 SF  
 RADIAL LONG CHORD DIMENSION = 6.1'

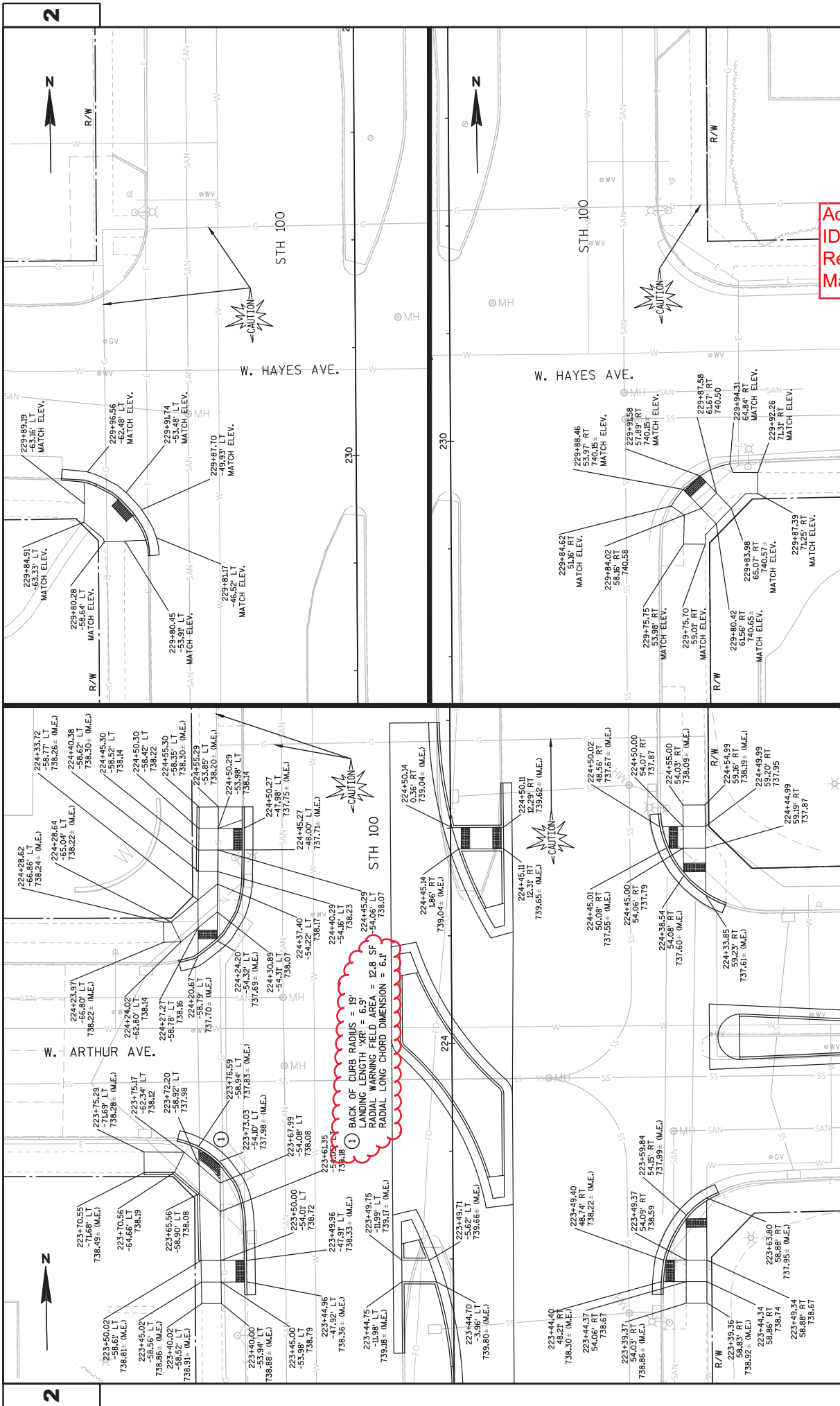
LEGEND  
 [Symbol] SIDEWALK REMOVED & REPLACED DUE TO TRAFFIC SIGNAL IMPACTS (REPLACE SLABS AT SAME ELEVATIONS AS EXISTING).

Addendum No. 01  
 ID 2030-13-70  
 Revised Sheet 21  
 May 29, 2020

PROJECT NO: 2030-13-70  
 COUNTY: MILWAUKEE  
 HWY: STH 100  
 INTERSECTION DETAILS  
 SHEET 21  
 NOTE: M.E. (MATCH ELEV.)

FILE NAME : N:\POS\30\20301300\SHEETS\PLAN\202101\_10.DWG  
 LAYOUT NAME - INTERSECTION DETAILS  
 PLOT DATE : 5/6/2020 8:31 AM  
 PLOT BY : JOHANSEN, AMANDA A  
 PLOT NAME :  
 PLOT SCALE : 1 IN=20 FT  
 WSDOT/CADD SHEET 42

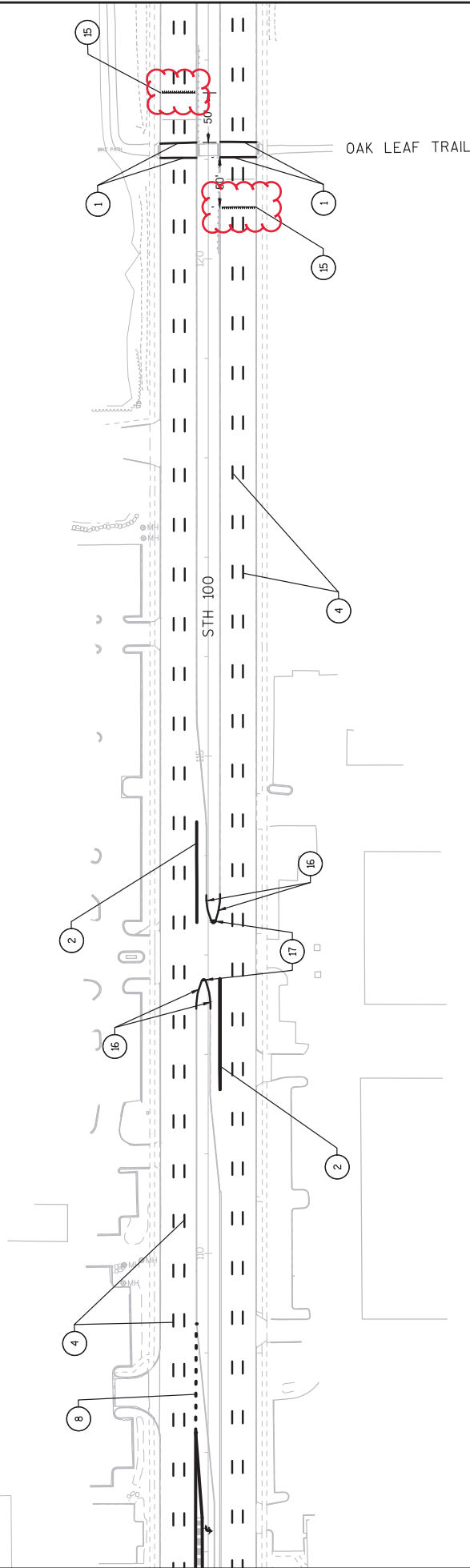
87+46.95  
 -60.06' LT  
 MATCH ELEV.  
 87+57.97  
 -56.93' LT  
 MATCH ELEV.  
 87+47.13  
 -54.98' LT  
 MATCH ELEV.  
 87+95.64  
 -57.85' LT  
 MATCH ELEV.  
 88+00.81  
 -52.46' LT  
 MATCH ELEV.  
 88+07.44  
 -54.09' LT  
 MATCH ELEV.  
 88+11.33  
 -54.07' LT  
 MATCH ELEV.  
 88+12.29  
 -59.04' RT  
 MATCH ELEV.  
 88+00.99  
 -52.46' LT  
 MATCH ELEV.  
 88+05.33  
 -54.07' LT  
 MATCH ELEV.  
 79+44.39  
 51.74' RT  
 56.71' RT  
 76.755  
 MATCH ELEV.  
 79+52.97  
 52.07' RT  
 76.765  
 MATCH ELEV.  
 79+47.83  
 60.45' RT  
 76.763  
 MATCH ELEV.  
 79+44.29  
 67.63' RT  
 63.98' RT  
 76.763  
 MATCH ELEV.  
 79+39.82  
 51.74' RT  
 56.71' RT  
 76.755  
 MATCH ELEV.  
 79+36.19  
 55.16' RT  
 76.755  
 MATCH ELEV.  
 79+40.90  
 60.15' RT  
 76.755  
 MATCH ELEV.  
 79+38.05  
 66.92' RT  
 76.756  
 MATCH ELEV.  
 79+43.00  
 67.63' RT  
 63.98' RT  
 76.761  
 MATCH ELEV.  
 78+23.62, 64.8' LT  
 766.45± (M.E.)  
 78+24.05  
 -59.53' LT  
 766.30± (M.E.)  
 78+19.06  
 -58.13' LT  
 766.42± (M.E.)  
 78+19.10  
 -53.79' LT  
 766.26± (M.E.)  
 78+30.57  
 -53.10' LT  
 767.18± (M.E.)  
 78+33.15  
 -56.10' LT  
 767.99± (M.E.)  
 78+27.25  
 -53.80' LT  
 767.99± (M.E.)  
 78+19.15  
 -48.01' LT  
 766.10± (M.E.)  
 78+19.14  
 -48.39' LT  
 766.01± (M.E.)  
 78+25.07  
 -6.62' LT  
 MATCH ELEV.  
 78+24.99  
 -0.74' LT  
 MATCH ELEV.  
 78+19.97  
 0.75' RT  
 MATCH ELEV.  
 78+19.21  
 54.40' RT  
 767.56  
 MATCH ELEV.  
 78+10.37  
 54.44' RT  
 767.96± (M.E.)  
 78+30.39  
 54.32' RT  
 767.47± (M.E.)  
 78+34.65  
 59.28' RT  
 767.41± (M.E.)  
 78+24.26  
 50.76' RT (M.E.)  
 761.59± (M.E.)  
 78+24.21  
 54.36' RT  
 767.78  
 78+19.28  
 49.30' RT  
 767.86± (M.E.)  
 78+34.65  
 59.28' RT  
 767.41± (M.E.)  
 78+19.14  
 -59.35' RT  
 59.40' RT  
 767.86  
 761.35  
 78+10.54  
 59.47' RT  
 766.01± (M.E.)



Addendum No. 01  
 ID 2030-13-70  
 Revised Sheet 28  
 May 29, 2020

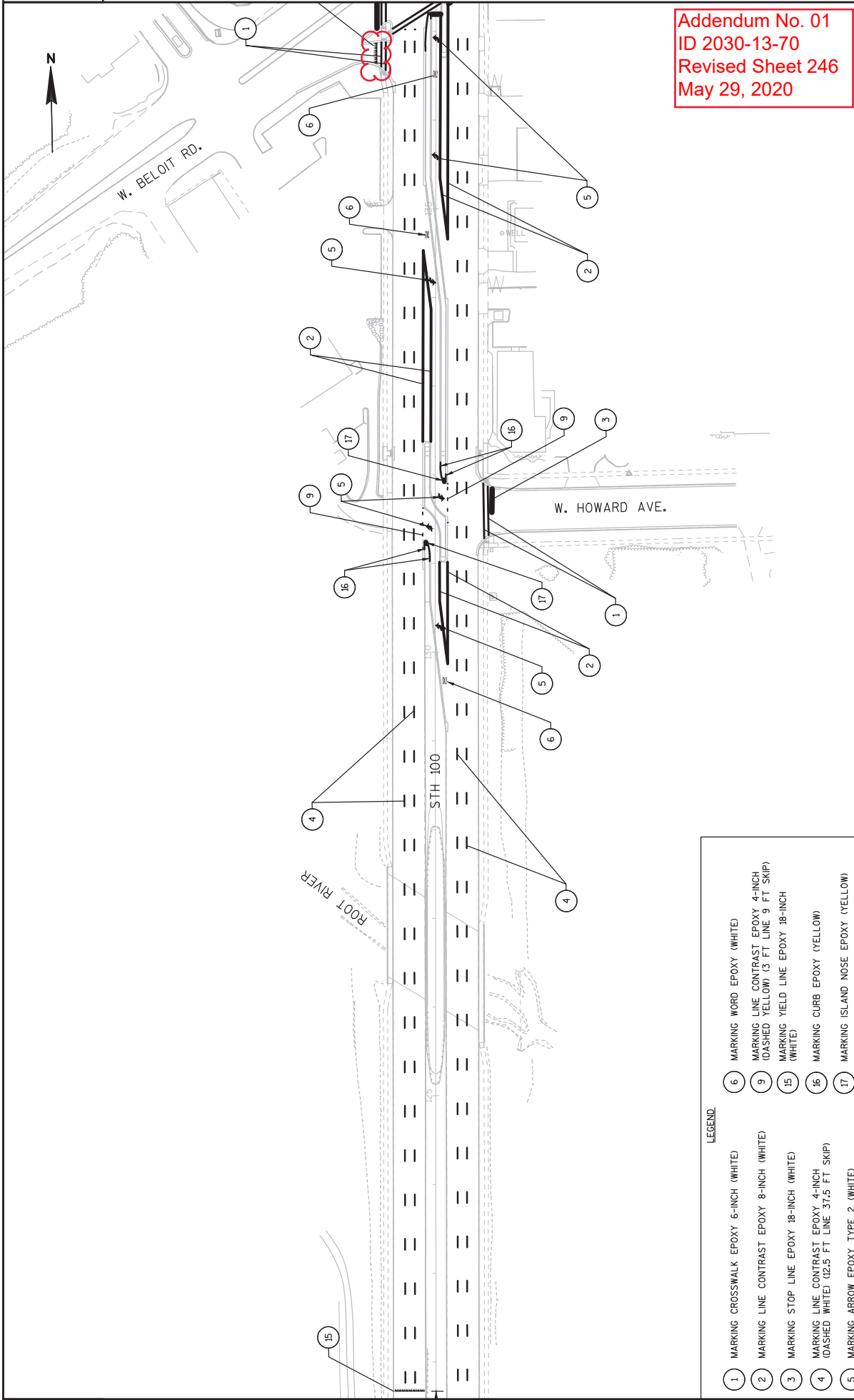


- LEGEND:**
- 1 MARKING CROSSWALK EPOXY 6-INCH (WHITE)
  - 2 MARKING LINE CONTRAST EPOXY 8-INCH (WHITE)
  - 4 MARKING LINE CONTRAST EPOXY 4-INCH (DASHED WHITE) (2.5 FT LINE 37.5 FT SKIP)
  - 8 MARKING LINE CONTRAST EPOXY 8-INCH (DASHED WHITE) (3 FT LINE 9 FT SKIP)
  - 15 MARKING YIELD LINE EPOXY 18-INCH (WHITE)
  - 16 MARKING CURB EPOXY (YELLOW)
  - 17 MARKING ISLAND NOSE EPOXY (YELLOW)



Addendum No. 01  
 ID 2030-13-70  
 Revised Sheet 245  
 May 29, 2020

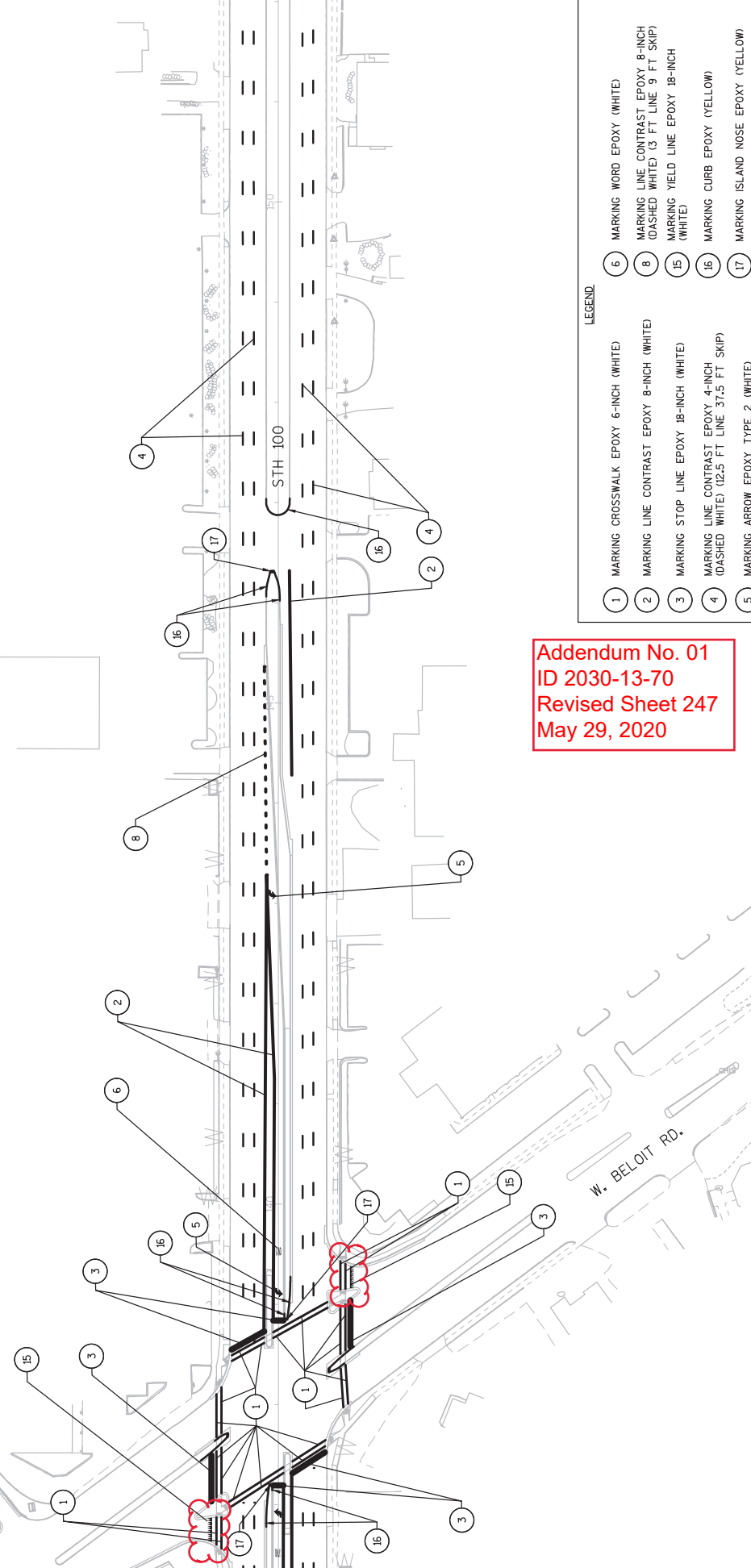




Addendum No. 01  
 ID 2030-13-70  
 Revised Sheet 246  
 May 29, 2020

**LEGEND**

1	MARKING CROSSWALK EPOXY 6-INCH (WHITE)	6	MARKING WORD EPOXY (WHITE)
2	MARKING LINE CONTRAST EPOXY 8-INCH (WHITE)	9	MARKING LINE CONTRAST EPOXY 4-INCH (DASHED YELLOW) (3 FT LINE 9 FT SKIP)
3	MARKING STOP LINE EPOXY 18-INCH (WHITE)	15	MARKING YIELD LINE EPOXY 18-INCH (WHITE)
4	MARKING LINE CONTRAST EPOXY 4-INCH (DASHED WHITE) (2.5 FT LINE 37.5 FT SKIP)	16	MARKING CURB EPOXY (YELLOW)
5	MARKING ARROW EPOXY TYPE 2 (WHITE)	17	MARKING ISLAND NOSE EPOXY (YELLOW)



Addendum No. 01  
 ID 2030-13-70  
 Revised Sheet 247  
 May 29, 2020

LEGEND:

- ① MARKING CROSSWALK EPOXY 6-INCH (WHITE)
- ② MARKING LINE CONTRAST EPOXY 8-INCH (WHITE) (DASHED WHITE) (3 FT LINE 9 FT SKIP)
- ③ MARKING STOP LINE EPOXY 18-INCH (WHITE)
- ④ MARKING LINE CONTRAST EPOXY 4-INCH (DASHED WHITE) (2.5 FT LINE 37.5 FT SKIP)
- ⑤ MARKING ARROW EPOXY TYPE 2 (WHITE)
- ⑥ MARKING WORD EPOXY (WHITE)
- ⑧ MARKING LINE CONTRAST EPOXY 8-INCH (WHITE) (DASHED WHITE) (3 FT LINE 9 FT SKIP)
- ⑮ MARKING YIELD LINE EPOXY 18-INCH (WHITE)
- ⑯ MARKING CURB EPOXY (YELLOW)
- ⑰ MARKING ISLAND NOSE EPOXY (YELLOW)

REMOVALS CONTINUED

CATEGORY	STAGE	ROADWAY/INTERSECTION	STATION	TO	STATION	LOCATION	204.0100 REMOVING PAVEMENT SY	204.0150 REMOVING CURB & GUTTER LF	**204.0155 REMOVING CONCRETE SIDEWALK SY	204.0165 REMOVING GUARDRAIL LF	SPV.0090.006 SAWING CONCRETE CURB HEAD LF	SPV.0180.001 REMOVING ASPHALTIC SURFACE MILLING SPECIAL SY	COMMENTS
1000	1A	SEWER ADJUSTMENTS & RECONSTRUCTIONS INLET REPLACEMENTS	1,833 426	-	-	-	-	-	-	-	-	-	-
STAGE 1A TOTAL							2,292	3,026	1,445	-	225	-	-
2A		STH 100 & LAYTON AVE	77+76	-	80+17	L/RT	-	103	6	-	-	-	CURB RAMP REPLACEMENT
			74+81	-	76+21	L/RT	-	20	-	-	-	-	SIGNAL WORK
		STH 100 & LINCOLN AVE	233+20	-	238+08	L/RT	-	48	-	-	-	-	SIGNAL WORK
		STH 100 & OKLAHOMA AVE	180+33	-	185+57	L/RT	-	54	-	-	-	-	SIGNAL WORK
		STH 100 & NATIONAL AVE	201+02	-	205+82	L/RT	-	71	-	-	-	-	SIGNAL WORK
		STH 100 & CLEVELAND AVE	206+92	-	211+59	L/RT	-	14	6	-	-	-	CURB RAMP REPLACEMENT
		STH 100 & OAK LEAF TRAIL	121+04	-	121+16	L/RT	-	-	30	-	-	-	MEDIAN MODIFICATION
		STH 100 & ROOT RIVER	125+24	-	128+31	L/RT	-	-	362	-	-	-	MEDIAN MODIFICATION
		STH 100 & ARTHUR AVE	223+19	-	224+75	L/RT	390	217	38	-	-	-	MEDIAN MODIFICATION
		STH 100 & MITCHELL ST	271+34	-	274+65	L/RT	515	-	-	-	-	-	MEDIAN MODIFICATION
STAGE 2A TOTAL							905	527	81	362	-	-	-
3A		STH 100	66+50	-	125+96	RT	-	-	-	-	-	26,756	START TO ROOT RIVER (SEGMENT 1)
			126+65	-	138+40	RT	-	-	-	-	-	5,557	ROOT RIVER TO BELOIT RD (SEGMENT 1)
			138+06	-	205+16	RT	-	-	-	-	-	30,900	BELOIT RD TO NATIONAL AVE (SEGMENT 2)
			204+79	-	280+00	RT	-	-	-	-	-	36,154	NATIONAL AVE TO GREENFIELD AVE (SEGMENT 3)
			280+00	-	562+00	RT	-	-	-	-	-	22,258	GREENFIELD AVE TO END (SEGMENT 4)
STAGE 3A TOTAL							-	-	-	-	-	121,626	-
3B		STH 100	562+00	-	280+00	LT	-	-	-	-	-	22,672	END TO GREENFIELD AVE (SEGMENT 1)
			280+00	-	237+14	LT	-	-	-	-	-	19,854	GREENFIELD AVE TO LINCOLN AVE (SEGMENT 2)
			237+19	-	204+24	LT	-	-	-	-	-	16,761	LINCOLN AVE TO NATIONAL AVE (SEGMENT 3)
			204+79	-	137+68	LT	-	-	-	-	-	32,198	NATIONAL AVE TO BELOIT RD (SEGMENT 4)
			138+06	-	127+24	LT	-	-	-	-	-	4,958	BELOIT RD TO ROOT RIVER (SEGMENT 5)
			126+30	-	66+50	LT	-	-	-	-	-	28,437	ROOT RIVER TO START (SEGMENT 5)
STAGE 3B TOTAL							-	-	-	-	-	124,880	-
UNDISTRIBUTED							-	-	56	-	-	-	-
TOTALS							3,197	3,553	1,581	362	225	246,506	-

\*\*QUANTITIES SHOWN ELSEWHERE

Addendum No. 01  
 ID 2030-13-70  
 Revised Sheet 390  
 May 29, 2020







Addendum No. 01  
 ID 2030-13-70  
 Revised Sheet 414  
 May 29, 2020

PAVEMENT MARKING REMOVALS

CATEGORY	ROADWAY	MARKING REMOVAL 8-INCH LF	MARKING REMOVAL LINE WIDE LF	MARKING REMOVAL SPECIAL MARKING EACH
1000	LAPHAM ST	150	24	5

\*\*QUANTITIES SHOWN ELSEWHERE

3

PERMANENT PAVEMENT MARKING

CAT	ROADWAY	STA	TO STA	646.1020 MARKING LINE EPOXY 4-INCH (3 FT LINE 9 FT SKIP)		646.6120 MARKING STOP LINE YIELD LINE 18-INCH EPOXY		646.6220 MARKING STOP LINE YIELD LINE 18-INCH EPOXY		646.7120 MARKING DIAGONAL CROSSWALK EPOXY 12-INCH		646.7420 MARKING CROSSWALK CURB EPOXY 6-INCH		646.8120 MARKING ISLAND NOSE EPOXY		646.8220 MARKING ISLAND NOSE EPOXY		646.9300 MARKING REMOVAL SPECIAL MARKING EACH				
				LF	LF	EA	EA	EA	EA	EA	EA	EA	EA	EA	EA	EA	EA	EA	EA	EA	EA	
1000	STH 100	78+00	-	185+00	309	9	233	1	42	--	--	--	--	21	820	820	1,991	40	11,979	11,979	32	135
		185+00	-	562+00	1,817	--	--	69	2	24	1,474	255	6,494	24	1,474	2,250	54	14,580	14,580	--	94	
					2,126	9	233	1	111	2	2,294	255	10,378	45	2,294	4,241	94	26,559	26,559	32	229	
						2,368		114		45		255	10,378	45		4,241	94	26,707	26,707	32	19,259	

TEMPORARY PAVEMENT MARKING

CATEGORY	STAGE	ROADWAY	649.0105 TEMPORARY MARKING LINE PAINT 4-INCH (DASHED WHITE) (12.5 FT LINE 37.5 FT SKIP)		649.0205 TEMPORARY MARKING LINE PAINT 8-INCH (DASHED WHITE) (3 FT LINE 9 FT SKIP)		649.0250 TEMPORARY MARKING LINE REMOVABLE TAPE 8-INCH (WHITE) (2 FT LINE 6 FT SKIP)		649.0505 TEMPORARY MARKING ARROW PAINT (WHITE) TYPE 1 TYPE 2 EACH		649.0550 TEMPORARY MARKING ARROW REMOVABLE TAPE TYPE 2 EACH		649.0805 TEMPORARY MARKING STOP LINE PAINT (WHITE) 18-INCH (WHITE) 4-INCH		649.0850 TEMPORARY MARKING STOP TAPE 18-INCH (WHITE) 4-INCH		646.9000 MARKING REMOVAL 8-INCH	
			LF	LF	LF	LF	LF	LF	EA	EA	EA	EA	EA	EA	EA	EA	EA	EA
1000	1A	STH 100	--	--	--	--	--	--	--	--	--	--	--	--	--	--	--	143
	2A	STH 100	--	--	--	--	34	--	--	--	8	--	--	--	--	--	--	701
		LAYTON AVE	--	--	--	326	--	--	--	--	3	--	--	--	--	--	--	123
		OKLAHOMA AVE	--	--	--	248	--	--	--	--	4	--	--	--	--	--	--	123
		NATIONAL AVE	--	--	--	517	--	--	--	--	4	--	--	--	--	--	--	123
		CLEVELAND AVE	--	--	--	169	--	--	--	--	4	--	--	--	--	--	--	76
		LINCOLN AVE	--	--	--	285	--	--	--	--	4	--	--	--	--	--	--	123
							34				27							1,269
		STAGE 2A TOTAL	--	--	--	9,654	--	--	--	--	27	--	--	--	--	--	--	142
	3A	STH 100	9,570	25,154	104	--	--	--	68	--	--	--	2,078	--	--	--	--	--
	3B	STH 100	10,164	25,178	274	--	--	--	82	--	--	--	1,083	--	--	--	--	--
		SUBTOTAL	19,734	50,332	378	9,654	34	150	150	27	3,161	11	1,412	11	1,412	142	142	
		TOTAL	70,066	32,568	9,688	152	27	3,161	11	1,412	142	142						

\*\*QUANTITIES SHOWN ELSEWHERE

3



Proposal Schedule of Items

Proposal ID: 20200609008 Project(s): 2030-13-70  
Federal ID(s): WISC 2020321

SECTION: 0001 Contract Items

Alt Set ID: Alt Mbr ID:

Proposal Line Number	Item ID Description	Approximate Quantity and Units	Unit Price	Bid Amount
0002	203.0210.S Abatement of Asbestos Containing Material (structure) 0001. B-40-318	LS	LUMP SUM	_____.
0004	203.0210.S Abatement of Asbestos Containing Material (structure) 0002. B-40-319	LS	LUMP SUM	_____.
0006	203.0600.S Removing Old Structure Over Waterway With Minimal Debris (station) 0001. 126+45	LS	LUMP SUM	_____.
0008	203.0600.S Removing Old Structure Over Waterway With Minimal Debris (station) 0002. 126+30	LS	LUMP SUM	_____.
0010	204.0100 Removing Concrete Pavement	3,197.000 SY	_____.	_____.
0012	204.0150 Removing Curb & Gutter	3,553.000 LF	_____.	_____.
0014	204.0155 Removing Concrete Sidewalk	1,878.000 SY	_____.	_____.
0016	204.0165 Removing Guardrail	362.000 LF	_____.	_____.
0018	204.0195 Removing Concrete Bases	82.000 EACH	_____.	_____.
0020	204.0220 Removing Inlets	30.000 EACH	_____.	_____.
0022	204.9105.S Removing (item description) 3001. Removing Traffic Signals STH 100 & Layton Avenue	LS	LUMP SUM	_____.
0024	204.9105.S Removing (item description) 3002. Removing Traffic Signals STH 100 & Oklahoma Avenue	LS	LUMP SUM	_____.
0026	204.9105.S Removing (item description) 3003. Removing Traffic Signals STH 100 & National Avenue	LS	LUMP SUM	_____.



Proposal Schedule of Items

Proposal ID: 20200609008 Project(s): 2030-13-70

Federal ID(s): WISC 2020321

SECTION: 0001

Contract Items

Alt Set ID:

Alt Mbr ID:

Proposal Line Number	Item ID Description	Approximate Quantity and Units	Unit Price	Bid Amount
0116	601.0600 Concrete Curb Pedestrian	496.000 LF	_____.	_____.
0118	602.0410 Concrete Sidewalk 5-Inch	17,957.000 SF	_____.	_____.
0120	602.0420 Concrete Sidewalk 7-Inch	629.000 SF	_____.	_____.
0122	602.0505 Curb Ramp Detectable Warning Field Yellow	1,070.000 SF	_____.	_____.
0124	602.2400 Concrete Safety Islands	66.000 SF	_____.	_____.
0126	603.8000 Concrete Barrier Temporary Precast Delivered	1,060.000 LF	_____.	_____.
0128	603.8125 Concrete Barrier Temporary Precast Installed	1,060.000 LF	_____.	_____.
0130	611.0420 Reconstructing Manholes	10.000 EACH	_____.	_____.
0132	611.0430 Reconstructing Inlets	169.000 EACH	_____.	_____.
0134	611.0654 Inlet Covers Type V	9.000 EACH	_____.	_____.
0136	611.1003 Catch Basins 3-FT Diameter	1.000 EACH	_____.	_____.
0138	611.1004 Catch Basins 4-FT Diameter	2.000 EACH	_____.	_____.
0140	611.2504 Manholes Variable Tee 4-FT Diameter	2.000 EACH	_____.	_____.
0142	611.3003 Inlets 3-FT Diameter	14.000 EACH	_____.	_____.
0144	611.3004 Inlets 4-FT Diameter	11.000 EACH	_____.	_____.
0146	611.3253 Inlets 2.5x3-FT	2.000 EACH	_____.	_____.





Proposal Schedule of Items

Proposal ID: 20200609008 Project(s): 2030-13-70

Federal ID(s): WISC 2020321

SECTION: 0001

Contract Items

Alt Set ID:

Alt Mbr ID:

Proposal Line Number	Item ID Description	Approximate Quantity and Units	Unit Price	Bid Amount
0246	644.1601 Temporary Pedestrian Curb Ramp	776.000 DAY	_____.	_____.
0248	644.1810 Temporary Pedestrian Barricade	4,269.000 LF	_____.	_____.
0250	646.1020 Marking Line Epoxy 4-Inch	2,368.000 LF	_____.	_____.
0252	646.5020 Marking Arrow Epoxy	114.000 EACH	_____.	_____.
0254	646.5120 Marking Word Epoxy	45.000 EACH	_____.	_____.
0256	646.6120 Marking Stop Line Epoxy 18-Inch	2,294.000 LF	_____.	_____.
0258	646.6220 Marking Yield Line Epoxy 18-Inch	52.000 EACH	_____.	_____.
0260	646.7120 Marking Diagonal Epoxy 12-Inch	255.000 LF	_____.	_____.
0262	646.7420 Marking Crosswalk Epoxy Transverse Line 6-Inch	10,378.000 LF	_____.	_____.
0264	646.8120 Marking Curb Epoxy	4,241.000 LF	_____.	_____.
0266	646.8220 Marking Island Nose Epoxy	94.000 EACH	_____.	_____.
0268	646.9000 Marking Removal Line 4-Inch	1,412.000 LF	_____.	_____.
0270	646.9100 Marking Removal Line 8-Inch	292.000 LF	_____.	_____.
0272	646.9200 Marking Removal Line Wide	24.000 LF	_____.	_____.
0274	646.9300 Marking Removal Special Marking	5.000 EACH	_____.	_____.
0276	649.0105 Temporary Marking Line Paint 4-Inch	70,066.000 LF	_____.	_____.



Proposal Schedule of Items

Proposal ID: 20200609008 Project(s): 2030-13-70

Federal ID(s): WISC 2020321

SECTION: 0001

Contract Items

Alt Set ID:

Alt Mbr ID:

Proposal Line Number	Item ID Description	Approximate Quantity and Units	Unit Price	Bid Amount
0550	SPV.0105 Special 3026. Install Fiber Optic Communications in Cabinet STH 100 & Lincoln Ave	LS	LUMP SUM	_____.
0552	SPV.0165 Special 4001. Removing Loose Concrete	280.000 SF	_____.	_____.
0554	SPV.0180 Special 001. Removing Asphaltic Surface Milling Special	246,506.000 SY	_____.	_____.
0556	SPV.0195 Special 001. Management of Solid Waste	63.000 TON	_____.	_____.
0558	SPV.0195 Special 002. Joint and Crack Repair	27.000 TON	_____.	_____.
0560	602.0605 Curb Ramp Detectable Warning Field Radial Yellow	26.000 SF	_____.	_____.
	Section: 0001		Total:	_____.
			Total Bid:	_____.