



Wisconsin Department of Transportation

July 07, 2020

Division of Transportation Systems Development

Bureau of Project Development
4822 Madison Yards Way, 4th Floor South
Madison, WI 53705

Telephone: (608) 266-1631
Facsimile (FAX): (608) 266-8459

NOTICE TO ALL CONTRACTORS:

Proposal #09: 9040-02-61, WISC 2020 349
Rhinelanders – Eagle River
Pollyana Rd – WIS 70
STH 17
Oneida and Vilas Counties

9040-02-62, WISC 2020 350
Rhinelanders – Eagle River
Pollyana Rd – WIS 70
STH 17
Oneida and Vilas Counties

Letting of July 14, 2020

This is Addendum No. 01, which provides for the following:

Special Provisions:

Revised Special Provisions	
Article No.	Description
3	Prosecution and Progress
4	Traffic
5	Holiday Work Restrictions
12	Asphaltic Surface

Schedule of Items:

Added Bid Item Quantities					
Bid Item	Item Description	Unit	Old Quantity	Revised Quantity	Proposal Total
450.4000	HMA Cold Weather Paving	Ton	0	6,517	6,517
460.6225	HMA Pavement 5 MT 58-28 S	Ton	0	26,065	26,065
649.0105	Temporary Marking Line Paint 4-Inch	LF	0	72,621	72,621
650.5500	Construction Staking Curb Gutter and Curb and Gutter	LF	0	2,607	2,607

Deleted Bid Item Quantities					
Bid Item	Item Description	Unit	Old Quantity	Revised Quantity	Proposal Total
460.5225	HMA Pavement 5 LT 58-28 S	Ton	26,065	-26,065	0

Plan Sheets:

Revised Plan Sheets	
Plan Sheet	Plan Sheet Title (brief description of changes to sheet)
5	Changed HMA Pavement type to 5MT 58-28 S
6	Changed HMA Pavement type to 3MT 58-28 S
9	Changed HMA Pavement type to 3MT 58-28 S
13 - 21	Changed HMA Pavement type to 5MT 58-28 S
36	Added item 460.4000, cold weather paving. Changed item 460.5225 to item 460.6225, HMA pavement 5MT 58-28 S.
38	Added item 649.0105, temporary marking line 4-inch yellow.
39	Added item 650.5500, construction staking curb and gutter.

Other

Revised Contract Time for Completion from a completion date of November 9, 2021 to a 70 Working Day Contract.

The responsibility for notifying potential subcontractors and suppliers of these changes remains with the prime contractor.

Sincerely,

Mike Coleman

Proposal Development Specialist
Proposal Management Section

ADDENDUM NO. 01

9040-02-61/62

July 7, 2020

Special Provisions

3. Prosecution and Progress.

Delete the last paragraph, which states:

If work is taking place in 2021, do not begin 2021 work prior to 6:00 AM, Tuesday September 7, 2021.

4. Traffic.

Delete paragraph two, which states:

Match up pavement surface heights at centerline by the end of the work day.

5. Holiday Work Restrictions.

Replace entire article language with the following:

Do not perform work on, nor haul materials of any kind along or across any portion of the highway carrying STH 17 traffic, and entirely clear the traveled way and shoulders of such portions of the highway of equipment, barricades, signs, lights, and any other material that might impede the free flow of traffic during the following holiday periods:

- From noon Friday, September 4, 2020 to 6:00 AM Tuesday, September 8, 2020 for Labor Day;
- From 6:00 AM Saturday, October 3, 2020 to 6:00 AM Monday, October 5, 2020 for Cranberry Fest;
- From noon Friday, September 3, 2021 to 6:00 AM Tuesday, September 7, 2020 for Labor Day;
- From noon Friday, May 28, 2021 to 6:00 AM Tuesday, June 1, 2021 for Memorial Day;
- From noon Friday, July 2, 2020 to 6:00 AM Tuesday, July 6, 2021 for Independence Day;
- From 6:00 AM Saturday to 6:00 AM Monday for 2021 Cranberry Fest (usually the first weekend in October).

stp-107-005 (20181119)

12 Asphaltic Surface.

Replace entire article language with the following:

Replace standard spec 465.2 (1) with the following:

Under the Asphaltic Surface bid item submit a mix design. Furnish asphaltic mixture meeting the requirements specified for HMA Pavement 5 MT 58-28 S under standard spec 460.2; except the engineer will not require the contractor to conform to the quality management program specified under standard spec 460.2.8.

ncr-465-005 (20160401)

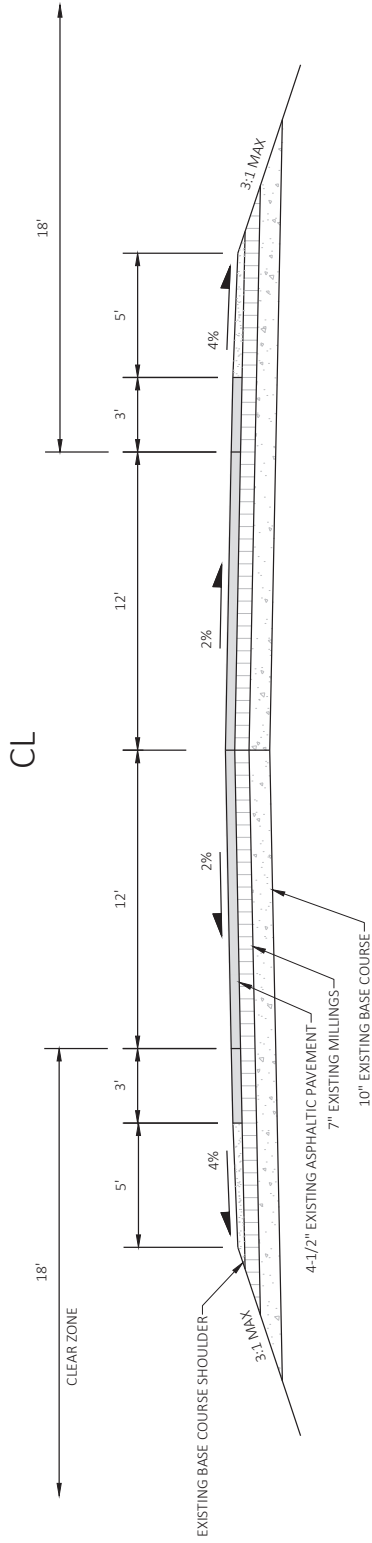
Schedule of Items

Attached, dated July 7, 2020, are the revised Schedule of Items Pages 1-5.

Plan Sheets

The following 8½ x 11-inch sheets are attached and made part of the plans for this proposal:
Revised: 5, 6, 9, 13 – 21, 36, 38, and 39.

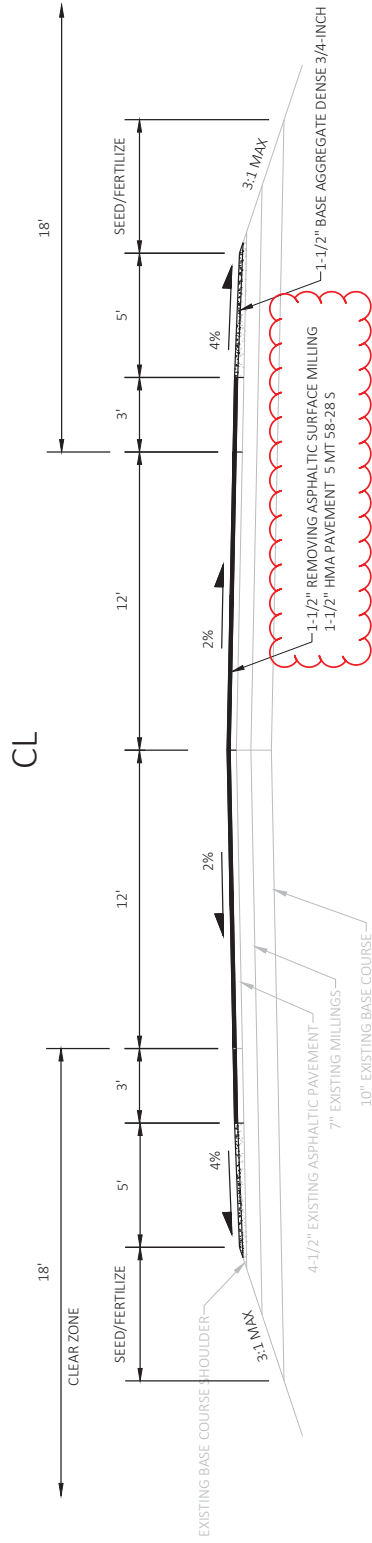
END OF ADDENDUM



EXISTING TYPICAL SECTION

STH 17
STA 128+20 - 1047+30

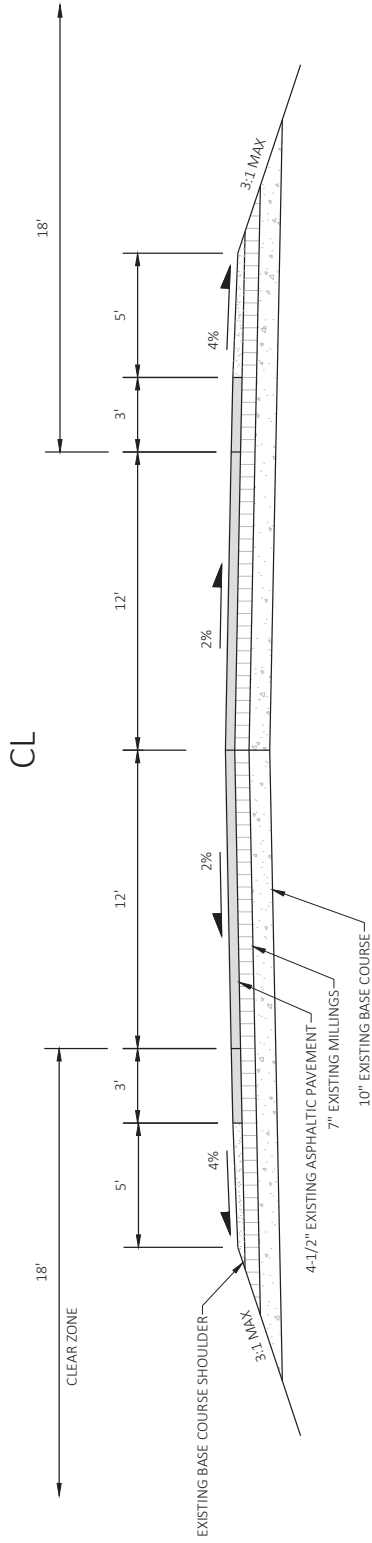
Addendum No. 01
ID 9040-02-61
Revised Sheet 5
July 7, 2020



PROPOSED TYPICAL SECTION

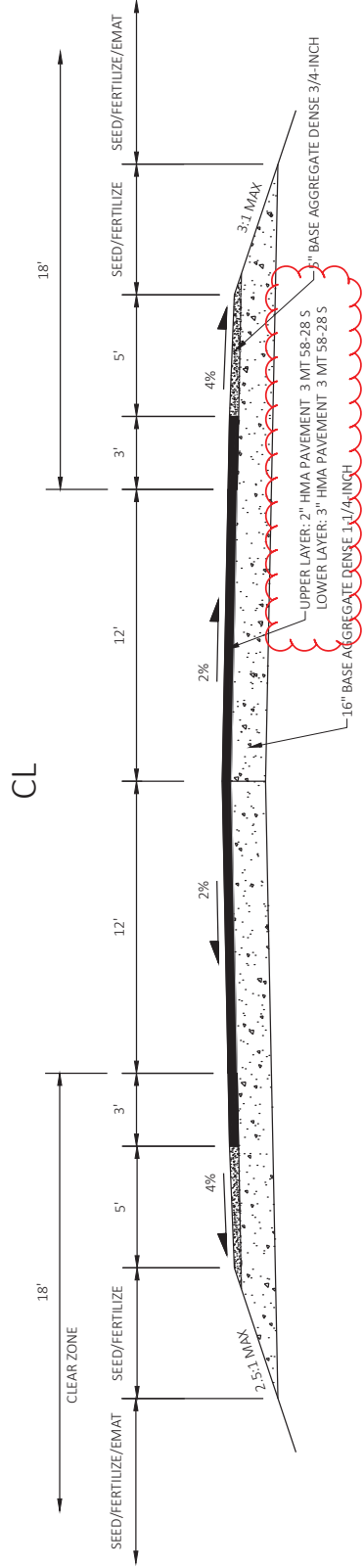
STH 17
STA 128+20 - 1047+30

PROJECT NO: 9040-02-61	COUNTY: ONEIDA / VILAS	PLAN: TYPICAL SECTIONS	SHEET 5	E
FILE NAME: N:\PDS\330\90400231\5\SHETS\PLAN\02\001\15.DWG	FLYBY: DEORA, TODD MICHAEL	PLOT DATE: 7/6/2020 2:50 PM	PLOT SCALE: 1 IN = 5 FT	WSS07/CADD5 SHEET 42
LAYOUT NAME: 003306-15				



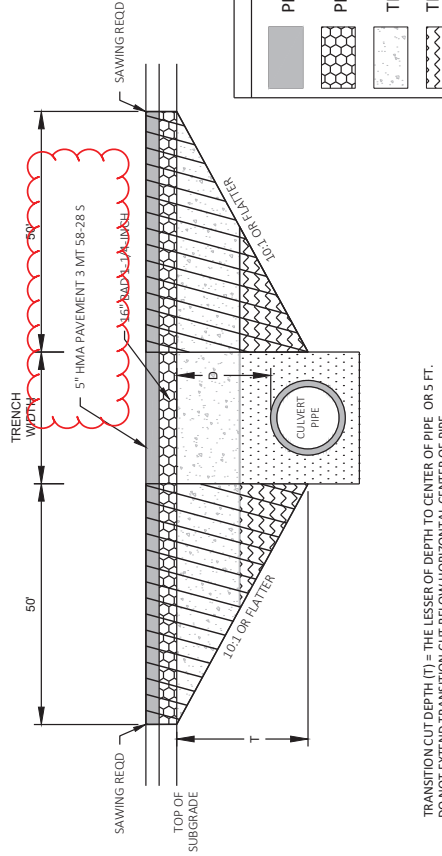
EXISTING TYPICAL SECTION
 STH 17
 STA 128+20 - 1047+30

Addendum No. 01
 ID 9040-02-61
 Revised Sheet 6
 July 7, 2020



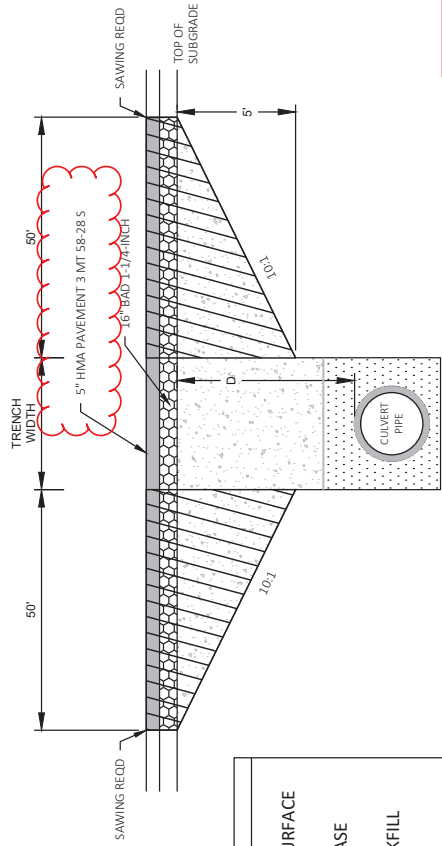
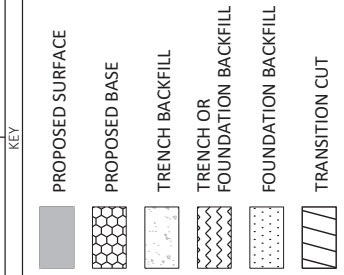
PROPOSED TYPICAL SECTION
 STH 17
 CULVERT REPLACEMENT LOCATIONS

PROJECT NO: 9040-02-62	COUNTY: ONEIDA / VILAS	PLAN: TYPICAL SECTIONS	SHEET 6	E
FILE NAME: N:\PDS\330\9040023\3\SHEETS\PLAN\02\080115.DWG	HWY: STH 17	FLYBY: DEORA, TODD MICHE	1 INS FT	W8507/CADD SHEET 42
LAYOUT NAME: 080307-15	PILOT DATE: 7/7/2020 7:52 AM	PILOT NAME:		



TRANSITION CUT DEPTH (T) = THE LESSER OF DEPTH TO CENTER OF PIPE OR 5 FT.
DO NOT EXCEED TRANSITION CUT BELOW HORIZONTAL CENTER OF PIPE.

DEPTH D < 6 FT



DEPTH D ≥ 6 FT

Addendum No. 01
ID 9040-02-61
Revised Sheet 9
July 7, 2020

NOTES

TRANSITION CUT IS PAID AS EXCAVATION COMMON.
TRANSITION CUT WIDTH IS FROM SUBGRADE SHOULDER POINT TO SUBGRADE SHOULDER POINT.
BACKFILL THE TRANSITION CUT AREAS WITH FOUNDATION AND TRENCH BACKFILLS AS SPECIFIED IN STANDARD SPEC § 5.0.
PERFORM CULVERT PIPE INSTALLATION BEFORE MILLING AND PAVING.

CULVERT PIPE TRANSITION

ROUTE	STA (CL)	DEPTH D (FT)	PIPE DIA (IN)	REMARKS
STH 17	277+70	4.1	24	C 43-17-400
STH 17	309+52	4.9	30	C 43-17-430
STH 17	347+03	2.2	24	C 43-17-460
STH 17	383+64	3.1	24	C 43-17-520
STH 17	476+84	0.8	24	C 43-17-580
STH 17	499+86	4.4	24	C 43-17-590
STH 17	512+70	7.6	24	C 43-17-600
STH 17	596+65	4.8	30	C 43-17-690
STH 17	800+03	2.8	24	C 43-17-830
STH 17	805+19	1.9	30	C 43-17-840
STH 17	820+24	3.2	24	C 43-17-860
ROUTE	STA (CL)	DEPTH D (FT)	PIPE DIA (IN)	REMARKS
STH 17	825+46	4.0	24	C 43-17-870
STH 17	831+13	4.3	24	C 43-17-880
STH 17	837+48	0.7	24	C 43-17-890
STH 17	845+14	3.2	24	C 43-17-900
STH 17	854+15	2.9	24	C 63-17-910
STH 17	907+31	4.4	24	C 63-17-030
STH 17	930+51	0.7	24	C 63-17-050
STH 17	953+31	1.3	24	C-63-17-070
STH 17	979+88	3.7	24	C-63-17-080
STH 17	996+92	2.5	30	C-63-17-090

PROJECT NO: 9040-02-62

HWY: STH 17

COUNTY: ONEIDA/VILAS

PLAN: CONSTRUCTION DETAILS

SHEET 9

LEGEND

36" TYPE D CURB AND GUTTER REMOVAL AND REPLACEMENT (SEE DETAIL)

30" TYPE J CURB AND GUTTER REMOVAL AND REPLACEMENT (SEE DETAIL)

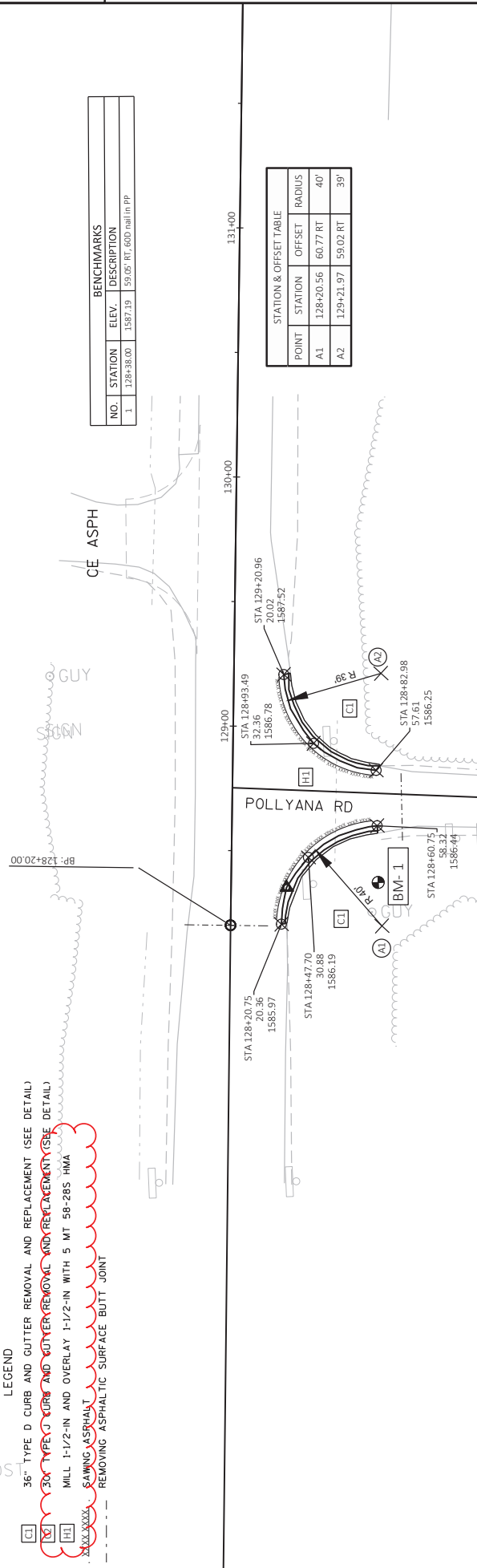
MILL 1-1/2-IN AND OVERLAY 1-1/2-IN WITH 5 MT 58-285 HMA

SAWING ASPHALT

REMOVING ASPHALTIC SURFACE BUTT JOINT

BENCHMARKS			
NO.	STATION	ELEV.	DESCRIPTION
1	128+38.00	1587.19	59.05' RT, 60D NAIL IN PP

STATION & OFFSET TABLE			
POINT	STATION	OFFSET	RADIUS
A1	128+20.56	60.77 RT	40'
A2	129+21.97	59.02 RT	39'



LEGEND

36" TYPE D CURB AND GUTTER REMOVAL AND REPLACEMENT (SEE DETAIL)

30" TYPE J CURB AND GUTTER REMOVAL AND REPLACEMENT (SEE DETAIL)

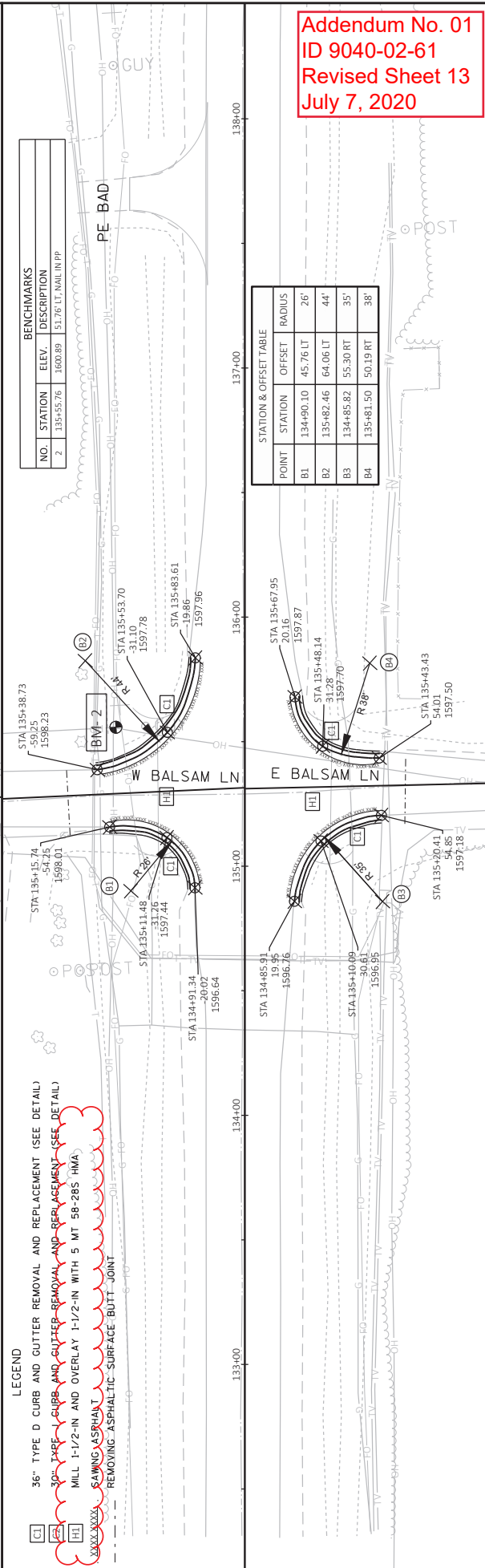
MILL 1-1/2-IN AND OVERLAY 1-1/2-IN WITH 5 MT 58-285 HMA

SAWING ASPHALT

REMOVING ASPHALTIC SURFACE BUTT JOINT

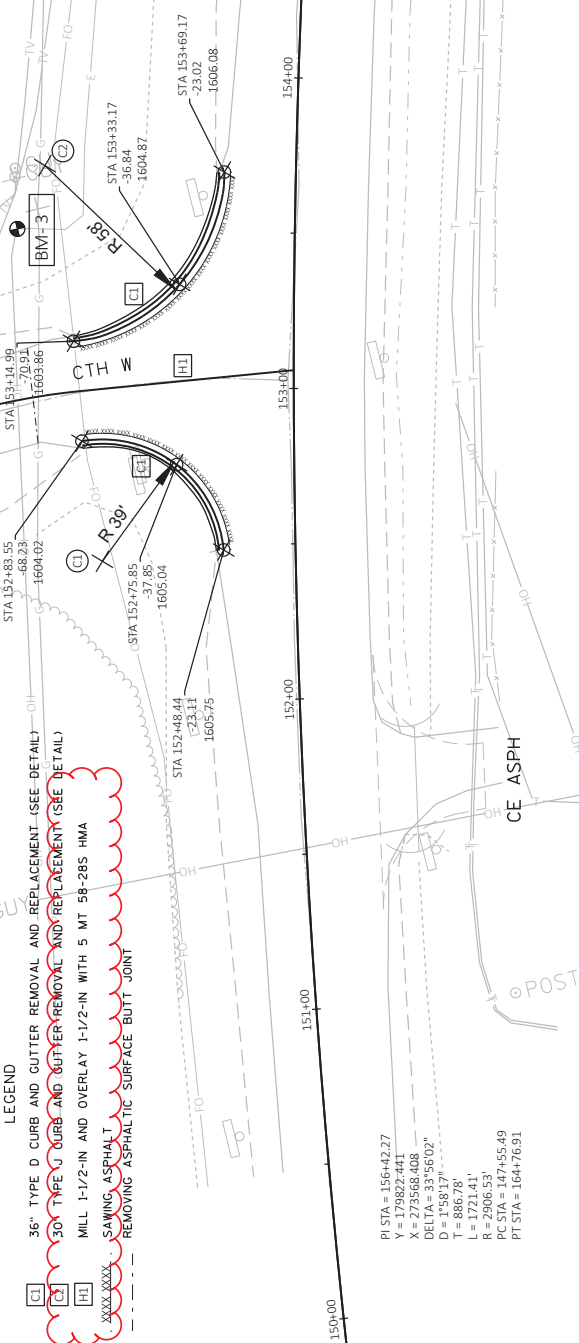
BENCHMARKS			
NO.	STATION	ELEV.	DESCRIPTION
2	135+55.76	1600.89	51.76' LT, NAIL IN PP

STATION & OFFSET TABLE			
POINT	STATION	OFFSET	RADIUS
B1	134+90.10	45.76 LT	26'
B2	135+82.46	64.06 LT	44'
B3	134+85.82	55.30 RT	35'
B4	135+81.50	50.19 RT	38'



Addendum No. 01
ID 9040-02-61
Revised Sheet 13
July 7, 2020

BENCHMARKS			
NO.	STATION	ELEV.	DESCRIPTION
3	153+50.01	1601.42	89.29" I.I., NAIL IN PP



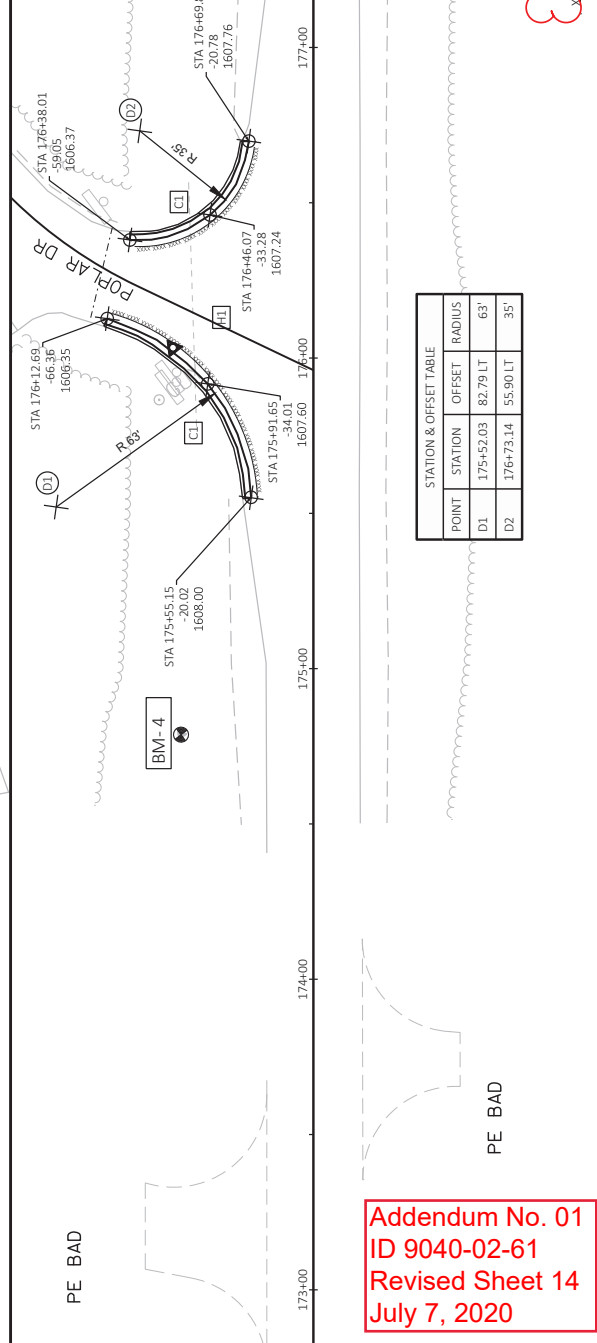
STATION & OFFSET TABLE			
POINT	STATION	OFFSET	RADIUS
C1	152+45.65	62.22 LT	39'
C2	153+69.99	80.83 LT	58'

LEGEND

- C1 36" TYPE D CURB AND GUTTER REMOVAL AND REPLACEMENT (SEE DETAIL)
- C2 30" TYPE J CURB AND GUTTER REMOVAL AND REPLACEMENT (SEE DETAIL)
- H1 MILL 1-1/2-IN AND OVERLAY 1-1/2-IN WITH 5 MT 58-28S HMA
- XXXX XXXX SAWING ASPHALT SURFACE BUTT JOINT
- REMOVING ASPHALTIC SURFACE BUTT JOINT

PI STA = 156+42.27
 Y = 179822.741
 X = 273568.408
 DELTA = 33°56'02"
 D = 1°58'17"
 T = 886.78'
 L = 1721.41'
 R = 2906.53'
 PC STA = 147+55.49
 PT STA = 164+76.91

BENCHMARKS			
NO.	STATION	ELEV.	DESCRIPTION
4	174+78.73	1608.20	42.80" I.I., BRASS CAP IN CONCRETE



STATION & OFFSET TABLE			
POINT	STATION	OFFSET	RADIUS
D1	175+52.03	82.79 LT	63'
D2	176+73.14	55.90 LT	35'

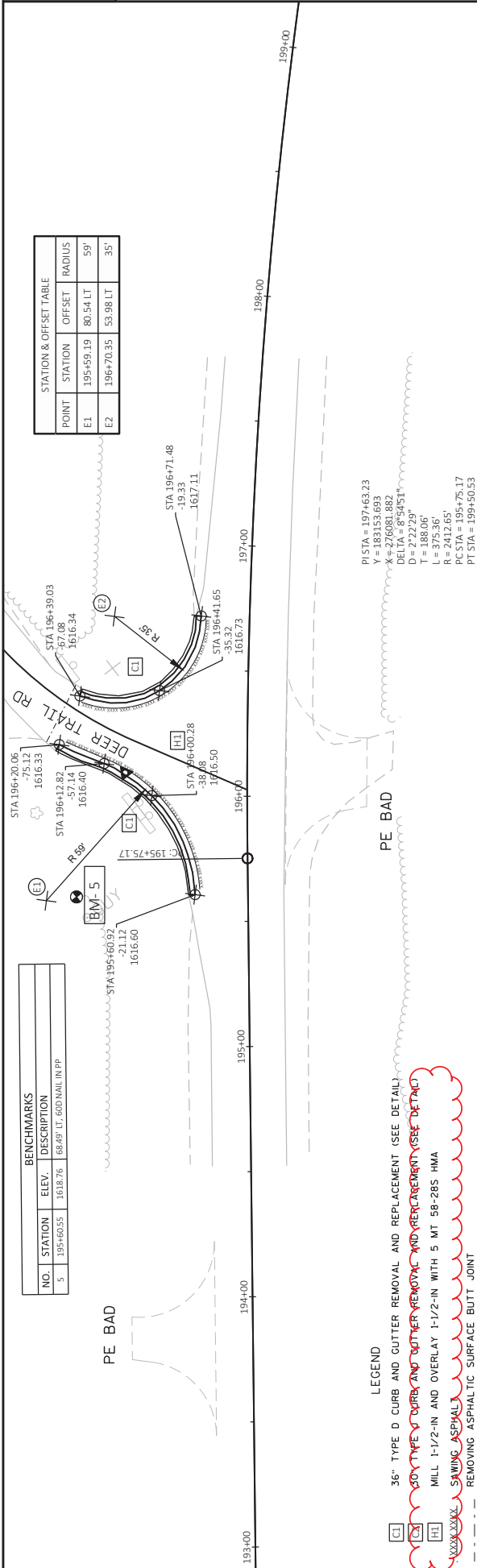
LEGEND

- C1 36" TYPE D CURB AND GUTTER REMOVAL AND REPLACEMENT (SEE DETAIL)
- C2 30" TYPE J CURB AND GUTTER REMOVAL AND REPLACEMENT (SEE DETAIL)
- H1 MILL 1-1/2-IN AND OVERLAY 1-1/2-IN WITH 5 MT 58-28S HMA
- XXXX XXXX SAWING ASPHALT SURFACE BUTT JOINT
- REMOVING ASPHALTIC SURFACE BUTT JOINT

Addendum No. 01
 ID 9040-02-61
 Revised Sheet 14
 July 7, 2020

NO.	STATION	ELEV.	DESCRIPTION
5	195+60.55	1618.76	68.49' LT, 60D NAIL IN PP

STATION & OFFSET TABLE			
POINT	STATION	OFFSET	RADIUS
E1	195+59.19	80.54 LT	59'
E2	196+70.35	53.98 LT	35'



LEGEND

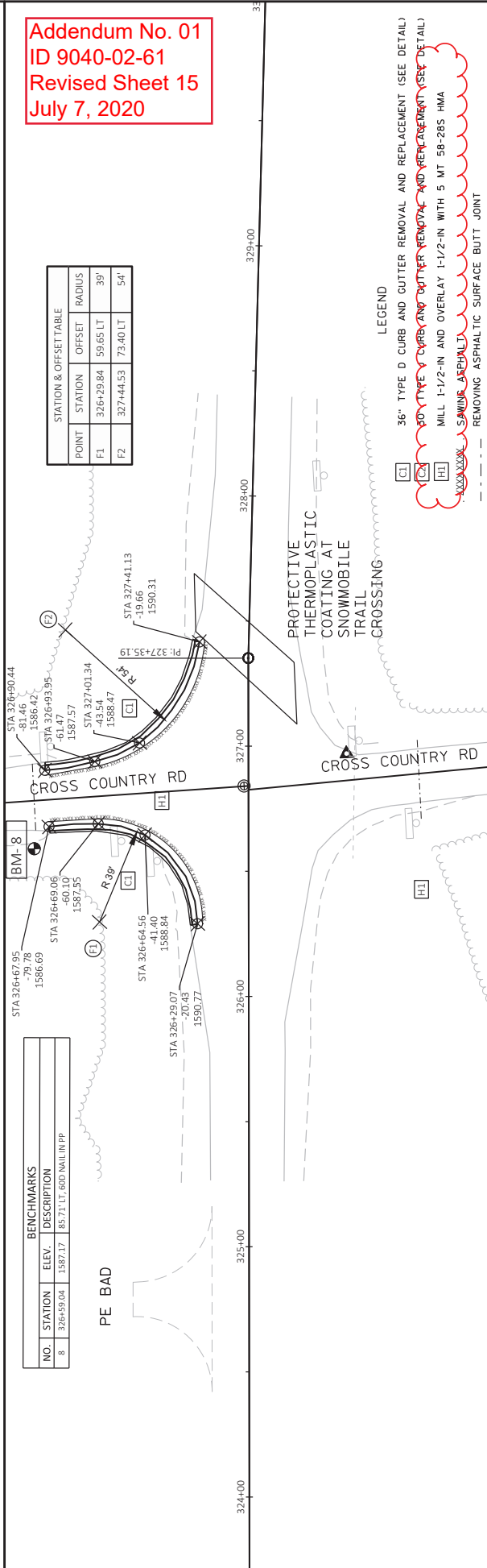
- CI 36" TYPE D CURB AND GUTTER REMOVAL AND REPLACEMENT (SEE DETAIL)
- CI 36" TYPE D CURB AND GUTTER REMOVAL AND REPLACEMENT (SEE DETAIL)
- HI MILL 1-1/2-IN AND OVERLAY 1-1/2-IN WITH 5 MT 58-285 HMA
- HI MILL 1-1/2-IN AND OVERLAY 1-1/2-IN WITH 5 MT 58-285 HMA
- REMOVING ASPHALTIC SURFACE BUTT JOINT

PI STA = 197+653.23
 Y = 183153.693
 X = 270381.882
 DELTA = 149.451"
 DELTA T = 272.239"
 T = 188.06'
 L = 375.36'
 R = 2412.65'
 PC STA = 195+75.17
 PT STA = 199+50.53

NO.	STATION	ELEV.	DESCRIPTION
8	326+59.04	1587.17	85.71' LT, 60D NAIL IN PP

STATION & OFFSET TABLE			
POINT	STATION	OFFSET	RADIUS
F1	326+29.84	59.65 LT	39'
F2	327+44.53	73.40 LT	54'

Addendum No. 01
 ID 9040-02-61
 Revised Sheet 15
 July 7, 2020



LEGEND

- CI 36" TYPE D CURB AND GUTTER REMOVAL AND REPLACEMENT (SEE DETAIL)
- CI 36" TYPE D CURB AND GUTTER REMOVAL AND REPLACEMENT (SEE DETAIL)
- HI MILL 1-1/2-IN AND OVERLAY 1-1/2-IN WITH 5 MT 58-285 HMA
- HI MILL 1-1/2-IN AND OVERLAY 1-1/2-IN WITH 5 MT 58-285 HMA
- REMOVING ASPHALTIC SURFACE BUTT JOINT

PROJECT NO: 9040-02-61 HWY: STH 17 COUNTY: ONEIDA/VILAS DEER TRAIL RD/CROSS COUNTRY RD SHEET 15 E

FILE NAME: N:\PDS\330\9040023\3SHEETS\PLAN\0201-PP-6.LDW LAYOUT NAME: 020205-PP PLOT DATE: 7/6/2020 9:48 PM PLOT BY: DEORIA, TODD MICHE PLOT NAME: 1 IN=40 FT PLOT SCALE: 1 IN=40 FT WISDOT/CADD/SHEET 144

LEGEND

- 36" TYPE D CURB AND GUTTER REMOVAL AND REPLACEMENT (SEE DETAIL)
- 30" TYPE C CURB AND GUTTER REMOVAL AND REPLACEMENT (SEE DETAIL)
- MILL 1-1/2-IN AND OVERLAY 1-1/2-IN WITH 5 MT 58-2BS HMA
- SAWING ASPHALT
- REMOVING ASPHALTIC SURFACE BUTT JOINT

2

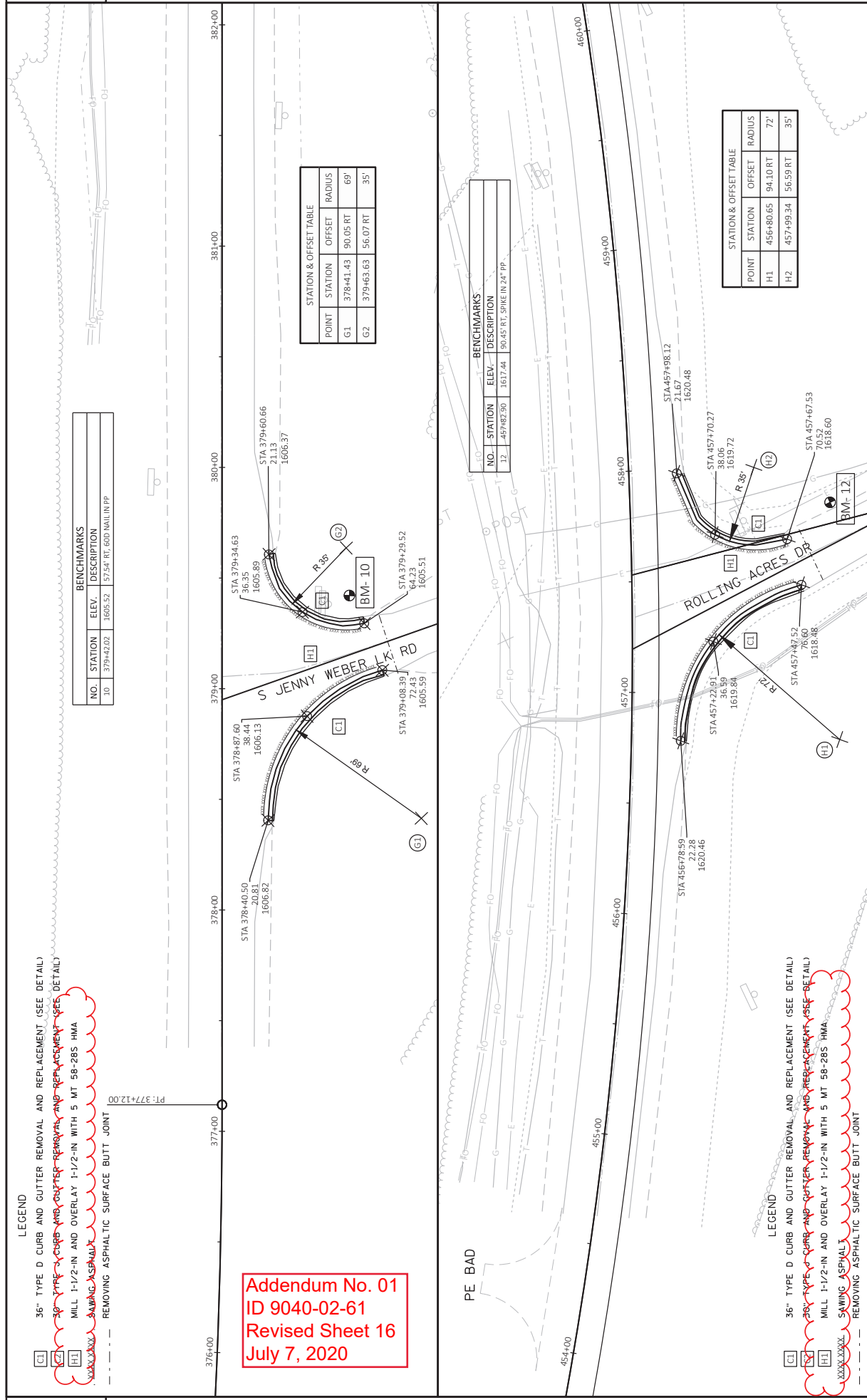
NO.	STATION	ELEV.	DESCRIPTION
10	379+42.02	1605.52	17.54' RT, 60D NAIL IN P.P.

Addendum No. 01
ID 9040-02-61
Revised Sheet 16
July 7, 2020

STATION & OFFSET TABLE			
POINT	STATION	OFFSET	RADIUS
G1	378+41.43	90.05 RT	69'
G2	379+43.63	56.07 RT	35'

BENCHMARKS		
NO.	STATION	ELEV. - DESCRIPTION
12	457+82.50	1617.44 90.45' RT, SPIKE IN 24" P.P.

STATION & OFFSET TABLE			
POINT	STATION	OFFSET	RADIUS
H1	456+80.65	94.10 RT	72'
H2	457+99.34	56.59 RT	35'



LEGEND

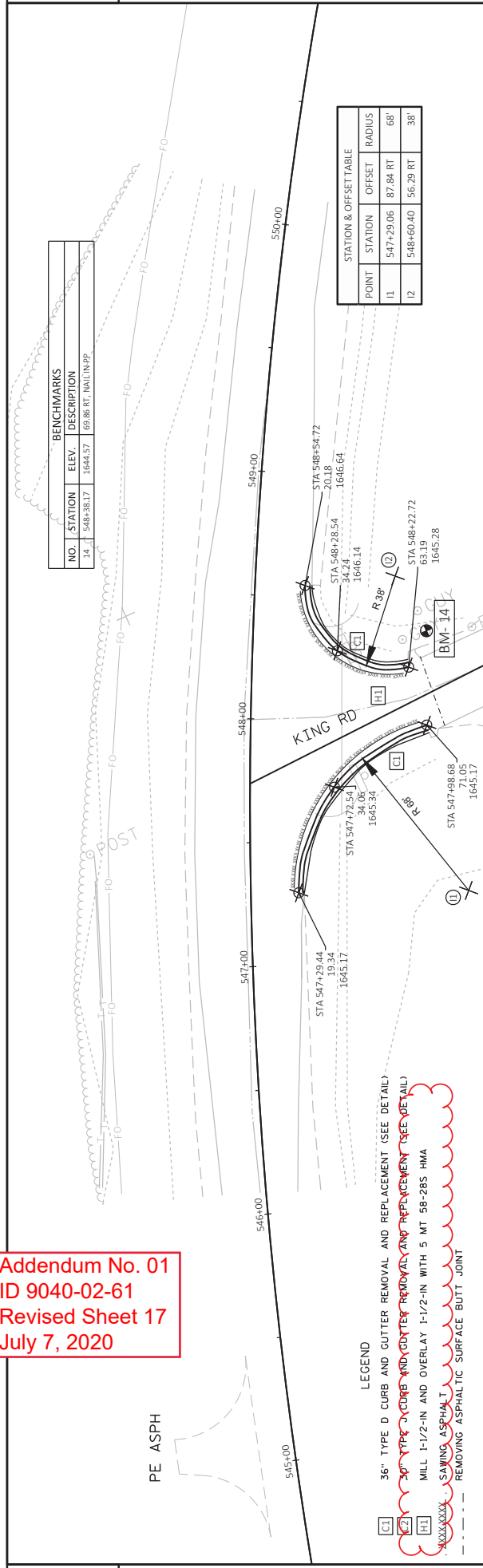
- 36" TYPE D CURB AND GUTTER REMOVAL AND REPLACEMENT (SEE DETAIL)
- 30" TYPE C CURB AND GUTTER REMOVAL AND REPLACEMENT (SEE DETAIL)
- MILL 1-1/2-IN AND OVERLAY 1-1/2-IN WITH 5 MT 58-2BS HMA
- SAWING ASPHALT
- REMOVING ASPHALTIC SURFACE BUTT JOINT

PROJECT NO: 9040-02-61	COUNTY: ONEIDA/VILAS	S JENNY WEBER LAKE RD/ROLLING ACRES DR	SHEET 16
FILE NAME: N:\PDS\330\904002\33SHEETS\PLAN\0201\PG-6.LDWG	FLYBY: DEORIA, TODD MCHIE	FLYBY: DEORIA, TODD MCHIE	FLYBY: DEORIA, TODD MCHIE
LAYOUT NAME: 0201-04.pdf	PLLOT DATE: 7/6/2020 3:48 PM	PLLOT NAME:	PLLOT SCALE: 1 IN=40 FT

BENCHMARKS		
NO.	STATION	ELEV.
14	548+381.7	69.86 RT, NAIL IN PP.
15	596+411.4	65.97 LT, NAIL IN PP.

STATION & OFFSET TABLE			
POINT	STATION	OFFSET	RADIUS
I1	547+29.06	87.84 RT	68'
I2	548+60.40	56.29 RT	38'

Addendum No. 01
 ID 9040-02-61
 Revised Sheet 17
 July 7, 2020



LEGEND

36" TYPE D CURB AND GUTTER REMOVAL AND REPLACEMENT (SEE DETAIL)

30" TYPE C CURB AND GUTTER REMOVAL AND REPLACEMENT (SEE DETAIL)

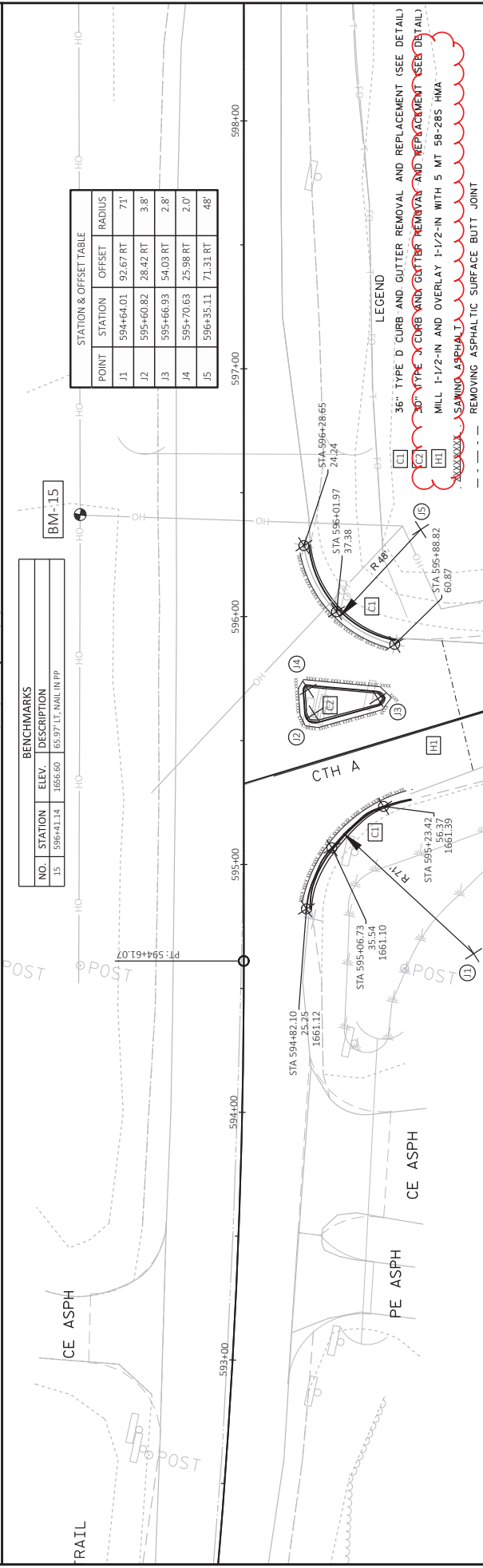
MILL 1-1/2-IN AND OVERLAY 1-1/2-IN WITH 5 MT 58-285 HMA

SAWING ASPHALT

REMOVING ASPHALTIC SURFACE BUTT JOINT

BENCHMARKS		
NO.	STATION	ELEV.
15	596+411.4	65.97 LT, NAIL IN PP.

STATION & OFFSET TABLE			
POINT	STATION	OFFSET	RADIUS
J1	594+64.01	92.67 RT	71'
J2	595+60.82	28.42 RT	3.8'
J3	595+66.93	54.03 RT	2.8'
J4	595+70.63	25.98 RT	2.0'
J5	596+35.11	71.31 RT	48'



LEGEND

36" TYPE D CURB AND GUTTER REMOVAL AND REPLACEMENT (SEE DETAIL)

30" TYPE C CURB AND GUTTER REMOVAL AND REPLACEMENT (SEE DETAIL)

MILL 1-1/2-IN AND OVERLAY 1-1/2-IN WITH 5 MT 58-285 HMA

SAWING ASPHALT

REMOVING ASPHALTIC SURFACE BUTT JOINT

PROJECT NO: 9040-02-61

HWY: STH 17

COUNTY: ONEIDA/VILAS

FLYBY: DEORIA, TODD MCHAE

FLYBY: KING RD/CTH A

FLYBY: 1 IN/40 FT

PLOT DATE: 7/6/2020 3:49 PM

PLOT SCALE: 1 IN=40 FT

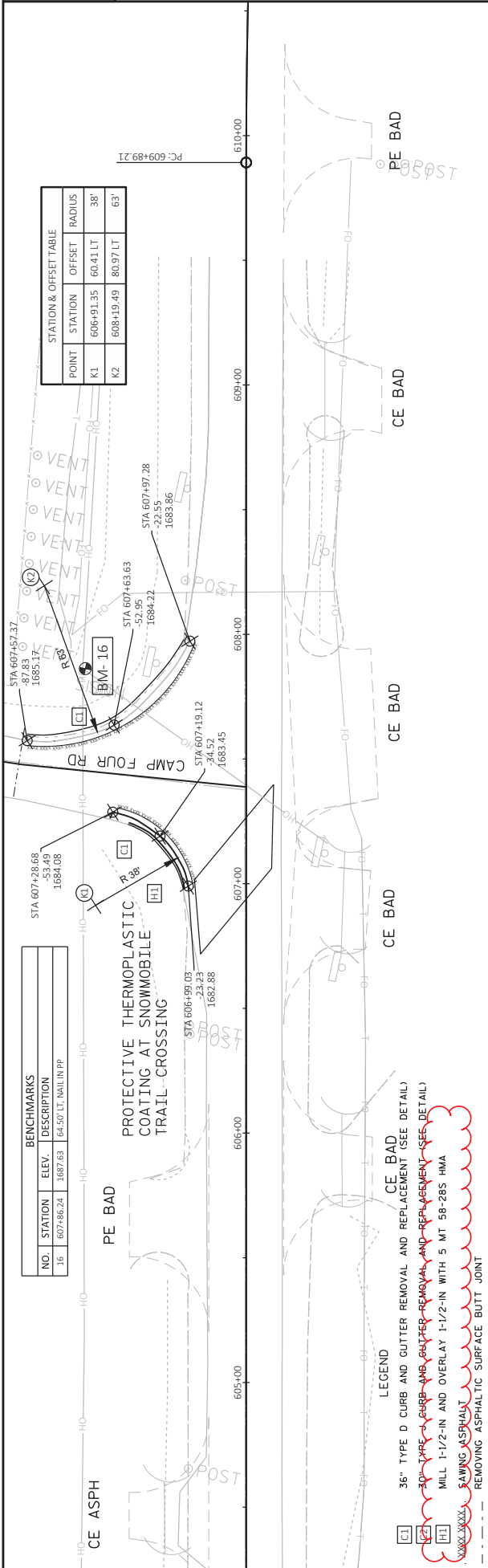
SHEET 17

E

FILE NAME: N:\PDS\330\904002\33SHEETS\PLAN\02001-PP-6.LDWG

LAYOUT NAME: 020205-PP

WISDOT/CAD/ISS/SHEET 14



BENCHMARKS			
NO.	STATION	ELEV.	DESCRIPTION
16	607+86.24	1687.63	64.50 LT. NAIL IN PP

STATION & OFFSET TABLE			
POINT	STATION	OFFSET	RADIUS
K1	606+91.35	60.41 LT	38'
K2	608+19.49	80.97 LT	63'

LEGEND

36" TYPE D CURB AND GUTTER REMOVAL AND REPLACEMENT (SEE DETAIL)

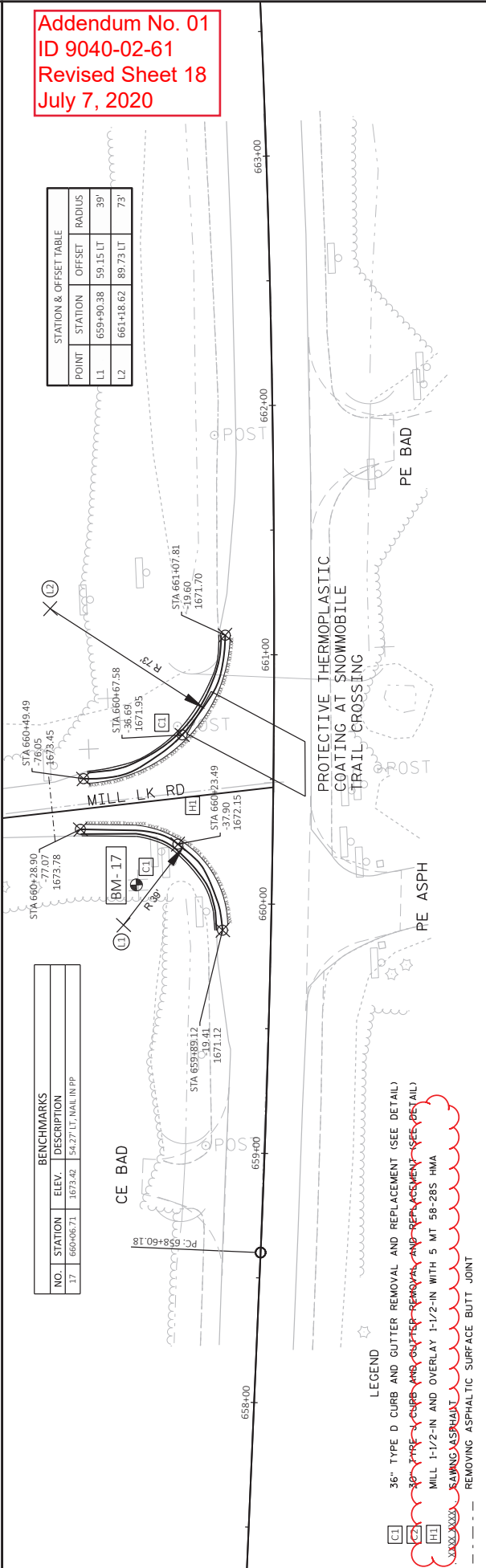
30" TYPE A CURB AND GUTTER REMOVAL AND REPLACEMENT (SEE DETAIL)

MILL 1-1/2-IN AND OVERLAY 1-1/2-IN WITH 5 MT 58-285 HMA

SAWING ASPHALT

REMOVING ASPHALTIC SURFACE BUTT JOINT

Addendum No. 01
 ID 9040-02-61
 Revised Sheet 18
 July 7, 2020



BENCHMARKS			
NO.	STATION	ELEV.	DESCRIPTION
17	660+06.71	1673.42	54.27 LT. NAIL IN PP

STATION & OFFSET TABLE			
POINT	STATION	OFFSET	RADIUS
L1	659+90.38	59.15 LT	39'
L2	661+18.62	89.73 LT	73'

LEGEND

36" TYPE D CURB AND GUTTER REMOVAL AND REPLACEMENT (SEE DETAIL)

30" TYPE A CURB AND GUTTER REMOVAL AND REPLACEMENT (SEE DETAIL)

MILL 1-1/2-IN AND OVERLAY 1-1/2-IN WITH 5 MT 58-285 HMA

SAWING ASPHALT

REMOVING ASPHALTIC SURFACE BUTT JOINT

LEGEND

- 36" TYPE D CURB AND GUTTER REMOVAL AND REPLACEMENT (SEE DETAIL)
- 30" TYPE V CURB AND GUTTER REMOVAL AND REPLACEMENT (SEE DETAIL)
- MILL 1-1/2-IN AND OVERLAY 1-1/2-IN WITH 5-MT-58-28S-HMA
- SAWING ASPHALT
- REMOVING ASPHALTIC SURFACE BUTT JOINT

BENCHMARKS			
NO.	STATION	ELEV.	DESCRIPTION
18	668+29.97	1676.79	71.78" LT, NAIL IN 2.4" PINE

BM-18

666+00 667+00 668+00 669+00 670+00 671+00

INDIAN LK RD

STATION & OFFSET TABLE			
POINT	STATION	OFFSET	RADIUS
M1	667+70.26	82.47 RT	62'
M2	668+93.65	60.01 RT	40'

BENCHMARKS			
NO.	STATION	ELEV.	DESCRIPTION
19	687+81.60	1683.63	49.76" LT, NAIL IN PP

Addendum No. 01
 ID 9040-02-61
 Revised Sheet 19
 July 7, 2020

STATION & OFFSET TABLE			
POINT	STATION	OFFSET	RADIUS
N1	686+30.61	30.70 LT	8.7'
N2	686+34.45	88.60 LT	47'
N3	686+59.93	61.28 LT	37'
N4	686+89.12	89.74 LT	7.6'
N5	687+84.80	69.94 LT	45'

CE ASPH
 STA 686+54.87
 -44.96
 1683.96

CE ASPH
 STA 686+21.92
 -31.00
 1682.60

CE ASPH
 STA 687+39.64
 -69.62
 1684.09

CE ASPH
 STA 687+88.96
 -22.77
 1685.21

685+00 686+00 687+00 688+00 689+00 690+00

PE BAD

CTH D

INDIAN LAKE RD/CTH D

LEGEND

- 36" TYPE D CURB AND GUTTER REMOVAL AND REPLACEMENT (SEE DETAIL)
- 30" TYPE V CURB AND GUTTER REMOVAL AND REPLACEMENT (SEE DETAIL)
- MILL 1-1/2-IN AND OVERLAY 1-1/2-IN WITH 5-MT-58-28S-HMA
- SAWING ASPHALT
- REMOVING ASPHALTIC SURFACE BUTT JOINT

PROJECT NO: 9040-02-61

HWY: STH 17

COUNTY: ONEIDA/VILAS

INDIAN LAKE RD/CTH D

SHEET 19

E

FILE NAME: N:\PDS\330\904002\3\SHEETS\PLAN\0201-PP-61.DWG

DATE: 7/6/2020 3:49 PM

PLOT NAME: DEORIA, TODD MCHIE

PLOT SCALE: 1 IN=40 FT

WISDOT/CADDS SHEET 44

LEGEND

C1 36" TYPE D CURB AND GUTTER REMOVAL AND REPLACEMENT (SEE DETAIL)

C2 30" TYPE J CURB AND GUTTER REMOVAL AND REPLACEMENT (SEE DETAIL)

H1 MILL 1-1/2-IN AND OVERLAY 1-1/2-IN WITH 5 MT 58-285 HMA

XXXXXX SAWING ASPHALT REMOVING ASPHALTIC SURFACE BUTT JOINT

BENCHMARKS

NO.	STATION	ELEV.	DESCRIPTION
20	743+79.16	1663.55	86.00' RT, NAIL IN PP

Addendum No. 01
ID 9040-02-61
Revised Sheet 20
July 7, 2020

STATION & OFFSET TABLE

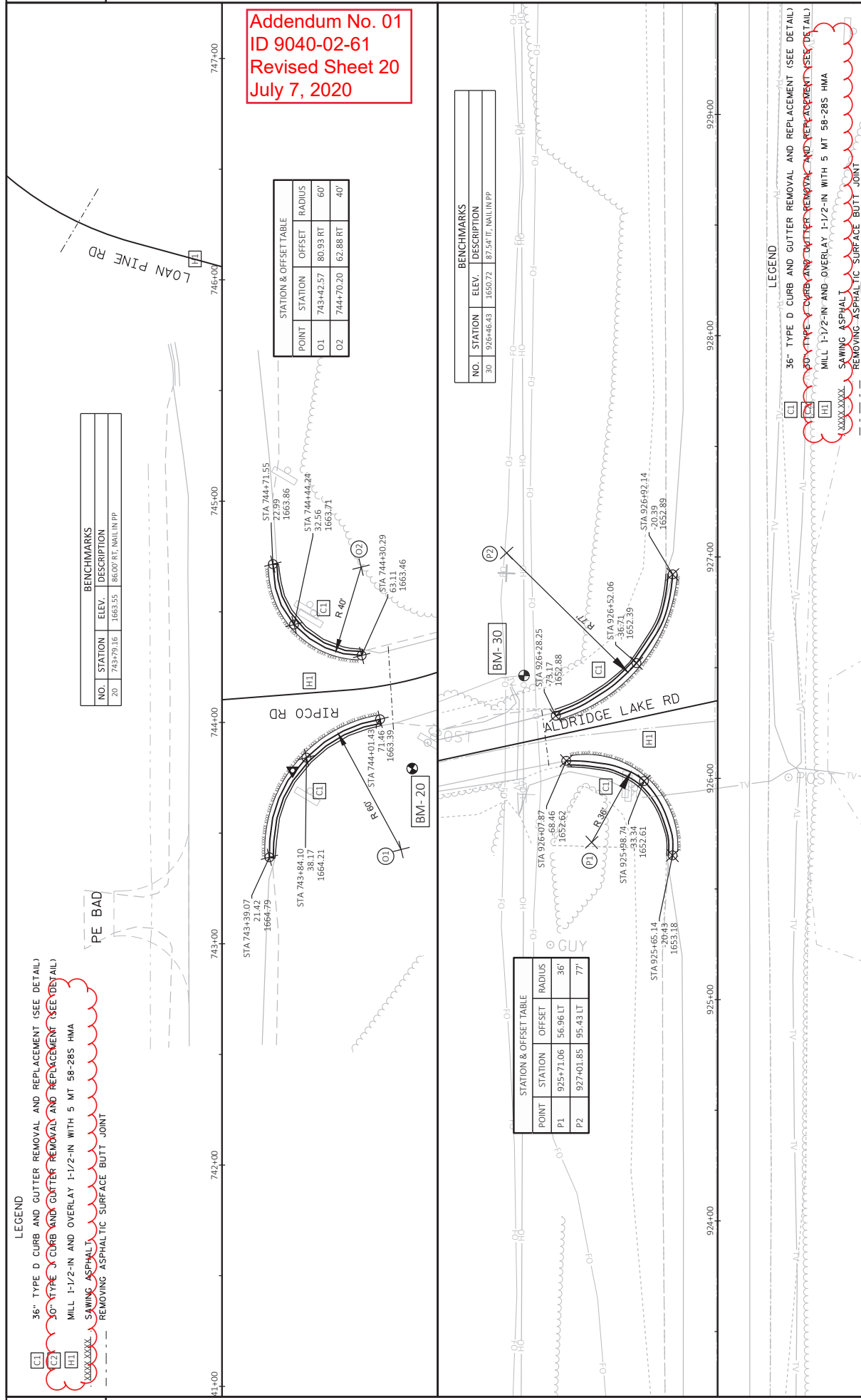
POINT	STATION	OFFSET	RADIUS
O1	743+42.57	80.93 RT	60'
O2	744+70.20	62.88 RT	40'

BENCHMARKS

NO.	STATION	ELEV.	DESCRIPTION
30	926+46.43	1650.72	87.54' TR, NAIL IN PP

STATION & OFFSET TABLE

POINT	STATION	OFFSET	RADIUS
P1	925+71.06	56.96 LT	36'
P2	927+01.85	95.43 LT	77'



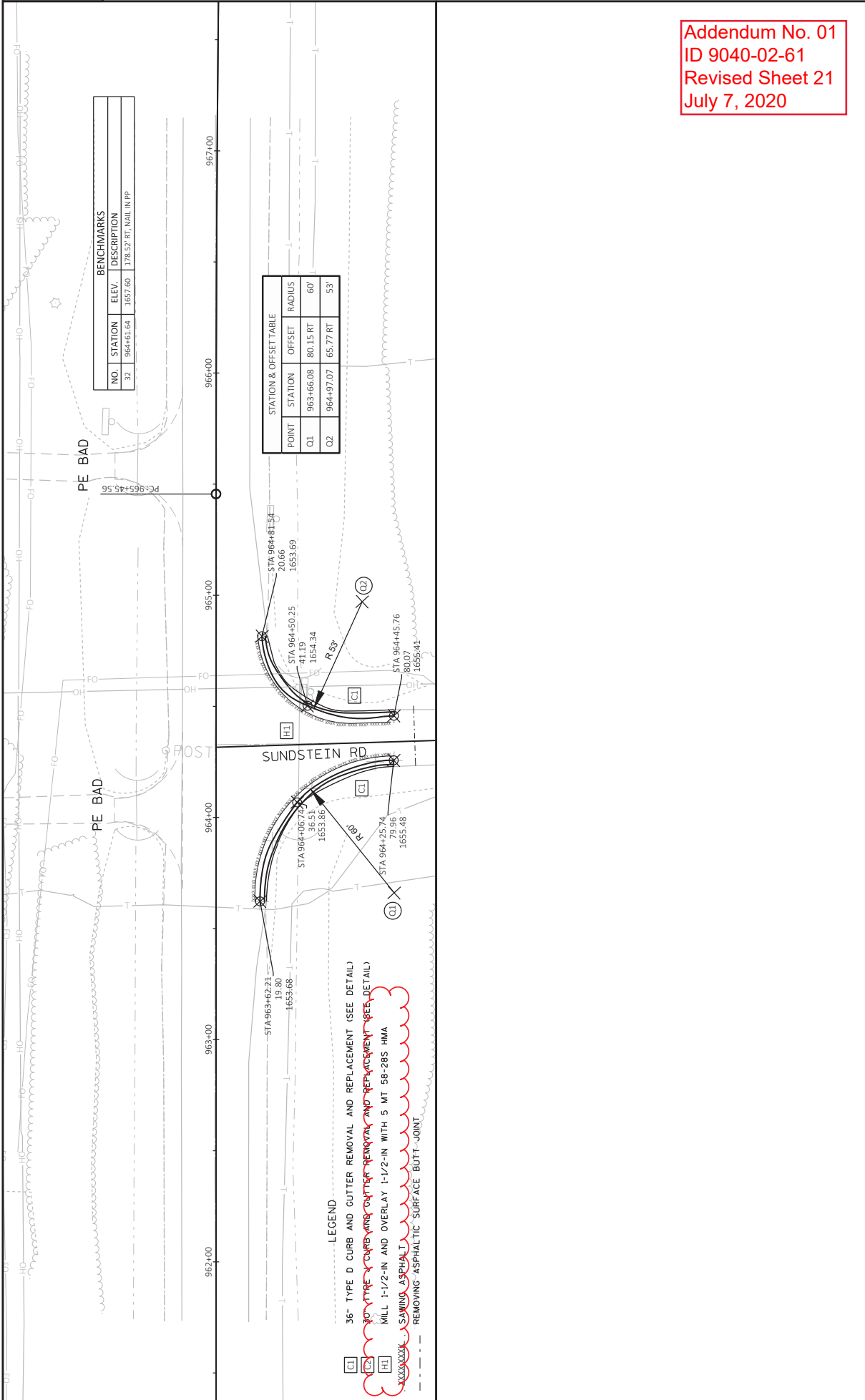
LEGEND

C1 36" TYPE D CURB AND GUTTER REMOVAL AND REPLACEMENT (SEE DETAIL)

C2 30" TYPE J CURB AND GUTTER REMOVAL AND REPLACEMENT (SEE DETAIL)

H1 MILL 1-1/2-IN AND OVERLAY 1-1/2-IN WITH 5 MT 58-285 HMA

XXXXXX SAWING ASPHALT REMOVING ASPHALTIC SURFACE BUTT JOINT



Addendum No. 01
ID 9040-02-61
Revised Sheet 36
July 7, 2020

PROJECTS 9040-02-61 & 9040-02-62	305.0110 BASE AGGREGATE DENSE 3/4-INCH TON	305.0120 BASE AGGREGATE DENSE 1 1/4-INCH TON	COMMENTS
PROJECT 9040-02-61 STA 277+70 - STA 996+92	9,003		ROADWAY
PROJECT 9040-02-62 STA 277+70 - STA 996+92	749	10,609	CULVERTS
TOTAL	9,752	10,609	

PROJECT 9040-02-61 & 9040-02-62	450.4000 COLD WEATHER PAVING TON	495.0605 TACK COAT GAL	460.6225 HMA PAVEMENT 5 MT 58-28 S TON	465.0105 ASPHALTIC SURFACE TON	465.0110 ASPHALTIC SURFACE PATCHING TON
PROJECT 9040-02-61 128+20-1047+30 C&G REMOVALS	6517	21625	26065		135
TOTAL	6517	22164	26065	650	135

PROJECT 9040-02-62	CLASS III		CLASS IV		APRON ENDWALLS FOR CULVERT PIPE RC
	24-INCH LF	30-INCH LF	24-INCH LF	30-INCH LF	
CULVERT					
C 43-17-400	--	--	68	--	2
C 43-17-430	--	88	--	--	2
C 43-17-460	--	--	66	--	2
C 43-17-520	78	--	--	--	2
C 43-17-580	--	--	56	--	2
C 43-17-590	86	--	--	--	2
C 43-17-600	24	--	--	--	2
C 43-17-690	--	6	--	--	2
C 43-17-830	74	--	--	--	2
C 43-17-840	--	--	--	64	2
C 43-17-860	78	--	--	--	2
C 43-17-870	96	--	--	--	2
C 43-17-880	94	--	--	--	2
C 43-17-890	--	--	60	--	2
C 43-17-900	60	--	--	--	2
C 63-17-910	64	--	--	--	2
C 63-17-030	86	--	--	--	2
C 63-17-050	--	--	60	--	2
C 63-17-070	--	--	60	--	2
C 63-17-080	74	--	--	--	2
C 63-17-090	--	--	--	78	2
TOTAL:	814	94	370	142	34
					8

PWL Mixture Use Table

The following acceptance criteria are applicable for this project

Location	Station	Mixture Use	Underlying Surface	Thick ness	Quality Management Program to be used for:	
					Mixture Acceptance	Density Acceptance
12 foot Driving Lane	128+20 to 1047+30	Upper Layer	Milled Existing HMA Surface	1-1/2"	PWL Incentive Air Voids HMA Pavement 460.2010	HMA Pavement 460.2005
Shoulders, intersections, turn/bypass lanes	128+20 to 1047+30	Upper Layer	Milled Existing HMA Surface	1-1/2"	PWL Incentive Air Voids HMA Pavement 460.2010	Acceptance Testing by the department; Not eligible for incentive
Various		C&G Removals	Base Aggregate	4"	QMP as per SS 465	Acceptance by ordinary compaction
				total		
					135	

PROJECT 9040-02-61	465.0450 ASPHALTIC INTERSECTION RUMBLE STRIPS SY	465.0475 ASPHALTIC CENTERLINE RUMBLE STRIPS 2-LANE RURAL LF
PROJECT 9040-02-61	--	68967
1045+90 - 1046+15, 1' - 10.5' RT	26	--
1044+15 - 1044+40, 1' - 10.5' RT	26	--
1038+20 - 1038+45, 1' - 10.5' RT	27	--
TOTAL	79	68,967

Addendum No. 01
 ID 9040-02-61
 Revised Sheet 38
 July 7, 2020

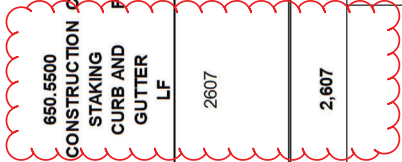
3

PROJECT 9040-02-61 & PROJECT 9040-02-62	629.0210 FERTILIZER TYPE B CWT	630.0120 SEEDING MIXTURE #20 LB	630.0500 SEED WATER MGAL	Notes
LOCATION PROJECT 9040-02-61 SHOULDERS:	72.06	3088.18		
C&G REPLACEMENTS:				
128+70	0.03	1.34	1.12	Pollyana Rd
135+30	0.06	2.46	2.05	Balsam Ln
153+10	0.04	1.67	1.39	CTHW
176+00	0.03	1.18	0.98	Poplar Rd
196+10	0.04	1.68	1.40	Deer Trail Rd
326+85	0.05	1.93	1.61	Cross County Rd
378+95	0.04	1.69	1.41	S. Jenny Weber Lake Rd
457+25	0.04	1.90	1.58	Rolling Acres Dr
547+80	0.04	1.76	1.47	King Rd
595+60	0.03	1.46	1.22	CTHA
660+48	0.05	1.93	1.61	Mill Lake Rd
668+52	0.04	1.79	1.49	Indian Lake Rd
687+25	0.02	0.92	0.77	CTHD
744+13	0.04	1.88	1.57	Ripco Rd
926+35	0.04	1.86	1.55	Aldridge Lake Rd
964+32	0.05	2.03	1.69	Sundstein Rd
PROJECT 9040-02-62				
CULVERT REPLACEMENTS:				
277+70	0.22	9.56	7.95	
309+52	0.40	17.09	14.22	
347+03	0.24	10.31	8.58	
383+64	0.20	8.56	7.12	
476+84	0.16	6.79	5.79	
499+86	0.49	21.11	17.56	
512+70	0.66	28.16	23.42	
596+65	0.25	10.75	8.94	
603+50	0.39	16.61	13.81	
800+03	0.27	11.69	9.72	
805+19	0.23	9.72	8.09	
820+24	0.25	10.77	8.96	
825+46	0.36	15.50	12.89	
831+13	0.40	17.31	14.40	
837+48	0.17	7.32	6.09	
845+14	0.21	8.86	7.37	
854+15	0.25	10.88	9.05	
907+31	0.43	18.23	15.16	
930+51	0.15	6.64	5.52	
953+31	0.19	7.99	6.65	
979+88	0.28	12.20	10.15	
996+92	0.30	12.91	10.74	
Undistributed	0.65	27.91	23.22	
9040-02-61 TOTAL	73	3,116	24	
9040-02-62 TOTAL	7	307	255	
PROJECT TOTAL	80	3,423	279	

PROJECT 9040-02-61 & PROJECT 9040-02-62	633.5200 MARKERS END EA	634.0614 POSTS 4X6-INCH 14-FT EA	638.2102 MOVING SIGNS TYPE II EA	643.0100 TRAFFIC CONTROL DRUMS EA	643.0300 TRAFFIC CONTROL DRUMS EA	643.0900 TRAFFIC CONTROL SIGNS EA	NO. DAYS	NO. DAYS	NO. DAYS
LOCATION PROJECT 9040-02-61	--	2	4	0.5	24	7	10	95	
PROJECT 9040-02-62	42	--	--	0.5	28	42	8	46	
9040-02-61 TOTALS:	42	2	4	0.5	168	950			
9040-02-62 TOTALS:	42	2	4	0.5	1176	368			
PROJECT TOTALS:	42	2	4	1	1344	1318			
MARKING LINE EPOXY									
PROJECTS 9040-02-61 & PROJECT 9040-02-62	646.1020 MARKING LINE EPOXY 4-INCH YELLOW	646.1040 GROOVED WET REFLECTIVE WHITE	646.1020 MARKING LINE EPOXY 4-INCH WHITE	646.3040 STOP LOCATING LINE 18-INCH WET REFLECTIVE	648.0100 TRAFFIC CONTROL DRUMS	648.0100 TRAFFIC CONTROL SIGNS	649.0105 TEMPORARY MARKING LINE 4-INCH YELLOW	649.0120 TEMPORARY EPOXY 4-INCH YELLOW	
LOCATION PROJECT 9040-02-61	84856	--	--	--	17.4	72621	--	--	
128+20-1047+30	--	182800	--	--	--	--	--	72621	
EDGE LINE	--	--	100	--	--	--	--	--	
CTH W	--	--	250	42	--	--	--	--	
CTH A	--	--	250	--	--	--	--	--	
CTH D	--	--	--	--	--	--	--	--	
PROJECT 9040-02-62									
277+70	220	--	--	--	--	--	--	--	
309+52	220	--	--	--	--	--	--	--	
347+03	220	--	--	--	--	--	--	--	
383+64	220	--	--	--	--	--	--	--	
476+84	220	--	--	--	--	--	--	--	
499+86	220	--	--	--	--	--	--	--	
512+70	220	--	--	--	--	--	--	--	
596+65	220	--	--	--	--	--	--	--	
800+03	220	--	--	--	--	--	--	--	
805+19	220	--	--	--	--	--	--	--	
820+24	220	--	--	--	--	--	--	--	
825+46	220	--	--	--	--	--	--	--	
831+13	220	--	--	--	--	--	--	--	
837+48	220	--	--	--	--	--	--	--	
845+14	220	--	--	--	--	--	--	--	
907+31	220	--	--	--	--	--	--	--	
930+51	220	--	--	--	--	--	--	--	
953+31	220	--	--	--	--	--	--	--	
979+88	220	--	--	--	--	--	--	--	
996+92	220	--	--	--	--	--	--	--	
9040-02-61 TOTAL:	84,856	--	182,800	600	42	17.4	72,621	--	
9040-02-62 TOTAL:	4,620	4,620	600	42	17.4	72,621	--	--	
PROJECT TOTAL:	89,476	4,620	182,800	600	42	17.4	72,621	38	

CONSTRUCTION STAKING

PROJECT 9040-02-61 & PROJECT 9040-02-62	650.4000 CONSTRUCTION STAKING STORM SEWER	EA	650.5500 CONSTRUCTION STAKING CURB AND GUTTER	LF	650.6000 CONSTRUCTION STAKING PIPE CULVERTS	EA	650.8000 CONSTRUCTION STAKING RESURFACING REFERENCE	LF	650.9910 CONSTRUCTION STAKING CONTROL	LS	690.0150 SAWING ASPHALT	LF
PROJECT 9040-02-61 128+20 - 1047+30			2607				91910	1			2733	
PROJECT 9040-02-62 128+20 - 1047+30	3				20							1,260
TOTAL:	3		2,607		20		91,910	1			3,993	



PROJECT 9040-02-61

**SPV.0180.01
PROTECTIVE THERMOPLASTIC
COATING AT
SNOWMOBILE TRAIL
CROSSINGS**

LOCATION	SY	NOTES
327+40	108	CROSS COUNTRY RD
385+48	67	N OF JENNIE WEBER LAKE RD
437+05	67	LILY BASS RD
469+70	67	TAMARACK RD
540+38	75	N OF MARATHON GAS STATION
589+90	67	S OF CTH A
607+15	100	CAMP 4 RD
621+05	67	ORCHARD DR
642+15	67	SUGAR CAMP LAKE
660+60	83	MILL LAKE RD
912+32	92	RIPCO- ALDRIDGE LAKE RD
TOTAL:	858	

PROJECT 9040-02-62

**SPV.0060.01
LANE
SHIFT**

STATION	EA
CULVERT REPLACEMENTS	
277+70	-
309+52	1
347+03	-
383+64	-
476+84	-
499+86	1
512+70	1
596+65	-
800+03	1
805+19	1
820+24	1
825+46	1
831+13	1
837+48	-
845+14	1
854+15	-
907+31	1
930+51	-
953+31	1
979+88	1
996+92	1
TOTAL:	13

Addendum No. 01
ID 9040-02-61
Revised Sheet 39
July 7, 2020



Proposal Schedule of Items

Proposal ID: 20200714009 Project(s): 9040-02-61, 9040-02-62

Federal ID(s): WISC 2020349, WISC 2020350

SECTION: 0001

Contract Items

Alt Set ID:

Alt Mbr ID:

Proposal Line Number	Item ID Description	Approximate Quantity and Units	Unit Price	Bid Amount
0002	203.0100 Removing Small Pipe Culverts	20.000 EACH	_____.	_____.
0004	204.0115 Removing Asphaltic Surface Butt Joints	1,146.000 SY	_____.	_____.
0006	204.0120 Removing Asphaltic Surface Milling	321,537.000 SY	_____.	_____.
0008	204.0150 Removing Curb & Gutter	2,607.000 LF	_____.	_____.
0010	205.0100 Excavation Common	8,119.000 CY	_____.	_____.
0012	209.2100 Backfill Granular Grade 2	300.000 CY	_____.	_____.
0014	211.0400 Prepare Foundation for Asphaltic Shoulders	3.000 STA	_____.	_____.
0016	213.0100 Finishing Roadway (project) 01. 9040-02-61	1.000 EACH	_____.	_____.
0018	305.0110 Base Aggregate Dense 3/4-Inch	9,752.000 TON	_____.	_____.
0020	305.0120 Base Aggregate Dense 1 1/4-Inch	10,609.000 TON	_____.	_____.
0022	455.0605 Tack Coat	22,164.000 GAL	_____.	_____.
0024	460.0105.S HMA Percent Within Limits (PWL) Test Strip Volumetrics	1.000 EACH	_____.	_____.
0026	460.0110.S HMA Percent Within Limits (PWL) Test Strip Density	1.000 EACH	_____.	_____.
0028	460.2005 Incentive Density PWL HMA Pavement	20,680.000 DOL	1.00000	20,680.00
0030	460.2007 Incentive Density HMA Pavement Longitudinal Joints	36,749.000 DOL	1.00000	36,749.00



Proposal Schedule of Items

Proposal ID: 20200714009 Project(s): 9040-02-61, 9040-02-62

Federal ID(s): WISC 2020349, WISC 2020350

SECTION: 0001

Contract Items

Alt Set ID:

Alt Mbr ID:

Proposal Line Number	Item ID Description	Approximate Quantity and Units	Unit Price	Bid Amount
0032	460.2010 Incentive Air Voids HMA Pavement	27,130.000 DOL	1.00000	27,130.00
0036	465.0105 Asphaltic Surface	650.000 TON	_____	_____
0038	465.0110 Asphaltic Surface Patching	135.000 TON	_____	_____
0040	465.0450 Asphaltic Intersection Rumble Strips	79.000 SY	_____	_____
0042	465.0475 Asphalt Centerline Rumble Strips 2-Lane Rural	68,967.000 LF	_____	_____
0044	522.0124 Culvert Pipe Reinforced Concrete Class III 24-Inch	814.000 LF	_____	_____
0046	522.0130 Culvert Pipe Reinforced Concrete Class III 30-Inch	94.000 LF	_____	_____
0048	522.0424 Culvert Pipe Reinforced Concrete Class IV 24-Inch	370.000 LF	_____	_____
0050	522.0430 Culvert Pipe Reinforced Concrete Class IV 30-Inch	142.000 LF	_____	_____
0052	522.1024 Apron Endwalls for Culvert Pipe Reinforced Concrete 24-Inch	34.000 EACH	_____	_____
0054	522.1030 Apron Endwalls for Culvert Pipe Reinforced Concrete 30-Inch	8.000 EACH	_____	_____
0056	601.0557 Concrete Curb & Gutter 6-Inch Sloped 36-Inch Type D	2,291.000 LF	_____	_____
0058	601.0576 Concrete Curb & Gutter 4-Inch Sloped 30-Inch Type J	316.000 LF	_____	_____
0060	608.0324 Storm Sewer Pipe Reinforced Concrete Class III 24-Inch	132.000 LF	_____	_____



Proposal Schedule of Items

Proposal ID: 20200714009 Project(s): 9040-02-61, 9040-02-62

Federal ID(s): WISC 2020349, WISC 2020350

SECTION: 0001

Contract Items

Alt Set ID:

Alt Mbr ID:

Proposal Line Number	Item ID Description	Approximate Quantity and Units	Unit Price	Bid Amount
0062	611.0612 Inlet Covers Type C	1.000 EACH	_____.	_____.
0064	611.3004 Inlets 4-FT Diameter	1.000 EACH	_____.	_____.
0066	618.0100 Maintenance And Repair of Haul Roads (project) 01. 9040-02-61	1.000 EACH	_____.	_____.
0068	619.1000 Mobilization	1.000 EACH	_____.	_____.
0070	624.0100 Water	265.000 MGAL	_____.	_____.
0072	625.0100 Topsoil	12,390.000 SY	_____.	_____.
0074	628.1504 Silt Fence	6,123.000 LF	_____.	_____.
0076	628.1520 Silt Fence Maintenance	6,123.000 LF	_____.	_____.
0078	628.1905 Mobilizations Erosion Control	2.000 EACH	_____.	_____.
0080	628.1910 Mobilizations Emergency Erosion Control	2.000 EACH	_____.	_____.
0082	628.2004 Erosion Mat Class I Type B	1,018.000 SY	_____.	_____.
0084	628.2027 Erosion Mat Class II Type C	11,368.000 SY	_____.	_____.
0086	628.7010 Inlet Protection Type B	1.000 EACH	_____.	_____.
0088	628.7504 Temporary Ditch Checks	20.000 LF	_____.	_____.
0090	628.7555 Culvert Pipe Checks	120.000 EACH	_____.	_____.
0092	628.7570 Rock Bags	50.000 EACH	_____.	_____.



Proposal Schedule of Items

Proposal ID: 20200714009 Project(s): 9040-02-61, 9040-02-62

Federal ID(s): WISC 2020349, WISC 2020350

SECTION: 0001

Contract Items

Alt Set ID:

Alt Mbr ID:

Proposal Line Number	Item ID Description	Approximate Quantity and Units	Unit Price	Bid Amount
0094	629.0210 Fertilizer Type B	79.860 CWT	_____.	_____.
0096	630.0120 Seeding Mixture No. 20	3,422.670 LB	_____.	_____.
0098	630.0500 Seed Water	279.500 MGAL	_____.	_____.
0100	633.5200 Markers Culvert End	42.000 EACH	_____.	_____.
0102	634.0614 Posts Wood 4x6-Inch X 14-FT	2.000 EACH	_____.	_____.
0104	638.2102 Moving Signs Type II	4.000 EACH	_____.	_____.
0106	642.5201 Field Office Type C	1.000 EACH	_____.	_____.
0108	643.0300 Traffic Control Drums	1,344.000 DAY	_____.	_____.
0110	643.0900 Traffic Control Signs	1,318.000 DAY	_____.	_____.
0112	643.5000 Traffic Control	1.000 EACH	_____.	_____.
0114	646.1020 Marking Line Epoxy 4-Inch	94,096.000 LF	_____.	_____.
0116	646.1040 Marking Line Grooved Wet Ref Epoxy 4-Inch	182,800.000 LF	_____.	_____.
0118	646.3040 Marking Line Grooved Wet Ref Epoxy 8-Inch	600.000 LF	_____.	_____.
0120	646.6120 Marking Stop Line Epoxy 18-Inch	42.000 LF	_____.	_____.
0122	648.0100 Locating No-Passing Zones	17.400 MI	_____.	_____.
0124	649.0120 Temporary Marking Line Epoxy 4-Inch	72,621.000 LF	_____.	_____.



Proposal Schedule of Items

Proposal ID: 20200714009 Project(s): 9040-02-61, 9040-02-62

Federal ID(s): WISC 2020349, WISC 2020350

SECTION: 0001

Contract Items

Alt Set ID:

Alt Mbr ID:

Proposal Line Number	Item ID Description	Approximate Quantity and Units	Unit Price	Bid Amount
0126	650.4000 Construction Staking Storm Sewer	3.000 EACH	_____.	_____.
0128	650.6000 Construction Staking Pipe Culverts	20.000 EACH	_____.	_____.
0130	650.8000 Construction Staking Resurfacing Reference	91,910.000 LF	_____.	_____.
0132	650.9910 Construction Staking Supplemental Control (project) 01. 9040-02-61	LS	LUMP SUM	_____.
0134	650.9910 Construction Staking Supplemental Control (project) 02. 9040-02-62	LS	LUMP SUM	_____.
0136	690.0150 Sawing Asphalt	3,993.000 LF	_____.	_____.
0138	740.0440 Incentive IRI Ride	69,600.000 DOL	1.00000	69,600.00
0140	SPV.0060 Special 01. Lane Shift	13.000 EACH	_____.	_____.
0142	SPV.0180 Special 01. Protective Thermoplastic Coatings At Snowmobile Trail Crossings	858.000 SY	_____.	_____.
0144	450.4000 HMA Cold Weather Paving	6,517.000 TON	_____.	_____.
0146	460.6225 HMA Pavement 5 MT 58-28 S	26,065.000 TON	_____.	_____.
0148	649.0105 Temporary Marking Line Paint 4-Inch	72,621.000 LF	_____.	_____.
0150	650.5500 Construction Staking Curb Gutter and Curb & Gutter	2,607.000 LF	_____.	_____.

Section: 0001

Total: _____.

Total Bid: _____.

