



Wisconsin Department of Transportation

Division of Transportation Systems Development

Bureau of Project Development
4822 Madison Yards Way, 4th Floor South
Madison, WI 53705

August 4, 2020

Telephone: (608) 266-1631
Facsimile (FAX): (608) 266-8459

NOTICE TO ALL CONTRACTORS:

Proposal #07: 4492-03-71, WISC 2020 384
Racine Street Bridge, C of Menasha;
Fox River Bridge and Approaches
Local Str
Winnebago County

Letting of August 11, 2020

This is Addendum No. 02, which provides for the following:

Special Provisions:

Deleted Special Provisions	
Article No.	Description
4m	Environmental; Management of Petroleum Contaminated Water, Item SPV.0105.30

Added Special Provisions	
Article No.	Description
13g	Drainage and Erosion Control; Storm Sewer Pipe 8-Inch, Item SPV.0090.11

Schedule of Items:

Revised Bid Item Quantities					
Bid Item	Item Description	Unit	Old Quantity	Revised Quantity	Proposal Total
204.0245.01	Removing Storm Sewer (8-Inch)	LF	562	32	594
305.0120	Base Aggregate Dense 1 ¼-Inch	Ton	4,452	-4	4,448
416.0160	Concrete Driveway 6-inch	SY	132	-13	119
455.0605	Tack Coat	Gal	65	228	293
465.0105	Asphaltic Surface	Ton	145	365	510
602.0410	Concrete Sidewalk 5-Inch	SF	29,173	115	29288
625.0100	Topsoil	SY	6,978	-33	6945
629.0210	Fertilizer Type B	CWT	4.5	-0.1	4.4
631.0300	Sod Water	MGal	118	-1	117
631.1000	Sod Lawn	SY	5,179	-34	5145
SPV.0180.01	Shredded Hardwood Bark Mulch	SY	800	32	832

Added Bid Item Quantities					
Bid Item	Item Description	Unit	Old Quantity	Revised Quantity	Proposal Total
SPV.0090.11	Storm Sewer Pipe 8-Inch	LF	0	9	9

Deleted Bid Item Quantities					
Bid Item	Item Description	Unit	Old Quantity	Revised Quantity	Proposal Total
SPV.0105.30	Management of Petroleum Contaminated Water	LS	1	-1	0

Plan Sheets:

Revised Plan Sheets	
Plan Sheet	Plan Sheet Title (brief description of changes to sheet)
26	Plan Details (Driveway widths and existing topography)
34	Storm Sewer Removal Plan (Additional removal for new pipe location)
50	Paving Grades (Driveway jointing update)
66	Erosion Control – Permanent (Updated sod and mulch for driveway changes)
70	Storm Sewer (Revised pipe at Broad Street intersection)
134	Miscellaneous Quantities (Revised storm sewer removal quantity)
136	Miscellaneous Quantities (Revised asphaltic surface for peninsula, revised driveway, sidewalk, base for Broad and Racine Street intersection NE quadrant)
137	Miscellaneous Quantities (Added storm sewer SPV)
141	Miscellaneous Quantities (Revised topsoil, fertilizer, sod, water, and mulch quantities)
151	Miscellaneous Quantities (Removed Management of Petroleum Contaminated Water item)
164	Plan and Profile: Racine Street Northbound (Revised utility and topography base files, proposed driveways)
166	Plan and Profile: Racine Street Southbound (Revised utility and topography base files, proposed driveways)
174	Plan and Profile: Broad Street (Revised utility and topography base files, proposed driveways)

The responsibility for notifying potential subcontractors and suppliers of these changes remains with the prime contractor.

Sincerely,

Mike Coleman

Proposal Development Specialist
Proposal Management Section

ADDENDUM NO. 02
PROJECT ID 4992-03-71
August 4, 2020

Special Provisions

4. Environmental,
m. Management of Petroleum Contaminated Water, Item SPV.0105.30
Delete entire article

13. Drainage & Erosion Control

g. Storm Sewer Pipe 8-Inch, Item SPV.0090.11.

A Description

This section describes providing new storm sewer.

B Materials

Furnish pipe consistent with the diameter the bid item indicates. Furnish pipe material the same as existing pipe being connected to.

Furnish pipe materials conforming to the following to match existing pipe:

PVC pipe.....	ASTM D-3034
SDR-35	
PVC	
Fittings.....	ASTM F-
477	
Corrugated polyethylene pipe	AASHTO
M294 S	
Composite pipe, couplings, fittings and joint materials	ASTM
D2680	

Backfill materials shall conform to standard spec 608.2.2 Backfill

C Construction

Construction shall conform to the plans and with standard spec 608.

D Measurement

Measurement shall conform with standard spec 608.

E Payment

The department will pay for measured quantities at the contract unit price under the following bid item:

ITEM NUMBER	DESCRIPTION	UNIT
SPV.0090.11	Storm Sewer Pipe 8-Inch	LF

Payment shall conform to standard spec 608.5 except 608.5.2 as modified below.

Payment for the Storm Sewer Pipe bid items is full compensation for providing storm sewer; for providing fittings; for concrete collars not required under 520.3.1(5) or 608.3.3(10); for excavating, except for rock excavation; for providing and removing sheeting and shoring; for constructing the foundation; for backfilling; for cleaning out; and for restoring the site.

Schedule of Items

Attached, dated August 4, 2020, are the revised Schedule of Items Pages 1 – 21.

Plan Sheets

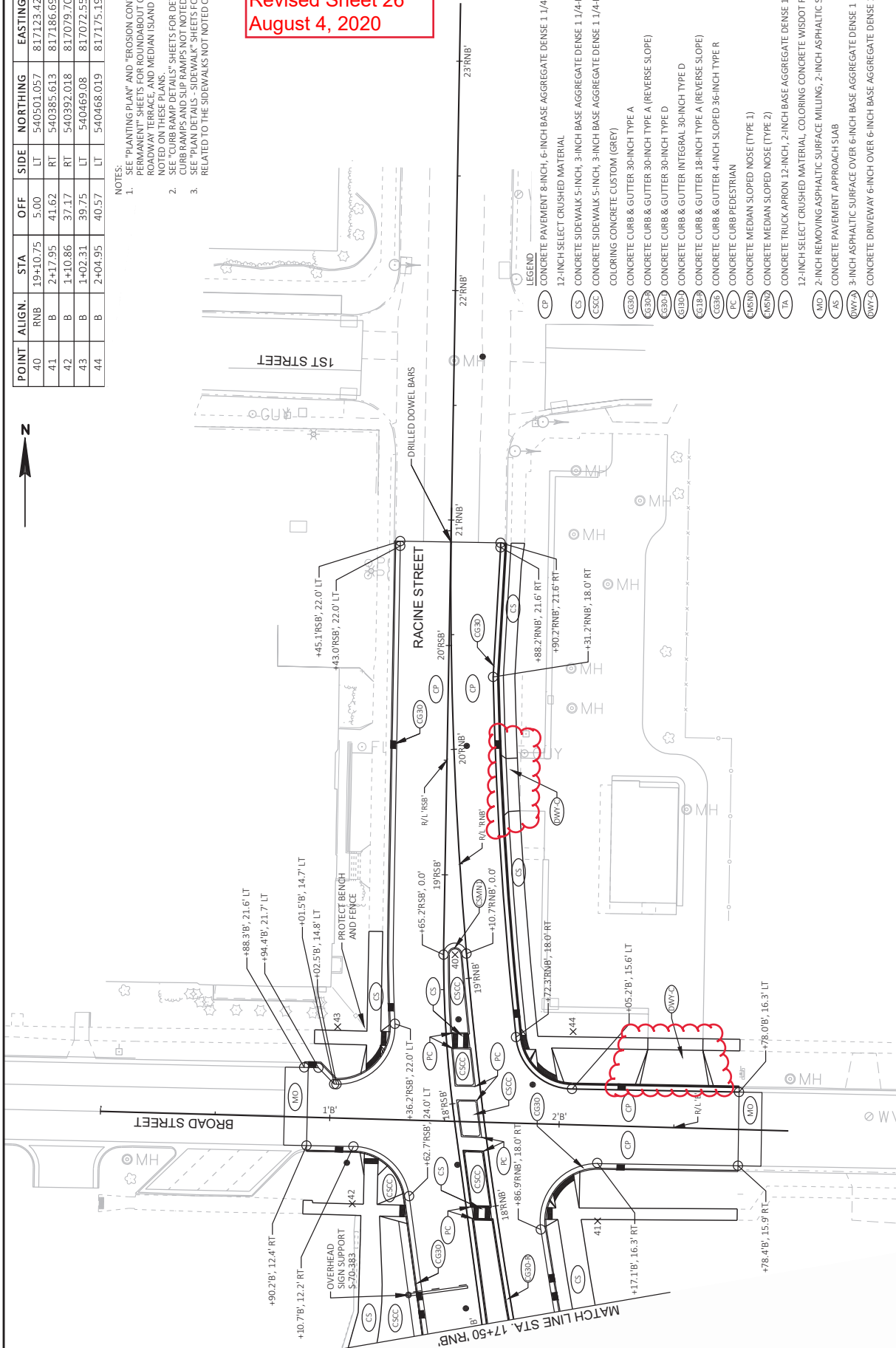
The following 8½ x 11-inch sheets are attached and made part of the plans for this proposal:
Revised: 26, 34, 50, 66, 70, 134, 136, 137, 141, 151, 164, 166, and 174.

END OF ADDENDUM

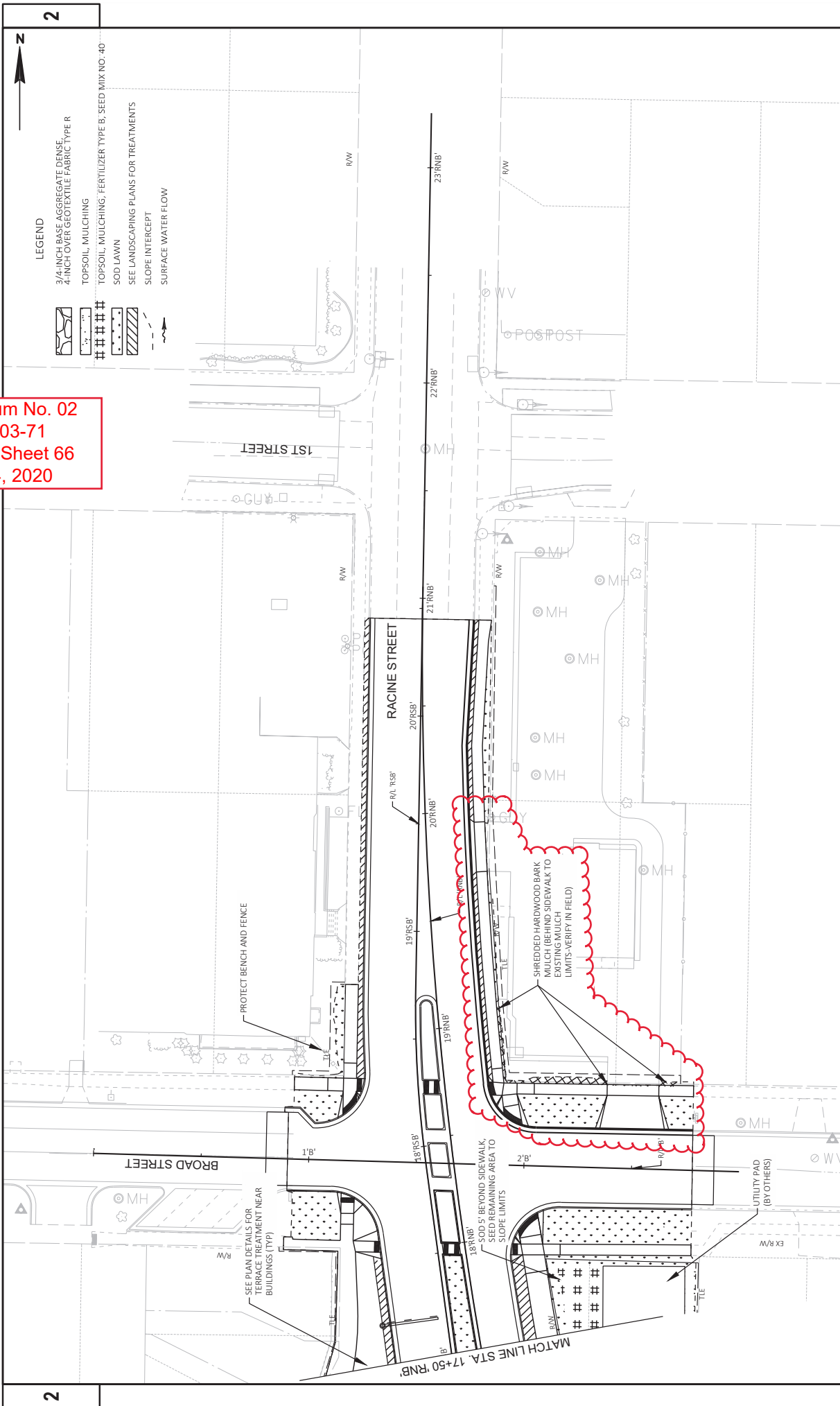
POINT	ALIGN.	STA	OFF	SIDE	NORTHING	EASTING	RADII
40	RNB	19+10.75	5.00	LT	540501.057	817123.426	3.00
41	B	2+17.95	41.62	RT	540385.613	817186.698	23.00
42	B	1+10.86	37.17	RT	540392.018	817079.704	23.00
43	B	1+02.31	39.75	LT	540469.08	817072.559	23.00
44	B	2+04.95	40.57	LT	540468.019	817175.196	23.00

- NOTES:
- SEE "PLANTING PLAN" AND "EROSION CONTROL PLAN - PERMANENT" SHEETS FOR ROUNDABOUT CENTRAL ISLAND, ROADWAY TERRACE, AND MEDIAN ISLAND TREATMENTS NOT NOTED ON THESE PLANS.
 - SEE "CURB RAMP DETAILS" SHEETS FOR DETAILS RELATED TO CURB RAMPS AND SLIP RAMPS NOT NOTED ON THESE PLANS.
 - SEE "PLAN DETAILS - SIDEWALK" SHEETS FOR DETAILS RELATED TO THE SIDEWALKS NOT NOTED ON THESE PLANS.

Addendum No. 02
ID 4992-03-71
Revised Sheet 26
August 4, 2020



PROJECT NO: 4992-03-71	COUNTY: WINNEBAGO	PLAN DETAILS	SHEET 26	E
FILE NAME: C:\P\WORKING\AECOM_ID516_MANESSICA.LANCELLE@AECOM.COM\0011728\021200_PD.DWG	HWY: LOCAL	FLYBY: LANCELLE, JESSICA	PLLOT SCALE: #####	WISDOT/CADDIS SHEET 42
LAYOUT NAME: 021204	PROJECT DATE: 8/9/2020 1:11 PM	FLYBY DATE: 8/9/2020 1:11 PM	PLLOT NAME:	



Addendum No. 02
 ID 4992-03-71
 Revised Sheet 66
 August 4, 2020

2

2

CLEARING AND GRUBBING

LOCATION	STA-STA	OFFSET	STA	STA	201.0105 CLEARING	201.0205 GRUBBING	201.0120 CLEARING	201.0220 GRUBBING
SOUTH	8RNB+00 - 7RNB+00	LT	1	-	-	-	-	-
	2RNB+00	LT	-	2	-	2	-	2
	3RNB+75	LT	-	-	-	3	-	3
	0N+75	LT	-	-	-	4	-	4
PENINSULA	8RNB+00 - 18RNB+00	LT/RT	3	3	-	-	-	-
	15RNB+00 - 16RNB+00	LT	1	-	-	-	-	-
TOTALS			5	5	9	9	9	

REMOVALS

LOCATION	STA	STA	SIDE	SY	204.0100	204.0150	204.0165	204.0170	204.0185	204.0990.S.01	204.0990.S.02	204.9106.S.01
SOUTH	4RNB+70	5RNB+43	RT	-	582	-	-	-	-	-	-	-
	5RNB+98	6RNB+34	LT	-	-	79	-	-	-	-	-	-
	5RNB+86	6RNB+57	RT	-	-	-	37	-	-	-	-	-
	6RNB+07	6RNB+34	LT	-	-	-	-	68	-	-	-	-
	14RSB+63	15RSB+14	LT	-	228	-	-	-	-	-	-	1
	14RSB+68	14RSB+79	LT/RT	-	-	-	-	124	-	-	156	-
	14RSB+55	-	LT/RT	-	-	-	-	-	-	-	-	-
TOTALS				8,166	810	2,245	79	169	106	156	1	

STORM SEWER REMOVALS

LOCATION	MANHOLES	INLETS	REMOVING	204.0210	204.0220	204.0245.01	204.0245.02	204.0245.03	204.0245.04	204.0245.05	204.0245.06	204.0245.07	204.0250	204.0291.S
SOUTH	8	14	REMOVING	8	14	REMOVING	REMOVING	REMOVING	REMOVING	REMOVING	REMOVING	REMOVING	REMOVING	REMOVING
	7	8	INLETS	360	329	REMOVING	REMOVING	REMOVING	REMOVING	REMOVING	REMOVING	REMOVING	REMOVING	REMOVING
NORTH	7	8	MANHOLES	337	299	REMOVING	REMOVING	REMOVING	REMOVING	REMOVING	REMOVING	REMOVING	REMOVING	REMOVING
	15	22	INLETS	697	628	REMOVING	REMOVING	REMOVING	REMOVING	REMOVING	REMOVING	REMOVING	REMOVING	REMOVING
TOTALS	15	22	MANHOLES	594	594	REMOVING	REMOVING	REMOVING	REMOVING	REMOVING	REMOVING	REMOVING	REMOVING	REMOVING

Addendum No. 02
ID 4992-03-71
Revised Sheet 134
August 4, 2020

PAVING ITEMS

204.0120	305.0120	312.0110	405.0100	405.0200	415.0080	415.0410	416.0160	416.0280	416.0512	455.0605	462.0410	620.0300	624.0100	
REMOVING ASPHALTIC SURFACE MILLING	BASE AGGREGATE DENSE 1 1/4-INCH	SELECT CRUSHED MATERIAL	COLORING CONCRETE WISDOT RED	COLORING CONCRETE CUSTOM	CONCRETE PAVEMENT 8-INCH	CONCRETE PAVEMENT APPROACH SLAB	CONCRETE DRIVEWAY 6-INCH	CONCRETE DRIVEWAY HES 6-INCH	CONCRETE TRUCK APRON 12-INCH	TACK COAT	ASPHALTIC SURFACE TON	CONCRETE SIDEWALK 5-INCH	CONCRETE MEDIAN SLOPED NOSE	WATER MGAL
SY	TON	TON	CY	CY	SY	SY	SY	SY	SY	GAL	TON	SF	SF	MGAL
85	1,921	2,667	88	-	2,927	89	38	21	264	59	135	11,194	281	63
74	2,518	4,052	100	69	4,447	68	81	-	296	6	10	18,094	281	99
159	4,439	6,719	188	69	7,374	157	119	21	560	293	510	29,288	562	167
TOTALS														

PENINSULA PARKING AREA

* ADDITIONAL QUANTITIES LISTED ELSEWHERE
 ** CATEGORY 0060
 NOTE: CONCRETE DRIVEWAY HES LOCATED AT DAM ACCESS. ASPHALTIC SURFACE IN PENINSULA PARKING AREA IS FOR RESTORATION PURPOSES IN THE STAGING AREA.

CONCRETE PAVEMENT JOINT LAYOUT

415.5110.S
 CONCRETE PAVEMENT JOINT LAYOUT

LOCATION	LS
PROJECT	1
TOTAL	1

FINISHING ROADWAY

213.0100
 FINISHING ROADWAY
 4992-03-71

LOCATION	EACH
PROJECT	1
TOTAL	1

DRILLED BARS

416.0620

DRILLED DOWEL BARS

LOCATION	EACH
SOUTH	29
NORTH	54
TOTALS	83

RAILING PIPE

513.2001
 RAILING PIPE

STA	STA	LF
2' MMB +65	- 2' MMB +90	25
TOTAL		25

STORM SEWER ROCK EXCAVATION

608.0005
 STORM SEWER ROCK EXCAVATION

LOCATION	STR	TO	STR	CY
SOUTH	7.0	-	17.0	56
TOTALS				56

DRILLED BARS

416.0620

DRILLED DOWEL BARS

LOCATION	EACH
SOUTH	29
NORTH	54
TOTALS	83

Addendum No. 02
 ID 4992-03-71
 Revised Sheet 136
 August 4, 2020

ALL ITEMS ARE CATEGORY 0010 UNLESS OTHERWISE SPECIFIED.

PROJECT NUMBER: 4992-03-71

MISCELLANEOUS QUANTITIES

HWY: LOCAL

COUNTY: WINNEBAGO

SHEET NO: 136

E

ORIGINATOR: JESSICA LANCELLE

ORIG. DATE: 9/4/18

PLOTTED DATE: 8/30/20 2:48 PM

Addendum No. 02
ID 4992-03-71
Revised Sheet 141
August 4, 2020

RESTORATION

LOCATION	SY	SY	CWT	NO. 40 LB	MGAL	SY	MGAL	SY	MGAL	SY	MGAL
SOUTH	2,650	0	1.7	0	0	2,650	60	-	-	-	-
PENINSULA	541	541	0.4	10	13	1,466	33	-	-	-	-
NORTH	2,365	899	1.4	14	17	4,116	93	25	25	25	25
SUBTOTAL	5,556	1,440	3.5	24	30	1,029	24	7	7	7	7
UNDISTRIBUTED	1,389	360	0.9	6	8	5,145	117	32	32	32	32
TOTAL	6,945	1,800	4.4	30	38						

*DENOTES QUANTITY FOUND ELSEWHERE

LANDSCAPING ITEMS

LOCATION	SY	SY	CWT	NO. 40 LB	MGAL	SY	MGAL	SY	MGAL	SY	MGAL
SOUTH	-	-	-	-	-	-	-	-	-	-	-
NORTH	3	62	1	519	238	95	800	140	140	140	140
TOTALS	3	62	1	519	238	95	800	140	140	140	140

**CATEGORY 0060
*** FOR INFORMATION ONLY. TO BE PROCURED AND PLANTED BY CITY OF MENASHA FORCES

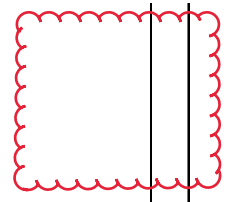
SAWING CURB HEAD

SPV.0090.08
SAWING CURB HEAD

LOCATION	LF
CONTRACTOR ACCESS	30
TOTAL	30

MANAGEMENT OF PETROLEUM CONTAMINATION

SPV.0120.01
MANAGEMENT OF
PETROLEUM
CONTAMINATED
GROUNDWATER



LOCATION	MGAL
PROJECT	1,041
TOTAL	1,041

EXCAVATION, HAULING, AND DISPOSAL OF CONTAMINATED SOIL

LOCATION	CY	TON	TON	TON
PROJECT	2,250	296	1,567	3,938
TOTAL	2,250	296	1,567	3,938

*DENOTES QUANTITY FOUND ELSEWHERE

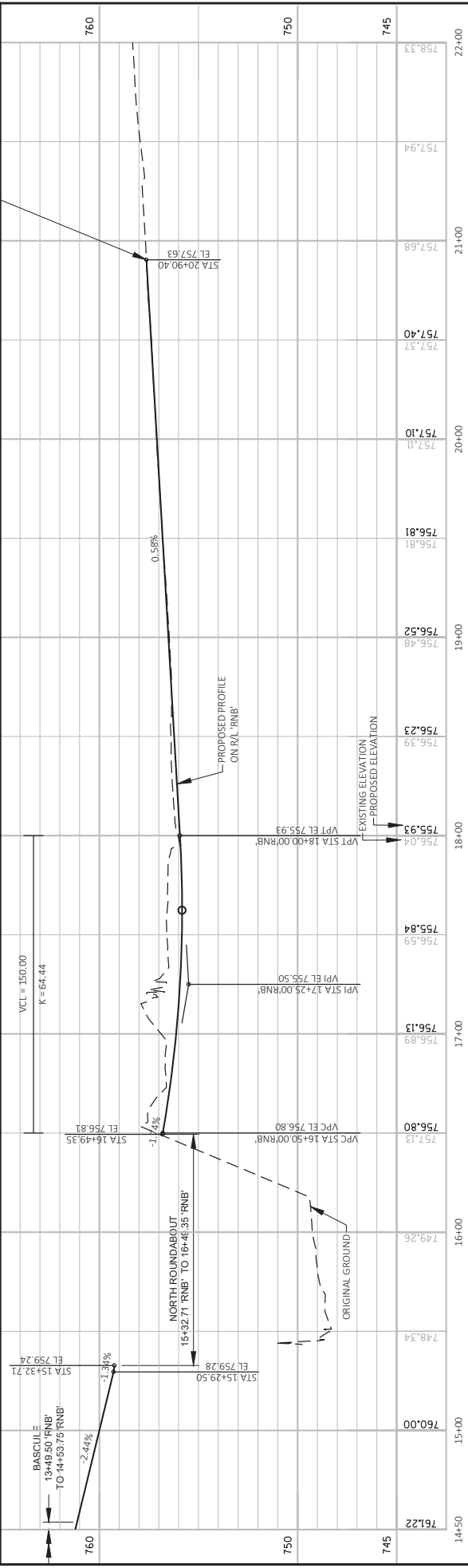
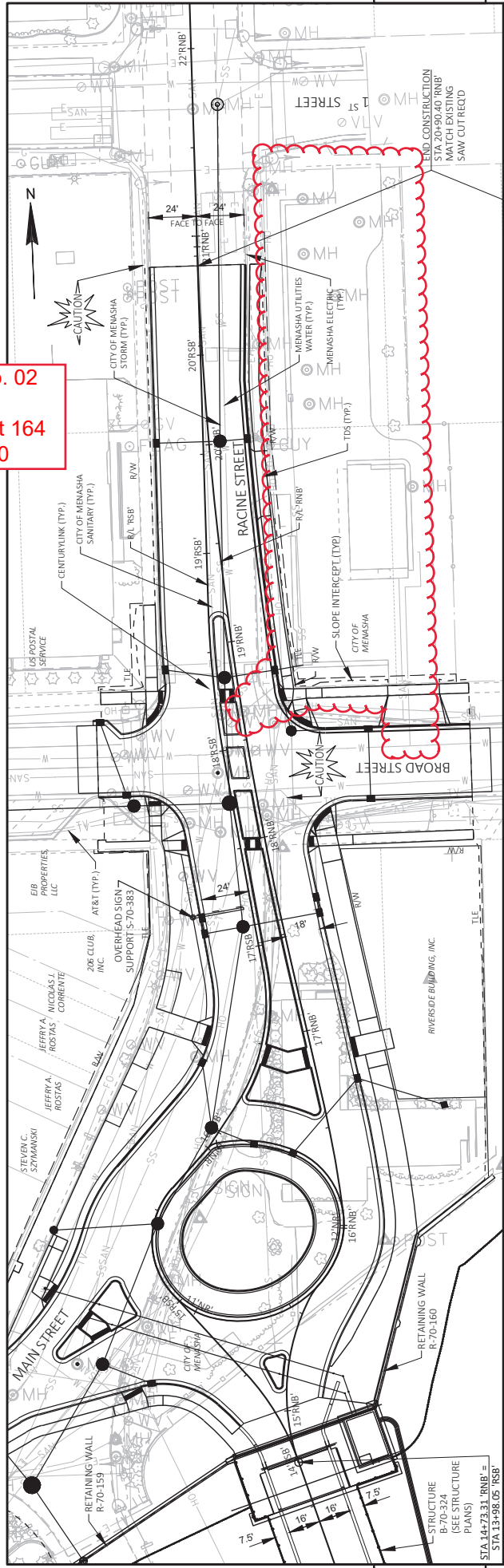
INSULATION BOARD

SPV.0165.03
INSULATION BOARD
2-INCH

LOCATION	SF
PROJECT	450
TOTAL	450

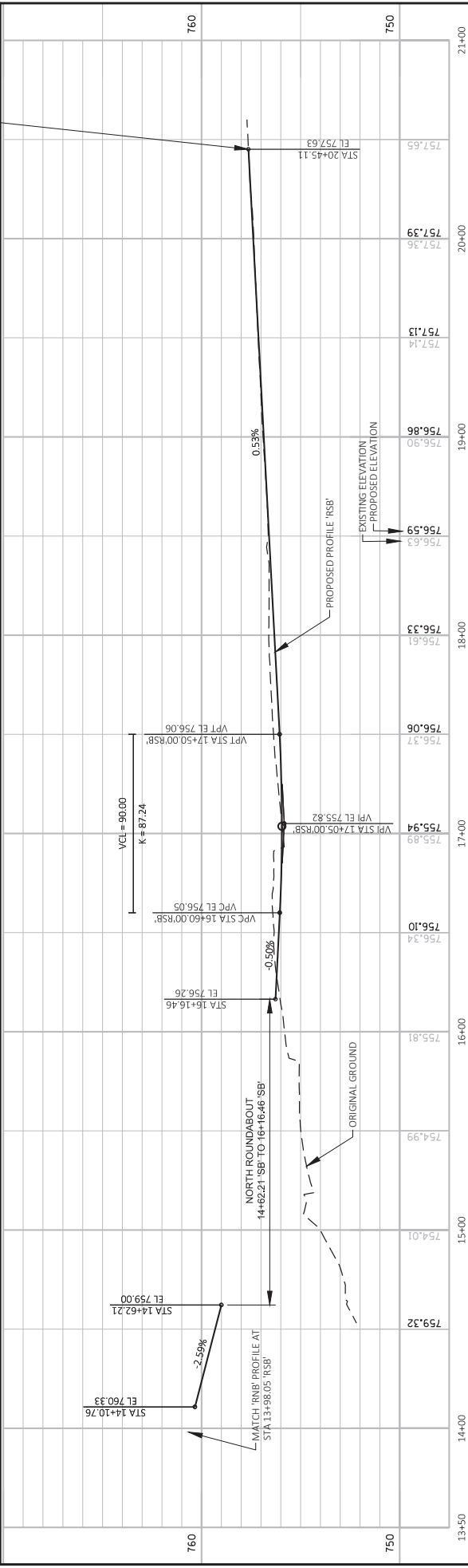
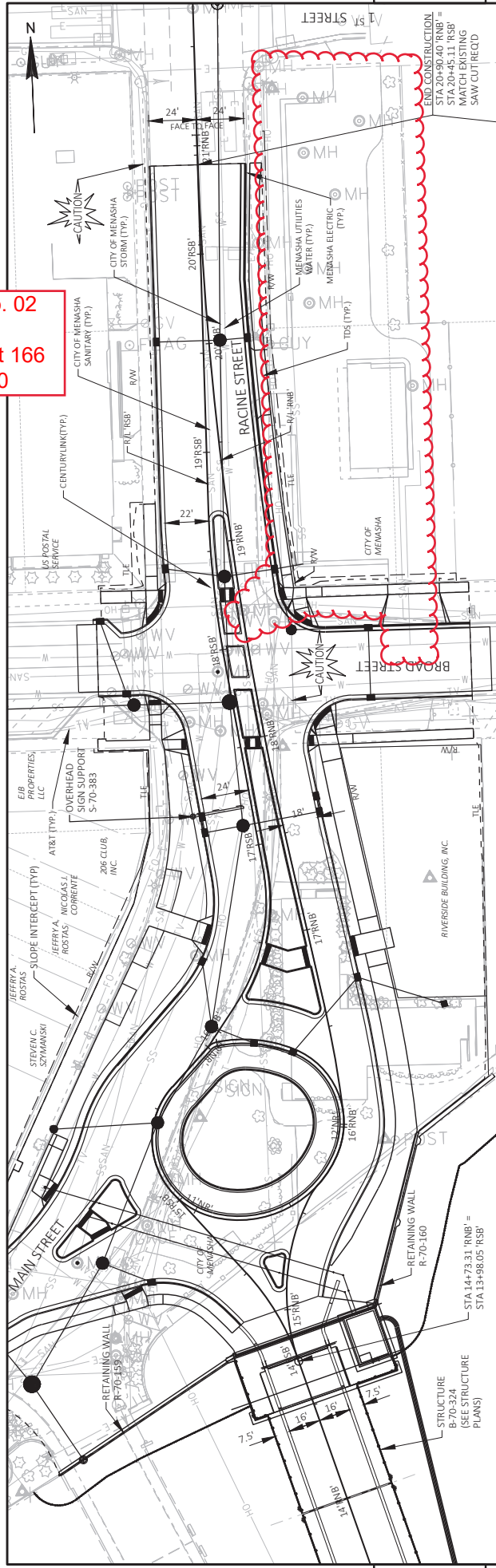
Addendum No. 02
ID 4992-03-71
Revised Sheet 151
August 4, 2020

Addendum No. 02
ID 4992-03-71
Revised Sheet 164
August 4, 2020



Station	Elevation	Notes
14+50	761.22	
15+00	760.00	
16+00	749.26	
17+00	756.13	
17+25.00	756.13	VPI STA 17+25.00 RNB
18+00	755.93	
18+00.00	756.04	VPT STA 18+00.00 RNB
19+00	756.52	
20+00	757.10	
21+00	757.40	
21+00	757.68	
21+00	757.94	
22+00	758.33	

Addendum No. 02
 ID 4992-03-71
 Revised Sheet 166
 August 4, 2020



PROJECT NO:	4992-03-71	COUNTY:	WINNEBAGO	PLAN AND PROFILE:	RACINE STREET SOUTHBOUND	SHEET:	166
FILE NAME:	C:\P\WORKING\AECOM_ID516_MAVESSICA.LANCELLE@AECOM.COM\001172805101_L_P_RSB.DWG	HWY:	LOCAL	DATE:	8/9/2020 12:38 PM	SCALE:	1"=40'
LAYOUT NAME:	001172805101	DESIGNER:	LANCELLE, JESSICA	DATE:	8/9/2020 12:38 PM	SCALE:	1"=40'



Proposal Schedule of Items

Proposal ID: 20200811007 Project(s): 4992-03-71
Federal ID(s): WISC 2020384

SECTION: 0001 Contract Items

Alt Set ID: Alt Mbr ID:

Proposal Line Number	Item ID Description	Approximate Quantity and Units	Unit Price	Bid Amount
0002	201.0105 Clearing	5.000 STA	_____.	_____.
0004	201.0120 Clearing	9.000 ID	_____.	_____.
0006	201.0205 Grubbing	5.000 STA	_____.	_____.
0008	201.0220 Grubbing	9.000 ID	_____.	_____.
0010	203.0600.S Removing Old Structure Over Waterway With Minimal Debris (station) 01. Sta. 6+04	LS	LUMP SUM	_____.
0012	204.0100 Removing Concrete Pavement	8,166.000 SY	_____.	_____.
0014	204.0120 Removing Asphaltic Surface Milling	159.000 SY	_____.	_____.
0016	204.0150 Removing Curb & Gutter	810.000 LF	_____.	_____.
0018	204.0155 Removing Concrete Sidewalk	2,245.000 SY	_____.	_____.
0020	204.0165 Removing Guardrail	79.000 LF	_____.	_____.
0022	204.0170 Removing Fence	169.000 LF	_____.	_____.
0024	204.0185 Removing Masonry	5.000 CY	_____.	_____.
0026	204.0195 Removing Concrete Bases	19.000 EACH	_____.	_____.
0028	204.0210 Removing Manholes	15.000 EACH	_____.	_____.
0030	204.0220 Removing Inlets	22.000 EACH	_____.	_____.
0032	204.0245 Removing Storm Sewer (size) 01. 8-Inch	594.000 LF	_____.	_____.



Proposal Schedule of Items

Proposal ID: 20200811007 Project(s): 4992-03-71

Federal ID(s): WISC 2020384

SECTION: 0001

Contract Items

Alt Set ID:

Alt Mbr ID:

Proposal Line Number	Item ID Description	Approximate Quantity and Units	Unit Price	Bid Amount
0034	204.0245 Removing Storm Sewer (size) 02. 12-Inch	697.000 LF	_____.	_____.
0036	204.0245 Removing Storm Sewer (size) 03. 15-Inch	628.000 LF	_____.	_____.
0038	204.0245 Removing Storm Sewer (size) 04. 18-Inch	171.000 LF	_____.	_____.
0040	204.0245 Removing Storm Sewer (size) 05. 24-Inch	157.000 LF	_____.	_____.
0042	204.0245 Removing Storm Sewer (size) 06. 30-Inch	446.000 LF	_____.	_____.
0044	204.0245 Removing Storm Sewer (size) 07. 42-Inch	204.000 LF	_____.	_____.
0046	204.0250 Abandoning Manholes	1.000 EACH	_____.	_____.
0048	204.0291.S Abandoning Sewer	17.000 CY	_____.	_____.
0050	204.9090.S Removing (item description) 01. Railing	106.000 LF	_____.	_____.
0052	204.9090.S Removing (item description) 02. Landscaping Brick	156.000 LF	_____.	_____.
0054	204.9105.S Removing (item description) 01. Modular Block Wall	LS	LUMP SUM	_____.
0056	205.0100 Excavation Common	9,730.000 CY	_____.	_____.
0058	205.0200 Excavation Rock	303.000 CY	_____.	_____.
0060	206.1000 Excavation for Structures Bridges (structure) 01. B-70-324	LS	LUMP SUM	_____.



Proposal Schedule of Items

Proposal ID: 20200811007 Project(s): 4992-03-71

Federal ID(s): WISC 2020384

SECTION: 0001

Contract Items

Alt Set ID:

Alt Mbr ID:

Proposal Line Number	Item ID Description	Approximate Quantity and Units	Unit Price	Bid Amount
0062	206.1050.S Underwater Foundation Inspection (location) 01. South Abutment	1.000 EACH	_____.	_____.
0064	206.1050.S Underwater Foundation Inspection (location) 02. Pier 1	1.000 EACH	_____.	_____.
0066	206.1050.S Underwater Foundation Inspection (location) 03. Pier 3	1.000 EACH	_____.	_____.
0068	206.1050.S Underwater Foundation Inspection (location) 04. Pier 4	1.000 EACH	_____.	_____.
0070	206.3000 Excavation for Structures Retaining Walls (structure) 01. R-70-161	LS	LUMP SUM	_____.
0072	208.0100 Borrow	68.000 CY	_____.	_____.
0074	209.0300.S Backfill Coarse Aggregate (size) 01. No. 2	390.000 CY	_____.	_____.
0076	210.1500 Backfill Structure Type A	7,005.000 TON	_____.	_____.
0078	213.0100 Finishing Roadway (project) 01. 4992-03-71	1.000 EACH	_____.	_____.
0080	305.0110 Base Aggregate Dense 3/4-Inch	339.000 TON	_____.	_____.
0082	305.0120 Base Aggregate Dense 1 1/4-Inch	4,448.000 TON	_____.	_____.
0084	310.0110 Base Aggregate Open-Graded	4,427.000 TON	_____.	_____.
0086	312.0110 Select Crushed Material	6,719.000 TON	_____.	_____.
0088	405.0100 Coloring Concrete WisDOT Red	188.000 CY	_____.	_____.
0090	405.0200 Coloring Concrete Custom	69.000 CY	_____.	_____.



Proposal Schedule of Items

Proposal ID: 20200811007 Project(s): 4992-03-71
Federal ID(s): WISC 2020384

SECTION: 0001 Contract Items

Alt Set ID: Alt Mbr ID:

Proposal Line Number	Item ID Description	Approximate Quantity and Units	Unit Price	Bid Amount
0092	415.0080 Concrete Pavement 8-Inch	7,374.000 SY	_____.	_____.
0094	415.0410 Concrete Pavement Approach Slab	157.000 SY	_____.	_____.
0096	415.5110.S Concrete Pavement Joint Layout	1.000 LS	_____.	_____.
0098	416.0160 Concrete Driveway 6-Inch	119.000 SY	_____.	_____.
0100	416.0260 Concrete Driveway HES 6-Inch	21.000 SY	_____.	_____.
0102	416.0512 Concrete Truck Apron 12-Inch	560.000 SY	_____.	_____.
0104	416.0620 Drilled Dowel Bars	83.000 EACH	_____.	_____.
0106	455.0605 Tack Coat	293.000 GAL	_____.	_____.
0108	465.0105 Asphaltic Surface	510.000 TON	_____.	_____.
0110	501.1000.S Ice Hot Weather Concreting	36,794.000 LB	_____.	_____.
0112	502.0100 Concrete Masonry Bridges	4,838.000 CY	_____.	_____.
0114	502.1100 Concrete Masonry Seal	1,407.000 CY	_____.	_____.
0116	502.3101 Expansion Device	69.000 LF	_____.	_____.
0118	502.3200 Protective Surface Treatment	4,503.000 SY	_____.	_____.
0120	502.3210 Pigmented Surface Sealer	1,135.000 SY	_____.	_____.
0122	502.4104 Adhesive Anchors 1/2-inch	40.000 EACH	_____.	_____.
0124	502.4208 Adhesive Anchors No. 8 Bar	10.000 EACH	_____.	_____.



Proposal Schedule of Items

Proposal ID: 20200811007 Project(s): 4992-03-71

Federal ID(s): WISC 2020384

SECTION: 0001

Contract Items

Alt Set ID:

Alt Mbr ID:

Proposal Line Number	Item ID Description	Approximate Quantity and Units	Unit Price	Bid Amount
0126	502.9000.S Underwater Substructure Inspection (Structure) 01. B-70-324	4.000 EACH	_____.	_____.
0128	503.0172 Prestressed Girder Type I 72W-Inch	4,270.000 LF	_____.	_____.
0130	504.0500 Concrete Masonry Retaining Walls	256.000 CY	_____.	_____.
0132	505.0400 Bar Steel Reinforcement HS Structures	304,795.000 LB	_____.	_____.
0134	505.0600 Bar Steel Reinforcement HS Coated Structures	775,748.000 LB	_____.	_____.
0136	505.0800.S Bar Steel Reinforcement HS Stainless Structures	100.000 LB	_____.	_____.
0138	506.2605 Bearing Pads Elastomeric Non-Laminated	14.000 EACH	_____.	_____.
0140	506.2610 Bearing Pads Elastomeric Laminated	42.000 EACH	_____.	_____.
0142	506.3005 Welded Stud Shear Connectors 7/8x4-Inch	1,746.000 EACH	_____.	_____.
0144	506.3008 Welded Stud Shear Connectors 5/8x5-Inch	358.000 EACH	_____.	_____.
0146	506.4000 Steel Diaphragms (structure) 01. B-70-324	48.000 EACH	_____.	_____.
0148	512.0500 Piling Steel Sheet Permanent Delivered	4,637.000 SF	_____.	_____.
0150	512.0600 Piling Steel Sheet Permanent Driven	4,637.000 SF	_____.	_____.
0152	513.2001 Railing Pipe	25.000 LF	_____.	_____.
0154	514.0450 Floor Drains Type WF	6.000 EACH	_____.	_____.



Proposal Schedule of Items

Proposal ID: 20200811007 Project(s): 4992-03-71

Federal ID(s): WISC 2020384

SECTION: 0001

Contract Items

Alt Set ID:

Alt Mbr ID:

Proposal Line Number	Item ID Description	Approximate Quantity and Units	Unit Price	Bid Amount
0156	514.2608 Downspout 8-Inch	40.000 LF	_____.	_____.
0158	516.0500 Rubberized Membrane Waterproofing	232.000 SY	_____.	_____.
0160	517.0600 Painting Epoxy System (structure) 01. B-70-324	LS	LUMP SUM	_____.
0162	550.0020 Pre-Boring Rock or Consolidated Materials	368.000 LF	_____.	_____.
0164	550.1120 Piling Steel HP 12-Inch X 53 Lb	480.000 LF	_____.	_____.
0166	601.0405 Concrete Curb & Gutter 18-Inch Type A	375.000 LF	_____.	_____.
0168	601.0409 Concrete Curb & Gutter 30-Inch Type A	3,628.000 LF	_____.	_____.
0170	601.0411 Concrete Curb & Gutter 30-Inch Type D	81.000 LF	_____.	_____.
0172	601.0452 Concrete Curb & Gutter Integral 30-Inch Type D	138.000 LF	_____.	_____.
0174	601.0580 Concrete Curb & Gutter 4-Inch Sloped 36-Inch Type R	539.000 LF	_____.	_____.
0176	601.0600 Concrete Curb Pedestrian	255.000 LF	_____.	_____.
0178	602.0410 Concrete Sidewalk 5-Inch	29,288.000 SF	_____.	_____.
0180	602.0515 Curb Ramp Detectable Warning Field Natural Patina	520.000 SF	_____.	_____.
0182	602.0615 Curb Ramp Detectable Warning Field Radial Natural Patina	160.000 SF	_____.	_____.
0184	603.1432 Concrete Barrier Type S32C	68.000 LF	_____.	_____.



Proposal Schedule of Items

Proposal ID: 20200811007 Project(s): 4992-03-71

Federal ID(s): WISC 2020384

SECTION: 0001

Contract Items

Alt Set ID:

Alt Mbr ID:

Proposal Line Number	Item ID Description	Approximate Quantity and Units	Unit Price	Bid Amount
0186	606.0100 Riprap Light	380.000 CY	_____.	_____.
0188	606.0300 Riprap Heavy	564.000 CY	_____.	_____.
0190	608.0005 Storm Sewer Rock Excavation	56.000 CY	_____.	_____.
0192	608.0312 Storm Sewer Pipe Reinforced Concrete Class III 12-Inch	349.000 LF	_____.	_____.
0194	608.0315 Storm Sewer Pipe Reinforced Concrete Class III 15-Inch	326.000 LF	_____.	_____.
0196	608.0318 Storm Sewer Pipe Reinforced Concrete Class III 18-Inch	32.000 LF	_____.	_____.
0198	608.0324 Storm Sewer Pipe Reinforced Concrete Class III 24-Inch	357.000 LF	_____.	_____.
0200	608.0336 Storm Sewer Pipe Reinforced Concrete Class III 36-Inch	551.000 LF	_____.	_____.
0202	608.0348 Storm Sewer Pipe Reinforced Concrete Class III 48-Inch	202.000 LF	_____.	_____.
0204	608.0412 Storm Sewer Pipe Reinforced Concrete Class IV 12-Inch	215.000 LF	_____.	_____.
0206	608.0415 Storm Sewer Pipe Reinforced Concrete Class IV 15-Inch	135.000 LF	_____.	_____.
0208	608.0430 Storm Sewer Pipe Reinforced Concrete Class IV 30-Inch	48.000 LF	_____.	_____.
0210	608.0436 Storm Sewer Pipe Reinforced Concrete Class IV 36-Inch	46.000 LF	_____.	_____.
0212	611.0420 Reconstructing Manholes	1.000 EACH	_____.	_____.



Proposal Schedule of Items

Proposal ID: 20200811007 Project(s): 4992-03-71

Federal ID(s): WISC 2020384

SECTION: 0001

Contract Items

Alt Set ID:

Alt Mbr ID:

Proposal Line Number	Item ID Description	Approximate Quantity and Units	Unit Price	Bid Amount
0214	611.0530 Manhole Covers Type J	15.000 EACH	_____.	_____.
0216	611.0606 Inlet Covers Type B	1.000 EACH	_____.	_____.
0218	611.0624 Inlet Covers Type H	15.000 EACH	_____.	_____.
0220	611.0639 Inlet Covers Type H-S	17.000 EACH	_____.	_____.
0222	611.0652 Inlet Covers Type T	5.000 EACH	_____.	_____.
0224	611.1003 Catch Basins 3-FT Diameter	1.000 EACH	_____.	_____.
0226	611.1004 Catch Basins 4-FT Diameter	3.000 EACH	_____.	_____.
0228	611.1006 Catch Basins 6-FT Diameter	1.000 EACH	_____.	_____.
0230	611.1230 Catch Basins 2x3-FT	26.000 EACH	_____.	_____.
0232	611.2004 Manholes 4-FT Diameter	4.000 EACH	_____.	_____.
0234	611.2005 Manholes 5-FT Diameter	6.000 EACH	_____.	_____.
0236	611.2006 Manholes 6-FT Diameter	2.000 EACH	_____.	_____.
0238	611.2007 Manholes 7-FT Diameter	3.000 EACH	_____.	_____.
0240	611.3220 Inlets 2x2-FT	1.000 EACH	_____.	_____.
0242	611.3230 Inlets 2x3-FT	1.000 EACH	_____.	_____.
0244	612.0406 Pipe Underdrain Wrapped 6-Inch	535.000 LF	_____.	_____.
0246	616.0700.S Fence Safety	500.000 LF	_____.	_____.



Proposal Schedule of Items

Proposal ID: 20200811007 Project(s): 4992-03-71

Federal ID(s): WISC 2020384

SECTION: 0001

Contract Items

Alt Set ID:

Alt Mbr ID:

Proposal Line Number	Item ID Description	Approximate Quantity and Units	Unit Price	Bid Amount
0248	618.0100 Maintenance And Repair of Haul Roads (project) 01. 4992-03-71	1.000 EACH	_____.	_____.
0250	619.1000 Mobilization	1.000 EACH	_____.	_____.
0252	620.0300 Concrete Median Sloped Nose	562.000 SF	_____.	_____.
0254	624.0100 Water	167.000 MGAL	_____.	_____.
0256	625.0100 Topsoil	6,945.000 SY	_____.	_____.
0258	627.0200 Mulching	1,800.000 SY	_____.	_____.
0260	628.1504 Silt Fence	700.000 LF	_____.	_____.
0262	628.1520 Silt Fence Maintenance	700.000 LF	_____.	_____.
0264	628.1905 Mobilizations Erosion Control	11.000 EACH	_____.	_____.
0266	628.1910 Mobilizations Emergency Erosion Control	6.000 EACH	_____.	_____.
0268	628.7005 Inlet Protection Type A	50.000 EACH	_____.	_____.
0270	628.7010 Inlet Protection Type B	10.000 EACH	_____.	_____.
0272	628.7015 Inlet Protection Type C	51.000 EACH	_____.	_____.
0274	628.7020 Inlet Protection Type D	28.000 EACH	_____.	_____.
0276	628.7560 Tracking Pads	1.000 EACH	_____.	_____.
0278	629.0210 Fertilizer Type B	4.400 CWT	_____.	_____.



Proposal Schedule of Items

Proposal ID: 20200811007 Project(s): 4992-03-71
Federal ID(s): WISC 2020384

SECTION: 0001 Contract Items

Alt Set ID: Alt Mbr ID:

Proposal Line Number	Item ID Description	Approximate Quantity and Units	Unit Price	Bid Amount
0280	630.0140 Seeding Mixture No. 40	30.000 LB	_____.	_____.
0282	630.0500 Seed Water	38.000 MGAL	_____.	_____.
0284	631.0300 Sod Water	117.000 MGAL	_____.	_____.
0286	631.1000 Sod Lawn	5,145.000 SY	_____.	_____.
0288	634.0614 Posts Wood 4x6-Inch X 14-FT	38.000 EACH	_____.	_____.
0290	634.0616 Posts Wood 4x6-Inch X 16-FT	10.000 EACH	_____.	_____.
0292	634.0814 Posts Tubular Steel 2x2-Inch X 14-FT	11.000 EACH	_____.	_____.
0294	634.0816 Posts Tubular Steel 2x2-Inch X 16-FT	8.000 EACH	_____.	_____.
0296	637.2210 Signs Type II Reflective H	477.700 SF	_____.	_____.
0298	637.2230 Signs Type II Reflective F	216.000 SF	_____.	_____.
0300	638.2102 Moving Signs Type II	25.000 EACH	_____.	_____.
0302	638.2601 Removing Signs Type I	3.000 EACH	_____.	_____.
0304	638.2602 Removing Signs Type II	68.000 EACH	_____.	_____.
0306	638.3000 Removing Small Sign Supports	22.000 EACH	_____.	_____.
0308	638.3150 Removing Overhead Sign Supports Cantilever (structure) 01. STA 17+20'RSB'	1.000 EACH	_____.	_____.
0310	638.3150 Removing Overhead Sign Supports Cantilever (structure) 02. STA 2+10'RSB'	1.000 EACH	_____.	_____.



Proposal Schedule of Items

Proposal ID: 20200811007 Project(s): 4992-03-71
Federal ID(s): WISC 2020384

SECTION: 0001 Contract Items

Alt Set ID: Alt Mbr ID:

Proposal Line Number	Item ID Description	Approximate Quantity and Units	Unit Price	Bid Amount
0312	641.8100 Overhead Sign Support (structure) 01. S-70-383	LS	LUMP SUM	_____.
0314	642.5201 Field Office Type C 01. Office #1	1.000 EACH	_____.	_____.
0316	642.5201 Field Office Type C 02. Office #2	1.000 EACH	_____.	_____.
0318	643.0300 Traffic Control Drums	5,958.000 DAY	_____.	_____.
0320	643.0410 Traffic Control Barricades Type II	18,276.000 DAY	_____.	_____.
0322	643.0420 Traffic Control Barricades Type III	5,547.000 DAY	_____.	_____.
0324	643.0705 Traffic Control Warning Lights Type A	7,268.000 DAY	_____.	_____.
0326	643.0715 Traffic Control Warning Lights Type C	1,563.000 DAY	_____.	_____.
0328	643.0900 Traffic Control Signs	63,160.000 DAY	_____.	_____.
0330	643.0910 Traffic Control Covering Signs Type I	3.000 EACH	_____.	_____.
0332	643.1050 Traffic Control Signs PCMS	84.000 DAY	_____.	_____.
0334	643.5000 Traffic Control	1.000 EACH	_____.	_____.
0336	644.1420 Temporary Pedestrian Surface Plywood	1,600.000 SF	_____.	_____.
0338	644.1601 Temporary Pedestrian Curb Ramp	800.000 DAY	_____.	_____.
0340	644.1810 Temporary Pedestrian Barricade	575.000 LF	_____.	_____.
0342	645.0111 Geotextile Type DF Schedule A	310.000 SY	_____.	_____.



Proposal Schedule of Items

Proposal ID: 20200811007 Project(s): 4992-03-71

Federal ID(s): WISC 2020384

SECTION: 0001

Contract Items

Alt Set ID:

Alt Mbr ID:

Proposal Line Number	Item ID Description	Approximate Quantity and Units	Unit Price	Bid Amount
0344	645.0112 Geotextile Type DF Schedule B	943.000 SY	_____.	_____.
0346	645.0120 Geotextile Type HR	957.000 SY	_____.	_____.
0348	645.0130 Geotextile Type R	1,569.000 SY	_____.	_____.
0350	646.1020 Marking Line Epoxy 4-Inch	7,247.000 LF	_____.	_____.
0352	646.3020 Marking Line Epoxy 8-Inch	685.000 LF	_____.	_____.
0354	646.5020 Marking Arrow Epoxy	13.000 EACH	_____.	_____.
0356	646.5120 Marking Word Epoxy	10.000 EACH	_____.	_____.
0358	646.5220 Marking Symbol Epoxy	7.000 EACH	_____.	_____.
0360	646.6120 Marking Stop Line Epoxy 18-Inch	72.000 LF	_____.	_____.
0362	646.6320 Marking Dotted Extension Epoxy 18-Inch	109.000 LF	_____.	_____.
0364	646.7120 Marking Diagonal Epoxy 12-Inch	175.000 LF	_____.	_____.
0366	646.7420 Marking Crosswalk Epoxy Transverse Line 6-Inch	881.000 LF	_____.	_____.
0368	646.8120 Marking Curb Epoxy	48.000 LF	_____.	_____.
0370	646.8320 Marking Parking Stall Epoxy	40.000 LF	_____.	_____.
0372	646.9200 Marking Removal Line Wide	48.000 LF	_____.	_____.
0374	649.0105 Temporary Marking Line Paint 4-Inch	250.000 LF	_____.	_____.



Proposal Schedule of Items

Proposal ID: 20200811007 Project(s): 4992-03-71
Federal ID(s): WISC 2020384

SECTION: 0001 Contract Items

Alt Set ID: Alt Mbr ID:

Proposal Line Number	Item ID Description	Approximate Quantity and Units	Unit Price	Bid Amount
0376	649.0150 Temporary Marking Line Removable Tape 4-Inch	100.000 LF	_____.	_____.
0378	650.4000 Construction Staking Storm Sewer	54.000 EACH	_____.	_____.
0380	650.4500 Construction Staking Subgrade	1,722.000 LF	_____.	_____.
0382	650.5500 Construction Staking Curb Gutter and Curb & Gutter	5,072.000 LF	_____.	_____.
0384	650.6500 Construction Staking Structure Layout (structure) 01. B-70-324	LS	LUMP SUM	_____.
0386	650.6500 Construction Staking Structure Layout (structure) 02. R-70-160	LS	LUMP SUM	_____.
0388	650.6500 Construction Staking Structure Layout (structure) 03. R-70-161	LS	LUMP SUM	_____.
0390	650.6500 Construction Staking Structure Layout (structure) 04. R-70-159	LS	LUMP SUM	_____.
0392	650.7000 Construction Staking Concrete Pavement	1,740.000 LF	_____.	_____.
0394	650.9000 Construction Staking Curb Ramps	36.000 EACH	_____.	_____.
0396	650.9910 Construction Staking Supplemental Control (project) 01. 4992-03-71	LS	LUMP SUM	_____.
0398	652.0125 Conduit Rigid Metallic 2-Inch	244.000 LF	_____.	_____.
0400	652.0220 Conduit Rigid Nonmetallic Schedule 40 1 1/2-Inch	128.000 LF	_____.	_____.
0402	652.0225 Conduit Rigid Nonmetallic Schedule 40 2-Inch	4,104.000 LF	_____.	_____.



Proposal Schedule of Items

Proposal ID: 20200811007 Project(s): 4992-03-71
Federal ID(s): WISC 2020384

SECTION: 0001 Contract Items

Alt Set ID: Alt Mbr ID:

Proposal Line Number	Item ID Description	Approximate Quantity and Units	Unit Price	Bid Amount
0404	652.0235 Conduit Rigid Nonmetallic Schedule 40 3-Inch	1,660.000 LF	_____.	_____.
0406	652.0800 Conduit Loop Detector	86.000 LF	_____.	_____.
0408	653.0164 Pull Boxes Non-Conductive 24x42-Inch	19.000 EACH	_____.	_____.
0410	653.0222 Junction Boxes 18x12x6-Inch	11.000 EACH	_____.	_____.
0412	653.0905 Removing Pull Boxes	4.000 EACH	_____.	_____.
0414	654.0105 Concrete Bases Type 5	9.000 EACH	_____.	_____.
0416	654.0230 Concrete Control Cabinet Bases Type L30	2.000 EACH	_____.	_____.
0418	655.0610 Electrical Wire Lighting 12 AWG	4,572.000 LF	_____.	_____.
0420	655.0620 Electrical Wire Lighting 8 AWG	30,900.000 LF	_____.	_____.
0422	655.0800 Loop Detector Wire	282.000 LF	_____.	_____.
0424	656.0200 Electrical Service Meter Breaker Pedestal (location) 01. Racine Street & Ahnaip Street	LS	LUMP SUM	_____.
0426	656.0200 Electrical Service Meter Breaker Pedestal (location) 02. Racine Street & Main Street	LS	LUMP SUM	_____.
0428	657.0255 Transformer Bases Breakaway 11 1/2-Inch Bolt Circle	13.000 EACH	_____.	_____.
0430	657.0322 Poles Type 5-Aluminum	13.000 EACH	_____.	_____.



Proposal Schedule of Items

Proposal ID: 20200811007 Project(s): 4992-03-71
Federal ID(s): WISC 2020384

SECTION: 0001 Contract Items

Alt Set ID: Alt Mbr ID:

Proposal Line Number	Item ID Description	Approximate Quantity and Units	Unit Price	Bid Amount
0432	657.0610 Luminaire Arms Single Member 4 1/2-Inch Clamp 6-FT	13.000 EACH	_____.	_____.
0434	657.6005 Anchor Assemblies Light Poles on Structures	6.000 EACH	_____.	_____.
0436	659.2130 Lighting Control Cabinets 120/240 30-Inch	1.000 EACH	_____.	_____.
0438	690.0150 Sawing Asphalt	331.000 LF	_____.	_____.
0440	690.0250 Sawing Concrete	442.000 LF	_____.	_____.
0442	715.0415 Incentive Strength Concrete Pavement	2,410.000 DOL	1.00000	2,410.00
0444	715.0502 Incentive Strength Concrete Structures	31,122.000 DOL	1.00000	31,122.00
0446	715.0710 Optimized Aggregate Gradation Incentive	7,964.000 DOL	1.00000	7,964.00
0448	SPV.0035 Special 01. Counterweight Concrete	346.000 CY	_____.	_____.
0450	SPV.0035 Special 02. Concrete Masonry Bridges Lightweight	93.000 CY	_____.	_____.
0452	SPV.0035 Special 03. Excavation and Dewatering of Dredging Material	2,250.000 CY	_____.	_____.
0454	SPV.0035 Special 04. Planting Mixture	300.000 CY	_____.	_____.
0456	SPV.0060 Special 01. Clearance Gauge	2.000 EACH	_____.	_____.
0458	SPV.0060 Special 02. Inlets 2x2.5-FT, Special	4.000 EACH	_____.	_____.
0460	SPV.0060 Special 03. Luminaires Utility LED	13.000 EACH	_____.	_____.



Proposal Schedule of Items

Proposal ID: 20200811007 Project(s): 4992-03-71
Federal ID(s): WISC 2020384

SECTION: 0001 Contract Items

Alt Set ID: Alt Mbr ID:

Proposal Line Number	Item ID Description	Approximate Quantity and Units	Unit Price	Bid Amount
0462	SPV.0060 Special 04. Concrete Bases Type 7 Modified	18.000 EACH	_____.	_____.
0464	SPV.0060 Special 05. Decorative Light Pole Assembly 12 FT	3.000 EACH	_____.	_____.
0466	SPV.0060 Special 06. Decorative Light Pole Assembly 16 FT	13.000 EACH	_____.	_____.
0468	SPV.0060 Special 07. Decorative Light Pole Assembly 30 FT	2.000 EACH	_____.	_____.
0470	SPV.0060 Special 08. Lighting Control Cabinet Special	1.000 EACH	_____.	_____.
0472	SPV.0060 Special 09. Decorative Pedestal Masonry	12.000 EACH	_____.	_____.
0474	SPV.0060 Special 10. Catch Basins 5-FT Diameter, Special	1.000 EACH	_____.	_____.
0476	SPV.0060 Special 11. Adjusting Sanitary Manhole Covers	7.000 EACH	_____.	_____.
0478	SPV.0060 Special 12. Underwater Inspection	5.000 EACH	_____.	_____.
0480	SPV.0060 Special 13. Inlet Covers Type R-2569	1.000 EACH	_____.	_____.
0482	SPV.0075 Special 01. Street Sweeping	70.000 HRS	_____.	_____.
0484	SPV.0085 Special 01. Structural Steel Bridge	900,624.000 LB	_____.	_____.
0486	SPV.0085 Special 02. Steel Treads, Tracks & Centerlocks	42,574.000 LB	_____.	_____.
0488	SPV.0085 Special 03. Structural Steel Operator House	2,753.000 LB	_____.	_____.



Proposal Schedule of Items

Proposal ID: 20200811007 Project(s): 4992-03-71
 Federal ID(s): WISC 2020384

SECTION: 0001 Contract Items

Alt Set ID: Alt Mbr ID:

Proposal Line Number	Item ID Description	Approximate Quantity and Units	Unit Price	Bid Amount
0490	SPV.0090 Special 01. Railing Aluminum Special B-70-324	1,702.000 LF	_____.	_____.
0492	SPV.0090 Special 02. Railing Aluminum Special R-70-159	102.000 LF	_____.	_____.
0494	SPV.0090 Special 03. Railing Aluminum Special R-70-160	129.000 LF	_____.	_____.
0496	SPV.0090 Special 04. Railing Aluminum Special R-70-161	50.000 LF	_____.	_____.
0498	SPV.0090 Special 05. Sanitary Sewer Pipe PVC 4-Inch	150.000 LF	_____.	_____.
0500	SPV.0090 Special 06. C-901 PE Pipe 1-Inch	180.000 LF	_____.	_____.
0502	SPV.0090 Special 07. Concrete Curb & Gutter 30-Inch HES Type A	56.000 LF	_____.	_____.
0504	SPV.0090 Special 08. Sawing Curb Head	30.000 LF	_____.	_____.
0506	SPV.0090 Special 09. Turbidity Barrier Special	1,000.000 LF	_____.	_____.
0508	SPV.0090 Special 10. Landscape Edging	140.000 LF	_____.	_____.
0510	SPV.0105 Special 01. Waterproofing Bascule Pier and Bascule Abutment	LS	LUMP SUM	_____.
0512	SPV.0105 Special 02. Closures and Seals	LS	LUMP SUM	_____.
0514	SPV.0105 Special 03. HVAC Work	LS	LUMP SUM	_____.
0516	SPV.0105 Special 04. Operator House Miscellaneous	LS	LUMP SUM	_____.
0518	SPV.0105 Special 05. Fender Rub Rails	LS	LUMP SUM	_____.



Proposal Schedule of Items

Proposal ID: 20200811007 Project(s): 4992-03-71
Federal ID(s): WISC 2020384

SECTION: 0001 Contract Items

Alt Set ID: Alt Mbr ID:

Proposal Line Number	Item ID Description	Approximate Quantity and Units	Unit Price	Bid Amount
0520	SPV.0105 Special 06. Mechanical Work Bascule Span	LS	LUMP SUM	_____.
0522	SPV.0105 Special 07. Rear Locks Bascule Span	LS	LUMP SUM	_____.
0524	SPV.0105 Special 08. Bridge Electrical Work B-70-324	LS	LUMP SUM	_____.
0526	SPV.0105 Special 09. Span Drives and Motors B-70-324	LS	LUMP SUM	_____.
0528	SPV.0105 Special 10. Control Console B-70-324	LS	LUMP SUM	_____.
0530	SPV.0105 Special 11. PLC Cabinet B-70-324	LS	LUMP SUM	_____.
0532	SPV.0105 Special 12. Programming B-70-324	LS	LUMP SUM	_____.
0534	SPV.0105 Special 13. Lightning and Surge Suppression B-70-324	LS	LUMP SUM	_____.
0536	SPV.0105 Special 14. Traffic Gates and Signals B-70-324	LS	LUMP SUM	_____.
0538	SPV.0105 Special 15. Motor Control Center B-70-324	LS	LUMP SUM	_____.
0540	SPV.0105 Special 16. Limits and Sensors B-70-324	LS	LUMP SUM	_____.
0542	SPV.0105 Special 17. Training, Manuals and Spare Parts B-70-324	LS	LUMP SUM	_____.
0544	SPV.0105 Special 18. Auxiliary Electrical Equipment B-70-324	LS	LUMP SUM	_____.
0546	SPV.0105 Special 19. Submarine Cable B-70-324	LS	LUMP SUM	_____.



Proposal Schedule of Items

Proposal ID: 20200811007 Project(s): 4992-03-71

Federal ID(s): WISC 2020384

SECTION: 0001

Contract Items

Alt Set ID:

Alt Mbr ID:

Proposal Line Number	Item ID Description	Approximate Quantity and Units	Unit Price	Bid Amount
0548	SPV.0105 Special 20. Tayco Street Remote Operations B-70-324	LS	LUMP SUM	_____.
0550	SPV.0105 Special 21. Steel Stairs, Platforms and Railing	LS	LUMP SUM	_____.
0552	SPV.0105 Special 22. Tool Box with Tools	LS	LUMP SUM	_____.
0554	SPV.0105 Special 23. Substructure Temporary Dewatering System South Abutment	LS	LUMP SUM	_____.
0556	SPV.0105 Special 24. Substructure Temporary Dewatering System Pier 1	LS	LUMP SUM	_____.
0558	SPV.0105 Special 25. Substructure Temporary Dewatering System Pier 2	LS	LUMP SUM	_____.
0560	SPV.0105 Special 26. Substructure Temporary Dewatering System Pier 3	LS	LUMP SUM	_____.
0562	SPV.0105 Special 27. Substructure Temporary Dewatering System Pier 4	LS	LUMP SUM	_____.
0564	SPV.0105 Special 28. Substructure Temporary Dewatering System South Bascule Pier	LS	LUMP SUM	_____.
0566	SPV.0105 Special 29. Substructure Temporary Dewatering System North Bascule Abutment	LS	LUMP SUM	_____.
0570	SPV.0105 Special 31. Plumbing Work	LS	LUMP SUM	_____.
0572	SPV.0105 Special 32. Anchoring System for Sheet Pile Wall R-70-159	LS	LUMP SUM	_____.
0574	SPV.0105 Special 33. Anchoring System for Sheet Pile Wall R-70-160	LS	LUMP SUM	_____.



Proposal Schedule of Items

Proposal ID: 20200811007 Project(s): 4992-03-71
Federal ID(s): WISC 2020384

SECTION: 0001 Contract Items

Alt Set ID: Alt Mbr ID:

Proposal Line Number	Item ID Description	Approximate Quantity and Units	Unit Price	Bid Amount
0576	SPV.0105 Special 34. Substructure Temporary Dewatering R-70-161 Segment B	LS	LUMP SUM	_____.
0578	SPV.0105 Special 35. Salvage Existing Traffic Signal and Lighting Equipment	LS	LUMP SUM	_____.
0580	SPV.0105 Special 36. Lighting Equipment Painting	LS	LUMP SUM	_____.
0582	SPV.0105 Special 37. Operator House Masonry	LS	LUMP SUM	_____.
0584	SPV.0105 Special 38. Construction Staking Water Main	LS	LUMP SUM	_____.
0586	SPV.0120 Special 01. Management of Petroleum Contaminated Groundwater	1,041.000 MGAL	_____.	_____.
0588	SPV.0165 Special 01. Counterweight Concrete Sealer	4,983.000 SF	_____.	_____.
0590	SPV.0165 Special 02. Steel Grid Floor Concrete Filled	3,339.000 SF	_____.	_____.
0592	SPV.0165 Special 03. Insulation Board 2-Inch	450.000 SF	_____.	_____.
0594	SPV.0165 Special 04. Fiberglass Sidewalk Floor Plates	1,346.000 SF	_____.	_____.
0596	SPV.0180 Special 01. Shredded Hardwood Bark Mulch	832.000 SY	_____.	_____.
0598	SPV.0195 Special 01. Excavation, Hauling, and Disposal of River Material at Substructures	3,931.000 TON	_____.	_____.
0600	SPV.0195 Special 02. Excavation, Hauling, and Disposal of Contaminated Soil (Direct Landfill)	911.000 TON	_____.	_____.



Proposal Schedule of Items

Proposal ID: 20200811007 Project(s): 4992-03-71
Federal ID(s): WISC 2020384

SECTION: 0001 Contract Items

Alt Set ID: Alt Mbr ID:

Proposal Line Number	Item ID Description	Approximate Quantity and Units	Unit Price	Bid Amount
0602	SPV.0195 Special 03. Excavation, Hauling, and Disposal of Contaminated Soil (Bioremediation)	1,567.000 TON	_____.	_____.
0604	SPV.0195 Special 04. Hauling and Disposal of Dredging Material	3,938.000 TON	_____.	_____.
0606	SPV.0090 Special 11. Storm Sewer Pipe 8-Inch	9.000 LF	_____.	_____.
Section: 0001			Total:	_____.
			Total Bid:	_____.