



Wisconsin Department of Transportation

August 28, 2020

Division of Transportation Systems Development

Bureau of Project Development
4822 Madison Yards Way, 4th Floor South
Madison, WI 53705

Telephone: (608) 266-1631
Facsimile (FAX): (608) 266-8459

NOTICE TO ALL CONTRACTORS:

Proposal #11: 9200-10-71, WISC 2019 634
Shawano – Green Bay
CTH VV Interchange
STH 29
Brown County

9200-10-72, WISC 2019 634
Shawano – Green Bay
CTH VV Interchange
STH 29
Brown County

Letting of September 15, 2020

This is Addendum No. 02, which provides for the following:

Special Provisions:

Revised Special Provisions	
Article No.	Description
21	Native American Hiring Provision

Added Special Provisions	
Article No.	Description
108	Basic Traffic Queue Warning System, Item 643.1205.S
109	Topsoil Stockpile, SPV.0035.03

Deleted Special Provisions	
Article No.	Description
31	Notice to Contractor – Topsoil Stockpile for removal from project.

Schedule of Items:

Revised Bid Item Quantities					
Bid Item	Item Description	Unit	Old Quantity	Revised Quantity	Proposal Total
643.0300	Traffic Control Drums	DAY	65,200	-2,880	62,320
643.0420	Traffic Control Barricade Type III	DAY	19,400	-820	18,580
643.0705	Traffic Control Warning Lights Type A	DAY	28,400	-1,240	27,160
643.0715	Traffic Control Warning Lights Type C	DAY	22,500	-1,420	21,080
643.0800	Traffic Control Arrow Boards	DAY	3,600	-2,610	990

643.0900	Traffic Control Signs	DAY	71,300	-7,235	64,065
643.1050	Traffic Control Signs PCMS	DAY	500	-40	460

Added Bid Item Quantities					
Bid Item	Item Description	Unit	Old Quantity	Revised Quantity	Proposal Total
643.1205.S	Basic Traffic Queue Warning System, Item 643.1205.S	DAY	0	200	200
SPV.0035	Special 03. Topsoil Stockpile	CY	0	5,000	5,000

Plan Sheets:

Revised Plan Sheets	
Plan Sheet	Plan Sheet Title (brief description of changes to sheet)
13	Typical Sections (Tie bar added)
14	Typical Sections (Tie bar added)
17	Typical Sections (Tie bar added)
546	Miscellaneous Quantities (Added item and update of quantities)
573	Miscellaneous Quantities (Added item)

Added Plan Sheets	
Plan Sheet	Plan Sheet Title (brief description of why sheet was added)
660A	Standard Detail Drawing - Concrete Pavement Longitudinal Joints and Ties (Missing from plan)
712A	Standard Detail Drawing - Traffic Control, Lane Closure, Basic Traffic Queue Warning System (Added bid item)

The responsibility for notifying potential subcontractors and suppliers of these changes remains with the prime contractor.

Sincerely,

Mike Coleman

Proposal Development Specialist
Proposal Management Section

ADDENDUM NO. 02
9200-10-71, 9200-10-72
August 28, 2020

Special Provisions

22. Native American Hiring Provision.

Replace Oneida Nation tribal labor office contact information with the following:

Troy Parr, Community Development
Email: tparr@oneidanation.org

David Jordan, Community Development
Email: djordan1@oneidanation.org

N7332 Water Circle Place, PO Box 365, Oneida, WI 54155
Office: (920) 869-4574
Cell: (920) 606-8909

31. DELETED.

108. Basic Traffic Queue Warning System, Item 643.1205.S

A Description

This special provision describes providing, repositioning, operating, maintaining, monitoring, calibrating, testing and removing a basic traffic queue warning system (QWS) capable of measuring vehicular speeds at downstream sections of a roadway, and activating the system.

B Materials

Provide Basic Traffic QWS components and software that is National Transportation Communications for ITS Protocol (NCTIP) compliant.

B.1 Portable Traffic Sensors (PTS)

Provide PTS that are nonintrusive and capable of capturing vehicle speed in mph. Integrate each sensor with a modem to communicate with the automated system manager.

B.2 Static Traffic Control Signs with Temporary Flashing Beacon Signs (FBS)

Provide static traffic control signs with temporary flashing beacon signs conforming to standard spec 658.2(2) for Traffic Signal Faces. Ensure each FBS is integrated with a modem, and other equipment (e.g., automated system manager) mounted on it, and acts as a single device for communicating with similarly integrated devices and displaying real-time traffic conditions.

B.3 Automated System Manager

Provide an ASM that assesses current traffic data captured by the PTS and activates/deactivates the FBS based on predetermined speed thresholds.

B.4 System Communications

Ensure Basic Traffic QWS communications meet the following requirements:

1. Perform required configuration of the Basic Traffic QWS's communication system automatically during system initialization.
2. Communication between the server and any individual FBS or PTS are independent through the full range of deployed locations, and do not rely upon communications with any other FBS or PTS.
3. Incorporate an error detection/correction mechanism into the Basic Traffic QWS communication system to ensure the integrity of all traffic condition data.

B.5 System Acceptance

Submit vendor verification to the engineer and Bureau of Traffic Operations (DOTBTOWorkzone@dot.wi.gov) 14 calendar days before the pre-construction meeting that the system will adequately perform the functions specified in this special provision. Adequate verification includes past successful performance of the system, literature and references from successful use of the system by other agencies, and/or demonstration of the system.

Provide contact information for a designated representative responsible for monitoring the performance of the system and for making modifications to the operational settings as the engineer directs. Provide all testing and calibration equipment.

C Construction

C.1 General

Install and reposition Basic Traffic Queue Warning System per plan or as the engineer directs. Provide plan to the engineer and Bureau of Traffic Operations (DOTBTOWorkzone@dot.wi.gov) 14 calendar days before the pre-construction meeting.

PTS may be mounted on FBS, arrow board or other trailer devices.

Install PTS at the following locations:

1. Place first PTS within the lane closure taper.
2. Place second PTS 5,700 feet upstream of the lane closure taper or on FBS #3.
3. Place third PTS 2 miles upstream of the lane closure taper or on FBS #2.

Install FBS at the following locations, delineated by 5 drums:

1. Place first FBS (FBS #3) 5,700 feet upstream of the lane closure taper.
2. Place second FBS (FBS #2) 2 miles upstream of the lane closure taper.
3. Place third FBS (FBS #1) 3 miles upstream of the lane closure taper.

If there are more than 2 lanes or specified in the plans, place FBS on both sides of the roadway.

Number the devices in chronological order so they are visible from the shoulder with 6-inch white high reflective sheeting.

Provide technical personnel for all system calibration, operation, maintenance, and timely on-call support services.

Promptly correct the system within 24 hours of becoming aware of a deficiency in the operation or individual part of the system. A minimum of three days before deployment, place the Basic Traffic QWS and demonstrate to the Department that the Basic Traffic QWS is operational.

Maintain the Basic Traffic QWS for the duration of the project. Ensure the system operates continuously (24 hours, 7 days a week) in the automated mode throughout the duration of the project.

Remove the system upon completion.

C.2 Reports

Provide an electronic copy of a weekly summary report of all data via email to the engineer. Ensure the report includes, at a minimum, the average speed per sensor, time in congestive state per sensor and number of triggers per day.

C.3 Meetings

Attend mandatory in-person pre-construction meetings with the department. Attend additional meetings as deemed necessary by the department. These meetings may be held in person or via teleconference, as scheduled by the department.

C.4 Programming

C.4.1 General

Program the Basic Traffic QWS to ensure that the following general operations are performed:

1. Provide a password protected login to the ASM, website and all other databases.
2. Automatic setting of the FBS to reflect current traffic flow status updated every 60 seconds for congestion. Ensure to remove a congestion message when 180 seconds of average traffic speeds above the current level are observed, or utilize a customized frequency as determined by the engineer.
3. The FBS activate based on pre-determined speed thresholds from the next downstream sensor.
 - FBS #3 shall activate based on traffic speeds at the PTS located within the lane closure taper.
 - FBS #2 shall activate based on traffic speeds at the PTS located approximately 1 mile upstream of lane closure taper, or at FBS #3.
 - FBS #1 shall activate based on traffic speeds at the PTS located 2 miles upstream of lane closure taper, or at FBS #2.
4. Provide real-time data from the ASM to a website with a full color mapping feature and refresh every 60 seconds. Make data on website available to the department staff at all times for the duration of the work zone activity. Ensure website includes:
 - Vehicle speeds
 - FBS triggers
 - Device locations
5. Archive all traffic data in a Microsoft Excel format with date and time stamps.
6. Configure the website to quantify system failures which includes communication disruption between any devices in the system configuration, FBS malfunctioning, PTS malfunction, loss of power, low battery, etc.
7. Automatically generate and send an email alert any time a user specified queue is detected by the system.
8. Ensure the system autonomously restarts in case of any power failure.

C.4.2 System Operation Strategy

Arrange for the vendor/manufacturer to coordinate system operation, detection, and trends/thresholds with the engineer.

The sequences below are a minimum requirement, but can be adjusted at the discretion of the engineer, are as follows:

Free Flow:

If the current PTS speed on a downstream section is at or above 40 mph, the next upstream FBS will not flash.

Slow or Stopped Traffic:

If the current PTS speed on a downstream section of the roadway is between the 39 mph and 0 mph (for example, 35 mph), the next upstream FBS shall flash.

C.5 Calibration and Testing

At the beginning of the project and perform a successful field test and calibration at the Basic Traffic QWS location to verify the system is detecting accurate vehicle speeds, and accurately relaying the information to the ASM and the FBS.

Send email of successful calibration and testing to the engineer.

D Measurement

The department will measure Basic Traffic Queue Warning System by the day, acceptably completed, measured as each complete system per roadway.

E Payment

The department will pay for measured quantities at the contract unit price under the following bid item:

ITEM NUMBER	DESCRIPTION	UNIT
643.1205.S	Basic Traffic Queue Warning System	DAY

Payment is full compensation for providing, repositioning, operating, maintaining, monitoring, calibrating, testing, and removing the complete system consisting of FBS, PTS, ASM, and system communications.

Failure to correct a deficiency to the FBS, PTS, or ASM within 24 hours after notification from the engineer or the department will result in a one-day deduction of the measured quantity for each day in which the deficiency is not corrected.

Failure to correct the website within 24 hours after notification from the engineer will result in a 10% reduction of the day quantity for each day the website is down.

The engineer will have sole discretion to assess the deductions for an improperly working Basic Traffic QWS.

stp-643-046 (20200629)

109. Topsoil Stockpile, Item SPV.0035.03.

A Description

This special provision describes providing topsoil in a stockpile to be removed by others.

B (Vacant)

C Construction

Strip existing topsoil within project per section 625.3.2. of the standard specifications.

Stockpile the amount of topsoil shown in plans near the intersection of future Evergreen Avenue and Milltown Road. Provide an access from Milltown road to the stockpile including a temporary culvert if needed depending on location of access selected.

Stockpiled topsoil will become property of adjacent property owner who will have 14 calendar days to remove topsoil after stockpiling is completed.

D Measurement

The department will measure Topsoil Stockpile by the Cubic Yard, acceptably completed.

E Payment

The department will pay for measured quantities at the contract unit price under the following bid item:

ITEM NUMBER	DESCRIPTION	UNIT
SPV.0035.03	Topsoil Stockpile	CY

Payment is full compensation for stripping, placing, and stockpiling topsoil; for creating an access from Milltown Road; for providing a temporary culvert; for removing access and temporary culvert after removal of topsoil.

Schedule of Items

Attached, dated August 28, 2020, are the revised Schedule of Items Pages 15, 16, and 24.

Plan Sheets

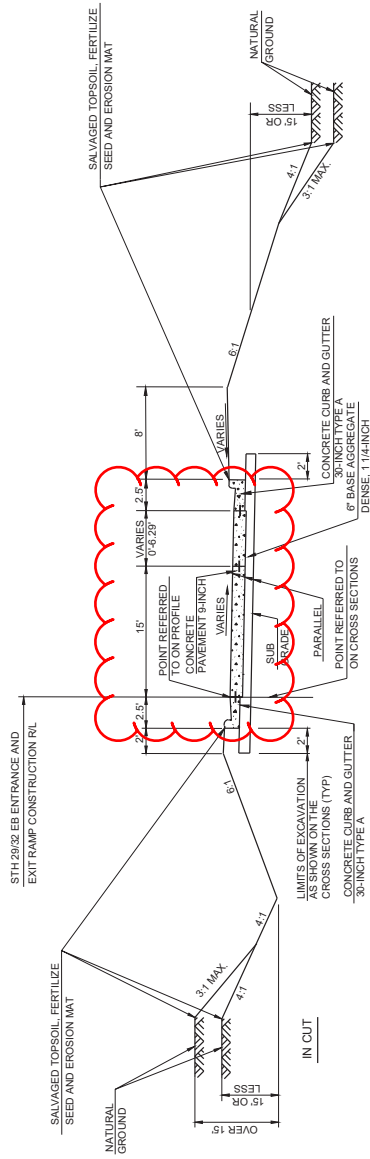
The following 8½ x 11-inch sheets are attached and made part of the plans for this proposal:

Revised: 13, 14, 17, 546, and 573.

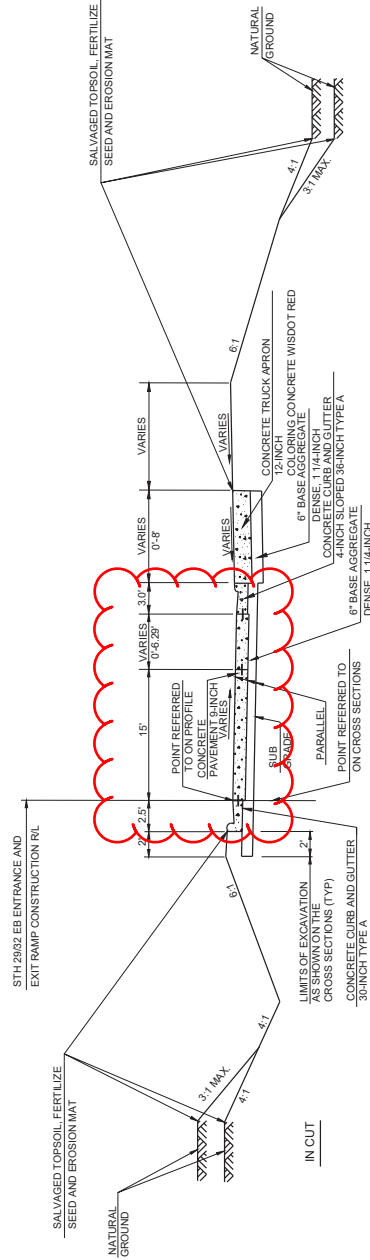
Added: 660A and 712A.

END OF ADDENDUM

Addendum No. 02
 ID 9200-10-71
 Revised Sheet 13
 August 28, 2020



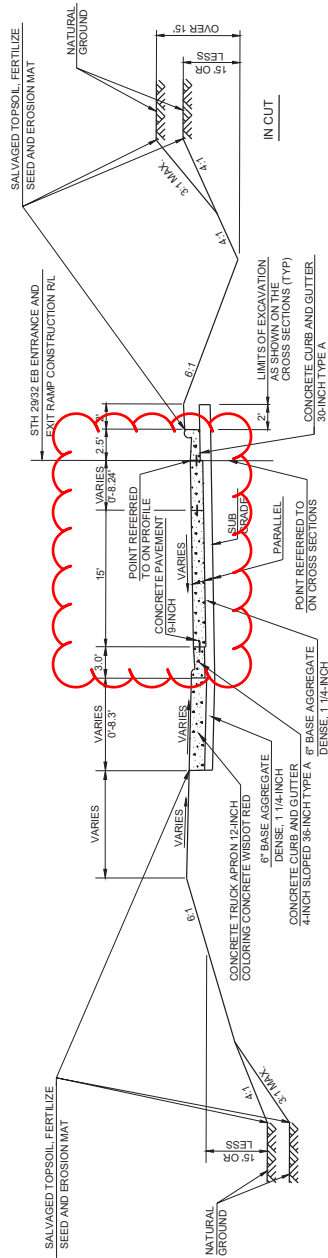
TYPICAL FINISHED SECTION FOR STH 29/32
 ENTRANCE AND EXIT RAMPS
 STA. 215+19.10'RA' - STA. 215+61.60'RA'
 STA. 300+00.00'RB' - STA. 300+64.94'RB'



TYPICAL FINISHED SECTION FOR STH 29/32
 ENTRANCE AND EXIT RAMPS
 STA. 215+61.60'RA' - STA. 216+54.82'RA'

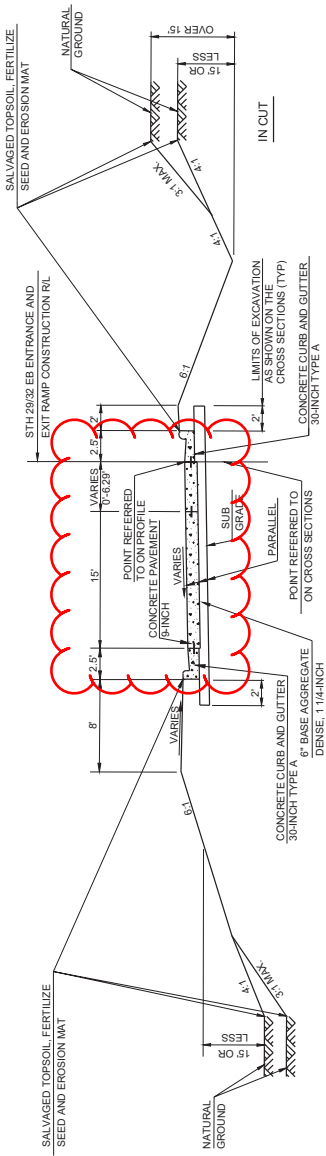
PROJECT NO: 9200-10-71	COUNTY: BROWN	TYPICAL SECTIONS	SHEET 13	E
FILE NAME: V:\TRANS-SB\410610\STH 29-CH\W\INTERCHANGE\C\3D\SHEETS\PLANO\2901-TS.DWG	PLOT DATE: 8/28/2020 7:45 PM	PLOT BY: VERVILLE, PHILIP	PLOT SCALE: 1 IN=200 FT	WISDOT/CADDIS SHEET 42
HWY: STH 29				

Addendum No. 02
 ID 9200-10-71
 Revised Sheet 14
 August 28, 2020



TYPICAL FINISHED SECTION FOR STH 29/32
 ENTRANCE AND EXIT RAMPS

STA. 409+00.00RC - STA. 409+35.83RC
 STA. 525+49.93RD - STA. 525+61.86RD

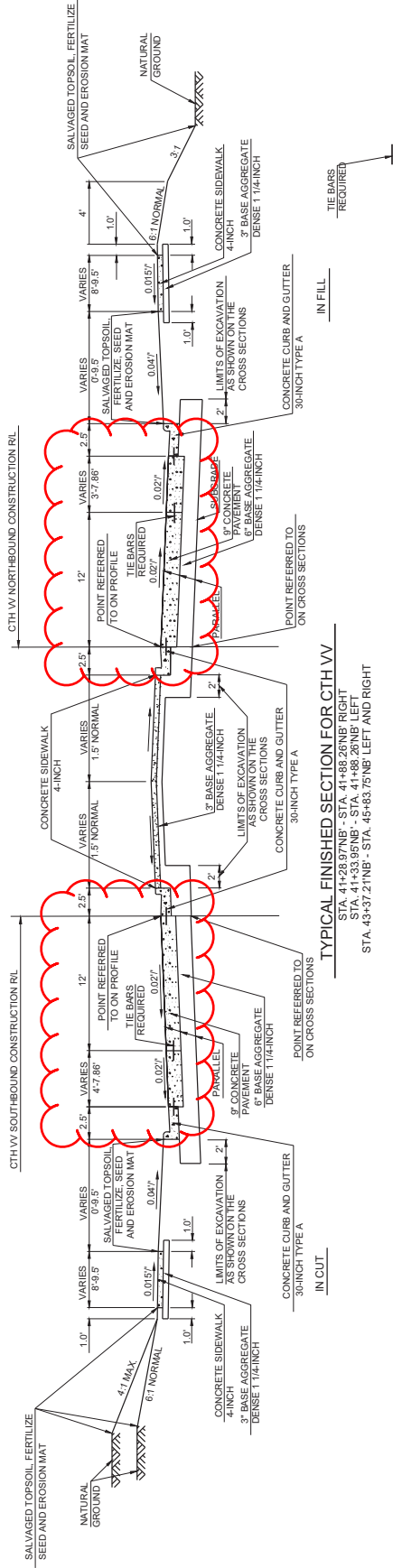


TYPICAL FINISHED SECTION FOR STH 29/32
 ENTRANCE AND EXIT RAMPS

STA. 409+35.83RC - STA. 409+61.86RC
 STA. 525+12.37RD - STA. 525+49.93RD

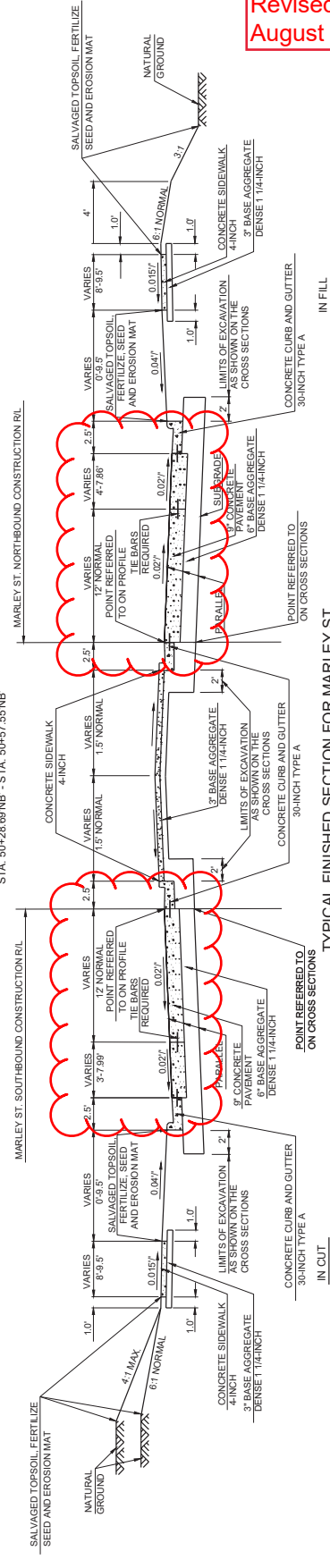
PROJECT NO: 9200-10-71	COUNTY: BROWN	TYPICAL SECTIONS	SHEET 14	E
FILE NAME: V:\TRANS-SB\4.06.10\STH 29-CITY\INTERCHANGE\C3D\SHEETS\PLAND\29301-T5.DWG	DATE: 8/28/2020 7:44 PM	DESIGNED BY: VERNILLE, PHILIP	SCALE: 1 IN=200 FT	PROJECT: WIS907/CADDS SHEET 42
HWY: STH 29				

NOTE:
 COLORED AND STAMPED
 CONCRETE 4-INCH IN MEDIAN
 STA. 41+67.97' NB' - STA. 45+83.75' NB'



TYPICAL FINISHED SECTION FOR CTH VV
 STA. 41+28.97' NB' - STA. 41+88.28' NB' RIGHT
 STA. 41+33.95' NB' - STA. 41+88.28' NB' LEFT
 STA. 43+37.21' NB' - STA. 45+83.75' NB' LEFT AND RIGHT

NOTE:
 COLORED AND STAMPED
 CONCRETE 4-INCH IN MEDIAN
 STA. 47+44.25' NB' - STA. 48+79.89' NB' AND
 STA. 50+28.69' NB' - STA. 50+57.55' NB'



TYPICAL FINISHED SECTION FOR MARLEY ST.
 STA. 47+44.25' NB' - STA. 48+79.89' NB' LEFT AND RIGHT
 STA. 50+28.69' NB' - STA. 50+85.66' NB' RIGHT
 STA. 50+28.69' NB' - STA. 51+09.55' NB' LEFT

Addendum No. 02
 ID 9200-10-71
 Revised Sheet 17
 August 28, 2020

PROJECT NO: 9200-10-71

HWY: STH 29

COUNTY: BROWN

TYPICAL SECTIONS

SHEET 17

E

FILE NAME: V:\TRANS-S&L\0510\STH 29\CTH VV\INTERCHANGE\CD\SHEETS\PLAND\2801-TS.DWG
 LAYOUT NAME: 0033415

PLOT DATE: 8/28/2020 6:48 PM

PLOT BY: VENVILLE, PHILIP

PLOT SCALE: 1 IN=200 FT

WIS007/CADD/SHEET 42

Addendum No. 02
ID 9200-10-71
Revised Sheet 546
August 28, 2020

DEFENTION POND PLANTINGS

SPV.0060.60	SPV.0060.61	SPV.0060.62
PLANTING	SUBWURGENT	EMERGENT
POD	WETLAND	WETLAND
EACH	PLANTINGS	PLANTINGS
38	EACH	EACH
EVERGREENPOND	755	1,520
TOTAL 0010	38	755

DELINATOR ITEMS

633.0100	633.0500
DELINATOR POSTS/STEEL	DELINATOR REFLECTORS
EACH	EACH
15	20
RAMP A	
0010	7
STH.29, RAMP A TO RAMP B	
0010	38
RAMP B	
0010	25
RAMP C	
0010	20
STH.29, RAMP C TO RAMP D	
0010	7
RAMP D	
0010	38
STH.29, EAST RCUT	
0010	1
STH.29/CTHU	
0010	5
TOTAL 0010	100
	136

ROUNDABOUT CARE CYCLES, SOIL MIXTURE AND MULCH

632.9101	SPV.0085.01	SPV.0180.01
LANDSCAPE PLANTING SURVILLANCE AND CARE CYCLES	PLANTING SOIL MIXTURE	HARDWOOD MULCH
EACH	CY	SY
-	250	370
0010	235	350
CTH VV-RAMP AB RAB		
0010	350	350
MARLEY-RAMP CD RAB		
0010	250	370
MARLEY-EVERGREEN RAB		
UNDISTRIBUTED		
12	970	1,440
TOTAL 0010		

TRAFFIC CONTROL

643.0300	643.0420	643.0705	643.0715	643.0800	643.0900	643.1050	643.1205.S	643.5000	603.8000	603.8125
DRUMS	BARRICADES TYPE III	WARNING LIGHTS TYPE A	WARNING LIGHTS TYPE C	ARROW BOARDS	SIGNS PCMS	SIGNS PCMS	TRAFFIC QUIFF WARNING SYSTEM	TRAFFIC CONTROL	CONCRETE BARRIER DELIVERED	CONCRETE BARRIER TEMPORARY PRECAST INSTALLED
DAY	DAY	DAY	DAY	DAY	DAY	DAY	DAY	EACH	LF	LF
568	2,049	2,478	2,160	80	7,425	30	20	-	-	-
STAGE 3B	STAGE 4A	STAGE 4B	STAGE 4C	STAGE 5A	STAGE 5B	STAGE 6A	STAGE 6B	-	-	-
440	1,188	1,592	392	208	3,687	28	10	-	-	-
STAGE 4B	STAGE 4C	STAGE 4D	STAGE 5A	STAGE 5B	STAGE 5C	STAGE 6A	STAGE 6B	-	-	-
90	2,160	2,880	1,844	176	3,652	102	44	-	-	-
STAGE 4B	STAGE 4C	STAGE 4D	STAGE 5A	STAGE 5B	STAGE 5C	STAGE 6A	STAGE 6B	-	-	-
44	4,396	1,012	1,844	176	3,652	102	44	-	-	-
STAGE 4B	STAGE 4C	STAGE 4D	STAGE 5A	STAGE 5B	STAGE 5C	STAGE 6A	STAGE 6B	-	-	-
14	798	224	560	56	182	28	14	-	-	-
STAGE 4B	STAGE 4C	STAGE 4D	STAGE 5A	STAGE 5B	STAGE 5C	STAGE 6A	STAGE 6B	-	-	-
27	702	471	642	120	2,124	20	20	-	-	-
STAGE 4B	STAGE 4C	STAGE 4D	STAGE 5A	STAGE 5B	STAGE 5C	STAGE 6A	STAGE 6B	-	-	-
135	568	2,049	2,160	80	7,425	30	20	-	-	-
STAGE 3B	STAGE 4A	STAGE 4B	STAGE 4C	STAGE 5A	STAGE 5B	STAGE 6A	STAGE 6B	-	-	-
49	440	1,188	1,592	208	3,687	28	10	-	-	-
STAGE 4B	STAGE 4C	STAGE 4D	STAGE 5A	STAGE 5B	STAGE 5C	STAGE 6A	STAGE 6B	-	-	-
90	2,160	2,880	1,844	176	3,652	102	44	-	-	-
STAGE 4B	STAGE 4C	STAGE 4D	STAGE 5A	STAGE 5B	STAGE 5C	STAGE 6A	STAGE 6B	-	-	-
14	798	224	560	56	182	28	14	-	-	-
STAGE 4B	STAGE 4C	STAGE 4D	STAGE 5A	STAGE 5B	STAGE 5C	STAGE 6A	STAGE 6B	-	-	-
286	12,870	1,430	1,716	784	126	28	14	-	-	-
TEMPORARY CONNECTION RD	TEMPORARY CONNECTION RD	TEMPORARY CONNECTION RD	TEMPORARY CONNECTION RD	TEMPORARY CONNECTION RD	TEMPORARY CONNECTION RD	TEMPORARY CONNECTION RD	TEMPORARY CONNECTION RD	-	-	-
359	8,975	1,077	2,154	7180	1,436	-	-	-	-	-
MARLEY TEMPORARY CONNECTION	MARLEY TEMPORARY CONNECTION	MARLEY TEMPORARY CONNECTION	MARLEY TEMPORARY CONNECTION	MARLEY TEMPORARY CONNECTION	MARLEY TEMPORARY CONNECTION	MARLEY TEMPORARY CONNECTION	MARLEY TEMPORARY CONNECTION	-	-	-
ENTIRE PROJECT	ENTIRE PROJECT	ENTIRE PROJECT	ENTIRE PROJECT	ENTIRE PROJECT	ENTIRE PROJECT	ENTIRE PROJECT	ENTIRE PROJECT	-	-	-
5,666	1,677	2,445	1,919	94	3,395	40	14	-	-	-
UNDISTRIBUTED	UNDISTRIBUTED	UNDISTRIBUTED	UNDISTRIBUTED	UNDISTRIBUTED	UNDISTRIBUTED	UNDISTRIBUTED	UNDISTRIBUTED	-	-	-
62,320	18,446	26,892	21,080	990	37,349	446	200	1	3,200	3,200
TOTAL 0010	TOTAL 0010	TOTAL 0010	TOTAL 0010	TOTAL 0010	TOTAL 0010	TOTAL 0010	TOTAL 0010	1	3,200	3,200

*-ADDITIONAL QUANTITIES SHOWN ELSEWHERE

HWY: STH 29

COUNTY: BROWN

MISCELLANEOUS QUANTITIES

SHEET 546

FOUNDATION BACKFILL

CATEGORY	STATION	LOCATION	CY
0010	637E6E+40	EVERGREEN AVE	125
TOTAL 0010			125

TOPSOIL STOCKPILE

CATEGORY	LOCATION	CY
0010	EVERGREEN AVE	5,000
TOTAL 0010		5,000

STEEL CASING PIPE

CATEGORY	STATION	TO	STATION	LOCATION	LF
0030	34NB+50	-	37NB+50	CTH VV	380
TOTAL 0030					380

GRADING AND SHAPING TEMPORARY CONNECTION ROAD

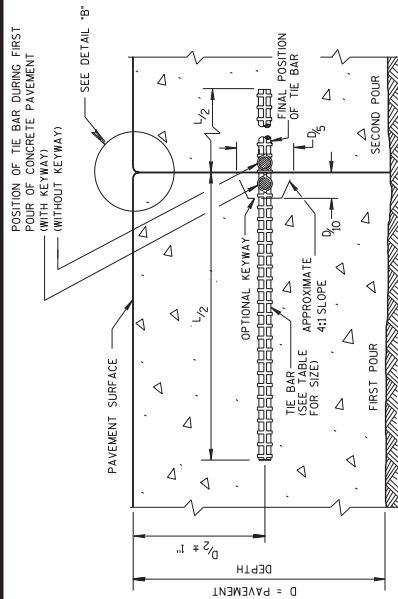
CATEGORY	STATION	TO	STATION	LOCATION	EXCAVATION COMMON	FILL	BORROW
					CY	CY	CY
0010	10TRG+45	-	11TCR+80	TEMPORARY CONNECTION RD	1	110	410
TOTAL 0010					1	110	410

** NON-BID ITEM, ITEMS AND QUANTITIES LISTED FOR BID INFORMATION ONLY - ITEMS INCIDENTAL TO GRADING AND SHAPING TEMPORARY CONNECTION ROAD

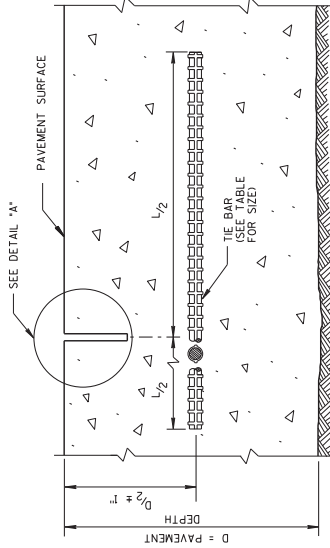
Addendum No. 02
ID 9200-10-71
Revised Sheet 573
August 28, 2020

GENERAL NOTES

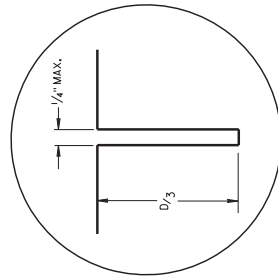
- 1. ANCHOR TIE BARS INTO DRILLED HOLES WITH AN EPOXY.
 - 2. PAVEMENT THAT WAS IN PLACE PRIOR TO THE CONTRACT.
- CREATE A LONGITUDINAL JOINT FOR PAVEMENT WIDTHS GREATER THAN 15 FEET.
CORRELATE LONGITUDINAL JOINTS WITH LANE LINES WHEN POSSIBLE.



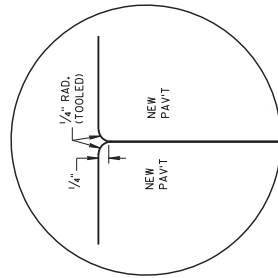
CONSTRUCTION JOINT



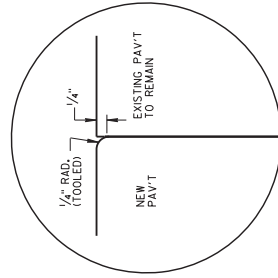
SAWED JOINT



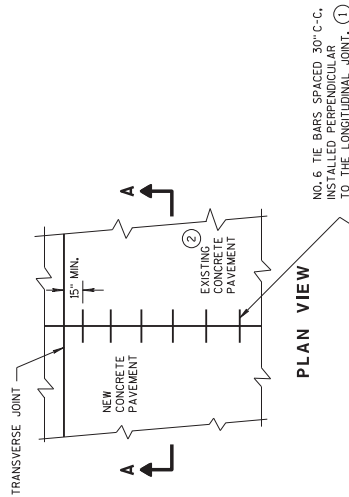
DETAIL "A"



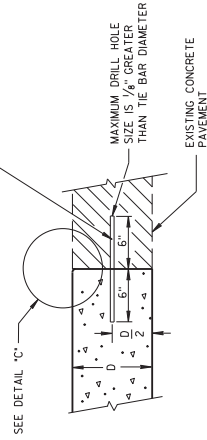
DETAIL "B"



DETAIL "C"



PLAN VIEW

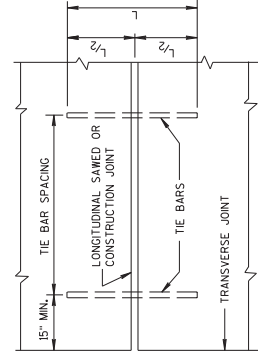


**SECTION A-A
LONGITUDINAL CONSTRUCTION JOINT
TIE BARS ANCHORED
INTO EXISTING PAVEMENT**

TIE BAR TABLE

PAVEMENT DEPTH (D)	TIE BAR SIZE	TIE BAR LENGTH (L)	MAX TIE BAR SPACING
< 10 1/2"	NO. 4	30"	36"
≥ 10 1/2"	NO. 5	36"	36"
	NO. 4 *	30"	24**

* SUBSTITUTE BENT BARS AT LONGITUDINAL JOINTS WHEN EQUIPMENT LIMITATIONS DURING CONSTRUCTION WARRANT (e.g. AUXILIARY LANES OR TURN LANES)
** CONFORM TO 15" MINIMUM SPACING FROM TRANSVERSE JOINTS; SPACING BETWEEN TIE BARS WILL BE 30" AT TRANSVERSE JOINTS.



**PLAN VIEW
SHOWING LOCATION OF TIE BARS**

Addendum No. 02
ID 9200-10-71
Added Sheet 660A
August 28, 2020

**CONCRETE PAVEMENT
LONGITUDINAL JOINTS AND TIES**

STATE OF WISCONSIN
DEPARTMENT OF TRANSPORTATION

APPROVED _____
Mcr-ch 2008 /S/ Peter Kemp, P.E.
DATE PAVEMENT SUPERVISOR
FHWA

GENERAL NOTES

THE EXACT NUMBER, LOCATION, AND SPACING OF ALL SIGNS, INCLUDING FBS AND DEVICES SHALL BE ADJUSTED TO FIT FIELD CONDITIONS AS APPROVED BY THE ENGINEER.

THE SPACING BETWEEN SIGNS SHOULD BE ADJUSTED TO NOT CONFLICT WITH AND TO PROVIDE A MINIMUM OF 200 FEET (500 FEET DESIRABLE) CLEARANCE TO EXISTING SIGNS.

THIS LANE CLOSURE IS TYPICAL FOR CLOSING RIGHT LANE - REVERSE FOR CLOSING LEFT LANE.

ALL SIGNS ARE 48" x 48" UNLESS OTHERWISE NOTED.

"W" SIGNS ARE THE SAME AS "W" SIGNS EXCEPT THE BACKGROUND IS ORANGE.

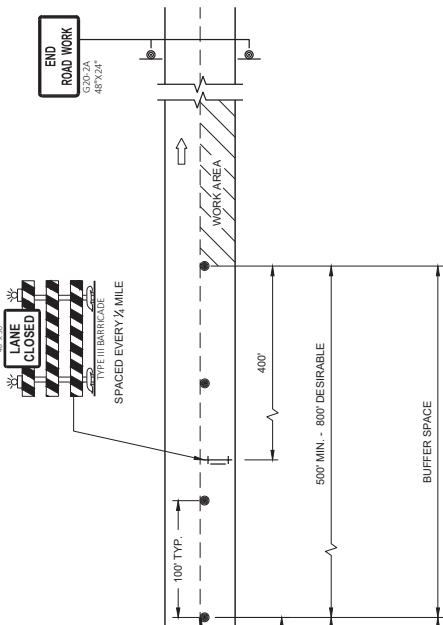
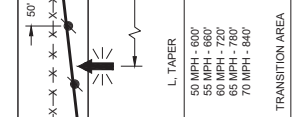
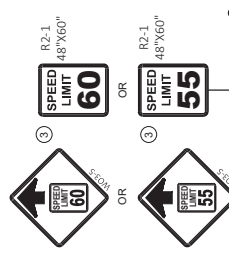
ANY SIGNS TEMPORARY OR EXISTING, WHICH CONFLICT WITH TRAFFIC CONTROL "IN USE" SHALL BE REMOVED OR COVERED AS NEEDED OR AS APPROVED BY THE ENGINEER. NO WARNING LIGHTS SHALL BE WORKING ON "COVERED" OR "DOWNED" SIGNS.

FOR A LANE CLOSURE THAT IS IN PLACE LESS THAN 7 CONTINUOUS DAYS AND NIGHTS, THE ADVANCED WARNING SIGNS MAY BE MOUNTED ON PORTABLE SUPPORTS.

- 1 5 DRUMS SPACED AT 10 FOOT INTERVALS AS NEEDED.
- 2 IF THERE ARE MORE THAN TWO LANES OR IF SPECIFIED IN THE PLANS, PLACE FBS ON BOTH SIDES OF THE ROADWAY.
- 3 A SPEED LIMIT SIGN SHALL BE LOCATED 1500 FEET BEYOND THE END OF THE ACCELERATION LANE OF EACH ENTRANCE RAMP. PLACE A SPEED LIMIT SIGN A MINIMUM OF EVERY 3 MILES. INCLUDE A "RESUME SPEED LIMIT" SIGN 200 FEET MINIMUM (800 FEET DESIRABLE) BEYOND THE "END OF ROADWAY" SIGN.

LEGEND

- SIGN ON PERMANENT SUPPORT
- TRAFFIC CONTROL DRUM
- TRAFFIC CONTROL DRUM WITH TYPE "C" STEADY BURN LIGHT
- TYPE III BARRICADE WITH ATTACHED SIGN
- TYPE "X" WARNING LIGHT (FLASHING)
- REMOVING PAVEMENT MARKINGS
- DIRECTION OF TRAFFIC
- WORK AREA
- FLASHING ARROW BOARD
- FLASHING BEACON SIGN
- STOPPED OR SLOW TRAFFIC WHEN FLASHING W8776 60x36



TRAFFIC CONTROL, LANE CLOSURE, BASIC TRAFFIC QUEUE WARNING SYSTEM

STATE OF WISCONSIN
DEPARTMENT OF TRANSPORTATION

APPROVED
February 2020
DATE

/s/ Andrew Hedding
WORK ZONE ENGINEER

Addendum No. 02
ID 9200-10-71
Added Sheet 712A
August 28, 2020



Proposal Schedule of Items

Proposal ID: 20200915011 Project(s): 9200-10-71, 9200-10-72

Federal ID(s): WISC 2019634, WISC 2019634

SECTION: 0001

Contract Items

Alt Set ID:

Alt Mbr ID:

Proposal Line Number	Item ID Description	Approximate Quantity and Units	Unit Price	Bid Amount
0002	201.0105 Clearing	55.000 STA	_____.	_____.
0004	201.0120 Clearing	200.000 ID	_____.	_____.
0006	201.0205 Grubbing	55.000 STA	_____.	_____.
0008	201.0220 Grubbing	200.000 ID	_____.	_____.
0010	203.0100 Removing Small Pipe Culverts	29.000 EACH	_____.	_____.
0012	204.0100 Removing Concrete Pavement	5,120.000 SY	_____.	_____.
0014	204.0110 Removing Asphaltic Surface	225.000 SY	_____.	_____.
0016	204.0115 Removing Asphaltic Surface Butt Joints	25.000 SY	_____.	_____.
0018	204.0130 Removing Curb	560.000 LF	_____.	_____.
0020	204.0150 Removing Curb & Gutter	3,565.000 LF	_____.	_____.
0022	204.0155 Removing Concrete Sidewalk	2,725.000 SY	_____.	_____.
0024	204.0165 Removing Guardrail	325.000 LF	_____.	_____.
0026	204.0170 Removing Fence	495.000 LF	_____.	_____.
0028	204.0180 Removing Delineators and Markers	15.000 EACH	_____.	_____.
0030	204.0210 Removing Manholes	2.000 EACH	_____.	_____.
0032	204.0220 Removing Inlets	9.000 EACH	_____.	_____.



Proposal Schedule of Items

Proposal ID: 20200915011 Project(s): 9200-10-71, 9200-10-72

Federal ID(s): WISC 2019634, WISC 2019634

SECTION: 0001

Contract Items

Alt Set ID:

Alt Mbr ID:

Proposal Line Number	Item ID Description	Approximate Quantity and Units	Unit Price	Bid Amount
0034	204.0245 Removing Storm Sewer (size) 01. 12-Inch	112.000 LF	_____.	_____.
0036	204.0245 Removing Storm Sewer (size) 02. 18-Inch	834.000 LF	_____.	_____.
0038	204.0245 Removing Storm Sewer (size) 03. 24-Inch	25.000 LF	_____.	_____.
0040	204.0245 Removing Storm Sewer (size) 04. 30-Inch	12.000 LF	_____.	_____.
0042	204.9060.S Removing (item description) 01. Apron Endwalls	6.000 EACH	_____.	_____.
0044	204.9060.S Removing (item description) 02. Underdrain Apron Endwalls	8.000 EACH	_____.	_____.
0046	204.9090.S Removing (item description) 01. Culvert Pipe	86.000 LF	_____.	_____.
0048	204.9090.S Removing (item description) 02. Pipe Underdrain 6-Inch	1,930.000 LF	_____.	_____.
0050	205.0100 Excavation Common	141,000.000 CY	_____.	_____.
0052	206.1000 Excavation for Structures Bridges (structure) 01. B-5-416	LS	LUMP SUM	_____.
0054	208.0100 Borrow	573,088.000 CY	_____.	_____.
0056	208.1100 Select Borrow	44,381.000 CY	_____.	_____.
0058	210.1500 Backfill Structure Type A	590.000 TON	_____.	_____.
0060	213.0100 Finishing Roadway (project) 01. 9200-10-71	1.000 EACH	_____.	_____.



Proposal Schedule of Items

Proposal ID: 20200915011 Project(s): 9200-10-71, 9200-10-72

Federal ID(s): WISC 2019634, WISC 2019634

SECTION: 0001

Contract Items

Alt Set ID:

Alt Mbr ID:

Proposal Line Number	Item ID Description	Approximate Quantity and Units	Unit Price	Bid Amount
0062	213.0100 Finishing Roadway (project) 02. 9200-10-72	1.000 EACH	_____.	_____.
0064	214.0100 Obliterating Old Road	7.600 STA	_____.	_____.
0066	305.0110 Base Aggregate Dense 3/4-Inch	3,310.000 TON	_____.	_____.
0068	305.0120 Base Aggregate Dense 1 1/4-Inch	85,808.000 TON	_____.	_____.
0070	305.0130 Base Aggregate Dense 3-Inch	18,200.000 TON	_____.	_____.
0072	310.0115 Base Aggregate Open-Graded	150.000 CY	_____.	_____.
0074	312.0110 Select Crushed Material	110,660.000 TON	_____.	_____.
0076	405.0100 Coloring Concrete WisDOT Red	630.000 CY	_____.	_____.
0078	415.0090 Concrete Pavement 9-Inch	10,560.000 SY	_____.	_____.
0080	415.0410 Concrete Pavement Approach Slab	80.000 SY	_____.	_____.
0082	415.4100 Concrete Pavement Joint Filling	5,590.000 SY	_____.	_____.
0084	415.5110.S Concrete Pavement Joint Layout	1.000 LS	_____.	_____.
0086	416.0160 Concrete Driveway 6-Inch	50.000 SY	_____.	_____.
0088	416.0512 Concrete Truck Apron 12-Inch	1,915.000 SY	_____.	_____.
0090	416.0610 Drilled Tie Bars	395.000 EACH	_____.	_____.
0092	450.4000 HMA Cold Weather Paving	2,540.000 TON	_____.	_____.



Proposal Schedule of Items

Proposal ID: 20200915011 Project(s): 9200-10-71, 9200-10-72

Federal ID(s): WISC 2019634, WISC 2019634

SECTION: 0001

Contract Items

Alt Set ID:

Alt Mbr ID:

Proposal Line Number	Item ID Description	Approximate Quantity and Units	Unit Price	Bid Amount
0094	455.0605 Tack Coat	5,060.000 GAL		
0096	460.2000 Incentive Density HMA Pavement	12,120.000 DOL	1.00000	12,120.00
0098	460.5223 HMA Pavement 3 LT 58-28 S	2,660.000 TON		
0100	460.5224 HMA Pavement 4 LT 58-28 S	2,050.000 TON		
0102	460.6223 HMA Pavement 3 MT 58-28 S	8,550.000 TON		
0104	460.6424 HMA Pavement 4 MT 58-28 H	5,660.000 TON		
0106	465.0105 Asphaltic Surface	15.000 TON		
0108	465.0120 Asphaltic Surface Driveways and Field Entrances	345.000 TON		
0110	465.0125 Asphaltic Surface Temporary	200.000 TON		
0112	465.0315 Asphaltic Flumes	60.000 SY		
0114	465.0400 Asphaltic Shoulder Rumble Strips	10,540.000 LF		
0116	502.0100 Concrete Masonry Bridges	1,164.000 CY		
0118	502.3200 Protective Surface Treatment	1,843.000 SY		
0120	502.3210 Pigmented Surface Sealer	217.000 SY		
0122	503.0146 Prestressed Girder Type I 45W-Inch	1,969.000 LF		
0124	505.0400 Bar Steel Reinforcement HS Structures	11,420.000 LB		



Proposal Schedule of Items

Proposal ID: 20200915011 Project(s): 9200-10-71, 9200-10-72

Federal ID(s): WISC 2019634, WISC 2019634

SECTION: 0001

Contract Items

Alt Set ID:

Alt Mbr ID:

Proposal Line Number	Item ID Description	Approximate Quantity and Units	Unit Price	Bid Amount
0126	505.0600 Bar Steel Reinforcement HS Coated Structures	182,680.000 LB	_____.	_____.
0128	505.0800.S Bar Steel Reinforcement HS Stainless Structures	2,210.000 LB	_____.	_____.
0130	506.2605 Bearing Pads Elastomeric Non-Laminated	36.000 EACH	_____.	_____.
0132	506.4000 Steel Diaphragms (structure) 01. B-5-416	32.000 EACH	_____.	_____.
0134	513.4091 Railing Tubular Screening	521.000 LF	_____.	_____.
0136	516.0500 Rubberized Membrane Waterproofing	32.000 SY	_____.	_____.
0138	517.1010.S Concrete Staining (structure) 01. B-5-416	6,070.000 SF	_____.	_____.
0140	517.1015.S Concrete Staining Multi-Color (structure) 01. B-5-416	2,665.000 SF	_____.	_____.
0142	517.1050.S Architectural Surface Treatment (structure) 01. B-5-416	2,665.000 SF	_____.	_____.
0144	520.1024 Apron Endwalls for Culvert Pipe 24-Inch	2.000 EACH	_____.	_____.
0146	520.2024 Culvert Pipe Temporary 24-Inch	88.000 LF	_____.	_____.
0148	520.8000 Concrete Collars for Pipe	13.000 EACH	_____.	_____.
0150	521.0348 Apron Endwalls for Culvert Pipe Sloped Cross Drains Steel 48-Inch 4 to 1	1.000 EACH	_____.	_____.
0152	521.1012 Apron Endwalls for Culvert Pipe Steel 12-Inch	3.000 EACH	_____.	_____.
0154	521.1018 Apron Endwalls for Culvert Pipe Steel 18-Inch	8.000 EACH	_____.	_____.



Proposal Schedule of Items

Proposal ID: 20200915011 Project(s): 9200-10-71, 9200-10-72

Federal ID(s): WISC 2019634, WISC 2019634

SECTION: 0001

Contract Items

Alt Set ID:

Alt Mbr ID:

Proposal Line Number	Item ID Description	Approximate Quantity and Units	Unit Price	Bid Amount
0156	521.1024 Apron Endwalls for Culvert Pipe Steel 24-Inch	8.000 EACH	_____.	_____.
0158	521.1030 Apron Endwalls for Culvert Pipe Steel 30-Inch	2.000 EACH	_____.	_____.
0160	521.1217 Apron Endwalls for Pipe Arch Steel 17x13-Inch	2.000 EACH	_____.	_____.
0162	521.1221 Apron Endwalls for Pipe Arch Steel 21x15-Inch	4.000 EACH	_____.	_____.
0164	521.3118 Culvert Pipe Corrugated Steel 18-Inch	206.000 LF	_____.	_____.
0166	521.3124 Culvert Pipe Corrugated Steel 24-Inch	174.000 LF	_____.	_____.
0168	521.3130 Culvert Pipe Corrugated Steel 30-Inch	76.000 LF	_____.	_____.
0170	521.3717 Pipe Arch Corrugated Steel 17x13-Inch	34.000 LF	_____.	_____.
0172	521.3721 Pipe Arch Corrugated Steel 21x15-Inch	62.000 LF	_____.	_____.
0174	522.0118 Culvert Pipe Reinforced Concrete Class III 18-Inch	64.000 LF	_____.	_____.
0176	522.0124 Culvert Pipe Reinforced Concrete Class III 24-Inch	6.000 LF	_____.	_____.
0178	522.0130 Culvert Pipe Reinforced Concrete Class III 30-Inch	142.000 LF	_____.	_____.
0180	522.0148 Culvert Pipe Reinforced Concrete Class III 48-Inch	22.000 LF	_____.	_____.
0182	522.0430 Culvert Pipe Reinforced Concrete Class IV 30-Inch	164.000 LF	_____.	_____.



Proposal Schedule of Items

Proposal ID: 20200915011 Project(s): 9200-10-71, 9200-10-72

Federal ID(s): WISC 2019634, WISC 2019634

SECTION: 0001

Contract Items

Alt Set ID:

Alt Mbr ID:

Proposal Line Number	Item ID Description	Approximate Quantity and Units	Unit Price	Bid Amount
0184	522.0436 Culvert Pipe Reinforced Concrete Class IV 36-Inch	184.000 LF	_____.	_____.
0186	522.1012 Apron Endwalls for Culvert Pipe Reinforced Concrete 12-Inch	1.000 EACH	_____.	_____.
0188	522.1018 Apron Endwalls for Culvert Pipe Reinforced Concrete 18-Inch	8.000 EACH	_____.	_____.
0190	522.1021 Apron Endwalls for Culvert Pipe Reinforced Concrete 21-Inch	1.000 EACH	_____.	_____.
0192	522.1024 Apron Endwalls for Culvert Pipe Reinforced Concrete 24-Inch	5.000 EACH	_____.	_____.
0194	522.1030 Apron Endwalls for Culvert Pipe Reinforced Concrete 30-Inch	4.000 EACH	_____.	_____.
0196	522.1036 Apron Endwalls for Culvert Pipe Reinforced Concrete 36-Inch	6.000 EACH	_____.	_____.
0198	522.1048 Apron Endwalls for Culvert Pipe Reinforced Concrete 48-Inch	1.000 EACH	_____.	_____.
0200	522.2338 Culvert Pipe Reinforced Concrete Horizontal Elliptical Class HE-III 38x60-Inch	152.000 LF	_____.	_____.
0202	522.2629 Apron Endwalls for Culvert Pipe Reinforced Concrete Horizontal Elliptical 29x45-Inch	1.000 EACH	_____.	_____.
0204	522.2638 Apron Endwalls for Culvert Pipe Reinforced Concrete Horizontal Elliptical 38x60-Inch	2.000 EACH	_____.	_____.
0206	524.0124 Culvert Pipe Salvaged 24-Inch	100.000 LF	_____.	_____.
0208	524.0624 Apron Endwalls for Culvert Pipe Salvaged 24-Inch	5.000 EACH	_____.	_____.



Proposal Schedule of Items

Proposal ID: 20200915011 Project(s): 9200-10-71, 9200-10-72

Federal ID(s): WISC 2019634, WISC 2019634

SECTION: 0001

Contract Items

Alt Set ID:

Alt Mbr ID:

Proposal Line Number	Item ID Description	Approximate Quantity and Units	Unit Price	Bid Amount
0210	524.0630 Apron Endwalls for Culvert Pipe Salvaged 30-Inch	1.000 EACH	_____.	_____.
0212	550.1100 Piling Steel HP 10-Inch X 42 Lb	5,265.000 LF	_____.	_____.
0214	601.0405 Concrete Curb & Gutter 18-Inch Type A	1,075.000 LF	_____.	_____.
0216	601.0409 Concrete Curb & Gutter 30-Inch Type A	2,600.000 LF	_____.	_____.
0218	601.0411 Concrete Curb & Gutter 30-Inch Type D	31,180.000 LF	_____.	_____.
0220	601.0551 Concrete Curb & Gutter 4-Inch Sloped 36-Inch Type A	500.000 LF	_____.	_____.
0222	601.0553 Concrete Curb & Gutter 4-Inch Sloped 36-Inch Type D	150.000 LF	_____.	_____.
0224	601.0576 Concrete Curb & Gutter 4-Inch Sloped 30-Inch Type J	60.000 LF	_____.	_____.
0226	601.0580 Concrete Curb & Gutter 4-Inch Sloped 36-Inch Type R	1,420.000 LF	_____.	_____.
0228	601.0600 Concrete Curb Pedestrian	640.000 LF	_____.	_____.
0230	602.0405 Concrete Sidewalk 4-Inch	101,700.000 SF	_____.	_____.
0232	602.0415 Concrete Sidewalk 6-Inch	4,660.000 SF	_____.	_____.
0234	602.0515 Curb Ramp Detectable Warning Field Natural Patina	872.000 SF	_____.	_____.
0236	602.0615 Curb Ramp Detectable Warning Field Radial Natural Patina	125.000 SF	_____.	_____.
0238	603.8000 Concrete Barrier Temporary Precast Delivered	3,200.000 LF	_____.	_____.



Proposal Schedule of Items

Proposal ID: 20200915011 Project(s): 9200-10-71, 9200-10-72

Federal ID(s): WISC 2019634, WISC 2019634

SECTION: 0001

Contract Items

Alt Set ID:

Alt Mbr ID:

Proposal Line Number	Item ID Description	Approximate Quantity and Units	Unit Price	Bid Amount
0240	603.8125 Concrete Barrier Temporary Precast Installed	3,200.000 LF	_____.	_____.
0242	604.0500 Slope Paving Crushed Aggregate	678.000 SY	_____.	_____.
0244	606.0200 Riprap Medium	800.000 CY	_____.	_____.
0246	608.0312 Storm Sewer Pipe Reinforced Concrete Class III 12-Inch	247.000 LF	_____.	_____.
0248	608.0315 Storm Sewer Pipe Reinforced Concrete Class III 15-Inch	296.000 LF	_____.	_____.
0250	608.0318 Storm Sewer Pipe Reinforced Concrete Class III 18-Inch	884.000 LF	_____.	_____.
0252	608.0324 Storm Sewer Pipe Reinforced Concrete Class III 24-Inch	2,277.000 LF	_____.	_____.
0254	608.0330 Storm Sewer Pipe Reinforced Concrete Class III 30-Inch	1,498.000 LF	_____.	_____.
0256	608.0336 Storm Sewer Pipe Reinforced Concrete Class III 36-Inch	1,992.000 LF	_____.	_____.
0258	608.0348 Storm Sewer Pipe Reinforced Concrete Class III 48-Inch	1,249.000 LF	_____.	_____.
0260	608.0412 Storm Sewer Pipe Reinforced Concrete Class IV 12-Inch	969.000 LF	_____.	_____.
0262	608.0415 Storm Sewer Pipe Reinforced Concrete Class IV 15-Inch	730.000 LF	_____.	_____.
0264	608.0418 Storm Sewer Pipe Reinforced Concrete Class IV 18-Inch	1,074.000 LF	_____.	_____.



Proposal Schedule of Items

Proposal ID: 20200915011 Project(s): 9200-10-71, 9200-10-72

Federal ID(s): WISC 2019634, WISC 2019634

SECTION: 0001

Contract Items

Alt Set ID:

Alt Mbr ID:

Proposal Line Number	Item ID Description	Approximate Quantity and Units	Unit Price	Bid Amount
0266	608.0421 Storm Sewer Pipe Reinforced Concrete Class IV 21-Inch	171.000 LF	_____.	_____.
0268	608.0424 Storm Sewer Pipe Reinforced Concrete Class IV 24-Inch	191.000 LF	_____.	_____.
0270	608.2329 Storm Sewer Pipe Reinforced Concrete Horizontal Elliptical Class HE-III 29x45-Inch	58.000 LF	_____.	_____.
0272	608.6008 Storm Sewer Pipe Composite 8-Inch	138.000 LF	_____.	_____.
0274	608.6010 Storm Sewer Pipe Composite 10-Inch	138.000 LF	_____.	_____.
0276	608.6012 Storm Sewer Pipe Composite 12-Inch	236.000 LF	_____.	_____.
0278	611.0535 Manhole Covers Type J-Special	58.000 EACH	_____.	_____.
0280	611.0624 Inlet Covers Type H	111.000 EACH	_____.	_____.
0282	611.0639 Inlet Covers Type H-S	34.000 EACH	_____.	_____.
0284	611.0642 Inlet Covers Type MS	5.000 EACH	_____.	_____.
0286	611.0652 Inlet Covers Type T	8.000 EACH	_____.	_____.
0288	611.2003 Manholes 3-FT Diameter	6.000 EACH	_____.	_____.
0290	611.2004 Manholes 4-FT Diameter	5.000 EACH	_____.	_____.
0292	611.2005 Manholes 5-FT Diameter	16.000 EACH	_____.	_____.
0294	611.2006 Manholes 6-FT Diameter	12.000 EACH	_____.	_____.



Proposal Schedule of Items

Proposal ID: 20200915011 Project(s): 9200-10-71, 9200-10-72

Federal ID(s): WISC 2019634, WISC 2019634

SECTION: 0001

Contract Items

Alt Set ID:

Alt Mbr ID:

Proposal Line Number	Item ID Description	Approximate Quantity and Units	Unit Price	Bid Amount
0296	611.2007 Manholes 7-FT Diameter	10.000 EACH	_____.	_____.
0298	611.2008 Manholes 8-FT Diameter	1.000 EACH	_____.	_____.
0300	611.3004 Inlets 4-FT Diameter	12.000 EACH	_____.	_____.
0302	611.3225 Inlets 2x2.5-FT	4.000 EACH	_____.	_____.
0304	611.3230 Inlets 2x3-FT	135.000 EACH	_____.	_____.
0306	611.3901 Inlets Median 1 Grate	1.000 EACH	_____.	_____.
0308	611.3902 Inlets Median 2 Grate	2.000 EACH	_____.	_____.
0310	611.9800.S Pipe Grates	4.000 EACH	_____.	_____.
0312	612.0106 Pipe Underdrain 6-Inch	3,140.000 LF	_____.	_____.
0314	612.0206 Pipe Underdrain Unperforated 6-Inch	70.000 LF	_____.	_____.
0316	612.0406 Pipe Underdrain Wrapped 6-Inch	238.000 LF	_____.	_____.
0318	612.0700 Drain Tile Exploration	50.000 LF	_____.	_____.
0320	612.0806 Apron Endwalls for Underdrain Reinforced Concrete 6-Inch	7.000 EACH	_____.	_____.
0322	614.0150 Anchor Assemblies for Steel Plate Beam Guard	4.000 EACH	_____.	_____.
0324	614.0220 Steel Thrie Beam Bullnose Terminal	2.000 EACH	_____.	_____.
0326	614.0230 Steel Thrie Beam	125.000 LF	_____.	_____.



Proposal Schedule of Items

Proposal ID: 20200915011 Project(s): 9200-10-71, 9200-10-72

Federal ID(s): WISC 2019634, WISC 2019634

SECTION: 0001

Contract Items

Alt Set ID:

Alt Mbr ID:

Proposal Line Number	Item ID Description	Approximate Quantity and Units	Unit Price	Bid Amount
0328	614.0905 Crash Cushions Temporary	4.000 EACH	_____.	_____.
0330	616.0700.S Fence Safety	400.000 LF	_____.	_____.
0332	618.0100 Maintenance And Repair of Haul Roads (project) 01. 9200-10-71	1.000 EACH	_____.	_____.
0334	618.0100 Maintenance And Repair of Haul Roads (project) 02. 9200-10-72	1.000 EACH	_____.	_____.
0336	619.1000 Mobilization	1.000 EACH	_____.	_____.
0338	620.0300 Concrete Median Sloped Nose	1,490.000 SF	_____.	_____.
0340	621.0100 Landmark Reference Monuments	14.000 EACH	_____.	_____.
0342	623.0200 Dust Control Surface Treatment	12,000.000 SY	_____.	_____.
0344	624.0100 Water	2,100.000 MGAL	_____.	_____.
0346	625.0500 Salvaged Topsoil	314,010.000 SY	_____.	_____.
0348	627.0200 Mulching	115,000.000 SY	_____.	_____.
0350	628.1504 Silt Fence	70,800.000 LF	_____.	_____.
0352	628.1520 Silt Fence Maintenance	111,500.000 LF	_____.	_____.
0354	628.1905 Mobilizations Erosion Control	36.000 EACH	_____.	_____.
0356	628.1910 Mobilizations Emergency Erosion Control	26.000 EACH	_____.	_____.
0358	628.2004 Erosion Mat Class I Type B	307,500.000 SY	_____.	_____.



Proposal Schedule of Items

Proposal ID: 20200915011 Project(s): 9200-10-71, 9200-10-72

Federal ID(s): WISC 2019634, WISC 2019634

SECTION: 0001

Contract Items

Alt Set ID:

Alt Mbr ID:

Proposal Line Number	Item ID Description	Approximate Quantity and Units	Unit Price	Bid Amount
0360	628.2008 Erosion Mat Urban Class I Type B	54,300.000 SY	_____.	_____.
0362	628.2037 Erosion Mat Class III Type C	530.000 SY	_____.	_____.
0364	628.6510 Soil Stabilizer Type B	16.000 ACRE	_____.	_____.
0366	628.7005 Inlet Protection Type A	165.000 EACH	_____.	_____.
0368	628.7010 Inlet Protection Type B	10.000 EACH	_____.	_____.
0370	628.7015 Inlet Protection Type C	185.000 EACH	_____.	_____.
0372	628.7020 Inlet Protection Type D	10.000 EACH	_____.	_____.
0374	628.7504 Temporary Ditch Checks	1,400.000 LF	_____.	_____.
0376	628.7555 Culvert Pipe Checks	320.000 EACH	_____.	_____.
0378	628.7560 Tracking Pads	17.000 EACH	_____.	_____.
0380	628.7570 Rock Bags	1,200.000 EACH	_____.	_____.
0382	629.0210 Fertilizer Type B	375.000 CWT	_____.	_____.
0384	630.0110 Seeding Mixture No. 10	1,800.000 LB	_____.	_____.
0386	630.0120 Seeding Mixture No. 20	7,580.000 LB	_____.	_____.
0388	630.0130 Seeding Mixture No. 30	280.000 LB	_____.	_____.
0390	630.0140 Seeding Mixture No. 40	700.000 LB	_____.	_____.
0392	630.0175 Seeding Mixture No. 75	65.000 LB	_____.	_____.



Proposal Schedule of Items

Proposal ID: 20200915011 Project(s): 9200-10-71, 9200-10-72

Federal ID(s): WISC 2019634, WISC 2019634

SECTION: 0001

Contract Items

Alt Set ID:

Alt Mbr ID:

Proposal Line Number	Item ID Description	Approximate Quantity and Units	Unit Price	Bid Amount
0394	630.0200 Seeding Temporary	500.000 LB	_____.	_____.
0396	630.0500 Seed Water	1,500.000 MGAL	_____.	_____.
0398	632.0101 Trees (species) (size) (root) 01. Syringa Reticulata, B&B, 2" Cal, Ivory Silk Lilac	6.000 EACH	_____.	_____.
0400	632.0101 Trees (species) (size) (root) 02. Juniperus Chinensis, B&B, 48" HT, Spartan Juniper	8.000 EACH	_____.	_____.
0402	632.0201 Shrubs (species) (size) (root) 01. Physocarpus Opulifolius 'Monlo', CG, #5 Ninebark Diabolo	16.000 EACH	_____.	_____.
0404	632.0201 Shrubs (species) (size) (root) 02. Potentilla Fruticosa, CG, #2, Abbotswood Potentilla	72.000 EACH	_____.	_____.
0406	632.9101 Landscape Planting Surveillance and Care Cycles	12.000 EACH	_____.	_____.
0408	633.0100 Delineator Posts Steel	100.000 EACH	_____.	_____.
0410	633.0500 Delineator Reflectors	136.000 EACH	_____.	_____.
0412	633.5200 Markers Culvert End	16.000 EACH	_____.	_____.
0414	634.0612 Posts Wood 4x6-Inch X 12-FT	56.000 EACH	_____.	_____.
0416	634.0614 Posts Wood 4x6-Inch X 14-FT	74.000 EACH	_____.	_____.
0418	634.0616 Posts Wood 4x6-Inch X 16-FT	45.000 EACH	_____.	_____.
0420	634.0618 Posts Wood 4x6-Inch X 18-FT	31.000 EACH	_____.	_____.



Proposal Schedule of Items

Proposal ID: 20200915011 Project(s): 9200-10-71, 9200-10-72

Federal ID(s): WISC 2019634, WISC 2019634

SECTION: 0001

Contract Items

Alt Set ID:

Alt Mbr ID:

Proposal Line Number	Item ID Description	Approximate Quantity and Units	Unit Price	Bid Amount
0422	634.0812 Posts Tubular Steel 2x2-Inch X 12-FT	4.000 EACH	_____.	_____.
0424	635.0200 Sign Supports Structural Steel HS	9,555.000 LB	_____.	_____.
0426	636.0100 Sign Supports Concrete Masonry	14.000 CY	_____.	_____.
0428	636.0500 Sign Supports Steel Reinforcement	826.000 LB	_____.	_____.
0430	637.1220 Signs Type I Reflective SH	2,312.500 SF	_____.	_____.
0432	637.2210 Signs Type II Reflective H	1,477.820 SF	_____.	_____.
0434	637.2220 Signs Type II Reflective SH	20.250 SF	_____.	_____.
0436	637.2230 Signs Type II Reflective F	323.170 SF	_____.	_____.
0438	638.2601 Removing Signs Type I	8.000 EACH	_____.	_____.
0440	638.2602 Removing Signs Type II	128.000 EACH	_____.	_____.
0442	638.3000 Removing Small Sign Supports	171.000 EACH	_____.	_____.
0444	638.3100 Removing Structural Steel Sign Supports	6.000 EACH	_____.	_____.
0446	640.1303.S Pond Liner Clay	7,420.000 CY	_____.	_____.
0448	642.5401 Field Office Type D	1.000 EACH	_____.	_____.
0450	643.0300 Traffic Control Drums	62,320.000 DAY	_____.	_____.
0452	643.0420 Traffic Control Barricades Type III	18,580.000 DAY	_____.	_____.
0454	643.0705 Traffic Control Warning Lights Type A	27,160.000 DAY	_____.	_____.



Proposal Schedule of Items

Proposal ID: 20200915011 Project(s): 9200-10-71, 9200-10-72

Federal ID(s): WISC 2019634, WISC 2019634

SECTION: 0001

Contract Items

Alt Set ID:

Alt Mbr ID:

Proposal Line Number	Item ID Description	Approximate Quantity and Units	Unit Price	Bid Amount
0456	643.0715 Traffic Control Warning Lights Type C	21,080.000 DAY	_____.	_____.
0458	643.0800 Traffic Control Arrow Boards	990.000 DAY	_____.	_____.
0460	643.0900 Traffic Control Signs	64,065.000 DAY	_____.	_____.
0462	643.1000 Traffic Control Signs Fixed Message	126.000 SF	_____.	_____.
0464	643.1050 Traffic Control Signs PCMS	460.000 DAY	_____.	_____.
0466	643.5000 Traffic Control	1.000 EACH	_____.	_____.
0468	645.0111 Geotextile Type DF Schedule A	2,794.000 SY	_____.	_____.
0470	645.0120 Geotextile Type HR	2,320.000 SY	_____.	_____.
0472	645.0140 Geotextile Type SAS	88,410.000 SY	_____.	_____.
0474	646.1020 Marking Line Epoxy 4-Inch	53,675.000 LF	_____.	_____.
0476	646.1555 Marking Line Grooved Contrast Permanent Tape 4-Inch	100.000 LF	_____.	_____.
0478	646.3020 Marking Line Epoxy 8-Inch	540.000 LF	_____.	_____.
0480	646.3555 Marking Line Grooved Contrast Permanent Tape 8-Inch	3,380.000 LF	_____.	_____.
0482	646.5020 Marking Arrow Epoxy	8.000 EACH	_____.	_____.
0484	646.6120 Marking Stop Line Epoxy 18-Inch	15.000 LF	_____.	_____.
0486	646.6464 Cold Weather Marking Epoxy 4-Inch	10,940.000 LF	_____.	_____.



Proposal Schedule of Items

Proposal ID: 20200915011 Project(s): 9200-10-71, 9200-10-72

Federal ID(s): WISC 2019634, WISC 2019634

SECTION: 0001

Contract Items

Alt Set ID:

Alt Mbr ID:

Proposal Line Number	Item ID Description	Approximate Quantity and Units	Unit Price	Bid Amount
0488	646.6468 Cold Weather Marking Epoxy 8-Inch	290.000 LF	_____.	_____.
0490	646.7120 Marking Diagonal Epoxy 12-Inch	530.000 LF	_____.	_____.
0492	646.7420 Marking Crosswalk Epoxy Transverse Line 6-Inch	1,510.000 LF	_____.	_____.
0494	646.8120 Marking Curb Epoxy	375.000 LF	_____.	_____.
0496	646.8220 Marking Island Nose Epoxy	10.000 EACH	_____.	_____.
0498	646.9010 Marking Removal Line Water Blasting 4-Inch	4,085.000 LF	_____.	_____.
0500	646.9110 Marking Removal Line Water Blasting 8-Inch	3,415.000 LF	_____.	_____.
0502	649.0120 Temporary Marking Line Epoxy 4-Inch	920.000 LF	_____.	_____.
0504	649.0820 Temporary Marking Stop Line Epoxy 18-Inch	30.000 LF	_____.	_____.
0506	650.4000 Construction Staking Storm Sewer	216.000 EACH	_____.	_____.
0508	650.4500 Construction Staking Subgrade	31,764.000 LF	_____.	_____.
0510	650.5000 Construction Staking Base	21,878.000 LF	_____.	_____.
0512	650.5500 Construction Staking Curb Gutter and Curb & Gutter	33,203.000 LF	_____.	_____.
0514	650.6000 Construction Staking Pipe Culverts	15.000 EACH	_____.	_____.
0516	650.6500 Construction Staking Structure Layout (structure) 01. B-5-416	LS	LUMP SUM	_____.



Proposal Schedule of Items

Proposal ID: 20200915011 Project(s): 9200-10-71, 9200-10-72

Federal ID(s): WISC 2019634, WISC 2019634

SECTION: 0001

Contract Items

Alt Set ID:

Alt Mbr ID:

Proposal Line Number	Item ID Description	Approximate Quantity and Units	Unit Price	Bid Amount
0518	650.7000 Construction Staking Concrete Pavement	9,886.000 LF	_____.	_____.
0520	650.8500 Construction Staking Electrical Installations (project) 01. 9200-10-71	LS	LUMP SUM	_____.
0522	650.9000 Construction Staking Curb Ramps	49.000 EACH	_____.	_____.
0524	650.9910 Construction Staking Supplemental Control (project) 01. 9200-10-71	LS	LUMP SUM	_____.
0526	650.9910 Construction Staking Supplemental Control (project) 02. 9200-10-72	LS	LUMP SUM	_____.
0528	650.9920 Construction Staking Slope Stakes	34,606.000 LF	_____.	_____.
0530	652.0125 Conduit Rigid Metallic 2-Inch	34.000 LF	_____.	_____.
0532	652.0225 Conduit Rigid Nonmetallic Schedule 40 2-Inch	7,933.000 LF	_____.	_____.
0534	652.0235 Conduit Rigid Nonmetallic Schedule 40 3-Inch	2,065.000 LF	_____.	_____.
0536	652.0605 Conduit Special 2-Inch	95.000 LF	_____.	_____.
0538	652.0700.S Install Conduit into Existing Item	2.000 EACH	_____.	_____.
0540	653.0140 Pull Boxes Steel 24x42-Inch	2.000 EACH	_____.	_____.
0542	653.0164 Pull Boxes Non-Conductive 24x42-Inch	40.000 EACH	_____.	_____.
0544	653.0222 Junction Boxes 18x12x6-Inch	1.000 EACH	_____.	_____.
0546	653.0905 Removing Pull Boxes	21.000 EACH	_____.	_____.



Proposal Schedule of Items

Proposal ID: 20200915011 Project(s): 9200-10-71, 9200-10-72

Federal ID(s): WISC 2019634, WISC 2019634

SECTION: 0001

Contract Items

Alt Set ID:

Alt Mbr ID:

Proposal Line Number	Item ID Description	Approximate Quantity and Units	Unit Price	Bid Amount
0548	654.0105 Concrete Bases Type 5	42.000 EACH	_____.	_____.
0550	654.0230 Concrete Control Cabinet Bases Type L30	2.000 EACH	_____.	_____.
0552	654.1150 Concrete Bases Camera Pole 50-FT	1.000 EACH	_____.	_____.
0554	655.0515 Electrical Wire Traffic Signals 10 AWG	755.000 LF	_____.	_____.
0556	655.0525 Electrical Wire Traffic Signals 6 AWG	330.000 LF	_____.	_____.
0558	655.0610 Electrical Wire Lighting 12 AWG	8,853.000 LF	_____.	_____.
0560	655.0615 Electrical Wire Lighting 10 AWG	9,320.000 LF	_____.	_____.
0562	655.0625 Electrical Wire Lighting 6 AWG	29,865.000 LF	_____.	_____.
0564	656.0200 Electrical Service Meter Breaker Pedestal (location) 01. CB100	LS	LUMP SUM	_____.
0566	656.0200 Electrical Service Meter Breaker Pedestal (location) 02. CB200	LS	LUMP SUM	_____.
0568	656.0200 Electrical Service Meter Breaker Pedestal (location) 03. STH 29 EB & CTH VV	LS	LUMP SUM	_____.
0570	656.0200 Electrical Service Meter Breaker Pedestal (location) 04. STH 29 WB & CTH VV	LS	LUMP SUM	_____.
0572	656.0500 Electrical Service Breaker Disconnect Box (location) 01. CCTV-05-0113	LS	LUMP SUM	_____.
0574	657.0255 Transformer Bases Breakaway 11 1/2-Inch Bolt Circle	42.000 EACH	_____.	_____.



Proposal Schedule of Items

Proposal ID: 20200915011 Project(s): 9200-10-71, 9200-10-72

Federal ID(s): WISC 2019634, WISC 2019634

SECTION: 0001

Contract Items

Alt Set ID:

Alt Mbr ID:

Proposal Line Number	Item ID Description	Approximate Quantity and Units	Unit Price	Bid Amount
0576	657.0322 Poles Type 5-Aluminum	42.000 EACH	_____.	_____.
0578	657.0710 Luminaire Arms Truss Type 4 1/2-Inch Clamp 12-FT	43.000 EACH	_____.	_____.
0580	657.6005 Anchor Assemblies Light Poles on Structures	1.000 EACH	_____.	_____.
0582	659.1115 Luminaires Utility LED A	28.000 EACH	_____.	_____.
0584	659.1120 Luminaires Utility LED B	15.000 EACH	_____.	_____.
0586	659.2130 Lighting Control Cabinets 120/240 30- Inch	2.000 EACH	_____.	_____.
0588	670.0100 Field System Integrator	LS	LUMP SUM	_____.
0590	670.0200 ITS Documentation	LS	LUMP SUM	_____.
0592	673.0200 Tracer Wire Marker Posts	3.000 EACH	_____.	_____.
0594	673.0225.S Install Pole Mounted Cabinet	1.000 EACH	_____.	_____.
0596	677.0150 Install Camera Pole 50-FT	1.000 EACH	_____.	_____.
0598	677.0200 Install Camera Assembly	1.000 EACH	_____.	_____.
0600	678.0012 Install Fiber Optic Cable Outdoor Plant 12-CT	935.000 LF	_____.	_____.
0602	678.0300 Fiber Optic Splice	16.000 EACH	_____.	_____.
0604	678.0400 Fiber Optic Termination	12.000 EACH	_____.	_____.
0606	678.0500 Communication System Testing	LS	LUMP SUM	_____.



Proposal Schedule of Items

Proposal ID: 20200915011 Project(s): 9200-10-71, 9200-10-72

Federal ID(s): WISC 2019634, WISC 2019634

SECTION: 0001

Contract Items

Alt Set ID:

Alt Mbr ID:

Proposal Line Number	Item ID Description	Approximate Quantity and Units	Unit Price	Bid Amount
0608	678.0600 Install Ethernet Switches	1.000 EACH	_____.	_____.
0610	690.0150 Sawing Asphalt	10,185.000 LF	_____.	_____.
0612	690.0250 Sawing Concrete	4,115.000 LF	_____.	_____.
0614	715.0415 Incentive Strength Concrete Pavement	5,540.000 DOL	1.00000	5,540.00
0616	715.0502 Incentive Strength Concrete Structures	6,950.000 DOL	1.00000	6,950.00
0618	715.0710 Optimized Aggregate Gradation Incentive	9,950.000 DOL	1.00000	9,950.00
0620	740.0440 Incentive IRI Ride	5,890.000 DOL	1.00000	5,890.00
0622	999.1500.S Crack and Damage Survey	LS	LUMP SUM	_____.
0624	SPV.0035 Special 01. Planting Soil Mixture	970.000 CY	_____.	_____.
0626	SPV.0035 Special 02. Foundation Backfill	125.000 CY	_____.	_____.
0628	SPV.0060 Special 01. Manholes 10-FT Diameter	1.000 EACH	_____.	_____.
0630	SPV.0060 Special 02. Inlets 6-FT Diameter	2.000 EACH	_____.	_____.
0632	SPV.0060 Special 03. Apron Endwalls for Culvert Pipe Steel 10-Inch	2.000 EACH	_____.	_____.
0634	SPV.0060 Special 04. Outfall Structure 2X2-FT	3.000 EACH	_____.	_____.
0636	SPV.0060 Special 05. Outfall Structure 3X3-FT	2.000 EACH	_____.	_____.
0638	SPV.0060 Special 06. Outfall Structure 3X6-FT	1.000 EACH	_____.	_____.



Proposal Schedule of Items

Proposal ID: 20200915011 Project(s): 9200-10-71, 9200-10-72

Federal ID(s): WISC 2019634, WISC 2019634

SECTION: 0001

Contract Items

Alt Set ID:

Alt Mbr ID:

Proposal Line Number	Item ID Description	Approximate Quantity and Units	Unit Price	Bid Amount
0640	SPV.0060 Special 07. Rock Crib CTH TS	1.000 EACH	_____.	_____.
0642	SPV.0060 Special 08. Rock Crib CTH VV	1.000 EACH	_____.	_____.
0644	SPV.0060 Special 09. Rock Crib Evergreen Ave	1.000 EACH	_____.	_____.
0646	SPV.0060 Special 10. Construction Staking Pond Layout	3.000 EACH	_____.	_____.
0648	SPV.0060 Special 12. Storm Sewer Plug 12-Inch	2.000 EACH	_____.	_____.
0650	SPV.0060 Special 13. Storm Sewer Plug 21-Inch	1.000 EACH	_____.	_____.
0652	SPV.0060 Special 14. Storm Sewer Plug 24-Inch	1.000 EACH	_____.	_____.
0654	SPV.0060 Special 20. Cable Splice	10.000 EACH	_____.	_____.
0656	SPV.0060 Special 21. Handhole	44.000 EACH	_____.	_____.
0658	SPV.0060 Special 30. Concrete Control Cabinet Base NER Type 10	2.000 EACH	_____.	_____.
0660	SPV.0060 Special 40. Grasses, Feather Reed Grass (Karl Foerster), CG, #1	93.000 EACH	_____.	_____.
0662	SPV.0060 Special 41. Perennials, Russian Sage, CG, #1	148.000 EACH	_____.	_____.
0664	SPV.0060 Special 42. Perennials, Professor Kippenbeg Aster, CG, #1	52.000 EACH	_____.	_____.
0666	SPV.0060 Special 43. Perennials, Purple Gas Plant, CG, #1	49.000 EACH	_____.	_____.
0668	SPV.0060 Special 44. Perennials, Butterfly Flower, CG, #1	25.000 EACH	_____.	_____.



Proposal Schedule of Items

Proposal ID: 20200915011 Project(s): 9200-10-71, 9200-10-72

Federal ID(s): WISC 2019634, WISC 2019634

SECTION: 0001

Contract Items

Alt Set ID:

Alt Mbr ID:

Proposal Line Number	Item ID Description	Approximate Quantity and Units	Unit Price	Bid Amount
0670	SPV.0060 Special 45. Perennials, 'Bravado' Coneflower, CG, #1	96.000 EACH	_____.	_____.
0672	SPV.0060 Special 46. Perennials, 'Fireball' Monarda, CG, #1	79.000 EACH	_____.	_____.
0674	SPV.0060 Special 47. Perennials, 'Autumn Fire' Sedum, CG, #1	123.000 EACH	_____.	_____.
0676	SPV.0060 Special 48. Perennials, 'Stella D' Oro' Daylilly, CG, #1	509.000 EACH	_____.	_____.
0678	SPV.0060 Special 49. Perennials, 'Autumn Joy', Sedum, CG, #1	443.000 EACH	_____.	_____.
0680	SPV.0060 Special 50. Perennials, Moonshine Yarrow, CG, #1	183.000 EACH	_____.	_____.
0682	SPV.0060 Special 60. Planting Pod	38.000 EACH	_____.	_____.
0684	SPV.0060 Special 61. Submergent Wetland Plantings	755.000 EACH	_____.	_____.
0686	SPV.0060 Special 62. Emergent Wetland Plantings	1,520.000 EACH	_____.	_____.
0688	SPV.0090 Special 01. Concrete Curb & Gutter 24-Inch Type D	145.000 LF	_____.	_____.
0690	SPV.0090 Special 02. Fence Chain Link Polymer Coated 6-FT	64.000 LF	_____.	_____.
0692	SPV.0090 Special 03. Steel Casing Pipe 20-Inch	380.000 LF	_____.	_____.
0694	SPV.0090 Special 04. Concrete Curb Type G Modified	50.000 LF	_____.	_____.
0696	SPV.0090 Special 05. Storm Lateral 4-Inch	50.000 LF	_____.	_____.



Proposal Schedule of Items

Proposal ID: 20200915011 Project(s): 9200-10-71, 9200-10-72

Federal ID(s): WISC 2019634, WISC 2019634

SECTION: 0001

Contract Items

Alt Set ID:

Alt Mbr ID:

Proposal Line Number	Item ID Description	Approximate Quantity and Units	Unit Price	Bid Amount
0698	SPV.0090 Special 06. Marking Line Yield Line 18-Inch	230.000 LF	_____	_____
0700	SPV.0090 Special 20. HDPE Conduit 1.25-Inch and 2-Inch Directional Bored	53,873.000 LF	_____	_____
0702	SPV.0090 Special 21. HDPE Conduit 1.25-Inch and 2-Inch Vibratory Plowed	11,231.000 LF	_____	_____
0704	SPV.0090 Special 22. 432 Strand Fiber Optic Cable	47,695.000 LF	_____	_____
0706	SPV.0090 Special 23. 216 Strand Fiber Optic Cable	22,909.000 LF	_____	_____
0708	SPV.0105 Special 01. Remove RCUT Lighting Equipment	LS	LUMP SUM	_____
0710	SPV.0105 Special 02. Grading and Shaping Temporary Connection Road	LS	LUMP SUM	_____
0712	SPV.0105 Special 20. Traffic Control Project 9200-10-72	LS	LUMP SUM	_____
0714	SPV.0105 Special 21. Construction Staking Broadband Fiber	LS	LUMP SUM	_____
0716	SPV.0180 Special 01. Hardwood Mulch	1,440.000 SY	_____	_____
0718	SPV.0180 Special 02. Concrete Base SHES 9-Inch	5,960.000 SY	_____	_____
0720	SPV.0180 Special 03. Colored and Stamped Concrete 4-Inch	2,090.000 SY	_____	_____
0722	643.1205.S Basic Traffic Queue Warning System	200.000 DAY	_____	_____
0724	SPV.0035 Special 03. Topsoil Stockpile	5,000.000 CY	_____	_____
Section: 0001			Total:	_____

Total Bid: _____.

