



Wisconsin Department of Transportation

Division of Transportation Systems Development

Bureau of Project Development
4822 Madison Yards Way, 4th Floor South
Madison, WI 53705

October 22, 2020

Telephone: (608) 266-1631
Facsimile (FAX): (608) 266-8459

NOTICE TO ALL CONTRACTORS:

Proposal #18: 2440-09-70, WISC 2020 539
Washington Ave, City of Racine
Roosevelt Ave to West Blvd
STH 20
Racine County

Letting of November 10, 2020

This is Addendum No. 01, which provides for the following:

Schedule of Items:

Added Bid Item Quantities					
Bid Item	Item Description	Unit	Old Quantity	Revised Quantity	Proposal Total
608.3012	Storm Sewer Pipe Class III-A 12-Inch	LF	0	4,465	4,465
608.3015	Storm Sewer Pipe Class III-A 15-Inch	LF	0	1,270	1,270
608.3018	Storm Sewer Pipe Class III-A 18-Inch	LF	0	102	102
608.3018	Storm Sewer Pipe Class III-A 24-Inch	LF	0	294	294

Deleted Bid Item Quantities					
Bid Item	Item Description	Unit	Old Quantity	Revised Quantity	Proposal Total
608.0312	Storm Sewer Pipe Reinforced Concrete Class III 12-Inch	LF	4,465	-4,465	0
608.0315	Storm Sewer Pipe Reinforced Concrete Class III 15-Inch	LF	1,270	-1,270	0
608.0318	Storm Sewer Pipe Reinforced Concrete Class III 18-Inch	LF	102	-102	0
608.0324	Storm Sewer Pipe Reinforced Concrete Class III 24-Inch	LF	294	-294	0

Plan Sheets:

Revised Plan Sheets	
Plan Sheet	Plan Sheet Title (brief description of changes to sheet)
138 - 157	Storm Sewer Sheets: Note is added to replace "Storm Sewer Pipe Reinforced Concrete Class III" with "Storm Sewer Pipe Class III-A" on all sheets.
377 - 378	Miscellaneous Quantity Table for bid Items "Storm Sewer Pipe Reinforced Concrete Class III" are Replaced with "Storm Sewer Pipe Class III-A" on both sheets.

Schedule of Items

Attached, dated October 21, 2022 are the revised Schedule of Items Pages 1 – 20.

Plan Sheets

The following 8½ x 11-inch sheets are attached and made part of the plans for this proposal:
Revised: Sheets 138 - 157, 377, and 378.

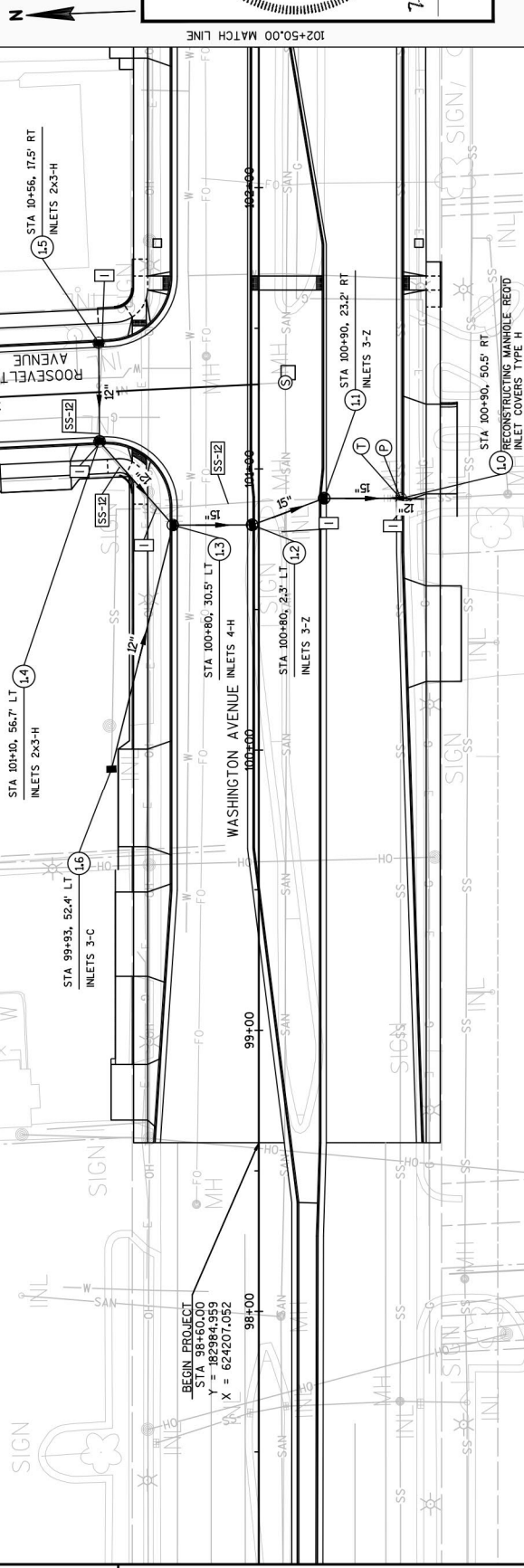
The responsibility for notifying potential subcontractors and suppliers of these changes remains with the prime contractor.

Sincerely,

Mike Coleman

Proposal Development Specialist
Proposal Management Section

END OF ADDENDUM



ORIGINAL PLANS PREPARED BY:

RILEY D. THOSS
46659-6
MILWAUKEE, WI

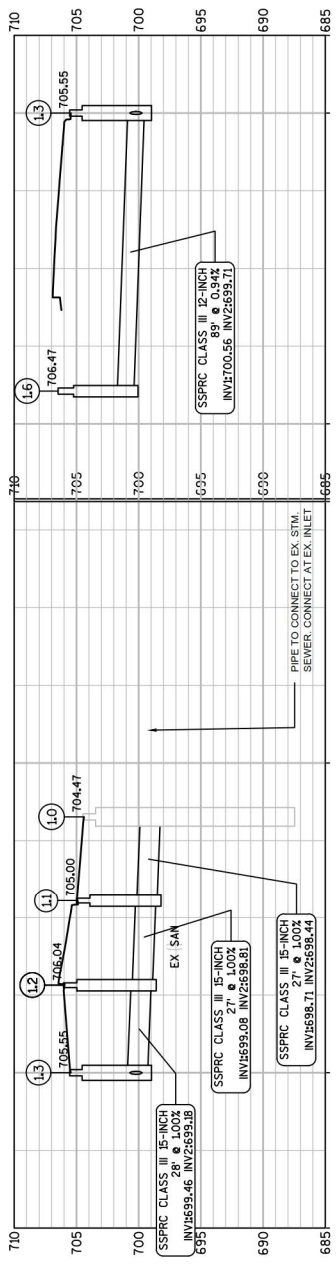
7-16-2020 *Riley*

DATE: 7-16-2020
DRAWN BY: Riley
CHECKED BY: [Signature]

THIS DRAWING APPLIES TO: [Blank]

Addendum No. 01
ID 2440-09-70
Revised Sheet 138
October 22, 2020

REPLACE SSRPC CLASS III
PIPES WITH SSP CLASS III-A



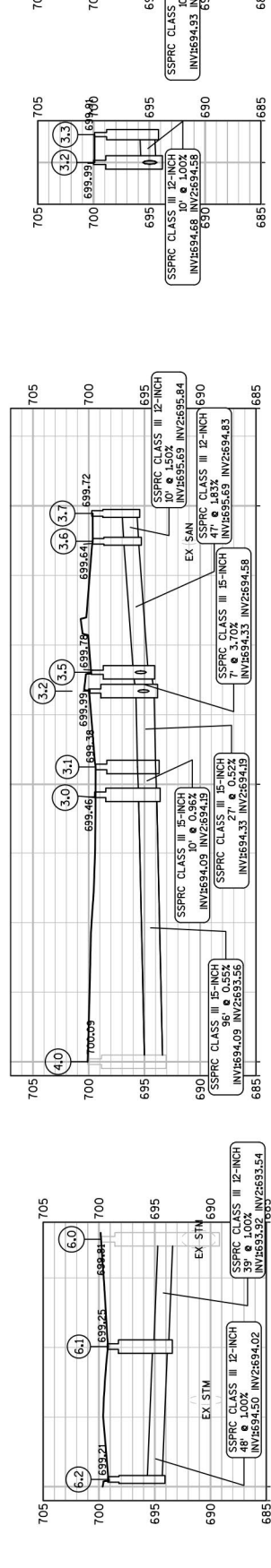
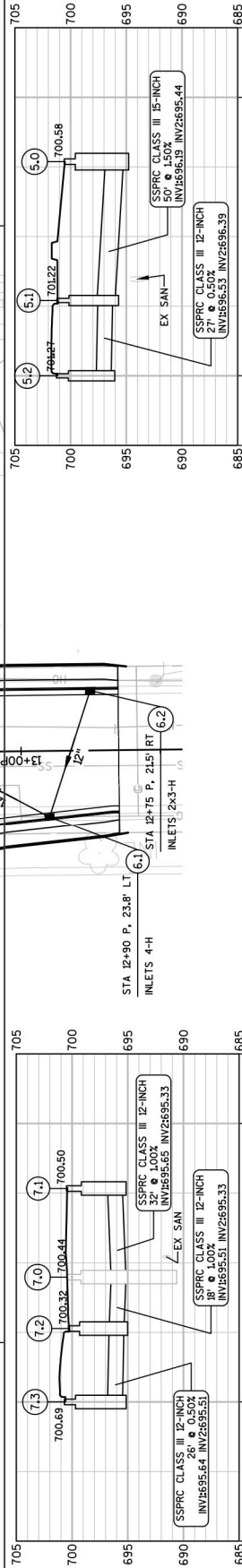
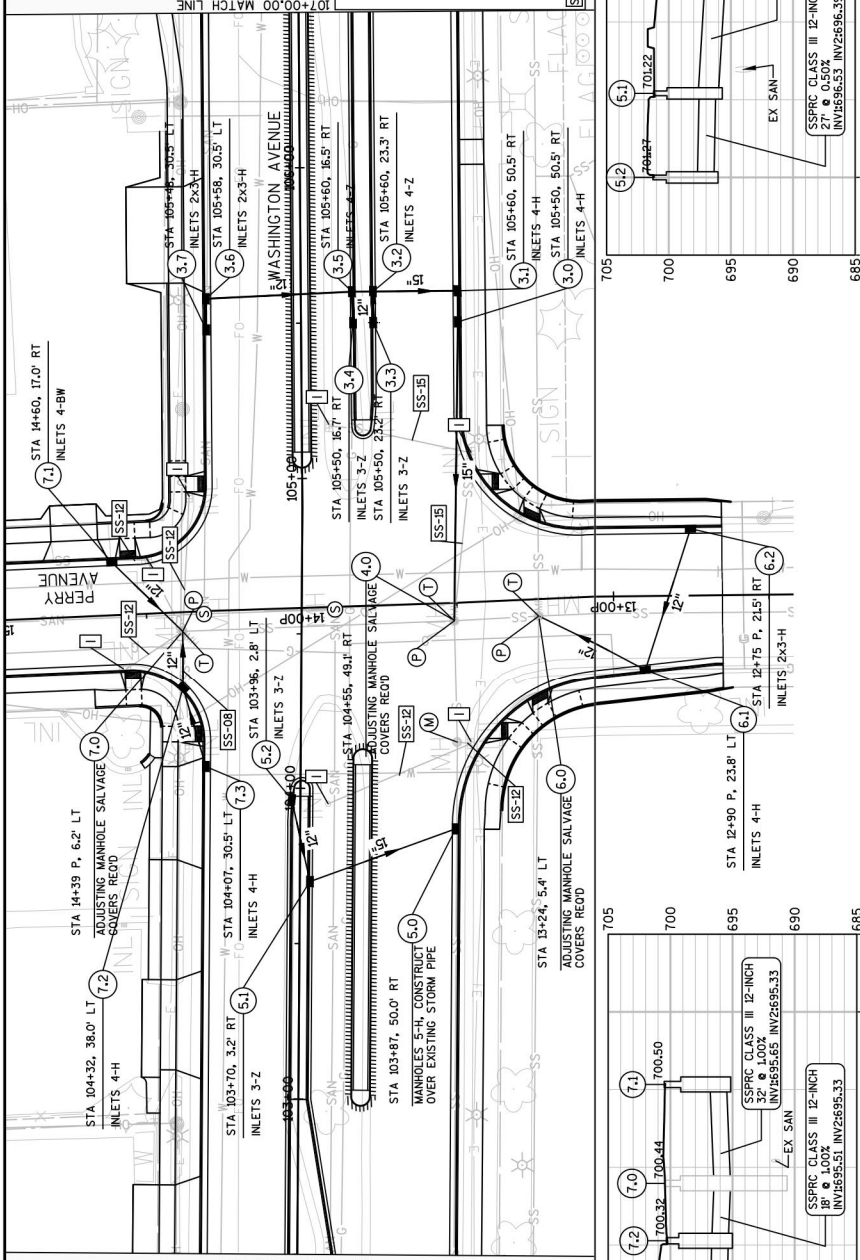
- LEGEND:
- [M] REMOVING STORM SEWER MANHOLES REOD
 - [L] REMOVING INLETS REOD
 - [A] ADJUSTING STORM SEWER MANHOLE COVERS REOD
 - [S] ADJUSTING SANITARY SEWER MANHOLE COVERS REOD
 - [I] ADJUSTING INLET COVERS REOD
 - [A] RECONSTRUCTING STORM SEWER MANHOLES REOD
 - [A] RECONSTRUCTING SANITARY SEWER MANHOLES REOD
 - [T] STORM SEWER TAP REOD
 - [P] SEALING PIPES REOD
 - [SS-32X] REMOVING STORM SEWER (XX-INCH)

REPLACE SSPPRC CLASS III
PIPES WITH SSP CLASS III-A

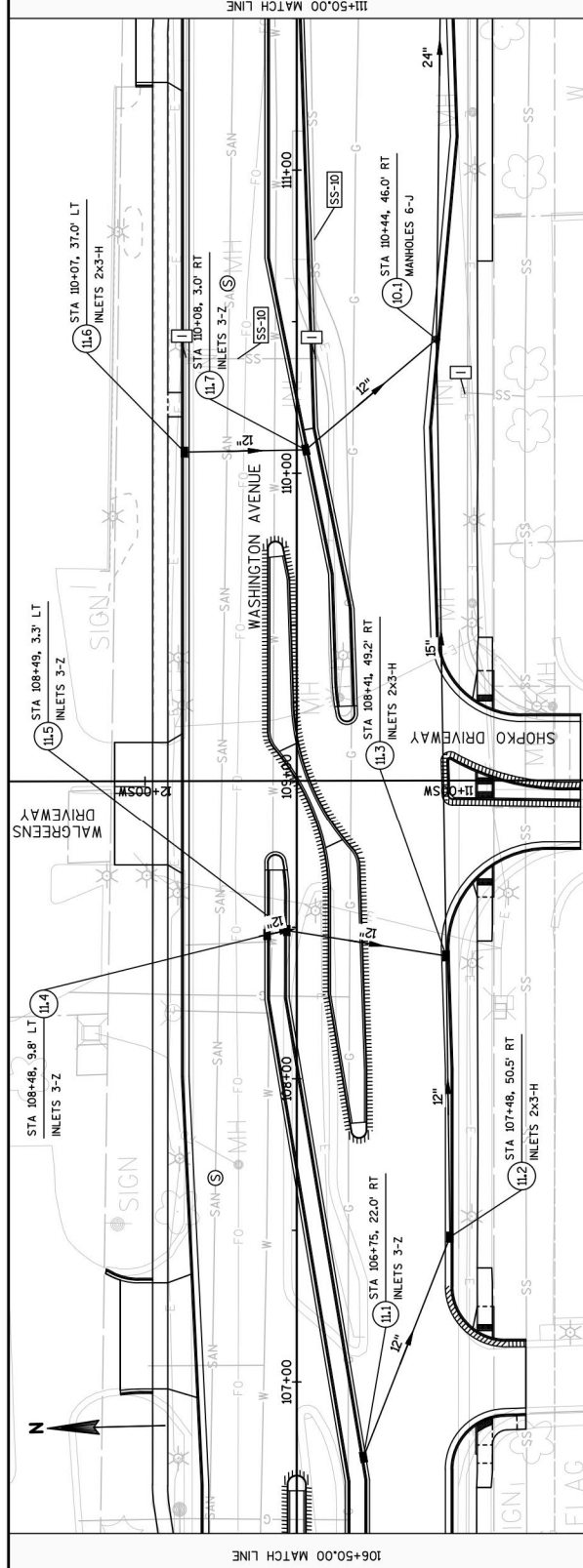
LEGEND

- M** REMOVING STORM SEWER MANHOLES REOD
- L** REMOVING INLETS REOD
- S** ADJUSTING STORM SEWER MANHOLE COVERS REOD
- U** ADJUSTING SANITARY SEWER MANHOLE COVERS REOD
- O** ADJUSTING INLET COVERS REOD
- A** RECONSTRUCTING STORM SEWER MANHOLES REOD
- T** RECONSTRUCTING SANITARY SEWER MANHOLES REOD
- P** STORM SEWER TAP REOD
- SS-XX** SEALING PIPES REOD
- SS-XX** REMOVING STORM SEWER XX-INCH

Addendum No. 01
ID 2440-09-70
Revised Sheet 139
October 22, 2020



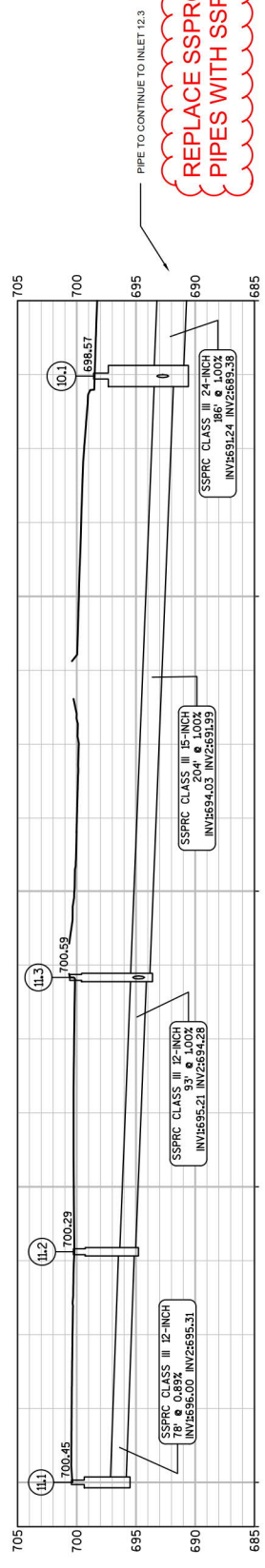
Addendum No. 01
ID 2440-09-70
Revised Sheet 140
October 22, 2020



106+50.00 MATCH LINE

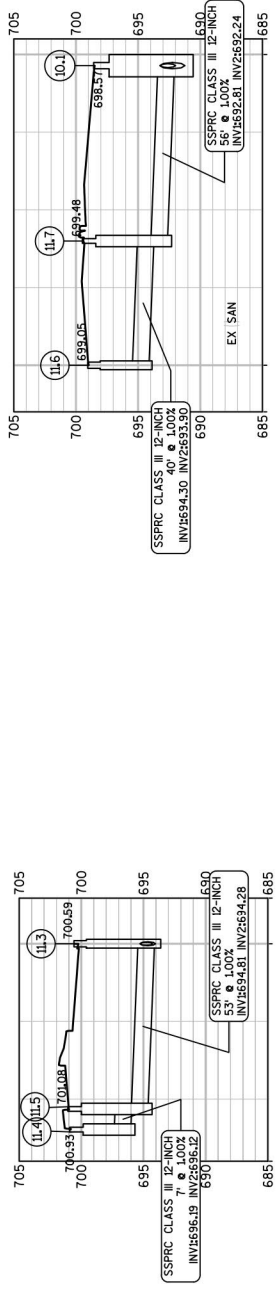
111+50.00 MATCH LINE

REPLACE SSRPC CLASS III
PIPES WITH SSP CLASS III-A



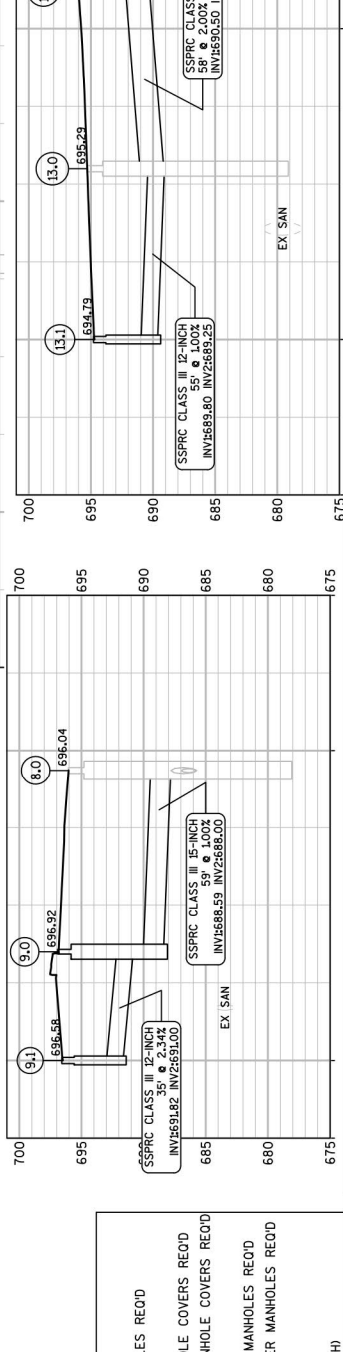
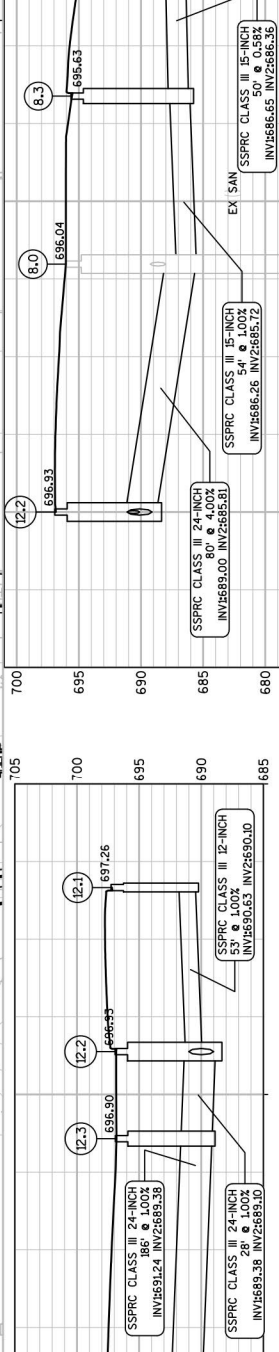
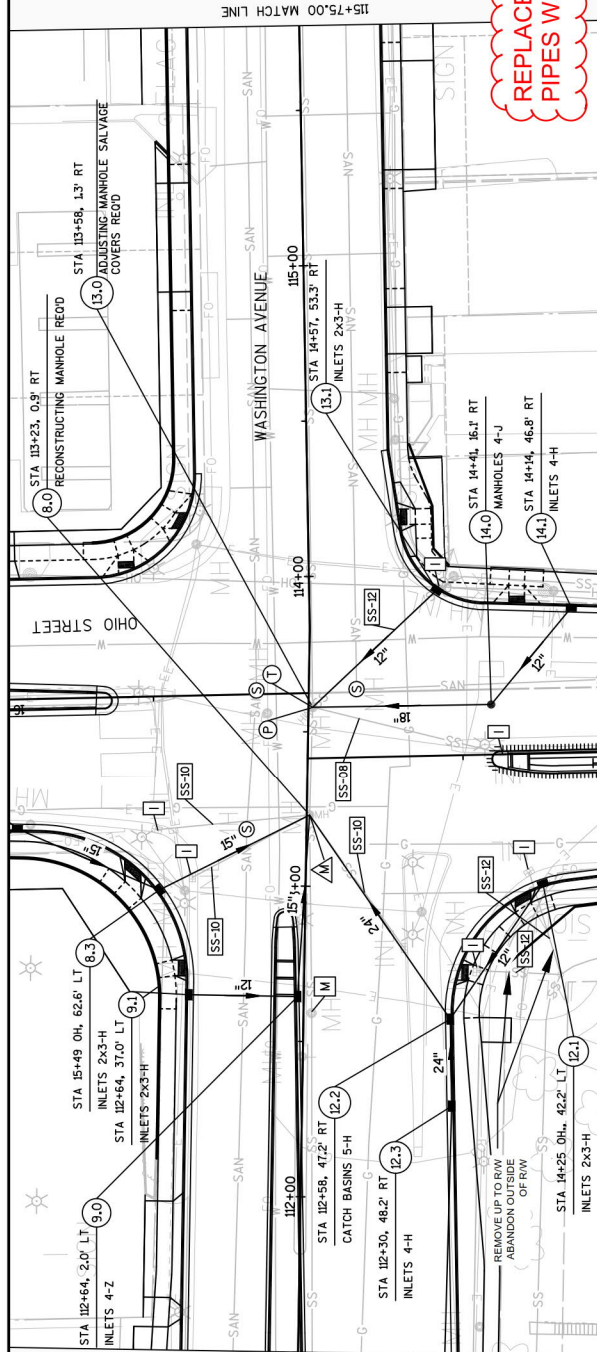
PIPE TO CONTINUE TO INLET 12.3

- LEGEND:**
- REMOVING STORM SEWER MANHOLES REOD
 - REMOVING INLETS REOD
 - ADJUSTING STORM SEWER MANHOLE COVERS REOD
 - ADJUSTING SANITARY SEWER MANHOLE COVERS REOD
 - ADJUSTING INLET COVERS REOD
 - RECONSTRUCTING STORM SEWER MANHOLES REOD
 - RECONSTRUCTING SANITARY SEWER MANHOLES REOD
 - STORM SEWER TAP REOD
 - SEALING PIPES REOD
 - REMOVING STORM SEWER (XX-INCH)



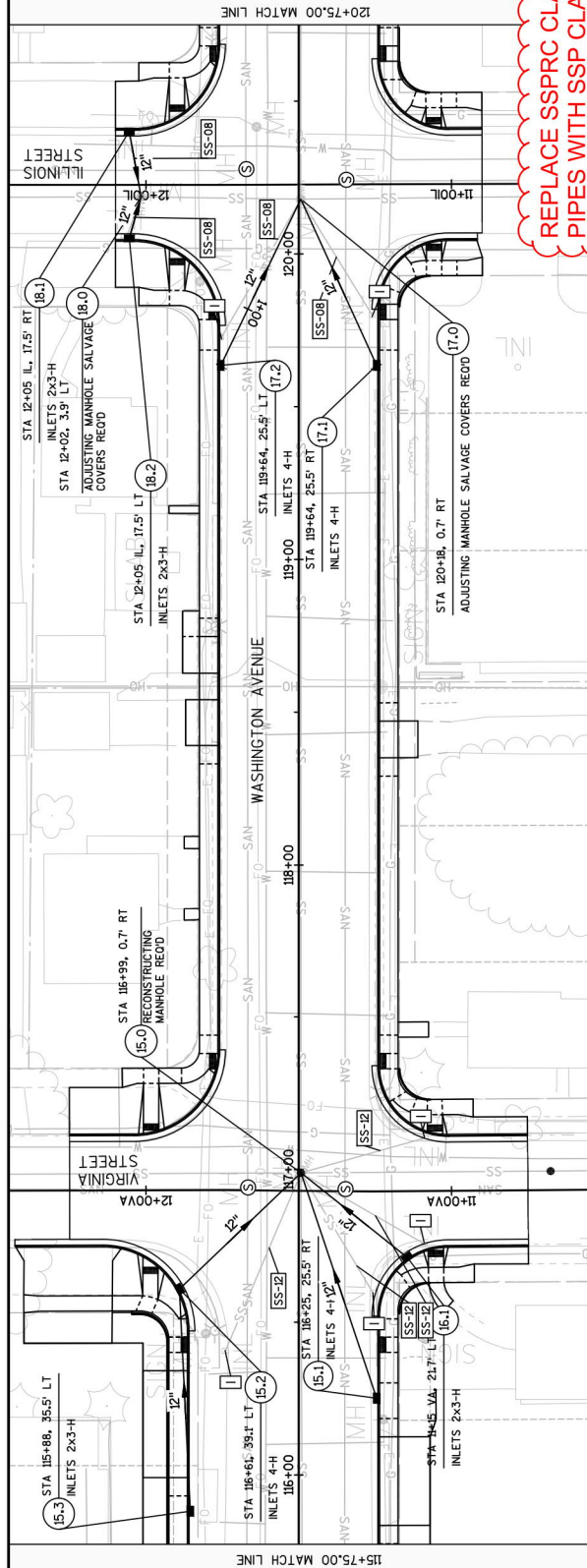
Addendum No. 01
ID 2440-09-70
Revised Sheet 141
October 22, 2020

REPLACE SSPPRC CLASS III
PIPES WITH SSP CLASS III-A



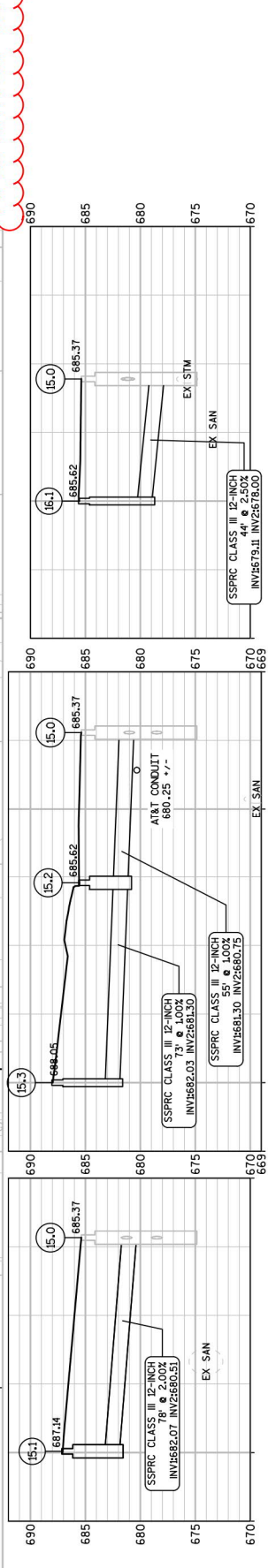
- LEGEND:**
- REMOVING STORM SEWER MANHOLES RECD
 - REMOVING INLETS RECD
 - ADJUSTING STORM SEWER MANHOLE COVERS RECD
 - ADJUSTING SANITARY SEWER MANHOLE COVERS RECD
 - ADJUSTING INLET COVERS RECD
 - RECONSTRUCTING STORM SEWER MANHOLES RECD
 - RECONSTRUCTING SANITARY SEWER MANHOLES RECD
 - STORM SEWER TAP RECD
 - SEALING PIPES RECD
 - REMOVING STORM SEWER (XX-INCH)

PROJECT NO: 2440-09-70	HWY: STH 20	COUNTY: RACINE	STORM SEWER	SHEET	141
FILE NAME : F:\B494 WASHINGTON AVE (STH 20) RACINE COUNTY\TRANSPORTATION\CADD\B494_STH 20_SHEET\PLAN\22501_SS.DWG					
PLOT DATE : 7/13/2020 5:18 PM					
PLOT BY : RYAN TOY					
PLOT SCALE : 1 IN=40 FT					



REPLACE SSPRC CLASS III
PIPES WITH SSP CLASS III-A

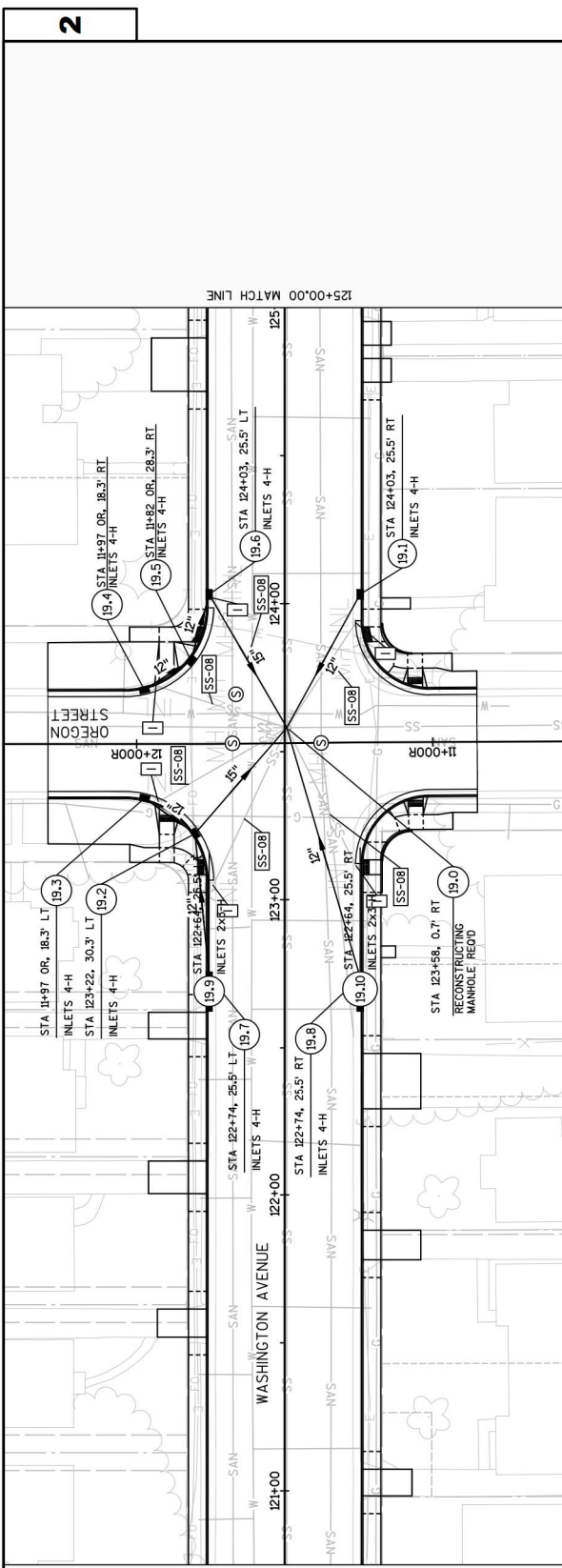
Addendum No. 01
ID 2440-09-70
Revised Sheet 142
October 22, 2020



- LEGEND:
- REMOVING STORM SEWER MANHOLES REOD
 - REMOVING INLETS REOD
 - ADJUSTING STORM SEWER MANHOLE COVERS REOD
 - ADJUSTING SANITARY SEWER MANHOLE COVERS REOD
 - ADJUSTING INLET COVERS REOD
 - RECONSTRUCTING STORM SEWER MANHOLES REOD
 - RECONSTRUCTING SANITARY SEWER MANHOLES REOD
 - STORM SEWER TAP REOD
 - SEALING PIPES REOD
 - REMOVING STORM SEWER (XX-INCH)

PROJECT NO: 2440-09-70
 COUNTY: RACINE
 HWY: STH 20
 STORM SEWER
 SHEET 142
 WISDOT/CADD SHEET 41

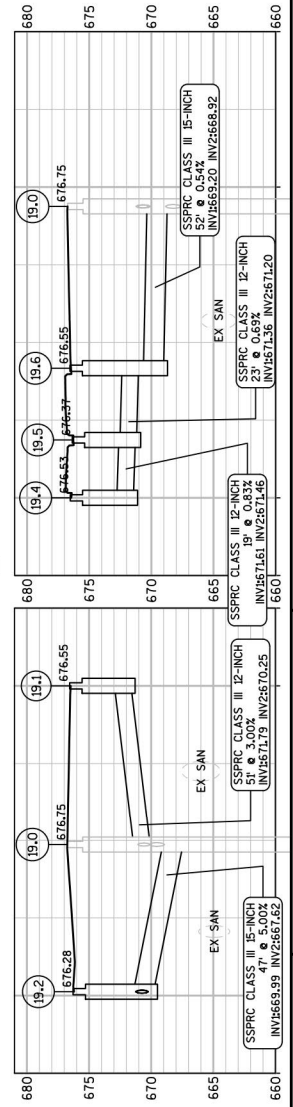
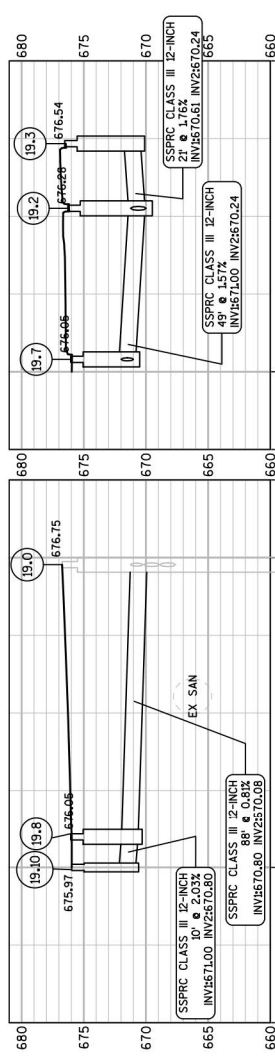
FILE NAME : F:\B494 WASHINGTON AVE (STH 20), RACINE COUNTY\TRANSPORTATION\CADD\B494_STH 20_SHEET\PLAN\22501_SS.DWG
 PLOT NAME :
 PLOT SCALE : 1 IN=40 FT
 PLOT DATE : 7/13/2020 5:19 PM
 PLOT BY : RYAN TOY

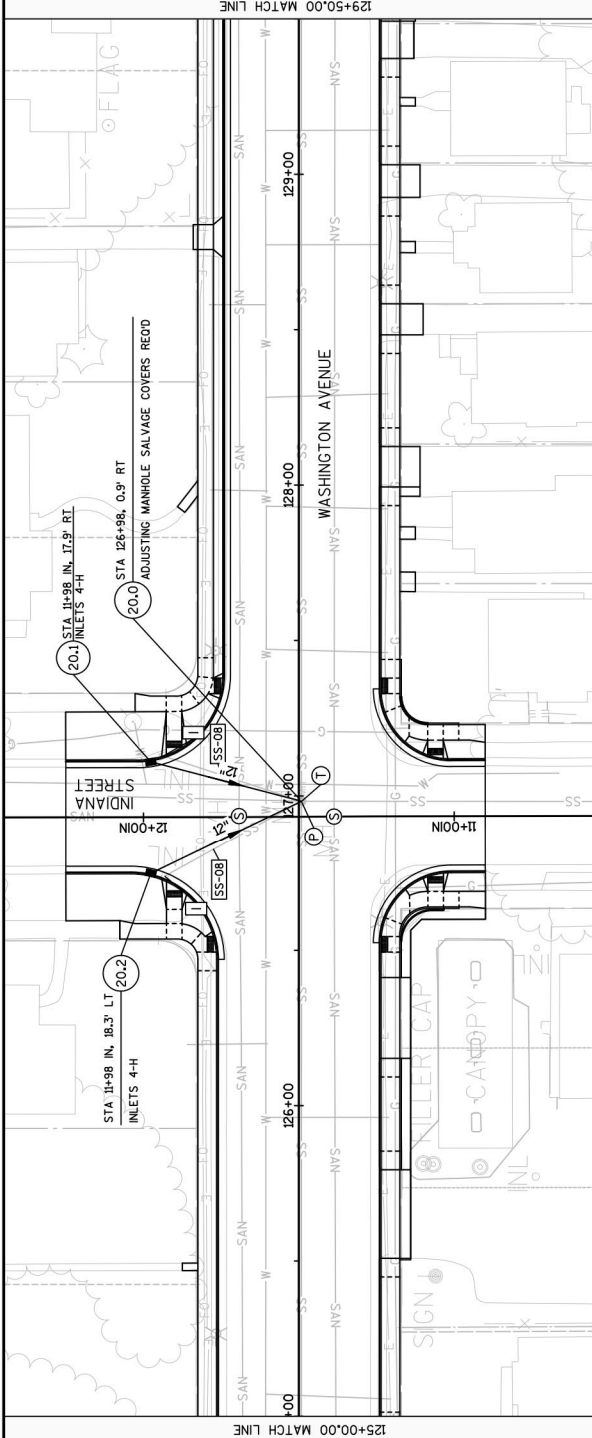


Addendum No. 01
 ID 2440-09-70
 Revised Sheet 143
 October 22, 2020

REPLACE SSPRC CLASS III
 PIPES WITH SSP CLASS III-A

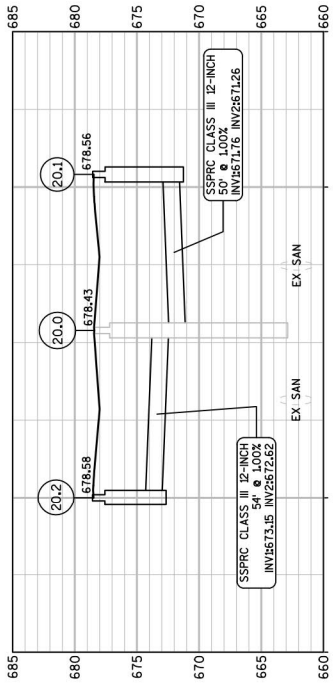
- LEGEND:
- REMOVING STORM SEWER MANHOLES REOD
 - REMOVING INLETS REOD
 - ADJUSTING STORM SEWER MANHOLE COVERS REOD
 - ADJUSTING SANITARY SEWER MANHOLE COVERS REOD
 - ADJUSTING INLET COVERS REOD
 - RECONSTRUCTING STORM SEWER MANHOLES REOD
 - RECONSTRUCTING SANITARY SEWER MANHOLES REOD
 - STORM SEWER TAP REOD
 - SEALING PIPES REOD
 - REMOVING STORM SEWER (XX-INCH)





REPLACE SSPPC CLASS III
PIPES WITH SSP CLASS III-A

Addendum No. 01
ID 2440-09-70
Revised Sheet 144
October 22, 2020



- REMOVING STORM SEWER MANHOLES REOD
- REMOVING INLETS REOD
- ADJUSTING STORM SEWER MANHOLE COVERS REOD
- ADJUSTING SANITARY SEWER MANHOLE COVERS REOD
- ADJUSTING INLET COVERS REOD
- RECONSTRUCTING STORM SEWER MANHOLES REOD
- RECONSTRUCTING SANITARY SEWER MANHOLES REOD
- STORM SEWER TAP REOD
- SEALING PIPES REOD
- REMOVING STORM SEWER (XX-INCH)

PROJECT NO: 2440-09-70

HWY: STH 20

COUNTY: RACINE

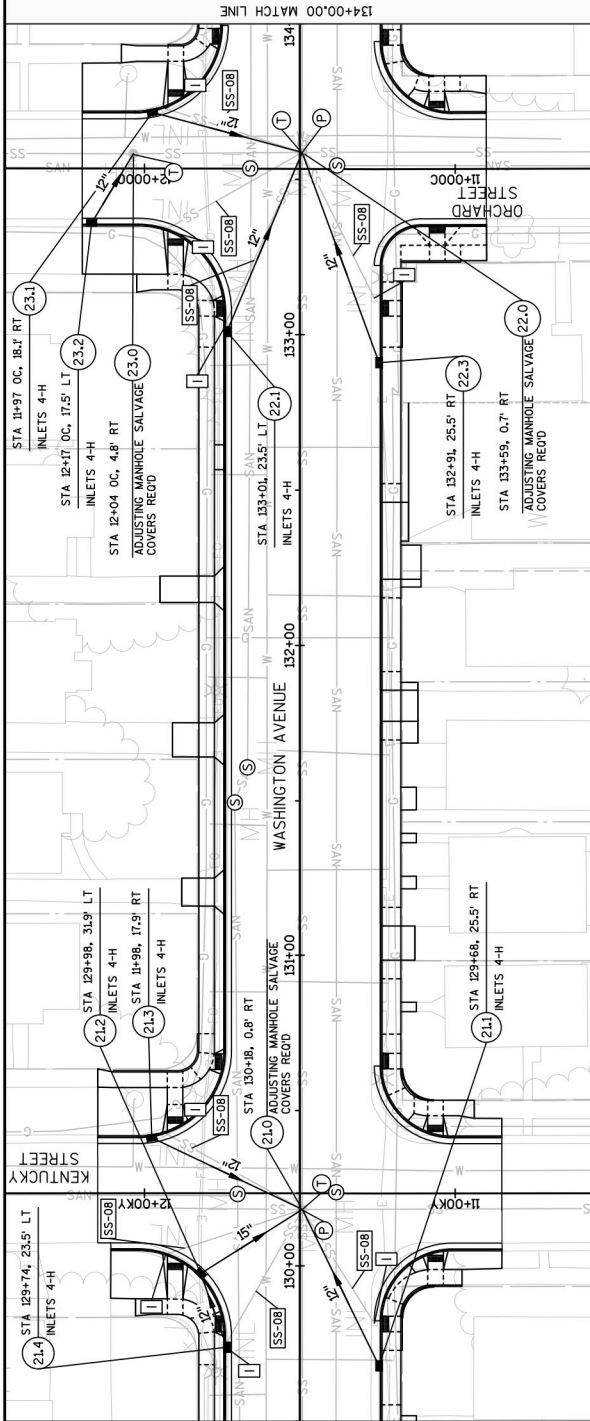
STORM SEWER

SHEET

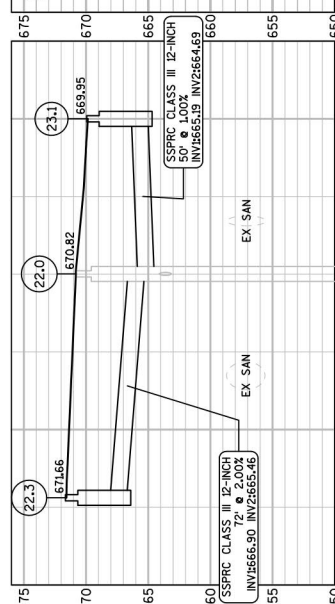
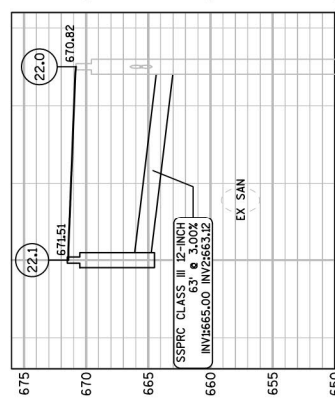
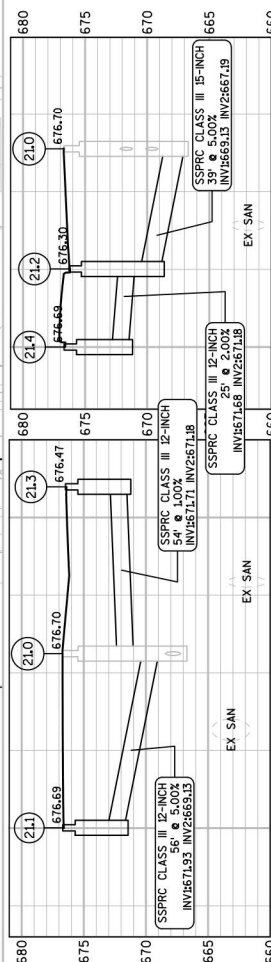
144

E

Addendum No. 01
ID 2440-09-70
Revised Sheet 145
October 22, 2020

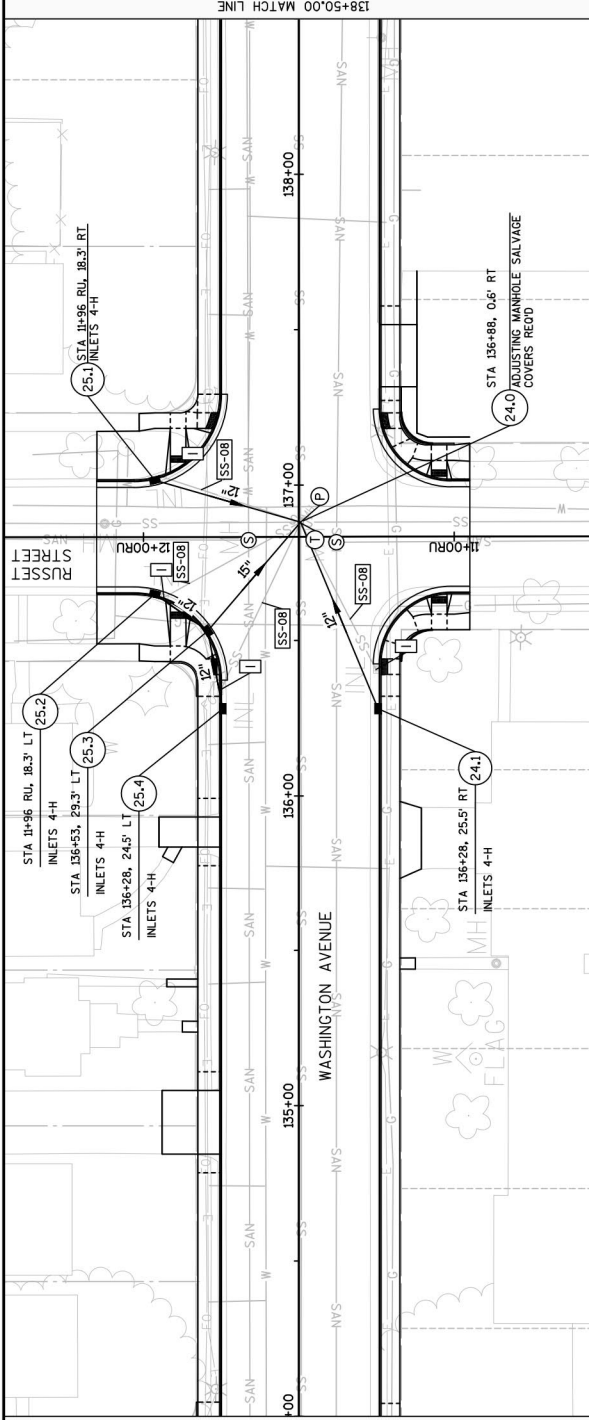


REPLACE SSPRC CLASS III
PIPES WITH SSP CLASS III-A

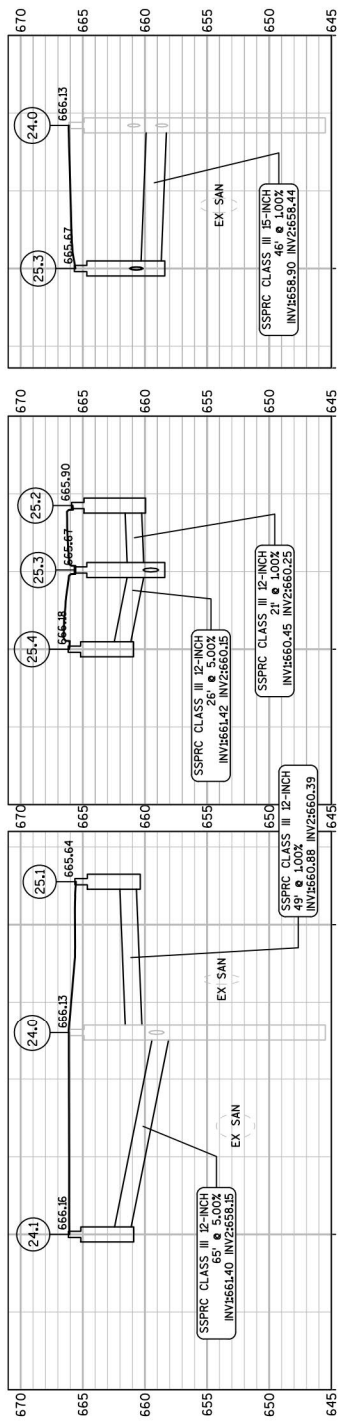


- LEGEND:**
- REMOVING STORM SEWER MANHOLES REOD
 - REMOVING INLETS REOD
 - ADJUSTING STORM SEWER MANHOLE COVERS REOD
 - ADJUSTING SANITARY SEWER MANHOLE COVERS REOD
 - ADJUSTING INLET COVERS REOD
 - RECONSTRUCTING STORM SEWER MANHOLES REOD
 - RECONSTRUCTING SANITARY SEWER MANHOLES REOD
 - STORM SEWER TAP REOD
 - SEALING PIPES REOD
 - REMOVING STORM SEWER (XX-INCH)

Addendum No. 01
ID 2440-09-70
Revised Sheet 146
October 22, 2020



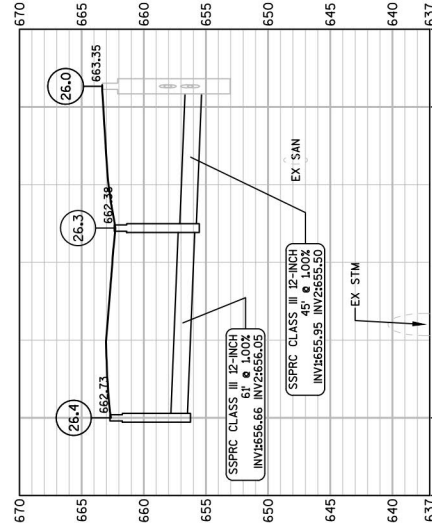
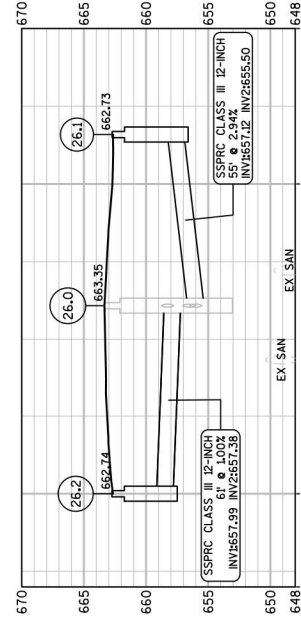
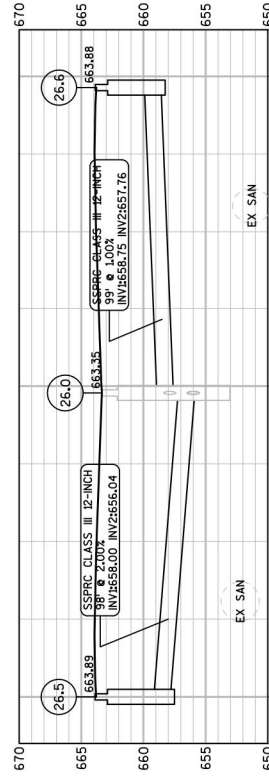
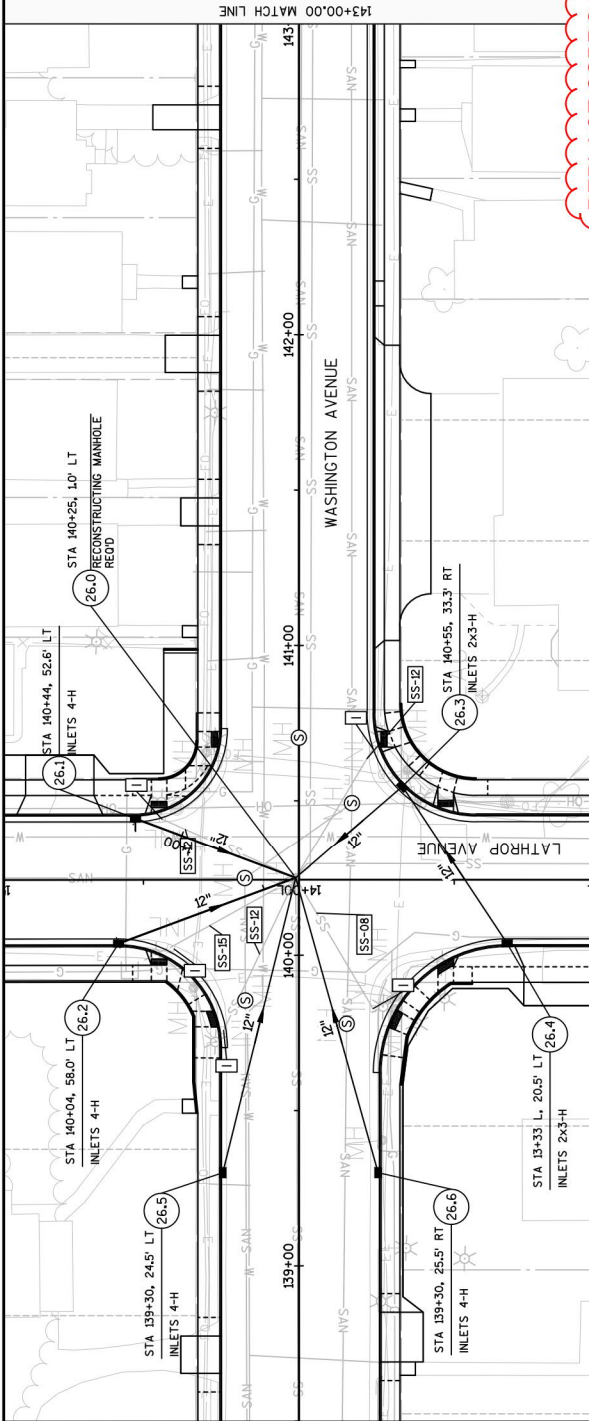
REPLACE SSPRC CLASS III
PIPES WITH SSP CLASS III-A



- LEGEND:**
- REMOVING STORM SEWER MANHOLES REOD
 - REMOVING INLETS REOD
 - ADJUSTING STORM SEWER MANHOLE COVERS REOD
 - ADJUSTING SANITARY SEWER MANHOLE COVERS REOD
 - ADJUSTING INLET COVERS REOD
 - RECONSTRUCTING STORM SEWER MANHOLES REOD
 - RECONSTRUCTING SANITARY SEWER MANHOLES REOD
 - STORM SEWER TAP REOD
 - SEALING PIPES REOD
 - REMOVING STORM SEWER (XX-INCH)

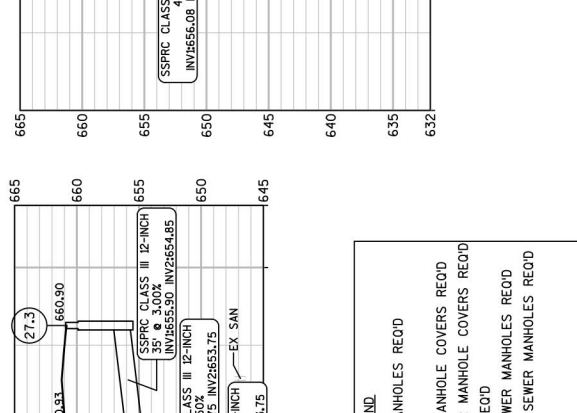
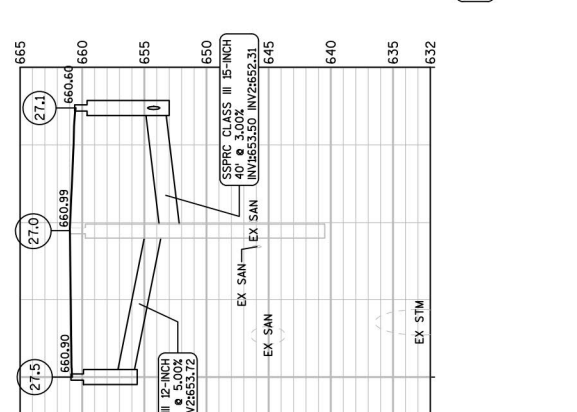
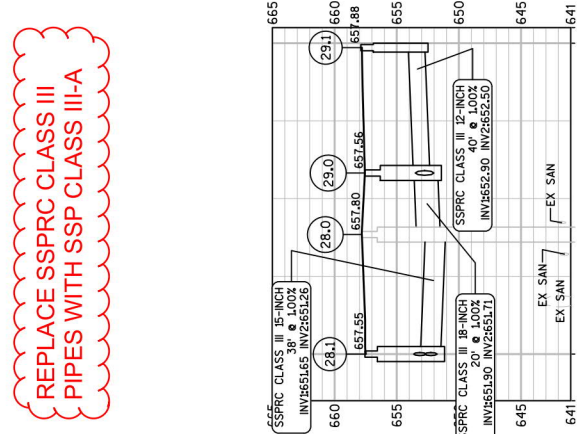
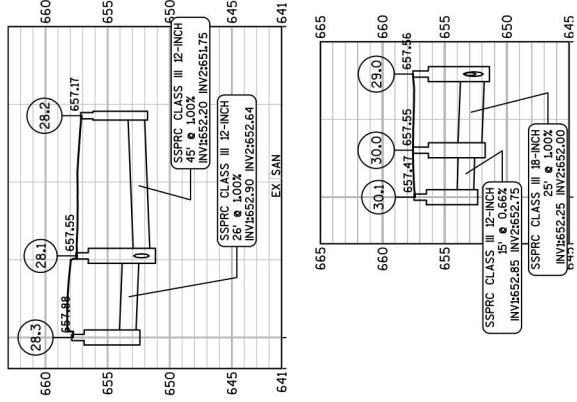
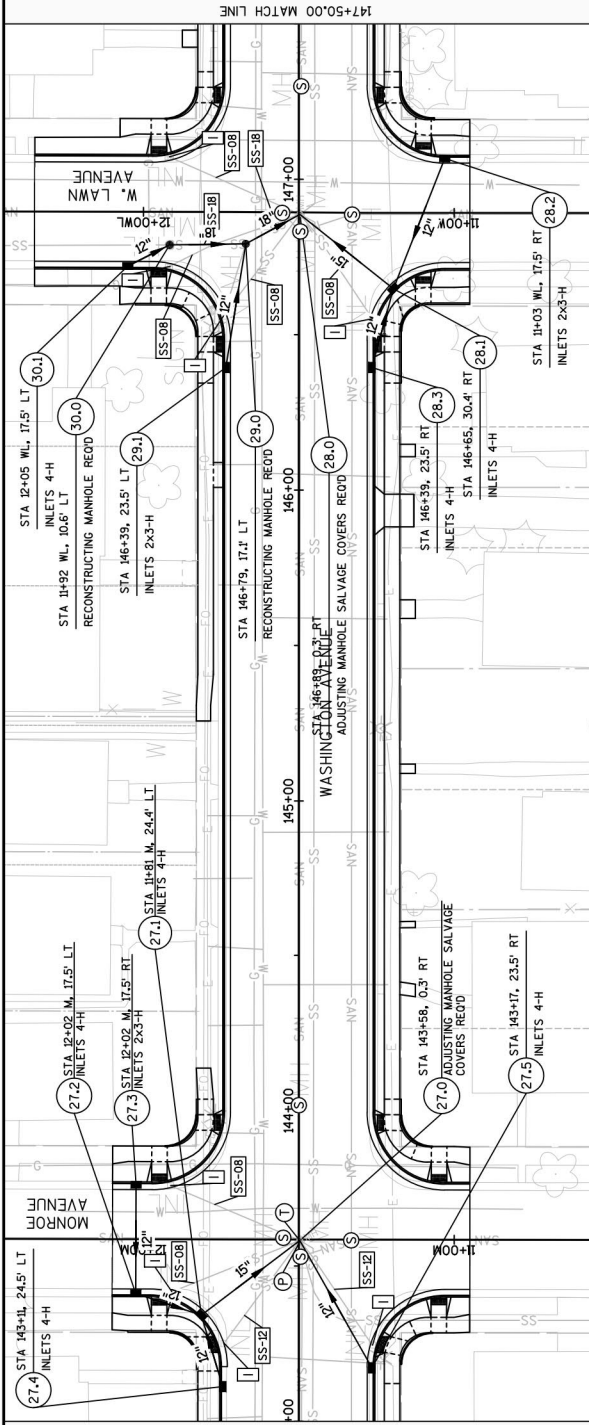
Addendum No. 01
ID 2440-09-70
Revised Sheet 147
October 22, 2020

REPLACE SSPPRC CLASS III
PIPES WITH SSP CLASS III-A

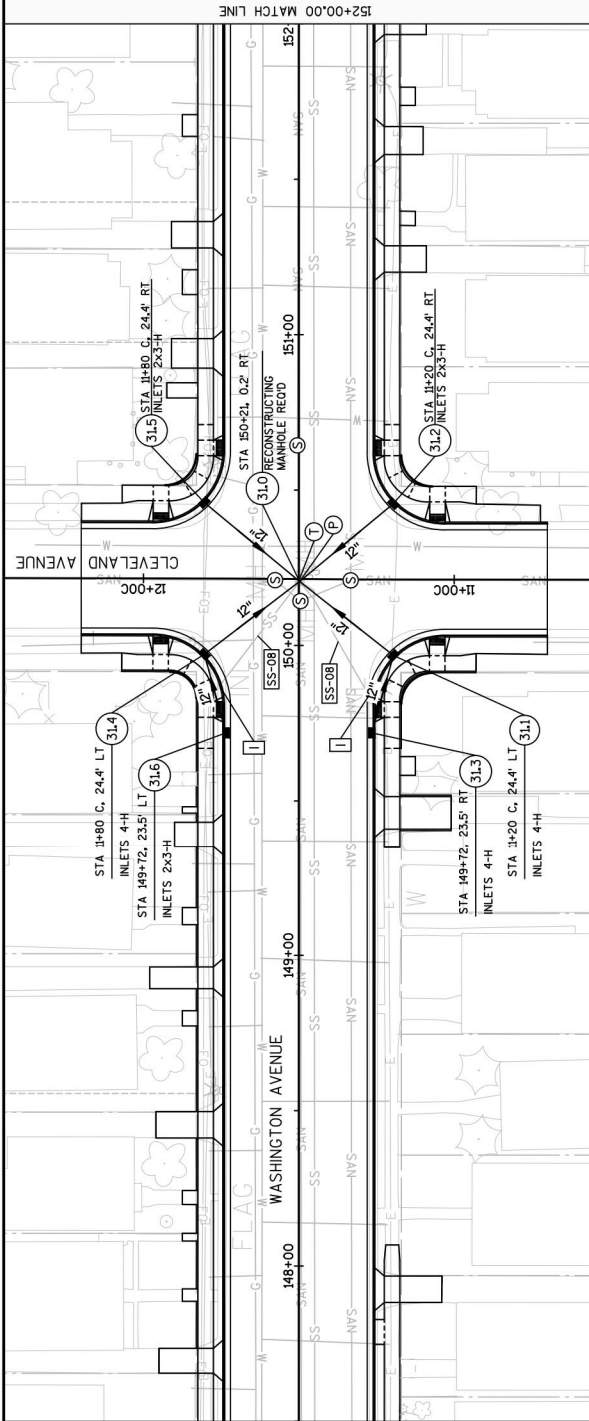


- LEGEND:**
- REMOVING STORM SEWER MANHOLES REOD
 - REMOVING INLETS REOD
 - ADJUSTING STORM SEWER MANHOLE COVERS REOD
 - ADJUSTING SANITARY SEWER MANHOLE COVERS REOD
 - ADJUSTING INLET COVERS REOD
 - RECONSTRUCTING STORM SEWER MANHOLES REOD
 - RECONSTRUCTING SANITARY SEWER MANHOLES REOD
 - STORM SEWER TAP REOD
 - SEALING PIPES REOD
 - REMOVING STORM SEWER (XX-INCH)

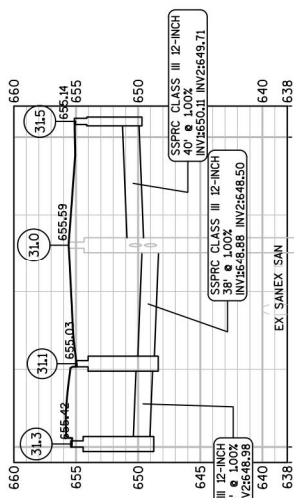
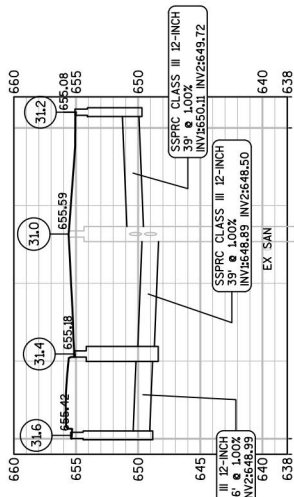
Addendum No. 01
ID 2440-09-70
Revised Sheet 148
October 22, 2020



- LEGEND:**
- REMOVING STORM SEWER MANHOLES RECD
 - REMOVING INLETS RECD
 - ADJUSTING STORM SEWER MANHOLE COVERS RECD
 - ADJUSTING SANITARY SEWER MANHOLE COVERS RECD
 - ADJUSTING INLET COVERS RECD
 - RECONSTRUCTING STORM SEWER MANHOLES RECD
 - RECONSTRUCTING SANITARY SEWER MANHOLES RECD
 - STORM SEWER TAP RECD
 - SEALING PIPES RECD
 - REMOVING STORM SEWER (XX-INCH)

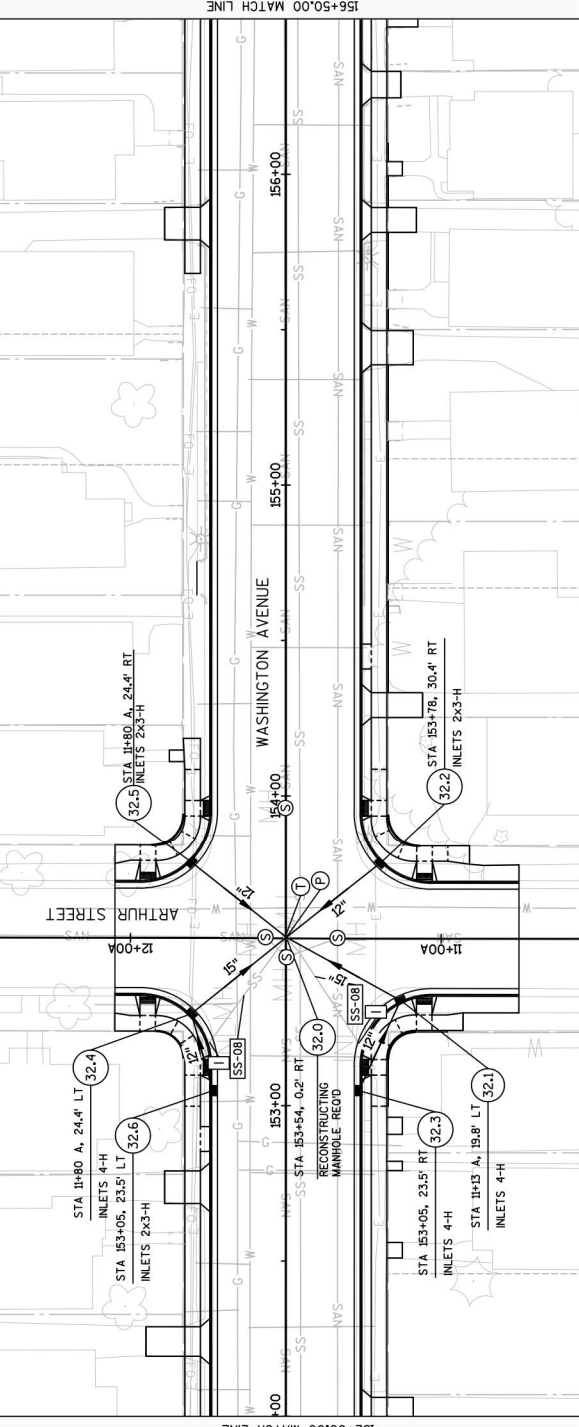


Addendum No. 01
 ID 2440-09-70
 Revised Sheet 149
 October 22, 2020

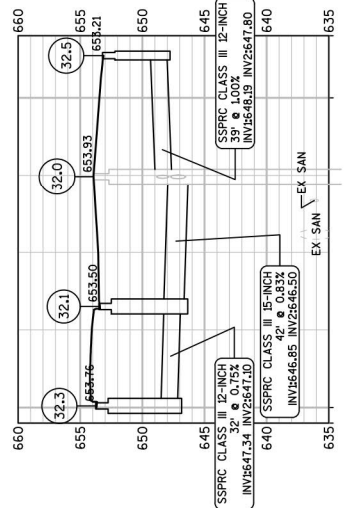
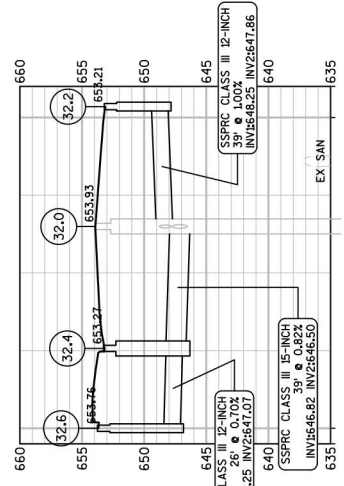


REPLACE SS-XX CLASS III
 PIPES WITH SS-08 CLASS III-A

- LEGEND:**
- [M] REMOVING STORM SEWER MANHOLES REOD
 - [L] REMOVING INLETS REOD
 - [M] ADJUSTING STORM SEWER MANHOLE COVERS REOD
 - [S] ADJUSTING SANITARY SEWER MANHOLE COVERS REOD
 - [L] ADJUSTING INLET COVERS REOD
 - [A] RECONSTRUCTING STORM SEWER MANHOLES REOD
 - [A] RECONSTRUCTING SANITARY SEWER MANHOLES REOD
 - [T] STORM SEWER TAP REOD
 - [P] SEALING PIPES REOD
 - [SS-XX] REMOVING STORM SEWER (XX-INCH)



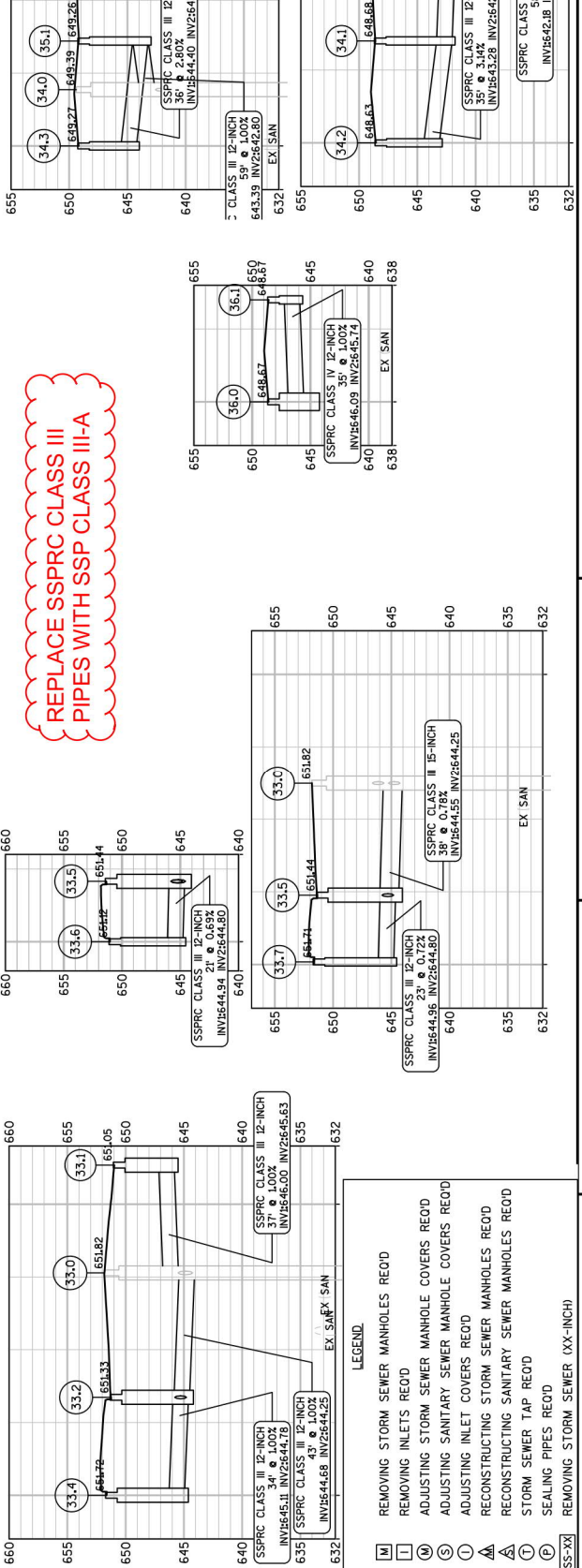
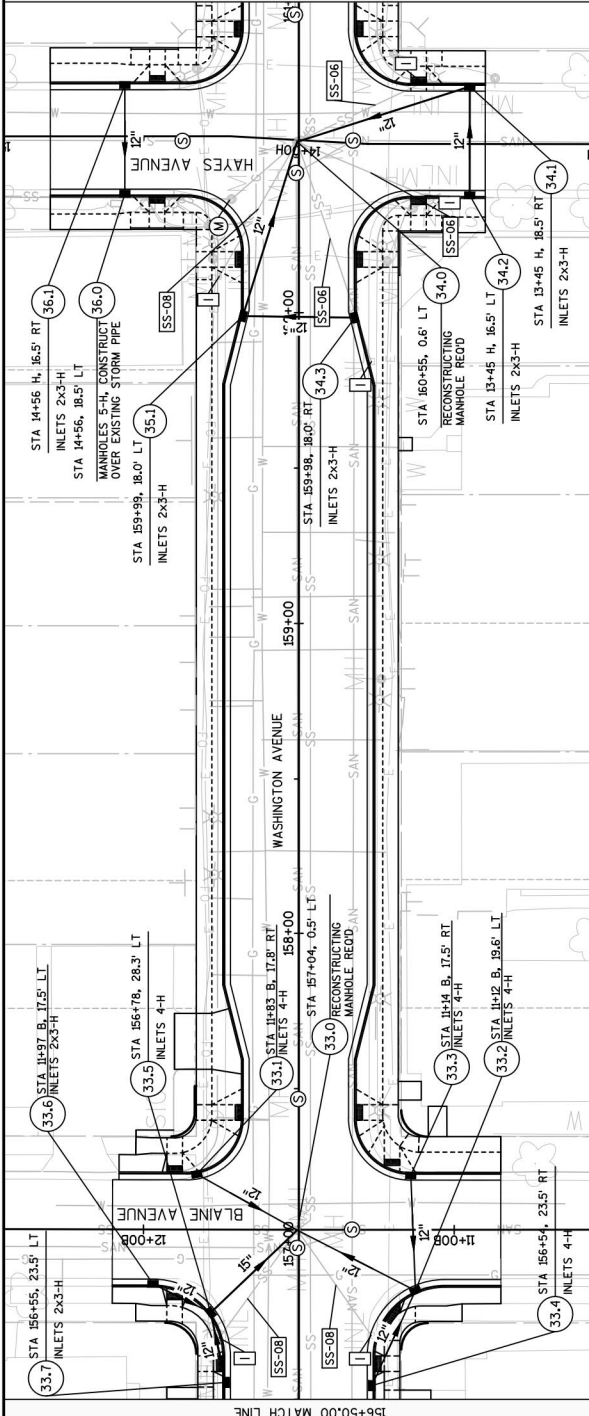
REPLACE SSRPC CLASS III
PIPES WITH SSP CLASS III-A



- LEGEND:**
- [W] REMOVING STORM SEWER MANHOLES REOD
 - [L] REMOVING INLETS REOD
 - [M] ADJUSTING STORM SEWER MANHOLE COVERS REOD
 - [S] ADJUSTING SANITARY SEWER MANHOLE COVERS REOD
 - [I] ADJUSTING INLET COVERS REOD
 - [A] RECONSTRUCTING STORM SEWER MANHOLES REOD
 - [T] RECONSTRUCTING SANITARY SEWER MANHOLES REOD
 - [P] STORM SEWER TAP REOD
 - [SS-XX] SEALING PIPES REOD
 - [SS-XX] REMOVING STORM SEWER (XX-INCH)

Addendum No. 01
ID 2440-09-70
Revised Sheet 150
October 22, 2020

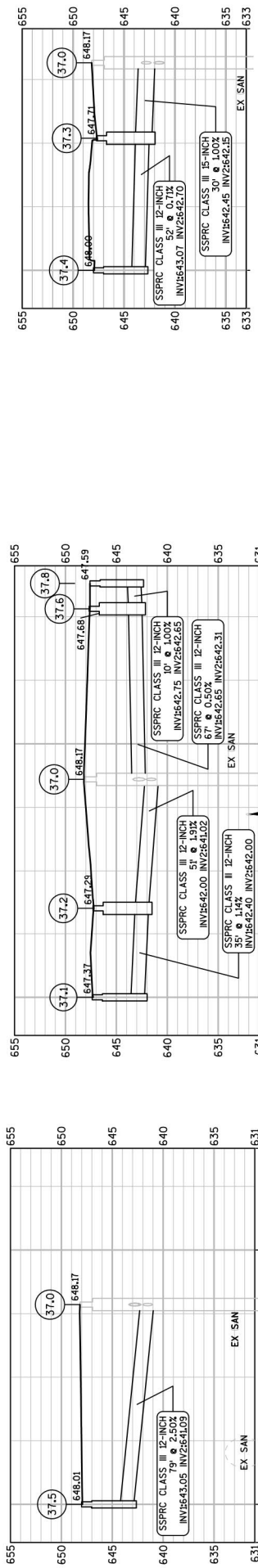
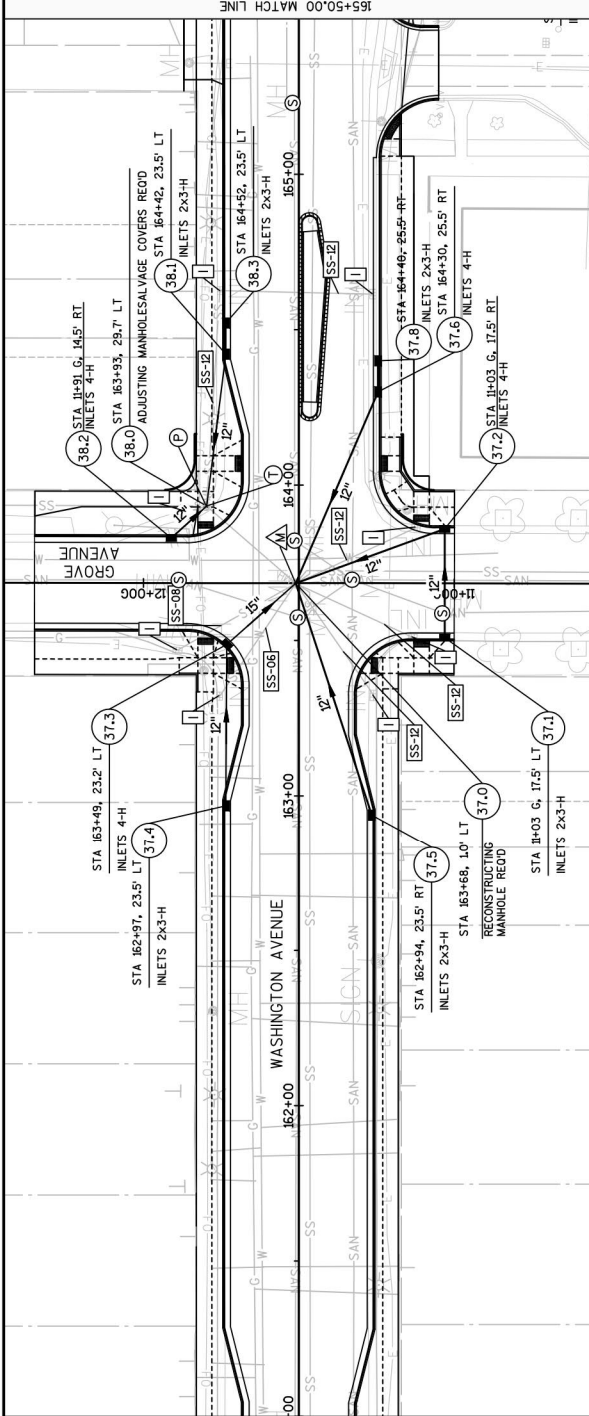
Addendum No. 01
ID 2440-09-70
Revised Sheet 151
October 22, 2020



REPLACE SSPPRC CLASS III
PIPES WITH SSP CLASS III-A

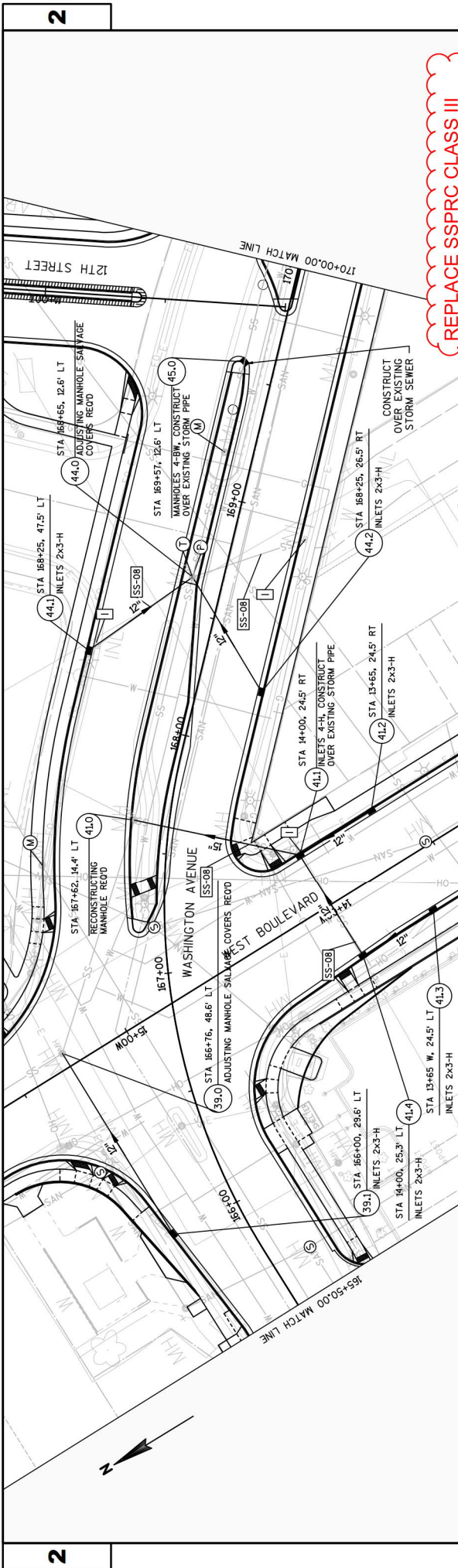
- LEGEND**
- REMOVING STORM SEWER MANHOLES RECORD
 - REMOVING INLETS RECORD
 - ADJUSTING STORM SEWER MANHOLE COVERS RECORD
 - ADJUSTING SANITARY SEWER MANHOLE COVERS RECORD
 - ADJUSTING INLET COVERS RECORD
 - RECONSTRUCTING STORM SEWER MANHOLES RECORD
 - RECONSTRUCTING SANITARY SEWER MANHOLES RECORD
 - STORM SEWER TAP RECORD
 - SEALING PIPES RECORD
 - REMOVING STORM SEWER (XX-INCH)

Addendum No. 01
ID 2440-09-70
Revised Sheet 152
October 22, 2020



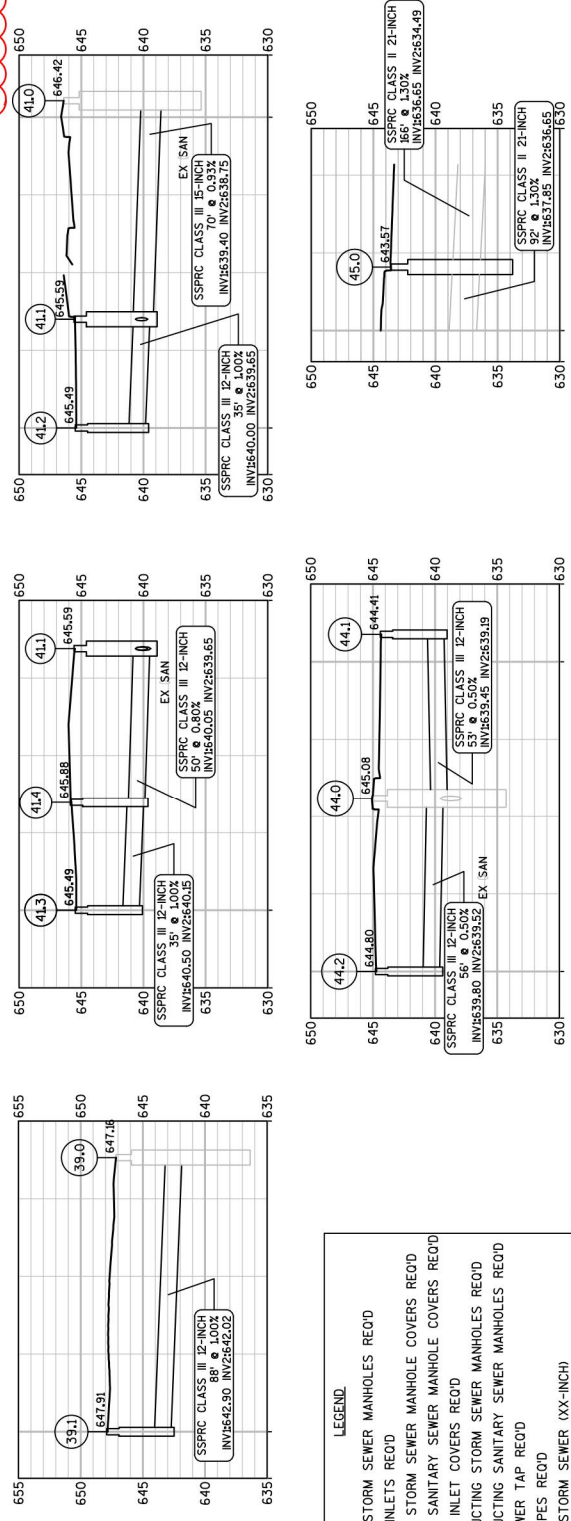
- LEGEND:**
- REMOVING STORM SEWER MANHOLES REOD
 - REMOVING INLETS REOD
 - ADJUSTING STORM SEWER MANHOLE COVERS REOD
 - ADJUSTING SANITARY SEWER MANHOLE COVERS REOD
 - ADJUSTING INLET COVERS REOD
 - RECONSTRUCTING STORM SEWER MANHOLES REOD
 - RECONSTRUCTING SANITARY SEWER MANHOLES REOD
 - STORM SEWER TAP REOD
 - SEALING PIPES REOD
 - REMOVING STORM SEWER (XX-INCH)

REPLACE SSPPRC CLASS III
PIPES WITH SSP CLASS III-A

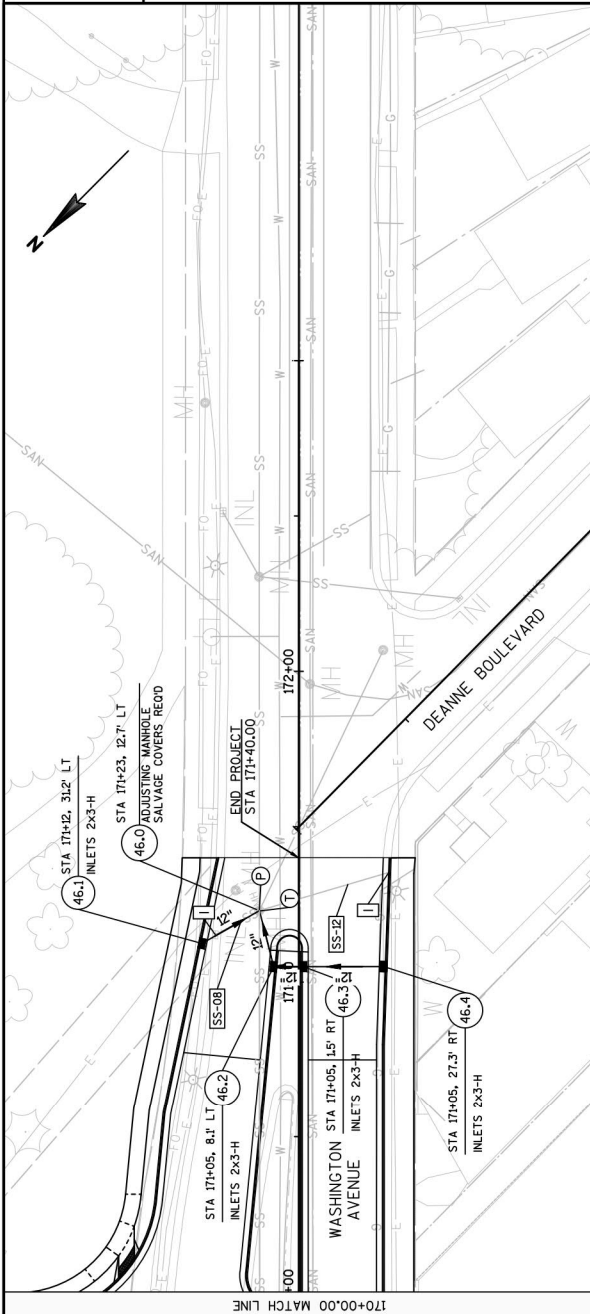


REPLACE SSRPC CLASS III PIPES WITH SSP CLASS III-A

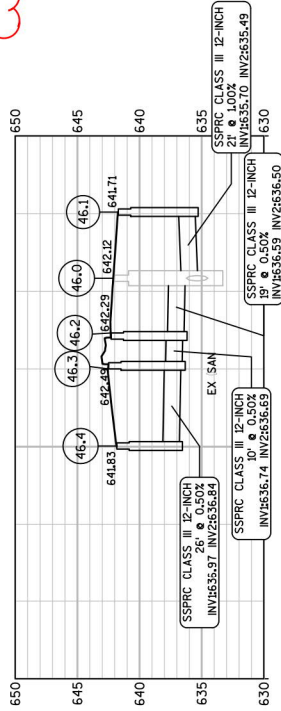
Addendum No. 01
 ID 2440-09-70
 Revised Sheet 153
 October 22, 2020



- LEGEND:**
- REMOVING STORM SEWER MANHOLES REOD
 - REMOVING INLETS REOD
 - ADJUSTING STORM SEWER MANHOLE COVERS REOD
 - ADJUSTING SANITARY SEWER MANHOLE COVERS REOD
 - ADJUSTING INLET COVERS REOD
 - RECONSTRUCTING STORM SEWER MANHOLES REOD
 - RECONSTRUCTING SANITARY SEWER MANHOLES REOD
 - STORM SEWER TAP REOD
 - SEALING PIPES REOD
 - REMOVING STORM SEWER (XX-INCH)

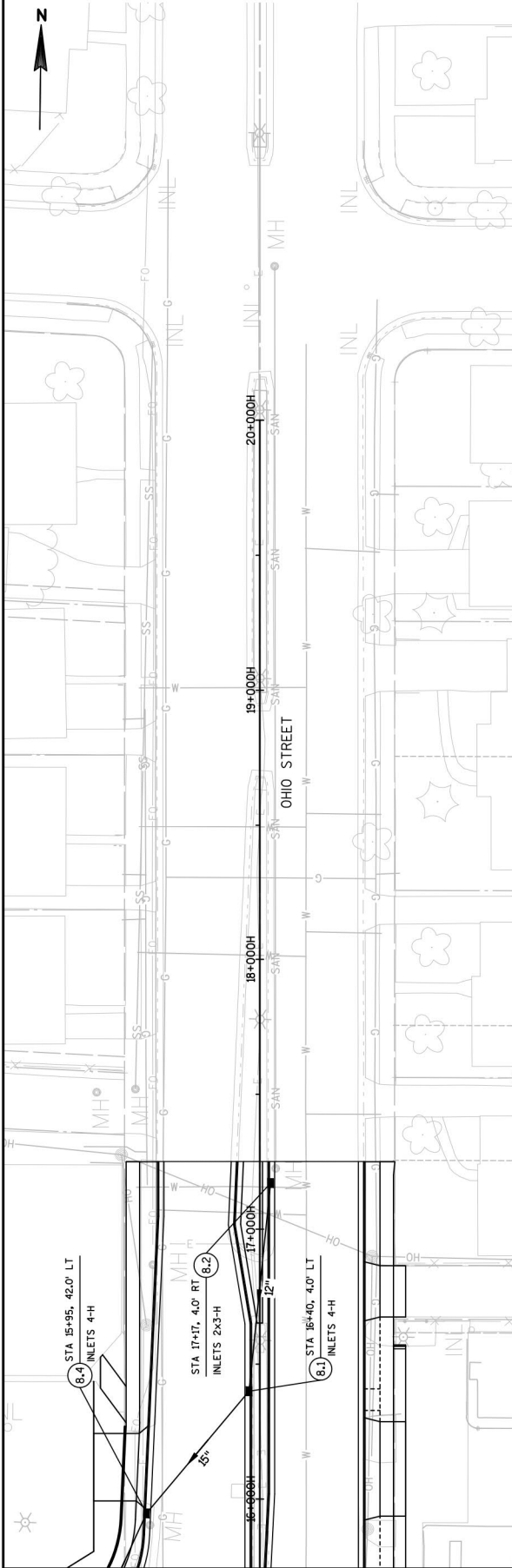


REPLACE SSPRC CLASS III
PIPES WITH SSP CLASS III-A



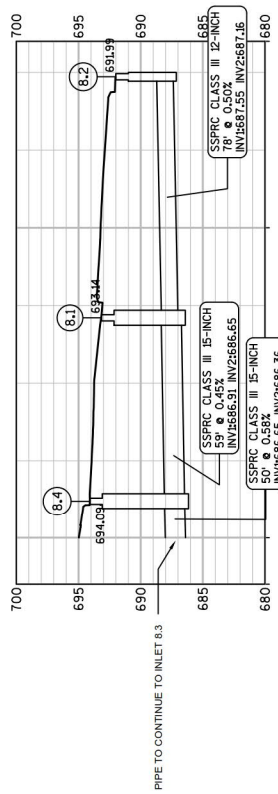
Addendum No. 01
ID 2440-09-70
Revised Sheet 154
October 22, 2020

- LEGEND:
- [M] REMOVING STORM SEWER MANHOLES R/O/D
 - [L] REMOVING INLETS R/O/D
 - [M] ADJUSTING STORM SEWER MANHOLE COVERS R/O/D
 - [S] ADJUSTING SANITARY SEWER MANHOLE COVERS R/O/D
 - [L] ADJUSTING INLET COVERS R/O/D
 - [A] RECONSTRUCTING STORM SEWER MANHOLES R/O/D
 - [A] RECONSTRUCTING SANITARY SEWER MANHOLES R/O/D
 - [T] STORM SEWER TAP R/O/D
 - [P] SEALING PIPES R/O/D
 - [SS-XX] REMOVING STORM SEWER (XX-INCH)

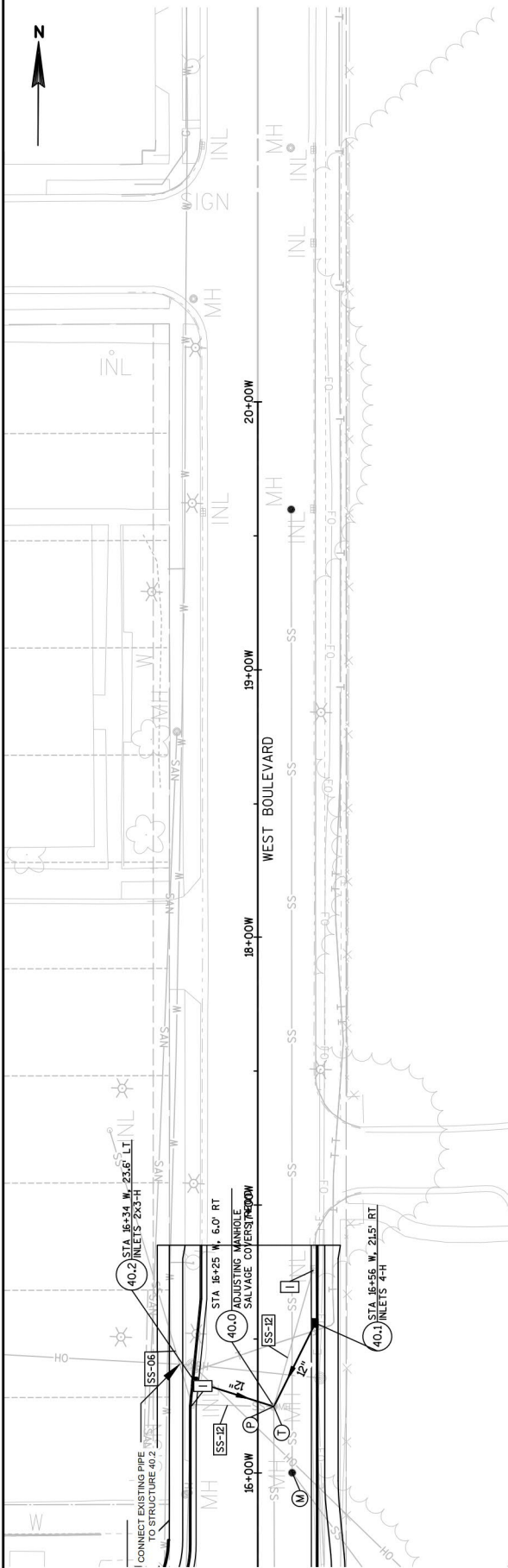


REPLACE SSRPC CLASS III
PIPES WITH SSP CLASS III-A

Addendum No. 01
ID 2440-09-70
Revised Sheet 155
October 22, 2020

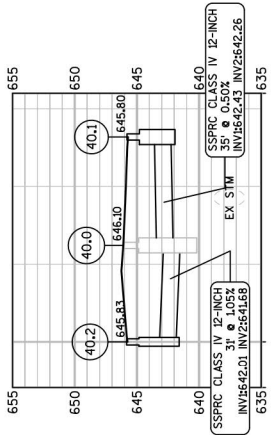


- LEGEND:**
- REMOVING STORM SEWER MANHOLES REOD
 - REMOVING INLETS REOD
 - ADJUSTING STORM SEWER MANHOLE COVERS REOD
 - ADJUSTING SANITARY SEWER MANHOLE COVERS REOD
 - ADJUSTING INLET COVERS REOD
 - RECONSTRUCTING STORM SEWER MANHOLES REOD
 - RECONSTRUCTING SANITARY SEWER MANHOLES REOD
 - STORM SEWER TAP REOD
 - SEALING PIPES REOD
 - REMOVING STORM SEWER (XX-INCH)



REPLACE SSPRC CLASS III
PIPES WITH SSP CLASS III-A

Addendum No. 01
ID 2440-09-70
Revised Sheet 156
October 22, 2020



- LEGEND:**
- [M] REMOVING STORM SEWER MANHOLES REOD
 - [I] REMOVING INLETS REOD
 - [M] ADJUSTING STORM SEWER MANHOLE COVERS REOD
 - [S] ADJUSTING SANITARY SEWER MANHOLE COVERS REOD
 - [L] ADJUSTING INLET COVERS REOD
 - [A] RECONSTRUCTING STORM SEWER MANHOLES REOD
 - [A] RECONSTRUCTING SANITARY SEWER MANHOLES REOD
 - [T] STORM SEWER TAP REOD
 - [P] SEALING PIPES REOD
 - [SS-XX] REMOVING STORM SEWER (XX-INCH)

PROJECT NO: 2440-09-70

HWY: STH 20

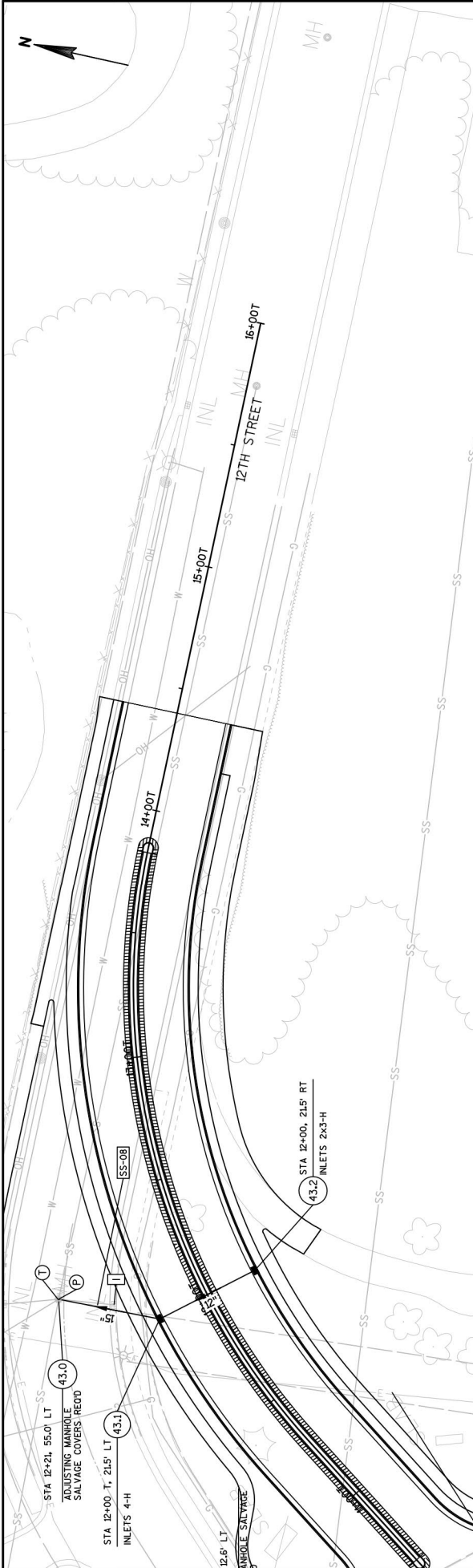
COUNTY: RACINE

STORM SEWER

SHEET

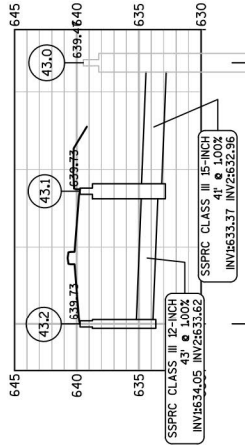
156

E



REPLACE SSPRC CLASS III
PIPES WITH SSP CLASS III-A

Addendum No. 01
ID 2440-09-70
Revised Sheet 157
October 22, 2020



- LEGEND:**
- [W] REMOVING STORM SEWER MANHOLES REOD
 - [L] REMOVING INLETS REOD
 - [M] ADJUSTING STORM SEWER MANHOLE COVERS REOD
 - [S] ADJUSTING SANITARY SEWER MANHOLE COVERS REOD
 - [I] ADJUSTING INLET COVERS REOD
 - [A] RECONSTRUCTING STORM SEWER MANHOLES REOD
 - [T] RECONSTRUCTING SANITARY SEWER MANHOLES REOD
 - [P] STORM SEWER TAP REOD
 - [P] SEALING PIPES REOD
 - [SS-XX] REMOVING STORM SEWER (XX-INCH)

Addendum No. 01
ID 2440-09-70
Revised Sheet 378
October 22, 2020

STORM SEWER PIPE REINFORCED CONCRETE

CATEGORY	FROM		TO	LOCATION	12-INCH		15-INCH		18-INCH		24-INCH		CLASS IV Per Inch	INLET ELEVATION	DISCHARGE ELEVATION	SLOPE (%)	
	LF	LF			LF	LF	LF	LF	LF	LF							
0010	38.1	-	38	WS 20	49	--	--	--	--	--	--	--	642.31	641.82	1.00%		
	38.2	-	38	GROVE	15	--	--	--	--	--	--	--	642.50	642.35	1.00%		
	38.3	-	38.1	WS 20	10	--	--	--	--	--	--	--	643.41	643.31	1.00%		
	39.1	-	39	WS 20	88	--	--	--	--	--	--	--	642.90	642.02	1.00%		
	40.1	-	40	WEST	--	--	--	--	--	--	--	35	642.43	642.26	0.49%		
	40.2	-	40	WEST	--	--	--	--	--	--	--	31	642.01	641.68	1.06%		
	41.1	-	41	WS 20	--	70	--	--	--	--	--	--	639.40	638.75	0.93%		
	41.2	-	41.1	WS 20	35	--	--	--	--	--	--	--	640.00	639.65	1.00%		
	41.3	-	41.4	WS 20	35	--	--	--	--	--	--	--	640.50	640.15	1.00%		
	41.4	-	41.1	WEST	50	--	--	--	--	--	--	--	640.05	639.65	0.80%		
	43.1	-	43	WS 20	--	41	--	--	--	--	--	--	633.37	632.96	1.00%		
	43.2	-	43.1	12TH	43	--	--	--	--	--	--	--	634.05	633.62	1.00%		
	44.1	-	44	WS 20	53	--	--	--	--	--	--	--	639.45	639.19	0.49%		
	44.2	-	44	WS 20	56	--	--	--	--	--	--	--	639.80	639.52	0.50%		
	46.1	-	46	WS 20	21	--	--	--	--	--	--	--	635.70	635.49	1.00%		
	46.2	-	46	WS 20	19	--	--	--	--	--	--	--	636.59	636.50	0.47%		
	46.3	-	46.2	WS 20	10	--	--	--	--	--	--	--	636.74	636.69	0.50%		
	46.4	-	46.3	WS 20	26	--	--	--	--	--	--	--	636.97	636.84	0.50%		
	5.1	-	5	WS 20	--	50	--	--	--	--	--	--	696.19	695.44	1.50%		
	5.2	-	5.1	WS 20	27	--	--	--	--	--	--	--	696.53	696.39	0.52%		
	6.1	-	6	WS 20	39	--	--	--	--	--	--	--	693.92	693.54	0.97%		
	6.2	-	6.1	PERRY	48	--	--	--	--	--	--	--	694.50	694.02	1.00%		
	7.1	-	7	WS 20	32	--	--	--	--	--	--	--	695.65	695.33	1.00%		
	7.2	-	7	WS 20	18	--	--	--	--	--	--	--	695.51	695.33	1.00%		
	7.3	-	7.2	WS 20	26	--	--	--	--	--	--	--	695.64	695.51	0.50%		
	12.2	-	8	WS 20	--	--	--	--	--	--	80	--	689.00	685.81	3.99%		
	8.3	-	8	WS 20	--	54	--	--	--	--	--	--	686.26	685.72	1.00%		
	9	-	8	WS 20	--	59	--	--	--	--	--	--	688.59	688.00	1.00%		
	8.2	-	8.1	OHIO NORTH	78	--	--	--	--	--	--	--	687.55	687.16	0.50%		
	8.1	-	8.4	OHIO NORTH	--	59	--	--	--	--	--	--	686.91	686.65	0.44%		
	8.4	-	8.3	WS 20	--	50	--	--	--	--	--	--	686.65	686.36	0.58%		
	9.1	-	9	WS 20	35	--	--	--	--	--	--	--	691.82	691.00	2.34%		
TOTALS					4,465	1,270	102	294				101					
** REINFORCED CONCRETE																	



Proposal Schedule of Items

Proposal ID: 20201110018 Project(s): 2440-09-70

Federal ID(s): WISC 2020539

SECTION: 0001

Contract Items

Alt Set ID:

Alt Mbr ID:

Proposal Line Number	Item ID Description	Approximate Quantity and Units	Unit Price	Bid Amount
0002	201.0120 Clearing	211.000 ID	_____.	_____.
0004	201.0220 Grubbing	211.000 ID	_____.	_____.
0006	204.0100 Removing Concrete Pavement	64,588.000 SY	_____.	_____.
0008	204.0150 Removing Curb & Gutter	1,108.000 LF	_____.	_____.
0010	204.0155 Removing Concrete Sidewalk	11,350.000 SY	_____.	_____.
0012	204.0195 Removing Concrete Bases	143.000 EACH	_____.	_____.
0014	204.0210 Removing Manholes	1.000 EACH	_____.	_____.
0016	204.0220 Removing Inlets	89.000 EACH	_____.	_____.
0018	204.0245 Removing Storm Sewer (size) 01. 6 Inch	234.000 LF	_____.	_____.
0020	204.0245 Removing Storm Sewer (size) 02. 8 Inch	2,147.000 LF	_____.	_____.
0022	204.0245 Removing Storm Sewer (size) 03. 10 Inch	471.000 LF	_____.	_____.
0024	204.0245 Removing Storm Sewer (size) 04. 12 Inch	1,224.000 LF	_____.	_____.
0026	204.0245 Removing Storm Sewer (size) 05. 15 Inch	146.000 LF	_____.	_____.
0028	204.0245 Removing Storm Sewer (size) 06. 18 Inch	65.000 LF	_____.	_____.
0030	204.9060.S Removing (item description) 01. Standard Light Poles	88.000 EACH	_____.	_____.



Proposal Schedule of Items

Proposal ID: 20201110018 Project(s): 2440-09-70

Federal ID(s): WISC 2020539

SECTION: 0001

Contract Items

Alt Set ID:

Alt Mbr ID:

Proposal Line Number	Item ID Description	Approximate Quantity and Units	Unit Price	Bid Amount
0032	204.9060.S Removing (item description) 02. Decorative Light Poles	11.000 EACH	_____.	_____.
0034	205.0100 Excavation Common	69,668.000 CY	_____.	_____.
0036	205.0501.S Excavation, Hauling, and Disposal of Petroleum Contaminated Soil	5,081.000 TON	_____.	_____.
0038	213.0100 Finishing Roadway (project) 01. 2440- 09-70	1.000 EACH	_____.	_____.
0040	305.0120 Base Aggregate Dense 1 1/4-Inch	26,555.000 TON	_____.	_____.
0042	310.0110 Base Aggregate Open-Graded	42.000 TON	_____.	_____.
0044	311.0110 Breaker Run	59,563.000 TON	_____.	_____.
0046	405.1000 Stamping Colored Concrete	84.000 CY	_____.	_____.
0048	415.0085 Concrete Pavement 8 1/2-Inch	49,883.000 SY	_____.	_____.
0050	415.0210 Concrete Pavement Gaps	23.000 EACH	_____.	_____.
0052	415.1085 Concrete Pavement HES 8 1/2-Inch	4,639.000 SY	_____.	_____.
0054	415.4100 Concrete Pavement Joint Filling	59,419.000 SY	_____.	_____.
0056	415.5110.S Concrete Pavement Joint Layout	1.000 LS	_____.	_____.
0058	416.0160 Concrete Driveway 6-Inch	1,964.000 SY	_____.	_____.
0060	416.0260 Concrete Driveway HES 6-Inch	507.000 SY	_____.	_____.
0062	416.0610 Drilled Tie Bars	110.000 EACH	_____.	_____.



Proposal Schedule of Items

Proposal ID: 20201110018 Project(s): 2440-09-70

Federal ID(s): WISC 2020539

SECTION: 0001

Contract Items

Alt Set ID:

Alt Mbr ID:

Proposal Line Number	Item ID Description	Approximate Quantity and Units	Unit Price	Bid Amount
0064	416.0620 Drilled Dowel Bars	1,379.000 EACH	_____.	_____.
0066	460.6223 HMA Pavement 3 MT 58-28 S	213.000 TON	_____.	_____.
0068	460.6424 HMA Pavement 4 MT 58-28 H	77.000 TON	_____.	_____.
0070	465.0120 Asphaltic Surface Driveways and Field Entrances	218.000 TON	_____.	_____.
0072	465.0125 Asphaltic Surface Temporary	289.000 TON	_____.	_____.
0074	513.2001 Railing Pipe	90.000 LF	_____.	_____.
0076	601.0405 Concrete Curb & Gutter 18-Inch Type A	2,221.000 LF	_____.	_____.
0078	601.0407 Concrete Curb & Gutter 18-Inch Type D	97.000 LF	_____.	_____.
0080	601.0409 Concrete Curb & Gutter 30-Inch Type A	16,511.000 LF	_____.	_____.
0082	601.0411 Concrete Curb & Gutter 30-Inch Type D	221.000 LF	_____.	_____.
0084	601.0452 Concrete Curb & Gutter Integral 30-Inch Type D	3,730.000 LF	_____.	_____.
0086	601.0454 Concrete Curb & Gutter Integral 30-Inch Type J	1,397.000 LF	_____.	_____.
0088	601.0600 Concrete Curb Pedestrian	1,620.000 LF	_____.	_____.
0090	602.0410 Concrete Sidewalk 5-Inch	100,253.000 SF	_____.	_____.
0092	602.0505 Curb Ramp Detectable Warning Field Yellow	1,430.000 SF	_____.	_____.



Proposal Schedule of Items

Proposal ID: 20201110018 Project(s): 2440-09-70

Federal ID(s): WISC 2020539

SECTION: 0001

Contract Items

Alt Set ID:

Alt Mbr ID:

Proposal Line Number	Item ID Description	Approximate Quantity and Units	Unit Price	Bid Amount
0094	602.0605 Curb Ramp Detectable Warning Field Radial Yellow	257.000 SF	_____.	_____.
0096	602.1500 Concrete Steps	298.000 SF	_____.	_____.
0106	608.0412 Storm Sewer Pipe Reinforced Concrete Class IV 12-Inch	101.000 LF	_____.	_____.
0108	611.0420 Reconstructing Manholes	13.000 EACH	_____.	_____.
0110	611.0530 Manhole Covers Type J	4.000 EACH	_____.	_____.
0112	611.0610 Inlet Covers Type BW	2.000 EACH	_____.	_____.
0114	611.0612 Inlet Covers Type C	1.000 EACH	_____.	_____.
0116	611.0624 Inlet Covers Type H	124.000 EACH	_____.	_____.
0118	611.0666 Inlet Covers Type Z	13.000 EACH	_____.	_____.
0120	611.2004 Manholes 4-FT Diameter	4.000 EACH	_____.	_____.
0122	611.2005 Manholes 5-FT Diameter	3.000 EACH	_____.	_____.
0124	611.2006 Manholes 6-FT Diameter	2.000 EACH	_____.	_____.
0126	611.3003 Inlets 3-FT Diameter	10.000 EACH	_____.	_____.
0128	611.3004 Inlets 4-FT Diameter	70.000 EACH	_____.	_____.
0130	611.3230 Inlets 2x3-FT	55.000 EACH	_____.	_____.
0132	611.8110 Adjusting Manhole Covers	19.000 EACH	_____.	_____.



Proposal Schedule of Items

Proposal ID: 20201110018 Project(s): 2440-09-70

Federal ID(s): WISC 2020539

SECTION: 0001

Contract Items

Alt Set ID:

Alt Mbr ID:

Proposal Line Number	Item ID Description	Approximate Quantity and Units	Unit Price	Bid Amount
0134	612.0106 Pipe Underdrain 6-Inch	600.000 LF	_____	_____
0136	619.1000 Mobilization	1.000 EACH	_____	_____
0138	620.0300 Concrete Median Sloped Nose	915.000 SF	_____	_____
0140	624.0100 Water	192.000 MGAL	_____	_____
0142	625.0100 Topsoil	16,750.000 SY	_____	_____
0144	627.0200 Mulching	4,500.000 SY	_____	_____
0146	628.1104 Erosion Bales	10.000 EACH	_____	_____
0148	628.1504 Silt Fence	1,500.000 LF	_____	_____
0150	628.1520 Silt Fence Maintenance	1,500.000 LF	_____	_____
0152	628.1905 Mobilizations Erosion Control	14.000 EACH	_____	_____
0154	628.1910 Mobilizations Emergency Erosion Control	10.000 EACH	_____	_____
0156	628.2006 Erosion Mat Urban Class I Type A	7,050.000 SY	_____	_____
0158	628.7005 Inlet Protection Type A	169.000 EACH	_____	_____
0160	628.7015 Inlet Protection Type C	197.000 EACH	_____	_____
0162	628.7020 Inlet Protection Type D	10.000 EACH	_____	_____
0164	628.7560 Tracking Pads	1.000 EACH	_____	_____
0166	629.0210 Fertilizer Type B	6.700 CWT	_____	_____



Proposal Schedule of Items

Proposal ID: 20201110018 Project(s): 2440-09-70

Federal ID(s): WISC 2020539

SECTION: 0001

Contract Items

Alt Set ID:

Alt Mbr ID:

Proposal Line Number	Item ID Description	Approximate Quantity and Units	Unit Price	Bid Amount
0168	630.0130 Seeding Mixture No. 30	109.000 LB	_____.	_____.
0170	630.0140 Seeding Mixture No. 40	63.000 LB	_____.	_____.
0172	630.0200 Seeding Temporary	50.000 LB	_____.	_____.
0174	630.0500 Seed Water	248.000 MGAL	_____.	_____.
0176	631.0300 Sod Water	160.000 MGAL	_____.	_____.
0178	631.1000 Sod Lawn	7,400.000 SY	_____.	_____.
0180	632.0101 Trees (species) (size) (root) 01. American Sentry Linden 2-Inch Cal B&B	5.000 EACH	_____.	_____.
0182	632.0101 Trees (species) (size) (root) 02. Common Hackberry 2-Inch Cal B&B	8.000 EACH	_____.	_____.
0184	632.0101 Trees (species) (size) (root) 03. Kentucky Coffeetree, Espresso 2-Inch Cal B&B	4.000 EACH	_____.	_____.
0186	632.0101 Trees (species) (size) (root) 04. Tree Lilac, Ivory Silk 1 1/2-Inch Cal B&B	5.000 EACH	_____.	_____.
0188	632.0101 Trees (species) (size) (root) 05. Regal Elm 2-Inch Cal B&B	5.000 EACH	_____.	_____.
0190	632.0101 Trees (species) (size) (root) 06. Skyline Honeylocust 2-Inch Cal B&B	9.000 EACH	_____.	_____.
0192	632.0101 Trees (species) (size) (root) 07. Swamp White Oak 2-Inch Cal B&B	4.000 EACH	_____.	_____.
0194	632.9101 Landscape Planting Surveillance and Care Cycles	10.000 EACH	_____.	_____.



Proposal Schedule of Items

Proposal ID: 20201110018 Project(s): 2440-09-70

Federal ID(s): WISC 2020539

SECTION: 0001

Contract Items

Alt Set ID:

Alt Mbr ID:

Proposal Line Number	Item ID Description	Approximate Quantity and Units	Unit Price	Bid Amount
0196	634.0618 Posts Wood 4x6-Inch X 18-FT	14.000 EACH	_____.	_____.
0198	634.0816 Posts Tubular Steel 2x2-Inch X 16-FT	178.000 EACH	_____.	_____.
0200	637.2210 Signs Type II Reflective H	1,368.910 SF	_____.	_____.
0202	637.2215 Signs Type II Reflective H Folding	184.840 SF	_____.	_____.
0204	637.2230 Signs Type II Reflective F	203.000 SF	_____.	_____.
0206	638.2102 Moving Signs Type II	10.000 EACH	_____.	_____.
0208	638.2602 Removing Signs Type II	151.000 EACH	_____.	_____.
0210	638.3000 Removing Small Sign Supports	76.000 EACH	_____.	_____.
0212	642.5201 Field Office Type C	1.000 EACH	_____.	_____.
0214	643.0300 Traffic Control Drums	74,252.000 DAY	_____.	_____.
0216	643.0420 Traffic Control Barricades Type III	56,366.000 DAY	_____.	_____.
0218	643.0500 Traffic Control Flexible Tubular Marker Posts	133.000 EACH	_____.	_____.
0220	643.0600 Traffic Control Flexible Tubular Marker Bases	133.000 EACH	_____.	_____.
0222	643.0705 Traffic Control Warning Lights Type A	51,468.000 DAY	_____.	_____.
0224	643.0715 Traffic Control Warning Lights Type C	13,007.000 DAY	_____.	_____.
0226	643.0800 Traffic Control Arrow Boards	710.000 DAY	_____.	_____.



Proposal Schedule of Items

Proposal ID: 20201110018 Project(s): 2440-09-70

Federal ID(s): WISC 2020539

SECTION: 0001

Contract Items

Alt Set ID:

Alt Mbr ID:

Proposal Line Number	Item ID Description	Approximate Quantity and Units	Unit Price	Bid Amount
0228	643.0900 Traffic Control Signs	81,572.000 DAY	_____.	_____.
0230	643.0920 Traffic Control Covering Signs Type II	30.000 EACH	_____.	_____.
0232	643.1000 Traffic Control Signs Fixed Message	119.000 SF	_____.	_____.
0234	643.1050 Traffic Control Signs PCMS	54.000 DAY	_____.	_____.
0236	643.5000 Traffic Control	1.000 EACH	_____.	_____.
0238	644.1410 Temporary Pedestrian Surface Asphalt	3,150.000 SF	_____.	_____.
0240	644.1601 Temporary Pedestrian Curb Ramp	288.000 DAY	_____.	_____.
0242	644.1810 Temporary Pedestrian Barricade	757.000 LF	_____.	_____.
0244	645.0111 Geotextile Type DF Schedule A	267.000 SY	_____.	_____.
0246	645.0120 Geotextile Type HR	212.000 SY	_____.	_____.
0248	645.0135 Geotextile Type SR	13,500.000 SY	_____.	_____.
0250	646.1020 Marking Line Epoxy 4-Inch	28,885.000 LF	_____.	_____.
0252	646.3020 Marking Line Epoxy 8-Inch	1,422.000 LF	_____.	_____.
0254	646.5020 Marking Arrow Epoxy	59.000 EACH	_____.	_____.
0256	646.5120 Marking Word Epoxy	60.000 EACH	_____.	_____.
0258	646.5220 Marking Symbol Epoxy	3.000 EACH	_____.	_____.
0260	646.6120 Marking Stop Line Epoxy 18-Inch	632.000 LF	_____.	_____.



Proposal Schedule of Items

Proposal ID: 20201110018 Project(s): 2440-09-70

Federal ID(s): WISC 2020539

SECTION: 0001

Contract Items

Alt Set ID:

Alt Mbr ID:

Proposal Line Number	Item ID Description	Approximate Quantity and Units	Unit Price	Bid Amount
0262	646.7120 Marking Diagonal Epoxy 12-Inch	549.000 LF	_____.	_____.
0264	646.7420 Marking Crosswalk Epoxy Transverse Line 6-Inch	3,162.000 LF	_____.	_____.
0266	646.7520 Marking Crosswalk Epoxy Block Style 24-Inch	863.000 LF	_____.	_____.
0268	646.8120 Marking Curb Epoxy	431.000 LF	_____.	_____.
0270	646.8220 Marking Island Nose Epoxy	19.000 EACH	_____.	_____.
0272	646.8320 Marking Parking Stall Epoxy	262.000 LF	_____.	_____.
0274	646.9000 Marking Removal Line 4-Inch	4,442.000 LF	_____.	_____.
0276	646.9100 Marking Removal Line 8-Inch	2,010.000 LF	_____.	_____.
0278	646.9200 Marking Removal Line Wide	249.000 LF	_____.	_____.
0280	646.9300 Marking Removal Special Marking	29.000 EACH	_____.	_____.
0282	649.0105 Temporary Marking Line Paint 4-Inch	15,721.000 LF	_____.	_____.
0284	649.0150 Temporary Marking Line Removable Tape 4-Inch	32,196.000 LF	_____.	_____.
0286	649.0205 Temporary Marking Line Paint 8-Inch	887.000 LF	_____.	_____.
0288	649.0250 Temporary Marking Line Removable Tape 8-Inch	2,819.000 LF	_____.	_____.
0290	649.0505 Temporary Marking Arrow Paint	18.000 EACH	_____.	_____.



Proposal Schedule of Items

Proposal ID: 20201110018 Project(s): 2440-09-70

Federal ID(s): WISC 2020539

SECTION: 0001

Contract Items

Alt Set ID:

Alt Mbr ID:

Proposal Line Number	Item ID Description	Approximate Quantity and Units	Unit Price	Bid Amount
0292	649.0550 Temporary Marking Arrow Removable Tape	24.000 EACH	_____.	_____.
0294	649.0850 Temporary Marking Stop Line Removable Tape 18-Inch	295.000 LF	_____.	_____.
0296	650.4000 Construction Staking Storm Sewer	155.000 EACH	_____.	_____.
0298	650.4500 Construction Staking Subgrade	10,588.000 LF	_____.	_____.
0300	650.7000 Construction Staking Concrete Pavement	12,545.000 LF	_____.	_____.
0302	650.8500 Construction Staking Electrical Installations (project) 01. 2440-09-70	LS	LUMP SUM	_____.
0304	650.9000 Construction Staking Curb Ramps	164.000 EACH	_____.	_____.
0306	650.9910 Construction Staking Supplemental Control (project) 01. 2440-09-70	LS	LUMP SUM	_____.
0308	650.9920 Construction Staking Slope Stakes	12,545.000 LF	_____.	_____.
0310	652.0225 Conduit Rigid Nonmetallic Schedule 40 2-Inch	12,869.000 LF	_____.	_____.
0312	652.0235 Conduit Rigid Nonmetallic Schedule 40 3-Inch	11,403.000 LF	_____.	_____.
0314	652.0615 Conduit Special 3-Inch	86.000 LF	_____.	_____.
0316	653.0140 Pull Boxes Steel 24x42-Inch	143.000 EACH	_____.	_____.
0318	653.0164 Pull Boxes Non-Conductive 24x42-Inch	11.000 EACH	_____.	_____.
0320	653.0905 Removing Pull Boxes	67.000 EACH	_____.	_____.



Proposal Schedule of Items

Proposal ID: 20201110018 Project(s): 2440-09-70

Federal ID(s): WISC 2020539

SECTION: 0001

Contract Items

Alt Set ID:

Alt Mbr ID:

Proposal Line Number	Item ID Description	Approximate Quantity and Units	Unit Price	Bid Amount
0322	654.0101 Concrete Bases Type 1	17.000 EACH	_____.	_____.
0324	654.0102 Concrete Bases Type 2	23.000 EACH	_____.	_____.
0326	654.0105 Concrete Bases Type 5	65.000 EACH	_____.	_____.
0328	654.0110 Concrete Bases Type 10	6.000 EACH	_____.	_____.
0330	654.0113 Concrete Bases Type 13	3.000 EACH	_____.	_____.
0332	654.0200 Concrete Control Cabinet Bases Type 6	2.000 EACH	_____.	_____.
0334	654.0217 Concrete Control Cabinet Bases Type 9 Special	5.000 EACH	_____.	_____.
0336	655.0230 Cable Traffic Signal 5-14 AWG	3,196.000 LF	_____.	_____.
0338	655.0240 Cable Traffic Signal 7-14 AWG	1,124.000 LF	_____.	_____.
0340	655.0260 Cable Traffic Signal 12-14 AWG	6,910.000 LF	_____.	_____.
0342	655.0263 Cable Traffic Signal 15-10 AWG	517.000 LF	_____.	_____.
0344	655.0320 Cable Type UF 2-10 AWG Grounded	3,051.000 LF	_____.	_____.
0346	655.0515 Electrical Wire Traffic Signals 10 AWG	6,611.000 LF	_____.	_____.
0348	655.0610 Electrical Wire Lighting 12 AWG	12,155.000 LF	_____.	_____.
0350	655.0615 Electrical Wire Lighting 10 AWG	3,589.000 LF	_____.	_____.
0352	655.0620 Electrical Wire Lighting 8 AWG	19,464.000 LF	_____.	_____.



Proposal Schedule of Items

Proposal ID: 20201110018 Project(s): 2440-09-70

Federal ID(s): WISC 2020539

SECTION: 0001

Contract Items

Alt Set ID:

Alt Mbr ID:

Proposal Line Number	Item ID Description	Approximate Quantity and Units	Unit Price	Bid Amount
0354	655.0625 Electrical Wire Lighting 6 AWG	8,877.000 LF	_____.	_____.
0356	655.0630 Electrical Wire Lighting 4 AWG	29,614.000 LF	_____.	_____.
0358	655.0635 Electrical Wire Lighting 2 AWG	60.000 LF	_____.	_____.
0360	656.0200 Electrical Service Meter Breaker Pedestal (location) 01. Perry Avenue	LS	LUMP SUM	_____.
0362	656.0200 Electrical Service Meter Breaker Pedestal (location) 02. Ohio Street	LS	LUMP SUM	_____.
0364	656.0200 Electrical Service Meter Breaker Pedestal (location) 03. Lathrop Avenue	LS	LUMP SUM	_____.
0366	656.0200 Electrical Service Meter Breaker Pedestal (location) 04. Hayes Avenue	LS	LUMP SUM	_____.
0368	656.0200 Electrical Service Meter Breaker Pedestal (location) 05. West Boulevard	LS	LUMP SUM	_____.
0370	656.0200 Electrical Service Meter Breaker Pedestal (location) 06. SW Quadrant Ohio Street	LS	LUMP SUM	_____.
0372	656.0200 Electrical Service Meter Breaker Pedestal (location) 07. NW Quadrant Hayes Avenue	LS	LUMP SUM	_____.
0374	657.0100 Pedestal Bases	15.000 EACH	_____.	_____.
0376	657.0255 Transformer Bases Breakaway 11 1/2-Inch Bolt Circle	59.000 EACH	_____.	_____.
0378	657.0310 Poles Type 3	15.000 EACH	_____.	_____.
0380	657.0322 Poles Type 5-Aluminum	44.000 EACH	_____.	_____.



Proposal Schedule of Items

Proposal ID: 20201110018 Project(s): 2440-09-70

Federal ID(s): WISC 2020539

SECTION: 0001

Contract Items

Alt Set ID:

Alt Mbr ID:

Proposal Line Number	Item ID Description	Approximate Quantity and Units	Unit Price	Bid Amount
0382	657.0345 Poles Type 9	2.000 EACH	_____.	_____.
0384	657.0347 Poles Type 9-Special	2.000 EACH	_____.	_____.
0386	657.0350 Poles Type 10	5.000 EACH	_____.	_____.
0388	657.0352 Poles Type 10-Special	1.000 EACH	_____.	_____.
0390	657.0355 Poles Type 12	1.000 EACH	_____.	_____.
0392	657.0360 Poles Type 13	2.000 EACH	_____.	_____.
0394	657.0410 Traffic Signal Standards Aluminum 9-FT	2.000 EACH	_____.	_____.
0396	657.0420 Traffic Signal Standards Aluminum 13-FT	11.000 EACH	_____.	_____.
0398	657.0425 Traffic Signal Standards Aluminum 15-FT	6.000 EACH	_____.	_____.
0400	657.0525 Monotube Arms 25-FT	2.000 EACH	_____.	_____.
0402	657.0530 Monotube Arms 30-FT	5.000 EACH	_____.	_____.
0404	657.0536 Monotube Arms 35-FT-Special	2.000 EACH	_____.	_____.
0406	657.0541 Monotube Arms 40-FT-Special	1.000 EACH	_____.	_____.
0408	657.0550 Monotube Arms 50-FT	2.000 EACH	_____.	_____.
0410	657.0555 Monotube Arms 55-FT	1.000 EACH	_____.	_____.
0412	657.0585 Trombone Arms 15-FT	1.000 EACH	_____.	_____.
0414	657.0590 Trombone Arms 20-FT	1.000 EACH	_____.	_____.



Proposal Schedule of Items

Proposal ID: 20201110018 Project(s): 2440-09-70

Federal ID(s): WISC 2020539

SECTION: 0001

Contract Items

Alt Set ID:

Alt Mbr ID:

Proposal Line Number	Item ID Description	Approximate Quantity and Units	Unit Price	Bid Amount
0416	657.0595 Trombone Arms 25-FT	1.000 EACH	_____.	_____.
0418	657.0609 Luminaire Arms Single Member 4-Inch Clamp 6-FT	6.000 EACH	_____.	_____.
0420	657.0610 Luminaire Arms Single Member 4 1/2- Inch Clamp 6-FT	44.000 EACH	_____.	_____.
0422	657.0806 Luminaire Arms Steel 6-FT	8.000 EACH	_____.	_____.
0424	658.0171 Traffic Signal Face 1S 12-Inch	2.000 EACH	_____.	_____.
0426	658.0173 Traffic Signal Face 3S 12-Inch	70.000 EACH	_____.	_____.
0428	658.0174 Traffic Signal Face 4S 12-Inch	15.000 EACH	_____.	_____.
0430	658.0175 Traffic Signal Face 5S 12-Inch	4.000 EACH	_____.	_____.
0432	658.0416 Pedestrian Signal Face 16-Inch	40.000 EACH	_____.	_____.
0434	658.0500 Pedestrian Push Buttons	42.000 EACH	_____.	_____.
0436	658.5069 Signal Mounting Hardware (location) 01. Perry Avenue	LS	LUMP SUM	_____.
0438	658.5069 Signal Mounting Hardware (location) 02. Ohio Street	LS	LUMP SUM	_____.
0440	658.5069 Signal Mounting Hardware (location) 03. Lathrop Avenue	LS	LUMP SUM	_____.
0442	658.5069 Signal Mounting Hardware (location) 04. Hayes Avenue	LS	LUMP SUM	_____.
0444	658.5069 Signal Mounting Hardware (location) 05. West Boulevard	LS	LUMP SUM	_____.



Proposal Schedule of Items

Proposal ID: 20201110018 Project(s): 2440-09-70

Federal ID(s): WISC 2020539

SECTION: 0001

Contract Items

Alt Set ID:

Alt Mbr ID:

Proposal Line Number	Item ID Description	Approximate Quantity and Units	Unit Price	Bid Amount
0446	659.2130 Lighting Control Cabinets 120/240 30-Inch	2.000 EACH	_____.	_____.
0448	661.0200 Temporary Traffic Signals for Intersections (location) 01. Ohio Street	LS	LUMP SUM	_____.
0450	661.0200 Temporary Traffic Signals for Intersections (location) 02. West Boulevard	LS	LUMP SUM	_____.
0452	670.0100 Field System Integrator	LS	LUMP SUM	_____.
0454	670.0200 ITS Documentation	LS	LUMP SUM	_____.
0456	673.0105 Communication Vault Type 1	1.000 EACH	_____.	_____.
0458	674.0300 Remove Cable	11,029.000 LF	_____.	_____.
0460	674.0400 Reinstall Cable	6,245.000 LF	_____.	_____.
0462	678.0006 Install Fiber Optic Cable Outdoor Plant 6-CT	7,347.000 LF	_____.	_____.
0464	678.0200 Fiber Optic Splice Enclosure	3.000 EACH	_____.	_____.
0466	678.0300 Fiber Optic Splice	304.000 EACH	_____.	_____.
0468	678.0400 Fiber Optic Termination	28.000 EACH	_____.	_____.
0470	678.0500 Communication System Testing	LS	LUMP SUM	_____.
0472	678.0600 Install Ethernet Switches	7.000 EACH	_____.	_____.
0474	690.0150 Sawing Asphalt	2,165.000 LF	_____.	_____.



Proposal Schedule of Items

Proposal ID: 20201110018 Project(s): 2440-09-70

Federal ID(s): WISC 2020539

SECTION: 0001

Contract Items

Alt Set ID:

Alt Mbr ID:

Proposal Line Number	Item ID Description	Approximate Quantity and Units	Unit Price	Bid Amount
0476	690.0250 Sawing Concrete	14,414.000 LF		
0478	715.0415 Incentive Strength Concrete Pavement	16,357.000 DOL	1.00000	16,357.00
0480	715.0710 Optimized Aggregate Gradation Incentive	45,716.000 DOL	1.00000	45,716.00
0482	740.0440 Incentive IRI Ride	11,030.000 DOL	1.00000	11,030.00
0484	ASP.1T0A On-the-Job Training Apprentice at \$5.00/HR	2,400.000 HRS	5.00000	12,000.00
0486	ASP.1T0G On-the-Job Training Graduate at \$5.00/HR	11,400.000 HRS	5.00000	57,000.00
0488	SPV.0035 Special 01. Planting Soil Mix	130.000 CY		
0490	SPV.0060 Special 01. Section Corner Monuments Special	3.000 EACH		
0492	SPV.0060 Special 02. Parking Meter Posts	18.000 EACH		
0494	SPV.0060 Special 03. Utility Line Opening (ULO)	12.000 EACH		
0496	SPV.0060 Special 04. Relocating Existing Lighting Unit	5.000 EACH		
0498	SPV.0060 Special 05. Removing Lighting Control Cabinets	3.000 EACH		
0500	SPV.0060 Special 06. Storm Sewer Tap	18.000 EACH		
0502	SPV.0060 Special 07. Adjusting Sanitary Sewer Manhole Covers	62.000 EACH		
0504	SPV.0060 Special 08. Moving Existing Bus Stop Shelter	1.000 EACH		



Proposal Schedule of Items

Proposal ID: 20201110018 Project(s): 2440-09-70

Federal ID(s): WISC 2020539

SECTION: 0001

Contract Items

Alt Set ID:

Alt Mbr ID:

Proposal Line Number	Item ID Description	Approximate Quantity and Units	Unit Price	Bid Amount
0506	SPV.0060 Special 09. Traffic Signal Controller and Cabinet	5.000 EACH	_____.	_____.
0508	SPV.0060 Special 10. Luminaires Utility LED 100 Watts	44.000 EACH	_____.	_____.
0510	SPV.0060 Special 11. Decorative Lighting Arm and Fixture Unit	8.000 EACH	_____.	_____.
0512	SPV.0060 Special 12. Arm-Mounted Decorative Lighting Unit	16.000 EACH	_____.	_____.
0514	SPV.0060 Special 13. Install Existing Circuit Into New Pull Box	8.000 EACH	_____.	_____.
0516	SPV.0060 Special 14. Concrete Bases Type 10 Special	3.000 EACH	_____.	_____.
0518	SPV.0060 Special 15. Salvaging and Resetting Planter Pole Assembly	10.000 EACH	_____.	_____.
0520	SPV.0060 Special 16. Luminaires Utility LED 139 Watts	11.000 EACH	_____.	_____.
0522	SPV.0060 Special 17. Luminaires Utility LED 66 Watts	3.000 EACH	_____.	_____.
0524	SPV.0060 Special 18. Sealing Manhole Openings	12.000 EACH	_____.	_____.
0526	SPV.0060 Special 19. Perennial Plant, Purple Coneflower 1 Gal CG	266.000 EACH	_____.	_____.
0528	SPV.0060 Special 20. Perennial Plant, Prairie Dropseed 1 Gal CG	513.000 EACH	_____.	_____.
0530	SPV.0060 Special 21. Panel Type A	4.000 EACH	_____.	_____.
0532	SPV.0060 Special 22. Panel Type B	3.000 EACH	_____.	_____.



Proposal Schedule of Items

Proposal ID: 20201110018 Project(s): 2440-09-70

Federal ID(s): WISC 2020539

SECTION: 0001

Contract Items

Alt Set ID:

Alt Mbr ID:

Proposal Line Number	Item ID Description	Approximate Quantity and Units	Unit Price	Bid Amount
0534	SPV.0060 Special 23. Panel Type C	3.000 EACH	_____.	_____.
0536	SPV.0060 Special 24. Tree Gate	4.000 EACH	_____.	_____.
0538	SPV.0090 Special 01. Marking Contrast Epoxy 4-Inch	1,335.000 LF	_____.	_____.
0540	SPV.0090 Special 02. Marking Contrast Epoxy 8-Inch	2,680.000 LF	_____.	_____.
0542	SPV.0105 Special 01. Remove Traffic Signals Walgreens Driveway	LS	LUMP SUM	_____.
0544	SPV.0105 Special 02. Remove Traffic Signals Ohio Street	LS	LUMP SUM	_____.
0546	SPV.0105 Special 03. Remove Traffic Signals Lathrop Avenue	LS	LUMP SUM	_____.
0548	SPV.0105 Special 04. Remove Traffic Signals Hayes Avenue	LS	LUMP SUM	_____.
0550	SPV.0105 Special 05. Remove Traffic Signals West Boulevard	LS	LUMP SUM	_____.
0552	SPV.0105 Special 06. Video Detection System Perry Avenue	LS	LUMP SUM	_____.
0554	SPV.0105 Special 07. Video Detection System Ohio Street	LS	LUMP SUM	_____.
0556	SPV.0105 Special 08. Video Detection System Lathrop Avenue	LS	LUMP SUM	_____.
0558	SPV.0105 Special 09. Video Detection System Hayes Avenue	LS	LUMP SUM	_____.



Proposal Schedule of Items

Proposal ID: 20201110018 Project(s): 2440-09-70

Federal ID(s): WISC 2020539

SECTION: 0001

Contract Items

Alt Set ID:

Alt Mbr ID:

Proposal Line Number	Item ID Description	Approximate Quantity and Units	Unit Price	Bid Amount
0560	SPV.0105 Special 10. Video Detection System West Boulevard	LS	LUMP SUM	_____.
0562	SPV.0105 Special 11. Microwave Detection System Perry Avenue	LS	LUMP SUM	_____.
0564	SPV.0105 Special 12. Microwave Detection System Ohio Street	LS	LUMP SUM	_____.
0566	SPV.0105 Special 13. Microwave Detection System Lathrop Avenue	LS	LUMP SUM	_____.
0568	SPV.0105 Special 14. Microwave Detection System Hayes Avenue	LS	LUMP SUM	_____.
0570	SPV.0105 Special 15. Microwave Detection System West Boulevard	LS	LUMP SUM	_____.
0572	SPV.0105 Special 16. Emergency Vehicle Preemption System Perry Avenue	LS	LUMP SUM	_____.
0574	SPV.0105 Special 17. Emergency Vehicle Preemption System Ohio street	LS	LUMP SUM	_____.
0576	SPV.0105 Special 18. Emergency Vehicle Preemption System Lathrop Avenue	LS	LUMP SUM	_____.
0578	SPV.0105 Special 19. Emergency Vehicle Preemption System Hayes Avenue	LS	LUMP SUM	_____.
0580	SPV.0105 Special 20. Emergency Vehicle Preemption System West Boulevard	LS	LUMP SUM	_____.
0582	SPV.0105 Special 21. Relocating Stone Monument - The World's War	LS	LUMP SUM	_____.
0584	SPV.0105 Special 22. Relocating Stone Monument - Peder Back Plaza	LS	LUMP SUM	_____.



Proposal Schedule of Items

Proposal ID: 20201110018 Project(s): 2440-09-70

Federal ID(s): WISC 2020539

SECTION: 0001

Contract Items

Alt Set ID:

Alt Mbr ID:

Proposal Line Number	Item ID Description	Approximate Quantity and Units	Unit Price	Bid Amount
0586	SPV.0105 Special 23. Removing and Reinstalling Water Fountain	LS	LUMP SUM	_____.
0588	SPV.0105 Special 24. Relocating Overhead Speed Sign and Support	LS	LUMP SUM	_____.
0590	SPV.0165 Special 01. Concrete Sidewalk Thickened Edge	1,032.000 SF	_____.	_____.
0592	SPV.0165 Special 02. Remove and Replace Brick Pavers	37.000 SF	_____.	_____.
0594	SPV.0195 Special 01. Management of Solid Waste	461.000 TON	_____.	_____.
0596	608.3012 Storm Sewer Pipe Class III-A 12-Inch	4,465.000 LF	_____.	_____.
0598	608.3015 Storm Sewer Pipe Class III-A 15-Inch	1,270.000 LF	_____.	_____.
0600	608.3018 Storm Sewer Pipe Class III-A 18-Inch	102.000 LF	_____.	_____.
0602	608.3024 Storm Sewer Pipe Class III-A 24-Inch	294.000 LF	_____.	_____.
Section: 0001			Total:	_____.
				Total Bid: _____.