



Wisconsin Department of Transportation

Division of Transportation Systems Development

Bureau of Project Development
4822 Madison Yards Way, 4th Floor South
Madison, WI 53705

November 5, 2020

Telephone: (608) 266-1631
Facsimile (FAX): (608) 266-8459

NOTICE TO ALL CONTRACTORS:

Proposal #32: 7630-00-72, WISC 2020 557
River Falls – Spring Valley
CTH CC South to STH 128
STH 29
Pierce and St Croix Counties

7630-00-73, WISC 2020 558
River Falls – Spring Valley
Eau Galle Bridge B-47-0775
STH 29
Pierce County

Letting of November 9, 2020

This is Addendum No. 01, which provides for the following:

Schedule of Items:

| Revised Bid Item Quantities | | | | | |
|-----------------------------|-------------------------------------|------|--------------|------------------|----------------|
| Bid Item | Item Description | Unit | Old Quantity | Revised Quantity | Proposal Total |
| 205.0100 | Excavation Common | CY | 2,455 | -414 | 2,041 |
| 208.0100 | Borrow | CY | 7,256 | 192 | 7,448 |
| 455.0605 | Tack Coat | Gal | 11,625 | 70 | 11,695 |
| 460.6645 | HMA Pavement 5 MT 58-34 V | Ton | 15,165 | -85 | 15,080 |
| 465.0105 | Asphaltic Surface | Ton | 227 | 183 | 410 |
| 649.0105 | Temporary Marking Line Paint 4-Inch | LF | 6,000 | 12,000 | 18,000 |

| Added Bid Item Quantities | | | | | |
|---------------------------|---------------------------|------|--------------|------------------|----------------|
| Bid Item | Item Description | Unit | Old Quantity | Revised Quantity | Proposal Total |
| 646.1020 | Marking Line Epoxy 4-Inch | LF | 0 | 34,160 | 34,160 |

| Deleted Bid Item Quantities | | | | | |
|-----------------------------|------------------------------------|------|--------------|------------------|----------------|
| Bid Item | Item Description | Unit | Old Quantity | Revised Quantity | Proposal Total |
| 646.4520 | Marking Line Same Day Epoxy 4-Inch | LF | 34,160 | -34,160 | 0 |

Plan Sheets:

| Revised Plan Sheets | |
|----------------------------|---|
| Plan Sheet | Plan Sheet Title (brief description of changes to sheet) |
| 2 | General Notes (Updated HMA course table) |
| 14 | Typical Sections (Changed bid item in legend) |
| 19 | Construction Details (Added notes for Lane Repair Detail) |
| 21 | Construction Details (Added pavement detail for culvert replacements) |
| 28-36 | Pavement Marking (Changed bid item in legend) |
| 57 | Miscellaneous Quantities (Updated quantity) |
| 58 | Miscellaneous Quantities (Updated quantity) |
| 61 | Miscellaneous Quantities (Updated quantity) |
| 62 | Miscellaneous Quantities (Updated quantity) |
| 206-208 | Earthwork Data Tables (Updated tables) |

Schedule of Items

Attached, dated November 5, 2020, are the revised Schedule of Items Pages 1 - 11.

Plan Sheets

The following 8½ x 11-inch sheets are attached and made part of the plans for this proposal:
Revised: 2, 14, 19, 21, 28-36, 57-58, 61-62 and 206-208

The responsibility for notifying potential subcontractors and suppliers of these changes remains with the prime contractor.

Sincerely,

Mike Coleman

Proposal Development Specialist
Proposal Management Section

END OF ADDENDUM

ABBREVIATIONS

BAD BENCH MARK
 BLDG. BUILDING
 CBTP. CONCRETE BARRIER TEMPORARY PRECAST CENTER
 C/L CENTERLINE
 C.E. COMMERCIAL ENTRANCE
 CONC. CONCRETE
 CSW CONCRETE SIDEWALK
 CMCP CORRUGATED METAL CULVERT PIPE
 CP CULVERT PIPE
 CPKS CULVERT PIPE CORRUGATED STEEL
 CPRC CULVERT PIPE REINFORCED CONCRETE
 CP3CH HORIZONTAL ELLIPTICAL
 CONSTRUCTION PERMIT
 DMS DYNAMIC MESSAGE SIGN
 EAT ENERGY ABSORBING TERMINAL
 ELEC ELECTRICAL
 ELEV ELEVATION
 EX OR EXIST EXISTING
 FO FIBER OPTIC
 F.E. FIELD ENTRANCE
 GAS GAS
 HMA HOT MIX ASPHALT
 HSE HOUSE
 LHF LEFT HAND FORWARD
 MH MANHOLE
 MAX. MAXIMUM
 MIN. MINIMUM
 NOR. NORMAL
 NOT TO SCALE NOT TO SCALE
 NTS PERMANENT LIMITED EASEMENT
 P.E. PRIVATE ENTRANCE
 P.L. PROPERTY LINE
 PRW PROPOSED RIGHT-OF-WAY
 RAD OR R. RADIUS
 REQD. REQUIRED
 RHF RIGHT HAND FORWARD
 RIGHT-OF-WAY LINE RIGHT-OF-WAY LINE
 SAN SANITARY SEWER
 SHLD SHOULDER
 SW SIDEWALK
 SQUARE FEET SQUARE FEET
 SY SQUARE YARD
 STANDARD DETAIL DRAWING STANDARD DETAIL DRAWING
 STA. STATION
 SS STORM SEWER
 TEL TELEPHONE
 TEMPORARY LIMITED EASEMENT TEMPORARY LIMITED EASEMENT
 TYP. TYPICAL
 WATER WATER
 WB WESTBOUND

UTILITY CONTACTS

COMMUNICATIONS
 STEVE MAREK
 SPRING VALLEY TELEPHONE COMPANY INC
 5131 MCKAY AVENUE
 SPRING VALLEY, WI 54767
 (715) 778-4203
 (715) 419-4174 (MOBILE)
 SVAREK@SVTEL.NET

ELECTRIC - TRANSMISSION
 MITCHELL DIENGER
 XCEL ENERGY
 414 NICOLLET MALL 5TH FLOOR
 MINNEAPOLIS, MN 55109
 (612) 321-3109
 MITCHELLA.DIENGER@XCELENERGY.COM

WATER
 LUANN EMERSON
 VILLAGE OF SPRING VALLEY
 E.121 S. 2ND STREET
 SPRING VALLEY, WI 54767
 (715) 778-5635 (CLERK)
 CLERK@SPRINGVALLEYWI.COM

COMMUNICATIONS
 BRADLEY SCHMIDTKE
 WEST WISCONSIN TELCOM
 5808 OLD MILL PLAZA
 EAU CLAIRE, WI 54703
 (715) 231-9504
 BRADS@WWT.COOP

GAS
 STEVE CHAVERS
 WE ENERGIES
 104 W SOUTH STREET
 RICE LAKE, WI 54868
 715-234-9605
 715-213-4327 (MOBILE)
 STEVEN.CHAVERS@WE-ENERGIES.COM
 (800) 261-5325 - EMERGENCY 24/7 PHONE

ELECTRICITY
 ROB DOOLEY
 ST. CROIX ELECTRIC COOPERATIVE
 1925 RIDGEWAY ST.
 HAWAII, WI 54015
 (715) 796-7000
 ROBDO@SCECNET.NET

ORDER OF DETAIL SHEETS

PROJECT OVERVIEW
 TYPICAL SECTIONS
 CONSTRUCTION DETAILS
 PLAN DETAILS
 PERMANENT SIGNING
 PAVEMENT MARKING
 TRAFFIC CONTROL PLAN
 ALIGNMENT DIAGRAM
 CONTROL POINTS

Addendum No. 01
 ID 7630-00-72/73
 Revised Sheet 2
 November 5, 2020

GENERAL NOTES

THE LOCATION OF EXISTING AND PROPOSED UTILITY INSTALLATIONS AS SHOWN IN THE PLAN, ARE APPROXIMATE. THERE MAY BE OTHER UTILITY INSTALLATIONS WITHIN THE PROJECT AREA THAT ARE NOT SHOWN. CONTACT DIGGERS HOTLINE AND AFFECTED UTILITIES PRIOR TO START OF WORK.

UTILITY LOCATION MARKERS ON THE CROSS SECTIONS ARE FOR APPROXIMATE HORIZONTAL REFERENCE ONLY.

REMOVAL ITEMS REQUIRING RESTORATION OF CONCRETE OR ASPHALT SHALL BE REMOVED TO AN EXISTING JOINT OR SAWED AS DETERMINED BY THE ENGINEER.

EROSION CONTROL FEATURES AS SHOWN IN THE PLANS ARE AT SUGGESTED LOCATIONS. THE ENGINEER MAY MODIFY LOCATIONS AS NEEDED. ALL EROSION CONTROL MEASURES SHALL BE MAINTAINED UNTIL SUCH TIME AS THE ENGINEER DETERMINES THE MEASURE IS NO LONGER NECESSARY.

NO TREES AND/OR SHRUBS ARE TO BE REMOVED WITHOUT THE APPROVAL OF THE ENGINEER.

PIPE ELEVATIONS, LENGTHS, AND LOCATIONS AS SHOWN ON THE PLANS, MAY BE ADJUSTED TO FIT EXISTING FIELD CONDITIONS AS APPROVED BY THE ENGINEER.

JOINT TIES FOR CONCRETE PIPE SHALL BE PROVIDED AT ALL REINFORCED CONCRETE APRON ENDWALL LOCATIONS. APRON ENDWALLS SHALL BE TIED FOR THE LAST THREE JOINTS AT PIPE ENDS. THE COST OF THESE TIES SHALL BE INCLUDED IN THE CONTRACT UNIT PRICE FOR THE REINFORCED CONCRETE PIPE.

STATIONING AND OFFSETS TO APRON ENDWALLS FOR CULVERT PIPES ARE SHOWN TO THE END OF THE PIPE.

CONTRACTOR IS RESPONSIBLE FOR RESHAPING AND FINISHING ANY PREVIOUSLY GRASSED AREAS WHICH ARE DISTURBED BY THEIR OPERATION OUTSIDE THE NORMAL CONSTRUCTION LIMITS.

THE CONTRACTOR'S HMA PAVING OPERATION SHALL BE CONSISTENT WITH THE TYPICAL SECTIONS AND CONSTRUCTED TO PREVENT LONGITUDINAL JOINTS FROM BEING LOCATED WITHIN A DRIVING, TURNING, PASSING OR PARKING LANE.

THE HMA PAVEMENT WEIGHT CALCULATIONS ARE BASED ON 112 LBS/SY/IN.

ANY SIGNS DISTURBED BY THE PROJECT SHALL BE MOVED DURING CONSTRUCTION AND INSTALLED IN THEIR ORIGINAL LOCATION, PAID FOR AS MOVING SIGNS TYPE 2 AND MOVING SMALL SIGN SUPPORTS.

ELEVATIONS SHOWN ON THE PLAN ARE REFERENCED TO THE NORTH AMERICAN VERTICAL DATUM OF 1988 WITH ADJUSTMENT (NAVD88(2011)). COORDINATES ON THIS PLAN ARE REFERENCED TO THE NORTH AMERICAN DATUM OF 1983 WITH 2011 ADJUSTMENT (NAD83(2011)).

DNR LIAISON
 AMY LESIK
 DEPARTMENT OF NATURAL RESOURCES
 1300 W CLAREMONT AVE
 EAU CLAIRE, WI 54701
 (715) 836-6571
 AMY.LESIK@WISCONSIN.GOV

DESIGN CONTACT
 BRETT HOLLISTER
 APRES ASSOCIATES INC
 3433 DAN FORD HILLS PARKWAY
 FARMERS GROVE, WI 54751
 (608) 869-2381 (OFFICE)
 (608) 869-2381 (MOBILE)
 HOLLISTER@APRESASSOCIATES.COM

DESIGN CONTACT
 BRIAN ST. VINCENT, P.E.
 KL ENGINEERING, INC.
 5400 KING JAMES WAY
 WATKINS CO., WI 53719
 (608) 663-1318
 BSTVINCENT@KLENGINEERING.COM

| LOCATION | TOTAL DEPTH | LAYERS | GRADATION | TRAFFIC | BINDER | DESIGNATION | NOTE |
|-------------------|-------------|---|-----------|---------|--------|-------------|-------------------------------|
| 5TH 29 | 3.25-INCH | 1.50" UPPER 1.75" LOWER | 5 | MT | 58-34 | V | OVERLAY AND SHOULDER PAVEMENT |
| 5TH 29 | 6.25-INCH | 1.50" UPPER 1.75" LOWER 3.00" LOWER | 5 | MT | 58-34 | V | CULVERT REPLACEMENT PAVEMENT |
| ASPHALTIC SURFACE | | | | | | | |

GENERAL NOTES

COUNTY: PIERCE & ST CROIX

HWY: 5TH 29

PROJECT NO: 7630-00-72/73

FILE NAME: G:\W007\W13004-006-5TH 29\CIVIL 3D\SHEETS\PLAN\02000_GND.DWG LAYOUT NAME: Sheet - 1)

KL ENGINEERING

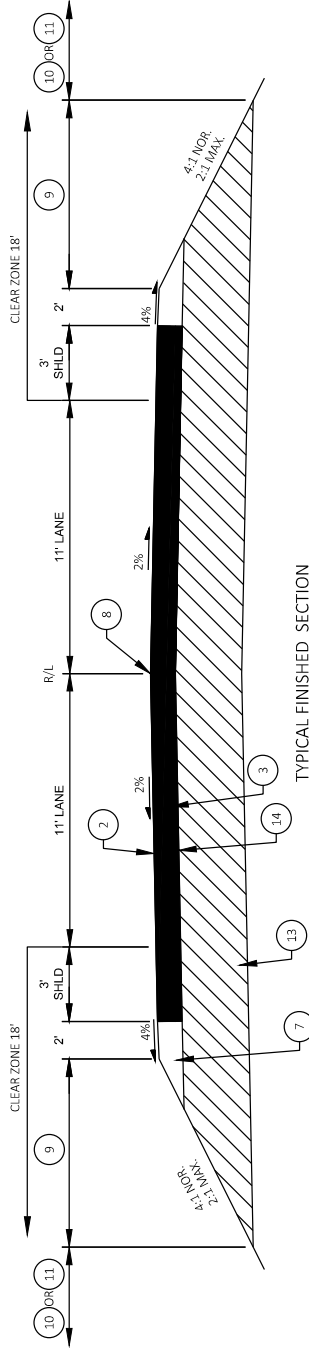
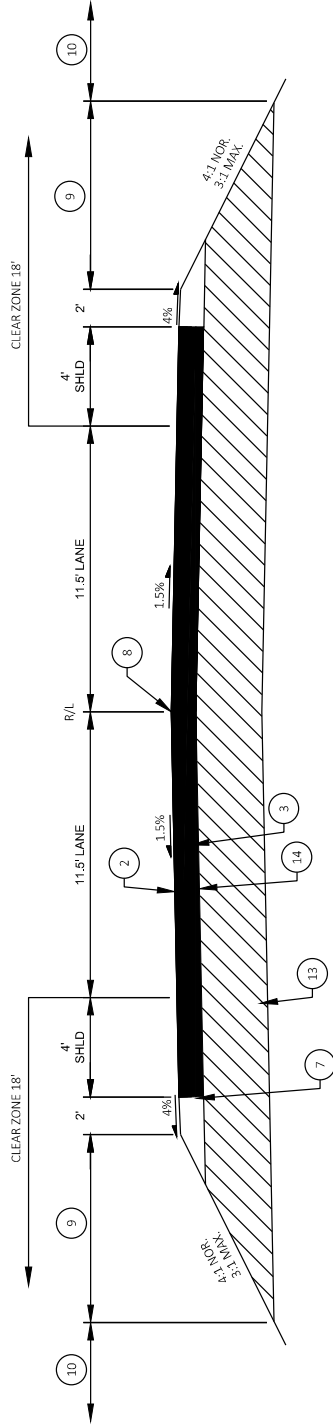
PLOT NAME:

PLOT SCALE: 1 IN=100 FT

SHEET 2

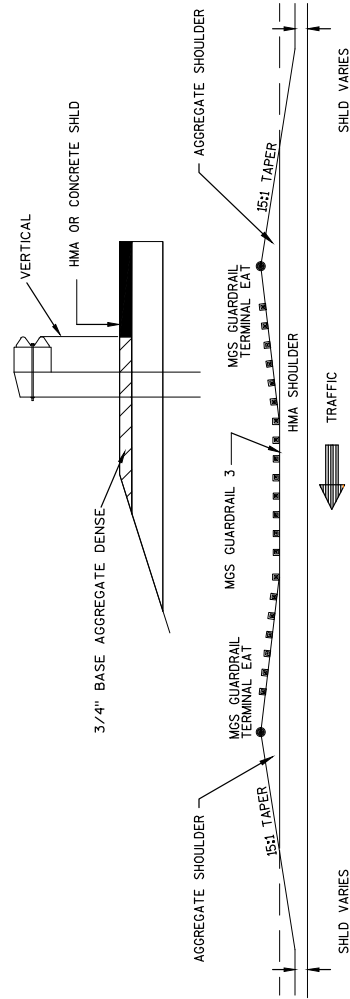
WIS007CAD05 SHEET 42

Addendum No. 01
ID 7630-00-72/73
Revised Sheet 14
November 5, 2020



LEGEND

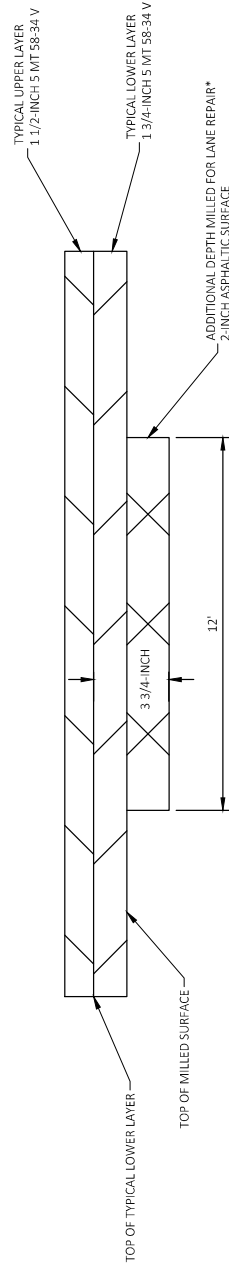
- 2 1.5" HMA PAVEMENT 5 MT 58-34 V UPPER LAYER
- 3 1.75" HMA PAVEMENT 5 MT 58-34 V LOWER LAYER
- 7 BASE AGGREGATE DENSE 3/4-INCH
- 8 ASPHALTIC CENTERLINE RUMBLE STRIP 2-LANE RURAL
- 9 SEEDING MIXTURE NO. 30 AND FERTILIZER TYPE A
- 10 SALVAGED TOPSOIL SEEDING MIXTURE NO. 20, FERTILIZER TYPE A, AND EROSION MAT CLASS I TYPE B
- 11 SALVAGED TOPSOIL SEEDING MIXTURE NO. 20, FERTILIZER TYPE A, SOIL STABILIZER TYPE A, AND EROSION MAT CLASS II TYPE D
- 13 6.5% AGGREGATE BASE 4.75-INCH, 16-MCH
- 14 3" ASPHALTIC SURFACE LOWER LAYER



DETAIL FOR ASPHALTIC OR CONCRETE SHOULDER AT BEAM GUARD
(SEE PLAN DETAIL SHEETS FOR LOCATIONS)

SEE S.D.D. "MIDWEST GUARDRAIL SYSTEM (MGS) GUARDRAIL"
 "MIDWEST GUARDRAIL SYSTEM (MGS) ENERGY ABSORBING TERMINAL",
 "MIDWEST GUARDRAIL SYSTEM (MGS) THREE BEAM TRANSITION",
 "MIDWEST GUARDRAIL SYSTEM (MGS) TYPE 2 TERMINAL"
 FOR DETAILS NOT SHOWN.

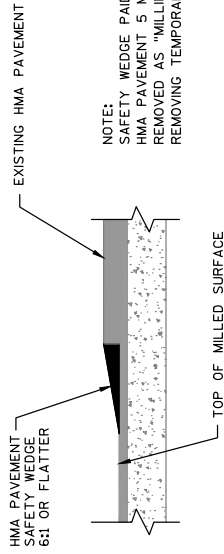
Addendum No. 01
ID 7630-00-72/73
Revised Sheet 19
November 5, 2020



LANE REPAIR DETAIL

*IN AREAS OF 2-INCH MILL DEPTH, THE CONTRACTOR WILL BE ALLOWED TO PAVE UP TO 3-INCH DEPTH OF THE LOWER LAYER. ONE LIFT OF THE LOWER LAYER SHALL BE REQUIRED. THE CONTRACTOR SHALL BE REQUIRED TO MILL THE 2-INCH DEPTH MILLED AREAS AND THE LOWER LAYER IN THE SAME DAY AS MILLING OPERATIONS.

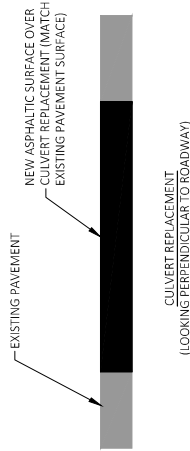
NOTES:
 IF LOWER LAYER MIX IS USED FOR LANE REPAIR, THE HMA QUANTITY REQUIRED FOR THE LANE REPAIR WILL STILL BE PAID FOR UNDER THE LANE REPAIR ITEM.
 IF A PWL TEST AREA IS WITHIN A LANE REPAIR THE TEST AREA WILL BE MOVED OUTSIDE OF THE LANE REPAIR.



HMA PAVEMENT SAFETY WEDGE

NOTE: HMA PAVEMENT SAFETY WEDGE TO BE PLACED WHEN UNABLE TO MILL EXISTING PAVEMENT AND PAVE LOWER LAYER OF HMA PAVEMENT ON THE SAME DAY AND DROP OFF BETWEEN LAYERS EXCEEDS 2".

Addendum No. 01
ID 7630-00-72/73
Revised Sheet 21
November 5, 2020



MILL ASPHALTIC SURFACE WITH EXISTING PAVEMENT

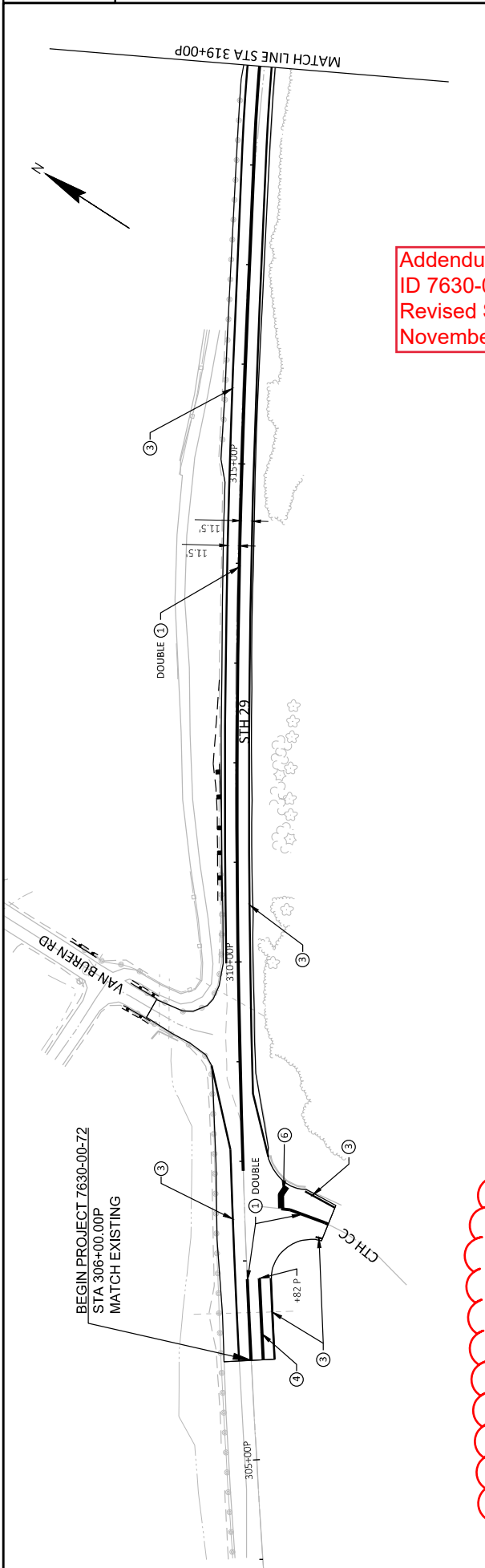
ASPHALTIC SURFACE (LOOKING PERPENDICULAR TO ROADWAY)

EXISTING PAVEMENT

OVERLAY WITH FINAL PAVEMENT LAYERS (SEE TYPICAL SECTIONS)

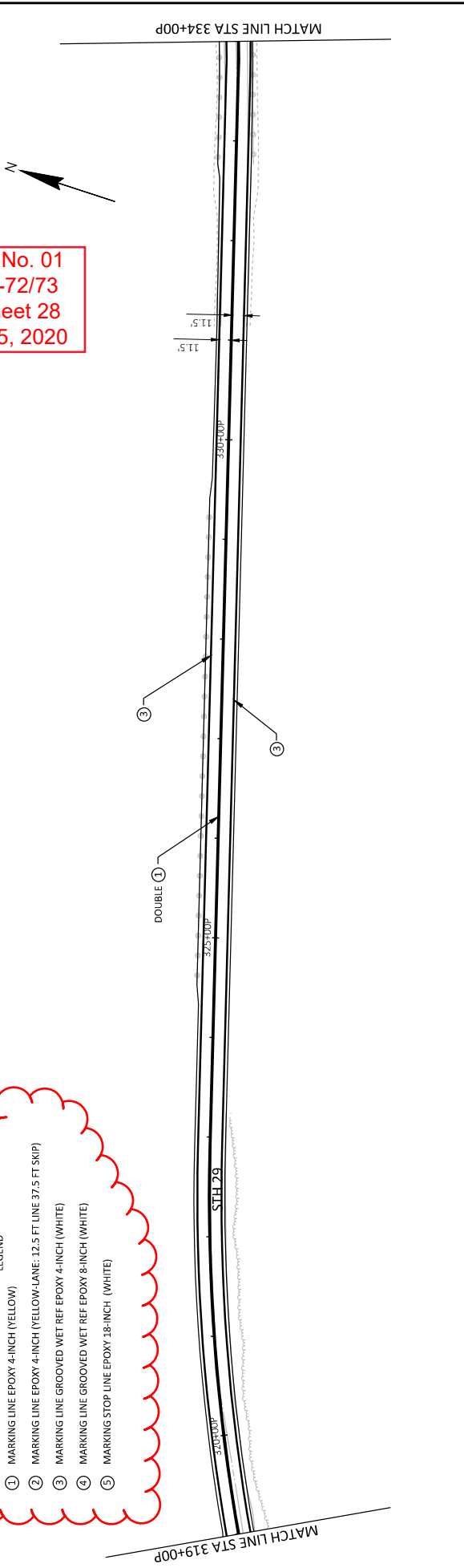
OVERLAY (LOOKING PERPENDICULAR TO ROADWAY)

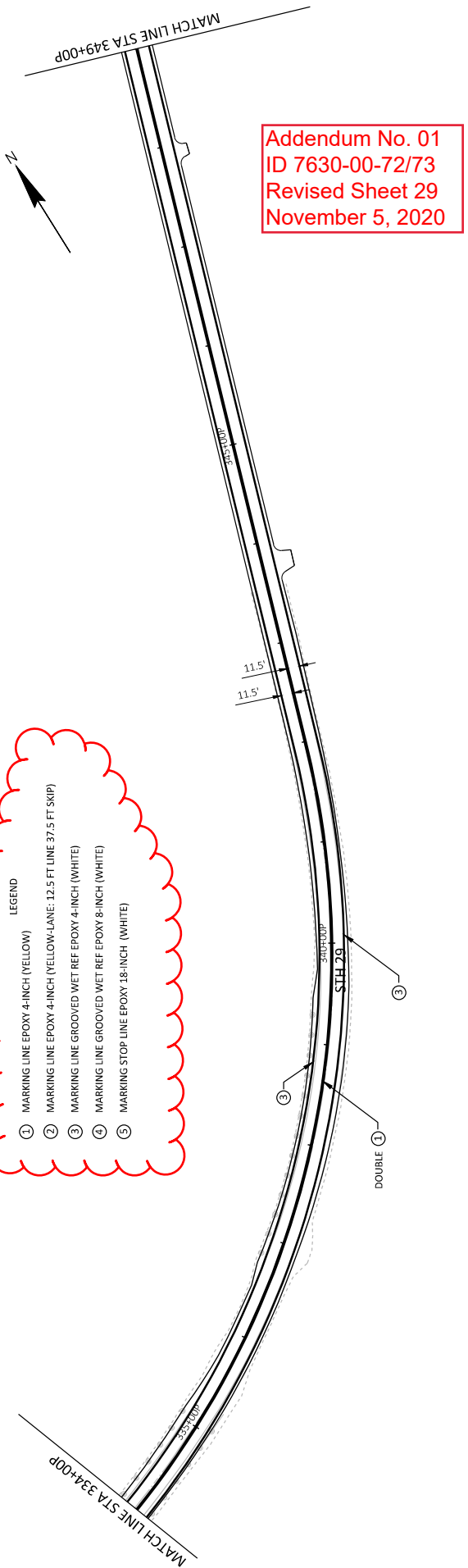
CULVERT REPLACEMENT PAVEMENT DETAIL
SEE TYPICAL SECTIONS AND PLAN DETAILS FOR LOCATIONS



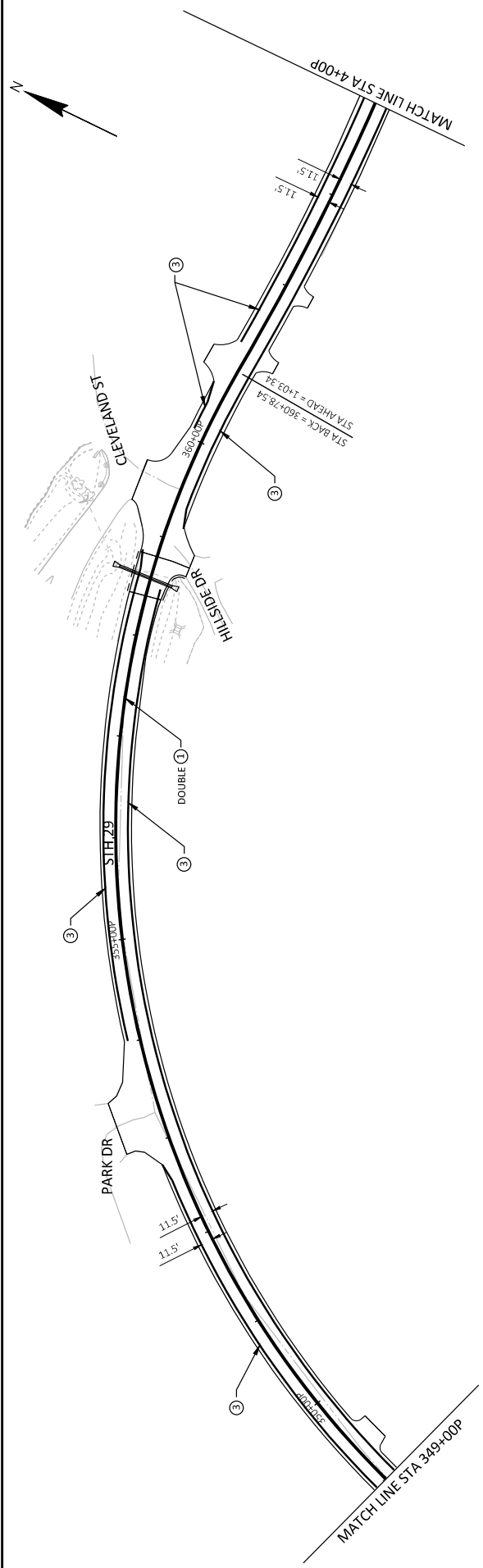
Addendum No. 01
 ID 7630-00-72/73
 Revised Sheet 28
 November 5, 2020

- LEGEND
- ① MARKING LINE EPOXY 4-INCH (YELLOW)
 - ② MARKING LINE EPOXY 4-INCH (YELLOW-LANE: 12.5 FT LINE 37.5 FT SKIP)
 - ③ MARKING LINE GROOVED WET REF EPOXY 4-INCH (WHITE)
 - ④ MARKING LINE GROOVED WET REF EPOXY 8-INCH (WHITE)
 - ⑤ MARKING STOP LINE EPOXY 18-INCH (WHITE)

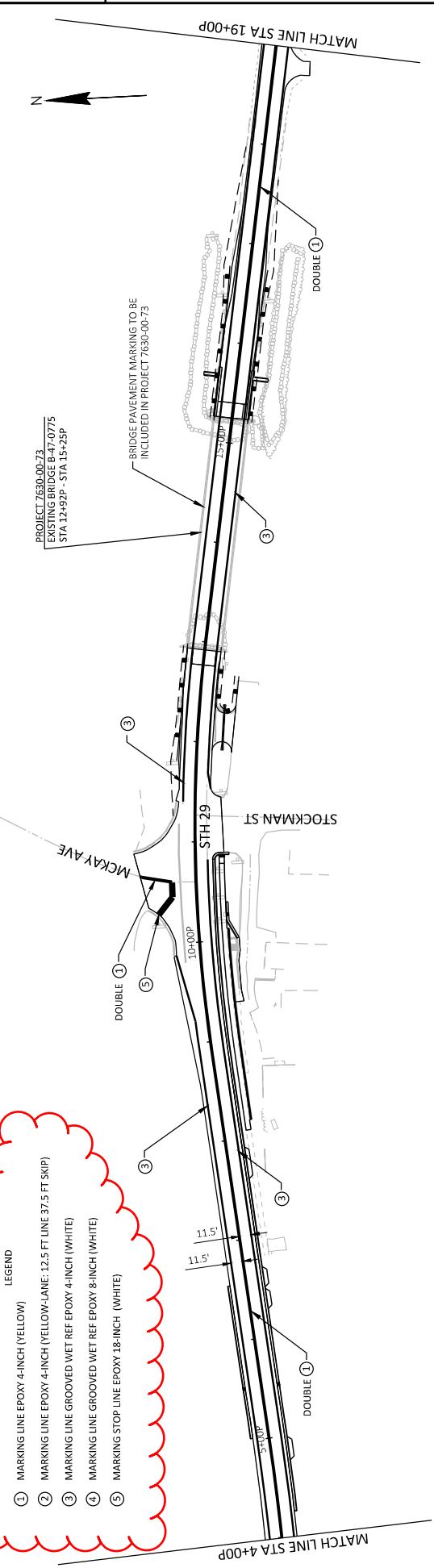




- LEGEND
- ① MARKING LINE EPOXY 4-INCH (YELLOW)
 - ② MARKING LINE EPOXY 4-INCH (YELLOW-LANE: 12.5 FT LINE 37.5 FT SKIP)
 - ③ MARKING LINE GROOVED WET REF EPOXY 4-INCH (WHITE)
 - ④ MARKING LINE GROOVED WET REF EPOXY 8-INCH (WHITE)
 - ⑤ MARKING STOP LINE EPOXY 18-INCH (WHITE)

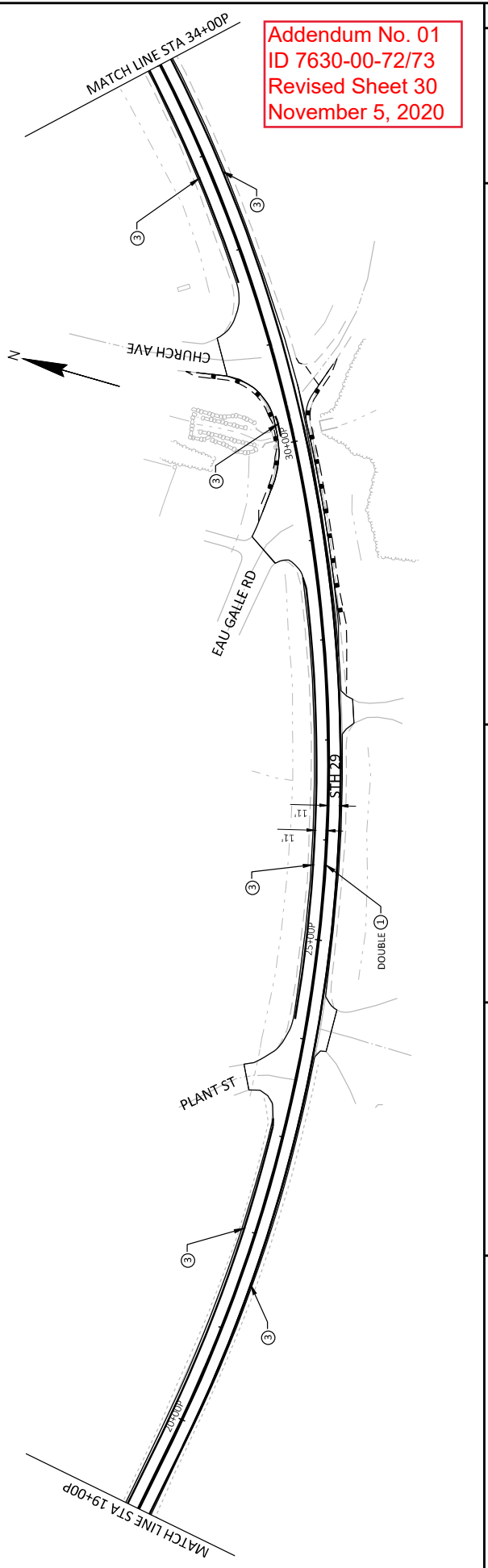


| | | | | |
|---|-------------------------|------------------|-------------|-----------------------|
| PROJECT NO: 7630-00-72 | COUNTY: PIERCE | PAVEMENT MARKING | SHEET 29 | E |
| FILE NAME: G:\WOODTWIN\13004-006-3TH-29\CIVIL-3D\SHEETS\PLAN\024501_PALDING_LAYOUT.NAME - P12 | HWY: STH 29 | BRAN ST, VINCENT | 1 IN=100 FT | WISDOT/CADDS-SHEET 44 |
| | DATE: 11/4/2020 4:38 PM | PLOT BY: | | |



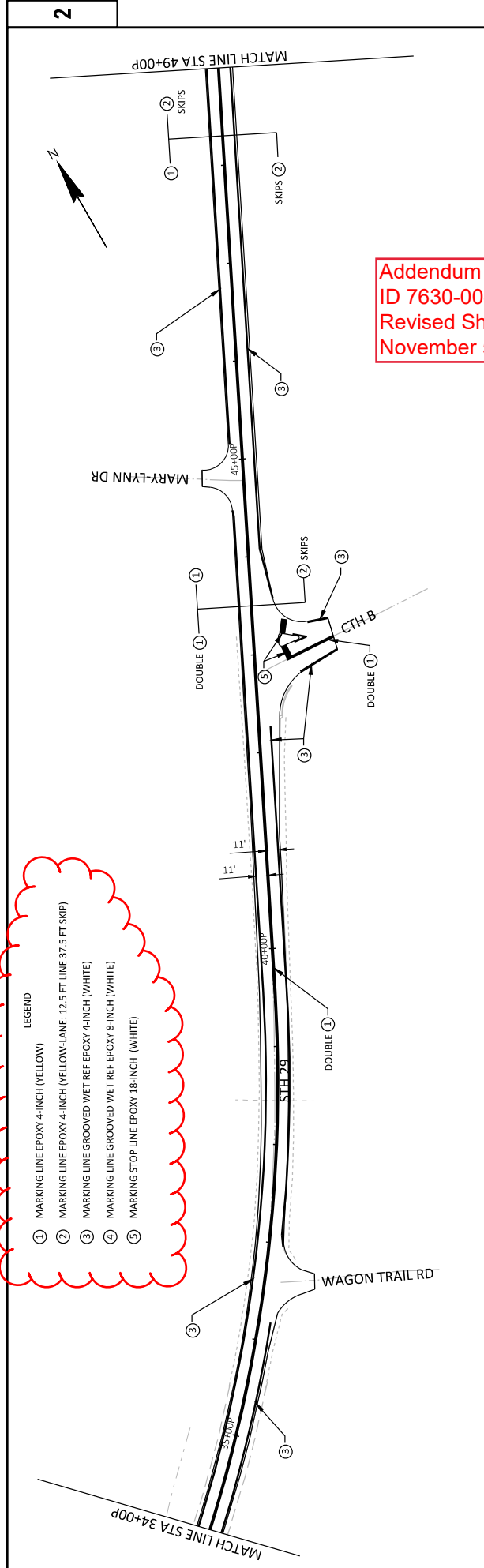
- ① MARKING LINE EPOXY 4-INCH (YELLOW)
- ② MARKING LINE EPOXY 4-INCH (YELLOW-LANE: 12.5 FT LINE 37.5 FT SKIP)
- ③ MARKING LINE GROOVED WET REF EPOXY 4-INCH (WHITE)
- ④ MARKING LINE GROOVED WET REF EPOXY 8-INCH (WHITE)
- ⑤ MARKING STOP LINE EPOXY 18-INCH (WHITE)

Addendum No. 01
ID 7630-00-72/73
Revised Sheet 30
November 5, 2020

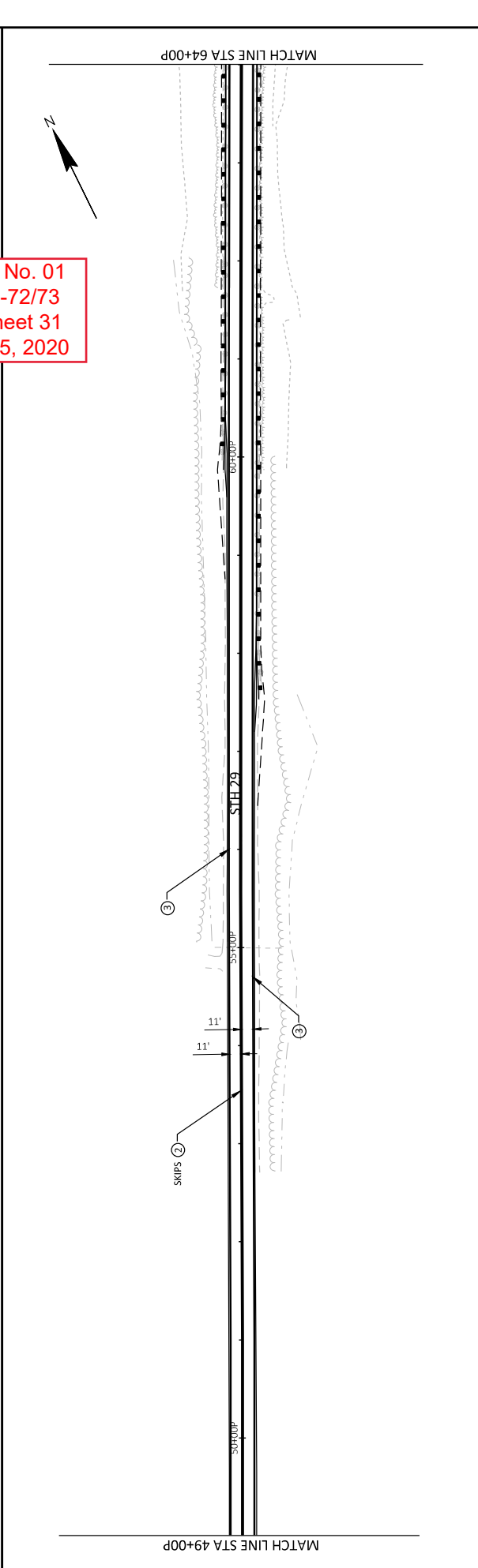


| | | | | |
|--|----------------|-------------------|-------------|-----------------------|
| PROJECT NO: 7630-00-72 | COUNTY: PIERCE | PAVEMENT MARKING | SHEET 30 | E |
| FILE NAME: G:\W007\W13004-006-3TH-29\CIVIL-3D\SHEETS\PLAN\024501_P\LDWG LAYOUT NAME: P18 | HWY: STH 29 | BRAN ST, VINCENT | 1 IN=100 FT | WISDOT\CADDS-SHEET 44 |
| | | 11/4/2020 4:38 PM | | |

- LEGEND**
- ① MARKING LINE EPOXY 4-INCH (YELLOW)
 - ② MARKING LINE EPOXY 4-INCH (YELLOW-LANE: 12.5 FT LINE 37.5 FT SKIP)
 - ③ MARKING LINE GROOVED WET REF EPOXY 4-INCH (WHITE)
 - ④ MARKING LINE GROOVED WET REF EPOXY 8-INCH (WHITE)
 - ⑤ MARKING STOP LINE EPOXY 18-INCH (WHITE)

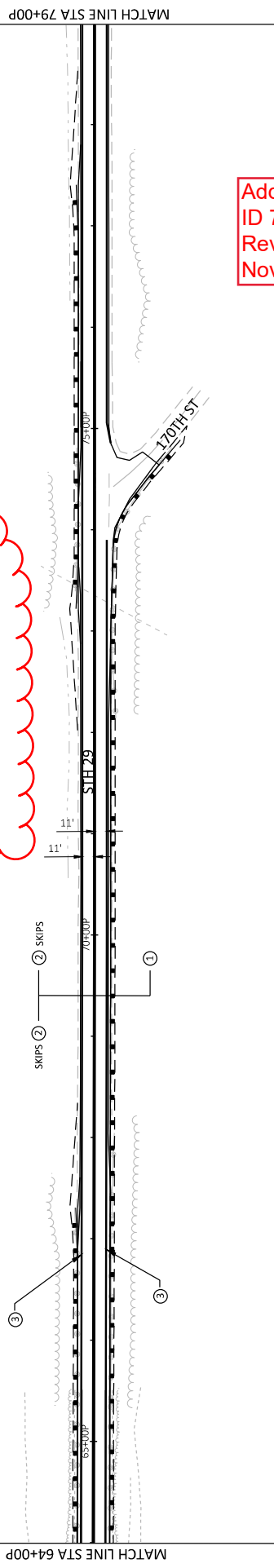


Addendum No. 01
 ID 7630-00-72/73
 Revised Sheet 31
 November 5, 2020

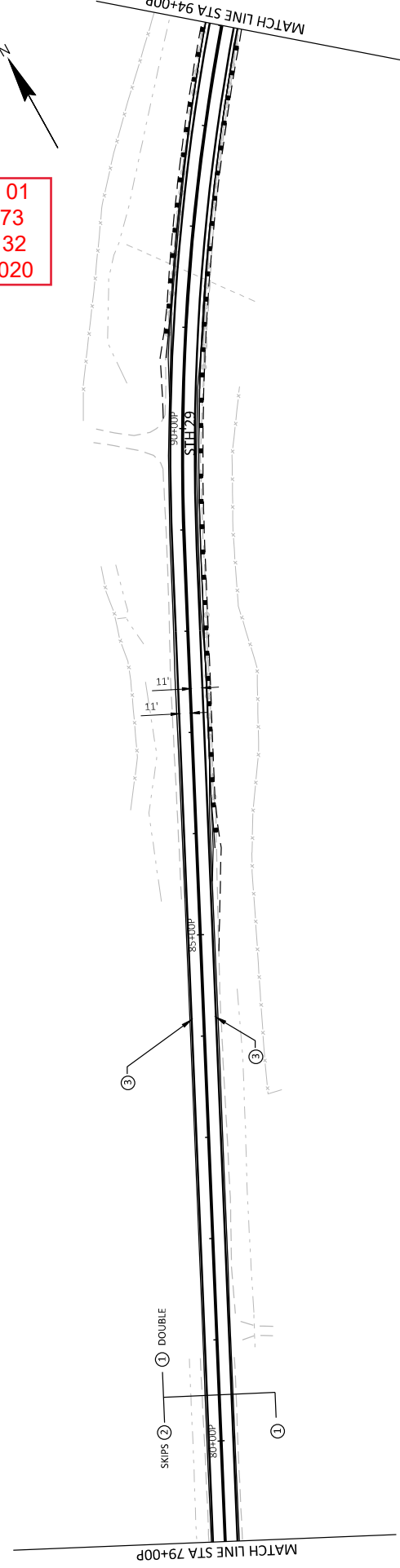


| | | | |
|--|-------------------------------|-----------------------------|--------------------------|
| PROJECT NO: 7630-00-72 | COUNTY: PIERCE | PAVEMENT MARKING | SHEET 31 |
| FILE NAME: G:\W007\W13004-006-3TH-29\CIVIL-3D\SHEETS\PLAN\024501_P.MXD | PLLOT DATE: 11/4/2020 4:38 PM | PLLOT BY: BRIAN ST. VINCENT | PLLOT SCALE: 1 IN=100 FT |
| LAYOUT NAME: PH | | WISDOT/CADDS-SHEET 44 | |

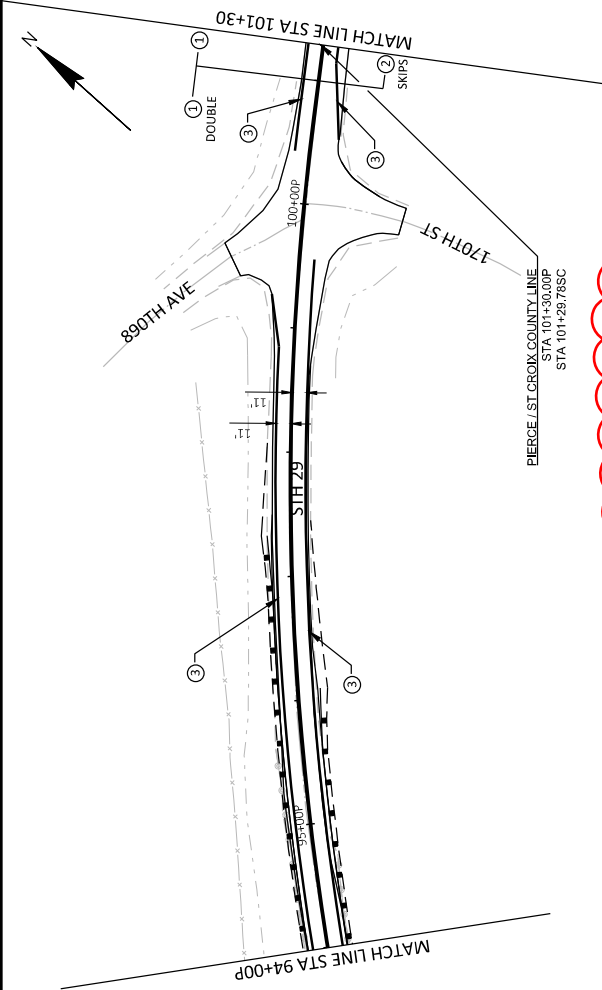
- LEGEND
- ① MARKING LINE EPOXY 4-INCH (YELLOW)
 - ② MARKING LINE EPOXY 4-INCH (YELLOW-LANE: 12.5 FT LINE 37.5 FT SKIP)
 - ③ MARKING LINE GROOVED WET REF EPOXY 4-INCH (WHITE)
 - ④ MARKING LINE GROOVED WET REF EPOXY 8-INCH (WHITE)
 - ⑤ MARKING STOP LINE EPOXY 18-INCH (WHITE)



Addendum No. 01
 ID 7630-00-72/73
 Revised Sheet 32
 November 5, 2020



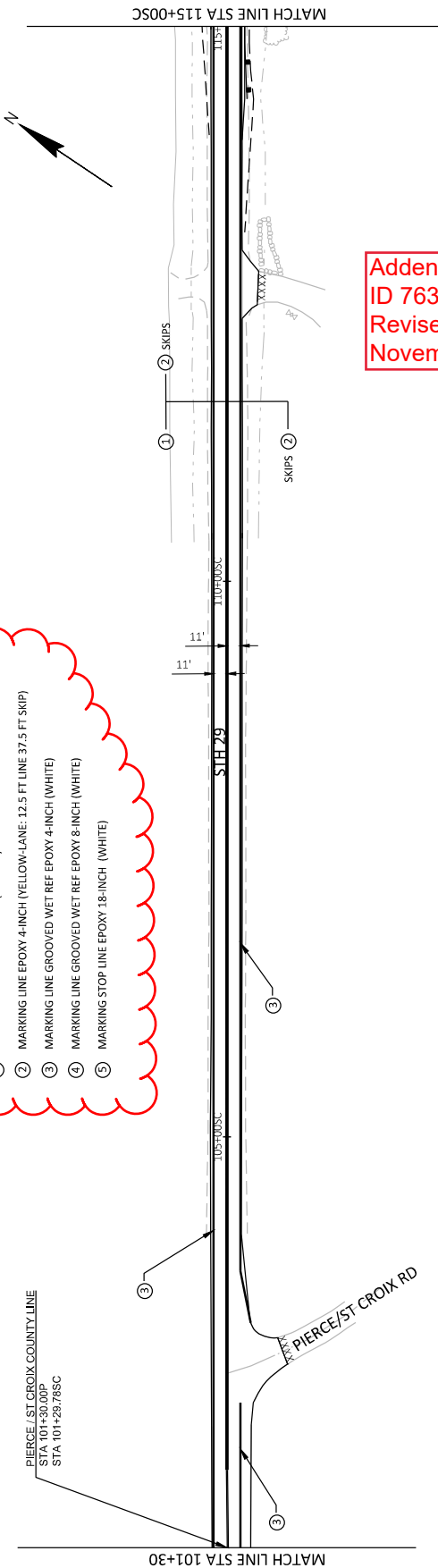
| | | | | |
|--|----------------|-------------------|-------------|----------------------|
| PROJECT NO: 7630-00-72 | COUNTY: PIERCE | PAVEMENT MARKING | SHEET 32 | E |
| FILE NAME: G:\W007\W13004-006-5TH-25\CIVIL-3D\SHEETS\PLAN\024504_LAYOUT.LAYOUT NAME: PBI | HWY: STH 29 | BRAN ST, VINCENT | 1 IN=100 FT | WISDOT/CADD/SHEET 44 |
| | | 11/4/2020 4:38 PM | | |



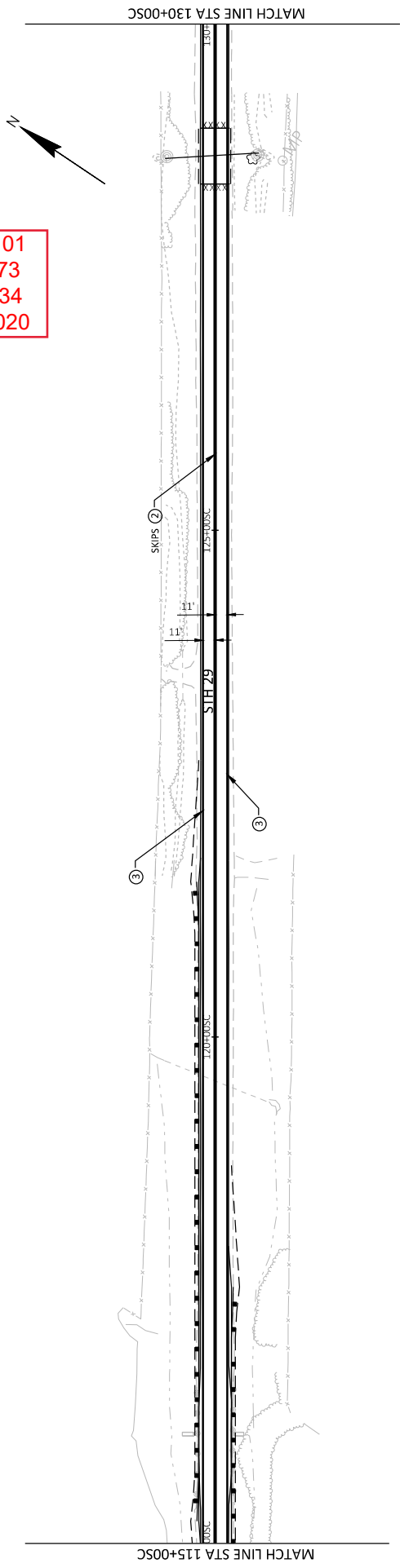
- LEGEND
- ① MARKING LINE EPOXY 4-INCH (YELLOW)
 - ② MARKING LINE EPOXY 4-INCH (YELLOW-LANE: 12.5 FT LINE 37.5 FT SKIP)
 - ③ MARKING LINE GROOVED WET REF EPOXY 4-INCH (WHITE)
 - ④ MARKING LINE GROOVED WET REF EPOXY 8-INCH (WHITE)
 - ⑤ MARKING STOP LINE EPOXY 18-INCH (WHITE)

Addendum No. 01
 ID 7630-00-72/73
 Revised Sheet 33
 November 5, 2020

- LEGEND**
- ① MARKING LINE EPOXY 4-INCH (YELLOW)
 - ② MARKING LINE EPOXY 4-INCH (YELLOW-LANE: 12.5 FT LINE 37.5 FT SKIP)
 - ③ MARKING LINE GROOVED WET REF EPOXY 4-INCH (WHITE)
 - ④ MARKING LINE GROOVED WET REF EPOXY 8-INCH (WHITE)
 - ⑤ MARKING STOP LINE EPOXY 1.8-INCH (WHITE)

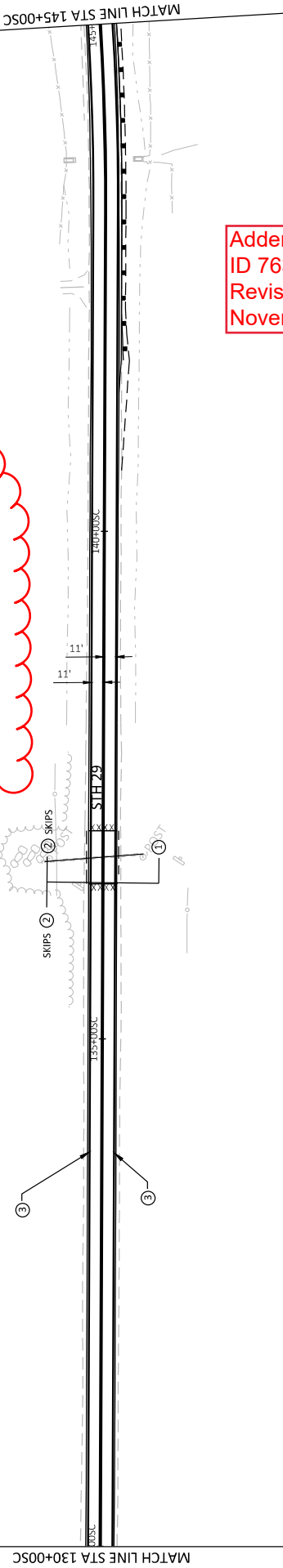
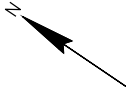


Addendum No. 01
ID 7630-00-72/73
Revised Sheet 34
November 5, 2020

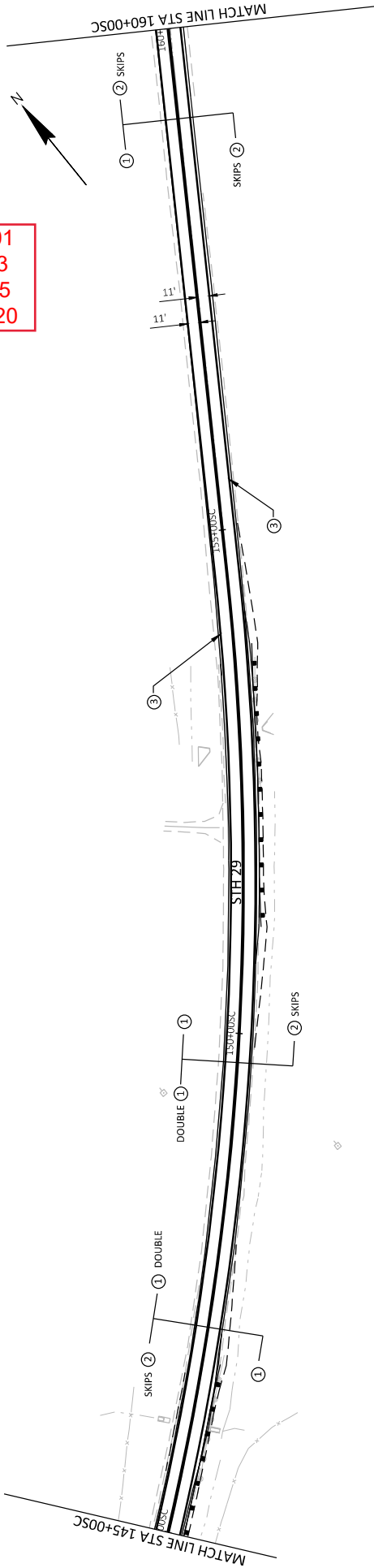


| | | | | |
|---|-------------------------------|-------------------|--------------|-----------------------|
| PROJECT NO: 7630-00-72 | COUNTY: ST CROIX | PAVEMENT MARKING | SHEET 34 | E |
| FILE NAME: G:\W007\W13004-006-3TH-29\CIVIL-3D\SHEETS\PLAN\02450L_P\LDWG | HWY: STH 29 | BRAN ST., VINCENT | 1 IN.=100 FT | WISDOT/CADDS-SHEET 44 |
| LAYOUT NAME: S(1) | PILOT DATE: 11/4/2020 4:38 PM | PILOT NAME: | | |

- ① MARKING LINE EPOXY 4-INCH (YELLOW)
- ② MARKING LINE EPOXY 4-INCH (YELLOW-LANE: 12.5 FT LINE 37.5 FT SKIP)
- ③ MARKING LINE GROOVED WET REF EPOXY 4-INCH (WHITE)
- ④ MARKING LINE GROOVED WET REF EPOXY 8-INCH (WHITE)
- ⑤ MARKING STOP LINE EPOXY 18-INCH (WHITE)

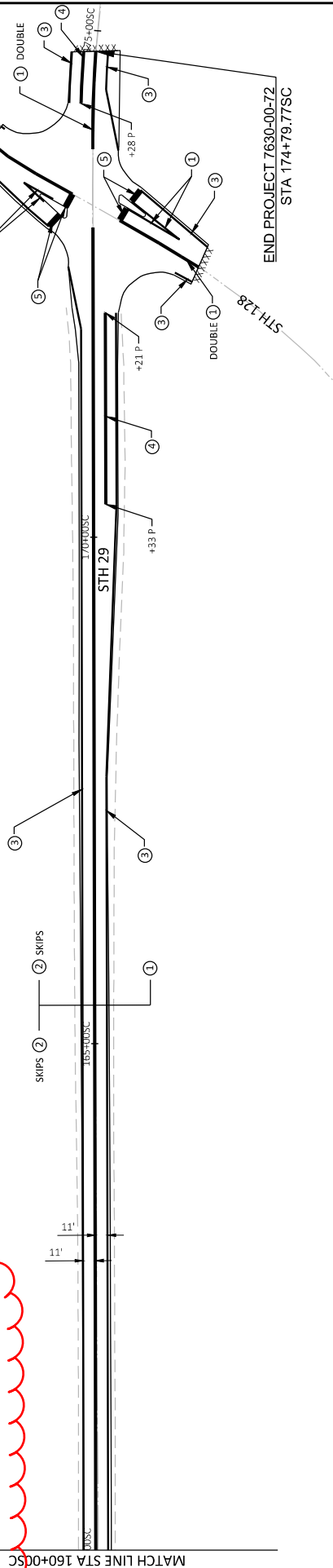


Addendum No. 01
ID 7630-00-72/73
Revised Sheet 35
November 5, 2020



| | | | | |
|---|------------------|------------------------------|-------------|----------------------|
| PROJECT NO: 7630-00-72 | COUNTY: ST CROIX | PAVEMENT MARKING | SHEET 35 | E |
| FILE NAME: G:\W00T\W13004-006-5TH-29\CIVIL-3D\SHEETS\PLAN\024501_LAYOUT.LAYOUT NAME: SCLZ | HWY: STH 29 | BRAN ST. VINCENT | 1 IN=100 FT | WISDOT/CADD/SHEET 44 |
| | | PLOT BY: BRAN ST. VINCENT | PLOT SCALE: | |
| | | PLOT DATE: 11/4/2020 4:38 PM | PLOT NAME: | |

- LEGEND
- ① MARKING LINE EPOXY 4-INCH (YELLOW)
 - ② MARKING LINE EPOXY 4-INCH (YELLOW-LANE: 12.5 FT LINE 37.5 FT SKIP)
 - ③ MARKING LINE GROOVED WET REF EPOXY 4-INCH (WHITE)
 - ④ MARKING LINE GROOVED WET REF EPOXY 8-INCH (WHITE)
 - ⑤ MARKING STOP LINE EPOXY 18-INCH (WHITE)



Addendum No. 01
 ID 7630-00-72/73
 Revised Sheet 36
 November 5, 2020

| | | | | |
|---|-----------------------------|---------------------------|------------------------|----------------------|
| PROJECT NO: 7630-00-72 | COUNTY: ST CROIX | PAVEMENT MARKING | SHEET 36 | E |
| FILE NAME: G:\WDOT\WV\3004-006-STH-29\CIVIL\30SHEETS\PLAN\2450L_PMD.DWG | FLY DATE: 11/4/2020 4:38 PM | FLY BY: BRIAN ST. VINCENT | FLY SCALE: 1 IN=100 FT | WSDOT\CADDS-SHEET 44 |
| LAYOUT NAME: SCEJ | | | | |

EXCAVATION SUMMARY

| 7630-00-72 CATEGORY 0010 | FROM / TO STATION | DIVISION | LOCATION | CONSTRUCTION STAGE | EXCAVATION COMMON (CY) | SALVAGED/ UNUSABLE PAVEMENT MATERIAL (CY) | AVAILABLE MATERIAL (CY) | UNEXPANDED FILL (3) (CY) | EXPANDED FILL (3) (CY) | MASS ORDINATE +/- (4) | WASTE (5) (CY) | BORROW (7) (CY) | COMMENT |
|-----------------------------|-------------------|----------|---------------------------|-----------------------|------------------------------|---|-------------------------------|--------------------------------|------------------------------|-----------------------------|-------------------|-----------------------|---------------------------|
| | | | | | | | | | | | | | |
| | 310+92 - 312+83 | 1-1 | STH 29 | STAGE 1 | 40 | 0 | 40 | 136 | 177 | -138 | 0 | 138 | |
| | 8+07 - 10+80 | 1-2 | STH 29 | STAGE 1 | 79 | 0 | 79 | 9 | 12 | 68 | 68 | -68 | Excess available material |
| | 11+26 - 12+92 | 1-3 | STH 29 | STAGE 1 | 58 | 0 | 58 | 15 | 19 | 39 | 39 | -39 | Excess available material |
| | 15+25 - 17+96 | 1-4 | STH 29 | STAGE 1 | 110 | 0 | 110 | 746 | 970 | -660 | 0 | 860 | |
| | 27+50 - 30+70 | 1-5 | STH 29 | STAGE 1 | 138 | 0 | 138 | 69 | 90 | -48 | 48 | -48 | Excess available material |
| | 56+44 - 78+63 | 1-6 | STH 29 | STAGE 1 | 863 | 0 | 863 | 2,619 | 3,404 | -2,741 | 0 | 2,741 | |
| | 84+83 - 89+07 | 1-7 | STH 29 | STAGE 1 | 371 | 0 | 371 | 1,383 | 1,797 | -1,427 | 0 | 1,427 | |
| | 113+14 - 122+54 | 1-8 | STH 29 | STAGE 1 | 305 | 0 | 305 | 1,569 | 2,039 | -1,734 | 0 | 1,734 | |
| | 140+60 - 147+92 | 1-9 | STH 29 | STAGE 1 | 172 | 0 | 172 | 466 | 631 | -439 | 0 | 439 | |
| | 193+97 - 124+98 | 1-10 | STH 29 | STAGE 1 | 102 | 0 | 102 | 586 | 762 | -309 | 0 | 309 | |
| | | | DIV 1 SUBTOTAL | | 2,041 | 0 | 2,041 | 7,259 | 9,488 | -7,448 | 155 | 7,448 | |
| | | | 7630-00-72 PROJECT TOTALS | | 2,041 | | | | | | | 7,448 | |

Note 1) Salvaged/Unusable Pavement Material is included in Cut.
 Note 2) Available Material = Cut - Salvaged/Unusable Pavement Material
 Note 3) Expanded Fill Factor = 1.30
 Note 4) The Mass Ordinate +/- Or - Qty. calculated for the Division.
 Positive quantity indicates an excess of material within the Division.
 Negative quantity indicates a deficit of material within the Division.
 Mass Ordinate = Available Material - Expanded Fill
 Note 5) Waste = Positive Division Mass Ordinate
 Note 6) Unexpanded Fill = Unexpanded Fill from individual Earthwork tables
 Note 7) It was assumed that any excess material used as Fill between Divisions would be counted as Borrow.

PWL TEST STRIPS AND INCENTIVES

| | |
|--|---------------------------|
| 460.0105.S | 460.0110.S |
| HMA PERCENT WITHIN LIMITS (PW) TEST STRIP (EACH) | DENSITY (EACH) |
| PROJECT 7630-00-72 | LOCATION - STATION |
| CATEGORY 0010 | PROJECT UN-DISTRIBUTED |
| | 1 |
| | 2 |
| | 1 |
| | 2 |
| | 7630-00-72 PROJECT TOTALS |
| | 1 |
| | 2 |

DRILLED TIE BARS

| | |
|--------------------|---------------------------|
| 416.0070 | 416.0070 |
| PROJECT 7630-00-72 | LOCATION - STATION |
| CATEGORY 0010 | PROJECT UN-DISTRIBUTED |
| | 1 |
| | 1 |
| | 1 |
| | 10 |
| | 13 |
| | 7630-00-72 PROJECT TOTALS |
| | 13 |

CONCRETE PAVEMENT APPROACH SLAB

| | |
|--------------------|---------------------------|
| 415.0410 | 415.0070 |
| PROJECT 7630-00-72 | LOCATION - STATION |
| CATEGORY 0010 | PROJECT UN-DISTRIBUTED |
| | 1 |
| | 1 |
| | 1 |
| | 7 |
| | 7 |
| | 14 |
| | 7630-00-72 PROJECT TOTALS |
| | 14 |

CONCRETE SURFACE DRAINS

| | |
|--------------------|---------------------------|
| 416.1010 | 416.0070 |
| PROJECT 7630-00-72 | LOCATION - STATION |
| CATEGORY 0010 | PROJECT UN-DISTRIBUTED |
| | 2 |
| | 2 |
| | 4 |
| | 7630-00-72 PROJECT TOTALS |
| | 4 |

CONCRETE DRIVEWAY FENCH

| | |
|--------------------|---------------------------|
| 416.0160 | 416.0070 |
| PROJECT 7630-00-72 | LOCATION - STATION |
| CATEGORY 0010 | PROJECT UN-DISTRIBUTED |
| | 9 |
| | 8 |
| | 8 |
| | 13 |
| | 37 |
| | 7630-00-72 PROJECT TOTALS |
| | 37 |

REHEATING HMA PAVEMENT LONGITUDINAL JOINTS

| | |
|--------------------|---------------------------|
| SPV.0090.004 | SPV.0090.004 |
| PROJECT 7630-00-72 | LOCATION - STATION |
| CATEGORY 0010 | PROJECT UN-DISTRIBUTED |
| | 154 |
| | 6,281 |
| | 2,956 |
| | 5,881 |
| | 7,197 |
| | 22,592 |
| | 7630-00-72 PROJECT TOTALS |
| | 22,592 |

Addendum No. 01
 ID 7630-00-72/73
 Revised Sheet 57
 November 5, 2020

| EROSION CONTROL SLOPES AND DITCHES | | | | | | | | | | | | | | |
|---|-----------------------|-----------------------------|--|---------------------------------------|---|---|---|---|---|---|---|---|---|---|
| LOCATION | STATION - STATION | SILT FENCE MAINTENANCE (LF) | SILT FENCE (LF) | CLASS I TYPE B (ST) | CLASS II TYPE B (ST) | URBAN CLASS III TYPE B (ST) | EROSION MAT TYPE B (ST) | TEMPORARY DITCH CHECKS (LF) | TRACING PADS (EACH) | PAVEMENT MARKING | | | | |
| | | | | | | | | | | 628.1504* | 628.1520* | 628.2004* | 628.2008** | 628.2039 |
| PROJECT 7630-00-72 CATEGORY 0010 | LOCATION | STATION - STATION | MARKING LINE EPOXY PAINT (YELLOW) (DASHED YELLOW) (LF) | MARKING LINE EPOXY PAINT (WHITE) (LF) | GROOVED WET REF EPOXY BANCH (INCH) (LF) | GROOVED WET REF EPOXY BANCH (INCH) (LF) | GROOVED WET STOP LINE EPOXY BANCH (INCH) (LF) | MARKING STOP LINE EPOXY BANCH (INCH) (LF) | MARKING STOP LINE EPOXY BANCH (INCH) (LF) | MARKING STOP LINE EPOXY BANCH (INCH) (LF) | MARKING STOP LINE EPOXY BANCH (INCH) (LF) | MARKING STOP LINE EPOXY BANCH (INCH) (LF) | MARKING STOP LINE EPOXY BANCH (INCH) (LF) | MARKING STOP LINE EPOXY BANCH (INCH) (LF) |
| PROJECT 7630-00-72 CATEGORY 0010 | PTH-CC - MCKAYAVE | 310+55P - 310+55P | 227 | 681 | 295 | - | - | - | - | - | - | - | - | 646,6120 |
| | PTH-CC - MCKAYAVE | 358+25P - 358+25P | 86 | 258 | 63 | - | - | - | - | - | - | - | - | 646,3040 |
| | PTH-CC - MCKAYAVE | 358+64P - 358+64P | RT | 54 | 54 | - | - | - | - | - | - | - | - | 646,1040 |
| | PTH-CC - MCKAYAVE | 11+27P - 12+92P | RT | 184 | 552 | 80 | - | - | - | - | - | - | - | 646,1020 |
| | PTH-CC - MCKAYAVE | 11+80P - 12+52P | RT | 64 | 64 | - | - | - | - | - | - | - | - | 646,1040 |
| | PTH-CC - MCKAYAVE | 15+24P - 18+06P | RT | 283 | 849 | 662 | - | - | - | - | - | - | - | 646,1040 |
| | PTH-CC - MCKAYAVE | 15+26P - 17+77P | RT | 257 | 771 | 328 | - | - | - | - | - | - | - | 646,1040 |
| | PTH-CC - MCKAYAVE | 15+26P - 17+77P | RT | 257 | 771 | 328 | - | - | - | - | - | - | - | 646,1040 |
| | PTH-CC - MCKAYAVE | 24+48P - 30+83P | RT | 146 | 439 | 93 | - | - | - | - | - | - | - | 646,1040 |
| | PTH-CC - MCKAYAVE | 56+44P - 55+75P | RT | 417 | 1,251 | 431 | - | - | - | - | - | - | - | 646,1040 |
| | PTH-CC - MCKAYAVE | 58+75P - 68+34P | RT | 517 | 1,551 | 530 | - | - | - | - | - | - | - | 646,1040 |
| | PTH-CC - MCKAYAVE | 72+02P - 78+53P | RT | 98 | 294 | 210 | - | - | - | - | - | - | - | 646,1040 |
| | PTH-CC - MCKAYAVE | 84+83P - 97+14P | RT | 1,270 | 3,810 | 944 | - | - | - | - | - | - | - | 646,1040 |
| | PTH-CC - MCKAYAVE | 90+10P - 98+28P | RT | 434 | 1,193 | 210 | - | - | - | - | - | - | - | 646,1040 |
| | PTH-CC - MCKAYAVE | 113+H75C - 118+735C | RT | 96 | 288 | 1,017 | - | - | - | - | - | - | - | 646,1040 |
| PTH-CC - MCKAYAVE | 114+025C - 122+945C | RT | 188 | 564 | 1,263 | - | - | - | - | - | - | - | 646,1040 | |
| PTH-CC - MCKAYAVE | 128+425C - 138+875C | RT | 67 | 201 | 90 | - | - | - | - | - | - | - | 646,1040 | |
| PTH-CC - MCKAYAVE | 138+455C - 137+055C | RT | 69 | 207 | 171 | - | - | - | - | - | - | - | 646,1040 | |
| PTH-CC - MCKAYAVE | 140+605C - 147+885C | RT | 750 | 2,221 | 750 | - | - | - | - | - | - | - | 646,1040 | |
| PTH-CC - MCKAYAVE | 145+595C - 146+595C | RT | 126 | 378 | 221 | - | - | - | - | - | - | - | 646,1040 | |
| PTH-CC - MCKAYAVE | 149+975C - 155+065C | RT | 184 | 552 | 580 | - | - | - | - | - | - | - | 646,1040 | |
| PTH-CC - MCKAYAVE | 310+30VBR - 310+45VBR | RT | 55 | 165 | 165 | - | - | - | - | - | - | - | 646,1040 | |
| PTH-CC - MCKAYAVE | 311+10VBR - 311+25VBR | RT | 55 | 165 | 165 | - | - | - | - | - | - | - | 646,1040 | |
| PTH-CC - MCKAYAVE | UNDISTRIBUTED | | 1,412 | 4,236 | 1,906 | 380 | 1,885 | 210 | 6 | | | | | |
| 7630-00-72 PROJECT TOTALS | | | 7,000 | 21,000 | 9,400 | 1,850 | 9,100 | 1,000 | 40 | | | | | |
| *ADDITIONAL QUANTITY FOUND IN 'EROSION CONTROL AT ENDSALLS' TABLE **ADDITIONAL QUANTITY FOUND IN 'EROSION CONTROL AT FLUMES' TABLE | | | | | | | | | | | | | | |

| TRAFFIC CONTROL | | | | | | | | | | | | | | |
|----------------------------------|-------------------|--------------|---------------------------|--------------------------|------------------------------|------------------------------|----------------------------|--------------------|---------------------------|------------------|-----------------------------|--------------------------|-------------------------|---|
| LOCATION | STATION - STATION | DRUMS (DAYS) | BARRICADES TYPE II (DAYS) | BARRICADES TYPE I (DAYS) | WARNING LIGHTS TYPE A (DAYS) | WARNING LIGHTS TYPE B (DAYS) | FIXED SIGNS MESSAGE (DAYS) | FIXED SIGNS (DAYS) | PEDESTRIAN SURFACE (DAYS) | CURB RAMP (DAYS) | PEDESTRIAN BARRICADE (DAYS) | TEMPORARY TYPE II (DAYS) | TEMPORARY TYPE I (DAYS) | NOTES |
| | | | | | | | | | | | | | | |
| PROJECT 7630-00-72 CATEGORY 0010 | LOCATION | # OF DAYS | TYPE II (DAYS) | TYPE I (DAYS) | TYPE A (DAYS) | TYPE B (DAYS) | MESSAGE (DAYS) | SIGNS (DAYS) | PEDESTRIAN SURFACE (DAYS) | CURB RAMP (DAYS) | PEDESTRIAN BARRICADE (DAYS) | TEMPORARY TYPE II (DAYS) | TEMPORARY TYPE I (DAYS) | NOTES |
| PROJECT 7630-00-72 CATEGORY 0010 | PTH-CC - MCKAYAVE | 102 | - | - | - | - | - | 9,282 | - | - | - | - | - | 643,0920 |
| | PTH-CC - MCKAYAVE | 33 | - | 462 | 924 | - | - | 132 | - | - | - | - | - | TRAFFIC CONTROL COVERING SIGNS |
| | PTH-CC - MCKAYAVE | 7 | - | 14 | 28 | - | - | 28 | 100 | 14 | 150 | - | - | |
| 7630-00-72 PROJECT TOTALS | UNDISTRIBUTED | 2,470 | 1 | 50 | 102 | 0 | 1,186 | 0 | 25 | 6 | 50 | - | - | 3 1 CYCLE DETOUR - CLOSURE 1 8 1 CYCLE UNDISTRIBUTED |
| | PROJECT TOTALS | 26,980 | 15 | 540 | 1,110 | - | 15,380 | 9 | 42 | 20 | 200 | - | - | 7630-00-72 PROJECT TOTALS |
| PROJECT 7630-00-73 CATEGORY 0010 | PTH-CC - MCKAYAVE | 33 | 2,607 | - | 66 | - | 2,079 | 1,155 | - | - | - | - | - | |
| | UNDISTRIBUTED | 263 | 0 | 9 | 0 | 211 | 115 | 0 | 0 | 0 | 0 | - | - | |
| 7630-00-73 PROJECT TOTALS | | | 2,870 | - | 75 | - | 2,290 | 1,270 | - | - | - | - | - | |

CONSTRUCTION STAKING

| LOCATION | STATION - STATION | SUBGRADE (LF) | BASE (LF) | CURB CUTTER AND CURB (LF) | PIPE AND CULVERT (EACH) | CONCRETE PAVEMENT (LF) | RESURFACING (LF) | CURB RAMP (EACH) | SLOPE STAKES (LF) |
|----------------------------------|-----------------------|---------------|--------------|---------------------------|-------------------------|------------------------|------------------|------------------|-------------------|
| S.O.P. - CTHCC | 306+00P - 307+54P | - | - | - | - | - | 154 | - | - |
| CTHCC - MCKAY AVE | 10+60P | 900 | 900 | 869 | 1 | - | 6,281 | - | 900 |
| MCKAY AVE - CTHB | 42+79P | 832 | 832 | 100 | 1 | 30 | 2,996 | 1 | 832 |
| CTHB - C.L. | 101+30P | 3,553 | 3,553 | - | - | - | 3,951 | - | 3,553 |
| CTHB - C.L. | 101+30P | 2,626 | 2,626 | - | - | - | 1,531 | - | 2,626 |
| STH 128 - E.O.P. | 173+27SC - 174+80SC | 75 | 75 | - | - | - | 153 | - | 75 |
| VAN BUREN RD | 310+25VBR - 311+25VBR | - | - | - | - | - | - | - | - |
| 7630-00-72 PROJECT TOTALS | | 7,686 | 7,686 | 969 | 4 | 30 | 22,592 | 1 | 7,686 |

Addendum No. 01
ID 7630-00-72/73
Revised Sheet 62
November 5, 2020

MOVING SIGNS

| | |
|----------------------------------|-----------------------------------|
| 636,2102 | 636,4000 |
| MOVING SIGNS TYPE I (EACH) | MOVING SMALL SIGN SUPPORTS (EACH) |
| LOCATION | 24 |
| UNDISTRIBUTED | 24 |
| 7630-00-72 PROJECT TOTALS | |
| 24 | |

TEMPORARY PAVEMENT MARKING

| LOCATION | STATION - STATION | MARKING REMOVAL (LF) | TEMPORARY MARKING (LF) | TEMPORARY MARKING LINE (LF) | STOP LINE (LF) | STOP LINE (LF) | STOP LINE (LF) | STOP LINE (LF) | STOP LINE (LF) |
|----------------------------------|---------------------|----------------------|------------------------|-----------------------------|----------------|----------------|----------------|----------------|----------------|
| 646,9700 | 649,0105 | 649,0150 | 649,0850 | - | - | - | - | - | - |
| S.O.P. - CTHCC | 306+00P - 307+54P | - | - | - | - | - | - | - | - |
| CTHCC - MCKAY AVE | 10+60P | 117 | 117 | - | - | - | - | - | - |
| MCKAY AVE - CTHB | 42+79P | 4,713 | 4,713 | - | - | - | - | - | - |
| CTHB - C.L. | 101+30P | 2,415 | 2,415 | - | - | - | - | - | - |
| CTHB - C.L. | 101+30P | 4,389 | 4,389 | - | - | - | - | - | - |
| C.L. - STH 128 | 101+30SC - 173+27SC | 5,400 | 5,400 | - | - | - | - | - | - |
| STH 128 - E.O.P. | 173+27SC - 174+80SC | 117 | 117 | - | - | - | - | - | - |
| UNDISTRIBUTED | | 0 | 849 | 0 | 0 | 0 | 0 | 0 | 0 |
| 7630-00-72 PROJECT TOTALS | | 18,000 | 18,000 | 70 | 70 | 2,800 | 48 | 150 | 2 |

CLEANING DITCH

| LOCATION | STATION - STATION | CLEANING DITCH (LF) | O/S (LF) |
|----------------------------------|---------------------|---------------------|------------|
| CTHCC - MCKAY AVE | 351+05P - 352+60P | 50 | RT |
| CTHCC - MCKAY AVE | 358+40P - 359+00P | 50 | LT |
| C.L. - STH 128 | 105+00SC - 106+40SC | 100 | LT & RT |
| C.L. - STH 128 | 119+10SC - 119+60SC | 50 | RT |
| C.L. - STH 128 | 119+50SC - 120+00SC | 50 | LT |
| C.L. - STH 128 | 128+40SC - 128+90SC | 100 | LT & RT |
| 7630-00-72 PROJECT TOTALS | | 900 | 900 |

SAWING

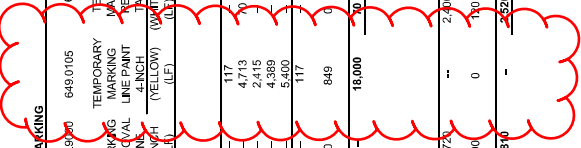
| LOCATION | STATION - STATION | SAWING ASPHALT CONCRETE (LF) | SAWING ASPHALT CONCRETE (LF) |
|----------------------------------|---------------------|------------------------------|------------------------------|
| S.O.P. - CTHCC | 306+00P - 307+54P | 690,0150 | 690,0250 |
| CTHCC - MCKAY AVE | 10+60P | - | - |
| MCKAY AVE - CTHB | 42+79P | - | - |
| CTHB - C.L. | 101+30P | - | - |
| C.L. - STH 128 | 101+30SC - 173+27SC | - | - |
| STH 128 - E.O.P. | 173+27SC - 174+80SC | - | - |
| UNDISTRIBUTED | | 73 | 1 |
| 7630-00-72 PROJECT TOTALS | | 1,555 | 15 |

PROJECT 7630-00-73

| LOCATION | STATION - STATION | SAWING ASPHALT CONCRETE (LF) | SAWING ASPHALT CONCRETE (LF) |
|----------------------------------|-------------------|------------------------------|------------------------------|
| MCKAY AVE - CTHB | 12+10P - 17+10P | 2,900 | 2,800 |
| UNDISTRIBUTED | | 150 | 2 |
| 7630-00-73 PROJECT TOTALS | | 3,050 | 2,802 |

TURTLE FENCE

| LOCATION | STATION - STATION | TURTLE FENCE (LF) |
|----------------------------------|-------------------|-------------------|
| SPV,0090,003 | | 1,000 |
| UNDISTRIBUTED | | 1,000 |
| 7630-00-72 PROJECT TOTALS | | 1,000 |



| STATION | Distance | Area | | Incremental | | Cumulative Vol(CY) | | | Mass Ordinate |
|---------|----------|---------------|-----------|-------------|-------------|--------------------|--------|--------|---------------|
| | | Cut (SF) | Fill (SF) | Note 1 (CY) | Note 2 (CY) | Note 1 | Note 2 | Note 3 | |
| 310+62 | | 6.1 | 5.1 | 8 | 10 | 6 | 10 | 13 | -5 |
| 311+00 | 38 | 5.3 | 9.0 | 8 | 10 | 17 | 38 | 90 | -33 |
| 311+49 | 49 | 4.5 | 22.4 | 9 | 29 | 17 | 67 | 151 | -51 |
| 311+82 | 14 | 4.5 | 26.4 | 4 | 22 | 21 | 89 | 79 | -58 |
| 311+99 | 24 | 4.5 | 26.4 | 4 | 26 | 25 | 87 | 114 | -88 |
| 312+00 | 1 | 4.6 | 29.9 | 0 | 1 | 25 | 88 | 115 | -90 |
| 312+50 | 50 | 4.6 | 12.0 | 9 | 39 | 34 | 127 | 165 | -132 |
| 312+83 | 33 | 4.6 | 2.9 | 6 | 9 | 40 | 136 | 177 | -138 |
| | | Column totals | | 40 | | 136 | | | |

Notes:
 1 - Cut: Cut includes Salvaged/Unusable Pavement Material
 2 - Fill: Does not include Unusable Pavement Excavation volume
 3 - Cut: Cut includes Salvaged/Unusable Pavement Material
 4 - Fill: Does not include Unusable Pavement Excavation volume
 5 - Mass Ordinate: [Cut - Expanded Fill] (Fill Factor Adjusted)

| STATION | Distance | Area | | Incremental | | Cumulative Vol(CY) | | | Mass Ordinate |
|---------|----------|---------------|-----------|-------------|-------------|--------------------|--------|--------|---------------|
| | | Cut (SF) | Fill (SF) | Note 1 (CY) | Note 2 (CY) | Note 1 | Note 2 | Note 3 | |
| 11+26 | | 4.1 | 2.0 | 4 | 2 | 4 | 2 | 3 | 2 |
| 11+54 | 28 | 4.1 | 7.4 | 5 | 5 | 10 | 7 | 9 | 1 |
| 11+80 | 26 | 7.3 | 7.4 | 5 | 5 | 15 | 10 | 13 | 1 |
| 12+00 | 20 | 5.9 | 1.4 | 1 | 0 | 16 | 10 | 15 | 2 |
| 12+30 | 25 | 4.3 | 1.7 | 5 | 1 | 20 | 11 | 15 | 5 |
| 12+40 | 20 | 19.0 | 1.5 | 9 | 1 | 29 | 13 | 16 | 12 |
| 12+92 | 42 | 19.0 | 1.5 | 30 | 2 | 58 | 15 | 19 | 39 |
| | | Column totals | | 58 | | 15 | | | |

Notes:
 1 - Cut: Cut includes Salvaged/Unusable Pavement Material
 2 - Fill: Does not include Unusable Pavement Excavation volume
 3 - Cut: Cut includes Salvaged/Unusable Pavement Material
 4 - Fill: Does not include Unusable Pavement Excavation volume
 5 - Mass Ordinate: [Cut - Expanded Fill] (Fill Factor Adjusted)

| STATION | Distance | Area | | Incremental | | Cumulative Vol(CY) | | | Mass Ordinate |
|---------|----------|---------------|-----------|-------------|-------------|--------------------|--------|--------|---------------|
| | | Cut (SF) | Fill (SF) | Note 1 (CY) | Note 2 (CY) | Note 1 | Note 2 | Note 3 | |
| 27+50 | | 6.9 | 0.0 | 12 | 14 | 12 | 14 | 18 | -6 |
| 28+00 | 50 | 5.3 | 15.0 | 3 | 9 | 15 | 23 | 30 | 15 |
| 28+14 | 4 | 5.7 | 20.2 | 3 | 6 | 18 | 29 | 34 | -34 |
| 28+50 | 12 | 5.6 | 12.0 | 3 | 6 | 22 | 43 | 56 | -34 |
| 28+63 | 13 | 5.4 | 3.5 | 3 | 4 | 25 | 47 | 61 | -36 |
| 29+00 | 37 | 5.0 | 4.8 | 7 | 6 | 32 | 53 | 69 | -37 |
| 29+50 | 50 | 18.4 | 4.0 | 22 | 8 | 54 | 61 | 79 | -26 |
| 30+00 | 50 | 9.7 | 2.5 | 26 | 6 | 80 | 67 | 87 | -7 |
| 30+50 | 50 | 29.6 | 0.0 | 36 | 2 | 116 | 69 | 90 | 26 |
| 30+70 | 20 | 29.6 | 0.0 | 22 | 0 | 138 | 69 | 90 | 48 |
| | | Column totals | | 138 | | 69 | | | |

Notes:
 1 - Cut: Cut includes Salvaged/Unusable Pavement Material
 2 - Fill: Does not include Unusable Pavement Excavation volume
 3 - Cut: Cut includes Salvaged/Unusable Pavement Material
 4 - Fill: Does not include Unusable Pavement Excavation volume
 5 - Mass Ordinate: [Cut - Expanded Fill] (Fill Factor Adjusted)

Addendum No. 01
 ID 7630-00-72/73
 Revised Sheet 206
 November 5, 2020

| STATION | Distance | Area | | Incremental | | Cumulative Vol(CY) | | | Mass Ordinate |
|---------|----------|---------------|-----------|-------------|-------------|--------------------|--------|--------|---------------|
| | | Cut (SF) | Fill (SF) | Note 1 (CY) | Note 2 (CY) | Note 1 | Note 2 | Note 3 | |
| 8+07 | | 9.9 | 0.0 | 16 | 0 | 16 | 0 | 0 | 16 |
| 8+50 | 43 | 9.9 | 0.0 | 16 | 0 | 32 | 0 | 0 | 32 |
| 9+00 | 50 | 7.1 | 0.1 | 13 | 0 | 45 | 0 | 0 | 45 |
| 9+50 | 50 | 6.5 | 0.5 | 3 | 4 | 70 | 9 | 12 | 52 |
| 10+50 | 50 | 6.5 | 0.0 | 9 | 0 | 79 | 9 | 12 | 68 |
| 10+88 | 39 | 6.5 | 0.0 | 9 | 0 | 79 | 9 | 12 | 68 |
| | | Column totals | | 79 | | 9 | | | |

Notes:
 1 - Cut: Cut includes Salvaged/Unusable Pavement Material
 2 - Fill: Does not include Unusable Pavement Excavation volume
 3 - Cut: Cut includes Salvaged/Unusable Pavement Material
 4 - Fill: Does not include Unusable Pavement Excavation volume
 5 - Mass Ordinate: [Cut - Expanded Fill] (Fill Factor Adjusted)

| STATION | Distance | Area | | Incremental | | Cumulative Vol(CY) | | | Mass Ordinate |
|---------|----------|---------------|-----------|-------------|-------------|--------------------|--------|--------|---------------|
| | | Cut (SF) | Fill (SF) | Note 1 (CY) | Note 2 (CY) | Note 1 | Note 2 | Note 3 | |
| 15+25 | | 11.5 | 28.1 | 11 | 26 | 11 | 26 | 34 | -23 |
| 15+50 | 25 | 11.5 | 45.2 | 19 | 68 | 29 | 94 | 122 | -49 |
| 16+00 | 50 | 8.6 | 63.3 | 8 | 50 | 37 | 144 | 187 | -150 |
| 16+25 | 25 | 8.0 | 63.3 | 8 | 50 | 45 | 194 | 232 | -160 |
| 16+50 | 24 | 12.7 | 42.2 | 10 | 65 | 47 | 231 | 306 | -253 |
| 16+51 | 1 | 12.7 | 127.2 | 0 | 5 | 48 | 236 | 306 | -259 |
| 16+51 | 0 | 12.7 | 127.2 | 0 | 0 | 48 | 236 | 306 | -259 |
| 16+76 | 25 | 12.8 | 140.5 | 12 | 124 | 60 | 360 | 468 | -408 |
| 16+76 | 0 | 12.8 | 140.3 | 0 | 0 | 60 | 360 | 468 | -408 |
| 17+00 | 24 | 11.9 | 133.1 | 11 | 122 | 71 | 481 | 625 | -555 |
| 17+50 | 50 | 11.7 | 69.8 | 22 | 188 | 93 | 669 | 870 | -777 |
| 17+97 | 17 | 12.2 | 53.0 | 8 | 39 | 100 | 708 | 920 | -820 |
| 17+96 | 29 | 6.3 | 19.3 | 10 | 38 | 110 | 746 | 970 | -860 |
| | | Column totals | | 110 | | 746 | | | |

Notes:
 1 - Cut: Cut includes Salvaged/Unusable Pavement Material
 2 - Fill: Does not include Unusable Pavement Excavation volume
 3 - Cut: Cut includes Salvaged/Unusable Pavement Material
 4 - Fill: Does not include Unusable Pavement Excavation volume
 5 - Mass Ordinate: [Cut - Expanded Fill] (Fill Factor Adjusted)

Addendum No. 01
 ID 7630-00-72/73
 Revised Sheet 208
 November 5, 2020

DIVISION 1-10/CAT. 0010 (STA 148+87 - STA 154+98) - STAGE 1 CONSTRUCTION - STH 29

| STATION | Distance | Area | | Incremental | | Cumulative Vol (CY) | | | Mass Ordinate |
|---------|----------|---------------|-----------|-------------|-----------|---------------------|-------|-------------------|---------------|
| | | Cut (SF) | Fill (SF) | Cut (CY) | Fill (CY) | 1,000 | 1,000 | Expanded Fill 1,3 | |
| 148+87 | | 5.6 | 0.8 | | | | | | Note 5 |
| 150+00 | 13 | 5.8 | 1.5 | 3 | 1 | 3 | 1 | 1 | 2 |
| 150+50 | 50 | 5.8 | 6.7 | 11 | 8 | 13 | 8 | 11 | 3 |
| 151+00 | 50 | 5.4 | 15.3 | 10 | 20 | 24 | 28 | 37 | -13 |
| 151+06 | 6 | 5.5 | 16.4 | 1 | 4 | 25 | 32 | 41 | -16 |
| 151+10 | 25 | 5.2 | 17.7 | 1 | 3 | 26 | 35 | 44 | -21 |
| 151+50 | 19 | 5.7 | 4.1 | 4 | 6 | 34 | 51 | 67 | -32 |
| 151+56 | 6 | 5.7 | 4.0 | 1 | 1 | 35 | 52 | 68 | -32 |
| 152+00 | 44 | 5.8 | 3.5 | 9 | 6 | 45 | 58 | 76 | -31 |
| 152+50 | 50 | 6.5 | 1.3 | 11 | 4 | 56 | 63 | 82 | -25 |
| 153+00 | 50 | 5.1 | 0.2 | 11 | 1 | 67 | 64 | 83 | -17 |
| 153+36 | 36 | 5.1 | 21.7 | 7 | 15 | 74 | 79 | 102 | -29 |
| 153+90 | 14 | 5.2 | 44.6 | 3 | 17 | 76 | 96 | 123 | -48 |
| 153+61 | 1 | 5.3 | 42.4 | 2 | 16 | 78 | 114 | 148 | -69 |
| 154+00 | 14 | 4.4 | 45.4 | 2 | 15 | 80 | 129 | 168 | -98 |
| 154+00 | 14 | 4.4 | 42.1 | 2 | 23 | 86 | 179 | 233 | -147 |
| 154+98 | 48 | 6.5 | 9.4 | 10 | 28 | 105 | 267 | 348 | -243 |
| | | Column totals | | 105 | 267 | | | | |

Notes:
 1 - Cut/ Cut includes Salvaged/Unusable Pavement Material
 2 - Fill/ Does not include Unusable Pavement Excavation volume
 3 - Cut/ Cut includes Salvaged/Unusable Pavement Material
 4 - Fill/ Does not include Unusable Pavement Excavation volume
 5 - Mass Ordinate (Cut - Expanded Fill) (Fill Factor Adjusted)

DIVISION 1-9/CAT. 0010 (STA 140+60 - STA 147+92) - STAGE 1 CONSTRUCTION - STH 29

| STATION | Distance | Area | | Incremental | | Cumulative Vol (CY) | | | Mass Ordinate |
|---------|----------|---------------|-----------|-------------|-----------|---------------------|-------|-------------------|---------------|
| | | Cut (SF) | Fill (SF) | Cut (CY) | Fill (CY) | 1,000 | 1,000 | Expanded Fill 1,3 | |
| 140+60 | | 7.5 | 2.8 | | | | | | Note 5 |
| 141+00 | 40 | 7.5 | 6.3 | 11 | 7 | 11 | 7 | 9 | 2 |
| 141+50 | 50 | 8.5 | 9.2 | 15 | 14 | 26 | 21 | 27 | -1 |
| 141+69 | 19 | 9.0 | 10.9 | 6 | 7 | 32 | 28 | 36 | -4 |
| 142+00 | 46 | 8.3 | 9.0 | 2 | 2 | 40 | 30 | 41 | -3 |
| 142+19 | 19 | 7.7 | 2.3 | 6 | 4 | 46 | 43 | 56 | -9 |
| 142+50 | 31 | 7.2 | 2.0 | 9 | 2 | 56 | 46 | 59 | -3 |
| 143+00 | 50 | 5.6 | 2.8 | 12 | 4 | 68 | 50 | 65 | 3 |
| 143+50 | 50 | 3.7 | 31.9 | 9 | 32 | 77 | 82 | 107 | -30 |
| 143+67 | 17 | 3.5 | 7.5 | 2 | 12 | 79 | 95 | 123 | -44 |
| 144+00 | 33 | 4.1 | 13.7 | 5 | 13 | 84 | 108 | 140 | -56 |
| 144+50 | 50 | 5.4 | 9.1 | 9 | 21 | 92 | 129 | 167 | -75 |
| 145+00 | 50 | 7.0 | 6.0 | 13 | 11 | 105 | 140 | 182 | -82 |
| 145+50 | 50 | 7.0 | 6.0 | 13 | 11 | 116 | 151 | 199 | -82 |
| 146+00 | 50 | 7.0 | 75.6 | 13 | 76 | 129 | 228 | 287 | -168 |
| 146+08 | 8 | 6.8 | 156.3 | 2 | 34 | 131 | 263 | 341 | -210 |
| 146+23 | 15 | 7.0 | 61.2 | 4 | 60 | 135 | 323 | 420 | -285 |
| 146+48 | 25 | 8.3 | 49.8 | 7 | 51 | 142 | 374 | 487 | -345 |
| 146+50 | 2 | 8.5 | 50.2 | 1 | 4 | 143 | 378 | 492 | -349 |
| 146+73 | 23 | 5.0 | 50.9 | 6 | 35 | 149 | 413 | 537 | -388 |
| 147+00 | 27 | 5.7 | 22.8 | 5 | 27 | 154 | 440 | 571 | -418 |
| 147+00 | 27 | 3.8 | 22.2 | 1 | 32 | 155 | 472 | 603 | -459 |
| 147+92 | 92 | 3.9 | 5.3 | 8 | 14 | 172 | 486 | 631 | -459 |
| | | Column totals | | 172 | 486 | | | | |

Notes:
 1 - Cut/ Cut includes Salvaged/Unusable Pavement Material
 2 - Fill/ Does not include Unusable Pavement Excavation volume
 3 - Cut/ Cut includes Salvaged/Unusable Pavement Material
 4 - Fill/ Does not include Unusable Pavement Excavation volume
 5 - Mass Ordinate (Cut - Expanded Fill) (Fill Factor Adjusted)



Proposal Schedule of Items

Proposal ID: 20201110032 Project(s): 7630-00-72, 7630-00-73

Federal ID(s): WISC 2020557, WISC 2020558

SECTION: 0001 Contract Items

Alt Set ID: Alt Mbr ID:

| Proposal Line Number | Item ID Description | Approximate Quantity and Units | Unit Price | Bid Amount |
|----------------------|--|--------------------------------|------------|------------|
| 0002 | 201.0105 Clearing | 47.000 STA | _____. | _____. |
| 0004 | 201.0205 Grubbing | 47.000 STA | _____. | _____. |
| 0006 | 203.0100 Removing Small Pipe Culverts | 4.000 EACH | _____. | _____. |
| 0008 | 203.0200 Removing Old Structure (station) 001. 116+08SC | LS | LUMP SUM | _____. |
| 0010 | 203.0200 Removing Old Structure (station) 002. 146+08SC | LS | LUMP SUM | _____. |
| 0012 | 203.0200 Removing Old Structure (station) 003. 152+75SC | LS | LUMP SUM | _____. |
| 0014 | 203.0200 Removing Old Structure (station) 004. 9+00P | LS | LUMP SUM | _____. |
| 0016 | 204.0120 Removing Asphaltic Surface Milling | 81,650.000 SY | _____. | _____. |
| 0018 | 204.0150 Removing Curb & Gutter | 920.000 LF | _____. | _____. |
| 0020 | 204.0155 Removing Concrete Sidewalk | 249.000 SY | _____. | _____. |
| 0022 | 204.0165 Removing Guardrail | 7,477.000 LF | _____. | _____. |
| 0024 | 204.0170 Removing Fence | 100.000 LF | _____. | _____. |
| 0026 | 205.0100 Excavation Common | 2,041.000 CY | _____. | _____. |
| 0028 | 206.2000 Excavation for Structures Culverts (structure) 001. C-55-1891 | LS | LUMP SUM | _____. |
| 0030 | 206.2000 Excavation for Structures Culverts (structure) 002. C-55-1001 | LS | LUMP SUM | _____. |



Proposal Schedule of Items

Proposal ID: 20201110032 Project(s): 7630-00-72, 7630-00-73

Federal ID(s): WISC 2020557, WISC 2020558

SECTION: 0001 Contract Items

Alt Set ID: Alt Mbr ID:

| Proposal Line Number | Item ID Description | Approximate Quantity and Units | Unit Price | Bid Amount |
|----------------------|---|--------------------------------|------------|------------|
| 0032 | 206.2000 Excavation for Structures Culverts (structure) 003. C-55-1893 | LS | LUMP SUM | _____. |
| 0034 | 208.0100 Borrow | 7,448.000 CY | _____. | _____. |
| 0036 | 210.2500 Backfill Structure Type B | 445.000 TON | _____. | _____. |
| 0038 | 211.0100 Prepare Foundation for Asphaltic Paving (project) 001. 7630-00-72 | LS | LUMP SUM | _____. |
| 0040 | 213.0100 Finishing Roadway (project) 001. 7630-00-72 | 1.000 EACH | _____. | _____. |
| 0042 | 305.0110 Base Aggregate Dense 3/4-Inch | 1,360.000 TON | _____. | _____. |
| 0044 | 305.0120 Base Aggregate Dense 1 1/4-Inch | 6,930.000 TON | _____. | _____. |
| 0046 | 305.0500 Shaping Shoulders | 322.000 STA | _____. | _____. |
| 0048 | 311.0115 Breaker Run | 46.000 CY | _____. | _____. |
| 0050 | 415.0070 Concrete Pavement 7-Inch | 14.000 SY | _____. | _____. |
| 0052 | 415.0410 Concrete Pavement Approach Slab | 75.000 SY | _____. | _____. |
| 0054 | 416.0160 Concrete Driveway 6-Inch | 37.000 SY | _____. | _____. |
| 0056 | 416.0610 Drilled Tie Bars | 13.000 EACH | _____. | _____. |
| 0058 | 416.1010 Concrete Surface Drains | 4.000 CY | _____. | _____. |
| 0060 | 455.0605 Tack Coat | 11,695.000 GAL | _____. | _____. |
| 0062 | 460.0105.S HMA Percent Within Limits (PWL) Test Strip Volumetrics | 1.000 EACH | _____. | _____. |



Proposal Schedule of Items

Proposal ID: 20201110032 Project(s): 7630-00-72, 7630-00-73

Federal ID(s): WISC 2020557, WISC 2020558

SECTION: 0001 Contract Items

Alt Set ID: Alt Mbr ID:

| Proposal Line Number | Item ID Description | Approximate Quantity and Units | Unit Price | Bid Amount |
|----------------------|--|--------------------------------|------------|------------|
| 0064 | 460.0110.S HMA Percent Within Limits (PWL) Test Strip Density | 2.000 EACH | _____. | _____. |
| 0066 | 460.2005 Incentive Density PWL HMA Pavement | 10,200.000 DOL | 1.00000 | 10,200.00 |
| 0068 | 460.2007 Incentive Density HMA Pavement Longitudinal Joints | 22,600.000 DOL | 1.00000 | 22,600.00 |
| 0070 | 460.2010 Incentive Air Voids HMA Pavement | 15,170.000 DOL | 1.00000 | 15,170.00 |
| 0072 | 460.6645 HMA Pavement 5 MT 58-34 V | 15,080.000 TON | _____. | _____. |
| 0074 | 465.0105 Asphaltic Surface | 410.000 TON | _____. | _____. |
| 0076 | 465.0110 Asphaltic Surface Patching | 50.000 TON | _____. | _____. |
| 0078 | 465.0120 Asphaltic Surface Driveways and Field Entrances | 90.000 TON | _____. | _____. |
| 0080 | 465.0475 Asphalt Centerline Rumble Strips 2-Lane Rural | 15,110.000 LF | _____. | _____. |
| 0082 | 502.3200 Protective Surface Treatment | 857.000 SY | _____. | _____. |
| 0084 | 502.3210 Pigmented Surface Sealer | 187.000 SY | _____. | _____. |
| 0086 | 502.4205 Adhesive Anchors No. 5 Bar | 112.000 EACH | _____. | _____. |
| 0088 | 504.0100 Concrete Masonry Culverts | 63.000 CY | _____. | _____. |
| 0090 | 505.0400 Bar Steel Reinforcement HS Structures | 3,310.000 LB | _____. | _____. |
| 0092 | 505.0600 Bar Steel Reinforcement HS Coated Structures | 4,700.000 LB | _____. | _____. |



Proposal Schedule of Items

Proposal ID: 20201110032 Project(s): 7630-00-72, 7630-00-73

Federal ID(s): WISC 2020557, WISC 2020558

SECTION: 0001 Contract Items

Alt Set ID: Alt Mbr ID:

| Proposal Line Number | Item ID Description | Approximate Quantity and Units | Unit Price | Bid Amount |
|----------------------|--|--------------------------------|------------|------------|
| 0094 | 509.0301 Preparation Decks Type 1 | 10.000 SY | _____. | _____. |
| 0096 | 509.0302 Preparation Decks Type 2 | 10.000 SY | _____. | _____. |
| 0098 | 509.0500 Cleaning Decks | 857.000 SY | _____. | _____. |
| 0100 | 509.1500 Concrete Surface Repair | 10.000 SF | _____. | _____. |
| 0102 | 509.2000 Full-Depth Deck Repair | 1.000 SY | _____. | _____. |
| 0104 | 509.2500 Concrete Masonry Overlay Decks | 48.000 CY | _____. | _____. |
| 0106 | 511.1200 Temporary Shoring (structure) 001. R-47-22 | 780.000 SF | _____. | _____. |
| 0108 | 511.1200 Temporary Shoring (structure) 002. C-55-1001 | 660.000 SF | _____. | _____. |
| 0110 | 511.1200 Temporary Shoring (structure) 003. C-55-1893 | 500.000 SF | _____. | _____. |
| 0112 | 511.1200 Temporary Shoring (structure) 004. C-55-1891 | 660.000 SF | _____. | _____. |
| 0114 | 513.2001 Railing Pipe | 192.000 LF | _____. | _____. |
| 0116 | 516.0500 Rubberized Membrane Waterproofing | 58.000 SY | _____. | _____. |
| 0118 | 520.1015 Apron Endwalls for Culvert Pipe 15-Inch | 2.000 EACH | _____. | _____. |
| 0120 | 520.1024 Apron Endwalls for Culvert Pipe 24-Inch | 2.000 EACH | _____. | _____. |
| 0122 | 520.3524 Culvert Pipe Class III-B 24-Inch | 95.000 LF | _____. | _____. |
| 0124 | 520.5115 Culvert Pipe Class V 15-Inch | 33.000 LF | _____. | _____. |



Proposal Schedule of Items

Proposal ID: 20201110032 Project(s): 7630-00-72, 7630-00-73

Federal ID(s): WISC 2020557, WISC 2020558

SECTION: 0001 Contract Items

Alt Set ID: Alt Mbr ID:

| Proposal Line Number | Item ID Description | Approximate Quantity and Units | Unit Price | Bid Amount |
|----------------------|---|--------------------------------|------------|------------|
| 0126 | 520.8700 Cleaning Culvert Pipes | 3.000 EACH | _____. | _____. |
| 0128 | 522.0424 Culvert Pipe Reinforced Concrete Class IV 24-Inch | 91.000 LF | _____. | _____. |
| 0130 | 522.0530 Culvert Pipe Reinforced Concrete Class V 30-Inch | 55.000 LF | _____. | _____. |
| 0132 | 522.1024 Apron Endwalls for Culvert Pipe Reinforced Concrete 24-Inch | 2.000 EACH | _____. | _____. |
| 0134 | 522.1030 Apron Endwalls for Culvert Pipe Reinforced Concrete 30-Inch | 2.000 EACH | _____. | _____. |
| 0136 | 601.0411 Concrete Curb & Gutter 30-Inch Type D | 869.000 LF | _____. | _____. |
| 0138 | 601.0588 Concrete Curb & Gutter 4-Inch Sloped 36-Inch Type TBT | 70.000 LF | _____. | _____. |
| 0140 | 601.0590 Concrete Curb & Gutter 4-Inch Sloped 36-Inch Type TBTT | 30.000 LF | _____. | _____. |
| 0142 | 602.0410 Concrete Sidewalk 5-Inch | 1,675.000 SF | _____. | _____. |
| 0144 | 602.0515 Curb Ramp Detectable Warning Field Natural Patina | 10.000 SF | _____. | _____. |
| 0146 | 603.8000 Concrete Barrier Temporary Precast Delivered | 562.500 LF | _____. | _____. |
| 0148 | 603.8125 Concrete Barrier Temporary Precast Installed | 1,125.000 LF | _____. | _____. |
| 0150 | 606.0200 Riprap Medium | 30.000 CY | _____. | _____. |
| 0152 | 606.0300 Riprap Heavy | 75.000 CY | _____. | _____. |



Proposal Schedule of Items

Proposal ID: 20201110032 Project(s): 7630-00-72, 7630-00-73

Federal ID(s): WISC 2020557, WISC 2020558

SECTION: 0001 Contract Items

Alt Set ID: Alt Mbr ID:

| Proposal Line Number | Item ID Description | Approximate Quantity and Units | Unit Price | Bid Amount |
|----------------------|--|--------------------------------|------------|------------|
| 0154 | 611.0430 Reconstructing Inlets | 2.000 EACH | _____. | _____. |
| 0156 | 611.8110 Adjusting Manhole Covers | 1.000 EACH | _____. | _____. |
| 0158 | 611.8115 Adjusting Inlet Covers | 1.000 EACH | _____. | _____. |
| 0160 | 611.8120.S Cover Plates Temporary | 1.000 EACH | _____. | _____. |
| 0162 | 612.0406 Pipe Underdrain Wrapped 6-Inch | 210.000 LF | _____. | _____. |
| 0164 | 614.0115 Anchorages for Steel Plate Beam Guard Type 2 | 3.000 EACH | _____. | _____. |
| 0166 | 614.0305 Steel Plate Beam Guard Class A | 180.500 LF | _____. | _____. |
| 0168 | 614.0370 Steel Plate Beam Guard Energy Absorbing Terminal | 1.000 EACH | _____. | _____. |
| 0170 | 614.2300 MGS Guardrail 3 | 2,178.200 LF | _____. | _____. |
| 0172 | 614.2330 MGS Guardrail 3 K | 3,653.100 LF | _____. | _____. |
| 0174 | 614.2350 MGS Guardrail Short Radius | 275.000 LF | _____. | _____. |
| 0176 | 614.2500 MGS Thrie Beam Transition | 160.000 LF | _____. | _____. |
| 0178 | 614.2610 MGS Guardrail Terminal EAT | 21.000 EACH | _____. | _____. |
| 0180 | 614.2630 MGS Guardrail Short Radius Terminal | 5.000 EACH | _____. | _____. |
| 0182 | 616.0100 Fence Woven Wire (height) 001. 4-FT | 100.000 LF | _____. | _____. |
| 0184 | 616.0700.S Fence Safety | 9,350.000 LF | _____. | _____. |



Proposal Schedule of Items

Proposal ID: 20201110032 Project(s): 7630-00-72, 7630-00-73

Federal ID(s): WISC 2020557, WISC 2020558

SECTION: 0001 Contract Items

Alt Set ID: Alt Mbr ID:

| Proposal Line Number | Item ID Description | Approximate Quantity and Units | Unit Price | Bid Amount |
|----------------------|---|--------------------------------|------------|------------|
| 0186 | 618.0100 Maintenance And Repair of Haul Roads (project) 001. 7630-00-72 | 1.000 EACH | _____. | _____. |
| 0188 | 619.1000 Mobilization | 1.000 EACH | _____. | _____. |
| 0190 | 624.0100 Water | 280.000 MGAL | _____. | _____. |
| 0192 | 625.0500 Salvaged Topsoil | 21,000.000 SY | _____. | _____. |
| 0194 | 627.0200 Mulching | 600.000 SY | _____. | _____. |
| 0196 | 628.1504 Silt Fence | 8,000.000 LF | _____. | _____. |
| 0198 | 628.1520 Silt Fence Maintenance | 24,000.000 LF | _____. | _____. |
| 0200 | 628.1905 Mobilizations Erosion Control | 6.000 EACH | _____. | _____. |
| 0202 | 628.1910 Mobilizations Emergency Erosion Control | 3.000 EACH | _____. | _____. |
| 0204 | 628.2004 Erosion Mat Class I Type B | 9,560.000 SY | _____. | _____. |
| 0206 | 628.2008 Erosion Mat Urban Class I Type B | 1,895.000 SY | _____. | _____. |
| 0208 | 628.2039 Erosion Mat Class III Type D | 9,100.000 SY | _____. | _____. |
| 0210 | 628.6505 Soil Stabilizer Type A | 2.500 ACRE | _____. | _____. |
| 0212 | 628.7015 Inlet Protection Type C | 2.000 EACH | _____. | _____. |
| 0214 | 628.7504 Temporary Ditch Checks | 1,000.000 LF | _____. | _____. |
| 0216 | 628.7555 Culvert Pipe Checks | 165.000 EACH | _____. | _____. |



Proposal Schedule of Items

Proposal ID: 20201110032 Project(s): 7630-00-72, 7630-00-73

Federal ID(s): WISC 2020557, WISC 2020558

SECTION: 0001 Contract Items

Alt Set ID: Alt Mbr ID:

| Proposal Line Number | Item ID Description | Approximate Quantity and Units | Unit Price | Bid Amount |
|----------------------|--|--------------------------------|------------|------------|
| 0218 | 628.7560 Tracking Pads | 40.000 EACH | _____. | _____. |
| 0220 | 629.0205 Fertilizer Type A | 18.000 CWT | _____. | _____. |
| 0222 | 630.0120 Seeding Mixture No. 20 | 560.000 LB | _____. | _____. |
| 0224 | 630.0130 Seeding Mixture No. 30 | 160.000 LB | _____. | _____. |
| 0226 | 630.0500 Seed Water | 590.000 MGAL | _____. | _____. |
| 0228 | 633.5200 Markers Culvert End | 8.000 EACH | _____. | _____. |
| 0230 | 638.2102 Moving Signs Type II | 24.000 EACH | _____. | _____. |
| 0232 | 638.4000 Moving Small Sign Supports | 22.000 EACH | _____. | _____. |
| 0234 | 642.5001 Field Office Type B | 1.000 EACH | _____. | _____. |
| 0236 | 643.0300 Traffic Control Drums | 29,820.000 DAY | _____. | _____. |
| 0238 | 643.0410 Traffic Control Barricades Type II | 15.000 DAY | _____. | _____. |
| 0240 | 643.0420 Traffic Control Barricades Type III | 615.000 DAY | _____. | _____. |
| 0242 | 643.0705 Traffic Control Warning Lights Type A | 1,110.000 DAY | _____. | _____. |
| 0244 | 643.0715 Traffic Control Warning Lights Type C | 2,290.000 DAY | _____. | _____. |
| 0246 | 643.0900 Traffic Control Signs | 16,650.000 DAY | _____. | _____. |
| 0248 | 643.0920 Traffic Control Covering Signs Type II | 15.000 EACH | _____. | _____. |
| 0250 | 643.1000 Traffic Control Signs Fixed Message | 9.000 SF | _____. | _____. |



Proposal Schedule of Items

Proposal ID: 20201110032 Project(s): 7630-00-72, 7630-00-73

Federal ID(s): WISC 2020557, WISC 2020558

SECTION: 0001 Contract Items

Alt Set ID: Alt Mbr ID:

| Proposal Line Number | Item ID Description | Approximate Quantity and Units | Unit Price | Bid Amount |
|----------------------|--|--------------------------------|------------|------------|
| 0252 | 643.1050 Traffic Control Signs PCMS | 42.000 DAY | _____. | _____. |
| 0254 | 643.5000 Traffic Control | 1.000 EACH | _____. | _____. |
| 0256 | 644.1420 Temporary Pedestrian Surface Plywood | 125.000 SF | _____. | _____. |
| 0258 | 644.1601 Temporary Pedestrian Curb Ramp | 20.000 DAY | _____. | _____. |
| 0260 | 644.1810 Temporary Pedestrian Barricade | 200.000 LF | _____. | _____. |
| 0262 | 645.0105 Geotextile Type C | 127.000 SY | _____. | _____. |
| 0264 | 645.0120 Geotextile Type HR | 80.000 SY | _____. | _____. |
| 0266 | 646.1040 Marking Line Grooved Wet Ref Epoxy 4-Inch | 46,060.000 LF | _____. | _____. |
| 0268 | 646.3040 Marking Line Grooved Wet Ref Epoxy 8-Inch | 340.000 LF | _____. | _____. |
| 0272 | 646.6120 Marking Stop Line Epoxy 18-Inch | 155.000 LF | _____. | _____. |
| 0274 | 646.9000 Marking Removal Line 4-Inch | 1,810.000 LF | _____. | _____. |
| 0276 | 649.0105 Temporary Marking Line Paint 4-Inch | 18,000.000 LF | _____. | _____. |
| 0278 | 649.0150 Temporary Marking Line Removable Tape 4-Inch | 5,540.000 LF | _____. | _____. |
| 0280 | 649.0850 Temporary Marking Stop Line Removable Tape 18-Inch | 50.000 LF | _____. | _____. |
| 0282 | 650.4500 Construction Staking Subgrade | 7,686.000 LF | _____. | _____. |
| 0284 | 650.5000 Construction Staking Base | 7,686.000 LF | _____. | _____. |



Proposal Schedule of Items

Proposal ID: 20201110032 Project(s): 7630-00-72, 7630-00-73

Federal ID(s): WISC 2020557, WISC 2020558

SECTION: 0001 Contract Items

Alt Set ID: Alt Mbr ID:

| Proposal Line Number | Item ID Description | Approximate Quantity and Units | Unit Price | Bid Amount |
|----------------------|---|--------------------------------|------------|------------|
| 0286 | 650.5500 Construction Staking Curb Gutter and Curb & Gutter | 969.000 LF | _____. | _____. |
| 0288 | 650.6000 Construction Staking Pipe Culverts | 4.000 EACH | _____. | _____. |
| 0290 | 650.7000 Construction Staking Concrete Pavement | 30.000 LF | _____. | _____. |
| 0292 | 650.8000 Construction Staking Resurfacing Reference | 22,592.000 LF | _____. | _____. |
| 0294 | 650.9000 Construction Staking Curb Ramps | 1.000 EACH | _____. | _____. |
| 0296 | 650.9910 Construction Staking Supplemental Control (project) 001. 7630-00-72 | LS | LUMP SUM | _____. |
| 0298 | 650.9920 Construction Staking Slope Stakes | 7,686.000 LF | _____. | _____. |
| 0300 | 661.0100 Temporary Traffic Signals for Bridges (structure) 001. B-47-0775 | LS | LUMP SUM | _____. |
| 0302 | 690.0150 Sawing Asphalt | 1,535.000 LF | _____. | _____. |
| 0304 | 690.0250 Sawing Concrete | 15.000 LF | _____. | _____. |
| 0306 | 715.0415 Incentive Strength Concrete Pavement | 45.000 DOL | | _____. |
| 0308 | 740.0440 Incentive IRI Ride | 17,140.000 DOL | 1.00000 | 17,140.00 |
| 0310 | ASP.1T0A On-the-Job Training Apprentice at \$5.00/HR | 600.000 HRS | 5.00000 | 3,000.00 |
| 0312 | ASP.1T0G On-the-Job Training Graduate at \$5.00/HR | 630.000 HRS | 5.00000 | 3,150.00 |
| 0314 | SPV.0090 Special 001. Cleaning Ditch | 900.000 LF | _____. | _____. |



Proposal Schedule of Items

Proposal ID: 20201110032 Project(s): 7630-00-72, 7630-00-73

Federal ID(s): WISC 2020557, WISC 2020558

SECTION: 0001 Contract Items

Alt Set ID: Alt Mbr ID:

| Proposal Line Number | Item ID Description | Approximate Quantity and Units | Unit Price | Bid Amount |
|----------------------|---|--------------------------------|---------------|--------------------------|
| 0316 | SPV.0090 Special 002. Lane Repair | 3,400.000 LF | _____. | _____. |
| 0318 | SPV.0090 Special 003. Turtle Fence | 1,000.000 LF | _____. | _____. |
| 0320 | SPV.0105 Special 001. Milling and Removing Temporary Joint | LS | LUMP SUM | _____. |
| 0322 | SPV.0105 Special 002. Material Transfer Vehicle | LS | LUMP SUM | _____. |
| 0324 | SPV.0105 Special 003. Box Culvert Joint Repair C-55-1892 | LS | LUMP SUM | _____. |
| 0326 | SPV.0165 Special 001. Wall Modular Block Mechanically Stabilized Earth R-47-22 | 1,000.000 SF | _____. | _____. |
| 0328 | 646.1020 Marking Line Epoxy 4-Inch | 34,160.000 LF | _____. | _____. |
| Section: 0001 | | | Total: | _____. |
| | | | | Total Bid: _____. |

