



Wisconsin Department of Transportation

November 19, 2020

Division of Transportation Systems Development
 Bureau of Project Development
 4822 Madison Yards Way, 4th Floor South
 Madison, WI 53705

Telephone: (608) 266-1631
 Facsimile (FAX): (608) 266-8459

NOTICE TO ALL CONTRACTORS:

Proposal #18: 4090-06-71, WISC 2021 036
Village of Campbellsport
Baumann Street – Triple S Road
STH 67
Fond Du Lac County

4090-06-71, WISC 2021 036
Village of Campbellsport
Baumann Street – Triple S Road
STH 67
Fond Du Lac County

Letting of December 8, 2020

This is Addendum No. 01, which provides for the following:

Special Provisions:

Revised Special Provisions	
Article No.	Description
24	Removing Beam Guard Retaining Wall, Item 204.9090.S.001

Added Special Provisions	
Article No.	Description
64	Removing Concrete Raceway at Utility Crossing, Item 204.9060.S.001; Removing Concrete Raceway at Roadway Crossing, Item 204.9090.S.002
66	Temporary Salvaged United States Postal Service Cluster Box, Item SPV.0060.120; Permanent Salvaged United States Postal Service Cluster Box, Item SPV.0060.121

Schedule of Items:

Added Bid Item Quantities					
Bid Item	Item Description	Unit	Old Quantity	Revised Quantity	Proposal Total
204.9060.S.001	Removing Concrete Raceway at Utility Crossing	EACH	0	1	1
204.9090.S.002	Removing Concrete Raceway at Roadway Crossing	LF	0	50	50
608.3012	Storm Sewer Pipe Class III-A 12-Inch	LF	0	1,841	1,841
608.3015	Storm Sewer Pipe Class III-A 15-Inch	LF	0	318	318
608.3018	Storm Sewer Pipe Class III-A 18-Inch	LF	0	1,428	1,428
608.3024	Storm Sewer Pipe Class III-A 24-Inch	LF	0	2,571	2,571
608.3030	Storm Sewer Pipe Class III-A 30-Inch	LF	0	25	25

608.3036	Storm Sewer Pipe Class III-A 36-Inch	LF	0	55	55
SPV.0060.120	Temporary Salvaged United States Postal Service Cluster Box	EACH	0	9	9
SPV.0060.121	Permanent Salvaged United States Postal Service Cluster Box	EACH	0	9	9

Deleted Bid Item Quantities					
Bid Item	Item Description	Unit	Old Quantity	Revised Quantity	Proposal Total
608.0312	Storm Sewer Pipe Reinforced Concrete Class III 12-Inch	LF	1,841	-1,841	0
608.0315	Storm Sewer Pipe Reinforced Concrete Class III 15-Inch	LF	318	-318	0
608.0318	Storm Sewer Pipe Reinforced Concrete Class III 18-Inch	LF	1,428	-1,428	0
608.0324	Storm Sewer Pipe Reinforced Concrete Class III 24-Inch	LF	2,571	-2,571	0
608.0330	Storm Sewer Pipe Reinforced Concrete Class III 30-Inch	LF	25	-25	0
608.0336	Storm Sewer Pipe Reinforced Concrete Class III 36-Inch	LF	55	-55	0

Plan Sheets:

Revised Plan Sheets	
Plan Sheet	Plan Sheet Title (brief description of changes to sheet)
29-48	Removals_New Bid items added to Legend
32	Removals_Callouts for Temporary Salvaged United States Postal Service Cluster Box and Permanent Salvaged United States Postal Service Cluster Box added at station 1018+64.
34	Removals_Callouts for Temporary Salvaged United States Postal Service Cluster Box and Permanent Salvaged United States Postal Service Cluster Box added at station 1032+64.
35	Removals_Callouts for Temporary Salvaged United States Postal Service Cluster Box and Permanent Salvaged United States Postal Service Cluster Box added at station 1040+35.
37	Removals_Callouts for Temporary Salvaged United States Postal Service Cluster Box and Permanent Salvaged United States Postal Service Cluster Box added at station 1049+15.
38	Removals_Callouts for Temporary Salvaged United States Postal Service Cluster Box and Permanent Salvaged United States Postal Service Cluster Box added at station 1054+94.
39	Removals_Callouts for Temporary Salvaged United States Postal Service Cluster Box and Permanent Salvaged United States Postal Service Cluster Box added at station 1065+72.
40	Removals_Callouts for Removing Concrete Raceway at Utility Crossing and Removing Concrete Raceway at Roadway Crossing added at station 1071+95.
102-118	Storm Sewer_Many storm sewer_pipes originally labeled as SSPRC in the profile view have be revised to SSPIII-A be reflect the bid item change.
183	Miscellaneous Quantities_Removing Concrete Raceway Table added to sheet. Tables arranged to correct order based on Bid item Number. Bid item number of "Removing Beam Guard Retaining Wall" revised to 204.9090.S.02.
193-196	Miscellaneous Quantities_Storm Sewer Pipe Tables revised to show bid item change. Storm Sewer Pipe Reinforced Concrete Class III updated to Storm Sewer Pipe Class III-A for pipe sizes 12-inch thru 36-inch.
221	Miscellaneous Quantities_United States Postal Service Cluster Box Table added to sheet. Tables arranged to correct order based on Bid Item Number. Tables for Seismograph and Crack and Damage Survey items were removed from this sheet and added to the 4090-06-72 MQ sheets.

554	Miscellaneous Quantities Tables for Seismograph and Crack and Damage Survey items were added to this sheet.
-----	---

The responsibility for notifying potential subcontractors and suppliers of these changes remains with the prime contractor.

Sincerely,

Mike Coleman

Proposal Development Specialist
Proposal Management Section

ADDENDUM NO. 01

4090-06-71/72

November 19, 2020

Special Provisions

24. Removing Beam Guard Retaining Wall, Item 204.9090.S.001.

Replace entire article language with the following:

A Description

This special provision describes removing Beam Guard Retaining Wall conforming to standard spec 204.

B (Vacant)

C Construction

Removal of existing beam guard retaining walls shall include all components including railing, concrete, posts, cabling, deadmen, anchors, etc.

D Measurement

The department will measure Removing Beam Guard Retaining Wall in linear feet, acceptably completed.

E Payment

Add the following to standard spec 204.5:

ITEM NUMBER	DESCRIPTION	UNIT
204.9090.S.001	Removing Beam Guard Retaining Wall	LF

64. Removing Concrete Raceway at Utility Crossing, Item 204.9060.S.002; Removing Concrete Raceway at Roadway Crossing, Item 204.9090.S.01.

A Description

This special provision describes removing Concrete Raceway at Utility Crossing and Removing Concrete Raceway at Roadway Crossing conforming to standard spec 204.

B (Vacant)

C Construction

Where an existing concrete raceway affects the installation of any proposed utility, the concrete raceway shall be removed entirely and to the extent as to which the utility can be installed normally without impact.

D Measurement

The department will measure Removing Concrete Raceway at Utility Crossing as each individual crossing that requires entire raceway to be removed for installation of either storm sewer, watermain, or sanitary sewer. The Department will measure Removing Concrete Raceway at Roadway Crossing by the linear foot acceptably completed. Removing Concrete Raceway at Roadway Crossing shall be measured along the centerline of the raceway structure.

E Payment

Add the following to standard spec 204.5:

ITEM NUMBER	DESCRIPTION	UNIT
204.9060.S.001	Removing Concrete Raceway at Utility Crossing	EA
204.9090.S.002	Removing Concrete Raceway at Roadway Crossing	LF

**65. Temporary Salvaged United States Postal Service Cluster Box, Item SPV.0060.120;
Permanent Salvaged United States Postal Service Cluster Box, Item SPV.0060.121.**

A Description

This special provision describes the removal, relocation, and re-installation of salvaged United States Postal Service (USPS) cluster boxes. Existing cluster boxes are to be removed prior to construction and relocated to a temporary location. Once construction is substantially complete, cluster boxes to be removed from temporary sites and placed at permanent sites in the original locations. Temporary sites are to be determined by engineer in the field and local post office.

B Materials

Expansion bolts, mounting hardware, rubber pad, concrete, base aggregate material, etc. shall conform to USPS detail drawings (See Section "C Construction" below) or the mailbox manufacturers installation manual.

C Construction

The contractor shall remove existing cluster boxes using caution to not damage the cabinet. The Existing Concrete base may be salvaged and used at the temporary site if it can remain undamaged (See Attachment 1 of USPS Maintenance Management Order MMO-069-04 for guidance). Cluster boxes are then to be reinstalled on either the salvaged pad or newly constructed concrete base in the temporary location. When placed at the permanent location a new concrete base shall be constructed. Both temporary pads and permanent pads shall be of same construction and follow guidance found in the "U.S. Postal Service National Delivery Planning Standards A guide for Builders and Developers" on the USPS website: <https://about.usps.com/what-we-are-doing/current-initiatives/delivery-growth-management/operations-developers-and-builders-guide.pdf>. Reference Appendix A – Cluster Box Unit Installation Single Unit and Appendix B - Cluster Box Unit Installation Multiple Unit for mounting instructions and pad design.

D Measurement

The department will measure Temporary Salvaged United States Postal Service Cluster Box and Permanent Salvaged United States Postal Service Cluster Box by the Each, acceptably completed. Multiple Cluster Boxes placed on a single concrete base shall be paid by the number of boxes present and not by the number of bases.

E Payment

The department will pay for measured quantities at the contract unit price under the following bid items:

ITEM NUMBER	DESCRIPTION	UNIT
SPV.0060.120	Temporary Salvaged United States Postal Service Cluster Box	EA
SPV.0060.121	Permanent Salvaged United States Postal Service Cluster Box	EA

Schedule of Items

Attached, dated November 19, 2020, are the revised Schedule of Items Pages 1 – 15.

Plan Sheets

The following 8½ x 11-inch sheets are attached and made part of the plans for this proposal:
Revised: 29 - 48, 102 - 118, 183, 193 - 196, 221, and 554.

END OF ADDENDUM



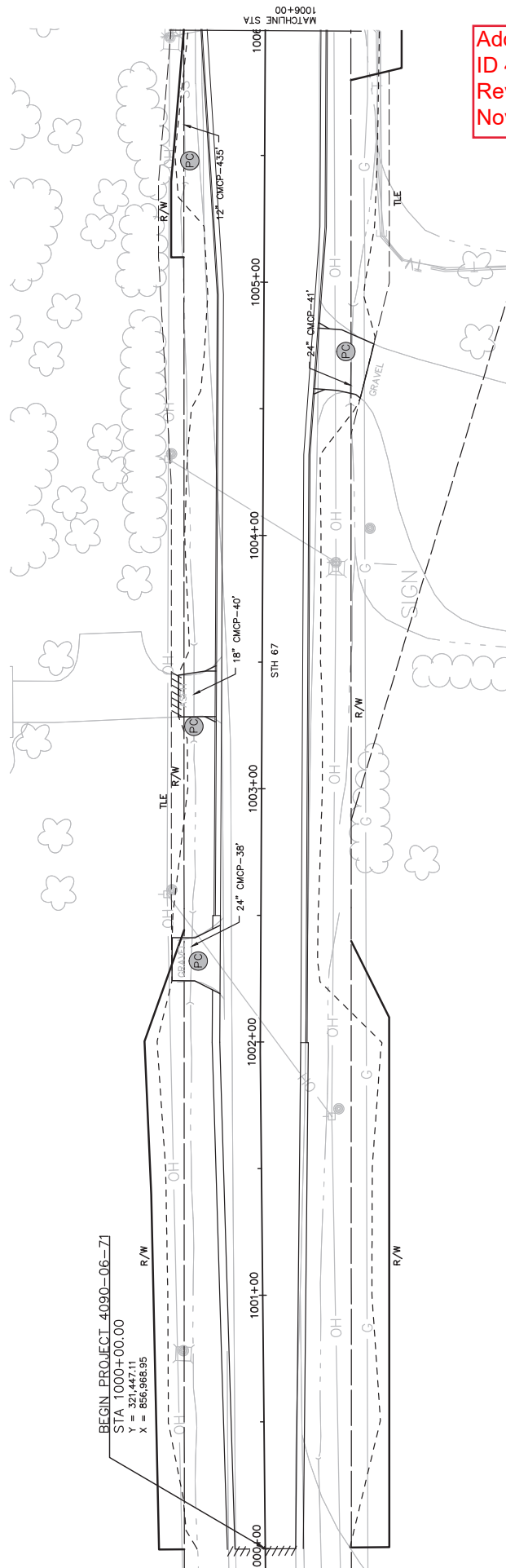
LEGEND

- REMOVING MANHOLES
- REMOVING INLETS
- REMOVING STORM SEWER
- CLEARING AND GRUBBING
- REMOVING GUARDRAIL
- REMOVING WALL-TYPE CURBS
- REMOVING CONCRETE RACEWAY AT ROADWAY CROSSING
- TEMPORARY SALVAGED UNITED STATES POSTAL SERVICE CLUSTER BOX
- REMOVING CONCRETE SIDEWALK
- REMOVING CURB & GUTTER
- SAWING ASPHALT
- SAWING CONCRETE
- REMOVING PAVEMENT
- REMOVING BEAM GUARDRAIL
- REMOVING CONCRETE RACEWAY AT UTILITY CROSSING
- PERMANENT SALVAGED UNITED STATES POSTAL SERVICE CLUSTER BOX

NOTES:

- NO TREE OR SHRUBS ARE TO BE REMOVED WITHOUT APPROVAL OF THE ENGINEER.
- A VERTICAL SAWCUT SHALL BE MADE THROUGH EXISTING PAVEMENTS AT REMOVAL LIMITS.
- ALL HOLES OR OPENINGS BELOW SUBGRADE RESULTING FROM ABANDONMENT OR REMOVAL OF EXISTING STRUCTURES SHALL BE FILLED WITH GRANULAR MATERIAL OR AS DIRECTED BY THE ENGINEER.

BEGIN_PROJECT_4090-06-71
 STA 1000+00.00
 Y = 321,447.11
 X = 856,968.95



Addendum No. 01
 ID 4090-06-71
 Revised Sheet 29
 November 19, 2020



LEGEND

- REMOVING MANHOLES
- REMOVING INLETS
- REMOVING STORM SEWER
- CLEARING AND GRUBBING
- REMOVING GUARDRAIL
- REMOVING SMALL PIPE CULVER'S
- REMOVING CONCRETE RACEWAY AT ROADWAY CROSSING
- TEMPORARY SALVAGED UNITED STATES POSTAL SERVICE CLUSTER BOX
- REMOVING CONCRETE SIDEWALK
- REMOVING CURB & GUTTER
- SAWING ASPHALT
- SAWING CONCRETE
- REMOVING PAVEMENT
- REMOVING BEAM GUARD RETAINING WALL
- REMOVING CONCRETE RACEWAY AT UTILITY CROSSING
- PERMANENT SALVAGED UNITED STATES POSTAL SERVICE CLUSTER BOX

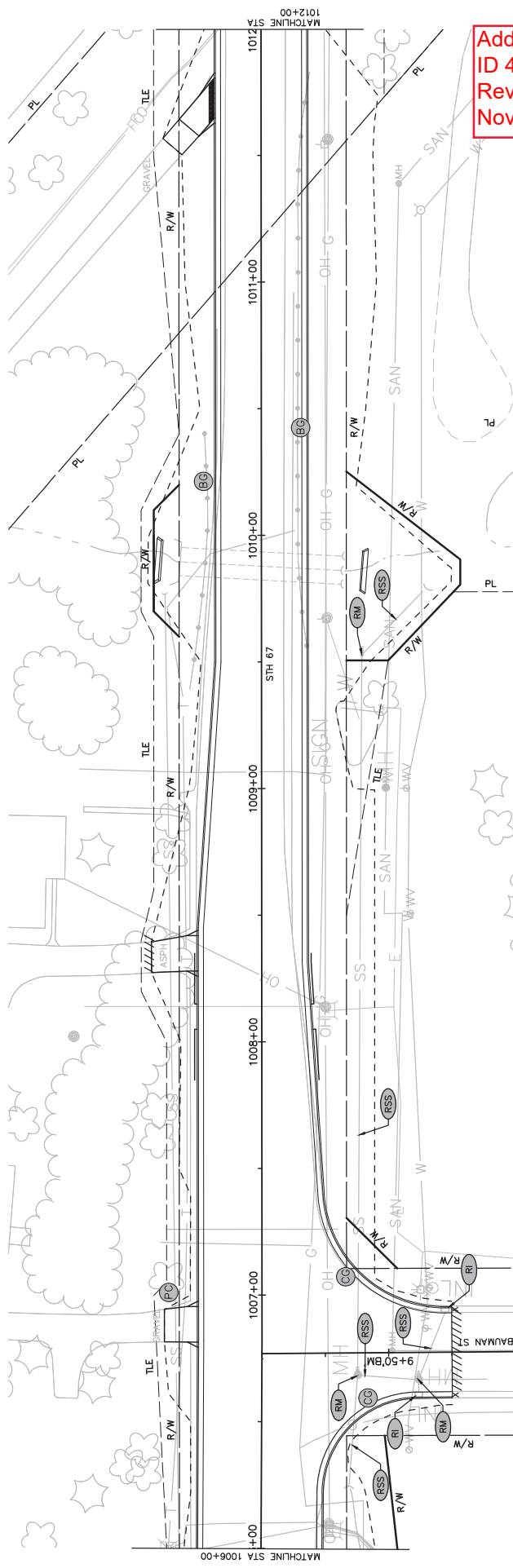
NOTES:

NO TREE OR SHRUBS ARE TO BE REMOVED WITHOUT APPROVAL OF THE ENGINEER.

A VERTICAL SAWCUT SHALL BE MADE THROUGH EXISTING PAVEMENTS AT REMOVAL LIMITS.

ALL HOLES OR OPENINGS BELOW SUBGRADE RESULTING FROM ABANDONMENT OR REMOVAL OF EXISTING STRUCTURES SHALL BE FILLED WITH GRANULAR MATERIAL OR AS DIRECTED BY THE ENGINEER.

REMOVE STORM SEWER PIPE STA. 1006+68 - STA. 1009+52, RT TO THE GREATEST EXTENT POSSIBLE WITHOUT IMPACTING THE "WELCOME TO CAMPBELLSPORT" SIGN.



Addendum No. 01
 ID 4090-06-71
 Revised Sheet 30
 November 19, 2020

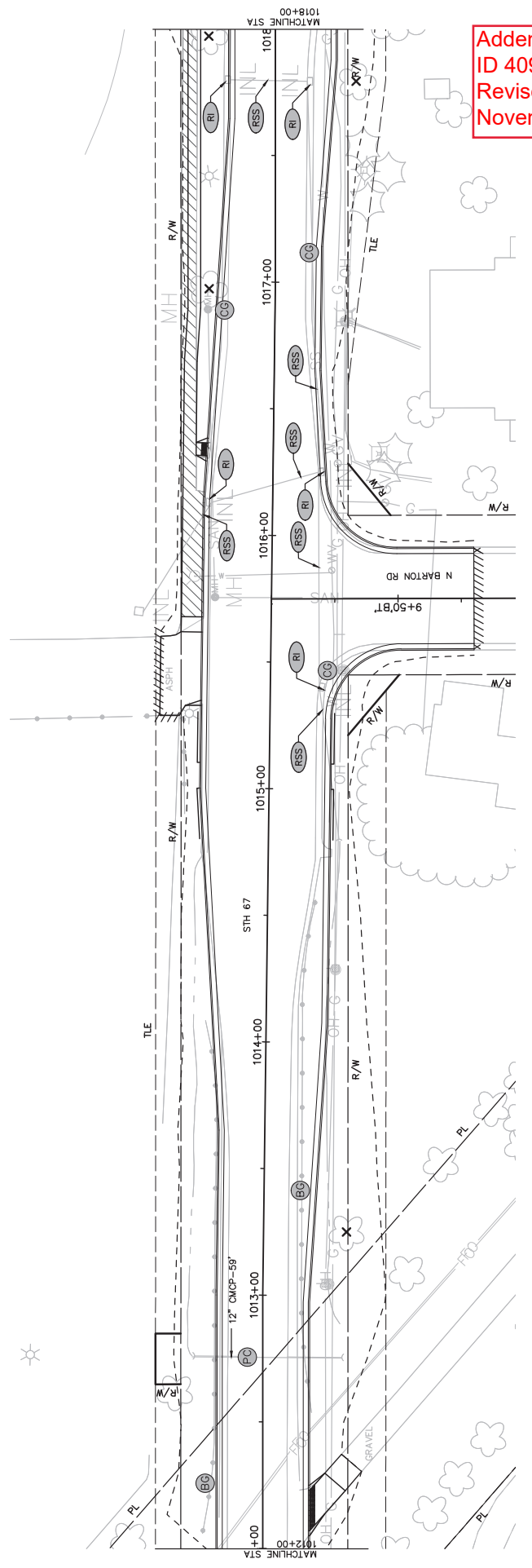


NOTES:

- NO TREE OR SHRUBS ARE TO BE REMOVED WITHOUT APPROVAL OF THE ENGINEER.
- A VERTICAL SAWCUT SHALL BE MADE THROUGH EXISTING PAVEMENTS AT REMOVAL LIMITS.
- ALL HOLES OR OPENINGS BELOW SUBGRADE RESULTING FROM ABANDONMENT OR REMOVAL OF EXISTING STRUCTURES SHALL BE FILLED WITH GRANULAR MATERIAL OR AS DIRECTED BY THE ENGINEER.

LEGEND:

- RM REMOVING MANHOLES
- RI REMOVING INLETS
- RSS REMOVING STORM SEWER
- X CLEARING AND GRUBBING
- GC REMOVING GUARDRAIL
- PC REMOVING WALL-TYPE PAVEMENTS
- RRU REMOVING CONCRETE RACEWAY AT ROADWAY CROSSING
- TCB TEMPORARY SALVAGED UNITED STATES POSTAL SERVICE CLUSTER BOX
- REMOVING CONCRETE SIDEWALK
- REMOVING CURB & GUTTER
- SAWMING ASPHALT
- SAWMING CONCRETE
- REMOVING PAVEMENT
- REMOVING BEAM CURB REMAINING WALL
- REMOVING CONCRETE RACEWAY AT UTILITY CROSSING
- PERMANENT SALVAGED UNITED STATES POSTAL SERVICE CLUSTER BOX



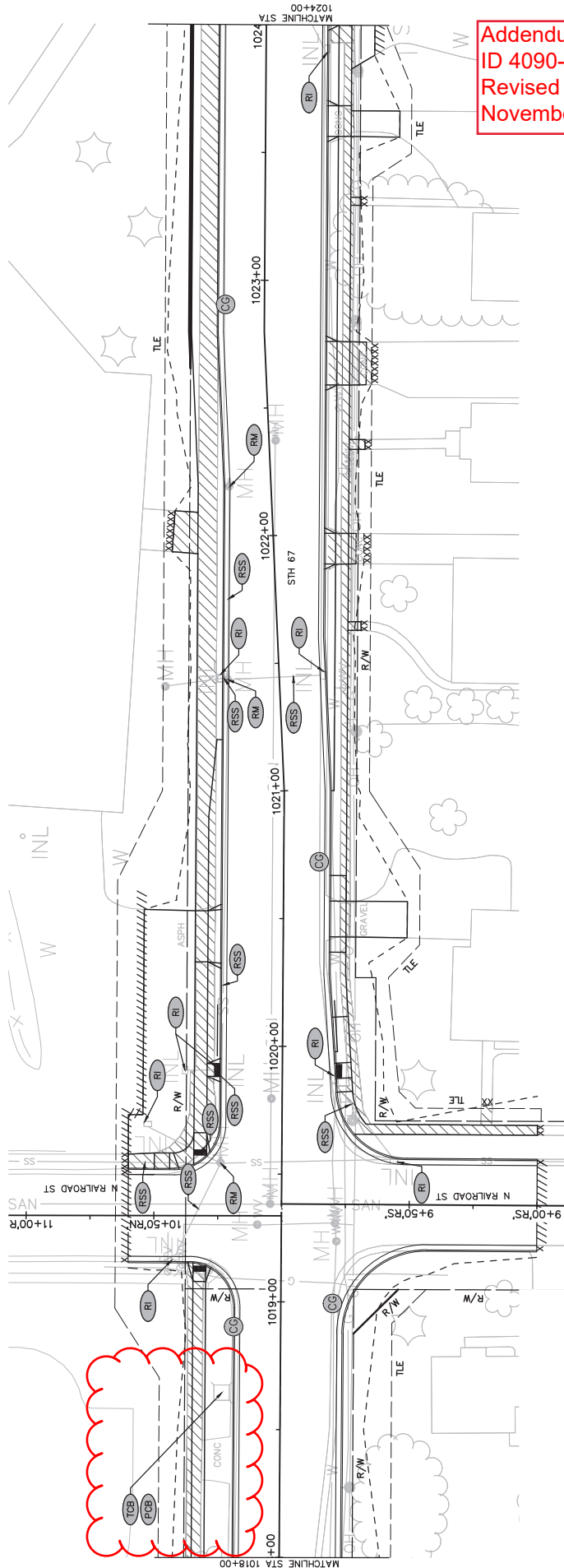
Addendum No. 01
 ID 4090-06-71
 Revised Sheet 31
 November 19, 2020

LEGEND

- (RM) REMOVING MANHOLES
- (RI) REMOVING INLETS
- (RSS) REMOVING STORM SEWER
- X CLEARING AND GRUBBING
- (CG) REMOVING GUARDRAIL
- (PC) REMOVING WALL TYPE CURBS
- (RW) REMOVING BEAM GUARD RETAINING WALL
- (RRU) REMOVING CONCRETE RACEWAY AT ROADWAY CROSSING
- (P/CB) PERMANENT SALVAGED UNITED STATES POSTAL SERVICE CLUSTER BOX
- (T/CB) TEMPORARY SALVAGED UNITED STATES POSTAL SERVICE CLUSTER BOX
- ▨ REMOVING CONCRETE SIDEWALK
- CS REMOVING CURB & GUTTER
- //// SAWING ASPHALT
- XXXXX SAWING CONCRETE
- REMOVING PAVEMENT
- REMOVING WALL TYPE CURBS
- REMOVING CONCRETE RACEWAY AT ROADWAY CROSSING
- PERMANENT SALVAGED UNITED STATES POSTAL SERVICE CLUSTER BOX

NOTES:

- NO TREE OR SHRUBS ARE TO BE REMOVED WITHOUT APPROVAL OF THE ENGINEER.
- A VERTICAL SAWCUT SHALL BE MADE THROUGH EXISTING PAVEMENTS AT REMOVAL LIMITS.
- ALL HOLES OR OPENINGS BELOW SUBGRADE RESULTING FROM ABANDONMENT OR REMOVAL OF EXISTING STRUCTURES SHALL BE FILLED WITH GRANULAR MATERIAL OR AS DIRECTED BY THE ENGINEER.



Addendum No. 01
 ID 4090-06-71
 Revised Sheet 32
 November 19, 2020



NOTES:

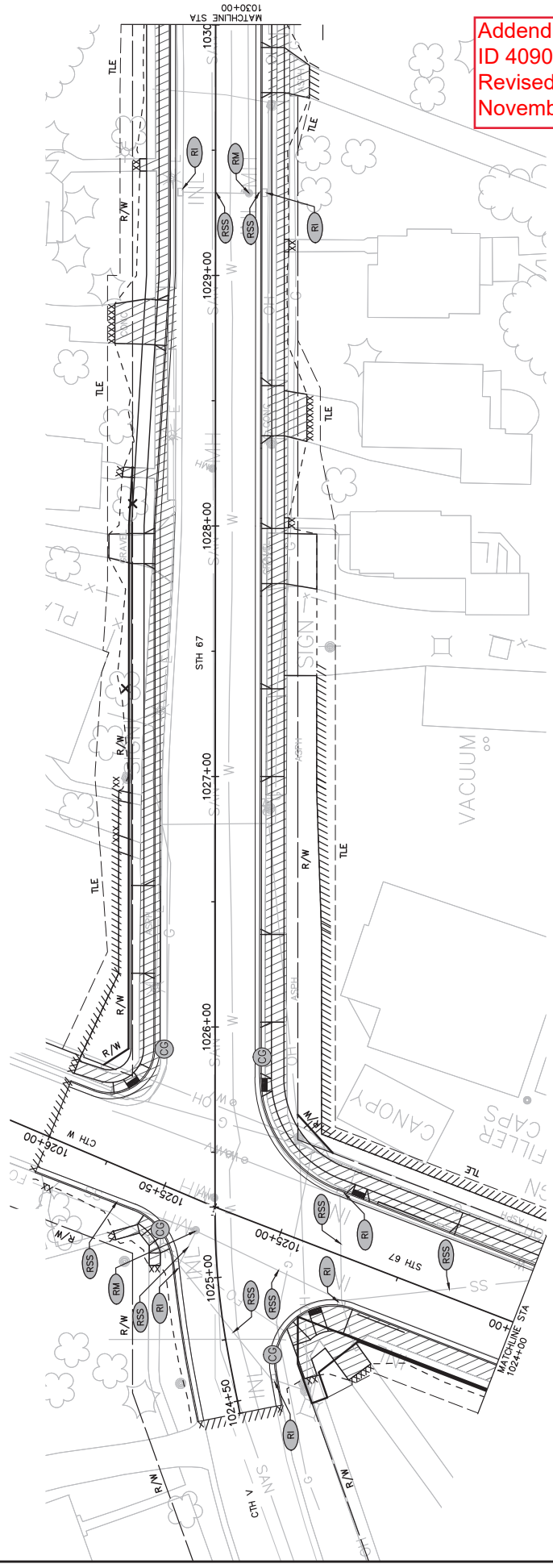
- NO TREE OR SHRUBS ARE TO BE REMOVED WITHOUT APPROVAL OF THE ENGINEER.
- A VERTICAL SAWCUT SHALL BE MADE THROUGH EXISTING PAVEMENTS AT REMOVAL LIMITS.
- ALL HOLES OR OPENINGS BELOW SUBGRADE RESULTING FROM ABANDONMENT OR REMOVAL OF EXISTING STRUCTURES SHALL BE FILLED WITH GRANULAR MATERIAL OR AS DIRECTED BY THE ENGINEER.

LEGEND:

- RM REMOVING MANHOLES
- RI REMOVING INLETS
- RSS REMOVING STORM SEWER
- X CLEARING AND GRUBBING
- RG REMOVING GUARDRAIL
- PC REMOVING SMALL PIPE CULVERTS
- RW REMOVING BEAM GUARD RETAINING WALL
- RRR REMOVING CONCRETE RACEWAY AT ROADWAY CROSSING
- TCB TEMPORARY SALVAGED UNITED STATES POSTAL SERVICE CLUSTER BOX
- CS REMOVING CONCRETE SIDEWALK
- CG REMOVING CURB & GUTTER
- SAWING ASPHALT
- SAWING CONCRETE
- REMOVING PAVEMENT
- REMOVING CONCRETE RACEWAY AT UTILITY CROSSING
- PERMANENT SALVAGED UNITED STATES POSTAL SERVICE CLUSTER BOX



Addendum No. 01
 ID 4090-06-71
 Revised Sheet 33
 November 19, 2020



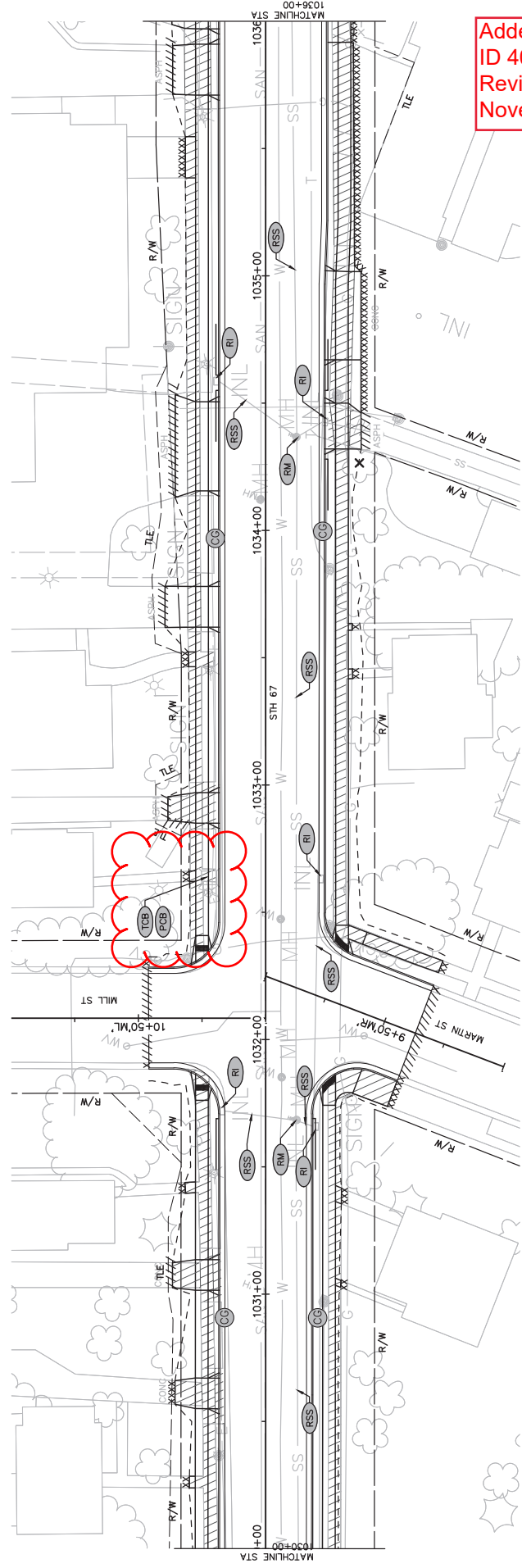


NOTES.

- NO TREE OR SHRUBS ARE TO BE REMOVED WITHOUT APPROVAL OF THE ENGINEER.
- A VERTICAL SAWCUT SHALL BE MADE THROUGH EXISTING PAVEMENTS AT REMOVAL LIMITS.
- ALL HOLES OR OPENINGS BELOW SUBGRADE RESULTING FROM ABANDONMENT OR REMOVAL OF EXISTING STRUCTURES SHALL BE FILLED WITH GRANULAR MATERIAL OR AS DIRECTED BY THE ENGINEER.

LEGEND

- RM REMOVING MANHOLES
- RI REMOVING INLETS
- RSS REMOVING STORM SEWER
- X CLEARING AND GRUBBING
- 66 REMOVING GUARDBAIL
- PC REMOVING WALL TYPE CURBS
- RW REMOVING BEAM GUARD RETAINING WALL
- RRU REMOVING CONCRETE RACEWAY AT ROADWAY CROSSING
- TCS REMOVING CONCRETE RACEWAY AT UTILITY CROSSING
- PCB PERMANENT SALVAGED UNITED STATES POSTAL SERVICE CLUSTER BOX
- CS REMOVING CONCRETE SIDEWALK
- CG REMOVING CURB & GUTTER
- SAWING ASPHALT
- SAWING CONCRETE
- REMOVING PAVEMENT
- REMOVING WALL TYPE CURBS
- REMOVING CONCRETE RACEWAY AT ROADWAY CROSSING
- REMOVING CONCRETE RACEWAY AT UTILITY CROSSING
- PERMANENT SALVAGED UNITED STATES POSTAL SERVICE CLUSTER BOX



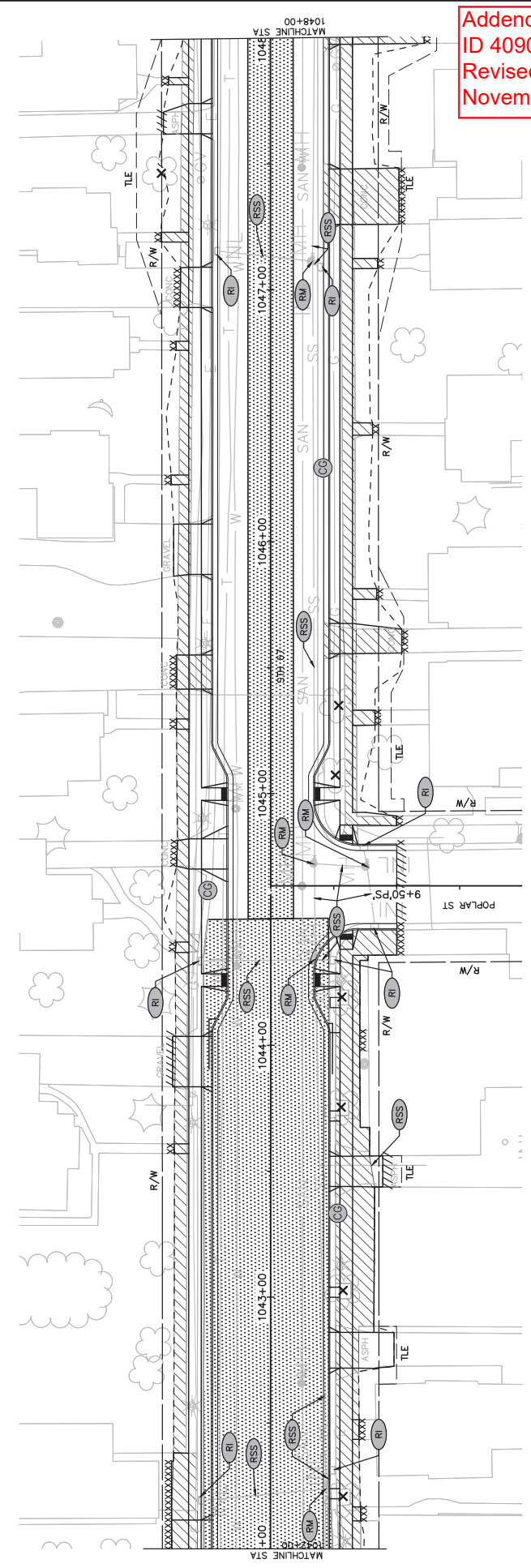
Addendum No. 01
 ID 4090-06-71
 Revised Sheet 34
 November 19, 2020



NO TREE OR SHRUBS ARE TO BE REMOVED WITHOUT APPROVAL OF THE ENGINEER.
 A VERTICAL SAWCUT SHALL BE MADE THROUGH EXISTING PAVEMENTS AT REMOVAL LIMITS.
 ALL HOLES OR OPENINGS BELOW SUBGRADE RESULTING FROM ABANDONMENT OR REMOVAL
 OF EXISTING STRUCTURES SHALL BE FILLED WITH GRANULAR MATERIAL OR AS DIRECTED BY
 THE ENGINEER.

NOTES:

- RM REMOVING MANHOLES
- RI REMOVING INLETS
- RSS REMOVING STORM SEWER
- X CLEARING AND GRUBBING
- CG REMOVING GUARDRAIL
- PCB REMOVING WALL-TYPE CURBS
- RRU REMOVING CONCRETE RACEWAY AT ROADWAY CROSSING
- TCB TEMPORARY SALVAGED UNITED STATES POSTAL SERVICE CLUSTER BOX
- CG REMOVING CONCRETE SIDEWALK
- CS REMOVING CURB & GUTTER
- //// SAWING ASPHALT
- XXXXX SAWING CONCRETE
- XXXXX REMOVING PAVEMENT
- RM REMOVING BEAM CURBS
- RRU REMOVING CONCRETE RACEWAY AT UTILITY CROSSING
- PCB PERMANENT SALVAGED UNITED STATES POSTAL SERVICE CLUSTER BOX



Addendum No. 01
 ID 4090-06-71
 Revised Sheet 36
 November 19, 2020



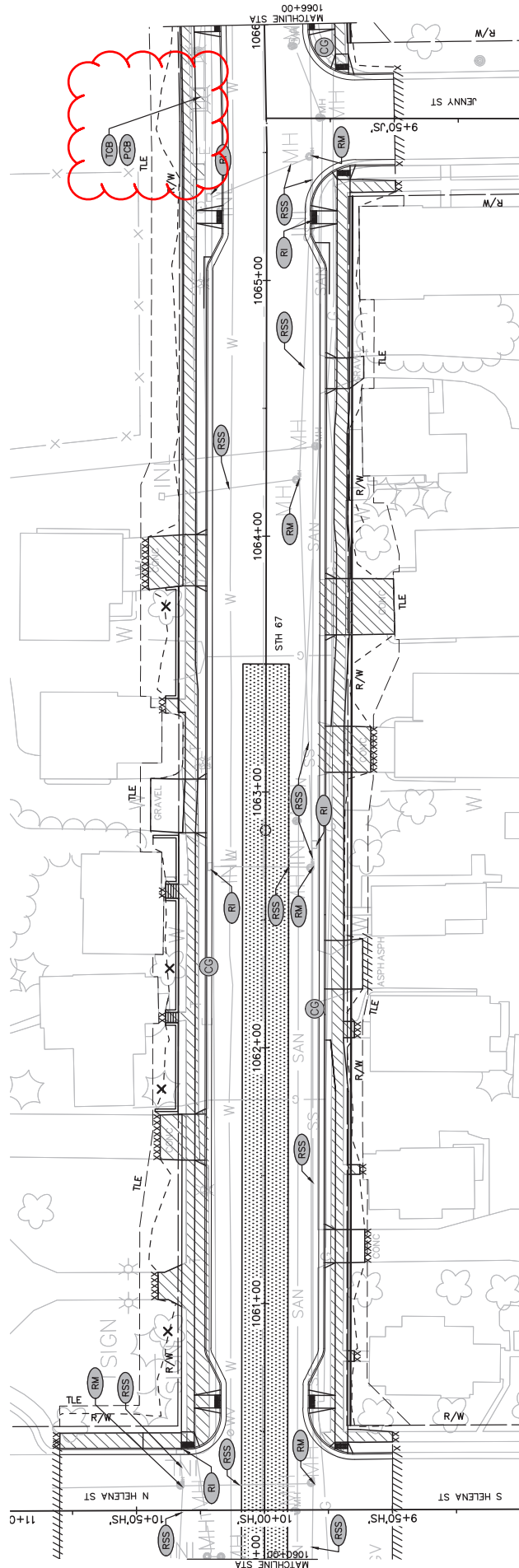
Addendum No. 01
ID 4090-06-71
Revised Sheet 39
November 19, 2020

NOTES:

- NO TREE OR SHRUBS ARE TO BE REMOVED WITHOUT APPROVAL OF THE ENGINEER.
- A VERTICAL SAWCUT SHALL BE MADE THROUGH EXISTING PAVEMENTS AT REMOVAL LIMITS.
- ALL HOLES OR OPENINGS BELOW SUBGRADE RESULTING FROM ABANDONMENT OR REMOVAL OF STRUCTURES SHALL BE FILLED WITH GRANULAR MATERIAL OR AS DIRECTED BY THE ENGINEER.

LEGEND

- RM REMOVING MANHOLES
- RI REMOVING INLETS
- RSS REMOVING STORM SEWER
- X CLEARING AND GRUBBING
- CG REMOVING GUARDRAIL
- PCB REMOVING WALL PIPE FLUENTS
- RRU REMOVING CONCRETE RACEWAY AT ROADWAY CROSSING
- TCB TEMPORARY SALVAGED UNITED STATES POSTAL SERVICE CLUSTER BOX
- REMOVING CONCRETE SIDEWALK
- CS REMOVING CURB & GUTTER
- //// SAWING ASPHALT
- XXXXX SAWING CONCRETE
- REMOVING PAVEMENT
- RM REMOVING BEAM GUARD RETAINING WALL
- RRU REMOVING CONCRETE RACEWAY AT UTILITY CROSSING
- PCB PERMANENT SALVAGED UNITED STATES POSTAL SERVICE CLUSTER BOX

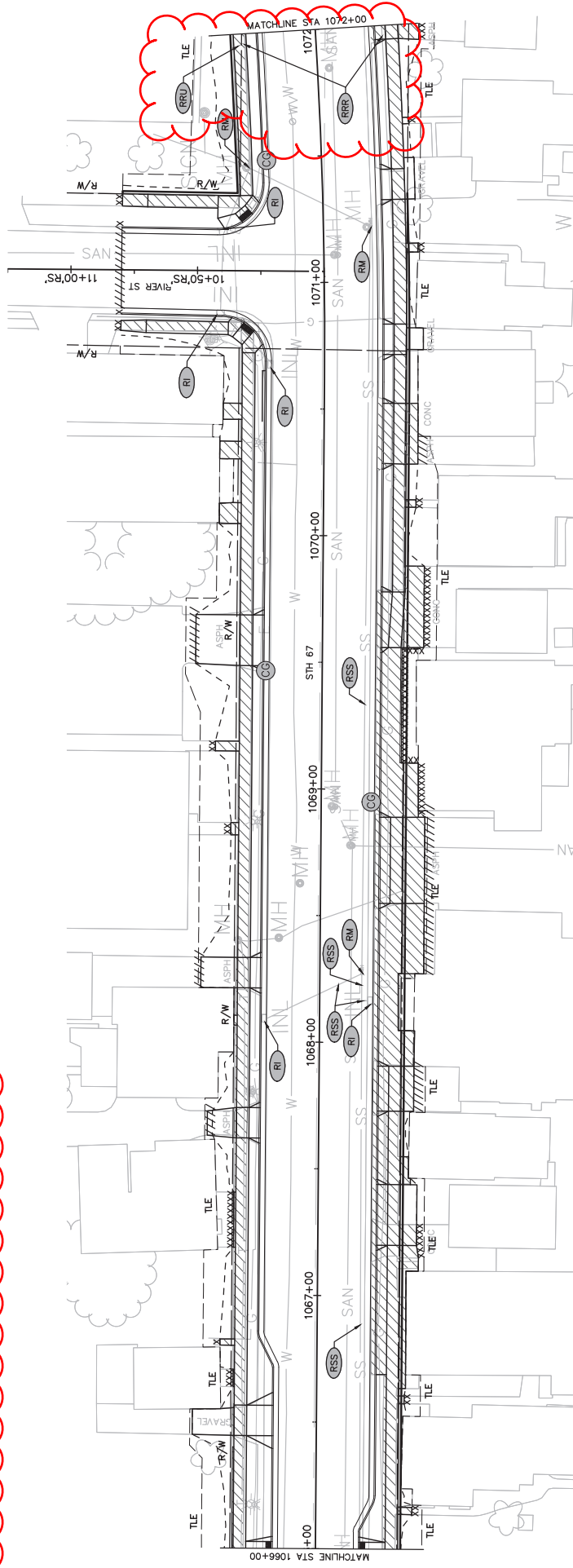


Addendum No. 01
ID 4090-06-71
Revised Sheet 40
November 19, 2020

NOTES:

- NO TREE OR SHRUBS ARE TO BE REMOVED WITHOUT APPROVAL OF THE ENGINEER.
- A VERTICAL SAWCUT SHALL BE MADE THROUGH EXISTING PAVEMENTS AT REMOVAL LIMITS.
- ALL HOLES OR OPENINGS BELOW SUBGRADE RESULTING FROM ABANDONMENT OR REMOVAL OF EXISTING STRUCTURES SHALL BE FILLED WITH GRANULAR MATERIAL OR AS DIRECTED BY THE ENGINEER.

- LEGEND**
- (RM) REMOVING MANHOLES
 - (RI) REMOVING INLETS
 - (RSS) REMOVING STORM SEWER
 - X CLEARING AND GRUBBING
 - (RC) REMOVING GUARDRAIL
 - (PCB) REMOVING WALL-TYPE CURBS
 - (RRU) REMOVING CONCRETE RACEWAY AT ROADWAY CROSSING
 - (TDB) TEMPORARY SALVAGED UNITED STATES POSTAL SERVICE CLUSTER BOX
 - (CS) REMOVING CONCRETE SIDEWALK
 - (CG) REMOVING CURB & GUTTER
 - ///// SAWING ASPHALT
 - XXXXX SAWING CONCRETE
 - XXXXXXXXX REMOVING PAVEMENT
 - (RW) REMOVING BEAM GUARD RETAINING WALL
 - (RR) REMOVING CONCRETE RACEWAY AT UTILITY CROSSING
 - (P/S) PERMANENT SALVAGED UNITED STATES POSTAL SERVICE CLUSTER BOX





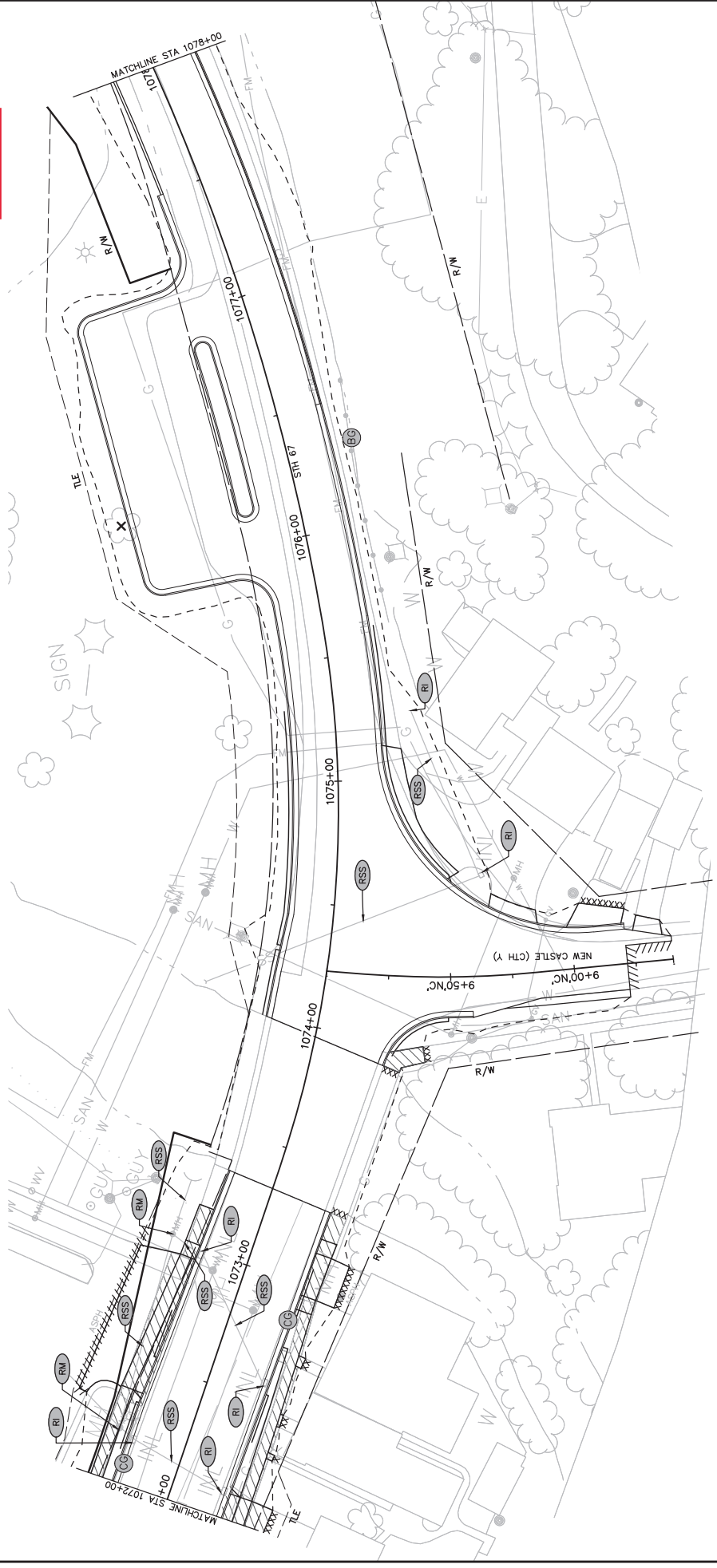
Addendum No. 01
ID 4090-06-71
Revised Sheet 41
November 19, 2020

NOTES:

- NO TREE OR SHRUBS ARE TO BE REMOVED WITHOUT APPROVAL OF THE ENGINEER.
- A VERTICAL SAWCUT SHALL BE MADE THROUGH EXISTING PAVEMENTS AT REMOVAL LIMITS.
- ALL HOLES OR OPENINGS BELOW SUBGRADE RESULTING FROM ABANDONMENT OR REMOVAL OF EXISTING STRUCTURES SHALL BE FILLED WITH GRANULAR MATERIAL OR AS DIRECTED BY THE ENGINEER.

LEGEND

RM	REMOVING MANHOLES	CC	REMOVING CONCRETE SIDEWALK
RI	REMOVING INLETS	ASPH	REMOVING CURB & GUTTER
RSS	REMOVING STORM SEWER	S	SAWING ASPHALT
X	CLEARING AND GRUBBING	XXXXXX	SAWING CONCRETE
EG	REMOVING GUARDRAIL	REMOVING PAVEMENT	
PC	REMOVING WALL TYPE CULVERTS	RW	REMOVING BEAM GUARD RETAINING WALL
RRR	REMOVING CONCRETE RACEWAY AT ROADWAY CROSSING	RRU	REMOVING CONCRETE RACEWAY AT UTILITY CROSSING
TDB	TEMPORARY SALVAGED UNITED STATES POSTAL SERVICE CLUSTER BOX	PCB	PERMANENT SALVAGED UNITED STATES POSTAL SERVICE CLUSTER BOX



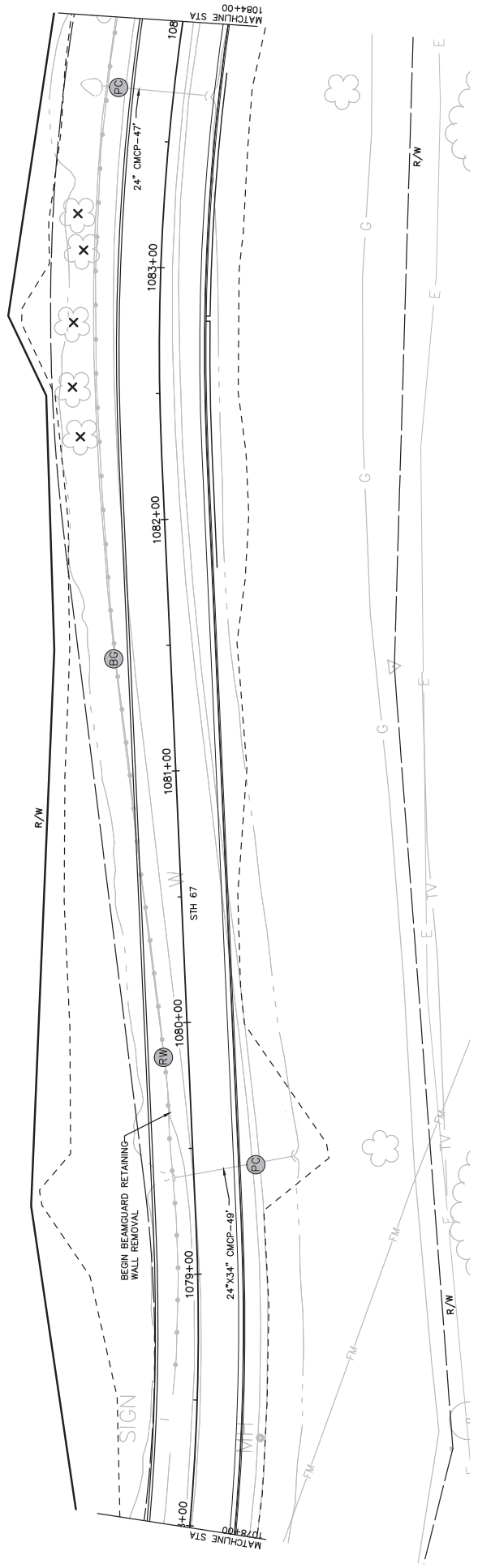


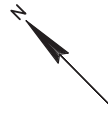
Addendum No. 01
ID 4090-06-71
Revised Sheet 42
November 19, 2020

NOTES:
NO TREE OR SHRUBS ARE TO BE REMOVED WITHOUT APPROVAL OF THE ENGINEER.
A VERTICAL SAWCUT SHALL BE MADE THROUGH EXISTING PAVEMENTS AT REMOVAL LIMITS.
ALL HOLES OR OPENINGS BELOW SUBGRADE RESULTING FROM ABANDONMENT OR REMOVAL OF EXISTING STRUCTURES SHALL BE FILLED WITH GRANULAR MATERIAL OR AS DIRECTED BY THE ENGINEER.

LEGEND

REMOVING MANHOLES	REMOVING CONCRETE SIDEWALK
REMOVING INLETS	REMOVING CURB & GUTTER
REMOVING STORM SEWER	SAWING ASPHALT
CLEARING AND GRUBBING	SAWING CONCRETE
REMOVING GUARDRAIL	REMOVING PAVEMENT
REMOVING WALL TYPE TUBES	REMOVING BEAM GUARD RETAINING WALL
REMOVING CONCRETE RACEWAY AT ROADWAY CROSSING	REMOVING CONCRETE RACEWAY AT UTILITY CROSSING
TEMPORARY SALVAGED UNITED STATES POSTAL SERVICE CLUSTER BOX	PERMANENT SALVAGED UNITED STATES POSTAL SERVICE CLUSTER BOX





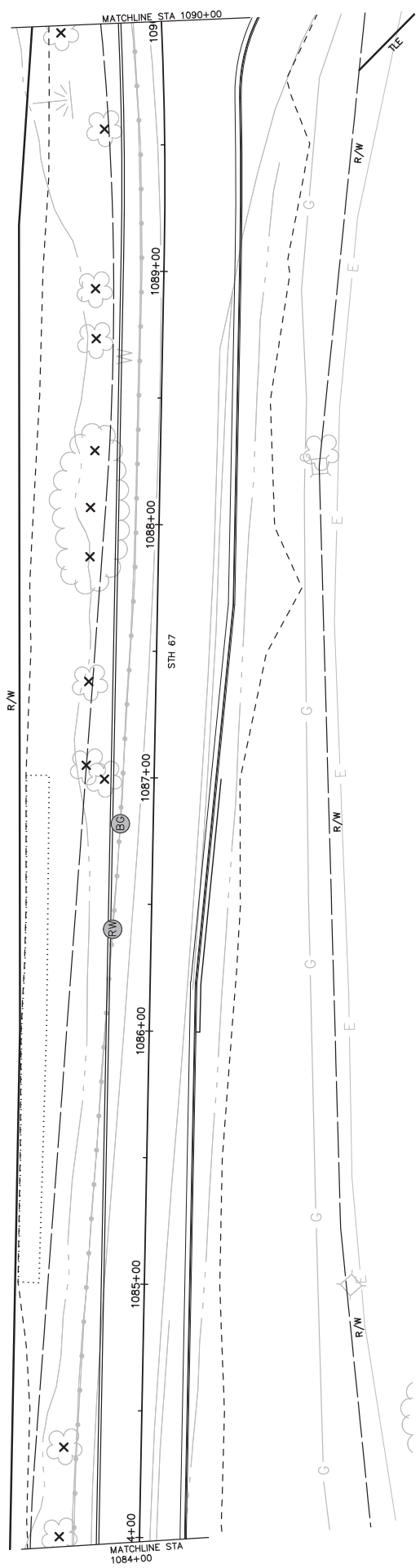
Addendum No. 01
ID 4090-06-71
Revised Sheet 43
November 19, 2020

NOTES:

- NO TREE OR SHRUBS ARE TO BE REMOVED WITHOUT APPROVAL OF THE ENGINEER.
- A VERTICAL SAWCUT SHALL BE MADE THROUGH EXISTING PAVEMENTS AT REMOVAL LIMITS.
- ALL HOLES OR OPENINGS BELOW SUBGRADE RESULTING FROM ABANDONMENT OR REMOVAL OF EXISTING STRUCTURES SHALL BE FILLED WITH GRANULAR MATERIAL OR AS DIRECTED BY THE ENGINEER.

LEGEND:

- (RM) REMOVING MANHOLES
- (RI) REMOVING INLETS
- (RSS) REMOVING STORM SEWER
- X CLEARING AND GRUBBING
- (GR) REMOVING GUARDRAIL
- (PC) REMOVING SMALL TYPE CULVERTS
- (RR) REMOVING CONCRETE RACEWAY AT ROADWAY CROSSING
- (TDB) TEMPORARY SALVAGED UNITED STATES POSTAL SERVICE CLUSTER BOX
- (C5) REMOVING CONCRETE SIDEWALK
- (CS) REMOVING CURB & GUTTER
- //// SAWING ASPHALT
- XXXXX SAWING CONCRETE
- REMOVING PAVEMENT
- (RW) REMOVING BEAM GUARD RETAINING WALL
- (RRU) REMOVING CONCRETE RACEWAY AT UTILITY CROSSING
- (PCB) PERMANENT SALVAGED UNITED STATES POSTAL SERVICE CLUSTER BOX



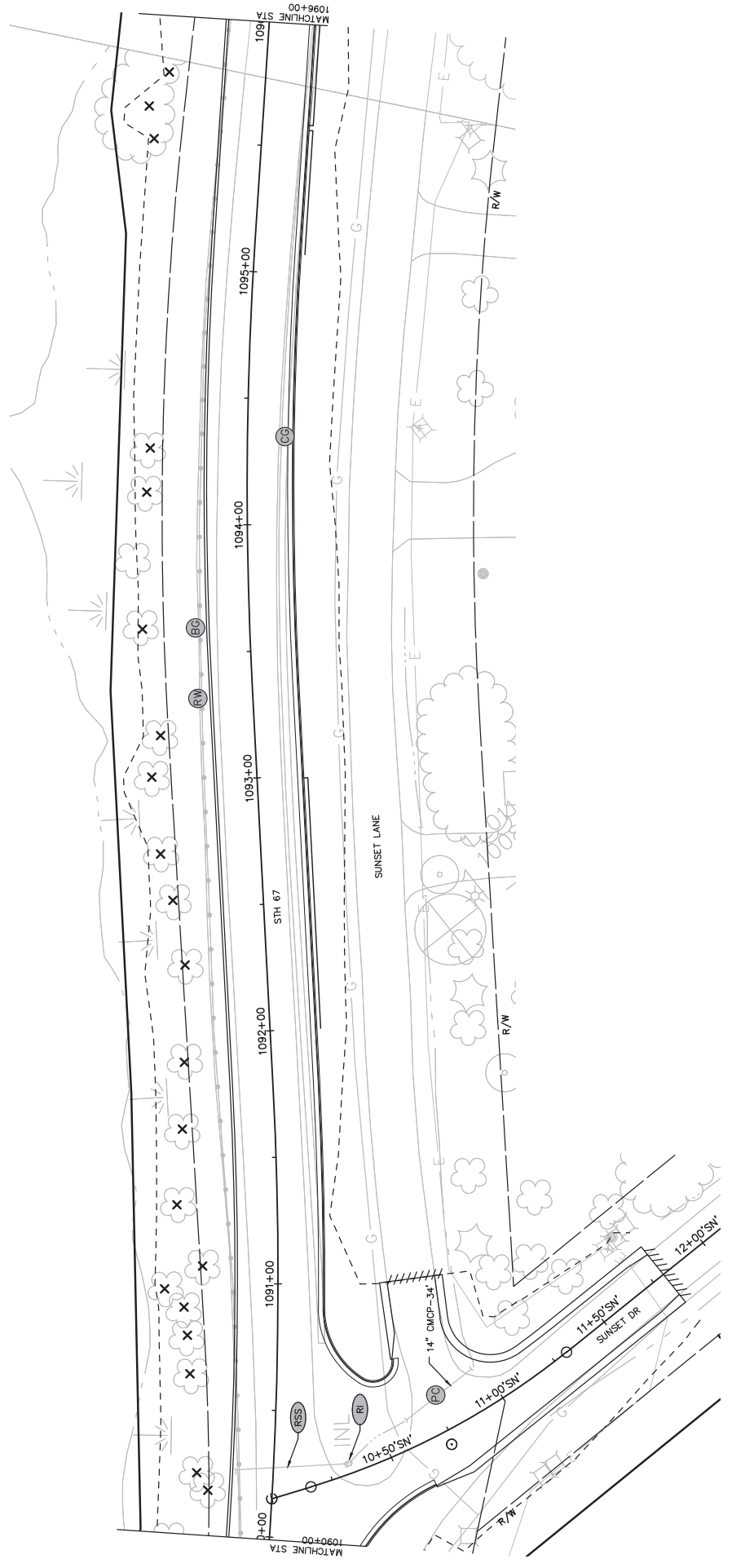


Addendum No. 01
 ID 4090-06-71
 Revised Sheet 44
 November 19, 2020

NOTES:
 NO TREE OR SHRUBS ARE TO BE REMOVED WITHOUT APPROVAL OF THE ENGINEER.
 A VERTICAL SAWCUT SHALL BE MADE THROUGH EXISTING PAVEMENTS AT REMOVAL LIMITS.
 ALL HOLES OR OPENINGS BELOW SUBGRADE RESULTING FROM ABANDONMENT OR REMOVAL OF EXISTING STRUCTURES SHALL BE FILLED WITH GRANULAR MATERIAL OR AS DIRECTED BY THE ENGINEER.

LEGEND

REMOVING MANHOLES	REMOVING CONCRETE SIDEWALK
REMOVING INLETS	REMOVING CURB & GUTTER
REMOVING STORM SEWER	SAWING ASPHALT
CLEARING AND GRUBBING	SAWING CONCRETE
REMOVING GUARDRAIL	REMOVING PAVEMENT
REMOVING SMALL PIPE CULVERTS	REMOVING BEAM GUARD/RETAINING WALL
REMOVING CONCRETE RACEWAY AT ROADWAY CROSSING	REMOVING CONCRETE RACEWAY AT UTILITY CROSSING
TEMPORARY SALVAGED UNITED STATES POSTAL SERVICE CLUSTER BOX	PERMANENT SALVAGED UNITED STATES POSTAL SERVICE CLUSTER BOX



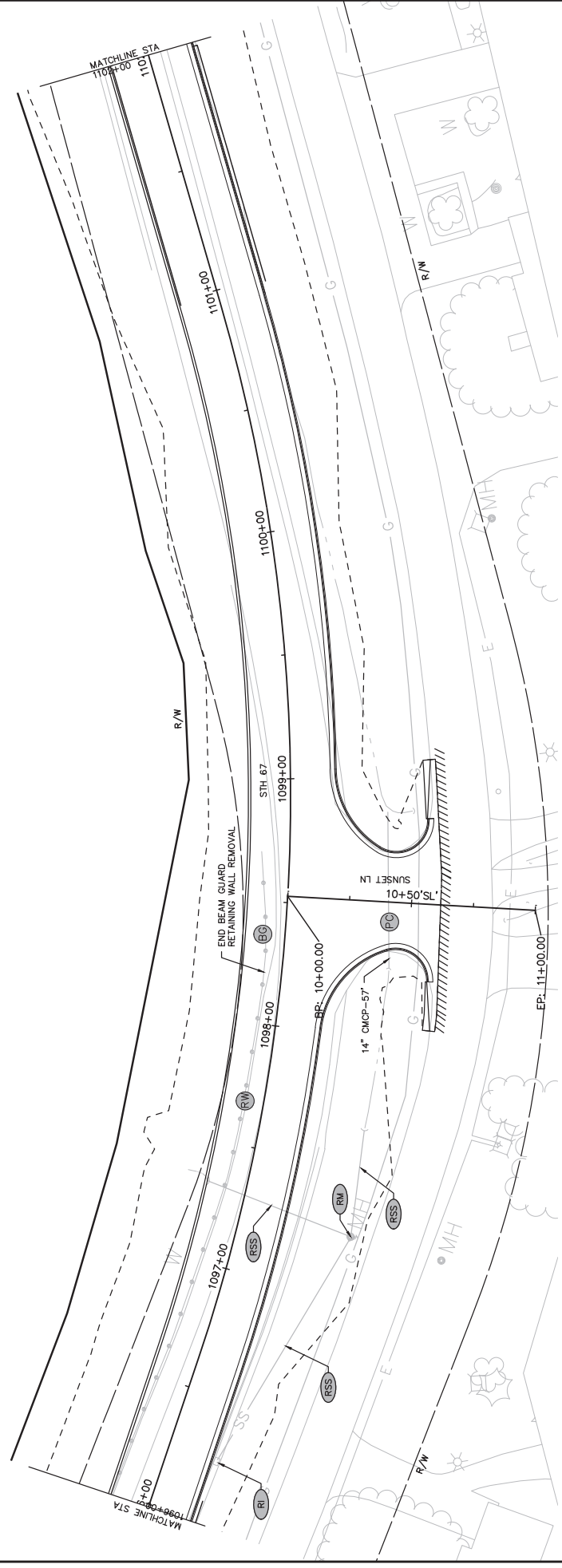
Addendum No. 01
 ID 4090-06-71
 Revised Sheet 45
 November 19, 2020

NOTES:

- NO TREE OR SHRUBS ARE TO BE REMOVED WITHOUT APPROVAL OF THE ENGINEER.
- A VERTICAL SAWCUT SHALL BE MADE THROUGH EXISTING PAVEMENTS AT REMOVAL LIMITS.
- ALL HOLES OR OPENINGS BELOW SUBGRADE RESULTING FROM ABANDONMENT OR REMOVAL OF EXISTING STRUCTURES SHALL BE FILLED WITH GRANULAR MATERIAL OR AS DIRECTED BY THE ENGINEER.

LEGEND

	REMOVING MANHOLES		REMOVING CONCRETE SIDEWALK
	REMOVING INLETS		REMOVING CURB & GUTTER
	REMOVING STORM SEWER		SAWING ASPHALT
	CLEARING AND GRUBBING		SAWING CONCRETE
	REMOVING GUARDRAIL		REMOVING PAVEMENT
	REMOVING SMALL PIPE CULVERS		REMOVING BEAM GUARD RETAINING WALL
	REMOVING CONCRETE RACEWAY AT ROADWAY CROSSING		REMOVING CONCRETE RACEWAY AT UTILITY CROSSING
	TEMPORARY SALVAGED UNITED STATES POSTAL SERVICE CLUSTER BOX		PERMANENT SALVAGED UNITED STATES POSTAL SERVICE CLUSTER BOX





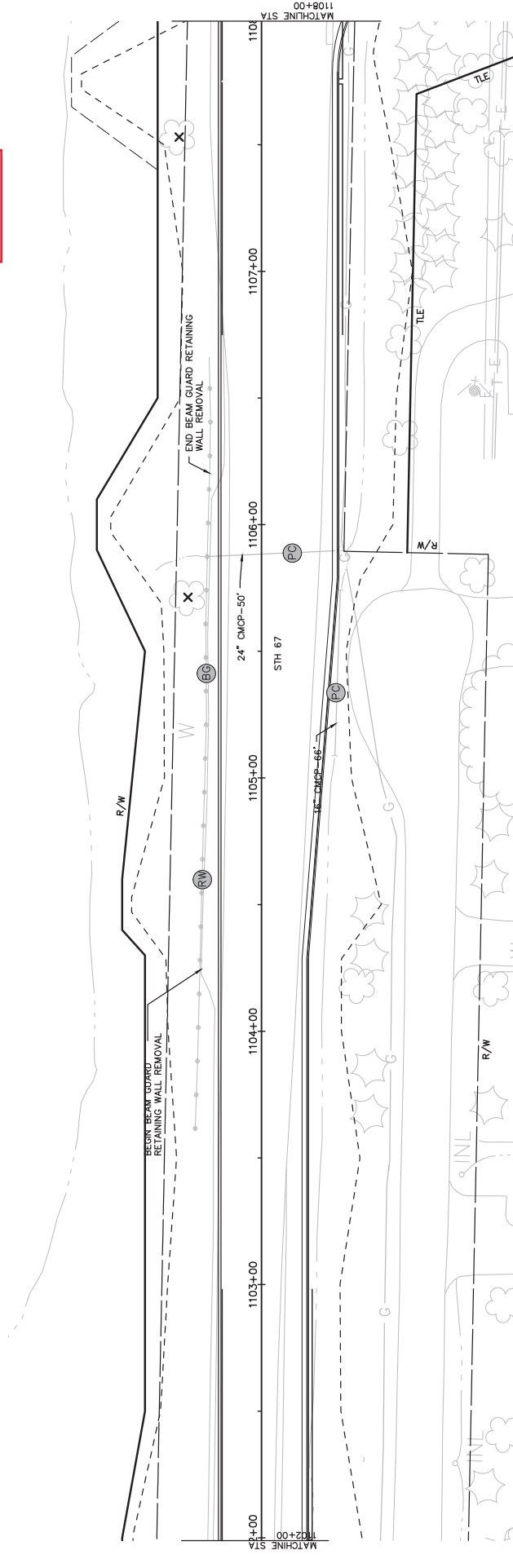
Addendum No. 01
ID 4090-06-71
Revised Sheet 46
November 19, 2020

NOTES:

- NO TREE OR SHRUBS ARE TO BE REMOVED WITHOUT APPROVAL OF THE ENGINEER.
- A VERTICAL SAWCUT SHALL BE MADE THROUGH EXISTING PAVEMENTS AT REMOVAL LIMITS.
- ALL HOLES OR OPENINGS BELOW SUBGRADE RESULTING FROM ABANDONMENT OR REMOVAL OF EXISTING STRUCTURES SHALL BE FILLED WITH GRANULAR MATERIAL OR AS DIRECTED BY THE ENGINEER.

LEGEND:

- (RM) REMOVING MANHOLES
- (RI) REMOVING INLETS
- (RSS) REMOVING STORM SEWER
- X CLEARING AND GRUBBING
- (RG) REMOVING GUARDBAIL
- (RW) REMOVING WALL-TYPE CURBS
- (RR) REMOVING CONCRETE RACEWAY AT ROADWAY CROSSING
- (TDB) TEMPORARY SALVAGED UNITED STATES POSTAL SERVICE CLUSTER BOX
- (CS) REMOVING CONCRETE SIDEWALK
- (C&G) REMOVING CURB & GUTTER
- //// SAWING ASPHALT
- XXXXX SAWING CONCRETE
- REMOVING PAVEMENT
- (RW) REMOVING BEAM GUARD RETAINING WALL
- (RR) REMOVING CONCRETE RACEWAY AT UTILITY CROSSING
- (PCB) PERMANENT SALVAGED UNITED STATES POSTAL SERVICE CLUSTER BOX



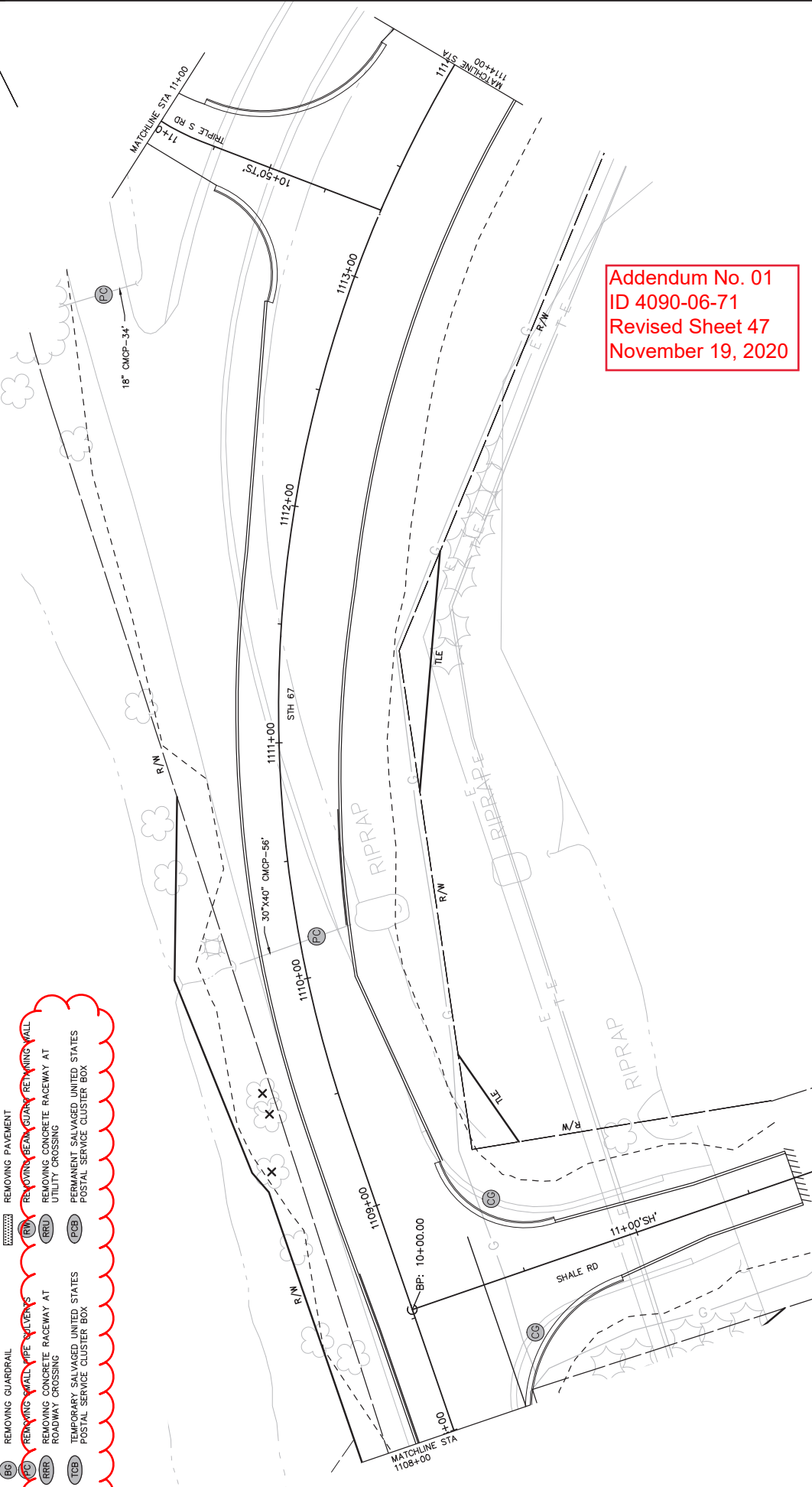


LEGEND

- REMOVING MANHOLES
- REMOVING INLETS
- REMOVING STORM SEWER
- CLEARING AND GRUBBING
- REMOVING GUARDRAIL
- REMOVING WALL PIPE VALVES
- REMOVING CONCRETE RACEWAY AT ROADWAY CROSSING
- TEMPORARY SALVAGED UNITED STATES POSTAL SERVICE CLUSTER BOX
- REMOVING CONCRETE SIDEWALK
- REMOVING CURB & GUTTER
- SAWING ASPHALT
- SAWING CONCRETE
- REMOVING PAVEMENT
- REMOVING BEAM GUARD RETAINING WALL
- REMOVING CONCRETE RACEWAY AT UTILITY CROSSING
- PERMANENT SALVAGED UNITED STATES POSTAL SERVICE CLUSTER BOX

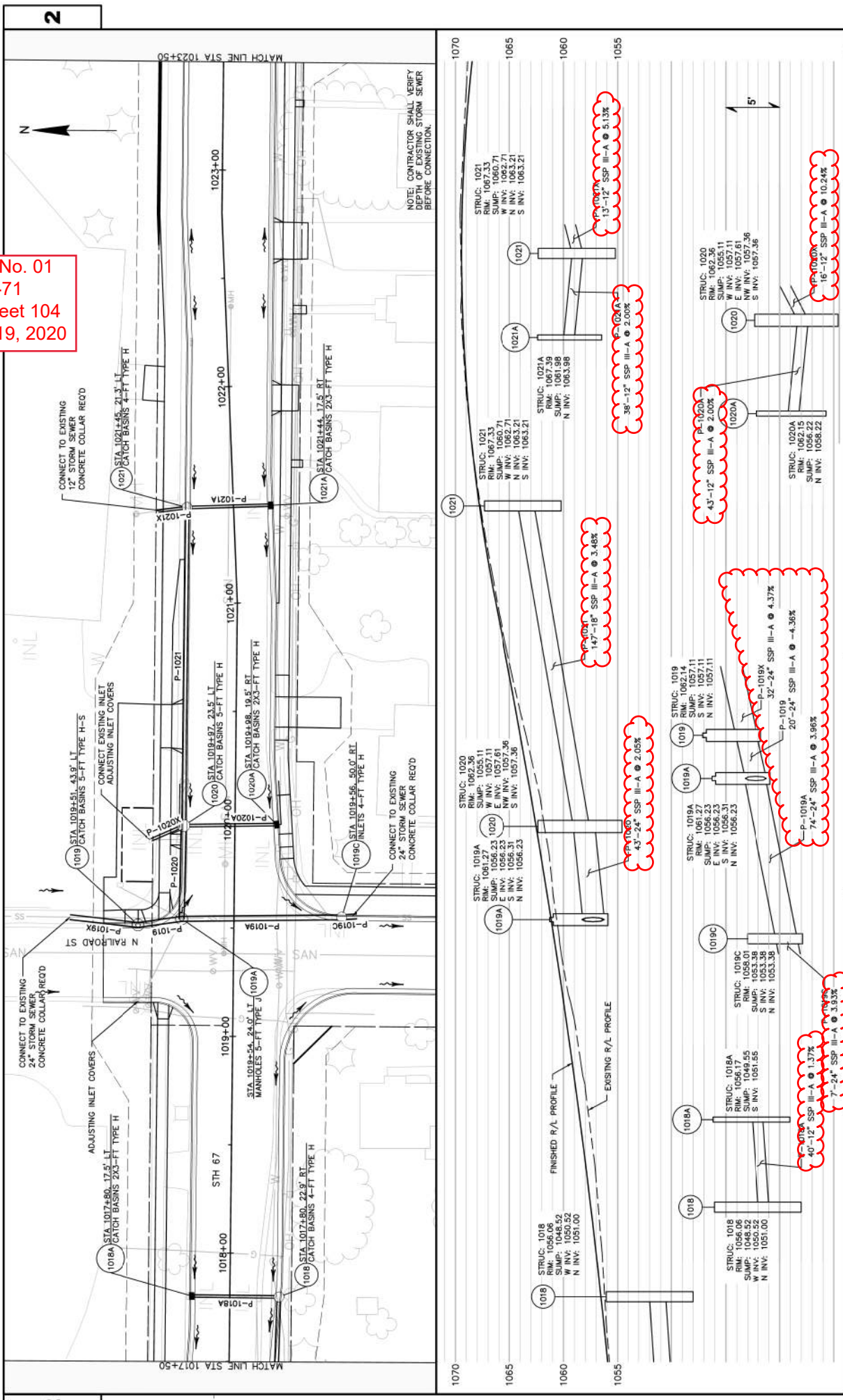
NOTES

NO TREE OR SHRUBS ARE TO BE REMOVED WITHOUT APPROVAL OF THE ENGINEER.
 A VERTICAL SAWCUT SHALL BE MADE THROUGH EXISTING PAVEMENTS AT REMOVAL LIMITS.
 ALL HOLES OR OPENINGS BELOW SUBGRADE RESULTING FROM ABANDONMENT OR REMOVAL OF EXISTING STRUCTURES SHALL BE FILLED WITH GRANULAR MATERIAL OR AS DIRECTED BY THE ENGINEER.

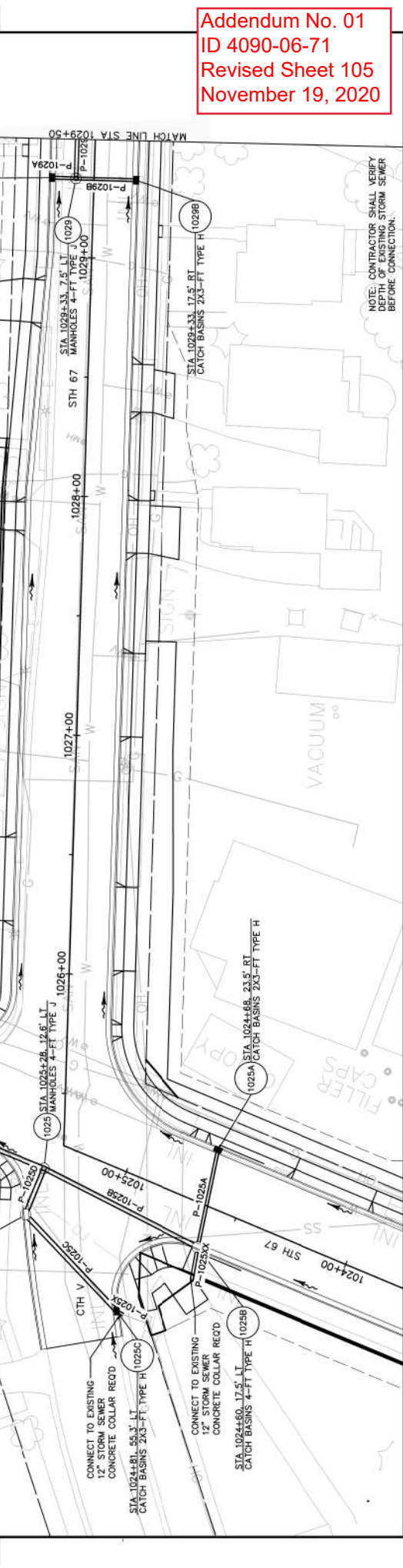
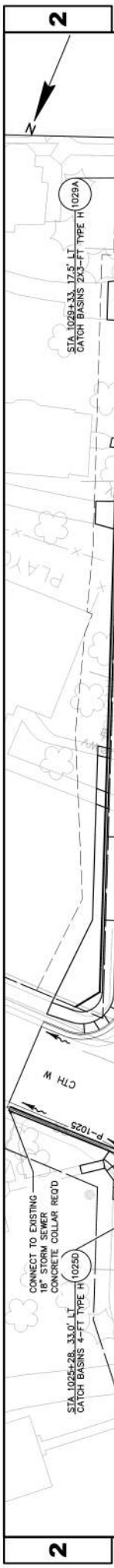


Addendum No. 01
 ID 4090-06-71
 Revised Sheet 47
 November 19, 2020

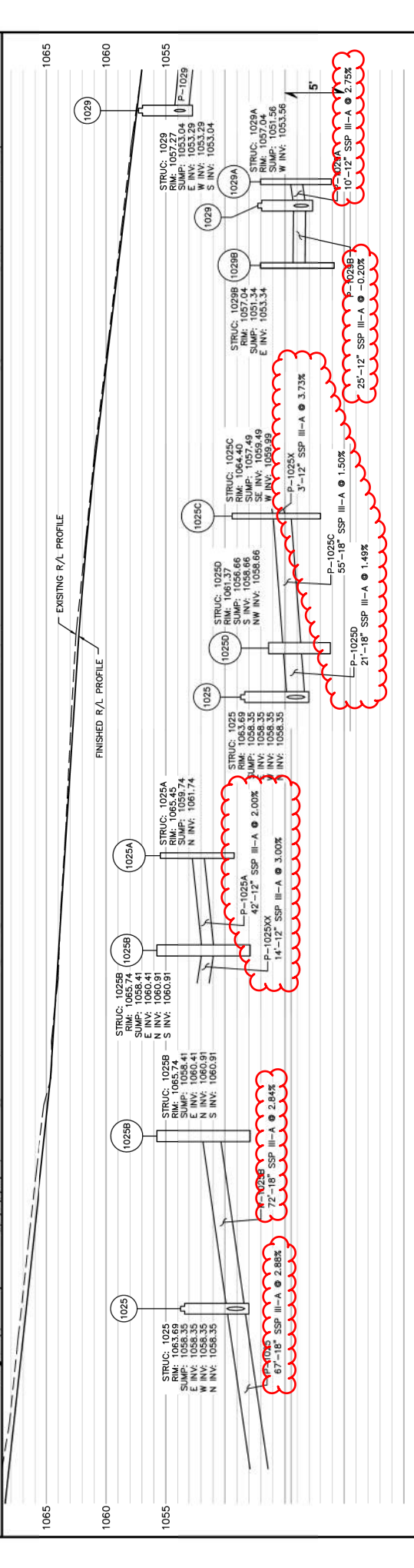
Addendum No. 01
 ID 4090-06-71
 Revised Sheet 104
 November 19, 2020



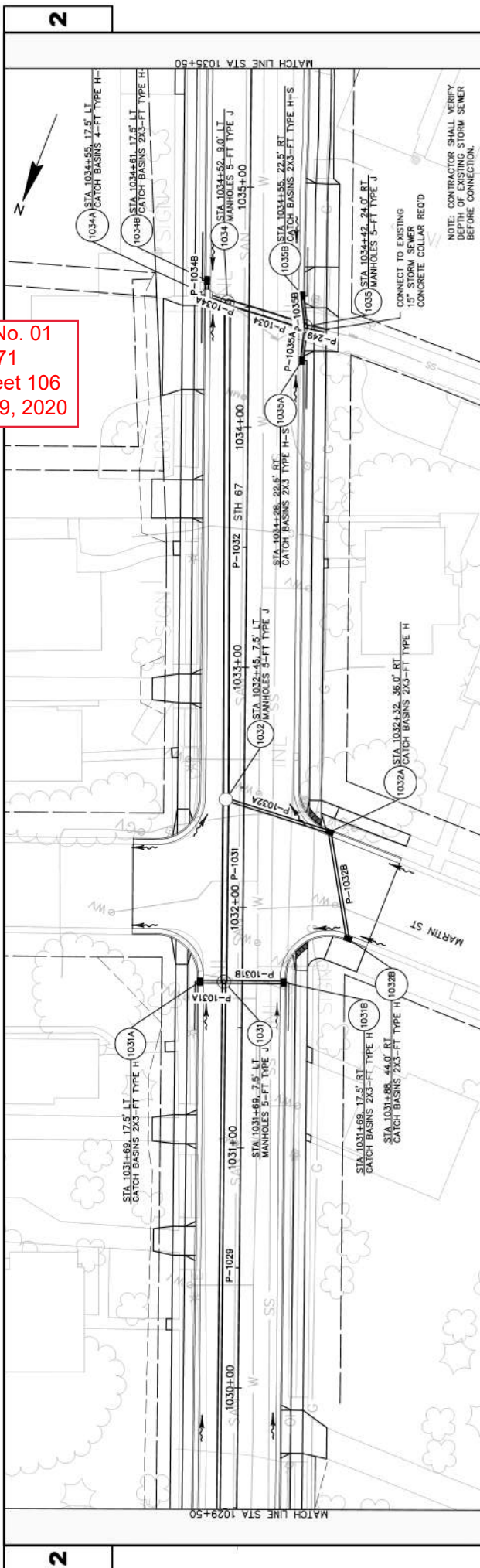
PROJECT NO: 4090-06-71	COUNTY: FOND DU LAC	STORM SEWER	SHEET 104	E
FILE NAME: X:\3230500\113975\02\TECH\4090\40900600\SSHEE\FPLAN\022501_SS.DWG PLOT DATE: 11/19/2020 3:06 PM PLOT BY: LUKE SENZ PLOT NAME:				
PLOT SCALE: 1" = 40' REF				



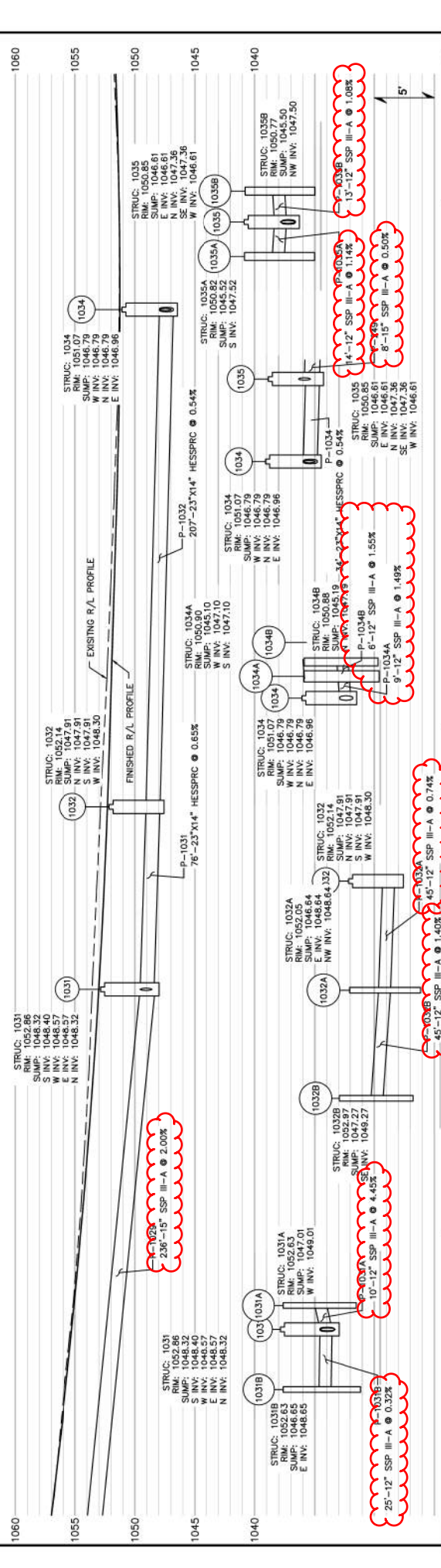
Addendum No. 01
ID 4090-06-71
Revised Sheet 105
November 19, 2020



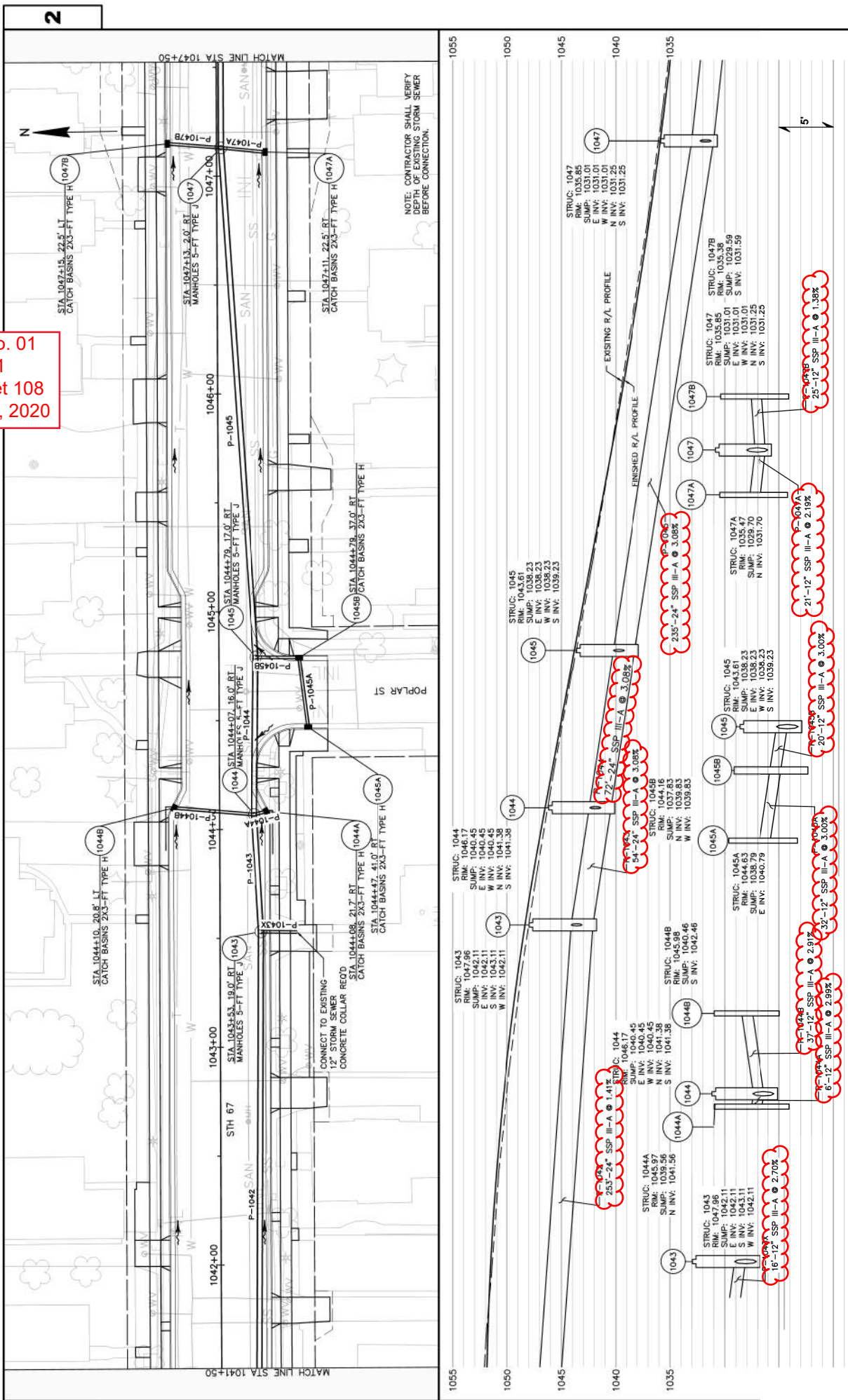
PROJECT NO: 4090-06-71	COUNTY: FOND DU LAC	STORM SEWER	SHEET 105	E
FILE NAME : X:\3230560\113975.02\TECH\CADD\40900600\SHEETPLAN\022501_SS.DWG				
PLOT DATE : 11/19/2020 3:07 PM				
PLOT BY : LUKE SENZ				
PLOT NAME :				
PLOT SCALE : 1" = 40' REF				
WISDOT/CADDSS SHEET 44				



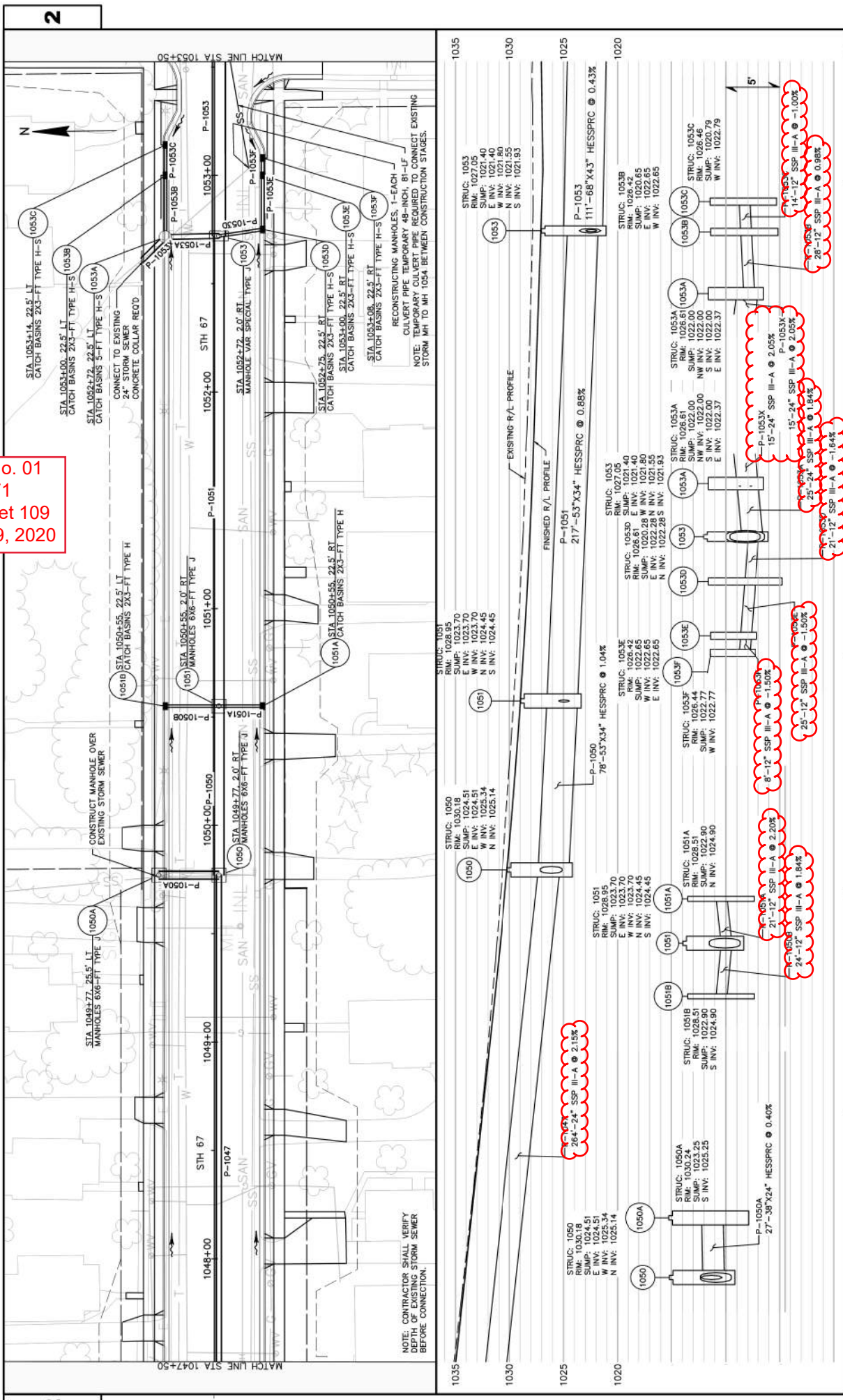
Addendum No. 01
 ID 4090-06-71
 Revised Sheet 106
 November 19, 2020



Addendum No. 01
 ID 4090-06-71
 Revised Sheet 108
 November 19, 2020



Addendum No. 01
 ID 4090-06-71
 Revised Sheet 109
 November 19, 2020

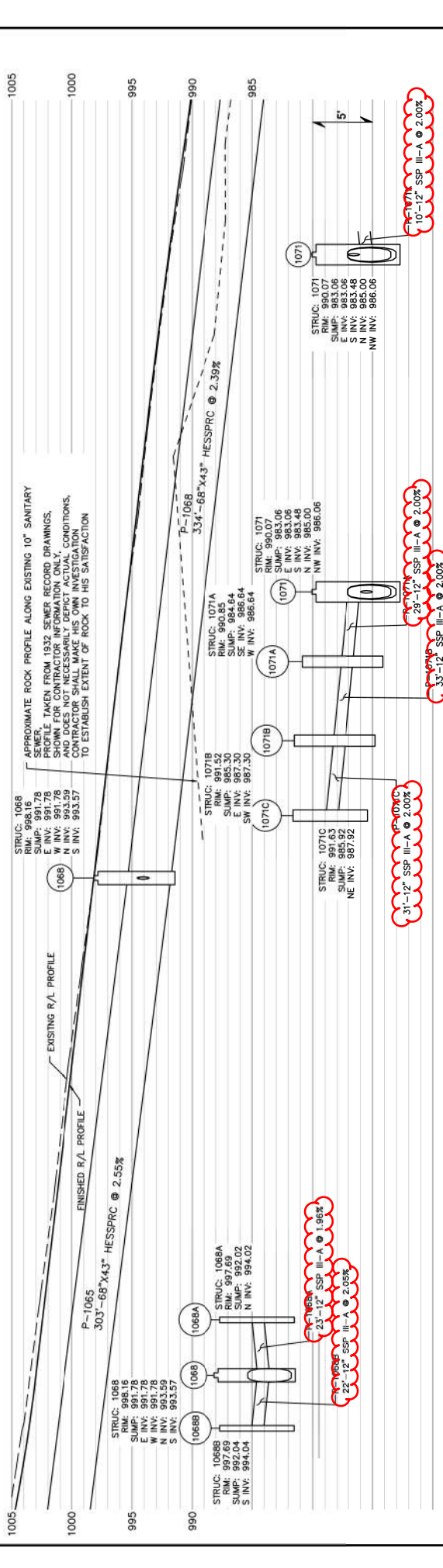
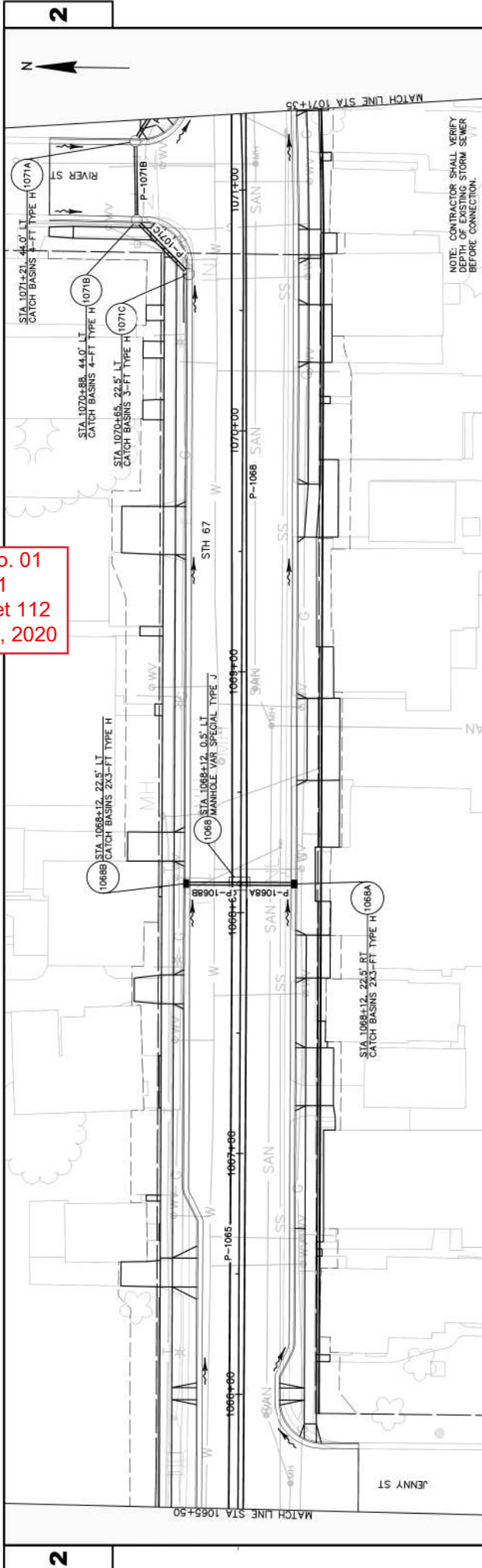


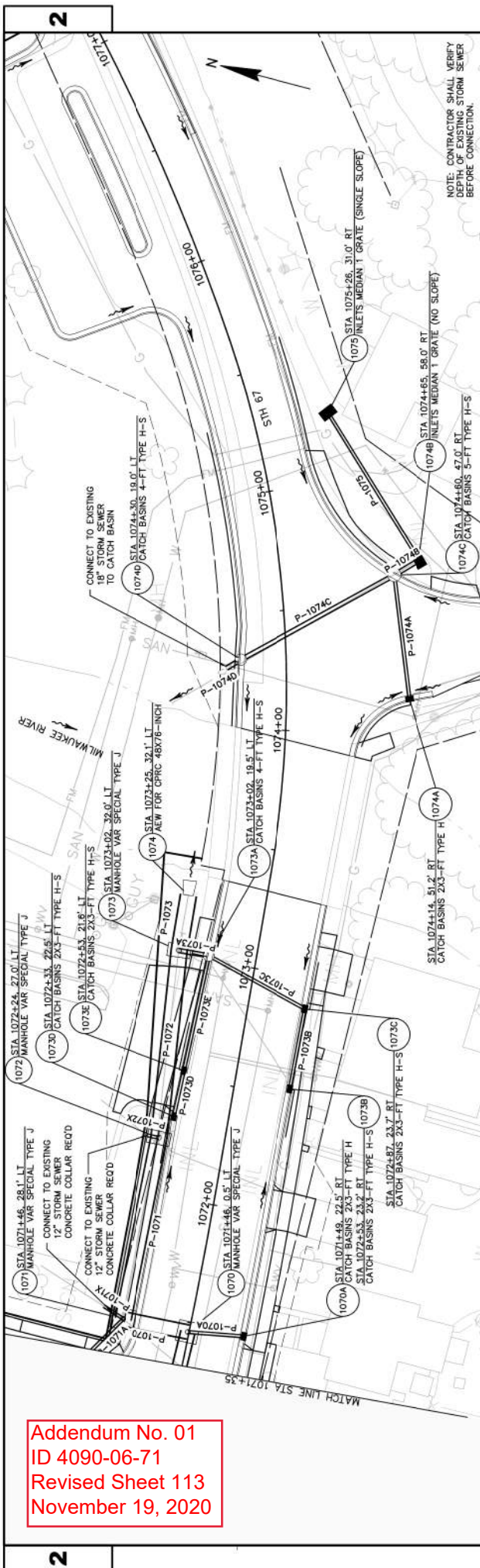
NOTE: CONTRACTOR SHALL VERIFY DEPTH OF EXISTING STORM SEWER BEFORE CONNECTION.

NOTE: RECONSTRUCTING MANHOLES - EACH CURB PIPE TEMPORARY 48-INCH 81-LF STORM MH TO MH 1054 BETWEEN CONSTRUCTION STAGES.

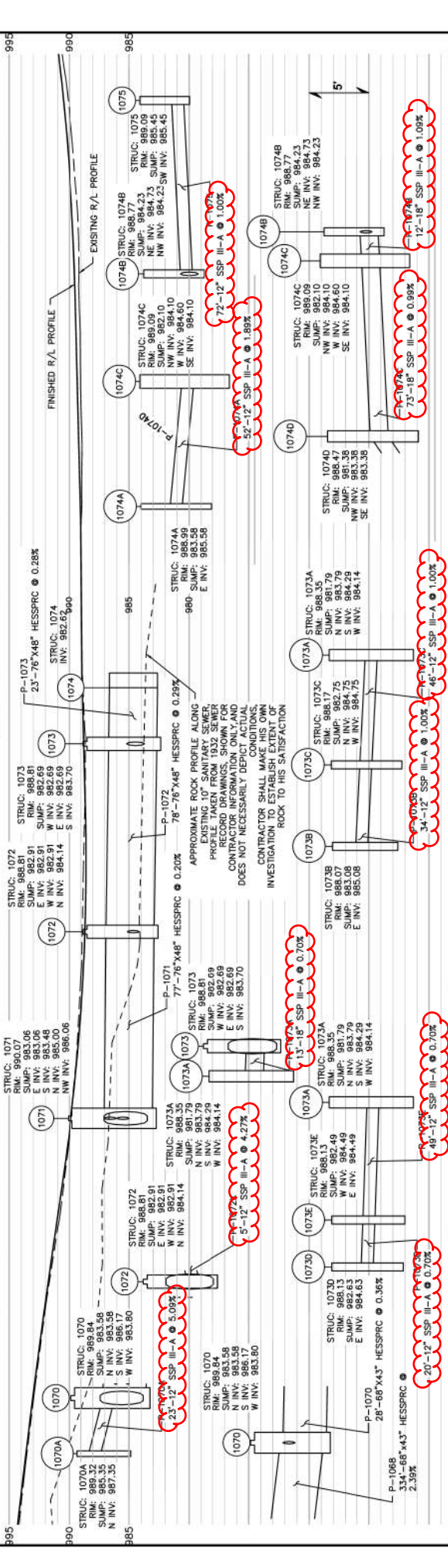
PROJECT NO: 4090-06-71	HWY: STH 67	COUNTY: FOND DU LAC	STORM SEWER	SHEET 109	E
FILE NAME I:\3330560\13975 02\TECH\400\40900600\SSHEE\PLAN\022501_SS.DWG					
PLOT DATE 11/17/2020 3:08 PM					
PLOT NAME : PLOT 871 - LUKE SENZ					
PLOT SCALE 1" = 40' REF					

Addendum No. 01
 ID 4090-06-71
 Revised Sheet 112
 November 19, 2020

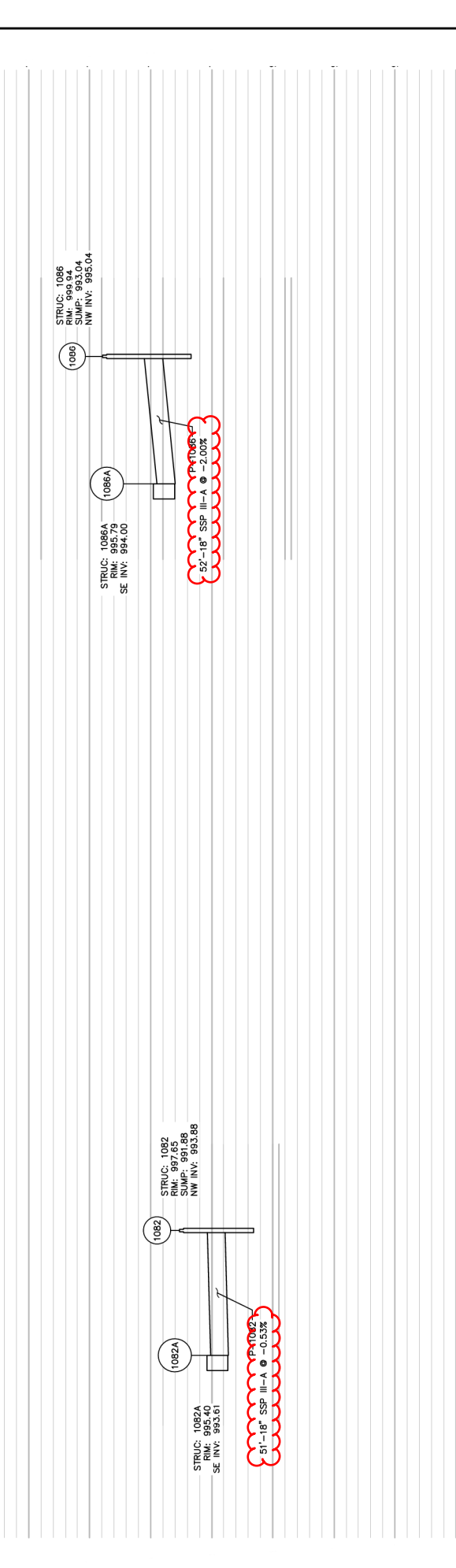
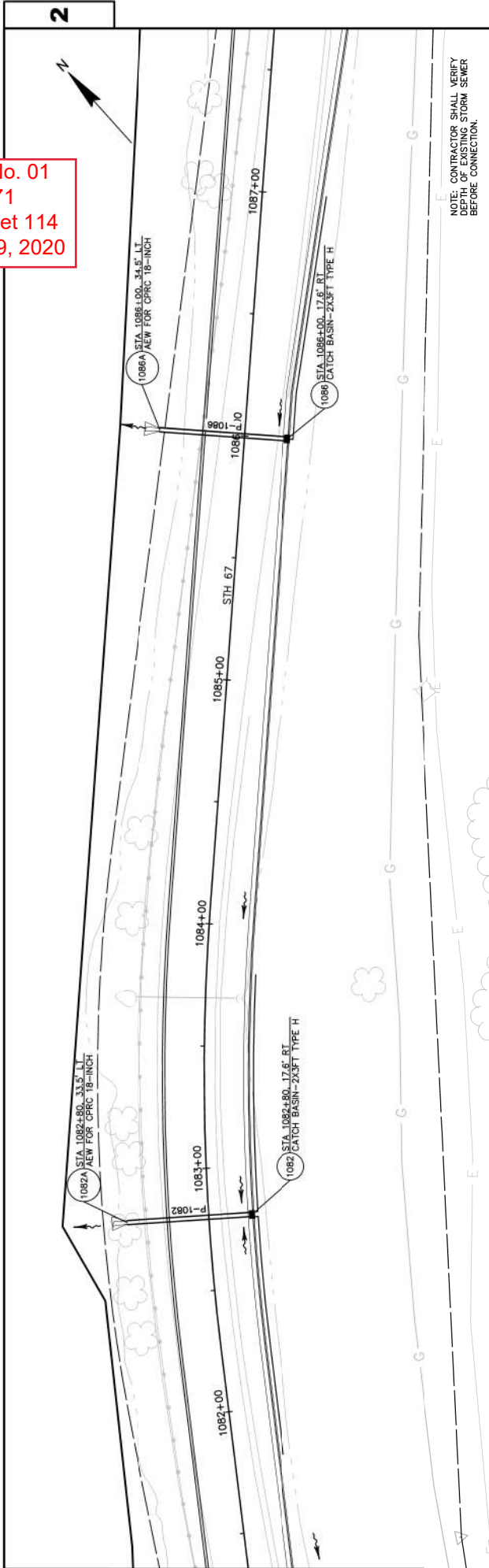




Addendum No. 01
 ID 4090-06-71
 Revised Sheet 113
 November 19, 2020

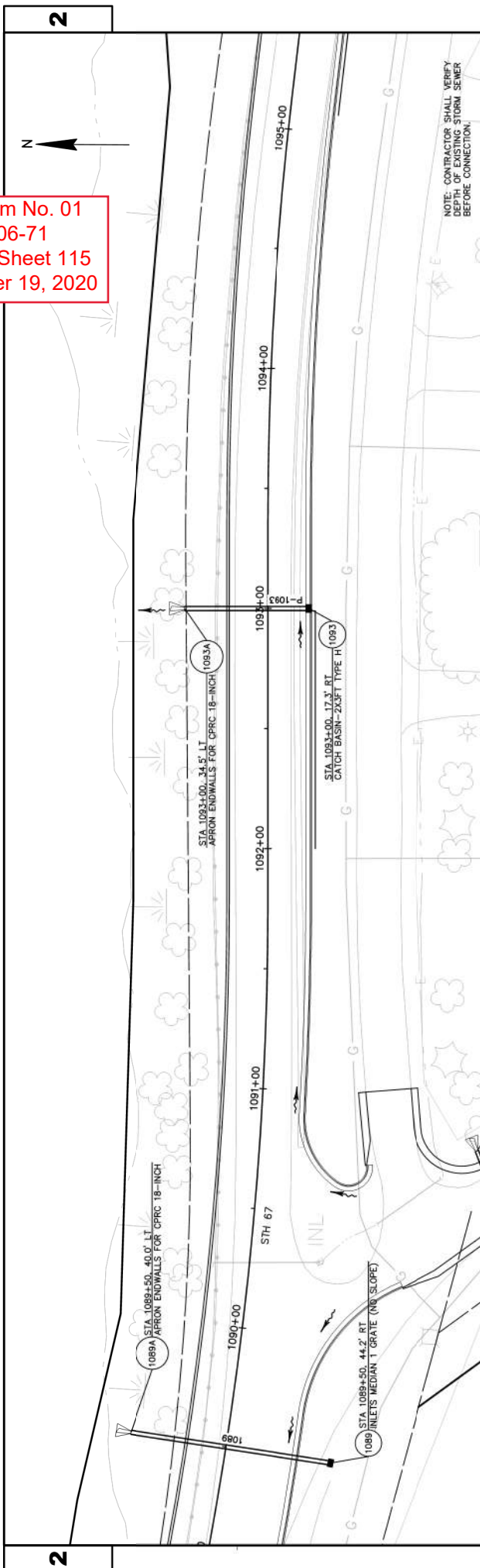


Addendum No. 01
 ID 4090-06-71
 Revised Sheet 114
 November 19, 2020



PROJECT NO: 4090-06-71	HWY: STH 67	COUNTY: FOND DU LAC	STORM SEWER	SHEET 114	E
FILE NAME : X:\2326560\13975.02\TECH\CADD\40906600\SHEET\PLAN\022501_SS.DWG					
PLOT DATE : 11/19/2020 3:09 PM					
PLOT BY : LUKE SENZ					
PLOT NAME :					
PLOT SCALE : 1" = 40' REF					

Addendum No. 01
 ID 4090-06-71
 Revised Sheet 115
 November 19, 2020

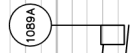


STRUC: 1089
 RIM: 1097.01
 SUMP: 1097.01
 NW INV: 1097.00

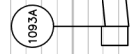


84"-18" SSP III-A @ 2.00%

STRUC: 1089A
 RIM: 1097.11
 SE INV: 1095.32

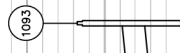


STRUC: 1093A
 RIM: 985.14
 SE INV: 986.35

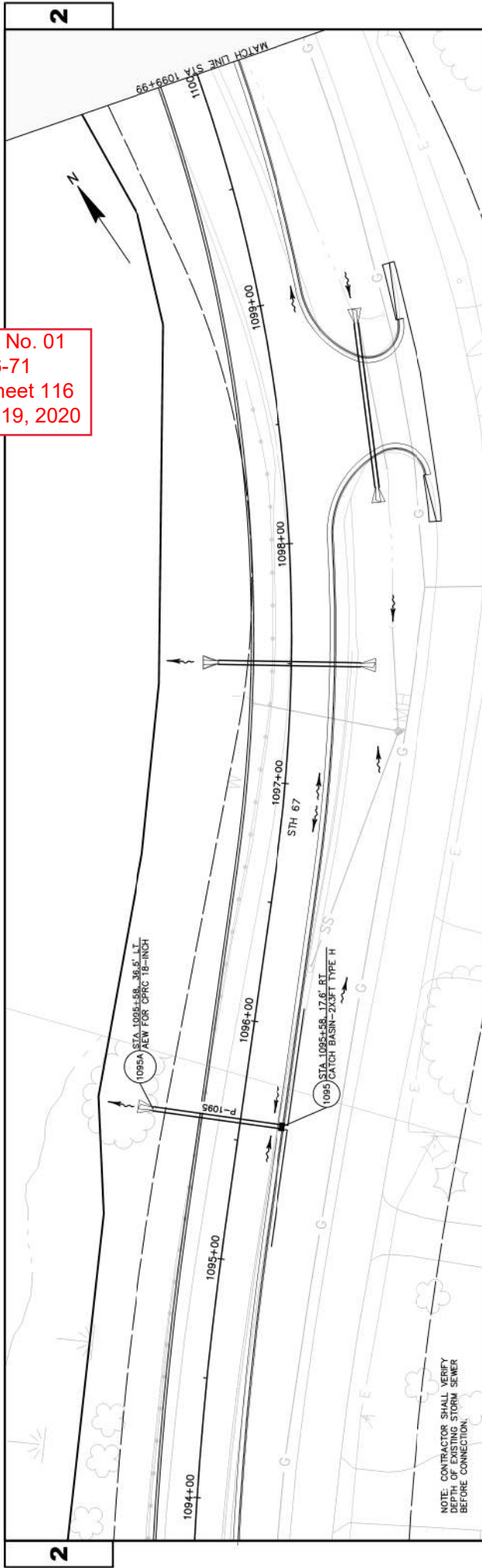


52"-18" SSP III-A @ 2.01%

STRUC: 1093
 RIM: 1001.76
 SUMP: 995.39
 NW INV: 997.39

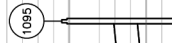


Addendum No. 01
 ID 4090-06-71
 Revised Sheet 116
 November 19, 2020

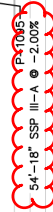


NOTE: CONTRACTOR SHALL VERIFY DEPTH OF EXISTING STORM SEWER BEFORE CONNECTION.

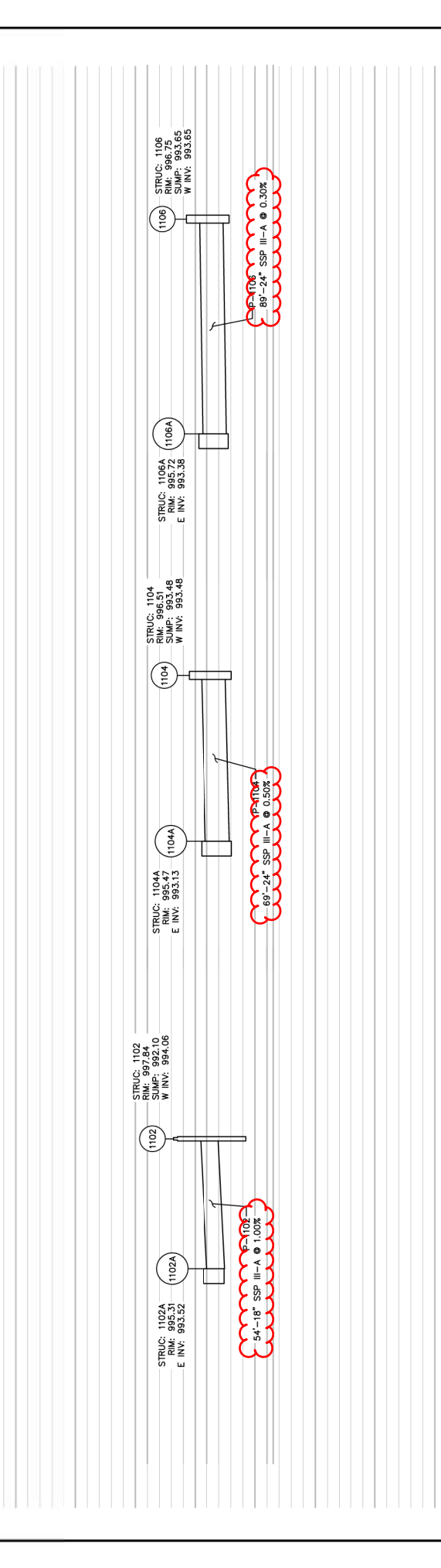
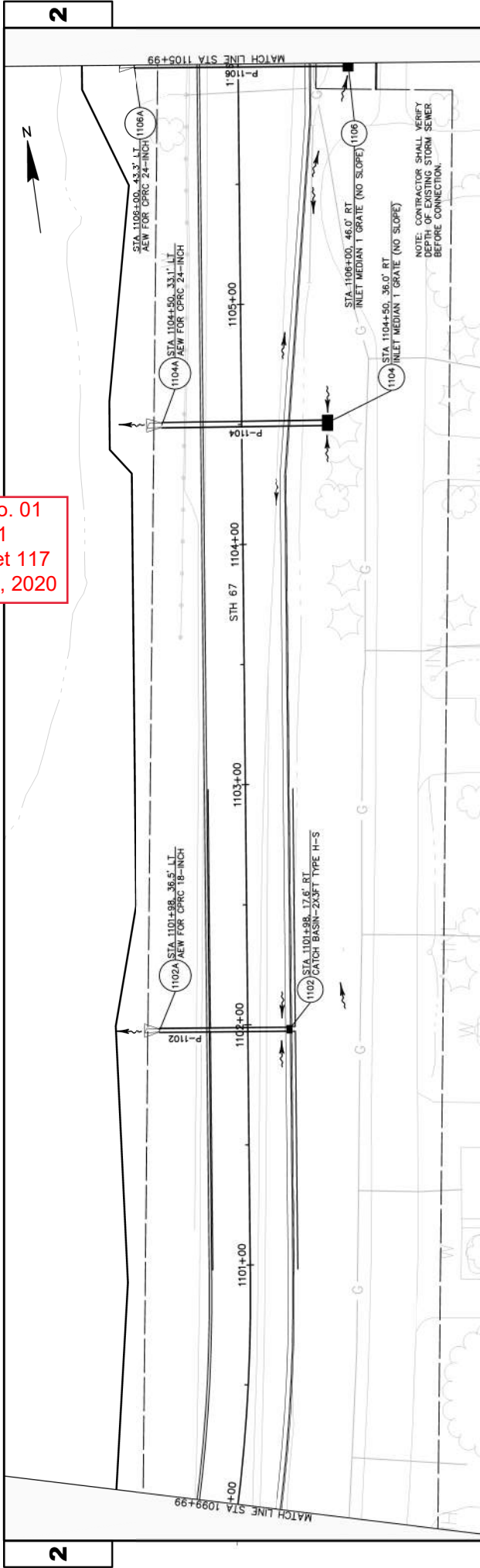
STRUC: 1095
 RIM: 1000.46
 SJMP: 993.58
 NW INV: 995.58

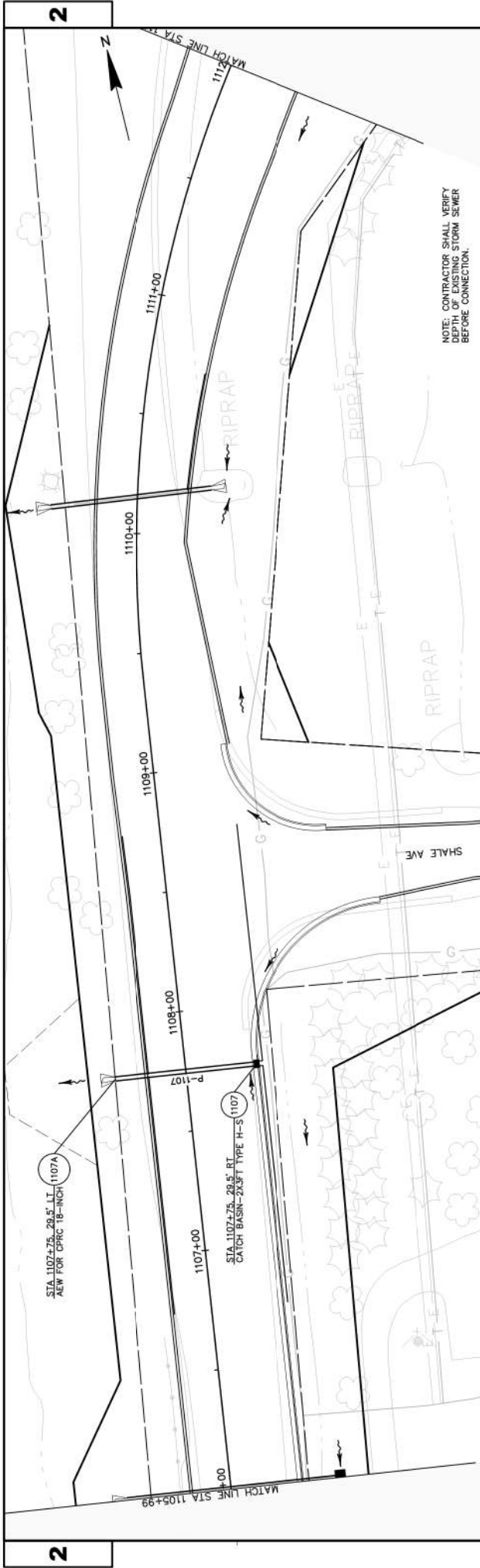


STRUC: 1095A
 RIM: 986.29
 SE INV: 984.50

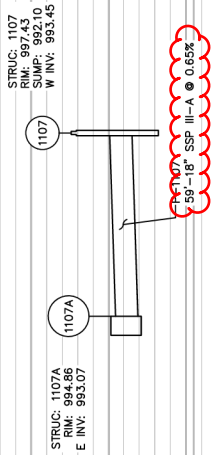


Addendum No. 01
 ID 4090-06-71
 Revised Sheet 117
 November 19, 2020





Addendum No. 01
 ID 4090-06-71
 Revised Sheet 118
 November 19, 2020



STRUC: 1107
 RMC: 993.45
 E INV: 993.0
 W INV: 993.45

STRUC: 1107A
 RMC: 993.86
 E INV: 993.07

Addendum No. 01
 ID 4090-06-71
 Revised Sheet 183
 November 19, 2020

REMOVING CONCRETE SIDEWALK

CATEGORY	STATION	TO	STATION	LOCATION	REMARKS	SY
0010	1015+67	-	1019+15	LT	DRIVEWAY	117
0010	1018+38	-		LT	DRIVEWAY	21
0010	1019+51	-	1024+84	RT	DRIVEWAY	133
0010	1019+66	-	1023+93	RT	DRIVEWAY	114
0010	1020+50	-		RT	DRIVEWAY	10
0010	1021+94	-		RT	DRIVEWAY	11
0010	1022+67	-		RT	DRIVEWAY	25
0010	1023+62	-		RT	DRIVEWAY	8
0010	1023+93	-	1027+52	RT	DRIVEWAY	242
0010	1025+39 WE	-	1025+62 WE	LT	DRIVEWAY	16
0010	1025+71	-	1031+88	LT	DRIVEWAY	470
0010	1027+32	-	1031+89	RT	DRIVEWAY	300
0010	1027+90	-		LT	DRIVEWAY	22
0010	1028+47	-		RT	DRIVEWAY	24
0010	1028+83	-		LT	DRIVEWAY	40
0010	1029+83	-		RT	DRIVEWAY	23
0010	1030+60	-		LT	DRIVEWAY	19
0010	1031+07	-		RT	DRIVEWAY	19
0010	1032+26	-	1036+40	RT	DRIVEWAY	355
0010	1032+29	-	1036+14	LT	DRIVEWAY	248
0010	1032+92	-		LT	DRIVEWAY	21
0010	1034+41	-		RT	DRIVEWAY	11
0010	1036+37 WM'	-	1037+0 FA'	RT	DRIVEWAY	103
0010	1036+14	-	1042+38	LT	DRIVEWAY	700
0010	1037+38	-	1044+46	RT	DRIVEWAY	908
0010	1042+38	-	1053+59	LT	DRIVEWAY	625
0010	1043+93	-		LT	DRIVEWAY	11
0010	1044+77	-		LT	DRIVEWAY	12
0010	1044+80	-	1053+43	RT	DRIVEWAY	524
0010	1045+48	-		LT	DRIVEWAY	15
0010	1045+60	-		RT	DRIVEWAY	31
0010	1045+97	-		LT	DRIVEWAY	22
0010	1047+02	-		LT	DRIVEWAY	5
0010	1047+36	-		RT	DRIVEWAY	64
0010	1047+66	-		LT	DRIVEWAY	10
0010	1048+02	-		RT	DRIVEWAY	68
0010	1048+58	-		RT	DRIVEWAY	5
0010	1048+68	-		LT	DRIVEWAY	15
0010	1049+54	-		LT	DRIVEWAY	18
0010	1049+80	-		RT	DRIVEWAY	11
0010	1049+94	-		LT	DRIVEWAY	19
0010	1050+36	-		RT	DRIVEWAY	40
0010	1050+97	-		RT	DRIVEWAY	10
0010	1051+99	-		RT	DRIVEWAY	36
0010	1052+65	-		RT	DRIVEWAY	25

REMOVING CONCRETE SIDEWALK (CONTINUED)

CATEGORY	STATION	TO	STATION	LOCATION	REMARKS	SY
0010	10+32'NE'	-	11+00'NE'	LT	DRIVEWAY	30
0010	10+32'NE'	-	11+00'NE'	RT	DRIVEWAY	31
0010	1053+81	-	1059+97	RT	DRIVEWAY	473
0010	1053+93	-	1059+94	LT	DRIVEWAY	364
0010	1055+61	-		LT	DRIVEWAY	37
0010	1056+28	-		LT	DRIVEWAY	23
0010	1056+92	-		LT	DRIVEWAY	28
0010	1057+38	-		RT	DRIVEWAY	16
0010	1057+90	-		RT	DRIVEWAY	16
0010	1058+04	-		LT	DRIVEWAY	37
0010	1058+51	-		RT	DRIVEWAY	17
0010	1058+70	-		RT	DRIVEWAY	14
0010	1058+71	-		LT	DRIVEWAY	36
0010	10+31'HS'	-	10+80'HS'	LT	DRIVEWAY	23
0010	10+30'HS'	-		RT	DRIVEWAY	13
0010	1060+42	-	1065+43	RT	DRIVEWAY	299
0010	1060+44	-	1070+86	LT	DRIVEWAY	674
0010	1061+21	-		RT	DRIVEWAY	8
0010	1061+65	-		LT	DRIVEWAY	28
0010	1062+28	-		RT	DRIVEWAY	11
0010	1062+92	-		LT	DRIVEWAY	10
0010	1063+17	-		RT	DRIVEWAY	33
0010	1063+72	-		RT	DRIVEWAY	59
0010	1063+92	-		LT	DRIVEWAY	39
0010	1064+63	-		RT	DRIVEWAY	9
0010	1065+84	-	1073+71	RT	DRIVEWAY	754
0010	1066+49	-		LT	DRIVEWAY	9
0010	1067+68	-		LT	DRIVEWAY	9
0010	1068+27	-		LT	DRIVEWAY	9
0010	1069+58	-		LT	DRIVEWAY	14
0010	1069+67	-		RT	DRIVEWAY	30
0010	1070+40	-		RT	DRIVEWAY	31
0010	1070+78	-		RT	DRIVEWAY	9
0010	10+32'RS'	-	10+80'RS'	LT	DRIVEWAY	20
0010	10+34'RS'	-	10+80'RS'	RT	DRIVEWAY	25
0010	1071+25	-	1073+17	LT	DRIVEWAY	141
0010	1071+37	-		RT	DRIVEWAY	9
0010	1072+04	-		RT	DRIVEWAY	28
0010	1073+04	-		RT	DRIVEWAY	16
0010	1073+90	-	1074+00	RT	DRIVEWAY	12
TOTAL 0010						8,980

REMOVING GUARDRAIL

CATEGORY	STATION	TO	STATION	LOCATION	REMARKS	SY
0010	1009+39	-	1010+41	LT	DRIVEWAY	103
0010	1009+55	-	1011+83	RT	DRIVEWAY	228
0010	1012+05	-	1014+08	LT	DRIVEWAY	203
0010	1012+53	-	1014+57	RT	DRIVEWAY	203
0010	1075+60	-	1076+58	RT	DRIVEWAY	101
0010	1078+51	-	1098+70	LT	DRIVEWAY	2,022
0010	1103+60	-	1106+66	LT	DRIVEWAY	306
TOTAL 0010						3,166

REMOVING CONCRETE RACEWAY

CATEGORY	STATION	TO	STATION	LOCATION	REMARKS	SY
0010	1071+95	-	LT		DRIVEWAY	1
0010	1071+95	-	LT/RT		DRIVEWAY	50
TOTAL 0010						50

REMOVING BEAM GUARD RETAINING WALL

CATEGORY	STATION	TO	STATION	LOCATION	REMARKS	SY
0010	1079+50	-	1098+25	LT	DRIVEWAY	1,875
0010	1104+25	-	1106+25	LT	DRIVEWAY	200
TOTAL 0010						2,075

SAWING (CONTINUED)

CATEGORY	STATION	TO	STATION	LOCATION	690.0150 SAWING ASPHALT LF	690.0250 SAWING CONCRETE LF
0010	1066+15	-	RT			3
0010	1066+59	-	RT			3
0010	1066+67	-	LT			7
0010	1066+81	-	LT			3
0010	1067+24	-	RT			14
0010	1067+30	-	LT			22
0010	1067+68	-	LT			10
0010	1067+82	-	RT			18
0010	1068+27	-	LT			13
0010	1068+27	-	RT			62
0010	1068+84	-	LT			114
0010	1069+17	-	LT			4
0010	1069+59	-	LT			20
0010	1070+13	-	RT			3
0010	1070+78	-	RT			9
0010	10+80/RS'	-	LT/RT			30
0010	1071+13	-	RT			4
0010	1071+63	-	RT			3
0010	1072+02	-	RT			17
0010	1072+30	-	RT			3
0010	1072+31	-	LT			64
0010	1072+45	-	RT			6
0010	1072+70	-	RT			5
0010	1073+04	-	RT			18
0010	1073+31	-	RT			10
0010	1073+34	-	LT			9
0010	1073+91	-	RT			7
0010	1073+98	-	RT			7
0010	8+60'NC'	-	RT			20
0010	8+78'NC'	-	LT/RT			18
0010	8+78'NC'	-	RT			18
0010	10+91'SN'	-	LT			19
0010	11+80'SN'	-	LT/RT			20
0010	10+62'SL'	-	LT/RT			115
0010	11+70'SH'	-	LT/RT			22
0010	11+58'TS'	-	LT			14
0010	12+48'TS'	-	LT/RT			22
0010	1118+66	-	LT/RT			34
TOTAL 0010					2,161	2,003

STORM SEWER TAP

CATEGORY	LOCATION	SPV.0060.07 STORM SEWER LATERAL TO MAINLINE PIPE CONNECTOR EACH
0010	UNDISTRIBUTED	4
0010	TOTAL 0010	4

CATEGORY	STATION	LOCATION	SPV.0060.08 CONNECTING ARTESIAN WELL EACH
0010	1006+67	LT	1
0010	TOTAL 0010		1

UNITED STATES POSTAL SERVICE CLUSTER BOX

CATEGORY	STATION	LOCATION	EA	EA
0010	1018+64	LT	1	1
0010	1032+64	LT	1	1
0010	1040+35	LT	2	2
0010	1049+15	LT	2	2
0010	1054+94	LT	1	1
0010	1065+72	LT	2	2
TOTAL 0010			9	9

UNITED STATES POSTAL SERVICE CLUSTER BOX

CATEGORY	STATION	LOCATION	EA	EA
0010	1018+64	LT	1	1
0010	1032+64	LT	1	1
0010	1040+35	LT	2	2
0010	1049+15	LT	2	2
0010	1054+94	LT	1	1
0010	1065+72	LT	2	2
TOTAL 0010			9	9

STORM SEWER LATERAL

CATEGORY	LOCATION	SPV.0090.02 STORM SEWER LATERAL LF
0010	UNDISTRIBUTED	100
0010	TOTAL 0010	100

WALL MODULAR BLOCK GRAVITY LANDSCAPE

CATEGORY	STATION	TO	STATION	LOCATION	SF
0010	1055+05.77	-	1055+42.85	LT	141
0010	1055+46.50	-	1055+52.50	LT	60
0010	1055+66.50	-	1055+87.92	LT	109
0010	1055+92.42	-	1056+21.00	LT	132
0010	1058+76.50	-	1058+89.02	LT	76
0010	1058+93.02	-	1059+62.99	LT	287
0010	1059+67.49	-	1059+85.72	LT	215
0010	1061+75.00	-	1062+09.75	LT	182
0010	1062+13.75	-	1062+58.42	LT	235
0010	1062+63.92	-	1062+83.00	LT	120
0010	1063+36.50	-	1063+74.87	LT	208
TOTAL 0010					1,765

EXCAVATION, HAULING, AND DISPOSAL OF PAH CONTAMINATED SEDIMENT

CATEGORY	STATION	LOCATION	TON
0010	1009+50 - 1013+50, RT	DEFENTION POND	3,150
TOTAL 0010			3,150

Addendum No. 01
ID 4090-06-71
Revised Sheet 221
November 19, 2020

3

3

HWY: STH 67

PROJECT NO: 4090-06-71

COUNTY: FOND DU LAC

MISCELLANEOUS QUANTITIES

SHEET: 221

E

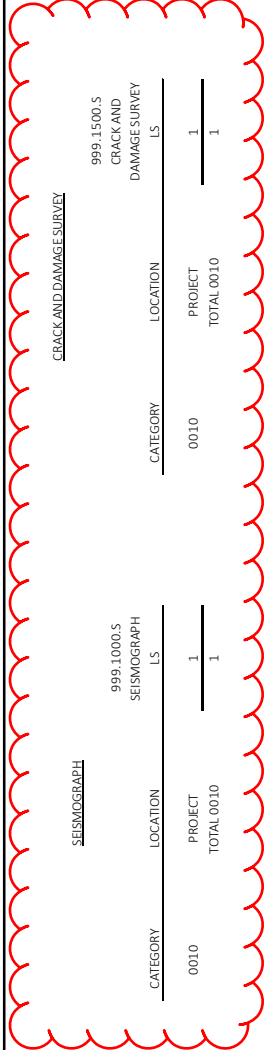
FILE NAME :

PLOT DATE :

PLOT NAME :

PLOT SCALE : 1:1

Addendum No. 01
ID 4090-06-72
Revised Sheet 554
November 19, 2020



WATERMAIN

CATEGORY	STATION	STATION	OFFSET	DIP		WATERMAIN		PIPE		
				6-INCH	8-INCH	WATERMAIN	12-INCH	INSULATION	UF	
	0020	1024+90.76	1025+48.42		90					
	0020	1025+48.42	1031+95.57		648					
	0020	1031+95.57	1031+97.39		67					
	0020	1031+95.57	1032+403.37		8					
	0020	1032+400.37	1032+403.37		35					
	0020	1032+403.37	1036+72.67		469					
	0020	1036+72.67	1036+76.84		4					
	0020	1036+52.16	1036+76.84		58					
	0020	1036+72.67	1037+11.12		83					
	0020	1036+76.84	1041+65.57		488					
	0020	1044+55.51	1044+57.45		56					
	0020	1041+65.57	1044+57.45		292					
	0020	1044+57.45	1053+56.22		899					
	0020	1053+54.27	1053+56.22		48					
	0020	1053+56.22	1053+69.90		14					
	0020	1053+67.93	1053+69.90		27					
	0020	1053+69.90	1060+12.39		642					
	0020	1060+10.06	1060+12.39		31					
	0020	1060+12.23	1060+12.39		56					
	0020	1060+12.39	1061+35.35		125					
	0020	1061+35.35	1065+70.68		435					
	0020	1065+70.68	1071+40.99		532					
	0020	1071+40.99	1071+10.73		35					
	0020	1071+40.99	1072+95.12		226					
	0020	1031+63.19	8.29' RT	30						
	0020	1032+42.42	8.14' RT	30						
	0020	1037+33.25	10.09' LT	16						
	0020	1040+83.16	10.64' LT	15						
	0020	1044+41.20	11.55' LT	13						
	0020	1049+69.74	11.32' LT	13						
	0020	1054+08.80	11.10' LT	14						
	0020	1059+82.88	10.89' LT	9						
	0020	1059+85.38	10.89' LT	34						
	0020	1065+45.64	15.41' LT	5						
	0020	1070+70.11	14.03' LT	11						
	0020	1024+92.96	49.93' LT	10						
	0020	1036+96.11	36.54' RT	10						
	0020	1065+09.02	15.42' LT	10						
	0020	1024+90.76	1072+98.28							
	0020	UNDISTRIBUTED							270	
		TOTAL 0020		190	586				4,782	300



Proposal Schedule of Items

Proposal ID: 20201208018 Project(s): 4090-06-71, 4090-06-72

Federal ID(s): WISC 2021036, N/A

SECTION: 0001

Contract Items

Alt Set ID:

Alt Mbr ID:

Proposal Line Number	Item ID Description	Approximate Quantity and Units	Unit Price	Bid Amount
0002	201.0105 Clearing	41.000 STA	_____.	_____.
0004	201.0205 Grubbing	41.000 STA	_____.	_____.
0006	203.0100 Removing Small Pipe Culverts	13.000 EACH	_____.	_____.
0008	204.0100 Removing Concrete Pavement	8,144.000 SY	_____.	_____.
0010	204.0110 Removing Asphaltic Surface	48,095.000 SY	_____.	_____.
0012	204.0150 Removing Curb & Gutter	13,789.000 LF	_____.	_____.
0014	204.0155 Removing Concrete Sidewalk	8,980.000 SY	_____.	_____.
0016	204.0165 Removing Guardrail	3,166.000 LF	_____.	_____.
0018	204.0210 Removing Manholes	37.000 EACH	_____.	_____.
0020	204.0220 Removing Inlets	70.000 EACH	_____.	_____.
0022	204.0245 Removing Storm Sewer (size) 001. 6-Inch	58.000 LF	_____.	_____.
0024	204.0245 Removing Storm Sewer (size) 002. 10-Inch	946.000 LF	_____.	_____.
0026	204.0245 Removing Storm Sewer (size) 003. 12-Inch	957.000 LF	_____.	_____.
0028	204.0245 Removing Storm Sewer (size) 004. 15-Inch	1,592.000 LF	_____.	_____.
0030	204.0245 Removing Storm Sewer (size) 005. 18-Inch	669.000 LF	_____.	_____.



Proposal Schedule of Items

Proposal ID: 20201208018 Project(s): 4090-06-71, 4090-06-72

Federal ID(s): WISC 2021036, N/A

SECTION: 0001

Contract Items

Alt Set ID:

Alt Mbr ID:

Proposal Line Number	Item ID Description	Approximate Quantity and Units	Unit Price	Bid Amount
0032	204.0245 Removing Storm Sewer (size) 006. 20-Inch	329.000 LF	_____.	_____.
0034	204.0245 Removing Storm Sewer (size) 007. 21-Inch	506.000 LF	_____.	_____.
0036	204.0245 Removing Storm Sewer (size) 008. 24-Inch	431.000 LF	_____.	_____.
0038	204.0245 Removing Storm Sewer (size) 009. 30-Inch	25.000 LF	_____.	_____.
0040	204.0245 Removing Storm Sewer (size) 010. 36-Inch	50.000 LF	_____.	_____.
0042	204.0245 Removing Storm Sewer (size) 011. 42-Inch	397.000 LF	_____.	_____.
0044	204.0245 Removing Storm Sewer (size) 012. 48-Inch	383.000 LF	_____.	_____.
0046	204.0245 Removing Storm Sewer (size) 013. 34X53-Inch	905.000 LF	_____.	_____.
0048	204.0245 Removing Storm Sewer (size) 014. 38X60-Inch	694.000 LF	_____.	_____.
0050	204.9090.S Removing (item description) 001. Beam Guard Retaining Wall	2,075.000 LF	_____.	_____.
0052	205.0100 Excavation Common	42,191.000 CY	_____.	_____.
0054	205.0400 Excavation Marsh	8,219.000 CY	_____.	_____.
0056	205.0501.S Excavation, Hauling, and Disposal of Petroleum Contaminated Soil	140.000 TON	_____.	_____.
0058	209.2500 Backfill Granular Grade 2	18,000.000 TON	_____.	_____.



Proposal Schedule of Items

Proposal ID: 20201208018 Project(s): 4090-06-71, 4090-06-72

Federal ID(s): WISC 2021036, N/A

SECTION: 0001

Contract Items

Alt Set ID:

Alt Mbr ID:

Proposal Line Number	Item ID Description	Approximate Quantity and Units	Unit Price	Bid Amount
0060	213.0100 Finishing Roadway (project) 001. 4090-06-71	1.000 EACH	_____.	_____.
0062	305.0110 Base Aggregate Dense 3/4-Inch	470.000 TON	_____.	_____.
0064	305.0120 Base Aggregate Dense 1 1/4-Inch	44,550.000 TON	_____.	_____.
0066	312.0110 Select Crushed Material	45,130.000 TON	_____.	_____.
0068	371.2000.S QMP Base Aggregate Dense 1 1/4-Inch Compaction	30.000 EACH	_____.	_____.
0070	416.0160 Concrete Driveway 6-Inch	2,487.000 SY	_____.	_____.
0072	416.0260 Concrete Driveway HES 6-Inch	106.000 SY	_____.	_____.
0074	450.4000 HMA Cold Weather Paving	1,076.000 TON	_____.	_____.
0076	455.0605 Tack Coat	4,005.000 GAL	_____.	_____.
0078	460.2000 Incentive Density HMA Pavement	9,780.000 DOL	1.00000	9,780.00
0080	460.5223 HMA Pavement 3 LT 58-28 S	9,616.000 TON	_____.	_____.
0082	460.5224 HMA Pavement 4 LT 58-28 S	5,610.000 TON	_____.	_____.
0084	465.0120 Asphaltic Surface Driveways and Field Entrances	305.000 TON	_____.	_____.
0086	502.3200 Protective Surface Treatment	327.000 SY	_____.	_____.
0088	504.0900 Concrete Masonry Endwalls	7.000 CY	_____.	_____.
0090	509.0301 Preparation Decks Type 1	154.000 SY	_____.	_____.



Proposal Schedule of Items

Proposal ID: 20201208018 Project(s): 4090-06-71, 4090-06-72

Federal ID(s): WISC 2021036, N/A

SECTION: 0001

Contract Items

Alt Set ID:

Alt Mbr ID:

Proposal Line Number	Item ID Description	Approximate Quantity and Units	Unit Price	Bid Amount
0092	509.0302 Preparation Decks Type 2	62.000 SY	_____.	_____.
0094	509.0505.S Cleaning Decks to Reapply Concrete Masonry Overlay	327.000 SY	_____.	_____.
0096	509.1200 Curb Repair	130.000 LF	_____.	_____.
0098	509.1500 Concrete Surface Repair	55.000 SF	_____.	_____.
0100	509.2000 Full-Depth Deck Repair	2.000 SY	_____.	_____.
0102	509.2500 Concrete Masonry Overlay Decks	22.000 CY	_____.	_____.
0104	509.9005.S Removing Concrete Masonry Deck Overlay (structure) 001. B-20-32	327.000 SY	_____.	_____.
0106	513.2001 Railing Pipe	23.000 LF	_____.	_____.
0108	520.1012 Apron Endwalls for Culvert Pipe 12-Inch	6.000 EACH	_____.	_____.
0110	520.2048 Culvert Pipe Temporary 48-Inch	81.000 LF	_____.	_____.
0112	520.3312 Culvert Pipe Class III-A 12-Inch	110.000 LF	_____.	_____.
0114	520.8000 Concrete Collars for Pipe	21.000 EACH	_____.	_____.
0116	522.0115 Culvert Pipe Reinforced Concrete Class III 15-Inch	38.000 LF	_____.	_____.
0118	522.0118 Culvert Pipe Reinforced Concrete Class III 18-Inch	195.000 LF	_____.	_____.
0120	522.0124 Culvert Pipe Reinforced Concrete Class III 24-Inch	258.000 LF	_____.	_____.



Proposal Schedule of Items

Proposal ID: 20201208018 Project(s): 4090-06-71, 4090-06-72

Federal ID(s): WISC 2021036, N/A

SECTION: 0001

Contract Items

Alt Set ID:

Alt Mbr ID:

Proposal Line Number	Item ID Description	Approximate Quantity and Units	Unit Price	Bid Amount
0122	522.1015 Apron Endwalls for Culvert Pipe Reinforced Concrete 15-Inch	2.000 EACH	_____.	_____.
0124	522.1018 Apron Endwalls for Culvert Pipe Reinforced Concrete 18-Inch	15.000 EACH	_____.	_____.
0126	522.1024 Apron Endwalls for Culvert Pipe Reinforced Concrete 24-Inch	9.000 EACH	_____.	_____.
0128	522.2648 Apron Endwalls for Culvert Pipe Reinforced Concrete Horizontal Elliptical 48x76-Inch	1.000 EACH	_____.	_____.
0130	601.0411 Concrete Curb & Gutter 30-Inch Type D	15,964.000 LF	_____.	_____.
0132	601.0553 Concrete Curb & Gutter 4-Inch Sloped 36-Inch Type D	205.000 LF	_____.	_____.
0134	601.0576 Concrete Curb & Gutter 4-Inch Sloped 30-Inch Type J	3,264.000 LF	_____.	_____.
0136	601.0600 Concrete Curb Pedestrian	291.000 LF	_____.	_____.
0138	602.0405 Concrete Sidewalk 4-Inch	65,455.000 SF	_____.	_____.
0140	602.0515 Curb Ramp Detectable Warning Field Natural Patina	508.000 SF	_____.	_____.
0142	602.0615 Curb Ramp Detectable Warning Field Radial Natural Patina	26.000 SF	_____.	_____.
0144	602.1500 Concrete Steps	126.000 SF	_____.	_____.
0146	606.0200 Riprap Medium	51.000 CY	_____.	_____.
0148	606.0300 Riprap Heavy	140.000 CY	_____.	_____.



Proposal Schedule of Items

Proposal ID: 20201208018 Project(s): 4090-06-71, 4090-06-72

Federal ID(s): WISC 2021036, N/A

SECTION: 0001

Contract Items

Alt Set ID:

Alt Mbr ID:

Proposal Line Number	Item ID Description	Approximate Quantity and Units	Unit Price	Bid Amount
0150	608.0005 Storm Sewer Rock Excavation	363.000 CY	_____.	_____.
0164	608.2314 Storm Sewer Pipe Reinforced Concrete Horizontal Elliptical Class HE-III 14x23-Inch	317.000 LF	_____.	_____.
0166	608.2324 Storm Sewer Pipe Reinforced Concrete Horizontal Elliptical Class HE-III 24x38-Inch	27.000 LF	_____.	_____.
0168	608.2334 Storm Sewer Pipe Reinforced Concrete Horizontal Elliptical Class HE-III 34x53-Inch	534.000 LF	_____.	_____.
0170	608.2338 Storm Sewer Pipe Reinforced Concrete Horizontal Elliptical Class HE-III 38x60-Inch	241.000 LF	_____.	_____.
0172	608.2343 Storm Sewer Pipe Reinforced Concrete Horizontal Elliptical Class HE-III 43x68-Inch	1,422.000 LF	_____.	_____.
0174	608.2348 Storm Sewer Pipe Reinforced Concrete Horizontal Elliptical Class HE-III 48x76-Inch	178.000 LF	_____.	_____.
0176	611.0420 Reconstructing Manholes	1.000 EACH	_____.	_____.
0178	611.0530 Manhole Covers Type J	40.000 EACH	_____.	_____.
0180	611.0624 Inlet Covers Type H	59.000 EACH	_____.	_____.
0182	611.0639 Inlet Covers Type H-S	32.000 EACH	_____.	_____.
0184	611.0642 Inlet Covers Type MS	5.000 EACH	_____.	_____.
0186	611.1003 Catch Basins 3-FT Diameter	4.000 EACH	_____.	_____.



Proposal Schedule of Items

Proposal ID: 20201208018 Project(s): 4090-06-71, 4090-06-72

Federal ID(s): WISC 2021036, N/A

SECTION: 0001

Contract Items

Alt Set ID:

Alt Mbr ID:

Proposal Line Number	Item ID Description	Approximate Quantity and Units	Unit Price	Bid Amount
0188	611.1004 Catch Basins 4-FT Diameter	11.000 EACH	_____	_____
0190	611.1005 Catch Basins 5-FT Diameter	6.000 EACH	_____	_____
0192	611.1230 Catch Basins 2x3-FT	68.000 EACH	_____	_____
0194	611.2004 Manholes 4-FT Diameter	4.000 EACH	_____	_____
0196	611.2005 Manholes 5-FT Diameter	19.000 EACH	_____	_____
0198	611.2006 Manholes 6-FT Diameter	1.000 EACH	_____	_____
0200	611.2066 Manholes 6x6-FT	4.000 EACH	_____	_____
0202	611.2604 Manholes Variable Special 4-FT Diameter	12.000 EACH	_____	_____
0204	611.3004 Inlets 4-FT Diameter	1.000 EACH	_____	_____
0206	611.3901 Inlets Median 1 Grate	5.000 EACH	_____	_____
0208	612.0206 Pipe Underdrain Unperforated 6-Inch	10.000 LF	_____	_____
0210	612.0406 Pipe Underdrain Wrapped 6-Inch	2,285.000 LF	_____	_____
0212	616.0700.S Fence Safety	1,500.000 LF	_____	_____
0214	618.0100 Maintenance And Repair of Haul Roads (project) 001. 4090-06-71	1.000 EACH	_____	_____
0216	619.1000 Mobilization	1.000 EACH	_____	_____
0218	623.0200 Dust Control Surface Treatment	62,739.000 SY	_____	_____



Proposal Schedule of Items

Proposal ID: 20201208018 Project(s): 4090-06-71, 4090-06-72

Federal ID(s): WISC 2021036, N/A

SECTION: 0001

Contract Items

Alt Set ID:

Alt Mbr ID:

Proposal Line Number	Item ID Description	Approximate Quantity and Units	Unit Price	Bid Amount
0220	624.0100 Water	840.000 MGAL	_____.	_____.
0222	625.0500 Salvaged Topsoil	40,433.000 SY	_____.	_____.
0224	628.1504 Silt Fence	8,681.000 LF	_____.	_____.
0226	628.1520 Silt Fence Maintenance	8,681.000 LF	_____.	_____.
0228	628.1905 Mobilizations Erosion Control	15.000 EACH	_____.	_____.
0230	628.1910 Mobilizations Emergency Erosion Control	10.000 EACH	_____.	_____.
0232	628.2008 Erosion Mat Urban Class I Type B	43,352.000 SY	_____.	_____.
0234	628.2023 Erosion Mat Class II Type B	4,746.000 SY	_____.	_____.
0236	628.7005 Inlet Protection Type A	5.000 EACH	_____.	_____.
0238	628.7010 Inlet Protection Type B	5.000 EACH	_____.	_____.
0240	628.7015 Inlet Protection Type C	131.000 EACH	_____.	_____.
0242	628.7020 Inlet Protection Type D	30.000 EACH	_____.	_____.
0244	628.7504 Temporary Ditch Checks	300.000 LF	_____.	_____.
0246	628.7555 Culvert Pipe Checks	24.000 EACH	_____.	_____.
0248	628.7560 Tracking Pads	4.000 EACH	_____.	_____.
0250	628.7570 Rock Bags	60.000 EACH	_____.	_____.
0252	629.0205 Fertilizer Type A	28.000 CWT	_____.	_____.



Proposal Schedule of Items

Proposal ID: 20201208018 Project(s): 4090-06-71, 4090-06-72

Federal ID(s): WISC 2021036, N/A

SECTION: 0001

Contract Items

Alt Set ID:

Alt Mbr ID:

Proposal Line Number	Item ID Description	Approximate Quantity and Units	Unit Price	Bid Amount
0254	630.0110 Seeding Mixture No. 10	55.000 LB	_____.	_____.
0256	630.0130 Seeding Mixture No. 30	488.000 LB	_____.	_____.
0258	630.0140 Seeding Mixture No. 40	255.000 LB	_____.	_____.
0260	630.0200 Seeding Temporary	1,008.000 LB	_____.	_____.
0262	630.0500 Seed Water	1,110.000 MGAL	_____.	_____.
0264	632.0101 Trees (species) (size) (root) 001. Maidenhair Ginkgo-Princeton Sentry B&B 3-Inch Cal	14.000 EACH	_____.	_____.
0266	632.9101 Landscape Planting Surveillance and Care Cycles	14.000 EACH	_____.	_____.
0268	633.5200 Markers Culvert End	35.000 EACH	_____.	_____.
0270	634.0614 Posts Wood 4x6-Inch X 14-FT	40.000 EACH	_____.	_____.
0272	634.0616 Posts Wood 4x6-Inch X 16-FT	48.000 EACH	_____.	_____.
0274	634.0618 Posts Wood 4x6-Inch X 18-FT	14.000 EACH	_____.	_____.
0276	637.2210 Signs Type II Reflective H	544.690 SF	_____.	_____.
0278	637.2230 Signs Type II Reflective F	252.750 SF	_____.	_____.
0280	638.2602 Removing Signs Type II	124.000 EACH	_____.	_____.
0282	638.3000 Removing Small Sign Supports	126.000 EACH	_____.	_____.
0284	642.5401 Field Office Type D	1.000 EACH	_____.	_____.



Proposal Schedule of Items

Proposal ID: 20201208018 Project(s): 4090-06-71, 4090-06-72

Federal ID(s): WISC 2021036, N/A

SECTION: 0001

Contract Items

Alt Set ID:

Alt Mbr ID:

Proposal Line Number	Item ID Description	Approximate Quantity and Units	Unit Price	Bid Amount
0286	643.0300 Traffic Control Drums	10,620.000 DAY	_____.	_____.
0288	643.0410 Traffic Control Barricades Type II	3,396.000 DAY	_____.	_____.
0290	643.0420 Traffic Control Barricades Type III	12,773.000 DAY	_____.	_____.
0292	643.0705 Traffic Control Warning Lights Type A	23,479.000 DAY	_____.	_____.
0294	643.0900 Traffic Control Signs	79,068.000 DAY	_____.	_____.
0296	643.0910 Traffic Control Covering Signs Type I	4.000 EACH	_____.	_____.
0298	643.0920 Traffic Control Covering Signs Type II	14.000 EACH	_____.	_____.
0300	643.1050 Traffic Control Signs PCMS	28.000 DAY	_____.	_____.
0302	643.5000 Traffic Control	1.000 EACH	_____.	_____.
0304	644.1410 Temporary Pedestrian Surface Asphalt	5,145.000 SF	_____.	_____.
0306	644.1601 Temporary Pedestrian Curb Ramp	3,106.000 DAY	_____.	_____.
0308	644.1810 Temporary Pedestrian Barricade	2,058.000 LF	_____.	_____.
0310	645.0120 Geotextile Type HR	467.000 SY	_____.	_____.
0312	645.0140 Geotextile Type SAS	7,300.000 SY	_____.	_____.
0314	646.1020 Marking Line Epoxy 4-Inch	38,553.000 LF	_____.	_____.
0316	646.3020 Marking Line Epoxy 8-Inch	2,247.000 LF	_____.	_____.
0318	646.5020 Marking Arrow Epoxy	22.000 EACH	_____.	_____.



Proposal Schedule of Items

Proposal ID: 20201208018 Project(s): 4090-06-71, 4090-06-72

Federal ID(s): WISC 2021036, N/A

SECTION: 0001

Contract Items

Alt Set ID:

Alt Mbr ID:

Proposal Line Number	Item ID Description	Approximate Quantity and Units	Unit Price	Bid Amount
0320	646.5120 Marking Word Epoxy	6.000 EACH	_____.	_____.
0322	646.6120 Marking Stop Line Epoxy 18-Inch	247.000 LF	_____.	_____.
0324	646.7420 Marking Crosswalk Epoxy Transverse Line 6-Inch	2,336.000 LF	_____.	_____.
0326	646.8320 Marking Parking Stall Epoxy	365.000 LF	_____.	_____.
0328	649.0105 Temporary Marking Line Paint 4-Inch	3,024.000 LF	_____.	_____.
0330	650.4000 Construction Staking Storm Sewer	151.000 EACH	_____.	_____.
0332	650.4500 Construction Staking Subgrade	13,251.000 LF	_____.	_____.
0334	650.5000 Construction Staking Base	13,251.000 LF	_____.	_____.
0336	650.5500 Construction Staking Curb Gutter and Curb & Gutter	19,724.000 LF	_____.	_____.
0338	650.6000 Construction Staking Pipe Culverts	11.000 EACH	_____.	_____.
0340	650.9000 Construction Staking Curb Ramps	48.000 EACH	_____.	_____.
0342	650.9910 Construction Staking Supplemental Control (project) 001. 4090-06-71	LS	LUMP SUM	_____.
0344	650.9920 Construction Staking Slope Stakes	13,251.000 LF	_____.	_____.
0346	690.0150 Sawing Asphalt	2,161.000 LF	_____.	_____.
0348	690.0250 Sawing Concrete	2,003.000 LF	_____.	_____.
0350	740.0440 Incentive IRI Ride	8,944.000 DOL	1.00000	8,944.00



Proposal Schedule of Items

Proposal ID: 20201208018 Project(s): 4090-06-71, 4090-06-72

Federal ID(s): WISC 2021036, N/A

SECTION: 0001

Contract Items

Alt Set ID:

Alt Mbr ID:

Proposal Line Number	Item ID Description	Approximate Quantity and Units	Unit Price	Bid Amount
0352	999.1000.S Seismograph	LS	LUMP SUM	_____.
0354	999.1500.S Crack and Damage Survey	LS	LUMP SUM	_____.
0356	ASP.1T0A On-the-Job Training Apprentice at \$5.00/HR	2,500.000 HRS	5.00000	12,500.00
0358	ASP.1T0G On-the-Job Training Graduate at \$5.00/HR	3,280.000 HRS	5.00000	16,400.00
0360	SPV.0035 Special 001. Excavation Waste	42,805.000 CY	_____.	_____.
0362	SPV.0060 Special 007. Storm Sewer Lateral to Mainline Pipe Connector	4.000 EACH	_____.	_____.
0364	SPV.0060 Special 008. Connecting Artesian Well	1.000 EACH	_____.	_____.
0366	SPV.0060 Special 100. Connect to Existing Sanitary Force Main	4.000 EACH	_____.	_____.
0368	SPV.0060 Special 101. Gate Valve, Box And Adaptor, 12-Inch	14.000 EACH	_____.	_____.
0370	SPV.0060 Special 102. Gate Valve, Box And Adaptor, 8-Inch	11.000 EACH	_____.	_____.
0372	SPV.0060 Special 103. Gate Valve, Box And Adaptor, 6-Inch	10.000 EACH	_____.	_____.
0374	SPV.0060 Special 105. Salvage And Reinstall Hydrants	11.000 EACH	_____.	_____.
0376	SPV.0060 Special 106. Water Service Connection Set, 2-Inch	3.000 EACH	_____.	_____.
0378	SPV.0060 Special 108. Water Service Connection Set, 1-Inch	80.000 EACH	_____.	_____.



Proposal Schedule of Items

Proposal ID: 20201208018 Project(s): 4090-06-71, 4090-06-72

Federal ID(s): WISC 2021036, N/A

SECTION: 0001

Contract Items

Alt Set ID:

Alt Mbr ID:

Proposal Line Number	Item ID Description	Approximate Quantity and Units	Unit Price	Bid Amount
0380	SPV.0060 Special 109. Connect Into Existing Watermain	12.000 EACH	_____.	_____.
0382	SPV.0060 Special 110. Reinstall Sanitary Sewer Lateral At Main	98.000 EACH	_____.	_____.
0384	SPV.0060 Special 111. Sewer Force Main Air Release Valve With Manholes 4-Ft Diameter	1.000 EACH	_____.	_____.
0386	SPV.0060 Special 112. Plug Valve, Box And Adapter, 10-Inch	6.000 EACH	_____.	_____.
0388	SPV.0060 Special 115. Reinstall Sanitary Sewer Lateral Inside Building	49.000 EACH	_____.	_____.
0390	SPV.0060 Special 116. Reinstall Sanitary Sewer Lateral Outside Building	49.000 EACH	_____.	_____.
0392	SPV.0060 Special 117. Sanitary Sewer Manhole Internal Chimney Seal	31.000 EACH	_____.	_____.
0394	SPV.0060 Special 118. Reinststate Sanitary Sewer Lateral	98.000 EACH	_____.	_____.
0396	SPV.0090 Special 002. Storm Sewer Lateral	100.000 LF	_____.	_____.
0398	SPV.0090 Special 100. Abandon Existing Sanitary Sewer Force Main 10-Inch	1,385.000 LF	_____.	_____.
0400	SPV.0090 Special 103. SDR-35 PVC Sanitary Sewer Pipe, 10-Inch	10.000 LF	_____.	_____.
0402	SPV.0090 Special 110. Abandon Existing Watermain	4,446.000 LF	_____.	_____.
0404	SPV.0090 Special 112. DIP Watermain, 12-Inch	4,782.000 LF	_____.	_____.



Proposal Schedule of Items

Proposal ID: 20201208018 Project(s): 4090-06-71, 4090-06-72

Federal ID(s): WISC 2021036, N/A

SECTION: 0001

Contract Items

Alt Set ID:

Alt Mbr ID:

Proposal Line Number	Item ID Description	Approximate Quantity and Units	Unit Price	Bid Amount
0406	SPV.0090 Special 113. DIP Watermain, 8-Inch	586.000 LF	_____.	_____.
0408	SPV.0090 Special 114. DIP Watermain, 6-Inch	190.000 LF	_____.	_____.
0410	SPV.0090 Special 116. Pipe Insulation	300.000 LF	_____.	_____.
0412	SPV.0090 Special 117. Type K Water Services, 2-Inch	78.000 LF	_____.	_____.
0414	SPV.0090 Special 119. Type K Water Services, 1-Inch	2,285.000 LF	_____.	_____.
0416	SPV.0090 Special 120. Sanitary Sewer Force Main Pipe Bursting, 16-Inch	80.000 LF	_____.	_____.
0418	SPV.0090 Special 124. Sanitary Sewer Lateral Pipe Bursting, 6-Inch	5,497.000 LF	_____.	_____.
0420	SPV.0090 Special 127. Ductile Iron Sanitary Sewer Force Main, 10-Inch	1,330.000 LF	_____.	_____.
0422	SPV.0090 Special 130. Sanitary Sewer Cured In Place Pipe, 12-Inch	1,353.000 LF	_____.	_____.
0424	SPV.0090 Special 131. Sanitary Sewer Cured In Place Pipe, 10-Inch	3,728.000 LF	_____.	_____.
0426	SPV.0090 Special 132. Sanitary Sewer Cured In Place Pipe, 18-Inch	599.000 LF	_____.	_____.
0428	SPV.0105 Special 001. Research and Locate Existing Property Monuments	LS	LUMP SUM	_____.
0430	SPV.0165 Special 001. Wall Modular Block Gravity Landscape Sta 1055+06-1063+75	1,765.000 SF	_____.	_____.
0432	SPV.0195 Special 002. Excavation, Hauling, and Disposal of PAH Contaminated Sediment	3,150.000 TON	_____.	_____.



Proposal Schedule of Items

Proposal ID: 20201208018 Project(s): 4090-06-71, 4090-06-72

Federal ID(s): WISC 2021036, N/A

SECTION: 0001

Contract Items

Alt Set ID:

Alt Mbr ID:

Proposal Line Number	Item ID Description	Approximate Quantity and Units	Unit Price	Bid Amount
0434	SPV.0200 Special 100. Sanitary Sewer Manhole Restoration	349.000 VF	_____.	_____.
0436	204.9060.S Removing (item description) 001. Concrete Raceway at Utility Crossing	1.000 EACH	_____.	_____.
0438	204.9090.S Removing (item description) 002. Concrete Raceway at Roadway Crossing	50.000 LF	_____.	_____.
0440	608.3012 Storm Sewer Pipe Class III-A 12-Inch	1,841.000 LF	_____.	_____.
0442	608.3015 Storm Sewer Pipe Class III-A 15-Inch	318.000 LF	_____.	_____.
0444	608.3018 Storm Sewer Pipe Class III-A 18-Inch	1,428.000 LF	_____.	_____.
0446	608.3024 Storm Sewer Pipe Class III-A 24-Inch	2,571.000 LF	_____.	_____.
0448	608.3030 Storm Sewer Pipe Class III-A 30-Inch	25.000 LF	_____.	_____.
0450	608.3036 Storm Sewer Pipe Class III-A 36-Inch	55.000 LF	_____.	_____.
0452	SPV.0060 Special 120. Temporary Salvaged United States Postal Service Cluster Box	9.000 EACH	_____.	_____.
0454	SPV.0060 Special 121. Permanent Salvaged United States Postal Service Cluster Box	9.000 EACH	_____.	_____.
Section: 0001			Total:	_____.
			Total Bid:	_____.

