



Wisconsin Department of Transportation

November 30, 2020

Division of Transportation Systems Development

Bureau of Project Development
4822 Madison Yards Way, 4th Floor South
Madison, WI 53705

Telephone: (608) 266-1631
Facsimile (FAX): (608) 266-8459

NOTICE TO ALL CONTRACTORS:

Proposal #27: 8630-03-82, WISC 2021 049
Glenwood City - Colfax
STH 128 to STH 79
STH 170
Dunn County

8630-05-82, WISC 2021 053
Glenwood City - Colfax
STH 25 to CTH D
STH 170
Dunn County

8630-05-83, WISC 2021 050
Glenwood City - Colfax
STH 79 to STH 25
STH 170
Dunn County

Letting of December 8, 2020

This is Addendum No. 01, which provides for the following:

Schedule of Items:

Revised Bid Item Quantities					
Bid Item	Item Description	Unit	Old Quantity	Revised Quantity	Proposal Total
204.0115	Removing Asphaltic Surface Butt Joints	SY	940	689	1,629
305.0110	Base Aggregate Dense ¾-Inch	TON	3,080	334	3,414
305.0500	Shaping Shoulders	STA	604	530	1,134
327.1000.S	CIR Asphaltic Base Layer	SY	144,185	19,711	163,896
455.0770.S	Asphalt Stabilizing Agent	TON	504	70	574
460.0105.S	HMA Pavement PWL Test Strip Volumetrics	EA	1.6	0.4	2
460.0110.S	HMA Pavement PWL Test Strip Density	EA	4.1	-1.1	3
460.2000	Incentive Density HMA Pavement	DOL	9,890	-5,780	4,110
460.2005	Incentive Density PWL HMA Pavement	DOL	25,750	9,040	34,790
460.2010	Incentive Air Voids HMA Pavement	DOL	34,890	11,440	46,330
603.8500	Anchoring Concrete Barrier Temporary Precast	LF	1,000	-900	100
637.2230	Signs Type II Reflective F	SF	116.75	-31.5	85.25
SPV.0060.05	Lane Shift	EA	7	7	14

Deleted Bid Item Quantities					
Bid Item	Item Description	Unit	Old Quantity	Revised Quantity	Proposal Total
204.0105	Removing Pavement Butt Joints	SY	849	-849	0

Plan Sheets:

Revised Plan Sheets - Project 8630-03-82	
Plan Sheet	Plan Sheet Title (brief description of changes to sheet)
27	Construction Detail (Revised detail for butt joints)
156	Miscellaneous Quantities (Updated quantity)
159	Miscellaneous Quantities (Updated PWL Mixture Use Table)
163	Miscellaneous Quantities (Updated quantity)
189	Plan Details (Removed call out for signs attached to EATs)
192	Plan Details (Removed call out for signs attached to EATs)
194	Plan Details (Removed call out for signs attached to EATs)
201	Plan Details (Removed call out for signs attached to EATs)
203	Plan Details (Removed call out for signs attached to EATs)

Revised Plan Sheets - Project 8630-05-82/83	
Plan Sheet	Plan Sheet Title (brief description of changes to sheet)
5	Typical Section – Modified milling depth and limits of CIR
6	Typical Section – Modified milling depth and limits of CIR
7	Construction Detail – Updated based on milling depth change
8	Construction Detail – Updated based on milling depth change
13	Culvert Pipe Detail – Updated utilities shown on plan
15	Culvert Pipe Detail – Updated utilities shown on plan
17	Culvert Pipe Detail – Updated utilities shown on plan
24	Curb Ramp Details – Updated utilities shown on plan
31	Plan – Updated utilities shown on plan
32	Plan – Updated utilities shown on plan
33	Plan – Updated utilities shown on plan
35	Plan – Updated utilities shown on plan
44	Miscellaneous Quantities – Updated Bid item name and number for Butt Joint
45	Miscellaneous Quantities – Updated Quantities for Base and Shaping Shoulder
46	Miscellaneous Quantities – Updated Quantities for CIR
53	Miscellaneous Quantities – Updated Quantities Lane Shift

Schedule of Items

Attached, dated November 30, 2020, are the revised Schedule of Items Pages 1 - 16.

Plan Sheets

The following 8½ x 11-inch sheets are attached and made part of the plans for this proposal:

Revised: 8630-03-82 – 27, 156, 159, 163, 189, 192, 194, 201, and 203

8630-05-82/83 – 5-8, 13, 15, 17, 24 31-33, 35, 44-46, and 53

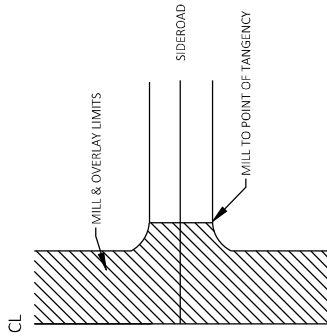
The responsibility for notifying potential subcontractors and suppliers of these changes remains with the prime contractor.

Sincerely,

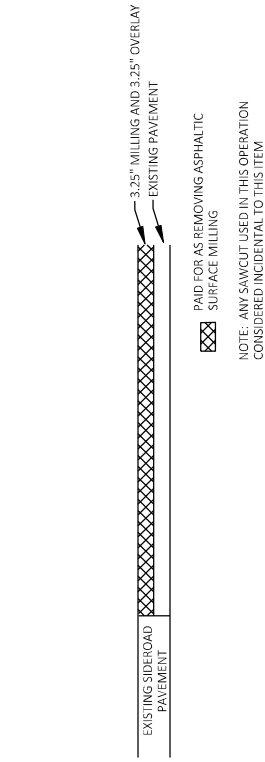
Mike Coleman

Proposal Development Specialist
Proposal Management Section

END OF ADDENDUM

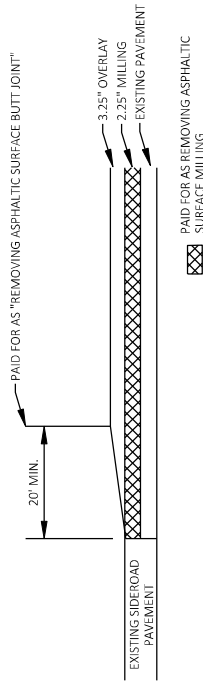


SIDEROAD DETAIL

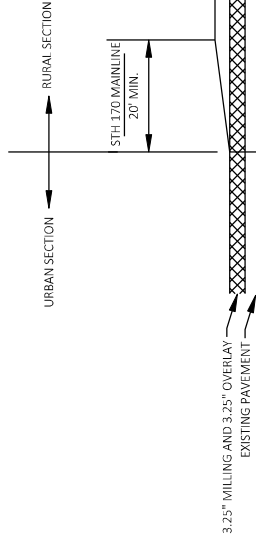


MILLING AND OVERLAY - URBAN SIDEROADS

Addendum No. 01
 ID 8630-03-82
 Revised Sheet 27
 November 30, 2020



BUTT JOINT DETAIL - RURAL SIDEROADS



MAINLINE TRANSITION

- STA. 136+33
- STA. 145+92
- STA. 156+00
- STA. 2106+97.0
- STA. 2111+00.0
- STA. 2135+00.0
- STA. 2155+13.0
- STA. 2172+35.0
- STA. 2176+83.0
- STA. 2221+69.0
- STA. 2328+57.0
- STA. 2365+08.0
- STA. 2398+00.0

PAID FOR AS REMOVING ASPHALTIC SURFACE MILLING
 NOTE: ANY SAWCUT USED IN THIS OPERATION CONSIDERED INCIDENTAL TO THIS ITEM

PAID FOR AS REMOVING ASPHALTIC SURFACE MILLING
 NOTE: ANY SAWCUT USED IN THIS OPERATION CONSIDERED INCIDENTAL TO THIS ITEM

Addendum No. 01
ID 8630-03-82
Revised Sheet 156
November 30, 2020

REMOVING ASPHALTIC SURFACE														
LOCATION	STATION-STATION	REMOVING ASPHALTIC SURFACE	ASPHALTIC SURFACE	BUTT JOINTS	MILLING	204.0115	204.0120	204.0115	204.0120	REMOVING ASPHALTIC SURFACE	ASPHALTIC SURFACE	BUTT JOINTS	MILLING	204.0120
LOCATION	STATION-STATION	REMOVING ASPHALTIC SURFACE	ASPHALTIC SURFACE	BUTT JOINTS	MILLING	(SY)	(SY)	(SY)	(SY)	REMOVING ASPHALTIC SURFACE	ASPHALTIC SURFACE	BUTT JOINTS	MILLING	(SY)
8630-03-82 CATEGORY 0010														
ST CROIX COUNTY														
STH170	98+50 - 123+00	9,568	-	-	-	138	24,223	-	-	2092+00D' - 2172+00D'	STH170	2092+00D' - 2172+00D'	8,568	-
STH170	123+00 - 145+00	7,503	-	-	-	174	22,668	-	-	2172+00D' - 2252+00D'	STH170	2172+00D' - 2252+00D'	7,503	-
STH170	145+00 - 168+00	120	-	-	-	138	21,615	-	-	2252+00D' - 2332+00D'	STH170	2252+00D' - 2332+00D'	120	-
STH170	168+00 - 192+00	6,089	-	-	-	120	9,176	-	-	2332+00D' - 2410+00D'	STH170	2332+00D' - 2410+00D'	6,089	-
BIKE PATH	-	-	-	-	-	680	-	-	-				-	-
ST CROIX COUNTY SUBTOTAL														
		0	120	29,411		780	120,590			CATEGORY 0080 SUBTOTAL		0	0	950
DUNN COUNTY														
STH170	2092+00D' - 2172+00D'	138	24,223			138	24,223			CATEGORY 0080 SUBTOTAL		120	780	128,300
STH170	2172+00D' - 2252+00D'	174	22,668			174	22,668			PROJECT 8630-03-82 TOTAL		120	780	128,300
STH170	2252+00D' - 2332+00D'	138	21,615			138	21,615							
STH170	2332+00D' - 2410+00D'	120	9,176			120	9,176							
DUNN COUNTY SUBTOTAL														
		120	780	120,590		780	120,590							
PROJECT 8630-03-82 TOTAL														
		120	780	120,590		780	120,590							

REMOVING ASPHALTIC SURFACE CONTINUED

8630-03-82 CATEGORY 0080

BOYCEVILLE

LOCATION	STATION-STATION	REMOVING ASPHALTIC SURFACE	ASPHALTIC SURFACE	BUTT JOINTS	MILLING	204.0115	204.0120	204.0115	204.0120	REMOVING ASPHALTIC SURFACE	ASPHALTIC SURFACE	BUTT JOINTS	MILLING	204.0120
LOCATION	STATION-STATION	REMOVING ASPHALTIC SURFACE	ASPHALTIC SURFACE	BUTT JOINTS	MILLING	(SY)	(SY)	(SY)	(SY)	REMOVING ASPHALTIC SURFACE	ASPHALTIC SURFACE	BUTT JOINTS	MILLING	(SY)
8630-03-82 CATEGORY 0010														
ST CROIX COUNTY														
STH170	2092+00D' - 2172+00D'	8,568	-	-	-	138	24,223	-	-	2092+00D' - 2172+00D'	STH170	2092+00D' - 2172+00D'	8,568	-
STH170	123+00 - 145+00	7,503	-	-	-	174	22,668	-	-	2172+00D' - 2252+00D'	STH170	2172+00D' - 2252+00D'	7,503	-
STH170	145+00 - 168+00	120	-	-	-	138	21,615	-	-	2252+00D' - 2332+00D'	STH170	2252+00D' - 2332+00D'	120	-
STH170	168+00 - 192+00	6,089	-	-	-	120	9,176	-	-	2332+00D' - 2410+00D'	STH170	2332+00D' - 2410+00D'	6,089	-
BIKE PATH	-	-	-	-	-	680	-	-	-				-	-
BOYCEVILLE SUBTOTAL														
		0	120	29,411		780	120,590			CATEGORY 0080 SUBTOTAL		0	0	950
PROJECT 8630-03-82 TOTAL														
		120	780	120,590		780	120,590							

CONCRETE DRIVEWAY

LOCATION	STATION	OFFSET	416.0160
8630-03-82 CATEGORY 0010			
ST CROIX COUNTY			
STH170	133+34	LT	27
ST CROIX COUNTY SUBTOTAL			
			27
DUNN COUNTY			
STH170	2388+67D'	RT	6
DUNN COUNTY SUBTOTAL			
			6
PROJECT 8630-03-82 TOTAL			
			33

8630-03-82 CATEGORY 0010

ST CROIX COUNTY

ST CROIX COUNTY SUBTOTAL

DUNN COUNTY

DUNN COUNTY SUBTOTAL

PROJECT 8630-03-82 TOTAL

PROJECT NO: 8630-03-82 HWY: STH 170

COUNTY: ST. CROIX & DUNN

MISCELLANEOUS QUANTITIES

SHEET 156

FILE NAME:

ORIGINATOR: KL ENGINEERING, INC.

REV. DATE:

REV. DATE:

PRINT DATE: November 23, 2020

Addendum No. 01
ID 8630-03-82
Revised Sheet 159
November 30, 2020

PVI MIXTURE USE TABLE		QUALITY MANAGEMENT PROGRAM TO BE USED FOR:					
LOCATION	STATION	MIXTURE USE	UNDERLYING SURFACE	BID ITEM	THICKNESS	MIXTURE ACCEPTANCE	DENSITY ACCEPTANCE
12 FOOT DRIVING LANES, LT AND RT	99+50 - 132+00	UPPER LAYER	LOWER LAYER OF HMA PAVEMENT 5 MT 58.34V	HMA PAVEMENT 4 MT 58.34V	2.418	PVI INCENTIVE AIR VOIDS-HMA PAVEMENT 460.2000	INCENTIVE DENSITY PVI HMA PAVEMENT 460.2000
12 FOOT DRIVING LANES, LT AND RT	99+50 - 132+00	LOWER LAYER	EXISTING MILLED ASPHALT SURFACE	HMA PAVEMENT 5 MT 58.34V	2.072	PVI INCENTIVE AIR VOIDS-HMA PAVEMENT 460.2000	INCENTIVE DENSITY PVI HMA PAVEMENT 460.2000
10 FOOT PARKING LANE, RT AND LT	99+50 - 107+40	UPPER LAYER	EXISTING MILLED ASPHALT SURFACE	HMA PAVEMENT 4 MT 58.34V	2.13	PVI INCENTIVE AIR VOIDS-HMA PAVEMENT 460.2000	INCENTIVE DENSITY HMA PAVEMENT 460.2000
8 FOOT PARKING LANE, LT	107+40 - 135+86	UPPER LAYER	EXISTING MILLED ASPHALT SURFACE	HMA PAVEMENT 4 MT 58.34V	2.84	PVI INCENTIVE AIR VOIDS-HMA PAVEMENT 460.2000	INCENTIVE DENSITY HMA PAVEMENT 460.2000
VARIES 3'-6" SHOULDER PLUS TURN LANES, RT AND LT	135+86 - 192+00	UPPER LAYER	LOWER LAYER OF HMA PAVEMENT 5 MT 58.34V	HMA PAVEMENT 4 MT 58.34V	6.02	PVI INCENTIVE AIR VOIDS-HMA PAVEMENT 460.2000	INCENTIVE DENSITY HMA PAVEMENT 460.2000
VARIES 3'-6" SHOULDER PLUS TURN LANES, RT AND LT	135+86 - 192+00	LOWER LAYER	EXISTING MILLED ASPHALT SURFACE	HMA PAVEMENT 5 MT 58.34V	4.52	PVI INCENTIVE AIR VOIDS-HMA PAVEMENT 460.2000	INCENTIVE DENSITY HMA PAVEMENT 460.2000
GREENWOOD CITY CURB EXTENSION AND PARKING LANE	131+14 - 134+28	UPPER LAYER LOWER LAYER	BASE AGGREGATE	HMA PAVEMENT 4 MT 58.34V	63	PVI INCENTIVE AIR VOIDS-HMA PAVEMENT 460.2000	INCENTIVE DENSITY HMA PAVEMENT 460.2000
ST. CROIX COUNTY CULVERT REPLACEMENT	176+88	UPPER LAYER LOWER LAYER	BASE AGGREGATE	HMA PAVEMENT 4 MT 58.34V	30	PVI INCENTIVE AIR VOIDS-HMA PAVEMENT 460.2000	INCENTIVE DENSITY PVI HMA PAVEMENT 460.2000
12 FOOT DRIVING LANES, LT AND RT	2092+00'D - 2386+00'D	UPPER LAYER	LOWER LAYER OF HMA PAVEMENT 5 MT 58.34V	HMA PAVEMENT 4 MT 58.34V	7.986	PVI INCENTIVE AIR VOIDS-HMA PAVEMENT 460.2000	INCENTIVE DENSITY PVI HMA PAVEMENT 460.2000
12 FOOT DRIVING LANES, LT AND RT	2092+00'D - 2386+00'D	LOWER LAYER	EXISTING MILLED ASPHALT SURFACE	HMA PAVEMENT 5 MT 58.34V	6.663	PVI INCENTIVE AIR VOIDS-HMA PAVEMENT 460.2000	INCENTIVE DENSITY PVI HMA PAVEMENT 460.2000
8 FOOT PARKING LANE, LT AND RT	2127+26'D - 2150+64'D	UPPER LAYER	EXISTING MILLED ASPHALT SURFACE	HMA PAVEMENT 4 MT 58.34V	3.40	PVI INCENTIVE AIR VOIDS-HMA PAVEMENT 460.2000	INCENTIVE DENSITY HMA PAVEMENT 460.2000
12 FOOT DRIVING LANES, LT, 20 DRIVING LANES, RT	2386+00'D - 2388+48'D	UPPER LAYER	LOWER LAYER OF HMA PAVEMENT 5 MT 58.34V	HMA PAVEMENT 4 MT 58.34V	8.4	PVI INCENTIVE AIR VOIDS-HMA PAVEMENT 460.2000	INCENTIVE DENSITY PVI HMA PAVEMENT 460.2000
12 FOOT DRIVING LANES, LT, 20 DRIVING LANES, RT	2386+00'D - 2388+48'D	LOWER LAYER	EXISTING MILLED ASPHALT SURFACE	HMA PAVEMENT 5 MT 58.34V	7.2	PVI INCENTIVE AIR VOIDS-HMA PAVEMENT 460.2000	INCENTIVE DENSITY PVI HMA PAVEMENT 460.2000
5TH 79 INTERSECTION RECONSTRUCT	2088+48'D - 2391+50'D	UPPER LAYER LOWER LAYER	BASE AGGREGATE	HMA PAVEMENT 4 MT 58.34V	6.53	PVI INCENTIVE AIR VOIDS-HMA PAVEMENT 460.2000	INCENTIVE DENSITY PVI HMA PAVEMENT 460.2000
24 FOOT DRIVING LANES, LT AND RT	2391+50'D - 2394+50'D	UPPER LAYER	LOWER LAYER OF HMA PAVEMENT 5 MT 58.34V	HMA PAVEMENT 4 MT 58.34V	1.57	PVI INCENTIVE AIR VOIDS-HMA PAVEMENT 460.2000	INCENTIVE DENSITY PVI HMA PAVEMENT 460.2000
24 FOOT DRIVING LANES, LT AND RT	2391+50'D - 2394+50'D	LOWER LAYER	EXISTING MILLED ASPHALT SURFACE	HMA PAVEMENT 5 MT 58.34V	1.35	PVI INCENTIVE AIR VOIDS-HMA PAVEMENT 460.2000	INCENTIVE DENSITY PVI HMA PAVEMENT 460.2000
24 FOOT DRIVING LANES, LT, 12 DRIVING LANES, RT	2394+50'D - 2396+00'D	UPPER LAYER	LOWER LAYER OF HMA PAVEMENT 5 MT 58.34V	HMA PAVEMENT 4 MT 58.34V	5.9	PVI INCENTIVE AIR VOIDS-HMA PAVEMENT 460.2000	INCENTIVE DENSITY PVI HMA PAVEMENT 460.2000
24 FOOT DRIVING LANES, LT, 12 DRIVING LANES, RT	2394+50'D - 2396+00'D	LOWER LAYER	EXISTING MILLED ASPHALT SURFACE	HMA PAVEMENT 5 MT 58.34V	5.1	PVI INCENTIVE AIR VOIDS-HMA PAVEMENT 460.2000	INCENTIVE DENSITY PVI HMA PAVEMENT 460.2000
VARIES 12-24 FOOT DRIVING LANES, LT, 12 DRIVING LANES, RT	2396+00'D - 2398+00'D	UPPER LAYER	LOWER LAYER OF HMA PAVEMENT 5 MT 58.34V	HMA PAVEMENT 4 MT 58.34V	4.9	PVI INCENTIVE AIR VOIDS-HMA PAVEMENT 460.2000	INCENTIVE DENSITY PVI HMA PAVEMENT 460.2000
VARIES 12-24 FOOT DRIVING LANES, LT, 12 DRIVING LANES, RT	2396+00'D - 2398+00'D	LOWER LAYER	EXISTING MILLED ASPHALT SURFACE	HMA PAVEMENT 5 MT 58.34V	4.2	PVI INCENTIVE AIR VOIDS-HMA PAVEMENT 460.2000	INCENTIVE DENSITY PVI HMA PAVEMENT 460.2000
VARIES 3'-6" SHOULDER PLUS TURN LANES, RT AND LT	2092+00'D - 2126+00'D	UPPER LAYER	LOWER LAYER OF HMA PAVEMENT 5 MT 58.34V	HMA PAVEMENT 4 MT 58.34V	2.77	PVI INCENTIVE AIR VOIDS-HMA PAVEMENT 460.2000	INCENTIVE DENSITY HMA PAVEMENT 460.2000
VARIES 3'-6" SHOULDER PLUS TURN LANES, RT AND LT	2092+00'D - 2126+00'D	LOWER LAYER	EXISTING MILLED ASPHALT SURFACE	HMA PAVEMENT 5 MT 58.34V	2.37	PVI INCENTIVE AIR VOIDS-HMA PAVEMENT 460.2000	INCENTIVE DENSITY HMA PAVEMENT 460.2000
VARIES 3'-6" SHOULDER PLUS TURN LANES, RT AND LT	2150+64'D - 2386+00'D	UPPER LAYER	LOWER LAYER OF HMA PAVEMENT 5 MT 58.34V	HMA PAVEMENT 4 MT 58.34V	2.12	PVI INCENTIVE AIR VOIDS-HMA PAVEMENT 460.2000	INCENTIVE DENSITY HMA PAVEMENT 460.2000
VARIES 3'-6" SHOULDER PLUS TURN LANES, RT AND LT	2150+64'D - 2386+00'D	LOWER LAYER	EXISTING MILLED ASPHALT SURFACE	HMA PAVEMENT 5 MT 58.34V	1.63	PVI INCENTIVE AIR VOIDS-HMA PAVEMENT 460.2000	INCENTIVE DENSITY HMA PAVEMENT 460.2000
VARIES 3'-6" SHOULDER PLUS TURN LANES, RT AND LT	2394+50'D - 2398+00'D	UPPER LAYER	LOWER LAYER OF HMA PAVEMENT 5 MT 58.34V	HMA PAVEMENT 4 MT 58.34V	1.20	PVI INCENTIVE AIR VOIDS-HMA PAVEMENT 460.2000	INCENTIVE DENSITY HMA PAVEMENT 460.2000
VARIES 3'-6" SHOULDER PLUS TURN LANES, RT AND LT	2394+50'D - 2398+00'D	LOWER LAYER	EXISTING MILLED ASPHALT SURFACE	HMA PAVEMENT 5 MT 58.34V	1.03	PVI INCENTIVE AIR VOIDS-HMA PAVEMENT 460.2000	INCENTIVE DENSITY HMA PAVEMENT 460.2000
DUNN COUNTY CULVERT REPLACEMENTS	VARIOUS	UPPER LAYER LOWER LAYER	BASE AGGREGATE	HMA PAVEMENT 4 MT 58.34V	1.73	PVI INCENTIVE AIR VOIDS-HMA PAVEMENT 460.2000	INCENTIVE DENSITY PVI HMA PAVEMENT 460.2000

ASPHALTIC FLOW

8630-03-82 CATEGORY 0100	465.0510	465.0315
ST CROIX COUNTY	ASPHALTIC CURB	ASPHALTIC CURB
	STATION	OFFSET
	134+33	15.6' LT
	17	7
	17	7
	ST CROIX COUNTY SUBTOTAL	
	61	30
	PROJECT 8630-03-82 TOTAL	

TEMPORARY PAVEMENT MARKING

649.0120	849.0850	TEMPORARY MARKING STOP LINE EPOXY (BLACK)	TEMPORARY MARKING STOP LINE REMOVABLE TAPE (WHITE)
8630-03-42	8630-03-42	STATION-STATION (LF)	STATION-STATION (LF)
ST CROIX COUNTY	123+00'-145+00'	252	0
DUNN COUNTY	2082+00'-2172+00'	3,438	24
DUNN COUNTY	2332+00'-2410+00'	610	24
PROJECT 8630-03-42 TOTAL	7,100		24

PERMANENT SIGNING TYPE II

SIGN #	SIGN CODE	SIGN SIZE	SIGN W X H	SIGN REFLECTIVE	SIGN TYPE II	SIGN REMOVING	SIGN MOUNTED	SIGN ON SAME	SIGN POST AS	SIGN EACH	SIGN REMARKS
1-02	W16-ZL	30 X 30	30 X 30	6.25	1	1-01	PEDESTRIAN CROSSING SYMBOL				
1-03	W16-ZL	30 X 30	30 X 30	6.25	1	1-03	LEFT DIAGONAL DOWNWARD POINTING ARROW (YELLOW)				
1-04	W16-ZL	24 X 12	24 X 12	2.00	1	1-03	LEFT DIAGONAL DOWNWARD POINTING ARROW (YELLOW)				
2-01	W16-ZL	30 X 30	30 X 30	6.25	1	2-01	PEDESTRIAN CROSSING SYMBOL				
2-02	W16-ZL	24 X 12	24 X 12	2.00	1	2-01	LEFT DIAGONAL DOWNWARD POINTING ARROW (YELLOW)				
2-03	W16-ZL	30 X 30	30 X 30	6.25	1	2-03	PEDESTRIAN CROSSING SYMBOL				
2-04	W16-ZL	24 X 12	24 X 12	2.00	1	2-03	LEFT DIAGONAL DOWNWARD POINTING ARROW (YELLOW)				
2-05	R7-S1L	18 X 24	18 X 24	3.00	1		NO PARKING HERE TO CORNER (LEFT ARROW)				
2-07	W16-ZL	24 X 12	24 X 12	6.50	1		LEFT DIAGONAL DOWNWARD POINTING ARROW (YELLOW)				
8-01	R1-1	30 X 30	30 X 30	6.25	1	2-06	LEFT DIAGONAL DOWNWARD POINTING ARROW (YELLOW)				
8-02	R1-1	30 X 30	30 X 30	6.25	1		STOP SIGN REPLACE EXISTING YIELD SIGN				
14-01	W5-3	36 X 36	36 X 36	9.00	1		REMOVE EXISTING SIGN				
15-02	R3-8LF	36 X 30	36 X 30	7.50	1		SIGNAL AHEAD				
15-03	W2-3	36 X 36	36 X 36	9.00	1		LEFT ONLY / AHEAD, R/HT				
15-04	W2-3	36 X 36	36 X 36	9.00	1		SIGNAL AHEAD				
15-05	R3-8R	36 X 30	36 X 30	7.50	1		LEFT ONLY / AHEAD, R/HT ONLY				
15-06	R3-8R	36 X 30	36 X 30	7.50	1		SIGNAL AHEAD				
15-07	W2-3	36 X 36	36 X 36	9.00	1		LEFT ONLY / AHEAD ONLY / RIGHT ONLY				
15-08	R3-8ER	36 X 30	36 X 30	7.50	1		LEFT / AHEAD / RIGHT ONLY				
15-11	W16-15P	24 X 12	24 X 12	2.00	1	15-01	NEW				
15-12	W16-15P	24 X 12	24 X 12	2.00	1	15-03	NEW				
15-13	W16-15P	24 X 12	24 X 12	2.00	1	15-04	NEW				
15-14	W16-15P	24 X 12	24 X 12	2.00	1	15-07	NEW				
PROJECT 8630-03-42 TOTALS				4925	8525	9		5	3		

COVERING SIGNS

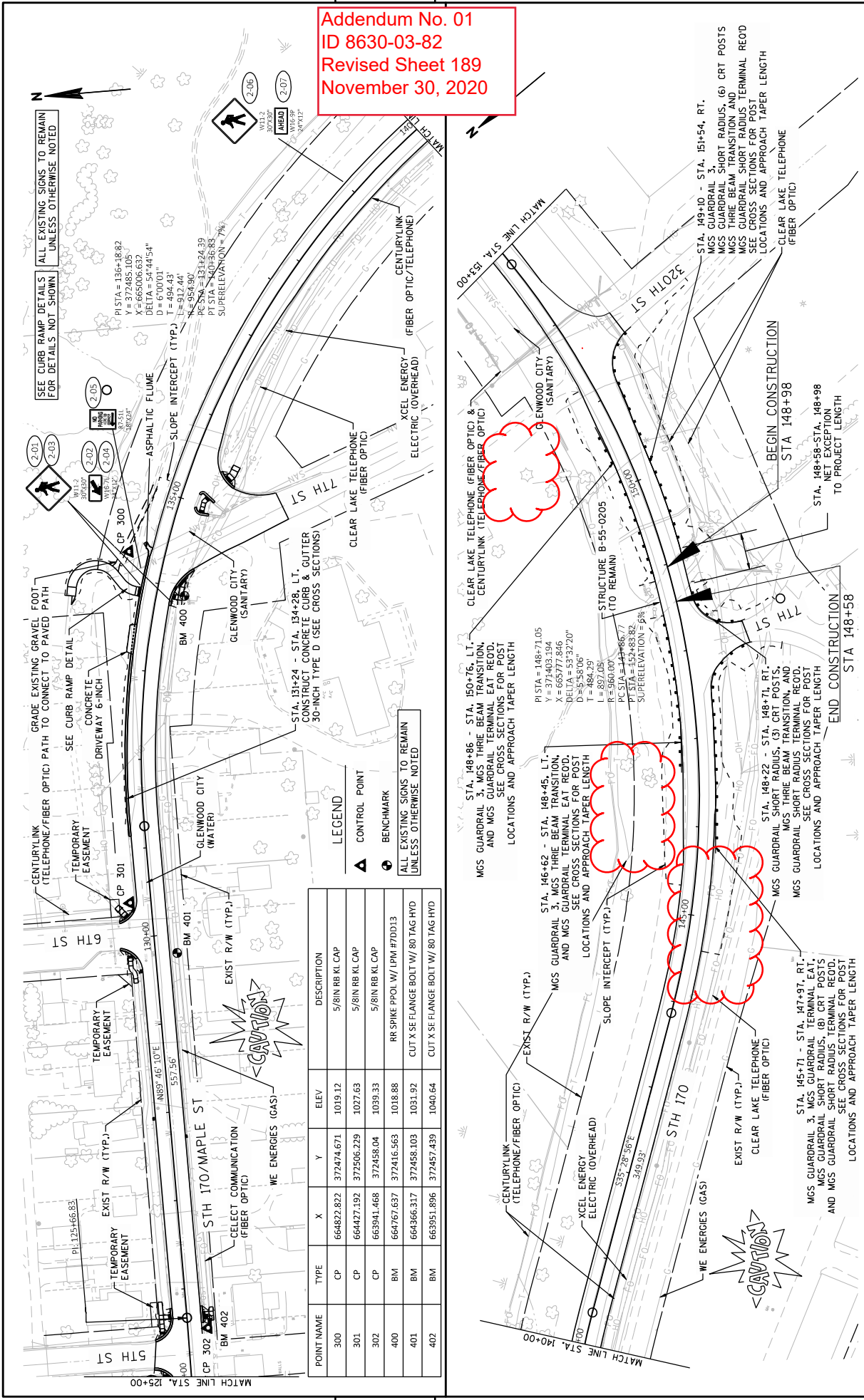
643.0910	643.0920	TRAFFIC CONTROL COVERING SIGNS TYPE I	TRAFFIC CONTROL COVERING SIGNS TYPE II
8630-03-42	8630-03-42	NUMBER OF SIGNS	NUMBER OF SIGNS
STH 170 - ST. CROIX COUNTY	0	1	0
STH 170 - DUNN COUNTY	0	0	0
STH 170 - DETOUR	3	1	3
STH 79 - DETOUR	0	0	0
PROJECT 8630-03-42 TOTAL	3	1	3

TRAFFIC CONTROL DEVICES

LOCATION	603.8500				603.8505				603.8506				603.8510				603.8515				603.8520				603.8525			
	CONCRETE BARRIER	TEMPORARY PRECAST DELIVERED	CONCRETE BARRIER	TEMPORARY PRECAST DELIVERED	CONCRETE BARRIER	TEMPORARY PRECAST DELIVERED	CONCRETE BARRIER	TEMPORARY PRECAST DELIVERED	CONCRETE BARRIER	TEMPORARY PRECAST DELIVERED	CONCRETE BARRIER	TEMPORARY PRECAST DELIVERED	CONCRETE BARRIER	TEMPORARY PRECAST DELIVERED	CONCRETE BARRIER	TEMPORARY PRECAST DELIVERED	CONCRETE BARRIER	TEMPORARY PRECAST DELIVERED	CONCRETE BARRIER	TEMPORARY PRECAST DELIVERED	CONCRETE BARRIER	TEMPORARY PRECAST DELIVERED	CONCRETE BARRIER	TEMPORARY PRECAST DELIVERED				
ST. CROIX COUNTY	0	0	0	0	0	0	0	0	0	0	0	0	0	0	0	0	0	0	0	0	0	0	0	0				
DUNN COUNTY	900	1,200	100	100	200	2,818	353	2,005	2,850	1,000	4,495	1,797	189	951	487	734	0	4,869	403	21	49	210	1,000					
STH 170 SUBTOTAL	900	1,200	100	100	200	3,000	600	2,492	3,564	1,000	9,364	2,200	210	1,000	487	734	0	4,869	403	21	49	210	1,000					
DETOURS	0	0	0	0	0	0	0	0	0	0	40,824	0	0	0	672	1,344	0	40,824	0	0	0	0	0					
STH 79 DETOUR	0	0	0	0	0	0	0	0	0	0	14,112	0	0	0	672	1,344	0	14,112	0	0	0	0	0					
DETOURS SUBTOTAL	0	0	0	0	0	0	0	0	0	0	54,936	0	0	0	1,008	2,016	0	54,936	0	0	0	0	0					
PROJECT 8630-03-42 TOTAL	900	1,200	100	100	200	3,000	600	3,500	5,600	1,000	64,300	2,200	210	1,000	487	734	0	64,300	2,200	210	49	210	1,000					

Addendum No. 01
 ID 8630-03-82
 Revised Sheet 163
 November 30, 2020

Addendum No. 01
ID 8630-03-82
Revised Sheet 189
November 30, 2020



SEE CURB RAMP DETAILS FOR DETAILS NOT SHOWN

ALL EXISTING SIGNS TO REMAIN UNLESS OTHERWISE NOTED

SEE CURB RAMP DETAILS FOR DETAILS NOT SHOWN

ALL EXISTING SIGNS TO REMAIN UNLESS OTHERWISE NOTED

LEGEND

▲ CONTROL POINT

● BENCHMARK

ALL EXISTING SIGNS TO REMAIN UNLESS OTHERWISE NOTED

POINT NAME	TYPE	X	Y	ELEV.	DESCRIPTION
300	CP	664822.822	377474.671	1019.12	5/8IN RB KL CAP
301	CP	664427.192	377506.229	1027.63	5/8IN RB KL CAP
302	CP	663941.468	377458.04	1039.33	5/8IN RB KL CAP
400	BM	664767.637	377416.563	1018.88	RR SPIKE PPOL W/ IPW #7DDJ13
401	BM	664366.317	377458.103	1031.92	CUT X SE FLANGE BOLT W/ .80 TAG HYD
402	BM	663951.896	377457.439	1040.64	CUT X SE FLANGE BOLT W/ .80 TAG HYD

PROJECT NO: 8630-03-82 COUNTY: ST. CROIX HWY: STH 170

PLAN DETAILS: ST. CROIX COUNTY

SHEET 189

FILE NAME: G:\WORK\18046-000\18170_CIVIL_3D\SHEETS\PLAN\ST_CROIX\031700.PLT ST. CROIX DWG LAYOUT NAME: STA 175+00 - STA 153+00

PLOT DATE: 11/18/2020 8:10 AM

PLOT BY: KE ENGINEERING

PLOT SCALE: 1IN=100FT

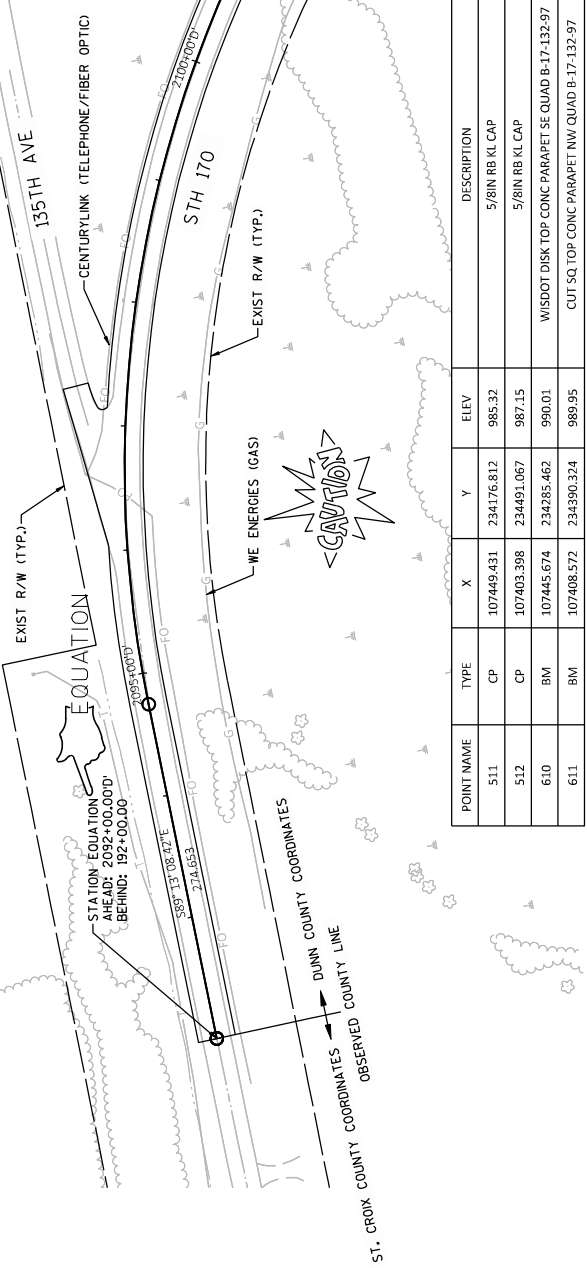
WISDOT/CADDS SHEET 44

Addendum No. 01
ID 8630-03-82
Revised Sheet 192
November 30, 2020



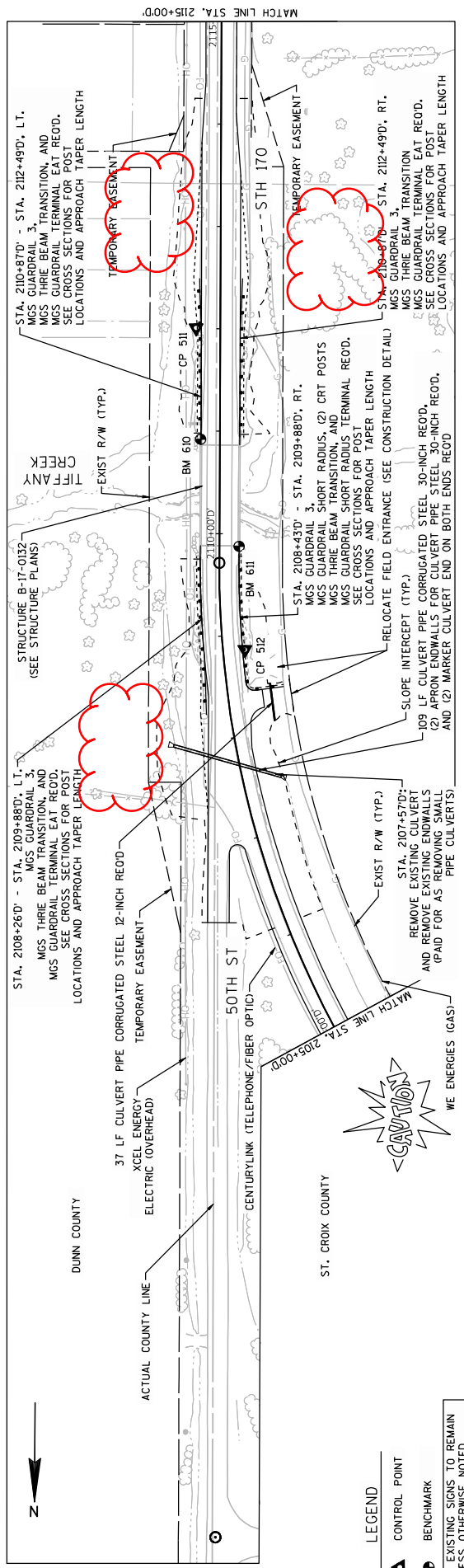
ALL EXISTING SIGNS TO REMAIN
 UNLESS OTHERWISE NOTED

PI STA = 2104+35.88
 V = 235357.583
 X = 107436.701
 DELTA = 89°44'36"
 D = 5°59'47"
 T = 951.23'
 L = 1496.62'
 R = 955.50'
 PC STA = 2094+74.65
 PT STA = 2109+71.27
 SUPERELEVATION = 6%



POINT NAME	TYPE	X	Y	ELEV	DESCRIPTION
511	CP	107449.431	234176.812	985.32	5/8IN RB KL CAP
512	CP	107403.398	234491.067	987.15	5/8IN RB KL CAP
610	BM	107445.674	234285.462	990.01	WISDOT DISK TOP CONC PARAPET SE QUAD B-17-132-97
611	BM	107408.572	234390.324	989.95	CUIT SQ TOP CONC PARAPET NW QUAD B-17-132-97

5



- LEGEND**
- ▲ CONTROL POINT
 - ⊕ BENCHMARK
- ALL EXISTING SIGNS TO REMAIN
 UNLESS OTHERWISE NOTED

PROJECT NO: 8630-03-82

HWY: STH 170

COUNTY: DUNN

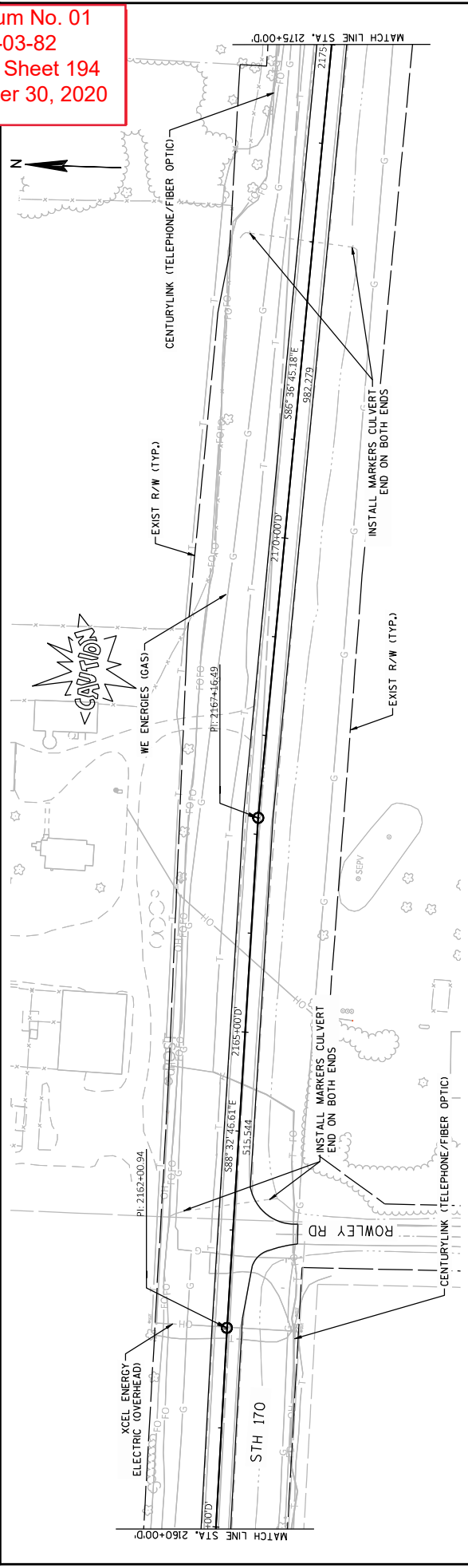
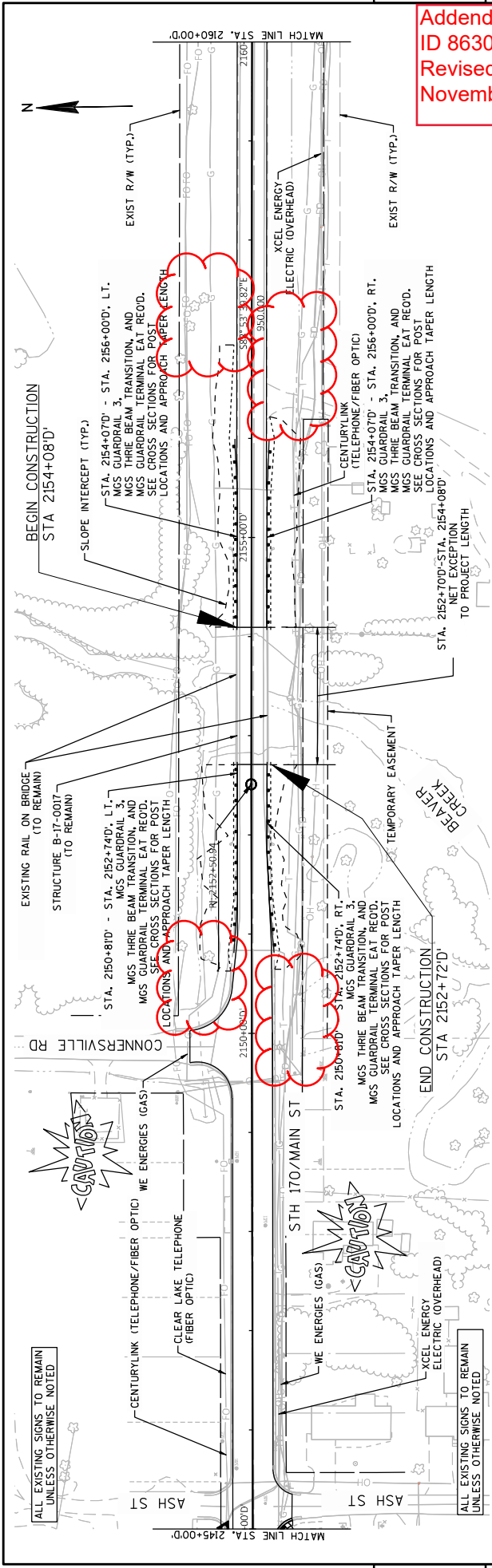
PLAN DETAILS: DUNN COUNTY

SHEET 192

FILE NAME: G:\WORK\18046-000\1817170_CIVIL_3D\SHEETS\PLAN\072101-PD_DUNN.DWG
 LAYOUT NAME: STA_005+00_ STA_2115+00
 PLOT DATE: 11/18/2020 8:17 AM
 PLOT BY: KE ENGINEERING
 PLOT NAME: 1 IN=100 FT
 WISDOT/CADDS SHEET 44

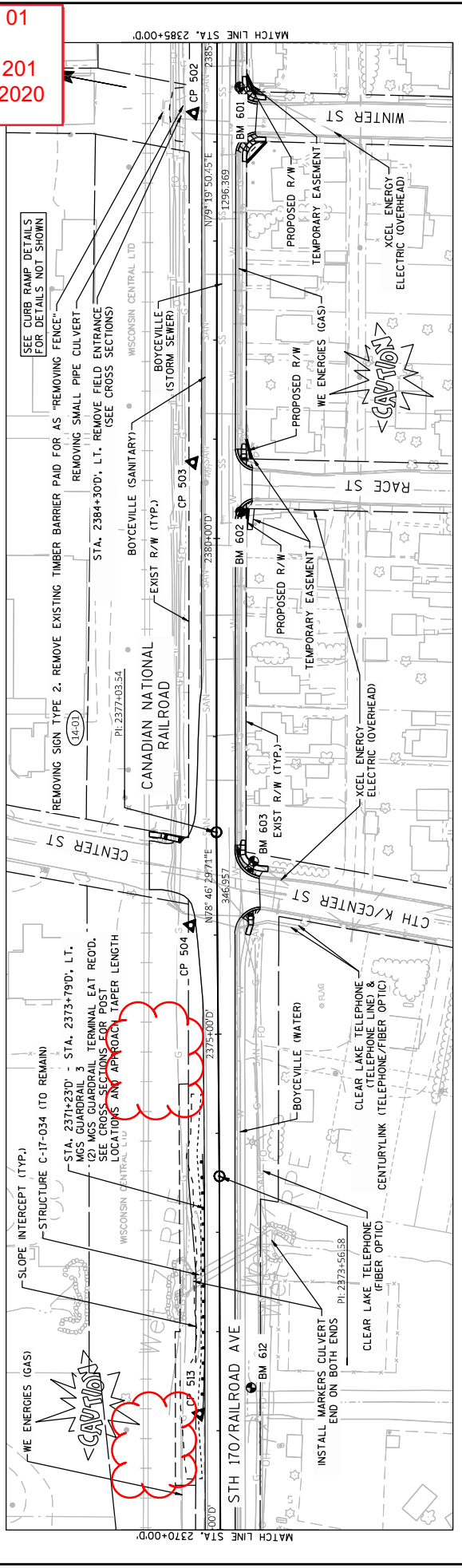
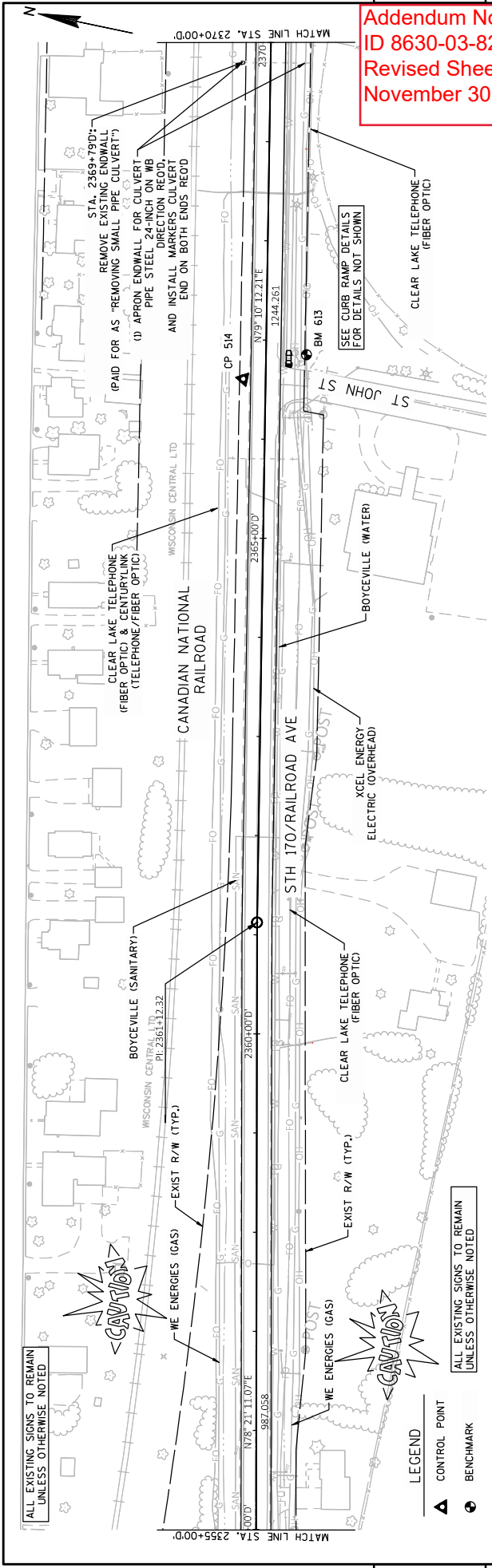
5

Addendum No. 01
 ID 8630-03-82
 Revised Sheet 194
 November 30, 2020



ALL EXISTING SIGNS TO REMAIN UNLESS OTHERWISE NOTED

ALL EXISTING SIGNS TO REMAIN UNLESS OTHERWISE NOTED

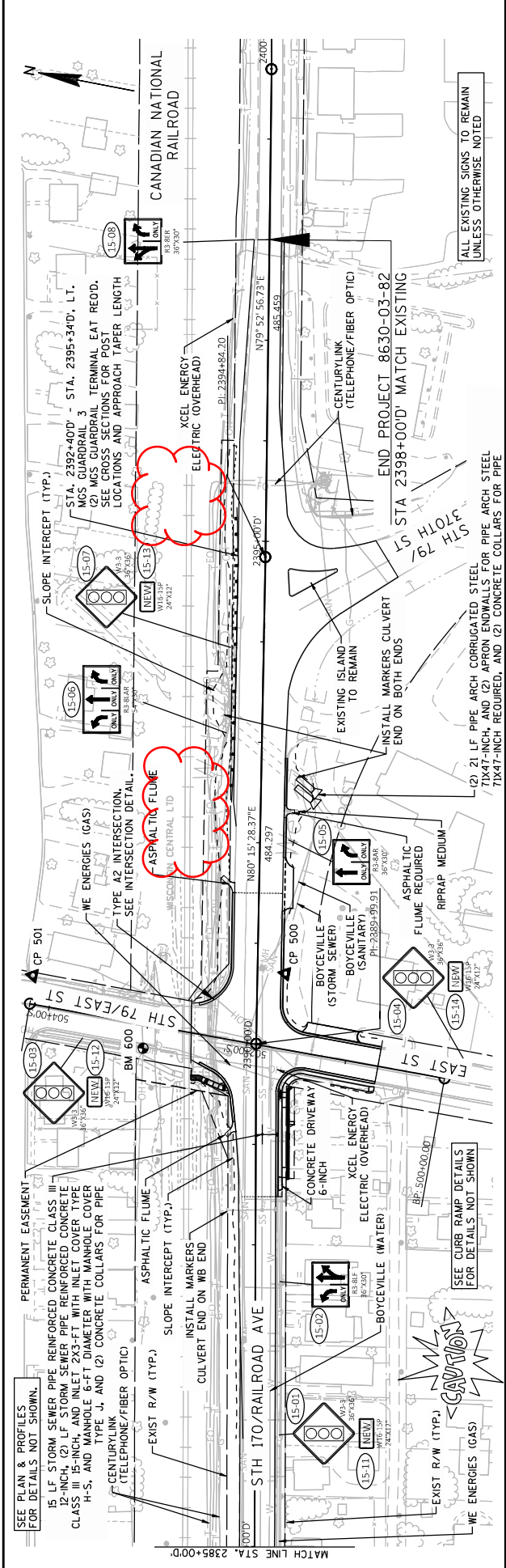


ALL EXISTING SIGNS TO REMAIN UNLESS OTHERWISE NOTED

LEGEND
 ▲ CONTROL POINT
 ● BENCHMARK

ALL EXISTING SIGNS TO REMAIN UNLESS OTHERWISE NOTED

Addendum No. 01
 ID 8630-03-82
 Revised Sheet 203
 November 30, 2020



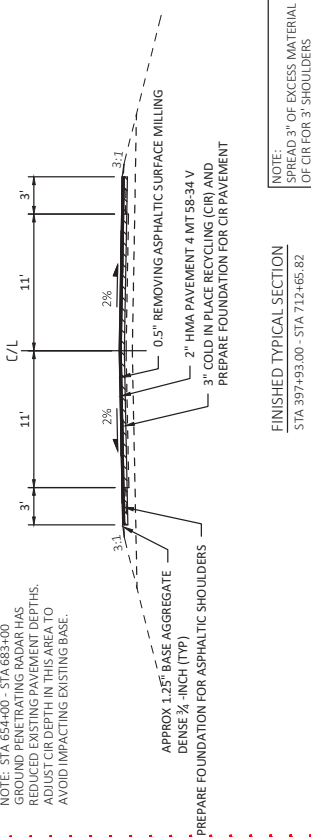
- LEGEND
- ▲ CONTROL POINT
 - BENCHMARK

POINT NAME	TYPE	X	Y	ELEV	DESCRIPTION
500	CP	133528.124	231904.554	946.77	5/8IN RB KL CAP
501	CP	133478.899	232151.226	944.84	5/8IN RB KL CAP
600	BM	133428.445	232029.774	947.54	RR SPIKE PPOOL #04

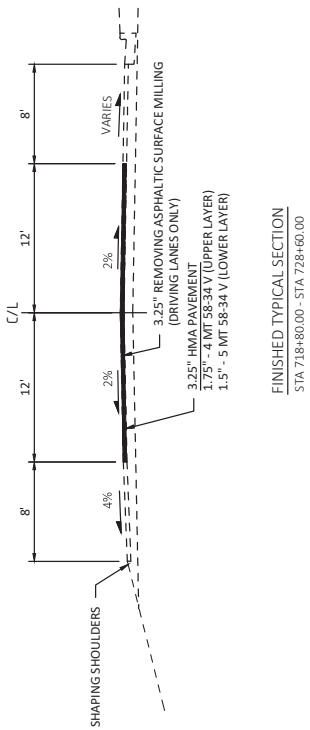
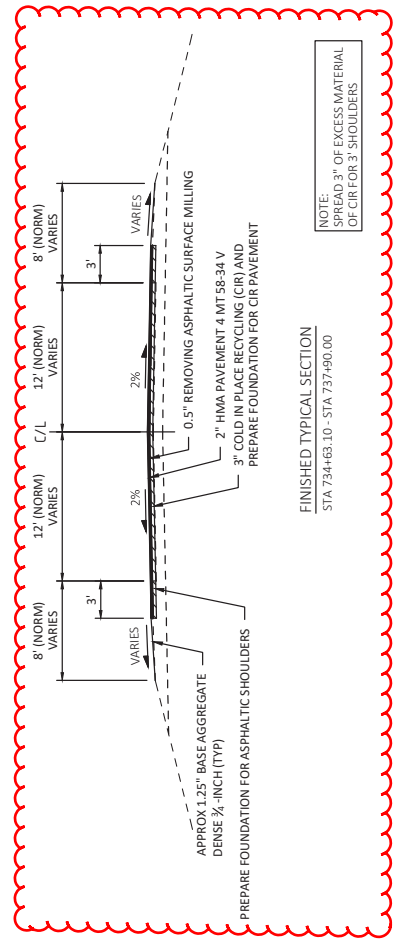
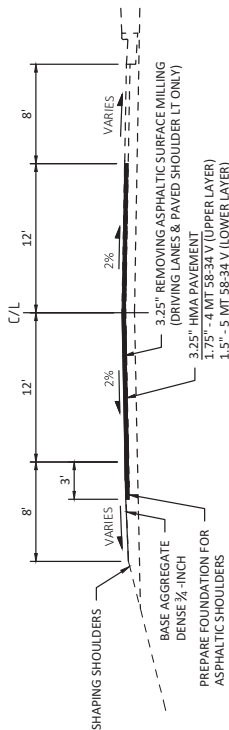
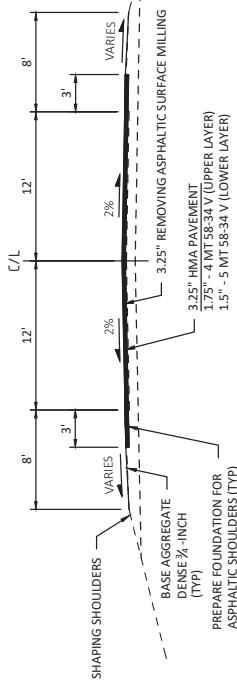
PROJECT NO: 8630-03-82 HWY: STH 170 COUNTY: DUNN PLAN DETAILS: DUNN COUNTY SHEET: 203 E

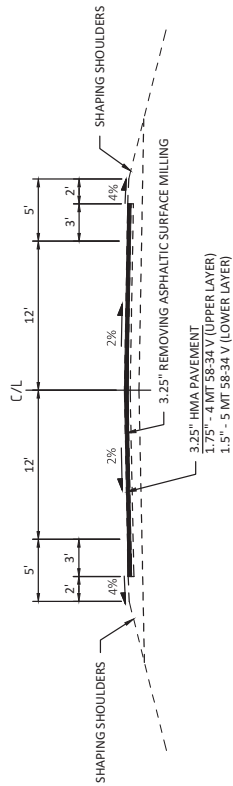
FILE NAME: G:\WORK\18046-000\181701_CIVIL_3D\SHEETS\PLAN\072017-PD_DUNN.DWG PLOT DATE: 11/18/2020 8:31 AM PLOT BY: KE ENGINEERING PLOT NAME: PLOT SCALE: 1 IN=100 FT W8007/CADD9 SHEET 44

NOTE: STA 664.00 - STA 683.00
GROUND PENETRATING RADAR HAS
REDUCED EXISTING PAVEMENT DEPTHS.
ADJUST CIR DEPTH IN THIS AREA TO
AVOID IMPACTING EXISTING BASE.

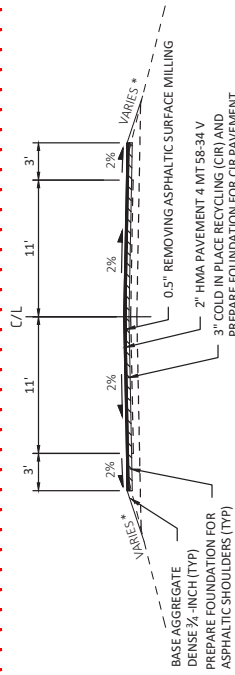


Addendum No. 01
ID 8630-05-82/83
Revised Sheet 5
November 30, 2020



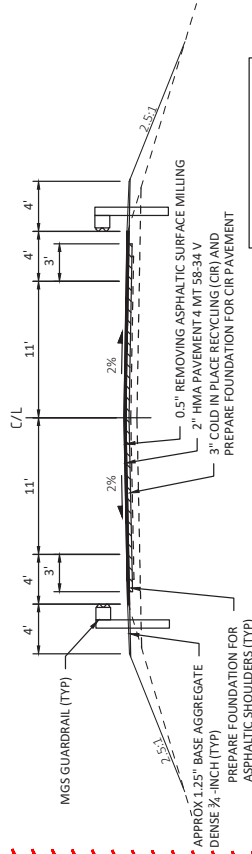


FINISHED TYPICAL SECTION - STH 25
 STA 9+19.10 - STA 11+68.47



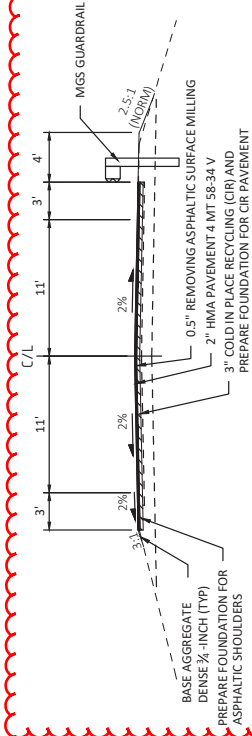
FINISHED TYPICAL SECTION
 STA 737+90.00 - STA 798+00.00
 STA 821+00.00 - STA 843+45.40
 STA 849+26.60 - STA 948+94.80

* MATCH EXISTING
 SUBGRADE SHOULDER POINT



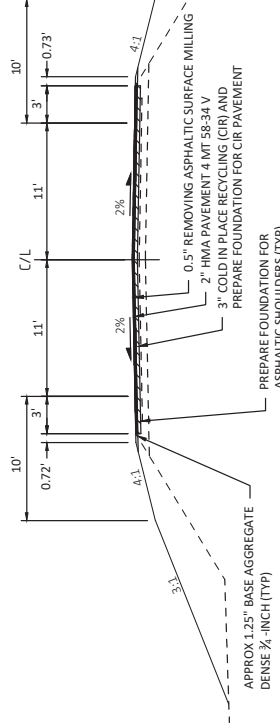
FINISHED TYPICAL SECTION
 STA 803+08.20 - STA 808+58.20
 STA 810+82.60 - STA 815+32.60

Addendum No. 01
 ID 8630-05-82/83
 Revised Sheet 6
 November 30, 2020



FINISHED TYPICAL SECTION
 STA 843+45.40 - STA 849+26.60

NOTE:
 SPREAD 3" OF EXCESS MATERIAL
 OF CIR FOR 3' SHOULDERS



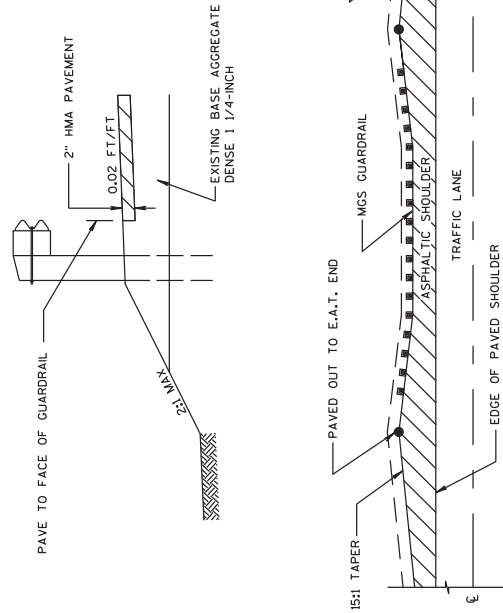
FINISHED TYPICAL SECTION REMOVING EXISTING CABLE GUARD
 STA 798+08.00 - STA 803+08.20
 STA 815+32.60 - STA 821+00.00

NOTE:
 SPREAD 3" OF EXCESS MATERIAL
 OF CIR FOR 3' SHOULDERS

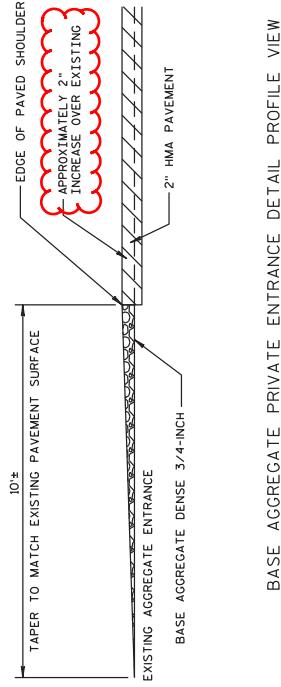
RUNOFF COEFFICIENT TABLE

A	HYDROLOGIC SOIL GROUP					
	B		C		D	
	SLOPE RANGE (PERCENT)		SLOPE RANGE (PERCENT)		SLOPE RANGE (PERCENT)	
LAND USE:	0-2	2-6	6 & OVER	0-2	2-6	6 & OVER
ROW CROPS	.08	.16	.22	.12	.20	.27
MEDIAN STRIP-TURF	.19	.20	.24	.19	.22	.26
SIDE SLOPE-TURF	.24	.26	.30	.25	.28	.33
PAVEMENT:	.25	.27	.34	.28	.36	.38
ASPHALT	.70 - .95					
CONCRETE	.80 - .95					
BRICK	.70 - .80					
DRIVES, WALLS	.75 - .85					
ROOFS	.75 - .95					
GRAVEL ROADS, SHOULDERS	.40 - .60					

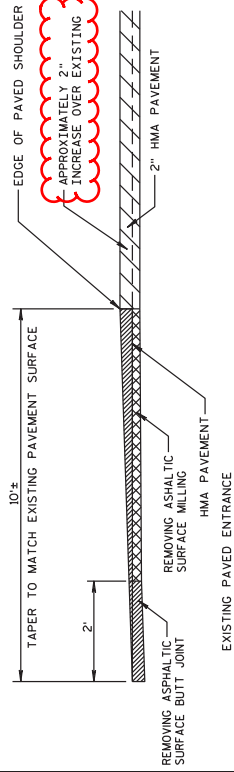
TOTAL PROJECT AREA = 126 ACRES
 TOTAL AREA EXPECTED TO BE DISTURBED BY CONSTRUCTION ACTIVITIES = 25 ACRES



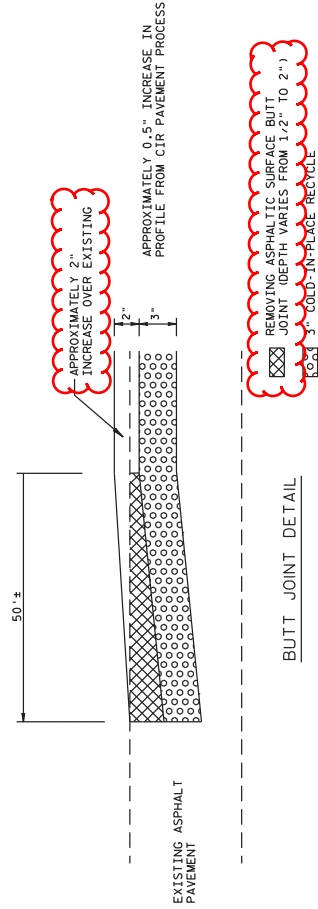
ASPHALTIC PAVING ALONG BEAMGUARD



BASE AGGREGATE PRIVATE ENTRANCE DETAIL PROFILE VIEW



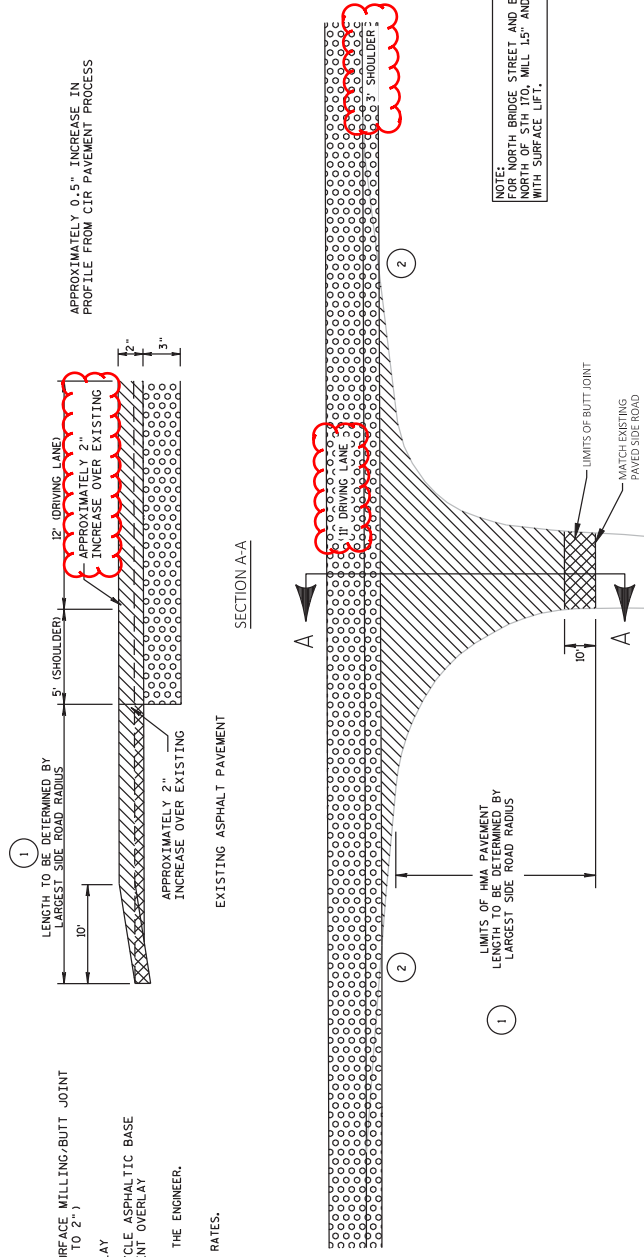
PAVED PRIVATE ENTRANCE DETAIL PROFILE VIEW



BUTT JOINT DETAIL

Addendum No. 01
 ID 8630-05-82/83
 Revised Sheet 7
 November 30, 2020

Addendum No. 01
ID 8630-05-82/83
Revised Sheet 8
November 30, 2020



DETAIL FOR RURAL PAVED SIDE ROAD

- REMOVING ASPHALTIC SURFACE MILLING/BUTT JOINT (DEPTH VARIES FROM 0" TO 2")
- 2" HMA PAVEMENT OVERLAY
- 3" COLD IN-PLACE RECYCLE ASPHALTIC BASE LAYER W/ 2" HMA PAVEMENT OVERLAY
- 1 LIMITS AS DIRECTED BY THE ENGINEER.
- 2 MATCH EXISTING TAPER RATES.

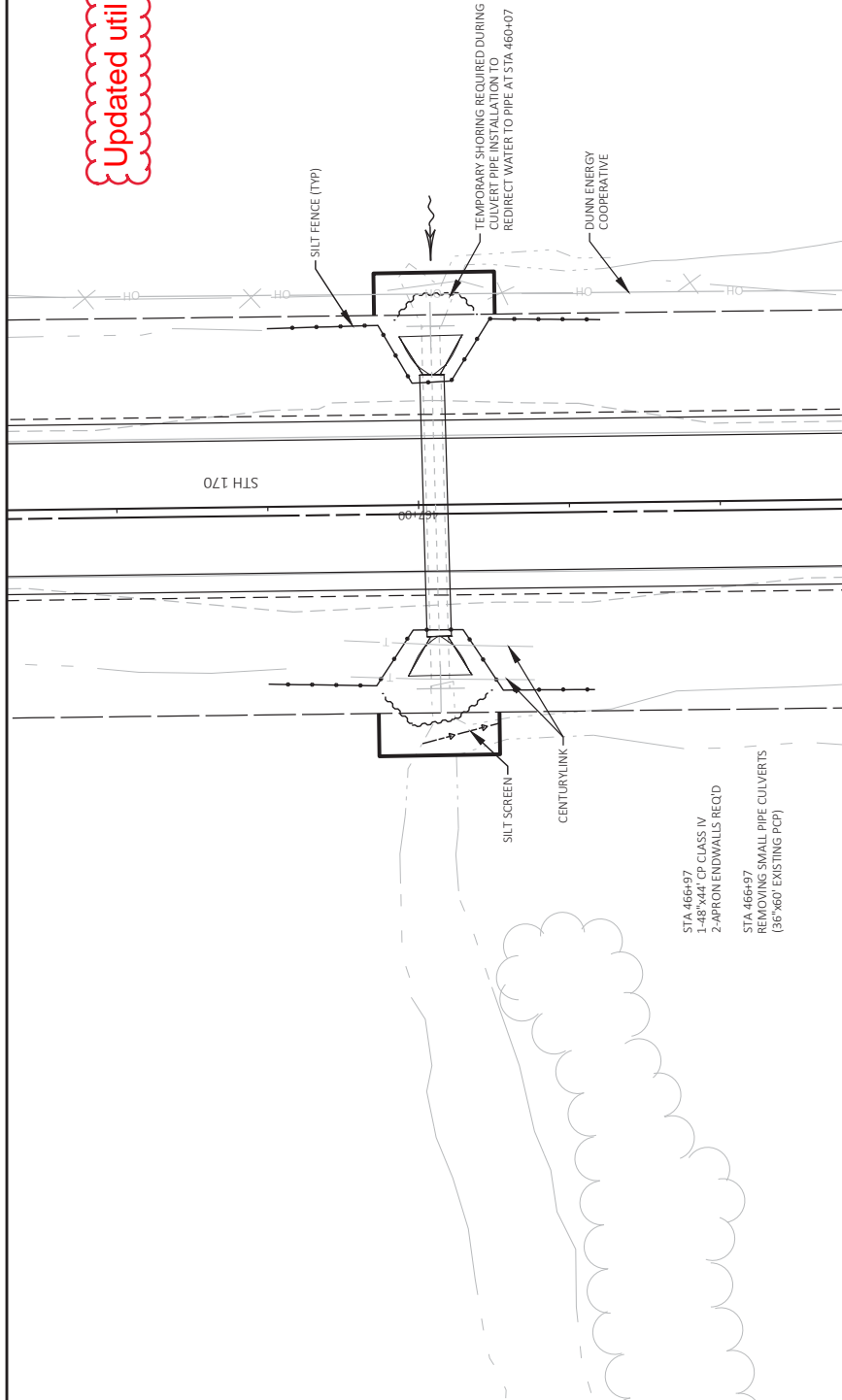
PROJECT NO: 8630-05-83/82	COUNTY: DUNN	CONSTRUCTION DETAILS	SHEET 8	E
FILE NAME: I:\EVAL1079_28_5TH I70_SHT 70 CTR (R)CBV\SHETS\LAND\21001_CD.DWG	HWY: 5TH I70	RESHEXE, CARBE	1 IN/10 FT	WISS07/CADDS SHEET 42
LAYOUT NAME: 021002.cd	11/19/2020 2:14 PM	RESHEXE, CARBE	1 IN/10 FT	

Updated utilities on page



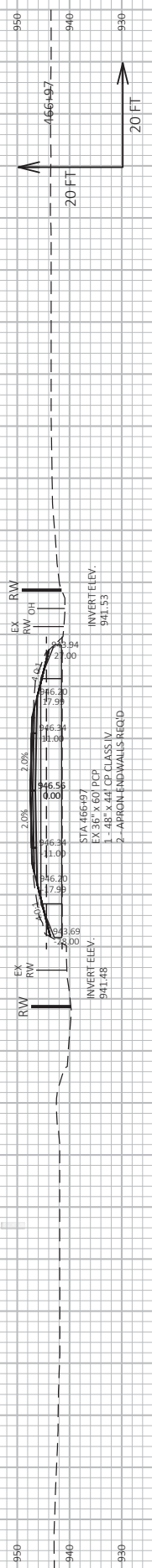
Addendum No. 01
ID 8630-05-82/83
Revised Sheet 13
November 30, 2020

SEE DETAIL FOR STH 170 CULVERT
PIPE REMOVAL, REPLACEMENT AND
BASE PATCHING INSTALLATION



STA 466+97
1-48"x44" CP CLASS IV
2-APRON ENDWALLS REQD

STA 466+97
REMOVING SMALL PIPE CULVERTS
(36"x60" EXISTING PCP)

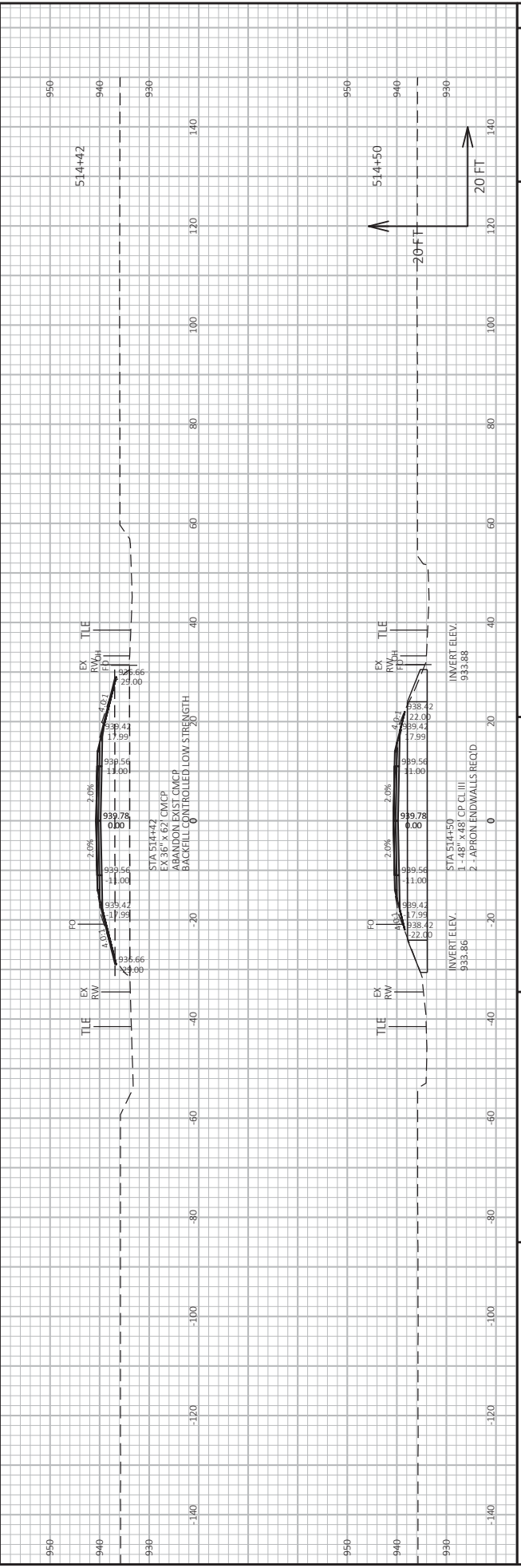
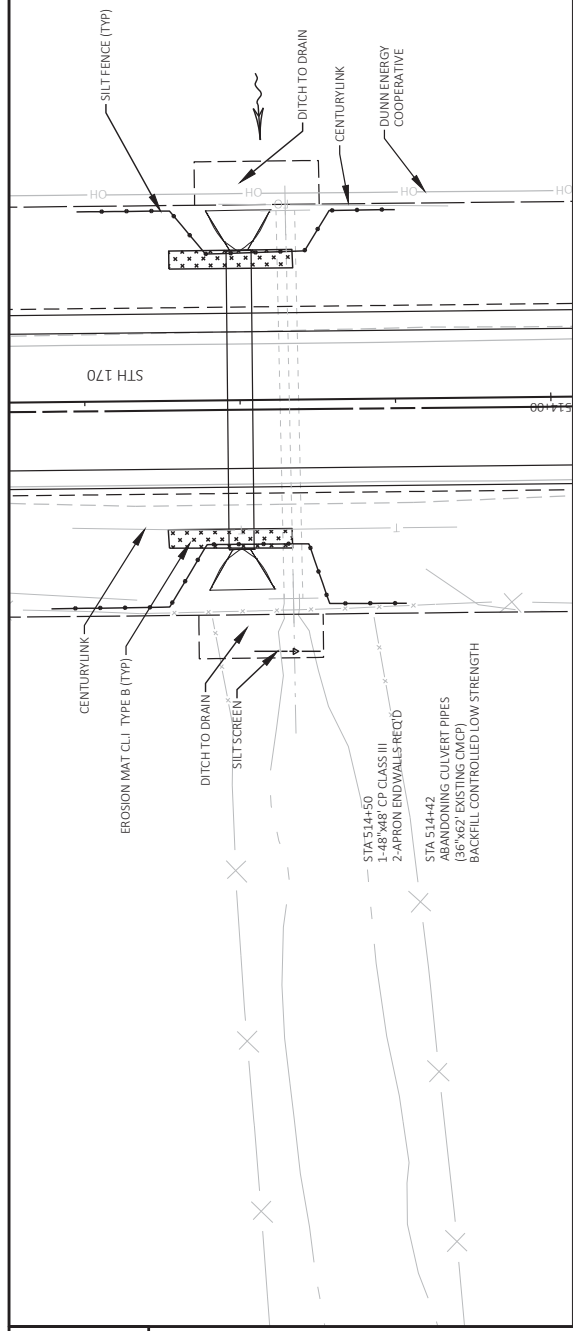


Addendum No. 01
 ID 8630-05-82/83
 Revised Sheet 15
 November 30, 2020

Updated utilities on page



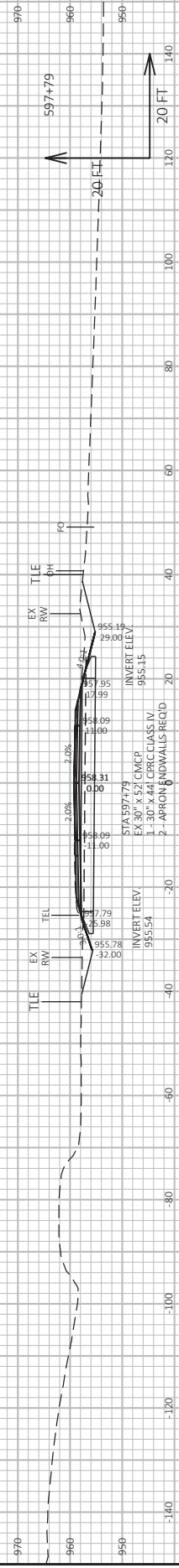
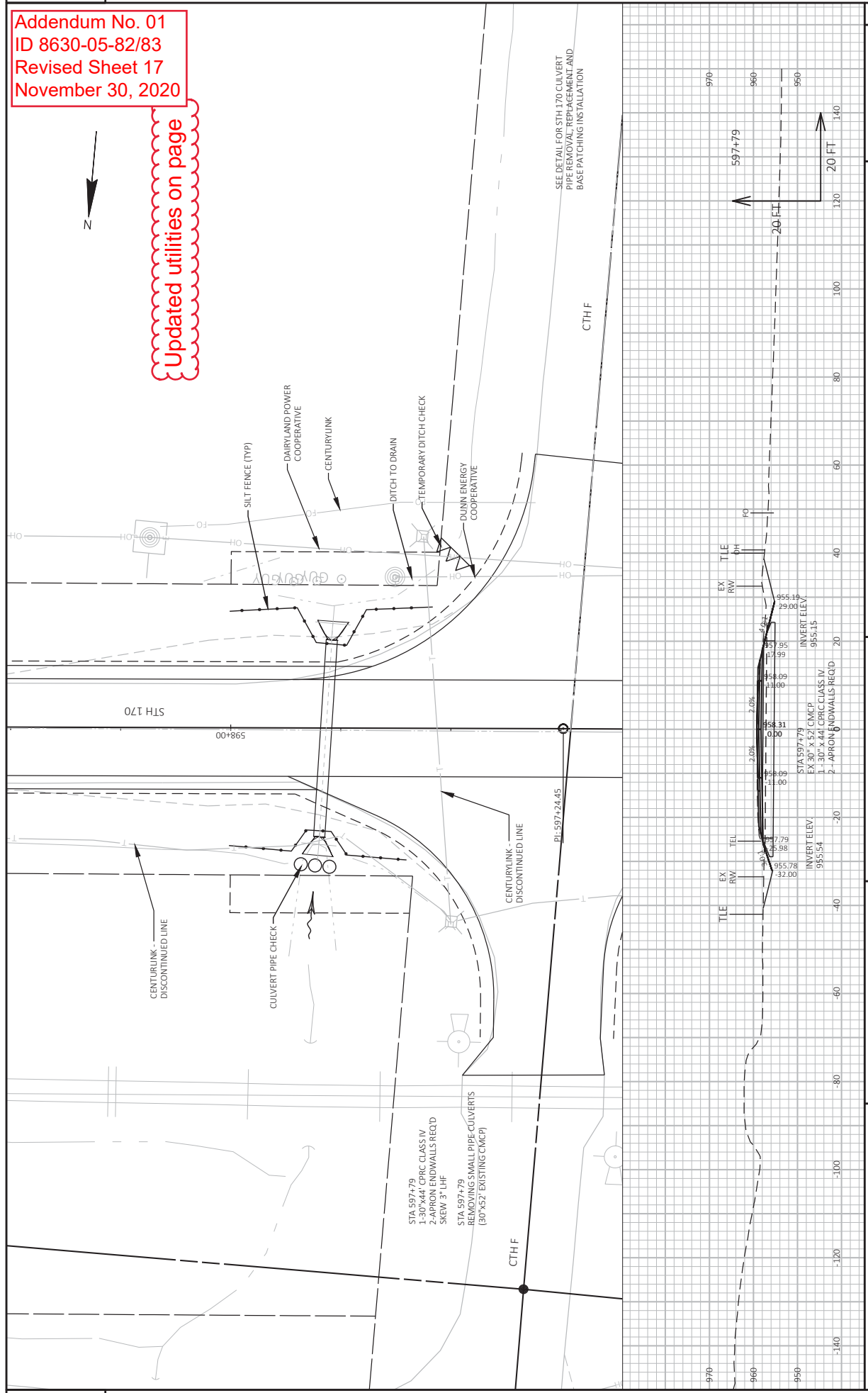
SEE DETAIL FOR STH 170 CULVERT
 PIPE REMOVAL, REPLACEMENT AND
 BASE PATCHING INSTALLATION



Addendum No. 01
 ID 8630-05-82/83
 Revised Sheet 17
 November 30, 2020



Updated utilities on page



Updated utilities on page

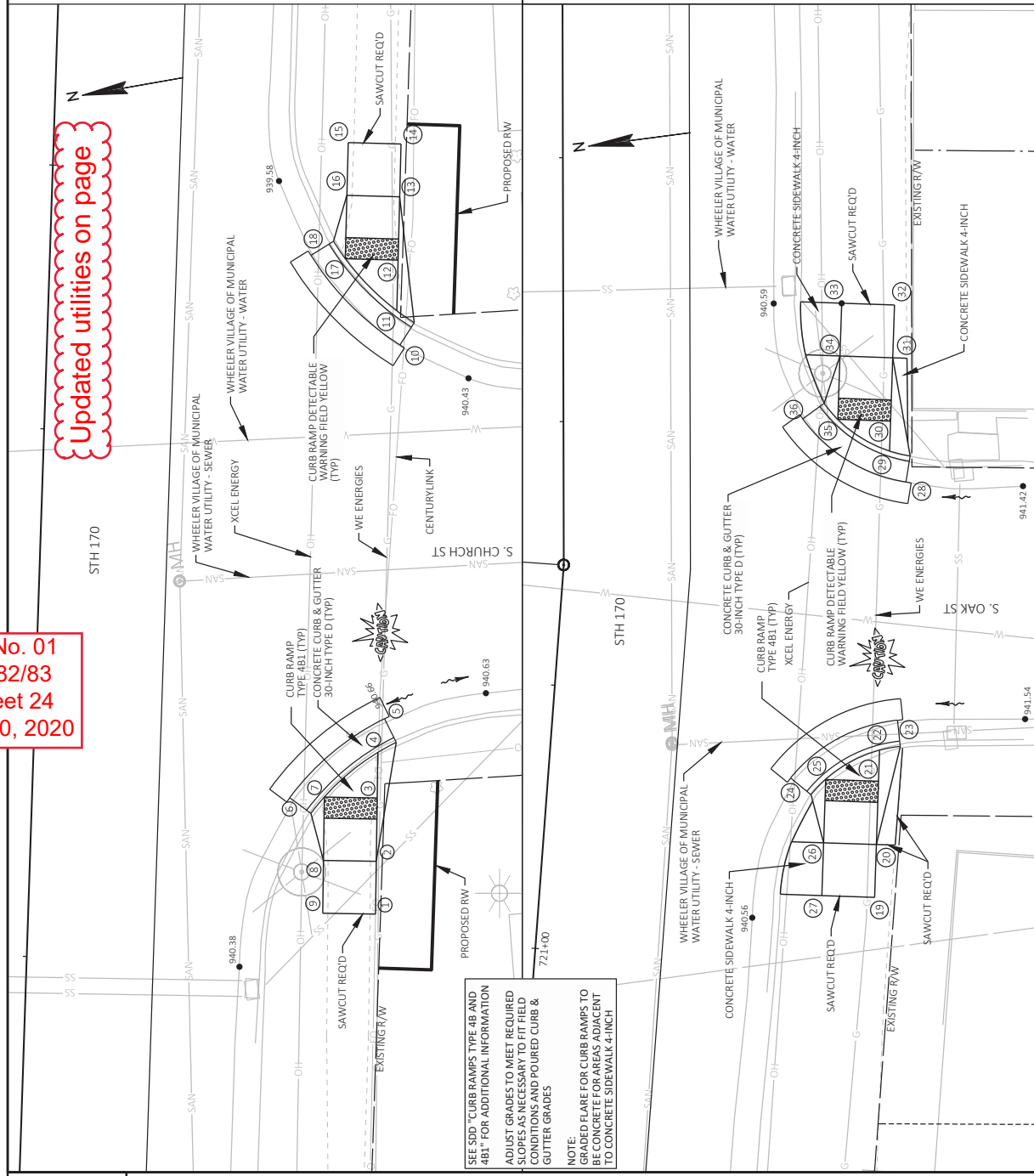
Addendum No. 01
ID 8630-05-82/83
Revised Sheet 24
November 30, 2020

STATION & OFFSET TABLE

POINT	STATION	OFFSET	Y COORDS	X COORDS	ELEVATION
1	715+30.11	32.88 RT	232032.49	165374.59	941.14
2	715+35.11	32.78 RT	232031.56	165379.50	940.83
3	715+41.11	32.67 RT	232030.45	165385.40	940.54
4	715+45.40	32.59 RT	232029.65	165389.61	940.53
5	715+48.62	33.13 RT	232028.47	165392.66	940.66
6	715+40.85	24.41 RT	232038.59	165386.83	940.51
7	715+41.01	27.67 RT	232035.36	165386.32	940.47
8	715+35.01	27.78 RT	232036.48	165380.43	940.75
9	715+30.01	27.88 RT	232037.40	165375.52	940.98
10	715+84.05	33.42 RT	232030.96	165427.29	940.27
11	715+87.29	33.01 RT	232020.69	165430.54	940.15
12	715+92.09	32.97 RT	232019.75	165435.24	940.17
13	715+98.09	32.93 RT	232018.58	165441.13	940.20
14	716+03.09	32.89 RT	232017.60	165446.03	940.25
15	716+03.05	27.89 RT	232022.50	165447.01	940.10
16	715+98.05	27.93 RT	232023.48	165442.11	940.05
17	715+92.05	27.97 RT	232024.66	165436.22	939.99
18	715+92.26	24.72 RT	232027.80	165437.10	939.87

STATION & OFFSET TABLE

POINT	STATION	OFFSET	Y COORDS	X COORDS	ELEVATION
19	721+07.21	31.69 RT	231915.94	165939.80	941.36
20	721+12.20	31.48 RT	231915.12	165944.73	941.28
21	721+18.20	31.24 RT	231914.13	165950.65	941.15
22	721+24.12	31.12 RT	231913.65	165953.54	941.12
23	721+24.09	32.62 RT	231911.58	165956.14	941.21
24	721+17.88	22.93 RT	231922.34	165952.03	940.98
25	721+18.00	26.25 RT	231919.06	165951.47	940.95
26	721+12.00	26.49 RT	231920.05	165945.55	941.08
27	721+07.01	26.69 RT	231920.87	165940.62	941.15
28	721+44.21	32.43 RT	231907.84	165978.41	941.21
29	721+47.15	30.88 RT	231908.99	165981.52	940.93
30	721+49.99	30.98 RT	231908.53	165984.32	940.97
31	721+55.98	31.20 RT	231907.54	165990.24	941.27
32	721+60.98	31.38 RT	231906.72	165995.17	941.35
33	721+61.16	26.38 RT	231911.65	165995.99	941.07
34	721+56.16	26.20 RT	231912.47	165991.06	941.21
35	721+50.16	25.99 RT	231913.46	165985.14	940.91
36	721+50.22	22.67 RT	231916.75	165985.62	940.81



SEE SDD "CURB RAMPS TYPE 4B AND 4B1" FOR ADDITIONAL INFORMATION
ADJUST GRADES TO MEET REQUIRED SLOPES AND SMOOTH FIELD CONDITIONS AND POURED CURB & GUTTER GRADES

NOTE:
GRADED FLARE FOR CURB RAMPS TO BE CONCRETE FOR AREAS ADJACENT TO CONCRETE SIDEWALK 4-INCH



PI STA = 478+27.72
Y = 132743.72
X = 142232.43

STA 478+54
36" x 50" EXIST CULVERT
REPLACE AND ADD ENDWALLS
SEE DETAIL

PI: 478+27.72

320TH ST

DUNN ENERGY COOPERATIVE

EXISTING R/W (TYP)

STH 170

STA 466+97
36" x 52" EXIST CULVERT
REPLACE AND ADD ENDWALLS
SEE DETAIL

CENTURYLINK

STA 460+07
36" x 50" EXIST CULVERT
REPLACE AND ADD ENDWALLS
SEE DETAIL

Addendum No. 01
ID 8630-05-82/83
Revised Sheet 31
November 30, 2020

Updated utilities on page



CENTURYLINK

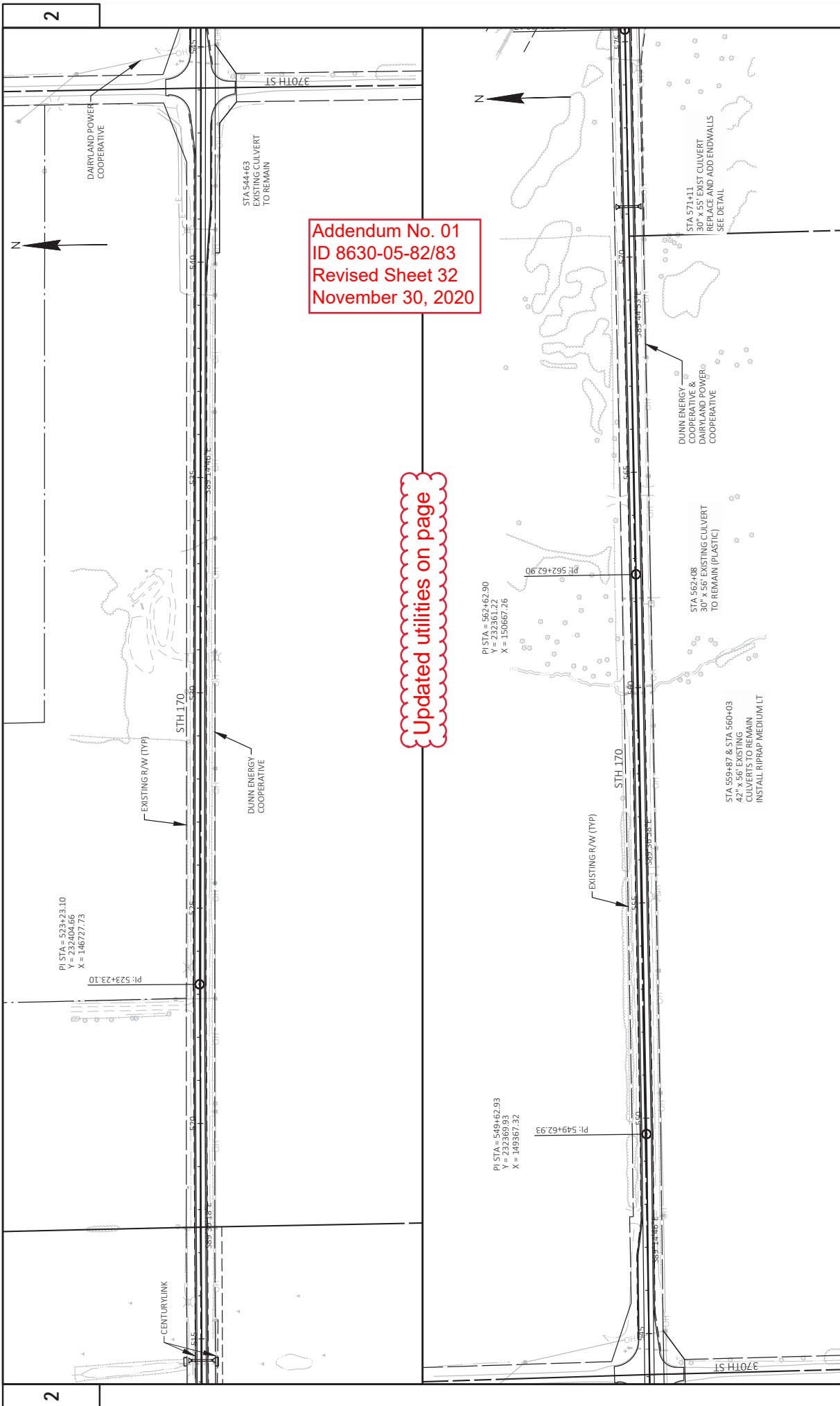
STA 514+42
ABANDON CULVERT PIPE
36" x 62" EXIST CULVERT
REPLACE AND ADD ENDWALLS
SEE DETAIL

STA 505+11
24" x 46" EXISTING
CULVERT TO REMAIN
CLEANING CULVERT
PIPE

EXISTING R/W (TYP)

STH 170

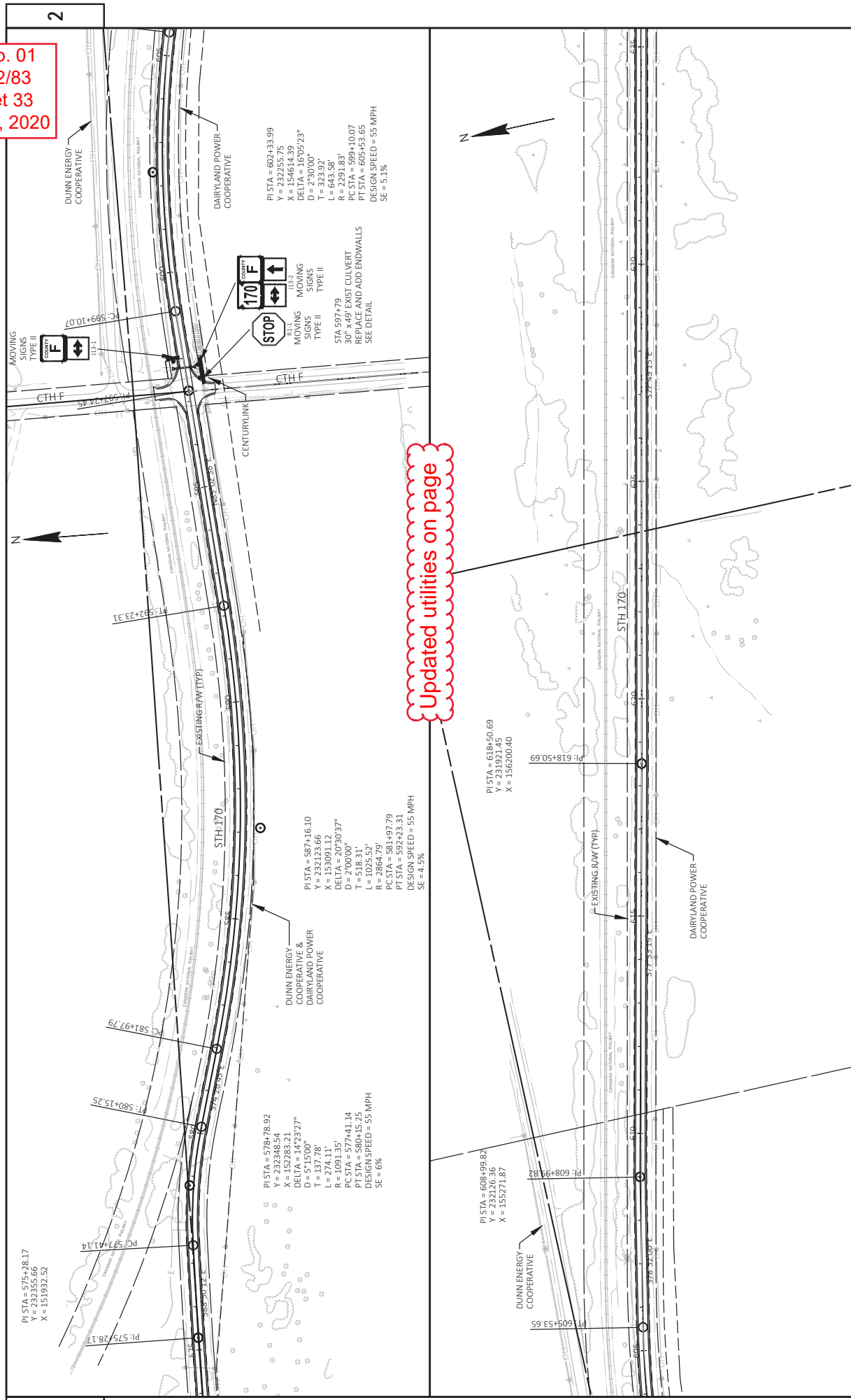
DUNN ENERGY COOPERATIVE



Addendum No. 01
 ID 8630-05-82/83
 Revised Sheet 32
 November 30, 2020

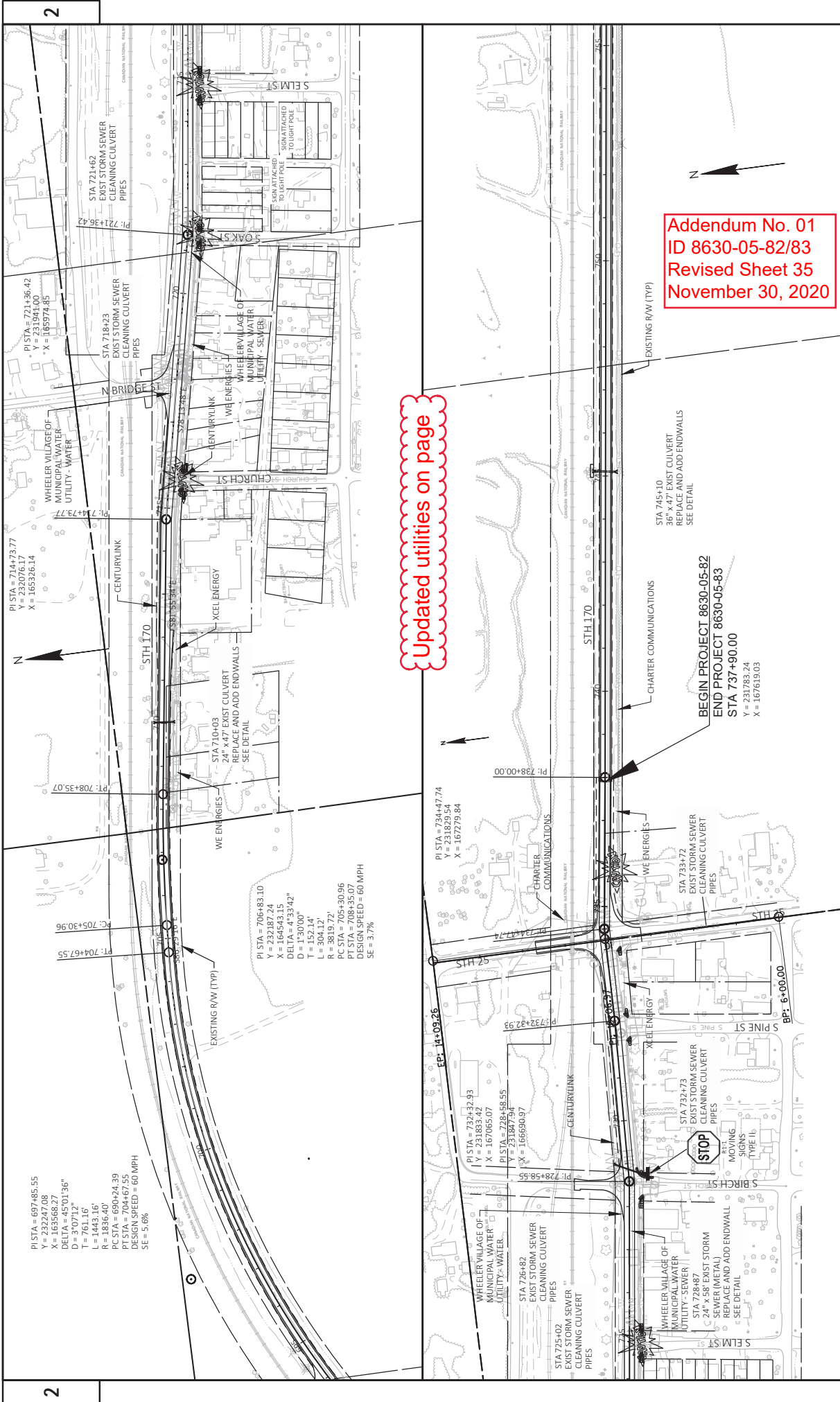
Updated utilities on page

Addendum No. 01
 ID 8630-05-82/83
 Revised Sheet 33
 November 30, 2020



Updated utilities on page

PROJECT NO: 8630-05-83	COUNTY: DUNN	PLAN	SHEET 33	E
FILE NAME: I:\MVA\1079_28_STH170_SHT70.CHD\SHETS\LAND\50101.PP.DWG	DATE: 11/12/2020 09:56 AM	BY: RESHEKE, CARRE	SCALE: 1 IN=200 FT	NO: WISS07/CADD/SHEET 44
LAYOUT NAME: 050101-PP				



2

2

Updated utilities on page

Addendum No. 01
 ID 8630-05-82/83
 Revised Sheet 35
 November 30, 2020

PI STA = 697+85.55
 Y = 232427.08
 X = 165568.27
 DELTA = 45°01'36"
 D = 3'07"12"
 T = 761.16'
 L = 1443.16'
 R = 1836.40'
 PC STA = 690+24.39
 PT STA = 704+67.55
 DESIGN SPEED = 60 MPH
 SE = 3.06%

PI STA = 706+83.10
 Y = 232187.24
 X = 164543.15
 DELTA = 4°33'42"
 D = 152'10"
 T = 152.14'
 L = 304.12'
 R = 3819.72'
 PC STA = 705+30.96
 PT STA = 708+35.07
 DESIGN SPEED = 60 MPH
 SE = 3.7%

PI STA = 734+47.74
 Y = 231829.54
 X = 167279.84

PI STA = 732+32.93
 Y = 231883.62
 X = 167065.07

PI STA = 728+58.55
 Y = 231847.94
 X = 166960.97

PROJECT NO: 8630-05-83/8630-05-82	COUNTY: DUNN	PLAN	SHEET 35	E
HWY: STH 170	PLOT DATE: 11/11/2020 12:12 PM	PLOT NAME: RESHEKE, CARBE	PLOT SCALE: 1 IN=200 FT	WISDOT/CADDIS SHEET 44
FILE NAME: I:\RAV\079_28_STH170_SHT70\CHD\DS\DRSHEETS\LAND\50101-PP.DWG	LAYOUT NAME: 050106-PP			

CLEARING & GRUBBING

STATION TO STATION	STA	SY	201.0105	201.0205
798+00 - 801+00	3	3		
804+00 - 806+00	2	2		
812+00 - 816+00	4	4		
819+00 - 820+00	1	1		
PROJECT ID 8630-05-82 SUMMARY	10	10		
PROJECT TOTAL	10	10		

REMOVING SMALL PIPE CULVERTS

STATION	LOCATION	SIZE	MATERIAL	BACH	203.0100
460+07	STH 170	36"x50"	CNCP	1	
466+97	STH 170	36"x60"	PCP	1	
478+54	STH 170	18"x48"	CNCP	1	
571+11	STH 170	30"x62"	PCP	1	
597+79	STH 170	30"x52"	CNCP	1	
636+45	STH 170	36"x58"	CNCP	1	
678+22	STH 170	18"x56"	CNCP	1	
710+03	STH 170	24"x44"	CNCP	1	
728+87	STH 170	24"x58"	CNCP	1	
PROJECT ID 8630-05-83 SUMMARY				9	
745+10	STH 170	36"x56"	CNCP	1	
787+37	STH 170	24"x54"	CNCP	1	
PROJECT ID 8630-05-82 SUMMARY				2	
PROJECT TOTAL				11	

REMOVING ASPHALTIC SURFACE

STATION	LOCATION	SY	204.0110
460+07	PIPE REPLACEMENT	53	
466+97	PIPE REPLACEMENT	56	
478+54	PIPE REPLACEMENT	69	
514+47	PIPE REPLACEMENT	70	
571+17	PIPE REPLACEMENT	57	
597+79	PIPE REPLACEMENT	66	
636+44	PIPE REPLACEMENT	55	
678+22	PIPE REPLACEMENT	82	
710+03	PIPE REPLACEMENT	50	
715+42	SW QUAD OF S CHURCH ST	3	
715+92	SE QUAD OF S CHURCH ST	3	
721+17	SW QUAD OF S OAK ST	3	
721+51	SE QUAD OF S OAK ST	3	
724+49	SW QUAD OF S ELM ST	3	
725+16	SE QUAD OF S ELM ST	3	
728+19	SW QUAD OF S BIRCH ST	3	
728+87	PIPE REPLACEMENT	126	
731+86	SW QUAD OF S PINE ST	3	
732+46	SE QUAD OF S PINE ST	3	
733+94	SW QUAD OF STH 25	3	
PROJECT ID 8630-05-83 SUMMARY		714	
745+10	PIPE REPLACEMENT	69	
787+37	PIPE REPLACEMENT	58	
933+12-934+75	STH 170 WIDE SHOULDER	142	
PROJECT ID 8630-05-82 SUMMARY		269	
PROJECT TOTAL		983	

REMOVING ASPHALTIC SURFACE BUTT JOINTS

STATION	LOCATION	SY	204.0115
397+93	STH 170	142	
443+97	PRAIRIE ROAD	27	
478+28	320TH ST	46	
544+05	370TH ST	77	
597+26	CTH F	52	
677+75	470TH ST	25	
693+95	1010TH AVE	25	
717+80	N BRIDGE ST	29	
728+54	BIRCH ST	25	
734+21	STH 25	68	
DRIVEWAYS	ENTIRE PROJECT	60	
PROJECT ID 8630-05-83 SUMMARY		576	
785+55	550ST ST	21	
830+85	CTH S	25	
913+70	630TH ST	26	
923+50	634TH ST	23	
934+00	634TH ST	21	
948+94	STH 170	142	
DRIVEWAYS	ENTIRE PROJECT	15	
PROJECT ID 8630-05-82 SUMMARY		273	
PROJECT TOTAL		849	

Addendum No. 01
ID 8630-05-82/83
Revised Sheet 44
November 30, 2020

REMOVING CONCRETE SIDEWALK

STATION TO STATION	LOCATION	SY	204.0155
807+66 - 808+58	LT	92	
802+66 - 808+58	RT	592	
810+83 - 815+62	LT	479	
810+83 - 815+50	RT	467	
845+87 - 848+91	RT	304	
PROJECT ID 8630-05-82 SUMMARY		1934	
PROJECT TOTAL		1934	

REMOVING CURB & GUTTER

STATION TO STATION	LOCATION	LF	204.0150
SW QUAD OF S CHURCH ST		12	
SE QUAD OF S CHURCH ST		12	
SW QUAD OF S OAK ST		11	
SE QUAD OF S OAK ST		11	
SW QUAD OF S ELM ST		13	
SE QUAD OF S ELM ST		13	
SW QUAD OF S BIRCH ST		12	
SE QUAD OF S BIRCH ST		46	
SW QUAD OF S PINE ST		12	
SE QUAD OF S PINE ST		12	
SW QUAD OF STH 25		12	
PROJECT ID 8630-05-83 SUMMARY		168	
PROJECT TOTAL		168	

REMOVING ASPHALTIC SURFACE MILLING

STATION TO STATION	LOCATION	SY	204.0120
9+19 - 11+68	STH 25	661	
397+93.04-737+90	STH 170	88401	
PROJECT ID 8630-05-83 SUMMARY		88401	
737+90-808+57.69	STH 170	17723	
810+83.05-948+94.80	STH 170	34668	
PROJECT ID 8630-05-82 SUMMARY		52391	
PROJECT TOTAL		140792	

REMOVING GUARDRAIL

STATION TO STATION	LOCATION	LF	204.0165
807+66 - 808+58	LT	92	
802+66 - 808+58	RT	592	
810+83 - 815+62	LT	479	
810+83 - 815+50	RT	467	
845+87 - 848+91	RT	304	
PROJECT ID 8630-05-82 SUMMARY		1934	
PROJECT TOTAL		1934	

ABANDONING CULVERT PIPES

STATION	LOCATION	SIZE	MATERIAL	204.0270
514+42	STH 170	36"x62"	CNCP	1
PROJECT ID 8630-05-83 SUMMARY				1
PROJECT TOTAL				1

Addendum No. 01
ID 8630-05-82/83
Revised Sheet 45
November 30, 2020

EARTHWORK SUMMARY

STATION TO STATION	LOCATION	205.0100 EXCAVATION COMMON CY	(2) (4) UNEXPANDED FILL CY	(5) MASS ORDINATE +/- CY	(1) WASTE CY	(3) 208-.0100 BORROW CY
UNDISTRIBUTED (PIPES)	STH 170	20	---	---	---	20
PROJECT ID 8630-05-83 SUMMARY						
UNDISTRIBUTED		20				20
798+00 - 808+57.50	STH 170	120	2899	3649	---	3649
810+83.5 - 821+00	STH 170	65	3129	4068	---	4003
842+25.40 - 850+46.60	STH 170	433	188	244	---	-189
UNDISTRIBUTED (PIPES)		0	---	---	---	10
PROJECT ID 8630-05-82 SUMMARY						
UNDISTRIBUTED		618				7473
PROJECT TOTAL						
UNDISTRIBUTED		638				7493

- (1) WASTE = EXPANDED FILL - EXCAVATION COMMON (FOR INFORMATION ONLY - NOT A BID ITEM)
- (2) EXPANSION FACTOR = 1.30
- (3) BORROW = EXPANDED FILL - EXCAVATION COMMON
- (4) EXPANDED FILL = UNEXPANDED FILL * EXPANSION FACTOR
- (5) THE MASS ORDINATE + OR - QTY CALCULATED FOR THE DIVISION. MINUS QUANTITY INDICATES AN EXCESS OF MATERIAL WITHIN THE DIVISION. PLUS INDICATES A SHORTAGE OF MATERIAL WITHIN THE DIVISION.
- (6) NO EXCAVATION COMMON FOR PIPE EXCAVATION. UNDISTRIUBED EXCAVATION COMMON IS BASED ON DITCHING TO DRAIN

REMOVING CABLE GUARD

STATION TO STATION	LOCATION	204.9090.S LF
798+44 - 802+55	LT	411
798+45 - 801+93	RT	348
816+65 - 820+03	LT	338
816+84 - 819+95	RT	311
PROJECT ID 8630-05-82 SUMMARY		
PROJECT TOTAL		1408

PREPARING FOUNDATION FOR ASPHALT SHOULDER

STATION TO STATION	LOCATION	211.0400 STA
798+44 - 802+55	LT	411
798+45 - 801+93	RT	348
816+65 - 820+03	LT	338
816+84 - 819+95	RT	311
PROJECT ID 8630-05-83 SUMMARY		
PROJECT TOTAL		652

BACKFILL CONTROLLED LOW STRENGTH

STATION	LOCATION	209.0200.S CY
514+42	STH 170	16.2
PROJECT ID 8630-05-83 SUMMARY		
PROJECT TOTAL		16.2

PREPARE FOUNDATION FOR CLR BASE LAYER

STATION TO STATION	LOCATION	211.0700.S EACH
UNDISTRIBUTED		1
.003 8630-05-83		1
.002 8630-05-82		1

BASE REPAIR FOR CIR PAVEMENT

LOCATION	211.0800.S CY
UNDISTRIBUTED	200
PROJECT ID 8630-05-83 SUMMARY	
UNDISTRIBUTED	200
PROJECT ID 8630-05-82 SUMMARY	
UNDISTRIBUTED	400
PROJECT TOTAL	
UNDISTRIBUTED	400

BASE AGGREGATE DENSE

STATION TO STATION	LOCATION	305.0110 3/4-INCH TON	305.0120 1 1/4-INCH TON
397+93-737+90	STH 170	350	---
460+07	DRIVERWAYS	40	---
466+97	PIPE REPLACEMENT	10	40
478-54	PIPE REPLACEMENT	10	42
514+47	PIPE REPLACEMENT	10	43
571+17	PIPE REPLACEMENT	13	53
597+79	PIPE REPLACEMENT	11	47
636+44	PIPE REPLACEMENT	10	42
678+22	PIPE REPLACEMENT	12	43
710+03	PIPE REPLACEMENT	9	38
715+42	PIPE REPLACEMENT	5	5
721+17	SW QUAD OF S CHURCH ST	---	6
721+51	SE QUAD OF S OAK ST	---	5
725+16	SE QUAD OF S OAK ST	---	5
728+19	SE QUAD OF S ELM ST	---	7
728+73	SE QUAD OF S BIRCH ST	---	7
728+87	SE QUAD OF S BIRCH ST	---	11
731+86	PIPE REPLACEMENT	5	49
732+46	SE QUAD OF S PINE ST	---	5
733+94	SW QUAD OF S PINE ST	---	6
UNDISTRIBUTED		510	---
PROJECT ID 8630-05-83 SUMMARY			
UNDISTRIBUTED		1000	508

SHAPING SHOULDERS

STATION TO STATION	DESCRIPTION	305.0500 STA
397+93 - 737+90	STH 170	341
10+42 - 11+68	STH 25	4
PROJECT ID 8630-05-83 SUMMARY		
737+90 - 808+58.20	STH 170	72
810+82.60 - 948+94.80	STH 170	139
PROJECT ID 8630-05-83 SUMMARY		
PROJECT TOTAL		211

FINISHING ROADWAY

STATION TO STATION	DESCRIPTION	305.0500 STA
798+00-802+00	STH 170	120
810+82.60-816+52.00	STH 170	110
816+52.00-821+00	STH 170	25
821+00-843+45.40	STH 170	30
843+45.40-849+26.60	STH 170	100
849+26.60-948+94.80	STH 170	150
UNDISTRIBUTED		425
PROJECT ID 8630-05-82 SUMMARY		
UNDISTRIBUTED		1134
PROJECT TOTALS		
UNDISTRIBUTED		2134

(1) UNDISTRIBUTED INCLUDED TO ACCOUNT FOR EXISTING SHOULDER

Addendum No. 01
ID 8630-05-82/83
Revised Sheet 46
November 30, 2020

COLD-IN-PLACE RECYCLING (CIR) PARTIAL DEPTH ITEMS

STATION TO STATION	SY	TON
327.1000.S		455.0770.S
COLD-IN-PLACE ASPHALT		
RECYCLING (CIR) STABILIZING		
ASPHALT PAVEMENT AGENT		
737+93 - 712+66	97916	343
734+63 - 737+90	1017	4
PROJECT ID 8630-05-83 SUMMARY	98933	347
737+90 - 808+58	21989	77
810+82 - 948+95	42974	150
PROJECT ID 8630-05-82 SUMMARY	64963	227
PROJECT TOTALS	262829	921

HMA PAVEMENT ITEMS

STATION TO STATION	LOCATION	TON	465.0120 ASPHALTIC SURFACE	465.0105 ASPHALTIC SURFACE	455.0605 TACK COAT	460.0105.S HMA PAVEMENT	460.0110.S HMA PAVEMENT
397+93-737+90	STH 170 (1)	12175	---	---	---	---	---
397+93-737+90	DRIVEWAYS	640	---	---	8051	---	---
460+07	PIPE REPLACEMENT	---	20	---	---	---	---
466+97	PIPE REPLACEMENT	---	15	3	---	---	---
478+54	PIPE REPLACEMENT	---	16	3	---	---	---
514+47	PIPE REPLACEMENT	---	20	4	---	---	---
571+17	PIPE REPLACEMENT	---	20	4	---	---	---
597+79	PIPE REPLACEMENT	---	16	3	---	---	---
636+44	PIPE REPLACEMENT	---	19	4	---	---	---
678+22	PIPE REPLACEMENT	---	16	3	---	---	---
710+03	PIPE REPLACEMENT	---	23	5	---	---	---
728+87	PIPE REPLACEMENT	---	14	3	---	---	---
728+87	PIPE REPLACEMENT	---	36	7	---	---	---
PROJECT ID 8630-05-83 SUMMARY		12175	195	195	8090	0.4	0.7
737+90-808+58.20	STH 170	2495	---	---	1559	---	---
737+90-948+94.80	DRIVEWAYS	---	5	---	---	---	---
745+10	PIPE REPLACEMENT	---	20	3	---	---	---
787+37	PIPE REPLACEMENT	---	17	3	---	---	---
810+82.60-948+94.80	STH 170	4885	---	---	3052	---	---
PROJECT ID 8630-05-82 SUMMARY		7380	0	37	4617	0.2	0.4
PROJECT TOTALS		19555	640	232	12707	0.6	1.1

(1) INCLUDES STH 25 PAVEMENT

Addendum No. 01
ID 8630-05-82/83
Revised Sheet 53
November 30, 2020

CONSTRUCTION STAKING

STATION TO STATION	650.9920 SLOPE STAKES	LF
798+00 - 808+58	1058	
810+83 - 821+00	570	
842+25 - 855+47	448	
PROJECT ID 8630-05-82 SUMMARY	2076	
PROJECT TOTALS	2076	

CONSTRUCTION STAKING RESURFACING REFERENCE

STATION TO STATION	650.8000	LF
397+93-737+90	33997	
PROJECT ID 8630-05-83 SUMMARY	33997	
737+90-808+58.20	7069	
810+82.60-948+94.80	13813	
PROJECT ID 8630-05-82 SUMMARY	20882	
PROJECT TOTAL	54879	

CONSTRUCTION STAKING CURB RAMP

LOCATION	650.9000	EACH
SW QUAD OF S CHURCH ST	1	
SE QUAD OF S CHURCH ST	1	
SW QUAD OF S OAK ST	1	
SE QUAD OF S OAK ST	1	
SW QUAD OF S BIRCH ST	1	
SE QUAD OF S BIRCH ST	1	
SW QUAD OF S PINE ST	1	
SE QUAD OF S PINE ST	1	
SW QUAD OF STH 25	1	
PROJECT ID 8630-05-83 SUMMARY	11	
PROJECT TOTAL	11	

CONSTRUCTION STAKING CURB GUTTER AND CURB & GUTTER

STATION	LOCATION	650.5500	LF
715+44	SW QUAD OF S CHURCH ST	12	
715+89	SE QUAD OF S CHURCH ST	12	
721+20	SW QUAD OF S OAK ST	11	
721+48	SE QUAD OF S OAK ST	11	
724+54	SW QUAD OF S ELM ST	13	
725+11	SE QUAD OF S ELM ST	13	
728+21	SW QUAD OF S BIRCH ST	12	
728+71	SE QUAD OF S BIRCH ST	48	
731+87	SW QUAD OF S PINE ST	12	
732+44	SE QUAD OF S PINE ST	12	
733+97	SW QUAD OF STH 25	12	
PROJECT ID 8630-05-83 SUMMARY	168		
PROJECT TOTAL	168		

CONSTRUCTION STAKING PIPE CULVERTS

STATION	LOCATION	650.6000	EACH
460+07	STH 170	1	
466+97	STH 170	1	
478+54	STH 170	1	
514+47	STH 170	1	
571+17	STH 170	1	
597+79	STH 170	1	
636+44	STH 170	1	
678+22	STH 170	1	
710+03	STH 170	1	
729+00	STH 170	1	
PROJECT ID 8630-05-83 SUMMARY	10		
745+10	STH 170	1	
787+37	STH 170	1	
PROJECT ID 8630-05-82 SUMMARY	2		
PROJECT TOTAL	12		

CONSTRUCTION STAKING SUPPLEMENTAL CONTROL

PROJECT	650.9910	LS
003. 8630-05-83	1	
002. 8630-05-82	1	
PROJECT	2	

MATERIAL TRANSFER VEHICLE

PROJECT	SPV. 0105.002	SPV. 0105.003
8630-05-83	---	1
8630-05-82	1	---
PROJECT TOTALS	1	1

SAVING

STATION	LOCATION	690.0150	690.0250
460+07	PIPE REPLACEMENT	46	---
466+97	PIPE REPLACEMENT	46	---
478+54	PIPE REPLACEMENT	72	---
514+47	PIPE REPLACEMENT	46	---
571+17	PIPE REPLACEMENT	46	---
597+79	PIPE REPLACEMENT	60	---
636+44	PIPE REPLACEMENT	46	---
678+22	PIPE REPLACEMENT	56	---
710+03	PIPE REPLACEMENT	44	---
715+42	3W QUAD OF S CHURCH ST	18	9
721+17	SE QUAD OF S OAK ST	18	15
721+51	SE QUAD OF S OAK ST	18	15
724+49	SW QUAD OF S ELM ST	19	16
725+16	SE QUAD OF S ELM ST	19	14
728+19	SW QUAD OF S BIRCH ST	19	14
728+73	SE QUAD OF S BIRCH ST	---	4
729+00	PIPE REPLACEMENT	138	---
731+86	SW QUAD OF S PINE ST	18	9
732+46	SE QUAD OF S PINE ST	18	10
733+94	SW QUAD OF STH 25	18	9
PROJECT ID 8630-05-83 SUMMARY	783	124	
745+10	PIPE REPLACEMENT	44	---
787+37	PIPE REPLACEMENT	44	---
933+13-934+75	STH 170 RT SHOULDER	162	---
PROJECT ID 8630-05-82 SUMMARY	250	0	
PROJECT TOTAL	1033	124	

LANE SHIFT

STATION	LOCATION	SPV. 0060.005	EACH
460+07	LT/RT STH 170	2	
466+97	LT/RT STH 170	2	
514+47	LT/RT STH 170	2	
571+17	LT/RT STH 170	2	
636+44	LT/RT STH 170	2	
PROJECT ID 8630-05-83 SUMMARY	10		
745+10	LT/RT STH 170	2	
787+37	LT/RT STH 170	2	
PROJECT ID 8630-05-82 SUMMARY	4		
PROJECT TOTALS	14		

MISCELLANEOUS QUANTITIES

PROJECT NO:	8630-05-82/83	HWY: STH 170	COUNTY: DUNN	SHEET NO: 53
-------------	---------------	--------------	--------------	--------------



Proposal Schedule of Items

Proposal ID: 20201208027 Project(s): 8630-03-82, 8630-05-82, 8630-05-83

Federal ID(s): WISC 2021049, WISC 2021053, WISC 2021050

SECTION: 0001

Contract Items

Alt Set ID:

Alt Mbr ID:

Proposal Line Number	Item ID Description	Approximate Quantity and Units	Unit Price	Bid Amount
0002	201.0105 Clearing	17.000 STA	_____.	_____.
0004	201.0205 Grubbing	17.000 STA	_____.	_____.
0006	203.0100 Removing Small Pipe Culverts	21.000 EACH	_____.	_____.
0008	204.0100 Removing Concrete Pavement	6.000 SY	_____.	_____.
0012	204.0110 Removing Asphaltic Surface	1,103.000 SY	_____.	_____.
0014	204.0115 Removing Asphaltic Surface Butt Joints	1,629.000 SY	_____.	_____.
0016	204.0120 Removing Asphaltic Surface Milling	269,092.000 SY	_____.	_____.
0018	204.0150 Removing Curb & Gutter	2,288.000 LF	_____.	_____.
0020	204.0155 Removing Concrete Sidewalk	1,104.000 SY	_____.	_____.
0022	204.0165 Removing Guardrail	3,944.000 LF	_____.	_____.
0024	204.0170 Removing Fence	28.000 LF	_____.	_____.
0026	204.0270 Abandoning Culvert Pipes	1.000 EACH	_____.	_____.
0028	204.9090.S Removing (item description) 001. Removing Cable Guard	1,408.000 LF	_____.	_____.
0030	205.0100 Excavation Common	4,918.000 CY	_____.	_____.
0032	208.0100 Borrow	9,133.000 CY	_____.	_____.
0034	209.0200.S Backfill Controlled Low Strength	16.200 CY	_____.	_____.



Proposal Schedule of Items

Proposal ID: 20201208027 Project(s): 8630-03-82, 8630-05-82, 8630-05-83

Federal ID(s): WISC 2021049, WISC 2021053, WISC 2021050

SECTION: 0001 Contract Items

Alt Set ID: Alt Mbr ID:

Proposal Line Number	Item ID Description	Approximate Quantity and Units	Unit Price	Bid Amount
0036	211.0100 Prepare Foundation for Asphaltic Paving (project) 001. 8630-03-82	LS	LUMP SUM	_____.
0038	211.0400 Prepare Foundation for Asphaltic Shoulders	1,069.000 STA	_____.	_____.
0040	211.0700.S Prepare Foundation for CIR Base Layer (project) 002. 8630-05-82	1.000 EACH	_____.	_____.
0042	211.0700.S Prepare Foundation for CIR Base Layer (project) 003. 8630-05-83	1.000 EACH	_____.	_____.
0044	211.0800.S Base Repair for CIR Layer	400.000 CY	_____.	_____.
0046	213.0100 Finishing Roadway (project) 001. 8630-03-82	1.000 EACH	_____.	_____.
0048	213.0100 Finishing Roadway (project) 002. 8630-05-82	1.000 EACH	_____.	_____.
0050	213.0100 Finishing Roadway (project) 003. 8630-05-83	1.000 EACH	_____.	_____.
0052	305.0110 Base Aggregate Dense 3/4-Inch	3,414.000 TON	_____.	_____.
0054	305.0120 Base Aggregate Dense 1 1/4-Inch	6,346.000 TON	_____.	_____.
0056	305.0500 Shaping Shoulders	1,134.000 STA	_____.	_____.
0058	327.1000.S CIR Asphaltic Base Layer	163,896.000 SY	_____.	_____.
0060	416.0160 Concrete Driveway 6-Inch	33.000 SY	_____.	_____.
0062	455.0605 Tack Coat	32,757.000 GAL	_____.	_____.
0064	455.0770.S Asphalt Stabilizing Agent	574.000 TON	_____.	_____.



Proposal Schedule of Items

Proposal ID: 20201208027 Project(s): 8630-03-82, 8630-05-82, 8630-05-83

Federal ID(s): WISC 2021049, WISC 2021053, WISC 2021050

SECTION: 0001

Contract Items

Alt Set ID:

Alt Mbr ID:

Proposal Line Number	Item ID Description	Approximate Quantity and Units	Unit Price	Bid Amount
0066	460.0105.S HMA Percent Within Limits (PWL) Test Strip Volumetrics	2.000 EACH	_____.	_____.
0068	460.0110.S HMA Percent Within Limits (PWL) Test Strip Density	3.000 EACH	_____.	_____.
0070	460.2000 Incentive Density HMA Pavement	4,110.000 DOL	1.00000	4,110.00
0072	460.2005 Incentive Density PWL HMA Pavement	34,790.000 DOL	1.00000	34,790.00
0074	460.2007 Incentive Density HMA Pavement Longitudinal Joints	102,700.000 DOL	1.00000	102,700.00
0076	460.2010 Incentive Air Voids HMA Pavement	46,330.000 DOL	1.00000	46,330.00
0078	460.6644 HMA Pavement 4 MT 58-34 V	34,875.000 TON	_____.	_____.
0080	460.6645 HMA Pavement 5 MT 58-34 V	12,080.000 TON	_____.	_____.
0082	465.0105 Asphaltic Surface	772.000 TON	_____.	_____.
0084	465.0120 Asphaltic Surface Driveways and Field Entrances	65.000 TON	_____.	_____.
0086	465.0310 Asphaltic Curb	61.000 LF	_____.	_____.
0088	465.0315 Asphaltic Flumes	30.000 SY	_____.	_____.
0090	502.3200 Protective Surface Treatment	394.000 SY	_____.	_____.
0092	504.0900 Concrete Masonry Endwalls	10.000 CY	_____.	_____.
0094	509.0301 Preparation Decks Type 1	1.000 SY	_____.	_____.
0096	509.0302 Preparation Decks Type 2	1.000 SY	_____.	_____.



Proposal Schedule of Items

Proposal ID: 20201208027 Project(s): 8630-03-82, 8630-05-82, 8630-05-83

Federal ID(s): WISC 2021049, WISC 2021053, WISC 2021050

SECTION: 0001

Contract Items

Alt Set ID:

Alt Mbr ID:

Proposal Line Number	Item ID Description	Approximate Quantity and Units	Unit Price	Bid Amount
0098	509.0500 Cleaning Decks	394.000 SY	_____.	_____.
0100	509.1500 Concrete Surface Repair	15.000 SF	_____.	_____.
0102	509.2000 Full-Depth Deck Repair	1.000 SY	_____.	_____.
0104	509.2500 Concrete Masonry Overlay Decks	22.000 CY	_____.	_____.
0106	511.1100 Temporary Shoring	372.000 SF	_____.	_____.
0108	520.1024 Apron Endwalls for Culvert Pipe 24-Inch	6.000 EACH	_____.	_____.
0110	520.1030 Apron Endwalls for Culvert Pipe 30-Inch	2.000 EACH	_____.	_____.
0112	520.1042 Apron Endwalls for Culvert Pipe 42-Inch	2.000 EACH	_____.	_____.
0114	520.1048 Apron Endwalls for Culvert Pipe 48-Inch	8.000 EACH	_____.	_____.
0116	520.1054 Apron Endwalls for Culvert Pipe 54-Inch	2.000 EACH	_____.	_____.
0118	520.3142 Culvert Pipe Class III 42-Inch	48.000 LF	_____.	_____.
0120	520.3148 Culvert Pipe Class III 48-Inch	48.000 LF	_____.	_____.
0122	520.3330 Culvert Pipe Class III-A 30-Inch	46.000 LF	_____.	_____.
0124	520.4124 Culvert Pipe Class IV 24-Inch	134.000 LF	_____.	_____.
0126	520.4148 Culvert Pipe Class IV 48-Inch	132.000 LF	_____.	_____.
0128	520.4154 Culvert Pipe Class IV 54-Inch	44.000 LF	_____.	_____.
0130	520.8000 Concrete Collars for Pipe	4.000 EACH	_____.	_____.



Proposal Schedule of Items

Proposal ID: 20201208027 Project(s): 8630-03-82, 8630-05-82, 8630-05-83

Federal ID(s): WISC 2021049, WISC 2021053, WISC 2021050

SECTION: 0001

Contract Items

Alt Set ID:

Alt Mbr ID:

Proposal Line Number	Item ID Description	Approximate Quantity and Units	Unit Price	Bid Amount
0132	520.8700 Cleaning Culvert Pipes	17.000 EACH	_____.	_____.
0134	520.9700.S Culvert Pipe Liners (size) 01. 30-INCH	134.000 LF	_____.	_____.
0136	520.9750.S Cleaning Culvert Pipes for Liner Verification	2.000 EACH	_____.	_____.
0138	521.1024 Apron Endwalls for Culvert Pipe Steel 24-Inch	3.000 EACH	_____.	_____.
0140	521.1030 Apron Endwalls for Culvert Pipe Steel 30-Inch	3.000 EACH	_____.	_____.
0142	521.1048 Apron Endwalls for Culvert Pipe Steel 48-Inch	2.000 EACH	_____.	_____.
0144	521.1271 Apron Endwalls for Pipe Arch Steel 71x47-Inch	2.000 EACH	_____.	_____.
0146	521.3112 Culvert Pipe Corrugated Steel 12-Inch	38.000 LF	_____.	_____.
0148	521.3124 Culvert Pipe Corrugated Steel 24-Inch	18.000 LF	_____.	_____.
0150	521.3130 Culvert Pipe Corrugated Steel 30-Inch	110.000 LF	_____.	_____.
0152	521.3148 Culvert Pipe Corrugated Steel 48-Inch	64.000 LF	_____.	_____.
0154	521.3771 Pipe Arch Corrugated Steel 71x47-Inch	44.000 LF	_____.	_____.
0156	522.0430 Culvert Pipe Reinforced Concrete Class IV 30-Inch	44.000 LF	_____.	_____.
0158	522.0530 Culvert Pipe Reinforced Concrete Class V 30-Inch	116.000 LF	_____.	_____.
0160	522.0536 Culvert Pipe Reinforced Concrete Class V 36-Inch	46.000 LF	_____.	_____.



Proposal Schedule of Items

Proposal ID: 20201208027 Project(s): 8630-03-82, 8630-05-82, 8630-05-83

Federal ID(s): WISC 2021049, WISC 2021053, WISC 2021050

SECTION: 0001

Contract Items

Alt Set ID:

Alt Mbr ID:

Proposal Line Number	Item ID Description	Approximate Quantity and Units	Unit Price	Bid Amount
0162	522.1024 Apron Endwalls for Culvert Pipe Reinforced Concrete 24-Inch	1.000 EACH	_____.	_____.
0164	522.1030 Apron Endwalls for Culvert Pipe Reinforced Concrete 30-Inch	2.000 EACH	_____.	_____.
0166	522.1036 Apron Endwalls for Culvert Pipe Reinforced Concrete 36-Inch	2.000 EACH	_____.	_____.
0168	601.0411 Concrete Curb & Gutter 30-Inch Type D	2,888.000 LF	_____.	_____.
0170	601.0600 Concrete Curb Pedestrian	180.000 LF	_____.	_____.
0172	602.0405 Concrete Sidewalk 4-Inch	1,115.000 SF	_____.	_____.
0174	602.0410 Concrete Sidewalk 5-Inch	9,760.000 SF	_____.	_____.
0176	602.0505 Curb Ramp Detectable Warning Field Yellow	750.000 SF	_____.	_____.
0178	602.0605 Curb Ramp Detectable Warning Field Radial Yellow	88.000 SF	_____.	_____.
0180	603.8000 Concrete Barrier Temporary Precast Delivered	900.000 LF	_____.	_____.
0182	603.8125 Concrete Barrier Temporary Precast Installed	1,200.000 LF	_____.	_____.
0184	603.8500 Anchoring Concrete Barrier Temporary Precast	100.000 LF	_____.	_____.
0186	603.8505 Anchoring Concrete Barrier Temporary Precast on Bridge Decks	200.000 LF	_____.	_____.
0188	606.0200 Riprap Medium	19.000 CY	_____.	_____.



Proposal Schedule of Items

Proposal ID: 20201208027 Project(s): 8630-03-82, 8630-05-82, 8630-05-83

Federal ID(s): WISC 2021049, WISC 2021053, WISC 2021050

SECTION: 0001

Contract Items

Alt Set ID:

Alt Mbr ID:

Proposal Line Number	Item ID Description	Approximate Quantity and Units	Unit Price	Bid Amount
0190	608.0312 Storm Sewer Pipe Reinforced Concrete Class III 12-Inch	16.000 LF	_____.	_____.
0192	608.0315 Storm Sewer Pipe Reinforced Concrete Class III 15-Inch	20.000 LF	_____.	_____.
0194	608.0318 Storm Sewer Pipe Reinforced Concrete Class III 18-Inch	48.000 LF	_____.	_____.
0196	608.0424 Storm Sewer Pipe Reinforced Concrete Class IV 24-Inch	86.000 LF	_____.	_____.
0198	611.0530 Manhole Covers Type J	1.000 EACH	_____.	_____.
0200	611.0639 Inlet Covers Type H-S	2.000 EACH	_____.	_____.
0202	611.2006 Manholes 6-FT Diameter	1.000 EACH	_____.	_____.
0204	611.3230 Inlets 2x3-FT	2.000 EACH	_____.	_____.
0206	611.8115 Adjusting Inlet Covers	19.000 EACH	_____.	_____.
0208	614.2300 MGS Guardrail 3	3,644.750 LF	_____.	_____.
0210	614.2350 MGS Guardrail Short Radius	118.750 LF	_____.	_____.
0212	614.2500 MGS Thrie Beam Transition	622.800 LF	_____.	_____.
0214	614.2610 MGS Guardrail Terminal EAT	20.000 EACH	_____.	_____.
0216	614.2630 MGS Guardrail Short Radius Terminal	4.000 EACH	_____.	_____.
0218	618.0100 Maintenance And Repair of Haul Roads (project) 002. 8630-05-82	1.000 EACH	_____.	_____.



Proposal Schedule of Items

Proposal ID: 20201208027 Project(s): 8630-03-82, 8630-05-82, 8630-05-83

Federal ID(s): WISC 2021049, WISC 2021053, WISC 2021050

SECTION: 0001

Contract Items

Alt Set ID:

Alt Mbr ID:

Proposal Line Number	Item ID Description	Approximate Quantity and Units	Unit Price	Bid Amount
0220	618.0100 Maintenance And Repair of Haul Roads (project) 003. 8630-05-83	1.000 EACH	_____.	_____.
0222	619.1000 Mobilization	1.000 EACH	_____.	_____.
0224	621.0100 Landmark Reference Monuments	3.000 EACH	_____.	_____.
0226	624.0100 Water	215.000 MGAL	_____.	_____.
0228	625.0500 Salvaged Topsoil	25,010.000 SY	_____.	_____.
0230	627.0200 Mulching	17,513.000 SY	_____.	_____.
0232	628.1104 Erosion Bales	650.000 EACH	_____.	_____.
0234	628.1504 Silt Fence	12,915.000 LF	_____.	_____.
0236	628.1520 Silt Fence Maintenance	16,615.000 LF	_____.	_____.
0238	628.1550 Silt Screen	55.000 LF	_____.	_____.
0240	628.1905 Mobilizations Erosion Control	14.000 EACH	_____.	_____.
0242	628.1910 Mobilizations Emergency Erosion Control	11.000 EACH	_____.	_____.
0244	628.2004 Erosion Mat Class I Type B	35.000 SY	_____.	_____.
0246	628.2006 Erosion Mat Urban Class I Type A	11,000.000 SY	_____.	_____.
0248	628.2027 Erosion Mat Class II Type C	5,230.000 SY	_____.	_____.
0250	628.7015 Inlet Protection Type C	64.000 EACH	_____.	_____.



Proposal Schedule of Items

Proposal ID: 20201208027 Project(s): 8630-03-82, 8630-05-82, 8630-05-83

Federal ID(s): WISC 2021049, WISC 2021053, WISC 2021050

SECTION: 0001

Contract Items

Alt Set ID:

Alt Mbr ID:

Proposal Line Number	Item ID Description	Approximate Quantity and Units	Unit Price	Bid Amount
0252	628.7504 Temporary Ditch Checks	491.000 LF	_____.	_____.
0254	628.7555 Culvert Pipe Checks	98.000 EACH	_____.	_____.
0256	629.0210 Fertilizer Type B	18.200 CWT	_____.	_____.
0258	630.0120 Seeding Mixture No. 20	472.000 LB	_____.	_____.
0260	630.0140 Seeding Mixture No. 40	202.000 LB	_____.	_____.
0262	630.0200 Seeding Temporary	237.000 LB	_____.	_____.
0264	630.0500 Seed Water	985.000 MGAL	_____.	_____.
0266	631.0300 Sod Water	70.000 MGAL	_____.	_____.
0268	631.1000 Sod Lawn	1,370.000 SY	_____.	_____.
0270	633.5200 Markers Culvert End	69.000 EACH	_____.	_____.
0272	634.0614 Posts Wood 4x6-Inch X 14-FT	5.000 EACH	_____.	_____.
0274	634.0616 Posts Wood 4x6-Inch X 16-FT	9.000 EACH	_____.	_____.
0276	637.2210 Signs Type II Reflective H	54.430 SF	_____.	_____.
0278	637.2230 Signs Type II Reflective F	85.250 SF	_____.	_____.
0280	638.2102 Moving Signs Type II	12.000 EACH	_____.	_____.
0282	638.2602 Removing Signs Type II	4.000 EACH	_____.	_____.
0284	638.4000 Moving Small Sign Supports	12.000 EACH	_____.	_____.



Proposal Schedule of Items

Proposal ID: 20201208027 Project(s): 8630-03-82, 8630-05-82, 8630-05-83

Federal ID(s): WISC 2021049, WISC 2021053, WISC 2021050

SECTION: 0001

Contract Items

Alt Set ID:

Alt Mbr ID:

Proposal Line Number	Item ID Description	Approximate Quantity and Units	Unit Price	Bid Amount
0286	642.5001 Field Office Type B	1.000 EACH	_____.	_____.
0288	643.0300 Traffic Control Drums	3,100.000 DAY	_____.	_____.
0290	643.0410 Traffic Control Barricades Type II	600.000 DAY	_____.	_____.
0292	643.0420 Traffic Control Barricades Type III	3,500.000 DAY	_____.	_____.
0294	643.0705 Traffic Control Warning Lights Type A	5,600.000 DAY	_____.	_____.
0296	643.0715 Traffic Control Warning Lights Type C	1,000.000 DAY	_____.	_____.
0298	643.0900 Traffic Control Signs	70,687.000 DAY	_____.	_____.
0300	643.0910 Traffic Control Covering Signs Type I	3.000 EACH	_____.	_____.
0302	643.0920 Traffic Control Covering Signs Type II	13.000 EACH	_____.	_____.
0304	643.5000 Traffic Control	1.000 EACH	_____.	_____.
0306	644.1420 Temporary Pedestrian Surface Plywood	2,200.000 SF	_____.	_____.
0308	644.1430 Temporary Pedestrian Surface Plate	150.000 SF	_____.	_____.
0310	644.1601 Temporary Pedestrian Curb Ramp	265.000 DAY	_____.	_____.
0312	644.1810 Temporary Pedestrian Barricade	1,100.000 LF	_____.	_____.
0314	645.0120 Geotextile Type HR	76.000 SY	_____.	_____.
0316	646.1020 Marking Line Epoxy 4-Inch	2,840.000 LF	_____.	_____.



Proposal Schedule of Items

Proposal ID: 20201208027 Project(s): 8630-03-82, 8630-05-82, 8630-05-83

Federal ID(s): WISC 2021049, WISC 2021053, WISC 2021050

SECTION: 0001

Contract Items

Alt Set ID:

Alt Mbr ID:

Proposal Line Number	Item ID Description	Approximate Quantity and Units	Unit Price	Bid Amount
0318	646.1040 Marking Line Grooved Wet Ref Epoxy 4-Inch	173,204.000 LF	_____.	_____.
0320	646.3020 Marking Line Epoxy 8-Inch	490.000 LF	_____.	_____.
0322	646.4520 Marking Line Same Day Epoxy 4-Inch	119,150.000 LF	_____.	_____.
0324	646.5020 Marking Arrow Epoxy	3.000 EACH	_____.	_____.
0326	646.5320 Marking Railroad Crossings Epoxy	2.000 EACH	_____.	_____.
0328	646.6020 Marking Stop Line Epoxy 12-Inch	360.000 LF	_____.	_____.
0330	646.7020 Marking Diagonal Epoxy 6-Inch	250.000 LF	_____.	_____.
0332	646.7420 Marking Crosswalk Epoxy Transverse Line 6-Inch	1,240.000 LF	_____.	_____.
0334	646.8120 Marking Curb Epoxy	130.000 LF	_____.	_____.
0336	646.8220 Marking Island Nose Epoxy	2.000 EACH	_____.	_____.
0338	648.0100 Locating No-Passing Zones	10.440 MI	_____.	_____.
0340	649.0105 Temporary Marking Line Paint 4-Inch	120,500.000 LF	_____.	_____.
0342	649.0120 Temporary Marking Line Epoxy 4-Inch	7,100.000 LF	_____.	_____.
0344	649.0850 Temporary Marking Stop Line Removable Tape 18-Inch	24.000 LF	_____.	_____.
0346	650.4000 Construction Staking Storm Sewer	4.000 EACH	_____.	_____.
0348	650.5000 Construction Staking Base	3,800.000 LF	_____.	_____.



Proposal Schedule of Items

Proposal ID: 20201208027 Project(s): 8630-03-82, 8630-05-82, 8630-05-83

Federal ID(s): WISC 2021049, WISC 2021053, WISC 2021050

SECTION: 0001

Contract Items

Alt Set ID:

Alt Mbr ID:

Proposal Line Number	Item ID Description	Approximate Quantity and Units	Unit Price	Bid Amount
0350	650.5500 Construction Staking Curb Gutter and Curb & Gutter	2,868.000 LF	_____.	_____.
0352	650.6000 Construction Staking Pipe Culverts	23.000 EACH	_____.	_____.
0354	650.8000 Construction Staking Resurfacing Reference	94,729.000 LF	_____.	_____.
0356	650.8500 Construction Staking Electrical Installations (project) 01. 8630-03-82	LS	LUMP SUM	_____.
0358	650.9000 Construction Staking Curb Ramps	75.000 EACH	_____.	_____.
0360	650.9910 Construction Staking Supplemental Control (project) 001. 8630-03-82	LS	LUMP SUM	_____.
0362	650.9910 Construction Staking Supplemental Control (project) 002. 8630-05-82	LS	LUMP SUM	_____.
0364	650.9910 Construction Staking Supplemental Control (project) 003. 8630-05-83	LS	LUMP SUM	_____.
0366	650.9920 Construction Staking Slope Stakes	5,876.000 LF	_____.	_____.
0368	652.0225 Conduit Rigid Nonmetallic Schedule 40 2-Inch	1,536.000 LF	_____.	_____.
0370	652.0235 Conduit Rigid Nonmetallic Schedule 40 3-Inch	966.000 LF	_____.	_____.
0372	652.0615 Conduit Special 3-Inch	400.000 LF	_____.	_____.
0374	652.0700.S Install Conduit into Existing Item	1.000 EACH	_____.	_____.
0376	652.0800 Conduit Loop Detector	930.000 LF	_____.	_____.
0378	652.0900 Loop Detector Slots	88.000 LF	_____.	_____.



Proposal Schedule of Items

Proposal ID: 20201208027 Project(s): 8630-03-82, 8630-05-82, 8630-05-83

Federal ID(s): WISC 2021049, WISC 2021053, WISC 2021050

SECTION: 0001

Contract Items

Alt Set ID:

Alt Mbr ID:

Proposal Line Number	Item ID Description	Approximate Quantity and Units	Unit Price	Bid Amount
0380	653.0154 Pull Boxes Non-Conductive 24x36-Inch	7.000 EACH	_____.	_____.
0382	653.0164 Pull Boxes Non-Conductive 24x42-Inch	8.000 EACH	_____.	_____.
0384	654.0101 Concrete Bases Type 1	2.000 EACH	_____.	_____.
0386	654.0102 Concrete Bases Type 2	6.000 EACH	_____.	_____.
0388	654.0105 Concrete Bases Type 5	5.000 EACH	_____.	_____.
0390	654.0113 Concrete Bases Type 13	1.000 EACH	_____.	_____.
0392	654.0217 Concrete Control Cabinet Bases Type 9 Special	1.000 EACH	_____.	_____.
0394	655.0230 Cable Traffic Signal 5-14 AWG	612.000 LF	_____.	_____.
0396	655.0240 Cable Traffic Signal 7-14 AWG	587.000 LF	_____.	_____.
0398	655.0260 Cable Traffic Signal 12-14 AWG	692.000 LF	_____.	_____.
0400	655.0305 Cable Type UF 2-12 AWG Grounded	1,384.000 LF	_____.	_____.
0402	655.0515 Electrical Wire Traffic Signals 10 AWG	775.000 LF	_____.	_____.
0404	655.0610 Electrical Wire Lighting 12 AWG	936.000 LF	_____.	_____.
0406	655.0700 Loop Detector Lead In Cable	1,970.000 LF	_____.	_____.
0408	655.0800 Loop Detector Wire	3,037.000 LF	_____.	_____.
0410	656.0200 Electrical Service Meter Breaker Pedestal (location) 01. STH 170 & STH 79	LS	LUMP SUM	_____.



Proposal Schedule of Items

Proposal ID: 20201208027 Project(s): 8630-03-82, 8630-05-82, 8630-05-83

Federal ID(s): WISC 2021049, WISC 2021053, WISC 2021050

SECTION: 0001

Contract Items

Alt Set ID:

Alt Mbr ID:

Proposal Line Number	Item ID Description	Approximate Quantity and Units	Unit Price	Bid Amount
0412	657.0100 Pedestal Bases	2.000 EACH	_____.	_____.
0414	657.0255 Transformer Bases Breakaway 11 1/2-Inch Bolt Circle	11.000 EACH	_____.	_____.
0416	657.0305 Poles Type 2	3.000 EACH	_____.	_____.
0418	657.0310 Poles Type 3	3.000 EACH	_____.	_____.
0420	657.0322 Poles Type 5-Aluminum	5.000 EACH	_____.	_____.
0422	657.0360 Poles Type 13	1.000 EACH	_____.	_____.
0424	657.0425 Traffic Signal Standards Aluminum 15-FT	1.000 EACH	_____.	_____.
0426	657.0430 Traffic Signal Standards Aluminum 10-FT	1.000 EACH	_____.	_____.
0428	657.0545 Monotube Arms 45-FT	1.000 EACH	_____.	_____.
0430	657.0585 Trombone Arms 15-FT	2.000 EACH	_____.	_____.
0432	657.0590 Trombone Arms 20-FT	1.000 EACH	_____.	_____.
0434	657.0609 Luminaire Arms Single Member 4-Inch Clamp 6-FT	2.000 EACH	_____.	_____.
0436	657.0610 Luminaire Arms Single Member 4 1/2-Inch Clamp 6-FT	1.000 EACH	_____.	_____.
0438	657.0614 Luminaire Arms Single Member 4-Inch Clamp 8-FT	1.000 EACH	_____.	_____.
0440	657.0615 Luminaire Arms Single Member 4 1/2-Inch Clamp 8-FT	4.000 EACH	_____.	_____.



Proposal Schedule of Items

Proposal ID: 20201208027 Project(s): 8630-03-82, 8630-05-82, 8630-05-83

Federal ID(s): WISC 2021049, WISC 2021053, WISC 2021050

SECTION: 0001

Contract Items

Alt Set ID:

Alt Mbr ID:

Proposal Line Number	Item ID Description	Approximate Quantity and Units	Unit Price	Bid Amount
0442	657.0815 Luminaire Arms Steel 15-FT	1.000 EACH	_____.	_____.
0444	658.0173 Traffic Signal Face 3S 12-Inch	10.000 EACH	_____.	_____.
0446	658.0175 Traffic Signal Face 5S 12-Inch	2.000 EACH	_____.	_____.
0448	658.0416 Pedestrian Signal Face 16-Inch	2.000 EACH	_____.	_____.
0450	658.0500 Pedestrian Push Buttons	2.000 EACH	_____.	_____.
0452	658.5069 Signal Mounting Hardware (location) 01. STH 170 & STH 79	LS	LUMP SUM	_____.
0454	659.1115 Luminaires Utility LED A	6.000 EACH	_____.	_____.
0456	659.1125 Luminaires Utility LED C	4.000 EACH	_____.	_____.
0458	661.0100 Temporary Traffic Signals for Bridges (structure) 001. B-17-132	LS	LUMP SUM	_____.
0460	690.0150 Sawing Asphalt	1,893.000 LF	_____.	_____.
0462	690.0250 Sawing Concrete	914.000 LF	_____.	_____.
0464	740.0440 Incentive IRI Ride	20,873.000 DOL	1.00000	20,873.00
0466	ASP.1T0A On-the-Job Training Apprentice at \$5.00/HR	1,000.000 HRS	5.00000	5,000.00
0468	ASP.1T0G On-the-Job Training Graduate at \$5.00/HR	630.000 HRS	5.00000	3,150.00
0470	SPV.0060 Special 001. Pull Boxes Non-Conductive 24X48-Inch	2.000 EACH	_____.	_____.



Proposal Schedule of Items

Proposal ID: 20201208027 Project(s): 8630-03-82, 8630-05-82, 8630-05-83

Federal ID(s): WISC 2021049, WISC 2021053, WISC 2021050

SECTION: 0001

Contract Items

Alt Set ID:

Alt Mbr ID:

Proposal Line Number	Item ID Description	Approximate Quantity and Units	Unit Price	Bid Amount
0472	SPV.0060 Special 002. LED Blank Out Sign	3.000 EACH	_____.	_____.
0474	SPV.0060 Special 003. Abandoning Cattle Pass	1.000 EACH	_____.	_____.
0476	SPV.0060 Special 004. Connection to Existing Inlets or Manholes	1.000 EACH	_____.	_____.
0478	SPV.0060 Special 005. Lane Shift	14.000 EACH	_____.	_____.
0480	SPV.0090 Special 001. Concrete Curb And Gutter Repair	750.000 LF	_____.	_____.
0482	SPV.0105 Special 001. Material Transfer Vehicle Project 8630-03-82	LS	LUMP SUM	_____.
0484	SPV.0105 Special 002. Material Transfer Vehicle project 8630-05-82	LS	LUMP SUM	_____.
0486	SPV.0105 Special 003. Material Transfer Vehicle Project 8630-05-83	LS	LUMP SUM	_____.
Section: 0001			Total:	_____.
			Total Bid:	_____.