



Wisconsin Department of Transportation

Division of Transportation Systems Development

Bureau of Project Development
4822 Madison Yards Way, 4th Floor South
Madison, WI 53705

December 15, 2020

Telephone: (608) 266-1631
Facsimile (FAX): (608) 266-8459

NOTICE TO ALL CONTRACTORS:

Proposal #05: 5310-02-76, WISC 2021 077
Spring Green - Madison
Walter Road to CTH KP
USH 14
Dane County

Letting of January 12, 2021

This is Addendum No. 01, which provides for the following:

Schedule of Items:

Revised Bid Item Quantities					
Bid Item	Item Description	Unit	Old Quantity	Revised Quantity	Proposal Total
608.0312	Storm Sewer Pipe Reinforced Concrete Class III 12-Inch	LF	1078	272	1350
608.0315	Storm Sewer Pipe Reinforced Concrete Class III 15-Inch	LF	282	-21	261
608.0318	Storm Sewer Pipe Reinforced Concrete Class III 18-Inch	LF	517	-106	411
608.0324	Storm Sewer Pipe Reinforced Concrete Class III 24-Inch	LF	1895	-23	1872
608.0330	Storm Sewer Pipe Reinforced Concrete Class III 30-Inch	LF	898	-153	745
611.0624	Inlet Covers Type H	EACH	61	-2	59
611.2004	Manholes 4-FT Diameter	EACH	2	3	5
611.2005	Manholes 5-FT Diameter	EACH	5	8	13
611.2006	Manholes 6-FT Diameter	EACH	3	-2	1
611.3003	Inlets 3-FT Diameter	EACH	4	-2	2
611.3004	Inlets 4-FT Diameter	EACH	18	-1	17
611.3230	Inlets 2x3-FT	EACH	41	3	44
650.4000	Construction Staking Storm Sewer	EACH	94	-2	92
657.0255	Transformer Bases Breakaway 11 ½-Inch Bolt Circle	EACH	36	2	38
657.0327	Poles Type 6-Aluminum	EACH	32	2	34
657.0605	Luminaire Arms Single Member 4 ½-Inch Clamp 4-FT	EACH	32	2	34

Added Bid Item Quantities					
Bid Item	Item Description	Unit	Old Quantity	Revised Quantity	Proposal Total
522.1024	Apron Endwalls for Culvert Pipe Reinforced Concrete 24-Inch	EACH	0	1	1
608.0336	Storm Sewer Pipe Reinforced Concrete Class III 36-Inch	LF	0	49	49

Deleted Bid Item Quantities					
Bid Item	Item Description	Unit	Old Quantity	Revised Quantity	Proposal Total
522.1030	Apron Endwalls for Culvert Pipe Reinforced Concrete 30-Inch	EACH	1	-1	0
611.2033	Manholes 3x3-FT	EACH	9	-9	0
611.2044	Manholes 4x4-FT	EACH	2	-2	0

Plan Sheets:

Revised Plan Sheets	
Plan Sheet	Plan Sheet Title (brief description of changes to sheet)
61-71	Storm Sewer: Changes to manholes, inlets and storm sewer pipe
80	Lighting Plan – General Notes: Two notes were modified
162-166	Miscellaneous Quantities: Updated storm sewer item quantities
177	Lighting Plan Quantities: Updated lighting item quantities

Schedule of Items

Attached, dated December 15, 2020, are the revised Schedule of Items Pages 1 – 13.

Plan Sheets

The following 8½ x 11-inch sheets are attached and made part of the plans for this proposal:

Revised: 61 – 71, 80, 162 – 166, and 177.

The responsibility for notifying potential subcontractors and suppliers of these changes remains with the prime contractor.

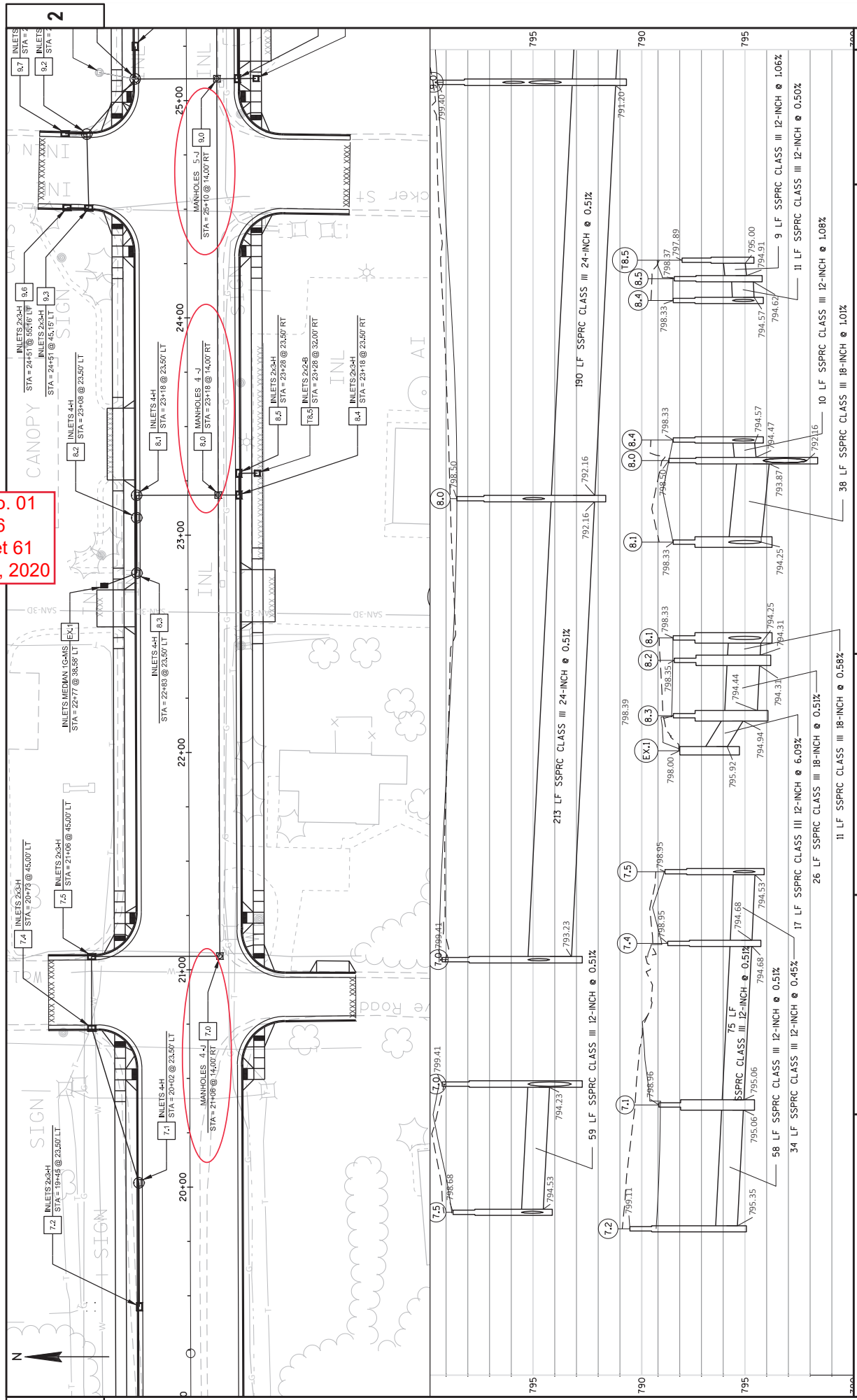
Sincerely,

Mike Coleman

Proposal Development Specialist
Proposal Management Section

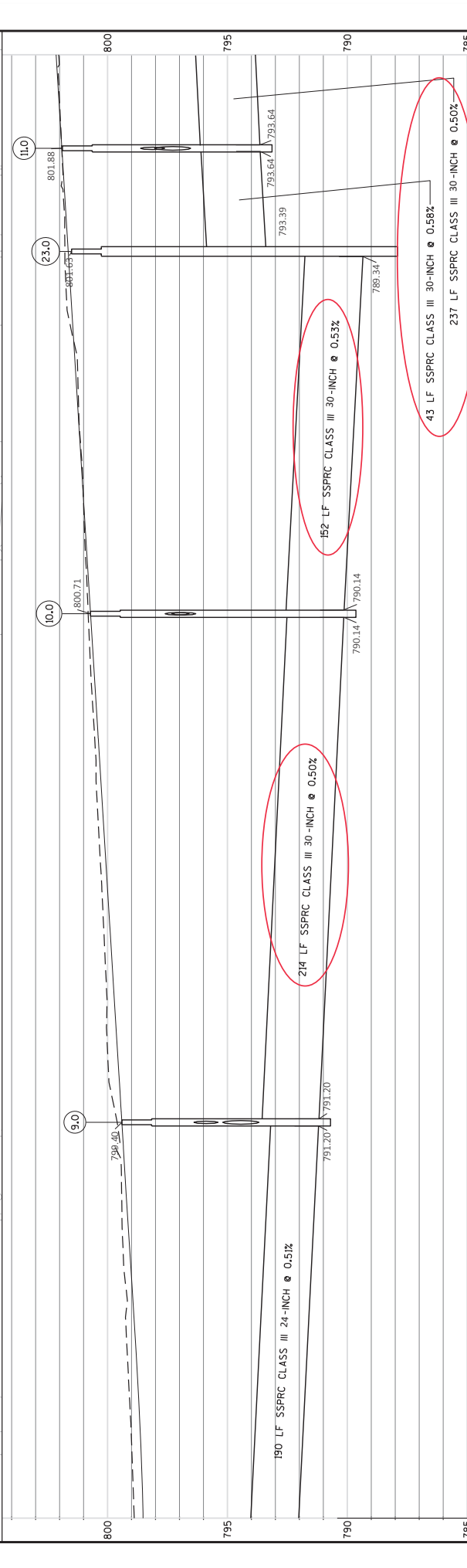
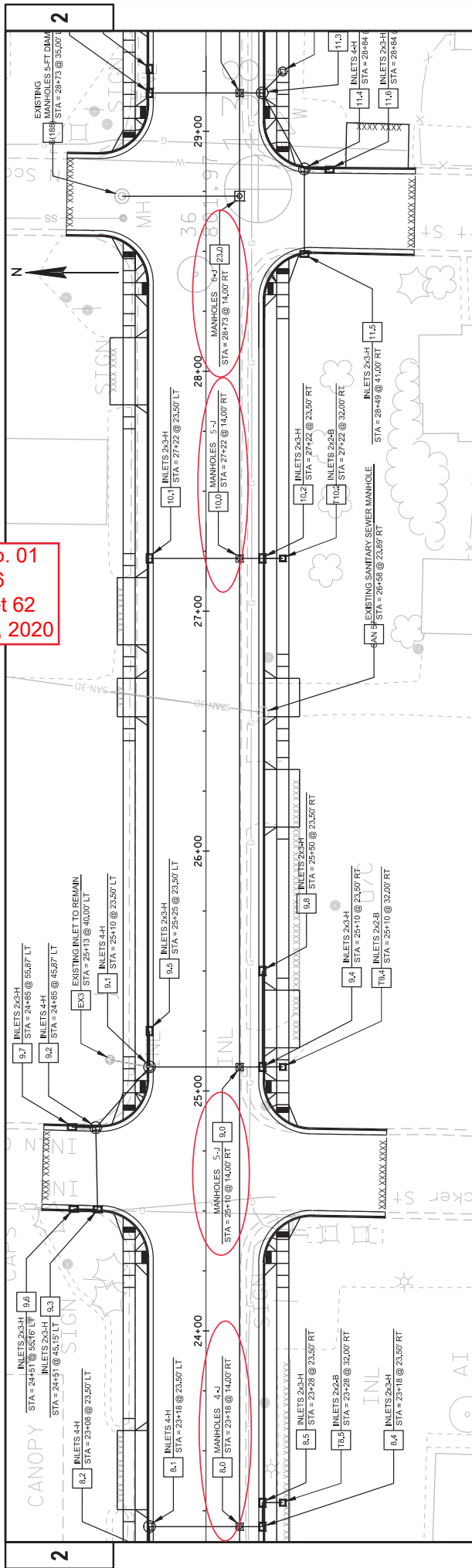
END OF ADDENDUM

Addendum No. 01
ID 5310-02-76
Revised Sheet 61
December 15, 2020



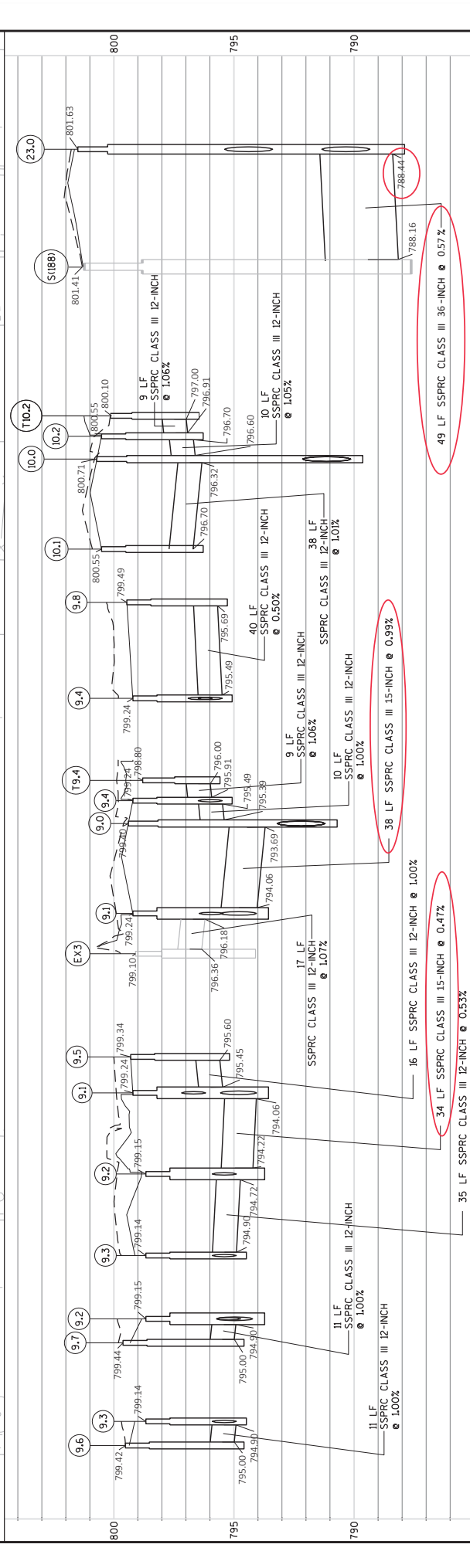
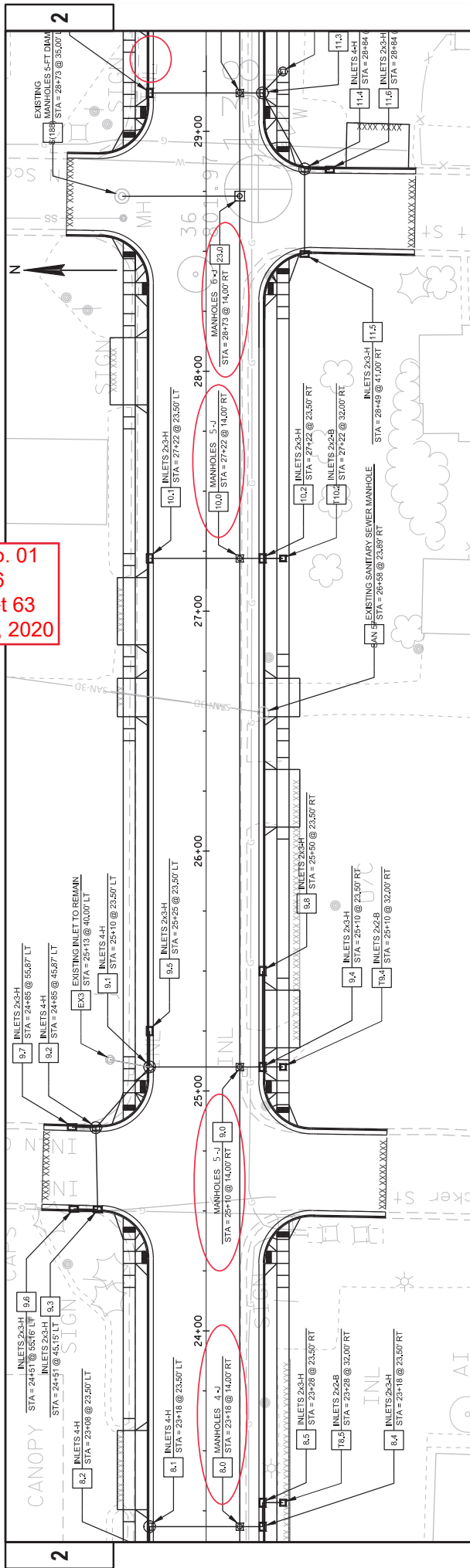
PROJECT NO: 5310-02-76	COUNTY: DANE	STORM SEWER	SHEET 61
FILE NAME: N:\PDS\3305\33000\01-41\SSHEEPS\PA02\2501-SS.DWG	LAYOUT NAME: 02F502	DATE: 9/25/2020 6:57 AM	PLOT SCALE: 1 IN=40 FT
PROJECT NAME: HWY: USH 14	DESIGNER: PORTER, STEVEN J	DATE: 11/04/20	PROJECT NO: 5310-02-76

Addendum No. 01
 ID 5310-02-76
 Revised Sheet 62
 December 15, 2020



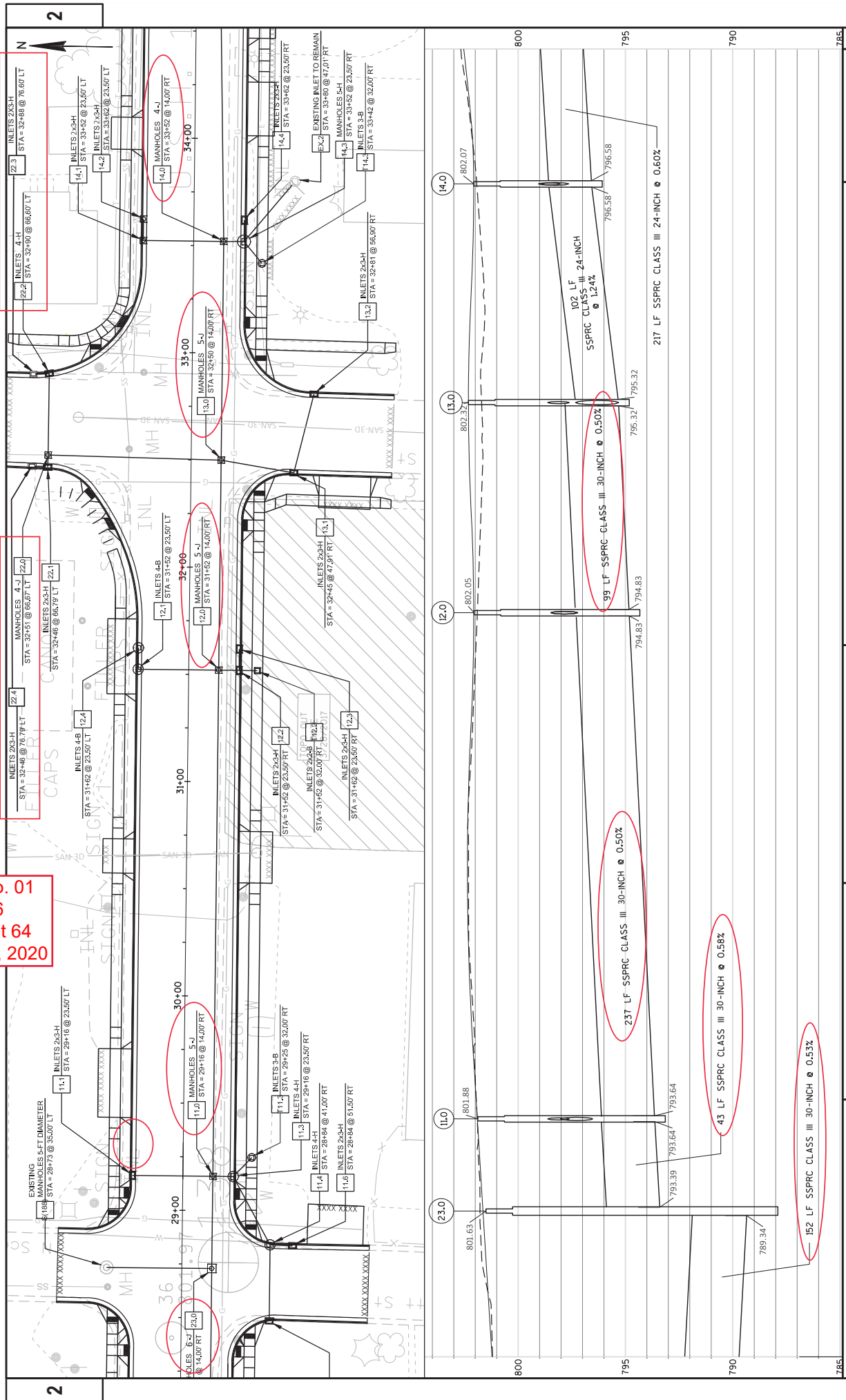
PROJECT NO: 5310-02-76	COUNTY: DANE	STORM SEWER	SHEET 62
HWY: USH 14			
FILE NAME: N:\PDS\320\531002081\015HSETS\PLAN\02501-SSDWG	DATE: 9/25/2020 6:57 AM	PLOT BY: PORTER, STEVEN J	PLOT NAME: 1 IN=40 FT
LAYOUT NAME: 025285			WISDOT/CADDIS SHEET 41

Addendum No. 01
 ID 5310-02-76
 Revised Sheet 63
 December 15, 2020



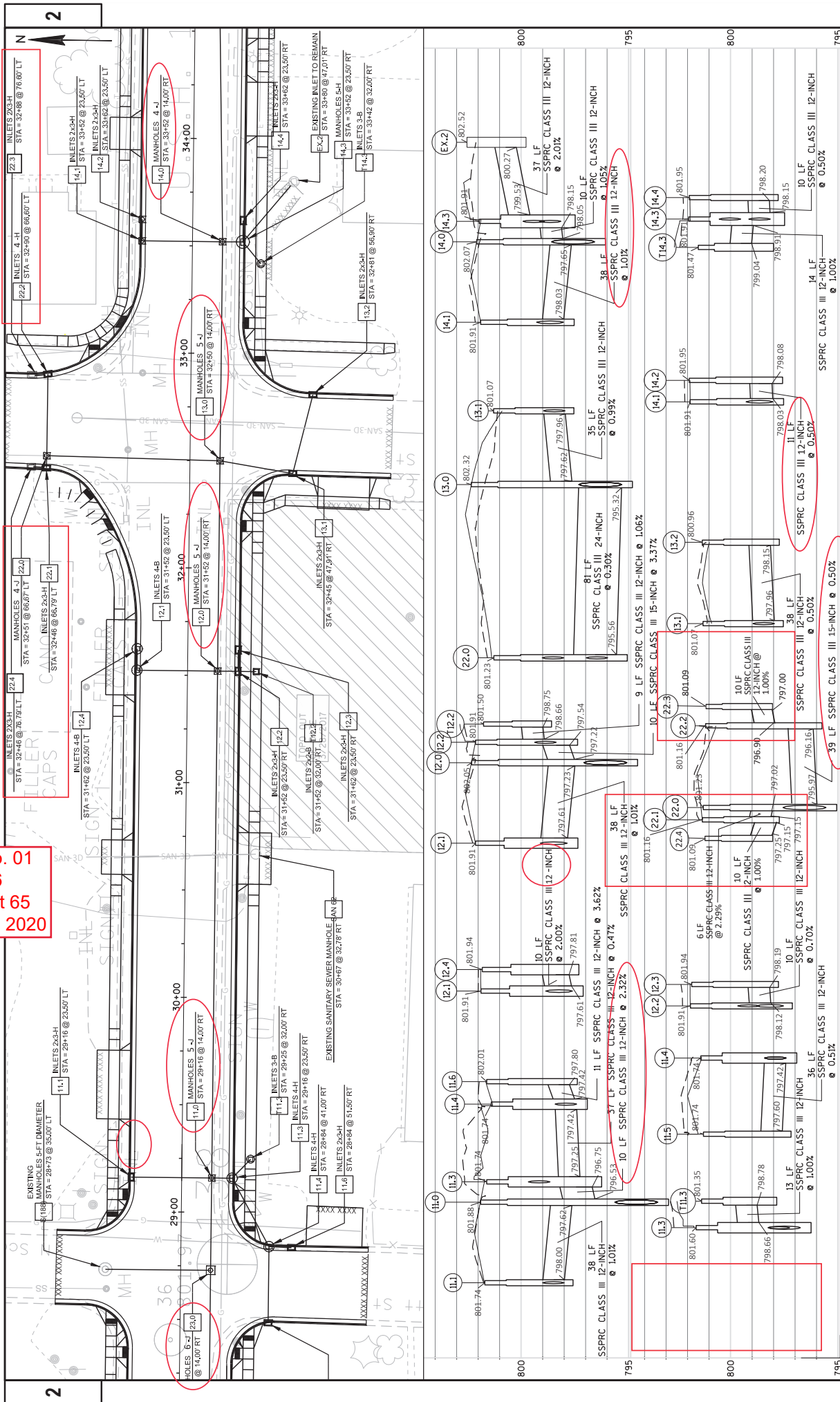
PROJECT NO: 5310-02-76	COUNTY: DANE	STORM SEWER	SHEET 63
FILE NAME: N:\PDS\3205\3205000\01\5310-02-76\SSPPRC\02501-SSDWG	LAYOUT NAME: 025305 (2)	FLYBY: PORTER, STEVEN J	PLOT SCALE: 1 IN=40 FT
	HWY: USH 14	FLYBY DATE: 9/25/2020 6:57 AM	PLOT NAME:

Addendum No. 01
 ID 5310-02-76
 Revised Sheet 64
 December 15, 2020

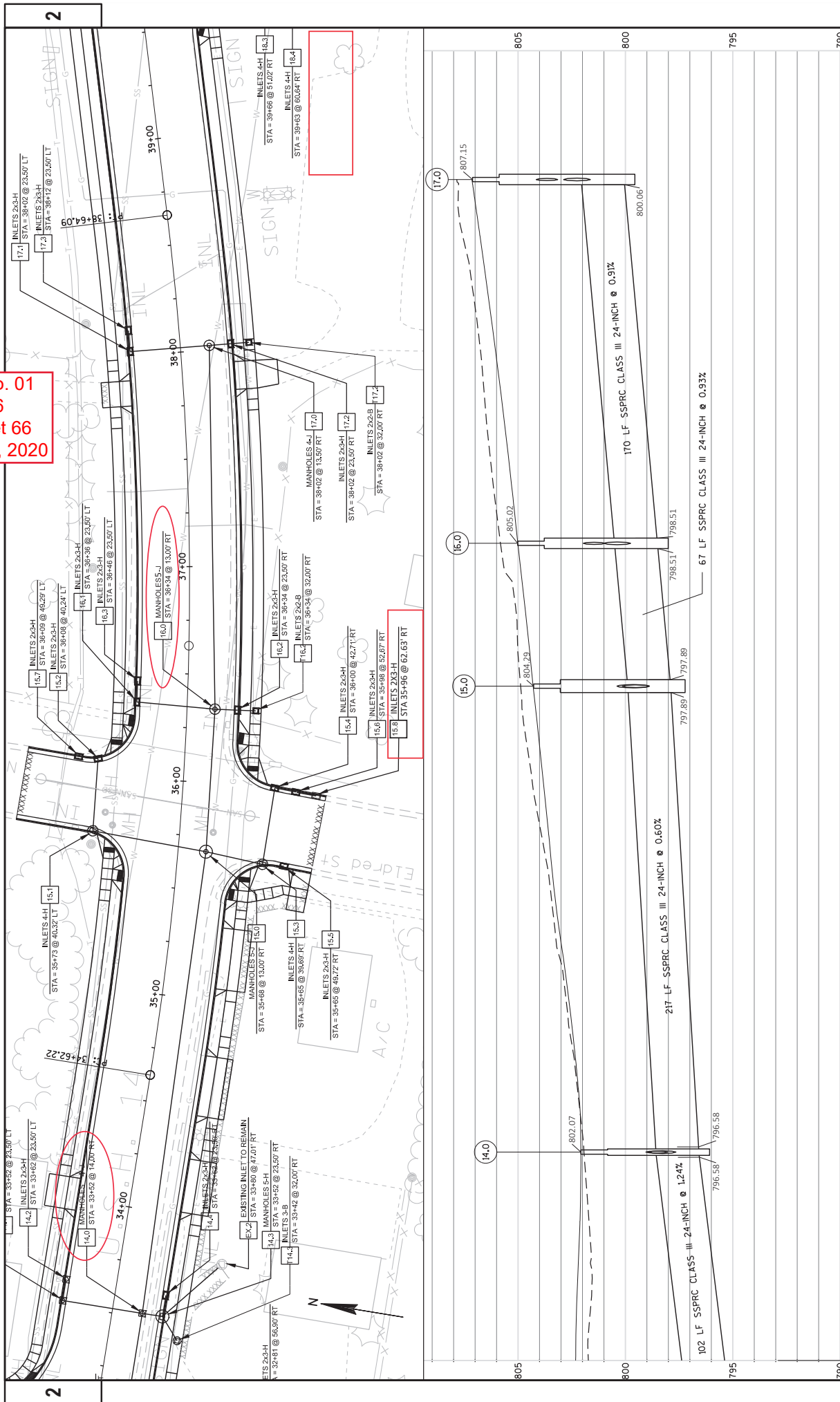


PROJECT NO: 5310-02-76	COUNTY: DANE	STORM SEWER	SHEET 64	E
FILE NAME: N:\PDS\3305\330008\1-01\SHETS\PLAN\02-2501-SSD.WG	HWY: USH 14	FLYBY: PORTER, STEVEN J	PLOT NAME: 1 IN\40 FT	
LAYOUT NAME: 02-2501		PLOT DATE: 9/25/2020 6:57 AM	PLOT SCALE: 1 IN=40 FT	

Addendum No. 01
ID 5310-02-76
Revised Sheet 65
December 15, 2020

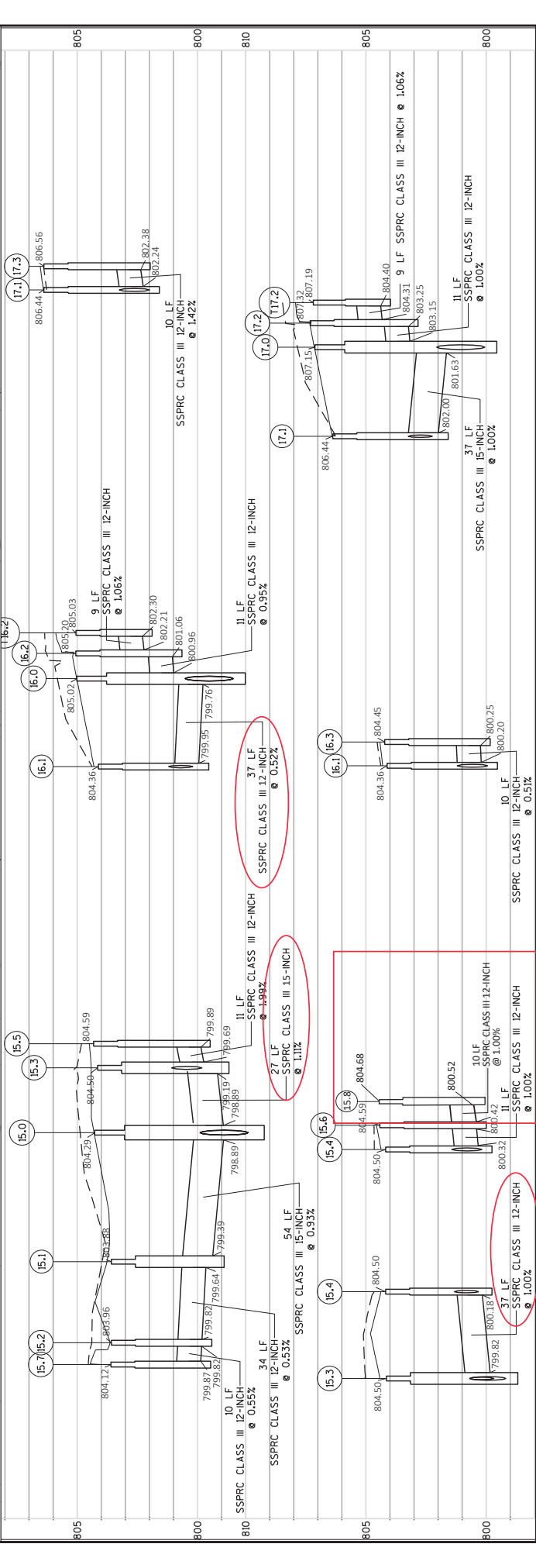
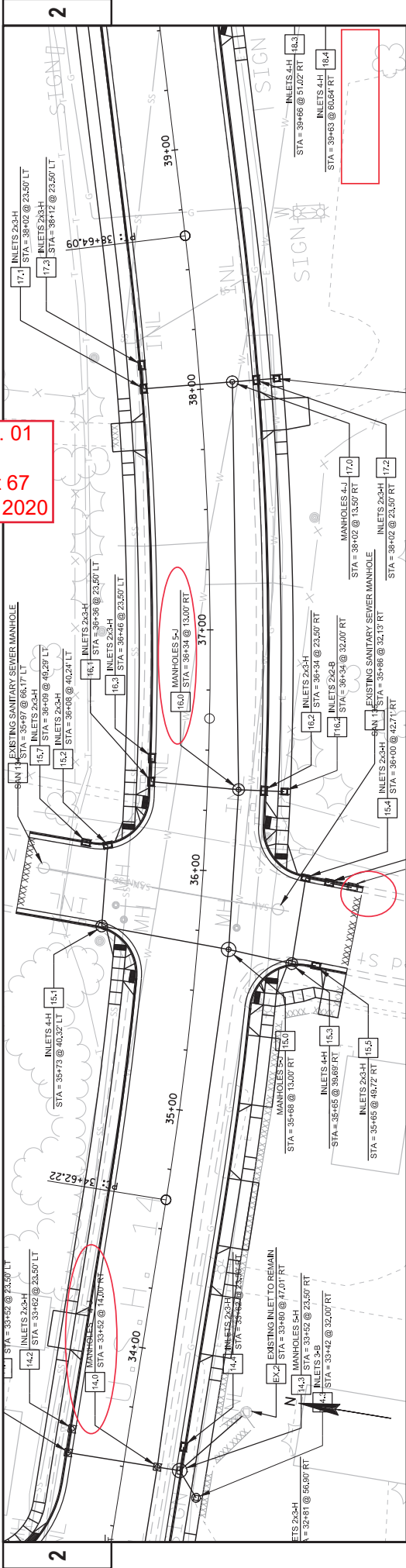


Addendum No. 01
ID 5310-02-76
Revised Sheet 66
December 15, 2020



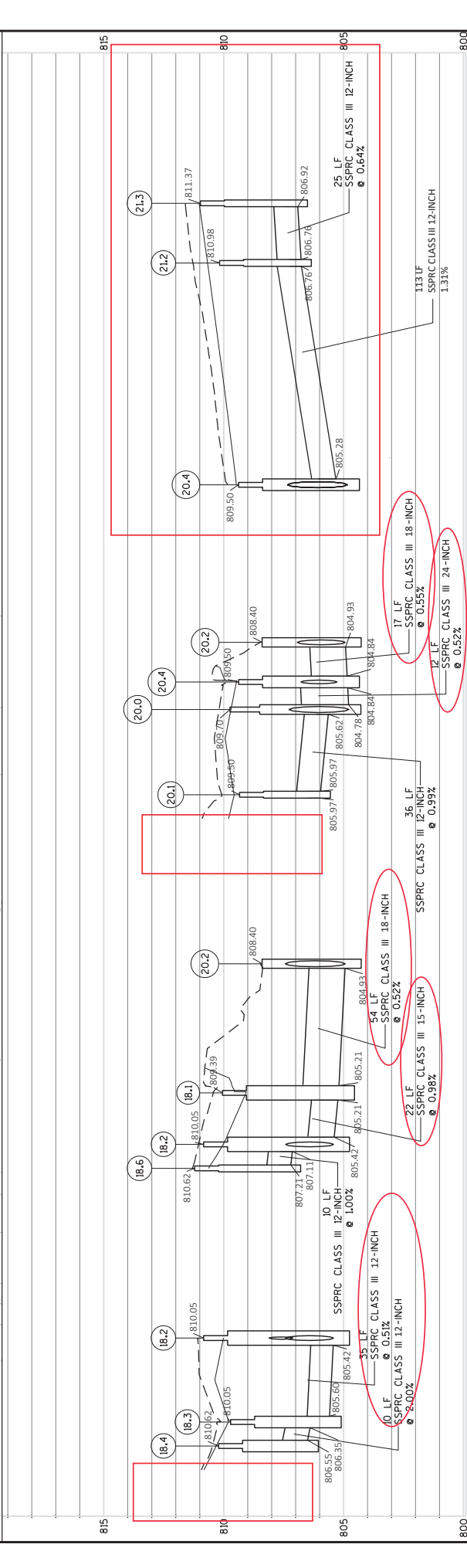
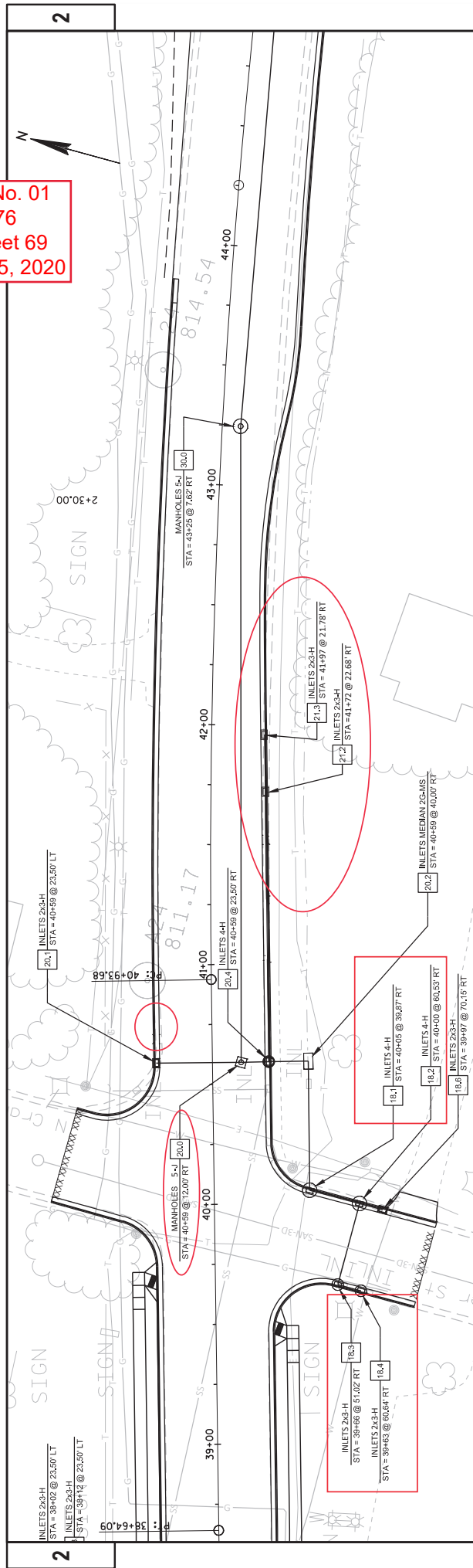
PROJECT NO: 5310-02-76	COUNTY: DANE	STORM SEWER	SHEET 66	E
FILE NAME: N:\PDS\3305\33000\01-4\5\SHETS\PLAN\02-2501-SS.DWG	LAYOUT NAME: 022505	FLYBY: PORTER, STEVEN J	PLOT NAME: 1 IN=40 FT	WSS007/CADD/SHEET 41
HWY: USH 14	PILOT DATE: 9/25/2020 6:58 AM			

Addendum No. 01
ID 5310-02-76
Revised Sheet 67
December 15, 2020

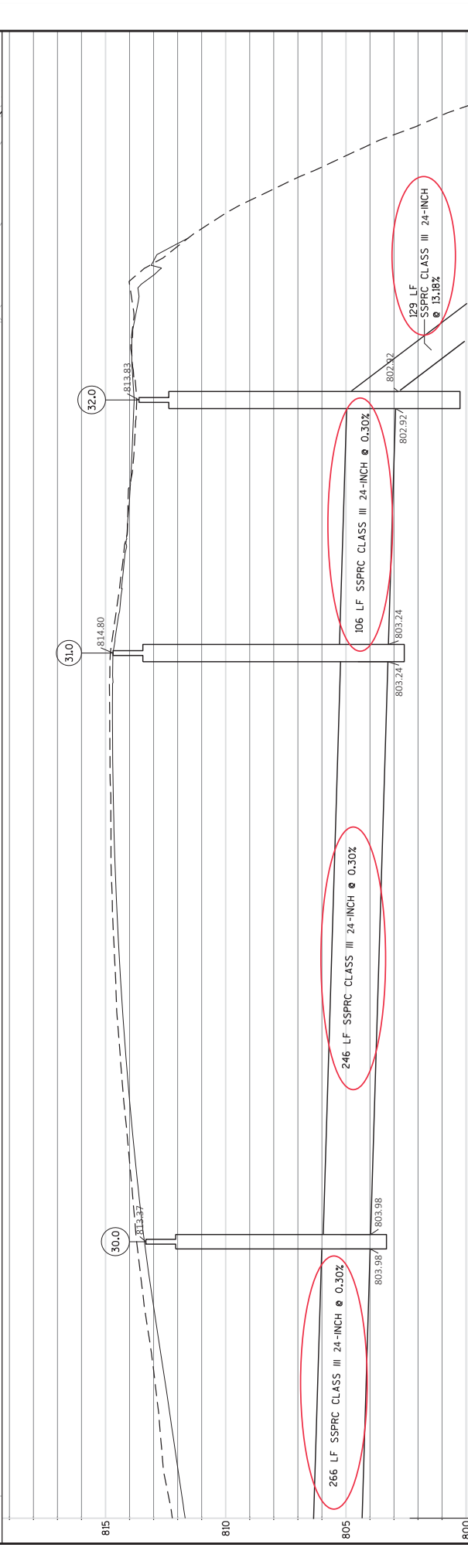
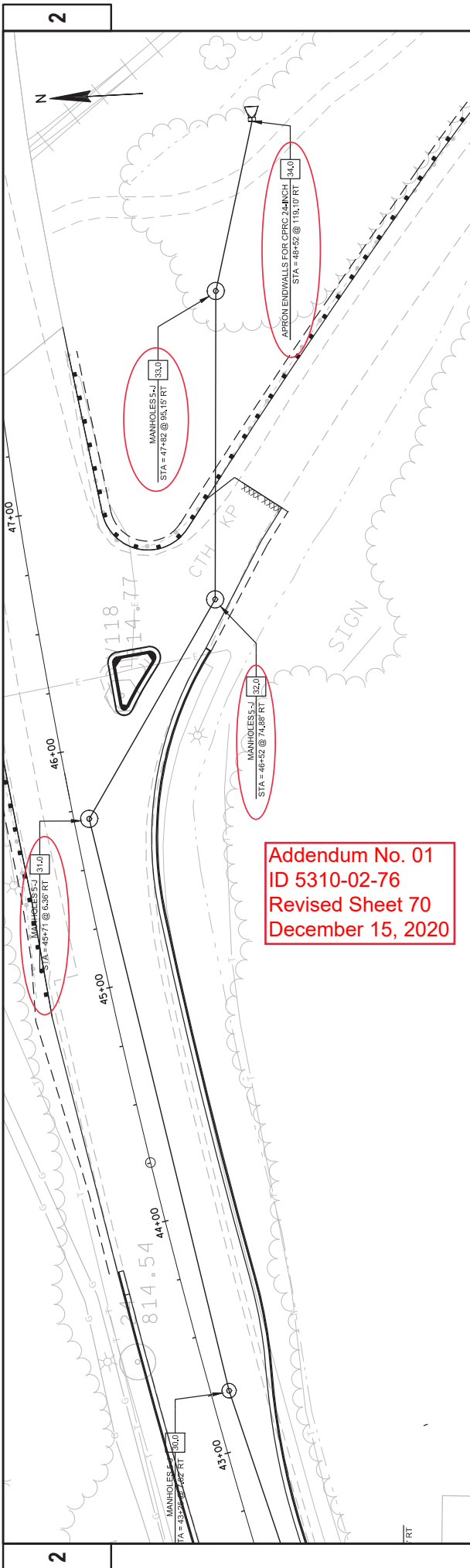


PROJECT NO: 5310-02-76	COUNTY: DANF	STORM SEWER	SHEET 67
FILE NAME: N:\PDS\330531002\01\531002\PLAN\02-2501-SS.DWG			PLOT NAME: 1 IN\40FT
LAYOUT NAME: 022305 (2)			PLOT SCALE: 1 IN\40FT
DATE: 9/25/2020 6:58 AM			PLOT DATE: 9/25/2020 6:58 AM
DRAWN BY: PORTER, STEVEN J			PLOT NAME: 1 IN\40FT

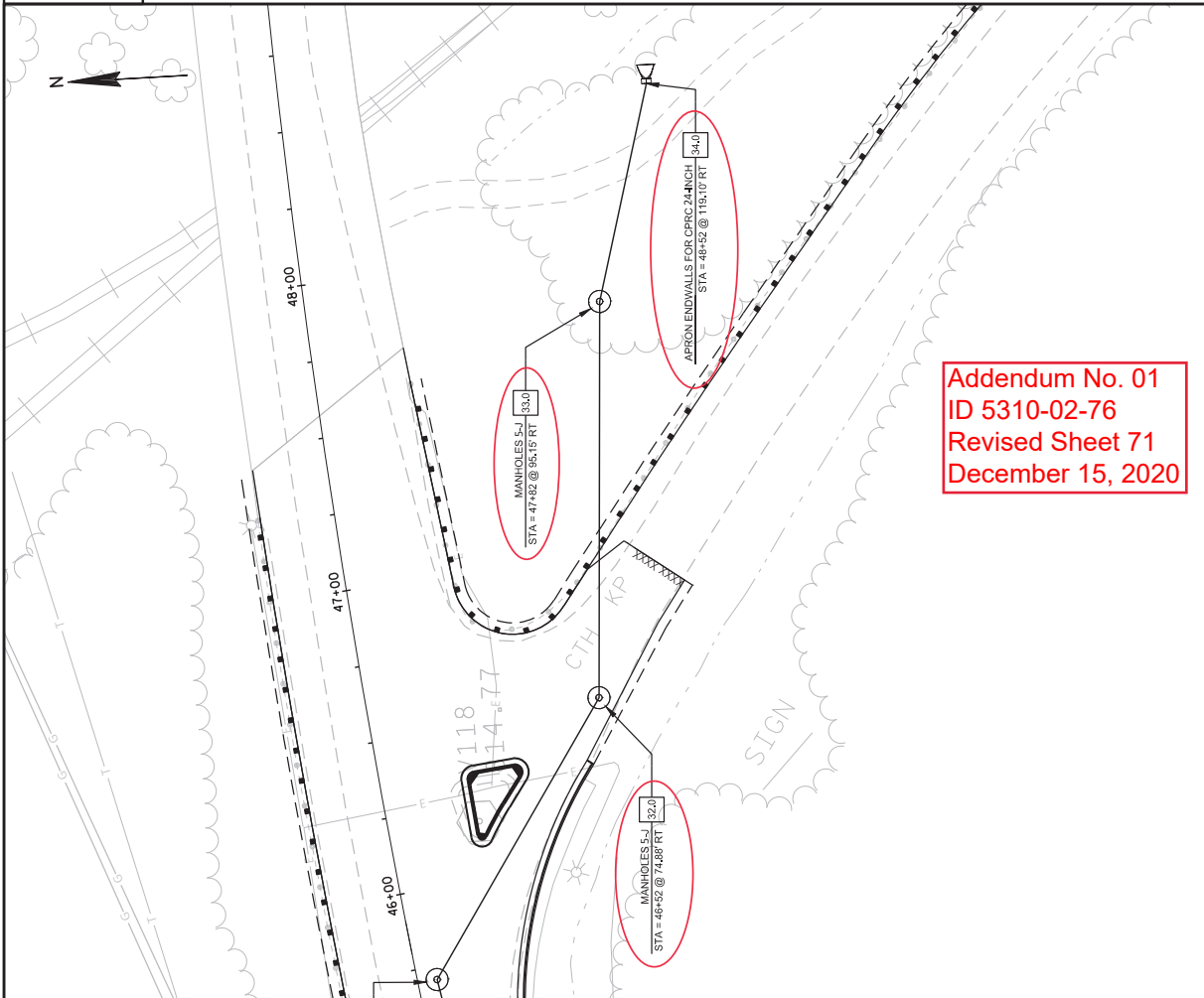
Addendum No. 01
 ID 5310-02-76
 Revised Sheet 69
 December 15, 2020



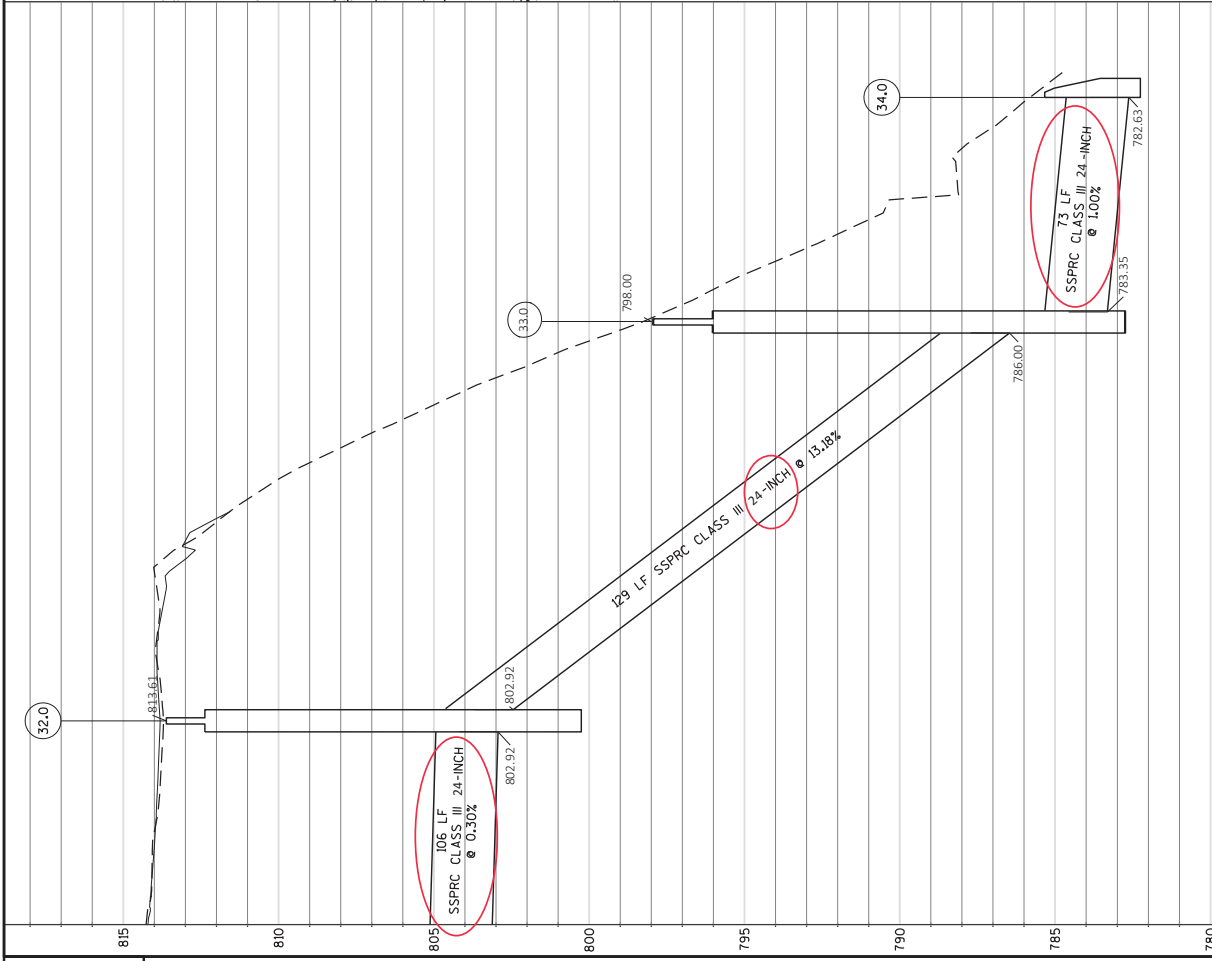
PROJECT NO: 5310-02-76	COUNTY: DANE	STORM SEWER	SHEET 69
FILE NAME: N:\PDS\330\531002081-4\531002081\531002081-SSDWG	LAYOUT NAME: 025306 (2)	PLOT DATE: 9/25/2020 6:59 AM	PLOT NAME: PORTER, STEVEN J
	HWY: USH 14		PLOT SCALE: 1"=40.00'
			WISDOT/CADDIS SHEET 41



PROJECT NO: 5310-02-76	COUNTY: DANE	STORM SEWER	SHEET 70	E
FILE NAME: N:\PDS\330\531002081-01\5310-02-76\SSDWG	LAYOUT NAME: 025207	HWY: USH 14	FLYBY: PORTER, STEVEN J	PLOT NAME: 1 IN=40 FT
			PLOT DATE: 9/25/2020 6:59 AM	PLOT SCALE: 1 IN=40 FT



Addendum No. 01
 ID 5310-02-76
 Revised Sheet 71
 December 15, 2020



LIGHTING PLANS PREPARED BY:

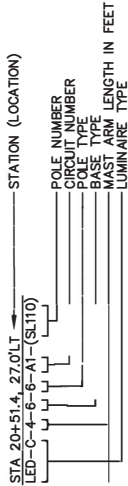
DATE _____ SIGNATURE _____

100% DRAWINGS

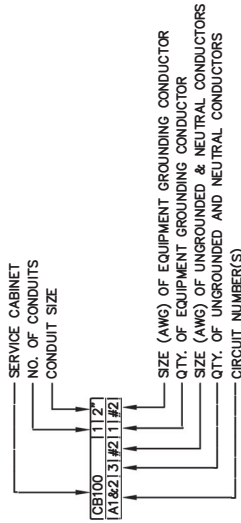
LEGEND:

- SINGLE ARM LIGHTING UNIT - TYPE 6 AND GFCI RECEPTACLE
- LIGHTING CONDUIT (2" SCHEDULE 40 PVC UNLESS NOTED)
- CONCRETE CONTROL CABINET BASE/ELECTRICAL SERVICE
- PULL BOX (24"x42" STEEL)

LIGHTING UNIT LEGEND



CONDUIT/CONDUCTOR LEGEND



ABBREVIATIONS:
PWO = PULL WIRE ONLY

NOTES:

- 1) WISCONSIN DOT ELECTRICAL UNIT SHALL APPROVE THE FINAL LOCATION FOR ALL CONCRETE BASES AND PULLBOXES IN THE FIELD PRIOR TO INSTALLATION. CONTACT THEM 3 DAYS IN ADVANCE.
- 2) PITCH ALL CONDUIT TOWARD PULLBOXES. A 2" DRAIN DUCT TO DITCH OR STORM SEWER REQUIRED FOR ALL PULLBOXES IN LOW POINTS. REFER TO THE MISCELLANEOUS QUANTITIES FOR LOCATIONS OF DRAIN DUCT.
- 3) THE LOCATION OF EXISTING AND PROPOSED UTILITIES AS SHOWN ON THE PLANS ARE APPROXIMATE. IN ADDITION, THERE MAY BE OTHER UTILITIES WITHIN THE PROJECT AREA WHICH ARE NOT SHOWN. THE CONTRACTOR SHALL VERIFY THE LOCATIONS OF ALL UTILITIES PRIOR TO CONSTRUCTION.
- 4) ALL POLES SHALL BE PLACED A MINIMUM OF 2-3 FEET FROM THE FACE OF CURB.
- 5) CABINET BASES AND THE PULLBOXES AND CONDUIT WITHIN THE AREA OF CABINET BASES SHALL BE INSTALLED PER FIELD CONDITIONS (WITH ENGINEER APPROVAL). VERIFY THE LOCATION OF ALL ELECTRICAL FACILITIES WITH THE ENGINEER PRIOR TO INSTALLING.
- 6) TWO (2) 120-VOLT CIRCUITS WITH A SHARED NEUTRAL AND GROUND CONDUCTOR SHALL BE EXTENDED BETWEEN ALL STREETLIGHTS UNLESS NOTED OTHERWISE. ALTERNATE STREETLIGHT CONNECTIONS BETWEEN THE TWO CIRCUITS. STREETLIGHTS SHALL OPERATE AT 120 VOLTS. AT THE CONTROL CABINET PANEL, THE CONTRACTOR SHALL PROVIDE BREAKERS FOR EACH LIGHT CIRCUIT PER NESC CODE.
- 7) NO SPICES ALLOWED IN PULLBOXES UNLESS NOTED OTHERWISE.
- 8) CONDUIT MUST BE PLACED PRIOR TO CURB AND GUTTER AND SIDEWALK CONSTRUCTION.
- 9) FOR ELECTRIC UTILITY ASSISTANCE CONTACT MR. SHAWN DILLEY OF VANGUARD ELECTRIC, AT 608-767-2561.
- 10) LIGHT FIXTURES AND MASTARMS MOUNTED ON TRAFFIC CONTROL POLES ARE TO BE INSTALLED BY THE TRAFFIC CONTROL POLE INSTALLER ALONG WITH ALL RELATED WIRING AND CONDUIT BACK TO THE RELATED TRAFFIC CONTROL CABINET WITH LIGHT CONTROLS. REFER TO TRAFFIC CONTROL DRAWINGS FOR MORE DETAILS.

Addendum No. 01
ID 5310-02-76
Revised Sheet 80
December 15, 2020

Sheet 01 of 11

HIGHWAY LIGHTING
USH 14 (E COMMERCIAL ST)
CITY OF MAZOMANIE
DANE COUNTY

DESIGN: FORSTER ELECTRICAL ENGINEERING

DATE: 2020-07-14

REV: 2

PROJECT NO: 5310-02-76

HWY: USH 14

COUNTY: DANE

PLAN: LIGHTING PLAN - GENERAL NOTES

SHEET 80

E

FILE NAME : C:\ABAUTZ CURRENT WORK\M3 MAZOMANIE\M03-19A DRAFTING\M03-19A-WDOT-5310-02-76-001.DWG PLOT DATE : 7/13/2020 PLOT BY : FORSTER ENGINEERING PLOT NAME : WSDOT/CADD SHEET 42

Addendum No. 01
 ID 5310-02-76
 Revised Sheet 162
 December 15, 2020

608-STORM SEWER PIPE

CATEGORY	STRUCTURE	TO	STRUCTURE	608.0312		608.0315		608.0318		608.0324		608.0330		608.0336		INLET ELEVATION	DISCHARGE ELEVATION	SLOPE
				STORM SEWER PIPE REINFORCED CONCRETE CLASS III 12-INCH	STORM SEWER PIPE REINFORCED CONCRETE CLASS III 15-INCH	STORM SEWER PIPE REINFORCED CONCRETE CLASS III 18-INCH	STORM SEWER PIPE REINFORCED CONCRETE CLASS III 24-INCH	STORM SEWER PIPE REINFORCED CONCRETE CLASS III 30-INCH	STORM SEWER PIPE REINFORCED CONCRETE CLASS III 36-INCH	LF	LF	LF	LF	LF	LF			
0010	2.1	-	2.0	-	-	-	190	-	-	-	-	-	-	-	-	789.03	788.49	-0.003
0010	2.2	-	2.1	-	-	-	85	-	-	-	-	-	-	-	-	789.29	788.03	-0.003
0010	7.2	-	7.1	-	-	-	-	-	-	-	-	-	-	-	-	795.35	795.05	-0.005
0010	7.1	-	7.4	-	-	-	-	-	-	-	-	-	-	-	-	795.06	794.68	-0.005
0010	7.4	-	7.5	-	-	-	-	-	-	-	-	-	-	-	-	794.68	794.53	-0.005
0010	7.5	-	7.0	-	-	-	-	-	-	-	-	-	-	-	-	794.53	794.23	-0.005
0010	7.0	-	8.0	-	-	-	-	-	213	-	-	-	-	-	-	793.23	792.16	-0.005
0010	78.5	-	8.5	-	-	-	-	-	-	-	-	-	-	-	-	795.00	794.91	-0.011
0010	8.5	-	8.4	-	-	-	-	-	-	-	-	-	-	-	-	794.62	794.57	-0.005
0010	8.4	-	8.0	-	-	-	-	-	-	-	-	-	-	-	-	794.57	794.47	-0.011
0010	8.1	-	8.3	-	-	-	-	-	-	-	-	-	-	-	-	795.52	794.94	-0.061
0010	8.3	-	8.2	-	-	-	26	-	-	-	-	-	-	-	-	794.44	794.31	-0.005
0010	8.2	-	8.1	-	-	-	11	-	-	-	-	-	-	-	-	794.31	794.25	-0.006
0010	8.1	-	8.0	-	-	-	38	-	-	-	-	-	-	-	-	794.25	793.87	-0.010
0010	8.0	-	9.0	-	-	-	-	190	-	-	-	-	-	-	-	792.16	791.20	-0.005
0010	9.6	-	9.3	-	-	-	-	-	-	-	-	-	-	-	-	795.00	794.90	-0.010
0010	9.3	-	9.2	-	-	-	-	-	-	-	-	-	-	-	-	794.80	794.72	-0.005
0010	9.7	-	9.2	-	-	-	-	-	-	-	-	-	-	-	-	795.00	794.90	-0.010
0010	9.2	-	9.1	-	-	-	34	-	-	-	-	-	-	-	-	794.22	794.06	-0.005
0010	8.3	-	9.1	-	-	-	-	-	-	-	-	-	-	-	-	796.36	795.18	-0.011
0010	9.5	-	9.1	-	-	-	16	-	-	-	-	-	-	-	-	795.60	795.45	-0.010
0010	9.1	-	9.0	-	-	-	38	-	-	-	-	-	-	-	-	794.05	793.69	-0.010
0010	9.8	-	9.4	-	-	-	40	-	-	-	-	-	-	-	-	795.69	795.49	-0.005
0010	10.4	-	9.4	-	-	-	-	-	-	-	-	-	-	-	-	796.00	795.91	-0.011
0010	9.4	-	9.0	-	-	-	10	-	-	-	-	-	-	-	-	795.49	795.39	-0.010
0010	9.0	-	10.0	-	-	-	-	-	-	-	-	-	-	-	-	791.20	790.14	-0.005
0010	10.1	-	10.0	-	-	-	38	-	-	-	-	-	-	-	-	796.70	796.32	-0.010
0010	110.2	-	10.2	-	-	-	9	-	-	-	-	-	-	-	-	797.00	796.91	-0.011
0010	10.2	-	10.0	-	-	-	10	-	-	-	-	-	-	-	-	796.70	796.60	-0.010
0010	10.0	-	23.0	-	-	-	-	-	-	-	-	-	-	-	-	790.14	789.34	-0.005
0010	21.0	-	5188	-	-	-	-	-	-	-	-	-	-	-	-	788.44	788.16	-0.006
0010	11.0	-	230	-	-	-	-	-	-	-	-	-	-	-	-	793.64	793.39	-0.006
0010	11.5	-	11.4	-	-	-	36	-	-	-	-	-	-	-	-	797.60	797.42	-0.005
0010	11.6	-	11.4	-	-	-	11	-	-	-	-	-	-	-	-	797.80	797.42	-0.016
0010	11.4	-	11.3	-	-	-	37	-	-	-	-	-	-	-	-	797.42	797.25	-0.005
0010	11.3	-	11.3	-	-	-	13	-	-	-	-	-	-	-	-	798.78	798.66	-0.010
0010	11.3	-	11.0	-	-	-	10	-	-	-	-	-	-	-	-	796.75	796.53	-0.023
0010	11.1	-	11.0	-	-	-	38	-	-	-	-	-	-	-	-	798.00	797.61	-0.010
0010	12.0	-	11.0	-	-	-	-	-	-	-	-	-	-	-	-	794.83	793.64	-0.005
0010	12.3	-	12.2	-	-	-	10	-	-	-	-	-	-	-	-	798.19	798.12	-0.007
0010	112.2	-	12.2	-	-	-	9	-	-	-	-	-	-	-	-	798.75	798.66	-0.011
0010	12.2	-	12.0	-	-	-	10	-	-	-	-	-	-	-	-	797.54	797.22	-0.034
0010	12.4	-	12.1	-	-	-	10	-	-	-	-	-	-	-	-	797.81	797.61	-0.020
0010	12.1	-	12.0	-	-	-	38	-	-	-	-	-	-	-	-	797.61	797.23	-0.010
0010	11.0	-	11.0	-	-	-	-	-	-	-	-	-	-	-	-	795.32	794.83	-0.005
0010	13.2	-	13.1	-	-	-	38	-	-	-	-	-	-	-	-	798.15	797.96	-0.005
0010	13.1	-	13.0	-	-	-	35	-	-	-	-	-	-	-	-	797.96	797.62	-0.010
0010	22.2	-	22.0	-	-	-	39	-	-	-	-	-	-	-	-	796.15	795.97	-0.005

(quantities continued on next page)

Addendum No. 01
ID 5310-02-76
Revised Sheet 163
December 15, 2020

608 - STORM SEWER PIPE																					
CATEGORY	STRUCTURE	TO	STRUCTURE	608.0312			608.0315			608.0318			608.0324			608.0330			608.0336		
				LF	LF	LF	LF	LF	LF	LF	LF	LF	LF	LF	LF	LF	LF	LF	LF	LF	LF
				STORM SEWER PIPE REINFORCED CONCRETE CLASS III 12-INCH	STORM SEWER PIPE REINFORCED CONCRETE CLASS III 15-INCH	STORM SEWER PIPE REINFORCED CONCRETE CLASS III 18-INCH	STORM SEWER PIPE REINFORCED CONCRETE CLASS III 24-INCH	STORM SEWER PIPE REINFORCED CONCRETE CLASS III 30-INCH	STORM SEWER PIPE REINFORCED CONCRETE CLASS III 36-INCH	INLET	DISCHARGE	SLOPE									
				ELEVATION	ELEVATION	ELEVATION	ELEVATION	ELEVATION	ELEVATION	ELEVATION	ELEVATION	FT/FT									
0010	22.1	-	22.0	6	-	-	-	-	-	798.15	798.02	-0.023									
0010	22.0	-	13.0	-	-	-	81	-	-	795.56	795.32	-0.003									
0010	T14.3	-	14.3	14	-	-	-	-	-	799.04	798.91	-0.010									
0010	EX.2	-	14.3	37	-	-	-	-	-	800.27	799.53	-0.020									
0010	14.4	-	14.3	10	-	-	-	-	-	798.20	798.15	-0.005									
0010	14.3	-	14.0	10	-	-	-	-	-	798.15	798.05	-0.010									
0010	14.2	-	14.1	11	-	-	-	-	-	798.08	798.03	-0.005									
0010	14.1	-	14.0	38	-	-	-	-	-	798.03	797.65	-0.010									
0010	14.0	-	13.0	-	-	-	102	-	-	796.58	795.32	-0.012									
0010	15.0	-	14.0	-	-	-	217	-	-	797.89	796.58	-0.006									
0010	15.5	-	15.3	11	-	-	-	-	-	799.89	799.69	-0.020									
0010	15.3	-	15.0	-	27	-	-	-	-	799.19	798.89	-0.011									
0010	15.6	-	15.4	11	-	-	-	-	-	800.42	800.32	-0.010									
0010	15.4	-	15.3	37	-	-	-	-	-	800.18	799.82	-0.010									
0010	15.7	-	15.2	10	-	-	-	-	-	799.87	799.82	-0.005									
0010	15.2	-	15.1	34	-	-	-	-	-	799.82	799.64	-0.005									
0010	15.1	-	15.0	-	54	-	-	-	-	799.39	798.89	-0.009									
0010	16.0	-	15.0	-	-	-	67	-	-	798.51	797.89	-0.009									
0010	T16.2	-	16.2	9	-	-	-	-	-	802.30	802.21	-0.009									
0010	16.2	-	16.0	11	-	-	-	-	-	801.06	800.96	-0.009									
0010	16.3	-	16.1	10	-	-	-	-	-	800.25	800.20	-0.005									
0010	16.1	-	16.0	37	-	-	-	-	-	799.95	799.76	-0.005									
0010	17.0	-	16.0	-	-	-	170	-	-	800.06	798.51	-0.009									
0010	T17.2	-	17.2	9	-	-	-	-	-	804.40	804.31	-0.011									
0010	17.2	-	17.0	11	-	-	-	-	-	803.25	803.15	-0.010									
0010	17.3	-	17.1	10	-	-	-	-	-	802.38	802.24	-0.014									
0010	17.1	-	17.0	-	37	-	-	-	-	802.00	801.63	-0.010									
0010	15.8	-	15.6	10	-	-	-	-	-	800.52	800.42	-0.010									
0010	18.4	-	18.3	10	-	-	-	-	-	806.55	806.35	-0.020									
0010	18.3	-	18.2	35	-	-	-	-	-	805.60	805.42	-0.005									
0010	18.6	-	18.2	10	-	-	-	-	-	807.21	807.11	-0.010									
0010	18.2	-	18.1	-	22	-	-	-	-	805.42	805.21	-0.010									
0010	18.1	-	20.2	-	54	-	-	-	-	805.21	804.93	-0.005									
0010	20.2	-	20.4	-	17	-	-	-	-	804.93	804.84	-0.005									
0010	20.4	-	20.0	-	-	-	12	-	-	804.84	804.78	-0.005									
0010	20.1	-	20.0	36	-	-	-	-	-	805.97	805.62	-0.010									
0010	20.0	-	30.0	-	-	-	266	-	-	804.78	803.98	-0.003									
0010	21.3	-	21.2	25	-	-	-	-	-	806.92	806.76	-0.006									
0010	22.4	-	22.1	10	-	-	-	-	-	797.25	797.15	-0.010									
0010	22.3	-	22.2	10	-	-	-	-	-	797.00	796.90	-0.010									
0010	21.2	-	20.4	113	-	-	-	-	-	806.76	805.28	-0.013									
0010	30.0	-	31.0	-	-	-	246	-	-	803.98	803.24	-0.003									
0010	31.0	-	32.0	-	-	-	106	-	-	803.24	802.92	-0.003									
0010	32.0	-	33.0	-	-	-	129	-	-	802.92	798.00	-0.132									
0010	33.0	-	34.0	-	-	-	73	-	-	783.35	782.63	-0.010									
TOTAL				1,350	261	411	1,872	745	49												

CATEGORY	STRUCTURE	STATION	OFFSET	RIM ELEVATION	INVERT ELEVATION	DEPTH	LOCATIO	APRON ENDWALLS FOR CULVERT PIPE REINFORCED CONCRETE 24-INCH		MANHOLE COVERS TYPE J	INLET COVERS TYPE H	MANHOLES 4-FT DIAMETER	MANHOLES 5-FT DIAMETER	MANHOLES 6-FT DIAMETER	CONSTRUCTION STAKING STORMY SEWER
								EACH	EACH						
<u>611 - MAINHOLES</u>															
<u>STAGE 3</u>															
0010	7.0	21+06	14.0	799.41	793.23	4.93	RT	-	-	1	-	1	-	-	-
0010	8.0	23+18	14.0	796.50	792.16	5.09	RT	-	-	1	-	1	-	-	-
0010	9.0	25+10	14.0	799.40	791.20	6.95	RT	-	-	1	-	1	-	-	-
0010	10.0	27+22	14.0	800.71	790.14	9.32	RT	-	-	1	-	1	-	-	-
0010	23.0	28+73	14.0	801.63	788.40	11.98	RT	-	-	1	-	1	-	-	-
0010	11.0	29+16	14.0	801.88	793.64	6.99	RT	-	-	1	-	1	-	-	-
0010	12.0	31+52	14.0	802.05	794.83	5.97	RT	-	-	1	-	1	-	-	-
0010	13.0	32+50	14.0	802.32	795.32	5.75	RT	-	-	1	-	1	-	-	-
0010	14.0	33+52	14.0	802.07	796.58	4.24	RT	-	-	1	-	1	-	-	-
0010	14.3	33+52	23.5	801.91	798.15	2.76	RT	-	-	1	-	1	-	-	-
0010	15.0	35+68	13.0	804.29	797.89	5.15	RT	-	-	1	-	1	-	-	-
0010	16.0	36+34	13.0	805.02	798.51	5.26	RT	-	-	1	-	1	-	-	-
0010	17.0	38+02	13.5	807.15	800.06	5.84	RT	-	-	1	-	1	-	-	-
0010	20.0	40+59	12.0	809.70	804.78	3.67	RT	-	-	1	-	1	-	-	-
0010	30.0	43+25	7.6	813.37	803.98	8.14	RT	-	-	1	-	1	-	-	-
0010	31.0	45+71	6.4	814.80	803.24	10.31	RT	-	-	1	-	1	-	-	-
0010	32.0	46+52	74.9	813.83	802.92	9.66	RT	-	-	1	-	1	-	-	-
0010	33.0	47+82	95.2	798.00	783.35	13.40	RT	-	-	1	-	1	-	-	-
0010	34.0	48+52	119.1	-	782.63	-	RT	-	-	1	-	1	-	-	-
<u>STAGE 4</u>															
0010	22.0	32+51	66.7	801.23	795.56	-	LT	-	-	1	-	1	-	-	-
TOTAL								1	18	1	5	13	1	20	
* ADDITIONAL QUANTITIES IN 611 - INLETS															

Addendum No. 01
ID 5310-02-76
Revised Sheet 165
December 15, 2020

		611-INLETS																		
CATEGORY	STRUCTURE	STATION	OFFSET	ELEVATION	RIM	INVERT	DEPTH	LOCATION	RECONSTRUCTING MANHOLES	INLET COVERS TYPE B	INLET COVER TYPE H	INLET COVERS TYPE MS	INLETS 3-FT DIAMETER	INLETS 4-FT DIAMETER	INLETS 2X2-FT	INLETS 2X3-FT	611.3230	611.3002	680.0000	
									EACH	EACH	EACH	EACH	EACH	EACH	EACH	EACH	EACH	EACH	EACH	EACH
0010	2.0	7477	340	791.75	788.49	1.93	LT			1				1						1
0010	2.1	9425	460	794.40	789.03	5.37	LT			2										1
0010	3.6	37	310	804.00			LT													
0010	388.21	310	805.41				LT													
STAGE 3									2	0	2	0	0	1	0	0	0	1	2	
SUBTOTAL									2	3	2	0	0	1	0	0	0	1	2	
0010	2.2	9425	300	791.77	789.29	2.48	RT													1
0010	8.4	2348	235	798.33	794.57	2.76	RT													1
0010	8.5	2348	235	798.37	794.62	2.75	RT													1
0010	18.5	2348	320	797.89	795.00	1.56	RT													1
0010	9.4	2510	235	799.24	795.49	2.75	RT													1
0010	19.4	2510	320	798.80	796.00	1.47	RT													1
0010	9.8	2510	235	799.49	795.69	2.80	RT													1
0010	10.2	2742	235	800.55	796.70	2.85	RT													1
0010	110.2	2742	320	800.10	797.00	1.77	RT													1
0010	11.5	2849	410	801.74	797.60	3.14	RT													1
0010	11.4	2849	410	801.74	797.42	3.32	RT													1
0010	11.6	2884	515	802.01	797.80	3.21	RT													1
0010	11.3	2945	235	801.74	796.75	3.99	RT													1
0010	111.3	2945	320	801.35	798.78	1.24	RT													1
0010	12.2	3145	235	801.91	798.12	2.79	RT													1
0010	112.2	3142	320	801.50	798.75	1.42	RT													1
0010	12.3	3162	235	801.94	798.19	2.75	RT													1
0010	13.1	3245	475	801.07	797.96	2.11	RT													1
0010	13.2	3248	569	800.96	798.15	1.81	RT													1
0010	114.3	3342	320	801.47	799.04	1.10	RT													1
0010	14.4	3342	235	801.95	798.20	2.75	RT													1
0010	15.3	35465	397	804.50	799.19	4.31	RT													1
0010	15.5	35465	497	804.59	799.89	3.70	RT													1
0010	15.6	35498	527	804.59	800.42	3.17	RT													1
0010	15.4	36400	427	804.50	800.18	3.32	RT													1
0010	16.2	36434	235	805.20	801.06	3.14	RT													1
0010	116.2	36434	320	805.03	802.30	1.40	RT													1
0010	17.2	38402	235	807.32	803.25	3.07	RT													1
0010	17.2	38402	320	807.19	804.40	1.46	RT													1
0010	15.8	35496	626	804.68	800.52	3.16	RT													1
0010	18.4	39463	606	810.62	806.55	3.07	RT													1
0010	18.3	39466	510	810.05	805.60	3.45	RT													1
0010	18.6	39497	702	810.62	807.21	2.41	RT													1
0010	20.4	40459	235	809.50	804.84	3.66	RT													1
0010	20.2	40459	400	808.40	804.53	3.47	RT													1
0010	18.2	40400	605	810.05	805.42	3.63	RT													1
0010	18.1	40405	399	809.39	805.21	3.18	RT													1
0010	21.2	41472	227	810.98	806.76	3.22	RT													1
0010	21.3	41497	218	811.37	806.92	3.45	RT													1
STAGE 3									0	8	29	4	6	6	23	2	2	39		
SUBTOTAL									0	8	29	4	6	6	23	2	2	39		

Addendum No. 01
ID 5310-02-76
Revised Sheet 166
December 15, 2020

CATEGOR Y	STRUCTURE STATION	OFFSET	RIM ELEVATION	INVERT	DEPTH	LOCATION	611 - INLETS (CONTINUED)										CONSTRUCTION STAKING STORM SEWER			
							RECONSTRUCTING MANHOLES	611.0420	611.0606	611.0624	611.0642	611.3003	611.3004	611.3220	611.3230	611.3902		650.4000		
			N				EACH	EACH	EACH	EACH	EACH	EACH	EACH	EACH	EACH	EACH	EACH	EACH	EACH	
STAGE 4																				
0010	7.2	19+45	23.5	799.11	2.76	LT														
0010	7.1	20+02	23.5	798.96	2.90	LT														
0010	7.4	20+73	45.0	798.95	3.27	LT														
0010	7.5	21+06	45.0	798.95	3.42	LT														
0010	8.3	22+83	23.5	798.39	2.95	LT														
0010	8.2	23+08	23.5	798.35	2.94	LT														
0010	8.1	23+18	23.5	798.33	2.76	LT														
0010	9.3	24+51	45.2	799.14	3.24	LT														
0010	9.6	24+51	55.2	799.42	3.42	LT														
0010	9.2	24+85	45.9	799.15	3.93	LT														
0010	9.7	24+85	55.9	799.44	3.44	LT														
0010	9.1	25+10	23.5	799.24	4.18	LT														
0010	9.5	25+25	23.5	799.34	2.74	LT														
0010	10.1	27+22	23.3	800.34	2.95	LT														
0010	10.1	27+22	23.3	800.34	2.95	LT														
0010	12.1	31+52	23.5	801.91	2.97	LT														
0010	12.4	31+62	23.5	801.94	2.80	LT														
0010	22.1	32+46	66.8	801.16	2.01	LT														
0010	22.2	32+90	66.6	801.16	4.00	LT														
0010	14.1	33+52	23.5	801.91	2.88	LT														
0010	14.2	33+62	23.5	801.95	2.87	LT														
0010	15.1	35+73	40.3	803.88	3.49	LT														
0010	15.2	36+08	40.2	803.96	3.14	LT														
0010	15.7	36+09	49.3	804.12	3.25	LT														
0010	16.1	36+36	23.5	804.36	3.41	LT														
0010	16.3	36+46	23.5	804.45	3.20	LT														
0010	17.1	38+02	23.5	806.44	3.44	LT														
0010	17.3	38+12	23.5	806.56	3.18	LT														
0010	20.1	40+59	23.5	809.50	2.53	LT														
0010	22.4	32+46	76.8	801.09	2.84	LT														
0010	22.3	32+88	76.6	801.09	2.97	LT														
						STAGE 4														
						SUBTOTAL	0	2	29	58	2	6	17	6	21	0	0	0	0	31
						TOTAL 0010	2	13	58	2	6	17	6	21	0	0	0	0	0	31

* ADDITIONAL QUANTITIES IN 611 - MANHOLES

Addendum No. 01
ID 5310-02-76
Revised Sheet 177
December 15, 2020

659-LIGHTING

LIGHTING BASES, POLES, ARMS, FIXTURES AND WIRE

State Project No. 5310-02-76	654.0106 CONCRETE BASES TYPE 6	657.0255 TRANSFORMER BASE BREAKAWAY 11 1/2-INCH BOLT CIRCLE	657.0327 POLES TYPE 6 ALUMINUM	657.0605 LUMINAIRE ARMS SINGLE MEMBER 4 1/2-INCH CLAMP 4-FT	659.1125 LUMINAIRE UTILITY LED C 160 WATT	655.0610 ELECTRICAL WIRE LIGHTING 12 AWG	REMARKS
LIGHT NUMBER	STATION	OFFSET	RL	EACH	EACH	LF	
ALL ITEMS ARE CATEGORY 0020							
SL 101	08+20.7	29.0'	LT	1	1	1	126
SL 102	09+57.5	30.1'	LT	1	1	1	126
SL 103	10+93.8	28.8'	LT	1	1	1	126
SL 104	12+30.2	23.2'	LT	1	1	1	126
SL 105	13+66.8	21.0'	LT	1	1	1	126
SL 106	15+03.6	21.0'	LT	1	1	1	126
SL 107	16+35.5	21.0'	LT	1	1	1	126
SL 108	17+75.5	24.8'	LT	1	1	1	126
SL 109	19+13.4	27.0'	LT	1	1	1	126
SL 110	20+36.9	27.0'	LT	1	1	1	126
SL 111	21+35.6	27.0'	LT	1	1	1	126
SL 112	22+45.6	27.0'	LT	1	1	1	126
SL 113	23+65.6	27.0'	LT	1	1	1	126
SL 114	24+37.7	27.7'	LT	1	1	1	126
SL 115	25+31.1	27.0'	LT	1	1	1	126
SL 116	26+80.0	27.0'	LT	1	1	1	126
SL 117	28+25.6	27.0'	LT	1	1	1	126
SL 118	29+18.5	27.0'	LT	1	1	1	126
SL 119	30+13.5	27.0'	LT	1	1	1	126
SL 120	31+13.5	27.0'	LT	1	1	1	126
SL 121	34+22.8	27.0'	LT	1	1	1	126
SL 122	35+42.2	27.0'	LT	1	1	1	126
SL 123	36+50.4	27.0'	LT	1	1	1	126
SL 124	37+62.6	27.0'	LT	1	1	1	126
SL 125	38+70.7	27.0'	LT	1	1	1	126
SL 126	39+76.7	27.0'	LT	1	1	1	126
SL 127	40+67.8	27.0'	LT	1	1	1	126
SL 128	42+04.7	27.0'	LT	1	1	1	126
SL 129	43+41.6	27.0'	LT	1	1	1	126
SL 130	44+78.5	27.0'	LT	1	1	1	126
SL 131	46+15.5	27.0'	LT	1	1	1	126
SL 132	47+38.8	27.0'	LT	1	1	1	126
SPARES				2	2	2	TO BE DELIVERED TO MAZOMANIE STORAGE FACILITY
TOTALS				32	34	34	4032

* ADDITIONAL QUANTITIES ARE IN 657 - TRAFFIC SIGNALS 1

HIGHWAY LIGHTING
USH 14 (E COMMERCIAL ST.)
CITY OF MAZOMANIE
DANE COUNTY

DESIGN: FORSTER ELECTRICAL ENGINEERING
DATE: 2020-07-14



Proposal Schedule of Items

Proposal ID: 20210112005 Project(s): 5310-02-76

Federal ID(s): WISC 2021077

SECTION: 0001

Contract Items

Alt Set ID:

Alt Mbr ID:

Proposal Line Number	Item ID Description	Approximate Quantity and Units	Unit Price	Bid Amount
0002	201.0105 Clearing	14.000 STA	_____.	_____.
0004	201.0205 Grubbing	16.000 STA	_____.	_____.
0006	203.0100 Removing Small Pipe Culverts	3.000 EACH	_____.	_____.
0008	204.0100 Removing Concrete Pavement	7,599.000 SY	_____.	_____.
0010	204.0110 Removing Asphaltic Surface	250.000 SY	_____.	_____.
0012	204.0115 Removing Asphaltic Surface Butt Joints	768.000 SY	_____.	_____.
0014	204.0120 Removing Asphaltic Surface Milling	1,280.000 SY	_____.	_____.
0016	204.0150 Removing Curb & Gutter	5,933.000 LF	_____.	_____.
0018	204.0155 Removing Concrete Sidewalk	419.000 SY	_____.	_____.
0020	204.0165 Removing Guardrail	772.000 LF	_____.	_____.
0022	204.0185 Removing Masonry	4.000 CY	_____.	_____.
0024	204.0210 Removing Manholes	7.000 EACH	_____.	_____.
0026	204.0220 Removing Inlets	31.000 EACH	_____.	_____.
0028	204.0245 Removing Storm Sewer (size) 01. 12-Inch	1,372.000 LF	_____.	_____.
0030	204.0245 Removing Storm Sewer (size) 02. 15-Inch	307.000 LF	_____.	_____.
0032	204.0245 Removing Storm Sewer (size) 03. 18-Inch	755.000 LF	_____.	_____.



Proposal Schedule of Items

Proposal ID: 20210112005 Project(s): 5310-02-76

Federal ID(s): WISC 2021077

SECTION: 0001

Contract Items

Alt Set ID:

Alt Mbr ID:

Proposal Line Number	Item ID Description	Approximate Quantity and Units	Unit Price	Bid Amount
0034	204.9060.S Removing (item description) 01. Apron Endwall	1.000 EACH	_____.	_____.
0036	205.0100 Excavation Common	27,121.000 CY	_____.	_____.
0038	208.0100 Borrow	489.000 CY	_____.	_____.
0040	213.0100 Finishing Roadway (project) 01. 5310-02-76	1.000 EACH	_____.	_____.
0042	305.0110 Base Aggregate Dense 3/4-Inch	502.000 TON	_____.	_____.
0044	305.0120 Base Aggregate Dense 1 1/4-Inch	14,919.000 TON	_____.	_____.
0046	305.0130 Base Aggregate Dense 3-Inch	23,205.000 TON	_____.	_____.
0048	415.1080 Concrete Pavement HES 8-Inch	73.000 SY	_____.	_____.
0050	415.1410 Concrete Pavement Approach Slab HES	60.000 SY	_____.	_____.
0052	416.0160 Concrete Driveway 6-Inch	674.000 SY	_____.	_____.
0054	416.0610 Drilled Tie Bars	116.000 EACH	_____.	_____.
0056	450.4000 HMA Cold Weather Paving	121.000 TON	_____.	_____.
0058	455.0605 Tack Coat	2,463.000 GAL	_____.	_____.
0060	460.2000 Incentive Density HMA Pavement	4,700.000 DOL	1.00000	4,700.00
0062	460.6224 HMA Pavement 4 MT 58-28 S	4,634.000 TON	_____.	_____.
0064	460.6424 HMA Pavement 4 MT 58-28 H	2,700.000 TON	_____.	_____.



Proposal Schedule of Items

Proposal ID: 20210112005 Project(s): 5310-02-76

Federal ID(s): WISC 2021077

SECTION: 0001

Contract Items

Alt Set ID:

Alt Mbr ID:

Proposal Line Number	Item ID Description	Approximate Quantity and Units	Unit Price	Bid Amount
0066	465.0120 Asphaltic Surface Driveways and Field Entrances	98.000 TON	_____.	_____.
0068	465.0125 Asphaltic Surface Temporary	1,006.000 TON	_____.	_____.
0070	465.0305 Asphaltic Surface Safety Islands	4.000 TON	_____.	_____.
0072	520.2018 Culvert Pipe Temporary 18-Inch	154.000 LF	_____.	_____.
0074	520.3318 Culvert Pipe Class III-A 18-Inch	154.000 LF	_____.	_____.
0076	520.8700 Cleaning Culvert Pipes	1.000 EACH	_____.	_____.
0078	521.1018 Apron Endwalls for Culvert Pipe Steel 18-Inch	8.000 EACH	_____.	_____.
0082	601.0411 Concrete Curb & Gutter 30-Inch Type D	6,190.000 LF	_____.	_____.
0084	601.0557 Concrete Curb & Gutter 6-Inch Sloped 36-Inch Type D	1,163.000 LF	_____.	_____.
0086	602.0410 Concrete Sidewalk 5-Inch	24,794.000 SF	_____.	_____.
0088	602.0505 Curb Ramp Detectable Warning Field Yellow	410.000 SF	_____.	_____.
0090	602.0605 Curb Ramp Detectable Warning Field Radial Yellow	40.000 SF	_____.	_____.
0092	606.0200 Riprap Medium	12.000 CY	_____.	_____.
0094	608.0005 Storm Sewer Rock Excavation	500.000 CY	_____.	_____.
0096	608.0312 Storm Sewer Pipe Reinforced Concrete Class III 12-Inch	1,350.000 LF	_____.	_____.



Proposal Schedule of Items

Proposal ID: 20210112005 Project(s): 5310-02-76

Federal ID(s): WISC 2021077

SECTION: 0001

Contract Items

Alt Set ID:

Alt Mbr ID:

Proposal Line Number	Item ID Description	Approximate Quantity and Units	Unit Price	Bid Amount
0098	608.0315 Storm Sewer Pipe Reinforced Concrete Class III 15-Inch	261.000 LF	_____.	_____.
0100	608.0318 Storm Sewer Pipe Reinforced Concrete Class III 18-Inch	411.000 LF	_____.	_____.
0102	608.0324 Storm Sewer Pipe Reinforced Concrete Class III 24-Inch	1,872.000 LF	_____.	_____.
0104	608.0330 Storm Sewer Pipe Reinforced Concrete Class III 30-Inch	745.000 LF	_____.	_____.
0106	611.0420 Reconstructing Manholes	2.000 EACH	_____.	_____.
0108	611.0530 Manhole Covers Type J	18.000 EACH	_____.	_____.
0110	611.0606 Inlet Covers Type B	13.000 EACH	_____.	_____.
0112	611.0624 Inlet Covers Type H	59.000 EACH	_____.	_____.
0114	611.0642 Inlet Covers Type MS	6.000 EACH	_____.	_____.
0116	611.2004 Manholes 4-FT Diameter	5.000 EACH	_____.	_____.
0118	611.2005 Manholes 5-FT Diameter	13.000 EACH	_____.	_____.
0120	611.2006 Manholes 6-FT Diameter	1.000 EACH	_____.	_____.
0126	611.3003 Inlets 3-FT Diameter	2.000 EACH	_____.	_____.
0128	611.3004 Inlets 4-FT Diameter	17.000 EACH	_____.	_____.
0130	611.3220 Inlets 2x2-FT	6.000 EACH	_____.	_____.
0132	611.3230 Inlets 2x3-FT	44.000 EACH	_____.	_____.



Proposal Schedule of Items

Proposal ID: 20210112005 Project(s): 5310-02-76

Federal ID(s): WISC 2021077

SECTION: 0001

Contract Items

Alt Set ID:

Alt Mbr ID:

Proposal Line Number	Item ID Description	Approximate Quantity and Units	Unit Price	Bid Amount
0134	611.3902 Inlets Median 2 Grate	3.000 EACH	_____.	_____.
0136	614.0010 Barrier System Grading Shaping Finishing	1.000 EACH	_____.	_____.
0138	614.2300 MGS Guardrail 3	181.000 LF	_____.	_____.
0140	614.2330 MGS Guardrail 3 K	350.000 LF	_____.	_____.
0142	614.2350 MGS Guardrail Short Radius	50.000 LF	_____.	_____.
0144	614.2500 MGS Thrie Beam Transition	79.000 LF	_____.	_____.
0146	614.2610 MGS Guardrail Terminal EAT	2.000 EACH	_____.	_____.
0148	616.0406 Fence Chain Link Salvaged 6-FT	20.000 LF	_____.	_____.
0150	618.0100 Maintenance And Repair of Haul Roads (project) 01. 5310-02-76	1.000 EACH	_____.	_____.
0152	619.1000 Mobilization	1.000 EACH	_____.	_____.
0154	624.0100 Water	258.000 MGAL	_____.	_____.
0156	628.1504 Silt Fence	4,483.000 LF	_____.	_____.
0158	628.1520 Silt Fence Maintenance	4,483.000 LF	_____.	_____.
0160	628.1905 Mobilizations Erosion Control	12.000 EACH	_____.	_____.
0162	628.1910 Mobilizations Emergency Erosion Control	5.000 EACH	_____.	_____.
0164	628.2004 Erosion Mat Class I Type B	3,224.000 SY	_____.	_____.



Proposal Schedule of Items

Proposal ID: 20210112005 Project(s): 5310-02-76

Federal ID(s): WISC 2021077

SECTION: 0001

Contract Items

Alt Set ID:

Alt Mbr ID:

Proposal Line Number	Item ID Description	Approximate Quantity and Units	Unit Price	Bid Amount
0166	628.2008 Erosion Mat Urban Class I Type B	13,083.000 SY	_____.	_____.
0168	628.2023 Erosion Mat Class II Type B	1,822.000 SY	_____.	_____.
0170	628.6505 Soil Stabilizer Type A	2.000 ACRE	_____.	_____.
0172	628.7005 Inlet Protection Type A	4.000 EACH	_____.	_____.
0174	628.7010 Inlet Protection Type B	13.000 EACH	_____.	_____.
0176	628.7015 Inlet Protection Type C	70.000 EACH	_____.	_____.
0178	628.7504 Temporary Ditch Checks	154.000 LF	_____.	_____.
0180	629.0210 Fertilizer Type B	11.200 CWT	_____.	_____.
0182	630.0120 Seeding Mixture No. 20	100.000 LB	_____.	_____.
0184	630.0130 Seeding Mixture No. 30	248.000 LB	_____.	_____.
0186	630.0200 Seeding Temporary	270.000 LB	_____.	_____.
0188	630.0500 Seed Water	462.000 MGAL	_____.	_____.
0190	634.0614 Posts Wood 4x6-Inch X 14-FT	38.000 EACH	_____.	_____.
0192	634.0616 Posts Wood 4x6-Inch X 16-FT	20.000 EACH	_____.	_____.
0194	637.2210 Signs Type II Reflective H	322.660 SF	_____.	_____.
0196	637.2230 Signs Type II Reflective F	35.000 SF	_____.	_____.
0198	638.2102 Moving Signs Type II	55.000 EACH	_____.	_____.



Proposal Schedule of Items

Proposal ID: 20210112005 Project(s): 5310-02-76

Federal ID(s): WISC 2021077

SECTION: 0001

Contract Items

Alt Set ID:

Alt Mbr ID:

Proposal Line Number	Item ID Description	Approximate Quantity and Units	Unit Price	Bid Amount
0200	638.2602 Removing Signs Type II	49.000 EACH	_____.	_____.
0202	638.3000 Removing Small Sign Supports	59.000 EACH	_____.	_____.
0204	642.5001 Field Office Type B	1.000 EACH	_____.	_____.
0206	643.0300 Traffic Control Drums	15,892.000 DAY	_____.	_____.
0208	643.0410 Traffic Control Barricades Type II	1,298.000 DAY	_____.	_____.
0210	643.0420 Traffic Control Barricades Type III	5,477.000 DAY	_____.	_____.
0212	643.0500 Traffic Control Flexible Tubular Marker Posts	770.000 EACH	_____.	_____.
0214	643.0600 Traffic Control Flexible Tubular Marker Bases	770.000 EACH	_____.	_____.
0216	643.0705 Traffic Control Warning Lights Type A	10,954.000 DAY	_____.	_____.
0218	643.0715 Traffic Control Warning Lights Type C	461.000 DAY	_____.	_____.
0220	643.0900 Traffic Control Signs	20,321.000 DAY	_____.	_____.
0222	643.0920 Traffic Control Covering Signs Type II	147.000 EACH	_____.	_____.
0224	643.1050 Traffic Control Signs PCMS	28.000 DAY	_____.	_____.
0226	643.5000 Traffic Control	1.000 EACH	_____.	_____.
0228	645.0120 Geotextile Type HR	38.000 SY	_____.	_____.
0230	646.1020 Marking Line Epoxy 4-Inch	18,963.000 LF	_____.	_____.



Proposal Schedule of Items

Proposal ID: 20210112005 Project(s): 5310-02-76

Federal ID(s): WISC 2021077

SECTION: 0001

Contract Items

Alt Set ID:

Alt Mbr ID:

Proposal Line Number	Item ID Description	Approximate Quantity and Units	Unit Price	Bid Amount
0232	646.3020 Marking Line Epoxy 8-Inch	642.000 LF	_____.	_____.
0234	646.5020 Marking Arrow Epoxy	22.000 EACH	_____.	_____.
0236	646.6120 Marking Stop Line Epoxy 18-Inch	133.000 LF	_____.	_____.
0238	646.7120 Marking Diagonal Epoxy 12-Inch	309.000 LF	_____.	_____.
0240	646.7420 Marking Crosswalk Epoxy Transverse Line 6-Inch	1,933.000 LF	_____.	_____.
0242	646.8320 Marking Parking Stall Epoxy	50.000 LF	_____.	_____.
0244	646.9000 Marking Removal Line 4-Inch	12,561.000 LF	_____.	_____.
0246	646.9100 Marking Removal Line 8-Inch	200.000 LF	_____.	_____.
0248	646.9300 Marking Removal Special Marking	10.000 EACH	_____.	_____.
0250	649.0105 Temporary Marking Line Paint 4-Inch	62,706.000 LF	_____.	_____.
0252	649.0150 Temporary Marking Line Removable Tape 4-Inch	1,525.000 LF	_____.	_____.
0254	649.0205 Temporary Marking Line Paint 8-Inch	549.000 LF	_____.	_____.
0256	649.0250 Temporary Marking Line Removable Tape 8-Inch	575.000 LF	_____.	_____.
0258	649.0805 Temporary Marking Stop Line Paint 18-Inch	88.000 LF	_____.	_____.
0260	650.4000 Construction Staking Storm Sewer	92.000 EACH	_____.	_____.
0262	650.4500 Construction Staking Subgrade	10,908.000 LF	_____.	_____.



Proposal Schedule of Items

Proposal ID: 20210112005 Project(s): 5310-02-76

Federal ID(s): WISC 2021077

SECTION: 0001

Contract Items

Alt Set ID:

Alt Mbr ID:

Proposal Line Number	Item ID Description	Approximate Quantity and Units	Unit Price	Bid Amount
0264	650.5000 Construction Staking Base	10,908.000 LF	_____.	_____.
0266	650.5500 Construction Staking Curb Gutter and Curb & Gutter	7,353.000 LF	_____.	_____.
0268	650.6000 Construction Staking Pipe Culverts	8.000 EACH	_____.	_____.
0270	650.8500 Construction Staking Electrical Installations (project) 01. 5310-02-76	LS	LUMP SUM	_____.
0272	650.9000 Construction Staking Curb Ramps	44.000 EACH	_____.	_____.
0274	650.9910 Construction Staking Supplemental Control (project) 01. 5310-02-76	LS	LUMP SUM	_____.
0276	650.9920 Construction Staking Slope Stakes	13,716.000 LF	_____.	_____.
0278	652.0225 Conduit Rigid Nonmetallic Schedule 40 2-Inch	4,184.000 LF	_____.	_____.
0280	652.0235 Conduit Rigid Nonmetallic Schedule 40 3-Inch	864.000 LF	_____.	_____.
0282	652.0800 Conduit Loop Detector	1,313.000 LF	_____.	_____.
0284	653.0154 Pull Boxes Non-Conductive 24x36-Inch	8.000 EACH	_____.	_____.
0286	653.0164 Pull Boxes Non-Conductive 24x42-Inch	9.000 EACH	_____.	_____.
0288	654.0101 Concrete Bases Type 1	10.000 EACH	_____.	_____.
0290	654.0102 Concrete Bases Type 2	4.000 EACH	_____.	_____.
0292	654.0106 Concrete Bases Type 6	32.000 EACH	_____.	_____.



Proposal Schedule of Items

Proposal ID: 20210112005 Project(s): 5310-02-76

Federal ID(s): WISC 2021077

SECTION: 0001

Contract Items

Alt Set ID:

Alt Mbr ID:

Proposal Line Number	Item ID Description	Approximate Quantity and Units	Unit Price	Bid Amount
0294	654.0217 Concrete Control Cabinet Bases Type 9 Special	1.000 EACH	_____.	_____.
0296	654.0230 Concrete Control Cabinet Bases Type L30	2.000 EACH	_____.	_____.
0298	655.0230 Cable Traffic Signal 5-14 AWG	1,506.000 LF	_____.	_____.
0300	655.0250 Cable Traffic Signal 9-14 AWG	407.000 LF	_____.	_____.
0302	655.0260 Cable Traffic Signal 12-14 AWG	101.000 LF	_____.	_____.
0304	655.0305 Cable Type UF 2-12 AWG Grounded	368.000 LF	_____.	_____.
0306	655.0515 Electrical Wire Traffic Signals 10 AWG	1,554.000 LF	_____.	_____.
0308	655.0610 Electrical Wire Lighting 12 AWG	4,032.000 LF	_____.	_____.
0310	655.0635 Electrical Wire Lighting 2 AWG	14,961.000 LF	_____.	_____.
0312	655.0700 Loop Detector Lead In Cable	2,161.000 LF	_____.	_____.
0314	655.0800 Loop Detector Wire	2,849.000 LF	_____.	_____.
0316	656.0400 Electrical Service Main Lugs Only Meter Pedestal (location) 01. Sta. 20+58.6	LS	LUMP SUM	_____.
0318	656.0400 Electrical Service Main Lugs Only Meter Pedestal (location) 02. Sta. 36+24.1	LS	LUMP SUM	_____.
0320	657.0100 Pedestal Bases	10.000 EACH	_____.	_____.
0322	657.0255 Transformer Bases Breakaway 11 1/2-Inch Bolt Circle	38.000 EACH	_____.	_____.



Proposal Schedule of Items

Proposal ID: 20210112005 Project(s): 5310-02-76

Federal ID(s): WISC 2021077

SECTION: 0001

Contract Items

Alt Set ID:

Alt Mbr ID:

Proposal Line Number	Item ID Description	Approximate Quantity and Units	Unit Price	Bid Amount
0324	657.0310 Poles Type 3	2.000 EACH	_____.	_____.
0326	657.0315 Poles Type 4	2.000 EACH	_____.	_____.
0328	657.0327 Poles Type 6-Aluminum	34.000 EACH	_____.	_____.
0330	657.0420 Traffic Signal Standards Aluminum 13-FT	4.000 EACH	_____.	_____.
0332	657.0430 Traffic Signal Standards Aluminum 10-FT	6.000 EACH	_____.	_____.
0334	657.0585 Trombone Arms 15-FT	2.000 EACH	_____.	_____.
0336	657.0605 Luminaire Arms Single Member 4 1/2-Inch Clamp 4-FT	34.000 EACH	_____.	_____.
0338	657.0810 Luminaire Arms Steel 10-FT	4.000 EACH	_____.	_____.
0340	658.0173 Traffic Signal Face 3S 12-Inch	12.000 EACH	_____.	_____.
0342	658.0416 Pedestrian Signal Face 16-Inch	8.000 EACH	_____.	_____.
0344	658.0500 Pedestrian Push Buttons	8.000 EACH	_____.	_____.
0346	658.5069 Signal Mounting Hardware (location) 01. USH 14 & CTH Y	LS	LUMP SUM	_____.
0348	659.1125 Luminaires Utility LED C	34.000 EACH	_____.	_____.
0350	659.2130 Lighting Control Cabinets 120/240 30-Inch	2.000 EACH	_____.	_____.
0352	690.0150 Sawing Asphalt	15,004.000 LF	_____.	_____.
0354	690.0250 Sawing Concrete	3,752.000 LF	_____.	_____.



Proposal Schedule of Items

Proposal ID: 20210112005 Project(s): 5310-02-76

Federal ID(s): WISC 2021077

SECTION: 0001

Contract Items

Alt Set ID:

Alt Mbr ID:

Proposal Line Number	Item ID Description	Approximate Quantity and Units	Unit Price	Bid Amount
0356	715.0415 Incentive Strength Concrete Pavement	500.000 DOL	1.00000	500.00
0358	740.0440 Incentive IRI Ride	3,064.000 DOL	1.00000	3,064.00
0360	801.0117 Railroad Flagging Reimbursement	5,000.000 DOL	1.00000	5,000.00
0362	ASP.1T0A On-the-Job Training Apprentice at \$5.00/HR	1,100.000 HRS	5.00000	5,500.00
0364	ASP.1T0G On-the-Job Training Graduate at \$5.00/HR	800.000 HRS	5.00000	4,000.00
0366	SPV.0045 Special 01. Temporary Crosswalk	381.000 DAY	_____.	_____.
0368	SPV.0060 Special 01. Storm Sewer Tap	3.000 EACH	_____.	_____.
0370	SPV.0060 Special 02. Adjusting Water Main Valve Box	8.000 EACH	_____.	_____.
0372	SPV.0060 Special 03. Adjusting Sanitary Manhole Covers	4.000 EACH	_____.	_____.
0374	SPV.0090 Special 01. Salvage and Reinstall Fieldstone Boulder Wall	20.000 LF	_____.	_____.
0376	SPV.0105 Special 01. Management of Contaminated Groundwater	LS	LUMP SUM	_____.
0378	SPV.0180 Special 01. Topsoil Special	27,327.000 SY	_____.	_____.
0380	SPV.0195 Special 01. Excavating, Hauling and Disposal of Petroleum Contaminated Soil	10.000 TON	_____.	_____.
0382	522.1024 Apron Endwalls for Culvert Pipe Reinforced Concrete 24-Inch	1.000 EACH	_____.	_____.



Proposal Schedule of Items

Proposal ID: 20210112005 Project(s): 5310-02-76

Federal ID(s): WISC 2021077

SECTION: 0001

Contract Items

Alt Set ID:

Alt Mbr ID:

Proposal Line Number	Item ID Description	Approximate Quantity and Units	Unit Price	Bid Amount
0384	608.0336 Storm Sewer Pipe Reinforced Concrete Class III 36-Inch	49.000 LF	_____.	_____.
	Section: 0001		Total:	_____.
			Total Bid:	_____.

