



# Wisconsin Department of Transportation

January 27, 2021

## Division of Transportation Systems Development

Bureau of Project Development  
4822 Madison Yards Way, 4<sup>th</sup> Floor South  
Madison, WI 53705

Telephone: (608) 266-1631  
Facsimile (FAX): (608) 266-8459

### NOTICE TO ALL CONTRACTORS:

**Proposal #12: 1300-03-72, WISC 2021 140**  
**Lake Parkway – Milwaukee/St. Francis**  
**E Lincoln Ave to S Pennsylvania Ave**  
**STH 794**  
**Milwaukee County**

### Letting of February 9, 2021

This is Addendum No. 02, which provides for the following:

#### Special Provisions:

| Revised Special Provisions |                          |
|----------------------------|--------------------------|
| Article No.                | Description              |
| 3                          | Prosecution and Progress |

| Added Special Provisions |  |
|--------------------------|--|
| Article No.              | Description                              |
| 47                       | Stamping Colored Concrete, Item 405.1000 |

#### Schedule of Items:

| Added Bid Item Quantities |                             |      |              |                  |                |
|---------------------------|-----------------------------|------|--------------|------------------|----------------|
| Bid Item                  | Item Description            | Unit | Old Quantity | Revised Quantity | Proposal Total |
| 405.1000                  | Stamping Colored Concrete   | CY   | 0            | 2.30             | 2.30           |
| 465.0125                  | Asphaltic Surface Temporary | TON  | 0            | 123              | 123            |

| Deleted Bid Item Quantities |                          |      |              |                  |                |
|-----------------------------|--------------------------|------|--------------|------------------|----------------|
| Bid Item                    | Item Description         | Unit | Old Quantity | Revised Quantity | Proposal Total |
| 602.0410                    | Concrete Sidewalk 5-Inch | SF   | 410          | -410             | 0              |

**Plan Sheets:**

| <b>Revised Plan Sheets</b> |   |
|----------------------------|---|
| <b>Plan Sheet</b>          | <b>Plan Sheet Title (brief description of changes to sheet)</b>   |
| 32                         | Construction detail note change item from asphalt patching to asphaltic surface temporary and asphalt depth to match existing pavement structure full depth |
| 33-46                      | Plan Detail sheet legend updated to remove Concrete Sidewalk 5-Inch and replace with Stamping Colored Concrete  |
| 230                        | Miscellaneous Quantity table updated to remove Concrete Sidewalk 5-Inch and replace with Stamping Colored Concrete  |
| 236                        | Miscellaneous Quantity table updated to add Asphaltic Surface Temporary   |

The responsibility for notifying potential subcontractors and suppliers of these changes remains with the prime contractor.

Sincerely,

*Mike Coleman*

Proposal Development Specialist  
Proposal Management Section

**ADDENDUM NO. 02**

**1300-03-72**

**January 27, 2021**

**Special Provisions**

**3. Prosecution and Progress.**

*Replace entire section titled **Construction Activities** with the following:*

**Construction Activities**

**Stage 1** activities shall include construction of:

- Using nighttime full closure and daytime lane closures to complete roadwork and ramp work on northbound and southbound STH 794 from Howard Avenue (Sta 132+00) to the north project limits.
- Install the new signal equipment at the Ellen Street intersection at STH 794.
- Install final marking and permanent signing north of Sta 132+00.
- Repair noise walls within Stage 1 area -  
All noise walls removed shall be replaced within 10 calendar days at each location. If the contractor fails to complete the necessary work to replace the noise wall at each location within 10 calendar days, the department will assess the contractor \$2000 in liquidated damages for each calendar day the contract work remains incomplete.

**Stage 2** activities shall include construction of:

- Using nighttime full closure and daytime lane closures to complete roadwork and ramp work on northbound and southbound STH 794 from Pennsylvania Avenue to Howard Avenue (Sta 132+00).
- Install final marking and permanent signing south of Sta 132+00.
- Repair noise walls within Stage 2 area –  
All noise walls removed shall be replaced within 10 calendar days at each location. If the contractor fails to complete the necessary work to replace the noise wall at each location within 10 calendar days, the department will assess the contractor \$2000 in liquidated damages for each calendar day the contract work remains incomplete.

**47. Stamping Colored Concrete, Item 405.1000.**

This special provision describes stamping and coloring concrete WisDOT Red for work constructed under other contract bid items. Conform to standard spec 405 as modified in this special provision.

*Replace the entire contents of standard spec 405.2.2 with the following:*

(1) Running bond brick pattern.

(2) Per manufacturer's recommendations.

*Replace the entire contents of standard spec 405.3.2 with the following:*

(1) Color concrete full-depth conforming to standard spec 405.3.1.

(2) While initially finished concrete is in plastic state, accurately align and place imprinting stamps. Once the concrete has set to the point it can be stamped begin stamping. Uniformly pound or press imprint tools into concrete to produce required pattern and depth of imprint on concrete surface. Remove platform tools immediately. Hand texture and stamp edges and surfaces unable to be imprinted by stamp mats. Touch up imperfections such as broken corners, double imprints and surface cracks.

Stamp concrete consistently so that stamped concrete does not have a vertical elevation difference of 1/2 inch or depressions in concrete capable of causing ponding water or ice.

For concrete hand stamp edges and surfaces that are unable to be imprinted by platform tools, use texture mats and single blade hand stamps to match platform tool stamping pattern. Finish imprinting to match sample panels

(3) After concrete has been stamped and the sheen has left the surface of the colored concrete, seal colored concrete. Apply per manufacturer's recommendations. Apply two coats of seal. Apply second coat after first coat has dried. Do not seal over blemishes or imperfections caused by rainfall or protection materials.

Protect colored concrete from premature drying and excessive cold or hot temperatures. Apply evaporation retarders to concrete surfaces during initial finishing only if hot, dry, or windy conditions cause a moisture loss approaching 0.20 lb/sf/hr before and during initial finishing. Apply according to manufacturer's written instructions.

#### **Schedule of Items**

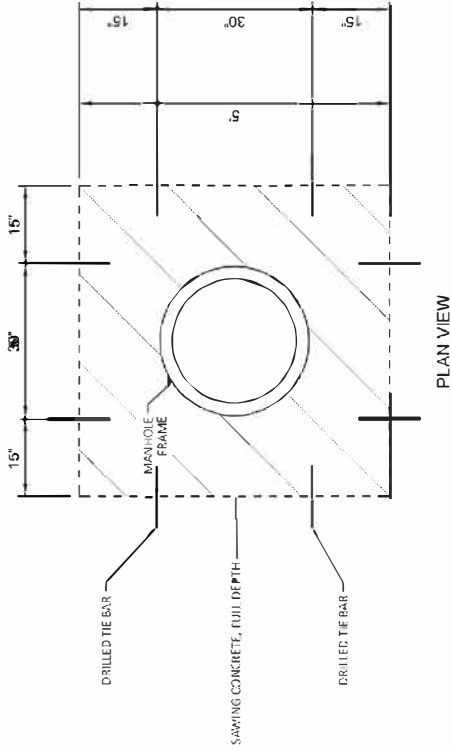
Attached, dated January 27, 2021, are the revised Schedule of Items Pages 1 – 11.

#### **Plan Sheets**

The following 8½ x 11-inch sheets are attached and made part of the plans for this proposal:  
Revised: 32-46, 230, and 236.

END OF ADDENDUM

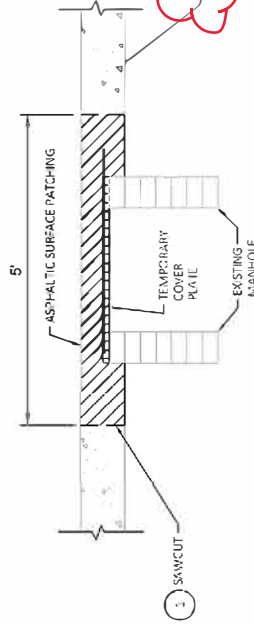
Addendum No. 01  
ID 1300-03-72  
Revised Sheet 32  
January 27, 2021



PLAN VIEW

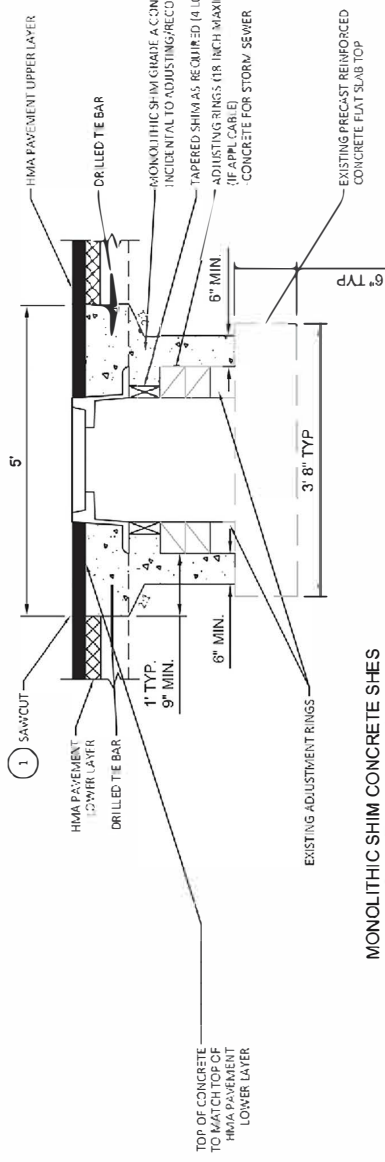
- STEP 1**
- PRIOR TO REPAVING ASPHALTIC SURFACE, PARTIAL DEPTH SAWING (OR REMOVAL) OF ALL COVER FURNISH AND INSTALL TEMPORARY COVER PLATE
  - BACKFILL USING ASPHALTIC SURFACE TEMPORARY

REMOVING PAVEMENT (INCIDENTAL TO ADJUSTING/RECONSTRUCTING MANHOLE)



EXISTING HMA / CONCRETE PAVEMENT TO REMAIN

- STEP 2**
- AFTER PAVING LOWER LAYER:
- EXCAVATE AND REMOVE TEMPORARY COVER PLATE
  - ADJUST AND REINSTALL SALVAGED MANHOLE FRAME OR INSTALL NEW CASTING AND COVER USING MONOTONIC CONCRETE SHIM
- ALL WORK EXCEPT ASPHALT PATCHING, SAWING CONCRETE, DRILLED-TIE BARS, AND INSTALLATION REMOVAL OF TEMPORARY COVER PLATE IS INCLUDED IN THE COST OF ADJUSTING MANHOLE COVERS.

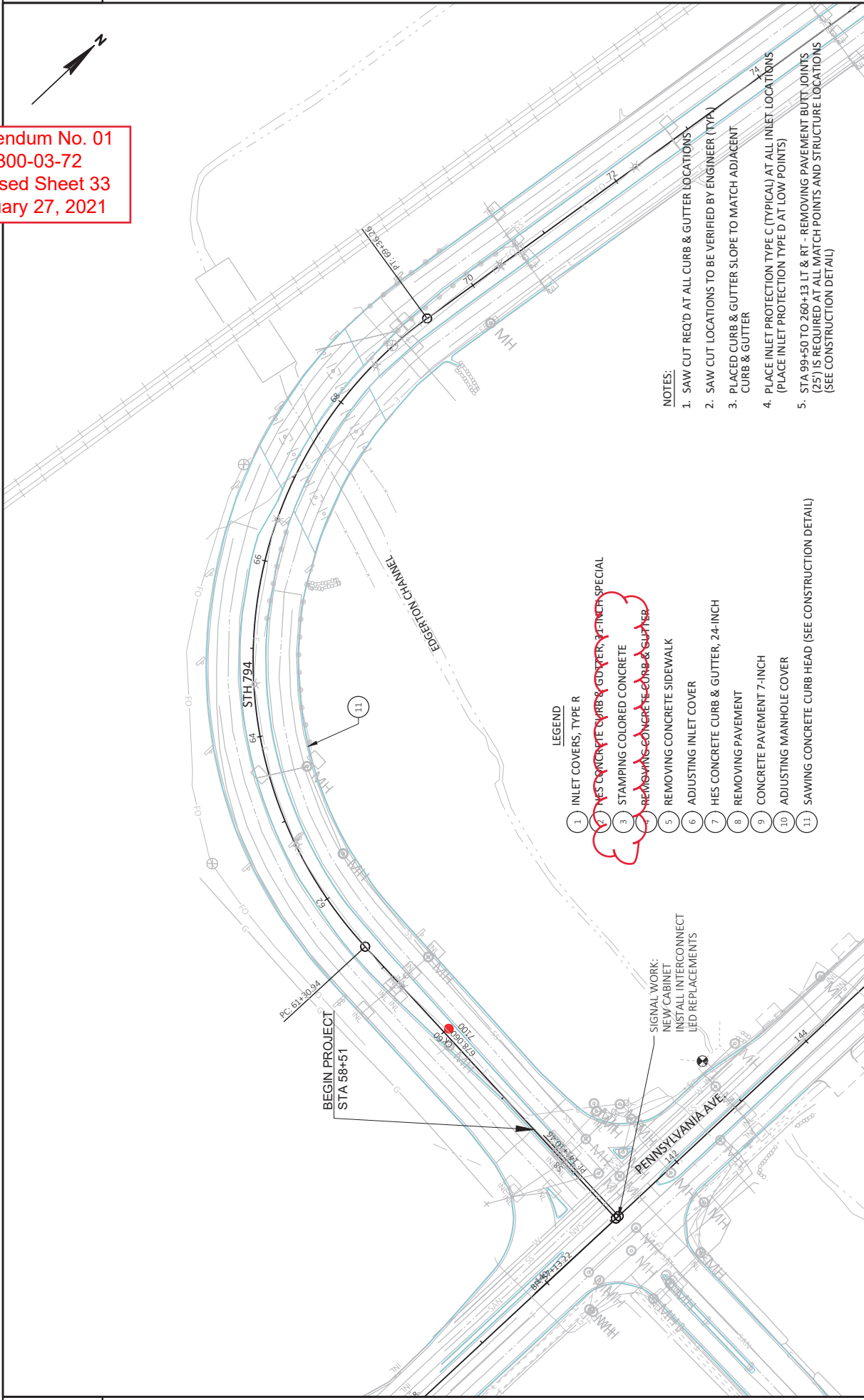


MONOLITHIC SHIM CONCRETE SHES

\*ADJUST ALL EXISTING MANHOLES FROM STA. 99+20 - 200+13 NB & SB STH 794

|   |                             |                      |                        |                     |
|---|-----------------------------|----------------------|------------------------|---------------------|
| PROJECT NO: 1300-03-72  | COUNTY: MILWAUKEE           | CONSTRUCTION DETAILS | SHEET 32               | E                   |
| FILE NAME: N:\WORK\1300\1300-03-72\9-18-17\SP-1300-03-72-1300-03-72.DWG | PLOT DATE: 1/27/20 11:13 AM | PLOT BY: ST31-GSRV   | PLOT SCALE: 1/8"=1'-0" | WINDOZ2005 SHEET 42 |

Addendum No. 01  
ID 1300-03-72  
Revised Sheet 33  
January 27, 2021



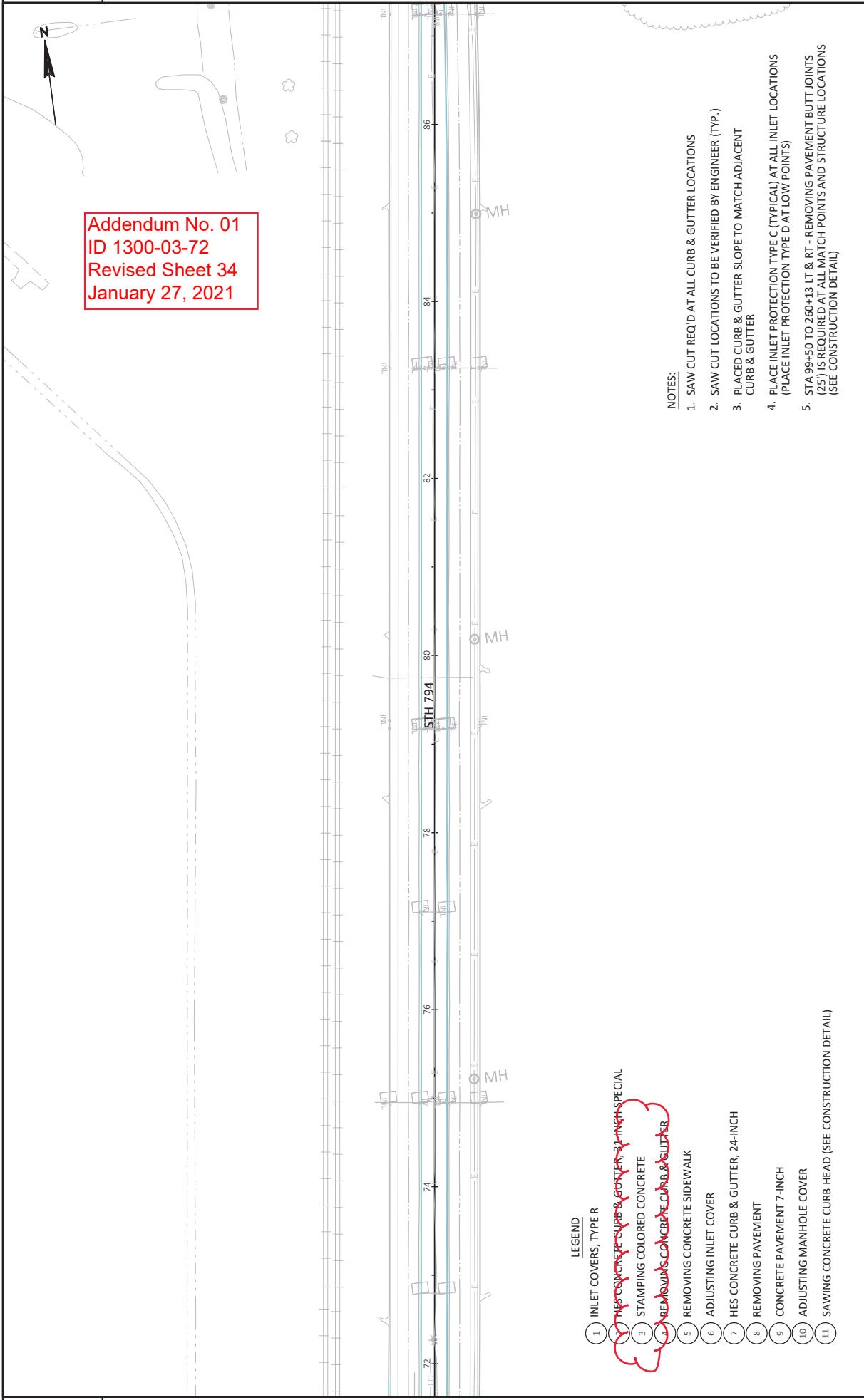
LEGEND

- 1 INLET COVERS, TYPE R
- 2 ~~NEW CONCRETE CURB & GUTTER, 24 INCH SPECIAL~~
- 3 STAMPING COLORED CONCRETE
- 4 ~~REMOVING CONCRETE CURB & GUTTER~~
- 5 REMOVING CONCRETE SIDEWALK
- 6 ADJUSTING INLET COVER
- 7 HES CONCRETE CURB & GUTTER, 24-INCH
- 8 REMOVING PAVEMENT
- 9 CONCRETE PAVEMENT 7-INCH
- 10 ADJUSTING MANHOLE COVER
- 11 SAWING CONCRETE CURB HEAD (SEE CONSTRUCTION DETAIL)

NOTES:

- 1. SAW CUT REQ'D AT ALL CURB & GUTTER LOCATIONS
- 2. SAW CUT LOCATIONS TO BE VERIFIED BY ENGINEER (TYP)
- 3. PLACED CURB & GUTTER SLOPE TO MATCH ADJACENT CURB & GUTTER
- 4. PLACE INLET PROTECTION TYPE C (TYPICAL) AT ALL INLET LOCATIONS (PLACE INLET PROTECTION TYPE D AT LOW POINTS)
- 5. STA 99+50 TO 260+13 LT & RT - REMOVING PAVEMENT BUTT JOINTS (25') IS REQUIRED AT ALL MATCH POINTS AND STRUCTURE LOCATIONS (SEE CONSTRUCTION DETAIL)

Addendum No. 01  
ID 1300-03-72  
Revised Sheet 34  
January 27, 2021



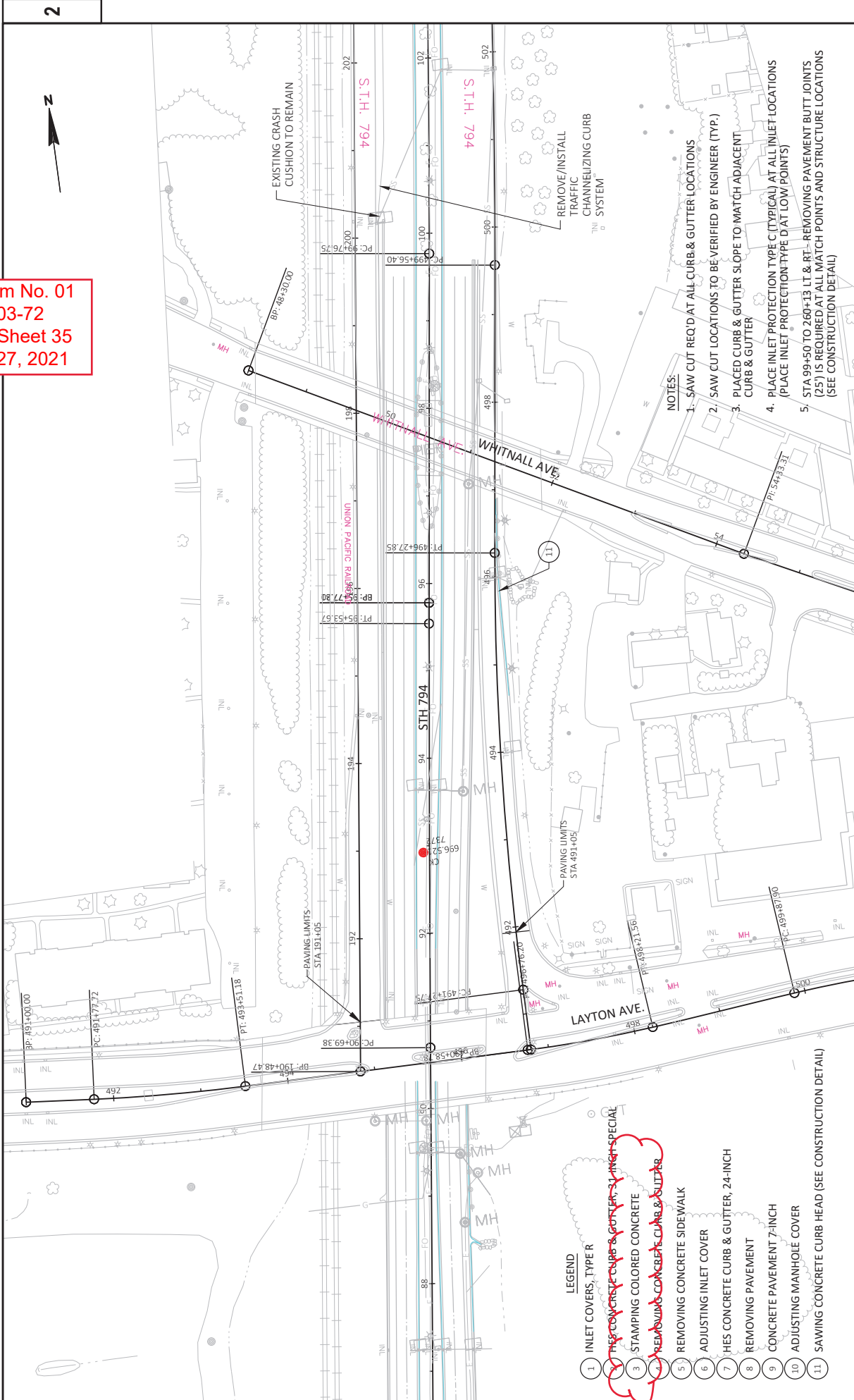
**NOTES:**

- 1. SAW CUT REQ'D AT ALL CURB & GUTTER LOCATIONS
- 2. SAW CUT LOCATIONS TO BE VERIFIED BY ENGINEER (TYP.)
- 3. PLACED CURB & GUTTER SLOPE TO MATCH ADJACENT CURB & GUTTER
- 4. PLACE INLET PROTECTION TYPE C (TYPICAL) AT ALL INLET LOCATIONS (PLACE INLET PROTECTION TYPE D AT LOW POINTS)
- 5. STA 99+50 TO 260+13 LT & RT - REMOVING PAVEMENT BUTT JOINTS (25') IS REQUIRED AT ALL MATCH POINTS AND STRUCTURE LOCATIONS (SEE CONSTRUCTION DETAIL)

**LEGEND**

- 1 INLET COVERS, TYPE R
- 2 ~~THIS CONCRETE CURB & GUTTER IS 3-INCH SPECIAL~~
- 3 STAMPING COLORED CONCRETE
- 4 ~~REMOVING CONCRETE CURB & GUTTER~~
- 5 REMOVING CONCRETE SIDEWALK
- 6 ADJUSTING INLET COVER
- 7 HES CONCRETE CURB & GUTTER, 24-INCH
- 8 REMOVING PAVEMENT
- 9 CONCRETE PAVEMENT 7-INCH
- 10 ADJUSTING MANHOLE COVER
- 11 SAWING CONCRETE CURB HEAD (SEE CONSTRUCTION DETAIL)

Addendum No. 01  
 ID 1300-03-72  
 Revised Sheet 35  
 January 27, 2021

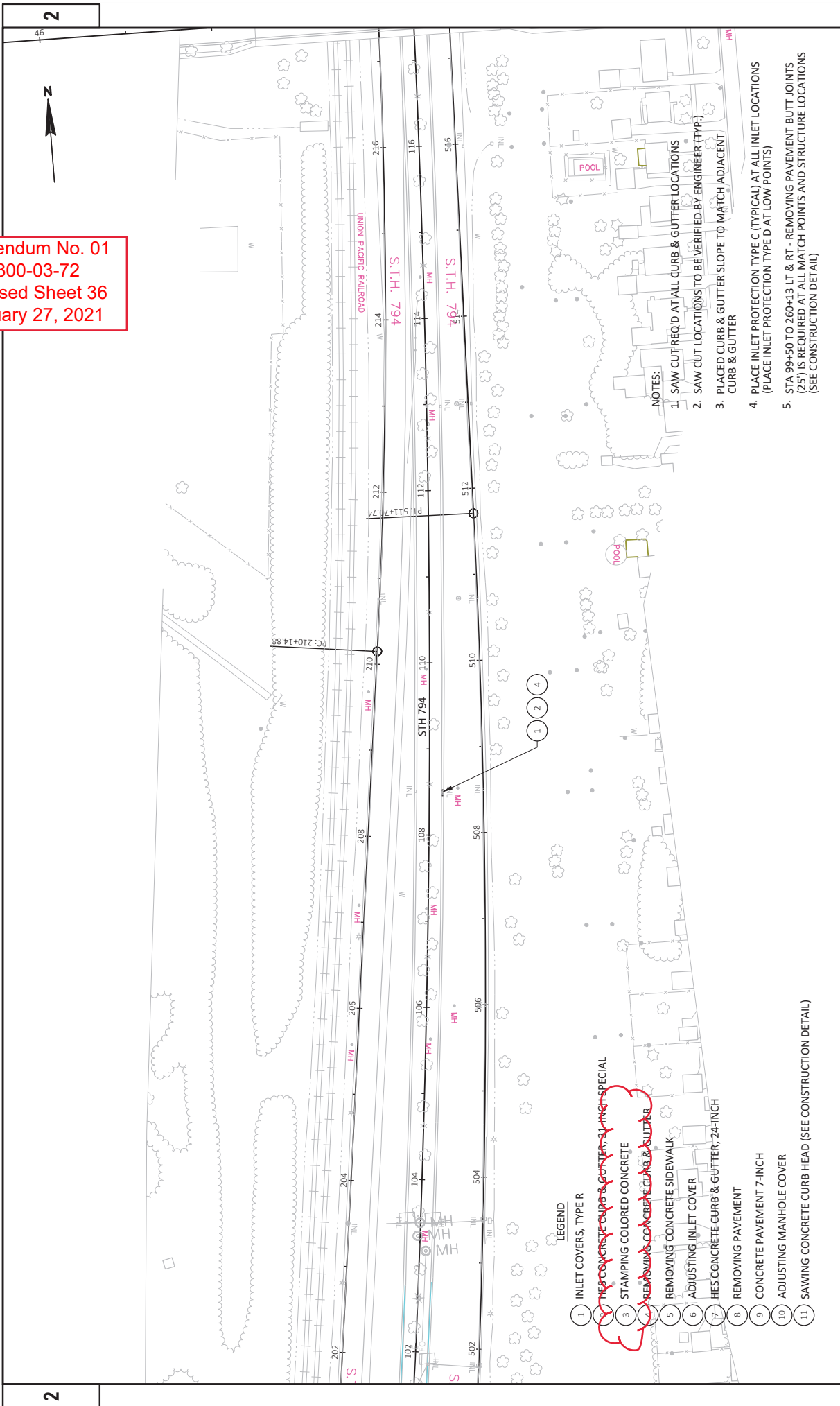


- LEGEND
- 1 INLET COVERS, TYPE R
  - 2 ~~REMOVING CONCRETE CURB & GUTTER, 24-INCH SPECIAL~~
  - 3 STAMPING COLORED CONCRETE
  - 4 ~~REMOVING CONCRETE CURB & GUTTER~~
  - 5 REMOVING CONCRETE SIDEWALK
  - 6 ADJUSTING INLET COVER
  - 7 ~~RES CONCRETE CURB & GUTTER, 24-INCH~~
  - 8 REMOVING PAVEMENT
  - 9 CONCRETE PAVEMENT 7-INCH
  - 10 ADJUSTING MANHOLE COVER
  - 11 SAWING CONCRETE CURB HEAD (SEE CONSTRUCTION DETAIL)

- NOTES:
1. SAW CUT REQ'D AT ALL CURB & GUTTER LOCATIONS
  2. SAW CUT LOCATIONS TO BE VERIFIED BY ENGINEER (TYP.)
  3. PLACED CURB & GUTTER SLOPE TO MATCH ADJACENT CURB & GUTTER
  4. PLACE INLET PROTECTION TYPE C (TYPICAL) AT ALL INLET LOCATIONS (PLACE INLET PROTECTION TYPE D AT LOW POINTS)
  5. STA 99+50 TO 260+13 LT & RT- REMOVING PAVEMENT BUTT JOINTS (25') IS REQUIRED AT ALL MATCH POINTS AND STRUCTURE LOCATIONS (SEE CONSTRUCTION DETAIL)

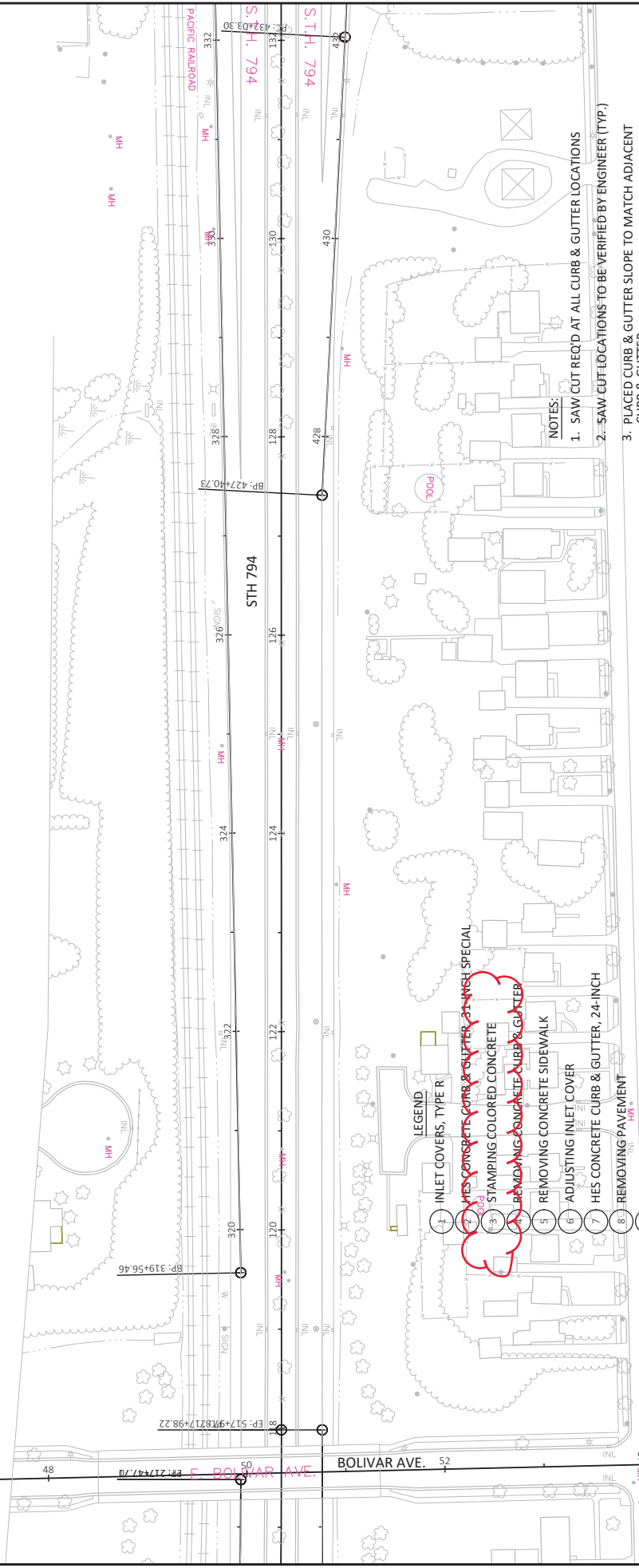
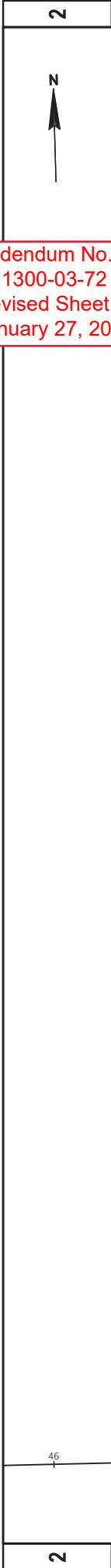


Addendum No. 01  
 ID 1300-03-72  
 Revised Sheet 36  
 January 27, 2021



- LEGEND
- 1) INLET COVERS, TYPE R
  - 2) ~~THE CONCRETE CURB & GUTTER, 24-INCH SPECIAL~~
  - 3) STAMPING COLORED CONCRETE
  - 4) ~~REMOVING CONCRETE CURB & GUTTER~~
  - 5) REMOVING CONCRETE SIDEWALK
  - 6) ADJUSTING INLET COVER
  - 7) ~~THE CONCRETE CURB & GUTTER, 24-INCH~~
  - 8) REMOVING PAVEMENT
  - 9) CONCRETE PAVEMENT 7-INCH
  - 10) ADJUSTING MANHOLE COVER
  - 11) SAWING CONCRETE CURB HEAD (SEE CONSTRUCTION DETAIL)

Addendum No. 01  
 ID 1300-03-72  
 Revised Sheet 37  
 January 27, 2021



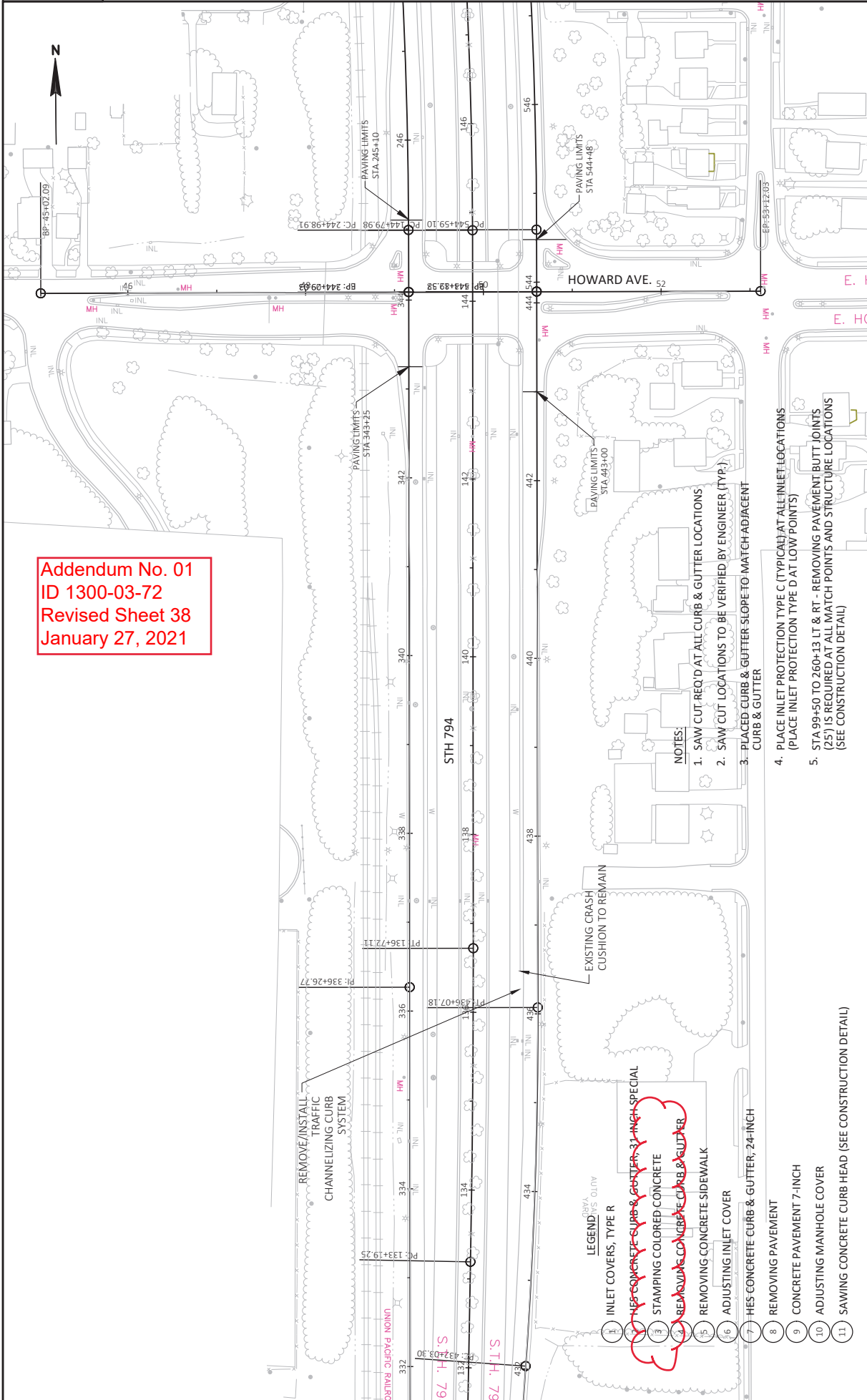
- LEGEND**
- 1 INLET COVERS, TYPE R
  - 2 ~~HES CONCRETE CURB & GUTTER, 24-INCH SPECIAL~~
  - 3 STAMPING COLORED CONCRETE
  - 4 ~~REMOVING CONCRETE CURB & GUTTER~~
  - 5 REMOVING CONCRETE SIDEWALK
  - 6 ADJUSTING INLET COVER
  - 7 HES CONCRETE CURB & GUTTER, 24-INCH
  - 8 REMOVING PAVEMENT
  - 9 CONCRETE PAVEMENT 7-INCH
  - 10 ADJUSTING MANHOLE COVER
  - 11 SAWING CONCRETE CURB HEAD (SEE CONSTRUCTION DETAIL)

- NOTES:**
1. SAW CUT REQ'D AT ALL CURB & GUTTER LOCATIONS
  2. SAW CUT LOCATIONS TO BE VERIFIED BY ENGINEER (TYP.)
  3. PLACED CURB & GUTTER SLOPE TO MATCH ADJACENT CURB & GUTTER
  4. PLACE INLET PROTECTION TYPE C (TYPICAL) AT ALL INLET LOCATIONS (PLACE INLET PROTECTION TYPE D AT LOW POINTS)
  5. STA 99+50 TO 260+13 LT & RT - REMOVING PAVEMENT BUTT JOINTS (25') IS REQUIRED AT ALL MATCH POINTS AND STRUCTURE LOCATIONS (SEE CONSTRUCTION DETAIL)

|   |                    |                         |                        |
|---|--------------------|-------------------------|------------------------|
| PROJECT NO: 1300-03-72  | COUNTY: MILWAUKEE  | PLAN DETAIL             | SHEET 37               |
| FILE NAME: N:\PDS\3201\300303\37SHEETSPAN02\201_P0.DWG<br>LAYOUT NAME: 000105_1.d | FLYBY: STARK, GARW | PLANT NAME:             | WISDOT/CADDIS SHEET 42 |
| DATE: 1/22/2021 12:21 PM  | PLOT DATE:         | PLOT SCALE: 1 IN=100 FT |                        |
| HWY: STH 794  |                    |                         |                        |



Addendum No. 01  
 ID 1300-03-72  
 Revised Sheet 38  
 January 27, 2021



- NOTES:
1. SAW CUT REQ'D AT ALL CURB & GUTTER LOCATIONS
  2. SAW CUT LOCATIONS TO BE VERIFIED BY ENGINEER (TYP.)
  3. PLACE CURB & GUTTER SLOPE TO MATCH ADJACENT CURB & GUTTER
  4. PLACE INLET PROTECTION TYPE C (TYPICAL) AT ALL INLET LOCATIONS (PLACE INLET PROTECTION TYPE D AT LOW POINTS)
  5. STA. 99+50 TO 260+13 LT & RT - REMOVING PAVEMENT BUTT JOINTS (25') IS REQUIRED AT ALL MATCH POINTS AND STRUCTURE LOCATIONS (SEE CONSTRUCTION DETAIL)

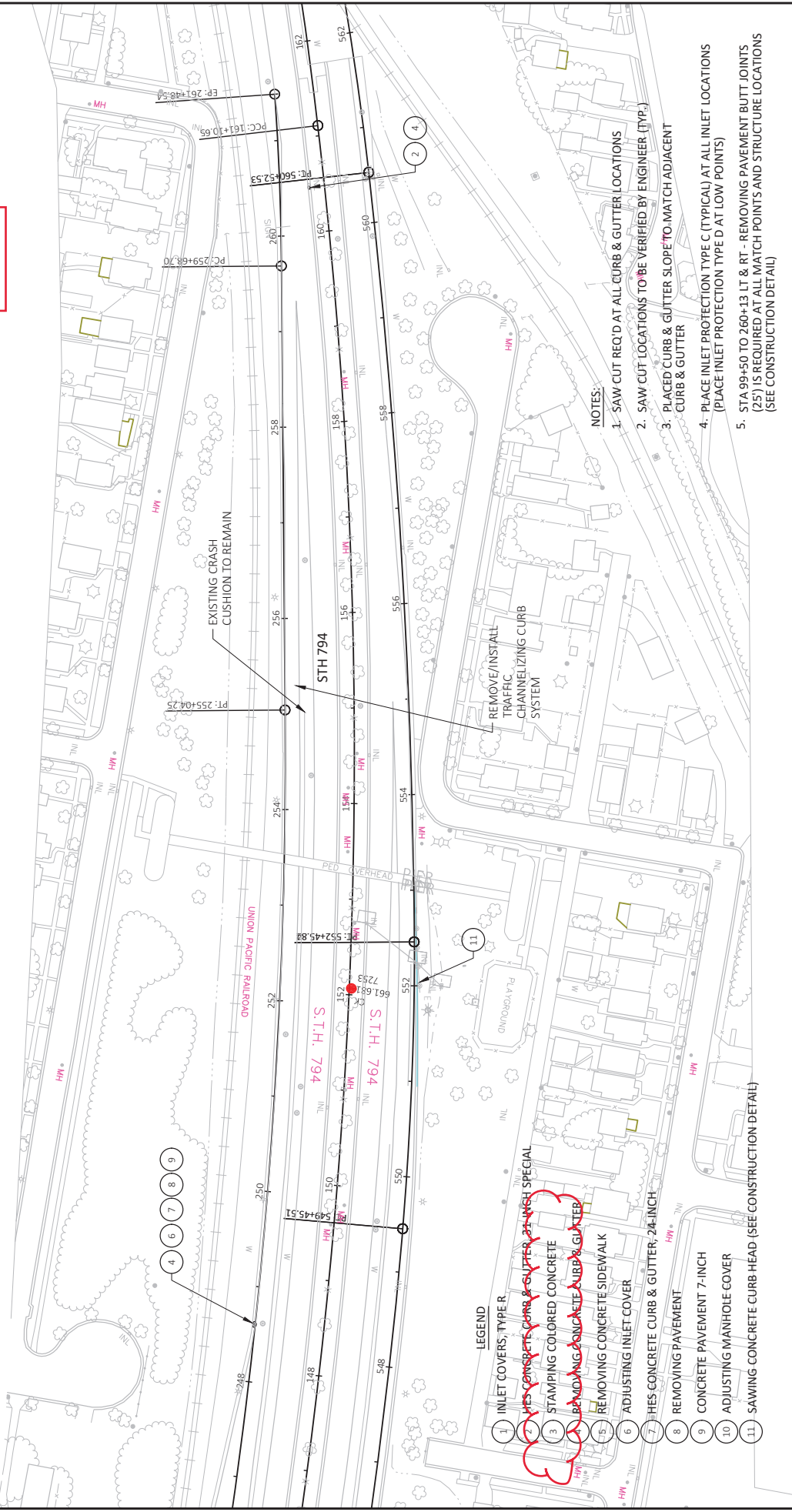
- LEGEND
- 1. REMOVE CONCRETE CURB & GUTTER
  - 2. STAMPING COLORED CONCRETE
  - 3. REMOVING CONCRETE CURB & GUTTER
  - 4. REMOVING CONCRETE SIDEWALK
  - 5. ADJUSTING INLET COVER
  - 6. HES CONCRETE CURB & GUTTER
  - 7. REMOVING PAVEMENT
  - 8. CONCRETE PAVEMENT 7-INCH
  - 9. ADJUSTING MANHOLE COVER
  - 10. SAWING CONCRETE CURB HEAD
  - 11. SAWING CONCRETE CURB HEAD (SEE CONSTRUCTION DETAIL)

Addendum No. 01  
ID 1300-03-72  
Revised Sheet 39  
January 27, 2021

2



2



- NOTES:
1. SAW CUT REQ'D AT ALL CURB & GUTTER LOCATIONS
  2. SAW CUT LOCATIONS TO BE VERIFIED BY ENGINEER (TYP.)
  3. PLACED CURB & GUTTER SLOPE TO MATCH ADJACENT CURB & GUTTER
  4. PLACE INLET PROTECTION TYPE C (TYPICAL) AT ALL INLET LOCATIONS (PLACE INLET PROTECTION TYPE D AT LOW POINTS)
  5. STA 99+50 TO 260+13 LT & RT - REMOVING PAVEMENT BUTT JOINTS (25') IS REQUIRED AT ALL MATCH POINTS AND STRUCTURE LOCATIONS (SEE CONSTRUCTION DETAIL)

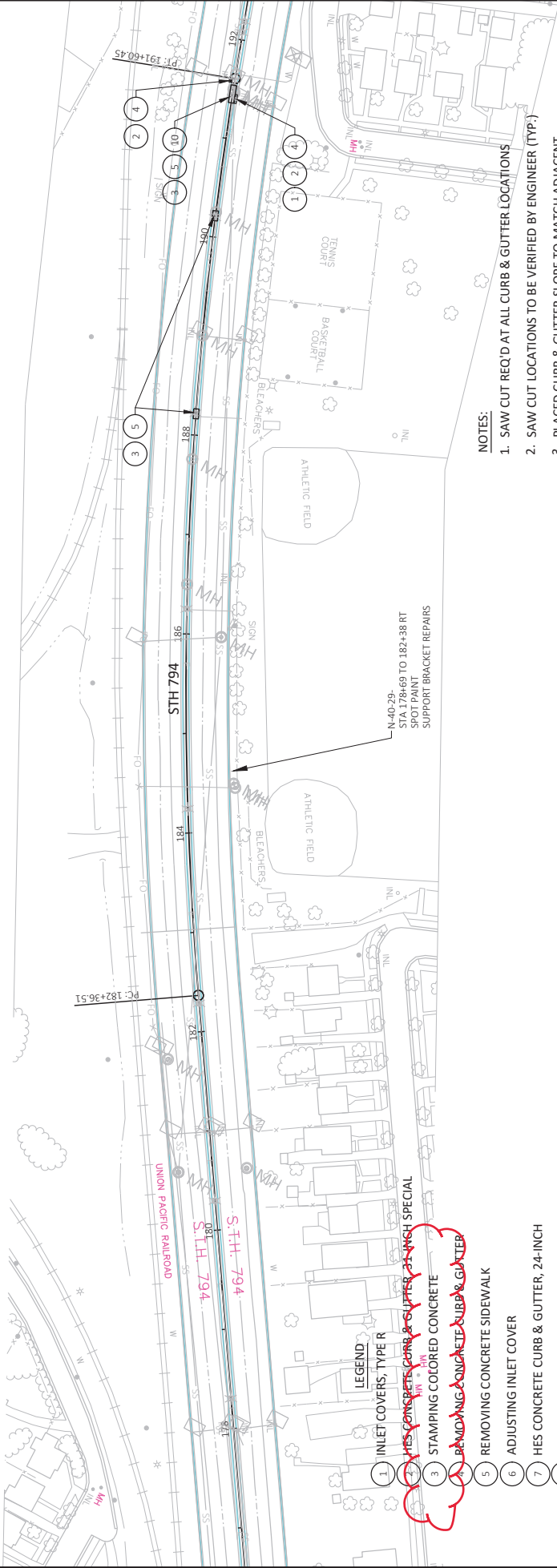
- LEGEND
- (1) INLET COVERS, TYPE B
  - (2) 18" CONCRETE CURB & GUTTER, 24" HIGH SPECIAL
  - (3) STAMPING COLORED CONCRETE
  - (4) REMOVING CONCRETE CURB & GUTTER
  - (5) REMOVING CONCRETE SIDEWALK
  - (6) ADJUSTING INLET COVER
  - (7) 18" CONCRETE CURB & GUTTER, 24" INCH
  - (8) REMOVING PAVEMENT
  - (9) CONCRETE PAVEMENT 7" INCH
  - (10) ADJUSTING MANHOLE COVER
  - (11) SAWING CONCRETE CURB HEAD (SEE CONSTRUCTION DETAIL)







Addendum No. 01  
 ID 1300-03-72  
 Revised Sheet 41  
 January 27, 2021



- NOTES:**
- 1. SAW CUT REQ'D AT ALL CURB & GUTTER LOCATIONS
  - 2. SAW CUT LOCATIONS TO BE VERIFIED BY ENGINEER (TYP.)
  - 3. PLACED CURB & GUTTER SLOPE TO MATCH ADJACENT CURB & GUTTER
  - 4. PLACE INLET PROTECTION TYPE C (TYPICAL) AT ALL INLET LOCATIONS (PLACE INLET PROTECTION TYPE D AT LOW POINTS)
  - 5. STA 99+50 TO 260+13 LT & RT - REMOVING PAVEMENT BUTT JOINTS (25') IS REQUIRED AT ALL MATCH POINTS AND STRUCTURE LOCATIONS (SEE CONSTRUCTION DETAIL)

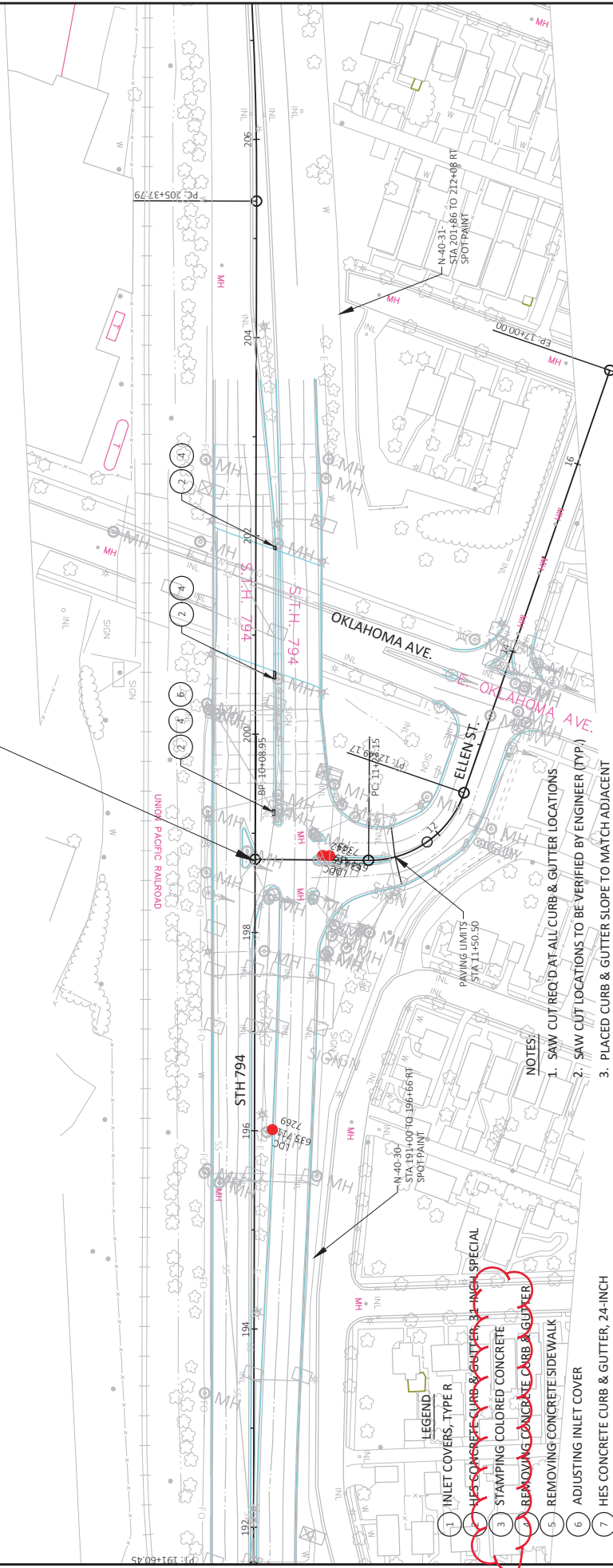
- LEGEND**  
 INLET COVERS, TYPE R
- 1) HES CONCRETE CURB & GUTTER, 24-INCH SPECIAL
  - 2) STAMPING COLORED CONCRETE
  - 3) REMOVING CONCRETE CURB & GUTTER
  - 4) REMOVING CONCRETE CURB & GUTTER
  - 5) REMOVING CONCRETE SIDEWALK
  - 6) ADJUSTING INLET COVER
  - 7) HES CONCRETE CURB & GUTTER, 24-INCH
  - 8) REMOVING PAVEMENT
  - 9) CONCRETE PAVEMENT 7-INCH
  - 10) ADJUSTING MANHOLE COVER
  - 11) SAWING CONCRETE CURB HEAD (SEE CONSTRUCTION DETAIL)

|  |                                 |                        |                         |
|--|---------------------------------|------------------------|-------------------------|
| PROJECT NO: 1300-03-72   | COUNTY: MILWAUKEE               | PLAN DETAIL            | SHEET 41                |
| FILE NAME: N:\PDS\32013000302\320130003\320130003\1300_03_72_01_LAYOUT.DWG | PLOT DATE: 1/22/2021 12:22 PM   | PLOT BY: STARK, GARY W | PLOT SCALE: 1 IN=100 FT |
| LAYOUT NAME: 00109_jd  | PLOT NAME: WIS07\CADDS SHEET 42 | HWY: STH 794           |                         |

Addendum No. 01  
 ID 1300-03-72  
 Revised Sheet 42  
 January 27, 2021



SIGNAL WORK:  
 NEW SIGNALS  
 NEW CABINET  
 RELOCATE/ABANDON ELLEN ST. FAR LOOP



- 1 INLET COVERS, TYPE R
- 2 ~~REMOVING CONCRETE CURB & GUTTER, 24-INCH~~
- 3 STAMPING COLORED CONCRETE
- 4 ~~REMOVING CONCRETE CURB & GUTTER~~
- 5 REMOVING CONCRETE SIDEWALK
- 6 ADJUSTING INLET COVER
- 7 HES CONCRETE CURB & GUTTER, 24-INCH
- 8 REMOVING PAVEMENT
- 9 CONCRETE PAVEMENT 7-INCH
- 10 ADJUSTING MANHOLE COVER
- 11 SAWING CONCRETE CURB HEAD (SEE CONSTRUCTION DETAIL)

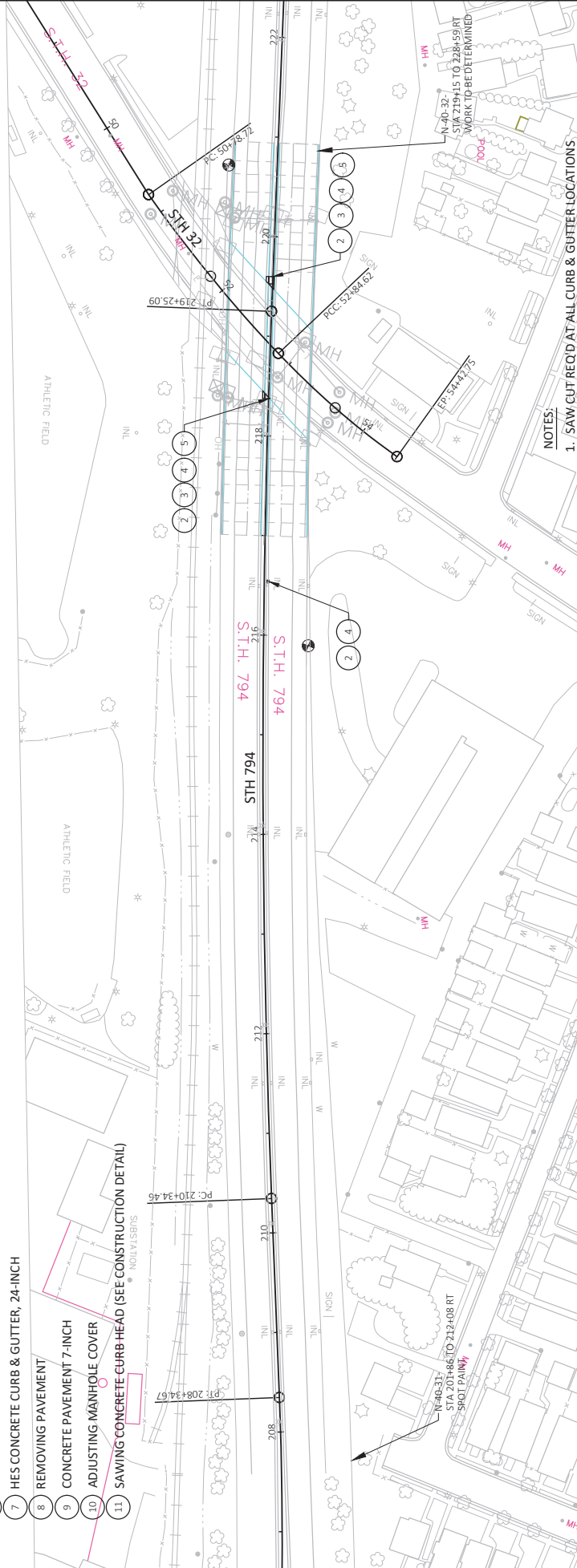
- NOTES:
- 1. SAW CUT REQ'D AT ALL CURB & GUTTER LOCATIONS
- 2. SAW CUT LOCATIONS TO BE VERIFIED BY ENGINEER (TYP.)
- 3. PLACED CURB & GUTTER SLOPE TO MATCH ADJACENT CURB & GUTTER
- 4. PLACE INLET PROTECTION TYPE C (TYPICAL) AT ALL INLET LOCATIONS (PLACE INLET PROTECTION TYPE D AT LOW POINTS)
- 5. STA 99+50 TO 260+13 LT & RT - REMOVING PAVEMENT BUTT JOINTS (25') IS REQUIRED AT ALL MATCH POINTS AND STRUCTURE LOCATIONS (SEE CONSTRUCTION DETAIL)

|   |                         |                    |                      |
|---|-------------------------|--------------------|----------------------|
| PROJECT NO: 1300-03-72                                  | COUNTY: MILWAUKEE       | PLAN DETAIL        | SHEET 42             |
| HWY: STH 794  | FLOTBY: STARK, GARBY    | 1/22/2021 12:22 PM | 1 IN=100 FT          |
| FILE NAME: N:\PDS\3201\30003201SHEETS\PLAN02\201_P0.DWG | LAYOUT NAME: 001_00_.pd |                    | WIS007/CADD/SHEET 42 |

Addendum No. 01  
 ID 1300-03-72  
 Revised Sheet 43  
 January 27, 2021

LEGEND

- 1 INLET COVERS, TYPE R
- 2 ~~HES CONCRETE CURB & GUTTERS, 24-INCH SPECIAL~~
- 3 STAMPING COLORED CONCRETE
- 4 ~~REMOVING CONCRETE CURB & GUTTER~~
- 5 REMOVING CONCRETE SIDEWALK
- 6 ADJUSTING INLET COVER
- 7 HES CONCRETE CURB & GUTTER, 24-INCH
- 8 REMOVING PAVEMENT
- 9 CONCRETE PAVEMENT 7-INCH
- 10 ADJUSTING MANHOLE COVER
- 11 SAWING CONCRETE CURB HEAD (SEE CONSTRUCTION DETAIL)



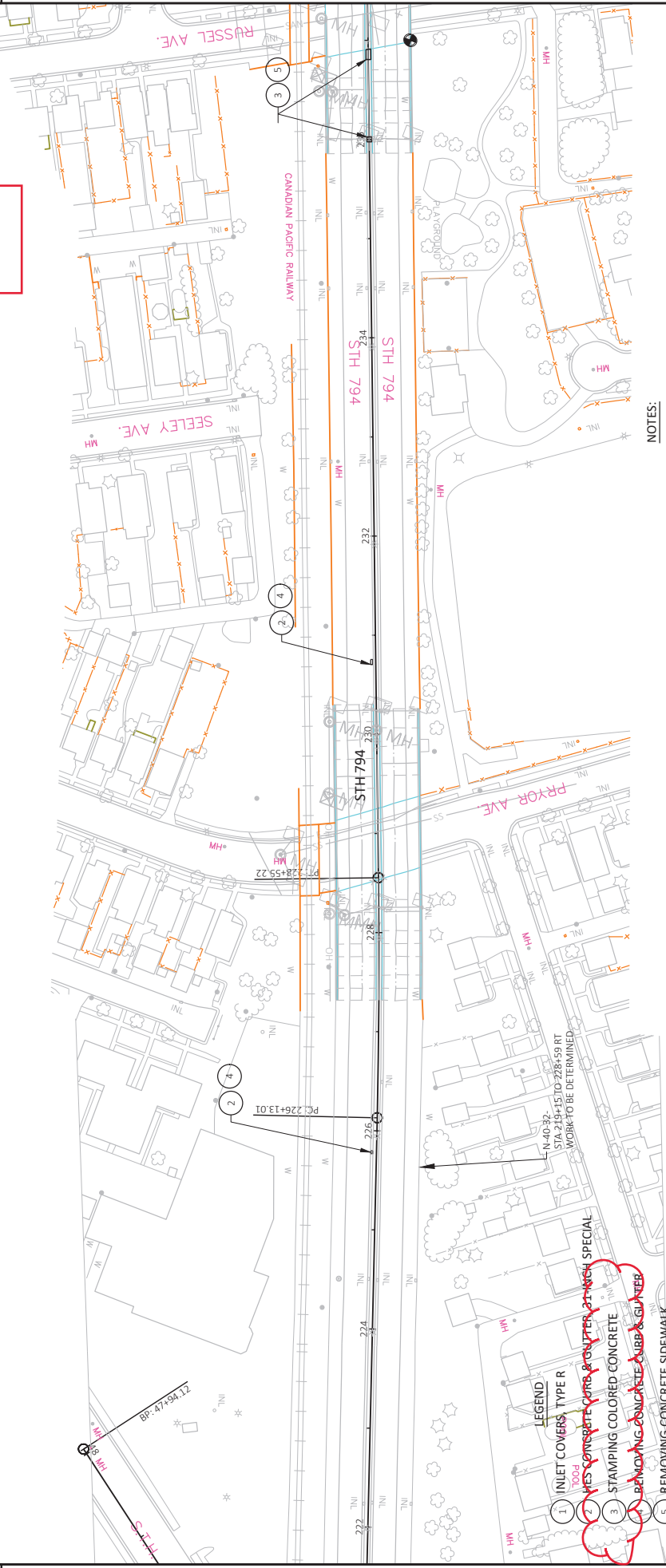
NOTES:

1. SAW CUT REQ'D AT ALL CURB & GUTTER LOCATIONS
2. SAW CUT LOCATIONS TO BE VERIFIED BY ENGINEER (TYP.)
3. PLACED CURB & GUTTER SLOPE TO MATCH ADJACENT CURB & GUTTER
4. PLACE INLET PROTECTION TYPE C (TYPICAL) AT ALL INLET LOCATIONS (PLACE INLET PROTECTION TYPE D AT LOW POINTS)
5. STA 99+50 TO 260+13 LT & RT - REMOVING PAVEMENT BUTT JOINTS (25') IS REQUIRED AT ALL MATCH POINTS AND STRUCTURE LOCATIONS (SEE CONSTRUCTION DETAIL)

|  |                      |                    |                        |
|--|----------------------|--------------------|------------------------|
| PROJECT NO: 1300-03-72                                 | COUNTY: MILWAUKEE    | PLAN DETAIL        | SHEET 43               |
| FILE NAME: N:\PDS\32013000303\32SHEETSPAN021201_PD.DWG | FLYBY: STARK, GARY W | 1/22/2021 12:23 PM | 1 IN=100 FT            |
| LAYOUT NAME: 00111_pd                                  |                      |                    | WISDOT/CADDIS SHEET 42 |



Addendum No. 01  
 ID 1300-03-72  
 Revised Sheet 44  
 January 27, 2021



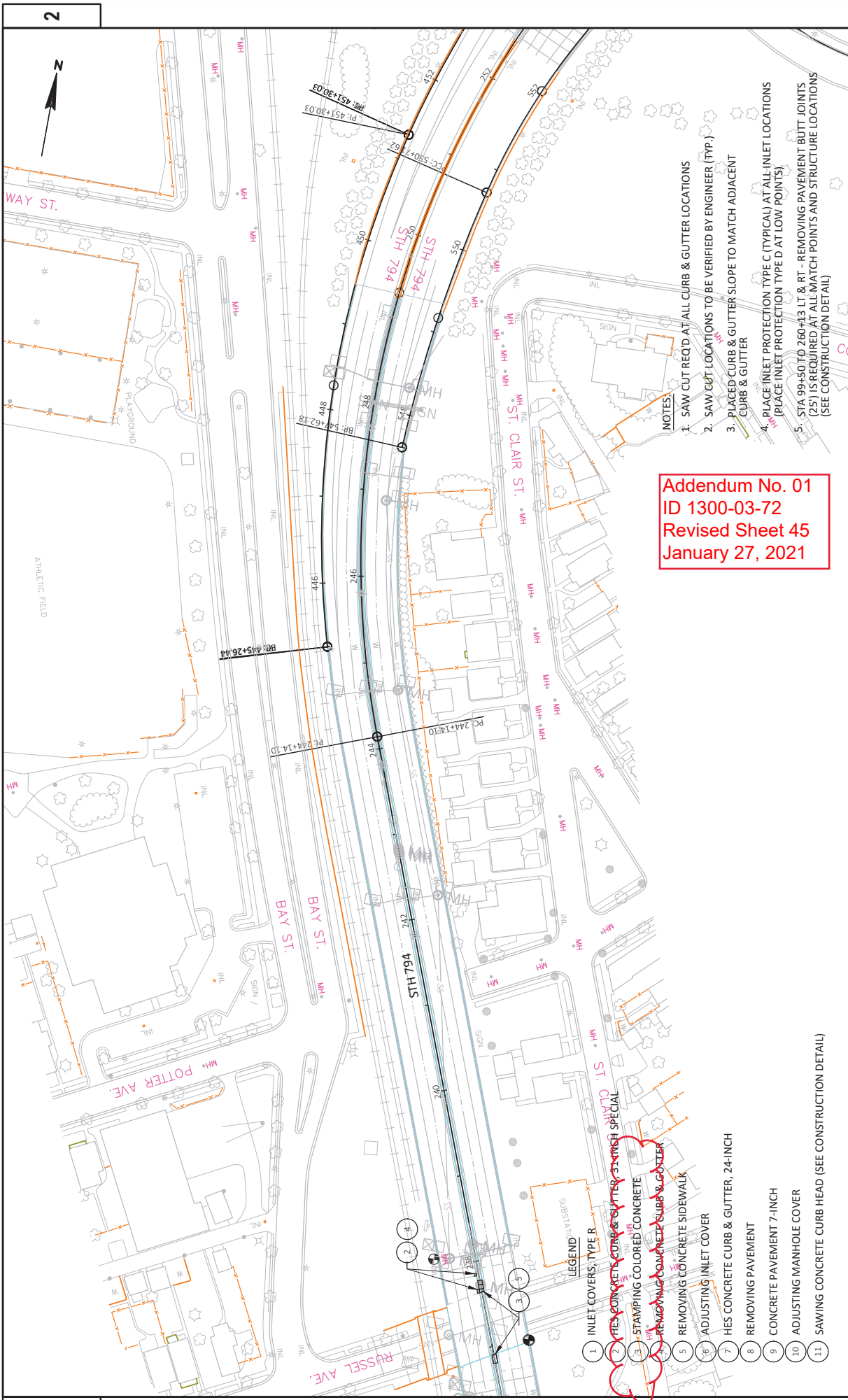
**NOTES:**

1. SAW CUT REQ'D AT ALL CURB & GUTTER LOCATIONS
2. SAW CUT LOCATIONS TO BE VERIFIED BY ENGINEER (TYP.)
3. PLACED CURB & GUTTER SLOPE TO MATCH ADJACENT CURB & GUTTER
4. PLACE INLET PROTECTION TYPE C (TYPICAL) AT ALL INLET LOCATIONS (PLACE INLET PROTECTION TYPE D AT LOW POINTS)
5. STA 99+50 TO 260+13 LT & RT - REMOVING PAVEMENT BUTT JOINTS (25') IS REQUIRED AT ALL MATCH POINTS AND STRUCTURE LOCATIONS (SEE CONSTRUCTION DETAIL)

1. INLET COVERS TYPE R
2. REMOVING COLORED CONCRETE
3. STAMPING COLORED CONCRETE
4. REMOVING CONCRETE CURB & GUTTER
5. REMOVING CONCRETE SIDEWALK
6. ADJUSTING INLET COVER
7. HES CONCRETE CURB & GUTTER, 24-INCH
8. REMOVING PAVEMENT
9. CONCRETE PAVEMENT 7-INCH
10. ADJUSTING MANHOLE COVER
11. SAWING CONCRETE CURB HEAD (SEE CONSTRUCTION DETAIL)

**LEGEND**

|  |                      |                    |                      |
|--|----------------------|--------------------|----------------------|
| PROJECT NO: 1300-03-72                                   | COUNTY: MILWAUKEE    | PLAN DETAIL        | SHEET 44             |
| FILE NAME: N:\PDS\3201\300303\32SHEEPS\PLAN02\201_P0.DWG | FLYBY: STARK, GARY W | 1/22/2021 12:23 PM | 1 IN=100 FT          |
| LAYOUT NAME: 00112_1.d                                   | PLLOT NAME:          |                    | WIS007/CADD/SHEET 42 |



2

2

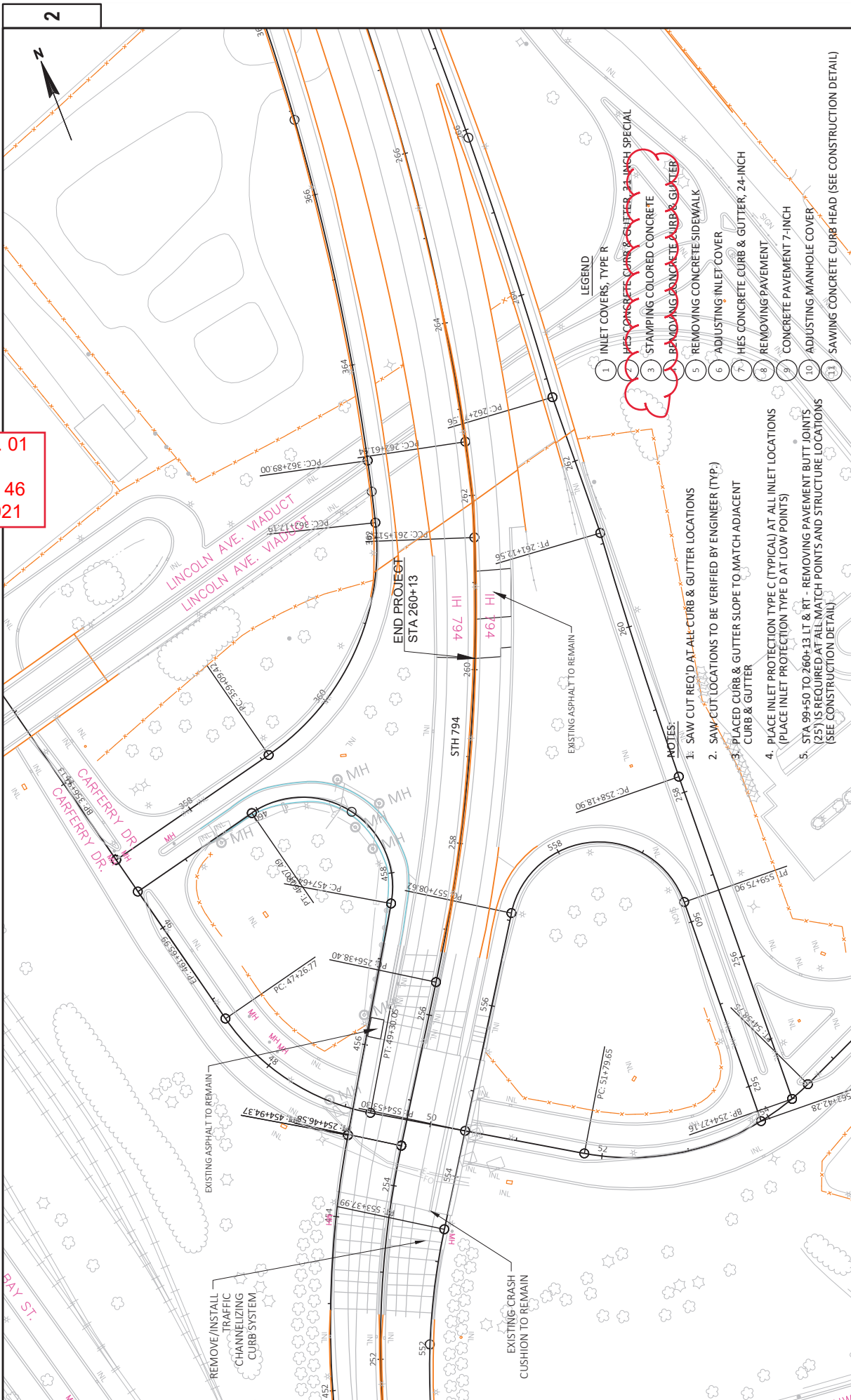


Addendum No. 01  
 ID 1300-03-72  
 Revised Sheet 45  
 January 27, 2021

- NOTES:
1. SAW CUT REQ'D AT ALL CURB & GUTTER LOCATIONS
  2. SAW CUT LOCATIONS TO BE VERIFIED BY ENGINEER (TYP.)
  3. PLACED CURB & GUTTER SLOPE TO MATCH ADJACENT CURB & GUTTER
  4. PLACE INLET PROTECTION TYPE C (TYPICAL) AT ALL INLET LOCATIONS (PLACE INLET PROTECTION TYPE D AT LOW POINTS)
  5. STA 99+50 TO 260+43 LT & RT - REMOVING PAVEMENT BUTT JOINTS (25') IS REQUIRED AT ALL MATCH POINTS AND STRUCTURE LOCATIONS (SEE CONSTRUCTION DETAIL)

- LEGEND:
- 1 INLET COVERS, TYPE R
  - 2 HES CONCRETE CURB & GUTTER, 24-INCH
  - 3 STAMPING COLORED CONCRETE
  - 4 REMOVING CONCRETE CURB & GUTTER
  - 5 REMOVING CONCRETE SIDEWALK
  - 6 ADJUSTING INLET COVER
  - 7 HES CONCRETE CURB & GUTTER, 24-INCH
  - 8 REMOVING PAVEMENT
  - 9 CONCRETE PAVEMENT 7-INCH
  - 10 ADJUSTING MANHOLE COVER
  - 11 SAWING CONCRETE CURB HEAD (SEE CONSTRUCTION DETAIL)

Addendum No. 01  
ID 1300-03-72  
Revised Sheet 46  
January 27, 2021



LEGEND

- 1 INLET COVERS, TYPE R
- 2 HES CONCRETE CURB & GUTTER, 24-INCH SPECIAL
- 3 STAMPING COLORED CONCRETE
- 4 REMAINING CONCRETE CURB & GUTTER
- 5 REMOVING CONCRETE SIDEWALK
- 6 ADJUSTING INLET COVER
- 7 HES CONCRETE CURB & GUTTER, 24-INCH
- 8 REMOVING PAVEMENT
- 9 CONCRETE PAVEMENT 7-INCH
- 10 ADJUSTING MANHOLE COVER
- 11 SAWING CONCRETE CURB HEAD (SEE CONSTRUCTION DETAIL)

- NOTES:
1. SAW CUT REQ'D AT ALL CURB & GUTTER LOCATIONS
  2. SAW CUT LOCATIONS TO BE VERIFIED BY ENGINEER (TYP.)
  3. PLACED CURB & GUTTER SLOPE TO MATCH ADJACENT CURB & GUTTER
  4. PLACE INLET PROTECTION TYPE C (TYPICAL) AT ALL INLET LOCATIONS (PLACE INLET PROTECTION TYPE D AT LOW POINTS)
  5. STA 99+50 TO 260+13 LT & RT - REMOVING PAVEMENT BUTT JOINTS (2'S) IS REQUIRED AT ALL MATCH POINTS AND STRUCTURE LOCATIONS (SEE CONSTRUCTION DETAIL)

Addendum No. 01  
ID 1300-03-72  
Revised Sheet 230  
January 27, 2021

CATEGORY 0010

| LOCATION           | REMOVING CURB & GUTTER<br>204.0150<br>LF | REMOVING CONCRETE<br>SIDEWALK<br>204.0155<br>SY | REMOVING PAVEMENT<br>204.0100<br>SY | SAVING CONCRETE<br>690.0250**<br>LF | STAMPING<br>COLORED<br>CONCRETE<br>405.1000<br>CY | CONCRETE<br>PAVEMENT<br>7-INCH<br>415.0070<br>SY | DRILLED TIE<br>BARS<br>416.0610**<br>EACH | HES CONCRETE<br>CURB & GUTTER<br>31-INCH SPECIAL<br>SPV.0090.04<br>LF | HES CONCRETE<br>CURB & GUTTER<br>24-INCH<br>SPV.0090.05<br>LF |
|--------------------|--|---|-------------------------------------|-------------------------------------|---|--|---|---|---|
| STH794             |  |   |                                     |                                     |   |  |   |   |   |
| STA 108+50, 16' RT | 7  | --  | --                                  | 13                                  | --  | --   | 2   | 7   | --  |
| STA 160+47, 15' LT | 3  | --  | --                                  | 9                                   | 0.30  | --   | 1   | 3   | --  |
| STA 188+20, 2' LT  | --                                       | --  | --                                  | 8                                   | 0.30  | --   | --  | --  | --  |
| STA 190+20, 2' LT  | --                                       | --  | --                                  | 8                                   | 0.50  | --   | --  | --  | --  |
| STA 191+44, 5' RT  | 9  | 3.0   | --                                  | 23                                  | --  | --   | 3   | 9   | --  |
| STA 191+57, 5' LT  | 3  | --  | --                                  | 9                                   | --  | --   | 1   | 3   | --  |
| STA 199+22, 18' RT | 6  | --  | --                                  | 12                                  | --  | --   | 2   | 6   | --  |
| STA 200+55, 18' RT | 8  | --  | --                                  | 14                                  | --  | --   | 2   | 8   | --  |
| STA 201+89, 18' RT | 3  | --  | --                                  | 9                                   | --  | --   | 1   | 3   | --  |
| STA 216+54, 5' RT  | 3  | --  | --                                  | 9                                   | --  | --   | 1   | 3   | --  |
| STA 218+40, 4' LT  | 8  | 2.0   | --                                  | 22                                  | 0.10  | --   | 1   | 3   | --  |
| STA 219+56, 4' LT  | 7  | 2.0   | --                                  | 21                                  | 0.30  | --   | 2   | 8   | --  |
| STA 225+78, 6' LT  | 3  | --  | --                                  | 9                                   | 0.30  | --   | 2   | 7   | --  |
| STA 230+74, 5' LT  | 5  | --  | --                                  | 11                                  | --  | --   | 1   | 3   | --  |
| STA 236+00, CENTER | --                                       | --  | --                                  | 8                                   | 0.40  | --   | 1   | 4   | --  |
| STA 236+80, CENTER | --                                       | --  | --                                  | 8                                   | --  | --   | 1   | 3   | --  |
| STA 237+67, 5' LT  | 4  | 1.0   | --                                  | 15                                  | --  | --   | --  | --  | --  |
| STA 237+86, 5' LT  | 3  | --  | --                                  | 9                                   | --  | --   | --  | --  | --  |
| HOWARD SB OFF RAMP |  |   |                                     |                                     |   |  |   |   |   |
| STA 248+60, 1' LT  | 6  | --  | 0.4                                 | 20                                  | --  | 0.4  | --  | --  | 6   |
| UNDISTRIBUTED      | --                                       | --  | --                                  | 12                                  | --  | --   | --  | --  | --  |
| <b>SUBTOTAL</b>    | <b>78</b>                                | <b>8.0</b>                                      | <b>0.4</b>                          | <b>249</b>                          |   |  | <b>21</b>                                 | <b>72</b>   | <b>6</b>  |
| LOCATION           |  |   |                                     |                                     |   |  |   |   |   |
| STH794             |  |   |                                     |                                     |   |  |   |   |   |
| STA 108+50, 16' RT |  |   |                                     |                                     |   |  |   |   |   |
| STA 160+47, 15' LT |  |   |                                     |                                     |   |  |   |   |   |
| STA 188+20, 2' LT  |  |   |                                     |                                     |   |  |   |   |   |
| STA 190+20, 2' LT  |  |   |                                     |                                     |   |  |   |   |   |
| STA 191+44, 5' RT  |  |   |                                     |                                     |   |  |   |   |   |
| STA 191+57, 5' LT  |  |   |                                     |                                     |   |  |   |   |   |
| STA 199+22, 18' RT |  |   |                                     |                                     |   |  |   |   |   |
| STA 200+55, 18' RT |  |   |                                     |                                     |   |  |   |   |   |
| STA 201+89, 18' RT |  |   |                                     |                                     |   |  |   |   |   |
| STA 216+54, 5' RT  |  |   |                                     |                                     |   |  |   |   |   |
| STA 218+40, 4' LT  |  |   |                                     |                                     |   |  |   |   |   |
| STA 219+56, 4' LT  |  |   |                                     |                                     |   |  |   |   |   |
| STA 225+78, 6' LT  |  |   |                                     |                                     |   |  |   |   |   |
| STA 230+74, 5' LT  |  |   |                                     |                                     |   |  |   |   |   |
| STA 236+00, CENTER |  |   |                                     |                                     |   |  |   |   |   |
| STA 236+80, CENTER |  |   |                                     |                                     |   |  |   |   |   |
| STA 237+67, 5' LT  |  |   |                                     |                                     |   |  |   |   |   |
| STA 237+86, 5' LT  |  |   |                                     |                                     |   |  |   |   |   |
| HOWARD SB OFF RAMP |  |   |                                     |                                     |   |  |   |   |   |
| STA 248+60, 1' LT  |  |   |                                     |                                     |   |  |   |   |   |
| UNDISTRIBUTED      |  |   |                                     |                                     |   |  |   |   |   |
| <b>TOTAL</b>       |  |   |                                     |                                     | <b>2.30</b>                                       | <b>0.4</b>                                       | <b>21</b>                                 | <b>72</b>   | <b>6</b>  |

\*\* ADDITIONAL QUANTITIES SHOWN ELSEWHERE IN PLAN

\*\* ADDITIONAL QUANTITIES SHOWN ELSEWHERE IN PLAN



CATEGORY 0010

Addendum No. 01  
ID 1300-03-72  
Revised Sheet 236  
January 27, 2021

| LOCATION              | BASE PATCHING<br>CONCRETE SHES<br>390.0403* | DRILLED TIE<br>BARS<br>EACH | DRILLED DOWEL<br>BARS<br>EACH | CONCRETE<br>PAVEMENT<br>REPLACEMENT SHES<br>416.1725 | SAWING<br>CONCRETE<br>690.0250** |
|-----------------------|---|-----------------------------|-------------------------------|--|----------------------------------|
| NB STH 794            |   |                             |                               |  |                                  |
| STA 58+51 TO 132+00   | 2,325                                       | 654                         | 5,231                         | --   | 6,974                            |
| STA 132+00 TO 196+00  | 2,224                                       | 1,356                       | 5,005                         | 1500   | 6,673                            |
| STA 1960+00 TO 253+42 | 1,731                                       | 519                         | 4,673                         | --   | 6,231                            |
| STA 255+93 TO 260+13  | 136   | 41                          | 368                           | --   | 490                              |
| SB STH 794            |   |                             |                               |  |                                  |
| STA 58+51 TO 132+00   | 2,533                                       | 712                         | 5,699                         | --   | 7,598                            |
| STA 132+00 TO 194+25  | 2,244                                       | 561                         | 5,049                         | --   | 6,733                            |
| STA 194+25 TO 253+49  | 1,790                                       | 448                         | 4,028                         | --   | 5,371                            |
| STA 256+03 TO 260+13  | 130   | 33                          | 293                           | --   | 391                              |
| UNDISTRIBUTED         | 656   | 216                         | 1,517                         | --   | 2,023                            |
| <b>TOTAL</b>          | <b>13,769</b>                               | <b>4,540</b>                | <b>31,863</b>                 | <b>1,500</b>   | <b>42,484</b>                    |

| LOCATION           | INLET COVERS<br>TYPE R<br>611.0648<br>EACH |
|--------------------|--|
| STA 108+50, 16' RT | 1  |
| STA 191+44, 5' RT  | 1  |
| <b>TOTAL</b>       | <b>2</b>                                   |

\*\* ADDITIONAL QUANTITIES SHOWN ELSEWHERE IN PLAN  
\* ENGINEER TO DETERMINE EXACT LOCATION IN THE FIELD

| LOCATION             | MONOLITHIC SHIM<br>CONCRETE SHES<br>SPV.0035.01<br>CY | ASPHALTIC SURFACE<br>TEMPORARY<br>465.01<br>TON | ADJUSTING<br>MANHOLE COVERS<br>611.8110<br>EACH | ADJUSTING<br>INLET COVERS<br>611.8115<br>EACH | COVER PLATES<br>TEMPORARY<br>611.8120 S<br>EACH | INLET PROTECTION<br>TYPE C<br>628.7015*<br>EACH | SAWING<br>CONCRETE<br>690.0250**<br>LF |
|----------------------|---|---|---|---|---|---|--|
| NB STH 794           |   |   |   |   |   |   |  |
| STA 58+51 TO 99+50   | --  | --  | --  | --  | --  | 23  | --                                     |
| STA 99+50 TO 155+00  | 16.5  | 20  | --  | --  | 11  | 28  | 220                                    |
| STA 155+00 TO 177+25 | 16.5  | 20  | --  | --  | 11  | 15  | 220                                    |
| STA 177+25 TO 223+00 | 3.0   | 4   | --  | --  | 2   | 33  | 40                                     |
| STA 223+00 TO 260+13 | 6.0   | 7   | 1   | --  | 4   | 27  | 80                                     |
| SB STH 794           |   |   |   |   |   |   |  |
| STA 58+51 TO 99+50   | --  | --  | --  | --  | --  | 27  | --                                     |
| STA 99+50 TO 155+00  | 10.5  | 13  | 1   | 1   | 7   | 22  | 140                                    |
| STA 155+00 TO 177+25 | 13.5  | 17  | --  | --  | 9   | 14  | 180                                    |
| STA 177+25 TO 223+00 | 13.5  | 17  | 1   | 1   | 9   | 34  | 180                                    |
| STA 223+00 TO 260+13 | 7.5   | 9   | --  | --  | 5   | 27  | 100                                    |
| LAYTON AVE           |   |   |   |   |   |   |  |
| NB ON RAMP           | 3.0   | 4   | --  | --  | 2   | 9   | 40                                     |
| SB OFF RAMP          | 4.5   | 6   | --  | --  | 3   | 12  | 60                                     |
| HOWARD AVE           |   |   |   |   |   |   |  |
| NB ON RAMP           | --  | --  | --  | --  | --  | 5   | --                                     |
| NB OFF RAMP          | --  | --  | --  | --  | --  | 5   | --                                     |
| SB ON RAMP           | 4.5   | 6   | --  | --  | 3   | 10  | 60                                     |
| SB OFF RAMP          | --  | --  | --  | --  | --  | --  | --                                     |
| <b>TOTAL</b>         | <b>99.0</b>   | <b>123</b>                                      | <b>1</b>  | <b>2</b>                                      | <b>66</b>                                       | <b>291</b>                                      | <b>1,320</b>                           |

\* ENGINEER TO DETERMINE EXACT LOCATION IN THE FIELD  
\*\* ADDITIONAL QUANTITIES SHOWN ELSEWHERE IN PLAN



Proposal Schedule of Items

Proposal ID: 20210209012 Project(s): 1300-03-72

Federal ID(s): WISC 2021140

SECTION: 0001 Roadway Items

Alt Set ID: Alt Mbr ID:

| Proposal Line Number | Item ID Description   | Approximate Quantity and Units | Unit Price | Bid Amount |
|----------------------|---|--------------------------------|------------|------------|
| 0002                 | 203.0200<br>Removing Old Structure (station) 01.<br>174'LA'+95, RT  | LS                             | LUMP SUM   | _____.     |
| 0004                 | 203.0200<br>Removing Old Structure (station) 02.<br>23'E'+70, LT  | LS                             | LUMP SUM   | _____.     |
| 0006                 | 203.0200<br>Removing Old Structure (station) 03.<br>206'LA'+92, RT  | LS                             | LUMP SUM   | _____.     |
| 0008                 | 203.0200<br>Removing Old Structure (station) 04.<br>223'LA'+87, RT  | LS                             | LUMP SUM   | _____.     |
| 0010                 | 204.0100<br>Removing Concrete Pavement  | 0.400<br>SY                    | _____.     | _____.     |
| 0012                 | 204.0105<br>Removing Pavement Butt Joints   | 3,184.000<br>SY                | _____.     | _____.     |
| 0014                 | 204.0150<br>Removing Curb & Gutter  | 78.000<br>LF                   | _____.     | _____.     |
| 0016                 | 204.0155<br>Removing Concrete Sidewalk  | 8.000<br>SY                    | _____.     | _____.     |
| 0018                 | 204.0195<br>Removing Concrete Bases   | 17.000<br>EACH                 | _____.     | _____.     |
| 0020                 | 204.9060.S<br>Removing (item description) 11. Lighting<br>Units   | 7.000<br>EACH                  | _____.     | _____.     |
| 0022                 | 204.9060.S<br>Removing (item description) 12. Sign<br>Lighting  | 2.000<br>EACH                  | _____.     | _____.     |
| 0024                 | 204.9090.S<br>Removing (item description) 11.<br>Electrical Wires from Conduit                                      | 875.000<br>LF                  | _____.     | _____.     |
| 0026                 | 204.9105.S<br>Removing (item description) 30. Traffic<br>Signals STH 794 & Ellen St                                 | LS                             | LUMP SUM   | _____.     |
| 0028                 | 204.9105.S<br>Removing (item description) 31. Loop<br>Detector Wire & Lead-In Cable STH 794<br>& S Pennsylvania Ave | LS                             | LUMP SUM   | _____.     |



## Proposal Schedule of Items

Proposal ID: 20210209012 Project(s): 1300-03-72

Federal ID(s): WISC 2021140

SECTION: 0001

Roadway Items

Alt Set ID:

Alt Mbr ID:

| Proposal Line Number | Item ID Description   | Approximate Quantity and Units | Unit Price | Bid Amount |
|----------------------|---|--------------------------------|------------|------------|
| 0030                 | 204.9105.S<br>Removing (item description) 32. Loop Detector Wire & Lead-In Cable STH 794 & Layton Ave | LS                             | LUMP SUM   | _____.     |
| 0032                 | 204.9105.S<br>Removing (item description) 33. Loop Detector Wire & Lead-In Cable STH 794 & Ellen St   | LS                             | LUMP SUM   | _____.     |
| 0034                 | 213.0100<br>Finishing Roadway (project) 01. 1300-03-72  | 1.000<br>EACH                  | _____.     | _____.     |
| 0036                 | 390.0403<br>Base Patching Concrete Shes   | 13,769.000<br>SY               | _____.     | _____.     |
| 0038                 | 415.0070<br>Concrete Pavement 7-Inch  | 0.400<br>SY                    | _____.     | _____.     |
| 0040                 | 416.0610<br>Drilled Tie Bars  | 4,561.000<br>EACH              | _____.     | _____.     |
| 0042                 | 416.0620<br>Drilled Dowel Bars  | 31,863.000<br>EACH             | _____.     | _____.     |
| 0044                 | 416.1725<br>Concrete Pavement Replacement SHES  | 1,500.000<br>SY                | _____.     | _____.     |
| 0046                 | 455.0605<br>Tack Coat   | 20,657.000<br>GAL              | _____.     | _____.     |
| 0048                 | 460.0105.S<br>HMA Percent Within Limits (PWL) Test Strip Volumetrics                                  | 1.000<br>EACH                  | _____.     | _____.     |
| 0050                 | 460.0110.S<br>HMA Percent Within Limits (PWL) Test Strip Density                                      | 2.000<br>EACH                  | _____.     | _____.     |
| 0052                 | 460.2000<br>Incentive Density HMA Pavement  | 3,710.000<br>DOL               | 1.00000    | 3,710.00   |
| 0054                 | 460.2005<br>Incentive Density PWL HMA Pavement  | 23,130.000<br>DOL              | 1.00000    | 23,130.00  |
| 0056                 | 460.2010<br>Incentive Air Voids HMA Pavement  | 31,537.000<br>DOL              | 1.00000    | 31,537.00  |
| 0058                 | 460.6223<br>HMA Pavement 3 MT 58-28 S   | 3,710.000<br>TON               | _____.     | _____.     |



Proposal Schedule of Items

Proposal ID: 20210209012 Project(s): 1300-03-72

Federal ID(s): WISC 2021140

SECTION: 0001 Roadway Items

Alt Set ID: Alt Mbr ID:

| Proposal Line Number | Item ID Description  | Approximate Quantity and Units | Unit Price | Bid Amount |
|----------------------|--|--------------------------------|------------|------------|
| 0060                 | 460.6224<br>HMA Pavement 4 MT 58-28 S  | 31,537.000<br>TON              | _____.     | _____.     |
| 0062                 | 517.3000.S<br>Structure Overcoating Cleaning and Priming (structure) 01. N-40-29 | LS                             | LUMP SUM   | _____.     |
| 0064                 | 517.3000.S<br>Structure Overcoating Cleaning and Priming (structure) 02. N-40-30 | LS                             | LUMP SUM   | _____.     |
| 0066                 | 517.3000.S<br>Structure Overcoating Cleaning and Priming (structure) 03. N-40-31 | LS                             | LUMP SUM   | _____.     |
| 0068                 | 517.3000.S<br>Structure Overcoating Cleaning and Priming (structure) 04. N-40-32 | LS                             | LUMP SUM   | _____.     |
| 0072                 | 611.0648<br>Inlet Covers Type R  | 2.000<br>EACH                  | _____.     | _____.     |
| 0074                 | 611.8110<br>Adjusting Manhole Covers   | 1.000<br>EACH                  | _____.     | _____.     |
| 0076                 | 611.8115<br>Adjusting Inlet Covers   | 2.000<br>EACH                  | _____.     | _____.     |
| 0078                 | 611.8120.S<br>Cover Plates Temporary   | 66.000<br>EACH                 | _____.     | _____.     |
| 0080                 | 619.1000<br>Mobilization   | 1.000<br>EACH                  | _____.     | _____.     |
| 0082                 | 625.0100<br>Topsoil  | 26.000<br>SY                   | _____.     | _____.     |
| 0084                 | 628.1905<br>Mobilizations Erosion Control  | 1.000<br>EACH                  | _____.     | _____.     |
| 0086                 | 628.1910<br>Mobilizations Emergency Erosion Control                              | 1.000<br>EACH                  | _____.     | _____.     |
| 0088                 | 628.2008<br>Erosion Mat Urban Class I Type B                                     | 26.000<br>SY                   | _____.     | _____.     |
| 0090                 | 628.7015<br>Inlet Protection Type C  | 291.000<br>EACH                | _____.     | _____.     |
| 0092                 | 629.0210<br>Fertilizer Type B  | 1.620<br>CWT                   | _____.     | _____.     |





Proposal Schedule of Items

Proposal ID: 20210209012 Project(s): 1300-03-72

Federal ID(s): WISC 2021140

SECTION: 0001 Roadway Items

Alt Set ID: Alt Mbr ID:

| Proposal Line Number | Item ID Description                                       | Approximate Quantity and Units | Unit Price | Bid Amount |
|----------------------|---|--------------------------------|------------|------------|
| 0094                 | 630.0140<br>Seeding Mixture No. 40                        | 0.460<br>LB                    | _____.     | _____.     |
| 0096                 | 634.0618<br>Posts Wood 4x6-Inch X 18-FT                   | 22.000<br>EACH                 | _____.     | _____.     |
| 0098                 | 634.0814<br>Posts Tubular Steel 2x2-Inch X 14-FT          | 5.000<br>EACH                  | _____.     | _____.     |
| 0100                 | 635.0300<br>Sign Supports Replacing Base Connection Bolts | 14.000<br>EACH                 | _____.     | _____.     |
| 0102                 | 637.1220<br>Signs Type I Reflective SH                    | 984.500<br>SF                  | _____.     | _____.     |
| 0104                 | 637.2210<br>Signs Type II Reflective H                    | 190.000<br>SF                  | _____.     | _____.     |
| 0106                 | 637.2215<br>Signs Type II Reflective H Folding            | 44.760<br>SF                   | _____.     | _____.     |
| 0108                 | 637.2230<br>Signs Type II Reflective F                    | 35.000<br>SF                   | _____.     | _____.     |
| 0110                 | 638.2102<br>Moving Signs Type II                          | 7.000<br>EACH                  | _____.     | _____.     |
| 0112                 | 638.2601<br>Removing Signs Type I                         | 18.000<br>EACH                 | _____.     | _____.     |
| 0114                 | 638.2602<br>Removing Signs Type II                        | 9.000<br>EACH                  | _____.     | _____.     |
| 0116                 | 642.5401<br>Field Office Type D                           | 1.000<br>EACH                  | _____.     | _____.     |
| 0118                 | 643.0300<br>Traffic Control Drums                         | 93,600.000<br>DAY              | _____.     | _____.     |
| 0120                 | 643.0420<br>Traffic Control Barricades Type III           | 8,900.000<br>DAY               | _____.     | _____.     |
| 0122                 | 643.0705<br>Traffic Control Warning Lights Type A         | 17,700.000<br>DAY              | _____.     | _____.     |
| 0124                 | 643.0715<br>Traffic Control Warning Lights Type C         | 8,600.000<br>DAY               | _____.     | _____.     |



## Proposal Schedule of Items

Proposal ID: 20210209012 Project(s): 1300-03-72

Federal ID(s): WISC 2021140

SECTION: 0001

Roadway Items

Alt Set ID:

Alt Mbr ID:

| Proposal Line Number | Item ID Description   | Approximate Quantity and Units | Unit Price | Bid Amount |
|----------------------|---|--------------------------------|------------|------------|
| 0126                 | 643.0800<br>Traffic Control Arrow Boards                        | 900.000<br>DAY                 | _____.     | _____.     |
| 0128                 | 643.0900<br>Traffic Control Signs                               | 118,700.000<br>DAY             | _____.     | _____.     |
| 0130                 | 643.0920<br>Traffic Control Covering Signs Type II              | 2,979.000<br>EACH              | _____.     | _____.     |
| 0132                 | 643.1050<br>Traffic Control Signs PCMS                          | 2,800.000<br>DAY               | _____.     | _____.     |
| 0134                 | 643.5000<br>Traffic Control                                     | 1.000<br>EACH                  | _____.     | _____.     |
| 0136                 | 646.1040<br>Marking Line Grooved Wet Ref Epoxy 4-Inch           | 98,648.000<br>LF               | _____.     | _____.     |
| 0138                 | 646.1555<br>Marking Line Grooved Contrast Permanent Tape 4-Inch | 10,966.000<br>LF               | _____.     | _____.     |
| 0140                 | 646.3555<br>Marking Line Grooved Contrast Permanent Tape 8-Inch | 16,724.000<br>LF               | _____.     | _____.     |
| 0142                 | 646.5020<br>Marking Arrow Epoxy                                 | 39.000<br>EACH                 | _____.     | _____.     |
| 0144                 | 646.5120<br>Marking Word Epoxy                                  | 20.000<br>EACH                 | _____.     | _____.     |
| 0146                 | 646.6120<br>Marking Stop Line Epoxy 18-Inch                     | 160.000<br>LF                  | _____.     | _____.     |
| 0148                 | 646.7120<br>Marking Diagonal Epoxy 12-Inch                      | 4,825.000<br>LF                | _____.     | _____.     |
| 0150                 | 646.7220<br>Marking Chevron Epoxy 24-Inch                       | 1,376.000<br>LF                | _____.     | _____.     |
| 0152                 | 646.8220<br>Marking Island Nose Epoxy                           | 3.000<br>EACH                  | _____.     | _____.     |
| 0154                 | 646.9010<br>Marking Removal Line Water Blasting 4-Inch          | 12,183.000<br>LF               | _____.     | _____.     |



## Proposal Schedule of Items

Proposal ID: 20210209012 Project(s): 1300-03-72

Federal ID(s): WISC 2021140

SECTION: 0001 Roadway Items

Alt Set ID: Alt Mbr ID:

| Proposal Line Number | Item ID Description  | Approximate Quantity and Units | Unit Price | Bid Amount |
|----------------------|--|--------------------------------|------------|------------|
| 0156                 | 646.9110<br>Marking Removal Line Water Blasting 8-Inch                             | 3,384.000<br>LF                | _____.     | _____.     |
| 0158                 | 646.9310<br>Marking Removal Special Marking Water Blasting                         | 46.000<br>EACH                 | _____.     | _____.     |
| 0160                 | 649.0105<br>Temporary Marking Line Paint 4-Inch                                    | 237,030.000<br>LF              | _____.     | _____.     |
| 0162                 | 649.0205<br>Temporary Marking Line Paint 8-Inch                                    | 33,836.000<br>LF               | _____.     | _____.     |
| 0164                 | 649.0505<br>Temporary Marking Arrow Paint  | 22.000<br>EACH                 | _____.     | _____.     |
| 0166                 | 649.0605<br>Temporary Marking Word Paint   | 24.000<br>EACH                 | _____.     | _____.     |
| 0168                 | 649.0805<br>Temporary Marking Stop Line Paint 18-Inch                              | 286.000<br>LF                  | _____.     | _____.     |
| 0170                 | 650.8000<br>Construction Staking Resurfacing Reference                             | 28,649.000<br>LF               | _____.     | _____.     |
| 0172                 | 650.8500<br>Construction Staking Electrical Installations (project) 01. 1300-03-72 | LS                             | LUMP SUM   | _____.     |
| 0174                 | 650.9910<br>Construction Staking Supplemental Control (project) 01. 1300-03-72     | LS                             | LUMP SUM   | _____.     |
| 0176                 | 652.0225<br>Conduit Rigid Nonmetallic Schedule 40 2-Inch                           | 1,217.000<br>LF                | _____.     | _____.     |
| 0178                 | 652.0235<br>Conduit Rigid Nonmetallic Schedule 40 3-Inch                           | 405.000<br>LF                  | _____.     | _____.     |
| 0180                 | 652.0615<br>Conduit Special 3-Inch   | 978.000<br>LF                  | _____.     | _____.     |
| 0182                 | 652.0700.S<br>Install Conduit into Existing Item                                   | 6.000<br>EACH                  | _____.     | _____.     |
| 0184                 | 652.0800<br>Conduit Loop Detector  | 1,558.000<br>LF                | _____.     | _____.     |



Proposal Schedule of Items

Proposal ID: 20210209012 Project(s): 1300-03-72

Federal ID(s): WISC 2021140

SECTION: 0001 Roadway Items

Alt Set ID: Alt Mbr ID:

| Proposal Line Number | Item ID Description  | Approximate Quantity and Units | Unit Price | Bid Amount |
|----------------------|--|--------------------------------|------------|------------|
| 0186                 | 653.0135<br>Pull Boxes Steel 24x36-Inch                      | 3.000<br>EACH                  | _____.     | _____.     |
| 0188                 | 653.0140<br>Pull Boxes Steel 24x42-Inch                      | 17.000<br>EACH                 | _____.     | _____.     |
| 0190                 | 653.0905<br>Removing Pull Boxes                              | 13.000<br>EACH                 | _____.     | _____.     |
| 0192                 | 654.0101<br>Concrete Bases Type 1                            | 8.000<br>EACH                  | _____.     | _____.     |
| 0194                 | 654.0102<br>Concrete Bases Type 2                            | 2.000<br>EACH                  | _____.     | _____.     |
| 0196                 | 654.0105<br>Concrete Bases Type 5                            | 2.000<br>EACH                  | _____.     | _____.     |
| 0198                 | 654.0113<br>Concrete Bases Type 13                           | 2.000<br>EACH                  | _____.     | _____.     |
| 0200                 | 654.0217<br>Concrete Control Cabinet Bases Type 9<br>Special | 1.000<br>EACH                  | _____.     | _____.     |
| 0202                 | 655.0230<br>Cable Traffic Signal 5-14 AWG                    | 647.000<br>LF                  | _____.     | _____.     |
| 0204                 | 655.0240<br>Cable Traffic Signal 7-14 AWG                    | 3,608.000<br>LF                | _____.     | _____.     |
| 0206                 | 655.0260<br>Cable Traffic Signal 12-14 AWG                   | 433.000<br>LF                  | _____.     | _____.     |
| 0208                 | 655.0320<br>Cable Type UF 2-10 AWG Grounded                  | 873.000<br>LF                  | _____.     | _____.     |
| 0210                 | 655.0515<br>Electrical Wire Traffic Signals 10 AWG           | 6,224.000<br>LF                | _____.     | _____.     |
| 0212                 | 655.0610<br>Electrical Wire Lighting 12 AWG                  | 954.000<br>LF                  | _____.     | _____.     |
| 0214                 | 655.0620<br>Electrical Wire Lighting 8 AWG                   | 2,815.000<br>LF                | _____.     | _____.     |
| 0216                 | 655.0630<br>Electrical Wire Lighting 4 AWG                   | 2,070.000<br>LF                | _____.     | _____.     |



## Proposal Schedule of Items

Proposal ID: 20210209012 Project(s): 1300-03-72

Federal ID(s): WISC 2021140

SECTION: 0001

Roadway Items

Alt Set ID:

Alt Mbr ID:

| Proposal Line Number | Item ID Description   | Approximate Quantity and Units | Unit Price | Bid Amount |
|----------------------|---|--------------------------------|------------|------------|
| 0218                 | 655.0640<br>Electrical Wire Lighting 1 AWG  | 18.000<br>LF                   | _____.     | _____.     |
| 0220                 | 655.0700<br>Loop Detector Lead In Cable   | 5,659.000<br>LF                | _____.     | _____.     |
| 0222                 | 655.0800<br>Loop Detector Wire  | 5,642.000<br>LF                | _____.     | _____.     |
| 0224                 | 656.0200<br>Electrical Service Meter Breaker<br>Pedestal (location) 01. STH 794 & Ellen<br>St | LS                             | LUMP SUM   | _____.     |
| 0226                 | 657.0100<br>Pedestal Bases  | 8.000<br>EACH                  | _____.     | _____.     |
| 0228                 | 657.0255<br>Transformer Bases Breakaway 11 1/2-<br>Inch Bolt Circle                           | 4.000<br>EACH                  | _____.     | _____.     |
| 0230                 | 657.0310<br>Poles Type 3  | 2.000<br>EACH                  | _____.     | _____.     |
| 0232                 | 657.0322<br>Poles Type 5-Aluminum   | 2.000<br>EACH                  | _____.     | _____.     |
| 0234                 | 657.0420<br>Traffic Signal Standards Aluminum 13-FT   | 8.000<br>EACH                  | _____.     | _____.     |
| 0236                 | 657.0609<br>Luminaire Arms Single Member 4-Inch<br>Clamp 6-FT                                 | 3.000<br>EACH                  | _____.     | _____.     |
| 0238                 | 657.0715<br>Luminaire Arms Truss Type 4 1/2-Inch<br>Clamp 15-FT                               | 2.000<br>EACH                  | _____.     | _____.     |
| 0240                 | 658.0171<br>Traffic Signal Face 1S 12-Inch  | 6.000<br>EACH                  | _____.     | _____.     |
| 0242                 | 658.0173<br>Traffic Signal Face 3S 12-Inch  | 13.000<br>EACH                 | _____.     | _____.     |
| 0244                 | 658.5069<br>Signal Mounting Hardware (location) 01.<br>STH 794 & Ellen St                     | LS                             | LUMP SUM   | _____.     |
| 0246                 | 659.1125<br>Luminaires Utility LED C  | 7.000<br>EACH                  | _____.     | _____.     |



## Proposal Schedule of Items

Proposal ID: 20210209012 Project(s): 1300-03-72

Federal ID(s): WISC 2021140

SECTION: 0001 Roadway Items

Alt Set ID: Alt Mbr ID:

| Proposal Line Number | Item ID Description                                       | Approximate Quantity and Units | Unit Price | Bid Amount |
|----------------------|---|--------------------------------|------------|------------|
| 0248                 | 670.0100<br>Field System Integrator 01. 1300-03-72        | LS                             | LUMP SUM   | _____.     |
| 0250                 | 670.0200<br>ITS Documentation 01. 1300-03-72              | LS                             | LUMP SUM   | _____.     |
| 0252                 | 674.0300<br>Remove Cable                                  | 360.000<br>LF                  | _____.     | _____.     |
| 0254                 | 678.0006<br>Install Fiber Optic Cable Outdoor Plant 6-CT  | 1,175.000<br>LF                | _____.     | _____.     |
| 0256                 | 678.0036<br>Install Fiber Optic Cable Outdoor Plant 36-CT | 4,541.000<br>LF                | _____.     | _____.     |
| 0258                 | 678.0200<br>Fiber Optic Splice Enclosure                  | 2.000<br>EACH                  | _____.     | _____.     |
| 0260                 | 678.0300<br>Fiber Optic Splice                            | 18.000<br>EACH                 | _____.     | _____.     |
| 0262                 | 678.0400<br>Fiber Optic Termination                       | 10.000<br>EACH                 | _____.     | _____.     |
| 0264                 | 678.0500<br>Communication System Testing 01. 1300-03-72   | LS                             | LUMP SUM   | _____.     |
| 0266                 | 678.0600<br>Install Ethernet Switches                     | 2.000<br>EACH                  | _____.     | _____.     |
| 0268                 | 690.0150<br>Sawing Asphalt                                | 332.000<br>LF                  | _____.     | _____.     |
| 0270                 | 690.0250<br>Sawing Concrete                               | 44,053.000<br>LF               | _____.     | _____.     |
| 0272                 | ASP.1T0A<br>On-the-Job Training Apprentice at \$5.00/HR   | 3,200.000<br>HRS               | 5.00000    | 16,000.00  |
| 0274                 | ASP.1T0G<br>On-the-Job Training Graduate at \$5.00/HR     | 7,200.000<br>HRS               | 5.00000    | 36,000.00  |
| 0276                 | SPV.0035<br>Special 01. Monolithic Shim Concrete SHES     | 99.000<br>CY                   | _____.     | _____.     |



## Proposal Schedule of Items

Proposal ID: 20210209012 Project(s): 1300-03-72

Federal ID(s): WISC 2021140

SECTION: 0001

Roadway Items

Alt Set ID:

Alt Mbr ID:

| Proposal Line Number | Item ID Description  | Approximate Quantity and Units | Unit Price | Bid Amount |
|----------------------|--|--------------------------------|------------|------------|
| 0278                 | SPV.0060<br>Special 01. Precast Sound Barrier Panel Support Repair                                   | 110.000<br>EACH                | _____.     | _____.     |
| 0280                 | SPV.0060<br>Special 30. Install Poles Type 12  | 1.000<br>EACH                  | _____.     | _____.     |
| 0282                 | SPV.0060<br>Special 31. Install Poles Type 13  | 1.000<br>EACH                  | _____.     | _____.     |
| 0284                 | SPV.0060<br>Special 32. Install Monotube Arms 50-Ft  | 1.000<br>EACH                  | _____.     | _____.     |
| 0286                 | SPV.0060<br>Special 33. Install Monotube Arms 55-Ft  | 1.000<br>EACH                  | _____.     | _____.     |
| 0288                 | SPV.0060<br>Special 34. Install Luminaire Arms Steel 15-Ft   | 1.000<br>EACH                  | _____.     | _____.     |
| 0290                 | SPV.0060<br>Special 35. Install Luminaire Arms Steel 15-Ft Clamp-On                                  | 1.000<br>EACH                  | _____.     | _____.     |
| 0292                 | SPV.0090<br>Special 01. Vinyl Coated Chain Link Fence Repair   | 445.000<br>LF                  | _____.     | _____.     |
| 0294                 | SPV.0090<br>Special 02. Traffic Channelizing Curb System   | 105.000<br>LF                  | _____.     | _____.     |
| 0296                 | SPV.0090<br>Special 03. Sawing Concrete Curb Head  | 75.000<br>LF                   | _____.     | _____.     |
| 0298                 | SPV.0090<br>Special 04. HES Concrete Curb & Gutter 31-Inch Special                                   | 72.000<br>LF                   | _____.     | _____.     |
| 0300                 | SPV.0090<br>Special 05. HES Concrete Curb and Gutter 24-Inch   | 6.000<br>LF                    | _____.     | _____.     |
| 0302                 | SPV.0105<br>Special 11. Maintenance of Lighting Systems  | LS                             | LUMP SUM   | _____.     |
| 0304                 | SPV.0105<br>Special 30. Trnspt & Inst State Furn Traffic Signal Cabinet STH 794 & S Pennsylvania Ave | LS                             | LUMP SUM   | _____.     |



Proposal Schedule of Items

Proposal ID: 20210209012 Project(s): 1300-03-72

Federal ID(s): WISC 2021140

SECTION: 0001 Roadway Items

Alt Set ID: Alt Mbr ID:

| Proposal Line Number | Item ID Description   | Approximate Quantity and Units | Unit Price | Bid Amount |
|----------------------|---|--------------------------------|------------|------------|
| 0306                 | SPV.0105<br>Special 31. Trnspt & Install State Furn Traffic Signal Cabinet STH 794 & Ellen St | LS                             | LUMP SUM   | _____.     |
| 0308                 | SPV.0105<br>Special 32. Trnspt & Install State Furn Radar Detect Sys STH 794 & Ellen St       | LS                             | LUMP SUM   | _____.     |
| 0310                 | SPV.0105<br>Special 33. Trnspt Traffic Signal & Inter Lighting Materials STH 794 & Ellen St   | LS                             | LUMP SUM   | _____.     |
| 0312                 | SPV.0105<br>Special 34. Trnspt & Install State Furn FO Cable Pigtail 8-Ct CB1 (S40-1231)      | LS                             | LUMP SUM   | _____.     |
| 0314                 | SPV.0105<br>Special 35. Trnspt & Install State Furn FO Cable Pigtail 8-Ct CB1 (S40-1216)      | LS                             | LUMP SUM   | _____.     |
| 0316                 | SPV.0180<br>Special 01. Removing Asphaltic Surface Milling Special                            | 163,934.000<br>SY              | _____.     | _____.     |
| 0318                 | 405.1000<br>Stamping Colored Concrete   | 2.300<br>CY                    | _____.     | _____.     |
| 0320                 | 465.0125<br>Asphaltic Surface Temporary   | 123.000<br>TON                 | _____.     | _____.     |
| Section: 0001        |   |                                | Total:     | _____.     |
|                      |   |                                | Total Bid: | _____.     |