



# Wisconsin Department of Transportation

## Division of Transportation Systems Development

Bureau of Project Development  
4822 Madison Yards Way, 4<sup>th</sup> Floor South  
Madison, WI 53705

February 18, 2021

Telephone: (608) 266-1631  
Facsimile (FAX): (608) 266-8459

### NOTICE TO ALL CONTRACTORS:

**Proposal #01: 1630-03-61, WISC 2021 216**  
**La Crosse – Galesville**  
**Black R Bridge B-32-79**  
**USH 53**  
**La Crosse & Trempealeau Counties**

### Letting of Mach 9, 2021

This is Addendum No. 01, which provides for the following:

#### Schedule of Items:

Added Bid Item Quantities					
Bid Item	Item Description	Unit	Old Quantity	Revised Quantity	Proposal Total
520.1024	Apron Endwalls for Culvert Pipe 24-Inch	EA	0	2	2
520.3324	Culvert Pipe Class III-A 24-Inch	LF	0	76	76

Deleted Bid Item Quantities					
Bid Item	Item Description	Unit	Old Quantity	Revised Quantity	Proposal Total
522.1024	Apron Endwalls for Culvert Pipe Reinforced Concrete 24-Inch	EA	2	-2	0
608.0324	Storm Sewer Pipe Reinforced Concrete Class III 24-Inch	LF	76	-76	0

#### Plan Sheets:

Revised Plan Sheets	
Plan Sheet	Plan Sheet Title (brief description of changes to sheet)
15	Storm Sewer (Changed pipe and apron materials for P-2, P-3, AE-2, and AE-3)
37	Miscellaneous Quantities (Changed pipe and apron bid item names and numbers)
50	Plan and Profile (Changed pipe material)

**Schedule of Items**

Attached, dated February 18, 2021, are the revised Schedule of Items Page 1 - 9.

**Plan Sheets**

The following 8½ x 11-inch sheets are attached and made part of the plans for this proposal:

Revised: 15, 37, and 50.

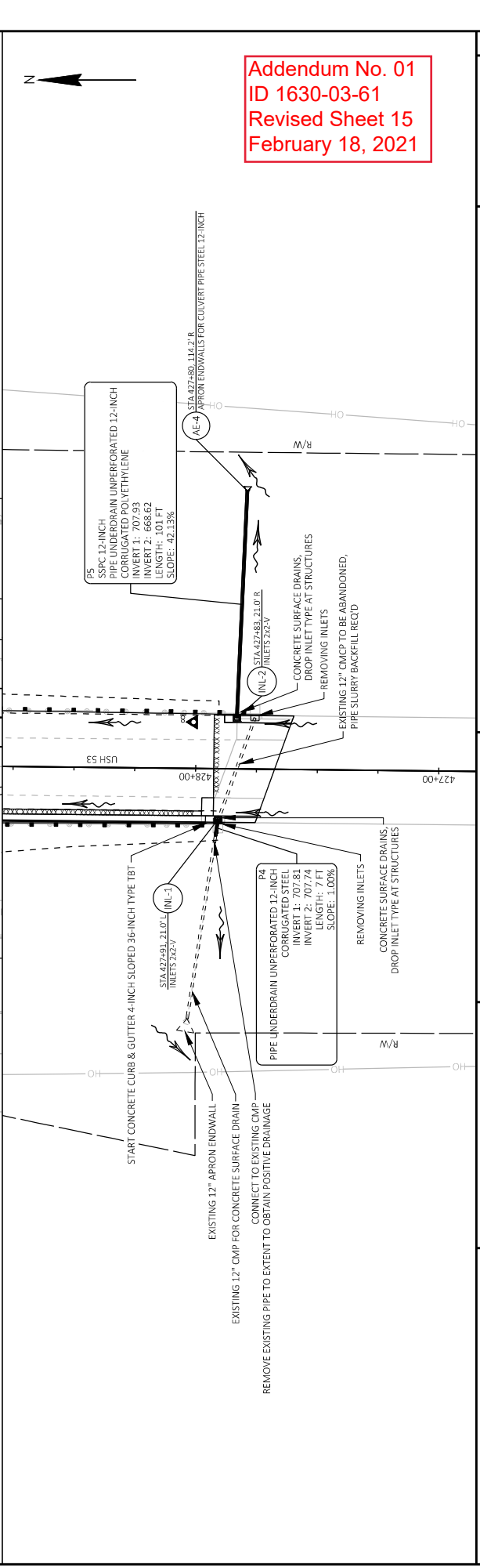
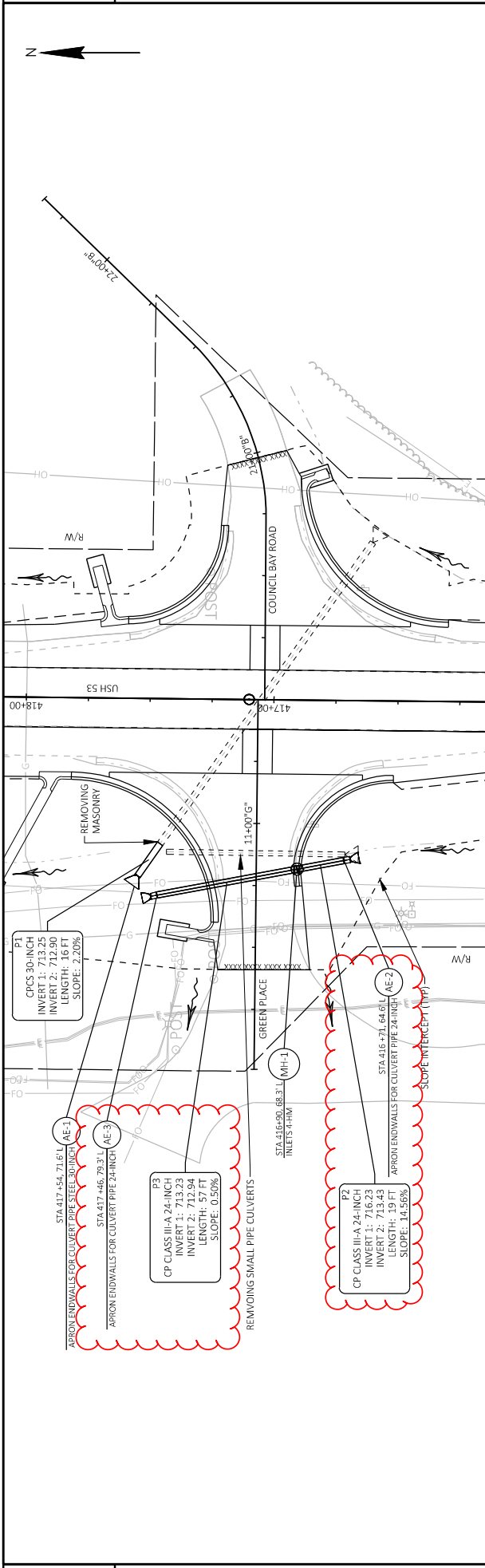
The responsibility for notifying potential subcontractors and suppliers of these changes remains with the prime contractor.

Sincerely,

*Mike Coleman*

Proposal Development Specialist  
Proposal Management Section

END OF ADDENDUM



Addendum No. 01  
 ID 1630-03-61  
 Revised Sheet 15  
 February 18, 2021

Addendum No. 01  
ID 1630-03-61  
Revised Sheet 37  
February 18, 2021

CULVERT SUMMARY

CAT	FROM STRUCTURE NO.	TO STRUCTURE NO.	REMOVING MASONRY	APRON ENDWALLS FOR CULVERT PIPE	CULVERT PIPE CORRUGATED STEEL	CONSTRUCTION STAKING PIPE CULVERTS	REMARKS
0030	EX. P1	AE-1	1	1	16	1	P1, PIPE CROSSES FROM SE TO NW OF INTERSECTION
PROJECT TOTALS =			1	1	16	1	

STORM SEWER SUMMARY

CAT	FROM STRUCTURE NO.	TO STRUCTURE NO.	REMOVING STORM SEWER	PIPE CLASS	PIPE UNDERDRAIN	REMARKS
0030	MH-1	MH-1	19	III-A 24-INCH	12-INCH	P2, RCP: 9 JOINT TIES REQ'D, CMP: 0.064 MIN. THICKNESS P3, RCP: 9 JOINT TIES REQ'D, CMP: 0.064 MIN. THICKNESS P4 P5
0030	MH-1	AE-3	57	520.3324	612.0212	
0010	EX P4	EX P4	7			
0010	INL-2	AE-4	-		101	
0010 PROJECT TOTALS =			7	0	108	
0030 PROJECT TOTALS =			0	76	0	
PROJECT TOTALS =			7	76	108	

STRUCTURE SUMMARY

CAT	STRUCTURE NO.	STATION	OFFSET	RIM ELEVATION	REMOVING INLETS	APRON ENDWALLS FOR CULVERT PIPE	INLET COVERS	INLET COVERS	INLET COVERS	INLETS	MANHOLES	CONSTRUCTION STAKING	REMARKS
0030	AE-2	416+71	64.6' LT	716.23	-	1	-	-	-	-	-	1	
0030	MH-1	416+90	68.3' LT	718.46	-	-	1	-	-	-	1	1	
0030	AE-3	417+46	79.3' LT	712.94	-	1	-	-	-	-	-	1	
0030	AE-1	417+54	71.6' LT	712.90	-	-	-	-	-	-	-	1	
0010	EX-INL-2	427+75	21.0' RT	-	1	-	-	-	-	-	-	-	
0010	AE-4	427+80	114.2' RT	668.62	-	-	-	-	-	-	-	1	
0010	INL-2	427+83	21.0' RT	711.26	1	-	1	-	-	1	-	1	
0010	INL-1	427+91	21.0' LT	711.14	1	-	-	-	-	1	-	1	
0010 PROJECT TOTALS =					2	1	0	0	2	2	0	3	
0030 PROJECT TOTALS =					0	0	2	1	0	0	1	4	
PROJECT TOTALS =					2	1	2	1	2	2	1	7	





Proposal Schedule of Items

Proposal ID: 20210309001 Project(s): 1630-03-61

Federal ID(s): WISC 2021216

SECTION: 0001 Roadway

Alt Set ID: Alt Mbr ID:

Proposal Line Number	Item ID Description	Approximate Quantity and Units	Unit Price	Bid Amount
0002	203.0100 Removing Small Pipe Culverts	1.000 EACH	_____.	_____.
0004	203.0210.S Abatement of Asbestos Containing Material (structure) 01. B-32-79	LS	LUMP SUM	_____.
0006	204.0100 Removing Concrete Pavement	225.000 SY	_____.	_____.
0008	204.0110 Removing Asphaltic Surface	265.000 SY	_____.	_____.
0010	204.0150 Removing Curb & Gutter	291.000 LF	_____.	_____.
0012	204.0165 Removing Guardrail	955.000 LF	_____.	_____.
0014	204.0185 Removing Masonry	1.000 CY	_____.	_____.
0016	204.0220 Removing Inlets	2.000 EACH	_____.	_____.
0018	204.0245 Removing Storm Sewer (size) 01. 12-Inch	7.000 LF	_____.	_____.
0020	204.9060.S Removing (item description) 01. STA. 424+76.51, Wingwall	1.000 EACH	_____.	_____.
0022	205.0100 Excavation Common	3,061.000 CY	_____.	_____.
0024	206.1000 Excavation for Structures Bridges (structure) 01. B-32-79	LS	LUMP SUM	_____.
0026	208.0100 Borrow	200.000 CY	_____.	_____.
0028	210.1500 Backfill Structure Type A	91.000 TON	_____.	_____.
0030	213.0100 Finishing Roadway (project) 01. 1630-03-61	1.000 EACH	_____.	_____.



## Proposal Schedule of Items

Proposal ID: 20210309001 Project(s): 1630-03-61

Federal ID(s): WISC 2021216

SECTION: 0001 Roadway

Alt Set ID: Alt Mbr ID:

Proposal Line Number	Item ID Description	Approximate Quantity and Units	Unit Price	Bid Amount
0032	305.0110 Base Aggregate Dense 3/4-Inch	493.000 TON	_____.	_____.
0034	305.0120 Base Aggregate Dense 1 1/4-Inch	2,230.000 TON	_____.	_____.
0036	415.0095 Concrete Pavement 9 1/2-Inch	3,683.000 SY	_____.	_____.
0038	415.0210 Concrete Pavement Gaps	2.000 EACH	_____.	_____.
0040	415.0410 Concrete Pavement Approach Slab	228.000 SY	_____.	_____.
0042	415.1095 Concrete Pavement HES 9 1/2-Inch	48.000 SY	_____.	_____.
0044	415.4100 Concrete Pavement Joint Filling	3,731.000 SY	_____.	_____.
0046	415.5110.S Concrete Pavement Joint Layout	1.000 LS	_____.	_____.
0048	416.0610 Drilled Tie Bars	899.000 EACH	_____.	_____.
0050	416.0620 Drilled Dowel Bars	40.000 EACH	_____.	_____.
0052	416.1010 Concrete Surface Drains	3.000 CY	_____.	_____.
0054	465.0105 Asphaltic Surface	144.000 TON	_____.	_____.
0056	465.0315 Asphaltic Flumes	53.000 SY	_____.	_____.
0058	502.0100 Concrete Masonry Bridges	8.000 CY	_____.	_____.
0060	502.3101 Expansion Device 01. B-31-79	100.000 LF	_____.	_____.
0062	502.3215.S Protective Surface Treatment Reseal	490.000 SY	_____.	_____.
0064	502.4204 Adhesive Anchors No. 4 Bar	5.000 EACH	_____.	_____.



Proposal Schedule of Items

Proposal ID: 20210309001 Project(s): 1630-03-61  
Federal ID(s): WISC 2021216

SECTION: 0001 Roadway

Alt Set ID: Alt Mbr ID:

Proposal Line Number	Item ID Description	Approximate Quantity and Units	Unit Price	Bid Amount
0066	502.4205 Adhesive Anchors No. 5 Bar	134.000 EACH	_____.	_____.
0068	505.0600 Bar Steel Reinforcement HS Coated Structures	4,445.000 LB	_____.	_____.
0070	505.0904 Bar Couplers No. 4	8.000 EACH	_____.	_____.
0072	505.0905 Bar Couplers No. 5	12.000 EACH	_____.	_____.
0074	505.0906 Bar Couplers No. 6	32.000 EACH	_____.	_____.
0076	505.0908 Bar Couplers No. 8	20.000 EACH	_____.	_____.
0078	506.6000 Bearing Assemblies Expansion (structure) 01. B-32-79	10.000 EACH	_____.	_____.
0080	506.7050.S Removing Bearings (structure) 01. B-32-79	10.000 EACH	_____.	_____.
0082	509.0301 Preparation Decks Type 1	167.000 SY	_____.	_____.
0084	509.0302 Preparation Decks Type 2	118.000 SY	_____.	_____.
0086	509.0500 Cleaning Decks	2,836.000 SY	_____.	_____.
0088	509.1000 Joint Repair	43.000 SY	_____.	_____.
0090	509.1500 Concrete Surface Repair	48.000 SF	_____.	_____.
0092	509.2000 Full-Depth Deck Repair	13.000 SY	_____.	_____.
0094	509.2500 Concrete Masonry Overlay Decks	190.000 CY	_____.	_____.
0096	509.5100.S Polymer Overlay	2,836.000 SY	_____.	_____.





Proposal Schedule of Items

Proposal ID: 20210309001 Project(s): 1630-03-61  
Federal ID(s): WISC 2021216

SECTION: 0001 Roadway

Alt Set ID: Alt Mbr ID:

Proposal Line Number	Item ID Description	Approximate Quantity and Units	Unit Price	Bid Amount
0098	509.9020.S Epoxy Crack Sealing	159.000 LF	_____.	_____.
0100	514.0900 Adjusting Floor Drains	4.000 EACH	_____.	_____.
0102	516.0500 Rubberized Membrane Waterproofing	2.000 SY	_____.	_____.
0104	521.1012 Apron Endwalls for Culvert Pipe Steel 12-Inch	1.000 EACH	_____.	_____.
0106	521.1030 Apron Endwalls for Culvert Pipe Steel 30-Inch	1.000 EACH	_____.	_____.
0108	521.3130 Culvert Pipe Corrugated Steel 30-Inch	16.000 LF	_____.	_____.
0112	601.0557 Concrete Curb & Gutter 6-Inch Sloped 36-Inch Type D	301.000 LF	_____.	_____.
0114	601.0588 Concrete Curb & Gutter 4-Inch Sloped 36-Inch Type TBT	249.000 LF	_____.	_____.
0116	603.8000 Concrete Barrier Temporary Precast Delivered	2,236.000 LF	_____.	_____.
0118	603.8125 Concrete Barrier Temporary Precast Installed	4,472.000 LF	_____.	_____.
0120	606.0200 Riprap Medium	27.000 CY	_____.	_____.
0124	611.0627 Inlet Covers Type HM	1.000 EACH	_____.	_____.
0126	611.0654 Inlet Covers Type V	2.000 EACH	_____.	_____.
0128	611.2004 Manholes 4-FT Diameter	1.000 EACH	_____.	_____.
0130	611.3220 Inlets 2x2-FT	2.000 EACH	_____.	_____.



## Proposal Schedule of Items

Proposal ID: 20210309001 Project(s): 1630-03-61

Federal ID(s): WISC 2021216

SECTION: 0001 Roadway

Alt Set ID: Alt Mbr ID:

Proposal Line Number	Item ID Description	Approximate Quantity and Units	Unit Price	Bid Amount
0132	612.0212 Pipe Underdrain Unperforated 12-Inch	108.000 LF	_____.	_____.
0134	614.0150 Anchor Assemblies for Steel Plate Beam Guard	1.000 EACH	_____.	_____.
0136	614.0397 Guardrail Mow Strip Emulsified Asphalt	333.000 SY	_____.	_____.
0138	614.0905 Crash Cushions Temporary	2.000 EACH	_____.	_____.
0140	614.2300 MGS Guardrail 3	525.000 LF	_____.	_____.
0142	614.2500 MGS Thrie Beam Transition	158.000 LF	_____.	_____.
0144	614.2610 MGS Guardrail Terminal EAT	4.000 EACH	_____.	_____.
0146	618.0100 Maintenance And Repair of Haul Roads (project) 01. 1630-03-61	1.000 EACH	_____.	_____.
0148	619.1000 Mobilization	1.000 EACH	_____.	_____.
0150	624.0100 Water	41.000 MGAL	_____.	_____.
0152	625.0500 Salvaged Topsoil	9,260.000 SY	_____.	_____.
0154	628.1104 Erosion Bales	36.000 EACH	_____.	_____.
0156	628.1504 Silt Fence	2,063.000 LF	_____.	_____.
0158	628.1520 Silt Fence Maintenance	2,063.000 LF	_____.	_____.
0160	628.1905 Mobilizations Erosion Control	5.000 EACH	_____.	_____.
0162	628.1910 Mobilizations Emergency Erosion Control	5.000 EACH	_____.	_____.



## Proposal Schedule of Items

Proposal ID: 20210309001 Project(s): 1630-03-61

Federal ID(s): WISC 2021216

SECTION: 0001 Roadway

Alt Set ID: Alt Mbr ID:

Proposal Line Number	Item ID Description	Approximate Quantity and Units	Unit Price	Bid Amount
0164	628.2027 Erosion Mat Class II Type C	12,800.000 SY	_____.	_____.
0166	628.7015 Inlet Protection Type C	3.000 EACH	_____.	_____.
0168	628.7504 Temporary Ditch Checks	218.000 LF	_____.	_____.
0170	628.7555 Culvert Pipe Checks	12.000 EACH	_____.	_____.
0172	628.7570 Rock Bags	170.000 EACH	_____.	_____.
0174	629.0210 Fertilizer Type B	6.000 CWT	_____.	_____.
0176	630.0120 Seeding Mixture No. 20	442.000 LB	_____.	_____.
0178	630.0200 Seeding Temporary	120.000 LB	_____.	_____.
0180	630.0500 Seed Water	171.000 MGAL	_____.	_____.
0182	631.0300 Sod Water	3.600 MGAL	_____.	_____.
0184	631.1000 Sod Lawn	22.000 SY	_____.	_____.
0186	633.5200 Markers Culvert End	5.000 EACH	_____.	_____.
0188	634.0616 Posts Wood 4x6-Inch X 16-FT	11.000 EACH	_____.	_____.
0190	637.2210 Signs Type II Reflective H	67.450 SF	_____.	_____.
0192	638.2102 Moving Signs Type II	5.000 EACH	_____.	_____.
0194	638.2602 Removing Signs Type II	6.000 EACH	_____.	_____.
0196	638.3000 Removing Small Sign Supports	11.000 EACH	_____.	_____.



Proposal Schedule of Items

Proposal ID: 20210309001 Project(s): 1630-03-61

Federal ID(s): WISC 2021216

SECTION: 0001 Roadway

Alt Set ID: Alt Mbr ID:

Proposal Line Number	Item ID Description	Approximate Quantity and Units	Unit Price	Bid Amount
0198	642.5001 Field Office Type B	1.000 EACH	_____.	_____.
0200	643.0300 Traffic Control Drums	9,132.000 DAY	_____.	_____.
0202	643.0420 Traffic Control Barricades Type III	984.000 DAY	_____.	_____.
0204	643.0500 Traffic Control Flexible Tubular Marker Posts	146.000 EACH	_____.	_____.
0206	643.0600 Traffic Control Flexible Tubular Marker Bases	146.000 EACH	_____.	_____.
0208	643.0715 Traffic Control Warning Lights Type C	2,090.000 DAY	_____.	_____.
0210	643.0900 Traffic Control Signs	7,012.000 DAY	_____.	_____.
0212	643.0920 Traffic Control Covering Signs Type II	3.000 EACH	_____.	_____.
0214	643.1050 Traffic Control Signs PCMS	62.000 DAY	_____.	_____.
0216	643.5000 Traffic Control	1.000 EACH	_____.	_____.
0218	645.0111 Geotextile Type DF Schedule A	18.000 SY	_____.	_____.
0220	645.0120 Geotextile Type HR	86.000 SY	_____.	_____.
0222	646.1020 Marking Line Epoxy 4-Inch	6,291.000 LF	_____.	_____.
0224	646.1545 Marking Line Grooved Wet Ref Contrast Epoxy 4-Inch	8,370.000 LF	_____.	_____.
0226	646.3020 Marking Line Epoxy 8-Inch	243.000 LF	_____.	_____.
0228	646.3545 Marking Line Grooved Wet Ref Contrast Epoxy 8-Inch	856.000 LF	_____.	_____.



Proposal Schedule of Items

Proposal ID: 20210309001 Project(s): 1630-03-61  
Federal ID(s): WISC 2021216

SECTION: 0001 Roadway

Alt Set ID: Alt Mbr ID:

Proposal Line Number	Item ID Description	Approximate Quantity and Units	Unit Price	Bid Amount
0230	646.5020 Marking Arrow Epoxy	8.000 EACH	_____.	_____.
0232	646.5120 Marking Word Epoxy	4.000 EACH	_____.	_____.
0234	646.7120 Marking Diagonal Epoxy 12-Inch	125.000 LF	_____.	_____.
0236	646.9000 Marking Removal Line 4-Inch	9,787.000 LF	_____.	_____.
0238	649.0105 Temporary Marking Line Paint 4-Inch	5,803.000 LF	_____.	_____.
0240	649.0150 Temporary Marking Line Removable Tape 4-Inch	35,026.000 LF	_____.	_____.
0242	650.4000 Construction Staking Storm Sewer	7.000 EACH	_____.	_____.
0244	650.4500 Construction Staking Subgrade	1,242.000 LF	_____.	_____.
0246	650.5000 Construction Staking Base	147.000 LF	_____.	_____.
0248	650.5500 Construction Staking Curb Gutter and Curb & Gutter	550.000 LF	_____.	_____.
0250	650.6000 Construction Staking Pipe Culverts	1.000 EACH	_____.	_____.
0252	650.7000 Construction Staking Concrete Pavement	1,097.000 LF	_____.	_____.
0254	650.9910 Construction Staking Supplemental Control (project) 01. 1630-03-61	LS	LUMP SUM	_____.
0256	650.9920 Construction Staking Slope Stakes	1,654.000 LF	_____.	_____.
0258	690.0150 Sawing Asphalt	414.000 LF	_____.	_____.
0260	690.0250 Sawing Concrete	196.000 LF	_____.	_____.



Proposal Schedule of Items

Proposal ID: 20210309001 Project(s): 1630-03-61

Federal ID(s): WISC 2021216

SECTION: 0001 Roadway

Alt Set ID: Alt Mbr ID:

Proposal Line Number	Item ID Description	Approximate Quantity and Units	Unit Price	Bid Amount
0262	715.0415 Incentive Strength Concrete Pavement	1,120.000 DOL	1.00000	1,120.00
0264	715.0710 Optimized Aggregate Gradation Incentive	4,770.000 DOL	1.00000	4,770.00
0266	ASP.1T0A On-the-Job Training Apprentice at \$5.00/HR	600.000 HRS	5.00000	3,000.00
0268	ASP.1T0G On-the-Job Training Graduate at \$5.00/HR	900.000 HRS	5.00000	4,500.00
0270	SPV.0035 Special 01. Pipe Slurry Backfill	2.000 CY	_____.	_____.
0272	SPV.0060 Special 01. Embedded Galvanic Anodes	46.000 EACH	_____.	_____.
0274	SPV.0060 Special 02. Remove Debris and Regrade	3.000 EACH	_____.	_____.
0276	SPV.0060 Special 03. Temporary Sediment Traps	4.000 EACH	_____.	_____.
0278	520.1024 Apron Endwalls for Culvert Pipe 24-Inch	2.000 EACH	_____.	_____.
0280	520.3324 Culvert Pipe Class III-A 24-Inch	76.000 LF	_____.	_____.
Section: 0001			Total:	_____.
			Total Bid:	_____.