



Wisconsin Department of Transportation

Division of Transportation Systems Development

Bureau of Project Development
4822 Madison Yards Way, 4th Floor South
Madison, WI 53705

Telephone: (608) 266-1631
Facsimile (FAX): (608) 266-8459

February 23, 2021

NOTICE TO ALL CONTRACTORS:

Proposal #18: 9261-06-60
Crandon – Three Lakes
Culvert Replacement C-43-9706
STH 32
Oneida County

Letting of March 9, 2021

This is Addendum No. 01, which provides for the following:

Plan Sheets:

Added Plan Sheets	
Plan Sheet	Plan Sheet Title (brief description of why sheet was added)
7A	Traffic Control – Detour Details – Detour of closure on STH 32 using STH 45, STH 8, and STH 55
7B	Traffic Control – Closure Detail and location of PCMS prior to closure.

The responsibility for notifying potential subcontractors and suppliers of these changes remains with the prime contractor.

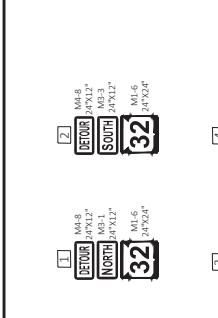
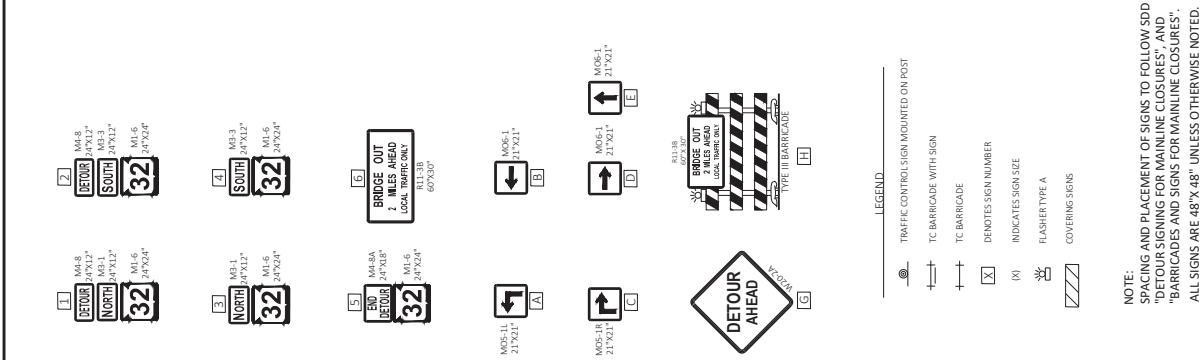
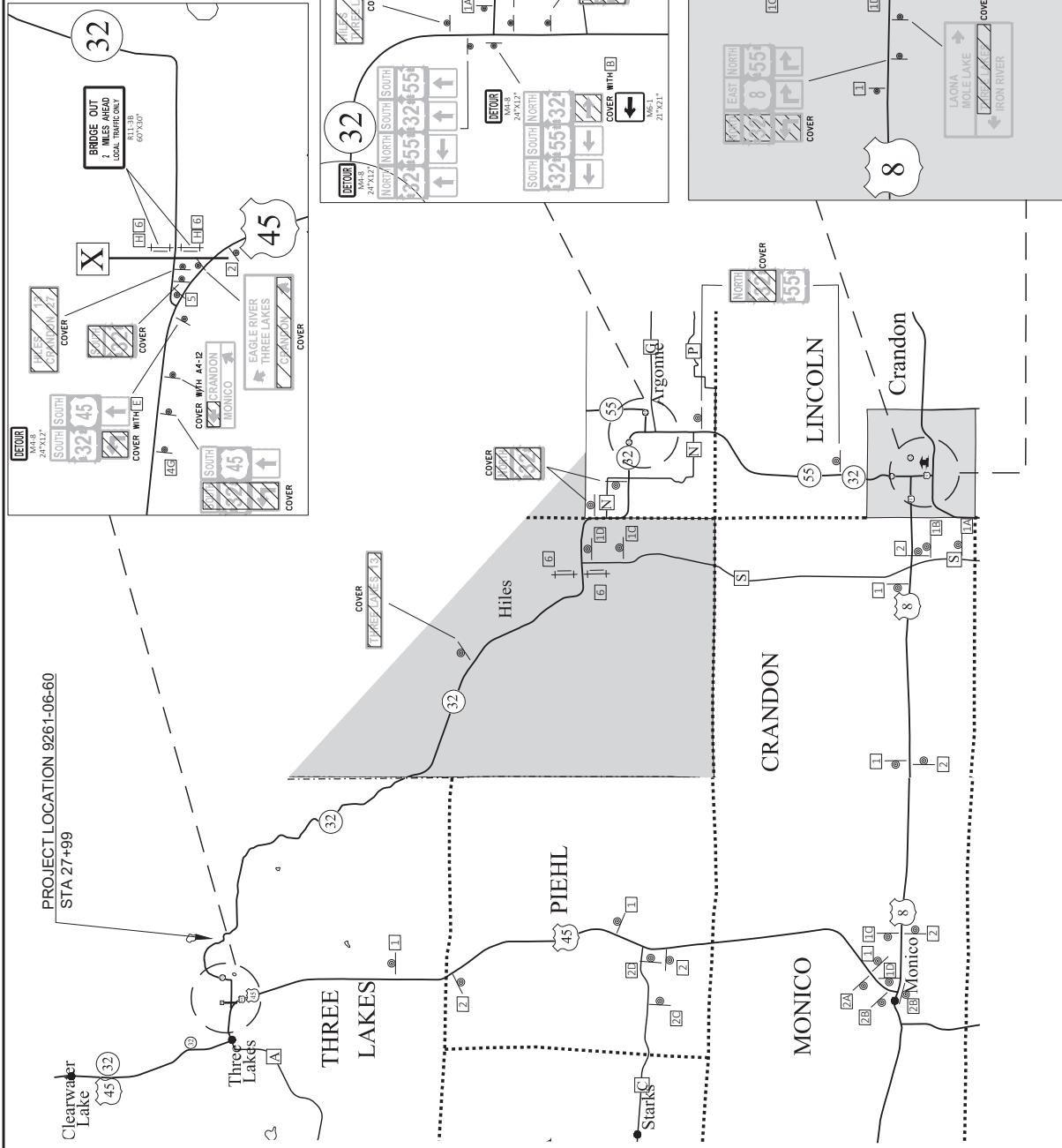
Sincerely,

Mike Coleman

Proposal Development Specialist
Proposal Management Section

END OF ADDENDUM

Addendum No. 01
 ID 9261-06-60
 Added Sheet 7A
 February 23, 2021



NOTE:
 SPACING AND PLACEMENT OF SIGNS TO FOLLOW SDD
 "DETOUR SIGNING FOR MAINLINE CLOSURES", AND
 "BARRICADES AND SIGNS FOR MAINLINE CLOSURES".
 ALL SIGNS ARE 48"X 48" UNLESS OTHERWISE NOTED.

