



# Wisconsin Department of Transportation

April 7, 2021

## Division of Transportation Systems Development

Bureau of Project Development  
4822 Madison Yards Way, 4<sup>th</sup> Floor South  
Madison, WI 53705

Telephone: (608) 266-1631  
Facsimile (FAX): (608) 266-8459

### NOTICE TO ALL CONTRACTORS:

**Proposal #08: 2978-02-70, WISC 2021 261**  
**Silver Spring Drive**  
**N Long Island Dr to N Lydell Ave**  
**Local Street**  
**Milwaukee County**

### Letting of April 13, 2021

This is Addendum No. 03, which provides for the following:

#### Special Provisions:

Revised Special Provisions	
Article No.	Description
38	Curb Ramp Grading, Shaping and Finishing, Item SPV.0060.07

Added Special Provisions	
Article No.	Description
51	Pedestrian Curb Grading, Shaping and Finishing, Item SPV.0060.12

#### Schedule of Items:

Revised Bid Item Quantities					
Bid Item	Item Description	Unit	Old Quantity	Revised Quantity	Proposal Total
634.0816	Post Tubular Steel 2x2-Inch x 16-FT	Each	4	1	5
637.2210	Signs Type II Reflective	SF	91.22	-52.22	39.00

Added Bid Item Quantities					
Bid Item	Item Description	Unit	Old Quantity	Revised Quantity	Proposal Total
637.2215	Signs Type II Reflective Folding	SF	0	52.22	52.22
SPV.0060.12	Pedestrian Curb Grading, Shaping and Finishing	EACH	0	2	2

**Plan Sheets:**

<b>Revised Plan Sheets</b>	
Plan Sheet	Plan Sheet Title (brief description of changes to sheet)
131	Pavement Marking And Signing – added sign numbers
133	Pavement Marking And Signing – added sign numbers
134	Pavement Marking And Signing – added sign numbers
135	Pavement Marking And Signing – added sign numbers
136	Pavement Marking And Signing – added sign numbers
146	Miscellaneous Quantities – removed Permanent Signing items table
147	Miscellaneous Quantities – revised Restoration Items quantity table for added type

<b>Added Plan Sheets</b>	
Plan Sheet	Plan Sheet Title (brief description of changes to sheet)
146A	Miscellaneous Quantities – new Permanent Signing items table

<b>Deleted Plan Sheets</b>	
Plan Sheet	Plan Sheet Title (brief description of changes to sheet)
137	Pavement Marking And Signing – duplicate of Sheet 135

The responsibility for notifying potential subcontractors and suppliers of these changes remains with the prime contractor.

Sincerely,

*Mike Coleman*

Proposal Development Specialist  
Proposal Management Section

**ADDENDUM NO. 03**

**2978-02-70**

**April 6, 2021**

**Special Provisions**

**38. Curb Ramp Grading, Shaping and Finishing, Item SPV.0060.07**

*Replace entire section titled C Construction with the following:*

**C Construction**

Construct the final subgrade and base for the curb ramp at the locations on the plans and as the engineer directs. Restore disturbed areas with topsoil or salvaged topsoil, fertilizer, seed and mulch, sod, or landscape materials.

Dispose of all surplus and unsuitable material as specified in standard spec 205.3.12.

*Replace entire section titled E Payment with the following:*

**E Payment**

The department will pay for measured quantities at the contract unit price under the following bid item:

ITEM NUMBER	DESCRIPTION	UNIT
SPV.0060.07	Curb Ramp Grading, Shaping, and Finishing	EACH

Payment is full compensation for all excavating, grading, placing borrow, base aggregate, shaping, and compacting, and for providing and placing topsoil or salvaged topsoil, fertilizer, seed and mulch, sod or landscaping materials at each curb ramp location.

Sidewalk removal, construction staking, curb ramp detectable warning field, and concrete sidewalk will be paid under respective contract bid items

**51. Pedestrian Curb Grading, Shaping and Finishing, Item SPV.0060.12.**

**A Description**

This special provision describes excavating, grading, filling, shaping, compacting, and finishing as necessary to construct each pedestrian curb location conforming to standard specs 205, 208, 211, 305, 625, 627, 629, and 630, as the plans show, and as follows.

**B Materials**

Furnish materials as the plans show and engineer directs conforming the standard specs for the following:

Common excavation	205.2
Borrow	208.2
Base Aggregate Dense	305.2
Topsoil or Salvaged Topsoil	625.2
Fertilizer	629.2
Sod Lawn	631.2
Sod Water	631.2

**C Construction**

Construct the final subgrade and base for the curb ramp at the locations on the plans and as the engineer directs. Restore disturbed areas with topsoil or salvaged topsoil, fertilizer, and sod.

Dispose of all surplus and unsuitable material as specified in standard spec 205.3.12.

**D Measurement**

The department will measure Pedestrian Curb Grading, Shaping, and Finishing as each individual plan location acceptably completed.

**E Payment**

The department will pay for measured quantities at the contract unit price under the following bid item:

ITEM NUMBER	DESCRIPTION	UNIT
SPV.0060.12	Pedestrian Curb Grading, Shaping, and Finishing	EACH

Payment is full compensation for all excavating, grading, placing borrow, base aggregate, shaping, and compacting, and for providing and placing topsoil or salvaged topsoil, fertilizer, sod or landscape materials at each pedestrian curb location.

Sidewalk removal, construction staking, and concrete sidewalk will be paid under respective contract bid items.

**Schedule of Items**

Attached, dated April 6, 2021, are the revised Schedule of Items Pages 3 and 9..

**Plan Sheets**

The following 8½ x 11-inch sheets are attached and made part of the plans for this proposal:

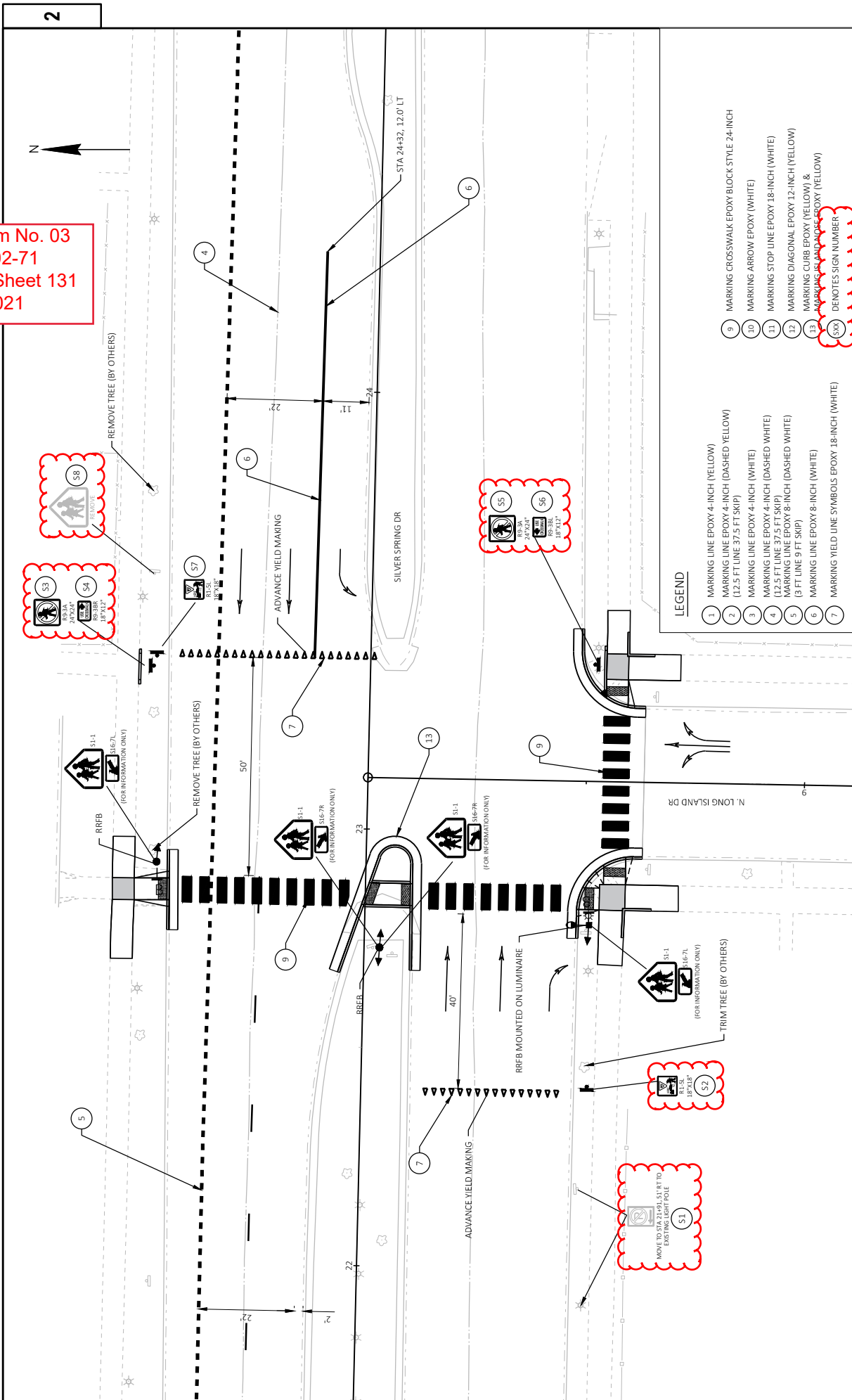
Revised: 131, 133, 134, 135, 136, 146, 147

Added: 146A

Deleted: 137

END OF ADDENDUM

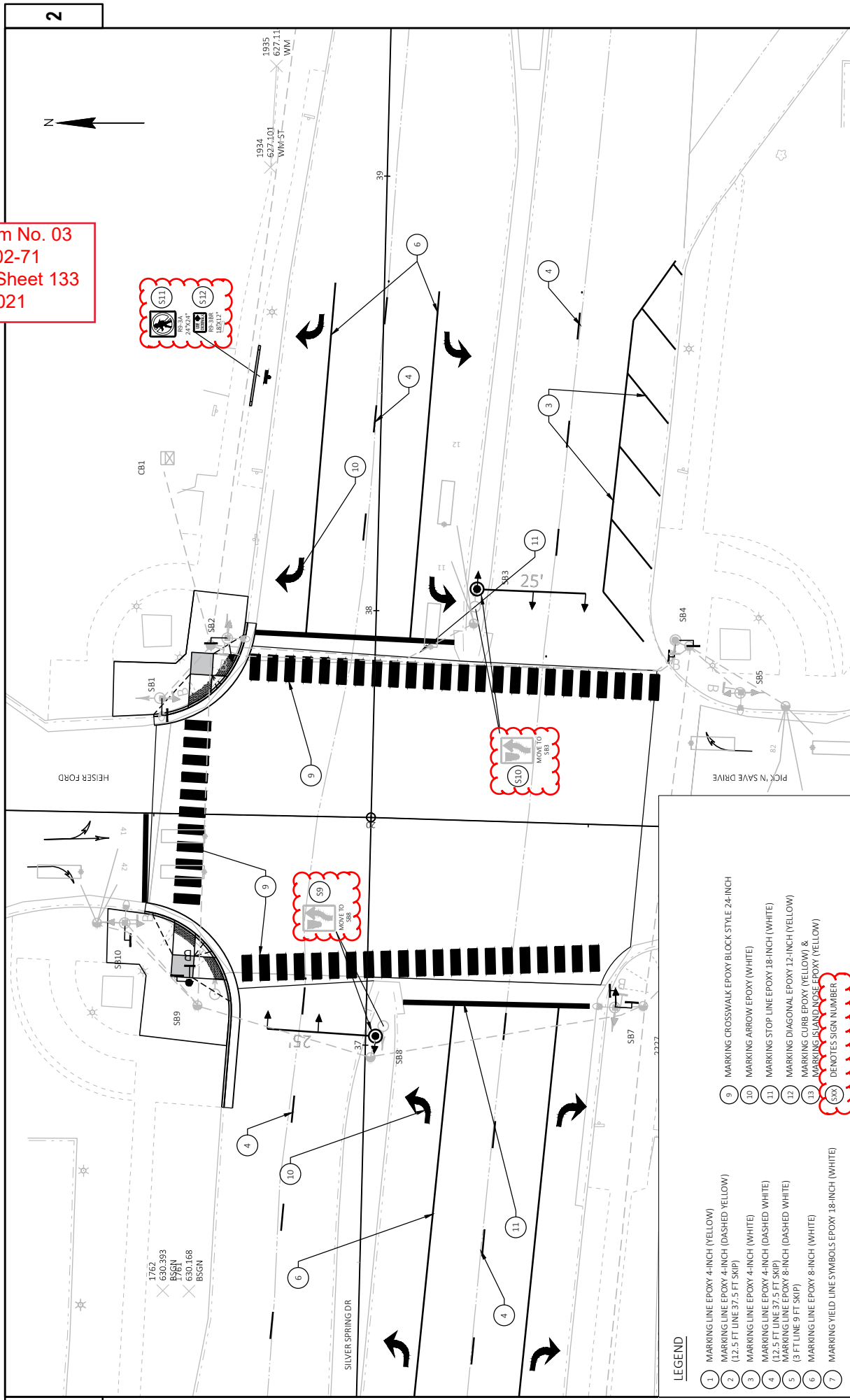
Addendum No. 03  
 ID 2978-02-71  
 Revised Sheet 131  
 April 7, 2021



**LEGEND**

1	MARKING LINE EPOXY 4-INCH (YELLOW)
2	MARKING LINE EPOXY 4-INCH (DASHED YELLOW) (12.5 FT LINE 37.5 FT SKIP)
3	MARKING LINE EPOXY 4-INCH (WHITE)
4	MARKING LINE EPOXY 4-INCH (DASHED WHITE)
5	MARKING LINE EPOXY 8-INCH (DASHED WHITE) (3 FT LINE 9 FT SKIP)
6	MARKING LINE EPOXY 8-INCH (WHITE)
7	MARKING YIELD LINE SYMBOLS EPOXY 18-INCH (WHITE)
8	MARKING CROSSWALK EPOXY BLOCK STYLE 24-INCH
9	MARKING ARROW EPOXY (WHITE)
10	MARKING STOP LINE EPOXY 18-INCH (WHITE)
11	MARKING DIAGONAL EPOXY 12-INCH (YELLOW)
12	MARKING CURB EPOXY (YELLOW) & MARKING CURB EPOXY (YELLOW)
13	MARKING CURB EPOXY (YELLOW) & MARKING CURB EPOXY (YELLOW)
(SX)	DENOTES SIGN NUMBER

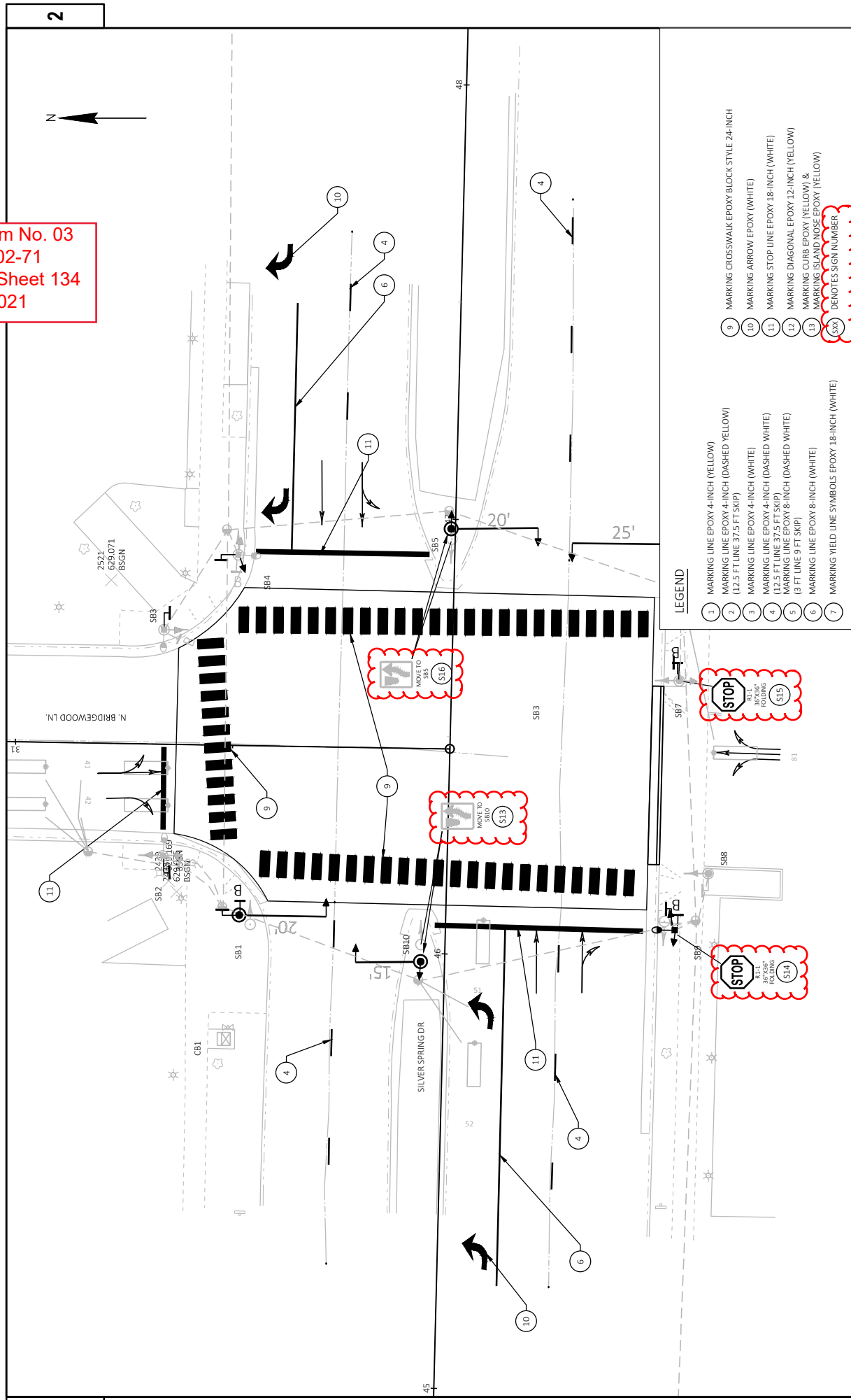
Addendum No. 03  
 ID 2978-02-71  
 Revised Sheet 133  
 April 7, 2021



- LEGEND**
- 1 MARKING LINE EPOXY 4-INCH (YELLOW)
  - 2 MARKING LINE EPOXY 4-INCH (DASHED YELLOW)
  - 3 (12.5 FT LINE 37.5 FT SKIP)
  - 4 MARKING LINE EPOXY 4-INCH (WHITE)
  - 5 MARKING LINE EPOXY 4-INCH (DASHED WHITE)
  - 6 MARKING LINE EPOXY 6-INCH (DASHED WHITE)
  - 7 MARKING LINE EPOXY 8-INCH (WHITE)
  - 8 MARKING YIELD LINE SYMBOLS EPOXY 18-INCH (WHITE)
  - 9 MARKING CROSSWALK EPOXY BLOCK STYLE 24-INCH
  - 10 MARKING ARROW EPOXY (WHITE)
  - 11 MARKING STOP LINE EPOXY 18-INCH (WHITE)
  - 12 MARKING DIAGONAL EPOXY 12-INCH (YELLOW)
  - 13 MARKING CURB EPOXY (YELLOW) & MARKING ISLAND NOSE EPOXY (YELLOW)
  - SXX DENOTES SIGN NUMBER

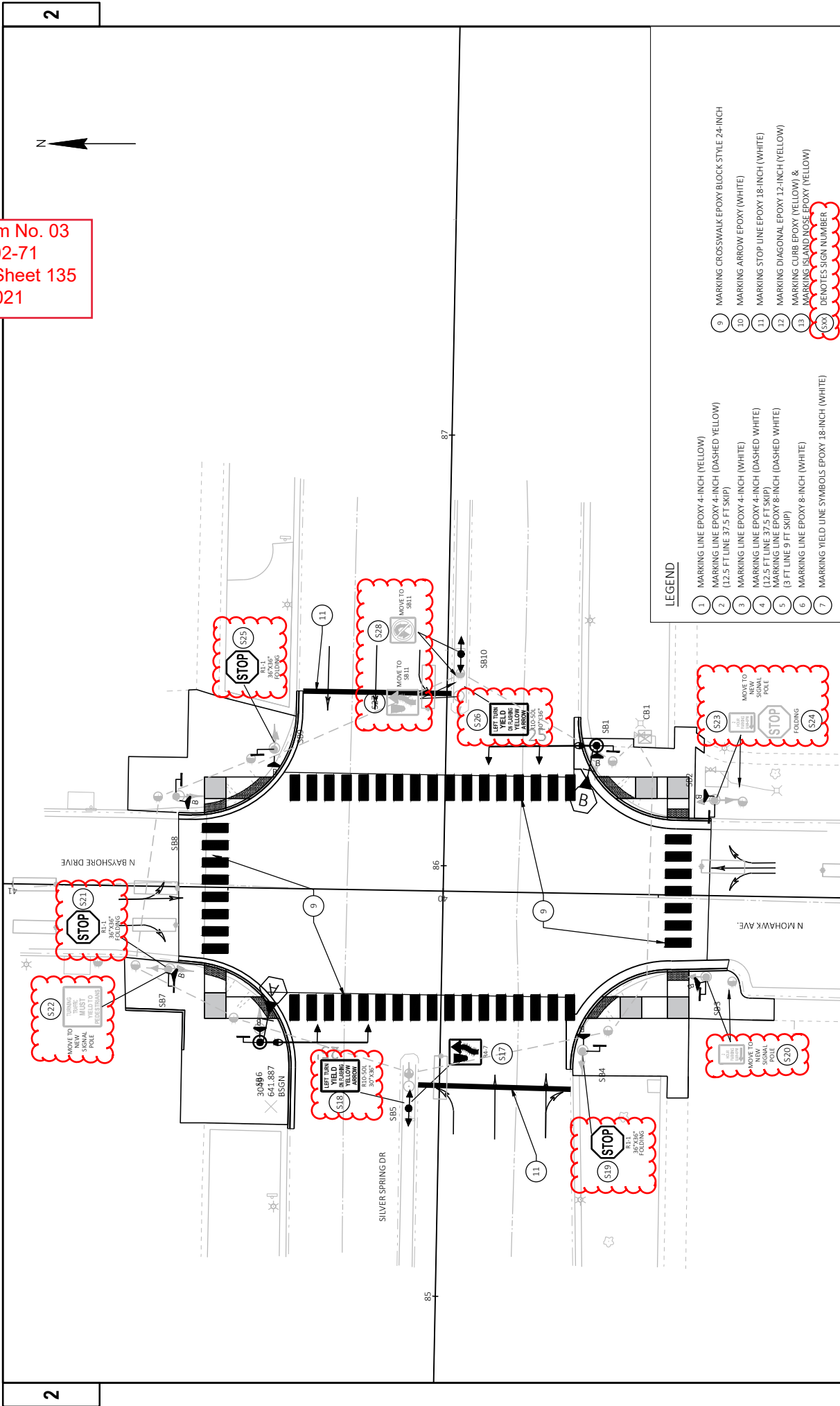
<b>PROJECT NO:</b> 2978-02-70	<b>COUNTY:</b> MILWAUKEE	<b>PAVEMENT MARKING AND SIGNING - PICK 'N SAVE AND HEISER FORD DRIVEWAYS</b>	<b>SHEET</b> 133	<b>E</b>
<small>FILE NAME: J:\ACTIVE\2978-02-00 SILVER SPRING DRIVE SEPA\29780000\00SHEET\TPAN\02901.PM.DWG</small>				
<small>LAYOUT NAME: 04</small>				
<small>PLOT DATE: 4/6/2021 12:18 PM</small>				
<small>PLOT BY: TONY BACAK</small>				
<small>PLOT NAME: 1 IN/20 FT</small>				
<small>WISDOT/CADDS SHEET 42</small>				

Addendum No. 03  
 ID 2978-02-71  
 Revised Sheet 134  
 April 7, 2021



- LEGEND**
- 1 MARKING LINE EPOXY 4-INCH (YELLOW)
  - 2 MARKING LINE EPOXY 4-INCH (DASHED YELLOW) (12.5 FT LINE 37.5 FT SKIP)
  - 3 MARKING LINE EPOXY 4-INCH (WHITE)
  - 4 MARKING LINE EPOXY 4-INCH (DASHED WHITE)
  - 5 MARKING LINE EPOXY 8-INCH (DASHED WHITE) (3 FT LINE 9 FT SKIP)
  - 6 MARKING LINE EPOXY 8-INCH (WHITE)
  - 7 MARKING YIELD LINE SYMBOLS EPOXY 18-INCH (WHITE)
  - 9 MARKING CROSSWALK EPOXY BLOCK STYLE 24-INCH
  - 10 MARKING ARROW EPOXY (WHITE)
  - 11 MARKING STOP LINE EPOXY 18-INCH (WHITE)
  - 12 MARKING DIAGONAL EPOXY 12-INCH (YELLOW)
  - 13 MARKING CURB EPOXY (YELLOW) & MARKING ISLAND NOSE EPOXY (YELLOW)
  - (SXX) DENOTES SIGN NUMBER

Addendum No. 03  
 ID 2978-02-71  
 Revised Sheet 135  
 April 7, 2021

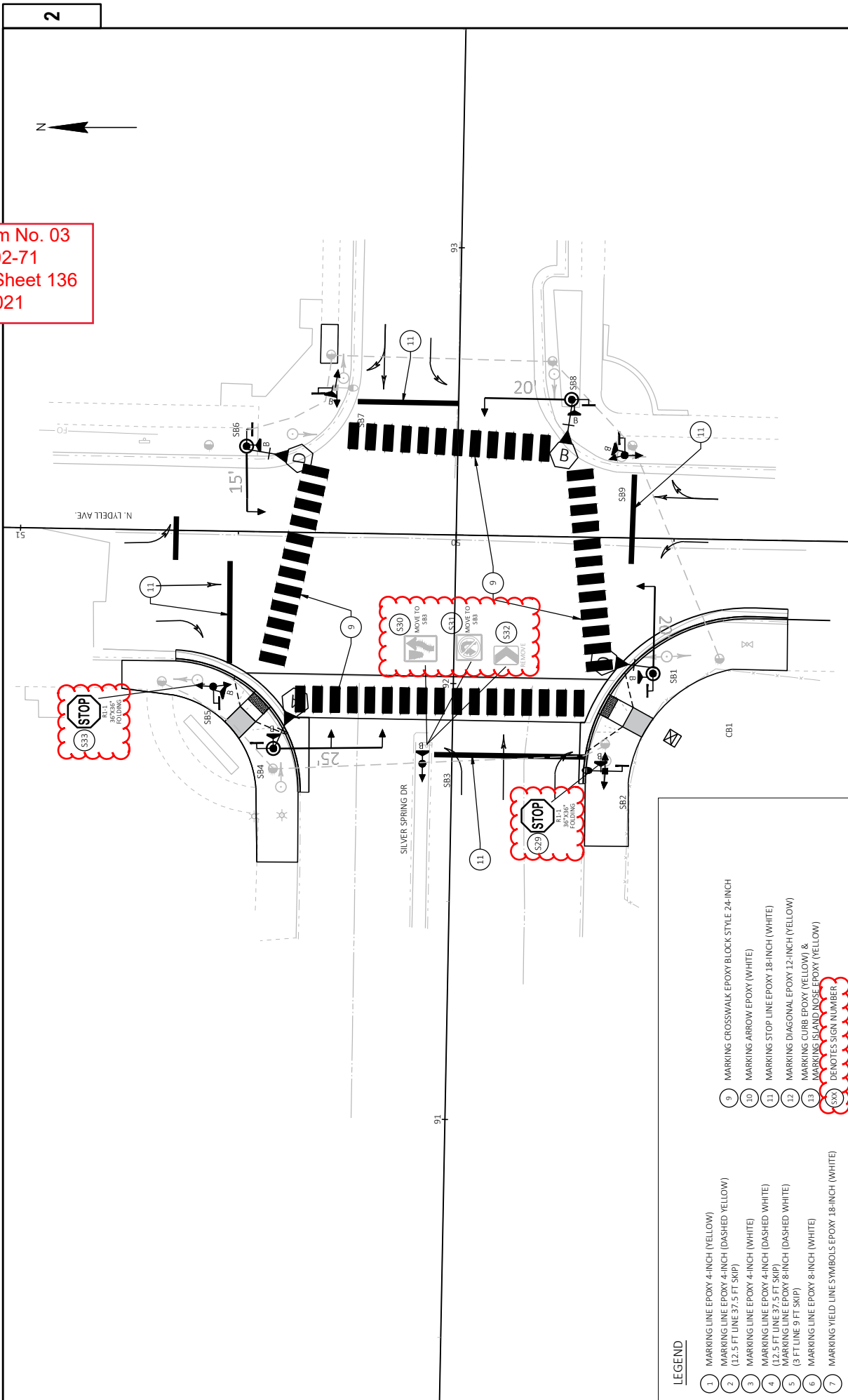


**LEGEND**

1	MARKING LINE EPOXY 4-INCH (YELLOW)
2	MARKING LINE EPOXY 4-INCH (DASHED YELLOW) (12.5 FT LINE 37.5 FT SKIP)
3	MARKING LINE EPOXY 4-INCH (WHITE)
4	MARKING LINE EPOXY 4-INCH (DASHED WHITE)
5	MARKING LINE EPOXY 8-INCH (DASHED WHITE) (3 FT LINE 9 FT SKIP)
6	MARKING LINE EPOXY 8-INCH (WHITE)
7	MARKING YIELD LINE SYMBOLS EPOXY 18-INCH (WHITE)
9	MARKING CROSSWALK EPOXY BLOCK STYLE 24-INCH
10	MARKING ARROW EPOXY (WHITE)
11	MARKING STOP LINE EPOXY 18-INCH (WHITE)
12	MARKING DIAGONAL EPOXY 12-INCH (YELLOW)
13	MARKING CURB EPOXY (YELLOW) & MARKING ISLAND NOSE EPOXY (YELLOW)
SXX	DENOTES SIGN NUMBER



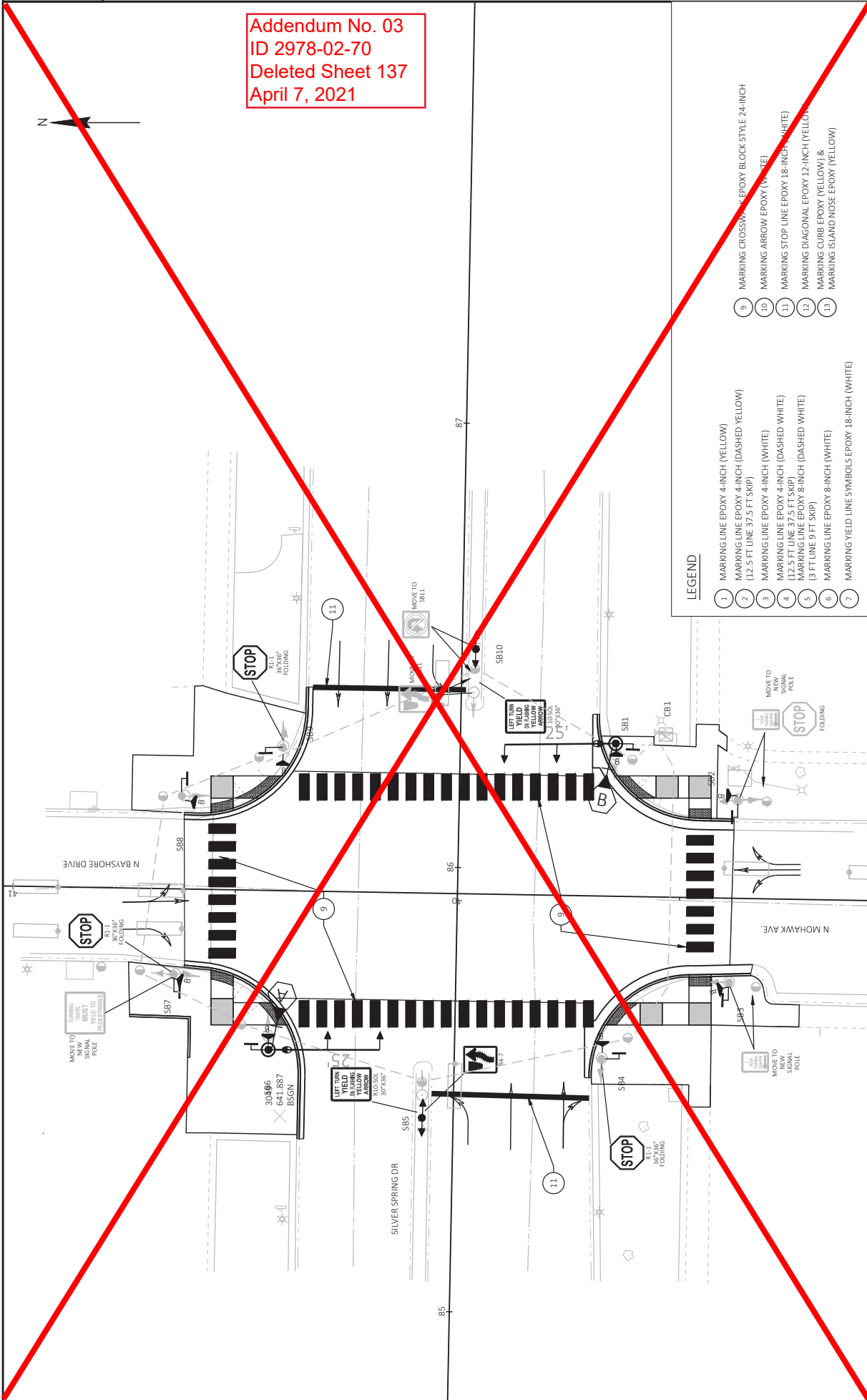
Addendum No. 03  
 ID 2978-02-71  
 Revised Sheet 136  
 April 7, 2021



**LEGEND**

- 1 MARKING LINE EPOXY 4-INCH (YELLOW)
- 2 MARKING LINE EPOXY 4-INCH (DASHED YELLOW) (12.5 FT LINE 37.5 FT SKIP)
- 3 MARKING LINE EPOXY 4-INCH (WHITE)
- 4 MARKING LINE EPOXY 4-INCH (DASHED WHITE) (3 FT LINE 9 FT SKIP)
- 5 MARKING LINE EPOXY 6-INCH (DASHED WHITE)
- 6 MARKING YIELD LINE SYMBOLS EPOXY 18-INCH (WHITE)
- 7 MARKING CROSSWALK EPOXY BLOCK STYLE 24-INCH
- 8 MARKING ARROW EPOXY (WHITE)
- 9 MARKING STOP LINE EPOXY 18-INCH (WHITE)
- 10 MARKING DIAGONAL EPOXY 12-INCH (YELLOW)
- 11 MARKING CURB EPOXY (YELLOW) & MARKING ISLAND NOSE EPOXY (YELLOW)
- 12 MARKING ISLAND NOSE EPOXY (YELLOW)
- 13 DENOTES SIGN NUMBER

Addendum No. 03  
ID 2978-02-70  
Deleted Sheet 137  
April 7, 2021



LEGEND

- 1 MARKING LINE EPOXY 4-INCH (YELLOW)
- 2 MARKING LINE EPOXY 4-INCH (DASHED YELLOW) (12.5 FT LINE 37.5 FT SKIP)
- 3 MARKING LINE EPOXY 4-INCH (WHITE)
- 4 MARKING LINE EPOXY 4-INCH (DASHED WHITE) (3 FT LINE 9 FT SKIP)
- 5 MARKING LINE EPOXY 8-INCH (DASHED WHITE)
- 6 MARKING LINE EPOXY 8-INCH (WHITE)
- 7 MARKING YIELD LINE SYMBOLS EPOXY 18-INCH (WHITE)
- 9 MARKING CROSSWALK EPOXY BLOCK STYLE 24-INCH
- 10 MARKING ARROW EPOXY (WHITE)
- 11 MARKING STOP LINE EPOXY 18-INCH (WHITE)
- 12 MARKING DIAGONAL EPOXY 12-INCH (YELLOW)
- 13 MARKING CURB EPOXY (YELLOW) & MARKING ISLAND NOSE EPOXY (YELLOW)

**SAW CUTTING ITEMS**

LOCATION	690.0150 SAWING ASPHALT LF	690.0250 SAWING CONCRETE LF
N LONG ISLAND DRIVE	179	63
PICK 'N SAVE DRIVEWAY/ HEISER FORD	288	149
BRIDGEWOOD LN.	365	--
N. BAYSHORE DRIVE	69	423
N. LYDELL AVE	208	251
UNDISTRIBUTED	110	90
<b>TOTALS</b>	<b>1,199</b>	<b>977</b>

ALL ITEMS CATEGORY 0010

**PERMANENT SIGNING**

LOCATION	634.0816 POST TUBULAR SIGNAL EACH	637.2210 SIGNS TYPE II REFLECTIVE SF	638.2102 MOVING SIGNS TYPE II EACH	638.2602 REMOVING SIGNS TYPE II EACH	638.3000 REMOVING SMALL SIGN SUPPORTS EACH
N LONG ISLAND DRIVE	4	15.5	1	1	2
PICK 'N SAVE DRIVEWAY/ HEISER FORD	--	5.5	2	--	--
BRIDGEWOOD LN.	--	14.9	2	--	--
N. BAYSHORE DRIVE	--	40.4	6	--	1
N. LYDELL AVE	--	14.9	2	1	1
<b>TOTALS</b>	<b>4</b>	<b>91.22</b>	<b>13</b>	<b>2</b>	<b>4</b>

ALL ITEMS CATEGORY 0010

Addendum No. 03  
 ID 2978-02-70  
 Revised Sheet 146  
 April 7, 2021

**PAVEMENT MARKING ITEMS**

LOCATION	646.1020 MARKING LINE EPOXY 4-INCH	646.3020 MARKING LINE EPOXY 8-INCH	646.5020 MARKING ARROW EPOXY	646.6120 MARKING STOP LINE EPOXY 18-INCH	646.6220 MARKING YIELD LINE EPOXY 18-INCH	646.7520 MARKING CROSSWALK EPOXY/BLOCK STYLE 24-INCH	646.8220 MARKING ISLAND NOSE EPOXY
N LONG ISLAND DRIVE	873	539	8	--	39	156	1
PICK 'N SAVE DRIVEWAY/ HEISER FORD	238	374	8	109	--	336	--
BRIDGEWOOD LN.	100	139	4	107	--	348	--
N. BAYSHORE DRIVE	--	--	--	70	--	294	--
N. LYDELL AVE	--	--	--	--	--	318	--
SUBTOTALS	1,211	1,052	12	286	39	1,452	1
<b>TOTALS</b>	<b>1,211</b>	<b>1,052</b>	<b>12</b>	<b>286</b>	<b>39</b>	<b>1,452</b>	<b>1</b>

ALL ITEMS CATEGORY 0010

Addendum No. 03  
ID 2978-02-70  
Added Sheet 146A  
April 7, 2021

PERMANENT SIGNING

LOCATION	SIGN NUMBER	SIGN CODE	SIGN SIZE (IN. X IN.)	TYPE II SIGN SIZE	POST TUBULAR STEEL EACH	SIGN TYPE II REFLECTIVE H SF	SIGN TYPE II REFLECTIVE H FOLDING SF	MOVING		REMOVING		REMARKS
								TYPE II	TYPE II	TYPE II	TYPE II	
<b>N. LONG ISLAND DRIVE INTERSECTION</b>												
STA21+97, 51' RT	S1	-	-	-	-	-	-	1	-	-	1	-
STA22+42, 52' LT	S2	R1-5L	18"x18"	-	1	2.25	-	-	-	-	-	-
STA23+36, 50' RT	S3	R9-3A	24"x24"	-	1	4.00	-	-	-	-	-	-
STA23+36, 50' RT	S4	R9-3BR	18"x12"	-	-	1.50	-	-	-	-	-	mount same post as S3
STA23+39, 49' RT	S5	R9-3A	24"x24"	-	1	4.00	-	-	-	-	-	-
STA23+39, 49' RT	S6	R9-3BR	18"x12"	-	-	1.50	-	-	-	-	-	mount same post as S5
STA23+39, 52' LT	S7	R1-5L	18"x18"	-	1	2.25	-	-	-	-	-	-
STA23+57, 50' LT	S8	-	-	-	-	-	-	-	-	-	1	remove sign & post
SUBTOTALS					4	15.50	-	1	1	1	2	
<b>PICK 'N SAVE DRIVEWAY/HEISER FORD INTERSECTION</b>												
STA37+04, 3' RT	S9	R4-7	existing	-	-	-	-	1	-	-	-	move to SB8
STA38+04, 23' RT	S10	R4-7	existing	-	-	-	-	1	-	-	-	move to SB3
STA38+53, 26' LT	S11	R9-3A	24"x24"	-	1	4.00	-	-	-	-	-	-
STA38+53, 26' LT	S12	R9-3BR	18"x12"	-	-	1.50	-	-	-	-	-	mount same post as S11
SUBTOTALS					1	5.50	-	2	-	-	-	
<b>BRIDGEWOOD LN. INTERSECTION</b>												
STA45+99, 5' LT	S13	R4-7	existing	-	-	-	-	1	-	-	-	move to SB10
STA46+06, 53' RT	S14	R1-1-F	36"x36"	-	-	7.46	-	-	-	-	-	mount to SB9
STA46+64, 52' RT	S15	R1-1-F	36"x36"	-	-	7.46	-	-	-	-	-	mount to SB7
STA46+97, 1' LT	S16	R4-7	existing	-	-	-	-	1	-	-	-	move to SB5
SUBTOTALS					-	-	14.92	2	-	-	-	
<b>N. BAYSHORE DRIVE INTERSECTION</b>												
STA85+44, 7' LT	S17	R4-7	18"x24"	-	-	3.00	-	-	-	-	-	mount to SB5
STA85+44, 7' LT	S18	R10-50L	30"x36"	-	-	7.50	-	-	-	-	-	mount to SB5
STA85+57, 33' RT	S19	R1-1-F	36"x36"	-	-	7.46	-	-	-	-	-	mount to SB4
STA85+75, 61' RT	S20	R7-5-L	existing	-	-	-	-	1	-	-	-	move to SB3
STA85+75, 63' LT	S21	R1-1-F	36"x36"	-	-	7.46	-	-	-	-	-	mount to SB7
STA85+75, 63' LT	S22	-	existing	-	-	-	-	1	-	-	-	mount to SB7
STA86+16, 63' RT	S23	R7-5-L	existing	-	-	-	-	1	-	-	-	mount to SB2
STA86+16, 63' RT	S24	R1-1-F	existing	-	-	-	-	1	-	-	-	mount to SB2
STA86+26, 40' LT	S25	R1-1-F	36"x36"	-	-	7.46	-	-	-	-	-	mount to SB9
STA86+49, 3' RT	S26	R10-50L	30"x36"	-	-	7.50	-	-	-	-	-	mount to SB11
STA86+49, 3' RT	S27	R4-7	existing	-	-	-	-	1	-	-	-	mount to SB11
STA86+49, 3' RT	S28	R3-4	existing	-	-	-	-	1	-	-	-	mount to SB11
SUBTOTALS					-	18.00	22.38	6	-	-	1	
<b>N. LYDELL AVE INTERSECTION</b>												
STA91+80, 35' RT	S29	R1-1-F	36"x36"	-	-	7.46	-	-	-	-	-	mount to SB2
STA91+81, 7' LT	S30	R4-7	existing	-	-	-	-	1	-	-	-	mount to SB3
STA91+81, 7' LT	S31	R3-4	existing	-	-	-	-	1	-	-	-	mount to SB3
STA91+81, 7' LT	S32	W1-8	existing	-	-	-	-	-	1	1	1	remove sign & post
STA91+98, 55' LT	S33	R1-1-F	36"x36"	-	-	7.46	-	-	-	-	-	mount to SB5
SUBTOTALS					-	-	14.92	2	-	-	1	
<b>TOTALS</b>					<b>5</b>	<b>39.00</b>	<b>52.22</b>	<b>13</b>	<b>2</b>	<b>2</b>	<b>4</b>	

ALL ITEMS CATEGORY 0010

TRAFFIC CONTROL

643.5000  
TRAFFIC  
CONTROL  
EACH  
1  
1

LOCATION PROJECT	EACH
	1
<b>TOTAL</b>	<b>1</b>

ALL ITEMS CATEGORY 0010

RESTORATION ITEMS

SPV.0060.07  
CURB  
RAMP GRADING  
SHAPING  
AND FINISHING  
EACH

LOCATION	EACH
N LONG ISLAND DRIVE	6
PICK 'N SAVE DRIVEWAY/ HEISER FORD	4
BRIDGEWOOD LN.	---
N. BAYSHORE DRIVE	8
N. LYDELL AVE	2
<b>TOTALS</b>	<b>20</b>

ALL ITEMS CATEGORY 0010

SPV.0060.12 PEDESTRIAN CURB GRADING SHAPING AND FINISHING EACH	EACH
	1
	1
	---
	---
	---
	---
	2
	2

VALVE AND MANHOLE ADJUSTMENTS

611.8110\* 611.8110\*\* SPV.0060.08\*\*

ADJUSTING  
MANHOLE  
COVERS  
EACH

ADJUSTING  
MANHOLE  
COVERS  
EACH

ADJUSTING  
WATER VALVE  
COVERS  
EACH

LOCATION	ADJUSTING MANHOLE COVERS EACH	ADJUSTING MANHOLE COVERS EACH	ADJUSTING WATER VALVE COVERS EACH
N LONG ISLAND DRIVE	-	-	3
PICK 'N SAVE DRIVEWAY/ HEISER FORD	2	1	1
BRIDGEWOOD LN.	2	1	2
N. BAYSHORE DRIVE	4	2	5
N. LYDELL AVE	-	-	-
UNDISTRIBUTED	2	1	3
<b>TOTALS</b>	<b>10</b>	<b>5</b>	<b>14</b>

\*CATEGORY 0010  
\*\*CATEGORY 0020

Addendum No. 03  
ID 2978-02-70  
Revised Sheet 147  
April 7, 2021



Proposal Schedule of Items

Proposal ID: 20210413008 Project(s): 2978-02-70

Federal ID(s): WISC 2021261

SECTION: 0001 Roadway Items

Alt Set ID: Alt Mbr ID:

Proposal Line Number	Item ID Description	Approximate Quantity and Units	Unit Price	Bid Amount
0002	204.0100 Removing Concrete Pavement	2,550.000 SY	_____.	_____.
0004	204.0110 Removing Asphaltic Surface	198.000 SY	_____.	_____.
0006	204.0115 Removing Asphaltic Surface Butt Joints	450.000 SY	_____.	_____.
0008	204.0150 Removing Curb & Gutter	695.000 LF	_____.	_____.
0010	204.0155 Removing Concrete Sidewalk	850.000 SY	_____.	_____.
0012	204.0195 Removing Concrete Bases	21.000 EACH	_____.	_____.
0014	204.9105.S Removing (item description) 01. Traffic Signals Silver Spring Drive & Pick N Save Driveway	LS	LUMP SUM	_____.
0016	204.9105.S Removing (item description) 02. Traffic Signals Silver Spring Drive & Bridgewood Lane	LS	LUMP SUM	_____.
0018	204.9105.S Removing (item description) 03. Traffic Signals Silver Spring Drive & Mohawk Avenue	LS	LUMP SUM	_____.
0020	204.9105.S Removing (item description) 04. Traffic Signals Silver Spring Drive & Lydell Avenue	LS	LUMP SUM	_____.
0022	205.0100 Excavation Common	400.000 CY	_____.	_____.
0024	205.0501.S Excavation, Hauling, and Disposal of Petroleum Contaminated Soil 01. Intersection of W Silver Spring Dr. and Lydell Avenue	5.900 TON	_____.	_____.
0026	211.0100 Prepare Foundation for Asphaltic Paving (project) 01. 2978-02-70	LS	LUMP SUM	_____.



Proposal Schedule of Items

Proposal ID: 20210413008 Project(s): 2978-02-70

Federal ID(s): WISC 2021261

SECTION: 0001 Roadway Items

Alt Set ID: Alt Mbr ID:

Proposal Line Number	Item ID Description	Approximate Quantity and Units	Unit Price	Bid Amount
0028	211.0200 Prepare Foundation for Concrete Pavement (project) 01. 2978-02-70	LS	LUMP SUM	_____.
0030	213.0100 Finishing Roadway (project) 01. 2978-02-70	1.000 EACH	_____.	_____.
0032	305.0120 Base Aggregate Dense 1 1/4-Inch	743.000 TON	_____.	_____.
0034	320.0135 Concrete Base 7-Inch	31.000 SY	_____.	_____.
0036	415.0085 Concrete Pavement 8 1/2-Inch	814.000 SY	_____.	_____.
0038	416.0610 Drilled Tie Bars	87.000 EACH	_____.	_____.
0040	416.0620 Drilled Dowel Bars	331.000 EACH	_____.	_____.
0042	455.0605 Tack Coat	266.000 GAL	_____.	_____.
0044	460.7223 HMA Pavement 3 HT 58-28 S	540.000 TON	_____.	_____.
0046	460.7224 HMA Pavement 4 HT 58-28 S	225.000 TON	_____.	_____.
0048	465.0105 Asphaltic Surface	82.000 TON	_____.	_____.
0050	601.0411 Concrete Curb & Gutter 30-Inch Type D	827.000 LF	_____.	_____.
0052	601.0600 Concrete Curb Pedestrian	86.000 LF	_____.	_____.
0054	602.0410 Concrete Sidewalk 5-Inch	7,534.000 SF	_____.	_____.
0056	602.0505 Curb Ramp Detectable Warning Field Yellow	100.000 SF	_____.	_____.
0058	602.0605 Curb Ramp Detectable Warning Field Radial Yellow	126.000 SF	_____.	_____.



Proposal Schedule of Items

Proposal ID: 20210413008 Project(s): 2978-02-70

Federal ID(s): WISC 2021261

SECTION: 0001 Roadway Items

Alt Set ID: Alt Mbr ID:

Proposal Line Number	Item ID Description	Approximate Quantity and Units	Unit Price	Bid Amount
0060	611.8110 Adjusting Manhole Covers	15.000 EACH	_____.	_____.
0062	611.8115 Adjusting Inlet Covers	10.000 EACH	_____.	_____.
0064	618.0100 Maintenance And Repair of Haul Roads (project) 01. 2978-02-70	1.000 EACH	_____.	_____.
0066	619.1000 Mobilization	1.000 EACH	_____.	_____.
0068	628.1905 Mobilizations Erosion Control	1.000 EACH	_____.	_____.
0070	628.1910 Mobilizations Emergency Erosion Control	3.000 EACH	_____.	_____.
0072	628.7010 Inlet Protection Type B	5.000 EACH	_____.	_____.
0074	628.7015 Inlet Protection Type C	38.000 EACH	_____.	_____.
0076	634.0816 Posts Tubular Steel 2x2-Inch X 16-FT	5.000 EACH	_____.	_____.
0078	637.2210 Signs Type II Reflective H	39.000 SF	_____.	_____.
0080	638.2102 Moving Signs Type II	13.000 EACH	_____.	_____.
0082	638.2602 Removing Signs Type II	2.000 EACH	_____.	_____.
0084	638.3000 Removing Small Sign Supports	4.000 EACH	_____.	_____.
0088	643.0300 Traffic Control Drums	23,752.000 DAY	_____.	_____.
0090	643.0410 Traffic Control Barricades Type II	1,687.000 DAY	_____.	_____.
0092	643.0420 Traffic Control Barricades Type III	4,646.000 DAY	_____.	_____.





Proposal Schedule of Items

Proposal ID: 20210413008 Project(s): 2978-02-70

Federal ID(s): WISC 2021261

SECTION: 0001 Roadway Items

Alt Set ID: Alt Mbr ID:

Proposal Line Number	Item ID Description	Approximate Quantity and Units	Unit Price	Bid Amount
0094	643.0500 Traffic Control Flexible Tubular Marker Posts	64.000 EACH	_____.	_____.
0096	643.0600 Traffic Control Flexible Tubular Marker Bases	64.000 EACH	_____.	_____.
0098	643.0715 Traffic Control Warning Lights Type C	2,090.000 DAY	_____.	_____.
0100	643.0800 Traffic Control Arrow Boards	170.000 DAY	_____.	_____.
0102	643.0900 Traffic Control Signs	10,140.000 DAY	_____.	_____.
0104	643.0910 Traffic Control Covering Signs Type I	1.000 EACH	_____.	_____.
0106	643.0920 Traffic Control Covering Signs Type II	8.000 EACH	_____.	_____.
0108	643.5000 Traffic Control	1.000 EACH	_____.	_____.
0110	646.1020 Marking Line Epoxy 4-Inch	1,211.000 LF	_____.	_____.
0112	646.3020 Marking Line Epoxy 8-Inch	1,052.000 LF	_____.	_____.
0114	646.5020 Marking Arrow Epoxy	12.000 EACH	_____.	_____.
0116	646.6120 Marking Stop Line Epoxy 18-Inch	286.000 LF	_____.	_____.
0118	646.6220 Marking Yield Line Epoxy 18-Inch	39.000 EACH	_____.	_____.
0120	646.7520 Marking Crosswalk Epoxy Block Style 24-Inch	1,452.000 LF	_____.	_____.
0122	646.8220 Marking Island Nose Epoxy	1.000 EACH	_____.	_____.
0124	646.9010 Marking Removal Line Water Blasting 4-Inch	1,315.000 LF	_____.	_____.



Proposal Schedule of Items

Proposal ID: 20210413008 Project(s): 2978-02-70

Federal ID(s): WISC 2021261

SECTION: 0001 Roadway Items

Alt Set ID: Alt Mbr ID:

Proposal Line Number	Item ID Description	Approximate Quantity and Units	Unit Price	Bid Amount
0126	649.0150 Temporary Marking Line Removable Tape 4-Inch	2,940.000 LF	_____.	_____.
0128	649.0250 Temporary Marking Line Removable Tape 8-Inch	450.000 LF	_____.	_____.
0130	652.0225 Conduit Rigid Nonmetallic Schedule 40 2-Inch	221.000 LF	_____.	_____.
0132	652.0235 Conduit Rigid Nonmetallic Schedule 40 3-Inch	33.000 LF	_____.	_____.
0134	652.0605 Conduit Special 2-Inch	157.000 LF	_____.	_____.
0136	652.0700.S Install Conduit into Existing Item	22.000 EACH	_____.	_____.
0138	653.0140 Pull Boxes Steel 24x42-Inch	4.000 EACH	_____.	_____.
0140	654.0101 Concrete Bases Type 1	5.000 EACH	_____.	_____.
0142	654.0102 Concrete Bases Type 2	13.000 EACH	_____.	_____.
0144	654.0205 Concrete Control Cabinet Bases Type 7	1.000 EACH	_____.	_____.
0146	655.0230 Cable Traffic Signal 5-14 AWG	1,491.000 LF	_____.	_____.
0148	655.0240 Cable Traffic Signal 7-14 AWG	617.000 LF	_____.	_____.
0150	655.0260 Cable Traffic Signal 12-14 AWG	2,612.000 LF	_____.	_____.
0152	655.0270 Cable Traffic Signal 15-14 AWG	683.000 LF	_____.	_____.
0154	655.0320 Cable Type UF 2-10 AWG Grounded	805.000 LF	_____.	_____.
0156	655.0515 Electrical Wire Traffic Signals 10 AWG	3,366.000 LF	_____.	_____.



Proposal Schedule of Items

Proposal ID: 20210413008 Project(s): 2978-02-70

Federal ID(s): WISC 2021261

SECTION: 0001 Roadway Items

Alt Set ID: Alt Mbr ID:

Proposal Line Number	Item ID Description	Approximate Quantity and Units	Unit Price	Bid Amount
0158	655.0610 Electrical Wire Lighting 12 AWG	819.000 LF	_____.	_____.
0160	656.0200 Electrical Service Meter Breaker Pedestal (location) 01. Silver Spring Dr & Lydell Ave	LS	LUMP SUM	_____.
0162	657.0100 Pedestal Bases	8.000 EACH	_____.	_____.
0164	657.0255 Transformer Bases Breakaway 11 1/2-Inch Bolt Circle	13.000 EACH	_____.	_____.
0166	657.0305 Poles Type 2	8.000 EACH	_____.	_____.
0168	657.0310 Poles Type 3	5.000 EACH	_____.	_____.
0170	657.0405 Traffic Signal Standards Aluminum 3.5-FT	1.000 EACH	_____.	_____.
0172	657.0420 Traffic Signal Standards Aluminum 13-FT	5.000 EACH	_____.	_____.
0174	657.0425 Traffic Signal Standards Aluminum 15-FT	2.000 EACH	_____.	_____.
0176	657.0585 Trombone Arms 15-FT	2.000 EACH	_____.	_____.
0178	657.0590 Trombone Arms 20-FT	4.000 EACH	_____.	_____.
0180	657.0595 Trombone Arms 25-FT	6.000 EACH	_____.	_____.
0182	657.0609 Luminaire Arms Single Member 4-Inch Clamp 6-FT	5.000 EACH	_____.	_____.
0184	658.0173 Traffic Signal Face 3S 12-Inch	50.000 EACH	_____.	_____.
0186	658.0174 Traffic Signal Face 4S 12-Inch	4.000 EACH	_____.	_____.



Proposal Schedule of Items

Proposal ID: 20210413008 Project(s): 2978-02-70

Federal ID(s): WISC 2021261

SECTION: 0001 Roadway Items

Alt Set ID: Alt Mbr ID:

Proposal Line Number	Item ID Description	Approximate Quantity and Units	Unit Price	Bid Amount
0188	658.0175 Traffic Signal Face 5S 12-Inch	8.000 EACH	_____.	_____.
0190	658.0416 Pedestrian Signal Face 16-Inch	30.000 EACH	_____.	_____.
0192	658.0500 Pedestrian Push Buttons	14.000 EACH	_____.	_____.
0194	658.5069 Signal Mounting Hardware (location) 01. Silver Spring Drive & Pick N Save Driveway	LS	LUMP SUM	_____.
0196	658.5069 Signal Mounting Hardware (location) 02. Silver Spring Drive & Bridgewood Ln	LS	LUMP SUM	_____.
0198	658.5069 Signal Mounting Hardware (location) 03. Silver Spring Drive & Mohawk Ave	LS	LUMP SUM	_____.
0200	658.5069 Signal Mounting Hardware (location) 04. Silver Spring Drive & Lydell Ave	LS	LUMP SUM	_____.
0202	659.1125 Luminaires Utility LED C	1.000 EACH	_____.	_____.
0204	661.0200 Temporary Traffic Signals for Intersections (location) 01. Silver Spring Drive & Lydell Avenue	LS	LUMP SUM	_____.
0206	690.0150 Sawing Asphalt	1,199.000 LF	_____.	_____.
0208	690.0250 Sawing Concrete	977.000 LF	_____.	_____.
0210	ASP.1T0A On-the-Job Training Apprentice at \$5.00/HR	550.000 HRS	5.00000	2,750.00
0212	ASP.1T0G On-the-Job Training Graduate at \$5.00/HR	600.000 HRS	5.00000	3,000.00
0214	SPV.0060 Special 01. Removing, Salvaging, and Reinstalling Light Poles, Luminaires, and Arms	2.000 EACH	_____.	_____.



Proposal Schedule of Items

Proposal ID: 20210413008 Project(s): 2978-02-70

Federal ID(s): WISC 2021261

SECTION: 0001 Roadway Items

Alt Set ID: Alt Mbr ID:

Proposal Line Number	Item ID Description	Approximate Quantity and Units	Unit Price	Bid Amount
0216	SPV.0060 Special 02. Traffic Signal Controller And Cabinet	1.000 EACH	_____.	_____.
0218	SPV.0060 Special 03. Concrete Bases Type B	4.000 EACH	_____.	_____.
0220	SPV.0060 Special 04. Traffic Signal Controller	1.000 EACH	_____.	_____.
0222	SPV.0060 Special 05. Traffic Signal Conflict Monitor	1.000 EACH	_____.	_____.
0224	SPV.0060 Special 06. Expose Existing Utility	2.000 EACH	_____.	_____.
0226	SPV.0060 Special 07. Curb Ramp Grading, Shaping and Finishing	20.000 EACH	_____.	_____.
0228	SPV.0060 Special 08. Decorative Traffic Signal Pole & Concrete Bases Type 5 Modified	2.000 EACH	_____.	_____.
0230	SPV.0060 Special 09. City Of Glendale Twin Luminaire Decorative Street Lighting Assembly	2.000 EACH	_____.	_____.
0232	SPV.0060 Special 10. Adjusting Water Valve Covers	14.000 EACH	_____.	_____.
0234	SPV.0105 Special 01. Video Vehicle Detection System Silver Spring Drive & Lydell Avenue	LS	LUMP SUM	_____.
0236	SPV.0105 Special 02. Emergency Vehicle Preemption System Silver Spring Drive & Mohawk Avenue	LS	LUMP SUM	_____.
0238	SPV.0105 Special 03. Emergency Vehicle Preemption System Silver Spring Drive & Lydell Avenue	LS	LUMP SUM	_____.
0240	SPV.0105 Special 04. Emergency Vehicle Preemption System at Silver Spring Drive & Bridgewood Lane	LS	LUMP SUM	_____.



Proposal Schedule of Items

Proposal ID: 20210413008 Project(s): 2978-02-70

Federal ID(s): WISC 2021261

SECTION: 0001 Roadway Items

Alt Set ID: Alt Mbr ID:

Proposal Line Number	Item ID Description	Approximate Quantity and Units	Unit Price	Bid Amount
0242	SPV.0105 Special 05. Emergency Vehicle Preemption System at Silver Spring Dr & Pick N Save Dr	LS	LUMP SUM	_____.
0244	SPV.0105 Special 06. Traffic Signal Cabinet Modifications Silver Spring Drive & Mohawk Avenue	LS	LUMP SUM	_____.
0246	SPV.0105 Special 07. Accessible Pedestrian Push Button System Silver Spring Drive & Mohawk Avenue	LS	LUMP SUM	_____.
0248	SPV.0105 Special 08. Accessible Pedestrian Push Button System Silver Spring Drive & Lydell Avenue	LS	LUMP SUM	_____.
0250	SPV.0105 Special 09. Remove, Salvage, and Reinstall Traffic Signal Interconnect	LS	LUMP SUM	_____.
0252	SPV.0105 Special 10. Rectangular Rapid Flashing Beacon System Silver Spring Drive & Long Island D	LS	LUMP SUM	_____.
0254	SPV.0105 Special 11. Survey Project 2978-02-70	LS	LUMP SUM	_____.
0256	SPV.0195 Special 01. Management of Solid Waste at Pick 'N Save Driveway / Heiser Ford	1.560 TON	_____.	_____.
0258	SPV.0195 Special 02. Management of Solid Waste at Bridgewood Lane	3.430 TON	_____.	_____.
0260	SPV.0060 Special 11. Field Facilities Office Space	1.000 EACH	_____.	_____.
0262	637.2215 Signs Type II Reflective H Folding	52.220 SF	_____.	_____.
0264	SPV.0060 Special Pedestrian Curb Grading, Shaping and Finishing	2.000 EACH	_____.	_____.
<b>Section: 0001</b>			<b>Total:</b>	_____.

**Total Bid:** \_\_\_\_\_.

