



Wisconsin Department of Transportation

September 9, 2021

Division of Transportation Systems Development

Bureau of Project Development
4822 Madison Yards Way, 4th Floor South
Madison, WI 53705

Telephone: (608) 266-1631
Facsimile (FAX): (608) 266-8459

NOTICE TO ALL CONTRACTORS:

<p>Proposal #20: 1520-00-73, WISC 2021495 Osseo - Fairchild West County Line to USH 12 West USH 10 Jackson County</p>	<p>1520-00-73, WISC 2021496 Osseo - Fairchild West County Line to USH 12 West USH 10 Jackson County</p>
--	--

Letting of September 14, 2021

This is Addendum No. 01, which provides for the following:

Special Provisions:

Revised Special Provisions	
Article No.	Description
33	Box Culvert Joint Repair C-27-0303, Item SPV.0105.04

Plan Sheets:

Revised Plan Sheets	
Plan Sheet	Plan Sheet Title (brief description of changes to sheet)
16	Construction Details (Box culvert joint repair detail changed to require galvanized steel plates and stainless steel or galvanized anchors)

The responsibility for notifying potential subcontractors and suppliers of these changes remains with the prime contractor.

Sincerely,

Mike Coleman

Proposal Development Specialist
Proposal Management Section

ADDENDUM NO. 1

1520-00-73

September 9, 2021

Special Provisions

33. Box Culvert Joint Repair C-27-0303, Item SPV.0105.04.

*Replace the first and second paragraphs under section titled **B Materials** with the following:*

Provide galvanized steel plates conforming to the pertinent sections of standard spec 506.2.

Provide either stainless steel or galvanized anchors conforming to the pertinent sections of standard spec 502.2.

Plan Sheets

The following 8½ x 11-inch sheets are attached and made part of the plans for this proposal:

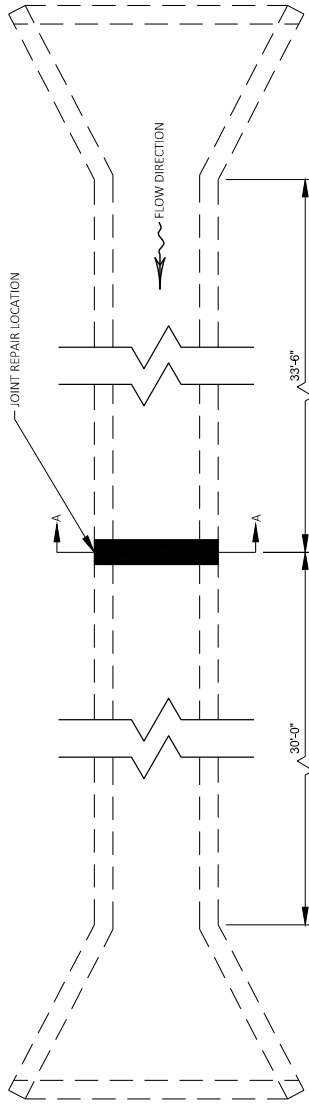
Revised: 16.

END OF ADDENDUM

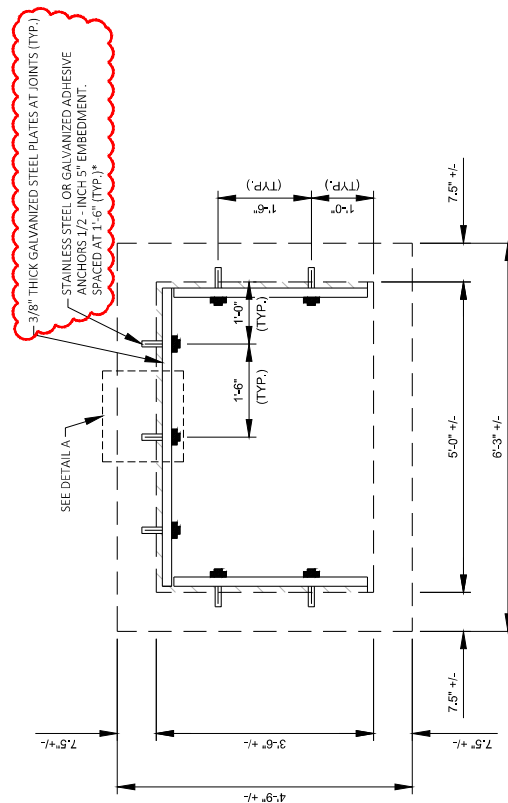
Addendum No. 01
ID 1520-00-73 &
ID 1520-02-70
Revised Sheet 16
September 9, 2021

NOTES

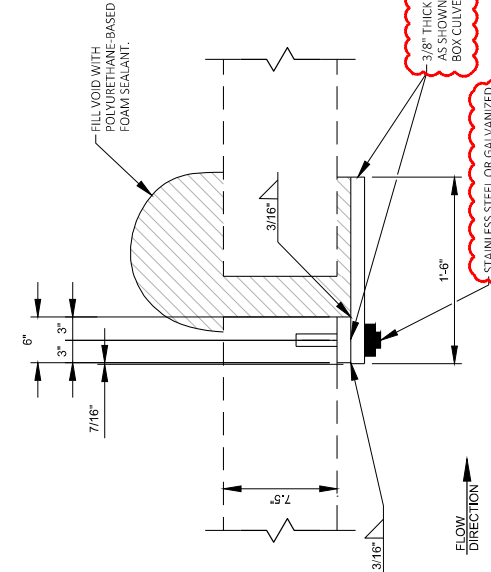
REPAIR TO BE PAID AS BOX CULVERT JOINT
 REPAIR C-27-0303



PLAN VIEW



SECTION A-A



DETAIL A

3/8" THICK GALVANIZED STEEL PLATES AT JOINTS (TYP.)
STAINLESS STEEL OR GALVANIZED ADHESIVE ANCHORS 1/2" X 5" EMBEDMENT, SPACED AT 1'-6" (TYP.)*

3/8" THICK GALVANIZED STEEL PLATES AS SHOWN IN TYPICAL SECTION THRU BOX CULVERT

STAINLESS STEEL OR GALVANIZED ADHESIVE ANCHORS 1/2" X 5" EMBEDMENT SPACED AT 1'-6"

***STAINLESS STEEL OR GALVANIZED MECHANICAL ANCHORS WILL BE ALLOWED TO BE SUBSTITUTED FOR OVERHEAD INSTALLATION.**

BOX CULVERT JOINT REPAIR C-27-0303
STA 625+18

8

8

