



Wisconsin Department of Transportation

September 8, 2021

Division of Transportation Systems Development

Bureau of Project Development
4822 Madison Yards Way, 4th Floor South
Madison, WI 53705

Telephone: (608) 266-1631
Facsimile (FAX): (608) 266-8459

NOTICE TO ALL CONTRACTORS:

Proposal #24: 2565-07-70, WISC 2021442
Green Bay Rd, Village of Brown Deer
Teutonia Avenue Intersection
STH 57
Milwaukee County

2150-00-72
Brown Deer Road
STH 100, B-40-504, B-40-505
STH 100
Milwaukee County

2270-04-70, WISC 2021441
STH 57-Vil Brown Deer & City Mequon
Teutonia Avenue to Mequon Road
STH 57
Milwaukee & Ozaukee County

Letting of September 14, 2021

This is Addendum No. 02, which provides for the following:

Special Provisions:

Revised Special Provisions	
Article No.	Description
9	Referenced Construction Specifications.
103	Sanitary Sewer Pipe Reinforced Concrete Class II 12-INCH, Item SPV.0090.10; Sanitary Sewer Pipe Reinforced Concrete Class II 21-INCH, Item SPV.0090.11.

Schedule of Items:

Revised Bid Item Quantities					
Bid Item	Item Description	Unit	Old Quantity	Revised Quantity	Proposal Total
SPV.0090.10	Sanitary Sewer Pipe Reinforced Concrete Class III 12-INCH	LF	63	0	63
SPV.0090.11	Sanitary Sewer Pipe Reinforced Concrete Class IV 21-INCH	LF	101	0	101
Revised Items above was for class change only					
608.0412	Storm Sewer Pipe Reinforced Concrete Class IV 12-INCH	LF	454	-44	410

Added Bid Item Quantities					
Bid Item	Item Description	Unit	Old Quantity	Revised Quantity	Proposal Total
608.3012	Storm Sewer Pipe Class III-A 12-INCH	LF	0	751	751
608.3015	Storm Sewer Pipe Class III-A 15-INCH	LF	0	3,117	3,117
608.3018	Storm Sewer Pipe Class III-A 18-INCH	LF	0	600	600
608.3024	Storm Sewer Pipe Class III-A 24-INCH	LF	0	2,155	2,155
608.3036	Storm Sewer Pipe Class III-A 36-INCH	LF	0	1,468	1,468

Deleted Bid Item Quantities					
Bid Item	Item Description	Unit	Old Quantity	Revised Quantity	Proposal Total
608.0312	Storm Sewer Pipe Reinforced Concrete Class III 12-INCH	LF	707	-707	0
608.0315	Storm Sewer Pipe Reinforced Concrete Class III 15-INCH	LF	3,117	-3,117	0
608.0318	Storm Sewer Pipe Reinforced Concrete Class III 18-INCH	LF	600	-600	0
608.0324	Storm Sewer Pipe Reinforced Concrete Class III 24-INCH	LF	2,155	-2,155	0
608.0336	Storm Sewer Pipe Reinforced Concrete Class III 36-INCH	LF	1,468	-1,468	0

Plan Sheets:

Revised Plan Sheets – 2270-04-70	
Plan Sheet	Plan Sheet Title (brief description of changes to sheet)
176	Storm Sewer Plan and Profile (Revised pipe type notes)
177	Storm Sewer Plan and Profile (Revised pipe type notes)
178	Storm Sewer Plan and Profile (Revised pipe type notes)
179	Storm Sewer Plan and Profile (Revised pipe type notes)
180	Storm Sewer Plan and Profile (Revised pipe type notes)
181	Storm Sewer Plan and Profile (Revised pipe type notes)
182	Storm Sewer Plan and Profile (Revised pipe type notes)
184	Storm Sewer Plan and Profile (Revised pipe type notes)
185	Storm Sewer Plan and Profile (Revised pipe type notes)
186	Storm Sewer Plan and Profile (Revised pipe type notes)
187	Storm Sewer Plan and Profile (Revised pipe type notes)
188	Sanitary Sewer (Revised pipe class note)
189	Sanitary Sewer (Revised pipe class note)
742	Drainage Quantities (Revised pipe class notes)
743	Drainage Quantities (Revised pipe class notes)
744	Drainage Quantities (Revised pipe class notes)
745	Drainage Quantities (Revised pipe class notes)
746	Drainage Quantities (Revised pipe class notes)
747	Drainage Quantities (Revised pipe class notes)
748	Drainage Quantities (Revised pipe class notes)
749	Drainage Quantities (Revised pipe class notes)
750	Drainage Quantities (Revised pipe class notes)
751	Drainage Quantities (Revised pipe class notes)
752	Drainage Quantities (Revised pipe class notes)
753	Miscellaneous Quantities (Revised pipe items)
756	Miscellaneous Quantities (Revised SPV titles for pipe class)

Revised Plan Sheets – 2565-07-70	
Plan Sheet	Plan Sheet Title (brief description of changes to sheet)
27	Storm Sewer (Revised pipe type notes)
28	Storm Sewer (Revised pipe type notes)
29	Storm Sewer (Revised pipe type notes)
65	Miscellaneous Quantities (Revised pipe class notes)
66	Miscellaneous Quantities (Revised pipe items)

The responsibility for notifying potential subcontractors and suppliers of these changes remains with the prime contractor.

Sincerely,

Mike Coleman

Proposal Development Specialist
Proposal Management Section

ADDENDUM NO. 02
2150-00-72, 2270-04-70, 2565-07-70
September 9, 2021

Special Provisions

9. Referenced Construction Specifications.

Replace entire article language with the following:

Construct the work enumerated below conforming to the "City of Mequon Standard Specifications for Land Development." If there is a discrepancy or conflict between the referenced specification and the standard specifications regarding contract administration, part 1 of the standard specifications governs.

Conform to the referenced construction specifications for the following:

- Sanitary Sewer Reinforced Concrete Collar 12-Inch
- Sanitary Sewer Reinforced Concrete Collar 21-Inch
- Sanitary Sewer Pipe Reinforced Concrete Class-III 12-Inch
- Sanitary Sewer Pipe Reinforced Concrete Class-IV 21-Inch
- Temporary Sanitary Sewer Bypass
- Adjusting City of Mequon Sanitary Manhole Covers
- Adjusting City of Mequon Water Boxes

Construct the work enumerated below conforming to the "Standard Specifications for Sewer and Water Construction in Wisconsin" If there is a discrepancy or conflict between the referenced specification and the standard specifications regarding contract administration, part 1 of the standard specifications governs.

Conform to the referenced construction specifications for the following:

- Reconstructing Village of Brown Deer Sanitary Manholes
- Adjusting Village of Brown Deer Sanitary Manhole Covers
- Adjusting Village of Brown Deer Water Boxes

stp-105-002 (20130615)

**103. Sanitary Sewer Pipe Reinforced Concrete Class II 12-INCH, Item SPV.0090.10;
Sanitary Sewer Pipe Reinforced Concrete Class II 21-INCH, Item SPV.0090.11.**

Replace entire article with the following:

**103. Sanitary Sewer Pipe Reinforced Concrete Class III 12-INCH, Item SPV.0090.10;
Sanitary Sewer Pipe Reinforced Concrete Class IV 21-INCH, Item SPV.0090.11.**

A Description

This special provision describes the furnishing and installation of new reinforced concrete sanitary sewer pipe.

B Materials

Furnish materials conforming to standards as specified in the latest edition of "City of Mequon Standard Specifications for Land Development."

C Construction

Install the sanitary sewer pipe according to all applicable provisions of the latest edition of “City of Mequon Standard Specifications for Land Development”.

D Measurement

The department will measure Sanitary Sewer Pipe Reinforced Concrete Class-III 12-Inch and Sanitary Sewer Pipe Reinforced Concrete Class-IV 21-Inch by the linear foot, acceptably completed.

E Payment

The department will pay for measured quantities at the contract unit price under the following bid item:

ITEM NUMBER	DESCRIPTION	UNIT
SPV.0090.10	Sanitary Sewer Pipe Reinforced Concrete Class III 12-Inch	LF
SPV.0090.11	Sanitary Sewer Pipe Reinforced Concrete Class IV 21-Inch	LF

Payment is full compensation for construction staking, water for dust control, providing and removing sheeting and shoring, excavation, constructing the foundation, furnishing, hauling and placement of all materials, and backfilling.

Schedule of Items

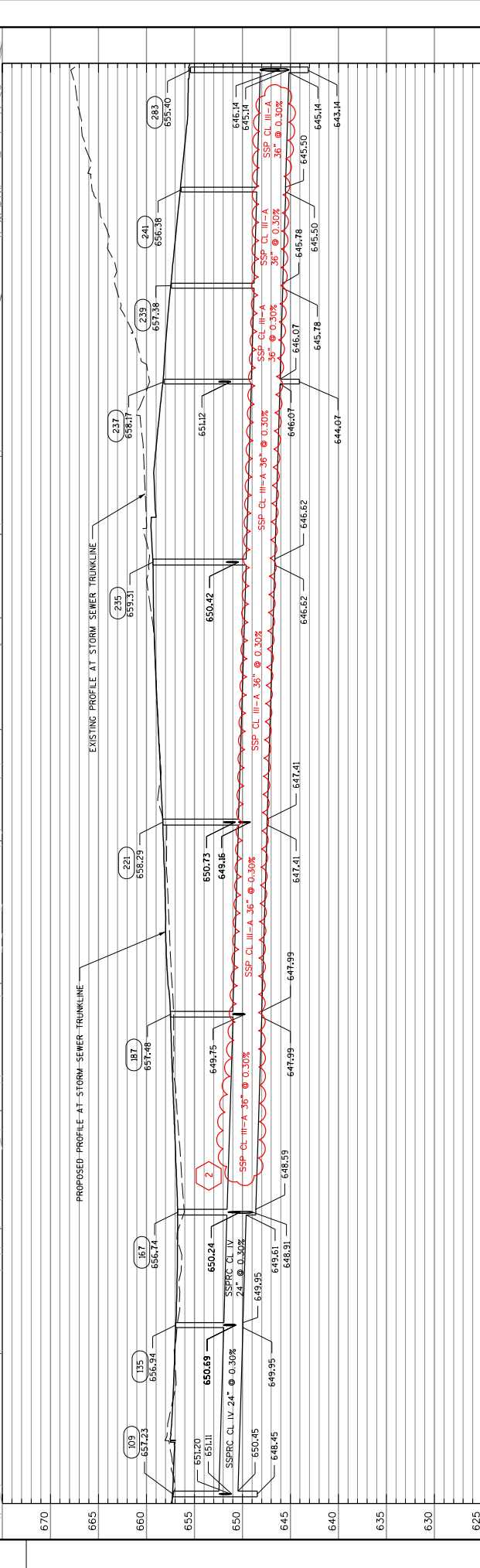
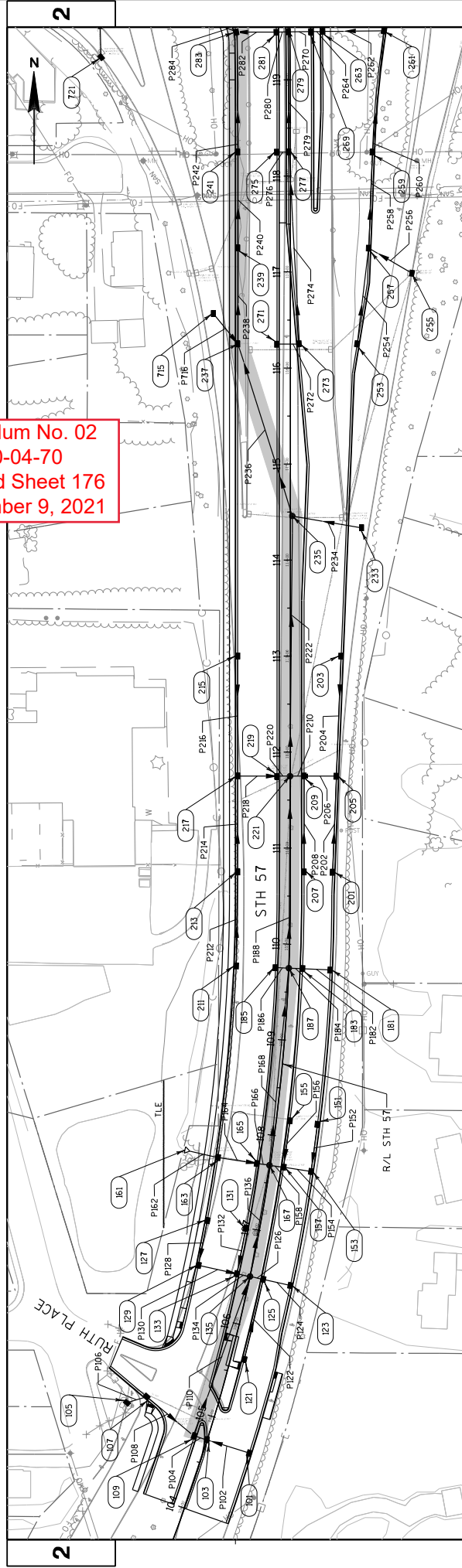
Attached, dated September 9, 2021, are the revised Schedule of Items Pages 1 – 33.

Plan Sheets

The following 8½ x 11-inch sheets are attached and made part of the plans for this proposal:
Revised: 176-182, 184-189, 742-753 and 756 (2270-04-70) and 27, 28, 29, 65 and 66 (2565-07-70).

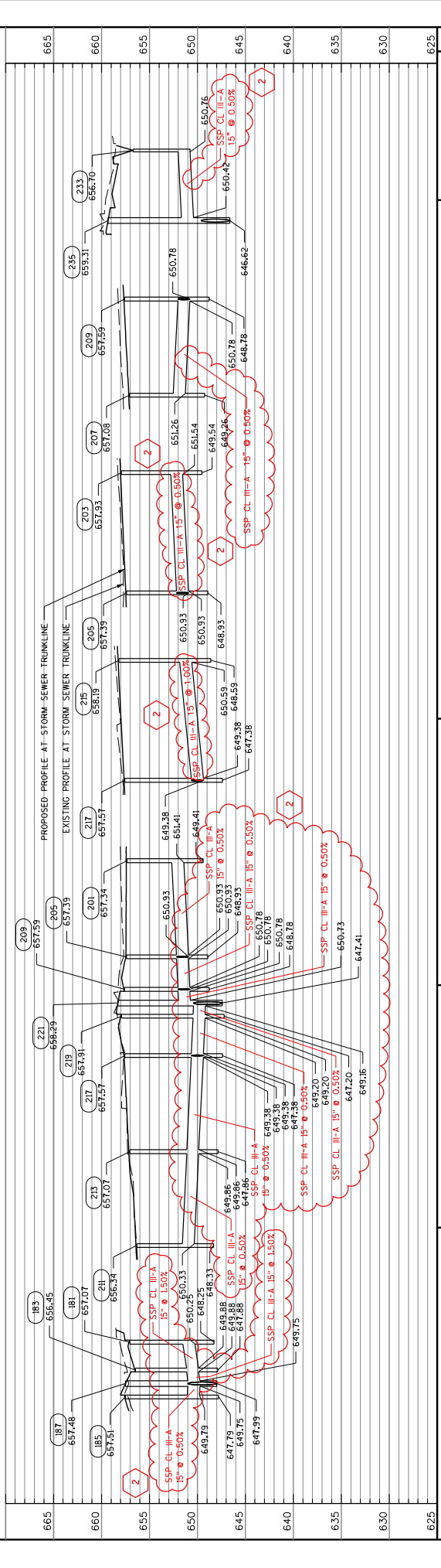
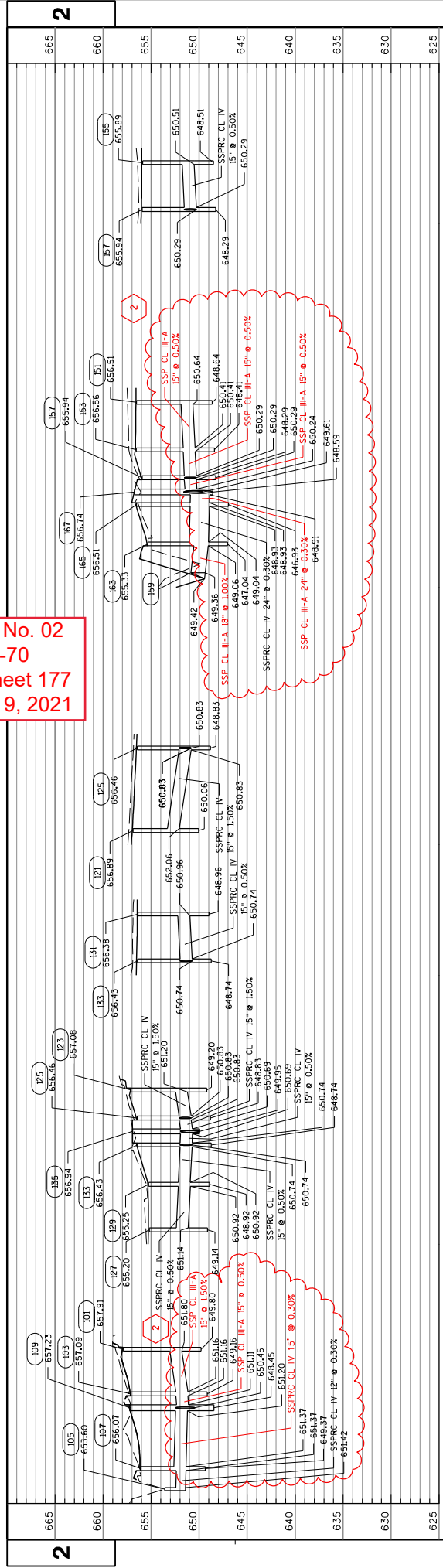
END OF ADDENDUM

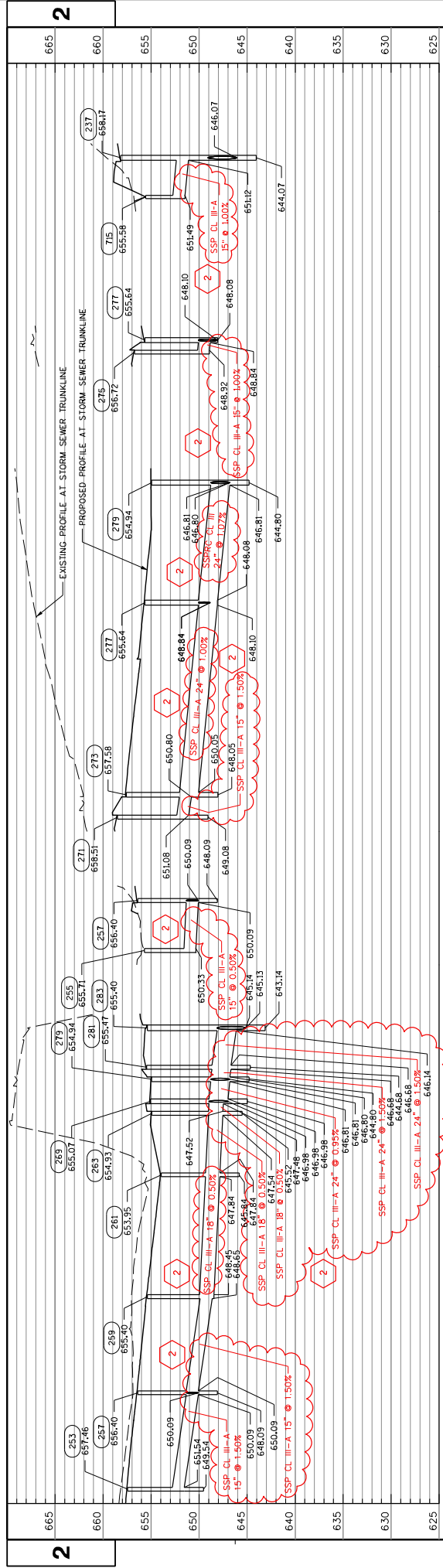
Addendum No. 02
 ID 2270-04-70
 Revised Sheet 176
 September 9, 2021



PROJECT NO: 2270-04-70	COUNTY: MILWAUKEE/OZAUKEE	STORM SEWER PLAN AND PROFILE - STH 57	SHEET 176
HWY: STH 57	PLOT NAME : WWOLOK		FILE NAME : S:\DOT\DOT_SE\170329-102270-04-00-STH57\Des\gn\DDN\PlanSheets\022511_SS.dgn
DATE: 9/8/2021		PLOT SCALE: 1:100	WISDOT/CADD SHEET 41

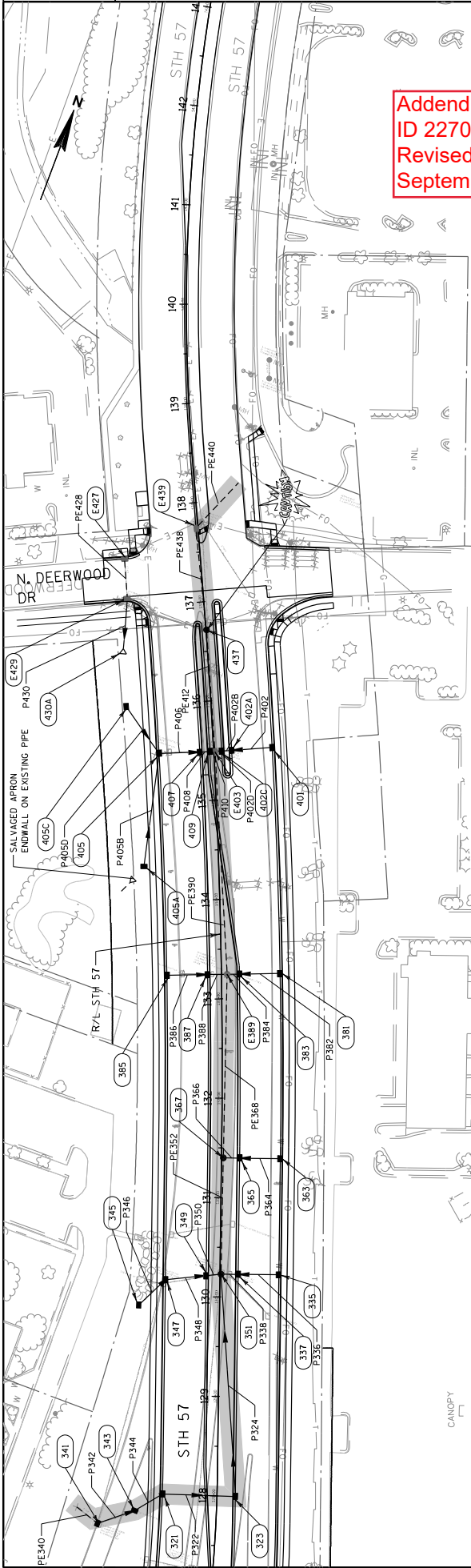
Addendum No. 02
 ID 2270-04-70
 Revised Sheet 177
 September 9, 2021



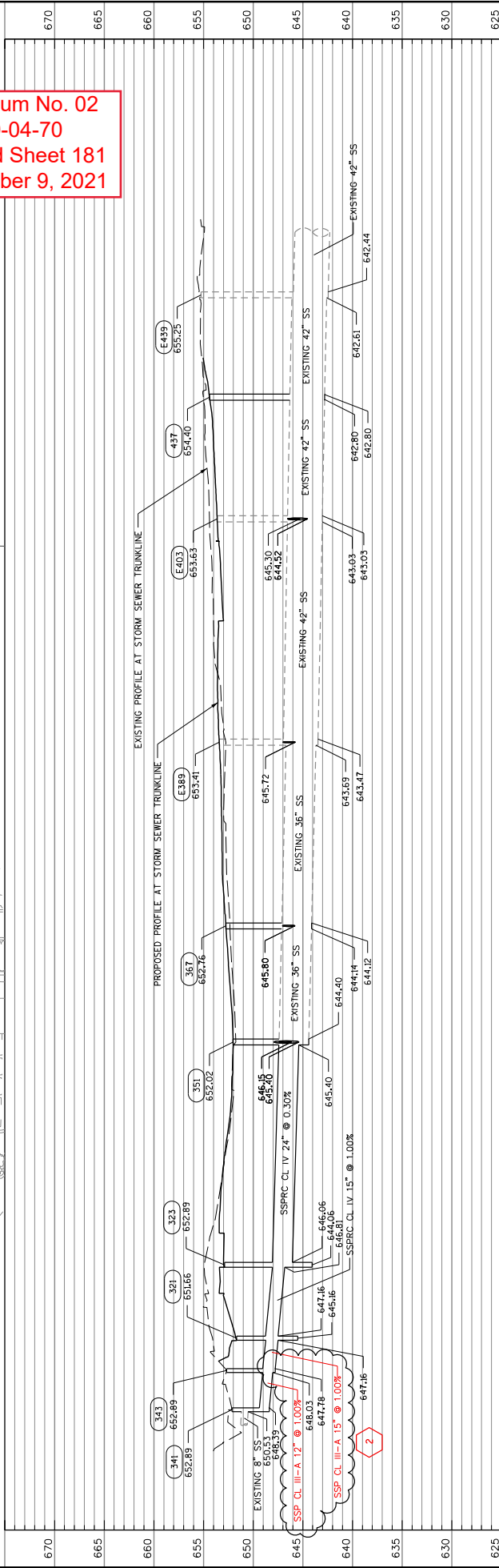


Addendum No. 02
 ID 2270-04-70
 Revised Sheet 178
 September 9, 2021

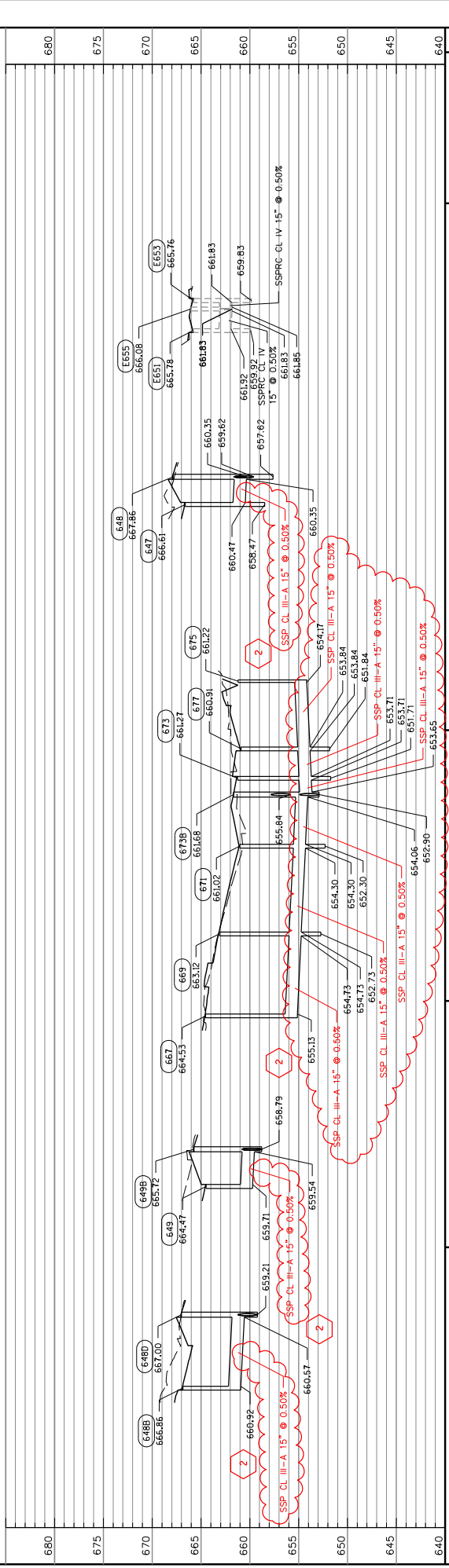
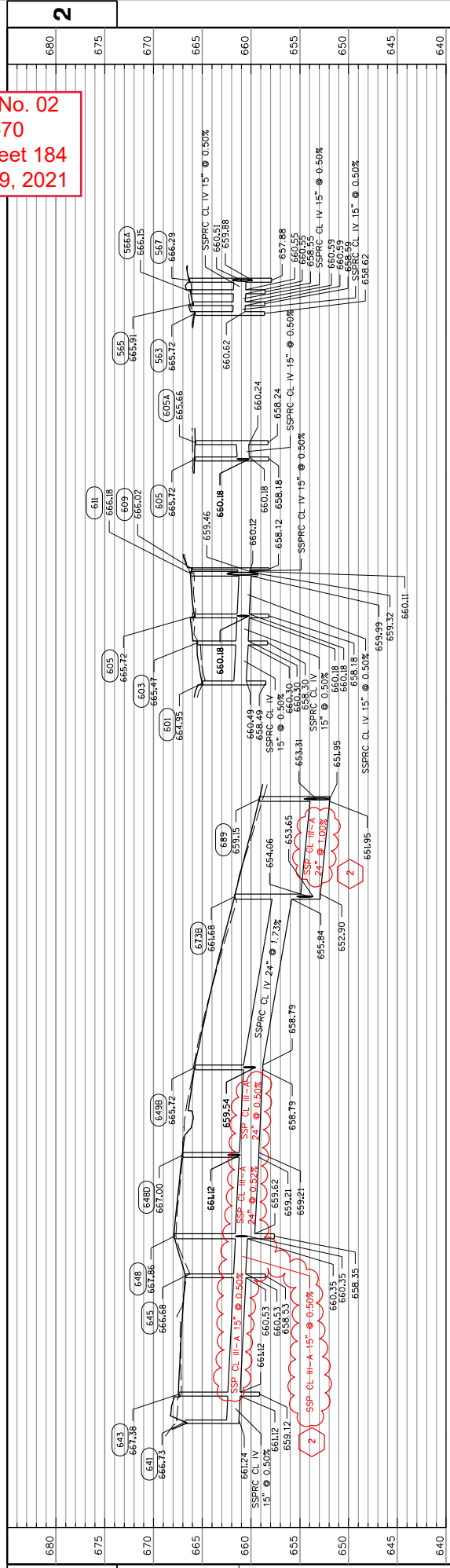
PROJECT NO: 2270-04-70	COUNTY: MILWAUKEE/OZAUKEE	STORM SEWER PLAN AND PROFILE	SHEET 178
FILE NAME : S:\DOT\DOT_SE\170329-102270-04-00-STHS7\Des\gn\DDNP\Lnshneers\022511c-SS.dgn	HWY: STH 57	PLOT DATE : 9/8/2021	PLOT SCALE : 1:100
			WISDOT/CADD SHEET 41



Addendum No. 02
 ID 2270-04-70
 Revised Sheet 181
 September 9, 2021



Addendum No. 02
 ID 2270-04-70
 Revised Sheet 184
 September 9, 2021

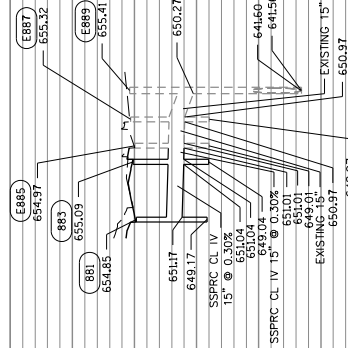


PROJECT NO: 2270-04-70
 COUNTY: MILWAUKEE/OZAUKEE
 HWY: STH 57
 STORM SEWER PLAN AND PROFILE
 SHEET 184
 WISDOT/CADD SHEET 41

FILE NAME : S:\DOT\DOT_SE\170329-102270-04-00-STH57\Des\gn\DDNP\Lnsh\seers\022515b-SS.dgn
 PLOT DATE : 9/8/2021
 PLOT SCALE : 1:100
 PLOT BY : wwo/lok

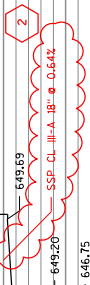
2

665
660
655
650
645
640
635
630
625

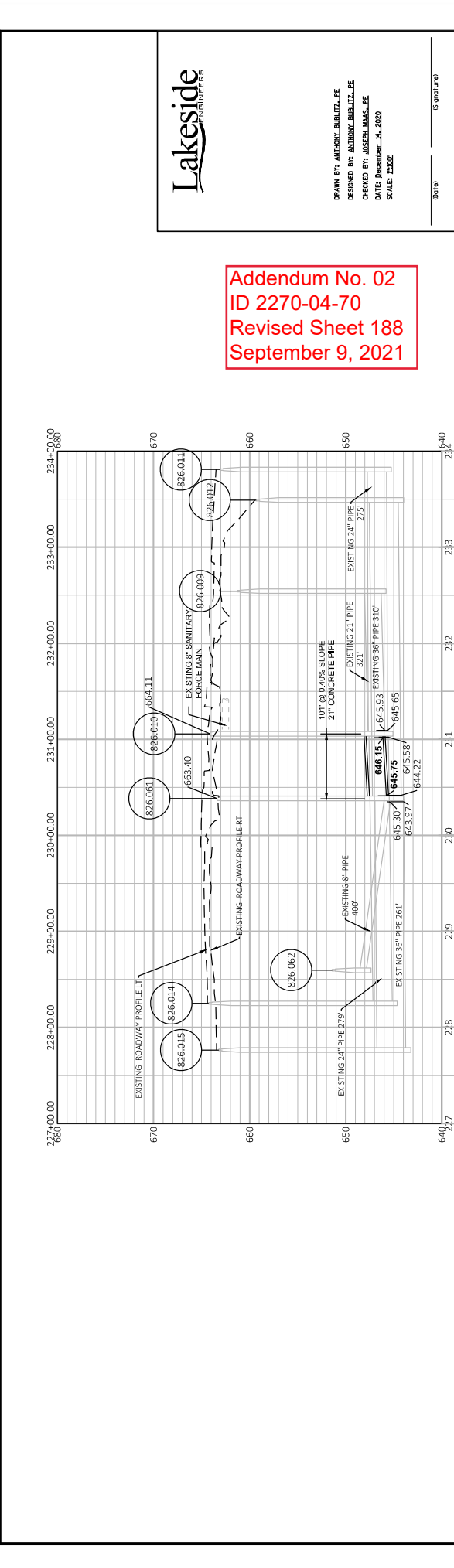
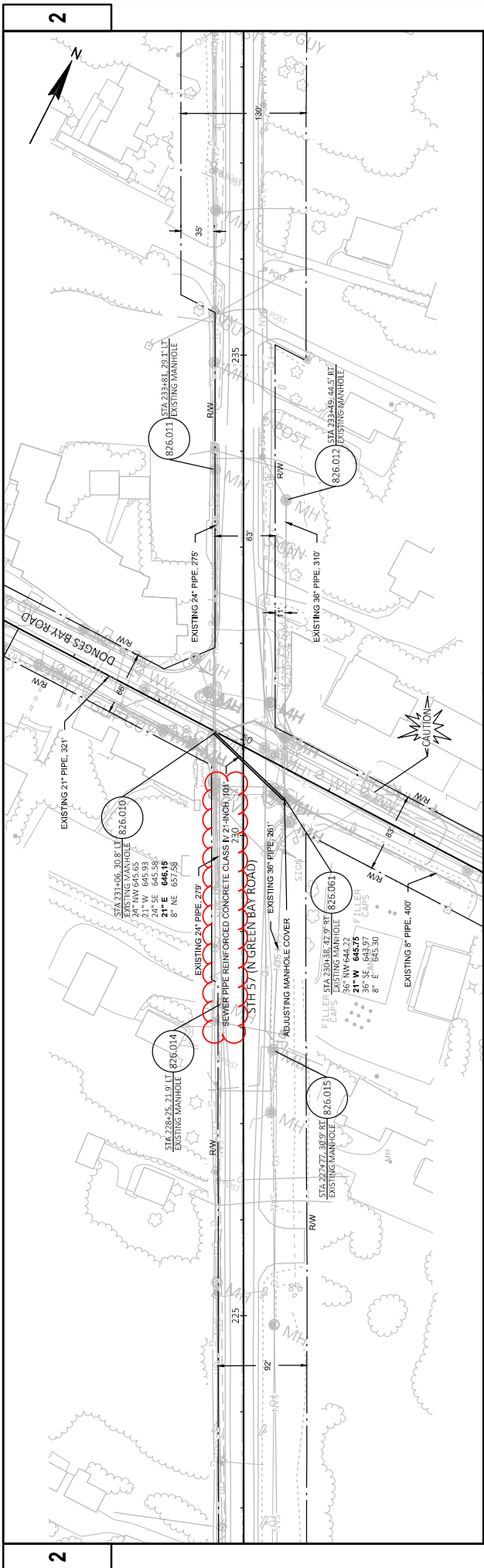



2

665
660
655
650
645
640
635
630
625



Addendum No. 02
 ID 2270-04-70
 Revised Sheet 187
 September 9, 2021

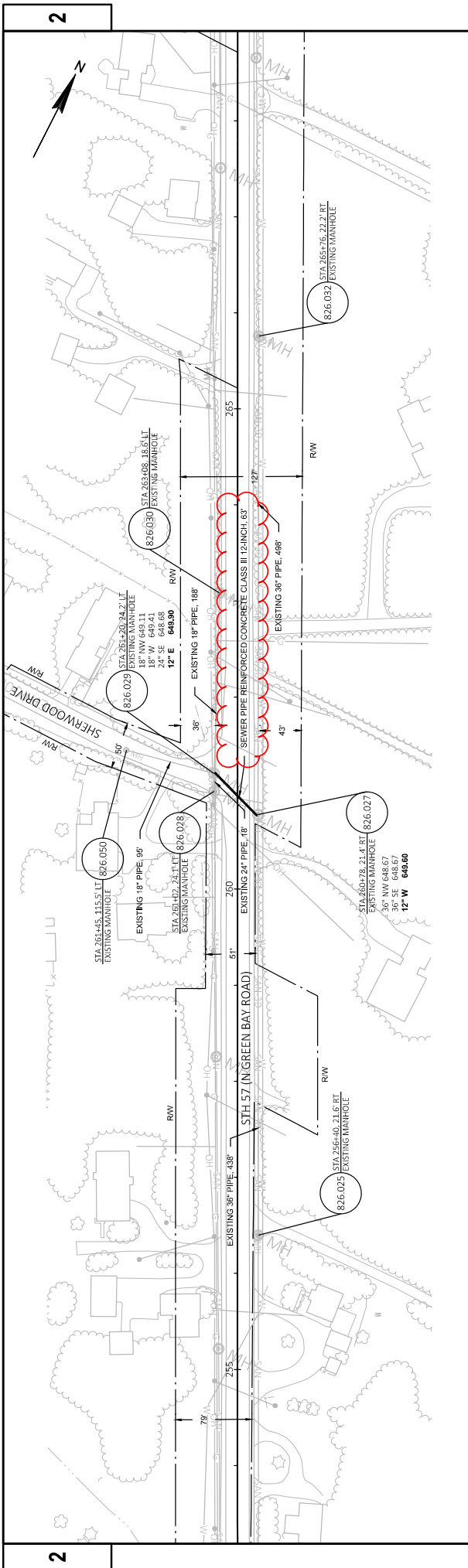




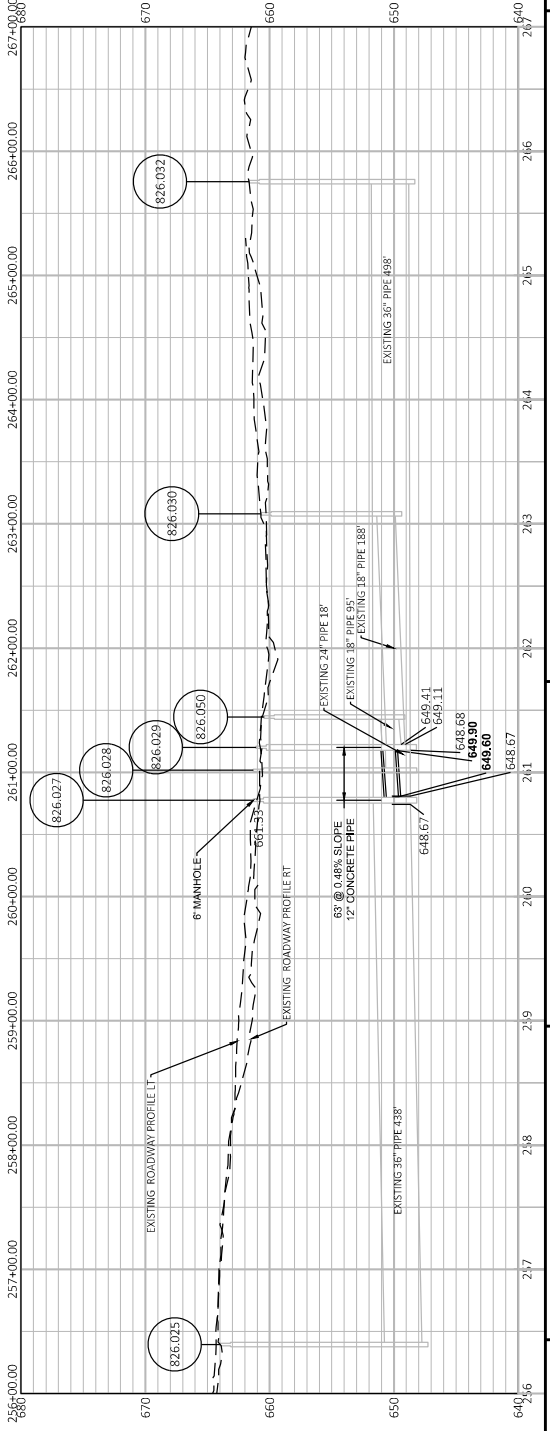
DRAWN BY: ANTHONY BURBITZ, PE
 DESIGNED BY: ANTHONY BURBITZ, PE
 CHECKED BY: JOSEPH LAMAS, PE
 DATE: December 14, 2020
 SCALE: 2:000

Date: _____ Signature: _____

Addendum No. 02
ID 2270-04-70
Revised Sheet 188
September 9, 2021



Addendum No. 02
ID 2270-04-70
Revised Sheet 189
September 9, 2021



Addendum No. 02
ID 2270-04-70
Revised Sheet 742
September 9, 2021

STORMSEWER STRUCTURES										STORMSEWER PIPES												
ROADWAY	STRUCTURE NO.	STRUCTURE STAGE	STATION	OFFSET (FT)	LOCATION	RIM OR FLOW ELEV	STRUCTURE TYPE	INLET/MANHOLE COVERS	DEPTH ¹ (FT)	STRUCTURE COMMENTS	PIPE D	PIPE STAGE	FROM STR	TO STR	INLET ELEV	DISCH ELEV	SLOPE ² %	PIPE LENGTH ³ (FT)	PIPE LENGTH ⁴ (FT)	PIPE CLASS	PIPE SIZE (INCH)	PIPE COMMENTS
STH 57	101	3	104+74.89	48.0	RT	657.91	CATCH BASINS 4-FT DIAMETER	H	8.11	—	P102	3	101	103	651.80	651.16	1.50	46	42	II-A	15	—
STH 57	103	3	104+74.46	2.4	LT	657.09	CATCH BASINS 4-FT DIAMETER	H	7.93	—	P104	3	103	109	651.16	651.11	0.50	15	10	II-A	15	—
STH 57	105	3	104+87.70	91.3	LT	653.60	INLETS MEDIUM 1 GRATE	MS	2.18	—	P106	3	105	107	651.42	651.37	0.30	21	18	IV	12	—
STH 57	107	3	104+98.19	74.1	LT	656.07	CATCH BASINS 4-FT DIAMETER	H-S	6.70	—	P108	3	107	109	651.37	651.20	0.30	63	58	IV	15	—
STH 57	109	3	104+74.95	12.0	LT	657.23	CATCH BASINS 6-FT DIAMETER	H	8.78	—	P110	3	109	135	650.45	649.95	0.30	176	170	IV	24	—
STH 57	121	3	105+65.71	12.0	RT	656.89	CATCH BASINS 4-FT DIAMETER	H	6.83	—	P122	3	121	125	652.06	650.83	1.50	82	82	IV	15	—
STH 57	123	3	106+50.74	45.0	RT	657.08	CATCH BASINS 4-FT DIAMETER	H	7.88	—	P124	3	123	125	651.20	650.83	1.50	25	25	IV	15	—
STH 57	125	3	106+50.83	12.0	RT	656.46	CATCH BASINS 4-FT DIAMETER	H	7.83	—	P126	3	125	135	650.83	650.69	1.50	10	10	IV	15	—
STH 57	127	3	107+00.06	57.0	LT	655.20	CATCH BASINS 4-FT DIAMETER	H	6.06	—	P128	3	127	129	651.14	650.92	0.50	44	44	IV	15	—
STH 57	129	3	106+51.12	57.0	LT	655.25	CATCH BASINS 4-FT DIAMETER	H	6.33	—	P130	3	129	133	650.92	650.74	0.50	37	37	IV	15	—
STH 57	131	3	107+00.01	12.0	LT	656.38	CATCH BASINS 4-FT DIAMETER	H	7.42	—	P132	3	131	133	650.86	650.74	0.50	45	45	IV	15	—
STH 57	133	3	106+50.94	12.0	LT	656.43	CATCH BASINS 4-FT DIAMETER	H	7.89	—	P134	3	133	135	650.74	650.69	0.50	10	10	IV	15	—
STH 57	135	3	106+51.06	0.0	RT	656.94	MANHOLES 5-FT DIAMETER	J-SPECIAL	6.99	—	P136	3	135	167	649.95	649.61	0.30	118	112	IV	24	—
STH 57	151	3	108+17.08	45.0	RT	656.51	CATCH BASINS 4-FT DIAMETER	H-S	7.87	—	P152	3	151	153	650.64	650.41	0.50	45	45	II-A	15	—
STH 57	153	3	107+88.70	45.0	RT	656.56	CATCH BASINS 4-FT DIAMETER	H	8.15	—	P154	3	153	157	650.41	650.29	0.50	25	25	II-A	15	—
STH 57	155	3	108+17.08	12.0	RT	655.89	CATCH BASINS 4-FT DIAMETER	H-S	7.38	—	P156	3	155	157	650.51	650.29	0.50	45	45	IV	15	—
STH 57	157	3	107+88.68	12.0	RT	655.94	CATCH BASINS 4-FT DIAMETER	H	7.85	—	P158	3	157	167	650.29	650.24	0.50	10	10	II-A	15	—
—	—	—	—	—	—	—	—	—	—	—	P162	3	161	163	649.36	649.06	1.00	28	28	II-A	18	FROM ENDWALL
STH 57	163	3	107+88.64	57.0	LT	655.33	CATCH BASINS 4-FT DIAMETER	H	8.29	—	P164	3	163	165	649.04	648.93	0.30	37	37	IV	24	—
STH 57	165	3	107+88.64	12.0	LT	656.51	CATCH BASINS 4-FT DIAMETER	H	9.88	—	P166	3	165	167	648.93	648.91	0.30	6	6	II-A	24	—

2

¹ DEPTH = RIM OR FLOW ELEV - LOWEST PIPE INVERT ELEVATION ^A SLOPE CALCULATED BASED ON PIPE LENGTH - PIPE LENGTH REPRESENTS LENGTH OF PIPE ^B PIPE LENGTH SHOWN FOR SLOPE CALCULATION ONLY. ^C PLAN LENGTH SHOWN FOR PAY QUANTITY.
² MATCH FLOW LINE OF REPLACED CONCRETE CURB AND GUTTER MEASURED FROM INSIDE FACE OF STRUCTURE TO INSIDE FACE OF STRUCTURE NOT INTENDED FOR PAY QUANTITY.

Addendum No. 02
ID 2270-04-70
Revised Sheet 743
September 9, 2021

STORMSEWER STRUCTURES										STORMSEWER PIPES												
ROADWAY	STRUCTURE NO.	STRUCTURE STAGE	STATION	OFFSET (FT)	LOCATION	RIM OR FLOW ELEV	STRUCTURE TYPE	INLET/MANHOLE COVERS	DEPTH ¹ (FT)	STRUCTURE COMMENTS	PIPE D	PIPE STAGE	FROM STR	TO STR	INLET ELEV	DISCH ELEV	SLOPE ^A %	PIPE LENGTH ^B (FT)	PIPE LENGTH ^C (FT)	PIPE CLASS	PIPE SIZE (INCH)	PIPE COMMENTS
STH 57	167	3	107+68.66	0.8	LT	6567.4	MANHOLES 6-FT DIAMETER	J-SPECIAL	8.15	—	P168	3	167	187	648.59	647.99	0.30	200	206	I-A	36	—
STH 57	181	3	109+75.00	45.0	RT	657.07	CATCH BASINS 4-FT DIAMETER	H	8.82	—	P182	3	181	183	650.25	649.88	1.50	25	29	I-A	15	—
STH 57	183	3	109+75.01	12.0	RT	656.45	CATCH BASINS 4-FT DIAMETER	H	8.57	—	P184	3	183	187	649.88	649.75	1.50	9	14	I-A	15	—
STH 57	185	3	109+75.02	12.0	LT	657.51	CATCH BASINS 4-FT DIAMETER	H	9.72	—	P186	3	185	187	649.79	649.75	0.50	9	14	I-A	15	—
STH 57	187	3	109+74.99	0.1	LT	657.48	MANHOLES 6-FT DIAMETER	J-SPECIAL	9.49	—	P188	3	187	221	647.99	647.41	0.30	194	200	I-A	36	—
STH 57	201	3	110+75.00	45.9	RT	657.34	CATCH BASINS 4-FT DIAMETER	H-S	7.93	—	P202	3	201	205	651.41	650.93	0.50	96	100	I-A	15	—
STH 57	203	3	113+00.05	54.8	RT	657.93	CATCH BASINS 4-FT DIAMETER	H	8.39	—	P204	3	203	205	651.54	650.93	0.50	121	125	I-A	15	—
STH 57	205	3	111+75.00	49.8	RT	657.39	CATCH BASINS 4-FT DIAMETER	H	8.46	—	P206	3	205	209	650.93	650.78	0.50	30	34	I-A	15	—
STH 57	207	3	110+75.00	12.0	RT	657.08	CATCH BASINS 4-FT DIAMETER	H	7.82	—	P208	3	207	209	651.26	650.78	0.50	96	100	I-A	15	—
STH 57	209	3	111+74.98	12.0	RT	657.59	CATCH BASINS 4-FT DIAMETER	H	8.81	—	P210	3	209	221	650.78	650.73	0.50	9	14	I-A	15	—
STH 57	211	3	109+75.00	57.0	LT	656.34	CATCH BASINS 4-FT DIAMETER	H	8.01	—	P212	3	211	213	650.33	649.86	0.50	94	98	I-A	15	—
STH 57	213	3	110+74.98	57.0	LT	657.07	CATCH BASINS 4-FT DIAMETER	H	9.21	—	P214	3	213	217	649.86	649.38	0.50	96	100	I-A	15	—
STH 57	215	3	113+00.00	57.0	LT	658.19	CATCH BASINS 4-FT DIAMETER	H	9.60	—	P216	3	215	217	650.59	649.38	1.00	121	125	I-A	15	—
STH 57	217	3	111+75.00	57.0	LT	657.57	CATCH BASINS 4-FT DIAMETER	H	10.19	—	P218	3	217	219	649.38	649.20	0.50	37	41	I-A	15	—
STH 57	219	3	111+75.01	12.0	LT	657.91	CATCH BASINS 4-FT DIAMETER	H	10.71	—	P220	3	219	221	649.20	649.16	0.50	9	14	I-A	15	—
STH 57	221	3	111+75.02	0.3	LT	656.29	MANHOLES 6-FT DIAMETER	J-SPECIAL	10.88	—	P222	3	221	235	647.41	646.62	0.30	285	271	I-A	36	—
STH 57	233	3	114+33.57	74.0	RT	656.70	INLETS MEDIAN 1 GRATE	MS	5.94	—	P234	3	233	235	650.76	650.42	0.50	69	73	I-A	15	—
STH 57	235	3	114+45.84	2.1	RT	659.31	MANHOLES 6-FT DIAMETER	J-SPECIAL	12.69	—	P236	3	235	237	646.62	646.07	0.30	182	188	I-A	36	—
STH 57	237	3	116+25.00	57.0	LT	658.17	CATCH BASINS 5-FT DIAMETER	H	14.10	—	P238	3	237	239	646.07	645.78	0.30	95	100	I-A	36	—
STH 57	239	3	117+25.00	57.0	LT	657.38	MANHOLES 5-FT DIAMETER	H	11.60	—	P240	3	239	241	645.78	645.50	0.30	95	100	I-A	36	—

2

¹ DEPTH = RIM OR FLOW ELEV - LOWEST PIPE INVERT ELEVATION ^A SLOPE CALCULATED BASED ON PIPE LENGTH. PIPE LENGTH REPRESENTS LENGTH OF PIPE FROM MATCH FLOW LINE OF REPLACED CONCRETE CURB AND GUTTER TO INSIDE FACE OF STRUCTURE ^B PIPE LENGTH SHOWN FOR SLOPE CALCULATION ONLY. NOT INTENDED FOR PAY QUANTITY. ^C PLAN LENGTH SHOWN FOR PAY QUANTITY.

Addendum No. 02
 ID 2270-04-70
 Revised Sheet 744
 September 9, 2021

STORMSEWER STRUCTURES										STORMSEWER PIPES												
ROADWAY	STRUCTURE NO.	STRUCTURE STAGE	STATION	OFFSET (FT)	LOCATION	RIM OR FINISH ELEV	STRUCTURE TYPE	INLET/MANHOLE COVERS	DEPTH ¹ (FT)	STRUCTURE COMMENTS	PIPE D	PIPE STAGE	FROM STR	TO STR	INLET ELEV	DISCH ELEV	SLOPE ² %	PIPE LENGTH ³ (FT)	PIPE LENGTH ⁴ (FT)	PIPE CLASS	PIPE SIZE (INCH)	PIPE COMMENTS
STH 57	241	3	118+24.98	57.0	LT	656.38	MANHOLES 5-FT DIAMETER	H	10.88	—	P242	3	241	283	645.50	645.14	0.30	119	125	B-A	36	—
STH 57	253	3	116+24.99	71.5	RT	657.46	CATCH BASINS 4-FT DIAMETER	H	7.92	—	P254	3	253	257	651.54	650.09	1.50	96	100	B-A	15	—
STH 57	255	3	116+98.73	126.5	RT	655.71	INLETS 4-FT DIAMETER	B	5.38	—	P256	3	255	257	650.33	650.09	0.50	48	52	B-A	15	—
STH 57	257	3	117+24.92	83.5	RT	656.40	CATCH BASINS 4-FT DIAMETER	H	8.31	—	P258	3	257	259	650.09	648.65	1.50	96	100	B-A	15	—
STH 57	259	3	118+25.00	87.4	RT	655.40	INLETS 4-FT DIAMETER	H	6.95	—	P260	3	259	261	648.45	647.84	0.50	123	127	B-A	18	—
STH 57	261	3	119+49.63	100.0	RT	653.95	CATCH BASINS 4-FT DIAMETER	H	8.11	—	P262	3	261	263	647.84	647.54	0.50	60	64	B-A	18	—
STH 57	263	3	119+50.01	32.0	RT	654.93	CATCH BASINS 4-FT DIAMETER	H	9.41	—	P264	3	263	269	647.52	647.48	0.50	8	13	B-A	18	—
STH 57	264A	3	119+95.98	89.7	RT	653.90	CATCH BASINS 4-FT DIAMETER	H	7.89	—	P264B	3	264A	264C	648.21	648.15	0.50	12	16	B-A	15	—
STH 57	264C	3	119+97.39	77.6	RT	654.19	CATCH BASINS 4-FT DIAMETER	H	8.04	—	P264D	3	264C	265	648.15	647.96	0.50	38	42	B-A	15	—
STH 57	265	3	119+93.15	32.0	RT	654.65	CATCH BASINS 4-FT DIAMETER	H	8.89	—	P266	3	265	267	647.96	647.92	0.50	6	12	B-A	15	—
STH 57	267	3	119+93.14	24.0	RT	654.79	CATCH BASINS 4-FT DIAMETER	H	9.62	—	P268	3	267	269	647.17	646.98	0.50	39	43	B-A	24	—
STH 57	269	3	119+50.01	24.0	RT	655.07	CATCH BASINS 5-FT DIAMETER	H	10.09	—	P270	3	269	279	646.98	646.81	0.95	18	23	B-A	24	—
STH 57	271	3	116+25.03	12.0	LT	658.51	CATCH BASINS 4-FT DIAMETER	H	9.43	—	P272	3	271	273	651.08	650.80	1.50	19	23	B-A	15	—
STH 57	273	3	116+24.93	6.8	RT	657.56	CATCH BASINS 5-FT DIAMETER	H	9.53	—	P274	3	273	277	650.05	648.10	1.00	195	200	B-A	24	—
STH 57	275	3	118+24.98	12.0	LT	656.72	INLETS 4-FT DIAMETER	H	7.80	—	P276	3	275	277	648.92	648.84	1.00	8	13	B-A	15	—
STH 57	277	3	116+24.95	4.0	LT	655.64	MANHOLES 5-FT DIAMETER	H	7.56	—	P278	3	277	279	648.08	646.81	1.07	120	125	B-A	24	—
STH 57	279	3	119+50.00	4.0	LT	654.94	CATCH BASINS 5-FT DIAMETER	H-S	10.14	—	P280	3	279	281	646.80	646.68	1.50	8	13	B-A	24	—
STH 57	281	3	119+50.02	12.0	LT	655.47	CATCH BASINS 4-FT DIAMETER	H	10.79	—	P282	3	281	283	646.68	646.14	1.50	36	41	B-A	24	—
STH 57	283	3	119+49.99	57.9	LT	655.40	CATCH BASINS 6-FT DIAMETER	H	12.26	—	P284	3	283	297	645.14	645.03	0.30	38	44	B-A	36	—
STH 100	285	3	486+69.50	112.5	RT	651.94	INLETS MEDIAN 1 GRATE	MS	4.90	—	P286	3	285	297	647.04	646.77	0.50	55	59	B-A	15	—

2

¹ DEPTH = RIM OR FLOW ELEV. - LOWEST PIPE INVERT ELEVATION ^A SLOPE CALCULATED BASED ON PIPE LENGTH. PIPE LENGTH REPRESENTS LENGTH OF PIPE MEASURED FROM INSIDE FACE OF STRUCTURE TO INSIDE FACE OF STRUCTURE ^B PIPE LENGTH SHOWN FOR SLOPE CALCULATION ONLY. NOT INTENDED FOR PAY QUANTITY. ^C PLAN LENGTH SHOWN FOR PAY QUANTITY.

Addendum No. 02
ID 2270-04-70
Revised Sheet 745
September 9, 2021

STORM SEWER STRUCTURES										STORM SEWER PIPES												
ROADWAY	STRUCTURE NO.	STRUCTURE STAGE	STATION	OFFSET (FT)	LOCATION	RIM OR FLOW LINE ELEV	STRUCTURE TYPE	INLET/MANHOLE COVERS TYPE	DEPTH ¹ (FT)	STRUCTURE COMMENTS	PIPE D	PIPE STAGE	FROM STR	TO STR	INLET ELEV	DISCH ELEV	SLOPE ² %	PIPE LENGTH ³ (FT)	PIPE LENGTH ⁴ (FT)	PIPE CLASS	PIPE SIZE (INCH)	PIPE COMMENTS
STH 100	297	3	487+28.32	112.0	RT	654.31	MANHOLES 6-FT DIAMETER	C	9.29	—	P298	4A	297	299	645.02	644.97	0.30	18	24	I-A	36	—
STH 100	299	3	487+24.88	91.0	RT	654.93	CATCH BASINS 6-FT DIAMETER	H-S	12.46	—	P299A	3	299	300	644.47	644.45	0.30	7	13	IV	42	—
STH 100	300	3	487+28.75	72.4	RT	655.22	CATCH BASINS 6-FT DIAMETER	H-S	12.79	—	P300A	3	300	301	644.43	644.38	0.30	17	23	IV	42	—
STH 100	301	3	487+42.01	59.5	RT	655.49	MANHOLES 6-FT DIAMETER	H	11.11	—	P302	3	301	775	644.38	644.29	0.30	31	38	IV	42	—
STH 57	321	5	128+00.06	57.0	LT	651.66	CATCH BASINS 4-FT DIAMETER	H-S	6.16	—	P322	3	321	323	647.50	646.81	1.00	69	74	IV	15	—
STH 57	323	3	127+99.94	16.3	RT	652.89	CATCH BASINS 5-FT DIAMETER	H	8.83	—	P324	3	323	351	646.06	645.40	0.30	219	224	IV	24	—
STH 57	335	3	130+23.12	61.0	RT	651.94	INLETS 4-FT DIAMETER	H	5.55	—	P336	3	335	337	646.39	646.21	0.50	37	41	I-A	15	—
STH 57	337	3	130+23.11	16.0	RT	652.28	CATCH BASINS 4-FT DIAMETER	H	8.07	—	P338	3	337	351	646.21	646.15	0.50	12	17	I-A	15	—
—	—	—	—	—	—	—	—	—	—	—	PE340	—	—	341	—	650.62	—	—	—	—	8	EXIST PIPE INTERPOL ELEV
STH 57	341	5	127+65.93	119.0	LT	652.13	INLETS MEDIAN 1 GRATE	MS	3.74	—	P342	5	341	343	646.39	646.03	1.00	36	40	I-A	12	—
STH 57	343	5	127+81.62	82.3	LT	652.67	INLETS 4-FT DIAMETER	B	4.89	—	P344	5	343	321	647.78	647.50	1.00	28	32	I-A	15	—
STH 57	345	5	129+60.98	61.6	LT	649.20	INLETS MEDIAN 2 GRATE	MS	3.42	—	P346	5	345	347	645.78	645.62	0.50	33	37	I-A	24	—
STH 57	347	5	130+16.60	57.0	LT	651.03	CATCH BASINS 4-FT DIAMETER	H-S	7.41	—	P348	4	347	349	645.62	645.43	0.50	36	41	IV	30	—
STH 57	349	5	130+21.45	12.0	LT	651.37	CATCH BASINS 5-FT DIAMETER	H-S	7.94	—	P350	3	349	351	645.43	645.40	0.30	10	16	IV	30	—
STH 57	351	3	130+23.12	0.9	RT	652.02	MANHOLES 6-FT DIAMETER	J-SPECIAL	7.62	—	PE352	—	351	367	644.40	644.14	—	—	—	—	36	EXIST PIPE INTERPOL ELEV
STH 57	363	3	131+40.00	61.0	RT	651.59	INLETS 4-FT DIAMETER	H-S	5.06	—	P364	3	363	365	646.53	645.97	1.50	37	41	IV	15	—
STH 57	365	3	131+40.00	16.0	RT	651.93	CATCH BASINS 4-FT DIAMETER	H-S	7.96	—	P366	3	365	367	645.97	645.80	1.50	11	16	I-A	15	—
STH 57	367	3	131+39.99	1.8	RT	652.76	MANHOLES 6-FT DIAMETER	J-SPECIAL	8.64	—	PE368	—	367	E389	644.12	—	—	—	—	—	36	EXIST PIPE INTERPOL ELEV
STH 57	381	3	133+24.62	61.0	RT	652.32	INLETS 4-FT DIAMETER	H	6.38	—	P382	3	381	383	645.84	645.76	0.50	37	41	I-A	15	—
STH 57	383	3	133+24.62	16.0	RT	652.66	CATCH BASINS 4-FT DIAMETER	H	8.90	—	P384	5	383	E389	645.76	645.72	0.50	7	12	I-A	15	—

2

¹ DEPTH = RIM OR FLOW ELEV - LOWEST PIPE INVERT ELEVATION ² MATCH FLOW LINE OF REPLACED CONCRETE CURB AND GUTTER MEASURED FROM INSIDE FACE OF STRUCTURE TO INSIDE FACE OF STRUCTURE ³ PIPE LENGTH SHOWN FOR SLOPE CALCULATION ONLY. NOT INTENDED FOR PAY QUANTITY. ⁴ PLAN LENGTH SHOWN FOR PAY QUANTITY.

Addendum No. 02
ID 2270-04-70
Revised Sheet 746
September 9, 2021

STORMSEWER STRUCTURES										STORMSEWER PIPES												
ROADWAY	STRUCTURE NO.	STRUCTURE STAGE	STATION	OFFSET (FT)	LOCATION	RIM OR FLOW LINE ELEV	STRUCTURE TYPE	INLET/MANHOLE TYPE	DEPTH ¹ (FT)	STRUCTURE COMMENTS	PIPE D	PIPE STAGE	FROM STR	TO STR	INLET ELEV	DISCH ELEV	SLOPE ² %	PIPE LENGTH ³ (FT)	PIPE LENGTH ⁴ (FT)	PIPE CLASS	PIPE SIZE (INCH)	PIPE COMMENTS
STH 57	385	5	133+24.61	57.0	LT	652.32	CATCHBASINS 4-FT DIAMETER	H	8.35	—	P386	4	385	387	645.97	645.79	0.50	41	37	I-A	15	—
STH 57	387	5	133+24.60	12.0	LT	652.66	CATCHBASINS 4-FT DIAMETER	H	8.87	—	P388	3	387	E389	645.79	645.72	0.50	20	15	I-A	15	—
STH 57	E389	—	133+24.63	5.7	RT	652.91	—	J-SPECIAL	—	ADJUST TO FINISHED GRADE & INSTALL COVER	PE390	—	E389	E403	—	—	—	—	—	—	42	—
STH 57	401	3	135+50.00	61.0	RT	653.45	INLETS 4-FT DIAMETER	H	7.91	—	P402	3	401	402A	645.54	645.35	0.50	42	39	I-A	15	—
STH 57	402A	3	135+49.09	16.0	RT	653.78	CATCHBASINS 24-FT DIAMETER	H	10.43	—	P402B	3	402A	402C	645.35	645.32	0.50	8	6	I-A	15	—
STH 57	402C	3	135+49.09	10.0	RT	653.68	CATCHBASINS 24-FT DIAMETER	H	10.36	—	P402D	3	402C	E403	645.32	645.30	0.50	8	4	I-A	15	—
STH 57	E403	—	135+49.09	1.4	RT	653.63	—	J-SPECIAL	—	ADJUST TO FINISHED GRADE & INSTALL COVER	PE412	—	E403	437	—	642.80	—	—	—	—	42	EXIST PIPE INTERPOL ELEV
STH 57	405A	5	134+35.83	75.2	LT	652.18	INLETS MEDIAN 1 GRATE	MS	6.37	—	P405B	5	405A	405	645.81	645.25	0.50	115	111	I-A	18	—
STH 57	405C	5	135+99.61	85.4	LT	648.72	INLETS MEDIAN 1 GRATE	MS	4.20	—	P405D	5	405C	405	645.52	645.25	0.50	58	54	I-A	18	—
STH 57	405	5	135+50.00	57.0	LT	653.24	CATCHBASINS 4-FT DIAMETER	H	10.49	—	P406	5	405	407	644.75	644.56	0.50	42	39	I-A	24	—
STH 57	407	5	135+49.09	12.0	LT	653.78	CATCHBASINS 24-FT DIAMETER	H	11.22	—	P408	4	407	409	644.56	644.53	0.50	8	6	I-A	24	—
STH 57	409	3	135+49.09	6.0	LT	653.44	CATCHBASINS 24-FT DIAMETER	H	10.91	—	P410	3	409	E403	644.53	644.52	0.50	6	2	I-A	24	—
STH 57	E427	—	137+51.25	76.2	LT	NOTE 2	—	H	—	ADJUST TO FINISHED GRADE & INSTALL COVER	PE428	—	E427	E429	—	—	—	—	—	—	12	—
STH 57	E429	—	137+07.16	76.5	LT	NOTE 2	—	H	—	ADJUST TO FINISHED GRADE & INSTALL COVER	P430	5	E429	430A	649.39	649.21	0.40	45	45	I-A	15	TO ENDWALL
STH 57	437	3	136+71.58	0.6	RT	654.40	MANHOLES 6-FT DIAMETER	J-SPECIAL	11.60	—	PE438	—	437	E439	642.80	—	—	—	—	—	42	EXIST PIPE INTERPOL ELEV
STH 57	E439	—	137+74.35	0.7	RT	655.25	—	—	—	—	PE440	—	E439	—	—	—	—	—	—	—	42	—
STH 57	453	3	126+25.13	9.9	RT	653.50	CATCHBASINS 4-FT DIAMETER	H	7.51	—	P454	3	453	455	647.99	647.93	0.50	17	12	I-A	15	—
STH 57	455	3	126+24.95	22.3	RT	651.76	CATCHBASINS 5-FT DIAMETER	H	6.80	—	P456	3	455	457	647.18	646.96	0.30	76	72	I-A	24	—
STH 57	457	3	125+50.00	24.8	RT	651.22	CATCHBASINS 4-FT DIAMETER	H	6.26	—	P458	3	457	475	646.96	646.59	0.30	127	123	I-A	24	—
STH 57	459	5	124+25.00	12.0	LT	652.05	CATCHBASINS 4-FT DIAMETER	H-S	6.55	—	P460	5	459	461	647.50	647.48	0.50	9	5	I-A	15	—

¹ DEPTH = RIM OR FLOW ELEV - LOWEST PIPE INVERT ELEVATION ^A SLOPE CALCULATED BASED ON PIPE LENGTH. PIPE LENGTH REPRESENTS LENGTH OF PIPE MEASURED FROM INSIDE FACE OF STRUCTURE TO INSIDE FACE OF STRUCTURE. ^B PIPE LENGTH SHOWN FOR SLOPE CALCULATION ONLY. NOT INTENDED FOR PAY QUANTITY. ^C PLAN LENGTH SHOWN FOR PAY QUANTITY.

Addendum No. 02
 ID 2270-04-70
 Revised Sheet 747
 September 9, 2021

STORMSEWER STRUCTURES										STORMSEWER PIPES												
ROADWAY	STRUCTURE NO.	STRUCTURE STAGE	STATION	OFFSET (FT)	LOCATION	RIM OR FLOW ELEV	STRUCTURE TYPE	INLET/MANHOLE COVERS	DEPTH ¹ (FT)	STRUCTURE COMMENTS	PIPE D	PIPE STAGE	FROM STR	TO STR	INLET ELEV	DISCH ELEV	SLOPE ^A %	PIPE LENGTH ^B (FT)	PIPE LENGTH ^C (FT)	PIPE CLASS	PIPE SIZE (INCH)	PIPE COMMENTS
STH 57	461	5	124+25.00	7.2	LT	651.97	CATCHBASINS 4-FT DIAMETER	H-S	6.49	—	P462	5	461	463	647.48	647.38	0.50	20	24	IV	15	—
STH 57	463	3	124+25.00	20.8	RT	652.77	CATCHBASINS 4-FT DIAMETER	H-S	7.39	—	P464	3	463	475	647.38	647.34	0.50	6	13	IV	15	—
STH 57	465	3	124+25.00	73.8	RT	651.78	CATCHBASINS 4-FT DIAMETER	H-S	6.26	—	P466	3	465	475	647.52	647.34	0.50	36	41	IV	15	—
STH 57	475	3	124+25.00	28.8	RT	650.72	CATCHBASINS 5-FT DIAMETER	H-S	6.13	—	P476	3	475	477	646.59	646.38	0.29	72	77	IV	24	—
STH 57	477	3	123+50.00	31.1	RT	650.88	CATCHBASINS 4-FT DIAMETER	H	6.50	—	P478	3	477	499	646.38	646.09	0.30	96	100	IV	24	—
STH 57	495	5	122+50.16	12.0	LT	652.65	CATCHBASINS 4-FT DIAMETER	H	7.72	—	P496	5	495	497	646.93	646.77	0.50	32	36	IV	15	—
STH 57	497	3	122+49.83	24.0	RT	652.39	CATCHBASINS 4-FT DIAMETER	H	7.62	—	P498	3	497	499	646.77	646.74	0.50	7	11	IV	15	—
STH 57	499	3	122+49.93	33.0	RT	651.94	MANHOLES 5-FT DIAMETER	J-SPECIAL	6.35	—	P500	3	499	501	645.59	645.29	0.30	100	105	IV	30	—
STH 57	501	3	121+45.25	29.8	RT	653.29	MANHOLES 5-FT DIAMETER	J-SPECIAL	8.01	—	P502	4A	501	777	645.28	645.04	0.30	79	85	IV	30	—
STH 100	531	5	487+32.58	59.9	LT	667.84	NLETS 4-FT DIAMETER	H-S	5.87	—	P531A	5	531	545	661.97	661.50	0.50	94	98	IV	15	—
STH 100	532A	5	487+59.84	15.0	RT	668.05	CATCHBASINS 4-FT DIAMETER	H	7.70	—	P532B	5	532A	532C	662.35	662.32	0.50	6	10	IV	15	—
STH 100	532C	5	487+59.86	9.0	RT	667.39	CATCHBASINS 4-FT DIAMETER	H-S	7.07	—	P532D	5	532C	532E	662.32	662.28	0.50	6	12	IV	15	—
STH 100	532E	5	487+60.08	7.0	LT	667.14	CATCHBASINS 4-FT DIAMETER	H-S	6.86	—	P532F	5	532E	533	662.28	662.15	0.50	26	30	IV	15	—
STH 100	533	5	487+32.74	15.0	LT	667.11	NLETS 4-FT DIAMETER	H	4.96	—	P532	5	533	531	662.15	661.97	0.50	37	41	IV	15	—
STH 100	545	5	486+34.40	60.0	LT	666.60	NLETS 4-FT DIAMETER	H	5.10	—	P546	5	545	547	661.50	661.23	0.50	54	58	IV	15	—
STH 100	547	5	485+93.80	15.0	LT	666.42	CATCHBASINS 4-FT DIAMETER	H	7.19	—	P546	5	547	549	661.23	661.20	0.50	6	10	IV	15	—
STH 100	549	5	485+93.80	9.0	LT	666.60	CATCHBASINS 4-FT DIAMETER	H	7.40	—	P550	5	549	551	661.20	661.10	0.50	20	25	IV	15	—
STH 100	551	3	485+93.80	15.0	RT	666.98	CATCHBASINS 5-FT DIAMETER	H	8.63	—	P552	3	551	567	660.35	659.88	0.35	133	137	IV	24	—
STH 100	563	5	484+54.51	15.0	LT	665.72	CATCHBASINS 4-FT DIAMETER	H	7.10	—	P564	5	563	565	660.62	660.59	0.50	6	10	IV	15	—
STH 100	565	5	484+54.51	9.0	LT	665.91	CATCHBASINS 4-FT DIAMETER	H	7.32	—	P566	5	565	566A	660.59	660.55	0.50	6	12	IV	15	—

¹ DEPTH = RIM OR FLOW ELEV. - LOWEST PIPE INVERT ELEVATION ^A SLOPE CALCULATED BASED ON PIPE LENGTH. PIPE LENGTH REPRESENTS LENGTH OF PIPE MEASURED FROM INSIDE FACE OF STRUCTURE TO INSIDE FACE OF STRUCTURE ^B PIPE LENGTH SHOWN FOR SLOPE CALCULATION ONLY. NOT INTENDED FOR PAY QUANTITY. ^C PLAN LENGTH SHOWN FOR PAY QUANTITY.

Addendum No. 02
ID 2270-04-70
Revised Sheet 748
September 9, 2021

STORMSEWER STRUCTURES										STORMSEWER PIPES												
ROADWAY	STRUCTURE NO.	STRUCTURE STAGE	STATION	OFFSET (FT)	LOCATION	RIM OR FLOW LINE ELEV	STRUCTURE TYPE	INLET/MANHOLE COVERS	DEPTH ¹ (FT)	STRUCTURE COMMENTS	PIPE D	PIPE STAGE	FROM STR	TO STR	INLET ELEV	DISCH ELEV	SLOPE ^A %	PIPE LENGTH ^B (FT)	PIPE LENGTH ^C (FT)	PIPE CLASS	PIPE SIZE (INCH)	PIPE COMMENTS
STH 100	566A	5	484+56.36	7.0	RT	666.15	CATCH BASINS 4-FT DIAMETER	H	7.60	—	P566B	5	566A	567	660.55	660.51	0.50	8	12	IV	15	—
STH 100	567	3	484+56.36	15.0	RT	666.29	CATCH BASINS 4-FT DIAMETER	H	8.41	—	P568	3	567	569	659.88	659.75	0.35	38	43	IV	24	—
—	—	—	—	—	—	—	—	—	—	—	PE582	—	—	569	—	660.20	—	—	—	—	24	EXIST PIPE INTERPOL ELEV
STH 100	569	3	484+40.28	60.0	RT	665.87	CATCH BASINS 6-FT DIAMETER	H-S	8.12	—	P570	3	PE512	PE614	659.75	659.72	0.35	6	14	IV	36	—
STH 100	593	3	484+27.10	54.1	RT	666.01	MANHOLES 5-FT DIAMETER	J-SPECIAL	6.29	—	PE584	—	PE613	611	659.72	659.46	—	—	—	—	36	EXIST PIPE INTERPOL ELEV
STH 100	601	1	483+47.95	60.0	LT	664.95	CATCH BASINS 4-FT DIAMETER	H	6.46	—	P602	1	601	603	660.49	660.30	0.50	37	41	IV	15	—
STH 100	603	1	483+47.55	15.0	LT	665.47	CATCH BASINS 4-FT DIAMETER	H	7.17	—	P604	1	603	605	660.30	660.18	0.50	24	28	IV	15	—
STH 100	605A	1	483+64.00	5.9	RT	665.66	CATCH BASINS 4-FT DIAMETER	H-S	7.42	—	P605B	1	605A	605	660.24	660.18	0.50	13	17	IV	15	—
STH 100	605	1	483+47.54	8.7	RT	665.72	CATCH BASINS 4-FT DIAMETER	H	7.54	—	P606	1	605	611	660.18	659.99	0.50	39	43	IV	15	—
STH 100	609	1	483+47.67	60.0	RT	666.02	CATCH BASINS 2x3-FT	H	7.90	—	P610	1	609	611	660.12	660.11	0.50	2	5	IV	15	—
STH 100	611	1	483+47.69	53.9	RT	666.18	MANHOLES 5-FT DIAMETER	J-SPECIAL	6.86	—	PE612	—	611	613	659.32	659.23	—	—	—	—	36	EXIST PIPE INTERPOL ELEV
—	—	—	—	—	—	—	—	—	—	—	P613	1	E612	E614	659.23	659.15	0.99	6	6	IV	36	—
—	—	—	—	—	—	—	—	—	—	—	PE614	—	613	E615	659.15	—	—	—	—	—	36	EXIST PIPE INTERPOL ELEV
STH 100	E615	—	482+63.07	54.1	RT	665.83	—	J-SPECIAL	—	ADJUST TO FINISHED GRADE & INSTALL COVER	PE616	—	E615	E621	—	—	—	—	—	—	36	—
STH 100	E621	—	481+06.25	15.2	RT	NOTE 2	—	H	—	ADJUST TO FINISHED GRADE & INSTALL COVER	PE622	—	E621	—	—	—	—	—	—	—	36	—
STH 100	641	3	489+04.39	77.2	RT	666.73	INLETS MEDIAN 1 GRATE	MS	5.49	—	P642	3	641	643	661.24	661.12	0.50	24	26	IV	15	—
STH 100	643	3	489+25.01	59.2	RT	667.38	CATCH BASINS 4-FT DIAMETER	H	8.26	—	P644	3	643	645	661.12	660.53	0.50	117	121	—	15	—
STH 100	645	3	490+49.99	58.7	RT	666.68	CATCH BASINS 4-FT DIAMETER	H	8.15	—	P646	3	645	648	660.53	660.35	0.50	36	41	—	15	—
STH 100	647	5	490+50.27	10.2	LT	666.61	CATCH BASINS 4-FT DIAMETER	H	8.14	—	P647A	5	647	648	660.47	660.35	0.50	24	28	—	15	—
STH 100	648	3	490+49.97	13.7	RT	667.86	CATCH BASINS 5-FT DIAMETER	H	10.24	—	P648A	3	648	648D	659.62	659.21	0.52	78	83	—	24	—

2

¹ DEPTH = RIM OR FLOW ELEV. - LOWEST PIPE INVERT ELEVATION ^A SLOPE CALCULATED BASED ON PIPE LENGTH. PIPE LENGTH REPRESENTS LENGTH OF PIPE MEASURED FROM INSIDE FACE OF STRUCTURE TO INSIDE FACE OF STRUCTURE
² MATCH FLOW LINE OF REPLACED CONCRETE CURB AND GUTTER MEASURED FROM INSIDE FACE OF STRUCTURE

PLAN LENGTH SHOWN FOR PAY QUANTITY. PIPE LENGTH SHOWN FOR SLOPE CALCULATION ONLY. NOT INTENDED FOR PAY QUANTITY.

Addendum No. 02
ID 2270-04-70
Revised Sheet 749
September 9, 2021

STORMSEWER STRUCTURES										STORMSEWER PIPES												
ROADWAY	STRUCTURE NO.	STRUCTURE STAGE	STATION	OFFSET (FT)	LOCATION	RIM OR FLOW ELEV	STRUCTURE TYPE	INLET/MANHOLE COVERS	DEPTH ¹ (FT)	STRUCTURE COMMENTS	PIPE D	PIPE STAGE	FROM STR	TO STR	INLET ELEV	DISCH ELEV	SLOPE ² %	PIPE LENGTH ³ (FT)	PIPE LENGTH ⁴ (FT)	PIPE CLASS	PIPE SIZE (INCH)	PIPE COMMENTS
STH 100	6488	5	491+20.55	59.9	LT	666.86	INLETS 4-FT DIAMETER	H-S	5.94	—	P648C	5	648B	648D	660.92	660.57	0.50	71	75	I-A	15	—
STH 100	648D	3	491+34.07	13.7	RT	667.00	MANHOLES 5-FT DIAMETER	H	7.79	—	P648E	3	648D	648B	659.21	658.79	0.50	85	90	I-A	24	—
STH 100	649	5	492+25.00	19.8	LT	664.47	INLETS 4-FT DIAMETER	H	4.76	—	P649A	5	649	648B	659.71	659.54	0.50	34	38	I-A	15	—
STH 100	649B	3	492+24.60	13.6	RT	665.72	MANHOLES 5-FT DIAMETER	H	6.93	—	P649C	3	649B	673B	658.79	655.84	1.73	170	175	IV	24	—
STH 100	E651	—	491+64.18	102.7	RT	665.61	—	H	—	ADJUST TO FINISHED GRADE & INSTALL COVER	PE652	—	E651	E655	—	—	—	—	—	—	15	—
STH 100	E653	—	491+99.35	89.3	RT	665.75	—	H	—	ADJUST TO FINISHED GRADE & INSTALL COVER	PE654	—	E653	E655	—	—	—	—	—	—	15	—
STH 100	E655	—	491+89.50	103.9	RT	666.08	—	J-SPECIAL	—	ADJUST TO FINISHED GRADE & INSTALL COVER	PE656	—	E655	—	—	—	—	—	—	—	15	—
STH 100	667	3	492+24.97	56.6	RT	664.53	INLETS 4-FT DIAMETER	H	9.40	—	P668	3	667	669	655.13	654.73	0.50	80	84	I-A	15	—
STH 100	669	3	493+10.11	64.1	RT	663.12	CATCH BASINS 4-FT DIAMETER	H	10.39	—	P670	3	669	671	654.73	654.30	0.50	86	90	I-A	15	—
STH 100	671	3	493+99.98	71.0	RT	661.02	CATCH BASINS 4-FT DIAMETER	H	8.72	—	P672	3	671	673B	654.30	654.06	0.50	49	53	I-A	15	—
STH 100	673	5	493+99.78	2.6	LT	661.27	CATCH BASINS 4-FT DIAMETER	H	9.56	—	P673A	5	673	673B	653.71	653.65	0.50	12	17	I-A	15	—
STH 100	673B	4A	494+00.02	16.0	RT	661.68	MANHOLES 5-FT DIAMETER	J-SPECIAL	8.78	—	P673C	4A	673B	689	652.90	651.95	1.00	95	100	I-A	24	—
STH 100	675	5	493+82.12	93.5	LT	661.22	INLETS MEDIAN 1 GRATE	MS	7.05	—	P676	5	675	677	654.17	653.84	0.50	66	69	I-A	15	—
STH 100	677	5	494+00.09	28.6	LT	660.91	CATCH BASINS 4-FT DIAMETER	H	9.07	—	P674	5	677	673	653.84	653.71	0.50	26	30	I-A	15	—
STH 100	689	4A	495+00.04	16.0	RT	659.15	MANHOLES 5-FT DIAMETER	J-SPECIAL	7.20	—	P700	4A	689	750	651.95	650.74	1.00	121	126	I-A	24	—
STH 100	691	5	494+99.76	15.1	LT	658.49	CATCH BASINS 4-FT DIAMETER	H	7.06	—	P690	5	691	689	653.43	653.31	0.50	25	29	I-A	15	—
STH 100	693	5	495+00.01	30.0	LT	658.41	CATCH BASINS 4-FT DIAMETER	H	6.91	—	P692	5	693	691	653.50	653.43	0.50	15	19	I-A	15	—
STH 57	715	3	116+56.76	80.3	LT	655.56	INLETS MEDIAN 1 GRATE	MS	4.09	—	P716	3	715	237	651.49	651.12	1.00	37	41	I-A	15	—
STH 100	721	3	496+27.60	154.6	RT	653.83	INLETS 4-FT DIAMETER	B	4.14	—	P722	3	721	739	649.69	649.20	0.64	76	81	I-A	18	—
STH 100	735	3	495+00.00	71.0	RT	658.49	CATCH BASINS 4-FT DIAMETER	H	9.83	—	P736	3	735	737	650.66	650.05	1.00	61	65	I-A	15	—

2

¹ DEPTH = RIM OR FLOW ELEV. - LOWEST PIPE INVERT ELEVATION ^A SLOPE CALCULATED BASED ON PIPE LENGTH. PIPE LENGTH REPRESENTS LENGTH OF PIPE MEASURED FROM INSIDE FACE OF STRUCTURE TO INSIDE FACE OF STRUCTURE ^B PIPE LENGTH SHOWN FOR SLOPE CALCULATION ONLY. NOT INTENDED FOR PAY QUANTITY. ^C PLAN LENGTH SHOWN FOR PAY QUANTITY.

Addendum No. 02
ID 2270-04-70
Revised Sheet 750
September 9, 2021

STORMSEWER STRUCTURES										STORMSEWER PIPES												
ROADWAY	STRUCTURE NO.	STRUCTURE STAGE	STATION	OFFSET (FT)	LOCATION	RIM OR FLOW LINE ELEV	STRUCTURE TYPE	INLET/MANHOLE COVERS	DEPTH ¹ (FT)	STRUCTURE COMMENTS	PIPE D	PIPE STAGE	FROM STR	TO STR	INLET ELEV	DISCH ELEV	SLOPE ² %	PIPE LENGTH ³ (FT)	PIPE LENGTH ⁴ (FT)	PIPE CLASS	PIPE SIZE (INCH)	PIPE COMMENTS
STH 100	737	3	495+64.48	72.0	RT	657.04	CATCH BASINS 4-FT DIAMETER	H	9.24	—	P738	3	737	739	649.80	649.27	0.95	56	61	I-A	18	—
STH 100	739	3	496+24.80	76.6	RT	655.83	CATCH BASINS 6-FT DIAMETER	H	9.08	—	P740	3	739	750	648.75	648.60	0.30	52	57	I-A	24	—
STH 100	741	5	496+25.00	22.0	LT	655.90	CATCH BASINS 4-FT DIAMETER	H	7.72	—	P749	5	741	750	650.18	650.02	0.50	32	37	I-A	15	—
STH 100	743	5	495+00.00	75.0	LT	658.83	CATCH BASINS 4-FT DIAMETER	H	9.93	—	P744	5	743	745	650.90	650.43	0.48	96	100	IV	15	—
STH 100	745	5	496+00.00	75.0	LT	656.01	INLETS 4-FT DIAMETER	H	5.58	—	P746	5	745	747	650.43	650.22	0.48	44	48	IV	15	—
STH 100	747	5	496+25.02	30.0	LT	655.86	CATCH BASINS 4-FT DIAMETER	H	7.64	—	P748	5	747	741	650.22	650.18	0.50	6	12	I-A	15	—
STH 100	750	4A	496+25.65	14.0	RT	656.51	CATCH BASINS 5-FT DIAMETER	H	10.17	—	P751	4A	750	752	648.34	647.79	1.00	55	60	I-A	24	—
STH 100	752	4A	496+85.86	14.0	RT	655.63	CATCH BASINS 6-FT DIAMETER	H	13.19	—	P753	4A	752	775	644.44	644.29	0.30	49	56	I-A	36	—
STH 100	754	4A	487+47.30	6.0	RT	654.92	CATCH BASINS 4-FT DIAMETER	H	7.93	—	P755	4A	754	775	648.99	648.94	0.50	9	15	I-A	15	—
STH 57	761	5	126+25.00	57.0	LT	651.49	CATCH BASINS 4-FT DIAMETER	H	7.26	—	P762	5	761	763	646.23	645.89	0.50	68	72	IV	24	—
STH 57	763	5	125+49.98	57.0	LT	651.03	CATCH BASINS 4-FT DIAMETER	H	7.14	—	P764	5	763	765	645.89	645.46	0.37	116	121	IV	24	—
STH 57	765	5	124+25.00	67.1	LT	650.49	CATCH BASINS 5-FT DIAMETER	H-S	7.03	—	P766	5	765	767	645.46	644.96	0.30	167	172	IV	24	—
STH 57	767	5	122+50.17	76.8	LT	652.46	CATCH BASINS 4-FT DIAMETER	H	9.50	—	P767A	5	767	768	644.96	644.86	0.30	33	37	I-A	24	—
STH 57	767B	5	122+17.56	56.9	LT	653.34	INLETS 4-FT DIAMETER	H	5.25	—	P767C	5	767B	767D	648.09	648.07	0.50	5	9	IV	15	—
STH 57	767D	5	122+17.81	63.7	LT	653.12	INLETS 4-FT DIAMETER	H	5.05	—	P767E	5	767D	768	648.07	647.90	0.50	35	39	IV	15	—
STH 57	768	5	122+25.72	103.5	LT	655.66	MANHOLES 4-FT DIAMETER	J-SPECIAL	10.80	—	P768A	5	768	771	644.86	644.65	0.29	72	76	I-A	24	—
STH 100	769	5	496+74.89	94.3	LT	654.10	INLETS MEDIAN 1 GRATE	MS	5.00	—	P770	5	769	771	649.10	648.90	1.00	20	24	I-A	15	—
STH 100	771	5	496+85.29	75.1	LT	654.57	INLETS 4-FT DIAMETER	H	9.92	—	P772	5	771	773	644.65	644.54	0.28	37	41	I-A	24	—
STH 100	773	5	496+85.52	30.0	LT	655.10	CATCH BASINS 4-FT DIAMETER	H	12.56	—	P774	5	773	774A	644.54	644.52	0.30	8	12	IV	24	—
STH 100	774A	4A	496+85.42	22.0	LT	655.01	CATCH BASINS 4-FT DIAMETER	H	12.49	—	P774B	4A	774A	752	644.52	644.43	0.28	32	37	I-A	24	—

2

¹ DEPTH = RIM OR FLOW ELEV - LOWEST PIPE INVERT ELEVATION ^A SLOPE CALCULATED BASED ON PIPE LENGTH. PIPE LENGTH REPRESENTS LENGTH OF PIPE MATCH FLOW LINE OF REPLACED CONCRETE CURB AND GUTTER MEASURED FROM INSIDE FACE OF STRUCTURE TO INSIDE FACE OF STRUCTURE. ^B PIPE LENGTH SHOWN FOR SLOPE CALCULATION ONLY. NOT INTENDED FOR PAY QUANTITY. ^C PLAN LENGTH SHOWN FOR PAY QUANTITY.

Addendum No. 02
ID 2270-04-70
Revised Sheet 751
September 9, 2021

STORMSEWER STRUCTURES										STORMSEWER PIPES												
ROADWAY	STRUCTURE NO.	STRUCTURE STAGE	STATION	OFFSET (FT)	LOCATION	RIM OR FLOW ELEV	STRUCTURE TYPE	INLET/MANHOLE COVERS	DEPTH ¹ (FT)	STRUCTURE COMMENTS	PIPE D	PIPE STAGE	FROM STR	TO STR	INLET ELEV	DISCH ELEV	SLOPE ² %	PIPE LENGTH ³ (FT)	PIPE LENGTH ⁴ (FT)	PIPE CLASS	PIPE SIZE (INCH)	PIPE COMMENTS
STH 100	775	4A	487+41.87	14.0	RT	655.10	MANHOLES 8-FT DIAMETER	H	13.26	2' SUMP	P776	4A	775	777	643.84	643.54	0.30	99	106	IV	48	—
STH 100	777	3	488+48.40	17.0	RT	654.14	MANHOLES 7-FT DIAMETER	J-SPECIAL	10.64	—	P778	3	777	817	643.50	642.99	0.30	168	177	IV	54	—
STH 100	793	5	489+42.81	158.9	LT	653.10	NILETS MEDIUM 1 GRATE	MS	6.35	—	P784	5	793	803	646.75	645.69	1.50	71	74	I-A	15	—
STH 100	801	5	489+66.26	76.5	LT	652.07	NILETS 4-FT DIAMETER	H	6.28	—	P802	5	801	802A	645.79	645.77	0.50	5	9	I-A	15	—
STH 100	802A	5	489+67.26	81.4	LT	651.90	CATCHBASINS 4-FT DIAMETER	H-S	8.13	—	P802B	5	802A	803	645.77	645.69	0.50	16	20	I-A	15	—
STH 100	803	5	489+82.87	98.4	LT	651.69	CATCHBASINS 4-FT DIAMETER	H-S	7.90	—	P804	5	803	805	645.69	645.50	0.50	39	43	I-A	15	—
STH 100	805	5	500+25.00	92.4	LT	651.68	CATCHBASINS 4-FT DIAMETER	H	8.43	—	P806	5	805	813	645.25	644.98	0.50	54	58	I-A	18	—
STH 100	811	5	489+75.00	30.0	LT	652.53	CATCHBASINS 4-FT DIAMETER	H	9.07	—	P812	5	811	813	645.46	645.23	0.50	46	50	I-A	15	—
STH 100	813	5	500+25.04	30.0	LT	652.37	NILETS 4-FT DIAMETER	H-S	7.39	—	P814	5	813	814A	644.88	644.94	0.50	8	12	I-A	18	—
STH 100	814A	5	500+25.03	22.0	LT	652.23	NILETS 4-FT DIAMETER	H-S	7.31	—	P814B	5	814A	815	644.82	644.82	0.50	20	24	I-A	18	—
STH 100	815	5	500+24.99	6.0	RT	651.75	NILETS 4-FT DIAMETER	H-S	6.93	—	P816	5	815	817	644.82	644.78	0.50	8	15	I-A	18	—
STH 100	817	3	500+25.01	14.0	RT	652.98	MANHOLES 10-FT SPECIAL	H-S	12.00	2' SUMP	P818	3	817	819	642.98	642.90	0.30	28	36	IV	54	—
STH 100	819	3	500+25.00	59.0	RT	652.64	MANHOLES 7-FT DIAMETER	H-S	11.74	2' SUMP	P820	3	819	821	642.90	642.86	0.30	12	21	IV	54	—
STH 100	821	3	500+24.96	76.4	RT	652.92	MANHOLES 10-FT SPECIAL	B	10.06	—	P822	3	821	843	642.86	642.51	0.30	117	125	IV	54	—
STH 100	833	5	502+29.57	83.7	LT	652.93	NILETS 4-FT DIAMETER	H	5.55	—	P834	5	833	835	647.38	646.64	1.00	74	78	I-A	15	—
STH 100	835	5	501+51.95	85.4	LT	652.32	NILETS 4-FT DIAMETER	H	5.88	—	P836	5	835	837	646.64	645.83	1.00	81	85	I-A	15	—
STH 100	837	5	501+50.12	4.0	RT	652.35	NILETS 4-FT DIAMETER	H	6.52	—	P838	5	837	839	645.83	645.75	1.00	8	12	I-A	15	—
STH 100	839	3	501+49.87	12.1	RT	653.49	NILETS 4-FT DIAMETER	H	7.74	—	P840	3	839	841	645.75	645.38	0.95	39	43	I-A	15	—
STH 100	841	3	501+50.00	59.0	RT	653.07	NILETS 4-FT DIAMETER	H	7.89	—	P842	3	841	843	645.38	645.24	1.00	14	19	I-A	15	—
STH 100	843	3	501+50.00	76.1	RT	653.04	MANHOLES 7-FT DIAMETER	J-SPECIAL	10.53	—	P844	3	843	857	642.51	641.63	0.30	294	301	IV	54	—

2

¹ DEPTH = RIM OR FLOW ELEV - LOWEST PIPE INVERT ELEVATION ^A SLOPE CALCULATED BASED ON PIPE LENGTH. PIPE LENGTH REPRESENTS LENGTH OF PIPE MEASURED FROM INSIDE FACE OF STRUCTURE TO INSIDE FACE OF STRUCTURE ^B PIPE LENGTH SHOWN FOR SLOPE CALCULATION ONLY. NOT INTENDED FOR PAY QUANTITY. ^C PLAN LENGTH SHOWN FOR PAY QUANTITY.

Addendum No. 02
ID 2270-04-70
Revised Sheet 752
September 9, 2021

STORM SEWER STRUCTURES										STORM SEWER PIPES												
ROADWAY	STRUCTURE NO.	STRUCTURE STAGE	STATION	OFFSET (FT)	LOCATION	RIM OR FLOW LINE ELEV	STRUCTURE TYPE	INLET/MANHOLE COVERS TYPE	DEPTH ¹ (FT)	STRUCTURE COMMENTS	PIPE D	PIPE STAGE	FROM STR	TO STR	INLET ELEV	DISCH ELEV	SLOPE ^A %	PIPE LENGTH ^B (FT)	PIPE LENGTH ^C (FT)	PIPE CLASS	PIPE SIZE (INCH)	PIPE COMMENTS
STH 100	855	3	504+50.87	59.0	RT	654.96	CATCH BASINS 4-FT DIAMETER	H	8.80	—	PE856	3	855	857	648.16	647.89	2.00	14	19	I-A	15	—
STH 100	857	3	504+50.95	76.4	RT	654.70	MANHOLES 7-FT DIAMETER	J-SPECIAL	13.07	—	PE858	3	857	890C	644.63	644.31	0.30	107	115	IV	54	—
STH 100	881	3	504+51.48	66.5	LT	654.85	CATCH BASINS 4-FT DIAMETER	H	5.68	—	PE882	3	881	883	651.17	651.04	0.30	43	47	IV	15	—
STH 100	883	5	504+51.82	16.0	LT	655.09	CATCH BASINS 4-FT DIAMETER	H	6.05	—	PE884	5	883	885	651.04	651.01	0.30	9	13	IV	15	—
STH 100	E885	—	504+51.84	7.0	LT	NOTE 2	—	H	—	ADJUST TO FINISHED GRADE & INSTALL COVER	PE886	—	E885	E887	—	—	—	—	—	—	—	—
STH 100	E887	—	504+51.37	14.2	RT	NOTE 2	—	H	—	ADJUST TO FINISHED GRADE & INSTALL COVER	PE888	—	E887	E889	—	—	—	—	—	—	—	—
STH 100	E889	—	504+73.87	21.9	RT	655.41	—	—	—	—	PE890	—	E889	890A	—	644.27	—	—	—	—	—	EXIST PIPE INTERPOL ELEV
STH 100	890A	3	505+66.14	62.2	RT	656.33	MANHOLES 7-FT DIAMETER	J-SPECIAL	15.07	—	PE890B	3	890A	890C	641.26	641.23	0.50	6	14	IV	48	—
STH 100	890C	3	505+66.14	76.5	RT	655.44	MANHOLES 9-FT SPECIAL	J-SPECIAL	14.21	—	PE90D	3	890C	891	644.23	644.16	0.30	25	33	IV	54	—
STH 100	891	3	505+69.08	76.5	RT	655.60	MANHOLES 7-FT DIAMETER	J-SPECIAL	14.44	—	PE92	3	891	915	641.16	640.85	0.30	104	111	IV	54	—
STH 100	915	3	507+00.83	121.9	RT	654.64	MANHOLES 7-FT DIAMETER	J-SPECIAL	13.79	—	PE916	3	915	917	640.85	640.36	0.46	105	108	IV	54	TO ENDWALL
—	—	—	—	—	—	—	—	—	—	—	PE922	5	921	923	646.57	645.84	0.97	72	75	I-A	36	FROM ENDWALL
STH 100	923	5	502+08.87	88.1	LT	653.33	MANHOLES 6-FT DIAMETER	J-SPECIAL	7.49	CENTER OF COVER AT STA. 502+08.82, 86.1' LT	PE924	5	923	925	645.84	645.48	0.50	73	79	I-A	36	—
STH 100	925	5	502+48.91	95.2	LT	652.24	MANHOLES 6-FT DIAMETER	J-SPECIAL	6.76	—	PE926	—	925	E927	645.48	—	—	—	—	—	—	EXIST PIPE INTERPOL ELEV
STH 100	E927	—	503+59.35	93.3	LT	653.81	—	—	—	—	—	—	—	—	—	—	—	—	—	—	—	—

¹ DEPTH = RIM OR FLOW ELEV - LOWEST PIPE INVERT ELEVATION ^A SLOPE CALCULATED BASED ON PIPE LENGTH. PIPE LENGTH REPRESENTS LENGTH OF PIPE MEASURED FROM INSIDE FACE OF STRUCTURE TO INSIDE FACE OF STRUCTURE
² MATCH FLOW LINE OF REPLACED CONCRETE CURB AND GUTTER MEASURED FROM INSIDE FACE OF STRUCTURE TO INSIDE FACE OF STRUCTURE
^B PIPE LENGTH SHOWN FOR SLOPE CALCULATION ONLY. NOT INTENDED FOR PAY QUANTITY.
^C PLAN LENGTH SHOWN FOR PAY QUANTITY.

STORM SEWER STRUCTURE SUMMARY

611.1004	4-FT DIAMETER CATCH BASINS	86	611.1005	5-FT DIAMETER CATCH BASINS	12	611.1006	6-FT DIAMETER CATCH BASINS	7	611.1230	24-FT CATCH BASINS	5	611.2004	4-FT DIAMETER MANHOLES	1	611.2005	5-FT DIAMETER MANHOLES	12	611.2006	6-FT DIAMETER MANHOLES	11	611.2007	7-FT DIAMETER MANHOLES	7	611.2008	8-FT DIAMETER MANHOLES	1	611.2009	8-FT DIAMETER SPECIAL MANHOLES	1	611.2004	4-FT DIAMETER INLETS	28	611.2901	MEDIAN 1 GRATE INLETS	11	611.2902	MEDIAN 2 GRATE INLETS	1	611.0535	TYPE J SPECIAL COVERS	28	611.0606	TYPE B INLET COVERS	4	611.0612	TYPE C INLET COVERS	1	611.0642	TYPE MS INLET COVERS	13	611.0624	TYPE H INLET COVERS	130	611.0639	TYPE HS INLET COVERS	31
----------	----------------------------	----	----------	----------------------------	----	----------	----------------------------	---	----------	--------------------	---	----------	------------------------	---	----------	------------------------	----	----------	------------------------	----	----------	------------------------	---	----------	------------------------	---	----------	--------------------------------	---	----------	----------------------	----	----------	-----------------------	----	----------	-----------------------	---	----------	-----------------------	----	----------	---------------------	---	----------	---------------------	---	----------	----------------------	----	----------	---------------------	-----	----------	----------------------	----

STORM SEWER PIPE SUMMARY

608.0312	12-INCH REINFORCED CONCRETE CLASS II	0	608.0315	15-INCH REINFORCED CONCRETE CLASS II	0	608.0324	24-INCH REINFORCED CONCRETE CLASS III	0	608.0336	36-INCH REINFORCED CONCRETE CLASS III	0	608.0342	42-INCH REINFORCED CONCRETE CLASS II	74	608.0348	48-INCH REINFORCED CONCRETE CLASS II	14	608.0354	54-INCH REINFORCED CONCRETE CLASS III	1027	608.0412	12-INCH REINFORCED CONCRETE CLASS IV	21	608.0415	15-INCH REINFORCED CONCRETE CLASS IV	1385	608.0418	18-INCH REINFORCED CONCRETE CLASS IV	58	608.0424	24-INCH REINFORCED CONCRETE CLASS IV	1671	608.0430	30-INCH REINFORCED CONCRETE CLASS IV	247	608.0436	36-INCH REINFORCED CONCRETE CLASS IV	22	608.0448	48-INCH REINFORCED CONCRETE CLASS IV	106	608.3012	12-INCH STORM SEWER CLASS I/A	40	608.3015	15-INCH STORM SEWER CLASS I/A	3117	608.3018	18-INCH STORM SEWER CLASS I/A	600	608.3024	24-INCH STORM SEWER CLASS I/A	1258	608.3036	36-INCH STORM SEWER CLASS I/A	1488
		0			0			0			0			74			14			1027			21			1385			58			1671			247			22			106			40			3117			600			1258			1488

2

2

Addendum No. 02
ID 2270-04-70
Revised Sheet 753
September 9, 2021

ALL ITEMS ARE CATEGORY 0050 UNLESS OTHERWISE NOTED

SANITARY BYPASS

SPV.0105.12
TEMPORARY
SANITARY
SEWER BYPASS

LOCATION	LS
Project No. 2270-04-70	1
PROJECT TOTALS	1

3

SANITARY SEWER PIPES						
PIPE ID	FROM STR	TO STR	INLET ELEV	DISCH ELEV	SLOPE ^A %	PIPE LENGTH ^B (FT)
--	826.010	826.061	646.15	645.75	0.40	101
--	826.029	826.027	649.90	649.60	0.48	63
						63
						12
						21
						IV
						PIPE CALS
						PIPE SIZE (INCH)

SANITARY SEWER ROADWAY

Location	SY	TON	GAL	TON	TON	LF
DONGES BAY ROAD	56	37	2	17	6	210
SHERWOOD DRIVE	35	23	1	10	3	134
PROJECT TOTALS	91	60	3	27	9	344

204.0100 REMOVING
CONCRETE BASE AGGREGATE
PAVEMENT DENSE 1 1/4-INCH

455.0605 TACK COAT
3 MT 58-28 S

460.6223 HIMA
PAVEMENT 4 MT 58-28 S

460.6224 HIMA
PAVEMENT 4 MT 58-28 S

690.0250 CONCRETE
SAWING

SANITARY SEWER SPECIAL

Location	EACH	LF	LF	LF	EACH
DONGES BAY ROAD	--	2	--	101	1
SHERWOOD DRIVE	2	--	63	--	--
PROJECT TOTALS	2	2	63	101	1

SPV.0060.10 SANITARY SEWER REINFORCED CONCRETE COLLAR 12-INCH

SPV.0060.11 SANITARY SEWER REINFORCED CONCRETE COLLAR 21-INCH

SPV.0090.10 SANITARY SEWER PIPE REINFORCED CONCRETE CLASS III 12-INCH

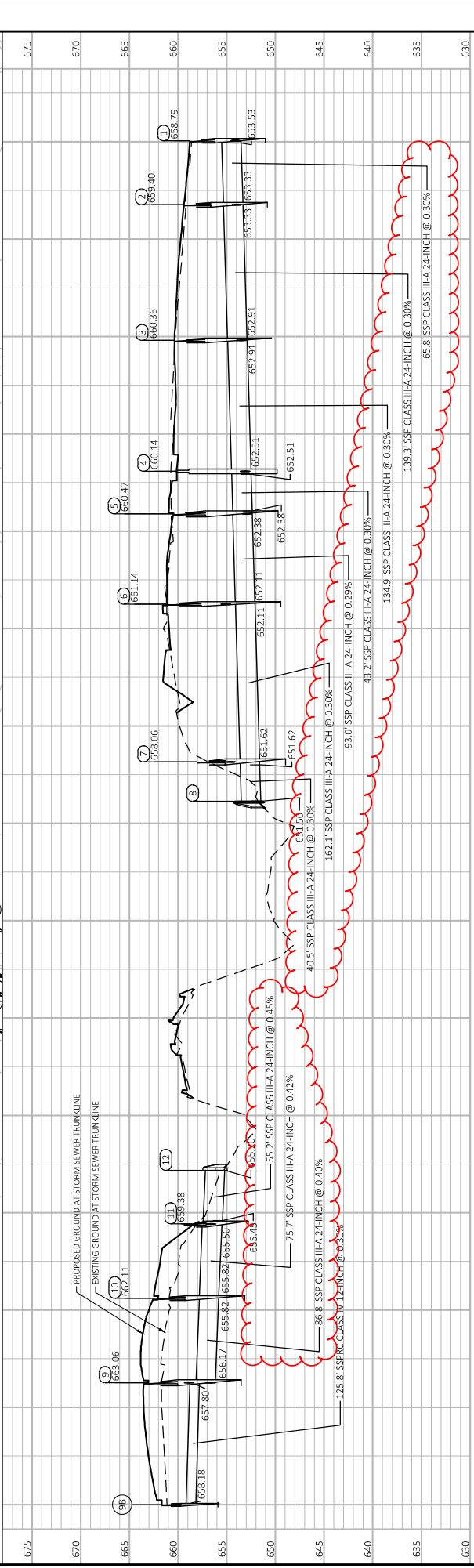
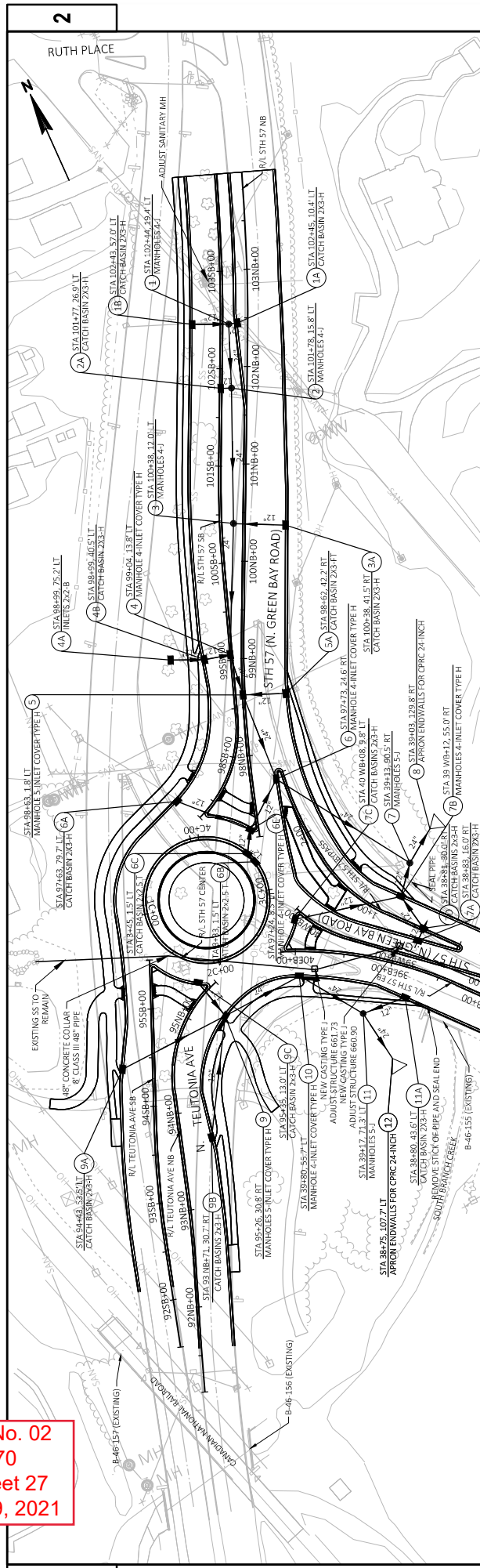
SPV.0090.11 SANITARY SEWER PIPE REINFORCED CONCRETE CLASS IV 21-INCH

SPV.0060.15 ADJUSTING CITY OF MEQUON SANITARY MANHOLE COVERS

Addendum No. 02
ID 2270-04-70
Revised Sheet 756
September 9, 2021

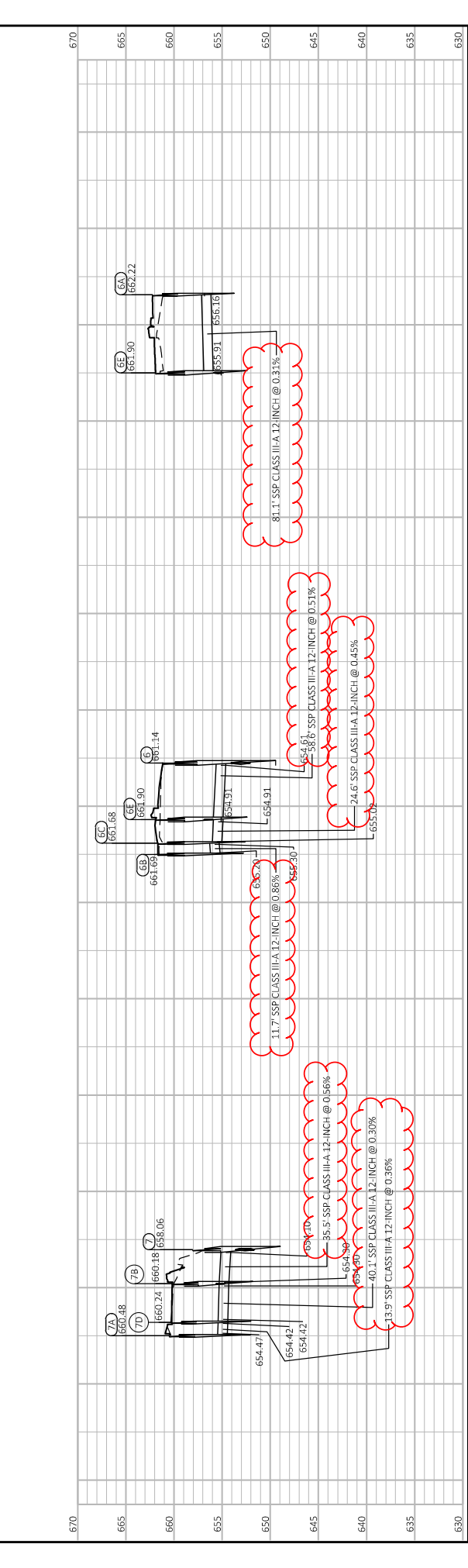
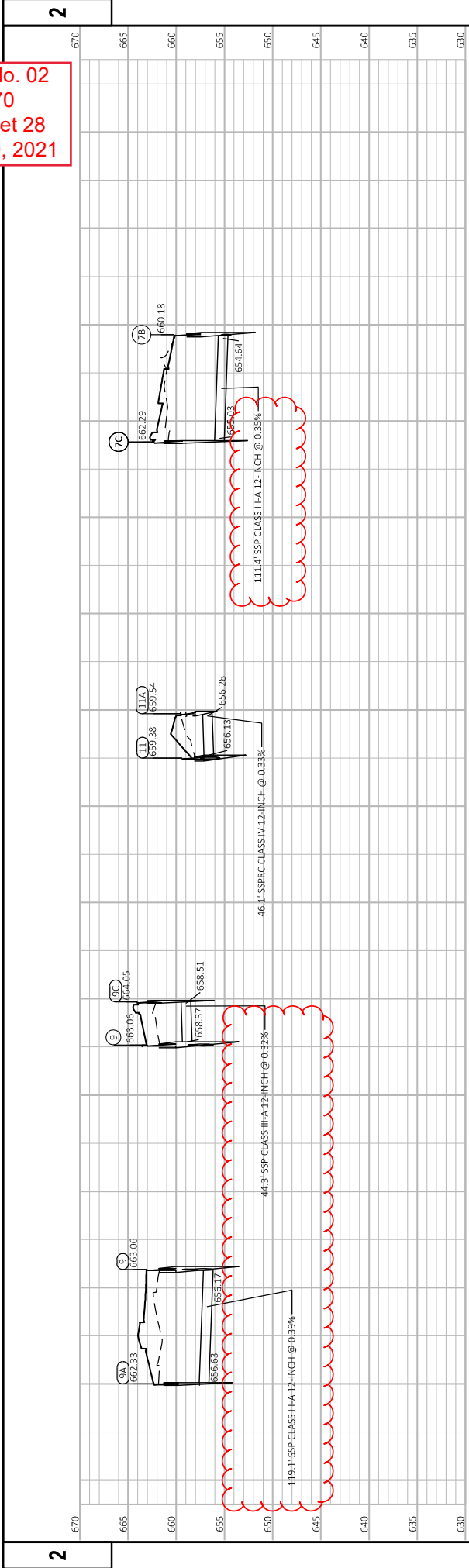
3

Addendum No. 02
 ID 2565-07-70
 Revised Sheet 27
 September 9, 2021



PROJECT NO: 2565-07-70	COUNTY: MILWAUKEE	STORM SEWER	SHEET 27
FILE NAME: L:\DESIGN PROJECTS\2565-07-00\STH 57\LD - ROADWAY\CA\DWG\SHEET\PLAN\2565-07-70-SS.DWG	LAYOUT NAME: 023901_SS	PLOT DATE: 9/9/2021 1:37 PM	PLOT NAME: REBECCA.ROMARDI
		PLOT SCALE: 1 IN=100 FT	

Addendum No. 02
 ID 2565-07-70
 Revised Sheet 28
 September 9, 2021



2

PROJECT NO: 2565-07-70

HWY: STH 57

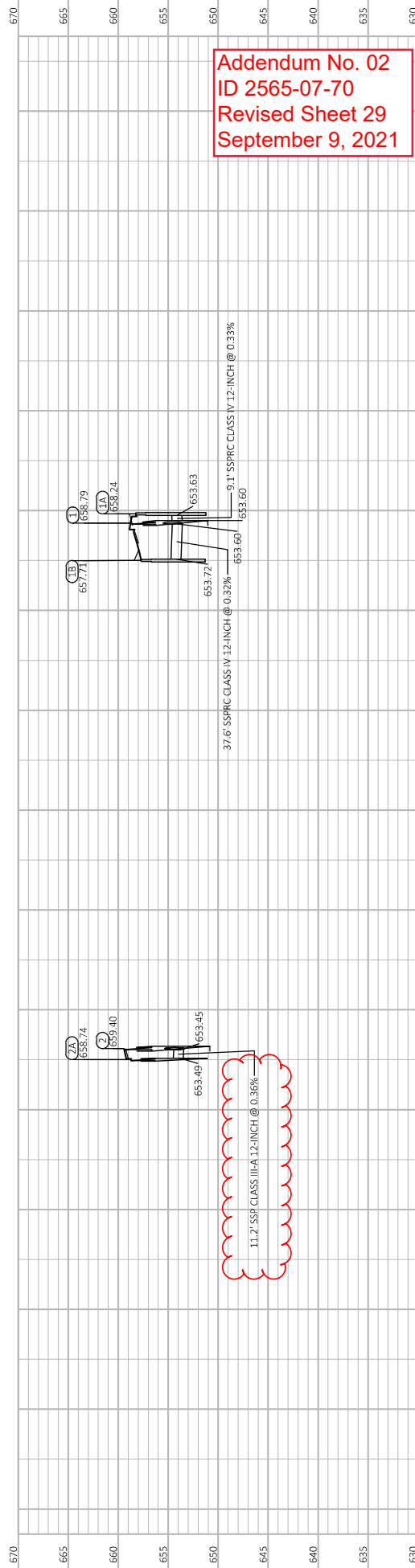
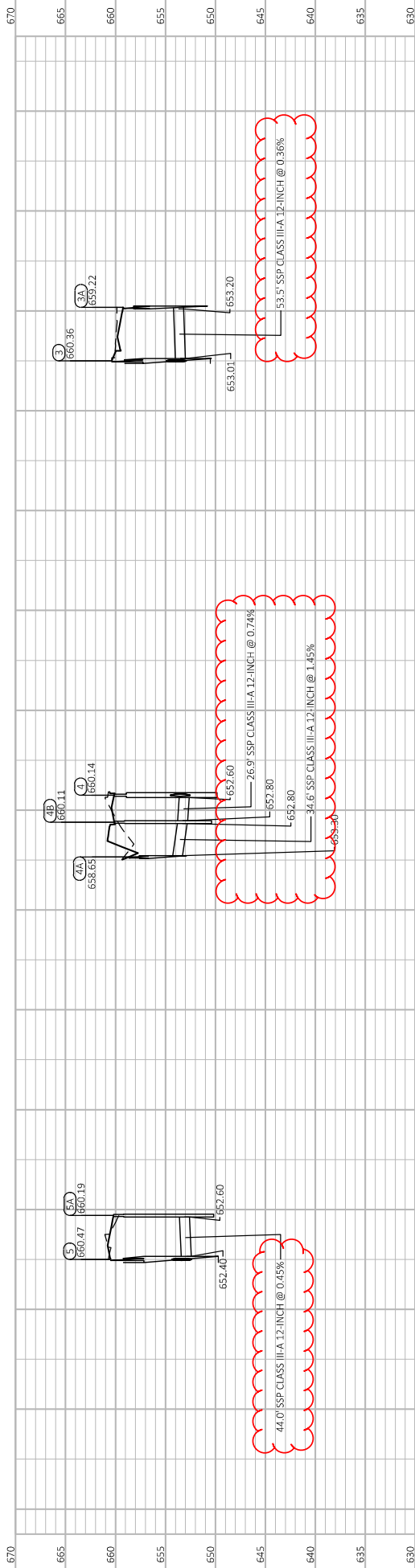
COUNTY: MILWAUKEE

STORM SEWER

SHEET 28

E

FILE NAME: L:\DESIGN PROJECTS\2565-07-00\STH 57\LD: ROADWAY\CADD\SHREE\PLAN\022501_SS.DWG
 LAYOUT NAME: 022501_SS (2)
 PLOT DATE: 9/9/2021 1:37 PM
 PLOT NAME: REBECCA.DONARDI
 PLOT SCALE: #####



Addendum No. 02
 ID 2565-07-70
 Revised Sheet 29
 September 9, 2021

ALL ITEMS ARE CATEGORY 0010 UNLESS OTHERWISE NOTED

Addendum No. 02
ID 2565-07-70
Revised Sheet 65
September 9, 2021

STORM SEWER STRUCTURES										STORM SEWER PIPES									
ROADWAY	STRUCTURE NO.	STATION	OFFSET (FT)	LOCATION	RIM OR FLOW ELEV	STRUCTURE TYPE	INLET/MANHOLE COVERS TYPE	DEPTH (FT)	FROM STR	TO STR	INLET ELEV	DISCH ELEV	SLOPE ^A %	PIPE LENGTH ^B (FT)	PIPE CLASS	PIPE SIZE (INCH)			
STH 57	1	102NB+44	19.4	LT	658.79	MANHOLE 4-FT DIAMETER	J	7.26	1	2	653.53	653.33	0.30	65.6	III-A	24			
STH 57	1A	102NB+45	10.4	LT	658.24	CATCH BASIN 2x3-FT	H	6.61	1A	1	653.63	653.60	0.33	9.1	IV	12			
STH 57	1B	102NB+43	57	LT	657.71	CATCH BASIN 2x3-FT	H	5.99	1B	1	653.72	653.60	0.32	37.6	IV	12			
STH 57	2	101NB+78	15.8	LT	659.4	MANHOLE 4-FT DIAMETER	J	8.07	2	3	653.33	652.91	0.30	139.3	III-A	24			
STH 57	2A	101NB+77	26.9	LT	658.74	CATCH BASIN 2x3-FT	H	7.25	2A	2	653.49	653.45	0.36	11.1	III-A	12			
STH 57	3	100NB+38	12	LT	660.36	MANHOLE 4-FT DIAMETER	J	9.45	3	4	652.91	652.51	0.30	134.9	III-A	24			
STH 57	3A	100NB+38	41.5	RT	659.22	CATCH BASIN 2x3-FT	H	8.02	3A	3	653.20	653.01	0.36	53.5	III-A	12			
STH 57	4	99NB+04	13.8	LT	660.14	MANHOLE 4-FT DIAMETER	H	9.63	4	5	652.51	652.38	0.30	43.1	III-A	24			
STH 57	4A	98NB+99	75.2	LT	658.65	INLETS 2x2-FT	B	5.35	4A	4B	653.30	652.80	1.45	34.6	III-A	12			
STH 57	4B	98NB+99	40.5	LT	660.11	CATCH BASIN 2x3-FT	H	9.31	4B	4	652.80	652.60	0.74	26.5	III-A	12			
STH 57	5	98NB+63	1.8	LT	660.47	MANHOLE 5-FT DIAMETER	H	10.09	5	6	652.38	652.11	0.29	93.1	III-A	24			
STH 57	5A	98NB+62	42.2	RT	660.19	CATCH BASIN 2x3-FT	H	9.59	5A	5	652.60	652.40	0.45	44.1	III-A	12			
STH 57	6	97NB+73	24.6	RT	661.14	MANHOLE 4-FT DIAMETER	H	11.03	6	7	652.11	651.62	0.30	162.1	III-A	24			
STH 57	6A	97NB+63	79.7	LT	662.22	CATCH BASIN 2x3-FT	H	8.06	6A	6E	656.16	655.91	0.31	81.1	III-A	12			
STH 57	6B	3C+33	1.5	LT	661.69	CATCH BASIN 2x3-FT	T	8.49	6B	6C	655.20	655.30	0.86	11.1	III-A	12			
STH 57	6C	3C+45	1.5	LT	661.68	CATCH BASIN 2x3-FT	T	8.66	6C	6E	655.02	654.91	0.45	24.5	III-A	12			
STH 57	6E	97NB+24	8.5	LT	661.9	MANHOLE 4-FT DIAMETER	H	8.99	6E	6	654.91	654.61	0.51	58.8	III-A	12			
STH 57	7	39NB+13	90.5	RT	658.06	MANHOLE 5-FT DIAMETER	J	8.44	7	8	651.62	651.50	0.30	40.5	III-A	24			
STH 57	7A	38WB+83	16	RT	660.48	CATCH BASIN 2x3-FT	H	8.01	7A	7D	654.47	654.42	0.36	13.5	III-A	12			
STH 57	7D	38WB+81	30	RT	660.24	CATCH BASIN 2x3-FT	H	7.82	7D	7B	654.42	654.30	0.30	40.1	III-A	12			
STH 57	7B	39WB+12	55	RT	660.18	MANHOLE 4-FT DIAMETER	H	7.88	7B	7	654.30	654.10	0.56	35.5	III-A	12			
STH 57	7C	40WB+08	9.8	LT	662.29	CATCH BASIN 2x3-FT	H	9.26	7C	7B	655.03	654.64	0.35	111.1	III-A	24			
STH 57	8	39WB+03	129.8	RT		APRON ENDWALL 24-IN													
N. TEUTONIA AVE	9	95NB+26	30.8	RT	663.06	MANHOLE 5-FT DIAMETER	H	8.89	9	10	656.17	655.82	0.40	86.6	III-A	24			
N. TEUTONIA AVE	9A	94NB+43	53.5	LT	662.33	CATCH BASIN 2x3-FT	H	7.70	9A	9	656.63	656.17	0.39	119.1	III-A	12			
N. TEUTONIA AVE	9B	93NB+71	30.7	RT	661.68	CATCH BASIN 2x3-FT	H	5.50	9B	9	658.18	657.80	0.30	125.8	IV	12			
N. TEUTONIA AVE	9C	95NB+35	13	LT	664.05	CATCH BASIN 2x3-FT	H	7.54	9C	9	658.51	658.37	0.32	44.1	III-A	12			
STH 57	10	39WB+80	55.7	LT	662.11	MANHOLE 4-FT DIAMETER	H	8.29	10	11	655.82	655.50	0.42	75.1	III-A	24			
STH 57	11	39WB+17	71.3	LT	659.38	MANHOLE 5-FT DIAMETER	J	5.93	11	12	655.45	655.20	0.45	55.1	III-A	24			
STH 57	11A	38WB+80	43.6	LT	659.54	CATCH BASIN 2x3-FT	H	5.26	11A	11	656.28	656.13	0.33	46.1	IV	12			
STH 57	12	38WB+75	107.7	LT		APRON ENDWALL 24-IN													

3

3

ALL ITEMS ARE CATEGORY 0010 UNLESS OTHERWISE NOTED

STORM SEWER SUMMARY

611.2004	MANHOLES 4-FT DIAMETER EACH	8	611.2005	MANHOLES 5-FT DIAMETER EACH	4	611.1230	CATCH BASIN 2X3-FT EACH	16	611.3220	INLETS 2X2-FT EACH	1	522.1024	APRON ENDWALLS FOR CULVERT PIPE REINFORCED CONCRETE 24-INCH EACH	2	611.0530	MANHOLE COVERS TYPE J EACH	9	611.0606	INLET COVERS TYPE B EACH	1	21	611.0624	INLET COVERS TYPE H EACH	21	2	611.0652	INLET COVERS TYPE T EACH	2	2	611.8170	ADJUSTING MANHOLE COVERS EACH	2	2	608.0312	STORM SEWER PIPE REINFORCED 12-INCH LF	0	608.0324	STORM SEWER PIPE REINFORCED 24-INCH LF	0	608.0348	STORM SEWER PIPE REINFORCED 48-INCH LF	8	608.0412	STORM SEWER PIPE REINFORCED 12-INCH LF	219	633.5200	MARKERS END	2	520.8000	CONCRETE COLLARS FOR PIPE EACH	2
----------	-----------------------------	---	----------	-----------------------------	---	----------	-------------------------	----	----------	--------------------	---	----------	--	---	----------	----------------------------	---	----------	--------------------------	---	----	----------	--------------------------	----	---	----------	--------------------------	---	---	----------	-------------------------------	---	---	----------	--	---	----------	--	---	----------	--	---	----------	--	-----	----------	-------------	---	----------	--------------------------------	---

608.3012
STORM SEWER PIPE CLASS III-A 12-INCH LF 711

608.3024
STORM SEWER PIPE CLASS III-A 24-INCH LF 897

Addendum No. 02
ID 2565-07-70
Revised Sheet 66
September 9, 2021

650.4000	CONSTRUCTION STAKING	31	650.4500	CONSTRUCTION STAKING SUBGRADE LF	1,800	650.7000	CONSTRUCTION STAKING CONCRETE PAVEMENT LF	1,800	650.8500	CONSTRUCTION STAKING ELECTRICAL INSTALLATIONS (2565-07-70) LS	1	650.9000	CONSTRUCTION STAKING SUPPLEMENTAL CONTROL (2565-07-70) LS	1	650.9910	CONSTRUCTION STAKING SUPPLEMENTAL CONTROL (2565-07-70) SF	22,330	650.9920	CONSTRUCTION STAKING STAKING SLOPE STAKES LF	3,043	650.9920	CONSTRUCTION STAKING STAKING SLOPE STAKES SF	22,330	SPV.0165.01	CONSTRUCTION STAKING STAKING SLOPE STAKES SF	22,330
PROJECT TOTALS		31	1,800	1,800	1	1,800	1	1,800	1	1	14	14	14	1	1	1	22,330	3,043	3,043	22,330	22,330	22,330	22,330			



Proposal Schedule of Items

Proposal ID: 20210914024 Project(s): 2150-00-72, 2270-04-70, 2565-07-70
 Federal ID(s): WISC 2021442, N/A, WISC 2021441

SECTION: 0001 Contract Items

Alt Set ID: Alt Mbr ID:

Proposal Line Number	Item ID Description	Approximate Quantity and Units	Unit Price	Bid Amount
0002	108.4400 CPM Progress Schedule	1.000 EACH	_____.	_____.
0004	201.0105 Clearing	45.000 STA	_____.	_____.
0006	201.0120 Clearing	60.000 ID	_____.	_____.
0008	201.0205 Grubbing	45.000 STA	_____.	_____.
0010	201.0220 Grubbing	60.000 ID	_____.	_____.
0012	203.0200 Removing Old Structure (station) 01. 120+00	LS	LUMP SUM	_____.
0014	203.0210.S Abatement of Asbestos Containing Material (structure) 01. B-40-153	LS	LUMP SUM	_____.
0016	204.0100 Removing Concrete Pavement	73,989.000 SY	_____.	_____.
0018	204.0109.S Removing Concrete Surface Partial Depth	322,878.000 SF	_____.	_____.
0020	204.0110 Removing Asphaltic Surface	170.000 SY	_____.	_____.
0022	204.0115 Removing Asphaltic Surface Butt Joints	671.000 SY	_____.	_____.
0024	204.0120 Removing Asphaltic Surface Milling	85,590.000 SY	_____.	_____.
0026	204.0150 Removing Curb & Gutter	7,524.000 LF	_____.	_____.
0028	204.0155 Removing Concrete Sidewalk	2,902.000 SY	_____.	_____.
0030	204.0165 Removing Guardrail	1,932.000 LF	_____.	_____.
0032	204.0175 Removing Concrete Slope Paving	485.000 SY	_____.	_____.



Proposal Schedule of Items

Proposal ID: 20210914024 Project(s): 2150-00-72, 2270-04-70, 2565-07-70
Federal ID(s): WISC 2021442, N/A, WISC 2021441

SECTION: 0001 Contract Items

Alt Set ID: Alt Mbr ID:

Proposal Line Number	Item ID Description	Approximate Quantity and Units	Unit Price	Bid Amount
0034	204.0185 Removing Masonry	40.000 CY	_____.	_____.
0036	204.0195 Removing Concrete Bases	63.000 EACH	_____.	_____.
0038	204.0210 Removing Manholes	14.000 EACH	_____.	_____.
0040	204.0220 Removing Inlets	100.000 EACH	_____.	_____.
0044	204.0245 Removing Storm Sewer (size) 01. 12-INCH	4,362.000 LF	_____.	_____.
0046	204.0245 Removing Storm Sewer (size) 02. 15-INCH	278.000 LF	_____.	_____.
0048	204.0245 Removing Storm Sewer (size) 03. 18-INCH	1,323.000 LF	_____.	_____.
0052	204.0245 Removing Storm Sewer (size) 04. 24-INCH	1,237.000 LF	_____.	_____.
0054	204.0245 Removing Storm Sewer (size) 05. 30-INCH	226.000 LF	_____.	_____.
0056	204.0245 Removing Storm Sewer (size) 06. 36-INCH	416.000 LF	_____.	_____.
0058	204.0245 Removing Storm Sewer (size) 07. 42-INCH	1,057.000 LF	_____.	_____.
0060	204.0245 Removing Storm Sewer (size) 08. 48-INCH	292.000 LF	_____.	_____.
0062	204.0250 Abandoning Manholes	2.000 EACH	_____.	_____.
0064	204.0280 Sealing Pipes	5.000 EACH	_____.	_____.
0066	204.0291.S Abandoning Sewer	150.000 CY	_____.	_____.



Proposal Schedule of Items

Proposal ID: 20210914024 Project(s): 2150-00-72, 2270-04-70, 2565-07-70
Federal ID(s): WISC 2021442, N/A, WISC 2021441

SECTION: 0001 Contract Items

Alt Set ID: Alt Mbr ID:

Proposal Line Number	Item ID Description	Approximate Quantity and Units	Unit Price	Bid Amount
0068	204.9060.S Removing (item description) 61. Removing Communication Vault	2.000 EACH	_____.	_____.
0070	204.9105.S Removing (item description) 61. Remove Traffic Signals STH 57 & STH 100	LS	LUMP SUM	_____.
0072	204.9105.S Removing (item description) 62. Remove Traffic Signals STH 100 & N Kildeer Ct	LS	LUMP SUM	_____.
0074	204.9105.S Removing (item description) 63. Remove Traffic Signals STH 57 & N Deerwood Dr	LS	LUMP SUM	_____.
0076	204.9105.S Removing (item description) 64. Remove Traffic Signals STH 57 & W Schroeder Dr	LS	LUMP SUM	_____.
0078	204.9105.S Removing (item description) 65. Remove Traffic Signals STH 57 & Donges Bay Rd	LS	LUMP SUM	_____.
0080	204.9105.S Removing (item description) 66. Remove Loop Detector Wire and Lead-In Cable STH 57 & STH 100	LS	LUMP SUM	_____.
0082	204.9105.S Removing (item description) 67. Remove Loop Detector Wire and Lead-In Cable STH 57 & N Deerwood Dr	LS	LUMP SUM	_____.
0084	204.9105.S Removing (item description) 68. Remove Loop Detector Wire and Lead-In Cable STH 57 & W Schroeder Dr	LS	LUMP SUM	_____.
0086	204.9105.S Removing (item description) 69. Remove Loop Detector Wire and Lead-In Cable STH 57 & Donges Bay Rd	LS	LUMP SUM	_____.
0088	204.9105.S Removing (item description) 70. Remove Loop Detector Wire and Lead-In Cable STH 100 & N Kildeer Ct	LS	LUMP SUM	_____.
0090	205.0100 Excavation Common	144,693.000 CY	_____.	_____.



Proposal Schedule of Items

Proposal ID: 20210914024 Project(s): 2150-00-72, 2270-04-70, 2565-07-70
 Federal ID(s): WISC 2021442, N/A, WISC 2021441

SECTION: 0001 Contract Items

Alt Set ID: Alt Mbr ID:

Proposal Line Number	Item ID Description	Approximate Quantity and Units	Unit Price	Bid Amount
0092	205.0501.S Excavation, Hauling, and Disposal of Petroleum Contaminated Soil	1.700 TON	_____.	_____.
0094	208.0100 Borrow	3,996.000 CY	_____.	_____.
0096	209.1500 Backfill Granular Grade 1	11,666.000 TON	_____.	_____.
0098	211.0100 Prepare Foundation for Asphaltic Paving (project) 01. 2270-04-70	LS	LUMP SUM	_____.
0100	213.0100 Finishing Roadway (project) 01. 2270-04-70	1.000 EACH	_____.	_____.
0102	213.0100 Finishing Roadway (project) 02. 2565-07-70	1.000 EACH	_____.	_____.
0104	214.0100 Obliterating Old Road	38.500 STA	_____.	_____.
0106	305.0110 Base Aggregate Dense 3/4-Inch	6,141.000 TON	_____.	_____.
0108	305.0120 Base Aggregate Dense 1 1/4-Inch	39,273.000 TON	_____.	_____.
0110	312.0110 Select Crushed Material	76,284.000 TON	_____.	_____.
0112	390.0103 Base Patching	106.000 SY	_____.	_____.
0114	390.0203 Base Patching Asphaltic	864.000 SY	_____.	_____.
0116	390.0303 Base Patching Concrete	2,139.000 SY	_____.	_____.
0118	405.0100 Coloring Concrete WisDOT Red	156.000 CY	_____.	_____.
0120	405.0200 Coloring Concrete Custom 01. Scofield Rust Fields	1,401.000 CY	_____.	_____.



Proposal Schedule of Items

Proposal ID: 20210914024 Project(s): 2150-00-72, 2270-04-70, 2565-07-70
 Federal ID(s): WISC 2021442, N/A, WISC 2021441

SECTION: 0001 Contract Items

Alt Set ID: Alt Mbr ID:

Proposal Line Number	Item ID Description	Approximate Quantity and Units	Unit Price	Bid Amount
0122	405.0200 Coloring Concrete Custom 02. Scofield Schooner Beige	363.000 CY	_____.	_____.
0124	405.0200 Coloring Concrete Custom 03. Scofield Plum Chestnut	213.000 CY	_____.	_____.
0126	415.0080 Concrete Pavement 8-Inch	54,710.000 SY	_____.	_____.
0128	415.0085 Concrete Pavement 8 1/2-Inch	12,100.000 SY	_____.	_____.
0130	415.1080 Concrete Pavement HES 8-Inch	5,439.000 SY	_____.	_____.
0132	415.5110.S Concrete Pavement Joint Layout 01. 2270-04-70	LS	LUMP SUM	_____.
0134	415.5110.S Concrete Pavement Joint Layout 02. 2565-07-70	LS	LUMP SUM	_____.
0136	416.0160 Concrete Driveway 6-Inch	140.000 SY	_____.	_____.
0138	416.0512 Concrete Truck Apron 12-Inch	470.000 SY	_____.	_____.
0140	450.4000 HMA Cold Weather Paving	2,446.000 TON	_____.	_____.
0142	455.0605 Tack Coat	6,921.000 GAL	_____.	_____.
0144	460.2000 Incentive Density HMA Pavement	12,810.000 DOL	1.00000	12,810.00
0146	460.6223 HMA Pavement 3 MT 58-28 S	11,817.000 TON	_____.	_____.
0148	460.6224 HMA Pavement 4 MT 58-28 S	8,877.000 TON	_____.	_____.
0150	465.0125 Asphaltic Surface Temporary	3,608.000 TON	_____.	_____.
0152	465.0310 Asphaltic Curb	736.000 LF	_____.	_____.



Proposal Schedule of Items

Proposal ID: 20210914024 Project(s): 2150-00-72, 2270-04-70, 2565-07-70
Federal ID(s): WISC 2021442, N/A, WISC 2021441

SECTION: 0001 Contract Items

Alt Set ID: Alt Mbr ID:

Proposal Line Number	Item ID Description	Approximate Quantity and Units	Unit Price	Bid Amount
0154	495.1000.S Cold patch	20.000 TON	_____.	_____.
0156	502.0100 Concrete Masonry Bridges	1.000 CY	_____.	_____.
0158	502.0717.S Crack Sealing Epoxy	60.000 LF	_____.	_____.
0160	502.3200 Protective Surface Treatment	2,377.000 SY	_____.	_____.
0162	502.3210 Pigmented Surface Sealer	86.000 SY	_____.	_____.
0164	502.3215.S Protective Surface Treatment Reseal	1,288.000 SY	_____.	_____.
0166	505.0600 Bar Steel Reinforcement HS Coated Structures	50.000 LB	_____.	_____.
0168	509.0200 Preparation Approaches	303.000 SY	_____.	_____.
0170	509.0301 Preparation Decks Type 1	1,273.000 SY	_____.	_____.
0172	509.0302 Preparation Decks Type 2	955.000 SY	_____.	_____.
0174	509.0505.S Cleaning Decks to Reapply Concrete Masonry Overlay	2,377.000 SY	_____.	_____.
0176	509.0600 Cleaning Approaches	303.000 SY	_____.	_____.
0178	509.1200 Curb Repair	60.000 LF	_____.	_____.
0180	509.1500 Concrete Surface Repair	2,345.000 SF	_____.	_____.
0182	509.2000 Full-Depth Deck Repair	2.000 SY	_____.	_____.
0184	509.2500 Concrete Masonry Overlay Decks	271.000 CY	_____.	_____.



Proposal Schedule of Items

Proposal ID: 20210914024 Project(s): 2150-00-72, 2270-04-70, 2565-07-70
Federal ID(s): WISC 2021442, N/A, WISC 2021441

SECTION: 0001 Contract Items

Alt Set ID: Alt Mbr ID:

Proposal Line Number	Item ID Description	Approximate Quantity and Units	Unit Price	Bid Amount
0186	509.2600 Concrete Masonry Overlay Approaches	13.000 CY	_____.	_____.
0188	509.9005.S Removing Concrete Masonry Deck Overlay (structure) 30. B-40-504	1,240.000 SY	_____.	_____.
0190	509.9005.S Removing Concrete Masonry Deck Overlay (structure) 31. B-40-505	1,137.000 SY	_____.	_____.
0192	509.9050.S Cleaning Parapets	512.000 LF	_____.	_____.
0194	520.8000 Concrete Collars for Pipe	14.000 EACH	_____.	_____.
0196	522.1015 Apron Endwalls for Culvert Pipe Reinforced Concrete 15-Inch	1.000 EACH	_____.	_____.
0198	522.1018 Apron Endwalls for Culvert Pipe Reinforced Concrete 18-Inch	1.000 EACH	_____.	_____.
0200	522.1024 Apron Endwalls for Culvert Pipe Reinforced Concrete 24-Inch	2.000 EACH	_____.	_____.
0202	522.1036 Apron Endwalls for Culvert Pipe Reinforced Concrete 36-Inch	1.000 EACH	_____.	_____.
0204	522.1054 Apron Endwalls for Culvert Pipe Reinforced Concrete 54-Inch	1.000 EACH	_____.	_____.
0206	524.0612 Apron Endwalls for Culvert Pipe Salvaged 12-Inch	1.000 EACH	_____.	_____.
0208	531.2030 Drilling Shaft 30-Inch 01. S-40-3092	17.000 LF	_____.	_____.
0210	531.2030 Drilling Shaft 30-Inch 02. S-40-3093	17.000 LF	_____.	_____.
0212	531.2042 Drilling Shaft 42-Inch 0001. S-40-669	18.000 LF	_____.	_____.
0214	531.2042 Drilling Shaft 42-Inch 0002. S-40-3090	18.000 LF	_____.	_____.



Proposal Schedule of Items

Proposal ID: 20210914024 Project(s): 2150-00-72, 2270-04-70, 2565-07-70
Federal ID(s): WISC 2021442, N/A, WISC 2021441

SECTION: 0001 Contract Items

Alt Set ID: Alt Mbr ID:

Proposal Line Number	Item ID Description	Approximate Quantity and Units	Unit Price	Bid Amount
0216	531.2042 Drilling Shaft 42-Inch 0003. S-40-3091	18.000 LF	_____.	_____.
0218	531.5110 Foundation Single-Shaft Type MC-I (structure) 01. S-40-3092	1.000 EACH	_____.	_____.
0220	531.5110 Foundation Single-Shaft Type MC-I (structure) 02. S-40-3093	1.000 EACH	_____.	_____.
0222	531.5130 Foundation Single-Shaft Type MC-III (structure) 0001. S-40-669	1.000 EACH	_____.	_____.
0224	531.5130 Foundation Single-Shaft Type MC-III (structure) 0002. S-40-3090	1.000 EACH	_____.	_____.
0226	531.5140 Foundation Single-Shaft Type MC-IV (structure) 0003. S-40-3091	1.000 EACH	_____.	_____.
0228	532.5110 Monotube Cantilever Type I (structure) 01. S-40-3092	1.000 EACH	_____.	_____.
0230	532.5110 Monotube Cantilever Type I (structure) 02. S-40-3093	1.000 EACH	_____.	_____.
0232	532.5130 Monotube Cantilever Type III (structure) 0001. S-40-669	1.000 EACH	_____.	_____.
0234	532.5130 Monotube Cantilever Type III (structure) 0002. S-40-3090	1.000 EACH	_____.	_____.
0236	532.5140 Monotube Cantilever Type IV (structure) 0003. S-40-3091	1.000 EACH	_____.	_____.
0238	601.0405 Concrete Curb & Gutter 18-Inch Type A	389.000 LF	_____.	_____.
0240	601.0407 Concrete Curb & Gutter 18-Inch Type D	240.000 LF	_____.	_____.
0242	601.0409 Concrete Curb & Gutter 30-Inch Type A	31,355.000 LF	_____.	_____.



Proposal Schedule of Items

Proposal ID: 20210914024 Project(s): 2150-00-72, 2270-04-70, 2565-07-70
Federal ID(s): WISC 2021442, N/A, WISC 2021441

SECTION: 0001 Contract Items

Alt Set ID: Alt Mbr ID:

Proposal Line Number	Item ID Description	Approximate Quantity and Units	Unit Price	Bid Amount
0244	601.0411 Concrete Curb & Gutter 30-Inch Type D	1,470.000 LF	_____.	_____.
0246	601.0413 Concrete Curb & Gutter 6-Inch Sloped 30-Inch Type G	621.000 LF	_____.	_____.
0248	601.0557 Concrete Curb & Gutter 6-Inch Sloped 36-Inch Type D	1,079.000 LF	_____.	_____.
0250	601.0580 Concrete Curb & Gutter 4-Inch Sloped 36-Inch Type R	393.000 LF	_____.	_____.
0252	601.0600 Concrete Curb Pedestrian	642.000 LF	_____.	_____.
0254	602.0410 Concrete Sidewalk 5-Inch	109,454.000 SF	_____.	_____.
0256	602.0505 Curb Ramp Detectable Warning Field Yellow	1,064.000 SF	_____.	_____.
0258	602.0605 Curb Ramp Detectable Warning Field Radial Yellow	56.000 SF	_____.	_____.
0260	603.8000 Concrete Barrier Temporary Precast Delivered	1,105.000 LF	_____.	_____.
0262	603.8125 Concrete Barrier Temporary Precast Installed	2,068.000 LF	_____.	_____.
0264	606.0200 Riprap Medium	23.000 CY	_____.	_____.
0276	608.0342 Storm Sewer Pipe Reinforced Concrete Class III 42-Inch	74.000 LF	_____.	_____.
0278	608.0348 Storm Sewer Pipe Reinforced Concrete Class III 48-Inch	22.000 LF	_____.	_____.
0280	608.0354 Storm Sewer Pipe Reinforced Concrete Class III 54-Inch	1,027.000 LF	_____.	_____.



Proposal Schedule of Items

Proposal ID: 20210914024 Project(s): 2150-00-72, 2270-04-70, 2565-07-70
 Federal ID(s): WISC 2021442, N/A, WISC 2021441

SECTION: 0001 Contract Items

Alt Set ID: Alt Mbr ID:

Proposal Line Number	Item ID Description	Approximate Quantity and Units	Unit Price	Bid Amount
0282	608.0412 Storm Sewer Pipe Reinforced Concrete Class IV 12-Inch	410.000 LF	_____.	_____.
0284	608.0415 Storm Sewer Pipe Reinforced Concrete Class IV 15-Inch	1,395.000 LF	_____.	_____.
0286	608.0418 Storm Sewer Pipe Reinforced Concrete Class IV 18-Inch	58.000 LF	_____.	_____.
0288	608.0424 Storm Sewer Pipe Reinforced Concrete Class IV 24-Inch	1,671.000 LF	_____.	_____.
0290	608.0430 Storm Sewer Pipe Reinforced Concrete Class IV 30-Inch	247.000 LF	_____.	_____.
0292	608.0436 Storm Sewer Pipe Reinforced Concrete Class IV 36-Inch	22.000 LF	_____.	_____.
0294	608.0448 Storm Sewer Pipe Reinforced Concrete Class IV 48-Inch	106.000 LF	_____.	_____.
0296	611.0430 Reconstructing Inlets	3.000 EACH	_____.	_____.
0298	611.0530 Manhole Covers Type J	9.000 EACH	_____.	_____.
0300	611.0535 Manhole Covers Type J-Special	28.000 EACH	_____.	_____.
0302	611.0606 Inlet Covers Type B	5.000 EACH	_____.	_____.
0304	611.0612 Inlet Covers Type C	2.000 EACH	_____.	_____.
0306	611.0624 Inlet Covers Type H	153.000 EACH	_____.	_____.
0308	611.0639 Inlet Covers Type H-S	31.000 EACH	_____.	_____.
0310	611.0642 Inlet Covers Type MS	13.000 EACH	_____.	_____.



Proposal Schedule of Items

Proposal ID: 20210914024 Project(s): 2150-00-72, 2270-04-70, 2565-07-70
Federal ID(s): WISC 2021442, N/A, WISC 2021441

SECTION: 0001 Contract Items

Alt Set ID: Alt Mbr ID:

Proposal Line Number	Item ID Description	Approximate Quantity and Units	Unit Price	Bid Amount
0312	611.0651 Inlet Covers Type S	5.000 EACH	_____.	_____.
0314	611.0652 Inlet Covers Type T	2.000 EACH	_____.	_____.
0316	611.1004 Catch Basins 4-FT Diameter	96.000 EACH	_____.	_____.
0318	611.1005 Catch Basins 5-FT Diameter	12.000 EACH	_____.	_____.
0320	611.1006 Catch Basins 6-FT Diameter	7.000 EACH	_____.	_____.
0322	611.1230 Catch Basins 2x3-FT	21.000 EACH	_____.	_____.
0324	611.2004 Manholes 4-FT Diameter	9.000 EACH	_____.	_____.
0326	611.2005 Manholes 5-FT Diameter	16.000 EACH	_____.	_____.
0328	611.2006 Manholes 6-FT Diameter	11.000 EACH	_____.	_____.
0330	611.2007 Manholes 7-FT Diameter	7.000 EACH	_____.	_____.
0332	611.2008 Manholes 8-FT Diameter	1.000 EACH	_____.	_____.
0334	611.3003 Inlets 3-FT Diameter	3.000 EACH	_____.	_____.
0336	611.3004 Inlets 4-FT Diameter	28.000 EACH	_____.	_____.
0338	611.3220 Inlets 2x2-FT	1.000 EACH	_____.	_____.
0340	611.3901 Inlets Median 1 Grate	11.000 EACH	_____.	_____.
0342	611.3902 Inlets Median 2 Grate	1.000 EACH	_____.	_____.
0344	611.8110 Adjusting Manhole Covers	3.000 EACH	_____.	_____.



Proposal Schedule of Items

Proposal ID: 20210914024 Project(s): 2150-00-72, 2270-04-70, 2565-07-70
Federal ID(s): WISC 2021442, N/A, WISC 2021441

SECTION: 0001 Contract Items

Alt Set ID: Alt Mbr ID:

Proposal Line Number	Item ID Description	Approximate Quantity and Units	Unit Price	Bid Amount
0346	611.8115 Adjusting Inlet Covers	14.000 EACH	_____.	_____.
0348	611.8120.S Cover Plates Temporary	5.000 EACH	_____.	_____.
0350	611.9800.S Pipe Grates	3.000 EACH	_____.	_____.
0352	614.0905 Crash Cushions Temporary	1.000 EACH	_____.	_____.
0354	614.0935 Salvaged Sand Barrels	25.000 EACH	_____.	_____.
0356	616.0700.S Fence Safety	560.000 LF	_____.	_____.
0358	619.1000 Mobilization	1.000 EACH	_____.	_____.
0360	620.0300 Concrete Median Sloped Nose	2,070.000 SF	_____.	_____.
0362	624.0100 Water	1,467.000 MGAL	_____.	_____.
0364	625.0100 Topsoil	24,938.000 SY	_____.	_____.
0366	625.0500 Salvaged Topsoil	29,170.000 SY	_____.	_____.
0368	627.0200 Mulching	10,755.000 SY	_____.	_____.
0370	628.1104 Erosion Bales	16.000 EACH	_____.	_____.
0372	628.1504 Silt Fence	6,446.000 LF	_____.	_____.
0374	628.1520 Silt Fence Maintenance	8,644.000 LF	_____.	_____.
0376	628.1550 Silt Screen	30.000 LF	_____.	_____.
0378	628.1905 Mobilizations Erosion Control	7.000 EACH	_____.	_____.



Proposal Schedule of Items

Proposal ID: 20210914024 Project(s): 2150-00-72, 2270-04-70, 2565-07-70
Federal ID(s): WISC 2021442, N/A, WISC 2021441

SECTION: 0001 Contract Items

Alt Set ID: Alt Mbr ID:

Proposal Line Number	Item ID Description	Approximate Quantity and Units	Unit Price	Bid Amount
0380	628.1910 Mobilizations Emergency Erosion Control	16.000 EACH	_____.	_____.
0382	628.2006 Erosion Mat Urban Class I Type A	23,200.000 SY	_____.	_____.
0384	628.2008 Erosion Mat Urban Class I Type B	3,893.000 SY	_____.	_____.
0386	628.6505 Soil Stabilizer Type A	2.000 ACRE	_____.	_____.
0388	628.7005 Inlet Protection Type A	237.000 EACH	_____.	_____.
0390	628.7010 Inlet Protection Type B	33.000 EACH	_____.	_____.
0392	628.7015 Inlet Protection Type C	494.000 EACH	_____.	_____.
0394	628.7020 Inlet Protection Type D	36.000 EACH	_____.	_____.
0396	628.7504 Temporary Ditch Checks	620.000 LF	_____.	_____.
0398	628.7555 Culvert Pipe Checks	18.000 EACH	_____.	_____.
0400	628.7560 Tracking Pads	14.000 EACH	_____.	_____.
0402	628.7570 Rock Bags	50.000 EACH	_____.	_____.
0404	629.0205 Fertilizer Type A	34.000 CWT	_____.	_____.
0406	630.0140 Seeding Mixture No. 40	1,129.000 LB	_____.	_____.
0408	630.0200 Seeding Temporary	157.000 LB	_____.	_____.
0410	630.0500 Seed Water	958.000 MGAL	_____.	_____.
0412	631.0300 Sod Water	172.000 MGAL	_____.	_____.



Proposal Schedule of Items

Proposal ID: 20210914024 Project(s): 2150-00-72, 2270-04-70, 2565-07-70
Federal ID(s): WISC 2021442, N/A, WISC 2021441

SECTION: 0001 Contract Items

Alt Set ID: Alt Mbr ID:

Proposal Line Number	Item ID Description	Approximate Quantity and Units	Unit Price	Bid Amount
0414	631.1000 Sod Lawn	11,344.000 SY	_____.	_____.
0416	632.0101 Trees (species) (size) (root) 01. Trees, Carpinus Caroliniana 'JN Upright'	13.000 EACH	_____.	_____.
0418	632.0101 Trees (species) (size) (root) 02. Trees, Syringa Reticulata 'Ivory Silk'	18.000 EACH	_____.	_____.
0420	632.0101 Trees (species) (size) (root) 03. Trees, Ginkgo Biloba 'Princeton Sentry'	9.000 EACH	_____.	_____.
0422	632.0101 Trees (species) (size) (root) 04. Trees, Malus Royal Raindrops	17.000 EACH	_____.	_____.
0424	632.0101 Trees (species) (size) (root) 05. Trees, Gleditsia Triacanthos 'Shademaster'	4.000 EACH	_____.	_____.
0426	632.0101 Trees (species) (size) (root) 06. Trees, Crataegus Viridis ' Winter King'	18.000 EACH	_____.	_____.
0428	632.0101 Trees (species) (size) (root) 08. Trees, Picea Glauca Var Densata	9.000 EACH	_____.	_____.
0430	632.0101 Trees (species) (size) (root) 09. Malus 'Red Barron' B&B, 2-INCH CAL	3.000 EACH	_____.	_____.
0432	632.0101 Trees (species) (size) (root) 10. Amelachier X Grandiflora 'Autumn Brilliance' B&B, 7-FT HT	3.000 EACH	_____.	_____.
0434	632.0101 Trees (species) (size) (root) 11. Cratageus Laevigata 'Crimson Cloud' B&B, 2-INCH CAL	3.000 EACH	_____.	_____.
0436	632.0201 Shrubs (species) (size) (root) 01. Shrubs, Diervilla Lonicera 'Dwarf Bush'	144.000 EACH	_____.	_____.
0438	632.0201 Shrubs (species) (size) (root) 02. Shrubs, Juniperus Sabina 'Buffalo'	82.000 EACH	_____.	_____.



Proposal Schedule of Items

Proposal ID: 20210914024 Project(s): 2150-00-72, 2270-04-70, 2565-07-70
Federal ID(s): WISC 2021442, N/A, WISC 2021441

SECTION: 0001 Contract Items

Alt Set ID: Alt Mbr ID:

Proposal Line Number	Item ID Description	Approximate Quantity and Units	Unit Price	Bid Amount
0440	632.0201 Shrubs (species) (size) (root) 03. Shrubs, Rosa Rugosa 'Dwarf Pavement'	74.000 EACH	_____.	_____.
0442	632.0201 Shrubs (species) (size) (root) 04. Shrubs, Aronia Melanocarpa 'Morton'	56.000 EACH	_____.	_____.
0444	633.5200 Markers Culvert End	6.000 EACH	_____.	_____.
0446	634.0618 Posts Wood 4x6-Inch X 18-FT	283.000 EACH	_____.	_____.
0448	634.0622 Posts Wood 4x6-Inch X 22-FT	6.000 EACH	_____.	_____.
0450	634.0814 Posts Tubular Steel 2x2-Inch X 14-FT	68.000 EACH	_____.	_____.
0452	637.2210 Signs Type II Reflective H	2,937.015 SF	_____.	_____.
0454	637.2215 Signs Type II Reflective H Folding	313.320 SF	_____.	_____.
0456	637.2230 Signs Type II Reflective F	793.530 SF	_____.	_____.
0458	638.2102 Moving Signs Type II	20.000 EACH	_____.	_____.
0460	638.2602 Removing Signs Type II	242.000 EACH	_____.	_____.
0462	638.3000 Removing Small Sign Supports	215.000 EACH	_____.	_____.
0464	643.0300 Traffic Control Drums	364,511.000 DAY	_____.	_____.
0466	643.0410 Traffic Control Barricades Type II	2,591.000 DAY	_____.	_____.
0468	643.0420 Traffic Control Barricades Type III	72,318.000 DAY	_____.	_____.
0470	643.0500 Traffic Control Flexible Tubular Marker Posts	1,007.000 EACH	_____.	_____.



Proposal Schedule of Items

Proposal ID: 20210914024 Project(s): 2150-00-72, 2270-04-70, 2565-07-70
Federal ID(s): WISC 2021442, N/A, WISC 2021441

SECTION: 0001 Contract Items

Alt Set ID: Alt Mbr ID:

Proposal Line Number	Item ID Description	Approximate Quantity and Units	Unit Price	Bid Amount
0472	643.0600 Traffic Control Flexible Tubular Marker Bases	859.000 EACH	_____.	_____.
0474	643.0705 Traffic Control Warning Lights Type A	144,636.000 DAY	_____.	_____.
0476	643.0715 Traffic Control Warning Lights Type C	72,058.000 DAY	_____.	_____.
0478	643.0800 Traffic Control Arrow Boards	1,909.000 DAY	_____.	_____.
0480	643.0900 Traffic Control Signs	181,144.000 DAY	_____.	_____.
0482	643.0920 Traffic Control Covering Signs Type II	27.000 EACH	_____.	_____.
0484	643.1000 Traffic Control Signs Fixed Message	574.000 SF	_____.	_____.
0486	643.1050 Traffic Control Signs PCMS	465.000 DAY	_____.	_____.
0488	643.1070 Traffic Control Cones 42-Inch	22,153.000 DAY	_____.	_____.
0490	643.4100.S Traffic Control Interim Lane Closure	112.000 EACH	_____.	_____.
0492	643.5000 Traffic Control	1.000 EACH	_____.	_____.
0494	644.1410 Temporary Pedestrian Surface Asphalt	2,605.000 SF	_____.	_____.
0496	644.1430 Temporary Pedestrian Surface Plate	2,645.000 SF	_____.	_____.
0498	644.1601 Temporary Pedestrian Curb Ramp	718.000 DAY	_____.	_____.
0500	644.1810 Temporary Pedestrian Barricade	2,635.000 LF	_____.	_____.
0502	645.0120 Geotextile Type HR	16.000 SY	_____.	_____.



Proposal Schedule of Items

Proposal ID: 20210914024 Project(s): 2150-00-72, 2270-04-70, 2565-07-70
Federal ID(s): WISC 2021442, N/A, WISC 2021441

SECTION: 0001 Contract Items

Alt Set ID: Alt Mbr ID:

Proposal Line Number	Item ID Description	Approximate Quantity and Units	Unit Price	Bid Amount
0504	645.0130 Geotextile Type R	30.000 SY	_____.	_____.
0506	646.1020 Marking Line Epoxy 4-Inch	48,654.000 LF	_____.	_____.
0508	646.1040 Marking Line Grooved Wet Ref Epoxy 4-Inch	15,837.000 LF	_____.	_____.
0510	646.1545 Marking Line Grooved Wet Ref Contrast Epoxy 4-Inch	5,105.000 LF	_____.	_____.
0512	646.3020 Marking Line Epoxy 8-Inch	2,442.000 LF	_____.	_____.
0514	646.3545 Marking Line Grooved Wet Ref Contrast Epoxy 8-Inch	8,077.000 LF	_____.	_____.
0516	646.4520 Marking Line Same Day Epoxy 4-Inch	19,972.000 LF	_____.	_____.
0518	646.4620 Marking Line Same Day Epoxy 8-Inch	2,091.000 LF	_____.	_____.
0520	646.5005 Marking Arrow Paint	2.000 EACH	_____.	_____.
0522	646.5020 Marking Arrow Epoxy	69.000 EACH	_____.	_____.
0524	646.5105 Marking Word Paint	2.000 EACH	_____.	_____.
0526	646.5120 Marking Word Epoxy	29.000 EACH	_____.	_____.
0528	646.5320 Marking Railroad Crossings Epoxy	6.000 EACH	_____.	_____.
0530	646.6120 Marking Stop Line Epoxy 18-Inch	1,034.000 LF	_____.	_____.
0532	646.6320 Marking Dotted Extension Epoxy 18-Inch	67.000 LF	_____.	_____.
0534	646.7120 Marking Diagonal Epoxy 12-Inch	942.000 LF	_____.	_____.



Proposal Schedule of Items

Proposal ID: 20210914024 Project(s): 2150-00-72, 2270-04-70, 2565-07-70
Federal ID(s): WISC 2021442, N/A, WISC 2021441

SECTION: 0001 Contract Items

Alt Set ID: Alt Mbr ID:

Proposal Line Number	Item ID Description	Approximate Quantity and Units	Unit Price	Bid Amount
0536	646.7420 Marking Crosswalk Epoxy Transverse Line 6-Inch	3,616.000 LF	_____.	_____.
0538	646.7520 Marking Crosswalk Epoxy Block Style 24-Inch	271.000 LF	_____.	_____.
0540	646.8120 Marking Curb Epoxy	3,014.000 LF	_____.	_____.
0542	646.8220 Marking Island Nose Epoxy	33.000 EACH	_____.	_____.
0544	646.9000 Marking Removal Line 4-Inch	14,036.000 LF	_____.	_____.
0546	646.9100 Marking Removal Line 8-Inch	400.000 LF	_____.	_____.
0548	646.9300 Marking Removal Special Marking	7.000 EACH	_____.	_____.
0550	648.0100 Locating No-Passing Zones	1.940 MI	_____.	_____.
0552	649.0105 Temporary Marking Line Paint 4-Inch	39,023.000 LF	_____.	_____.
0554	649.0150 Temporary Marking Line Removable Tape 4-Inch	112,951.000 LF	_____.	_____.
0556	649.0205 Temporary Marking Line Paint 8-Inch	1,804.000 LF	_____.	_____.
0558	649.0250 Temporary Marking Line Removable Tape 8-Inch	5,621.000 LF	_____.	_____.
0560	649.0650 Temporary Marking Word Removable Tape	8.000 EACH	_____.	_____.
0562	649.0760 Temporary Marking Raised Pavement Marker Type I	423.000 EACH	_____.	_____.
0564	649.0805 Temporary Marking Stop Line Paint 18-Inch	144.000 LF	_____.	_____.



Proposal Schedule of Items

Proposal ID: 20210914024 Project(s): 2150-00-72, 2270-04-70, 2565-07-70
Federal ID(s): WISC 2021442, N/A, WISC 2021441

SECTION: 0001 Contract Items

Alt Set ID: Alt Mbr ID:

Proposal Line Number	Item ID Description	Approximate Quantity and Units	Unit Price	Bid Amount
0566	649.0850 Temporary Marking Stop Line Removable Tape 18-Inch	792.000 LF	_____.	_____.
0568	649.0960 Temporary Marking Removable Mask Out Tape 6-Inch	2,423.000 LF	_____.	_____.
0570	650.4000 Construction Staking Storm Sewer	247.000 EACH	_____.	_____.
0572	650.4500 Construction Staking Subgrade	15,113.000 LF	_____.	_____.
0574	650.7000 Construction Staking Concrete Pavement	13,344.000 LF	_____.	_____.
0576	650.8000 Construction Staking Resurfacing Reference	14,499.000 LF	_____.	_____.
0578	650.8500 Construction Staking Electrical Installations (project) 01. 2270-04-70	LS	LUMP SUM	_____.
0580	650.8500 Construction Staking Electrical Installations (project) 02. 2565-07-70	LS	LUMP SUM	_____.
0582	650.9000 Construction Staking Curb Ramps	89.000 EACH	_____.	_____.
0584	650.9910 Construction Staking Supplemental Control (project) 01. 2270-04-70	LS	LUMP SUM	_____.
0586	650.9910 Construction Staking Supplemental Control (project) 02. 2565-07-70	LS	LUMP SUM	_____.
0588	650.9920 Construction Staking Slope Stakes	16,356.000 LF	_____.	_____.
0590	652.0225 Conduit Rigid Nonmetallic Schedule 40 2-Inch	11,900.000 LF	_____.	_____.
0592	652.0235 Conduit Rigid Nonmetallic Schedule 40 3-Inch	6,492.000 LF	_____.	_____.



Proposal Schedule of Items

Proposal ID: 20210914024 Project(s): 2150-00-72, 2270-04-70, 2565-07-70
Federal ID(s): WISC 2021442, N/A, WISC 2021441

SECTION: 0001 Contract Items

Alt Set ID: Alt Mbr ID:

Proposal Line Number	Item ID Description	Approximate Quantity and Units	Unit Price	Bid Amount
0594	652.0605 Conduit Special 2-Inch	156.000 LF	_____.	_____.
0596	652.0615 Conduit Special 3-Inch	1,970.000 LF	_____.	_____.
0598	652.0800 Conduit Loop Detector	11,992.000 LF	_____.	_____.
0600	653.0135 Pull Boxes Steel 24x36-Inch	67.000 EACH	_____.	_____.
0602	653.0140 Pull Boxes Steel 24x42-Inch	99.000 EACH	_____.	_____.
0604	653.0905 Removing Pull Boxes	87.000 EACH	_____.	_____.
0606	654.0101 Concrete Bases Type 1	39.000 EACH	_____.	_____.
0608	654.0102 Concrete Bases Type 2	11.000 EACH	_____.	_____.
0610	654.0105 Concrete Bases Type 5	47.000 EACH	_____.	_____.
0612	654.0110 Concrete Bases Type 10	10.000 EACH	_____.	_____.
0614	654.0120 Concrete Bases Type 10-Special	15.000 EACH	_____.	_____.
0616	654.0217 Concrete Control Cabinet Bases Type 9 Special	4.000 EACH	_____.	_____.
0618	654.0230 Concrete Control Cabinet Bases Type L30	1.000 EACH	_____.	_____.
0620	655.0230 Cable Traffic Signal 5-14 AWG	4,504.000 LF	_____.	_____.
0622	655.0240 Cable Traffic Signal 7-14 AWG	9,906.000 LF	_____.	_____.
0624	655.0260 Cable Traffic Signal 12-14 AWG	13,371.000 LF	_____.	_____.



Proposal Schedule of Items

Proposal ID: 20210914024 Project(s): 2150-00-72, 2270-04-70, 2565-07-70
 Federal ID(s): WISC 2021442, N/A, WISC 2021441

SECTION: 0001 Contract Items

Alt Set ID: Alt Mbr ID:

Proposal Line Number	Item ID Description	Approximate Quantity and Units	Unit Price	Bid Amount
0626	655.0270 Cable Traffic Signal 15-14 AWG	550.000 LF	_____.	_____.
0628	655.0320 Cable Type UF 2-10 AWG Grounded	9,943.000 LF	_____.	_____.
0630	655.0510 Electrical Wire Traffic Signals 12 AWG	8,111.000 LF	_____.	_____.
0632	655.0515 Electrical Wire Traffic Signals 10 AWG	15,803.000 LF	_____.	_____.
0634	655.0610 Electrical Wire Lighting 12 AWG	11,013.000 LF	_____.	_____.
0636	655.0615 Electrical Wire Lighting 10 AWG	11,347.000 LF	_____.	_____.
0638	655.0700 Loop Detector Lead In Cable	44,400.000 LF	_____.	_____.
0640	655.0800 Loop Detector Wire	46,196.000 LF	_____.	_____.
0642	655.0900 Traffic Signal EVP Detector Cable	7,644.000 LF	_____.	_____.
0644	656.0200 Electrical Service Meter Breaker Pedestal (location) 61. STH 100 & N Deerbrook Trl	LS	LUMP SUM	_____.
0646	656.0200 Electrical Service Meter Breaker Pedestal (location) 62. STH 57 & STH 100	LS	LUMP SUM	_____.
0648	656.0200 Electrical Service Meter Breaker Pedestal (location) 63. STH 57 & N Deerwood Dr	LS	LUMP SUM	_____.
0650	656.0200 Electrical Service Meter Breaker Pedestal (location) 64. STH 57 & W Schroeder Dr	LS	LUMP SUM	_____.
0652	656.0200 Electrical Service Meter Breaker Pedestal (location) 65. STH 57 & Donges Bay Rd	LS	LUMP SUM	_____.



Proposal Schedule of Items

Proposal ID: 20210914024 Project(s): 2150-00-72, 2270-04-70, 2565-07-70
Federal ID(s): WISC 2021442, N/A, WISC 2021441

SECTION: 0001 Contract Items

Alt Set ID: Alt Mbr ID:

Proposal Line Number	Item ID Description	Approximate Quantity and Units	Unit Price	Bid Amount
0654	656.0400 Electrical Service Main Lugs Only Meter Pedestal (location) 01. HL-40-GBT	LS	LUMP SUM	_____.
0656	657.0100 Pedestal Bases	2.000 EACH	_____.	_____.
0658	657.0255 Transformer Bases Breakaway 11 1/2-Inch Bolt Circle	2.000 EACH	_____.	_____.
0660	657.0305 Poles Type 2	1.000 EACH	_____.	_____.
0662	657.0322 Poles Type 5-Aluminum	1.000 EACH	_____.	_____.
0664	657.0420 Traffic Signal Standards Aluminum 13-FT	2.000 EACH	_____.	_____.
0666	657.0610 Luminaire Arms Single Member 4 1/2-Inch Clamp 6-FT	1.000 EACH	_____.	_____.
0668	658.0173 Traffic Signal Face 3S 12-Inch	12.000 EACH	_____.	_____.
0670	658.0174 Traffic Signal Face 4S 12-Inch	4.000 EACH	_____.	_____.
0672	658.5069 Signal Mounting Hardware (location) 61. STH 100 & N Deerbrook Trl	LS	LUMP SUM	_____.
0674	658.5069 Signal Mounting Hardware (location) 62. STH 57 & STH 100	LS	LUMP SUM	_____.
0676	658.5069 Signal Mounting Hardware (location) 63. STH 100 & N Kildeer Cr	LS	LUMP SUM	_____.
0678	658.5069 Signal Mounting Hardware (location) 64. STH 57 & N Deerwood Dr	LS	LUMP SUM	_____.
0680	658.5069 Signal Mounting Hardware (location) 65. STH 57 & W Schroeder Dr	LS	LUMP SUM	_____.



Proposal Schedule of Items

Proposal ID: 20210914024 Project(s): 2150-00-72, 2270-04-70, 2565-07-70
Federal ID(s): WISC 2021442, N/A, WISC 2021441

SECTION: 0001 Contract Items

Alt Set ID: Alt Mbr ID:

Proposal Line Number	Item ID Description	Approximate Quantity and Units	Unit Price	Bid Amount
0682	658.5069 Signal Mounting Hardware (location) 66. STH 57 & Donges Bay Road	LS	LUMP SUM	_____.
0684	659.1125 Luminaires Utility LED C	4.000 EACH	_____.	_____.
0686	659.2230 Lighting Control Cabinets 240/480 30-Inch	1.000 EACH	_____.	_____.
0688	661.0200 Temporary Traffic Signals for Intersections (location) 61. STH 57 SB Ramps & STH 100	LS	LUMP SUM	_____.
0690	661.0200 Temporary Traffic Signals for Intersections (location) 62. STH 57 & STH 100	LS	LUMP SUM	_____.
0692	661.0200 Temporary Traffic Signals for Intersections (location) 63. STH 57 & N Deerwood Dr	LS	LUMP SUM	_____.
0694	661.0200 Temporary Traffic Signals for Intersections (location) 64. STH 57 & W Schroeder Dr	LS	LUMP SUM	_____.
0696	661.0300 Generators	4.000 DAY	_____.	_____.
0698	670.0100 Field System Integrator 61. STH 100 & STH 57 Traffic Signals	LS	LUMP SUM	_____.
0700	670.0200 ITS Documentation 61. STH 100 & STH 57 Traffic Signals	LS	LUMP SUM	_____.
0702	671.0122 Conduit HDPE 2-Duct 2-Inch	5,174.000 LF	_____.	_____.
0704	671.0222 Conduit HDPE Directional Bore 2-Duct 2-Inch	290.000 LF	_____.	_____.
0706	673.0105 Communication Vault Type 1	6.000 EACH	_____.	_____.



Proposal Schedule of Items

Proposal ID: 20210914024 Project(s): 2150-00-72, 2270-04-70, 2565-07-70
Federal ID(s): WISC 2021442, N/A, WISC 2021441

SECTION: 0001 Contract Items

Alt Set ID: Alt Mbr ID:

Proposal Line Number	Item ID Description	Approximate Quantity and Units	Unit Price	Bid Amount
0708	674.0300 Remove Cable	3,658.000 LF	_____.	_____.
0710	677.0200 Install Camera Assembly	5.000 EACH	_____.	_____.
0712	678.0036 Install Fiber Optic Cable Outdoor Plant 36-CT	8,398.000 LF	_____.	_____.
0714	678.0200 Fiber Optic Splice Enclosure	4.000 EACH	_____.	_____.
0716	678.0300 Fiber Optic Splice	92.000 EACH	_____.	_____.
0718	678.0500 Communication System Testing 61. STH 100 & STH 57 Traffic Signals	LS	LUMP SUM	_____.
0720	678.0600 Install Ethernet Switches	4.000 EACH	_____.	_____.
0722	678.0700 Install Wireless Antennas	1.000 EACH	_____.	_____.
0724	690.0150 Sawing Asphalt	3,876.000 LF	_____.	_____.
0726	690.0250 Sawing Concrete	13,228.000 LF	_____.	_____.
0728	715.0415 Incentive Strength Concrete Pavement	21,675.000 DOL	1.00000	21,675.00
0730	715.0502 Incentive Strength Concrete Structures	1,626.000 DOL	1.00000	1,626.00
0732	715.0710 Optimized Aggregate Gradation Incentive	63,624.000 DOL	1.00000	63,624.00
0734	999.2000.S Installing and Maintaining Bird Deterrent System (Station) 01. B-40-504	1.000 EACH	_____.	_____.
0736	999.2000.S Installing and Maintaining Bird Deterrent System (Station) 02. B-40-505	1.000 EACH	_____.	_____.



Proposal Schedule of Items

Proposal ID: 20210914024 Project(s): 2150-00-72, 2270-04-70, 2565-07-70
 Federal ID(s): WISC 2021442, N/A, WISC 2021441

SECTION: 0001 Contract Items

Alt Set ID: Alt Mbr ID:

Proposal Line Number	Item ID Description	Approximate Quantity and Units	Unit Price	Bid Amount
0738	ASP.1T0A On-the-Job Training Apprentice at \$5.00/HR	6,400.000 HRS	5.00000	32,000.00
0740	ASP.1T0G On-the-Job Training Graduate at \$5.00/HR	17,280.000 HRS	4.98000	86,054.40
0742	SPV.0035 Special 01. Backfill Slurry	10.000 CY	_____	_____
0744	SPV.0035 Special 40. Shredded Hardwood Bark Mulch	290.000 CY	_____	_____
0746	SPV.0060 Special 01. Manholes 9-FT Special	1.000 EACH	_____	_____
0748	SPV.0060 Special 02. Manholes 10-FT Special	2.000 EACH	_____	_____
0750	SPV.0060 Special 03. Pipe Connection to Existing Structure	6.000 EACH	_____	_____
0752	SPV.0060 Special 05. Field Facilities Office Space	1.000 EACH	_____	_____
0754	SPV.0060 Special 06. Curb Ramp Grading, Shaping, and Finishing	17.000 EACH	_____	_____
0756	SPV.0060 Special 10. Sanitary Sewer Reinforced Concrete Collar 12-INCH	2.000 EACH	_____	_____
0758	SPV.0060 Special 11. Sanitary Sewer Reinforced Concrete Collar 21-INCH	2.000 EACH	_____	_____
0760	SPV.0060 Special 12. Reconstructing Village of Brown Deer Sanitary Manholes	1.000 EACH	_____	_____
0762	SPV.0060 Special 13. Adjusting Village of Brown Deer Sanitary Manhole Covers	4.000 EACH	_____	_____
0764	SPV.0060 Special 14. Adjusting Village of Brown Deer Water Boxes	14.000 EACH	_____	_____



Proposal Schedule of Items

Proposal ID: 20210914024 Project(s): 2150-00-72, 2270-04-70, 2565-07-70
Federal ID(s): WISC 2021442, N/A, WISC 2021441

SECTION: 0001 Contract Items

Alt Set ID: Alt Mbr ID:

Proposal Line Number	Item ID Description	Approximate Quantity and Units	Unit Price	Bid Amount
0766	SPV.0060 Special 15. Adjusting City of Mequon Sanitary Manhole Covers	1.000 EACH	_____.	_____.
0768	SPV.0060 Special 16. Adjusting Mequon Water Utility Water Boxes	3.000 EACH	_____.	_____.
0770	SPV.0060 Special 17. Marking Contrast Epoxy Special Marking Arrow	23.000 EACH	_____.	_____.
0772	SPV.0060 Special 18. Marking Contrast Epoxy Special Marking Words	7.000 EACH	_____.	_____.
0774	SPV.0060 Special 19. Utility Line Opening (ULO)	12.000 EACH	_____.	_____.
0776	SPV.0060 Special 30. Tubular Railing Repair Type 1	3.000 EACH	_____.	_____.
0778	SPV.0060 Special 31. Tubular Railing Repair Type 2	3.000 EACH	_____.	_____.
0780	SPV.0060 Special 32. Tubular Railing Repair Type 3	1.000 EACH	_____.	_____.
0782	SPV.0060 Special 40. Masonry Pillar and Wall	1.000 EACH	_____.	_____.
0784	SPV.0060 Special 41. Perennials, Geranium X Cantabrigiense 'Karmina'	200.000 EACH	_____.	_____.
0786	SPV.0060 Special 42. Perennials, Panicum Virgatum 'Heavy Metal'	106.000 EACH	_____.	_____.
0788	SPV.0060 Special 43. Perennials, Nepeta 'Kit Cat'	156.000 EACH	_____.	_____.
0790	SPV.0060 Special 44. Perennials, Schizachyrium Scoparium 'Little Bluestem Grass'	215.000 EACH	_____.	_____.
0792	SPV.0060 Special 45. Perennials, Calamintha Nepeta 'Montrose White'	94.000 EACH	_____.	_____.



Proposal Schedule of Items

Proposal ID: 20210914024 Project(s): 2150-00-72, 2270-04-70, 2565-07-70
Federal ID(s): WISC 2021442, N/A, WISC 2021441

SECTION: 0001 Contract Items

Alt Set ID: Alt Mbr ID:

Proposal Line Number	Item ID Description	Approximate Quantity and Units	Unit Price	Bid Amount
0794	SPV.0060 Special 46. Perennials, Sporobulus Heterolepis 'Prairie Dropseed'	144.000 EACH	_____.	_____.
0796	SPV.0060 Special 47. Remove, Stockpile and Reinstall Municipal Monument Sign	1.000 EACH	_____.	_____.
0798	SPV.0060 Special 48. Select Stone Material 3'X4'X3'	219.000 EACH	_____.	_____.
0800	SPV.0060 Special 49. Select Stone Material 5'X3'X5'	10.000 EACH	_____.	_____.
0802	SPV.0060 Special 50. Artistic Panels	10.000 EACH	_____.	_____.
0804	SPV.0060 Special 51. Wayfinding Sign	1.000 EACH	_____.	_____.
0806	SPV.0060 Special 61. Concrete Control Cabinet Bases Type 9 Special Super P	1.000 EACH	_____.	_____.
0808	SPV.0060 Special 62. Pedestal Bases Black	43.000 EACH	_____.	_____.
0810	SPV.0060 Special 63. Transformer Bases Breakaway 11 1/2-Inch Bolt Circle Black	58.000 EACH	_____.	_____.
0812	SPV.0060 Special 64. Poles Type 3 Black	9.000 EACH	_____.	_____.
0814	SPV.0060 Special 65. Poles Type 5-Aluminum Black	49.000 EACH	_____.	_____.
0816	SPV.0060 Special 66. Traffic Signal Standards Aluminum 3.5-FT Black	1.000 EACH	_____.	_____.
0818	SPV.0060 Special 67. Traffic Signal Standards Aluminum 13-FT Black	16.000 EACH	_____.	_____.
0820	SPV.0060 Special 68. Traffic Signal Standards Aluminum 15-FT Black	17.000 EACH	_____.	_____.



Proposal Schedule of Items

Proposal ID: 20210914024 Project(s): 2150-00-72, 2270-04-70, 2565-07-70
Federal ID(s): WISC 2021442, N/A, WISC 2021441

SECTION: 0001 Contract Items

Alt Set ID: Alt Mbr ID:

Proposal Line Number	Item ID Description	Approximate Quantity and Units	Unit Price	Bid Amount
0822	SPV.0060 Special 69. Traffic Signal Standards Aluminum 10-FT Black	9.000 EACH	_____.	_____.
0824	SPV.0060 Special 70. Luminaire Arms Single Member 4-INCH Clamp 6-FT Black	14.000 EACH	_____.	_____.
0826	SPV.0060 Special 71. Luminaire Arms Single Member 4 1/2-INCH Clamp 6-FT Black	34.000 EACH	_____.	_____.
0828	SPV.0060 Special 72. Install Poles Type 9	3.000 EACH	_____.	_____.
0830	SPV.0060 Special 73. Install Poles Type 9-Special	9.000 EACH	_____.	_____.
0832	SPV.0060 Special 74. Install Poles Type 10	8.000 EACH	_____.	_____.
0834	SPV.0060 Special 75. Install Poles Type 10-Special	6.000 EACH	_____.	_____.
0836	SPV.0060 Special 76. Install Monotube Arms 20-FT	1.000 EACH	_____.	_____.
0838	SPV.0060 Special 77. Install Monotube Arms 25-FT	4.000 EACH	_____.	_____.
0840	SPV.0060 Special 78. Install Monotube Arms 30-FT	6.000 EACH	_____.	_____.
0842	SPV.0060 Special 79. Install Monotube Arms 35-FT Special	3.000 EACH	_____.	_____.
0844	SPV.0060 Special 80. Install Monotube Arms 40-FT Special	3.000 EACH	_____.	_____.
0846	SPV.0060 Special 81. Install Monotube Arms 45-FT Special	9.000 EACH	_____.	_____.
0848	SPV.0060 Special 82. Install Luminaire Arms Steel 15-FT	20.000 EACH	_____.	_____.
0850	SPV.0060 Special 83. Traffic Signal Face 3S 12-INCH Black	92.000 EACH	_____.	_____.



Proposal Schedule of Items

Proposal ID: 20210914024 Project(s): 2150-00-72, 2270-04-70, 2565-07-70
 Federal ID(s): WISC 2021442, N/A, WISC 2021441

SECTION: 0001 Contract Items

Alt Set ID: Alt Mbr ID:

Proposal Line Number	Item ID Description	Approximate Quantity and Units	Unit Price	Bid Amount
0852	SPV.0060 Special 84. Traffic Signal Face 4S 12-INCH Black	34.000 EACH	_____.	_____.
0854	SPV.0060 Special 85. Pedestrian Signal Face 16-INCH Black	42.000 EACH	_____.	_____.
0856	SPV.0060 Special 86. Pedestrian Push Button Black	51.000 EACH	_____.	_____.
0858	SPV.0060 Special 87. Luminaires Utility LED C Black	85.000 EACH	_____.	_____.
0860	SPV.0060 Special 88. Luminaire Arms Single Member 4 1/2-Inch Clamp 8-FT Black	20.000 EACH	_____.	_____.
0862	SPV.0060 Special 89. Install Monotube Arms 45-FT	2.000 EACH	_____.	_____.
0864	SPV.0060 Special 90. Install Poles Type 12	2.000 EACH	_____.	_____.
0866	SPV.0085 Special 40. No Mow Fescue Mix	29.000 LB	_____.	_____.
0868	SPV.0090 Special 01. Heavy Duty Silt Fence	2,198.000 LF	_____.	_____.
0870	SPV.0090 Special 10. Sanitary Sewer Pipe Reinforced Concrete Class III 12-INCH	63.000 LF	_____.	_____.
0872	SPV.0090 Special 11. Sanitary Sewer Pipe Reinforced Concrete Class IV 21-INCH	101.000 LF	_____.	_____.
0876	SPV.0090 Special 40. Steel Edging Material	1,430.000 LF	_____.	_____.
0878	SPV.0090 Special 41. Compacted Gravel Leveling Course	20.000 LF	_____.	_____.
0880	SPV.0105 Special 01. Control of Water Storm Sewer	LS	LUMP SUM	_____.



Proposal Schedule of Items

Proposal ID: 20210914024 Project(s): 2150-00-72, 2270-04-70, 2565-07-70
Federal ID(s): WISC 2021442, N/A, WISC 2021441

SECTION: 0001 Contract Items

Alt Set ID: Alt Mbr ID:

Proposal Line Number	Item ID Description	Approximate Quantity and Units	Unit Price	Bid Amount
0886	SPV.0105 Special 12. Temporary Sanitary Sewer Bypass	LS	LUMP SUM	_____.
0888	SPV.0105 Special 61. Trnspt & Install State Furn Traffic Signal Cabinet STH 100 & N Deerbrook Trl	LS	LUMP SUM	_____.
0890	SPV.0105 Special 62. Trnspt & Install State Furn Traffic Signal Cabinet STH 57 & STH 100	LS	LUMP SUM	_____.
0892	SPV.0105 Special 63. Trnspt & Install State Furn Traffic Signal Cabinet STH 57 & N Deerwood Dr	LS	LUMP SUM	_____.
0894	SPV.0105 Special 64. Trnspt & Install State Furn Traffic Signal Cabinet STH 57 & W Schroeder Dr	LS	LUMP SUM	_____.
0896	SPV.0105 Special 65. Trnspt & Install State Furn Traffic Signal Cabinet STH 57 & Donges Bay Rd	LS	LUMP SUM	_____.
0898	SPV.0105 Special 66. Trnspt Traffic Signals & Inter Lighting Materials STH 100 & N Deerbrook Trl	LS	LUMP SUM	_____.
0900	SPV.0105 Special 67. Trnspt Traffic Signals & Inter Lighting Materials STH 57 & STH 100	LS	LUMP SUM	_____.
0902	SPV.0105 Special 68. Trnspt Traffic Signals & Inter Lighting Materials STH 100 & N Kildeer Ct	LS	LUMP SUM	_____.
0904	SPV.0105 Special 69. Trnspt Traffic Signals & Inter Lighting Materials STH 57 & N Deerwood Dr	LS	LUMP SUM	_____.
0906	SPV.0105 Special 70. Trnspt Traffic Signals & Inter Lighting Materials STH 57 & W Schroeder Dr	LS	LUMP SUM	_____.



Proposal Schedule of Items

Proposal ID: 20210914024 Project(s): 2150-00-72, 2270-04-70, 2565-07-70
Federal ID(s): WISC 2021442, N/A, WISC 2021441

SECTION: 0001 Contract Items

Alt Set ID: Alt Mbr ID:

Proposal Line Number	Item ID Description	Approximate Quantity and Units	Unit Price	Bid Amount
0908	SPV.0105 Special 71. Trnspt Traffic Signals & Inter Lighting Materials STH 57 & Donges Bay Rd	LS	LUMP SUM	_____.
0910	SPV.0105 Special 72. Trnspt & Install State Furn EVP Heads STH 100 & N Deerbrook Trl	LS	LUMP SUM	_____.
0912	SPV.0105 Special 73. Trnspt & Install State Furn EVP Heads STH 57 & STH 100	LS	LUMP SUM	_____.
0914	SPV.0105 Special 74. Trnspt & Install State Furn EVP Heads STH 100 & N Kildeer Ct	LS	LUMP SUM	_____.
0916	SPV.0105 Special 75. Trnspt & Install State Furn EVP Heads STH 57 & N Deerwood Dr	LS	LUMP SUM	_____.
0918	SPV.0105 Special 76. Trnspt & Install State Furn EVP Heads STH 57 & W Schroeder Dr	LS	LUMP SUM	_____.
0920	SPV.0105 Special 77. Trnspt & Install State Furn EVP Heads STH 57 & Donges Bay Rd	LS	LUMP SUM	_____.
0922	SPV.0105 Special 79. Trnspt and Install S-F FO Cable Pigtail 8-CT STH 100 & N Deerbrook Trl	LS	LUMP SUM	_____.
0924	SPV.0105 Special 80. Trnspt and Install S-F FO Cable Pigtail 8-CT STH 57 & STH 100	LS	LUMP SUM	_____.
0926	SPV.0105 Special 81. Trnspt and Install S-F FO Cable Pigtail 8-CT STH 57 & N Deerwood Dr	LS	LUMP SUM	_____.
0928	SPV.0105 Special 82. Trnspt and Install S-F FO Cable Pigtail 8-CT STH 57 & W Schroeder Dr	LS	LUMP SUM	_____.
0930	SPV.0105 Special 83. Trnspt and Install S-F Radar Detection System STH 100 & N Deerbrook Trl	LS	LUMP SUM	_____.



Proposal Schedule of Items

Proposal ID: 20210914024 Project(s): 2150-00-72, 2270-04-70, 2565-07-70
 Federal ID(s): WISC 2021442, N/A, WISC 2021441

SECTION: 0001 Contract Items

Alt Set ID: Alt Mbr ID:

Proposal Line Number	Item ID Description	Approximate Quantity and Units	Unit Price	Bid Amount
0932	SPV.0105 Special 84. Temporary EVP System STH 57 SB Ramps & STH 100	LS	LUMP SUM	_____.
0934	SPV.0105 Special 85. Temporary EVP System STH 57 & STH 100	LS	LUMP SUM	_____.
0936	SPV.0105 Special 86. Temporary EVP System STH 57 & N Deerwood Dr	LS	LUMP SUM	_____.
0938	SPV.0105 Special 87. Temporary EVP System STH 57 & W Schroeder Dr	LS	LUMP SUM	_____.
0940	SPV.0105 Special 88. Covering Traffic Signal Equipment STH 100 & N Deerbrook Trl	LS	LUMP SUM	_____.
0942	SPV.0165 Special 01. Construction Staking Sidewalk	79,608.000 SF	_____.	_____.
0944	SPV.0165 Special 30. PPC Beam Surface Repair	5.000 SF	_____.	_____.
0946	SPV.0195 Special 01. Excavation, Hauling, and Disposal of Creosote Contaminated Soil	3,587.000 TON	_____.	_____.
0948	SPV.0195 Special 02. Joint and Crack Repair	575.000 TON	_____.	_____.
0950	608.3012 Storm Sewer Pipe Class III-A 12-Inch	751.000 LF	_____.	_____.
0952	608.3015 Storm Sewer Pipe Class III-A 15-Inch	3,117.000 LF	_____.	_____.
0954	608.3018 Storm Sewer Pipe Class III-A 18-Inch	600.000 LF	_____.	_____.
0956	608.3024 Storm Sewer Pipe Class III-A 24-Inch	2,155.000 LF	_____.	_____.
0958	608.3036 Storm Sewer Pipe Class III-A 36-Inch	1,468.000 LF	_____.	_____.
Section: 0001			Total:	_____.

Total Bid: _____.

