



# Wisconsin Department of Transportation

December 8, 2021

**Division of Transportation Systems Development**  
 Bureau of Project Development  
 4822 Madison Yards Way, 4<sup>th</sup> Floor South  
 Madison, WI 53705

Telephone: (608) 266-1631  
 Facsimile (FAX): (608) 266-8459

## NOTICE TO ALL CONTRACTORS:

**Proposal #24: 1229-04-74, WISC 2022106**  
**I-43 North South Freeway**  
**W County Line Rd Interchange**  
**IH 43**  
**Milwaukee and Ozaukee Counties**

## Letting of December 14, 2021

This is Addendum No. 02, which provides for the following:

### Special Provisions:

Deleted Special Provisions	
Article No.	Description
67	Removing Temporary Shoring Left in Place, Item 204.9165.S.0001

### Schedule of Items:

Revised Bid Item Quantities					
Bid Item	Item Description	Unit	Old Quantity	Revised Quantity	Proposal Total
608.0315	Storm Sewer Pipe Reinforced Concrete Class III 15-Inch	LF	1663	46	1709
608.0415	Storm Sewer Pipe Reinforced Concrete Class IV 15-Inch	LF	1103	-38	1065
611.0624	Inlet Covers Type H	EACH	107	1	108
611.3004	Inlets 4-FT Diameter	EACH	171	1	172
634.0814	Posts Tubular Steel 2x2 INCH x 14 FT	EACH	154	1	155
637.2230	Signs Type II Reflective F	SF	504.75	3	507.75
SPV.0060.0918	Traffic Control Full Freeway Closure	EACH	5	11	16

Added Bid Item Quantities					
Bid Item	Item Description	Unit	Old Quantity	Revised Quantity	Proposal Total
603.8500	Anchoring Concrete Barrier Temporary Precast	LF	0	3,872	3,872

Deleted Bid Item Quantities					
Bid Item	Item Description	Unit	Old Quantity	Revised Quantity	Proposal Total
204.9165.S	Removing Temporary Shoring Left in Place	SF	2,531	-2,531	0

**Plan Sheets:**

<b>Revised Plan Sheets</b>	
Plan Sheet	Plan Sheet Title (brief description of changes to sheet)
7	Typical Existing Sections (Revised per work completed in Work Zone Prep Project 1229-0470)
333	Proposed Drainage Plan (Added inlet 466L-S3 at STA 352PSCN+00 to redirect storm line to avoid Existing Sanitary Manhole at ~352PSCN+60)
335	Proposed Drainage Profile (Added inlet 466L-S3 at STA 352PSCN+00 to redirect storm line to avoid Existing Sanitary Manhole at ~352PSCN+60)
389	Permanent Signing – IH 43 (Added PATH ENDS AHEAD sign)
480	Traffic Control Typical Section (Updated concrete barrier adjacent to shoring to anchored)
481	Traffic Control Typical Sections (Updated shoulder widths adjacent to concrete barrier)
697	Drainage Quantities (Updated Storm Sewer General Note #3 to include pipe thickness in structure depth calculation)
712	Drainage Quantities (Deleted pipe segment from 467A-S3 to 467E-S3 to avoid Existing Sanitary Manhole, updated pipe inverts for redirection of storm sewer)
713	Drainage Quantities (Deleted pipe segment from 467A-S3 to 467E-S3 to avoid Existing Sanitary Manhole, updated pipe inverts for redirection of storm sewer)
716	Drainage Quantities (Updated Project Totals for Storm Sewer Class III 15-Inch and Class IV 15-Inch Reinforced Concrete Pipe Totals)
722	Drainage Quantities (Updated the rim elevation and depth for structure 465F-S2)
723	Drainage Quantities (Updated the rim elevation and depth for structure 465F-S2)
728	Drainage Quantities (Updated the invert elevation and depth for structures 466B-S3 and 467A-S3)
729	Drainage Quantities (Updated the invert elevation and depth for structures 466B-S3 and 467A-S3)
730	Drainage Quantities (Added structure 466L-S3 to the structure quantity table and updated the Stage 3 Subtotal for Inlet Covers Type H)
731	Drainage Quantities (Added structure 466L-S3 to the structure quantity table and updated the Stage 3 Subtotal for Inlet 4' Diameter)
732	Drainage Quantities (Updated Project Totals for Inlet Covers Type H)
733	Drainage Quantities (Updated Project Totals for Inlet 4' Diameter)
767	MQ sheet for Temp Barrier (Added Anchoring Concrete Barrier Temporary Precast)
788	Miscellaneous Quantities (Added PATH ENDS AHEAD sign)

<b>Added Plan Sheets</b>	
Plan Sheet	Plan Sheet Title (brief description of why sheet was added)
1067A	Permanent Signing (PATH ENDS AHEAD SIGN)

The responsibility for notifying potential subcontractors and suppliers of these changes remains with the prime contractor.

Sincerely,

*Mike Coleman*

Proposal Development Specialist  
Proposal Management Section

**ADDENDUM NO. 01**

**1229-04-74**

**December 8, 2021**

**Special Provisions**

**67. Deleted**

**Schedule of Items**

Attached, dated December 8, 2021, are the revised Schedule of Items Pages 1 - 35.

**Plan Sheets**

The following 8½ x 11-inch sheets are attached and made part of the plans for this proposal:

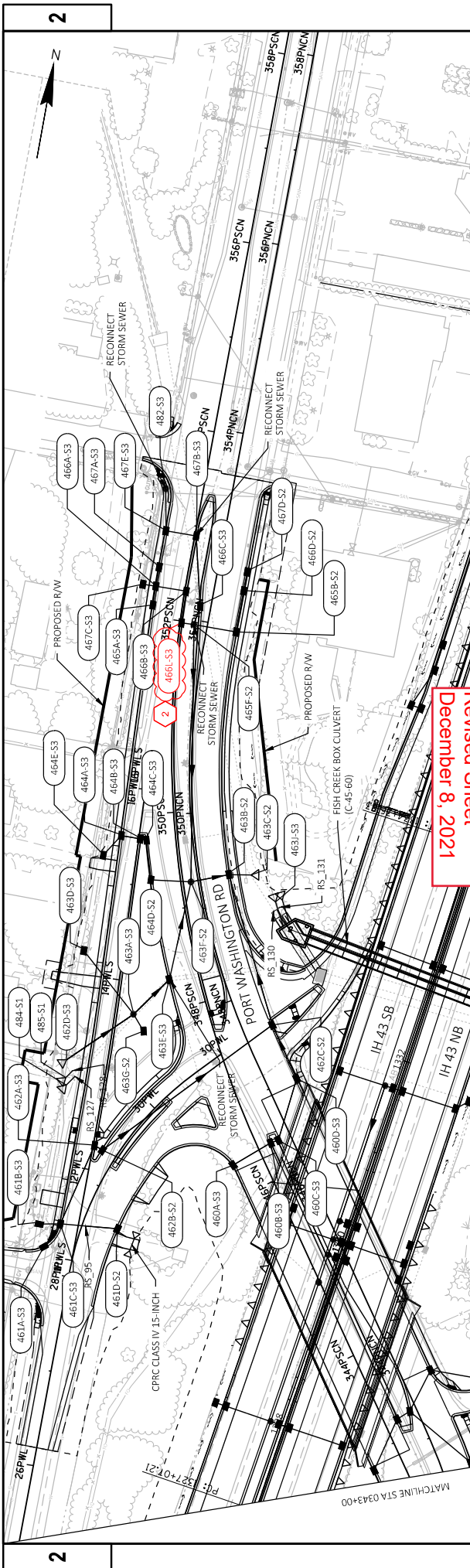
Revised: 7, 333, 335, 389, 480, 481, 697, 712, 713, 716, 722, 723, 728, 729, 730, 731, 732, 733, 767, and 788.

Added: 1067A

END OF ADDENDUM

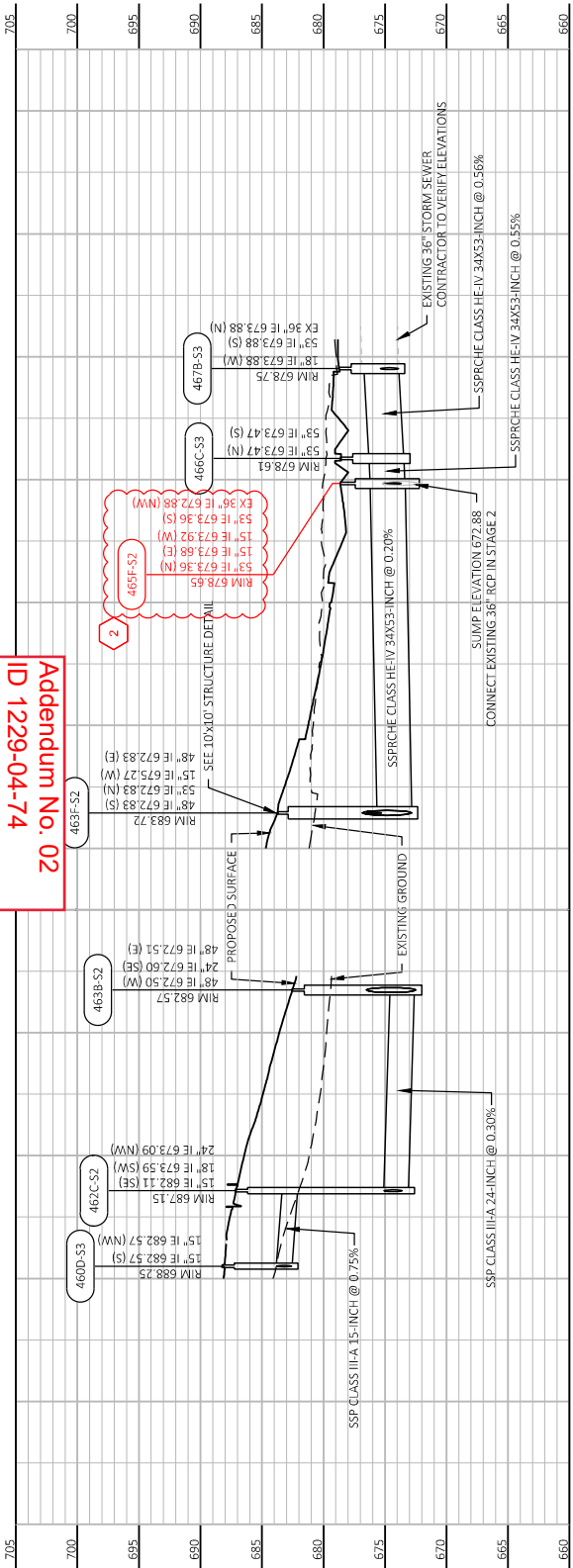






Addendum No. 02  
 ID 1229-04-74  
 Revised Sheet  
 December 8, 2021

Addendum No. 02  
 ID 1229-04-74  
 Revised Sheet 333  
 December 8, 2021





Addendum No. 02  
ID 1229-04-74  
Revised Sheet 389  
December 8, 2021

LEGEND

- EXISTING SIGN MOUNTED ON POST(S)
- EXISTING SIGN MOUNTED ON BRIDGE OR SIGN BRIDGE
- PROPOSED SIGN MOUNTED ON POST(S)
- PROPOSED SIGN MOUNTED ON BRIDGE OR SIGN BRIDGE
- WIS VARIABLE MESSAGE SIGN
- EXISTING LIGHT OR SIGNAL POLE SIGN BRIDGE
- CANTILEVER SIGN BRIDGE
- WIS DENOTES SIGN NUMBER
- (X) INDICATES SIGN SIZE
- ESTR EXISTING SIGN TO REMAIN

Food  
SIS  
BY WISC  
BUSINESS LOGOS  
1-608-579-1570

(SIS)  
Lodging  
Attraction  
BY WISC  
BUSINESS LOGOS  
1-608-579-1570

Port Washington Rd  
County Line Rd  
ONLY

Katherine Dr

Port Washington Rd  
ONLY



45

46

47

318

319

70

344

345

341

342

343

344

345

346

347

348

349

350

351

352

353

354

355

356

357

358

359

360

361

362

363

364

365

366

367

368

369

370

371

372

373

374

375

376

377

378

379

380

381

382

383

384

385

386

387

388

389

390

391

392

393

394

395

396

397

398

399

400

401

402

403

404

405

406

407

408

409

410

411

412

413

414

415

416

417

418

419

420

421

422

423

424

425

426

427

428

429

430

431

432

433

434

435

436

437

438

439

440

441

442

443

444

445

446

447

448

449

450

451

452

453

454

455

456

457

458

459

460

461

462

463

464

465

466

467

468

469

470

471

472

473

474

475

476

477

478

479

480

481

482

483

484

485

486

487

488

489

490

491

492

493

494

495

496

497

498

499

500

501

502

503

504

505

506

507

508

509

510

511

512

513

514

515

516

517

518

519

520

521

522

523

524

525

526

527

528

529

530

531

532

533

534

535

536

537

538

539

540

541

542

543

544

545

546

547

548

549

550

551

552

553

554

555

556

557

558

559

560

561

562

563

564

565

566

567

568

569

570

571

572

573

574

575

576

577

578

579

580

581

582

583

584

585

586

587

588

589

590

591

592

593

594

595

596

597

598

599

600

601

602

603

604

605

606

607

608

609

610

611

612

613

614

615

616

617

618

619

620

621

622

623

624

625

626

627

628

629

630

631

632

633

634





Addendum No. 02  
ID 1229-04-74  
Revised Sheet 697  
December 8, 2021

**STORM SEWER GENERAL NOTES**

1) STATIONS AND OFFSETS ARE TO THE CENTER OF STRUCTURES UNLESS OTHERWISE NOTED.

2) SEE CONSTRUCTION DETAIL FOR STRUCTURE RIM ELEVATION.

3) **2** STRUCTURE DEPTH = RIM ELEVATION - CASTING - 0.5 FT (ADJUSTMENT) - INVERT + PIPE THICKNESS (BOTTOM), EXCEPT MEDIAN INLETS.

4) STATIONS, OFFSETS, AND ELEVATIONS FOR ALL ENDWALL LOCATIONS ARE TO THE END OF PIPE UNLESS OTHERWISE NOTED.

5) LOCATIONS AND DEPTHS OF EXISTING STRUCTURES AND PIPES SHALL BE VERIFIED IN THE FIELD

Addendum No. 02  
ID 1229-04-74  
Revised Sheet  
December 8, 2021

PROJECT NO: 1229-04-74	HWY: IH 43	COUNTY: MILWAUKEE / OZAUKEE	MISCELLANEOUS QUANTITIES	SHEET 697	E
FILE NAME: C:\CADD\B\PM\WPA\ENG\GREATLAKES\0025625\02501_55_C01-SR.DWG	LAYOUT NAME: BLANK.COPY	PLOT DATE: 3/17/2021 7:59 PM	PLOT BY: ANDREW PATEK	PLOT SCALE: 1 IN=100 FT	WISDOT/CADDS SHEET 42





Addendum No. 02  
ID 1229-04-74  
Revised Sheet 713  
December 8, 2021

608.2434 608.3012 608.3015 608.3018 608.3024 608.3615 608.3618

STORM SEWER PIPE

LOCATION	FROM	TO	INLET ELEVATION	DISCHARGE ELEVATION	SLOPE FT/FT	REINFORCED CONCRETE HORIZONTAL ELLIPTICAL C LASS HE-IV 34X53-INCH				CLASS III-A				CLASS III-B				COMMENTS				
						LF	LF	LF	LF	LF	LF	LF	LF	LF	LF	LF	LF		LF	LF	LF	
PW-NB-CN	460C-S3	460D-S3	683.10	682.57	0.0079	--	--	67	--	--	--	--	--	--	--	--	--	--	--	--	--	
PW-NB-CN	461B-S3	461C-S3	675.05	674.94	0.0050	--	--	--	--	--	--	--	--	--	--	--	--	--	--	--	--	
PW-NB-CN	462A-S3	462B-S3	674.40	674.40	0.0050	--	--	89	--	--	--	--	--	--	--	--	--	--	--	--	--	
PW-NB-CN	463A-S3	463B-S3	674.76	674.08	0.0081	--	--	--	--	--	--	--	--	--	--	--	--	--	--	--	--	
PW-NB-CN	463A-S3	463E-S3	674.98	673.86	0.0080	--	--	--	--	--	--	--	--	--	--	--	--	--	--	--	--	
PW-NB-CN	463A-S3	463A-S3	675.31	675.31	0.0032	--	--	--	--	--	--	--	--	--	--	--	--	--	--	--	--	
PW-NB-CN	464A-S3	464B-S3	675.74	675.64	0.0048	--	--	--	--	--	--	--	--	--	--	--	--	--	--	--	--	
PW-NB-CN	464B-S3	464C-S3	675.64	675.64	0.0058	--	--	7	--	--	--	--	--	--	--	--	--	--	--	--	--	
43-RL	464E-S3	464A-S3	675.87	675.74	0.0050	--	--	--	--	--	--	--	--	--	--	--	--	--	--	--	--	
PW-NB-CN	465A-S3	466A-S3	674.21	674.15	0.0030	--	--	--	--	--	--	--	--	--	--	--	--	--	--	--	--	
PW-NB-CN	467A-S3	468A-S3	674.21	674.15	0.0030	--	--	--	--	--	--	--	--	--	--	--	--	--	--	--	--	
43-RL	469A-S3	469B-S3	674.15	674.05	0.0030	--	--	--	--	--	--	--	--	--	--	--	--	--	--	--	--	
PW-NB-CN	467E-S3	467E-S3	674.09	674.09	0.0056	73	--	--	--	--	--	--	--	--	--	--	--	--	--	--	2	
PW-NB-CN	467B-S3	468C-S3	673.88	673.47	0.0056	--	--	--	--	--	--	--	--	--	--	--	--	--	--	--	--	
43-RL	467C-S3	468A-S3	674.19	674.15	0.0030	--	--	--	--	--	--	--	--	--	--	--	--	--	--	--	--	
PW-NB-CN	467E-S3	467B-S3	673.98	673.88	0.0030	--	--	--	--	--	--	--	--	--	--	--	--	--	--	--	--	
PW-NB-CN	468A-S3	468A-S3	671.26	671.04	0.0050	--	--	45	--	--	--	--	--	--	--	--	--	--	--	--	--	
KTN-CN	468B-S3	468A-S3	671.43	671.26	0.0051	--	--	32	--	--	--	--	--	--	--	--	--	--	--	--	--	
KTN-CN	468C-S3	468B-S3	676.17	676.14	0.0055	--	--	6	--	--	--	--	--	--	--	--	--	--	--	--	--	
KTN-CN	468D-S3	468C-S3	676.32	676.17	0.0049	--	--	31	--	--	--	--	--	--	--	--	--	--	--	--	--	
KTN-CN	469C-S3	469C-S3	674.20	674.09	0.0050	--	--	22	--	--	--	--	--	--	--	--	--	--	--	--	--	
KTN-CN	469E-S3	469E-S3	674.27	674.09	0.0050	--	--	37	--	--	--	--	--	--	--	--	--	--	--	--	--	
KTN-CN	469E-S3	469B-S3	672.34	641.43	0.0050	--	--	182	--	--	--	--	--	--	--	--	--	--	--	--	--	
KTN-CN	470A-S3	470E-S3	673.49	673.43	0.0030	--	--	--	--	--	--	--	--	--	--	--	--	--	--	--	--	
KTN-CN	470B-S3	470E-S3	673.43	673.43	0.0035	--	--	--	--	--	--	--	--	--	--	--	--	--	--	--	--	
KTN-CN	470C-S3	470A-S3	673.55	673.49	0.0030	--	--	--	--	--	--	--	--	--	--	--	--	--	--	--	--	
KTN-CN	470D-S3	470B-S3	673.60	673.53	0.0035	--	--	--	--	--	--	--	--	--	--	--	--	--	--	--	--	
KTN-CN	470E-S3	469E-S3	673.18	672.34	0.0050	--	--	169	--	--	--	--	--	--	--	--	--	--	--	--	--	
KTN-CN	471A-S3	471C-S3	674.38	674.28	0.0050	--	--	19	--	--	--	--	--	--	--	--	--	--	--	--	--	
KTN-CN	471B-S3	471C-S3	674.40	674.28	0.0050	--	--	22	--	--	--	--	--	--	--	--	--	--	--	--	--	
KTN-CN	471C-S3	470E-S3	674.03	673.18	0.0050	--	--	171	--	--	--	--	--	--	--	--	--	--	--	--	--	
PW-NB-CN	460D-S3	462C-S2	682.57	682.11	0.0075	--	--	61	--	--	--	--	--	--	--	--	--	--	--	--	--	
PN-CN	462A-S2	462B-S2	674.39	674.36	0.0039	--	--	9	--	--	--	--	--	--	--	--	--	--	--	--	--	
PW-NB-CN	464C-S3	464D-S2	675.60	675.44	0.0030	--	--	42	--	--	--	--	--	--	--	--	--	--	--	--	--	
PW-NB-CN	466C-S3	465F-S2	673.47	673.36	0.0030	--	--	--	--	--	34	--	--	--	--	--	--	--	--	--	--	
43-RL	405E-S3	421-S1	663.88	663.75	0.0030	--	--	--	--	--	--	--	--	--	--	--	--	--	--	--	--	
43-RL	427-S3	425-S1	662.85	662.40	0.0048	--	--	81	--	--	--	--	--	--	--	--	--	--	--	--	--	
43-RL	4312-S2	4328-S3	663.61	663.52	0.0030	--	--	--	--	--	--	--	--	--	--	--	--	--	--	--	--	
KTN-CN	472A-S3	472B-S3	676.30	676.05	0.0030	--	--	--	--	--	--	--	--	--	--	--	--	--	--	--	--	
KTN-CN	472C-S3	472D-S3	675.17	675.00	0.0030	--	--	--	--	--	--	--	--	--	--	--	--	--	--	--	--	
43-RL	425-S1	RS_12	658.85	658.56	0.0030	--	--	--	--	--	--	--	--	--	--	--	--	--	--	--	--	
43-RL	407B-S3	4079-S4	666.87	666.86	0.0048	--	--	--	--	--	--	--	--	--	--	--	--	--	--	--	--	
PW-NB-CN	446-S3	RS_124	672.60	672.51	0.0050	--	--	19	--	--	--	--	--	--	--	--	--	--	--	--	--	
43-RL	482-S3	467D-S3	674.11	673.98	0.0030	--	--	--	--	--	--	--	--	--	--	--	--	--	--	--	--	
PW-NB-CN	463J-S3 (N)	FISH CRK JCT	672.13	672.00	0.0055	--	--	--	--	--	--	--	--	--	--	--	--	--	--	--	--	
PW-NB-CN	463J-S3 (S)	FISH CRK JCT	672.13	672.00	0.0055	--	--	--	--	--	--	--	--	--	--	--	--	--	--	--	--	
PW-NB-CN	RS_130	FISH CRK JCT	661.53	661.45	0.0100	--	--	--	--	--	--	--	--	--	--	--	--	--	--	--	--	
PW-NB-CN	RS_131	FISH CRK JCT	661.53	661.45	0.0100	--	--	--	--	--	--	--	--	--	--	--	--	--	--	--	--	
43-RL	4317C-S3	4317B-S4	663.03	662.40	0.0050	--	--	--	--	--	--	--	--	--	--	--	--	--	--	--	--	
PW-NB-CN	466B-S3	466L-S3	674.06	673.96	0.0030	--	--	1	--	--	--	--	--	--	--	--	--	--	--	--	--	
PW-NB-CN	466L-S3	465F-S2	673.96	673.92	0.0030	--	--	--	--	--	--	--	--	--	--	--	--	--	--	--	--	
STAGE 3 SUBTOTAL						93	0	30	1074	1002	1212	0	0	0	0	0	0	0	0	0	0	0

Addendum No. 02  
ID 1229-04-74  
Revised Sheet  
December 8, 2021

PROJECT NO: 1229-04-74 COUNTY: MILWAUKEE / OZAUKEE HWY: IH 43

SHEET 713

MISCELLANEOUS QUANTITIES

1 IN=100 FT

PLOT NAME: ANDREW PATEK

PLOT DATE: 3/17/2021 7:59 PM

WISDOT/CADDS SHEET 42





Addendum No. 02  
ID 1229-04-74  
Revised Sheet 722  
December 8, 2021

STORM SEWER STRUCTURES

611.0530 611.0535 611.0545 611.0610 611.0612 611.0624 611.0642 611.0657 611.2004 611.2005 611.2006 611.2007 611.2008  
MANHOLE COVERS INLET COVERS MANHOLES

LOCATION	STRUCTURE	STATION	OFFSET	RIM ELEVATION	DEPTH	TYPE J	TYPE J SPECIAL		TYPE L	TYPE BW	TYPE C	TYPE H	TYPE MS	TYPE W	4-FT DIAMETER		5-FT DIAMETER		6-FT DIAMETER		7-FT DIAMETER		8-FT DIAMETER	
							EACH	EACH							EACH	EACH	EACH	EACH	EACH	EACH	EACH	EACH	EACH	EACH
43-RL	4457-S2	1355+54.00	5.00' LT	681.78	7.55	--	--	--	1	--	--	--	--	--	--	1	--	--	--	--	--	--	--	--
43-RL	4458-S2	1355+53.87	4.99' RT	681.80	4.12	--	--	--	--	--	--	--	--	--	--	--	--	--	--	--	--	--	--	--
PW-AB-CN	445-S2	334+70.91	1.50' LT	678.31	672.44	--	--	--	--	1	--	--	--	--	--	--	--	--	--	--	--	--	--	--
43-RL	4463-S2	1351+07.87	8.83' LT	683.13	10.57	--	--	--	1	--	--	--	--	--	--	--	--	--	--	--	--	1	--	--
KTN-CN	4464-S2	154+22.29	82.93' LT	670.00	8.65	--	--	--	--	--	--	--	2	--	--	--	--	--	--	--	--	--	--	--
43-RL	4469-S2	1285+63.04	4.51' RT	677.50	670.41	--	--	--	1	--	--	--	--	--	--	--	--	--	--	--	--	--	--	--
43-RL	4470-S2	1329+53.04	14.44' LT	687.25	4.57	--	--	1	--	--	--	--	--	--	--	1	--	--	--	--	--	--	--	--
PW-AB-CN	448-S2	338+11.84	1.51' LT	681.86	676.40	--	--	--	--	--	--	1	--	--	--	--	--	--	--	--	--	--	--	--
PW-AB-CN	449-S2	338+13.23	16.51' LT	681.98	4.83	--	--	--	--	--	--	1	--	--	--	--	--	--	--	--	--	--	--	--
PW-AB-CN	450-S2	338+15.43	48.46' LT	681.42	5.22	--	--	--	--	--	--	1	--	--	--	--	--	--	--	--	--	--	--	--
PN-CN	461D-S2	28+65.33	35.92' RT	682.52	675.23	--	--	--	--	--	--	1	--	--	--	--	--	--	--	--	--	--	--	--
PN-CN	462B-S2	29+33.51	15.49' LT	684.64	674.36	--	--	--	--	--	--	1	--	--	--	--	--	--	--	--	--	--	--	--
PW-AB-CN	462C-S2	347+60.06	30.50' RT	687.15	13.31	--	--	--	--	--	--	1	--	--	--	--	--	--	--	--	--	--	--	--
PW-AB-CN	463B-S2	349+30.91	30.51' RT	682.57	672.51	--	--	--	--	--	--	1	--	--	--	--	--	--	--	--	--	--	--	1
PW-AB-CN	463F-S2	349+29.53	9.77' LT	683.86	672.83	--	--	1	--	--	--	--	--	--	--	--	--	--	--	--	--	--	--	--
PN-CN	463G-S2	30+41.43	67.43' LT	681.98	676.00	--	--	--	--	--	--	2	--	--	--	--	--	--	--	--	--	--	--	--
PW-AB-CN	464D-S2	349+37.76	50.56' LT	682.40	675.44	--	--	--	--	--	--	1	--	--	--	--	--	--	--	--	--	--	--	--
PW-AB-CN	465E-S2	351+95.33	30.50' RT	677.92	673.81	--	--	--	--	--	--	1	--	--	--	--	--	--	--	--	--	--	--	--
PW-AB-CN	465F-S2	351+94.98	14.10' LT	677.82	672.88	--	--	--	--	--	--	1	--	--	--	--	--	--	--	--	--	--	--	1
PW-AB-CN	466D-S2	352+39.00	30.50' RT	677.82	673.94	--	--	--	--	--	--	1	--	--	--	--	--	--	--	--	--	--	--	--
PW-AB-CN	467D-S2	352+59.02	30.50' RT	677.84	674.00	--	--	--	--	--	--	1	--	--	--	--	--	--	--	--	--	--	--	--
DB	473B-S2	50+24.92	17.32' LT	684.99	681.39	--	--	--	--	--	--	1	--	--	--	--	--	--	--	--	--	--	--	--
DB	473C-S2	50+25.01	6.06' RT	685.20	681.27	--	--	1	--	--	--	--	--	--	--	--	--	--	--	--	--	--	--	--
DB	473D-S2	50+24.96	17.33' RT	684.99	681.33	--	--	--	--	--	--	1	--	--	--	--	--	--	--	--	--	--	--	--
DB	474A-S2	51+30.60	24.53' LT	687.21	682.70	--	--	--	--	--	--	1	--	--	--	--	--	--	--	--	--	--	--	--
DB	474B-S2	51+30.49	6.06' RT	687.54	682.33	--	--	1	--	--	--	--	--	--	--	--	--	--	--	--	--	--	--	1
DB	474C-S2	51+40.28	18.50' RT	687.60	682.63	--	--	--	--	--	--	1	--	--	--	--	--	--	--	--	--	--	--	--
DB	474D-S2	52+00.65	25.00' RT	689.57	682.93	--	--	--	--	--	--	1	--	--	--	--	--	--	--	--	--	--	--	--
DB	474E-S2	51+10.35	25.00' RT	686.27	682.79	--	--	--	--	--	--	1	--	--	--	--	--	--	--	--	--	--	--	--
DB	476A-S2	53+00.10	33.02' LT	693.11	688.53	--	--	--	--	--	--	1	--	--	--	--	--	--	--	--	--	--	--	--
DB	476B-S2	52+99.98	18.50' LT	694.20	686.46	--	--	--	--	--	--	1	--	--	--	--	--	--	--	--	--	--	--	--
DB	476C-S2	53+00.01	6.06' RT	694.44	686.00	--	--	1	--	--	--	--	--	--	--	1	--	--	--	--	--	--	--	--
DB	476D-S2	52+99.99	18.50' RT	694.20	686.40	--	--	--	--	--	--	1	--	--	--	--	--	--	--	--	--	--	--	--
DB	477A-S2	55+12.52	18.50' LT	703.74	699.16	--	--	--	--	--	--	1	--	--	--	--	--	--	--	--	--	--	--	--
DB	477B-S2	55+12.52	6.06' RT	703.97	693.14	--	--	1	--	--	--	--	--	--	1	--	--	--	--	--	--	--	--	--
DB	477C-S2	55+12.52	18.50' RT	703.74	699.10	--	--	--	--	--	--	1	--	--	--	--	--	--	--	--	--	--	--	--
DB	478A-S2	58+49.98	18.50' LT	706.02	696.20	--	--	--	--	--	--	1	--	--	--	--	--	--	--	--	--	--	--	--
DB	478C-S2	58+50.00	18.50' RT	706.02	696.71	--	--	--	--	--	--	1	--	--	--	--	--	--	--	--	--	--	--	--
DB	479A-S2	60+50.01	18.50' LT	701.39	697.60	--	--	--	--	--	--	1	--	--	--	--	--	--	--	--	--	--	--	--
DB	479C-S2	60+50.01	18.50' RT	701.39	696.45	--	--	--	--	--	--	1	--	--	--	--	--	--	--	--	--	--	--	--
DB	483C-S2	51+28.09	25.00' RT	686.77	682.69	--	--	--	--	--	--	1	--	--	--	--	--	--	--	--	--	--	--	--
					STAGE 2 SUBTOTAL		1	18	1	71	0	38	14	0	3	13	23	13				13	4	

1229-04-74 STAGE 3

PROJECT NO: 1229-04-74

HWY: IH 43

COUNTY: MILWAUKEE / OZAUKEE

MISCELLANEOUS QUANTITIES

SHEET 722

Addendum No. 02  
ID 1229-04-74  
Revised Sheet 723  
December 8, 2021

SPV.0060.0208 611.3004 611.3225 611.3230 611.3901 611.3902  
INLETS  
10X10 FT BOX 4-FT DIAMETER 2X2.5-FT 2X3-FT MEDIAN 1 MEDIAN 2  
DEPTH INVERT ELEVATION FT

LOCATION	STRUCTURE	STATION	OFFSET	RIM ELEVATION	DEPTH	10X10 FT BOX	4-FT DIAMETER	2X2.5-FT	2X3-FT	MEDIAN 1	MEDIAN 2	COMMENTS				
					FT		EACH	EACH	EACH	EACH	EACH					
43-R	4457-S2	1355+54.00	5.00 RT	681.78	7.55	--	--	--	--	--	--					
43-R	4458-S2	1355+53.87	4.99 RT	681.80	676.55	4.12	1	--	--	--	--					
PW-NB-CN	445-S2	334+70.91	1.50 LT	678.31	672.44	5.06	--	--	--	--	--					
43-R	4463-S2	1351+07.87	8.83 LT	683.13	10.57	--	--	--	--	--	--					
KTN-CN	4464-S2	15+22.29	82.93 LT	670.00	661.56	8.65	--	--	--	--	1					
43-R	4469-S2	1285+63.04	4.51 RT	677.50	670.41	6.05	--	--	--	--	--					
43-R	4470-S2	1329+53.04	14.44 LT	687.25	681.73	4.97	--	--	--	--	--					
PW-NB-CN	448-S2	338+11.84	1.51 LT	681.86	676.40	4.64	1	--	--	--	--					
PW-NB-CN	449-S2	338+13.23	16.51 LT	681.98	676.32	4.83	--	1	--	--	--					
PW-NB-CN	450-S2	338+15.43	48.46 LT	681.42	675.45	5.22	1	--	--	--	--					
PW-NB-CN	461D-S2	28+65.33	35.92 RT	682.52	675.23	6.48	1	--	--	--	--					
PW-NB-CN	462B-S2	29+33.51	15.49 LT	684.64	674.36	9.49	1	--	--	--	--					
PW-NB-CN	462C-S2	347+60.06	30.50 RT	687.15	673.09	13.31	--	--	--	--	--					
PW-NB-CN	463B-S2	349+30.91	30.51 RT	682.57	672.51	9.48	--	--	--	--	--					
PW-NB-CN	463F-S2	349+29.53	9.77 LT	683.86	672.83	10.62	1	--	--	--	--					
PW-NB-CN	463G-S2	30+41.43	67.43 LT	681.98	676.00	6.19	--	--	--	--	1					
PW-NB-CN	464D-S2	349+37.76	50.56 LT	682.40	675.44	6.15	--	--	--	--	--					
PW-NB-CN	465E-S2	351+95.33	30.50 RT	677.92	673.81	3.30	1	--	--	--	--					
PW-NB-CN	465F-S2	351+94.98	14.10 LT	678.05	672.88	4.95	2	--	--	--	--					
PW-NB-CN	466D-S2	352+39.00	30.50 RT	677.82	673.94	3.07	1	--	--	--	--					
PW-NB-CN	467D-S2	352+59.02	30.50 RT	677.84	674.00	3.03	1	--	--	--	--					
PW-NB-CN	473B-S2	50+24.92	17.32 LT	684.99	681.39	2.79	--	1	--	--	--					
DB	473C-S2	50+25.01	6.06 RT	685.20	681.27	2.88	--	--	1	--	--					
DB	473D-S2	50+24.96	17.33 RT	684.99	681.33	2.85	--	--	1	--	--					
DB	474A-S2	51+30.60	24.53 LT	687.21	682.70	4.70	--	--	1	--	--					
DB	474B-S2	51+30.49	6.06 RT	687.54	682.33	4.16	--	--	--	--	--					
DB	474C-S2	51+40.28	18.50 RT	687.60	682.63	4.16	--	--	--	--	--					
DB	474D-S2	52+00.65	25.00 RT	689.57	682.93	6.83	--	--	1	--	--					
DB	474E-S2	51+10.35	25.00 RT	686.27	682.79	3.67	--	--	1	--	--					
DB	476A-S2	53+00.10	33.02 LT	693.11	688.53	4.77	--	--	1	--	--					
DB	476B-S2	52+99.98	18.50 LT	694.20	686.46	4.93	--	--	1	--	--					
DB	476C-S2	53+00.01	6.06 RT	694.44	686.00	7.38	--	--	--	--	--					
DB	476D-S2	52+99.99	18.50 RT	694.20	686.40	4.99	--	--	1	--	--					
DB	477A-S2	55+12.52	18.50 LT	703.74	699.16	4.29	--	--	1	--	--					
DB	477B-S2	55+12.52	6.05 RT	703.97	693.14	10.03	--	--	--	--	--					
DB	477C-S2	55+12.52	18.50 RT	703.74	699.10	4.32	--	--	1	--	--					
DB	478A-S2	58+49.98	18.50 LT	706.02	696.20	7.00	--	--	1	--	--					
DB	478C-S2	58+50.00	18.50 RT	706.02	696.71	6.49	1	--	--	--	--					
DB	479A-S2	60+50.01	18.50 LT	701.39	697.60	2.98	--	--	1	--	--					
DB	479C-S2	60+50.01	18.50 RT	701.39	696.45	4.13	--	--	--	--	--					
DB	483-S2	51+28.09	25.00 RT	686.77	682.69	4.27	--	--	1	--	--					
STAGE 2 SUBTOTAL											4	34	23	10	6	4

1229-04-74 STAGE 3

Addendum No. 02  
ID 1229-04-74  
Revised Sheet 728  
December 8, 2021

STORM SEWER STRUCTURES  
INLET COVERS

LOCATION	STRUCTURE	STATION	OFFSET	RIM ELEVATION	DEPTH FT	TYPE J MANHOLE COVERS		TYPE L MANHOLE COVERS		4-FT MANHOLES		5-FT MANHOLES		6-FT MANHOLES		7-FT MANHOLES		8-FT MANHOLES		
						TYPE J	SPECIAL	TYPE L	TYPE BW	TYPE C	TYPE H	TYPE MS	TYPE W	DIAMETER	DIAMETER	DIAMETER	DIAMETER	DIAMETER	DIAMETER	DIAMETER
CND	4455A-S3	1340+97.40	7.00 LT	678.04	6.67															
CND	4455B-S3	1341+60.16	7.00 LT	678.04	3.71															
CND	4455C-S3	1341+30.19	7.00 LT	678.01	6.81															
43-RL	4456-S3	1355+54.90	70.97 LT	676.21	4.13															
43-RL	4459-S3	1355+52.97	71.00 RT	681.48	4.14															
43-RL	4460-S3	1355+75.11	86.00 LT	679.00	6.74															
43-RL	4461-S3	1355+75.00	85.70 RT	678.00	6.74															
43-RL	4462-S3	1348+01.18	91.32 LT	680.22	5.42															
43-RL	4468-S3	1285+65.02	63.00 LT	677.49	6.74															
PW-NB-CN	334+74.46	30.50 RT	677.75	672.60	4.34															
PW-NB-CN	337+91.09	30.50 RT	680.88	676.55	3.51															
PW-NB-CN	341+05.10	52.15 LT	687.43	677.64	9.04															
PW-NB-CN	341+19.92	42.49 RT	687.40	682.82	3.76															
PW-NB-CN	342+61.16	30.49 RT	689.79	682.38	6.60															
PW-NB-CN	343+13.40	104.67 RT	687.64	682.61	4.21															
PW-NB-CN	343+31.84	22.50 LT	690.80	682.08	7.92															
PW-NB-CN	343+33.93	7.03 LT	690.69	682.13	7.74															
PW-NB-CN	343+63.96	30.50 RT	690.22	682.30	7.11															
PW-NB-CN	346+43.69	67.20 LT	688.63	683.50	4.51															
PW-NB-CN	346+48.37	21.90 LT	689.43	683.17	5.45															
PW-NB-CN	346+47.46	13.50 LT	689.88	683.10	5.98															
PW-NB-CN	346+97.84	30.50 RT	688.25	682.57	4.87															
PNSL-CN	11+34.58	40.08 LT	677.76	675.05	2.90															
PNSL-CN	11+38.74	18.51 LT	682.58	674.69	7.09															
PNSL-CN	12+25.56	1.50 RT	684.36	674.39	9.17															
PNSL-CN	13+66.34	19.35 RT	683.30	674.08	8.40															
PNSL-CN	14+25.00	40.79 LT	678.73	675.58	3.34															
PW-NB-CN	348+39.58	54.29 LT	685.20	672.95	11.67															
PNSL-CN	15+49.15	18.50 LT	680.62	675.74	4.07															
PNSL-CN	15+48.38	1.50 RT	680.97	675.64	4.52															
PW-NB-CN	349+76.66	50.18 LT	681.28	675.60	4.87															
PW-NB-CN	349+66.45	96.45 LT	678.95	675.87	3.26															
PW-NB-CN	352+07.17	59.76 LT	678.01	674.21	2.99															
PW-NB-CN	352+26.98	60.32 LT	678.00	674.15	3.03															
PW-NB-CN	352+27.56	28.32 LT	678.58	674.06	3.75															
PW-NB-CN	352+14.97	10.96 LT	678.61	673.47	4.56															
PW-NB-CN	352+47.21	60.50 LT	678.02	674.21	3.03															
PW-NB-CN	352+86.08	28.50 LT	678.75	673.88	4.28															
PW-NB-CN	352+26.54	73.87 LT	676.64	674.19	2.63															
PW-NB-CN	352+85.53	60.51 LT	678.16	673.98	3.40															
KTN-CN	13+34.12	50.77 LT	682.38	671.26	10.33															
KTN-CN	13+34.60	18.74 LT	682.82	671.43	10.61															
KTN-CN	13+34.67	12.56 LT	682.79	676.17	5.61															
KTN-CN	13+35.22	18.50 RT	681.93	676.32	4.79															
KTN-CN	14+98.62	32.65 LT	679.40	674.20	4.39															
KTN-CN	14+98.62	18.48 RT	679.42	674.27	4.34															
KTN-CN	15+16.72	13.51 LT	679.86	672.34	6.49															
KTN-CN	16+86.03	27.64 LT	678.08	673.49	3.78															
KTN-CN	16+84.96	16.50 RT	677.90	673.53	3.96															
KTN-CN	17+06.02	27.01 LT	678.06	673.55	3.70															
KTN-CN	17+05.05	18.50 RT	677.89	673.60	3.48															
KTN-CN	16+85.59	8.65 LT	678.43	673.18	4.22															
KTN-CN	18+56.71	22.24 LT	679.19	674.38	4.00															
KTN-CN	18+55.73	18.50 RT	679.11	674.40	3.91															
KTN-CN	18+56.27	3.78 LT	679.56	674.03	4.49															

Addendum No. 02  
ID 1229-04-74  
Revised Sheet 729  
December 8, 2021

SPV.0060.0208 611.3004 611.3225 611.3230 611.3901 611.3902

INLETS

4-FT DIAMETER 2X2.5-FT 2X3-FT

10X10 FT BOX

DEPTH

INVERT ELEVATION

STATION

OFFSET

RIM ELEVATION

STRUCTURE

LOCATION

COMMENTS

MEDIAN 1 GRATE EACH

MEDIAN 2 GRATE EACH

LOCATION	STRUCTURE	STATION	OFFSET	RIM ELEVATION	INVERT ELEVATION	DEPTH	10X10 FT BOX	4-FT DIAMETER	2X2.5-FT	2X3-FT	MEDIAN 1 GRATE EACH	MEDIAN 2 GRATE EACH	COMMENTS
CND	4455A-S3	1340+97.40	7.00 LT	678.04	670.22	6.67	--	1	--	--	--	--	--
CND	4455B-S3	1341+60.16	7.00 LT	678.04	673.18	3.71	--	1	--	--	--	--	--
CND	4455-S3	1341+30.19	7.00 LT	678.01	670.08	6.81	--	--	--	--	--	--	--
43-RL	4456-S3	1355+54.90	70.97 LT	681.47	676.21	4.13	--	1	--	--	--	--	--
43-RL	4456-S3	1355+52.97	71.00 RT	681.48	676.21	4.14	--	1	--	--	--	--	--
43-RL	4460-S3	1355+75.11	86.00 LT	679.00	674.86	4.34	--	--	--	--	--	1	--
43-RL	4461-S3	1355+75.00	85.70 RT	678.00	674.91	3.30	--	--	--	--	1	--	--
43-RL	4462-S3	1348+01.18	91.32 LT	680.22	675.02	5.42	--	--	--	--	1	--	--
43-RL	4468-S3	1285+65.02	63.00 LT	677.49	674.22	2.11	--	1	--	--	--	--	--
PW-NB-CN	446-S3	334+74.46	30.50 RT	677.75	672.60	4.34	--	1	--	--	--	--	--
PW-NB-CN	447-S3	337+91.09	30.50 RT	680.88	676.55	3.51	--	1	--	--	--	--	--
PW-NB-CN	451-S3	341+05.10	52.15 LT	687.43	677.64	9.04	--	--	--	--	--	--	--
PW-NB-CN	454-S3	341+19.92	42.49 RT	687.40	682.82	3.76	--	1	--	--	--	--	--
PW-NB-CN	455-S3	342+61.16	30.49 RT	689.79	682.38	6.60	--	1	--	--	--	--	--
PW-NB-CN	456-S3	343+13.40	104.67 RT	687.64	682.61	4.21	--	1	--	--	--	--	--
PW-NB-CN	457-S3	343+31.84	22.50 LT	690.80	682.08	7.92	--	1	--	--	--	--	--
PW-NB-CN	458-S3	343+33.93	7.03 LT	690.69	682.13	7.74	--	1	--	--	--	--	--
PW-NB-CN	459-S3	343+63.95	30.50 RT	690.22	682.30	7.11	--	1	--	--	--	--	--
PW-NB-CN	460A-S3	346+43.69	67.20 LT	688.63	683.50	4.51	--	1	--	--	--	--	--
PW-NB-CN	460B-S3	346+48.37	21.90 LT	689.43	683.17	5.45	--	1	--	--	--	--	--
PW-NB-CN	460C-S3	346+47.46	13.50 LT	689.88	683.10	5.98	--	1	--	--	--	--	--
PW-NB-CN	460D-S3	346+97.84	30.50 RT	688.25	682.57	4.87	--	1	--	--	--	--	--
PNSL-CN	461B-S3	11+34.58	40.08 LT	677.76	675.05	2.90	--	--	--	1	--	--	--
PNSL-CN	461C-S3	11+38.74	18.51 LT	682.58	674.69	7.09	--	1	--	--	--	--	--
PNSL-CN	462A-S3	12+25.56	1.50 RT	684.36	674.39	9.17	--	1	--	--	--	--	--
PNSL-CN	463A-S3	13+66.34	19.35 RT	683.30	674.08	8.40	--	--	--	--	--	--	--
PNSL-CN	463D-S3	14+25.00	40.79 LT	678.73	675.58	3.34	--	--	--	1	--	--	--
PW-NB-CN	463E-S3	348+39.58	54.29 LT	685.20	672.95	11.67	--	1	--	--	--	--	--
PNSL-CN	464A-S3	15+49.15	18.50 LT	680.62	675.74	4.07	--	1	--	--	--	--	--
PNSL-CN	464B-S3	15+48.38	1.50 RT	680.97	675.64	4.52	--	1	--	--	--	--	--
PW-NB-CN	464C-S3	349+76.66	50.18 LT	681.28	675.60	4.87	--	1	--	--	--	--	--
PW-NB-CN	464E-S3	349+66.45	96.45 LT	678.95	675.87	3.26	--	--	--	1	--	--	--
PW-NB-CN	465A-S3	352+07.17	59.76 LT	678.01	674.21	2.99	--	1	--	--	--	--	--
PW-NB-CN	466A-S3	352+26.98	60.32 LT	678.00	674.15	3.03	--	1	--	--	--	--	--
PW-NB-CN	466B-S3	352+27.56	28.32 LT	678.58	674.06	3.75	--	1	--	--	--	--	--
PW-NB-CN	466C-S3	352+14.97	10.96 LT	678.61	673.47	4.56	--	1	--	--	--	--	--
PW-NB-CN	467A-S3	352+47.21	60.50 LT	678.02	674.21	3.03	--	1	--	--	--	--	--
PW-NB-CN	467B-S3	352+86.08	28.50 LT	678.75	673.88	4.28	--	--	--	--	--	--	--
PW-NB-CN	467C-S3	352+26.54	73.87 LT	676.64	674.19	2.63	--	--	--	1	--	--	--
PW-NB-CN	467E-S3	352+85.53	60.51 LT	678.16	673.98	3.40	--	1	--	--	--	--	--
KTN-CN	468A-S3	13+34.12	50.77 LT	682.38	671.26	10.33	--	1	--	--	--	--	--
KTN-CN	468B-S3	13+34.60	18.74 LT	682.82	671.43	10.61	--	1	--	--	--	--	--
KTN-CN	468C-S3	13+34.67	12.56 LT	682.79	676.17	5.81	--	1	--	--	--	--	--
KTN-CN	468D-S3	13+35.22	18.50 RT	681.93	676.32	4.79	--	1	--	--	--	--	--
KTN-CN	468C-S3	15+27.56	32.65 LT	679.40	674.20	4.39	--	1	--	--	--	--	--
KTN-CN	469D-S3	14+98.62	18.48 RT	679.42	674.27	4.34	--	1	--	--	--	--	--
KTN-CN	469E-S3	15+16.72	13.51 LT	679.86	672.34	6.49	--	1	--	--	--	--	--
KTN-CN	470A-S3	16+86.03	27.64 LT	678.08	673.49	3.78	--	1	--	--	--	--	--
KTN-CN	470B-S3	16+84.96	16.50 RT	677.90	673.53	3.96	--	1	--	--	--	--	--
KTN-CN	470C-S3	17+06.02	27.01 LT	678.06	673.55	3.70	--	1	--	--	--	--	--
KTN-CN	470D-S3	17+05.05	18.50 RT	677.89	673.60	3.48	--	1	--	--	--	--	--
KTN-CN	470E-S3	16+85.59	8.65 LT	678.43	673.18	4.22	--	1	--	--	--	--	--
KTN-CN	471A-S3	18+56.71	22.24 LT	679.19	674.38	4.00	--	1	--	--	--	--	--
KTN-CN	471B-S3	18+55.73	18.50 RT	679.11	674.40	3.91	--	1	--	--	--	--	--
KTN-CN	471C-S3	18+56.27	3.78 LT	679.56	674.03	4.49	--	1	--	--	--	--	--



Addendum No. 02  
 ID 1229-04-74  
 Revised Sheet 731  
 December 8, 2021

SPV.0060.0208 611.3004 611.3225 611.3230 611.3901 611.3902

LOCATION	STRUCTURE	STATION	OFFSET	RIM ELEVATION	INVERT ELEVATION	DEPTH FT	10x10 FT BOX		4-FT DIAMETER		2X3-FT INLETS		MEDIAN 1		MEDIAN 2		COMMENTS	
							INVERT	DEPTH	EACH	EACH	EACH	EACH	EACH	EACH	EACH	EACH		
PW-CN	461A-S3	28+24.25	31.61' LT	681.94	676.59	4.55	--	--	1	--	--	--	--	--	--	--		
PW-NB-CN	482-S3	353+28.57	68.66' LT	679.14	674.11	4.00	--	--	1	--	--	--	--	--	--	--		
43-RL	4317C-S3	1320+49.99	70.68' LT	668.93	663.03	4.57	--	--	1	--	--	--	--	--	--	--		
PW-NB-CN	468L-S3	351+94.26	27.15' LT	678.63	673.96	3.90	2	1	1	2	1	2	1	2	1	2		
STAGE 3 SUBTOTAL							2	0	93	36	4	9	7					
1229-04-74 STAGE 4																		
CN	EX-40M-S4	31+79.45	30.50' LT	673.77	650.76	22.51	--	--	--	--	--	--	--	--	--	--		
PW-NB-CN	400-S4	299+36.18	24.31' RT	671.49	666.64	3.68	--	--	1	--	--	--	--	--	--	--		
PW-NB-CN	403-S4	300+80.61	21.19' RT	671.92	666.06	4.69	--	--	1	--	--	--	--	--	--	--		
PW-NB-CN	404-S4	303+74.44	21.20' RT	672.59	664.89	6.54	--	--	1	--	--	--	--	--	--	--		
43-RL	4079-S4	1304+05.80	63.00' LT	672.97	666.66	5.18	--	--	1	--	--	--	--	--	--	--		
PW-NB-CN	407-S4	305+70.64	21.26' RT	670.41	665.53	3.71	--	--	1	--	--	--	--	--	--	--		
43-RL	4086-S4	1307+06.49	63.00' LT	668.41	661.99	5.29	--	--	1	--	--	--	--	--	--	--		
PW-NB-CN	408A-S4	306+70.20	21.21' RT	670.32	665.76	3.39	--	--	1	--	--	--	--	--	--	--		
PW-NB-CN	408-S4	306+25.74	21.19' RT	670.23	665.74	3.33	--	--	1	--	--	--	--	--	--	--		
43-RL	4093-S4	1309+00.83	63.01' LT	665.68	659.18	5.57	--	--	1	--	--	--	--	--	--	--		
43-RL	4096-S4	1310+06.19	63.84' LT	665.07	652.41	11.83	--	--	1	--	--	--	--	--	--	--		
PW-NB-CN	410-S4	311+24.48	21.20' RT	673.59	668.51	3.92	--	--	1	--	--	--	--	--	--	--		
CN	411A-S4	22+55.43	32.20' RT	680.84	676.00	4.03	--	--	1	--	--	--	--	--	--	--		
CN	411B-S4	23+19.74	26.01' LT	680.37	675.89	3.67	--	--	1	--	--	--	--	--	--	--		
CN	411C-S4	23+36.33	18.49' RT	680.54	675.52	4.21	--	--	1	--	--	--	--	--	--	--		
CN	411D-S4	28+74.55	57.49' RT	684.93	672.99	11.12	--	--	1	--	--	--	--	--	--	--		
CN	411E-S4	26+13.73	73.79' LT	685.00	673.60	10.59	--	--	1	--	--	--	--	--	--	--		
CN	411F-S4	26+21.93	50.92' RT	685.47	673.16	11.50	--	--	1	--	--	--	--	--	--	--		
CN	411G-S4	23+20.87	18.48' RT	680.52	675.67	4.04	--	--	1	--	--	--	--	--	--	--		
CN	411H-S4	21+73.00	26.12' LT	681.61	676.52	5.27	--	--	1	--	--	--	--	--	--	--		
CN	411J-S4	23+22.24	39.96' LT	679.86	675.96	4.08	--	--	1	--	--	--	--	--	--	--		
CN	411K-S4	23+44.54	40.41' RT	679.06	675.63	3.62	--	--	1	--	--	--	--	--	--	--		
CN	411L-S4	23+54.08	27.69' LT	680.43	676.02	3.60	--	--	1	--	--	--	--	--	--	--		
CN	411-S4	22+10.69	20.69' LT	681.49	676.39	4.29	--	--	1	--	--	--	--	--	--	--		
CN	4265-S4	25+39.09	58.39' RT	680.31	665.31	14.09	--	--	1	--	--	--	--	--	--	--		
PW-NB-CN	427A-S4	309+01.09	21.21' RT	671.96	666.96	3.84	--	--	1	--	--	--	--	--	--	--		
43-RL	4284-S4	1311+86.41	5.00' LT	662.44	657.43	3.88	--	--	1	--	--	--	--	--	--	--		
43-RL	4285-S4	1311+55.54	66.63' LT	665.03	657.97	5.94	--	--	1	--	--	--	--	--	--	--		
43-RL	4286A-S4	1311+86.36	67.13' LT	665.03	657.47	6.44	--	--	1	--	--	--	--	--	--	--		
43-RL	4286-S4	1311+75.09	67.02' LT	665.03	657.86	6.03	--	--	1	--	--	--	--	--	--	--		
43-RL	4288-S4	1311+99.40	5.00' LT	662.43	657.49	3.81	--	--	1	--	--	--	--	--	--	--		
43-RL	4292-S4	1312+19.37	5.00' LT	662.43	657.59	3.72	--	--	1	--	--	--	--	--	--	--		
43-RL	4295-S4	1312+50.00	80.22' LT	662.71	658.14	4.78	--	--	1	--	--	--	--	--	--	--		
43-RL	4296-S4	1312+36.71	68.17' LT	665.09	658.04	5.93	--	--	1	--	--	--	--	--	--	--		
PW-CN	4298-S4	11+83.93	25.50' LT	681.29	674.02	6.46	--	--	1	--	--	--	--	--	--	--		
PW-NB-CN	4299-S4	316+67.43	21.19' RT	672.27	668.12	2.96	--	--	1	--	--	--	--	--	--	--		
43-RL	4302-S4	1315+99.99	73.76' LT	667.78	661.05	5.61	--	--	1	--	--	--	--	--	--	--		
43-RL	4306-S4	1314+04.18	70.99' LT	665.94	658.56	6.26	--	--	1	--	--	--	--	--	--	--		
PW-CN	4307-S4	13+34.96	20.56' LT	679.43	674.56	4.05	--	--	1	--	--	--	--	--	--	--		
PW-NB-CN	430A-S4	318+48.73	21.19' RT	671.18	667.05	2.96	--	--	1	--	--	--	--	--	--	--		
PW-NB-CN	430B-S4	318+20.48	20.99' RT	671.21	667.19	2.86	--	--	1	--	--	--	--	--	--	--		
43-RL	4317A-S4	1318+93.68	72.09' LT	668.80	662.24	5.44	--	--	1	--	--	--	--	--	--	--		
43-RL	4317B-S4	1319+25.00	81.08' LT	667.28	662.40	5.09	--	--	1	--	--	--	--	--	--	--		
43-RL	4317-S4	1317+90.24	72.92' LT	668.49	661.72	5.64	--	--	1	--	--	--	--	--	--	--		
PW-NB-CN	431A-S4	318+76.89	21.19' RT	671.15	666.91	3.60	--	--	1	--	--	--	--	--	--	--		
PW-NB-CN	432A-S4	321+58.39	21.20' RT	674.32	669.92	6.04	--	--	1	--	--	--	--	--	--	--		
CN	440B-S4	32+63.34	20.51' LT	672.26	667.18	4.26	--	--	1	--	--	--	--	--	--	--		
CN	440C-S4	32+63.55	18.50' RT	672.30	666.99	4.50	--	--	1	--	--	--	--	--	--	--		
CN	440D-S4	31+59.43	18.50' RT	674.73	666.53	7.38	--	--	1	--	--	--	--	--	--	--		

Addendum No. 02  
ID 1229-04-74  
Revised Sheet 732  
December 8, 2021

STORM SEWER STRUCTURES

611.0530 611.0535 611.0545 611.0610 611.0612 611.0624 611.0642 611.0657 611.2004 611.2005 611.2006 611.2007 611.2008  
MANHOLE COVERS INLET COVERS MANHOLES

LOCATION	STRUCTURE	STATION	OFFSET	RIM ELEVATION	INVERT ELEVATION	DEPTH FT	TYPE J		TYPE L		TYPE BW		TYPE C		TYPE H		TYPE MS		TYPE W		4-FT DIAMETER		5-FT DIAMETER		6-FT DIAMETER		7-FT DIAMETER		8-FT DIAMETER			
							TYPE J	SPECIAL	EACH	EACH	EACH	EACH	EACH	EACH	EACH	EACH	EACH	EACH	EACH	EACH	EACH	EACH	EACH	EACH	EACH	EACH	EACH	EACH	EACH	EACH	EACH	EACH
CN	440E-S4	31+59.33	44.40 RT	670.02	666.66	3.55	--	--	--	--	--	--	--	--	--	--	--	--	--	--	--	--	--	--	--	--	--	--	--	--	--	
CN	440F-S4	31+05.00	51.33 RT	669.66	666.95	2.90	--	--	--	--	--	--	--	--	--	--	--	--	--	--	--	--	--	--	--	--	--	--	--	--	--	
CN	440G-S4	32+00.00	39.79 RT	670.10	666.87	3.42	--	--	--	--	--	--	--	--	--	--	--	--	--	--	--	--	--	--	--	--	--	--	--	--	--	
CN	441B-S4	30+39.86	37.64 LT	678.99	675.70	2.46	--	--	--	--	--	--	--	--	--	--	--	--	--	--	--	--	--	--	--	--	--	--	--	--	--	
CN	441C-S4	30+24.73	24.00 RT	679.34	675.92	2.59	--	--	--	--	--	--	--	--	--	--	--	--	--	--	--	--	--	--	--	--	--	--	--	--	--	
CN	441D-S4	29+77.43	87.89 LT	680.90	675.68	4.41	--	--	--	--	--	--	--	--	--	--	--	--	--	--	--	--	--	--	--	--	--	--	--	--	--	
CN	441F-S4	28+75.53	30.51 LT	682.08	676.26	5.01	--	--	--	--	--	--	--	--	--	--	--	--	--	--	--	--	--	--	--	--	--	--	--	--	--	
CN	441G-S4	28+72.67	30.50 RT	681.99	676.57	4.61	--	--	--	--	--	--	--	--	--	--	--	--	--	--	--	--	--	--	--	--	--	--	--	--	--	
43-RL	4469A-S4	1309+02.00	74.02 LT	664.39	659.22	4.30	--	--	--	--	--	--	--	--	--	--	--	--	--	--	--	--	--	--	--	--	--	--	--	--	--	
STAGE 4 SUBTOTAL							1	0	0	0	15	0	0	20	1	12	1	13	0	5	1	0	0	0	0	0	0	0	0	3		
1229-04-74 STAGE 5																																
43-RL	4083A-S5	1305+59.38	63.05 RT	667.40	662.56	3.72	--	--	--	--	--	--	--	--	--	--	--	--	--	--	--	--	--	--	--	--	--	--	--	--	--	--
43-RL	4083-S5	1304+07.24	63.00 RT	669.60	664.85	3.62	--	--	--	--	--	--	--	--	--	--	--	--	--	--	--	--	--	--	--	--	--	--	--	--	--	--
43-RL	4090A-S5	1307+50.00	69.66 RT	663.64	660.42	3.43	--	--	--	--	--	--	--	--	--	--	--	--	--	--	--	--	--	--	--	--	--	--	--	--	--	--
43-RL	4090-S5	1307+08.02	63.00 RT	665.04	660.26	3.66	--	--	--	--	--	--	--	--	--	--	--	--	--	--	--	--	--	--	--	--	--	--	--	--	--	--
43-RL	4282-S5	1311+74.22	85.73 RT	659.64	654.44	4.08	--	--	--	--	--	--	--	--	--	--	--	--	--	--	--	--	--	--	--	--	--	--	--	--	--	--
43-RL	4283-S5	1311+99.46	5.00 RT	663.46	657.54	4.80	--	--	--	--	--	--	--	--	--	--	--	--	--	--	--	--	--	--	--	--	--	--	--	--	--	--
43-RL	4289-S5	1311+50.62	5.00 RT	663.42	658.02	4.27	--	--	--	--	--	--	--	--	--	--	--	--	--	--	--	--	--	--	--	--	--	--	--	--	--	--
43-RL	4290-S5	1312+00.02	86.84 RT	659.61	654.57	3.92	--	--	--	--	--	--	--	--	--	--	--	--	--	--	--	--	--	--	--	--	--	--	--	--	--	--
43-RL	4293-S5	1311+75.29	5.02 RT	663.43	657.90	4.41	--	--	--	--	--	--	--	--	--	--	--	--	--	--	--	--	--	--	--	--	--	--	--	--	--	--
43-RL	4294-S5	1312+20.60	87.57 RT	659.61	654.67	3.82	--	--	--	--	--	--	--	--	--	--	--	--	--	--	--	--	--	--	--	--	--	--	--	--	--	--
43-RL	4297-S5	1314+00.00	103.30 RT	658.45	655.57	3.09	--	--	--	--	--	--	--	--	--	--	--	--	--	--	--	--	--	--	--	--	--	--	--	--	--	--
43-RL	4299-S5	1314+01.14	94.10 RT	660.21	655.54	3.55	--	--	--	--	--	--	--	--	--	--	--	--	--	--	--	--	--	--	--	--	--	--	--	--	--	--
43-RL	4300-S5	1316+00.00	96.75 RT	663.72	657.90	4.70	--	--	--	--	--	--	--	--	--	--	--	--	--	--	--	--	--	--	--	--	--	--	--	--	--	--
43-RL	4305-S5	1314+03.58	5.00 RT	664.52	658.37	5.03	--	--	--	--	--	--	--	--	--	--	--	--	--	--	--	--	--	--	--	--	--	--	--	--	--	--
43-RL	4310-S5	1316+00.00	5.00 RT	666.58	660.89	4.56	--	--	--	--	--	--	--	--	--	--	--	--	--	--	--	--	--	--	--	--	--	--	--	--	--	--
STAGE 5 SUBTOTAL							0	0	0	13	0	0	0	0	0	0	0	0	0	0	0	0	0	0	0	0	0	0	0	0	0	
PROJECT 1229-04-74 TOTAL							9	22	1	197	3	3	0	21	3	108	53	21	3	33	34	14	14	0	0	0	0	0	0	0	0	



Addendum No. 02  
 ID 1229-04-74  
 Revised Sheet 733  
 December 8, 2021

SPV/0060.0208 611.3004 611.3225 611.3230 611.3901 611.3902

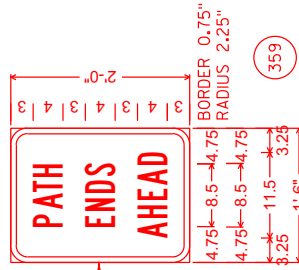
LOCATION	STRUCTURE	STATION	OFFSET	RIM ELEVATION	DEPTH	10X10 FT BOX	4-FT DIAMETER		2X2.5-FT		2X3-FT		MEDIAN 1		MEDIAN 2		COMMENTS
							EACH	EACH	EACH	EACH	GRATE	GRATE	GRATE	GRATE			
CN	440E-S4	31+59.33	44.40 RT	670.02	3.55	--	--	--	--	1	--	--	1	--	--	--	
CN	440F-S4	31+05.00	51.33 RT	669.66	2.90	--	--	--	--	1	--	--	1	--	--	--	
CN	440G-S4	32+00.00	39.79 RT	670.10	3.42	--	--	--	--	1	--	--	1	--	--	--	
CN	441B-S4	30+39.86	37.64 LT	678.99	2.46	--	--	--	--	1	--	--	1	--	--	--	
CN	441C-S4	30+24.73	24.00 RT	679.34	2.59	--	--	--	--	1	--	--	1	--	--	--	
CN	441D-S4	29+77.43	87.89 LT	680.90	4.41	--	--	--	--	1	--	--	1	--	--	--	
CN	441F-S4	28+75.53	30.51 LT	682.08	5.01	--	--	--	--	1	--	--	1	--	--	--	
CN	441G-S4	28+72.67	30.50 RT	681.99	4.61	--	--	--	--	1	--	--	1	--	--	--	
43-RL	4469A-S4	1309+02.00	74.02 LT	664.39	4.30	--	--	--	--	1	--	--	1	--	--	--	
STAGE 4 SUBTOTAL																	
							0	35	4	1	6	3	1				
1229-04-74 STAGE 5																	
43-RL	4083A-S5	1305+59.38	63.05 RT	667.40	3.72	--	--	1	--	--	--	--	--	--	--	--	
43-RL	4083-S5	1304+07.24	63.00 RT	669.60	3.62	--	--	1	--	--	--	--	--	--	--	--	
43-RL	4090A-S5	1307+50.00	69.66 RT	663.64	3.43	--	--	1	--	--	--	--	--	--	--	--	
43-RL	4090-S5	1307+08.02	63.00 RT	665.04	3.66	--	--	1	--	--	--	--	--	--	--	--	
43-RL	4282-S5	1311+74.22	85.73 RT	659.64	4.08	--	--	1	--	--	--	--	--	--	--	--	
43-RL	4283-S5	1311+99.46	5.00 RT	663.46	4.80	--	--	1	--	--	--	--	--	--	--	--	
43-RL	4289-S5	1311+50.62	5.00 RT	663.42	4.27	--	--	1	--	--	--	--	--	--	--	--	
43-RL	4290-S5	1312+00.02	86.84 RT	659.61	3.92	--	--	1	--	--	--	--	--	--	--	--	
43-RL	4293-S5	1311+75.29	5.02 RT	663.43	4.41	--	--	1	--	--	--	--	--	--	--	--	
43-RL	4294-S5	1312+20.60	87.57 RT	659.61	3.82	--	--	1	--	--	--	--	--	--	--	--	
43-RL	4297-S5	1314+00.00	103.30 RT	658.45	3.09	--	--	1	--	--	--	--	--	--	--	--	
43-RL	4299-S5	1314+01.14	94.10 RT	660.21	3.55	--	--	1	--	--	--	--	--	--	--	--	
43-RL	4300-S5	1316+00.00	96.75 RT	663.72	4.70	--	--	1	--	--	--	--	--	--	--	--	
43-RL	4305-S5	1314+03.58	5.00 RT	664.52	5.03	--	--	1	--	--	--	--	--	--	--	--	
43-RL	4310-S5	1316+00.00	5.00 RT	666.58	4.56	--	--	1	--	--	--	--	--	--	--	--	
STAGE 5 SUBTOTAL																	
							0	9	4	0	0	1	2				
PROJECT 1229-04-74 TOTAL																	
							7	172	67	15	21	16					





NOTES:

1. Signs are Type II - Type H Reflective
2. Color:  
Background - Yellow  
Message - Black
3. Message Series - B except as noted.



YELLOW BACKGROUND  
(FLUORESCENT YELLOW)  
BLACK COPY

SERIES B  
LETTERS

Addendum No. 02  
ID 1229-04-74  
Added Sheet 1067A  
December 8, 2021

PROJECT NO: 1229-04-74	Hwy: IH43	COUNTY: MILWAUKEE/OZAUKEE	PERMANENT SIGNING	SHEET 1067A	E
FILE NAME: N:\PDS\330\CAD\12290402\4\SIGN\0700_L_MIS.DWG	LAYOUT NAME: Psn 1 IN 50 FT	PLOT DATE: 12/7/2021 8:28 AM	FLOT BY: VANDE LEST, CYNTHIA	PLOT SCALE: 1 IN=50 FT	WSDOT/CAD/SHEET



Proposal Schedule of Items

Proposal ID: 20211214024 Project(s): 1229-04-74

Federal ID(s): WISC 2022106

SECTION: 0001

Contract Items

Alt Set ID:

Alt Mbr ID:

Proposal Line Number	Item ID Description	Approximate Quantity and Units	Unit Price	Bid Amount
0002	201.0105 Clearing	60.000 STA	_____.	_____.
0004	201.0120 Clearing	142.000 ID	_____.	_____.
0006	201.0205 Grubbing	60.000 STA	_____.	_____.
0008	201.0220 Grubbing	142.000 ID	_____.	_____.
0010	203.0211.S Abatement of Asbestos Containing Material (structure) 0001. B-40-338	1.000 EACH	_____.	_____.
0012	203.0211.S Abatement of Asbestos Containing Material (structure) 0002. B-45-17	1.000 EACH	_____.	_____.
0014	203.0211.S Abatement of Asbestos Containing Material (structure) 0004. B-45-18	1.000 EACH	_____.	_____.
0016	203.0220 Removing Structure (structure) 0001. B-40-338	1.000 EACH	_____.	_____.
0018	203.0220 Removing Structure (structure) 0002. B-45-17	1.000 EACH	_____.	_____.
0020	203.0220 Removing Structure (structure) 0013. C-45-17	1.000 EACH	_____.	_____.
0022	203.0220 Removing Structure (structure) 2003. 56DB+59	1.000 EACH	_____.	_____.
0024	204.0100 Removing Concrete Pavement	81,880.000 SY	_____.	_____.
0026	204.0150 Removing Curb & Gutter	3,570.000 LF	_____.	_____.
0028	204.0155 Removing Concrete Sidewalk	1,470.000 SY	_____.	_____.
0030	204.0157 Removing Concrete Barrier	230.000 LF	_____.	_____.



## Proposal Schedule of Items

Proposal ID: 20211214024 Project(s): 1229-04-74

Federal ID(s): WISC 2022106

SECTION: 0001

Contract Items

Alt Set ID:

Alt Mbr ID:

Proposal Line Number	Item ID Description	Approximate Quantity and Units	Unit Price	Bid Amount
0032	204.0165 Removing Guardrail	13,660.000 LF	_____.	_____.
0034	204.0170 Removing Fence	16,690.000 LF	_____.	_____.
0036	204.0180 Removing Delineators and Markers	34.000 EACH	_____.	_____.
0038	204.0185 Removing Masonry	10.000 CY	_____.	_____.
0040	204.0195 Removing Concrete Bases	22.000 EACH	_____.	_____.
0042	204.0210 Removing Manholes	15.000 EACH	_____.	_____.
0044	204.0220 Removing Inlets	152.000 EACH	_____.	_____.
0046	204.0245 Removing Storm Sewer (size) 0001. 12-Inch	3,438.000 LF	_____.	_____.
0048	204.0245 Removing Storm Sewer (size) 0002. 15-Inch	812.000 LF	_____.	_____.
0050	204.0245 Removing Storm Sewer (size) 0003. 18-Inch	1,800.000 LF	_____.	_____.
0052	204.0245 Removing Storm Sewer (size) 0004. 21-Inch	146.000 LF	_____.	_____.
0054	204.0245 Removing Storm Sewer (size) 0005. 24-Inch	1,330.000 LF	_____.	_____.
0056	204.0245 Removing Storm Sewer (size) 0006. 30-Inch	299.000 LF	_____.	_____.
0058	204.0245 Removing Storm Sewer (size) 0007. 36-Inch	1,067.000 LF	_____.	_____.
0060	204.0245 Removing Storm Sewer (size) 0008. 42-Inch	2,427.000 LF	_____.	_____.



Proposal Schedule of Items

Proposal ID: 20211214024 Project(s): 1229-04-74

Federal ID(s): WISC 2022106

SECTION: 0001

Contract Items

Alt Set ID:

Alt Mbr ID:

Proposal Line Number	Item ID Description	Approximate Quantity and Units	Unit Price	Bid Amount
0062	204.0245 Removing Storm Sewer (size) 0009. 48-Inch	10.000 LF	_____.	_____.
0064	204.0245 Removing Storm Sewer (size) 0010. 60-Inch	605.000 LF	_____.	_____.
0066	204.0245 Removing Storm Sewer (size) 0011. 4'x8' Box	208.000 LF	_____.	_____.
0068	204.0246 Removing Ancillary Structure (structure) 0001. S-40-927	1.000 EACH	_____.	_____.
0070	204.0265 Abandoning Wells	7.000 EACH	_____.	_____.
0072	204.0291.S Abandoning Sewer	220.120 CY	_____.	_____.
0074	204.9060.S Removing (item description) 0001. Barricade Rack and Barricades	1.000 EACH	_____.	_____.
0076	204.9060.S Removing (item description) 1001. Lighting Units	4.000 EACH	_____.	_____.
0078	204.9060.S Removing (item description) 3001. Luminaires	4.000 EACH	_____.	_____.
0080	204.9060.S Removing (item description) 3002. Traffic Signals IH 43 NB Off Ramp & CTH W	1.000 EACH	_____.	_____.
0082	204.9060.S Removing (item description) 3003. Loop Detector Wire and Lead-In Cable IH 43 NB Off Ramp & CTH W	1.000 EACH	_____.	_____.
0084	204.9060.S Removing (item description) 3004. Loop Detector Wire and Lead-In Cable CTH W & Donges Bay Rd	1.000 EACH	_____.	_____.
0086	204.9090.S Removing (item description) 0001. Lannon Stone Wall	4.000 LF	_____.	_____.



Proposal Schedule of Items

Proposal ID: 20211214024 Project(s): 1229-04-74

Federal ID(s): WISC 2022106

SECTION: 0001

Contract Items

Alt Set ID:

Alt Mbr ID:

Proposal Line Number	Item ID Description	Approximate Quantity and Units	Unit Price	Bid Amount
0090	205.0100 Excavation Common	164,092.000 CY	_____.	_____.
0092	205.0300 Excavation Stone Piles and Stone Fences	6.000 CY	_____.	_____.
0094	206.1000 Excavation for Structures Bridges (structure) 0001.B-40-918	LS	LUMP SUM	_____.
0096	206.1000 Excavation for Structures Bridges (structure) 0003. B-45-103	LS	LUMP SUM	_____.
0098	206.1000 Excavation for Structures Bridges (structure) 1001. B-45-106	LS	LUMP SUM	_____.
0100	206.2000 Excavation for Structures Culverts (structure) 0013. C-45-60	LS	LUMP SUM	_____.
0102	210.1500 Backfill Structure Type A	1,282.000 TON	_____.	_____.
0104	210.2500 Backfill Structure Type B	11,160.000 TON	_____.	_____.
0106	211.0400 Prepare Foundation for Asphaltic Shoulders	68.000 STA	_____.	_____.
0108	213.0100 Finishing Roadway (project) 0100. 1229-04-74	1.000 EACH	_____.	_____.
0110	305.0120 Base Aggregate Dense 1 1/4-Inch	106,057.000 TON	_____.	_____.
0112	310.0110 Base Aggregate Open-Graded	730.000 TON	_____.	_____.
0114	311.0110 Breaker Run	185,920.000 TON	_____.	_____.
0116	371.2000.S QMP Base Aggregate Dense 1 1/4-Inch Compaction	28.000 EACH	_____.	_____.
0118	390.0203 Base Patching Asphaltic	2,600.000 SY	_____.	_____.





## Proposal Schedule of Items

Proposal ID: 20211214024 Project(s): 1229-04-74

Federal ID(s): WISC 2022106

SECTION: 0001

Contract Items

Alt Set ID:

Alt Mbr ID:

Proposal Line Number	Item ID Description	Approximate Quantity and Units	Unit Price	Bid Amount
0120	415.0060 Concrete Pavement 6-Inch	1,290.000 SY	_____.	_____.
0122	415.0410 Concrete Pavement Approach Slab	730.000 SY	_____.	_____.
0124	416.0270 Concrete Driveway HES 7-Inch	620.000 SY	_____.	_____.
0126	416.1110 Concrete Shoulder Rumble Strips	14,410.000 LF	_____.	_____.
0128	450.1100.S Asphaltic Mixture For Extreme Conditions	50.000 TON	_____.	_____.
0130	450.4000 HMA Cold Weather Paving	210.000 TON	_____.	_____.
0132	455.0605 Tack Coat	6,300.000 GAL	_____.	_____.
0134	460.2000 Incentive Density HMA Pavement	14,330.000 DOL	1.00000	14,330.00
0136	460.6223 HMA Pavement 3 MT 58-28 S	14,560.000 TON	_____.	_____.
0138	460.6224 HMA Pavement 4 MT 58-28 S	7,830.000 TON	_____.	_____.
0140	465.0120 Asphaltic Surface Driveways and Field Entrances	200.000 TON	_____.	_____.
0142	465.0125 Asphaltic Surface Temporary	100.000 TON	_____.	_____.
0144	495.1000.S Cold patch	20.000 TON	_____.	_____.
0146	501.1000.S Ice Hot Weather Concreting	50,469.000 LB	_____.	_____.
0148	502.0100 Concrete Masonry Bridges	1,294.000 CY	_____.	_____.
0150	502.2000 Compression Joint Sealer Preformed Elastomeric (width) 0002. 2 1/4-Inch	221.000 LF	_____.	_____.



Proposal Schedule of Items

Proposal ID: 20211214024 Project(s): 1229-04-74

Federal ID(s): WISC 2022106

SECTION: 0001

Contract Items

Alt Set ID:

Alt Mbr ID:

Proposal Line Number	Item ID Description	Approximate Quantity and Units	Unit Price	Bid Amount
0152	502.3101 Expansion Device	328.000 LF	_____.	_____.
0154	502.3200 Protective Surface Treatment	6,585.000 SY	_____.	_____.
0156	502.3210 Pigmented Surface Sealer	1,208.000 SY	_____.	_____.
0158	503.0137 Prestressed Girder Type I 36W-Inch	2,643.000 LF	_____.	_____.
0160	503.0146 Prestressed Girder Type I 45W-Inch	3,470.000 LF	_____.	_____.
0162	504.0100 Concrete Masonry Culverts	930.000 CY	_____.	_____.
0164	504.0500 Concrete Masonry Retaining Walls	895.000 CY	_____.	_____.
0166	504.0900 Concrete Masonry Endwalls	3.000 CY	_____.	_____.
0168	505.0400 Bar Steel Reinforcement HS Structures	161,570.000 LB	_____.	_____.
0170	505.0600 Bar Steel Reinforcement HS Coated Structures	700,910.000 LB	_____.	_____.
0172	505.0800.S Bar Steel Reinforcement HS Stainless Structures	7,440.000 LB	_____.	_____.
0174	506.2605 Bearing Pads Elastomeric Non-Laminated	96.000 EACH	_____.	_____.
0176	506.2610 Bearing Pads Elastomeric Laminated	32.000 EACH	_____.	_____.
0178	506.4000 Steel Diaphragms (structure) 0001. B-40-918	30.000 EACH	_____.	_____.
0180	506.4000 Steel Diaphragms (structure) 0002. B-45-102	28.000 EACH	_____.	_____.



## Proposal Schedule of Items

Proposal ID: 20211214024 Project(s): 1229-04-74

Federal ID(s): WISC 2022106

SECTION: 0001

Contract Items

Alt Set ID:

Alt Mbr ID:

Proposal Line Number	Item ID Description	Approximate Quantity and Units	Unit Price	Bid Amount
0182	506.4000 Steel Diaphragms (structure) 0003. B-45-103	28.000 EACH	_____.	_____.
0184	506.4000 Steel Diaphragms (structure) 1002. B-45-106	8.000 EACH	_____.	_____.
0186	509.5100.S Polymer Overlay	2,153.000 SY	_____.	_____.
0188	511.1200 Temporary Shoring (structure) 0001. B-40-918	480.000 SF	_____.	_____.
0190	511.1200 Temporary Shoring (structure) 0002. B-45-102	1,000.000 SF	_____.	_____.
0192	511.1200 Temporary Shoring (structure) 0013. C-45-60	4,260.000 SF	_____.	_____.
0194	511.1300 Temporary Shoring (location) 0010. Mainline Sta. 1326+00 To 1347+00 LT/RT	15,488.000 SF	_____.	_____.
0196	513.2001 Railing Pipe	1,351.000 LF	_____.	_____.
0198	513.4091 Railing Tubular Screening	1,236.000 LF	_____.	_____.
0200	513.7093 Railing Steel Type 3T	70.000 LF	_____.	_____.
0202	516.0500 Rubberized Membrane Waterproofing	273.000 SY	_____.	_____.
0204	520.1018 Apron Endwalls for Culvert Pipe 18-Inch	1.000 EACH	_____.	_____.
0206	520.1024 Apron Endwalls for Culvert Pipe 24-Inch	5.000 EACH	_____.	_____.
0208	522.0412 Culvert Pipe Reinforced Concrete Class IV 12-Inch	72.000 LF	_____.	_____.



Proposal Schedule of Items

Proposal ID: 20211214024 Project(s): 1229-04-74

Federal ID(s): WISC 2022106

SECTION: 0001

Contract Items

Alt Set ID:

Alt Mbr ID:

Proposal Line Number	Item ID Description	Approximate Quantity and Units	Unit Price	Bid Amount
0210	522.0415 Culvert Pipe Reinforced Concrete Class IV 15-Inch	55.000 LF	_____.	_____.
0212	522.1012 Apron Endwalls for Culvert Pipe Reinforced Concrete 12-Inch	3.000 EACH	_____.	_____.
0214	522.1015 Apron Endwalls for Culvert Pipe Reinforced Concrete 15-Inch	10.000 EACH	_____.	_____.
0216	522.1018 Apron Endwalls for Culvert Pipe Reinforced Concrete 18-Inch	3.000 EACH	_____.	_____.
0218	522.1036 Apron Endwalls for Culvert Pipe Reinforced Concrete 36-Inch	4.000 EACH	_____.	_____.
0220	522.1048 Apron Endwalls for Culvert Pipe Reinforced Concrete 48-Inch	2.000 EACH	_____.	_____.
0222	522.1060 Apron Endwalls for Culvert Pipe Reinforced Concrete 60-Inch	1.000 EACH	_____.	_____.
0224	531.1100 Concrete Masonry Ancillary Structures Type NS	42.000 CY	_____.	_____.
0226	531.1140 Steel Reinforcement HS Ancillary Structures Type NS	4,892.000 LB	_____.	_____.
0228	531.1160 Steel Reinforcement HS Coated Ancillary Structures Type NS	2,440.000 LB	_____.	_____.
0230	531.2024 Drilling Shaft 24-Inch	96.000 LF	_____.	_____.
0232	531.2036 Drilling Shaft 36-Inch	146.000 LF	_____.	_____.
0234	531.2048 Drilling Shaft 48-Inch	23.000 LF	_____.	_____.
0236	531.4050 Foundation Camera Pole 50-FT	1.000 EACH	_____.	_____.



## Proposal Schedule of Items

Proposal ID: 20211214024 Project(s): 1229-04-74

Federal ID(s): WISC 2022106

SECTION: 0001

Contract Items

Alt Set ID:

Alt Mbr ID:

Proposal Line Number	Item ID Description	Approximate Quantity and Units	Unit Price	Bid Amount
0238	531.5330 Foundation Single-Shaft Type TC-III (structure) 0015. S-40-3059	1.000 EACH	_____.	_____.
0240	531.5420 Foundation Single-Shaft Type TF-II (structure) 0017. S-45-217	2.000 EACH	_____.	_____.
0242	531.6020 Foundation Two-Shaft Type FC-II (structure) 0018. S-45-218	1.000 EACH	_____.	_____.
0244	532.5330 Truss Cantilever 2-Chord Type III (structure) 0015. S-40-3059	1.000 EACH	_____.	_____.
0246	532.5420 Truss Full Span 2-Chord Type II (structure) 0017. S-45-217	1.000 EACH	_____.	_____.
0248	532.6000 Truss Cantilever 4-Chord Type NS (structure) 0014. S-40-3058	1.000 EACH	_____.	_____.
0250	532.6000 Truss Cantilever 4-Chord Type NS (structure) 0016. S-45-5	1.000 EACH	_____.	_____.
0252	532.6020 Truss Cantilever 4-Chord Type II (structure) 0018. S-45-218	1.000 EACH	_____.	_____.
0254	541.0300.S Noise Barriers Double-Sided Sound Absorptive (structure) 0019. N-40-101	67,350.000 SF	_____.	_____.
0256	550.0500 Pile Points	182.000 EACH	_____.	_____.
0258	550.2126 Piling CIP Concrete 12 3/4 X 0.375-Inch	15,480.000 LF	_____.	_____.
0260	601.0331 Concrete Curb & Gutter 31-Inch	3,430.000 LF	_____.	_____.
0262	601.0409 Concrete Curb & Gutter 30-Inch Type A	3,450.000 LF	_____.	_____.
0264	601.0411 Concrete Curb & Gutter 30-Inch Type D	12,880.000 LF	_____.	_____.



Proposal Schedule of Items

Proposal ID: 20211214024 Project(s): 1229-04-74

Federal ID(s): WISC 2022106

SECTION: 0001

Contract Items

Alt Set ID:

Alt Mbr ID:

Proposal Line Number	Item ID Description	Approximate Quantity and Units	Unit Price	Bid Amount
0266	601.0600 Concrete Curb Pedestrian	25.000 LF	_____.	_____.
0268	602.0410 Concrete Sidewalk 5-Inch	75,480.000 SF	_____.	_____.
0270	602.0505 Curb Ramp Detectable Warning Field Yellow	210.000 SF	_____.	_____.
0272	602.0605 Curb Ramp Detectable Warning Field Radial Yellow	433.000 SF	_____.	_____.
0274	603.1456 Concrete Barrier Type S56C	1,563.000 LF	_____.	_____.
0276	603.2156 Concrete Barrier Fixed Object Protection Type S56	40.000 LF	_____.	_____.
0278	603.3559 Concrete Barrier Transition Type S42 to S56	18.000 EACH	_____.	_____.
0280	603.8000 Concrete Barrier Temporary Precast Delivered	60,787.000 LF	_____.	_____.
0282	603.8125 Concrete Barrier Temporary Precast Installed	60,787.000 LF	_____.	_____.
0284	604.0400 Slope Paving Concrete	228.000 SY	_____.	_____.
0286	606.0200 Riprap Medium	340.000 CY	_____.	_____.
0288	606.0300 Riprap Heavy	431.000 CY	_____.	_____.
0290	608.0315 Storm Sewer Pipe Reinforced Concrete Class III 15-Inch	1,709.000 LF	_____.	_____.
0292	608.0318 Storm Sewer Pipe Reinforced Concrete Class III 18-Inch	5,703.000 LF	_____.	_____.



Proposal Schedule of Items

Proposal ID: 20211214024 Project(s): 1229-04-74

Federal ID(s): WISC 2022106

SECTION: 0001

Contract Items

Alt Set ID:

Alt Mbr ID:

Proposal Line Number	Item ID Description	Approximate Quantity and Units	Unit Price	Bid Amount
0294	608.0324 Storm Sewer Pipe Reinforced Concrete Class III 24-Inch	2,828.000 LF	_____.	_____.
0296	608.0330 Storm Sewer Pipe Reinforced Concrete Class III 30-Inch	619.000 LF	_____.	_____.
0298	608.0336 Storm Sewer Pipe Reinforced Concrete Class III 36-Inch	2,697.000 LF	_____.	_____.
0300	608.0342 Storm Sewer Pipe Reinforced Concrete Class III 42-Inch	957.000 LF	_____.	_____.
0302	608.0348 Storm Sewer Pipe Reinforced Concrete Class III 48-Inch	303.000 LF	_____.	_____.
0304	608.0360 Storm Sewer Pipe Reinforced Concrete Class III 60-Inch	264.000 LF	_____.	_____.
0306	608.0412 Storm Sewer Pipe Reinforced Concrete Class IV 12-Inch	200.000 LF	_____.	_____.
0308	608.0415 Storm Sewer Pipe Reinforced Concrete Class IV 15-Inch	1,065.000 LF	_____.	_____.
0310	608.0418 Storm Sewer Pipe Reinforced Concrete Class IV 18-Inch	1,117.000 LF	_____.	_____.
0312	608.0424 Storm Sewer Pipe Reinforced Concrete Class IV 24-Inch	353.000 LF	_____.	_____.
0314	608.0430 Storm Sewer Pipe Reinforced Concrete Class IV 30-Inch	14.000 LF	_____.	_____.
0316	608.0442 Storm Sewer Pipe Reinforced Concrete Class IV 42-Inch	288.000 LF	_____.	_____.
0318	608.0484 Storm Sewer Pipe Reinforced Concrete Class IV 84-Inch	782.000 LF	_____.	_____.



Proposal Schedule of Items

Proposal ID: 20211214024 Project(s): 1229-04-74

Federal ID(s): WISC 2022106

SECTION: 0001

Contract Items

Alt Set ID:

Alt Mbr ID:

Proposal Line Number	Item ID Description	Approximate Quantity and Units	Unit Price	Bid Amount
0320	608.0560 Storm Sewer Pipe Reinforced Concrete Class V 60-Inch	404.000 LF	_____.	_____.
0322	608.2434 Storm Sewer Pipe Reinforced Concrete Horizontal Elliptical Class HE-IV 34x53-Inch	361.000 LF	_____.	_____.
0324	608.3012 Storm Sewer Pipe Class III-A 12-Inch	30.000 LF	_____.	_____.
0326	608.3015 Storm Sewer Pipe Class III-A 15-Inch	2,909.000 LF	_____.	_____.
0328	608.3018 Storm Sewer Pipe Class III-A 18-Inch	1,053.000 LF	_____.	_____.
0330	608.3024 Storm Sewer Pipe Class III-A 24-Inch	2,475.000 LF	_____.	_____.
0332	608.3615 Storm Sewer Pipe Class III-B 15-Inch	328.000 LF	_____.	_____.
0334	608.3618 Storm Sewer Pipe Class III-B 18-Inch	220.000 LF	_____.	_____.
0336	611.0420 Reconstructing Manholes	2.000 EACH	_____.	_____.
0338	611.0530 Manhole Covers Type J	9.000 EACH	_____.	_____.
0340	611.0535 Manhole Covers Type J-Special	22.000 EACH	_____.	_____.
0342	611.0545 Manhole Covers Type L	1.000 EACH	_____.	_____.
0344	611.0550 Manhole Covers Type M	2.000 EACH	_____.	_____.
0346	611.0610 Inlet Covers Type BW	197.000 EACH	_____.	_____.
0348	611.0612 Inlet Covers Type C	3.000 EACH	_____.	_____.
0350	611.0624 Inlet Covers Type H	108.000 EACH	_____.	_____.





Proposal Schedule of Items

Proposal ID: 20211214024 Project(s): 1229-04-74

Federal ID(s): WISC 2022106

SECTION: 0001

Contract Items

Alt Set ID:

Alt Mbr ID:

Proposal Line Number	Item ID Description	Approximate Quantity and Units	Unit Price	Bid Amount
0352	611.0642 Inlet Covers Type MS	55.000 EACH	_____.	_____.
0354	611.0657 Inlet Covers Type W	21.000 EACH	_____.	_____.
0356	611.2004 Manholes 4-FT Diameter	3.000 EACH	_____.	_____.
0358	611.2005 Manholes 5-FT Diameter	33.000 EACH	_____.	_____.
0360	611.2006 Manholes 6-FT Diameter	34.000 EACH	_____.	_____.
0362	611.2007 Manholes 7-FT Diameter	14.000 EACH	_____.	_____.
0364	611.2008 Manholes 8-FT Diameter	14.000 EACH	_____.	_____.
0366	611.3004 Inlets 4-FT Diameter	172.000 EACH	_____.	_____.
0368	611.3225 Inlets 2x2.5-FT	67.000 EACH	_____.	_____.
0370	611.3230 Inlets 2x3-FT	15.000 EACH	_____.	_____.
0372	611.3901 Inlets Median 1 Grate	21.000 EACH	_____.	_____.
0374	611.3902 Inlets Median 2 Grate	16.000 EACH	_____.	_____.
0376	611.8115 Adjusting Inlet Covers	4.000 EACH	_____.	_____.
0378	611.8120.S Cover Plates Temporary	9.000 EACH	_____.	_____.
0380	611.9800.S Pipe Grates	1.000 EACH	_____.	_____.
0382	611.9900.S Drain Slotted Vane	5.000 EACH	_____.	_____.
0384	612.0106 Pipe Underdrain 6-Inch	23,280.000 LF	_____.	_____.



Proposal Schedule of Items

Proposal ID: 20211214024 Project(s): 1229-04-74

Federal ID(s): WISC 2022106

SECTION: 0001

Contract Items

Alt Set ID:

Alt Mbr ID:

Proposal Line Number	Item ID Description	Approximate Quantity and Units	Unit Price	Bid Amount
0386	612.0206 Pipe Underdrain Unperforated 6-Inch	304.000 LF	_____.	_____.
0388	612.0406 Pipe Underdrain Wrapped 6-Inch	3,259.000 LF	_____.	_____.
0390	614.0150 Anchor Assemblies for Steel Plate Beam Guard	4.000 EACH	_____.	_____.
0392	614.0397 Guardrail Mow Strip Emulsified Asphalt	42.000 SY	_____.	_____.
0394	614.0805 Crash Cushions Permanent Low Maintenance	2.000 EACH	_____.	_____.
0396	614.0905 Crash Cushions Temporary	12.000 EACH	_____.	_____.
0398	614.1100 MGS Guardrail Temporary Thrie Beam Transition	72.000 LF	_____.	_____.
0400	614.2310 MGS Guardrail 3 HS	12.500 LF	_____.	_____.
0402	614.2500 MGS Thrie Beam Transition	39.000 LF	_____.	_____.
0404	614.2610 MGS Guardrail Terminal EAT	1.000 EACH	_____.	_____.
0406	616.0206 Fence Chain Link 6-FT	13,838.000 LF	_____.	_____.
0408	616.0329 Gates Chain Link (width) 0001. 4-FT	1.000 EACH	_____.	_____.
0410	616.0329 Gates Chain Link (width) 0002. 13-FT	1.000 EACH	_____.	_____.
0412	616.0700.S Fence Safety	8,500.000 LF	_____.	_____.
0414	618.0100 Maintenance And Repair of Haul Roads (project) 0100. 1229-04-74	1.000 EACH	_____.	_____.
0416	619.1000 Mobilization	1.000 EACH	_____.	_____.



Proposal Schedule of Items

Proposal ID: 20211214024 Project(s): 1229-04-74

Federal ID(s): WISC 2022106

SECTION: 0001

Contract Items

Alt Set ID:

Alt Mbr ID:

Proposal Line Number	Item ID Description	Approximate Quantity and Units	Unit Price	Bid Amount
0418	620.0200 Concrete Median Blunt Nose	140.000 SF	_____.	_____.
0420	620.0300 Concrete Median Sloped Nose	1,420.000 SF	_____.	_____.
0422	624.0100 Water	660.000 MGAL	_____.	_____.
0424	627.0200 Mulching	102,000.000 SY	_____.	_____.
0426	628.1104 Erosion Bales	200.000 EACH	_____.	_____.
0428	628.1504 Silt Fence	6,960.000 LF	_____.	_____.
0430	628.1520 Silt Fence Maintenance	5,950.000 LF	_____.	_____.
0432	628.1905 Mobilizations Erosion Control	25.000 EACH	_____.	_____.
0434	628.1910 Mobilizations Emergency Erosion Control	40.000 EACH	_____.	_____.
0436	628.2002 Erosion Mat Class I Type A	50,690.000 SY	_____.	_____.
0438	628.2006 Erosion Mat Urban Class I Type A	27,880.000 SY	_____.	_____.
0440	628.2008 Erosion Mat Urban Class I Type B	3,167.000 SY	_____.	_____.
0442	628.2023 Erosion Mat Class II Type B	3,530.000 SY	_____.	_____.
0444	628.6505 Soil Stabilizer Type A	1.000 ACRE	_____.	_____.
0446	628.6510 Soil Stabilizer Type B	17.200 ACRE	_____.	_____.
0448	628.7005 Inlet Protection Type A	78.000 EACH	_____.	_____.
0450	628.7010 Inlet Protection Type B	181.000 EACH	_____.	_____.



Proposal Schedule of Items

Proposal ID: 20211214024 Project(s): 1229-04-74

Federal ID(s): WISC 2022106

SECTION: 0001

Contract Items

Alt Set ID:

Alt Mbr ID:

Proposal Line Number	Item ID Description	Approximate Quantity and Units	Unit Price	Bid Amount
0452	628.7015 Inlet Protection Type C	157.000 EACH	_____.	_____.
0454	628.7020 Inlet Protection Type D	21.000 EACH	_____.	_____.
0456	628.7504 Temporary Ditch Checks	650.000 LF	_____.	_____.
0458	628.7555 Culvert Pipe Checks	42.000 EACH	_____.	_____.
0460	628.7560 Tracking Pads	10.000 EACH	_____.	_____.
0462	628.7570 Rock Bags	220.000 EACH	_____.	_____.
0464	629.0210 Fertilizer Type B	70.000 CWT	_____.	_____.
0466	630.0170 Seeding Mixture No. 70	6.000 LB	_____.	_____.
0468	630.0200 Seeding Temporary	50.000 LB	_____.	_____.
0470	630.0500 Seed Water	3,000.000 MGAL	_____.	_____.
0472	631.0300 Sod Water	910.000 MGAL	_____.	_____.
0474	631.1000 Sod Lawn	4,510.000 SY	_____.	_____.
0476	633.1000 Delineators Barrier Wall	180.000 EACH	_____.	_____.
0478	633.5200 Markers Culvert End	29.000 EACH	_____.	_____.
0480	634.0618 Posts Wood 4x6-Inch X 18-FT	62.000 EACH	_____.	_____.
0482	634.0622 Posts Wood 4x6-Inch X 22-FT	53.000 EACH	_____.	_____.
0484	634.0814 Posts Tubular Steel 2x2-Inch X 14-FT	155.000 EACH	_____.	_____.



Proposal Schedule of Items

Proposal ID: 20211214024 Project(s): 1229-04-74

Federal ID(s): WISC 2022106

SECTION: 0001

Contract Items

Alt Set ID:

Alt Mbr ID:

Proposal Line Number	Item ID Description	Approximate Quantity and Units	Unit Price	Bid Amount
0486	634.0885 Posts Tubular Steel 2x2-Inch X 8.5-FT	13.000 EACH	_____.	_____.
0488	635.0200 Sign Supports Structural Steel HS	6,800.000 LB	_____.	_____.
0490	637.1220 Signs Type I Reflective SH	2,008.500 SF	_____.	_____.
0492	637.2210 Signs Type II Reflective H	2,111.810 SF	_____.	_____.
0494	637.2215 Signs Type II Reflective H Folding	143.960 SF	_____.	_____.
0496	637.2230 Signs Type II Reflective F	507.750 SF	_____.	_____.
0498	638.2101 Moving Signs Type I	2.000 EACH	_____.	_____.
0500	638.2102 Moving Signs Type II	6.000 EACH	_____.	_____.
0502	638.2601 Removing Signs Type I	9.000 EACH	_____.	_____.
0504	638.2602 Removing Signs Type II	177.000 EACH	_____.	_____.
0506	638.3000 Removing Small Sign Supports	187.000 EACH	_____.	_____.
0508	638.3100 Removing Structural Steel Sign Supports	13.000 EACH	_____.	_____.
0510	640.1303.S Pond Liner Clay	2,165.000 CY	_____.	_____.
0512	643.0300 Traffic Control Drums	102,355.000 DAY	_____.	_____.
0514	643.0410 Traffic Control Barricades Type II	667.000 DAY	_____.	_____.
0516	643.0420 Traffic Control Barricades Type III	11,942.000 DAY	_____.	_____.
0518	643.0705 Traffic Control Warning Lights Type A	23,824.000 DAY	_____.	_____.



Proposal Schedule of Items

Proposal ID: 20211214024 Project(s): 1229-04-74

Federal ID(s): WISC 2022106

SECTION: 0001

Contract Items

Alt Set ID:

Alt Mbr ID:

Proposal Line Number	Item ID Description	Approximate Quantity and Units	Unit Price	Bid Amount
0520	643.0715 Traffic Control Warning Lights Type C	20,970.000 DAY	_____.	_____.
0522	643.0800 Traffic Control Arrow Boards	62.000 DAY	_____.	_____.
0524	643.0900 Traffic Control Signs	49,488.000 DAY	_____.	_____.
0526	643.0910 Traffic Control Covering Signs Type I	5.000 EACH	_____.	_____.
0528	643.0920 Traffic Control Covering Signs Type II	99.000 EACH	_____.	_____.
0530	643.1000 Traffic Control Signs Fixed Message	38.750 SF	_____.	_____.
0532	643.1050 Traffic Control Signs PCMS	784.000 DAY	_____.	_____.
0534	643.1055.S Truck or Trailer Mounted Attenuator	10.000 DAY	_____.	_____.
0536	643.1205.S Basic Traffic Queue Warning System	784.000 DAY	_____.	_____.
0538	643.4100.S Traffic Control Interim Lane Closure	10.000 EACH	_____.	_____.
0540	643.5000 Traffic Control	1.000 EACH	_____.	_____.
0542	645.0105 Geotextile Type C	1,190.000 SY	_____.	_____.
0544	645.0111 Geotextile Type DF Schedule A	12,940.000 SY	_____.	_____.
0546	645.0120 Geotextile Type HR	856.000 SY	_____.	_____.
0548	646.1020 Marking Line Epoxy 4-Inch	52,510.000 LF	_____.	_____.
0550	646.1545 Marking Line Grooved Wet Ref Contrast Epoxy 4-Inch	23,640.000 LF	_____.	_____.



Proposal Schedule of Items

Proposal ID: 20211214024 Project(s): 1229-04-74

Federal ID(s): WISC 2022106

SECTION: 0001

Contract Items

Alt Set ID:

Alt Mbr ID:

Proposal Line Number	Item ID Description	Approximate Quantity and Units	Unit Price	Bid Amount
0552	646.1555 Marking Line Grooved Contrast Permanent Tape 4-Inch	3,980.000 LF	_____.	_____.
0554	646.3020 Marking Line Epoxy 8-Inch	3,260.000 LF	_____.	_____.
0556	646.3555 Marking Line Grooved Contrast Permanent Tape 8-Inch	6,390.000 LF	_____.	_____.
0558	646.5020 Marking Arrow Epoxy	31.000 EACH	_____.	_____.
0560	646.5120 Marking Word Epoxy	9.000 EACH	_____.	_____.
0562	646.5320 Marking Railroad Crossings Epoxy	2.000 EACH	_____.	_____.
0564	646.6120 Marking Stop Line Epoxy 18-Inch	562.000 LF	_____.	_____.
0566	646.6220 Marking Yield Line Epoxy 18-Inch	19.000 EACH	_____.	_____.
0568	646.7120 Marking Diagonal Epoxy 12-Inch	4,880.000 LF	_____.	_____.
0570	646.7220 Marking Chevron Epoxy 24-Inch	770.000 LF	_____.	_____.
0572	646.7420 Marking Crosswalk Epoxy Transverse Line 6-Inch	1,865.000 LF	_____.	_____.
0574	646.8120 Marking Curb Epoxy	410.000 LF	_____.	_____.
0576	646.8220 Marking Island Nose Epoxy	11.000 EACH	_____.	_____.
0578	646.9010 Marking Removal Line Water Blasting 4-Inch	146,274.000 LF	_____.	_____.
0580	649.0105 Temporary Marking Line Paint 4-Inch	231,879.000 LF	_____.	_____.



## Proposal Schedule of Items

Proposal ID: 20211214024 Project(s): 1229-04-74

Federal ID(s): WISC 2022106

SECTION: 0001

Contract Items

Alt Set ID:

Alt Mbr ID:

Proposal Line Number	Item ID Description	Approximate Quantity and Units	Unit Price	Bid Amount
0582	649.0760 Temporary Marking Raised Pavement Marker Type I	4,603.000 EACH	_____.	_____.
0584	652.0125 Conduit Rigid Metallic 2-Inch	63.000 LF	_____.	_____.
0586	652.0225 Conduit Rigid Nonmetallic Schedule 40 2-Inch	7,369.000 LF	_____.	_____.
0588	652.0235 Conduit Rigid Nonmetallic Schedule 40 3-Inch	5,220.000 LF	_____.	_____.
0590	652.0605 Conduit Special 2-Inch	600.000 LF	_____.	_____.
0592	652.0800 Conduit Loop Detector	2,616.000 LF	_____.	_____.
0594	653.0135 Pull Boxes Steel 24x36-Inch	10.000 EACH	_____.	_____.
0596	653.0140 Pull Boxes Steel 24x42-Inch	66.000 EACH	_____.	_____.
0598	653.0220 Junction Boxes 18x6x6-Inch	2.000 EACH	_____.	_____.
0600	653.0905 Removing Pull Boxes	20.000 EACH	_____.	_____.
0602	654.0101 Concrete Bases Type 1	24.000 EACH	_____.	_____.
0604	654.0102 Concrete Bases Type 2	9.000 EACH	_____.	_____.
0606	654.0105 Concrete Bases Type 5	11.000 EACH	_____.	_____.
0608	654.0106 Concrete Bases Type 6	2.000 EACH	_____.	_____.
0610	654.0110 Concrete Bases Type 10	3.000 EACH	_____.	_____.
0612	654.0120 Concrete Bases Type 10-Special	8.000 EACH	_____.	_____.





Proposal Schedule of Items

Proposal ID: 20211214024 Project(s): 1229-04-74

Federal ID(s): WISC 2022106

SECTION: 0001

Contract Items

Alt Set ID:

Alt Mbr ID:

Proposal Line Number	Item ID Description	Approximate Quantity and Units	Unit Price	Bid Amount
0614	654.0217 Concrete Control Cabinet Bases Type 9 Special	3.000 EACH	_____.	_____.
0616	654.0230 Concrete Control Cabinet Bases Type L30	1.000 EACH	_____.	_____.
0618	654.1239 Concrete Control Cabinet Bases ITS	1.000 EACH	_____.	_____.
0620	655.0210 Cable Traffic Signal 3-14 AWG	5,400.000 LF	_____.	_____.
0622	655.0230 Cable Traffic Signal 5-14 AWG	1,888.000 LF	_____.	_____.
0624	655.0240 Cable Traffic Signal 7-14 AWG	6,633.000 LF	_____.	_____.
0626	655.0260 Cable Traffic Signal 12-14 AWG	4,848.000 LF	_____.	_____.
0628	655.0320 Cable Type UF 2-10 AWG Grounded	3,502.000 LF	_____.	_____.
0630	655.0510 Electrical Wire Traffic Signals 12 AWG	1,010.000 LF	_____.	_____.
0632	655.0515 Electrical Wire Traffic Signals 10 AWG	16,562.000 LF	_____.	_____.
0634	655.0610 Electrical Wire Lighting 12 AWG	5,424.000 LF	_____.	_____.
0636	655.0620 Electrical Wire Lighting 8 AWG	4,907.000 LF	_____.	_____.
0638	655.0625 Electrical Wire Lighting 6 AWG	3,165.000 LF	_____.	_____.
0640	655.0630 Electrical Wire Lighting 4 AWG	1,745.000 LF	_____.	_____.
0642	655.0700 Loop Detector Lead In Cable	10,075.000 LF	_____.	_____.
0644	655.0800 Loop Detector Wire	10,116.000 LF	_____.	_____.



Proposal Schedule of Items

Proposal ID: 20211214024 Project(s): 1229-04-74

Federal ID(s): WISC 2022106

SECTION: 0001

Contract Items

Alt Set ID:

Alt Mbr ID:

Proposal Line Number	Item ID Description	Approximate Quantity and Units	Unit Price	Bid Amount
0646	655.0900 Traffic Signal EVP Detector Cable	5,400.000 LF	_____.	_____.
0648	656.0200 Electrical Service Meter Breaker Pedestal (location) 2001. MB-RM-40-0086	LS	LUMP SUM	_____.
0650	656.0200 Electrical Service Meter Breaker Pedestal (location) 3001. IH 43 NB Off Ramp/N Katherine Dr & CTH W	LS	LUMP SUM	_____.
0652	656.0200 Electrical Service Meter Breaker Pedestal (location) 3002. IH 43 SB Off Ramp/Port Washington Ln & CTH W	LS	LUMP SUM	_____.
0654	656.0200 Electrical Service Meter Breaker Pedestal (location) 3003. N Port Washington Rd & W County Line Road	LS	LUMP SUM	_____.
0656	656.0400 Electrical Service Main Lugs Only Meter Pedestal (location) 1001. HL-45-RH	LS	LUMP SUM	_____.
0658	656.0500 Electrical Service Breaker Disconnect Box (location) 2001. CB-RM-40-0086	LS	LUMP SUM	_____.
0660	657.0100 Pedestal Bases	19.000 EACH	_____.	_____.
0662	657.0255 Transformer Bases Breakaway 11 1/2-Inch Bolt Circle	21.000 EACH	_____.	_____.
0664	657.0310 Poles Type 3	9.000 EACH	_____.	_____.
0666	657.0322 Poles Type 5-Aluminum	11.000 EACH	_____.	_____.
0668	657.0327 Poles Type 6-Aluminum	1.000 EACH	_____.	_____.
0670	657.0420 Traffic Signal Standards Aluminum 13-FT	8.000 EACH	_____.	_____.
0672	657.0425 Traffic Signal Standards Aluminum 15-FT	4.000 EACH	_____.	_____.



## Proposal Schedule of Items

Proposal ID: 20211214024 Project(s): 1229-04-74

Federal ID(s): WISC 2022106

SECTION: 0001

Contract Items

Alt Set ID:

Alt Mbr ID:

Proposal Line Number	Item ID Description	Approximate Quantity and Units	Unit Price	Bid Amount
0674	657.0430 Traffic Signal Standards Aluminum 10-FT	7.000 EACH	_____.	_____.
0676	657.0609 Luminaire Arms Single Member 4-Inch Clamp 6-FT	13.000 EACH	_____.	_____.
0678	657.0610 Luminaire Arms Single Member 4 1/2- Inch Clamp 6-FT	11.000 EACH	_____.	_____.
0680	658.0173 Traffic Signal Face 3S 12-Inch	42.000 EACH	_____.	_____.
0682	658.0174 Traffic Signal Face 4S 12-Inch	16.000 EACH	_____.	_____.
0684	658.0416 Pedestrian Signal Face 16-Inch	16.000 EACH	_____.	_____.
0686	658.0500 Pedestrian Push Buttons	16.000 EACH	_____.	_____.
0688	658.5069 Signal Mounting Hardware (location) 3001. IH 43 NB Off Ramp/N Katherine Dr & CTH W	LS	LUMP SUM	_____.
0690	658.5069 Signal Mounting Hardware (location) 3002. IH 43 SB Off Ramp/Port Washington Ln & CTH W	LS	LUMP SUM	_____.
0692	658.5069 Signal Mounting Hardware (location) 3003. N Port Washington Rd & W County Line Road	LS	LUMP SUM	_____.
0694	659.1125 Luminaires Utility LED C	41.000 EACH	_____.	_____.
0696	659.2130 Lighting Control Cabinets 120/240 30- Inch	1.000 EACH	_____.	_____.
0698	662.1040.S Ramp Closure Gates 40-FT	3.000 EACH	_____.	_____.
0700	670.0100 Field System Integrator 0100. FTMS	LS	LUMP SUM	_____.



Proposal Schedule of Items

Proposal ID: 20211214024 Project(s): 1229-04-74

Federal ID(s): WISC 2022106

SECTION: 0001

Contract Items

Alt Set ID:

Alt Mbr ID:

Proposal Line Number	Item ID Description	Approximate Quantity and Units	Unit Price	Bid Amount
0702	670.0100 Field System Integrator 3001. CTH W	LS	LUMP SUM	_____.
0704	670.0100 Field System Integrator 3002. W County Line Rd	LS	LUMP SUM	_____.
0706	670.0200 ITS Documentation 0200. FTMS	LS	LUMP SUM	_____.
0708	670.0200 ITS Documentation 3001. CTH W	LS	LUMP SUM	_____.
0710	670.0200 ITS Documentation 3002. W County Line Rd	LS	LUMP SUM	_____.
0712	671.0132 Conduit HDPE 3-Duct 2-Inch	7,625.000 LF		_____.
0714	673.0105 Communication Vault Type 1	4.000 EACH		_____.
0716	673.0200.S Install ITS Field Cabinet	1.000 EACH		_____.
0718	674.0200 Cable Microwave Detector	4,125.000 LF		_____.
0720	674.0300 Remove Cable	495.000 LF		_____.
0722	675.0100 Install Controller Ramp Meter Processor Assembly	1.000 EACH		_____.
0724	675.0300 Install Mounted Controller Microwave Detector Assembly	6.000 EACH		_____.
0726	677.0150 Install Camera Pole 50-FT	1.000 EACH		_____.
0728	677.0200 Install Camera Assembly	1.000 EACH		_____.
0730	678.0006 Install Fiber Optic Cable Outdoor Plant 6-CT	2,655.000 LF		_____.



## Proposal Schedule of Items

Proposal ID: 20211214024 Project(s): 1229-04-74

Federal ID(s): WISC 2022106

SECTION: 0001

Contract Items

Alt Set ID:

Alt Mbr ID:

Proposal Line Number	Item ID Description	Approximate Quantity and Units	Unit Price	Bid Amount
0732	678.0072 Install Fiber Optic Cable Outdoor Plant 72-CT	8,175.000 LF	_____.	_____.
0734	678.0300 Fiber Optic Splice	80.000 EACH	_____.	_____.
0736	678.0400 Fiber Optic Termination	6.000 EACH	_____.	_____.
0738	678.0500 Communication System Testing 0500. FTMS	LS	LUMP SUM	_____.
0740	678.0500 Communication System Testing 3001. CTH W	LS	LUMP SUM	_____.
0742	678.0500 Communication System Testing 3002. W County Line Rd	LS	LUMP SUM	_____.
0744	678.0600 Install Ethernet Switches	4.000 EACH	_____.	_____.
0746	690.0150 Sawing Asphalt	800.000 LF	_____.	_____.
0748	690.0250 Sawing Concrete	23,670.000 LF	_____.	_____.
0750	715.0502 Incentive Strength Concrete Structures	32,906.000 DOL	1.00000	32,906.00
0752	715.0603 Incentive Strength Concrete Barrier	11,525.000 DOL	1.00000	11,525.00
0754	715.0715 Incentive Flexural Strength Concrete Pavement	43,455.000 DOL	1.00000	43,455.00
0756	740.0440 Incentive IRI Ride	27,550.000 DOL	1.00000	27,550.00
0758	ASP.1T0A On-the-Job Training Apprentice at \$5.00/HR	11,200.000 HRS	5.00000	56,000.00
0760	ASP.1T0G On-the-Job Training Graduate at \$5.00/HR	17,280.000 HRS	5.00000	86,400.00



Proposal Schedule of Items

Proposal ID: 20211214024 Project(s): 1229-04-74

Federal ID(s): WISC 2022106

SECTION: 0001

Contract Items

Alt Set ID:

Alt Mbr ID:

Proposal Line Number	Item ID Description	Approximate Quantity and Units	Unit Price	Bid Amount
0762	SPV.0035 Special 0001. Roadway Embankment	87,605.000 CY	_____.	_____.
0764	SPV.0035 Special 4000. HPC Masonry Structures	2,312.000 CY	_____.	_____.
0766	SPV.0045 Special 1001. Truck Entering Warning System	784.000 DAY	_____.	_____.
0768	SPV.0045 Special 1002. Combination Work Zone Digital Speed Limit - Speed Feedback Sign Trailer	784.000 DAY	_____.	_____.
0770	SPV.0060 Special 0010. Maintain and Salvage Crash Cushions Temporary Left In Place	6.000 EACH	_____.	_____.
0776	SPV.0060 Special 0013. Maintain and Salvage Traffic Control Warning Lights Type A Left In Place	22.000 EACH	_____.	_____.
0778	SPV.0060 Special 0014. Maintain and Salvage Traffic Control Barricades Type III Left In Place	11.000 EACH	_____.	_____.
0780	SPV.0060 Special 0020. Marking Contrast Epoxy Special Marking Arrow	25.000 EACH	_____.	_____.
0782	SPV.0060 Special 0021. Marking Contrast Epoxy Special Marking Word	6.000 EACH	_____.	_____.
0784	SPV.0060 Special 0101. Concrete Barrier Transition Type G1	1.000 EACH	_____.	_____.
0786	SPV.0060 Special 0102. Concrete Barrier Transition Type G2	1.000 EACH	_____.	_____.
0788	SPV.0060 Special 0106. Inlets Type Tee Special	2.000 EACH	_____.	_____.
0790	SPV.0060 Special 0107. Temporary Storm Sewer Plug	59.000 EACH	_____.	_____.



Proposal Schedule of Items

Proposal ID: 20211214024 Project(s): 1229-04-74

Federal ID(s): WISC 2022106

SECTION: 0001

Contract Items

Alt Set ID:

Alt Mbr ID:

Proposal Line Number	Item ID Description	Approximate Quantity and Units	Unit Price	Bid Amount
0792	SPV.0060 Special 0110. Reconnect Storm Sewer	108.000 EACH	_____.	_____.
0794	SPV.0060 Special 0120. Mobilizations Emergency Pavement Repair	10.000 EACH	_____.	_____.
0796	SPV.0060 Special 0125. Section Corner Monuments Special	2.000 EACH	_____.	_____.
0798	SPV.0060 Special 0200. Fastening Sewer Access Covers	12.000 EACH	_____.	_____.
0800	SPV.0060 Special 0208. Manhole, 10X10-FT	7.000 EACH	_____.	_____.
0802	SPV.0060 Special 0210. Riser Pipe Grate	2.000 EACH	_____.	_____.
0804	SPV.0060 Special 0601. Baseline CPM Progress Schedule	1.000 EACH	_____.	_____.
0806	SPV.0060 Special 0602. Monthly CPM Progress Schedule Updates	22.000 EACH	_____.	_____.
0808	SPV.0060 Special 0700. Port Washington Pond Outlet Storm Sewer Structure	1.000 EACH	_____.	_____.
0810	SPV.0060 Special 0701. Corrugated Metal Anti-Seep Collar	1.000 EACH	_____.	_____.
0812	SPV.0060 Special 0918. Traffic Control Full Freeway Closure	16.000 EACH	_____.	_____.
0814	SPV.0060 Special 0940. Emergency Response to Traffic Involving Concrete Barrier Temporary	10.000 EACH	_____.	_____.
0816	SPV.0060 Special 0945. Emergency Response to Traffic Involving Crash Cushion	5.000 EACH	_____.	_____.
0818	SPV.0060 Special 1000. Survey Project 1229-04-74	1.000 EACH	_____.	_____.



Proposal Schedule of Items

Proposal ID: 20211214024 Project(s): 1229-04-74

Federal ID(s): WISC 2022106

SECTION: 0001

Contract Items

Alt Set ID:

Alt Mbr ID:

Proposal Line Number	Item ID Description	Approximate Quantity and Units	Unit Price	Bid Amount
0820	SPV.0060 Special 1001. Remove Electrical Service Meter Breaker Pedestal Lighting	1.000 EACH	_____.	_____.
0822	SPV.0060 Special 1002. Removing Municipal Lighting Units	2.000 EACH	_____.	_____.
0824	SPV.0060 Special 1003. Municipal LED Luminaires	9.000 EACH	_____.	_____.
0826	SPV.0060 Special 1004. Concrete Bases Type 2 Modified	6.000 EACH	_____.	_____.
0828	SPV.0060 Special 1005. Salvage Municipal Pole	6.000 EACH	_____.	_____.
0830	SPV.0060 Special 1006. Install Salvaged Municipal Pole	6.000 EACH	_____.	_____.
0832	SPV.0060 Special 1007. Maintenance of Lighting System	1.000 EACH	_____.	_____.
0834	SPV.0060 Special 1008. Lighting System Integrator	1.000 EACH	_____.	_____.
0836	SPV.0060 Special 2000. Removing Electrical Service Meter Breaker Pedestal	1.000 EACH	_____.	_____.
0838	SPV.0060 Special 2001. Removing Controller Cabinet	1.000 EACH	_____.	_____.
0840	SPV.0060 Special 2002. Removing Controller Cabinet Base	1.000 EACH	_____.	_____.
0842	SPV.0060 Special 2008. Remove Pole	1.000 EACH	_____.	_____.
0844	SPV.0060 Special 2013. Ground Rod	6.000 EACH	_____.	_____.
0846	SPV.0060 Special 2015. Refocus Vehicle Detector Assembly	4.000 EACH	_____.	_____.





## Proposal Schedule of Items

Proposal ID: 20211214024 Project(s): 1229-04-74

Federal ID(s): WISC 2022106

SECTION: 0001

Contract Items

Alt Set ID:

Alt Mbr ID:

Proposal Line Number	Item ID Description	Approximate Quantity and Units	Unit Price	Bid Amount
0848	SPV.0060 Special 2016. Install Ethernet Radio	2.000 EACH	_____.	_____.
0850	SPV.0060 Special 2017. Signal Assembly Ramp Control Sidemount	2.000 EACH	_____.	_____.
0852	SPV.0060 Special 2018. Signal Assembly Advance Flasher Type 1	2.000 EACH	_____.	_____.
0854	SPV.0060 Special 2019. Install Salvaged Pole	1.000 EACH	_____.	_____.
0856	SPV.0060 Special 2020. Install Terminal Servers	1.000 EACH	_____.	_____.
0858	SPV.0060 Special 3001. Install Poles Type 9	1.000 EACH	_____.	_____.
0860	SPV.0060 Special 3002. Install Poles Type 10	2.000 EACH	_____.	_____.
0862	SPV.0060 Special 3003. Install Poles Type 9-Special	2.000 EACH	_____.	_____.
0864	SPV.0060 Special 3004. Install Poles Type 10-Special	6.000 EACH	_____.	_____.
0866	SPV.0060 Special 3007. Install Monotube Arms 15-FT	1.000 EACH	_____.	_____.
0868	SPV.0060 Special 3008. Install Monotube Arms 20-FT	1.000 EACH	_____.	_____.
0870	SPV.0060 Special 3010. Install Monotube Arms 30-FT	1.000 EACH	_____.	_____.
0872	SPV.0060 Special 3012. Install Monotube Arms 35-FT-Special	3.000 EACH	_____.	_____.
0874	SPV.0060 Special 3014. Install Monotube Arms 40-FT-Special	5.000 EACH	_____.	_____.



Proposal Schedule of Items

Proposal ID: 20211214024 Project(s): 1229-04-74

Federal ID(s): WISC 2022106

SECTION: 0001

Contract Items

Alt Set ID:

Alt Mbr ID:

Proposal Line Number	Item ID Description	Approximate Quantity and Units	Unit Price	Bid Amount
0876	SPV.0060 Special 3019. Install Luminaire Arms Steel 15-FT	13.000 EACH	_____.	_____.
0878	SPV.0060 Special 3021. Video Detection System Programming	1.000 EACH	_____.	_____.
0880	SPV.0060 Special 3022. Traffic Signal Controller Programming	2.000 EACH	_____.	_____.
0882	SPV.0060 Special 3023. EVP Cabinet Equipment	1.000 EACH	_____.	_____.
0884	SPV.0060 Special 3051. Trnsp & Inst St Furn Traf Sig Cabin IH 43 NB Off R/N Katherine & CTH W	1.000 EACH	_____.	_____.
0886	SPV.0060 Special 3052. Trnsp & Ins St Furn Traf Sig Cab IH 43 SB Off R/Port Wash Ln & CTH W	1.000 EACH	_____.	_____.
0888	SPV.0060 Special 3053. Trnsp Traf Sig & Inter Light Matl IH 43 NB Off R/N Katherine Dr & CTH W	1.000 EACH	_____.	_____.
0890	SPV.0060 Special 3054. Trnsp Traf Sig & Inter Light Matl IH 43 SB Off R/Port Wash Ln & CTH W	1.000 EACH	_____.	_____.
0892	SPV.0060 Special 3055. Trnsp & Inst S-F FO Cable Pigtail 8-CT IH 43 Off R/N Katherine Dr & CTH W	1.000 EACH	_____.	_____.
0894	SPV.0060 Special 3056. Trnsp & Inst S-F FO Cable Pigtail 8-CT IH 43 Off R/Port Wash Ln & CTH W	1.000 EACH	_____.	_____.
0896	SPV.0060 Special 3057. Trnsp & Inst S-F Radar Detec System IH 43 NB Off R/N Katherine Dr & CTH W	1.000 EACH	_____.	_____.



## Proposal Schedule of Items

Proposal ID: 20211214024 Project(s): 1229-04-74

Federal ID(s): WISC 2022106

SECTION: 0001

Contract Items

Alt Set ID:

Alt Mbr ID:

Proposal Line Number	Item ID Description	Approximate Quantity and Units	Unit Price	Bid Amount
0898	SPV.0060 Special 3058. Trnsp & Inst S-F Radar Detetc Syst IH 43 SB Off R/Port Wash Ln & CTH W	1.000 EACH	_____.	_____.
0900	SPV.0060 Special 3059. Trnsp & Inst S-F EVP Heads W/ Conf Lts IH 43 NB Off R/N Katherine & CTH W	1.000 EACH	_____.	_____.
0902	SPV.0060 Special 3060. Trnsp & Inst S-F EVP Heads W/Conf Lts IH 43 SB Off R/Port Wash Ln & CTH W	1.000 EACH	_____.	_____.
0904	SPV.0060 Special 3061. Trnsp & Inst S-F EVP Heads W/Conf Lts CTH W & Donges Bay	1.000 EACH	_____.	_____.
0906	SPV.0060 Special 3062. Trnsp & Inst S-F Muni Sig Cab N Port Washington Rd & W County Line Road	1.000 EACH	_____.	_____.
0908	SPV.0060 Special 3063. Trnsp Trf Sig & Inter Ltg Mat N Port Washington Rd & W County Line Road	1.000 EACH	_____.	_____.
0910	SPV.0060 Special 3064. Trnsp & Inst S-F FO Cable Pigtail 8-CT N Port Wash Rd & W County Line	1.000 EACH	_____.	_____.
0912	SPV.0060 Special 3065. Video Vehicle Detection System N Port Washington Rd & W County Line Rd	1.000 EACH	_____.	_____.
0914	SPV.0060 Special 3066. Trnsp & Inst S-F EVP Heads With Conf Ltg N Port Wash & W County Line	1.000 EACH	_____.	_____.
0916	SPV.0060 Special 4000. Pile Dynamic Analyzer (PDA) Testing	6.000 EACH	_____.	_____.
0918	SPV.0060 Special 4001. Pile Dynamic Analyzer (PDA) Restrikes	6.000 EACH	_____.	_____.



Proposal Schedule of Items

Proposal ID: 20211214024 Project(s): 1229-04-74

Federal ID(s): WISC 2022106

SECTION: 0001

Contract Items

Alt Set ID:

Alt Mbr ID:

Proposal Line Number	Item ID Description	Approximate Quantity and Units	Unit Price	Bid Amount
0920	SPV.0060 Special 4002. Case Pile Wave Analysis Program (CAPWAP) Evaluation	3.000 EACH	_____.	_____.
0922	SPV.0060 Special 4003. Concrete Base Sleeves	1.000 EACH	_____.	_____.
0924	SPV.0060 Special 4004. Temporary Water Diversion Culvert C-45-60	1.000 EACH	_____.	_____.
0926	SPV.0060 Special 4005. Temporary Water Diversion Junction Chamber	1.000 EACH	_____.	_____.
0928	SPV.0060 Special 5000. Adjusting Sanitary Manhole	5.000 EACH	_____.	_____.
0930	SPV.0060 Special 5001. Reconstruct Sanitary Manhole	14.000 EACH	_____.	_____.
0932	SPV.0060 Special 5002. Furnish Sanitary Manhole Cover	8.000 EACH	_____.	_____.
0934	SPV.0060 Special 5010. Adjusting Water Valve Boxes	24.000 EACH	_____.	_____.
0936	SPV.0060 Special 5020. Hydrant Assembly Relocation	4.000 EACH	_____.	_____.
0938	SPV.0060 Special 5030. Valve Stem Extension and New Valve Box	4.000 EACH	_____.	_____.
0940	SPV.0075 Special 0601. Pavement Cleanup Project 1229-04-74	1,500.000 HRS	_____.	_____.
0942	SPV.0085 Special 0003. Seeding Mixture No. 30 Special	1,826.000 LB	_____.	_____.
0944	SPV.0090 Special 0001. Concrete Curb and Gutter 54-Inch Type A	400.000 LF	_____.	_____.



## Proposal Schedule of Items

Proposal ID: 20211214024 Project(s): 1229-04-74

Federal ID(s): WISC 2022106

SECTION: 0001

Contract Items

Alt Set ID:

Alt Mbr ID:

Proposal Line Number	Item ID Description	Approximate Quantity and Units	Unit Price	Bid Amount
0946	SPV.0090 Special 0002. Concrete Barrier Type S42 Special	25,529.000 LF	_____.	_____.
0948	SPV.0090 Special 0003. Concrete Barrier Type S56 Special	8,923.000 LF	_____.	_____.
0950	SPV.0090 Special 0004. Salvage and Reinstall Fence	155.000 LF	_____.	_____.
0952	SPV.0090 Special 0015. Maintain and Salvage Temporary Precast Concrete Barrier Left In Place	2,100.000 LF	_____.	_____.
0954	SPV.0090 Special 0201. Storm Sewer Pipe PVC, 6- Inch	8.000 LF	_____.	_____.
0956	SPV.0090 Special 0301. Heavy Duty Silt Fence	2,500.000 LF	_____.	_____.
0958	SPV.0090 Special 0600. Concrete Barrier Temporary Precast Left In Place	4,518.000 LF	_____.	_____.
0960	SPV.0090 Special 0910. Glare Screens Temporary	14,700.000 LF	_____.	_____.
0962	SPV.0090 Special 2001. Outdoor Rated Network Cable	420.000 LF	_____.	_____.
0964	SPV.0090 Special 5010. 4-Inch Water Main By- Pass Piping	209.000 LF	_____.	_____.
0966	SPV.0135 Special 0001. Field Office Special	18.000 MON	_____.	_____.
0968	SPV.0165 Special 4000. Longitudinal Grooving Bridge Deck	18,118.000 SF	_____.	_____.
0970	SPV.0165 Special 4001. Wall Concrete Panel Mechanically Stabilized Earth R-40-653	3,860.000 SF	_____.	_____.



## Proposal Schedule of Items

Proposal ID: 20211214024 Project(s): 1229-04-74

Federal ID(s): WISC 2022106

SECTION: 0001

Contract Items

Alt Set ID:

Alt Mbr ID:

Proposal Line Number	Item ID Description	Approximate Quantity and Units	Unit Price	Bid Amount
0972	SPV.0165 Special 4002. Wall Concrete Panel Mechanically Stabilized Earth R-40-654	4,321.000 SF	_____.	_____.
0974	SPV.0165 Special 4003. Wall Concrete Panel Mechanically Stabilized Earth R-45-27	9,426.000 SF	_____.	_____.
0976	SPV.0165 Special 4004. Wall Concrete Panel Mechanically Stabilized Earth R-45-28	15,040.000 SF	_____.	_____.
0978	SPV.0165 Special 4005. Wall Concrete Panel Mechanically Stabilized Earth R-45-29	2,771.000 SF	_____.	_____.
0980	SPV.0165 Special 4006. Wall Concrete Panel Mechanically Stabilized Earth R-45-33	2,761.000 SF	_____.	_____.
0982	SPV.0165 Special 4007. Wall Concrete Panel Mechanically Stabilized Earth R-45-34	2,521.000 SF	_____.	_____.
0984	SPV.0165 Special 4008. Wall Concrete Panel Mechanically Stabilized Earth R-45-44	362.000 SF	_____.	_____.
0986	SPV.0180 Special 0001. Topsoil Special	106,480.000 SY	_____.	_____.
0988	SPV.0180 Special 0003. Concrete Pavement 8-Inch Special	23,500.000 SY	_____.	_____.
0990	SPV.0180 Special 0004. Concrete Pavement 10.5- Inch Special	120,060.000 SY	_____.	_____.
0992	SPV.0180 Special 0106. Asphaltic Material Binder	2,450.000 SY	_____.	_____.
0994	SPV.0195 Special 0001. HMA Longitudinal Joint Repair	50.000 TON	_____.	_____.
0996	SPV.0195 Special 0002. HMA Transverse Joint Repair	20.000 TON	_____.	_____.



Proposal Schedule of Items

Proposal ID: 20211214024 Project(s): 1229-04-74

Federal ID(s): WISC 2022106

SECTION: 0001

Contract Items

Alt Set ID:

Alt Mbr ID:

Proposal Line Number	Item ID Description	Approximate Quantity and Units	Unit Price	Bid Amount
0998	SPV.0195 Special 4000. Excavation, Hauling, and Disposal of Creosote Contaminated Soil	1,907.000 TON	_____.	_____.
1000	SPV.0060 Special 0015. Maintain Traffic Control Signs Left In Place	316.000 EACH	_____.	_____.
1002	SPV.0060 Special 0950. Exposing Existing Infrastructure Paved Area	10.000 EACH	_____.	_____.
1004	SPV.0060 Special 0955. Exposing Existing Infrastructure Unpaved Area	10.000 EACH	_____.	_____.
1006	SPV.0090 Special 0016. Maintain Temporary Precast Concrete Barrier Left In Place	10,236.000 LF	_____.	_____.
1008	603.8500 Anchoring Concrete Barrier Temporary Precast	3,872.000 LF	_____.	_____.
Section: 0001			Total:	_____.
			Total Bid:	_____.

