



Wisconsin Department of Transportation

Division of Transportation Systems Development

Bureau of Project Development
4822 Madison Yards Way, 4th Floor South
Madison, WI 53705

January 27, 2022

Telephone: (608) 266-1631
Facsimile (FAX): (608) 266-8459

NOTICE TO ALL CONTRACTORS:

Proposal #15: 2718-04-71, WISC 2022167
W St. Paul Avenue
Mountain Ave to Madison St
Local Street
Waukesha County

Letting of November 8, 2022

This is Addendum No. 01, which provides for the following:

Schedule of Items:

Revised Bid Item Quantities					
Bid Item	Item Description	Unit	Old Quantity	Revised Quantity	Proposal Total
SPV.0060.13	Sanitary Manhole 48-Inch	EA	3	1	4
SPV.0090.10	PVC Sanitary Sewer Pipe 8-Inch	LF	296	142	438

Deleted Bid Item Quantities					
Bid Item	Item Description	Unit	Old Quantity	Revised Quantity	Proposal Total
SPV.0090.04	CIPP Sanitary Sewer Pipe 8-Inch	LF	179	-179	0

Plan Sheets:

Revised Plan Sheets	
Plan Sheet	Plan Sheet Title (brief description of changes to sheet)
76	Sanitary sewer/CIPP. Changed from CIPP to a sewer relay.
77	Sanitary sewer/CIPP. Changed from CIPP to a sewer relay. Added one sanitary manhole
240	MISC Quantities. Revised the 48-inch manhole quantity
241	MISC Quantities. Revised the 8 Inch CIPP quantity and 8 Inch PVC quantity

Schedule of Items

Attached, dated January 27, 2022, are the revised Schedule of Items Pages 12, 15 and 16.

Plan Sheets

The following 8½ x 11-inch sheets are attached and made part of the plans for this proposal:

Revised: 76, 77, 240, and 241

The responsibility for notifying potential subcontractors and suppliers of these changes remains with the prime contractor.

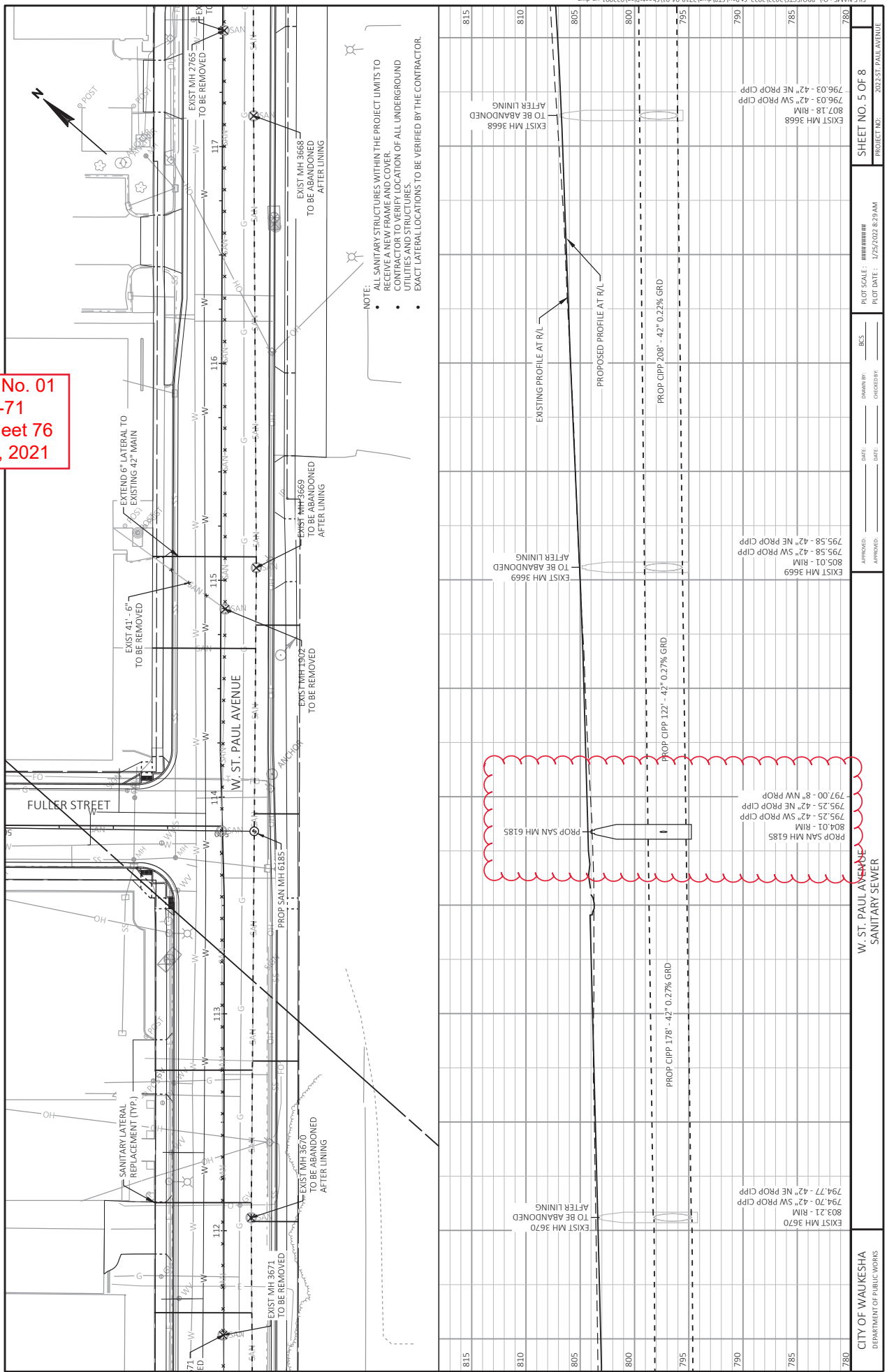
Sincerely,

Mike Coleman

Proposal Development Specialist
Proposal Management Section

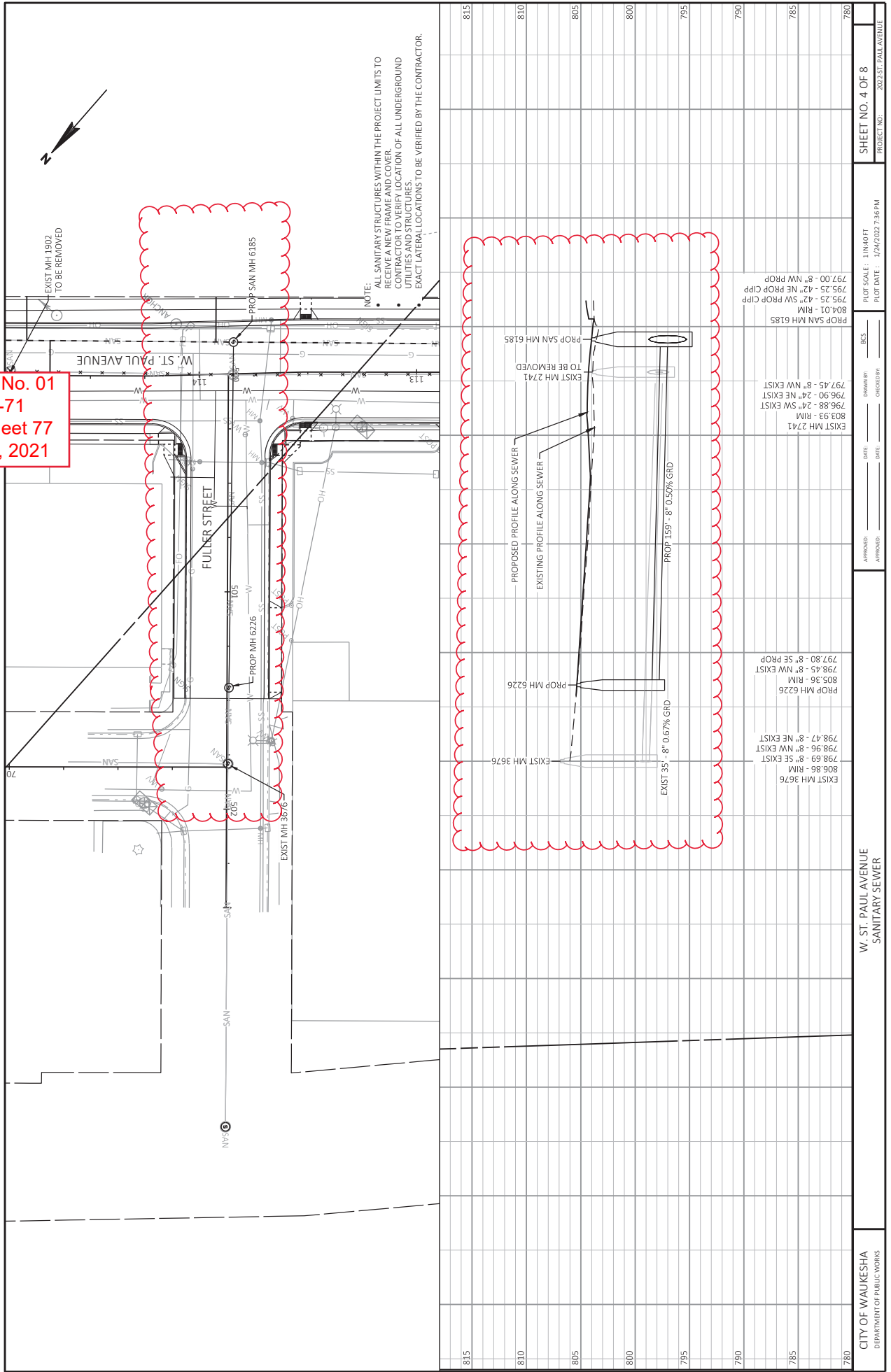
END OF ADDENDUM

Addendum No. 01
 ID 2718-04-71
 Revised Sheet 76
 January 27, 2021



- NOTE:
- ALL SANITARY STRUCTURES WITHIN THE PROJECT LIMITS TO RECEIVE A NEW FRAME AND COVER.
 - CONTRACTOR TO VERIFY LOCATION OF ALL UNDERGROUND UTILITIES AND STRUCTURES.
 - EXACT LATERAL LOCATIONS TO BE VERIFIED BY THE CONTRACTOR.

**Addendum No. 01
ID 2718-04-71
Revised Sheet 77
January 27, 2021**



Addendum No. 01
ID 2718-04-71
Revised Sheet 240
January 27, 2021

ROADWAY		STRUCTURE ID	STA	OFFSET	SPV.0060.11 ABANDONING SANITARY SEWER MANHOLES	EA	204.9060.5.02 REMOVING SANITARY SEWER MANHOLES	EA	SPV.0060.12 ADJUSTING SANITARY SEWER MANHOLES	EA	SPV.0060.13 48 INCH DIA SANITARY MANHOLE	EA	SPV.0060.14 72 INCH DIA SANITARY MANHOLE	EA
W. ST PAUL AVE	EXIST MH 3686	STA 103+09.18	1.6' RT	1										
	EXIST MH 3687	STA 104+78.01	0.1' RT	1										
	PROP SAN MH 6184	STA 106+71.79	0.2' LT	1										
	EXIST MH 3675	STA 106+95.84	0.1' RT	1										
	EXIST MH 3673	STA 109+13.42	1.5' RT	1										
	EXIST MH 3671	STA 111+51.88	0.3' LT	1										
	EXIST MH 2741	STA 113+84.34	0.4' LT	1										
	EXIST MH 1902	STA 114+86.70	2.0' RT	1										
	EXIST MH 2765	STA 117+53.51	0.7' RT	1										
	EXIST MH 3666	STA 119+31.75	1.6' LT	1										
EXIST MH 2764	STA 119+77.54	0.2' RT	1											
EXIST MH 1112	STA 120+17.87	0.5' LT	1											
EXIST MH 1113	STA 121+21.85	2.2' LT	1											
EXIST MH 2763	STA 121+46.44	2.3' LT	1											
EXIST MH 3682	STA 303+81.86	52.6' LT	1											
EXIST MH 3674	STA 305+04.34	21.9' RT	1											
EXIST MH 3672	STA 109+13.89	14.9' RT	1											
EXIST MH 3670	STA 112+06.01	12.6' RT	1											
PROP SAN MH 6185	STA 113+83.83	14.6' RT	1											
EXIST MH 3669	STA 115+05.82	16.3' RT	1											
EXIST MH 3668	STA 117+14.16	14.4' RT	1											
EXIST MH 3667	STA 119+14.67	13.2' RT	1											
EXIST MH 5894	STA 600+26.18	0.4' RT	1											
PROP SAN MH 6187	STA 600+26.18	0.4' RT	1											
PROP SAN MH 6186	STA 601+50.28	0.1' LT	1											
EXIST MH 3941	STA 602+78.72	0.0' LT/RT	1											
EXIST MH 1128	STA 604+90.95	0.1' LT	1											
PROP SAN MH 6226	sb 501+44.26	0.7' LT	1											
TOTAL					4	8	11	4	1	4	1			

ALL CATEGORY 0020 UNLESS OTHERWISE NOTED

Addendum No. 01
ID 2718-04-71
Revised Sheet 241
January 27, 2021

ROADWAY	FROM STRUCTURE	TO STRUCTURE	SANITARY SEWER PIPE		SANITARY SEWER MAIN		SANITARY SEWER PIPE		SANITARY SEWER PIPE		SANITARY SEWER PIPE		SANITARY SEWER PIPE		SANITARY SEWER PIPE	
			SPV.0090.04 8 INCH CIPP	SPV.0090.05 10 INCH CIPP	SPV.0090.06 18 INCH CIPP	SPV.0090.07 24 INCH CIPP	SPV.0090.08 42 INCH CIPP	SPV.0090.09 48 INCH CIPP	SPV.0090.10 8 INCH PVC	SPV.0090.11 10 INCH PVC	LF	UF	LF	UF	LF	UF
W. ST PAUL AVE	EXIST MH 3685	EXIST MH 3686	--	249	--	--	--	--	--	--	--	--	--	--	--	--
	EXIST MH 3686	EXIST MH 3687	--	169	--	--	--	--	--	--	--	--	--	--	--	--
	EXIST MH 3687	PROP SAN MH 6184	--	194	--	--	--	--	--	--	--	--	--	--	--	--
	PROP SAN MH 6184	EXIST MH 3674	--	--	--	--	--	--	--	--	--	--	--	--	12	--
	EXIST MH 3666	EXIST MH 2764	--	--	--	--	46	--	--	--	--	--	--	--	--	--
	EXIST MH 2764	EXIST MH 1112	--	--	--	--	40	--	--	--	--	--	--	--	--	--
	EXIST MH 1112	EXIST MH 1113	--	--	--	--	104	--	--	--	--	--	--	--	--	--
	EXIST MH 3682	EXIST MH 3674	--	--	--	--	--	--	149	--	--	--	--	--	--	--
	EXIST MH 3674	EXIST MH 3672	--	--	--	--	--	--	242	--	--	--	--	--	--	--
	EXIST MH 3672	EXIST MH 3670	--	--	--	--	--	--	292	--	--	--	--	--	--	--
WISCONSIN AVE	EXIST MH 3670	PROP SAN MH 6185	--	--	--	--	--	--	178	--	--	--	--	--	--	--
	EXIST MH 3670	EXIST MH 3669	--	--	--	--	--	--	122	--	--	--	--	--	--	--
	EXIST MH 3669	EXIST MH 3668	--	--	--	--	--	--	208	--	--	--	--	--	--	--
	EXIST MH 3668	EXIST MH 3667	--	--	--	--	--	--	201	--	--	--	--	--	--	--
W. ST PAUL AVE	EXIST MH 3667	EXIST MH 3666	--	--	--	--	--	--	23	--	--	--	--	--	--	--
	EXIST MH 3666	EXIST MH 3665	--	--	--	--	--	--	--	--	--	--	--	--	--	--
	EXIST MH 3665	PROP SAN MH 6226	--	--	--	--	--	--	--	--	--	--	--	159	--	--
	PROP SAN MH 6226	EXIST MH 3676	--	--	--	--	--	--	--	--	--	--	--	--	--	--
MADISON ST	EXIST MH 2741	EXIST MH 3676	--	--	--	--	--	--	--	--	--	--	--	124	--	--
	EXIST MH 3676	PROP SAN MH 6186	--	--	--	--	--	--	--	--	--	--	--	155	--	--
	PROP SAN MH 6186	EXIST MH 1112	--	--	--	--	--	--	--	--	--	--	--	--	--	--
	EXIST MH 1112	EXIST MH 3643	--	--	--	--	--	--	--	--	--	--	--	--	--	--
RIVERWALK DR	EXIST MH 3643	EXIST MH 3642	--	--	--	--	--	--	--	--	--	--	--	267	--	--
	EXIST MH 3642	EXIST MH 3647/8	--	--	--	--	--	--	--	--	--	--	--	275	--	--
	EXIST MH 3647/8	EXIST MH 3645/6	--	--	--	--	--	--	--	--	--	--	--	190	--	--
	EXIST MH 3645/6	EXIST MH 3649	--	--	133	--	399	--	--	--	--	--	--	59	--	--
TOTAL			0	612	133	399	1,214	1,182	438	12						

ALL CATEGORY 0020 UNLESS OTHERWISE NOTED



Proposal Schedule of Items

Proposal ID: 20220208015 Project(s): 2718-04-71

Federal ID(s): WISC 2022167

SECTION: 0001 Roadway Items

Alt Set ID: Alt Mbr ID:

Proposal Line Number	Item ID Description	Approximate Quantity and Units	Unit Price	Bid Amount
0340	SPV.0060 Special 01. Remove and Salvage Existing Street Lighting Unit	27.000 EACH	_____.	_____.
0342	SPV.0060 Special 02. Remove and Dispose of Existing Street Light Controller	1.000 EACH	_____.	_____.
0344	SPV.0060 Special 03. Lighting Control Cabinet	1.000 EACH	_____.	_____.
0346	SPV.0060 Special 04. Install City Furnished Pole & 8-Foot Arm LED Luminaire	14.000 EACH	_____.	_____.
0348	SPV.0060 Special 05. Install City Furnished Post Top Pole LED Luminaire	14.000 EACH	_____.	_____.
0350	SPV.0060 Special 06. Install City-Furnished Street Light Luminaire on Traffic Signal	8.000 EACH	_____.	_____.
0352	SPV.0060 Special 07. Install Existing Fiber Optic Communication Conduit into New Pull Box	3.000 EACH	_____.	_____.
0354	SPV.0060 Special 08. Communications Vault 24x36	12.000 EACH	_____.	_____.
0356	SPV.0060 Special 09. Traffic Signal Controller Programming W St Paul Ave & Wisconsin Ave	1.000 EACH	_____.	_____.
0358	SPV.0060 Special 10. Traffic Signal Controller Programming W St Paul Ave & Madison St	1.000 EACH	_____.	_____.
0360	SPV.0060 Special 11. Abandoning Sanitary Sewer Manholes	4.000 EACH	_____.	_____.
0362	SPV.0060 Special 12. Adjusting Sanitary Sewer Manholes	11.000 EACH	_____.	_____.
0364	SPV.0060 Special 13. Sanitary Manhole 48-Inch	4.000 EACH	_____.	_____.



Proposal Schedule of Items

Proposal ID: 20220208015 Project(s): 2718-04-71

Federal ID(s): WISC 2022167

SECTION: 0001

Roadway Items

Alt Set ID:

Alt Mbr ID:

Proposal Line Number	Item ID Description	Approximate Quantity and Units	Unit Price	Bid Amount
0418	SPV.0060 Special 43. Furnish and Install Emergency Vehicle Preemption System W St Paul Ave & Madi	1.000 EACH	_____.	_____.
0420	SPV.0060 Special 44. Relocate Existing Wireless Communication Antenna	1.000 EACH	_____.	_____.
0422	SPV.0060 Special 45. Furnish and Install Vehicle Video Detection System W St Paul Ave & Wisconsin	1.000 EACH	_____.	_____.
0424	SPV.0060 Special 46. Furnish and Install Vehicle Video Detection System W St Paul Ave & Madison S	1.000 EACH	_____.	_____.
0426	SPV.0060 Special 47. Temporary Street Lighting	1.000 EACH	_____.	_____.
0428	SPV.0090 Special 01. Remove and Dispose of Existing Wire and Abandon Conduit In Place	4,050.000 LF	_____.	_____.
0430	SPV.0090 Special 02. Abandoning Storm Sewer	196.000 LF	_____.	_____.
0432	SPV.0090 Special 03. Abandoning Sanitary Sewer Pipe	253.000 LF	_____.	_____.
0436	SPV.0090 Special 05. CIPP Sanitary Sewer Pipe 10-inch	612.000 LF	_____.	_____.
0438	SPV.0090 Special 06. CIPP Sanitary Sewer Pipe 18-inch	133.000 LF	_____.	_____.
0440	SPV.0090 Special 07. CIPP Sanitary Sewer Pipe 24-inch	399.000 LF	_____.	_____.
0442	SPV.0090 Special 08. CIPP Sanitary Sewer Pipe 42-inch	1,214.000 LF	_____.	_____.



Proposal Schedule of Items

Proposal ID: 20220208015 Project(s): 2718-04-71

Federal ID(s): WISC 2022167

SECTION: 0001 Roadway Items

Alt Set ID: Alt Mbr ID:

Proposal Line Number	Item ID Description	Approximate Quantity and Units	Unit Price	Bid Amount
0444	SPV.0090 Special 09. CIPP Sanitary Sewer Pipe 48-inch	1,182.000 LF	_____.	_____.
0446	SPV.0090 Special 10. PVC Sanitary Sewer Pipe 8-inch	438.000 LF	_____.	_____.
0448	SPV.0090 Special 11. PVC Sanitary Sewer Pipe 10-inch	12.000 LF	_____.	_____.
0450	SPV.0090 Special 12. Sanitary Sewer Lateral Replacement 6-inch	648.000 LF	_____.	_____.
0452	SPV.0090 Special 13. Furnish and Install Water Main and Fittings 8-inch	270.000 LF	_____.	_____.
0454	SPV.0090 Special 14. Furnish and Install Water Main and Fittings 12-inch	2,055.000 LF	_____.	_____.
0456	SPV.0090 Special 15. Furnish and Install Water Main and Fittings 16-inch Class 52	490.000 LF	_____.	_____.
0458	SPV.0090 Special 16. Clean and Televise Sanitary Sewer	1,075.000 LF	_____.	_____.
0460	SPV.0090 Special 16. Construction Staking Watermain	2,755.000 LF	_____.	_____.
0462	SPV.0090 Special 17. Clean and Televise Storm Sewer	5,000.000 LF	_____.	_____.
0464	SPV.0090 Special 19. Conduit HDPE 1-Duct 3-Inch	1,911.000 LF	_____.	_____.
Section: 0001			Total:	_____.
			Total Bid:	_____.

