



Wisconsin Department of Transportation

January 29, 2022

Division of Transportation Systems Development

Bureau of Project Development
4822 Madison Yards Way, 4th Floor South
Madison, WI 53705

Telephone: (608) 266-1631
Facsimile (FAX): (608) 266-8459

NOTICE TO ALL CONTRACTORS:

Proposal #41: 1020-02-83, WISC 2022204
Hudson – Baldwin; Carmichael
Road Bridge B-55-0118
IH 094
St Croix County

Letting of February 8, 2022

This is Addendum No. 01, which provides for the following:

Special Provisions:

Added Special Provisions	
Article No.	Description
22	Temporary Detectable Warning Field

Schedule of Items:

Revised Bid Item Quantities					
Bid Item	Item Description	Unit	Old Quantity	Revised Quantity	Proposal Total
643.0420	Traffic Control Barricades Type III	DAY	402	17	419
643.0705	Traffic Control Warning Lights Type A	DAY	860	34	894
643.0900	Traffic Control Signs	DAY	3281	28	3309
644.1810	Temporary Pedestrian Barricade	LF	1240	10	1250
649.0150	Temporary Marking Line Removable Tape 4-inch	LF	17100	-800	16300

Added Bid Item Quantities					
Bid Item	Item Description	Unit	Old Quantity	Revised Quantity	Proposal Total
SPV.0045.01	Temporary Detectable Warning Field	DAY	0	10	10

Deleted Bid Item Quantities					
Bid Item	Item Description	Unit	Old Quantity	Revised Quantity	Proposal Total
643.0410	Traffic Control Barricades Type II	DAY	28	-28	0

Plan Sheets:

Revised Plan Sheets	
Plan Sheet	Plan Sheet Title (brief description of changes to sheet)
23	Traffic Control – Stage 1A (revised sign sizes)
24	Traffic Control – Stage 1A (added signs and barricade, revised SDD note)
26	Traffic Control – Stage 1B (revised sign size)
30	Traffic Control – Stage 2A (revised sign size)
31	Traffic Control – Stage 2A (revised sign size, size message, and revised SDD note)
32	Traffic Control – Stage 2B (revised sign message, removed temp markings, revised location of temporary pedestrian barricade)
33	Traffic Control – Stage 2B (revised sign message, sign size, removed temp markings, added Temporary Detectable Warning Field)
35	Traffic Control – Stage 2C (revised sign size)
37	Traffic Control – Stage 3 (revised sign size)
38	Traffic Control – Stage 3 (added sign and barricade)
51	Miscellaneous Quantities (revised Traffic Control table and quantities; revised Temporary Pedestrian Items table and quantities, added Temporary Detectable Warning Field item)
52	Miscellaneous Quantities (revised Temporary Marking Items table and quantity for removable tape 4-inch)

Added Plan Sheets	
Plan Sheet	Plan Sheet Title (brief description of changes to sheet)
102A, B	Standard Detail Drawing – Channelizing Devices added
110A	Standard Detail Drawing – Traffic Control, Lane Shift, Multi- Lane Divided added
128A	Standard Sign Plate – M4-60 L&R added

Revised Plan Sheets	
Plan Sheet	Plan Sheet Title (brief description of changes to sheet)
23	Traffic Control – Stage 1A (revised sign sizes)
24	Traffic Control – Stage 1A (added signs and barricade, revised SDD note)
26	Traffic Control – Stage 1B (revised sign size)
30	Traffic Control – Stage 2A (revised sign size)
31	Traffic Control – Stage 2A (revised sign size, size message, and revised SDD note)
32	Traffic Control – Stage 2B (revised sign message, removed temp markings, revised location of temporary pedestrian barricade)
33	Traffic Control – Stage 2B (revised sign message, sign size, removed temp markings, added Temporary Detectable Warning Field)
35	Traffic Control – Stage 2C (revised sign size)
37	Traffic Control – Stage 3 (revised sign size)
38	Traffic Control – Stage 3 (added sign and barricade)
51	Miscellaneous Quantities (revised Traffic Control table and quantities; revised Temporary Pedestrian Items table and quantities, added Temporary Detectable Warning Field item)
52	Miscellaneous Quantities (revised Temporary Marking Items table and quantity for removable tape 4-inch)

The responsibility for notifying potential subcontractors and suppliers of these changes remains with the prime contractor.

Sincerely,

Mike Coleman

Proposal Development Specialist
Proposal Management Section

ADDENDUM NO. 01

1020-02-83

January 29, 2022

Special Provisions

21. Temporary Detectable Warning Field, SPV.0045.01

A Description

This special provision describes providing, maintaining, and removing temporary detectable warning fields.

B Materials

Furnish yellow detectable warning fields conforming to Americans with Disabilities Act Accessibility Guidelines. Use either an engineer-approved surface-applied type or cast iron from the department's approved products list.

C Construction

Provide and maintain temporary detectable warning fields, throughout the project duration.

Remove and dispose temporary curb detectable warning fields when no longer required. Repair damage done during removal as the engineer directs.

D Measurement

The department will measure temporary detectable warning fields by the calendar day acceptably completed, measured only on days when not obstructed by construction operations.

E Payment

The department will pay for measured quantities at the contract unit price under the following bid item:

ITEM NUMBER	DESCRIPTION	UNIT
SPV.0045.01	Temporary Detectable Warning Field	DAY

Payment is full compensation for providing, maintaining, and removing temporary detectable warning fields.

Schedule of Items

Attached, dated January 29, 2022, are the revised Schedule of Items Pages 1 – 8.

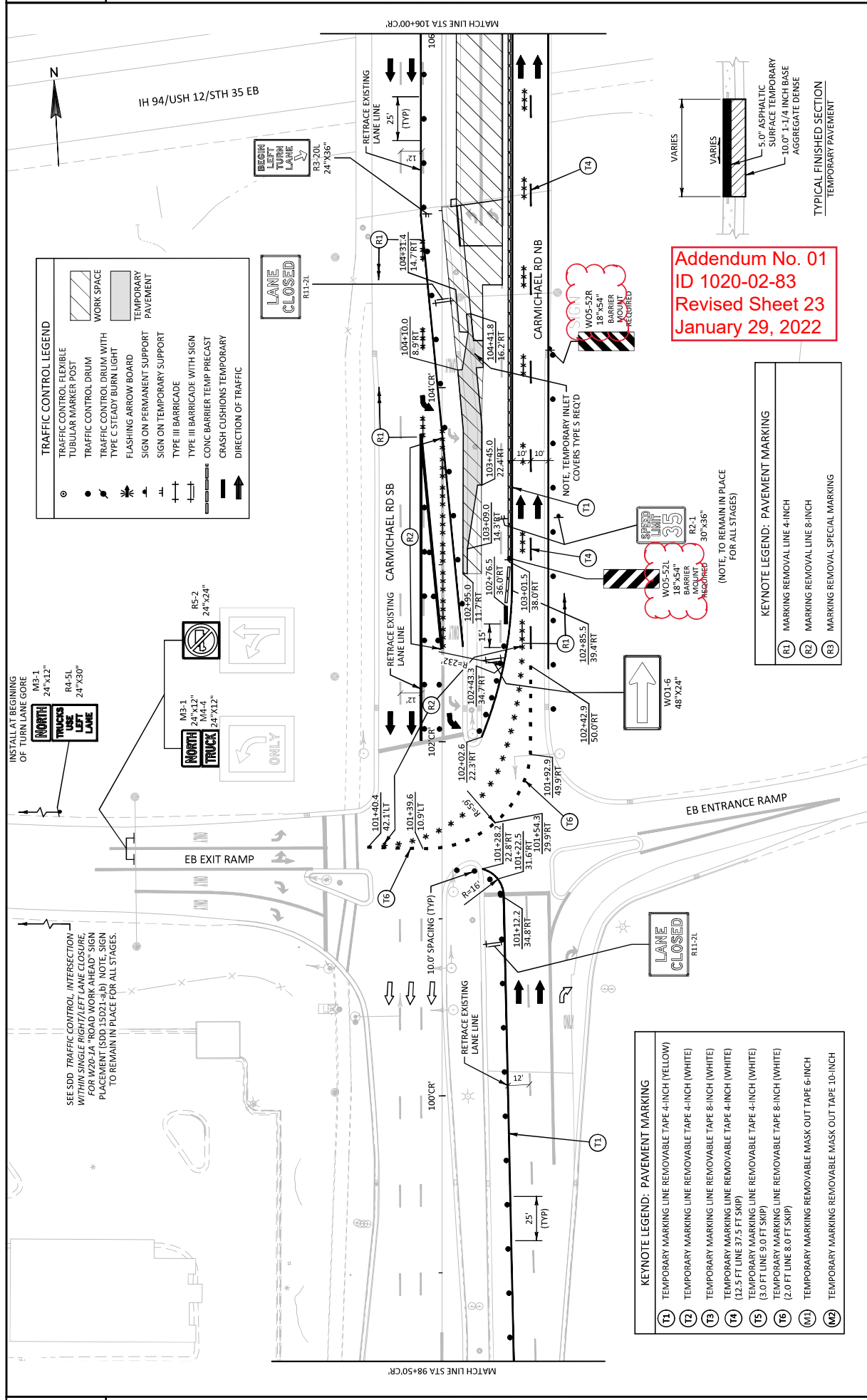
Plan Sheets

The following 8½ x 11-inch sheets are attached and made part of the plans for this proposal:

Revised: 23, 24, 26, 30, 31, 32, 33, 35, 37, 38, 51 and 52.

Added: 102A-B, 110A, and 128A.

END OF ADDENDUM



TRAFFIC CONTROL LEGEND

○	TRAFFIC CONTROL FLEXIBLE TUBULAR MARKER POST
●	TRAFFIC CONTROL DRUM WITH TYPE C STEADY BURN LIGHT
⚡	FLASHING ARROW BOARD
⊥	SIGN ON PERMANENT SUPPORT
⊥	SIGN ON TEMPORARY SUPPORT
⊥	TYPE III BARRICADE
⊥	TYPE III BARRICADE WITH SIGN
⊥	CONC BARRIER TEMP PRECAST
⊥	CRASH CUSHIONS TEMPORARY
↑	DIRECTION OF TRAFFIC
▨	WORK SPACE
▨	TEMPORARY PAVEMENT

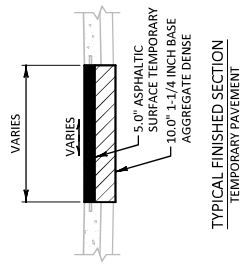
KEYNOTE LEGEND: PAVEMENT MARKING

T1	TEMPORARY MARKING LINE REMOVABLE TAPE 4-INCH (YELLOW)
T2	TEMPORARY MARKING LINE REMOVABLE TAPE 4-INCH (WHITE)
T3	TEMPORARY MARKING LINE REMOVABLE TAPE 4-INCH (WHITE)
T4	TEMPORARY MARKING LINE REMOVABLE TAPE 4-INCH (WHITE) (12.5 FT LINE 37.5 FT SKIP)
T5	TEMPORARY MARKING LINE REMOVABLE TAPE 4-INCH (WHITE) (3.0 FT LINE 9.0 FT SKIP)
T6	TEMPORARY MARKING LINE REMOVABLE TAPE 8-INCH (WHITE) (2.0 FT LINE 8.0 FT SKIP)
M1	TEMPORARY MARKING REMOVABLE MASK OUT TAPE 6-INCH
M2	TEMPORARY MARKING REMOVABLE MASK OUT TAPE 10-INCH

KEYNOTE LEGEND: PAVEMENT MARKING

R1	MARKING REMOVAL LINE 4-INCH
R2	MARKING REMOVAL LINE 8-INCH
R3	MARKING REMOVAL SPECIAL MARKING

Addendum No. 01
ID 1020-02-83
Revised Sheet 23
January 29, 2022



SEE SDD TRAFFIC CONTROL INTERSECTION WITHIN SINGLE RIGHT/LEFT LANE CLOSURE, FOR W20-1A "ROAD WORK AHEAD" SIGN PLACEMENT (SDD 15D21-4b) NOTE, SIGN TO REMAIN IN PLACE FOR ALL STAGES.

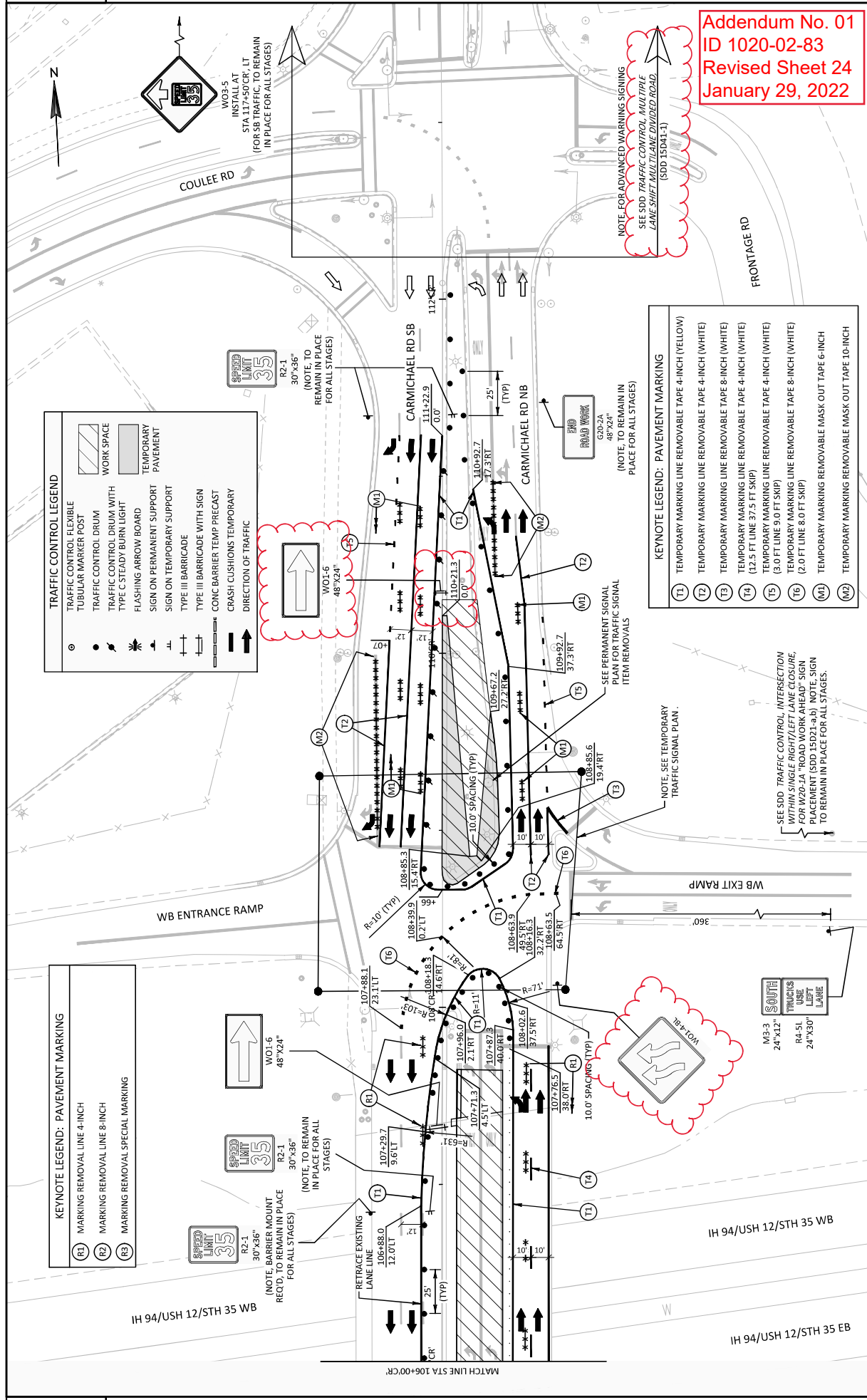
INSTALL AT BEGINNING OF TURN LANE GORE

M3-1 24"x12"
 R4-5L 24"x30"

M3-1 24"x12"
 M4-4 24"x12"

R5-2 24"x24"





Addendum No. 01
ID 1020-02-83
Revised Sheet 24
January 29, 2022

TRAFFIC CONTROL LEGEND

	TRAFFIC CONTROL FLEXIBLE
	TUBULAR MARKER POST
	TRAFFIC CONTROL DRUM WITH TYPE C STEADY BURN LIGHT
	FLASHING ARROW BOARD
	SIGN ON PERMANENT SUPPORT
	SIGN ON TEMPORARY SUPPORT
	TYPE III BARRICADE
	TYPE III BARRICADE WITH SIGN
	CRASH CUSHIONS
	TEMPORARY PAVEMENT
	DIRECTION OF TRAFFIC

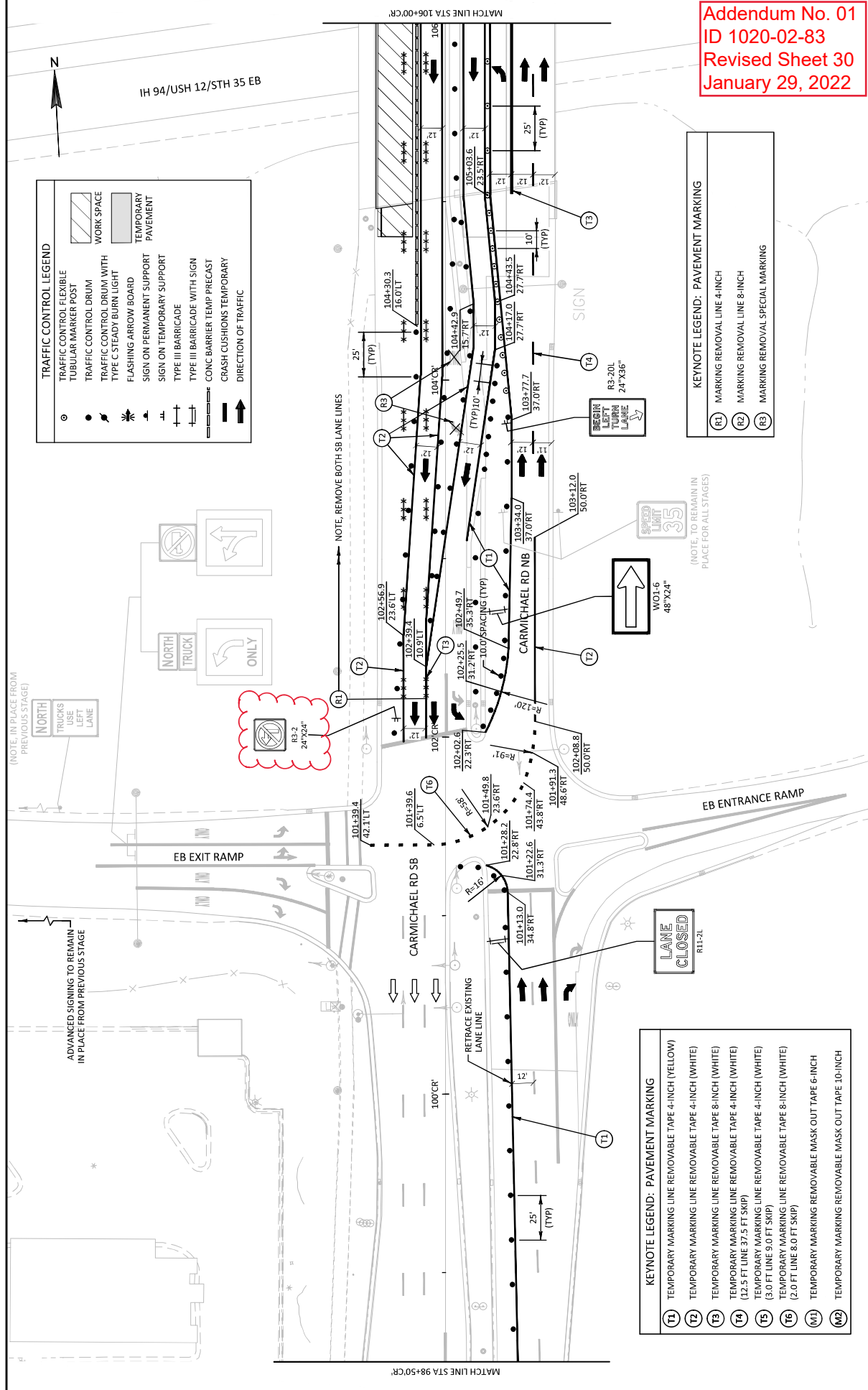
KEYNOTE LEGEND: PAVEMENT MARKING

	MARKING REMOVAL LINE 4-INCH
	MARKING REMOVAL LINE 8-INCH
	MARKING REMOVAL SPECIAL MARKING

KEYNOTE LEGEND: PAVEMENT MARKING

	TEMPORARY MARKING LINE REMOVABLE TAPE 4-INCH (YELLOW)
	TEMPORARY MARKING LINE REMOVABLE TAPE 4-INCH (WHITE)
	TEMPORARY MARKING LINE REMOVABLE TAPE 8-INCH (WHITE)
	TEMPORARY MARKING LINE REMOVABLE TAPE 4-INCH (WHITE) (2.5 FT LINE 37.5 FT SKIP)
	TEMPORARY MARKING LINE REMOVABLE TAPE 4-INCH (WHITE) (3.0 FT LINE 9.0 FT SKIP)
	TEMPORARY MARKING LINE REMOVABLE TAPE 8-INCH (WHITE) (2.0 FT LINE 8.0 FT SKIP)
	TEMPORARY MARKING REMOVABLE MASK OUT TAPE 6-INCH
	TEMPORARY MARKING REMOVABLE MASK OUT TAPE 10-INCH

Addendum No. 01
 ID 1020-02-83
 Revised Sheet 30
 January 29, 2022



TRAFFIC CONTROL LEGEND

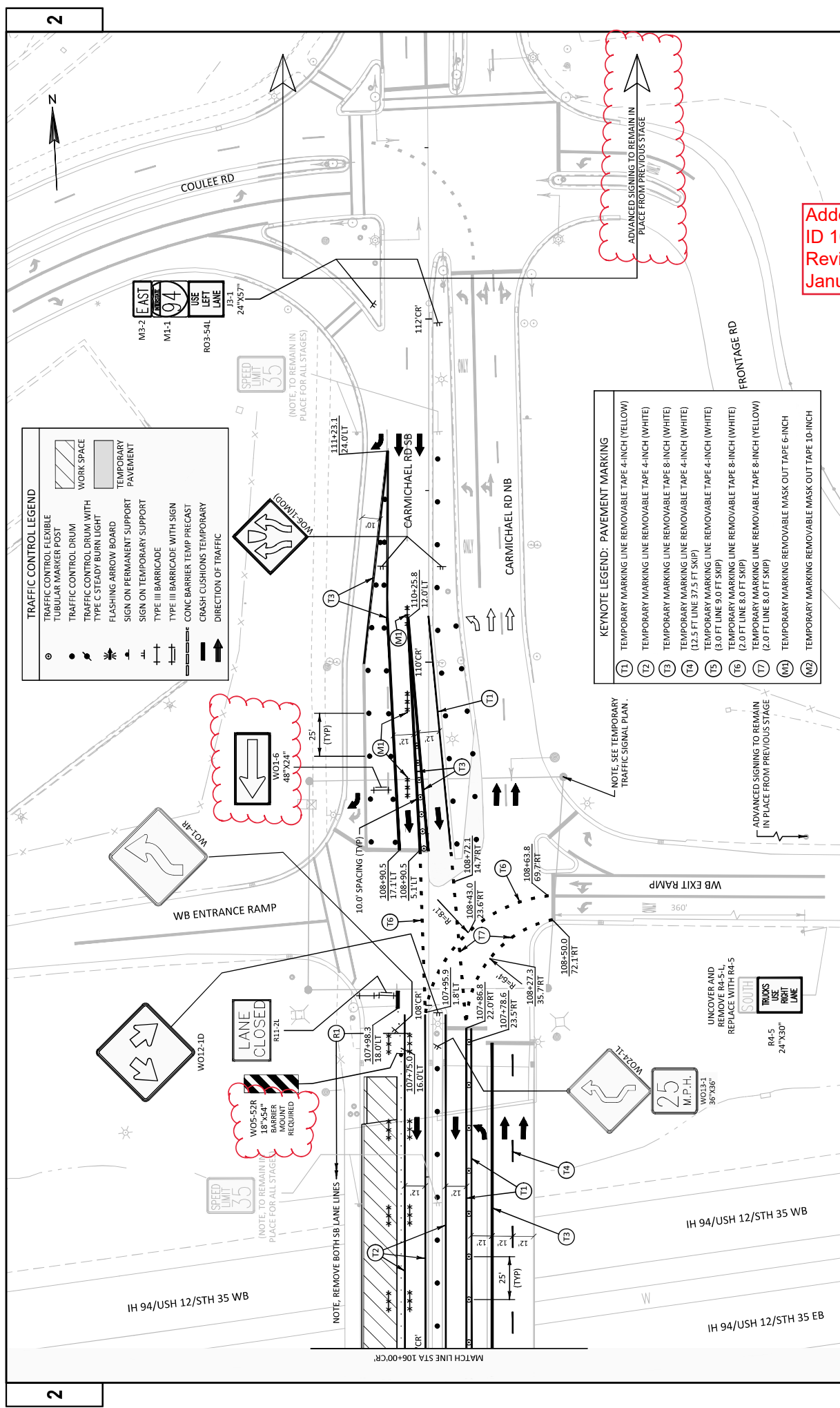
- TRAFFIC CONTROL FLEXIBLE
- TUBULAR MARKER POST
- TRAFFIC CONTROL DRUM
- TYPE C STEADY BURN LIGHT
- FLASHING ARROW BOARD
- SIGN ON PERMANENT SUPPORT
- TYPE III BARRICADE
- TYPE III BARRICADE WITH SIGN
- CONG BARRIER TEMP PRECAST
- CRASH CUSHIONS TEMPORARY
- DIRECTION OF TRAFFIC

KEYNOTE LEGEND: PAVEMENT MARKING

- (T1)** TEMPORARY MARKING LINE REMOVABLE TAPE 4-INCH (YELLOW)
- (T2)** TEMPORARY MARKING LINE REMOVABLE TAPE 4-INCH (WHITE)
- (T3)** TEMPORARY MARKING LINE REMOVABLE TAPE 8-INCH (WHITE)
- (T4)** TEMPORARY MARKING LINE REMOVABLE TAPE 4-INCH (WHITE) (12.5 FT LINE 37.5 FT SKIP)
- (T5)** TEMPORARY MARKING LINE REMOVABLE TAPE 4-INCH (WHITE) (3.0 FT LINE 9.0 FT SKIP)
- (T6)** TEMPORARY MARKING LINE REMOVABLE TAPE 8-INCH (WHITE) (2.0 FT LINE 8.0 FT SKIP)
- (M1)** TEMPORARY MARKING REMOVABLE MASK OUT TAPE 6-INCH
- (M2)** TEMPORARY MARKING REMOVABLE MASK OUT TAPE 10-INCH

KEYNOTE LEGEND: PAVEMENT MARKING

- (R1)** MARKING REMOVAL LINE 4-INCH
- (R2)** MARKING REMOVAL LINE 8-INCH
- (R3)** MARKING REMOVAL SPECIAL MARKING



TRAFFIC CONTROL LEGEND

	TRAFFIC CONTROL FLEXIBLE
	TUBULAR MARKER POST
	TRAFFIC CONTROL DRUM
	TRAFFIC CONTROL DRUM WITH TYPE C STEADY BURN LIGHT
	FLASHING ARROW BOARD
	SIGN ON PERMANENT SUPPORT
	SIGN ON TEMPORARY SUPPORT
	TYPE III BARRICADE
	TYPE II BARRICADE WITH SIGN
	CONC BARRIER TEMP PRECAST
	CRASH CUSHIONS TEMPORARY
	DIRECTION OF TRAFFIC

KEYNOTE LEGEND: PAVEMENT MARKING

T1	TEMPORARY MARKING LINE REMOVABLE TAPE 4-INCH (YELLOW)
T2	TEMPORARY MARKING LINE REMOVABLE TAPE 4-INCH (WHITE)
T3	TEMPORARY MARKING LINE REMOVABLE TAPE 6-INCH (WHITE)
T4	TEMPORARY MARKING LINE REMOVABLE TAPE 8-INCH (WHITE)
T5	TEMPORARY MARKING LINE REMOVABLE TAPE 4-INCH (WHITE) (3.0 FT LINE 9.0 FT SKIP)
T6	TEMPORARY MARKING LINE REMOVABLE TAPE 4-INCH (WHITE) (2.0 FT LINE 8.0 FT SKIP)
T7	TEMPORARY MARKING LINE REMOVABLE TAPE 6-INCH (YELLOW) (2.0 FT LINE 8.0 FT SKIP)
M1	TEMPORARY MARKING REMOVABLE MASK OUT TAPE 10-INCH
M2	TEMPORARY MARKING REMOVABLE MASK OUT TAPE 10-INCH

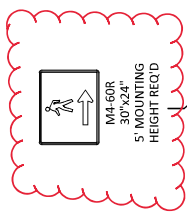
Addendum No. 01
 ID 1020-02-83
 Revised Sheet 31
 January 29, 2022

FILE NAME: X:\12\WITW\10168315-FINAL.DWG\51-DRAWINGS\40-TRANS\HYCD\SHETS\PA\SEC 02 TYP SEC & DETAILS\022000-1C STG 2A SHTS (TRM) CTRL STAGE 2A.DWG
 PLOT DATE: 12/21/2021 1:29 PM
 LAYOUT NAME: 04
 PLOT BY: SEH

STAGE 2B CONSTRUCTION SUMMARY
SB SIDEWALK WORK.

MAINTENANCE OF TRAFFIC
NB TRAFFIC ON OUTSIDE LANES.
SB TRAFFIC ON SHIFTED LANES.
PEDESTRIAN TRAFFIC DETOURED ACROSS BRIDGE.

TRAFFIC CONTROL LEGEND	
	TRAFFIC CONTROL FLEXIBLE
	TUBULAR MARKER POST
	WORK SPACE
	TRAFFIC CONTROL DRUM
	TRAFFIC CONTROL DRUM WITH TYPE C STEADY BURN LIGHT
	FLASHING ARROW BOARD
	SIGN ON PERMANENT SUPPORT
	SIGN ON TEMPORARY SUPPORT
	TYPE III BARRICADE
	TYPE III BARRICADE WITH SIGN
	CONC BARRIER TEMP PRECAST
	CRASH CUSHIONS TEMPORARY
	DIRECTION OF TRAFFIC



"TEMPORARY PEDESTRIAN BARRICADE" SEE SDD TRAFFIC CONTROL PEDESTRIAN ACCOMMODATION (SDD 150380) (TYP)

"TEMPORARY CURB RAMP PERPENDICULAR TO CURB" SEE SDD TRAFFIC CONTROL PEDESTRIAN ACCOMMODATION (SDD 150380)

SOUTHBOUND TRAFFIC CONTROLS TO REMAIN IN PLACE FROM PREVIOUS STAGE

CARMICHAEL RD SB

CARMICHAEL RD NB

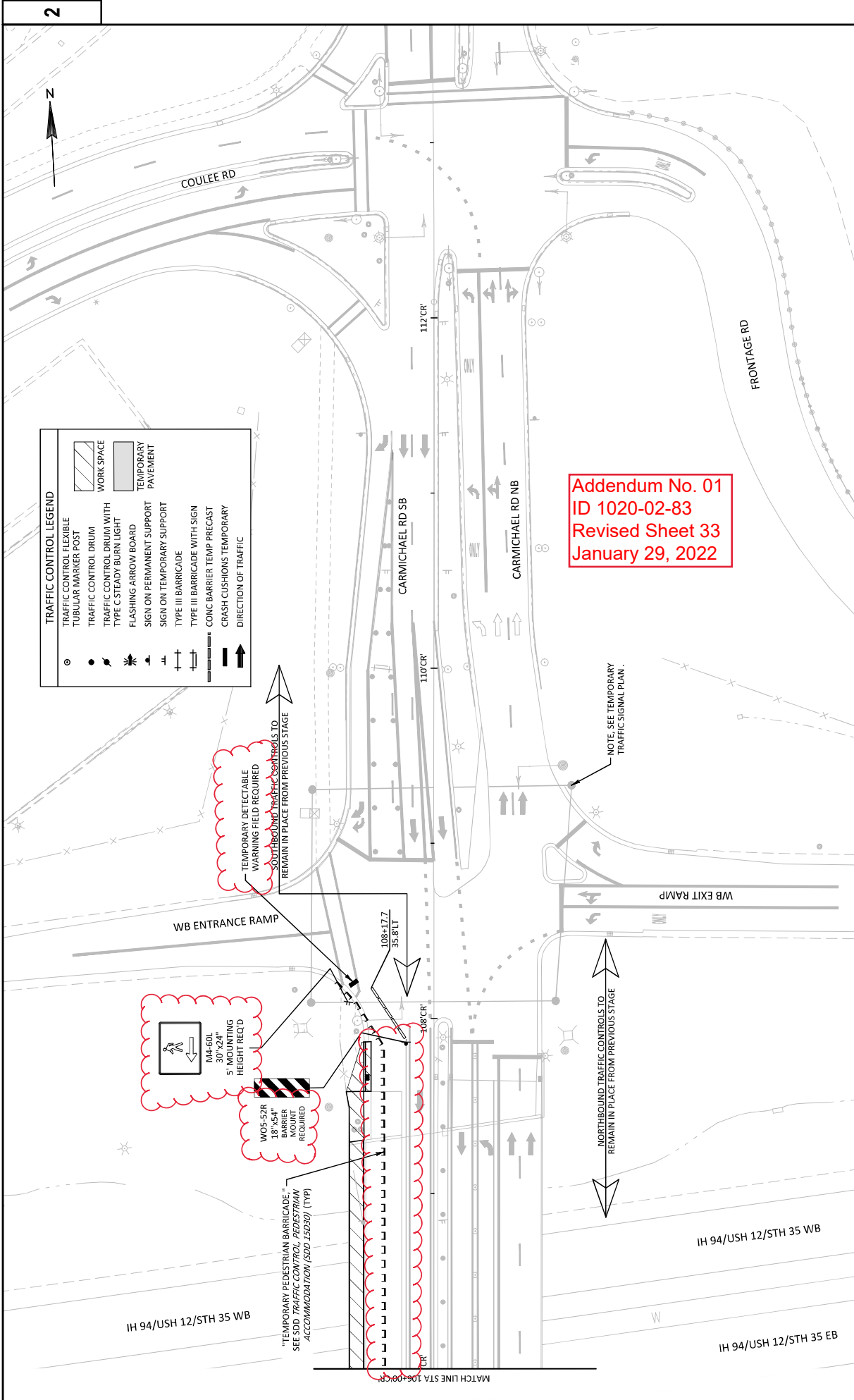
NORTHBOUND TRAFFIC CONTROLS TO REMAIN IN PLACE FROM PREVIOUS STAGE

EB ENTRANCE RAMP

IH 94/USH 12/STH 35 EB

MATCH LINE STA 106+00/CR

Addendum No. 01
ID 1020-02-83
Revised Sheet 32
January 29, 2022



TRAFFIC CONTROL LEGEND

	TRAFFIC CONTROL FLEXIBLE
	TUBULAR MARKER POST
	TRAFFIC CONTROL DRUM
	TYPE C STEADY BURN LIGHT
	FLASHING ARROW BOARD
	SIGN ON PERMANENT SUPPORT
	SIGN ON TEMPORARY SUPPORT
	TYPE III BARRICADE
	TYPE III BARRICADE WITH SIGN
	CONC BARRIER TEMP PRECAST
	CRASH CUSHIONS TEMPORARY
	DIRECTION OF TRAFFIC
	WORK SPACE
	TEMPORARY PAVEMENT

Addendum No. 01
 ID 1020-02-83
 Revised Sheet 33
 January 29, 2022

TEMPORARY DETECTABLE
 WARNING FIELD REQUIRED
 SOUTHBOUND TRAFFIC CONTROLS TO
 REMAIN IN PLACE FROM PREVIOUS STAGE

M4-60L
 30"x24"
 5' MOUNTING
 HEIGHT REQ'D

W05-52R
 18"x54"
 BARRIER
 REQUIRED

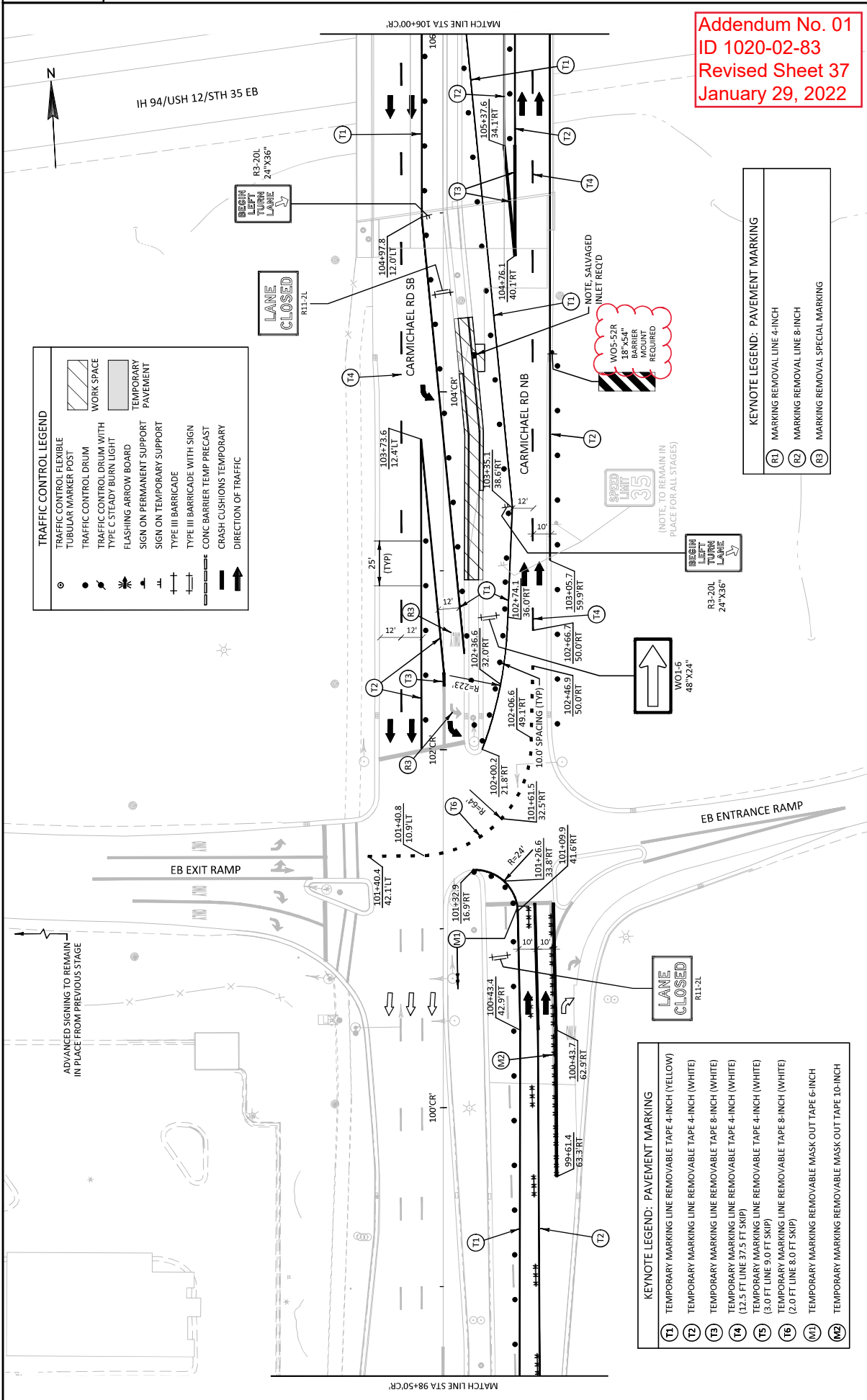
"TEMPORARY PEDESTRIAN BARRICADE,"
 SEE SDD "TRAFFIC CONTROL, PEDESTRIAN
 ACCOMMODATION (SDD 1502B)" (TYP)

NOTE: SEE TEMPORARY
 TRAFFIC SIGNAL PLAN.

NORTHBOUND TRAFFIC CONTROLS TO
 REMAIN IN PLACE FROM PREVIOUS STAGE

2

2

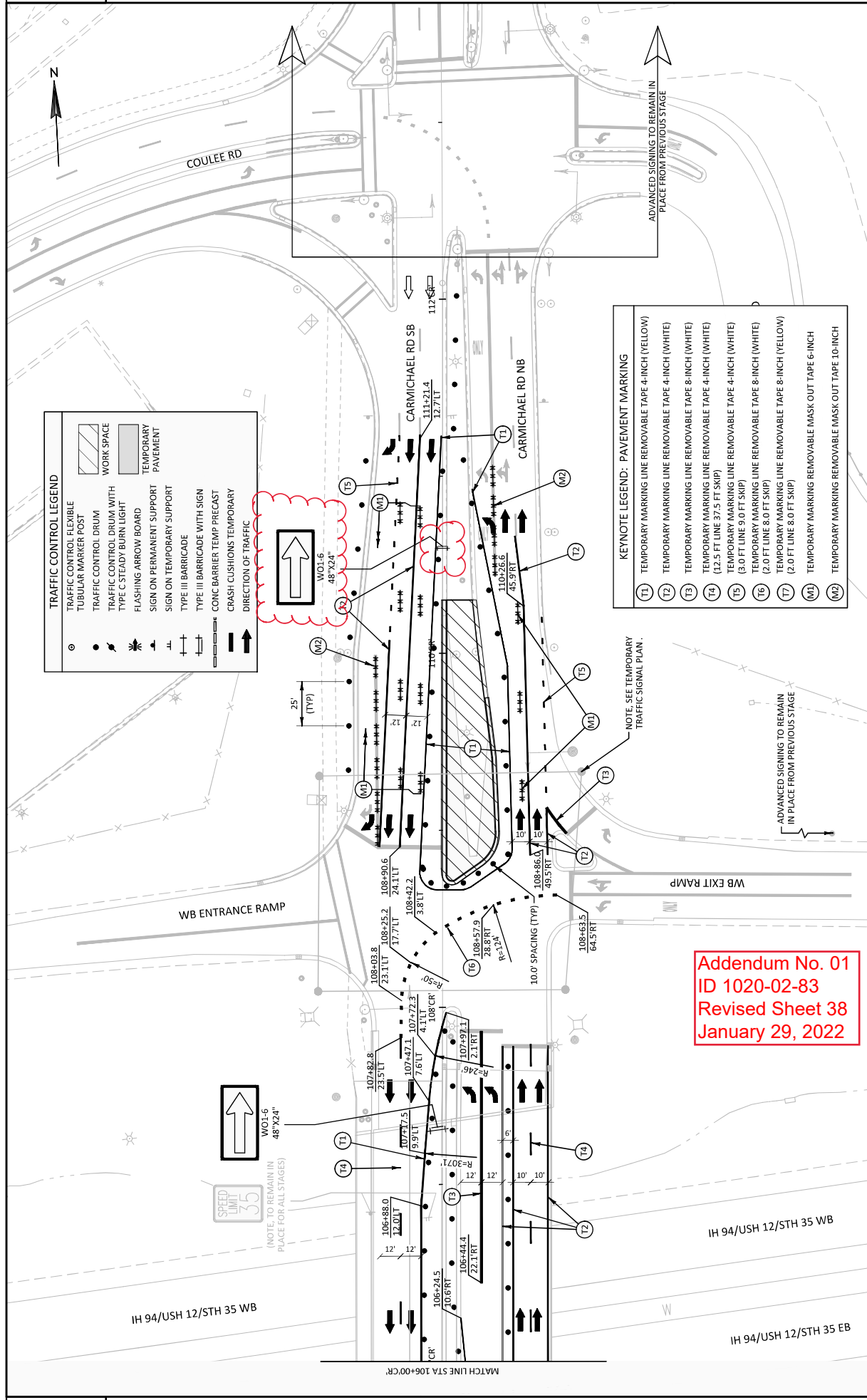


Addendum No. 01
 ID 1020-02-83
 Revised Sheet 37
 January 29, 2022

TRAFFIC CONTROL LEGEND	
	TRAFFIC CONTROL FLEXIBLE
	TUBULAR WRECKER POST
	TRAFFIC CONTROL DRUM
	TRAFFIC CONTROL DRUM WITH TYPE C STEADY BURN LIGHT
	FLASHING ARROW BOARD
	SIGN ON PERMANENT SUPPORT
	SIGN ON TEMPORARY SUPPORT
	TYPE III BARRICADE
	TYPE III BARRICADE WITH SIGN
	CONC BARRIER TEMP PRECAST
	CRASH CUSHIONS TEMPORARY
	DIRECTION OF TRAFFIC
	WORK SPACE
	TEMPORARY PAVEMENT

KEYNOTE LEGEND: PAVEMENT MARKING	
(T1)	TEMPORARY MARKING LINE REMOVABLE TAPE 4-INCH (YELLOW)
(T2)	TEMPORARY MARKING LINE REMOVABLE TAPE 4-INCH (WHITE)
(T3)	TEMPORARY MARKING LINE REMOVABLE TAPE 8-INCH (WHITE)
(T4)	TEMPORARY MARKING LINE REMOVABLE TAPE 4-INCH (WHITE) (12.5 FT LINE 37.5 FT SKIP)
(T5)	TEMPORARY MARKING LINE REMOVABLE TAPE 4-INCH (WHITE) (3.0 FT LINE 9.0 FT SKIP)
(T6)	TEMPORARY MARKING LINE REMOVABLE TAPE 8-INCH (WHITE) (2.0 FT LINE 8.0 FT SKIP)
(M1)	TEMPORARY MARKING REMOVABLE MASK OUT TAPE 6-INCH
(M2)	TEMPORARY MARKING REMOVABLE MASK OUT TAPE 10-INCH

KEYNOTE LEGEND: PAVEMENT MARKING	
(R1)	MARKING REMOVAL LINE 4-INCH
(R2)	MARKING REMOVAL LINE 8-INCH
(R3)	MARKING REMOVAL SPECIAL MARKING



TRAFFIC CONTROL LEGEND

	TRAFFIC CONTROL FLEXIBLE
	TUBULAR MARKER POST
	TRAFFIC CONTROL DRUM
	TYPE C STEADY BURN LIGHT
	FLASHING ARROW BOARD
	SIGN ON PERMANENT SUPPORT
	SIGN ON TEMPORARY SUPPORT
	TYPE III BARRICADE
	TYPE II BARRICADE WITH SIGN
	CONC BARRIER TEMP PRECAST
	CRASH CUSHIONS TEMPORARY
	DIRECTION OF TRAFFIC

KEYNOTE LEGEND: PAVEMENT MARKING

(T1)	TEMPORARY MARKING LINE REMOVABLE TAPE 4-INCH (YELLOW)
(T2)	TEMPORARY MARKING LINE REMOVABLE TAPE 8-INCH (WHITE)
(T3)	TEMPORARY MARKING LINE REMOVABLE TAPE 4-INCH (WHITE)
(T4)	TEMPORARY MARKING LINE REMOVABLE TAPE 4-INCH (WHITE) (12.5 FT LINE 37.5 FT SKIP)
(T5)	TEMPORARY MARKING LINE REMOVABLE TAPE 4-INCH (WHITE) (3.0 FT LINE 9.0 FT SKIP)
(T6)	TEMPORARY MARKING LINE REMOVABLE TAPE 8-INCH (WHITE) (2.0 FT LINE 8.0 FT SKIP)
(T7)	TEMPORARY MARKING LINE REMOVABLE TAPE 8-INCH (YELLOW) (2.0 FT LINE 8.0 FT SKIP)
(M1)	TEMPORARY MARKING REMOVABLE MASK OUT TAPE 6-INCH
(M2)	TEMPORARY MARKING REMOVABLE MASK OUT TAPE 10-INCH

Addendum No. 01
ID 1020-02-83
Revised Sheet 38
January 29, 2022

SPEED LIMIT 35
 (NOTE, TO REMAIN IN PLACE FOR ALL STAGES)

NOTE: SEE TEMPORARY TRAFFIC SIGNAL PLAN.

ADVANCED SIGNING TO REMAIN IN PLACE FROM PREVIOUS STAGE

ADVANCED SIGNING TO REMAIN IN PLACE FROM PREVIOUS STAGE

TRAFFIC CONTROL COVERING SIGNS

PROJECT NUMBER	NUMBER OF CYCLES	SIGNS (EACH)	COMMENTS
1020-02-83	1	1	STAGE 1B; WB EXIT RAMP

PROJECT NUMBER	NUMBER OF CYCLES	SIGNS (EACH)	COMMENTS
643.0920	1	1	TYPE II

TRAFFIC CONTROL

APPROX. SERVICE PERIOD	643.0300	643.0410	643.0420	643.0705	643.C715	643.0800	643.0900	643.1050								
TRAFFIC CONTROL	TRAFFIC CONTROL	TRAFFIC CONTROL	TRAFFIC CONTROL	TRAFFIC CONTROL	TRAFFIC CONTROL	TRAFFIC CONTROL	TRAFFIC CONTROL	TRAFFIC CONTROL								
DRUMS	BARRICADES TYPE II	BARRICADES TYPE III	TYPE A	TYPE C	ARROW BOARDS	SIGNS	SIGNS	SIGNS								
DATE	DATE	DATE	DATE	DATE	DATE	DATE	DATE	DATE								
QTY.	QTY.	QTY.	QTY.	QTY.	QTY.	QTY.	QTY.	QTY.								
12	165	1580	0	8	95	16	192	22	264	1	12	54	648	2	24	
STAGE 1A SUBTOTALS																
			0	0	95		192		264		12		648		24	
12	115	1380	0	6	72	12	144	14	168	1	12	45	540	2	24	
STAGE 1B SUBTOTALS																
			0	6	72		144		168		12		540		24	
11	165	1815	0	6	65	12	132	14	154	1	11	53	583	2	22	
STAGE 2A SUBTOTALS																
			0	65	132		154		154		11		583		22	
9	165	1485	0	6	54	16	144	14	126	1	9	54	486	2	18	
STAGE 2B SUBTOTALS																
			0	54	144		144		126		9		486		18	
11	170	1870	0	6	65	12	132	14	154	1	11	52	572	2	22	
STAGE 2C SUBTOTALS																
			0	65	132		154		154		11		572		22	
5	170	850	0	7	35	14	70	12	60	1	5	46	230	2	10	
STAGE 3 SUBTOTALS																
			0	35	70		60		60		5		230		10	
5	200	1000	0	6	30	16	80	12	60	1	5	50	250	2	10	
STAGE 4 SUBTOTALS																
			0	30	60		80		60		5		250		10	
PROJECT TOTALS																
		10380	0	419	894		986		65		3309				130	

TRAFFIC CONTROL FLEXIBLE TUBULAR MARKER ITEMS

643.0500	643.0600	POSTS	BASES	EACH	COMMENTS
0010	2A	1034*78*CR - 107*78*CR	RT	23	23
		108*91*CR - 109*51*CR	LT	7	7
STAGE 2A SUBTOTALS					
				30	30
				7	7
STAGE 2C SUBTOTALS					
				7	7
PROJECT TOTALS					
				37	37

TEMPORARY PEDESTRIAN ITEMS

644.1601	644.1810	SPV.0045.01	TEMPORARY DETECTABLE BARRICADE	WARRING FIELD	DAY
0010	2B	104+50 - 108+25	LT	14	450
STAGE 2B SUBTOTALS					
				14	450
				1	800
STAGE 2B SUBTOTALS					
				1	800
PROJECT TOTALS					
				15	1250

Addendum No. 01
ID 1020-02-83
Revised Sheet 51
January 29, 2022

TEMPORARY MOVING SIGNS

638.2101	MOVING SIGNS	TYPE II	EACH
0010	1-3	CREST VIEW DR	3
OVERHEAD SIGN STRUCTURE			
STAGE SUBTOTALS			
3			
PROJECT TOTALS			
3			

* ADDITIONAL QUANTITIES SHOWN ELSEWHERE

PROJECT NO: 1020-02-83

HWY: IH 94

COUNTY: ST CROIX

MISCELLANEOUS QUANTITIES

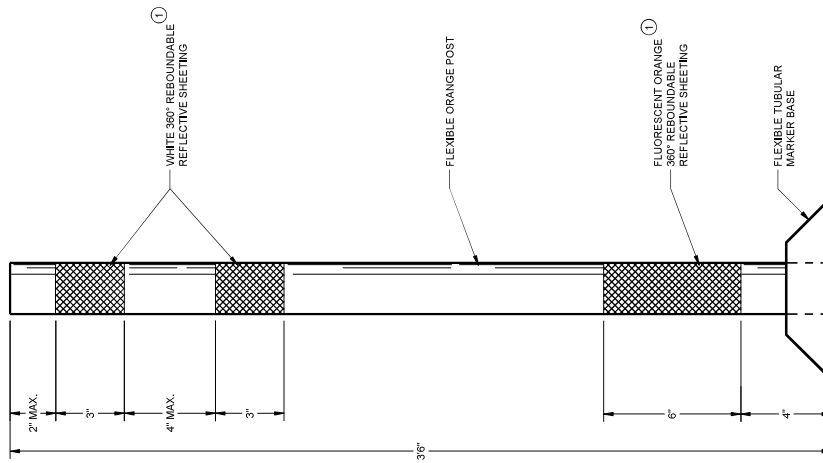
SHEET 51

E

GENERAL NOTES

DETAILS OF CONSTRUCTION NOT SHOWN ON THIS DRAWING SHALL CONFORM TO THE PERTINENT REQUIREMENTS OF THE STANDARD SPECIFICATIONS AND THE APPLICABLE SPECIAL PROVISIONS.
 SURFACE MOUNTED BASES SHALL BE FURNISHED IN ACCORDANCE WITH MANUFACTURERS RECOMMENDATIONS TO BE COMPATIBLE WITH FLEXIBLE TUBULAR MARKER POSTS TO A SIZE AND SHAPE THAT WILL PROVIDE A STABLE POST FOUNDATION WHEN SECURED TO THE PAVEMENT.
 THE ASPHALTIC ADHESIVE OR BUTYL PAD FURNISHED SHALL BE IN ACCORDANCE WITH MANUFACTURERS RECOMMENDATIONS UNLESS DIRECTED BY THE ENGINEER TO USE BOLTS.

① REFLECTIVE SHEETING SHALL FOLLOW THE REQUIREMENTS IN THE APPROVED PRODUCTS LISTING FOR SIGN SHEETING.



Addendum No. 01
 ID 1020-02-83
 Added Sheet 102A
 January 29, 2022

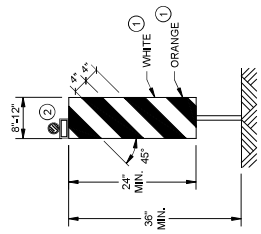
**CHANNELIZING DEVICES
 FLEXIBLE TUBULAR
 MARKER POST**

STATE OF WISCONSIN
 DEPARTMENT OF TRANSPORTATION

APPROVED _____
 DATE: 01/29/2022
 WORK BY: 102A

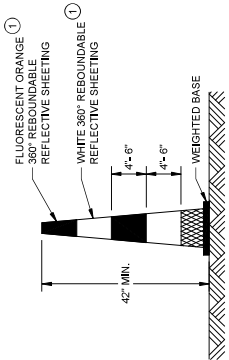
GENERAL NOTES

- ① REFLECTIVE SHEETING SHALL FOLLOW THE REQUIREMENTS IN THE APPROVED PRODUCTS LISTING FOR SIGN SHEETINGS.
- ② LOCATION OF WARNING LIGHTS WHEN SHOWN ON THE PLAN.



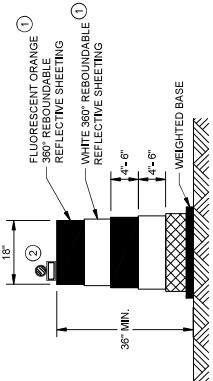
VERTICAL PANEL

THE STRIPES SHALL SLOPE DOWNWARD TO THE TRAFFIC SIDE FOR CHANNELIZATION.

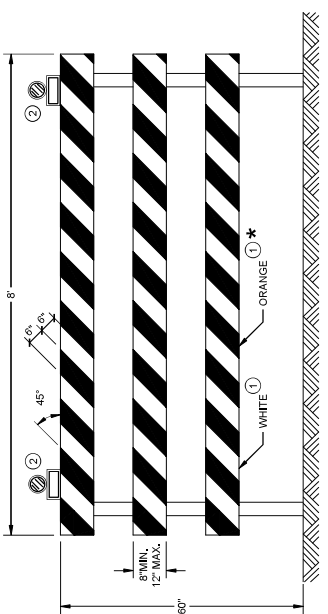


42" CONE

DO NOT USE IN TAPERS
 2/3 SPACING OF DRUMS



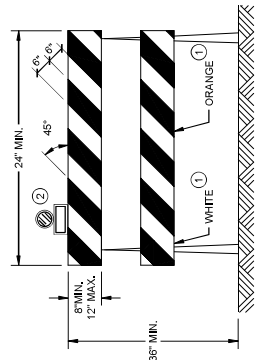
DRUM



TYPE III BARRICADE

IF SIGN MOUNTED, DO NOT COVER MORE THAN 50% OF THE TOP TWO RAILS OR 33% OF THE TOTAL AREA OF THE THREE RAILS.

* IF USED FOR A PERMANENT APPLICATION USE RED SHEETING.



TYPE II BARRICADE

FOR RAILS LESS THAN 36" LONG, 4" WIDE STRIPES MAY BE USED. ALL STRIPES SHALL SLOPE DOWNWARD TO THE TRAFFIC SIDE FOR CHANNELIZATION.

Addendum No. 01
 ID 1020-02-83
 Added Sheet 102B
 January 29, 2022

**CHANNELIZING DEVICES
 DRUMS, CONES, BARRICADES
 AND VERTICAL PANELS**

STATE OF WISCONSIN
 DEPARTMENT OF TRANSPORTATION

APPROVED _____
 DATE _____
 WORK NO. 102B
 R

GENERAL NOTES

THE EXACT NUMBER, LOCATION, AND SPACING OF ALL SIGNS AND DEVICES SHALL BE ADJUSTED TO FIT FIELD CONDITIONS AS APPROVED BY THE ENGINEER.

THE SPACING BETWEEN SIGNS SHOULD BE ADJUSTED TO NOT CONFLICT WITH AND TO PROVIDE A MINIMUM OF 200 FEET (500 FEET DESIRABLE) DISTANCE TO EXISTING SIGNS.

THIS LANE CLOSURE IS TYPICAL FOR LANE SHIFT RIGHT - REVERSE FOR SHIFTING LEFT.

ALL SIGNS ARE 48"X48" UNLESS OTHERWISE NOTED.

"W" IS THE SAME AS "W" EXCEPT THE BACKGROUND IS ORANGE.

ANY SIGNS TEMPORARY OR EXISTING WHICH CONFLICT WITH TRAFFIC CONTROL "IN USE" SHALL BE REMOVED OR COVERED AS NEEDED AND AS APPROVED BY THE ENGINEER.

FOR A LANE CLOSURE THAT IS IN PLACE LESS THAN 7 CONTINUOUS DAYS AND NIGHTS, THE ADVANCED WARNING SIGNS MAY BE MOUNTED ON PORTABLE SUPPORTS.

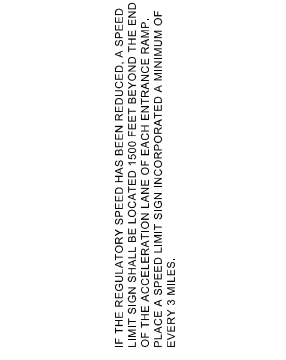
REMOVE PAVEMENT MARKINGS IF LANE CLOSURE IS TO BE IN PLACE FOR LONGER THAN 4 OR MORE DAYS AND NIGHTS.

IF THE HORIZONTAL ALIGNMENT IS SUCH THAT A CURVE MAY REQUIRE ADDITIONAL DELINEATION, THE DEVICE SPACING MAY BE DECREASED TO 50 FEET.

ADJUSTMENTS IN BUFFER SPACE NEED TO BE INCORPORATED WHEN THE LANE SHIFT OCCURS NEAR AN INTERCHANGE EXIT OR ENTRANCE RAMP. THE LANE SHIFT MUST BE PLACED FAR ENOUGH FROM THE INTERCHANGE EXIT OR ENTRANCE RAMP TO PROVIDE A MINIMUM BUFFER SPACE. THE MINIMUM LENGTH OF THE BUFFER SPACE BEFORE AN EXIT RAMP SHOULD BE 1/2 THE LENGTH OF THE TRANSITION AREA. THE ENTRANCE RAMP SHOULD BE FOLLOWED BY THE ORIGINAL BUFFER SPACE LENGTH OF 800 FEET DESIRABLE PRIOR TO ANOTHER TRAFFIC CONTROL CHANGE SUCH AS A CROSSOVER MANUEVER.

- ① USE ONLY WHEN T < 600'. OMIT W01-4C.
- ② IF NEEDED, USE ONLY IF DESIGN SPEED IS 10 MPH BELOW POSTED SPEED.

* INCLUDE RESUME SPEED LIMIT SIGN A MINIMUM OF 200 FEET (500 FEET DESIRABLE) AFTER END ROAD WORK SIGNS.



IF THE REGULATORY SPEED HAS BEEN REDUCED, A SPEED LIMIT SIGN OF THE ACCELERATION LANE OF EACH ENTRANCE RAMP. PLACE A SPEED LIMIT SIGN INCORPORATED A MINIMUM OF EVERY 3 MILES.

LOCATED 500 FEET TO THE "ROAD WORK 1 MILE" (W2D-F) SIGN (W2D-F) SIGN

LOCATED 500 FEET TO THE "ROAD WORK 1 MILE" (W2D-F) SIGN (W2D-F) SIGN

LOCATED 500 FEET TO THE "ROAD WORK 1 MILE" (W2D-F) SIGN (W2D-F) SIGN

LOCATED 500 FEET TO THE "ROAD WORK 1 MILE" (W2D-F) SIGN (W2D-F) SIGN

LOCATED 500 FEET TO THE "ROAD WORK 1 MILE" (W2D-F) SIGN (W2D-F) SIGN

LOCATED 500 FEET TO THE "ROAD WORK 1 MILE" (W2D-F) SIGN (W2D-F) SIGN

LOCATED 500 FEET TO THE "ROAD WORK 1 MILE" (W2D-F) SIGN (W2D-F) SIGN

LOCATED 500 FEET TO THE "ROAD WORK 1 MILE" (W2D-F) SIGN (W2D-F) SIGN

LOCATED 500 FEET TO THE "ROAD WORK 1 MILE" (W2D-F) SIGN (W2D-F) SIGN

LOCATED 500 FEET TO THE "ROAD WORK 1 MILE" (W2D-F) SIGN (W2D-F) SIGN

LOCATED 500 FEET TO THE "ROAD WORK 1 MILE" (W2D-F) SIGN (W2D-F) SIGN

LOCATED 500 FEET TO THE "ROAD WORK 1 MILE" (W2D-F) SIGN (W2D-F) SIGN

LOCATED 500 FEET TO THE "ROAD WORK 1 MILE" (W2D-F) SIGN (W2D-F) SIGN

LOCATED 500 FEET TO THE "ROAD WORK 1 MILE" (W2D-F) SIGN (W2D-F) SIGN

LOCATED 500 FEET TO THE "ROAD WORK 1 MILE" (W2D-F) SIGN (W2D-F) SIGN

LOCATED 500 FEET TO THE "ROAD WORK 1 MILE" (W2D-F) SIGN (W2D-F) SIGN

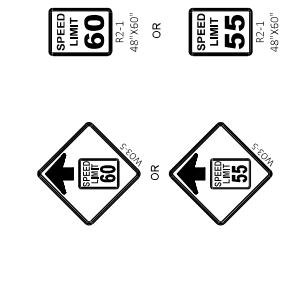
LOCATED 500 FEET TO THE "ROAD WORK 1 MILE" (W2D-F) SIGN (W2D-F) SIGN

LOCATED 500 FEET TO THE "ROAD WORK 1 MILE" (W2D-F) SIGN (W2D-F) SIGN

LOCATED 500 FEET TO THE "ROAD WORK 1 MILE" (W2D-F) SIGN (W2D-F) SIGN

LOCATED 500 FEET TO THE "ROAD WORK 1 MILE" (W2D-F) SIGN (W2D-F) SIGN

LOCATED 500 FEET TO THE "ROAD WORK 1 MILE" (W2D-F) SIGN (W2D-F) SIGN



LOCATED 500 FEET TO THE "ROAD WORK 1 MILE" (W2D-F) SIGN (W2D-F) SIGN

LOCATED 500 FEET TO THE "ROAD WORK 1 MILE" (W2D-F) SIGN (W2D-F) SIGN

LOCATED 500 FEET TO THE "ROAD WORK 1 MILE" (W2D-F) SIGN (W2D-F) SIGN

LOCATED 500 FEET TO THE "ROAD WORK 1 MILE" (W2D-F) SIGN (W2D-F) SIGN

LOCATED 500 FEET TO THE "ROAD WORK 1 MILE" (W2D-F) SIGN (W2D-F) SIGN

LOCATED 500 FEET TO THE "ROAD WORK 1 MILE" (W2D-F) SIGN (W2D-F) SIGN

LOCATED 500 FEET TO THE "ROAD WORK 1 MILE" (W2D-F) SIGN (W2D-F) SIGN

LOCATED 500 FEET TO THE "ROAD WORK 1 MILE" (W2D-F) SIGN (W2D-F) SIGN

LOCATED 500 FEET TO THE "ROAD WORK 1 MILE" (W2D-F) SIGN (W2D-F) SIGN

LOCATED 500 FEET TO THE "ROAD WORK 1 MILE" (W2D-F) SIGN (W2D-F) SIGN

LOCATED 500 FEET TO THE "ROAD WORK 1 MILE" (W2D-F) SIGN (W2D-F) SIGN

LOCATED 500 FEET TO THE "ROAD WORK 1 MILE" (W2D-F) SIGN (W2D-F) SIGN

LOCATED 500 FEET TO THE "ROAD WORK 1 MILE" (W2D-F) SIGN (W2D-F) SIGN

LOCATED 500 FEET TO THE "ROAD WORK 1 MILE" (W2D-F) SIGN (W2D-F) SIGN

LOCATED 500 FEET TO THE "ROAD WORK 1 MILE" (W2D-F) SIGN (W2D-F) SIGN

LOCATED 500 FEET TO THE "ROAD WORK 1 MILE" (W2D-F) SIGN (W2D-F) SIGN

LOCATED 500 FEET TO THE "ROAD WORK 1 MILE" (W2D-F) SIGN (W2D-F) SIGN

LOCATED 500 FEET TO THE "ROAD WORK 1 MILE" (W2D-F) SIGN (W2D-F) SIGN

LOCATED 500 FEET TO THE "ROAD WORK 1 MILE" (W2D-F) SIGN (W2D-F) SIGN

LOCATED 500 FEET TO THE "ROAD WORK 1 MILE" (W2D-F) SIGN (W2D-F) SIGN

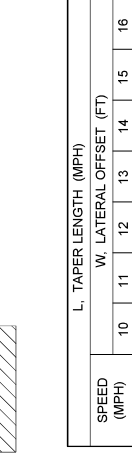
LOCATED 500 FEET TO THE "ROAD WORK 1 MILE" (W2D-F) SIGN (W2D-F) SIGN

LOCATED 500 FEET TO THE "ROAD WORK 1 MILE" (W2D-F) SIGN (W2D-F) SIGN

LEGEND

- TYPE III BARRICADE WITH ATTACHED SIGN
- SIGN ON PERMANENT SUPPORT
- TRAFFIC CONTROL DRUM
- DIRECTION OF TRAFFIC
- CONCRETE BARRIER TEMPORARY PRECAST
- TYPE "A" WARNING LIGHT (FLASHING)
- WORK AREA

SPEED (MPH)	L, TAPER LENGTH (MPH)										
	10	11	12	13	14	15	16	17	18	19	20
45	450	465	480	495	510	525	540	555	570	585	600
50	500	520	540	560	580	600	620	640	660	680	700
55	550	575	600	625	650	675	700	725	750	775	800
60	600	630	660	690	720	750	780	810	840	870	900
65	650	690	730	770	810	850	890	930	970	1010	1050
70	700	750	800	850	900	950	1000	1050	1100	1150	1200



TAPER TO OUTSIDE EDGE OF WORK ZONE CLEAR ZONE, OTHERWISE PROVIDE CRASH CUSHION.

500' MIN. 800' DESIRABLE

500' MIN. 800' DESIRABLE

500' MIN. 800' DESIRABLE

500' MIN. 800' DESIRABLE

500' MIN. 800' DESIRABLE

500' MIN. 800' DESIRABLE

500' MIN. 800' DESIRABLE

500' MIN. 800' DESIRABLE

500' MIN. 800' DESIRABLE

500' MIN. 800' DESIRABLE

500' MIN. 800' DESIRABLE

500' MIN. 800' DESIRABLE

500' MIN. 800' DESIRABLE

500' MIN. 800' DESIRABLE

500' MIN. 800' DESIRABLE

500' MIN. 800' DESIRABLE

500' MIN. 800' DESIRABLE

500' MIN. 800' DESIRABLE

500' MIN. 800' DESIRABLE

Addendum No. 01
ID 1020-02-83
Added Sheet 110A
January 29, 2022

TRAFFIC CONTROL
MULTIPLE LANE SHIFT
MULTILANE DIVIDED ROAD

STATE OF WISCONSIN
DEPARTMENT OF TRANSPORTATION

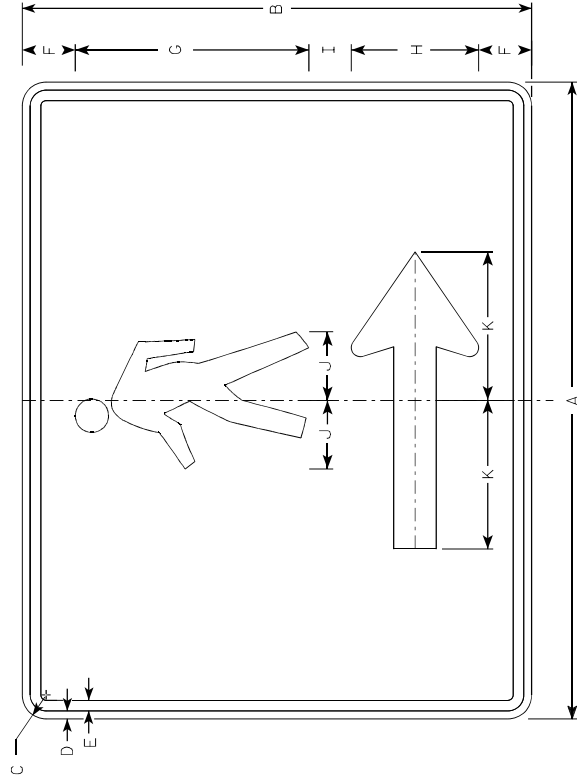
APPROVED
November 2018
DATE

IS: ADVISORY SHEET
WORK 22-110A
EER

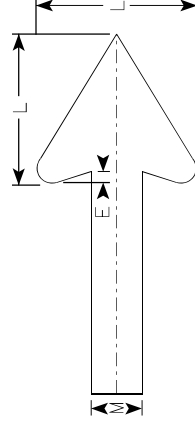
MULTIPLE LANE SHIFT MULTILANE DIVIDED ROAD

NOTES

1. Sign is Type II- Type F Reflective
2. Color:
Background - Orange
Message - Black
3. Corners may be square or rounded when base material is plywood but borders shall be rounded as shown. When base material is metal, the corners and borders shall be rounded.
4. M4-60L is the same as M4-60R except the arrow is reversed.



M4-60R



Arrow Detail

Addendum No. 01
 ID 1020-02-83
 Added Sheet 128A
 January 29, 2022

SIZE	A	B	C	D	E	F	G	H	I	J	K	L	M	N	O	P	Q	R	S	T	U	V	W	X	Y	Z	Area sq. ft.
1																											
2	30	24	1 1/8	3/8	1/2	2 1/2	11	6	2	3 1/4	7	6	2														5.00
3																											
4																											
5																											

STANDARD SIGN
 M4-60 L&R
 WISCONSIN DEPT OF TRANSPORTATION
 APPROVED *Matthew R. Rausch*
 74 years Traffic Engineer
 DATE 9/16/2021 PLATE NO. M4-60.L

PROJECT NO: _____ COUNTY: _____ HWY: _____ SHEET NO: 128A
 PLOT DATE: 16-SEPT 2021 8:00 PLOT BY: dotc4c PLOT NAME: _____ PLOT SCALE: 88.....plotscale.....88 WISDOT/CADDS SHEET 42
 FILE NAME: C:\CACF\Les\Projects\TY-std\plate\M460.dgn



Proposal Schedule of Items

Proposal ID: 20220208041 Project(s): 1020-02-83

Federal ID(s): WISC 2022204

SECTION: 0001 Contract Items

Alt Set ID: Alt Mbr ID:

Proposal Line Number	Item ID Description	Approximate Quantity and Units	Unit Price	Bid Amount
0002	204.0100 Removing Concrete Pavement	610.000 SY	_____.	_____.
0004	204.0110 Removing Asphaltic Surface	360.000 SY	_____.	_____.
0006	204.0150 Removing Curb & Gutter	466.000 LF	_____.	_____.
0008	204.0155 Removing Concrete Sidewalk	535.000 SY	_____.	_____.
0010	204.0157 Removing Concrete Barrier	108.000 LF	_____.	_____.
0012	204.0195 Removing Concrete Bases	3.000 EACH	_____.	_____.
0014	205.0100 Excavation Common	240.000 CY	_____.	_____.
0016	211.0200 Prepare Foundation for Concrete Pavement (project) 01. 1020-02-83	LS	LUMP SUM	_____.
0018	213.0100 Finishing Roadway (project) 01. 1020-02-83	1.000 EACH	_____.	_____.
0020	305.0120 Base Aggregate Dense 1 1/4-Inch	496.000 TON	_____.	_____.
0022	415.1080 Concrete Pavement HES 8-Inch	141.000 SY	_____.	_____.
0024	415.1410 Concrete Pavement Approach Slab HES	436.000 SY	_____.	_____.
0026	416.0610 Drilled Tie Bars	259.000 EACH	_____.	_____.
0028	416.0620 Drilled Dowel Bars	138.000 EACH	_____.	_____.
0030	465.0125 Asphaltic Surface Temporary	101.000 TON	_____.	_____.
0032	502.2000 Compression Joint Sealer Preformed Elastomeric (width) 01. 2-Inch	232.000 LF	_____.	_____.



Proposal Schedule of Items

Proposal ID: 20220208041 Project(s): 1020-02-83

Federal ID(s): WISC 2022204

SECTION: 0001 Contract Items

Alt Set ID: Alt Mbr ID:

Proposal Line Number	Item ID Description	Approximate Quantity and Units	Unit Price	Bid Amount
0034	502.3101 Expansion Device 01. B-55-118	222.000 LF	_____.	_____.
0036	502.3200 Protective Surface Treatment	292.000 SY	_____.	_____.
0038	502.3210 Pigmented Surface Sealer	267.000 SY	_____.	_____.
0040	502.4205 Adhesive Anchors No. 5 Bar	228.000 EACH	_____.	_____.
0042	505.0600 Bar Steel Reinforcement HS Coated Structures	6,150.000 LB	_____.	_____.
0044	505.0904 Bar Couplers No. 4	8.000 EACH	_____.	_____.
0046	505.0905 Bar Couplers No. 5	78.000 EACH	_____.	_____.
0048	505.0906 Bar Couplers No. 6	24.000 EACH	_____.	_____.
0050	509.0301 Preparation Decks Type 1	1.000 SY	_____.	_____.
0052	509.0302 Preparation Decks Type 2	1.000 SY	_____.	_____.
0054	509.0310.S Sawing Pavement Deck Preparation Areas	10.000 LF	_____.	_____.
0056	509.1000 Joint Repair	107.000 SY	_____.	_____.
0058	509.1500 Concrete Surface Repair	35.000 SF	_____.	_____.
0060	509.2100.S Concrete Masonry Deck Repair	41.000 CY	_____.	_____.
0062	509.5100.S Polymer Overlay	2,631.000 SY	_____.	_____.
0064	509.9050.S Cleaning Parapets	1,017.000 LF	_____.	_____.



Proposal Schedule of Items

Proposal ID: 20220208041 Project(s): 1020-02-83

Federal ID(s): WISC 2022204

SECTION: 0001 Contract Items

Alt Set ID: Alt Mbr ID:

Proposal Line Number	Item ID Description	Approximate Quantity and Units	Unit Price	Bid Amount
0066	601.0409 Concrete Curb & Gutter 30-Inch Type A	607.000 LF	_____.	_____.
0068	601.0411 Concrete Curb & Gutter 30-Inch Type D	30.000 LF	_____.	_____.
0070	602.0410 Concrete Sidewalk 5-Inch	4,890.000 SF	_____.	_____.
0072	603.0105 Concrete Barrier Single-Faced 32-Inch	108.000 LF	_____.	_____.
0074	603.8000 Concrete Barrier Temporary Precast Delivered	913.000 LF	_____.	_____.
0076	603.8125 Concrete Barrier Temporary Precast Installed	1,658.000 LF	_____.	_____.
0078	611.0651 Inlet Covers Type S	1.000 EACH	_____.	_____.
0080	611.8115 Adjusting Inlet Covers	2.000 EACH	_____.	_____.
0082	611.9710 Salvaged Inlet Covers	1.000 EACH	_____.	_____.
0084	614.0905 Crash Cushions Temporary	4.000 EACH	_____.	_____.
0086	618.0100 Maintenance And Repair of Haul Roads (project) 01. 1020-02-83	1.000 EACH	_____.	_____.
0088	619.1000 Mobilization	1.000 EACH	_____.	_____.
0090	624.0100 Water	5.000 MGAL	_____.	_____.
0092	628.1905 Mobilizations Erosion Control	6.000 EACH	_____.	_____.
0094	628.1910 Mobilizations Emergency Erosion Control	4.000 EACH	_____.	_____.
0096	628.7015 Inlet Protection Type C	25.000 EACH	_____.	_____.



Proposal Schedule of Items

Proposal ID: 20220208041 Project(s): 1020-02-83

Federal ID(s): WISC 2022204

SECTION: 0001 Contract Items

Alt Set ID: Alt Mbr ID:

Proposal Line Number	Item ID Description	Approximate Quantity and Units	Unit Price	Bid Amount
0098	634.0612 Posts Wood 4x6-Inch X 12-FT	2.000 EACH	_____.	_____.
0100	634.0614 Posts Wood 4x6-Inch X 14-FT	3.000 EACH	_____.	_____.
0102	634.0616 Posts Wood 4x6-Inch X 16-FT	5.000 EACH	_____.	_____.
0104	634.0618 Posts Wood 4x6-Inch X 18-FT	6.000 EACH	_____.	_____.
0106	634.0622 Posts Wood 4x6-Inch X 22-FT	4.000 EACH	_____.	_____.
0108	637.2210 Signs Type II Reflective H	623.840 SF	_____.	_____.
0110	637.2230 Signs Type II Reflective F	12.500 SF	_____.	_____.
0112	638.2102 Moving Signs Type II	5.000 EACH	_____.	_____.
0114	638.2602 Removing Signs Type II	74.000 EACH	_____.	_____.
0116	638.3000 Removing Small Sign Supports	18.000 EACH	_____.	_____.
0118	642.5001 Field Office Type B	1.000 EACH	_____.	_____.
0120	643.0300 Traffic Control Drums	10,380.000 DAY	_____.	_____.
0124	643.0420 Traffic Control Barricades Type III	419.000 DAY	_____.	_____.
0126	643.0500 Traffic Control Flexible Tubular Marker Posts	37.000 EACH	_____.	_____.
0128	643.0600 Traffic Control Flexible Tubular Marker Bases	37.000 EACH	_____.	_____.
0130	643.0705 Traffic Control Warning Lights Type A	894.000 DAY	_____.	_____.



Proposal Schedule of Items

Proposal ID: 20220208041 Project(s): 1020-02-83

Federal ID(s): WISC 2022204

SECTION: 0001 Contract Items

Alt Set ID: Alt Mbr ID:

Proposal Line Number	Item ID Description	Approximate Quantity and Units	Unit Price	Bid Amount
0132	643.0715 Traffic Control Warning Lights Type C	986.000 DAY	_____.	_____.
0134	643.0800 Traffic Control Arrow Boards	65.000 DAY	_____.	_____.
0136	643.0900 Traffic Control Signs	3,309.000 DAY	_____.	_____.
0138	643.0920 Traffic Control Covering Signs Type II	1.000 EACH	_____.	_____.
0140	643.1050 Traffic Control Signs PCMS	130.000 DAY	_____.	_____.
0142	643.5000 Traffic Control	1.000 EACH	_____.	_____.
0144	644.1601 Temporary Pedestrian Curb Ramp	15.000 DAY	_____.	_____.
0146	644.1810 Temporary Pedestrian Barricade	1,250.000 LF	_____.	_____.
0148	646.1020 Marking Line Epoxy 4-Inch	512.000 LF	_____.	_____.
0150	646.3020 Marking Line Epoxy 8-Inch	757.000 LF	_____.	_____.
0152	646.5020 Marking Arrow Epoxy	6.000 EACH	_____.	_____.
0154	646.5120 Marking Word Epoxy	3.000 EACH	_____.	_____.
0156	646.6120 Marking Stop Line Epoxy 18-Inch	100.000 LF	_____.	_____.
0158	646.8120 Marking Curb Epoxy	56.000 LF	_____.	_____.
0160	646.8220 Marking Island Nose Epoxy	2.000 EACH	_____.	_____.
0162	646.9000 Marking Removal Line 4-Inch	731.000 LF	_____.	_____.
0164	646.9100 Marking Removal Line 8-Inch	481.000 LF	_____.	_____.



Proposal Schedule of Items

Proposal ID: 20220208041 Project(s): 1020-02-83

Federal ID(s): WISC 2022204

SECTION: 0001 Contract Items

Alt Set ID: Alt Mbr ID:

Proposal Line Number	Item ID Description	Approximate Quantity and Units	Unit Price	Bid Amount
0166	646.9300 Marking Removal Special Marking	8.000 EACH	_____.	_____.
0168	649.0150 Temporary Marking Line Removable Tape 4-Inch	16,300.000 LF	_____.	_____.
0170	649.0250 Temporary Marking Line Removable Tape 8-Inch	2,250.000 LF	_____.	_____.
0172	649.0960 Temporary Marking Removable Mask Out Tape 6-Inch	778.000 LF	_____.	_____.
0174	649.0970 Temporary Marking Removable Mask Out Tape 10-Inch	660.000 LF	_____.	_____.
0176	650.7000 Construction Staking Concrete Pavement	463.000 LF	_____.	_____.
0178	650.8500 Construction Staking Electrical Installations (project) 01. 1020-02-83	LS	LUMP SUM	_____.
0180	650.9910 Construction Staking Supplemental Control (project) 01. 1020-02-83	LS	LUMP SUM	_____.
0182	652.0225 Conduit Rigid Nonmetallic Schedule 40 2-Inch	79.000 LF	_____.	_____.
0184	652.0700.S Install Conduit into Existing Item	1.000 EACH	_____.	_____.
0186	652.0800 Conduit Loop Detector	255.000 LF	_____.	_____.
0188	653.0135 Pull Boxes Steel 24x36-Inch	1.000 EACH	_____.	_____.
0190	653.0900 Adjusting Pull Boxes	7.000 EACH	_____.	_____.
0192	654.0101 Concrete Bases Type 1	1.000 EACH	_____.	_____.
0194	654.0102 Concrete Bases Type 2	2.000 EACH	_____.	_____.



Proposal Schedule of Items

Proposal ID: 20220208041 Project(s): 1020-02-83

Federal ID(s): WISC 2022204

SECTION: 0001 Contract Items

Alt Set ID: Alt Mbr ID:

Proposal Line Number	Item ID Description	Approximate Quantity and Units	Unit Price	Bid Amount
0196	655.0800 Loop Detector Wire	940.000 LF	_____.	_____.
0198	661.0200 Temporary Traffic Signals for Intersections (location) 01. IH 94 WB Ramps & Carmichael Road	LS	LUMP SUM	_____.
0200	661.0300 Generators	2.000 DAY	_____.	_____.
0202	690.0150 Sawing Asphalt	60.000 LF	_____.	_____.
0204	690.0250 Sawing Concrete	1,288.000 LF	_____.	_____.
0206	715.0603 Incentive Strength Concrete Barrier	54.000 DOL	1.00000	54.00
0208	715.0720 Incentive Compressive Strength Concrete Pavement	500.000 DOL	1.00000	500.00
0210	ASP.1T0A On-the-Job Training Apprentice at \$5.00/HR	300.000 HRS	5.00000	1,500.00
0212	ASP.1T0G On-the-Job Training Graduate at \$5.00/HR	300.000 HRS	5.00000	1,500.00
0214	SPV.0060 Special 01. Temporary Vehicle Detection	1.000 EACH	_____.	_____.
0216	SPV.0060 Special 02. Temporary EVP System	1.000 EACH	_____.	_____.
0218	SPV.0060 Special 03. Remove, Salvage, and Reinstall Traffic Signal Equipment	3.000 EACH	_____.	_____.
0220	SPV.0060 Special 04. Replumb Existing Pole	2.000 EACH	_____.	_____.
0222	SPV.0165 Special 01. Fiber Wrap Reinforcing Non-Structural	120.000 SF	_____.	_____.



Proposal Schedule of Items

Proposal ID: 20220208041 Project(s): 1020-02-83

Federal ID(s): WISC 2022204

SECTION: 0001 Contract Items

Alt Set ID: Alt Mbr ID:

Proposal Line Number	Item ID Description	Approximate Quantity and Units	Unit Price	Bid Amount
0224	SPV.0180 Special 01. Abutment Seat Cleaning and Sealing	57.000 SY	_____.	_____.
0226	SPV.0045 Special 01. Temporary Detectable Warning Field	10.000 DAY	_____.	_____.
Section: 0001			Total:	_____.
			Total Bid:	_____.