



Wisconsin Department of Transportation

March 3, 2022

Division of Transportation Systems Development

Bureau of Project Development
4822 Madison Yards Way, 4th Floor South
Madison, WI 53705

Telephone: (608) 266-1631
Facsimile (FAX): (608) 266-8459

NOTICE TO ALL CONTRACTORS:

Proposal #09: 5992-11-31/32/33, WISC 2022233
City of Madison, University Avenue
Shorewood Blvd to University Bay Drive
Local Street
Dane County

5992-11-32
City of Madison, University Avenue
Shorewood Blvd to University Bay Drive
Local Street
Dane County

5992-11-33
City of Madison, University Avenue
Shorewood Blvd to University Bay Drive
Local Street
Dane County

Letting of March 8, 2022

This is Addendum No. 02, which provides for the following:

Special Provisions:

Revised Special Provisions	
Article No.	Description
30	Trenchless Installation of 96-Inch Storm Sewer Pipe.
103	LED Luminaire and Mounting Bracket Type V, Item SPV.0060.079; LED Luminaire and Mounting Bracket Type I, Item SPV.0060.082; LED Luminaire and Mounting Bracket Type II, Item SPV.0060.083; LED Luminaire and Mounting Bracket Type III, Item SPV.0060.084; LED Luminaire and Mounting Bracket Type IV, Item SPV.0060.085.

Schedule of Items:

Added Bid Item Quantities					
Bid Item	Item Description	Unit	Old Quantity	Revised Quantity	Proposal Total
531.2036	Drilling Shaft 36-Inch	LF	0	90	90
531.5310.001	Foundation Single-Shaft Type TC-I Structure S-13-589	EACH	0	1	1
531.5310.002	Foundation Single-Shaft Type TC-I Structure S-13-590	EACH	0	1	1
531.5310.003	Foundation Single-Shaft Type TC-I Structure S-13-591	EACH	0	1	1
531.5310.004	Foundation Single-Shaft Type TC-I Structure S-13-592	EACH	0	1	1
531.5310.005	Foundation Single-Shaft Type TC-I Structure S-13-593	EACH	0	1	1
532.5310.001	Truss Cantilever 2-Chord Type I Structure S-13-589	EACH	0	1	1
532.5310.002	Truss Cantilever 2-Chord Type I Structure S-13-590	EACH	0	1	1
532.5310.003	Truss Cantilever 2-Chord Type I Structure S-13-591	EACH	0	1	1
532.5310.004	Truss Cantilever 2-Chord Type I Structure S-13-592	EACH	0	1	1
532.5310.005	Truss Cantilever 2-Chord Type I Structure S-13-593	EACH	0	1	1

Deleted Bid Item Quantities					
Bid Item	Item Description	Unit	Old Quantity	Revised Quantity	Proposal Total
532.5120.001	Monotube Cantilever Type II Sta. 143+10	EACH	1	-1	0
532.5120.002	Monotube Cantilever Type II Sta. 142+63	EACH	1	-1	0
532.5120.003	Monotube Cantilever Type II Sta. 153+40	EACH	1	-1	0
532.5120.004	Monotube Cantilever Type II Sta. 154+06	EACH	1	-1	0
532.5120.005	Monotube Cantilever Type II Sta. 160+47	EACH	1	-1	0

Plan Sheets:

Revised Plan Sheets	
Plan Sheet	Plan Sheet Title (brief description of changes to sheet)
3	Project Overview. Add sign structures
166, 168-169	Permanent Signing. Add sign structure label
351	Remove Monotube Cantilever Table. Quantity now included on sign structure plans.
379, 383	Plan and Profile. Detail. Add sign structure label

Added Plan Sheets	
Plan Sheet	Plan Sheet Title (brief description of why sheet was added)
632A-632J	Sign Structure Plans S-13-589/590/591/592/593

Full size structure plans can be found at the following location:

<https://wisdot.box.com/s/zqci595or7wz6hodjh2tw6xbacxo5ka>

Deleted Plan Sheets	
Plan Sheet	Plan Sheet Title (brief description of why sheet was deleted)
57-61	Monotube Sign Details. Replaced with sign structure plans.

The responsibility for notifying potential subcontractors and suppliers of these changes remains with the prime contractor.

Sincerely,

Mike Coleman

Proposal Development Specialist
Proposal Management Section

ADDENDUM NO. 02
PROJECT ID 5992-11-31/32/33
March 3, 2022

Special Provisions

30. Trenchless Installation of 96-Inch Storm Sewer Pipe.

*Replace paragraph one under section titled **B.1 Project Superintendent** with the following:*

The Project Superintendent shall have completed a minimum of five tunnel installations, each with a minimum drive length of 500 linear feet of installed pipe with a minimum of 48-inch diameter. One documented drive shall be equal to or greater than the longest drive length proposed for this project. The Project Superintendent shall be able to document experience with tunneling equipment similar to that proposed for this project. All documented experience shall have occurred within the past 8 years. At least one of the referenced projects shall include installation and use of an Intermediate Jacking Station, if an Intermediate Jacking Station is proposed for this project.

*Replace entire section titled **B2 Tunnel Boring Machine (TBM) Operator** with the following:*

B2 Tunnel Boring Machine (TBM) Operator

The TBM Operator shall have successfully completed a minimum of seven installation projects, each with a minimum drive of 500 linear feet of installed pipe with a minimum of 48-inch diameter. The TBM Operator shall be able to document experience with tunneling equipment similar to that proposed for this project. All documented experience shall have occurred within the past 10 years. Additionally, the TBM Operator shall have experience installing the same pipe material and size as proposed for this project and shall have successfully completed one drive length equal to or greater than the longest drive length proposed for this project. The TBM Operator shall have successfully completed a project in similar subsurface ground conditions. If an Intermediary Jacking Station is proposed, the TBM Operator shall document applicable experience.

**103. LED Luminaire and Mounting Bracket Type V, Item SPV.0060.079;
LED Luminaire and Mounting Bracket Type I, Item SPV.0060.082;
LED Luminaire and Mounting Bracket Type II, Item SPV.0060.083;
LED Luminaire and Mounting Bracket Type III, Item SPV.0060.084;
LED Luminaire and Mounting Bracket Type IV, Item SPV.0060.085.**

*Replace paragraph three under section titled **B.1 Material Qualifications** with the following:*

The LED Luminaire and Mounting Bracket Type V shall consist of WisDOT standard bid item 657.0806 "Luminaire Arms Steel 6-FT" and 659.1120 "Luminaires Utility LED B" as described in the standard specs, standard details, and as found on the qualified products list.

*Replace last paragraph under section titled **E Payment** with the following:*

Payment is full compensation for furnishing all materials, including all luminaires, luminaire fusing, luminaire arms, fittings, brackets, mounting hardware and leveling shims.

Schedule of Items

Attached, dated March 3, 2022, are the revised Schedule of Items Pages 1 - 28.

Plan Sheets

The following 8½ x 11-inch sheets are attached and made part of the plans for this proposal:

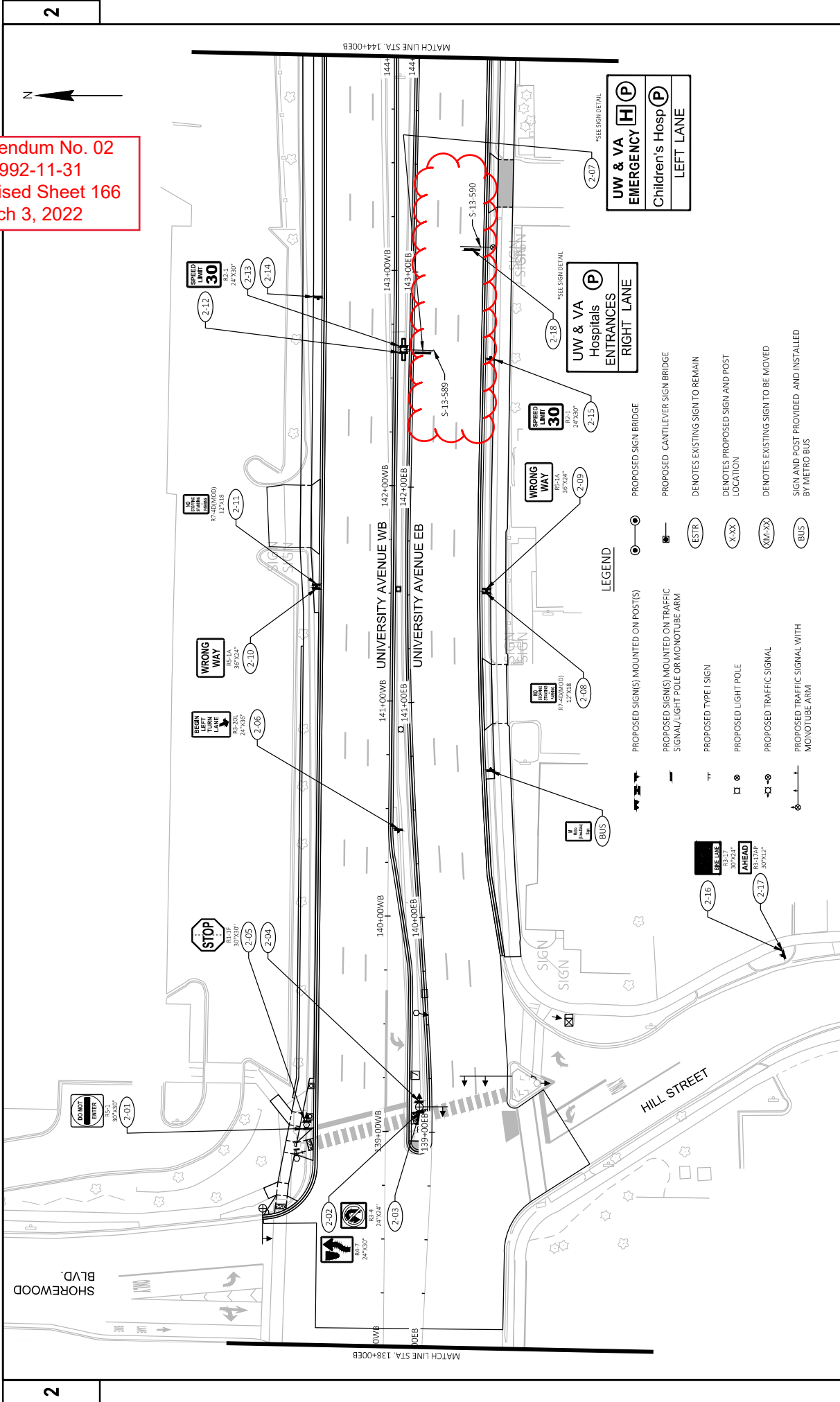
Revised: 3, 166, 168-169, 351, 379 and 383.

Added: 632A-632J.

Deleted: 57-61.

END OF ADDENDUM

Addendum No. 02
 ID 5992-11-31
 Revised Sheet 166
 March 3, 2022

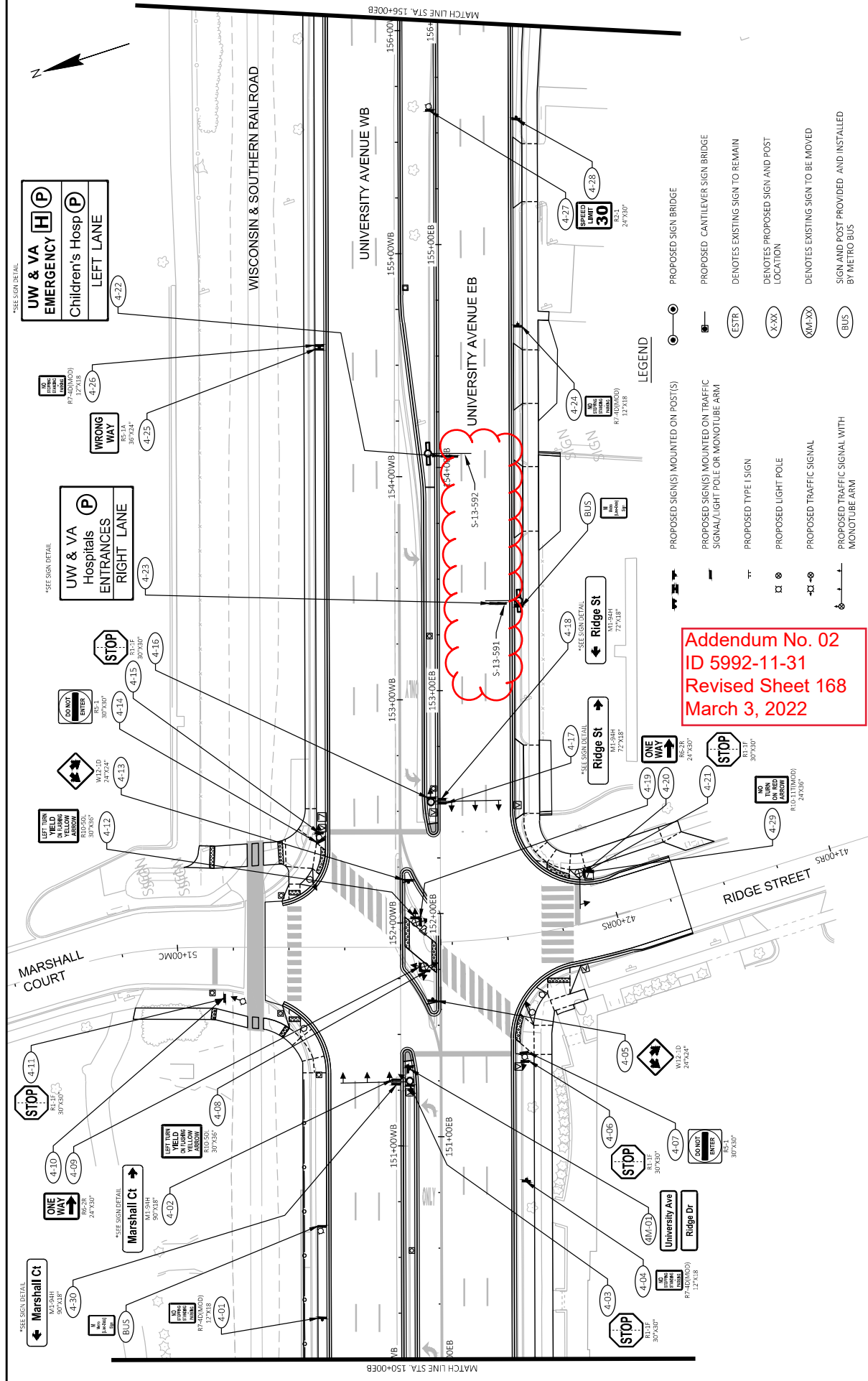


UW & VA
 EMERGENCY
 Children's Hosp
 LEFT LANE

UW & VA
 Hospitals
 ENTRANCES
 RIGHT LANE

LEGEND

- PROPOSED SIGN(S) MOUNTED ON POST(S)
- PROPOSED SIGN BRIDGE
- PROPOSED SIGN(S) MOUNTED ON TRAFFIC SIGNAL/LIGHT POLE OR MONOTUBE ARM
- PROPOSED CANTILEVER SIGN BRIDGE
- PROPOSED TYPE 'I' SIGN
- PROPOSED LIGHT POLE
- PROPOSED TRAFFIC SIGNAL
- PROPOSED TRAFFIC SIGNAL WITH MONOTUBE ARM
- DEMOTES EXISTING SIGN TO REMAIN
- DEMOTES EXISTING SIGN AND POST LOCATION
- DEMOTES EXISTING SIGN TO BE MOVED
- SIGN AND POST PROVIDED AND INSTALLED BY METRO BUS



- LEGEND**
- (with symbol) PROPOSED SIGN(S) MOUNTED ON POST(S)
 - (with symbol) PROPOSED SIGN(S) MOUNTED ON TRAFFIC SIGNAL/LIGHT POLE OR MONOTUBE ARM
 - (with symbol) PROPOSED TYPE I SIGN
 - ⊠ (with symbol) PROPOSED LIGHT POLE
 - ⊕ (with symbol) PROPOSED TRAFFIC SIGNAL
 - ⊕ (with symbol) PROPOSED TRAFFIC SIGNAL WITH MONOTUBE ARM
 - (with symbol) PROPOSED SIGN BRIDGE
 - (with symbol) PROPOSED CANTILEVER SIGN BRIDGE
 - (with symbol) DENOTES EXISTING SIGN TO REMAIN
 - (with symbol) DENOTES PROPOSED SIGN AND POST LOCATION
 - (with symbol) DENOTES EXISTING SIGN TO BE MOVED
 - (with symbol) SIGN AND POST PROVIDED AND INSTALLED BY METRO BUS

Addendum No. 02
 ID 5992-11-31
 Revised Sheet 168
 March 3, 2022

*SEE SIGN DETAIL
UW & VA EMERGENCY
Children's Hosp
LEFT LANE
 4-22

*SEE SIGN DETAIL
UW & VA Hospitals ENTRANCES
RIGHT LANE
 4-23

*SEE SIGN DETAIL
WRONG WAY
 4-25

*SEE SIGN DETAIL
STOP
 4-15

*SEE SIGN DETAIL
DO NOT ENTER
 4-11

*SEE SIGN DETAIL
LEFT TURN ON RED
 4-12

*SEE SIGN DETAIL
STOP
 4-11

*SEE SIGN DETAIL
ONE WAY
 4-10

*SEE SIGN DETAIL
Marshall Ct
 4-30

*SEE SIGN DETAIL
STOP
 4-02

*SEE SIGN DETAIL
NO TURN ON RED
 4-01

*SEE SIGN DETAIL
STOP
 4-05

*SEE SIGN DETAIL
NO TURN ON RED
 4-06

*SEE SIGN DETAIL
STOP
 4-07

*SEE SIGN DETAIL
NO TURN ON RED
 4-04

*SEE SIGN DETAIL
STOP
 4-03

*SEE SIGN DETAIL
NO TURN ON RED
 4-03

*SEE SIGN DETAIL
STOP
 4-17

*SEE SIGN DETAIL
ONE WAY
 4-19

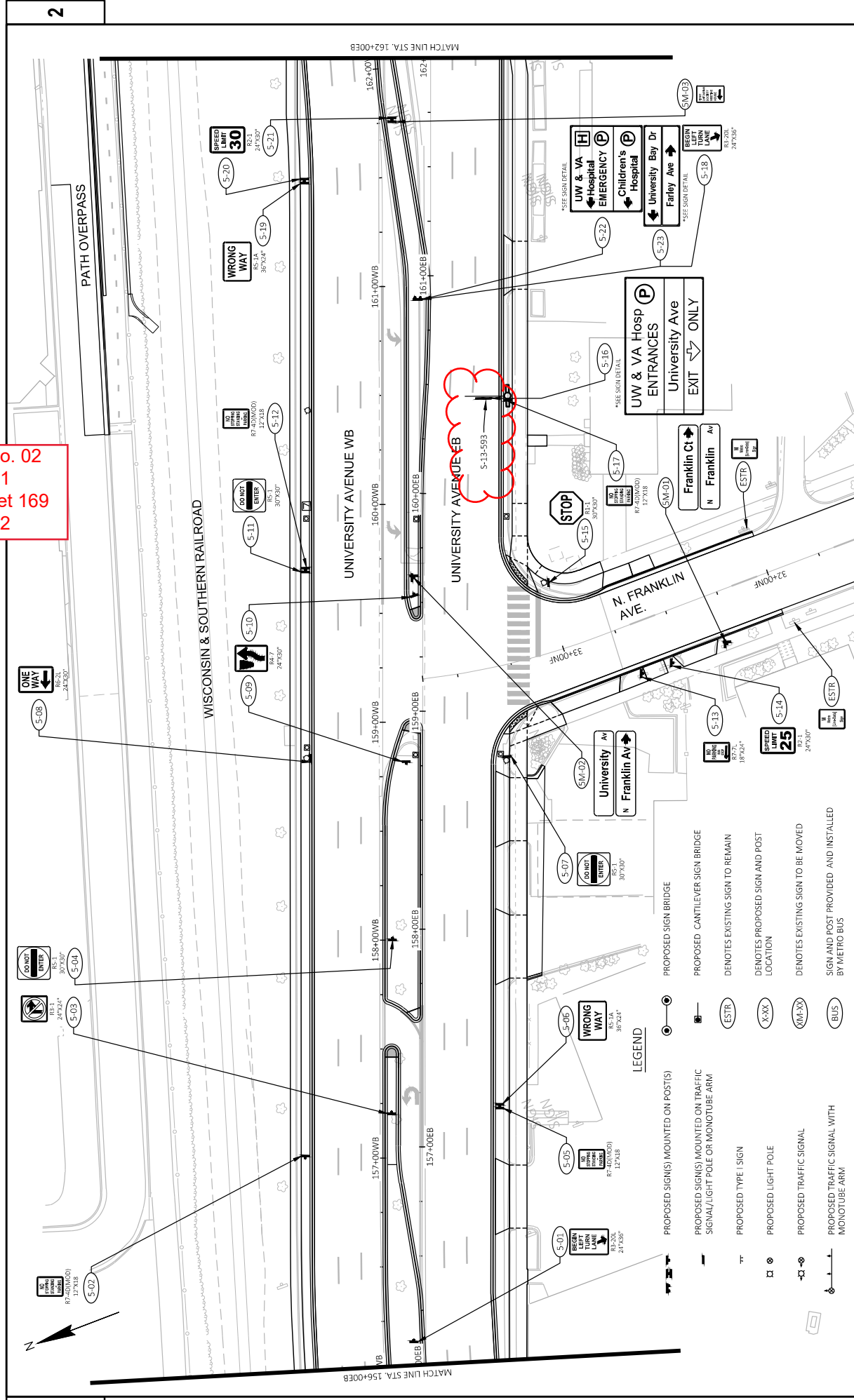
*SEE SIGN DETAIL
STOP
 4-20

*SEE SIGN DETAIL
NO TURN ON RED
 4-21

*SEE SIGN DETAIL
STOP
 4-29

*SEE SIGN DETAIL
NO TURN ON RED
 4-29

Addendum No. 02
 ID 5992-11-31
 Revised Sheet 169
 March 3, 2022



PROJECT NO: 5992-11-31	HWY: UNIVERSITY AVENUE	COUNTY: DANE	PERMANENT SIGNING - UNIVERSITY AVENUE	SHEET	169	E
FILE NAME: G:\WISCONSIN\18026-001 UNIV AVE (SHORWOOD - UNIVERSITY BAYVIEW)\01\30\5992\PLAN\05 PLAN DETAILS\02303-PS.DWG	DATE: 3/1/2022 8:48 AM	PLOT DATE: 3/1/2022 8:48 AM	PLOT BY: KE ENGINEERING	PLOT NAME: 1 IN 40 FT	PLOT SCALE: 1 IN 40 FT	WISDOT/CADDS SHEET 42

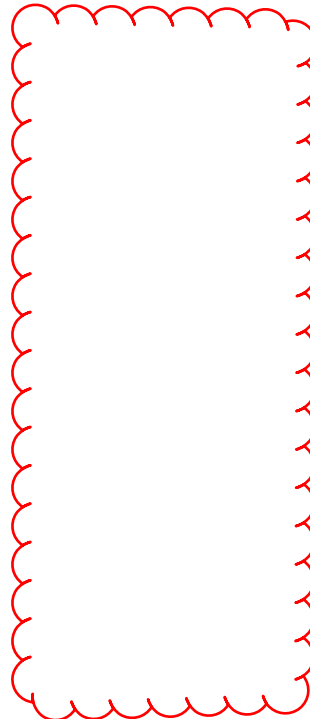
2

2

Addendum No. 02
 ID 5992-11-31
 Revised Sheet 351
 March 3, 2022

PERMANENT SIGNING

SIGN #	SIGN CODE	SIGN SIZE	SIGN WxH	SIGN REFLECTIVE TYPE (SF)	SIGN REFLECTIVE TYPE (SF)	SIGN REFLECTIVE FOLDING SF	SIGN TYPE II REFLECTIVE H SF	SIGN TYPE II REFLECTIVE F SF	CONCRETE BASES TYPE 10 (EACH)	POLE TYPE 9 OVER ARMS 15-FT (EACH)	MONOTUBE PRECAST SIGN POST (EACH)	CONCRETE BASE FOR INSTALLATION (EACH)	SIGN POST (LF)	SIGN MOUNTED ON SAME POST (LF)	REFLECTIVE SIGN (LF)	SPV.0090.005	SIGN POST (LF)	SPV.0090.004	SIGN POST (LF)	SPV.0090.005	SIGN MOUNTED ON SAME POST (LF)	REMARKS																					
																							687.1220	637.2210	637.2215	637.2230	654.0110	657.0346	657.0515	SPV.0090.004	SPV.0090.005												
8-14	R5-7B	2S	30X12	--	2.80	--	--	--	--	--	--	--	--	--	--	POLE	BIKE LANE ENDS (PLAQUE)																										
8-16	R5-4D	2S	30X14	--	3.00	--	--	--	--	--	--	--	--	--	--	POLE	NO SIGN FOR FOLDING (DOUBLE ARROW)																										
8-17	R5-1	2S	24X24	--	4.00	--	--	--	--	--	1	--	10	--	--	POLE	NO SIGN FOR FOLDING (DOUBLE ARROW)																										
8-18	R5-1	2S	30X30	--	6.25	--	--	--	--	--	1	--	10	--	--	POLE	NO SIGN FOR FOLDING (DOUBLE ARROW)																										
8-19	R5-1	2S	30X30	--	6.25	--	--	--	--	--	1	--	10	--	--	POLE	NO SIGN FOR FOLDING (DOUBLE ARROW)																										
CATEGORY 0010 TOTAL																						410.00	751.48	72.52	35.00	1	1	2	44	7	256	238											
CATEGORY 0080																																											
7-01	W4-2R	2S	36X36	--	7.07	--	--	9.00	--	--	--	--	--	--	--	POLE	LANE REDUCTION TRANSITION SYMBOL (RIGHT)																										
7-04	W16-1	2S	36X36	--	3.00	--	--	3.00	--	--	1	--	10	--	--	POLE	STOP SIGN (FOLDING)																										
7-05	W16-1	2S	18X24	--	--	--	--	--	--	--	--	--	--	--	--	POLE	STOP SIGN (FOLDING)																										
7-06	M1-54H	Custom	80X18	--	11.25	--	--	--	--	--	--	--	--	--	--	POLE	NO PARKING ANY TIME (DOUBLE ARROW)																										
7-07	M1-54H	Custom	80X18	--	11.25	--	--	--	--	--	--	--	--	--	--	POLE	LANE REDUCTION TRANSITION SYMBOL (RIGHT)																										
7-08	R1-1F	2S	30X30	--	5.18	--	--	5.18	--	--	--	--	--	--	--	POLE	STOP SIGN (FOLDING)																										
7-09	R1-1F	2S	30X30	--	5.18	--	--	5.18	--	--	--	--	--	--	--	POLE	STOP SIGN (FOLDING)																										
7-10	M1-54H	Custom	86X18	--	12.00	--	--	--	--	--	--	--	--	--	--	POLE	STOP SIGN (FOLDING)																										
7-11	M1-54H	Custom	86X18	--	12.00	--	--	--	--	--	--	--	--	--	--	POLE	STOP SIGN (FOLDING)																										
7-12	R5-17	2S	30X24	--	5.00	--	--	5.18	--	--	--	--	--	--	--	POLE	BIKE LANE (BASE SYMBOL)																										
7-13	R1-1F	2S	30X30	--	5.00	--	--	5.18	--	--	--	--	--	--	--	POLE	STOP SIGN (FOLDING)																										
7-14	W11-2	2S	30X30	--	6.25	--	--	2.00	--	--	1	--	10	--	--	POLE	PEDESTRIAN CROSSING SYMBOL																										
7-15	W16-7L	2S	24X12	--	2.00	--	--	2.00	--	--	--	--	--	--	--	POLE	LEFT DIAGONAL DOWNWARD POINTING ARROW (YELLOW)																										
CATEGORY 0080 TOTAL																						0	58.57	15.54	20.25	0	0	0	2	46	276	238											
PROJECT 5992-11-31 TOTAL																						410.00	810.05	88.06	55.25	1	1	2	46	7	276	238											

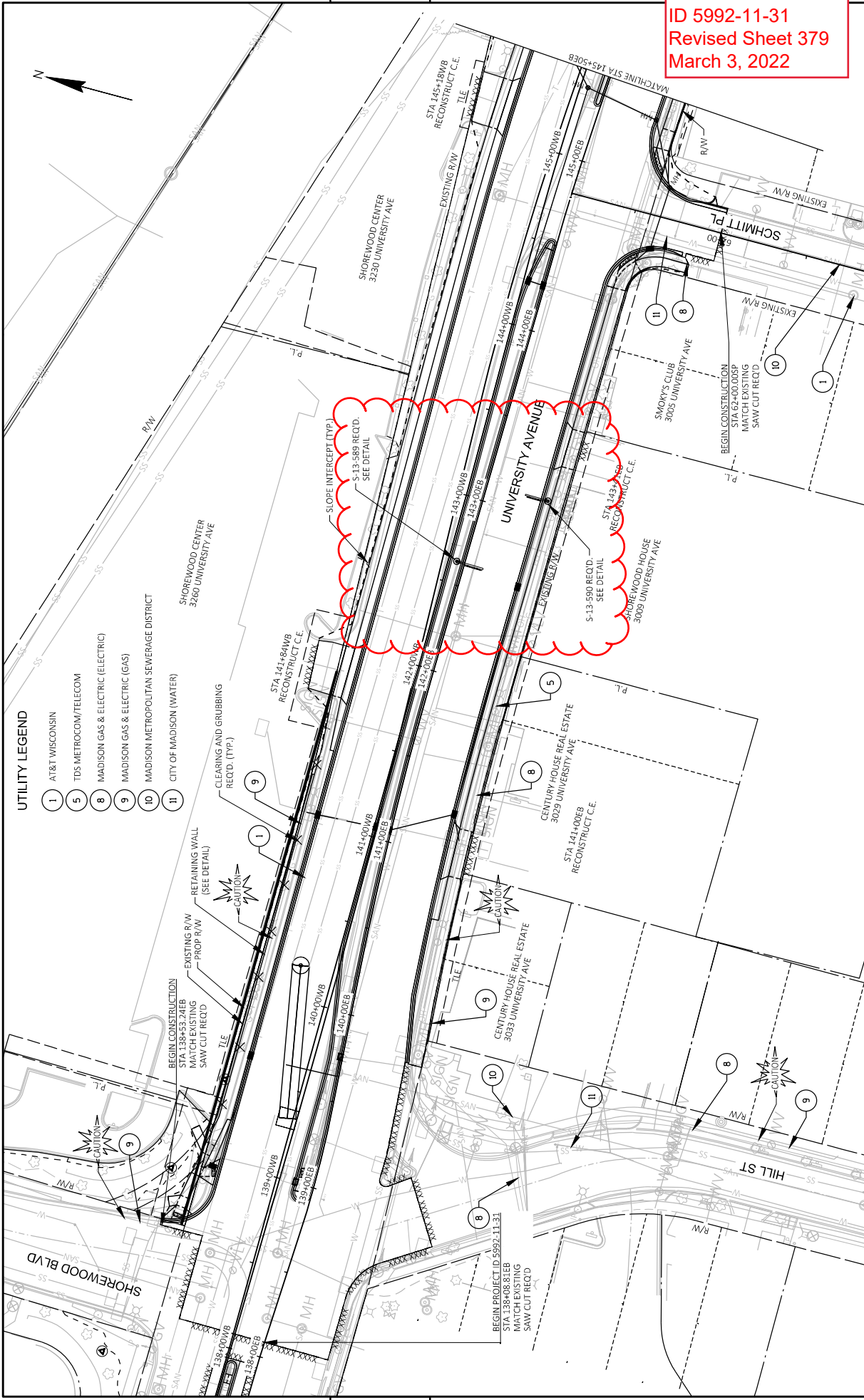


ORIG. DATE:

REV. DATE:

FILE NAME:

Addendum No. 02
 ID 5992-11-31
 Revised Sheet 379
 March 3, 2022



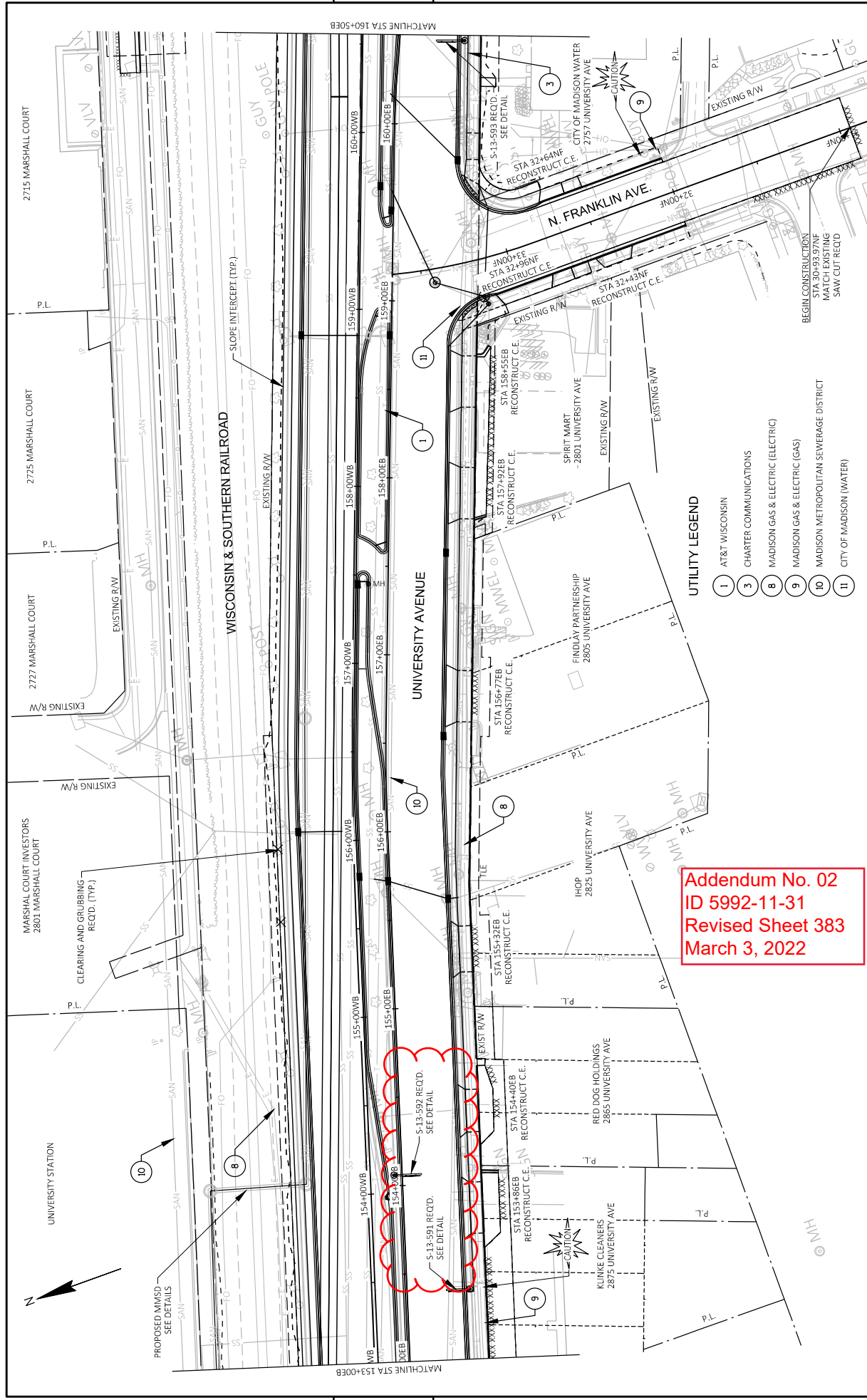
UTILITY LEGEND

- 1 A&T WISCONSIN
- 5 TDS METROCOM/TELECOM
- 8 MADISON GAS & ELECTRIC (ELECTRIC)
- 9 MADISON GAS & ELECTRIC (GAS)
- 10 MADISON METROPOLITAN SEWERAGE DISTRICT
- 11 CITY OF MADISON (WATER)

PROJECT NO: 5992-11-31	COUNTY: DANE	PLAN AND PROFILE - UNIVERSITY AVENUE	SHEET	E
FILE NAME: G:\MADISON\18026-001 UNIV AVE (SHORWOOD - UNIVERSITY BAY)\GVL_30\SHRTP\LAN\08 PLAN AND PROFILE\5992-11-31-PP-UNIVERSITY AVE EB.DWG	PLOT DATE: 3/1/2022 8:58 AM	PLOT BY: MK ENGINEERING	PLOT SCALE: 1"=50.00 FT	WISDOT/CAD05 SHEET 42
HWY: UNIVERSITY AVENUE				

5

5



Addendum No. 02
 ID 5992-11-31
 Revised Sheet 383
 March 3, 2022

UTILITY LEGEND

- ① AT&T WISCONSIN
- ③ CHARTER COMMUNICATIONS
- ⑧ MADISON GAS & ELECTRIC (ELECTRIC)
- ⑨ MADISON GAS & ELECTRIC (GAS)
- ⑩ MADISON METROPOLITAN SEWERAGE DISTRICT
- ⑪ CITY OF MADISON (WATER)

STRUCTURE DATA

NO.	DATE	REVISION	BY
2	3/2/22	NEW 2-CHORD TRUSS PLANS	CDH

GENERAL NOTES

DRAWINGS SHALL NOT BE SCALED.
 ALTERNATE DESIGNS ARE NOT ALLOWED.
 COORDINATES ON THIS PLAN ARE REFERRED TO THE WISCONSIN COUNTY COORDINATE SYSTEM (MCS). DANE COUNTY ZONE (MAD 83 (2007)). ALL STATIONS AND ELEVATIONS ARE IN FEET. ELEVATIONS ARE REFERENCED TO THE NORTH AMERICAN VERTICAL DATUM NAVD 88 (1991).
 ALL REINFORCING BARS ARE IN ENGLISH UNITS. THE FIRST DIGIT OF A THREE-DIGIT BAR MARK OR THE FIRST TWO DIGITS OF A FOUR-DIGIT BAR MARK SIGNIFIES THE BAR SIZE.
 SIGN BRIDGE ID PLAQUES SHALL BE CONSIDERED INCIDENTAL TO THE TRUSS OR MONOTUBE BID ITEMS FOR EACH APPLICABLE SIGN STRUCTURE IN THE PLAN SET. LOCATE THE ID PLAQUE WITHIN THE SIGN STRUCTURE. THE ID PLAQUE SHALL BE INSTALLED ON THE EXTERIOR SIDE OF THE ROADWAY, FABRICATE AND INSTALL THE ID PLAQUE IN ACCORDANCE WITH S.D.P. 12.A.4.3. UNLESS DETAILED OTHERWISE IN THE PLANS, ALL H.S. BOLTED CONNECTIONS SHALL BE WELDED. WELDED CONNECTIONS CAN BE USED IN LIEU OF BOLTED CONNECTIONS, IF A TRUSS UNIT CAN BE GALVANNEDED IN ONE PIECE.
 WELD TEST AS PER AWS D1.1.
 SEE SIGN PLATE NO. 44-6, 44-7A & 44-7B OF THE SIGN PLATE MANUAL FOR INSTRUCTIONS ON CENTERING SIGNS VERTICALLY ON THE TRUSS.
 SIGNS OR BLANKS SHALL BE INSTALLED ON TRUSSES AT TIME OF ERECTION. BLANKS SHALL BE 1/4 THE LENGTH OF THE CANTILEVER SPAN, 2'-0" DEEPER THAN THE CAL TO COLOR CHORDS, AND SHALL BE CENTERED ON THE BRIDGE. SIGNS SHALL BE AS DESIGNATED ON THE PLANS. THE INFORMATION SHOWN ON THESE DRAWINGS CONCERNING TYPE AND LOCATION OF UNDERGROUND UTILITIES IS NOT GUARANTEED TO BE ACCURATE OR ALL INCLUSIVE. THE CONTRACTOR IS RESPONSIBLE FOR MAKING HIS OWN DETERMINATION OF THE TYPE AND LOCATION OF UTILITIES AS MAY BE NECESSARY TO AVOID DAMAGE.
 CONTRACTOR SHALL SUBMIT SHOP DRAWINGS PER THE REQUIREMENTS IN THE STANDARD SPECIFICATIONS PRIOR TO FABRICATION OF THE STRUCTURE. CONTRACTOR SHALL SHOW SIGNS ON THE SHOP DRAWINGS.
 THE CONTRACTOR SHALL BE RESPONSIBLE FOR DRILLING OR EXCAVATING AND MAINTAINING A STABLE AND OPEN HOLE FOR SUBSEQUENT INSTALLATION OF CONCRETE REINFORCEMENT. THE CONTRACTOR SHALL BE RESPONSIBLE FOR THE STABILITY OF THE EXCAVATED HOLE FOR THE SIGN SUPPORT PRIOR TO FILLING THE HOLE WITH CONCRETE. PERMANENT CASING MADE FROM STEEL OR TEMPORARY PERMANENT CASING, IF USED, SHALL BE INCIDENTAL TO THE BID ITEM "DRILLING shaft (dia. 7)".

LIST OF DRAWINGS

NO.	DATE	REVISION	BY
1.		MONOTUBE & 2-CHORD TRUSS DETAILS 1	
2.		GENERAL LAYOUT 5-13-589	
3.		GENERAL LAYOUT 5-13-590	
4.		GENERAL LAYOUT 5-13-591	
5.		GENERAL LAYOUT 5-13-592	
6.		GENERAL LAYOUT 5-13-593	

FOUNDATION DATA

SIGN STRUCTURE FOUNDATIONS ARE SUPPORTED ON DRILLED SHAFTS THAT HAVE BEEN DESIGNED FOR SITES WHERE SOILS EXHIBIT A PH-ANGLE GREATER THAN OR EQUAL TO 24° (GRANULAR SOILS), OR A COHESION VALUE GREATER THAN OR EQUAL TO 2.0 KIPS/FT. (CLAY SOILS). FOUNDATION DESIGN IS BASED ON THE GROUND WATER TABLE FOR DESIGN IS ASSUMED TO BE AT A DEPTH OF 10'-0" BELOW THE GROUND SURFACE. ACTUAL WATER LEVEL AT SITE MAY VARY. THE REGION GEOTECHNICAL ENGINEER SHALL VISUALLY INSPECT THE SUBSURFACE SOILS DURING CONSTRUCTION TO DETERMINE THE NECESSARY FOUNDATION TYPE TO OBTAIN THESE PROPERTIES PRIOR TO PLACEMENT OF THE DRILLED SHAFT CONCRETE.

MATERIAL PROPERTIES

CONCRETE MASONRY $f_c = 3,300$ psi
 HIGH STRENGTH STEEL REINFORCEMENT, GRADE 60 $f_y = 60,000$ psi
 HIGH STRENGTH BOLTS - A325 $f_y = 92,000$ psi
 ANCHOR RODS - ASTM F1554 GRADE 55 $f_y = 55,000$ psi
 HEAVY HEX NUTS FOR ANCHOR RODS - ASTM A563A
 WASHERS FOR ANCHOR RODS - ASTM A436

DESIGN DATA

CONTRACTOR DESIGNED OVERHEAD SIGN STRUCTURES SHALL BE DESIGNED ACCORDING TO THE AASHTO LRFD SPECIFICATIONS FOR STRUCTURAL SUPPORTS FOR HIGHWAY SIGNS, LUMINAIRES AND TRAFFIC SIGNALS, 1ST EDITION AND INTERIM SPECIFICATIONS, AND THE WIDEBY BRIDGE MANUAL.
 STANDARD FOUNDATIONS DESIGNED ACCORDING TO THE AASHTO LRFD BRIDGE DESIGN SPECIFICATIONS, 8TH EDITION.
 DEAD LOAD: WT OF SIGN AND SUPPORTING STRUCTURE.
 ICE LOAD: 3 PSF TO ONE FACE OF SIGN & SURFACE OF MEMBERS.
 WIND PRESSURE: (700 YEAR MEAN RECURRENCE INTERVAL)
 WIND COMPONENTS: NORMAL TRANSVERSE
 LOAD CASE 1: 0.00
 LOAD CASE 2: 0.75
 LOAD CASE 3: 0.75
 LOAD COMBINATIONS
 STRENGTH I (MAX DC): 1.35 DC + 1.6 LL
 STRENGTH II (MIN DC): 1.1 DC + 1.0 W + 1.0 ICE
 EXTREME I (MIN DC): 0.9 DC + 1.0 W
 EXTREME II (MIN DC): 1.0 W + 1.0 W (NATURAL WIND GUST VIBRATION)
 FATIGUE I: 1.0 TRG (TRUCK INDUCED GUST VIBRATION)
 FATIGUE II: 1.0 GW (GALLOWING - CANTILEVER ONLY)

TOTAL ESTIMATED QUANTITIES

BID ITEM NO.	BID ITEM	UNIT	5-13-589	5-13-590	5-13-591	5-13-592	5-13-593
531.2036	DRILLING SHAFT 36-INCH	LF	18	18	18	18	18
531.5310.001	FOUNDATION SINGLE-SHAFT TYPE TC1-S-13-589	EA	1	1	1	1	1
531.5310.002	FOUNDATION SINGLE-SHAFT TYPE TC1-S-13-590	EA	1	1	1	1	1
531.5310.003	FOUNDATION SINGLE-SHAFT TYPE TC1-S-13-591	EA	1	1	1	1	1
531.5310.004	FOUNDATION SINGLE-SHAFT TYPE TC1-S-13-592	EA	1	1	1	1	1
531.5310.005	FOUNDATION SINGLE-SHAFT TYPE TC1-S-13-593	EA	1	1	1	1	1
532.5310.001	TRUSS CANTILEVER TWO-CHORD TYPE IS-13-589	EA	1	1	1	1	1
532.5310.002	TRUSS CANTILEVER TWO-CHORD TYPE IS-13-589	EA	1	1	1	1	1
532.5310.003	TRUSS CANTILEVER TWO-CHORD TYPE IS-13-591	EA	1	1	1	1	1
532.5310.004	TRUSS CANTILEVER TWO-CHORD TYPE IS-13-592	EA	1	1	1	1	1
532.5310.005	TRUSS CANTILEVER TWO-CHORD TYPE IS-13-593	EA	1	1	1	1	1

GENERAL NOTES

THESE ARE STANDARD DESIGN PLANS DEVELOPED AND MAINTAINED BY THE WISCONSIN DEPARTMENT OF TRANSPORTATION. THE DESIGNER CERTIFIES THAT THE DESIGN OF THIS PROJECT CONFORMS WITH THE GUIDANCE PROVIDED IN THE CURRENT WISCONSIN BRIDGE MANUAL CHAPTER 39.



ACCEPTED: **Engineering**
 STATE OF WISCONSIN
 DEPARTMENT OF TRANSPORTATION
 CHIEF STRUCTURES DESIGN ENGINEER DATE: 03/02/22

MONOTUBE AND 2-CHORD TRUSS PLANS

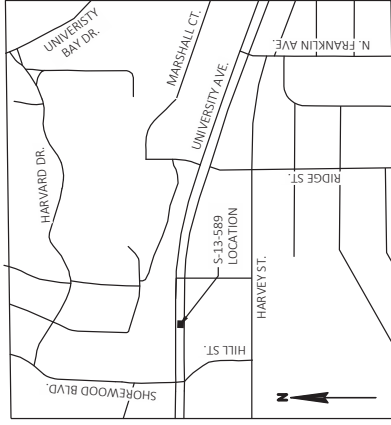
COUNTY: DANE CITY: MADISON
 DESIGN SPEC: DESCRIPTION: 2-CHORD TRUSS PLANS

DESIGNED BY: CHAD HALVerson
 CHECKED BY: BOB BOGERT
 DESIGNED BY: BOB BOGERT
 STANDARD: BOB BOGERT
 SHEET 1 OF 10
 GENERAL NOTES & DESIGN DATA
 632A

STRUCTURE DESIGN CONTACTS:
 AMRON BOMK (608) 761-0261
 CHAD HALVerson (608) 663-1218

ADDENDUM NO. 02
 ID 5992-11-31
 ADDED SHEET 632A
 MARCH 3, 2022

DATE: 03/02/22
 I.D. DATE: 03/02/22



LOCATION MAP

Addendum No. 02
ID 5992-11-31
Added Sheet 632B
March 3, 2022

NOTE

POINT OF MIN. VERTICAL CLEARANCE
STA. 142+63.63, 10'-0" RT
EL. = 885.91

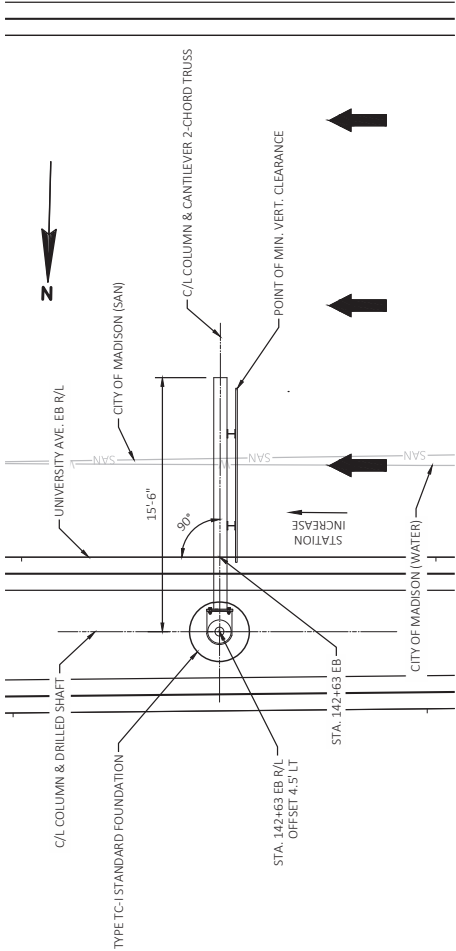
LEGEND

ELEVATIONS GIVEN ALONG C/L CANTILEVER 2-CHORD TRUSS.

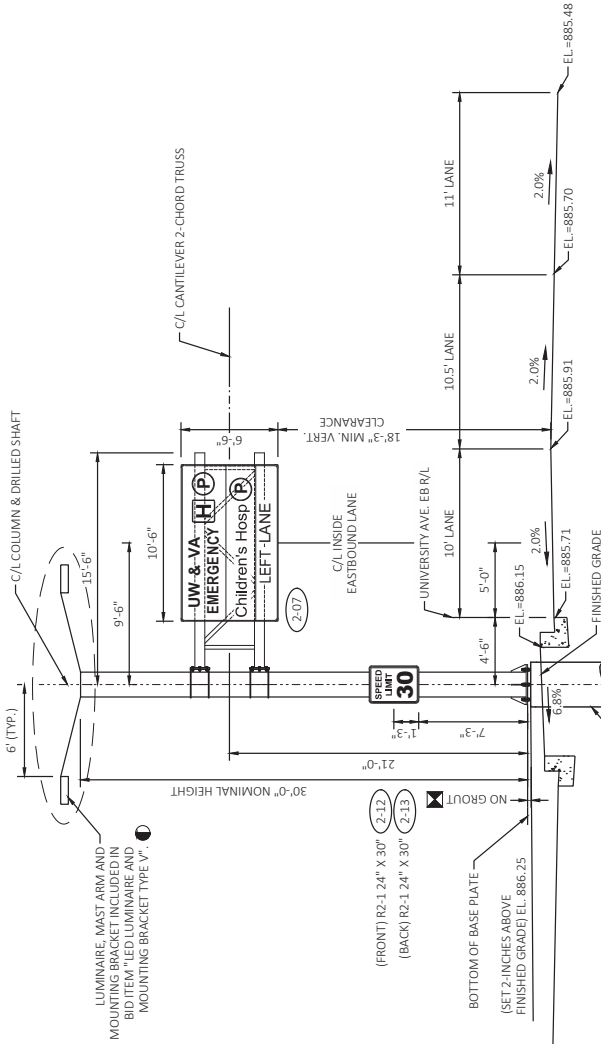
☆ (X-XX) SIGN NUMBER (PERMANENT SIGNING PLAN)

STANDOFF DIMENSION IS ASSUMED TO BE 2'-2", BUT IS A MAXIMUM OF 2'-0" ANCHOR DIMENSION. SEE FOUNDATION DETAILS SHEET AND SHOP DRAWINGS FOR MORE INFORMATION.

SEE SDD "TYPE 13 POLE 35'-55" MONOTUBE ARM" AND "GENERAL NOTES AND HARDWARE FOR TYPES 9, 10, 9/10 SPECIAL, 12, AND 13 POLES WITH MONOTUBE ARMS" FOR ADDITIONAL DETAILS.



PLAN



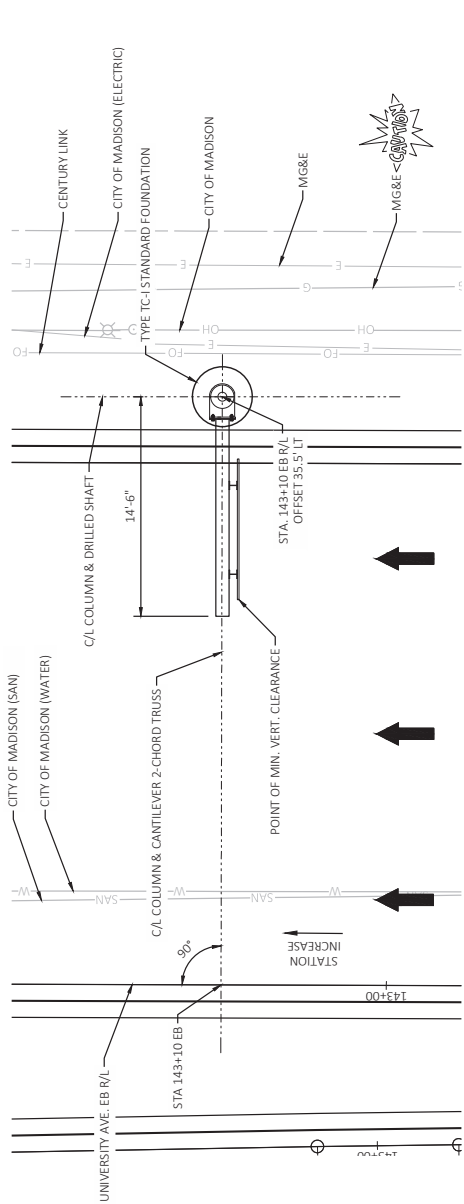
ELEVATION
STA. 142+63EB

NO.	DATE	REVISION	CDM
2	3/7/22	NEW 2-CHORD TRUSS PLANS	BY

STRUCTURE	S-13-589
DRAWN BY	PKAS
CHECKED BY	CAH
STANDARD	STD
SCALE	1"=10'

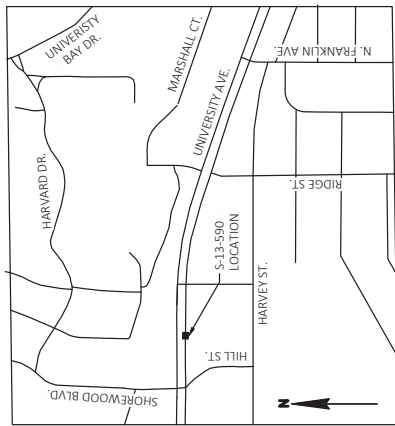
GENERAL LAYOUT	SHEET 2 OF 10
S-13-589	632B

STATE PROJECT NUMBER
5992-11-31



PLAN

LOCATION MAP



Addendum No. 02
ID 5992-11-31
Added Sheet 632C
March 3, 2022

NOTE

POINT OF MIN. VERTICAL CLEARANCE
STA. 143+10 EB, 21'-9" FT
EL. = 887.34

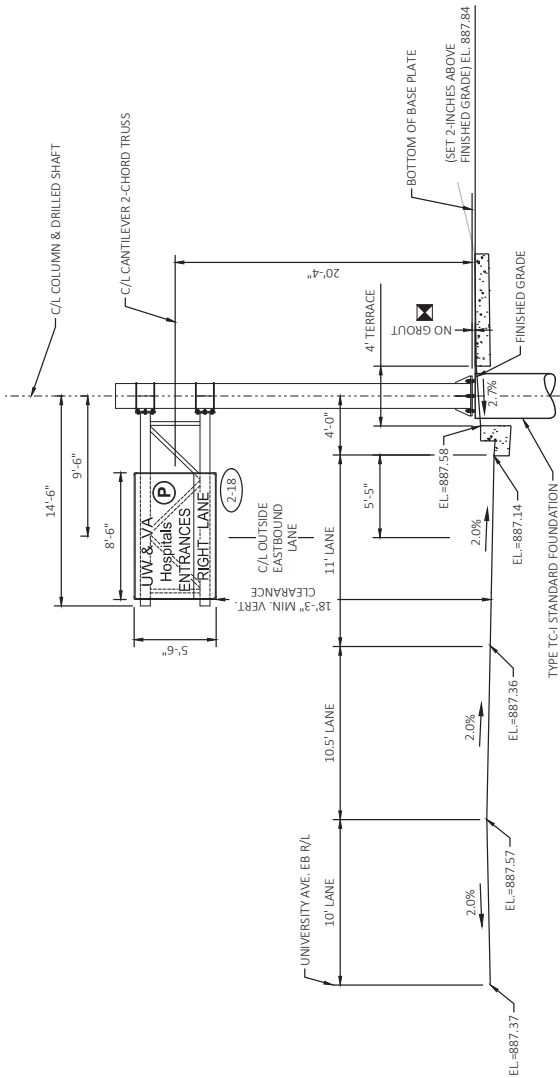
LEGEND



ELEVATIONS GIVEN ALONG C/L CANTILEVER 2-CHORD TRUSS.

SIGN NUMBER (PERMANENT SIGNING PLAN)

STANDOFF DIMENSION IS ASSUMED TO BE 2'-2", BUT IS A MAXIMUM
STANDOFF DIMENSION. SEE FOUNDATION DETAILS SHEET AND
SHOP DRAWINGS FOR MORE INFORMATION.



ELEVATION
STA. 143+10EB

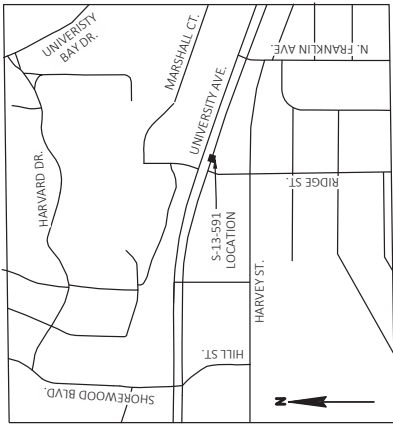
NO.	DATE	REVISION	CDM BY
2	3/2/22	NEW 2-CHORD TRUSS PLANS	

STRUCTURE	S-13-590
DRAWN BY	PKS
CHECKED BY	CAH
STANDARD	STD
SHEET	3 OF 10
PROJECT	632C

8

8

STATE PROJECT NUMBER
5992-11-31



LOCATION MAP

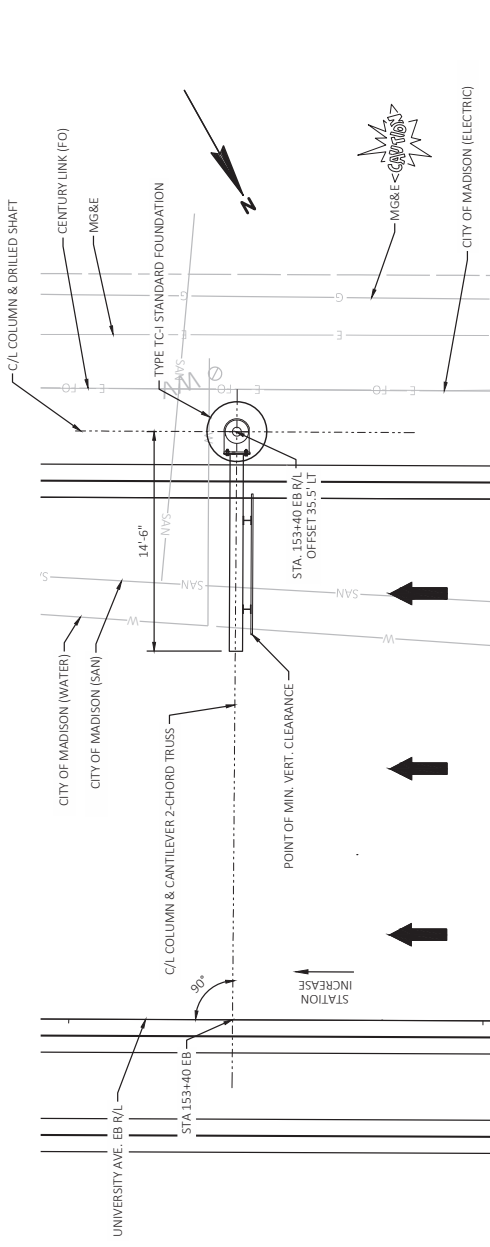
Addendum No. 02
ID 5992-11-31
Added Sheet 632D
March 3, 2022

NOTE

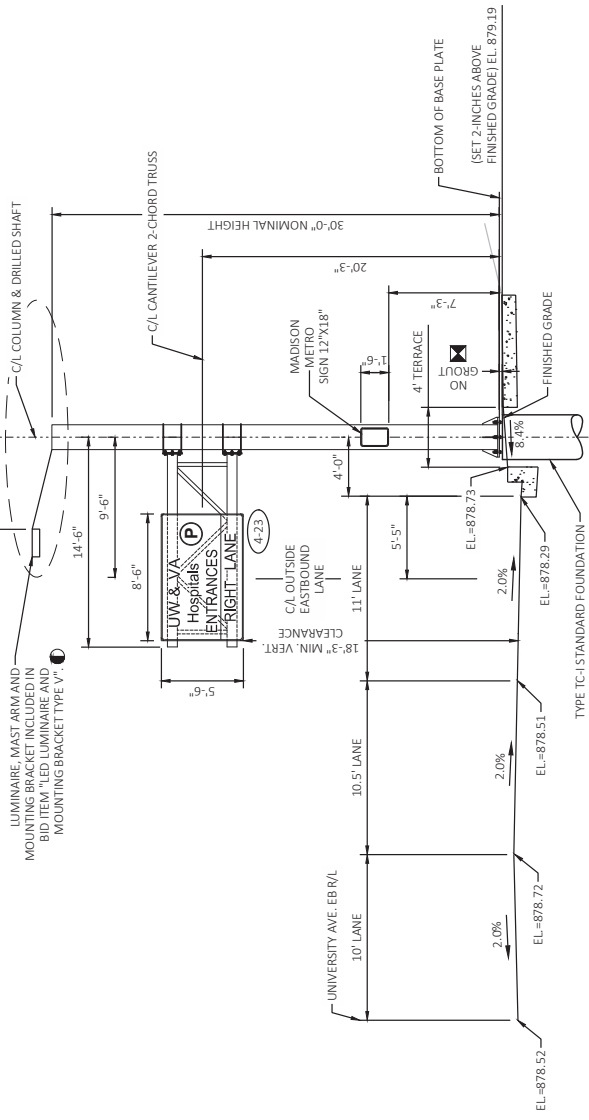
POINT OF MIN. VERTICAL CLEARANCE
STA. 153+40.88, 21.9' RT
EL. = 878.48

LEGEND

- ☆ ELEVATIONS GIVEN ALONG C/L CANTILEVER 2-CHORD TRUSS.
- (X)XX SIGN NUMBER (PERMANENT SIGNING PLAN)
- ☒ STANDOFF DIMENSION IS ASSUMED TO BE 2 1/2', BUT IS A MAXIMUM OF 2' ANCHOR DIMENSION. SEE FOUNDATION DETAILS SHEET AND SHOP DRAWINGS FOR MORE INFORMATION.
- SEE SDD "TYPE 13 POLE 35'-55' MONOTUBE ARM" AND "GENERAL NOTES AND HARDWARE FOR TYPES 9, 10, 9/10 SPECIAL, 12, AND 13 POLES WITH MONOTUBE ARMS" FOR ADDITIONAL DETAILS.



PLAN



ELEVATION
STA. 153+40.88

NO.	DATE	REVISION	CDM BY
2	1/2/22	NEW 2-CHORD TRUSS PLANS	CAH

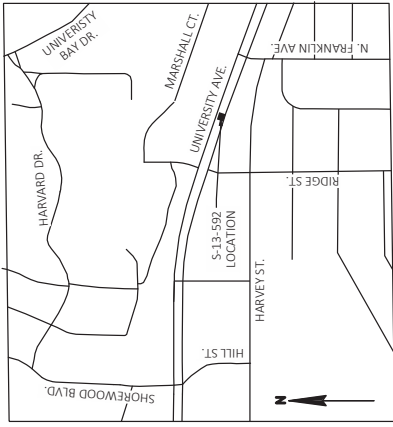
STRUCTURE	S-13-591
DRAWN BY	STL
CHECKED BY	CAH

GENERAL LAYOUT	SHEET 4 OF 10
S-13-591	632D

8

8

STATE PROJECT NUMBER
5992-11-31



LOCATION MAP

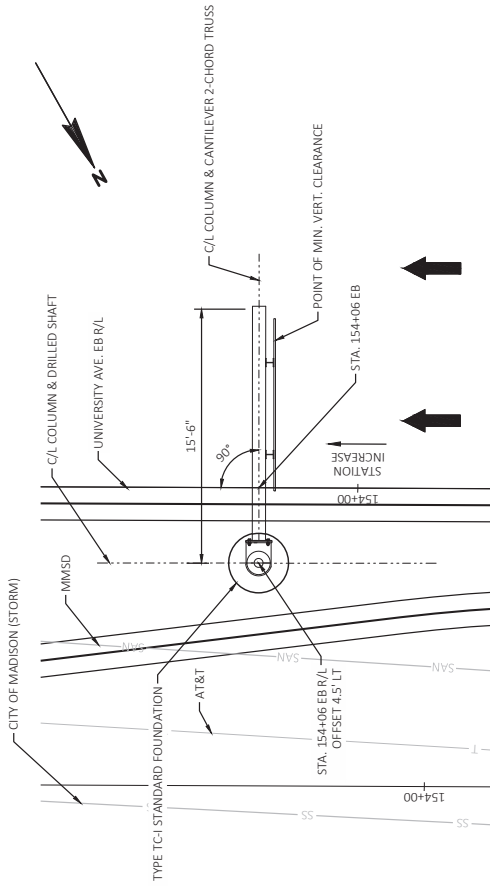
Addendum No. 02
ID 5992-11-31
Added Sheet 632E
March 3, 2022

NOTE

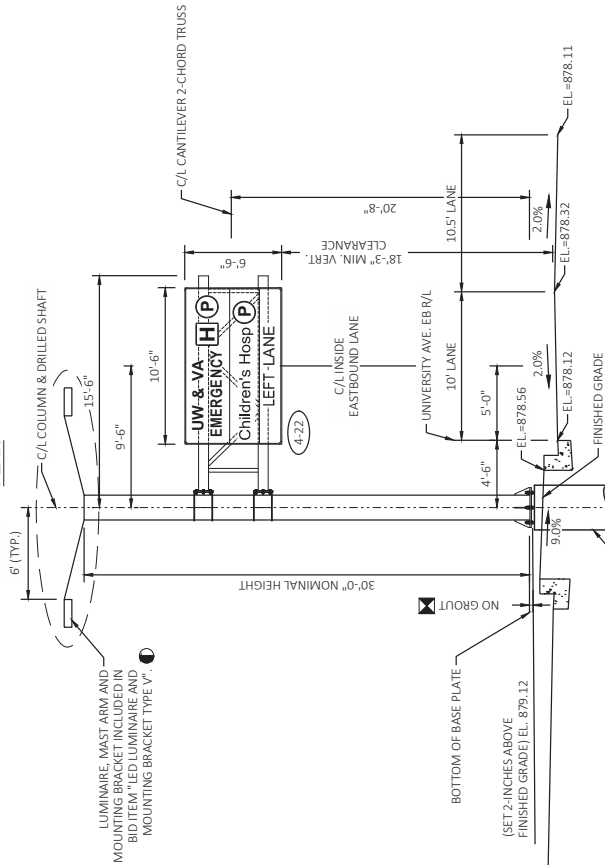
POINT OF MIN. VERTICAL CLEARANCE
STA. 154+06 EB, 10'-0" RT
EL. = 878.32

LEGEND

- ☆ ELEVATIONS GIVEN ALONG C/L CANTILEVER 2-CHORD TRUSS.
- (X-XX) SIGN NUMBER (PERMANENT SIGNING PLAN)
- ☒ STANDOFF DIMENSION IS ASSUMED TO BE 2'-2", BUT IS A MAXIMUM OF 2'-X ANCHOR DIMENSION. SEE FOUNDATION DETAILS SHEET AND SHOP DRAWINGS FOR MORE INFORMATION.
- SEE SDD "TYPE 13 POLE 35'-55" MONOTUBE ARM" AND "GENERAL NOTES AND HARDWARE FOR TYPES 9, 10, 9/10 SPECIAL, 12, AND 13 POLES WITH MONOTUBE ARMS" FOR ADDITIONAL DETAILS.



PLAN

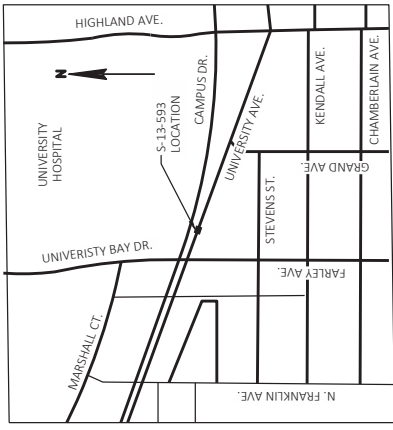


ELEVATION

STA. 154+06EB

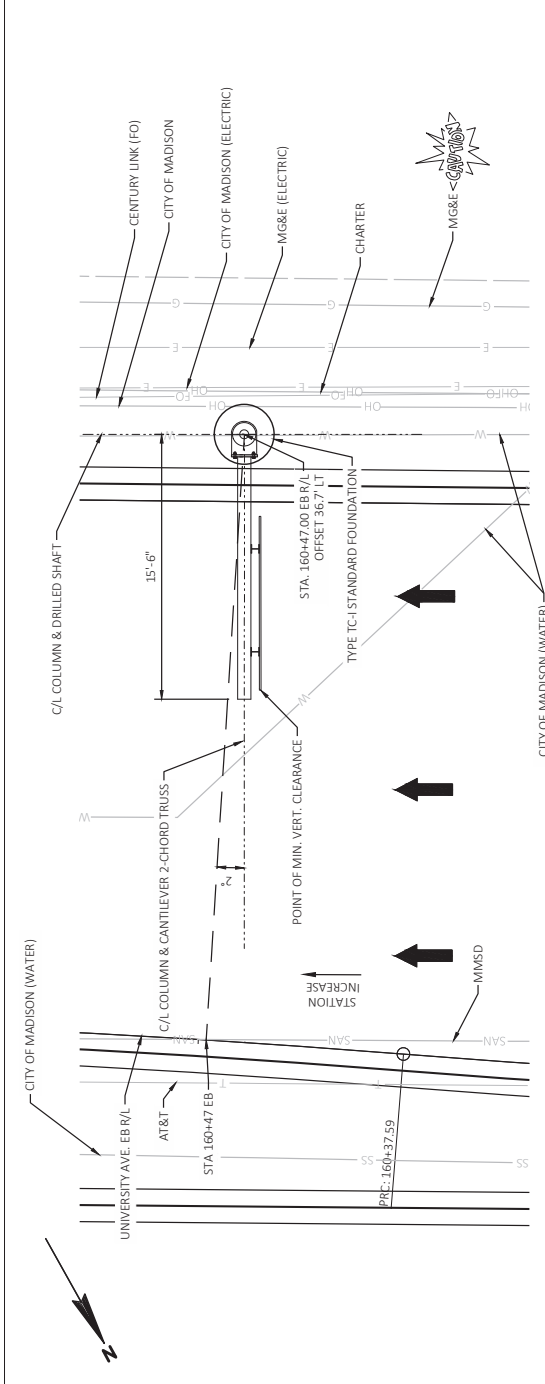
NO.	DATE	REVISION	CDM BY
2	3/27/22	NEW 2-CHORD TRUSS PLANS	CAH

NO.	DATE	REVISION	CDM BY
STRUCTURE S-13-592			
DRAWN BY: CAH			
STD: CK/D			
SHEET 5 OF 10			
632E			

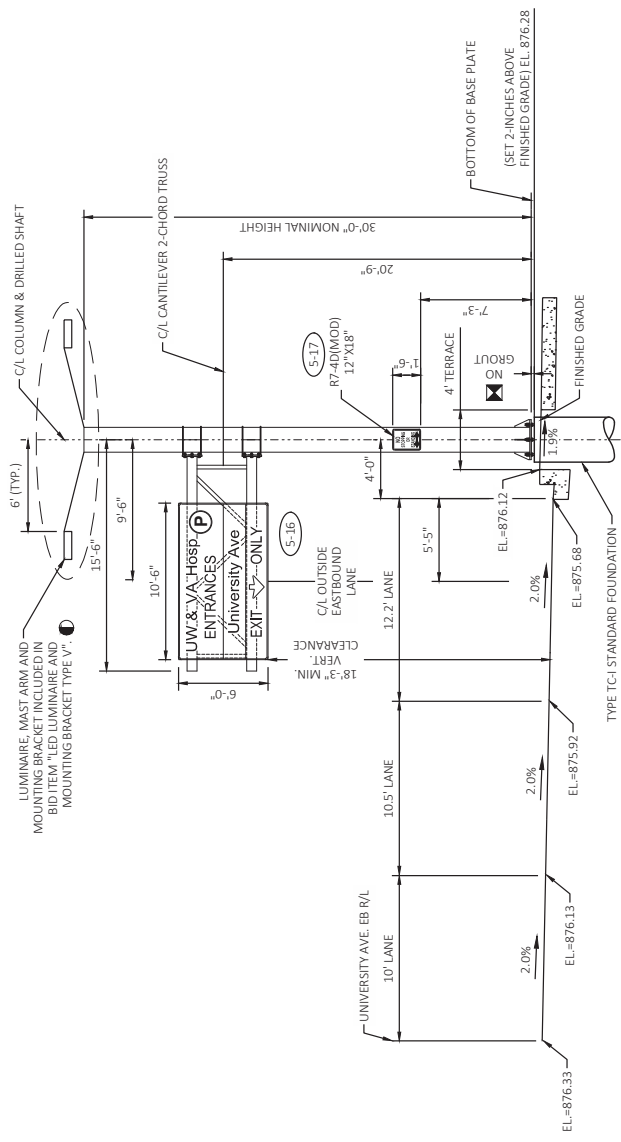


LOCATION MAP

Addendum No. 02
ID 5992-11-31
Added Sheet 632F
March 3, 2022



PLAN



ELEVATION
STA. 160+47EB

NOTE

POINT OF MIN. VERTICAL CLEARANCE
STA. 160+46.49EB, 22.2' RT
EL. = 875.85

LEGEND

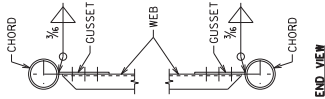
- ☆ ELEVATIONS GIVEN ALONG C/L CANTILEVER 2-CHORD TRUSS.
- (X-XX) SIGN NUMBER (PERMANENT SIGNING PLAN)
- ☒ STANDOFF DIMENSION IS ASSUMED TO BE 2 1/2", BUT IS A MAXIMUM OF 2" ANCHOR DIMENSION. SEE FOUNDATION DETAILS SHEET AND SHOP DRAWINGS FOR MORE INFORMATION.
- SEE SDD "TYPE 13 POLE 35'-55' MONOTUBE ARM" AND "GENERAL NOTES AND HARDWARE FOR TYPES 9, 10, 9/10 SPECIAL, 12, AND 13 POLES WITH MONOTUBE ARMS" FOR ADDITIONAL DETAILS.

NO.	DATE	REVISION	CDM BY
2	3/2/22	NEW 2-CHORD TRUSS PLANS	CAH

STRUCTURE S-13-593
DRAWN BY: CAH
STD. C/D: CAH

GENERAL LAYOUT
S-13-593

SHEET 6 OF 10
632F

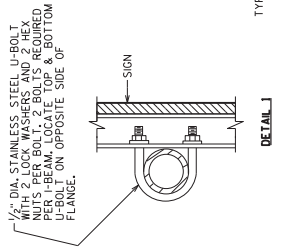


END VIEW

CLIP DETAIL

TRUSS CONNECTION DETAILS

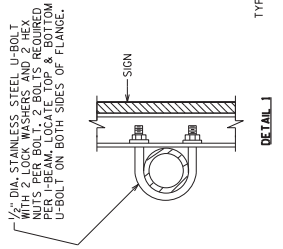
BOLTED CONNECTIONS SHOWN NUMBER OF BOLTS BY DESIGN WELDED CONNECTIONS SIMILAR



2-CHORD TRUSS SIGN CONNECTION

SEE SIGN PLATE MANUAL 44-7A FOR DETAILS ALUMINUM I-5X3.7 I-BEAMS ARE TO BE SUPPLIED WITH THE SIGN PANEL

HARDWARE TO BE SUPPLIED BY THE CONTRACTOR

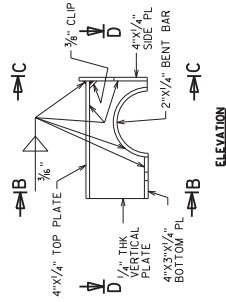


MONOTUBE SIGN CONNECTION

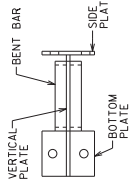
SEE SIGN PLATE MANUAL 44-7B FOR DETAILS ALUMINUM I-5X3.7 I-BEAMS ARE TO BE SUPPLIED WITH THE SIGN PANEL

HARDWARE TO BE SUPPLIED BY THE CONTRACTOR

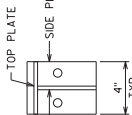
Addendum No. 02
ID 5992-11-31
Added Sheet 632H
March 3, 2022



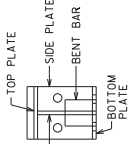
ELEVATION



SECTION D-D



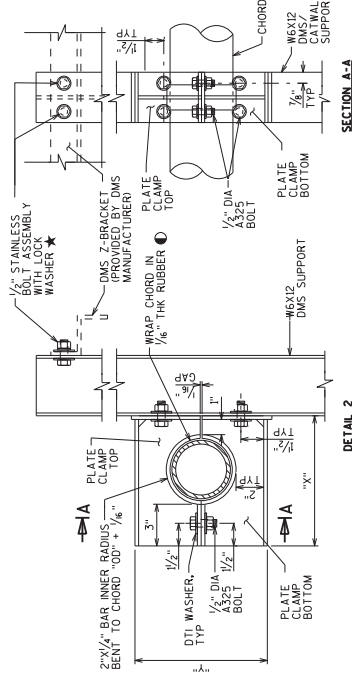
SECTION C-C



SECTION B-B

DMS WELDED PLATE CONNECTION DETAILS

TOP PLATE CLAMP SHOWN BOTTOM PLATE CLAMP SIMILAR



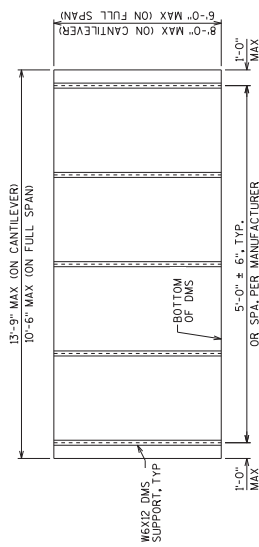
SECTION A-A

DETAIL 2

TYPICAL DMS CONNECTION

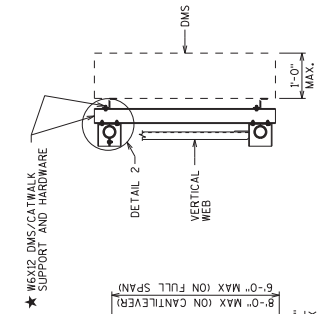
NEOPENE GRADE 4545 OTHERWISE MEETING THE REQUIREMENTS OF STD SPEC 506.2.6.1

CHORD OUTER DIA	"X"	"Y"
"00"	"00"+4 1/8"	"00"+5 1/8"



DMS MOUNTING POST SPACING DETAIL

POST SPACING MAY BE ADJUSTED AS REQUIRED IF CONFLICT WITH TRUSS IS ENCOUNTERED.

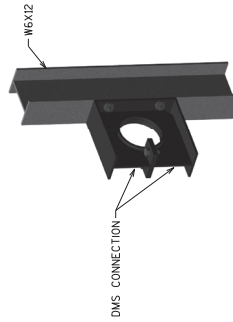


SECTION THRU TRUSS

FOR DMS/CATWALK CONNECTION W6X12 SUPPORTS AND HARDWARE ARE TO BE SUPPLIED BY THE CONTRACTOR. 1/2" DIA STAINLESS BOLT, NUT, WASHER AND LOCK WASHER REQUIRED, 4 PER W6X12.

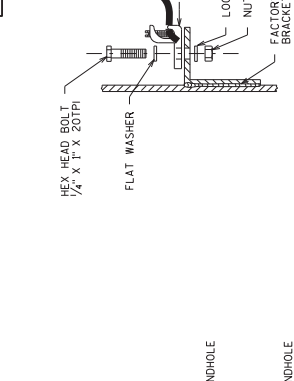
3-D VIEW DMS CONNECTION

CHORD NOT SHOWN FOR CLARITY



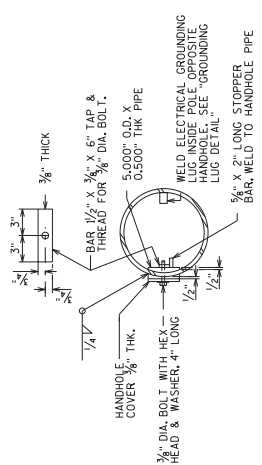
DMS CONNECTION

NO.	DATE	REVISION	BY
STATE OF WISCONSIN DEPARTMENT OF TRANSPORTATION STRUCTURES DESIGN SECTION			
UPDATED: APRIL 2021			
DESIGNED BY: BOS		CHECKED BY: BOS	



TYPICAL "J" HOOK LOCATION

THE "J" HOOK SHALL BE FACTORY WELDED TO THE INSIDE OF ALL COLUMNS CONTAINING ELECTRICAL WIRING. THE "J" HOOK SHALL BE ATTACHED ABOVE THE CENTERLINE OF THE UPPER HANDHOLE AND MOUNTED DIRECTLY OPPOSITE THE HANDHOLE AS SHOWN IN THE DRAWING.

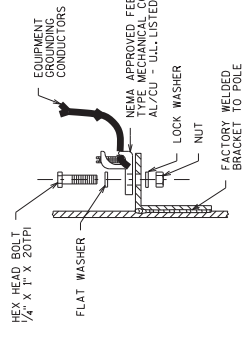


SECTION A-A

HANDHOLE NOTES

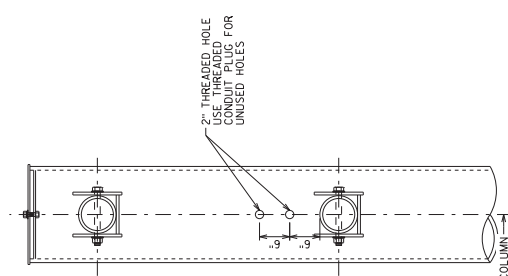
HANDHOLES SHALL BE LOCATED IN ONE COLUMN OF THE SIGN STRUCTURE IF ELECTRICALLY OPERATED DEVICES ARE INSTALLED ON THE STRUCTURE. COLUMNS WITH TWO HANDHOLES SHALL BE INSTALLED IN ONE COLUMN. VERIFY THE LOCATION OF THE ELECTRICAL SERVICE ENTRANCE WITH THE REGIONAL ELECTRICAL OFFICE PRIOR TO FABRICATION OF THE SIGN COLUMNS AND MEMBERS. CONDUIT (AS REQ'D) SHALL BE LOCATED, PLACED AND SIZED AS SHOWN ON THE ELECTRICAL PLAN DETAILS.

UNLESS NOTED OTHERWISE, ALL HANDHOLE ELEMENTS TO BE GALVANIZED PER THE WISDOT STANDARD SPECIFICATIONS.

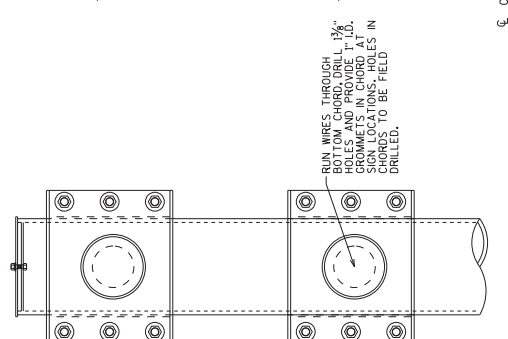


GROUNDING LUG DETAIL

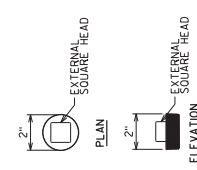
NUT, BOLT AND WASHERS SHALL BE STAINLESS STEEL



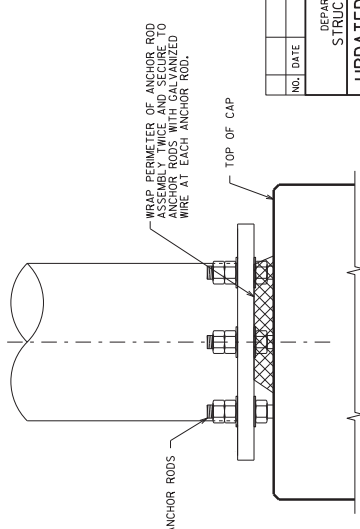
2-CHORD CANTILEVER



2-CHORD FULL SPAN SADDLE CONNECTIONS SHOWN BEARING AND CLAMP CONNECTIONS SIMILAR



CONDUIT PLUG DETAILS



RODENT SCREEN

(ONLY REQ'D WHEN ELECTRICAL DEVICES ARE INSTALLED)

**Addendum No. 02
ID 5992-11-31
Added Sheet 6321
March 3, 2022**

NO.	DATE	REVISION	BY
STATE OF WISCONSIN DEPARTMENT OF TRANSPORTATION STRUCTURES DESIGN SECTION			
UPDATED:		MARCH 2021	
BY:	DESIGNED BY:	BOB BOSCH	
MONOTUBE & 2-CHORD TRUSS ELECTRICAL DETAILS			SHEET III OF IV
			6321

FOUNDATION & REINFORCING DATA

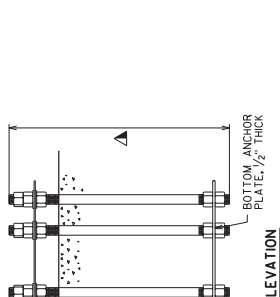
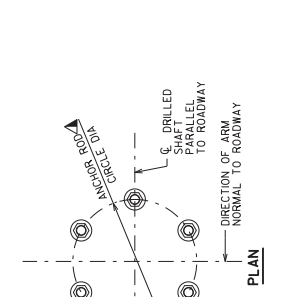
STANDARD FOUNDATION TYPE	SHAFT VARIABLES					
	"D"	"L"	"R"	"S"	"T"	"BC" MAX
MF1	2'-0"	12'-0"	12	A801	6	12"
MFII	2'-6"	13'-0"	13	A801	10	17"
MCI/MCI/TFI	2'-6"	17'-0"	17	A801	10	17"
TCI	3'-0"	18'-0"	18	A801	14	22"
TFII	3'-0"	20'-0"	20	A801	14	22"
MCI/TCI/TFII	3'-6"	18'-0"	18	A801	14	28"
MCI/TFIV	3'-6"	23'-0"	23	A1001	14	28"
TCIII	4'-0"	23'-0"	23	A1001	14	34"
TCIV	4'-0"	28'-0"	28	A1001	14	34"

STATE PROJECT NUMBER
STANDARD

NOTE: THE FIRST OR FIRST TWO DIGITS OF THE BAR MARK SIGNIFIES THE BAR SIZE

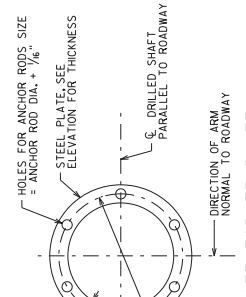
BILL OF BARS - STANDARD FOUNDATIONS

STANDARD FOUNDATION MFI			STANDARD FOUNDATION MCI/TCI/TFI			STANDARD FOUNDATION MCI/TCI/TFII			STANDARD FOUNDATION MCI/TCI/TFIV						
BAR MARK	NO. REOD.	LENGTH	BAR SERIES	NO. REOD.	LENGTH	BAR SERIES	NO. REOD.	LENGTH	BAR SERIES	NO. REOD.	LENGTH	BAR SERIES			
A801	6	11'-7"	BENT	A801	10	12'-7"	BENT	A801	14	17'-7"	BENT	A801	14	17'-7"	BENT
A402	13	5'-10"	X	A402	14	7'-5"	X	A402	19	9'-0"	X	A402	21	9'-0"	X
STANDARD FOUNDATION MFI			STANDARD FOUNDATION MCI/TCI/TFI			STANDARD FOUNDATION MCI/TCI/TFII			STANDARD FOUNDATION MCI/TCI/TFIV						
BAR MARK	NO. REOD.	LENGTH	BENT	BAR MARK	NO. REOD.	LENGTH	BENT	BAR MARK	NO. REOD.	LENGTH	BENT	BAR MARK	NO. REOD.	LENGTH	BENT
A801	10	12'-7"	BENT	A801	10	16'-7"	BENT	A801	14	19'-7"	BENT	A801	14	19'-7"	BENT
A402	14	7'-5"	X	A402	18	7'-5"	X	A402	21	9'-0"	X	A402	21	9'-0"	X
STANDARD FOUNDATION MCI/TCI/TFI			STANDARD FOUNDATION MCI/TCI/TFII			STANDARD FOUNDATION MCI/TCI/TFIV									
BAR MARK	NO. REOD.	LENGTH	BENT	BAR MARK	NO. REOD.	LENGTH	BENT	BAR MARK	NO. REOD.	LENGTH	BENT	BAR MARK	NO. REOD.	LENGTH	BENT
A801	10	16'-7"	BENT	A801	14	17'-7"	BENT	A801	14	19'-7"	BENT	A801	14	19'-7"	BENT
A402	14	7'-5"	X	A402	18	7'-5"	X	A402	21	9'-0"	X	A402	21	9'-0"	X
STANDARD FOUNDATION MCI/TCI/TFII			STANDARD FOUNDATION MCI/TCI/TFIV												
BAR MARK	NO. REOD.	LENGTH	BENT	BAR MARK	NO. REOD.	LENGTH	BENT	BAR MARK	NO. REOD.	LENGTH	BENT	BAR MARK	NO. REOD.	LENGTH	BENT
A801	14	17'-7"	BENT	A801	14	19'-7"	BENT	A801	14	19'-7"	BENT	A801	14	19'-7"	BENT
A402	19	9'-0"	X	A402	21	9'-0"	X	A402	21	9'-0"	X	A402	21	9'-0"	X
STANDARD FOUNDATION MCI/TCI/TFIV															
BAR MARK	NO. REOD.	LENGTH	BENT	BAR MARK	NO. REOD.	LENGTH	BENT	BAR MARK	NO. REOD.	LENGTH	BENT	BAR MARK	NO. REOD.	LENGTH	BENT
A801	14	17'-7"	BENT	A801	14	19'-7"	BENT	A801	14	19'-7"	BENT	A801	14	19'-7"	BENT
A402	19	9'-0"	X	A402	21	9'-0"	X	A402	21	9'-0"	X	A402	21	9'-0"	X



ANCHOR ROD ASSEMBLY DETAILS

ANCHOR ROD NUMBER, LENGTH & ORIENTATION AS SHOWN ON FABRICATION DRAWING.



ANCHOR PLATE/TOP TEMPLATE

NOTES
 CENTER ANCHOR ROD ASSEMBLY ON DRILLED SHAFT AND MAKE SURE IT IS PLUMB. MAINTAIN ANCHOR ROD PROJECTION ABOVE GROUND SURFACE. ANCHOR RODS TO BE PLACED IN POSITION DURING AND AFTER CONCRETE PLACEMENT. DO NOT WELD THE ANCHOR RODS.
 FOR OVERHEAD SIGN STRUCTURES THAT ARE INSTALLED ADJACENT TO SIDEWALKS, THE TOP OF THE SHAFT SHALL BE Poured FLUSH WITH THE FINISHED GRADE.
 2" DIA. NONMETALLIC CONDUITS; INSTALL ONLY WITH DMS. EXTEND CONDUITS AS SHOWN AND CAP DRILLING. EACH CONDUIT HANGING SHALL BE REMOVED TO THE DMS. CONDUITS INCIDENTAL TO THE FOUNDATION BID ITEMS.

Addendum No. 02
ID 5992-11-31
Added Sheet 632J
March 3, 2022

ESTIMATED QUANTITIES - FOUNDATIONS

STANDARD FOUNDATION TYPE	CONCRETE MASONRY (CY)	STEEL REINFORCEMENT (LBS)	FOUNDATION DRILLING (L.F)
MF1	2	240	24"
MFII	3	410	30"
MCI/MCI/TFI	4	540	36"
TCI	5	780	42"
TFII	6	860	48"
MCI/TCI/TFII	7	970	48"
MCI/TFIV	9	1,250	48"
TCIII	11	1,500	48"
TCIV	13	1,560	48"
TCV	15	1,600	48"

** * QUANTITIES ARE FOR INFORMATION ONLY AND ARE BASED ON STANDARD STRUCTURE DIMENSIONS

NO. DATE	REVISION	BY
	STATE OF WISCONSIN DEPARTMENT OF TRANSPORTATION STRUCTURES DESIGN SECTION	
UPDATED: MARCH 2021		
BY: BOS	DESIGNED BY: BOS	PROJECT NO: 632J
MONOTUBE & 2-CHORD TRUSS FOUNDATIONS		
SHEET IV OF IV		



Proposal Schedule of Items

Page 1 of 28

Proposal ID: 20220308009 Project(s): 5992-11-31, 5992-11-32, 5992-11-33

Federal ID(s): WISC 2022233, N/A, N/A

SECTION: 0001

Contract Items

Alt Set ID:

Alt Mbr ID:

Proposal Line Number	Item ID Description	Approximate Quantity and Units	Unit Price	Bid Amount
0002	201.0105 Clearing	19.000 STA	_____.	_____.
0004	201.0120 Clearing	45.000 ID	_____.	_____.
0006	201.0205 Grubbing	19.000 STA	_____.	_____.
0008	201.0220 Grubbing	45.000 ID	_____.	_____.
0010	204.0100 Removing Concrete Pavement	29,835.000 SY	_____.	_____.
0014	204.0150 Removing Curb & Gutter	9,560.000 LF	_____.	_____.
0016	204.0155 Removing Concrete Sidewalk	3,370.000 SY	_____.	_____.
0018	204.0165 Removing Guardrail	240.000 LF	_____.	_____.
0020	204.0195 Removing Concrete Bases	82.000 EACH	_____.	_____.
0022	204.0210 Removing Manholes	2.000 EACH	_____.	_____.
0024	204.0220 Removing Inlets	72.000 EACH	_____.	_____.
0026	204.0245 Removing Storm Sewer (size) 001. 12'X4' Box	44.000 LF	_____.	_____.
0028	204.0245 Removing Storm Sewer (size) 002. 12-Inch	1,360.000 LF	_____.	_____.
0030	204.0245 Removing Storm Sewer (size) 003. 15-Inch	408.000 LF	_____.	_____.
0032	204.0245 Removing Storm Sewer (size) 004. 18-Inch	172.000 LF	_____.	_____.



Proposal Schedule of Items

Proposal ID: 20220308009 Project(s): 5992-11-31, 5992-11-32, 5992-11-33

Federal ID(s): WISC 2022233, N/A, N/A

SECTION: 0001

Contract Items

Alt Set ID:

Alt Mbr ID:

Proposal Line Number	Item ID Description	Approximate Quantity and Units	Unit Price	Bid Amount
0034	204.0245 Removing Storm Sewer (size) 005. 24-Inch	111.000 LF	_____.	_____.
0036	204.0245 Removing Storm Sewer (size) 006. 30-Inch	118.000 LF	_____.	_____.
0038	204.0246 Removing Ancillary Structure (structure) 001. Sta 147+70	1.000 EACH	_____.	_____.
0040	204.0246 Removing Ancillary Structure (structure) 002. Sta 154+20	1.000 EACH	_____.	_____.
0042	204.0246 Removing Ancillary Structure (structure) 003. Sta 161+20	1.000 EACH	_____.	_____.
0044	204.0246 Removing Ancillary Structure (structure) 004. Sta 169+55	1.000 EACH	_____.	_____.
0046	204.9060.S Removing (item description) 001. Removing Street Light Assembly	66.000 EACH	_____.	_____.
0048	204.9060.S Removing (item description) 002. Traffic Signal	49.000 EACH	_____.	_____.
0050	204.9090.S Removing (item description) 001. Railing	425.000 LF	_____.	_____.
0052	205.0100 Excavation Common	43,698.000 CY	_____.	_____.
0054	206.1000 Excavation for Structures Bridges (structure) 001. B-13-891	LS	LUMP SUM	_____.
0056	213.0100 Finishing Roadway (project) 001. 5992-11-31	1.000 EACH	_____.	_____.
0058	305.0110 Base Aggregate Dense 3/4-Inch	1,711.000 TON	_____.	_____.
0060	305.0120 Base Aggregate Dense 1 1/4-Inch	29,165.000 TON	_____.	_____.



Proposal Schedule of Items

Proposal ID: 20220308009 Project(s): 5992-11-31, 5992-11-32, 5992-11-33

Federal ID(s): WISC 2022233, N/A, N/A

SECTION: 0001

Contract Items

Alt Set ID:

Alt Mbr ID:

Proposal Line Number	Item ID Description	Approximate Quantity and Units	Unit Price	Bid Amount
0062	305.0130 Base Aggregate Dense 3-Inch	20,100.000 TON	_____.	_____.
0064	310.0110 Base Aggregate Open-Graded	56.000 TON	_____.	_____.
0066	312.0110 Select Crushed Material	7,349.000 TON	_____.	_____.
0068	371.2000.S QMP Base Aggregate Dense 1 1/4-Inch Compaction	10.000 EACH	_____.	_____.
0070	405.0100 Coloring Concrete WisDOT Red	155.000 CY	_____.	_____.
0072	405.1000 Stamping Colored Concrete	155.000 CY	_____.	_____.
0074	415.0090 Concrete Pavement 9-Inch	120.000 SY	_____.	_____.
0076	416.0170 Concrete Driveway 7-Inch	540.000 SY	_____.	_____.
0078	416.0270 Concrete Driveway HES 7-Inch	320.000 SY	_____.	_____.
0080	455.0605 Tack Coat	4,749.000 GAL	_____.	_____.
0082	460.2000 Incentive Density HMA Pavement	8,700.000 DOL	1.00000	8,700.00
0084	460.6223 HMA Pavement 3 MT 58-28 S	9,891.000 TON	_____.	_____.
0086	460.6424 HMA Pavement 4 MT 58-28 H	3,695.000 TON	_____.	_____.
0088	465.0105 Asphaltic Surface	140.000 TON	_____.	_____.
0090	465.0120 Asphaltic Surface Driveways and Field Entrances	75.000 TON	_____.	_____.
0092	465.0125 Asphaltic Surface Temporary	3,930.000 TON	_____.	_____.



Proposal Schedule of Items

Page 4 of 28

Proposal ID: 20220308009 Project(s): 5992-11-31, 5992-11-32, 5992-11-33

Federal ID(s): WISC 2022233, N/A, N/A

SECTION: 0001

Contract Items

Alt Set ID:

Alt Mbr ID:

Proposal Line Number	Item ID Description	Approximate Quantity and Units	Unit Price	Bid Amount
0094	465.0315 Asphaltic Flumes	18.000 SY	_____.	_____.
0096	502.0100 Concrete Masonry Bridges	427.000 CY	_____.	_____.
0098	502.3101 Expansion Device	28.000 LF	_____.	_____.
0100	502.3200 Protective Surface Treatment	629.000 SY	_____.	_____.
0102	504.2000.S Precast Concrete Box Culvert (ft X ft) 001. 12 FT X 4 FT	107.000 LF	_____.	_____.
0106	505.0400 Bar Steel Reinforcement HS Structures	6,580.000 LB	_____.	_____.
0108	505.0600 Bar Steel Reinforcement HS Coated Structures	64,720.000 LB	_____.	_____.
0110	506.2605 Bearing Pads Elastomeric Non-Laminated	3.000 EACH	_____.	_____.
0112	506.8006.S Prefabricated Steel Truss Pedestrian Bridge LRFD (structure) 001. B-13-891	1.000 EACH	_____.	_____.
0114	511.1100 Temporary Shoring	19,642.000 SF	_____.	_____.
0116	511.2300 Temp Shoring Left in Place (location) 001. Stage 2	2,000.000 SF	_____.	_____.
0118	513.8016 Railing Steel Pedestrian Type C3	1,182.000 LF	_____.	_____.
0120	516.0500 Rubberized Membrane Waterproofing	7.000 SY	_____.	_____.
0122	517.1000 Painting Epoxy System Steel Truss (structure) 001. B-13-891	LS	LUMP SUM	_____.
0124	517.1010.S Concrete Staining (structure) 001. B-13-891	3,072.000 SF	_____.	_____.



Proposal Schedule of Items

Proposal ID: 20220308009 Project(s): 5992-11-31, 5992-11-32, 5992-11-33

Federal ID(s): WISC 2022233, N/A, N/A

SECTION: 0001

Contract Items

Alt Set ID:

Alt Mbr ID:

Proposal Line Number	Item ID Description	Approximate Quantity and Units	Unit Price	Bid Amount
0126	517.1010.S Concrete Staining (structure) 002. R-13-360	1,142.000 SF	_____.	_____.
0128	517.1010.S Concrete Staining (structure) 003. R-13-361	849.000 SF	_____.	_____.
0130	517.1015.S Concrete Staining Multi-Color (structure) 001. B-13-891	829.000 SF	_____.	_____.
0132	517.1015.S Concrete Staining Multi-Color (structure) 002. R-13-360	2,470.000 SF	_____.	_____.
0134	517.1015.S Concrete Staining Multi-Color (structure) 003. R-13-061	2,680.000 SF	_____.	_____.
0136	517.1050.S Architectural Surface Treatment (structure) 001. B-13-891	1,521.000 SF	_____.	_____.
0138	517.1050.S Architectural Surface Treatment (structure) 002. R-13-360	2,470.000 SF	_____.	_____.
0140	517.1050.S Architectural Surface Treatment (structure) 003. R-13-361	2,680.000 SF	_____.	_____.
0142	520.8000 Concrete Collars for Pipe	19.000 EACH	_____.	_____.
0144	522.1012 Apron Endwalls for Culvert Pipe Reinforced Concrete 12-Inch	1.000 EACH	_____.	_____.
0146	531.2030 Drilling Shaft 30-Inch	26.000 LF	_____.	_____.
0148	531.5220 Foundation Single-Shaft Type MF-II (structure) 001. S-13-586	2.000 EACH	_____.	_____.
0160	532.5220 Monotube Full Span Type II (structure) 001. S-13-856	1.000 EACH	_____.	_____.
0162	550.1100 Piling Steel HP 10-Inch X 42 Lb	2,070.000 LF	_____.	_____.



Proposal Schedule of Items

Proposal ID: 20220308009 Project(s): 5992-11-31, 5992-11-32, 5992-11-33

Federal ID(s): WISC 2022233, N/A, N/A

SECTION: 0001

Contract Items

Alt Set ID:

Alt Mbr ID:

Proposal Line Number	Item ID Description	Approximate Quantity and Units	Unit Price	Bid Amount
0164	550.1120 Piling Steel HP 12-Inch X 53 Lb	360.000 LF	_____	_____
0166	601.0407 Concrete Curb & Gutter 18-Inch Type D	160.000 LF	_____	_____
0168	601.0411 Concrete Curb & Gutter 30-Inch Type D	1,200.000 LF	_____	_____
0170	601.0600 Concrete Curb Pedestrian	445.000 LF	_____	_____
0172	602.0410 Concrete Sidewalk 5-Inch	58,870.000 SF	_____	_____
0174	602.0415 Concrete Sidewalk 6-Inch	2,010.000 SF	_____	_____
0176	602.0515 Curb Ramp Detectable Warning Field Natural Patina	455.000 SF	_____	_____
0178	602.0615 Curb Ramp Detectable Warning Field Radial Natural Patina	275.000 SF	_____	_____
0180	603.8000 Concrete Barrier Temporary Precast Delivered	1,800.000 LF	_____	_____
0182	603.8125 Concrete Barrier Temporary Precast Installed	2,100.000 LF	_____	_____
0184	604.0400 Slope Paving Concrete	10.000 SY	_____	_____
0186	608.0005 Storm Sewer Rock Excavation	150.000 CY	_____	_____
0188	608.0312 Storm Sewer Pipe Reinforced Concrete Class III 12-Inch	1,100.000 LF	_____	_____
0190	608.0315 Storm Sewer Pipe Reinforced Concrete Class III 15-Inch	22.000 LF	_____	_____
0192	608.0318 Storm Sewer Pipe Reinforced Concrete Class III 18-Inch	97.000 LF	_____	_____



Proposal Schedule of Items

Proposal ID: 20220308009 Project(s): 5992-11-31, 5992-11-32, 5992-11-33

Federal ID(s): WISC 2022233, N/A, N/A

SECTION: 0001

Contract Items

Alt Set ID:

Alt Mbr ID:

Proposal Line Number	Item ID Description	Approximate Quantity and Units	Unit Price	Bid Amount
0194	608.0324 Storm Sewer Pipe Reinforced Concrete Class III 24-Inch	190.000 LF	_____.	_____.
0196	608.0396 Storm Sewer Pipe Reinforced Concrete Class III 96-Inch	2,522.000 LF	_____.	_____.
0198	608.0412 Storm Sewer Pipe Reinforced Concrete Class IV 12-Inch	768.000 LF	_____.	_____.
0200	608.0415 Storm Sewer Pipe Reinforced Concrete Class IV 15-Inch	562.000 LF	_____.	_____.
0202	608.0418 Storm Sewer Pipe Reinforced Concrete Class IV 18-Inch	134.000 LF	_____.	_____.
0204	608.0430 Storm Sewer Pipe Reinforced Concrete Class IV 30-Inch	112.000 LF	_____.	_____.
0206	608.0436 Storm Sewer Pipe Reinforced Concrete Class IV 36-Inch	16.000 LF	_____.	_____.
0208	611.0420 Reconstructing Manholes	5.000 EACH	_____.	_____.
0210	611.0430 Reconstructing Inlets	4.000 EACH	_____.	_____.
0212	611.0530 Manhole Covers Type J	2.000 EACH	_____.	_____.
0214	611.0642 Inlet Covers Type MS	3.000 EACH	_____.	_____.
0216	611.2004 Manholes 4-FT Diameter	3.000 EACH	_____.	_____.
0218	611.2005 Manholes 5-FT Diameter	8.000 EACH	_____.	_____.
0220	611.2006 Manholes 6-FT Diameter	3.000 EACH	_____.	_____.
0222	611.3004 Inlets 4-FT Diameter	8.000 EACH	_____.	_____.



Proposal Schedule of Items

Proposal ID: 20220308009 Project(s): 5992-11-31, 5992-11-32, 5992-11-33

Federal ID(s): WISC 2022233, N/A, N/A

SECTION: 0001

Contract Items

Alt Set ID:

Alt Mbr ID:

Proposal Line Number	Item ID Description	Approximate Quantity and Units	Unit Price	Bid Amount
0224	611.3230 Inlets 2x3-FT	66.000 EACH	_____.	_____.
0226	611.3901 Inlets Median 1 Grate	3.000 EACH	_____.	_____.
0228	611.8110 Adjusting Manhole Covers	6.000 EACH	_____.	_____.
0230	611.8115 Adjusting Inlet Covers	11.000 EACH	_____.	_____.
0232	611.8120.S Cover Plates Temporary	20.000 EACH	_____.	_____.
0234	612.0106 Pipe Underdrain 6-Inch	700.000 LF	_____.	_____.
0236	612.0108 Pipe Underdrain 8-Inch	18.000 LF	_____.	_____.
0238	612.0110 Pipe Underdrain 10-Inch	9.000 LF	_____.	_____.
0240	612.0112 Pipe Underdrain 12-Inch	333.000 LF	_____.	_____.
0242	612.0206 Pipe Underdrain Unperforated 6-Inch	15.000 LF	_____.	_____.
0244	612.0406 Pipe Underdrain Wrapped 6-Inch	850.000 LF	_____.	_____.
0246	616.0700.S Fence Safety	5,000.000 LF	_____.	_____.
0248	618.0100 Maintenance And Repair of Haul Roads (project) 001. 5992-11-31	1.000 EACH	_____.	_____.
0250	619.1000 Mobilization	1.000 EACH	_____.	_____.
0252	620.0200 Concrete Median Blunt Nose	12.000 SF	_____.	_____.
0254	620.0300 Concrete Median Sloped Nose	669.000 SF	_____.	_____.



Proposal Schedule of Items

Proposal ID: 20220308009 Project(s): 5992-11-31, 5992-11-32, 5992-11-33

Federal ID(s): WISC 2022233, N/A, N/A

SECTION: 0001

Contract Items

Alt Set ID:

Alt Mbr ID:

Proposal Line Number	Item ID Description	Approximate Quantity and Units	Unit Price	Bid Amount
0256	624.0100 Water	1,475.000 MGAL	_____.	_____.
0258	625.0100 Topsoil	5,780.000 SY	_____.	_____.
0260	628.1504 Silt Fence	2,560.000 LF	_____.	_____.
0262	628.1520 Silt Fence Maintenance	4,570.000 LF	_____.	_____.
0264	628.1905 Mobilizations Erosion Control	21.000 EACH	_____.	_____.
0266	628.1910 Mobilizations Emergency Erosion Control	14.000 EACH	_____.	_____.
0268	628.2008 Erosion Mat Urban Class I Type B	5,780.000 SY	_____.	_____.
0270	628.7010 Inlet Protection Type B	61.000 EACH	_____.	_____.
0272	628.7015 Inlet Protection Type C	149.000 EACH	_____.	_____.
0274	629.0210 Fertilizer Type B	6.800 CWT	_____.	_____.
0276	630.0140 Seeding Mixture No. 40	104.000 LB	_____.	_____.
0278	630.0200 Seeding Temporary	156.000 LB	_____.	_____.
0280	630.0500 Seed Water	85.000 MGAL	_____.	_____.
0282	631.0300 Sod Water	81.000 MGAL	_____.	_____.
0284	631.1000 Sod Lawn	5,075.000 SY	_____.	_____.
0286	637.1220 Signs Type I Reflective SH	410.000 SF	_____.	_____.
0288	637.2210 Signs Type II Reflective H	810.050 SF	_____.	_____.



Proposal Schedule of Items

Proposal ID: 20220308009 Project(s): 5992-11-31, 5992-11-32, 5992-11-33

Federal ID(s): WISC 2022233, N/A, N/A

SECTION: 0001

Contract Items

Alt Set ID:

Alt Mbr ID:

Proposal Line Number	Item ID Description	Approximate Quantity and Units	Unit Price	Bid Amount
0290	637.2215 Signs Type II Reflective H Folding	88.060 SF	_____.	_____.
0292	637.2230 Signs Type II Reflective F	55.250 SF	_____.	_____.
0294	638.2102 Moving Signs Type II	20.000 EACH	_____.	_____.
0296	638.2601 Removing Signs Type I	2.000 EACH	_____.	_____.
0298	638.2602 Removing Signs Type II	100.000 EACH	_____.	_____.
0300	638.3000 Removing Small Sign Supports	26.000 EACH	_____.	_____.
0302	638.4000 Moving Small Sign Supports	4.000 EACH	_____.	_____.
0306	643.0300 Traffic Control Drums	43,400.000 DAY	_____.	_____.
0308	643.0410 Traffic Control Barricades Type II	2,420.000 DAY	_____.	_____.
0310	643.0420 Traffic Control Barricades Type III	5,440.000 DAY	_____.	_____.
0312	643.0500 Traffic Control Flexible Tubular Marker Posts	280.000 EACH	_____.	_____.
0314	643.0600 Traffic Control Flexible Tubular Marker Bases	280.000 EACH	_____.	_____.
0316	643.0705 Traffic Control Warning Lights Type A	8,300.000 DAY	_____.	_____.
0318	643.0715 Traffic Control Warning Lights Type C	3,230.000 DAY	_____.	_____.
0320	643.0800 Traffic Control Arrow Boards	550.000 DAY	_____.	_____.
0322	643.0900 Traffic Control Signs	22,050.000 DAY	_____.	_____.



Proposal Schedule of Items

Proposal ID: 20220308009 Project(s): 5992-11-31, 5992-11-32, 5992-11-33

Federal ID(s): WISC 2022233, N/A, N/A

SECTION: 0001

Contract Items

Alt Set ID:

Alt Mbr ID:

Proposal Line Number	Item ID Description	Approximate Quantity and Units	Unit Price	Bid Amount
0324	643.1000 Traffic Control Signs Fixed Message	34.500 SF	_____.	_____.
0326	643.1050 Traffic Control Signs PCMS	1,300.000 DAY	_____.	_____.
0328	643.5000 Traffic Control	1.000 EACH	_____.	_____.
0330	644.1410 Temporary Pedestrian Surface Asphalt	400.000 SF	_____.	_____.
0332	644.1601 Temporary Pedestrian Curb Ramp	1,195.000 DAY	_____.	_____.
0334	644.1810 Temporary Pedestrian Barricade	800.000 LF	_____.	_____.
0336	646.1020 Marking Line Epoxy 4-Inch	6,625.000 LF	_____.	_____.
0338	646.3020 Marking Line Epoxy 8-Inch	3,080.000 LF	_____.	_____.
0340	646.5020 Marking Arrow Epoxy	42.000 EACH	_____.	_____.
0342	646.5120 Marking Word Epoxy	12.000 EACH	_____.	_____.
0344	646.5220 Marking Symbol Epoxy	13.000 EACH	_____.	_____.
0346	646.5320 Marking Railroad Crossings Epoxy	4.000 EACH	_____.	_____.
0348	646.6120 Marking Stop Line Epoxy 18-Inch	550.000 LF	_____.	_____.
0350	646.7420 Marking Crosswalk Epoxy Transverse Line 6-Inch	330.000 LF	_____.	_____.
0352	646.7520 Marking Crosswalk Epoxy Block Style 24-Inch	1,765.000 LF	_____.	_____.
0354	646.8120 Marking Curb Epoxy	240.000 LF	_____.	_____.



Proposal Schedule of Items

Proposal ID: 20220308009 Project(s): 5992-11-31, 5992-11-32, 5992-11-33

Federal ID(s): WISC 2022233, N/A, N/A

SECTION: 0001

Contract Items

Alt Set ID:

Alt Mbr ID:

Proposal Line Number	Item ID Description	Approximate Quantity and Units	Unit Price	Bid Amount
0356	646.8220 Marking Island Nose Epoxy	13.000 EACH	_____.	_____.
0358	646.9000 Marking Removal Line 4-Inch	3,065.000 LF	_____.	_____.
0360	646.9100 Marking Removal Line 8-Inch	790.000 LF	_____.	_____.
0362	646.9300 Marking Removal Special Marking	6.000 EACH	_____.	_____.
0364	649.0105 Temporary Marking Line Paint 4-Inch	23,855.000 LF	_____.	_____.
0366	649.0120 Temporary Marking Line Epoxy 4-Inch	5,950.000 LF	_____.	_____.
0368	649.0150 Temporary Marking Line Removable Tape 4-Inch	7,675.000 LF	_____.	_____.
0370	649.0205 Temporary Marking Line Paint 8-Inch	2,660.000 LF	_____.	_____.
0372	649.0220 Temporary Marking Line Epoxy 8-Inch	3,610.000 LF	_____.	_____.
0374	649.0250 Temporary Marking Line Removable Tape 8-Inch	1,060.000 LF	_____.	_____.
0376	649.0505 Temporary Marking Arrow Paint	14.000 EACH	_____.	_____.
0378	649.0520 Temporary Marking Arrow Epoxy	52.000 EACH	_____.	_____.
0380	649.0550 Temporary Marking Arrow Removable Tape	10.000 EACH	_____.	_____.
0382	649.0620 Temporary Marking Word Epoxy	9.000 EACH	_____.	_____.
0384	649.0805 Temporary Marking Stop Line Paint 18-Inch	560.000 LF	_____.	_____.



Proposal Schedule of Items

Proposal ID: 20220308009 Project(s): 5992-11-31, 5992-11-32, 5992-11-33

Federal ID(s): WISC 2022233, N/A, N/A

SECTION: 0001

Contract Items

Alt Set ID:

Alt Mbr ID:

Proposal Line Number	Item ID Description	Approximate Quantity and Units	Unit Price	Bid Amount
0386	649.0820 Temporary Marking Stop Line Epoxy 18-Inch	1,620.000 LF	_____.	_____.
0388	649.0850 Temporary Marking Stop Line Removable Tape 18-Inch	70.000 LF	_____.	_____.
0390	652.0225 Conduit Rigid Nonmetallic Schedule 40 2-Inch	8,575.000 LF	_____.	_____.
0392	652.0235 Conduit Rigid Nonmetallic Schedule 40 3-Inch	6,050.000 LF	_____.	_____.
0394	652.0325 Conduit Rigid Nonmetallic Schedule 80 2-Inch	3,140.000 LF	_____.	_____.
0396	652.0335 Conduit Rigid Nonmetallic Schedule 80 3-Inch	2,850.000 LF	_____.	_____.
0398	652.0900 Loop Detector Slots	70.000 LF	_____.	_____.
0400	653.0900 Adjusting Pull Boxes	1.000 EACH	_____.	_____.
0402	653.0905 Removing Pull Boxes	24.000 EACH	_____.	_____.
0404	654.0110 Concrete Bases Type 10	5.000 EACH	_____.	_____.
0406	655.0230 Cable Traffic Signal 5-14 AWG	1,975.000 LF	_____.	_____.
0408	655.0240 Cable Traffic Signal 7-14 AWG	4,615.000 LF	_____.	_____.
0410	655.0250 Cable Traffic Signal 9-14 AWG	2,029.000 LF	_____.	_____.
0412	655.0260 Cable Traffic Signal 12-14 AWG	1,910.000 LF	_____.	_____.
0414	655.0615 Electrical Wire Lighting 10 AWG	14,608.000 LF	_____.	_____.



Proposal Schedule of Items

Proposal ID: 20220308009 Project(s): 5992-11-31, 5992-11-32, 5992-11-33

Federal ID(s): WISC 2022233, N/A, N/A

SECTION: 0001

Contract Items

Alt Set ID:

Alt Mbr ID:

Proposal Line Number	Item ID Description	Approximate Quantity and Units	Unit Price	Bid Amount
0416	655.0620 Electrical Wire Lighting 8 AWG	24,420.000 LF	_____.	_____.
0418	655.0630 Electrical Wire Lighting 4 AWG	8,140.000 LF	_____.	_____.
0420	655.0800 Loop Detector Wire	9,292.000 LF	_____.	_____.
0422	656.0200 Electrical Service Meter Breaker Pedestal (location) 001. Ridge & University	LS	LUMP SUM	_____.
0424	656.0200 Electrical Service Meter Breaker Pedestal (location) 002. University Bay & University	LS	LUMP SUM	_____.
0426	656.0200 Electrical Service Meter Breaker Pedestal (location) 003. University Bay & Marshall	LS	LUMP SUM	_____.
0428	656.0200 Electrical Service Meter Breaker Pedestal (location) 004. Ridge & University	LS	LUMP SUM	_____.
0430	656.0200 Electrical Service Meter Breaker Pedestal (location) 005. University Bay & University	LS	LUMP SUM	_____.
0432	657.0100 Pedestal Bases	21.000 EACH	_____.	_____.
0434	657.0255 Transformer Bases Breakaway 11 1/2-Inch Bolt Circle	43.000 EACH	_____.	_____.
0436	657.0346 Poles Type 9-Over Height	1.000 EACH	_____.	_____.
0438	657.0420 Traffic Signal Standards Aluminum 13-FT	16.000 EACH	_____.	_____.
0440	657.0425 Traffic Signal Standards Aluminum 15-FT	2.000 EACH	_____.	_____.



Proposal Schedule of Items

Proposal ID: 20220308009 Project(s): 5992-11-31, 5992-11-32, 5992-11-33

Federal ID(s): WISC 2022233, N/A, N/A

SECTION: 0001

Contract Items

Alt Set ID:

Alt Mbr ID:

Proposal Line Number	Item ID Description	Approximate Quantity and Units	Unit Price	Bid Amount
0442	657.0430 Traffic Signal Standards Aluminum 10-FT	5.000 EACH	_____.	_____.
0444	657.0515 Monotube Arms 15-FT	2.000 EACH	_____.	_____.
0446	658.0500 Pedestrian Push Buttons	29.000 EACH	_____.	_____.
0448	658.5069 Signal Mounting Hardware (location) 001. Hill	LS	LUMP SUM	_____.
0450	658.5069 Signal Mounting Hardware (location) 002. Ridge	LS	LUMP SUM	_____.
0452	658.5069 Signal Mounting Hardware (location) 003. Farley	LS	LUMP SUM	_____.
0454	658.5069 Signal Mounting Hardware (location) 004. Marshall	LS	LUMP SUM	_____.
0456	690.0150 Sawing Asphalt	9,615.000 LF	_____.	_____.
0458	690.0250 Sawing Concrete	6,720.000 LF	_____.	_____.
0460	715.0502 Incentive Strength Concrete Structures	500.000 DOL	1.00000	500.00
0462	715.0720 Incentive Compressive Strength Concrete Pavement	500.000 DOL	1.00000	500.00
0464	740.0440 Incentive IRI Ride	7,600.000 DOL	1.00000	7,600.00
0466	801.0117 Railroad Flagging Reimbursement	110,000.000 DOL	1.00000	110,000.00
0468	999.1001.S Seismograph	1.000 EACH	_____.	_____.
0470	999.1501.S Crack and Damage Survey	1.000 EACH	_____.	_____.



Proposal Schedule of Items

Proposal ID: 20220308009 Project(s): 5992-11-31, 5992-11-32, 5992-11-33

Federal ID(s): WISC 2022233, N/A, N/A

SECTION: 0001

Contract Items

Alt Set ID:

Alt Mbr ID:

Proposal Line Number	Item ID Description	Approximate Quantity and Units	Unit Price	Bid Amount
0472	ASP.1T0A On-the-Job Training Apprentice at \$5.00/HR	2,100.000 HRS	5.00000	10,500.00
0474	ASP.1T0G On-the-Job Training Graduate at \$5.00/HR	6,480.000 HRS	5.00000	32,400.00
0476	SPV.0035 Special 001. Abandon Sanitary Sewer-Slurry	22.860 CY	_____.	_____.
0478	SPV.0035 Special 002. Rock Excavation For Sanitary Sewer	50.000 CY	_____.	_____.
0480	SPV.0035 Special 003. Rock Excavation For Water Main	30.000 CY	_____.	_____.
0482	SPV.0060 Special 001. Settlement Monitoring	2.000 EACH	_____.	_____.
0484	SPV.0060 Special 002. Locate and Reference Property Corners	27.000 EACH	_____.	_____.
0486	SPV.0060 Special 003. Reset Property Corners	27.000 EACH	_____.	_____.
0488	SPV.0060 Special 004. Precast Sign Post Base	46.000 EACH	_____.	_____.
0490	SPV.0060 Special 005. Sign Post Base For Concrete Installation	7.000 EACH	_____.	_____.
0492	SPV.0060 Special 006. Project Dewatering	1.000 EACH	_____.	_____.
0494	SPV.0060 Special 007. Wastewater Control	1.000 EACH	_____.	_____.
0500	SPV.0060 Special 010. Inlet Cover Type H Special	82.000 EACH	_____.	_____.
0502	SPV.0060 Special 011. Inlet Cover Type H-S Special	12.000 EACH	_____.	_____.



Proposal Schedule of Items

Proposal ID: 20220308009 Project(s): 5992-11-31, 5992-11-32, 5992-11-33

Federal ID(s): WISC 2022233, N/A, N/A

SECTION: 0001

Contract Items

Alt Set ID:

Alt Mbr ID:

Proposal Line Number	Item ID Description	Approximate Quantity and Units	Unit Price	Bid Amount
0504	SPV.0060 Special 012. Manhole Cover Type J Special	24.000 EACH	_____.	_____.
0506	SPV.0060 Special 013. Temporary Inlet Cover	55.000 EACH	_____.	_____.
0508	SPV.0060 Special 014. Storm Sewer Pipe 96-Inch Bend	9.000 EACH	_____.	_____.
0510	SPV.0060 Special 015. Wastewater Control MMSD	1.000 EACH	_____.	_____.
0512	SPV.0060 Special 016. Inlet 2x3-Ft Special	9.000 EACH	_____.	_____.
0514	SPV.0060 Special 017. Manhole Special	1.000 EACH	_____.	_____.
0516	SPV.0060 Special 018. Storm Sewer Tap	27.000 EACH	_____.	_____.
0518	SPV.0060 Special 019. MMSD Sanitary Sewer Bypassing	1.000 EACH	_____.	_____.
0520	SPV.0060 Special 020. Close Storm Sewer Connection	8.000 EACH	_____.	_____.
0522	SPV.0060 Special 021. Construction Staking Project 5992-11-31	1.000 EACH	_____.	_____.
0524	SPV.0060 Special 022. Construction Staking Project 5992-11-33	1.000 EACH	_____.	_____.
0526	SPV.0060 Special 023. Implement Tree Protection Plan	1.000 EACH	_____.	_____.
0528	SPV.0060 Special 024. Furnish and Install Fluorocarbon Gaskets, 6-Inch	5.000 EACH	_____.	_____.
0530	SPV.0060 Special 025. Furnish and Install Fluorocarbon Gaskets, 8-Inch	5.000 EACH	_____.	_____.



Proposal Schedule of Items

Proposal ID: 20220308009 Project(s): 5992-11-31, 5992-11-32, 5992-11-33

Federal ID(s): WISC 2022233, N/A, N/A

SECTION: 0001

Contract Items

Alt Set ID:

Alt Mbr ID:

Proposal Line Number	Item ID Description	Approximate Quantity and Units	Unit Price	Bid Amount
0532	SPV.0060 Special 026. Furnish and Install Fluorocarbon Gaskets, 12-Inch	12.000 EACH	_____.	_____.
0534	SPV.0060 Special 027. Furnish and Install Fluorocarbon Gaskets, 16-Inch	36.000 EACH	_____.	_____.
0536	SPV.0060 Special 028. MMSD Sanitary Sewer Manhole (6-Foot Diameter)	3.000 EACH	_____.	_____.
0538	SPV.0060 Special 029. MMSD Sanitary Sewer Manhole (7-Foot Diameter)	1.000 EACH	_____.	_____.
0540	SPV.0060 Special 030. Utility Line Opening (ULO)	42.000 EACH	_____.	_____.
0542	SPV.0060 Special 031. Sewer Electronic Markers	41.000 EACH	_____.	_____.
0544	SPV.0060 Special 032. Sanitary Lateral Reconnect	21.000 EACH	_____.	_____.
0546	SPV.0060 Special 033. Sanitary Sewer Tap	13.000 EACH	_____.	_____.
0548	SPV.0060 Special 034. Sanitary Sewer Access Structure (4-Foot Diameter)	9.000 EACH	_____.	_____.
0550	SPV.0060 Special 035. Sanitary Sewer Access Structure (5-Foot Diameter)	8.000 EACH	_____.	_____.
0552	SPV.0060 Special 036. Sanitary Sewer Internal Chimney Seal	3.000 EACH	_____.	_____.
0554	SPV.0060 Special 037. Remove Sanitary Sewer Access Structure	3.000 EACH	_____.	_____.
0556	SPV.0060 Special 039. Abandon Sanitary Sewer Access Structure	9.000 EACH	_____.	_____.
0558	SPV.0060 Special 040. Abandon Sanitary Sewer-Pipe Plug	14.000 EACH	_____.	_____.



Proposal Schedule of Items

Proposal ID: 20220308009 Project(s): 5992-11-31, 5992-11-32, 5992-11-33

Federal ID(s): WISC 2022233, N/A, N/A

SECTION: 0001

Contract Items

Alt Set ID:

Alt Mbr ID:

Proposal Line Number	Item ID Description	Approximate Quantity and Units	Unit Price	Bid Amount
0560	SPV.0060 Special 041. Furnish & Install 6-Inch Water Valve, 6-Inch	15.000 EACH	_____.	_____.
0562	SPV.0060 Special 042. Furnish & Install 8-Inch Water Valve, 8-Inch	9.000 EACH	_____.	_____.
0564	SPV.0060 Special 043. Furnish & Install 12-Inch Water Valve, 12-Inch	4.000 EACH	_____.	_____.
0566	SPV.0060 Special 044. Furnish & Install 16-Inch Water Valve, 16-Inch	17.000 EACH	_____.	_____.
0568	SPV.0060 Special 045. Furnish And Install Hydrant / Salvage Existing Hydrant	6.000 EACH	_____.	_____.
0570	SPV.0060 Special 045. Furnish And Install Hydrant/Salvage Existing Hydrant	1.000 EACH	_____.	_____.
0572	SPV.0060 Special 046. Reconnect Water Service Lateral, 1-Inch	17.000 EACH	_____.	_____.
0574	SPV.0060 Special 048. Reconnect Water Service Lateral, 2-Inch	2.000 EACH	_____.	_____.
0576	SPV.0060 Special 049. Cut-In Or Connect-To Existing Water System	26.000 EACH	_____.	_____.
0578	SPV.0060 Special 051. Abandon Water Valve Box	16.000 EACH	_____.	_____.
0580	SPV.0060 Special 052. Abandon Water Valve Access Structure	2.000 EACH	_____.	_____.
0582	SPV.0060 Special 053. Furnish and Install Insulation	11.000 EACH	_____.	_____.
0584	SPV.0060 Special 054. Adjust Water Valve Box Sections	4.000 EACH	_____.	_____.



Proposal Schedule of Items

Proposal ID: 20220308009 Project(s): 5992-11-31, 5992-11-32, 5992-11-33

Federal ID(s): WISC 2022233, N/A, N/A

SECTION: 0001

Contract Items

Alt Set ID:

Alt Mbr ID:

Proposal Line Number	Item ID Description	Approximate Quantity and Units	Unit Price	Bid Amount
0586	SPV.0060 Special 055. Furnish And Install Anode	1.000 EACH	_____.	_____.
0588	SPV.0060 Special 056. Clay Trench Plug	7.000 EACH	_____.	_____.
0590	SPV.0060 Special 057. Interceptor Sewer Manhole, (6-Foot Diameter)	5.000 EACH	_____.	_____.
0592	SPV.0060 Special 058. Interceptor Manhole Lining System	5.000 EACH	_____.	_____.
0594	SPV.0060 Special 059. Adjust MMSD Special	2.000 EACH	_____.	_____.
0596	SPV.0060 Special 060. MMSD Manhole 02-048 Flat Top Replacement	1.000 EACH	_____.	_____.
0598	SPV.0060 Special 061. Rock Excavation for Concrete Bases	6.000 EACH	_____.	_____.
0600	SPV.0060 Special 062. Electrical Pull Box Type I	34.000 EACH	_____.	_____.
0602	SPV.0060 Special 063. Electrical Pull Box Type III	5.000 EACH	_____.	_____.
0604	SPV.0060 Special 064. Electrical Pull Box Type V	19.000 EACH	_____.	_____.
0606	SPV.0060 Special 065. Electrical Pull Box Type VII	12.000 EACH	_____.	_____.
0608	SPV.0060 Special 066. Concrete Bases Type G	16.000 EACH	_____.	_____.
0610	SPV.0060 Special 067. Concrete Bases Type LB-3	39.000 EACH	_____.	_____.
0612	SPV.0060 Special 068. Concrete Bases Type LB-8	15.000 EACH	_____.	_____.
0614	SPV.0060 Special 069. Concrete Bases Type P	5.000 EACH	_____.	_____.



Proposal Schedule of Items

Proposal ID: 20220308009 Project(s): 5992-11-31, 5992-11-32, 5992-11-33

Federal ID(s): WISC 2022233, N/A, N/A

SECTION: 0001

Contract Items

Alt Set ID:

Alt Mbr ID:

Proposal Line Number	Item ID Description	Approximate Quantity and Units	Unit Price	Bid Amount
0616	SPV.0060 Special 070. Concrete Bases Type G Spread Footing	1.000 EACH	_____.	_____.
0618	SPV.0060 Special 071. Transformer Base 16-Inch Steel	13.000 EACH	_____.	_____.
0620	SPV.0060 Special 072. Pole 20-Ft 7 Gauge	6.000 EACH	_____.	_____.
0622	SPV.0060 Special 073. Pole 30-Foot, 7 Gauge Single Mount	2.000 EACH	_____.	_____.
0624	SPV.0060 Special 074. Pole 30-Foot, 7 Gauge Twin Mount	3.000 EACH	_____.	_____.
0626	SPV.0060 Special 075. Pole 30-Foot, 11 Gauge Single Mount	37.000 EACH	_____.	_____.
0628	SPV.0060 Special 076. Pole 30-Foot, 11 Gauge Twin Mount	9.000 EACH	_____.	_____.
0630	SPV.0060 Special 077. Monotube Pole, Type 9	4.000 EACH	_____.	_____.
0632	SPV.0060 Special 079. LED Luminaire and Mounting Bracket Type V	5.000 EACH	_____.	_____.
0634	SPV.0060 Special 080. Monotube Arm, 25-Foot	2.000 EACH	_____.	_____.
0636	SPV.0060 Special 081. Monotube Arm, 30-Foot	2.000 EACH	_____.	_____.
0638	SPV.0060 Special 082. LED Luminaire And Mounting Bracket Type I	17.000 EACH	_____.	_____.
0640	SPV.0060 Special 083. LED Luminaire And Mounting Bracket Type II	24.000 EACH	_____.	_____.
0642	SPV.0060 Special 084. LED Luminaire And Mounting Bracket Type III	8.000 EACH	_____.	_____.



Proposal Schedule of Items

Proposal ID: 20220308009 Project(s): 5992-11-31, 5992-11-32, 5992-11-33

Federal ID(s): WISC 2022233, N/A, N/A

SECTION: 0001

Contract Items

Alt Set ID:

Alt Mbr ID:

Proposal Line Number	Item ID Description	Approximate Quantity and Units	Unit Price	Bid Amount
0644	SPV.0060 Special 085. LED Luminaire And Mounting Bracket Type IV	11.000 EACH	_____.	_____.
0646	SPV.0060 Special 086. Traffic Signal Trombone Arm Aluminum 12-Foot	1.000 EACH	_____.	_____.
0648	SPV.0060 Special 087. Traffic Signal Trombone Arm Aluminum 15-Foot	3.000 EACH	_____.	_____.
0650	SPV.0060 Special 088. Traffic Signal Trombone Arm Aluminum 18-Foot	2.000 EACH	_____.	_____.
0652	SPV.0060 Special 089. Traffic Signal Trombone Arm Aluminum 20-Foot	3.000 EACH	_____.	_____.
0654	SPV.0060 Special 090. Traffic Signal Trombone Arm Aluminum 22-Foot	2.000 EACH	_____.	_____.
0656	SPV.0060 Special 091. Traffic Signal Heads 12-Inch, 3-Section Vertical	71.000 EACH	_____.	_____.
0658	SPV.0060 Special 092. Traffic Signal Heads 12-Inch, 4-Section Vertical	7.000 EACH	_____.	_____.
0660	SPV.0060 Special 093. Traffic Signal Heads 12-Inch, 5-Section Vertical	2.000 EACH	_____.	_____.
0662	SPV.0060 Special 094. Traffic Signal Heads 16-Inch Pedestrian with Countdown	39.000 EACH	_____.	_____.
0664	SPV.0060 Special 095. Backplates Signal Face, 3-Section 12-Inch	71.000 EACH	_____.	_____.
0666	SPV.0060 Special 096. Backplates Signal Face, 4-Section 12-Inch	7.000 EACH	_____.	_____.
0668	SPV.0060 Special 097. Backplates Signal Face, 5-Section 12-Inch	2.000 EACH	_____.	_____.



Proposal Schedule of Items

Proposal ID: 20220308009 Project(s): 5992-11-31, 5992-11-32, 5992-11-33

Federal ID(s): WISC 2022233, N/A, N/A

SECTION: 0001

Contract Items

Alt Set ID:

Alt Mbr ID:

Proposal Line Number	Item ID Description	Approximate Quantity and Units	Unit Price	Bid Amount
0670	SPV.0060 Special 098. NEMA TS2 Type 1 Traffic Signal Control Cabinet	4.000 EACH	_____.	_____.
0672	SPV.0060 Special 099. Traffic Signal Controller	4.000 EACH	_____.	_____.
0674	SPV.0060 Special 100. Optical Signal Preempt	4.000 EACH	_____.	_____.
0676	SPV.0060 Special 101. Traffic Signal Ethernet Switch	4.000 EACH	_____.	_____.
0678	SPV.0060 Special 102. Malfunction Management Unit (MMU)	4.000 EACH	_____.	_____.
0680	SPV.0060 Special 103. Lighting Control Cabinet	2.000 EACH	_____.	_____.
0682	SPV.0060 Special 104. Vehicular Detection System Programming Unit	4.000 EACH	_____.	_____.
0684	SPV.0060 Special 105. No Right Turn Blank Out Signal	4.000 EACH	_____.	_____.
0686	SPV.0060 Special 106. Temporary Traffic Signals (Hill)	1.000 EACH	_____.	_____.
0688	SPV.0060 Special 107. Temporary Traffic Signals (Ridge)	1.000 EACH	_____.	_____.
0690	SPV.0060 Special 108. Temporary Traffic Signals (Farley)	1.000 EACH	_____.	_____.
0692	SPV.0060 Special 109. Temporary Street Lighting System Maintenance and Operations	1.000 EACH	_____.	_____.
0694	SPV.0060 Special 110. Temporary Wood Poles	37.000 EACH	_____.	_____.
0696	SPV.0060 Special 111. Temporary Lighting Arms	18.000 EACH	_____.	_____.



Proposal Schedule of Items

Proposal ID: 20220308009 Project(s): 5992-11-31, 5992-11-32, 5992-11-33

Federal ID(s): WISC 2022233, N/A, N/A

SECTION: 0001

Contract Items

Alt Set ID:

Alt Mbr ID:

Proposal Line Number	Item ID Description	Approximate Quantity and Units	Unit Price	Bid Amount
0698	SPV.0060 Special 112. Temporary Luminaires Utility	18.000 EACH	_____.	_____.
0700	SPV.0060 Special 113. Reconstruct Bench And Flowlines	5.000 EACH	_____.	_____.
0702	SPV.0060 Special 115. Salvage Hydrant	4.000 EACH	_____.	_____.
0704	SPV.0090 Special 001. Concrete Curb And Gutter 24-Inch Type D Special	14,010.000 LF	_____.	_____.
0706	SPV.0090 Special 002. Concrete Curb 24-Inch Type D Special	205.000 LF	_____.	_____.
0708	SPV.0090 Special 003. Pedestrian Railing	550.000 LF	_____.	_____.
0710	SPV.0090 Special 004. Sign Post	276.000 LF	_____.	_____.
0712	SPV.0090 Special 005. Reflective Sign Post	238.000 LF	_____.	_____.
0714	SPV.0090 Special 006. Loop Detector Lead-In Cable Special	8,886.000 LF	_____.	_____.
0716	SPV.0090 Special 007. Concrete Curb and Gutter 24-Inch Type A Special	240.000 LF	_____.	_____.
0718	SPV.0090 Special 008. Temporary Asphaltic Curb	6,800.000 LF	_____.	_____.
0720	SPV.0090 Special 011. Storm Sewer Pipe Reinforced Concrete Class IV 96-Inch	92.000 LF	_____.	_____.
0722	SPV.0090 Special 012. Storm Sewer Pipe Reinforced Concrete Class IV 96-Inch Rock Cut	900.000 LF	_____.	_____.
0724	SPV.0090 Special 019. Remove Pipe Sanitary	144.000 LF	_____.	_____.



Proposal Schedule of Items

Proposal ID: 20220308009 Project(s): 5992-11-31, 5992-11-32, 5992-11-33

Federal ID(s): WISC 2022233, N/A, N/A

SECTION: 0001

Contract Items

Alt Set ID:

Alt Mbr ID:

Proposal Line Number	Item ID Description	Approximate Quantity and Units	Unit Price	Bid Amount
0726	SPV.0090 Special 020. Sanitary Sewer Lateral	423.000 LF	_____.	_____.
0728	SPV.0090 Special 021. Sanitary Sewer Pipe PVC, 8-Inch	563.000 LF	_____.	_____.
0730	SPV.0090 Special 022. Sanitary Sewer Pipe PVC, 10-Inch	1,079.000 LF	_____.	_____.
0732	SPV.0090 Special 023. Sanitary Sewer Pipe PVC, 12-Inch	460.000 LF	_____.	_____.
0734	SPV.0090 Special 024. Select Fill for Sanitary Sewer	2,755.000 LF	_____.	_____.
0736	SPV.0090 Special 025. Furnish And Install Watermain Pipe & Fittings, 6-Inch	272.000 LF	_____.	_____.
0738	SPV.0090 Special 026. Furnish And Install Watermain Pipe & Fittings, 8-Inch	340.000 LF	_____.	_____.
0740	SPV.0090 Special 027. Furnish And Install Watermain Pipe & Fittings, 12-Inch	216.000 LF	_____.	_____.
0742	SPV.0090 Special 028. Furnish And Install Watermain Pipe & Fittings, 16-Inch	2,268.000 LF	_____.	_____.
0744	SPV.0090 Special 029. Furnish And Install Watermain Pipe & Fittings, 10-Inch	160.000 LF	_____.	_____.
0746	SPV.0090 Special 030. Select Fill For Water Main	3,256.000 LF	_____.	_____.
0748	SPV.0090 Special 031. Interceptor Sewer, 30-Inch	1,363.000 LF	_____.	_____.
0750	SPV.0090 Special 032. Trenchless Casing Pipe, 48-Inch Steel Minimum	45.000 LF	_____.	_____.
0752	SPV.0090 Special 033. Fiber Optic Cable 12-Count	3,867.000 LF	_____.	_____.



Proposal Schedule of Items

Proposal ID: 20220308009 Project(s): 5992-11-31, 5992-11-32, 5992-11-33

Federal ID(s): WISC 2022233, N/A, N/A

SECTION: 0001

Contract Items

Alt Set ID:

Alt Mbr ID:

Proposal Line Number	Item ID Description	Approximate Quantity and Units	Unit Price	Bid Amount
0754	SPV.0090 Special 034. Fiber Optic Cable 288-Count	2,923.000 LF	_____.	_____.
0756	SPV.0090 Special 035. Electrical Wire Lighting, 14-3 Grounded	2,079.000 LF	_____.	_____.
0758	SPV.0090 Special 036. Temporary Overhead Span Wire	3,769.000 LF	_____.	_____.
0760	SPV.0090 Special 037. MMSD Sanitary Sewer, 36-Inch	167.600 LF	_____.	_____.
0762	SPV.0090 Special 041. Railing Steel Pedestrian Ornamental	311.000 LF	_____.	_____.
0764	SPV.0165 Special 001. Wall Concrete Panel Mechanically Stabilized Earth R-13-360	3,810.000 SF	_____.	_____.
0766	SPV.0165 Special 002. Wall Concrete Panel Mechanically Stabilized Earth R-13-361	3,610.000 SF	_____.	_____.
0768	SPV.0165 Special 003. Wall Modular Block Gravity Landscape	435.000 SF	_____.	_____.
0770	SPV.0165 Special 004. High Friction Colored Surface - Bike Box Green	710.000 SF	_____.	_____.
0772	SPV.0170 Special 001. Pavement Cleanup Project 5992-11-31	82.000 STA	_____.	_____.
0774	SPV.0195 Special 001. Stabilization Clear Stone, 3-Inch	100.000 TON	_____.	_____.
0776	SPV.0195 Special 002. Granular Backfill, Interceptor Sewer	4,000.000 TON	_____.	_____.
0778	SPV.0195 Special 003. Excavation, Hauling, and Disposal of Petroleum Contaminated Soil	4,250.000 TON	_____.	_____.



Proposal Schedule of Items

Proposal ID: 20220308009 Project(s): 5992-11-31, 5992-11-32, 5992-11-33

Federal ID(s): WISC 2022233, N/A, N/A

SECTION: 0001

Contract Items

Alt Set ID:

Alt Mbr ID:

Proposal Line Number	Item ID Description	Approximate Quantity and Units	Unit Price	Bid Amount
0780	SPV.0195 Special 004. Excavating, Loading, Hauling, and Landfill Disposal of Cinder-Cntmated Soil	2,125.000 TON	_____.	_____.
0784	204.0120 Removing Asphaltic Surface Milling	8,660.000 SY	_____.	_____.
0786	504.2000.S Precast Concrete Box Culvert (ft X ft) 003. 15FT X 6 FT	50.000 LF	_____.	_____.
0788	628.7560 Tracking Pads	8.000 EACH	_____.	_____.
0790	642.5401 Field Office Type D	1.000 EACH	_____.	_____.
0792	644.1420 Temporary Pedestrian Surface Plywood	1,365.000 SF	_____.	_____.
0794	SPV.0045 Special 001. Temporary Crosswalk Access Shorewood Blvd/Hill Street	247.000 DAY	_____.	_____.
0796	SPV.0045 Special 002. Temporary Crosswalk Access Marshall Ct/Ridge St	247.000 DAY	_____.	_____.
0798	SPV.0045 Special 003. Temporary Crosswalk Access University Bay Drive/Farley Ave	247.000 DAY	_____.	_____.
0800	SPV.0060 Special 008. Construction Staking Project 5992-11-32	1.000 EACH	_____.	_____.
0802	SPV.0060 Special 038. External Sewer Access Structure Joint Seal	2.000 EACH	_____.	_____.
0804	SPV.0060 Special 047. Private Storm Sewer Connection	8.000 EACH	_____.	_____.
0806	SPV.0090 Special 037. Sanitary Sewer Pressure Pipe (C900), 10-Inch	13.000 LF	_____.	_____.
0808	SPV.0090 Special 038. Sanitary Sewer Pressure Pipe (C900), 12-Inch	237.000 LF	_____.	_____.



Proposal Schedule of Items

Proposal ID: 20220308009 Project(s): 5992-11-31, 5992-11-32, 5992-11-33

Federal ID(s): WISC 2022233, N/A, N/A

SECTION: 0001

Contract Items

Alt Set ID:

Alt Mbr ID:

Proposal Line Number	Item ID Description	Approximate Quantity and Units	Unit Price	Bid Amount
0810	SPV.0200 Special 002. Construct Inside Drop 10-Inch	2.300 VF	_____.	_____.
0812	531.2036 Drilling Shaft 36-Inch	90.000 LF	_____.	_____.
0814	531.5310 Foundation Single-Shaft Type TC-I (structure) 001. S-13-589	EACH	_____.	_____.
0816	531.5310 Foundation Single-Shaft Type TC-I (structure) 002. S-13-590	1.000 EACH	_____.	_____.
0818	531.5310 Foundation Single-Shaft Type TC-I (structure) 003. S-13-591	1.000 EACH	_____.	_____.
0820	531.5310 Foundation Single-Shaft Type TC-I (structure) 004. S-13-592	1.000 EACH	_____.	_____.
0822	531.5310 Foundation Single-Shaft Type TC-I (structure) 005. S-13-59	1.000 EACH	_____.	_____.
0824	532.5310 Truss Cantilever 2-Chord Type I (structure) 001. S-13-589	1.000 EACH	_____.	_____.
0826	532.5310 Truss Cantilever 2-Chord Type I (structure) 002. S-13-590	1.000 EACH	_____.	_____.
0828	532.5310 Truss Cantilever 2-Chord Type I (structure) 003. S-13-591	1.000 EACH	_____.	_____.
0830	532.5310 Truss Cantilever 2-Chord Type I (structure) 004. S-13-592	1.000 EACH	_____.	_____.
0832	532.5310 Truss Cantilever 2-Chord Type I (structure) 005. S-13-593	1.000 EACH	_____.	_____.

Section: 0001

Total: _____.

Total Bid: _____.