



Wisconsin Department of Transportation

April 7, 2022

Division of Transportation Systems Development

Bureau of Project Development
4822 Madison Yards Way, 4th Floor South
Madison, WI 53705

Telephone: (608) 266-1631
Facsimile (FAX): (608) 266-8459

NOTICE TO ALL CONTRACTORS:

Proposal #18: 1100-17-76, WISC2022300
Milwaukee – Fond du Lac
Good Hope Rd to Waukesha Co Ln
IH 41
Milwaukee County

Letting of April 12, 2022

This is Addendum No. 01, which provides for the following:

Special Provisions:

Revised Special Provisions	
Article No.	Description
3	Prosecution and Progress
5	Traffic

Schedule of Items:

Revised Bid Item Quantities					
Bid Item	Item Description	Unit	Old Quantity	Revised Quantity	Proposal Total
416.0610	Drilled Tie Bars	EACH	1,472	136	1,608
416.0620	Drilled Dowel Bars	EACH	6,882	160	7,042
416.1715	Concrete Pavement Repair SHES	SY	2,572	65	2,637
416.1725	Concrete Pavement Replacement SHES	SY	2,559	180	2,739
611.8110	Adjusting Manhole Covers	EACH	32	3	35
611.8115	Adjusting Inlet Covers	EACH	116	2	118
628.7020	Inlet Protection Type D	EACH	116	5	121
643.0300	Traffic Control Drums	DAY	14,139	588	14,727
643.0420	Traffic Control Barricades Type III	DAY	1,470	28	1,498
643.0705	Traffic Control Warning Lights Type A	DAY	2,840	56	2,896
643.0715	Traffic Control Warning Lights Type C	DAY	2,461	140	2,601
643.0800	Traffic Control Arrow Boards	DAY	241	28	269
643.0900	Traffic Control Signs	DAY	4,484	140	4,624
643.1050	Traffic Control Signs PCMS	DAY	90	14	104
643.4100.S	Traffic Control Interim Lane Closure	EACH	275	14	289
646.1020	Marking Line Epoxy 4-Inch	LF	319	283	602

646.1040	Marking Line Grooved Wet Ref Epoxy 4-Inch	LF	60,376	2,350	62,726
646.3020	Marking Line Epoxy 8-Inch	LF	2,099	221	2,320
646.5020	Marking Arrow Epoxy	EACH	24	2	26
646.5120	Marking Word Epoxy	EACH	16	2	18
646.6120	Marking Stop Line Epoxy 18-Inch	LF	424	36	460
646.8120	Marking Curb Epoxy	LF	221	55	276
646.8220	Marking Island Nose Epoxy	EACH	23	1	24
690.0250	Sawing Concrete	LF	10,140	609	10,749

Plan Sheets:

Revised Plan Sheets	
Plan Sheet	Plan Sheet Title (brief description of changes to sheet)
36	Plan Details, Added concrete pavement repair/replacement work on southbound N 124 th Street between the ramps.
62	Pavement Marking, Refreshing all markings on N 124 th Street between ramps.
147-151	Roadway MQ's, Added quantity for concrete pavement repair/replacement work on N 124 th Street between the ramps.

Added Plan Sheets	
Plan Sheet	Plan Sheet Title (brief description of why sheet was added)
178A	SDD - Concrete Pavement Jointing at Utility Fixtures
178B	SDD - Concrete Pavement Jointing Acceleration/Deceleration Lane
220A	SDD - Traffic Control, Single Lane Closure, Divided Non-Freeway/Expressway
220B	SDD - Traffic Control, Intersection Within Single Right Lane Closure
220C	SDD - Traffic Control, Intersection Within Single Left Lane Closure

The responsibility for notifying potential subcontractors and suppliers of these changes remains with the prime contractor.

Sincerely,

Mike Coleman

Proposal Development Specialist
Proposal Management Section

ADDENDUM NO. 01
PROJECT ID 1100-17-76
April 7, 2022

Special Provisions

3. Prosecution and Progress.

*Add the following section to section titled **Schedule of Operations**:*

N 124th Street

- Construction is from approximately from Station 197+00 to 203+00 SB.
- Provide temporary traffic control signs and devices as directed by the engineer.
- Provide and install erosion control items as approved in the ECIP and as directed by the engineer.
- Remove concrete pavement, saw concrete patches, drill tie bars and dowel bars, adjust manhole covers or adjusting inlet covers as required, concrete pavement repair SHES or concrete pavement replacement SHES. **Do not disturb traffic signal loops with concrete pavement work.**
- Install permanent pavement marking at locations no longer disturbed or in conflict with traffic staging.

5. Traffic.

*Add the following section to section titled **Staging Description**:*

N 124th Street

- Work can be performed anytime during nighttime lane closures except when Detour for STH 145 On-Ramp to IH-41/USH 45 NB is in effect for entrance ramp closure.
- Maintain one lane open in each direction on N 124th Street during nighttime operations.

Schedule of Items

Attached, dated April 7, 2022, are the revised Schedule of Items Pages 1 – 8.

Plan Sheets

The following 8½ x 11-inch sheets are attached and made part of the plans for this proposal:

Revised: 36, 62, 147 thru 150.

Added: 178A, 178B, 220A, 220B, and 220C

END OF ADDENDUM



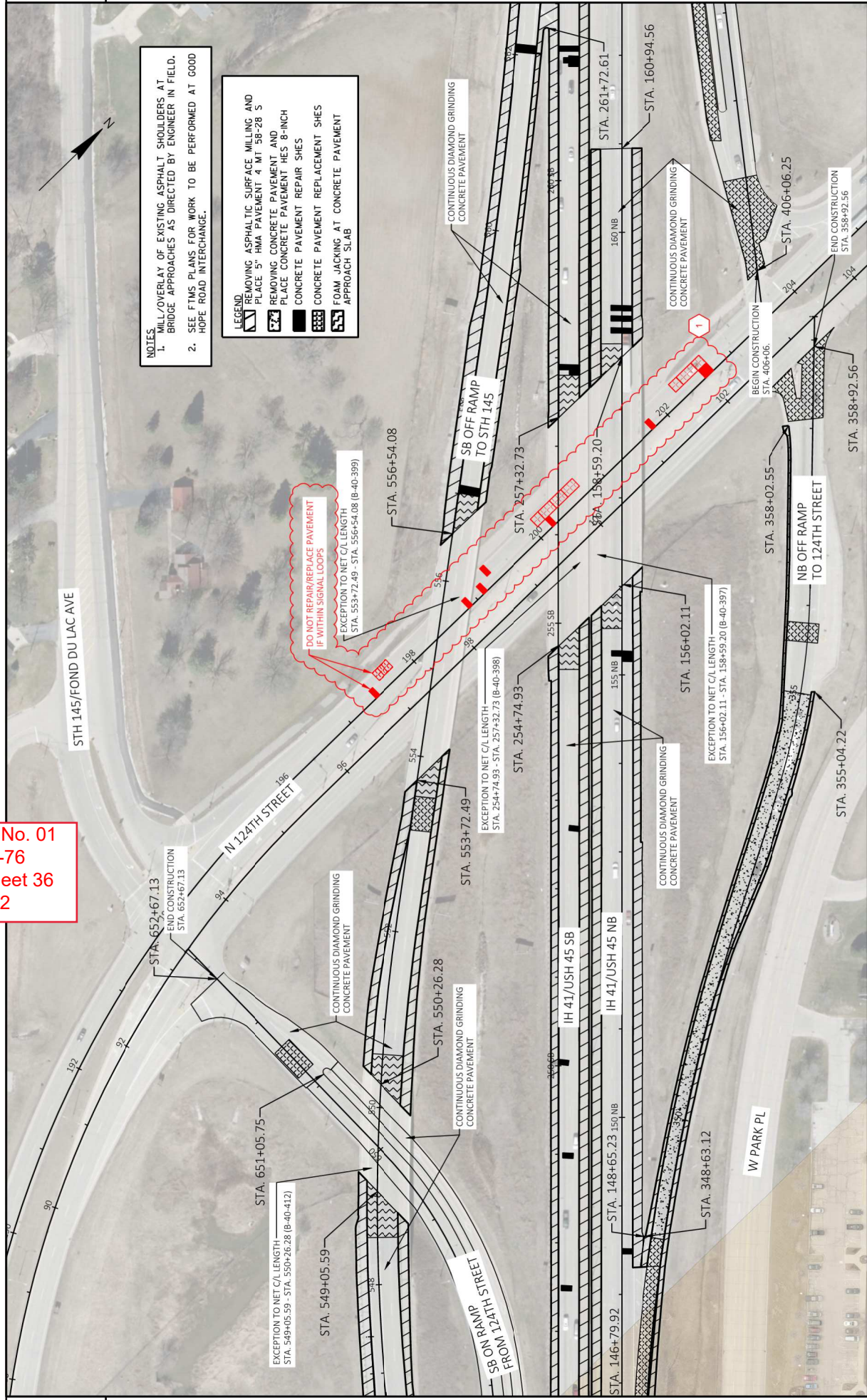
NOTES

- MILL/OVERLAY OF EXISTING ASPHALT SHOULDERS AT BRIDGE APPROACHES AS DIRECTED BY ENGINEER IN FIELD.
- SEE FIMS PLANS FOR WORK TO BE PERFORMED AT GOOD HOPE ROAD INTERCHANGE.

LEGEND

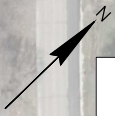
- MILL/OVERLAY OF EXISTING ASPHALT SURFACE MILLING AND PLACE 5" HMA PAVEMENT 4 FT 58-28 S
- REMOVING CONCRETE PAVEMENT AND PLACE CONCRETE PAVEMENT HES 8-INCH CONCRETE PAVEMENT REPAIR SHES
- CONCRETE PAVEMENT REPLACEMENT SHES
- FOAM JACKING AT CONCRETE PAVEMENT APPROACH SLAB

DO NOT REPAIR/REPLACE PAVEMENT IF WITHIN SIGNAL LOOPS
EXCEPTION TO NET C/L LENGTH STA. 553+72.49 - STA. 556+54.08 (B-40-399)

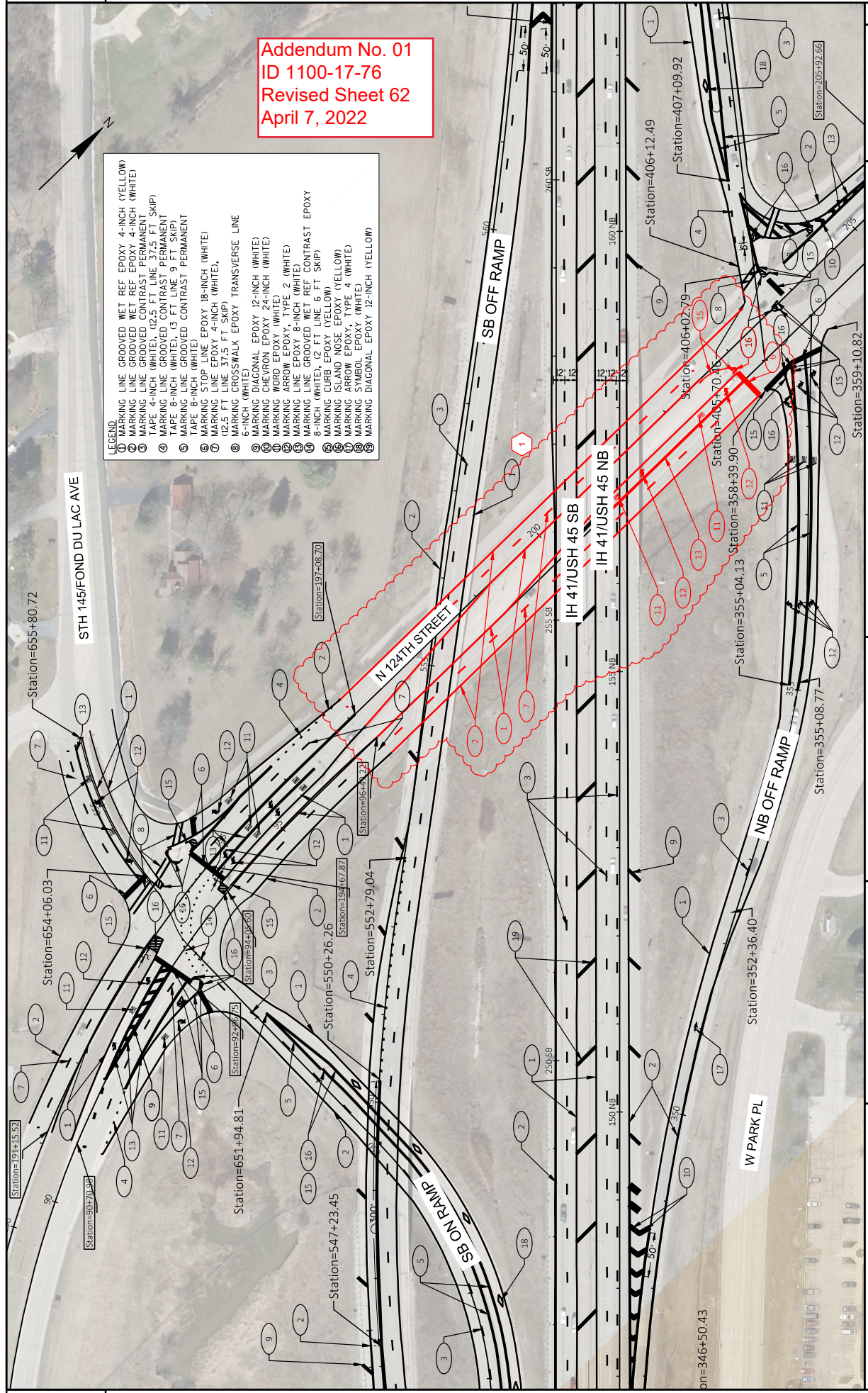


Addendum No. 01
ID 1100-17-76
Revised Sheet 36
April 7, 2022

Addendum No. 01
ID 1100-17-76
Revised Sheet 62
April 7, 2022



- LEGEND**
- ① MARKING LINE GROOVED WET EPOXY 4-INCH (YELLOW)
 - ② MARKING LINE GROOVED WET EPOXY 4-INCH (WHITE)
 - ③ MARKING LINE GROOVED CONTRAST PERMANENT
 - ④ TAPES 4-INCH (WHITE), (2.5 FT LINE, 12.5 FT LINE)
 - ⑤ TAPES 6-INCH (WHITE), (2.5 FT LINE, 9 FT LINE)
 - ⑥ TAPES 8-INCH (WHITE), (3 FT LINE, 9 FT LINE)
 - ⑦ MARKING LINE GROOVED CONTRAST PERMANENT
 - ⑧ TAPES 8-INCH (WHITE)
 - ⑨ MARKING STOP LINE EPOXY 18-INCH (WHITE)
 - ⑩ MARKING STOP LINE EPOXY 4-INCH (WHITE), (2.5 FT LINE, 37.5 FT SKIP)
 - ⑪ MARKING CROSSWALK EPOXY TRANSVERSE LINE 6-INCH (WHITE)
 - ⑫ MARKING DIAGONAL EPOXY 12-INCH (WHITE)
 - ⑬ MARKING CHEVRON EPOXY 4-INCH (WHITE)
 - ⑭ MARKING CHEVRON EPOXY 12-INCH (WHITE)
 - ⑮ MARKING ARROW EPOXY TYPE 2 (WHITE)
 - ⑯ MARKING LINE EPOXY 8-INCH (WHITE)
 - ⑰ MARKING LINE GROOVED WET REF CONTRAST EPOXY 8-INCH (WHITE), (2 FT LINE, 6 FT SKIP)
 - ⑱ MARKING CURB EPOXY (YELLOW)
 - ⑲ MARKING ISLAND NOSE EPOXY (YELLOW)
 - ⑳ MARKING SYMBOL EPOXY (WHITE)
 - ㉑ MARKING DIAGONAL EPOXY 12-INCH (YELLOW)



PROJECT NO: 1100-17-76	COUNTY: MILWAUKEE	PAVEMENT MARKING	SHEET 62	E
FILE NAME: N:\PDS\CD\11001706\5\SHETS\PLAN\024501-PM.DWG	LAYOUT NAME: PM - I4	PLOT DATE: 4/6/2022 7:59 AM	PLOT NAME: SANTIBAGO PEREZ, EDGA	PLOT SCALE: 1 IN=100 FT
WISDOT/CAD05 SHEET 42				

Addendum No. 01
 ID 1100-17-76
 Revised Sheet 147
 April 7, 2022

CATEGORY	ROADWAY	STATION	LOCATION	416.0610						416.0620						416.1715						416.1725						690.0250 SAWING CONCRETE
				DRILLED TIE BARS			DRILLED DOWEL BARS			CONCRETE PAVEMENT REPAIR SHES			CONCRETE PAVEMENT REPLACEMENT SHES			CONCRETE PAVEMENT REPAIR SHES			CONCRETE PAVEMENT REPLACEMENT SHES			CONCRETE PAVEMENT REPAIR SHES			CONCRETE PAVEMENT REPLACEMENT SHES			
				Lane 1	Lane 2	Lane 3	Lane 1	Lane 2	Lane 3	Lane 1	Lane 2	Lane 3	Lane 1	Lane 2	Lane 3	Lane 1	Lane 2	Lane 3	Lane 1	Lane 2	Lane 3	Lane 1	Lane 2	Lane 3	Lane 1	Lane 2	Lane 3	
1000	IH 41/USH 45 NB	105+88 NB-111+20 NB 114+00 NB-156+00 NB 158+60 NB-161+00 NB	MAIN LINE	12	9	12	66	66	46	34	34	26	22	22	22	22	22	22	22	22	22	22	22	22	416			
	IH 41/USH 45 SB	205+00 SB-212+00 SB 215+00 SB-255+00 SB 257+00 SB-265+50 SB	MAIN LINE	10	4	-	72	32	-	37	21	-	-	-	-	-	-	-	-	-	-	-	-	-	200			
	NB ON RAMP FROM STH 145 NB	406+00-430+50	NB ON RAMP FROM STH 145	8	12	-	48	64	-	26	32	-	-	-	-	-	-	-	-	-	-	-	-	-	233			
	NB EXT RAMP TO 124TH ST	346+00-359+00	NB EXT RAMP TO 124TH ST	142	-	-	156	-	-	-	-	-	-	-	-	-	-	-	-	-	-	-	-	-	890			
	NB ON RAMP FROM 124TH ST	407+00-418+00	NB ON RAMP FROM 124TH STREET	124	-	-	608	-	-	12	-	-	-	-	-	-	-	-	-	-	-	-	-	-	969			
	SB EXT RAMP TO STH 145	515+50-549+00	SB EXT RAMP TO STH 145	9	-	-	60	-	-	24	-	-	-	-	-	-	-	-	-	-	-	-	-	-	108			
	SB ON RAMP FROM STH 145	550+00-554+00 556+50-566+00 837+13-847+42	SB ON RAMP FROM STH 145	14	-	-	80	-	-	-	-	-	-	-	-	-	-	-	-	-	-	-	-	-	126			
	SB ON RAMP FROM STH 145	634+00-651+00 651+00-656+00	SB ON RAMP FROM STH 145	15	-	-	100	-	-	40	-	-	-	-	-	-	-	-	-	-	-	-	-	-	132			
	N 124TH STREET UNDER BRIDGES	198+00-202+00	N 124TH STREET	6	-	-	40	-	-	10	-	-	-	-	-	-	-	-	-	-	-	-	-	-	42			
	UNDISTRIBUTED			75	-	-	210	110	30	72	32	-	-	-	-	-	-	-	-	-	-	-	-	-	498			
				6	-	-	40	-	-	-	-	-	-	-	-	-	-	-	-	-	-	-	-	-	126			
				30	106	-	96	64	-	57	8	-	-	-	-	-	-	-	-	-	-	-	-	-	609			
				200	719	638	2724	3148	7042	1170	300	300	300	200	200	200	200	200	200	200	200	200	200	200	900			
				1608	1608	1608	1608	1608	1608	1608	1608	1608	1608	1608	1608	1608	1608	1608	1608	1608	1608	1608	1608	1608	1608	10749		
				719	638	251	2724	3148	7042	1170	828	1307	502	1991	476	272	2739	10749										
				1608	1608	1608	1608	1608	1608	1608	1608	1608	1608	1608	1608	1608	1608	1608	1608	1608	1608	1608	1608	1608	1608	10749		

NOTE: CONCRETE PAVEMENT ARE APPROXIMATE IN MISCELLANEOUS QUANTITY SHEET

Addendum No. 01
ID 1100-17-76
Revised Sheet 148
April 7, 2022

DRAINAGE							
	611,8110	611,8115	611,8120.S	612,0700	SPV,0060,5005		
	ADJUSTING MANHOLE COVERS	ADJUSTING INLET COVERS	COVER PLATES TEMPORARY	DRAIN TILE EXPLORATION	FASTENING SEWER ACCESS COVERS		
CATEGORY	ROADWAY	EACH	EACH	LF	EACH		
1000	IH 41/USH 45 NB	2	29	-	-		
	IH 41/USH 45 SB	8	29	-	-		
	STH 145 (NB) ON RAMP	1	1	-	-		
	TO 124TH STREET	3	2	-	-		
	FROM 124TH STREET	7	12	-	-		
	SB EXT TO STH 145 SB	4	11	-	-		
	FROM 124TH STREET	2	20	-	-		
	N 124TH STREET UNDER BRIDGES	3	2	-	-		
	UNDISTRIBUTED	5	12	35	250	153	
	TOTAL	35	118	35	250	153	

MAINTENANCE		
CATEGORY	ROADWAY	STATION
1000	124TH STREET	1
	TOTAL	1

EROSION CONTROL									
	628,1104	628,1504	628,1520	628,1905	628,1910	628,7020	628,7504		
	EROSION BALES	SILT FENCE	SILT FENCE MAINTENANCE	MOBILIZATIONS EROSION CONTROL	MOBILIZATIONS EMERGENCY EROSION CONTROL	INLET PROTECTION TYPE D	TEMPORARY DITCH CHECKS		
CATEGORY	ROADWAY	LF	LF	EACH	EACH	EACH	LF		
1000	IH 41/USH 45 NB	-	-	-	-	28	-		
	IH 41/USH 45 SB	-	-	-	-	28	-		
	STH 145 (NB) ON RAMP	-	-	-	-	3	-		
	TO 124TH STREET	-	-	-	-	4	-		
	FROM 124TH STREET	-	-	-	-	14	-		
	SB EXT TO STH 145 SB	-	-	-	-	11	-		
	FROM 124TH STREET	-	-	-	-	18	-		
	N 124TH STREET UNDER BRIDGES	-	-	-	-	5	-		
	UNDISTRIBUTED	100	2000	2000	4	1	10	100	100
	TOTAL	100	2000	2000	4	1	121	121	100

PROJECT NO: 1100-17-76 HWY: IH 41/USH 45 COUNTY: MILWAUKEE MISCELLANEOUS QUANTITIES SHEET: 148 E

FILE NAME: _____ PLOT DATE: _____ PLOT BY: _____ PLOT NAME: _____ PLOT SCALE: 1:1

CATEGORY	ROADWAY	STATION	DURATION	TRAFFIC CONTROL ITEMS												643.1055.S			
				643.0300 TRAFFIC CONTROL DRUMS		643.0420 TRAFFIC CONTROL BARRICADE TYPE II		643.0705 TRAFFIC CONTROL WARNING LIGHTS TYPE A		643.0715 TRAFFIC CONTROL WARNING LIGHTS TYPE C		643.0800 TRAFFIC CONTROL ARROW BOARDS		643.0900 TRAFFIC CONTROL SIGNS			643.0910 TRAFFIC CONTROL COVERING SIGNS TYPE I		643.1050 TRAFFIC CONTROL SIGNS POIS
				EACH*	DAY	EACH*	DAY	EACH*	DAY	EACH*	DAY	EACH*	DAY	EACH*	DAY	EACH*	DAY	EACH*	DAY
	IH 41/USH 45 NB	-	12	150	1800	25	300	50	600	24	288	2	24	81	972	-	-	-	-
	IH 41/USH 45 NB	-	15	164	2460	6	90	12	180	30	450	3	45	17	255	-	-	-	-
	IH 41/USH 45 NB	-	12	264	3168	25	300	50	600	54	648	3	36	67	804	-	-	-	-
	IH 41/USH 45 NB	-	10	79	790	5	50	10	100	12	120	-	-	64	640	3	1	10	-
	IH 41/USH 45 SB	-	15	141	2115	20	300	40	600	30	450	3	45	57	855	-	-	-	-
	IH 41/USH 45 SB	-	15	98	1470	6	90	12	180	15	225	2	30	14	210	-	-	-	-
	IH 41/USH 45 SB	-	12	153	1836	20	240	40	480	15	180	3	36	54	648	-	-	-	-
	N 124TH STREET	SB LANE 1	7	42	294	2	14	4	28	10	70	2	14	10	70	-	1	7	-
	UNDER BRIDGES	SB LANE 2	7	42	294	2	14	4	28	10	70	2	14	10	70	-	1	7	-
	UNDISTRIBUTED	-	40	-	500	-	100	-	100	-	100	-	25	-	100	-	2	80	-
	TOTAL	-		14,727	1,698	2,696	2,601	289	4,624	101	1,001	2	101	101	1,001	3	101	2	80

NOTE:
* = FOR INFORMATION ONLY

Addendum No. 01
ID 1100-17-76
Revised Sheet 149
April 7, 2022

TRAFFIC CONTROL SIGNS FIXED MESSAGE						
643.1000						
TRAFFIC CONTROL SIGNS FIXED MESSAGE						
CATEGORY	SIGN NO.	NUMBER REQUIRED	SIZE LENGTH (FT.)	SIZE WIDTH (FT.)	SIGN AREA (SF)	SIGN MESSAGE
1000	FM-01	2	11	6	66	HWY 145 NIGHTTIME RAMP CLOSURES 9PM-5:30AM
	FM-02	2	11	2	44	BEGINS XXXXX
	FM-03	2	11	5	110	I-41/HWY 45 NORTH RAMP CLOSED FOLLOW DETOUR
					TOTAL	286

Addendum No. 01
ID 1100-17-76
Revised Sheet 150
April 7, 2022

TRAFFIC CONTROL CLOSURES						
643.4100.S						
TRAFFIC CONTROL CLOSE-OPEN FREEWAY ENTRANCE RAMP CLOSURE						
CATEGORY	ROADWAY	LOCATION	EACH	EACH	SPV.0060.5001	SPV.0060.5002
1000	IH 41/USH 45 NB	MAIN LINE	12	-	TRAFFIC CONTROL FULL FREEWAY CLOSURE	TRAFFIC CONTROL FULL FREEWAY CLOSURE
	IH 41/USH 45 SB	MAIN LINE	12	-		
	W GOOD HOPE RD	ON RAMP	-	6		
	STH 145 (NB) ON RAMP	ON RAMP	-	6		
	NB EXT RAMP TO 124TH STREET	EXIT RAMP	-	6		
	NB ON RAMP FROM 124TH STREET	ON RAMP	-	6		
	SB EXT TO STH 145 SB	EXIT RAMP	-	6		
	SB ON RAMP FROM 124TH STREET	ON RAMP	-	8		
1	N 124TH STREET UNDER BRIDGES	SB DIRECTION	14	-		
	UNDISTRIBUTED	TOTAL	251	38		
		TOTAL	289	1		

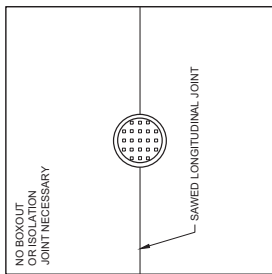
PAVEMENT MARKING												
CATEGORY	ROADWAY	STATION	MARKING LINE GROOVED WET REF EPOXY 4-INCH		MARKING LINE GROOVED CONTRAST TAPE 4-INCH		MARKING LINE GROOVED WET REF EPOXY 8-INCH		MARKING LINE GROOVED CONTRAST PERMANENT TAPE 8-INCH		MARKING LINE GROOVED CONTRAST PERMANENT TAPE 8-INCH	
			WHITE LF	YELLOW LF	WHITE LF	WHITE LF	WHITE LF	WHITE LF	WHITE LF	WHITE LF	WHITE LF	WHITE LF
1000	IH 41/USH 45 NB	105+95-103+00	6,069	7,752	3,883	2,242	2,892	2,892	2,892	2,892	2,892	2,892
	NB ON RAMP FROM GOOD HOPE RD	899+40-911+00	1,419	907	-	-	412	-	-	-	-	-
	NB ON RAMP FROM STH 145	406+00-430+00	2,618	2,210	134	-	578	-	-	-	-	-
	NB EXIT RAMP TO 124TH ST	348+00-359+00	1,564	992	66	-	1,021	-	-	-	-	-
	NB ON RAMP FROM STH 145	407+00-418+00	1,293	816	108	-	1,700	-	-	-	-	-
	NB ON RAMP FROM STH 145	515+50-566+00	4,754	4,619	1,386	-	1,539	-	-	-	-	-
	SB ON RAMP FROM STH 145	837+00-503+25	1,395	576	-	-	604	-	-	-	-	-
	SB ON RAMP FROM STH 145	634+00-669+00	1,798	1,543	254	-	2,694	-	-	-	-	-
	SB ON RAMP FROM STH 145	901+71-961+49	1,382	1,290	303	-	47	-	-	-	-	-
	SB ON RAMP FROM STH 145	197+09-203+46	1,219	1,131	283	-	221	-	-	-	-	-
	UNDISTRIBUTED		1,445	1,431	16	-	662	-	-	-	-	-
	SUB-TOTAL		31,553	31,173	8,488	-	14,321	-	-	-	-	-
	TOTAL		62,726	62,726	2,520	-	14,321	-	-	-	-	-

TEMPORARY PAVEMENT MARKING												
CATEGORY	ROADWAY	STATION	MARKING REMOVAL BLASTING 4-INCH		TEMPORARY MARKING LINE REMOVABLE TAPE 4-INCH		TEMPORARY MARKING LINE REMOVABLE TAPE 4-INCH CONTRAST		TEMPORARY MARKING LINE REMOVABLE TAPE 8-INCH		TEMPORARY MARKING LINE REMOVABLE TAPE 8-INCH CONTRAST	
			WHITE LF	YELLOW LF	WHITE LF	YELLOW LF	WHITE LF	WHITE LF	WHITE LF	WHITE LF	WHITE LF	WHITE LF
1000	IH 41/USH 45 NB	105+95-103+00	-	-	6,069	7,752	3,883	2,242	2,242	2,242	2,242	2,242
	NB ON RAMP FROM GOOD HOPE RD	899+40-911+00	-	-	6,597	7,906	2,242	-	-	-	-	-
	NB ON RAMP FROM STH 145	406+00-430+00	-	-	1,419	907	-	-	-	-	-	-
	NB ON RAMP FROM STH 145	407+00-418+00	-	-	2,618	2,210	134	-	-	-	-	-
	NB ON RAMP FROM STH 145	515+50-566+00	-	-	1,594	992	66	-	-	-	-	-
	SB ON RAMP FROM STH 145	837+00-503+25	-	-	1,293	816	108	-	-	-	-	-
	SB ON RAMP FROM STH 145	634+00-669+00	-	-	4,754	4,619	1,396	-	-	-	-	-
	SB ON RAMP FROM STH 145	901+71-961+49	-	-	1,395	576	-	-	-	-	-	-
	UNDISTRIBUTED		-	-	1,788	1,543	254	-	-	-	-	-
	SUB-TOTAL		17,286	17,286	4,124	1,461	1,685	-	-	-	-	-
	TOTAL		17,286	17,286	4,124	1,461	1,685	-	-	-	-	-

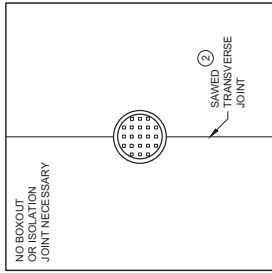
Addendum No. 01
 ID 1100-17-76
 Revised Sheet 151
 April 7, 2022

GENERAL NOTES

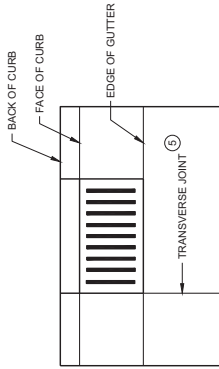
- 1 USE BOXOUTS WHEN UTILITY STRUCTURE IS IN THE PATH OF CONSTRUCTION JOINTS. PROVIDE A 1 FOOT MINIMUM CLEARANCE BETWEEN THE EXTERIOR LIMIT OF THE STRUCTURE TO THE DIAMOND BOXOUT.
- 2 ADJUST TRANSVERSE JOINT TO INTERSECT MANHOLE IF POSSIBLE.
- 3 IF DISTANCE BETWEEN THE LONGITUDINAL JOINT AND THE EDGE OF MANHOLE IS 2 FEET OR LESS, DIVERT THE LONGITUDINAL JOINT AT A 2:1 TAPER RATE TO THE CENTER OF THE MANHOLE. IF THE DISTANCE IS GREATER THAN 2 FEET, DO NOT DIVERT THE JOINT AND SAW AS NORMAL. PLACE REINFORCEMENT REBAR AROUND THE MANHOLE.
- 4 IF THE DISTANCE FROM THE EDGE OF THE MANHOLE TO THE NEAREST TRANSVERSE JOINT IS LESS 4 FEET OR LESS, REDIRECT JOINT TO INTERSECT THE CENTER OF THE MANHOLE. IF DISTANCE IS GREATER THAN 4 FEET, DO NOT DIVERT THE JOINT AND SAW AS NORMAL. PLACE REINFORCEMENT REBAR AROUND THE MANHOLE.
- 5 ALIGN TRANSVERSE JOINT WITH ONE EDGE OF INLET WHEN PRACTICAL.



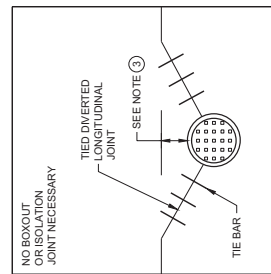
MANHOLE WITH LONGITUDINAL JOINT



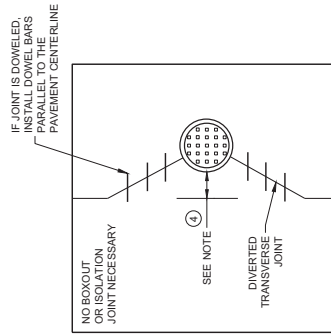
MANHOLE WITH TRANSVERSE JOINT



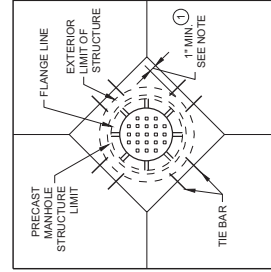
INLET WITH TRANSVERSE JOINT



MANHOLE WITH DIVERTED LONGITUDINAL CONTRACTION JOINT



MANHOLE WITH DIVERTED TRANSVERSE CONTRACTION JOINT



DIAGONAL MANHOLE BOXOUT FOR CONSTRUCTION JOINTS

Addendum No. 01
ID 1100-17-76
Added Sheet 178A
April 7, 2022

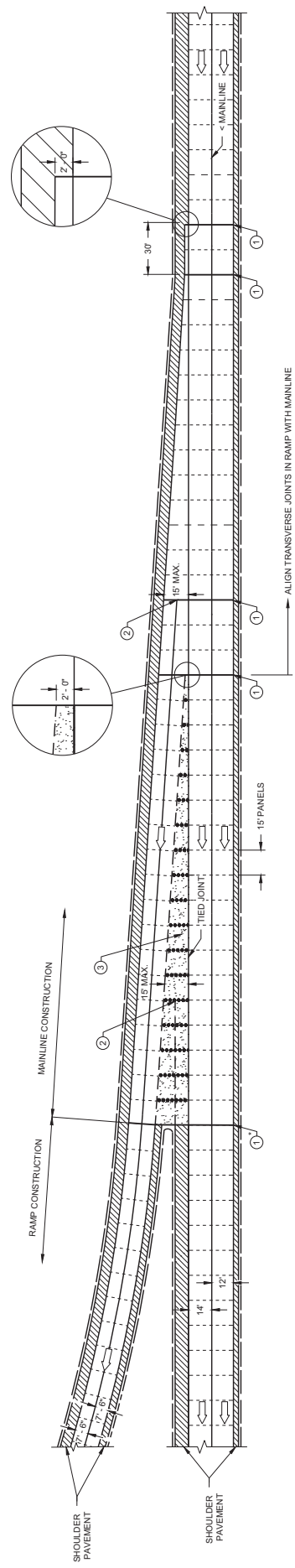
CONCRETE PAVEMENT JOINTING AT UTILITY FIXTURES
STATE OF WISCONSIN DEPARTMENT OF TRANSPORTATION
APPROVED November 2018 DATE /S/ Peter Kemp P.E. PAVEMENT SUPERVISOR

178A

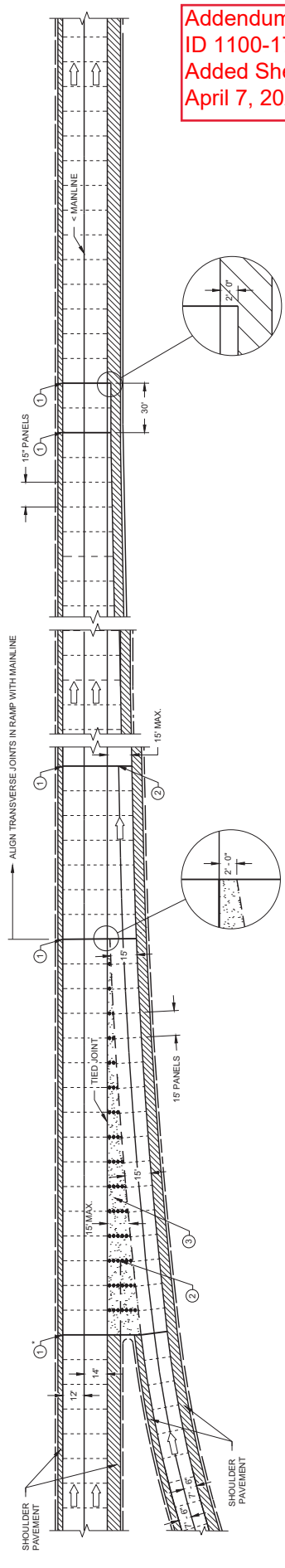
CONCRETE PAVEMENT JOINTING
ACCELERATION/ DECELERATION LANE
STATE OF WISCONSIN DEPARTMENT OF TRANSPORTATION
APPROVED November 2018 DATE
ISSUED BY Peter Kemp P.E. ROADWAY STRUCTURE DEVELOPMENT ENGINEER

178B

Addendum No. 01
ID 1100-17-76
Added Sheet 178B
April 7, 2022



DECELERATION LANE



ACCELERATION LANE

LEGEND

-----	DOWELED JOINT
.....	UNDOWELED JOINT
-----	TIED JOINT
-----	UNTIED JOINT
-----	GORE
↑	DIRECTION OF TRAVEL

GENERAL NOTES

- 1. PAVEMENT AND BASE THICKNESS, PANEL LENGTHS, JOINTS AND REINFORCEMENT FOR THE DECELERATION AND ACCELERATION LANES, INCLUDING TAPERS, SHALL BE THE SAME AS THE MAINLINE, EXCEPT WHERE OTHERWISE NOTED.
- 2. ALL REINFORCEMENT BARS SHALL BE EPOXY COATED CONFORMING TO SUBSECTION 505.2.6 OF THE STANDARD SPECIFICATIONS.
- 3. LANE AND SHOULDER WIDTHS MAY VARY FROM SHOWN. SEE CONSTRUCTION PLANS FOR ACTUAL PROPOSED WIDTHS.
- 4. CRITICAL TRANSVERSE JOINT LOCATIONS AT PAVEMENT WIDTH CHANGES.
- 5. (1) IS NOT A CRITICAL TRANSVERSE JOINT WHEN ASPHALTIC GORE IS INSTALLED.
- 6. STOP LONGITUDINAL JOINT WITH CORE HOLE (2" TYP.) WHEN IT MEETS THE FIRST TRANSVERSE JOINT LESS THAN 15' WIDE OR STOP LONGITUDINAL JOINT WHEN IT MEETS 2' AWAY FROM THE TIED JOINT OF THE MAINLINE.
- 7. DISREGARD THE JOINT DETAILS IN AND AROUND THE GORE WHEN ASPHALTIC GORE IS INSTALLED.

LEGEND

- SIGN ON PERMANENT SUPPORT
- TRAFFIC CONTROL DRUM
- TRAFFIC CONTROL DRUM WITH ATTACHED SIGN
- TYPE "C" STEADY BURNLIGHT
- TYPE "II" BARRICADE WITH ATTACHED SIGN
- TYPE "A" WARNING LIGHT (FLASHING)
- FLASHING ARROW BOARD
- DIRECTION OF TRAFFIC
- REMOVE PAVEMENT MARKING (SEE GENERAL NOTES)
- WORK AREA

GENERAL NOTES

FOR WORK ON ROADWAYS WITH SPEEDS GREATER THAN 45MPH, USE SDD 15D72. THIS LANE CLOSURE DETAIL IS TYPICAL FOR CLOSING THE LEFT LANE. FOR A RIGHT LANE CLOSURE, REVERSE THE TRAFFIC CONTROL.

THIS DETAIL MAY BE USED FOR ROADWAYS WITH EITHER TWO OR THREE LANES IN EACH DIRECTION. ALL SIGNS ARE 60"x24" UNLESS OTHERWISE NOTED. IF NECESSARY DUE TO SPACE CONSTRAINTS IN URBAN AREAS, 36"x36" SIGNS MAY BE USED IF APPROVED BY REGIONAL TRAFFIC UNIT.

"W" SIGN IS THE SAME AS "W" SIGN EXCEPT THE BACKGROUND IS ORANGE.

ANY SIGNS TEMPORARY OR EXISTING, WHICH CONFLICT WITH THE TRAFFIC CONTROL "IN USE", SHALL BE REMOVED OR COVERED AS NEEDED AND AS APPROVED BY THE ENGINEER. NO WARNING LIGHTS SHALL BE WORKING ON COVERED OR "DOWNED" SIGNS.

SIGNS THAT WILL BE IN PLACE LESS THAN 7 CONTINUOUS DAYS AND NIGHTS OR THAT WILL BE PLACED IN A CLOSED LANE MAY BE MOUNTED ON TEMPORARY SUPPORTS.

THE EXACT NUMBER, LOCATION, AND SPACING OF ALL SIGNS AND DEVICES SHALL BE ADJUSTED TO FIT FIELD CONDITIONS AS APPROVED BY THE ENGINEER.

THE SPACING BETWEEN TRAFFIC CONTROL SIGNS SHOULD BE ADJUSTED TO NOT CONFLICT WITH AND TO PROVIDE A MINIMUM OF 200 FEET (50W DESIRABLE) DISTANCE TO EXISTING SIGNS THAT WILL REMAIN IN PLACE WHERE THESE SIGNS ARE ALREADY PRESENT.

REMOVE PAVEMENT MARKINGS AND PLACE TEMPORARY PAVEMENT MARKING LINE IF LANE CLOSURE IS TO BE IN PLACE FOR 4 OR MORE CONTINUOUS DAYS AND NIGHTS.

CONSIDER GEOMETRICS, WHEN LOCATING SIGNS AND ARROW BOARDS SO THE APPROACHING DRIVER HAS A CLEAR VIEW OF THE ARROW BOARDS AND LANE CLOSURE DRUMS FOR A MINIMUM 1500 FEET IN FRONT OF DRUMS.

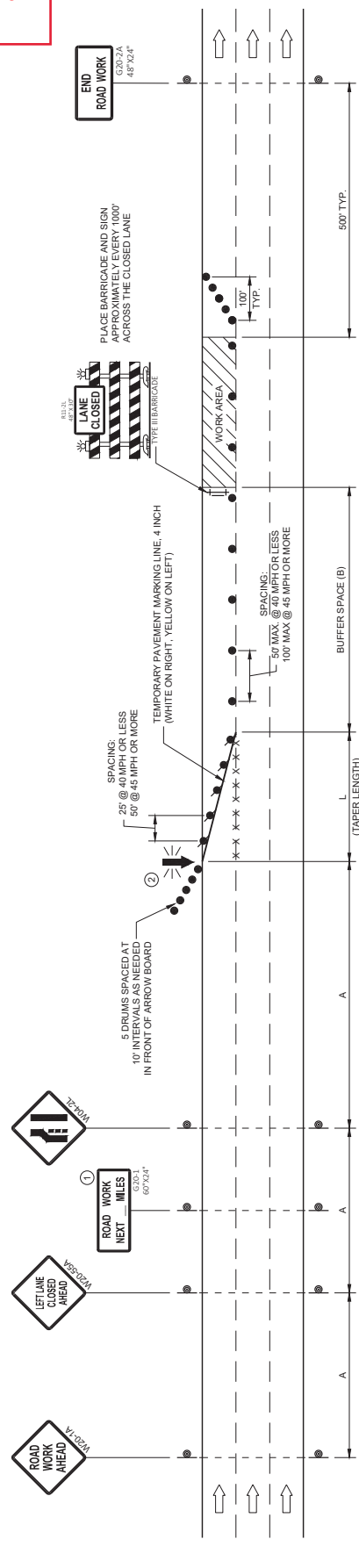
BARRICADES IN A CLOSED LANE THAT MUST BE MOVED FOR A WORK OPERATION SHALL BE IMMEDIATELY REESTABLISHED UPON COMPLETION OF THE OPERATION OR FOR CONTINUING OPERATIONS, AT THE END OF EACH WORKING DAY.

CHANNELIZING DEVICES PLACED ADJACENT TO WORK AREA SHALL BE PULLED BACK FROM THE TRAVEL LANE WHEN WORK IS NOT IN PROGRESS.

WARNING LIGHTS ARE NOT REQUIRED IF THE LANE CLOSURE IS A DAYTIME ONLY OPERATION.

- ① OMIT G20-1 SIGNS IF LENGTH OF WORK AREA IS 2 MILES OR LESS.
- ② WHERE THE SHOULDER OR TERRACE HAS INSUFFICIENT SPACE TO PLACE THE ARROW BOARD AS SHOWN, PLACE THE ARROW BOARD AT THE END OF THE TAPER.

Addendum No. 01
ID 1100-17-76
Added Sheet 220A
April 7, 2022



POSTED SPEED LIMIT PRIOR TO WORK STARTING (MPH)	ADVANCE WARNING SIGN SPACING (A) FEET	TAPER LENGTH (12 FT. LANE) (L) FEET	BUFFER SPACE (B) FEET
25	200'	125'	55'
30	200'	180'	85'
35	350'	245'	120'
40	350'	320'	170'
45	500'	540'	220'

TRAFFIC CONTROL, SINGLE LANE CLOSURE, DIVIDED NON-FREWAY/EXPRESSWAY

STATE OF WISCONSIN
DEPARTMENT OF TRANSPORTATION
APPROVED February 2022
DATE /S/ Andrew Hedtling
WORK ZONE ENGINEER

GENERAL NOTES

ALL SIGNS ARE 48"X48" UNLESS OTHERWISE NOTED. IF NECESSARY DUE TO SPACE CONSTRAINTS IN URBAN AREAS, 36" X 36" MAY BE USED IF APPROVED BY THE DISTRICT TRAFFIC UNIT.

"W" SIGNS THE SAME AS "W" SIGN EXCEPT THE BACKGROUND IS ORANGE.

ANY SIGNS TEMPORARY OR EXISTING, WHICH CONFLICT WITH THE TRAFFIC CONTROL "IN USE", SHALL BE REMOVED OR COVERED AS NEEDED AND AS APPROVED BY THE ENGINEER. NO WARNING LIGHTS SHALL BE WORKING ON COVERED OR DOWNED SIGNS.

THE EXACT NUMBER, LOCATION, AND SPACING OF ALL SIGNS AND DEVICES SHALL BE ADJUSTED TO FIT FIELD CONDITIONS AS APPROVED BY THE ENGINEER.

THE SPACING BETWEEN TRAFFIC CONTROL SIGNS SHOULD BE ADJUSTED TO NOT CONFLICT WITH AND TO PROVIDE A MINIMUM OF 200 FEET (50% DESIRABLE) DISTANCE TO EXISTING SIGNS THAT WILL REMAIN IN PLACE.

SIGN LAYOUTS SHALL BE IN ACCORDANCE WITH THE FHWA'S MANUAL OF STANDARD HIGHWAY SIGNS ON THE WISCONSIN STANDARD SIGN PLATES.

SIGNS THAT WILL REMAIN IN PLACE LESS THAN 7 CONTINUOUS DAYS AND NIGHTS OR THAT WILL BE PLACED IN A CLOSED LANE MAY BE MOUNTED ON PORTABLE SUPPORTS.

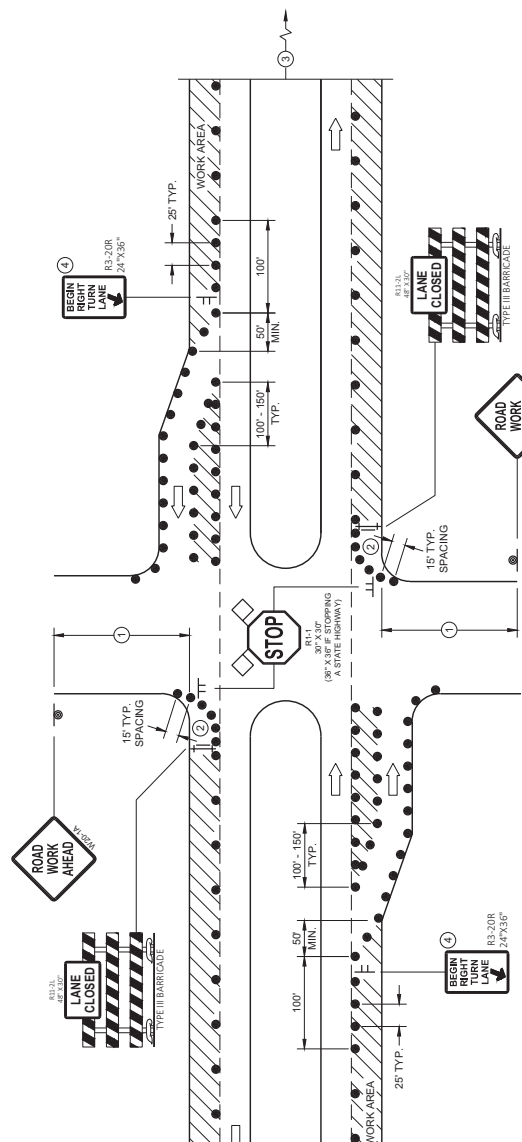
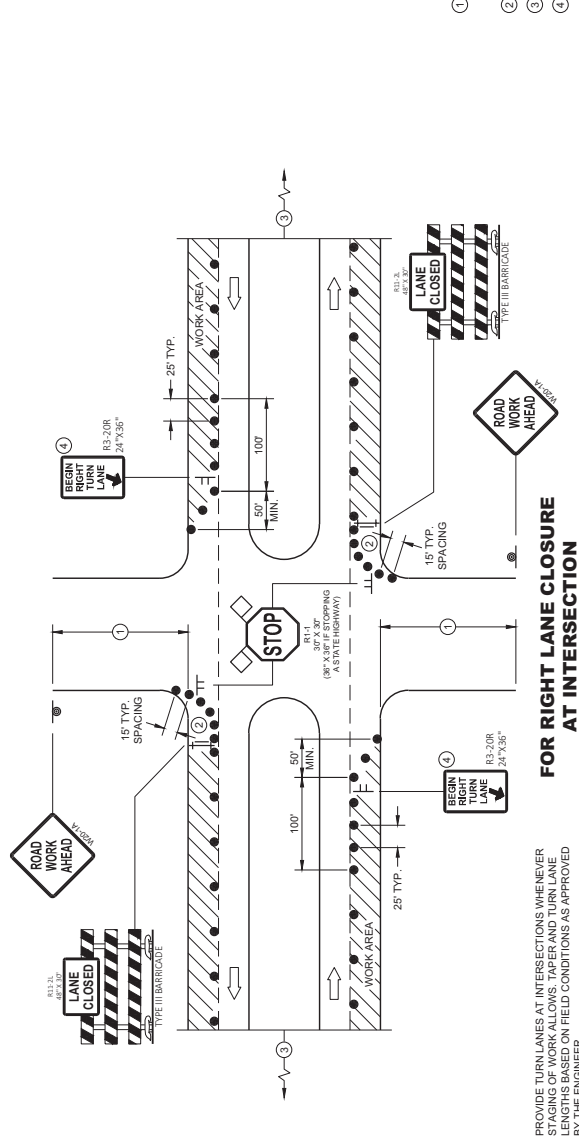
BARRICADES IN A CLOSED LANE THAT MUST BE MOVED FOR A WORK OPERATION SHALL BE IMMEDIATELY REESTABLISHED UPON COMPLETION OF THE OPERATION, OR FOR CONTINUING OPERATIONS, AT THE END OF EACH WORKING DAY.

CHANNELIZING DEVICES PLACED ADJACENT TO WORK AREA SHALL BE PULLED BACK FROM THE TRAVEL LANE WHEN WORK IS NOT IN PROGRESS.

- 1 500' TYPICAL OR AT LAST INTERSECTION, WHICHEVER IS CLOSER.
350' IF 35-40 MPH.
200' IF 25-30 MPH.
- 2 ALSO USE BARRICADE AND 15 FOOT TYPICAL DRUM SPACING AT COMMERCIAL DRIVEWAYS
- 3 SEE SEPARATE LANE CLOSURE DETAIL FOR ADDITIONAL TRAFFIC CONTROL.
- 4 MINIMUM MOUNTING HEIGHT OF 5 FEET FROM EDGE OF PAVEMENT (AT EDGE LINE LOCATION) TO BOTTOM OF SIGN.

LEGEND

- ⊥ SIGN ON TEMPORARY SUPPORT
- ⊥ SIGN ON PERMANENT SUPPORT
- TRAFFIC CONTROL DRUM
- ⇄ TYPE III BARRICADE WITH ATTACHED SIGN
- ➡ DIRECTION OF TRAFFIC
- ◇ FLAGS, 16" X 16" MIN., ORANGE
- ▨ WORK AREA



**TRAFFIC CONTROL,
INTERSECTION WITHIN SINGLE
RIGHT LANE CLOSURE**

STATE OF WISCONSIN
DEPARTMENT OF TRANSPORTATION

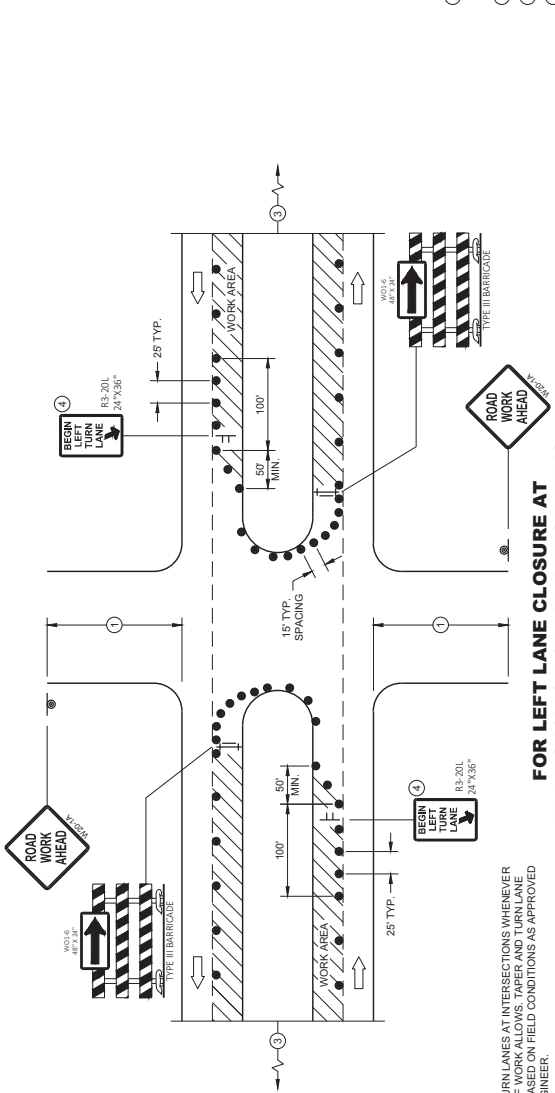
Addendum No. 01
ID 1100-17-76
Added Sheet 220B
April 7, 2022

220B

GENERAL NOTES

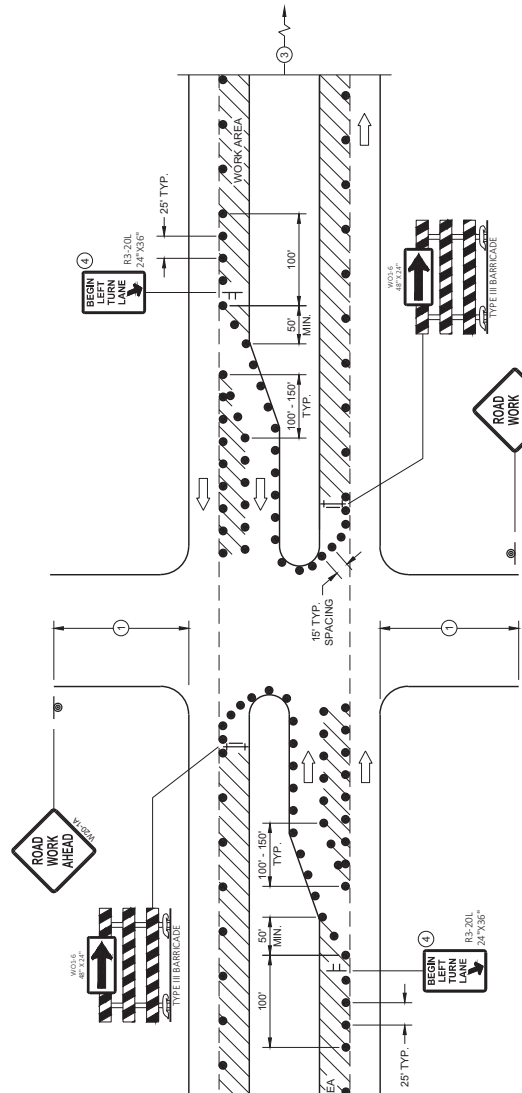
- ALL SIGNS ARE 48"X48" UNLESS OTHERWISE NOTED. IF NECESSARY DUE TO SPACE CONSTRAINTS IN URBAN AREAS, 36" X 36" MAY BE USED IF APPROVED BY THE DISTRICT TRAFFIC UNIT.
- "W" SIGN IS THE SAME AS "W" SIGN EXCEPT THE BACKGROUND IS ORANGE.
- ANY SIGNS TEMPORARY OR EXISTING, WHICH CONFLICT WITH THE TRAFFIC CONTROL "IN USE" SHALL BE REMOVED OR COVERED AS NEEDED AND AS APPROVED BY THE ENGINEER. NO WARNING LIGHTS SHALL BE WORKING ON COVERED OR "DOWNED" SIGNS.
- THE EXACT NUMBER, LOCATION, AND SPACING OF ALL SIGNS AND DEVICES SHALL BE ADJUSTED TO FIT FIELD CONDITIONS AS APPROVED BY THE ENGINEER.
- THE SPACING BETWEEN TRAFFIC CONTROL SIGNS SHOULD BE ADJUSTED TO NOT CONFLICT WITH THE MINIMUM 250 FEET (80' DESIRABLE) DISTANCE TO EXISTING SIGNS THAT WILL REMAIN IN PLACE.
- SIGN LAYOUTS SHALL BE IN ACCORDANCE WITH THE FHWA'S MANUAL OF STANDARD HIGHWAY SIGNS OR THE WISCONSIN STANDARD SIGN PLATES.
- SIGNS THAT WILL REMAIN IN PLACE LESS THAN 7 CONTINUOUS DAYS AND NIGHTS OR THAT WILL BE PLACED IN A CLOSED LANE MAY BE MOUNTED ON PORTABLE SUPPORTS.
- BARRICADES IN A CLOSED LANE THAT MUST BE MOVED FOR A WORK OPERATION SHALL BE IMMEDIATELY REESTABLISHED UPON COMPLETION OF THE OPERATION, OR FOR CONTINUING OPERATIONS, AT THE END OF EACH WORKING DAY.
- CHANNELIZING DEVICES PLACED ADJACENT TO WORK AREA SHALL BE PULLED BACK FROM THE TRAVEL LANE WHEN WORK IS NOT IN PROGRESS.

- 500' TYPICAL OR AT LAST INTERSECTION, WHICHEVER IS CLOSER.
350' IF 35 - 40 MPH,
200' IF 25 - 30 MPH.
- ALSO USE BARRICADE AND 15 FOOT TYPICAL DRUM SPACING AT COMMERCIAL DRIVEWAYS
- SEE SEPARATE LANE CLOSURE DETAIL FOR ADDITIONAL TRAFFIC CONTROL.
- MINIMUM MOUNTING HEIGHT OF 5 FEET FROM EDGE OF PAVEMENT (AT EDGE LINE LOCATION) TO BOTTOM OF SIGN.



PROVIDE TURN LANES AT INTERSECTIONS WHENEVER STAGING OF WORK ALLOWS. TAPER AND TURN LANE LENGTHS BASED ON FIELD CONDITIONS AS APPROVED BY THE ENGINEER.

FOR LEFT LANE CLOSURE AT INTERSECTION OR MEDIAN OPENING



FOR LEFT LANE CLOSURE AT INTERSECTION OR MEDIAN OPENING (WITH LEFT TURN BAY OPEN)

LEGEND

- SIGN ON TEMPORARY SUPPORT
- SIGN ON PERMANENT SUPPORT
- TRAFFIC CONTROL DRUM
- ⇄ TYPE III BARRICADE WITH ATTACHED SIGN
- ➡ DIRECTION OF TRAFFIC
- ◇ FLAGS, 16" X 16" MIN, ORANGE
- ▨ WORK AREA

TRAFFIC CONTROL, INTERSECTION WITHIN SINGLE LEFT LANE CLOSURE	
STATE OF WISCONSIN DEPARTMENT OF TRANSPORTATION	
APPROVED _____ DATE: AUGUST 2020	BY: Andrew Hedding WORK ZONE ENGINEER

Addendum No. 01
ID 1100-17-76
Added Sheet 220C
April 7, 2022



Proposal Schedule of Items

Proposal ID: 20220412018 Project(s): 1100-17-76

Federal ID(s): WISC 2022300

SECTION: 0001 Roadway Items

Alt Set ID: Alt Mbr ID:

Proposal Line Number	Item ID Description	Approximate Quantity and Units	Unit Price	Bid Amount
0002	108.4300 RBC Progress Schedule	1.000 EACH	_____.	_____.
0004	204.0100 Removing Concrete Pavement	1,400.000 SY	_____.	_____.
0006	204.0120 Removing Asphaltic Surface Milling	42,220.000 SY	_____.	_____.
0008	204.9060.S Removing (item description) 2000. Microwave Detector	1.000 EACH	_____.	_____.
0010	204.9060.S Removing (item description) 2001. Pole	1.000 EACH	_____.	_____.
0012	204.9060.S Removing (item description) 3000. Loop Detector Wire & Lead In Cable IH 41 NB Ramps & STH 145	1.000 EACH	_____.	_____.
0014	205.0100 Excavation Common	1,920.000 CY	_____.	_____.
0016	211.0400 Prepare Foundation for Asphaltic Shoulders	474.000 STA	_____.	_____.
0018	213.0100 Finishing Roadway (project) 0001. 1100-17-76	1.000 EACH	_____.	_____.
0020	305.0110 Base Aggregate Dense 3/4-Inch	488.000 TON	_____.	_____.
0022	305.0120 Base Aggregate Dense 1 1/4-Inch	470.000 TON	_____.	_____.
0024	305.0500 Shaping Shoulders	474.000 STA	_____.	_____.
0026	312.0115 Select Crushed Material	1,920.000 CY	_____.	_____.
0028	415.1080 Concrete Pavement HES 8-Inch	1,400.000 SY	_____.	_____.
0030	416.0610 Drilled Tie Bars	1,608.000 EACH	_____.	_____.



Proposal Schedule of Items

Proposal ID: 20220412018 Project(s): 1100-17-76

Federal ID(s): WISC 2022300

SECTION: 0001 Roadway Items

Alt Set ID: Alt Mbr ID:

Proposal Line Number	Item ID Description	Approximate Quantity and Units	Unit Price	Bid Amount
0032	416.0620 Drilled Dowel Bars	7,042.000 EACH	_____.	_____.
0034	416.1715 Concrete Pavement Repair SHES	2,637.000 SY	_____.	_____.
0036	416.1725 Concrete Pavement Replacement SHES	2,739.000 SY	_____.	_____.
0038	420.1000 Continuous Diamond Grinding Concrete Pavement	78,738.000 SY	_____.	_____.
0040	455.0605 Tack Coat	5,916.000 GAL	_____.	_____.
0042	460.2000 Incentive Density HMA Pavement	7,630.000 DOL	1.00000	7,630.00
0044	460.6224 HMA Pavement 4 MT 58-28 S	11,828.000 TON	_____.	_____.
0046	495.1000.S Cold patch	10.000 TON	_____.	_____.
0048	611.8110 Adjusting Manhole Covers	35.000 EACH	_____.	_____.
0050	611.8115 Adjusting Inlet Covers	118.000 EACH	_____.	_____.
0052	611.8120.S Cover Plates Temporary	32.000 EACH	_____.	_____.
0054	612.0700 Drain Tile Exploration	250.000 LF	_____.	_____.
0056	618.0100 Maintenance And Repair of Haul Roads (project) 0001. 1100-17-76	1.000 EACH	_____.	_____.
0058	619.1000 Mobilization	1.000 EACH	_____.	_____.
0060	628.1104 Erosion Bales	100.000 EACH	_____.	_____.
0062	628.1504 Silt Fence	2,000.000 LF	_____.	_____.



Proposal Schedule of Items

Proposal ID: 20220412018 Project(s): 1100-17-76

Federal ID(s): WISC 2022300

SECTION: 0001 Roadway Items

Alt Set ID: Alt Mbr ID:

Proposal Line Number	Item ID Description	Approximate Quantity and Units	Unit Price	Bid Amount
0064	628.1520 Silt Fence Maintenance	2,000.000 LF	_____.	_____.
0066	628.1905 Mobilizations Erosion Control	4.000 EACH	_____.	_____.
0068	628.1910 Mobilizations Emergency Erosion Control	1.000 EACH	_____.	_____.
0070	628.7020 Inlet Protection Type D	121.000 EACH	_____.	_____.
0072	628.7504 Temporary Ditch Checks	100.000 LF	_____.	_____.
0074	634.0622 Posts Wood 4x6-Inch X 22-FT	3.000 EACH	_____.	_____.
0076	637.1220 Signs Type I Reflective SH	994.000 SF	_____.	_____.
0078	637.2210 Signs Type II Reflective H	50.000 SF	_____.	_____.
0080	638.2102 Moving Signs Type II	3.000 EACH	_____.	_____.
0082	638.2601 Removing Signs Type I	7.000 EACH	_____.	_____.
0084	638.2602 Removing Signs Type II	3.000 EACH	_____.	_____.
0086	638.3000 Removing Small Sign Supports	3.000 EACH	_____.	_____.
0088	643.0300 Traffic Control Drums	14,727.000 DAY	_____.	_____.
0090	643.0420 Traffic Control Barricades Type III	1,498.000 DAY	_____.	_____.
0092	643.0705 Traffic Control Warning Lights Type A	2,896.000 DAY	_____.	_____.
0094	643.0715 Traffic Control Warning Lights Type C	2,601.000 DAY	_____.	_____.
0096	643.0800 Traffic Control Arrow Boards	269.000 DAY	_____.	_____.



Proposal Schedule of Items

Proposal ID: 20220412018 Project(s): 1100-17-76

Federal ID(s): WISC 2022300

SECTION: 0001 Roadway Items

Alt Set ID: Alt Mbr ID:

Proposal Line Number	Item ID Description	Approximate Quantity and Units	Unit Price	Bid Amount
0098	643.0900 Traffic Control Signs	4,624.000 DAY	_____.	_____.
0100	643.0910 Traffic Control Covering Signs Type I	3.000 EACH	_____.	_____.
0102	643.1000 Traffic Control Signs Fixed Message	286.000 SF	_____.	_____.
0104	643.1050 Traffic Control Signs PCMS	104.000 DAY	_____.	_____.
0106	643.1055.S Truck or Trailer Mounted Attenuator	80.000 DAY	_____.	_____.
0108	643.4100.S Traffic Control Interim Lane Closure	289.000 EACH	_____.	_____.
0110	643.5000 Traffic Control	1.000 EACH	_____.	_____.
0112	646.1020 Marking Line Epoxy 4-Inch	602.000 LF	_____.	_____.
0114	646.1040 Marking Line Grooved Wet Ref Epoxy 4-Inch	62,726.000 LF	_____.	_____.
0116	646.1555 Marking Line Grooved Contrast Permanent Tape 4-Inch	8,488.000 LF	_____.	_____.
0118	646.3020 Marking Line Epoxy 8-Inch	2,320.000 LF	_____.	_____.
0120	646.3545 Marking Line Grooved Wet Ref Contrast Epoxy 8-Inch	75.000 LF	_____.	_____.
0122	646.3555 Marking Line Grooved Contrast Permanent Tape 8-Inch	14,321.000 LF	_____.	_____.
0124	646.5020 Marking Arrow Epoxy	26.000 EACH	_____.	_____.
0126	646.5120 Marking Word Epoxy	18.000 EACH	_____.	_____.
0128	646.5220 Marking Symbol Epoxy	12.000 EACH	_____.	_____.



Proposal Schedule of Items

Proposal ID: 20220412018 Project(s): 1100-17-76

Federal ID(s): WISC 2022300

SECTION: 0001 Roadway Items

Alt Set ID: Alt Mbr ID:

Proposal Line Number	Item ID Description	Approximate Quantity and Units	Unit Price	Bid Amount
0130	646.5520 Marking Outfall Epoxy	15.000 EACH	_____.	_____.
0132	646.6120 Marking Stop Line Epoxy 18-Inch	460.000 LF	_____.	_____.
0134	646.7120 Marking Diagonal Epoxy 12-Inch	3,699.000 LF	_____.	_____.
0136	646.7220 Marking Chevron Epoxy 24-Inch	1,135.000 LF	_____.	_____.
0138	646.7420 Marking Crosswalk Epoxy Transverse Line 6-Inch	327.000 LF	_____.	_____.
0140	646.8120 Marking Curb Epoxy	276.000 LF	_____.	_____.
0142	646.8220 Marking Island Nose Epoxy	24.000 EACH	_____.	_____.
0144	646.9010 Marking Removal Line Water Blasting 4-Inch	17,296.000 LF	_____.	_____.
0146	646.9110 Marking Removal Line Water Blasting 8-Inch	4,124.000 LF	_____.	_____.
0148	649.0150 Temporary Marking Line Removable Tape 4-Inch	60,695.000 LF	_____.	_____.
0150	649.0155 Temporary Marking Line Removable Contrast Tape 4-Inch	8,488.000 LF	_____.	_____.
0152	649.0250 Temporary Marking Line Removable Tape 8-Inch	1,687.000 LF	_____.	_____.
0154	649.0255 Temporary Marking Line Removable Contrast Tape 8-Inch	14,274.000 LF	_____.	_____.
0156	649.0550 Temporary Marking Arrow Removable Tape	24.000 EACH	_____.	_____.



Proposal Schedule of Items

Proposal ID: 20220412018 Project(s): 1100-17-76

Federal ID(s): WISC 2022300

SECTION: 0001

Roadway Items

Alt Set ID:

Alt Mbr ID:

Proposal Line Number	Item ID Description	Approximate Quantity and Units	Unit Price	Bid Amount
0158	649.0650 Temporary Marking Word Removable Tape	16.000 EACH	_____.	_____.
0160	649.0850 Temporary Marking Stop Line Removable Tape 18-Inch	424.000 LF	_____.	_____.
0162	652.0225 Conduit Rigid Nonmetallic Schedule 40 2-Inch	814.000 LF	_____.	_____.
0164	652.0700.S Install Conduit into Existing Item	4.000 EACH	_____.	_____.
0166	652.0800 Conduit Loop Detector	718.000 LF	_____.	_____.
0168	653.0135 Pull Boxes Steel 24x36-Inch	1.000 EACH	_____.	_____.
0170	653.0140 Pull Boxes Steel 24x42-Inch	1.000 EACH	_____.	_____.
0172	653.0905 Removing Pull Boxes	38.000 EACH	_____.	_____.
0174	654.0106 Concrete Bases Type 6	4.000 EACH	_____.	_____.
0176	655.0515 Electrical Wire Traffic Signals 10 AWG	3,365.000 LF	_____.	_____.
0178	655.0700 Loop Detector Lead In Cable	2,824.000 LF	_____.	_____.
0180	655.0800 Loop Detector Wire	2,872.000 LF	_____.	_____.
0182	657.0255 Transformer Bases Breakaway 11 1/2-Inch Bolt Circle	4.000 EACH	_____.	_____.
0184	657.0327 Poles Type 6-Aluminum	4.000 EACH	_____.	_____.
0186	670.0100 Field System Integrator	LS	LUMP SUM	_____.
0188	670.0200 ITS Documentation	LS	LUMP SUM	_____.



Proposal Schedule of Items

Proposal ID: 20220412018 Project(s): 1100-17-76

Federal ID(s): WISC 2022300

SECTION: 0001 Roadway Items

Alt Set ID: Alt Mbr ID:

Proposal Line Number	Item ID Description	Approximate Quantity and Units	Unit Price	Bid Amount
0190	674.0200 Cable Microwave Detector	10,095.000 LF	_____	_____
0192	674.0300 Remove Cable	4,330.000 LF	_____	_____
0194	675.0300 Install Mounted Controller Microwave Detector Assembly	13.000 EACH	_____	_____
0196	690.0150 Sawing Asphalt	430.000 LF	_____	_____
0198	690.0250 Sawing Concrete	10,749.000 LF	_____	_____
0200	715.0720 Incentive Compressive Strength Concrete Pavement	500.000 DOL	1.00000	500.00
0202	740.0440 Incentive IRI Ride	19,570.000 DOL	1.00000	19,570.00
0204	ASP.1T0A On-the-Job Training Apprentice at \$5.00/HR	3,000.000 HRS	5.00000	15,000.00
0206	ASP.1T0G On-the-Job Training Graduate at \$5.00/HR	4,320.000 HRS	5.00000	21,600.00
0208	SPV.0060 Special 2002. Ground Rod	4.000 EACH	_____	_____
0210	SPV.0060 Special 2003. Refocus Side-Fire Vehicle Detector Site	10.000 EACH	_____	_____
0212	SPV.0060 Special 5001. Traffic Control Close-Open Freeway Entrance Ramp	38.000 EACH	_____	_____
0214	SPV.0060 Special 5002. Traffic Control Full Freeway Closure	1.000 EACH	_____	_____
0216	SPV.0060 Special 5003. Removing Raised Pavement Markers And Filling Voids	318.000 EACH	_____	_____
0218	SPV.0060 Special 5004. Utility Line Opening (ULO)	10.000 EACH	_____	_____



Proposal Schedule of Items

Proposal ID: 20220412018 Project(s): 1100-17-76

Federal ID(s): WISC 2022300

SECTION: 0001 Roadway Items

Alt Set ID: Alt Mbr ID:

Proposal Line Number	Item ID Description	Approximate Quantity and Units	Unit Price	Bid Amount
0220	SPV.0060 Special 5005. Fastening Sewer Access Covers	148.000 EACH	_____.	_____.
0222	SPV.0060 Special 5006. Mobilizations Emergency Pavement Repair	10.000 EACH	_____.	_____.
0224	SPV.0060 Special 5007. Survey Project 1100-17-76	1.000 EACH	_____.	_____.
0226	SPV.0075 Special 0001. Pavement Cleanup Project 1100-17-76	100.000 HRS	_____.	_____.
0228	SPV.0085 Special 0001. Foam Jacking	12,000.000 LB	_____.	_____.
0230	SPV.0085 Special 0002. Sealing Cracks and Joints with Hot-Applied Sealant	21,120.000 LB	_____.	_____.
Section: 0001			Total:	_____.
			Total Bid:	_____.

