



Wisconsin Department of Transportation

April 28, 2022

Division of Transportation Systems Development

Bureau of Project Development
4822 Madison Yards Way, 4th Floor South
Madison, WI 53705

Telephone: (608) 266-1631
Facsimile (FAX): (608) 266-8459

NOTICE TO ALL CONTRACTORS:

Proposal #24: 6240-22-71, WISC 2022399
Appleton – Black Creek
CTH JJ – CTH B
STH 47
Outagamie County

Letting of May 10, 2022

This is Addendum No. 01, which provides for the following:

Special Provisions:

Added Special Provisions	
Article No.	Description
28	Asphaltic Surface, Item 465.0105

Schedule of Items:

Revised Bid Item Quantities					
Bid Item	Item Description	Unit	Old Quantity	Revised Quantity	Proposal Total
460.6223	HMA Pavement 3 MT 58-28 S	TON	32,537	-665	31,872
460.6224	HMA Pavement 4 MT 58-28 S	TON	23,170	-203	22,967
521.1024	Apron Endwalls For Culvert Pipe Steel 24-Inch	EA	6	1	7
646.1020	Marking Line Epoxy 4-Inch	LF	62,854	-10,654	52,200

Added Bid Item Quantities					
Bid Item	Item Description	Unit	Old Quantity	Revised Quantity	Proposal Total
465.0110	Asphaltic Surface Patching	TON	0	868	868
520.1024	Apron Endwalls For Culvert Pipe 24-Inch	EA	0	7	7
520.1030	Apron Endwalls For Culvert Pipe 30-Inch	EA	0	6	6
520.1036	Apron Endwalls For Culvert Pipe 36-Inch	EA	0	4	4
520.3424	Culvert Pipe Class III-A Non-Metal 24-Inch	LF	0	292	292
520.3430	Culvert Pipe Class III-A Non-Metal 30-Inch	LF	0	114	114
520.3436	Culvert Pipe Class III-A Non-Metal 36-Inch	LF	0	155	155
520.3630	Culvert Pipe Class III-B Non-Metal 30-Inch	LF	0	131	131
521.3124	Culvert Pipe Corrugated Steel 24-Inch	LF	0	4	4
646.4520	Marking Line Same Day Epoxy 4-Inch	LF	0	10,654	10,654

Deleted Bid Item Quantities					
Bid Item	Item Description	Unit	Old Quantity	Revised Quantity	Proposal Total
522.0124	Culvert Pipe Reinforced Concrete Class III 24-Inch	LF	361	-361	0
522.0130	Culvert Pipe Reinforced Concrete Class III 30-Inch	LF	245	-245	0
522.0136	Culvert Pipe Reinforced Concrete Class III 36-Inch	LF	155	-155	0
522.1024	Apron Endwalls for Culvert Pipe Reinforced Concrete 24-Inch	EA	9	-9	0
522.1030	Apron Endwalls for Culvert Pipe Reinforced Concrete 30-Inch	EA	6	-6	0
522.1036	Apron Endwalls for Culvert Pipe Reinforced Concrete 36-Inch	EA	4	-4	0

Plan Sheets:

Revised Plan Sheets	
Plan Sheet	Plan Sheet Title (brief description of changes to sheet)
16	Construction Details (Pavement at Culvert Replacements Detail revised to show Asphaltic Surface Patching versus HMA pavement.)
17	Construction Details (New Culvert Pipes With Transition Detail revised to show Asphaltic Surface Patching versus HMA pavement.)
38	Miscellaneous Quantities (Quantities for HMA Pavement 3 MT 58-28 S and HMA Pavement 4 MT 58-28 S were removed from the Culvert Replacement Summary table. These items were replaced with the Asphaltic Surface item.)
40	Miscellaneous Quantities (The "*" was removed from item numbers 460.6223 and 460.6224 since these items are no longer shown in any other tables in the Miscellaneous Quantities.)
43	Miscellaneous Quantities (Apron Endwalls for Culvert Pipe Reinforced Concrete items for culverts 24" to 36" were removed and replaced with Apron Endwalls for Culvert Pipe items.)
44	Miscellaneous Quantities (Culvert Pipe Reinforced Concrete items for culverts 24" to 36" were removed and replaced with Culvert Pipe Class III-A/B Non-Metal items. Length, item number, and elevations were corrected for the culvert replacement at 601+80.)
50	Miscellaneous Quantities (Centerline Marking Line Epoxy 4-Inch quantities were replaced with Marking Line Same Day Epoxy 4-Inch for areas without rumble strips.)
75	Plan Sheet (Revised note for culvert replacement at 132+49.)
77	Plan Sheet (Revised note for culvert replacement at 191+82 and 201+50.)
79	Plan Sheet (Revised note for culvert replacement at 238+18.)
83	Plan Sheet (Revised note for culvert replacement at 381+70.)
86	Plan Sheet (Revised note for culvert replacement at 474+75.)
87	Plan Sheet (Revised note for culvert replacement at 496+37.)
89	Plan Sheet (Revised note for culvert replacement at 562+83.)
91	Plan Sheet (Revised note for culvert replacement at 617+41.)

The responsibility for notifying potential subcontractors and suppliers of these changes remains with the prime contractor.

Sincerely,

Mike Coleman

Proposal Development Specialist
Proposal Management Section

ADDENDUM NO. 01

6240-22-71

April 28, 2022

Special Provisions

28. Asphaltic Surface, Item 465.0105.

Replace standard spec 465.2(1) with the following:

(1) Under the Asphaltic Surface, Asphaltic Surface Detours, and Asphaltic Surface Patching bid items; submit a mix design. Furnish asphaltic mixture meeting the requirements specified for HMA Pavement 3 MT 58-28 S or HMA Pavement 4 MT 58-28 S under 460.2; except the engineer will not require the contractor to conform to the quality management program specified under 460.2.8. Use tack coat as required under 450.3.2.7.

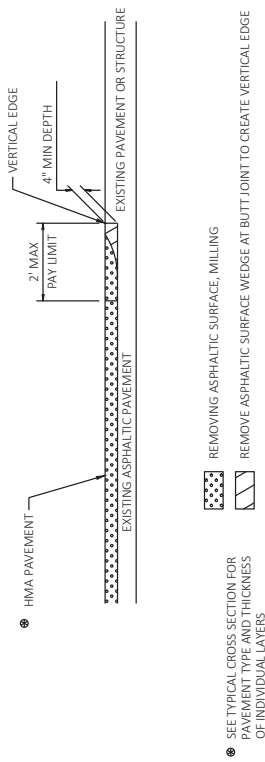
Schedule of Items

Attached, dated April 28, 2022, are the revised Schedule of Items Pages 1 – 9.

Plan Sheets

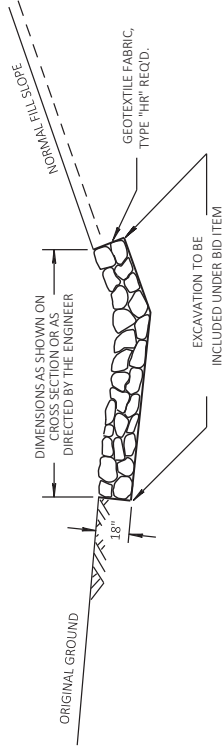
The following 8½ x 11-inch sheets are attached and made part of the plans for this proposal:
Revised: 16, 17, 38, 40, 43, 44, 50, 75, 77, 79, 83, 86, 87, 89, and 91.

END OF ADDENDUM

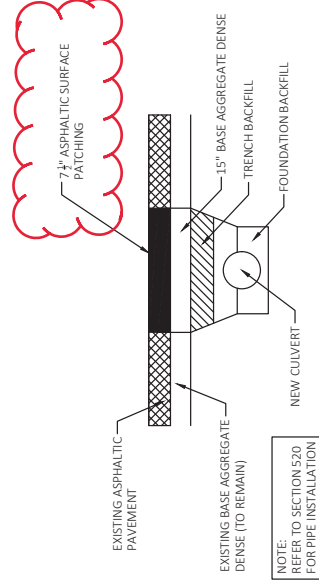


BUTT JOINT DETAIL FOR ASPHALTIC PAVEMENTS (NO PROFILE CHANGE)

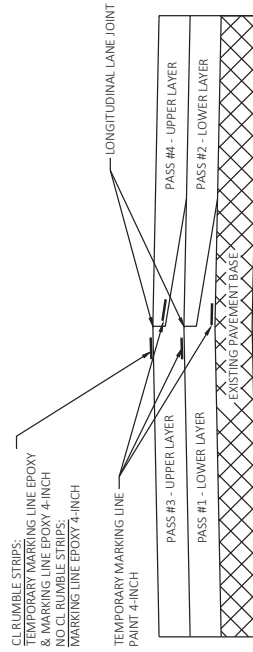
DETAIL FOR RIPRAP MEDIUM IN DITCHES



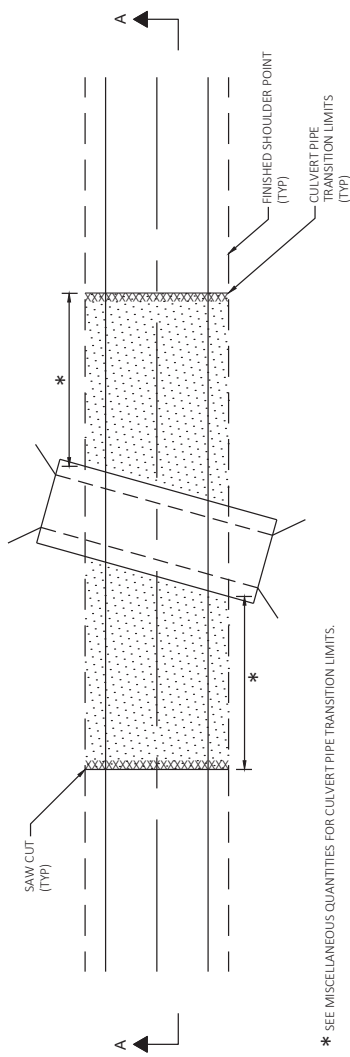
Addendum No. 01
ID 6240-22-71
Revised Sheet 16
April 28, 2022



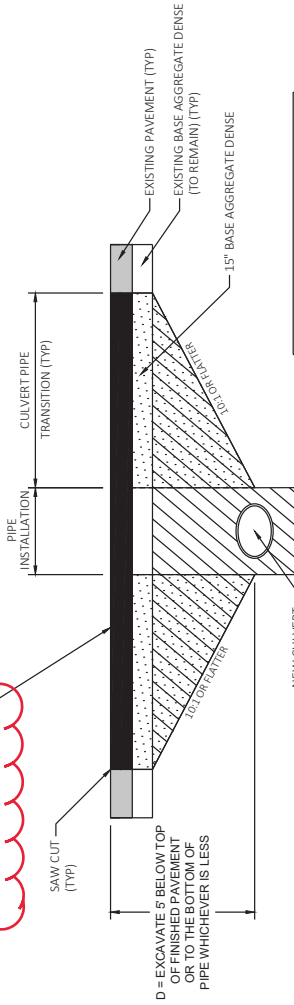
PAVEMENT AT CULVERT REPLACEMENTS
 STA 474+75
 STA 496+37
 STA 601+80



PAVEMENT MARKING DETAIL FOR JOINTS IN HMA PAVEMENTS
 STA 100+00 TO 673+99.39



7 1/2" ASPHALTIC SURFACE PATCHING



PIPE INSTALLATION AREA WILL FOLLOW SECTION 520 FOR INSTALLATION, WIDTHS AND PAYMENT.
 CONSTRUCT TRANSITION PERPENDICULAR TO CULVERT PIPE.
 CULVERT PIPE TRANSITION AREAS WILL BE PAID BY SPV, "FOUNDATION BACKFILL & COMMON EXCAVATION".
 PAVEMENT SAW CUT TO BE PERPENDICULAR TO ROADWAY ALIGNMENT.

NEW CULVERT PIPES WITH TRANSITION

STA 132+49	STA 326+17
STA 191+82	STA 415+32
STA 201+50	STA 562+83
STA 238+18	STA 617+41

Addendum No. 01
 ID 6240-22-71
 Revised Sheet 17
 April 28, 2022

Addendum No. 01
ID 6240-22-71
Revised Sheet 38
April 28, 2022

CULVERT REPLACEMENT SUMMARY

CATEGORY	STATION	LOCATION	REMOVING CONCRETE PAVEMENT SY	EXCAVATION COMMON CT	BASE AGGREGATE DENSE 1 1/4-INCH TON	TACK COAT GAL	ASPHALTIC SURFACE PATCHING TON	WATER MGAL	SPECIAL 0.1 FOUNDATION BACKFILL CT	SPV.0035
6240-22-71	132+49	STH 47	128	245	190	27	81	2.9	137	
0010	191+62	STH 47	92	222	137	19	59	2.1	119	
	201+50	STH 47	233	282	346	49	146	5.2	165	
	238+18	STH 47	79	189	117	17	50	1.8	96	
	326+17	STH 47	219	341	384	46	138	5.8	216	
	415+32	STH 47	272	439	405	57	171	6.1	256	
	474+75	STH 47	-	-	111	2	6	1.7	-	
	496+37	STH 47	-	-	75	2	7	1.1	-	
	562+83	STH 47	-	376	245	27	80	3.7	215	
	601+80	STH 47	-	-	77	2	5	1.2	-	
	617+41	STH 47	-	455	383	42	125	5.7	277	
6240-22-71 CATEGORY 0010 TOTAL			1,023	2,549	2,470	290	868	37.3	1,481	
PROJECT TOTAL			1,023	2,549	2,470	290	868	37.3	1,481	

* ADDITIONAL QUANTITY SHOWN ELSEWHERE

New Item/HMA Pavement items removed

PREPARE FOUNDATION FOR ASPHALTIC PAVING (PROJECT) 01_6240-22-71

CATEGORY	STATION	TO	STATION	LOCATION	LS	211.0400
6240-22-71	100+00	-	673+99	STH 47	1	2
0010	VARIES	-	VARIES	SIDERoadS	-	115
6240-22-71 CATEGORY 0010 TOTAL						1
PROJECT TOTAL						1

PREPARE FOUNDATION FOR ASPHALTIC SHOULDERS

CATEGORY	STATION	TO	STATION	LOCATION	STA	211.0400
6240-22-71	262+57	-	264+79	STH 47 LT	2	2
0010	266+80	-	382+26	STH 47 LT	115	115
	270+57	-	418+39	STH 47 RT	148	148
	385+17	-	411+36	STH 47 LT	26	26
	414+04	-	417+76	STH 47 LT	4	4
	419+14	-	673+99	STH 47 LT	255	255
	420+39	-	673+99	STH 47 RT	254	254
6240-22-71 CATEGORY 0010 TOTAL						804
PROJECT TOTAL						804

PROJECT NO: 6240-22-71

HWY: STH 47

COUNTY: OUTAGAMIE

MISCELLANEOUS QUANTITIES

SHEET: 38

E

FILE NAME: N:\PDS\...030200_mq.ppk

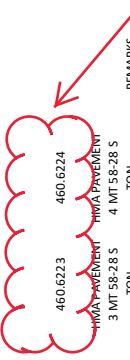
PLOT DATE: April 27, 2022

PLOT BY: A.R.H.

PLOT SCALE: 1:1

Addendum No. 01
ID 6240-22-71
Revised Sheet 40
April 28, 2022

* Removed from item



HMA PAVEMENT SUMMARY

CATEGORY	STATION	TO	STATION	LOCATION	TACK COAT GAL	TON	TON	REMARKS
6240-22-71 0010	100+00	-	122+53	STH 47	1299	1472	1061	
	9+30	-	9+85	W DEERVIEW DR	36	42	30	
	122+53	-	133+25	STH 47	435	493	355	
	19+12	-	19+84	W BROADWAY DR	46	52	38	
	20+47	-	20+84	BROADWAY DR	43	49	35	
	132+25	-	159+77	STH 47	1078	1222	881	
	30+18	-	30+82	SCHABO RD	40	45	32	
	159+77	-	186+05	STH 47	1082	1227	884	
	39+39	-	39+77	CTH O	27	31	22	
	40+22	-	40+64	MACKVILLE RD	26	29	21	
	186+05	-	205+33	STH 47	915	1038	748	
	49+66	-	49+85	EDWARD ST	9	10	8	
	205+33	-	208+98	STH 47	142	161	116	
	59+33	-	59+35	GLENN ST	46	53	38	
	208+98	-	238+89	STH 47	1216	1378	993	
	69+10	-	69+81	WEGE RD	52	59	43	
	70+22	-	70+64	WEGE RD	31	36	26	
	238+89	-	262+57	STH 47	977	1108	798	
	80+25	-	80+68	PINE GROVE RD	28	32	23	
	262+57	-	291+68	STH 47	1390	1576	1135	
	89+40	-	89+74	ROCK RD	23	26	19	
	90+23	-	90+78	ROCK RD	33	38	27	
	291+68	-	318+05	STH 47	1243	1409	1016	
	99+41	-	99+74	PLEASANT RD	24	26	19	
	100+24	-	100+64	PLEASANT RD	26	30	22	
318+05	-	327+46	STH 47	497	564	406		
110+27	-	110+97	CTH PP	57	64	46		
327+46	-	348+03	STH 47	1112	1260	908		
118+82	-	119+71	CTH S	87	99	71		
120+16	-	121+21	CTH S	86	97	70		
348+03	-	393+01	STH 47	2246	2545	1834		
129+38	-	129+78	COUNTRY GATE LN	26	29	21		
393+01	-	414+52	STH 47	1018	1153	831		
139+33	-	139+77	CENTER VALLEY RD	25	29	21		
140+25	-	141+13	CENTER VALLEY RD	55	62	44		
414+52	-	417+28	STH 47	173	197	142		
149+23	-	149+77	TWELVE CORNERS RD	29	32	23		
150+25	-	151+12	TWELVE CORNERS RD	55	63	45		
417+28	-	487+17	STH 47	3252	3686	2656		
159+17	-	159+84	CTH A	53	61	44		
487+17	-	502+08	STH 47	946	1072	772		
168+90	-	169+77	CTH A	70	80	58		
502+08	-	541+48	STH 47	1880	2131	1536		
179+38	-	179+76	SINGLE RD	22	25	18		
180+25	-	180+61	SINGLE RD	19	21	15		
541+48	-	596+23	STH 47	2513	2849	2053		
189+43	-	189+77	OTT RD	13	15	11		
190+23	-	190+54	OTT RD	17	19	14		
596+23	-	622+37	STH 47	1210	1371	988		
200+24	-	200+52	WOLF	15	17	12		
622+37	-	673+99	STH 47	2359	2674	1927		
6240-22-71 CATEGORY 0010 TOTAL					28,102	31,857	22,956	
6240-22-71 0030	189+31	-	190+98	STH 47 RT	14	15	11	PARKING LANE
6240-22-71 CATEGORY 0030 TOTAL					14	15	11	
PROJECT TOTAL					28,116	31,872	22,967	

*ADDITIONAL QUANTITY SHOWN ELSEWHERE

6240-22-71 0010	455,0605	TACK COAT GAL	1299
6240-22-71 0010	460,6223	3 MT 58-28 S	1472
6240-22-71 0010	460,6224	4 MT 58-28 S	1061

HMA COLD WEATHER PAVING

CATEGORY	LOCATION	TON
6240-22-71 0010	PROJECT	3,400
TEGORY 0010 TOTAL		3,400
PROJECT TOTAL		3,400

Culvert Pipe Reinforced Concrete items removed and replaced with Culvert Pipe Class III-A/B Non-Metal Items Length/item/elevation correction for culvert at 601+80

CULVERT PIPE SUMMARY

CATEGORY	STATION	LOCATION	CULVERT PIPE CLASS III-A NON-METAL 30-INCH LF	CULVERT PIPE CLASS III-A NON-METAL 36-INCH LF	CULVERT PIPE CLASS III-B NON-METAL 30-INCH LF	CULVERT PIPE CORRUGATED STEEL 24-INCH LF	CULVERT PIPE REINFORCED CONCRETE CLASS III 42-INCH LF	CULVERT PIPE REINFORCED CONCRETE CLASS III 38/60-INCH LF	DISCHARGE ELEVATION	INLET ELEVATION
6240-22-71 0010	132+49	5TH 47	60	-	-	-	-	-	799.50	799.38
	191+82	5TH 47	-	45	-	-	-	-	823.43	823.19
	201+50	5TH 47	-	51	-	-	-	-	826.82	826.57
	238+18	5TH 47	-	69	-	-	-	-	843.42	843.01
	326+17	5TH 47	-	-	-	-	85	-	821.89	821.24
	381+70	5TH 47 LT RT	88	-	-	-	-	-	797.00	799.00
	415+32	5TH 47	-	-	-	-	86	-	818.85	817.87
	474+75	5TH 47	-	-	131	-	-	-	850.30	847.05
	496+37	5TH 47	-	104	-	-	-	-	839.84	837.93
	562+83	5TH 47	59	-	-	-	-	-	842.86	841.74
	601+80	5TH 47	-	-	-	4	-	-	855.52	855.46
	617+41	5TH 47	85	-	-	-	-	-	847.03	843.15
6240-22-71 CATEGORY 0010 TOTAL			292	114	131	4	86	85		
PROJECT TOTAL			292	114	131	4	86	85		

CURB AND GUTTER SUMMARY

CATEGORY	STATION	TO	STATION	LOCATION	EXCAVATION COMMON CY	BASE PATCHING ASPHALTIC TON	CONCRETE CURB & GUTTER 4-INCH TYPE D LF	CONCRETE CURB & GUTTER 30-INCH SLOPED 30-INCH TYPE J LF
6240-22-71 0010	187+43	-	189+31	5TH 47 RT	31	16	-	188
	382+27	-	382+45	5TH 47 LT	-	-	18	-
6240-22-71 CATEGORY 0010 TOTAL					31	16	18	188
PROJECT TOTAL					31	16	18	188

*ADDITIONAL QUANTITY SHOWN ELSEWHERE

CONCRETE SIDEWALK 4-INCH

CATEGORY	STATION	TO	STATION	LOCATION	SF
6240-22-71 0010	187+43	-	189+31	5TH 47 RT	188
6240-22-71 CATEGORY 0010 TOTAL					188
PROJECT TOTAL					188

INLET SUMMARY

CATEGORY	STATION	OFFSET	LOCATION	EACH	RIM ELEVATION	INVERT ELEVATION	DEPTH FT
6240-22-71 0010	381+70	40.0' LT	5TH 47	1	803.00	799.00	4.00
6240-22-71 CATEGORY 0010 TOTAL					1	1	1
PROJECT TOTAL					1	1	1

Addendum No. 01
ID 6240-22-71
Revised Sheet 44
April 28, 2022

MOBILIZATION

CATEGORY	STATION	TO	STATION	LOCATION	EACH
6240-22-71 0010	100+00.00	-	673+99.39	5TH 47	1
6240-22-71 CATEGORY 0010 TOTAL					1
PROJECT TOTAL					1

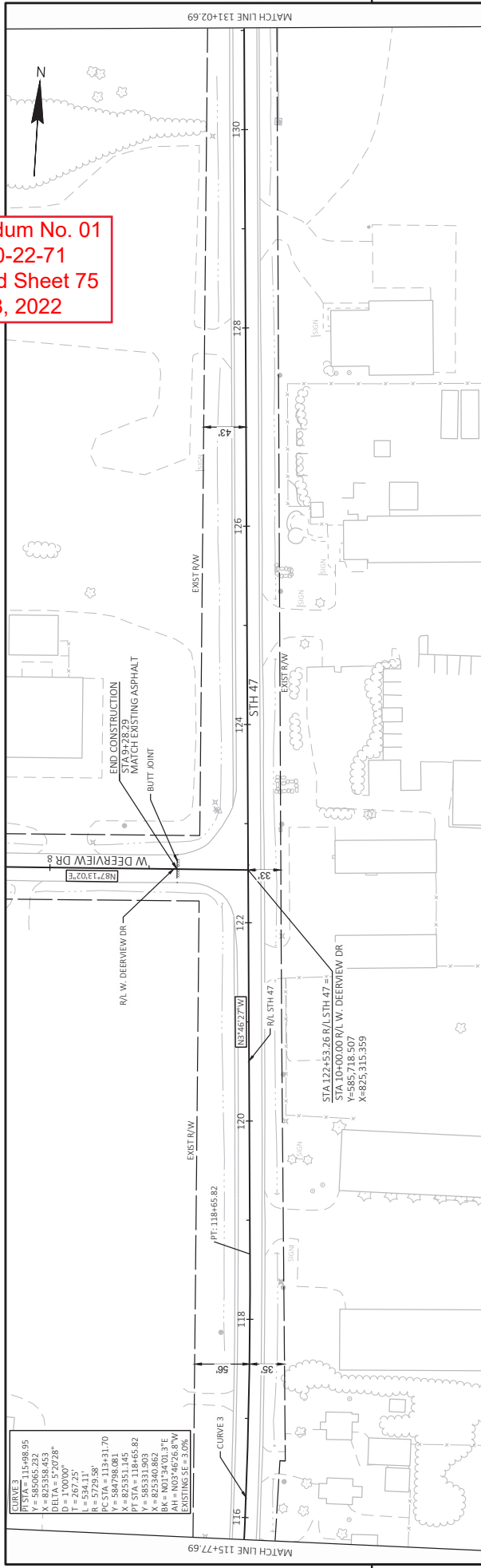
Addendum No. 01
ID 6240-22-71
Revised Sheet 50
April 28, 2022

CENTERLINE PAVEMENT MARKING SUMMARY

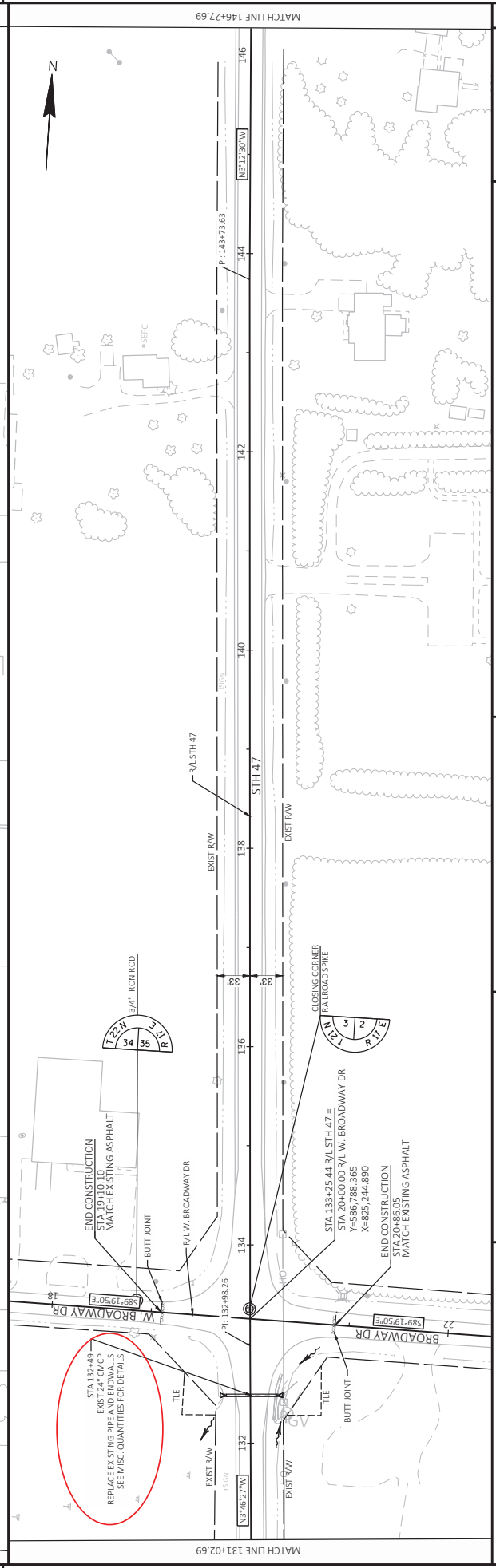
CATEGORY	STATION	TO	STATION	LOCATION	MARKING LINE EPOXY 4-INCH		MARKING LINE SAME DAY EPOXY 4-INCH		DIAGONAL EPOXY 12-INCH		TEMPORARY MARKING LINE EPOXY 4-INCH		REMARKS
					LF	LF	LF	LF	LF	LF	LF	LF	
6240-22-71 0010	100+00	-	103+92	STH 47	-	1568	-	4704	-	646.7120	-	649.0120	DOUBLE YELLOW
	105+45	-	111+26	STH 47	-	2324	-	6972	-	-	-	-	DOUBLE YELLOW
	105+45	-	111+26	STH 47	-	160	160	480	-	-	-	-	MISCELLANEOUS YELLOW
	111+26	-	116+88	STH 47	-	1124	-	3372	-	-	-	-	DOUBLE YELLOW
	116+88	-	123+04	STH 47	-	770	-	1998	-	-	-	-	SOLID AND SKIPS YELLOW
	123+04	-	151+04	STH 47	-	700	-	672	-	-	-	-	SKIPS YELLOW
	151+04	-	163+75	STH 47	-	1589	-	4119	-	-	-	-	SOLID AND SKIPS YELLOW
	163+75	-	182+56	STH 47	-	471	-	453	-	-	-	-	SKIPS YELLOW
	182+56	-	194+93	STH 47	-	1547	-	4008	-	-	-	-	SOLID AND SKIPS YELLOW
	194+93	-	210+97	STH 47	-	401	-	387	-	-	-	-	SKIPS YELLOW
	210+97	-	240+07	STH 47	-	728	-	699	-	-	-	-	SKIPS YELLOW/BEGIN RUMBLE STRIPS AT 210+97
	240+07	-	251+34	STH 47	-	1409	-	3654	-	-	-	-	SOLID AND SKIPS YELLOW
	251+34	-	264+86	STH 47	-	2704	-	8112	-	-	-	-	DOUBLE YELLOW
	264+86	-	275+44	STH 47	-	1323	-	3429	-	-	-	-	SOLID AND SKIPS YELLOW
	275+44	-	289+00	STH 47	-	339	-	327	-	-	-	-	SKIPS YELLOW
	289+00	-	321+53	STH 47	-	4067	-	10542	-	-	-	-	SOLID AND SKIPS YELLOW
	321+53	-	326+62	STH 47	-	1018	-	3054	-	-	-	-	DOUBLE YELLOW
	326+62	-	337+79	STH 47	-	1397	-	3621	-	-	-	-	SOLID AND SKIPS YELLOW
	337+79	-	341+09	STH 47	-	660	-	1980	-	-	-	-	DOUBLE YELLOW
	341+09	-	343+50	STH 47	-	964	49	2892	-	-	-	-	MISCELLANEOUS YELLOW
	343+50	-	347+45	STH 47	-	790	-	2370	-	-	-	-	DOUBLE YELLOW
	347+45	-	352+31	STH 47	-	744	-	2232	-	-	-	-	DOUBLE YELLOW
	352+31	-	354+53	STH 47	-	945	-	2835	-	-	-	-	MISCELLANEOUS YELLOW
	354+53	-	391+14	STH 47	-	7322	-	21966	-	-	-	-	DOUBLE YELLOW
	391+14	-	401+00	STH 47	-	1233	-	3195	-	-	-	-	SOLID AND SKIPS YELLOW
	401+00	-	421+16	STH 47	-	504	-	486	-	-	-	-	SKIPS YELLOW
	421+16	-	439+77	STH 47	-	2327	-	6030	-	-	-	-	SOLID AND SKIPS YELLOW
	439+77	-	457+42	STH 47	-	442	-	426	-	-	-	-	SKIPS YELLOW
	457+42	-	468+00	STH 47	-	1323	-	3429	-	-	-	-	SOLID AND SKIPS YELLOW
	468+00	-	501+09	STH 47	-	6618	-	19854	-	-	-	-	DOUBLE YELLOW
	501+09	-	529+03	STH 47	-	3493	-	9054	-	-	-	-	SOLID AND SKIPS YELLOW
	529+03	-	595+23	STH 47	-	1655	-	1590	-	-	-	-	SKIPS YELLOW
	595+23	-	607+78	STH 47	-	1569	-	4068	-	-	-	-	SOLID AND SKIPS YELLOW
607+78	-	614+24	STH 47	-	1292	-	3876	-	-	-	-	DOUBLE YELLOW	
614+24	-	624+94	STH 47	-	1338	-	3468	-	-	-	-	SOLID AND SKIPS YELLOW	
624+94	-	630+02	STH 47	-	127	-	123	-	-	-	-	SKIPS YELLOW	
630+02	-	640+94	STH 47	-	1365	-	3540	-	-	-	-	SOLID AND SKIPS YELLOW	
640+94	-	648+28	STH 47	-	1468	-	4404	-	-	-	-	DOUBLE YELLOW	
648+28	-	659+32	STH 47	-	1380	-	3579	-	-	-	-	SOLID AND SKIPS YELLOW	
659+32	-	673+99	STH 47	-	367	-	354	-	-	-	-	SKIPS YELLOW	
673+99	-	20+86	BROADWAY DR	-	82	-	246	-	-	-	-	DOUBLE YELLOW	
20+86	-	39+50	CTH O	-	26	-	78	-	-	-	-	DOUBLE YELLOW	
39+50	-	110+99	CTH P	-	102	-	306	-	-	-	-	DOUBLE YELLOW	
110+99	-	119+71	CTH S	-	182	-	546	-	-	-	-	DOUBLE YELLOW	
119+71	-	121+23	CTH S	-	162	-	486	-	-	-	-	DOUBLE YELLOW	
121+23	-	139+60	CENTER VALLEY RD	-	60	-	180	-	-	-	-	DOUBLE YELLOW	
139+60	-	159+73	CTH A	-	116	-	348	-	-	-	-	DOUBLE YELLOW	
159+73	-	169+76	CTH A	-	128	-	534	-	-	-	-	DOUBLE YELLOW	
169+76	-			-		-		-	-	-	-		
6240-22-71 CATEGORY 0010 TOTAL					51,819	10,654	209	165,078	45,971				
PROJECT TOTAL					51,819	10,654	209	165,078	45,971				

*ADDITIONAL QUANTITY SHOWN ELSEWHERE

Addendum No. 01
ID 6240-22-71
Revised Sheet 75
April 28, 2022

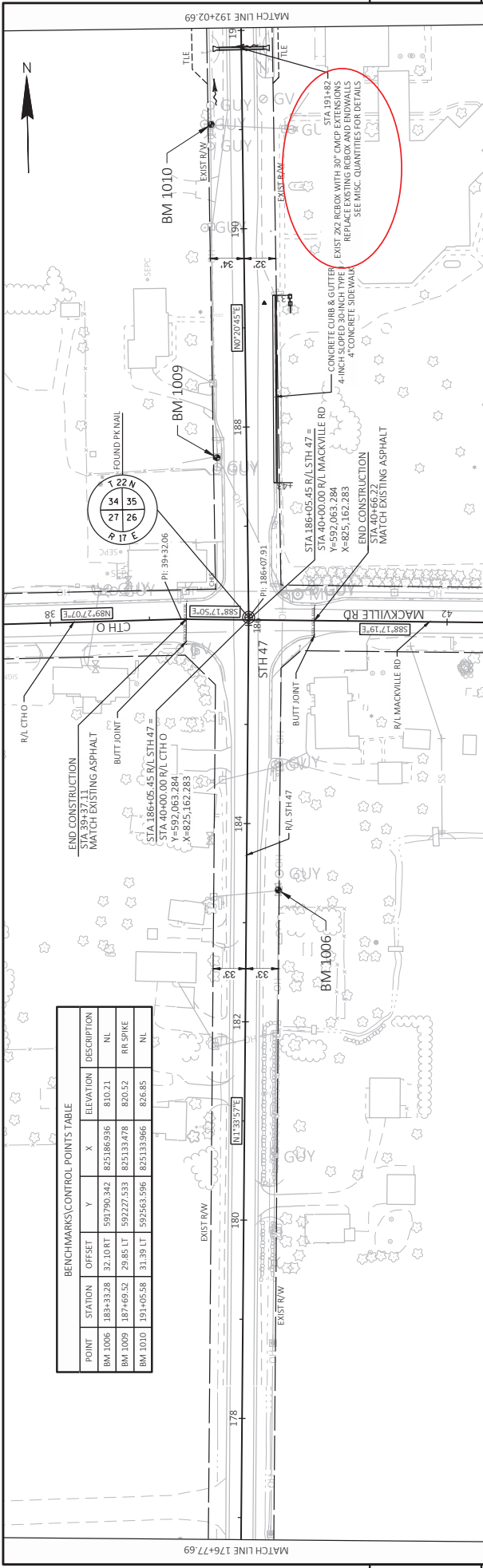


CURVE 3
 PTA = 115+98.95
 Y = 585065.232
 X = 825358.453
 D = 170.000°
 T = 267.25'
 L = 534.11'
 R = 5729.38'
 Y = 584798.981
 X = 825351.145
 PT STA = 118+65.82
 Y = 585065.232
 X = 825349.862
 BK = N01°34'01.3"E
 AH = N03°46'26.8"W
 EXISTING SE = 3.0%



STA 132+49
 EXIST'G CMP
 REPLACE EXISTING PIPE
 MATCH EXISTING ASPHALT
 SEE MISC. QUANTITIES FOR DETAILS

PROJECT NO: 6240-22-71	COUNTY: OUTAGAMIE	PLAN SHEETS	SHEET 75
FILE NAME: N:\PDS\320\2402200\5HEETS\PLAN\05001-PM-22.DWG	DATE: 4/28/2022 11:05 AM	BY: HUBERT_ILA	SCALE: 1 IN=100 FT
LAYOUT NAME: 05002-PP			



BENCHMARKS/CONTROL POINTS TABLE

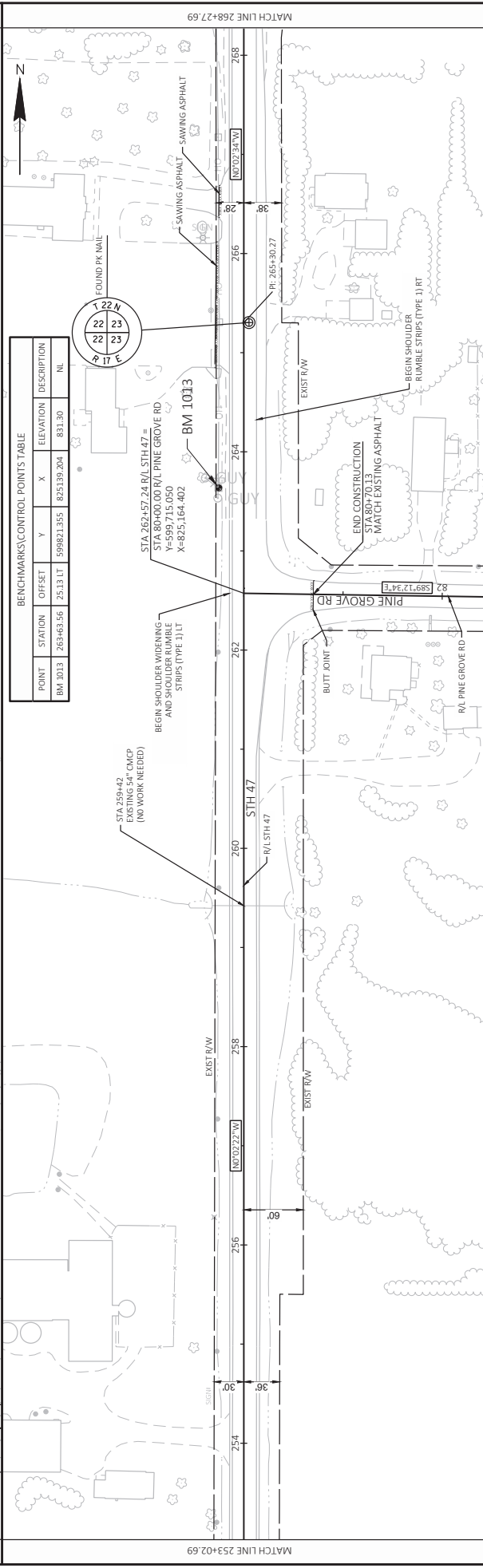
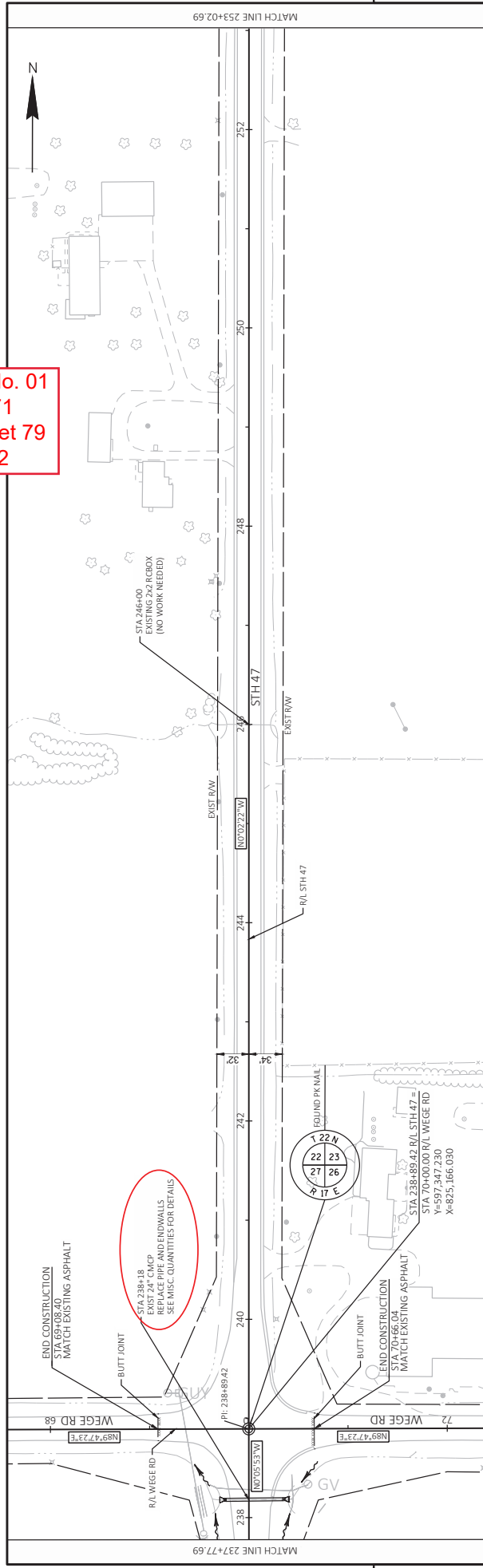
POINT	STATION	OFFSET	Y	X	ELEVATION	DESCRIPTION
BM 1006	183+33.28	32.10 RT	591790.42	825186.936	810.21	NL
BM 1009	187+69.52	29.85 LT	592227.533	825133.478	820.52	RR SPIKE
BM 1010	191+05.58	31.99 LT	592563.566	825133.966	826.85	NL

BENCHMARKS/CONTROL POINTS TABLE

POINT	STATION	OFFSET	Y	X	ELEVATION	DESCRIPTION
BM 1011	195+92.74	31.30 LT	593050.637	825136.593	832.12	NL

Addendum No. 01
 ID 6240-22-71
 Revised Sheet 77
 April 28, 2022

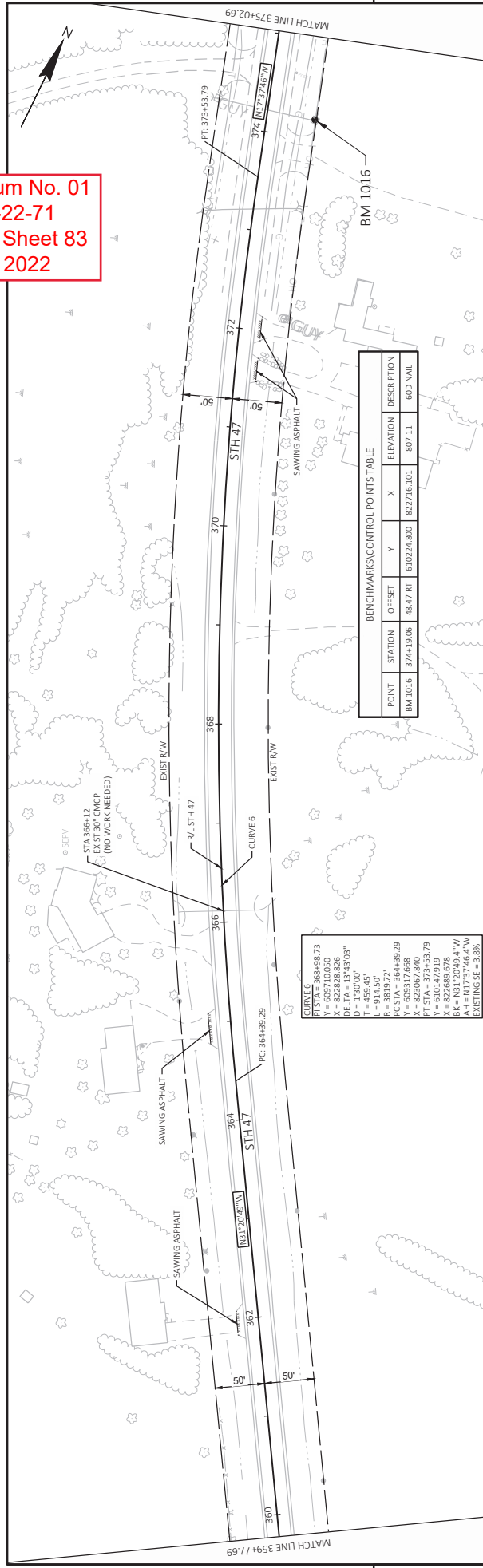
Addendum No. 01
ID 6240-22-71
Revised Sheet 79
April 28, 2022



BENCHMARKS/CONTROL POINTS TABLE

POINT	STATION	OFFSET	Y	X	ELEVATION	DESCRIPTION
BM 1013	263+63.56	25.13	LT	599821.355	826139.204	831.30 INL

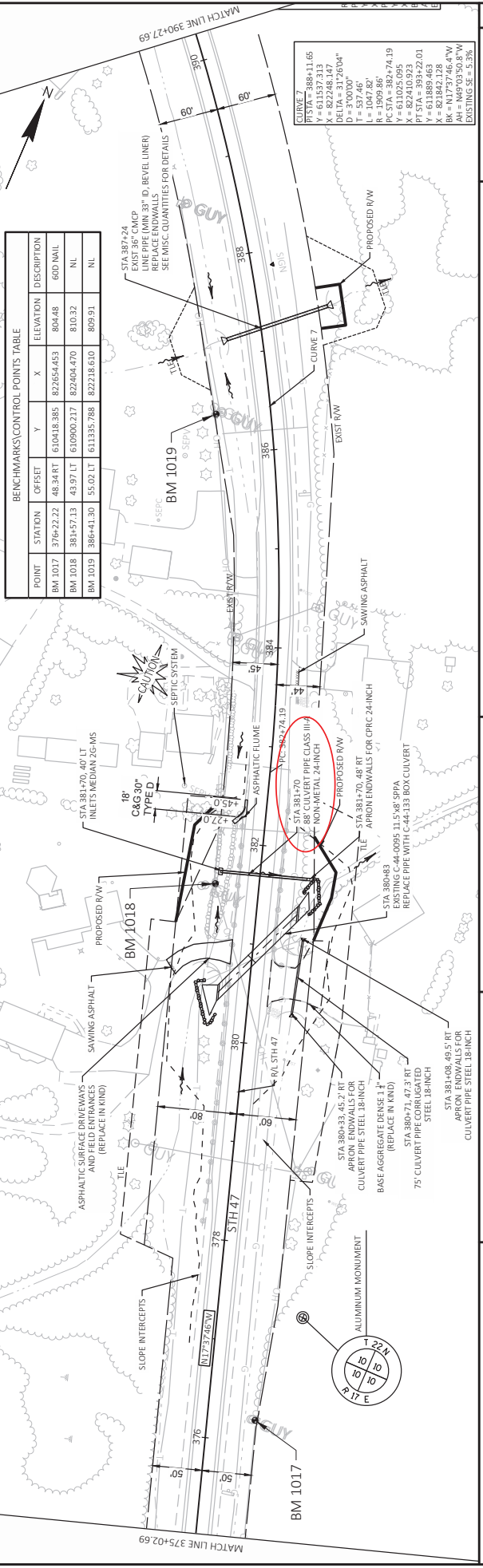
Addendum No. 01
 ID 6240-22-71
 Revised Sheet 83
 April 28, 2022



CURVE 6
 PC STA = 364+39.29
 PT STA = 368+88.73
 Y = 609710050
 DELTA = 134.303°
 D = 130.00°
 T = 459.45'
 L = 518.77'
 E = 3819.77'
 PC STA = 364+39.29
 Y = 609317.668
 X = 823067.840
 PC STA = 364+39.29
 Y = 610471919
 X = 822689.678
 BK = N31°20'49.4\"/>

BENCHMARKS/CONTROL POINTS TABLE

POINT	STATION	OFFSET	Y	X	ELEVATION	DESCRIPTION
BM 1016	374+19.06	48.47 RT	610224.800	822716.101	807.11	60D NAIL
BM 1018	38157.13	43.97 LT	610900.217	824004.470	810.32	NL
BM 1019	386+41.30	55.02 LT	611335.788	822218.610	809.91	NL

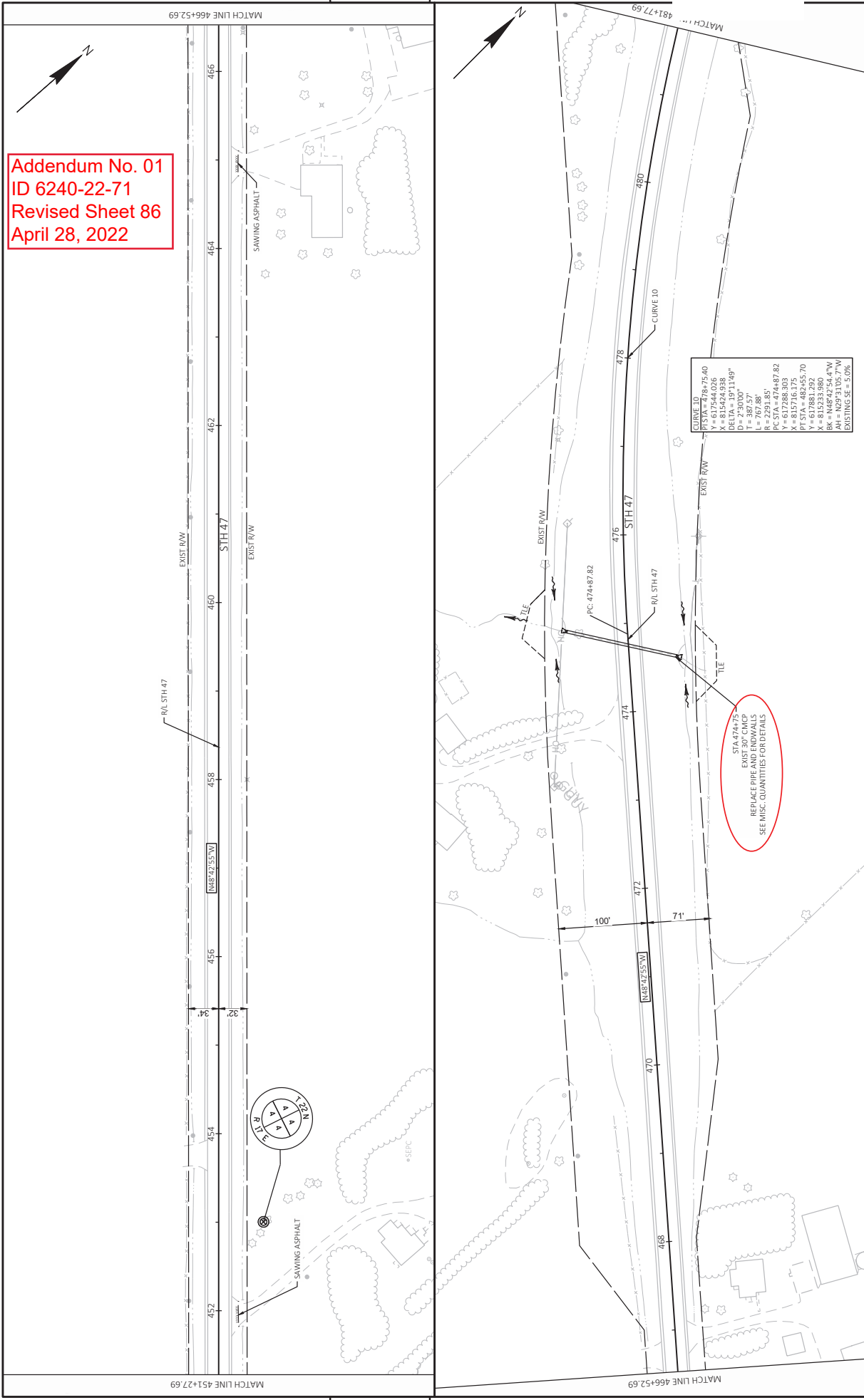


BENCHMARKS/CONTROL POINTS TABLE

POINT	STATION	OFFSET	Y	X	ELEVATION	DESCRIPTION
BM 1017	376+22.22	48.34 RT	610418.385	822654.453	804.48	60D NAIL
BM 1018	38157.13	43.97 LT	610900.217	824004.470	810.32	NL
BM 1019	386+41.30	55.02 LT	611335.788	822218.610	809.91	NL

CURVE 7
 PC STA = 388+11.65
 PT STA = 388+11.65
 Y = 611537.313
 DELTA = 134.303°
 D = 130.00°
 T = 459.45'
 L = 518.77'
 E = 3819.77'
 PC STA = 382+74.19
 Y = 611025.095
 X = 824106.923
 PT STA = 393+22.01
 Y = 611025.095
 X = 824106.923
 BK = N17°37'46.4\"/>

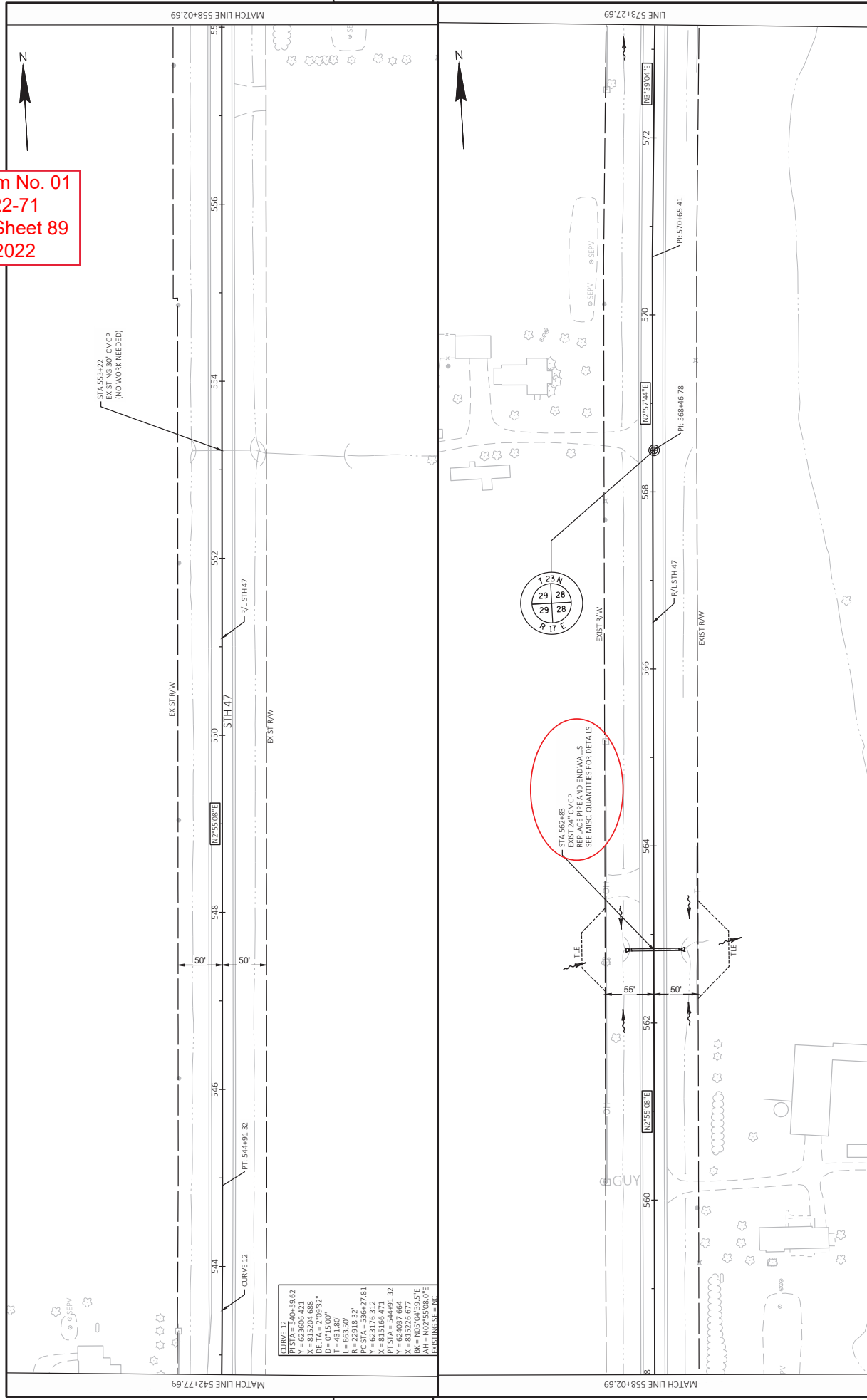
Addendum No. 01
 ID 6240-22-71
 Revised Sheet 86
 April 28, 2022



PROJECT NO: 6240-22-71
 COUNTY: OUTAGAMIE
 HWY: STH 47
 PLAN SHEETS: HUBERT_ILA
 SHEET 86

FILE NAME: N:\PDS\3D\62402200\05\0001\PN-22.DWG
 LAYOUT NAME: 050213-PP
 PLOT DATE: 4/28/2022 11:12 AM
 PLOT SCALE: 1 IN=100 FT
 WISDOT/CAD/SHEET 86

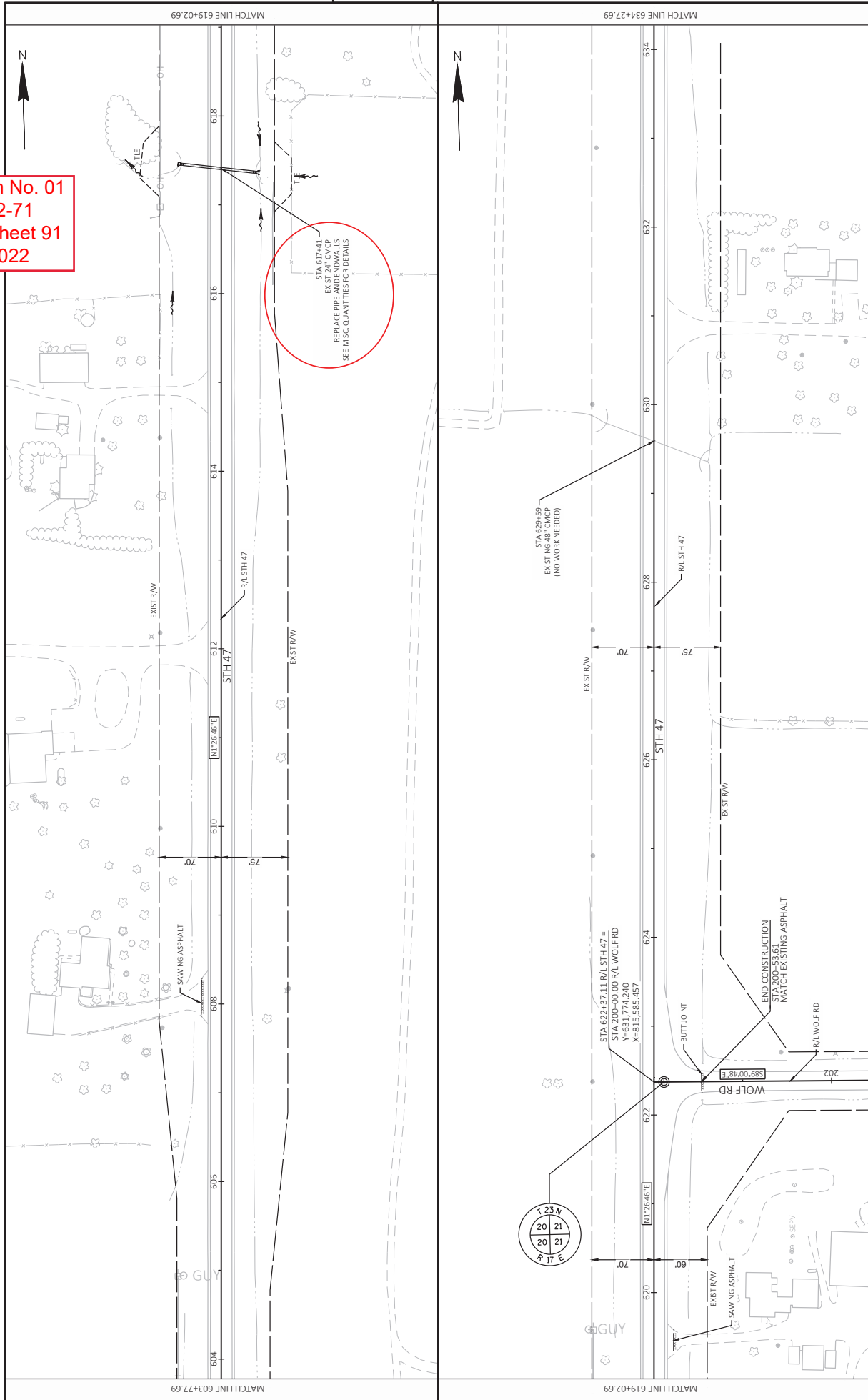
Addendum No. 01
 ID 6240-22-71
 Revised Sheet 89
 April 28, 2022



CURVE 12
 P1 STA = 544+59.62
 X = 815204.688
 DELTA = 2°09'32"
 D = 0°15'00"
 L = 631.807
 R = 22918.32'
 PC STA = 536+27.81
 Y = 623176.312
 PTA STA = 544+91.32
 X = 815226.677
 BK = 105°04'39.5"E
 PASTINGS, E & INC.

PROJECT NO: 6240-22-71	COUNTY: OUTAGAMIE	PLAN SHEETS	SHEET 89
FILE NAME: N:\PDS\320\62402200\5HEETS\PLAN\05001\PN-22.DWG	LOT BY: HUBERT_ILLA	DATE: 4/28/2022 11:14 AM	SCALE: 1 IN=100 FT
LAYOUT NAME: 050226-PP	PROJECT NAME: OUTAGAMIE	LOT NAME: HUBERT_ILLA	PROJECT NAME: HUBERT_ILLA
HWY: STH 47	COUNTY: OUTAGAMIE	PLAN SHEETS	SHEET 89

Addendum No. 01
 ID 6240-22-71
 Revised Sheet 91
 April 28, 2022

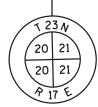


STA 617+41 -
 EXIST 24" CMCP
 REPLACE PIPE AND ENDWALLS
 SEE MISC QUANTITIES FOR DETAILS

STA 629+59
 EXISTING 48" CMCP
 (NO WORK NEEDED)

STA 622+37.11 R/L STH 47 =
 STA 200+00.00 R/L WOLF RD
 Y=631.774,240
 X=815.585,457

END CONSTRUCTION
 STA 200+53.61
 MATCH EXISTING ASPHALT



PROJECT NO: 6240-22-71	COUNTY: OUTAGAMIE	PLAN SHEETS	SHEET 91
FILE NAME: N:\PDS\320\2402200\5HEETS\PLAN\05001-PM-22.DWG	FLYBY: HUBBER, JLLA	PLOT SCALE: 1 IN=100 FT	WISDOT/CARDS SHEET 44
LAYOUT NAME: 050228-PP	PLOT DATE: 4/28/2022 11:16 AM	PLOT NAME:	
	HWY: STH 47		

5

5



Proposal Schedule of Items

Page 1 of 9

Proposal ID: 20220510024 Project(s): 6240-22-71

Federal ID(s): WISC 2022399

SECTION: 0001

Contract Items

Alt Set ID:

Alt Mbr ID:

Proposal Line Number	Item ID Description	Approximate Quantity and Units	Unit Price	Bid Amount
0002	201.0105 Clearing	9.000 STA	_____.	_____.
0004	201.0205 Grubbing	9.000 STA	_____.	_____.
0006	203.0100 Removing Small Pipe Culverts	12.000 EACH	_____.	_____.
0008	203.0220 Removing Structure (structure) 01. 2x2 RC Box	1.000 EACH	_____.	_____.
0010	203.0220 Removing Structure (structure) 02. C-44-0095	1.000 EACH	_____.	_____.
0012	204.0100 Removing Concrete Pavement	1,023.000 SY	_____.	_____.
0014	204.0110 Removing Asphaltic Surface	1,411.000 SY	_____.	_____.
0016	204.0115 Removing Asphaltic Surface Butt Joints	243.000 SY	_____.	_____.
0018	204.0120 Removing Asphaltic Surface Milling	216,075.000 SY	_____.	_____.
0020	204.0130 Removing Curb	53.000 LF	_____.	_____.
0022	204.0150 Removing Curb & Gutter	18.000 LF	_____.	_____.
0024	204.0155 Removing Concrete Sidewalk	21.000 SY	_____.	_____.
0026	204.0165 Removing Guardrail	622.000 LF	_____.	_____.
0028	204.9060.S Removing (item description) 01. Apron Endwalls	14.000 EACH	_____.	_____.
0030	205.0100 Excavation Common	3,231.000 CY	_____.	_____.
0032	206.2000 Excavation for Structures Culverts (structure) 01. C-44-133	LS	LUMP SUM	_____.



Proposal Schedule of Items

Proposal ID: 20220510024 Project(s): 6240-22-71

Federal ID(s): WISC 2022399

SECTION: 0001

Contract Items

Alt Set ID:

Alt Mbr ID:

Proposal Line Number	Item ID Description	Approximate Quantity and Units	Unit Price	Bid Amount
0034	210.2500 Backfill Structure Type B	1,741.000 TON	_____	_____
0036	211.0100 Prepare Foundation for Asphaltic Paving (project) 01. 6240-22-71	LS	LUMP SUM	_____
0038	211.0400 Prepare Foundation for Asphaltic Shoulders	804.000 STA	_____	_____
0040	213.0100 Finishing Roadway (project) 01. 6240-22-71	1.000 EACH	_____	_____
0042	305.0110 Base Aggregate Dense 3/4-Inch	6,134.000 TON	_____	_____
0044	305.0120 Base Aggregate Dense 1 1/4-Inch	2,711.000 TON	_____	_____
0046	311.0115 Breaker Run	96.000 CY	_____	_____
0048	390.0201 Base Patching Asphaltic	16.000 TON	_____	_____
0050	450.4000 HMA Cold Weather Paving	3,400.000 TON	_____	_____
0052	455.0605 Tack Coat	28,406.000 GAL	_____	_____
0054	460.0105.S HMA Percent Within Limits (PWL) Test Strip Volumetrics	2.000 EACH	_____	_____
0056	460.0110.S HMA Percent Within Limits (PWL) Test Strip Density	2.000 EACH	_____	_____
0058	460.2005 Incentive Density PWL HMA Pavement	36,700.000 DOL	1.00000	36,700.00
0060	460.2007 Incentive Density HMA Pavement Longitudinal Joints	45,920.000 DOL	1.00000	45,920.00
0062	460.2010 Incentive Air Voids HMA Pavement	55,750.000 DOL	1.00000	55,750.00



Proposal Schedule of Items

Proposal ID: 20220510024 Project(s): 6240-22-71

Federal ID(s): WISC 2022399

SECTION: 0001

Contract Items

Alt Set ID:

Alt Mbr ID:

Proposal Line Number	Item ID Description	Approximate Quantity and Units	Unit Price	Bid Amount
0064	460.6223 HMA Pavement 3 MT 58-28 S	31,872.000 TON	_____.	_____.
0066	460.6224 HMA Pavement 4 MT 58-28 S	22,967.000 TON	_____.	_____.
0068	465.0120 Asphaltic Surface Driveways and Field Entrances	182.000 TON	_____.	_____.
0070	465.0315 Asphaltic Flumes	7.000 SY	_____.	_____.
0072	465.0425 Asphaltic Shoulder Rumble Strips 2-Lane Rural	76,973.000 LF	_____.	_____.
0074	465.0475 Asphalt Centerline Rumble Strips 2-Lane Rural	38,689.000 LF	_____.	_____.
0076	504.0100 Concrete Masonry Culverts	145.000 CY	_____.	_____.
0078	505.0400 Bar Steel Reinforcement HS Structures	25,160.000 LB	_____.	_____.
0080	505.0600 Bar Steel Reinforcement HS Coated Structures	1,580.000 LB	_____.	_____.
0082	516.0500 Rubberized Membrane Waterproofing	27.000 SY	_____.	_____.
0084	520.2018 Culvert Pipe Temporary 18-Inch	88.000 LF	_____.	_____.
0086	520.9700.S Culvert Pipe Liners (size) 01. 30-Inch	66.000 LF	_____.	_____.
0088	520.9700.S Culvert Pipe Liners (size) 02. 36-Inch	107.000 LF	_____.	_____.
0090	520.9700.S Culvert Pipe Liners (size) 03. 42-Inch	88.000 LF	_____.	_____.
0092	520.9750.S Cleaning Culvert Pipes for Liner Verification	3.000 EACH	_____.	_____.



Proposal Schedule of Items

Proposal ID: 20220510024 Project(s): 6240-22-71

Federal ID(s): WISC 2022399

SECTION: 0001

Contract Items

Alt Set ID:

Alt Mbr ID:

Proposal Line Number	Item ID Description	Approximate Quantity and Units	Unit Price	Bid Amount
0094	521.0336 Apron Endwalls for Culvert Pipe Sloped Cross Drains Steel 36-Inch 4 to 1	2.000 EACH	_____.	_____.
0096	521.0535 Apron Endwalls for Pipe Arch Sloped Cross Drains Steel 35x24-Inch 4 to 1	1.000 EACH	_____.	_____.
0098	521.1018 Apron Endwalls for Culvert Pipe Steel 18-Inch	2.000 EACH	_____.	_____.
0100	521.1024 Apron Endwalls for Culvert Pipe Steel 24-Inch	7.000 EACH	_____.	_____.
0102	521.1036 Apron Endwalls for Culvert Pipe Steel 36-Inch	2.000 EACH	_____.	_____.
0104	521.1042 Apron Endwalls for Culvert Pipe Steel 42-Inch	2.000 EACH	_____.	_____.
0106	521.1048 Apron Endwalls for Culvert Pipe Steel 48-Inch	1.000 EACH	_____.	_____.
0108	521.1072 Apron Endwalls for Culvert Pipe Steel 72-Inch	2.000 EACH	_____.	_____.
0110	521.1235 Apron Endwalls for Pipe Arch Steel 35x24-Inch	1.000 EACH	_____.	_____.
0112	521.1249 Apron Endwalls for Pipe Arch Steel 49x33-Inch	3.000 EACH	_____.	_____.
0114	521.3118 Culvert Pipe Corrugated Steel 18-Inch	75.000 LF	_____.	_____.
0122	522.0142 Culvert Pipe Reinforced Concrete Class III 42-Inch	86.000 LF	_____.	_____.
0130	522.1042 Apron Endwalls for Culvert Pipe Reinforced Concrete 42-Inch	2.000 EACH	_____.	_____.



Proposal Schedule of Items

Proposal ID: 20220510024 Project(s): 6240-22-71

Federal ID(s): WISC 2022399

SECTION: 0001

Contract Items

Alt Set ID:

Alt Mbr ID:

Proposal Line Number	Item ID Description	Approximate Quantity and Units	Unit Price	Bid Amount
0132	522.2338 Culvert Pipe Reinforced Concrete Horizontal Elliptical Class HE-III 38x60-Inch	85.000 LF	_____.	_____.
0134	522.2638 Apron Endwalls for Culvert Pipe Reinforced Concrete Horizontal Elliptical 38x60-Inch	2.000 EACH	_____.	_____.
0136	601.0411 Concrete Curb & Gutter 30-Inch Type D	18.000 LF	_____.	_____.
0138	601.0576 Concrete Curb & Gutter 4-Inch Sloped 30-Inch Type J	188.000 LF	_____.	_____.
0140	602.0405 Concrete Sidewalk 4-Inch	188.000 SF	_____.	_____.
0142	606.0200 Riprap Medium	83.000 CY	_____.	_____.
0144	606.0300 Riprap Heavy	44.000 CY	_____.	_____.
0146	611.0642 Inlet Covers Type MS	1.000 EACH	_____.	_____.
0148	611.3902 Inlets Median 2 Grate	1.000 EACH	_____.	_____.
0150	618.0100 Maintenance And Repair of Haul Roads (project) 01. 6240-22-71	1.000 EACH	_____.	_____.
0152	619.1000 Mobilization	1.000 EACH	_____.	_____.
0154	624.0100 Water	129.400 MGAL	_____.	_____.
0156	625.0100 Topsoil	10,490.000 SY	_____.	_____.
0158	627.0200 Mulching	2,420.000 SY	_____.	_____.
0160	628.1504 Silt Fence	400.000 LF	_____.	_____.



Proposal Schedule of Items

Proposal ID: 20220510024 Project(s): 6240-22-71

Federal ID(s): WISC 2022399

SECTION: 0001

Contract Items

Alt Set ID:

Alt Mbr ID:

Proposal Line Number	Item ID Description	Approximate Quantity and Units	Unit Price	Bid Amount
0162	628.1520 Silt Fence Maintenance	400.000 LF	_____.	_____.
0164	628.1905 Mobilizations Erosion Control	12.000 EACH	_____.	_____.
0166	628.1910 Mobilizations Emergency Erosion Control	7.000 EACH	_____.	_____.
0168	628.2004 Erosion Mat Class I Type B	6,160.000 SY	_____.	_____.
0170	628.2008 Erosion Mat Urban Class I Type B	1,915.000 SY	_____.	_____.
0172	628.7010 Inlet Protection Type B	1.000 EACH	_____.	_____.
0174	628.7504 Temporary Ditch Checks	155.000 LF	_____.	_____.
0176	628.7555 Culvert Pipe Checks	115.000 EACH	_____.	_____.
0178	629.0210 Fertilizer Type B	6.800 CWT	_____.	_____.
0180	630.0110 Seeding Mixture No. 10	150.000 LB	_____.	_____.
0182	630.0500 Seed Water	190.000 MGAL	_____.	_____.
0184	633.5200 Markers Culvert End	52.000 EACH	_____.	_____.
0186	642.5001 Field Office Type B	1.000 EACH	_____.	_____.
0188	643.0300 Traffic Control Drums	70.000 DAY	_____.	_____.
0190	643.0420 Traffic Control Barricades Type III	146.000 DAY	_____.	_____.
0192	643.0705 Traffic Control Warning Lights Type A	292.000 DAY	_____.	_____.
0194	643.0900 Traffic Control Signs	11,241.000 DAY	_____.	_____.



Proposal Schedule of Items

Proposal ID: 20220510024 Project(s): 6240-22-71

Federal ID(s): WISC 2022399

SECTION: 0001

Contract Items

Alt Set ID:

Alt Mbr ID:

Proposal Line Number	Item ID Description	Approximate Quantity and Units	Unit Price	Bid Amount
0196	643.0920 Traffic Control Covering Signs Type II	3.000 EACH	_____.	_____.
0198	643.1050 Traffic Control Signs PCMS	28.000 DAY	_____.	_____.
0200	643.5000 Traffic Control	1.000 EACH	_____.	_____.
0202	645.0105 Geotextile Type C	310.000 SY	_____.	_____.
0204	645.0120 Geotextile Type HR	266.000 SY	_____.	_____.
0206	646.1020 Marking Line Epoxy 4-Inch	52,200.000 LF	_____.	_____.
0208	646.1040 Marking Line Grooved Wet Ref Epoxy 4-Inch	111,267.000 LF	_____.	_____.
0210	646.3020 Marking Line Epoxy 8-Inch	780.000 LF	_____.	_____.
0212	646.3040 Marking Line Grooved Wet Ref Epoxy 8-Inch	1,831.000 LF	_____.	_____.
0214	646.5020 Marking Arrow Epoxy	8.000 EACH	_____.	_____.
0216	646.5120 Marking Word Epoxy	6.000 EACH	_____.	_____.
0218	646.6120 Marking Stop Line Epoxy 18-Inch	87.000 LF	_____.	_____.
0220	646.7120 Marking Diagonal Epoxy 12-Inch	209.000 LF	_____.	_____.
0222	646.8120 Marking Curb Epoxy	314.000 LF	_____.	_____.
0224	646.8320 Marking Parking Stall Epoxy	200.000 LF	_____.	_____.
0226	648.0100 Locating No-Passing Zones	10.870 MI	_____.	_____.



Proposal Schedule of Items

Proposal ID: 20220510024 Project(s): 6240-22-71

Federal ID(s): WISC 2022399

SECTION: 0001

Contract Items

Alt Set ID:

Alt Mbr ID:

Proposal Line Number	Item ID Description	Approximate Quantity and Units	Unit Price	Bid Amount
0228	649.0105 Temporary Marking Line Paint 4-Inch	165,078.000 LF	_____.	_____.
0230	649.0120 Temporary Marking Line Epoxy 4-Inch	45,971.000 LF	_____.	_____.
0232	650.5000 Construction Staking Base	59,242.000 LF	_____.	_____.
0234	650.5500 Construction Staking Curb Gutter and Curb & Gutter	206.000 LF	_____.	_____.
0236	650.6000 Construction Staking Pipe Culverts	25.000 EACH	_____.	_____.
0238	650.6500 Construction Staking Structure Layout (structure) 01. C-44-133	LS	LUMP SUM	_____.
0240	650.8000 Construction Staking Resurfacing Reference	59,242.000 LF	_____.	_____.
0242	650.9910 Construction Staking Supplemental Control (project) 01. 6240-22-71	LS	LUMP SUM	_____.
0244	650.9920 Construction Staking Slope Stakes	552.000 LF	_____.	_____.
0246	690.0150 Sawing Asphalt	1,701.000 LF	_____.	_____.
0248	690.0250 Sawing Concrete	608.000 LF	_____.	_____.
0250	715.0502 Incentive Strength Concrete Structures	870.000 DOL	1.00000	870.00
0252	740.0440 Incentive IRI Ride	86,968.000 DOL	1.00000	86,968.00
0254	ASP.1T0A On-the-Job Training Apprentice at \$5.00/HR	2,000.000 HRS	5.00000	10,000.00
0256	ASP.1T0G On-the-Job Training Graduate at \$5.00/HR	1,320.000 HRS	5.00000	6,600.00



Proposal Schedule of Items

Proposal ID: 20220510024 Project(s): 6240-22-71

Federal ID(s): WISC 2022399

SECTION: 0001

Contract Items

Alt Set ID:

Alt Mbr ID:

Proposal Line Number	Item ID Description	Approximate Quantity and Units	Unit Price	Bid Amount
0258	SPV.0035 Special 01. Foundation Backfill	1,481.000 CY	_____.	_____.
0260	SPV.0060 Special 01. Temporary Water Diversion C-44-133 Station 380+83	1.000 EACH	_____.	_____.
0262	465.0110 Asphaltic Surface Patching	868.000 TON	_____.	_____.
0264	520.1024 Apron Endwalls for Culvert Pipe 24-Inch	7.000 EACH	_____.	_____.
0266	520.1030 Apron Endwalls for Culvert Pipe 30-Inch	6.000 EACH	_____.	_____.
0268	520.1036 Apron Endwalls for Culvert Pipe 36-Inch	4.000 EACH	_____.	_____.
0270	520.3424 Culvert Pipe Class III-A Non-metal 24-Inch	292.000 LF	_____.	_____.
0272	520.3430 Culvert Pipe Class III-A Non-metal 30-Inch	114.000 LF	_____.	_____.
0274	520.3436 Culvert Pipe Class III-A Non-metal 36-Inch	155.000 LF	_____.	_____.
0276	520.3630 Culvert Pipe Class III-B Non-metal 30-Inch	131.000 LF	_____.	_____.
0278	521.3124 Culvert Pipe Corrugated Steel 24-Inch	4.000 LF	_____.	_____.
0280	646.4520 Marking Line Same Day Epoxy 4-Inch	10,654.000 LF	_____.	_____.

Section: 0001

Total: _____.

Total Bid: _____.

