



Wisconsin Department of Transportation

May 2, 2022

Division of Transportation Systems Development

Bureau of Project Development
4822 Madison Yards Way, 4th Floor South
Madison, WI 53705

Telephone: (608) 266-1631
Facsimile (FAX): (608) 266-8459

NOTICE TO ALL CONTRACTORS:

Proposal #27: 6610-04-70, WISC 2022406
Rudolph – Knowlton
STH 34 & CTH DB/Old 51 Intersection
STH 34
Marathon County

Letting of May 10, 2022

This is Addendum No. 01, which provides for the following:

Schedule of Items:

Revised Bid Item Quantities					
Bid Item	Item Description	Unit	Old Quantity	Revised Quantity	Proposal Total
460.7223	HMA Pavement 3 HT 58-28 S	Ton	2534	36	2570
520.1024	Apron Endwalls for Culvert Pipe 24-Inch	Each	2	3	5
522.1012	Apron Endwalls for Culvert Pipe Reinforced Concrete 12-Inch	Each	6	-1	5
522.1024	Apron Endwalls for Culvert Pipe Reinforced Concrete 24-Inch	Each	8	-4	4

Added Bid Item Quantities					
Bid Item	Item Description	Unit	Old Quantity	Revised Quantity	Proposal Total
520.1012	Apron Endwalls for Culvert Pipe 12-Inch	Each	0	5	5
520.3312	Culvert Pipe Class III-A 12-Inch	LF	0	66	66
520.3324	Culvert Pipe Class III-A 24-Inch	LF	0	180	180
522.0412	Culvert Pipe Reinforced Concrete Class IV 12-Inch	LF	0	55	55
608.0412	Storm Sewer Pipe Reinforced Concrete Class IV 12-Inch	LF	0	129	129
608.3012	Storm Sewer Pipe Class III-A 12-Inch	LF	0	166	166

Deleted Bid Item Quantities					
Bid Item	Item Description	Unit	Old Quantity	Revised Quantity	Proposal Total
521.1012	Apron Endwalls for Culvert Pipe Steel 12-Inch	Each	4	-4	0
521.3112	Culvert Pipe Corrugated Steel 12-Inch	LF	121	-121	0
522.0124	Culvert Pipe Reinforced Concrete Class III 24-Inch	LF	180	-180	0
608.0312	Storm Sewer Pipe Reinforced Concrete Class III 12-Inch	LF	295	-295	0

Plan Sheets:

Revised Plan Sheets	
Plan Sheet	Plan Sheet Title (brief description of changes to sheet)
7,9	Typical Sections – Adjust HMA Pavement shoulder depth
26,29	Erosion Control (Stage 2) – Adjust pipe types
30	Erosion Control (Stage 3) – Adjust pipe types
31,34	Erosion Control (Stage 4) – Adjust pipe types
35-37	Storm Sewer – Adjust pipe types
77-80	Miscellaneous Quantities – Adjust quantities
95,96,99, 102,103,105	Miscellaneous Quantities – Adjust Culvert Pipe and Storm Sewer quantities
229,293,308	Cross Sections – Adjust pipe types

Schedule of Items

Attached, dated May 2, 2022, are the revised Schedule of Items Pages 1 – 10.

Plan Sheets

The following 8½ x 11-inch sheets are attached and made part of the plans for this proposal:
Revised: 7, 9, 26, 29-31, 34-37, 77-79, 95, 96, 99, 103, 105, 229, 293, 308.

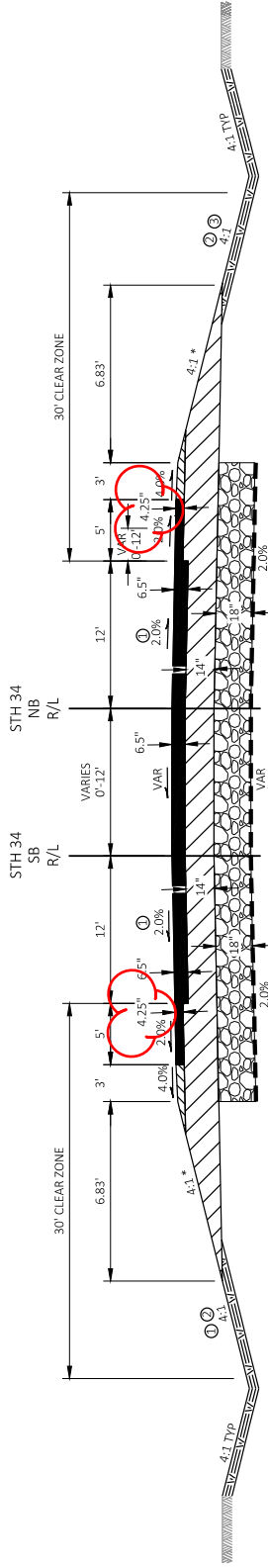
The responsibility for notifying potential subcontractors and suppliers of these changes remains with the prime contractor.

Sincerely,

Mike Coleman

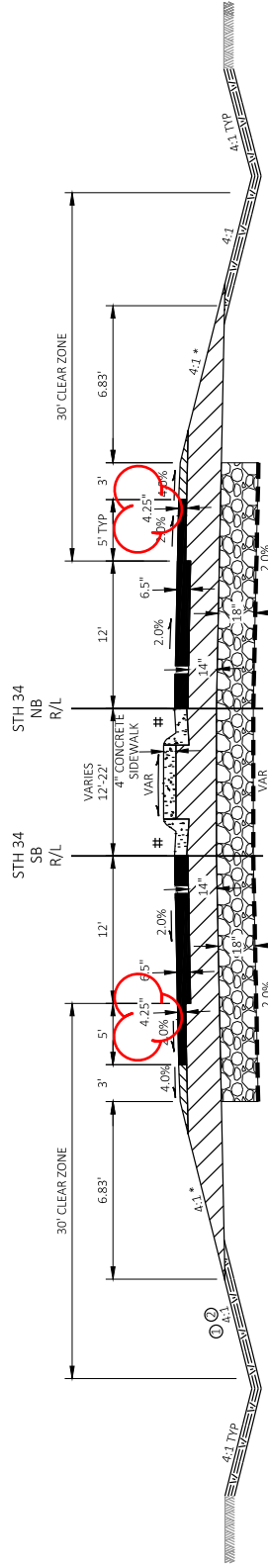
Proposal Development Specialist
Proposal Management Section

END OF ADDENDUM



FINISHED TYPICAL SECTION STH 34

STA 98+50SB TO STA 101+82SB ① ②
 STA 110+38SB TO STA 115+26SB ③
 STA 8+50NB TO STA 11+82NB ① ②
 STA 20+49NB TO STA 25+36NB ③



FINISHED TYPICAL SECTION STH 34

STA 101+82SB TO STA 104+55SB ②
 STA 107+95SB TO STA 110+38SB ③
 STA 11+82NB TO STA 14+17NB
 STA 17+80NB TO STA 20+49NB

LEGEND

- ▨ BASE AGGREGATE DENSE 3/4-INCH (SHOULDER)
- ▨ BASE AGGREGATE DENSE 1 1/4-INCH
- ▨ BREAKER RUN
- ▨ HMA PAVEMENT
- ▨ 2 LOWER LAYER 2.25" OF 3 HT 58-28 S
- ▨ 1 UPPER LAYER 2" OF 4 HT 58-28 H
- ▨ CONCRETE TRUCK APRON 12-INCH (RED)
- ▨ GEOTEXTILE FABRIC TYPE SAS
- ▨ PAVEMENT TIE REQUIRED
- ▨ TOPSOIL, SEED, FERTILIZER AND MULCH OR E-MAT
- ▨ EXISTING GROUND

- ① SLOPE VARIES (SEE CROSS SECTIONS)
- ② 8:1
- ③ VARIES 3:1 TO 6:1
- * SEED AND FERTILIZE SHOULDER FORESLOPE
- # SEE PLAN DETAILS SHEET FOR CURB AND GUTTER TYPES

Addendum No. 01
 ID 6610-04-70
 Revised Sheet 7
 May 2, 2022

PROJECT NO: 6610-04-70

HWY: STH 34

COUNTY: MARATHON

TYPICAL SECTIONS

SHEET 7

E

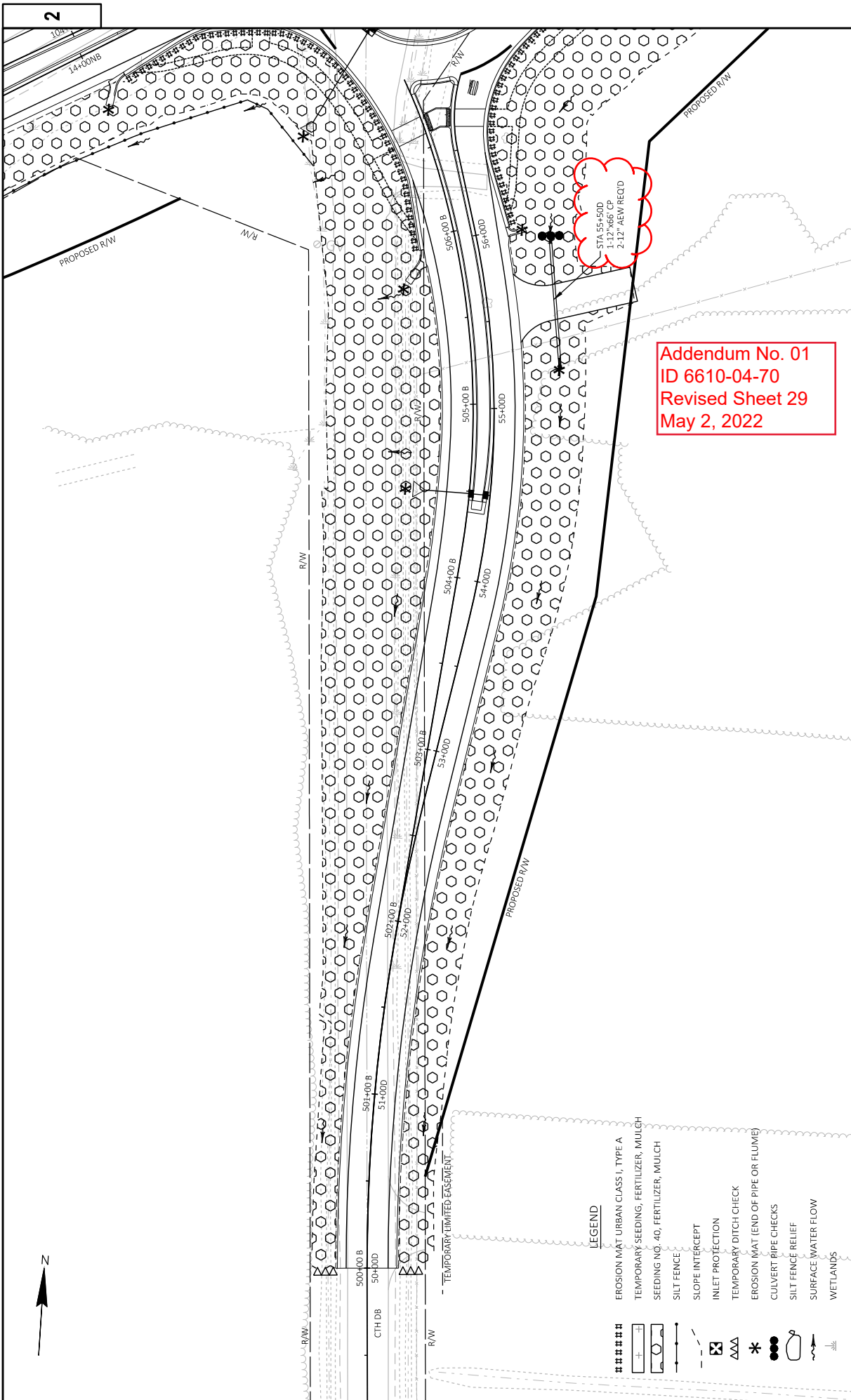
FILE NAME: N:\PDS\CAD\DEL0000\SHEETS\PLAN\02301_L15.DWG

LOT DATE: 4/27/2022 8:25 PM

LOT BY: CHRISTIANSON, ERIN M

LOT SCALE: 1 IN=10 FT

WISDOT/CADDIS SHEET 42



Addendum No. 01
 ID 6610-04-70
 Revised Sheet 29
 May 2, 2022

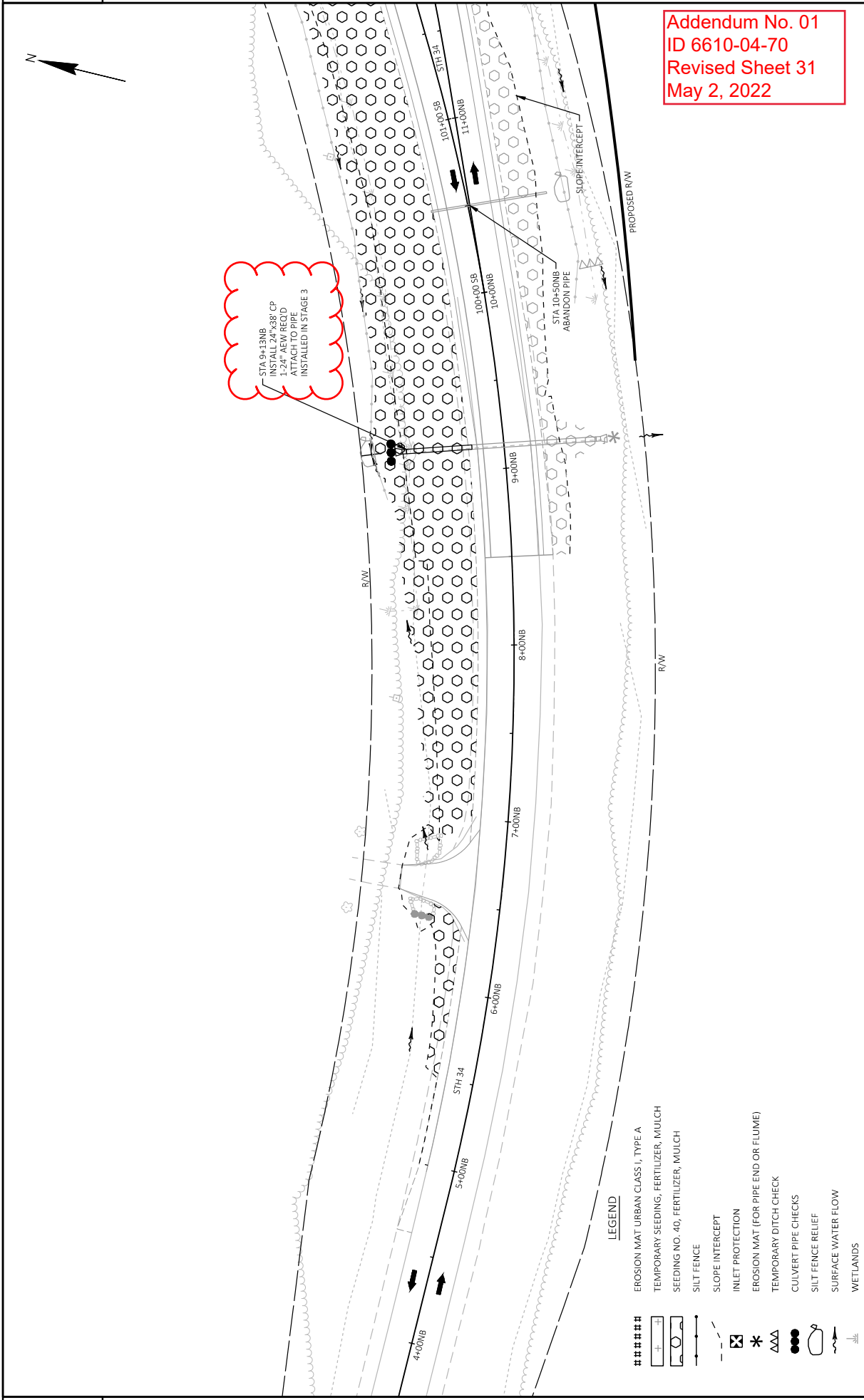
- LEGEND**
- #### EROSION MAT URBAN CLASS I, TYPE A
 - + TEMPORARY SEEDING, FERTILIZER, MULCH
 - TEMPORARY SEEDING, FERTILIZER, MULCH
 - SLOPE INTERCEPT
 - ⊠ INLET PROTECTION
 - AAA TEMPORARY DITCH CHECK
 - * EROSION MAT (END OF PIPE OR FLUME)
 - CULVERT PIPE CHECKS
 - SILT FENCE RELIEF
 - SURFACE WATER FLOW
 - ≡ WETLANDS

PROJECT NO: 6610-04-70 FILE NAME: R:\PDS\3D\66100400\SHETS\PLAN\02210_LCG2.DWG LAYOUT NAME: EC2	HWY: STH 34 COUNTY: MARATHON PLOT DATE: 4/27/2022 4:40 PM	EROSION CONTROL - STAGE 2 PLOT BY: CHRISTANSON, ERIN M	SHEET 29 PLOT NAME: 1 IN=50 FT WIS007.CADD.SHEET 44
---	---	---	---



STA 9+13NB
 INSTALL 24"x38" CP
 1-24" AEW REOD
 ATTACH TO PIPE
 INSTALLED IN STAGE 3

Addendum No. 01
 ID 6610-04-70
 Revised Sheet 31
 May 2, 2022



LEGEND

- ##### EROSION MAT URBAN CLASS I, TYPE A
- + SEEDING NO. 40, FERTILIZER, MULCH
- SEEDING NO. 40, FERTILIZER, MULCH
- SILT FENCE
- - - SLOPE INTERCEPT
- ⊠ INLET PROTECTION
- * EROSION MAT (FOR PIPE END OR FLUME)
- ▲▲▲ TEMPORARY DITCH CHECK
- CULVERT PIPE CHECKS
- SILT FENCE RELIEF
- SURFACE WATER FLOW
- WETLANDS

PROJECT NO: 6610-04-70	COUNTY: MARATHON	EROSION CONTROL - STAGE 4	SHEET 31	E
FILE NAME: N:\PDS\3D\66100400\5SHEETSP\PLAN\022301_EC4.DWG	LAYOUT NAME: EC4-01	PLOT DATE: 4/27/2022 4:33 PM	PLOT NAME: CHRISTIANSON, ERIN M	WIS007/CADD/SHEET 44
			PLOT SCALE: 1 IN=50 FT	
	HWY: STH 34			

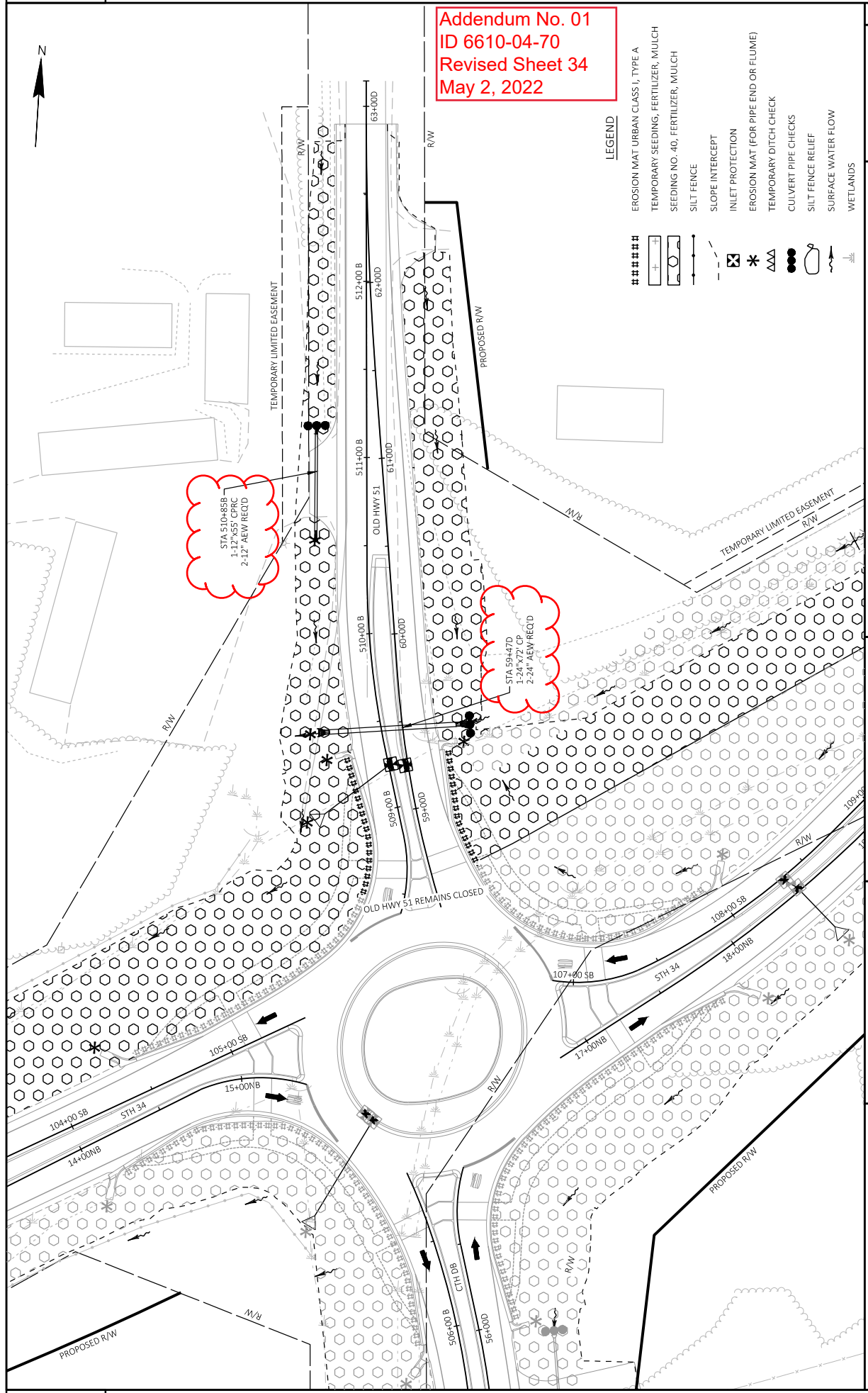
2

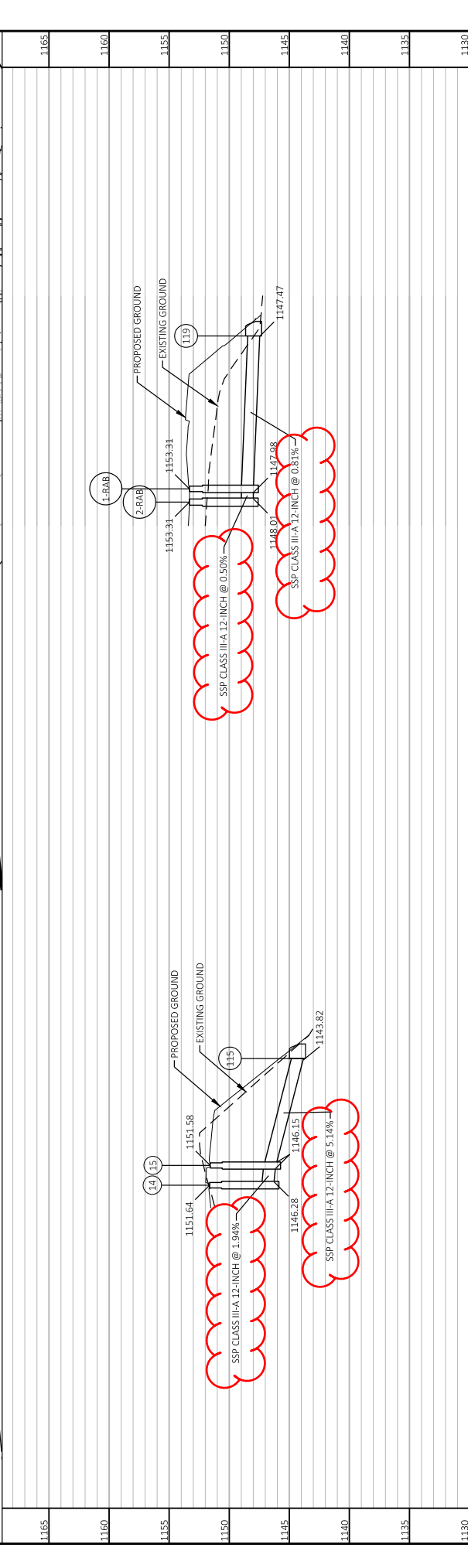
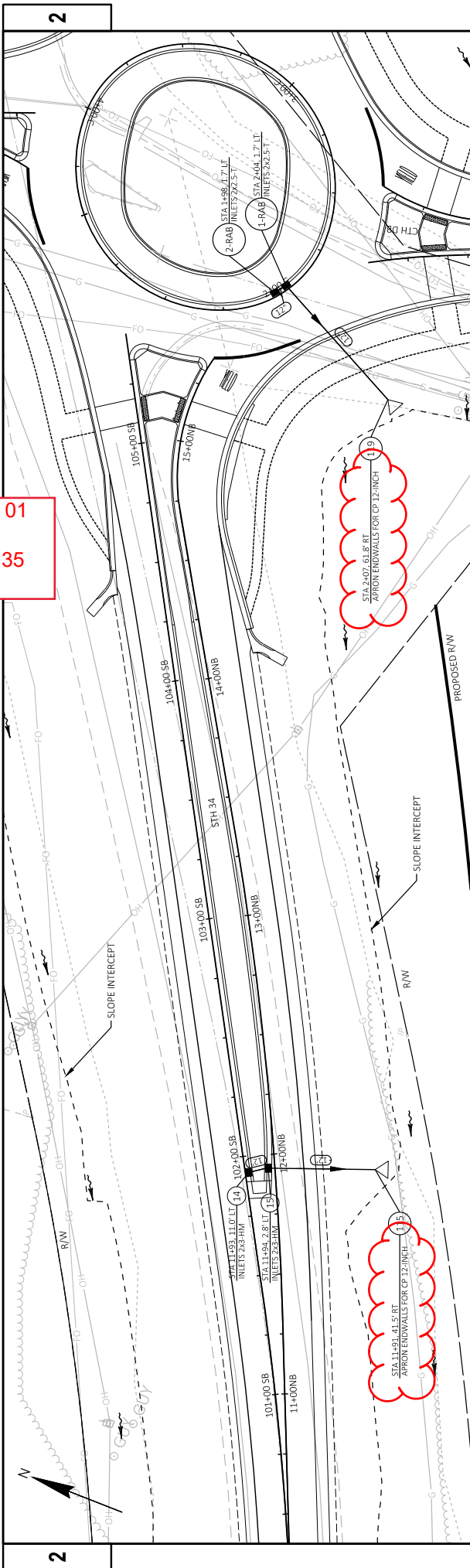


Addendum No. 01
ID 6610-04-70
Revised Sheet 34
May 2, 2022

LEGEND

- EROSION MAT URBAN CLASS I, TYPE A
- TEMPORARY SEEDING, FERTILIZER, MULCH
- SEEDING NO. 40, FERTILIZER, MULCH
- SILT FENCE
- SLOPE INTERCEPT
- INLET PROTECTION
- EROSION MAT (FOR PIPE END OR FLUME)
- TEMPORARY DITCH CHECK
- CULVERT PIPE CHECKS
- SILT FENCE RELIEF
- SURFACE WATER FLOW
- WETLANDS

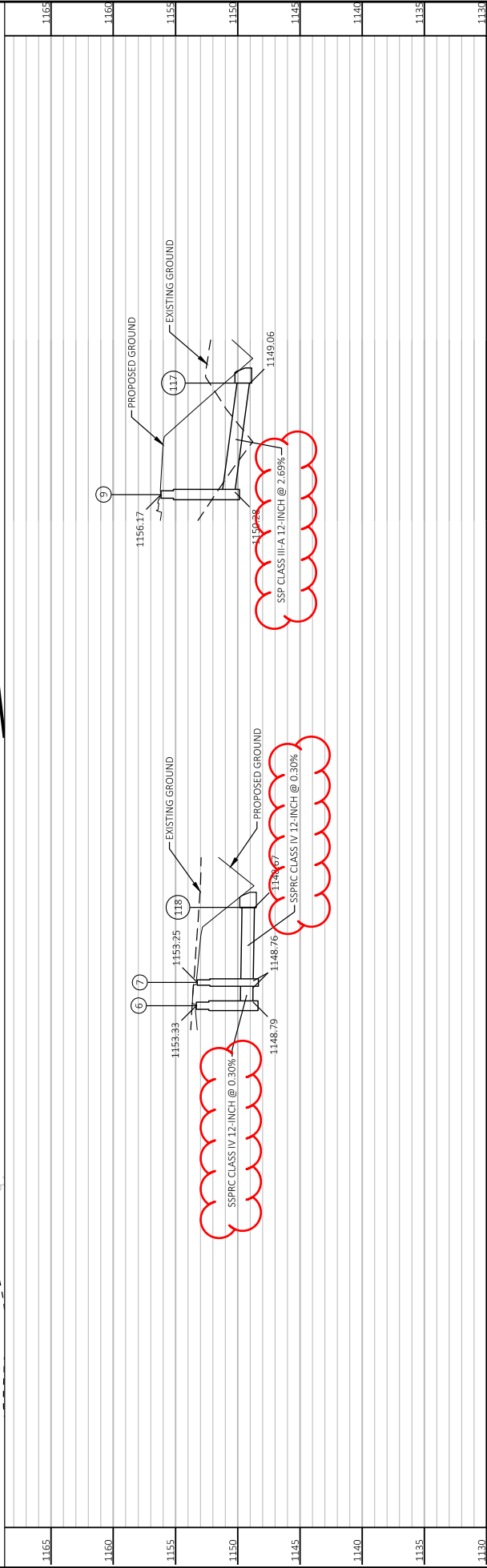
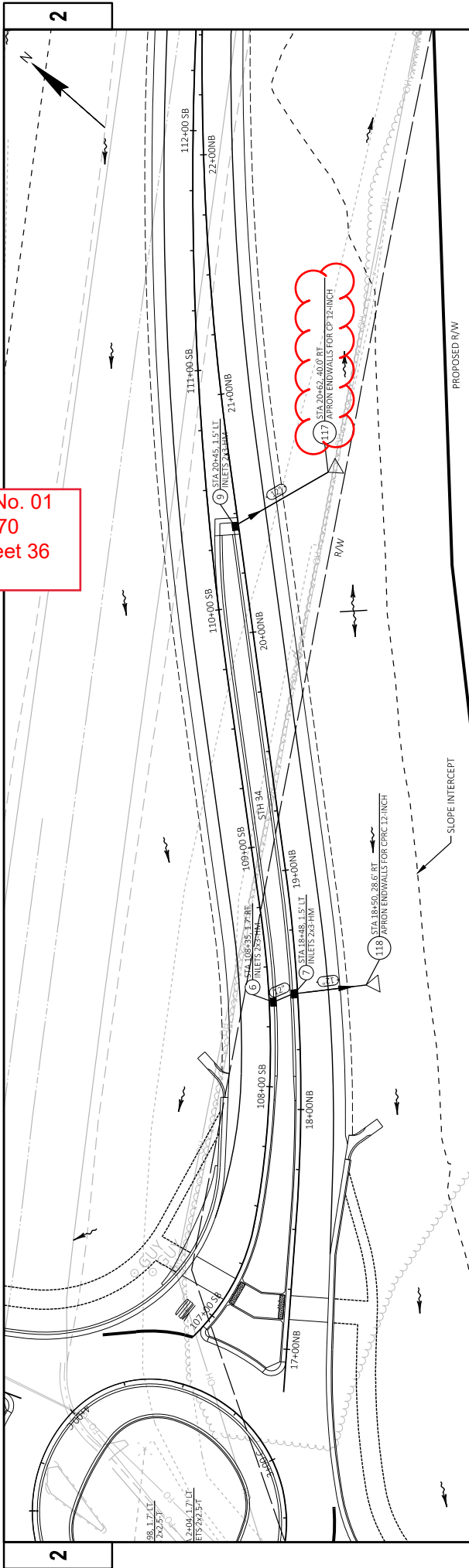




Addendum No. 01
 ID 6610-04-70
 Revised Sheet 35
 May 2, 2022

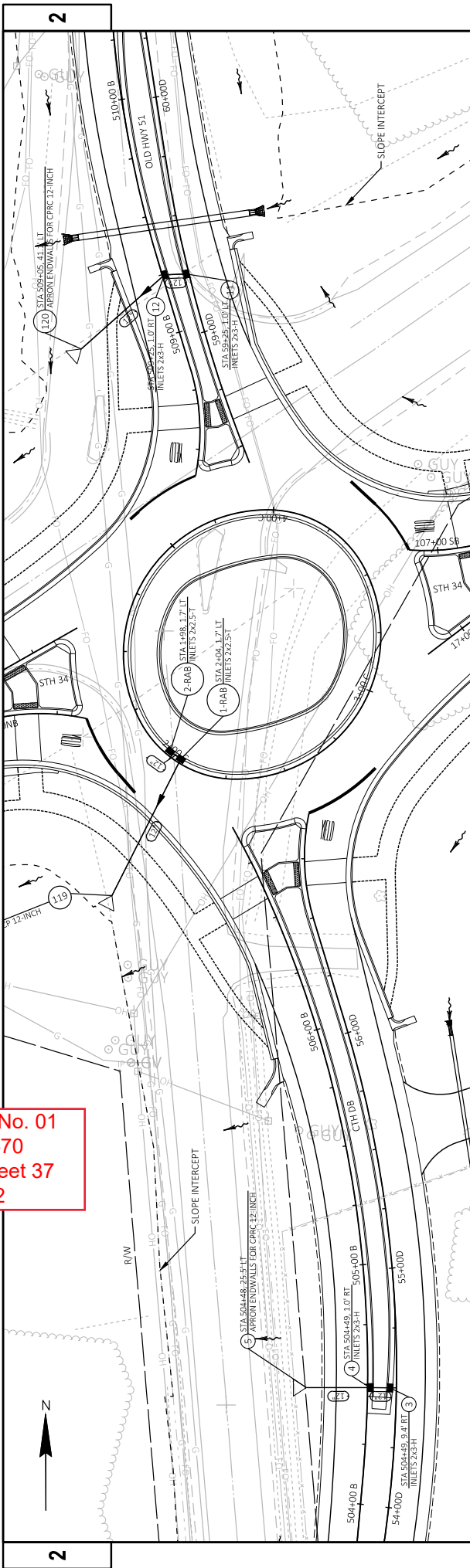
1165	1160	1155	1150	1145	1140	1135	1130
PROJECT NO: 6610-04-70 COUNTY: MARATHON HWY: STH 34 STORM SEWER SHEET 35 E							FILE NAME: N:\PDS\3D\66100400\SHEETPLAN\02301_LSSDWG LAYOUT NAME: SS-01
PLOT DATE: 4/27/2022 3:44 PM PLOT BY: CHRISTIANSON, ERIN M. PLOT NAME: 1 IN=40 FT							WISDOT/CADDIS SHEET 41

Addendum No. 01
 ID 6610-04-70
 Revised Sheet 36
 May 2, 2022



PROJECT NO: 6610-04-70	COUNTY: MARATHON	STORM SEWER	SHEET 36	E
FILE NAME: N:\PDS\CD\66100400\SHETS\PLAN\02301_LSSDWG	LAYOUT NAME: SS-02	HWY: STH 34	PLOT NAME: CHRISTANSON, ERIN M	1130
			PLOT DATE: 4/27/2022 3:44 PM	1135
			PLOT SCALE: 1 IN=40 FT	1140
				1145
				1150
				1155
				1160
				1165

Addendum No. 01
 ID 6610-04-70
 Revised Sheet 37
 May 2, 2022



1165	1160	1155	1150	1145	1140	1135	1130
<p>Profile view of storm sewer system showing proposed and existing ground elevations and pipe segments. Key features include:</p> <ul style="list-style-type: none"> Proposed Ground: 1154.13, 1153.98, 1149.05, 1147.30, 1147.38, 1147.41. Existing Ground: 1154.13, 1149.05, 1147.30, 1147.38, 1147.41. Manholes: (11), (12), (13), (14), (15), (16), (17), (18). SSPRC Class IV 12-INCH @ 0.27% (red wavy line) SSPRC Class IV 12-INCH @ 0.41% (red wavy line) SSPRC Class IV 12-INCH @ 0.30% (red wavy line) 							1130

CONCRETE TRUCK APRON			
STATION-STATION	LOCATION	CY	SY
14+64NB-15+28NB	STH 34 NB	4	13
106+97SB-107+75SB	STH 34 SB	6	17
1+00C-4+46C	ROUNDABOUT	137	410
TOTALS		147	440

TACK COAL			
STATION-STATION	LOCATION	455.0605 GAL	REMARKS
8+50NB-15+34NB	STH 34 NB	171	
16+89NB-25+36NB	STH 34 NB	244	
98+50S3-105+40S8	STH 34 SB	166	
106+97SB-115+76S8	STH 34 SB	210	
50+00D-56+91D	CTH DB/OLD HWY 51 NB	173	
58+45D-62+90D	CTH DB/OLD HWY 51 NB	112	
50+00B-506+87B	CTH DB/OLD HWY 51 SB	98	
508+42B-512+89B	CTH DB/OLD HWY 51 SB	121	
1+00C-4+46C	ROUNDABOUT	161	
6+85T-28+56T	TEMPORARY ROAD	292	
TOTAL		1748	

HMA PAVEMENT			
STATION-STATION	LOCATION	TON	REMARKS
8+50NB-15+34NB	STH 34 NB	310	156
16+89NB-25+36NB	STH 34 NB	440	215
98+50S3-105+40S8	STH 34 SB	298	152
106+97SB-115+26S8	STH 34 SB	378	191
50+00D-56+91D	CTH DB/OLD HWY 51 NB	312	157
58+45D-62+90D	CTH DB/OLD HWY 51 NB	202	100
500+003-506+87B	CTH DB/OLD HWY 51 SB	201	157
508+423-512+89B	CTH DB/OLD HWY 51 SB	139	105
1+00C-4+46C	ROUNDABOUT	290	129
TOTALS		2570	1362

ASPHALTIC SURFACE DRIVEWAYS AND FIELD ENTRANCES			
STATION	LOCATION	TON	REMARKS
6+75NB	STH 34 NB (L)	16	
510+50SB	OLD HWY 51 (L)	11	
TOTAL		27	

ASPHALTIC FLUMES			
STATION	LOCATION	SY	REMARKS
14+12NB	STH 34 NB	20	
17+85NB	STH 34 NB	15	
104+44SB	STH 34 SB	25	
106+00SB	STH 34 SB	15	
55+96D	CTH DB NB	15	
59+34D	OLD HWY 51 NB	15	
505+883	CTH DB SB	13	
509+353	OLD HWY 51 SB	18	
TOTAL		141	

ASPHALTIC SURFACE PATCHING			
STATION-STATION	LOCATION	TON	REMARKS
25+00NB-30+00NB	STH 34	70	
TOTAL		70	

ASPHALTIC SURFACE TEMPORARY			
STATION-STATION	LOCATION	TON	REMARKS
5+74T-25+87T	TEMPORARY ROAD	907	
26+85T-27+17T	TEMPORARY ROAD	8	139/US 51 SB OFF RAMP ISLAND
27+39T-28+32T	TEMPORARY ROAD	19	
TOTAL		934	

Addendum No. 01
ID 6610-04-70
Revised Sheet 77
May 2, 2022

STATION	LOCATION	#	520.1012	520.1024	520.1024	520.2024	520.3312	520.3324	520.8000	522.0412	522.1012	REMARKS
LOCATIONS	APRON ENDWALL	APRON ENDWALL	APRON ENDWALL	APRON ENDWALL	APRON ENDWALL	APRON ENDWALL	APRON ENDWALL	APRON ENDWALL	APRON ENDWALL	APRON ENDWALL	APRON ENDWALL	
LOCATIONS	FOR CULVERT PIPE	FOR CULVERT PIPE	FOR CULVERT PIPE	FOR CULVERT PIPE	FOR CULVERT PIPE	FOR CULVERT PIPE	FOR CULVERT PIPE	FOR CULVERT PIPE	FOR CULVERT PIPE	FOR CULVERT PIPE	FOR CULVERT PIPE	
LOCATIONS	12-INCH	24-INCH	24-INCH	24-INCH	24-INCH	24-INCH	24-INCH	24-INCH	24-INCH	24-INCH	24-INCH	
LOCATIONS	EACH	EACH	EACH	EACH	EACH	EACH	EACH	EACH	EACH	EACH	EACH	
10+221	TEMPORARY ROAD	1	---	1	23	---	---	1	---	---	---	STAGE 1
9+13NB	STH 34 NB	---	2	---	---	108	---	---	---	---	---	STAGE 2-3
10+50NB	STH 34 NB	---	---	---	---	---	---	---	---	---	71	STAGE 2-3
55+50D	CTH DB	2	---	---	---	56	---	---	---	---	---	STAGE 2-3
59+47D	OLD HWY 51 NB	---	2	---	---	72	---	---	---	---	---	STAGE 4
51D+853	OLD HWY 51 SB	---	---	---	---	---	---	---	---	55	---	STAGE 4
TOTALS		1	4	1	23	180	56	1	---	55	2	

QUANTITIES SHOWN ELSEWHERE IN MISCELLANEOUS QUANTITIES.

REMOVE BID ITEMS: 521.1012, 521.3312, 522.0124, 522.1024

Addendum No. 01
 ID 6610-04-70
 Revised Sheet 78
 May 2, 2022

STATION-START	LOCATION	LF	LF	LF	LF	LF	LF	LF	LF	LF	LF	REMARKS
11+89NB-14+34NB	STH 34 NB MEDIAN	---	---	---	---	---	---	---	---	---	---	MEDIAN SIDEWALK
14+34NB-15+31NB	STH 34 NB MEDIAN	---	---	---	---	---	---	---	---	---	---	MEDIAN SIDEWALK
16+95NB-18+04NB	STH 34 NB MEDIAN	---	---	---	---	---	---	---	---	---	---	MEDIAN SIDEWALK
18+04NB-20+41NB	STH 34 NB MEDIAN	---	---	---	---	---	---	---	---	---	---	MEDIAN SIDEWALK
25+71NB-26+86NB	BS/JSH 51 SB OFF RAMP	47	---	---	---	---	---	---	---	---	---	REMOVAL TEMPORARY ROAD
101+835B-104+335B	STH 34 SB MEDIAN	---	---	---	---	---	---	---	---	---	---	MEDIAN SIDEWALK
104+335B-105+355B	STH 34 SB MEDIAN	---	---	---	---	---	---	---	---	---	---	MEDIAN SIDEWALK
106+945B-107+955B	STH 34 SB MEDIAN	---	---	---	---	---	---	---	---	---	---	MEDIAN SIDEWALK
107+955B-110+935B	STH 34 SB MEDIAN	---	---	---	---	---	---	---	---	---	---	MEDIAN SIDEWALK
54+46D-56+87D	CTH DB/OLD HWY 51 NB	---	---	---	---	---	---	---	---	---	---	MEDIAN SIDEWALK
58+50D-60+38D	CTH DB/OLD HWY 51 NB	---	---	---	---	---	---	---	---	---	---	MEDIAN SIDEWALK
504+45B-506+825B	CTH DB/OLD HWY 51 SB	---	---	---	---	---	---	---	---	---	---	MEDIAN SIDEWALK
508+45B-520+35B	CTH DB/OLD HWY 51 SB	---	---	---	---	---	---	---	---	---	---	MEDIAN SIDEWALK
1+00C-4+46C	ROUNDABOUT	---	---	---	---	---	---	---	---	---	---	TRUCK APRON
1+52C-1+67C	STH 34 MEDIAN	---	---	---	---	---	---	---	---	---	---	MEDIAN SIDEWALK
2+35C-2+48C	CTH DB/OLD HWY 51 MEDIAN	---	---	---	---	---	---	---	---	---	---	MEDIAN SIDEWALK
3+27C-3+47C	STH 34 MEDIAN	---	---	---	---	---	---	---	---	---	---	MEDIAN SIDEWALK
4+14C-4+20C	CTH DB/OLD HWY 51 MEDIAN	---	---	---	---	---	---	---	---	---	---	MEDIAN SIDEWALK
0+00NB-2+48NW	NW QUAD	---	---	---	---	---	---	---	---	---	---	TRUCK APRON
0+00SW-0+47SW	SW QUAD	---	---	---	---	---	---	---	---	---	---	TRUCK APRON
0+47SW-1+00SW	SW QUAD	---	---	---	---	---	---	---	---	---	---	TRUCK APRON
1+00SW-2+46SW	SW QUAD	---	---	---	---	---	---	---	---	---	---	TRUCK APRON
0+00NE-1+44NE	NE QUAD	---	---	---	---	---	---	---	---	---	---	TRUCK APRON
1+44NE-2+03NE	NE QUAD	---	---	---	---	---	---	---	---	---	---	TRUCK APRON
2+03NE-2+43NE	NE QUAD	---	---	---	---	---	---	---	---	---	---	TRUCK APRON
0+00SE-2+45SE	SE QUAD	---	---	---	---	---	---	---	---	---	---	TRUCK APRON
TOTALS		47	247	82	1341	112	1844	112	346	44		

CONCRETE BARRIER TEMPORARY PRECAST

STATION	TO	LOCATION	DELIVERED	INSTALLED	CRASH	BACK	OBJECT	CRASH	TRAFFIC	TRAFFIC	CRASH	REMARKS
LF	LF	LF	LF	LF	WIDTH	FT	MARKING	TEST	DIRECTION	LOCATION	SHIELDS	
7+50T-26+90T		TEMPORARY ROAD (RT)	1940									STAGE 2
9+50T-26+60T		TEMPORARY ROAD (RT)	170	1	4	W05-S8M	TL-3	B	DIRECTIONAL	LT&RT	GGRE BETWEEN NB & SB	STAGE 3
7+50NB-12+00NB		STH 34 NB	220	450	1	4	W05-S8M	TL-3	B	DIRECTIONAL	LT&RT	GGRE BETWEEN NB & SB
19+90NB-25+50NB		STH 34 NB	560									STAGE 3
TOTALS			2720	4660	2							

STATION	STATION	LOCATION	LF	REMARKS
45+00E-49-50E	5TH 34 (RT)		450	R/W FENCE
109+2-95B-112-445B	5TH 34 (LT)		350	R/W FENCE
TOTAL			800	

LOCATION	MGAL	WATER	MGAL	SEED	MGAL	REMARKS
PROJECT LIMITS	273	330				
TOTAL	273	330				

STORM SEWER PIPE

FROM	TO	LOCATION	LF	CLASS	INLET	DISCHARGE	ELEVATION	SLOPE	REMARKS
LF	LF	LF	LF	12-INCH	ELEVATION	ELEVATION	FT/FT		
1-RAB-119		RAB	63		1147.98	1147.47	0.0081		
2-RAB-14-RAB		RAB	6		1148.01	1147.98	0.0050		
3-4		CTH DB SB	8		1147.41	1147.38	0.0028		
4-5		CTH DB SB	27		1147.38	1147.30	0.0090		
6-7		STH 34 SB	8		1148.79	1148.76	0.0030		
7-118		STH 34 SB	31		1148.76	1148.67	0.0090		
9-117		STH 34 NB	25		1150.28	1149.05	0.0269		
11-12		OLD HWY 51 SB	9		1149.26	1149.24	0.0027		
12-120		OLD HWY 51 SB	46		1149.24	1149.05	0.0041		
14-15		STH 34 SB	7		1146.28	1146.15	0.0194		
15-115		STH 34 SB	45		1146.15	1143.82	0.0514		
TOTALS			295						166

CONCRETE SIDEWALK & CURB RAMP DETECTABLE WARNING FIELD

STATION	STATION	LOCATION	SF	REMARKS
11+82NB	14+7NB	STH 34 MEDIAN	2057	20
17+80NB	20+43NB	STH 34 MEDIAN	1482	20
106+495B	105+405B	STH 34 MEDIAN	1260	20
106+975B	107+655B	STH 34 MEDIAN	1774	20
54+39D	56+01D	CTH DB/OLD HWY 51 MEDIAN	1038	20
56+01D	56+91D	CTH DB/OLD HWY 51 MEDIAN	968	20
58+45D	59+31D	CTH DB/OLD HWY 51 MEDIAN	585	20
59+31D	60+45D	CTH DB/OLD HWY 51 MEDIAN	852	20
TOTALS			9965	160

CONCRETE MEDIAN SLOPE ROSE

STATION	LOCATION	SF	REMARKS
11+82NB	STH 34 NB MEDIAN	68	TYPE 1
15+34NB	STH 34 NB MEDIAN	14	TYPE 2
16+89NB	STH 34 NB MEDIAN	34	TYPE 2
20+48NB	STH 34 NB MEDIAN	69	TYPE 1
105+405B	STH 34 SB MEDIAN	32	TYPE 2
106+915B	STH 34 SB MEDIAN	15	TYPE 2
54+38D	CTH DB/OLD HWY 51 NB MEDIAN	69	TYPE 1
56+91D	CTH DB/OLD HWY 51 NB MEDIAN	15	TYPE 2
58+45D	CTH DB/OLD HWY 51 NB MEDIAN	25	TYPE 2
60+45D	CTH DB/OLD HWY 51 NB MEDIAN	68	TYPE 1
506+87B	CTH DB/O-D HWY 51 SB MEDIAN	30	TYPE 2
508+42B	CTH DB/O-D HWY 51 SB MEDIAN	15	TYPE 2
TOTAL			454

Addendum No. 01
ID 6610-04-70
Revised Sheet 79
May 2, 2022

Addendum No. 01
 ID 6610-04-70
 Revised Sheet 80
 May 2, 2022

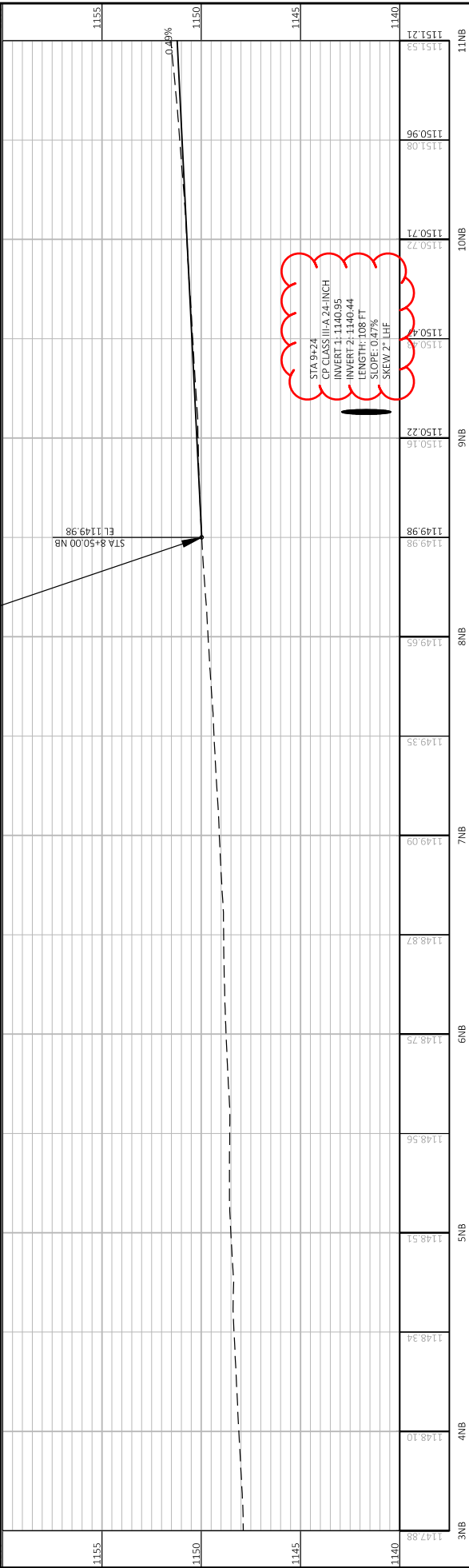
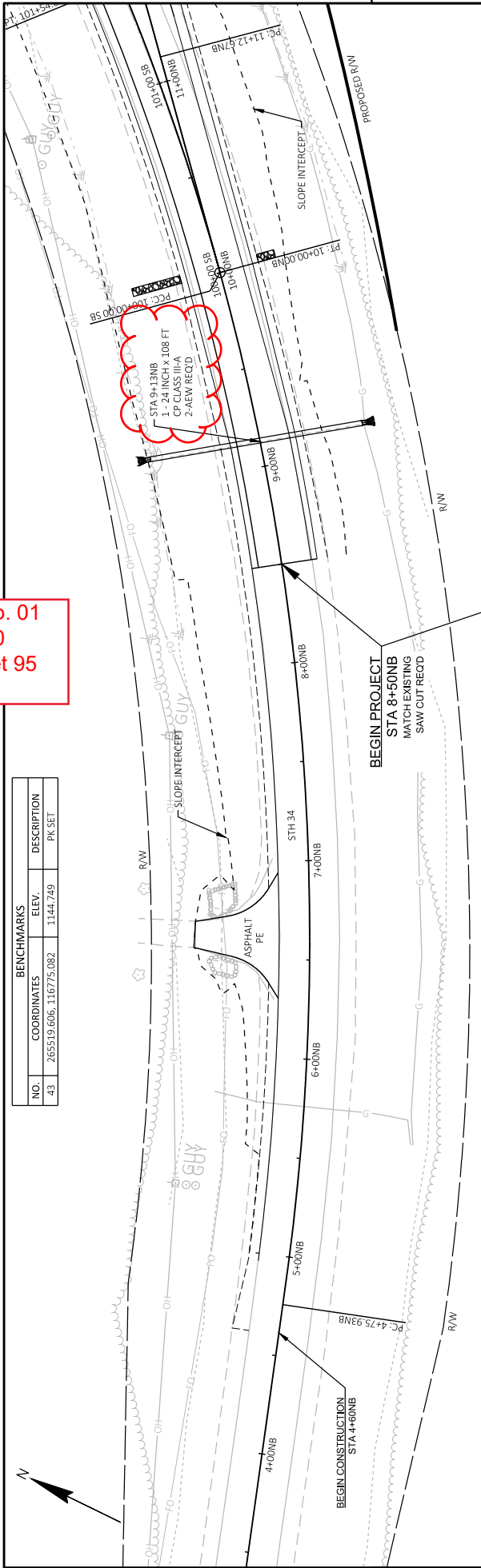
STORM SEWER STRUCTURES

STRUCTURE	STATION	OFFSET*	LOCATION	APRON		ENDWALLS		FOR CULVERT		REINFORCED CONCRETE		INLET				INLETS		CONSTRUCTION		RIM**	INVERT**		
				ENDWALLS	APRON	ENDWALLS	APRON	FOR CULVERT	FOR CULVERT	12-INCH	24-INCH	TYPEH	TYPEHM	TYPEH	TYPEHM	2X2.5-FT	2X3-FT	STORM	SEWER			ELEVATION	ELEVATION
1-RAB	2+04.00C	1.72' LT	RAB	---	---	---	---	---	---	---	---	---	---	---	---	---	---	---	---	---	---	---	
2-RAB	1+98.27C	1.73' LT	RAB	---	---	---	---	---	---	---	---	---	---	---	---	---	---	---	---	---	---	---	
3	504+48.59B	9.42' RT	CTH D6 SB	---	---	---	---	---	---	---	---	---	---	---	---	---	---	---	---	---	---	---	
4	504+48.71B	0.99' RT	CTH D6 SB	---	---	---	---	---	---	---	---	---	---	---	---	---	---	---	---	---	---	---	
5	504+48.29B	25.50' LT	CTH D6 SB	---	---	---	---	---	---	---	---	---	---	---	---	---	---	---	---	---	---	---	
6	18+45.40NB	10.34' LT	STH 34 NB	---	---	---	---	---	---	---	---	---	---	---	---	---	---	---	---	---	---	---	
7	18+48.21NB	1.50' LT	STH 34 NB	---	---	---	---	---	---	---	---	---	---	---	---	---	---	---	---	---	---	---	
9	20+44.72NB	1.50' LT	STH 34 NB	---	---	---	---	---	---	---	---	---	---	---	---	---	---	---	---	---	---	---	
11	509+22.37B	9.84' RT	OLD HWY 51 SB	---	---	---	---	---	---	---	---	---	---	---	---	---	---	---	---	---	---	---	
12	509+24.65B	0.98' RT	OLD HWY 51 SB	---	---	---	---	---	---	---	---	---	---	---	---	---	---	---	---	---	---	---	
14	11+93.16NB	10.96' LT	STH 34 NB	---	---	---	---	---	---	---	---	---	---	---	---	---	---	---	---	---	---	---	
15	11+94.33NB	2.87' LT	STH 34 NB	---	---	---	---	---	---	---	---	---	---	---	---	---	---	---	---	---	---	---	
19	9+14.83NB	55.88' LT	STH 34 NB	---	---	---	---	---	---	---	---	---	---	---	---	---	---	---	---	---	---	---	
20	9+11.69NB	52.08' RT	STH 34 NB	---	---	---	---	---	---	---	---	---	---	---	---	---	---	---	---	---	---	---	
113	59+49.08D	41.60' LT	OLD HWY 51 NB	---	---	---	---	---	---	---	---	---	---	---	---	---	---	---	---	---	---	---	
114	59+44.63D	30.27' RT	OLD HWY 51 NB	---	---	---	---	---	---	---	---	---	---	---	---	---	---	---	---	---	---	---	
115	11+90.62NB	41.54' RT	STH 34 NB	---	---	---	---	---	---	---	---	---	---	---	---	---	---	---	---	---	---	---	
117	20+61.81NB	39.97' RT	STH 34 NB	---	---	---	---	---	---	---	---	---	---	---	---	---	---	---	---	---	---	---	
118	18+50.06NB	28.69' RT	STH 34 NB	---	---	---	---	---	---	---	---	---	---	---	---	---	---	---	---	---	---	---	
119	2+06.52C	61.84' RT	RAB	---	---	---	---	---	---	---	---	---	---	---	---	---	---	---	---	---	---	---	
120	509+05.06D	41.13' LT	OLD HWY 51 SB	---	---	---	---	---	---	---	---	---	---	---	---	---	---	---	---	---	---	---	
122	10+24.88T	41.35' LT	TEMP RD	---	---	---	---	---	---	---	---	---	---	---	---	---	---	---	---	---	---	---	
TOTALS				3	1	3	4	4	5	2	2	9	17										

REMARKS:
 *STATIONS AND OFFSETS ARE TO CENTER OF STRUCTURE
 **RIM ELEV IS AT THE INLET COVER FLANGE LOCATION
 ***FOR STRUCTURES WITH SLUMPS, THE INVERT ELEVATION IS THE ELEVATION OF THE LOWEST PIPE FLOW LINE
 ****DEPTH = RIM ELEV - TOP OF STRUCTURE BASE ELEV - COVER HEIGHT - 6-INCH ADJUSTIVE RING HEIGHT
 #QUANTITIES SHOWN ELSEWHERE IN MISCELLANEOUS QUANTITIES.

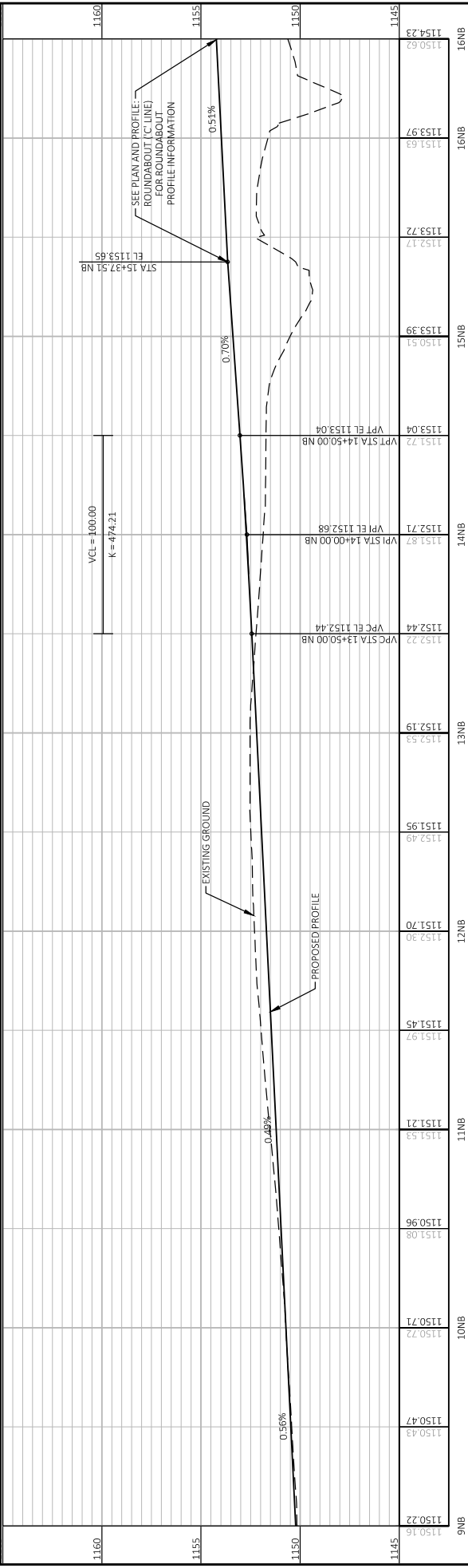
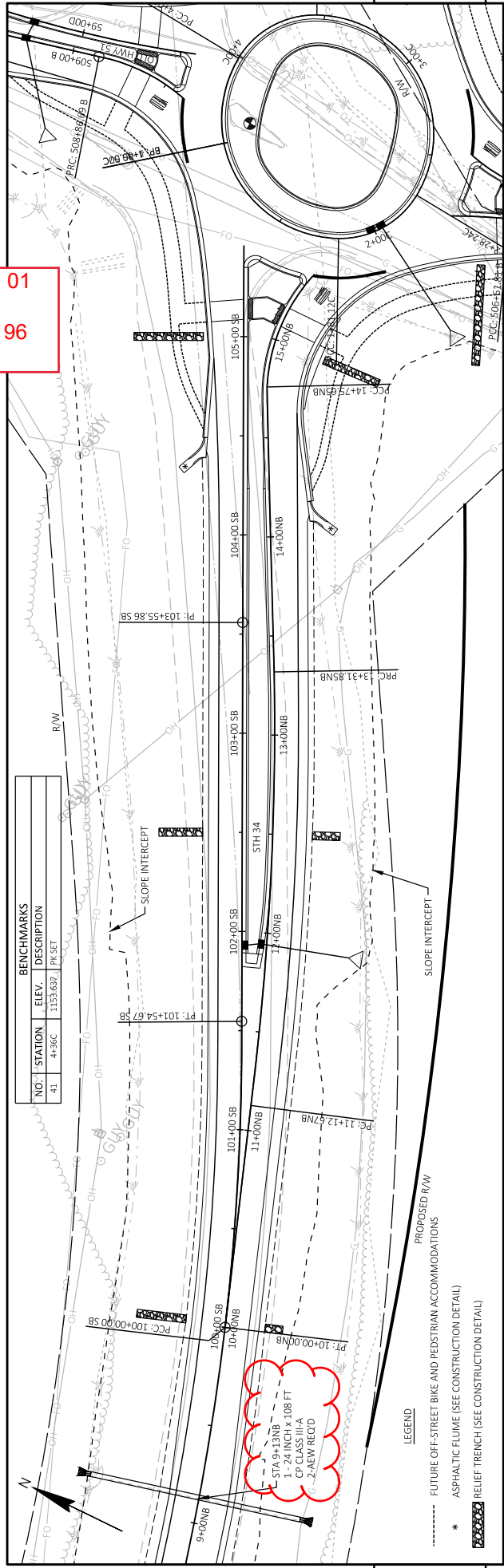
Addendum No. 01
ID 6610-04-70
Revised Sheet 95
May 2, 2022

BENCHMARKS			
NO.	COORDINATES	ELEV.	DESCRIPTION
43	265519.606, 116775.082	1144.749	PK SET



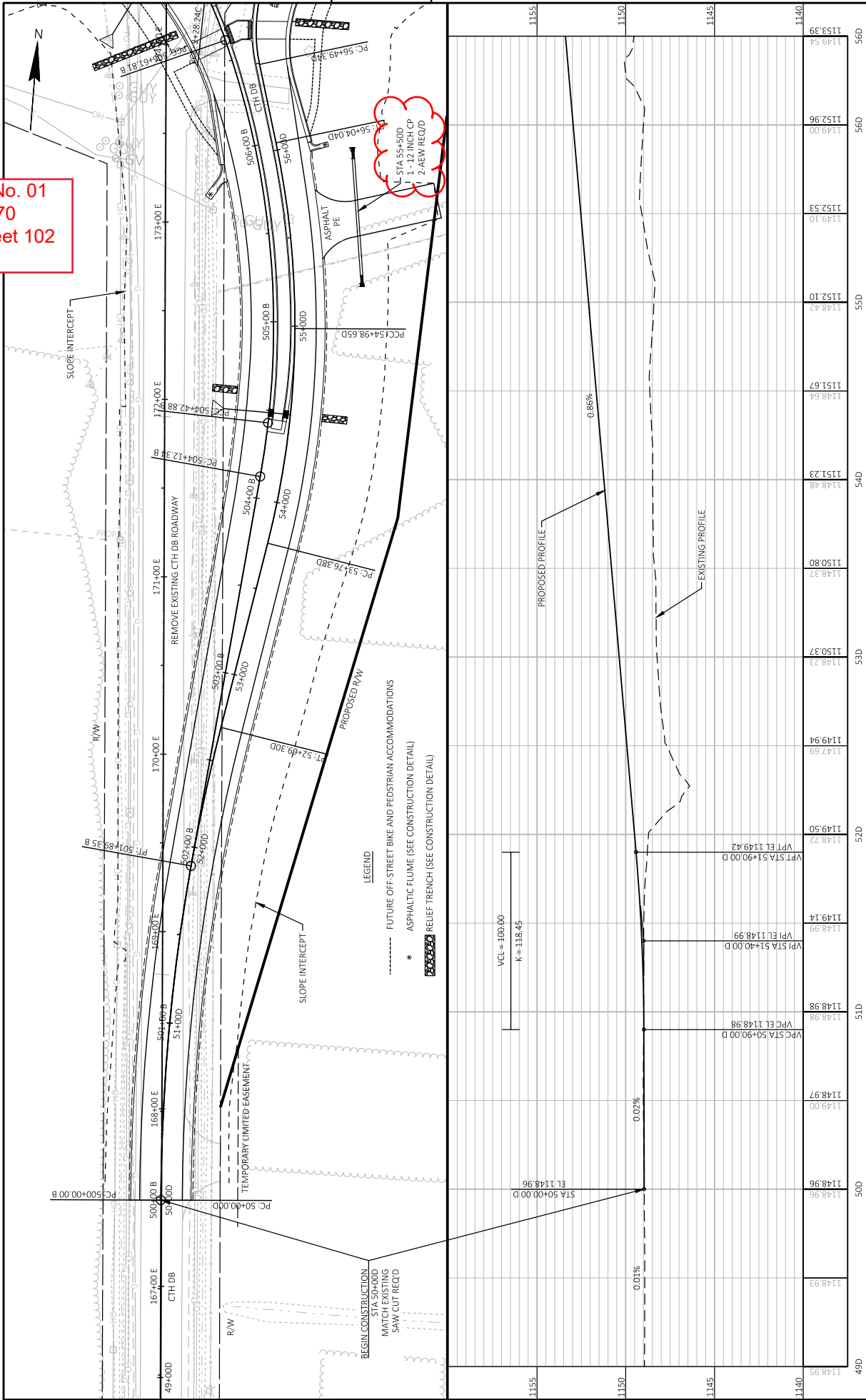
PROJECT NO:	6610-04-70	HWY:	STH 34	COUNTY:	MARATHON	PLAN AND PROFILE:	STH 34 - NB (NB' LINE)	SHEET	95
FILE NAME:	N:\PDS\3\DEL0400\00\SHETS\PLAN\05901_LP.DWG								
LAYOUT NAME:	01								
FLAT DATE:	4/27/2022 4:35 PM								
FLAT BY:	CHRISTIANSON, ERIN M								
FLAT SCALE:	1 IN=50 FT								
FLAT NAME:	WISDOT/CADD/SHEET 44								

Addendum No. 01
ID 6610-04-70
Revised Sheet 96
May 2, 2022



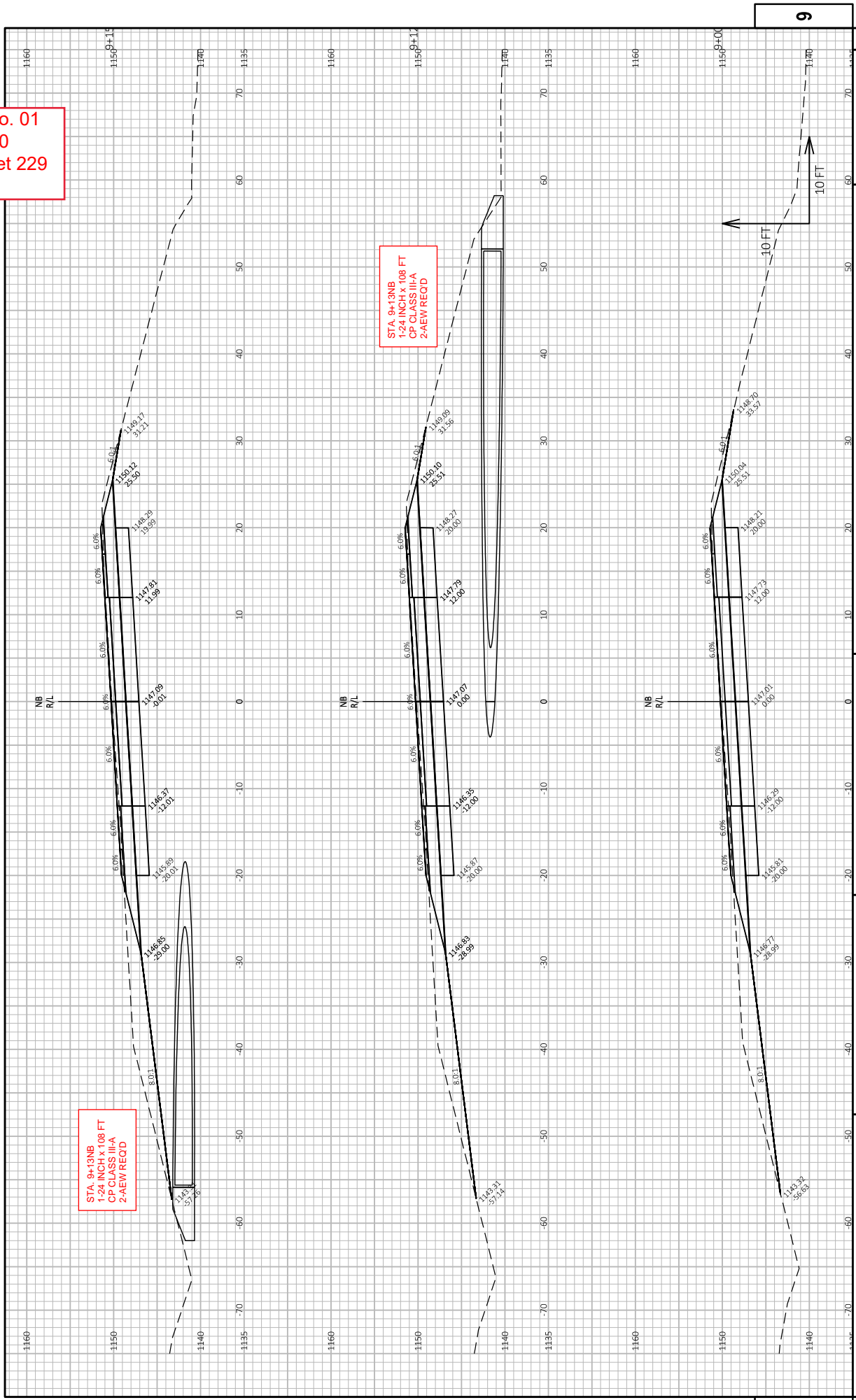
PROJECT NO:	6610-04-70	HWY:	STH 34	COUNTY:	MARATHON	PLAN AND PROFILE:	STH 34 - NB (NB LINE)	SHEET	96
FILE NAME:	N:\PDS\3D\66100400\SHETS\PLAN\05901_PP.DWG								
LAYOUT NAME:	02								
PLOT DATE:	4/27/2022 4:55 PM								
PLOT BY:	CHRISTIANSON.ERIN.M								
PLOT SCALE:	1 IN=50 FT								
	WISDOT/CADDIS SHEET 44								

Addendum No. 01
 ID 6610-04-70
 Revised Sheet 102
 May 2, 2022



STATION	ELEVATION	DESCRIPTION
49D	1148.95	
50D	1148.96	STA 50+00.00 D EL 1148.96
51D	1148.97	1149.00
52D	1148.98	1148.98
53D	1148.99	1149.00
54D	1149.00	1149.00
55D	1149.01	1149.01
56D	1149.02	1149.02
57D	1149.03	1149.03
58D	1149.04	1149.04
59D	1149.05	1149.05
60D	1149.06	1149.06
61D	1149.07	1149.07
62D	1149.08	1149.08
63D	1149.09	1149.09
64D	1149.10	1149.10
65D	1149.11	1149.11
66D	1149.12	1149.12
67D	1149.13	1149.13
68D	1149.14	1149.14
69D	1149.15	1149.15
70D	1149.16	1149.16
71D	1149.17	1149.17
72D	1149.18	1149.18
73D	1149.19	1149.19
74D	1149.20	1149.20
75D	1149.21	1149.21
76D	1149.22	1149.22
77D	1149.23	1149.23
78D	1149.24	1149.24
79D	1149.25	1149.25
80D	1149.26	1149.26
81D	1149.27	1149.27
82D	1149.28	1149.28
83D	1149.29	1149.29
84D	1149.30	1149.30
85D	1149.31	1149.31
86D	1149.32	1149.32
87D	1149.33	1149.33
88D	1149.34	1149.34
89D	1149.35	1149.35
90D	1149.36	1149.36
91D	1149.37	1149.37
92D	1149.38	1149.38
93D	1149.39	1149.39
94D	1149.40	1149.40
95D	1149.41	1149.41
96D	1149.42	1149.42
97D	1149.43	1149.43
98D	1149.44	1149.44
99D	1149.45	1149.45
100D	1149.46	1149.46
101D	1149.47	1149.47
102D	1149.48	1149.48
103D	1149.49	1149.49
104D	1149.50	1149.50
105D	1149.51	1149.51
106D	1149.52	1149.52
107D	1149.53	1149.53
108D	1149.54	1149.54
109D	1149.55	1149.55
110D	1149.56	1149.56
111D	1149.57	1149.57
112D	1149.58	1149.58
113D	1149.59	1149.59
114D	1149.60	1149.60
115D	1149.61	1149.61
116D	1149.62	1149.62
117D	1149.63	1149.63
118D	1149.64	1149.64
119D	1149.65	1149.65
120D	1149.66	1149.66
121D	1149.67	1149.67
122D	1149.68	1149.68
123D	1149.69	1149.69
124D	1149.70	1149.70
125D	1149.71	1149.71
126D	1149.72	1149.72
127D	1149.73	1149.73
128D	1149.74	1149.74
129D	1149.75	1149.75
130D	1149.76	1149.76
131D	1149.77	1149.77
132D	1149.78	1149.78
133D	1149.79	1149.79
134D	1149.80	1149.80
135D	1149.81	1149.81
136D	1149.82	1149.82
137D	1149.83	1149.83
138D	1149.84	1149.84
139D	1149.85	1149.85
140D	1149.86	1149.86
141D	1149.87	1149.87
142D	1149.88	1149.88
143D	1149.89	1149.89
144D	1149.90	1149.90
145D	1149.91	1149.91
146D	1149.92	1149.92
147D	1149.93	1149.93
148D	1149.94	1149.94
149D	1149.95	1149.95
150D	1149.96	1149.96
151D	1149.97	1149.97
152D	1149.98	1149.98
153D	1149.99	1149.99
154D	1150.00	1150.00
155D	1150.01	1150.01
156D	1150.02	1150.02
157D	1150.03	1150.03
158D	1150.04	1150.04
159D	1150.05	1150.05
160D	1150.06	1150.06
161D	1150.07	1150.07
162D	1150.08	1150.08
163D	1150.09	1150.09
164D	1150.10	1150.10
165D	1150.11	1150.11
166D	1150.12	1150.12
167D	1150.13	1150.13
168D	1150.14	1150.14
169D	1150.15	1150.15
170D	1150.16	1150.16
171D	1150.17	1150.17
172D	1150.18	1150.18
173D	1150.19	1150.19
174D	1150.20	1150.20
175D	1150.21	1150.21
176D	1150.22	1150.22
177D	1150.23	1150.23
178D	1150.24	1150.24
179D	1150.25	1150.25
180D	1150.26	1150.26
181D	1150.27	1150.27
182D	1150.28	1150.28
183D	1150.29	1150.29
184D	1150.30	1150.30
185D	1150.31	1150.31
186D	1150.32	1150.32
187D	1150.33	1150.33
188D	1150.34	1150.34
189D	1150.35	1150.35
190D	1150.36	1150.36
191D	1150.37	1150.37
192D	1150.38	1150.38
193D	1150.39	1150.39
194D	1150.40	1150.40
195D	1150.41	1150.41
196D	1150.42	1150.42
197D	1150.43	1150.43
198D	1150.44	1150.44
199D	1150.45	1150.45
200D	1150.46	1150.46
201D	1150.47	1150.47
202D	1150.48	1150.48
203D	1150.49	1150.49
204D	1150.50	1150.50
205D	1150.51	1150.51
206D	1150.52	1150.52
207D	1150.53	1150.53
208D	1150.54	1150.54
209D	1150.55	1150.55
210D	1150.56	1150.56
211D	1150.57	1150.57
212D	1150.58	1150.58
213D	1150.59	1150.59
214D	1150.60	1150.60
215D	1150.61	1150.61
216D	1150.62	1150.62
217D	1150.63	1150.63
218D	1150.64	1150.64
219D	1150.65	1150.65
220D	1150.66	1150.66
221D	1150.67	1150.67
222D	1150.68	1150.68
223D	1150.69	1150.69
224D	1150.70	1150.70
225D	1150.71	1150.71
226D	1150.72	1150.72
227D	1150.73	1150.73
228D	1150.74	1150.74
229D	1150.75	1150.75
230D	1150.76	1150.76
231D	1150.77	1150.77
232D	1150.78	1150.78
233D	1150.79	1150.79
234D	1150.80	1150.80
235D	1150.81	1150.81
236D	1150.82	1150.82
237D	1150.83	1150.83
238D	1150.84	1150.84
239D	1150.85	1150.85
240D	1150.86	1150.86
241D	1150.87	1150.87
242D	1150.88	1150.88
243D	1150.89	1150.89
244D	1150.90	1150.90
245D	1150.91	1150.91
246D	1150.92	1150.92
247D	1150.93	1150.93
248D	1150.94	1150.94
249D	1150.95	1150.95
250D	1150.96	1150.96
251D	1150.97	1150.97
252D	1150.98	1150.98
253D	1150.99	1150.99
254D	1151.00	1151.00
255D	1151.01	1151.01
256D	1151.02	1151.02
257D	1151.03	1151.03
258D	1151.04	1151.04
259D	1151.05	1151.05
260D	1151.06	1151.06
261D	1151.07	1151.07
262D	1151.08	1151.08
263D	1151.09	1151.09
264D	1151.10	1151.10
265D	1151.11	1151.11
266D	1151.12	1151.12
267D	1151.13	1151.13
268D	1151.14	1151.14
269D	1151.15	1151.15
270D	1151.16	1151.16
271D	1151.17	1151.17
272D	1151.18	1151.18
273D	1151.19	1151.19
274D	1151.20	1151.20
275D	1151.21	1151.21
276D	1151.22	1151.22
277D	1151.23	1151.23
278D	1151.24	1151.24
279D	1151.25	1151.25
280D	1151.26	1151.26
281D	1151.27	1151.27
282D	1151.28	1151.28
283D	1151.29	1151.29
284D	1151.30	1151.30
285D	1151.31	1151.31
286D	1151.32	1151.32
287D	1151.33	1151.33
288D	1151.34	1151.34
289D	1151.35	1151.35
290D	1151.36	1151.36
291D	1151.37	1151.37
292D	1151.38	1151.38
293D	1151.39	1151.39
294D	1151.40	1151.40
295D	1151.41	1151.41
296D	1151.42	1151.42
297D	1151.43	1151.43
298D	1151.44	1151.44
299D	1151.45	1151.45
300D	1151.46	1151.46
301D	1151.47	1151.47
302D	1151.48	1151.48
303D	1151.49	1151.49
304D	1151.50	1151.50
305D	1151.51	1151.51
306D	1151.52	1151.52
307D	1151.53	1151.53
308D	1151.54	1151.54
309D	1151.55	1151.55
310D	1151.56	1151.56
311D	1151.57	1151.57
312D	1151.58	1151.58
313D	1151.59	1151.59
314D	1151.60	1151.60
315D	1151.61	1151.61
316D	1151.62	1151.62
317D	1151.63	1151.63
318D	1151.64	1151.64
319D	1151.65	1151.65
320D	1151.66	1151.66
321D	1151.67	1151.67
322D	1151.68	1151.68
323D	1151.69	1151.69
324D	1151.70	1151.70
325D	1151.71	1151.71
326D	1151.72	1151.72
327D	1151.	

Addendum No. 01
ID 6610-04-70
Revised Sheet 229
May 2, 2022

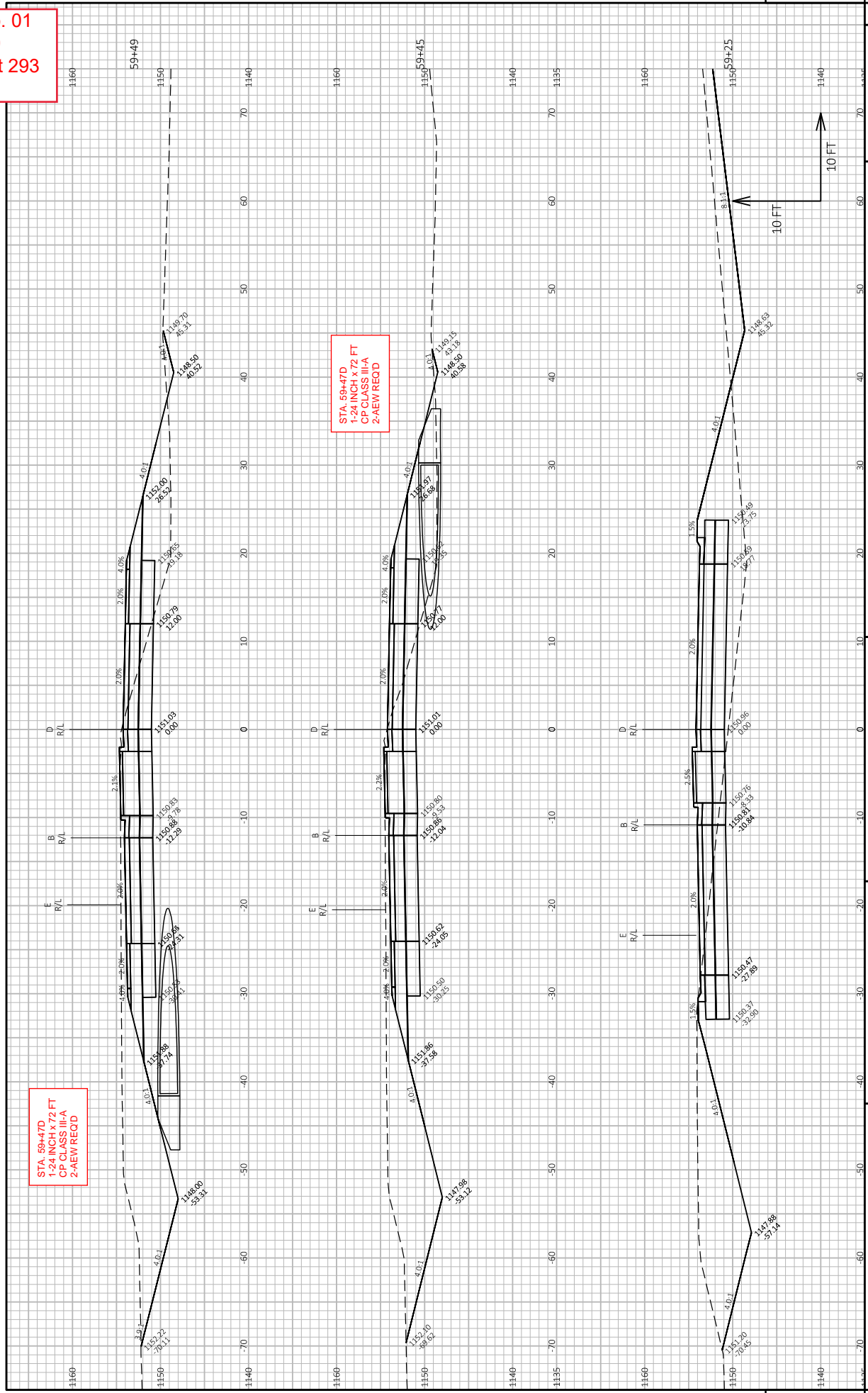


STA 9+13NB
1-24 INCH x 108 FT
CP CLASS III-A
2-AEW REQD

STA 9+13NB
1-24 INCH x 108 FT
CP CLASS III-A
2-AEW REQD

9

Addendum No. 01
 ID 6610-04-70
 Revised Sheet 293
 May 2, 2022

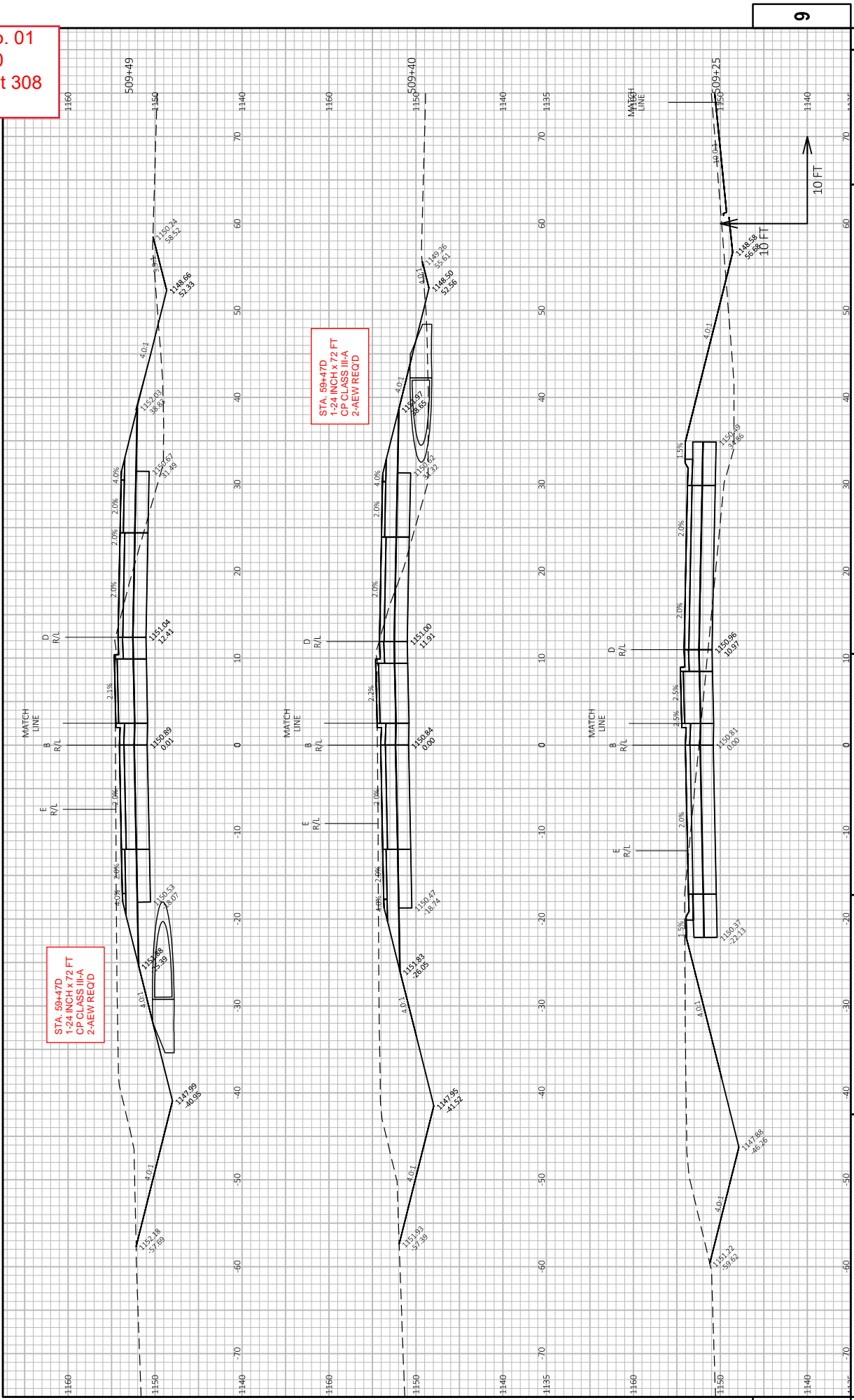


STA. 59+47D
 1-24 INCH X 72 FT
 CP CLASS III-A
 2-AEW REQD

STA. 59+47D
 1-24 INCH X 72 FT
 CP CLASS III-A
 2-AEW REQD

9

Addendum No. 01
 ID 6610-04-70
 Revised Sheet 308
 May 2, 2022



PROJECT NO: 6610-04-70
 COUNTY: MARATHON
 HWY: STH 34
 CROSS SECTIONS: DB-OLD51_SB
 SHEET: 308
 FILE NAME: N:\PDS\3\06100400\SHEET\PLAN\061004-DB-OLD51-SB_XS.DWG
 LAYOUT NAME: DB-0451-SB-1
 PLOT DATE: 1/31/2022 5:38 PM
 PLOT BY: CHRISTIANSON, ERIN M
 PLOT NAME: WISDOT/CADD/SHEET 49
 PLOT SCALE: 1 IN=10 FT HORIZ. / 1 IN=10 FT VERT.



Proposal Schedule of Items

Proposal ID: 20220510027 Project(s): 6610-04-70

Federal ID(s): WISC 2022406

SECTION: 0001 Contract Items

Alt Set ID: Alt Mbr ID:

Proposal Line Number	Item ID Description	Approximate Quantity and Units	Unit Price	Bid Amount
0002	201.0105 Clearing	25.000 STA	_____.	_____.
0004	201.0205 Grubbing	25.000 STA	_____.	_____.
0006	203.0100 Removing Small Pipe Culverts	3.000 EACH	_____.	_____.
0008	204.0100 Removing Concrete Pavement	2,647.000 SY	_____.	_____.
0010	204.0150 Removing Curb & Gutter	412.000 LF	_____.	_____.
0012	204.0170 Removing Fence	1,385.000 LF	_____.	_____.
0014	204.9060.S Removing (item description) 01. Apron Endwall	1.000 EACH	_____.	_____.
0016	205.0100 Excavation Common	12,670.000 CY	_____.	_____.
0018	205.0400 Excavation Marsh	1,932.000 CY	_____.	_____.
0020	208.0100 Borrow	5,986.000 CY	_____.	_____.
0022	213.0100 Finishing Roadway (project) 01. 6610-04-70	1.000 EACH	_____.	_____.
0024	305.0110 Base Aggregate Dense 3/4-Inch	517.000 TON	_____.	_____.
0026	305.0120 Base Aggregate Dense 1 1/4-Inch	16,608.000 TON	_____.	_____.
0028	311.0110 Breaker Run	10,181.000 TON	_____.	_____.
0030	405.0100 Coloring Concrete WisDOT Red	147.000 CY	_____.	_____.
0032	416.0512 Concrete Truck Apron 12-Inch	440.000 SY	_____.	_____.



Proposal Schedule of Items

Proposal ID: 20220510027 Project(s): 6610-04-70

Federal ID(s): WISC 2022406

SECTION: 0001 Contract Items

Alt Set ID: Alt Mbr ID:

Proposal Line Number	Item ID Description	Approximate Quantity and Units	Unit Price	Bid Amount
0034	416.0610 Drilled Tie Bars	44.000 EACH	_____.	_____.
0036	455.0605 Tack Coat	1,748.000 GAL	_____.	_____.
0038	460.2000 Incentive Density HMA Pavement	2,500.000 DOL	1.00000	2,500.00
0040	460.7223 HMA Pavement 3 HT 58-28 S	2,570.000 TON	_____.	_____.
0042	460.7424 HMA Pavement 4 HT 58-28 H	1,362.000 TON	_____.	_____.
0044	465.0110 Asphaltic Surface Patching	70.000 TON	_____.	_____.
0046	465.0120 Asphaltic Surface Driveways and Field Entrances	27.000 TON	_____.	_____.
0048	465.0125 Asphaltic Surface Temporary	934.000 TON	_____.	_____.
0050	465.0315 Asphaltic Flumes	141.000 SY	_____.	_____.
0052	520.1024 Apron Endwalls for Culvert Pipe 24-Inch	5.000 EACH	_____.	_____.
0054	520.2024 Culvert Pipe Temporary 24-Inch	23.000 LF	_____.	_____.
0056	520.8000 Concrete Collars for Pipe	1.000 EACH	_____.	_____.
0064	522.1012 Apron Endwalls for Culvert Pipe Reinforced Concrete 12-Inch	5.000 EACH	_____.	_____.
0066	522.1024 Apron Endwalls for Culvert Pipe Reinforced Concrete 24-Inch	4.000 EACH	_____.	_____.
0068	601.0105 Concrete Curb Type A	47.000 LF	_____.	_____.
0070	601.0405 Concrete Curb & Gutter 18-Inch Type A	247.000 LF	_____.	_____.



Proposal Schedule of Items

Proposal ID: 20220510027 Project(s): 6610-04-70

Federal ID(s): WISC 2022406

SECTION: 0001 Contract Items

Alt Set ID: Alt Mbr ID:

Proposal Line Number	Item ID Description	Approximate Quantity and Units	Unit Price	Bid Amount
0072	601.0409 Concrete Curb & Gutter 30-Inch Type A	82.000 LF	_____.	_____.
0074	601.0411 Concrete Curb & Gutter 30-Inch Type D	1,341.000 LF	_____.	_____.
0076	601.0551 Concrete Curb & Gutter 4-Inch Sloped 36-Inch Type A	112.000 LF	_____.	_____.
0078	601.0553 Concrete Curb & Gutter 4-Inch Sloped 36-Inch Type D	1,844.000 LF	_____.	_____.
0080	601.0580 Concrete Curb & Gutter 4-Inch Sloped 36-Inch Type R	346.000 LF	_____.	_____.
0082	602.0405 Concrete Sidewalk 4-Inch	9,966.000 SF	_____.	_____.
0084	602.0505 Curb Ramp Detectable Warning Field Yellow	160.000 SF	_____.	_____.
0086	603.8000 Concrete Barrier Temporary Precast Delivered	2,720.000 LF	_____.	_____.
0088	603.8125 Concrete Barrier Temporary Precast Installed	4,660.000 LF	_____.	_____.
0092	611.0624 Inlet Covers Type H	4.000 EACH	_____.	_____.
0094	611.0627 Inlet Covers Type HM	5.000 EACH	_____.	_____.
0096	611.0652 Inlet Covers Type T	2.000 EACH	_____.	_____.
0098	611.3225 Inlets 2x2.5-FT	2.000 EACH	_____.	_____.
0100	611.3230 Inlets 2x3-FT	9.000 EACH	_____.	_____.
0102	614.0905 Crash Cushions Temporary	2.000 EACH	_____.	_____.



Proposal Schedule of Items

Proposal ID: 20220510027 Project(s): 6610-04-70

Federal ID(s): WISC 2022406

SECTION: 0001 Contract Items

Alt Set ID: Alt Mbr ID:

Proposal Line Number	Item ID Description	Approximate Quantity and Units	Unit Price	Bid Amount
0104	616.0100 Fence Woven Wire (height) 01. 4-FT	800.000 LF	_____.	_____.
0106	618.0100 Maintenance And Repair of Haul Roads (project) 01. 6610-04-70	1.000 EACH	_____.	_____.
0108	619.1000 Mobilization	1.000 EACH	_____.	_____.
0110	620.0300 Concrete Median Sloped Nose	454.000 SF	_____.	_____.
0112	624.0100 Water	273.000 MGAL	_____.	_____.
0114	625.0100 Topsoil	33,000.000 SY	_____.	_____.
0116	627.0200 Mulching	33,000.000 SY	_____.	_____.
0118	628.1504 Silt Fence	2,700.000 LF	_____.	_____.
0120	628.1520 Silt Fence Maintenance	2,700.000 LF	_____.	_____.
0122	628.1905 Mobilizations Erosion Control	10.000 EACH	_____.	_____.
0124	628.1910 Mobilizations Emergency Erosion Control	4.000 EACH	_____.	_____.
0126	628.2006 Erosion Mat Urban Class I Type A	814.000 SY	_____.	_____.
0128	628.7015 Inlet Protection Type C	11.000 EACH	_____.	_____.
0130	628.7504 Temporary Ditch Checks	40.000 LF	_____.	_____.
0132	628.7555 Culvert Pipe Checks	38.000 EACH	_____.	_____.
0134	628.7570 Rock Bags	65.000 EACH	_____.	_____.



Proposal Schedule of Items

Proposal ID: 20220510027 Project(s): 6610-04-70

Federal ID(s): WISC 2022406

SECTION: 0001 Contract Items

Alt Set ID: Alt Mbr ID:

Proposal Line Number	Item ID Description	Approximate Quantity and Units	Unit Price	Bid Amount
0136	629.0210 Fertilizer Type B	19.000 CWT	_____.	_____.
0138	630.0140 Seeding Mixture No. 40	585.000 LB	_____.	_____.
0140	630.0200 Seeding Temporary	58.000 LB	_____.	_____.
0142	630.0500 Seed Water	330.000 MGAL	_____.	_____.
0144	632.0201 Shrubs (species) (size) (root) 01. Sea Green, B&B, 5 GAL	3.000 EACH	_____.	_____.
0146	632.9101 Landscape Planting Surveillance and Care Cycles	15.000 EACH	_____.	_____.
0148	633.5200 Markers Culvert End	10.000 EACH	_____.	_____.
0150	634.0612 Posts Wood 4x6-Inch X 12-FT	8.000 EACH	_____.	_____.
0152	634.0614 Posts Wood 4x6-Inch X 14-FT	24.000 EACH	_____.	_____.
0154	634.0616 Posts Wood 4x6-Inch X 16-FT	28.000 EACH	_____.	_____.
0156	634.0618 Posts Wood 4x6-Inch X 18-FT	3.000 EACH	_____.	_____.
0158	634.0620 Posts Wood 4x6-Inch X 20-FT	3.000 EACH	_____.	_____.
0160	634.0622 Posts Wood 4x6-Inch X 22-FT	2.000 EACH	_____.	_____.
0162	637.2210 Signs Type II Reflective H	484.170 SF	_____.	_____.
0164	637.2230 Signs Type II Reflective F	43.000 SF	_____.	_____.
0166	638.2102 Moving Signs Type II	1.000 EACH	_____.	_____.



Proposal Schedule of Items

Proposal ID: 20220510027 Project(s): 6610-04-70

Federal ID(s): WISC 2022406

SECTION: 0001 Contract Items

Alt Set ID: Alt Mbr ID:

Proposal Line Number	Item ID Description	Approximate Quantity and Units	Unit Price	Bid Amount
0168	638.2602 Removing Signs Type II	41.000 EACH	_____.	_____.
0170	638.3000 Removing Small Sign Supports	48.000 EACH	_____.	_____.
0172	638.4000 Moving Small Sign Supports	1.000 EACH	_____.	_____.
0174	642.5201 Field Office Type C	1.000 EACH	_____.	_____.
0176	643.0300 Traffic Control Drums	4,084.000 DAY	_____.	_____.
0178	643.0420 Traffic Control Barricades Type III	2,432.000 DAY	_____.	_____.
0180	643.0705 Traffic Control Warning Lights Type A	1,772.000 DAY	_____.	_____.
0182	643.0715 Traffic Control Warning Lights Type C	383.000 DAY	_____.	_____.
0184	643.0900 Traffic Control Signs	3,576.000 DAY	_____.	_____.
0186	643.1000 Traffic Control Signs Fixed Message	69.000 SF	_____.	_____.
0188	643.1050 Traffic Control Signs PCMS	8.000 DAY	_____.	_____.
0190	643.5000 Traffic Control	1.000 EACH	_____.	_____.
0192	645.0140 Geotextile Type SAS	11,302.000 SY	_____.	_____.
0194	646.1020 Marking Line Epoxy 4-Inch	6,678.000 LF	_____.	_____.
0196	646.1040 Marking Line Grooved Wet Ref Epoxy 4-Inch	9,856.000 LF	_____.	_____.
0198	646.3020 Marking Line Epoxy 8-Inch	253.000 LF	_____.	_____.



Proposal Schedule of Items

Proposal ID: 20220510027 Project(s): 6610-04-70

Federal ID(s): WISC 2022406

SECTION: 0001 Contract Items

Alt Set ID: Alt Mbr ID:

Proposal Line Number	Item ID Description	Approximate Quantity and Units	Unit Price	Bid Amount
0200	646.3040 Marking Line Grooved Wet Ref Epoxy 8-Inch	171.000 LF	_____.	_____.
0202	646.4520 Marking Line Same Day Epoxy 4-Inch	6,045.000 LF	_____.	_____.
0204	646.4620 Marking Line Same Day Epoxy 8-Inch	365.000 LF	_____.	_____.
0206	646.6120 Marking Stop Line Epoxy 18-Inch	44.000 LF	_____.	_____.
0208	646.6320 Marking Dotted Extension Epoxy 18-Inch	69.000 LF	_____.	_____.
0210	646.7120 Marking Diagonal Epoxy 12-Inch	260.000 LF	_____.	_____.
0212	646.8120 Marking Curb Epoxy	80.000 LF	_____.	_____.
0214	646.8220 Marking Island Nose Epoxy	4.000 EACH	_____.	_____.
0216	646.9000 Marking Removal Line 4-Inch	5,839.000 LF	_____.	_____.
0218	646.9100 Marking Removal Line 8-Inch	365.000 LF	_____.	_____.
0220	649.0105 Temporary Marking Line Paint 4-Inch	7,200.000 LF	_____.	_____.
0222	649.0150 Temporary Marking Line Removable Tape 4-Inch	260.000 LF	_____.	_____.
0224	649.0250 Temporary Marking Line Removable Tape 8-Inch	130.000 LF	_____.	_____.
0226	650.4000 Construction Staking Storm Sewer	17.000 EACH	_____.	_____.
0228	650.4500 Construction Staking Subgrade	7,843.000 LF	_____.	_____.
0230	650.5000 Construction Staking Base	7,843.000 LF	_____.	_____.



Proposal Schedule of Items

Proposal ID: 20220510027 Project(s): 6610-04-70

Federal ID(s): WISC 2022406

SECTION: 0001 Contract Items

Alt Set ID: Alt Mbr ID:

Proposal Line Number	Item ID Description	Approximate Quantity and Units	Unit Price	Bid Amount
0232	650.5500 Construction Staking Curb Gutter and Curb & Gutter	3,636.000 LF	_____.	_____.
0234	650.6000 Construction Staking Pipe Culverts	4.000 EACH	_____.	_____.
0236	650.8500 Construction Staking Electrical Installations (project) 01. 6610-04-70	LS	LUMP SUM	_____.
0238	650.9910 Construction Staking Supplemental Control (project) 01. 6610-04-70	LS	LUMP SUM	_____.
0240	650.9920 Construction Staking Slope Stakes	7,843.000 LF	_____.	_____.
0242	652.0225 Conduit Rigid Nonmetallic Schedule 40 2-Inch	2,539.000 LF	_____.	_____.
0244	652.0235 Conduit Rigid Nonmetallic Schedule 40 3-Inch	45.000 LF	_____.	_____.
0246	653.0164 Pull Boxes Non-Conductive 24x42-Inch	9.000 EACH	_____.	_____.
0248	654.0105 Concrete Bases Type 5	16.000 EACH	_____.	_____.
0250	654.0230 Concrete Control Cabinet Bases Type L30	1.000 EACH	_____.	_____.
0252	655.0610 Electrical Wire Lighting 12 AWG	2,616.000 LF	_____.	_____.
0254	655.0620 Electrical Wire Lighting 8 AWG	8,454.000 LF	_____.	_____.
0256	656.0200 Electrical Service Meter Breaker Pedestal (location) 01. Sta 510+40B	LS	LUMP SUM	_____.
0258	657.0255 Transformer Bases Breakaway 11 1/2-Inch Bolt Circle	16.000 EACH	_____.	_____.
0260	657.0322 Poles Type 5-Aluminum	16.000 EACH	_____.	_____.



Proposal Schedule of Items

Proposal ID: 20220510027 Project(s): 6610-04-70

Federal ID(s): WISC 2022406

SECTION: 0001 Contract Items

Alt Set ID: Alt Mbr ID:

Proposal Line Number	Item ID Description	Approximate Quantity and Units	Unit Price	Bid Amount
0262	657.0615 Luminaire Arms Single Member 4 1/2-Inch Clamp 8-FT	16.000 EACH	_____.	_____.
0264	659.1115 Luminaires Utility LED A	16.000 EACH	_____.	_____.
0266	659.2130 Lighting Control Cabinets 120/240 30-Inch	1.000 EACH	_____.	_____.
0268	690.0150 Sawing Asphalt	385.000 LF	_____.	_____.
0270	690.0250 Sawing Concrete	130.000 LF	_____.	_____.
0272	ASP.1T0A On-the-Job Training Apprentice at \$5.00/HR	1,200.000 HRS	5.00000	6,000.00
0274	ASP.1T0G On-the-Job Training Graduate at \$5.00/HR	600.000 HRS	5.00000	3,000.00
0276	SPV.0030 Special 01. Fertilizer for Lawn Type Turf	2.000 CWT	_____.	_____.
0278	SPV.0060 Special 01. Research and Locate Existing Land Parcel Monuments	22.000 EACH	_____.	_____.
0280	SPV.0060 Special 02. Verify and Replace Existing Land Parcel Monuments	22.000 EACH	_____.	_____.
0282	SPV.0085 Special 01. Seeding No Mow Fescue	24.000 LB	_____.	_____.
0284	SPV.0090 Special 01. Temporary Drainage Pipe	71.000 LF	_____.	_____.
0286	SPV.0180 Special 01. Preparing Topsoil for Lawn Type Turf	3,050.000 SY	_____.	_____.
0288	520.1012 Apron Endwalls for Culvert Pipe 12-Inch	5.000 EACH	_____.	_____.
0290	520.3312 Culvert Pipe Class III-A 12-Inch	66.000 LF	_____.	_____.



Proposal Schedule of Items

Proposal ID: 20220510027 Project(s): 6610-04-70

Federal ID(s): WISC 2022406

SECTION: 0001 Contract Items

Alt Set ID: Alt Mbr ID:

Proposal Line Number	Item ID Description	Approximate Quantity and Units	Unit Price	Bid Amount
0292	520.3324 Culvert Pipe Class III-A 24-Inch	180.000 LF	_____.	_____.
0294	522.0412 Culvert Pipe Reinforced Concrete Class IV 12-Inch	55.000 LF	_____.	_____.
0298	608.0412 Storm Sewer Pipe Reinforced Concrete Class IV 12-Inch	129.000 LF	_____.	_____.
0300	608.3012 Storm Sewer Pipe Class III-A 12-Inch	166.000 LF	_____.	_____.
Section: 0001			Total:	_____.
			Total Bid:	_____.

