



Wisconsin Department of Transportation

Division of Transportation Systems Development

Bureau of Project Development
4822 Madison Yards Way, 4th Floor South
Madison, WI 53705

December 8, 2022

Telephone: (608) 266-1631
Facsimile (FAX): (608) 266-8459

NOTICE TO ALL CONTRACTORS:

Proposal #09: 5540-02-70, WISC 2023090
Mt Sterling - Viroqua
.49 Mi S CTH C to Brookville Rd
STH 27
Crawford and Vernon Counties

Letting of December 13, 2022

This is Addendum No. 01, which provides for the following:

Schedule of Items:

Revised Bid Item Quantities					
Bid Item	Item Description	Unit	Proposal Total Prior to Addendum	Proposal Quantity Change (-)	Proposal Total After Addendum
520.8700	Cleaning Culvert Pipes	EACH	1	9	10
520.9750.S	Cleaning Culvert Pipes for Liner Verification	EACH	9	-1	8

Added Bid Item Quantities					
Bid Item	Item Description	Unit	Proposal Total Prior to Addendum	Quantity Added	Proposal Total After Addendum
211.0400	Prepare Foundation for Asphaltic Shoulders	STA	0	284	284

Plan Sheets:

Revised Plan Sheets	
Plan Sheet	Plan Sheet Title (brief description of changes to sheet)
47	Miscellaneous Quantities (added Prepare Foundation for Asphaltic Shoulders)
49	Miscellaneous Quantities (updated quantities for Cleaning Culvert Pipes and Cleaning Culvert Pipes for Liner Verification)
58-61, 63-65	Plan (updated callouts to clarify locations for Cleaning Culvert Pipes and Cleaning Culvert Pipes for Liner Verification)

Schedule of Items

Attached, dated December 8, 2022, are the revised Schedule of Items Pages 3 and 7.

Plan Sheets

The following 8½ x 11-inch sheets are attached and made part of the plans for this proposal:

Revised: 47, 49, 58-61, 63-65

The responsibility for notifying potential subcontractors and suppliers of these changes remains with the prime contractor.

Sincerely,

Mike Coleman

Proposal Development Specialist
Proposal Management Section

END OF ADDENDUM

GRADING SHAPING FINISHING INTERSECTION

205.9016.S.01 205.9016.S.02

STATION	TO	STATION	LOCATION	EACH	SY	CWT	LB	SEEDING MIXTURE NO. 30*	SEEDING MIXTURE NO. 40*	SEED WATER*	EROSION MAT CLASS II TYPE*	COMMON*
CRAWFORD COUNTY												
1593+88.8	-	1594+60.9	LT	1	-	0.1	-	1	-	1	-	7
VERNON COUNTY												
1760+0.5	-	1770+63.5	RT	-	1	0.4	9	-	-	12	545	488
ITEM TOTAL												
				1	1							3

* ITEMS SHOWN FOR REFERENCE ONLY. ITEMS INCIDENTAL TO THE ITEM BARRIER SYSTEM GRADING SHAPING FINISHING.

ASPHALT CENTERLINE RUMBLE STRIPS 2-LANE RURAL

465.0475
UF

STATION	TO	STATION	LOCATION	EACH	SY	CWT	LB	SEEDING MIXTURE NO. 30*	SEEDING MIXTURE NO. 40*	SEED WATER*	EROSION MAT CLASS II TYPE*	COMMON*
CRAWFORD COUNTY												
1423+25	-	1476+00										
1476+00	-	1529+00										
1529+00	-	1582+00										
1582+00	-	1631+02										
VERNON COUNTY												
1631+02	-	1684+00										
1684+00	-	1737+00										
1737+00	-	1790+00										
1790+00	-	1843+00										
1843+00	-	1896+00										
1896+00	-	1950+00										
1950+00	-	2005+00										
2005+00	-	2058+00										
2058+00	-	2122+20										
2122+20	-	2175+00										
ITEM TOTAL												
				55,800								

PWL TEST STRIPS

460.0105.S

STATION	TO	STATION	HMA PERCENT WITHIN LIMITS (PWL) TEST STRIP VOLUMETRICS	HMA PERCENT WITHIN LIMITS (PWL) TEST STRIP DENSITY EACH
1423+25	-	2122+20	2	2
ITEM TOTAL				
				2

AGGREGATE ITEMS

STATION	TO	STATION	TON	WATER	MGAL
CRAWFORD COUNTY					
1423+25	-	1476+00	396	-	6
1476+00	-	1529+00	466	-	7
1529+00	-	1582+00	419	-	14
1582+00	-	1631+02	491	-	8
UNDISTRIBUTED					
				397	6
VERNON COUNTY					
1631+02	-	1684+00	488	-	8
1684+00	-	1737+00	483	-	11
1737+00	-	1790+00	520	-	13
1790+00	-	1843+00	490	-	12
1843+00	-	1896+00	493	-	11
1896+00	-	1950+00	288	-	12
1950+00	-	2005+00	513	-	8
2005+00	-	2058+00	485	-	8
2058+00	-	2122+20	594	-	9
UNDISTRIBUTED					
				1,237	19
ITEM TOTAL					
				6,400	152

ASPHALTIC ITEMS

STATION	TO	STATION	TON	TON	TON
CRAWFORD COUNTY					
1423+25	-	1476+00	1,792	-	3,225
1476+00	-	1529+00	1,752	-	1,693
1529+00	-	1582+00	1,732	-	2,830
1582+00	-	1631+02	1,738	-	1,420
UNDISTRIBUTED					
				104	165
VERNON COUNTY					
1631+02	-	1684+00	2,136	-	1,744
1684+00	-	1737+00	2,115	-	1,727
1737+00	-	1790+00	2,447	-	1,599
1790+00	-	1843+00	2,145	-	2,253
1843+00	-	1896+00	2,145	-	1,755
1896+00	-	1950+00	2,202	-	1,798
1950+00	-	2005+00	2,284	-	1,865
2005+00	-	2058+00	2,121	-	1,732
2058+00	-	2122+20	2,703	-	2,210
ITEM TOTAL					
				27,420	26,520

MISCELLANEOUS QUANTITIES

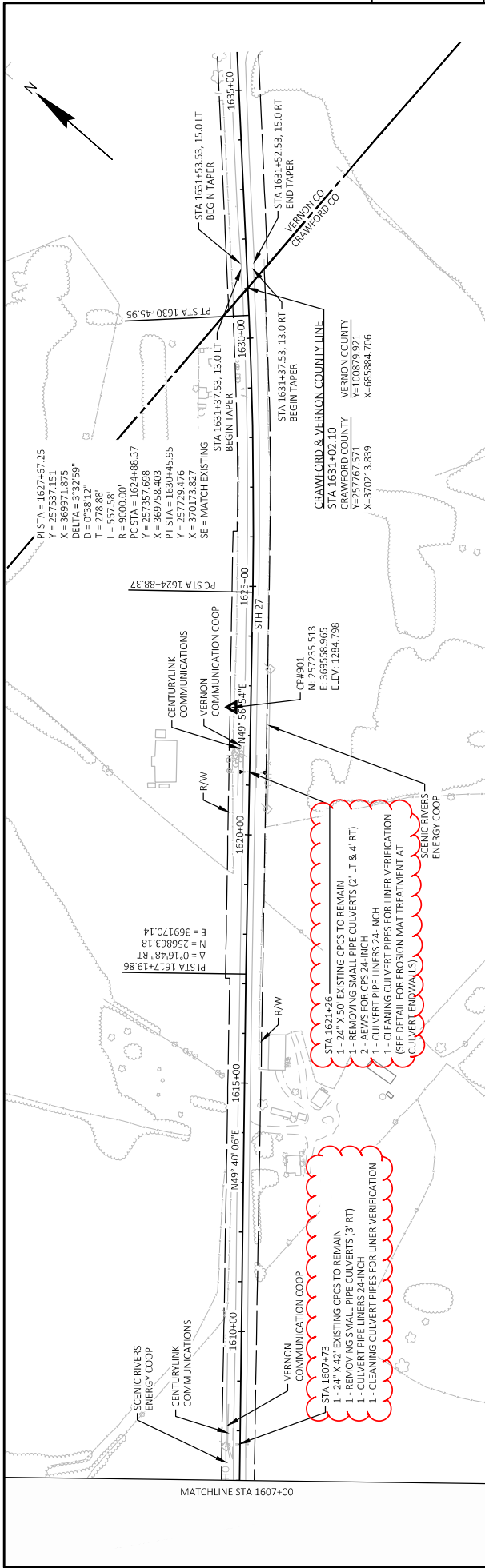
STATION	TO	STATION	TON	MGAL
CRAWFORD & VERNON				
			3,356	152
ITEM TOTAL				
			6,400	152

CULVERT PIPE ITEMS

STATION	LOCATION	520.1024 APRON ENDWALLS FOR CULVERT PIPE 24-INCH		520.8700 CLEANING CULVERT PIPES		520.9700.S CULVERT PIPE LINERS 24-INCH		520.9750.S CLEANING CULVERT PIPES FOR LINER VERIFICATION		521.1018 APRON ENDWALLS FOR CULVERT PIPE STEEL 24-INCH		521.3124 CORRUGATED CULVERT PIPE		628.7555 PIPE CHECKS		633.5200 MARKERS CULVERT END		SPV.0660.01 RESHAPE EMBANKMENT		ALUMINUM THICKNESS (INCHES)		STEEL THICKNESS (INCHES)	
		EACH	LF	EACH	LF	EACH	LF	EACH	LF	EACH	LF	EACH	LF	EACH	LF	EACH	LF	EACH	LF	EACH	LF	EACH	LF
CRAWFORD COUNTY																							
1473+50	LT	-	-	-	-	-	-	-	-	-	1	22	-	-	-	-	-	-	-	-	-	-	0.064
1504+12	LT	-	-	-	-	-	-	-	-	-	1	-	-	-	-	-	-	-	-	-	-	-	-
1552+24	LT & RT	2	42	-	-	-	-	-	-	-	-	-	-	-	-	-	-	-	-	-	-	0.075	0.064
1558+41	LT & RT	1	46	-	-	-	-	-	-	-	-	-	-	-	-	-	-	-	-	-	-	0.075	0.064
1587+02	RT	-	-	-	-	-	-	-	-	-	1	-	-	-	-	-	-	-	-	-	-	-	-
1598+35	LT & RT	-	-	1	-	-	-	-	-	-	-	-	-	-	-	-	-	-	-	-	-	-	-
1607+73	LT & RT	-	-	-	39	-	-	-	-	-	-	-	-	-	-	-	-	-	-	-	-	-	-
1621+26	LT & RT	-	-	-	44	-	-	-	-	-	2	-	-	-	-	-	-	-	-	-	-	-	-
VERNON COUNTY																							
1635+03	RT	-	-	-	-	-	-	-	-	-	-	-	-	-	-	-	-	-	-	-	-	-	-
1643+15	RT	-	-	-	57	-	-	-	-	-	-	-	-	-	-	-	-	-	-	-	-	-	0.064
1666+55	LT	-	-	-	-	-	-	-	-	-	1	-	-	-	-	-	-	-	-	-	-	-	-
1672+59	LT	-	-	-	-	-	-	-	-	-	1	-	-	-	-	-	-	-	-	-	-	-	-
1684+49	RT	-	-	1	-	-	-	-	-	-	-	-	-	-	-	-	-	-	-	-	-	-	-
1690+60	LT & RT	-	-	-	44	-	-	-	-	-	2	-	-	-	-	-	-	-	-	-	-	-	0.064
1701+36	LT	-	-	-	-	-	-	-	-	-	1	-	-	-	-	-	-	-	-	-	-	-	-
1701+46	LT & RT	2	52	-	-	-	-	-	-	-	-	-	-	-	-	-	-	-	-	-	-	-	0.064
1706+31	LT & RT	-	-	1	-	-	-	-	-	-	2	-	-	-	-	-	-	-	-	-	-	-	0.064
1724+16	LT & RT	-	-	1	-	-	-	-	-	-	-	-	-	-	-	-	-	-	-	-	-	-	0.064
1744+83	LT	-	-	-	-	-	-	-	-	-	1	-	-	-	-	-	-	-	-	-	-	-	0.064
1753+06	LT & RT	-	-	-	-	-	-	-	-	-	2	-	-	-	-	-	-	-	-	-	-	-	-
1762+03	LT & RT	-	-	-	68	-	-	-	-	-	-	-	-	-	-	-	-	-	-	-	-	-	0.064
1769+19	LT & RT	-	-	-	46	-	-	-	-	-	1	-	-	-	-	-	-	-	-	-	-	-	0.064
1794+36	LT & RT	2	42	-	-	-	-	-	-	-	-	-	-	-	-	-	-	-	-	-	-	-	-
1798+18	LT & RT	-	-	1	-	-	-	-	-	-	-	-	-	-	-	-	-	-	-	-	-	-	-
1836+55	LT & RT	2	44	-	-	-	-	-	-	-	-	-	-	-	-	-	-	-	-	-	-	-	0.064
1848+77	LT	-	-	-	-	-	-	-	-	-	-	-	-	-	-	-	-	-	-	-	-	-	-
1870+41	LT	-	-	-	-	-	-	-	-	-	-	-	-	-	-	-	-	-	-	-	-	-	-
1880+19	LT & RT	-	-	-	42	-	-	-	-	-	1	-	-	-	-	-	-	-	-	-	-	-	-
1885+36	LT & RT	2	38	-	-	-	-	-	-	-	-	-	-	-	-	-	-	-	-	-	-	-	0.064
1901+16	LT	-	-	-	-	-	-	-	-	-	-	-	-	-	-	-	-	-	-	-	-	-	-
1924+56	LT	-	-	-	-	-	-	-	-	-	-	-	-	-	-	-	-	-	-	-	-	-	-
1940+38	RT	-	-	-	-	-	-	-	-	-	-	-	-	-	-	-	-	-	-	-	-	-	-
1948+99	LT & RT	2	44	-	-	-	-	-	-	-	-	-	-	-	-	-	-	-	-	-	-	-	0.064
1975+15	LT & RT	-	-	1	-	-	-	-	-	-	-	-	-	-	-	-	-	-	-	-	-	-	-
1982+73	LT & RT	-	-	-	-	-	-	-	-	-	2	-	-	-	-	-	-	-	-	-	-	-	-
1989+20	LT & RT	-	-	-	46	-	-	-	-	-	2	-	-	-	-	-	-	-	-	-	-	-	-
2014+32	LT	-	-	1	-	-	-	-	-	-	-	-	-	-	-	-	-	-	-	-	-	-	0.064
2022+37	RT	-	-	-	-	-	-	-	-	-	-	-	-	-	-	-	-	-	-	-	-	-	0.064
2027+09	LT & RT	-	-	1	-	-	-	-	-	-	-	-	-	-	-	-	-	-	-	-	-	-	-
ITEM TOTAL		13	308	1	381	10	8	2	33	75	154	1	4										

Addendum No. 01
 ID 5540-02-70
 Revised Sheet 49
 December 8, 2022

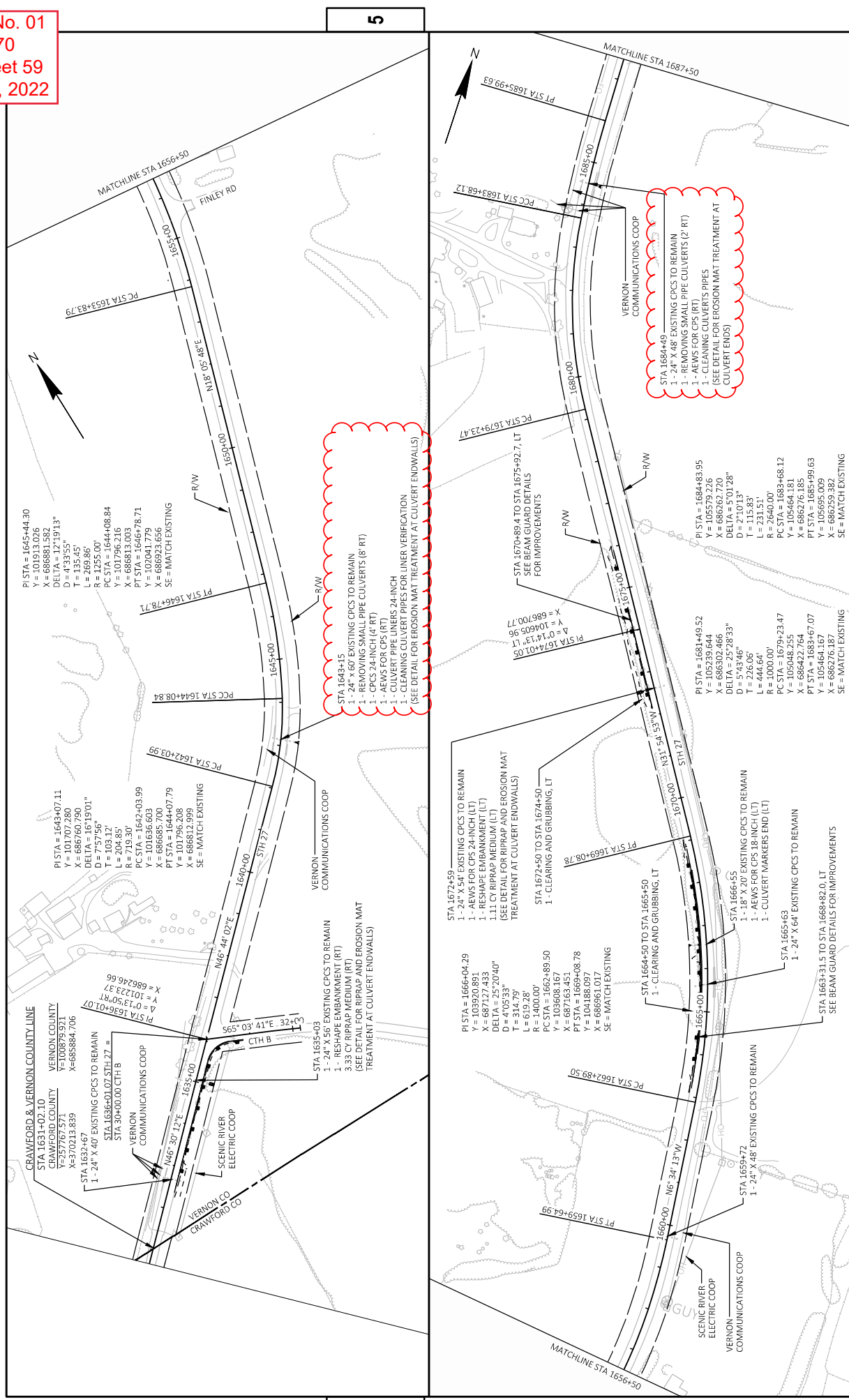
Addendum No. 01
 ID 5540-02-70
 Revised Sheet 58
 December 8, 2022



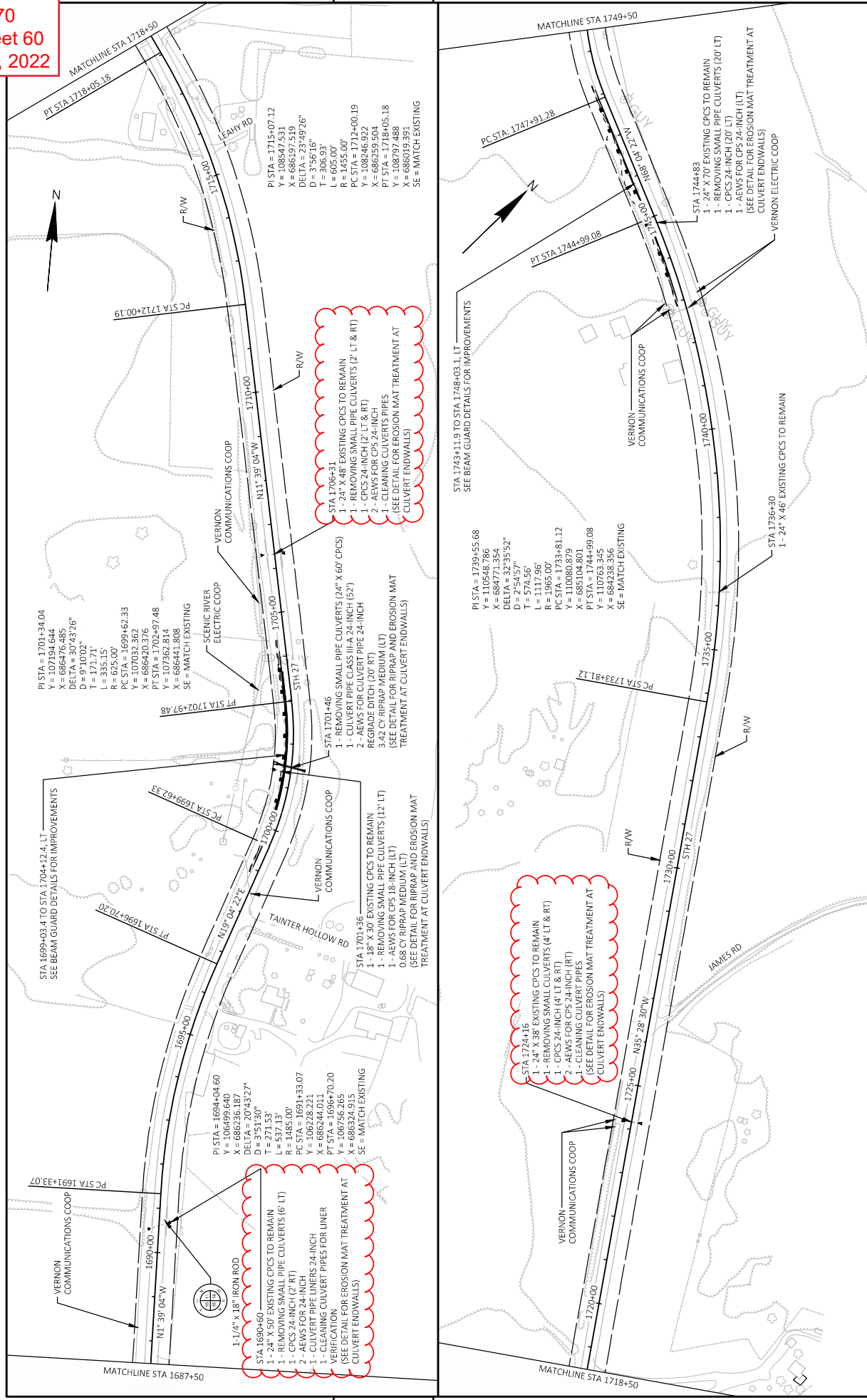
PROJECT NO: 5540-02-70	COUNTY: CRAWFORD	PLAN	SHEET 58
FILE NAME: X:\PROJECTS\CRAWFORD\5540-02-70_STH_27_CTH_C TO USH_14\DESIGN\CD\SHSHEETS\PLAN\650001-PN_CRAWFORD.DWG	PLLOT BY: BRAD GRIBB	PLLOT NAME:	PLLOT SCALE: 1 IN=200 FT
LAYOUT NAME: STH_27_Crawford - (04)	PLLOT DATE: 12/6/2022 10:47 AM		

5

5



PROJECT NO: 5540-02-70	COUNTY: VERNON	PLAN	SHEET 59
FILE NAME: X:\PROJECTS\CRAWFORD\5540-02-70_CTH_CTO USH 34.DESIGN\CDSHRETP\AWG\5002-PN_VERNON.DWG	LAYOUT NAME: Vernon - 001	PLOT BY: BRAD GRIBB	PLOT NAME: 1 IN=200 FT
		PLOT DATE: 12/6/2022 10:55 AM	



STA 1701-34.04
 Y = 107194.644
 X = 686476.485
 DELTA = 174°52'26"
 D = 9710.027'
 T = 1717.71'
 L = 335.15'
 R = 625.00'
 PC STA = 1699+62.33
 Y = 107032.362
 X = 686420.376
 PT STA = 1702+57.48
 Y = 107362.814
 X = 686441.808
 SE = MATCH EXISTING

PI STA = 1715+07.12
 Y = 108547.531
 X = 686197.519
 DELTA = 23°49'26"
 D = 308.93'
 T = 308.93'
 L = 605.00'
 R = 1455.00'
 PC STA = 1712+00.19
 Y = 108246.922
 X = 686259.504
 PT STA = 1718+05.18
 Y = 108797.488
 X = 686019.991
 SE = MATCH EXISTING

STA 1706+31
 1 - 24" X 48" EXISTING CPCS TO REMAIN
 1 - REMOVING SMALL PIPE CULVERTS (2' LT & RT)
 1 - CPCS 24-INCH (2' LT & RT)
 2 - AEWs FOR CPCS 24-INCH
 1 - CLEANING CULVERTS PIPES
 (SEE DETAIL FOR EROSION MAT TREATMENT AT CULVERT ENDWALLS)

STA 1701+46
 1 - REMOVING SMALL PIPE CULVERTS (24" X 60' CPCS)
 1 - CULVERT PIPE CLASS III-A 24-INCH (52')
 2 - AEWs FOR CULVERT PIPE 24-INCH
 3.42 CY RIPRAP MEDIUM (LT)
 (SEE DETAIL FOR RIPRAP AND EROSION MAT TREATMENT AT CULVERT ENDWALLS)

STA 1701+36
 1 - 18" X 30" EXISTING CPCS TO REMAIN
 1 - REMOVING SMALL PIPE CULVERTS (12' LT)
 1 - AEWs FOR CPCS 18-INCH (LT)
 0.68 CY RIPRAP MEDIUM (LT)
 (SEE DETAIL FOR RIPRAP AND EROSION MAT TREATMENT AT CULVERT ENDWALLS)

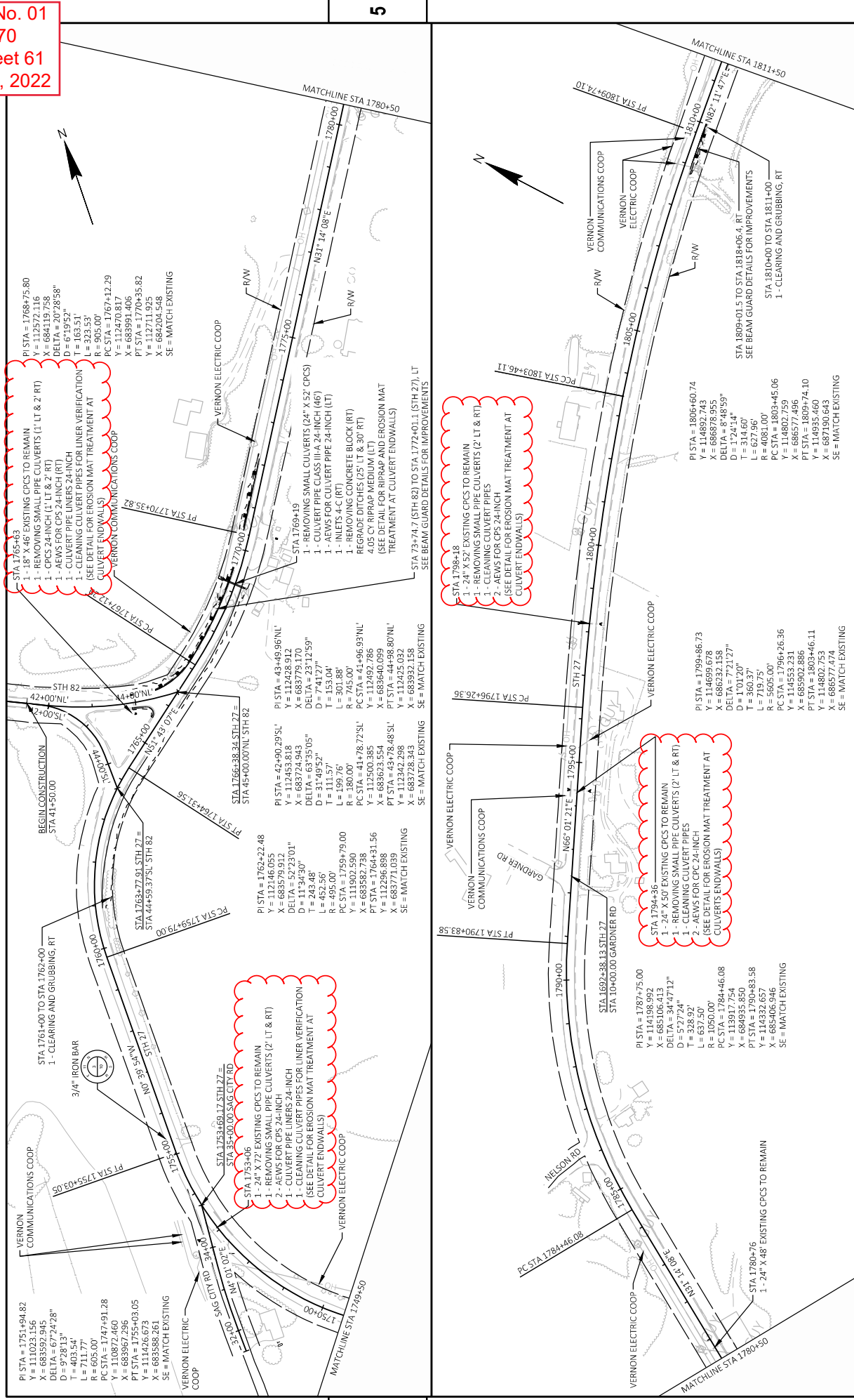
PI STA = 1694+04.60
 Y = 106499.640
 X = 686236.187
 DELTA = 20°43'27"
 D = 3°51'30"
 T = 271.13'
 L = 378.8510'
 R = 378.8510'
 PC STA = 1691+43.07
 Y = 106914.3307
 X = 686244.011
 PT STA = 1696+70.20
 Y = 106756.265
 X = 686324.915
 SE = MATCH EXISTING

STA 1690+60
 1 - 24" X 50" EXISTING CPCS TO REMAIN
 1 - REMOVING SMALL PIPE CULVERTS (6' LT)
 1 - CPCS 24-INCH (2' RT)
 2 - AEWs FOR 24-INCH
 1 - CLEANING CULVERT PIPES FOR LINER
 VERIFICATION
 (SEE DETAIL FOR EROSION MAT TREATMENT AT CULVERT ENDWALLS)

PI STA = 1739+55.68
 Y = 110548.786
 X = 684771.354
 DELTA = 152°35'52"
 D = 547.57'
 T = 574.56'
 L = 1117.96'
 R = 1965.00'
 PC STA = 1733+81.12
 Y = 110080.879
 X = 685104.801
 PT STA = 1744+59.08
 Y = 110763.345
 X = 684238.356
 SE = MATCH EXISTING

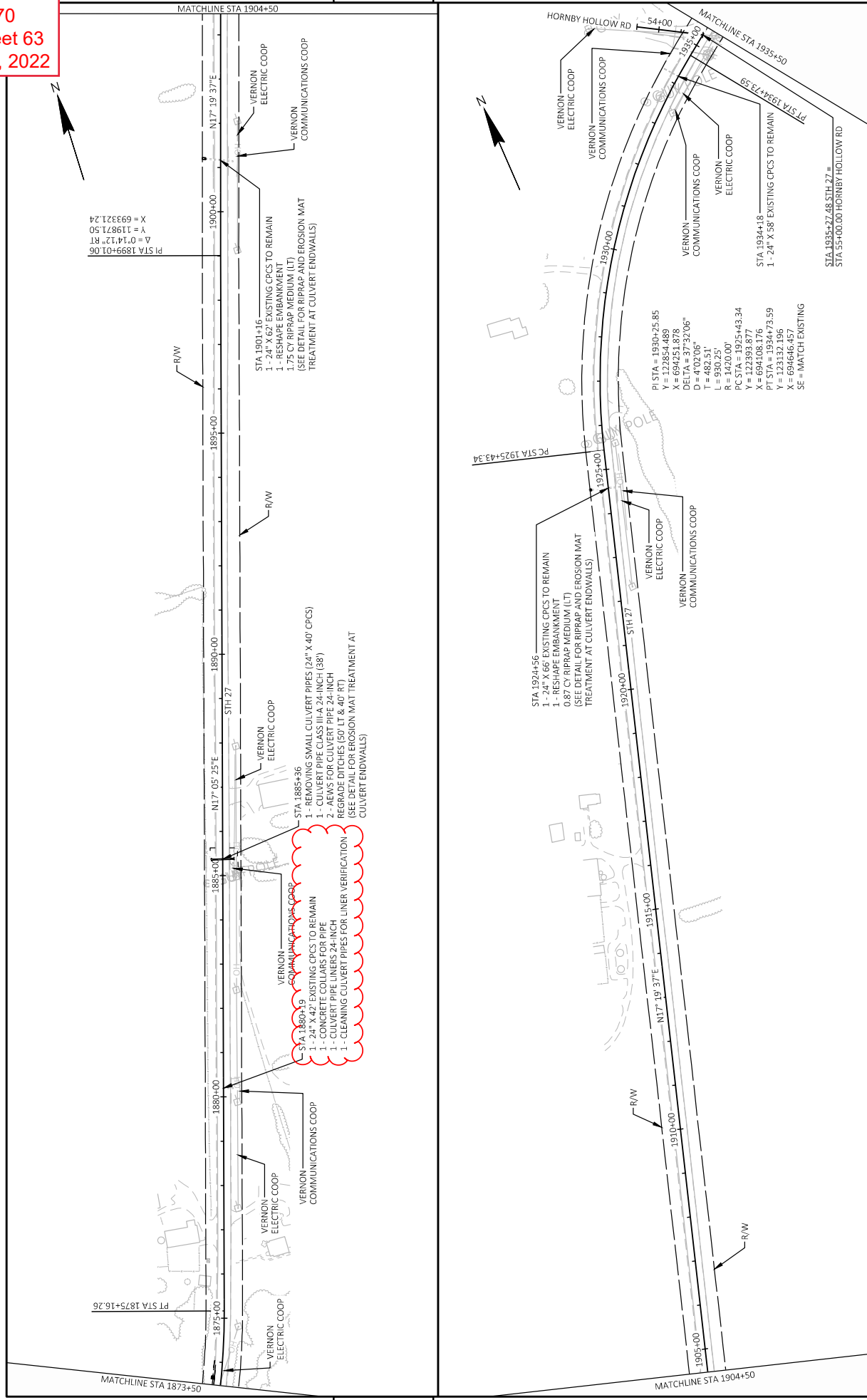
STA 1724+16
 1 - 24" X 38" EXISTING CPCS TO REMAIN
 1 - REMOVING SMALL CULVERTS (4' LT & RT)
 1 - CPCS 24-INCH (4' LT & RT)
 2 - AEWs FOR CPCS 24-INCH (RT)
 1 - CLEANING CULVERT PIPES
 (SEE DETAIL FOR EROSION MAT TREATMENT AT CULVERT ENDWALLS)

STA 1736+30
 1 - 24" X 46" EXISTING CPCS TO REMAIN



PROJECT NO: 5540-02-70	HWY: STH 27	COUNTY: VERNON	PLAN	SHEET 61
FILE NAME: X:\PROJECTS\GARDNER\5540-02-70_STH_27_CTO_USH_14\DESIGN\CD\SHRTP\LAN\65002-PN_VERNON.DWG				
LAYOUT NAME: Vernon - 031				
PLOT DATE: 12/06/2022 11:15 AM				
PLOT BY: BRAD GRIBB				
PLOT NAME:				
PLOT SCALE: 1 IN=200 FT				

Addendum No. 01
 ID 5540-02-70
 Revised Sheet 63
 December 8, 2022



PT STA 1899+01.06
 $\Delta = 0.1412^{\circ}$ RT
 $Y = 119871.50$
 $X = 693321.24$

STA 1901+16
 1- 24" X 62' EXISTING CPCS TO REMAIN
 1- RESHAPE EMBANKMENT
 1- 7.5 CY RIPRAP MEDIUM (LT)
 USE DETAIL FOR RIPRAP AND EROSION MAT TREATMENT AT CULVERT ENDWALLS)

STA 1885+36
 1- REMOVING SMALL CULVERT PIPES (24" X 40' CPCS)
 1- CULVERT PIPE CLASS III-A 24-INCH (38")
 2- AEWS FOR CULVERT PIPE 24-INCH REGRADE DITCHES (50' LT & 40' RT)
 (SEE DETAIL FOR EROSION MAT TREATMENT AT CULVERT ENDWALLS)

STA 1880+16
 1- 24" X 62' EXISTING CPCS TO REMAIN
 1- CONCRETE COLLARS FOR PIPE
 1- CULVERT PIPE LINERS 24-INCH
 1- CLEANING CULVERT PIPES FOR LINER VERIFICATION

STA 1924+56
 1- 24" X 66' EXISTING CPCS TO REMAIN
 1- RESHAPE EMBANKMENT
 0.87 CY RIPRAP MEDIUM (LT)
 (SEE DETAIL FOR RIPRAP AND EROSION MAT TREATMENT AT CULVERT ENDWALLS)

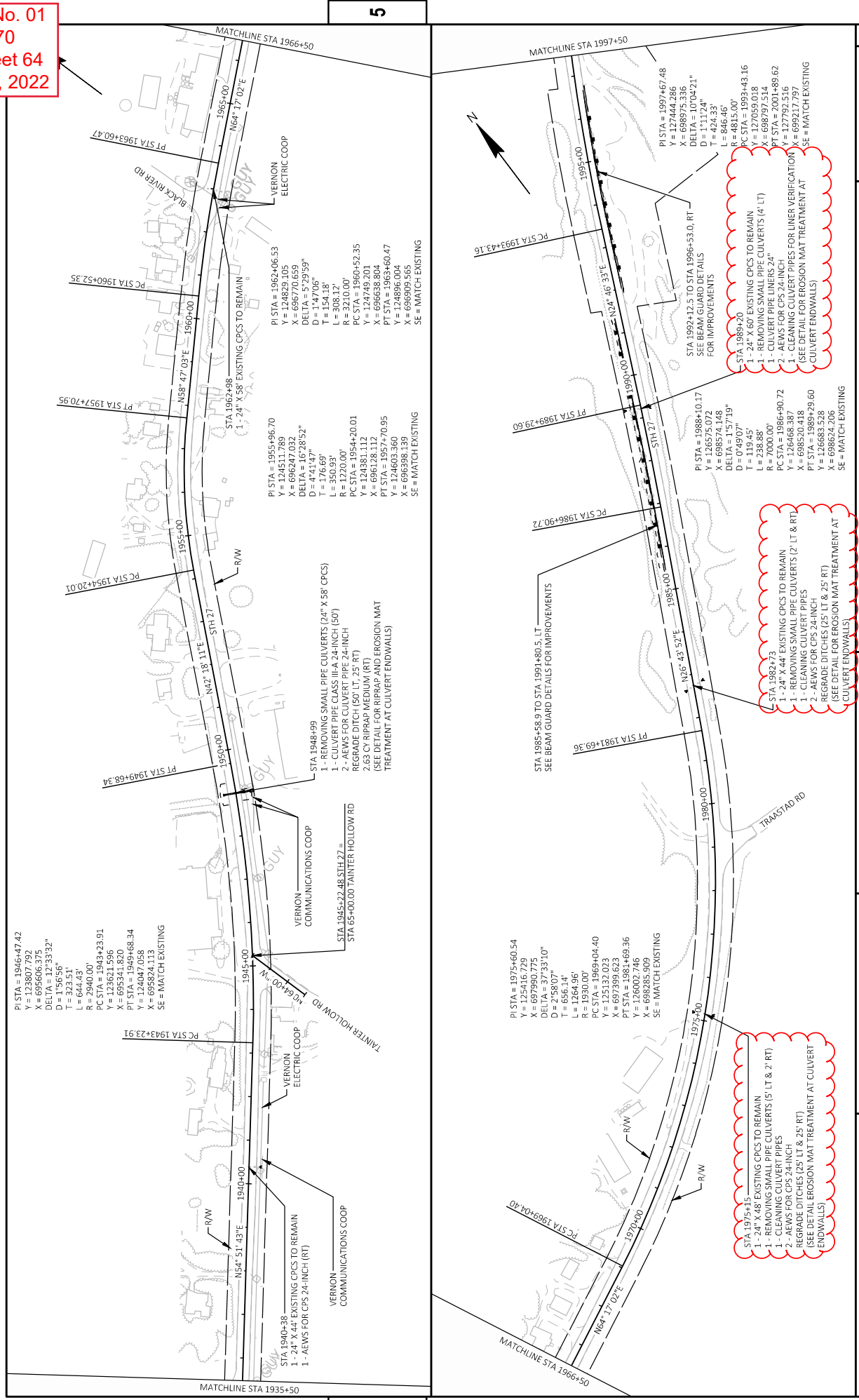
PI STA = 1930+25.85
 $\Delta = 7.7518^{\circ}$ RT
 $X = 694051.878$
 $Y = 72918.186$
 $\Delta = 37.3206^{\circ}$
 $D = 4702.06^{\circ}$
 $T = 482.51^{\circ}$
 $L = 930.25'$
 $R = 1420.00'$
 PC STA = 1925+43.34
 $Y = 122893.877$
 $X = 694108.176$
 PT STA = 1934+79.59
 $\Delta = 1.2727^{\circ}$ RT
 $X = 694346.187$
 $Y = 122927.459$
 SE = (MATCH EXISTING)

PROJECT NO: 5540-02-70	COUNTY: VERNON	PLAN	SHEET 63
FILE NAME: X:\PROJECTS\GAW\FR0540-02-00_5TH_27_CTH_C TO USH_14.DESIGN\CD\SHSHEET\PLAN\050202-PN_VERNOLDWG	PLOT DATE: 12/6/2022 11:16 AM	PLOT BY: BRAD GRUB	PLOT SCALE: 1 IN=200 FT
HWY: STH 27			
LAYOUT NAME: Vernon - (05)			WISDOT/CAD05 SHEET 44

5

5

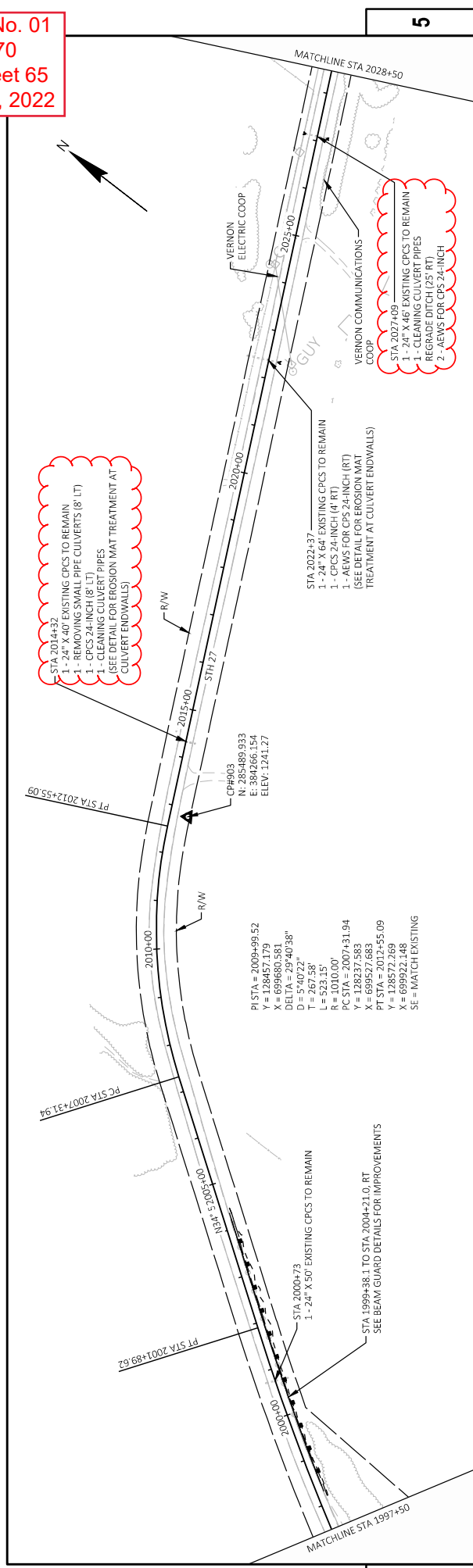
Addendum No. 01
 ID 5540-02-70
 Revised Sheet 64
 December 8, 2022



PROJECT NO: 5540-02-70	COUNTY: VERNON	PLAN	SHEET 64
FILE NAME: X:\PROJECTS\GROW\FR0540-02-00_5TH_27_CTO_USH_14.DESIGN\CDSDSHEETPLAN\050002-PN_VERNON.DWG	LAYOUT NAME: Vernon - 06	BRAD GRUB	1 IN=200 FT
DATE: 12/6/2022 11:18 AM	DATE: 12/6/2022 11:18 AM	DATE: 12/6/2022 11:18 AM	DATE: 12/6/2022 11:18 AM

5

5



STA 2014+32
 1 - 24" X 40' EXISTING CPCS TO REMAIN
 1 - REMOVING SMALL PIPE CULVERTS (8' LT)
 1 - CPCS 24-INCH (8' LT)
 1 - CLEANING CULVERT PIPES
 (SEE DETAIL FOR EROSION MAT TREATMENT AT CULVERT ENDWALLS)

STA 2022+37
 1 - 24" X 64' EXISTING CPCS TO REMAIN
 1 - CPCS 24-INCH (4' RT)
 1 - AEWS FOR CPCS 24-INCH (RT)
 (SEE DETAIL FOR EROSION MAT TREATMENT AT CULVERT ENDWALLS)

STA 2027+09
 1 - CLEANING CULVERT PIPES
 1 - CLEANING CULVERT PIPES
 REGRADE DITCH (25' RT)
 2 - AEWS FOR CPCS 24-INCH

PI STA = 2009+99.52
 Y = 1128457.179
 X = 699680.581
 DELTA = 29°40'38"
 D = 5740'22"
 T = 267.58'
 L = 523.15'
 R = 1010.00'
 PC STA = 2007+31.94
 Y = 128237.583
 X = 699527.663
 PT STA = 2007+31.94
 Y = 1128571.249
 X = 699922.148
 SE = MATCH EXISTING

STA 2000+73
 1 - 24" X 50' EXISTING CPCS TO REMAIN

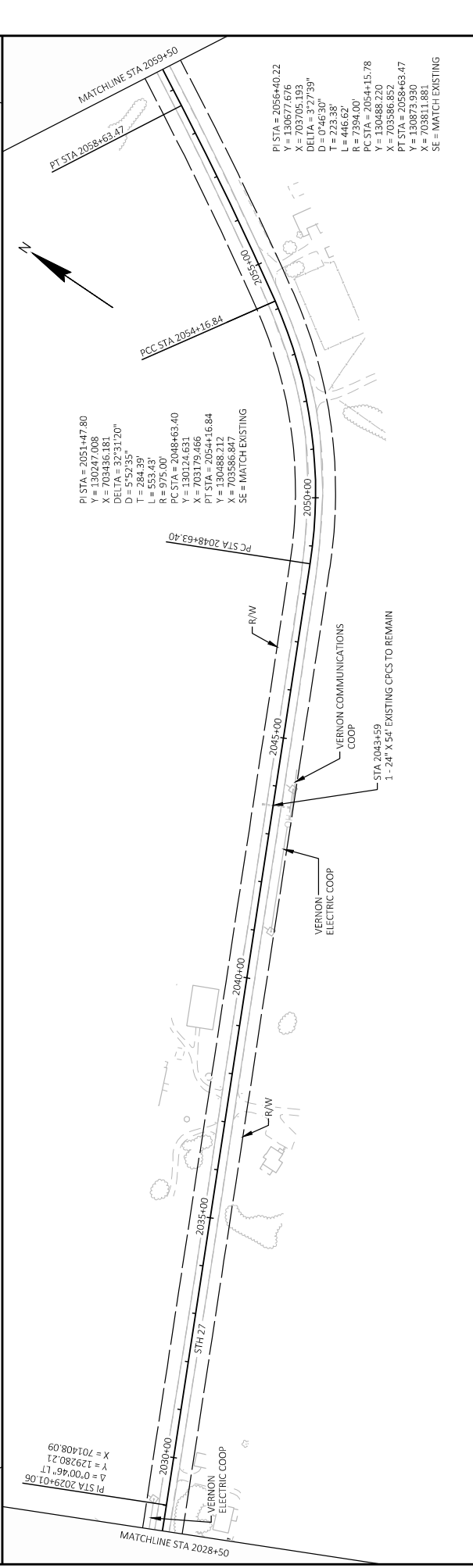
STA 1999+38.1 TO STA 2004+21.0 RT
 SEE BEAM GUARD DETAILS FOR IMPROVEMENTS

CP#903
 N: 285489.933
 E: 390266.154
 ELEV: 1341.27

PT STA 2012+55.09

PT STA 2001+89.62

PT STA 2029+01.06



PI STA = 2051+47.80
 Y = 130247.008
 X = 703436.181
 DELTA = 32°31'20"
 D = 5527'35"
 T = 654.39'
 L = 654.39'
 R = 875.00'
 PC STA = 2048+63.40
 Y = 130124.631
 X = 703179.466
 PT STA = 2054+16.84
 Y = 130488.212
 X = 703586.847
 SE = MATCH EXISTING

PI STA = 2056+40.22
 Y = 130677.676
 X = 703705.193
 DELTA = 37°27'39"
 D = 0°46'30"
 T = 223.38'
 L = 446.62'
 R = 7394.00'
 PC STA = 2054+15.78
 Y = 130488.220
 X = 703586.847
 PT STA = 2058+63.47
 Y = 130873.936
 X = 703811.881
 SE = MATCH EXISTING

STA 2043+59
 1 - 24" X 54' EXISTING CPCS TO REMAIN

PROJECT NO: 5540-02-70	COUNTY: VERNON	PLAN	SHEET 65
FILE NAME: X:\PROJECTS\GAW\FR0540-02-00_STH_27_CTO_USH_14\DESIGN\CD\SHRTP\LAN\05002-PN_VERNON.DWG	PLLOT DATE: 12/6/2022 11:20 AM	PLLOT BY: BRAD GRUBB	PLLOT SCALE: 1 IN=200 FT
LAYOUT NAME: Vernon - 001			WIS007CADD5 SHEET 44



Proposal Schedule of Items

Proposal ID: 20221213009 Project(s): 5540-02-70

Federal ID(s): WISC 2023090

SECTION: 0001 Roadway Items

Alt Set ID: Alt Mbr ID:

Proposal Line Number	Item ID Description	Approximate Quantity and Units	Unit Price	Bid Amount
0062	520.1024 Apron Endwalls for Culvert Pipe 24-Inch	13.000 EACH	_____.	_____.
0064	520.3324 Culvert Pipe Class III-A 24-Inch	308.000 LF	_____.	_____.
0066	520.8000 Concrete Collars for Pipe	1.000 EACH	_____.	_____.
0068	520.8700 Cleaning Culvert Pipes	10.000 EACH	_____.	_____.
0070	520.9700.S Culvert Pipe Liners (size) 01. 24-Inch	381.000 LF	_____.	_____.
0072	520.9750.S Cleaning Culvert Pipes for Liner Verification	8.000 EACH	_____.	_____.
0074	521.1018 Apron Endwalls for Culvert Pipe Steel 18-Inch	2.000 EACH	_____.	_____.
0076	521.1024 Apron Endwalls for Culvert Pipe Steel 24-Inch	33.000 EACH	_____.	_____.
0078	521.3124 Culvert Pipe Corrugated Steel 24-Inch	75.000 LF	_____.	_____.
0080	601.0557 Concrete Curb & Gutter 6-Inch Sloped 36-Inch Type D	870.000 LF	_____.	_____.
0082	601.0576 Concrete Curb & Gutter 4-Inch Sloped 30-Inch Type J	73.000 LF	_____.	_____.
0084	602.0415 Concrete Sidewalk 6-Inch	29.000 SF	_____.	_____.
0086	606.0200 Riprap Medium	40.000 CY	_____.	_____.
0088	611.0612 Inlet Covers Type C	2.000 EACH	_____.	_____.
0090	611.0627 Inlet Covers Type HM	1.000 EACH	_____.	_____.



Proposal Schedule of Items

Proposal ID: 20221213009 Project(s): 5540-02-70

Federal ID(s): WISC 2023090

SECTION: 0001 Roadway Items

Alt Set ID: Alt Mbr ID:

Proposal Line Number	Item ID Description	Approximate Quantity and Units	Unit Price	Bid Amount
0188	650.9920 Construction Staking Slope Stakes	445.000 LF	_____.	_____.
0190	690.0250 Sawing Concrete	4.000 LF	_____.	_____.
0192	740.0440 Incentive IRI Ride	52,960.000 DOL	1.00000	52,960.00
0194	ASP.1T0A On-the-Job Training Apprentice at \$5.00/HR	1,600.000 HRS	5.00000	8,000.00
0196	ASP.1T0G On-the-Job Training Graduate at \$5.00/HR	1,320.000 HRS	5.00000	6,600.00
0198	SPV.0060 Special 01. Reshape Embankment	4.000 EACH	_____.	_____.
0200	SPV.0060 Special 02. Landmark Reference Monuments Special	2.000 EACH	_____.	_____.
0202	SPV.0090 Special 01. Regrade Ditch	365.000 LF	_____.	_____.
0204	SPV.0180 Special 01. Removing Distressed Pavement Milling	1,470.000 SY	_____.	_____.
0206	211.0400 Prepare Foundation for Asphaltic Shoulders	284.000 STA	_____.	_____.
Section: 0001			Total:	_____.
			Total Bid:	_____.

