



# Wisconsin Department of Transportation

## Division of Transportation Systems Development

Bureau of Project Development  
4822 Madison Yards Way, 4<sup>th</sup> Floor South  
Madison, WI 53705

November 28, 2022

Telephone: (608) 266-1631  
Facsimile (FAX): (608) 266-8459

### NOTICE TO ALL CONTRACTORS:

**Proposal #10: 5796-00-74, WISC 2023092**  
**Town of Verona, Valley Road**  
**Sugar River Bridge, B-13-0886**  
**Loc Str**  
**Dane County**

### Letting of December 13, 2022

This is Addendum No. 01, which provides for the following:

#### Schedule of Items:

Revised Bid Item Quantities					
Bid Item	Item Description	Unit	Proposal Total Prior to Addendum	Proposal Quantity Change (-)	Proposal Total After Addendum
505.0600	Bar Steel Reinforcement HS Coated Structures	LB	44,820	430	45,250

#### Plan Sheets:

Revised Plan Sheets	
Plan Sheet	Plan Sheet Title (brief description of changes to sheet)
46	Quantities and Notes (revised bar steel quantity)
55	Superstructure (revised bar steel quantity)

**Schedule of Items**

Attached, dated November 28, 2022, are the revised Schedule of Items Page 2.

**Plan Sheets**

The following 8½ x 11-inch sheets are attached and made part of the plans for this proposal:

Revised: 46 and 55.

The responsibility for notifying potential subcontractors and suppliers of these changes remains with the prime contractor.

Sincerely,

*Mike Coleman*

Proposal Development Specialist  
Proposal Management Section

END OF ADDENDUM

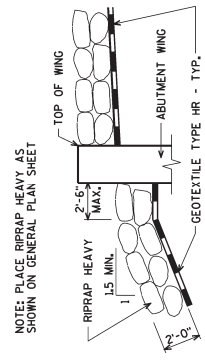
**TOTAL ESTIMATED QUANTITIES**

BID ITEM NUMBER	BID ITEMS	UNIT	W. ABUT.	PIER	E. ABUT.	SUPER.	TOTAL
203-0250	REMOVING STRUCTURE OVER WATERWAY REMOVE DEBRIS B-13-346	EACH	-----	-----	-----	-----	1
206-1001	EXCAVATION FOR STRUCTURES BRIDGES B-13-886	EACH	-----	-----	-----	-----	400
210-1500	BACKFILL STRUCTURE TYPE 4	TON	200	-----	200	-----	400
502-0300	CONCRETE MASONRY BRIDGES	CY	28.3	32.6	28.3	201.7	291
502-3200	PROTECTIVE SURFACE TREATMENT	SY	-----	-----	-----	280	280
502-3210	PIGMENTED SURFACE SEALER	SY	-----	-----	-----	90	90
506-0800	BAR STEEL REINFORCEMENT FOR STRUCTURES	LB	2,350	1,580	2,350	2,350	8,630
506-0810	WATERPROOFING	SY	1,410	60	1,410	-----	3,280
516-0800	BUBBERIZED MEMBRANE WATERPROOFING	SY	-----	-----	-----	-----	-----
550-1100	PILING STEEL HP 10-INCH X 42 LB	LF	490	700	385	-----	1,575
602-0300	PIPER UNDERDRAIN WRAPPED 6-INCH	CY	70	-----	50	-----	120
612-0400	PIPE UNDERDRAIN WRAPPED 6-INCH	LF	80	-----	80	-----	160
614-0150	ANCHOR ASSEMBLIES FOR STEEL PLATE BEAM GUARD	EACH	-----	-----	-----	4	4
645-0111	GEOTEXTILE TYPE DF SCHEDULE A	SY	60	-----	60	-----	120
645-0120	GEOTEXTILE TYPE HR	SY	130	-----	100	-----	230
SPV-0030-01	REMOVING EXISTING STEEL PILING	LF	-----	125	-----	-----	125
SPV-0135-01	SELECT CRUSHED MATERIAL FOR TRAVEL CORRIDOR	TON	10	-----	9	-----	19
	NON-BID ITEMS	SIZE	-----	-----	-----	-----	1/2" & 3/4"
	FILLER						

**GENERAL NOTES**

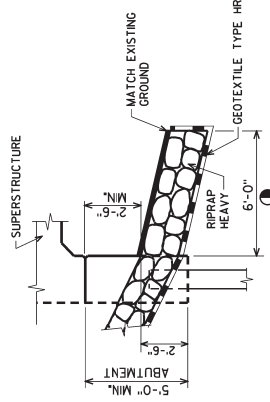
DRAWINGS SHALL NOT BE SCALED.  
 BAR STEEL REINFORCEMENT SHALL BE EMBEDDED 2" CLEAR UNLESS SHOWN OR NOTED OTHERWISE.  
 THE FIRST DIGIT OF A THREE DIGIT BAR NO. AND THE FIRST TWO DIGITS OF A FOUR DIGIT BAR NO. SIGNIFIES THE BAR SIZE.  
 CHANGES TO THE ORIGINAL DRAWINGS SHALL BE INDICATED BY A.A.S.H.T.O. DESIGNATION W 153, TYPE 1, H OR 111 OR A.A.S.H.T.O. DESIGNATION M 213.  
 THE SLOPE OF THE FILL IN FRONT OF THE ABUTMENTS SHALL BE COVERED WITH RIPRAP HEAVY AND GEOTEXTILE TYPE HR.  
 THE SLOPE OF THE FILL IN THE ABUTMENT DETAILS SHALL BE COVERED WITH RIPRAP HEAVY AND GEOTEXTILE TYPE HR.  
 SLAB FALSEWORK SHALL BE SUPPORTED ON PILES OR THE SUBSTRUCTURE UNLESS AN ALTERNATE METHOD IS APPROVED BY THE ENGINEER.  
 THE EXISTING STRUCTURE B-13-346 TO BE REMOVED IS A 73.8-FT LONG TWO-SPAN CONCRETE HAUNCHED SLAB BRIDGE ON CONCRETE ABUTMENTS AND STEEL PILE-BENT PIER WITH CONCRETE CAP WITH A 30.0-FT CLEAR ROADWAY WIDTH.  
 THE BACKFILL QUANTITIES ARE BASED ON THE PAY LIMITS SHOWN ON THIS SHEET. QUANTITIES FOR THE EXISTING STRUCTURE TYPE 4 REQUIRED DIRECTLY BEHIND ABUTMENTS AND ABUTMENTS WINGS FOR 3 FEET.  
 QUANTITIES FOR THE EXISTING STRUCTURE TYPE 4 REQUIRED DIRECTLY BEHIND ABUTMENTS AND ABUTMENTS WINGS FOR 3 FEET.  
 PROTECTIVE SURFACE TREATMENT AND PIGMENTED SURFACE SEALER TO BE APPLIED AS SHOWN IN DETAIL ON THIS SHEET, OTHERWISE EXPOSED EDGES OF CONCRETE 7/4 UNLESS NOTED OTHERWISE.  
 EXCAVATION BELOW THE ABUTMENT AND ABUTMENT BEDDING MATERIALS REQUIRES ENGINEER APPROVAL. GEOTEXTILE SHALL BE SET AT THE BOTTOM OF EXCAVATION AND EXTEND 2'-0" ABOVE BOTTOM OF ABUTMENT.  
 REMOVE EXISTING SUBSTRUCTURES AS NEEDED TO BUILD NEW SUBSTRUCTURES. COST OF SUBSTRUCTURE REMOVAL IS CONSIDERED INCIDENTAL TO "REMOVING STRUCTURE" BID ITEM.  
 SHALL OPEN UP UNDERWATER WILL BE ALLOWED AND SHALL BE IN ACCORDANCE WITH SECTION 502.35.3 OF THE STANDARD SPECIFICATIONS.

Addendum No. 01  
 ID 5796-00-74  
 Revised Sheet 46  
 November 28, 2022



**TYPICAL FILL SECTION AT WING TIPS**

NOTE: PLACE RIPRAP HEAVY AS SHOWN ON GENERAL PLAN SHEET



**TRAVEL CORRIDOR DETAIL**

FILL VOIDS WITH SELECT CRUSHED MATERIAL FOR TRAVEL CORRIDOR AFTER RIPRAP IS PLACED.



11/22/22

11/22/2022

**PROTECTIVE SURFACE TREATMENT AND PIGMENTED SURFACE SEALER DETAIL**

**DESIGN DATA**  
 LIVE LOAD: HS-20  
 DESIGN SPEED: 55 MPH  
 INVENTORY RATING FACTOR: 1.12  
 OPERATING RATING FACTOR: 1.45  
 WISCONSIN STANDARD PERMIT VEHICLE (WIS-SPV) = 250 KIPS  
 STRUCTURE IS DESTINED FOR A FUTURE WEARING SURFACE OF 20'-4.5'-0\"/>

**2 YEAR FREQUENCY**  
 $C_u = 2,335$  c.f.s.  
 $C_s = 640$  c.f.s.  
 $VEL = 6.1$  f.p.s.  
 $H_{w90} = EL. 923.69$   
 $H_{w50} = EL. 920.88$

WATERWAY AREA = 381 sq. ft.  
 DRAINAGE AREA = 44.7 sq. mi.  
 ROADWAY OVERTOPPING = N/A  
 SCOUR CRITICAL CODE = 5  
 DATUM = NAVD88 (2012)

**FOUNDATION DATA:**  
 ABUTMENTS TO BE SUPPORTED ON HP 10 x 42 STEEL PILING DRIVEN TO A DEPTH TO BE DETERMINED BY THE ENGINEER. REQUIRED DRIVING RESISTANCE OF 100 TONS PER PILE AS DETERMINED BY THE MODIFIED GATES DYNAMIC FORMULA. ESTIMATED LENGTH 70'-0\"/>

PIER TO BE SUPPORTED ON HP 10 x 42 STEEL PILING DRIVEN TO A DEPTH TO BE DETERMINED BY THE ENGINEER. REQUIRED DRIVING RESISTANCE OF 100 TONS PER PILE AS DETERMINED BY THE MODIFIED GATES DYNAMIC FORMULA. ESTIMATED LENGTH 70'-0\"/>

\* THE FACTORED AXIAL RESISTANCE OF PILES IN COMPRESSION USED FOR DESIGN IS THE REQUIRED DRIVING RESISTANCE MULTIPLIED BY A RESISTANCE FACTOR OF 0.5 USING MODIFIED GATES TO DETERMINE DRIVEN PILE CAPACITY.

**TRAFFIC DATA:**  
 A.A.D.T. = 1100 (2023)  
 A.A.D.T. = 1100 (2043)  
 R.D.S. = 45 M.P.H.

ORIGINAL PLANS PREPARED BY  
**AVRES**  
 3433 Oakwood Hills Parkway  
 Eau Claire, WI 54601  
 www.avresinc.com

QUANTITIES AND NOTES  
 SHEET 2 OF 14  
 46

NO.	DATE	REVISION
1	11-22-2022	BAR STEEL UPDATE

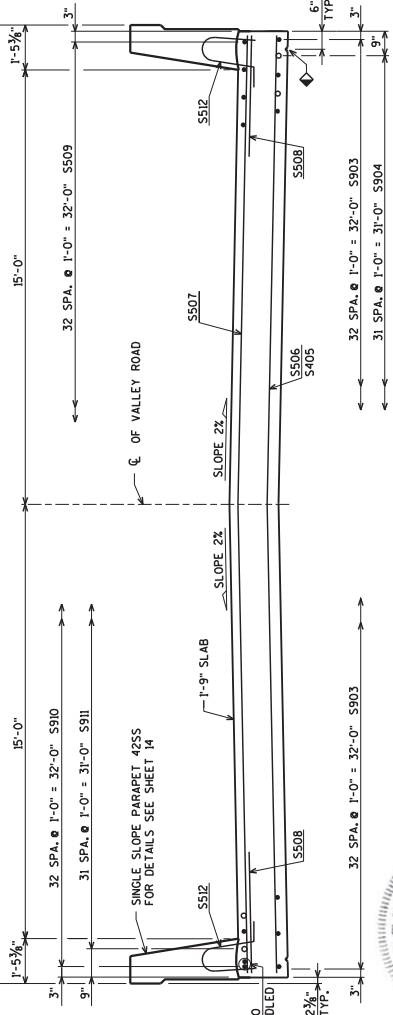
BY: \_\_\_\_\_  
 STATE OF WISCONSIN  
 DEPARTMENT OF TRANSPORTATION  
**STRUCTURE B-13-886**  
 DRAWN BY: \_\_\_\_\_  
 CHECKED BY: \_\_\_\_\_  
 DESIGNED BY: \_\_\_\_\_

TOP TRANSVERSE BARS IN SLAB SHALL BE SUPPORTED BY INDIVIDUAL BAR CHAIRS AT APPROXIMATELY 3'-0" CENTERS EACH WAY. BOTTOM LONGITUDINAL BARS SHALL BE SUPPORTED BY CONTINUOUS BAR CHAIRS AT APPROXIMATELY 4'-0" CENTERS.

ALL SLAB THICKNESS DIMENSIONS ARE MINIMUM. ANY TOLERANCES NECESSARY TO CORRECT CONSTRUCTION DISCREPANCIES ARE TO BE PLUS (+).

⊕ V - GROOVE, EXTEND V - GROOVE TO 6" FROM FRONT FACE OF ABUTMENTS - TYP.

⊕ WIRE BARS TOGETHER @ 2'-0" CENTERS



TYPICAL SECTION THRU BRIDGE

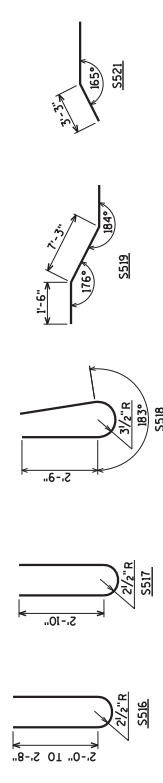


11/22/2022

**BILL OF BARS**

BAR NO.	COATED BAR	NO. REQ'D.	LENGTH	BENT BAR	BAR SERIES	LOCATION
S501	X	66	5'-8"	X		SLAB @ ABUT.
S502	X	66	3'-4"	X		SLAB @ ABUT.
S903	X	66	44'-4"			SLAB LONG. BOT.
S904	X	64	26'-0"			SLAB LONG. BOT.
S405	X	36	32'-2"			SLAB TRANS. BOT.
S507	X	56	32'-2"			SLAB TRANS. BOT.
S507	X	83	32'-2"			SLAB TRANS. TOP
S508	X	164	62'-0"			SLAB TRANS. TOP @ EDGES
S509	X	66	21'-7"			SLAB LONG. TOP
S910	X	68	44'-10"	X		SLAB LONG. TOP @ PIER
S911	X	64	15'-10"	X		SLAB LONG. TOP @ PIER
S512	X	196	4'-5"	X		SLAB @ PARAPET VERT.
S513	X	196	6'-8"	X		PARAPET VERT.
S514	X	44	2'-9"	X		SLAB @ PARAPET VERT.
S515	X	68	4'-4"	X		SLAB @ PARAPET VERT.
S516	X	24	5'-5"	X		PARAPET VERT.
S517	X	20	6'-5"	X		PARAPET VERT.
S518	X	24	6'-6"	X		PARAPET HORIZ.
S519	X	4	42'-8"	X		PARAPET HORIZ.
S520	X	20	42'-7"	X		PARAPET HORIZ.
S521	X	8	42'-9"	X		PARAPET HORIZ.

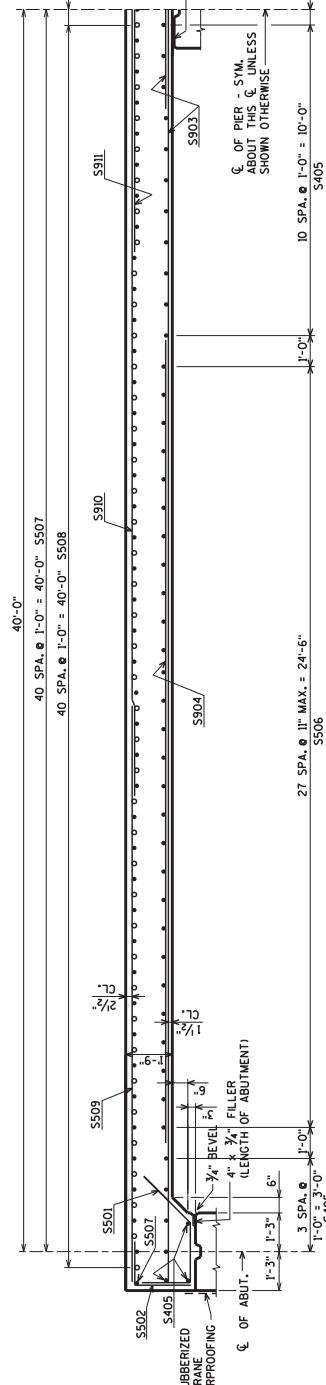
BENDING DIMENSIONS ARE OUT TO OUT OF BARS.  
 ⊕ LENGTH SHOWN FOR BAR IS AN AVERAGE LENGTH AND SHOULD ONLY BE USED FOR BAR WEIGHT CALCULATIONS. SEE BAR SERIES TABLE FOR ACTUAL LENGTHS.



BAR SERIES TABLE

BAR MARK	NO. REQ'D.	LENGTH
S516	4 SERIES OF 6	4'-9" TO 6'-1"

BUNDLE AND TAG EACH SERIES SEPARATELY.



PART LONGITUDINAL SECTION

Addendum No. 01  
 ID 5796-00-74  
 Revised Sheet 55  
 November 28, 2022

ORIGINAL PLANS PREPARED BY  
**AVRES**  
 3433 Oakwood Hills Parkway  
 Eau Claire, WI 54601  
 www.avresassociates.com

NO. DATE	REVISION	BY
11-22-2022	BAR STEEL UPDATE	DNS

STATE OF WISCONSIN  
 DEPARTMENT OF TRANSPORTATION

STRUCTURE B-13-886  
 DRAWN BY: CLP  
 CHECKED BY: JCK

SHEET 11 OF 14  
**55**  
 SUPERSTRUCTURE



## Proposal Schedule of Items

Proposal ID: 20221213010 Project(s): 5796-00-74

Federal ID(s): WISC 2023092

SECTION: 0001

Roadway Items

Alt Set ID:

Alt Mbr ID:

Proposal Line Number	Item ID Description	Approximate Quantity and Units	Unit Price	Bid Amount
0032	502.3200 Protective Surface Treatment	280.000 SY	_____.	_____.
0034	502.3210 Pigmented Surface Sealer	90.000 SY	_____.	_____.
0036	505.0400 Bar Steel Reinforcement HS Structures	6,360.000 LB	_____.	_____.
0038	505.0600 Bar Steel Reinforcement HS Coated Structures	45,250.000 LB	_____.	_____.
0040	516.0500 Rubberized Membrane Waterproofing	14.000 SY	_____.	_____.
0042	550.1100 Piling Steel HP 10-Inch X 42 Lb	1,575.000 LF	_____.	_____.
0044	606.0300 Riprap Heavy	120.000 CY	_____.	_____.
0046	612.0406 Pipe Underdrain Wrapped 6-Inch	160.000 LF	_____.	_____.
0048	614.0150 Anchor Assemblies for Steel Plate Beam Guard	4.000 EACH	_____.	_____.
0050	614.2300 MGS Guardrail 3	75.000 LF	_____.	_____.
0052	614.2500 MGS Thrie Beam Transition	158.000 LF	_____.	_____.
0054	614.2610 MGS Guardrail Terminal EAT	4.000 EACH	_____.	_____.
0056	618.0100 Maintenance And Repair of Haul Roads (project) 01. 5796-00-74	1.000 EACH	_____.	_____.
0058	619.1000 Mobilization	1.000 EACH	_____.	_____.
0060	623.0200 Dust Control Surface Treatment	1,330.000 SY	_____.	_____.
0062	624.0100 Water	8.000 MGAL	_____.	_____.

