



Wisconsin Department of Transportation

December 1, 2022

Division of Transportation Systems Development
 Bureau of Project Development
 4822 Madison Yards Way, 4th Floor South
 Madison, WI 53705

NOTICE TO ALL CONTRACTORS:

Telephone: (608) 266-1631
 Facsimile (FAX): (608) 266-8459

Proposal #20: 1146-75-76, WISC 2023101
STH 76-New London
CTH T-WI Central RR
STH 15
Outagamie County

1146-75-77, WISC 2023104
STH 76-New London
Central RR-CTH JJ
STH 15
Outagamie County

Letting of December 13, 2022

This is Addendum No. 03, which provides for the following:

Special Provisions:

Added Special Provisions	
Article No.	Description
37	Inlets 2x2.5-FT, Special, Item SPV.0060.10

Schedule of Items:

Revised Bid Item Quantities					
Bid Item	Item Description	Unit	Proposal Total Prior to Addendum	Proposal Quantity Change (-)	Proposal Total After Addendum
203.0100	Removing Small Pipe Culverts	EACH	6	1	7
205.0100	Excavation Common	CY	19,684	200	19,884
465.0120	Asphaltic Surface Driveways and Field Entrances	TON	408	-42	366
601.0588	Concrete Curb & Gutter 4-Inch Sloped 36-Inch Type TBT	LF	150	290	440
611.3004	Inlets 4-FT Diameter	EACH	7	-2	5
625.0500	Salvaged Topsoil	SY	69,748	1,140	70,888
628.2004	Erosion Mat Class I Type B	SY	31,323	1140	32,463
629.0210	Fertilizer Type B	CWT	44	17	61
630.0120	Seeding Mixture No. 20	LB	1,528	29.5	1,557.5
634.0616	Posts Wood 4x6x16	EACH	34	1	35
637.2210	Signs Type II Reflective H	SF	630.62	-9.25	621.37
643.0420	Traffic Control Barricades Type III	DAY	396	1,370	1,766
643.0705	Traffic Control Warning Lights Type A	DAY	358	3,020	3,378
643.0900	Traffic Control Signs	DAY	606	12,995	13,601
650.4000	Construction Staking Storm Sewer	EACH	11	5	16
650.5500	Construction Staking Curb Gutter and Curb & Gutter	LF	1,605	440	2,045

Added Bid Item Quantities					
Bid Item	Item Description	Unit	Proposal Total Prior to Addendum	Quantity Added	Proposal Total After Addendum
521.1012	Apron Endwalls for Culvert Pipe Steel 12-Inch	EACH	0	5	5
530.0112	Culvert Pipe Corrugated Polyethylene 12-Inch	LF	0	337	337
643.1000	Signs Fixed Message	SF	0	133.5	133.5
643.0910	Covering Signs Type I	EACH	0	4	4
643.0920	Covering Signs Type II	EACH	0	7	7
SPV.0060.10	Inlets 2x2.5-FT, Special	EACH	0	2	2

Deleted Bid Item Quantities					
Bid Item	Item Description	Unit	Proposal Total Prior to Addendum	Proposal Quantity Change (-)	Proposal Total After Addendum
522.0124	Culvert Pipe Reinforced Concrete Class III 24-Inch	LF	82	-82	0
522.1030	Apron Endwalls for Culvert Pipe Reinforced Concrete 30-Inch	EACH	2	-2	0

Plan Sheets:

Revised Plan Sheets	
Plan Sheet	Plan Sheet Title (brief description of changes to sheet)
	1146-75-76
32-34	Signing Plan
53	Revised MQ
61-62	Revised MQ
64-65	Revised MQ
172-174	Revised Sign Plate
236	Revised Plan View of S-44-114 (new sign plate)
	1146-75-77
50	Revised MQ
52	Revised MQ
54	Revised MQ

Added Plan Sheets	
Plan Sheet	Plan Sheet Title (brief description of why sheet was added)
	1146-75-76
14A	Drainage detail
65A-65E	Detour MQ sheets
174A	Fixed Message Sign Detail
	1146-75-77
55A	Restoration MQ sheet

The responsibility for notifying potential subcontractors and suppliers of these changes remains with the prime contractor.

Sincerely,

Mike Coleman

Proposal Development Specialist
Proposal Management Section

ADDENDUM NO. 03

1146-75-76/77

December 1, 2022

Special Provisions

37. Inlets 2x2.5-FT, Special, Item SPV.0060.10

A Description

This special provision describes providing Inlets 2x2.5-FT, Special as the plans show. Conform to standard spec 611 and as follows.

B Materials

Materials shall be conforming to standard spec 611.2. The rubber adjustment riser ring is to be on the department's approved product list.

Use manufacturer approved mastic adhesive and polyurethane adhesive with a flexible set. Supply manufacture's recommendations prior to installation.

C Construction

Construction shall be conforming to the plans and with standard spec 611.3.

Replace standard spec 611.3.3(1) with the following:

- (1) Set inlet cover on rubber adjustment riser ring. Use mastic adhesive between the ring and the inlet structure. Use polyurethane adhesive with a flexible set between the ring and the inlet cover. Use two 5/16-inch beads of adhesive placed 1 inch and 2 inches in from the outside edge of the ring. If multiple adjustment rings are necessary, a maximum of two adjustment rings can be used. A maximum of 3 inch adjustment is allowed. Use manufacturer approved polyurethane adhesive with a flexible set to join the two rings. If the adjustment rings must be cut, the joints must be staggered, and a polyurethane adhesive used to reattach the cut ends. No concrete adjustment rings or mortar is to be placed between the top of the structure and the inlet cover.

D Measurement

The department will measure Inlets 2x2.5-FT, Special as each individual inlet acceptably completed.

E Payment

The department will pay for measured quantities at the contract unit price under the following bid item:

ITEM NUMBER	DESCRIPTION	UNIT
SPV.0060.10	Inlets 2x2.5-FT, Special	EACH

Payment shall be conforming to standard spec 611.5.

ner-611-030 (20190712)

Schedule of Items

Attached, dated December 1, 2022, are the revised Schedule of Items Pages 1 – 12.

Plan Sheets

The following 8½ x 11-inch sheets are attached and made part of the plans for this proposal:

1146-75-76

Revised: 32-34, 53, 61-62, 64-65, 172-174, 236

Added: 14A, 65A-65E, 174A, 236A

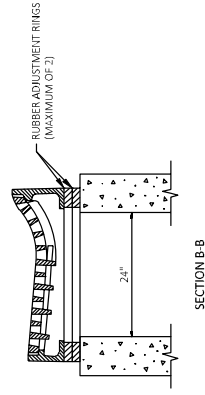
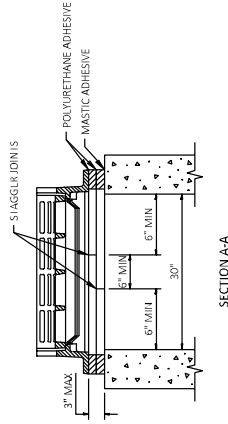
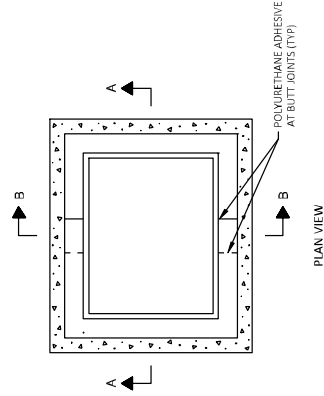
1146-75-77

Revised: 50, 52, 54

Added: 55A

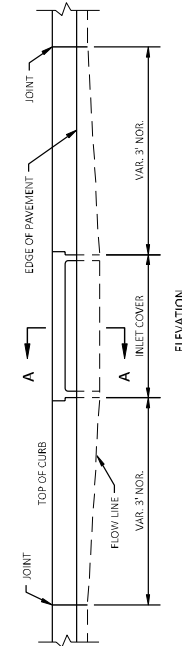
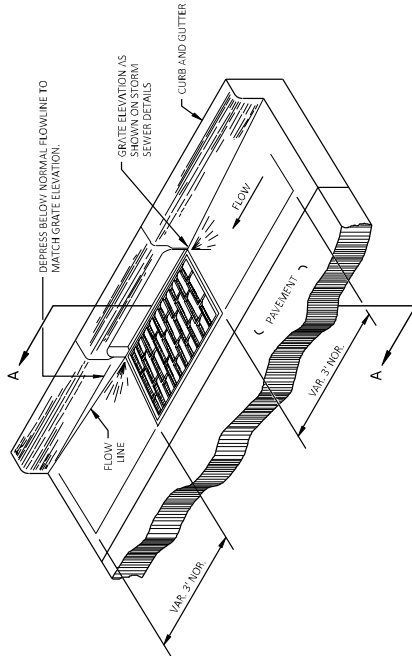
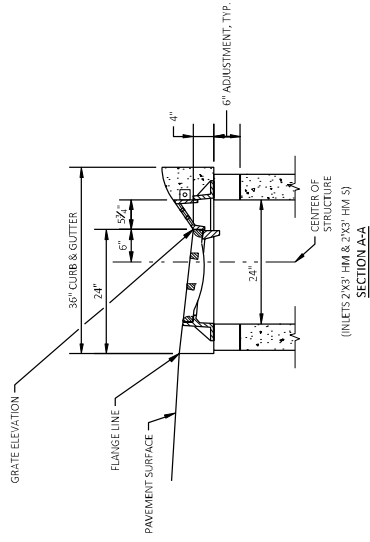
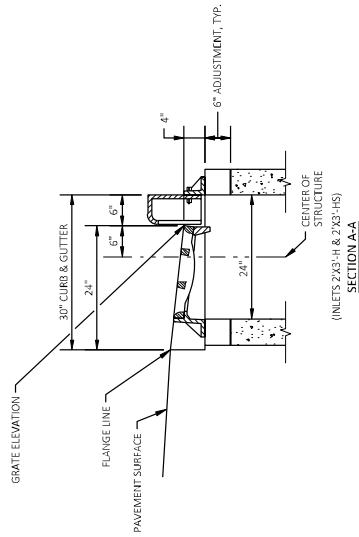
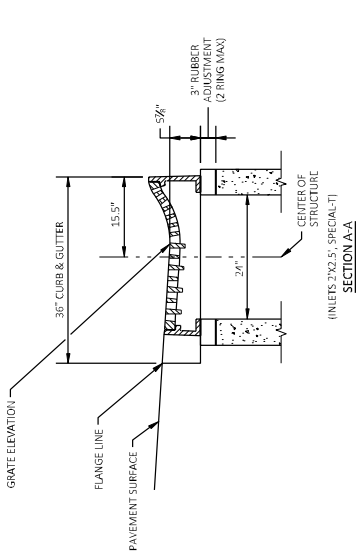
END OF ADDENDUM

NOTE:
ADJUSTERS MADE TO RUBBER ADJUSTMENT
RINGS WILL BE PERPENDICULAR AND
PROVIDE A TIGHT JOINT.



Addendum No. 03
ID 1146-75-76
Added Sheet 14A
December 1, 2022

RUBBER RING CUTTING DETAIL FOR INLET 2X2.5-FT. SPECIAL



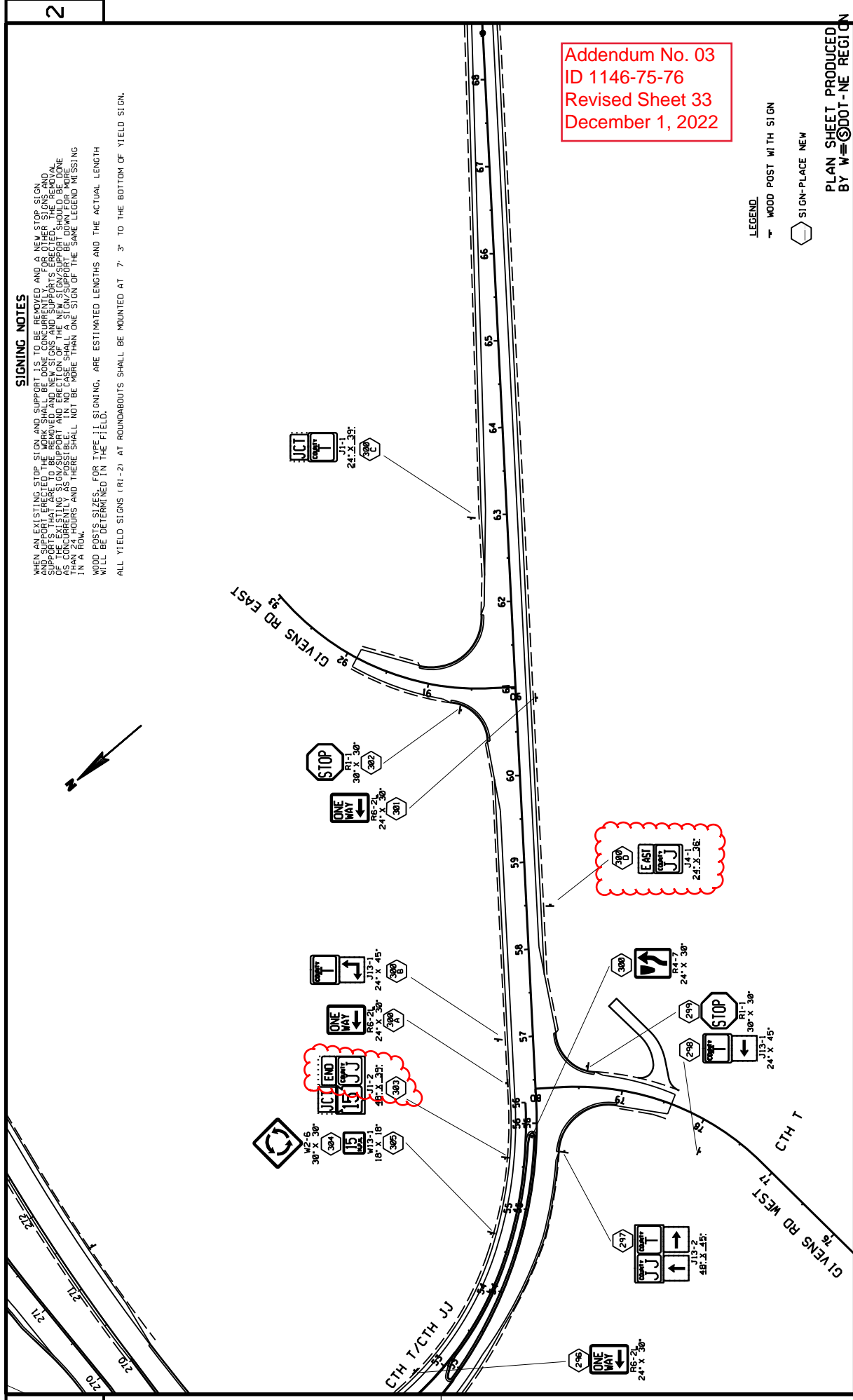
CURB AND GUTTER DETAIL AT INLETS

SIGNING NOTES

WHEN AN EXISTING STOP SIGN AND SUPPORT IS TO BE REMOVED AND A NEW STOP SIGN AND SUPPORT ERRECTED, THE WORK SHALL BE DONE CONCURRENTLY FOR OTHER SIGNS AND SUPPORTS. THE EXISTING STOP SIGN AND SUPPORT SHALL BE REMOVED BEFORE THE NEW SIGN AND SUPPORT ARE INSTALLED. THE EXISTING STOP SIGN AND SUPPORT SHALL BE REMOVED AND THE NEW SIGN AND SUPPORT SHALL BE INSTALLED AS CONCURRENTLY AS POSSIBLE. IN NO CASE SHALL A SIGN SUPPORT BE DOWN FOR MORE THAN 24 HOURS AND THERE SHALL NOT BE MORE THAN ONE SIGN OF THE SAME LEGEND MISSING FROM A ROAD. POSTS FOR TYPE 1 SIGNING, ARE ESTIMATED LENGTHS AND THE ACTUAL LENGTH WILL BE DETERMINED IN THE FIELD.

ALL YIELD SIGNS (R1-2) AT ROUNDABOUTS SHALL BE MOUNTED AT 7' 3" TO THE BOTTOM OF YIELD SIGN.

Addendum No. 03
 ID 1146-75-76
 Revised Sheet 33
 December 1, 2022



- LEGEND**
- WOOD POST WITH SIGN
 - SIGN-PLACE NEW

PLAN SHEET PRODUCED BY WISDOT FOR THE REGION

SHEET 33

PROJECT NO: 1146-75-76

HWY 5TH 15

COUNTY: OUTAGAMIE

PERMANENT SIGNING

FILE NAME: 88...design\1146-75-76

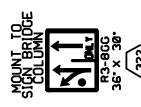
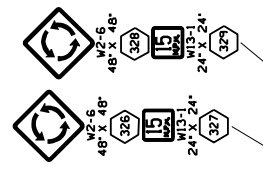
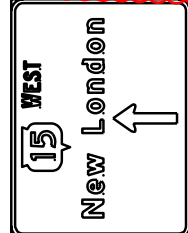
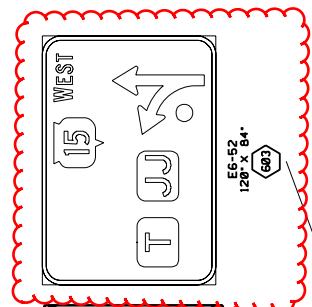
PLOT DATE: 88...plotting\data...88

PLOT BY: 88...plotter...88

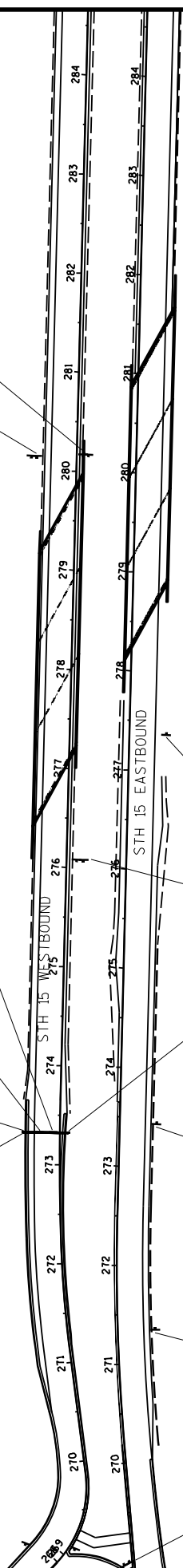
PLOT SCALE: 88...plot/cale...88



Addendum No. 03
ID 1146-75-76
Revised Sheet 34
December 1, 2022



STA. 273+32
SIGN BRIDGE
S-44-114



SIGNING NOTES

WHEN AN EXISTING STOP SIGN AND SUPPORT IS TO BE REMOVED AND A NEW STOP SIGN AND SUPPORT IS TO BE INSTALLED, THE EXISTING SIGN AND SUPPORTS SHOULD BE REMOVED AND NEW SIGNS AND SUPPORTS SHOULD BE INSTALLED. THE REMOVAL OF THE EXISTING SIGN AND SUPPORTS SHOULD BE COMPLETED BEFORE THE NEW SIGN AND SUPPORTS ARE INSTALLED. THE NEW SIGN AND SUPPORTS SHOULD BE MORE THAN 24 HOURS AND THERE SHALL NOT BE MORE THAN ONE SIGN OF THE SAME LEGEND MISSING IN A ROW.

WOOD POSTS: SIZES, FOR TYPE II SIGNING, ARE ESTIMATED LENGTHS AND THE ACTUAL LENGTH WILL BE DETERMINED IN THE FIELD.

ALL YIELD SIGNS (R1-2) AT ROUNDABOUTS SHALL BE MOUNTED AT 7' 3" TO THE BOTTOM OF YIELD SIGN.

LEGEND

- WOOD POST WITH SIGN
- STEEL POST AND V-LOCK WITH SIGN
- SIGN-PLACE NEW

PLAN SHEET PRODUCED
BY WISDOT FOR THE
SHEET 34

Culvert Pipe Reinforced Concrete - STH 15

ALL ITEMS CATEGORY 0010 522.0118* 522.0136

Table with columns: Station, INLET Offset, FT, Elevation, Station, OUTLET Offset, FT, Elevation, Slope, Location, L.F., Remarks. Includes rows for stations 207+00 to 271+50 and a TOTAL row.

TOTAL 374

Apron Endwalls For Culvert Pipe Reinforced Concrete - STH 15

ALL ITEMS CATEGORY 0010 522.1018* 522.1096

Table with columns: Station, INLET Offset, FT, Elevation, Station, OUTLET Offset, FT, Elevation, Location, 18-inch For CPWC, 24-inch For CPWC, 36-inch For CPWC, Markers Culvert End, Remarks. Includes rows for stations 207+00 to 271+50 and a TOTAL row.

TOTAL 4 2 2 6

Culvert Pipe Reinforced Concrete - Side Roads

ALL ITEMS CATEGORY 0010 520.2018 522.0118*

Table with columns: Station, INLET Offset, FT, Elevation, Station, OUTLET Offset, FT, Elevation, Slope, Location, L.F., Remarks. Includes rows for stations 64+17 to 79+45 and a TOTAL row.

TOTAL 46

Apron Endwalls For Culvert Pipe Reinforced Concrete - Side Roads

ALL ITEMS CATEGORY 0010 522.1018* 522.1024

Table with columns: Station, INLET Offset, FT, Elevation, Station, OUTLET Offset, FT, Elevation, Locations, 18-inch For CPWC, 24-inch For CPWC, Markers Culvert End, Remarks. Includes rows for stations 64+17 to 79+45 and a TOTAL row.

TOTAL 6 2 2



DRAINAGE ITEM NOTES:

- 1) STATIONS AND OFFSETS ARE TO THE CENTER OF STRUCTURE OR TO THE END OF PIPE WHERE THERE IS AN ENDWALL.
2) PIPE LENGTHS AND SLOPES ARE MEASURED TO THE CENTER OF STRUCTURE.
3) RIM ELEVATIONS ARE GIVEN AT THE FLANGE LINE FOR INLET GRATES OR THE CENTER OF THE MANHOLE COVER FOR MANHOLES.
4) STRUCTURE DEPTH = RIM ELEVATION - INVERT - CASTING HEIGHT - ADJUSTMENT + PIPE THICKNESS
ADJUSTMENT = 4" TYPICAL (NO ADJUSTMENT FOR INLETS MEDIAN 1 - 4 GRATE) CASTING HEIGHTS FOR INLET COVERS:
TYPES J AND C = 0.75' TYPE T = 0.58'
TYPES H AND HM = 0.50' TYPE MS = 0'

*ADDITIONAL QUANTITIES SHOWN ELSEWHERE

MEDIAN INLET SUMMARY

Table with columns: Station, Inlet Median, 1 Grate, 2 Grate, Inlet Cover* Type MS, Rim/Grate Elevation, Discharge Elevation, Structure Depth, FT, Remarks. Includes rows for stations 207+00 to 271+50 and a TOTAL row.

Addendum No. 03
ID 1146-75-76
Revised Sheet 61
December 1, 2022

* PROVIDE NO SLOPE INLET COVERS FOR 1G-MS
PROVIDE TWO SLOPE INLET COVERS FOR 2G-MS

ALL ITEMS CATEGORY 0010

Storm Sewer Structure Summary

Structure Number	Station	Location	Offset, FT	611.0624 Inl. Cover Type H	611.0627 Inl. Cover Type HM	611.0652 Inl. Cover Type T	611.3004 Inlet 4-FT	SPV.0060.10 Inlets 2x2.5-FT Special	616.98 Rim/ Elevation	810.97 Discharge Elevation	5.29 Structure Depth, FT	Remarks
20	12+90	RAB CIRC. RDWY	1.7 LT	1	1		1	1	816.98	810.97	5.29	AEW
20.1	12+90	RAB CIRC. RDWY	74.7 RT						--	--	--	AEW
20.2	13+00	RAB CIRC. RDWY	1.7 LT	1	1		1	1	817.09	811.07	5.30	
20.3	12+56	RAB CIRC. RDWY	21.5 RT	1			1	1	817.34	811.92	4.78	
20.4	13+31	RAB CIRC. RDWY	31.5 RT	1			1	1	817.19	812.19	4.36	
21	51+00	OLD 15 EB	1.3 LT	1			1	1	816.62	811.64	4.34	AEW
21.1	51+00	OLD 15 EB	60.2 RT						--	--	--	AEW
22	52+93	OLD 15 EB	1.8 LT	1			1	1	817.94	814.00	3.30	AEW
22.1	53+00	OLD 15 EB	44.6 RT						--	--	--	AEW
23	268+92	STH 15 EB	1.8 LT	1			1	1	818.61	813.61	4.36	AEW
23.1	268+92	STH 15 EB	44.6 RT						--	--	--	AEW
TOTAL				4	1	2	5	2				

ALL ITEMS CATEGORY 0010

Storm Sewer Pipe Summary

From STR.	To STR.	Inlet Elevation	Discharge Elevation	Slope	15 - INCH L.F.	15 - INCH CULVERT	MARKERS	Remarks
20	20.1	810.97	808.00	3.55%	1	84	1	
20.2	20	811.07	810.97	1.03%	10			
20.3	20	811.92	810.97	2.13%	45			
20.4	20.2	812.19	811.07	2.26%	50			
21	21.1	811.64	810.00	2.66%	1	62	1	
22	22.1	814.00	811.00	6.21%	1	48	1	
23	23.1	813.61	812.19	2.00%	1	106	1	
TOTAL						4	405	4

ALL ITEMS CATEGORY 0010

*ADDITIONAL QUANTITIES SHOWN ELSEWHERE

Addendum No. 03
ID 1146-75-76
Revised Sheet 62
December 1, 2022

ERECTION OF TYPE II SIGNS AND SUPPORTS

SIGN NO.	LOCATION	SIGN CODE	W X H	637.2210 SIGNS TYPE II REFLECTIVE H S.F.	637.2230 SIGNS TYPE II REFLECTIVE F S.F.	634.0614 POSTS WOOD 4x6x14 EACH	634.0616 POSTS WOOD 4x6x18 EACH	634.0618 POSTS WOOD 4x6x18 EACH	REMARKS
274	STH 15, W. OF CTH T/OLD STH 15 RAB	W2-6	48" X 48"	16.00	16.00	2	2	2	15 MPH, MOUNT BELOW SIGN #274
275	"	W13-1	24" X 24"	4.00	4.00				
276	"	W2-6	48" X 48"	16.00	16.00				15 MPH, MOUNT BELOW SIGN #276
277	"	W13-1	24" X 24"	4.00	4.00				
278	VACANT	---	---						
279	"	R4-3	36" X 48"	8.75	8.75	1	1	1	DALE. SEE SIGN DETAIL SHEET
280	"	D1-2	60" X 21"	12.00	12.00	1	1	1	55 MPH
281	STH 15, W. OF CTH T/OLD STH 15 RAB	R2-1	36" X 48"	7.50	7.50				MOUNT TO SIGN BRIDGE S-44-113 LEFT COLUMN
282	"	R3-8G	36" X 30"	7.50	7.50				MOUNT TO SIGN BRIDGE S-44-113 RIGHT COLUMN
283	"	R3-8G	36" X 30"	7.50	7.50				
284	"	J4-2	72" X 54"	27.00	27.00	2	2	2	WEST STH 15, CTH T
285	"	R1-2	48" X 42"	7.00	7.00				
286	VACANT	---	---						
287	"	R1-2	48" X 42"	7.00	7.00			1	
288	VACANT	---	---						
289	CTH T/OLD STH 15 RAB	R6-1R	54" X 18"	6.75	6.75	2	2	2	MOUNT BELOW SIGN #289
290	"	R6-4B	60" X 18"	7.50	7.50	2	2	2	CTH T, CTH JJ, SEE SIGN DETAIL SHEET
291	"	D1-1	60" X 18"	7.50	7.50			1	
292	CTH T/OLD STH 15, S. OF STH 15 RAB	R1-2	48" X 42"	7.00	7.00				55 MPH
293	"	R2-1	24" X 36"	6.00	6.00	1	1	1	CTH T, SEE PLAN SHEET
294	"	J12-1	24" X 45"	7.50	7.50	1	1	1	
295	"	R4-7	24" X 30"	5.00	5.00	1	1	1	
296	"	R6-2L	24" X 30"	5.00	5.00	1	1	1	
297	"	J13-2	48" X 45"	15.00	15.00	1	1	1	CTH JJ, CTH T, SEE PLAN SHEET
298	W. GIVENS RD	R1-1	30" X 30"	5.18	5.18	1	1	1	CTH JJ, SEE PLAN SHEET
299	"	R1-1	30" X 30"	5.18	5.18	1	1	1	
300	CTH T/OLD STH 15, S. OF STH 15 RAB	R4-7	24" X 30"	5.00	5.00	1	1	1	
300A	"	R6-2L	24" X 30"	5.00	5.00	1	1	1	CTH T, SEE PLAN SHEET
300B	"	J13-1	24" X 45"	7.50	7.50			1	CTH T, SEE PLAN SHEET
300C	"	J4-1	24" X 30"	6.00	6.00	1	1	1	CTH JJ, SEE PLAN SHEET
300D	"	R6-2L	24" X 30"	5.00	5.00	1	1	1	CTH JJ, SEE PLAN SHEET
301	"	R1-1	30" X 30"	5.18	5.18	1	1	1	
302	E. GIVENS RD	R1-1	30" X 30"	5.18	5.18	1	1	1	
303	CTH T/OLD STH 15, S. OF STH 15 RAB	J1-2	48" X 39"	13.00	13.00	1	1	1	JCT STH 15, END CTH JJ, SEE PLAN SHEET
304	"	W2-6	30" X 30"	6.25	6.25				
305	"	W13-1	18" X 18"	2.25	2.25				
306	"	J3-3	72" X 57"	28.50	28.50	2	2	2	WEST STH 15, CTH T, EAST STH 15, SEE PLAN SHEET
307	"	R1-2	36" X 31"	3.88	3.88			1	
308	VACANT	---	---						
309	CTH T/OLD STH 15 RAB	R6-1R	54" X 18"	6.75	6.75	2	2	2	MOUNT BELOW SIGN #309
310	"	R6-4B	60" X 24"	10.00	10.00	1	1	1	EAST STH 15, SEE SIGN DETAIL SHEET
311	"	D1-1	42" X 30"	8.75	8.75	1	1	1	WEST STH 15, SEE SIGN DETAIL SHEET
312	"	D1-1	42" X 30"	8.75	8.75	1	1	1	
313	"	R6-1R	54" X 18"	6.75	6.75	2	2	2	MOUNT BELOW SIGN #313
314	"	R6-4B	60" X 24"	10.00	10.00				
315	STH 15, E. OF CTH T/OLD STH 15 RAB	R1-2	48" X 42"	7.00	7.00	1	1	1	
PAGE SUBTOTALS				48.50	48.50	18	16	8	

Addendum No. 03
 ID 1146-75-76
 Revised Sheet 64
 December 1, 2022

PLAN SHEET PRODUCED
 BY WisDOT - NE REGION

PROJECT NUMBER: 1146-75-76

HWY: STH 15

COUNTY: OUTAGAMIE

MISCELLANEOUS QUANTITIES

SHEET

64

E

ERECTION OF TYPE II SIGNS AND SUPPORTS

SIGN NO.	LOCATION	SIGN CODE	W X H	637. 2210 SIGNS TYPE II REFLECTIVE H S. F.	637. 2230 SIGNS TYPE II REFLECTIVE F S. F.	634. 0614 POSTS WOOD 4x6x14 EACH	634. 0616 POSTS WOOD 4x6x16 EACH	634. 0618 POSTS WOOD 4x6x18 EACH	REMARKS
316	VACANT	---	---						
317	STH 15, E. OF CTH T/OLD STH 15 RAB	R1-2	48" X 42"	7.00				1	
318	VACANT	---	---						
319	"	J4-1	36" X 54"	13.50		1			EAST STH 15
320	"	R2-1	36" X 48"	12.00		1			55 MPH
321	STH 15, E. OF CTH T/OLD STH 15 RAB	R3-8GG	36" X 30"	7.50					MOUNT TO SIGN BRIDGE S-44-114 LEFT COLUMN
322	"	R3-8GG	36" X 30"	7.50					MOUNT TO SIGN BRIDGE S-44-114 RIGHT COLUMN
323	VACANT	---	---						
324	"	D1-1	60" X 21"	8.75					DALE. SEE SIGN DETAIL SHEET
325	"	R4-3	36" X 48"	12.00		1			
326	"	W2-6	48" X 48"		16.00			2	
327	"	W13-1	24" X 24"		4.00				15 MPH. MOUNT BELOW SIGN #326
328	"	W2-6	48" X 48"		16.00			2	
329	"	W13-1	24" X 24"		4.00				15 MPH. MOUNT BELOW SIGN #328
PAGE SUBTOTALS				68.25	40.00	2	3	5	
PROJECT TOTALS				379.87	88.50	20	19	13	

Addendum No. 03
 ID 1146-75-76
 Revised Sheet 65
 December 1, 2022

ERECTION OF TYPE I SIGNS AND SUPPORTS			
SIGN NO.	LOCATION	SIGN CODE	W X H
		637.1220 TYPE I REFLECTIVE SH	
		SF	REMARKS
600	STH 15 EB APPROACH TO CTH T/OLD STH 15 RAB	E6-54A	96" X 90"
601	"	E6-53	144" X 108"
602	STH 15 WB APPROACH TO CTH T/OLD STH 15 RAB	E6-54A	120" X 90"
603	"	E6-52	132" X 102"

PLAN SHEET PRODUCED
 BY WisDOT - NE REGION

PROJECT NUMBER: 1146-75-76

HWY: STH 15

COUNTY: OUTAGAMIE

MISCELLANEOUS QUANTITIES

SHEET 65

* Additional Quantities shown elsewhere

TRAFFIC CONTROL DETOUR SIGN SUMMARY

SIGN NO.	LOCATION	STGN CODE	SIZE W X H	NUMBER IN SERVICE	APPROX. SERVICE PERIOD DAYS	643.0900 SIGNS * DAYS	643.0420 BARRICADES TYPE III * DAYS	643.0705 WARNING LIGHTS TYPE A * DAYS	643.1000 SIGNS FIXED MESSAGE SF	643.1050 SIGNS PORTABLE MESSAGE CHANGABLE DAYS	NO OF CYCLES	643.0910 COVERING SIGNS TYPE I EACH	643.0920 COVERING SIGNS TYPE II EACH	REMARKS					
1	I-41, S. OF CTH A, COVER EXISTING TYPE I SIGN AS SHOWN	M 1-6	36"x36"	1	60	60					1	1		COVER "15" ROUTE MARKER					
2	I-41, S. OF CTH A, PLACE NEXT TO TYPE I SIGN ON RIGHT SHOULDER	W 20-2A	48"x48"	1	60	60								15					
3	I-41, S. OF CTH A, PLACE ACROSS FROM SIGN #2 ON MEDIAN SHOULDER	M 1-6	36"x36"	1	60	60								15					
4	I-41, N. OF STH 15, PLACE 1/2 MILE N. OF STH 15 EXIT ON RIGHT SHOULDER	W 20-2A	48"x48"	1	60	60								15					
5	I-41, N. OF STH 15, PLACE 1/2 MILE N. OF STH 15 EXIT ON MEDIAN SHOULDER	M 1-6	36"x36"	1	60	60								15					
6	I-41, N. OF STH 15, PLACE 1/4 MILE N. OF STH 15 EXIT ON RIGHT SHOULDER	MO 6-1	30"x30"	1	60	60								AHEAD					
7	I-41, N. OF STH 15, PLACE 1/4 MILE N. OF STH 15 EXIT ON MEDIAN SHOULDER	M 4-5	36"x48"	1	60	60			47.25		1	1		SEE SIGN DETAIL SHEET					
8	I-41, AT STH 15 EXIT, COVER EXISTING TYPE I SIGN AS SHOWN	M 1-6	36"x36"	1	60	60			47.25					SEE SIGN DETAIL SHEET					
9	I-41, AT STH 15 EXIT, PLACE NEXT TO TYPE I SIGN ON RIGHT SHOULDER	MO 6-1	30"x30"	1	60	60								COVER "15" ROUTE MARKER					
10	I-41, AT STH 15 EXIT, PLACE ACROSS FROM SIGN #10 ON MEDIAN SHOULDER	M 1-6	36"x36"	1	60	60								15					
11	I-41, S. OF STH 15, PLACE 800' S. OF STH 15 OVERPASS STRUCTURE ON RIGHT SHOULDER	MO 6-1	30"x30"	1	60	60								15					
12	I-41, S. OF STH 15, PLACE 800' S. OF STH 15 OVERPASS STRUCTURE ON MEDIAN SHOULDER	M 4-5	36"x48"	1	60	60								AHEAD					
13	CTH 00, W. OF BLUEWIND DR, PLACE 1000' E. OF I-41 NB ON-RAMP IN MEDIAN	M 1-6	36"x36"	1	60	60								15					
14	CTH 00, W. OF BLUEWIND DR, PLACE 500' E. OF I-41 NB ON-RAMP ON RIGHT SHOULDER	MO 6-1	30"x30"	1	60	60								AHEAD					
14A	CTH 00, W. OF BLUEWIND DR, PLACE ACROSS FROM SIGN #14A IN MEDIAN	M 1-6	36"x36"	1	60	60								15					
14B	CTH 00, W. OF BLUEWIND DR, PLACE ACROSS FROM SIGN #14B IN MEDIAN	MO 6-1	30"x30"	1	60	60								AHEAD					
15	CTH 00, W. OF BLUEWIND DR, PLACE 100' E. OF I-41 NB ON-RAMP ON RIGHT SHOULDER	W 20-2A	48"x48"	1	60	60			19.5					SEE SIGN DETAIL SHEET					
16	CTH 00, W. OF BLUEWIND DR, PLACE 100' E. OF I-41 NB ON-RAMP IN MEDIAN	M 1-6	36"x36"	1	60	60			19.5					SEE SIGN DETAIL SHEET					
17	CTH 00, W. OF I-41 NB ON-RAMP INTERSECTION, MODIFY EXISTING TYPE II SIGN	MO 6-1	21"x21"	1	60	60								15					
18	CTH 00, W. OF I-41 NB ON-RAMP INTERSECTION, PLACE ACROSS FROM SIGN #17 IN MEDIAN	M 4-5	24"x24"	1	60	60								AHEAD					
19	CTH 00, W. OF I-41 NB ON-RAMP INTERSECTION, PLACE ACROSS FROM SIGN #19 IN MEDIAN	M 4-5	24"x24"	1	60	60								15					
20	CTH 00, W. OF I-41 NB ON-RAMP INTERSECTION, PLACE ACROSS FROM SIGN #20 IN MEDIAN	M 4-5	24"x24"	1	60	60								15					
21	CTH 00, W. OF I-41 NB ON-RAMP INTERSECTION, PLACE ACROSS FROM SIGN #21 IN MEDIAN	M 4-5	24"x24"	1	60	60								15					
											43	2,580	0	0	133.50	0	2	1	
PAGE SUBTOTALS																			

Addendum No. 03
 ID 1146-75-76
 Added Sheet 65A
 December 1, 2022

PLAN SHEET PRODUCED
 BY WisDOT - NE REGION
 PROJECT NUMBER: 1146-75-76

HWY: STH 15

COUNTY: OUTAGAMIE

MISCELLANEOUS QUANTITIES

SHEET 65A

E

TRAFFIC CONTROL DETOUR SIGN SUMMARY

* Additional Quantities shown elsewhere

SGN NO.	LOCATION	SGN CODE	SIZE W X H	NUMBER IN SERVICE	APPROX. SERVICE PERIOD DAYS	643.0900 SIGNS * DAYS	643.0420 BARRICADES TYPE III * DAYS	643.0705 WARNING LIGHTS TYPE A * DAYS	643.1000 SIGNS FIXED MESSAGE SF	643.1050 SIGNS PORTABLE MESSAGE DAYS	NO OF CYCLES	643.0910 COVERING SIGNS TYPE I EACH	643.0920 COVERING SIGNS TYPE II EACH	REMARKS
22	STH 15, W. OF I-41 SB ON-RAMP, PLACE BARRICADE IN MEDIUM	R 11-3	60"x30"	1	60	60	60	120						11 MILES AHEAD
23	STH 15, W. OF I-41 SB ON-RAMP, COVER EXISTING TYPE II SIGN AS SHOWN	M 1-6	36"x36"	1	60	60					1	1		COVER "WEST 15"
24	I-41, AT STH 15/CTH 00 RAMP TAPER, COVER EXISTING TYPE I SIGN AS SHOWN	MO 6-1	30"x30"	1	60	60						1	1	COVER "15" ROUTE MARKER
25	I-41 NB OFF-RAMP TO STH 15/CTH 00, COVER EXISTING TYPE II SIGN AS SHOWN	M 4-5	36"x18"	1	60	60							1	COVER "WEST 15 TILT LEFT"
26	I-41 NB OFF-RAMP TO STH 15/CTH 00, COVER EXISTING TYPE II SIGN AS SHOWN	M 1-6	36"x36"	1	60	60							1	COVER "WEST 15 TILT LEFT"
27	I-41, 1/4 MILE S. OF STH 15/CTH 00 RAMP, COVER EXISTING TYPE I SIGN AS SHOWN	MO 6-1	30"x30"	1	60	60							1	COVER "15" ROUTE MARKER
28	I-41, N. OF STH 96, PLACE 400' N. OF S-44-13 SIGN CANTILEVER	M 4-5	36"x18"	1	60	60								
29	I-41, S. OF STH 125/CTH CA, PLACE 400' S. OF S-44-9 SIGN CANTILEVER	M 1-6	36"x36"	1	60	60								
30	I-41, N. OF CTH BB, PLACE 500' N. OF S-44-7 SIGN CANTILEVER	MO 6-1	30"x30"	1	60	60								
31	I-41, S. OF CTH BB, PLACE 1000' S. OF S-70-36 SIGN CANTILEVER	M 1-6	36"x36"	1	60	60								
32	I-41, S. OF CTH BB, PLACE 500' N. OF S-70-240 SIGN BRIDGE	MO 6-1	30"x30"	1	60	60								
33	I-41, N. OF STH 441/US 10, PLACE IN FRONT OF S-70-259 SIGN BRIDGE RIGHT COLUMN	M 1-6	36"x36"	1	60	60								
34	I-41 OFF-RAMP TO US 10 SPLIT, PLACE IN FRONT OF S-70-204 SIGN BRIDGE RIGHT COLUMN	MO 6-2	30"x30"	1	60	60								
35	US 10 OFF-RAMP TO I-41 SPLIT, PLACE IN FRONT OF S-70-201 SIGN BRIDGE LEFT COLUMN	M 1-6	36"x36"	1	60	60								15 TILT LEFT
36	US 10, AT OFF-RAMP TO I-41, PLACE IN FRONT OF S-70-200 SIGN BRIDGE RIGHT COLUMN	M 1-6	36"x36"	1	60	60								15 TILT RIGHT
37	US 10, AT OFF-RAMP TO CTH CB, PLACE 500' E. OF S-70-251 SIGN BRIDGE	M 4-5	36"x18"	1	60	60								15 AHEAD
38	US 10, W. OF COLD SPRINGS RD, PLACE 600' W. OF S-70-200 SIGN BRIDGE	M 1-6	36"x36"	1	60	60								15
39	US 10, W. OF CTH CB, PLACE 400' W. OF CTH CB RAMP TAPER POINT	MO 5-2R	30"x30"	1	60	60								15 AHEAD
40	US 10, E. OF STH 76, PLACE 400' E. OF STH 76 RAMP TAPER POINT	M 4-5	36"x18"	1	60	60								15
41	US 10, W. OF STH 76, PLACE 400' W. OF STH 76 RAMP TAPER POINT	MO 6-1	30"x30"	1	60	60								15 AHEAD
	PAGE SUBTOTALS			43	2,580	60	120	0	0	0	2	3		

Addendum No. 03
 ID 1146-75-76
 Added Sheet 65B
 December 1, 2022

* Additional Quantities shown elsewhere

TRAFFIC CONTROL DETOUR SIGN SUMMARY

SIGN NO.	LOCATION	SIGN CODE	SIZE IN FT.	NUMBER IN SERVICE	APPROX. SERVICE PERIOD IN DAYS	643.0900 SIGNS * DAYS	643.0420 BARRICADES TYPE III * DAYS	643.0705 WARNING LIGHTS TYPE A * DAYS	643.1000 SIGNS FIXED MESSAGE SF	643.1050 SIGNS PORTABLE MESSAGE CHANGEABLE DAYS	NO OF CYCLES	643.0910 COVERING SIGNS TYPE I EACH	643.0920 COVERING SIGNS TYPE II EACH	REMARKS
42	US 10, E. OF US 45 INTERCHANGE, PLACE 1000' E. OF US 45 N/S SPLIT ON RIGHT SHOULDER	M 4-5	36"x18"	1	60	60								
	"	M 1-6	36"x36"	1	60	60								15 AHEAD
	"	MO 5-2R	30"x30"	1	60	60								15 AHEAD
43	US 10, E. OF US 45 INTERCHANGE, PLACE 1000' E. OF US 45 N/S SPLIT ON MEDIAN SHOULDER	M 4-5	36"x18"	1	60	60								
	"	M 1-6	36"x36"	1	60	60								15 AHEAD
	"	MO 5-2R	30"x30"	1	60	60								15 AHEAD
44	US 10, AT US 45 INTERCHANGE, PLACE 200' E. OF S-70-41 SIGN BRIDGE ON RIGHT SHOULDER	M 4-5	36"x18"	1	60	60								15 TILT RIGHT
	"	M 1-6	36"x36"	1	60	60								15 TILT RIGHT
	"	MO 6-2	30"x30"	1	60	60								15 TILT RIGHT
45	US 10, AT US 45 INTERCHANGE, PLACE 200' E. OF S-70-41 SIGN BRIDGE ON MEDIAN SHOULDER	M 4-5	36"x18"	1	60	60								15 TILT RIGHT
	"	M 1-6	36"x36"	1	60	60								15 TILT RIGHT
	"	MO 6-2	30"x30"	1	60	60								15 TILT RIGHT
46	US 10, E. OF US 45 INTERCHANGE, PLACE TO RIGHT OF EXISTING J4-1 SIGN	M 4-5	36"x18"	1	60	60								15 AHEAD
	"	M 1-6	36"x36"	1	60	60								15 AHEAD
	"	MO 6-1	30"x30"	1	60	60								15 AHEAD
47	US 10/45, W. OF US 10-US 45 INTERCHANGE SOUTH JUNCTION, PLACE 250' W. OF S-70-44 ON RIGHT SHOULDER	M 4-5	36"x18"	1	60	60								15 TILT LEFT
	"	M 1-6	36"x36"	1	60	60								15 TILT LEFT
	"	MO 6-2	30"x30"	1	60	60								15 TILT LEFT
48	US 10/45, W. OF US 10-US 45 INTERCHANGE SOUTH JUNCTION, PLACE 250' W. OF S-70-44 ON MEDIAN SHOULDER	M 4-5	36"x18"	1	60	60								15 TILT LEFT
	"	M 1-6	36"x36"	1	60	60								15 TILT LEFT
	"	MO 6-2	30"x30"	1	60	60								15 TILT LEFT
49	US 10/45, W. OF US 10-US 45 INTERCHANGE SOUTH JUNCTION, PLACE TO RIGHT OF EXISTING J4-2 SIGN	M 4-5	36"x18"	1	60	60								15 AHEAD
	"	M 1-6	36"x36"	1	60	60								15 AHEAD
	"	MO 6-1	30"x30"	1	60	60								15 AHEAD
50	US 10/45, W. OF US 10-US 45 INTERCHANGE SOUTH JUNCTION, PLACE 1000' W. OF S-70-44 ON RIGHT SHOULDER	M 4-5	36"x18"	1	60	60								15
	"	M 1-6	36"x36"	1	60	60								15
	"	MO 5-2L	30"x30"	1	60	60								15
51	US 10/45, W. OF US 10-US 45 INTERCHANGE SOUTH JUNCTION, PLACE 1000' W. OF S-70-44 ON MEDIAN SHOULDER	M 4-5	36"x18"	1	60	60								15
	"	M 1-6	36"x36"	1	60	60								15
	"	MO 5-2L	30"x30"	1	60	60								15
52	US 10/45, E. OF US 10-US 45 INTERCHANGE NORTH JUNCTION, PLACE 1000' E. OF S-70-42 ON RIGHT SHOULDER	M 4-5	36"x18"	1	60	60								15
	"	M 1-6	36"x36"	1	60	60								15
	"	MO 5-2R	30"x30"	1	60	60								15
53	US 10/45, E. OF US 10-US 45 INTERCHANGE NORTH JUNCTION, PLACE 1000' E. OF S-70-42 ON MEDIAN SHOULDER	M 4-5	36"x18"	1	60	60								15
	"	M 1-6	36"x36"	1	60	60								15
	"	MO 5-2R	30"x30"	1	60	60								15
54	US 10/45, E. OF US 10-US 45 INTERCHANGE NORTH JUNCTION, PLACE TO RIGHT OF EXISTING J4-2 SIGN	M 4-5	36"x18"	1	60	60								15 AHEAD
	"	M 1-6	36"x36"	1	60	60								15 AHEAD
	"	MO 6-1	30"x30"	1	60	60								15 AHEAD
55	US 10/45, E. OF US 10-US 45 INTERCHANGE NORTH JUNCTION, PLACE 250' E. OF S-70-42 ON RIGHT SHOULDER	M 4-5	36"x18"	1	60	60								15
	"	M 1-6	36"x36"	1	60	60								15
	"	MO 6-2	30"x30"	1	60	60								15 TILT RIGHT
						2,520	0	0	0	0	0	0	0	0
PAGE SUBTOTALS						42								

Addendum No. 03
 ID 1146-75-76
 Added Sheet 65C
 December 1, 2022

PLAN SHEET PRODUCED
 BY WisDOT - NE REGION
 PROJECT NUMBER: 1146-75-76

HWY: STH 15

COUNTY: OUTAGAMIE

MISCELLANEOUS QUANTITIES

SHEET 65C

TRAFFIC CONTROL DETOUR SIGN SUMMARY

* Additional Quantities shown elsewhere

STGN NO.	LOCATION	STGN CODE	SIZE W X H	NUMBER IN SERVICE	APPROX. SERVICE PERIOD DAYS	643.0900 SIGNS * DAYS	643.0420 BARRICADES TYPE III * DAYS	643.0705 WARNING LIGHTS TYPE A * DAYS	643.1000 SIGNS FIXED MESSAGE SF	643.1050 SIGNS PORTABLE MESSAGE CHANGABLE DAYS	NO. OF CYCLES	643.0910 COVERING SIGNS TYPE I EACH	643.0920 COVERING SIGNS TYPE II EACH	REMARKS
56	US 10/45, E. OF US 10-45 INTERCHANGE NORTH JUNCTION, PLACE 250' E. OF S-70-42 ON RIGHT SHOULDER	M 4-5	36"x18"	1	60	60								
	"	M 1-6	36"x36"	1	60	60								15
	"	MO 6-2	30"x30"	1	60	60								TILT RIGHT
57	US 45, N. OF US 10-45 INTERCHANGE NORTH JUNCTION, PLACE 500' N. OF US 10 E/W RAMP MERGE	M 4-5	36"x18"	1	60	60								
	"	M 1-6	36"x36"	1	60	60								15
	"	MO 6-1	30"x30"	1	60	60								AHEAD
58	US 45, N. OF US 10-45 INTERCHANGE NORTH JUNCTION, PLACE 250' N. OF S-70-46 ON RIGHT SHOULDER	M 4-5	36"x18"	1	60	60								
	"	M 1-6	36"x36"	1	60	60								15
	"	MO 6-2	30"x30"	1	60	60								TILT LEFT
59	US 45, N. OF US 10-45 INTERCHANGE NORTH JUNCTION, PLACE 250' N. OF S-70-46 ON MEDIAN SHOULDER	M 4-5	36"x18"	1	60	60								
	"	M 1-6	36"x36"	1	60	60								15
	"	MO 6-2	30"x30"	1	60	60								TILT LEFT
60	US 45, N. OF US 10-45 INTERCHANGE NORTH JUNCTION, PLACE 1000' N. OF S-70-46 ON RIGHT SHOULDER	M 4-5	36"x18"	1	60	60								
	"	M 1-6	36"x36"	1	60	60								15
	"	MO 5-2L	30"x30"	1	60	60								
61	US 45, N. OF US 10-45 INTERCHANGE NORTH JUNCTION, PLACE 1000' N. OF S-70-46 ON MEDIAN SHOULDER	M 4-5	36"x18"	1	60	60								
	"	M 1-6	36"x36"	1	60	60								15
	"	MO 5-2L	30"x30"	1	60	60								
62	US 45, S. OF CTH W, PLACE 600' S. OF CTH W INTERSECTION	M 4-5	36"x18"	1	60	60								
	"	M 1-6	36"x36"	1	60	60								
	"	MO 6-1	30"x30"	1	60	60								
63	US 45, S. OF STH 96, PLACE 750' S. OF STH 96 INTERSECTION	M 4-5	24"x12"	1	60	60								
	"	M 1-6	24"x24"	1	60	60								
	"	MO 6-1	21"x21"	1	60	60								
64	US 45, N. OF STH 96, PLACE 600' N. OF STH 96 INTERSECTION	M 4-5	24"x12"	1	60	60								
	"	M 1-6	24"x24"	1	60	60								
	"	MO 6-1	21"x21"	1	60	60								
65	US 45, S. OF STH 15 INTERSECTION, MODIFY EXISTING TYPE II SIGN AS SHOWN	MO 4-8A	24"x18"	1	60	60								
66	US 45, S. OF STH 15 INTERSECTION, MODIFY EXISTING TYPE II SIGN AS SHOWN	MO 5-1L	21"x21"	1	60	60								
67	US 45, S. OF STH 15, COVER EXISTING TYPE II SIGN AS SHOWN	M 4-5	36"x18"	1	60	60					1	1	1	COVER "EAST 15 ADV RIGHT"
68	US 45, S. OF STH 15 INTERSECTION, PLACE TO RIGHT OF EXISTING 34-1 SIGN	M 1-6	36"x36"	1	60	60								
	"	MO 6-1	30"x30"	1	60	60								
PAGE SUBTOTALS						1,920	0	0	0	0	0	0	1	
32														

Addendum No. 03
 ID 1146-75-76
 Added Sheet 65D
 December 1, 2022

PLAN SHEET PRODUCED
 BY WisDOT - NE REGION
 PROJECT NUMBER: 1146-75-76

HWY: STH 15

COUNTY: OUTAGAMIE

MISCELLANEOUS QUANTITIES

SHEET 65D

E

* Additional Quantities shown elsewhere

TRAFFIC CONTROL DETOUR SIGN SUMMARY

SIGN NO.	LOCATION	SIGN CODE	SIZE W X H	NUMBER IN SERVICE	APPROX. SERVICE PERIOD DAYS	643.0900 SIGNS * DAYS	643.0420 BARRICADES TYPE III * DAYS	643.0705 WARNING LIGHTS TYPE A * DAYS	643.1000 SIGNS FIXED MESSAGE SF	643.1050 SIGNS PORTABLE CHANGEABLE MESSAGE DAYS	NO OF CYCLES	643.0910 COVERING SIGNS TYPE I EACH	643.0920 COVERING SIGNS TYPE II EACH	REMARKS
69	US 45, S. OF STH 15 INTERSECTION, MODIFY EXISTING TYPE II SIGN AS SHOWN	MO 6-1	21"X21"	1	60	60					1		1	COVER "EAST 15 RIGHT"
70	STH 15, AT US 45 INTERSECTION, PLACE IN MIDDLE OF ROADWAY FACING WEST	R 11-3	60"X30"	1	60	60	60	120						
	"	M 4-9R	30"X24"	1	60	60								
71	US 45, AT STH 15 INTERSECTION, PLACE IN LANE AT START OF RIGHT TURN LANE TO STH 15	R 11-2	48"X30"	1	60	60	60	120						
72	CTH T, W. OF BECKERT RD, PLACE TO RIGHT OF EXISTING 11-2 SIGN	M 1-6	24"X24"	1	60	60								
	"	W 20-2A	48"X48"	1	60	60								
73	CTH T, E. OF BECKERT RD, MODIFY EXISTING J2-2 SIGN AS SHOWN	M 4-5	24"X12"	1	60	60								
	"	MO 5-1R	21"X21"	1	60	60								
74	CTH T, W. OF US 45/STH 15 INTERSECTION, COVER EXISTING TYPE II SIGN AS SHOWN	M 4-5	24"X12"	1	60	60					1		1	COVER "HORTONVILLE"
75	CTH T, W. OF US 45/STH 15 INTERSECTION, PLACE TO RIGHT OF EXISTING J3-3 SIGN	M 1-6	24"X24"	1	60	60								
	"	M 1-6	21"X21"	1	60	60								
76	US 45, N. OF STH 15, PLACE 1500' N. OF STH 15 INTERSECTION IN MEDIAN	MO 6-1	21"X21"	1	60	60								
	"	W 20-2A	48"X48"	1	60	60								
77	US 45, N. OF STH 15, PLACE 1500' N. OF STH 15 INTERSECTION ON RIGHT SHOULDER	M 1-6	24"X24"	1	60	60								
	"	W 20-2A	48"X48"	1	60	60								
78	US 45, N. OF STH 15, MODIFY EXISTING J2-4 SIGN AS SHOWN	M 4-5	24"X12"	1	60	60								
	"	MO 6-1	21"X21"	1	60	60								
79	US 45, N. OF STH 15, MODIFY EXISTING J2-1 SIGN AS SHOWN	MO 6-1	21"X21"	1	60	60								
	"	M 4-5	24"X12"	1	60	60								
80	US 45, N. OF STH 15, COVER EXISTING TYPE II AS SHOWN	MO 6-1	21"X21"	1	60	60								
81	US 45, AT STH 15 INTERSECTION, MODIFY EXISTING J3-4 SIGN AS SHOWN	M 1-6	24"X24"	1	60	60								
	"	M 1-6	21"X21"	1	60	60								
82	US 45, N. OF STH 15 INTERSECTION, PLACE PCMS BOARD ON RIGHT SHOULDER/MEDIAN	PCMS		1	60	60				7				
83	STH 15, S. OF RIVER RD, PLACE PCMS BOARD ON RIGHT SHOULDER	PCMS		1	60	60				7				
84	STH 15, E. OF CTH T, PLACE PCMS BOARD ON RIGHT SHOULDER	PCMS		1	60	60				7				
85	STH 15, W. OF CTH W, PLACE IN PARKING LANE IMMEDIATELY W. OF CTH W INTERSECTION	R 11-3	60"X30"	1	60	60	60	120						2.1 MILES AHEAD
86	STH 15, W. OF CTH W, PLACE IN NW QUADRANT OF INTERSECTION ON GRASS	R 11-3	60"X30"	1	60	60	60	120						5.8 MILES AHEAD
PAGE SUBTOTALS						1,560	240	480	0	21	0	0	2	
PROJECT TOTALS						11,160	300	600	133.50	21	4	7		

Addendum No. 03
 ID 1146-75-76
 Added Sheet 65E
 December 1, 2022

PLAN SHEET PRODUCED
 BY WisDOT - NE REGION

PROJECT NUMBER: 1146-75-76

HWY: STH 15

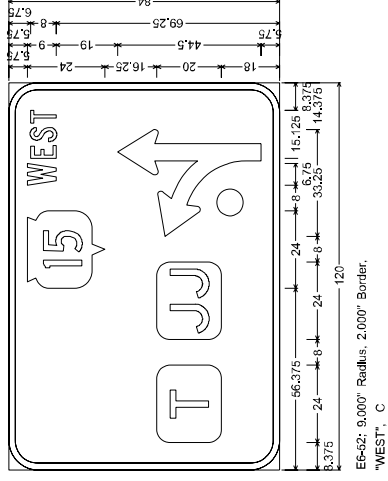
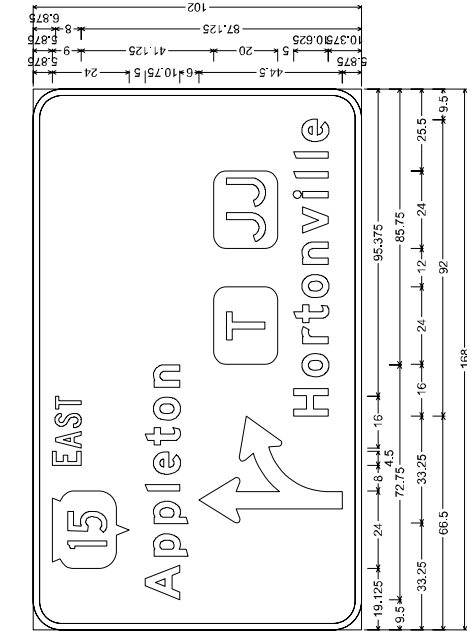
COUNTY: OUTAGAMIE

MISCELLANEOUS QUANTITIES

SHEET 65E

NOTES

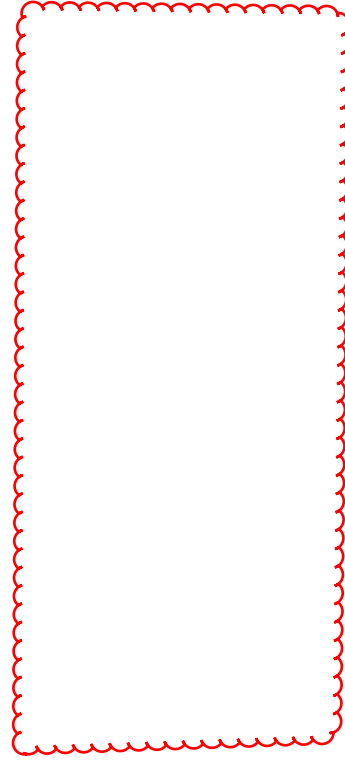
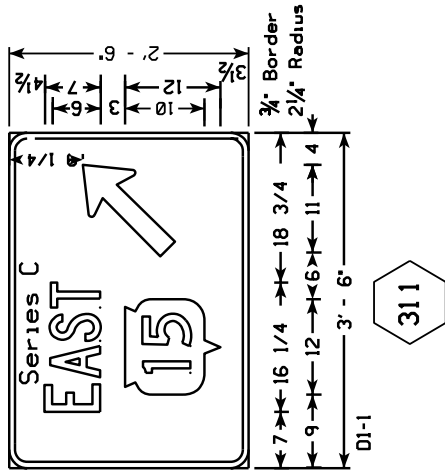
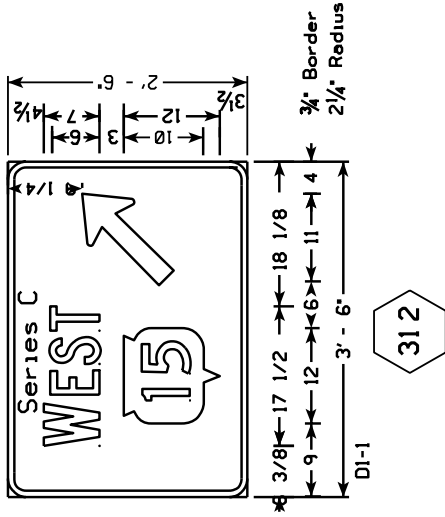
1. Signs are Type I - Type SH Reflective
2. Color:
Background - Green
Message - White
3. Message Series - E Modified except as noted



Addendum No. 03
ID 1146-75-76
Revised Sheet 172
December 1, 2022

NOTES

1. All Signs \otimes II- Type H Reflective
2. Color:
Background - GREEN
Message - WHITE
3. Message Series - E except as Shown

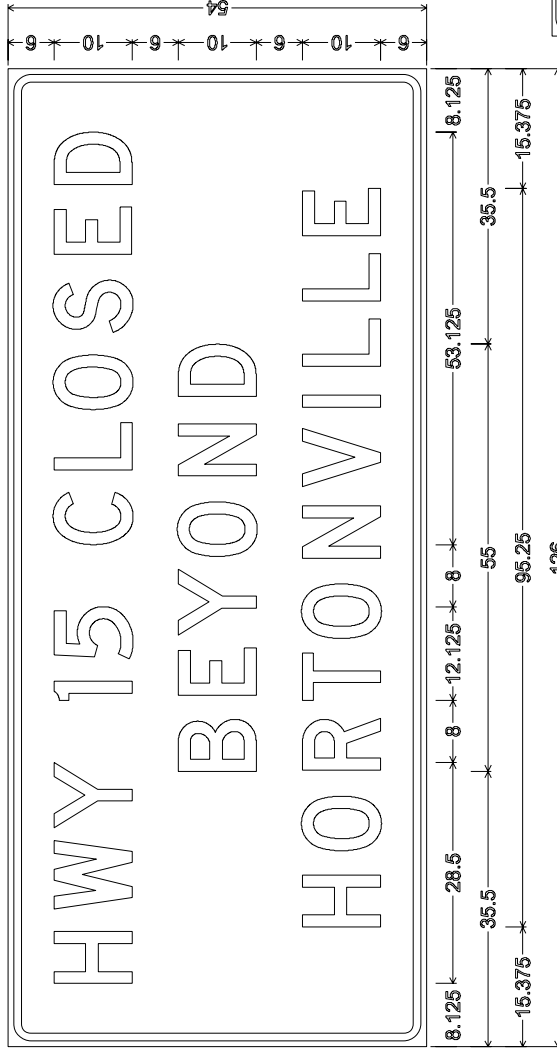


Addendum No. 03
ID 1146-75-76
Revised Sheet 174
December 1, 2022

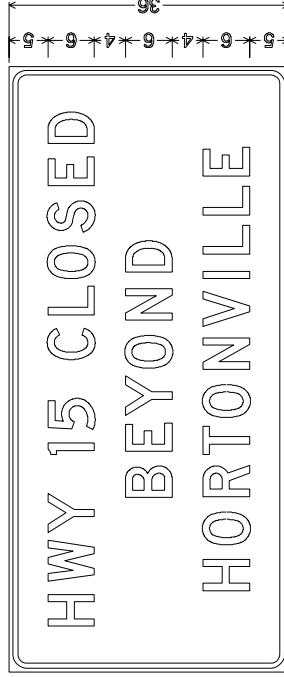
NOTES

1. ALL Signs Type II - Type F Reflective
2. Color:
 - Background - Orange
 - Message - Black
3. Message Series - D

Addendum No. 03
 ID 1146-75-76
 Added Sheet 174A
 December 1, 2022



3.000" Radius, 1.000" Border, 0.750" Indent, Black on Fluorescent orange;
 "HWY" D; "15" D; "CLOSED" D; "BEYOND" D; "HORTONVILLE" D;



2.250" Radius, 0.625" Border, 0.500" Indent, Black on Fluorescent orange;
 "HWY" D; "15" D; "CLOSED" D; "BEYOND" D;
 "HORTONVILLE" D;

STATE PROJECT NUMBER
1146-75-76

Addendum No. 03
ID 1146-75-76
Revised Sheet 236
December 1, 2022

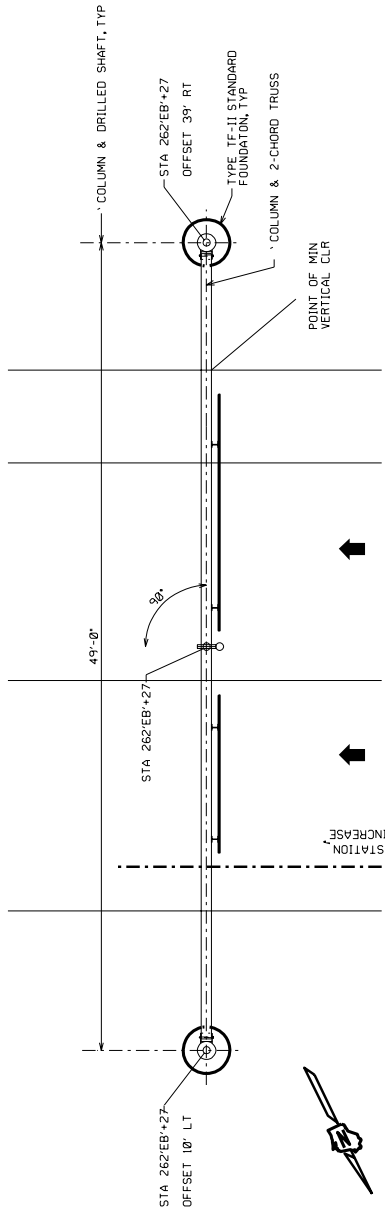
NOTE

POINT OF MIN VERTICAL CLEARANCE
STA 627+27.32, 80 FT
EL 816.27

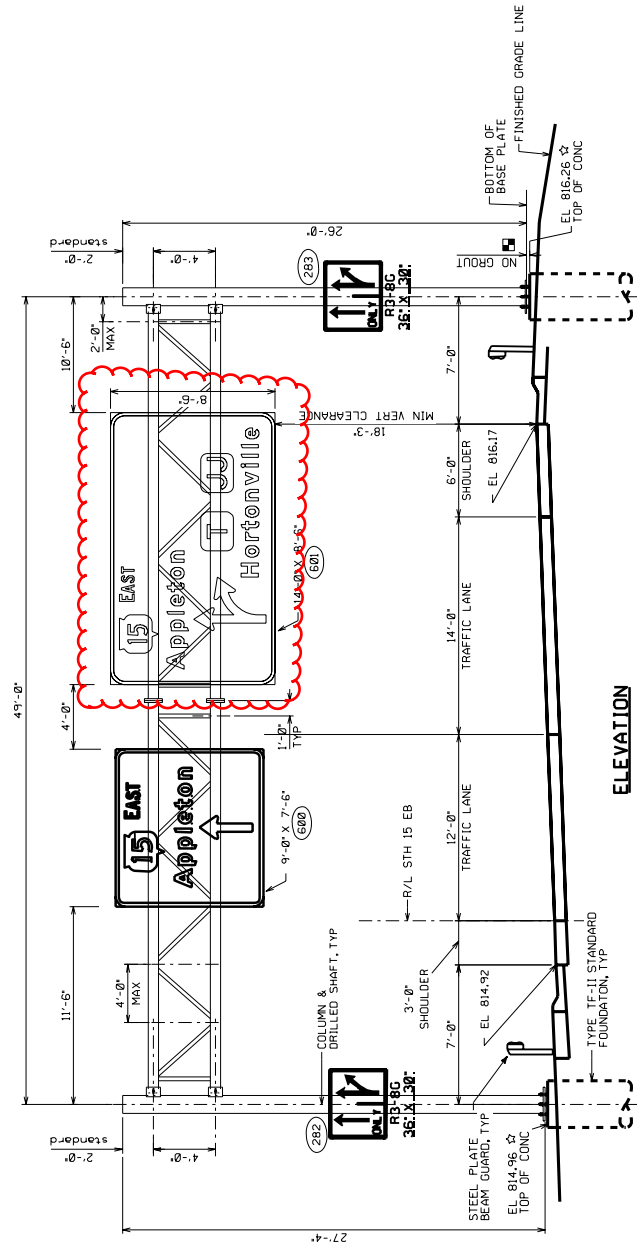
LEGEND

- ☆ ELEVATIONS GIVEN ALONG CL 2-CHORD TRUSS
- (XX) SIGN NUMBERS (PERMANENT SIGNING PLAN)
- standoff dimension is assumed to be 2 1/2", but is a maximum of 2" x anchor rod diameter. See notes on sheet and shop drawings for more information.

NO.	DATE	REVISION	BY
STATE OF WISCONSIN DEPARTMENT OF TRANSPORTATION STRUCTURES DESIGN SECTION			
STRUCTURE S-44-113			
DRAWN BY BRYAN ETS		CHECKED BY ETC.	
GENERAL LAYOUT S-44-113			SHEET 2 OF 7
			236



PLAN



ELEVATION

STA. 262+EB+27
(LOOKING UPSTATION AT FRONT OF SIGN)

STATE PROJECT NUMBER
1146-75-76

Addendum No. 03
ID 1146-75-76
Added Sheet 236A
December 1, 2022

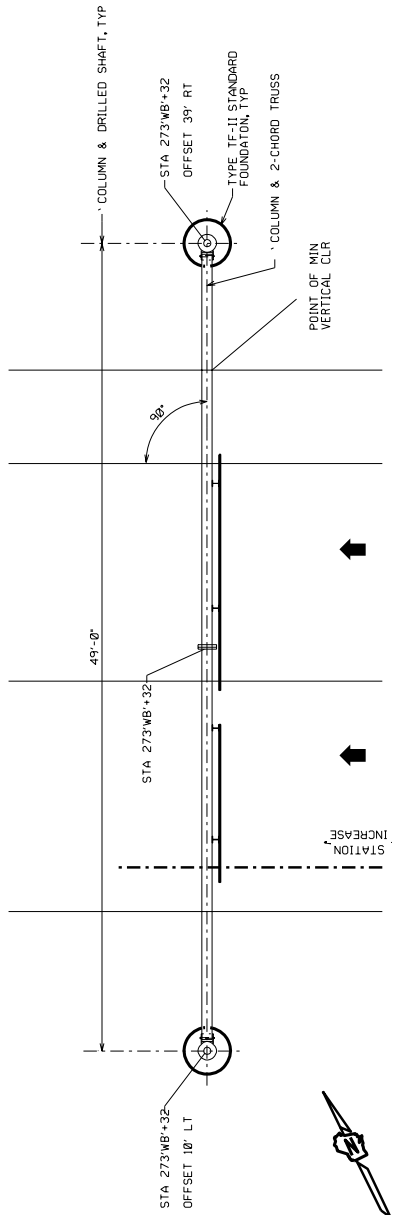
NOTE

POINT OF MIN VERTICAL CLEARANCE
STA 627+27.32, 80 RT
EL 816.27

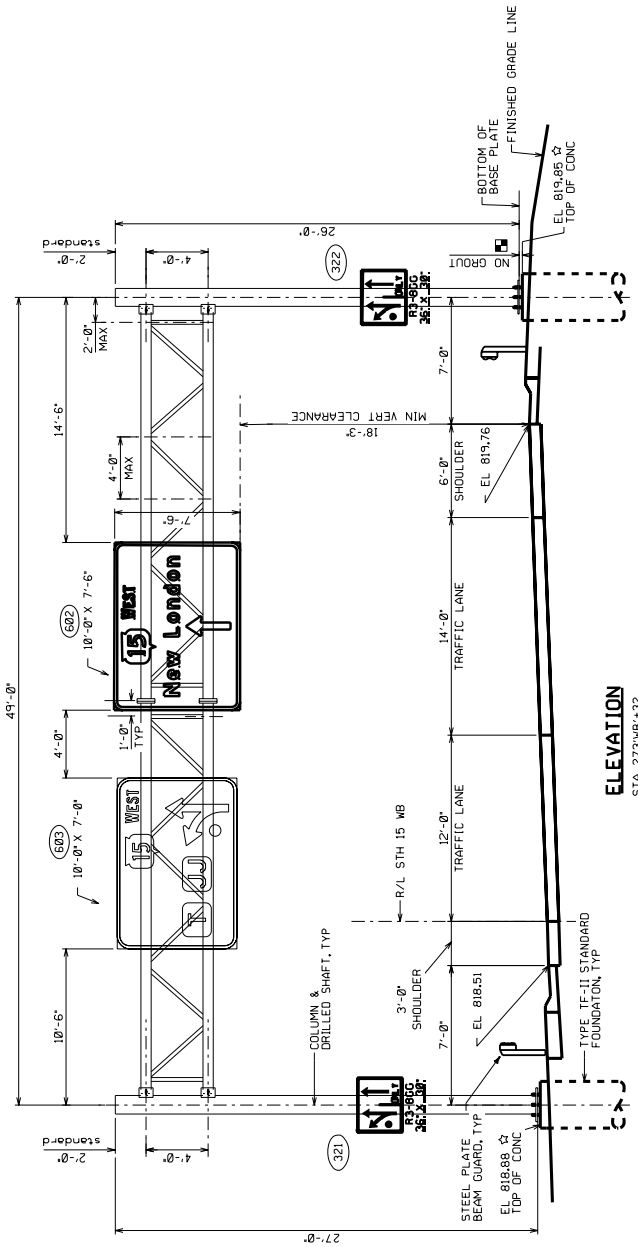
LEGEND

- ☆ ELEVATIONS GIVEN ALONG CL 2-CHORD TRUSS
- ⊗ SIGN NUMBERS (PERMANENT SIGNING PLAN)
- standoff dimension is assumed to be 2 1/2", but is a maximum of 2" x anchor rod
- dimensions are given in feet and inches and shop drawings for more information.

NO.	DATE	REVISION	BY
STATE OF WISCONSIN DEPARTMENT OF TRANSPORTATION STRUCTURES DESIGN SECTION			
STRUCTURE S-44-114			
DRAWN		ETS	CLS
CHECKED		ETS	CLS
GENERAL LAYOUT			SHEET 3 OF 7
S-44-114			236A



PLAN



ELEVATION

STA 273+WB+32
LOOKING UPSTATION AT FRONT OF SIGN

ALL ITEMS CATEGORY 0010 UNLESS OTHERWISE NOTED

Asphalt Summary

455.0605 Tack Coat GAL 19.4
 460.5224 HMA Pavement 4 LT 58-28 S 42

Station	to	Station	Location	TON	Remarks
275+00	--	278+88	STH 15 EB	79	
275+00	--	277+07	STH 15 WB	42	
281+02	--	349+40	STH 15 EB	1,175	
279+87	--	339+05	STH 15 WB	295.9	
340+81	--	373+00	STH 15 EB	648	
340+46	--	372+95	STH 15 WB	654	
373+83	--	388+64	STH 15 EB	296	
377+87	--	388+69	STH 15 WB	54.1	
389+57	--	465+00	STH 15 EB	377.2	
389+61	--	465+00	STH 15 WB	377.0	
319+16	--	321+43	STH EB + WB	11.4	Median Crossover
345+46	--	347+74	STH EB + WB	122	Median Crossover
408+54	--	410+82	STH EB + WB	122	Median Crossover
Total				7,784	

Rumble Strips

465.0400 Asphaltic Shoulder Rumble Strip L.F. 416,1110
 Concrete Shoulder Rumble Strips L.F. 100

Station	to	Station	Location	L.F.	Remarks
275+00	--	276+00	STH 15 WB	100	Outside Shoulder
275+00	--	277+02	STH 15 WB	202	Median Shoulder
275+00	--	277+70	STH 15 EB	270	Median Shoulder
275+00	--	278+71	STH 15 EB	371	Outside Shoulder
279+38	--	338+75	STH 15 WB	5,837	Outside Shoulder
280+40	--	338+98	STH 15 WB	5,858	Median Shoulder
281+06	--	339+25	STH 15 EB	5,819	Median Shoulder
281+98	--	339+48	STH 15 EB	5,750	Outside Shoulder
340+36	--	372+65	STH 15 WB	3,229	Outside Shoulder
340+60	--	372+85	STH 15 WB	3,225	Median Shoulder
340+88	--	372+78	STH 15 EB	3,190	Median Shoulder
341+11	--	373+06	STH 15 EB	3,195	Outside Shoulder
373+83	--	388+59	STH 15 WB	1,476	Outside Shoulder
374+08	--	388+51	STH 15 WB	1,443	Median Shoulder
374+05	--	388+51	STH 15 EB	1,446	Median Shoulder
374+31	--	388+44	STH 15 EB	1,413	Outside Shoulder
373+83	--	465+00	STH 15 WB	9,117	Outside Shoulder
374+08	--	465+00	STH 15 WB	9,092	Median Shoulder
370+04	--	465+00	STH 15 EB	9,496	Median Shoulder
374+32	--	465+00	STH 15 EB	9,068	Outside Shoulder
Total				40,041	39,656

Location	Quantity	Unit
Removing Small Pipe Culverts	203.0100	EACH
423+75 RT	1	
Total	1	

Location	Quantity	Unit
Excavation Common	205.0100	
320+40 RT	70	
423+75 RT	130	
Total	200	

Location	Quantity	Unit
RR Bridge STH 15 WB	30	L.F.
RR Bridges STH 15 EB	80	
B.O.C. Bridge STH 15 WB	80	
B.O.C. Bridge STH 15 EB	30	
CTH M Bridge STH 15 WB	30	
CTH M Bridge STH 15 EB	80	
Nash St Bridge STH 15 WB	30	
Nash St Bridge STH 15 EB	80	
Total	440	

601.0588 Concrete Curb & Gutter
 650.5500 Construction Staking
 4-Inch Sloped 36-Inch Curb Gutter and Curb & Gutter

Type TBT L.F.

Addendum No. 03
 ID 1146-75-77
 Revised Sheet 50
 December 1, 2022

Addendum No. 03
ID 1146-75-77
Revised Sheet 52
December 1, 2022

ALL ITEMS ARE CATEGORY 0010
UNLESS OTHERWISE NOTED

Station	to	Station	Location	Riprap Medium CY	Inlet Covers Type V Each	Inlets 2x2-FT Each	Geotextile Fabric Type HR SY	Remarks
276+00	19	--	STH 15 WB	10	1	1	20	LT
278+00	19	--	STH 15 EB	10	1	1	20	RT
372+50	14	--	STH 15 WB	10	1	1	20	RT
372+50	19	--	STH 15 EB	10	1	1	20	RT
388+00	19	--	STH 15 EB	10	1	1	20	RT
Total				50	5	5	100	

Location	Project 1146-75-77 (+/- 31 days) Entrance from Haul Road UNDISTRIBUTED	643.0420 Traffic Control Barricades Type III	643.0705 Traffic Control Warning Lights Type A	643.0900 Traffic Control Signs	Remarks
Entrance from Haul Road	3	93	2	3	93
	23	16		23	23
Total	116	78		116	

Project	Each	Remarks	Project	Each	Remarks
1146-75-77	1	Maintenance and Repair Of Haul Roads	1146-75-77	0.5	Mobilization
Total	1		Total	0.5	

Station	to	Station	Location	White L.F.	Yellow L.F.	646.1040 Marking Line Grooved Wet Ref Epoxy 4-inch	646.1545 Marking Line Grooved Wet Ref Contrast Epoxy 4-inch 4-inch	Remarks
275+00	--	278+88	STH 15 EB	388	388	141	141	
275+00	--	277+07	STH 15 WB	207	207	141	141	
278+88	--	281+02	WCL RR Bridge EB	214	214	3,219	3,219	
277+07	--	279+87	WCL RR Bridge WB	280	280	3,249	3,249	
281+02	--	339+40	STH 15 EB	5,838	5,838	93	93	
279+87	--	339+05	STH 15 WB	5,918	5,918	492	492	
339+40	--	340+81	B.O.C. Bridge EB	141	141	1,471	1,471	
339+05	--	340+46	B.O.C. Bridge WB	141	141	1,082	1,082	
340+81	--	373+00	STH 15 EB	3,219	3,219	93	93	
340+46	--	372+95	STH 15 WB	3,249	3,249	92	92	
373+00	--	373+93	CTH M Bridge EB	93	93	7,543	7,543	
372+95	--	377+87	CTH M Bridge WB	492	492	7,539	7,539	
373+93	--	388+64	STH 15 EB	1,471	1,471	38,000	38,000	
377+87	--	388+69	STH 15 WB	1,082	1,082	76,000	76,000	
388+64	--	389+57	Nash St. Bridge EB	93	93			
388+69	--	389+61	Nash St. Bridge WB	92	92			
389+57	--	465+00	STH 15 EB	7,543	7,543			
389+61	--	465+00	STH 15 WB	7,539	7,539			
Subtotal				38,000	38,000			
Total						9,500		

Station	Project	Each	Remarks	Project	Each	Remarks
521.1012	1146-75-77	1	Apron Endwalls for Culvert Pipe Steel 12-INCH	1146-75-77	0.5	
530.0112	1146-75-77	1	Drop Inlet at Structures Culvert Pipe Corrugated Polyethylene 12-INCH	1146-75-77	0.5	
276+00 LT		1	56		0.5	
276+00 RT		1	66		0.5	
372+50 RT		1	51		0.5	
372+50 LT		1	86		0.5	
388+00 RT		1	78		0.5	
Subtotal				5	337	

Crushed Aggregate Base Course

Station	to	Station	Location	Base Aggregate Dense 3/4-Inch	Base Aggregate Dense 1 1/4-Inch	Compaction	Dust Control	Remarks
Station	to	Station	Location	Ton	Ton	Mgal	Mgal	
275+00	--	276+88	STH 15 EB	83	639	7	3	
275+00	--	277+07	STH 15 WB	54	508	6	2	
319+16	--	321+43	STH 15 EB + WB	30	122	2	1	Median Crossover
281+02	--	339+40	STH 15 EB	924	3,866	48	19	
279+86	--	339+05	STH 15 WB	937	3,920	49	19	
345+46	--	347+74	STH 15 EB + WB	30	122	2	1	Median Crossover
340+80	--	372+99	STH 15 EB	509	2,132	26	11	
340+46	--	372+95	STH 15 WB	514	2,152	27	11	
373+92	--	388+64	STH 15 EB	233	975	12	5	
373+87	--	388+69	STH 15 WB	235	981	12	5	
408+54	--	410+82	STH 15 EB + WB	30	122	2	1	Median Crossover
446+86	--	449+14	STH 15 EB + WB	147	122	3	1	Snowmobile Crossover
389+56	--	465+00	STH 15 EB	1,193	4,996	62	25	
389+61	--	465+00	STH 15 WB	1,193	4,993	62	25	
--	--	--	Undistributed	306	1,282	16	6	
				Subtotal	26,930	333	133	
Total				6,418	26,930	467		

Addendum No. 03
 ID 1146-75-77
 Revised Sheet 54
 December 1, 2022

Station	to	Station	Location	650.4000	650.7000	650.9911
Station	to	Station	Location	Storm Sewer	Construction Staking	Construction Staking
Station	to	Station	Location	EACH	Concrete Pavement	Supplemental Control (1146-75-77)
275+00	--	278+88	STH 15 EB	-	388	Each
275+00	--	277+07	STH 15 WB	-	207	Each
281+02	--	349+40	STH 15 EB	-	6,838	
279+87	--	339+05	STH 15 WB	-	5,918	
340+81	--	373+00	STH 15 EB	-	3,219	
340+46	--	372+95	STH 15 WB	-	3,249	
373+93	--	388+64	STH 15 EB	-	1,471	
377+87	--	388+69	STH 15 WB	-	1,082	
389+57	--	465+00	STH 15 EB	-	7,543	
389+61	--	465+00	STH 15 WB	-	7,539	
276+00 LT				1		
278+00 RT				1		
372+50 RT				1		
372+50 LT				1		
388+00 RT				1		
Total				5	37,454	1

Addendum No. 03
ID 1146-75-77
Added Sheet 55A
December 1, 2022

Restoration									
625.0500		628.2004		629.0210		630.0120			
Location	Salvaged Topsoil SY	Erosion Mat Class I SY	Fertilizer Type B CWT	Seeding Mixture No. 20 LB					
276'WB'+00 LT	60	60	1	1.5					
276'WB'+00 RT	80	80	1	2					
275'EB'+00 LT	80	80	1	2					
278'EB'+00 RT	60	60	1	1.5					
320+40 RT	70	70	1	2					
341'WB'+00 LT	40	40	1	1					
341'WB'+00 RT	60	60	1	2					
342'EB'+00 LT	80	80	1	2					
342'EB'+00 RT	40	40	1	1					
372'WB'+50 RT	60	60	1	1.5					
372'EB'+50 RT	40	40	1	1					
388'WB'+00 LT	80	80	1	2					
388'WB'+00 RT	80	80	1	2					
388'EB'+00 LT	60	60	1	1.5					
388'EB'+00 RT	40	40	1	1					
423+75 RT	210	210	2	6					
Total	1140	1140	17	29.5					



Proposal Schedule of Items

Proposal ID: 20221213020 Project(s): 1146-75-76, 1146-75-77

Federal ID(s): WISC 2023101, WISC 2023104

SECTION: 0001

Contract Items

Alt Set ID:

Alt Mbr ID:

Proposal Line Number	Item ID Description	Approximate Quantity and Units	Unit Price	Bid Amount
0002	108.4300 RBC Progress Schedule	1.000 EACH	_____.	_____.
0004	201.0205 Grubbing	39.000 STA	_____.	_____.
0006	203.0100 Removing Small Pipe Culverts	7.000 EACH	_____.	_____.
0008	203.0220 Removing Structure (structure) 01. C-44-21	1.000 EACH	_____.	_____.
0010	204.0150 Removing Curb & Gutter	317.000 LF	_____.	_____.
0012	204.0165 Removing Guardrail	600.000 LF	_____.	_____.
0014	204.0180 Removing Delineators and Markers	2.000 EACH	_____.	_____.
0016	205.0100 Excavation Common	19,884.000 CY	_____.	_____.
0018	205.0200 Excavation Rock	120.000 CY	_____.	_____.
0020	206.2001 Excavation for Structures Culverts (structure) 01. C-44-124	1.000 EACH	_____.	_____.
0022	206.2001 Excavation for Structures Culverts (structure) 02. C-44-126	1.000 EACH	_____.	_____.
0024	210.2500 Backfill Structure Type B	3,055.000 TON	_____.	_____.
0026	211.0201 Prepare Foundation for Concrete Pavement (project) 02. 1146-75-77	1.000 EACH	_____.	_____.
0028	213.0100 Finishing Roadway (project) 01. 1146-75-76	1.000 EACH	_____.	_____.
0030	213.0100 Finishing Roadway (project) 02. 1146-75-77	1.000 EACH	_____.	_____.



Proposal Schedule of Items

Proposal ID: 20221213020 Project(s): 1146-75-76, 1146-75-77

Federal ID(s): WISC 2023101, WISC 2023104

SECTION: 0001

Contract Items

Alt Set ID:

Alt Mbr ID:

Proposal Line Number	Item ID Description	Approximate Quantity and Units	Unit Price	Bid Amount
0032	214.0100 Obliterating Old Road	11.000 STA	_____.	_____.
0034	305.0110 Base Aggregate Dense 3/4-Inch	8,857.000 TON	_____.	_____.
0036	305.0120 Base Aggregate Dense 1 1/4-Inch	52,304.000 TON	_____.	_____.
0038	311.0110 Breaker Run	1,666.000 TON	_____.	_____.
0040	311.0115 Breaker Run	175.000 CY	_____.	_____.
0042	312.0110 Select Crushed Material	19,859.000 TON	_____.	_____.
0044	405.0100 Coloring Concrete WisDOT Red	432.000 CY	_____.	_____.
0046	415.0090 Concrete Pavement 9-Inch	119,324.000 SY	_____.	_____.
0048	415.0410 Concrete Pavement Approach Slab	734.000 SY	_____.	_____.
0050	416.0512 Concrete Truck Apron 12-Inch	457.000 SY	_____.	_____.
0052	416.1010 Concrete Surface Drains	45.000 CY	_____.	_____.
0054	416.1110 Concrete Shoulder Rumble Strips	42,362.000 LF	_____.	_____.
0056	455.0605 Tack Coat	2,774.000 GAL	_____.	_____.
0058	460.2000 Incentive Density HMA Pavement	6,930.000 DOL	1.00000	6,930.00
0060	460.5223 HMA Pavement 3 LT 58-28 S	1,595.000 TON	_____.	_____.
0062	460.5224 HMA Pavement 4 LT 58-28 S	9,225.000 TON	_____.	_____.



Proposal Schedule of Items

Proposal ID: 20221213020 Project(s): 1146-75-76, 1146-75-77

Federal ID(s): WISC 2023101, WISC 2023104

SECTION: 0001

Contract Items

Alt Set ID:

Alt Mbr ID:

Proposal Line Number	Item ID Description	Approximate Quantity and Units	Unit Price	Bid Amount
0064	465.0120 Asphaltic Surface Driveways and Field Entrances	366.000 TON	_____.	_____.
0066	465.0125 Asphaltic Surface Temporary	1,396.000 TON	_____.	_____.
0068	465.0315 Asphaltic Flumes	405.000 SY	_____.	_____.
0070	465.0400 Asphaltic Shoulder Rumble Strips	40,311.000 LF	_____.	_____.
0072	504.0100 Concrete Masonry Culverts	203.000 CY	_____.	_____.
0074	505.0400 Bar Steel Reinforcement HS Structures	44,090.000 LB	_____.	_____.
0076	505.0600 Bar Steel Reinforcement HS Coated Structures	1,590.000 LB	_____.	_____.
0078	516.0500 Rubberized Membrane Waterproofing	43.000 SY	_____.	_____.
0080	520.2018 Culvert Pipe Temporary 18-Inch	46.000 LF	_____.	_____.
0082	522.0118 Culvert Pipe Reinforced Concrete Class III 18-Inch	402.000 LF	_____.	_____.
0086	522.0136 Culvert Pipe Reinforced Concrete Class III 36-Inch	200.000 LF	_____.	_____.
0088	522.1015 Apron Endwalls for Culvert Pipe Reinforced Concrete 15-Inch	4.000 EACH	_____.	_____.
0090	522.1018 Apron Endwalls for Culvert Pipe Reinforced Concrete 18-Inch	10.000 EACH	_____.	_____.
0092	522.1024 Apron Endwalls for Culvert Pipe Reinforced Concrete 24-Inch	2.000 EACH	_____.	_____.
0096	522.1036 Apron Endwalls for Culvert Pipe Reinforced Concrete 36-Inch	2.000 EACH	_____.	_____.



Proposal Schedule of Items

Proposal ID: 20221213020 Project(s): 1146-75-76, 1146-75-77

Federal ID(s): WISC 2023101, WISC 2023104

SECTION: 0001

Contract Items

Alt Set ID:

Alt Mbr ID:

Proposal Line Number	Item ID Description	Approximate Quantity and Units	Unit Price	Bid Amount
0098	531.2036 Drilling Shaft 36-Inch	80.000 LF	_____.	_____.
0100	531.5420 Foundation Single-Shaft Type TF-II (structure) 01. S-44-113	2.000 EACH	_____.	_____.
0102	531.5420 Foundation Single-Shaft Type TF-II (structure) 02. S-44-114	2.000 EACH	_____.	_____.
0104	532.5420 Truss Full Span 2-Chord Type II (structure) 01. S-44-113	1.000 EACH	_____.	_____.
0106	532.5420 Truss Full Span 2-Chord Type II (structure) 02. S-44-114	1.000 EACH	_____.	_____.
0108	601.0405 Concrete Curb & Gutter 18-Inch Type A	340.000 LF	_____.	_____.
0110	601.0409 Concrete Curb & Gutter 30-Inch Type A	1,170.000 LF	_____.	_____.
0112	601.0411 Concrete Curb & Gutter 30-Inch Type D	655.000 LF	_____.	_____.
0114	601.0555 Concrete Curb & Gutter 6-Inch Sloped 36-Inch Type A	1,601.000 LF	_____.	_____.
0116	601.0557 Concrete Curb & Gutter 6-Inch Sloped 36-Inch Type D	2,516.000 LF	_____.	_____.
0118	601.0580 Concrete Curb & Gutter 4-Inch Sloped 36-Inch Type R	428.000 LF	_____.	_____.
0120	601.0588 Concrete Curb & Gutter 4-Inch Sloped 36-Inch Type TBT	440.000 LF	_____.	_____.
0122	601.0600 Concrete Curb Pedestrian	394.000 LF	_____.	_____.
0124	602.0405 Concrete Sidewalk 4-Inch	1,569.000 SF	_____.	_____.
0126	602.0410 Concrete Sidewalk 5-Inch	18,009.000 SF	_____.	_____.



Proposal Schedule of Items

Proposal ID: 20221213020 Project(s): 1146-75-76, 1146-75-77

Federal ID(s): WISC 2023101, WISC 2023104

SECTION: 0001

Contract Items

Alt Set ID:

Alt Mbr ID:

Proposal Line Number	Item ID Description	Approximate Quantity and Units	Unit Price	Bid Amount
0128	602.0515 Curb Ramp Detectable Warning Field Natural Patina	120.000 SF	_____.	_____.
0130	606.0200 Riprap Medium	222.000 CY	_____.	_____.
0132	606.0300 Riprap Heavy	54.000 CY	_____.	_____.
0134	606.0400 Riprap Extra-Heavy	358.000 CY	_____.	_____.
0138	611.0624 Inlet Covers Type H	4.000 EACH	_____.	_____.
0140	611.0627 Inlet Covers Type HM	1.000 EACH	_____.	_____.
0142	611.0642 Inlet Covers Type MS	5.000 EACH	_____.	_____.
0144	611.0652 Inlet Covers Type T	2.000 EACH	_____.	_____.
0146	611.0654 Inlet Covers Type V	5.000 EACH	_____.	_____.
0148	611.3004 Inlets 4-FT Diameter	5.000 EACH	_____.	_____.
0150	611.3220 Inlets 2x2-FT	5.000 EACH	_____.	_____.
0152	611.3901 Inlets Median 1 Grate	3.000 EACH	_____.	_____.
0154	611.3902 Inlets Median 2 Grate	1.000 EACH	_____.	_____.
0156	614.2300 MGS Guardrail 3	3,801.000 LF	_____.	_____.
0158	614.2500 MGS Thrie Beam Transition	709.000 LF	_____.	_____.
0160	614.2610 MGS Guardrail Terminal EAT	20.000 EACH	_____.	_____.



Proposal Schedule of Items

Proposal ID: 20221213020 Project(s): 1146-75-76, 1146-75-77

Federal ID(s): WISC 2023101, WISC 2023104

SECTION: 0001

Contract Items

Alt Set ID:

Alt Mbr ID:

Proposal Line Number	Item ID Description	Approximate Quantity and Units	Unit Price	Bid Amount
0162	614.2620 MGS Guardrail Terminal Type 2	6.000 EACH	_____.	_____.
0164	616.0700.S Fence Safety	2,000.000 LF	_____.	_____.
0166	618.0100 Maintenance And Repair of Haul Roads (project) 01. 1146-75-76	1.000 EACH	_____.	_____.
0168	618.0100 Maintenance And Repair of Haul Roads (project) 02. 1146-75-77	1.000 EACH	_____.	_____.
0170	619.1000 Mobilization	1.000 EACH	_____.	_____.
0172	620.0300 Concrete Median Sloped Nose	442.000 SF	_____.	_____.
0174	624.0100 Water	1,115.000 MGAL	_____.	_____.
0176	625.0500 Salvaged Topsoil	70,888.000 SY	_____.	_____.
0178	627.0200 Mulching	82,406.000 SY	_____.	_____.
0180	628.1504 Silt Fence	10,510.000 LF	_____.	_____.
0182	628.1520 Silt Fence Maintenance	2,628.000 LF	_____.	_____.
0184	628.1905 Mobilizations Erosion Control	7.000 EACH	_____.	_____.
0186	628.1910 Mobilizations Emergency Erosion Control	5.000 EACH	_____.	_____.
0188	628.2004 Erosion Mat Class I Type B	32,463.000 SY	_____.	_____.
0190	628.6005 Turbidity Barriers	84.000 SY	_____.	_____.
0192	628.7005 Inlet Protection Type A	11.000 EACH	_____.	_____.



Proposal Schedule of Items

Proposal ID: 20221213020 Project(s): 1146-75-76, 1146-75-77

Federal ID(s): WISC 2023101, WISC 2023104

SECTION: 0001

Contract Items

Alt Set ID:

Alt Mbr ID:

Proposal Line Number	Item ID Description	Approximate Quantity and Units	Unit Price	Bid Amount
0194	628.7015 Inlet Protection Type C	7.000 EACH	_____.	_____.
0196	628.7504 Temporary Ditch Checks	320.000 LF	_____.	_____.
0198	628.7555 Culvert Pipe Checks	75.000 EACH	_____.	_____.
0200	628.7560 Tracking Pads	2.000 EACH	_____.	_____.
0202	629.0210 Fertilizer Type B	61.000 CWT	_____.	_____.
0204	630.0110 Seeding Mixture No. 10	408.000 LB	_____.	_____.
0206	630.0120 Seeding Mixture No. 20	1,557.500 LB	_____.	_____.
0208	630.0140 Seeding Mixture No. 40	118.000 LB	_____.	_____.
0210	630.0500 Seed Water	1,567.000 MGAL	_____.	_____.
0212	632.0101 Trees (species) (size) (root) 01. Crabapple, 'Prairie', B&B, 2-Inch Cal (PF)	6.000 EACH	_____.	_____.
0214	632.0201 Shrubs (species) (size) (root) 01. Dogwood, Redosier CG#3	30.000 EACH	_____.	_____.
0216	632.0201 Shrubs (species) (size) (root) 02. Juniper Maney, 15" SPD, CG	15.000 EACH	_____.	_____.
0218	632.9101 Landscape Planting Surveillance and Care Cycles	14.000 EACH	_____.	_____.
0220	633.5200 Markers Culvert End	12.000 EACH	_____.	_____.
0222	634.0614 Posts Wood 4x6-Inch X 14-FT	29.000 EACH	_____.	_____.



Proposal Schedule of Items

Proposal ID: 20221213020 Project(s): 1146-75-76, 1146-75-77

Federal ID(s): WISC 2023101, WISC 2023104

SECTION: 0001

Contract Items

Alt Set ID:

Alt Mbr ID:

Proposal Line Number	Item ID Description	Approximate Quantity and Units	Unit Price	Bid Amount
0224	634.0616 Posts Wood 4x6-Inch X 16-FT	35.000 EACH	_____.	_____.
0226	634.0618 Posts Wood 4x6-Inch X 18-FT	13.000 EACH	_____.	_____.
0228	637.1220 Signs Type I Reflective SH	336.500 SF	_____.	_____.
0230	637.2210 Signs Type II Reflective H	621.370 SF	_____.	_____.
0232	637.2230 Signs Type II Reflective F	88.500 SF	_____.	_____.
0234	638.2602 Removing Signs Type II	21.000 EACH	_____.	_____.
0236	638.3000 Removing Small Sign Supports	23.000 EACH	_____.	_____.
0238	642.5401 Field Office Type D	1.000 EACH	_____.	_____.
0240	643.0300 Traffic Control Drums	2,622.000 DAY	_____.	_____.
0242	643.0420 Traffic Control Barricades Type III	1,766.000 DAY	_____.	_____.
0244	643.0705 Traffic Control Warning Lights Type A	3,378.000 DAY	_____.	_____.
0246	643.0715 Traffic Control Warning Lights Type C	1,050.000 DAY	_____.	_____.
0248	643.0900 Traffic Control Signs	13,601.000 DAY	_____.	_____.
0250	643.1050 Traffic Control Signs PCMS	40.000 DAY	_____.	_____.
0252	643.5000 Traffic Control	1.000 EACH	_____.	_____.
0254	645.0105 Geotextile Type C	612.000 SY	_____.	_____.
0256	645.0120 Geotextile Type HR	932.000 SY	_____.	_____.



Proposal Schedule of Items

Proposal ID: 20221213020 Project(s): 1146-75-76, 1146-75-77

Federal ID(s): WISC 2023101, WISC 2023104

SECTION: 0001

Contract Items

Alt Set ID:

Alt Mbr ID:

Proposal Line Number	Item ID Description	Approximate Quantity and Units	Unit Price	Bid Amount
0258	646.1020 Marking Line Epoxy 4-Inch	4,940.000 LF	_____.	_____.
0260	646.1040 Marking Line Grooved Wet Ref Epoxy 4-Inch	87,624.000 LF	_____.	_____.
0262	646.1545 Marking Line Grooved Wet Ref Contrast Epoxy 4-Inch	10,335.000 LF	_____.	_____.
0264	646.3020 Marking Line Epoxy 8-Inch	250.000 LF	_____.	_____.
0266	646.3040 Marking Line Grooved Wet Ref Epoxy 8-Inch	840.000 LF	_____.	_____.
0268	646.5020 Marking Arrow Epoxy	16.000 EACH	_____.	_____.
0270	646.5120 Marking Word Epoxy	7.000 EACH	_____.	_____.
0272	646.6320 Marking Dotted Extension Epoxy 18-Inch	159.000 LF	_____.	_____.
0274	646.7120 Marking Diagonal Epoxy 12-Inch	290.000 LF	_____.	_____.
0276	646.8220 Marking Island Nose Epoxy	3.000 EACH	_____.	_____.
0278	650.4000 Construction Staking Storm Sewer	16.000 EACH	_____.	_____.
0280	650.4500 Construction Staking Subgrade	8,202.000 LF	_____.	_____.
0282	650.5000 Construction Staking Base	7,077.000 LF	_____.	_____.
0284	650.5500 Construction Staking Curb Gutter and Curb & Gutter	2,045.000 LF	_____.	_____.
0286	650.6501 Construction Staking Structure Layout (structure) 06. C-44-126	1.000 EACH	_____.	_____.



Proposal Schedule of Items

Proposal ID: 20221213020 Project(s): 1146-75-76, 1146-75-77

Federal ID(s): WISC 2023101, WISC 2023104

SECTION: 0001

Contract Items

Alt Set ID:

Alt Mbr ID:

Proposal Line Number	Item ID Description	Approximate Quantity and Units	Unit Price	Bid Amount
0288	650.6501 Construction Staking Structure Layout (structure) 07. C-44-124	1.000 EACH	_____.	_____.
0290	650.7000 Construction Staking Concrete Pavement	41,561.000 LF	_____.	_____.
0292	650.8501 Construction Staking Electrical Installations (project) 09. 1146-75-76	1.000 EACH	_____.	_____.
0294	650.9500 Construction Staking Sidewalk (project) 01. 1146-75-76	1.000 EACH	_____.	_____.
0296	650.9911 Construction Staking Supplemental Control (project) 01. 1146-75-76	1.000 EACH	_____.	_____.
0298	650.9911 Construction Staking Supplemental Control (project) 02. 1146-75-77	1.000 EACH	_____.	_____.
0300	650.9920 Construction Staking Slope Stakes	11,184.000 LF	_____.	_____.
0302	652.0225 Conduit Rigid Nonmetallic Schedule 40 2-Inch	1,005.000 LF	_____.	_____.
0304	652.0235 Conduit Rigid Nonmetallic Schedule 40 3-Inch	20.000 LF	_____.	_____.
0306	653.0164 Pull Boxes Non-Conductive 24x42-Inch	7.000 EACH	_____.	_____.
0308	654.0105 Concrete Bases Type 5	7.000 EACH	_____.	_____.
0310	654.0220 Concrete Control Cabinet Bases Type 10	1.000 EACH	_____.	_____.
0312	655.0610 Electrical Wire Lighting 12 AWG	1,050.000 LF	_____.	_____.
0314	655.0615 Electrical Wire Lighting 10 AWG	4,355.000 LF	_____.	_____.



Proposal Schedule of Items

Proposal ID: 20221213020 Project(s): 1146-75-76, 1146-75-77

Federal ID(s): WISC 2023101, WISC 2023104

SECTION: 0001

Contract Items

Alt Set ID:

Alt Mbr ID:

Proposal Line Number	Item ID Description	Approximate Quantity and Units	Unit Price	Bid Amount
0316	656.0201 Electrical Service Meter Breaker Pedestal (location) 11. CTH T RAB	1.000 EACH	_____.	_____.
0318	690.0150 Sawing Asphalt	732.000 LF	_____.	_____.
0320	715.0502 Incentive Strength Concrete Structures	1,230.000 DOL	1.00000	1,230.00
0322	715.0715 Incentive Flexural Strength Concrete Pavement	36,569.000 DOL	1.00000	36,569.00
0324	740.0440 Incentive IRI Ride	31,061.000 DOL	1.00000	31,061.00
0326	ASP.1T0A On-the-Job Training Apprentice at \$5.00/HR	2,400.000 HRS	5.00000	12,000.00
0328	ASP.1T0G On-the-Job Training Graduate at \$5.00/HR	2,100.000 HRS	5.00000	10,500.00
0330	SPV.0035 Special 01. Roadway Embankment	162,579.000 CY	_____.	_____.
0332	SPV.0060 Special 01. Temporary Bypass Channel, C-44-0126 - C-44-0124	1.000 EACH	_____.	_____.
0334	SPV.0060 Special 05. Transport and Install Transformer Base Breakaway 11.5" Bolt Circle	12.000 EACH	_____.	_____.
0336	SPV.0060 Special 06. Transport and Install Poles Type 5 Aluminum	12.000 EACH	_____.	_____.
0338	SPV.0060 Special 07. Transport and Install Luminaire Arms Truss Type 4.5" Clamp 12-FT	12.000 EACH	_____.	_____.
0340	SPV.0060 Special 08. Transport and Install Luminaires Utility LED-B	12.000 EACH	_____.	_____.
0342	SPV.0085 Special 01. Low Maintenance Seed Mix	43.000 LB	_____.	_____.



Proposal Schedule of Items

Proposal ID: 20221213020 Project(s): 1146-75-76, 1146-75-77

Federal ID(s): WISC 2023101, WISC 2023104

SECTION: 0001

Contract Items

Alt Set ID:

Alt Mbr ID:

Proposal Line Number	Item ID Description	Approximate Quantity and Units	Unit Price	Bid Amount
0344	SPV.0195 Special 02. Shot Rock	5,525.000 TON	_____.	_____.
0346	608.3015 Storm Sewer Pipe Class III-A 15-Inch	405.000 LF	_____.	_____.
0348	521.1012 Apron Endwalls for Culvert Pipe Steel 12-Inch	5.000 EACH	_____.	_____.
0350	530.0112 Culvert Pipe Corrugated Polyethylene 12-Inch	337.000 LF	_____.	_____.
0352	643.1000 Traffic Control Signs Fixed Message	133.500 SF	_____.	_____.
0354	643.0910 Traffic Control Covering Signs Type I	4.000 EACH	_____.	_____.
0356	643.0920 Traffic Control Covering Signs Type II	7.000 EACH	_____.	_____.
0358	SPV.0060 Special 10. Inlets 2x2.5-FT, Special	2.000 EACH	_____.	_____.
Section: 0001			Total:	_____.
			Total Bid:	_____.

