



# Wisconsin Department of Transportation

## Division of Transportation Systems Development

Bureau of Project Development  
4822 Madison Yards Way, 4<sup>th</sup> Floor South  
Madison, WI 53705

December 1, 2022

Telephone: (608) 266-1631  
Facsimile (FAX): (608) 266-8459

### NOTICE TO ALL CONTRACTORS:

**Proposal #27: 1053-07-75, WISC 2023110**  
**Abbotsford - Wausau**  
**CTH E to CTH H, EB**  
**STH 29**  
**Marathon County**

### Letting of December 13, 2022

This is Addendum No. 01, which provides for the following:

#### Schedule of Items:

Added Bid Item Quantities					
Bid Item	Item Description	Unit	Proposal Total Prior to Addendum	Quantity Added	Proposal Total After Addendum
608.0312	Storm Sewer Pipe Reinforced Concrete Class III 12-Inch	LF	0	555	555
608.0318	Storm Sewer Pipe Reinforced Concrete Class III 18-Inch	LF	0	15	15

Deleted Bid Item Quantities					
Bid Item	Item Description	Unit	Proposal Total Prior to Addendum	Proposal Quantity Change (-)	Proposal Total After Addendum
608.0212	Storm Sewer Pipe Reinforced Concrete Class II 12-Inch	LF	555	-555	0
608.0218	Storm Sewer Pipe Reinforced Concrete Class II 18-Inch	LF	8	-8	0
608.3018	Storm Sewer Pipe Class III-A 18-Inch	LF	7	-7	0

**Plan Sheets:**

<b>Revised Plan Sheets</b>	
<b>Plan Sheet</b>	<b>Plan Sheet Title (brief description of changes to sheet)</b>
30	Storm Sewer (Revised note "SSPRC Class II 12-Inch @ 1.47%" to "SSPRC Class III 12-Inch @ 1.47%"; Revised note "@ 1.50%" to "SSPRC Class III 15-Inch @ 1.50%")
31	Storm Sewer (Revised note "SSP Class III-A 18-Inch @ 2.07%" to "SSPRC Class III 18-Inch @ 2.07%"; Revised note "SSPRC Class II 18-Inch @ 2.01%" to "SSPRC Class III 18-Inch @ 2.01%")
151	Miscellaneous Quantities - Storm Sewer Items Table (Removed bid items 608.0212, 608.0218, and 608.3018 and added bid items 608.0312 and 608.0318 to the table with their respective quantities)

**Schedule of Items**

Attached, dated December 1, 2022, are the revised Schedule of Items Pages 1 – 8.

**Plan Sheets**

The following 8½ x 11-inch sheets are attached and made part of the plans for this proposal:  
Revised: 30, 31, and 151.

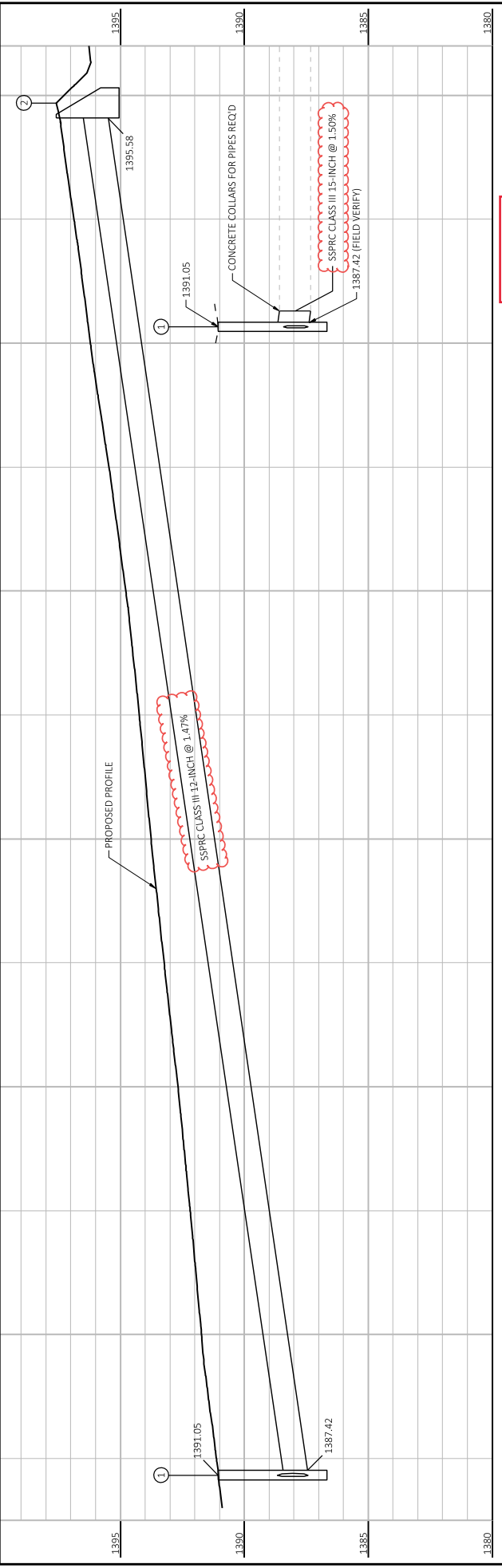
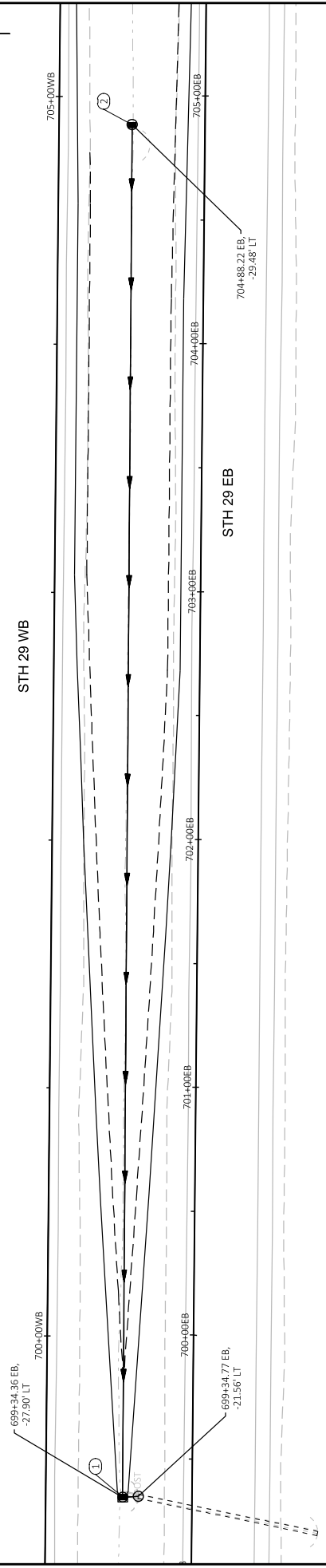
The responsibility for notifying potential subcontractors and suppliers of these changes remains with the prime contractor.

Sincerely,

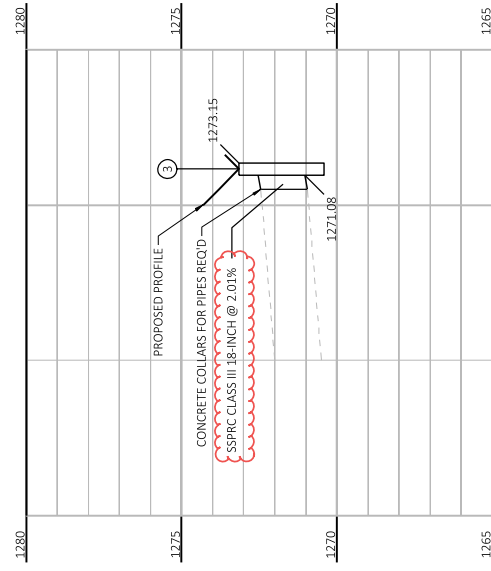
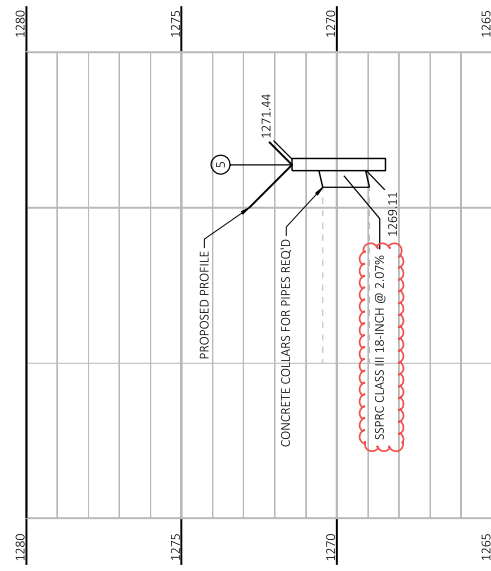
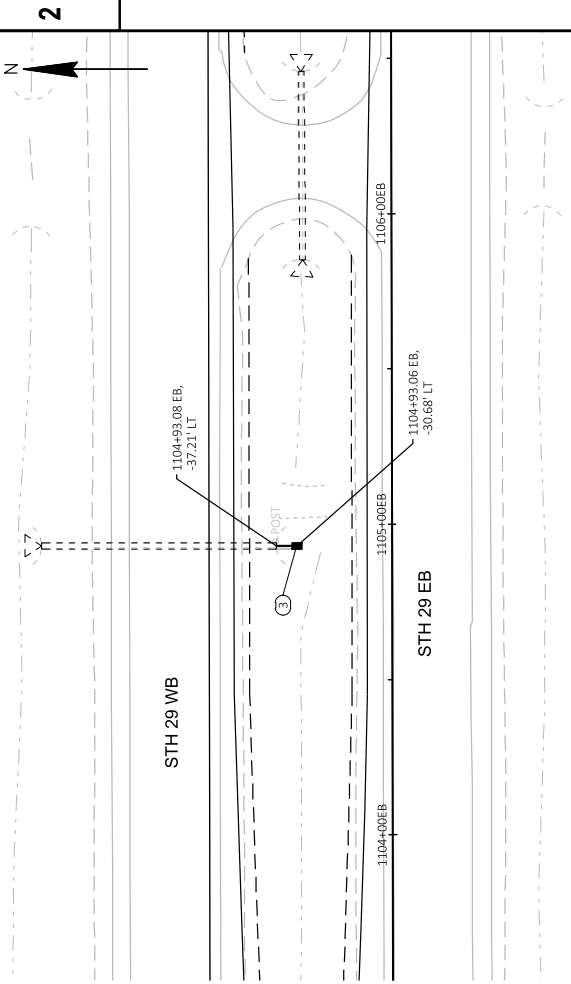
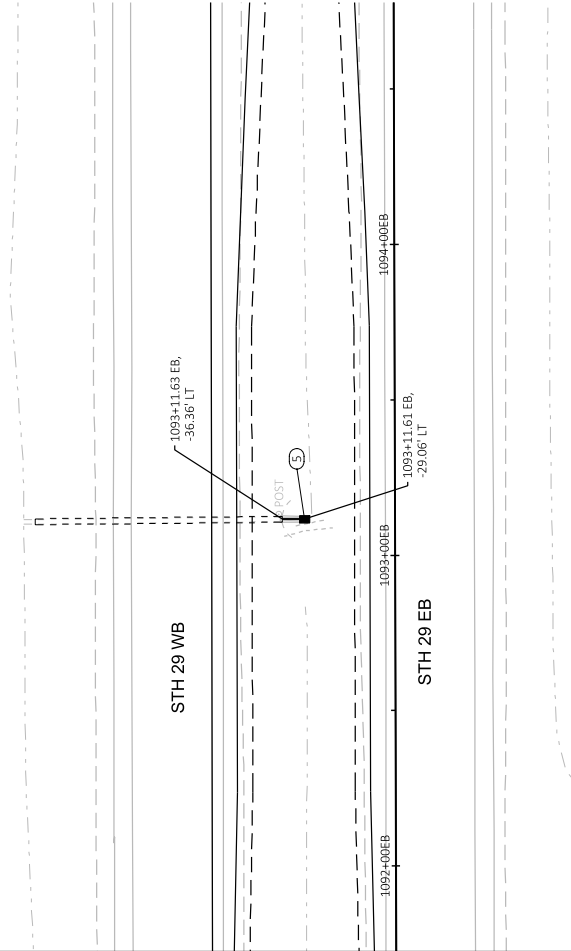
*Mike Coleman*

Proposal Development Specialist  
Proposal Management Section

END OF ADDENDUM



Addendum No. 01  
 ID 1053-07-75  
 Revised Sheet 30  
 December 1, 2022



Addendum No. 01  
 ID 1053-07-75  
 Revised Sheet 31  
 December 1, 2022

ASPHALTIC ITEMS

Table with columns: CATEGORY, STATION, STATION - STATION, LOCATION, SEAL, PAVING, COAT, TACK, WEATHER, WEATHER, SURFACE, ASPHALTIC, TON, REMOVING, PAVEMENT, ASPHALTIC, TON. Includes sub-totals for 0010 and overall totals.

NOTES: A UNIT WEIGHT OF 112 POUNDS PER SQUARE YARD PER INCH OF THICKNESS WAS USED TO ESTIMATE ALL ASPHALT QUANTITIES.

RUBBERIZED MEMBRANE WATERPROOFING

Table with columns: CATEGORY, STATION, STATION - STATION, LOCATION, REMOVING, PAVEMENT, ASPHALTIC, TON.

CONCRETE CURB & GUTTER

Table with columns: CATEGORY, STATION, STATION - STATION, LOCATION, CONCRETE CURB & GUTTER, CONSTRUCTION STAKING CURB GUTTER AND CURB & GUTTER, TON.

PIPE UNDERDRAIN ITEMS

Table with columns: CATEGORY, STATION, STATION - STATION, LOCATION, 209.1100 BAGGERS, 619.0106 UNDERDRAIN, 646.0111 GEOTEXTILE, TON.

CULVERT PIPE ITEMS

Table with columns: CATEGORY, STATION, STATION - STATION, LOCATION, 204.0220 REMOVING, 516.0500 CULVERT PIPE, TON.

\*ADDITIONAL QUANTITIES LISTED ELSEWHERE

STORM SEWER ITEMS

Table with columns: CATEGORY, STATION, STATION - STATION, LOCATION, 520.8000 CONCRETE, 608.0312 STORM SEWER PIPE, TON.

\*ADDITIONAL QUANTITIES LISTED ELSEWHERE

Addendum No. 01 ID 1053-07-75 Revised Sheet 151 December 1, 2022

PROJECT NO: 1053-07-75

HWY: STH 29

COUNTY: MARATHON

MISCELLANEOUS QUANTITIES

SHEET: 151



Proposal Schedule of Items

Proposal ID: 20221213027 Project(s): 1053-07-75

Federal ID(s): WISC 2023110

SECTION: 0001 Contract Items

Alt Set ID: Alt Mbr ID:

Proposal Line Number	Item ID Description	Approximate Quantity and Units	Unit Price	Bid Amount
0002	204.0100 Removing Concrete Pavement	92,070.000 SY	_____.	_____.
0004	204.0120 Removing Asphaltic Surface Milling	14,990.000 SY	_____.	_____.
0006	204.0150 Removing Curb & Gutter	745.000 LF	_____.	_____.
0008	204.0165 Removing Guardrail	144.000 LF	_____.	_____.
0010	204.0180 Removing Delineators and Markers	164.000 EACH	_____.	_____.
0012	204.0220 Removing Inlets	1.000 EACH	_____.	_____.
0014	205.0100 Excavation Common	156,779.000 CY	_____.	_____.
0016	208.0100 Borrow	2,057.000 CY	_____.	_____.
0018	209.1100 Backfill Granular Grade 1	21.000 CY	_____.	_____.
0020	213.0100 Finishing Roadway (project) 01. 1053-07-75	1.000 EACH	_____.	_____.
0022	305.0110 Base Aggregate Dense 3/4-Inch	7,427.000 TON	_____.	_____.
0024	305.0120 Base Aggregate Dense 1 1/4-Inch	95,710.000 TON	_____.	_____.
0026	312.0110 Select Crushed Material	131,748.000 TON	_____.	_____.
0028	415.0100 Concrete Pavement 10-Inch	92,250.000 SY	_____.	_____.
0030	415.0210 Concrete Pavement Gaps	1.000 EACH	_____.	_____.
0032	415.6000.S Rout and Seal	60,790.000 LF	_____.	_____.



Proposal Schedule of Items

Proposal ID: 20221213027 Project(s): 1053-07-75

Federal ID(s): WISC 2023110

SECTION: 0001 Contract Items

Alt Set ID: Alt Mbr ID:

Proposal Line Number	Item ID Description	Approximate Quantity and Units	Unit Price	Bid Amount
0034	416.0610 Drilled Tie Bars	1,751.000 EACH	_____.	_____.
0036	416.0620 Drilled Dowel Bars	4,478.000 EACH	_____.	_____.
0038	416.1110 Concrete Shoulder Rumble Strips	25,580.000 LF	_____.	_____.
0040	416.1710 Concrete Pavement Repair	3,015.000 SY	_____.	_____.
0042	416.1720 Concrete Pavement Replacement	981.000 SY	_____.	_____.
0044	420.1000 Continuous Diamond Grinding Concrete Pavement	9,504.000 SY	_____.	_____.
0046	450.4000 HMA Cold Weather Paving	3,048.000 TON	_____.	_____.
0048	455.0605 Tack Coat	4,801.000 GAL	_____.	_____.
0050	460.2000 Incentive Density HMA Pavement	10,250.000 DOL	1.00000	10,250.00
0052	460.6223 HMA Pavement 3 MT 58-28 S	8,122.000 TON	_____.	_____.
0054	460.6224 HMA Pavement 4 MT 58-28 S	7,656.000 TON	_____.	_____.
0056	465.0105 Asphaltic Surface	389.000 TON	_____.	_____.
0058	465.0400 Asphaltic Shoulder Rumble Strips	29,770.000 LF	_____.	_____.
0060	516.0500 Rubberized Membrane Waterproofing	35.000 SY	_____.	_____.
0062	520.2012 Culvert Pipe Temporary 12-Inch	705.000 LF	_____.	_____.
0064	520.8000 Concrete Collars for Pipe	3.000 EACH	_____.	_____.



Proposal Schedule of Items

Proposal ID: 20221213027 Project(s): 1053-07-75

Federal ID(s): WISC 2023110

SECTION: 0001 Contract Items

Alt Set ID: Alt Mbr ID:

Proposal Line Number	Item ID Description	Approximate Quantity and Units	Unit Price	Bid Amount
0066	601.0557 Concrete Curb & Gutter 6-Inch Sloped 36-Inch Type D	754.000 LF	_____.	_____.
0072	608.0315 Storm Sewer Pipe Reinforced Concrete Class III 15-Inch	9.000 LF	_____.	_____.
0076	611.0645 Inlet Covers Type MS-A	8.000 EACH	_____.	_____.
0078	611.3901 Inlets Median 1 Grate	4.000 EACH	_____.	_____.
0080	611.3904 Inlets Median 4 Grate	1.000 EACH	_____.	_____.
0082	612.0106 Pipe Underdrain 6-Inch	570.000 LF	_____.	_____.
0084	612.0806 Apron Endwalls for Underdrain Reinforced Concrete 6-Inch	4.000 EACH	_____.	_____.
0086	614.0397 Guardrail Mow Strip Emulsified Asphalt	68.000 SY	_____.	_____.
0088	614.2300 MGS Guardrail 3	425.000 LF	_____.	_____.
0090	614.2500 MGS Thrie Beam Transition	157.600 LF	_____.	_____.
0092	614.2610 MGS Guardrail Terminal EAT	4.000 EACH	_____.	_____.
0094	618.0100 Maintenance And Repair of Haul Roads (project) 01. 1053-07-75	1.000 EACH	_____.	_____.
0096	619.1000 Mobilization	1.000 EACH	_____.	_____.
0098	624.0100 Water	2,393.000 MGAL	_____.	_____.
0100	625.0100 Topsoil	8,475.000 SY	_____.	_____.
0102	628.1504 Silt Fence	995.000 LF	_____.	_____.





Proposal Schedule of Items

Proposal ID: 20221213027 Project(s): 1053-07-75

Federal ID(s): WISC 2023110

SECTION: 0001 Contract Items

Alt Set ID: Alt Mbr ID:

Proposal Line Number	Item ID Description	Approximate Quantity and Units	Unit Price	Bid Amount
0104	628.1520 Silt Fence Maintenance	1,990.000 LF	_____.	_____.
0106	628.1905 Mobilizations Erosion Control	5.000 EACH	_____.	_____.
0108	628.1910 Mobilizations Emergency Erosion Control	4.000 EACH	_____.	_____.
0110	628.2004 Erosion Mat Class I Type B	8,475.000 SY	_____.	_____.
0112	628.7005 Inlet Protection Type A	5.000 EACH	_____.	_____.
0114	628.7504 Temporary Ditch Checks	96.000 LF	_____.	_____.
0116	628.7555 Culvert Pipe Checks	30.000 EACH	_____.	_____.
0118	628.7570 Rock Bags	6.000 EACH	_____.	_____.
0120	629.0210 Fertilizer Type B	5.500 CWT	_____.	_____.
0122	630.0120 Seeding Mixture No. 20	226.000 LB	_____.	_____.
0124	630.0200 Seeding Temporary	225.000 LB	_____.	_____.
0126	630.0500 Seed Water	192.000 MGAL	_____.	_____.
0128	633.0100 Delineator Posts Steel	146.000 EACH	_____.	_____.
0130	633.0500 Delineator Reflectors	146.000 EACH	_____.	_____.
0132	633.1100 Delineators Temporary	102.000 EACH	_____.	_____.
0134	633.5350 Markers Permanent Flexible	106.000 EACH	_____.	_____.
0136	642.5201 Field Office Type C	1.000 EACH	_____.	_____.



Proposal Schedule of Items

Proposal ID: 20221213027 Project(s): 1053-07-75

Federal ID(s): WISC 2023110

SECTION: 0001 Contract Items

Alt Set ID: Alt Mbr ID:

Proposal Line Number	Item ID Description	Approximate Quantity and Units	Unit Price	Bid Amount
0138	643.0300 Traffic Control Drums	137,079.000 DAY	_____.	_____.
0140	643.0420 Traffic Control Barricades Type III	14,153.000 DAY	_____.	_____.
0142	643.0500 Traffic Control Flexible Tubular Marker Posts	913.000 EACH	_____.	_____.
0144	643.0600 Traffic Control Flexible Tubular Marker Bases	913.000 EACH	_____.	_____.
0146	643.0705 Traffic Control Warning Lights Type A	10,130.000 DAY	_____.	_____.
0148	643.0715 Traffic Control Warning Lights Type C	14,391.000 DAY	_____.	_____.
0150	643.0800 Traffic Control Arrow Boards	949.000 DAY	_____.	_____.
0152	643.0900 Traffic Control Signs	34,060.000 DAY	_____.	_____.
0154	643.0910 Traffic Control Covering Signs Type I	5.000 EACH	_____.	_____.
0156	643.0920 Traffic Control Covering Signs Type II	13.000 EACH	_____.	_____.
0158	643.1000 Traffic Control Signs Fixed Message	478.670 SF	_____.	_____.
0160	643.1051 Traffic Control Signs PCMS with Cellular Communications	98.000 DAY	_____.	_____.
0162	643.3105 Temporary Marking Line Paint 4-Inch	116,155.000 LF	_____.	_____.
0164	643.3150 Temporary Marking Line Removable Tape 4-Inch	11,740.000 LF	_____.	_____.
0166	643.3205 Temporary Marking Line Paint 8-Inch	400.000 LF	_____.	_____.



Proposal Schedule of Items

Proposal ID: 20221213027 Project(s): 1053-07-75

Federal ID(s): WISC 2023110

SECTION: 0001 Contract Items

Alt Set ID: Alt Mbr ID:

Proposal Line Number	Item ID Description	Approximate Quantity and Units	Unit Price	Bid Amount
0168	643.3250 Temporary Marking Line Removable Tape 8-Inch	500.000 LF	_____.	_____.
0170	643.3850 Temporary Marking Stop Line Removable Tape 18-Inch	150.000 LF	_____.	_____.
0172	643.5000 Traffic Control	1.000 EACH	_____.	_____.
0174	645.0111 Geotextile Type DF Schedule A	315.000 SY	_____.	_____.
0176	645.0140 Geotextile Type SAS	147,720.000 SY	_____.	_____.
0178	646.1020 Marking Line Epoxy 4-Inch	95,393.000 LF	_____.	_____.
0180	646.1040 Marking Line Grooved Wet Ref Epoxy 4-Inch	57,152.000 LF	_____.	_____.
0182	646.1555 Marking Line Grooved Contrast Permanent Tape 4-Inch	2,564.000 LF	_____.	_____.
0184	646.3020 Marking Line Epoxy 8-Inch	1,806.000 LF	_____.	_____.
0186	646.3040 Marking Line Grooved Wet Ref Epoxy 8-Inch	1,105.000 LF	_____.	_____.
0188	646.3555 Marking Line Grooved Contrast Permanent Tape 8-Inch	2,303.000 LF	_____.	_____.
0190	646.5520 Marking Outfall Epoxy	266.000 EACH	_____.	_____.
0192	646.6120 Marking Stop Line Epoxy 18-Inch	78.000 LF	_____.	_____.
0194	646.6464 Cold Weather Marking Epoxy 4-Inch	150,861.000 LF	_____.	_____.
0196	646.6468 Cold Weather Marking Epoxy 8-Inch	2,911.000 LF	_____.	_____.



Proposal Schedule of Items

Proposal ID: 20221213027 Project(s): 1053-07-75

Federal ID(s): WISC 2023110

SECTION: 0001 Contract Items

Alt Set ID: Alt Mbr ID:

Proposal Line Number	Item ID Description	Approximate Quantity and Units	Unit Price	Bid Amount
0198	646.7220 Marking Chevron Epoxy 24-Inch	171.000 LF	_____.	_____.
0200	646.9000 Marking Removal Line 4-Inch	167,518.000 LF	_____.	_____.
0202	646.9100 Marking Removal Line 8-Inch	2,052.000 LF	_____.	_____.
0204	650.4000 Construction Staking Storm Sewer	5.000 EACH	_____.	_____.
0206	650.4500 Construction Staking Subgrade	33,001.000 LF	_____.	_____.
0208	650.5500 Construction Staking Curb Gutter and Curb & Gutter	754.000 LF	_____.	_____.
0210	650.6000 Construction Staking Pipe Culverts	3.000 EACH	_____.	_____.
0212	650.7000 Construction Staking Concrete Pavement	33,001.000 LF	_____.	_____.
0214	650.9911 Construction Staking Supplemental Control (project) 01. 1053-07-75	1.000 EACH	_____.	_____.
0216	650.9920 Construction Staking Slope Stakes	33,001.000 LF	_____.	_____.
0218	690.0150 Sawing Asphalt	1,245.000 LF	_____.	_____.
0220	690.0250 Sawing Concrete	15,238.000 LF	_____.	_____.
0222	715.0715 Incentive Flexural Strength Concrete Pavement	27,675.000 DOL	1.00000	27,675.00
0224	740.0440 Incentive IRI Ride	33,830.000 DOL	1.00000	33,830.00
0226	ASP.1T0A On-the-Job Training Apprentice at \$5.00/HR	2,100.000 HRS	5.00000	10,500.00



Proposal Schedule of Items

Proposal ID: 20221213027 Project(s): 1053-07-75

Federal ID(s): WISC 2023110

SECTION: 0001 Contract Items

Alt Set ID: Alt Mbr ID:

Proposal Line Number	Item ID Description	Approximate Quantity and Units	Unit Price	Bid Amount
0228	ASP.1T0G On-the-Job Training Graduate at \$5.00/HR	4,800.000 HRS	5.00000	24,000.00
0230	SPV.0060 Special 01. Resetting Culvert Sections	1.000 EACH	_____.	_____.
0232	608.0312 Storm Sewer Pipe Reinforced Concrete Class III 12-Inch	555.000 LF	_____.	_____.
0234	608.0318 Storm Sewer Pipe Reinforced Concrete Class III 18-Inch	15.000 LF	_____.	_____.
<b>Section: 0001</b>			<b>Total:</b>	_____.
			<b>Total Bid:</b>	_____.

