



Wisconsin Department of Transportation

March 1, 2023

**Division of Transportation Systems
Development**

Bureau of Project Development
4822 Madison Yards Way, 4th Floor South
Madison, WI 53705

Telephone: (608) 266-1631
Facsimile (FAX): (608) 266-8459

NOTICE TO ALL CONTRACTORS:

**Proposal #36: 7710-00-70
Melrose – Sparta
Black River Bridge B-27-0074
STH 71
Jackson County**

Letting of March 14, 2023

This is Addendum No. 01, which provides for the following:

Plan Sheets:

Added Plan Sheets	
Plan Sheet	Plan Sheet Title (brief description of changes to sheet)
11A – 11N	SDD – Concrete Barrier Temporary Precast, 12'-6"

The responsibility for notifying potential subcontractors and suppliers of these changes remains with the prime contractor.

Sincerely,

Mike Coleman

Proposal Development Specialist
Proposal Management Section

END OF ADDENDUM

**CONCRETE BARRIER
TEMPORARY PRECAST,
12' - 6"**

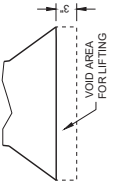
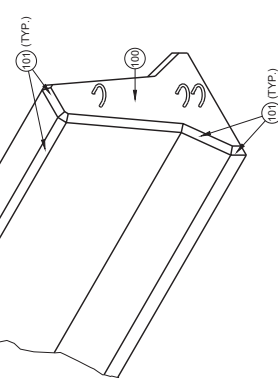
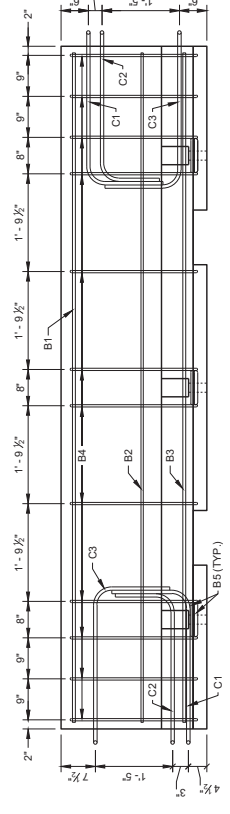
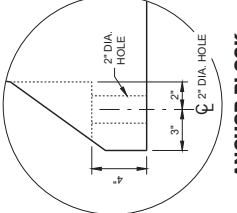
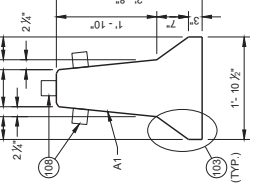
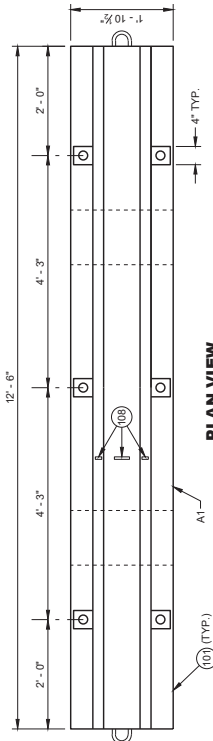
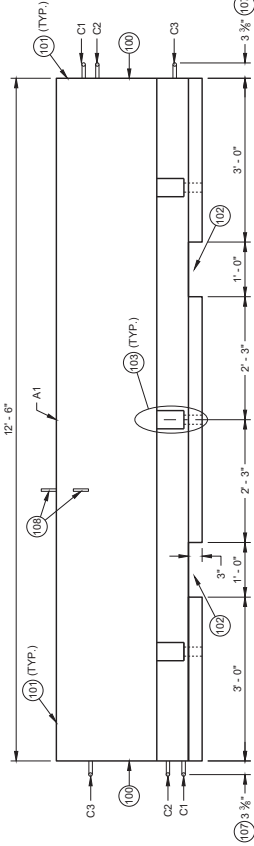
STATE OF WISCONSIN
DEPARTMENT OF TRANSPORTATION

GENERAL NOTES

PLACE BARRIER ON PAVED SURFACE BEFORE PLACEMENT OF TEMPORARY BARRIER.
REMOVE ALL LOOSE MATERIAL FROM PAVED SURFACE.

LOOP BARS C1, C2 AND C3 ARE NOT FOR PLACEMENT OR MOVEMENT OF BARRIER.

- (100) PERMANENTLY FORM INTO ONE END OF BARRIER THE FOLLOWING INFORMATION:
A. TYPE OF BARRIER; W/C-BTP
B. MANUFACTURER
C. DATE OF MANUFACTURE (MONTH AND YEAR)
- (101) 1" OPTIONAL CHAMFER
- (102) SEE LIFTING SLOT DETAIL
- (103) SEE ANCHOR BLOCK DETAIL
- (104) 1 1/2" MIN. CLEAR COVER
- (105) 7" MIN. CLEAR COVER
- (106) 1" MIN. CLEAR COVER
- (107) ± 1/2" MEASURED FROM FACE OF CONCRETE BARRIER TO OUTSIDE OF LOOP BAR (TYP.)
- (108) USE DELINEATORS CONFORMING TO SECTION 633 OF THE STANDARD SPECIFICATIONS. CONTRACTOR MAY USE ALTERNATE SHAPES AND HOUSING. INSTALL DELINEATORS ACCORDING TO MANUFACTURER'S INSTRUCTION. INSTALL YELLOW REFLECTORS WHEN OPERATIONAL. LOCATIONS OF REFLECTORS SHALL BE AS SHOWN ON PLAN VIEW OF TRAFFIC. SPACE DELINEATORS A MINIMUM OF 5 FEET APART. PROVIDE TO MOUNTED DELINEATORS IN ADDITION TO SIDE MOUNTED DELINEATORS ON BARRIER INSTALLATIONS LOCATED ON A CURVED ALIGNMENT LONGER THAN 200 FEET AND ON BARRIERS USED TO SEPARATE OPPOSING TRAFFIC.



Addendum No. 01
ID 7710-00-70
Added Sheet 11A
March 1, 2023

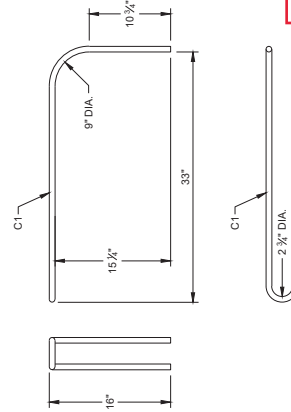
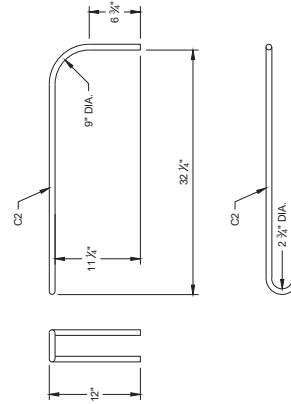
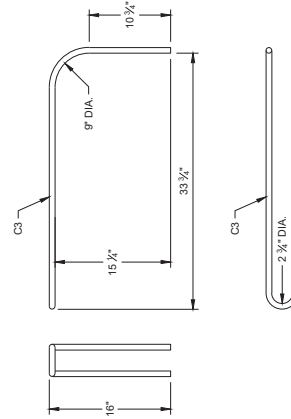
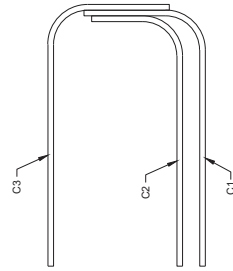
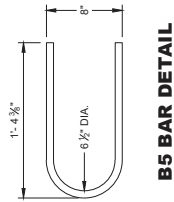
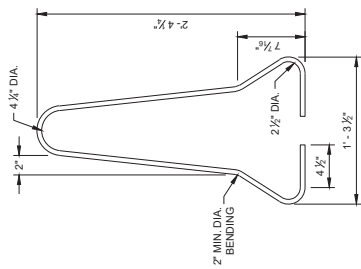
TEMPORARY BARRIER REINFORCEMENT

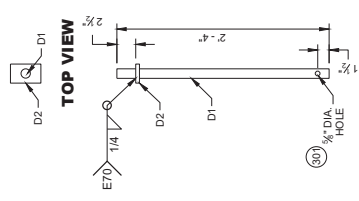
CONCRETE BARRIER
TEMPORARY PRECAST,
12' - 6"

STATE OF WISCONSIN
DEPARTMENT OF TRANSPORTATION

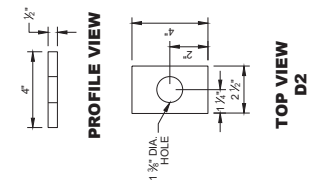
11B

Addendum No. 01
ID 7710-00-70
Added Sheet 11B
March 1, 2023

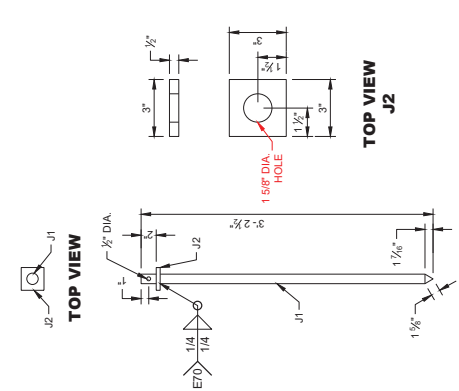




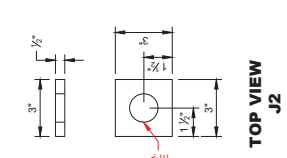
**PROFILE VIEW
CONNECTOR PIN
ASSEMBLY**



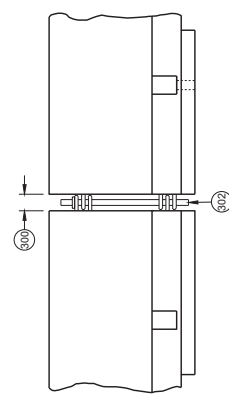
**TOP VIEW
D2**



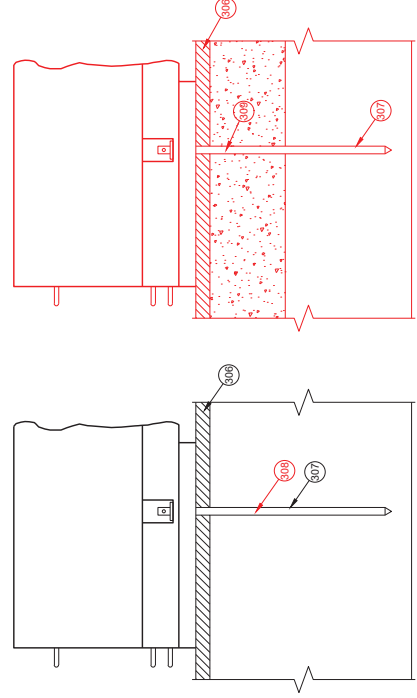
**PROFILE VIEW
ASPHALT ANCHOR PIN
ASSEMBLY**



**TOP VIEW
J2**



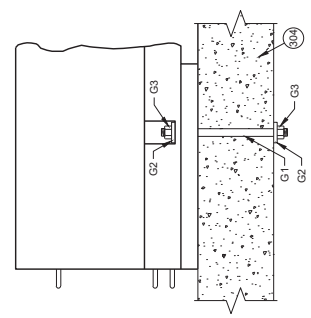
**CONNECTING TEMPORARY
BARRIER SECTIONS**



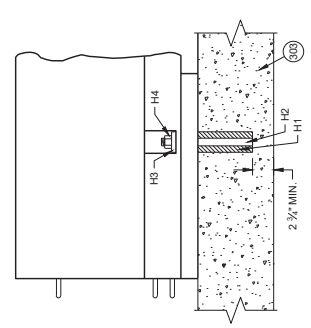
**SIDE VIEW
ASPHALT ANCHOR
INSTALLATION
THROUGH
ASPHALT PAVEMENT**

**SIDE VIEW
ASPHALT ANCHOR
INSTALLATION
THROUGH
ASPHALT OVERLAY
ON TOP OF
CONCRETE PAVEMENT**

- GENERAL NOTES**
- 309 SET WITH 3/4" WOOD BLOCK.
 - 307 HOLE IS OPTIONAL.
 - 302 CONNECTOR PIN ASSEMBLY.
 - 303 CONCRETE PAVEMENT, APPROACH SLAB, OR DECK.
 - 304 CONCRETE DECK.
 - 305 DO NOT USE ON CONCRETE BRIDGE DECK WITH ASPHALT OVERLAY OR CONCRETE PAVEMENT WITH ASPHALT OVERLAY.
 - 306 MINIMUM OF 2" OF ASPHALT.
 - 307 ASPHALT ANCHOR PIN ASSEMBLY.
 - 308 IF DRILLING A PILOT HOLE, THE MAX. DIA. OF THE HOLE IS 3/4".
 - 309 WHEN THERE IS ASPHALT OVERLAYING CONCRETE PAVEMENT, A 1.58" DIA. PILOT HOLE CAN BE DRILLED INTO THE OVERLAY AND CONCRETE. IF NEEDED DRILL A 3/4" PILOT HOLE IN BASE COURSE.



**SIDE VIEW
THROUGH BOLT ANCHOR
INSTALLATION**

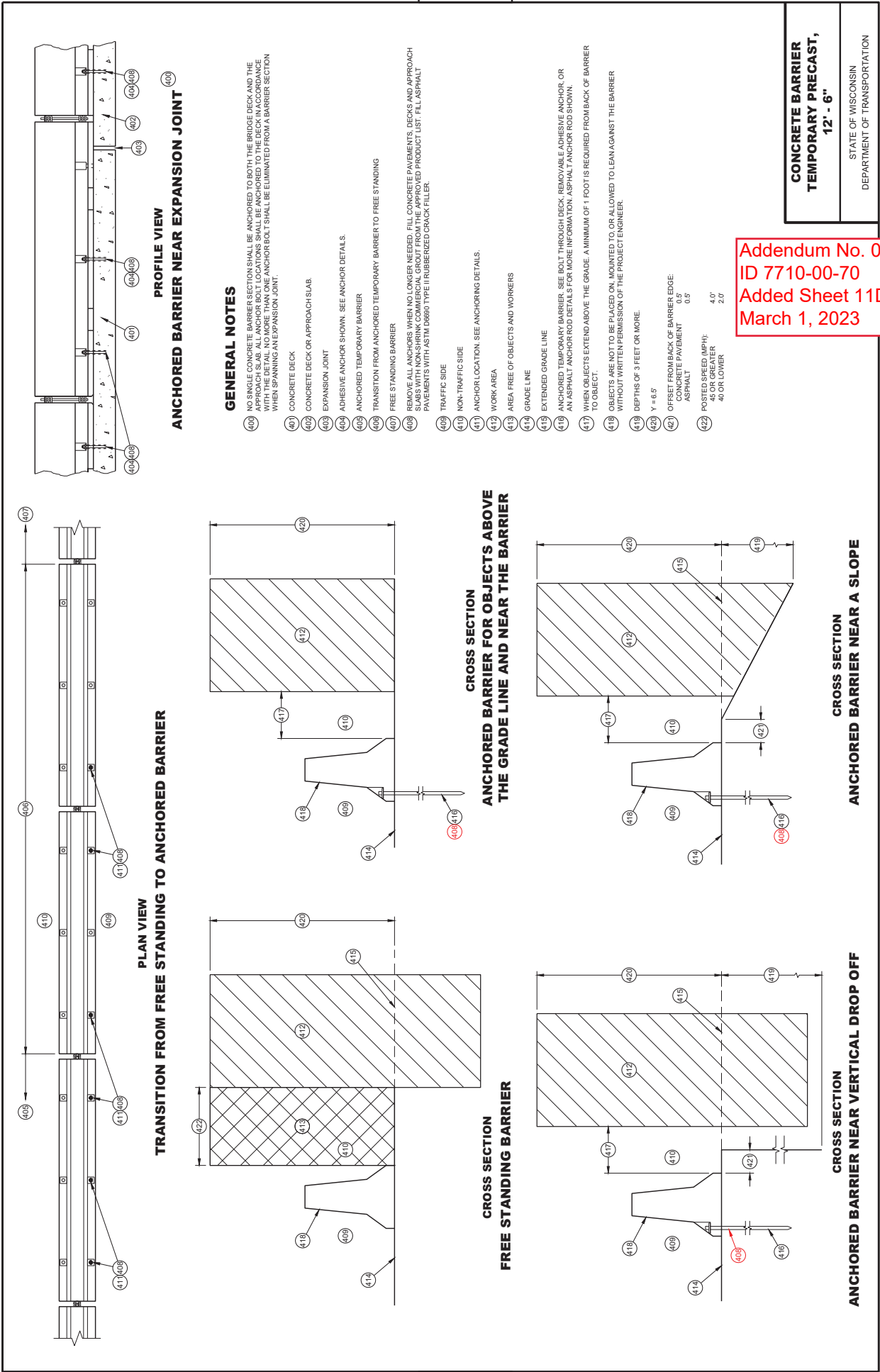


**SIDE VIEW
ADHESIVE ANCHOR
INSTALLATION**

Addendum No. 01
ID 7710-00-70
Added Sheet 11C
March 1, 2023

**CONCRETE BARRIER
TEMPORARY PRECAST,
12' - 6"**

STATE OF WISCONSIN
DEPARTMENT OF TRANSPORTATION



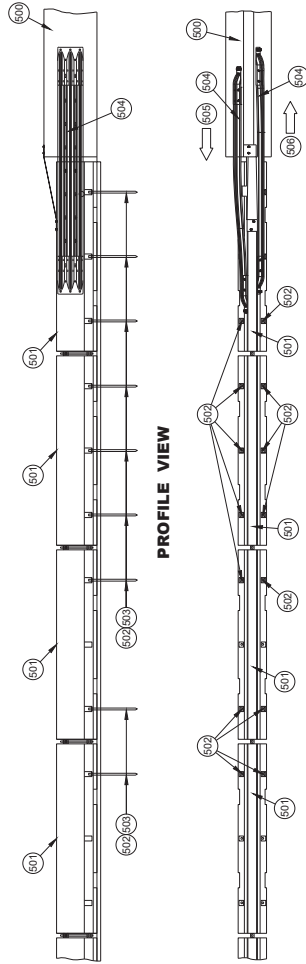
**CONCRETE BARRIER
 TEMPORARY PRECAST,
 12' - 6"**

STATE OF WISCONSIN
 DEPARTMENT OF TRANSPORTATION

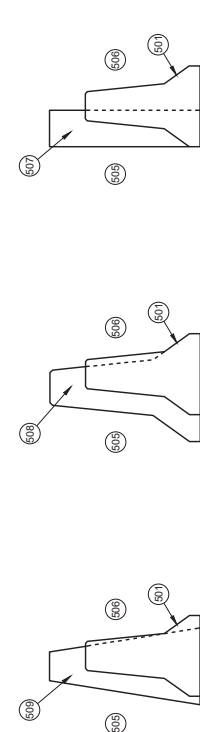
Addendum No. 01
 ID 7710-00-70
 Added Sheet 11D
 March 1, 2023

GENERAL NOTES

- 600 EXISTING RIGID BARRIERS (VARIES)
- 601 TEMPORARY BARRIER
- 602 SEE OTHER DETAIL ON HOW TO ANCHOR TEMPORARY BARRIER (BARRIER ASPHALT ANCHOR SHOWN).
- 603 ANCHORS ARE REQUIRED ON BOTH SIDES OF THE TEMPORARY BARRIER.
- 604 NESTED RAILS ARE REQUIRED ON BOTH SIDES OF THE TEMPORARY BARRIER FOR ALL INSTALLATIONS.
- 605 TRAFFIC TRAVELS FROM PERMANENT BARRIER TO TEMPORARY BARRIER.
- 606 TRAFFIC TRAVELS FROM TEMPORARY BARRIER TO PERMANENT BARRIER.
- 607 VERTICAL BARRIER
- 608 SAFETY SHAPE BARRIER
- 609 SINGLE SLOPE BARRIER
- 610 CAP END PLATE PLACED FLUSH WITH UPSTREAM END OF RIGID BARRIER.
- 611 BENT THRIE BEAM TO FIT.
- 612 THRIE BEAM PIECES ARE OFFSET 15'; TO PREVENT INTERFERENCE FROM THE ANCHORS ON OPPOSING SIDES.
- 613 TWO (2) P1, P2 AND P3 ARE REQUIRED
- 614 FIVE (5) N1, N2 AND N3 ARE REQUIRED
- 615 TWO (2) R1, R2 AND R3 ARE REQUIRED
- 616 CUT WOOD BLOCK TO FIT.
- 617 SEE THREE BEAM RAIL TERMINAL CONNECTOR DETAIL ASSEMBLY.
- 618 CAP ASSEMBLY
- 619 4" MAX. GAP BETWEEN TEMPORARY BARRIER AND RIGID BARRIER.
- 620 ALL TWELVE SPLICE HOLES REQUIRE M1 AND M2



PROFILE VIEW

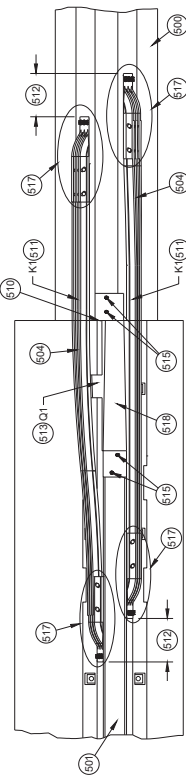


**CROSS SECTION
TEMPORARY BARRIER
PLACEMENT SINGLE SLOPE**

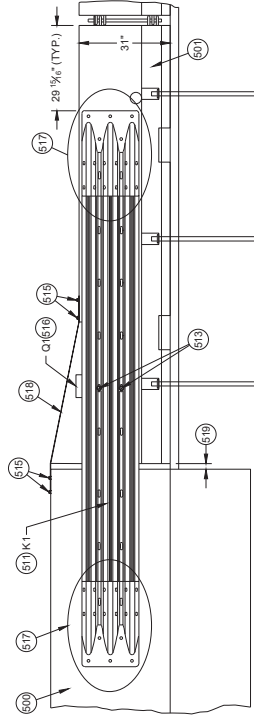
**CROSS SECTION
TEMPORARY BARRIER
PLACEMENT SAFETY SHAPE**

**CROSS SECTION
TEMPORARY BARRIER
PLACEMENT VERTICAL**

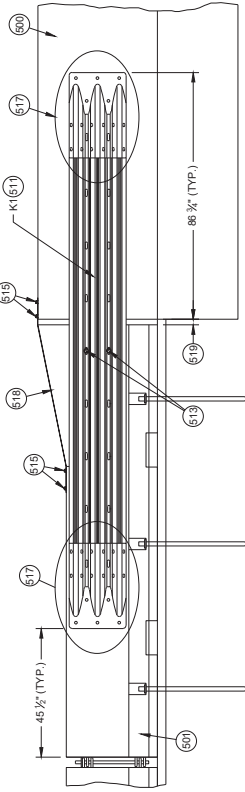
**PLAN VIEW
TRANSITION TO RIGID BARRIER**



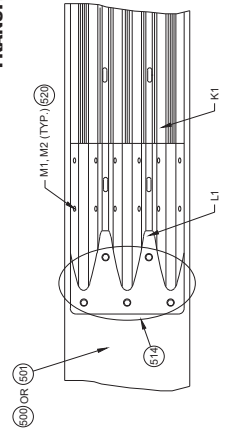
**PLAN DETAIL VIEW
TRANSITION TO RIGID BARRIER**



**BACK DETAIL VIEW
TRANSITION TO RIGID BARRIER**



**FRONT DETAIL VIEW
TRANSITION TO RIGID BARRIER**



**THRIE BEAM RAIL TERMINAL CONNECTOR ASSEMBLY
DETAIL PLAN VIEW**

Addendum No. 01
ID 7710-00-70
Added Sheet 11E
March 1, 2023

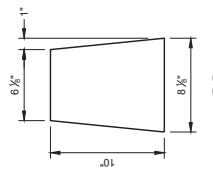
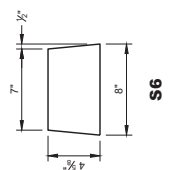
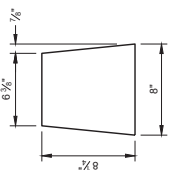
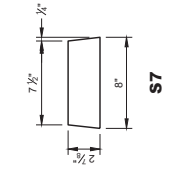
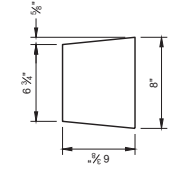
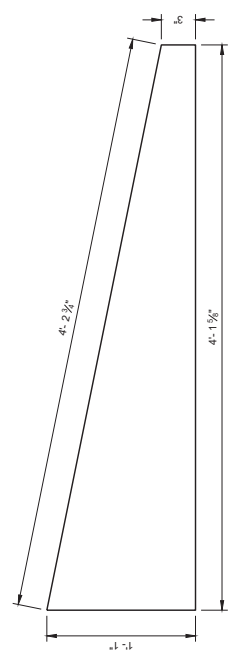
**CONCRETE BARRIER
TEMPORARY PRECAST,
12' - 6"**

STATE OF WISCONSIN
DEPARTMENT OF TRANSPORTATION

11E

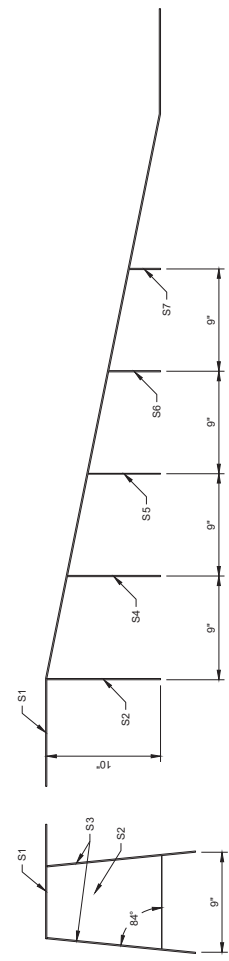
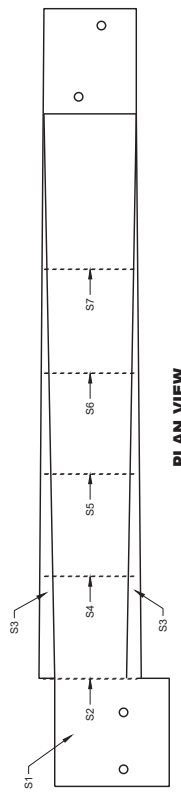
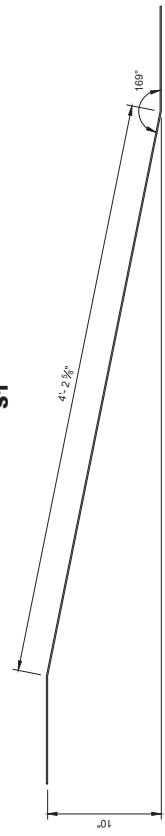
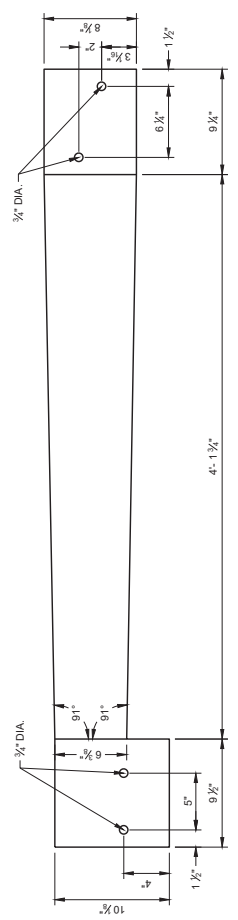
CONCRETE BARRIER
TEMPORARY PRECAST,
12' - 6"

STATE OF WISCONSIN
DEPARTMENT OF TRANSPORTATION



GENERAL NOTES
 STITCH WELD GUSSET PLATES AND END PLATES ON THREE SIDES
 STITCH WELD TWO SIDE PLATES TO TOP PLATE, END PLATE AND GUSSETS.
 (600) SIDE PLATES (S3) NOT SHOWN FOR CLARITY.

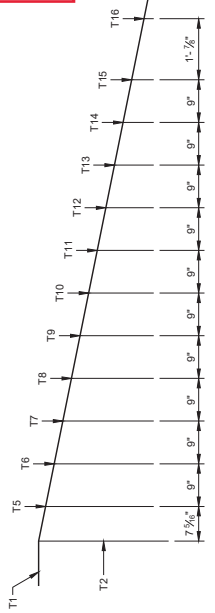
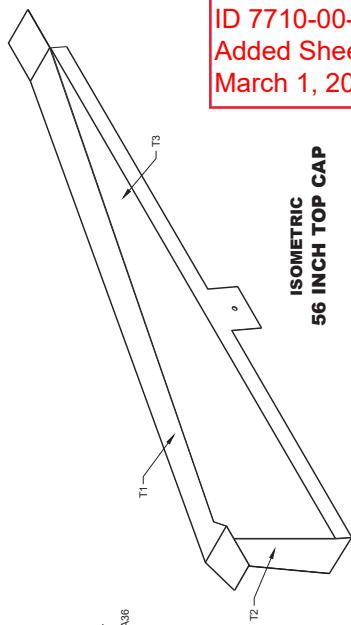
Addendum No. 01
 ID 7710-00-70
 Added Sheet 11F
 March 1, 2023



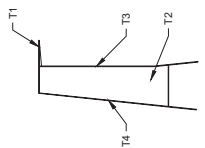
42" TOP CAP ASSEMBLY

Addendum No. 01
 ID 7710-00-70
 Added Sheet 11G
 March 1, 2023

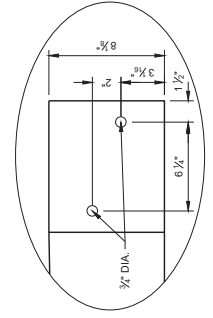
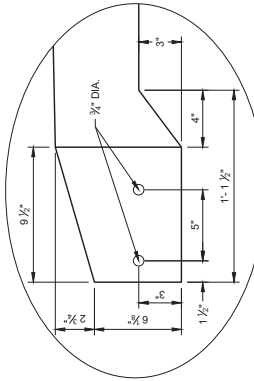
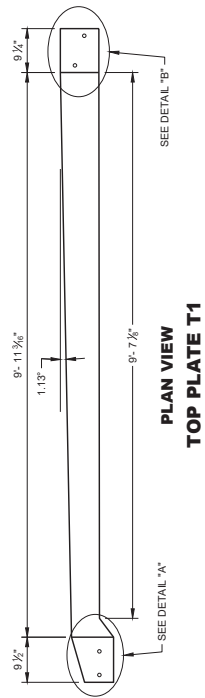
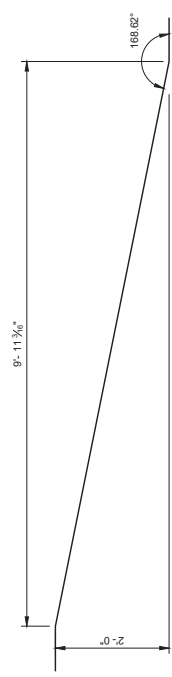
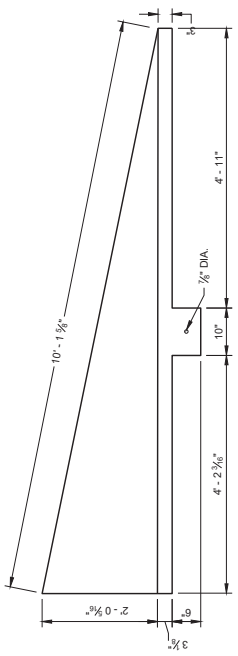
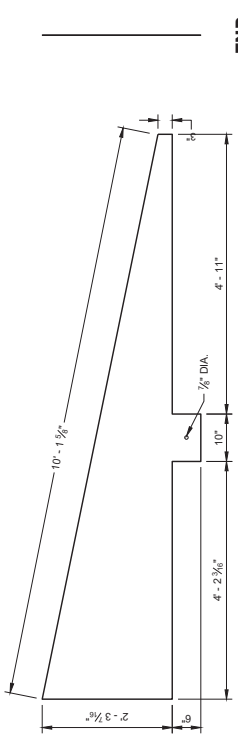
GENERAL NOTES
 STITCH WELD GUSSET PLATES AND END PLATES ON THREE SIDES
 STITCH WELD TWO SIDE PLATES TO TOP PLATE, END PLATE AND GUSSETS.
 SIDE PLATES, TOP PLATE, END PLATE AND GUSSETS ARE 12 GAUGE ASTM A36 GALVANIZED STEEL.
 (700) SIDE PLATES (T3 AND T4) NOT SHOWN FOR CLARITY.



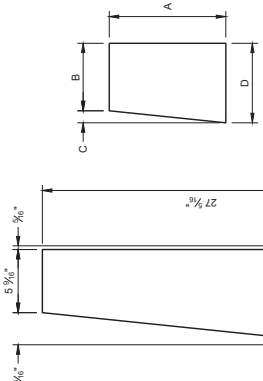
(700)
56 INCH TOP CAP



56 INCH TOP CAP



GUSSET NO.	GUSSET DIMENSIONS			
	A	B	C	D
T5	22 3/16"	5 7/16"	2 3/16"	8 7/16"
T6	21"	5 7/16"	2 3/16"	8 7/16"
T7	19 3/4"	6 3/4"	1 13/16"	8 7/16"
T8	17 7/16"	6 1/4"	1 13/16"	8 7/16"
T9	15 3/16"	6 3/4"	1 7/16"	8 7/16"
T10	13 3/4"	6 3/4"	1 7/16"	8 7/16"
T11	11 13/16"	6 3/4"	1 7/16"	8 7/16"
T12	10 1/2"	7"	1 7/16"	8 7/16"
T13	8 9/16"	7 3/8"	1 7/16"	8 7/16"
T14	6 9/16"	7 3/8"	1 7/16"	8 7/16"
T15	4 1/16"	7 3/8"	1 7/16"	8 7/16"
T16	2 1/2"	7 3/4"	1 7/16"	8 7/16"



END PLATE T2

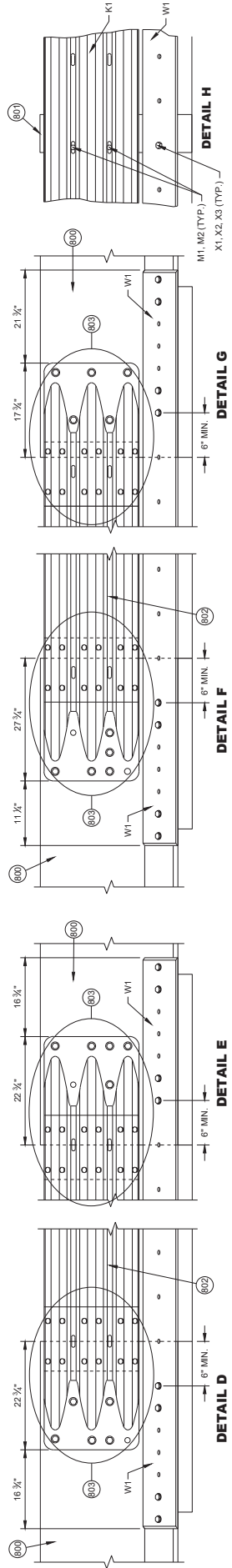
**CONCRETE BARRIER
 TEMPORARY PRECAST,
 12" - 6"**

STATE OF WISCONSIN
 DEPARTMENT OF TRANSPORTATION

Addendum No. 01
ID 7710-00-70
Added Sheet 11H
March 1, 2023

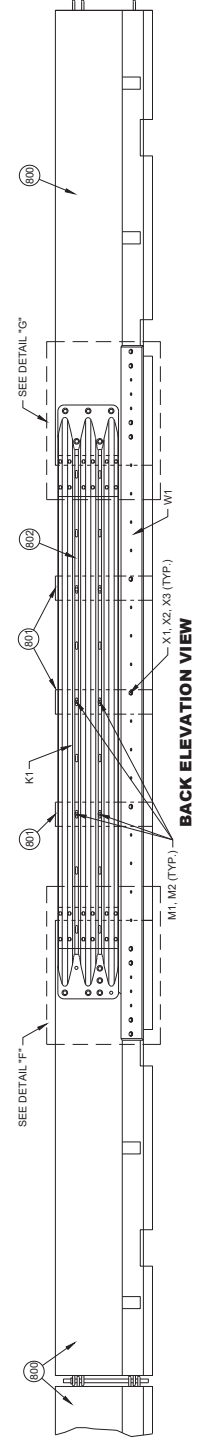
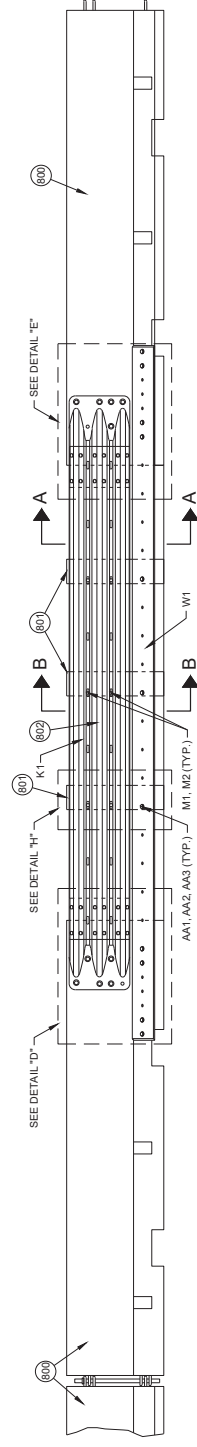
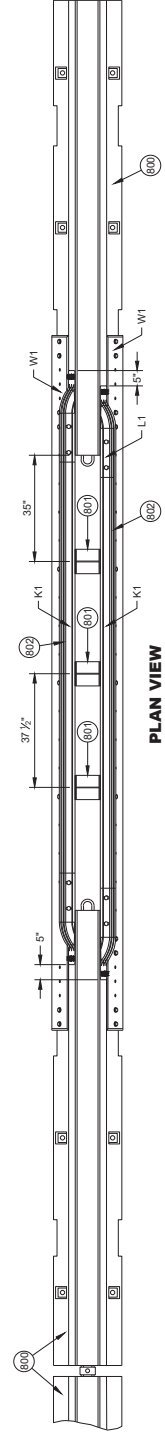
**CONCRETE BARRIER
TEMPORARY PRECAST,
12' - 6"**
STATE OF WISCONSIN
DEPARTMENT OF TRANSPORTATION

11H

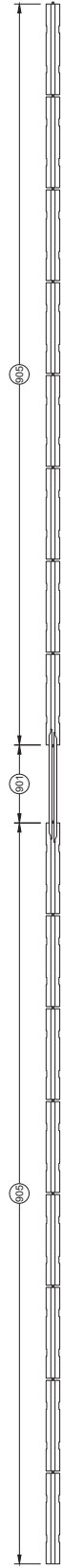


GENERAL NOTES

- 600 FREE STANDING TEMPORARY BARRIER
- 601 GAP STIFFENER ASSEMBLY
- 602 THRIE BEAMS ARE NESTED ON BOTH SIDES OF THE TEMPORARY BARRIER.
- 603 SEE THRIE BEAM RAIL TERMINAL CONNECTOR DETAIL



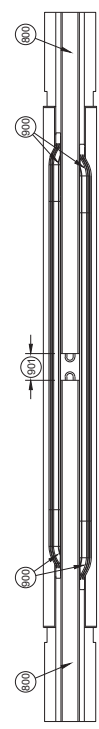
PORTABLE CONCRETE BARRIER GAP THRIE BEAM COVER



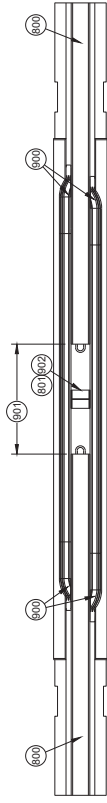
PLAN VIEW
GAP WITHIN SPACING

GENERAL NOTES

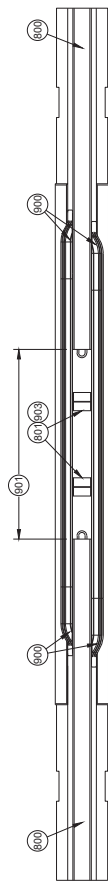
- 600 SEE OTHER DETAILS FOR TEMPORARY GAP-HARDWARE (TYP.)
- 601 TEMPORARY BARRIER GAP
- 602 GAP STIFFENER ASSEMBLY CENTERED IN THE GAP.
- 603 GAP STIFFENER ASSEMBLY IS OFFSET 18 3/4" FROM CENTER
- 604 MINIMUM NUMBER OF GAP STIFFENERS SHOWN FOR THE GAP RANGE SHOWN.
- 605 MINIMUM OF 8 CONTINUOUS FREE STANDING TEMPORARY BARRIERS



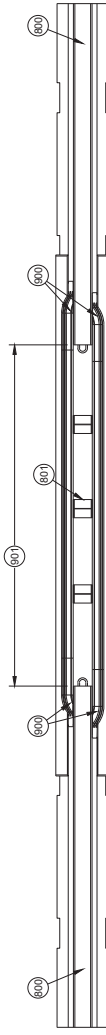
PLAN VIEW
TEMPORARY BARRIER GAP OVER 4" TO 1' MAX. 604



PLAN VIEW
TEMPORARY BARRIER GAP OVER 1' TO 4' MAX. 604



PLAN VIEW
TEMPORARY BARRIER GAP OVER 4' TO 7' MAX. 604



PLAN VIEW
TEMPORARY BARRIER GAP OVER 7' TO 12.5' MAX. 604

Addendum No. 01
ID 7710-00-70
Added Sheet 111
March 1, 2023

**CONCRETE BARRIER
TEMPORARY PRECAST,
12' - 6"**

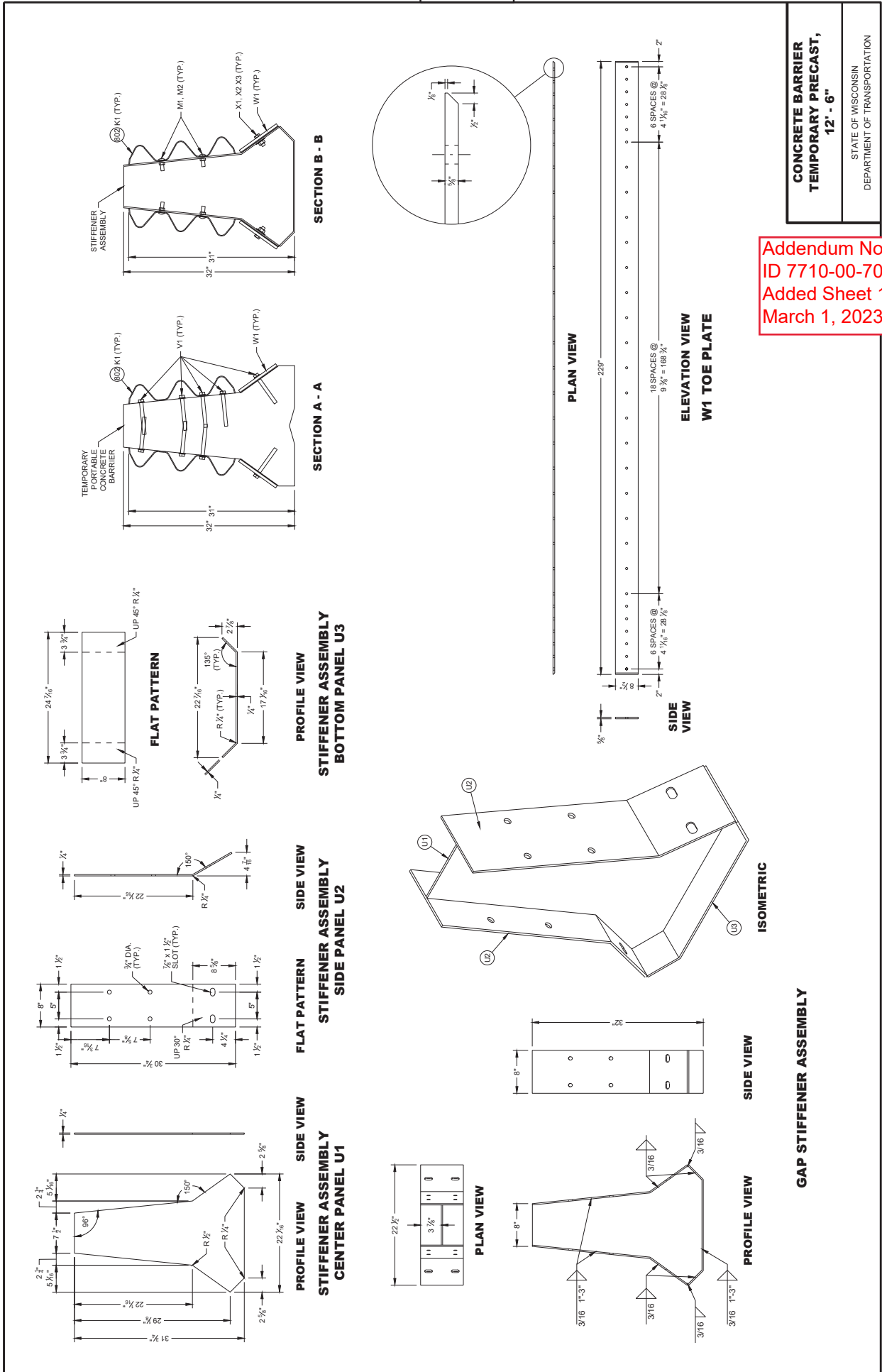
STATE OF WISCONSIN
DEPARTMENT OF TRANSPORTATION

CONCRETE BARRIER
TEMPORARY PRECAST,
12' - 6"

STATE OF WISCONSIN
DEPARTMENT OF TRANSPORTATION

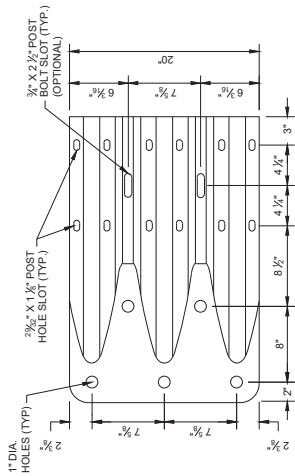
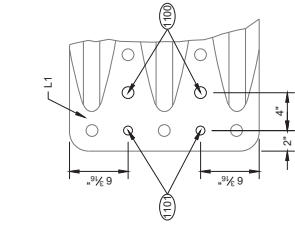
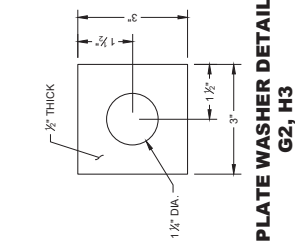
11J

Addendum No. 01
ID 7710-00-70
Added Sheet 11J
March 1, 2023



GENERAL NOTES

- (108) 1" DIA. HOLE
- (109) 3/4" DIA. HOLE
- (110) 3/4" DIA. HOLE
- (111) PROVIDE HOLES IN THRIE BEAM TERMINAL CONNECTOR TO LIMIT STEEL STRESS CONCENTRATION. PROVIDE HOLES IN THRIE BEAM TERMINAL CONNECTOR WITH ADDITIONAL HOLES OR PROVIDE THRIE BEAM TERMINAL CONNECTOR WITH ADDITIONAL HOLES FROM SUPPLIER.

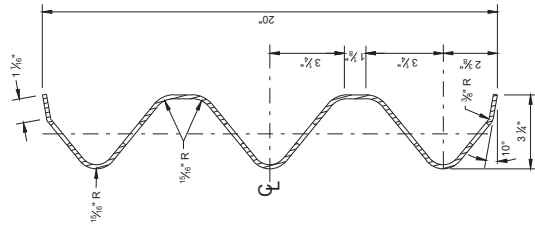


ELEVATION VIEW

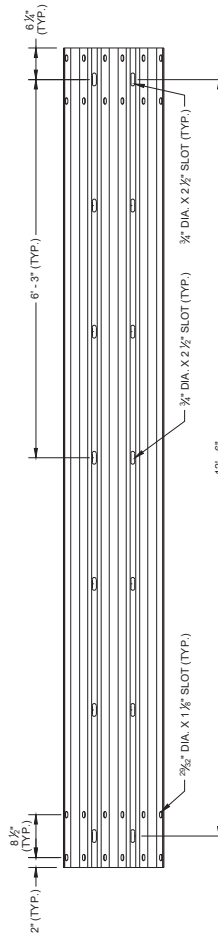
ADDITIONAL THRIE BEAM TERMINAL CONNECTOR HOLE DETAIL

ELEVATION VIEW

THRIE BEAM TERMINAL CONNECTOR



SECTION THROUGH BEAM K1



SLOTTED THRIE BEAM RAIL K1

Addendum No. 01
ID 7710-00-70
Added Sheet 11K
March 1, 2023

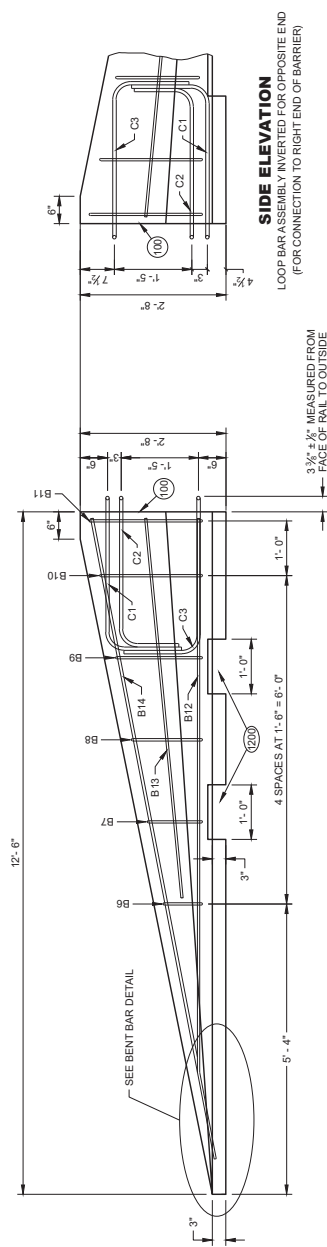
**CONCRETE BARRIER
TEMPORARY PRECAST,
12' - 6"**

STATE OF WISCONSIN
DEPARTMENT OF TRANSPORTATION

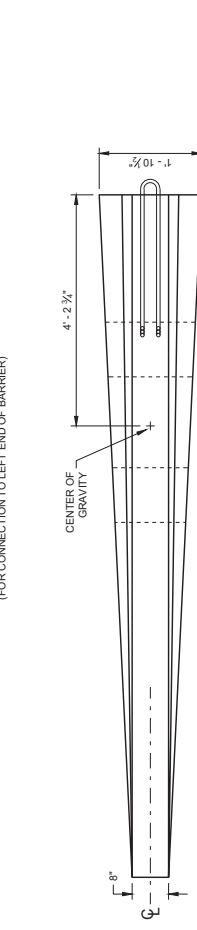
11K

GENERAL NOTES

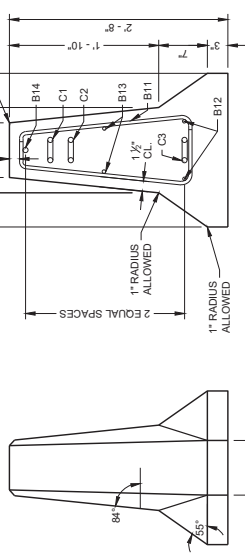
(20) SEE LIFTING SLOT DETAIL. LOCATION OF LIFTING SLOTS DETERMINED BY CONTRACTOR.



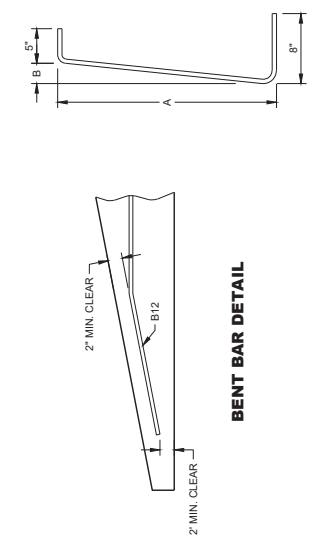
SIDE ELEVATION
(FOR CONNECTION TO LEFT END OF BARRIER)



PLAN VIEW



END SECTION



BENT BAR DETAIL

BAR	A	B
B6	10"	1"
B7	1'-1"	1 1/2"
B8	1'-5"	1 3/4"
B9	1'-8"	1 1/2"
B10	2'-0 1/2"	2 3/4"
B11	2'-3"	2 3/4"

B BARS

2 OF EACH SIZE REQUIRED FOR STIRRUP ASSEMBLY

FLARE AT BARRIER END



POSTED SPEED, (MPH)	FLARE RATE
40 OR LESS	6:1
45 OR GREATER	8:1

Addendum No. 01
ID 7710-00-70
Added Sheet 11L
March 1, 2023

**CONCRETE BARRIER
TEMPORARY PRECAST,
12' - 6"**

STATE OF WISCONSIN
DEPARTMENT OF TRANSPORTATION

DETAILS OF BARRIER TAPER SECTION

BILL OF MATERIALS - CONCRETE BARRIER PRECAST

PART	DESCRIPTION	MATERIALS SPECIFICATIONS	NOTES
A1	PRECAST TEMPORARY BARRIER - CONCRETE	MIN. = f _c 5000 PSI	
B1	REBAR	STANDARD SPEC. 505.2 GRADE 60 UNCOATED REBAR	#4 REBAR, LENGTH 12'-2"
B2	REBAR	STANDARD SPEC. 505.2 GRADE 60 UNCOATED REBAR	#4 REBAR, LENGTH 12'-2"
B3	REBAR	STANDARD SPEC. 505.2 GRADE 60 UNCOATED REBAR	#6 REBAR, LENGTH 12'-2"
B4	REBAR	STANDARD SPEC. 505.2 GRADE 60 UNCOATED REBAR	#6 REBAR, LENGTH 16'-0"
B5	REBAR	STANDARD SPEC. 505.2 GRADE 60 UNCOATED REBAR	#6 REBAR, LENGTH 2'-11"
B6	REBAR	STANDARD SPEC. 505.2 GRADE 60 UNCOATED REBAR	#4 REBAR, LENGTH 2'-2"
B7	REBAR	STANDARD SPEC. 505.2 GRADE 60 UNCOATED REBAR	#4 REBAR, LENGTH 2'-5"
B8	REBAR	STANDARD SPEC. 505.2 GRADE 60 UNCOATED REBAR	#4 REBAR, LENGTH 2'-5"
B9	REBAR	STANDARD SPEC. 505.2 GRADE 60 UNCOATED REBAR	#4 REBAR, LENGTH 3'-2"
B10	REBAR	STANDARD SPEC. 505.2 GRADE 60 UNCOATED REBAR	#4 REBAR, LENGTH 3'-2"
B11	REBAR	STANDARD SPEC. 505.2 GRADE 60 UNCOATED REBAR	#4 REBAR, LENGTH 3'-4"
B12	REBAR	STANDARD SPEC. 505.2 GRADE 60 UNCOATED REBAR	#4 REBAR, LENGTH 7'-0"
B13	REBAR	STANDARD SPEC. 505.2 GRADE 60 UNCOATED REBAR	#4 REBAR, LENGTH 7'-0"
B14	REBAR	STANDARD SPEC. 505.2 GRADE 60 UNCOATED REBAR	#6 REBAR, LENGTH 11'-9"
C1	LOOP BAR	ASTM A709 GRADE 70 SMOOTH BAR OR ASTM A706 GRADE 60 REBAR UNCOATED	3/4" DIA.
C2	LOOP BAR	ASTM A709 GRADE 70 SMOOTH BAR OR ASTM A706 GRADE 60 REBAR UNCOATED	3/4" DIA.
C3	LOOP BAR	ASTM A709 GRADE 70 SMOOTH BAR OR ASTM A706 GRADE 60 REBAR UNCOATED	3/4" DIA.
D1	CONNECTION PIN - ROD	ASTM A36, MIN. STRENGTH 36 KSI / ASTM A529 MAX. STRENGTH 50 KSI / ASTM A572 MAX STRENGTH 50 KSI / ASTM A592 MAX STRENGTH 50 KSI / ASTM A592 MAX STRENGTH 50 KSI /	1 1/2" DIA.
D2	CONNECTION PIN - TOP PLATE	ASTM A36, MIN. STRENGTH 36 KSI / ASTM A529 MAX. STRENGTH 50 KSI / ASTM A572 MAX STRENGTH 50 KSI / ASTM A592 MAX STRENGTH 50 KSI /	1 1/2" DIA.
G1	BOLT THROUGH ANCHOR - THREADED ROD	HOT DIP AASHTO M232 CLASS / ASTM A153 CLASS C / ASTM F2329 C OR MECHANICAL GALVANIZE TO AASHTO M298 CLASS 55 TYPE 2 / ASTM B895 CLASS 55 TYPE 2 / A307 GRADE A / SAE J429 GRADE 2, UNC / ASTM B895	1 1/2" DIA.
G2	BOLT THROUGH ANCHOR - WASHER, SQUARE	ASTM A36, MIN. STRENGTH 36 KSI / ASTM A529 MAX. STRENGTH 50 KSI / ASTM A572 MAX STRENGTH 50 KSI / ASTM A592 MAX STRENGTH 50 KSI /	
G3	BOLT THROUGH ANCHOR - NUT	HOT DIP AASHTO M232 CLASS / ASTM A153 CLASS C / ASTM F2329 C OR MECHANICAL GALVANIZE TO AASHTO M298 CLASS 55 TYPE 2 / ASTM B895 CLASS 55 TYPE 2 / A307 GRADE A / SAE J429 GRADE 2, UNC / ASTM B895	
H1	ADHESIVE ANCHOR - ADHESIVE	ICC E5-A3098, 5 1/2" EMBEDMENT WITH A MIN. 5000 PSI STRENGTH OF 1,650 PSI. SEE 603.2 AND 603.3.1.2 OF THE WISCONSIN STANDARD SPECIFICATIONS FOR MORE INFORMATION ON ADHESIVE ANCHORS.	
H2	ADHESIVE ANCHOR - THREADED ROD	HOT DIP AASHTO M232 CLASS / ASTM A153 CLASS C / ASTM F2329 C OR MECHANICAL GALVANIZE TO AASHTO M298 CLASS 55 TYPE 2 / ASTM B895 CLASS 55 TYPE 2 / A307 GRADE A / SAE J429 GRADE 2, UNC	1 1/2" DIA.
H3	ADHESIVE ANCHOR - WASHER, SQUARE	ASTM A36, MIN. STRENGTH 36 KSI / ASTM A529 MAX. STRENGTH 50 KSI / ASTM A572 MAX STRENGTH 50 KSI / ASTM A592 MAX STRENGTH 50 KSI /	
H4	ADHESIVE ANCHOR - NUT	HOT DIP AASHTO M232 CLASS / ASTM A153 CLASS C / ASTM F2329 C OR MECHANICAL GALVANIZE TO AASHTO M298 CLASS 55 TYPE 2 / ASTM B895 CLASS 55 TYPE 2 / A307 GRADE A / SAE J429 GRADE 2, UNC / ASTM B895 CLASS 55 TYPE 2 / A307 GRADE A / SAE J429 GRADE 2, UNC	
J1	ASPHALT ANCHOR PIN - ROD	ASTM A572 MAX STRENGTH 50 KSI / ASTM A592 MAX STRENGTH 50 KSI /	1 1/2" DIA.
J2	ASPHALT ANCHOR PIN - STOP PLATE	ASTM A36, MIN. STRENGTH 36 KSI / ASTM A529 MAX. STRENGTH 50 KSI / ASTM A572 MAX STRENGTH 50 KSI / ASTM A592 MAX STRENGTH 50 KSI /	
K1	THREE BEAM RAIL	AASHTO M180 CLASS A TYPE 2, APPROVED PRODUCER	
L1	THREE BEAM RAIL - TERMINAL	AASHTO M180 CLASS A TYPE 2, APPROVED PRODUCER	12 GAUGE

PART	DESCRIPTION	MATERIALS SPECIFICATIONS	NOTES
M1	SPLICE BOLT	HOT DIP AASHTO M232 CLASS / ASTM A153 CLASS C / ASTM F2329 C OR MECHANICAL GALVANIZE TO AASHTO M298 CLASS 55 TYPE 2 / ASTM B895 CLASS 55 TYPE 2 / A307 GRADE A / SAE J429 GRADE 2, UNC / ASTM B895 CLASS 55 TYPE 2 / A307 GRADE A / SAE J429 GRADE 2, UNC	3/4" DIA.
M2	SPLICE BOLT - NUT	HOT DIP AASHTO M232 CLASS / ASTM A153 CLASS C / ASTM F2329 C OR MECHANICAL GALVANIZE TO AASHTO M298 CLASS 55 TYPE 2 / ASTM B895 CLASS 55 TYPE 2 / A307 GRADE A / SAE J429 GRADE 2, UNC / ASTM B895 CLASS 55 TYPE 2 / A307 GRADE A / SAE J429 GRADE 2, UNC	
N1	THREE BEAM RAIL TERMINAL - MECHANICAL ANCHOR	HOT DIP AASHTO M232 CLASS / ASTM A153 CLASS C / ASTM F2329 C OR MECHANICAL GALVANIZE TO AASHTO M298 CLASS 55 TYPE 2 / ASTM B895 CLASS 55 TYPE 2 / A307 GRADE A / SAE J429 GRADE 2, UNC / ASTM B895 CLASS 55 TYPE 2 / A307 GRADE A / SAE J429 GRADE 2, UNC	3/4" DIA. LENGTH 6"
N2	THREE BEAM RAIL TERMINAL - WASHER	HOT DIP AASHTO M232 CLASS / ASTM A153 CLASS C / ASTM F2329 C OR MECHANICAL GALVANIZE TO AASHTO M298 CLASS 55 TYPE 2 / ASTM B895 CLASS 55 TYPE 2 / A307 GRADE A / SAE J429 GRADE 2, UNC / ASTM B895 CLASS 55 TYPE 2 / A307 GRADE A / SAE J429 GRADE 2, UNC	
N3	THREE BEAM RAIL TERMINAL MECHANICAL OR ADHESIVE ANCHOR	MINIMUM MECHANICAL OR ADHESIVE ANCHOR STRENGTH REQUIREMENTS: ULTIMATE TENSILE LOAD 17.9 KIPS AND ULTIMATE SHEAR LOAD 21.96 KIPS. SEE 603.2 AND 603.3.1.2 OF THE WISCONSIN STANDARD SPECIFICATIONS FOR MORE INFORMATION ON ADHESIVE ANCHORS.	
P1	THREE BEAM RAIL CONNECTION 1-BOLT	HOT DIP AASHTO M232 CLASS / ASTM A153 CLASS C / ASTM F2329 C OR MECHANICAL GALVANIZE TO AASHTO M298 CLASS 55 TYPE 2 / ASTM B895 CLASS 55 TYPE 2 / A307 GRADE A / SAE J429 GRADE 2, UNC / ASTM B895 CLASS 55 TYPE 2 / A307 GRADE A / SAE J429 GRADE 2, UNC	3/4" DIA.
P2	THREE BEAM RAIL CONNECTION 1-MECHANICAL OR ADHESIVE ANCHOR	HOT DIP AASHTO M232 CLASS / ASTM A153 CLASS C / ASTM F2329 C OR MECHANICAL GALVANIZE TO AASHTO M298 CLASS 55 TYPE 2 / ASTM B895 CLASS 55 TYPE 2 / A307 GRADE A / SAE J429 GRADE 2, UNC / ASTM B895 CLASS 55 TYPE 2 / A307 GRADE A / SAE J429 GRADE 2, UNC	
P3	THREE BEAM RAIL CONNECTION 1-MECHANICAL OR ADHESIVE ANCHOR	MINIMUM MECHANICAL OR ADHESIVE ANCHOR STRENGTH REQUIREMENTS: ULTIMATE TENSILE LOAD 9.48 KIPS AND ULTIMATE SHEAR LOAD 10.48 KIPS. SEE 603.2 AND 603.3.1.2 OF THE WISCONSIN STANDARD SPECIFICATIONS FOR MORE INFORMATION ON ADHESIVE ANCHORS.	
O1	BLOCK WOOD	SEE STANDARD SPEC. 614	
R1	CAP - BOLT	HOT DIP AASHTO M232 CLASS / ASTM A153 CLASS C / ASTM F2329 C OR MECHANICAL GALVANIZE TO AASHTO M298 CLASS 55 TYPE 2 / ASTM B895 CLASS 55 TYPE 2 / A307 GRADE A / SAE J429 GRADE 2, UNC / ASTM B895 CLASS 55 TYPE 2 / A307 GRADE A / SAE J429 GRADE 2, UNC	3/4" DIA.
R2	CAP - BOLT - WASHER	HOT DIP AASHTO M232 CLASS / ASTM A153 CLASS C / ASTM F2329 C OR MECHANICAL GALVANIZE TO AASHTO M298 CLASS 55 TYPE 2 / ASTM B895 CLASS 55 TYPE 2 / A307 GRADE A / SAE J429 GRADE 2, UNC / ASTM B895 CLASS 55 TYPE 2 / A307 GRADE A / SAE J429 GRADE 2, UNC	
R3	CAP - BOLT - MECHANICAL ANCHOR	MINIMUM MECHANICAL OR ADHESIVE ANCHOR STRENGTH REQUIREMENTS: ULTIMATE TENSILE LOAD 9.48 KIPS AND ULTIMATE SHEAR LOAD 10.48 KIPS. SEE 603.2 AND 603.3.1.2 OF THE WISCONSIN STANDARD SPECIFICATIONS FOR MORE INFORMATION ON ADHESIVE ANCHORS.	12 GAUGE
S1	CAP 42-INCH TOP PLATE	AASHTO M117, ASTM A123, ASTM A36, MIN. STRENGTH 36 KSI, OR ASTM A429 MAX. STRENGTH 50 KSI, OR ASTM A572 MAX. STRENGTH 50 KSI, OR ASTM A592 MAX. STRENGTH 50 KSI, OR ASTM A592 MAX. STRENGTH 50 KSI	12 GAUGE
S2	CAP 42-INCH END PLATE	AASHTO M117, ASTM A123, ASTM A36, MIN. STRENGTH 36 KSI, OR ASTM A429 MAX. STRENGTH 50 KSI, OR ASTM A572 MAX. STRENGTH 50 KSI, OR ASTM A592 MAX. STRENGTH 50 KSI, OR ASTM A592 MAX. STRENGTH 50 KSI	12 GAUGE
S3	CAP 42-INCH SIDE PLATE	AASHTO M117, ASTM A123, ASTM A36, MIN. STRENGTH 36 KSI, OR ASTM A429 MAX. STRENGTH 50 KSI, OR ASTM A572 MAX. STRENGTH 50 KSI, OR ASTM A592 MAX. STRENGTH 50 KSI, OR ASTM A592 MAX. STRENGTH 50 KSI	12 GAUGE
S4	CAP 42-INCH GUSSET 1	AASHTO M117, ASTM A123, ASTM A36, MIN. STRENGTH 36 KSI, OR ASTM A429 MAX. STRENGTH 50 KSI, OR ASTM A572 MAX. STRENGTH 50 KSI, OR ASTM A592 MAX. STRENGTH 50 KSI, OR ASTM A592 MAX. STRENGTH 50 KSI	12 GAUGE
S5	CAP 42-INCH GUSSET 2	AASHTO M117, ASTM A123, ASTM A36, MIN. STRENGTH 36 KSI, OR ASTM A429 MAX. STRENGTH 50 KSI, OR ASTM A572 MAX. STRENGTH 50 KSI, OR ASTM A592 MAX. STRENGTH 50 KSI, OR ASTM A592 MAX. STRENGTH 50 KSI	12 GAUGE
S6	CAP 42-INCH GUSSET 3	AASHTO M117, ASTM A123, ASTM A36, MIN. STRENGTH 36 KSI, OR ASTM A429 MAX. STRENGTH 50 KSI, OR ASTM A572 MAX. STRENGTH 50 KSI, OR ASTM A592 MAX. STRENGTH 50 KSI, OR ASTM A592 MAX. STRENGTH 50 KSI	12 GAUGE
S7	CAP 42-INCH GUSSET 4	AASHTO M117, ASTM A123, ASTM A36, MIN. STRENGTH 36 KSI, OR ASTM A429 MAX. STRENGTH 50 KSI, OR ASTM A572 MAX. STRENGTH 50 KSI, OR ASTM A592 MAX. STRENGTH 50 KSI, OR ASTM A592 MAX. STRENGTH 50 KSI	12 GAUGE

Addendum No. 01
ID 7710-00-70
Added Sheet 11M
March 1, 2023

**CONCRETE BARRIER
TEMPORARY PRECAST,
12' - 6"**
STATE OF WISCONSIN
DEPARTMENT OF TRANSPORTATION

11M

BILL OF MATERIALS - CONCRETE BARRIER PRECAST

PART	DESCRIPTION	MATERIALS SPECIFICATIONS	NOTES
T1	CAP 56-INCH TOP PLATE	ASHTO M117 / ASTM A153 / ASTM A95 MIN. STRENGTH 36 KSI OR ASTM A529 MAX. STRENGTH 50 KSI OR ASTM A992 MAX. STRENGTH 50 KSI	12 GAUGE
T2	CAP 56-INCH END PLATE	ASHTO M117 / ASTM A153 / ASTM A95 MIN. STRENGTH 36 KSI OR ASTM A529 MAX. STRENGTH 50 KSI OR ASTM A992 MAX. STRENGTH 50 KSI	12 GAUGE
T3	CAP 56-INCH SIDE PLATE 1	ASHTO M117 / ASTM A153 / ASTM A95 MIN. STRENGTH 36 KSI OR ASTM A529 MAX. STRENGTH 50 KSI OR ASTM A992 MAX. STRENGTH 50 KSI	12 GAUGE
T4	CAP 56-INCH SIDE PLATE 2	ASHTO M117 / ASTM A153 / ASTM A95 MIN. STRENGTH 36 KSI OR ASTM A529 MAX. STRENGTH 50 KSI OR ASTM A992 MAX. STRENGTH 50 KSI	12 GAUGE
T5	CAP 56-INCH GUSSET 1	ASHTO M117 / ASTM A153 / ASTM A95 MIN. STRENGTH 36 KSI OR ASTM A529 MAX. STRENGTH 50 KSI OR ASTM A992 MAX. STRENGTH 50 KSI	12 GAUGE
T6	CAP 56-INCH GUSSET 2	ASHTO M117 / ASTM A153 / ASTM A95 MIN. STRENGTH 36 KSI OR ASTM A529 MAX. STRENGTH 50 KSI OR ASTM A992 MAX. STRENGTH 50 KSI	12 GAUGE
T7	CAP 56-INCH GUSSET 3	ASHTO M117 / ASTM A153 / ASTM A95 MIN. STRENGTH 36 KSI OR ASTM A529 MAX. STRENGTH 50 KSI OR ASTM A992 MAX. STRENGTH 50 KSI	12 GAUGE
T8	CAP 42-INCH GUSSET 4	ASHTO M117 / ASTM A153 / ASTM A95 MIN. STRENGTH 36 KSI OR ASTM A529 MAX. STRENGTH 50 KSI OR ASTM A992 MAX. STRENGTH 50 KSI	12 GAUGE
T9	CAP 42-INCH GUSSET 5	ASHTO M117 / ASTM A153 / ASTM A95 MIN. STRENGTH 36 KSI OR ASTM A529 MAX. STRENGTH 50 KSI OR ASTM A992 MAX. STRENGTH 50 KSI	12 GAUGE
T10	CAP 42-INCH GUSSET 6	ASHTO M117 / ASTM A153 / ASTM A95 MIN. STRENGTH 36 KSI OR ASTM A529 MAX. STRENGTH 50 KSI OR ASTM A992 MAX. STRENGTH 50 KSI	12 GAUGE
T11	CAP 42-INCH GUSSET 7	ASHTO M117 / ASTM A153 / ASTM A95 MIN. STRENGTH 36 KSI OR ASTM A529 MAX. STRENGTH 50 KSI OR ASTM A992 MAX. STRENGTH 50 KSI	12 GAUGE
T12	CAP 42-INCH GUSSET 8	ASHTO M117 / ASTM A153 / ASTM A95 MIN. STRENGTH 36 KSI OR ASTM A529 MAX. STRENGTH 50 KSI OR ASTM A992 MAX. STRENGTH 50 KSI	12 GAUGE
T13	CAP 42-INCH GUSSET 9	ASHTO M117 / ASTM A153 / ASTM A95 MIN. STRENGTH 36 KSI OR ASTM A529 MAX. STRENGTH 50 KSI OR ASTM A992 MAX. STRENGTH 50 KSI	12 GAUGE
T14	CAP 42-INCH GUSSET 10	ASHTO M117 / ASTM A153 / ASTM A95 MIN. STRENGTH 36 KSI OR ASTM A529 MAX. STRENGTH 50 KSI OR ASTM A992 MAX. STRENGTH 50 KSI	12 GAUGE
T15	CAP 42-INCH GUSSET 11	ASHTO M117 / ASTM A153 / ASTM A95 MIN. STRENGTH 36 KSI OR ASTM A529 MAX. STRENGTH 50 KSI OR ASTM A992 MAX. STRENGTH 50 KSI	12 GAUGE
T16	CAP 42-INCH GUSSET 12	ASHTO M117 / ASTM A153 / ASTM A95 MIN. STRENGTH 36 KSI OR ASTM A529 MAX. STRENGTH 50 KSI OR ASTM A992 MAX. STRENGTH 50 KSI	12 GAUGE
U1	GAP STIFFENER	ASHTO M117 / ASTM A153 / ASTM A95 MIN. STRENGTH 36 KSI OR ASTM A529 MAX. STRENGTH 50 KSI OR ASTM A992 MAX. STRENGTH 50 KSI	12 GAUGE
U2	GAP STIFFENER - CONNECTION PLATE 1	ASHTO M117 / ASTM A153 / ASTM A95 MIN. STRENGTH 36 KSI OR ASTM A529 MAX. STRENGTH 50 KSI OR ASTM A992 MAX. STRENGTH 50 KSI	12 GAUGE
U3	GAP STIFFENER - CONNECTOR PLATE 2	ASHTO M117 / ASTM A153 / ASTM A95 MIN. STRENGTH 36 KSI OR ASTM A529 MAX. STRENGTH 50 KSI OR ASTM A992 MAX. STRENGTH 50 KSI	12 GAUGE

PART	DESCRIPTION	MATERIALS SPECIFICATIONS	NOTES
V1	THREE BEAM RAIL TERMINAL MECHANICAL OR ADHESIVE ANCHOR	MINIMUM MECHANICAL OR ADHESIVE ANCHOR STRENGTH REQUIREMENTS ULTIMATE TENSILE LOAD 24.0 KIIPS AND ULTIMATE SHEAR LOAD 21.5 KIIPS. SEE 603.2 AND 603.3.1.2 OF THE WISCONSIN STANDARD SPECIFICATIONS FOR MORE INFORMATION ON ADHESIVE ANCHORS.	3/4" DIA.
V2	GAP STIFFENER - BOLT - NUT	HOT DIP ASHTO M232 CLASS C / ASTM A143 CLASS C / ASTM F2329 C OR MECHANICAL GALVANIZE TO ASHTO M286 CLASS 50 TYPE 1 / ASTM B995 CLASS 50 TYPE 1 UNC OVER HEX HEAD OR ASHTO M189 HEAD / ASTM F125 GRADE A325 TYPE 1 HEAVY HEX HEAD OR SAE J429 GRADE 5 HEAVY HEX HEAD / ASTM A448 TYPE 1 HEAVY HEX HEAD. BOLTS MAY BE FULLY THREADED. PROVIDE ENOUGH THREADING FOR PROPER TIGHTENING OF BOLT.	3/4" DIA.
W1	TOE PLATE	ASHTO M117 / ASTM A153 / ASTM A95 MIN. STRENGTH 36 KSI OR ASTM A529 MAX. STRENGTH 50 KSI OR ASTM A992 MAX. STRENGTH 50 KSI	
X1	TOE PLATE - CONNECTION BOLT	HOT DIP ASHTO M232 CLASS C / ASTM A143 CLASS C / ASTM F2329 C OR MECHANICAL GALVANIZE TO ASHTO M286 CLASS 50 TYPE 1 / ASTM B995 CLASS 50 TYPE 1 HEAVY HEX HEAD OR SAE J429 GRADE 5 HEAVY HEX HEAD / ASTM A448 TYPE 1 HEAVY HEX HEAD. BOLTS MAY BE FULLY THREADED. PROVIDE ENOUGH THREADING FOR PROPER TIGHTENING OF BOLT.	3/4" DIA.
X2	TOE PLATE - CONNECTION BOLT - WASHER	HOT DIP ASHTO M232 CLASS C / ASTM A143 CLASS C / ASTM F2329 C OR MECHANICAL GALVANIZE TO ASHTO M286 CLASS 50 TYPE 2 / ASTM B995 CLASS 50 TYPE 2, F438 TYPE 1 (HARDEN WASHER ONLY)	
X3	TOE PLATE - CONNECTION BOLT - NUT	HOT DIP ASHTO M232 CLASS C / ASTM A143 CLASS C / ASTM F2329 C OR MECHANICAL GALVANIZE TO ASHTO M286 CLASS 55 TYPE 2 / ASTM B995 CLASS 55 UNC OVER TAP NUTS AS SPECIFIED IN ASHTO 281 / ASTM A 593 HEAVY HEX HEAD ASTM A583DH OR SAE J985 GRADE 5	

Addendum No. 01
ID 7710-00-70
Added Sheet 11N
March 1, 2023

**CONCRETE BARRIER
TEMPORARY PRECAST,
12' - 6"**

STATE OF WISCONSIN
DEPARTMENT OF TRANSPORTATION

APPROVED
February 2023
DATE
RST/ Rodrigo Taylor
ROADWAY STRUCTURE DEVELOPMENT
ENGINEER

11N

