



Wisconsin Department of Transportation

April 6, 2023

Division of Transportation Systems Development

Bureau of Project Development
4822 Madison Yards Way, 4th Floor South
Madison, WI 53705

Telephone: (608) 266-1631
Facsimile (FAX): (608) 266-8459

NOTICE TO ALL CONTRACTORS:

**Proposal #04: 2753-08-70, WISC 2023312
V MENOMONEE FALLS CTH VV
Intersection with CTH YY
CTH VV
Waukesha**

Letting of April 11, 2023

This is Addendum No. 01, which provides for the following:

Schedule of Items:

Revised Bid Item Quantities					
Bid Item	Item Description	Unit	Proposal Total Prior to Addendum	Proposal Quantity Change (-)	Proposal Total After Addendum
602.2400	Concrete Safety Island	SF	230	520	750

Plan Sheets:

Revised Plan Sheets	
Plan Sheet	Plan Sheet Title (brief description of changes to sheet)
10	Construction Details (Added Safety Island Detail)
13	Paving Details (Added concrete safety island and concrete sidewalk callouts)
14	Paving Details (Added concrete safety island and concrete sidewalk callouts)
43	Miscellaneous Quantities (Update Concrete Safety Islands quantity)

Schedule of Items

Attached, dated April 6, 2023, are the revised Schedule of Items Page 2.

Plan Sheets

The following 11 x 17-inch sheets are attached and made part of the plans for this proposal:
Revised: 10, 13, 14 and 43.

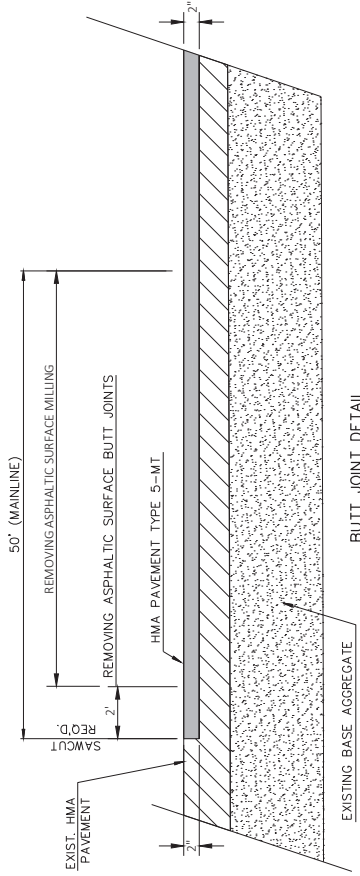
The responsibility for notifying potential subcontractors and suppliers of these changes remains with the prime contractor.

Sincerely,

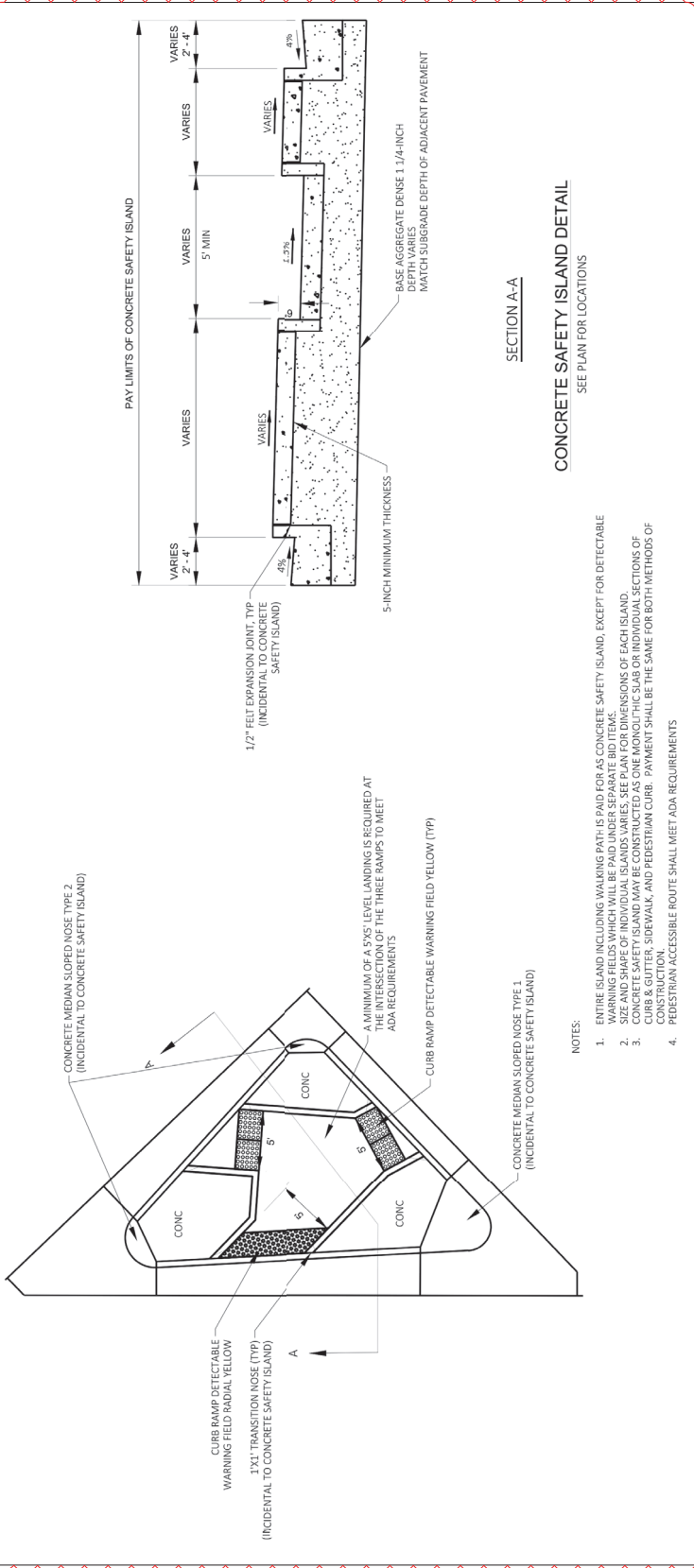
Mike Coleman

Proposal Development Specialist
Proposal Management Section

END OF ADDENDUM



BUTT JOINT DETAIL



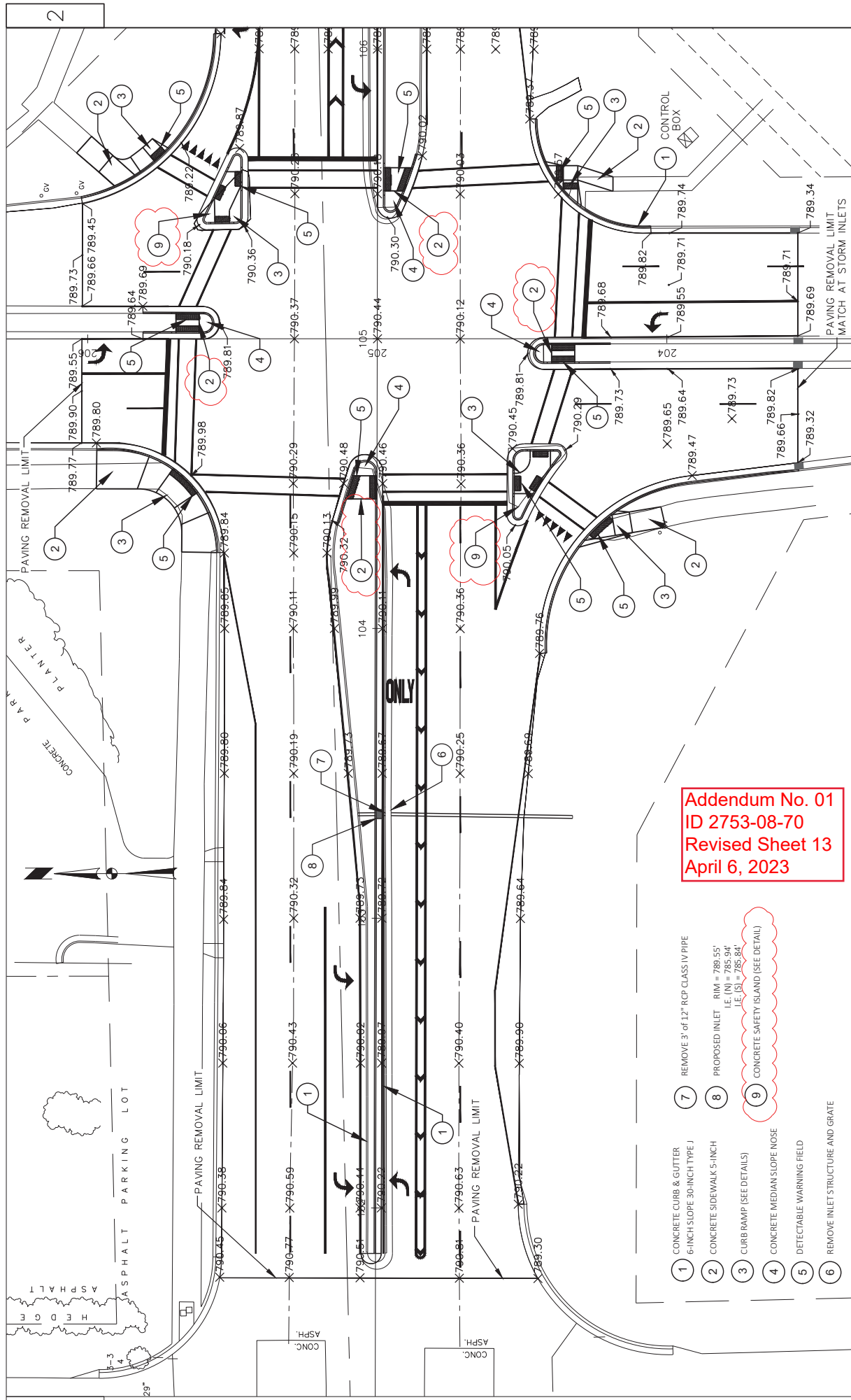
SECTION A-A
CONCRETE SAFETY ISLAND DETAIL

SEE PLAN FOR LOCATIONS

NOTES:

1. ENTIRE ISLAND INCLUDING WALKING PATH IS PAID FOR AS CONCRETE SAFETY ISLAND, EXCEPT FOR DETECTABLE WARNING FIELDS WHICH WILL BE PAID UNDER SEPARATE BID ITEMS.
2. SIZE AND SHAPE OF INDIVIDUAL ISLANDS VARIES; SEE PLAN FOR DIMENSIONS OF EACH ISLAND.
3. CONCRETE SAFETY ISLAND MAY BE CONSTRUCTED AS ONE MONOLITHIC SLAB OR INDIVIDUAL SECTIONS OF CURB, CURB, SIDEWALK, AND PEDESTRIAN CURB. PAYMENT SHALL BE THE SAME FOR BOTH METHODS OF CONSTRUCTION.
4. PEDESTRIAN ACCESSIBLE ROUTE SHALL MEET ADA REQUIREMENTS

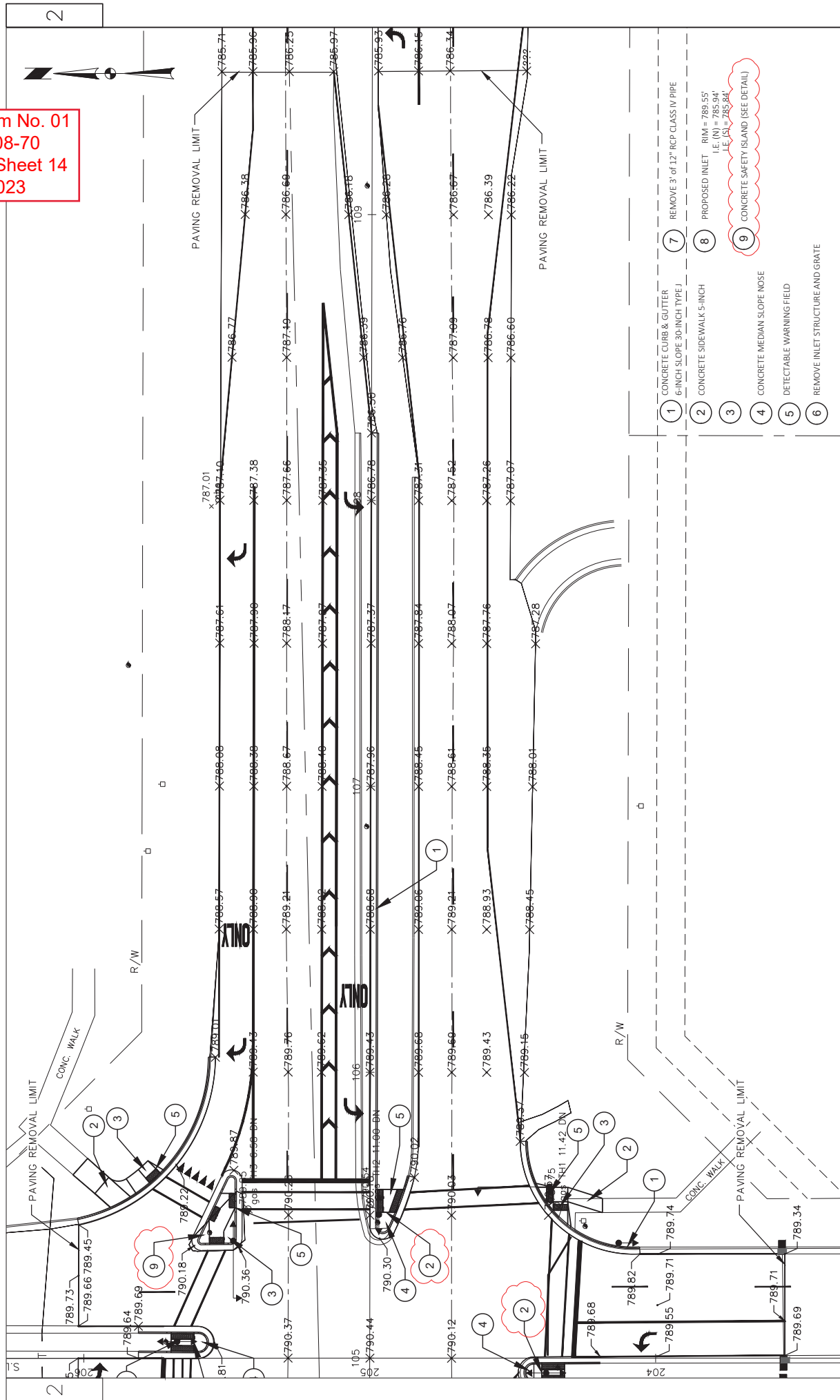
Addendum No. 01
 ID 2753-08-70
 Revised Sheet 10
 April 6, 2023



Addendum No. 01
 ID 2753-08-70
 Revised Sheet 13
 April 6, 2023

- ① CONCRETE CURB & GUTTER 6-INCH SLOPE 30-INCH TYPE J
- ② CONCRETE SIDEWALK 5-INCH CURB RAMP (SEE DETAILS)
- ③ CONCRETE MEDIAN SLOPE NOSE
- ④ DETECTABLE WARNING FIELD
- ⑤ REMOVE INLET STRUCTURE AND GRATE
- ⑥ REMOVE 3 OF 12" RCP CLASS IV PIPE
- ⑦ PROPOSED INLET RIM = 789.55' I.E. (N) = 785.94' I.E. (S) = 785.84'
- ⑧ CONCRETE SAFETY ISLAND (SEE DETAIL)

Addendum No. 01
 ID 2753-08-70
 Revised Sheet 14
 April 6, 2023



PROJECT NO: 2753-08-70	COUNTY: WAUKESHA	PAVING DETAILS	SHEET 14	E
------------------------	------------------	----------------	----------	---

FILE NAME : N:\DPW\ENGINEER\PROJECTS\VV AT YY INTERSECTION_HSP1_2753-08-00\ACAD\SHEET\PLAN\021201-PD.DWG PLOT DATE : 4/4/2023 10:22 AM PLOT BY : NATHAN BETH PLOT SCALE : 1"=30'

BASE AGGREGATE DENSE			
305.0110	305.0120	624.0100	
BASE AGGREGATE DENSE 3/4-INCH	BASE AGGREGATE DENSE 1 1/4-INCH	WATER	
TON	TON	M GAL	
30	530	5	
5	20	0	
LOCATION		PROJECT	
UNDISTRIBUTED		TOTAL	
		35	550
		5	0
		5	

SAWING	
690.0150	
SAWING ASPHALT	
LF	
1,300	
LOCATION	
PROJECT	
TOTAL	
	1,300

EXCAVATION	
205.0100	205.0501 S
EXCAVATION, HAULING AND DISPOSAL OF PETROLEUM CONTAMINATED SOIL	
COMMON	TON
C Y	20
LOCATION	
PROJECT	
TOTAL	
400	20

MOBILIZATION	
619.1000	
EACH	
1	
LOCATION	
PROJECT	
TOTAL	
	1

CONSTRUCTION STAKING			
650.6501	650.8501	650.9000	650.9911
CURB GUTTER and CURB & GUTTER	ELECTRICAL INSTALLATIONS	CURB RAMPS	SUPPLEMENTAL CONTROL
LF	EACH	EACH	EACH
1160	1	19	1
LOCATION		PROJECT	
TOTAL		TOTAL	
		1	1
		19	1

EROSION CONTROL							
625.0100	628.1504	628.1520	628.1910	628.7015	628.7555	630.0200	SPV.0180.01
TOPSOIL SY	SILT FENCE LF	SILT FENCE MAINTENANCE LF	EROSION CONTROL EACH	MOBILIZATIONS	PROTECTION TYPE C EACH	CULVERT PIPE SEEDING TEMPORARY HYDROSEED SY	
600	300	300	1	628.1905	10	15	600
--	75	75	--	EROSION CONTROL EACH	2	--	--
LOCATION		PROJECT		TOTAL		TOTAL	
UNDISTRIBUTED							
				1		600	
				2		--	
				10		15	
				7		15	

STORM SEWER			
611.0660	611.1253	611.3225	
INLET COVER TYPE VM	CATCH BASINS	INLETS	
EACH	2.5 x 3-FT	2x2.5-FT	
1	1	1	
LOCATION		PROJECT	
STA103+36		TOTAL	
		1	1

CONCRETE CURB & GUTTER	
601.0415	CONCRETE CURB & GUTTER
6-INCH SLOPED	30-INCH TYPE J
LF	1160
LOCATION	
PROJECT	
TOTAL	
	1,160

REMOVALS							
204.0110	204.0115	204.0120	204.0150	204.0155	204.0215	204.0245	
REMOVING ASPHALTIC SURFACE	REMOVING ASPHALTIC JOINTS	REMOVING ASPHALTIC SURFACE MILLING	REMOVING CURB & GUTTER	REMOVING CONCRETE SIDEWALK	REMOVING CATCH BASIN	REMOVING STORM SEWER	
SY	SY	SY	LF	SY	EACH	LF	
20	--	9500	1160	90	--	--	
--	25	--	--	--	1	3	
--	--	--	--	--	--	--	
--	47	--	--	--	--	--	
--	12	--	--	--	--	--	
--	13	--	--	--	--	--	
LOCATION		PROJECT		TOTAL		TOTAL	
STA101+75		STA103+36		STA104+26		STA105+76	
STA104+26		STA140+57 TO 105+46		STA109+50			
						3	

SIDEWALK			
602.0410	602.0505	602.0605	620.0300
CONCRETE SIDEWALK 5-INCH SF	CURB RAMP DETECTABLE WARNING FIELD YELLOW	CONCRETE SIDEWALK 5-INCH SF	CONCRETE MEDIAN SLOPED NOSE SF
1560	192	70	100
1,560	192	70	100
LOCATION		PROJECT	
TOTAL		TOTAL	
		100	

Addendum No. 01
ID 2753-08-70
Revised Sheet 43
April 6, 2023

FIELD OFFICE - TYPE C	
642.5201	
EACH	
1	
LOCATION	
PROJECT	
TOTAL	
	1

ASPHALT					
213.0100	390.0203	455.0605	460.6223	460.6225	
FINISHING ROADWAY	PATCHING ASPHALTIC	TACK COAT	HMA PAVEMENT		
EACH	SY	GAL	TON	TON	
1	1030	675	--	1100	
--	--	--	23	--	
--	--	--	37	--	
--	--	--	9	--	
--	--	--	41	--	
LOCATION		PROJECT		TOTAL	
STA101+75 TO 104+46		STA105+60 TO 108+24		STA108+24 TO 109+50	
UNDISTRIBUTED				1,100	



Proposal Schedule of Items

Proposal ID: 20230411004 Project(s): 2753-08-70

Federal ID(s): WISC 2023312

SECTION: 0001 Contract Items

Alt Set ID: Alt Mbr ID:

Proposal Line Number	Item ID Description	Approximate Quantity and Units	Unit Price	Bid Amount
0032	390.0203 Base Patching Asphaltic	1,030.000 SY	_____.	_____.
0034	455.0605 Tack Coat	675.000 GAL	_____.	_____.
0036	460.2000 Incentive Density HMA Pavement	780.000 DOL	1.00000	780.00
0038	460.6223 HMA Pavement 3 MT 58-28 S	110.000 TON	_____.	_____.
0040	460.6225 HMA Pavement 5 MT 58-28 S	1,100.000 TON	_____.	_____.
0042	601.0415 Concrete Curb & Gutter 6-Inch Sloped 30-Inch Type J	1,160.000 LF	_____.	_____.
0044	602.0410 Concrete Sidewalk 5-Inch	1,560.000 SF	_____.	_____.
0046	602.0505 Curb Ramp Detectable Warning Field Yellow	192.000 SF	_____.	_____.
0048	602.0605 Curb Ramp Detectable Warning Field Radial Yellow	70.000 SF	_____.	_____.
0050	602.2400 Concrete Safety Islands	750.000 SF	_____.	_____.
0052	611.0660 Inlet Covers Type WM	1.000 EACH	_____.	_____.
0054	611.1253 Catch Basins 2.5x3-FT	1.000 EACH	_____.	_____.
0056	611.3225 Inlets 2x2.5-FT	1.000 EACH	_____.	_____.
0058	619.1000 Mobilization	1.000 EACH	_____.	_____.
0060	620.0300 Concrete Median Sloped Nose	100.000 SF	_____.	_____.
0062	624.0100 Water	5.000 MGAL	_____.	_____.

